

Data Path : Z:\voasrv\HPCHEM1\MSVOA\_X\Data\VX101325\  
 Data File : VX048137.D  
 Acq On : 13 Oct 2025 13:27  
 Operator : JC/MD  
 Sample : Q3311-13  
 Misc : 5.0mL/MSVOA\_X/WATER  
 ALS Vial : 13 Sample Multiplier: 1

Instrument :  
 MSVOA\_X  
 ClientSampleId :  
 MW-215D

Integration Parameters: RTEINT.P

Integrator: RTE  
 Smoothing : ON Filtering: 5  
 Sampling : 1 Min Area: 3 % of largest Peak  
 Start Thrs: 0.2 Max Peaks: 100  
 Stop Thrs : 0 Peak Location: TOP

If leading or trailing edge < 100 prefer < Baseline drop else tangent >  
 Peak separation: 5

Method : Z:\voasrv\HPCHEM1\MSVOA\_X\Method\82X091625W.M  
 Title : SW846 8260

Signal : TIC: VX048137.D\data.ms

peak #	R.T. min	first scan	max scan	last scan	PK TY	peak height	corr. area	corr. % max.	% of total
1	5.379	691	704	720	rBV	96406	308352	10.92%	3.931%
2	5.544	720	731	749	rVB	129701	405908	14.37%	5.175%
3	5.940	786	796	815	rBV	105466	310542	10.99%	3.959%
4	6.751	919	929	947	rBV	250292	661825	23.43%	8.438%
5	8.635	1231	1238	1256	rBV	527861	857147	30.34%	10.928%
6	9.257	1333	1340	1367	rVB2	1863628	2824977	100.00%	36.015%
7	10.037	1462	1468	1484	rBV	633800	908361	32.15%	11.581%
8	11.067	1631	1637	1648	rBV	474566	664190	23.51%	8.468%
9	12.006	1785	1791	1806	rBV	667715	902516	31.95%	11.506%

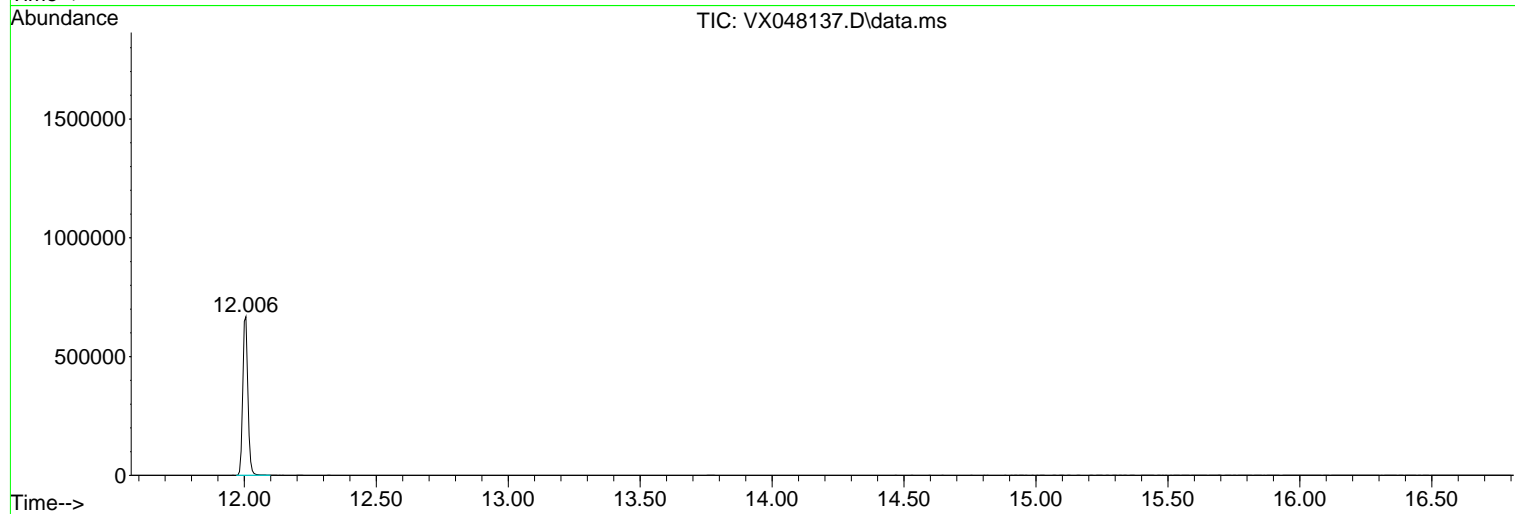
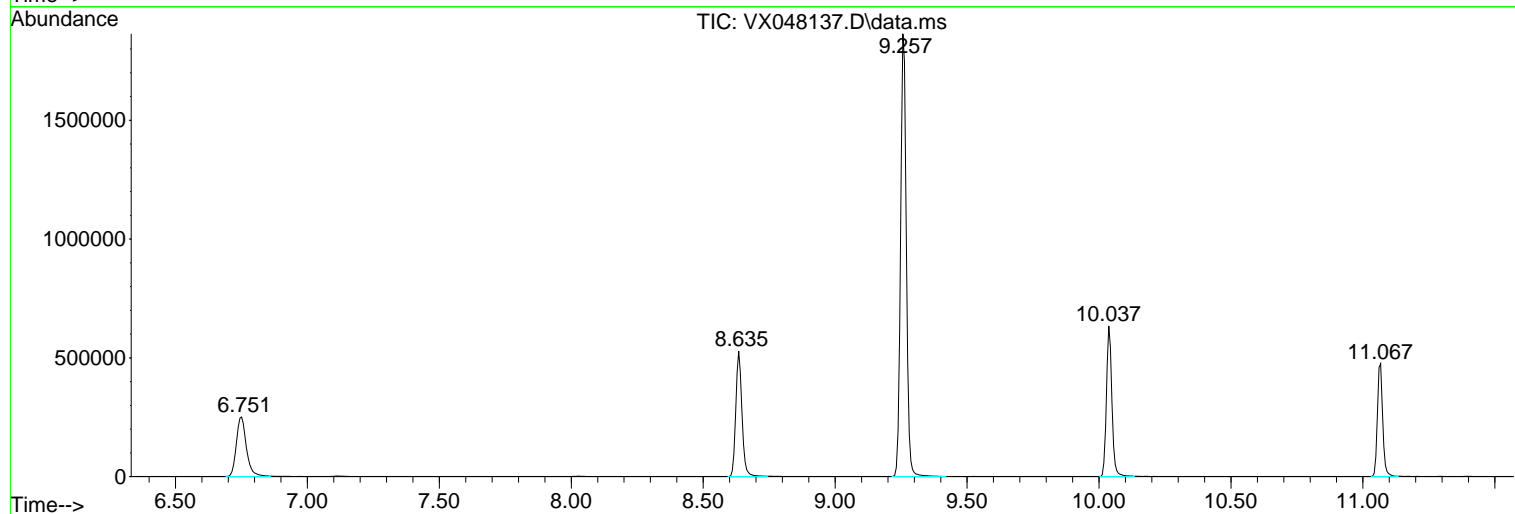
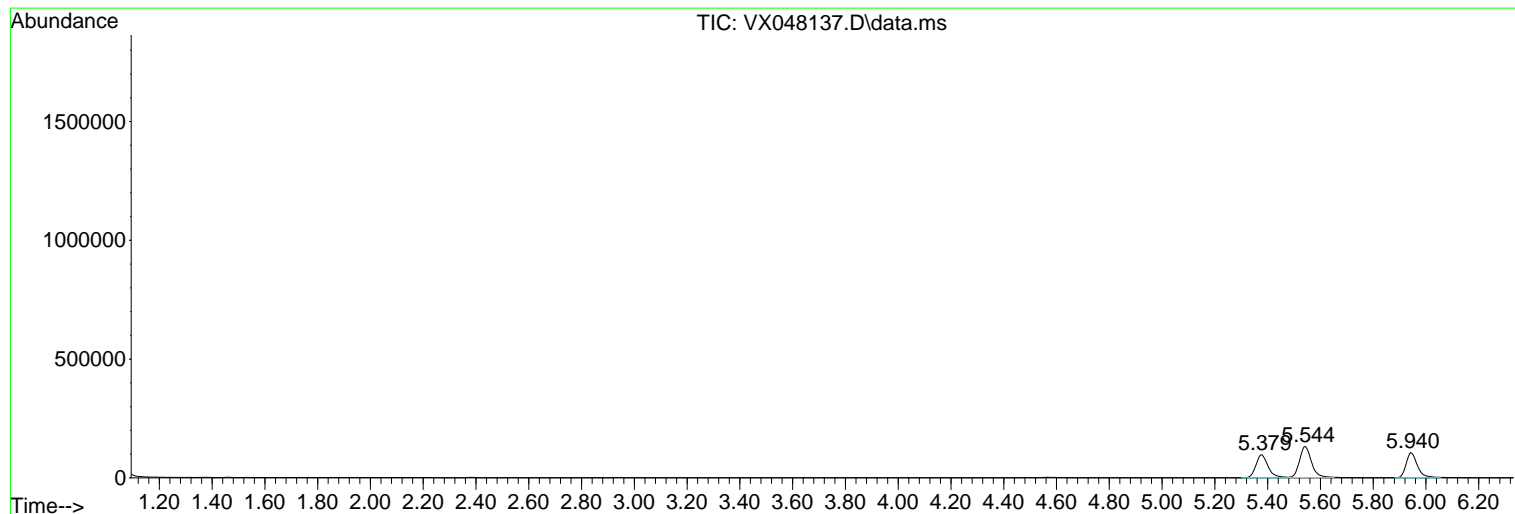
Sum of corrected areas: 7843818

Data Path : Z:\voasrv\HPCHEM1\MSVOA\_X\Data\VX101325\  
 Data File : VX048137.D  
 Acq On : 13 Oct 2025 13:27  
 Operator : JC/MD  
 Sample : Q3311-13  
 Misc : 5.0mL/MSVOA\_X/WATER  
 ALS Vial : 13 Sample Multiplier: 1

Instrument :  
 MSVOA\_X  
 ClientSampleId :  
 MW-215D

Quant Method : Z:\voasrv\HPCHEM1\MSVOA\_X\Method\82X091625W.M  
 Quant Title : SW846 8260

TIC Library : C:\Database\NIST20.L  
 TIC Integration Parameters: LSCINT.P



Library Search Compound Report

Data Path : Z:\voasrv\HPCHEM1\MSVOA\_X\Data\VX101325\  
Data File : VX048137.D  
Acq On : 13 Oct 2025 13:27  
Operator : JC/MD  
Sample : Q3311-13  
Misc : 5.0mL/MSVOA\_X/WATER  
ALS Vial : 13 Sample Multiplier: 1

Instrument :  
MSVOA\_X  
ClientSampleId :  
MW-215D

Quant Method : Z:\voasrv\HPCHEM1\MSVOA\_X\Method\82X091625W.M  
Quant Title : SW846 8260

TIC Library : C:\Database\NIST20.L  
TIC Integration Parameters: LSCINT.P

No Library Search Compounds Detected

\*\*\*\*\*

Data Path : Z:\voasrv\HPCHEM1\MSVOA\_X\Data\VX101325\  
Data File : VX048137.D  
Acq On : 13 Oct 2025 13:27  
Operator : JC/MD  
Sample : Q3311-13  
Misc : 5.0mL/MSVOA\_X/WATER  
ALS Vial : 13 Sample Multiplier: 1

Instrument :  
MSVOA\_X  
ClientSampleId :  
MW-215D

Quant Method : Z:\voasrv\HPCHEM1\MSVOA\_X\Method\82X091625W.M  
Quant Title : SW846 8260

TIC Library : C:\Database\NIST20.L  
TIC Integration Parameters: LSCINT.P

TIC Top Hit name	RT	EstConc	Units	Response	--Internal Standard--		
					#	RT	Resp Conc

---