

Data Path : Z:\voasrv\HPCHEM1\MSVOA\_X\Data\VX101425\  
 Data File : VX048168.D  
 Acq On : 14 Oct 2025 15:54  
 Operator : JC/MD  
 Sample : Q3276-01  
 Misc : 6.06g/5mL/100uL/5.00mL/MSVOA\_X/MEOH  
 ALS Vial : 18 Sample Multiplier: 1

Instrument :  
 MSVOA\_X  
 ClientSampleId :  
 SB2

Quant Time: Oct 15 02:47:51 2025  
 Quant Method : Z:\voasrv\HPCHEM1\MSVOA\_X\Method\82X091625W.M  
 Quant Title : SW846 8260  
 QLast Update : Wed Sep 17 06:39:58 2025  
 Response via : Initial Calibration

Compound	R.T.	QIon	Response	Conc	Units	Dev(Min)
Internal Standards						
1) Pentafluorobenzene	5.538	168	130580	50.000	ug/l	0.00
34) 1,4-Difluorobenzene	6.745	114	267000	50.000	ug/l	0.00
63) Chlorobenzene-d5	10.037	117	286249	50.000	ug/l	0.00
72) 1,4-Dichlorobenzene-d4	12.006	152	154440	50.000	ug/l	0.00
System Monitoring Compounds						
33) 1,2-Dichloroethane-d4	5.940	65	108914	52.400	ug/l	0.00
Spiked Amount	50.000	Range	78 - 117	Recovery	=	104.800%
35) Dibromofluoromethane	5.373	113	86165	48.119	ug/l	0.00
Spiked Amount	50.000	Range	75 - 124	Recovery	=	96.240%
50) Toluene-d8	8.635	98	302310	48.791	ug/l	0.00
Spiked Amount	50.000	Range	92 - 112	Recovery	=	97.580%
62) 4-Bromofluorobenzene	11.067	95	136218	57.928	ug/l	0.00
Spiked Amount	50.000	Range	83 - 123	Recovery	=	115.860%

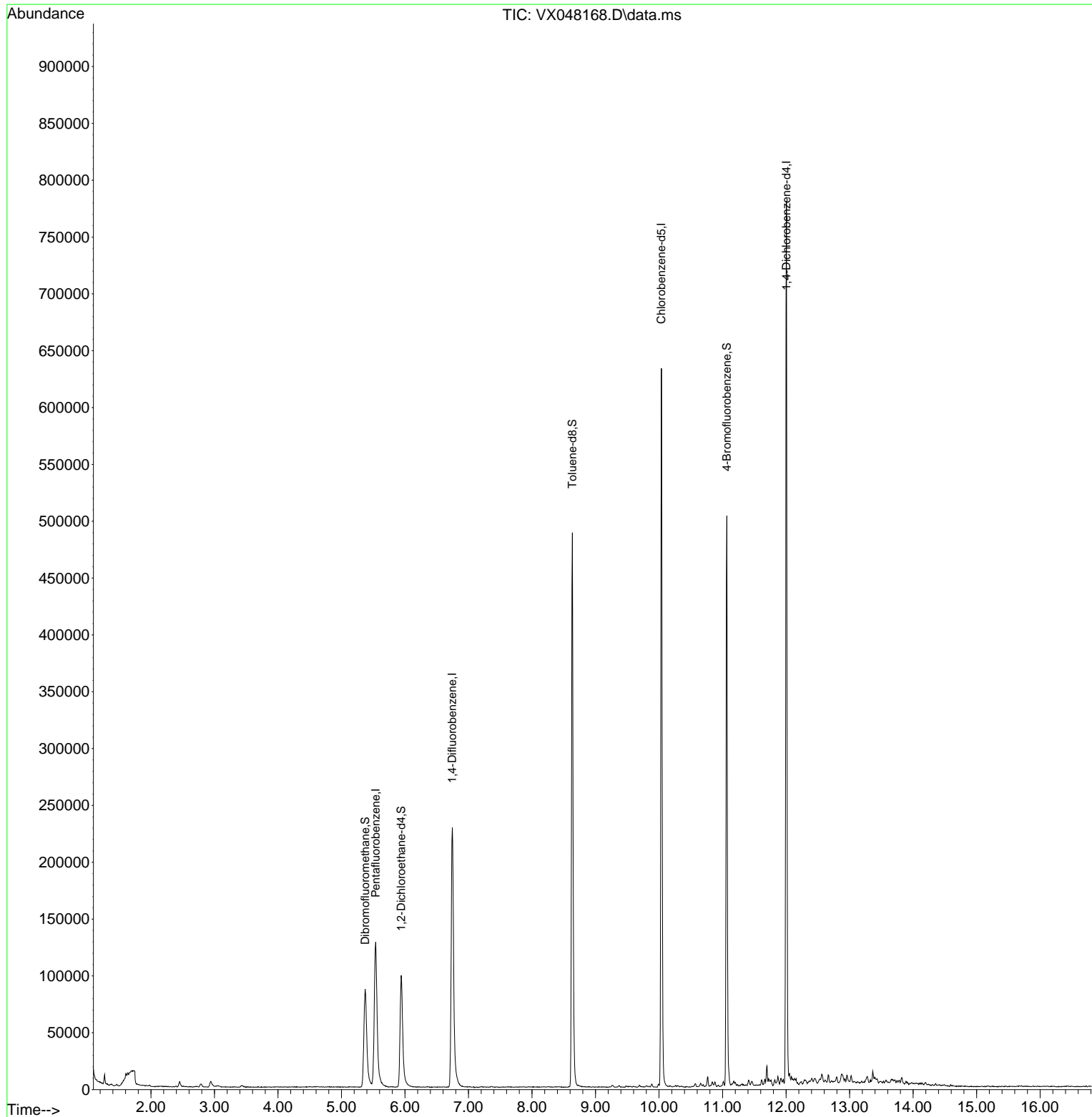
Target Compounds Qvalue

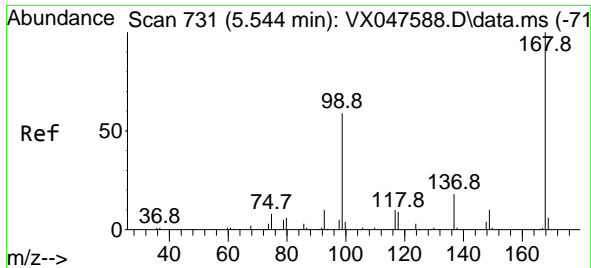
(#) = qualifier out of range (m) = manual integration (+) = signals summed

Data Path : Z:\voasrv\HPCHEM1\MSVOA\_X\Data\VX101425\  
 Data File : VX048168.D  
 Acq On : 14 Oct 2025 15:54  
 Operator : JC/MD  
 Sample : Q3276-01  
 Misc : 6.06g/5mL/100uL/5.00mL/MSVOA\_X/MEOH  
 ALS Vial : 18 Sample Multiplier: 1

Instrument :  
 MSVOA\_X  
 ClientSampleId :  
 SB2

Quant Time: Oct 15 02:47:51 2025  
 Quant Method : Z:\voasrv\HPCHEM1\MSVOA\_X\Method\82X091625W.M  
 Quant Title : SW846 8260  
 QLast Update : Wed Sep 17 06:39:58 2025  
 Response via : Initial Calibration

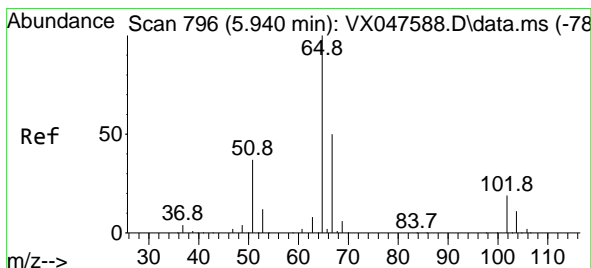
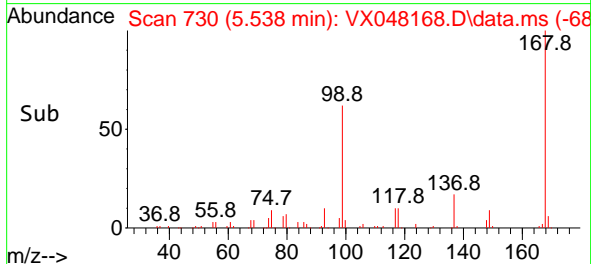
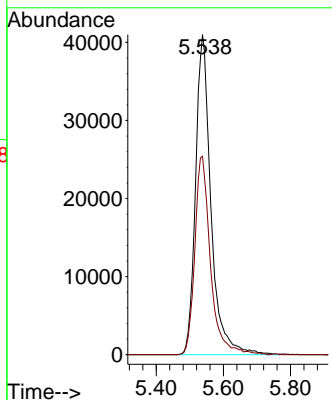
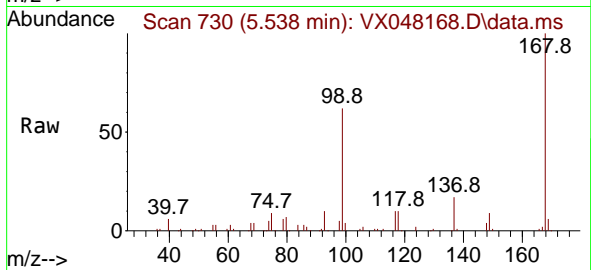




#1  
 Pentafluorobenzene  
 Concen: 50.000 ug/l  
 RT: 5.538 min Scan# 730  
 Delta R.T. -0.006 min  
 Lab File: VX048168.D  
 Acq: 14 Oct 2025 15:54

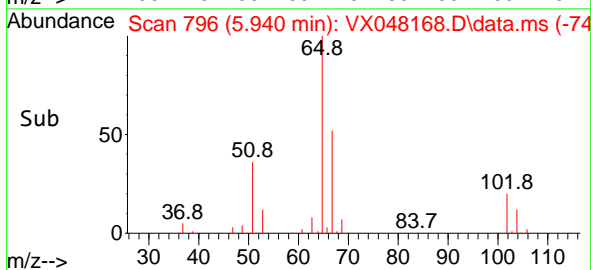
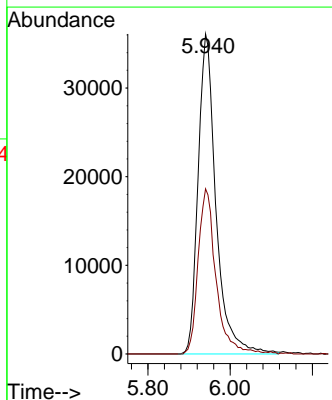
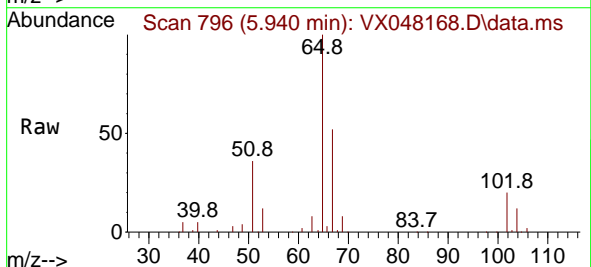
Instrument : MSVOA\_X  
 ClientSampleId : SB2

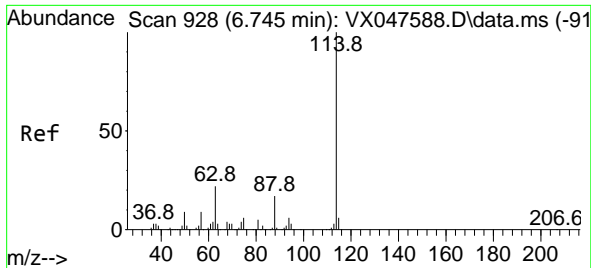
Tgt Ion:168 Resp: 130580  
 Ion Ratio Lower Upper  
 168 100  
 99 62.0 48.8 73.2



#33  
 1,2-Dichloroethane-d4  
 Concen: 52.400 ug/l  
 RT: 5.940 min Scan# 796  
 Delta R.T. -0.000 min  
 Lab File: VX048168.D  
 Acq: 14 Oct 2025 15:54

Tgt Ion: 65 Resp: 108914  
 Ion Ratio Lower Upper  
 65 100  
 67 51.4 0.0 103.0

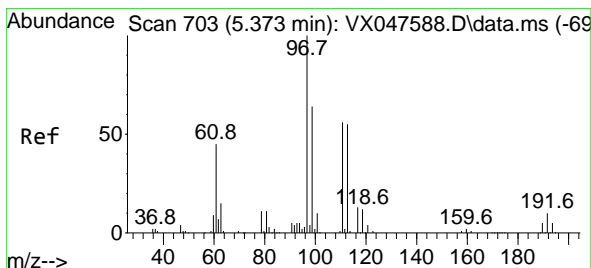
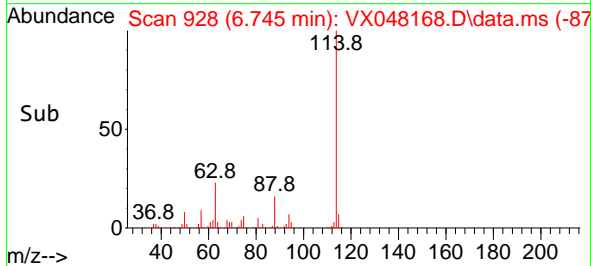
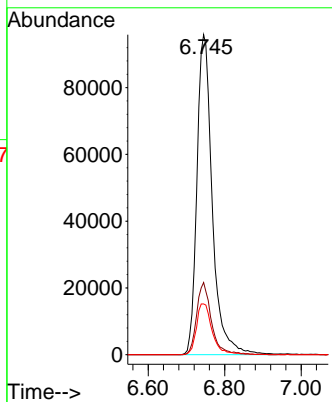
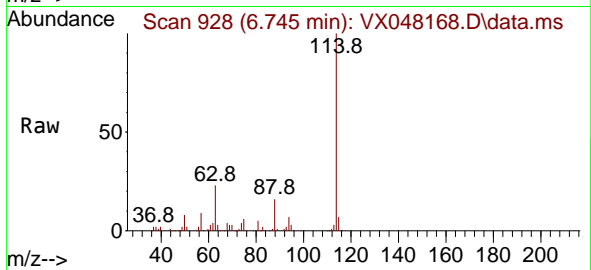




#34  
 1,4-Difluorobenzene  
 Concen: 50.000 ug/l  
 RT: 6.745 min Scan# 91  
 Delta R.T. -0.000 min  
 Lab File: VX048168.D  
 Acq: 14 Oct 2025 15:54

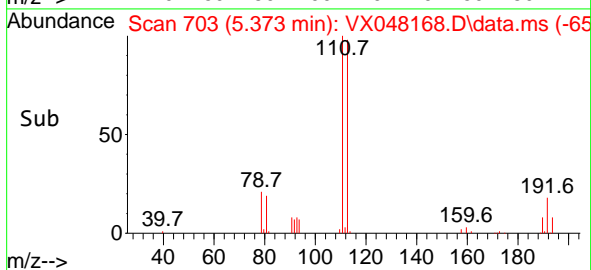
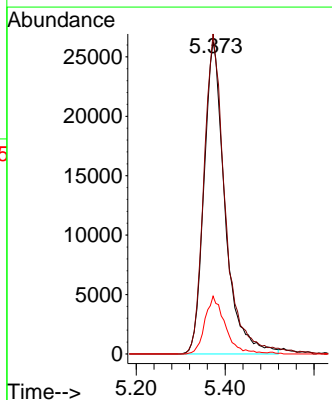
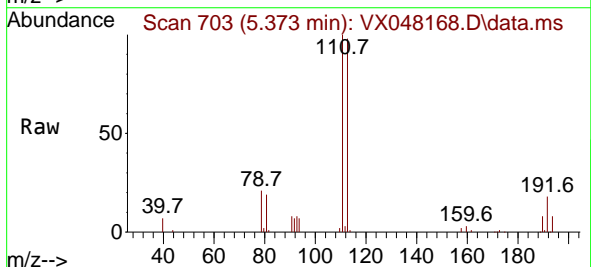
Instrument : MSVOA\_X  
 ClientSampleId : SB2

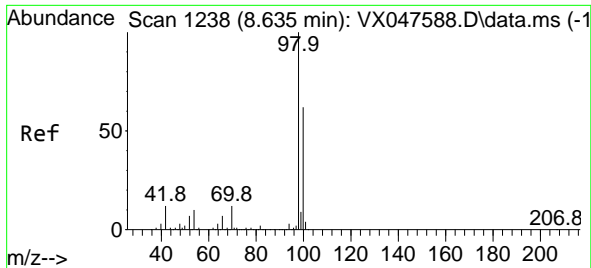
Tgt Ion	Resp	Lower	Upper
114	100		
63	22.5	0.0	44.0
88	15.8	0.0	34.2



#35  
 Dibromofluoromethane  
 Concen: 48.119 ug/l  
 RT: 5.373 min Scan# 703  
 Delta R.T. -0.000 min  
 Lab File: VX048168.D  
 Acq: 14 Oct 2025 15:54

Tgt Ion	Resp	Lower	Upper
113	100		
111	104.4	80.9	121.3
192	17.9	14.2	21.4

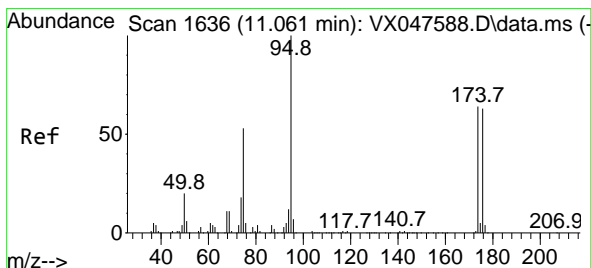
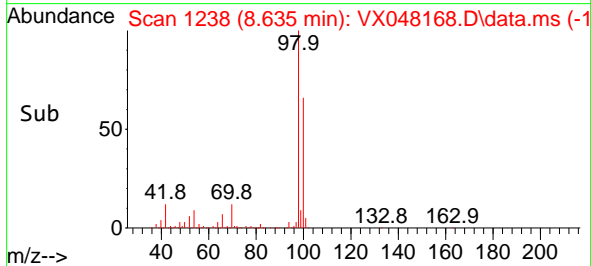
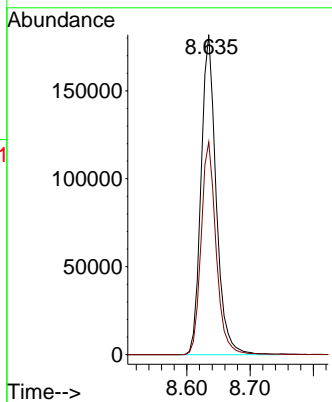
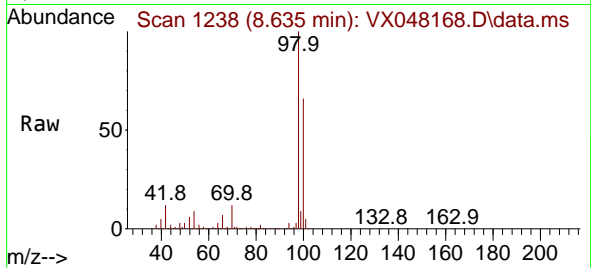




#50  
 Toluene-d8  
 Concen: 48.791 ug/l  
 RT: 8.635 min Scan# 11  
 Delta R.T. -0.000 min  
 Lab File: VX048168.D  
 Acq: 14 Oct 2025 15:54

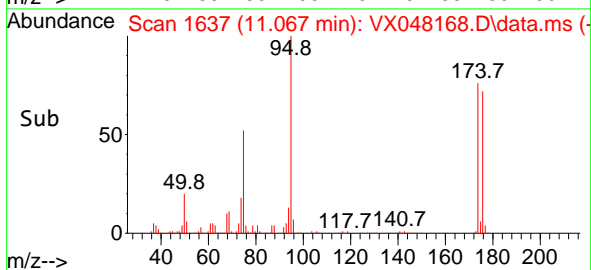
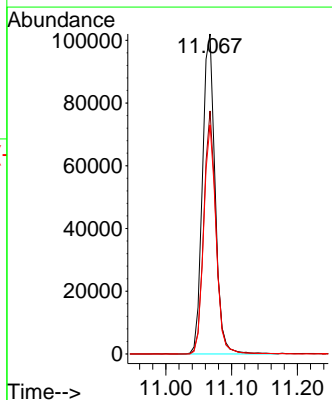
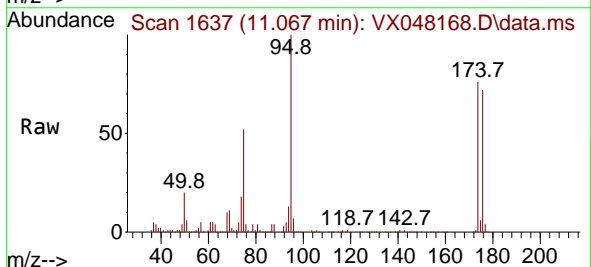
Instrument :  
 MSVOA\_X  
 ClientSampleId :  
 SB2

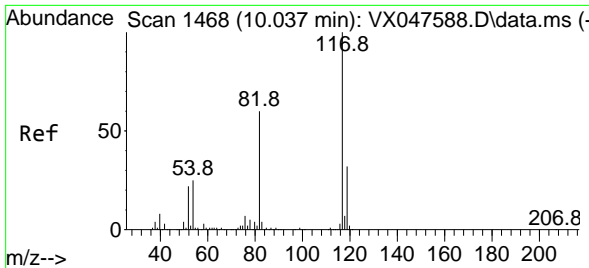
Tgt Ion: 98 Resp: 302310  
 Ion Ratio Lower Upper  
 98 100  
 100 66.1 53.0 79.4



#62  
 4-Bromofluorobenzene  
 Concen: 57.928 ug/l  
 RT: 11.067 min Scan# 1637  
 Delta R.T. 0.006 min  
 Lab File: VX048168.D  
 Acq: 14 Oct 2025 15:54

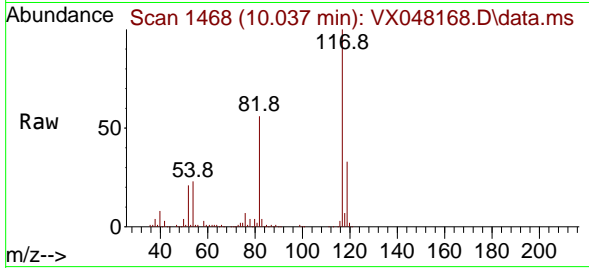
Tgt Ion: 95 Resp: 136218  
 Ion Ratio Lower Upper  
 95 100  
 174 73.4 0.0 141.6  
 176 70.0 0.0 138.4





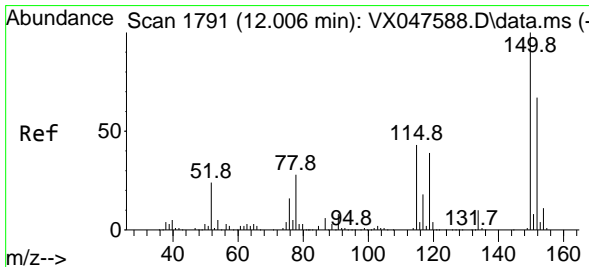
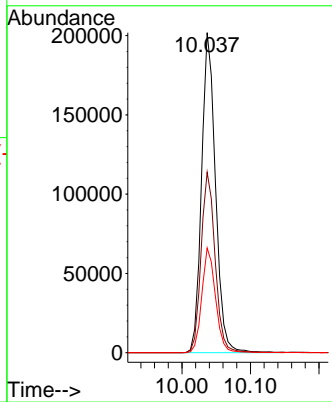
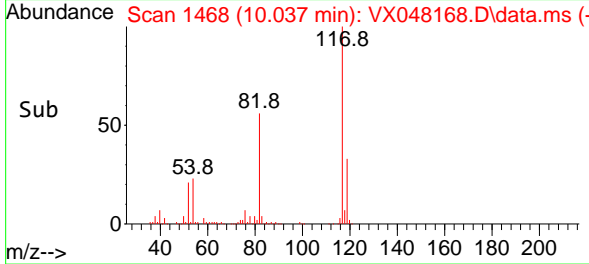
#63  
 Chlorobenzene-d5  
 Concen: 50.000 ug/l  
 RT: 10.037 min Scan# 1468  
 Delta R.T. -0.000 min  
 Lab File: VX048168.D  
 Acq: 14 Oct 2025 15:54

Instrument : MSVOA\_X  
 ClientSampleId : SB2

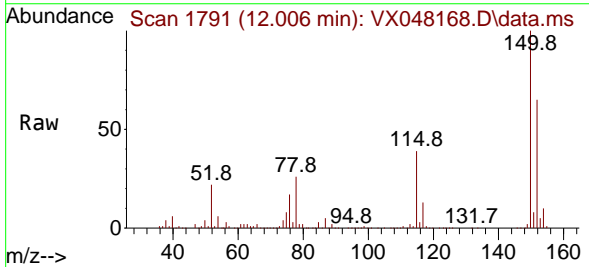


Tgt Ion:117 Resp: 286249

Ion	Ratio	Lower	Upper
117	100		
82	56.4	47.8	71.6
119	32.7	25.2	37.8



#72  
 1,4-Dichlorobenzene-d4  
 Concen: 50.000 ug/l  
 RT: 12.006 min Scan# 1791  
 Delta R.T. -0.000 min  
 Lab File: VX048168.D  
 Acq: 14 Oct 2025 15:54



Tgt Ion:152 Resp: 154440

Ion	Ratio	Lower	Upper
152	100		
115	62.6	44.9	134.5
150	157.4	0.0	352.0

