

Data Path : Z:\voasrv\HPCHEM1\MSVOA\_X\Data\VX101524\  
 Data File : VX043391.D  
 Acq On : 15 Oct 2024 09:31 am  
 Operator : JC/MD  
 Sample : VX1015WBL01  
 Misc : 5.0mL/MSVOA\_X/WATER  
 ALS Vial : 1 Sample Multiplier: 1

Instrument :  
 MSVOA\_X  
 ClientSampleId :

Quant Time: Oct 16 01:49:36 2024  
 Quant Method : Z:\voasrv\HPCHEM1\MSVOA\_X\Method\82X100124W.M  
 Quant Title : SW846 8260  
 QLast Update : Wed Oct 02 16:50:57 2024  
 Response via : Initial Calibration

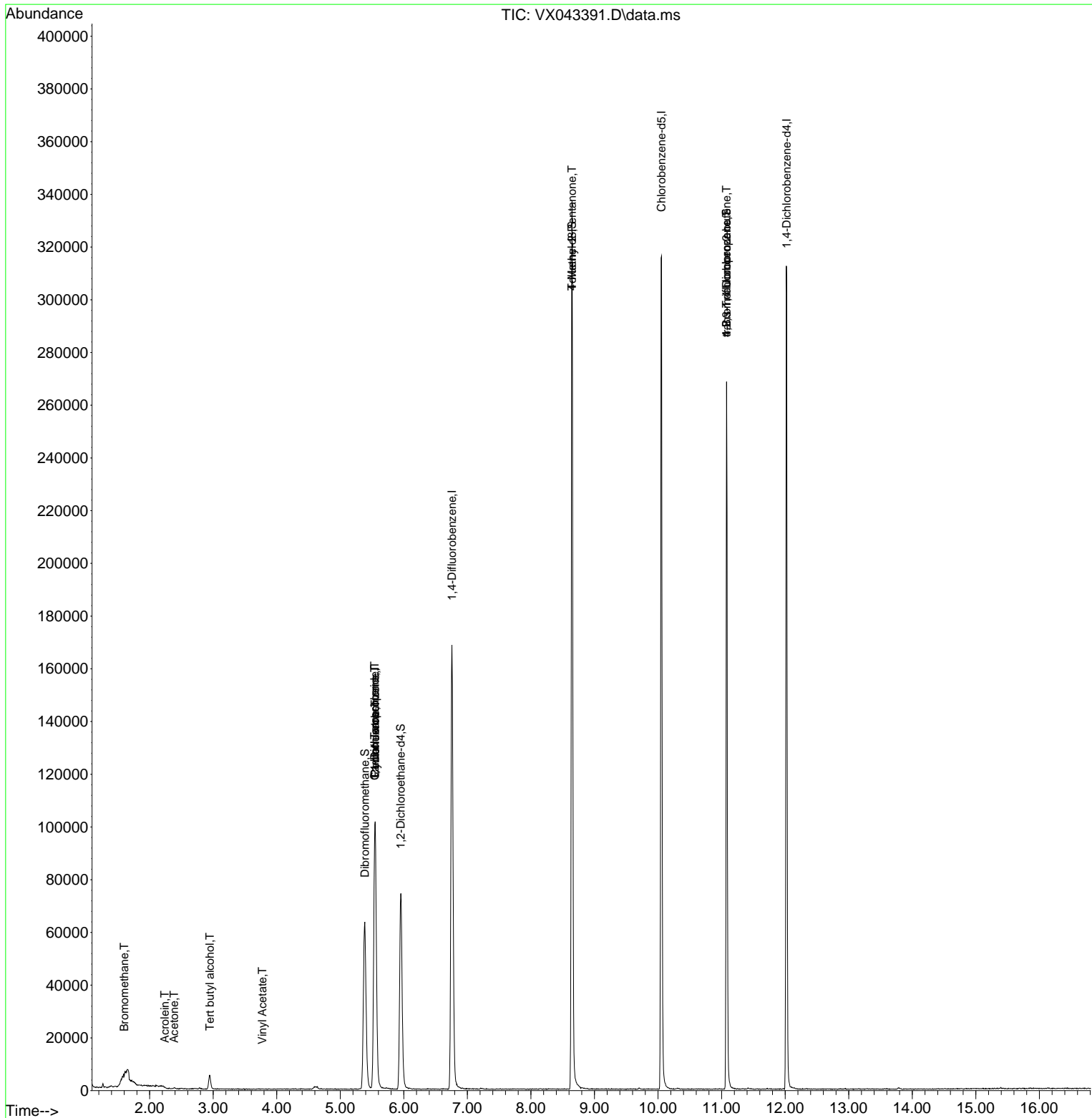
Compound	R.T.	QIon	Response	Conc	Units	Dev(Min)
-----						
Internal Standards						
1) Pentafluorobenzene	5.550	168	94368	50.000	ug/l	0.00
34) 1,4-Difluorobenzene	6.757	114	170879	50.000	ug/l	0.00
63) Chlorobenzene-d5	10.055	117	144567	50.000	ug/l	0.00
72) 1,4-Dichlorobenzene-d4	12.024	152	64756	50.000	ug/l	0.00
System Monitoring Compounds						
33) 1,2-Dichloroethane-d4	5.952	65	77644	50.380	ug/l	0.00
Spiked Amount	50.000	Range 74 - 125	Recovery	=	100.760%	
35) Dibromofluoromethane	5.385	113	56082	47.590	ug/l	0.00
Spiked Amount	50.000	Range 75 - 124	Recovery	=	95.180%	
50) Toluene-d8	8.647	98	202475	49.579	ug/l	0.00
Spiked Amount	50.000	Range 86 - 113	Recovery	=	99.160%	
62) 4-Bromofluorobenzene	11.079	95	72144	48.626	ug/l	0.00
Spiked Amount	50.000	Range 77 - 121	Recovery	=	97.260%	
Target Compounds						
					Qvalue	
5) Bromomethane	1.599	94	129	0.279	ug/l #	62
11) Tert butyl alcohol	2.947	59	2918	9.950	ug/l #	71
13) Acrolein	2.239	56	62	0.224	ug/l #	23
16) Acetone	2.386	43	394	0.612	ug/l #	47
23) Vinyl Acetate	3.776	43	20	6.344	ug/l #	71
31) Cyclohexane	5.550	56	2462	1.480	ug/l #	33
36) 1,1-Dichloropropene	5.544	75	8427	5.660	ug/l #	50
38) Carbon Tetrachloride	5.544	117	10258	5.820	ug/l #	15
51) 4-Methyl-2-Pentanone	8.647	43	1060	0.591	ug/l #	1
76) 1,2,3-Trichloropropane	11.079	75	39933	27.802	ug/l #	33
81) trans-1,4-Dichloro-2-b...	11.079	75	39933	72.052	ug/l #	8
-----						

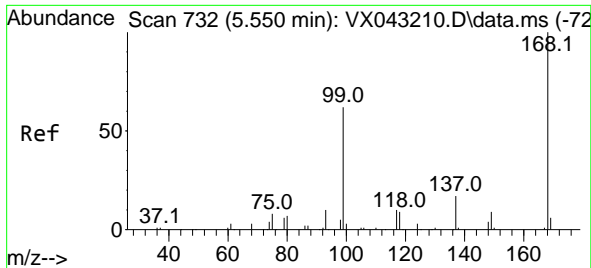
(#) = qualifier out of range (m) = manual integration (+) = signals summed

Data Path : Z:\voasrv\HPCHEM1\MSVOA\_X\Data\VX101524\  
 Data File : VX043391.D  
 Acq On : 15 Oct 2024 09:31 am  
 Operator : JC/MD  
 Sample : VX1015WBL01  
 Misc : 5.0mL/MSVOA\_X/WATER  
 ALS Vial : 1 Sample Multiplier: 1

Instrument :  
 MSVOA\_X  
 ClientSampleId :

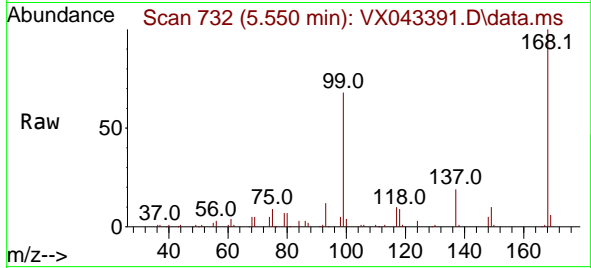
Quant Time: Oct 16 01:49:36 2024  
 Quant Method : Z:\voasrv\HPCHEM1\MSVOA\_X\Method\82X100124W.M  
 Quant Title : SW846 8260  
 QLast Update : Wed Oct 02 16:50:57 2024  
 Response via : Initial Calibration



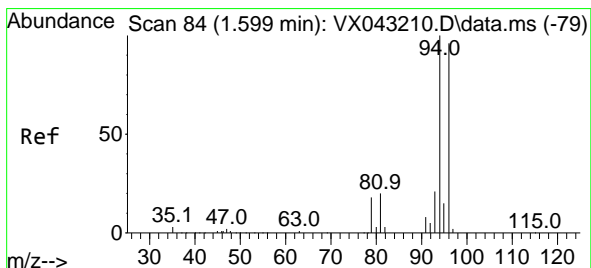
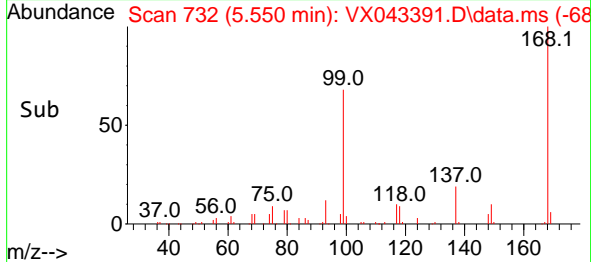
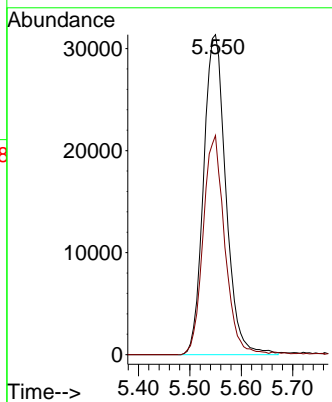


#1  
 Pentafluorobenzene  
 Concen: 50.000 ug/l  
 RT: 5.550 min Scan# 71  
 Delta R.T. -0.000 min  
 Lab File: VX043391.D  
 Acq: 15 Oct 2024 09:31

Instrument :  
 MSVOA\_X  
 ClientSampleId :

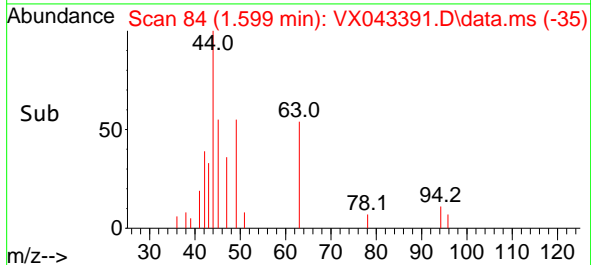
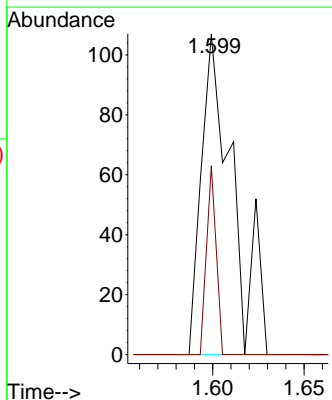
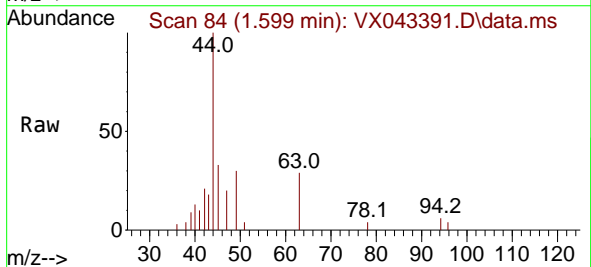


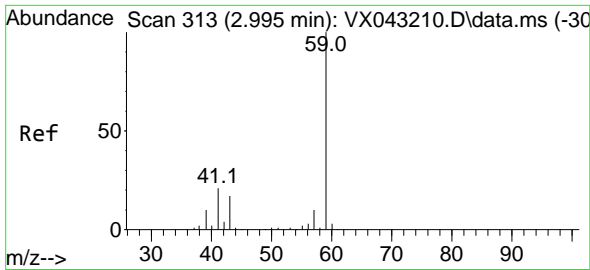
Tgt Ion:168 Resp: 94368  
 Ion Ratio Lower Upper  
 168 100  
 99 68.5 49.7 74.5



#5  
 Bromomethane  
 Concen: 0.279 ug/l  
 RT: 1.599 min Scan# 84  
 Delta R.T. 0.000 min  
 Lab File: VX043391.D  
 Acq: 15 Oct 2024 09:31 am

Tgt Ion: 94 Resp: 129  
 Ion Ratio Lower Upper  
 94 100  
 96 58.9 76.6 115.0#

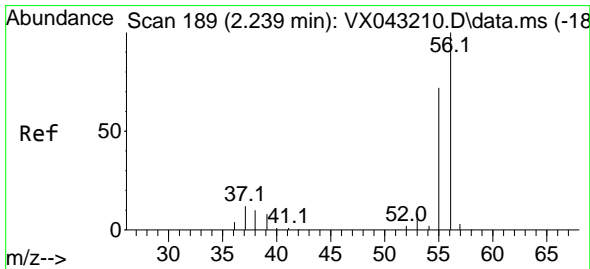
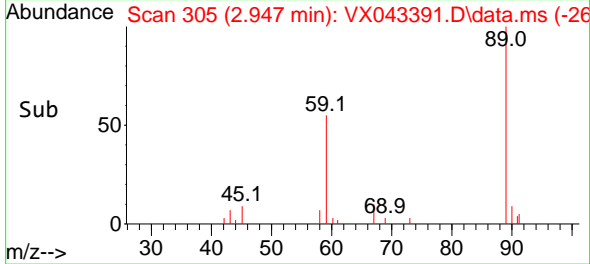
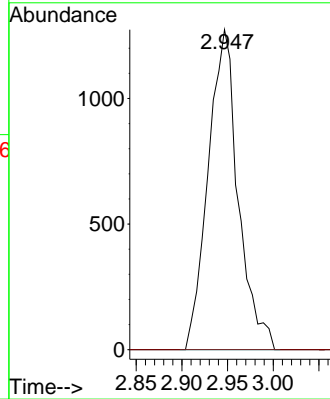
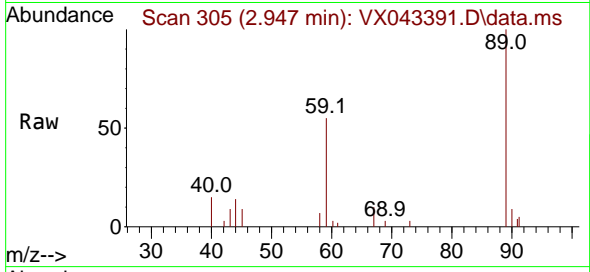




#11  
 Tert butyl alcohol  
 Concen: 9.950 ug/l  
 RT: 2.947 min Scan# 305  
 Delta R.T. -0.049 min  
 Lab File: VX043391.D  
 Acq: 15 Oct 2024 09:31

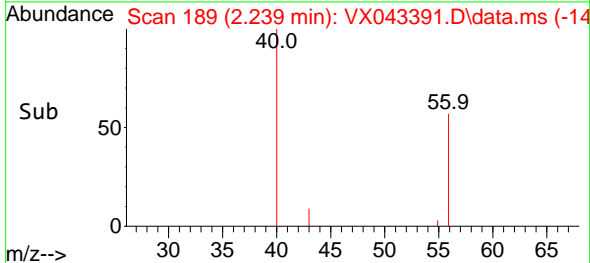
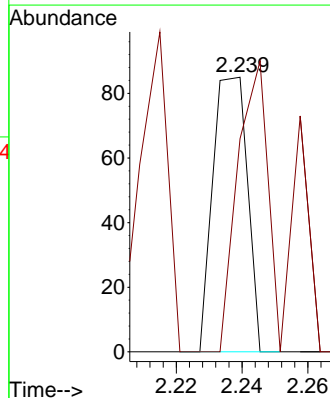
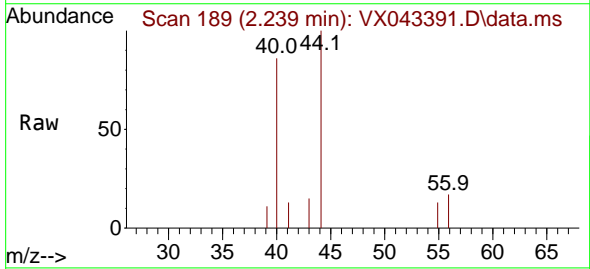
Instrument : MSVOA\_X  
 ClientSampleId :

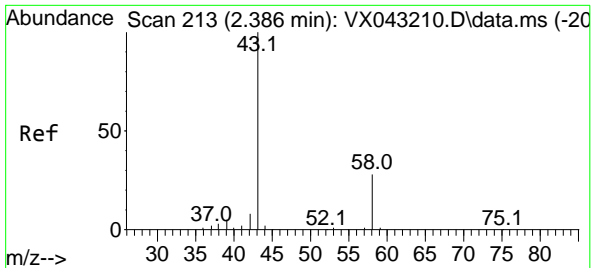
Tgt Ion: 59 Resp: 2918  
 Ion Ratio Lower Upper  
 59 100  
 57 0.0 8.6 13.0#



#13  
 Acrolein  
 Concen: 0.224 ug/l  
 RT: 2.239 min Scan# 189  
 Delta R.T. -0.000 min  
 Lab File: VX043391.D  
 Acq: 15 Oct 2024 09:31 am

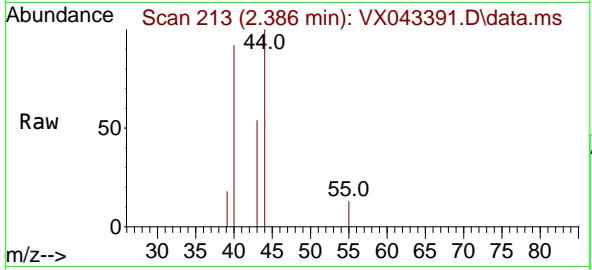
Tgt Ion: 56 Resp: 62  
 Ion Ratio Lower Upper  
 56 100  
 55 135.5 57.4 86.0#



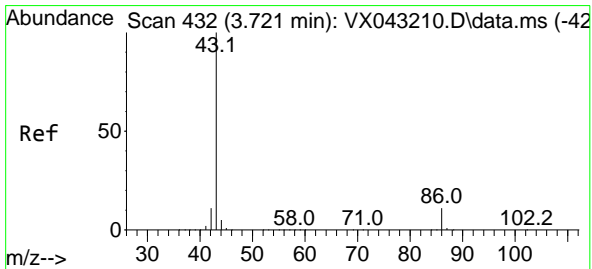
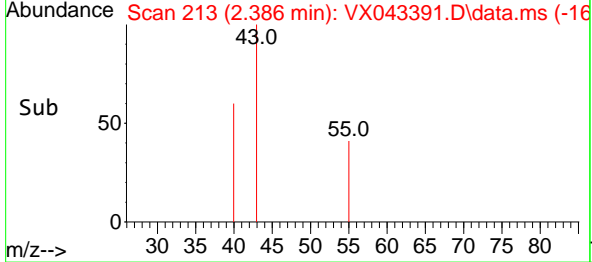
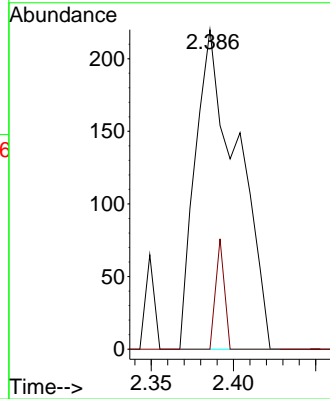


#16  
 Acetone  
 Concen: 0.612 ug/l  
 RT: 2.386 min Scan# 216  
 Delta R.T. -0.000 min  
 Lab File: VX043391.D  
 Acq: 15 Oct 2024 09:31

Instrument :  
 MSVOA\_X  
 ClientSampleId :

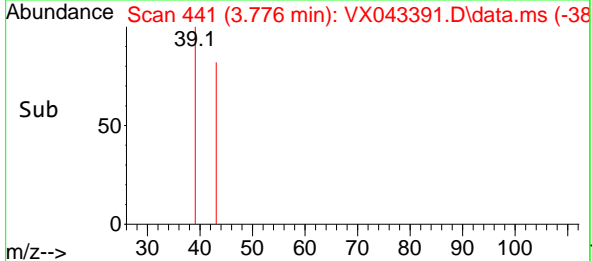
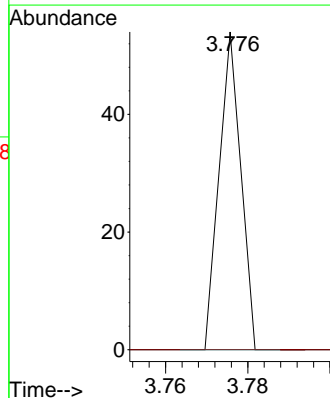
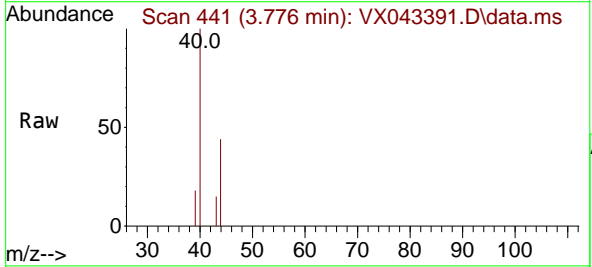


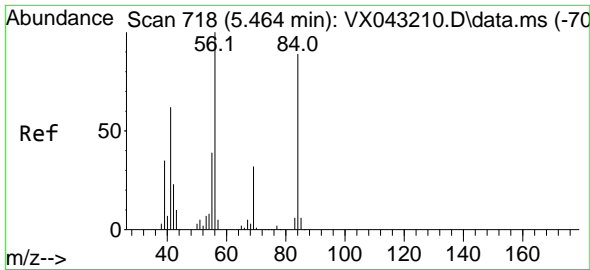
Tgt Ion: 43 Resp: 394  
 Ion Ratio Lower Upper  
 43 100  
 58 0.0 22.6 33.8#



#23  
 Vinyl Acetate  
 Concen: 6.344 ug/l  
 RT: 3.776 min Scan# 441  
 Delta R.T. 0.055 min  
 Lab File: VX043391.D  
 Acq: 15 Oct 2024 09:31 am

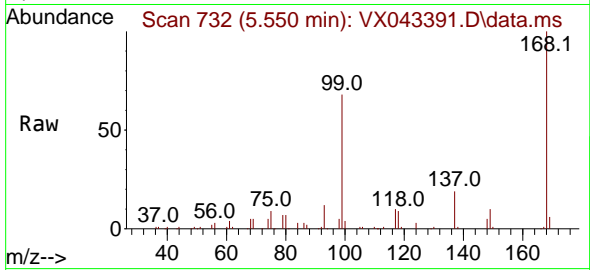
Tgt Ion: 43 Resp: 20  
 Ion Ratio Lower Upper  
 43 100  
 86 0.0 8.8 13.2#



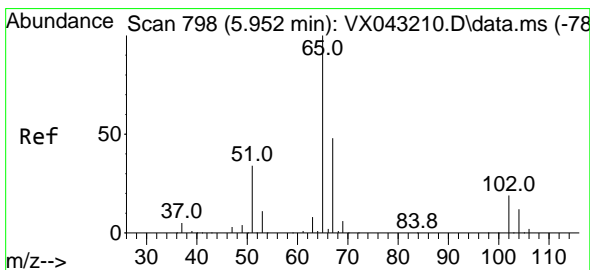
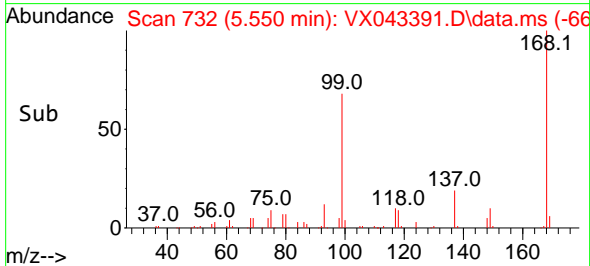
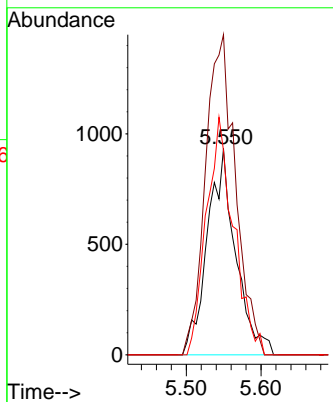


#31  
 Cyclohexane  
 Concen: 1.480 ug/l  
 RT: 5.550 min Scan# 718  
 Delta R.T. 0.085 min  
 Lab File: VX043391.D  
 Acq: 15 Oct 2024 09:31

Instrument :  
 MSVOA\_X  
 ClientSampleId :

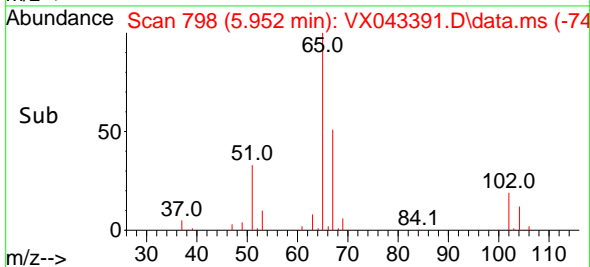
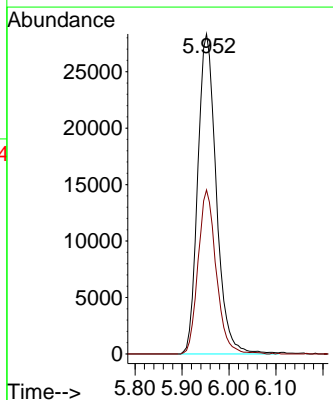
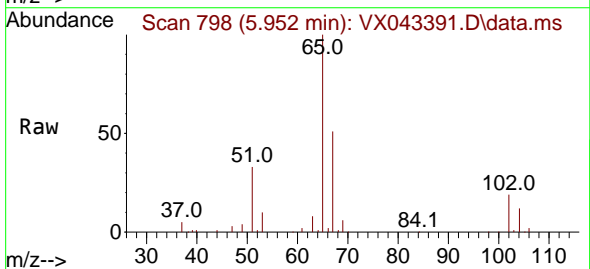


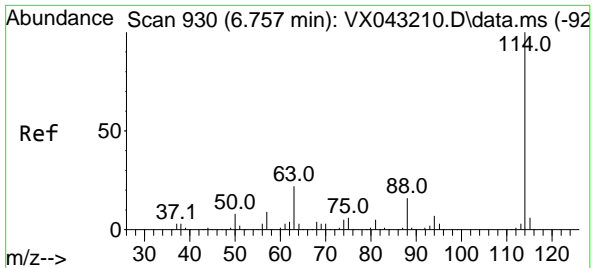
Tgt Ion: 56 Resp: 2462  
 Ion Ratio Lower Upper  
 56 100  
 69 155.3 25.8 38.6#  
 84 99.1 71.1 106.7



#33  
 1,2-Dichloroethane-d4  
 Concen: 50.380 ug/l  
 RT: 5.952 min Scan# 798  
 Delta R.T. -0.000 min  
 Lab File: VX043391.D  
 Acq: 15 Oct 2024 09:31 am

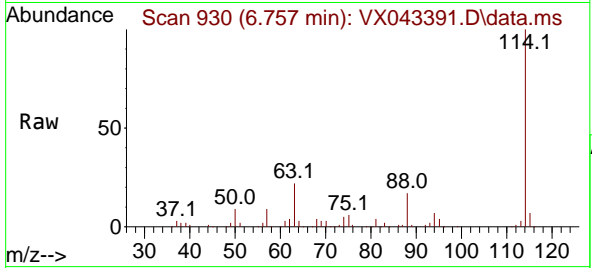
Tgt Ion: 65 Resp: 77644  
 Ion Ratio Lower Upper  
 65 100  
 67 50.2 0.0 99.0



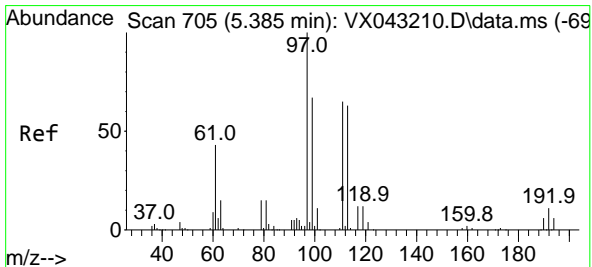
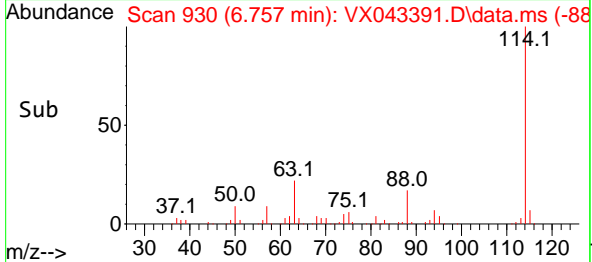
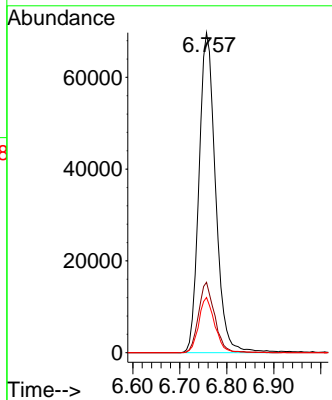


#34  
 1,4-Difluorobenzene  
 Concen: 50.000 ug/l  
 RT: 6.757 min Scan# 91  
 Delta R.T. -0.000 min  
 Lab File: VX043391.D  
 Acq: 15 Oct 2024 09:31

Instrument :  
 MSVOA\_X  
 ClientSampleId :

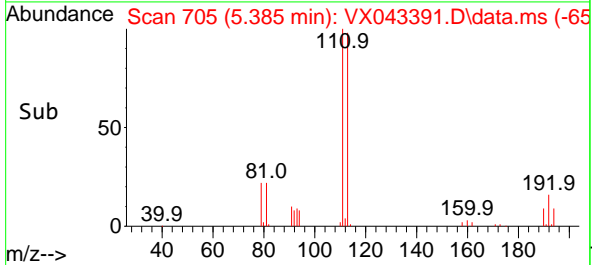
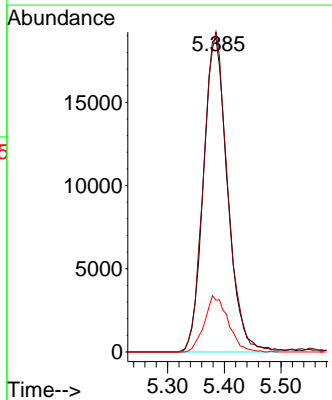
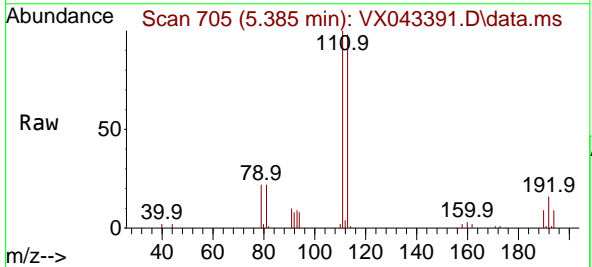


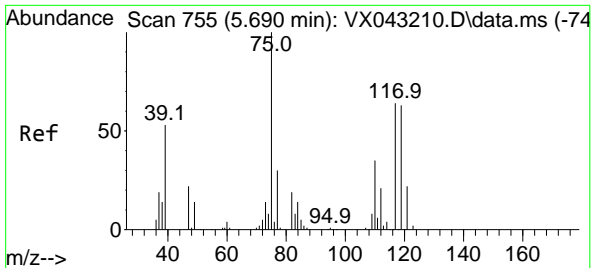
Tgt Ion:114 Resp: 170879  
 Ion Ratio Lower Upper  
 114 100  
 63 22.0 0.0 43.0  
 88 17.2 0.0 33.0



#35  
 Dibromofluoromethane  
 Concen: 47.590 ug/l  
 RT: 5.385 min Scan# 705  
 Delta R.T. -0.000 min  
 Lab File: VX043391.D  
 Acq: 15 Oct 2024 09:31 am

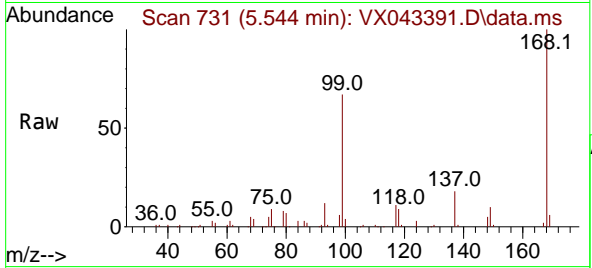
Tgt Ion:113 Resp: 56082  
 Ion Ratio Lower Upper  
 113 100  
 111 101.4 83.4 125.0  
 192 17.5 14.1 21.1





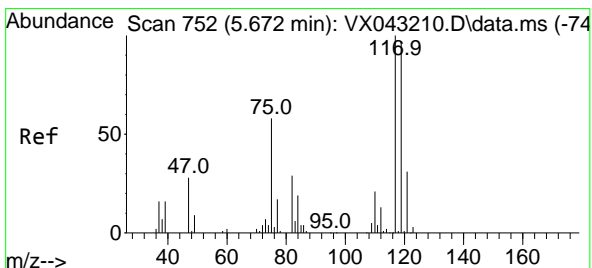
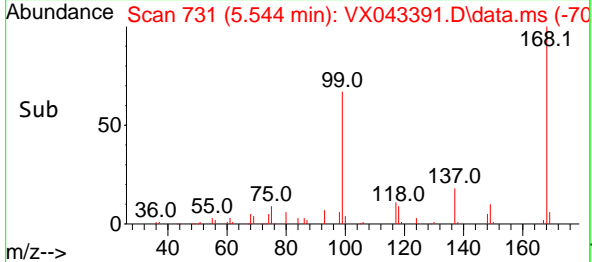
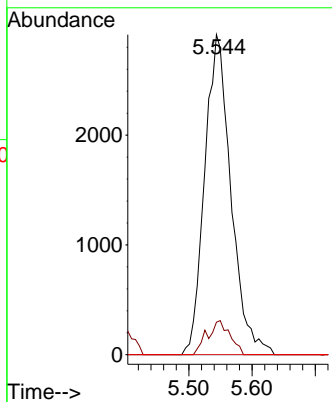
#36  
 1,1-Dichloropropene  
 Concen: 5.660 ug/l  
 RT: 5.544 min Scan# 711  
 Delta R.T. -0.146 min  
 Lab File: VX043391.D  
 Acq: 15 Oct 2024 09:31

Instrument : MSVOA\_X  
 ClientSampled :



Tgt Ion: 75 Resp: 8427

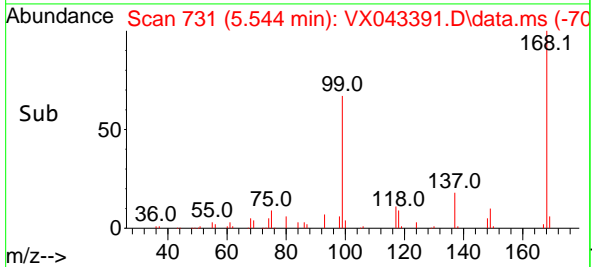
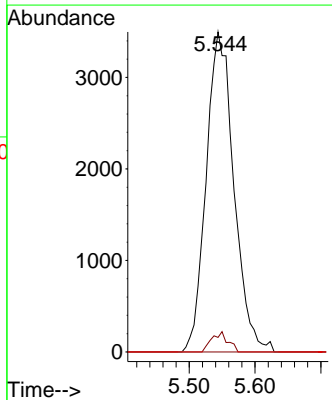
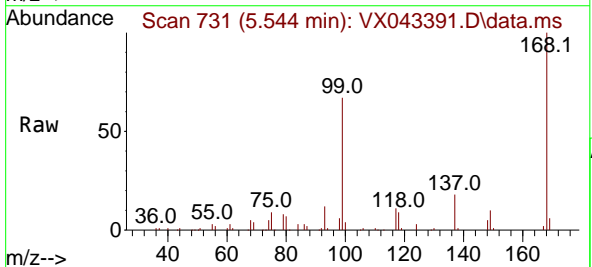
Ion	Ratio	Lower	Upper
75	100		
110	9.1	17.8	53.3#
77	0.0	24.9	37.3#



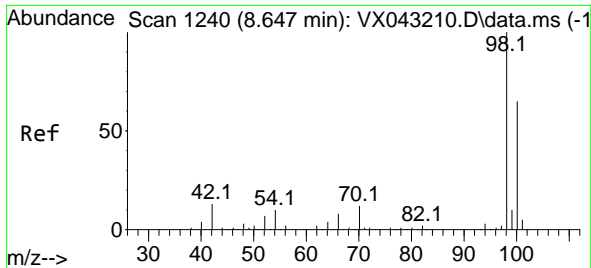
#38  
 Carbon Tetrachloride  
 Concen: 5.820 ug/l  
 RT: 5.544 min Scan# 731  
 Delta R.T. -0.128 min  
 Lab File: VX043391.D  
 Acq: 15 Oct 2024 09:31 am

Tgt Ion: 117 Resp: 10258

Ion	Ratio	Lower	Upper
117	100		
119	4.5	77.7	116.5#
121	0.0	24.3	36.5#



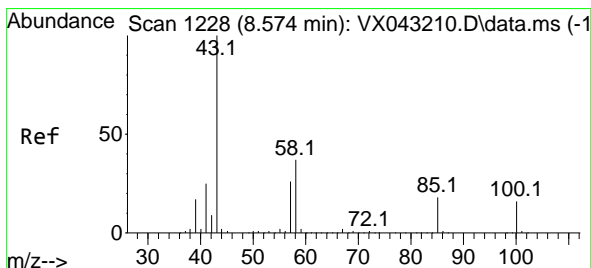
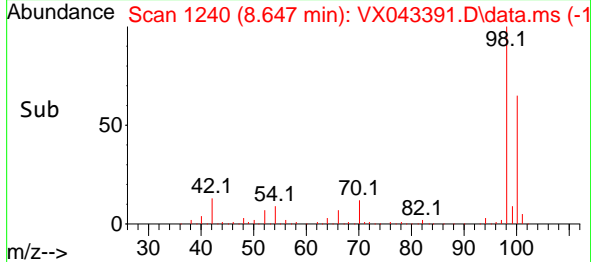
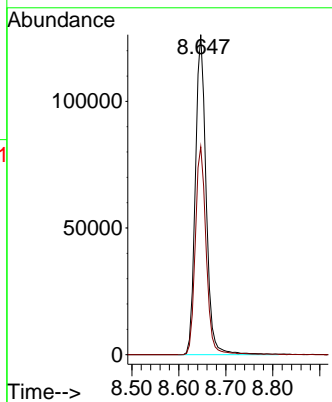
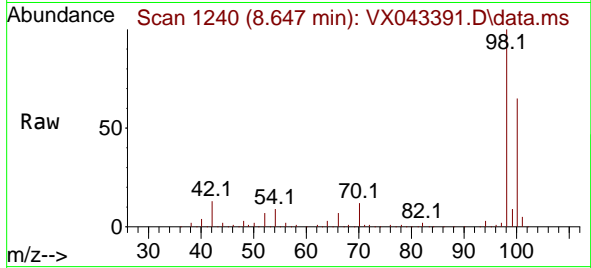




#50  
 Toluene-d8  
 Concen: 49.579 ug/l  
 RT: 8.647 min Scan# 11  
 Delta R.T. -0.000 min  
 Lab File: VX043391.D  
 Acq: 15 Oct 2024 09:31

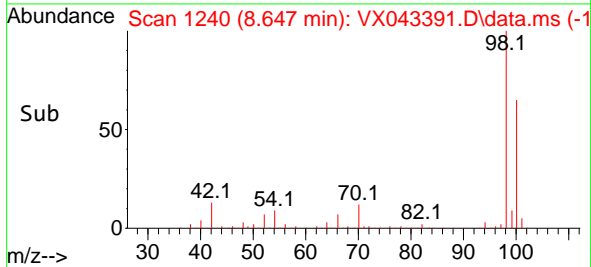
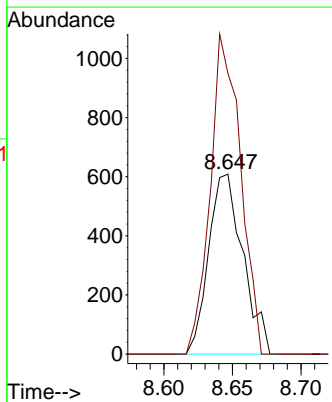
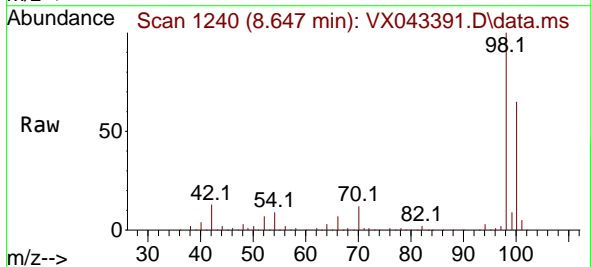
Instrument :  
 MSVOA\_X  
 ClientSampleId :

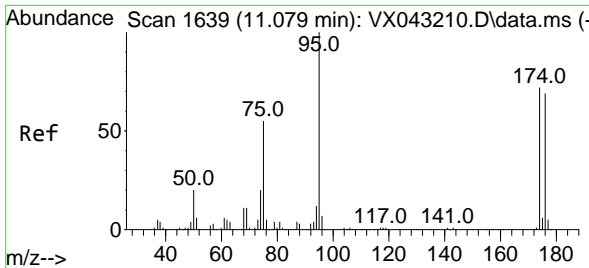
Tgt Ion: 98 Resp: 202475  
 Ion Ratio Lower Upper  
 98 100  
 100 65.4 52.4 78.6



#51  
 4-Methyl-2-Pentanone  
 Concen: 0.591 ug/l  
 RT: 8.647 min Scan# 1240  
 Delta R.T. 0.073 min  
 Lab File: VX043391.D  
 Acq: 15 Oct 2024 09:31 am

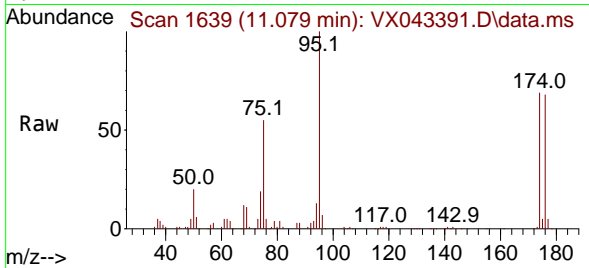
Tgt Ion: 43 Resp: 1060  
 Ion Ratio Lower Upper  
 43 100  
 58 157.1 30.0 45.0#



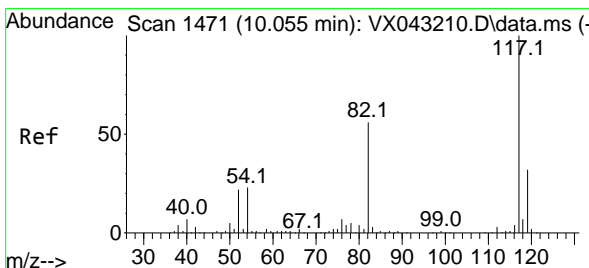
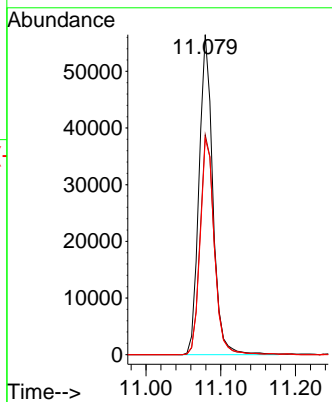
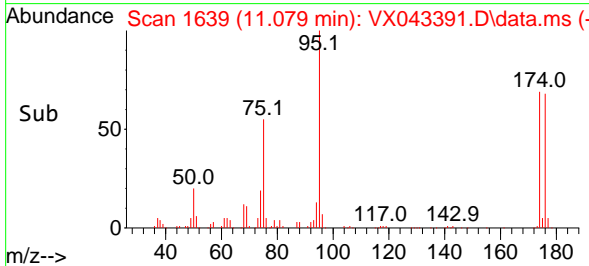


#62  
 4-Bromofluorobenzene  
 Concen: 48.626 ug/l  
 RT: 11.079 min Scan# 1639  
 Delta R.T. -0.000 min  
 Lab File: VX043391.D  
 Acq: 15 Oct 2024 09:31

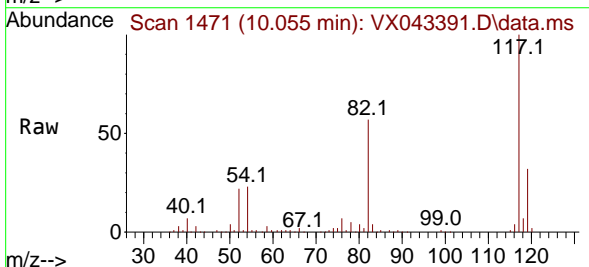
Instrument : MSVOA\_X  
 ClientSampleId :



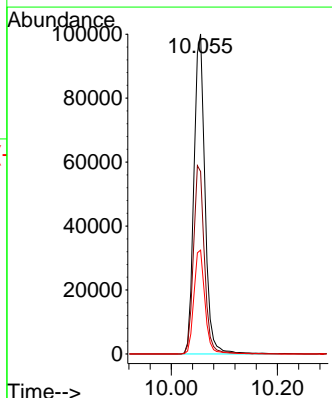
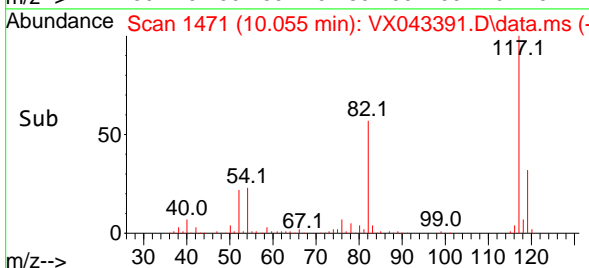
Tgt Ion: 95 Resp: 72144  
 Ion Ratio Lower Upper  
 95 100  
 174 71.1 0.0 145.0  
 176 69.4 0.0 143.0

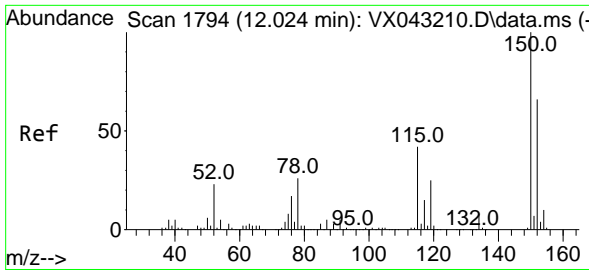


#63  
 Chlorobenzene-d5  
 Concen: 50.000 ug/l  
 RT: 10.055 min Scan# 1471  
 Delta R.T. -0.000 min  
 Lab File: VX043391.D  
 Acq: 15 Oct 2024 09:31 am



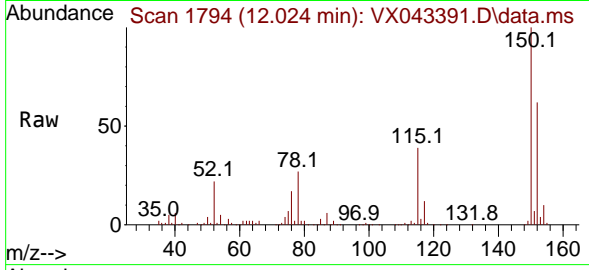
Tgt Ion: 117 Resp: 144567  
 Ion Ratio Lower Upper  
 117 100  
 82 57.0 45.0 67.6  
 119 32.4 25.3 37.9



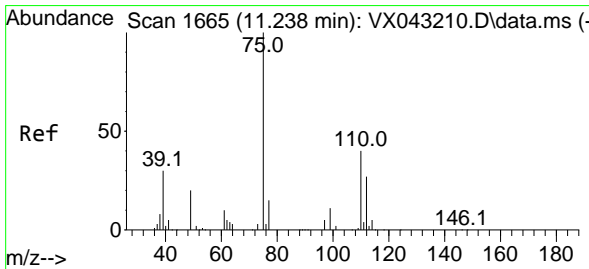
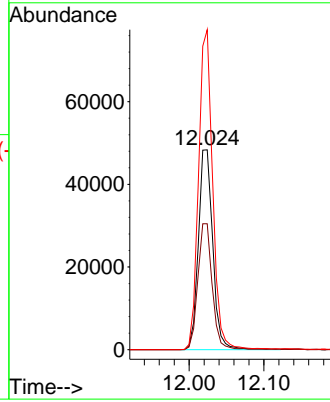
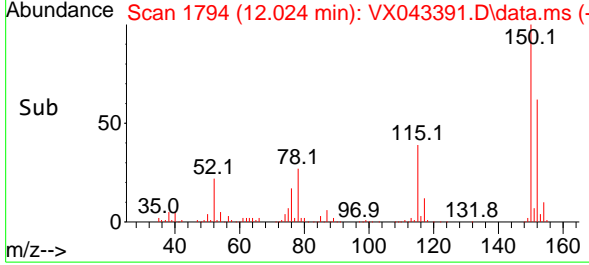


#72  
 1,4-Dichlorobenzene-d4  
 Concen: 50.000 ug/l  
 RT: 12.024 min Scan# 1  
 Delta R.T. -0.000 min  
 Lab File: VX043391.D  
 Acq: 15 Oct 2024 09:31

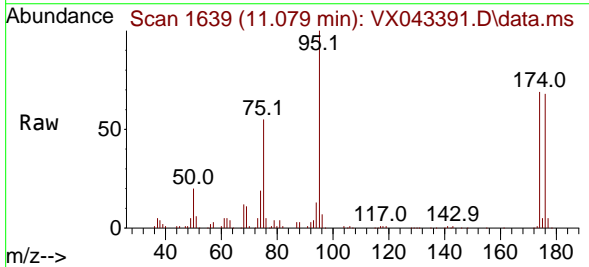
Instrument :  
 MSVOA\_X  
 ClientSampleId :



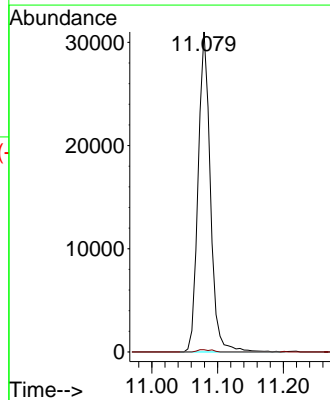
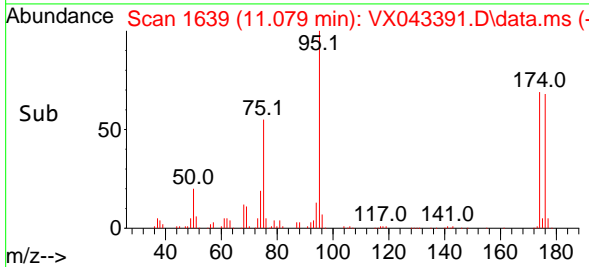
Tgt Ion:152 Resp: 64756  
 Ion Ratio Lower Upper  
 152 100  
 115 62.9 44.1 132.3  
 150 156.8 0.0 347.4

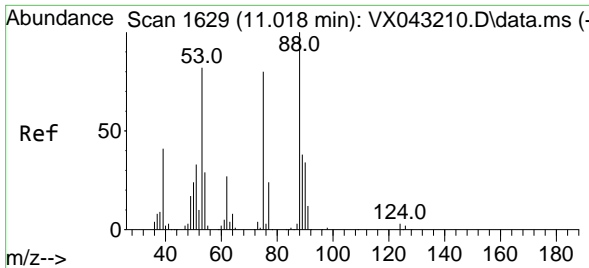


#76  
 1,2,3-Trichloropropane  
 Concen: 27.802 ug/l  
 RT: 11.079 min Scan# 1639  
 Delta R.T. -0.159 min  
 Lab File: VX043391.D  
 Acq: 15 Oct 2024 09:31 am



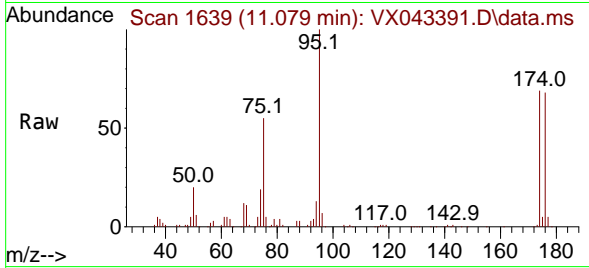
Tgt Ion: 75 Resp: 39933  
 Ion Ratio Lower Upper  
 75 100  
 77 0.8 22.0 66.0#





#81  
 trans-1,4-Dichloro-2-butene  
 Concen: 72.052 ug/l  
 RT: 11.079 min Scan# 1  
 Delta R.T. 0.061 min  
 Lab File: VX043391.D  
 Acq: 15 Oct 2024 09:31

Instrument :  
 MSVOA\_X  
 ClientSampleId :



Tgt Ion: 75 Resp: 39933

Ion	Ratio	Lower	Upper
75	100		
53	0.0	83.9	125.9#
89	0.0	38.6	58.0#

