

Data Path : Z:\voasrv\HPCHEM1\MSVOA_X\Data\VX101525\
 Data File : VX048190.D
 Acq On : 15 Oct 2025 14:56
 Operator : JC/MD
 Sample : Q3345-06
 Misc : 5.0mL/MSVOA_X/WATER
 ALS Vial : 11 Sample Multiplier: 1

Instrument :
 MSVOA_X
 ClientSampleId :

Quant Time: Oct 16 04:06:22 2025
 Quant Method : Z:\voasrv\HPCHEM1\MSVOA_X\Method\82X091625W.M
 Quant Title : SW846 8260
 QLast Update : Wed Sep 17 06:39:58 2025
 Response via : Initial Calibration

Compound	R.T.	QIon	Response	Conc	Units	Dev(Min)
Internal Standards						
1) Pentafluorobenzene	5.544	168	107308	50.000	ug/l	0.00
34) 1,4-Difluorobenzene	6.751	114	225211	50.000	ug/l	0.00
63) Chlorobenzene-d5	10.037	117	249533	50.000	ug/l	0.00
72) 1,4-Dichlorobenzene-d4	12.006	152	130686	50.000	ug/l	0.00
System Monitoring Compounds						
33) 1,2-Dichloroethane-d4	5.940	65	100399	58.779	ug/l	0.00
Spiked Amount	50.000	Range 78 - 117	Recovery	=	117.560%#	
35) Dibromofluoromethane	5.379	113	77692	51.438	ug/l	0.00
Spiked Amount	50.000	Range 75 - 124	Recovery	=	102.880%	
50) Toluene-d8	8.635	98	266697	51.030	ug/l	0.00
Spiked Amount	50.000	Range 92 - 112	Recovery	=	102.060%	
62) 4-Bromofluorobenzene	11.061	95	118032	59.508	ug/l	0.00
Spiked Amount	50.000	Range 83 - 123	Recovery	=	119.020%	
Target Compounds						
						Qvalue
11) Tert butyl alcohol	2.947	59	553	2.907	ug/l #	72
16) Acetone	2.380	43	19562	26.340	ug/l	98
17) Carbon Disulfide	2.520	76	1415	0.405	ug/l	97
18) Methyl Acetate	2.703	43	7027	4.252	ug/l	98
20) Methylene Chloride	2.788	84	4103	2.610	ug/l	92
25) 2-Butanone	4.568	43	7900	8.528	ug/l	92
29) Tetrahydrofuran	5.007	42	275	0.493	ug/l #	50
31) Cyclohexane	5.544	56	2720	1.205	ug/l #	23
36) 1,1-Dichloropropene	5.538	75	9307	4.217	ug/l #	48
37) Ethyl Acetate	4.715	43	3517	1.488	ug/l #	83
38) Carbon Tetrachloride	5.538	117	11381	4.746	ug/l #	17
40) Benzene	6.031	78	4538	0.677	ug/l	95
41) Methacrylonitrile	5.032	41	359	0.294	ug/l #	41
43) Isopropyl Acetate	6.336	43	9143	2.359	ug/l #	92
48) Methyl methacrylate	7.787	41	52996	27.452	ug/l #	48
51) 4-Methyl-2-Pentanone	8.537	43	59936	27.892	ug/l #	51
52) Toluene	8.708	92	2892	0.700	ug/l	98
54) cis-1,3-Dichloropropene	8.537	75	26098	9.287	ug/l #	63
57) 1,3-Dichloropropane	9.470	76	1997	0.730	ug/l #	44
59) 2-Hexanone	9.470	43	28069	18.188	ug/l #	56
67) Ethyl Benzene	10.177	91	96141	9.829	ug/l	99
68) m/p-Xylenes	10.287	106	12829	3.524	ug/l	96
69) o-Xylene	10.628	106	22625	6.425	ug/l	100
70) Styrene	10.628	104	2202	0.357	ug/l #	1
73) Isopropylbenzene	10.945	105	24249	2.441	ug/l	98
76) 1,2,3-Trichloropropane	11.061	75	63183	23.879	ug/l #	40
78) n-propylbenzene	11.287	91	11493	0.979	ug/l	99
79) 2-Chlorotoluene	11.384	91	3987	0.554	ug/l #	42
80) 1,3,5-Trimethylbenzene	11.433	105	20147	2.468	ug/l	99
81) trans-1,4-Dichloro-2-b...	11.061	75	63183	60.894	ug/l #	8
82) 4-Chlorotoluene	11.433	91	2794	0.329	ug/l #	50
83) tert-Butylbenzene	11.732	119	7740	0.926	ug/l #	52
84) 1,2,4-Trimethylbenzene	11.732	105	58885	7.115	ug/l	100
85) sec-Butylbenzene	11.732	105	58885	5.933	ug/l #	57
86) p-Isopropyltoluene	11.994	119	3174	0.378	ug/l #	68
89) n-Butylbenzene	12.225	91	163554	21.035	ug/l #	43

Data Path : Z:\voasrv\HPCHEM1\MSVOA_X\Data\VX101525\
Data File : VX048190.D
Acq On : 15 Oct 2025 14:56
Operator : JC/MD
Sample : Q3345-06
Misc : 5.0mL/MSVOA_X/WATER
ALS Vial : 11 Sample Multiplier: 1

Instrument :
MSVOA_X
ClientSampleId :

Quant Time: Oct 16 04:06:22 2025
Quant Method : Z:\voasrv\HPCHEM1\MSVOA_X\Method\82X091625W.M
Quant Title : SW846 8260
QLast Update : Wed Sep 17 06:39:58 2025
Response via : Initial Calibration

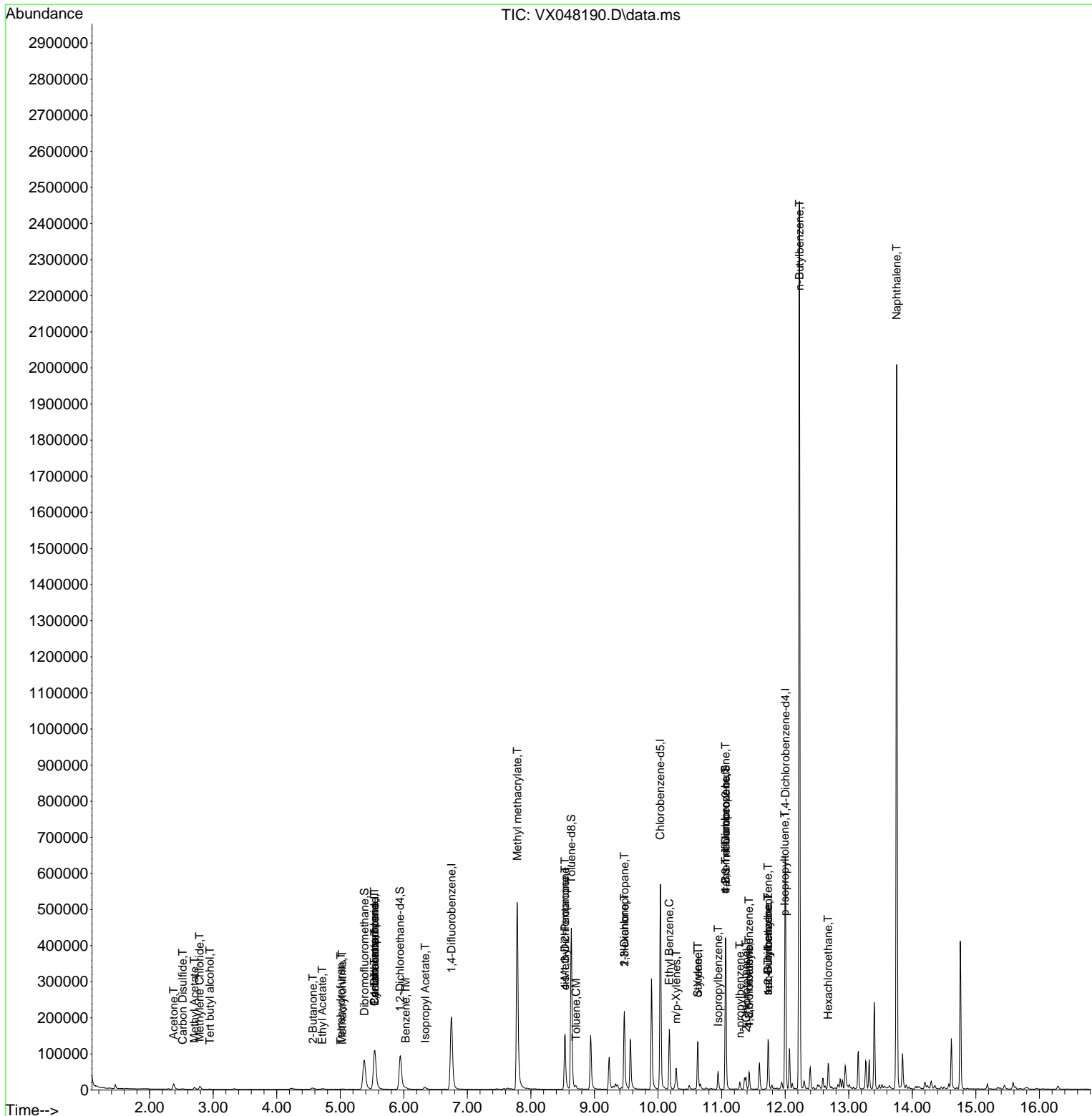
Compound	R.T.	QIon	Response	Conc	Units	Dev(Min)
90) Hexachloroethane	12.677	117	29085	19.715	ug/l #	16
95) Naphthalene	13.756	128	1153475	134.600	ug/l	100

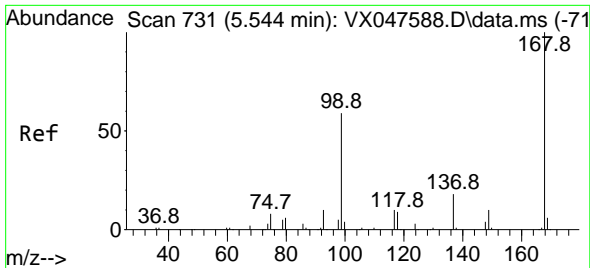
(#) = qualifier out of range (m) = manual integration (+) = signals summed

Data Path : Z:\voasrv\HPCHEM1\MSVOA_X\Data\VX101525\
 Data File : VX048190.D
 Acq On : 15 Oct 2025 14:56
 Operator : JC/MD
 Sample : Q3345-06
 Misc : 5.0mL/MSVOA_X/WATER
 ALS Vial : 11 Sample Multiplier: 1

Instrument :
 MSVOA_X
 ClientSampleId :

Quant Time: Oct 16 04:06:22 2025
 Quant Method : Z:\voasrv\HPCHEM1\MSVOA_X\Method\82X091625W.M
 Quant Title : SW846 8260
 QLast Update : Wed Sep 17 06:39:58 2025
 Response via : Initial Calibration

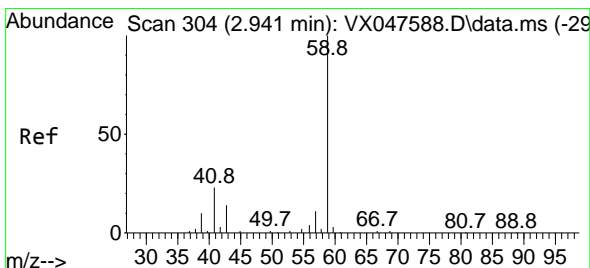
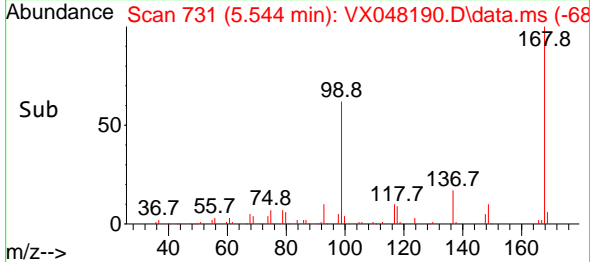
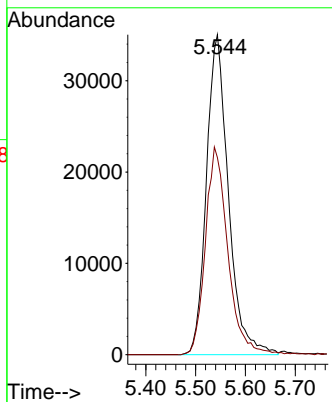
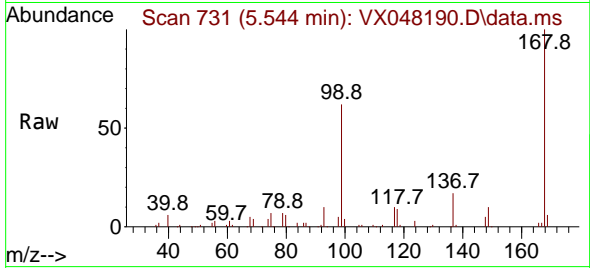




#1
 Pentafluorobenzene
 Concen: 50.000 ug/l
 RT: 5.544 min Scan# 71
 Delta R.T. -0.000 min
 Lab File: VX048190.D
 Acq: 15 Oct 2025 14:56

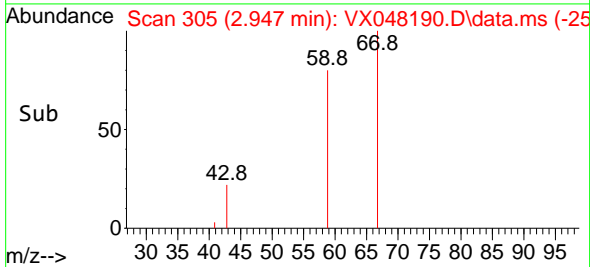
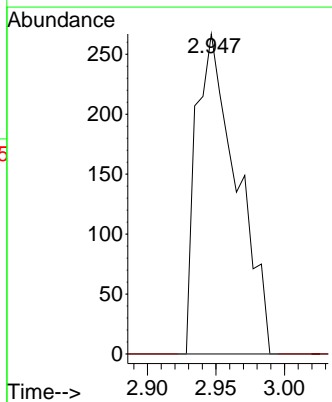
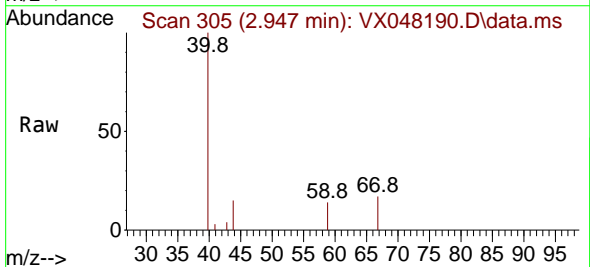
Instrument : MSVOA_X
 ClientSampleId :

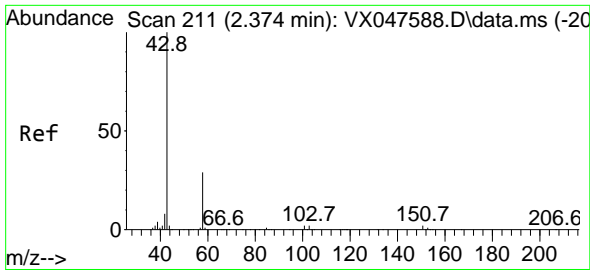
Tgt Ion:168 Resp: 107308
 Ion Ratio Lower Upper
 168 100
 99 61.6 48.8 73.2



#11
 Tert butyl alcohol
 Concen: 2.907 ug/l
 RT: 2.947 min Scan# 305
 Delta R.T. 0.006 min
 Lab File: VX048190.D
 Acq: 15 Oct 2025 14:56

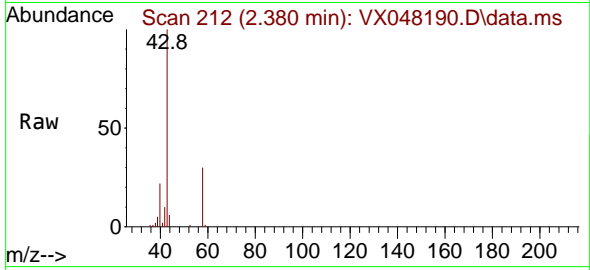
Tgt Ion: 59 Resp: 553
 Ion Ratio Lower Upper
 59 100
 57 0.0 8.3 12.5#



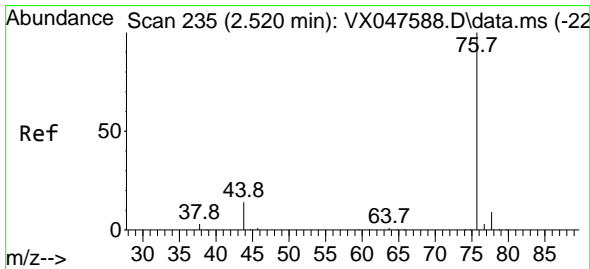
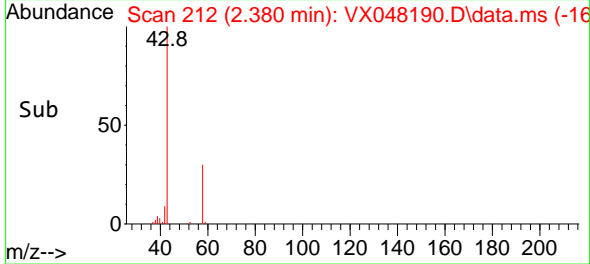
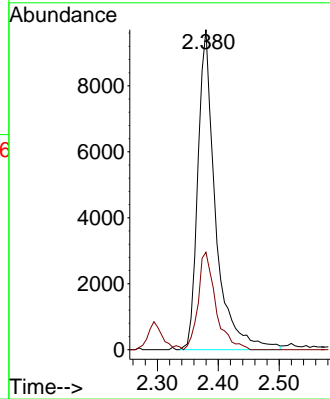


#16
 Acetone
 Concen: 26.340 ug/l
 RT: 2.380 min Scan# 211
 Delta R.T. 0.006 min
 Lab File: VX048190.D
 Acq: 15 Oct 2025 14:56

Instrument :
 MSVOA_X
 ClientSampleId :

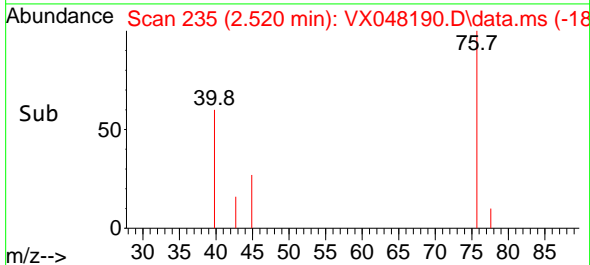
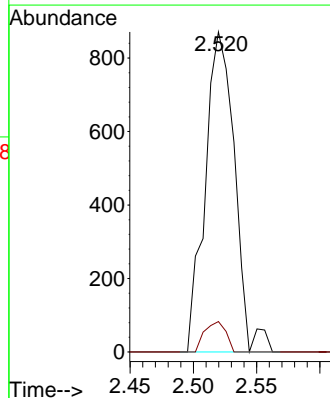
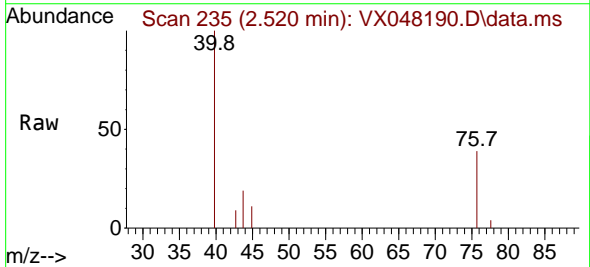


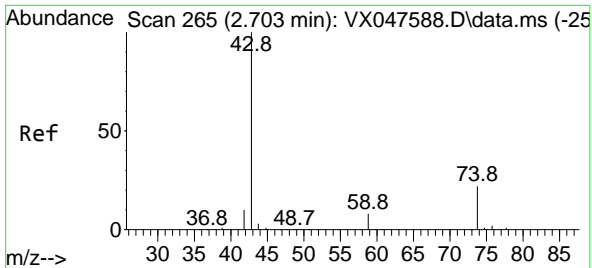
Tgt Ion: 43 Resp: 19562
 Ion Ratio Lower Upper
 43 100
 58 30.4 23.4 35.0



#17
 Carbon Disulfide
 Concen: 0.405 ug/l
 RT: 2.520 min Scan# 235
 Delta R.T. -0.000 min
 Lab File: VX048190.D
 Acq: 15 Oct 2025 14:56

Tgt Ion: 76 Resp: 1415
 Ion Ratio Lower Upper
 76 100
 78 9.5 6.8 10.2

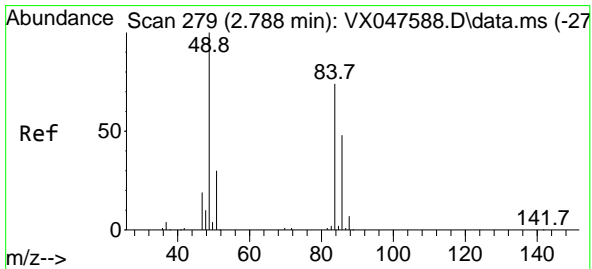
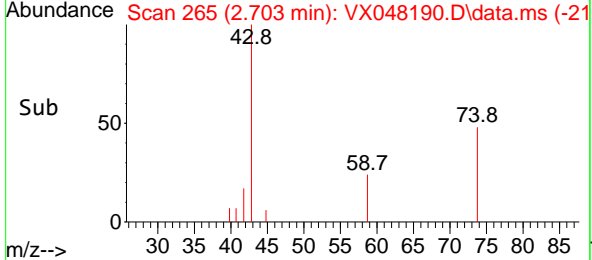
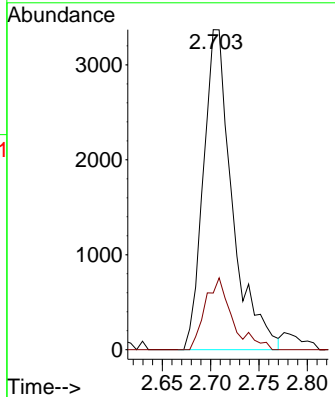
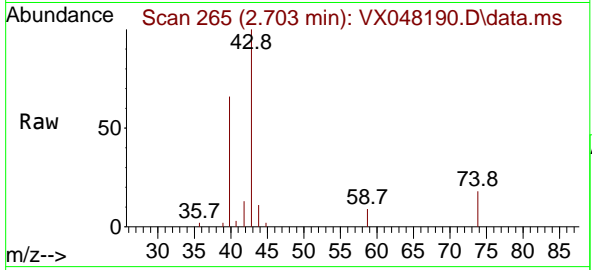




#18
 Methyl Acetate
 Concen: 4.252 ug/l
 RT: 2.703 min Scan# 20
 Delta R.T. -0.000 min
 Lab File: VX048190.D
 Acq: 15 Oct 2025 14:56

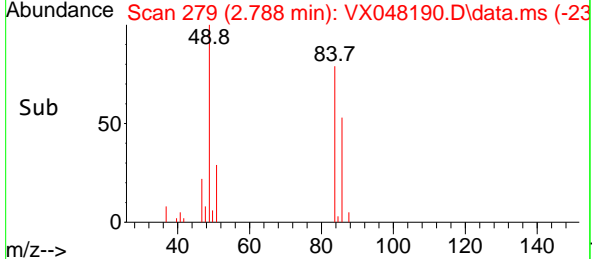
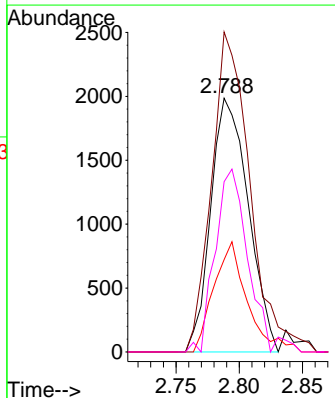
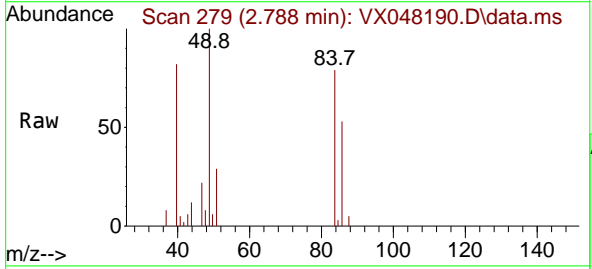
Instrument : MSVOA_X
 ClientSampleId :

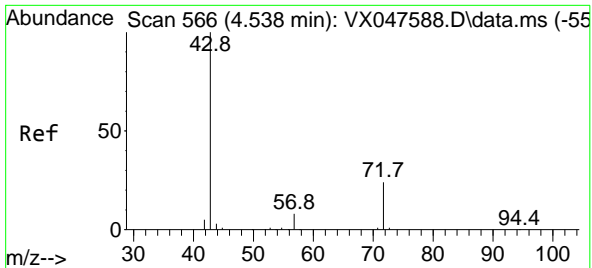
Tgt Ion: 43 Resp: 7027
 Ion Ratio Lower Upper
 43 100
 74 21.0 17.4 26.2



#20
 Methylene Chloride
 Concen: 2.610 ug/l
 RT: 2.788 min Scan# 279
 Delta R.T. -0.000 min
 Lab File: VX048190.D
 Acq: 15 Oct 2025 14:56

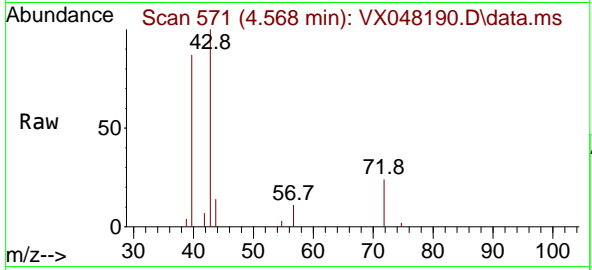
Tgt Ion: 84 Resp: 4103
 Ion Ratio Lower Upper
 84 100
 49 121.4 108.6 162.8
 51 35.0 32.6 48.8
 86 64.6 52.0 78.0



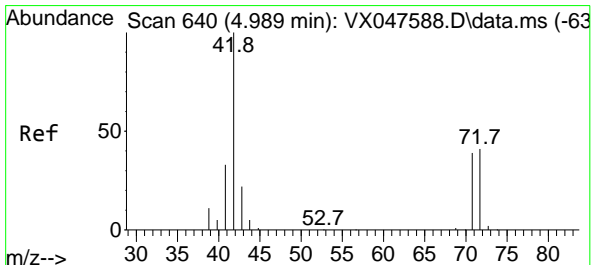
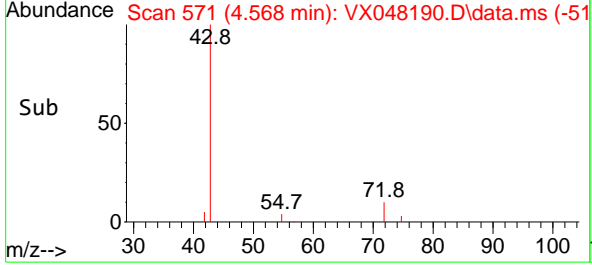
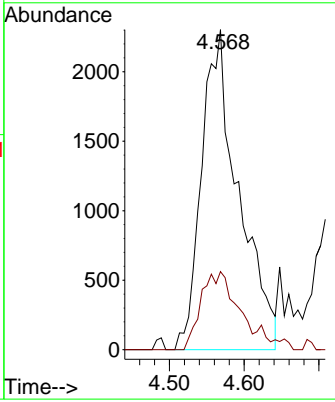


#25
 2-Butanone
 Concen: 8.528 ug/l
 RT: 4.568 min Scan# 51
 Delta R.T. 0.030 min
 Lab File: VX048190.D
 Acq: 15 Oct 2025 14:56

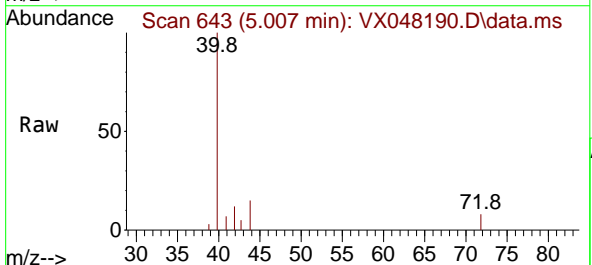
Instrument : MSVOA_X
 ClientSampleId :



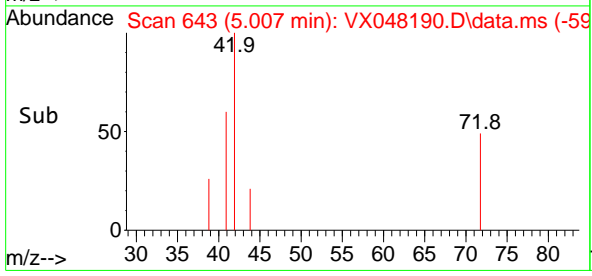
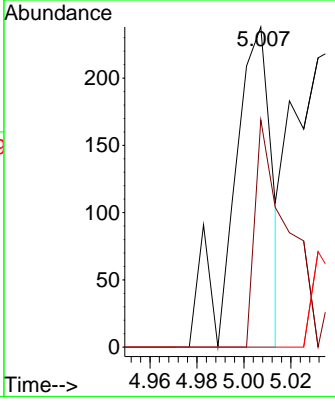
Tgt Ion: 43 Resp: 7900
 Ion Ratio Lower Upper
 43 100
 72 21.3 20.1 30.1

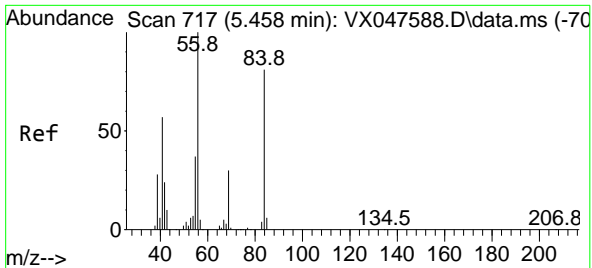


#29
 Tetrahydrofuran
 Concen: 0.493 ug/l
 RT: 5.007 min Scan# 643
 Delta R.T. 0.018 min
 Lab File: VX048190.D
 Acq: 15 Oct 2025 14:56



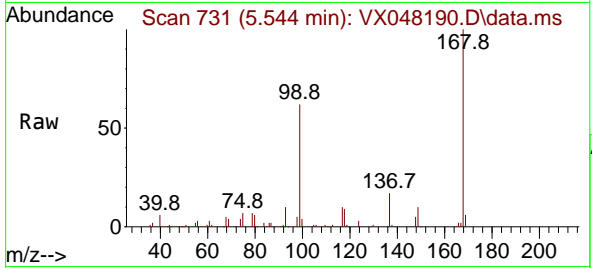
Tgt Ion: 42 Resp: 275
 Ion Ratio Lower Upper
 42 100
 72 65.5 34.2 51.2#
 71 0.0 31.9 47.9#



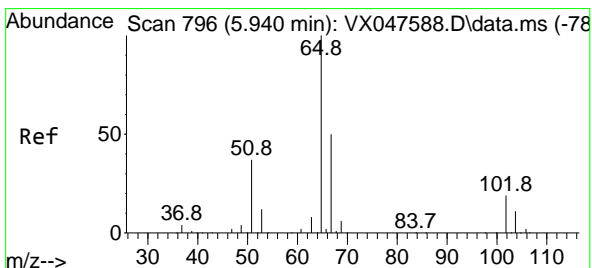
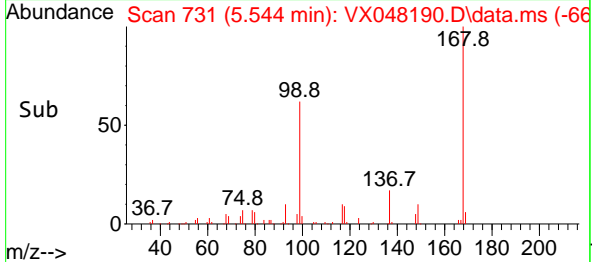
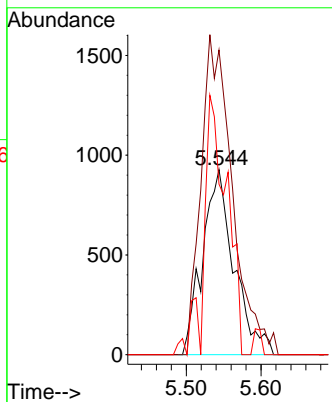


#31
 Cyclohexane
 Concen: 1.205 ug/l
 RT: 5.544 min Scan# 717
 Delta R.T. 0.085 min
 Lab File: VX048190.D
 Acq: 15 Oct 2025 14:56

Instrument :
 MSVOA_X
 ClientSampleId :

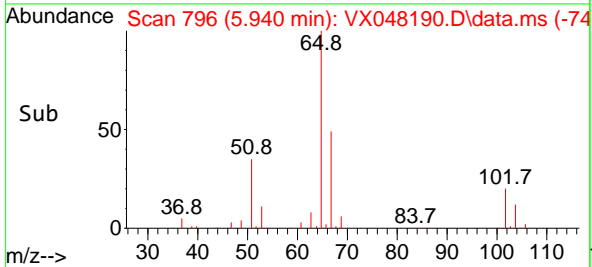
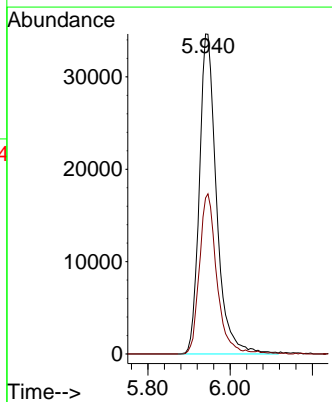
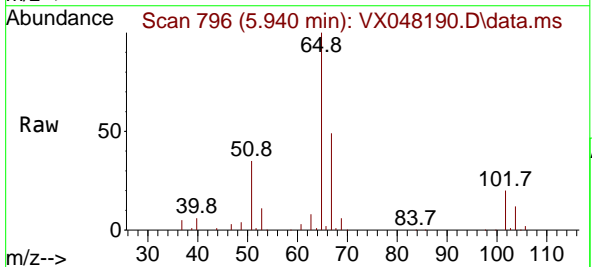


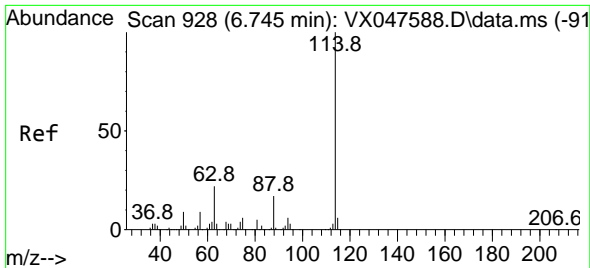
Tgt Ion: 56 Resp: 2720
 Ion Ratio Lower Upper
 56 100
 69 164.5 23.8 35.8#
 84 92.1 64.6 97.0



#33
 1,2-Dichloroethane-d4
 Concen: 58.779 ug/l
 RT: 5.940 min Scan# 796
 Delta R.T. -0.000 min
 Lab File: VX048190.D
 Acq: 15 Oct 2025 14:56

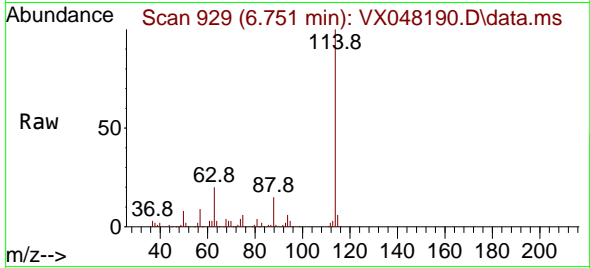
Tgt Ion: 65 Resp: 100399
 Ion Ratio Lower Upper
 65 100
 67 51.0 0.0 103.0



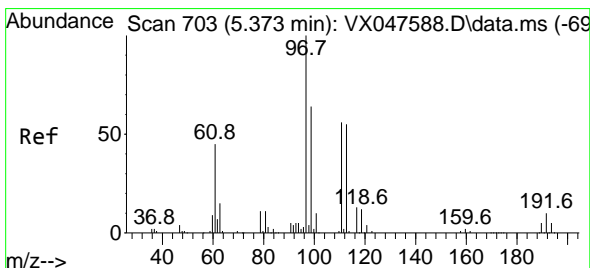
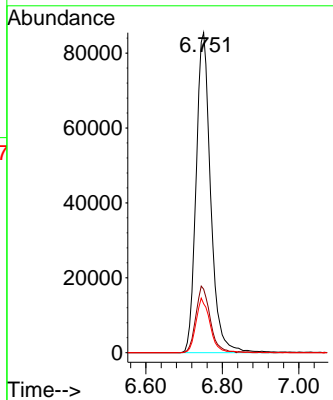
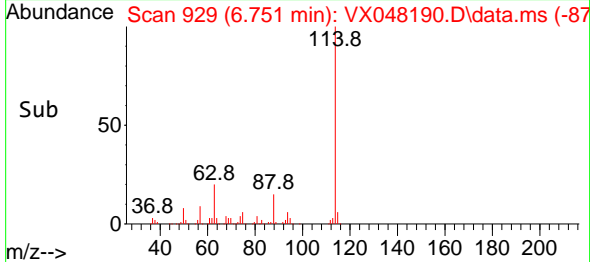


#34
 1,4-Difluorobenzene
 Concen: 50.000 ug/l
 RT: 6.751 min Scan# 91
 Delta R.T. 0.006 min
 Lab File: VX048190.D
 Acq: 15 Oct 2025 14:56

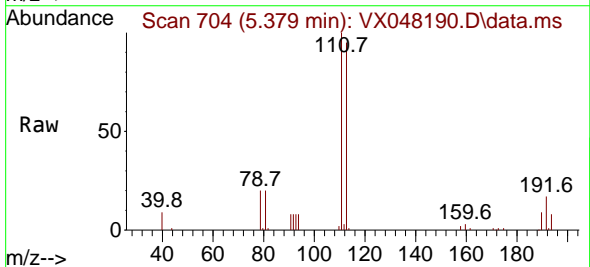
Instrument :
 MSVOA_X
 ClientSampleId :



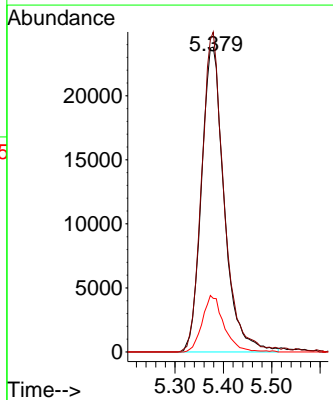
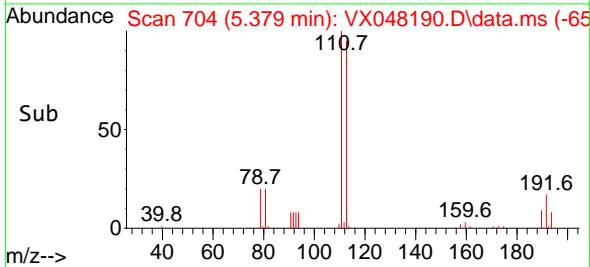
Tgt Ion:114 Resp: 225211
 Ion Ratio Lower Upper
 114 100
 63 19.9 0.0 44.0
 88 15.3 0.0 34.2

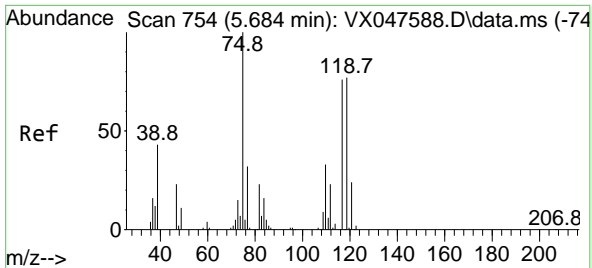


#35
 Dibromofluoromethane
 Concen: 51.438 ug/l
 RT: 5.379 min Scan# 704
 Delta R.T. 0.006 min
 Lab File: VX048190.D
 Acq: 15 Oct 2025 14:56



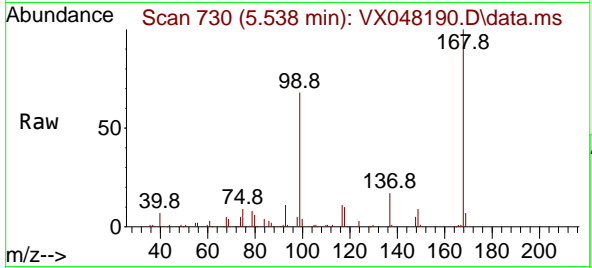
Tgt Ion:113 Resp: 77692
 Ion Ratio Lower Upper
 113 100
 111 102.6 80.9 121.3
 192 17.6 14.2 21.4



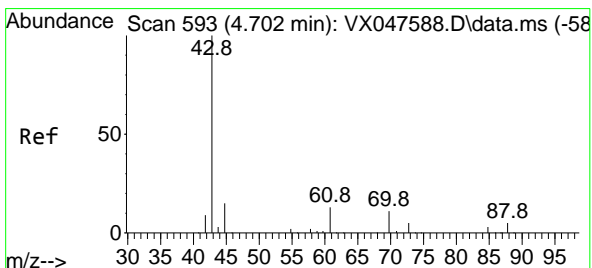
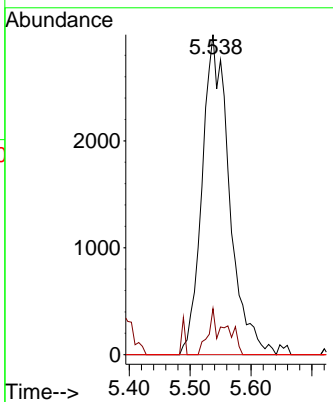
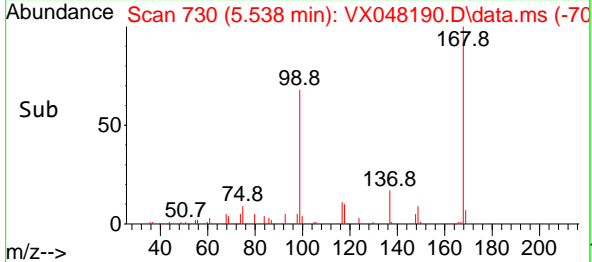


#36
 1,1-Dichloropropene
 Concen: 4.217 ug/l
 RT: 5.538 min Scan# 71
 Delta R.T. -0.146 min
 Lab File: VX048190.D
 Acq: 15 Oct 2025 14:56

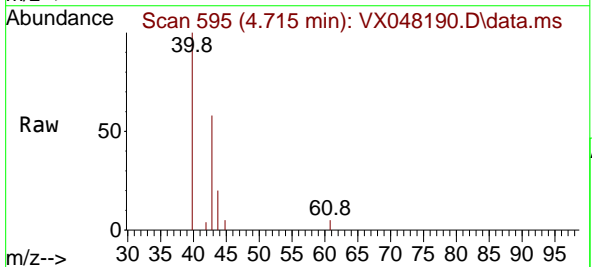
Instrument :
 MSVOA_X
 ClientSampleId :



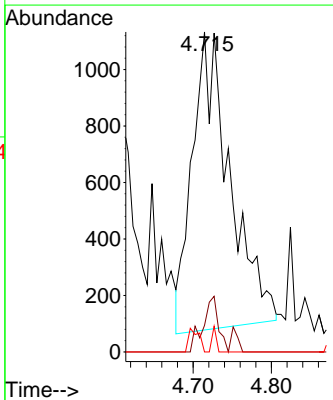
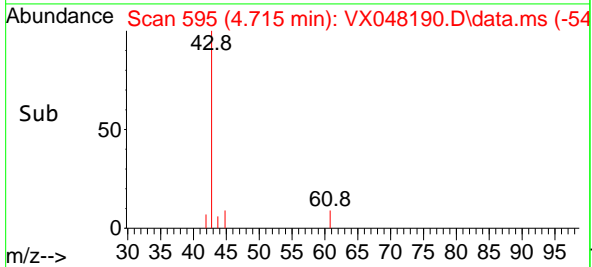
Tgt Ion: 75 Resp: 9307
 Ion Ratio Lower Upper
 75 100
 110 6.1 16.7 50.1#
 77 0.0 24.3 36.5#

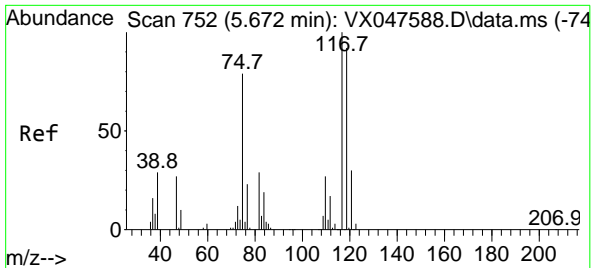


#37
 Ethyl Acetate
 Concen: 1.488 ug/l
 RT: 4.715 min Scan# 595
 Delta R.T. 0.012 min
 Lab File: VX048190.D
 Acq: 15 Oct 2025 14:56



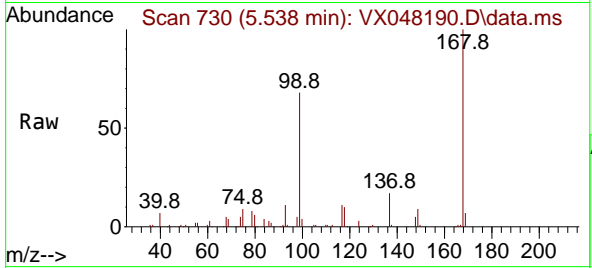
Tgt Ion: 43 Resp: 3517
 Ion Ratio Lower Upper
 43 100
 61 7.6 9.8 14.8#
 70 0.9 7.9 11.9#



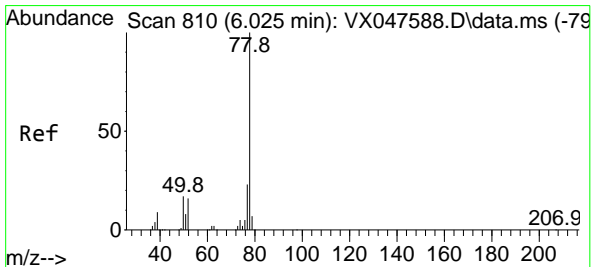
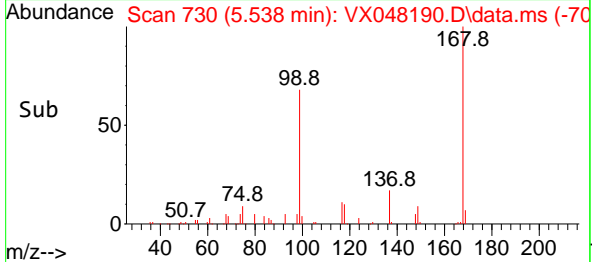
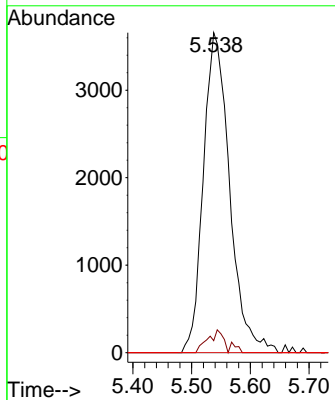


#38
 Carbon Tetrachloride
 Concen: 4.746 ug/l
 RT: 5.538 min Scan# 711
 Delta R.T. -0.134 min
 Lab File: VX048190.D
 Acq: 15 Oct 2025 14:56

Instrument :
 MSVOA_X
 ClientSampleId :

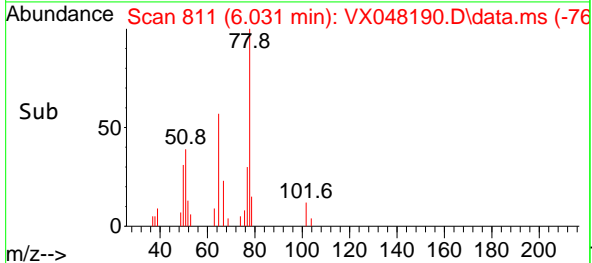
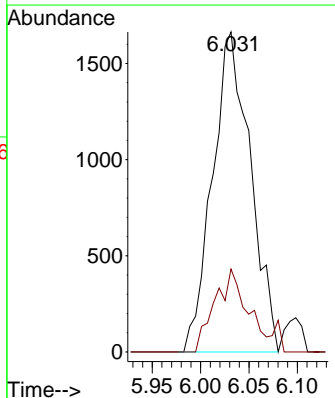
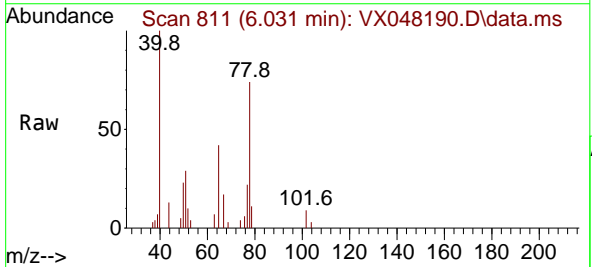


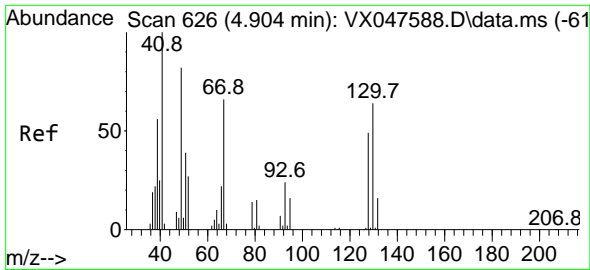
Tgt Ion: 117 Resp: 11381
 Ion Ratio Lower Upper
 117 100
 119 3.7 73.4 110.2#
 121 0.0 23.8 35.6#



#40
 Benzene
 Concen: 0.677 ug/l
 RT: 6.031 min Scan# 811
 Delta R.T. 0.006 min
 Lab File: VX048190.D
 Acq: 15 Oct 2025 14:56

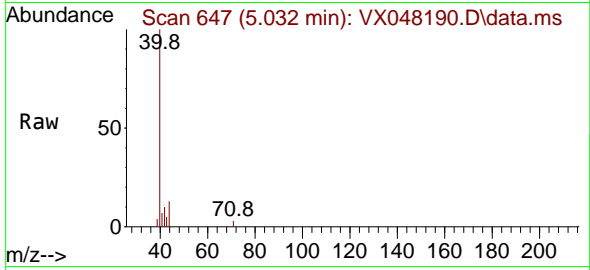
Tgt Ion: 78 Resp: 4538
 Ion Ratio Lower Upper
 78 100
 77 25.9 18.8 28.2





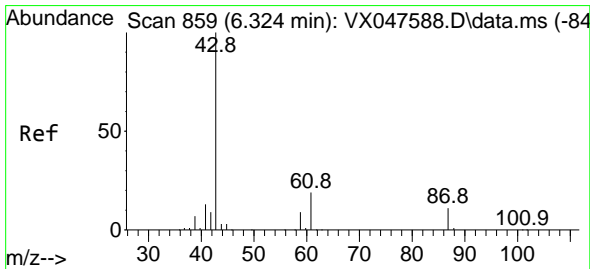
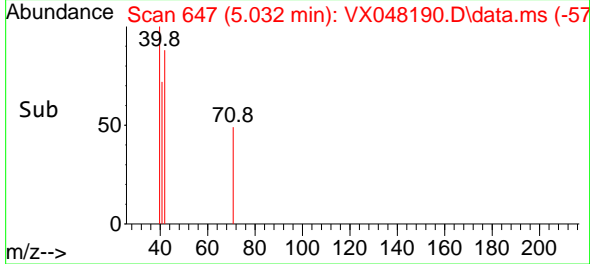
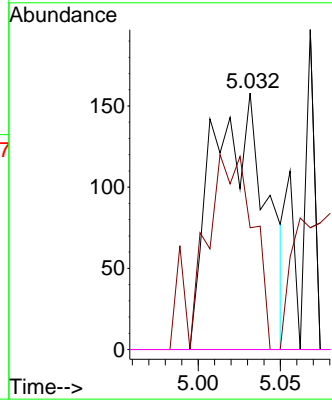
#41
 Methacrylonitrile
 Concen: 0.294 ug/l
 RT: 5.032 min Scan# 647
 Delta R.T. 0.128 min
 Lab File: VX048190.D
 Acq: 15 Oct 2025 14:56

Instrument :
 MSVOA_X
 ClientSampleId :



Tgt Ion: 41 Resp: 359

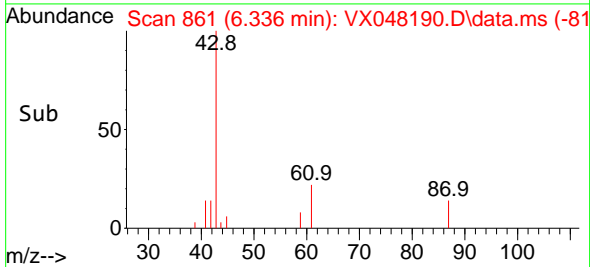
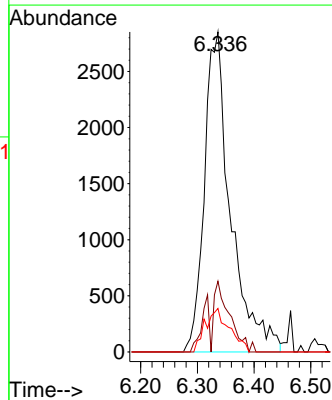
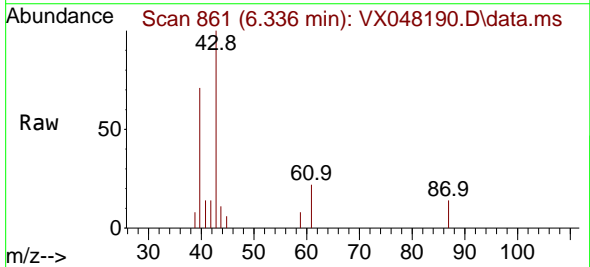
Ion	Ratio	Lower	Upper
41	100		
39	70.2	43.3	64.9#
67	0.0	58.6	87.8#
52	0.0	26.0	39.0#

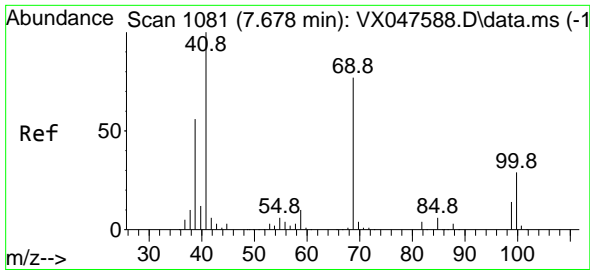


#43
 Isopropyl Acetate
 Concen: 2.359 ug/l
 RT: 6.336 min Scan# 861
 Delta R.T. 0.012 min
 Lab File: VX048190.D
 Acq: 15 Oct 2025 14:56

Tgt Ion: 43 Resp: 9143

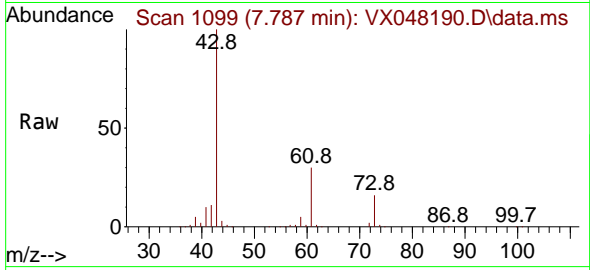
Ion	Ratio	Lower	Upper
43	100		
61	13.3	15.2	22.8#
87	12.5	9.6	14.4



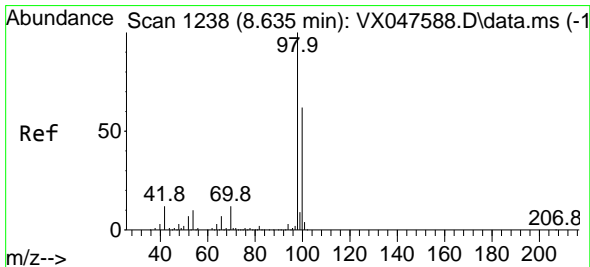
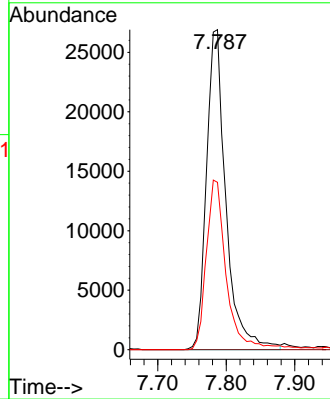
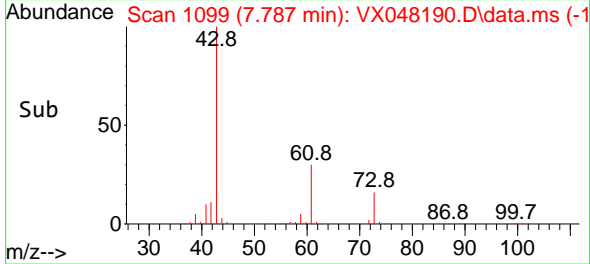


#48
 Methyl methacrylate
 Concen: 27.452 ug/l
 RT: 7.787 min Scan# 1099
 Delta R.T. 0.110 min
 Lab File: VX048190.D
 Acq: 15 Oct 2025 14:56

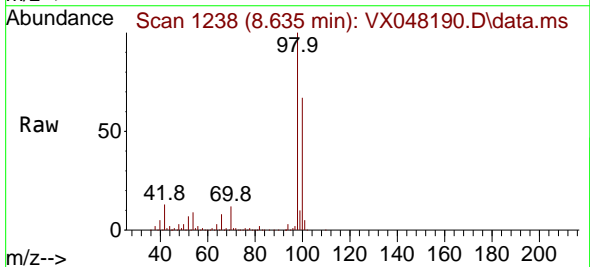
Instrument : MSVOA_X
 ClientSampleId :



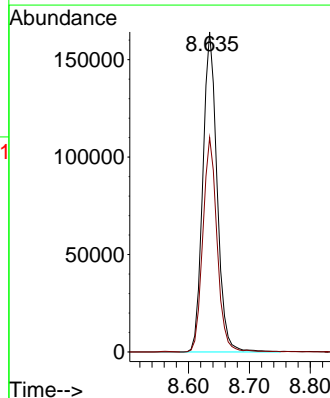
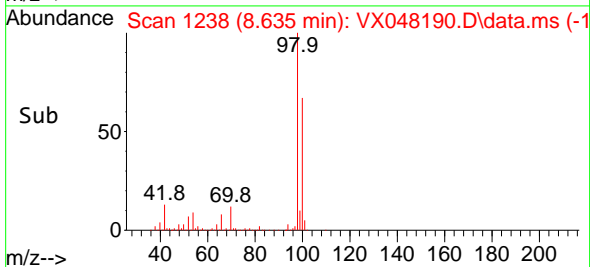
Tgt Ion: 41 Resp: 52996
 Ion Ratio Lower Upper
 41 100
 69 0.0 61.4 92.2#
 39 55.3 45.8 68.6

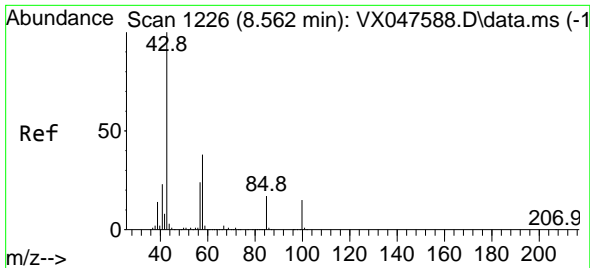


#50
 Toluene-d8
 Concen: 51.030 ug/l
 RT: 8.635 min Scan# 1238
 Delta R.T. -0.000 min
 Lab File: VX048190.D
 Acq: 15 Oct 2025 14:56



Tgt Ion: 98 Resp: 266697
 Ion Ratio Lower Upper
 98 100
 100 66.9 53.0 79.4

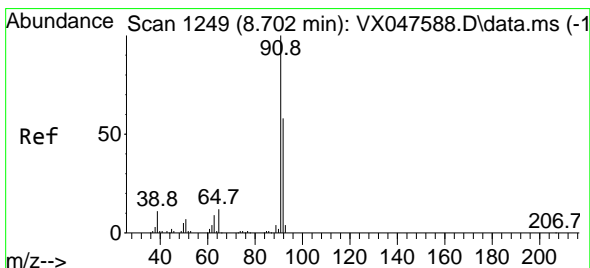
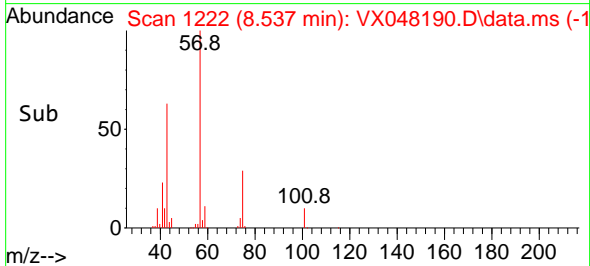
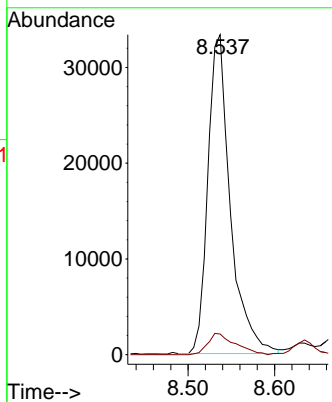
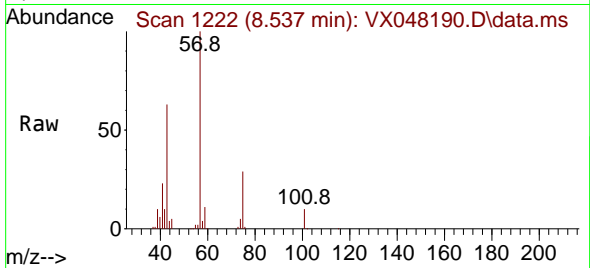




#51
 4-Methyl-2-Pentanone
 Concen: 27.892 ug/l
 RT: 8.537 min Scan# 1111
 Delta R.T. -0.024 min
 Lab File: VX048190.D
 Acq: 15 Oct 2025 14:56

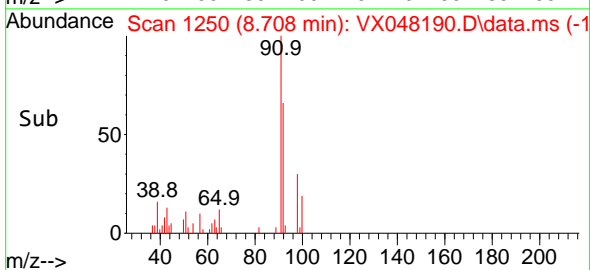
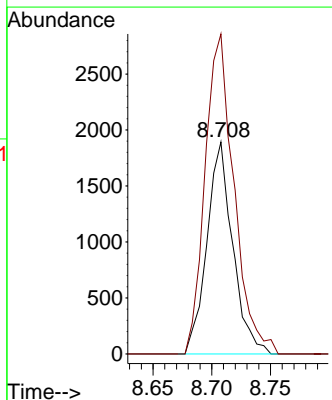
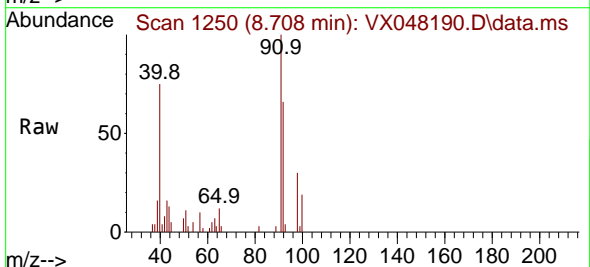
Instrument : MSVOA_X
 ClientSampleId :

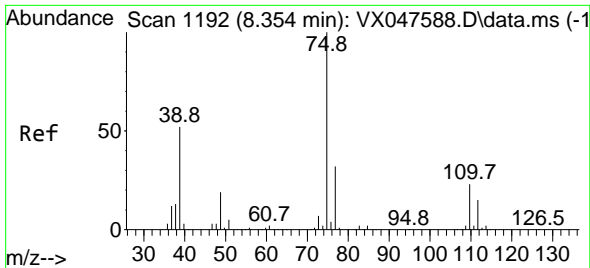
Tgt Ion: 43 Resp: 59936
 Ion Ratio Lower Upper
 43 100
 58 8.2 30.3 45.5#



#52
 Toluene
 Concen: 0.700 ug/l
 RT: 8.708 min Scan# 1250
 Delta R.T. 0.006 min
 Lab File: VX048190.D
 Acq: 15 Oct 2025 14:56

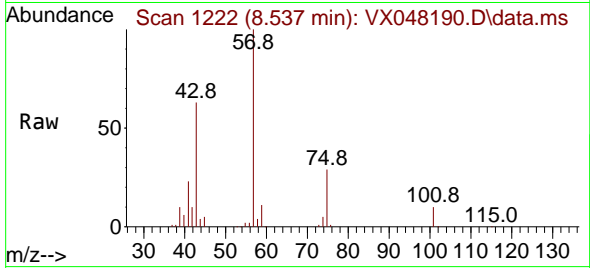
Tgt Ion: 92 Resp: 2892
 Ion Ratio Lower Upper
 92 100
 91 169.2 137.1 205.7



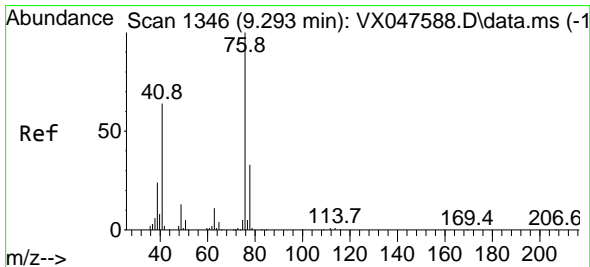
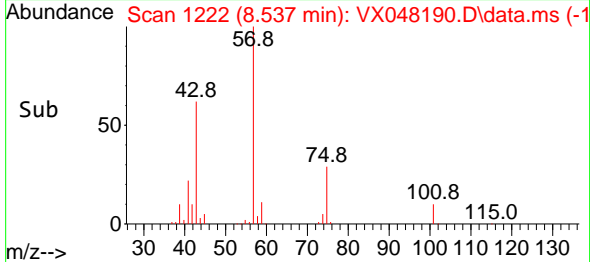
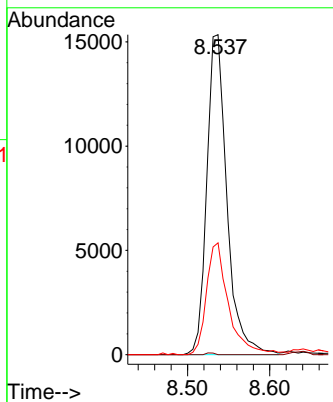


#54
 cis-1,3-Dichloropropene
 Concen: 9.287 ug/l
 RT: 8.537 min Scan# 1192
 Delta R.T. 0.183 min
 Lab File: VX048190.D
 Acq: 15 Oct 2025 14:56

Instrument :
 MSVOA_X
 ClientSampleId :

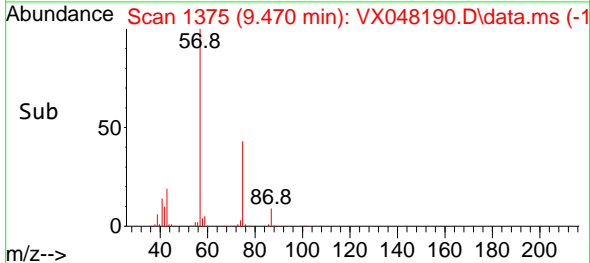
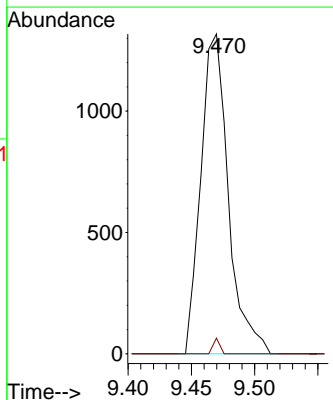
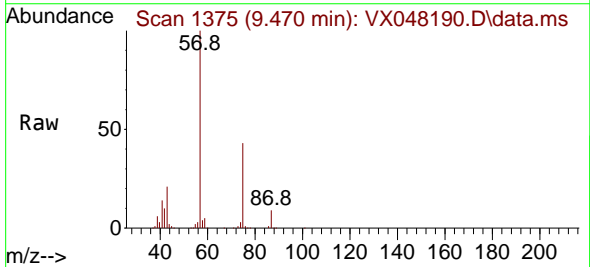


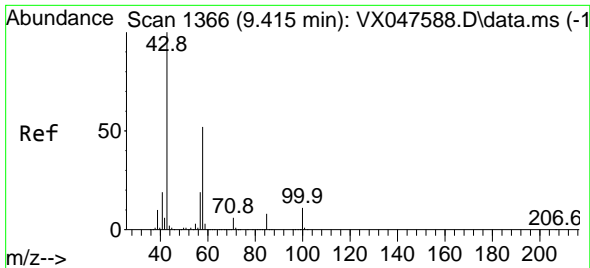
Tgt Ion: 75 Resp: 26098
 Ion Ratio Lower Upper
 75 100
 77 0.0 25.8 38.6#
 39 35.0 41.4 62.2#



#57
 1,3-Dichloropropane
 Concen: 0.730 ug/l
 RT: 9.470 min Scan# 1375
 Delta R.T. 0.177 min
 Lab File: VX048190.D
 Acq: 15 Oct 2025 14:56

Tgt Ion: 76 Resp: 1997
 Ion Ratio Lower Upper
 76 100
 78 1.2 26.2 39.4#

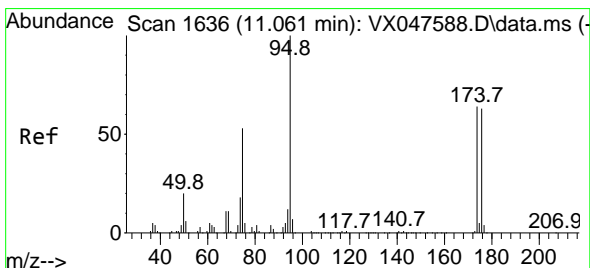
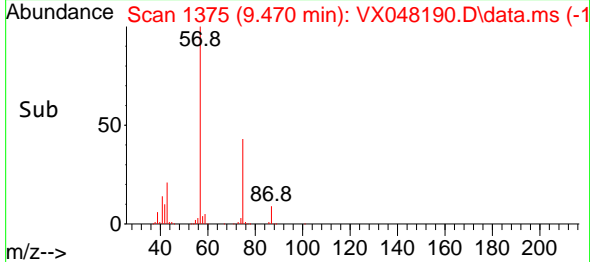
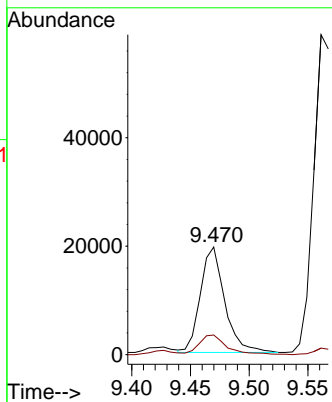
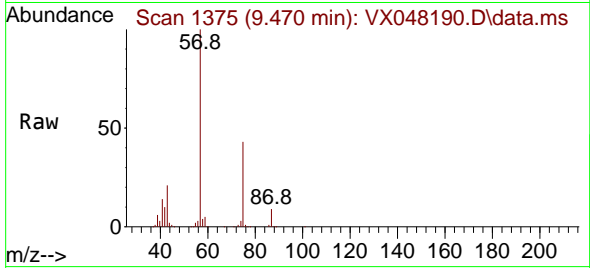




#59
 2-Hexanone
 Concen: 18.188 ug/l
 RT: 9.470 min Scan# 11
 Delta R.T. 0.055 min
 Lab File: VX048190.D
 Acq: 15 Oct 2025 14:56

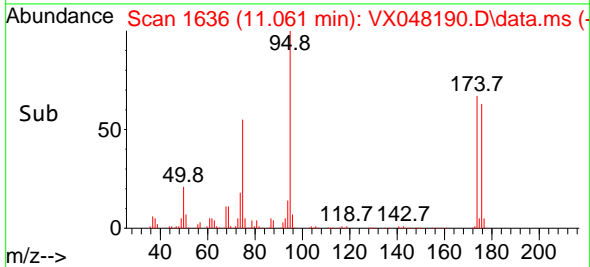
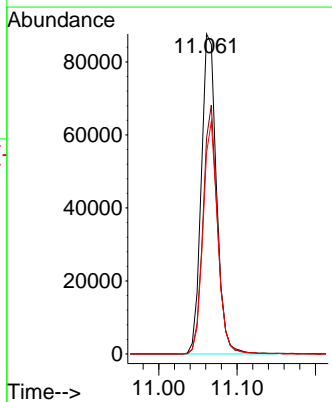
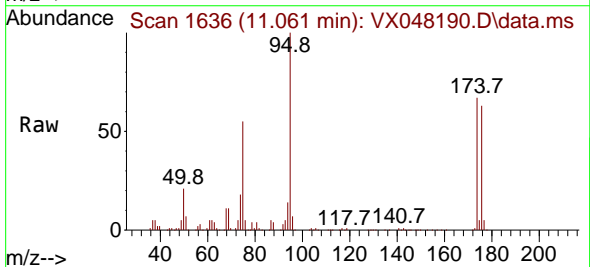
Instrument :
 MSVOA_X
 ClientSampleId :

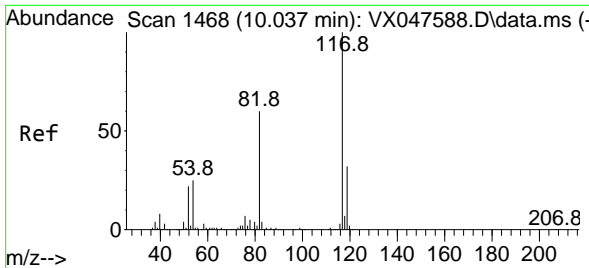
Tgt Ion: 43 Resp: 28069
 Ion Ratio Lower Upper
 43 100
 58 21.1 26.1 78.2#



#62
 4-Bromofluorobenzene
 Concen: 59.508 ug/l
 RT: 11.061 min Scan# 1636
 Delta R.T. -0.000 min
 Lab File: VX048190.D
 Acq: 15 Oct 2025 14:56

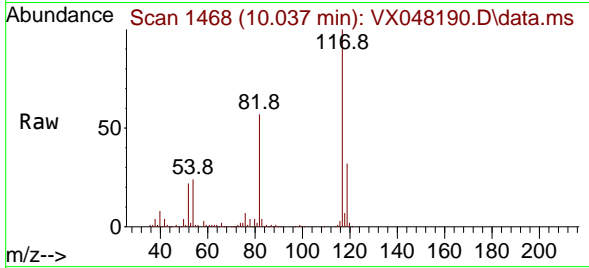
Tgt Ion: 95 Resp: 118032
 Ion Ratio Lower Upper
 95 100
 174 74.1 0.0 141.6
 176 70.4 0.0 138.4





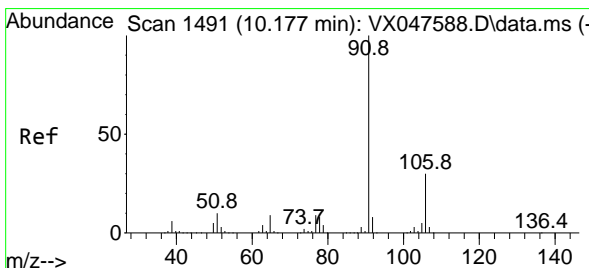
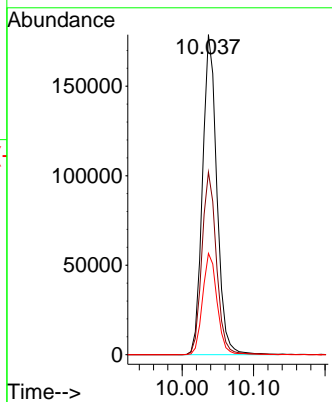
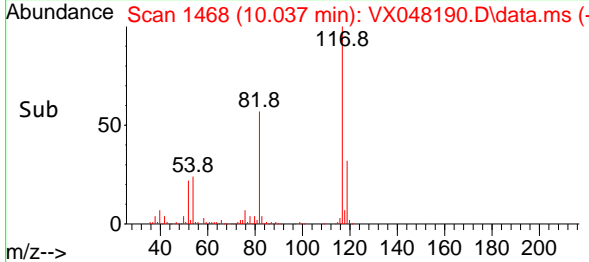
#63
 Chlorobenzene-d5
 Concen: 50.000 ug/l
 RT: 10.037 min Scan# 1468
 Delta R.T. -0.000 min
 Lab File: VX048190.D
 Acq: 15 Oct 2025 14:56

Instrument : MSVOA_X
 ClientSampleId :

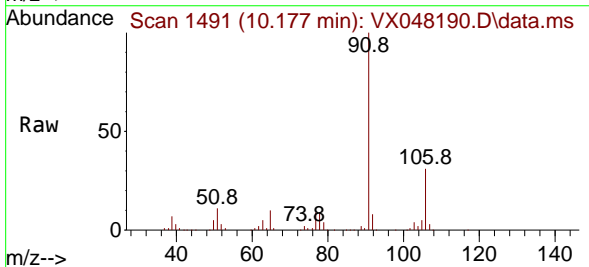


Tgt Ion: 117 Resp: 249533

Ion	Ratio	Lower	Upper
117	100		
82	57.0	47.8	71.6
119	31.7	25.2	37.8

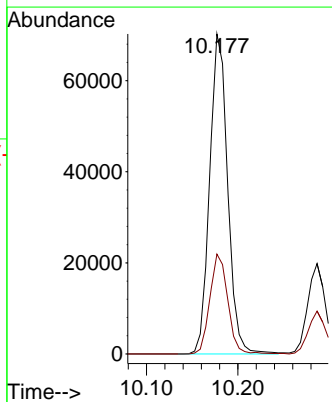
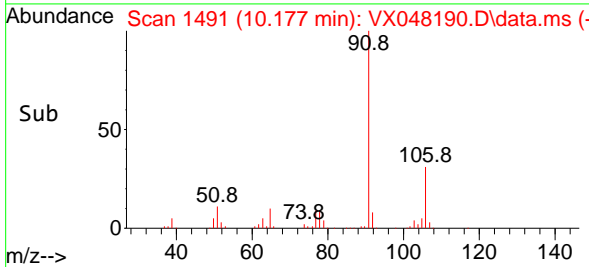


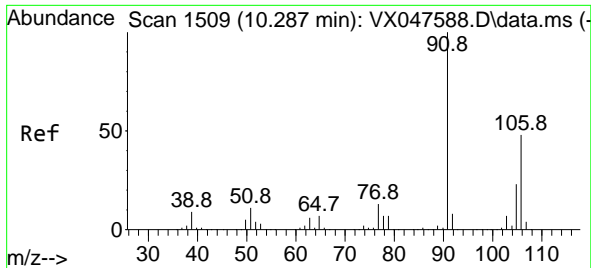
#67
 Ethyl Benzene
 Concen: 9.829 ug/l
 RT: 10.177 min Scan# 1491
 Delta R.T. -0.000 min
 Lab File: VX048190.D
 Acq: 15 Oct 2025 14:56



Tgt Ion: 91 Resp: 96141

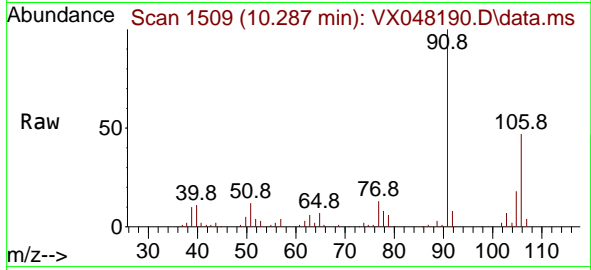
Ion	Ratio	Lower	Upper
91	100		
106	31.2	24.3	36.5



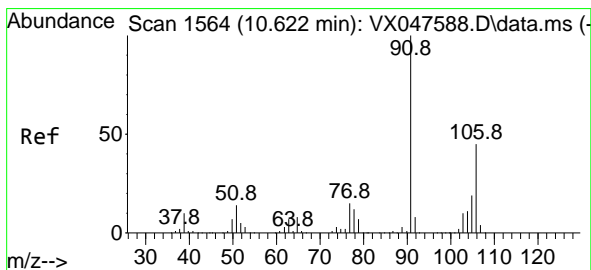
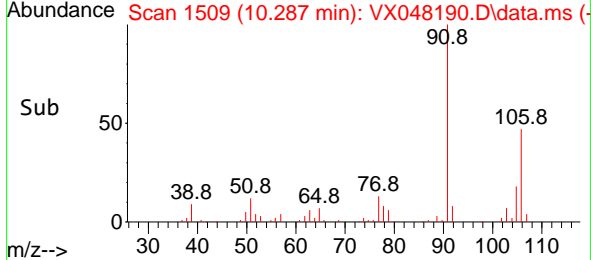
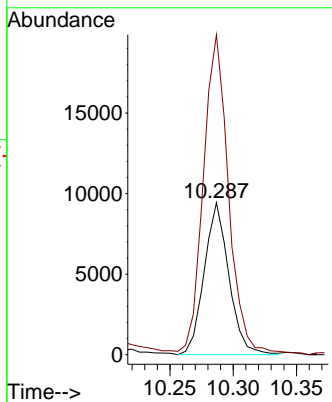


#68
 m/p-Xylenes
 Concen: 3.524 ug/l
 RT: 10.287 min Scan# 1509
 Delta R.T. -0.000 min
 Lab File: VX048190.D
 Acq: 15 Oct 2025 14:56

Instrument : MSVOA_X
 ClientSampleId :

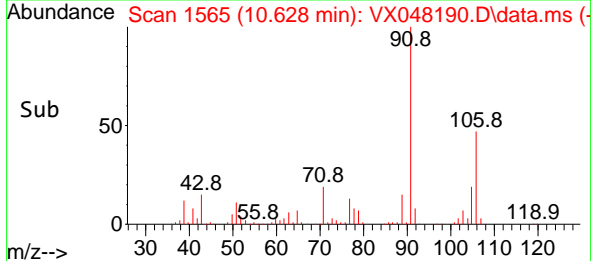
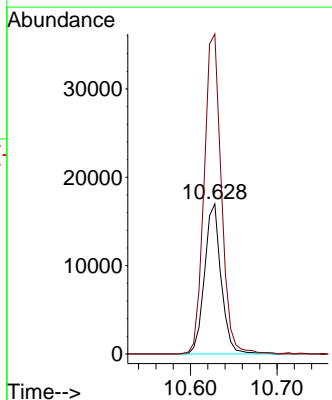
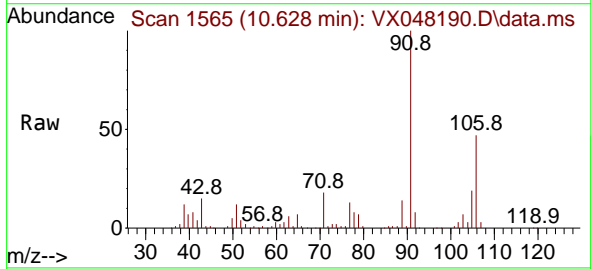


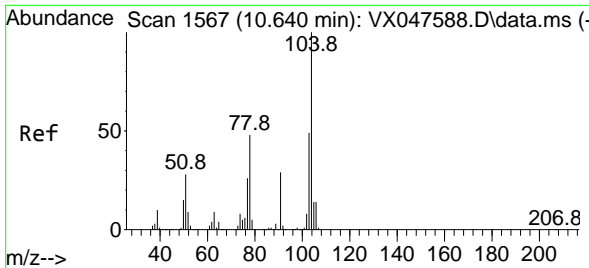
Tgt Ion:106 Resp: 12829
 Ion Ratio Lower Upper
 106 100
 91 215.5 167.8 251.8



#69
 o-Xylene
 Concen: 6.425 ug/l
 RT: 10.628 min Scan# 1565
 Delta R.T. 0.006 min
 Lab File: VX048190.D
 Acq: 15 Oct 2025 14:56

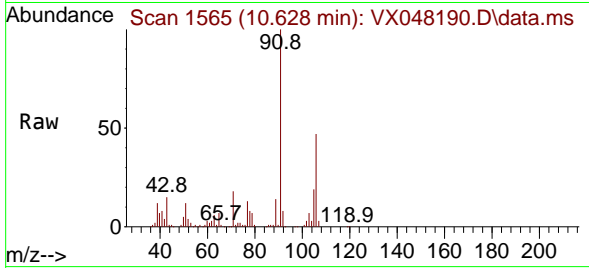
Tgt Ion:106 Resp: 22625
 Ion Ratio Lower Upper
 106 100
 91 221.6 111.1 333.4





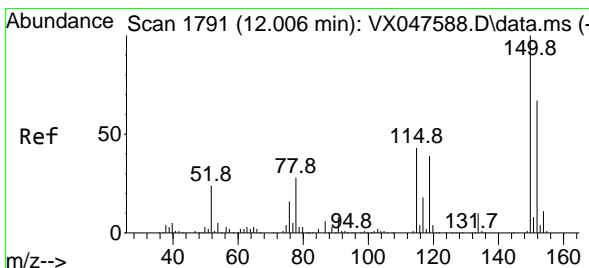
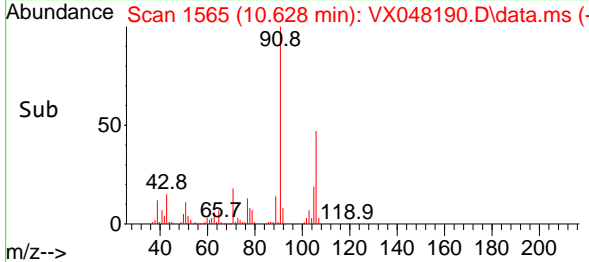
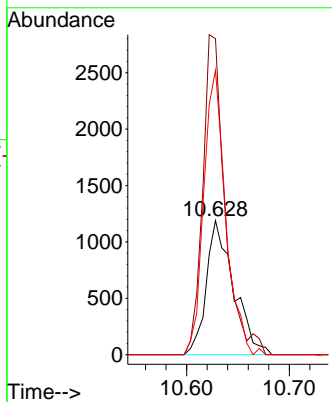
#70
 Styrene
 Concen: 0.357 ug/l
 RT: 10.628 min Scan# 11
 Delta R.T. -0.012 min
 Lab File: VX048190.D
 Acq: 15 Oct 2025 14:56

Instrument : MSVOA_X
 ClientSampleId :



Tgt Ion:104 Resp: 2202

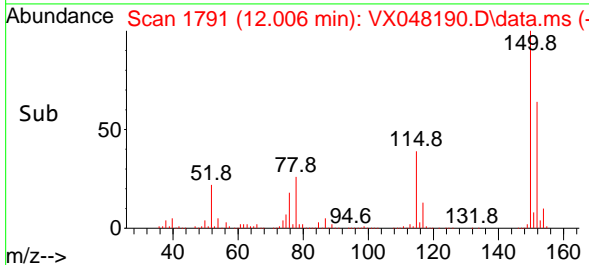
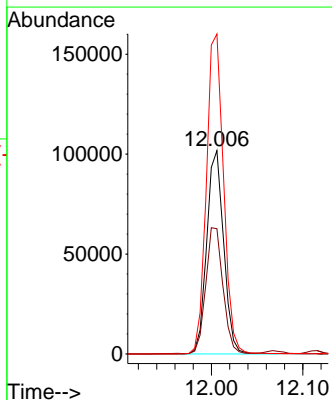
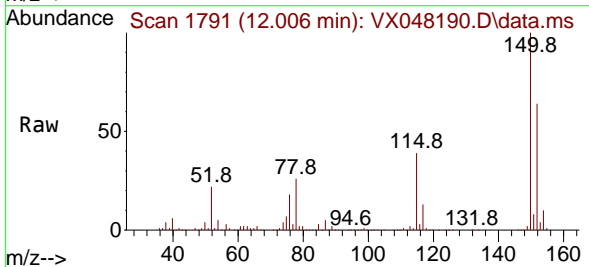
Ion	Ratio	Lower	Upper
104	100		
78	193.3	43.1	64.7#
103	170.4	43.1	64.7#

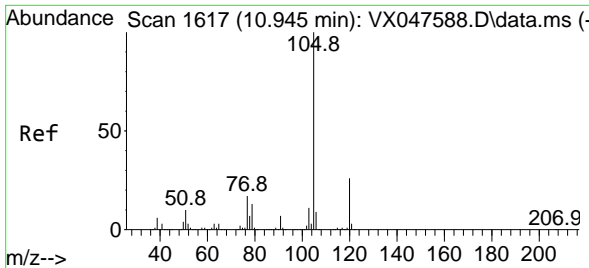


#72
 1,4-Dichlorobenzene-d4
 Concen: 50.000 ug/l
 RT: 12.006 min Scan# 1791
 Delta R.T. -0.000 min
 Lab File: VX048190.D
 Acq: 15 Oct 2025 14:56

Tgt Ion:152 Resp: 130686

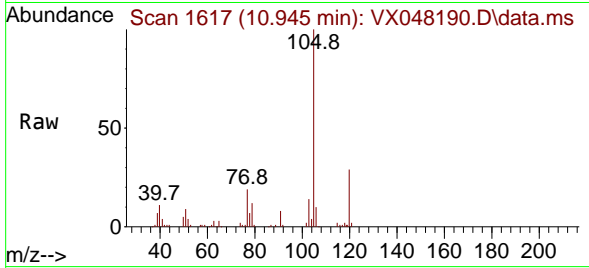
Ion	Ratio	Lower	Upper
152	100		
115	62.7	44.9	134.5
150	159.4	0.0	352.0



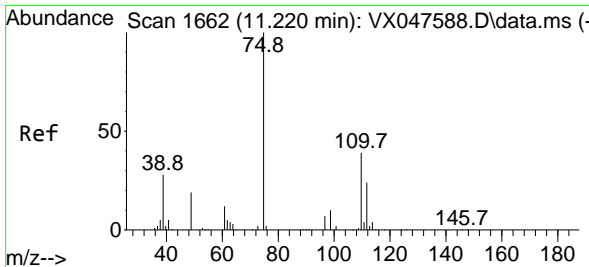
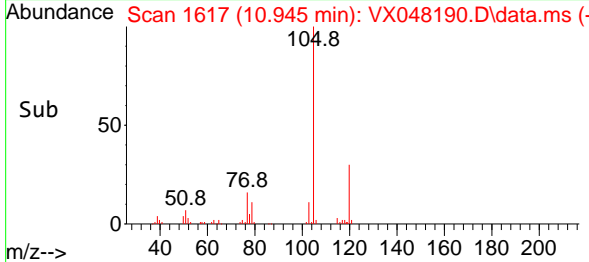
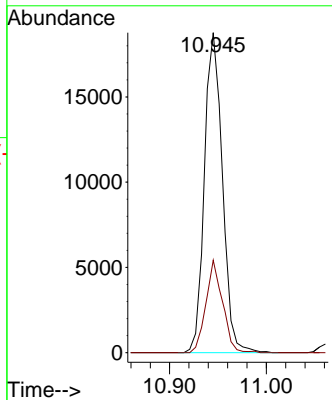


#73
 Isopropylbenzene
 Concen: 2.441 ug/l
 RT: 10.945 min Scan# 1636
 Delta R.T. -0.000 min
 Lab File: VX048190.D
 Acq: 15 Oct 2025 14:56

Instrument : MSVOA_X
 ClientSampleId :

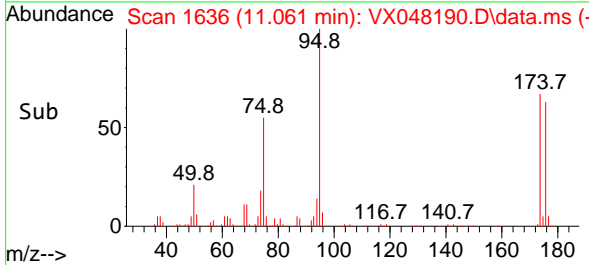
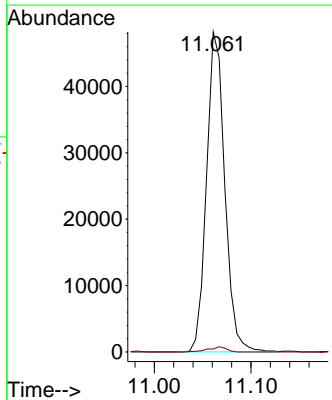
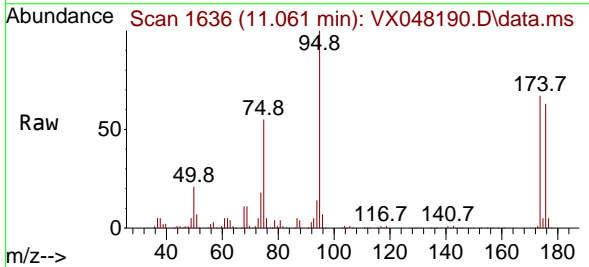


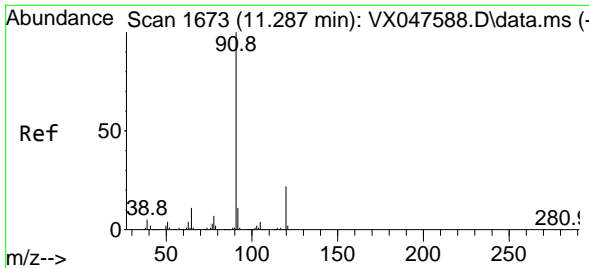
Tgt Ion: 105 Resp: 24249
 Ion Ratio Lower Upper
 105 100
 120 26.8 12.8 38.4



#76
 1,2,3-Trichloropropane
 Concen: 23.879 ug/l
 RT: 11.061 min Scan# 1636
 Delta R.T. -0.159 min
 Lab File: VX048190.D
 Acq: 15 Oct 2025 14:56

Tgt Ion: 75 Resp: 63183
 Ion Ratio Lower Upper
 75 100
 77 1.6 18.8 56.4#

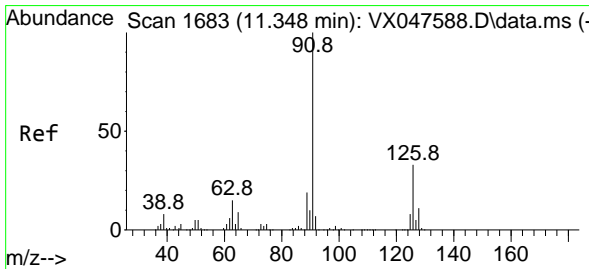
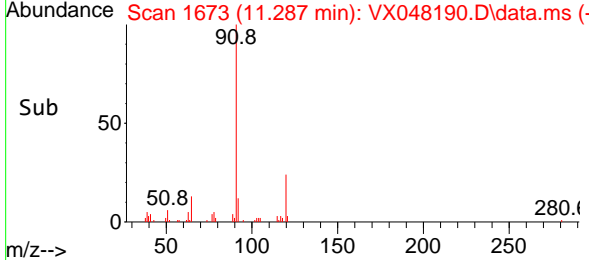
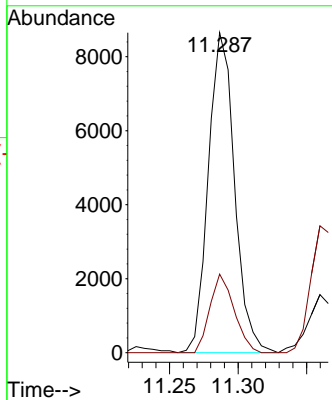
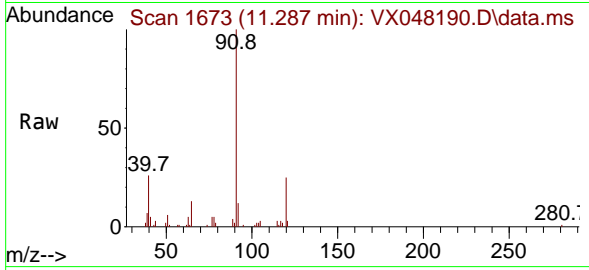




#78
 n-propylbenzene
 Concen: 0.979 ug/l
 RT: 11.287 min Scan# 1673
 Delta R.T. -0.000 min
 Lab File: VX048190.D
 Acq: 15 Oct 2025 14:56

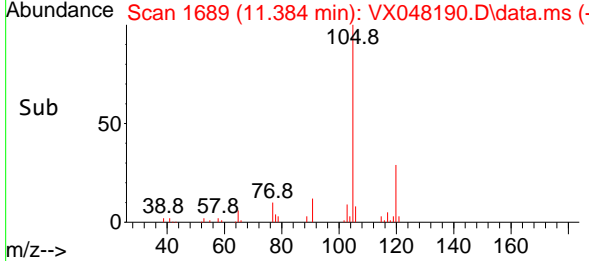
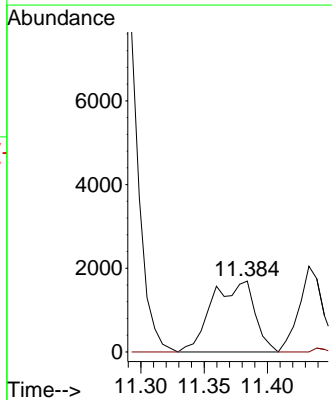
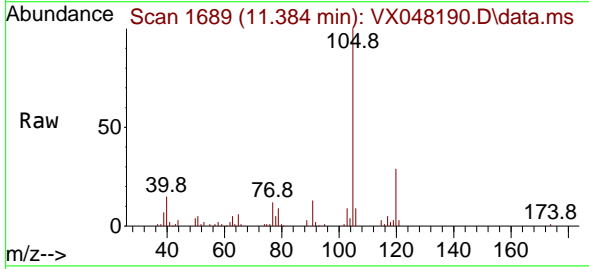
Instrument : MSVOA_X
 ClientSampleId :

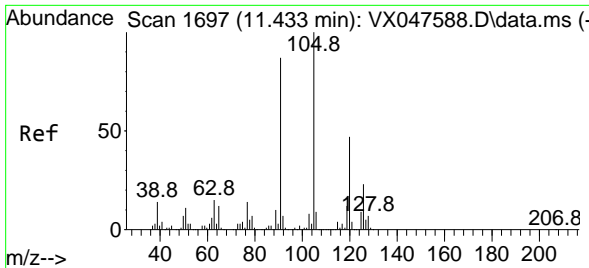
Tgt Ion: 91 Resp: 11493
 Ion Ratio Lower Upper
 91 100
 120 22.7 11.1 33.1



#79
 2-Chlorotoluene
 Concen: 0.554 ug/l
 RT: 11.384 min Scan# 1689
 Delta R.T. 0.036 min
 Lab File: VX048190.D
 Acq: 15 Oct 2025 14:56

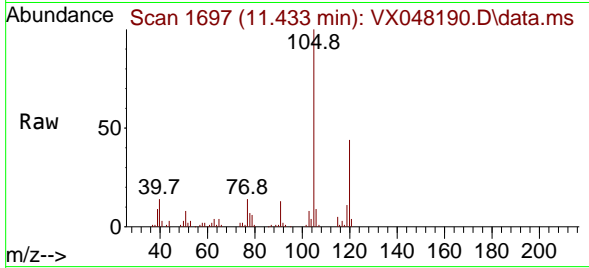
Tgt Ion: 91 Resp: 3987
 Ion Ratio Lower Upper
 91 100
 126 0.0 16.1 48.3#



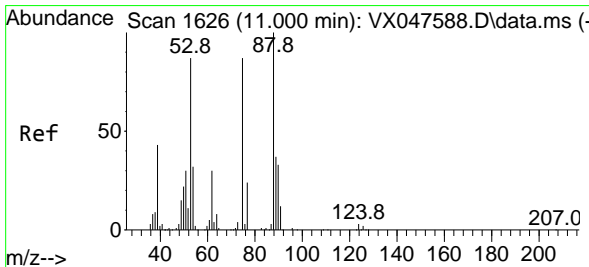
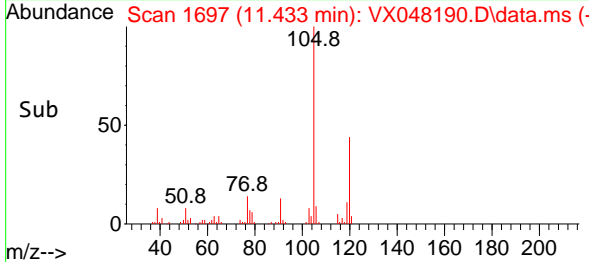
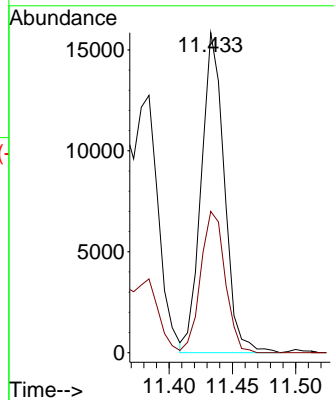


#80
 1,3,5-Trimethylbenzene
 Concen: 2.468 ug/l
 RT: 11.433 min Scan# 11
 Delta R.T. -0.000 min
 Lab File: VX048190.D
 Acq: 15 Oct 2025 14:56

Instrument : MSVOA_X
 ClientSampleId :

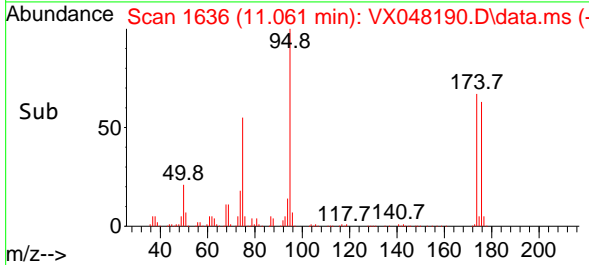
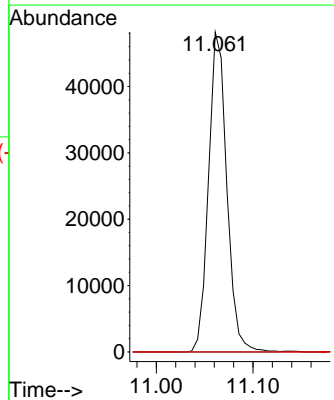
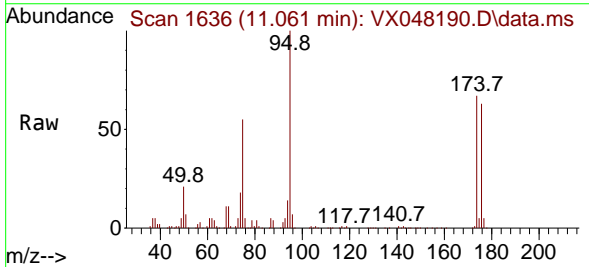


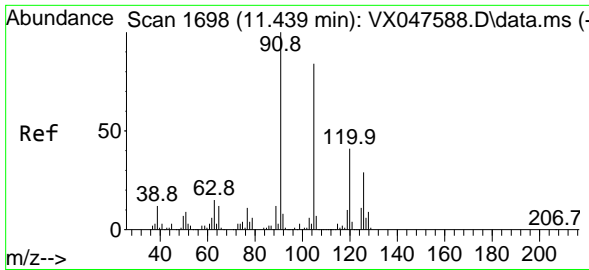
Tgt Ion: 105 Resp: 20147
 Ion Ratio Lower Upper
 105 100
 120 46.7 23.6 70.8



#81
 trans-1,4-Dichloro-2-butene
 Concen: 60.894 ug/l
 RT: 11.061 min Scan# 1636
 Delta R.T. 0.061 min
 Lab File: VX048190.D
 Acq: 15 Oct 2025 14:56

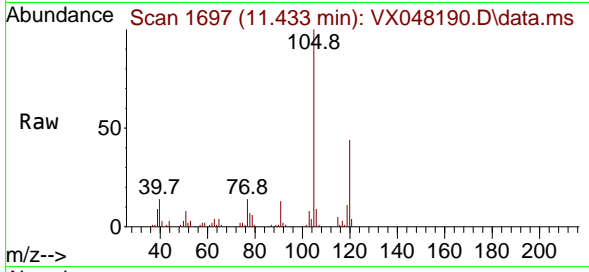
Tgt Ion: 75 Resp: 63183
 Ion Ratio Lower Upper
 75 100
 53 0.0 83.4 125.2#
 89 0.0 36.3 54.5#



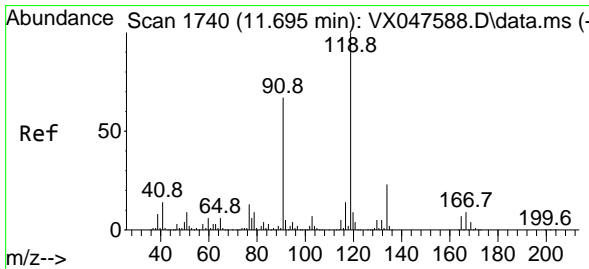
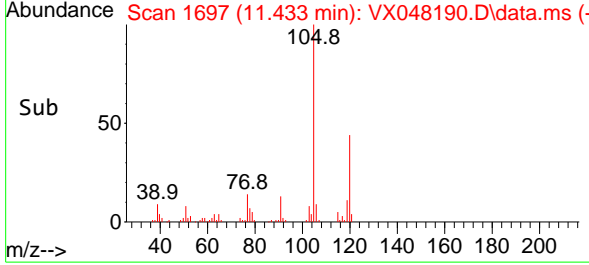
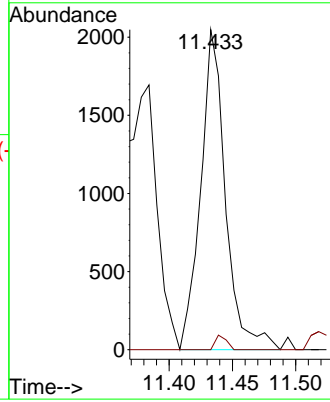


#82
 4-Chlorotoluene
 Concen: 0.329 ug/l
 RT: 11.433 min Scan# 1
 Delta R.T. -0.006 min
 Lab File: VX048190.D
 Acq: 15 Oct 2025 14:56

Instrument :
 MSVOA_X
 ClientSampleId :

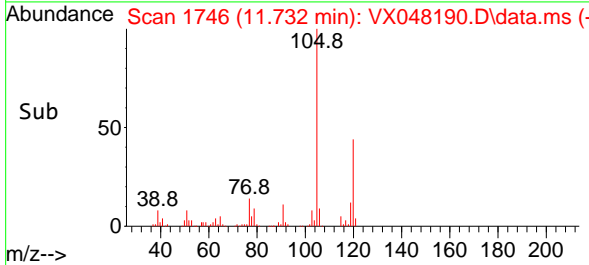
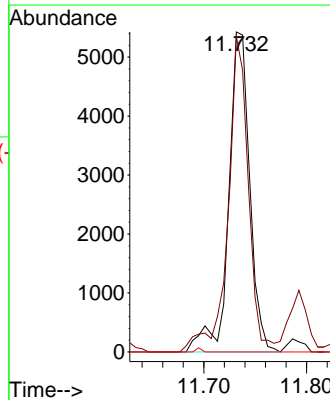
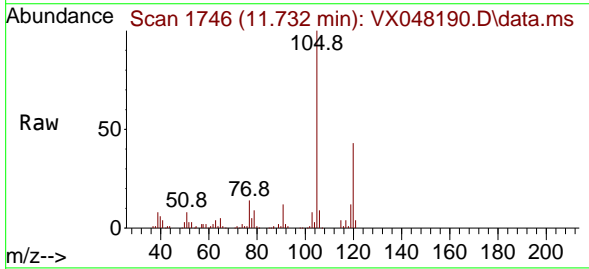


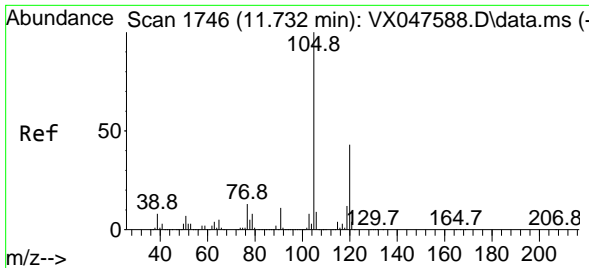
Tgt Ion: 91 Resp: 2794
 Ion Ratio Lower Upper
 91 100
 126 2.0 14.2 42.6#



#83
 tert-Butylbenzene
 Concen: 0.926 ug/l
 RT: 11.732 min Scan# 1746
 Delta R.T. 0.036 min
 Lab File: VX048190.D
 Acq: 15 Oct 2025 14:56

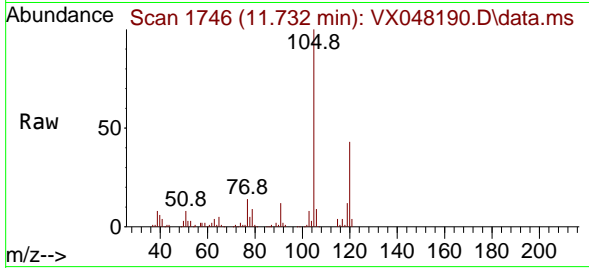
Tgt Ion: 119 Resp: 7740
 Ion Ratio Lower Upper
 119 100
 91 95.3 29.6 88.8#
 134 0.0 11.0 33.0#



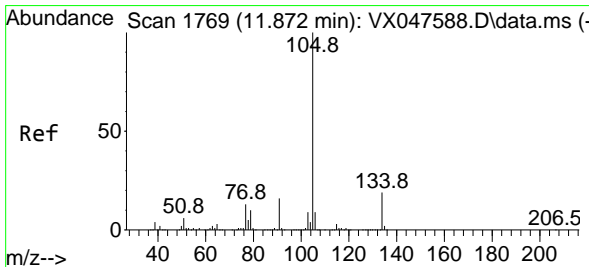
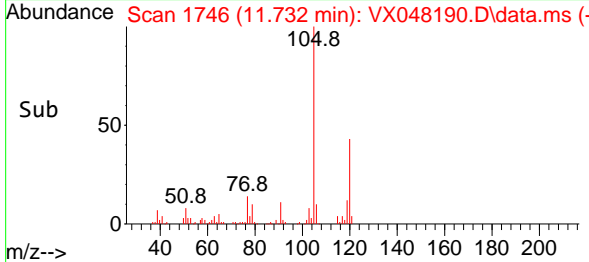
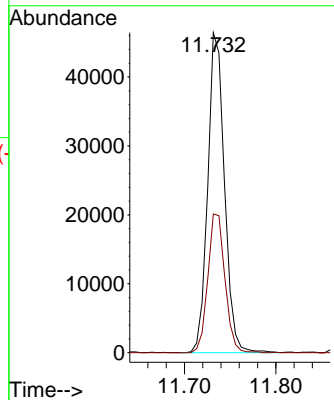


#84
 1,2,4-Trimethylbenzene
 Concen: 7.115 ug/l
 RT: 11.732 min Scan# 1746
 Delta R.T. -0.000 min
 Lab File: VX048190.D
 Acq: 15 Oct 2025 14:56

Instrument : MSVOA_X
 ClientSampleId :

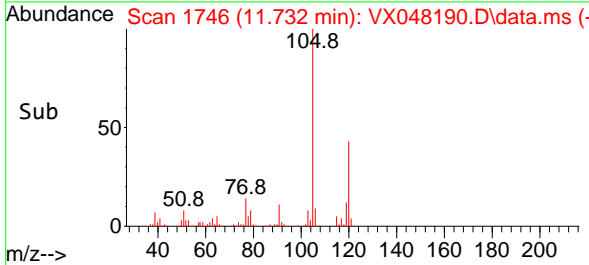
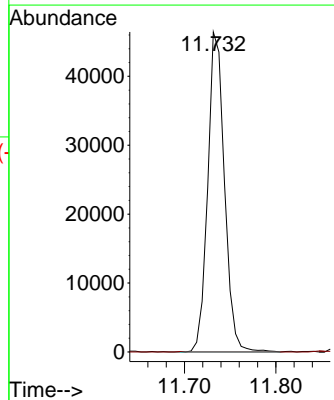
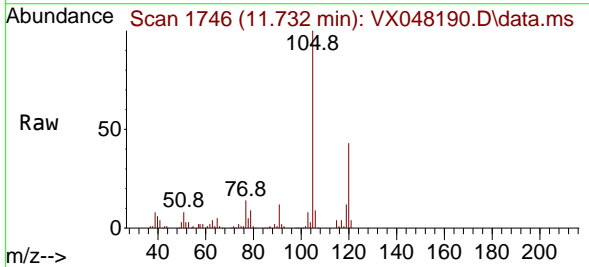


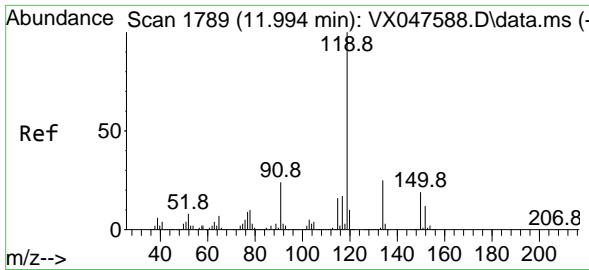
Tgt Ion:105 Resp: 58885
 Ion Ratio Lower Upper
 105 100
 120 44.4 22.1 66.1



#85
 sec-Butylbenzene
 Concen: 5.933 ug/l
 RT: 11.732 min Scan# 1746
 Delta R.T. -0.140 min
 Lab File: VX048190.D
 Acq: 15 Oct 2025 14:56

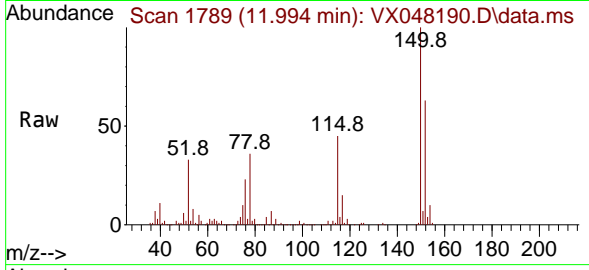
Tgt Ion:105 Resp: 58885
 Ion Ratio Lower Upper
 105 100
 134 0.0 9.8 29.5#





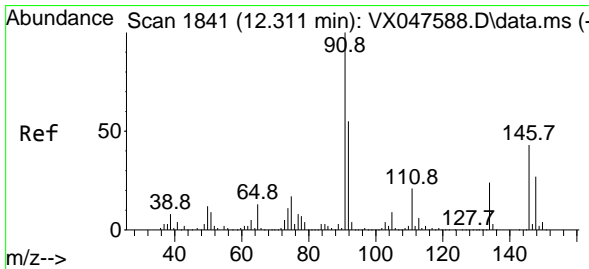
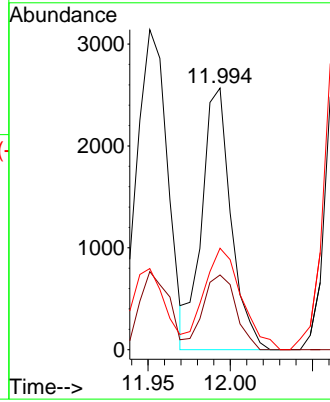
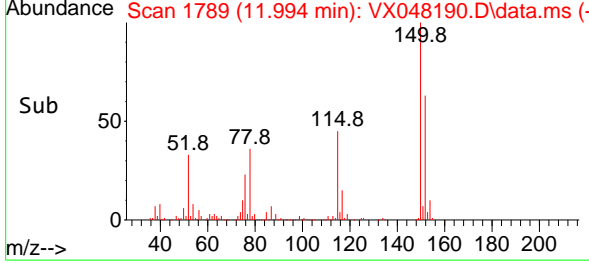
#86
 p-Isopropyltoluene
 Concen: 0.378 ug/l
 RT: 11.994 min Scan# 119
 Delta R.T. -0.000 min
 Lab File: VX048190.D
 Acq: 15 Oct 2025 14:56

Instrument : MSVOA_X
 ClientSampleId :

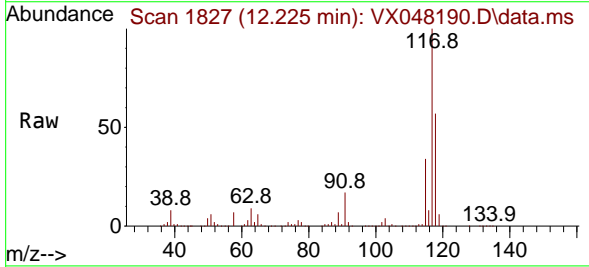


Tgt Ion:119 Resp: 3174

Ion	Ratio	Lower	Upper
119	100		
134	32.5	12.6	37.8
91	0.0	12.6	37.6#

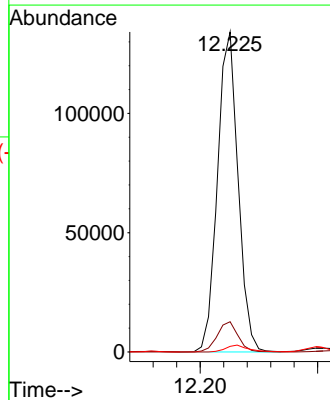
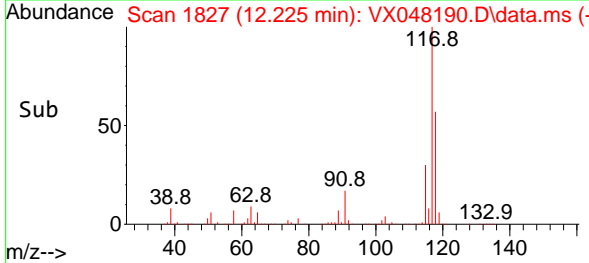


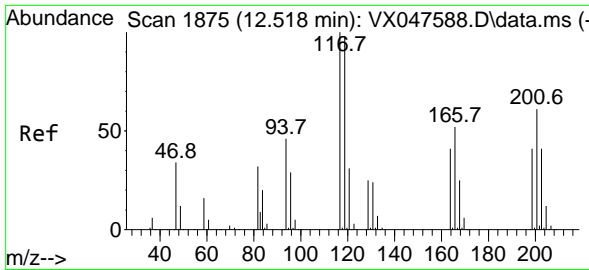
#89
 n-Butylbenzene
 Concen: 21.035 ug/l
 RT: 12.225 min Scan# 1827
 Delta R.T. -0.085 min
 Lab File: VX048190.D
 Acq: 15 Oct 2025 14:56



Tgt Ion: 91 Resp: 163554

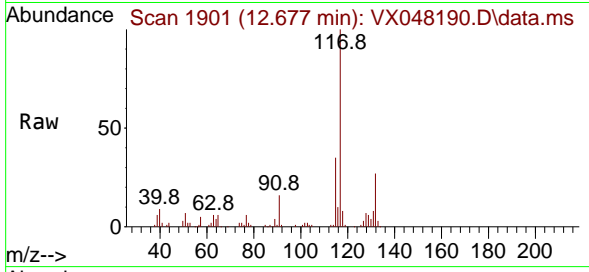
Ion	Ratio	Lower	Upper
91	100		
92	9.6	27.6	82.7#
134	2.3	12.6	37.8#



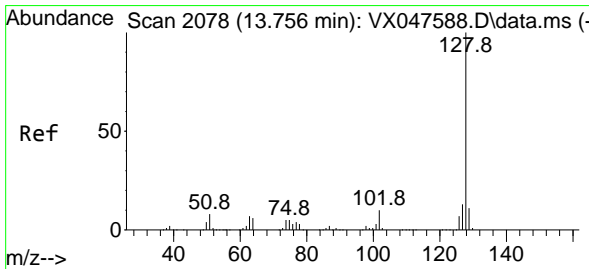
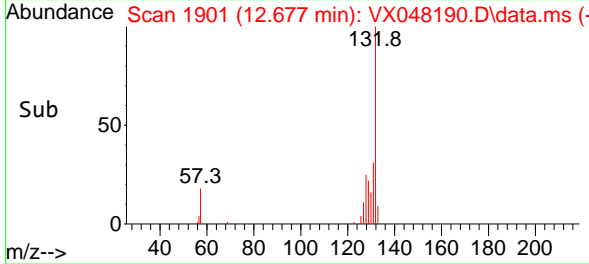
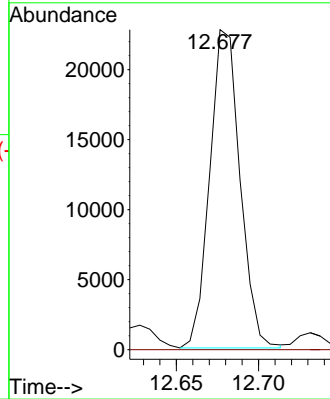


#90
 Hexachloroethane
 Concen: 19.715 ug/l
 RT: 12.677 min Scan# 1901
 Delta R.T. 0.158 min
 Lab File: VX048190.D
 Acq: 15 Oct 2025 14:56

Instrument : MSVOA_X
 ClientSampleId :



Tgt Ion:117 Resp: 29085
 Ion Ratio Lower Upper
 117 100
 201 0.0 34.2 102.5#



#95
 Naphthalene
 Concen: 134.600 ug/l
 RT: 13.756 min Scan# 2078
 Delta R.T. -0.000 min
 Lab File: VX048190.D
 Acq: 15 Oct 2025 14:56

Tgt Ion:128 Resp: 1153475
 Ion Ratio Lower Upper
 128 100
 127 12.8 10.2 15.2
 129 10.8 8.8 13.2

