

Data Path : Z:\voasrv\HPCHEM1\MSVOA_X\Data\VX101525\
 Data File : VX048195.D
 Acq On : 15 Oct 2025 16:40
 Operator : JC/MD
 Sample : IBLK
 Misc : 5.0mL/MSVOA_X/WATER
 ALS Vial : 16 Sample Multiplier: 1

Instrument :
 MSVOA_X
 ClientSampleId :

Quant Time: Oct 16 04:08:47 2025
 Quant Method : Z:\voasrv\HPCHEM1\MSVOA_X\Method\82X091625W.M
 Quant Title : SW846 8260
 QLast Update : Wed Sep 17 06:39:58 2025
 Response via : Initial Calibration

Compound	R.T.	QIon	Response	Conc	Units	Dev(Min)

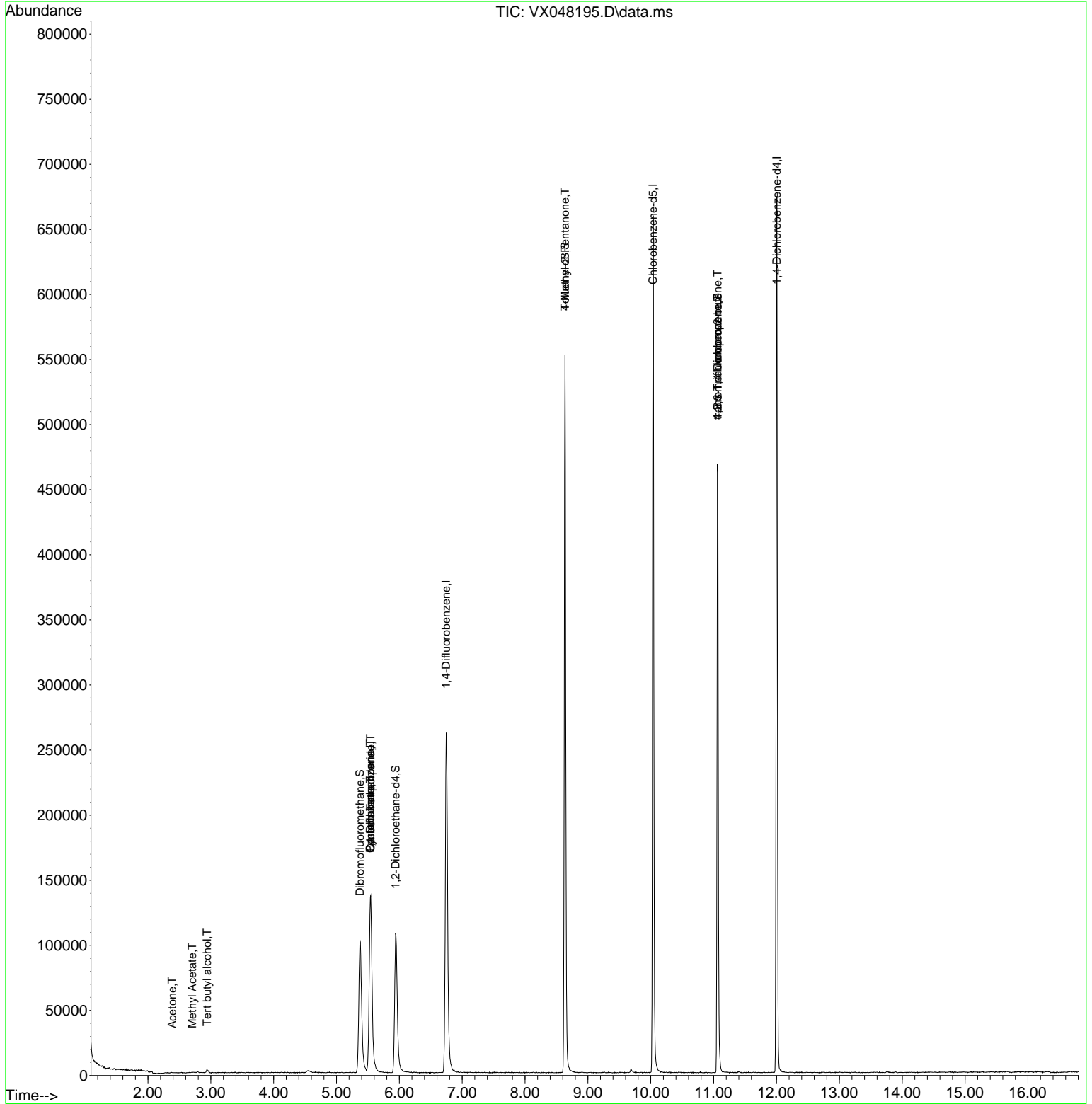
Internal Standards						
1) Pentafluorobenzene	5.538	168	135276	50.000	ug/l	0.00
34) 1,4-Difluorobenzene	6.745	114	286907	50.000	ug/l	0.00
63) Chlorobenzene-d5	10.037	117	291973	50.000	ug/l	0.00
72) 1,4-Dichlorobenzene-d4	12.006	152	141614	50.000	ug/l	0.00
System Monitoring Compounds						
33) 1,2-Dichloroethane-d4	5.940	65	117966	54.785	ug/l	0.00
Spiked Amount	50.000	Range 78 - 117	Recovery	=	109.580%	
35) Dibromofluoromethane	5.373	113	97615	50.731	ug/l	0.00
Spiked Amount	50.000	Range 75 - 124	Recovery	=	101.460%	
50) Toluene-d8	8.635	98	330948	49.707	ug/l	0.00
Spiked Amount	50.000	Range 92 - 112	Recovery	=	99.420%	
62) 4-Bromofluorobenzene	11.061	95	137354	54.359	ug/l	0.00
Spiked Amount	50.000	Range 83 - 123	Recovery	=	108.720%	
Target Compounds						
						Qvalue
11) Tert butyl alcohol	2.941	59	1059	4.416	ug/l #	72
16) Acetone	2.386	43	347	0.371	ug/l #	79
18) Methyl Acetate	2.703	43	554	0.266	ug/l #	73
31) Cyclohexane	5.538	56	3154	1.108	ug/l #	1
36) 1,1-Dichloropropene	5.538	75	11904	4.234	ug/l #	53
38) Carbon Tetrachloride	5.544	117	14699	4.812	ug/l #	17
51) 4-Methyl-2-Pentanone	8.635	43	1483	0.542	ug/l #	1
76) 1,2,3-Trichloropropane	11.061	75	73234	25.542	ug/l #	39
81) trans-1,4-Dichloro-2-b...	11.061	75	73234	65.135	ug/l #	8

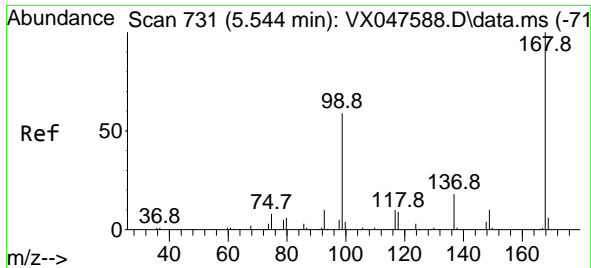
(#) = qualifier out of range (m) = manual integration (+) = signals summed

Data Path : Z:\voasrv\HPCHEM1\MSVOA_X\Data\VX101525\
 Data File : VX048195.D
 Acq On : 15 Oct 2025 16:40
 Operator : JC/MD
 Sample : IBLK
 Misc : 5.0mL/MSVOA_X/WATER
 ALS Vial : 16 Sample Multiplier: 1

Instrument :
 MSVOA_X
 ClientSampleId :

Quant Time: Oct 16 04:08:47 2025
 Quant Method : Z:\voasrv\HPCHEM1\MSVOA_X\Method\82X091625W.M
 Quant Title : SW846 8260
 QLast Update : Wed Sep 17 06:39:58 2025
 Response via : Initial Calibration

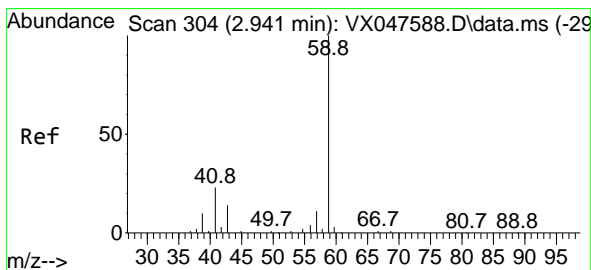
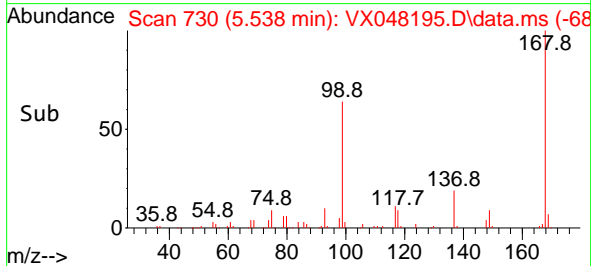
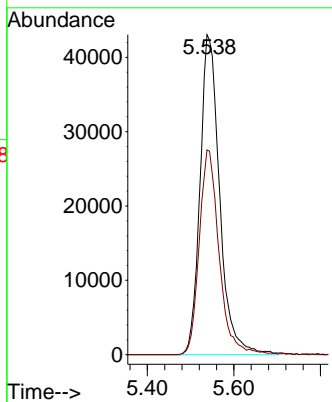
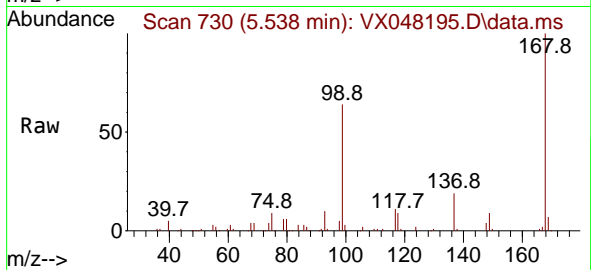




#1
 Pentafluorobenzene
 Concen: 50.000 ug/l
 RT: 5.538 min Scan# 71
 Delta R.T. -0.006 min
 Lab File: VX048195.D
 Acq: 15 Oct 2025 16:40

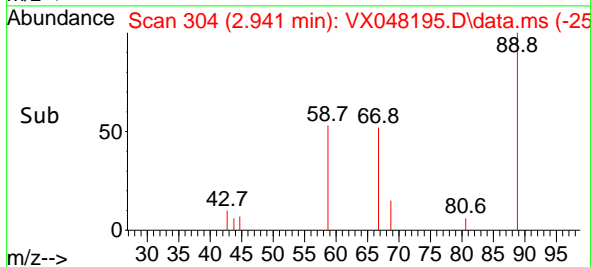
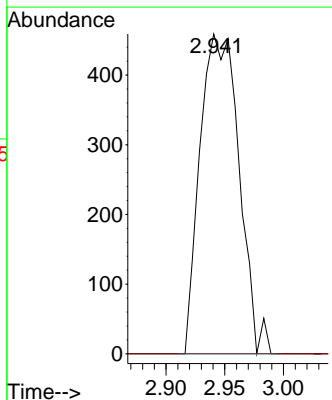
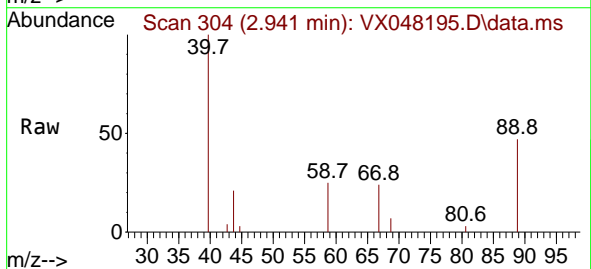
Instrument : MSVOA_X
 ClientSampleId :

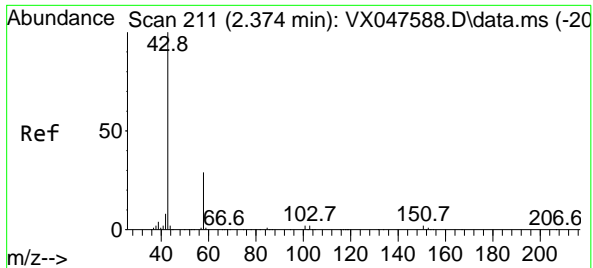
Tgt Ion:168 Resp: 135276
 Ion Ratio Lower Upper
 168 100
 99 64.0 48.8 73.2



#11
 Tert butyl alcohol
 Concen: 4.416 ug/l
 RT: 2.941 min Scan# 304
 Delta R.T. -0.000 min
 Lab File: VX048195.D
 Acq: 15 Oct 2025 16:40

Tgt Ion: 59 Resp: 1059
 Ion Ratio Lower Upper
 59 100
 57 0.0 8.3 12.5#

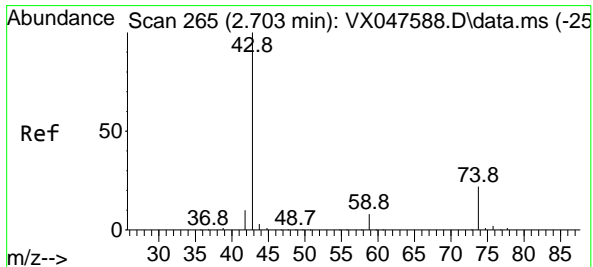
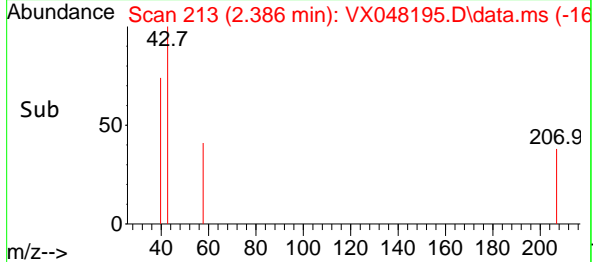
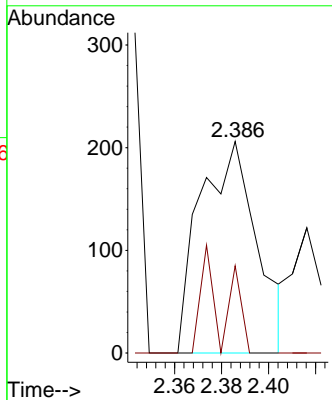
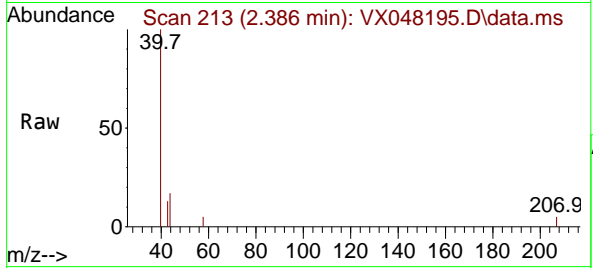




#16
 Acetone
 Concen: 0.371 ug/l
 RT: 2.386 min Scan# 211
 Delta R.T. 0.012 min
 Lab File: VX048195.D
 Acq: 15 Oct 2025 16:40

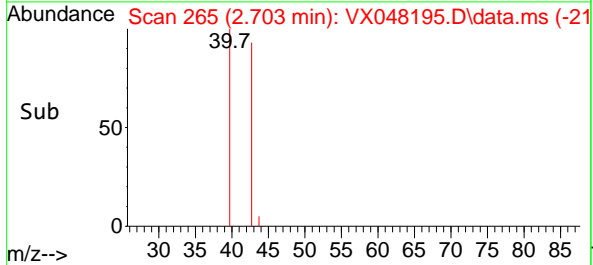
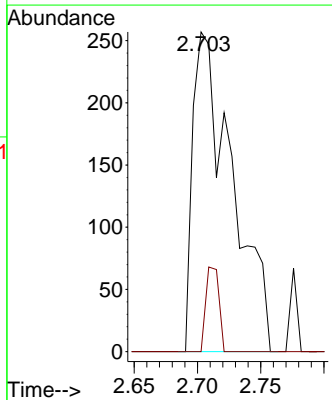
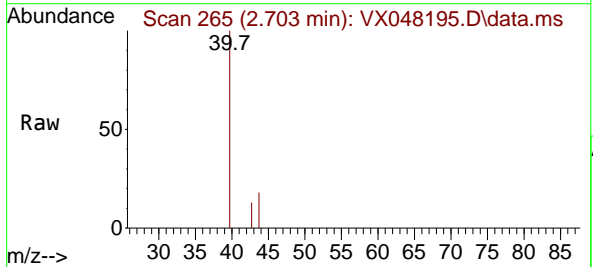
Instrument : MSVOA_X
 ClientSampleId :

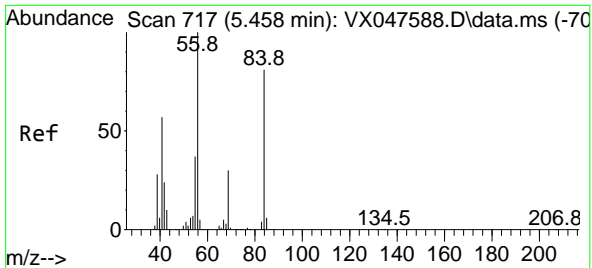
Tgt Ion: 43 Resp: 347
 Ion Ratio Lower Upper
 43 100
 58 18.0 23.4 35.0#



#18
 Methyl Acetate
 Concen: 0.266 ug/l
 RT: 2.703 min Scan# 265
 Delta R.T. -0.000 min
 Lab File: VX048195.D
 Acq: 15 Oct 2025 16:40

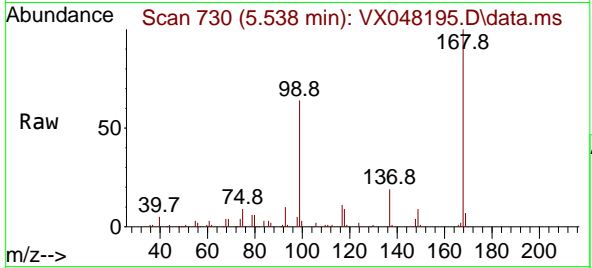
Tgt Ion: 43 Resp: 554
 Ion Ratio Lower Upper
 43 100
 74 8.8 17.4 26.2#



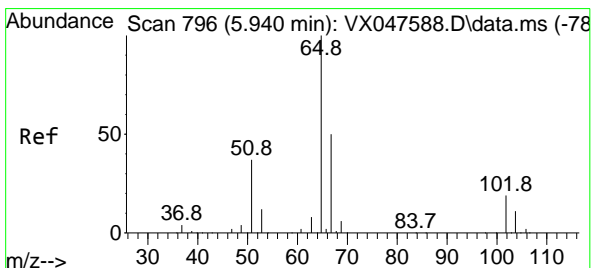
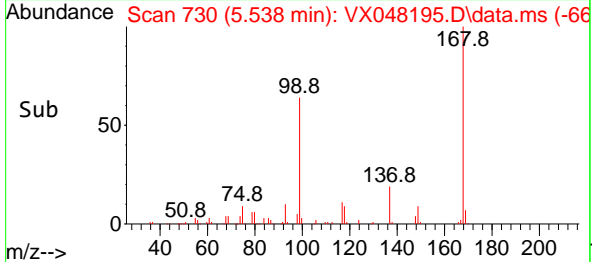
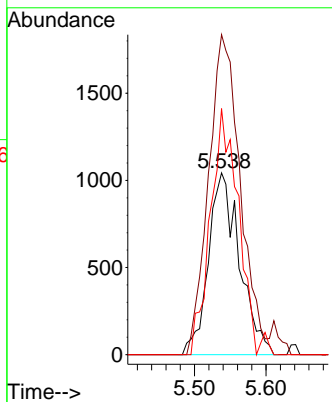


#31
 Cyclohexane
 Concen: 1.108 ug/l
 RT: 5.538 min Scan# 717
 Delta R.T. 0.079 min
 Lab File: VX048195.D
 Acq: 15 Oct 2025 16:40

Instrument : MSVOA_X
 ClientSampleId :

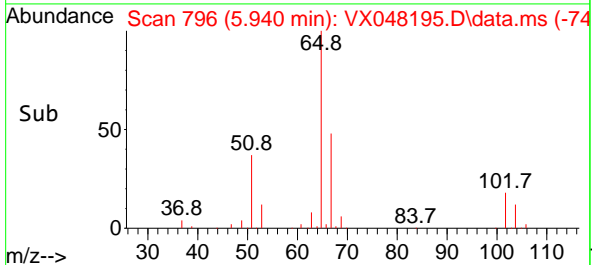
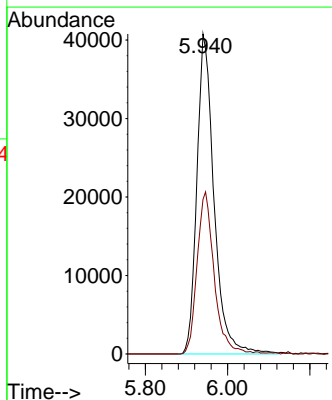
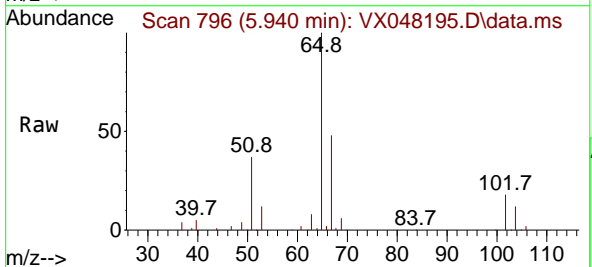


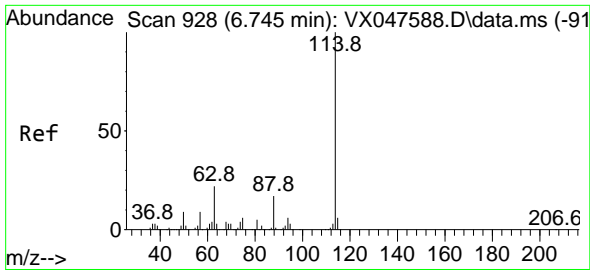
Tgt Ion: 56 Resp: 3154
 Ion Ratio Lower Upper
 56 100
 69 176.0 23.8 35.8#
 84 135.4 64.6 97.0#



#33
 1,2-Dichloroethane-d4
 Concen: 54.785 ug/l
 RT: 5.940 min Scan# 796
 Delta R.T. -0.000 min
 Lab File: VX048195.D
 Acq: 15 Oct 2025 16:40

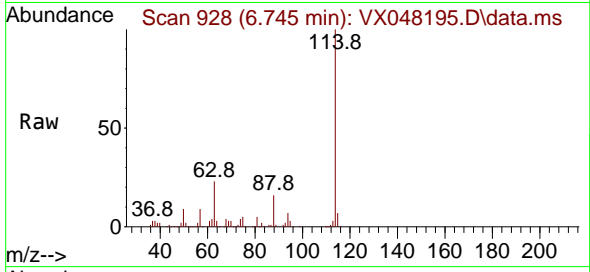
Tgt Ion: 65 Resp: 117966
 Ion Ratio Lower Upper
 65 100
 67 50.5 0.0 103.0



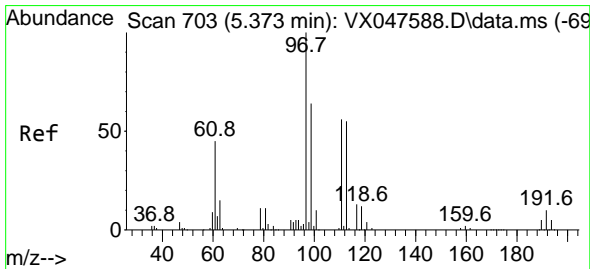
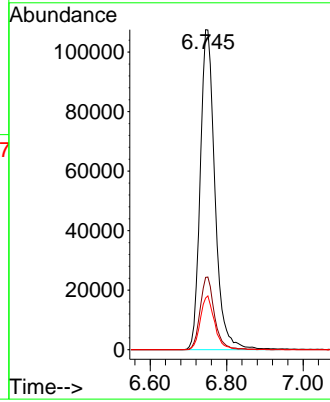
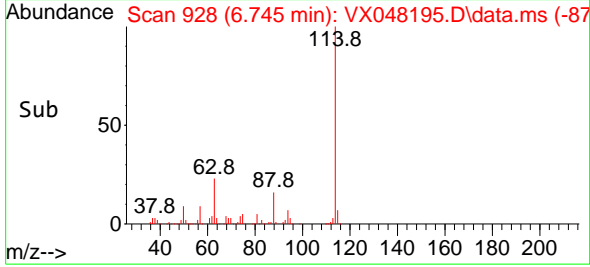


#34
 1,4-Difluorobenzene
 Concen: 50.000 ug/l
 RT: 6.745 min Scan# 91
 Delta R.T. -0.000 min
 Lab File: VX048195.D
 Acq: 15 Oct 2025 16:40

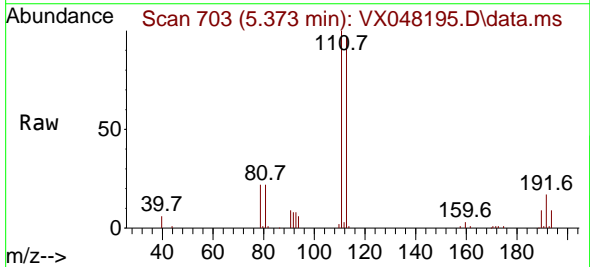
Instrument :
 MSVOA_X
 ClientSampleId :



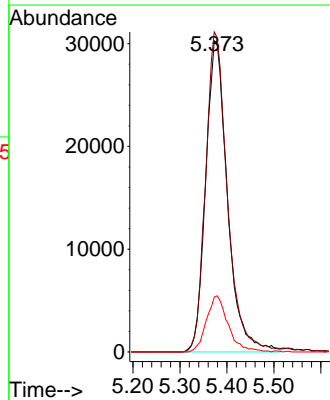
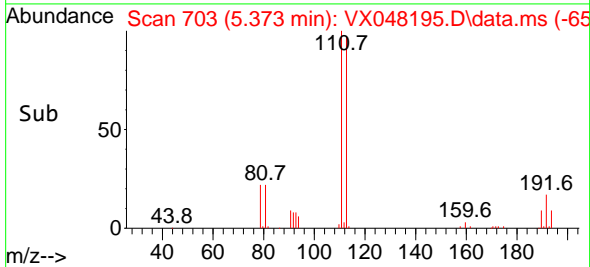
Tgt Ion:114 Resp: 286907
 Ion Ratio Lower Upper
 114 100
 63 22.6 0.0 44.0
 88 16.2 0.0 34.2

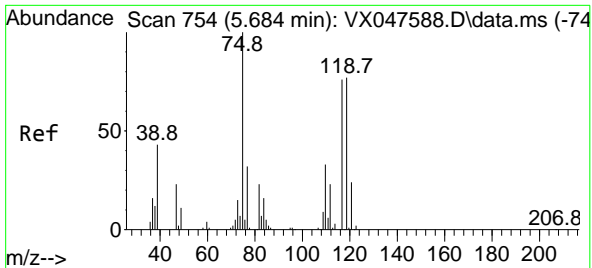


#35
 Dibromofluoromethane
 Concen: 50.731 ug/l
 RT: 5.373 min Scan# 703
 Delta R.T. -0.000 min
 Lab File: VX048195.D
 Acq: 15 Oct 2025 16:40



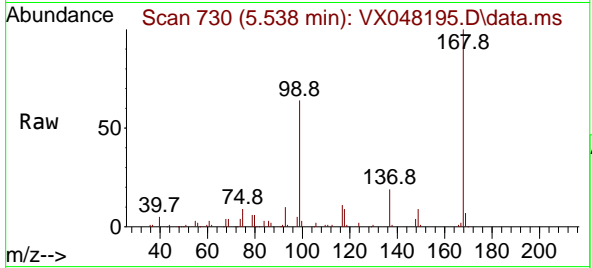
Tgt Ion:113 Resp: 97615
 Ion Ratio Lower Upper
 113 100
 111 102.4 80.9 121.3
 192 17.9 14.2 21.4



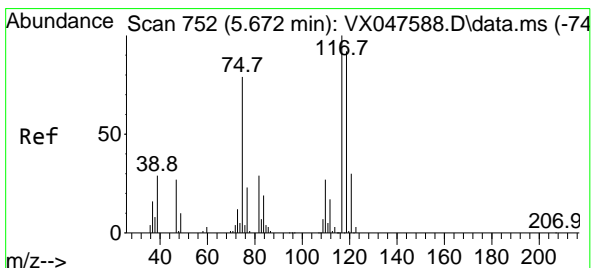
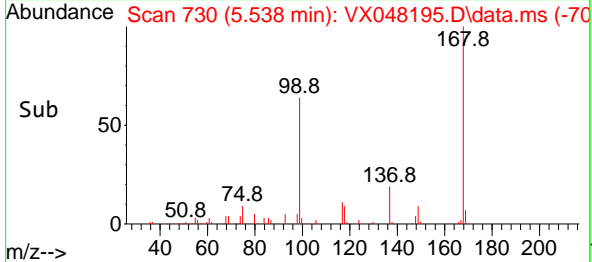
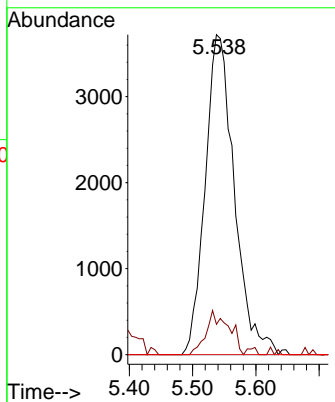


#36
 1,1-Dichloropropene
 Concen: 4.234 ug/l
 RT: 5.538 min Scan# 711
 Delta R.T. -0.146 min
 Lab File: VX048195.D
 Acq: 15 Oct 2025 16:40

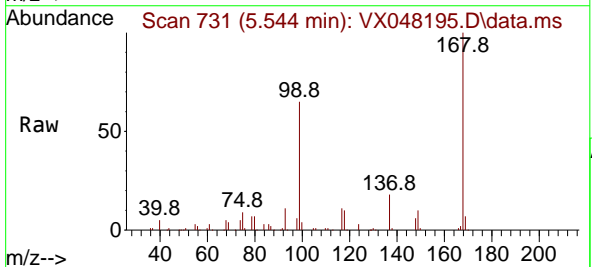
Instrument : MSVOA_X
 ClientSampleId :



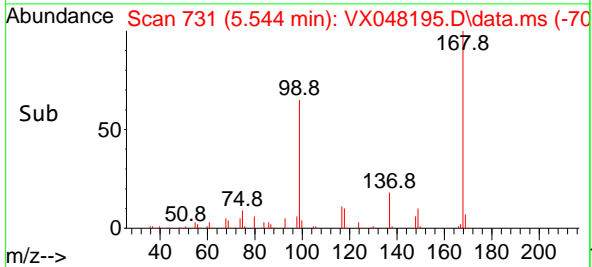
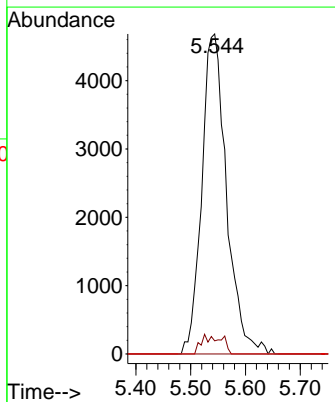
Tgt Ion: 75 Resp: 11904
 Ion Ratio Lower Upper
 75 100
 110 10.7 16.7 50.1#
 77 0.0 24.3 36.5#

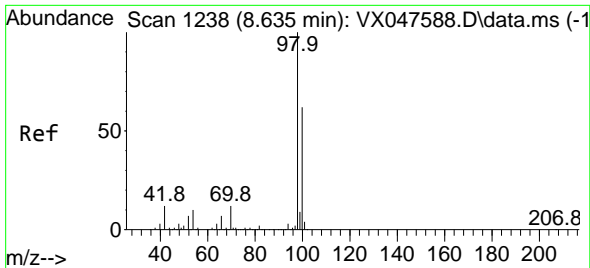


#38
 Carbon Tetrachloride
 Concen: 4.812 ug/l
 RT: 5.544 min Scan# 731
 Delta R.T. -0.128 min
 Lab File: VX048195.D
 Acq: 15 Oct 2025 16:40



Tgt Ion: 117 Resp: 14699
 Ion Ratio Lower Upper
 117 100
 119 4.1 73.4 110.2#
 121 0.0 23.8 35.6#

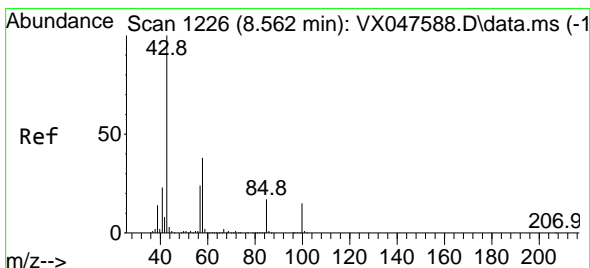
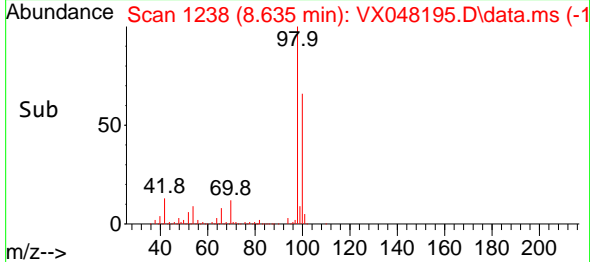
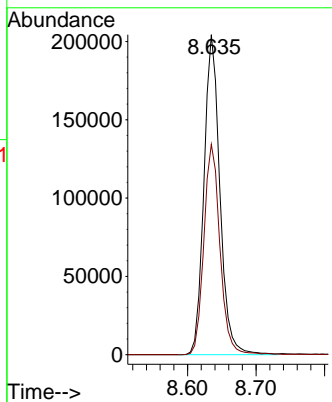
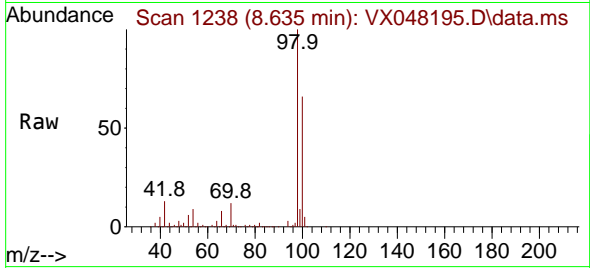




#50
 Toluene-d8
 Concen: 49.707 ug/l
 RT: 8.635 min Scan# 11
 Delta R.T. -0.000 min
 Lab File: VX048195.D
 Acq: 15 Oct 2025 16:40

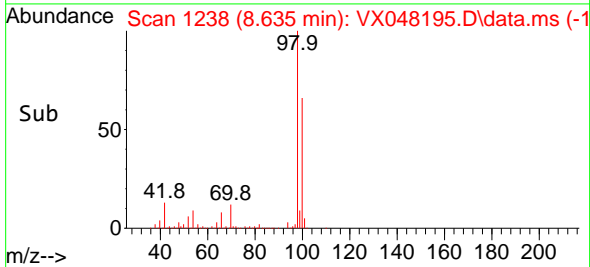
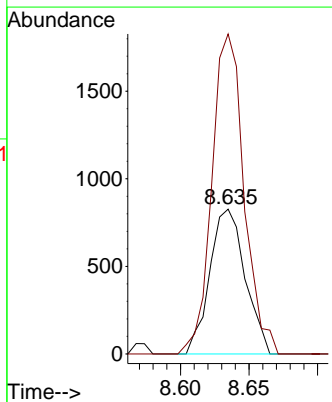
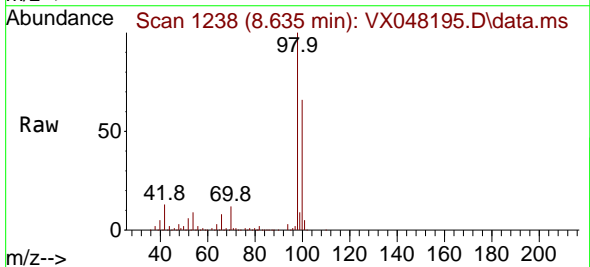
Instrument :
 MSVOA_X
 ClientSampleId :

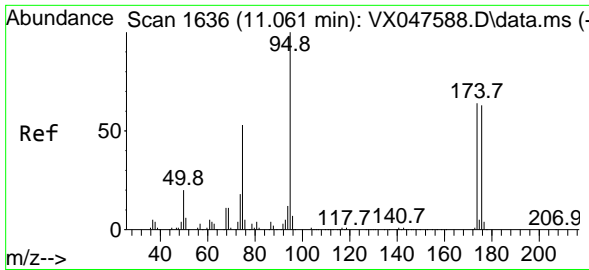
Tgt Ion: 98 Resp: 330948
 Ion Ratio Lower Upper
 98 100
 100 66.5 53.0 79.4



#51
 4-Methyl-2-Pentanone
 Concen: 0.542 ug/l
 RT: 8.635 min Scan# 1238
 Delta R.T. 0.073 min
 Lab File: VX048195.D
 Acq: 15 Oct 2025 16:40

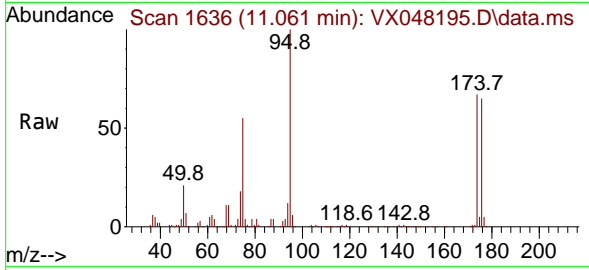
Tgt Ion: 43 Resp: 1483
 Ion Ratio Lower Upper
 43 100
 58 201.0 30.3 45.5#



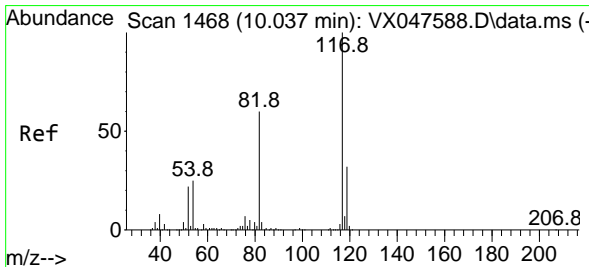
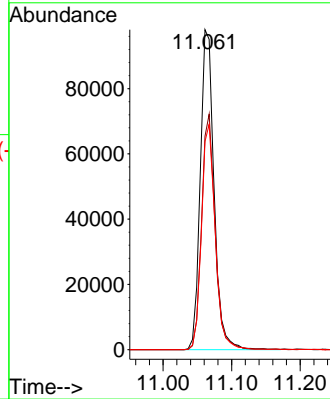
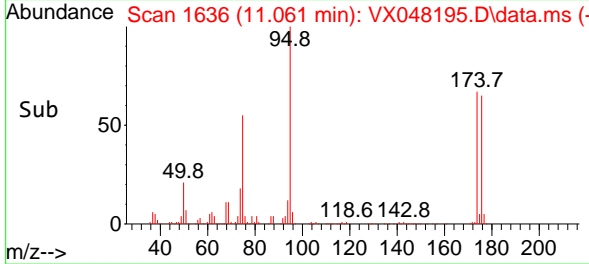


#62
 4-Bromofluorobenzene
 Concen: 54.359 ug/l
 RT: 11.061 min Scan# 11
 Delta R.T. -0.000 min
 Lab File: VX048195.D
 Acq: 15 Oct 2025 16:40

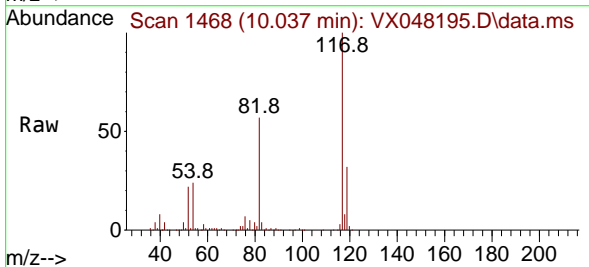
Instrument :
 MSVOA_X
 ClientSampleId :



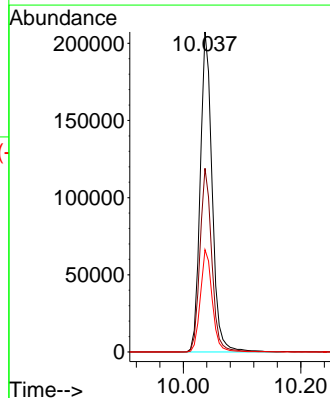
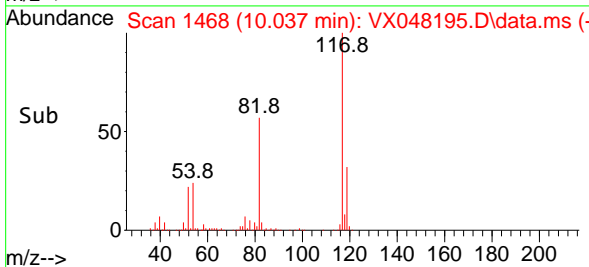
Tgt Ion: 95 Resp: 137354
 Ion Ratio Lower Upper
 95 100
 174 72.2 0.0 141.6
 176 70.4 0.0 138.4

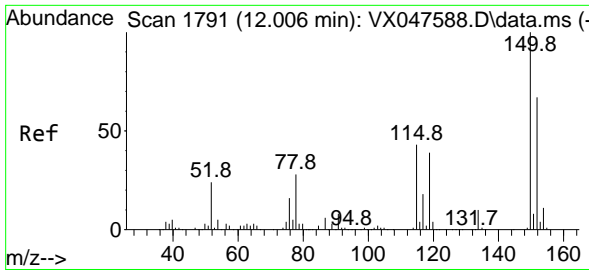


#63
 Chlorobenzene-d5
 Concen: 50.000 ug/l
 RT: 10.037 min Scan# 1468
 Delta R.T. -0.000 min
 Lab File: VX048195.D
 Acq: 15 Oct 2025 16:40



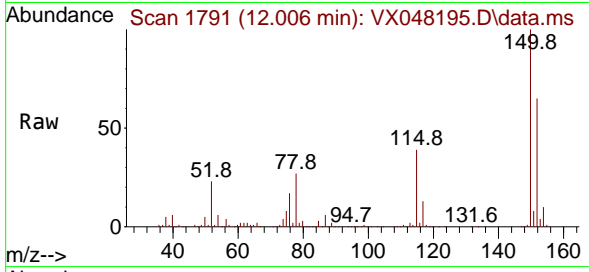
Tgt Ion: 117 Resp: 291973
 Ion Ratio Lower Upper
 117 100
 82 57.4 47.8 71.6
 119 32.0 25.2 37.8



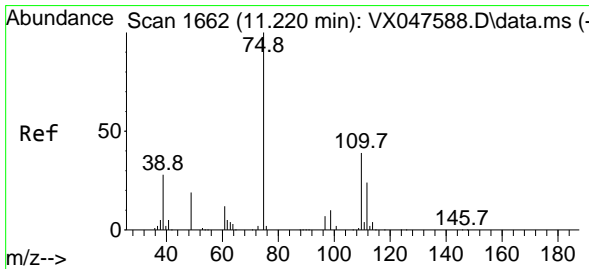
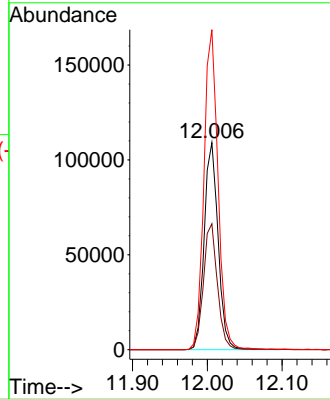
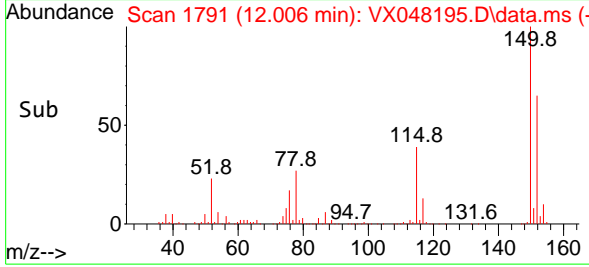


#72
 1,4-Dichlorobenzene-d4
 Concen: 50.000 ug/l
 RT: 12.006 min Scan# 1
 Delta R.T. -0.000 min
 Lab File: VX048195.D
 Acq: 15 Oct 2025 16:40

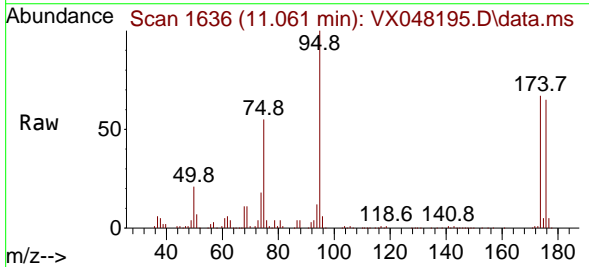
Instrument :
 MSVOA_X
 ClientSampleId :



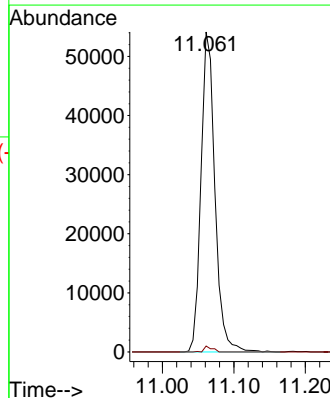
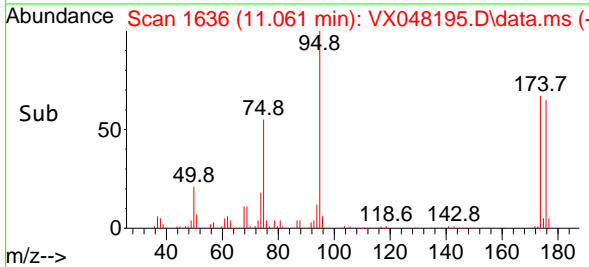
Tgt Ion:152 Resp: 141614
 Ion Ratio Lower Upper
 152 100
 115 61.1 44.9 134.5
 150 155.5 0.0 352.0

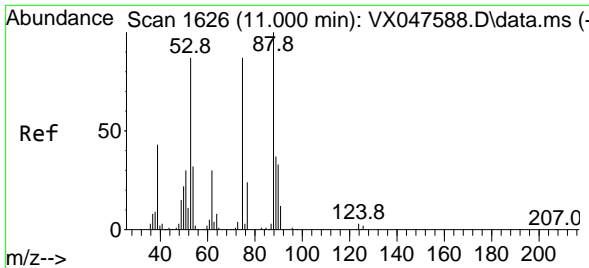


#76
 1,2,3-Trichloropropane
 Concen: 25.542 ug/l
 RT: 11.061 min Scan# 1636
 Delta R.T. -0.159 min
 Lab File: VX048195.D
 Acq: 15 Oct 2025 16:40



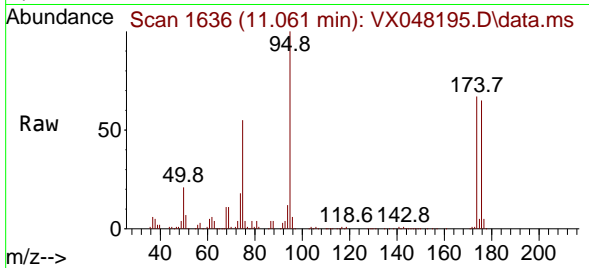
Tgt Ion: 75 Resp: 73234
 Ion Ratio Lower Upper
 75 100
 77 1.1 18.8 56.4#





#81
 trans-1,4-Dichloro-2-butene
 Concen: 65.135 ug/l
 RT: 11.061 min Scan# 1
 Delta R.T. 0.061 min
 Lab File: VX048195.D
 Acq: 15 Oct 2025 16:40

Instrument :
 MSVOA_X
 ClientSampleId :



Tgt Ion: 75 Resp: 73234
 Ion Ratio Lower Upper
 75 100
 53 0.0 83.4 125.2#
 89 0.0 36.3 54.5#

