

Data Path : Z:\voasrv\HPCHEM1\MSVOA\_X\Data\VX101624\  
 Data File : VX043419.D  
 Acq On : 16 Oct 2024 13:14  
 Operator : JC/MD  
 Sample : P4405-01  
 Misc : 5.0mL/MSVOA\_X/WATER  
 ALS Vial : 7 Sample Multiplier: 1

Instrument :  
 MSVOA\_X  
 ClientSampleId :

Quant Time: Oct 17 01:53:38 2024  
 Quant Method : Z:\voasrv\HPCHEM1\MSVOA\_X\Method\82X100124W.M  
 Quant Title : SW846 8260  
 QLast Update : Wed Oct 02 16:50:57 2024  
 Response via : Initial Calibration

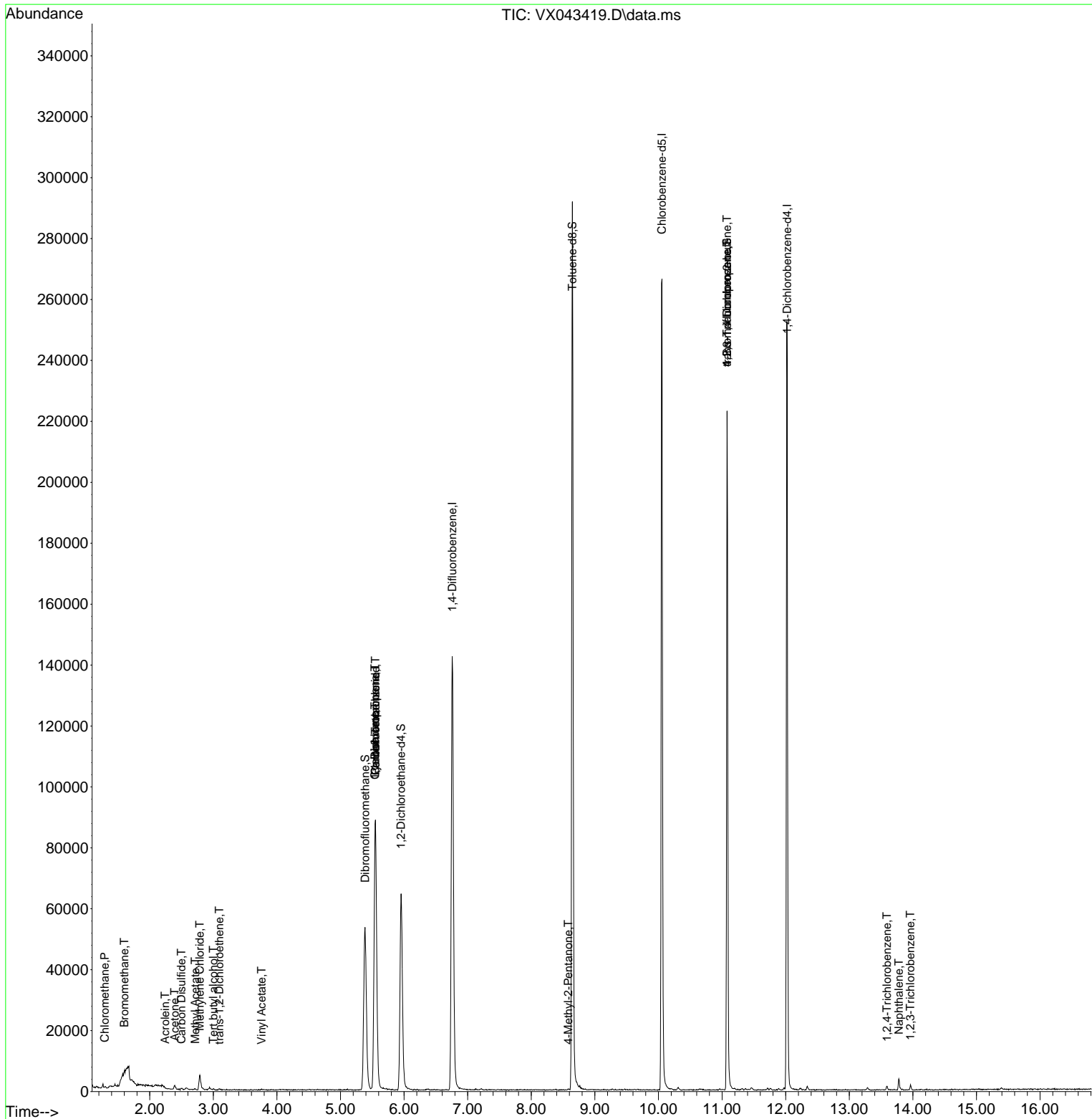
Compound	R.T.	QIon	Response	Conc	Units	Dev(Min)
-----						
Internal Standards						
1) Pentafluorobenzene	5.550	168	80645	50.000	ug/l	0.00
34) 1,4-Difluorobenzene	6.757	114	145095	50.000	ug/l	0.00
63) Chlorobenzene-d5	10.055	117	122380	50.000	ug/l	0.00
72) 1,4-Dichlorobenzene-d4	12.024	152	52081	50.000	ug/l	0.00
System Monitoring Compounds						
33) 1,2-Dichloroethane-d4	5.952	65	66711	50.652	ug/l	0.00
Spiked Amount	50.000	Range 74 - 125	Recovery	=	101.300%	
35) Dibromofluoromethane	5.385	113	47594	47.564	ug/l	0.00
Spiked Amount	50.000	Range 75 - 124	Recovery	=	95.120%	
50) Toluene-d8	8.647	98	172073	49.622	ug/l	0.00
Spiked Amount	50.000	Range 86 - 113	Recovery	=	99.240%	
62) 4-Bromofluorobenzene	11.079	95	60245	47.822	ug/l	0.00
Spiked Amount	50.000	Range 77 - 121	Recovery	=	95.640%	
Target Compounds						
						Qvalue
3) Chloromethane	1.294	50	326	0.337	ug/l	97
5) Bromomethane	1.599	94	208	0.526	ug/l #	68
11) Tert butyl alcohol	3.001	59	269	1.073	ug/l #	71
13) Acrolein	2.239	56	177	0.748	ug/l	95
16) Acetone	2.392	43	1617	2.940	ug/l	92
17) Carbon Disulfide	2.495	76	664	0.305	ug/l #	76
18) Methyl Acetate	2.715	43	331	0.240	ug/l #	51
20) Methylene Chloride	2.788	84	2514	2.479	ug/l	86
21) trans-1,2-Dichloroethene	3.093	96	181	0.203	ug/l #	63
23) Vinyl Acetate	3.757	43	302	6.430	ug/l #	71
31) Cyclohexane	5.544	56	2118	1.490	ug/l #	9
36) 1,1-Dichloropropene	5.544	75	6888	5.449	ug/l #	49
38) Carbon Tetrachloride	5.550	117	8933	5.969	ug/l #	14
51) 4-Methyl-2-Pentanone	8.580	43	343	0.225	ug/l #	58
76) 1,2,3-Trichloropropane	11.079	75	33259	28.790	ug/l #	34
81) trans-1,4-Dichloro-2-b...	11.079	75	33259	74.615	ug/l #	8
93) 1,2,4-Trichlorobenzene	13.591	180	487	0.476	ug/l	94
95) Naphthalene	13.780	128	3223	0.857	ug/l	98
96) 1,2,3-Trichlorobenzene	13.963	180	559	0.529	ug/l	95

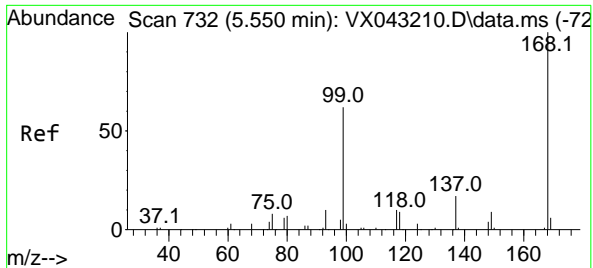
(#) = qualifier out of range (m) = manual integration (+) = signals summed

Data Path : Z:\voasrv\HPCHEM1\MSVOA\_X\Data\VX101624\  
 Data File : VX043419.D  
 Acq On : 16 Oct 2024 13:14  
 Operator : JC/MD  
 Sample : P4405-01  
 Misc : 5.0mL/MSVOA\_X/WATER  
 ALS Vial : 7 Sample Multiplier: 1

Instrument :  
 MSVOA\_X  
 ClientSampleId :

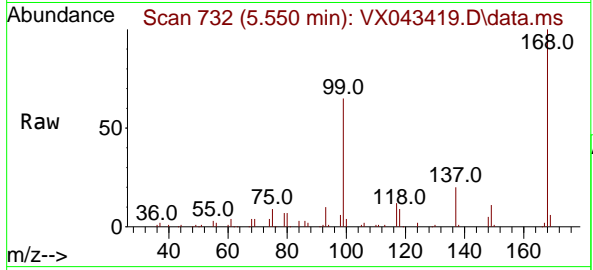
Quant Time: Oct 17 01:53:38 2024  
 Quant Method : Z:\voasrv\HPCHEM1\MSVOA\_X\Method\82X100124W.M  
 Quant Title : SW846 8260  
 QLast Update : Wed Oct 02 16:50:57 2024  
 Response via : Initial Calibration



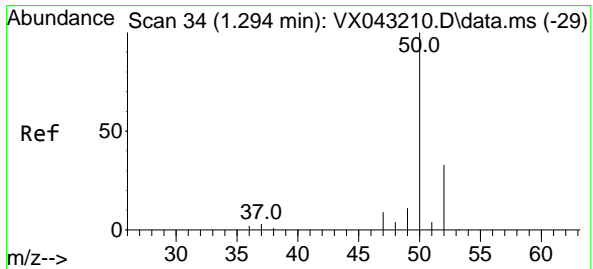
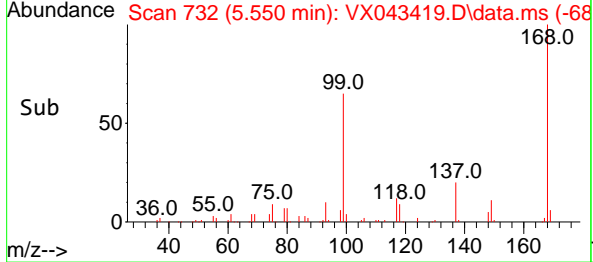
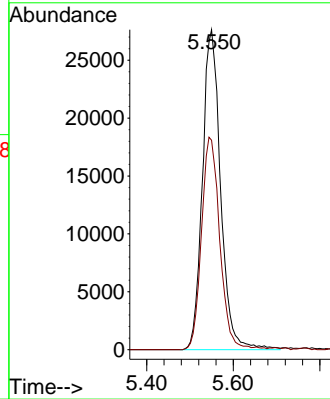


#1  
 Pentafluorobenzene  
 Concen: 50.000 ug/l  
 RT: 5.550 min Scan# 71  
 Delta R.T. -0.000 min  
 Lab File: VX043419.D  
 Acq: 16 Oct 2024 13:14

Instrument :  
 MSVOA\_X  
 ClientSampleId :

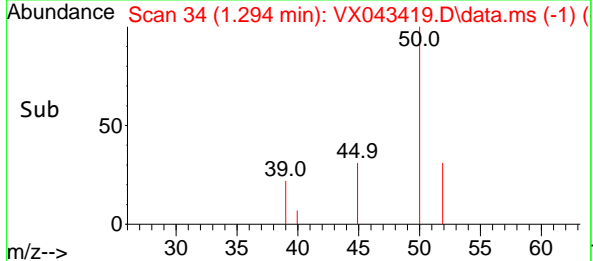
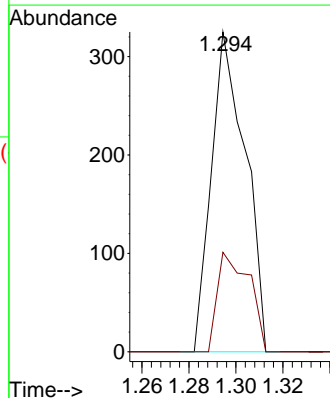
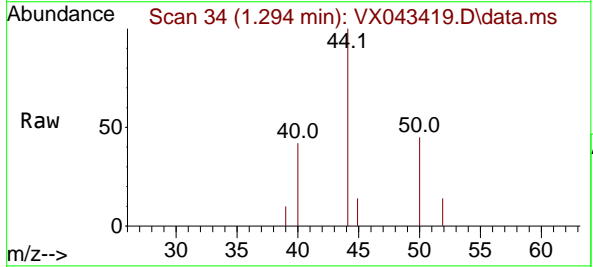


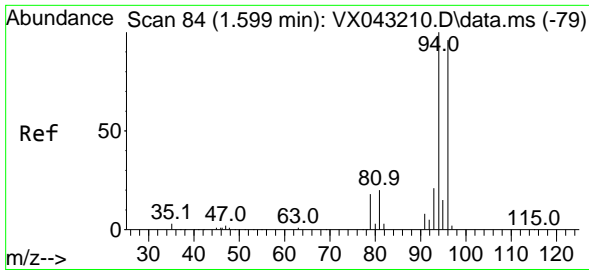
Tgt Ion:168 Resp: 80645  
 Ion Ratio Lower Upper  
 168 100  
 99 65.4 49.7 74.5



#3  
 Chloromethane  
 Concen: 0.337 ug/l  
 RT: 1.294 min Scan# 34  
 Delta R.T. -0.000 min  
 Lab File: VX043419.D  
 Acq: 16 Oct 2024 13:14

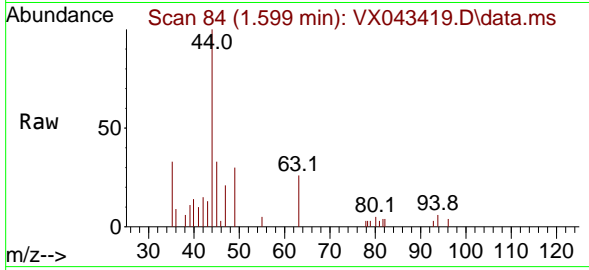
Tgt Ion: 50 Resp: 326  
 Ion Ratio Lower Upper  
 50 100  
 52 31.1 26.1 39.1



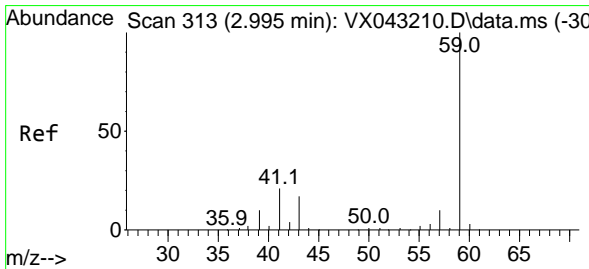
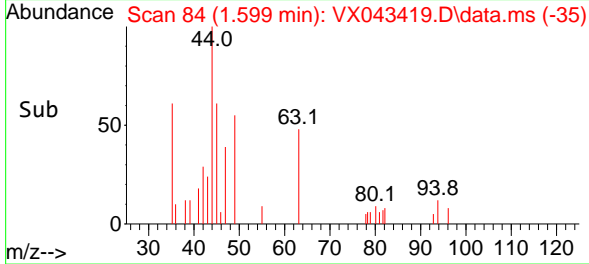
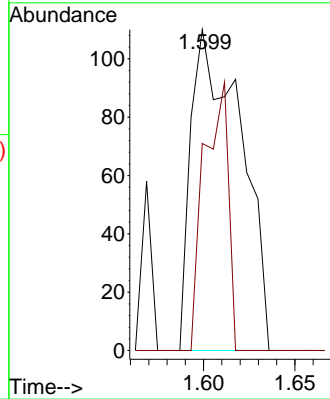


#5  
 Bromomethane  
 Concen: 0.526 ug/l  
 RT: 1.599 min Scan# 84  
 Delta R.T. 0.000 min  
 Lab File: VX043419.D  
 Acq: 16 Oct 2024 13:14

Instrument :  
 MSVOA\_X  
 ClientSampleId :

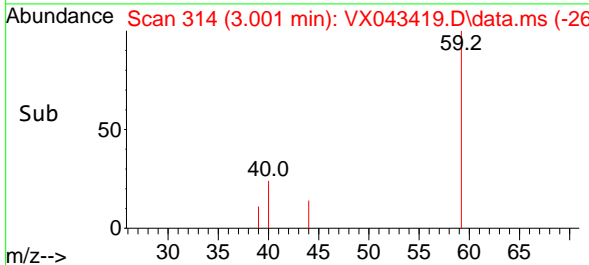
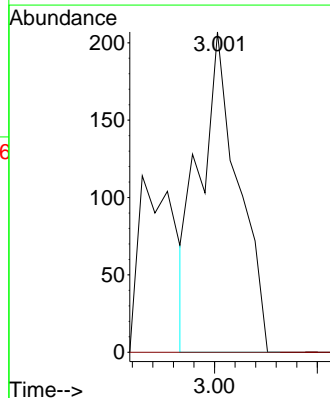
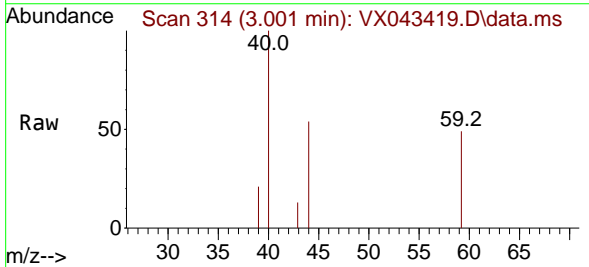


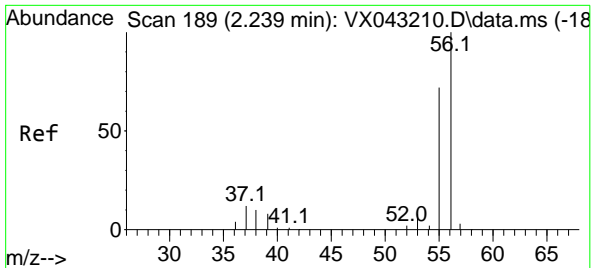
Tgt Ion: 94 Resp: 208  
 Ion Ratio Lower Upper  
 94 100  
 96 64.5 76.6 115.0#



#11  
 Tert butyl alcohol  
 Concen: 1.073 ug/l  
 RT: 3.001 min Scan# 314  
 Delta R.T. 0.006 min  
 Lab File: VX043419.D  
 Acq: 16 Oct 2024 13:14

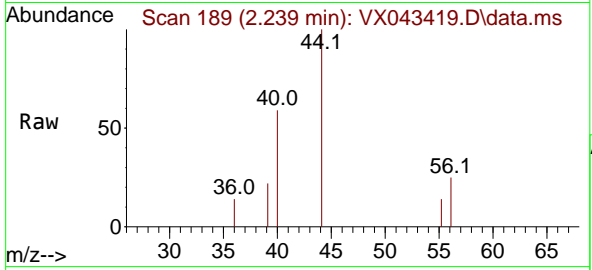
Tgt Ion: 59 Resp: 269  
 Ion Ratio Lower Upper  
 59 100  
 57 0.0 8.6 13.0#



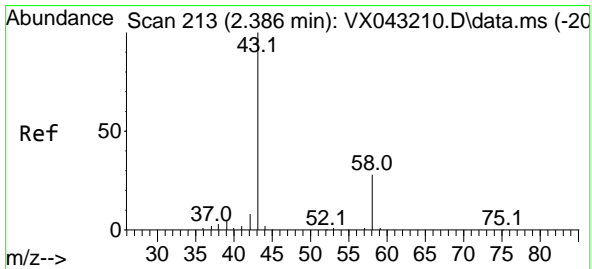
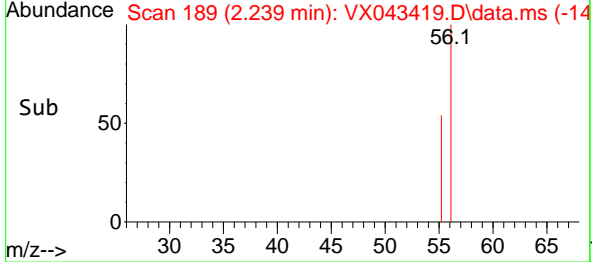
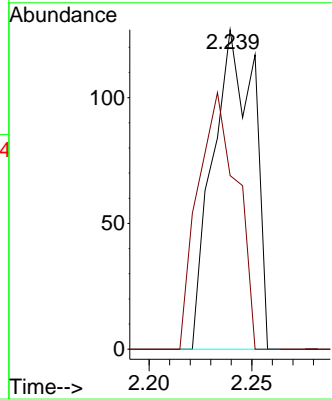


#13  
 Acrolein  
 Concen: 0.748 ug/l  
 RT: 2.239 min Scan# 117  
 Delta R.T. -0.000 min  
 Lab File: VX043419.D  
 Acq: 16 Oct 2024 13:14

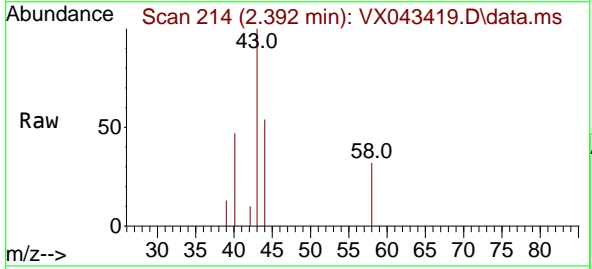
Instrument : MSVOA\_X  
 ClientSampleId :



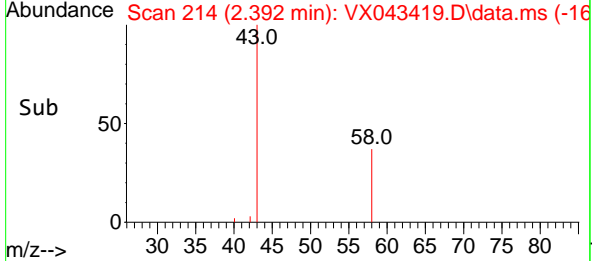
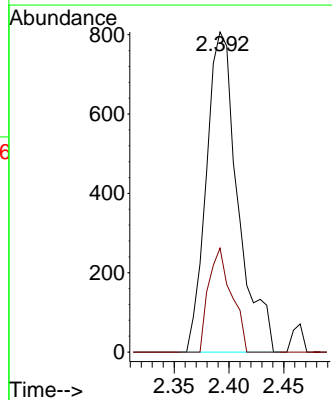
Tgt Ion: 56 Resp: 177  
 Ion Ratio Lower Upper  
 56 100  
 55 76.3 57.4 86.0

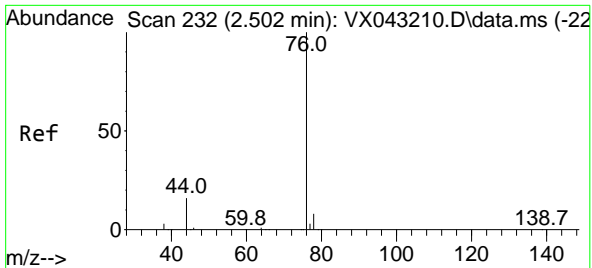


#16  
 Acetone  
 Concen: 2.940 ug/l  
 RT: 2.392 min Scan# 214  
 Delta R.T. 0.006 min  
 Lab File: VX043419.D  
 Acq: 16 Oct 2024 13:14



Tgt Ion: 43 Resp: 1617  
 Ion Ratio Lower Upper  
 43 100  
 58 32.5 22.6 33.8

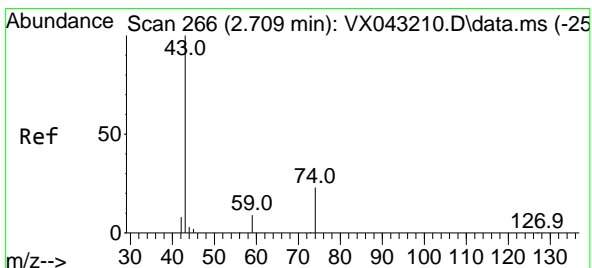
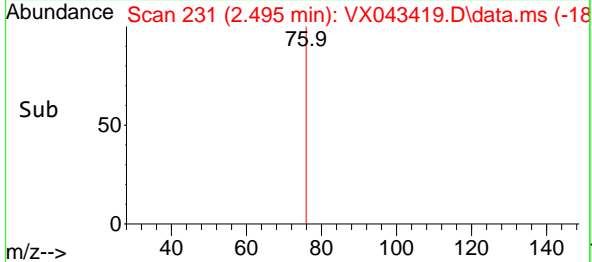
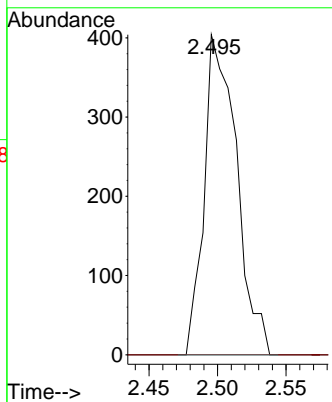
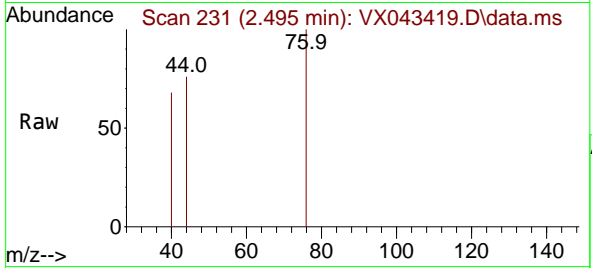




#17  
 Carbon Disulfide  
 Concen: 0.305 ug/l  
 RT: 2.495 min Scan# 21  
 Delta R.T. -0.006 min  
 Lab File: VX043419.D  
 Acq: 16 Oct 2024 13:14

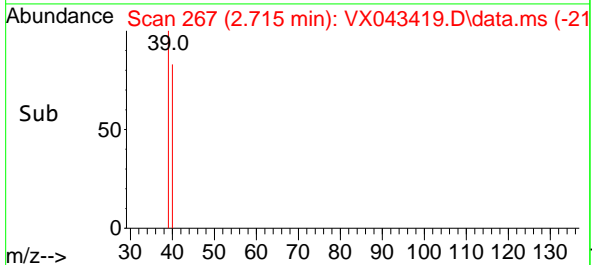
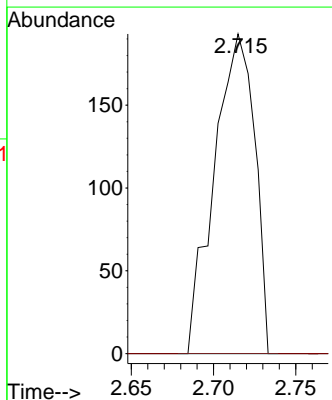
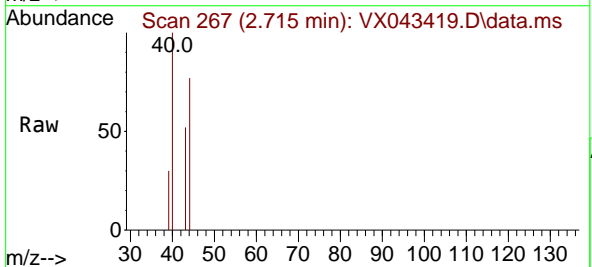
Instrument : MSVOA\_X  
 ClientSampleId :

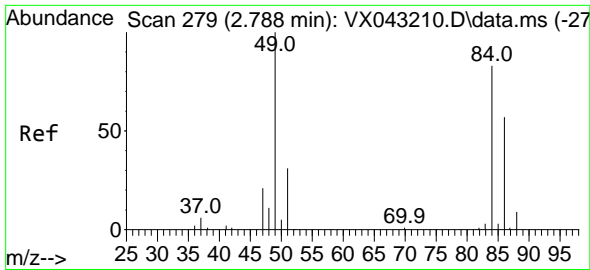
Tgt Ion: 76 Resp: 664  
 Ion Ratio Lower Upper  
 76 100  
 78 0.0 6.7 10.1#



#18  
 Methyl Acetate  
 Concen: 0.240 ug/l  
 RT: 2.715 min Scan# 267  
 Delta R.T. 0.006 min  
 Lab File: VX043419.D  
 Acq: 16 Oct 2024 13:14

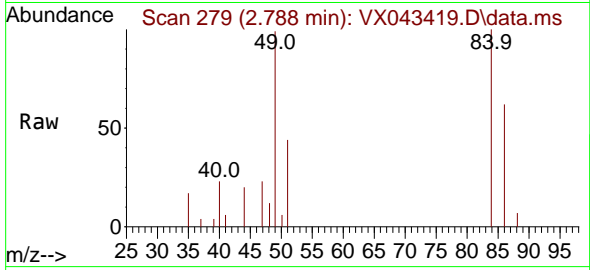
Tgt Ion: 43 Resp: 331  
 Ion Ratio Lower Upper  
 43 100  
 74 0.0 19.1 28.7#





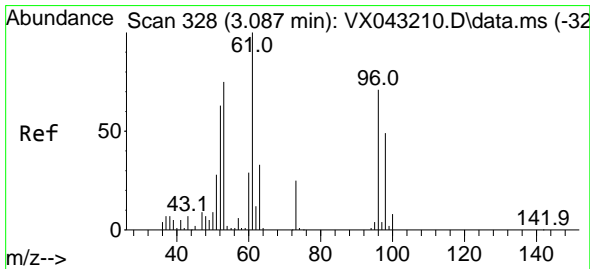
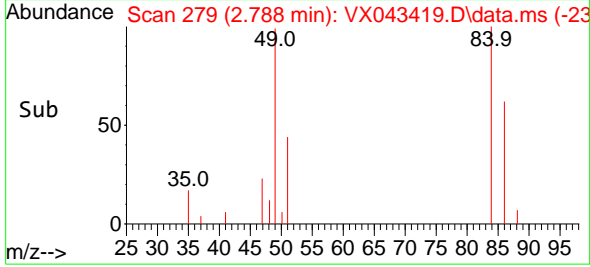
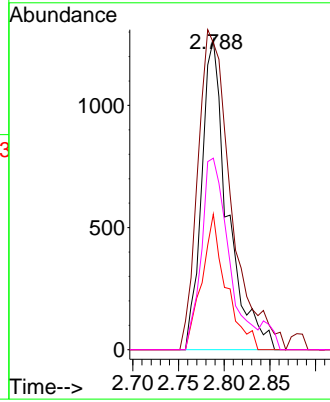
#20  
 Methylene Chloride  
 Concen: 2.479 ug/l  
 RT: 2.788 min Scan# 21  
 Delta R.T. -0.000 min  
 Lab File: VX043419.D  
 Acq: 16 Oct 2024 13:14

Instrument :  
 MSVOA\_X  
 ClientSampleId :



Tgt Ion: 84 Resp: 2514

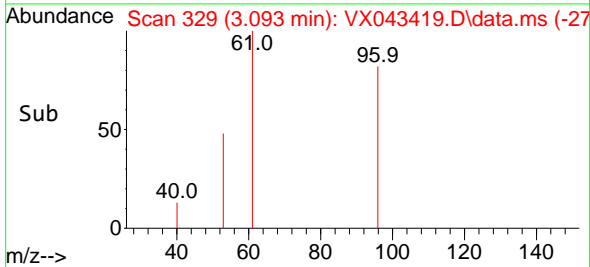
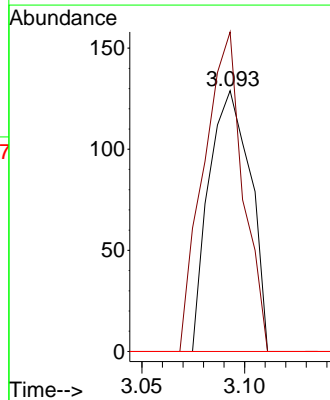
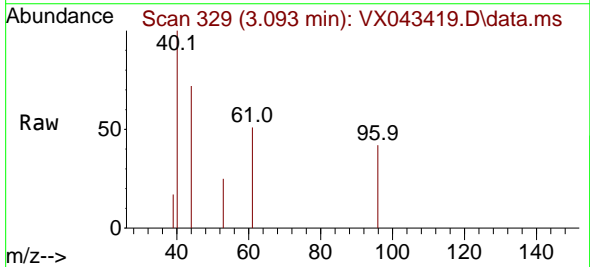
Ion	Ratio	Lower	Upper
84	100		
49	99.1	96.7	145.1
51	43.8	30.4	45.6
86	61.8	54.7	82.1

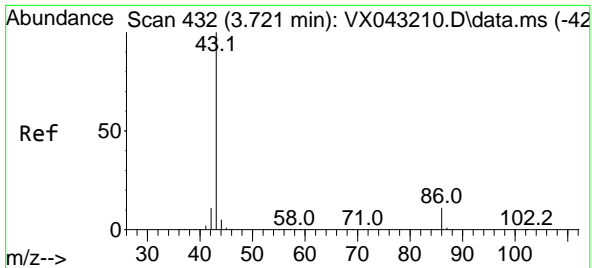


#21  
 trans-1,2-Dichloroethene  
 Concen: 0.203 ug/l  
 RT: 3.093 min Scan# 329  
 Delta R.T. 0.006 min  
 Lab File: VX043419.D  
 Acq: 16 Oct 2024 13:14

Tgt Ion: 96 Resp: 181

Ion	Ratio	Lower	Upper
96	100		
61	122.5	112.3	168.5
98	0.0	54.6	82.0



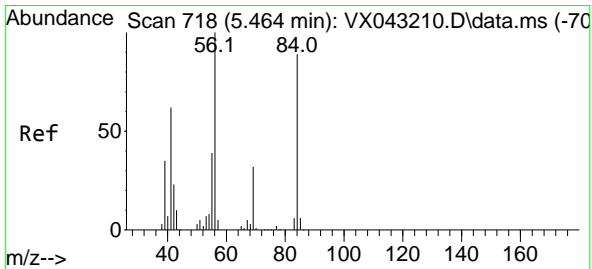
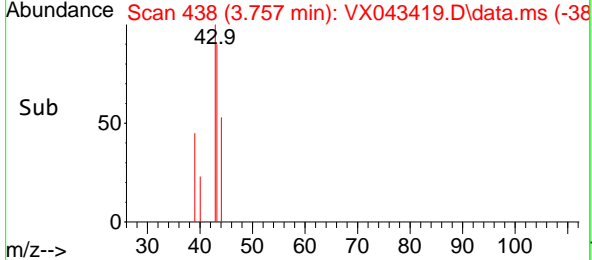
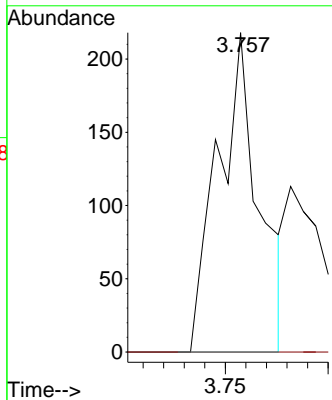
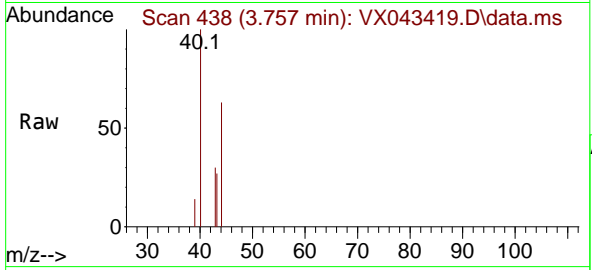


#23  
 Vinyl Acetate  
 Concen: 6.430 ug/l  
 RT: 3.757 min Scan# 41  
 Delta R.T. 0.036 min  
 Lab File: VX043419.D  
 Acq: 16 Oct 2024 13:14

Instrument : MSVOA\_X  
 ClientSampleId :

Tgt Ion: 43 Resp: 302

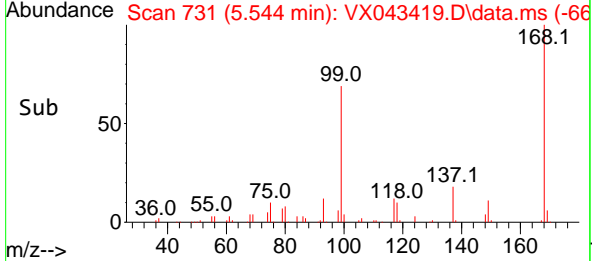
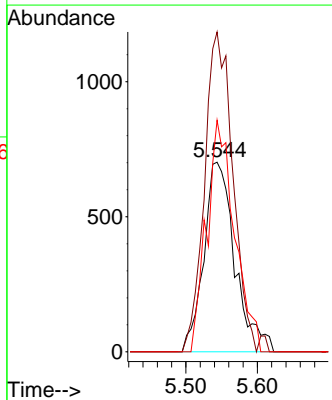
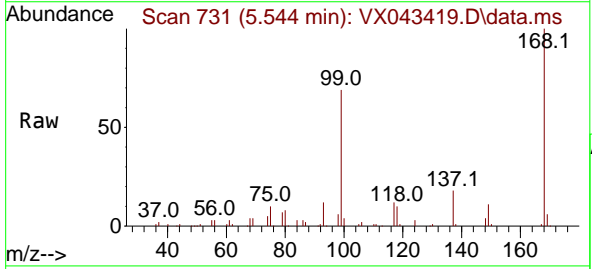
Ion	Ratio	Lower	Upper
43	100		
86	0.0	8.8	13.2#



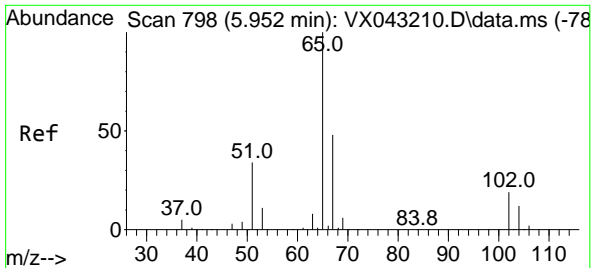
#31  
 Cyclohexane  
 Concen: 1.490 ug/l  
 RT: 5.544 min Scan# 731  
 Delta R.T. 0.079 min  
 Lab File: VX043419.D  
 Acq: 16 Oct 2024 13:14

Tgt Ion: 56 Resp: 2118

Ion	Ratio	Lower	Upper
56	100		
69	168.7	25.8	38.6#
84	122.1	71.1	106.7#

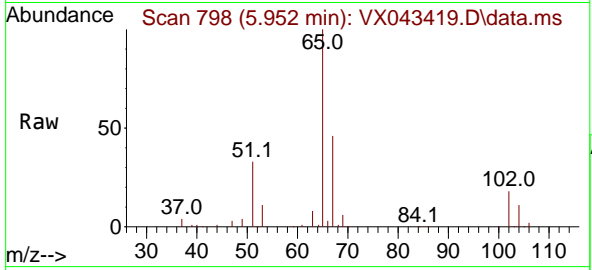




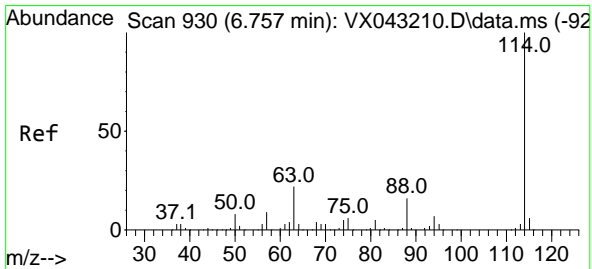
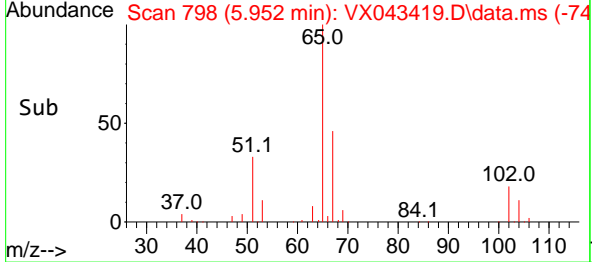
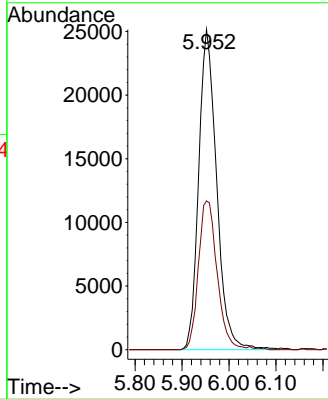


#33  
 1,2-Dichloroethane-d4  
 Concen: 50.652 ug/l  
 RT: 5.952 min Scan# 798  
 Delta R.T. -0.000 min  
 Lab File: VX043419.D  
 Acq: 16 Oct 2024 13:14

Instrument : MSVOA\_X  
 ClientSampleId :

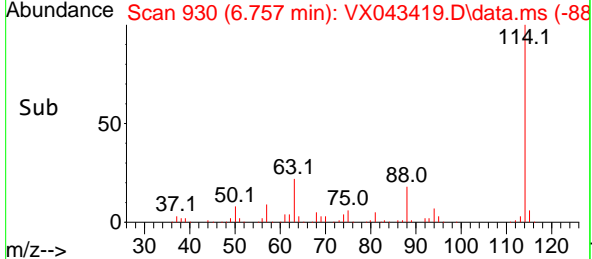
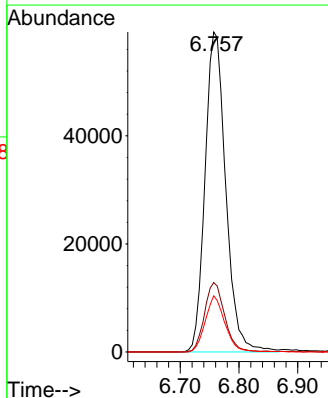
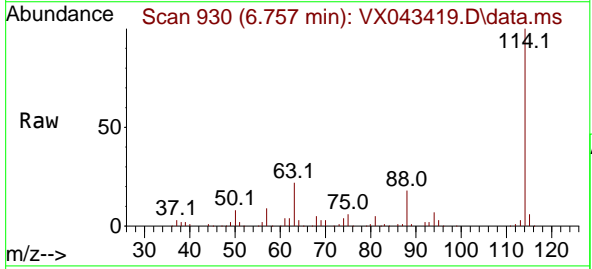


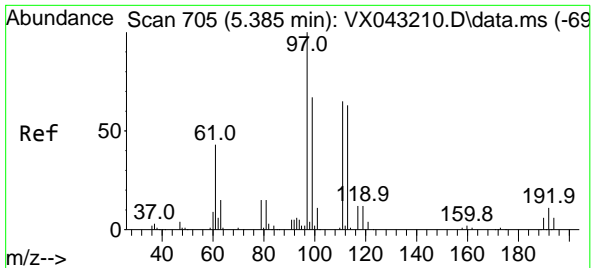
Tgt Ion: 65 Resp: 66711  
 Ion Ratio Lower Upper  
 65 100  
 67 48.4 0.0 99.0



#34  
 1,4-Difluorobenzene  
 Concen: 50.000 ug/l  
 RT: 6.757 min Scan# 930  
 Delta R.T. -0.000 min  
 Lab File: VX043419.D  
 Acq: 16 Oct 2024 13:14

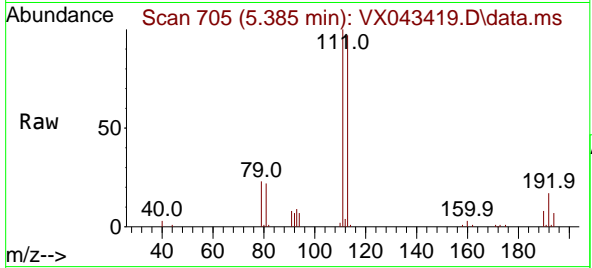
Tgt Ion: 114 Resp: 145095  
 Ion Ratio Lower Upper  
 114 100  
 63 21.7 0.0 43.0  
 88 17.5 0.0 33.0



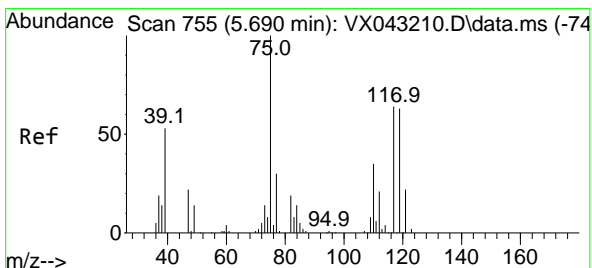
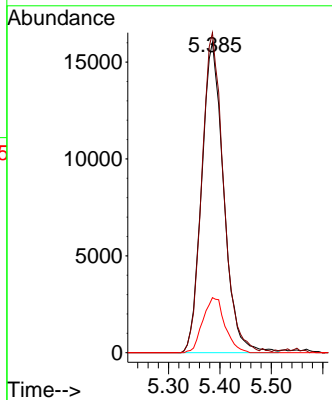
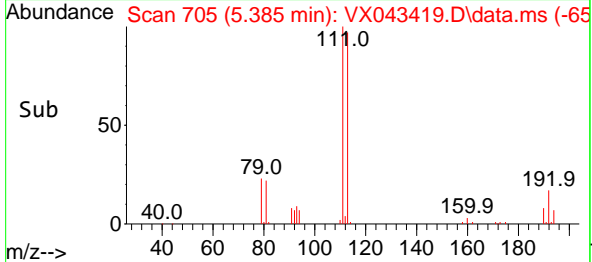


#35  
 Dibromofluoromethane  
 Concen: 47.564 ug/l  
 RT: 5.385 min Scan# 705  
 Delta R.T. -0.000 min  
 Lab File: VX043419.D  
 Acq: 16 Oct 2024 13:14

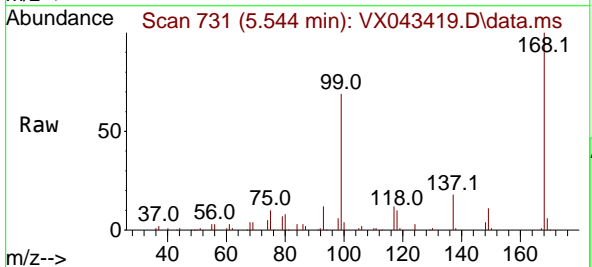
Instrument : MSVOA\_X  
 ClientSampleId :



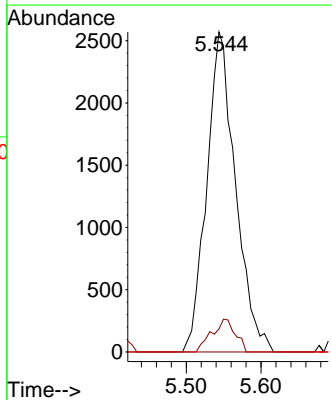
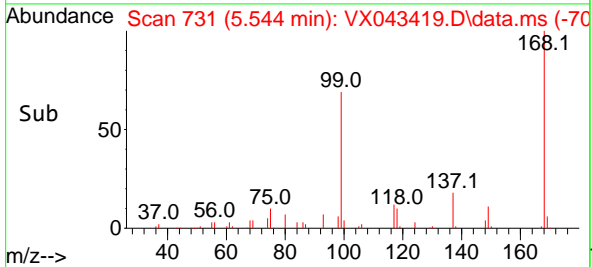
Tgt Ion:113 Resp: 47594  
 Ion Ratio Lower Upper  
 113 100  
 111 101.3 83.4 125.0  
 192 17.8 14.1 21.1

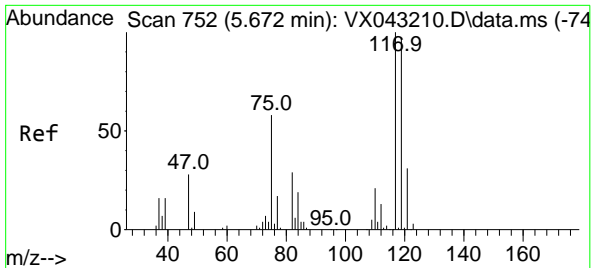


#36  
 1,1-Dichloropropene  
 Concen: 5.449 ug/l  
 RT: 5.544 min Scan# 731  
 Delta R.T. -0.146 min  
 Lab File: VX043419.D  
 Acq: 16 Oct 2024 13:14



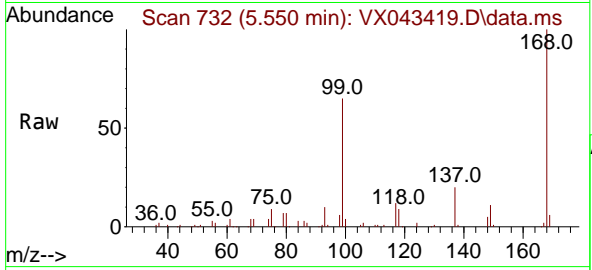
Tgt Ion: 75 Resp: 6888  
 Ion Ratio Lower Upper  
 75 100  
 110 8.3 17.8 53.3#  
 77 0.0 24.9 37.3#





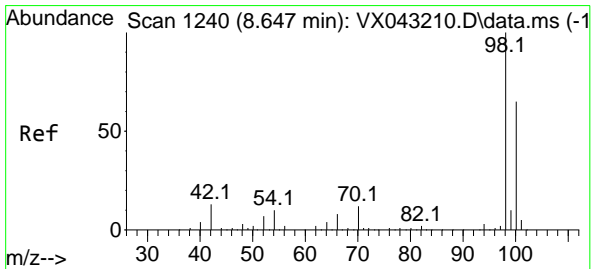
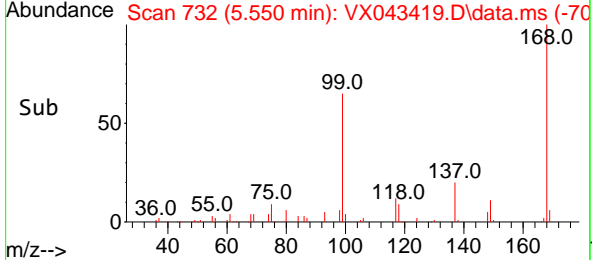
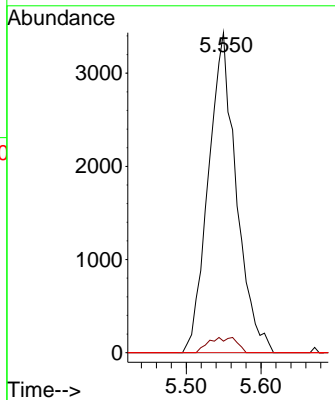
#38  
 Carbon Tetrachloride  
 Concen: 5.969 ug/l  
 RT: 5.550 min Scan# 71  
 Delta R.T. -0.122 min  
 Lab File: VX043419.D  
 Acq: 16 Oct 2024 13:14

Instrument : MSVOA\_X  
 ClientSampleId :



Tgt Ion: 117 Resp: 8933

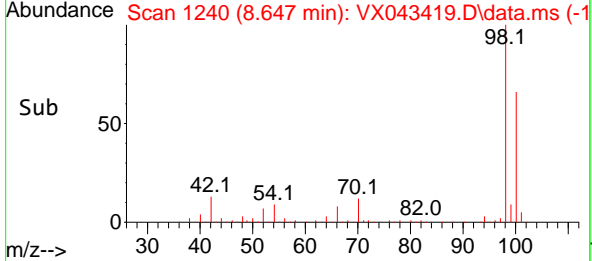
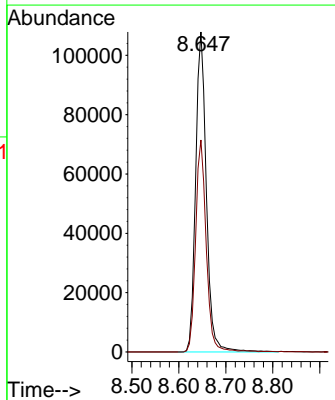
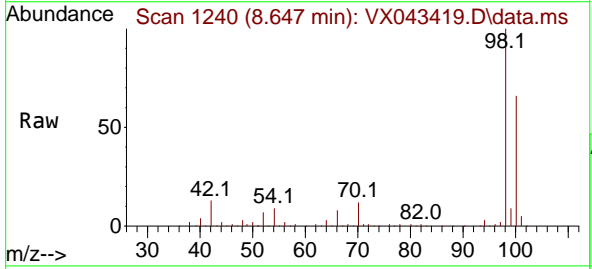
Ion	Ratio	Lower	Upper
117	100		
119	3.6	77.7	116.5#
121	0.0	24.3	36.5#

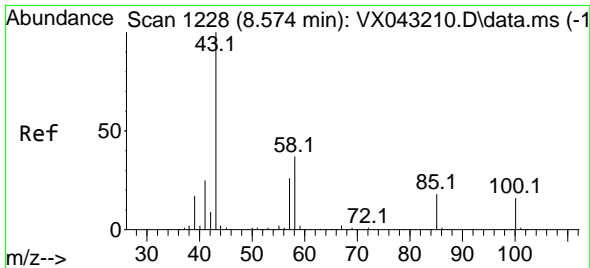


#50  
 Toluene-d8  
 Concen: 49.622 ug/l  
 RT: 8.647 min Scan# 1240  
 Delta R.T. -0.000 min  
 Lab File: VX043419.D  
 Acq: 16 Oct 2024 13:14

Tgt Ion: 98 Resp: 172073

Ion	Ratio	Lower	Upper
98	100		
100	65.6	52.4	78.6

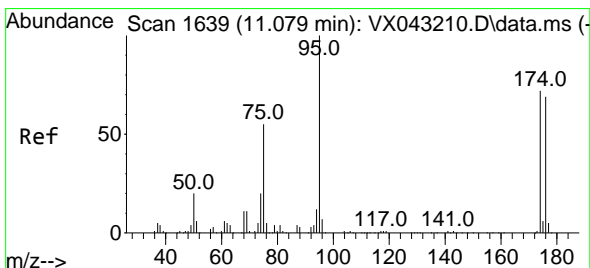
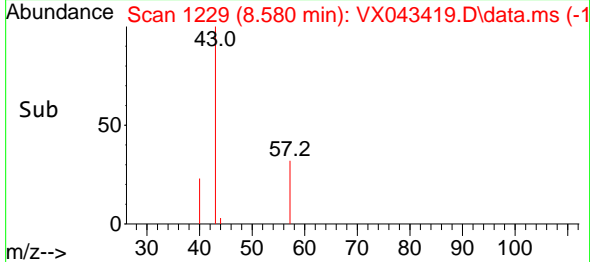
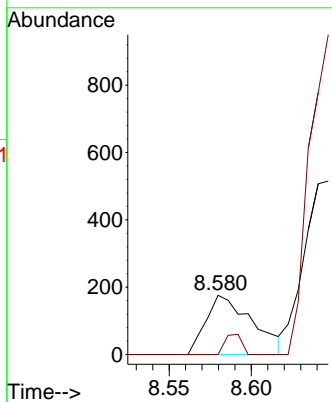
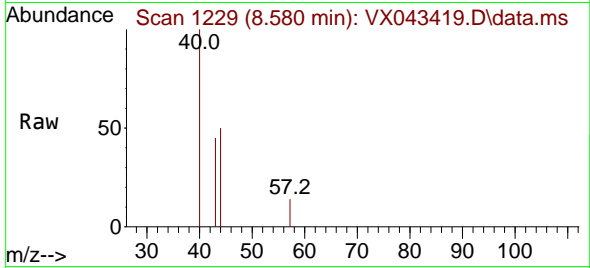




#51  
 4-Methyl-2-Pentanone  
 Concen: 0.225 ug/l  
 RT: 8.580 min Scan# 11  
 Delta R.T. 0.006 min  
 Lab File: VX043419.D  
 Acq: 16 Oct 2024 13:14

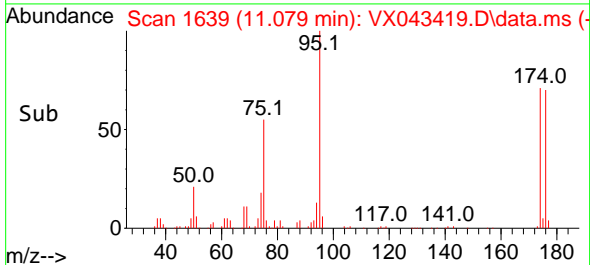
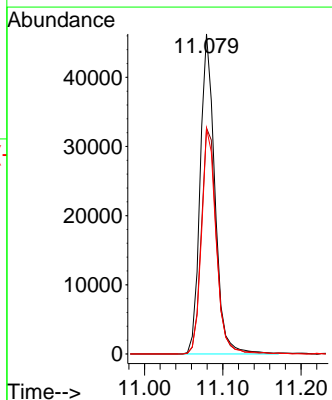
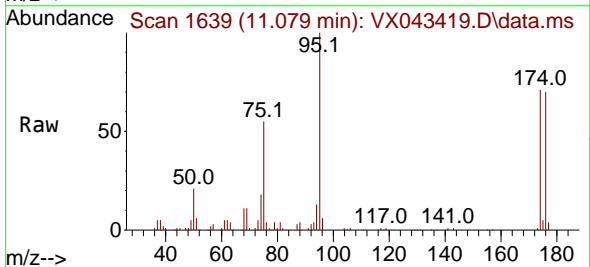
Instrument : MSVOA\_X  
 ClientSampleId :

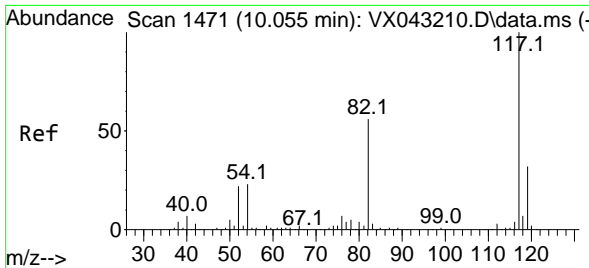
Tgt Ion: 43 Resp: 343  
 Ion Ratio Lower Upper  
 43 100  
 58 12.5 30.0 45.0#



#62  
 4-Bromofluorobenzene  
 Concen: 47.822 ug/l  
 RT: 11.079 min Scan# 1639  
 Delta R.T. -0.000 min  
 Lab File: VX043419.D  
 Acq: 16 Oct 2024 13:14

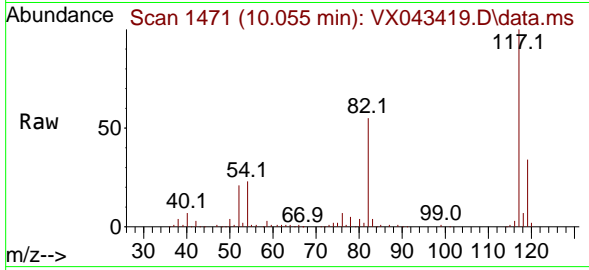
Tgt Ion: 95 Resp: 60245  
 Ion Ratio Lower Upper  
 95 100  
 174 72.6 0.0 145.0  
 176 70.4 0.0 143.0





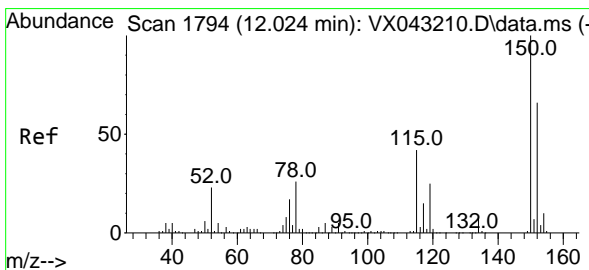
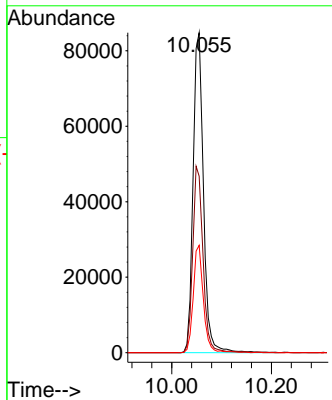
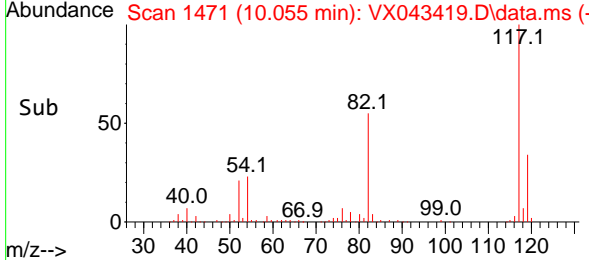
#63  
 Chlorobenzene-d5  
 Concen: 50.000 ug/l  
 RT: 10.055 min Scan# 1471  
 Delta R.T. -0.000 min  
 Lab File: VX043419.D  
 Acq: 16 Oct 2024 13:14

Instrument : MSVOA\_X  
 ClientSampleId :

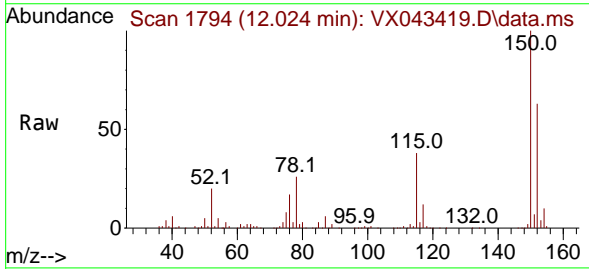


Tgt Ion:117 Resp: 122380

Ion	Ratio	Lower	Upper
117	100		
82	55.1	45.0	67.6
119	33.5	25.3	37.9

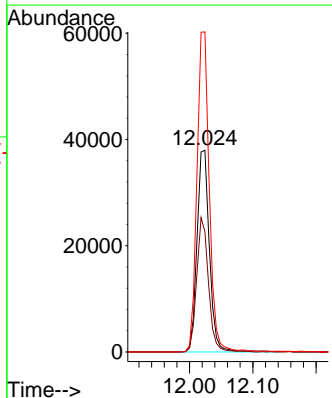
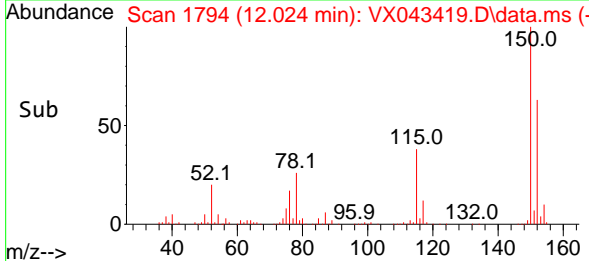


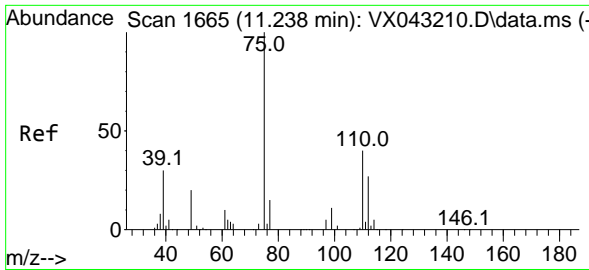
#72  
 1,4-Dichlorobenzene-d4  
 Concen: 50.000 ug/l  
 RT: 12.024 min Scan# 1794  
 Delta R.T. -0.000 min  
 Lab File: VX043419.D  
 Acq: 16 Oct 2024 13:14



Tgt Ion:152 Resp: 52081

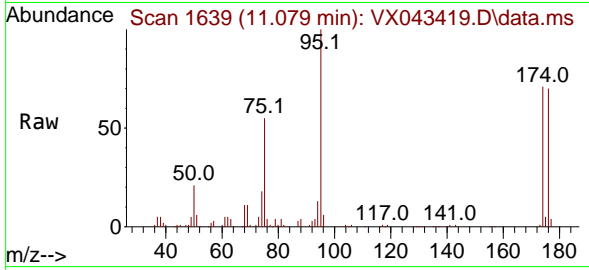
Ion	Ratio	Lower	Upper
152	100		
115	63.3	44.1	132.3
150	157.4	0.0	347.4



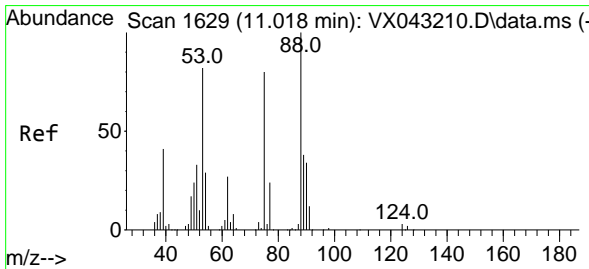
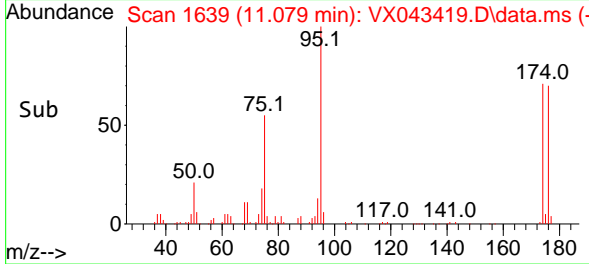
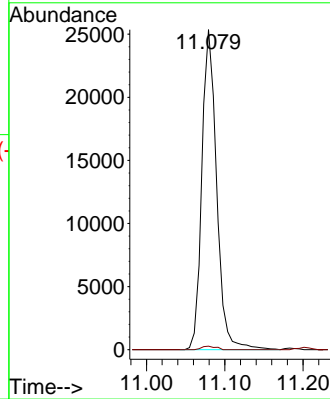


#76  
 1,2,3-Trichloropropane  
 Concen: 28.790 ug/l  
 RT: 11.079 min Scan# 1639  
 Delta R.T. -0.159 min  
 Lab File: VX043419.D  
 Acq: 16 Oct 2024 13:14

Instrument : MSVOA\_X  
 ClientSampleId :

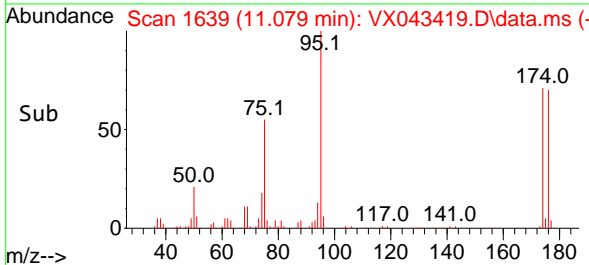
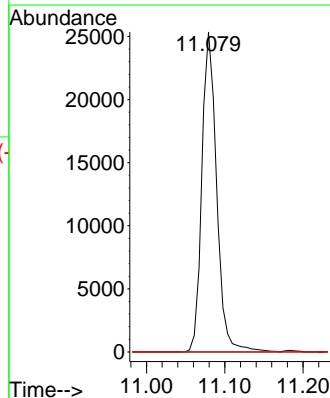
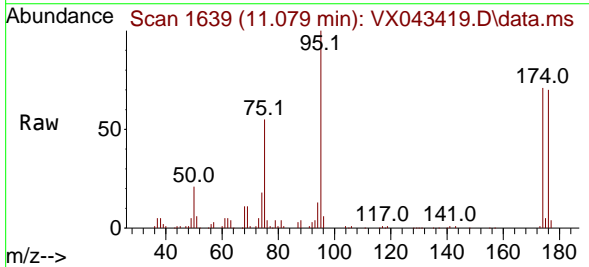


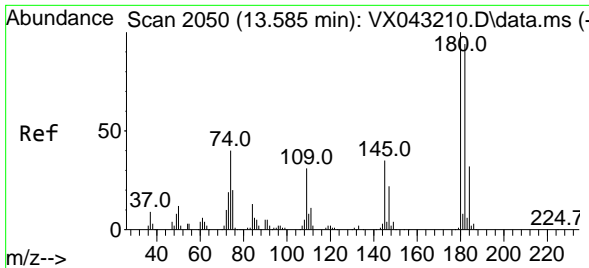
Tgt Ion: 75 Resp: 33259  
 Ion Ratio Lower Upper  
 75 100  
 77 1.1 22.0 66.0#



#81  
 trans-1,4-Dichloro-2-butene  
 Concen: 74.615 ug/l  
 RT: 11.079 min Scan# 1639  
 Delta R.T. 0.061 min  
 Lab File: VX043419.D  
 Acq: 16 Oct 2024 13:14

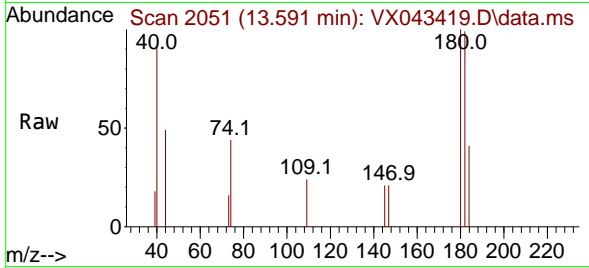
Tgt Ion: 75 Resp: 33259  
 Ion Ratio Lower Upper  
 75 100  
 53 0.0 83.9 125.9#  
 89 0.0 38.6 58.0#



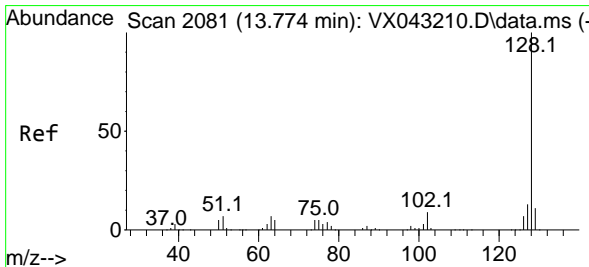
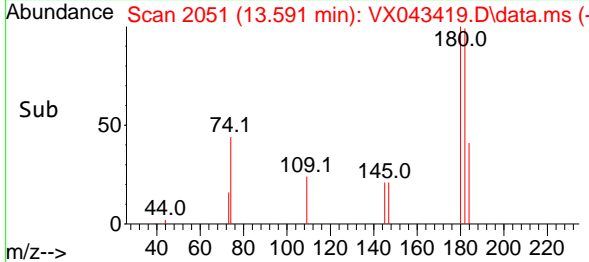
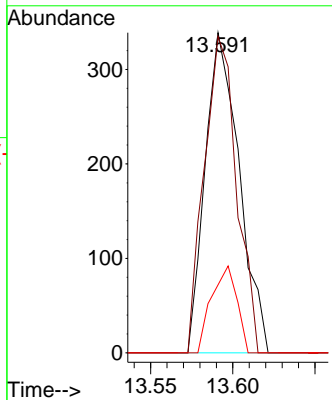


#93  
 1,2,4-Trichlorobenzene  
 Concen: 0.476 ug/l  
 RT: 13.591 min Scan# 2051  
 Delta R.T. 0.006 min  
 Lab File: VX043419.D  
 Acq: 16 Oct 2024 13:14

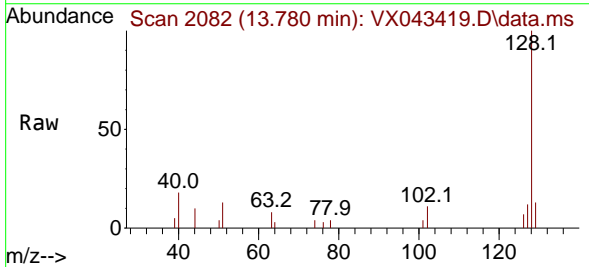
Instrument : MSVOA\_X  
 ClientSampleId :



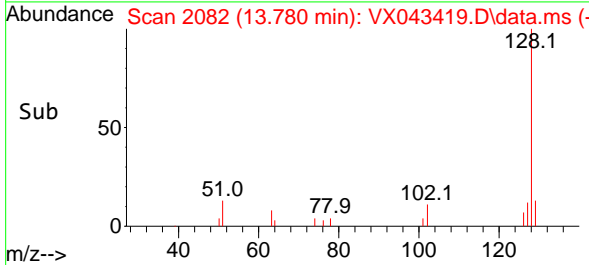
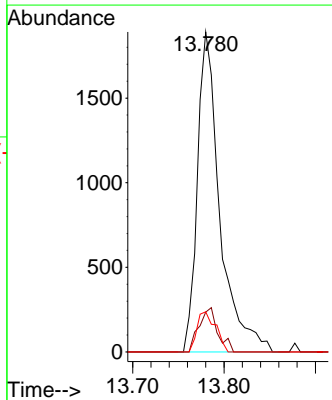
Tgt Ion:180 Resp: 487  
 Ion Ratio Lower Upper  
 180 100  
 182 94.0 47.1 141.3  
 145 20.1 16.6 49.8

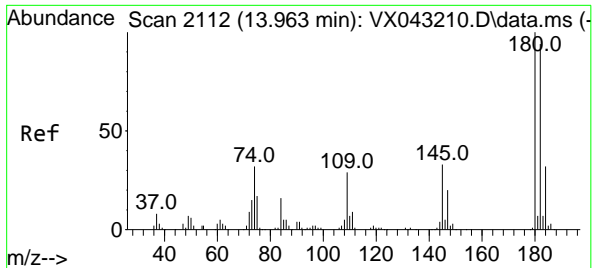


#95  
 Naphthalene  
 Concen: 0.857 ug/l  
 RT: 13.780 min Scan# 2082  
 Delta R.T. 0.006 min  
 Lab File: VX043419.D  
 Acq: 16 Oct 2024 13:14



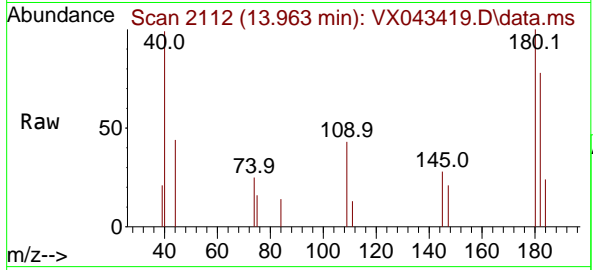
Tgt Ion:128 Resp: 3223  
 Ion Ratio Lower Upper  
 128 100  
 127 11.5 10.2 15.2  
 129 10.4 8.6 13.0





#96  
 1,2,3-Trichlorobenzene  
 Concen: 0.529 ug/l  
 RT: 13.963 min Scan# 21  
 Delta R.T. -0.000 min  
 Lab File: VX043419.D  
 Acq: 16 Oct 2024 13:14

Instrument :  
 MSVOA\_X  
 ClientSampleId :



Tgt Ion:180 Resp: 559

Ion	Ratio	Lower	Upper
180	100		
182	94.5	46.5	139.3
145	26.1	17.2	51.6

