

Data Path : Z:\VOASRV\HPCHEM1\MSVOA X\DATA\VX101719\
 Data File : VX013107.D
 Acq On : 17 Oct 2019 15:11
 Operator : JC/SP
 Sample : K5396-03
 Misc : 5.0mL/MSVOA X/WATER
 ALS Vial : 10 Sample Multiplier: 1

Instrument :
 MSVOA_X
 ClientSampleId :
 FA19-JBW7345A-9001

Integration Parameters: RTEINT.P

Integrator: RTE
 Smoothing : ON Filtering: 5
 Sampling : 1 Min Area: 3 % of largest Peak
 Start Thrs: 0.2 Max Peaks: 100
 Stop Thrs : 0 Peak Location: TOP

If leading or trailing edge < 100 prefer < Baseline drop else tangent >
 Peak separation: 5

Method : Z:\VOASRV\HPCHEM1\MSVOA_X\METHOD\82X100819W.M
 Title : SW846 8260

Signal : TIC

peak #	R.T. min	first scan	max scan	last scan	PK TY	peak height	corr. area	corr. % max.	% of total
1	1.070	26	30	44	rBV	761729	932375	100.00%	14.991%
2	1.265	59	62	69	rVB	10015	12824	1.38%	0.206%
3	2.594	274	280	293	rVB2	31034	57982	6.22%	0.932%
4	4.588	597	607	619	rBV	35290	97059	10.41%	1.561%
5	4.826	638	646	659	rBV3	6112	18551	1.99%	0.298%
6	5.490	742	755	769	rBV	110768	320179	34.34%	5.148%
7	5.655	769	782	799	rVB	197895	554126	59.43%	8.909%
8	6.057	837	848	864	rBV	118796	312870	33.56%	5.030%
9	6.850	968	978	991	rBV	294995	692471	74.27%	11.134%
10	7.209	1024	1037	1051	rBV	179756	384595	41.25%	6.184%
11	8.709	1276	1283	1299	rBV	587948	923844	99.09%	14.854%
12	10.111	1507	1513	1528	rVB	540318	751592	80.61%	12.084%
13	11.135	1675	1681	1694	rBV	416887	540581	57.98%	8.691%
14	12.074	1830	1835	1842	rBV	505726	620607	66.56%	9.978%

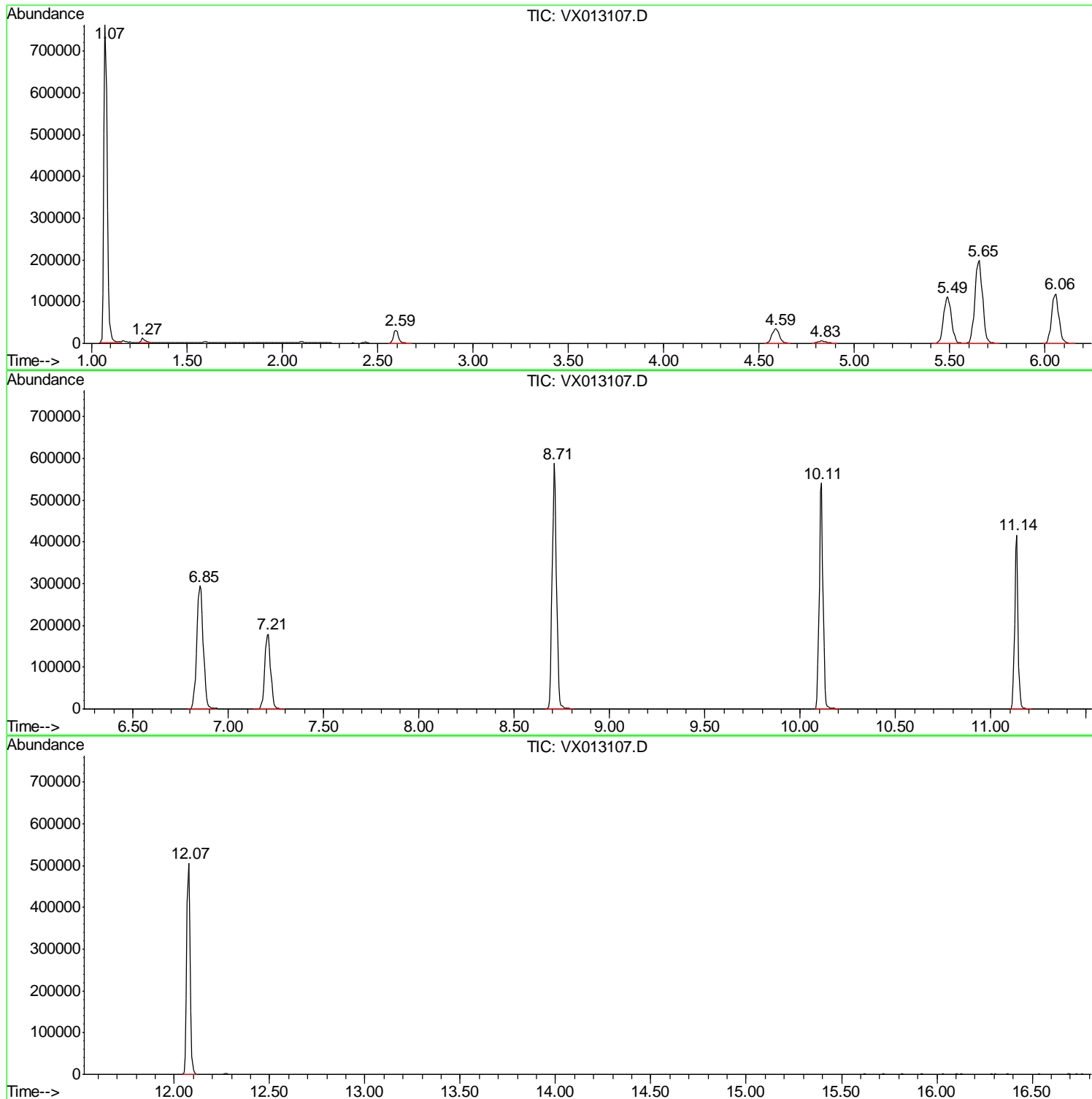
Sum of corrected areas: 6219656

Data Path : Z:\VOASRV\HPCHEM1\MSVOA X\DATA\VX101719\
Data File : VX013107.D
Acq On : 17 Oct 2019 15:11
Operator : JC/SP
Sample : K5396-03
Misc : 5.0mL/MSVOA X/WATER
ALS Vial : 10 Sample Multiplier: 1

Instrument :
MSVOA_X
ClientSampleId :
FA19-JBW7345A-9001

Quant Method : Z:\VOASRV\HPCHEM1\MSVOA_X\METHOD\82X100819W.M
Quant Title : SW846 8260

TIC Library : C:\DATABASE\NIST11.L
TIC Integration Parameters: LSCINT.P



Data Path : Z:\VOASRV\HPCHEM1\MSVOA X\DATA\VX101719\
 Data File : VX013107.D
 Acq On : 17 Oct 2019 15:11
 Operator : JC/SP
 Sample : K5396-03
 Misc : 5.0mL/MSVOA X/WATER
 ALS Vial : 10 Sample Multiplier: 1

Instrument :
 MSVOA_X
 ClientSampled :
 FA19-JBW7345A-9001

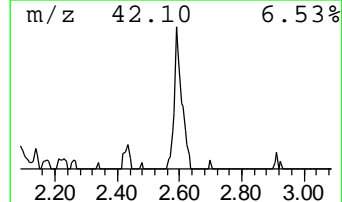
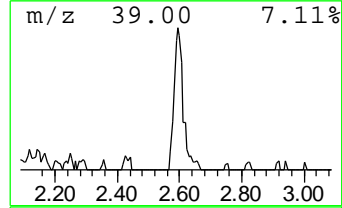
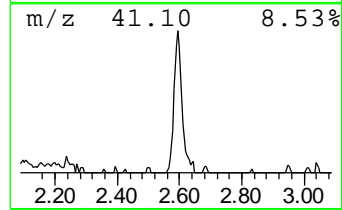
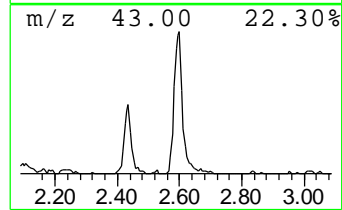
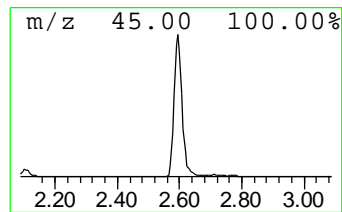
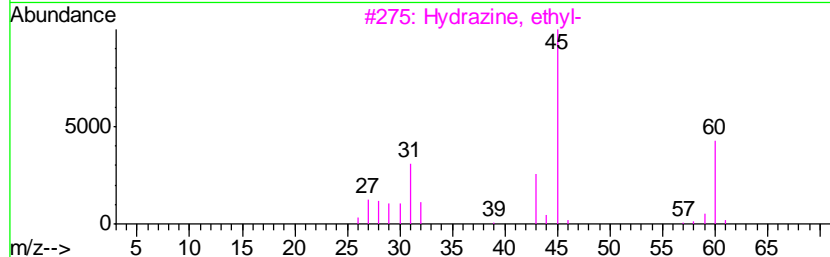
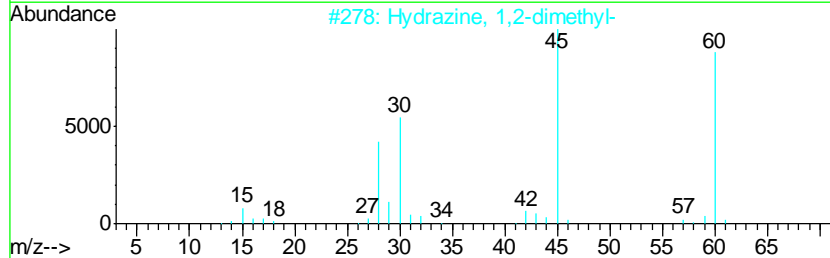
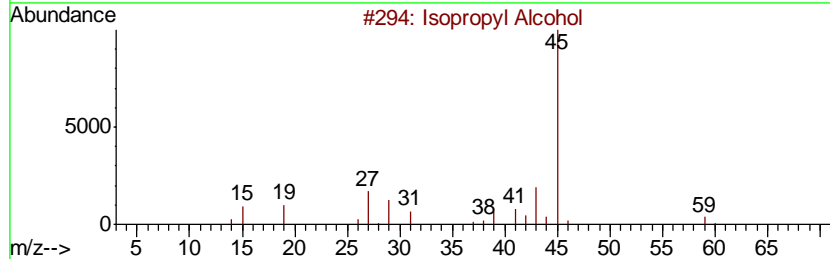
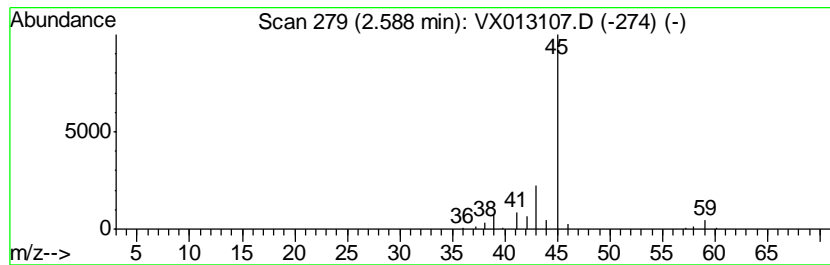
Quant Method : Z:\VOASRV\HPCHEM1\MSVOA_X\METHOD\82X100819W.M
 Quant Title : SW846 8260

TIC Library : C:\DATABASE\NIST11.L
 TIC Integration Parameters: LSCINT.P

 Peak Number 2 Isopropyl Alcohol Concentration Rank 2

R.T.	EstConc	Area	Relative to ISTD	R.T.
2.59	5.23 ug/l	57982	Pentafluorobenzene	5.65

Hit#	of	Tentative ID	MW	MolForm	CAS#	Qual
1	5	Isopropyl Alcohol	60	C3H8O	000067-63-0	78
2		Hydrazine, 1,2-dimethyl-	60	C2H8N2	000540-73-8	9
3		Hydrazine, ethyl-	60	C2H8N2	000624-80-6	9
4		Formamide	45	CH3NO	000075-12-7	5
5		4-Penten-2-ol	86	C5H10O	000625-31-0	4



Data Path : Z:\VOASRV\HPCHEM1\MSVOA_X\DATA\VX101719\
Data File : VX013107.D
Acq On : 17 Oct 2019 15:11
Operator : JC/SP
Sample : K5396-03
Misc : 5.0mL/MSVOA_X/WATER
ALS Vial : 10 Sample Multiplier: 1

Instrument :
MSVOA_X
ClientSampleId :
FA19-JBW7345A-9001

Quant Method : Z:\VOASRV\HPCHEM1\MSVOA_X\METHOD\82X100819W.M
Quant Title : SW846 8260

TIC Library : C:\DATABASE\NIST11.L
TIC Integration Parameters: LSCINT.P

TIC Top Hit name	RT	EstConc	Units	Response	--Internal Standard--			
					#	RT	Resp	Conc
Isopropyl Alcohol	2.59	5.2	ug/l	57982	1	5.65	554126	50.0