

Data Path : Z:\voasrv\HPCHEM1\MSVOA_X\Data\VX101722\
 Data File : VX032184.D
 Acq On : 18 Oct 2022 03:07
 Operator : JC/MD
 Sample : PB148361ZHE#03
 Misc : 5.0mL/MSVOA_X/WATER
 ALS Vial : 39 Sample Multiplier: 1

Instrument :
 MSVOA_X
 ClientSampleId :
 PB148361ZHE#03

Quant Time: Oct 18 04:37:08 2022
 Quant Method : Z:\voasrv\HPCHEM1\MSVOA_X\Method\82X101722W.M
 Quant Title : SW846 8260
 QLast Update : Tue Oct 18 04:18:35 2022
 Response via : Initial Calibration

Compound	R.T.	QIon	Response	Conc	Units	Dev(Min)

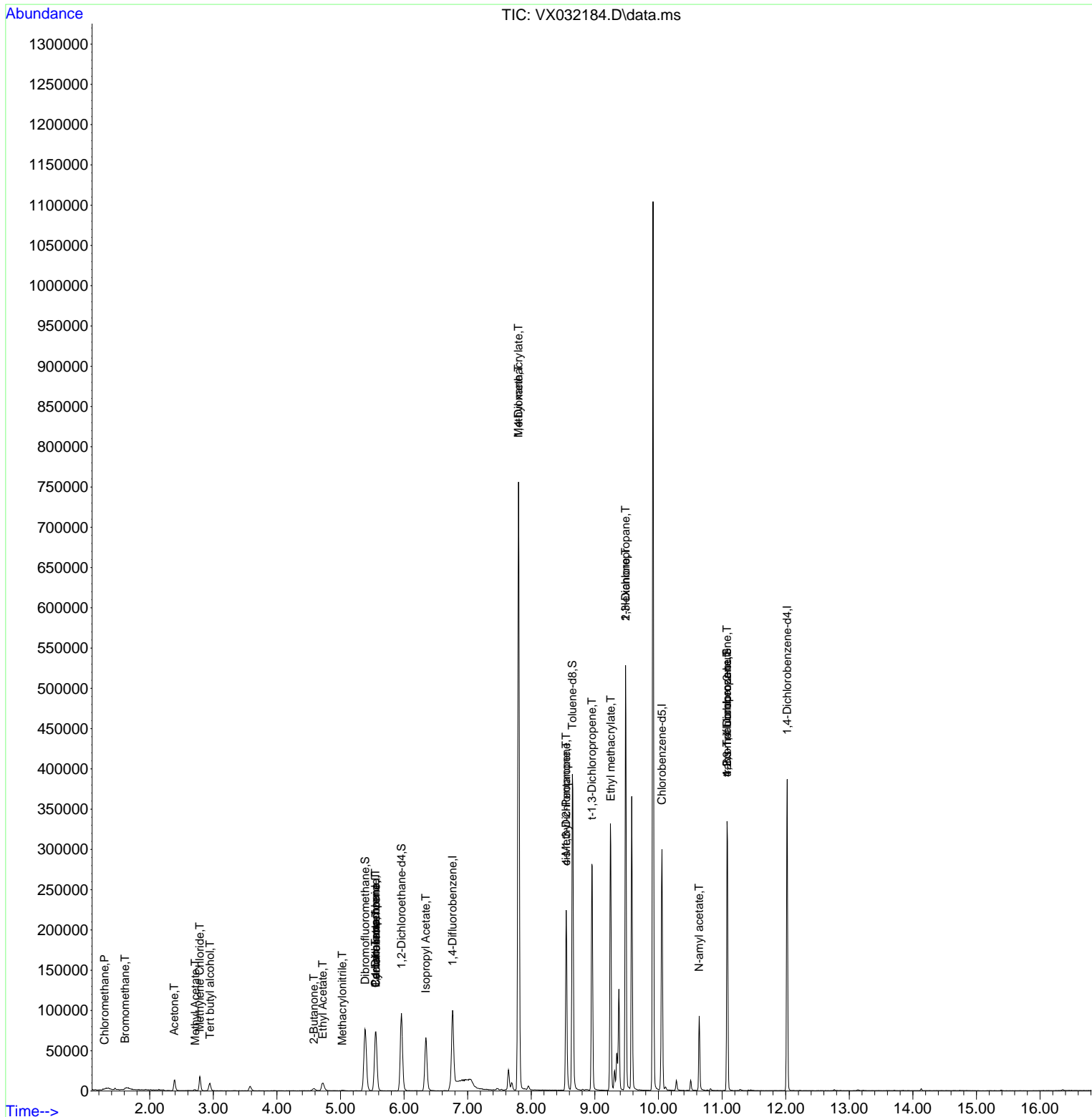
Internal Standards						
1) Pentafluorobenzene	5.556	168	65553	50.000	ug/l	0.00
34) 1,4-Difluorobenzene	6.763	114	89993	50.000	ug/l	0.00
63) Chlorobenzene-d5	10.055	117	124041	50.000	ug/l	0.00
72) 1,4-Dichlorobenzene-d4	12.024	152	72962	50.000	ug/l	0.00
System Monitoring Compounds						
33) 1,2-Dichloroethane-d4	5.958	65	92532	88.627	ug/l	0.00
Spiked Amount	50.000	Range 74 - 125	Recovery	=	177.260%#	
35) Dibromofluoromethane	5.385	113	64833	105.584	ug/l	0.00
Spiked Amount	50.000	Range 75 - 124	Recovery	=	211.160%#	
50) Toluene-d8	8.646	98	226741	105.277	ug/l	0.00
Spiked Amount	50.000	Range 86 - 113	Recovery	=	210.560%#	
62) 4-Bromofluorobenzene	11.079	95	85414	104.161	ug/l	0.00
Spiked Amount	50.000	Range 83 - 123	Recovery	=	208.320%#	
Target Compounds						
						Qvalue
3) Chloromethane	1.288	50	188	0.270	ug/l #	41
5) Bromomethane	1.611	94	231	0.402	ug/l #	62
11) Tert butyl alcohol	2.946	59	5738	39.959	ug/l #	73
16) Acetone	2.385	43	16734	66.660	ug/l	99
18) Methyl Acetate	2.715	43	1936	1.894	ug/l	98
20) Methylene Chloride	2.788	84	7675	9.944	ug/l	92
25) 2-Butanone	4.580	43	2480	4.624	ug/l	95
31) Cyclohexane	5.556	56	1812	1.557	ug/l #	34
36) 1,1-Dichloropropene	5.549	75	5904	6.646	ug/l #	50
37) Ethyl Acetate	4.720	43	18369	20.605	ug/l	99
38) Carbon Tetrachloride	5.549	117	7078	7.523	ug/l #	17
41) Methacrylonitrile	5.025	41	316	0.687	ug/l #	44
43) Isopropyl Acetate	6.342	43	88476	65.860	ug/l	99
48) Methyl methacrylate	7.799	41	65697	96.493	ug/l #	46
49) 1,4-Dioxane	7.799	88	35	2.507	ug/l #	1
51) 4-Methyl-2-Pentanone	8.549	43	76437	92.786	ug/l #	49
53) t-1,3-Dichloropropene	8.951	75	518	0.655	ug/l #	44
54) cis-1,3-Dichloropropene	8.549	75	33362	35.952	ug/l #	67
56) Ethyl methacrylate	9.250	69	959	1.117	ug/l #	1
57) 1,3-Dichloropropane	9.482	76	4581	4.347	ug/l #	43
59) 2-Hexanone	9.482	43	62412	102.264	ug/l #	52
74) N-amyl acetate	10.640	43	22976	11.896	ug/l #	53
76) 1,2,3-Trichloropropane	11.079	75	48794	30.843	ug/l #	37
81) trans-1,4-Dichloro-2-b...	11.079	75	48794	118.735	ug/l #	11

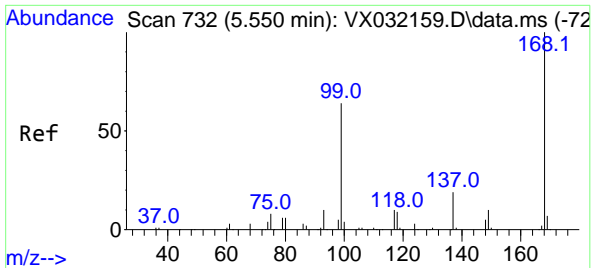
(#) = qualifier out of range (m) = manual integration (+) = signals summed

Data Path : Z:\voasrv\HPCHEM1\MSVOA_X\Data\VX101722\
 Data File : VX032184.D
 Acq On : 18 Oct 2022 03:07
 Operator : JC/MD
 Sample : PB148361ZHE#03
 Misc : 5.0mL/MSVOA_X/WATER
 ALS Vial : 39 Sample Multiplier: 1

Instrument :
 MSVOA_X
 ClientSampleId :
 PB148361ZHE#03

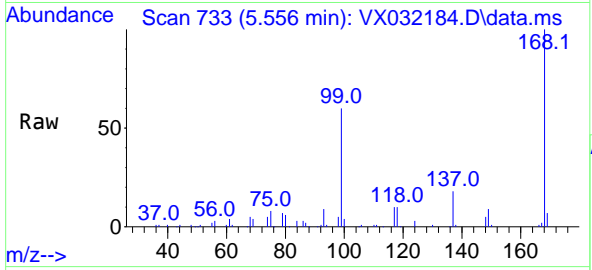
Quant Time: Oct 18 04:37:08 2022
 Quant Method : Z:\voasrv\HPCHEM1\MSVOA_X\Method\82X101722W.M
 Quant Title : SW846 8260
 QLast Update : Tue Oct 18 04:18:35 2022
 Response via : Initial Calibration



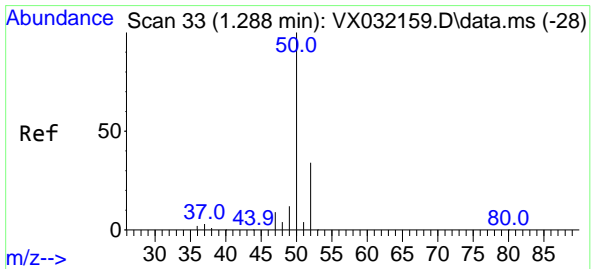
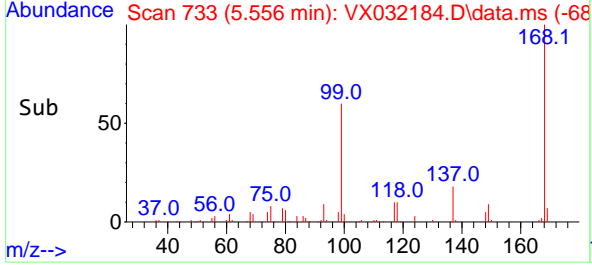
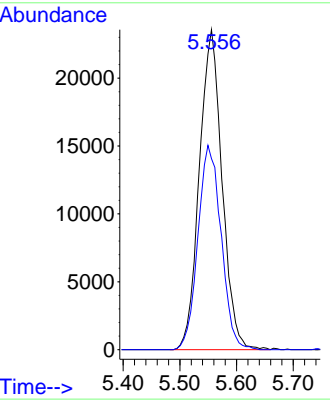


#1
 Pentafluorobenzene
 Concen: 50.000 ug/l
 RT: 5.556 min Scan# 71
 Delta R.T. 0.006 min
 Lab File: VX032184.D
 Acq: 18 Oct 2022 03:07

Instrument : MSVOA_X
 ClientSampleId : PB148361ZHE#03

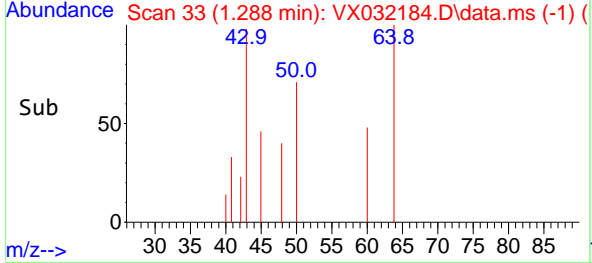
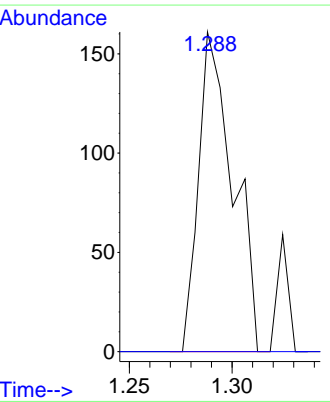
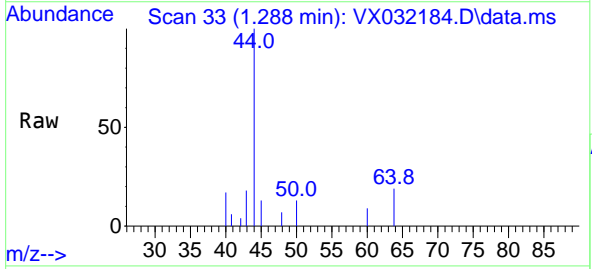


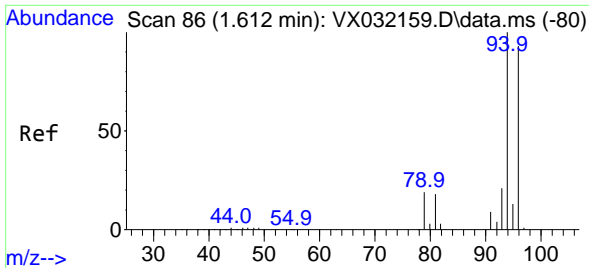
Tgt Ion:168 Resp: 65553
 Ion Ratio Lower Upper
 168 100
 99 59.7 48.8 73.2



#3
 Chloromethane
 Concen: 0.270 ug/l
 RT: 1.288 min Scan# 33
 Delta R.T. 0.000 min
 Lab File: VX032184.D
 Acq: 18 Oct 2022 03:07

Tgt Ion: 50 Resp: 188
 Ion Ratio Lower Upper
 50 100
 52 0.0 26.9 40.3#

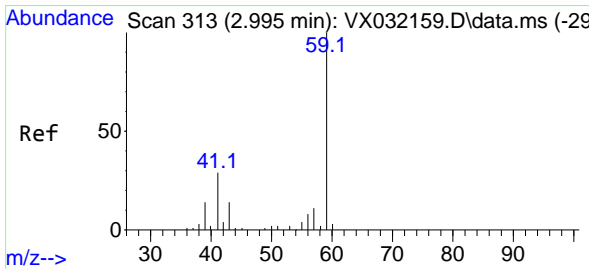
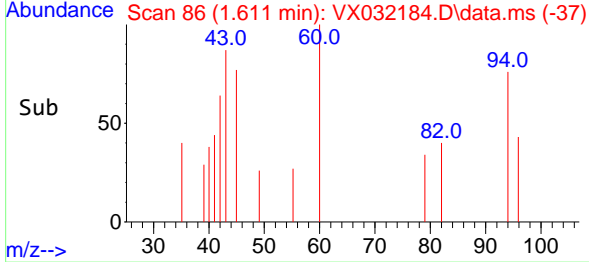
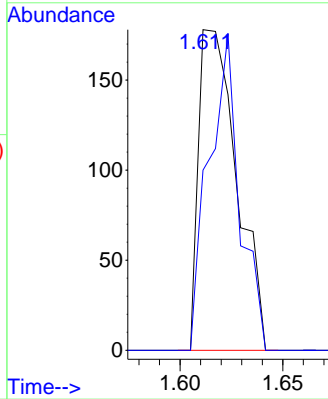
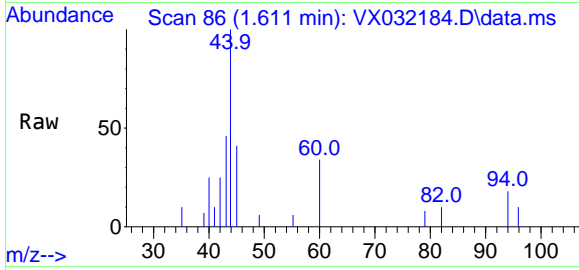




#5
 Bromomethane
 Concen: 0.402 ug/l
 RT: 1.611 min Scan# 80
 Delta R.T. -0.001 min
 Lab File: VX032184.D
 Acq: 18 Oct 2022 03:07

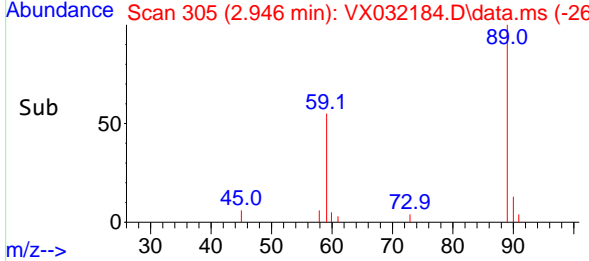
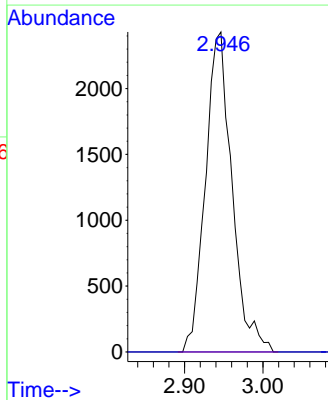
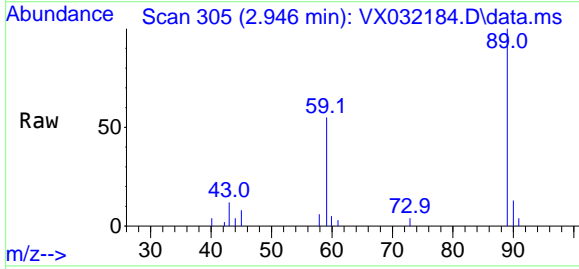
Instrument : MSVOA_X
 ClientSampleId : PB148361ZHE#03

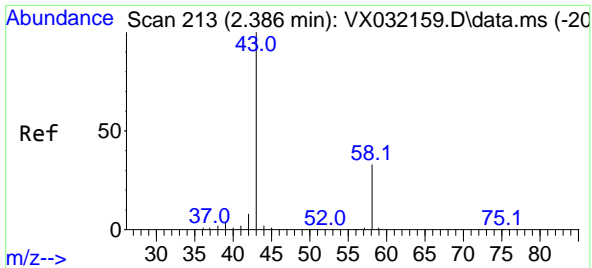
Tgt Ion: 94 Resp: 231
 Ion Ratio Lower Upper
 94 100
 96 56.2 74.4 111.6#



#11
 Tert butyl alcohol
 Concen: 39.959 ug/l
 RT: 2.946 min Scan# 305
 Delta R.T. -0.049 min
 Lab File: VX032184.D
 Acq: 18 Oct 2022 03:07

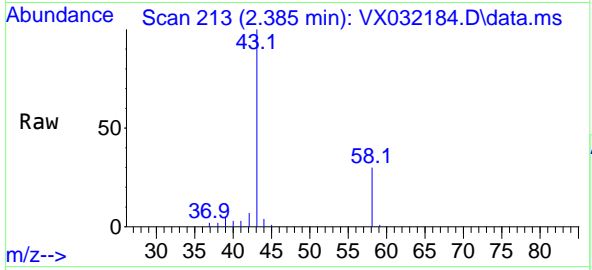
Tgt Ion: 59 Resp: 5738
 Ion Ratio Lower Upper
 59 100
 57 0.0 8.2 12.2#



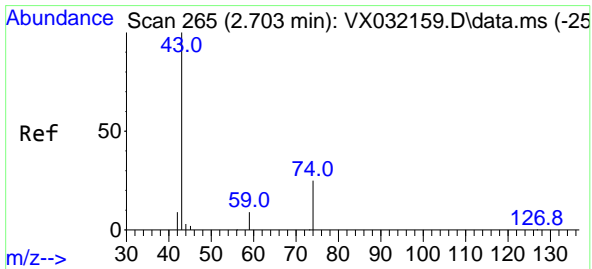
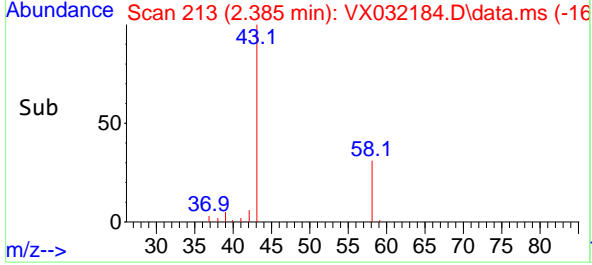
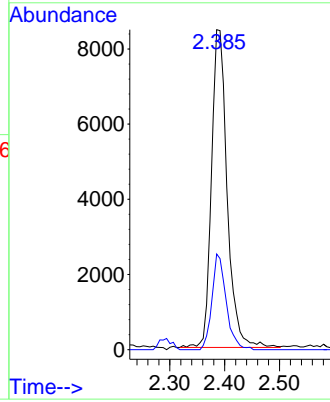


#16
 Acetone
 Concen: 66.660 ug/l
 RT: 2.385 min Scan# 213
 Delta R.T. -0.001 min
 Lab File: VX032184.D
 Acq: 18 Oct 2022 03:07

Instrument : MSVOA_X
 ClientSampleId : PB148361ZHE#03

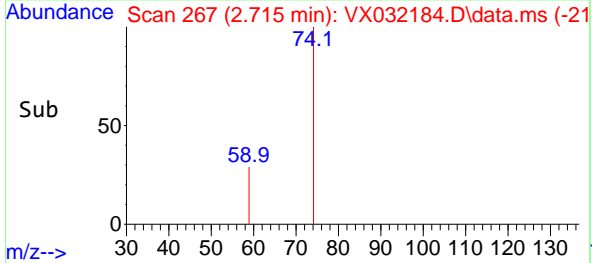
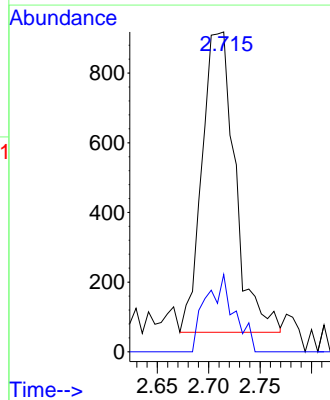
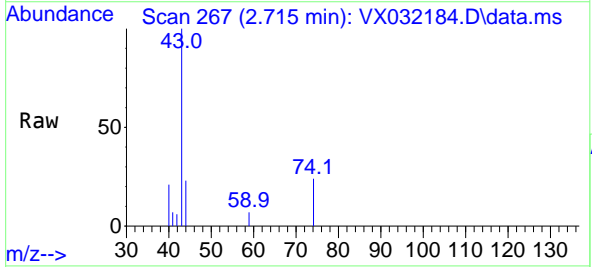


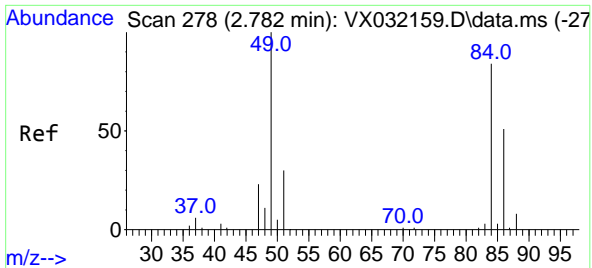
Tgt Ion: 43 Resp: 16734
 Ion Ratio Lower Upper
 43 100
 58 30.1 23.8 35.8



#18
 Methyl Acetate
 Concen: 1.894 ug/l
 RT: 2.715 min Scan# 267
 Delta R.T. 0.012 min
 Lab File: VX032184.D
 Acq: 18 Oct 2022 03:07

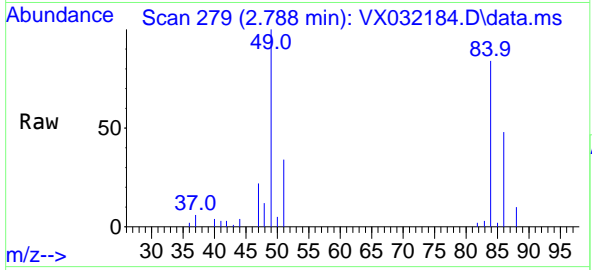
Tgt Ion: 43 Resp: 1936
 Ion Ratio Lower Upper
 43 100
 74 22.1 18.6 27.8





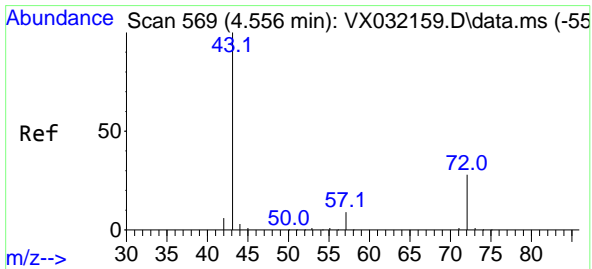
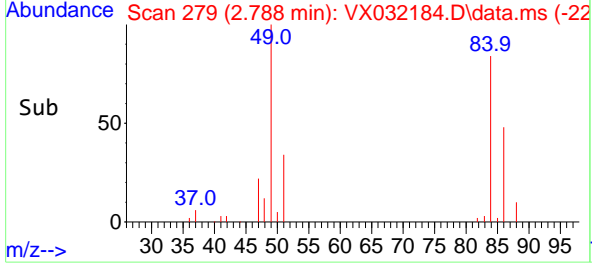
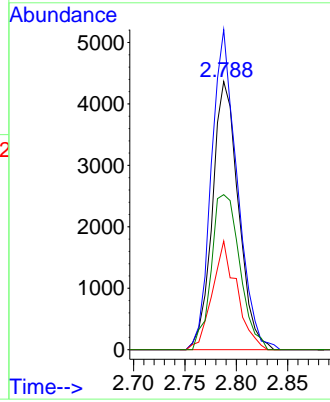
#20
 Methylene Chloride
 Concen: 9.944 ug/l
 RT: 2.788 min Scan# 21
 Delta R.T. 0.006 min
 Lab File: VX032184.D
 Acq: 18 Oct 2022 03:07

Instrument : MSVOA_X
 ClientSampleId : PB148361ZHE#03



Tgt Ion: 84 Resp: 7675

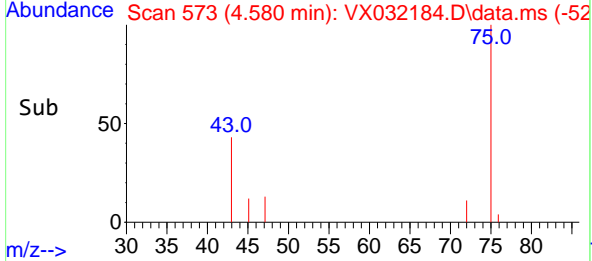
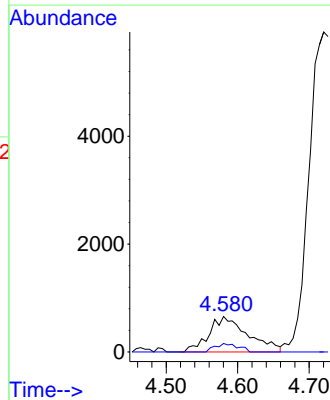
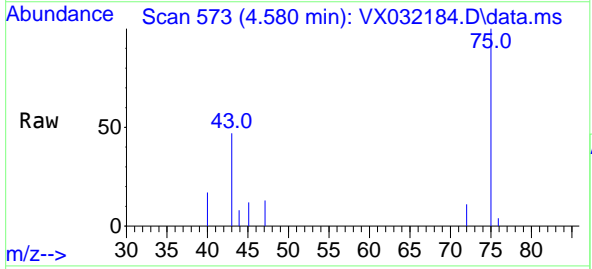
Ion	Ratio	Lower	Upper
84	100		
49	119.4	105.9	158.9
51	40.6	32.2	48.2
86	57.8	50.8	76.2

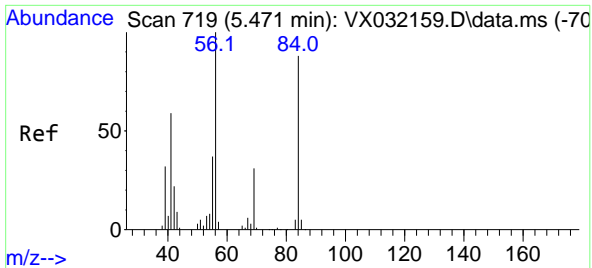


#25
 2-Butanone
 Concen: 4.624 ug/l
 RT: 4.580 min Scan# 573
 Delta R.T. 0.024 min
 Lab File: VX032184.D
 Acq: 18 Oct 2022 03:07

Tgt Ion: 43 Resp: 2480

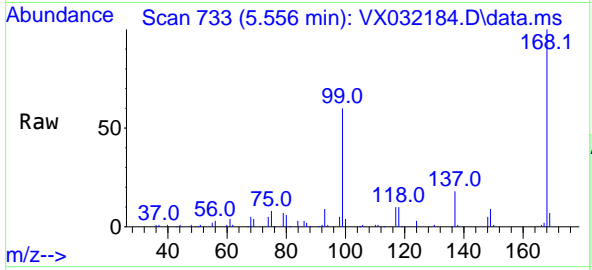
Ion	Ratio	Lower	Upper
43	100		
72	23.8	21.1	31.7



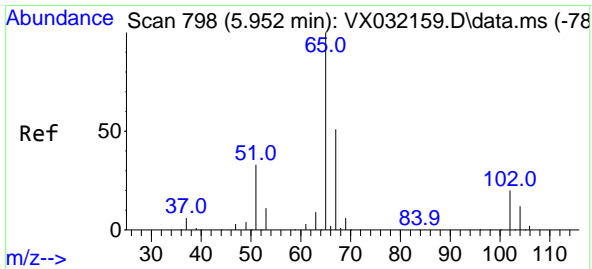
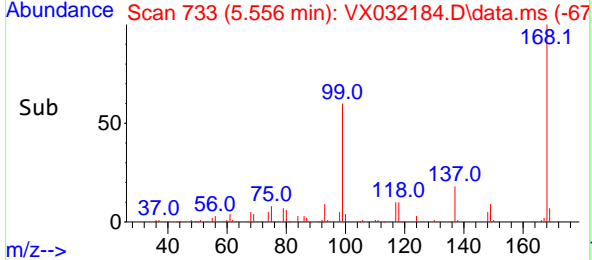
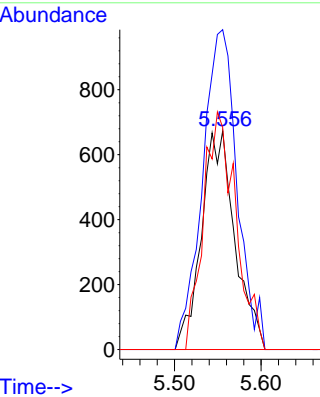


#31
 Cyclohexane
 Concen: 1.557 ug/l
 RT: 5.556 min Scan# 719
 Delta R.T. 0.085 min
 Lab File: VX032184.D
 Acq: 18 Oct 2022 03:07

Instrument : MSVOA_X
 ClientSampleId : PB148361ZHE#03

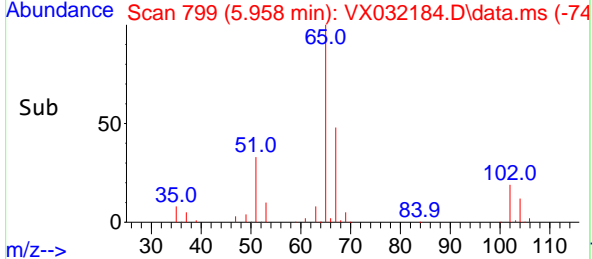
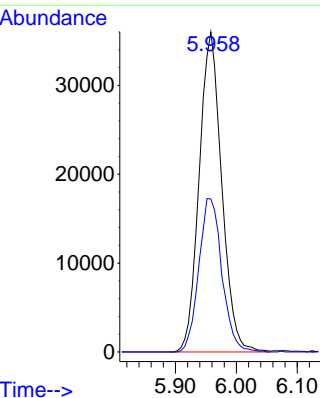
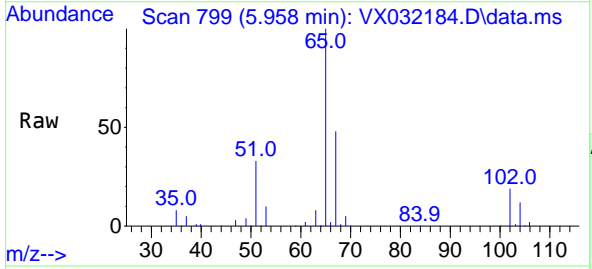


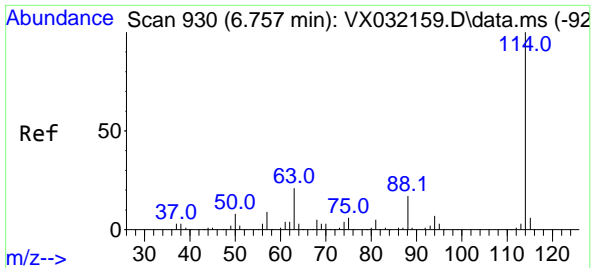
Tgt Ion: 56 Resp: 1812
 Ion Ratio Lower Upper
 56 100
 69 146.4 25.1 37.7#
 84 101.6 70.2 105.4



#33
 1,2-Dichloroethane-d4
 Concen: 88.627 ug/l
 RT: 5.958 min Scan# 799
 Delta R.T. 0.006 min
 Lab File: VX032184.D
 Acq: 18 Oct 2022 03:07

Tgt Ion: 65 Resp: 92532
 Ion Ratio Lower Upper
 65 100
 67 49.2 0.0 102.4

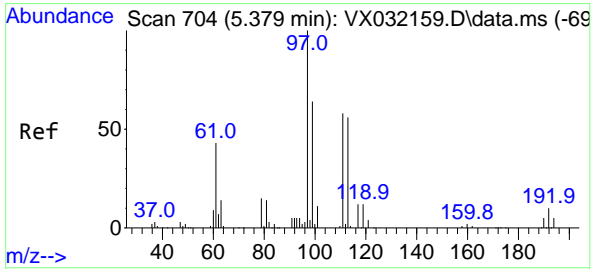
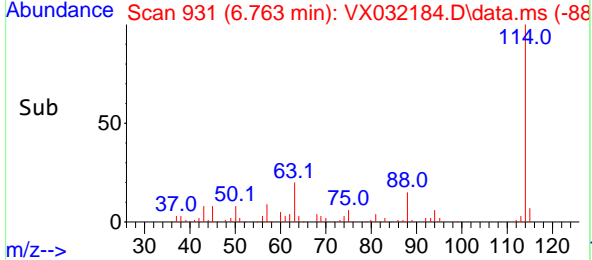
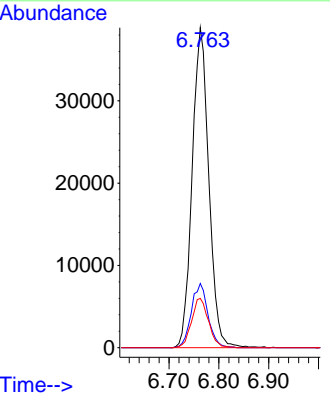
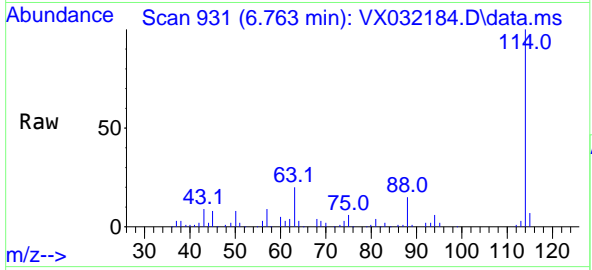




#34
 1,4-Difluorobenzene
 Concen: 50.000 ug/l
 RT: 6.763 min Scan# 91
 Delta R.T. 0.006 min
 Lab File: VX032184.D
 Acq: 18 Oct 2022 03:07

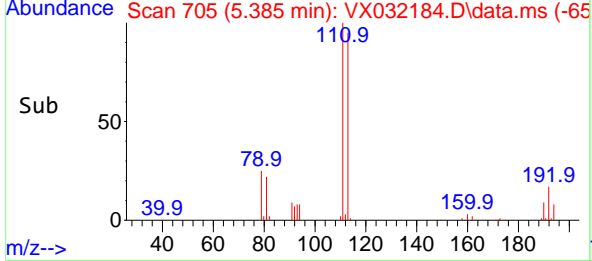
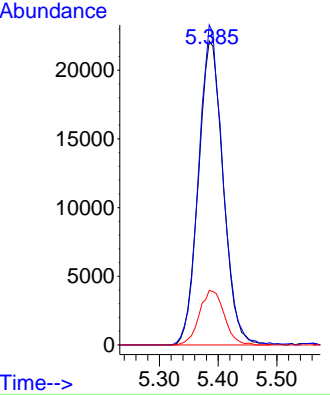
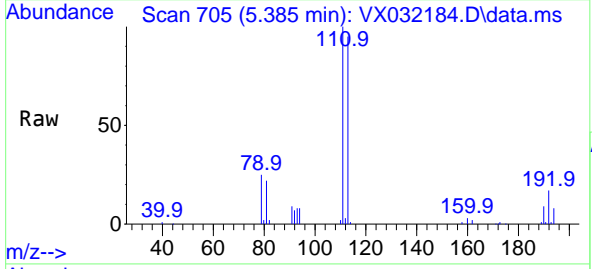
Instrument : MSVOA_X
 ClientSampleId : PB148361ZHE#03

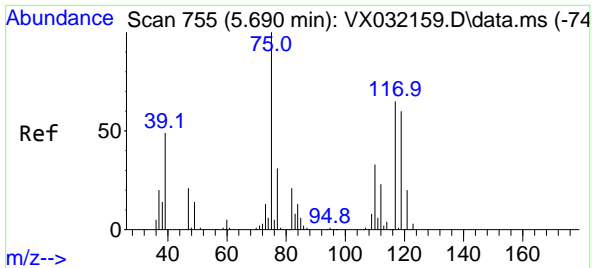
Tgt Ion	Resp	Lower	Upper
114	100		
63	20.0	0.0	42.6
88	15.4	0.0	33.0



#35
 Dibromofluoromethane
 Concen: 105.584 ug/l
 RT: 5.385 min Scan# 705
 Delta R.T. 0.006 min
 Lab File: VX032184.D
 Acq: 18 Oct 2022 03:07

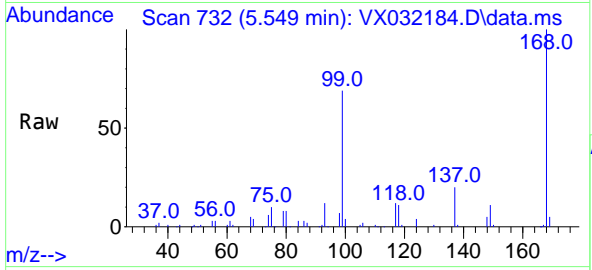
Tgt Ion	Resp	Lower	Upper
113	100		
111	102.7	82.4	123.6
192	18.0	14.1	21.1





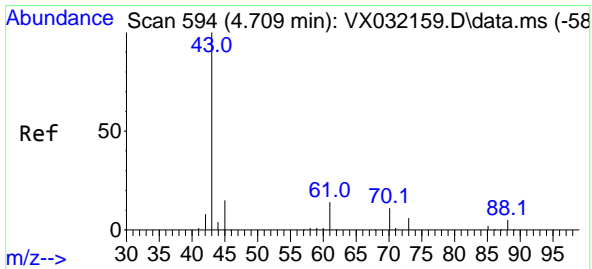
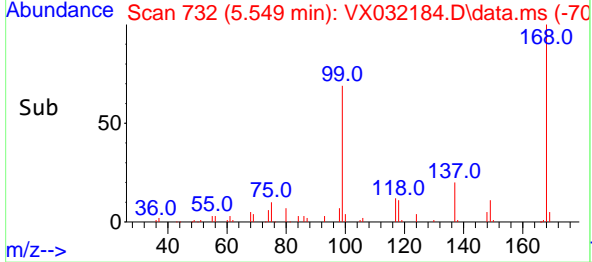
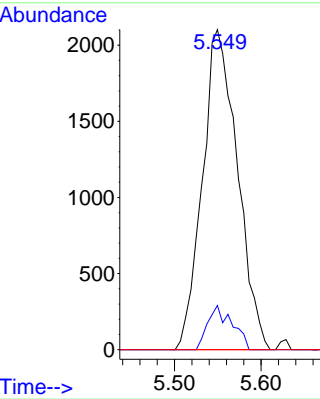
#36
 1,1-Dichloropropene
 Concen: 6.646 ug/l
 RT: 5.549 min Scan# 71
 Delta R.T. -0.141 min
 Lab File: VX032184.D
 Acq: 18 Oct 2022 03:07

Instrument : MSVOA_X
 ClientSampleId : PB148361ZHE#03

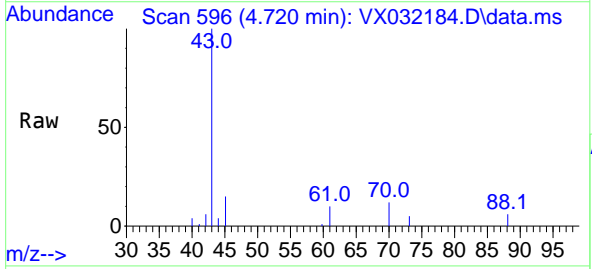


Tgt Ion: 75 Resp: 5904

Ion	Ratio	Lower	Upper
75	100		
110	9.7	17.5	52.5#
77	0.0	24.9	37.3#

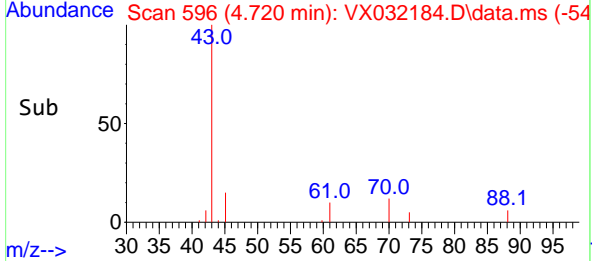
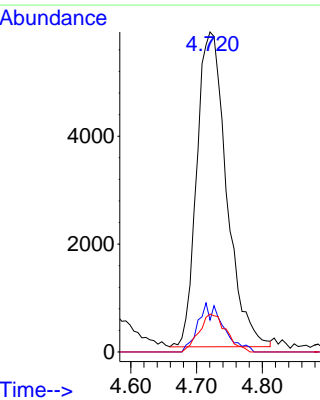


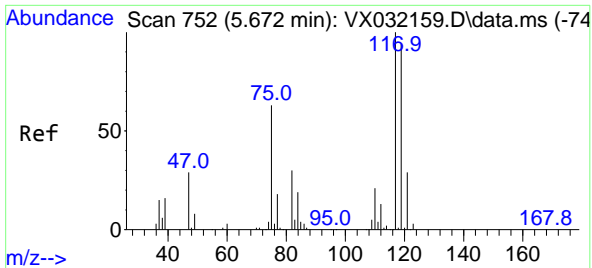
#37
 Ethyl Acetate
 Concen: 20.605 ug/l
 RT: 4.720 min Scan# 596
 Delta R.T. 0.011 min
 Lab File: VX032184.D
 Acq: 18 Oct 2022 03:07



Tgt Ion: 43 Resp: 18369

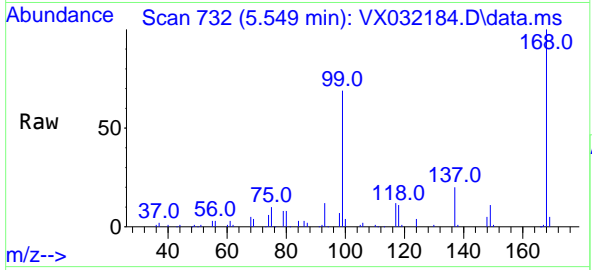
Ion	Ratio	Lower	Upper
43	100		
61	13.2	11.1	16.7
70	11.0	8.6	13.0





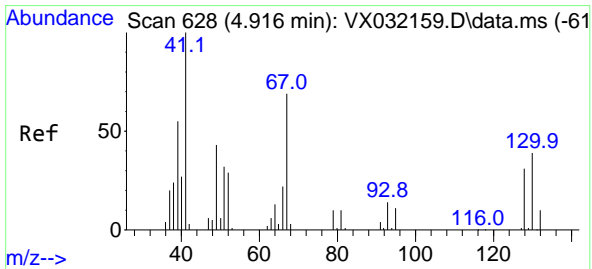
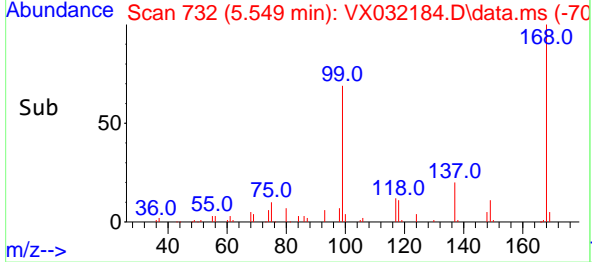
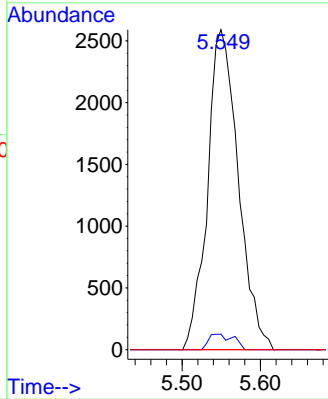
#38
 Carbon Tetrachloride
 Concen: 7.523 ug/l
 RT: 5.549 min Scan# 711
 Delta R.T. -0.123 min
 Lab File: VX032184.D
 Acq: 18 Oct 2022 03:07

Instrument : MSVOA_X
 ClientSampleId : PB148361ZHE#03



Tgt Ion: 117 Resp: 7078

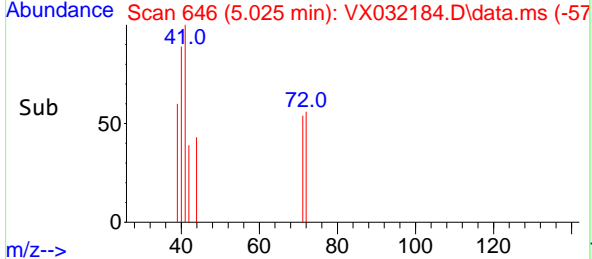
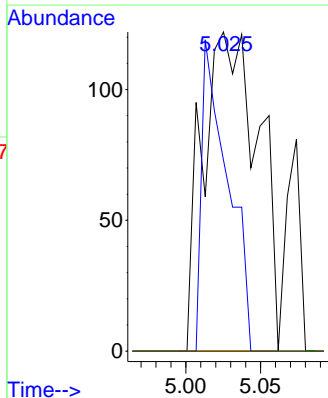
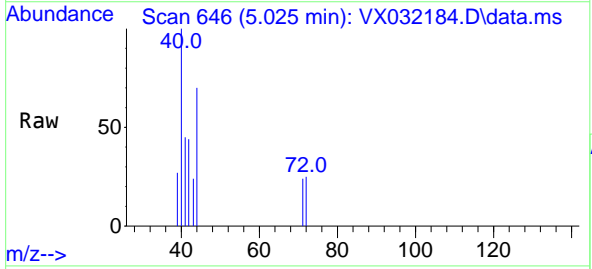
Ion	Ratio	Lower	Upper
117	100		
119	4.8	74.6	112.0#
121	0.0	25.3	37.9#

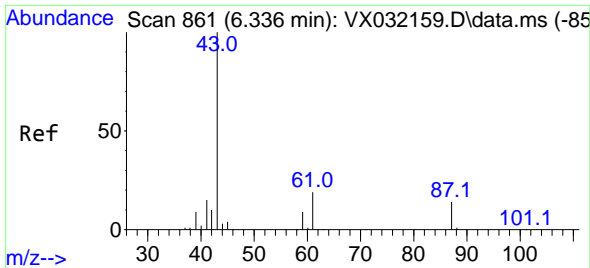


#41
 Methacrylonitrile
 Concen: 0.687 ug/l
 RT: 5.025 min Scan# 646
 Delta R.T. 0.109 min
 Lab File: VX032184.D
 Acq: 18 Oct 2022 03:07

Tgt Ion: 41 Resp: 316

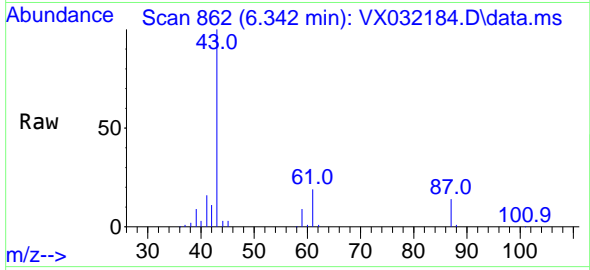
Ion	Ratio	Lower	Upper
41	100		
39	45.6	45.0	67.6
67	0.0	58.2	87.4#
52	0.0	25.0	37.6#



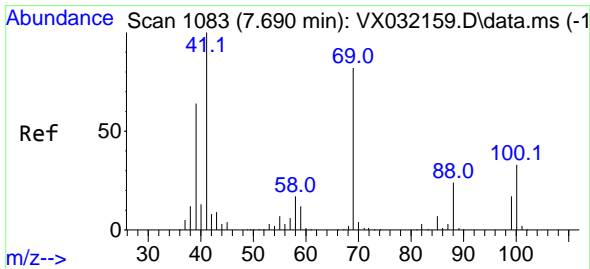
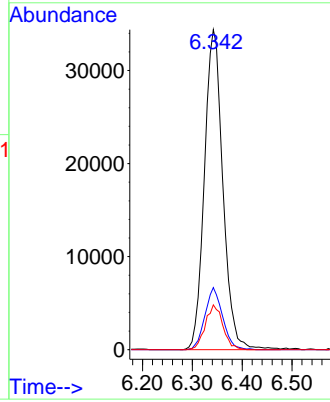
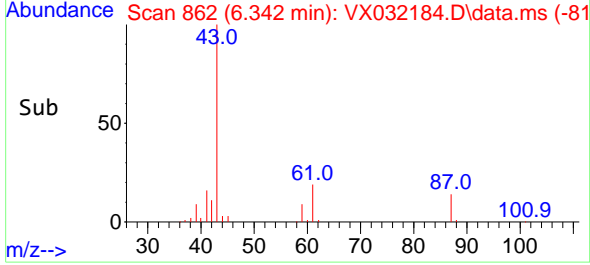


#43
 Isopropyl Acetate
 Concen: 65.860 ug/l
 RT: 6.342 min Scan# 80
 Delta R.T. 0.006 min
 Lab File: VX032184.D
 Acq: 18 Oct 2022 03:07

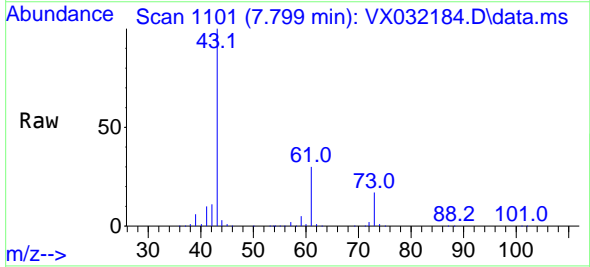
Instrument : MSVOA_X
 ClientSampleId : PB148361ZHE#03



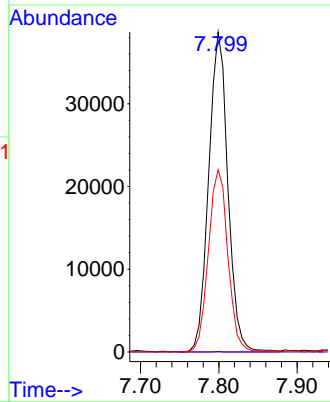
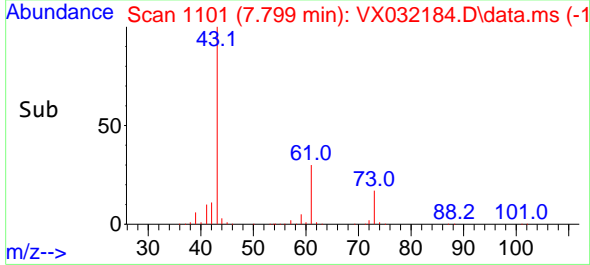
Tgt Ion: 43 Resp: 88476
 Ion Ratio Lower Upper
 43 100
 61 18.6 15.3 22.9
 87 13.3 10.6 15.8

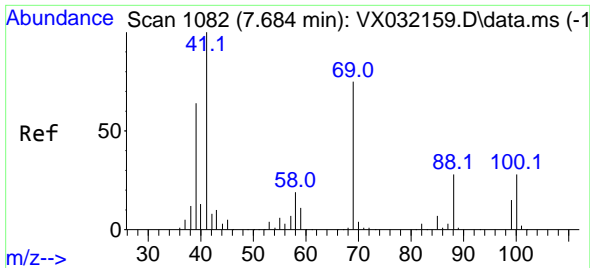


#48
 Methyl methacrylate
 Concen: 96.493 ug/l
 RT: 7.799 min Scan# 1101
 Delta R.T. 0.109 min
 Lab File: VX032184.D
 Acq: 18 Oct 2022 03:07



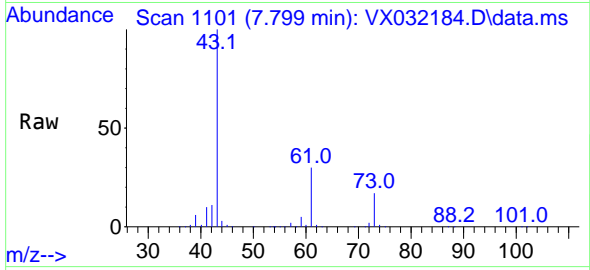
Tgt Ion: 41 Resp: 65697
 Ion Ratio Lower Upper
 41 100
 69 0.0 64.6 96.8#
 39 57.9 51.4 77.0



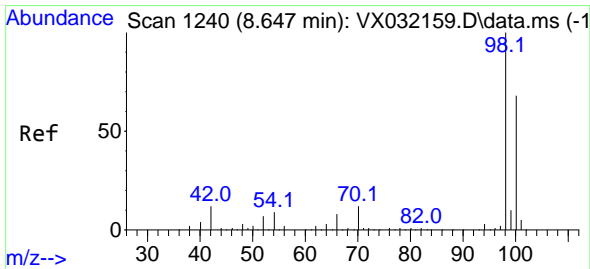
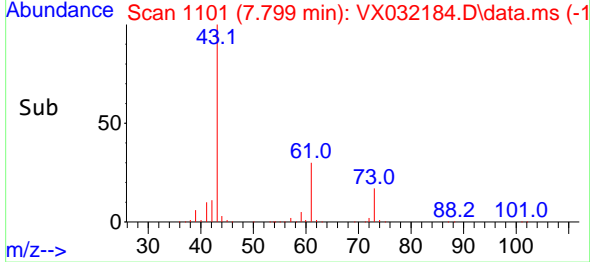
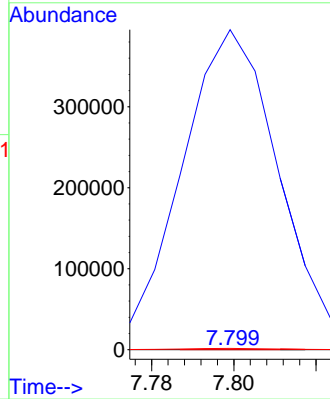


#49
 1,4-Dioxane
 Concen: 2.507 ug/l
 RT: 7.799 min Scan# 1101
 Delta R.T. 0.115 min
 Lab File: VX032184.D
 Acq: 18 Oct 2022 03:07

Instrument : MSVOA_X
 ClientSampleId : PB148361ZHE#03

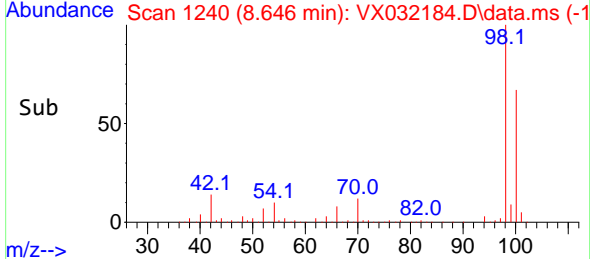
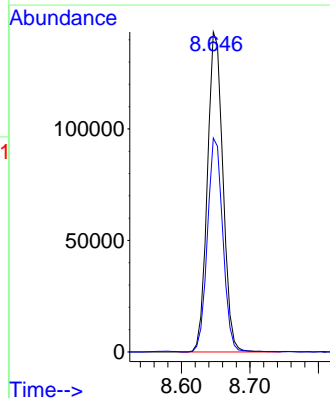
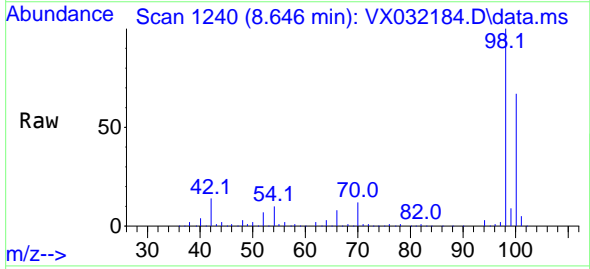


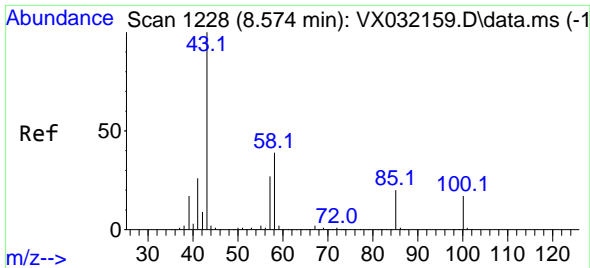
Tgt Ion: 88 Resp: 35
 Ion Ratio Lower Upper
 88 100
 43 1906140.0 27.1 40.7#
 58 7857.1 53.9 80.9#



#50
 Toluene-d8
 Concen: 105.277 ug/l
 RT: 8.646 min Scan# 1240
 Delta R.T. -0.001 min
 Lab File: VX032184.D
 Acq: 18 Oct 2022 03:07

Tgt Ion: 98 Resp: 226741
 Ion Ratio Lower Upper
 98 100
 100 66.4 52.5 78.7

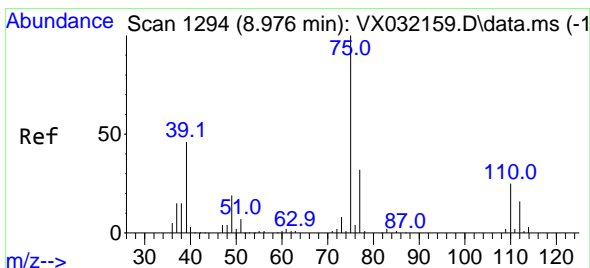
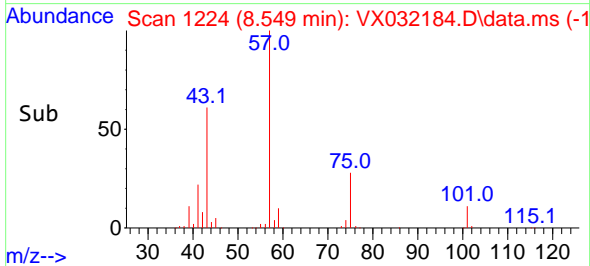
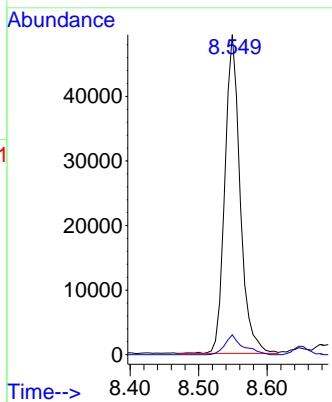
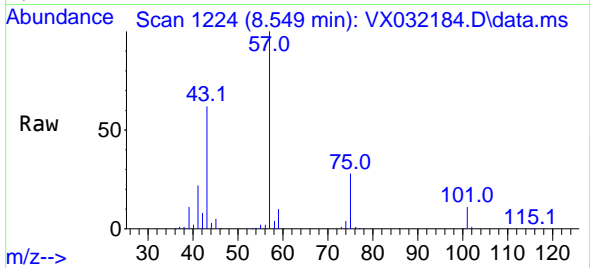




#51
 4-Methyl-2-Pentanone
 Concen: 92.786 ug/l
 RT: 8.549 min Scan# 11
 Delta R.T. -0.025 min
 Lab File: VX032184.D
 Acq: 18 Oct 2022 03:07

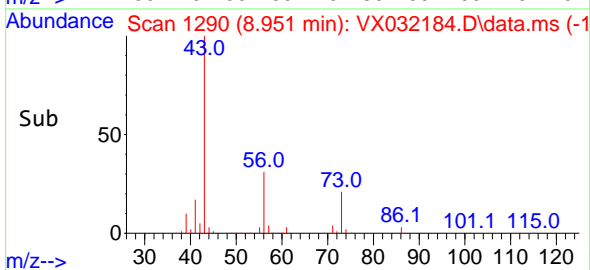
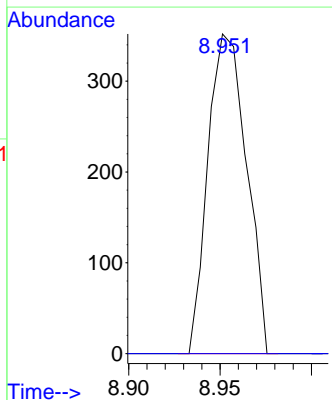
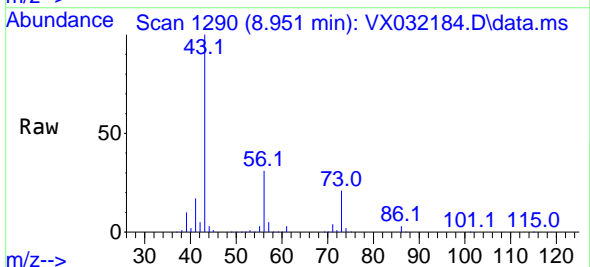
Instrument : MSVOA_X
 ClientSampleId : PB148361ZHE#03

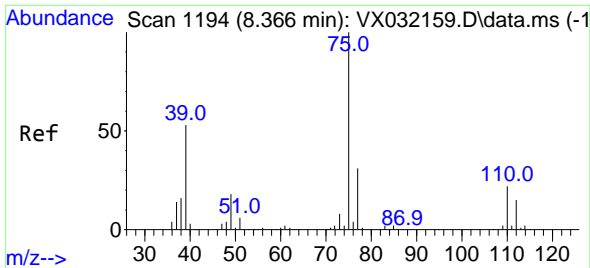
Tgt Ion: 43 Resp: 76437
 Ion Ratio Lower Upper
 43 100
 58 7.3 30.6 46.0#



#53
 t-1,3-Dichloropropene
 Concen: 0.655 ug/l
 RT: 8.951 min Scan# 1290
 Delta R.T. -0.025 min
 Lab File: VX032184.D
 Acq: 18 Oct 2022 03:07

Tgt Ion: 75 Resp: 518
 Ion Ratio Lower Upper
 75 100
 77 0.0 24.8 37.2#

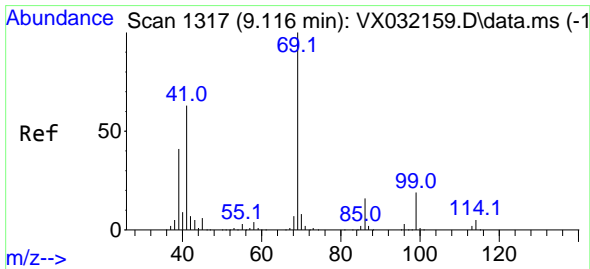
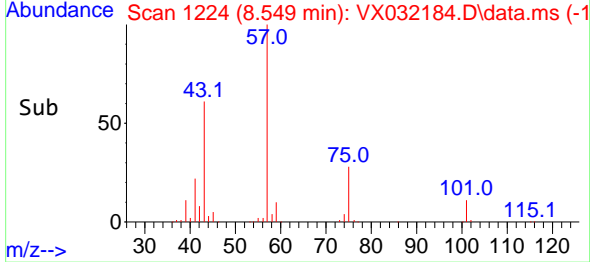
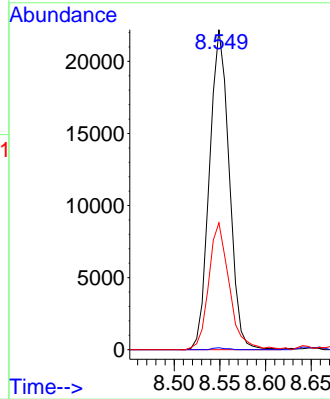
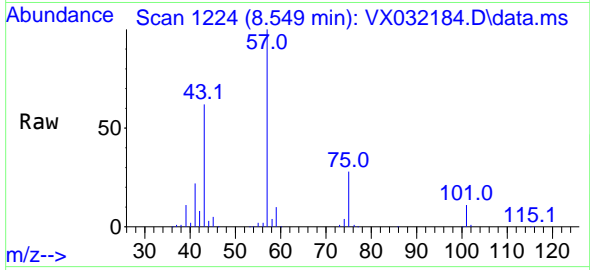




#54
 cis-1,3-Dichloropropene
 Concen: 35.952 ug/l
 RT: 8.549 min Scan# 1194
 Delta R.T. 0.183 min
 Lab File: VX032184.D
 Acq: 18 Oct 2022 03:07

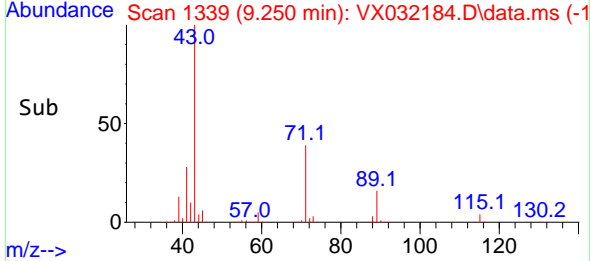
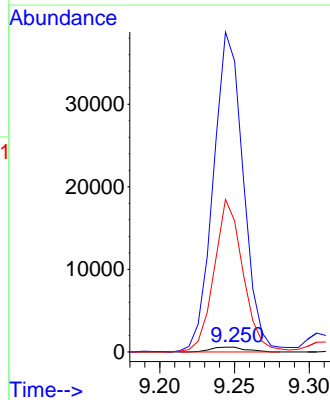
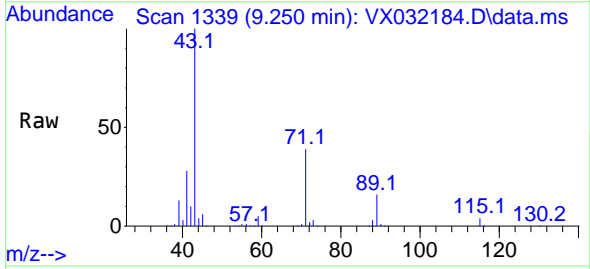
Instrument : MSVOA_X
 ClientSampleId : PB148361ZHE#03

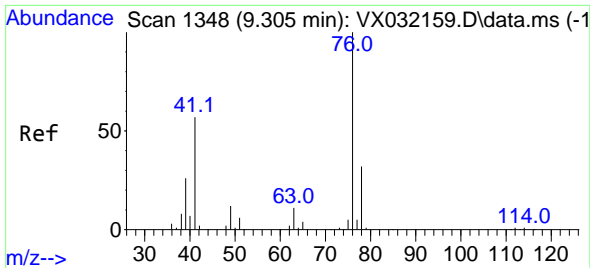
Tgt Ion: 75 Resp: 33362
 Ion Ratio Lower Upper
 75 100
 77 0.6 24.4 36.6#
 39 39.7 43.7 65.5#



#56
 Ethyl methacrylate
 Concen: 1.117 ug/l
 RT: 9.250 min Scan# 1339
 Delta R.T. 0.134 min
 Lab File: VX032184.D
 Acq: 18 Oct 2022 03:07

Tgt Ion: 69 Resp: 959
 Ion Ratio Lower Upper
 69 100
 41 5659.1 54.2 81.4#
 39 2590.3 34.2 51.2#

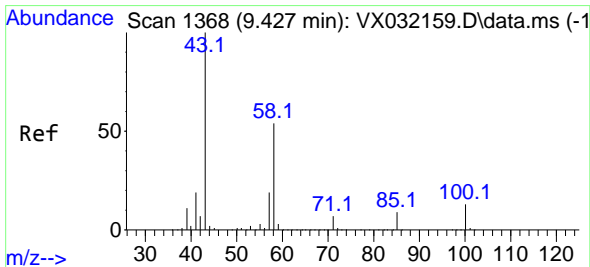
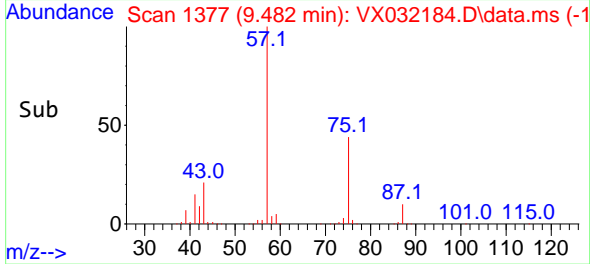
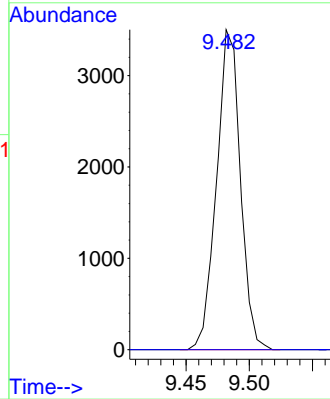
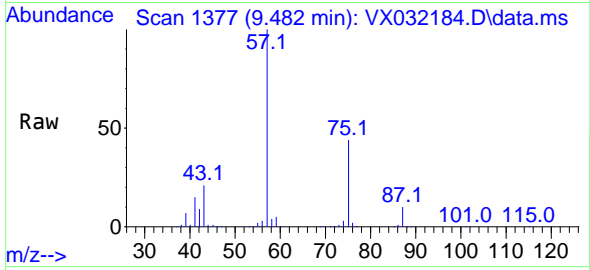




#57
 1,3-Dichloropropane
 Concen: 4.347 ug/l
 RT: 9.482 min Scan# 1377
 Delta R.T. 0.177 min
 Lab File: VX032184.D
 Acq: 18 Oct 2022 03:07

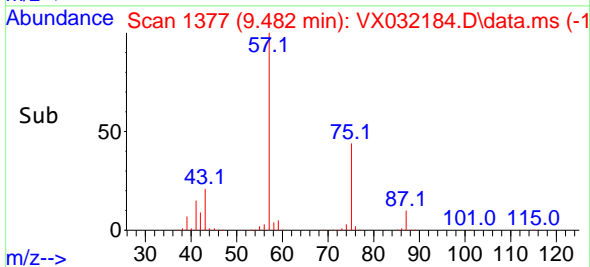
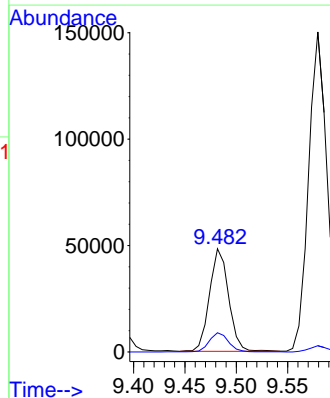
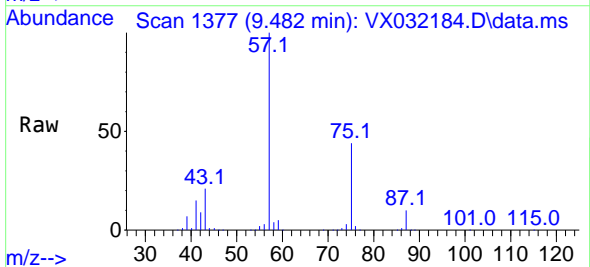
Instrument : MSVOA_X
 ClientSampleId : PB148361ZHE#03

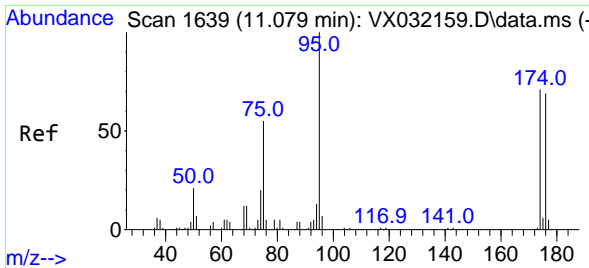
Tgt Ion: 76 Resp: 4581
 Ion Ratio Lower Upper
 76 100
 78 0.0 25.5 38.3#



#59
 2-Hexanone
 Concen: 102.264 ug/l
 RT: 9.482 min Scan# 1377
 Delta R.T. 0.055 min
 Lab File: VX032184.D
 Acq: 18 Oct 2022 03:07

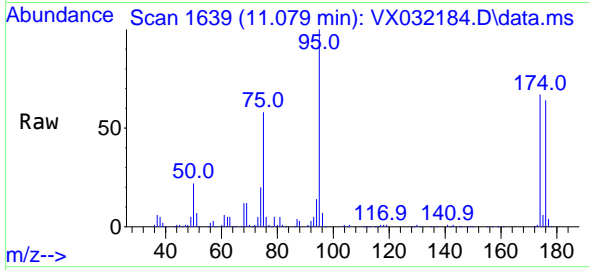
Tgt Ion: 43 Resp: 62412
 Ion Ratio Lower Upper
 43 100
 58 19.1 26.7 80.0#



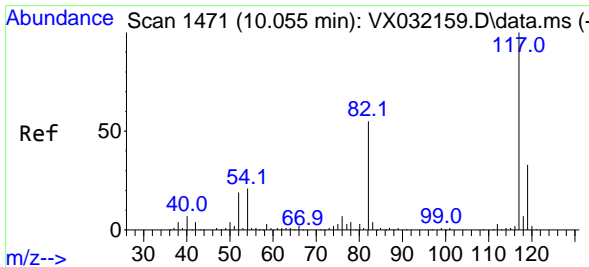
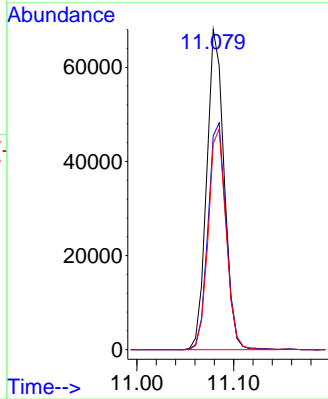
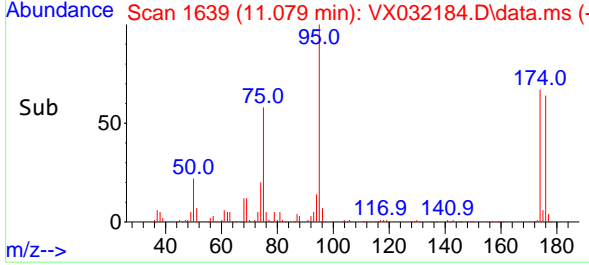


#62
 4-Bromofluorobenzene
 Concen: 104.161 ug/l
 RT: 11.079 min Scan# 1639
 Delta R.T. -0.000 min
 Lab File: VX032184.D
 Acq: 18 Oct 2022 03:07

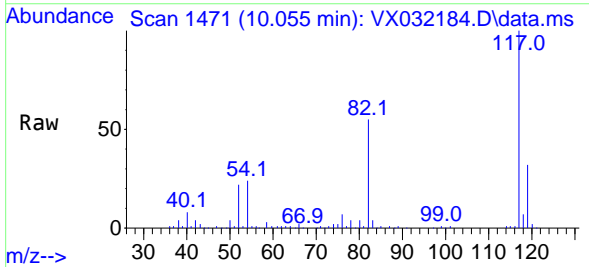
Instrument : MSVOA_X
 ClientSampleId : PB148361ZHE#03



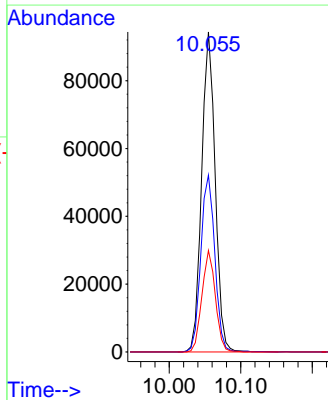
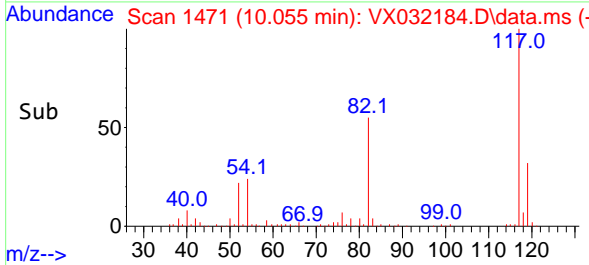
Tgt Ion: 95 Resp: 85414
 Ion Ratio Lower Upper
 95 100
 174 73.7 0.0 153.2
 176 70.2 0.0 144.0

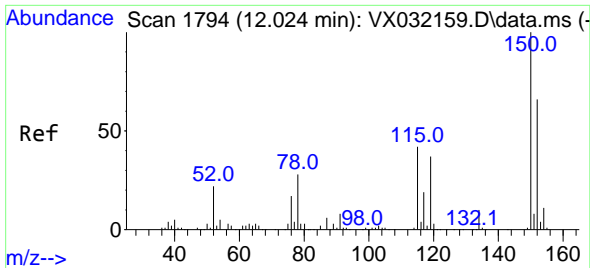


#63
 Chlorobenzene-d5
 Concen: 50.000 ug/l
 RT: 10.055 min Scan# 1471
 Delta R.T. -0.000 min
 Lab File: VX032184.D
 Acq: 18 Oct 2022 03:07



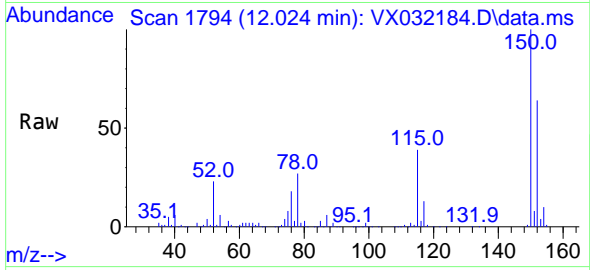
Tgt Ion: 117 Resp: 124041
 Ion Ratio Lower Upper
 117 100
 82 55.3 46.8 70.2
 119 31.7 26.4 39.6



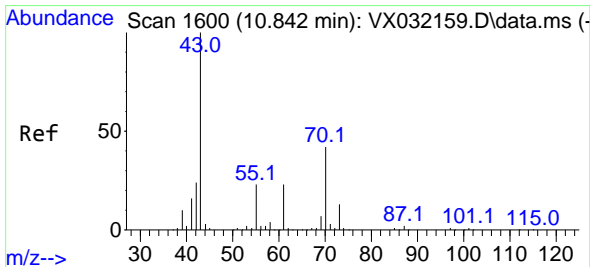
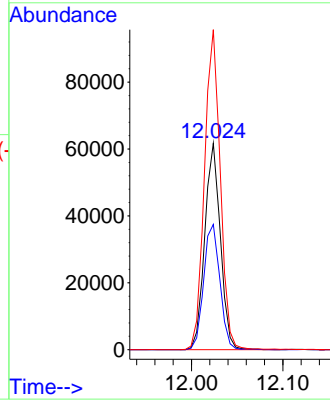
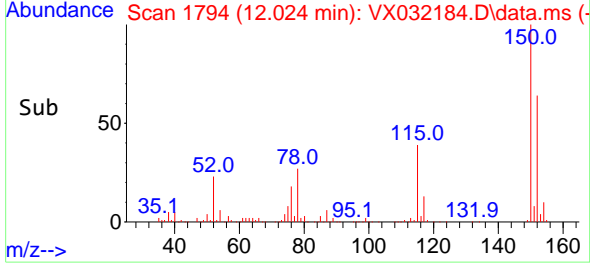


#72
 1,4-Dichlorobenzene-d4
 Concen: 50.000 ug/l
 RT: 12.024 min Scan# 11
 Delta R.T. -0.000 min
 Lab File: VX032184.D
 Acq: 18 Oct 2022 03:07

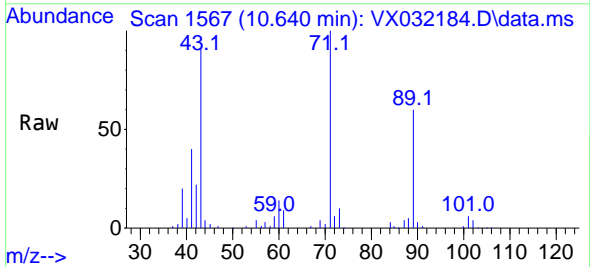
Instrument : MSVOA_X
 ClientSampleId : PB148361ZHE#03



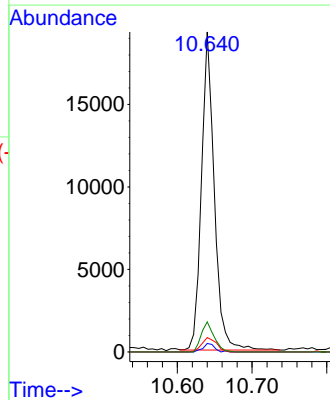
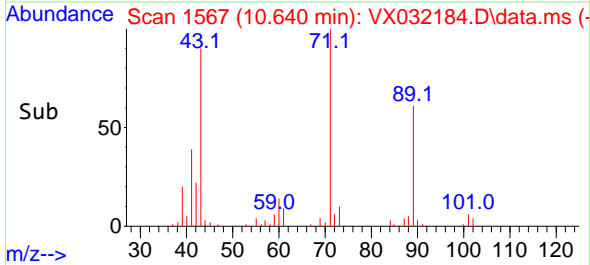
Tgt Ion:152 Resp: 72962
 Ion Ratio Lower Upper
 152 100
 115 63.2 43.4 130.1
 150 157.2 0.0 346.8

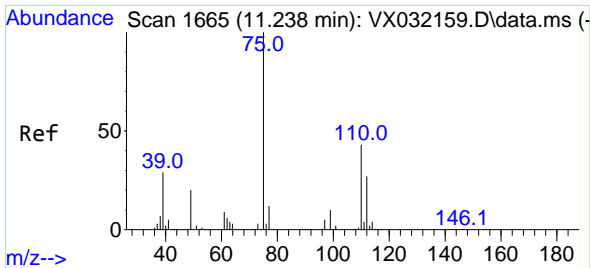


#74
 N-amy1 acetate
 Concen: 11.896 ug/l
 RT: 10.640 min Scan# 1567
 Delta R.T. -0.202 min
 Lab File: VX032184.D
 Acq: 18 Oct 2022 03:07



Tgt Ion: 43 Resp: 22976
 Ion Ratio Lower Upper
 43 100
 70 2.4 33.4 50.2#
 55 5.1 18.2 27.2#
 61 9.4 19.3 28.9#

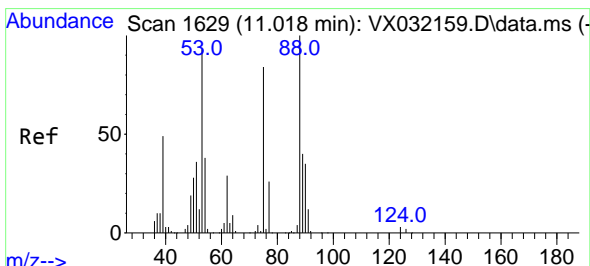
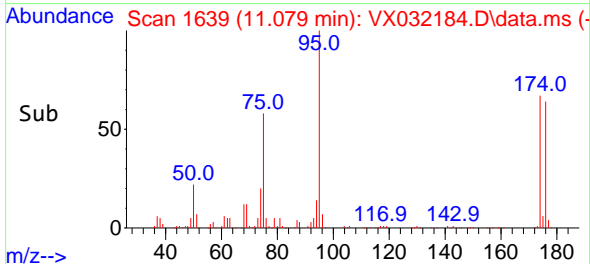
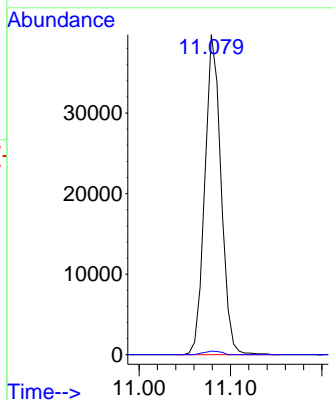
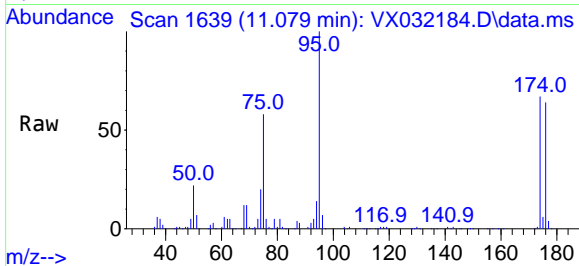




#76
 1,2,3-Trichloropropane
 Concen: 30.843 ug/l
 RT: 11.079 min Scan# 1639
 Delta R.T. -0.159 min
 Lab File: VX032184.D
 Acq: 18 Oct 2022 03:07

Instrument : MSVOA_X
 ClientSampleId : PB148361ZHE#03

Tgt Ion: 75 Resp: 48794
 Ion Ratio Lower Upper
 75 100
 77 1.2 20.3 60.9#



#81
 trans-1,4-Dichloro-2-butene
 Concen: 118.735 ug/l
 RT: 11.079 min Scan# 1639
 Delta R.T. 0.061 min
 Lab File: VX032184.D
 Acq: 18 Oct 2022 03:07

Tgt Ion: 75 Resp: 48794
 Ion Ratio Lower Upper
 75 100
 53 0.0 77.6 116.4#
 89 0.0 37.4 56.0#

