

Data Path : Z:\voasrv\HPCHEM1\MSVOA_X\Data\VX101823\
 Data File : VX038361.D
 Acq On : 18 Oct 2023 14:39
 Operator : JC/MD
 Sample : 04940-03
 Misc : 5.0mL/MSVOA_X/WATER
 ALS Vial : 16 Sample Multiplier: 1

Instrument :
 MSVOA_X
 ClientSampleId :
 GW-19-37-40

Quant Time: Oct 19 01:40:41 2023
 Quant Method : Z:\voasrv\HPCHEM1\MSVOA_X\Method\82X100523W.M
 Quant Title : SW846 8260
 QLast Update : Thu Oct 05 15:27:13 2023
 Response via : Initial Calibration

Compound	R.T.	QIon	Response	Conc	Units	Dev(Min)

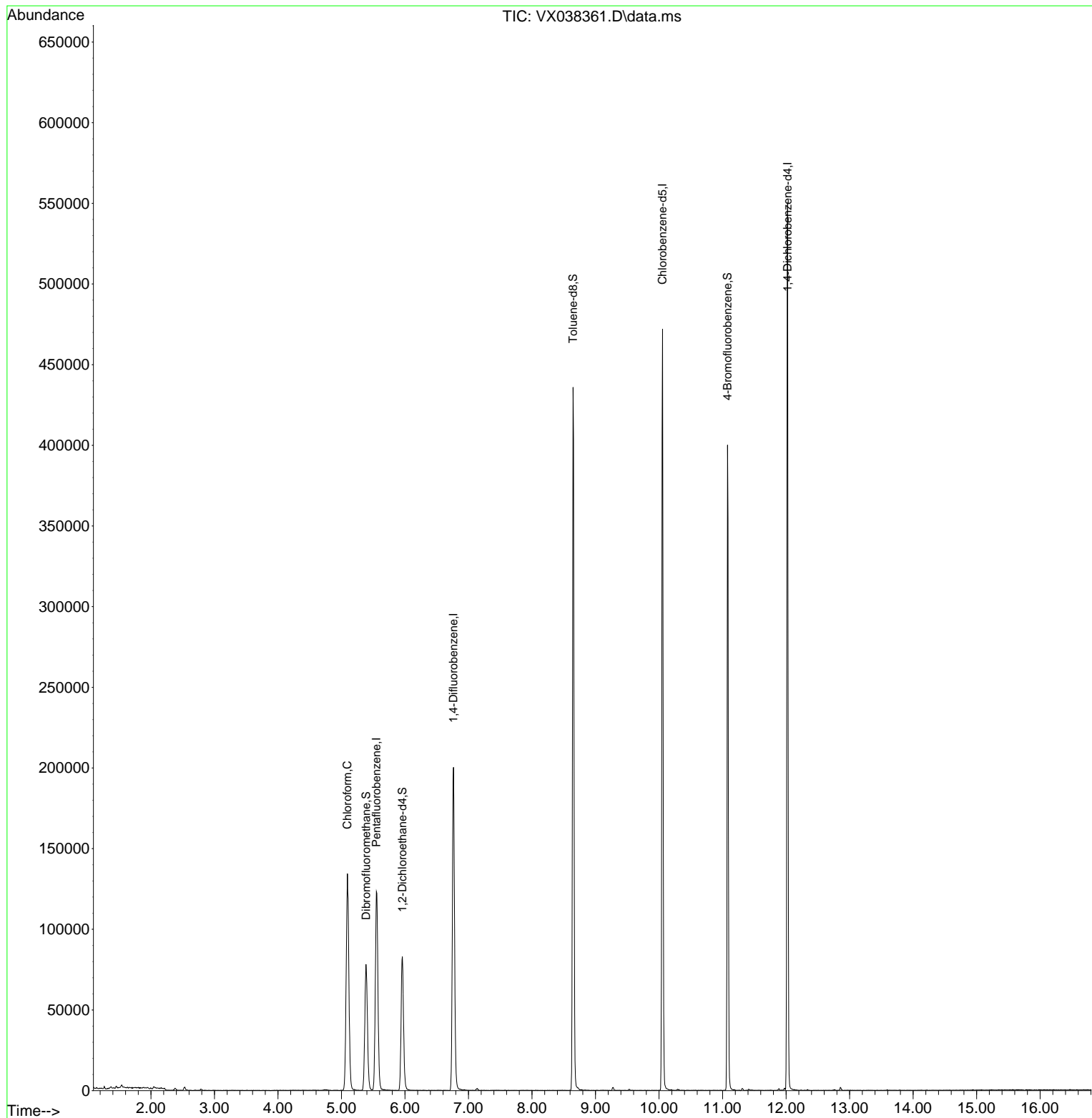
Internal Standards						
1) Pentafluorobenzene	5.550	168	115240	50.000	ug/l	0.00
34) 1,4-Difluorobenzene	6.763	114	206843	50.000	ug/l	0.00
63) Chlorobenzene-d5	10.055	117	208347	50.000	ug/l	0.00
72) 1,4-Dichlorobenzene-d4	12.024	152	111662	50.000	ug/l	0.00
System Monitoring Compounds						
33) 1,2-Dichloroethane-d4	5.958	65	81203	43.809	ug/l	0.00
Spiked Amount	50.000	Range	78 - 117	Recovery	=	87.620%
35) Dibromofluoromethane	5.385	113	65872	44.197	ug/l	0.00
Spiked Amount	50.000	Range	75 - 124	Recovery	=	88.400%
50) Toluene-d8	8.647	98	260610	45.759	ug/l	0.00
Spiked Amount	50.000	Range	92 - 112	Recovery	=	91.520%#
62) 4-Bromofluorobenzene	11.079	95	99751	46.199	ug/l	0.00
Spiked Amount	50.000	Range	83 - 123	Recovery	=	92.400%
Target Compounds						
30) Chloroform	5.093	83	150394	57.336	ug/l	100

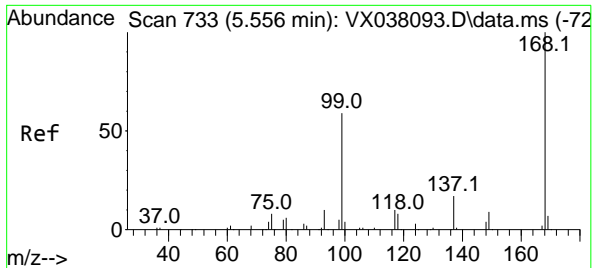
(#) = qualifier out of range (m) = manual integration (+) = signals summed

Data Path : Z:\voasrv\HPCHEM1\MSVOA_X\Data\VX101823\
 Data File : VX038361.D
 Acq On : 18 Oct 2023 14:39
 Operator : JC/MD
 Sample : 04940-03
 Misc : 5.0mL/MSVOA_X/WATER
 ALS Vial : 16 Sample Multiplier: 1

Instrument :
 MSVOA_X
 ClientSampleId :
 GW-19-37-40

Quant Time: Oct 19 01:40:41 2023
 Quant Method : Z:\voasrv\HPCHEM1\MSVOA_X\Method\82X100523W.M
 Quant Title : SW846 8260
 QLast Update : Thu Oct 05 15:27:13 2023
 Response via : Initial Calibration

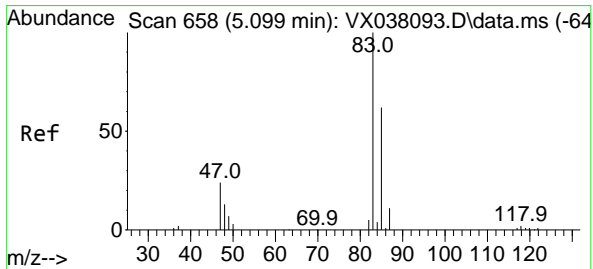
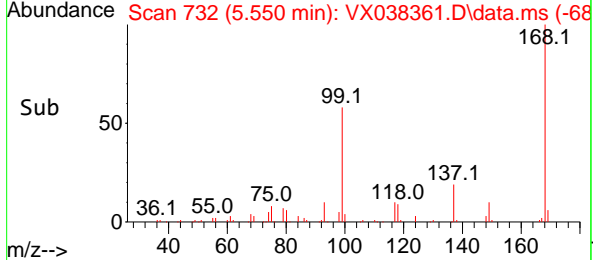
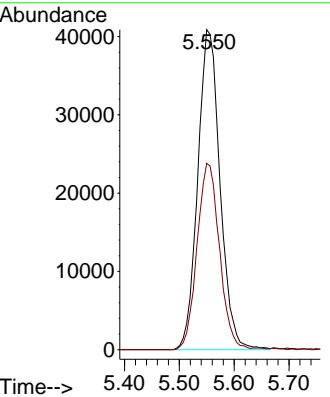
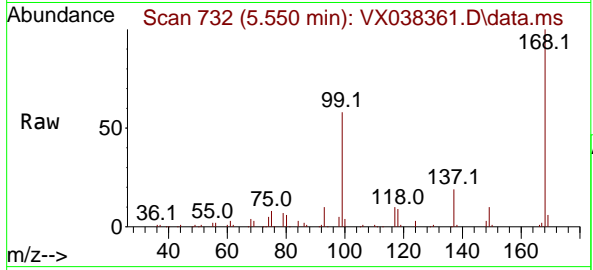




#1
 Pentafluorobenzene
 Concen: 50.000 ug/l
 RT: 5.550 min Scan# 71
 Delta R.T. -0.006 min
 Lab File: VX038361.D
 Acq: 18 Oct 2023 14:39

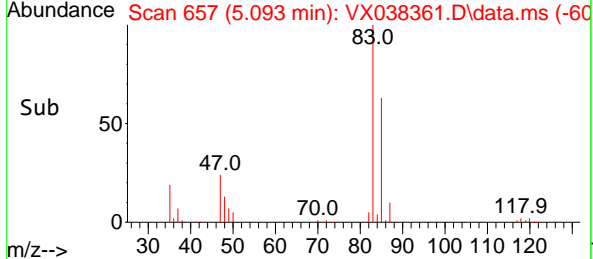
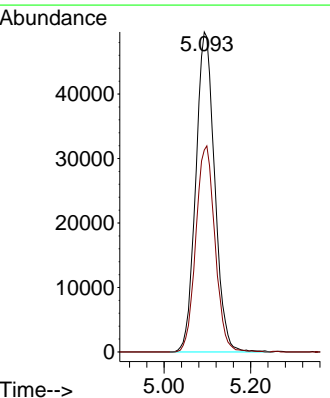
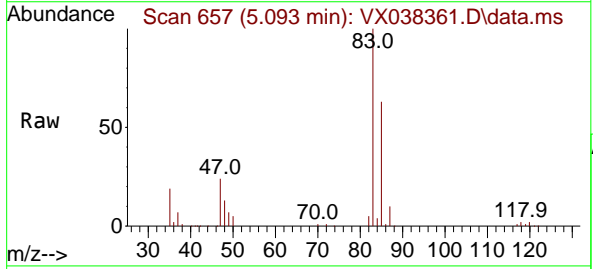
Instrument : MSVOA_X
 ClientSampleId : GW-19-37-40

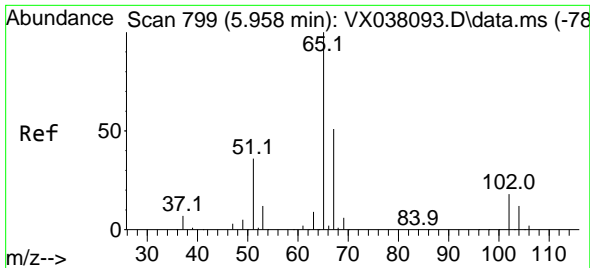
Tgt Ion:168 Resp: 115240
 Ion Ratio Lower Upper
 168 100
 99 58.3 56.6 85.0



#30
 Chloroform
 Concen: 57.336 ug/l
 RT: 5.093 min Scan# 657
 Delta R.T. -0.000 min
 Lab File: VX038361.D
 Acq: 18 Oct 2023 14:39

Tgt Ion: 83 Resp: 150394
 Ion Ratio Lower Upper
 83 100
 85 63.1 50.3 75.5

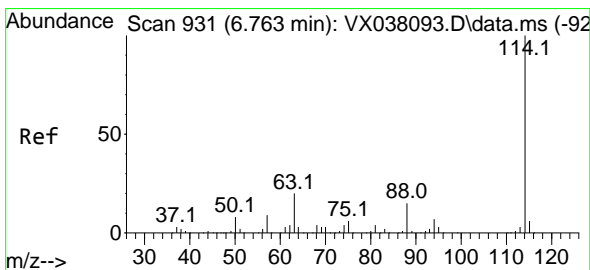
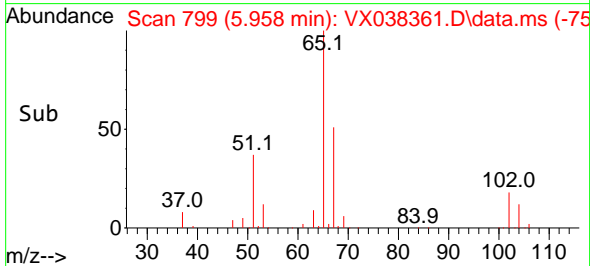
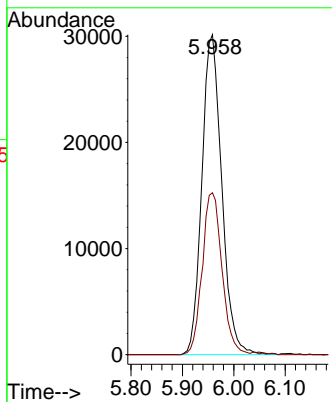
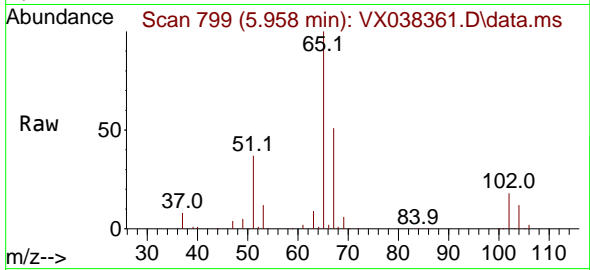




#33
 1,2-Dichloroethane-d4
 Concen: 43.809 ug/l
 RT: 5.958 min Scan# 799
 Delta R.T. 0.000 min
 Lab File: VX038361.D
 Acq: 18 Oct 2023 14:39

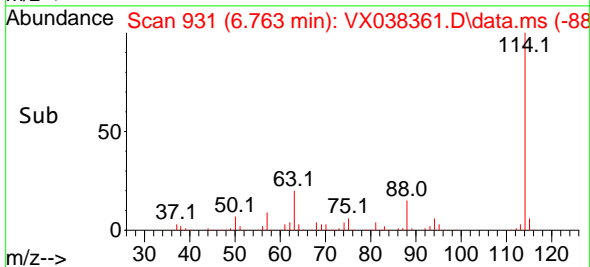
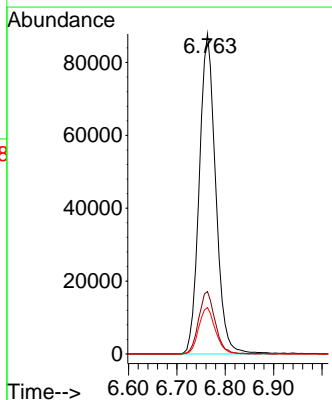
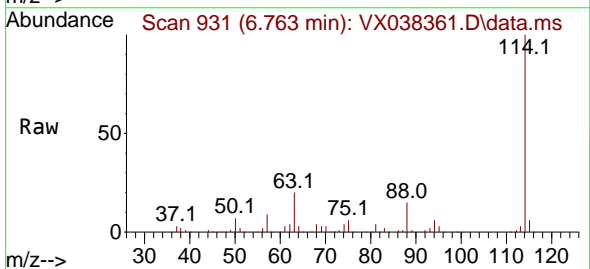
Instrument : MSVOA_X
 ClientSampleId : GW-19-37-40

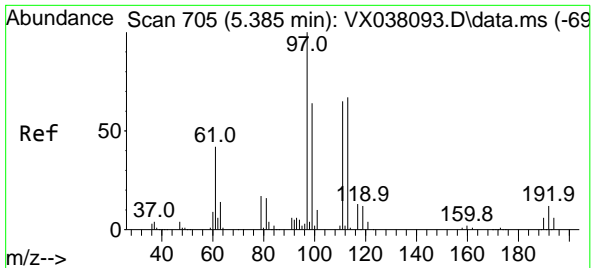
Tgt Ion: 65 Resp: 81203
 Ion Ratio Lower Upper
 65 100
 67 50.3 0.0 100.2



#34
 1,4-Difluorobenzene
 Concen: 50.000 ug/l
 RT: 6.763 min Scan# 931
 Delta R.T. -0.000 min
 Lab File: VX038361.D
 Acq: 18 Oct 2023 14:39

Tgt Ion: 114 Resp: 206843
 Ion Ratio Lower Upper
 114 100
 63 19.5 0.0 45.0
 88 14.5 0.0 36.6



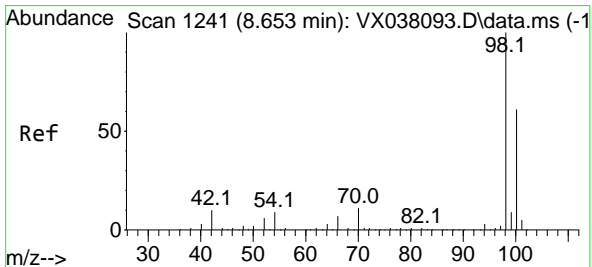
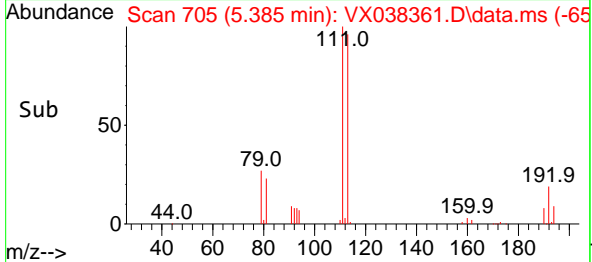
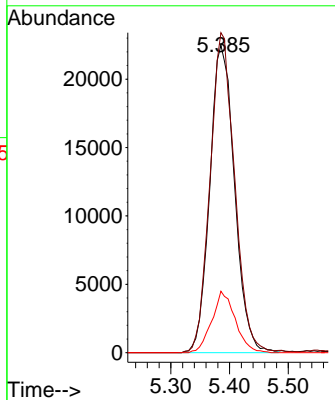
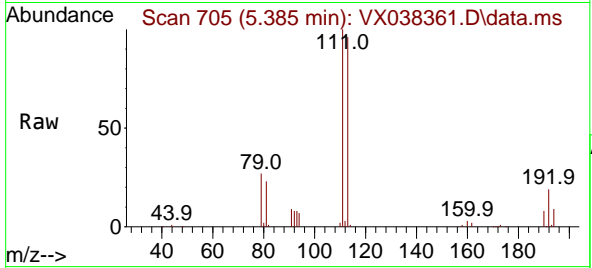


#35
 Dibromofluoromethane
 Concen: 44.197 ug/l
 RT: 5.385 min Scan# 705
 Delta R.T. 0.000 min
 Lab File: VX038361.D
 Acq: 18 Oct 2023 14:39

Instrument : MSVOA_X
 ClientSampleId : GW-19-37-40

Tgt Ion: 113 Resp: 65872

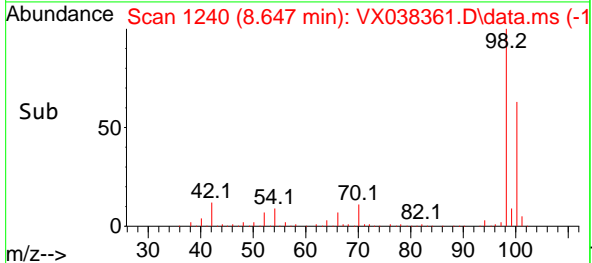
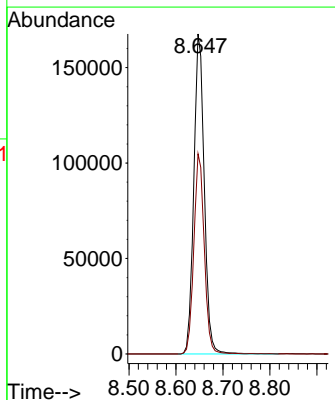
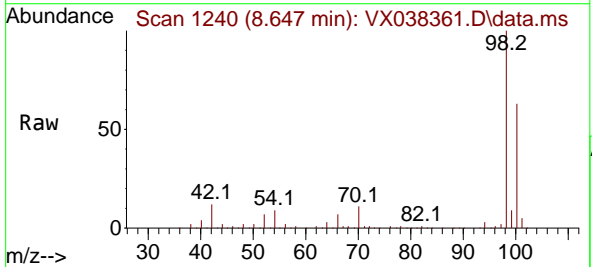
Ion	Ratio	Lower	Upper
113	100		
111	103.5	82.9	124.3
192	18.9	13.3	19.9

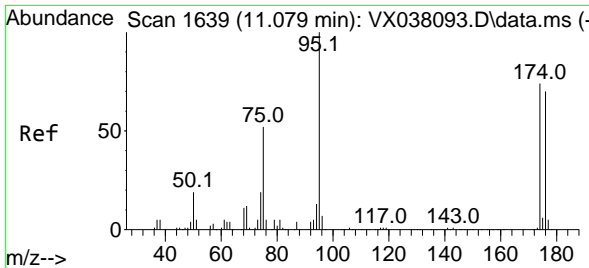


#50
 Toluene-d8
 Concen: 45.759 ug/l
 RT: 8.647 min Scan# 1240
 Delta R.T. -0.006 min
 Lab File: VX038361.D
 Acq: 18 Oct 2023 14:39

Tgt Ion: 98 Resp: 260610

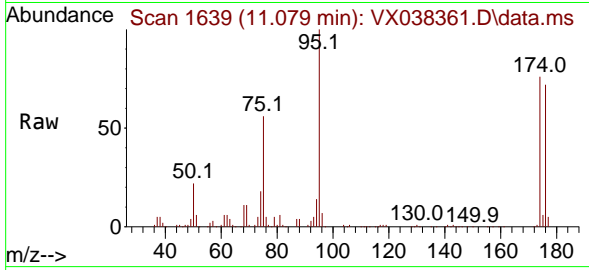
Ion	Ratio	Lower	Upper
98	100		
100	62.3	53.1	79.7



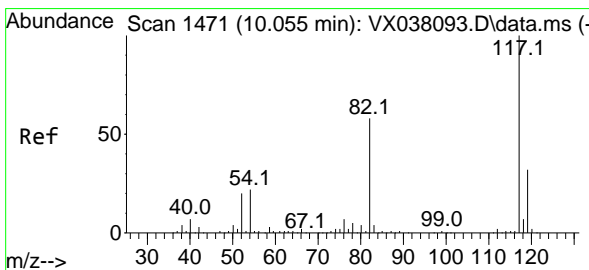
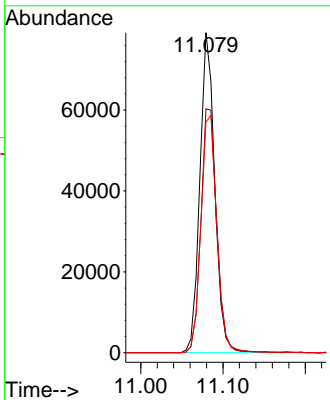
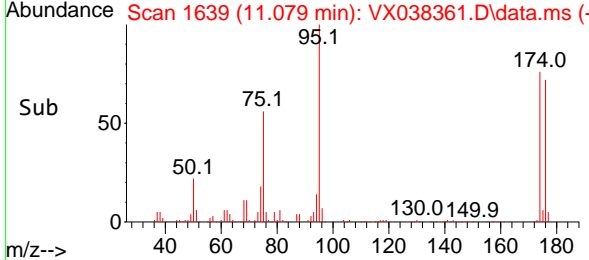


#62
 4-Bromofluorobenzene
 Concen: 46.199 ug/l
 RT: 11.079 min Scan# 1639
 Delta R.T. 0.000 min
 Lab File: VX038361.D
 Acq: 18 Oct 2023 14:39

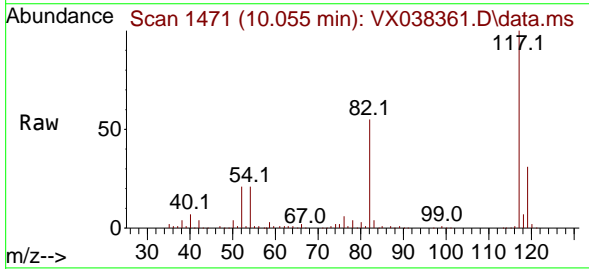
Instrument : MSVOA_X
 ClientSampleId : GW-19-37-40



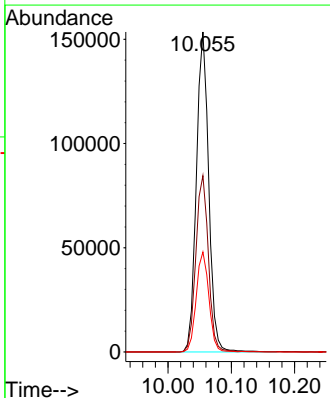
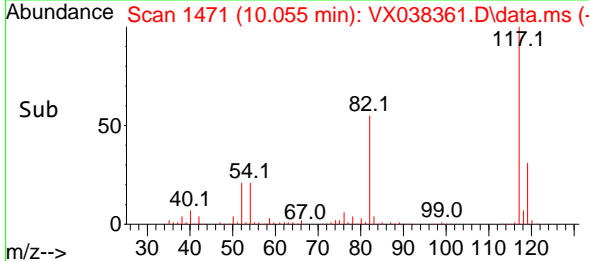
Tgt Ion: 95 Resp: 99751
 Ion Ratio Lower Upper
 95 100
 174 81.1 0.0 135.6
 176 79.2 0.0 131.0

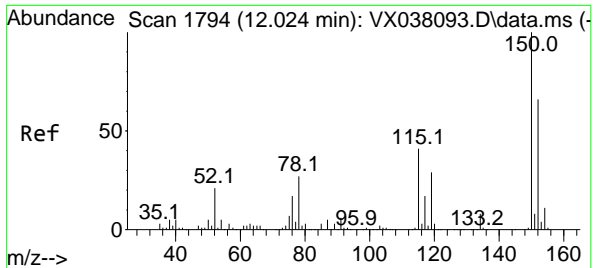


#63
 Chlorobenzene-d5
 Concen: 50.000 ug/l
 RT: 10.055 min Scan# 1471
 Delta R.T. 0.000 min
 Lab File: VX038361.D
 Acq: 18 Oct 2023 14:39



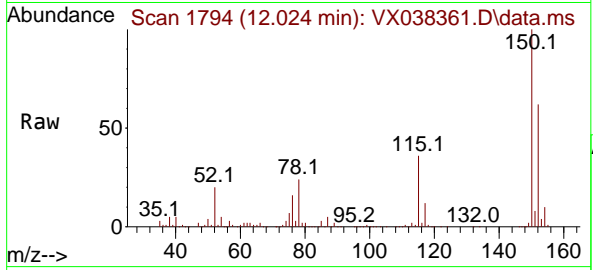
Tgt Ion: 117 Resp: 208347
 Ion Ratio Lower Upper
 117 100
 82 55.1 46.2 69.4
 119 31.3 25.5 38.3





#72
 1,4-Dichlorobenzene-d4
 Concen: 50.000 ug/l
 RT: 12.024 min Scan# 11
 Delta R.T. 0.000 min
 Lab File: VX038361.D
 Acq: 18 Oct 2023 14:39

Instrument :
 MSVOA_X
 ClientSampleId :
 GW-19-37-40



Tgt Ion:152 Resp: 111662

Ion	Ratio	Lower	Upper
152	100		
115	59.0	43.3	129.9
150	159.4	0.0	345.0

