

Data Path : Z:\voasrv\HPCHEM1\MSVOA\_X\Data\VX101823\  
 Data File : VX038355.D  
 Acq On : 18 Oct 2023 12:20  
 Operator : JC/MD  
 Sample : 04936-03 50X  
 Misc : 5.0mL/MSVOA\_X/WATER  
 ALS Vial : 10 Sample Multiplier: 1

Instrument :  
 MSVOA\_X  
 ClientSampleId :  
 1027

Integration Parameters: RTEINT.P

Integrator: RTE  
 Smoothing : ON Filtering: 5  
 Sampling : 1 Min Area: 3 % of largest Peak  
 Start Thrs: 0.2 Max Peaks: 100  
 Stop Thrs : 0 Peak Location: TOP

If leading or trailing edge < 100 prefer < Baseline drop else tangent >  
 Peak separation: 5

Method : Z:\voasrv\HPCHEM1\MSVOA\_X\Method\82X100523W.M  
 Title : SW846 8260

Signal : TIC: VX038355.D\data.ms

peak #	R.T. min	first scan	max scan	last scan	PK TY	peak height	corr. area	corr. % max.	% of total
1	4.233	505	516	528	rBV3	8991	25029	3.19%	0.579%
2	4.562	561	570	580	rBV3	5621	18856	2.40%	0.436%
3	5.385	693	705	722	rBV	86206	250470	31.95%	5.792%
4	5.550	722	732	745	rBV	139579	396299	50.54%	9.164%
5	5.952	789	798	814	rBV	95407	254133	32.41%	5.877%
6	6.763	921	931	949	rBV	229020	543962	69.38%	12.579%
7	8.647	1234	1240	1260	rBV	472587	761708	97.15%	17.614%
8	10.055	1465	1471	1485	rBV	534889	713610	91.01%	16.501%
9	11.079	1634	1639	1654	rBV	452465	576383	73.51%	13.328%
10	12.024	1788	1794	1805	rBV	616746	784066	100.00%	18.131%

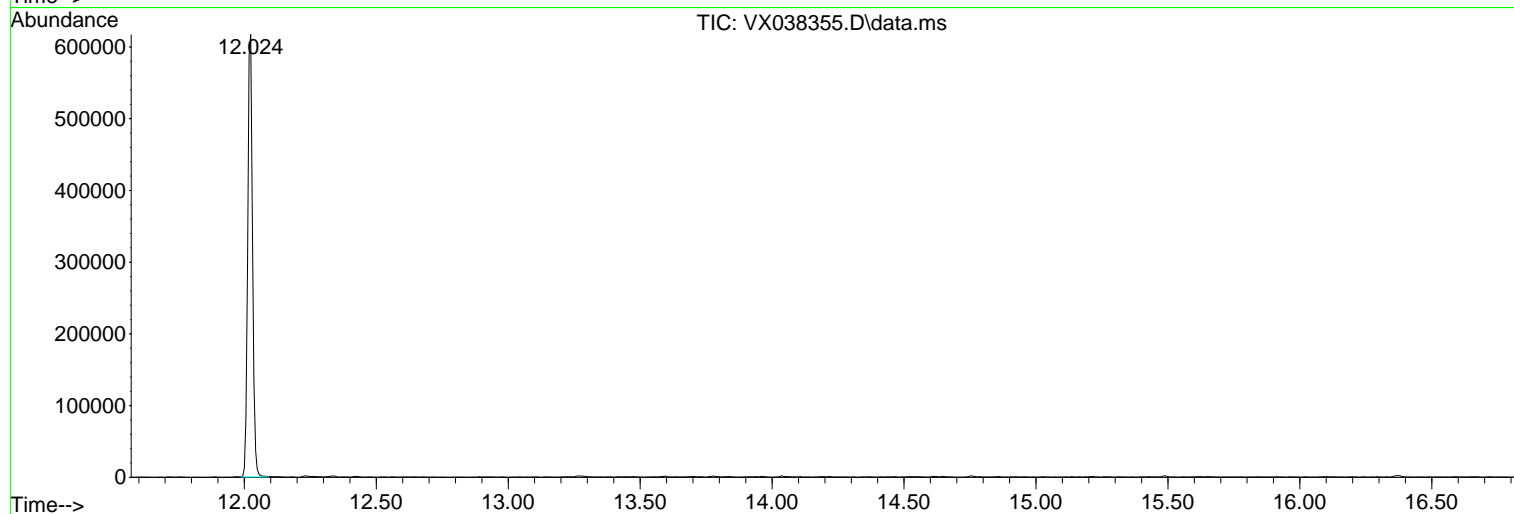
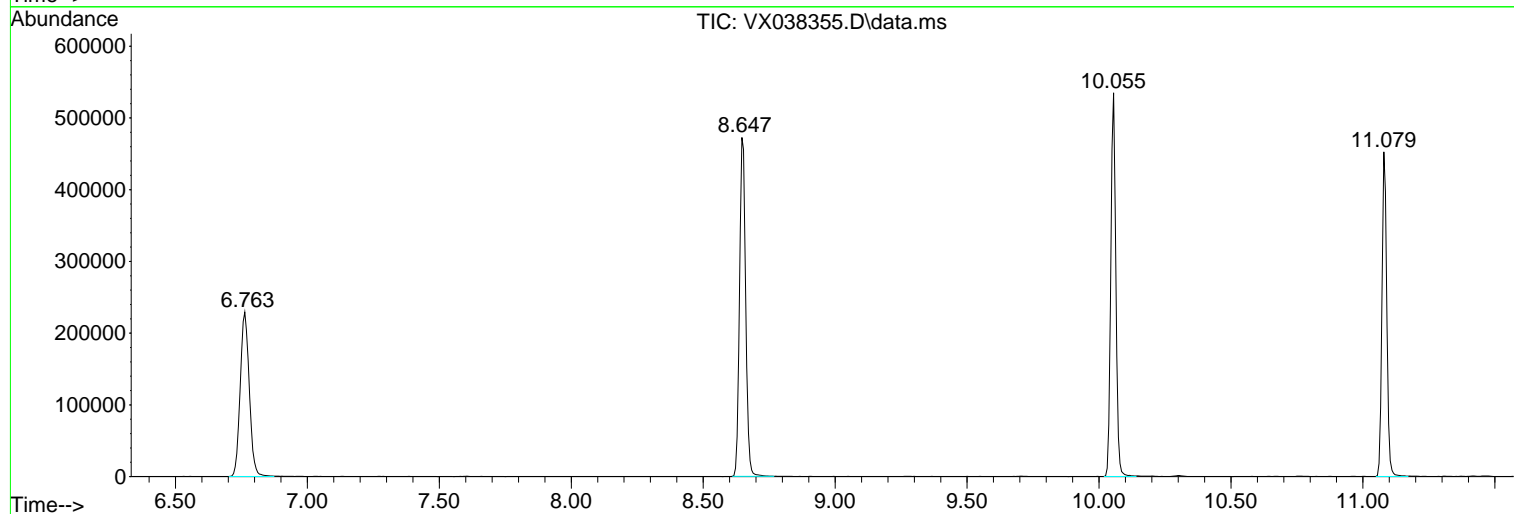
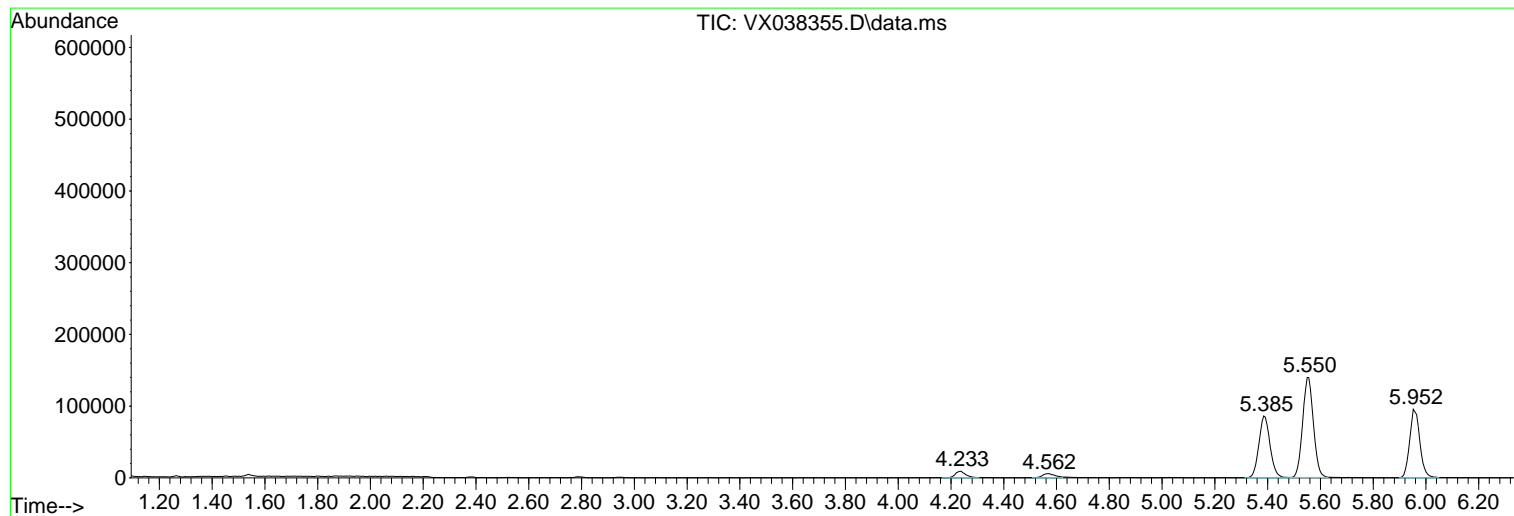
Sum of corrected areas: 4324516

Data Path : Z:\voasrv\HPCHEM1\MSVOA\_X\Data\VX101823\  
Data File : VX038355.D  
Acq On : 18 Oct 2023 12:20  
Operator : JC/MD  
Sample : 04936-03 50X  
Misc : 5.0mL/MSVOA\_X/WATER  
ALS Vial : 10 Sample Multiplier: 1

Instrument :  
MSVOA\_X  
ClientSampleId :  
1027

Quant Method : Z:\voasrv\HPCHEM1\MSVOA\_X\Method\82X100523W.M  
Quant Title : SW846 8260

TIC Library : C:\Database\NIST20.L  
TIC Integration Parameters: LSCINT.P



Library Search Compound Report

Data Path : Z:\voasrv\HPCHEM1\MSVOA\_X\Data\VX101823\  
Data File : VX038355.D  
Acq On : 18 Oct 2023 12:20  
Operator : JC/MD  
Sample : 04936-03 50X  
Misc : 5.0mL/MSVOA\_X/WATER  
ALS Vial : 10 Sample Multiplier: 1

Instrument :  
MSVOA\_X  
ClientSampleId :  
1027

Quant Method : Z:\voasrv\HPCHEM1\MSVOA\_X\Method\82X100523W.M  
Quant Title : SW846 8260

TIC Library : C:\Database\NIST20.L  
TIC Integration Parameters: LSCINT.P

No Library Search Compounds Detected

\*\*\*\*\*

Data Path : Z:\voasrv\HPCHEM1\MSVOA\_X\Data\VX101823\  
Data File : VX038355.D  
Acq On : 18 Oct 2023 12:20  
Operator : JC/MD  
Sample : 04936-03 50X  
Misc : 5.0mL/MSVOA\_X/WATER  
ALS Vial : 10 Sample Multiplier: 1

Instrument :  
MSVOA\_X  
ClientSampleId :  
1027

Quant Method : Z:\voasrv\HPCHEM1\MSVOA\_X\Method\82X100523W.M  
Quant Title : SW846 8260

TIC Library : C:\Database\NIST20.L  
TIC Integration Parameters: LSCINT.P

TIC Top Hit name	RT	EstConc	Units	Response	--Internal Standard--		
					#	RT	Resp Conc

---