

Data Path : Z:\voasrv\HPCHEM1\MSVOA_X\Data\VX101824\
 Data File : VX043431.D
 Acq On : 18 Oct 2024 14:00
 Operator : JC/MD
 Sample : P4427-01
 Misc : 5.0mL/MSVOA_X/WATER
 ALS Vial : 1 Sample Multiplier: 1

Instrument :
 MSVOA_X
 ClientSampleId :

Quant Time: Oct 18 23:19:19 2024
 Quant Method : Z:\voasrv\HPCHEM1\MSVOA_X\Method\82X100124W.M
 Quant Title : SW846 8260
 QLast Update : Wed Oct 02 16:50:57 2024
 Response via : Initial Calibration

Compound	R.T.	QIon	Response	Conc	Units	Dev(Min)
Internal Standards						
1) Pentafluorobenzene	5.544	168	65072	50.000	ug/l	0.00
34) 1,4-Difluorobenzene	6.757	114	119277	50.000	ug/l	0.00
63) Chlorobenzene-d5	10.055	117	101497	50.000	ug/l	0.00
72) 1,4-Dichlorobenzene-d4	12.024	152	44796	50.000	ug/l	0.00
System Monitoring Compounds						
33) 1,2-Dichloroethane-d4	5.952	65	56987	53.623	ug/l	0.00
Spiked Amount	50.000	Range	74 - 125	Recovery	=	107.240%
35) Dibromofluoromethane	5.385	113	38220	46.463	ug/l	0.00
Spiked Amount	50.000	Range	75 - 124	Recovery	=	92.920%
50) Toluene-d8	8.647	98	138145	48.461	ug/l	0.00
Spiked Amount	50.000	Range	86 - 113	Recovery	=	96.920%
62) 4-Bromofluorobenzene	11.079	95	51337	49.572	ug/l	0.00
Spiked Amount	50.000	Range	77 - 121	Recovery	=	99.140%
Target Compounds						
						Qvalue
4) Vinyl Chloride	1.380	62	310	0.397	ug/l	91
8) Diethyl Ether	2.136	74	2442	5.379	ug/l	90
11) Tert butyl alcohol	3.038	59	2063295	10202.670	ug/l	100
13) Acrolein	2.246	56	49	0.257	ug/l #	73
14) Allyl chloride	2.666	41	10993	9.255	ug/l #	36
15) Acrylonitrile	3.026	53	15655	37.911	ug/l #	6
16) Acetone	2.398	43	32016	72.140	ug/l	99
17) Carbon Disulfide	2.495	76	489	0.278	ug/l #	71
18) Methyl Acetate	2.941	43	4862	4.367	ug/l #	61
19) Methyl tert-butyl Ether	3.123	73	8374	3.237	ug/l #	59
23) Vinyl Acetate	3.721	43	74	6.367	ug/l #	71
25) 2-Butanone	4.648	43	93930	154.360	ug/l #	73
26) 2,2-Dichloropropane	4.654	77	81687	61.687	ug/l #	54
27) cis-1,2-Dichloroethene	4.489	96	1148	1.279	ug/l	96
28) Bromochloromethane	5.013	49	1057	1.925	ug/l #	10
29) Tetrahydrofuran	5.013	42	419948	1083.316	ug/l	97
31) Cyclohexane	5.538	56	1623	1.415	ug/l #	27
36) 1,1-Dichloropropene	5.727	75	232	0.223	ug/l #	41
37) Ethyl Acetate	4.648	43	93930	75.268	ug/l #	29
38) Carbon Tetrachloride	5.544	117	7298	5.932	ug/l #	15
40) Benzene	6.031	78	14689	4.662	ug/l	99
41) Methacrylonitrile	5.013	41	250365	385.409	ug/l #	47
42) 1,2-Dichloroethane	6.086	62	619	0.482	ug/l #	77
43) Isopropyl Acetate	6.275	43	7627	3.700	ug/l #	62
49) 1,4-Dioxane	7.678	88	3046	154.936	ug/l #	89
51) 4-Methyl-2-Pentanone	8.568	43	7404	5.914	ug/l #	61
52) Toluene	8.720	92	18203	9.218	ug/l	100
55) 1,1,2-Trichloroethane	9.080	97	517	0.659	ug/l #	22
56) Ethyl methacrylate	9.378	69	519	0.405	ug/l #	1
59) 2-Hexanone	9.244	43	4974	5.254	ug/l	88
65) Chlorobenzene	10.079	112	3300	1.512	ug/l #	72
67) Ethyl Benzene	10.195	91	39023	10.346	ug/l	97
68) m/p-Xylenes	10.299	106	17971	12.608	ug/l	99
69) o-Xylene	10.640	106	10085	7.120	ug/l	98
70) Styrene	10.659	104	2558	1.114	ug/l #	40
73) Isopropylbenzene	10.963	105	4076	1.170	ug/l	98

Data Path : Z:\voasrv\HPCHEM1\MSVOA_X\Data\VX101824\
 Data File : VX043431.D
 Acq On : 18 Oct 2024 14:00
 Operator : JC/MD
 Sample : P4427-01
 Misc : 5.0mL/MSVOA_X/WATER
 ALS Vial : 1 Sample Multiplier: 1

Instrument :
 MSVOA_X
 ClientSampleId :

Quant Time: Oct 18 23:19:19 2024
 Quant Method : Z:\voasrv\HPCHEM1\MSVOA_X\Method\82X100124W.M
 Quant Title : SW846 8260
 QLast Update : Wed Oct 02 16:50:57 2024
 Response via : Initial Calibration

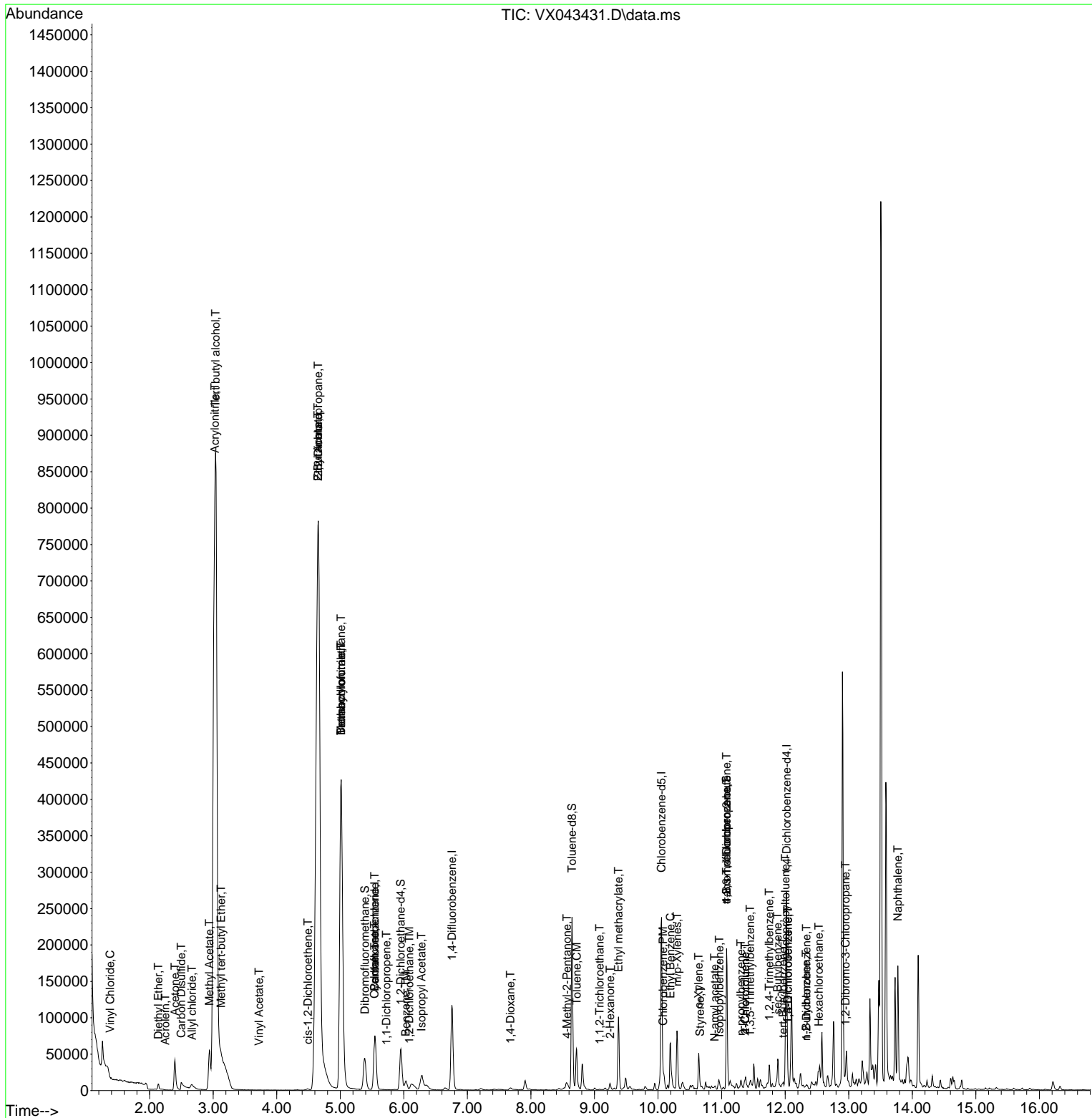
Compound	R.T.	QIon	Response	Conc	Units	Dev(Min)
74) N-amyl acetate	10.890	43	2528	1.529	ug/l #	54
76) 1,2,3-Trichloropropane	11.079	75	27631	27.808	ug/l #	34
78) n-propylbenzene	11.305	91	2380	0.622	ug/l	95
79) 2-Chlorotoluene	11.372	91	1737	0.707	ug/l	72
80) 1,3,5-Trimethylbenzene	11.451	105	3752	1.306	ug/l	96
81) trans-1,4-Dichloro-2-b...	11.079	75	27631	72.069	ug/l #	8
82) 4-Chlorotoluene	11.372	91	1737	0.620	ug/l	80
83) tert-Butylbenzene	11.969	119	687	0.232	ug/l	68
84) 1,2,4-Trimethylbenzene	11.750	105	13669	4.729	ug/l	96
85) sec-Butylbenzene	11.884	105	808	0.230	ug/l #	56
86) p-Isopropyltoluene	12.006	119	27805	9.498	ug/l	98
87) 1,3-Dichlorobenzene	12.043	146	4719	3.161	ug/l	83
88) 1,4-Dichlorobenzene	12.043	146	4719	3.066	ug/l	82
89) n-Butylbenzene	12.329	91	798	0.326	ug/l #	60
90) Hexachloroethane	12.530	117	139	0.253	ug/l #	16
91) 1,2-Dichlorobenzene	12.335	146	533	0.349	ug/l	77
92) 1,2-Dibromo-3-Chloropr...	12.951	75	316	1.141	ug/l #	5
95) Naphthalene	13.774	128	88051	27.210	ug/l	100

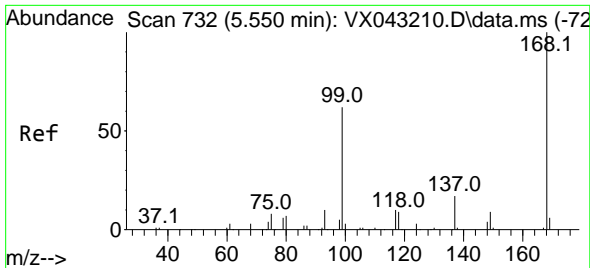
(#) = qualifier out of range (m) = manual integration (+) = signals summed

Data Path : Z:\voasrv\HPCHEM1\MSVOA_X\Data\VX101824\
 Data File : VX043431.D
 Acq On : 18 Oct 2024 14:00
 Operator : JC/MD
 Sample : P4427-01
 Misc : 5.0mL/MSVOA_X/WATER
 ALS Vial : 1 Sample Multiplier: 1

Instrument :
 MSVOA_X
 ClientSampleId :

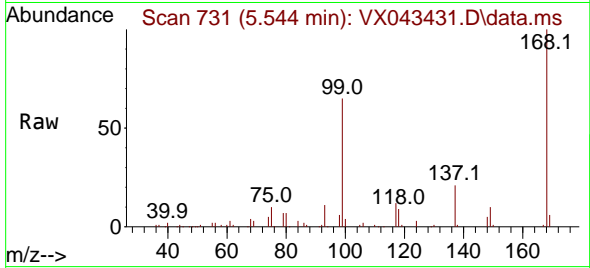
Quant Time: Oct 18 23:19:19 2024
 Quant Method : Z:\voasrv\HPCHEM1\MSVOA_X\Method\82X100124W.M
 Quant Title : SW846 8260
 QLast Update : Wed Oct 02 16:50:57 2024
 Response via : Initial Calibration



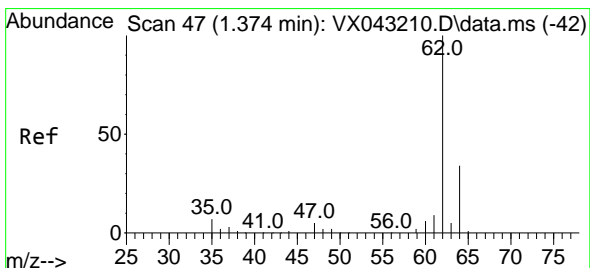
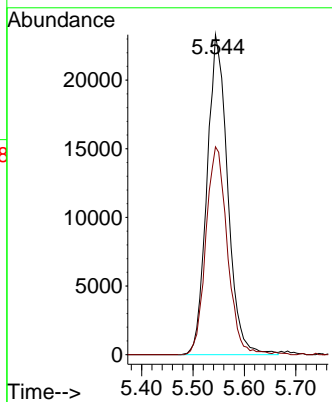
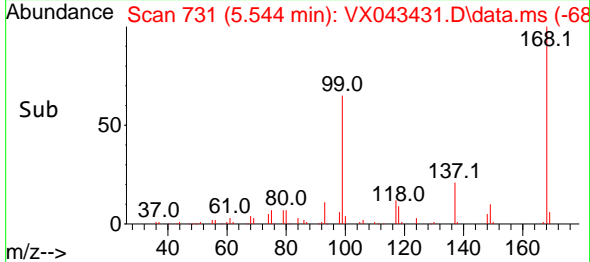


#1
 Pentafluorobenzene
 Concen: 50.000 ug/l
 RT: 5.544 min Scan# 71
 Delta R.T. -0.006 min
 Lab File: VX043431.D
 Acq: 18 Oct 2024 14:00

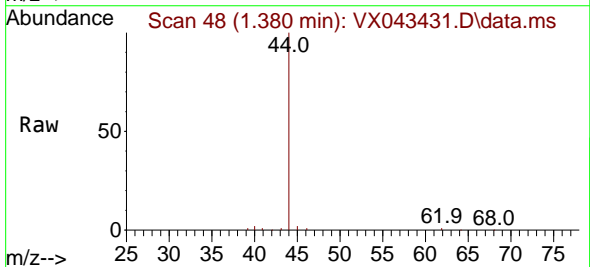
Instrument :
 MSVOA_X
 ClientSampleId :



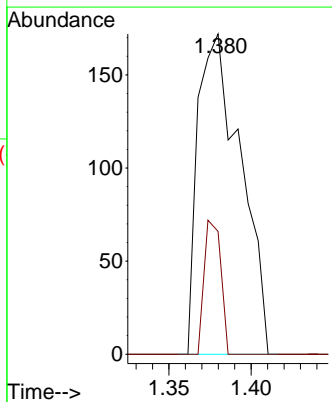
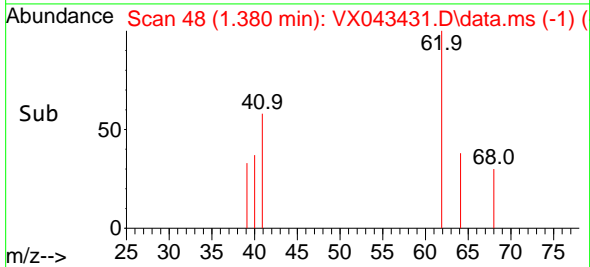
Tgt Ion:168 Resp: 65072
 Ion Ratio Lower Upper
 168 100
 99 65.0 49.7 74.5

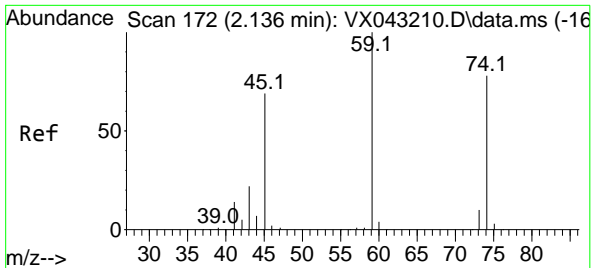


#4
 Vinyl Chloride
 Concen: 0.397 ug/l
 RT: 1.380 min Scan# 48
 Delta R.T. 0.006 min
 Lab File: VX043431.D
 Acq: 18 Oct 2024 14:00



Tgt Ion: 62 Resp: 310
 Ion Ratio Lower Upper
 62 100
 64 38.4 26.8 40.2

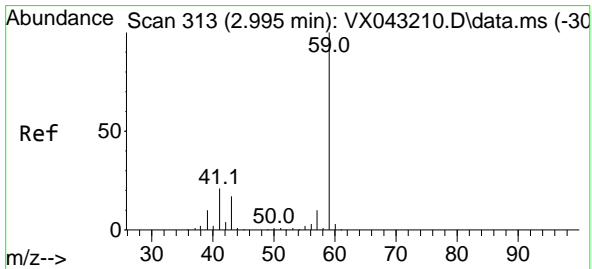
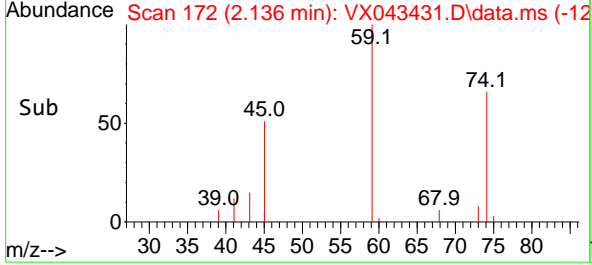
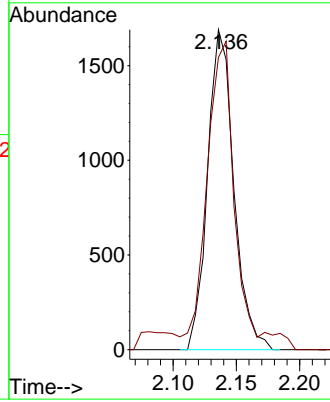
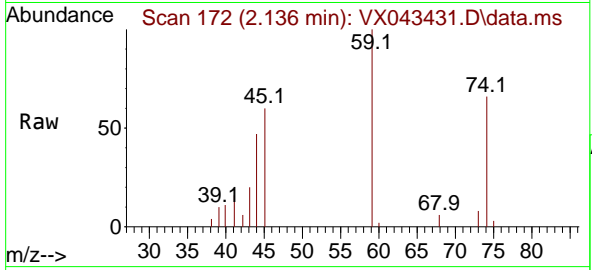




#8
 Diethyl Ether
 Concen: 5.379 ug/l
 RT: 2.136 min Scan# 11
 Delta R.T. 0.000 min
 Lab File: VX043431.D
 Acq: 18 Oct 2024 14:00

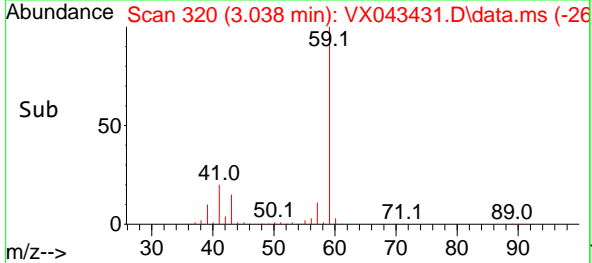
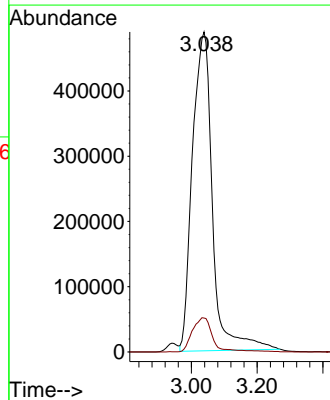
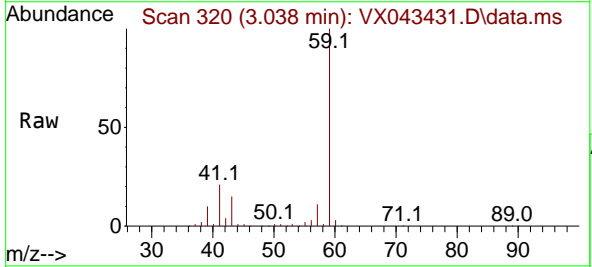
Instrument :
 MSVOA_X
 ClientSampleId :

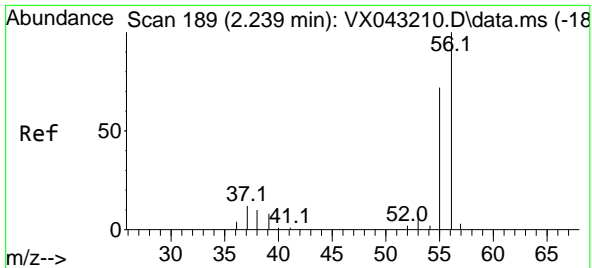
Tgt Ion: 74 Resp: 2442
 Ion Ratio Lower Upper
 74 100
 45 103.8 47.1 141.4



#11
 Tert butyl alcohol
 Concen: 10202.670 ug/l
 RT: 3.038 min Scan# 320
 Delta R.T. 0.043 min
 Lab File: VX043431.D
 Acq: 18 Oct 2024 14:00

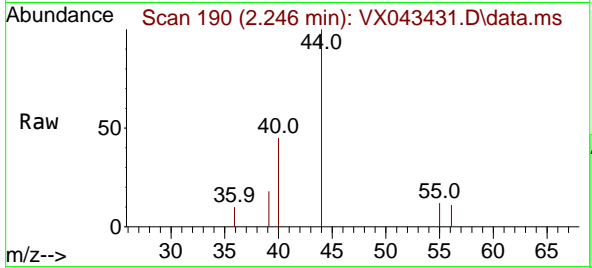
Tgt Ion: 59 Resp: 2063295
 Ion Ratio Lower Upper
 59 100
 57 10.9 8.6 13.0



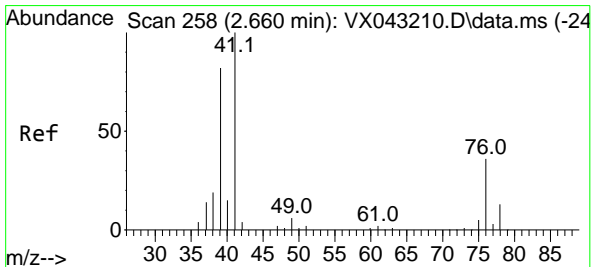
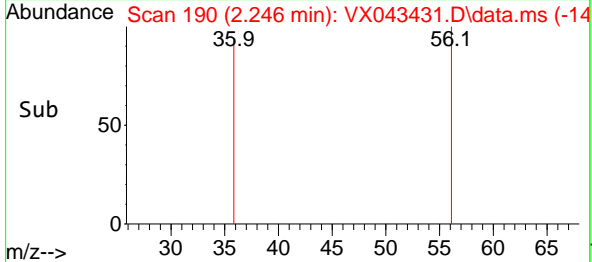
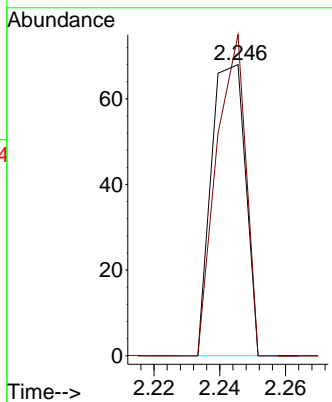


#13
 Acrolein
 Concen: 0.257 ug/l
 RT: 2.246 min Scan# 14
 Delta R.T. 0.006 min
 Lab File: VX043431.D
 Acq: 18 Oct 2024 14:00

Instrument : MSVOA_X
 ClientSampleId :

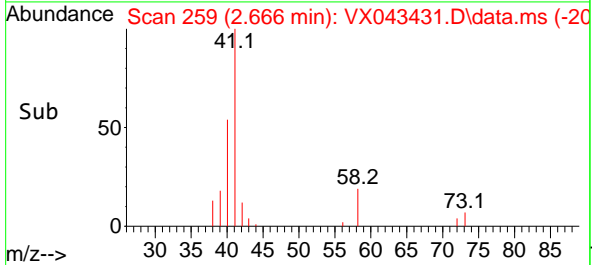
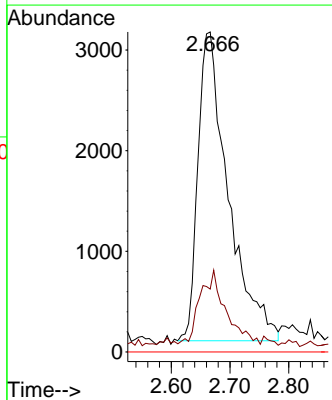
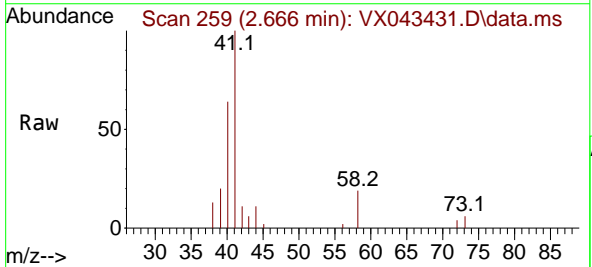


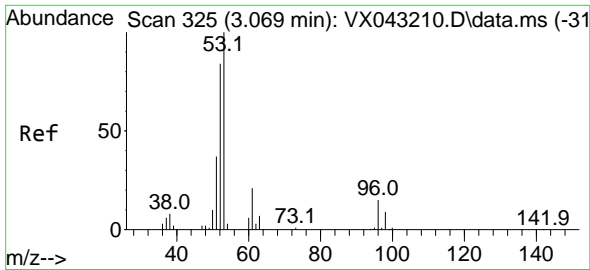
Tgt Ion: 56 Resp: 49
 Ion Ratio Lower Upper
 56 100
 55 93.9 57.4 86.0#



#14
 Allyl chloride
 Concen: 9.255 ug/l
 RT: 2.666 min Scan# 259
 Delta R.T. 0.006 min
 Lab File: VX043431.D
 Acq: 18 Oct 2024 14:00

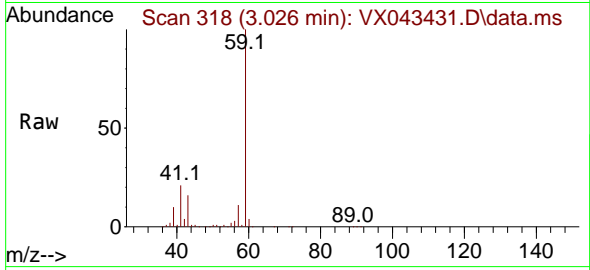
Tgt Ion: 41 Resp: 10993
 Ion Ratio Lower Upper
 41 100
 39 20.8 61.7 92.5#
 76 0.0 28.6 43.0#



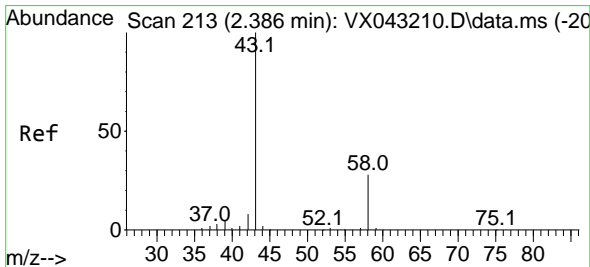
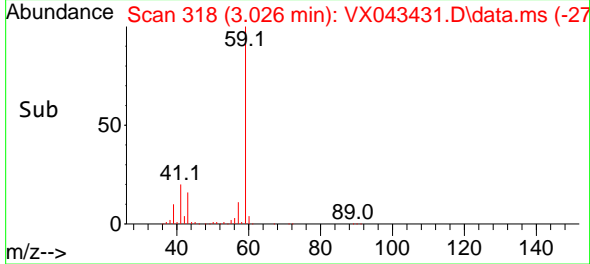
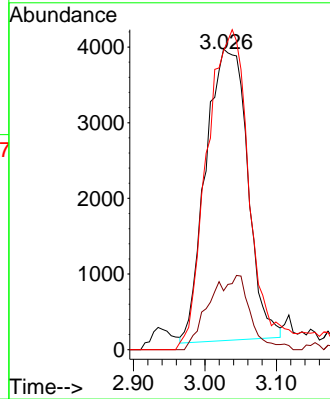


#15
 Acrylonitrile
 Concen: 37.911 ug/l
 RT: 3.026 min Scan# 31
 Delta R.T. -0.043 min
 Lab File: VX043431.D
 Acq: 18 Oct 2024 14:00

Instrument : MSVOA_X
 ClientSampleId :

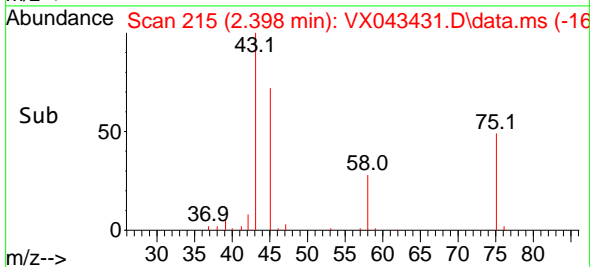
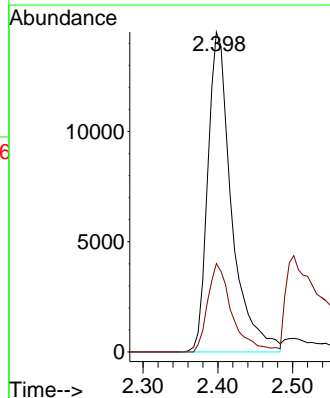
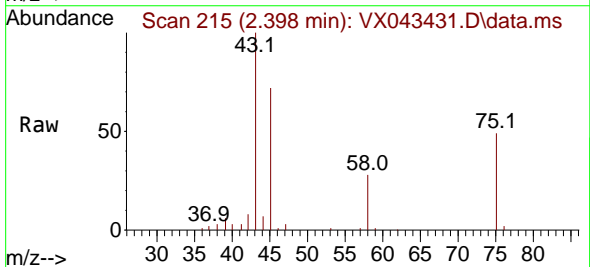


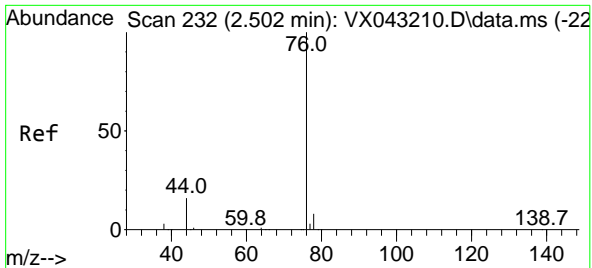
Tgt Ion	Resp	Lower	Upper
53	15655		
52	10.8	67.6	101.4#
51	111.8	30.3	45.5#



#16
 Acetone
 Concen: 72.140 ug/l
 RT: 2.398 min Scan# 215
 Delta R.T. 0.012 min
 Lab File: VX043431.D
 Acq: 18 Oct 2024 14:00

Tgt Ion	Resp	Lower	Upper
43	32016		
58	27.6	22.6	33.8

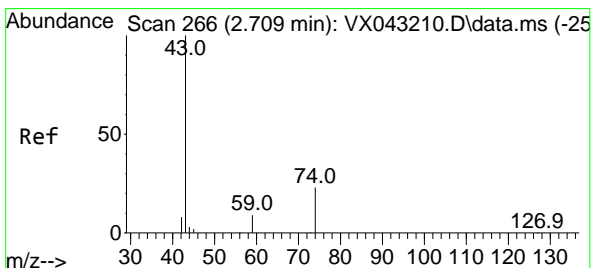
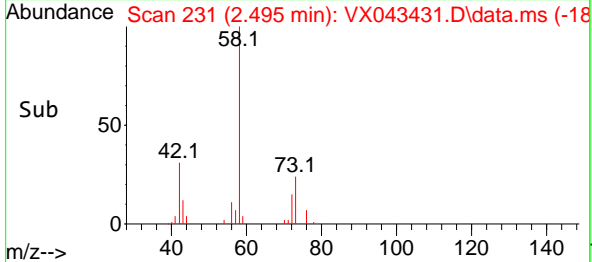
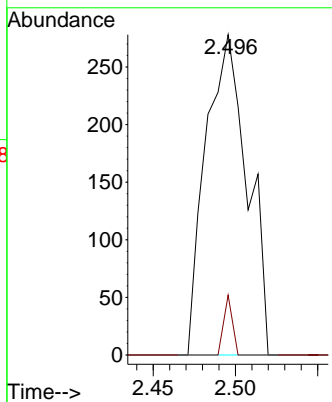
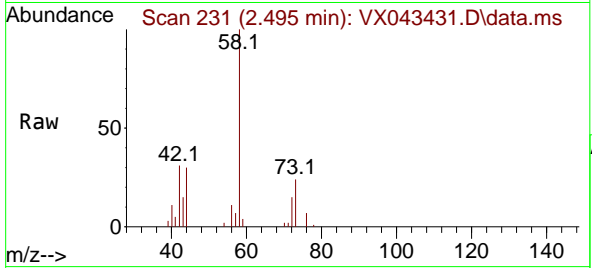




#17
 Carbon Disulfide
 Concen: 0.278 ug/l
 RT: 2.495 min Scan# 21
 Delta R.T. -0.006 min
 Lab File: VX043431.D
 Acq: 18 Oct 2024 14:00

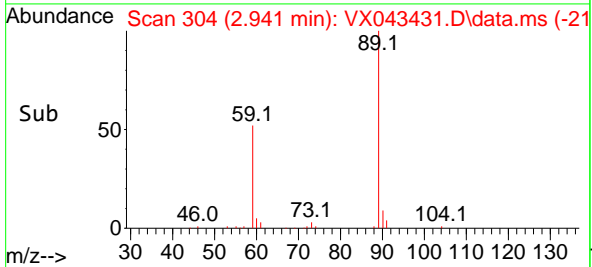
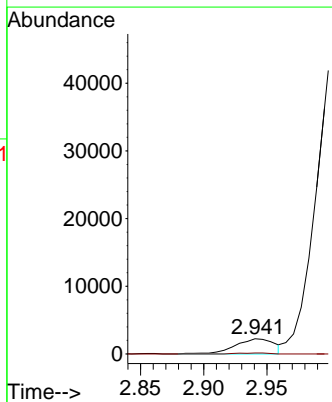
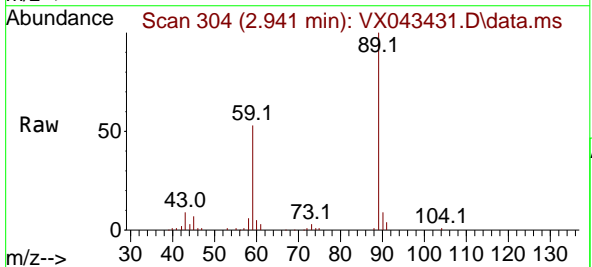
Instrument : MSVOA_X
 ClientSampleId :

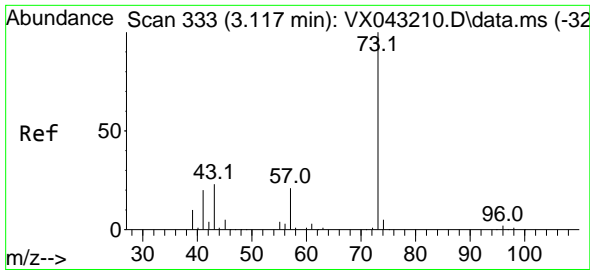
Tgt Ion: 76 Resp: 489
 Ion Ratio Lower Upper
 76 100
 78 18.7 6.7 10.1#



#18
 Methyl Acetate
 Concen: 4.367 ug/l
 RT: 2.941 min Scan# 304
 Delta R.T. 0.232 min
 Lab File: VX043431.D
 Acq: 18 Oct 2024 14:00

Tgt Ion: 43 Resp: 4862
 Ion Ratio Lower Upper
 43 100
 74 4.9 19.1 28.7#

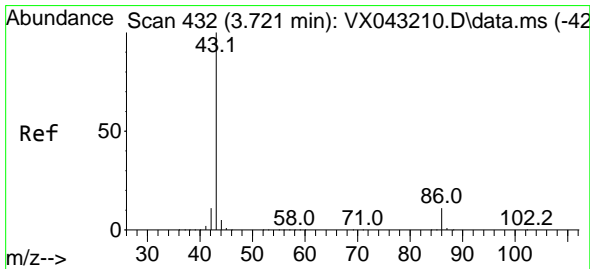
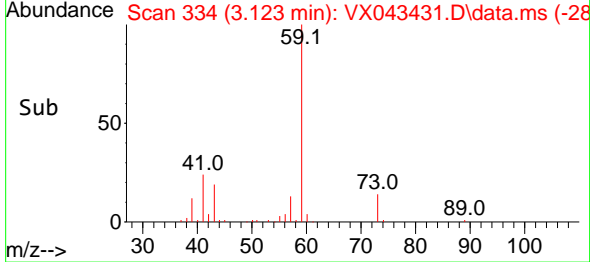
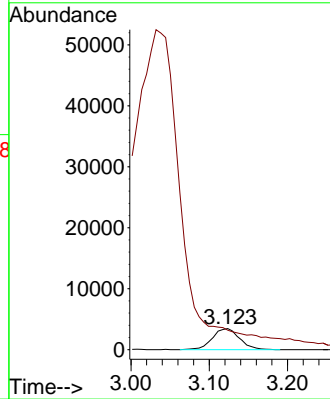
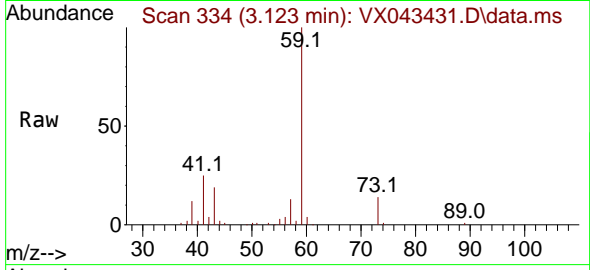




#19
 Methyl tert-butyl Ether
 Concen: 3.237 ug/l
 RT: 3.123 min Scan# 31
 Delta R.T. 0.006 min
 Lab File: VX043431.D
 Acq: 18 Oct 2024 14:00

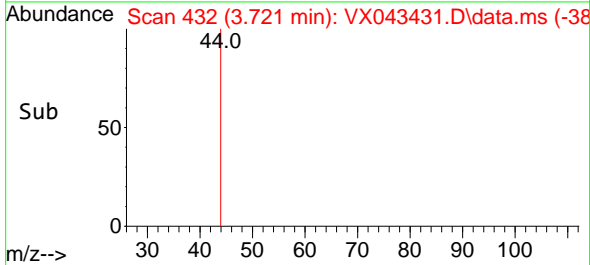
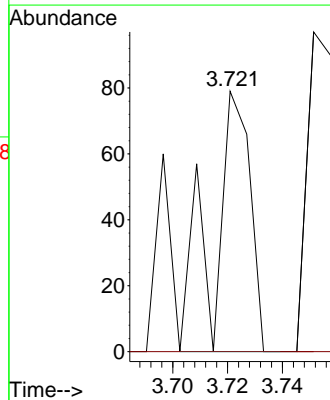
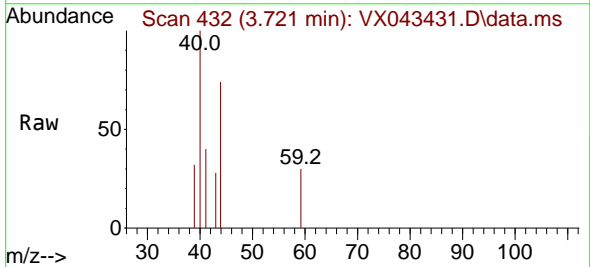
Instrument : MSVOA_X
 ClientSampleId :

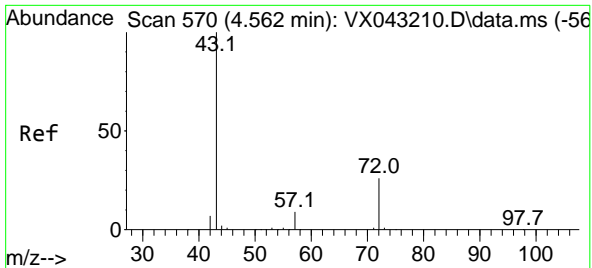
Tgt Ion: 73 Resp: 8374
 Ion Ratio Lower Upper
 73 100
 57 40.1 16.7 25.1#



#23
 Vinyl Acetate
 Concen: 6.367 ug/l
 RT: 3.721 min Scan# 432
 Delta R.T. -0.000 min
 Lab File: VX043431.D
 Acq: 18 Oct 2024 14:00

Tgt Ion: 43 Resp: 74
 Ion Ratio Lower Upper
 43 100
 86 0.0 8.8 13.2#

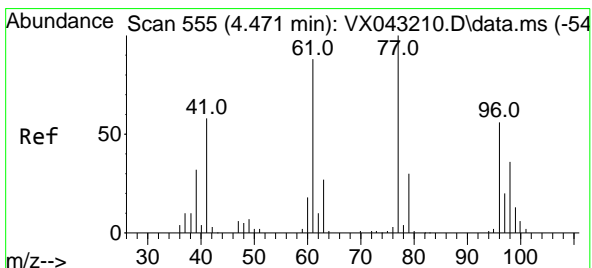
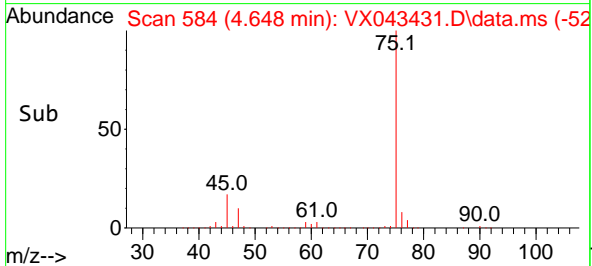
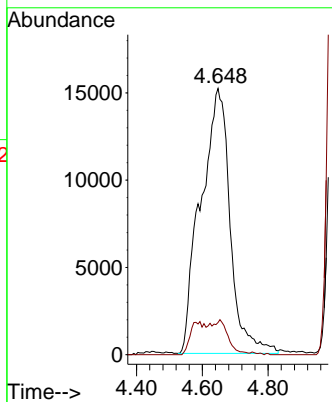
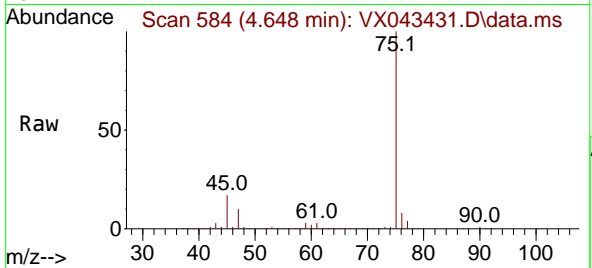




#25
 2-Butanone
 Concen: 154.360 ug/l
 RT: 4.648 min Scan# 584
 Delta R.T. 0.086 min
 Lab File: VX043431.D
 Acq: 18 Oct 2024 14:00

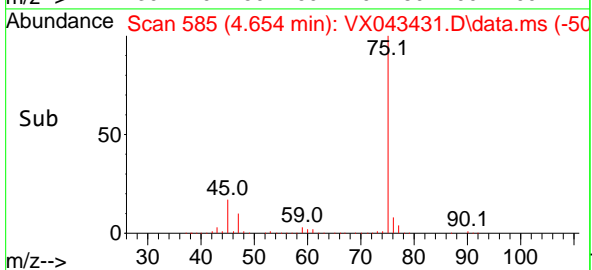
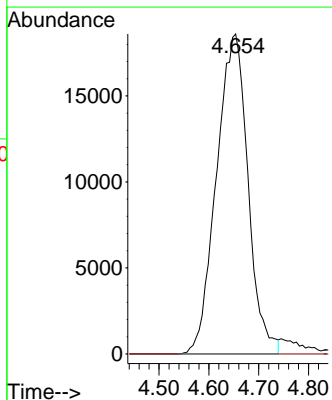
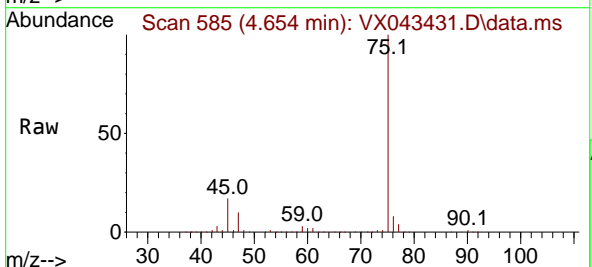
Instrument : MSVOA_X
 ClientSampleId :

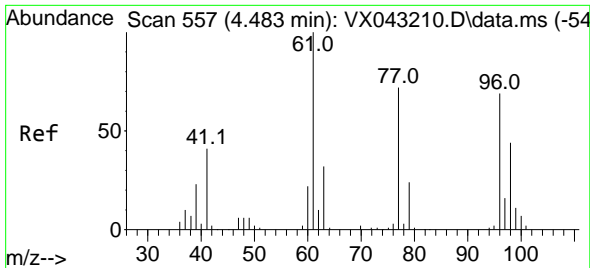
Tgt Ion: 43 Resp: 93930
 Ion Ratio Lower Upper
 43 100
 72 12.2 20.6 31.0#



#26
 2,2-Dichloropropane
 Concen: 61.687 ug/l
 RT: 4.654 min Scan# 585
 Delta R.T. 0.183 min
 Lab File: VX043431.D
 Acq: 18 Oct 2024 14:00

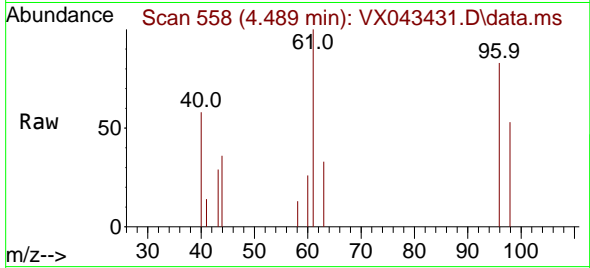
Tgt Ion: 77 Resp: 81687
 Ion Ratio Lower Upper
 77 100
 97 0.0 10.8 32.3#





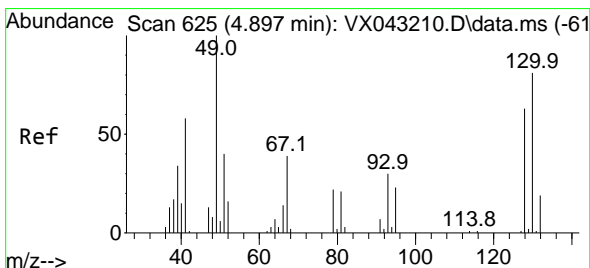
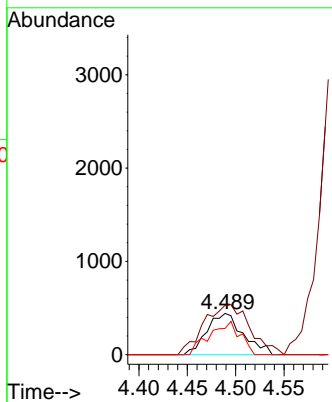
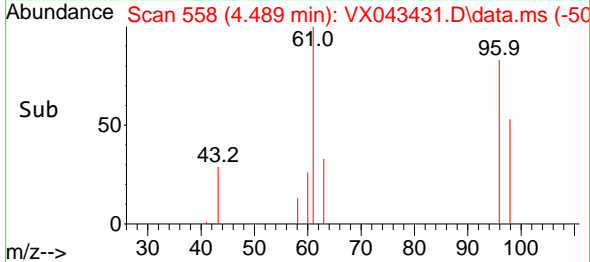
#27
 cis-1,2-Dichloroethene
 Concen: 1.279 ug/l
 RT: 4.489 min Scan# 511
 Delta R.T. 0.006 min
 Lab File: VX043431.D
 Acq: 18 Oct 2024 14:00

Instrument :
 MSVOA_X
 ClientSampleId :

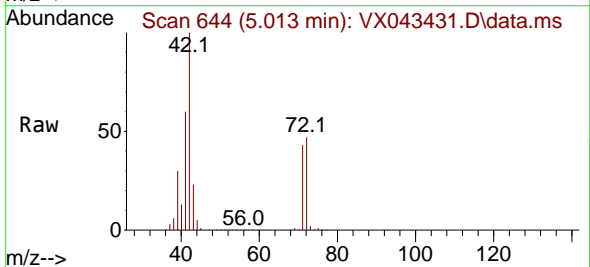


Tgt Ion: 96 Resp: 1148

Ion	Ratio	Lower	Upper
96	100		
61	154.6	0.0	298.2
98	68.0	0.0	128.6

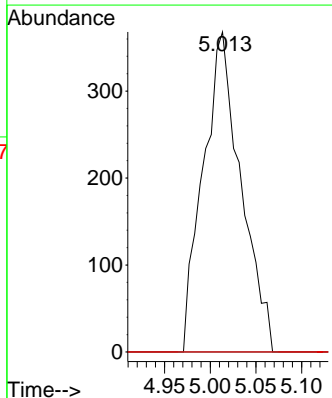
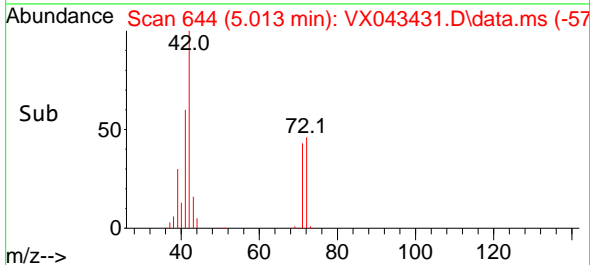


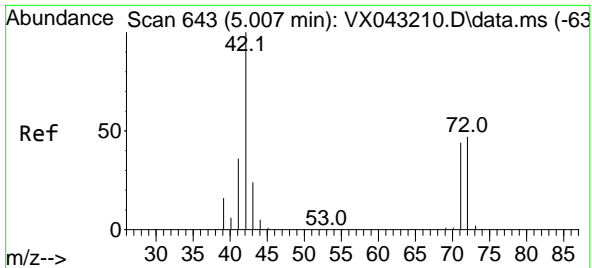
#28
 Bromochloromethane
 Concen: 1.925 ug/l
 RT: 5.013 min Scan# 644
 Delta R.T. 0.116 min
 Lab File: VX043431.D
 Acq: 18 Oct 2024 14:00



Tgt Ion: 49 Resp: 1057

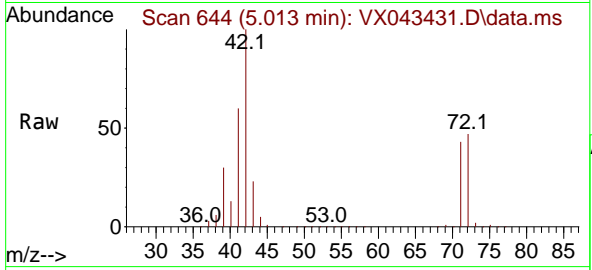
Ion	Ratio	Lower	Upper
49	100		
129	0.0	0.0	4.0
130	0.0	65.5	98.3





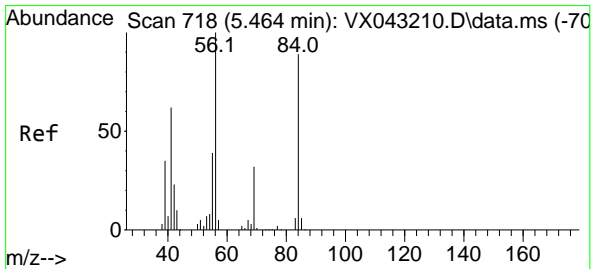
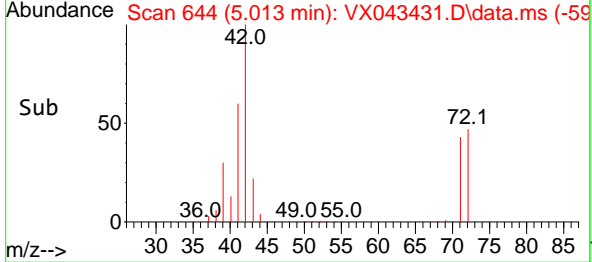
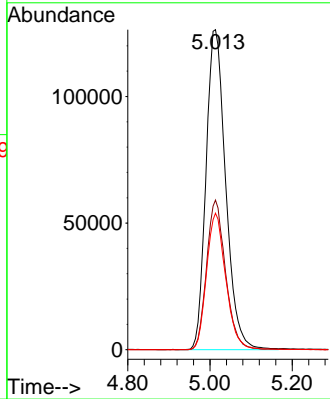
#29
 Tetrahydrofuran
 Concen: 1083.316 ug/l
 RT: 5.013 min Scan# 64
 Delta R.T. 0.006 min
 Lab File: VX043431.D
 Acq: 18 Oct 2024 14:00

Instrument : MSVOA_X
 ClientSampleId :



Tgt Ion: 42 Resp: 419948

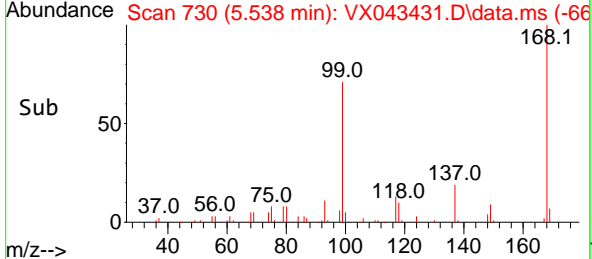
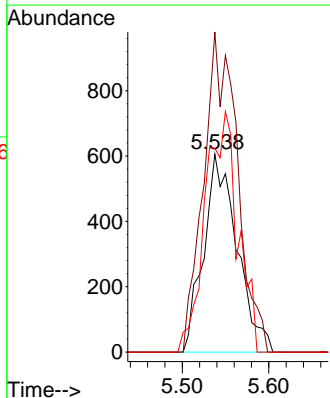
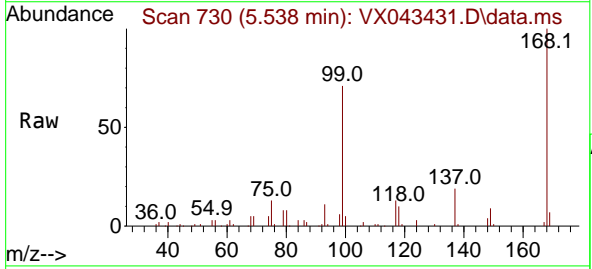
Ion	Ratio	Lower	Upper
42	100		
72	45.1	37.7	56.5
71	41.7	34.6	52.0

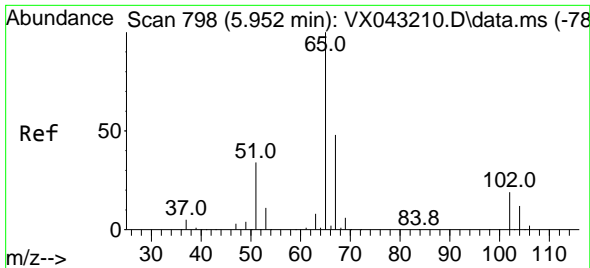


#31
 Cyclohexane
 Concen: 1.415 ug/l
 RT: 5.538 min Scan# 730
 Delta R.T. 0.073 min
 Lab File: VX043431.D
 Acq: 18 Oct 2024 14:00

Tgt Ion: 56 Resp: 1623

Ion	Ratio	Lower	Upper
56	100		
69	161.7	25.8	38.6#
84	103.0	71.1	106.7

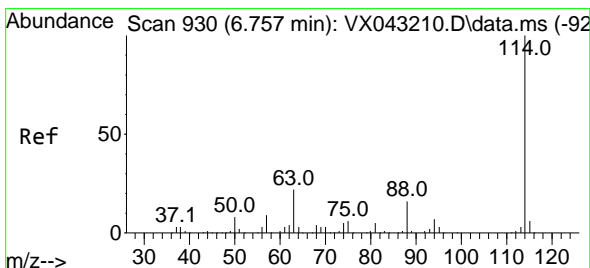
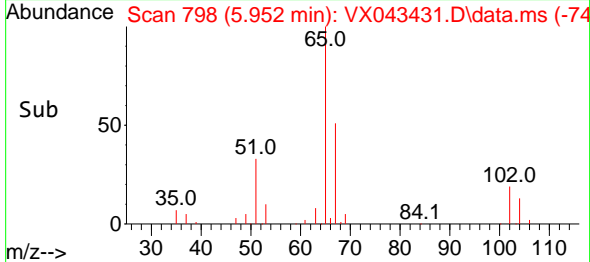
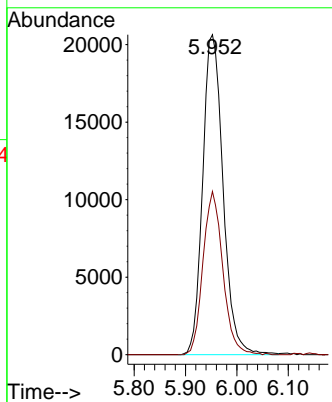
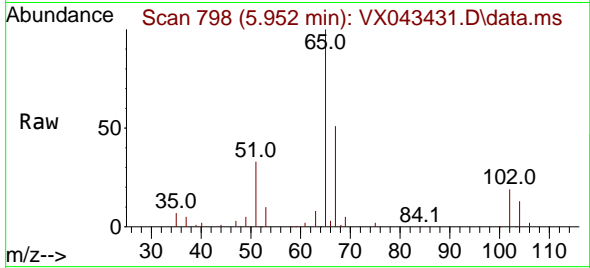




#33
 1,2-Dichloroethane-d4
 Concen: 53.623 ug/l
 RT: 5.952 min Scan# 798
 Delta R.T. 0.000 min
 Lab File: VX043431.D
 Acq: 18 Oct 2024 14:00

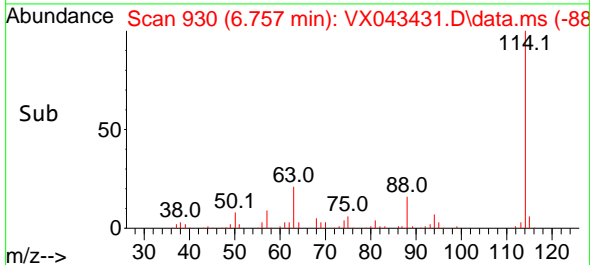
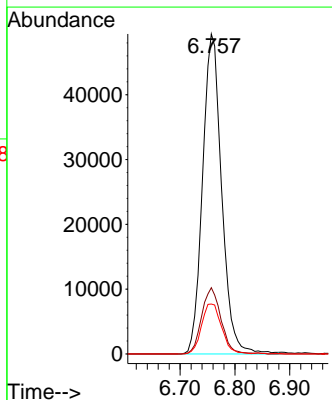
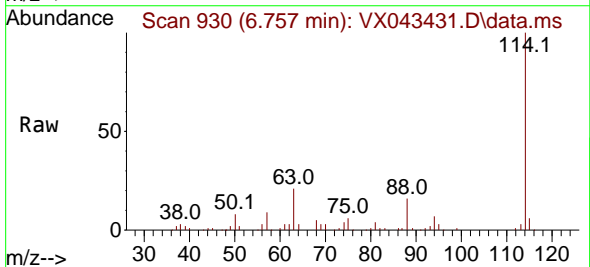
Instrument : MSVOA_X
 ClientSampleId :

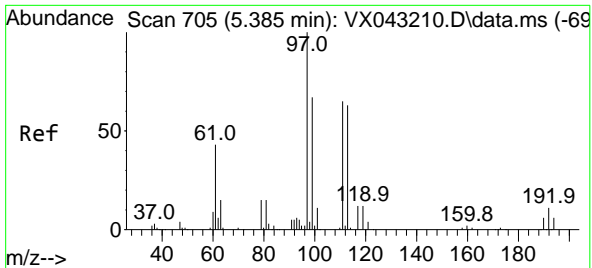
Tgt Ion: 65 Resp: 56987
 Ion Ratio Lower Upper
 65 100
 67 49.5 0.0 99.0



#34
 1,4-Difluorobenzene
 Concen: 50.000 ug/l
 RT: 6.757 min Scan# 930
 Delta R.T. 0.000 min
 Lab File: VX043431.D
 Acq: 18 Oct 2024 14:00

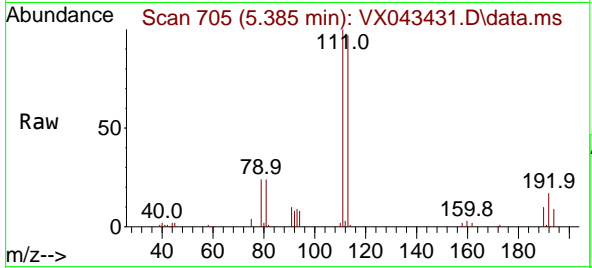
Tgt Ion: 114 Resp: 119277
 Ion Ratio Lower Upper
 114 100
 63 20.7 0.0 43.0
 88 15.6 0.0 33.0





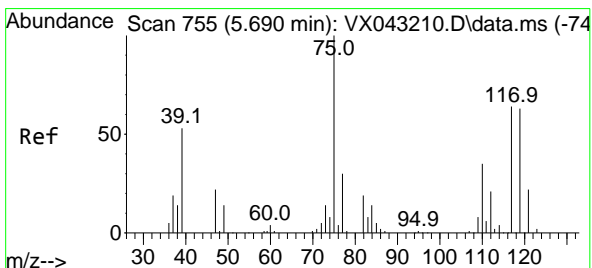
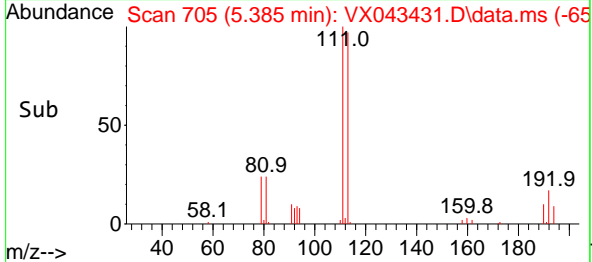
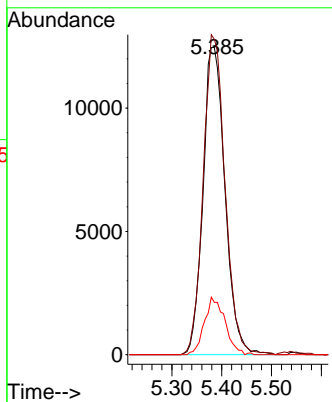
#35
 Dibromofluoromethane
 Concen: 46.463 ug/l
 RT: 5.385 min Scan# 705
 Delta R.T. 0.000 min
 Lab File: VX043431.D
 Acq: 18 Oct 2024 14:00

Instrument : MSVOA_X
 ClientSampleId :



Tgt Ion: 113 Resp: 38220

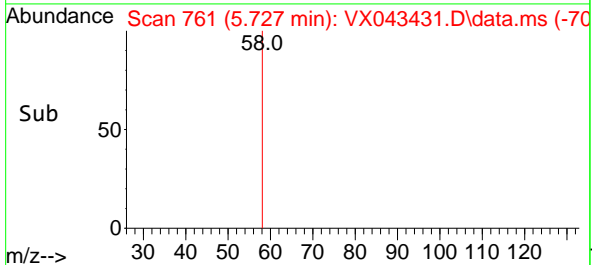
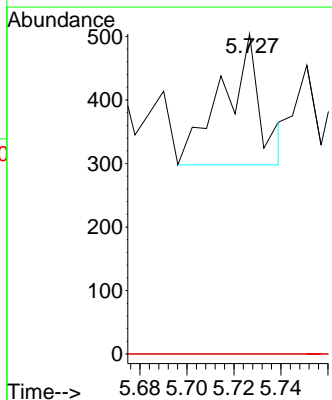
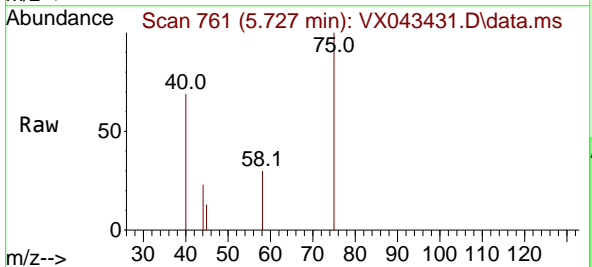
Ion	Ratio	Lower	Upper
113	100		
111	103.2	83.4	125.0
192	17.6	14.1	21.1

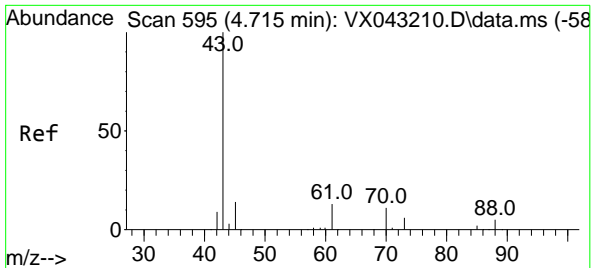


#36
 1,1-Dichloropropene
 Concen: 0.223 ug/l
 RT: 5.727 min Scan# 761
 Delta R.T. 0.037 min
 Lab File: VX043431.D
 Acq: 18 Oct 2024 14:00

Tgt Ion: 75 Resp: 232

Ion	Ratio	Lower	Upper
75	100		
110	0.0	17.8	53.3#
77	0.0	24.9	37.3#

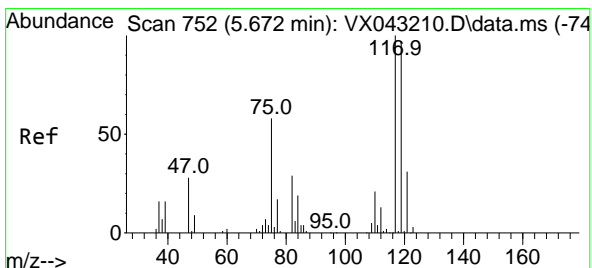
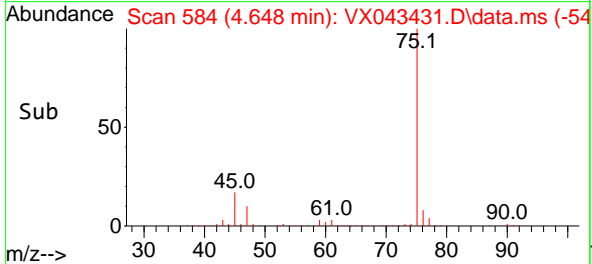
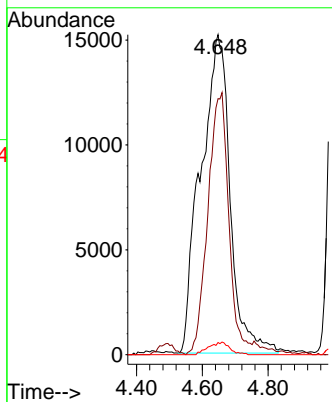
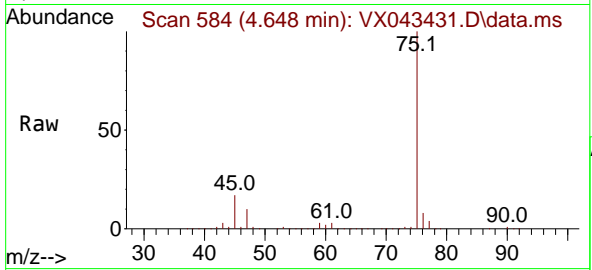




#37
 Ethyl Acetate
 Concen: 75.268 ug/l
 RT: 4.648 min Scan# 511
 Delta R.T. -0.067 min
 Lab File: VX043431.D
 Acq: 18 Oct 2024 14:00

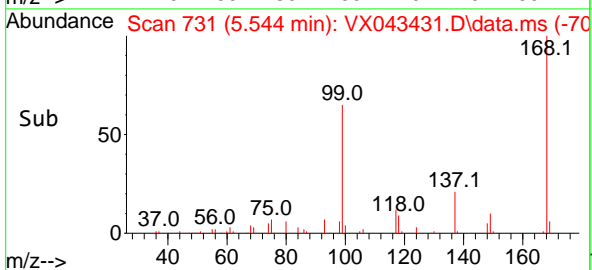
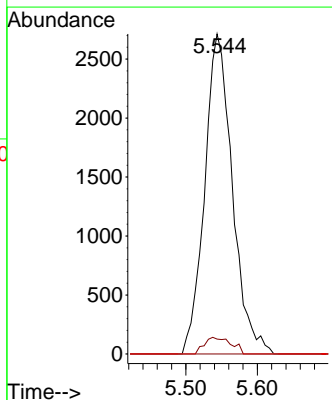
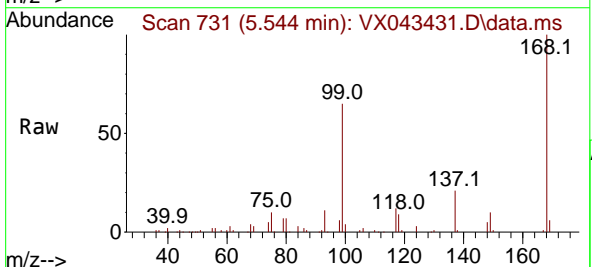
Instrument : MSVOA_X
 ClientSampleId :

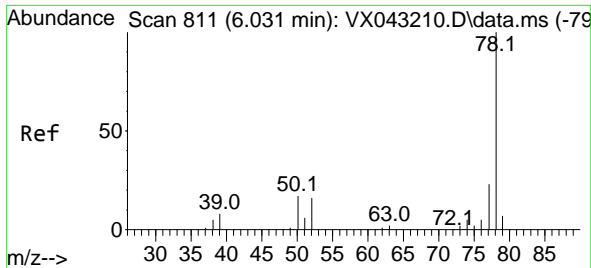
Tgt Ion	Resp	Ion Ratio	Lower	Upper
43	93930	100		
61	58.6	11.0	16.4#	
70	2.9	8.9	13.3#	



#38
 Carbon Tetrachloride
 Concen: 5.932 ug/l
 RT: 5.544 min Scan# 731
 Delta R.T. -0.128 min
 Lab File: VX043431.D
 Acq: 18 Oct 2024 14:00

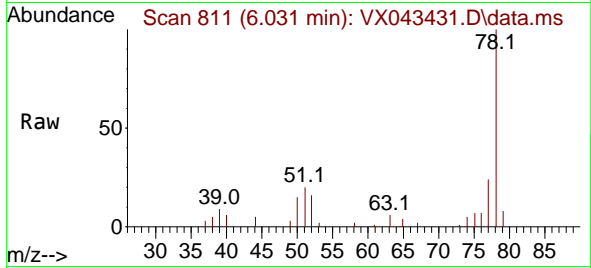
Tgt Ion	Resp	Ion Ratio	Lower	Upper
117	7298	100		
119	4.6	77.7	116.5#	
121	0.0	24.3	36.5#	



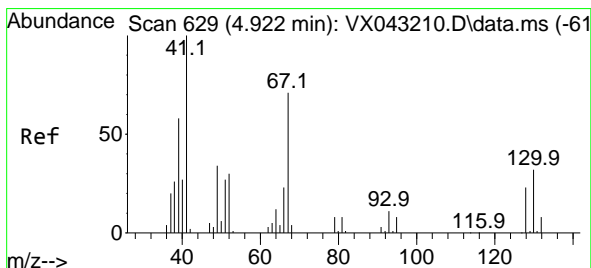
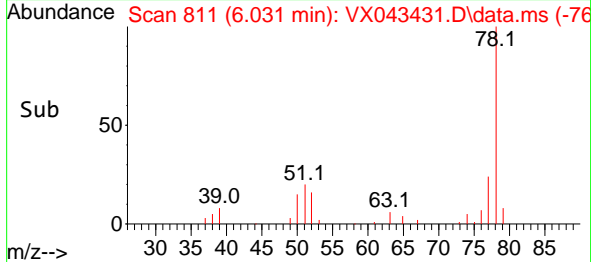
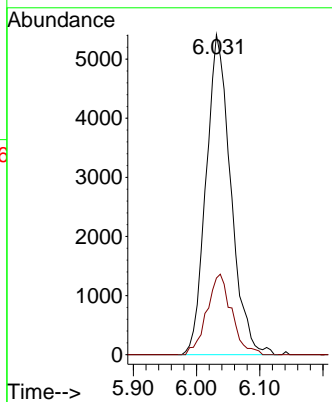


#40
Benzene
Concen: 4.662 ug/l
RT: 6.031 min Scan# 811
Delta R.T. 0.000 min
Lab File: VX043431.D
Acq: 18 Oct 2024 14:00

Instrument :
MSVOA_X
ClientSampleId :

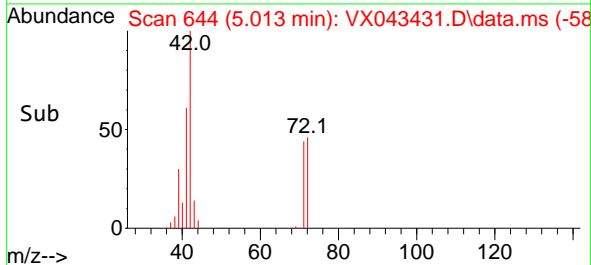
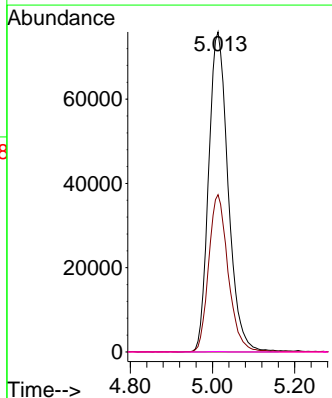
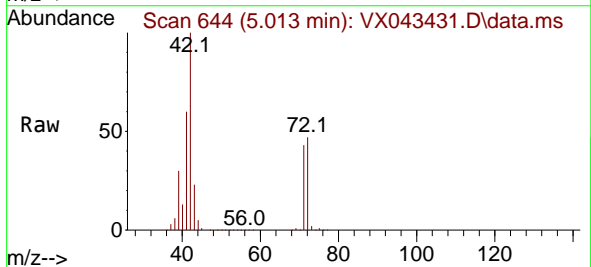


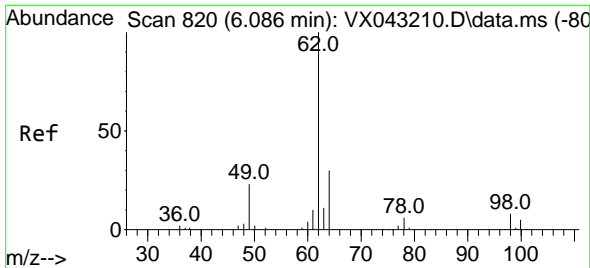
Tgt Ion: 78 Resp: 14689
Ion Ratio Lower Upper
78 100
77 24.0 18.8 28.2



#41
Methacrylonitrile
Concen: 385.409 ug/l
RT: 5.013 min Scan# 644
Delta R.T. 0.091 min
Lab File: VX043431.D
Acq: 18 Oct 2024 14:00

Tgt Ion: 41 Resp: 250365
Ion Ratio Lower Upper
41 100
39 49.2 45.0 67.4
67 0.0 56.0 84.0#
52 0.1 25.6 38.4#



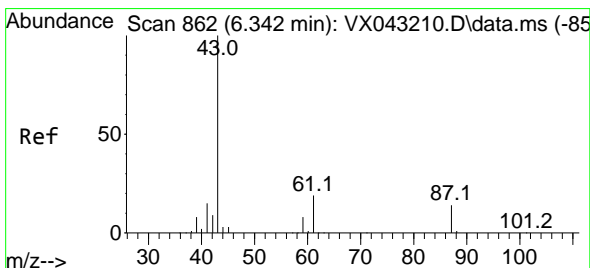
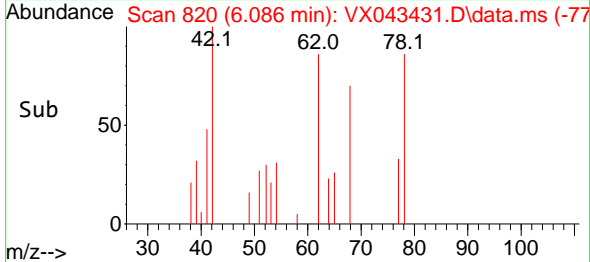
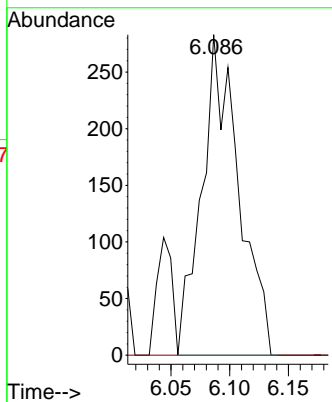
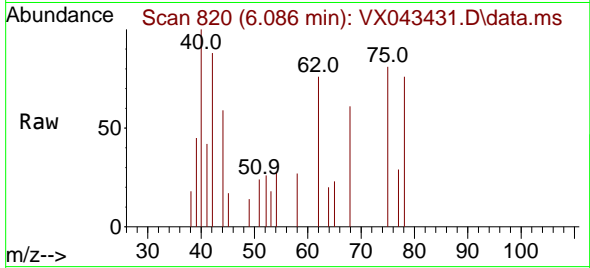


#42
 1,2-Dichloroethane
 Concen: 0.482 ug/l
 RT: 6.086 min Scan# 819
 Delta R.T. 0.000 min
 Lab File: VX043431.D
 Acq: 18 Oct 2024 14:00

Instrument : MSVOA_X
 ClientSampleId :

Tgt Ion: 62 Resp: 619

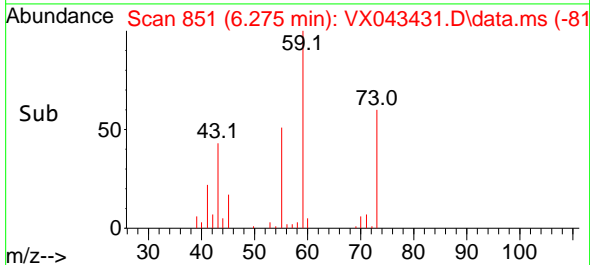
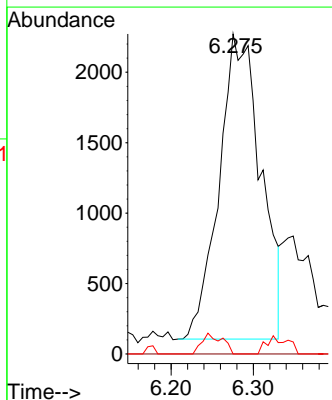
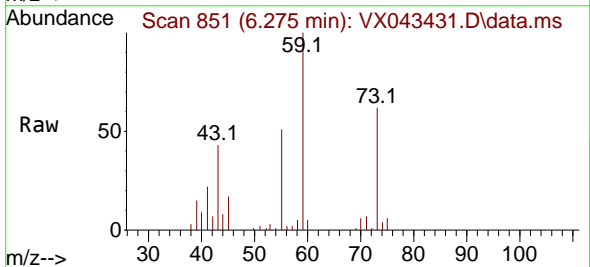
Ion	Ratio	Lower	Upper
62	100		
98	0.0	0.0	16.0

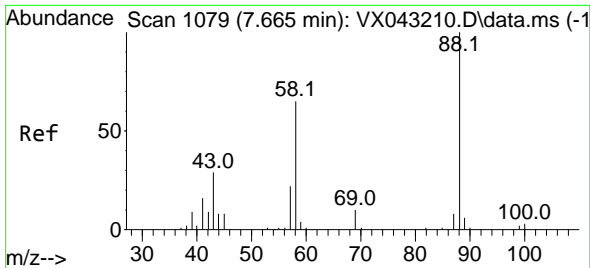


#43
 Isopropyl Acetate
 Concen: 3.700 ug/l
 RT: 6.275 min Scan# 851
 Delta R.T. -0.067 min
 Lab File: VX043431.D
 Acq: 18 Oct 2024 14:00

Tgt Ion: 43 Resp: 7627

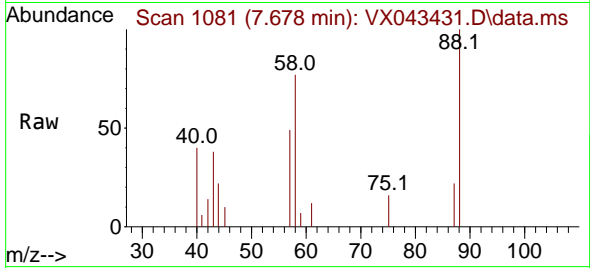
Ion	Ratio	Lower	Upper
43	100		
61	0.0	15.1	22.7#
87	0.0	10.8	16.2#





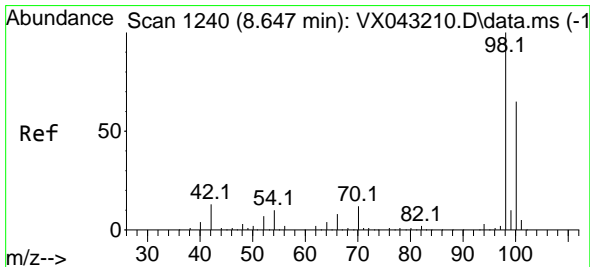
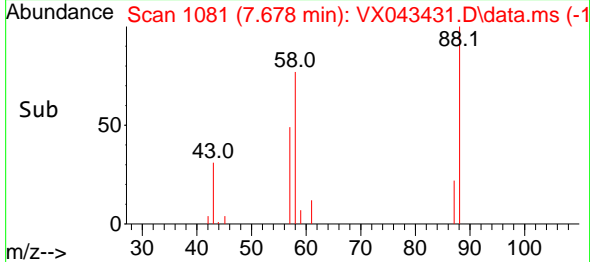
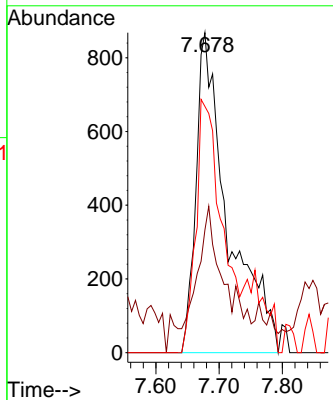
#49
 1,4-Dioxane
 Concen: 154.936 ug/l
 RT: 7.678 min Scan# 1079
 Delta R.T. 0.012 min
 Lab File: VX043431.D
 Acq: 18 Oct 2024 14:00

Instrument : MSVOA_X
 ClientSampleId :



Tgt Ion: 88 Resp: 3046

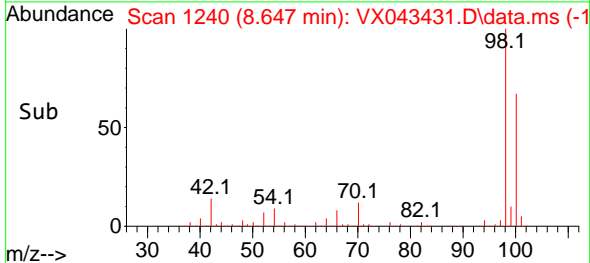
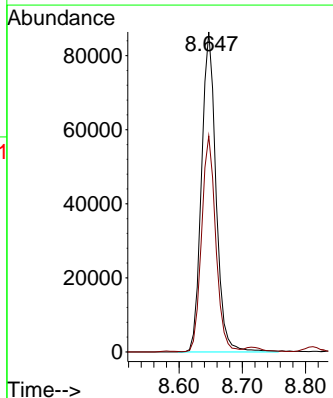
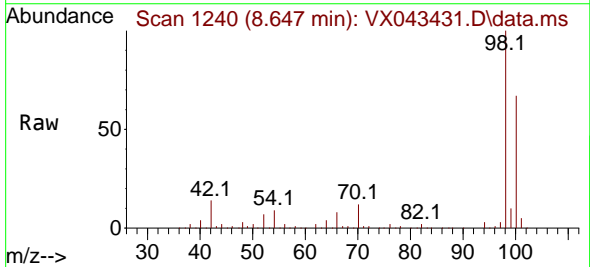
Ion	Ratio	Lower	Upper
88	100		
43	24.9	29.5	44.3#
58	64.4	55.2	82.8

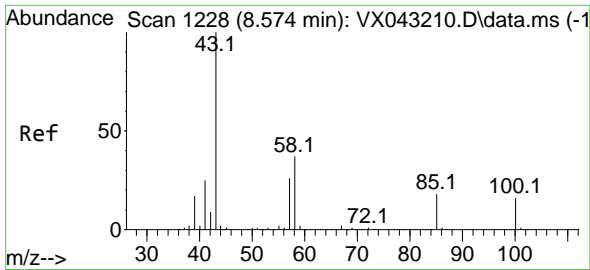


#50
 Toluene-d8
 Concen: 48.461 ug/l
 RT: 8.647 min Scan# 1240
 Delta R.T. 0.000 min
 Lab File: VX043431.D
 Acq: 18 Oct 2024 14:00

Tgt Ion: 98 Resp: 138145

Ion	Ratio	Lower	Upper
98	100		
100	65.6	52.4	78.6

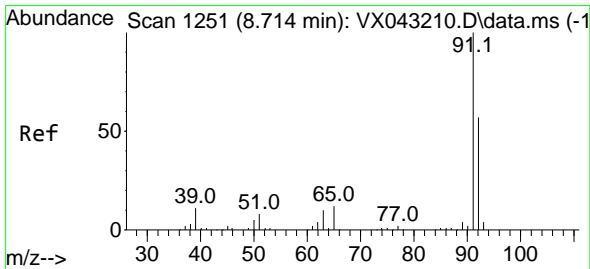
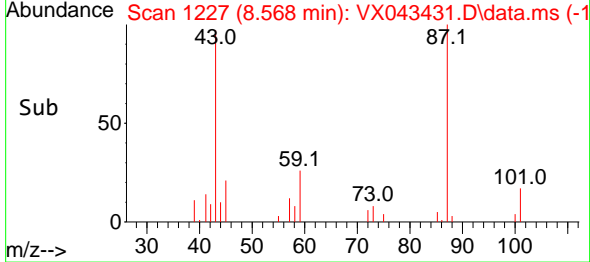
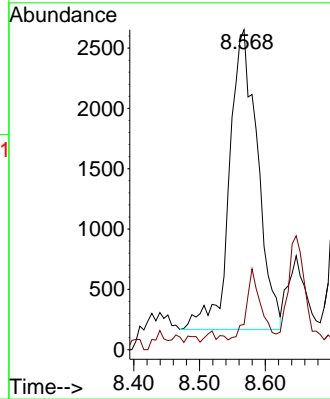
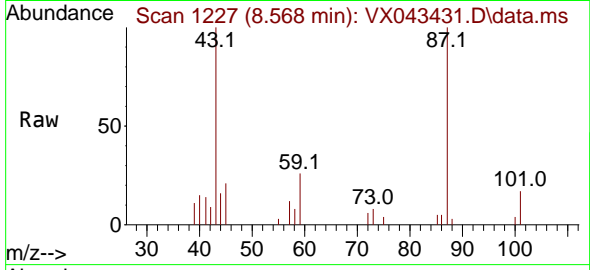




#51
 4-Methyl-2-Pentanone
 Concen: 5.914 ug/l
 RT: 8.568 min Scan# 11
 Delta R.T. -0.006 min
 Lab File: VX043431.D
 Acq: 18 Oct 2024 14:00

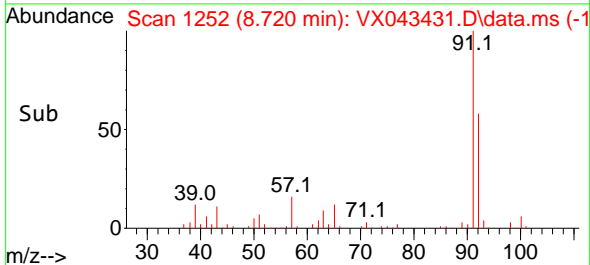
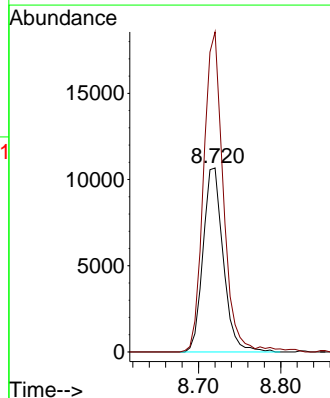
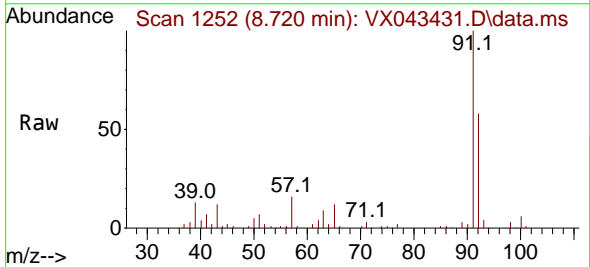
Instrument :
 MSVOA_X
 ClientSampleId :

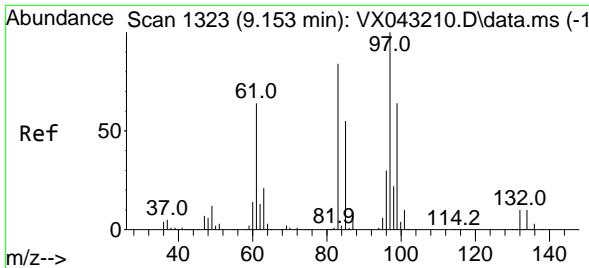
Tgt Ion: 43 Resp: 7404
 Ion Ratio Lower Upper
 43 100
 58 13.9 30.0 45.0#



#52
 Toluene
 Concen: 9.218 ug/l
 RT: 8.720 min Scan# 1252
 Delta R.T. 0.006 min
 Lab File: VX043431.D
 Acq: 18 Oct 2024 14:00

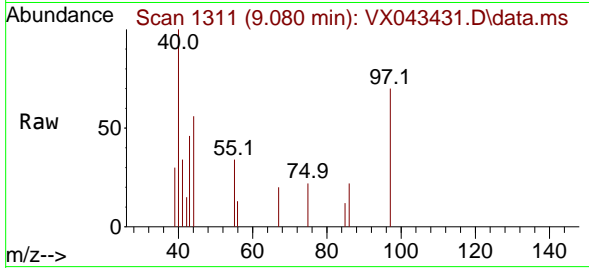
Tgt Ion: 92 Resp: 18203
 Ion Ratio Lower Upper
 92 100
 91 171.0 137.0 205.4





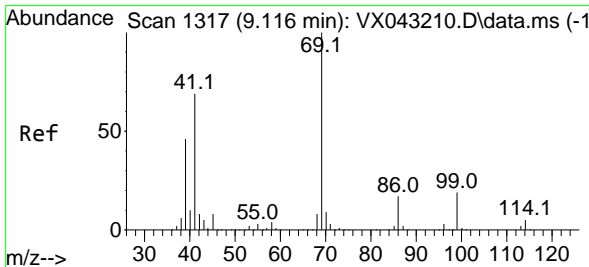
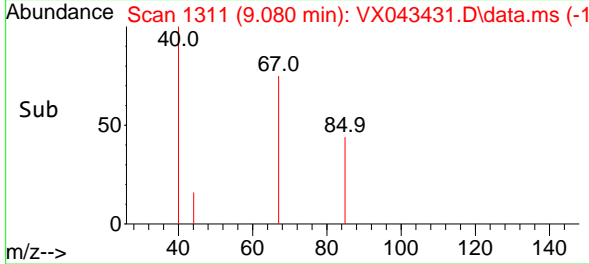
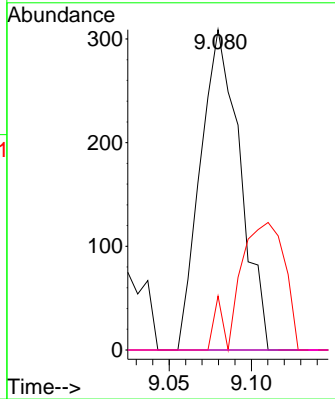
#55
 1,1,2-Trichloroethane
 Concen: 0.659 ug/l
 RT: 9.080 min Scan# 111
 Delta R.T. -0.073 min
 Lab File: VX043431.D
 Acq: 18 Oct 2024 14:00

Instrument : MSVOA_X
 ClientSampleId :



Tgt Ion: 97 Resp: 517

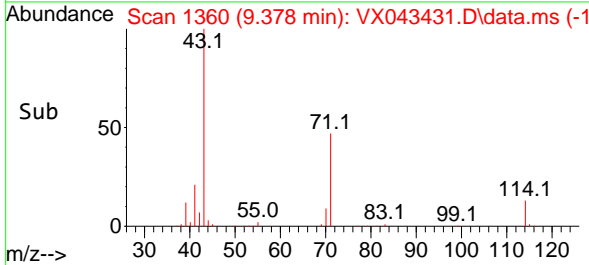
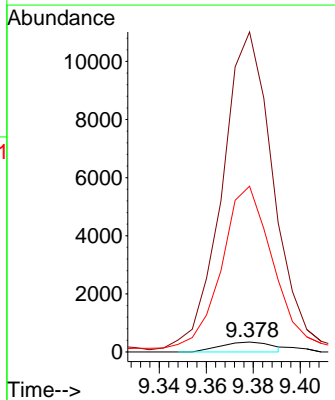
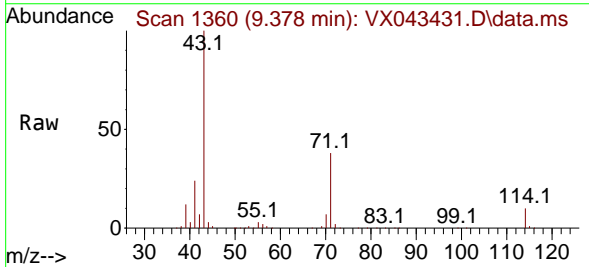
Ion	Ratio	Lower	Upper
97	100		
83	0.0	66.9	100.3#
85	16.8	43.9	65.9#
99	0.0	51.6	77.4#

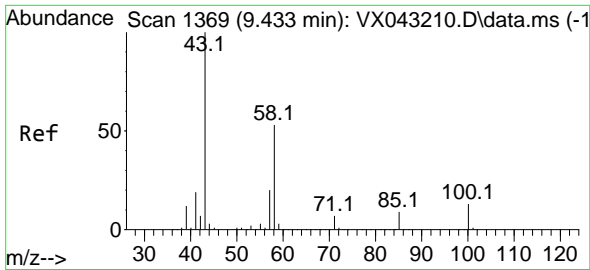


#56
 Ethyl methacrylate
 Concen: 0.405 ug/l
 RT: 9.378 min Scan# 1360
 Delta R.T. 0.262 min
 Lab File: VX043431.D
 Acq: 18 Oct 2024 14:00

Tgt Ion: 69 Resp: 519

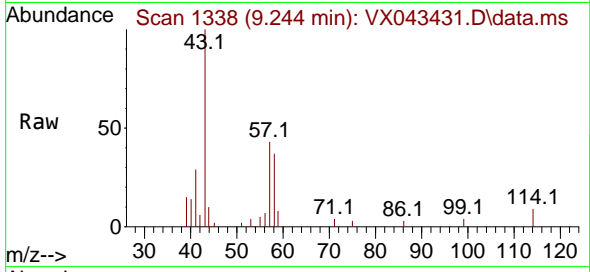
Ion	Ratio	Lower	Upper
69	100		
41	2984.6	56.1	84.1#
39	1513.9	36.4	54.6#



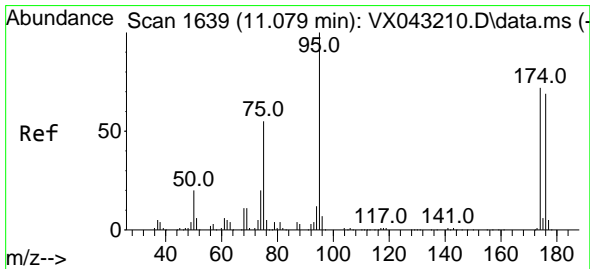
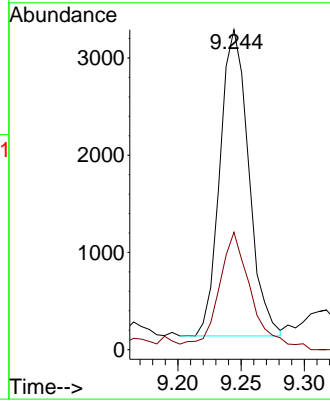
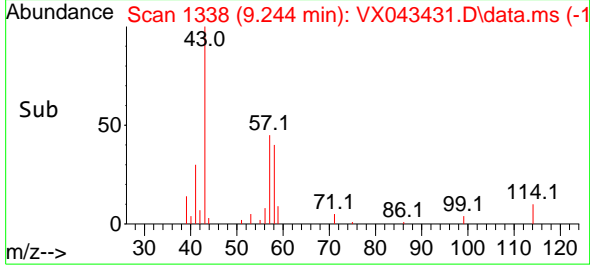


#59
 2-Hexanone
 Concen: 5.254 ug/l
 RT: 9.244 min Scan# 11
 Delta R.T. -0.189 min
 Lab File: VX043431.D
 Acq: 18 Oct 2024 14:00

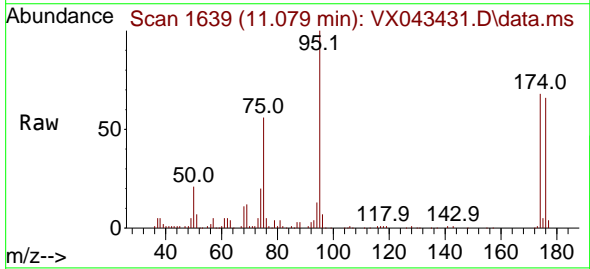
Instrument :
 MSVOA_X
 ClientSampleId :



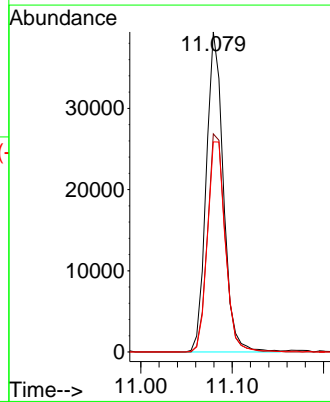
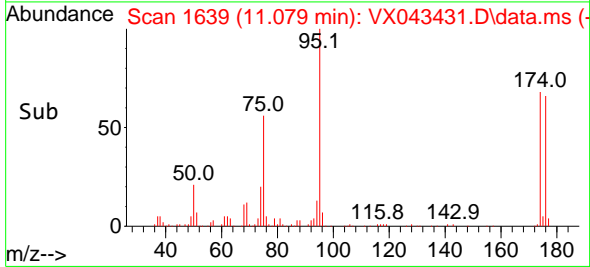
Tgt Ion: 43 Resp: 4974
 Ion Ratio Lower Upper
 43 100
 58 43.9 26.1 78.3

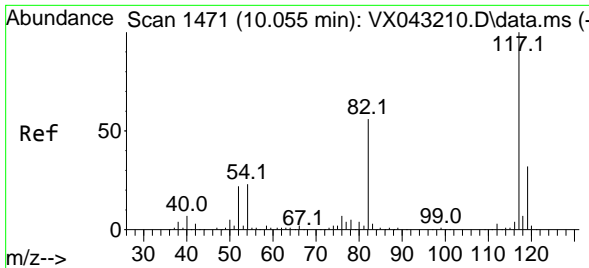


#62
 4-Bromofluorobenzene
 Concen: 49.572 ug/l
 RT: 11.079 min Scan# 1639
 Delta R.T. 0.000 min
 Lab File: VX043431.D
 Acq: 18 Oct 2024 14:00



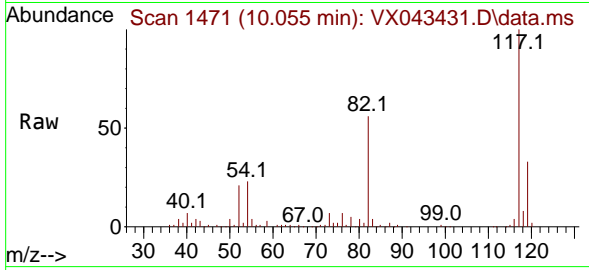
Tgt Ion: 95 Resp: 51337
 Ion Ratio Lower Upper
 95 100
 174 70.3 0.0 145.0
 176 68.8 0.0 143.0





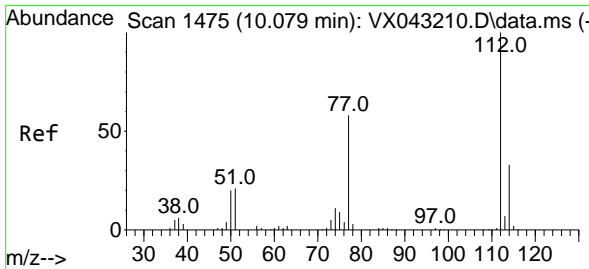
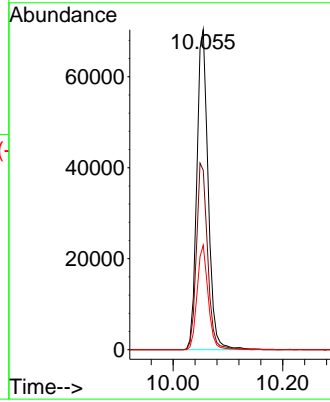
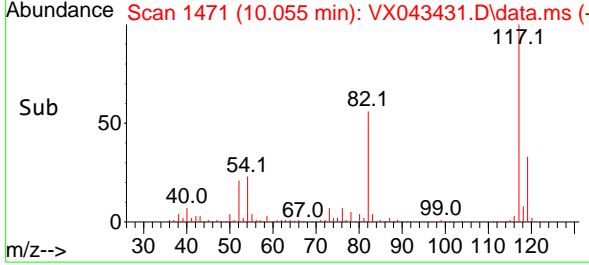
#63
 Chlorobenzene-d5
 Concen: 50.000 ug/l
 RT: 10.055 min Scan# 1471
 Delta R.T. 0.000 min
 Lab File: VX043431.D
 Acq: 18 Oct 2024 14:00

Instrument : MSVOA_X
 ClientSampleId :

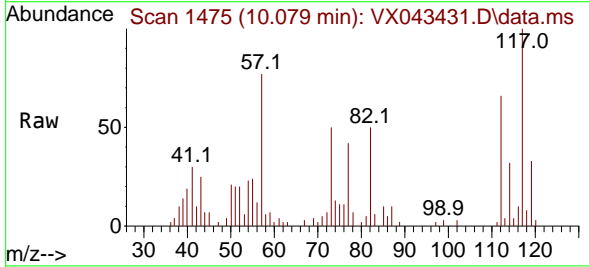


Tgt Ion:117 Resp: 101497

Ion	Ratio	Lower	Upper
117	100		
82	56.1	45.0	67.6
119	32.7	25.3	37.9

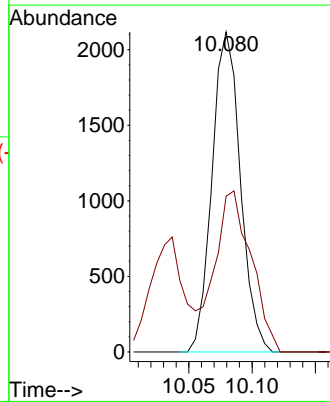
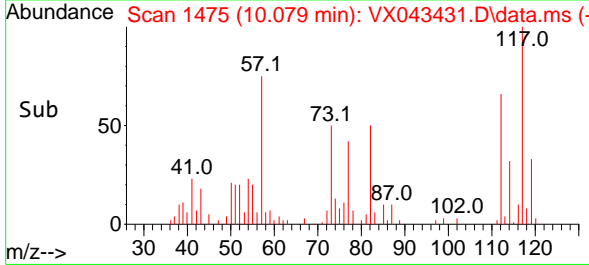


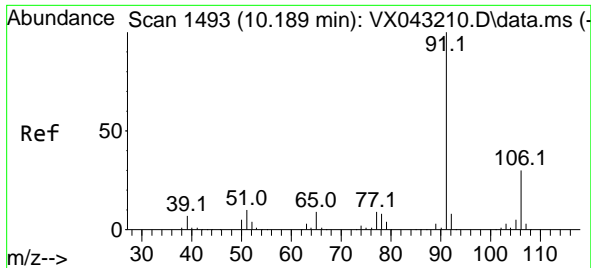
#65
 Chlorobenzene
 Concen: 1.512 ug/l
 RT: 10.079 min Scan# 1475
 Delta R.T. 0.000 min
 Lab File: VX043431.D
 Acq: 18 Oct 2024 14:00



Tgt Ion:112 Resp: 3300

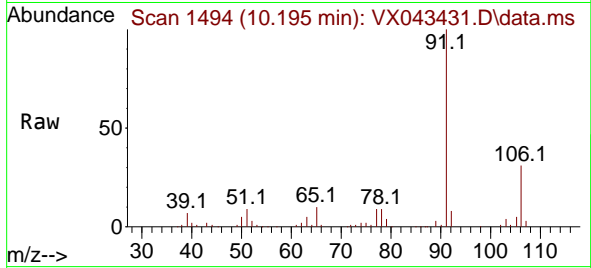
Ion	Ratio	Lower	Upper
112	100		
114	48.6	26.4	39.6



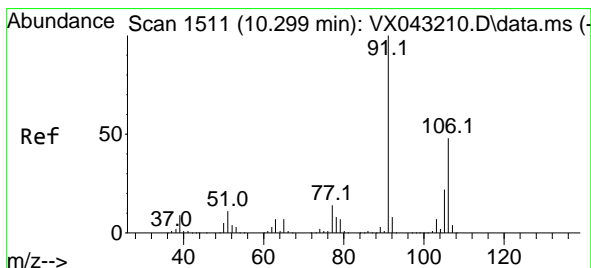
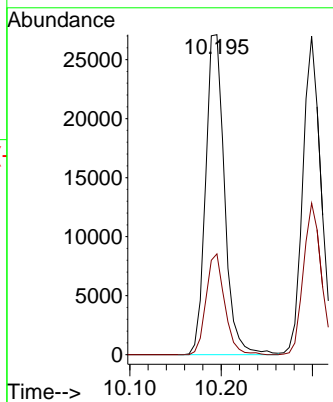
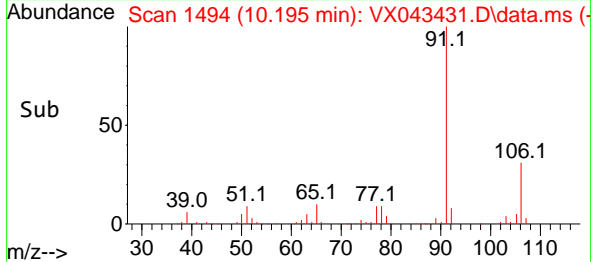


#67
 Ethyl Benzene
 Concen: 10.346 ug/l
 RT: 10.195 min Scan# 1494
 Delta R.T. 0.006 min
 Lab File: VX043431.D
 Acq: 18 Oct 2024 14:00

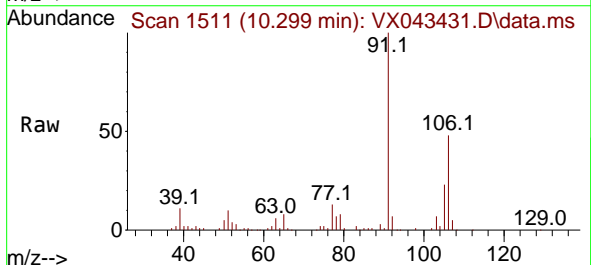
Instrument : MSVOA_X
 ClientSampleId :



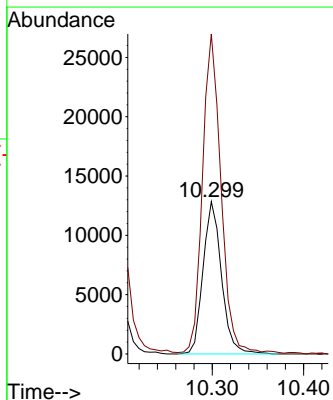
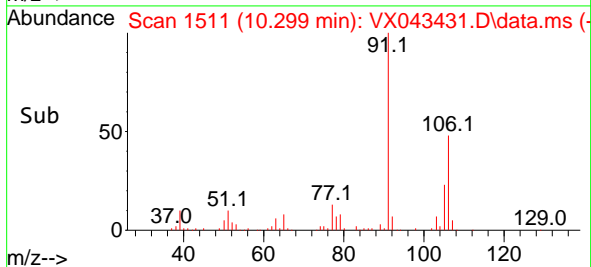
Tgt Ion: 91 Resp: 39023
 Ion Ratio Lower Upper
 91 100
 106 31.5 23.9 35.9

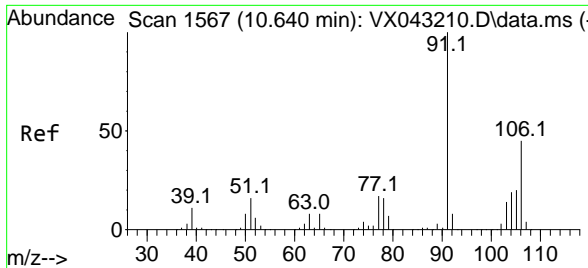


#68
 m/p-Xylenes
 Concen: 12.608 ug/l
 RT: 10.299 min Scan# 1511
 Delta R.T. 0.000 min
 Lab File: VX043431.D
 Acq: 18 Oct 2024 14:00



Tgt Ion: 106 Resp: 17971
 Ion Ratio Lower Upper
 106 100
 91 210.3 167.0 250.6

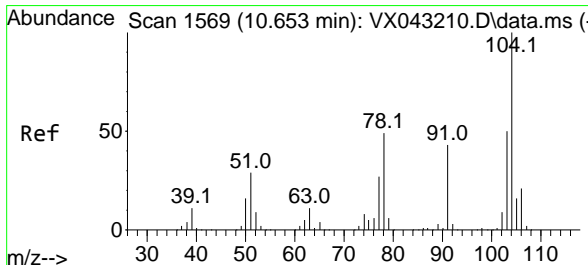
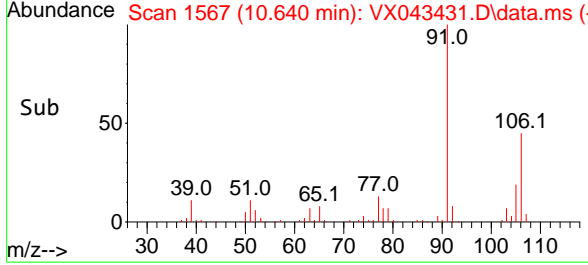
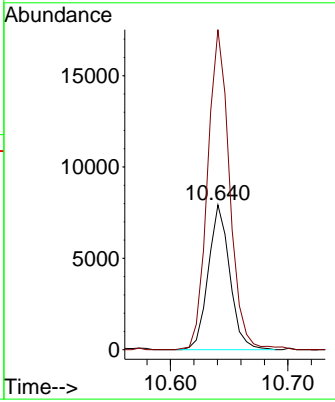
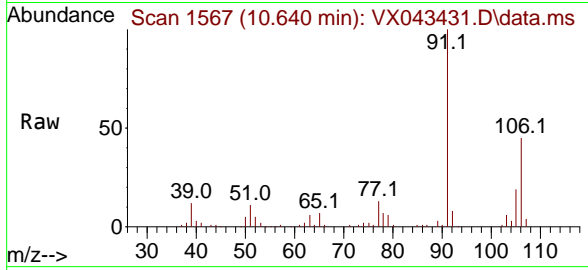




#69
 o-Xylene
 Concen: 7.120 ug/l
 RT: 10.640 min Scan# 11
 Delta R.T. 0.000 min
 Lab File: VX043431.D
 Acq: 18 Oct 2024 14:00

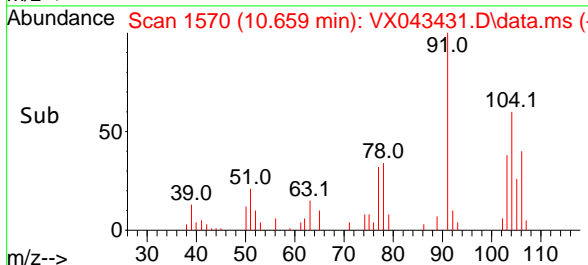
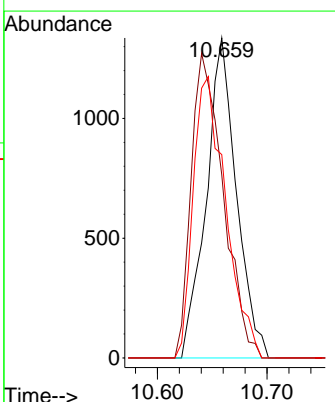
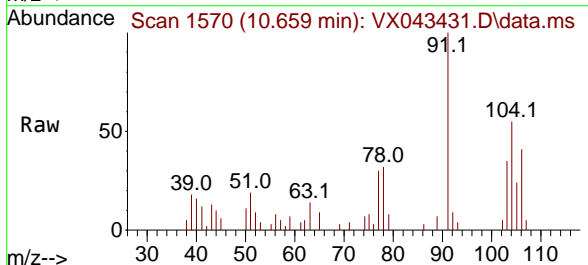
Instrument : MSVOA_X
 ClientSampleId :

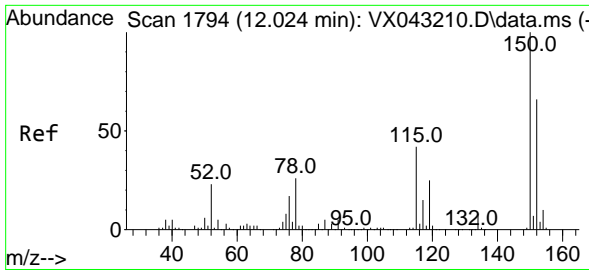
Tgt Ion:106 Resp: 10085
 Ion Ratio Lower Upper
 106 100
 91 226.7 111.6 334.8



#70
 Styrene
 Concen: 1.114 ug/l
 RT: 10.659 min Scan# 1570
 Delta R.T. 0.006 min
 Lab File: VX043431.D
 Acq: 18 Oct 2024 14:00

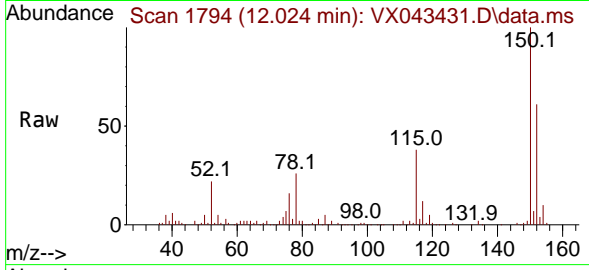
Tgt Ion:104 Resp: 2558
 Ion Ratio Lower Upper
 104 100
 78 101.2 43.5 65.3#
 103 94.4 43.9 65.9#



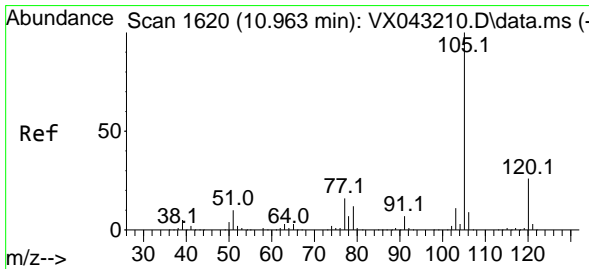
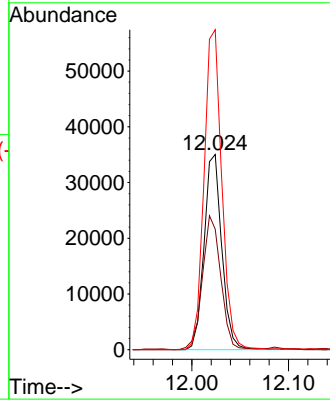
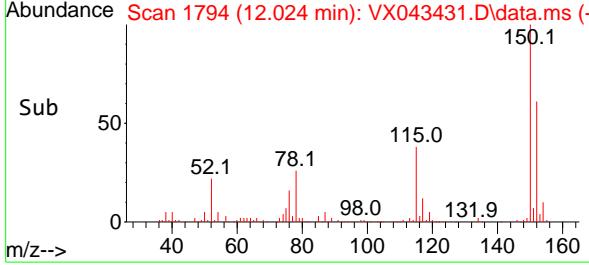


#72
 1,4-Dichlorobenzene-d4
 Concen: 50.000 ug/l
 RT: 12.024 min Scan# 11
 Delta R.T. 0.000 min
 Lab File: VX043431.D
 Acq: 18 Oct 2024 14:00

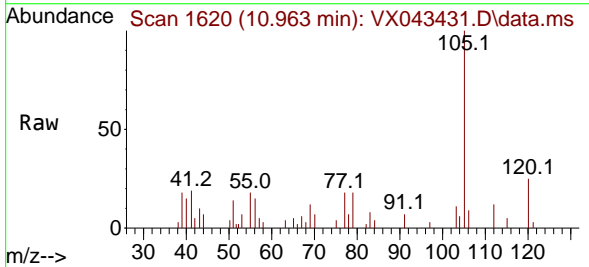
Instrument :
 MSVOA_X
 ClientSampleId :



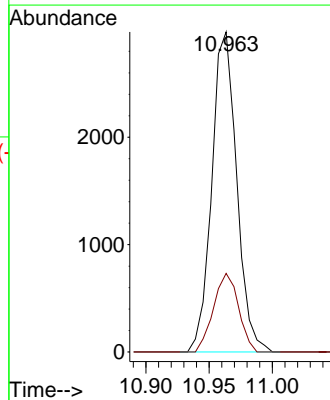
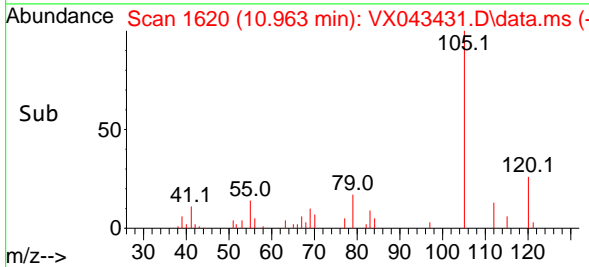
Tgt Ion:152 Resp: 44796
 Ion Ratio Lower Upper
 152 100
 115 70.9 44.1 132.3
 150 164.0 0.0 347.4

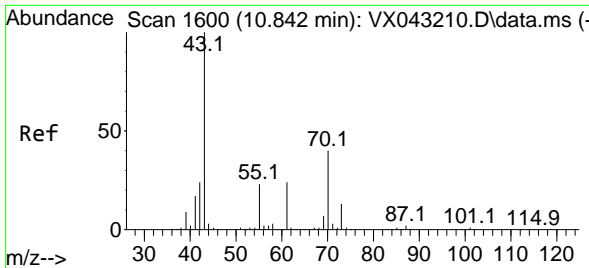


#73
 Isopropylbenzene
 Concen: 1.170 ug/l
 RT: 10.963 min Scan# 1620
 Delta R.T. 0.000 min
 Lab File: VX043431.D
 Acq: 18 Oct 2024 14:00



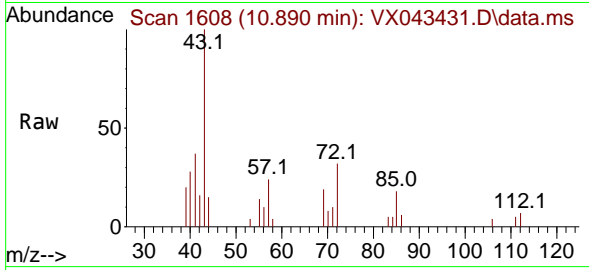
Tgt Ion:105 Resp: 4076
 Ion Ratio Lower Upper
 105 100
 120 24.6 12.9 38.7





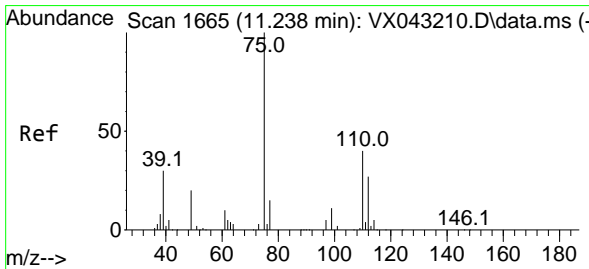
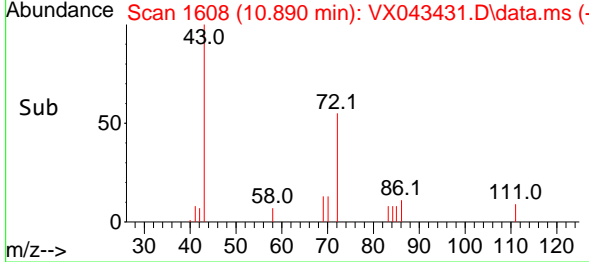
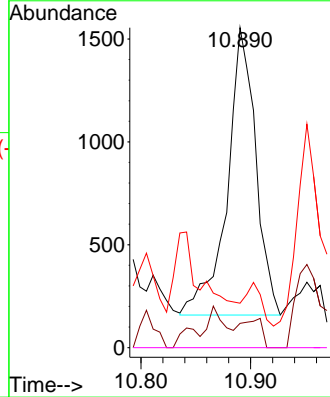
#74
 N-amy1 acetate
 Concen: 1.529 ug/l
 RT: 10.890 min Scan# 1608
 Delta R.T. 0.049 min
 Lab File: VX043431.D
 Acq: 18 Oct 2024 14:00

Instrument : MSVOA_X
 ClientSampleId :



Tgt Ion: 43 Resp: 2528

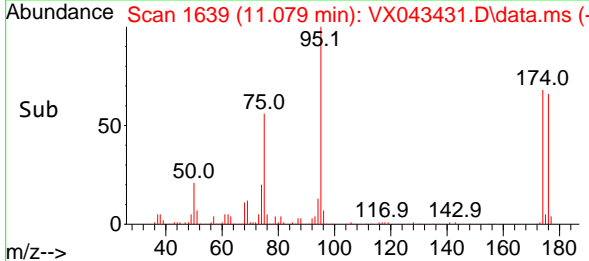
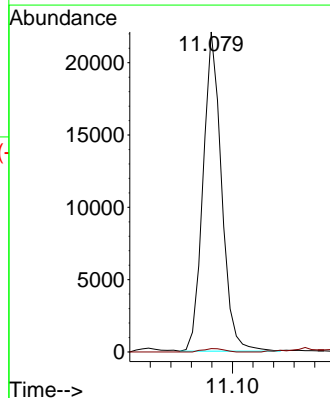
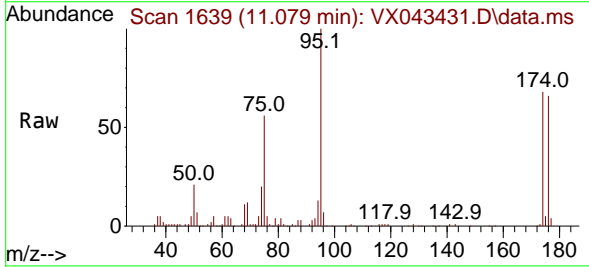
Ion	Ratio	Lower	Upper
43	100		
70	7.4	33.1	49.7#
55	8.0	18.6	27.8#
61	0.0	18.7	28.1#

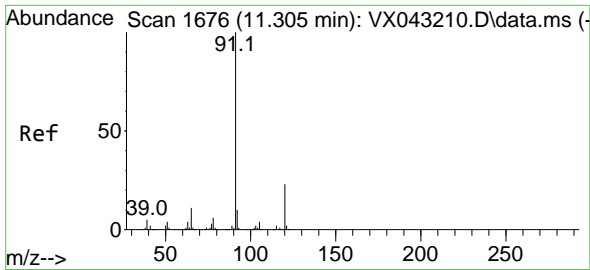


#76
 1,2,3-Trichloropropane
 Concen: 27.808 ug/l
 RT: 11.079 min Scan# 1639
 Delta R.T. -0.158 min
 Lab File: VX043431.D
 Acq: 18 Oct 2024 14:00

Tgt Ion: 75 Resp: 27631

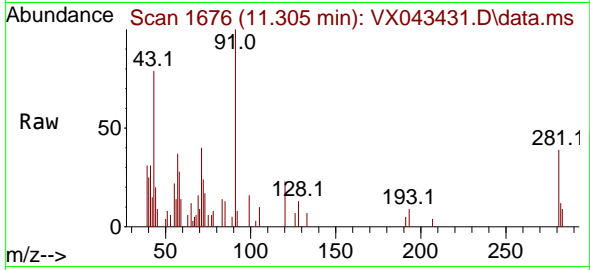
Ion	Ratio	Lower	Upper
75	100		
77	1.2	22.0	66.0#



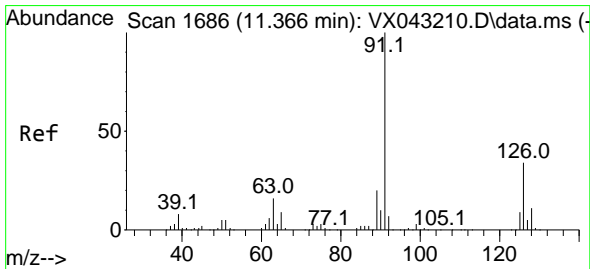
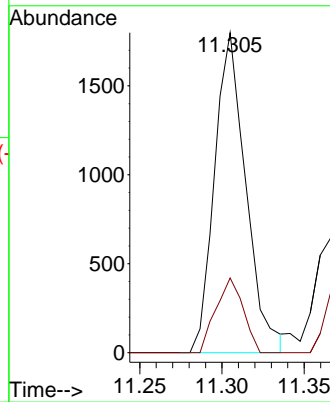
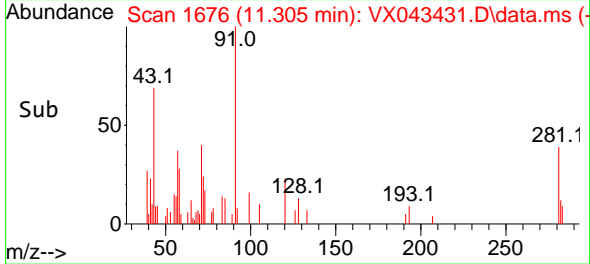


#78
 n-propylbenzene
 Concen: 0.622 ug/l
 RT: 11.305 min Scan# 1676
 Delta R.T. 0.000 min
 Lab File: VX043431.D
 Acq: 18 Oct 2024 14:00

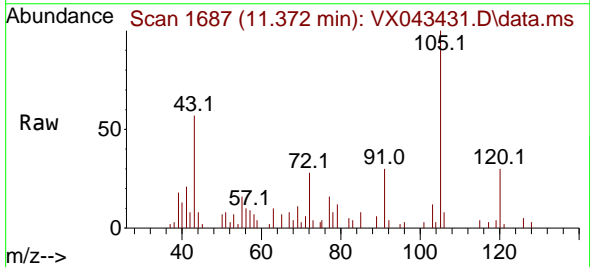
Instrument :
 MSVOA_X
 ClientSampleId :



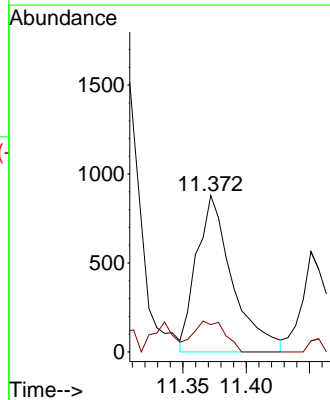
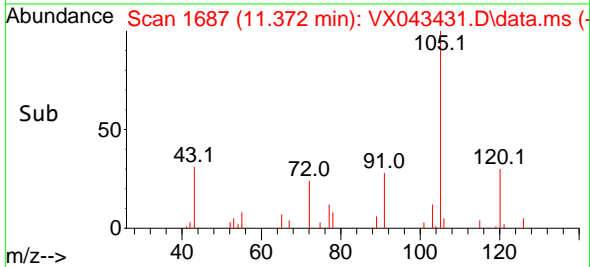
Tgt Ion: 91 Resp: 2380
 Ion Ratio Lower Upper
 91 100
 120 20.3 11.4 34.1

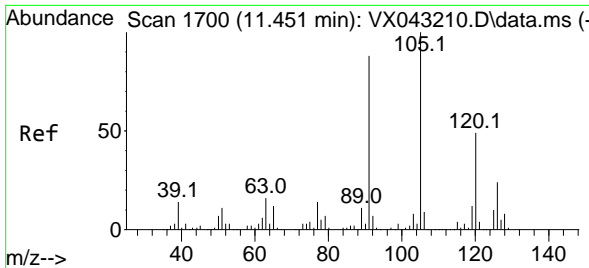


#79
 2-Chlorotoluene
 Concen: 0.707 ug/l
 RT: 11.372 min Scan# 1687
 Delta R.T. 0.006 min
 Lab File: VX043431.D
 Acq: 18 Oct 2024 14:00



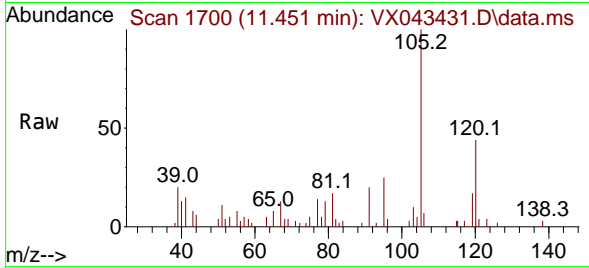
Tgt Ion: 91 Resp: 1737
 Ion Ratio Lower Upper
 91 100
 126 17.5 16.6 49.7



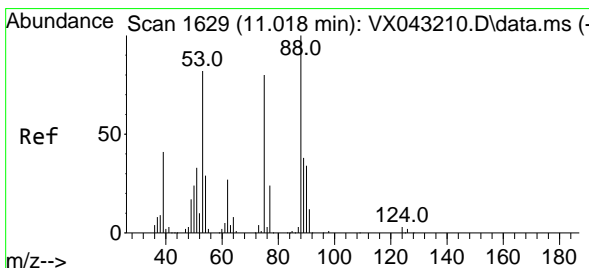
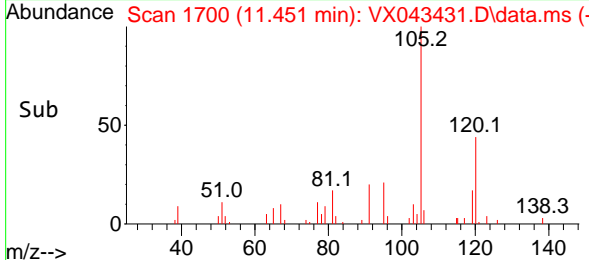
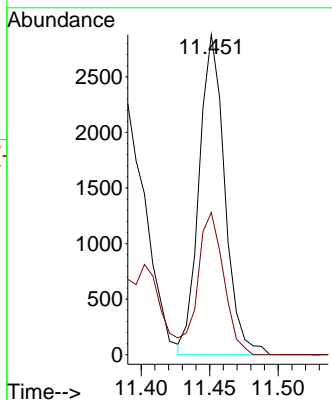


#80
 1,3,5-Trimethylbenzene
 Concen: 1.306 ug/l
 RT: 11.451 min Scan# 1700
 Delta R.T. 0.000 min
 Lab File: VX043431.D
 Acq: 18 Oct 2024 14:00

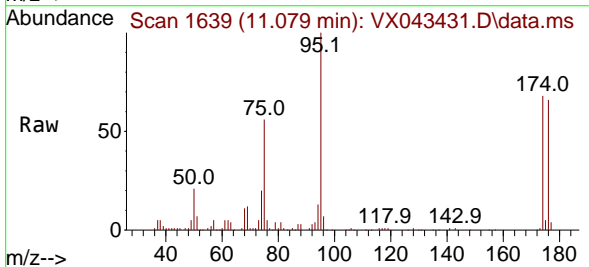
Instrument : MSVOA_X
 ClientSampleId :



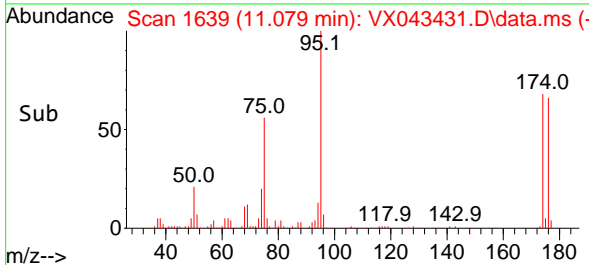
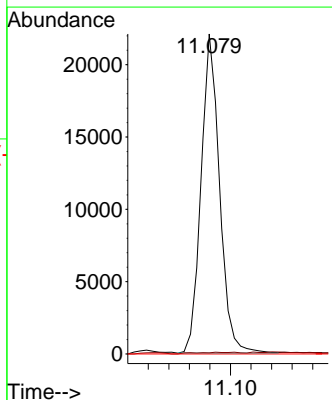
Tgt Ion:105 Resp: 3752
 Ion Ratio Lower Upper
 105 100
 120 44.9 23.9 71.8

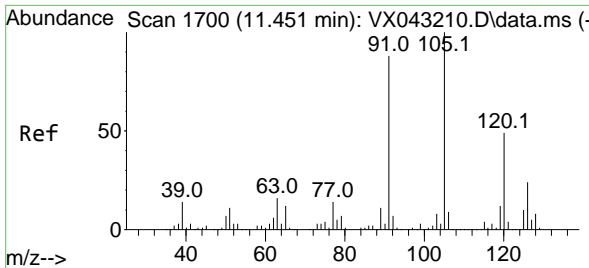


#81
 trans-1,4-Dichloro-2-butene
 Concen: 72.069 ug/l
 RT: 11.079 min Scan# 1639
 Delta R.T. 0.061 min
 Lab File: VX043431.D
 Acq: 18 Oct 2024 14:00



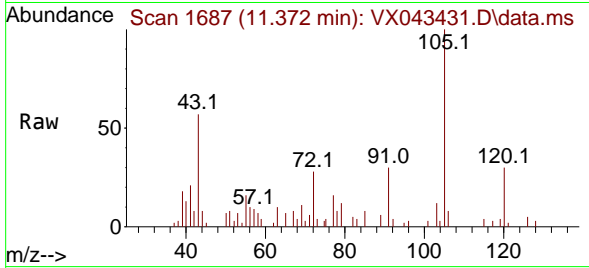
Tgt Ion: 75 Resp: 27631
 Ion Ratio Lower Upper
 75 100
 53 0.6 83.9 125.9#
 89 0.0 38.6 58.0#



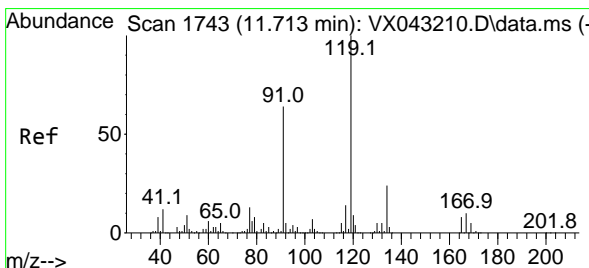
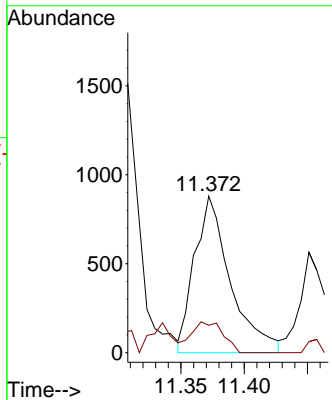
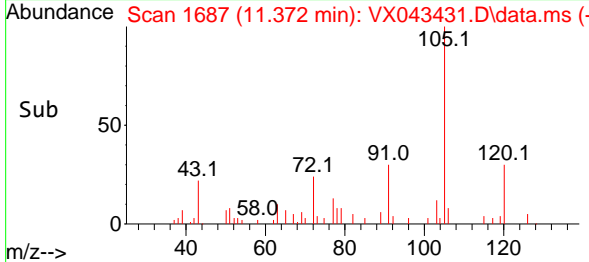


#82
 4-Chlorotoluene
 Concen: 0.620 ug/l
 RT: 11.372 min Scan# 1700
 Delta R.T. -0.079 min
 Lab File: VX043431.D
 Acq: 18 Oct 2024 14:00

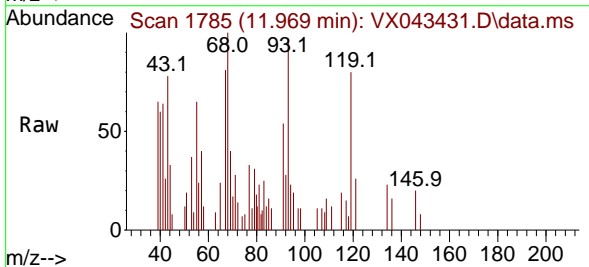
Instrument : MSVOA_X
 ClientSampleId :



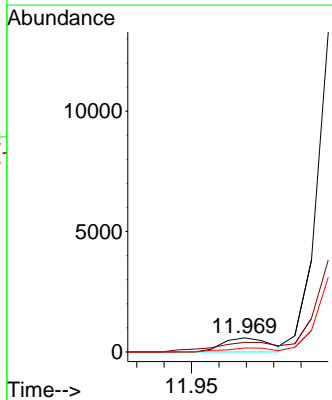
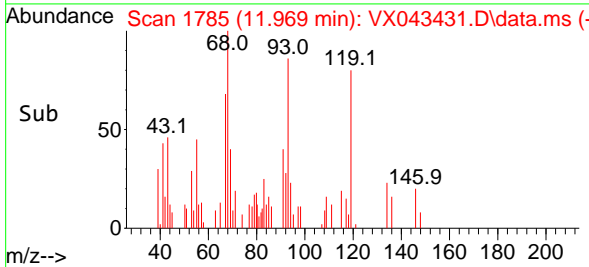
Tgt Ion: 91 Resp: 1737
 Ion Ratio Lower Upper
 91 100
 126 17.5 14.1 42.3

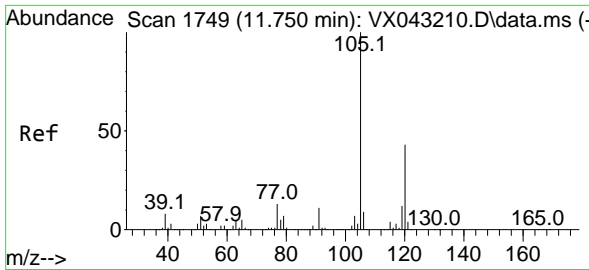


#83
 tert-Butylbenzene
 Concen: 0.232 ug/l
 RT: 11.969 min Scan# 1785
 Delta R.T. 0.256 min
 Lab File: VX043431.D
 Acq: 18 Oct 2024 14:00



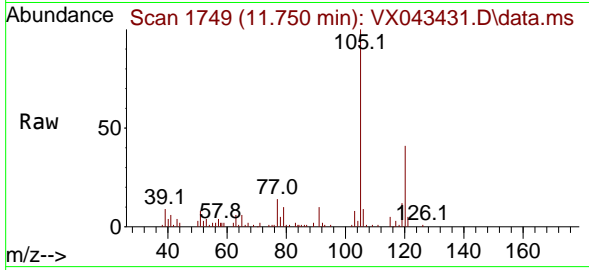
Tgt Ion: 119 Resp: 687
 Ion Ratio Lower Upper
 119 100
 91 92.4 31.0 93.0
 134 28.1 11.5 34.4



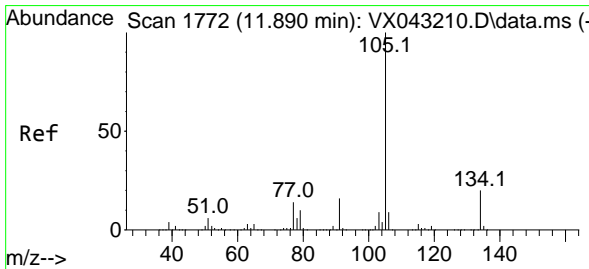
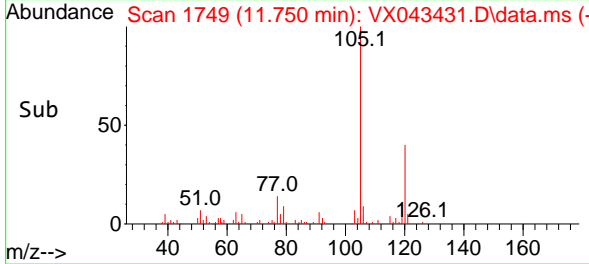
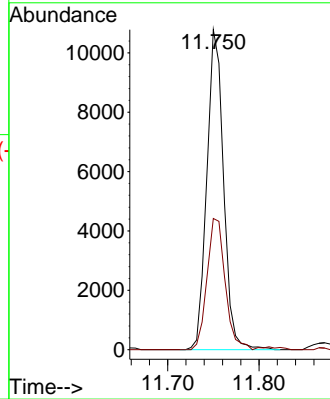


#84
 1,2,4-Trimethylbenzene
 Concen: 4.729 ug/l
 RT: 11.750 min Scan# 1749
 Delta R.T. 0.000 min
 Lab File: VX043431.D
 Acq: 18 Oct 2024 14:00

Instrument : MSVOA_X
 ClientSampleId :

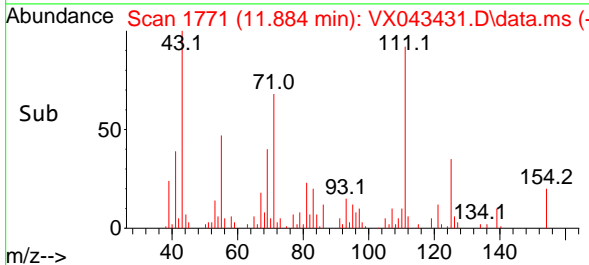
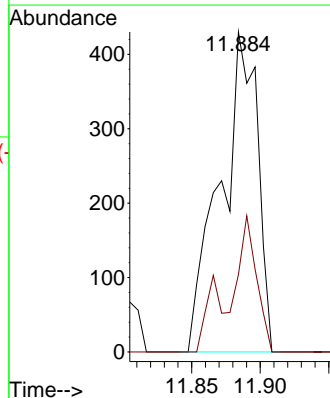
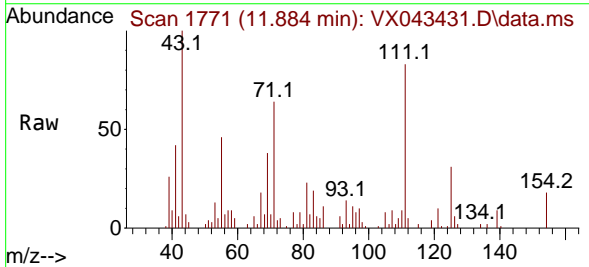


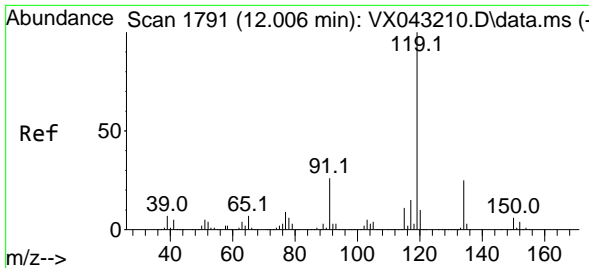
Tgt Ion:105 Resp: 13669
 Ion Ratio Lower Upper
 105 100
 120 45.0 21.2 63.6



#85
 sec-Butylbenzene
 Concen: 0.230 ug/l
 RT: 11.884 min Scan# 1771
 Delta R.T. -0.006 min
 Lab File: VX043431.D
 Acq: 18 Oct 2024 14:00

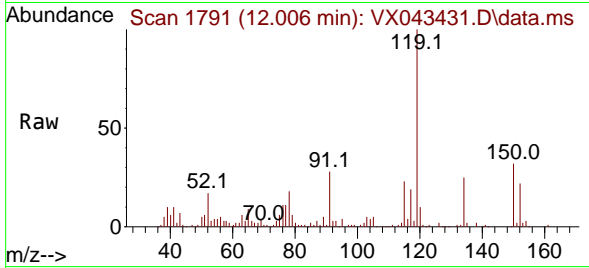
Tgt Ion:105 Resp: 808
 Ion Ratio Lower Upper
 105 100
 134 0.0 10.1 30.1#



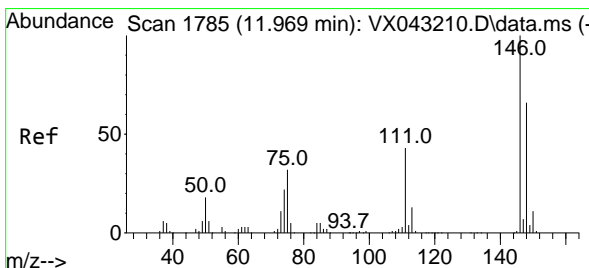
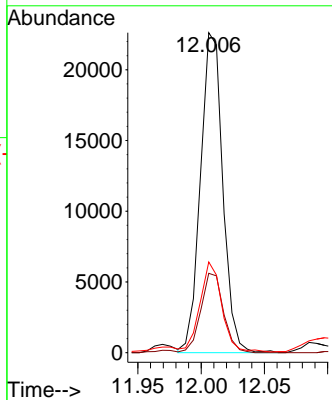
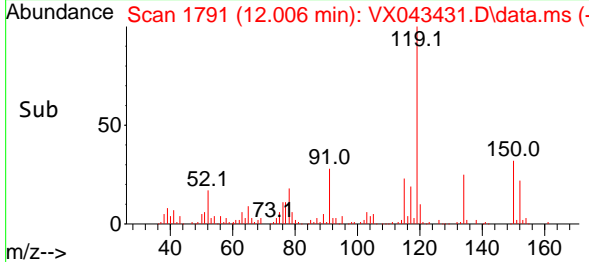


#86
 p-Isopropyltoluene
 Concen: 9.498 ug/l
 RT: 12.006 min Scan# 1797
 Delta R.T. 0.000 min
 Lab File: VX043431.D
 Acq: 18 Oct 2024 14:00

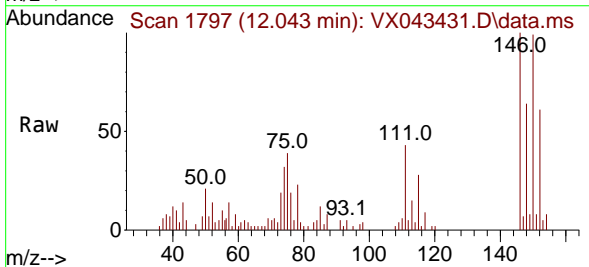
Instrument : MSVOA_X
 ClientSampleId :



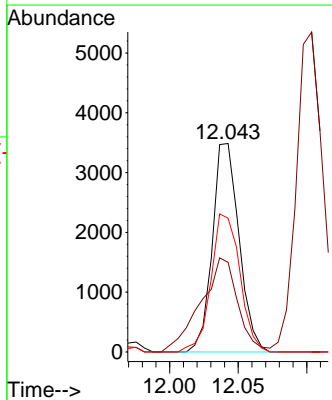
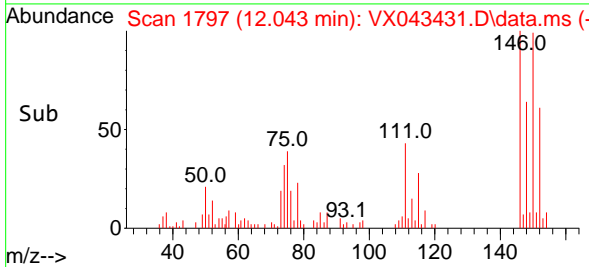
Tgt Ion:119 Resp: 27805
 Ion Ratio Lower Upper
 119 100
 134 25.1 13.0 38.9
 91 27.6 13.0 39.0

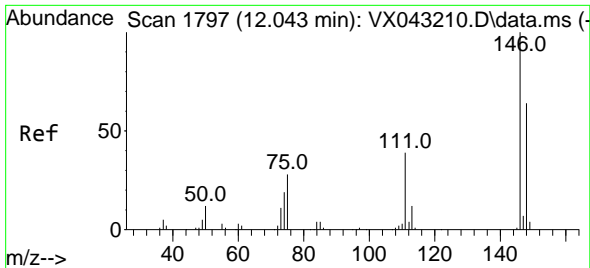


#87
 1,3-Dichlorobenzene
 Concen: 3.161 ug/l
 RT: 12.043 min Scan# 1797
 Delta R.T. 0.073 min
 Lab File: VX043431.D
 Acq: 18 Oct 2024 14:00



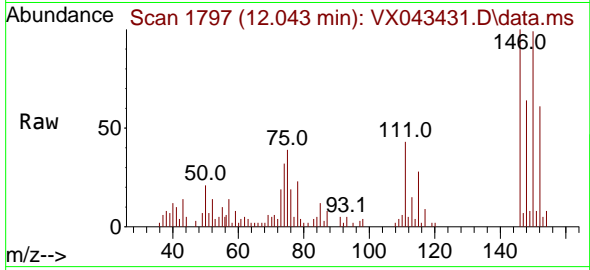
Tgt Ion:146 Resp: 4719
 Ion Ratio Lower Upper
 146 100
 111 62.5 21.8 65.3
 148 71.6 32.4 97.2



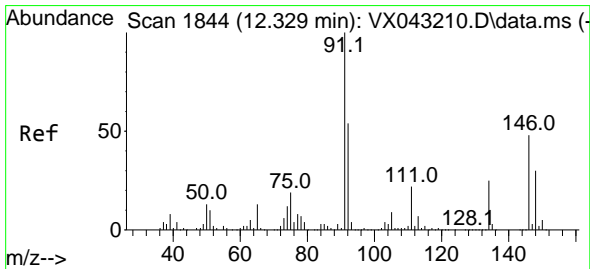
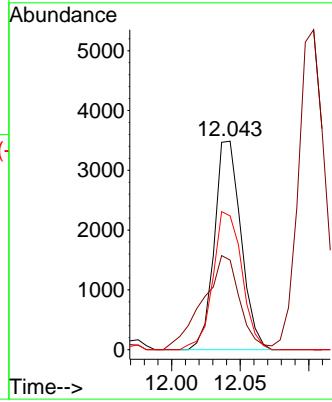
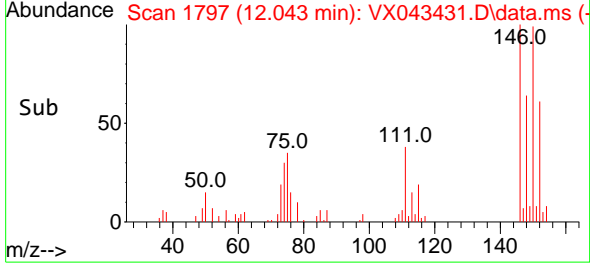


#88
 1,4-Dichlorobenzene
 Concen: 3.066 ug/l
 RT: 12.043 min Scan# 1797
 Delta R.T. 0.000 min
 Lab File: VX043431.D
 Acq: 18 Oct 2024 14:00

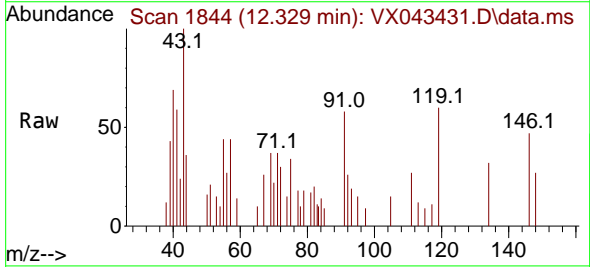
Instrument : MSVOA_X
 ClientSampleId :



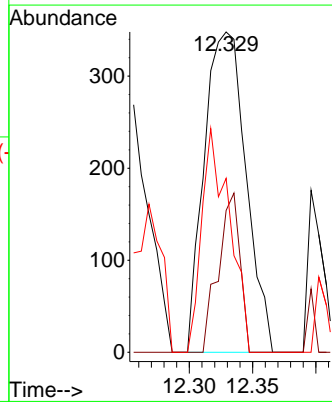
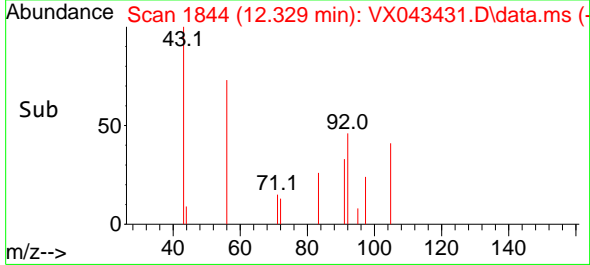
Tgt Ion:146 Resp: 4719
 Ion Ratio Lower Upper
 146 100
 111 62.5 20.8 62.5
 148 71.6 32.4 97.0

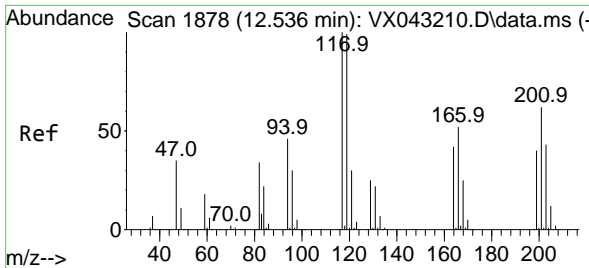


#89
 n-Butylbenzene
 Concen: 0.326 ug/l
 RT: 12.329 min Scan# 1844
 Delta R.T. 0.000 min
 Lab File: VX043431.D
 Acq: 18 Oct 2024 14:00



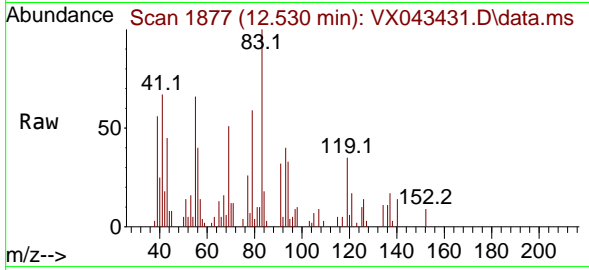
Tgt Ion: 91 Resp: 798
 Ion Ratio Lower Upper
 91 100
 92 25.8 27.0 81.0#
 134 46.4 12.9 38.6#



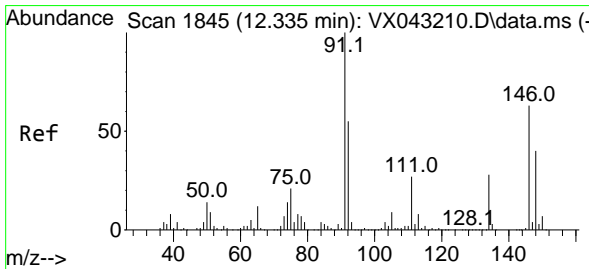
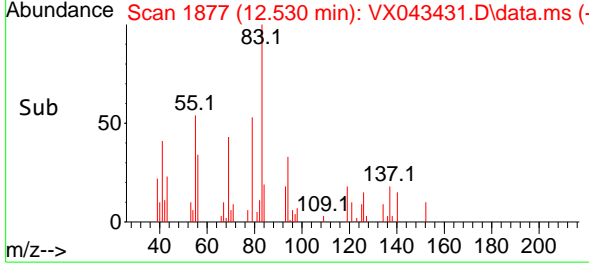
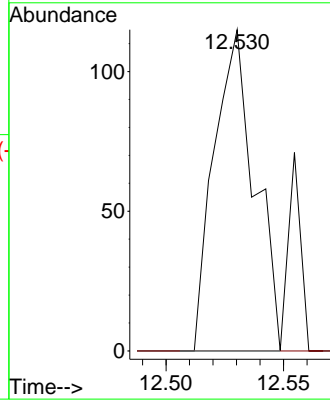


#90
 Hexachloroethane
 Concen: 0.253 ug/l
 RT: 12.530 min Scan# 117
 Delta R.T. -0.006 min
 Lab File: VX043431.D
 Acq: 18 Oct 2024 14:00

Instrument : MSVOA_X
 ClientSampleId :

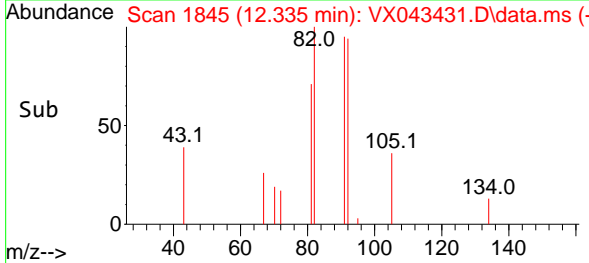
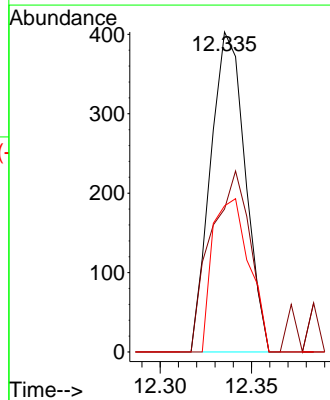
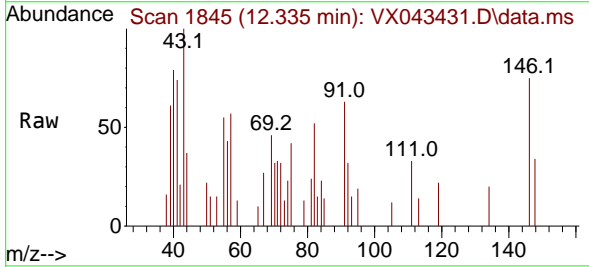


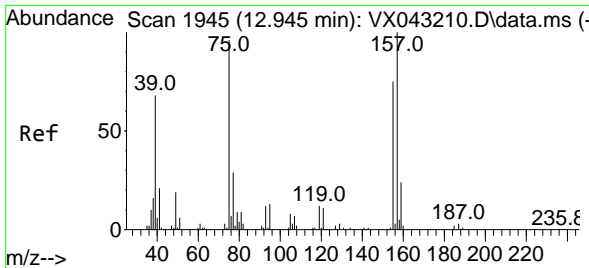
Tgt Ion:117 Resp: 139
 Ion Ratio Lower Upper
 117 100
 201 0.0 34.0 101.8#



#91
 1,2-Dichlorobenzene
 Concen: 0.349 ug/l
 RT: 12.335 min Scan# 1845
 Delta R.T. 0.000 min
 Lab File: VX043431.D
 Acq: 18 Oct 2024 14:00

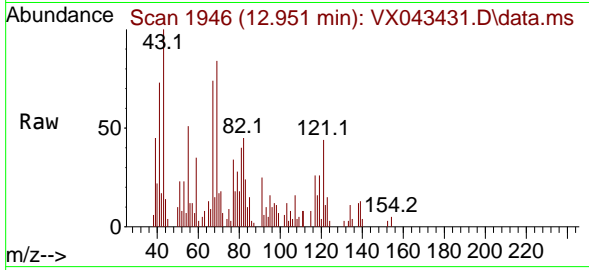
Tgt Ion:146 Resp: 533
 Ion Ratio Lower Upper
 146 100
 111 64.0 21.9 65.5
 148 50.7 31.9 95.5



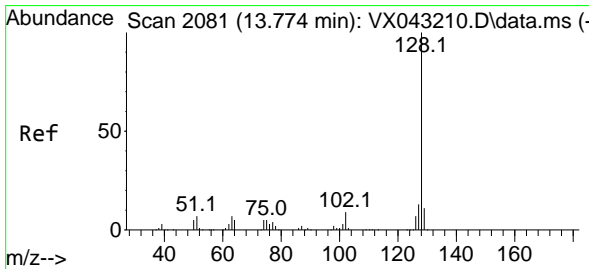
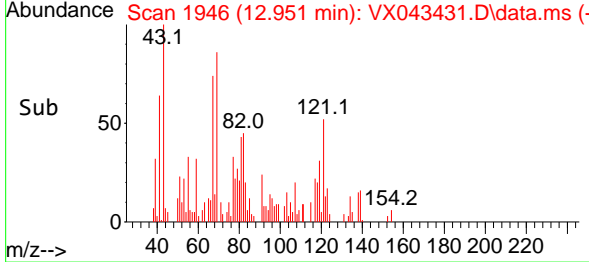
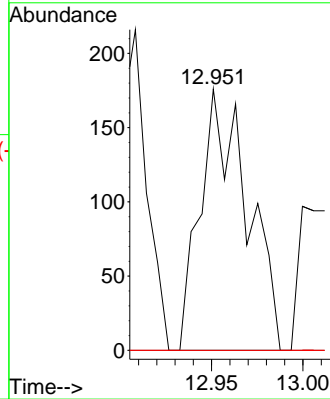


#92
 1,2-Dibromo-3-Chloropropane
 Concen: 1.141 ug/l
 RT: 12.951 min Scan# 1945
 Delta R.T. 0.006 min
 Lab File: VX043431.D
 Acq: 18 Oct 2024 14:00

Instrument : MSVOA_X
 ClientSampleId :



Tgt Ion: 75 Resp: 316
 Ion Ratio Lower Upper
 75 100
 155 0.0 38.8 116.4#
 157 0.0 49.0 147.0#



#95
 Naphthalene
 Concen: 27.210 ug/l
 RT: 13.774 min Scan# 2081
 Delta R.T. 0.000 min
 Lab File: VX043431.D
 Acq: 18 Oct 2024 14:00

Tgt Ion:128 Resp: 88051
 Ion Ratio Lower Upper
 128 100
 127 12.9 10.2 15.2
 129 11.0 8.6 13.0

