

Data Path : Z:\voasrv\HPCHEM1\MSVOA\_X\Data\VX101824\  
 Data File : VX043441.D  
 Acq On : 18 Oct 2024 17:51  
 Operator : JC/MD  
 Sample : P4440-02  
 Misc : 5.0mL/MSVOA\_X/WATER  
 ALS Vial : 1 Sample Multiplier: 1

Instrument :  
 MSVOA\_X  
 ClientSampleId :

Quant Time: Oct 18 23:24:22 2024  
 Quant Method : Z:\voasrv\HPCHEM1\MSVOA\_X\Method\82X100124W.M  
 Quant Title : SW846 8260  
 QLast Update : Wed Oct 02 16:50:57 2024  
 Response via : Initial Calibration

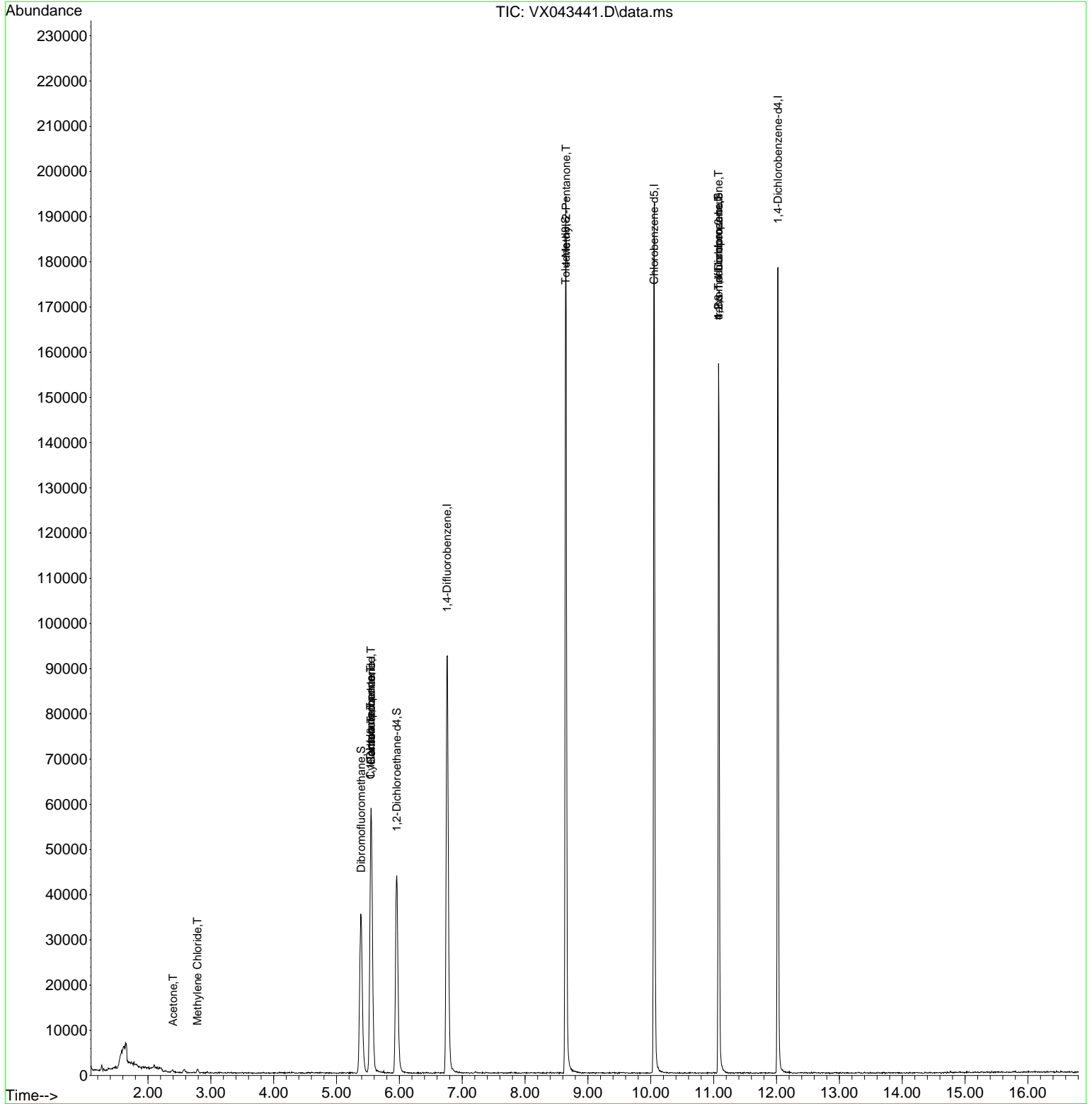
Compound	R.T.	QIon	Response	Conc	Units	Dev(Min)
-----						
Internal Standards						
1) Pentafluorobenzene	5.550	168	53257	50.000	ug/l	0.00
34) 1,4-Difluorobenzene	6.757	114	96560	50.000	ug/l	0.00
63) Chlorobenzene-d5	10.055	117	88103	50.000	ug/l	0.00
72) 1,4-Dichlorobenzene-d4	12.024	152	38572	50.000	ug/l	0.00
System Monitoring Compounds						
33) 1,2-Dichloroethane-d4	5.958	65	46320	53.256	ug/l	0.00
Spiked Amount	50.000	Range 74 - 125	Recovery	=	106.520%	
35) Dibromofluoromethane	5.391	113	31402	47.156	ug/l	0.00
Spiked Amount	50.000	Range 75 - 124	Recovery	=	94.320%	
50) Toluene-d8	8.647	98	115788	50.175	ug/l	0.00
Spiked Amount	50.000	Range 86 - 113	Recovery	=	100.340%	
62) 4-Bromofluorobenzene	11.079	95	43976	52.454	ug/l	0.00
Spiked Amount	50.000	Range 77 - 121	Recovery	=	104.900%	
Target Compounds						
					Qvalue	
16) Acetone	2.398	43	847	2.332	ug/l #	89
20) Methylene Chloride	2.788	84	481	0.718	ug/l #	85
31) Cyclohexane	5.543	56	1281	1.365	ug/l #	40
36) 1,1-Dichloropropene	5.543	75	4747	5.643	ug/l #	49
38) Carbon Tetrachloride	5.550	117	5834	5.858	ug/l #	17
51) 4-Methyl-2-Pentanone	8.653	43	538	0.531	ug/l #	1
76) 1,2,3-Trichloropropane	11.079	75	23978	28.026	ug/l #	33
81) trans-1,4-Dichloro-2-b...	11.079	75	23978	72.633	ug/l #	8

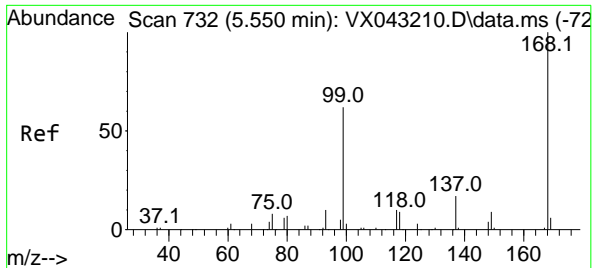
(#) = qualifier out of range (m) = manual integration (+) = signals summed

Data Path : Z:\voasrv\HPCHEM1\MSVOA\_X\Data\VX101824\  
 Data File : VX043441.D  
 Acq On : 18 Oct 2024 17:51  
 Operator : JC/MD  
 Sample : P4440-02  
 Misc : 5.0mL/MSVOA\_X/WATER  
 ALS Vial : 1 Sample Multiplier: 1

Instrument :  
 MSVOA\_X  
 ClientSampleId :

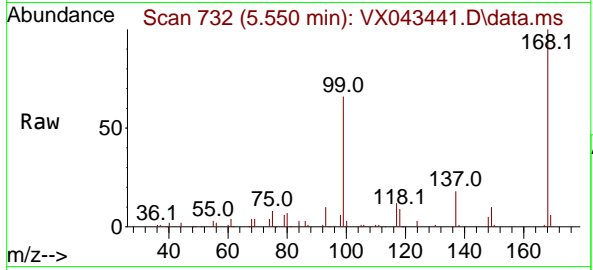
Quant Time: Oct 18 23:24:22 2024  
 Quant Method : Z:\voasrv\HPCHEM1\MSVOA\_X\Method\82X100124W.M  
 Quant Title : SW846 8260  
 QLast Update : Wed Oct 02 16:50:57 2024  
 Response via : Initial Calibration



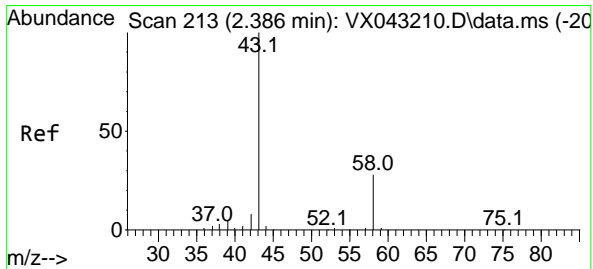
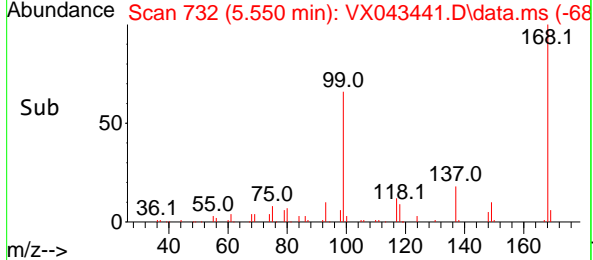
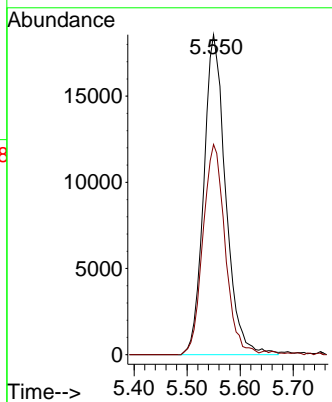


#1  
 Pentafluorobenzene  
 Concen: 50.000 ug/l  
 RT: 5.550 min Scan# 71  
 Delta R.T. -0.000 min  
 Lab File: VX043441.D  
 Acq: 18 Oct 2024 17:51

Instrument : MSVOA\_X  
 ClientSampleId :

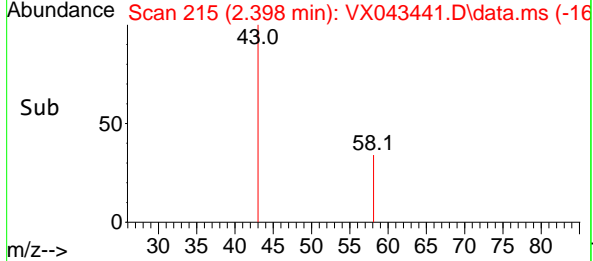
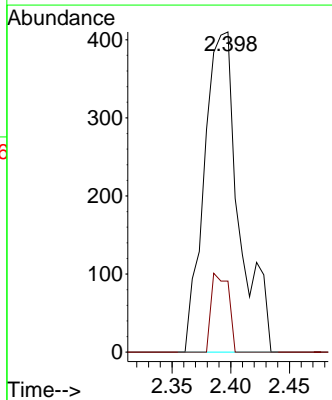
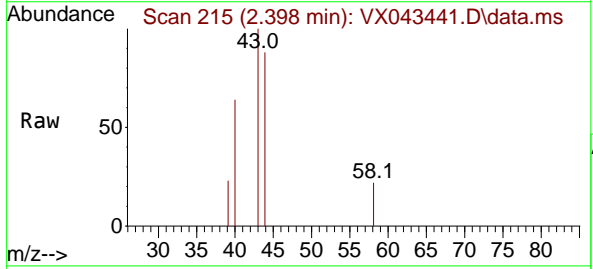


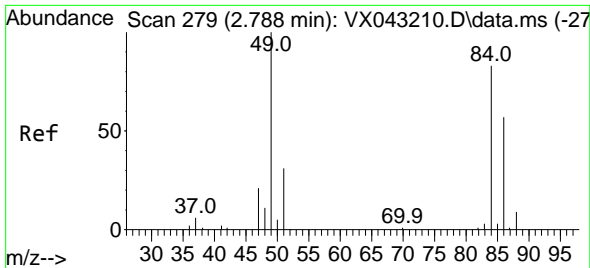
Tgt Ion:168 Resp: 53257  
 Ion Ratio Lower Upper  
 168 100  
 99 65.7 49.7 74.5



#16  
 Acetone  
 Concen: 2.332 ug/l  
 RT: 2.398 min Scan# 215  
 Delta R.T. 0.012 min  
 Lab File: VX043441.D  
 Acq: 18 Oct 2024 17:51

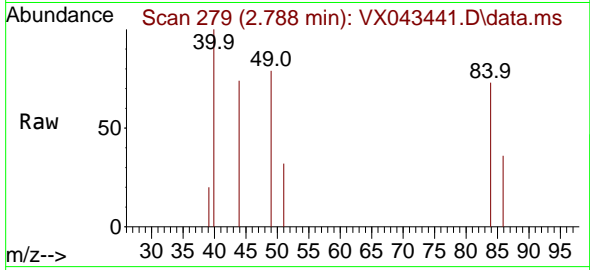
Tgt Ion: 43 Resp: 847  
 Ion Ratio Lower Upper  
 43 100  
 58 22.2 22.6 33.8#





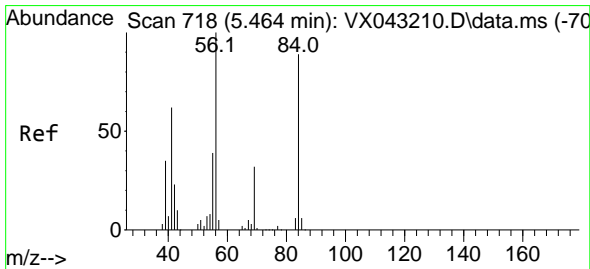
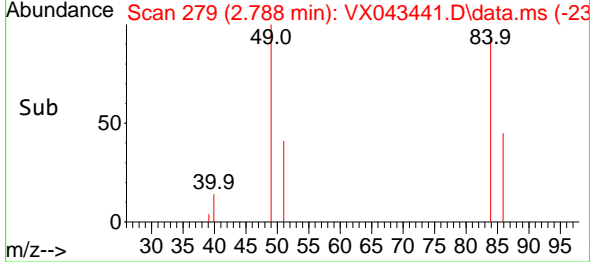
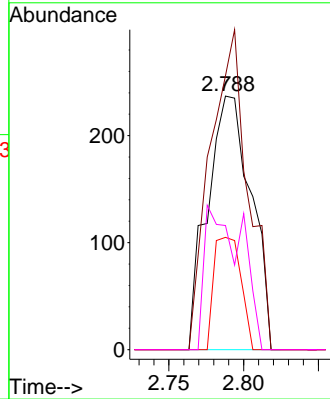
#20  
 Methylene Chloride  
 Concen: 0.718 ug/l  
 RT: 2.788 min Scan# 21  
 Delta R.T. -0.000 min  
 Lab File: VX043441.D  
 Acq: 18 Oct 2024 17:51

Instrument :  
 MSVOA\_X  
 ClientSampleId :

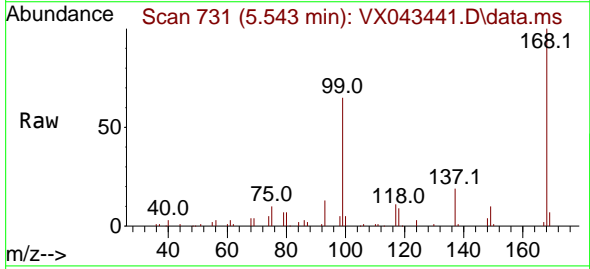


Tgt Ion: 84 Resp: 481

Ion	Ratio	Lower	Upper
84	100		
49	108.0	96.7	145.1
51	44.3	30.4	45.6
86	48.9	54.7	82.1#

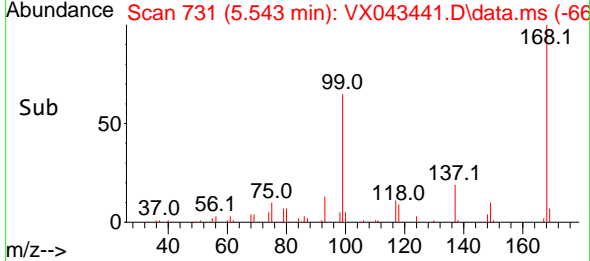
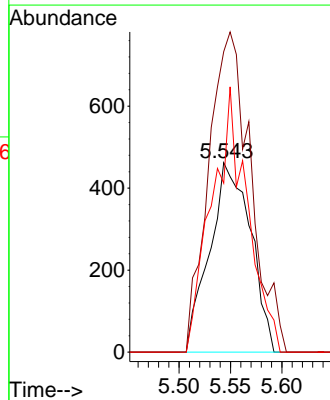


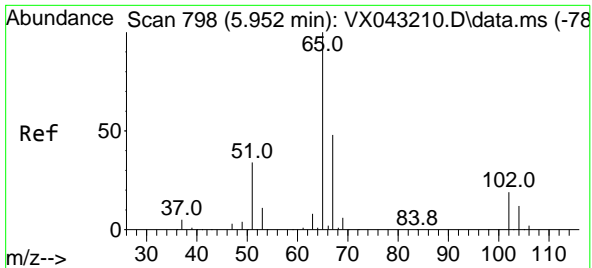
#31  
 Cyclohexane  
 Concen: 1.365 ug/l  
 RT: 5.543 min Scan# 731  
 Delta R.T. 0.079 min  
 Lab File: VX043441.D  
 Acq: 18 Oct 2024 17:51



Tgt Ion: 56 Resp: 1281

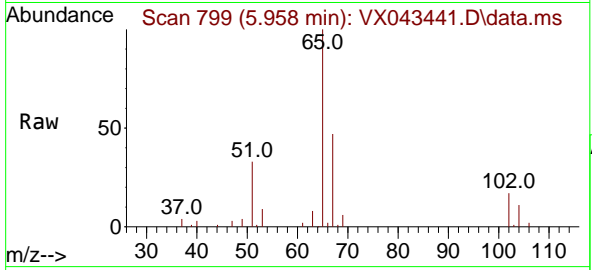
Ion	Ratio	Lower	Upper
56	100		
69	158.7	25.8	38.6#
84	89.2	71.1	106.7



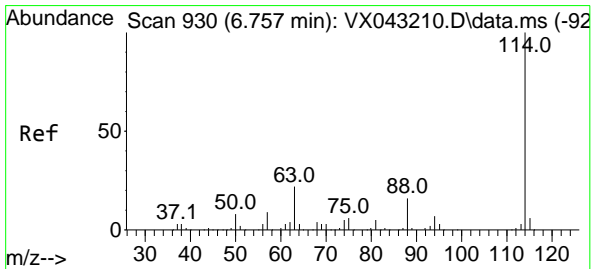
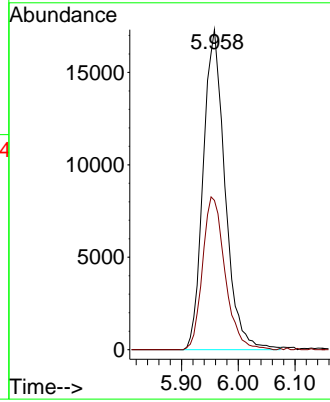
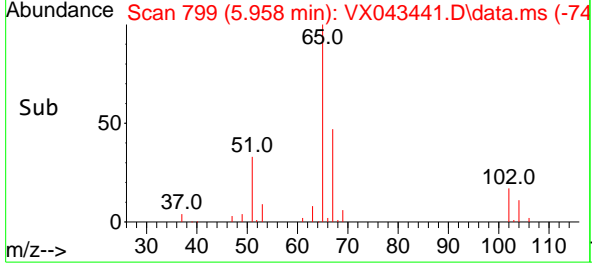


#33  
 1,2-Dichloroethane-d4  
 Concen: 53.256 ug/l  
 RT: 5.958 min Scan# 798  
 Delta R.T. 0.006 min  
 Lab File: VX043441.D  
 Acq: 18 Oct 2024 17:51

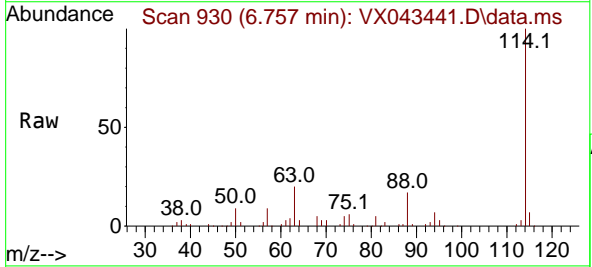
Instrument : MSVOA\_X  
 ClientSampleId :



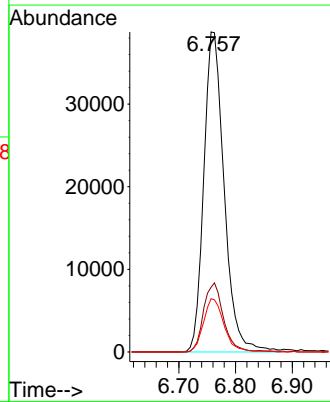
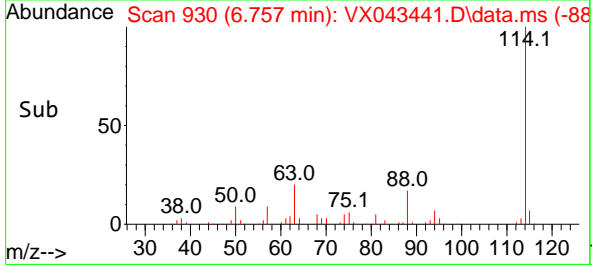
Tgt Ion: 65 Resp: 46320  
 Ion Ratio Lower Upper  
 65 100  
 67 49.1 0.0 99.0

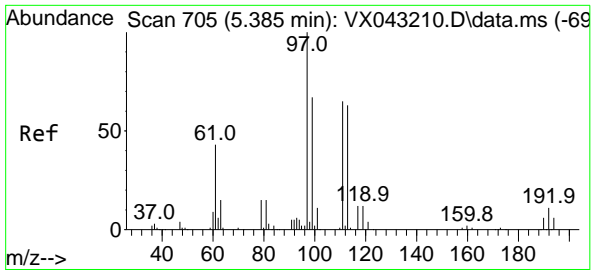


#34  
 1,4-Difluorobenzene  
 Concen: 50.000 ug/l  
 RT: 6.757 min Scan# 930  
 Delta R.T. -0.000 min  
 Lab File: VX043441.D  
 Acq: 18 Oct 2024 17:51



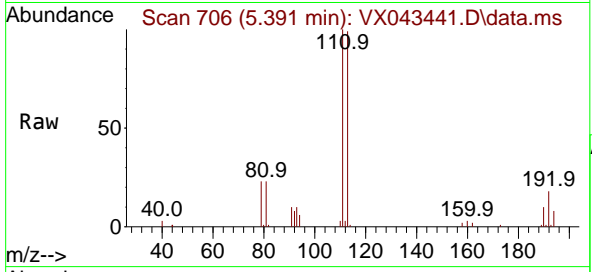
Tgt Ion: 114 Resp: 96560  
 Ion Ratio Lower Upper  
 114 100  
 63 20.2 0.0 43.0  
 88 16.6 0.0 33.0



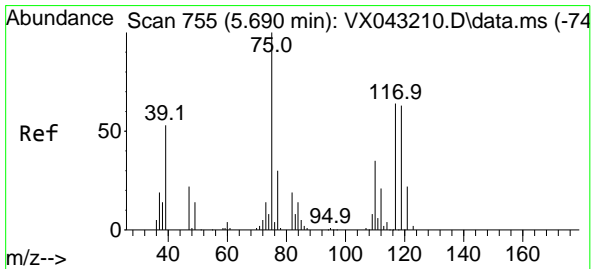
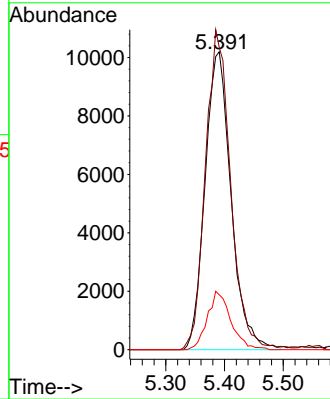
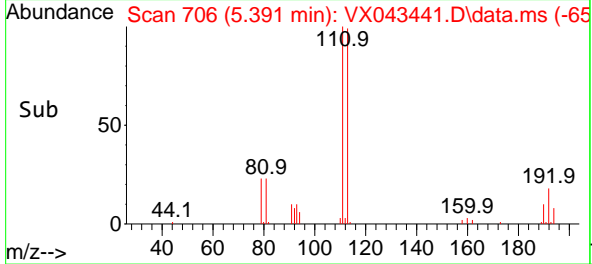


#35  
 Dibromofluoromethane  
 Concen: 47.156 ug/l  
 RT: 5.391 min Scan# 706  
 Delta R.T. 0.006 min  
 Lab File: VX043441.D  
 Acq: 18 Oct 2024 17:51

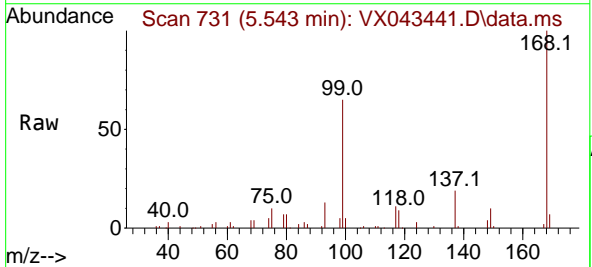
Instrument :  
 MSVOA\_X  
 ClientSampleId :



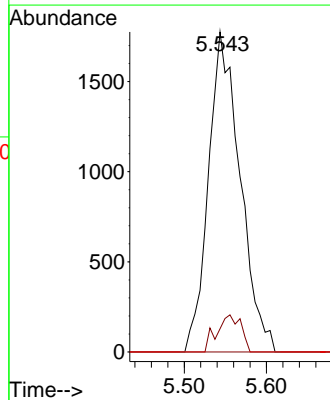
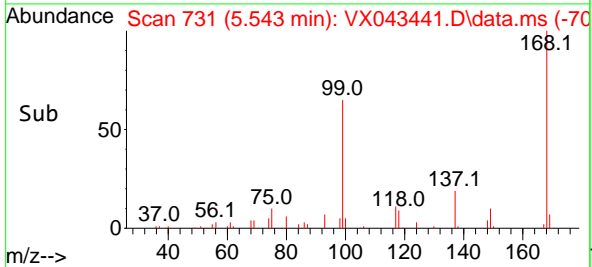
Tgt Ion:113 Resp: 31402  
 Ion Ratio Lower Upper  
 113 100  
 111 104.1 83.4 125.0  
 192 17.7 14.1 21.1

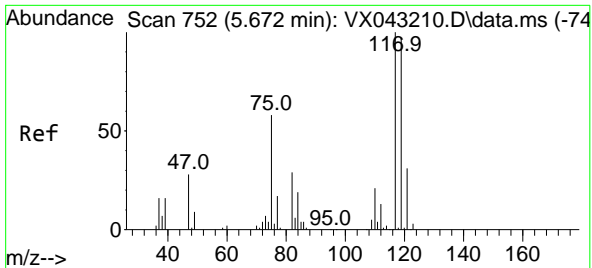


#36  
 1,1-Dichloropropene  
 Concen: 5.643 ug/l  
 RT: 5.543 min Scan# 731  
 Delta R.T. -0.147 min  
 Lab File: VX043441.D  
 Acq: 18 Oct 2024 17:51



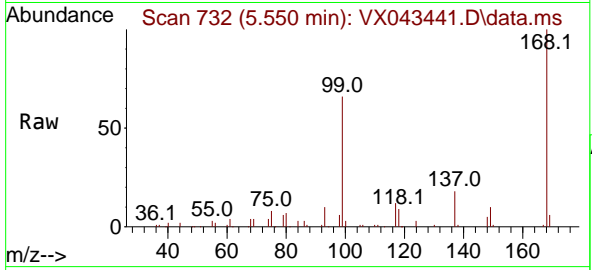
Tgt Ion: 75 Resp: 4747  
 Ion Ratio Lower Upper  
 75 100  
 110 8.8 17.8 53.3#  
 77 0.0 24.9 37.3#



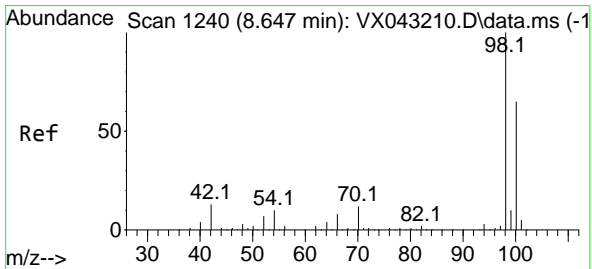
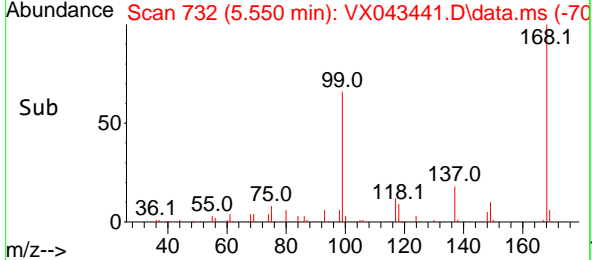
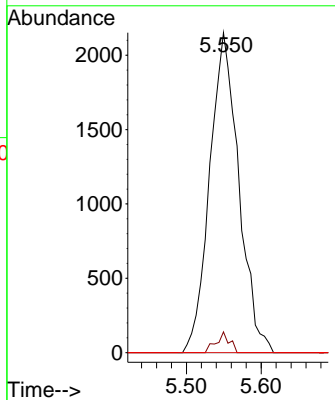


#38  
 Carbon Tetrachloride  
 Concen: 5.858 ug/l  
 RT: 5.550 min Scan# 71  
 Delta R.T. -0.122 min  
 Lab File: VX043441.D  
 Acq: 18 Oct 2024 17:51

Instrument :  
 MSVOA\_X  
 ClientSampleId :

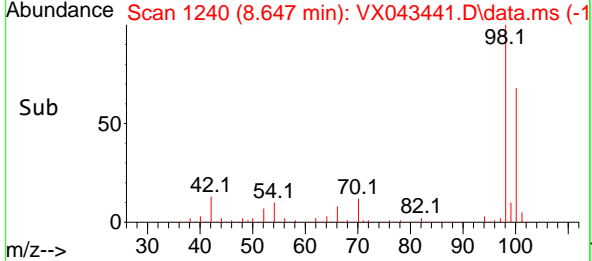
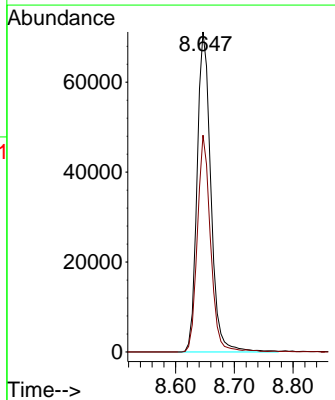
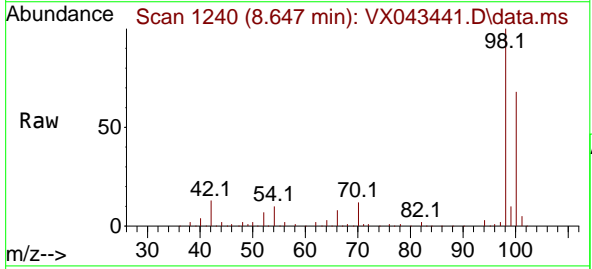


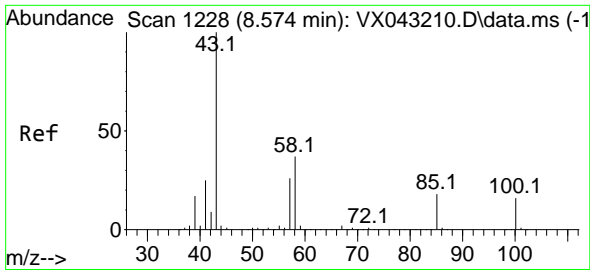
Tgt Ion:117 Resp: 5834  
 Ion Ratio Lower Upper  
 117 100  
 119 6.5 77.7 116.5#  
 121 0.0 24.3 36.5#



#50  
 Toluene-d8  
 Concen: 50.175 ug/l  
 RT: 8.647 min Scan# 1240  
 Delta R.T. -0.000 min  
 Lab File: VX043441.D  
 Acq: 18 Oct 2024 17:51

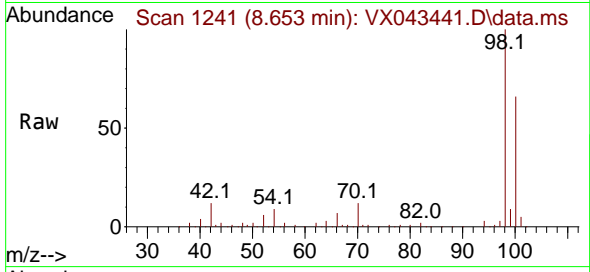
Tgt Ion: 98 Resp: 115788  
 Ion Ratio Lower Upper  
 98 100  
 100 65.1 52.4 78.6



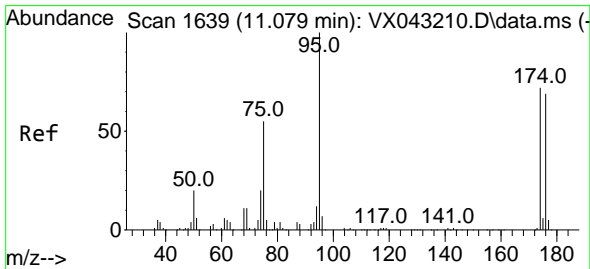
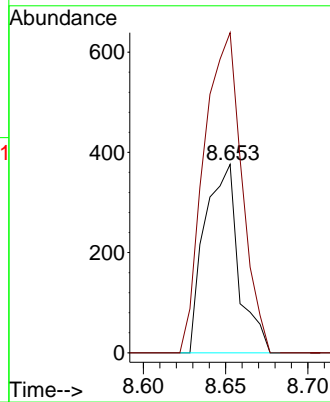
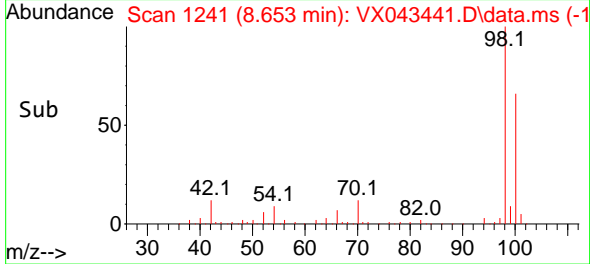


#51  
 4-Methyl-2-Pentanone  
 Concen: 0.531 ug/l  
 RT: 8.653 min Scan# 11  
 Delta R.T. 0.079 min  
 Lab File: VX043441.D  
 Acq: 18 Oct 2024 17:51

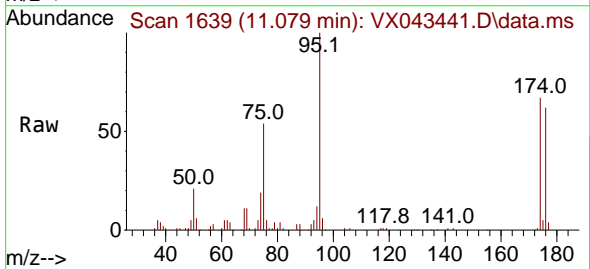
Instrument :  
 MSVOA\_X  
 ClientSampleId :



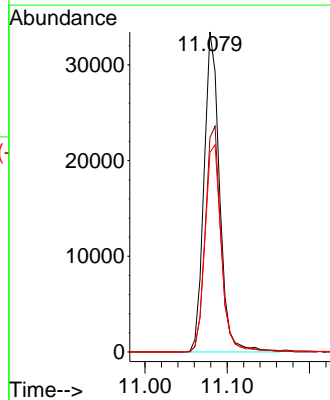
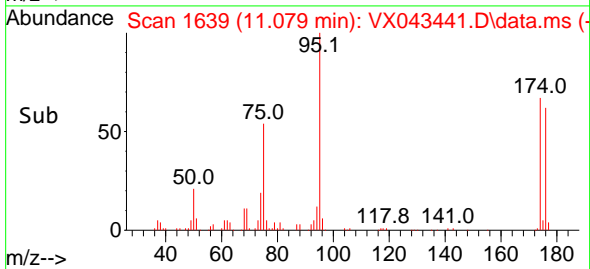
Tgt Ion: 43 Resp: 538  
 Ion Ratio Lower Upper  
 43 100  
 58 190.0 30.0 45.0#



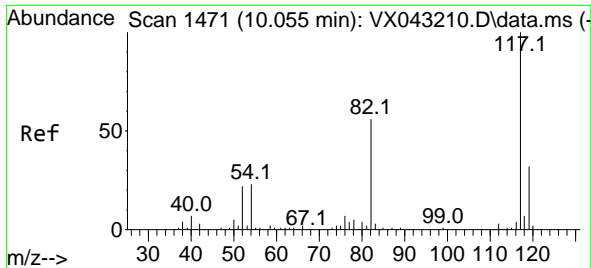
#62  
 4-Bromofluorobenzene  
 Concen: 52.454 ug/l  
 RT: 11.079 min Scan# 1639  
 Delta R.T. -0.000 min  
 Lab File: VX043441.D  
 Acq: 18 Oct 2024 17:51



Tgt Ion: 95 Resp: 43976  
 Ion Ratio Lower Upper  
 95 100  
 174 71.8 0.0 145.0  
 176 68.5 0.0 143.0





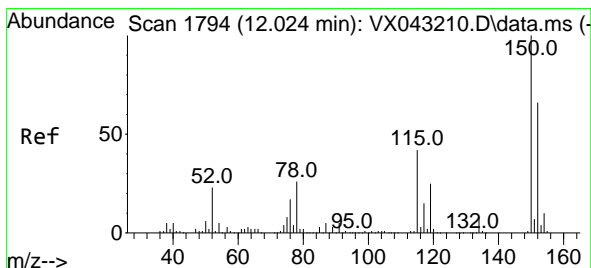
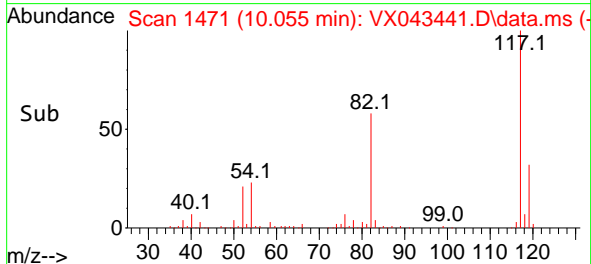
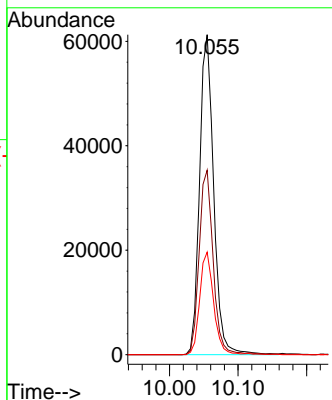
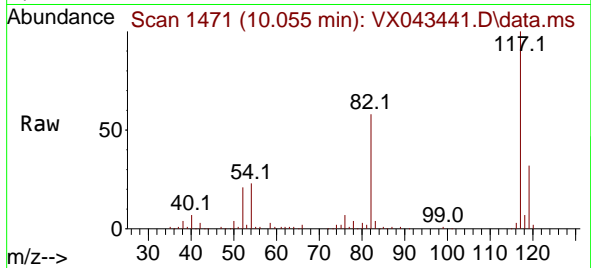


#63  
 Chlorobenzene-d5  
 Concen: 50.000 ug/l  
 RT: 10.055 min Scan# 1471  
 Delta R.T. -0.000 min  
 Lab File: VX043441.D  
 Acq: 18 Oct 2024 17:51

Instrument : MSVOA\_X  
 ClientSampleId :

Tgt Ion:117 Resp: 88103

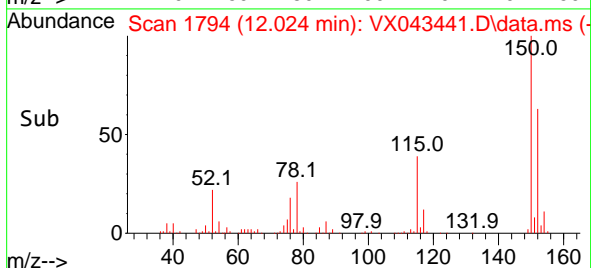
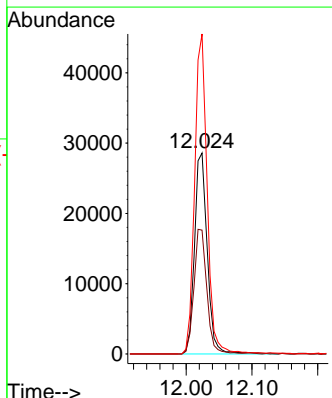
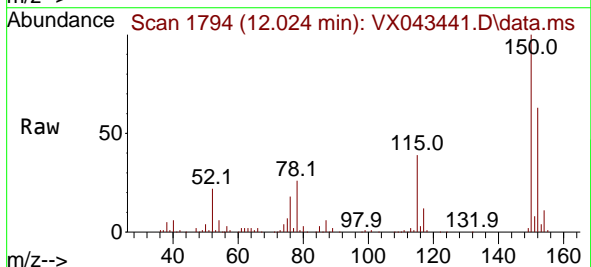
Ion	Ratio	Lower	Upper
117	100		
82	57.7	45.0	67.6
119	32.0	25.3	37.9

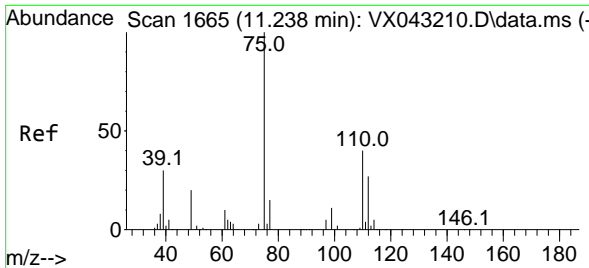


#72  
 1,4-Dichlorobenzene-d4  
 Concen: 50.000 ug/l  
 RT: 12.024 min Scan# 1794  
 Delta R.T. -0.000 min  
 Lab File: VX043441.D  
 Acq: 18 Oct 2024 17:51

Tgt Ion:152 Resp: 38572

Ion	Ratio	Lower	Upper
152	100		
115	62.5	44.1	132.3
150	156.4	0.0	347.4

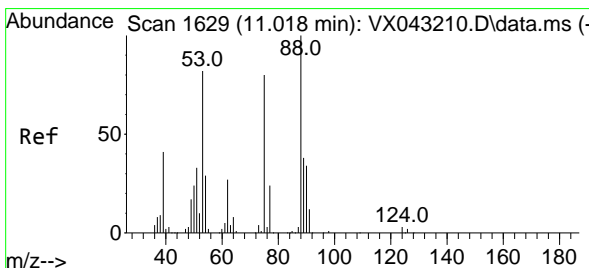
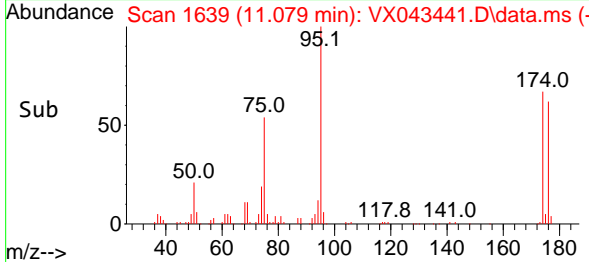
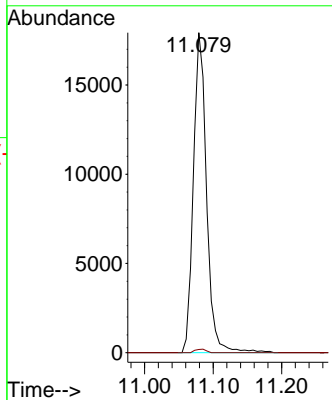
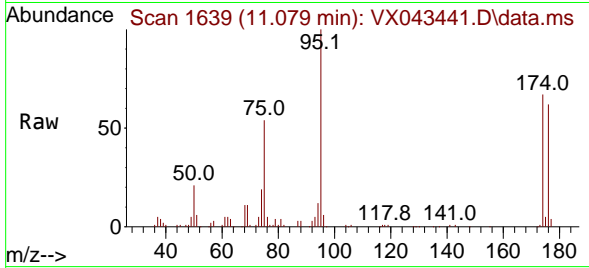




#76  
 1,2,3-Trichloropropane  
 Concen: 28.026 ug/l  
 RT: 11.079 min Scan# 1639  
 Delta R.T. -0.159 min  
 Lab File: VX043441.D  
 Acq: 18 Oct 2024 17:51

Instrument : MSVOA\_X  
 ClientSampleId :

Tgt Ion: 75 Resp: 23978  
 Ion Ratio Lower Upper  
 75 100  
 77 0.9 22.0 66.0#



#81  
 trans-1,4-Dichloro-2-butene  
 Concen: 72.633 ug/l  
 RT: 11.079 min Scan# 1639  
 Delta R.T. 0.061 min  
 Lab File: VX043441.D  
 Acq: 18 Oct 2024 17:51

Tgt Ion: 75 Resp: 23978  
 Ion Ratio Lower Upper  
 75 100  
 53 0.0 83.9 125.9#  
 89 0.0 38.6 58.0#

