

Data Path : Z:\voasrv\HPCHEM1\MSVOA_X\Data\VX101921\
 Data File : VX024844.D
 Acq On : 19 Oct 2021 13:33
 Operator : JC/MD
 Sample : M4181-02ME
 Misc : 6.00g/5.0mL/100uL/5.0mL/MSVOA_X/MEOH
 ALS Vial : 4 Sample Multiplier: 1

Instrument :
 MSVOA_X
 ClientSampleId :
 C0B07ME

Integration Parameters: LSCINT.P
 Integrator: RTE
 Smoothing : OFF Filtering: 5
 Sampling : 1 Min Area: 0 % of largest Peak
 Start Thrs: 0.2 Max Peaks: 100
 Stop Thrs : 0 Peak Location: TOP

If leading or trailing edge < 100 prefer < Baseline drop else tangent >
 Peak separation: 5

Method : Z:\voasrv\HPCHEM1\MSVOA_X\Method\SFAMXML100721WMA.M
 Title : VOC Analysis

Signal : TIC: VX024844.D\data.ms

peak #	R.T. min	first scan	max scan	last scan	PK TY	peak height	corr. area	corr. % max.	% of total
1	1.368	42	46	53	rBV	81542	96144	11.23%	1.323%
2	1.648	89	92	100	rBV	48948	69518	8.12%	0.956%
3	2.130	167	171	172	rBV3	1169	1208	0.14%	0.017%
4	2.166	175	177	179	rBV3	693	539	0.06%	0.007%
5	2.282	190	196	205	rVB	159102	252425	29.49%	3.473%
6	2.361	205	209	216	rBV2	3722	8614	1.01%	0.119%
7	2.465	225	226	228	rBV2	978	742	0.09%	0.010%
8	2.782	274	278	287	rVB3	3266	5729	0.67%	0.079%
9	2.934	300	303	304	rBV2	677	563	0.07%	0.008%
10	3.130	332	335	336	rVB2	775	550	0.06%	0.008%
11	3.160	336	340	341	rVV3	678	733	0.09%	0.010%
12	3.349	367	371	372	rBV2	526	582	0.07%	0.008%
13	3.770	437	440	443	rBV3	548	597	0.07%	0.008%
14	3.861	453	455	460	rVB2	391	463	0.05%	0.006%
15	3.977	473	474	479	rBV3	328	504	0.06%	0.007%
16	4.489	549	558	578	rBV	57510	240898	28.15%	3.314%
17	4.952	630	634	637	rBV2	445	767	0.09%	0.011%
18	5.062	640	652	667	rVV3	109656	352602	41.20%	4.851%
19	5.208	670	676	678	rBV3	529	929	0.11%	0.013%
20	5.233	678	680	684	rVB2	545	630	0.07%	0.009%
21	5.324	690	695	697	rBV	449	861	0.10%	0.012%
22	5.452	714	716	718	rBV3	625	488	0.06%	0.007%
23	5.501	721	724	726	rBV3	590	681	0.08%	0.009%
24	5.964	789	800	815	rBV4	297636	855872	100.00%	11.774%
25	6.068	815	817	820	rBV3	543	747	0.09%	0.010%
26	6.135	826	828	832	rVB2	574	655	0.08%	0.009%
27	6.178	833	835	839	rVB2	493	575	0.07%	0.008%
28	6.281	850	852	855	rVB	523	602	0.07%	0.008%
29	6.367	855	866	875	rBV6	4021	11852	1.38%	0.163%
30	6.763	921	931	943	rBV	284129	677281	79.13%	9.317%
31	6.861	946	947	949	rBV	539	464	0.05%	0.006%
32	7.117	980	989	994	rBV6	5886	15226	1.78%	0.209%
33	7.178	997	999	1000	rBV	642	436	0.05%	0.006%
34	7.208	1000	1004	1012	rVV5	2841	6642	0.78%	0.091%
35	7.312	1012	1021	1036	rVV	183843	406479	47.49%	5.592%
36	7.464	1043	1046	1047	rBV2	397	434	0.05%	0.006%

Data Path : Z:\voasrv\HPCHEM1\MSVOA_X\Data\VX101921\
 Data File : VX024844.D
 Acq On : 19 Oct 2021 13:33
 Operator : JC/MD
 Sample : M4181-02ME
 Misc : 6.00g/5.0mL/100uL/5.0mL/MSVOA_X/MEOH
 ALS Vial : 4 Sample Multiplier: 1

Instrument :
 MSVOA_X
 ClientSampleId :
 C0B07ME

Integration Parameters: LSCINT.P

Integrator: RTE
 Smoothing : OFF Filtering: 5
 Sampling : 1 Min Area: 0 % of largest Peak
 Start Thrs: 0.2 Max Peaks: 100
 Stop Thrs : 0 Peak Location: TOP

If leading or trailing edge < 100 prefer < Baseline drop else tangent >
 Peak separation: 5

Method : Z:\voasrv\HPCHEM1\MSVOA_X\Method\SFAMXLM100721WMA.M
 Title : VOC Analysis

37	7.818	1100	1104	1109	rVV4	709	1371	0.16%	0.019%
38	7.946	1119	1125	1126	rBV3	1865	3146	0.37%	0.043%
39	8.049	1140	1142	1147	rBV2	497	840	0.10%	0.012%
40	8.251	1171	1175	1179	rVV2	2867	4722	0.55%	0.065%
41	8.330	1181	1188	1201	rVV	120738	202674	23.68%	2.788%
42	8.470	1208	1211	1212	rBV	912	799	0.09%	0.011%
43	8.531	1218	1221	1222	rVB2	576	468	0.05%	0.006%
44	8.647	1234	1240	1248	rBV	409052	660661	77.19%	9.089%
45	8.720	1248	1252	1256	rBV2	5007	8321	0.97%	0.114%
46	8.952	1284	1290	1299	rVV	91307	135297	15.81%	1.861%
47	9.122	1313	1318	1321	rVB4	1011	1488	0.17%	0.020%
48	9.171	1324	1326	1330	rVB2	616	818	0.10%	0.011%
49	9.281	1338	1344	1346	rVB2	926	1275	0.15%	0.018%
50	9.397	1356	1363	1383	rBV	243835	504574	58.95%	6.941%
51	9.671	1407	1408	1410	rVV	607	431	0.05%	0.006%
52	9.714	1413	1415	1418	rVV2	814	1010	0.12%	0.014%
53	10.055	1465	1471	1483	rBV	556316	787517	92.01%	10.834%
54	10.195	1492	1494	1500	rVB2	986	1165	0.14%	0.016%
55	10.299	1506	1511	1515	rBV5	1915	2980	0.35%	0.041%
56	10.573	1553	1556	1558	rVV2	500	535	0.06%	0.007%
57	10.647	1564	1568	1574	rVB6	1577	2941	0.34%	0.040%
58	10.732	1581	1582	1588	rVV3	316	461	0.05%	0.006%
59	10.854	1600	1602	1605	rVV2	512	555	0.06%	0.008%
60	10.896	1608	1609	1611	rBV	629	518	0.06%	0.007%
61	10.945	1615	1617	1620	rBV2	418	515	0.06%	0.007%
62	10.970	1620	1621	1625	rVB2	889	608	0.07%	0.008%
63	11.092	1638	1641	1642	rBV2	829	640	0.07%	0.009%
64	11.122	1642	1646	1650	rVB2	2372	3324	0.39%	0.046%
65	11.195	1653	1658	1668	rVV	329572	456286	53.31%	6.277%
66	11.378	1686	1688	1692	rBV2	411	550	0.06%	0.008%
67	11.476	1701	1704	1708	rBV5	1859	2652	0.31%	0.036%
68	11.585	1720	1722	1725	rBV2	429	458	0.05%	0.006%
69	11.610	1725	1726	1731	rVB2	618	708	0.08%	0.010%
70	11.677	1735	1737	1740	rBV2	685	805	0.09%	0.011%
71	11.713	1740	1743	1745	rBV2	900	1305	0.15%	0.018%
72	11.750	1746	1749	1758	rVB4	3335	5079	0.59%	0.070%
73	11.841	1762	1764	1768	rVB3	529	588	0.07%	0.008%
74	11.933	1775	1779	1783	rVB3	1512	2120	0.25%	0.029%
75	11.969	1783	1785	1788	rBV3	875	853	0.10%	0.012%
76	12.024	1789	1794	1801	rBV	635266	786149	91.85%	10.815%

Data Path : Z:\voasrv\HPCHEM1\MSVOA_X\Data\VX101921\
 Data File : VX024844.D
 Acq On : 19 Oct 2021 13:33
 Operator : JC/MD
 Sample : M4181-02ME
 Misc : 6.00g/5.0mL/100uL/5.0mL/MSVOA_X/MEOH
 ALS Vial : 4 Sample Multiplier: 1

Instrument :
 MSVOA_X
 ClientSampleId :
 C0B07ME

Integration Parameters: LSCINT.P

Integrator: RTE
 Smoothing : OFF Filtering: 5
 Sampling : 1 Min Area: 0 % of largest Peak
 Start Thrs: 0.2 Max Peaks: 100
 Stop Thrs : 0 Peak Location: TOP

If leading or trailing edge < 100 prefer < Baseline drop else tangent >
 Peak separation: 5

Method : Z:\voasrv\HPCHEM1\MSVOA_X\Method\SFAMXML100721WMA.M
 Title : VOC Analysis

77	12.219	1824	1826	1828	rBV	604	454	0.05%	0.006%
78	12.323	1836	1843	1851	rBV	509505	646952	75.59%	8.900%
79	12.427	1857	1860	1864	rVB4	1573	2036	0.24%	0.028%
80	12.475	1864	1868	1869	rBV2	351	440	0.05%	0.006%
81	12.664	1897	1899	1902	rBV3	361	450	0.05%	0.006%
82	12.762	1911	1915	1916	rBV3	587	788	0.09%	0.011%
83	12.963	1944	1948	1950	rBV2	606	784	0.09%	0.011%
84	13.109	1971	1972	1976	rBV	908	876	0.10%	0.012%
85	13.274	1996	1999	2001	rVB2	486	466	0.05%	0.006%
86	13.402	2016	2020	2021	rBV2	501	664	0.08%	0.009%
87	13.597	2047	2052	2058	rBV4	1744	2641	0.31%	0.036%
88	13.780	2078	2082	2089	rBV	1571	2392	0.28%	0.033%
89	13.847	2089	2093	2095	rVB2	865	968	0.11%	0.013%
90	14.042	2123	2125	2129	rVV3	947	1066	0.12%	0.015%
91	14.195	2147	2150	2155	rBV2	431	765	0.09%	0.011%
92	14.280	2163	2164	2168	rVB2	788	692	0.08%	0.010%
93	14.432	2187	2189	2192	rVB2	622	735	0.09%	0.010%
94	14.567	2209	2211	2213	rBV2	540	559	0.07%	0.008%
95	15.066	2290	2293	2295	rVB3	526	501	0.06%	0.007%
96	15.188	2311	2313	2319	rBV5	679	973	0.11%	0.013%
97	15.390	2344	2346	2347	rBV2	1195	775	0.09%	0.011%
98	15.963	2438	2440	2441	rBV2	1017	701	0.08%	0.010%
99	16.469	2521	2523	2524	rBV	821	602	0.07%	0.008%
100	16.627	2547	2549	2550	rBV	644	434	0.05%	0.006%

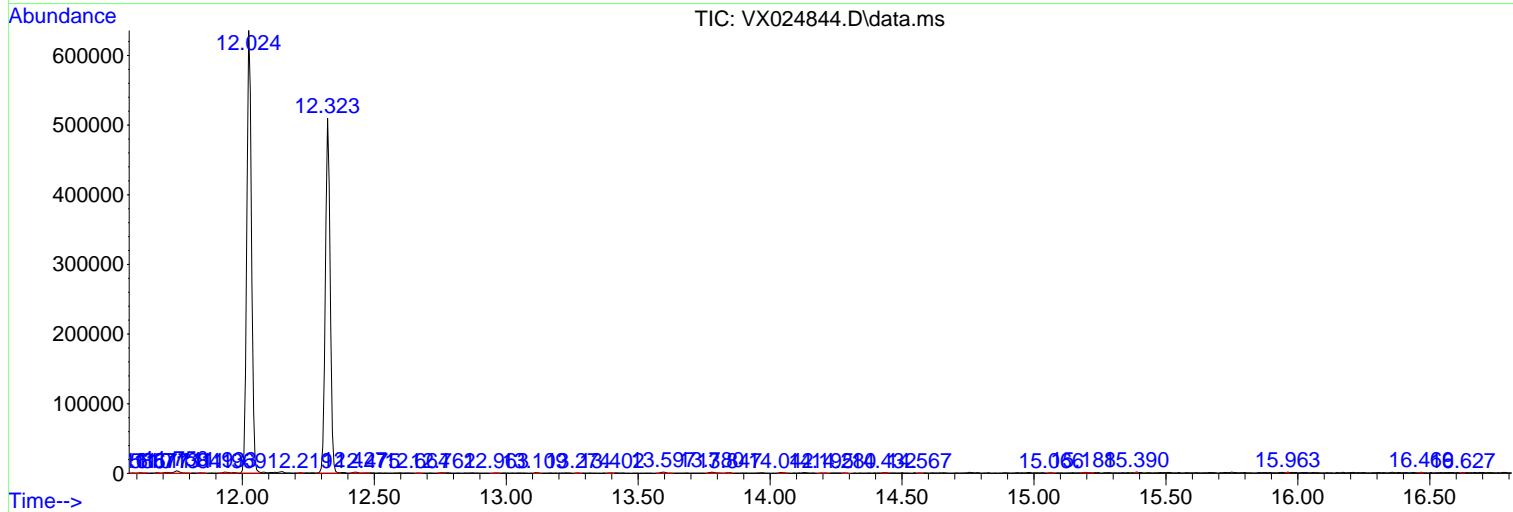
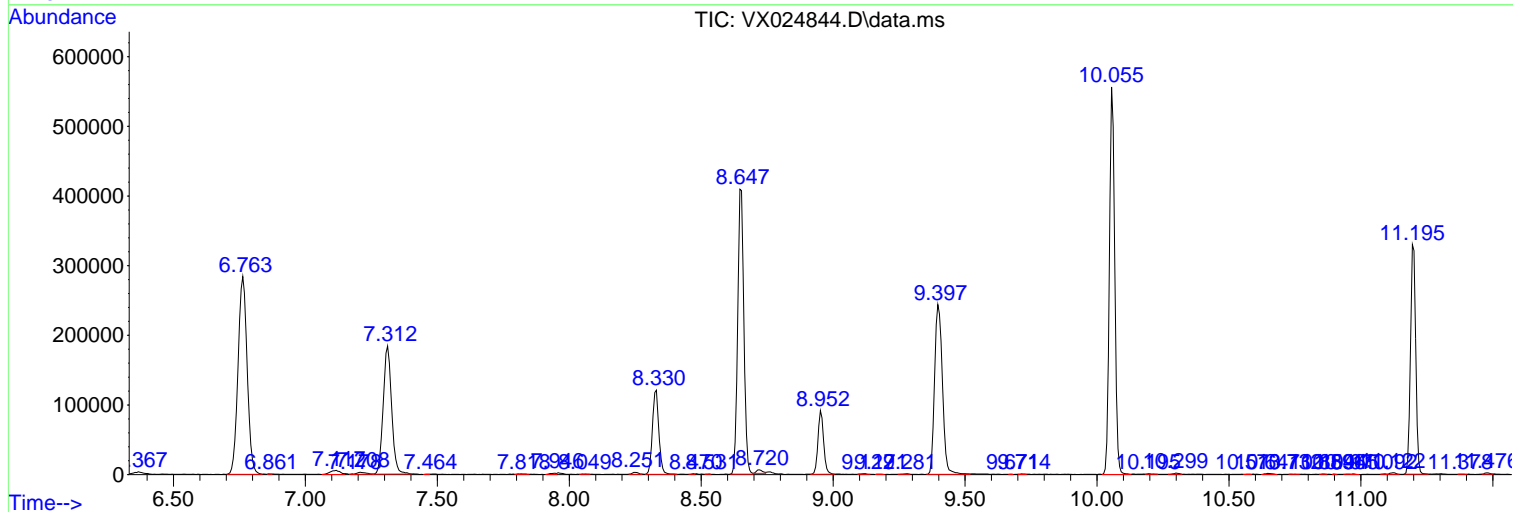
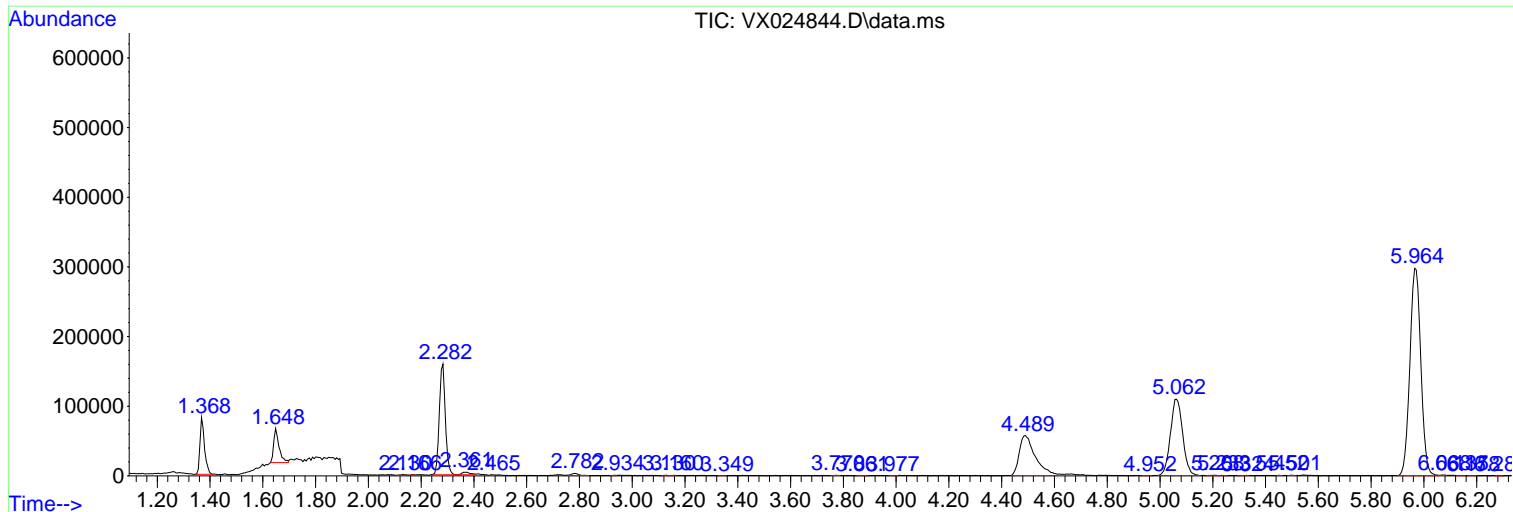
Sum of corrected areas: 7268953

Data Path : Z:\voasrv\HPCHEM1\MSVOA_X\Data\VX101921\
 Data File : VX024844.D
 Acq On : 19 Oct 2021 13:33
 Operator : JC/MD
 Sample : M4181-02ME
 Misc : 6.00g/5.0mL/100uL/5.0mL/MSVOA_X/MEOH
 ALS Vial : 4 Sample Multiplier: 1

Instrument :
 MSVOA_X
 ClientSampled :
 C0B07ME

Quant Method : Z:\voasrv\HPCHEM1\MSVOA_X\Method\SFAMXML100721WMA.M
 Quant Title : VOC Analysis

TIC Library : C:\Database\NIST20.L
 TIC Integration Parameters: LSCINT.P



Library Search Compound Report

Data Path : Z:\voasrv\HPCHEM1\MSVOA_X\Data\VX101921\
Data File : VX024844.D
Acq On : 19 Oct 2021 13:33
Operator : JC/MD
Sample : M4181-02ME
Misc : 6.00g/5.0mL/100uL/5.0mL/MSVOA_X/MEOH
ALS Vial : 4 Sample Multiplier: 1

Instrument :
MSVOA_X
ClientSampleId :
C0B07ME

Quant Method : Z:\voasrv\HPCHEM1\MSVOA_X\Method\SFAMXML100721WMA.M
Quant Title : VOC Analysis

TIC Library : C:\Database\NIST20.L
TIC Integration Parameters: LSCINT.P

No Library Search Compounds Detected

Data Path : Z:\voasrv\HPCHEM1\MSVOA_X\Data\VX101921\
Data File : VX024844.D
Acq On : 19 Oct 2021 13:33
Operator : JC/MD
Sample : M4181-02ME
Misc : 6.00g/5.0mL/100uL/5.0mL/MSVOA_X/MEOH
ALS Vial : 4 Sample Multiplier: 1

Instrument :
MSVOA_X
ClientSampleId :
C0B07ME

Quant Method : Z:\voasrv\HPCHEM1\MSVOA_X\Method\SFAMXLM100721WMA.M
Quant Title : VOC Analysis

TIC Library : C:\Database\NIST20.L
TIC Integration Parameters: LSCINT.P

TIC Top Hit name	RT	EstConc	Units	Response	--Internal Standard--			
					#	RT	Resp	Conc
