

Data Path : Z:\voasrv\HPCHEM1\MSVOA\_X\Data\VX101922\  
 Data File : VX032249.D  
 Acq On : 20 Oct 2022 08:00  
 Operator : JC/MD  
 Sample : PB148361ZHE#15  
 Misc : 5.0mL/MSVOA\_X/WATER  
 ALS Vial : 56 Sample Multiplier: 1

Instrument :  
 MSVOA\_X  
 ClientSampleId :  
 PB148361ZHE#15

Quant Time: Oct 20 13:14:40 2022  
 Quant Method : Z:\voasrv\HPCHEM1\MSVOA\_X\Method\82X101922W.M  
 Quant Title : SW846 8260  
 QLast Update : Wed Oct 19 16:51:09 2022  
 Response via : Initial Calibration

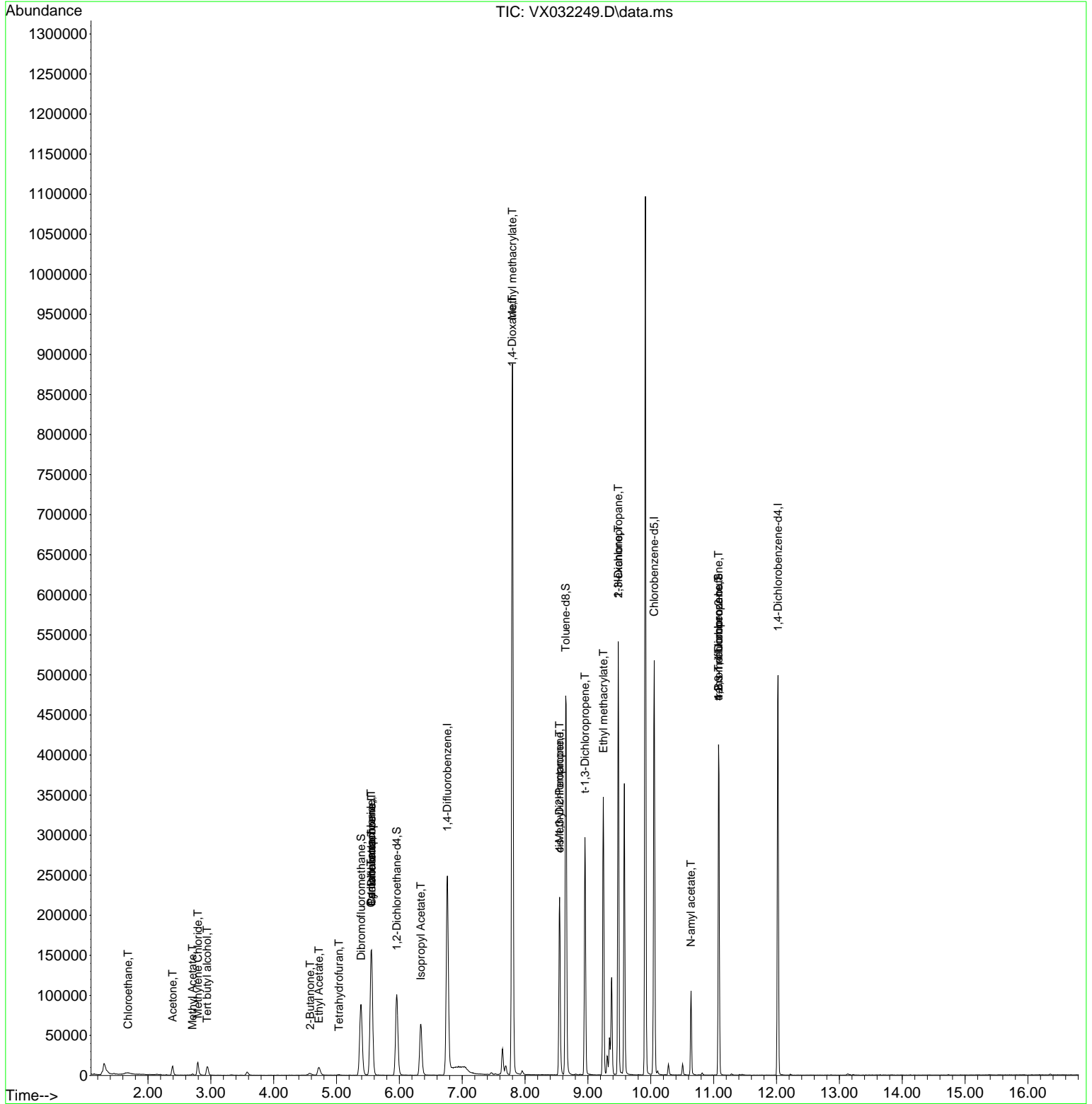
Compound	R.T.	QIon	Response	Conc	Units	Dev(Min)
-----						
Internal Standards						
1) Pentafluorobenzene	5.556	168	147924	50.000	ug/l	0.00
34) 1,4-Difluorobenzene	6.763	114	242261	50.000	ug/l	0.00
63) Chlorobenzene-d5	10.055	117	220977	50.000	ug/l	0.00
72) 1,4-Dichlorobenzene-d4	12.024	152	100034	50.000	ug/l	0.00
System Monitoring Compounds						
33) 1,2-Dichloroethane-d4	5.958	65	102222	53.121	ug/l	0.00
Spiked Amount	50.000	Range 78 - 117	Recovery	=	106.240%	
35) Dibromofluoromethane	5.391	113	76993	45.671	ug/l	0.00
Spiked Amount	50.000	Range 75 - 124	Recovery	=	91.340%	
50) Toluene-d8	8.647	98	283920	46.787	ug/l	0.00
Spiked Amount	50.000	Range 92 - 112	Recovery	=	93.580%	
62) 4-Bromofluorobenzene	11.079	95	105080	47.287	ug/l	0.00
Spiked Amount	50.000	Range 83 - 123	Recovery	=	94.580%	
Target Compounds						
					Qvalue	
3) Chloromethane	1.294	50	767	Below Cal	#	44
6) Chloroethane	1.685	64	53	1.988	ug/l #	41
11) Tert butyl alcohol	2.940	59	6777	2.107	ug/l #	74
16) Acetone	2.392	43	14117	22.606	ug/l	92
18) Methyl Acetate	2.709	43	2124	1.002	ug/l #	90
20) Methylene Chloride	2.794	84	7899	4.926	ug/l	84
25) 2-Butanone	4.580	43	2186	2.242	ug/l	93
29) Tetrahydrofuran	5.038	42	671	1.066	ug/l #	42
31) Cyclohexane	5.556	56	3153	1.433	ug/l #	31
36) 1,1-Dichloropropene	5.556	75	11397	5.256	ug/l #	50
37) Ethyl Acetate	4.721	43	18803	8.856	ug/l	98
38) Carbon Tetrachloride	5.550	117	15577	6.804	ug/l #	16
43) Isopropyl Acetate	6.342	43	88441	26.539	ug/l	99
48) Methyl methacrylate	7.799	41	80149	48.225	ug/l #	42
49) 1,4-Dioxane	7.793	88	128	3.838	ug/l #	1
51) 4-Methyl-2-Pentanone	8.549	43	77138	36.926	ug/l #	48
53) t-1,3-Dichloropropene	8.952	75	658	2.076	ug/l #	43
54) cis-1,3-Dichloropropene	8.549	75	33996	13.966	ug/l #	65
56) Ethyl methacrylate	9.244	69	746	0.313	ug/l #	1
57) 1,3-Dichloropropane	9.482	76	4442	1.658	ug/l #	42
59) 2-Hexanone	9.482	43	62501	40.098	ug/l #	51
74) N-amyl acetate	10.640	43	26376	10.002	ug/l #	52
76) 1,2,3-Trichloropropane	11.079	75	56801	28.657	ug/l #	45
81) trans-1,4-Dichloro-2-b...	11.079	75	56801	87.820	ug/l #	6

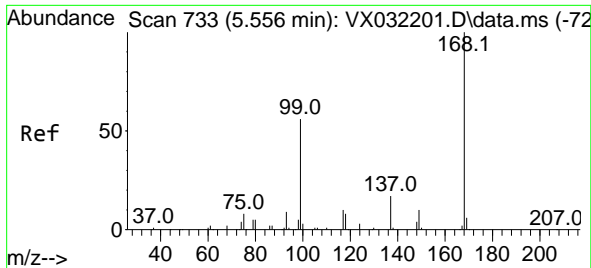
(#) = qualifier out of range (m) = manual integration (+) = signals summed

Data Path : Z:\voasrv\HPCHEM1\MSVOA\_X\Data\VX101922\  
 Data File : VX032249.D  
 Acq On : 20 Oct 2022 08:00  
 Operator : JC/MD  
 Sample : PB148361ZHE#15  
 Misc : 5.0mL/MSVOA\_X/WATER  
 ALS Vial : 56 Sample Multiplier: 1

Instrument :  
 MSVOA\_X  
 ClientSampleId :  
 PB148361ZHE#15

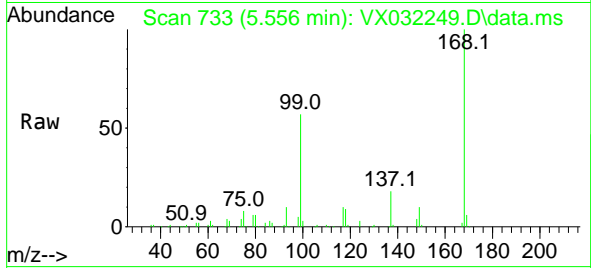
Quant Time: Oct 20 13:14:40 2022  
 Quant Method : Z:\voasrv\HPCHEM1\MSVOA\_X\Method\82X101922W.M  
 Quant Title : SW846 8260  
 QLast Update : Wed Oct 19 16:51:09 2022  
 Response via : Initial Calibration



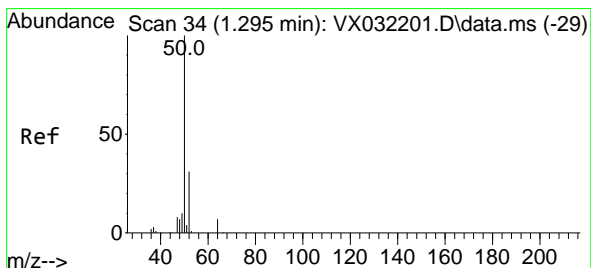
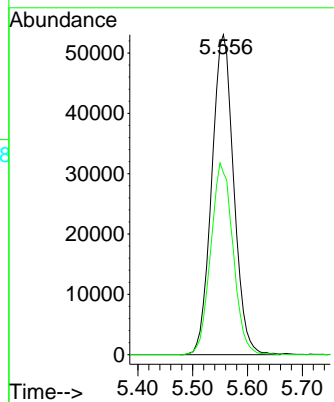
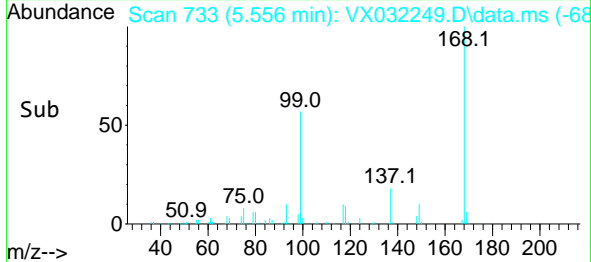


#1  
 Pentafluorobenzene  
 Concen: 50.000 ug/l  
 RT: 5.556 min Scan# 71  
 Delta R.T. -0.000 min  
 Lab File: VX032249.D  
 Acq: 20 Oct 2022 08:00

Instrument :  
 MSVOA\_X  
 ClientSampleId :  
 PB148361ZHE#15

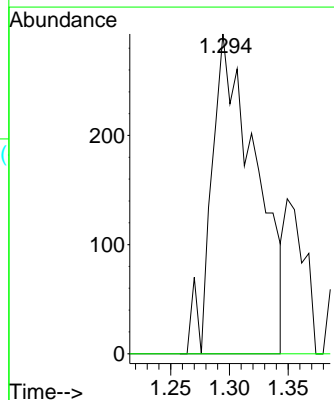
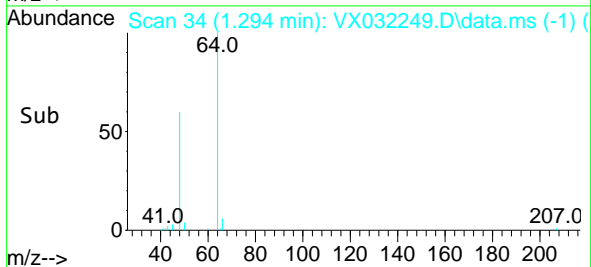
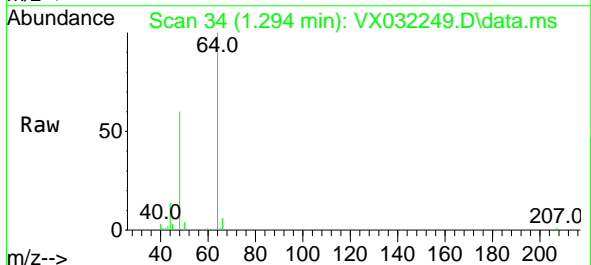


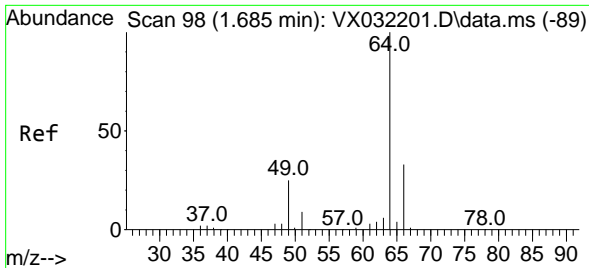
Tgt Ion:168 Resp: 147924  
 Ion Ratio Lower Upper  
 168 100  
 99 56.8 44.8 67.2



#3  
 Chloromethane  
 Concen: Below Cal  
 RT: 1.294 min Scan# 34  
 Delta R.T. -0.001 min  
 Lab File: VX032249.D  
 Acq: 20 Oct 2022 08:00

Tgt Ion: 50 Resp: 767  
 Ion Ratio Lower Upper  
 50 100  
 52 0.0 24.7 37.1#

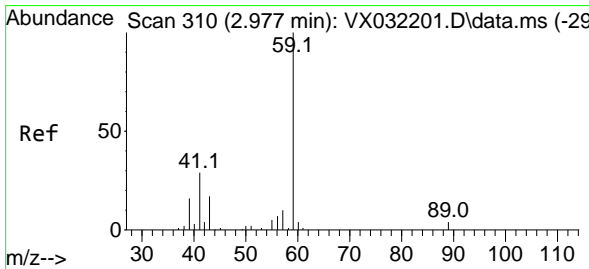
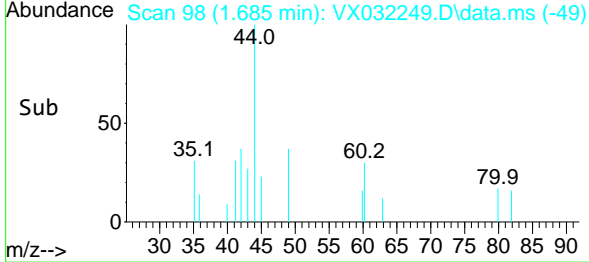
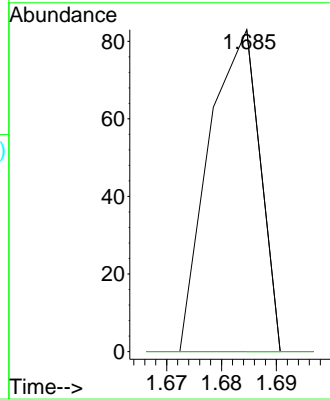
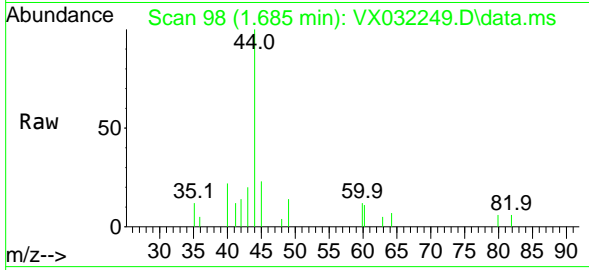




#6  
 Chloroethane  
 Concen: 1.988 ug/l  
 RT: 1.685 min Scan# 91  
 Delta R.T. -0.000 min  
 Lab File: VX032249.D  
 Acq: 20 Oct 2022 08:00

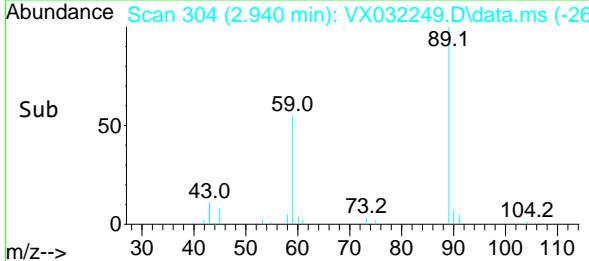
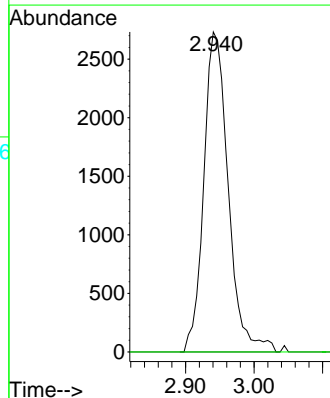
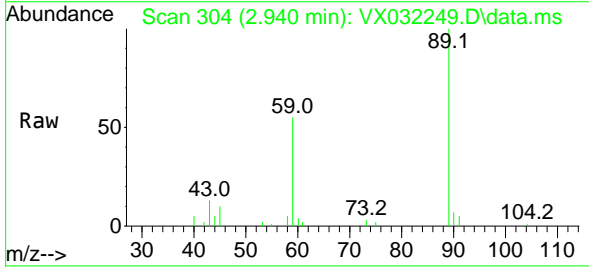
Instrument : MSVOA\_X  
 ClientSampleId : PB148361ZHE#15

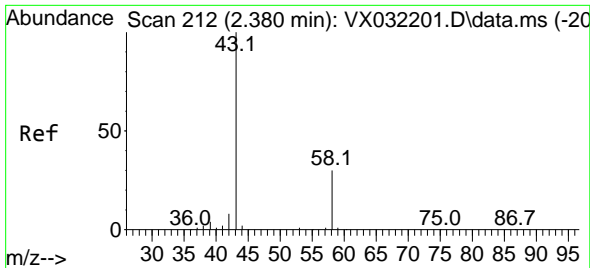
Tgt Ion: 64 Resp: 53  
 Ion Ratio Lower Upper  
 64 100  
 66 0.0 26.6 39.8#



#11  
 Tert butyl alcohol  
 Concen: 2.107 ug/l  
 RT: 2.940 min Scan# 304  
 Delta R.T. -0.037 min  
 Lab File: VX032249.D  
 Acq: 20 Oct 2022 08:00

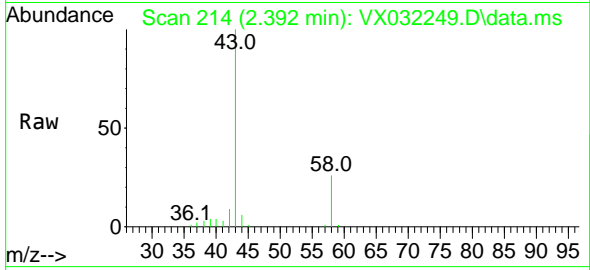
Tgt Ion: 59 Resp: 6777  
 Ion Ratio Lower Upper  
 59 100  
 57 0.0 7.5 11.3#



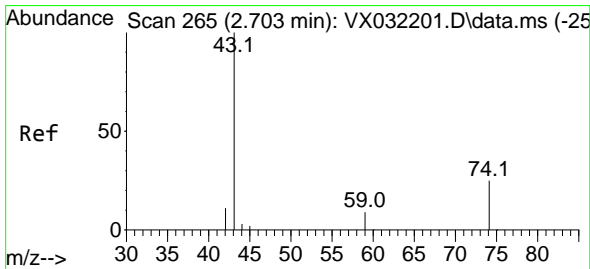
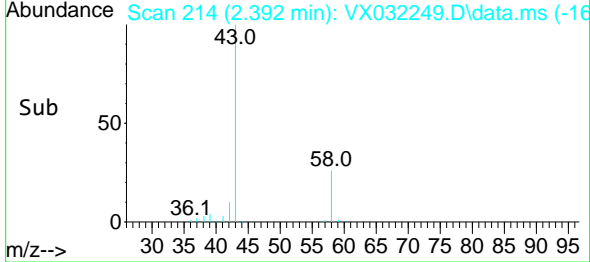
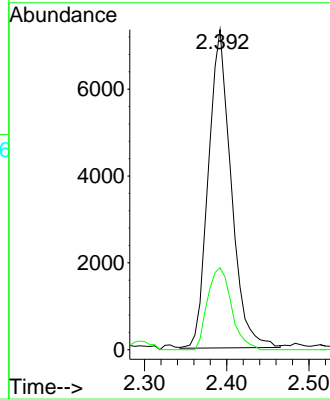


#16  
 Acetone  
 Concen: 22.606 ug/l  
 RT: 2.392 min Scan# 214  
 Delta R.T. 0.012 min  
 Lab File: VX032249.D  
 Acq: 20 Oct 2022 08:00

Instrument : MSVOA\_X  
 ClientSampleId : PB148361ZHE#15

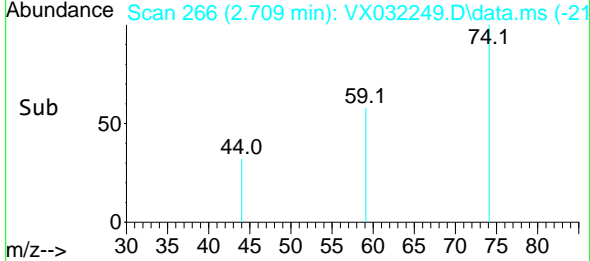
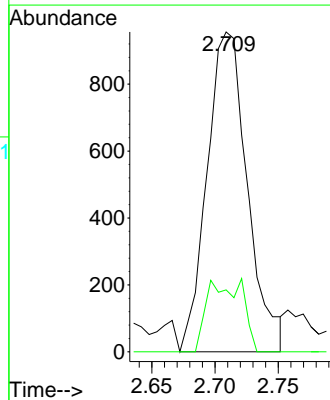
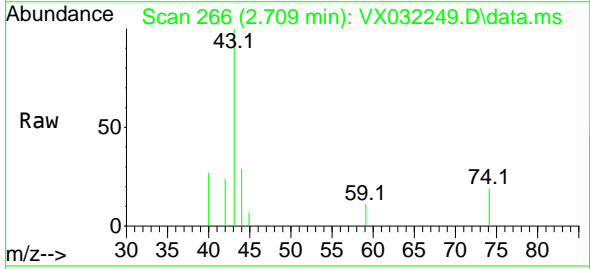


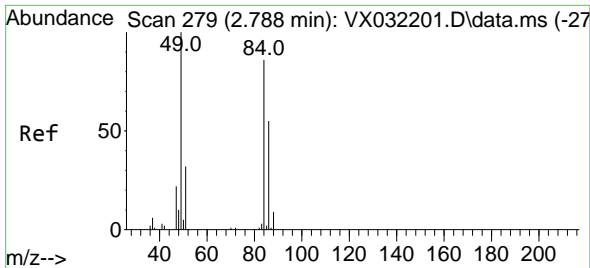
Tgt Ion: 43 Resp: 14117  
 Ion Ratio Lower Upper  
 43 100  
 58 25.8 24.2 36.2



#18  
 Methyl Acetate  
 Concen: 1.002 ug/l  
 RT: 2.709 min Scan# 266  
 Delta R.T. 0.006 min  
 Lab File: VX032249.D  
 Acq: 20 Oct 2022 08:00

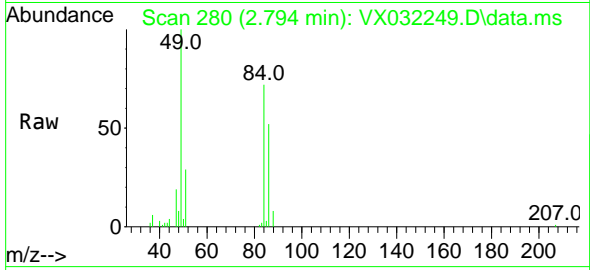
Tgt Ion: 43 Resp: 2124  
 Ion Ratio Lower Upper  
 43 100  
 74 19.6 19.8 29.8#





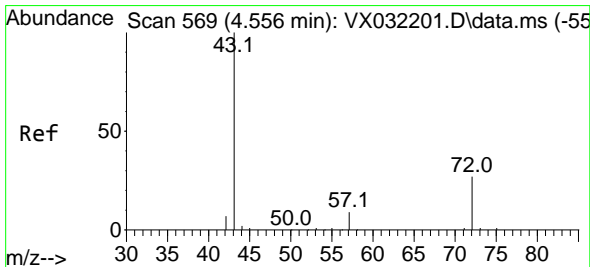
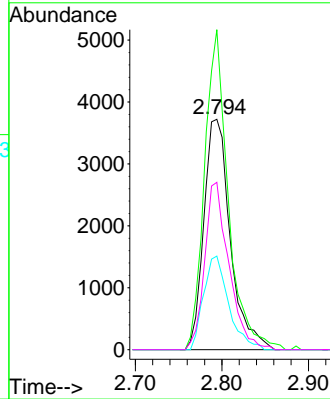
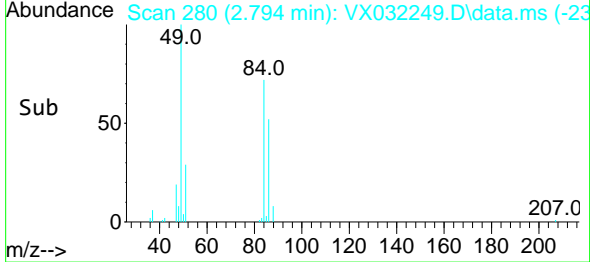
#20  
 Methylene Chloride  
 Concen: 4.926 ug/l  
 RT: 2.794 min Scan# 21  
 Delta R.T. 0.006 min  
 Lab File: VX032249.D  
 Acq: 20 Oct 2022 08:00

Instrument :  
 MSVOA\_X  
 ClientSampleId :  
 PB148361ZHE#15

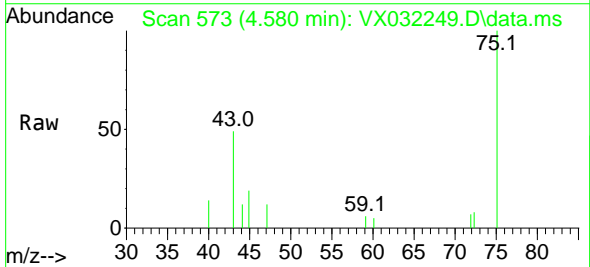


Tgt Ion: 84 Resp: 7899

Ion	Ratio	Lower	Upper
84	100		
49	138.9	92.6	139.0
51	40.6	29.2	43.8
86	72.6	51.4	77.0

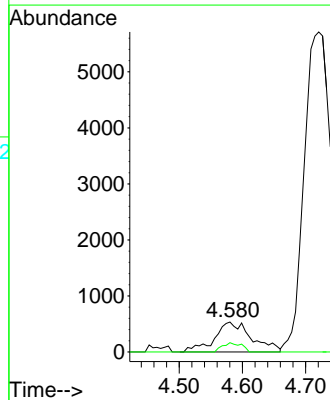
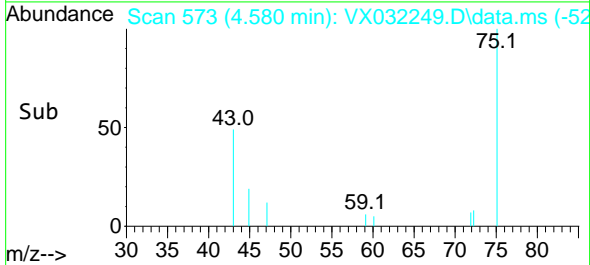


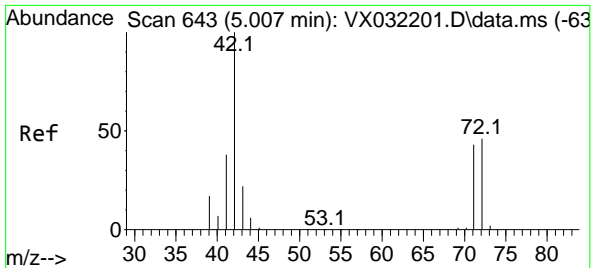
#25  
 2-Butanone  
 Concen: 2.242 ug/l  
 RT: 4.580 min Scan# 573  
 Delta R.T. 0.024 min  
 Lab File: VX032249.D  
 Acq: 20 Oct 2022 08:00



Tgt Ion: 43 Resp: 2186

Ion	Ratio	Lower	Upper
43	100		
72	30.9	21.7	32.5



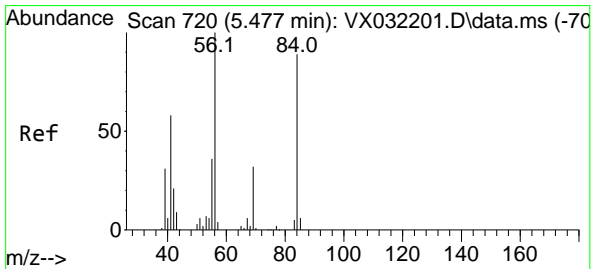
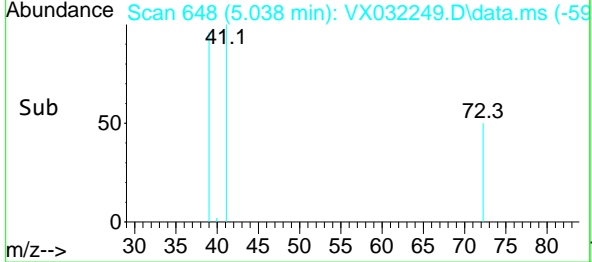
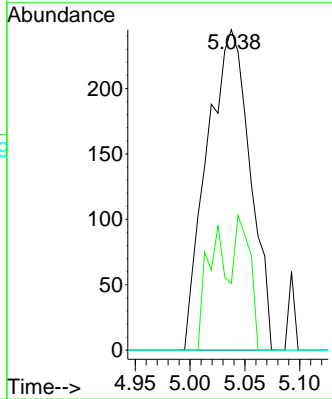
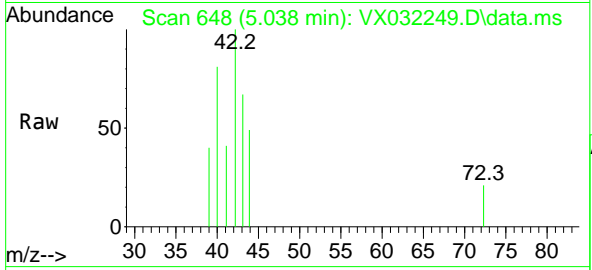


#29  
 Tetrahydrofuran  
 Concen: 1.066 ug/l  
 RT: 5.038 min Scan# 64  
 Delta R.T. 0.031 min  
 Lab File: VX032249.D  
 Acq: 20 Oct 2022 08:00

Instrument : MSVOA\_X  
 ClientSampleId : PB148361ZHE#15

Tgt Ion: 42 Resp: 671

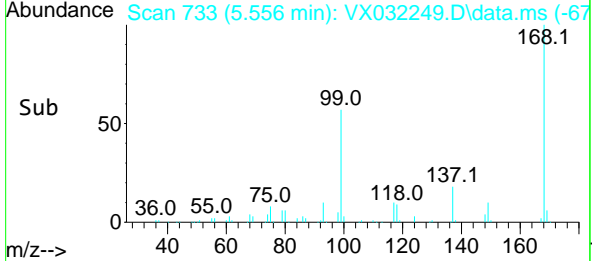
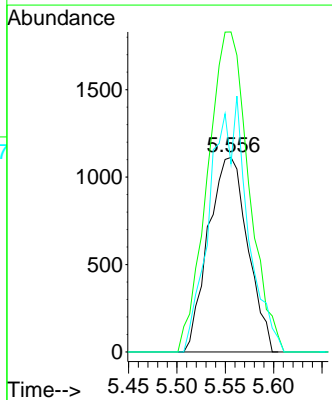
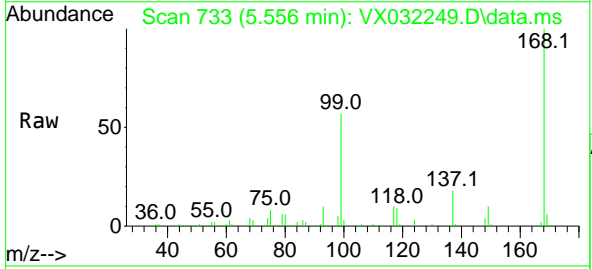
Ion	Ratio	Lower	Upper
42	100		
72	14.3	37.5	56.3#
71	0.0	34.7	52.1#

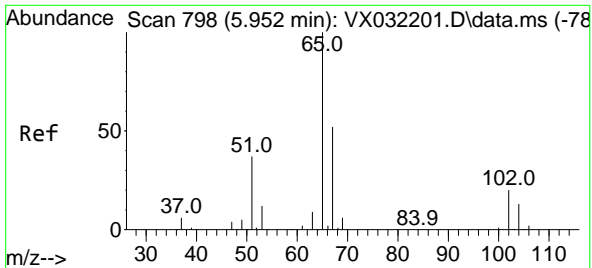


#31  
 Cyclohexane  
 Concen: 1.433 ug/l  
 RT: 5.556 min Scan# 733  
 Delta R.T. 0.079 min  
 Lab File: VX032249.D  
 Acq: 20 Oct 2022 08:00

Tgt Ion: 56 Resp: 3153

Ion	Ratio	Lower	Upper
56	100		
69	164.4	25.4	38.0#
84	96.6	71.2	106.8

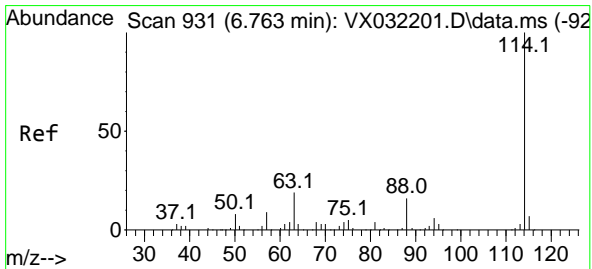
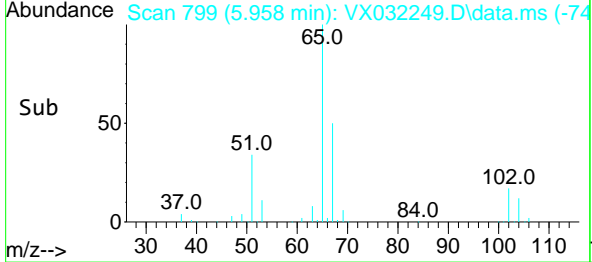
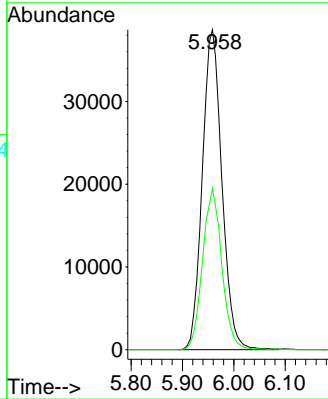
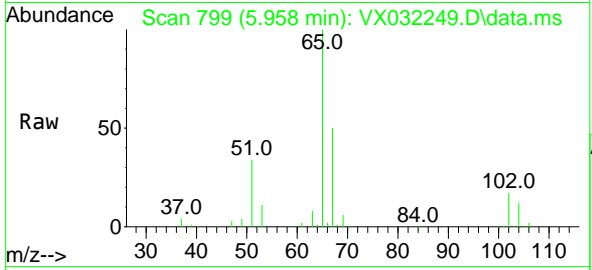




#33  
 1,2-Dichloroethane-d4  
 Concen: 53.121 ug/l  
 RT: 5.958 min Scan# 799  
 Delta R.T. 0.006 min  
 Lab File: VX032249.D  
 Acq: 20 Oct 2022 08:00

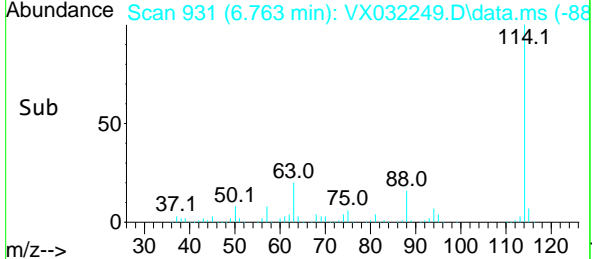
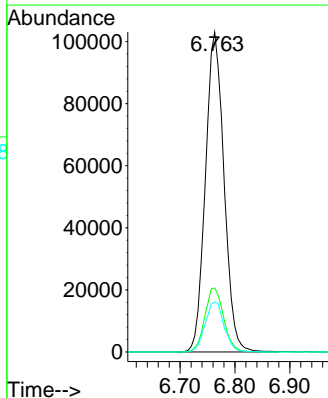
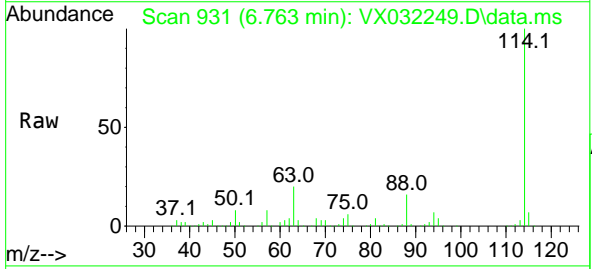
Instrument : MSVOA\_X  
 ClientSampleId : PB148361ZHE#15

Tgt Ion: 65 Resp: 102222  
 Ion Ratio Lower Upper  
 65 100  
 67 49.5 0.0 103.6

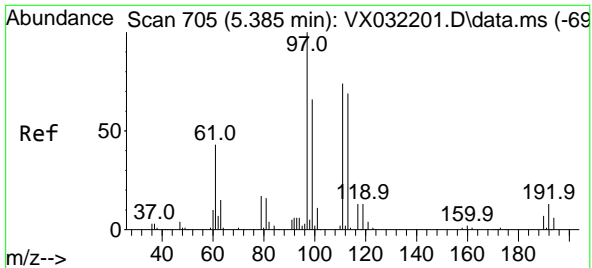


#34  
 1,4-Difluorobenzene  
 Concen: 50.000 ug/l  
 RT: 6.763 min Scan# 931  
 Delta R.T. -0.000 min  
 Lab File: VX032249.D  
 Acq: 20 Oct 2022 08:00

Tgt Ion:114 Resp: 242261  
 Ion Ratio Lower Upper  
 114 100  
 63 20.0 0.0 38.6  
 88 15.6 0.0 32.6

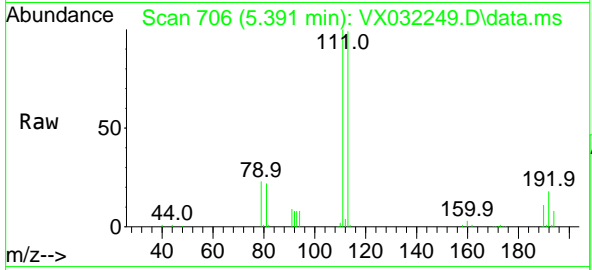




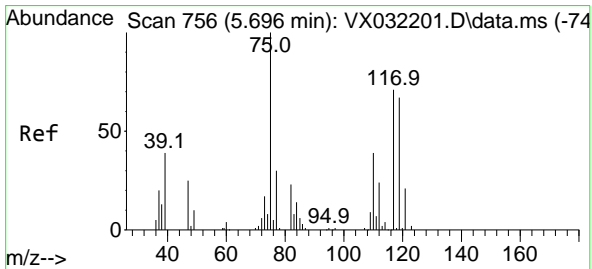
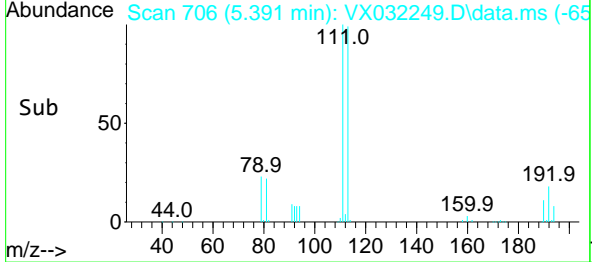
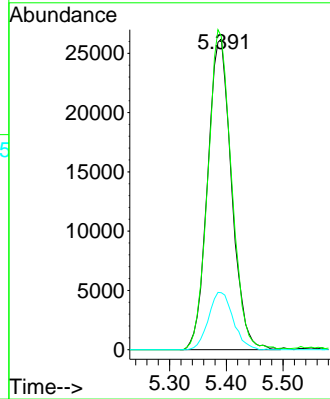


#35  
 Dibromofluoromethane  
 Concen: 45.671 ug/l  
 RT: 5.391 min Scan# 705  
 Delta R.T. 0.006 min  
 Lab File: VX032249.D  
 Acq: 20 Oct 2022 08:00

Instrument : MSVOA\_X  
 ClientSampleId : PB148361ZHE#15

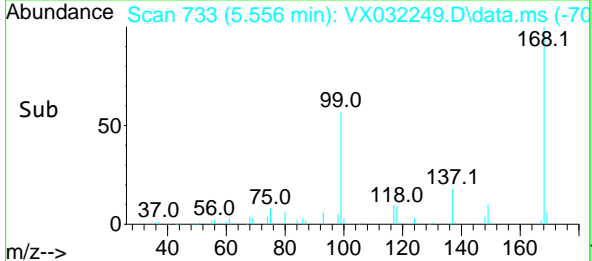
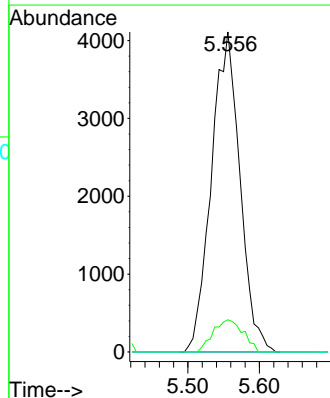
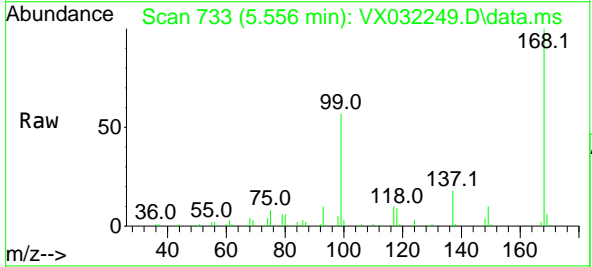


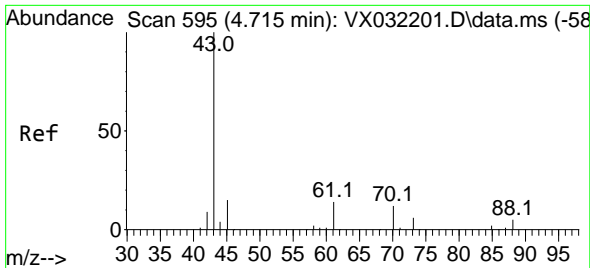
Tgt Ion:113 Resp: 76993  
 Ion Ratio Lower Upper  
 113 100  
 111 101.6 82.8 124.2  
 192 18.9 15.5 23.3



#36  
 1,1-Dichloropropene  
 Concen: 5.256 ug/l  
 RT: 5.556 min Scan# 733  
 Delta R.T. -0.140 min  
 Lab File: VX032249.D  
 Acq: 20 Oct 2022 08:00

Tgt Ion: 75 Resp: 11397  
 Ion Ratio Lower Upper  
 75 100  
 110 10.6 18.4 55.0#  
 77 0.0 24.7 37.1#

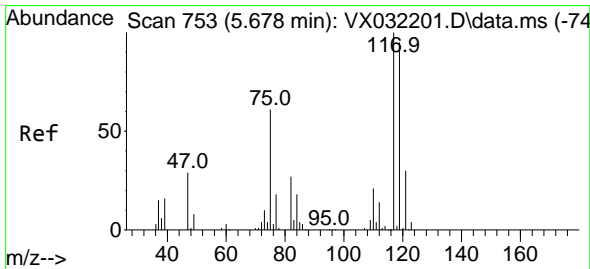
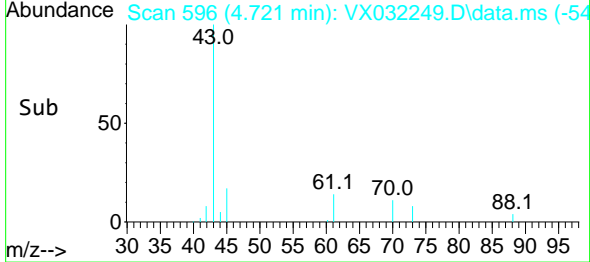
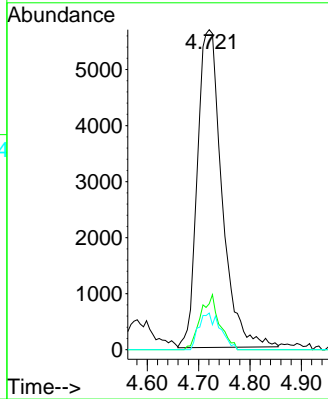
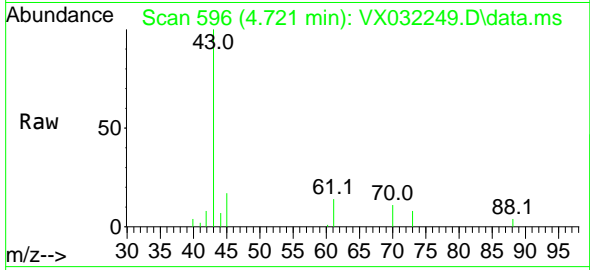




#37  
 Ethyl Acetate  
 Concen: 8.856 ug/l  
 RT: 4.721 min Scan# 596  
 Delta R.T. 0.006 min  
 Lab File: VX032249.D  
 Acq: 20 Oct 2022 08:00

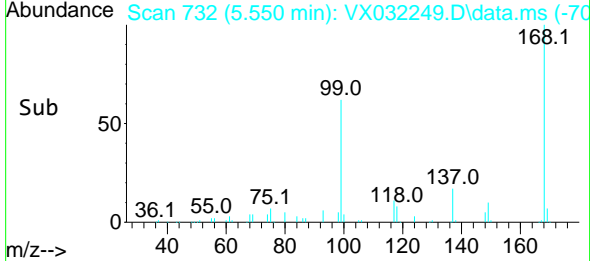
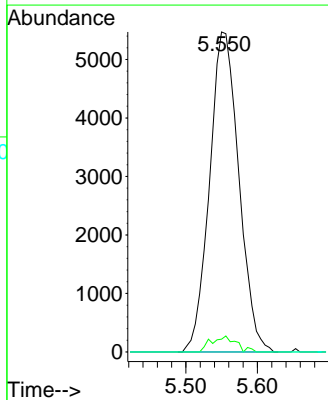
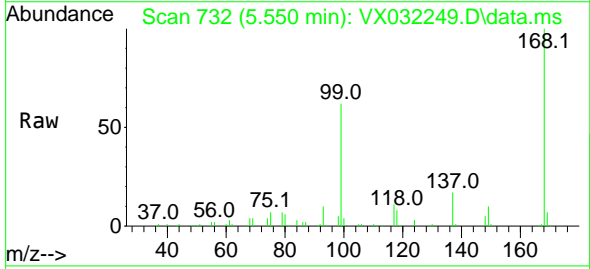
Instrument : MSVOA\_X  
 ClientSampleId : PB148361ZHE#15

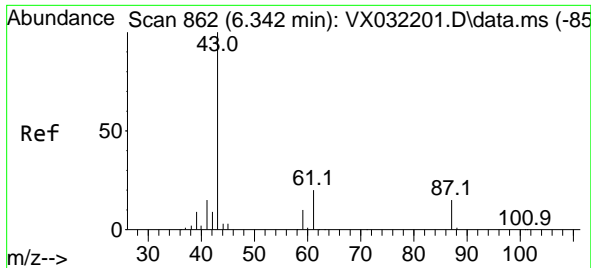
Tgt Ion	Resp	Lower	Upper
43	18803		
61	13.5	11.4	17.2
70	10.1	8.8	13.2



#38  
 Carbon Tetrachloride  
 Concen: 6.804 ug/l  
 RT: 5.550 min Scan# 732  
 Delta R.T. -0.128 min  
 Lab File: VX032249.D  
 Acq: 20 Oct 2022 08:00

Tgt Ion	Resp	Lower	Upper
117	15577		
119	4.0	75.4	113.0#
121	0.0	23.9	35.9#



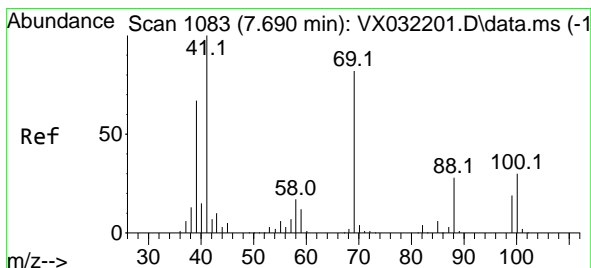
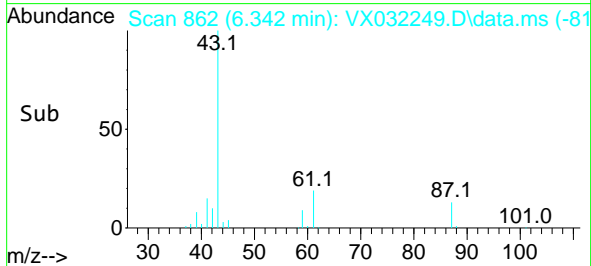
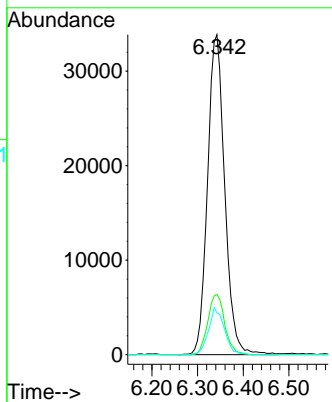
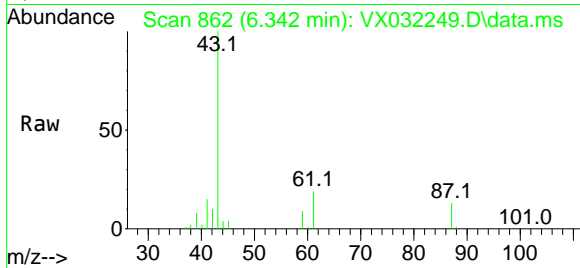


#43  
 Isopropyl Acetate  
 Concen: 26.539 ug/l  
 RT: 6.342 min Scan# 80  
 Delta R.T. 0.000 min  
 Lab File: VX032249.D  
 Acq: 20 Oct 2022 08:00

Instrument :  
 MSVOA\_X  
 ClientSampleId :  
 PB148361ZHE#15

Tgt Ion: 43 Resp: 88441

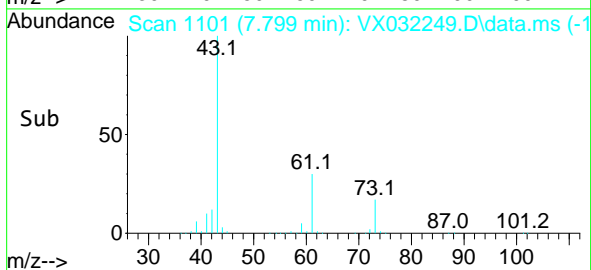
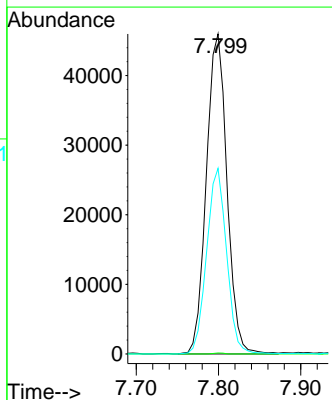
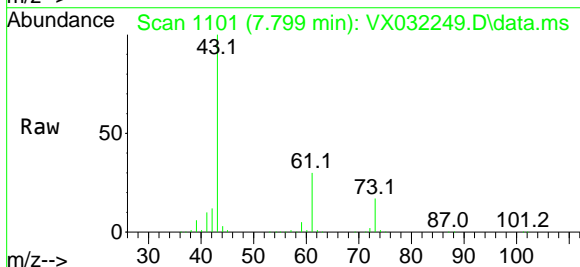
Ion	Ratio	Lower	Upper
43	100		
61	18.6	15.5	23.3
87	13.5	11.0	16.6

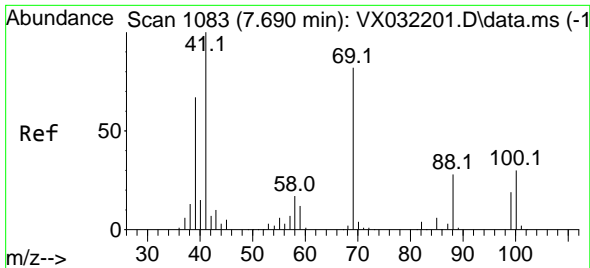


#48  
 Methyl methacrylate  
 Concen: 48.225 ug/l  
 RT: 7.799 min Scan# 1101  
 Delta R.T. 0.109 min  
 Lab File: VX032249.D  
 Acq: 20 Oct 2022 08:00

Tgt Ion: 41 Resp: 80149

Ion	Ratio	Lower	Upper
41	100		
69	0.1	67.3	100.9#
39	56.2	53.8	80.8

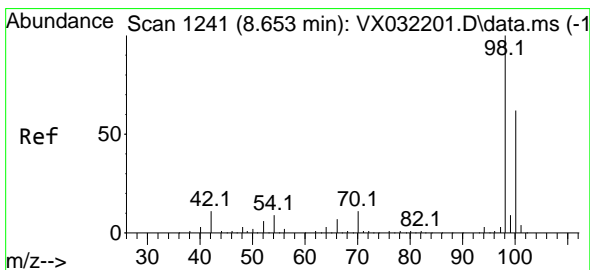
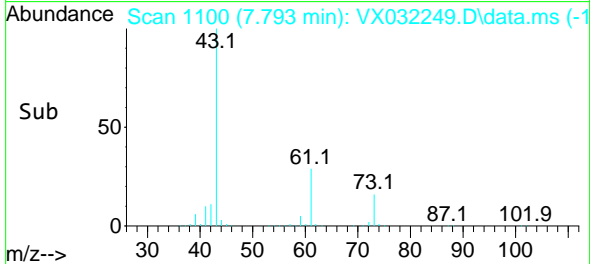
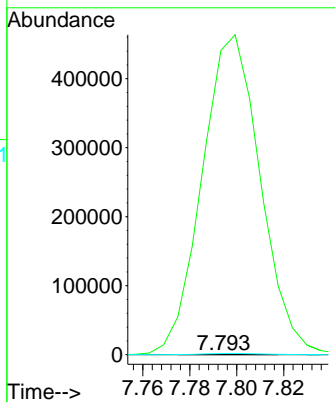
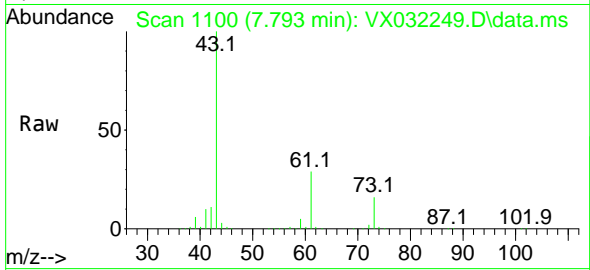




#49  
 1,4-Dioxane  
 Concen: 3.838 ug/l  
 RT: 7.793 min Scan# 1100  
 Delta R.T. 0.103 min  
 Lab File: VX032249.D  
 Acq: 20 Oct 2022 08:00

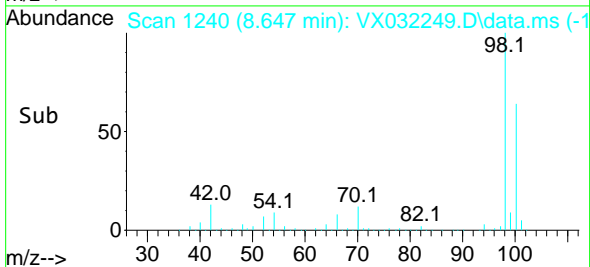
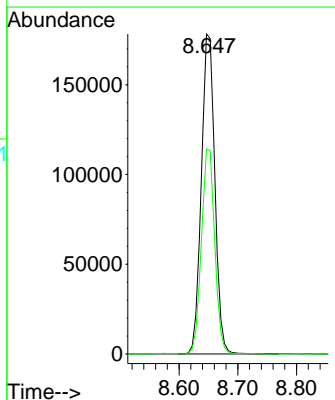
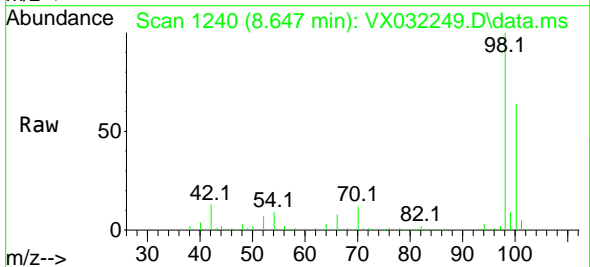
Instrument : MSVOA\_X  
 ClientSampleId : PB148361ZHE#15

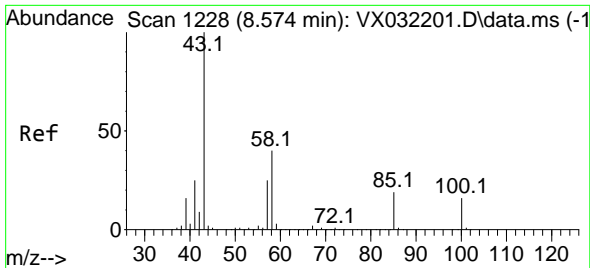
Tgt Ion: 88 Resp: 128  
 Ion Ratio Lower Upper  
 88 100  
 43 629789.1 26.9 40.3#  
 58 2575.8 50.7 76.1#



#50  
 Toluene-d8  
 Concen: 46.787 ug/l  
 RT: 8.647 min Scan# 1240  
 Delta R.T. -0.006 min  
 Lab File: VX032249.D  
 Acq: 20 Oct 2022 08:00

Tgt Ion: 98 Resp: 283920  
 Ion Ratio Lower Upper  
 98 100  
 100 63.6 50.7 76.1

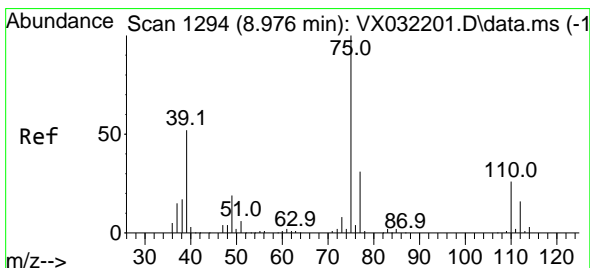
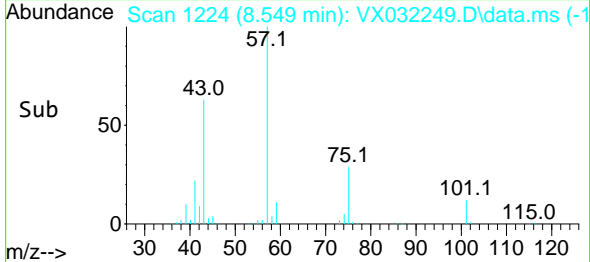
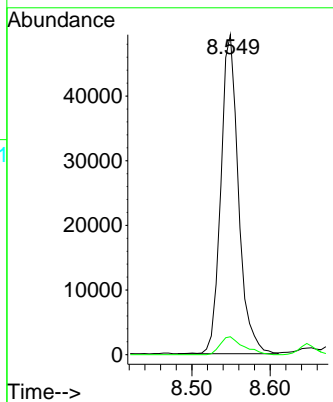
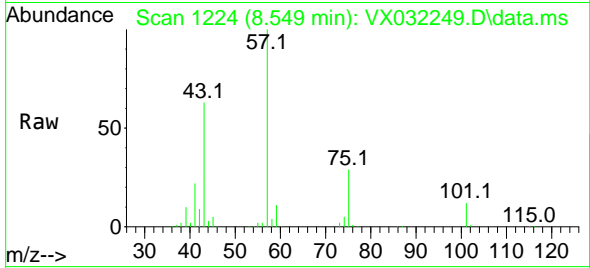




#51  
 4-Methyl-2-Pentanone  
 Concen: 36.926 ug/l  
 RT: 8.549 min Scan# 1111  
 Delta R.T. -0.025 min  
 Lab File: VX032249.D  
 Acq: 20 Oct 2022 08:00

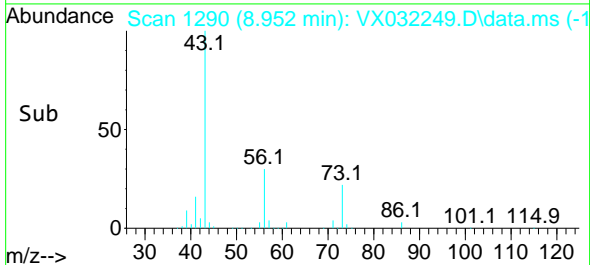
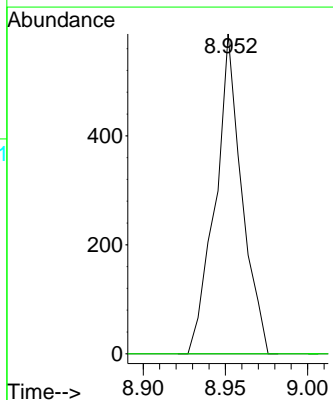
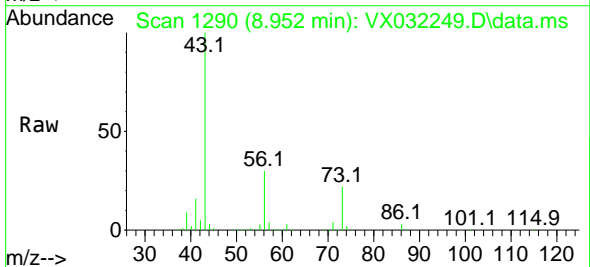
Instrument : MSVOA\_X  
 ClientSampleId : PB148361ZHE#15

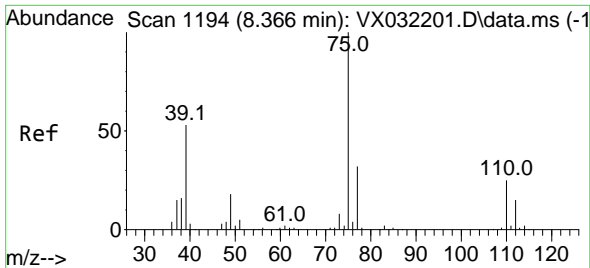
Tgt Ion: 43 Resp: 77138  
 Ion Ratio Lower Upper  
 43 100  
 58 7.3 31.0 46.4#



#53  
 t-1,3-Dichloropropene  
 Concen: 2.076 ug/l  
 RT: 8.952 min Scan# 1290  
 Delta R.T. -0.024 min  
 Lab File: VX032249.D  
 Acq: 20 Oct 2022 08:00

Tgt Ion: 75 Resp: 658  
 Ion Ratio Lower Upper  
 75 100  
 77 0.0 25.2 37.8#

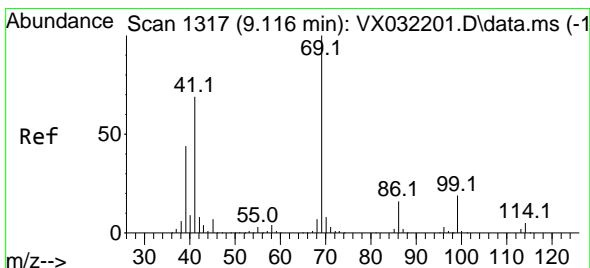
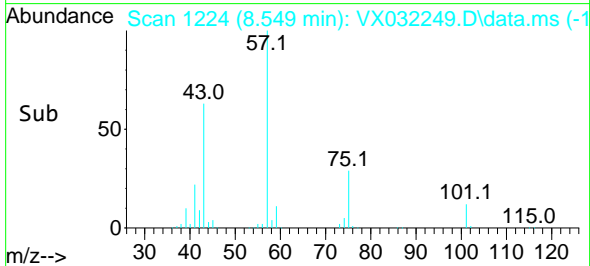
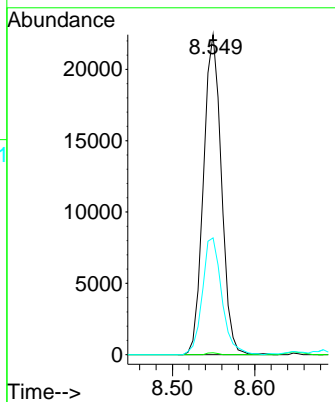
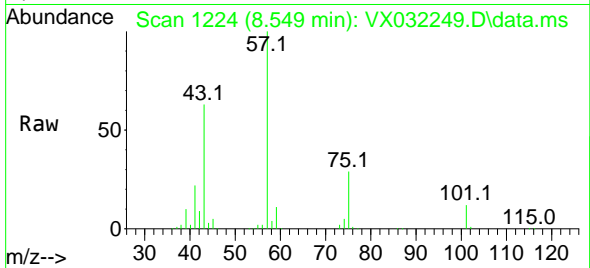




#54  
 cis-1,3-Dichloropropene  
 Concen: 13.966 ug/l  
 RT: 8.549 min Scan# 1194  
 Delta R.T. 0.183 min  
 Lab File: VX032249.D  
 Acq: 20 Oct 2022 08:00

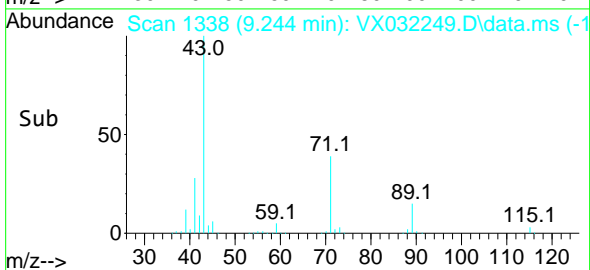
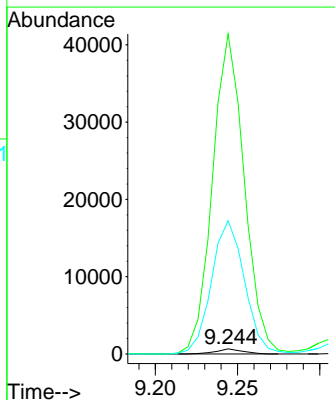
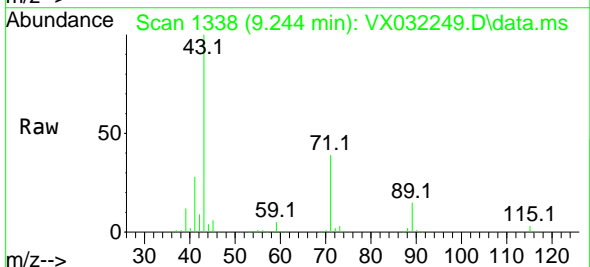
Instrument : MSVOA\_X  
 ClientSampleId : PB148361ZHE#15

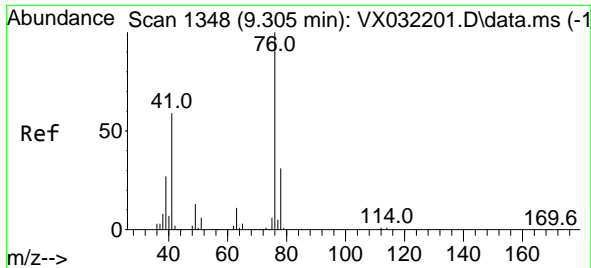
Tgt Ion	Resp	Lower	Upper
75	33996		
75	100		
77	0.6	25.3	37.9#
39	36.5	42.4	63.6#



#56  
 Ethyl methacrylate  
 Concen: 0.313 ug/l  
 RT: 9.244 min Scan# 1338  
 Delta R.T. 0.128 min  
 Lab File: VX032249.D  
 Acq: 20 Oct 2022 08:00

Tgt Ion	Resp	Lower	Upper
69	746		
69	100		
41	7475.6	54.5	81.7#
39	3234.9	35.7	53.5#

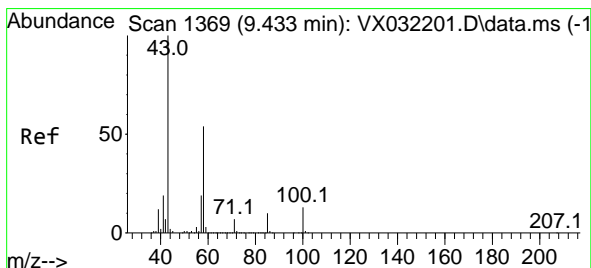
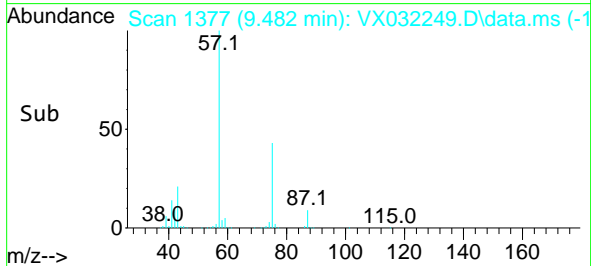
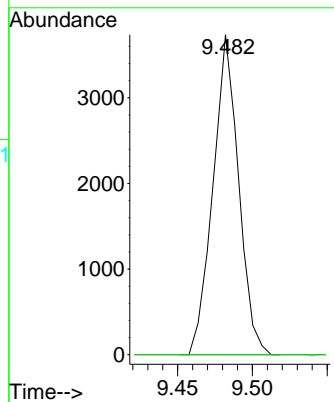
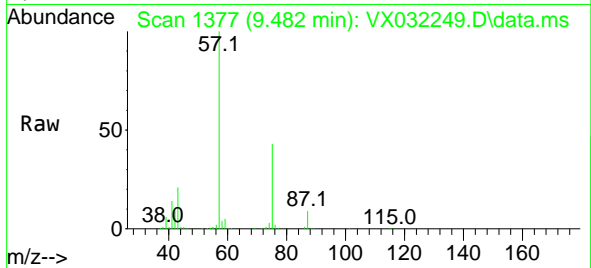




#57  
 1,3-Dichloropropane  
 Concen: 1.658 ug/l  
 RT: 9.482 min Scan# 1377  
 Delta R.T. 0.177 min  
 Lab File: VX032249.D  
 Acq: 20 Oct 2022 08:00

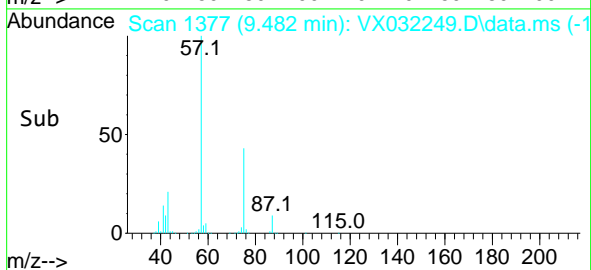
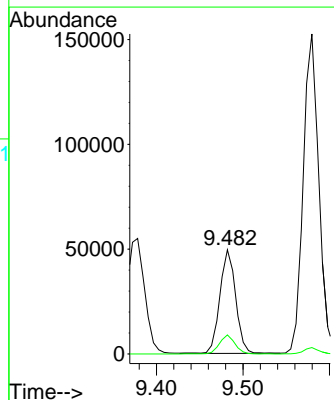
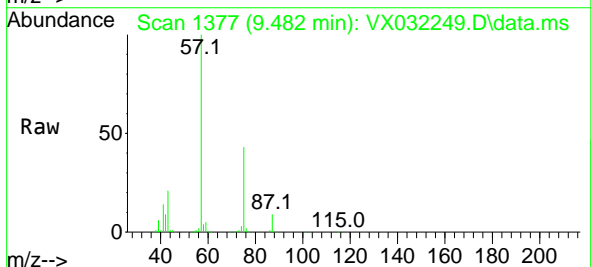
Instrument : MSVOA\_X  
 ClientSampleId : PB148361ZHE#15

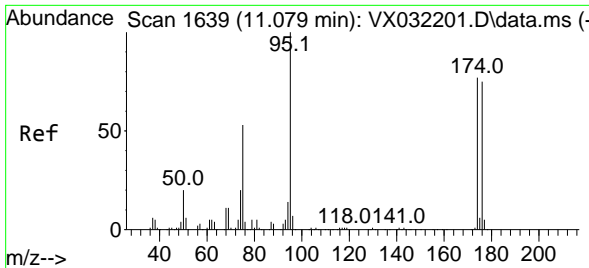
Tgt Ion: 76 Resp: 4442  
 Ion Ratio Lower Upper  
 76 100  
 78 0.0 26.0 39.0#



#59  
 2-Hexanone  
 Concen: 40.098 ug/l  
 RT: 9.482 min Scan# 1377  
 Delta R.T. 0.049 min  
 Lab File: VX032249.D  
 Acq: 20 Oct 2022 08:00

Tgt Ion: 43 Resp: 62501  
 Ion Ratio Lower Upper  
 43 100  
 58 18.2 26.7 80.1#



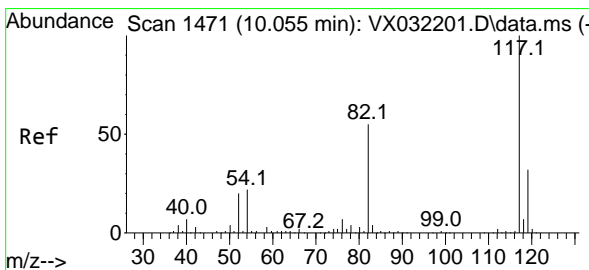
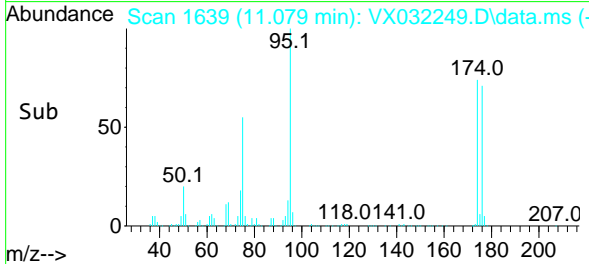
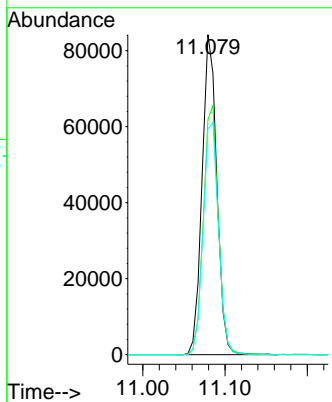
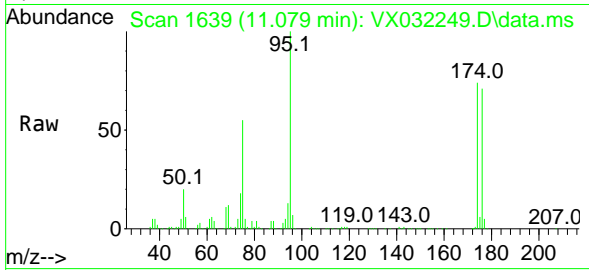


#62  
 4-Bromofluorobenzene  
 Concen: 47.287 ug/l  
 RT: 11.079 min Scan# 1639  
 Delta R.T. 0.000 min  
 Lab File: VX032249.D  
 Acq: 20 Oct 2022 08:00

Instrument : MSVOA\_X  
 ClientSampleId : PB148361ZHE#15

Tgt Ion: 95 Resp: 105080

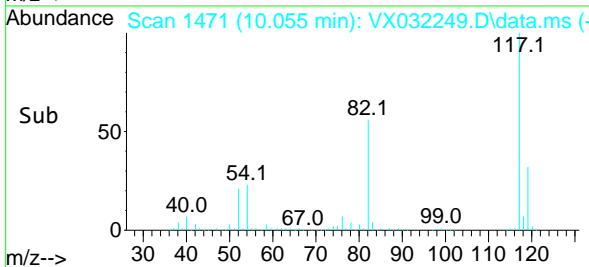
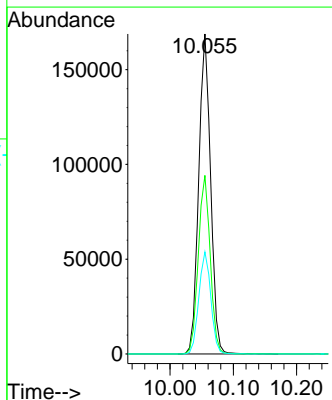
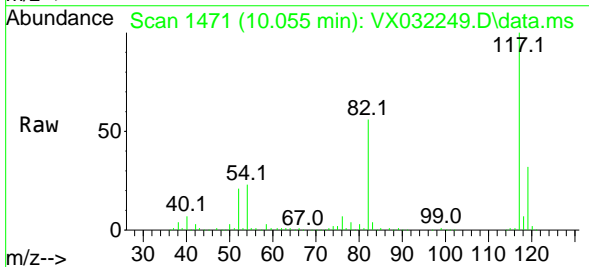
Ion	Ratio	Lower	Upper
95	100		
174	79.3	0.0	166.8
176	75.2	0.0	161.4



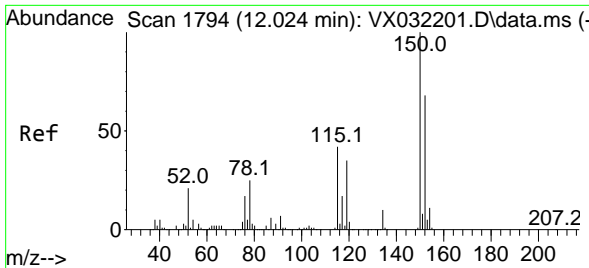
#63  
 Chlorobenzene-d5  
 Concen: 50.000 ug/l  
 RT: 10.055 min Scan# 1471  
 Delta R.T. 0.000 min  
 Lab File: VX032249.D  
 Acq: 20 Oct 2022 08:00

Tgt Ion: 117 Resp: 220977

Ion	Ratio	Lower	Upper
117	100		
82	55.8	44.2	66.4
119	31.9	25.8	38.8

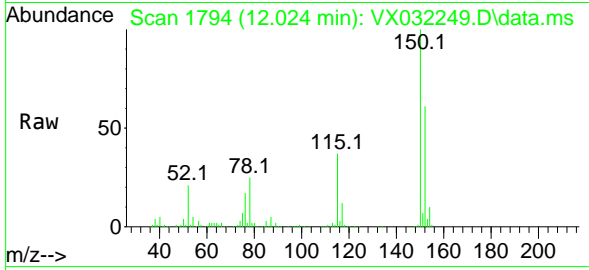




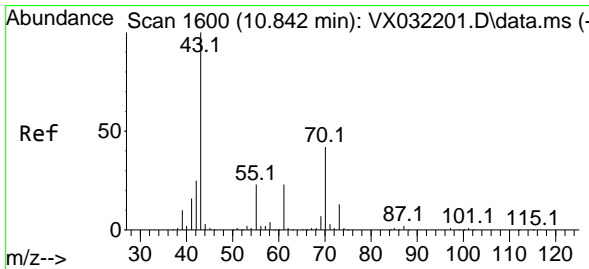
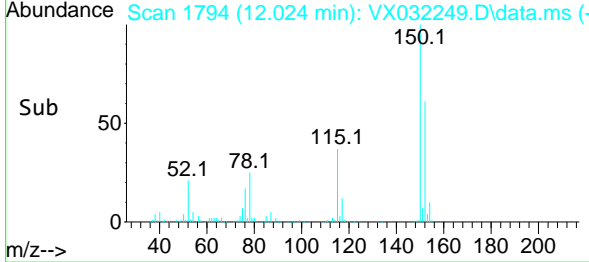
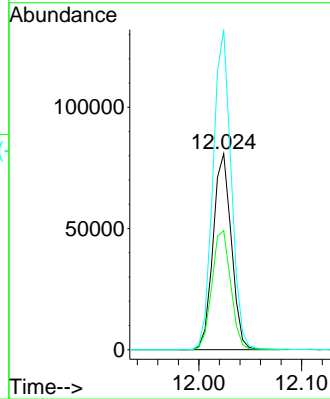


#72  
 1,4-Dichlorobenzene-d4  
 Concen: 50.000 ug/l  
 RT: 12.024 min Scan# 11  
 Delta R.T. 0.000 min  
 Lab File: VX032249.D  
 Acq: 20 Oct 2022 08:00

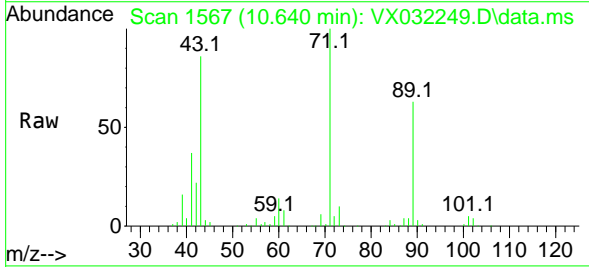
Instrument :  
 MSVOA\_X  
 ClientSampleId :  
 PB148361ZHE#15



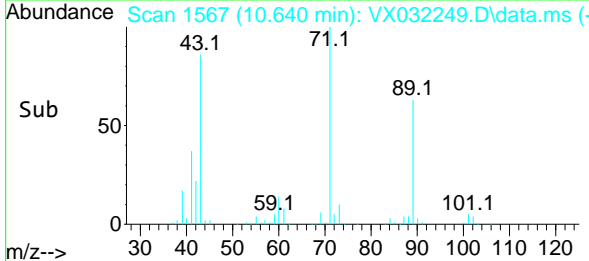
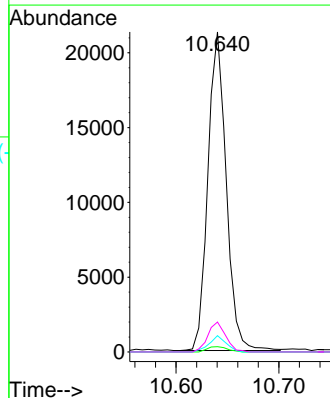
Tgt Ion:152 Resp: 100034  
 Ion Ratio Lower Upper  
 152 100  
 115 62.5 43.1 129.4  
 150 162.4 0.0 348.6

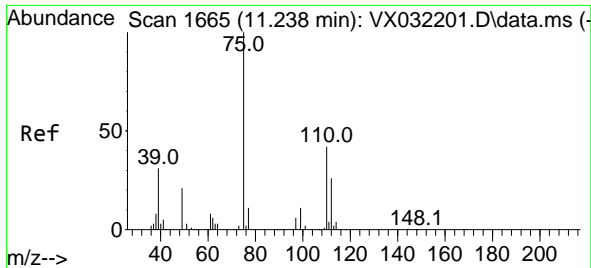


#74  
 N-amy1 acetate  
 Concen: 10.002 ug/l  
 RT: 10.640 min Scan# 1567  
 Delta R.T. -0.202 min  
 Lab File: VX032249.D  
 Acq: 20 Oct 2022 08:00



Tgt Ion: 43 Resp: 26376  
 Ion Ratio Lower Upper  
 43 100  
 70 1.8 33.9 50.9#  
 55 4.8 19.1 28.7#  
 61 9.1 19.0 28.4#

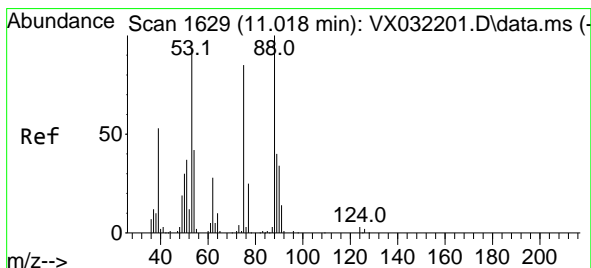
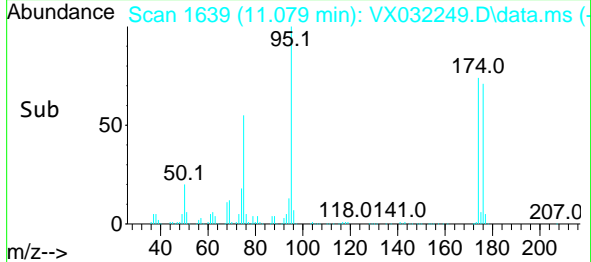
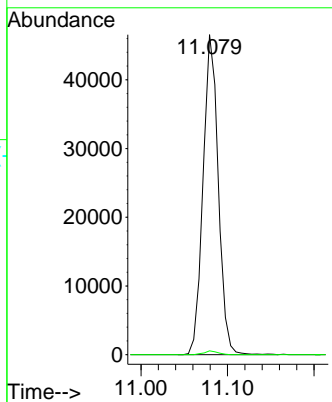
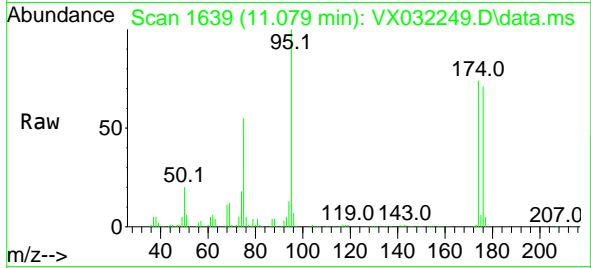




#76  
 1,2,3-Trichloropropane  
 Concen: 28.657 ug/l  
 RT: 11.079 min Scan# 1639  
 Delta R.T. -0.159 min  
 Lab File: VX032249.D  
 Acq: 20 Oct 2022 08:00

Instrument : MSVOA\_X  
 ClientSampleId : PB148361ZHE#15

Tgt Ion: 75 Resp: 56801  
 Ion Ratio Lower Upper  
 75 100  
 77 1.1 16.0 47.9#



#81  
 trans-1,4-Dichloro-2-butene  
 Concen: 87.820 ug/l  
 RT: 11.079 min Scan# 1639  
 Delta R.T. 0.061 min  
 Lab File: VX032249.D  
 Acq: 20 Oct 2022 08:00

Tgt Ion: 75 Resp: 56801  
 Ion Ratio Lower Upper  
 75 100  
 53 0.0 87.8 131.8#  
 89 0.0 37.8 56.8#

