

Data Path : Z:\voasrv\HPCHEM1\MSVOA\_X\Data\VX101922\  
 Data File : VX032219.D  
 Acq On : 19 Oct 2022 19:42  
 Operator : JC/MD  
 Sample : N5170-06 50X  
 Misc : 5.0mL/MSVOA\_X/WATER  
 ALS Vial : 24 Sample Multiplier: 1

Instrument :  
 MSVOA\_X  
 ClientSampleId :  
 TRE-1664

Integration Parameters: RTEINT.P

Integrator: RTE

Smoothing : ON

Filtering: 5

Sampling : 1

Min Area: 3 % of largest Peak

Start Thrs: 0.2

Max Peaks: 100

Stop Thrs : 0

Peak Location: TOP

If leading or trailing edge < 100 prefer < Baseline drop else tangent >

Peak separation: 5

Method : Z:\voasrv\HPCHEM1\MSVOA\_X\Method\82X101922W.M

Title : SW846 8260

Signal : TIC: VX032219.D\data.ms

peak #	R.T. min	first scan	max scan	last scan	PK TY	peak height	corr. area	corr. % max.	% of total
1	1.453	56	60	66	rVB	9201	10934	1.49%	0.257%
2	2.105	156	167	181	rBV2	16316	63770	8.69%	1.497%
3	2.386	205	213	222	rBV	6530	12091	1.65%	0.284%
4	2.947	298	305	314	rBV2	3868	8865	1.21%	0.208%
5	3.117	323	333	343	rBV	20169	46975	6.40%	1.103%
6	4.568	559	571	582	rBV3	3497	12075	1.65%	0.283%
7	5.385	693	705	721	rBV	86514	255720	34.84%	6.002%
8	5.556	721	733	750	rVB	149289	422354	57.54%	9.914%
9	5.958	789	799	815	rBV	96244	256651	34.97%	6.024%
10	6.763	920	931	948	rBV	221645	523935	71.38%	12.298%
11	8.647	1234	1240	1249	rBV	459111	733999	100.00%	17.229%
12	10.055	1465	1471	1483	rBV	460953	609899	83.09%	14.316%
13	10.299	1507	1511	1519	rBV	10546	15648	2.13%	0.367%
14	10.646	1562	1568	1573	rBV	7292	9475	1.29%	0.222%
15	11.079	1634	1639	1650	rBV	401088	509711	69.44%	11.964%
16	11.384	1684	1689	1697	rBV	7200	14813	2.02%	0.348%
17	11.750	1745	1749	1757	rVB	16521	21770	2.97%	0.511%
18	12.024	1788	1794	1800	rBV	485793	595337	81.11%	13.974%
19	12.097	1800	1806	1814	rVB5	11509	22479	3.06%	0.528%
20	12.244	1828	1830	1838	rVB2	10003	14692	2.00%	0.345%
21	12.317	1838	1842	1850	rVB4	4593	7642	1.04%	0.179%
22	13.170	1976	1982	1986	rVB3	5454	9811	1.34%	0.230%
23	13.292	1999	2002	2007	rVB2	13692	17593	2.40%	0.413%
24	13.420	2020	2023	2031	rVB	11608	16921	2.31%	0.397%
25	14.231	2149	2156	2161	rVB3	9175	17203	2.34%	0.404%
26	14.481	2193	2197	2206	rVB6	5829	10104	1.38%	0.237%
27	15.188	2306	2313	2316	rBV5	5958	10888	1.48%	0.256%
28	15.487	2356	2362	2367	rBV5	4964	8881	1.21%	0.208%

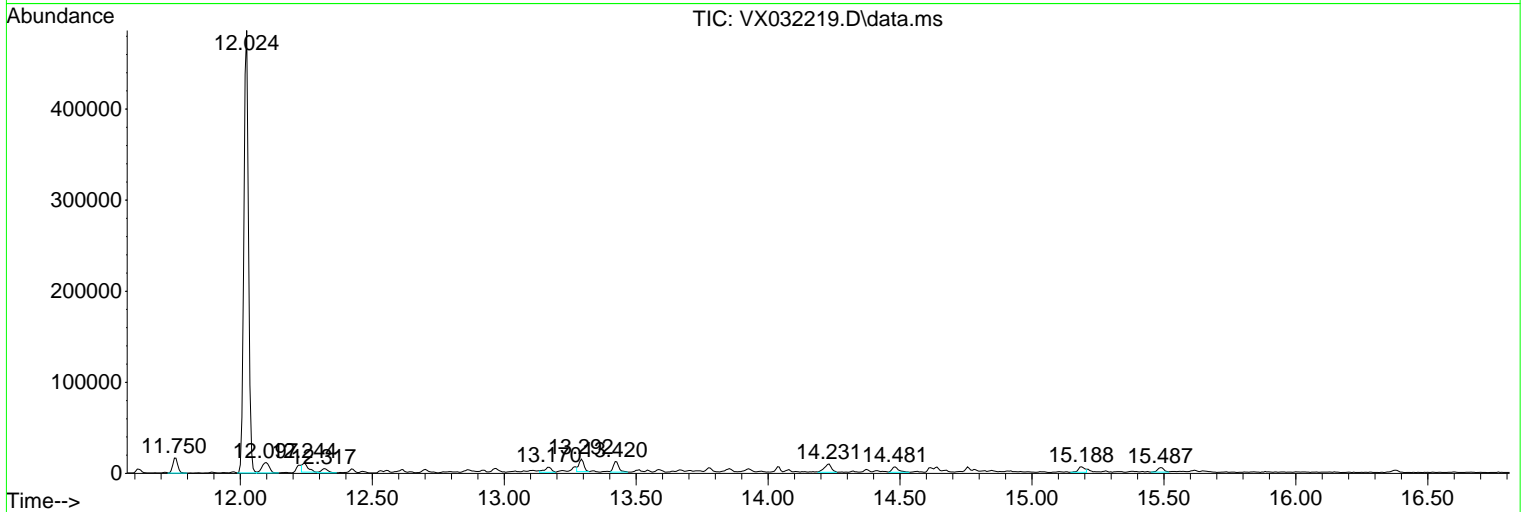
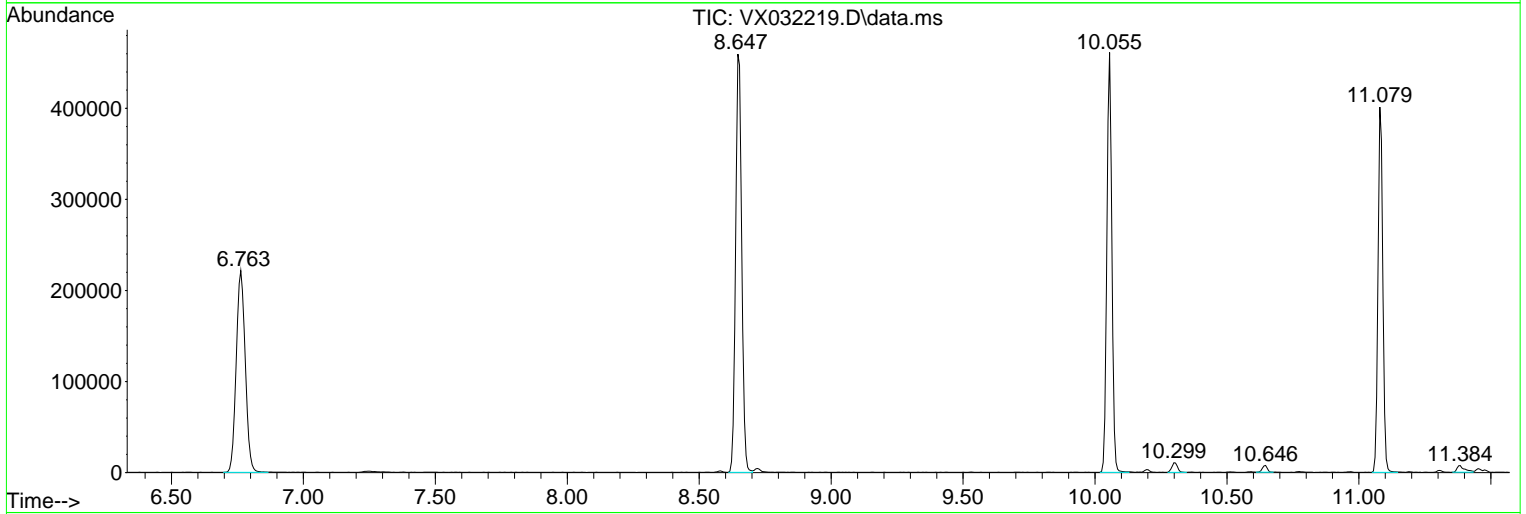
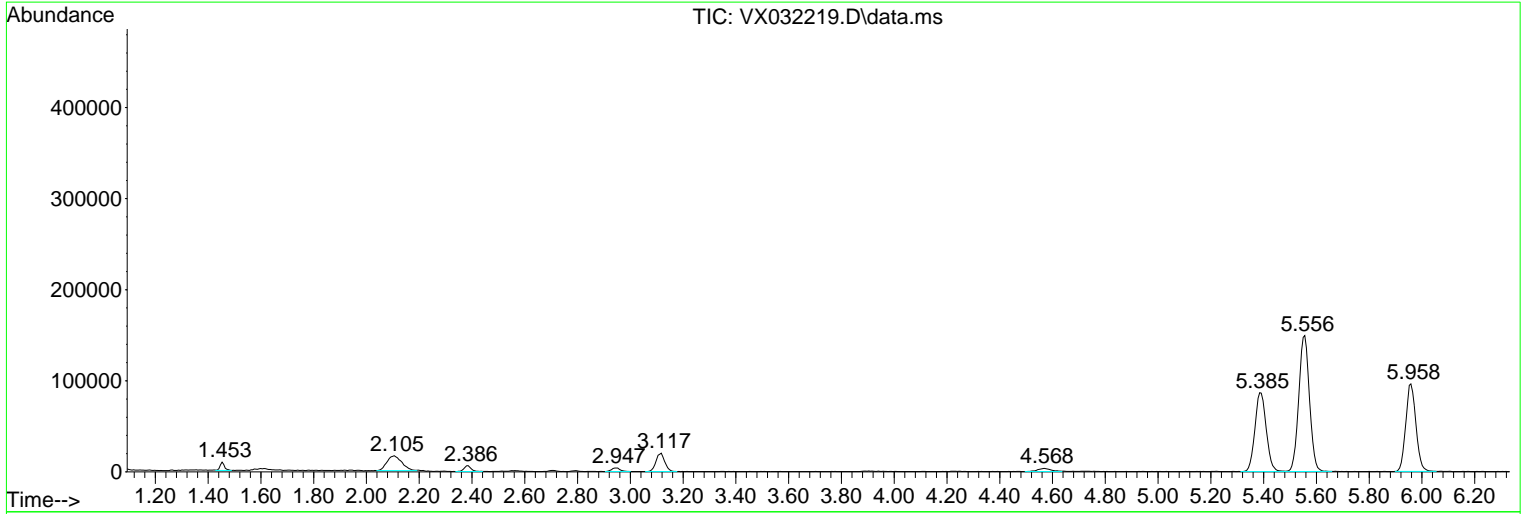
Sum of corrected areas: 4260236

Data Path : Z:\voasrv\HPCHEM1\MSVOA\_X\Data\VX101922\  
 Data File : VX032219.D  
 Acq On : 19 Oct 2022 19:42  
 Operator : JC/MD  
 Sample : N5170-06 50X  
 Misc : 5.0mL/MSVOA\_X/WATER  
 ALS Vial : 24 Sample Multiplier: 1

Instrument :  
 MSVOA\_X  
 ClientSampleId :  
 TRE-1664

Quant Method : Z:\voasrv\HPCHEM1\MSVOA\_X\Method\82X101922W.M  
 Quant Title : SW846 8260

TIC Library : C:\Database\NIST20.L  
 TIC Integration Parameters: LSCINT.P



Data Path : Z:\voasrv\HPCHEM1\MSVOA\_X\Data\VX101922\  
 Data File : VX032219.D  
 Acq On : 19 Oct 2022 19:42  
 Operator : JC/MD  
 Sample : N5170-06 50X  
 Misc : 5.0mL/MSVOA\_X/WATER  
 ALS Vial : 24 Sample Multiplier: 1

Instrument :  
 MSVOA\_X  
 ClientSampleId :  
 TRE-1664

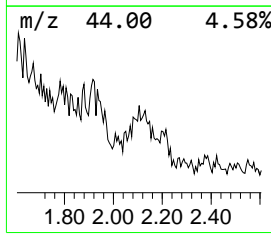
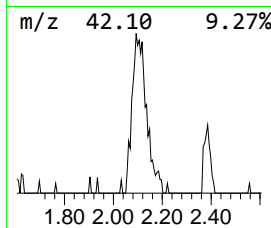
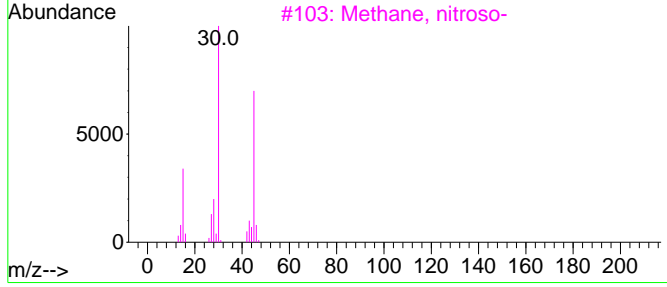
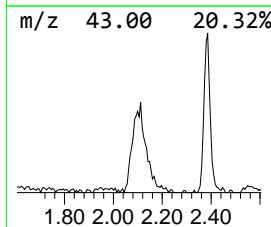
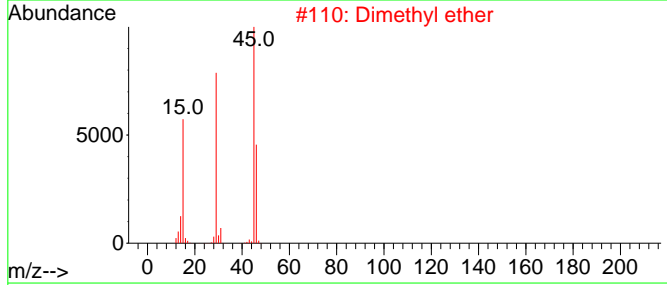
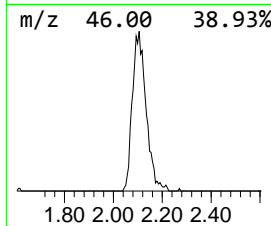
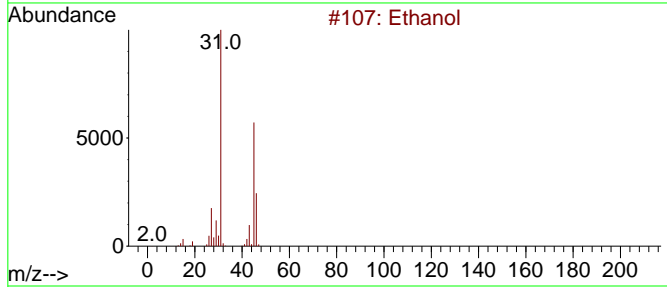
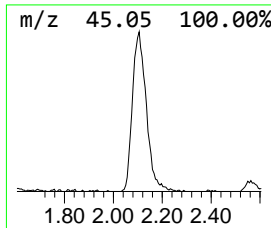
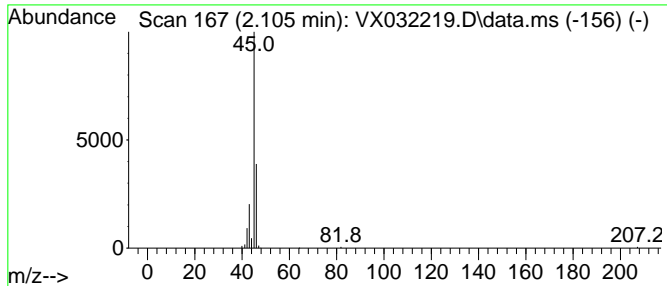
Quant Method : Z:\voasrv\HPCHEM1\MSVOA\_X\Method\82X101922W.M  
 Quant Title : SW846 8260

TIC Library : C:\Database\NIST0.L  
 TIC Integration Parameters: LSCINT.P

\*\*\*\*\*  
 Peak Number 1 Ethanol Concentration Rank 1

R.T.	EstConc	Area	Relative to ISTD	R.T.
2.105	7.55 ug/l	63770	Pentafluorobenzene	5.556

Hit#	of	5	Tentative ID	MW	MolForm	CAS#	Qual
1			Ethanol	46	C2H6O	000064-17-5	74
2			Dimethyl ether	46	C2H6O	000115-10-6	9
3			Methane, nitroso-	45	CH3NO	000865-40-7	4
4			Formic acid	46	CH2O2	000064-18-6	4
5			Propanedioic acid, dihydroxy-	136	C3H4O6	000560-27-0	4



Data Path : Z:\voasrv\HPCHEM1\MSVOA\_X\Data\VX101922\  
Data File : VX032219.D  
Acq On : 19 Oct 2022 19:42  
Operator : JC/MD  
Sample : N5170-06 50X  
Misc : 5.0mL/MSVOA\_X/WATER  
ALS Vial : 24 Sample Multiplier: 1

Instrument :  
MSVOA\_X  
ClientSampleId :  
TRE-1664

Quant Method : Z:\voasrv\HPCHEM1\MSVOA\_X\Method\82X101922W.M  
Quant Title : SW846 8260

TIC Library : C:\Database\NIST0.L  
TIC Integration Parameters: LSCINT.P

TIC Top Hit name	RT	EstConc	Units	Response	--Internal Standard--			
					#	RT	Resp	Conc
Ethanol	2.105	7.5	ug/l	63770	1	5.556	422354	50.0