

Data Path : Z:\voasrv\HPCHEM1\MSVOA_X\Data\VX102022\
 Data File : VX032275.D
 Acq On : 20 Oct 2022 19:57
 Operator : JC/MD
 Sample : N5185-17 10X
 Misc : 5.0mL/MSVOA_X/WATER
 ALS Vial : 25 Sample Multiplier: 1

Instrument :
 MSVOA_X
 ClientSampleId :
 PZ-02

Quant Time: Oct 21 02:17:33 2022
 Quant Method : Z:\voasrv\HPCHEM1\MSVOA_X\Method\82X101922W.M
 Quant Title : SW846 8260
 QLast Update : Wed Oct 19 16:51:09 2022
 Response via : Initial Calibration

Compound	R.T.	QIon	Response	Conc	Units	Dev(Min)

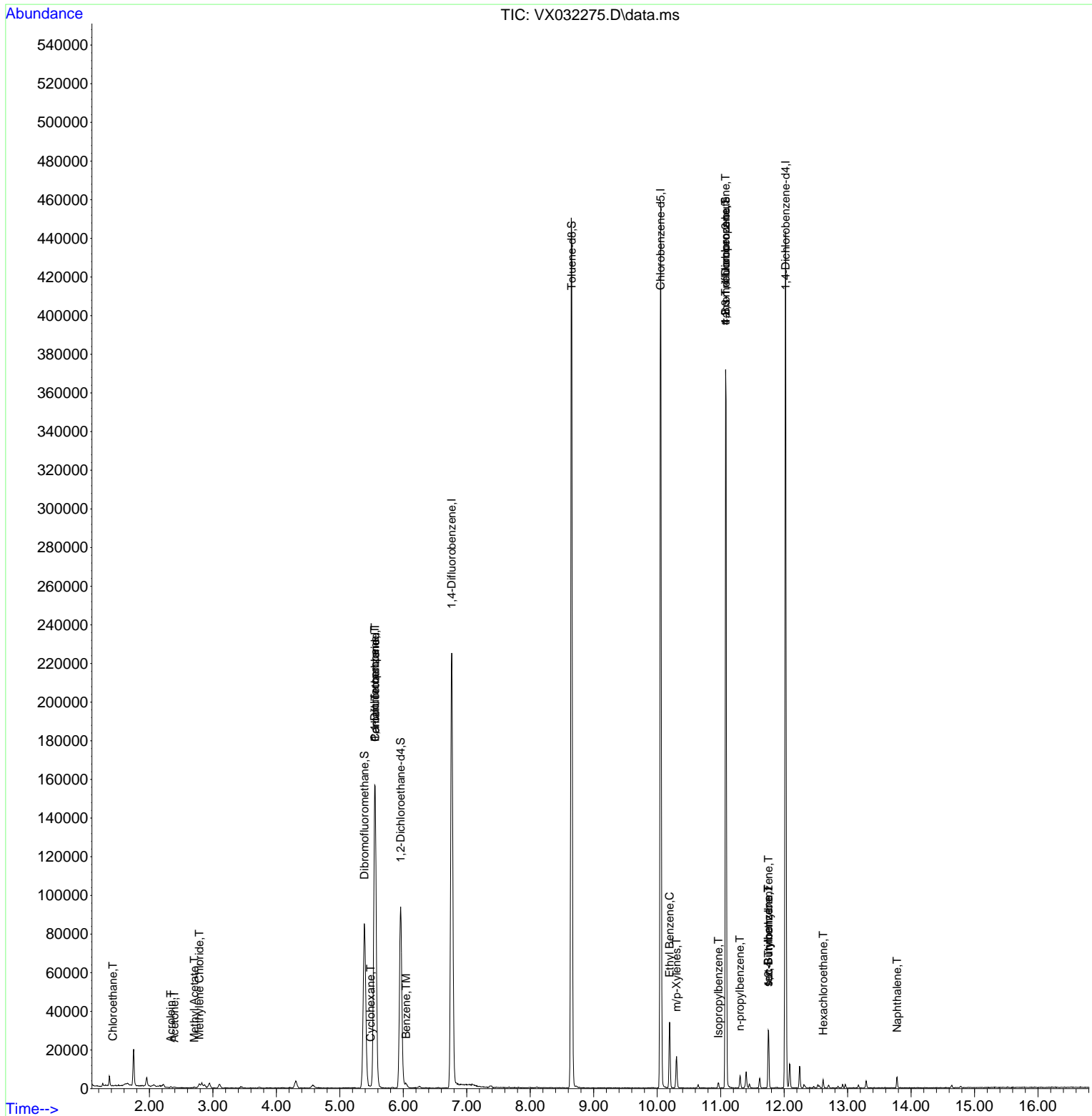
Internal Standards						
1) Pentafluorobenzene	5.556	168	147425	50.000	ug/l	0.00
34) 1,4-Difluorobenzene	6.763	114	228545	50.000	ug/l	0.00
63) Chlorobenzene-d5	10.055	117	196591	50.000	ug/l	0.00
72) 1,4-Dichlorobenzene-d4	12.024	152	88758	50.000	ug/l	0.00
System Monitoring Compounds						
33) 1,2-Dichloroethane-d4	5.958	65	93239	48.616	ug/l	0.00
Spiked Amount	50.000	Range	78 - 117	Recovery	=	97.240%
35) Dibromofluoromethane	5.385	113	71294	44.829	ug/l	0.00
Spiked Amount	50.000	Range	75 - 124	Recovery	=	89.660%
50) Toluene-d8	8.653	98	269477	47.072	ug/l	0.00
Spiked Amount	50.000	Range	92 - 112	Recovery	=	94.140%
62) 4-Bromofluorobenzene	11.079	95	94640	45.145	ug/l	0.00
Spiked Amount	50.000	Range	83 - 123	Recovery	=	90.300%
Target Compounds						
					Qvalue	
3) Chloromethane	1.301	50	56	Below Cal	#	44
6) Chloroethane	1.422	64	38	1.978	ug/l #	41
11) Tert butyl alcohol	2.940	59	1499	Below Cal	#	74
13) Acrolein	2.337	56	59	0.253	ug/l #	14
16) Acetone	2.392	43	799	1.284	ug/l	92
18) Methyl Acetate	2.709	43	730	0.345	ug/l #	50
20) Methylene Chloride	2.788	84	546	0.342	ug/l #	79
31) Cyclohexane	5.483	56	523	0.239	ug/l #	78
36) 1,1-Dichloropropene	5.550	75	11720	5.729	ug/l #	50
38) Carbon Tetrachloride	5.556	117	15009	6.950	ug/l #	17
40) Benzene	6.044	78	2637	0.445	ug/l	99
67) Ethyl Benzene	10.195	91	18785	2.632	ug/l	98
68) m/p-Xylenes	10.305	106	3695	1.311	ug/l	97
73) Isopropylbenzene	10.963	105	1595	0.252	ug/l	99
76) 1,2,3-Trichloropropane	11.079	75	52006	29.571	ug/l #	44
78) n-propylbenzene	11.305	91	4466	0.616	ug/l	99
81) trans-1,4-Dichloro-2-b...	11.079	75	52006	90.533	ug/l #	6
83) tert-Butylbenzene	11.750	119	1792	0.327	ug/l #	60
84) 1,2,4-Trimethylbenzene	11.756	105	13920	2.617	ug/l	98
85) sec-Butylbenzene	11.756	105	13920	2.104	ug/l #	56
90) Hexachloroethane	12.616	117	191	0.219	ug/l #	11
95) Naphthalene	13.780	128	3768	0.616	ug/l	96

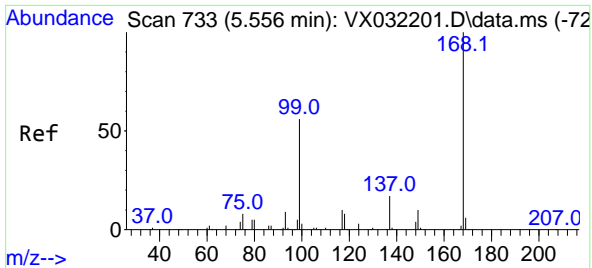
(#) = qualifier out of range (m) = manual integration (+) = signals summed

Data Path : Z:\voasrv\HPCHEM1\MSVOA_X\Data\VX102022\
 Data File : VX032275.D
 Acq On : 20 Oct 2022 19:57
 Operator : JC/MD
 Sample : N5185-17 10X
 Misc : 5.0mL/MSVOA_X/WATER
 ALS Vial : 25 Sample Multiplier: 1

Instrument :
 MSVOA_X
 ClientSampleId :
 PZ-02

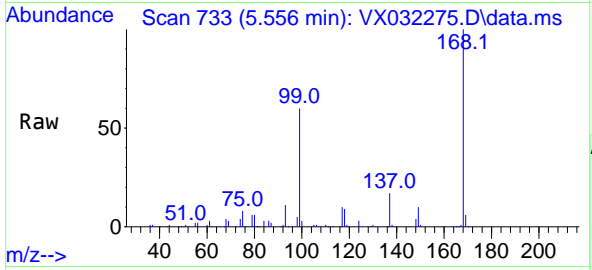
Quant Time: Oct 21 02:17:33 2022
 Quant Method : Z:\voasrv\HPCHEM1\MSVOA_X\Method\82X101922W.M
 Quant Title : SW846 8260
 QLast Update : Wed Oct 19 16:51:09 2022
 Response via : Initial Calibration



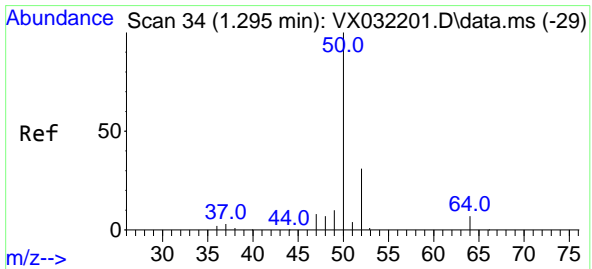
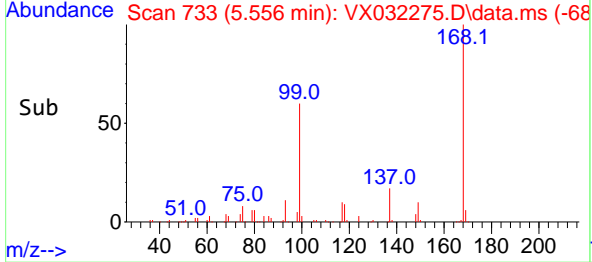
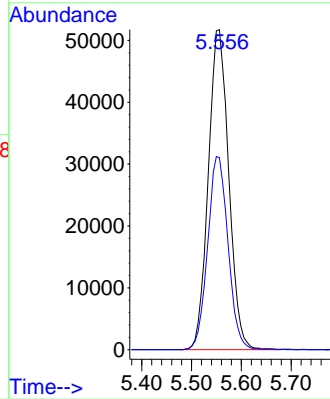


#1
 Pentafluorobenzene
 Concen: 50.000 ug/l
 RT: 5.556 min Scan# 71
 Delta R.T. -0.000 min
 Lab File: VX032275.D
 Acq: 20 Oct 2022 19:57

Instrument : MSVOA_X
 ClientSampleId : PZ-02

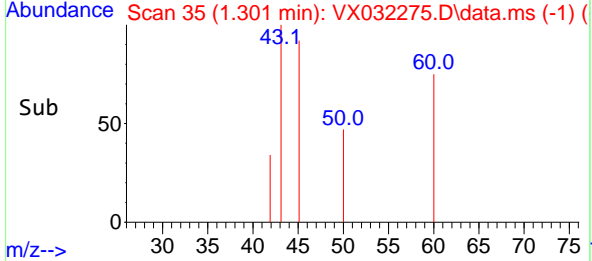
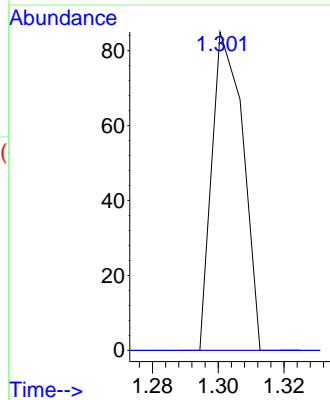
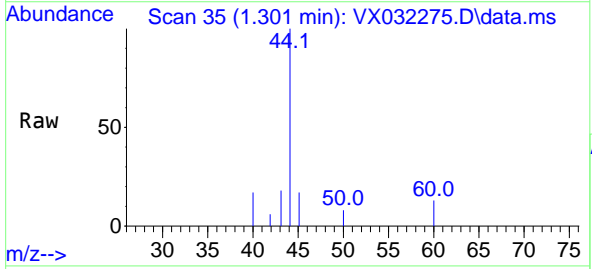


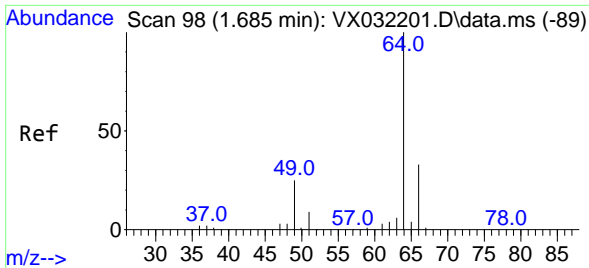
Tgt Ion:168 Resp: 147425
 Ion Ratio Lower Upper
 168 100
 99 60.1 44.8 67.2



#3
 Chloromethane
 Concen: Below Cal
 RT: 1.301 min Scan# 35
 Delta R.T. 0.006 min
 Lab File: VX032275.D
 Acq: 20 Oct 2022 19:57

Tgt Ion: 50 Resp: 56
 Ion Ratio Lower Upper
 50 100
 52 0.0 24.7 37.1#

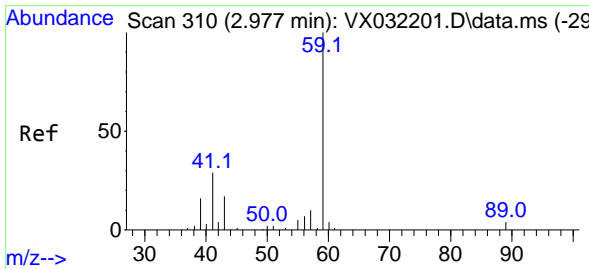
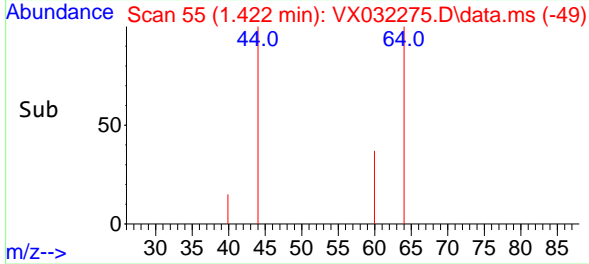
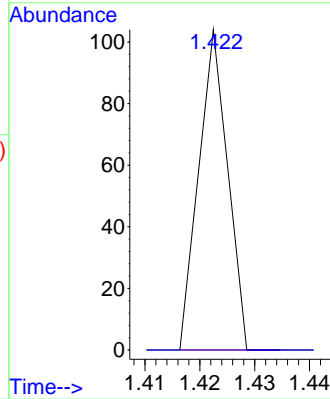
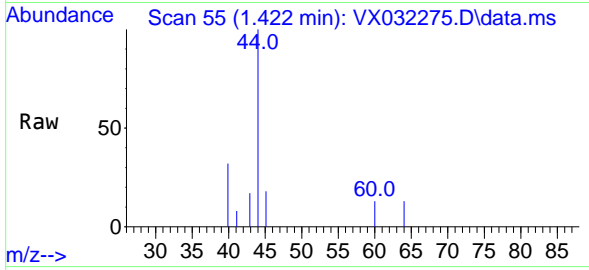




#6
 Chloroethane
 Concen: 1.978 ug/l
 RT: 1.422 min Scan# 51
 Delta R.T. -0.263 min
 Lab File: VX032275.D
 Acq: 20 Oct 2022 19:57

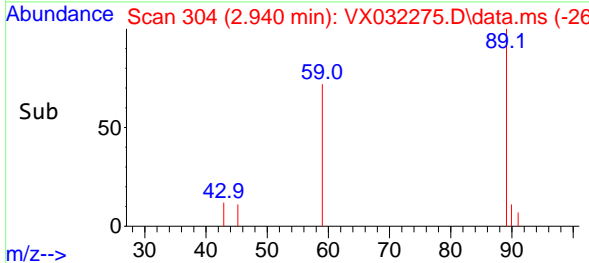
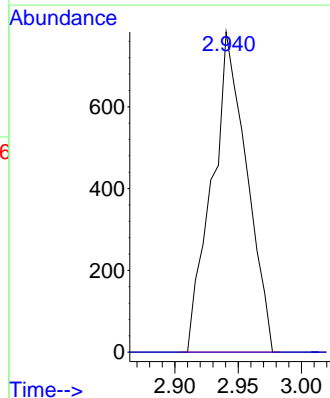
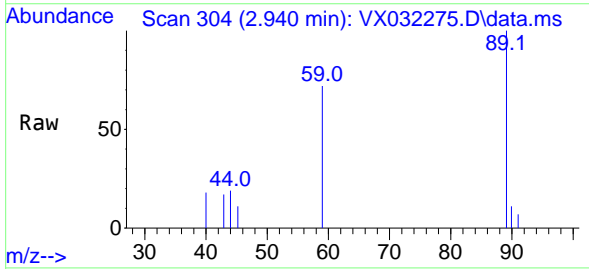
Instrument :
 MSVOA_X
 ClientSampleId :
 PZ-02

Tgt Ion: 64 Resp: 38
 Ion Ratio Lower Upper
 64 100
 66 0.0 26.6 39.8#

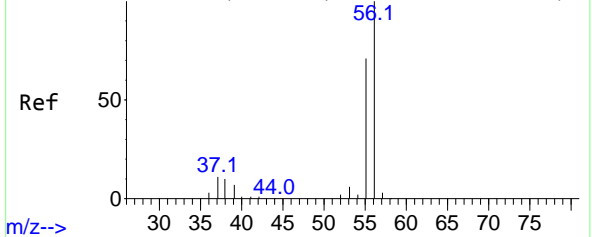


#11
 Tert butyl alcohol
 Concen: Below Cal
 RT: 2.940 min Scan# 304
 Delta R.T. -0.037 min
 Lab File: VX032275.D
 Acq: 20 Oct 2022 19:57

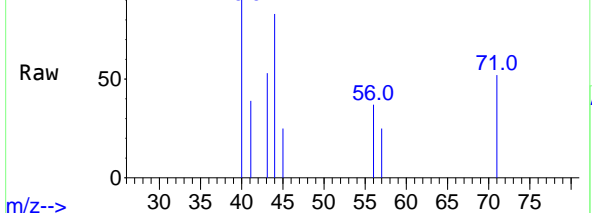
Tgt Ion: 59 Resp: 1499
 Ion Ratio Lower Upper
 59 100
 57 0.0 7.5 11.3#



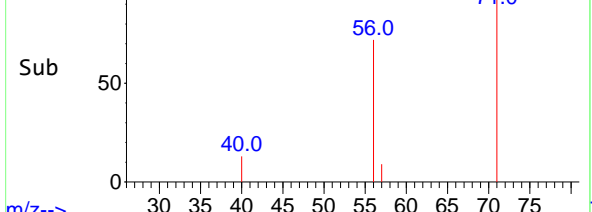
Abundance Scan 188 (2.233 min): VX032201.D\data.ms (-18)



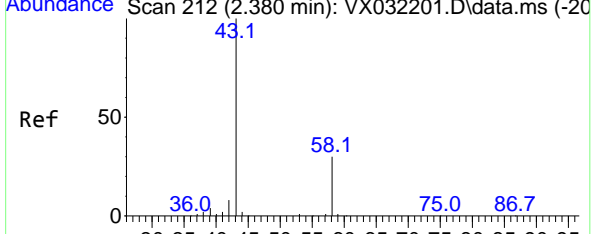
Ref



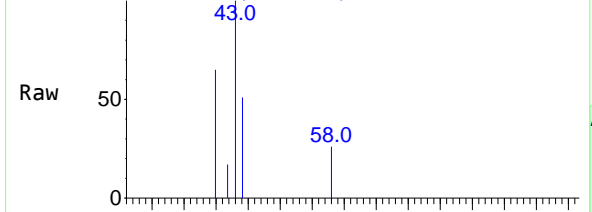
Abundance Scan 205 (2.337 min): VX032275.D\data.ms (-13)



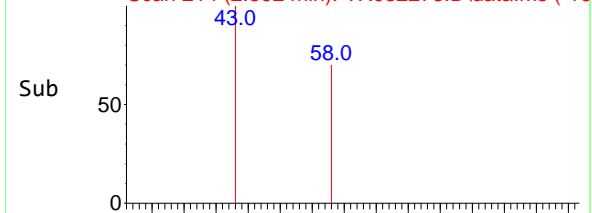
Sub



Abundance Scan 214 (2.392 min): VX032275.D\data.ms



Abundance Scan 214 (2.392 min): VX032275.D\data.ms (-16)



Sub

#13

Acrolein

Concen: 0.253 ug/l

RT: 2.337 min Scan# 205

Delta R.T. 0.104 min

Lab File: VX032275.D

Acq: 20 Oct 2022 19:57

Instrument :

MSVOA_X

ClientSampleId :

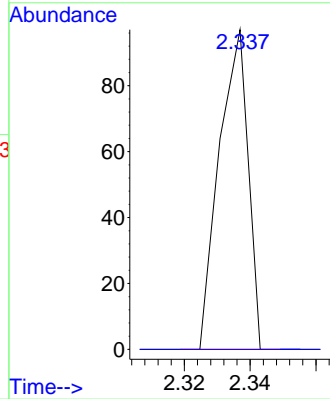
PZ-02

Tgt Ion: 56 Resp: 59

Ion Ratio Lower Upper

56 100

55 0.0 56.4 84.6#



#16

Acetone

Concen: 1.284 ug/l

RT: 2.392 min Scan# 214

Delta R.T. 0.012 min

Lab File: VX032275.D

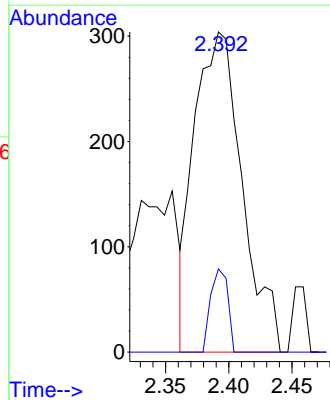
Acq: 20 Oct 2022 19:57

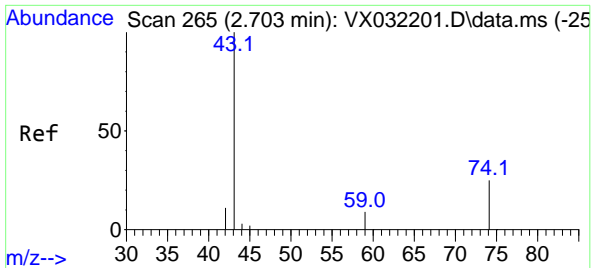
Tgt Ion: 43 Resp: 799

Ion Ratio Lower Upper

43 100

58 26.0 24.2 36.2



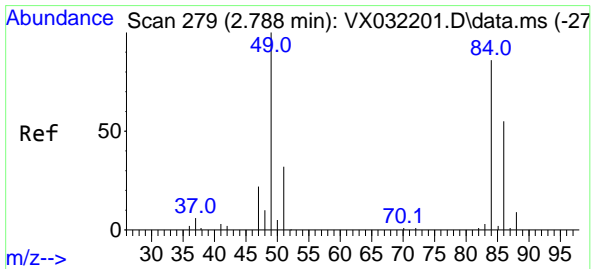
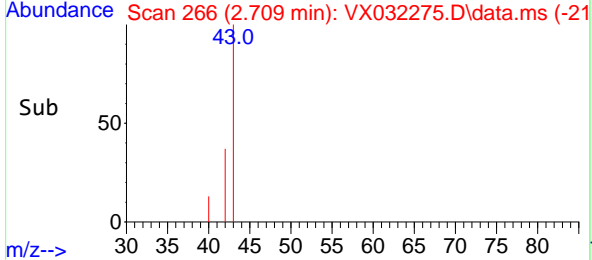
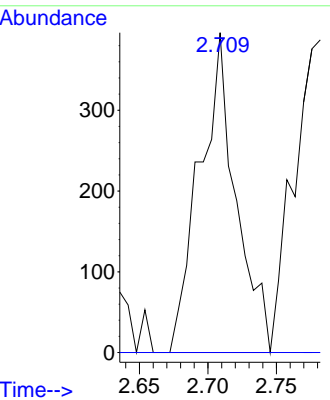
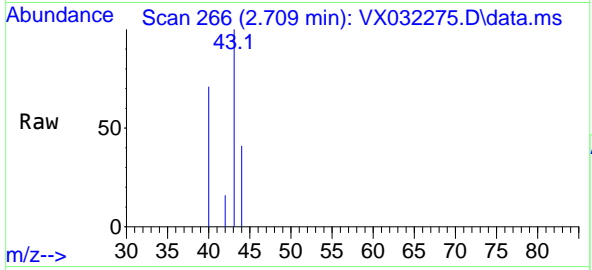


#18
 Methyl Acetate
 Concen: 0.345 ug/l
 RT: 2.709 min Scan# 266
 Delta R.T. 0.006 min
 Lab File: VX032275.D
 Acq: 20 Oct 2022 19:57

Instrument : MSVOA_X
 ClientSampleId : PZ-02

Tgt Ion: 43 Resp: 730

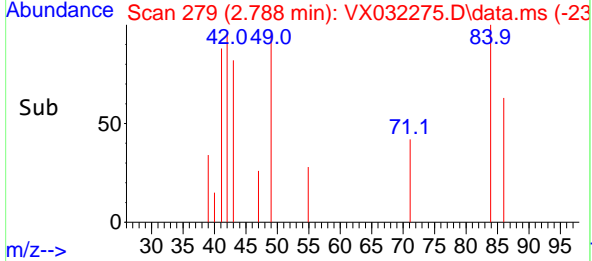
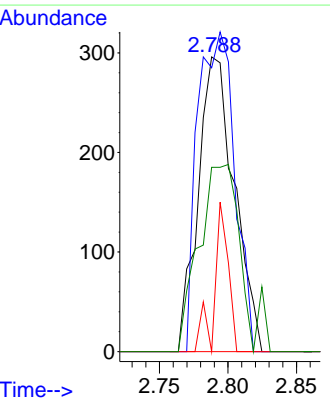
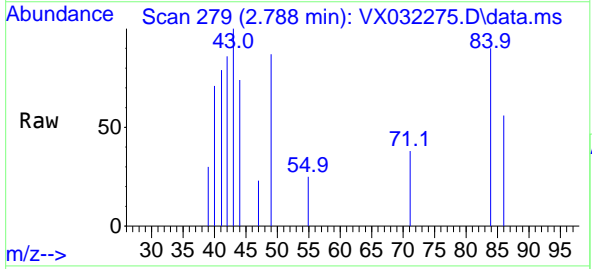
Ion	Ratio	Lower	Upper
43	100		
74	0.0	19.8	29.8#

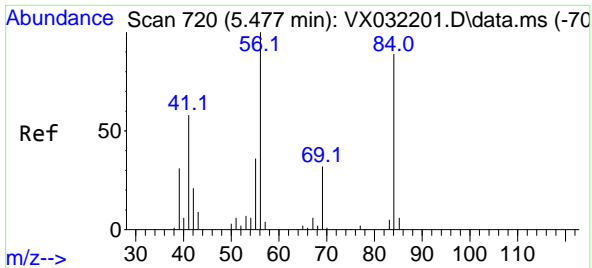


#20
 Methylene Chloride
 Concen: 0.342 ug/l
 RT: 2.788 min Scan# 279
 Delta R.T. 0.000 min
 Lab File: VX032275.D
 Acq: 20 Oct 2022 19:57

Tgt Ion: 84 Resp: 546

Ion	Ratio	Lower	Upper
84	100		
49	96.3	92.6	139.0
51	0.0	29.2	43.8#
86	62.5	51.4	77.0



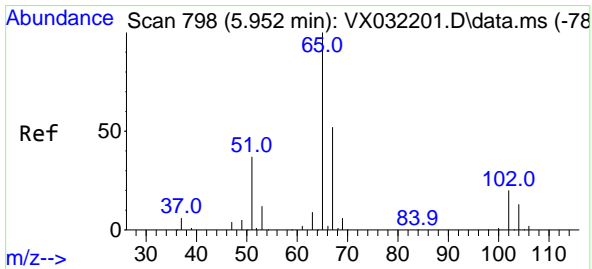
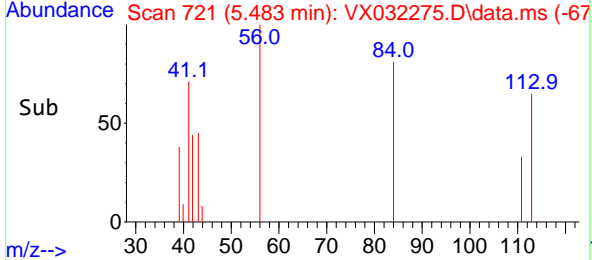
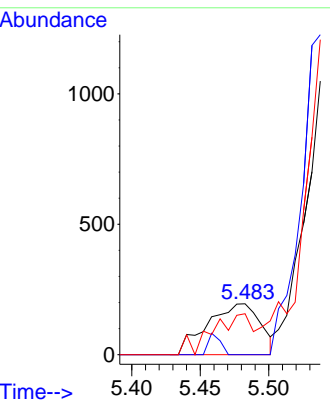
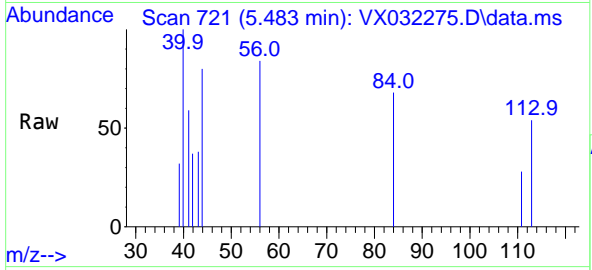


#31
 Cyclohexane
 Concen: 0.239 ug/l
 RT: 5.483 min Scan# 719
 Delta R.T. 0.006 min
 Lab File: VX032275.D
 Acq: 20 Oct 2022 19:57

Instrument : MSVOA_X
 ClientSampleId : PZ-02

Tgt Ion: 56 Resp: 523

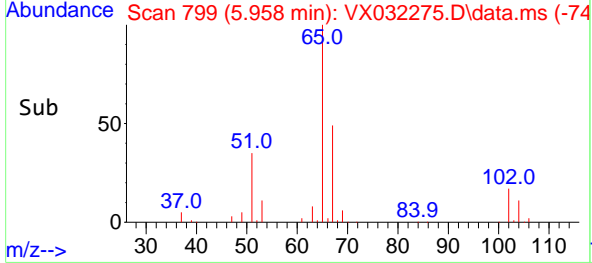
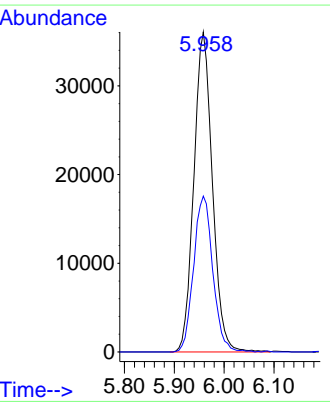
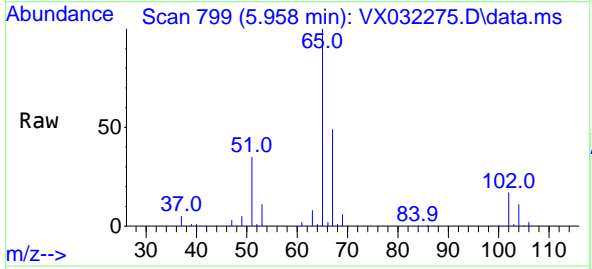
Ion	Ratio	Lower	Upper
56	100		
69	0.0	25.4	38.0#
84	80.5	71.2	106.8

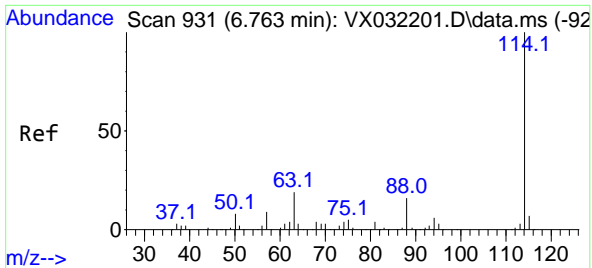


#33
 1,2-Dichloroethane-d4
 Concen: 48.616 ug/l
 RT: 5.958 min Scan# 799
 Delta R.T. 0.006 min
 Lab File: VX032275.D
 Acq: 20 Oct 2022 19:57

Tgt Ion: 65 Resp: 93239

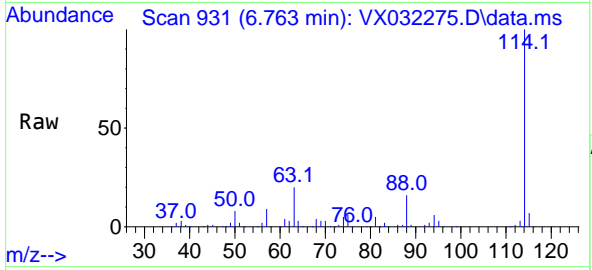
Ion	Ratio	Lower	Upper
65	100		
67	50.5	0.0	103.6





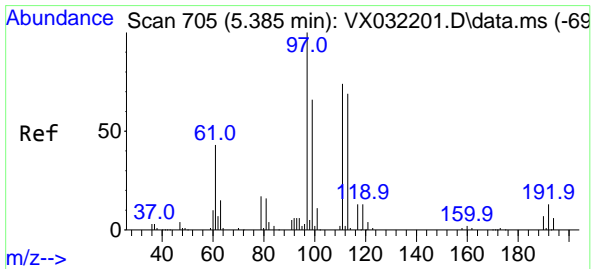
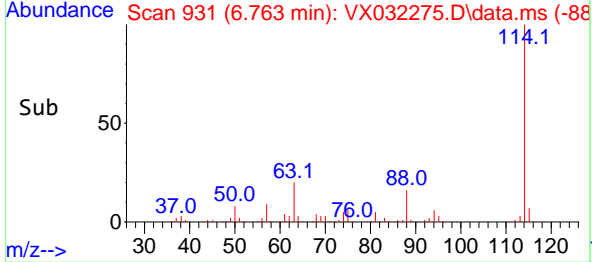
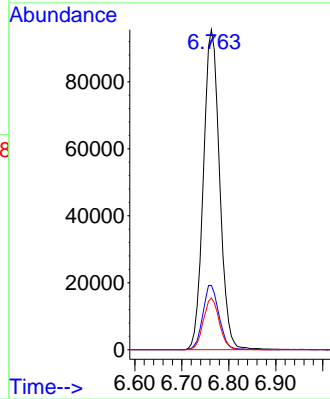
#34
 1,4-Difluorobenzene
 Concen: 50.000 ug/l
 RT: 6.763 min Scan# 91
 Delta R.T. -0.000 min
 Lab File: VX032275.D
 Acq: 20 Oct 2022 19:57

Instrument :
 MSVOA_X
 ClientSampleId :
 PZ-02

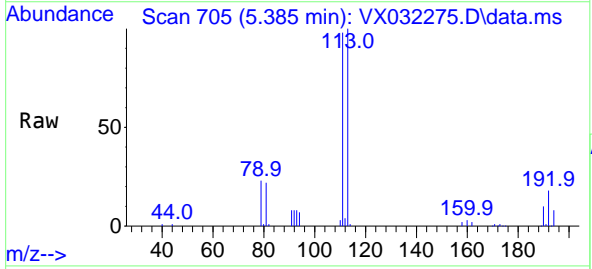


Tgt Ion:114 Resp: 228545

Ion	Ratio	Lower	Upper
114	100		
63	20.1	0.0	38.6
88	16.1	0.0	32.6

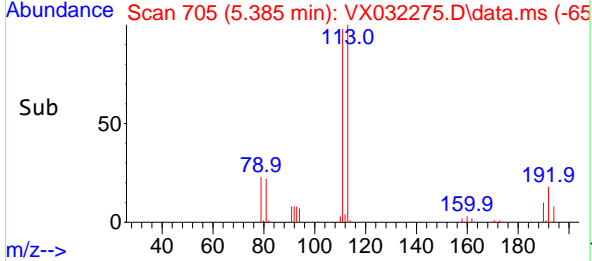
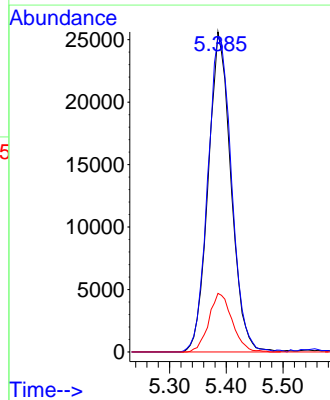


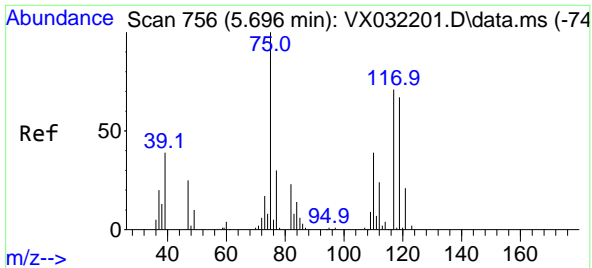
#35
 Dibromofluoromethane
 Concen: 44.829 ug/l
 RT: 5.385 min Scan# 705
 Delta R.T. 0.000 min
 Lab File: VX032275.D
 Acq: 20 Oct 2022 19:57



Tgt Ion:113 Resp: 71294

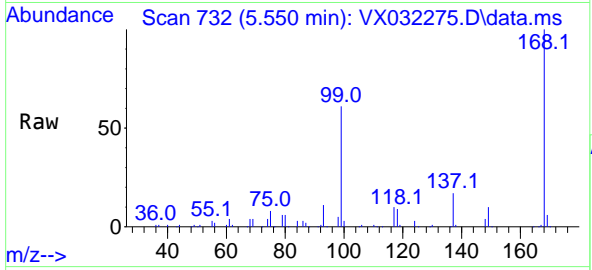
Ion	Ratio	Lower	Upper
113	100		
111	103.5	82.8	124.2
192	18.8	15.5	23.3



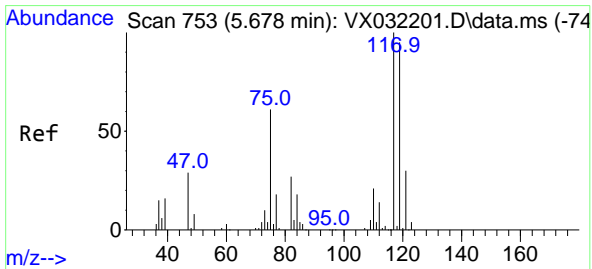
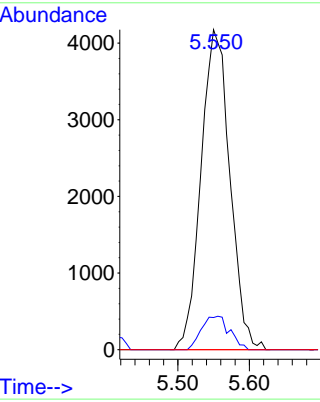
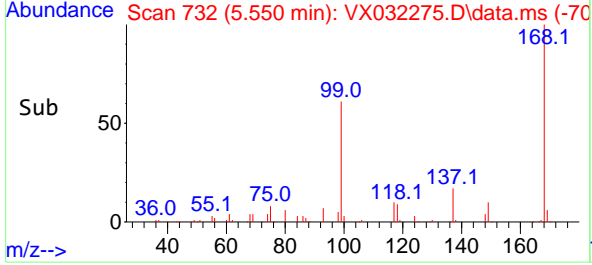


#36
 1,1-Dichloropropene
 Concen: 5.729 ug/l
 RT: 5.550 min Scan# 711
 Delta R.T. -0.146 min
 Lab File: VX032275.D
 Acq: 20 Oct 2022 19:57

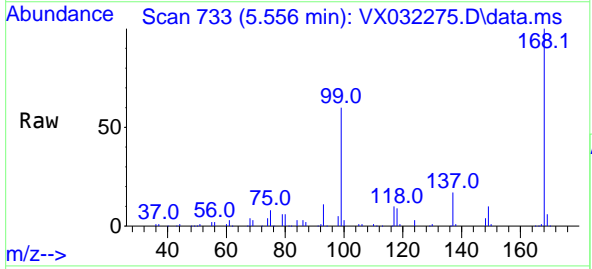
Instrument : MSVOA_X
 ClientSampleId : PZ-02



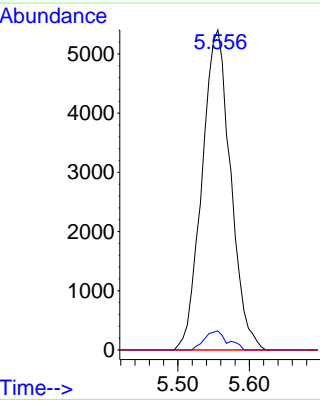
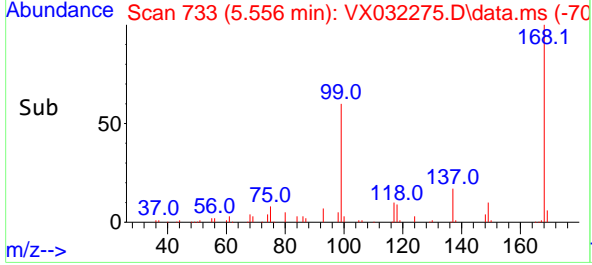
Tgt Ion: 75 Resp: 11720
 Ion Ratio Lower Upper
 75 100
 110 10.2 18.4 55.0#
 77 0.0 24.7 37.1#

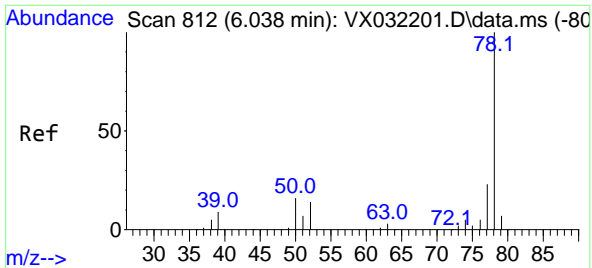


#38
 Carbon Tetrachloride
 Concen: 6.950 ug/l
 RT: 5.556 min Scan# 733
 Delta R.T. -0.122 min
 Lab File: VX032275.D
 Acq: 20 Oct 2022 19:57



Tgt Ion: 117 Resp: 15009
 Ion Ratio Lower Upper
 117 100
 119 6.0 75.4 113.0#
 121 0.0 23.9 35.9#

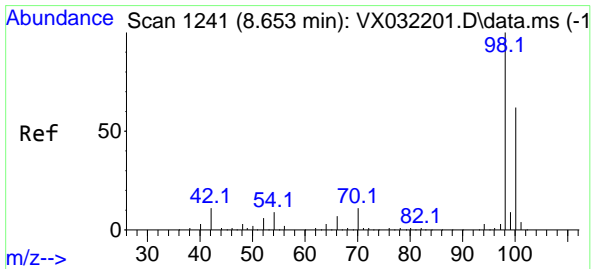
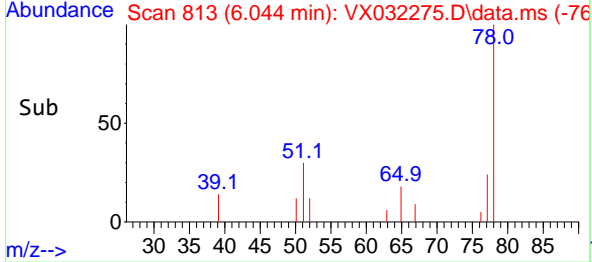
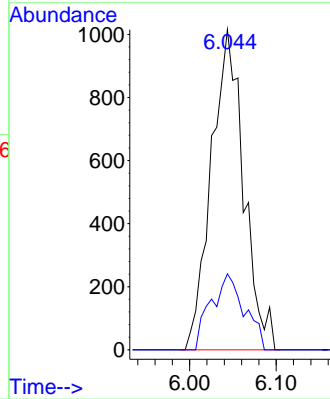
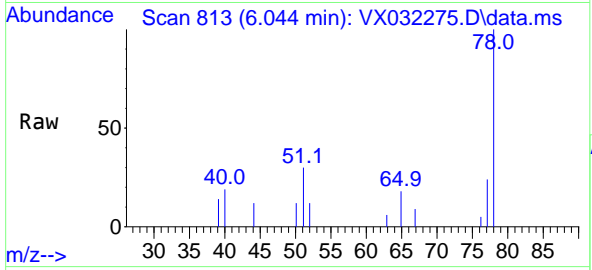




#40
Benzene
Concen: 0.445 ug/l
RT: 6.044 min Scan# 812
Delta R.T. 0.006 min
Lab File: VX032275.D
Acq: 20 Oct 2022 19:57

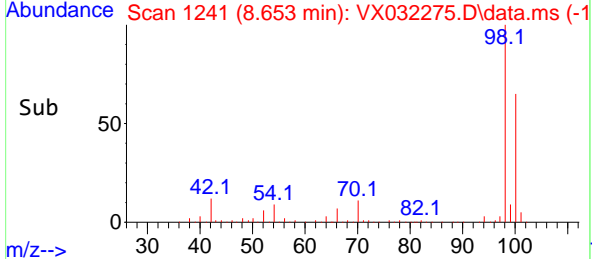
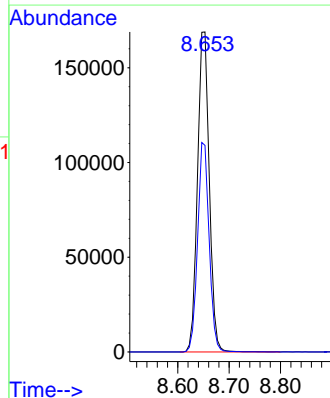
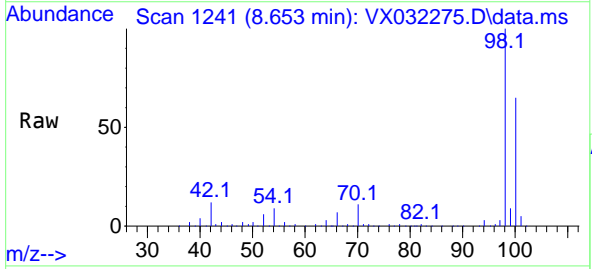
Instrument : MSVOA_X
ClientSampleId : PZ-02

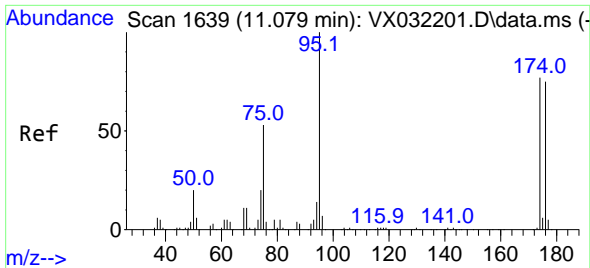
Tgt Ion: 78 Resp: 2637
Ion Ratio Lower Upper
78 100
77 23.7 18.6 27.8



#50
Toluene-d8
Concen: 47.072 ug/l
RT: 8.653 min Scan# 1241
Delta R.T. -0.000 min
Lab File: VX032275.D
Acq: 20 Oct 2022 19:57

Tgt Ion: 98 Resp: 269477
Ion Ratio Lower Upper
98 100
100 64.0 50.7 76.1



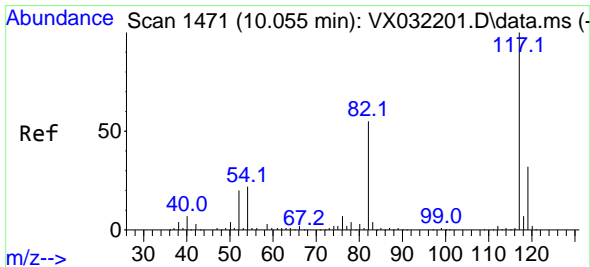
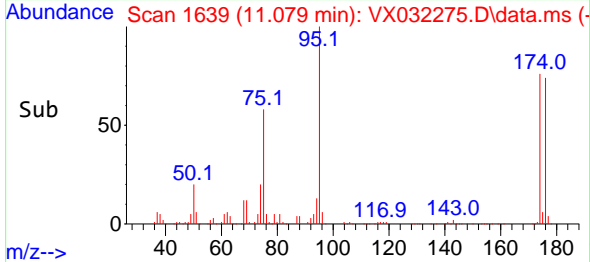
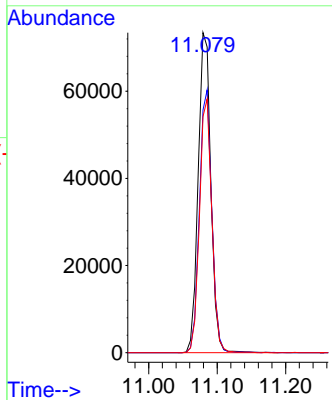
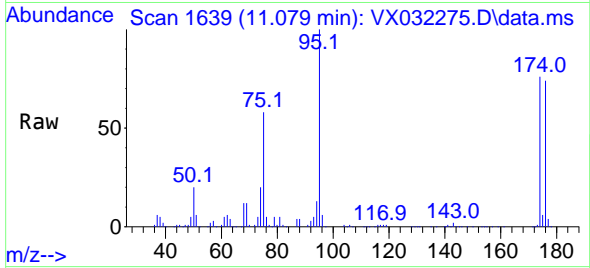


#62
 4-Bromofluorobenzene
 Concen: 45.145 ug/l
 RT: 11.079 min Scan# 1639
 Delta R.T. 0.000 min
 Lab File: VX032275.D
 Acq: 20 Oct 2022 19:57

Instrument : MSVOA_X
 ClientSampleId : PZ-02

Tgt Ion: 95 Resp: 94640

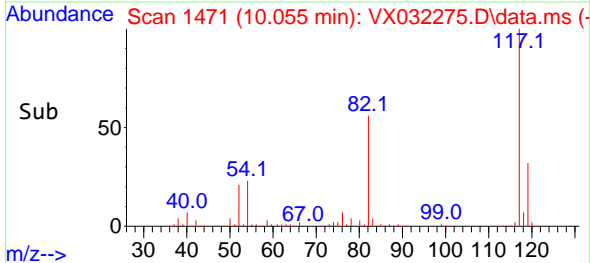
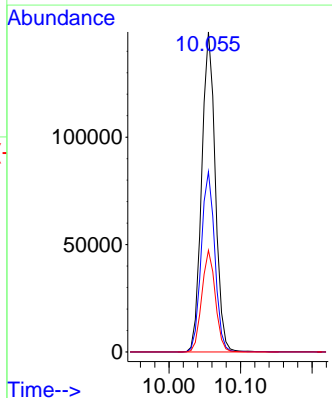
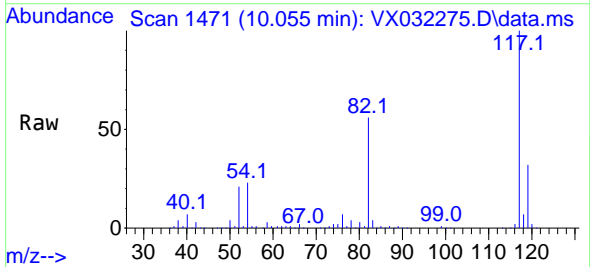
Ion	Ratio	Lower	Upper
95	100		
174	80.4	0.0	166.8
176	77.4	0.0	161.4

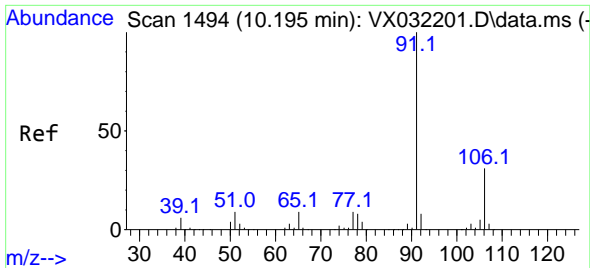


#63
 Chlorobenzene-d5
 Concen: 50.000 ug/l
 RT: 10.055 min Scan# 1471
 Delta R.T. 0.000 min
 Lab File: VX032275.D
 Acq: 20 Oct 2022 19:57

Tgt Ion: 117 Resp: 196591

Ion	Ratio	Lower	Upper
117	100		
82	56.3	44.2	66.4
119	31.8	25.8	38.8

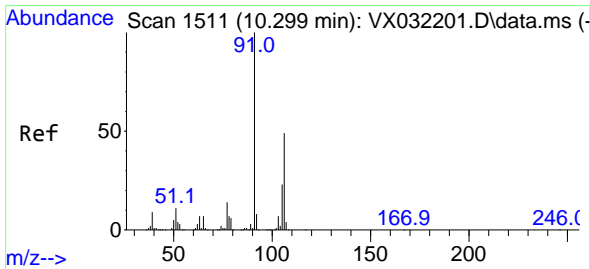
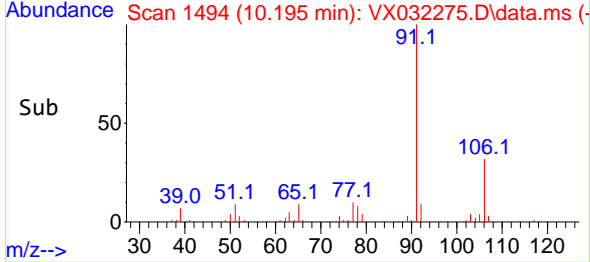
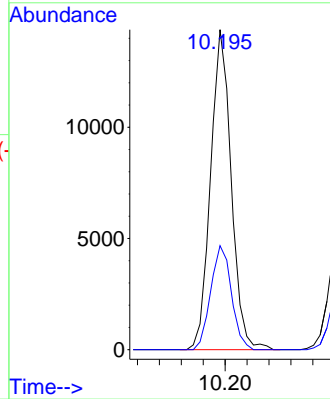
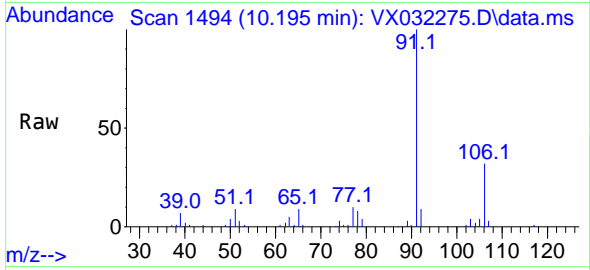




#67
 Ethyl Benzene
 Concen: 2.632 ug/l
 RT: 10.195 min Scan# 1494
 Delta R.T. 0.000 min
 Lab File: VX032275.D
 Acq: 20 Oct 2022 19:57

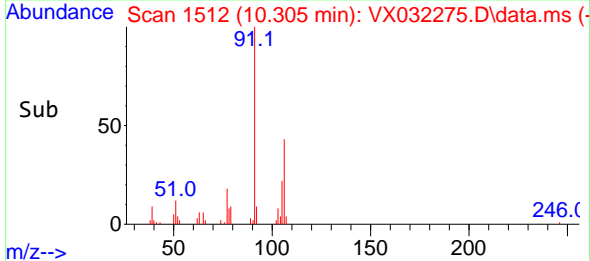
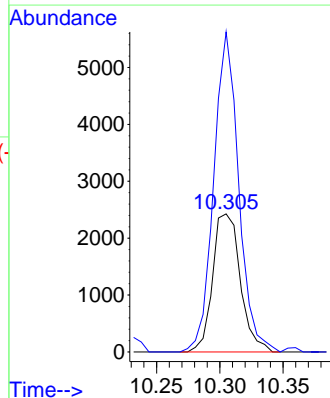
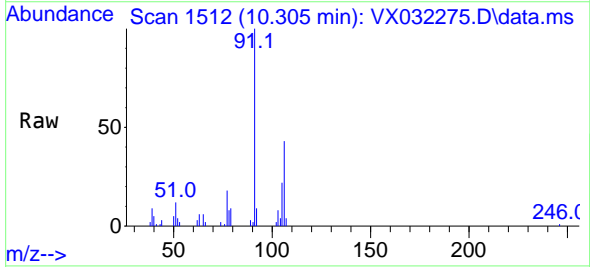
Instrument : MSVOA_X
 ClientSampleId : PZ-02

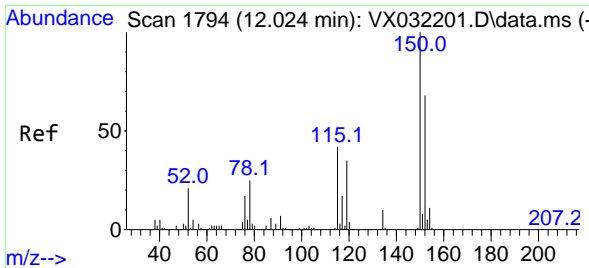
Tgt Ion: 91 Resp: 18785
 Ion Ratio Lower Upper
 91 100
 106 32.5 25.0 37.4



#68
 m/p-Xylenes
 Concen: 1.311 ug/l
 RT: 10.305 min Scan# 1512
 Delta R.T. 0.006 min
 Lab File: VX032275.D
 Acq: 20 Oct 2022 19:57

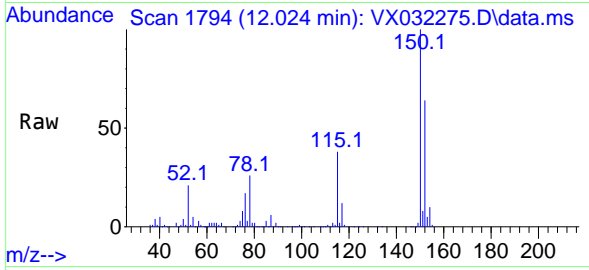
Tgt Ion: 106 Resp: 3695
 Ion Ratio Lower Upper
 106 100
 91 208.6 162.6 244.0



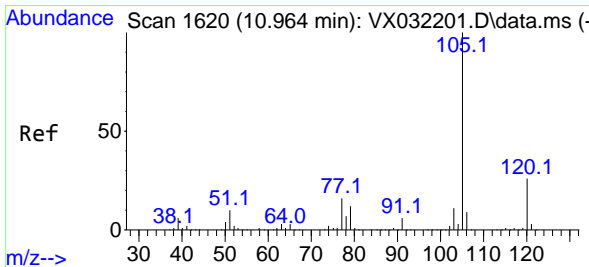
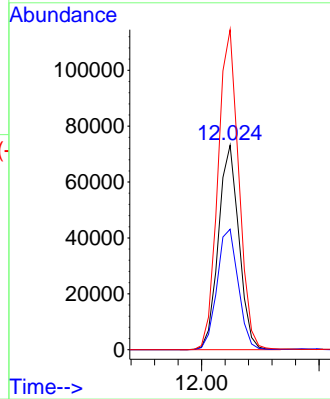
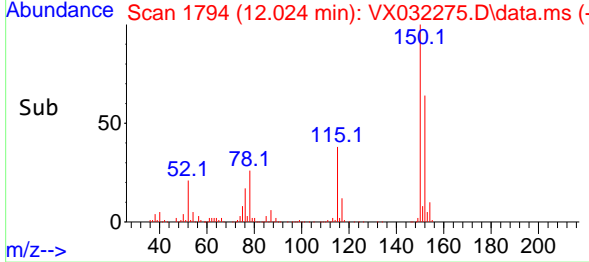


#72
 1,4-Dichlorobenzene-d4
 Concen: 50.000 ug/l
 RT: 12.024 min Scan# 11
 Delta R.T. 0.000 min
 Lab File: VX032275.D
 Acq: 20 Oct 2022 19:57

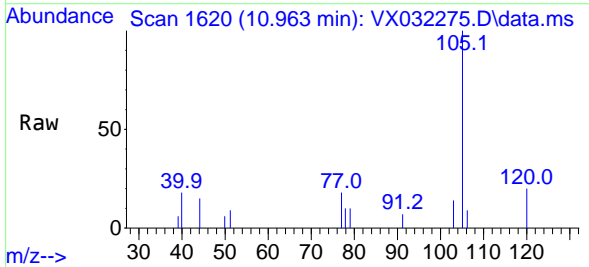
Instrument :
 MSVOA_X
 ClientSampleId :
 PZ-02



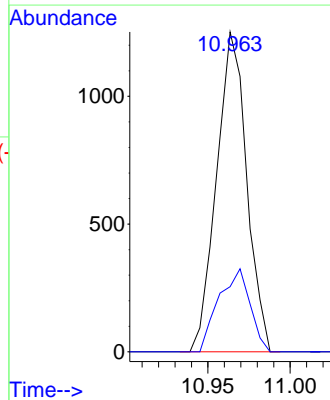
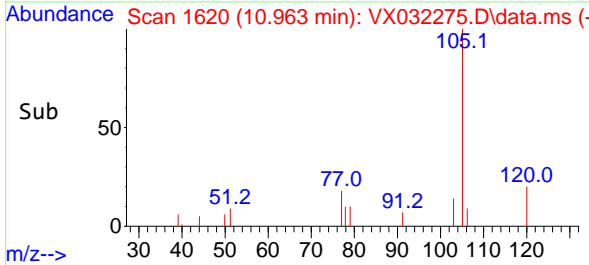
Tgt Ion:152 Resp: 88758
 Ion Ratio Lower Upper
 152 100
 115 61.1 43.1 129.4
 150 159.4 0.0 348.6

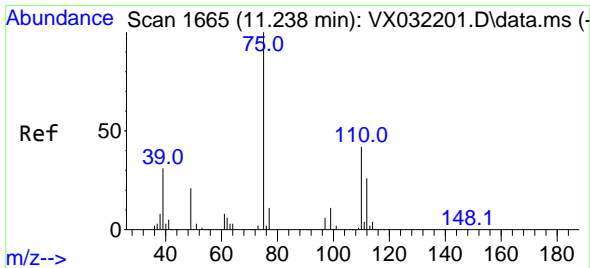


#73
 Isopropylbenzene
 Concen: 0.252 ug/l
 RT: 10.963 min Scan# 1620
 Delta R.T. -0.001 min
 Lab File: VX032275.D
 Acq: 20 Oct 2022 19:57



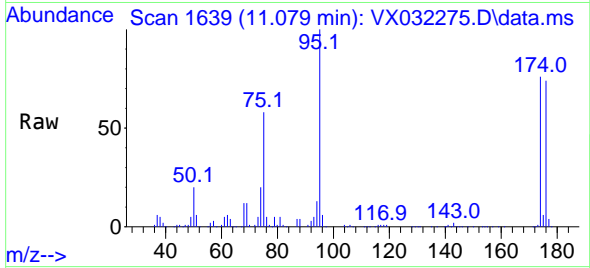
Tgt Ion:105 Resp: 1595
 Ion Ratio Lower Upper
 105 100
 120 27.0 13.2 39.6



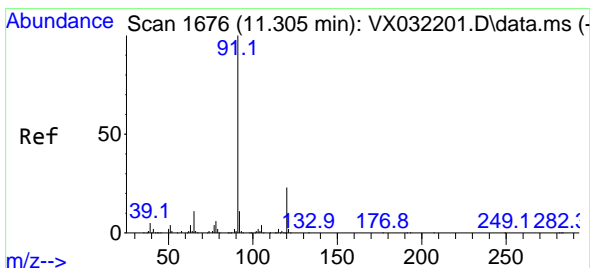
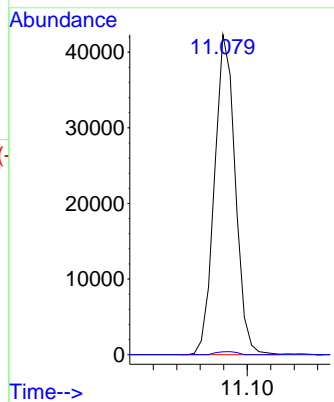
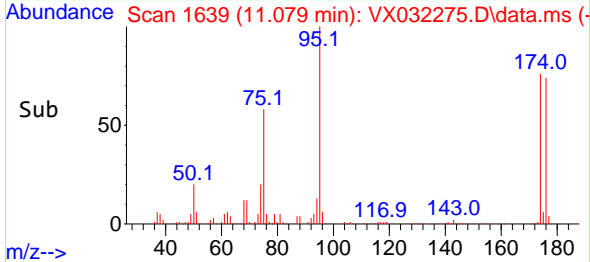


#76
 1,2,3-Trichloropropane
 Concen: 29.571 ug/l
 RT: 11.079 min Scan# 1639
 Delta R.T. -0.159 min
 Lab File: VX032275.D
 Acq: 20 Oct 2022 19:57

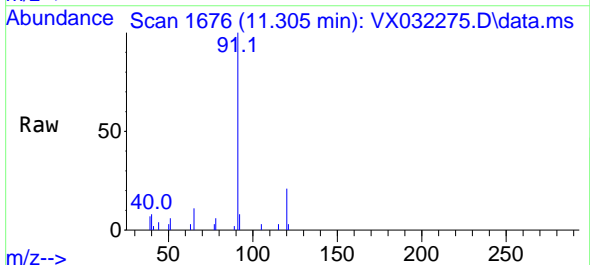
Instrument : MSVOA_X
 ClientSampleId : PZ-02



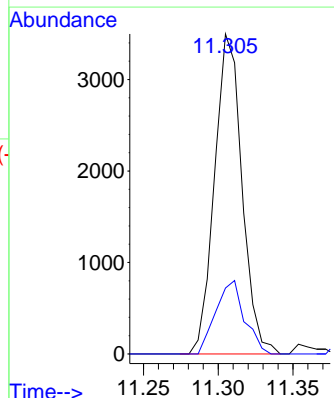
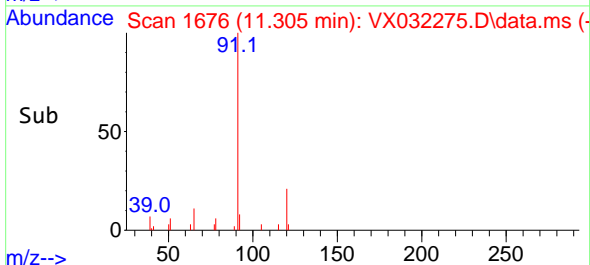
Tgt Ion: 75 Resp: 52006
 Ion Ratio Lower Upper
 75 100
 77 0.9 16.0 47.9#

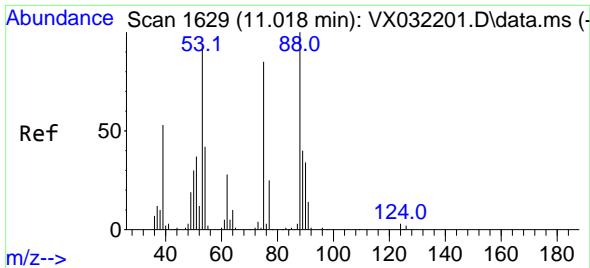


#78
 n-propylbenzene
 Concen: 0.616 ug/l
 RT: 11.305 min Scan# 1676
 Delta R.T. -0.000 min
 Lab File: VX032275.D
 Acq: 20 Oct 2022 19:57



Tgt Ion: 91 Resp: 4466
 Ion Ratio Lower Upper
 91 100
 120 23.9 11.6 34.8

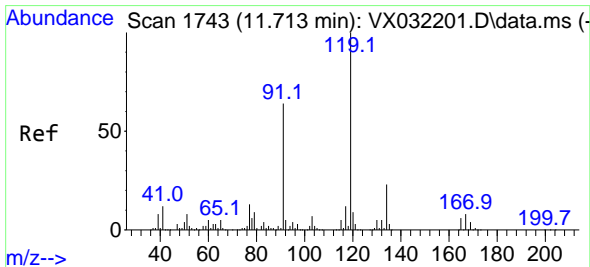
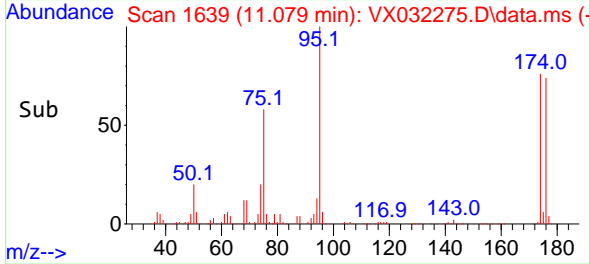
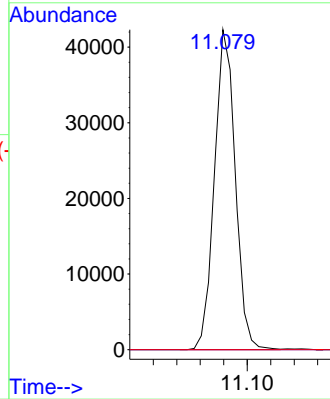
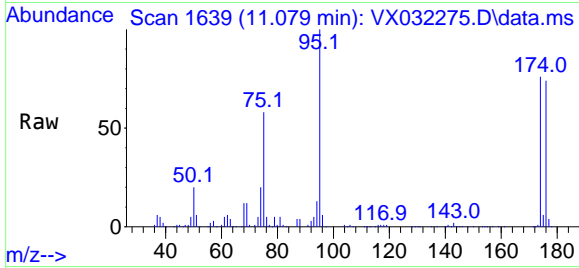




#81
 trans-1,4-Dichloro-2-butene
 Concen: 90.533 ug/l
 RT: 11.079 min Scan# 1639
 Delta R.T. 0.061 min
 Lab File: VX032275.D
 Acq: 20 Oct 2022 19:57

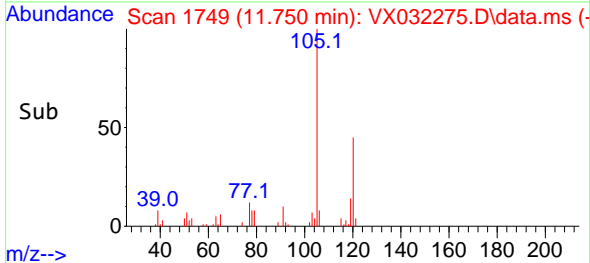
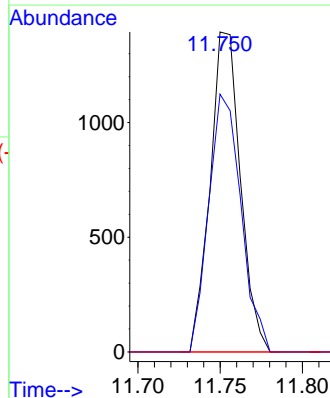
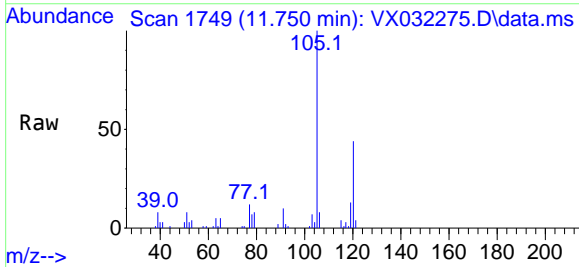
Instrument : MSVOA_X
 ClientSampleId : PZ-02

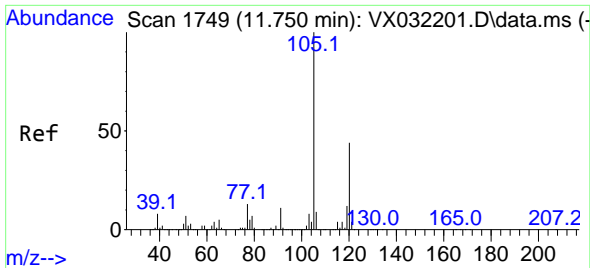
Tgt Ion: 75 Resp: 52006
 Ion Ratio Lower Upper
 75 100
 53 0.0 87.8 131.8#
 89 0.0 37.8 56.8#



#83
 tert-Butylbenzene
 Concen: 0.327 ug/l
 RT: 11.750 min Scan# 1749
 Delta R.T. 0.037 min
 Lab File: VX032275.D
 Acq: 20 Oct 2022 19:57

Tgt Ion:119 Resp: 1792
 Ion Ratio Lower Upper
 119 100
 91 85.8 29.1 87.3
 134 0.0 11.3 33.8#

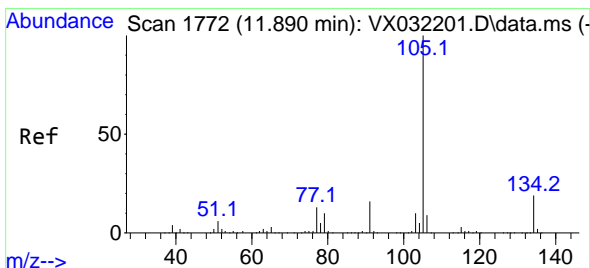
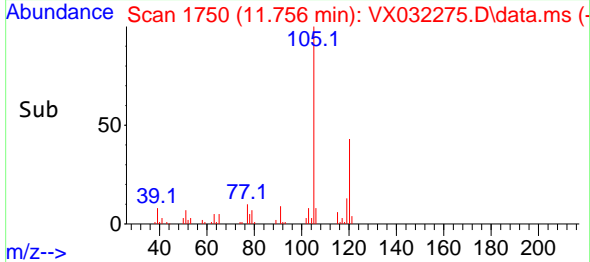
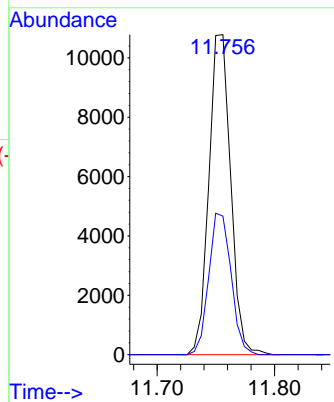
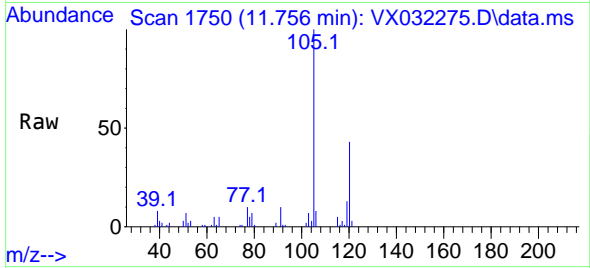




#84
 1,2,4-Trimethylbenzene
 Concen: 2.617 ug/l
 RT: 11.756 min Scan# 1750
 Delta R.T. 0.006 min
 Lab File: VX032275.D
 Acq: 20 Oct 2022 19:57

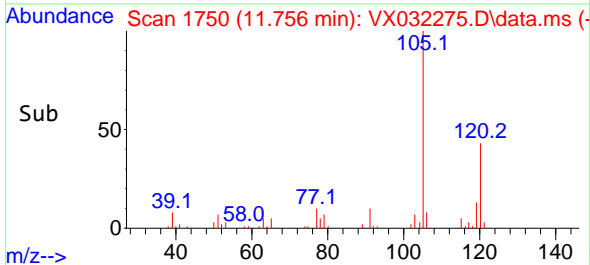
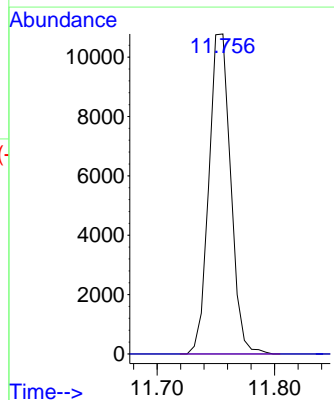
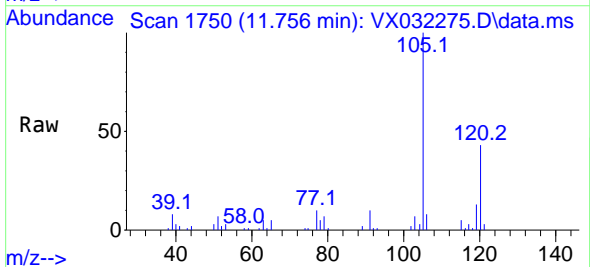
Instrument :
 MSVOA_X
 ClientSampleId :
 PZ-02

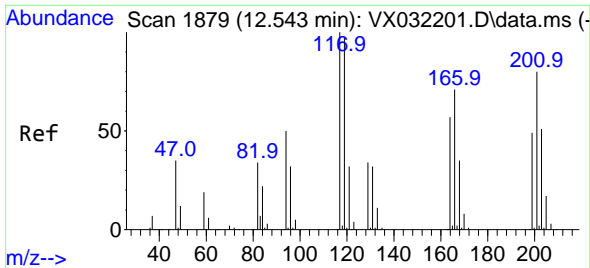
Tgt Ion:105 Resp: 13920
 Ion Ratio Lower Upper
 105 100
 120 45.2 22.1 66.1



#85
 sec-Butylbenzene
 Concen: 2.104 ug/l
 RT: 11.756 min Scan# 1750
 Delta R.T. -0.134 min
 Lab File: VX032275.D
 Acq: 20 Oct 2022 19:57

Tgt Ion:105 Resp: 13920
 Ion Ratio Lower Upper
 105 100
 134 0.0 10.1 30.3#

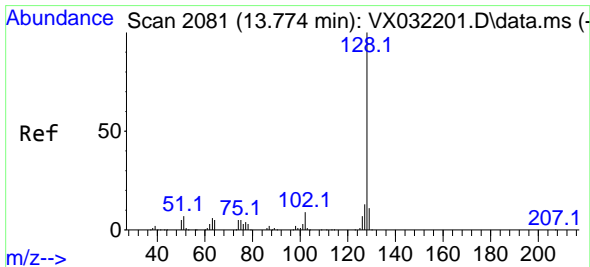
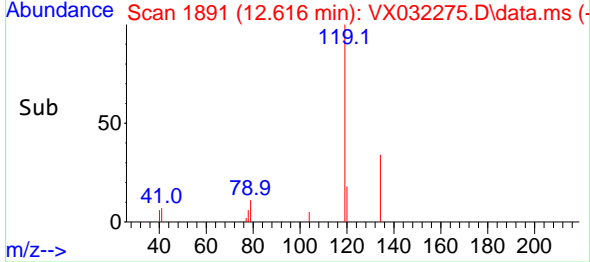
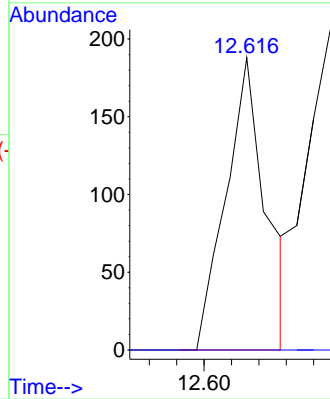
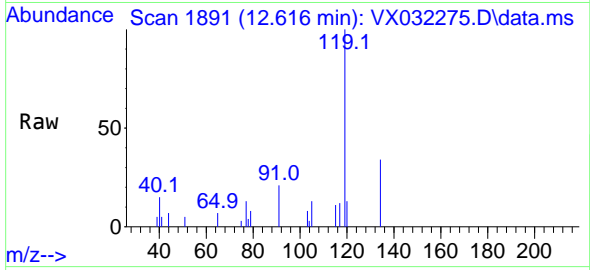




#90
 Hexachloroethane
 Concen: 0.219 ug/l
 RT: 12.616 min Scan# 1879
 Delta R.T. 0.073 min
 Lab File: VX032275.D
 Acq: 20 Oct 2022 19:57

Instrument : MSVOA_X
 ClientSampleId : PZ-02

Tgt Ion:117 Resp: 191
 Ion Ratio Lower Upper
 117 100
 201 0.0 38.5 115.3#



#95
 Naphthalene
 Concen: 0.616 ug/l
 RT: 13.780 min Scan# 2082
 Delta R.T. 0.006 min
 Lab File: VX032275.D
 Acq: 20 Oct 2022 19:57

Tgt Ion:128 Resp: 3768
 Ion Ratio Lower Upper
 128 100
 127 11.6 10.3 15.5
 129 8.8 8.7 13.1

