

Data Path : Z:\voasrv\HPCHEM1\MSVOA\_X\Data\VX102122\  
 Data File : VX032321.D  
 Acq On : 22 Oct 2022 05:11  
 Operator : JC/MD  
 Sample : N5248-20  
 Misc : 5.0mL/MSVOA\_X/WATER  
 ALS Vial : 45 Sample Multiplier: 1

Instrument :  
 MSVOA\_X  
 ClientSampleId :  
 FSND-MW-28-20221019

Integration Parameters: RTEINT.P  
 Integrator: RTE  
 Smoothing : ON Filtering: 5  
 Sampling : 1 Min Area: 3 % of largest Peak  
 Start Thrs: 0.2 Max Peaks: 100  
 Stop Thrs : 0 Peak Location: TOP

If leading or trailing edge < 100 prefer < Baseline drop else tangent >  
 Peak separation: 5

Method : Z:\voasrv\HPCHEM1\MSVOA\_X\Method\82X101922W.M  
 Title : SW846 8260

Signal : TIC: VX032321.D\data.ms

peak #	R.T. min	first scan	max scan	last scan	PK TY	peak height	corr. area	corr. % max.	% of total
1	4.495	549	559	565	rBV	8451	22338	1.19%	0.372%
2	4.574	565	572	584	rVB2	7200	24652	1.31%	0.411%
3	5.391	694	706	719	rBV2	98340	288963	15.34%	4.817%
4	5.556	722	733	745	rVV	151538	425906	22.61%	7.100%
5	5.958	788	799	814	rBV	89162	237760	12.62%	3.963%
6	6.763	921	931	947	rBV	219877	520537	27.63%	8.677%
7	7.129	981	991	1003	rBV	864179	1883937	100.00%	31.404%
8	8.647	1234	1240	1250	rBV	430886	692655	36.77%	11.546%
9	9.275	1337	1343	1354	rVB	193852	284480	15.10%	4.742%
10	10.055	1465	1471	1483	rBV	446816	599827	31.84%	9.999%
11	11.079	1634	1639	1655	rBV	358051	463134	24.58%	7.720%
12	12.024	1788	1794	1805	rBV	443520	554829	29.45%	9.249%

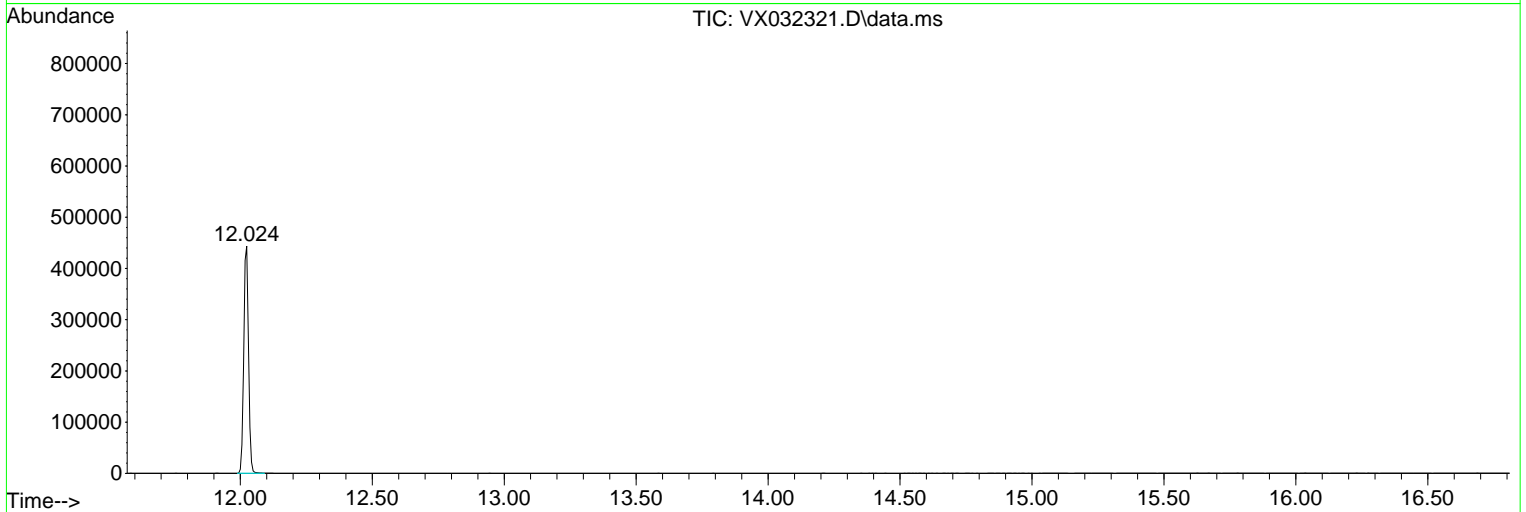
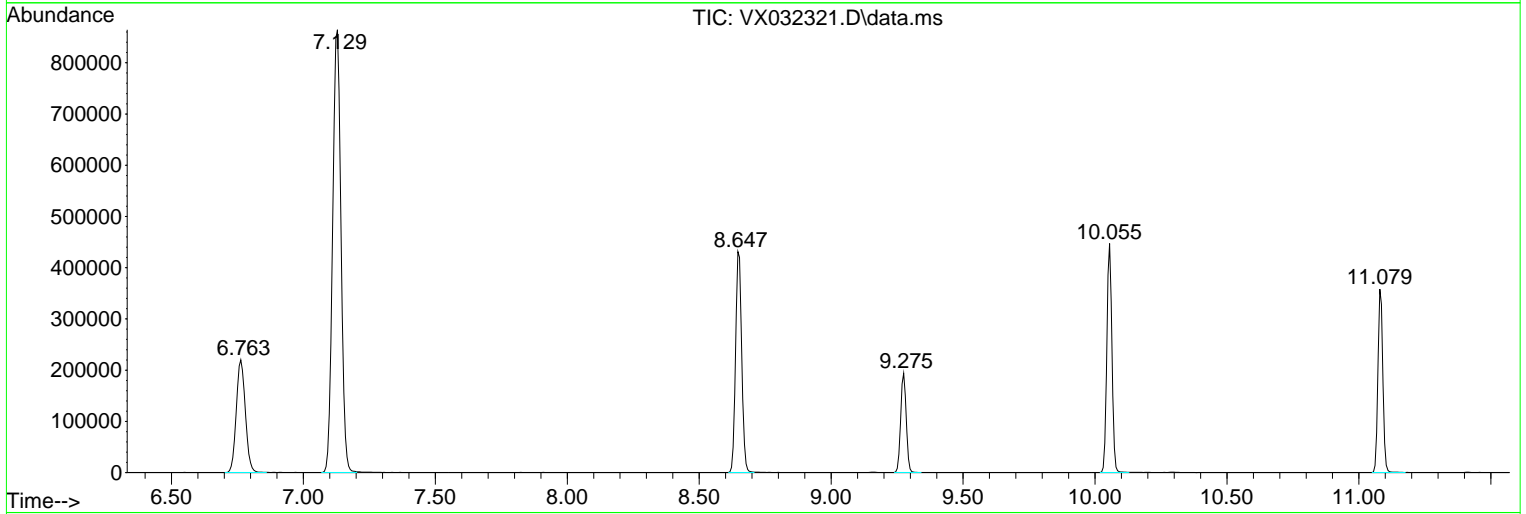
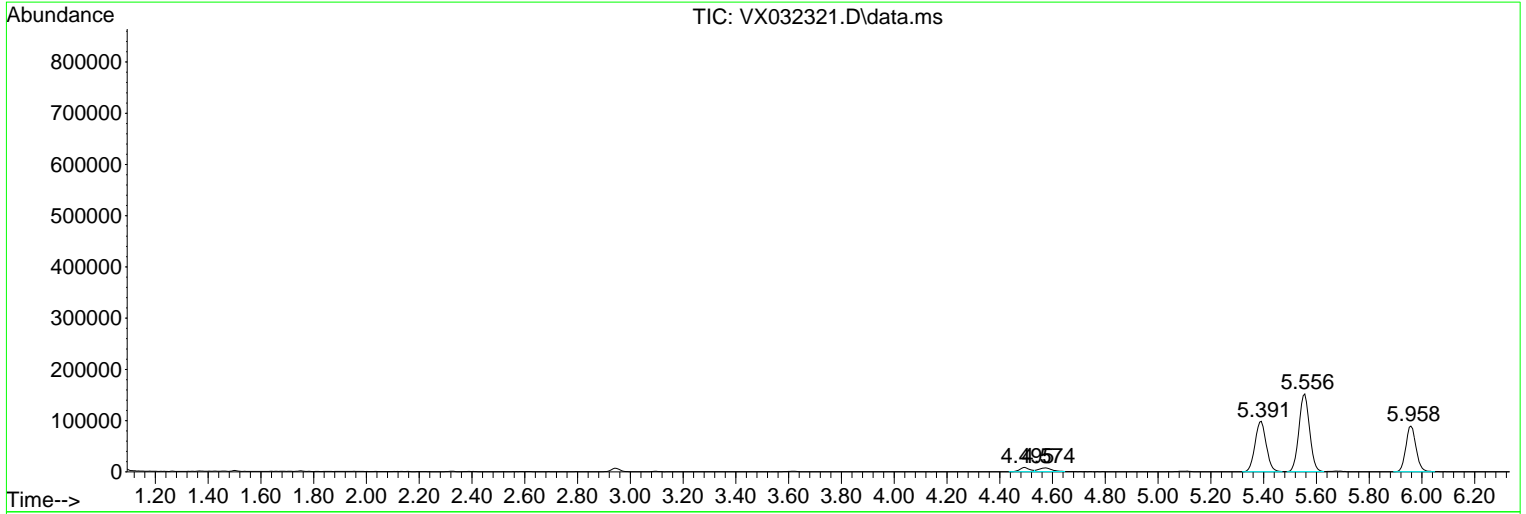
Sum of corrected areas: 5999018

Data Path : Z:\voasrv\HPCHEM1\MSVOA\_X\Data\VX102122\  
 Data File : VX032321.D  
 Acq On : 22 Oct 2022 05:11  
 Operator : JC/MD  
 Sample : N5248-20  
 Misc : 5.0mL/MSVOA\_X/WATER  
 ALS Vial : 45 Sample Multiplier: 1

**Instrument :**  
 MSVOA\_X  
**ClientSampleId :**  
 FSND-MW-28-20221019

Quant Method : Z:\voasrv\HPCHEM1\MSVOA\_X\Method\82X101922W.M  
 Quant Title : SW846 8260

TIC Library : C:\Database\NIST20.L  
 TIC Integration Parameters: LSCINT.P



Library Search Compound Report

Data Path : Z:\voasrv\HPCHEM1\MSVOA\_X\Data\VX102122\  
Data File : VX032321.D  
Acq On : 22 Oct 2022 05:11  
Operator : JC/MD  
Sample : N5248-20  
Misc : 5.0mL/MSVOA\_X/WATER  
ALS Vial : 45 Sample Multiplier: 1

**Instrument :**  
MSVOA\_X  
**ClientSampleId :**  
FSND-MW-28-20221019

Quant Method : Z:\voasrv\HPCHEM1\MSVOA\_X\Method\82X101922W.M  
Quant Title : SW846 8260

TIC Library : C:\Database\NIST20.L  
TIC Integration Parameters: LSCINT.P

No Library Search Compounds Detected

\*\*\*\*\*

Data Path : Z:\voasrv\HPCHEM1\MSVOA\_X\Data\VX102122\  
Data File : VX032321.D  
Acq On : 22 Oct 2022 05:11  
Operator : JC/MD  
Sample : N5248-20  
Misc : 5.0mL/MSVOA\_X/WATER  
ALS Vial : 45 Sample Multiplier: 1

Instrument :  
MSVOA\_X  
ClientSampleId :  
FSND-MW-28-20221019

Quant Method : Z:\voasrv\HPCHEM1\MSVOA\_X\Method\82X101922W.M  
Quant Title : SW846 8260

TIC Library : C:\Database\NIST0.L  
TIC Integration Parameters: LSCINT.P

TIC Top Hit name	RT	EstConc	Units	Response	#	RT	Resp	Conc
------------------	----	---------	-------	----------	---	----	------	------

---