

Data Path : Z:\VOASRV\HPCHEM1\MSVOA X\DATA\VX102220\
 Data File : VX019044.D
 Acq On : 22 Oct 2020 22:43
 Operator : JC/SP
 Sample : VX1022WBL02
 Misc : 5.0mL/MSVOA X/WATER
 ALS Vial : 35 Sample Multiplier: 1

Instrument :
 MSVOA_X
 ClientSampleId :
 VX1022WBL02

Integration Parameters: RTEINT.P
 Integrator: RTE
 Smoothing : ON Filtering: 5
 Sampling : 1 Min Area: 3 % of largest Peak
 Start Thrs: 0.2 Max Peaks: 100
 Stop Thrs : 0 Peak Location: TOP

If leading or trailing edge < 100 prefer < Baseline drop else tangent >
 Peak separation: 5

Method : Z:\VOASRV\HPCHEM1\MSVOA_X\METHOD\82X102120W.M
 Title : SW846 8260

Signal : TIC

| peak # | R.T. min | first scan | max scan | last scan | PK TY | peak height | corr. area | corr. % max. | % of total |
|--------|----------|------------|----------|-----------|-------|-------------|------------|--------------|------------|
| 1 | 5.464 | 707 | 718 | 731 | rBV | 170843 | 490304 | 32.09% | 6.008% |
| 2 | 5.629 | 733 | 745 | 760 | rVB | 282556 | 795361 | 52.05% | 9.745% |
| 3 | 6.031 | 800 | 811 | 829 | rBV | 180407 | 479666 | 31.39% | 5.877% |
| 4 | 6.830 | 930 | 942 | 960 | rBV | 452186 | 1071589 | 70.13% | 13.130% |
| 5 | 8.696 | 1241 | 1248 | 1269 | rBV | 1000347 | 1528018 | 100.00% | 18.723% |
| 6 | 10.098 | 1472 | 1478 | 1492 | rBV | 981497 | 1339927 | 87.69% | 16.418% |
| 7 | 11.122 | 1640 | 1646 | 1658 | rBV | 858339 | 1065180 | 69.71% | 13.052% |
| 8 | 12.061 | 1794 | 1800 | 1808 | rBV | 1125834 | 1391275 | 91.05% | 17.047% |

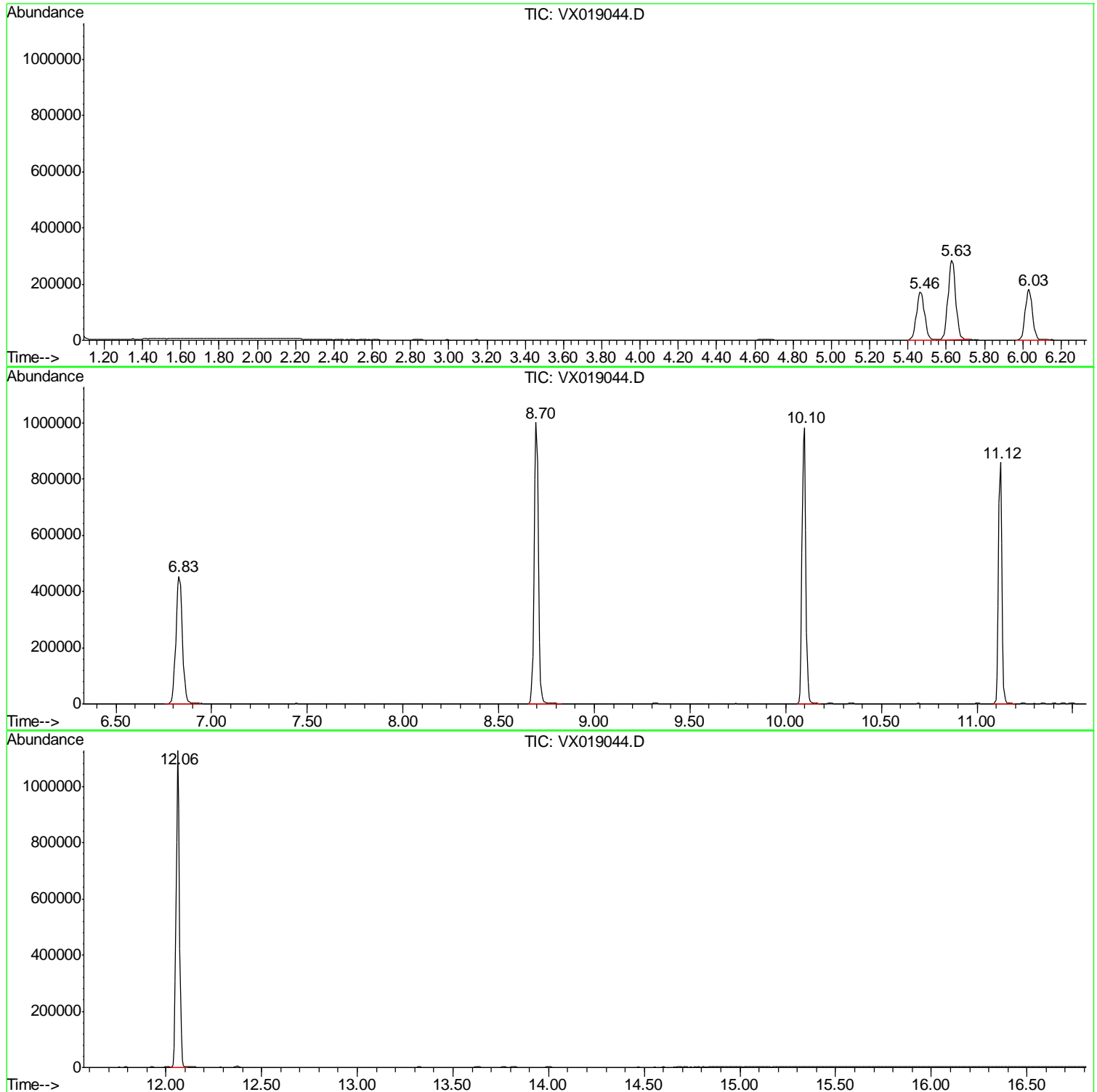
Sum of corrected areas: 8161320

Data Path : Z:\VOASRV\HPCHEM1\MSVOA X\DATA\VX102220\
Data File : VX019044.D
Acq On : 22 Oct 2020 22:43
Operator : JC/SP
Sample : VX1022WBL02
Misc : 5.0mL/MSVOA X/WATER
ALS Vial : 35 Sample Multiplier: 1

Instrument :
MSVOA_X
ClientSampled :
VX1022WBL02

Quant Method : Z:\VOASRV\HPCHEM1\MSVOA_X\METHOD\82X102120W.M
Quant Title : SW846 8260

TIC Library : C:\DATABASE\NIST11.L
TIC Integration Parameters: LSCINT.P



Data Path : Z:\VOASRV\HPCHEM1\MSVOA_X\DATA\VX102220\
Data File : VX019044.D
Acq On : 22 Oct 2020 22:43
Operator : JC/SP
Sample : VX1022WBL02
Misc : 5.0mL/MSVOA_X/WATER
ALS Vial : 35 Sample Multiplier: 1

Instrument :
MSVOA_X
ClientSampleId :
VX1022WBL02

Quant Method : Z:\VOASRV\HPCHEM1\MSVOA_X\METHOD\82X102120W.M
Quant Title : SW846 8260

TIC Library : C:\DATABASE\NIST11.L
TIC Integration Parameters: LSCINT.P

No Library Search Compounds Detected

Data Path : Z:\VOASRV\HPCHEM1\MSVOA_X\DATA\VX102220\
Data File : VX019044.D
Acq On : 22 Oct 2020 22:43
Operator : JC/SP
Sample : VX1022WBL02
Misc : 5.0mL/MSVOA_X/WATER
ALS Vial : 35 Sample Multiplier: 1

Instrument :
MSVOA_X
ClientSampleId :
VX1022WBL02

Quant Method : Z:\VOASRV\HPCHEM1\MSVOA_X\METHOD\82X102120W.M
Quant Title : SW846 8260

TIC Library : C:\DATABASE\NIST11.L
TIC Integration Parameters: LSCINT.P

| TIC Top Hit name | RT | EstConc | Units | Response | --Internal Standard-- | | | |
|------------------|----|---------|-------|----------|-----------------------|----|------|------|
| | | | | | # | RT | Resp | Conc |
