

Data Path : Z:\VOASRV\HPCHEM1\MSVOA X\DATA\VX102318\
 Data File : VX005526.D
 Acq On : 23 Oct 2018 17:34
 Operator : JC/MD
 Sample : J5646-02
 Misc : 5.0mL/MSVOA X/WATER
 ALS Vial : 13 Sample Multiplier: 1

Instrument :
 MSVOA_X
 ClientSampled :

Quant Time: Oct 24 01:15:30 2018
 Quant Method : Z:\VOASRV\HPCHEM1\MSVOA_X\METHOD\82X101218W.M
 Quant Title : SW846 8260
 QLast Update : Fri Oct 12 11:28:43 2018
 Response via : Initial Calibration

Internal Standards	R.T.	QIon	Response	Conc	Units	Dev(Min)
1) Pentafluorobenzene	5.67	168	253892	50.00	ug/l	0.00
34) 1,4-Difluorobenzene	6.86	114	341940	50.00	ug/l	0.00
63) Chlorobenzene-d5	10.12	117	294985	50.00	ug/l	0.00
72) 1,4-Dichlorobenzene-d4	12.08	152	146879	50.00	ug/l	0.00

System Monitoring Compounds

33) 1,2-Dichloroethane-d4	6.07	65	143187	50.81	ug/l	0.00
Spiked Amount	50.000		Recovery	=	101.62%	
35) Dibromofluoromethane	5.51	113	119741	52.87	ug/l	0.01
Spiked Amount	50.000		Recovery	=	105.74%	
50) Toluene-d8	8.71	98	399289	51.36	ug/l	0.00
Spiked Amount	50.000		Recovery	=	102.72%	
62) 4-Bromofluorobenzene	11.14	95	138853	47.54	ug/l	0.00
Spiked Amount	50.000		Recovery	=	95.08%	

Target Compounds

					Qvalue	
5) Bromomethane	1.65	94	366	0.804	ug/l	82
6) Chloroethane	1.57	64	19629	10.827	ug/l #	50
10) Methyl Iodide	2.52	142	142	2.544	ug/l #	77
11) Tert butyl alcohol	3.07	59	297505	374.285	ug/l	99
13) Acrolein	2.27	56	538	Below Cal	#	1
15) Acrylonitrile	3.19	53	1896	1.053	ug/l #	44
16) Acetone	2.45	43	7248	4.449	ug/l	91
17) Carbon Disulfide	2.58	76	1381	0.205	ug/l	99
18) Methyl Acetate	2.78	43	935	0.202	ug/l	97
19) Methyl tert-butyl Ether	3.20	73	72984	9.319	ug/l	92
20) Methylene Chloride	2.87	84	172	Below Cal	#	66
22) Diisopropyl ether	3.87	45	3732	0.455	ug/l	92
25) 2-Butanone	4.70	43	2746	1.152	ug/l	96
30) Chloroform	5.28	83	982	0.225	ug/l #	17
31) Cyclohexane	5.58	56	5994	1.547	ug/l	92
36) 1,1-Dichloropropene	5.67	75	17167	5.184	ug/l #	49
38) Carbon Tetrachloride	5.67	117	21173	6.363	ug/l #	15
39) Methylcyclohexane	7.46	83	6926	1.932	ug/l	85
40) Benzene	6.15	78	93369	9.399	ug/l #	85
42) 1,2-Dichloroethane	6.13	62	821	0.234	ug/l #	72
43) Isopropyl Acetate	6.35	43	10905	1.922	ug/l #	59
44) Trichloroethene	7.21	130	70	Below Cal	#	1
52) Toluene	8.79	92	2971	0.547	ug/l	93
55) 1,1,2-Trichloroethane	9.16	97	2935	1.275	ug/l #	23
56) Ethyl methacrylate	9.16	69	1056	0.315	ug/l #	19
67) Ethyl Benzene	10.26	91	4001	0.392	ug/l	92
68) m/p-Xylenes	10.36	106	2908	0.734	ug/l	100
69) o-Xylene	10.70	106	831	0.218	ug/l	82
73) Isopropylbenzene	11.02	105	79105	9.060	ug/l	99
76) 1,2,3-Trichloropropane	11.14	75	69981	24.563	ug/l #	37
78) n-propylbenzene	11.36	91	153448	15.272	ug/l	97
79) 2-Chlorotoluene	11.36	91	153448	24.936	ug/l #	39
80) 1,3,5-Trimethylbenzene	11.45	105	8588	1.149	ug/l	73
81) trans-1,4-Dichloro-2-buten	11.14	75	69981	74.634	ug/l #	10

Data Path : Z:\VOASRV\HPCHEM1\MSVOA X\DATA\VX102318\
 Data File : VX005526.D
 Acq On : 23 Oct 2018 17:34
 Operator : JC/MD
 Sample : J5646-02
 Misc : 5.0mL/MSVOA X/WATER
 ALS Vial : 13 Sample Multiplier: 1

Instrument :
 MSVOA_X
 ClientSampleId :

Quant Time: Oct 24 01:15:30 2018
 Quant Method : Z:\VOASRV\HPCHEM1\MSVOA_X\METHOD\82X101218W.M
 Quant Title : SW846 8260
 QLast Update : Fri Oct 12 11:28:43 2018
 Response via : Initial Calibration

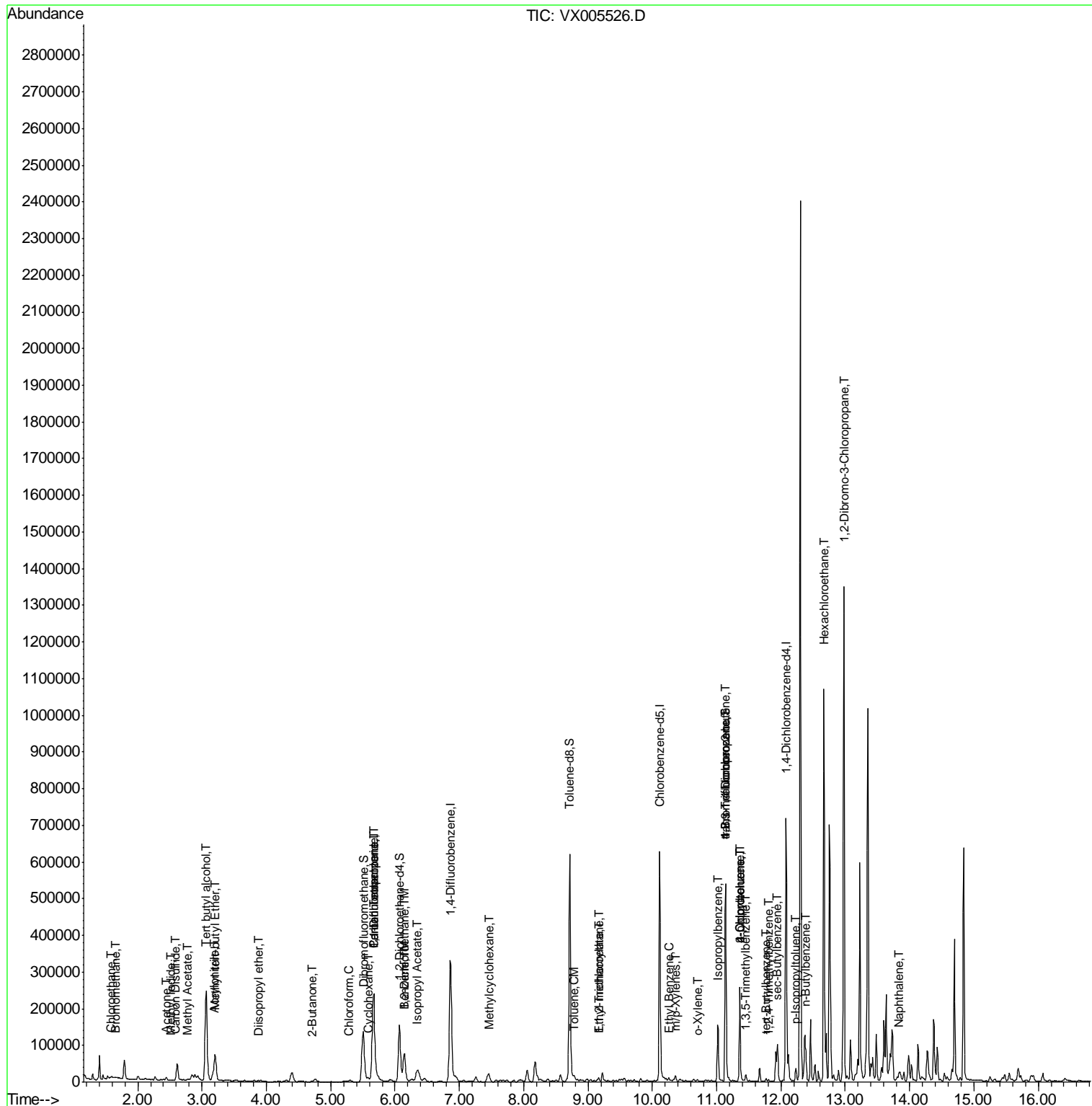
Internal Standards	R.T.	QIon	Response	Conc	Units	Dev(Min)
82) 4-Chlorotoluene	11.36	91	153448	21.036	ug/l #	44
83) tert-Butylbenzene	11.77	119	2498	0.330	ug/l	91
84) 1,2,4-Trimethylbenzene	11.81	105	2341	0.304	ug/l	100
85) sec-Butylbenzene	11.94	105	52946	5.909	ug/l	97
86) p-Isopropyltoluene	12.23	119	15328	1.893	ug/l #	77
89) n-Butylbenzene	12.39	91	42102	5.725	ug/l #	70
90) Hexachloroethane	12.67	117	45830	32.835	ug/l #	3
92) 1,2-Dibromo-3-Chloropropan	12.98	75	4338	5.399	ug/l #	1
95) Naphthalene	13.83	128	13357	1.319	ug/l #	86

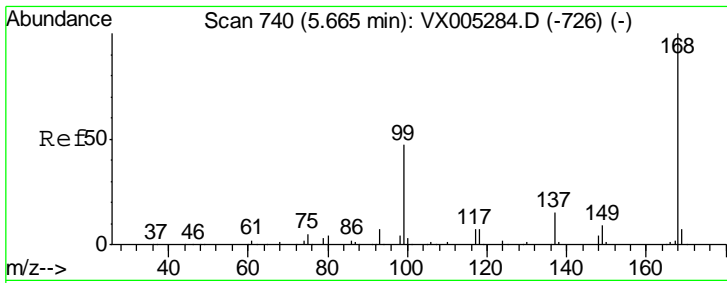
(#) = qualifier out of range (m) = manual integration (+) = signals summed

Data Path : Z:\VOASRV\HPCHEM1\MSVOA X\DATA\VX102318\
 Data File : VX005526.D
 Acq On : 23 Oct 2018 17:34
 Operator : JC/MD
 Sample : J5646-02
 Misc : 5.0mL/MSVOA X/WATER
 ALS Vial : 13 Sample Multiplier: 1

Instrument :
 MSVOA_X
 ClientSampled :

Quant Time: Oct 24 01:15:30 2018
 Quant Method : Z:\VOASRV\HPCHEM1\MSVOA_X\METHOD\82X101218W.M
 Quant Title : SW846 8260
 QLast Update : Fri Oct 12 11:28:43 2018
 Response via : Initial Calibration

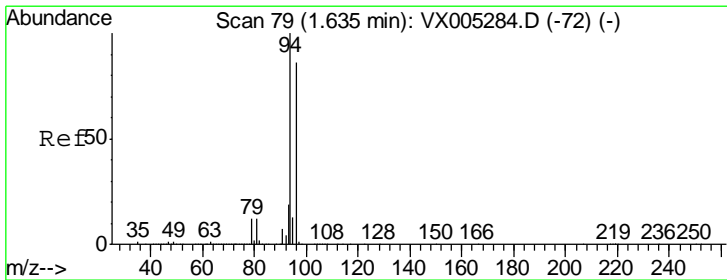
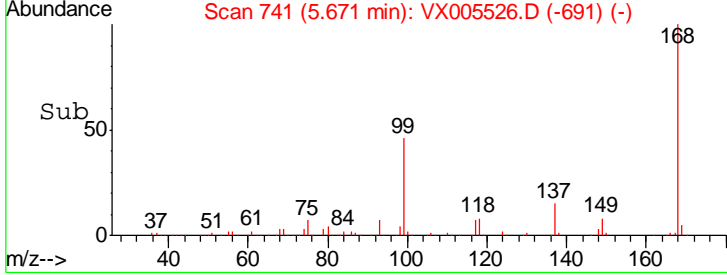
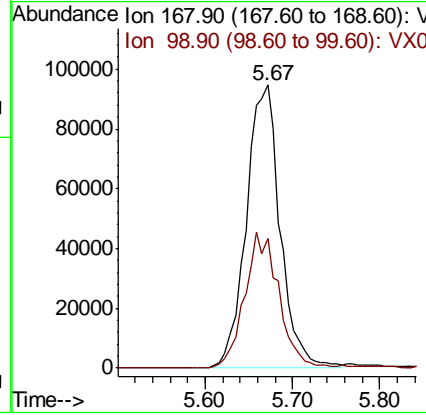
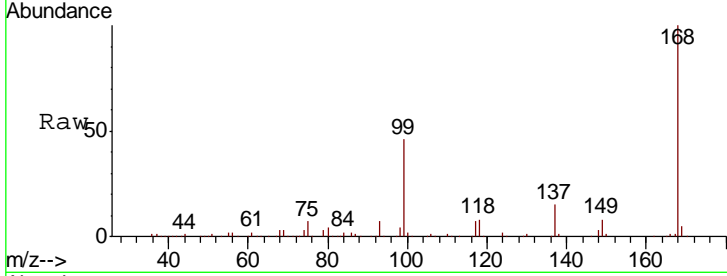




#1
 Pentafluorobenzene
 Concen: 50.000 ug/l
 RT: 5.67 min Scan# 741
 Delta R.T. 0.01 min
 Lab File: VX005526.D
 Acq: 23 Oct 2018 17:34

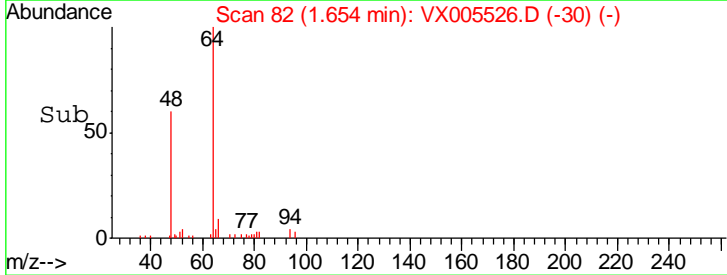
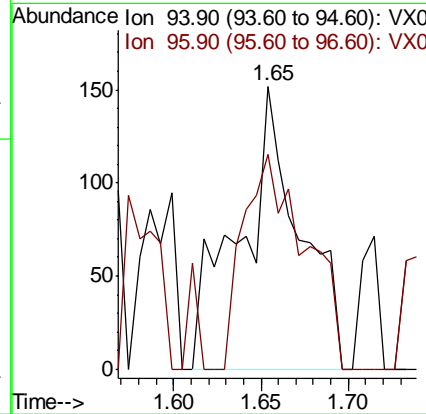
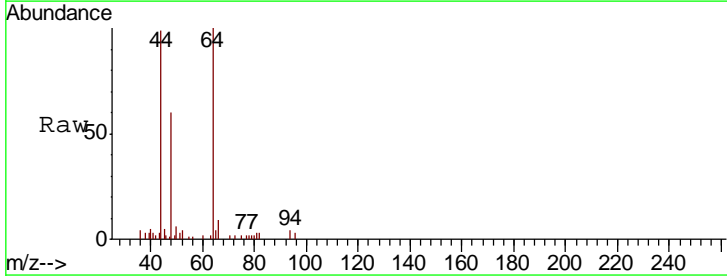
Instrument : MSVOA_X
 ClientSampled :

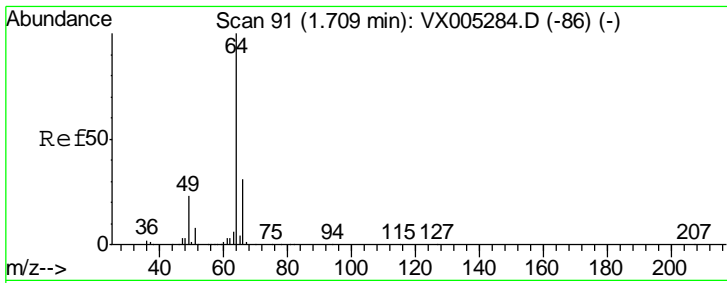
Tgt Ion	Resp	Lower	Upper
168	100		
99	45.9	39.9	59.9



#5
 Bromomethane
 Concen: 0.804 ug/l
 RT: 1.65 min Scan# 82
 Delta R.T. 0.02 min
 Lab File: VX005526.D
 Acq: 23 Oct 2018 17:34

Tgt Ion	Resp	Lower	Upper
94	100		
96	75.7	74.5	111.7

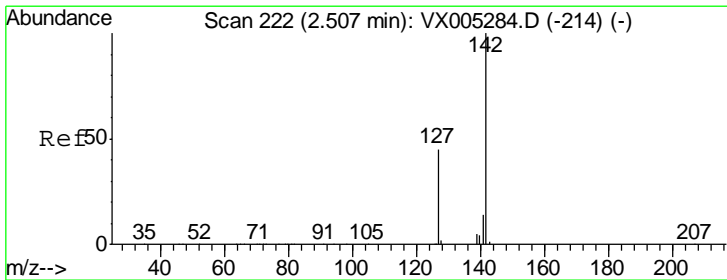
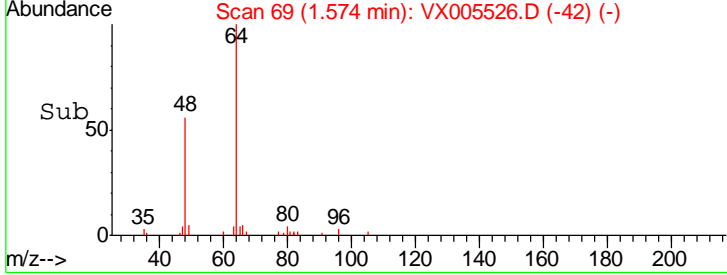
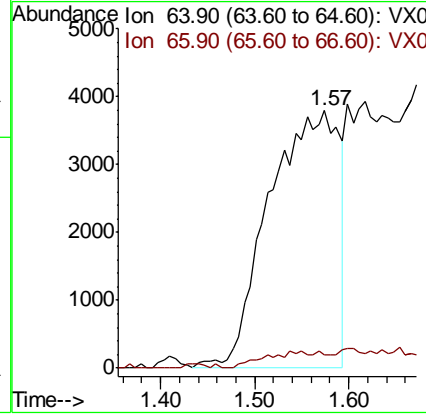
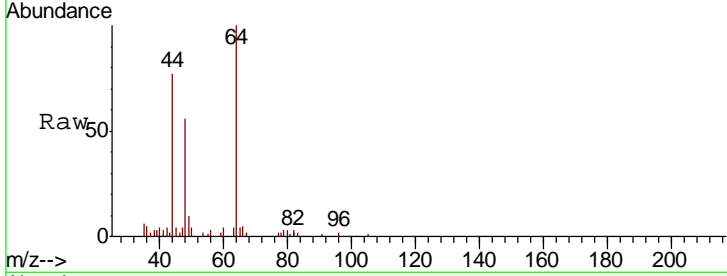




#6
 Chloroethane
 Concen: 10.827 ug/l
 RT: 1.57 min Scan# 69
 Delta R.T. -0.13 min
 Lab File: VX005526.D
 Acq: 23 Oct 2018 17:34

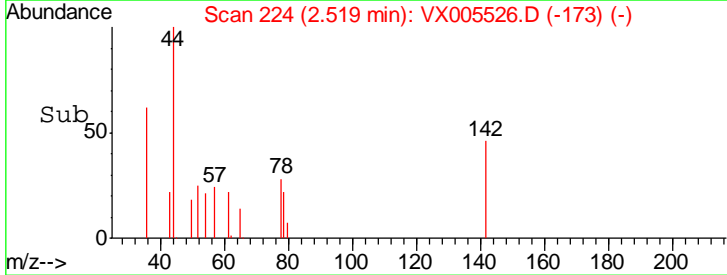
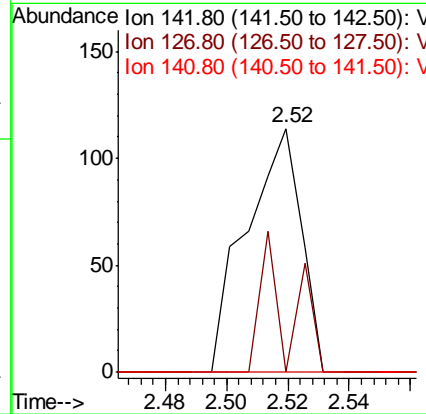
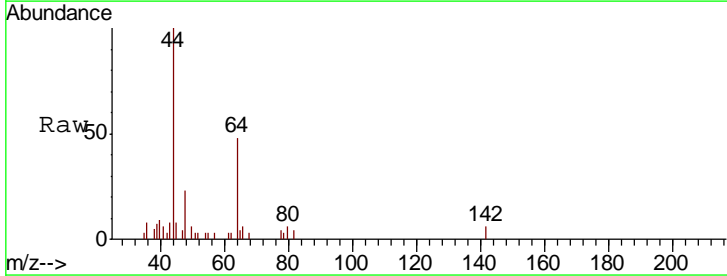
Instrument :
 MSVOA_X
 ClientSampled :

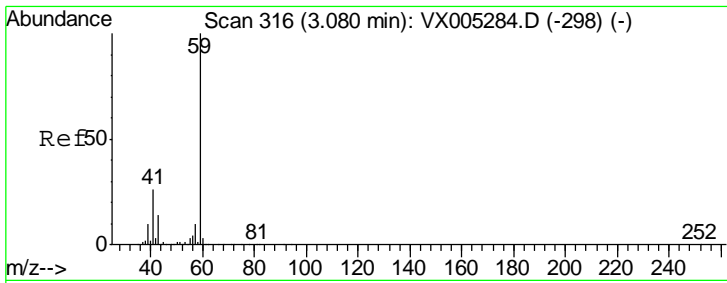
Tgt Ion	Resp	Lower	Upper
64	19629		
66	3.5	24.6	36.8#



#10
 Methyl Iodide
 Concen: 2.544 ug/l
 RT: 2.52 min Scan# 224
 Delta R.T. 0.01 min
 Lab File: VX005526.D
 Acq: 23 Oct 2018 17:34

Tgt Ion	Resp	Lower	Upper
142	142		
127	30.3	33.8	50.6#
141	0.0	11.4	17.0#

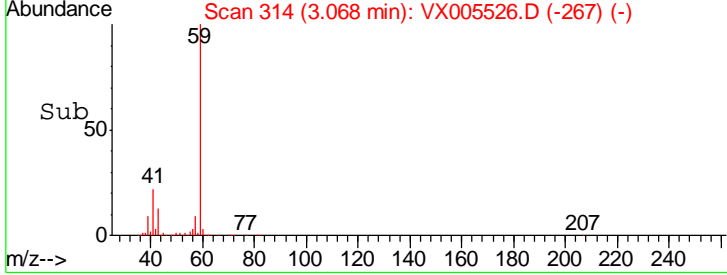
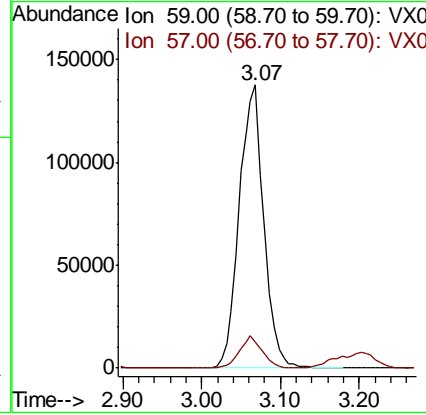
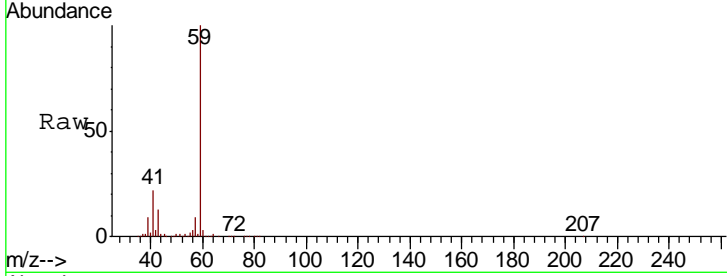




#11
 Tert butyl alcohol
 Concen: 374.285 ug/l
 RT: 3.07 min Scan# 314
 Delta R.T. -0.01 min
 Lab File: VX005526.D
 Acq: 23 Oct 2018 17:34

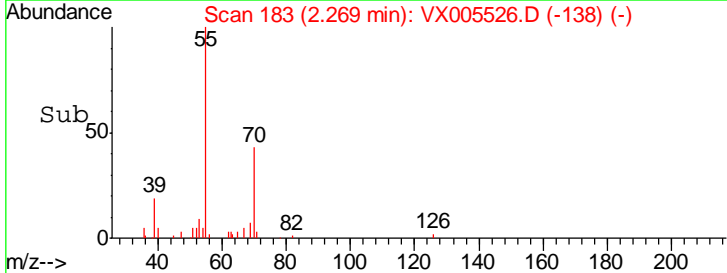
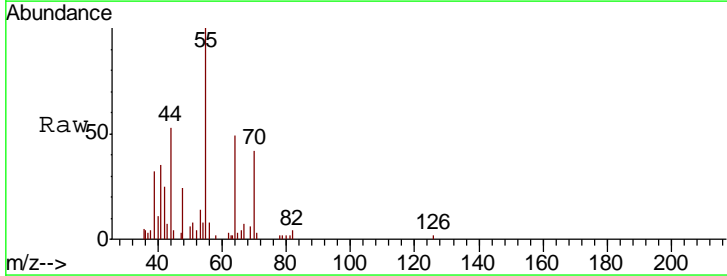
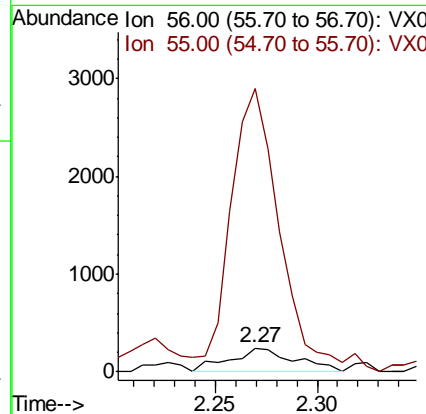
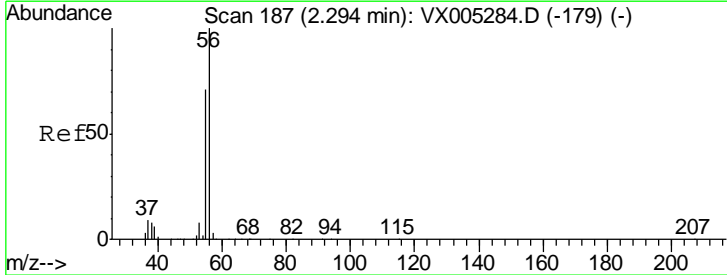
Instrument :
 MSVOA_X
 ClientSampled :

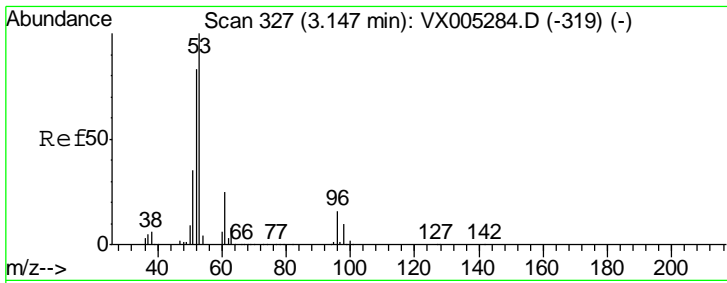
Tgt Ion	Resp	Lower	Upper
59	297505		
57	10.7	8.2	12.4



#13
 Acrolein
 Concen: Below Cal
 RT: 2.27 min Scan# 183
 Delta R.T. -0.02 min
 Lab File: VX005526.D
 Acq: 23 Oct 2018 17:34

Tgt Ion	Resp	Lower	Upper
56	538		
55	901.3	54.7	82.1#

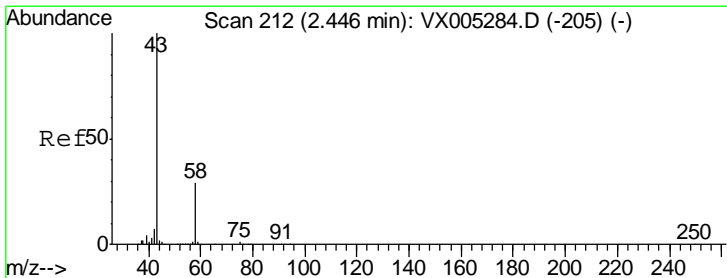
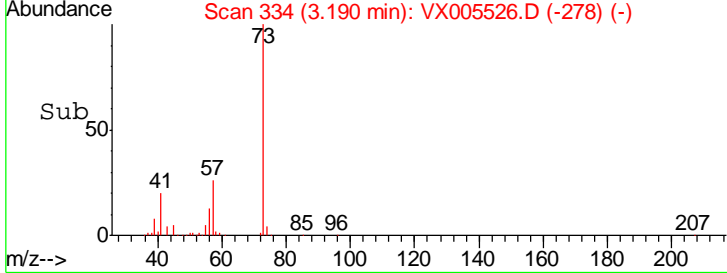
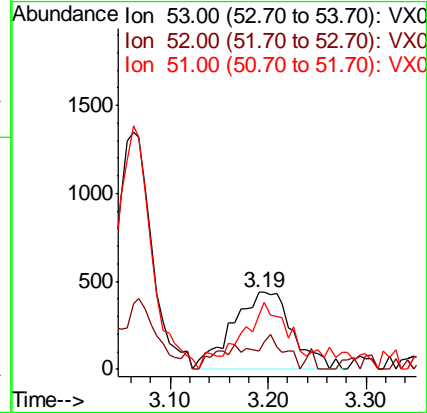
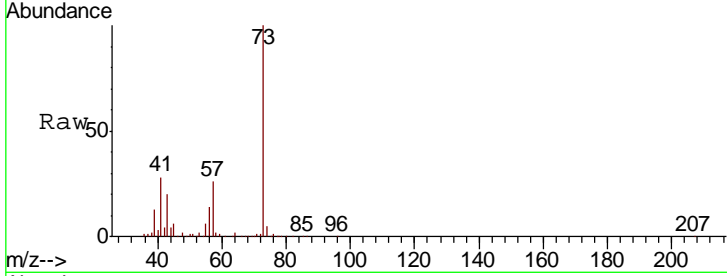




#15
 Acrylonitrile
 Concen: 1.053 ug/l
 RT: 3.19 min Scan# 334
 Delta R.T. 0.04 min
 Lab File: VX005526.D
 Acq: 23 Oct 2018 17:34

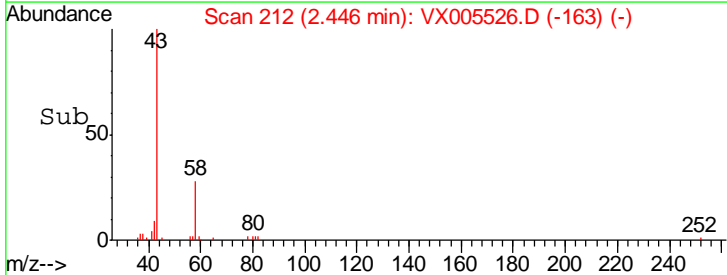
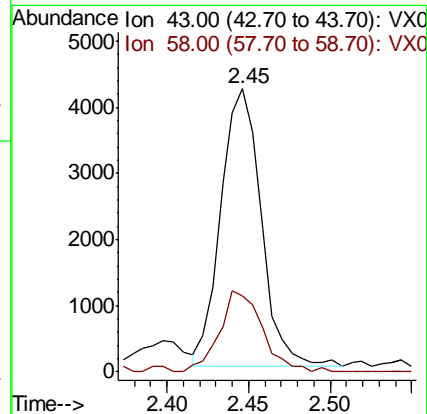
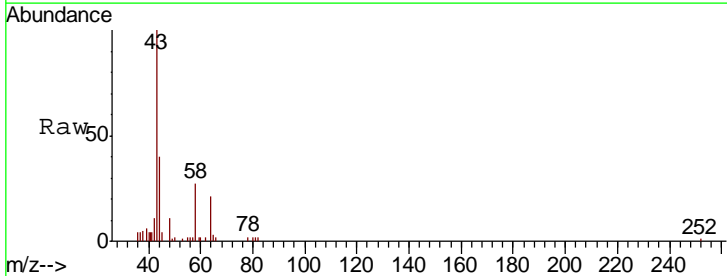
Instrument :
 MSVOA_X
 ClientSampled :

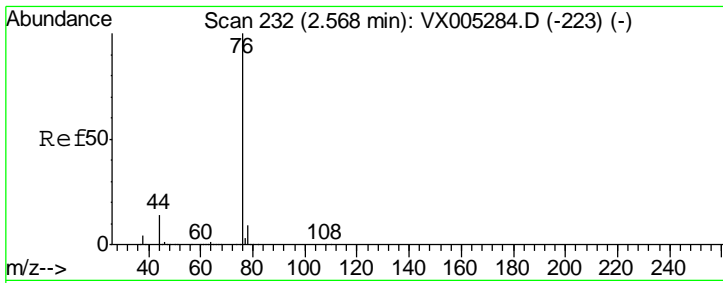
Tgt Ion	Resp	Lower	Upper
53	1896		
52	15.1	65.2	97.8#
51	43.5	28.2	42.2#



#16
 Acetone
 Concen: 4.449 ug/l
 RT: 2.45 min Scan# 212
 Delta R.T. -0.00 min
 Lab File: VX005526.D
 Acq: 23 Oct 2018 17:34

Tgt Ion	Resp	Lower	Upper
43	7248		
58	27.5	26.2	39.4

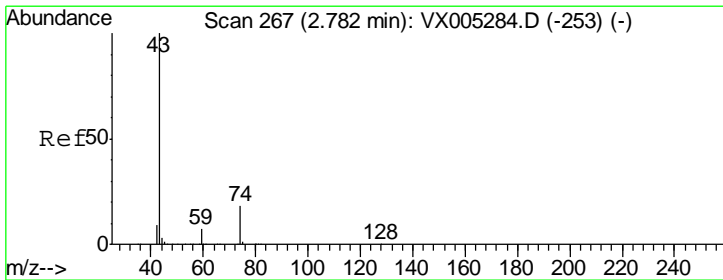
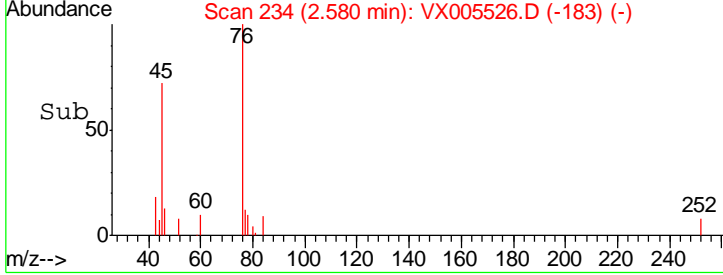
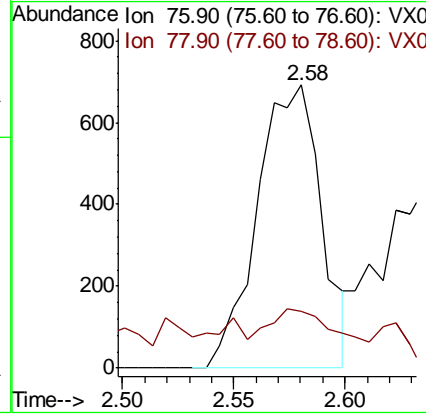
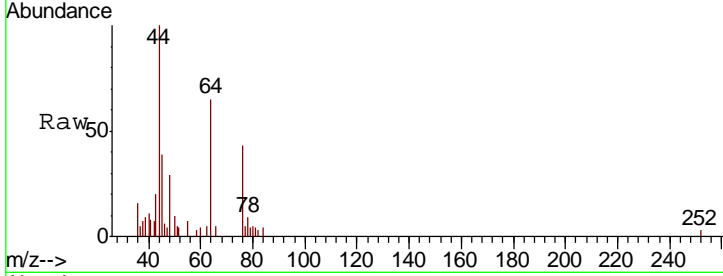




#17
 Carbon Disulfide
 Concen: 0.205 ug/l
 RT: 2.58 min Scan# 234
 Delta R.T. 0.01 min
 Lab File: VX005526.D
 Acq: 23 Oct 2018 17:34

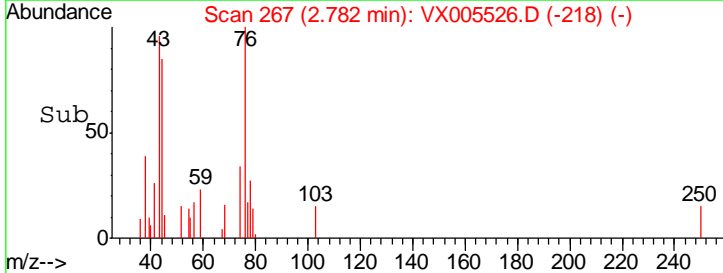
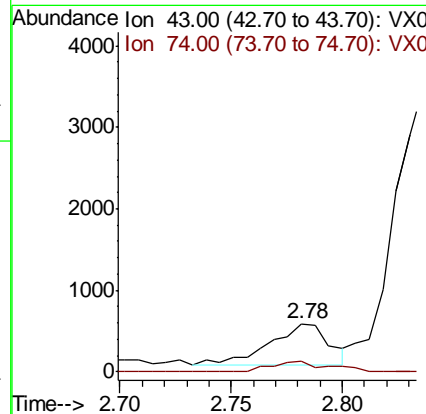
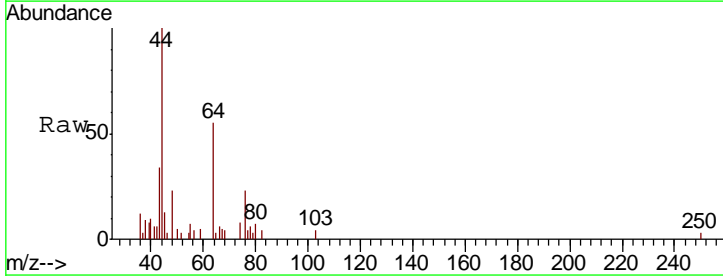
Instrument :
 MSVOA_X
 ClientSampled :

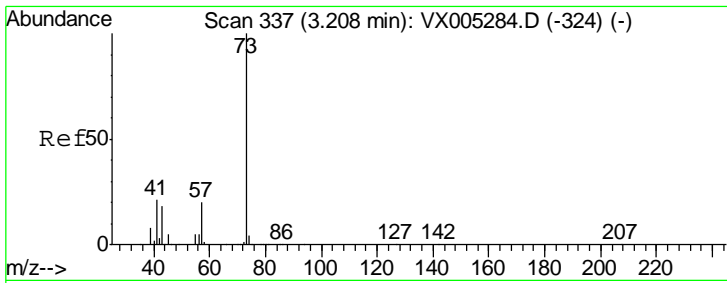
Tgt Ion	Resp	Lower	Upper
76	1381		
76	100		
78	9.2	7.0	10.6



#18
 Methyl Acetate
 Concen: 0.202 ug/l
 RT: 2.78 min Scan# 267
 Delta R.T. -0.00 min
 Lab File: VX005526.D
 Acq: 23 Oct 2018 17:34

Tgt Ion	Resp	Lower	Upper
43	935		
43	100		
74	25.7	19.4	29.2

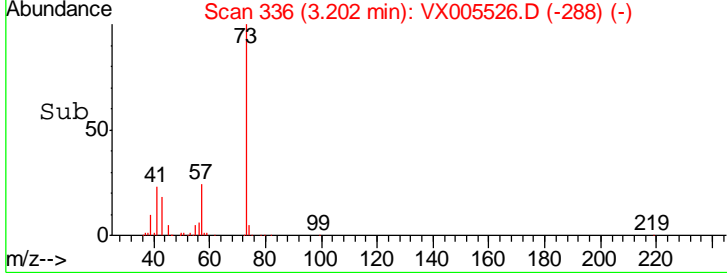
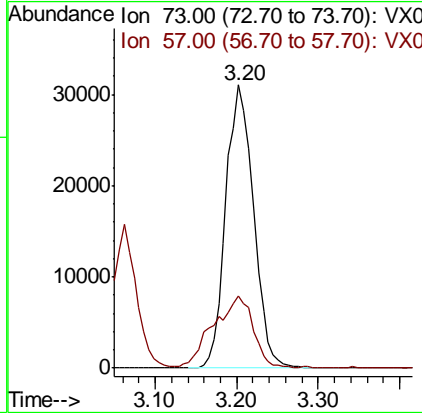
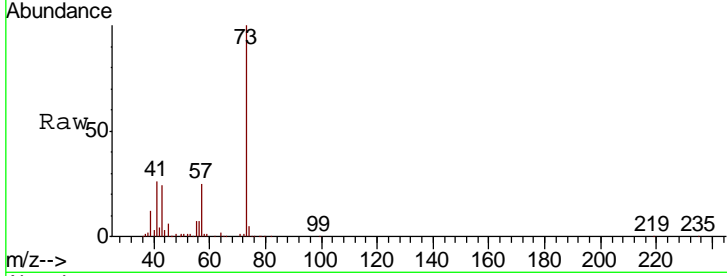




#19
 Methyl tert-butyl Ether
 Concen: 9.319 ug/l
 RT: 3.20 min Scan# 336
 Delta R.T. -0.01 min
 Lab File: VX005526.D
 Acq: 23 Oct 2018 17:34

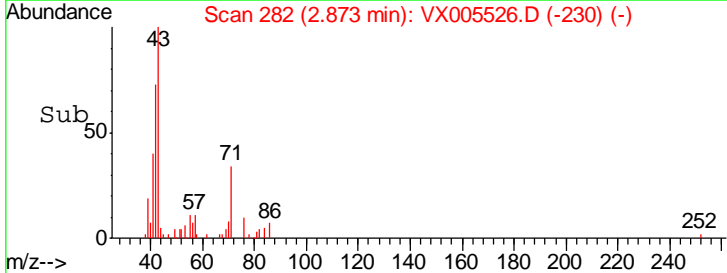
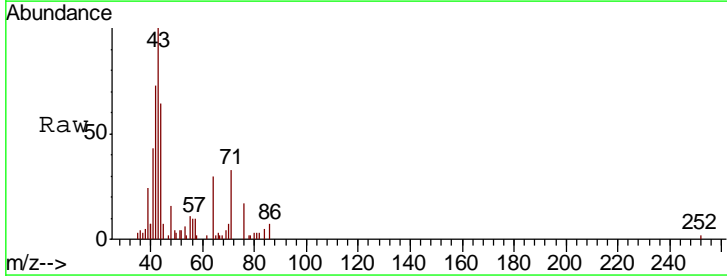
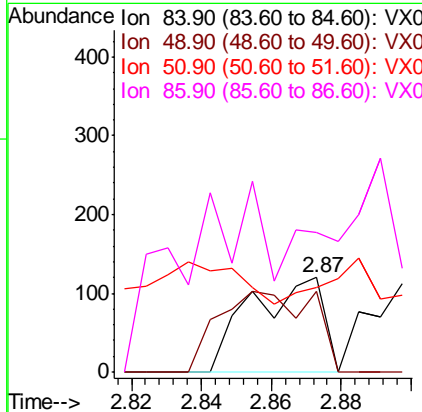
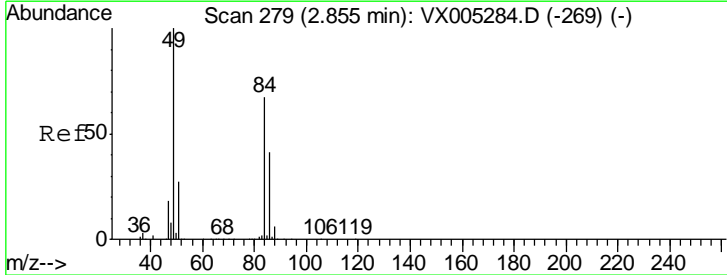
Instrument :
 MSVOA_X
 ClientSampled :

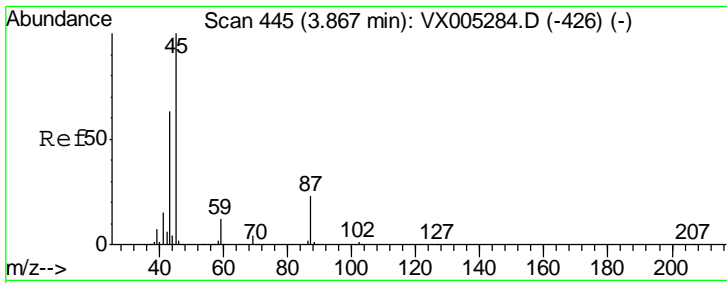
Tgt Ion	Resp	Lower	Upper
73	100		
57	25.1	17.1	25.7



#20
 Methylene Chloride
 Concen: Below Cal
 RT: 2.87 min Scan# 282
 Delta R.T. 0.02 min
 Lab File: VX005526.D
 Acq: 23 Oct 2018 17:34

Tgt Ion	Resp	Lower	Upper
84	100		
49	85.0	101.2	151.8#
51	0.0	29.5	44.3#
86	55.0	52.3	78.5

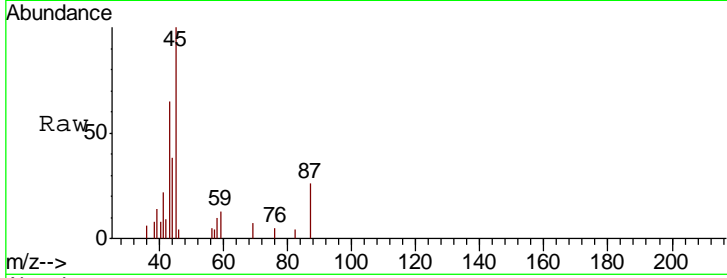




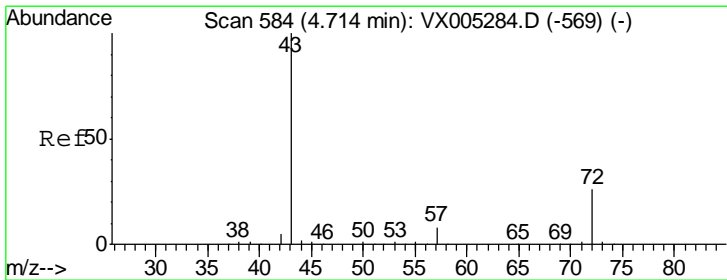
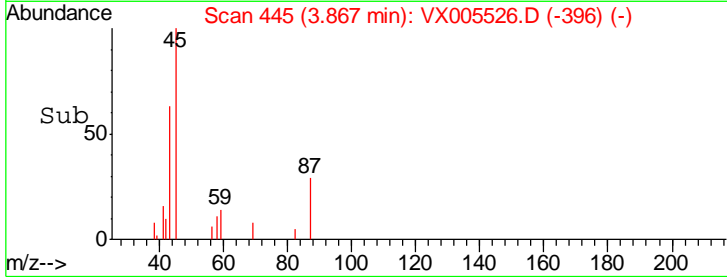
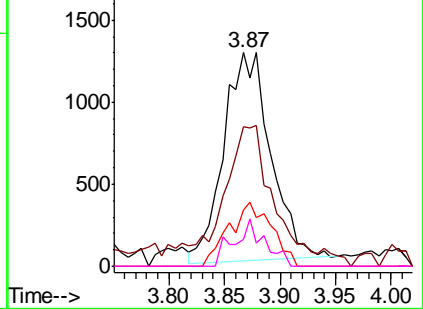
#22
 Diisopropyl ether
 Concen: 0.455 ug/l
 RT: 3.87 min Scan# 445
 Delta R.T. -0.00 min
 Lab File: VX005526.D
 Acq: 23 Oct 2018 17:34

Instrument : MSVOA_X
 ClientSampled :

Tgt Ion	Resp	Lower	Upper
45	3732		
43	62.9	42.8	64.2
87	27.8	22.6	34.0
59	13.1	9.6	14.4

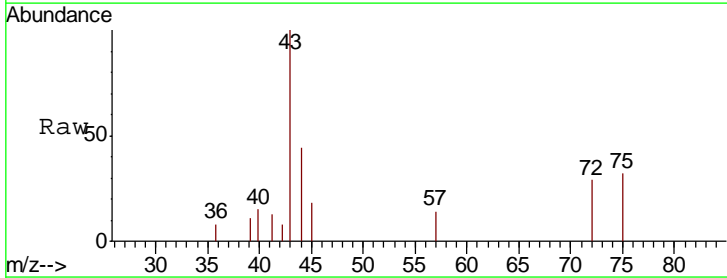


Abundance Ion 45.00 (44.70 to 45.70): VX0
 Ion 43.00 (42.70 to 43.70): VX0
 Ion 87.00 (86.70 to 87.70): VX0
 Ion 59.00 (58.70 to 59.70): VX0

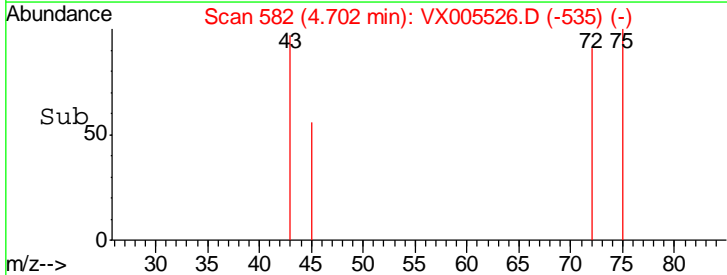
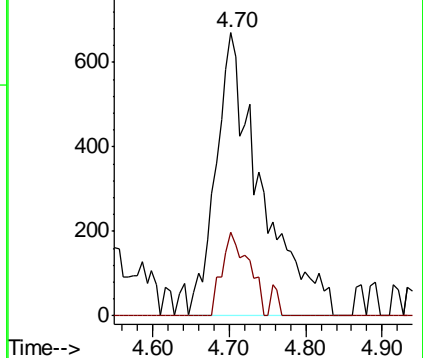


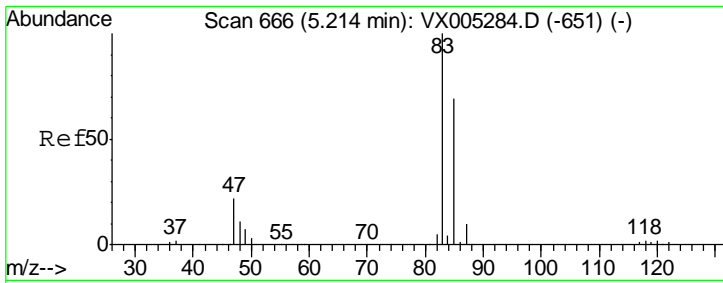
#25
 2-Butanone
 Concen: 1.152 ug/l
 RT: 4.70 min Scan# 582
 Delta R.T. -0.01 min
 Lab File: VX005526.D
 Acq: 23 Oct 2018 17:34

Tgt Ion	Resp	Lower	Upper
43	2746		
72	29.4	22.0	33.0



Abundance Ion 43.00 (42.70 to 43.70): VX0
 Ion 72.00 (71.70 to 72.70): VX0

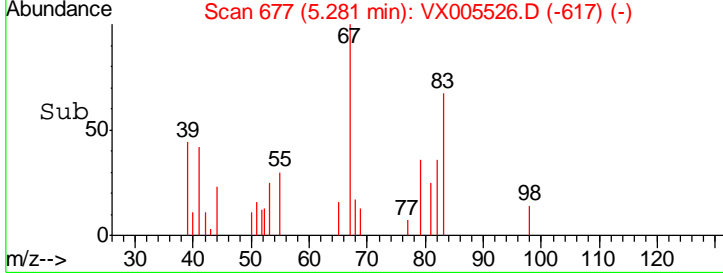
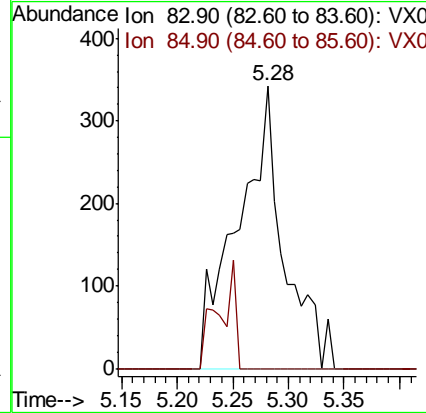
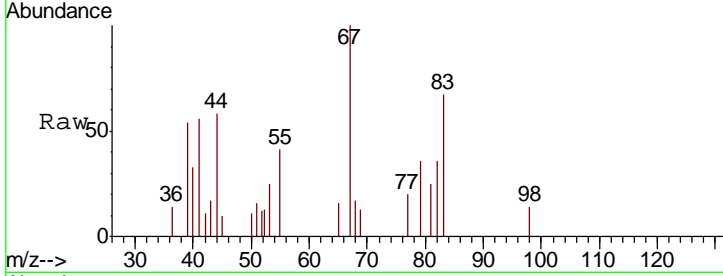




#30
 Chloroform
 Concen: 0.225 ug/l
 RT: 5.28 min Scan# 677
 Delta R.T. 0.07 min
 Lab File: VX005526.D
 Acq: 23 Oct 2018 17:34

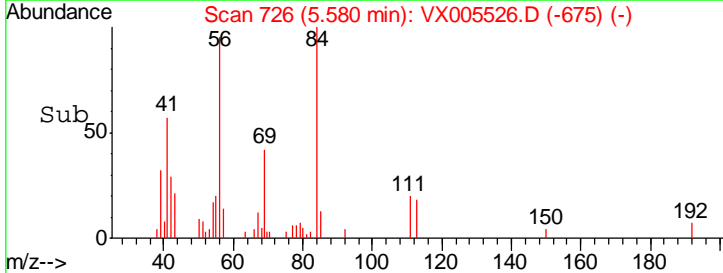
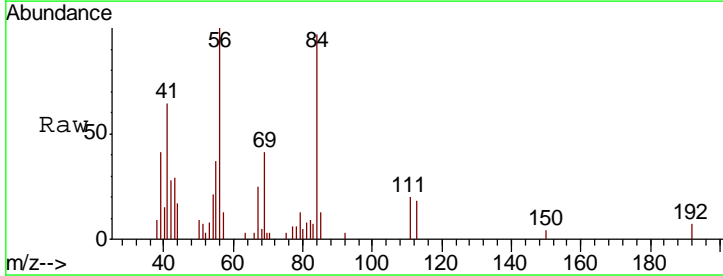
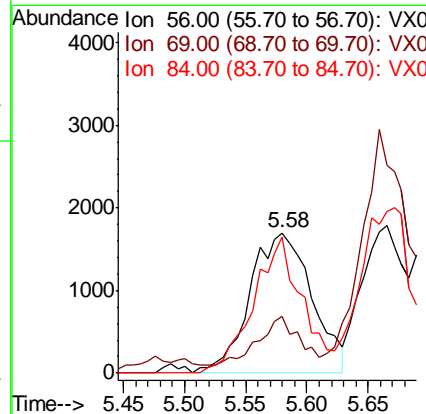
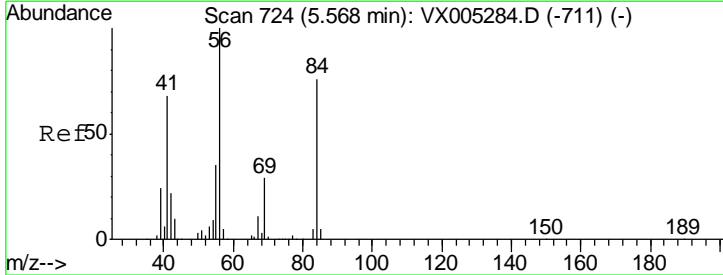
Instrument :
 MSVOA_X
 ClientSampled :

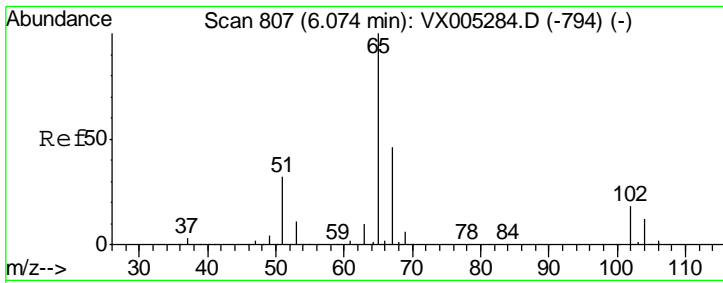
Tgt Ion	Resp	Lower	Upper
83	982		
85	0.0	52.6	79.0#



#31
 Cyclohexane
 Concen: 1.547 ug/l
 RT: 5.58 min Scan# 726
 Delta R.T. 0.01 min
 Lab File: VX005526.D
 Acq: 23 Oct 2018 17:34

Tgt Ion	Resp	Lower	Upper
56	5994		
69	34.2	25.4	38.2
84	97.5	71.4	107.2

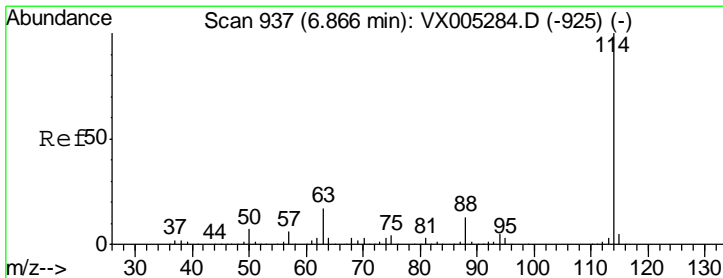
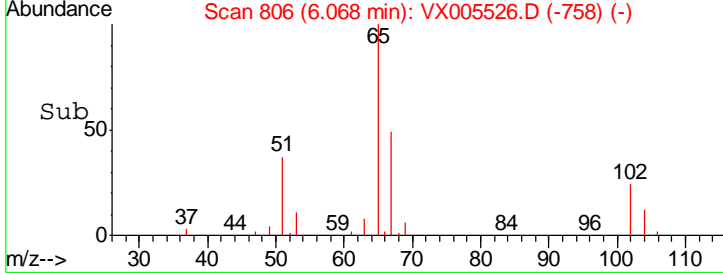
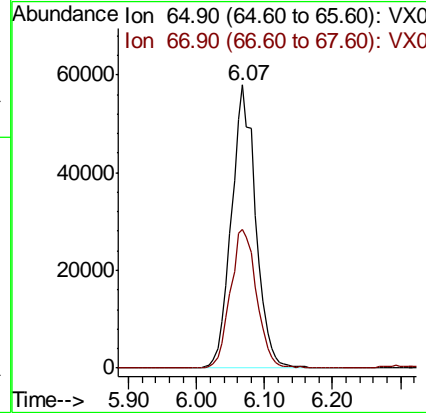
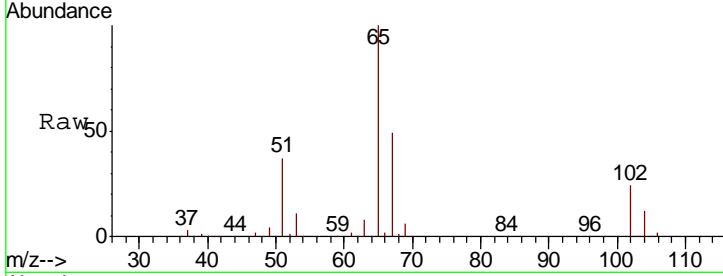




#33
 1,2-Dichloroethane-d4
 Concen: 50.815 ug/l
 RT: 6.07 min Scan# 806
 Delta R.T. -0.01 min
 Lab File: VX005526.D
 Acq: 23 Oct 2018 17:34

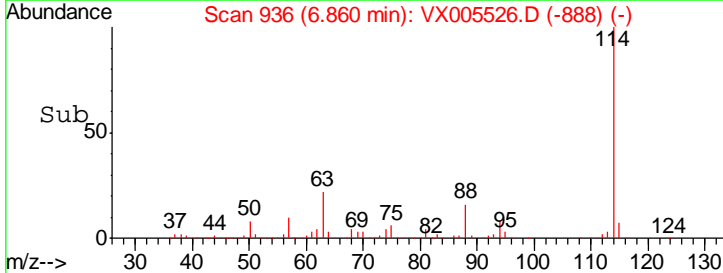
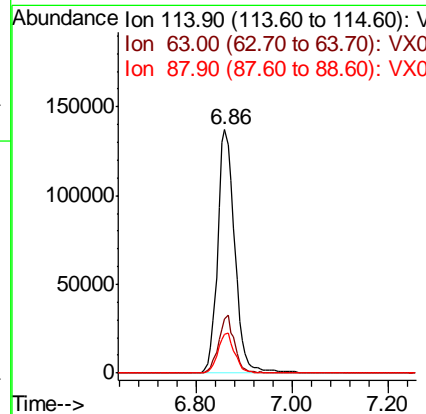
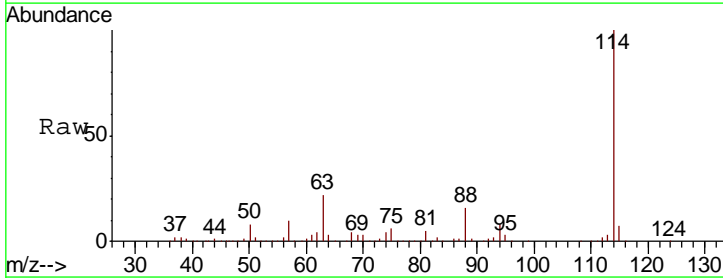
Instrument :
 MSVOA_X
 ClientSampled :

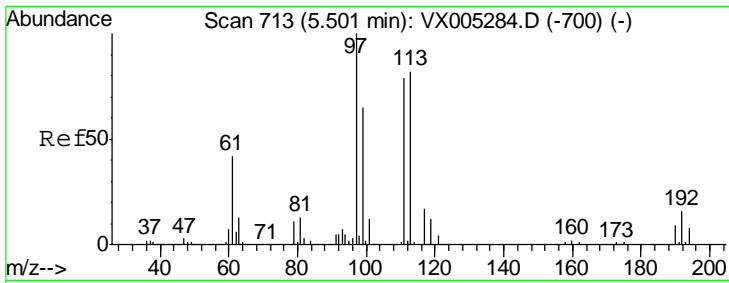
Tgt Ion	Resp	Lower	Upper
65	143187		
67	52.8	0.0	106.8



#34
 1,4-Difluorobenzene
 Concen: 50.000 ug/l
 RT: 6.86 min Scan# 936
 Delta R.T. -0.01 min
 Lab File: VX005526.D
 Acq: 23 Oct 2018 17:34

Tgt Ion	Resp	Lower	Upper
114	341940		
63	22.4	0.0	39.0
88	16.1	0.0	30.4

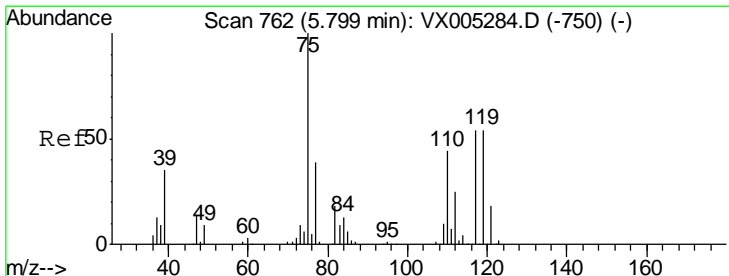
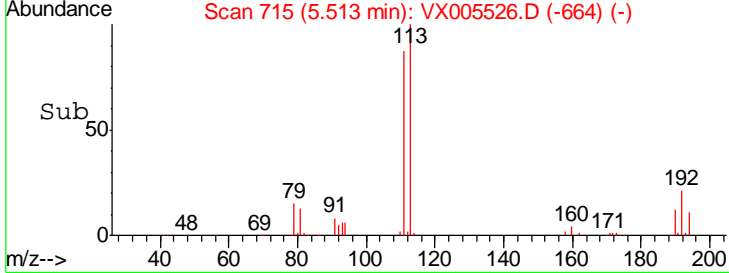
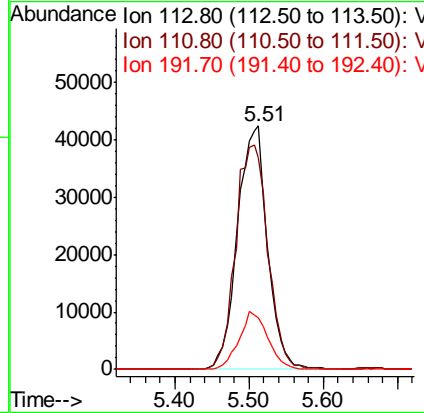
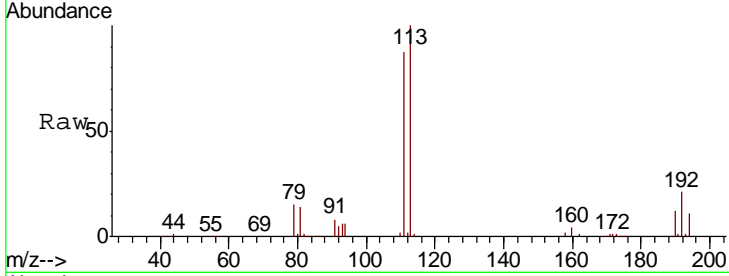




#35
 Dibromofluoromethane
 Concen: 52.872 ug/l
 RT: 5.51 min Scan# 715
 Delta R.T. 0.01 min
 Lab File: VX005526.D
 Acq: 23 Oct 2018 17:34

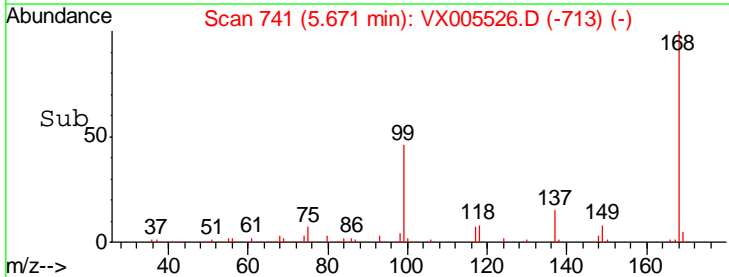
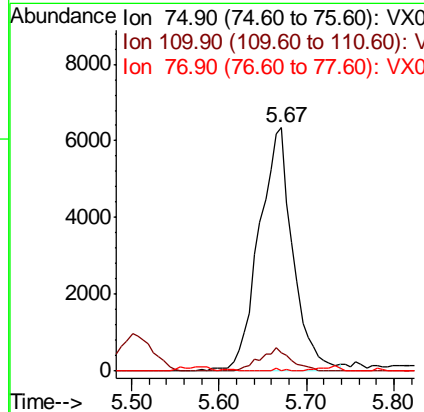
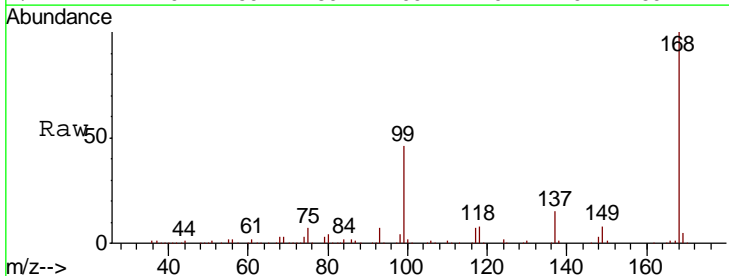
Instrument :
 MSVOA_X
 ClientSampled :

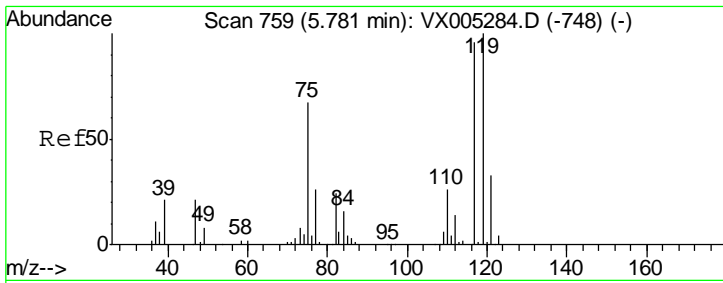
Tgt Ion	Resp	Lower	Upper
113	119741		
111	99.5	82.4	123.6
192	22.9	19.4	29.2



#36
 1,1-Dichloropropene
 Concen: 5.184 ug/l
 RT: 5.67 min Scan# 741
 Delta R.T. -0.13 min
 Lab File: VX005526.D
 Acq: 23 Oct 2018 17:34

Tgt Ion	Resp	Lower	Upper
75	17167		
110	8.6	18.0	54.0#
77	0.3	24.6	36.8#

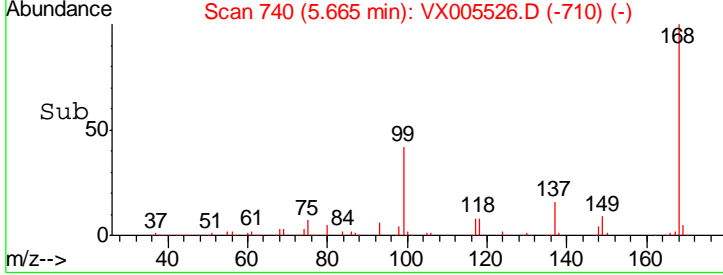
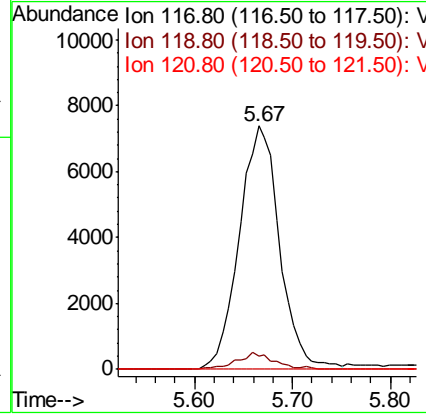
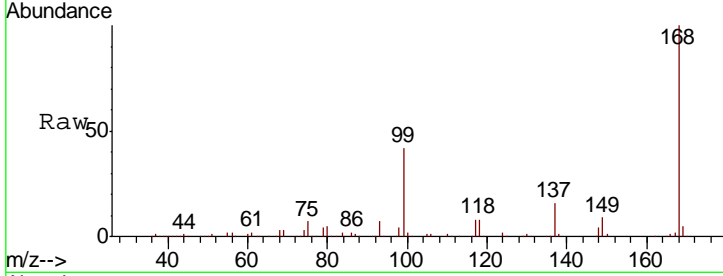




#38
 Carbon Tetrachloride
 Concen: 6.363 ug/l
 RT: 5.67 min Scan# 740
 Delta R.T. -0.12 min
 Lab File: VX005526.D
 Acq: 23 Oct 2018 17:34

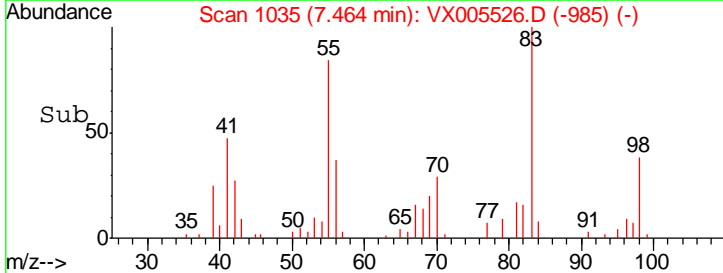
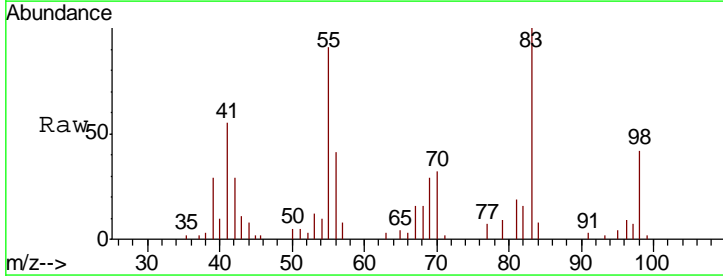
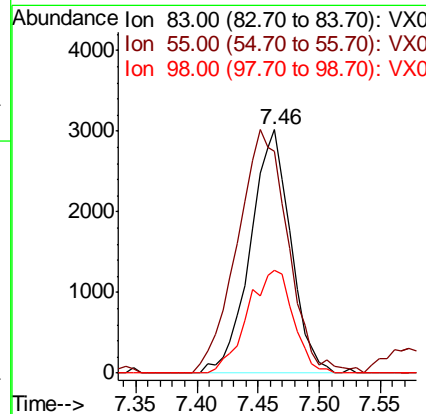
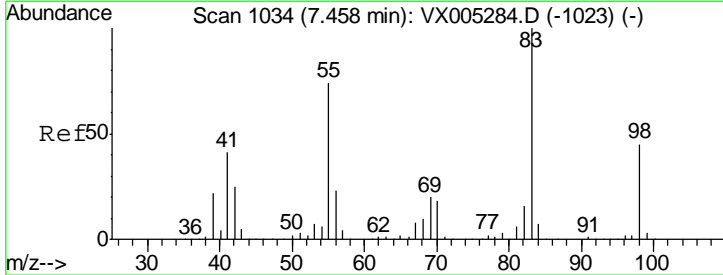
Instrument :
 MSVOA_X
 ClientSampled :

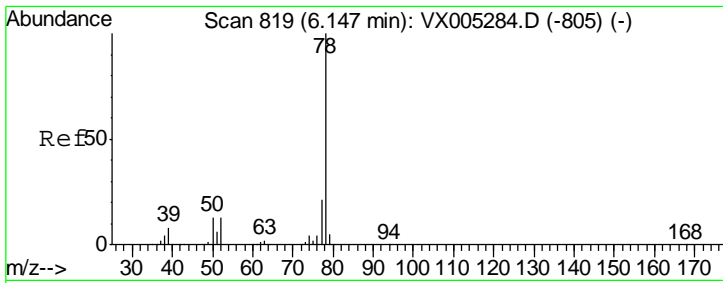
Tgt Ion	Resp	Lower	Upper
117	100		
119	5.7	78.8	118.2#
121	0.0	24.9	37.3#



#39
 Methylcyclohexane
 Concen: 1.932 ug/l
 RT: 7.46 min Scan# 1035
 Delta R.T. 0.01 min
 Lab File: VX005526.D
 Acq: 23 Oct 2018 17:34

Tgt Ion	Resp	Lower	Upper
83	100		
55	91.1	61.0	91.4
98	42.3	39.6	59.4

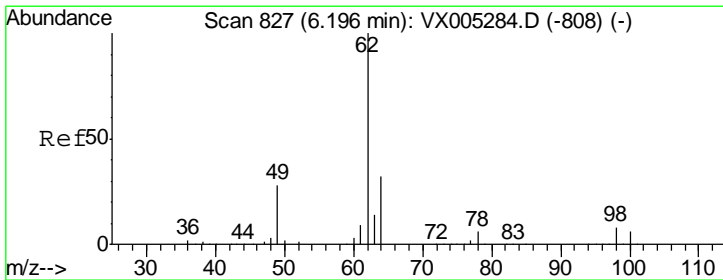
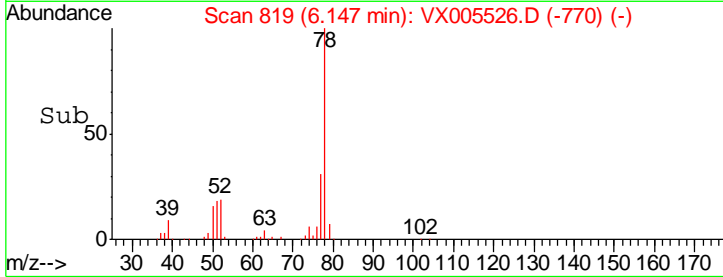
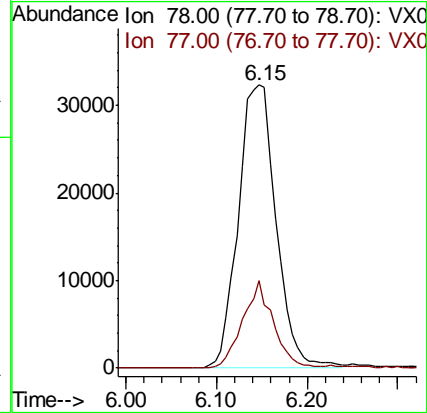
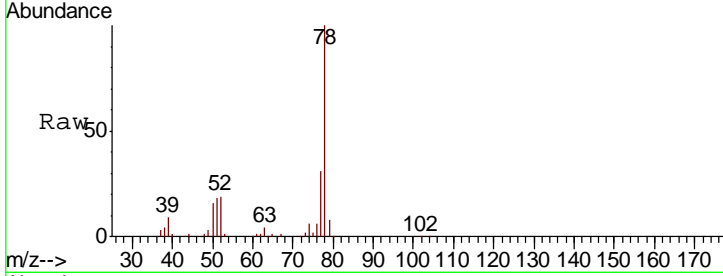




#40
Benzene
Concen: 9.399 ug/l
RT: 6.15 min Scan# 819
Delta R.T. -0.00 min
Lab File: VX005526.D
Acq: 23 Oct 2018 17:34

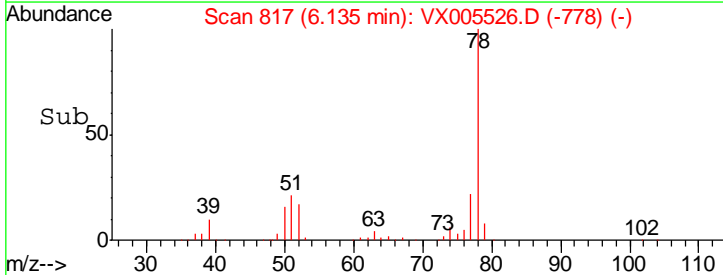
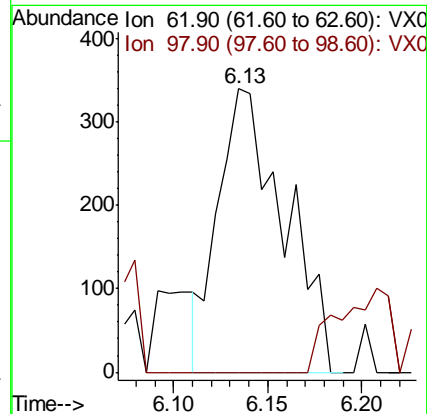
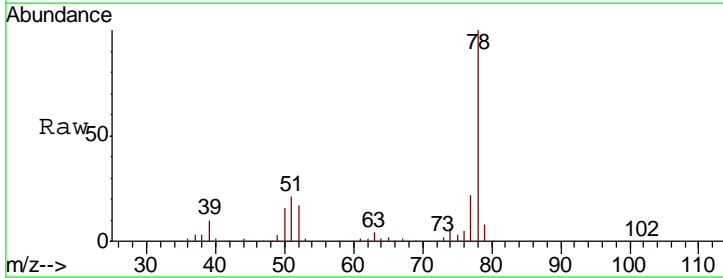
Instrument :
MSVOA_X
ClientSampled :

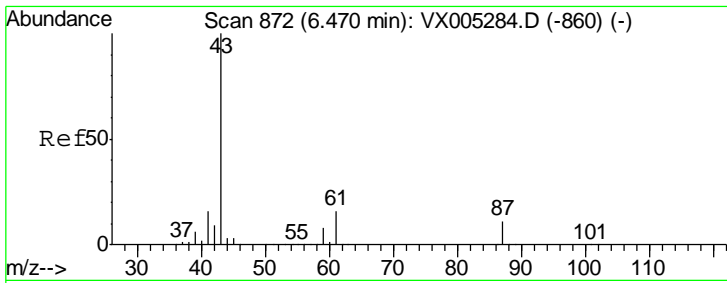
Tgt Ion: 78 Resp: 93369
Ion Ratio Lower Upper
78 100
77 30.8 19.0 28.4#



#42
1,2-Dichloroethane
Concen: 0.234 ug/l
RT: 6.13 min Scan# 817
Delta R.T. -0.06 min
Lab File: VX005526.D
Acq: 23 Oct 2018 17:34

Tgt Ion: 62 Resp: 821
Ion Ratio Lower Upper
62 100
98 0.0 0.0 20.6

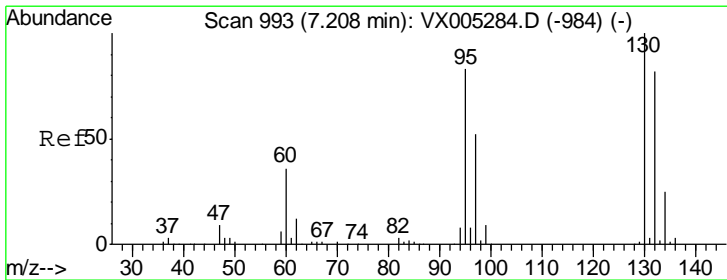
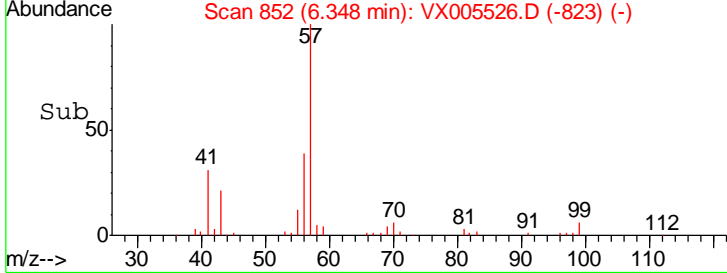
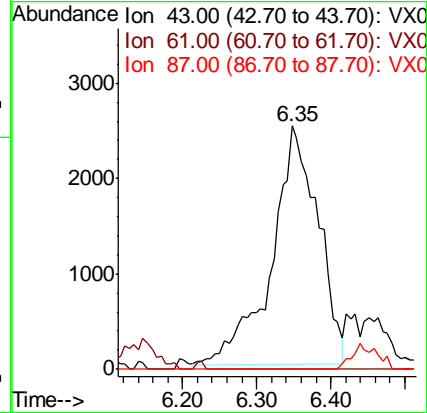
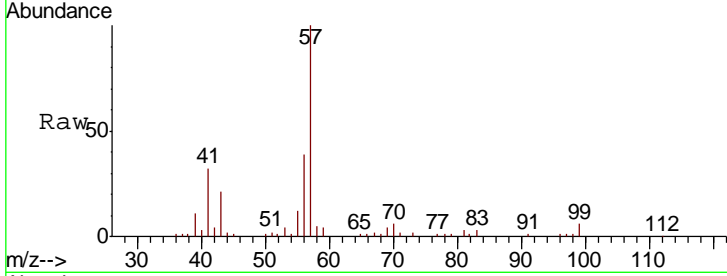




#43
 Isopropyl Acetate
 Concen: 1.922 ug/l
 RT: 6.35 min Scan# 852
 Delta R.T. -0.12 min
 Lab File: VX005526.D
 Acq: 23 Oct 2018 17:34

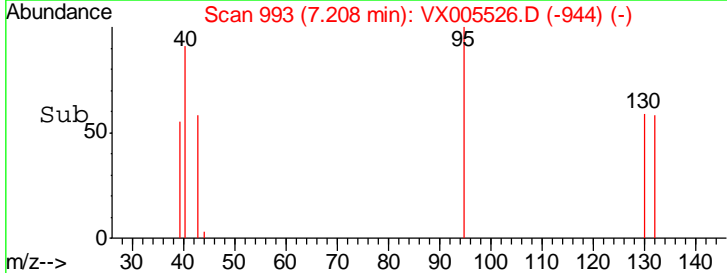
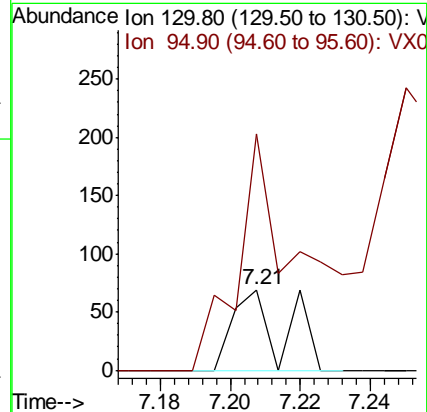
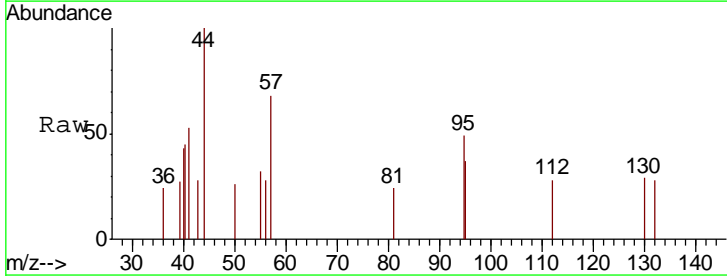
Instrument : MSVOA_X
 ClientSampled :

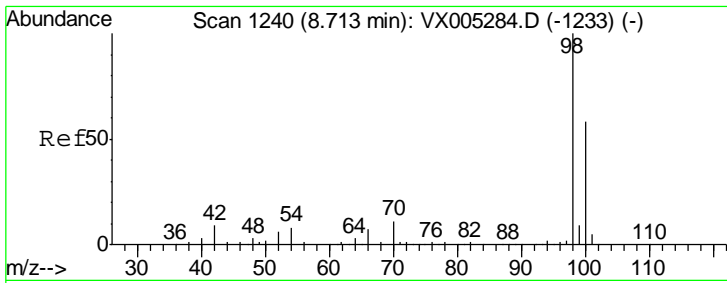
Tgt Ion	Resp	Lower	Upper
43	10905		
61	0.0	17.0	25.4#
87	0.0	11.4	17.2#



#44
 Trichloroethene
 Concen: Below Cal
 RT: 7.21 min Scan# 993
 Delta R.T. 0.00 min
 Lab File: VX005526.D
 Acq: 23 Oct 2018 17:34

Tgt Ion	Resp	Lower	Upper
130	70		
130	100		
95	294.2	0.0	181.6#

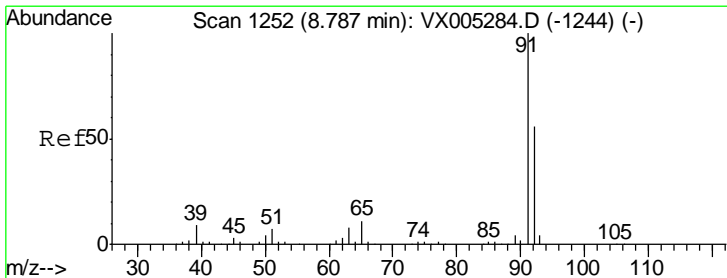
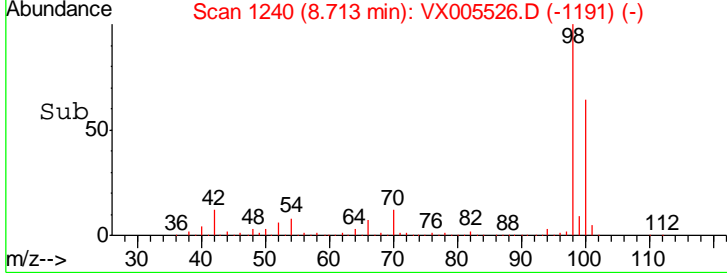
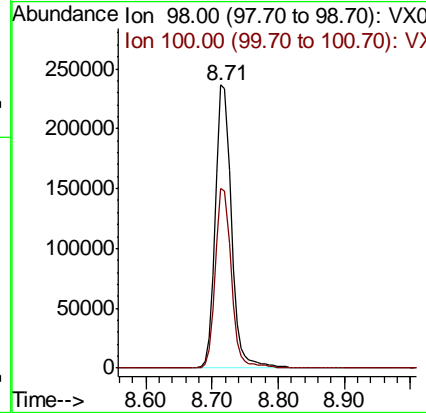
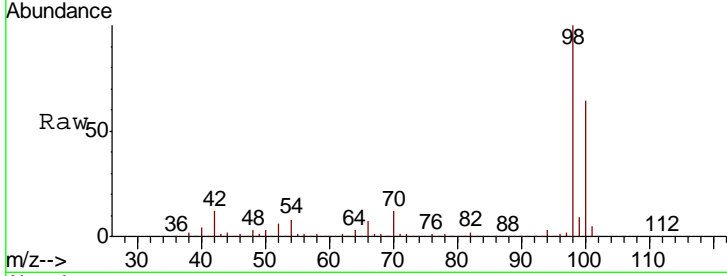




#50
 Toluene-d8
 Concen: 51.355 ug/l
 RT: 8.71 min Scan# 1240
 Delta R.T. -0.00 min
 Lab File: VX005526.D
 Acq: 23 Oct 2018 17:34

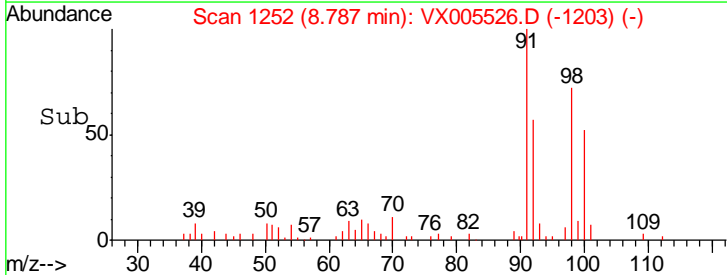
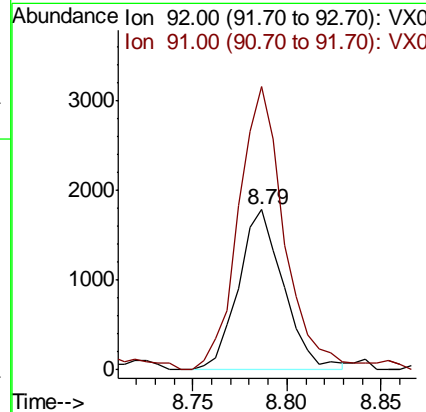
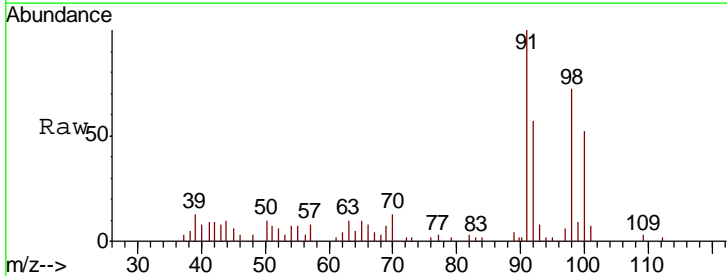
Instrument :
 MSVOA_X
 ClientSampled :

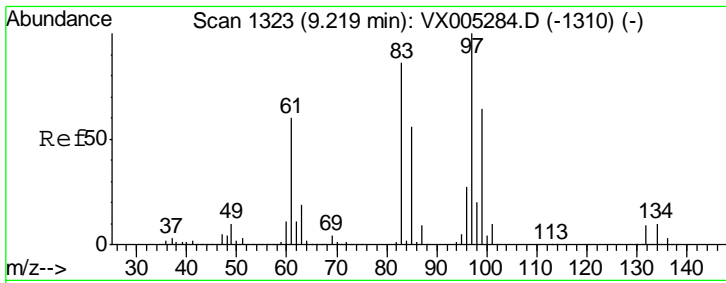
Tgt Ion: 98 Resp: 399289
 Ion Ratio Lower Upper
 98 100
 100 63.3 52.9 79.3



#52
 Toluene
 Concen: 0.547 ug/l
 RT: 8.79 min Scan# 1252
 Delta R.T. -0.00 min
 Lab File: VX005526.D
 Acq: 23 Oct 2018 17:34

Tgt Ion: 92 Resp: 2971
 Ion Ratio Lower Upper
 92 100
 91 179.6 136.4 204.6

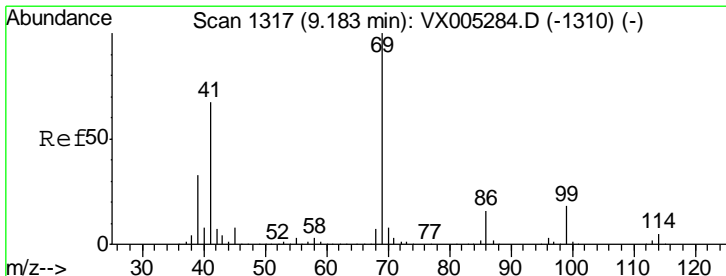
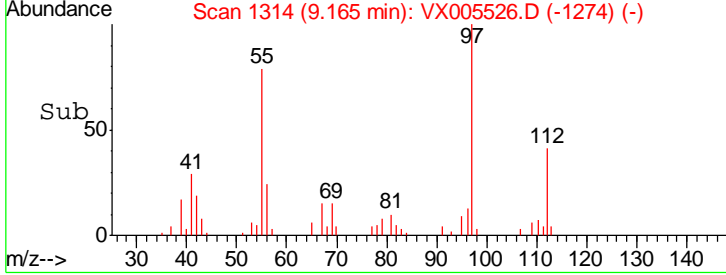
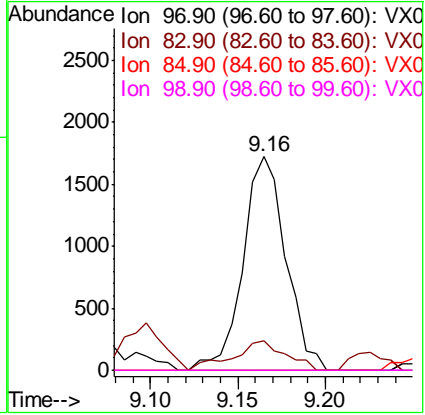
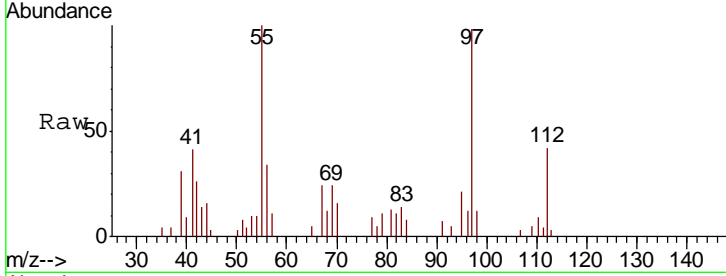




#55
 1,1,2-Trichloroethane
 Concen: 1.275 ug/l
 RT: 9.16 min Scan# 1314
 Delta R.T. -0.05 min
 Lab File: VX005526.D
 Acq: 23 Oct 2018 17:34

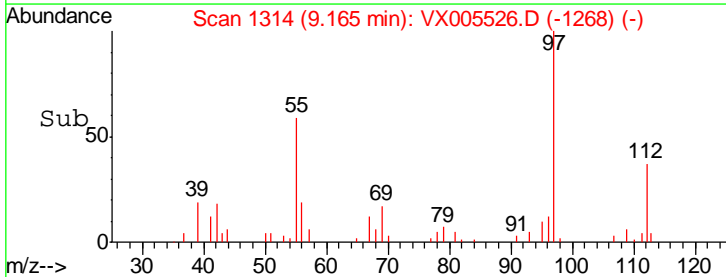
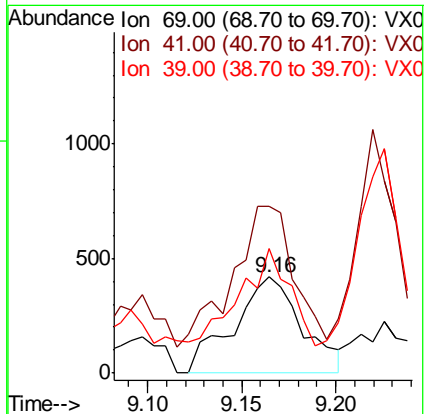
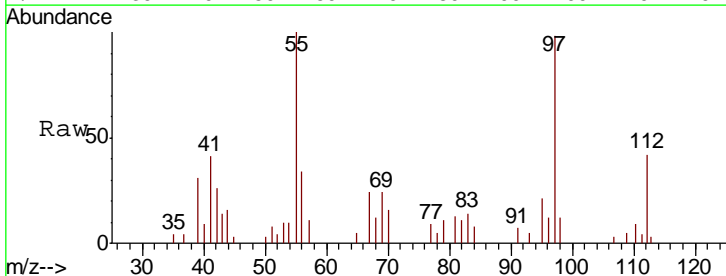
Instrument :
 MSVOA_X
 ClientSampled :

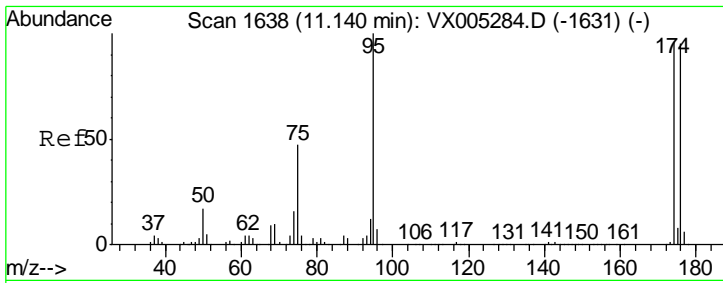
Tgt Ion	Resp	Lower	Upper
97	100		
83	13.9	66.4	99.6#
85	0.0	43.3	64.9#
99	0.0	49.0	73.4#



#56
 Ethyl methacrylate
 Concen: 0.315 ug/l
 RT: 9.16 min Scan# 1314
 Delta R.T. -0.02 min
 Lab File: VX005526.D
 Acq: 23 Oct 2018 17:34

Tgt Ion	Resp	Lower	Upper
69	100		
41	131.3	51.0	76.4#
39	72.8	26.1	39.1#

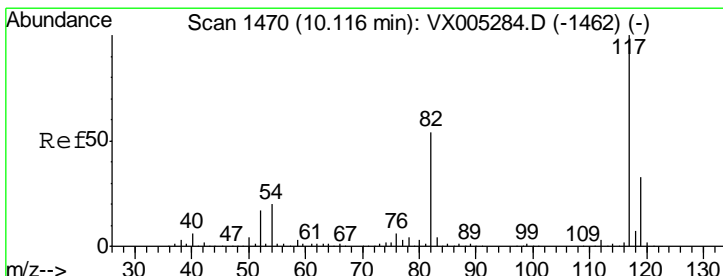
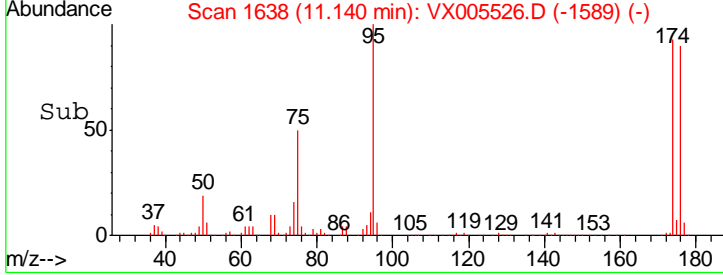
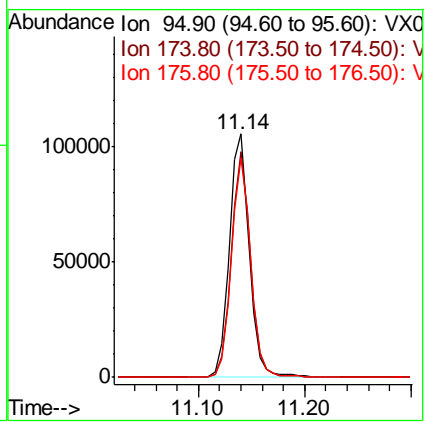
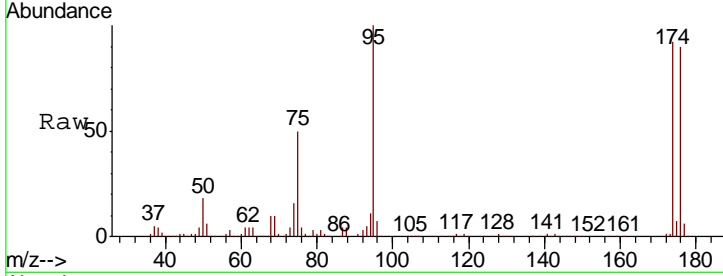




#62
 4-Bromofluorobenzene
 Concen: 47.539 ug/l
 RT: 11.14 min Scan# 1638
 Delta R.T. -0.00 min
 Lab File: VX005526.D
 Acq: 23 Oct 2018 17:34

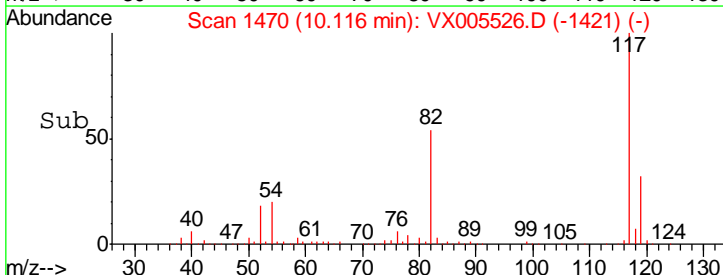
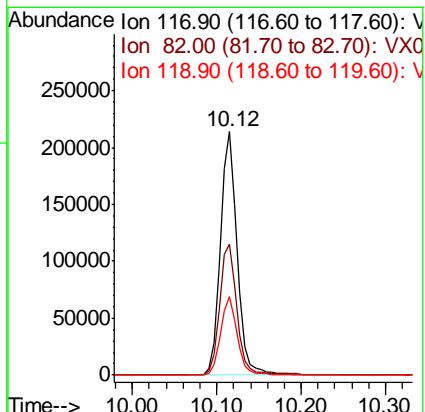
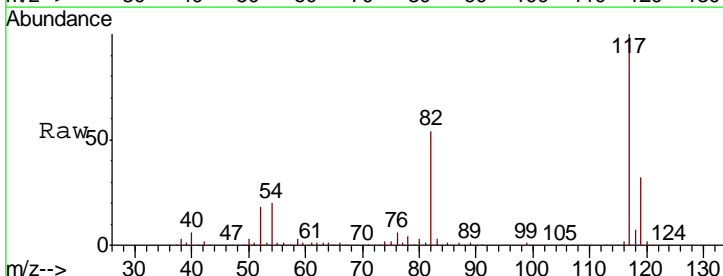
Instrument :
 MSVOA_X
 ClientSampled :

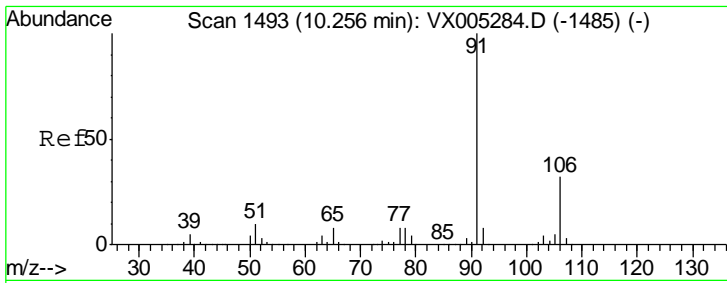
Tgt Ion	Resp	Lower	Upper
95	138853		
174	89.6	0.0	185.2
176	87.6	0.0	178.6



#63
 Chlorobenzene-d5
 Concen: 50.000 ug/l
 RT: 10.12 min Scan# 1470
 Delta R.T. -0.00 min
 Lab File: VX005526.D
 Acq: 23 Oct 2018 17:34

Tgt Ion	Resp	Lower	Upper
117	294985		
82	53.7	47.8	71.6
119	32.1	29.3	43.9

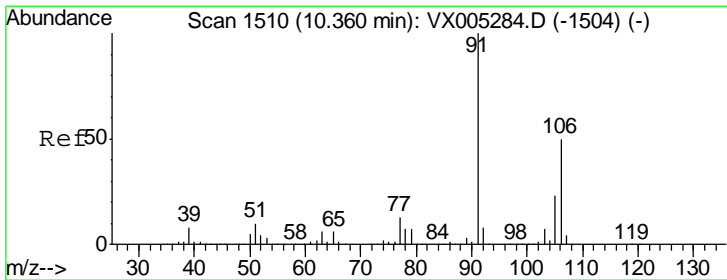
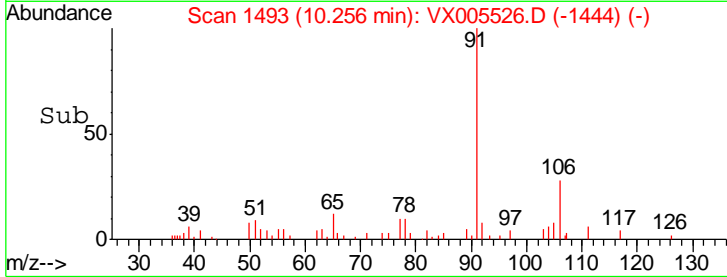
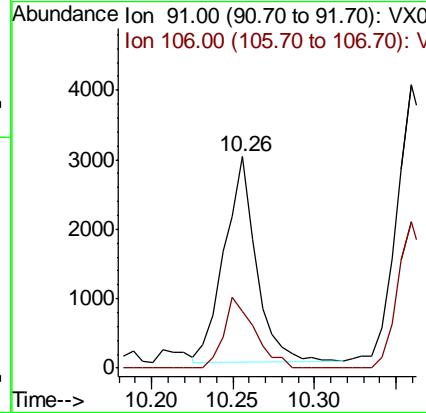
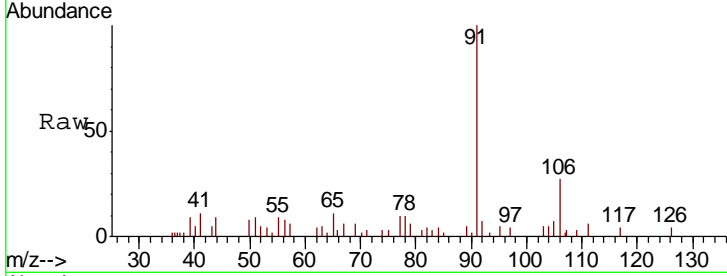




#67
Ethyl Benzene
Concen: 0.392 ug/l
RT: 10.26 min Scan# 1493
Delta R.T. -0.00 min
Lab File: VX005526.D
Acq: 23 Oct 2018 17:34

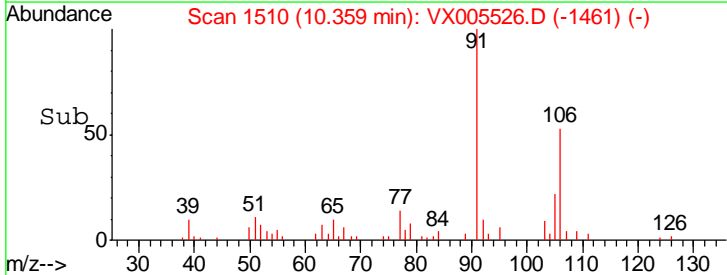
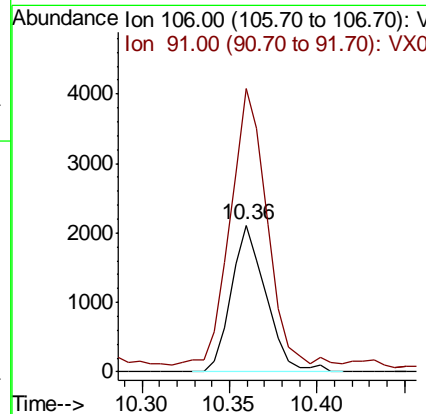
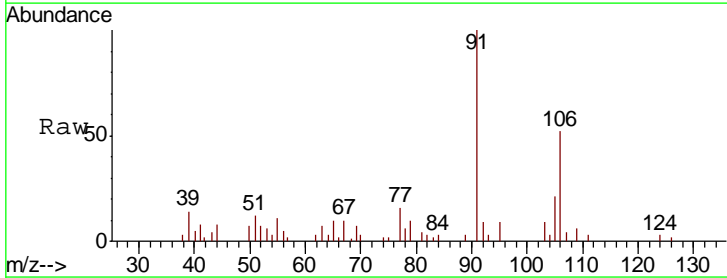
Instrument : MSVOA_X
Client Sampled :

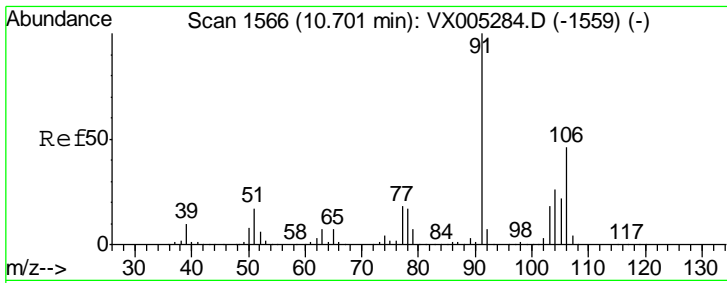
Tgt Ion	Resp	Lower	Upper
91	4001		
106	27.8	25.9	38.9



#68
m/p-Xylenes
Concen: 0.734 ug/l
RT: 10.36 min Scan# 1510
Delta R.T. -0.00 min
Lab File: VX005526.D
Acq: 23 Oct 2018 17:34

Tgt Ion	Resp	Lower	Upper
106	2908		
91	196.1	157.1	235.7

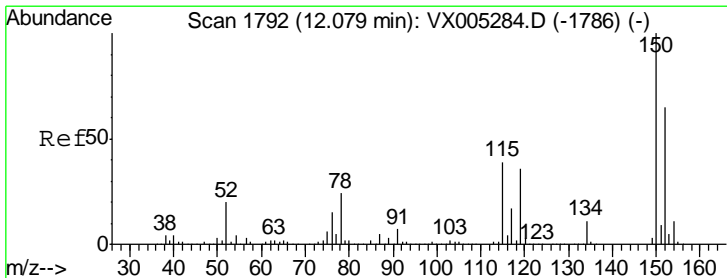
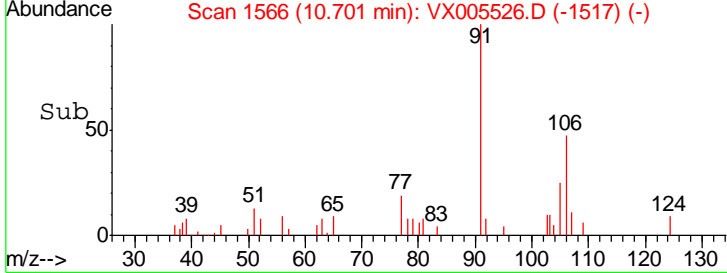
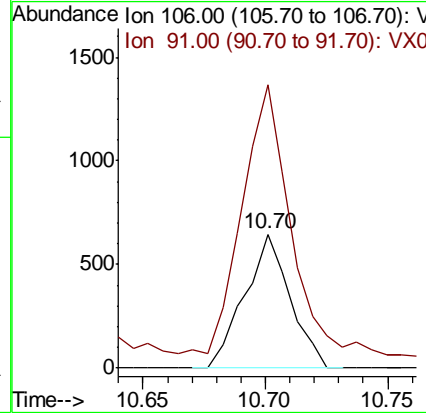
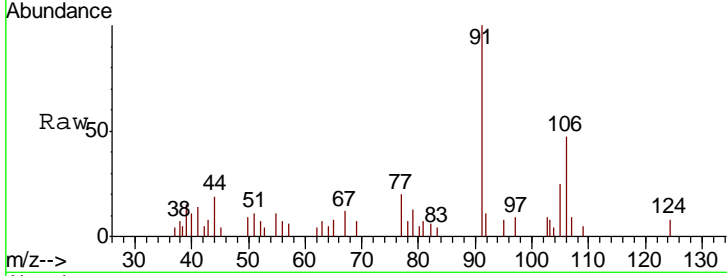




#69
 o-Xylene
 Concen: 0.218 ug/l
 RT: 10.70 min Scan# 1566
 Delta R.T. -0.00 min
 Lab File: VX005526.D
 Acq: 23 Oct 2018 17:34

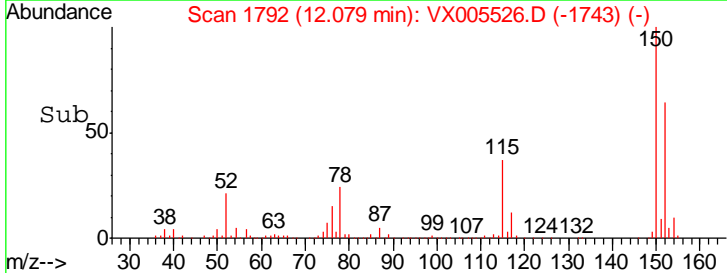
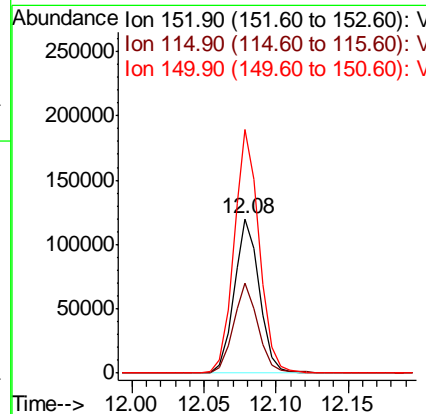
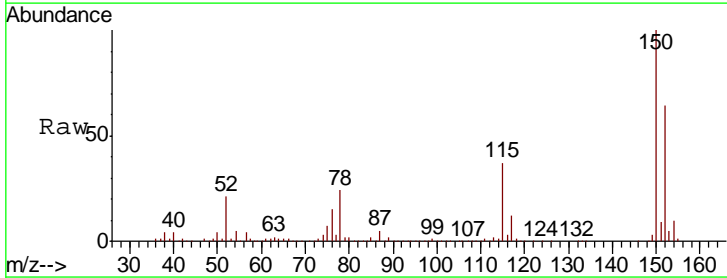
Instrument : MSVOA_X
 ClientSampled :

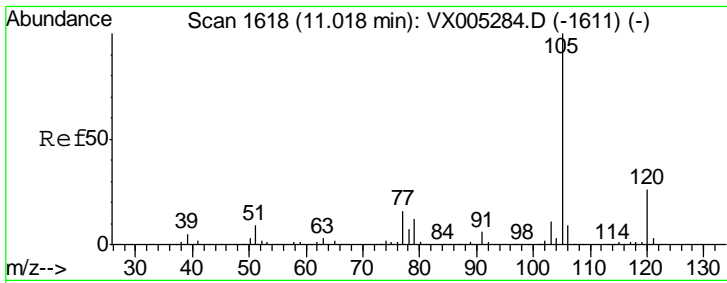
Tgt Ion	Resp	Lower	Upper
106	831		
106	100		
91	237.5	105.1	315.1



#72
 1,4-Dichlorobenzene-d4
 Concen: 50.000 ug/l
 RT: 12.08 min Scan# 1792
 Delta R.T. -0.00 min
 Lab File: VX005526.D
 Acq: 23 Oct 2018 17:34

Tgt Ion	Resp	Lower	Upper
152	146879		
152	100		
115	58.2	39.0	117.0
150	157.4	0.0	351.0

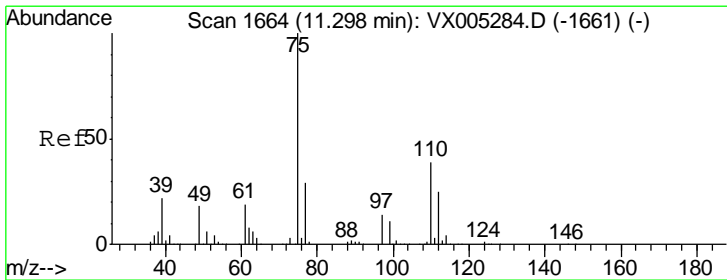
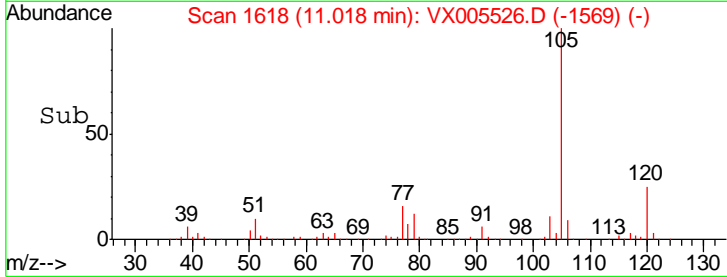
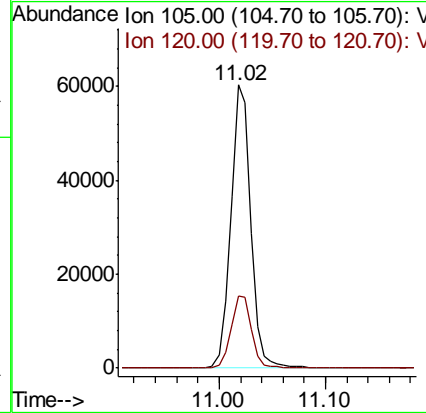
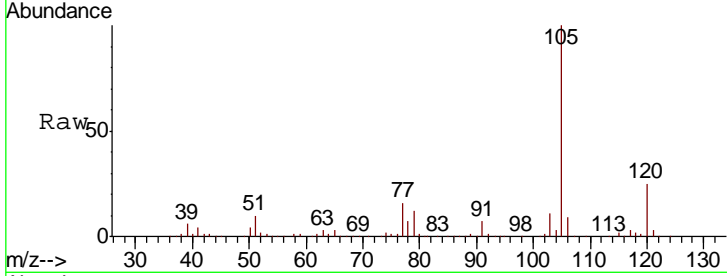




#73
 Isopropylbenzene
 Concen: 9.060 ug/l
 RT: 11.02 min Scan# 1618
 Delta R.T. -0.00 min
 Lab File: VX005526.D
 Acq: 23 Oct 2018 17:34

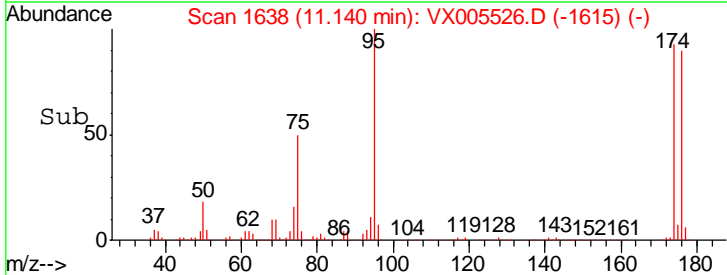
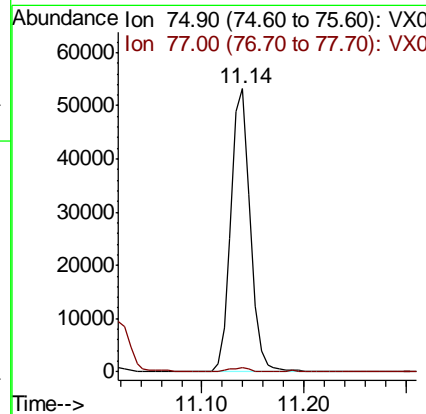
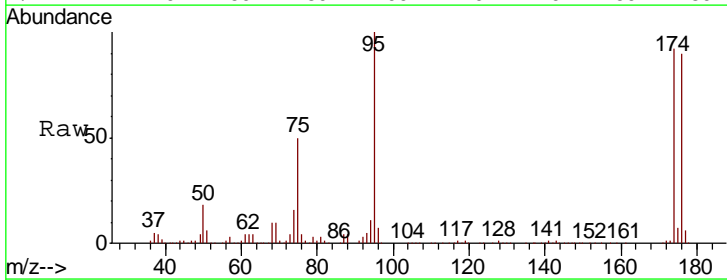
Instrument :
 MSVOA_X
 ClientSampled :

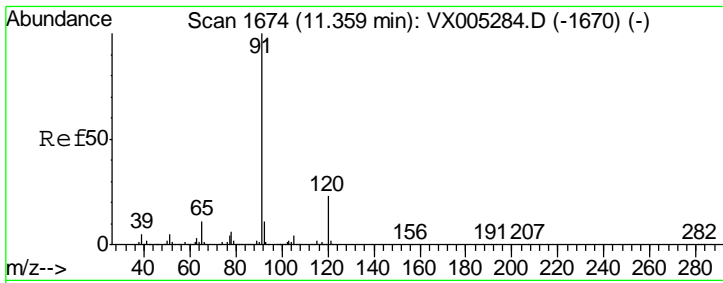
Tgt Ion: 105 Resp: 79105
 Ion Ratio Lower Upper
 105 100
 120 26.2 13.5 40.4



#76
 1,2,3-Trichloropropane
 Concen: 24.563 ug/l
 RT: 11.14 min Scan# 1638
 Delta R.T. -0.16 min
 Lab File: VX005526.D
 Acq: 23 Oct 2018 17:34

Tgt Ion: 75 Resp: 69981
 Ion Ratio Lower Upper
 75 100
 77 1.3 20.2 60.6#

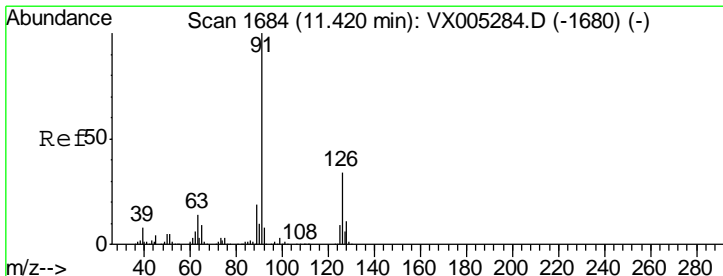
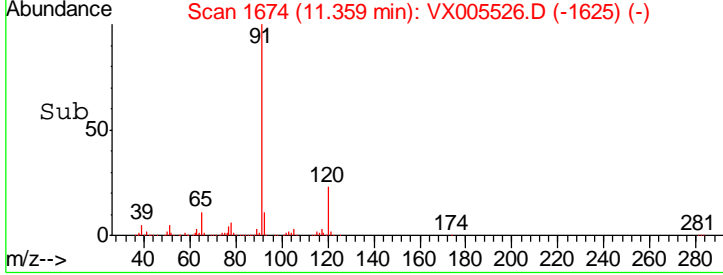
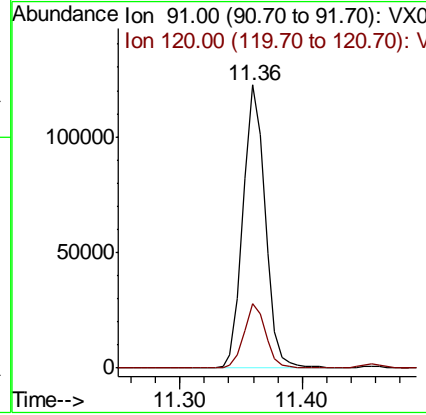
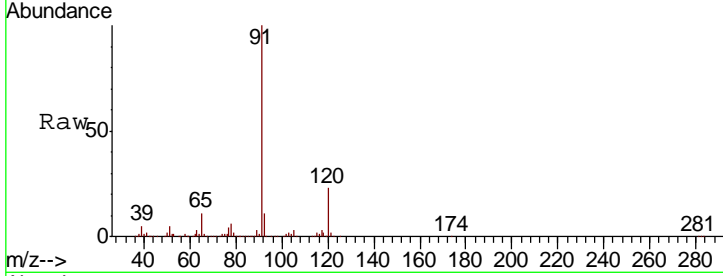




#78
 n-propylbenzene
 Concen: 15.272 ug/l
 RT: 11.36 min Scan# 1674
 Delta R.T. -0.00 min
 Lab File: VX005526.D
 Acq: 23 Oct 2018 17:34

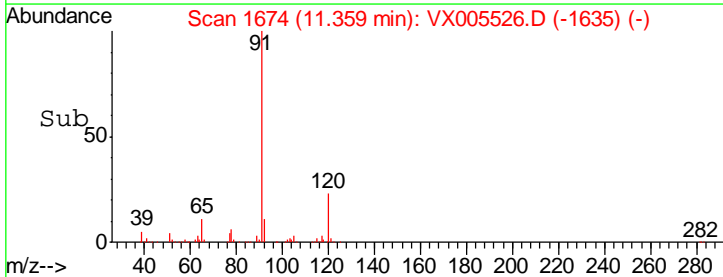
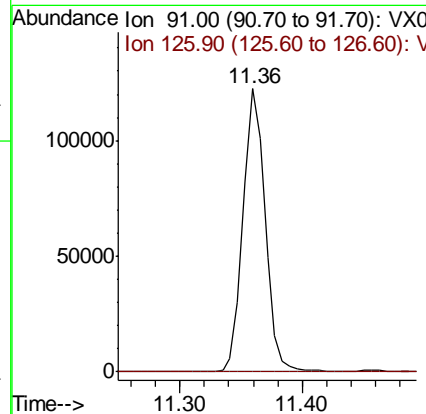
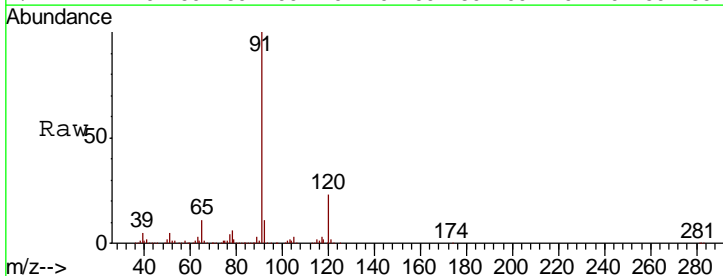
Instrument : MSVOA_X
 ClientSampled :

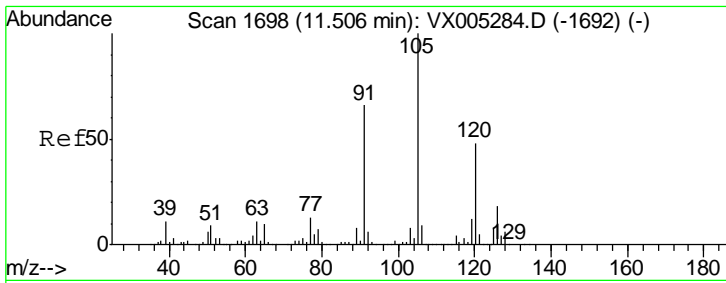
Tgt Ion	Resp	Lower	Upper
91	100		
120	22.3	11.9	35.9



#79
 2-Chlorotoluene
 Concen: 24.936 ug/l
 RT: 11.36 min Scan# 1674
 Delta R.T. -0.06 min
 Lab File: VX005526.D
 Acq: 23 Oct 2018 17:34

Tgt Ion	Resp	Lower	Upper
91	100		
126	0.0	17.9	53.7#

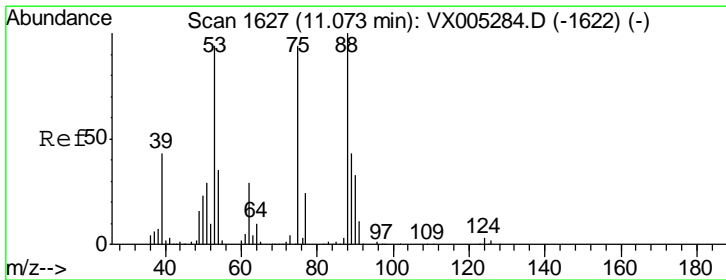
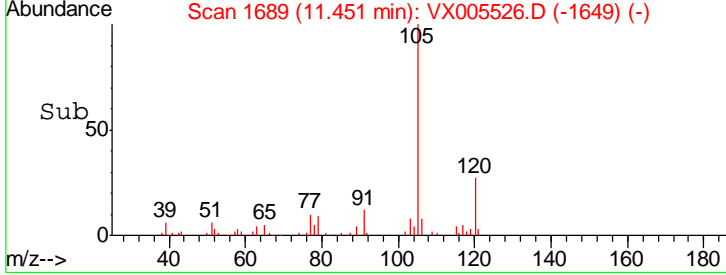
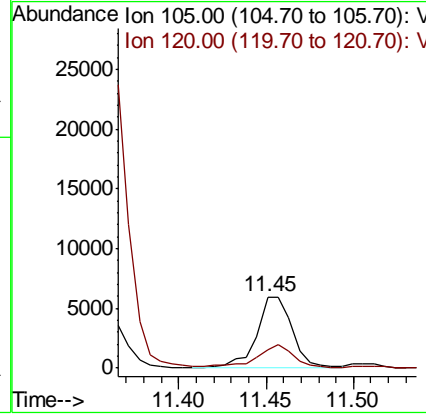
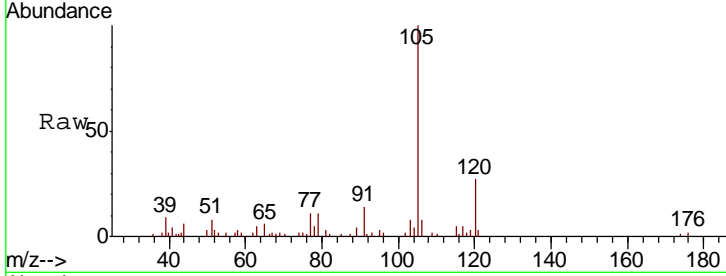




#80
 1,3,5-Trimethylbenzene
 Concen: 1.149 ug/l
 RT: 11.45 min Scan# 1689
 Delta R.T. -0.05 min
 Lab File: VX005526.D
 Acq: 23 Oct 2018 17:34

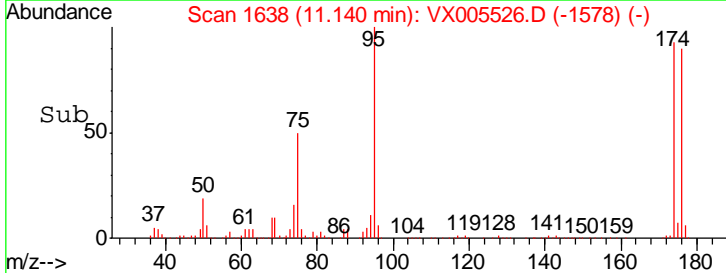
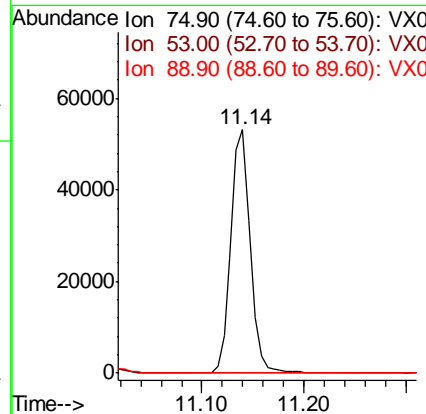
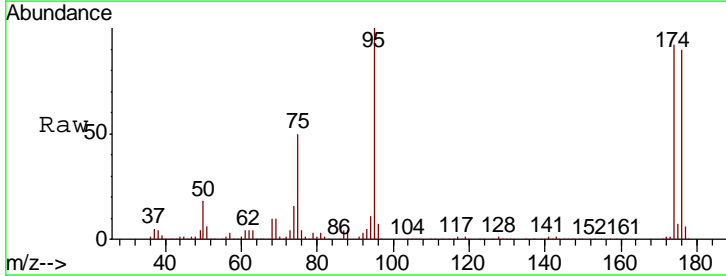
Instrument : MSVOA_X
 ClientSampled :

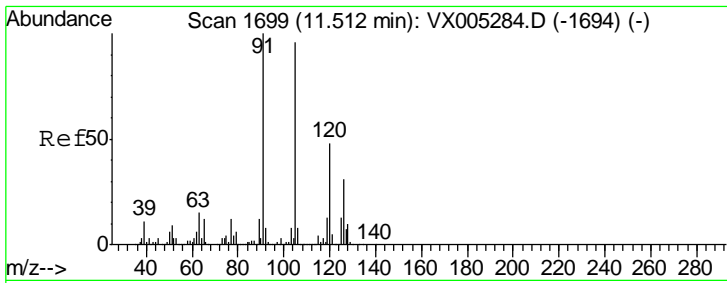
Tgt Ion	Resp	Lower	Upper
105	100		
120	32.2	25.6	76.8



#81
 trans-1,4-Dichloro-2-butene
 Concen: 74.634 ug/l
 RT: 11.14 min Scan# 1638
 Delta R.T. 0.07 min
 Lab File: VX005526.D
 Acq: 23 Oct 2018 17:34

Tgt Ion	Resp	Lower	Upper
75	100		
53	0.2	80.1	120.1#
89	0.0	37.2	55.8#

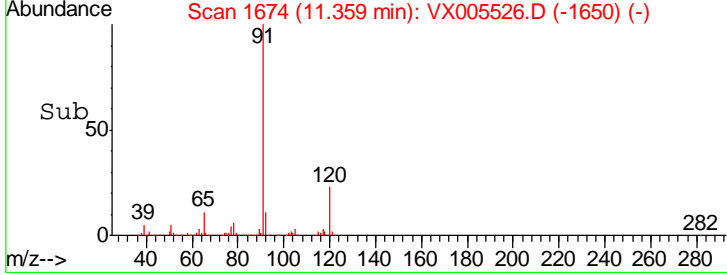
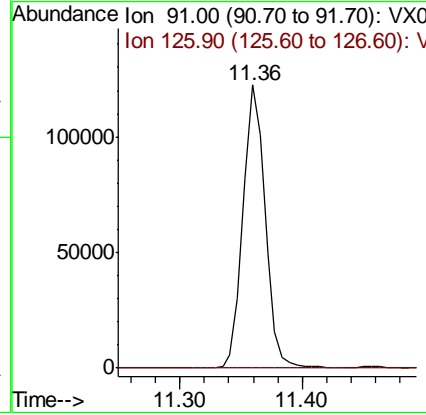
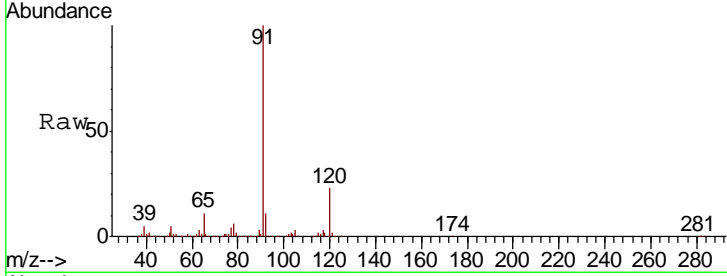




#82
 4-Chlorotoluene
 Concen: 21.036 ug/l
 RT: 11.36 min Scan# 1674
 Delta R.T. -0.15 min
 Lab File: VX005526.D
 Acq: 23 Oct 2018 17:34

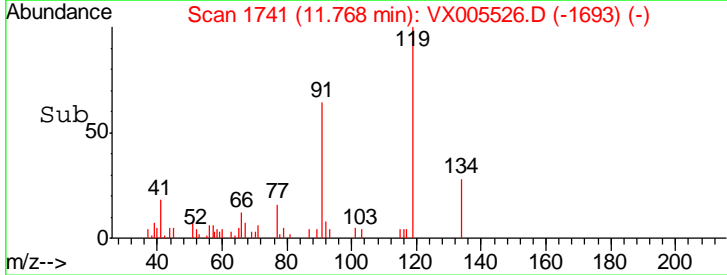
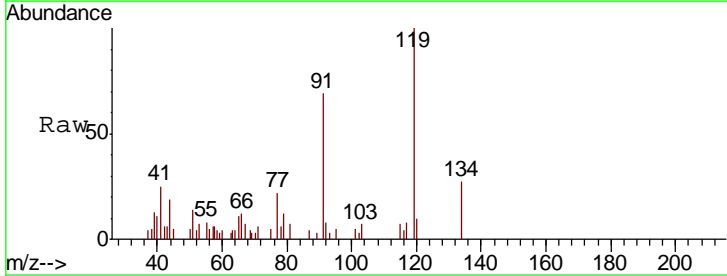
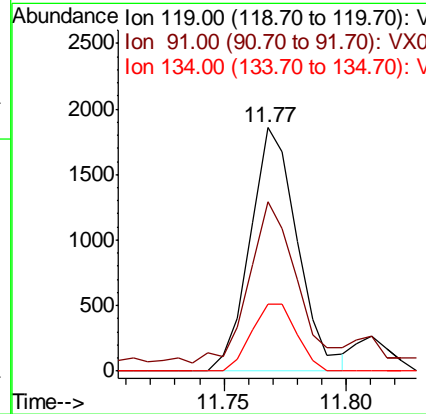
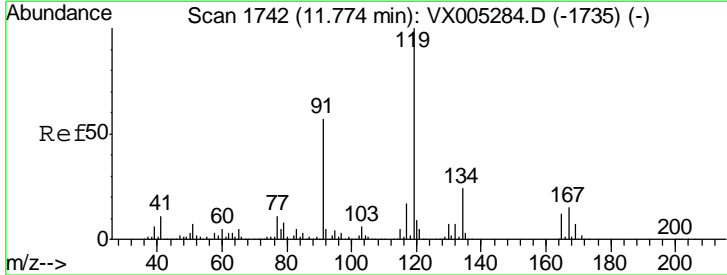
Instrument : MSVOA_X
 ClientSampled :

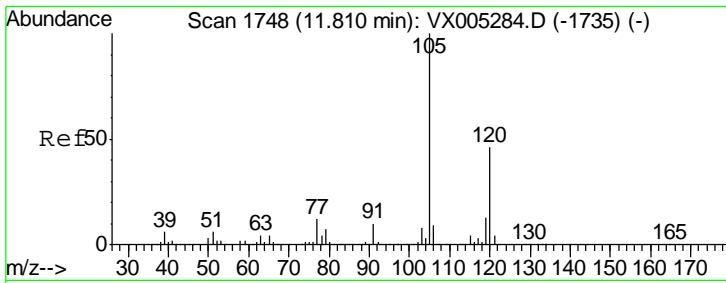
Tgt Ion	Resp	Lower	Upper
91	153448		
126	0.0	15.5	46.5#



#83
 tert-Butylbenzene
 Concen: 0.330 ug/l
 RT: 11.77 min Scan# 1741
 Delta R.T. -0.01 min
 Lab File: VX005526.D
 Acq: 23 Oct 2018 17:34

Tgt Ion	Resp	Lower	Upper
119	2498		
91	62.0	27.0	81.0
134	26.1	11.7	35.1

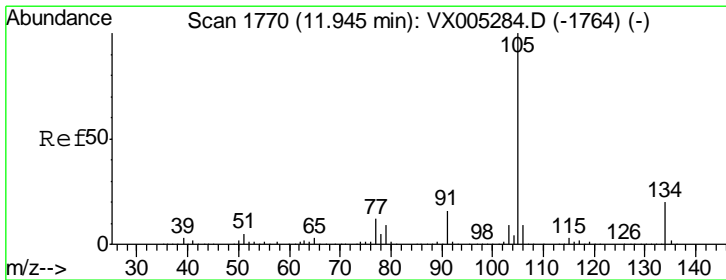
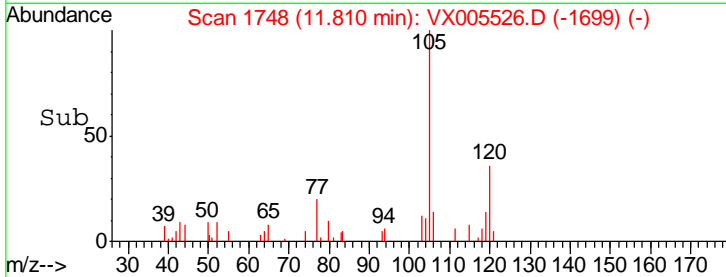
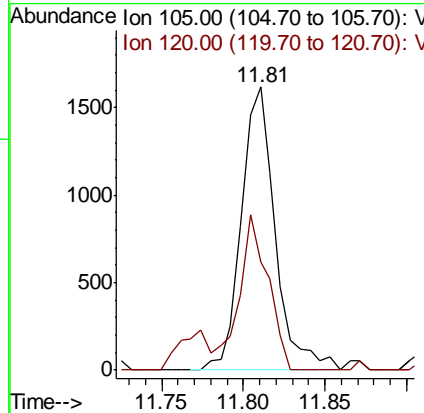
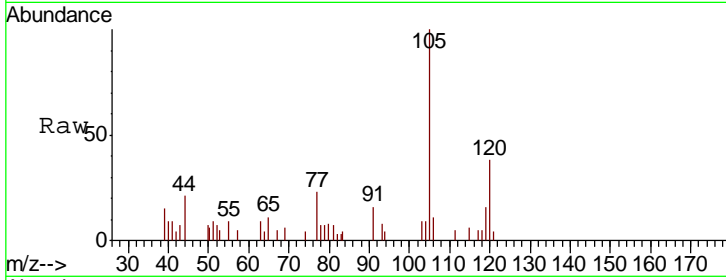




#84
 1,2,4-Trimethylbenzene
 Concen: 0.304 ug/l
 RT: 11.81 min Scan# 1748
 Delta R.T. -0.00 min
 Lab File: VX005526.D
 Acq: 23 Oct 2018 17:34

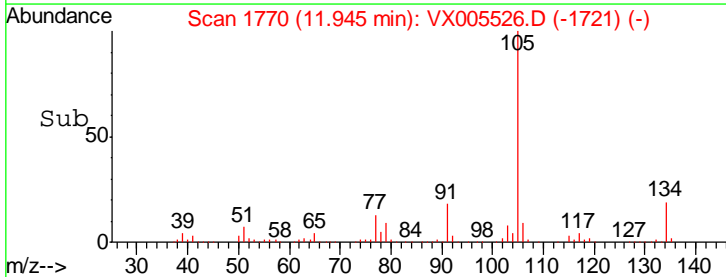
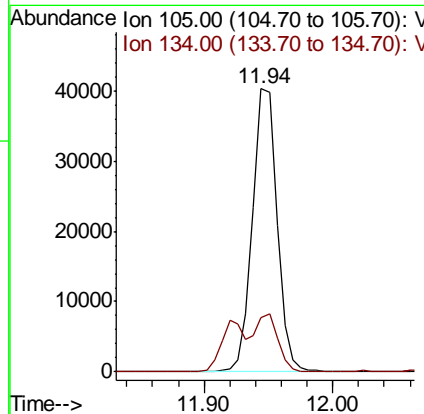
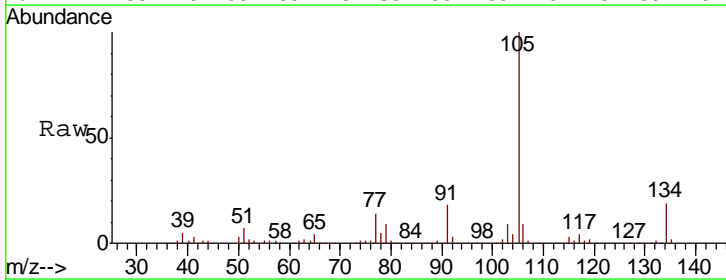
Instrument :
 MSVOA_X
 ClientSampled :

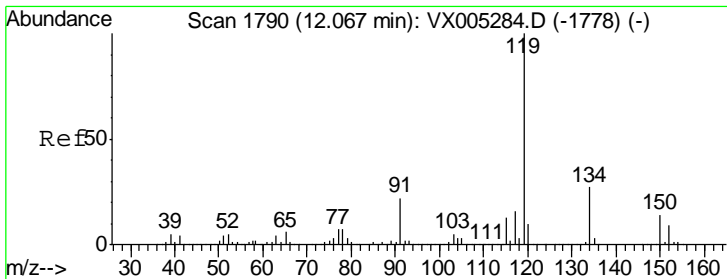
Tgt Ion	Resp	Lower	Upper
105	100		
120	46.6	23.2	69.6



#85
 sec-Butylbenzene
 Concen: 5.909 ug/l
 RT: 11.94 min Scan# 1770
 Delta R.T. -0.00 min
 Lab File: VX005526.D
 Acq: 23 Oct 2018 17:34

Tgt Ion	Resp	Lower	Upper
105	100		
134	19.6	10.5	31.5

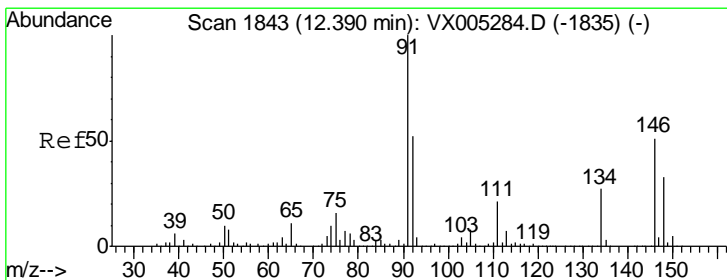
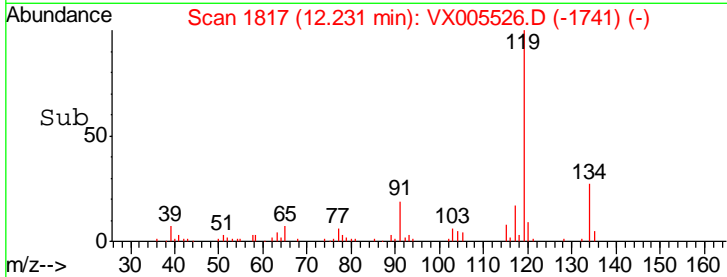
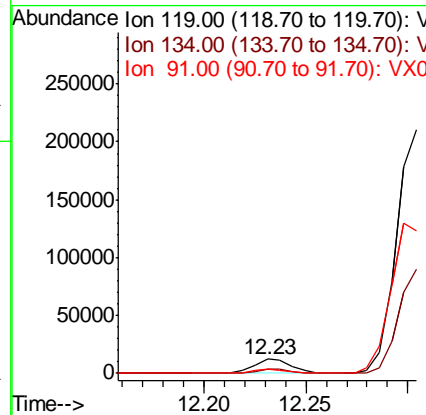
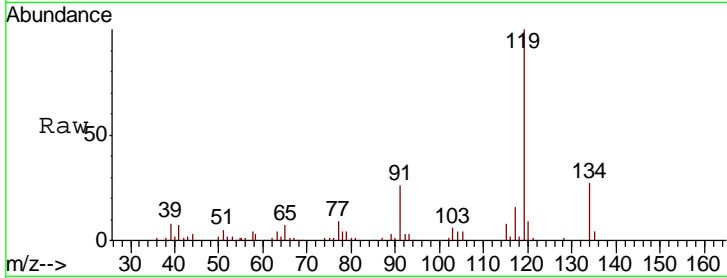




#86
 p-Isopropyltoluene
 Concen: 1.893 ug/l
 RT: 12.23 min Scan# 1817
 Delta R.T. 0.16 min
 Lab File: VX005526.D
 Acq: 23 Oct 2018 17:34

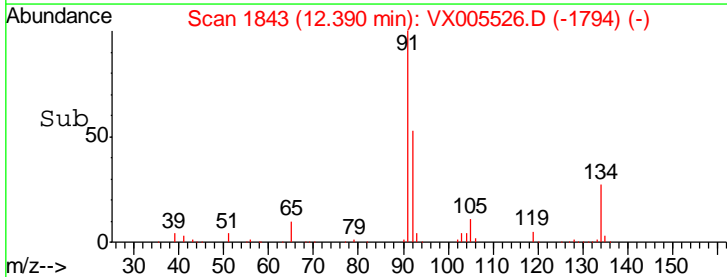
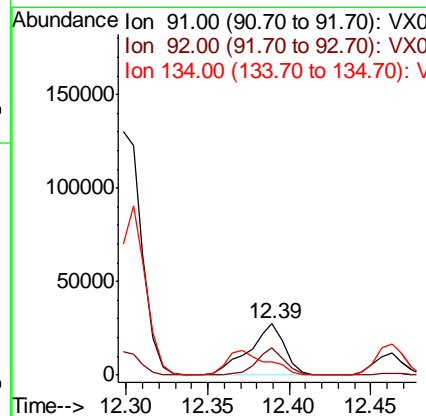
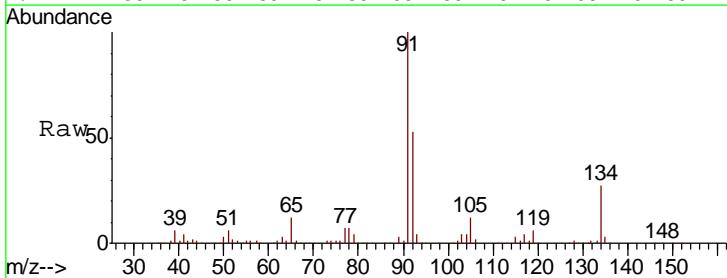
Instrument :
 MSVOA_X
 ClientSampled :

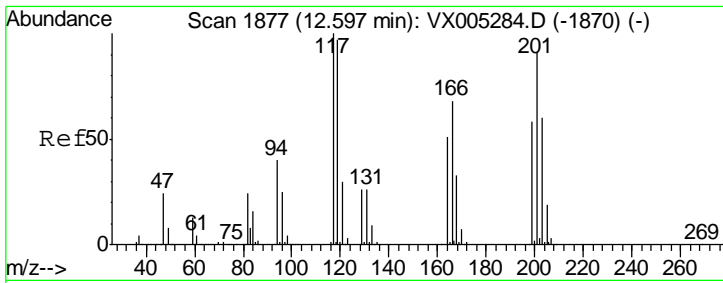
Tgt Ion	Resp	Lower	Upper
119	15328		
134	28.7	13.4	40.2
91	0.0	10.9	32.7#



#89
 n-Butylbenzene
 Concen: 5.725 ug/l
 RT: 12.39 min Scan# 1843
 Delta R.T. -0.00 min
 Lab File: VX005526.D
 Acq: 23 Oct 2018 17:34

Tgt Ion	Resp	Lower	Upper
91	42102		
92	41.7	27.3	81.9
134	55.4	13.6	40.7#

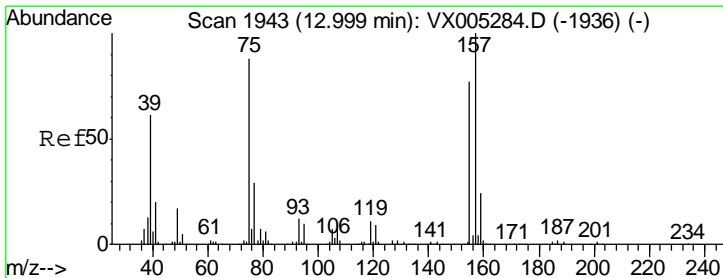
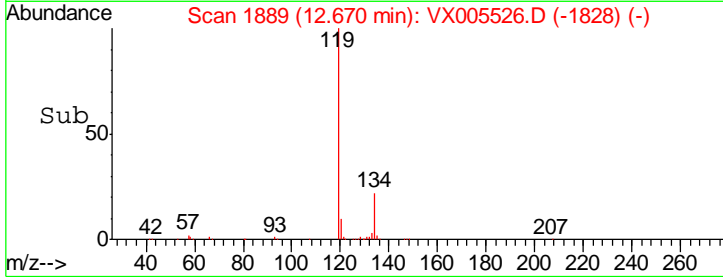
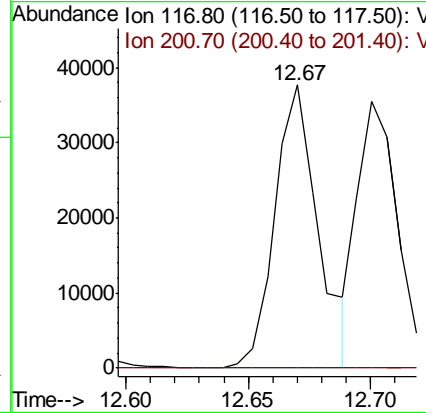
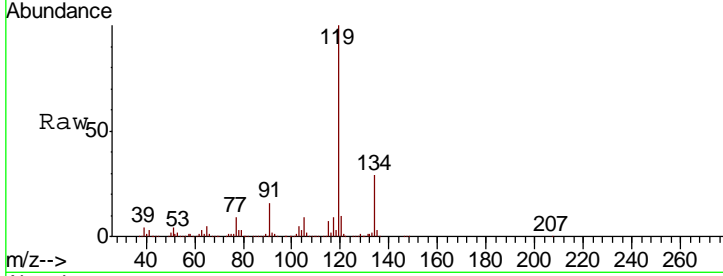




#90
 Hexachloroethane
 Concen: 32.835 ug/l
 RT: 12.67 min Scan# 1889
 Delta R.T. 0.07 min
 Lab File: VX005526.D
 Acq: 23 Oct 2018 17:34

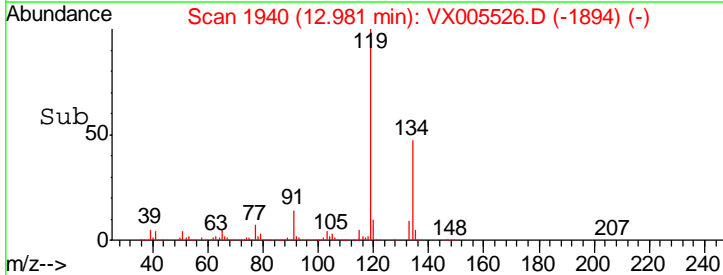
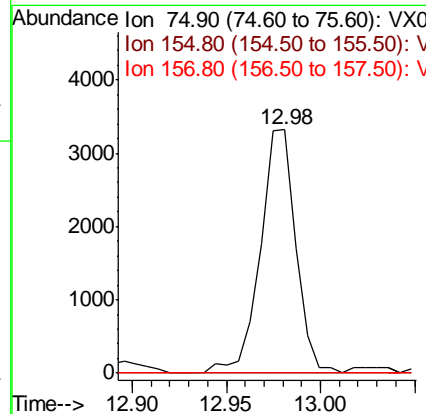
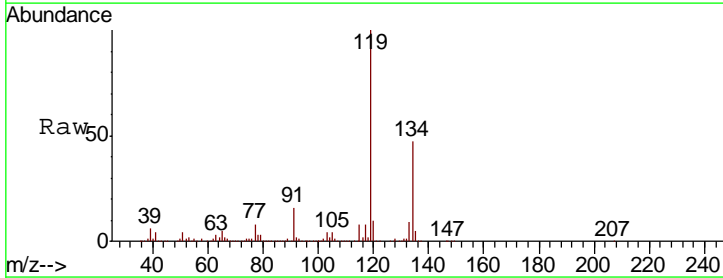
Instrument : MSVOA_X
 ClientSampled :

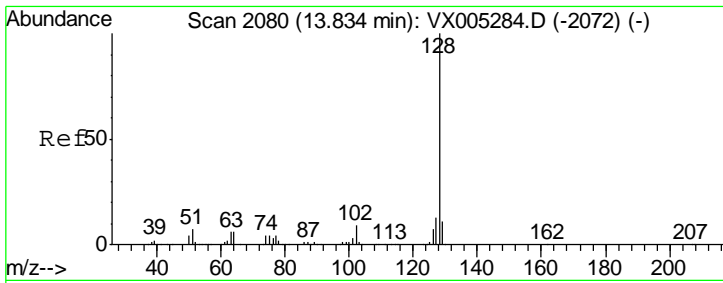
Tgt Ion	Resp	Lower	Upper
117	100		
201	0.0	46.9	140.6#



#92
 1,2-Dibromo-3-Chloropropane
 Concen: 5.399 ug/l
 RT: 12.98 min Scan# 1940
 Delta R.T. -0.02 min
 Lab File: VX005526.D
 Acq: 23 Oct 2018 17:34

Tgt Ion	Resp	Lower	Upper
75	100		
155	0.0	48.0	144.2#
157	0.0	61.4	184.1#





#95
 Naphthalene
 Concen: 1.319 ug/l
 RT: 13.83 min Scan# 2080
 Delta R.T. -0.00 min
 Lab File: VX005526.D
 Acq: 23 Oct 2018 17:34

Instrument : MSVOA_X
 ClientSampled :

Tot Ion:128 Resp: 13357

Ion	Ratio	Lower	Upper
128	100		
127	17.9	10.2	15.2#
129	16.7	8.6	12.8#

