

Data Path : Z:\voasrv\HPCHEM1\MSVOA_X\Data\VX102325\
 Data File : VX048311.D
 Acq On : 23 Oct 2025 09:46
 Operator : JC/MD
 Sample : VX1023MBL01
 Misc : 5.00g/10mL/100uL/5.00mL/MSVOA_X/MEOH
 ALS Vial : 3 Sample Multiplier: 1

Instrument :
 MSVOA_X
 ClientSampleId :

Quant Time: Oct 24 05:38:39 2025
 Quant Method : Z:\voasrv\HPCHEM1\MSVOA_X\Method\82X102025W.M
 Quant Title : SW846 8260
 QLast Update : Mon Oct 20 14:13:59 2025
 Response via : Initial Calibration

Compound	R.T.	QIon	Response	Conc	Units	Dev(Min)
Internal Standards						
1) Pentafluorobenzene	5.537	168	86084	50.000	ug/l	0.00
34) 1,4-Difluorobenzene	6.745	114	174731	50.000	ug/l	0.00
63) Chlorobenzene-d5	10.037	117	182476	50.000	ug/l	0.00
72) 1,4-Dichlorobenzene-d4	12.000	152	89788	50.000	ug/l	0.00
System Monitoring Compounds						
33) 1,2-Dichloroethane-d4	5.934	65	75969	62.942	ug/l	0.00
Spiked Amount	50.000	Range 78 - 117	Recovery	=	125.880%#	
35) Dibromofluoromethane	5.367	113	53778	45.083	ug/l	0.00
Spiked Amount	50.000	Range 75 - 124	Recovery	=	90.160%	
50) Toluene-d8	8.628	98	220541	52.746	ug/l	0.00
Spiked Amount	50.000	Range 92 - 112	Recovery	=	105.500%	
62) 4-Bromofluorobenzene	11.061	95	90969	57.190	ug/l	0.00
Spiked Amount	50.000	Range 83 - 123	Recovery	=	114.380%	
Target Compounds						
						Qvalue
10) Methyl Iodide	2.465	142	3677	3.149	ug/l #	90
11) Tert butyl alcohol	2.934	59	75	0.626	ug/l #	1
13) Acrolein	2.233	56	218	1.784	ug/l	98
14) Allyl chloride	2.666	41	333	0.222	ug/l #	76
15) Acrylonitrile	3.068	53	369	0.854	ug/l #	76
16) Acetone	2.373	43	4768	11.515	ug/l	94
17) Carbon Disulfide	2.514	76	1874	0.658	ug/l #	91
18) Methyl Acetate	2.697	43	799	0.924	ug/l #	59
20) Methylene Chloride	2.788	84	283	0.281	ug/l #	74
21) trans-1,2-Dichloroethene	3.087	96	206	0.208	ug/l #	49
23) Vinyl Acetate	3.709	43	625	0.261	ug/l #	73
25) 2-Butanone	4.544	43	332	0.633	ug/l #	50
29) Tetrahydrofuran	4.971	42	88	0.280	ug/l #	33
36) 1,1-Dichloropropene	5.531	75	7583	4.473	ug/l #	49
38) Carbon Tetrachloride	5.531	117	9030	4.317	ug/l #	15
39) Methylcyclohexane	7.360	83	426	0.213	ug/l #	82
51) 4-Methyl-2-Pentanone	8.555	43	442	0.332	ug/l #	38
58) 2-Chloroethyl Vinyl ether	8.232	63	134	1.843	ug/l #	47
59) 2-Hexanone	9.421	43	600	0.647	ug/l #	43
60) Dibromochloromethane	9.256	129	426	0.273	ug/l #	11
64) Tetrachloroethene	9.256	164	401	0.294	ug/l	96
76) 1,2,3-Trichloropropane	11.061	75	49622	34.080	ug/l #	33
78) n-propylbenzene	11.286	91	1815	0.239	ug/l	96
81) trans-1,4-Dichloro-2-b...	11.061	75	49622	82.913	ug/l #	10
82) 4-Chlorotoluene	11.439	91	1210	0.221	ug/l	97
83) tert-Butylbenzene	11.701	119	1282	0.230	ug/l	82
84) 1,2,4-Trimethylbenzene	11.738	105	1184	0.219	ug/l	86
85) sec-Butylbenzene	11.872	105	2597	0.387	ug/l	99
86) p-Isopropyltoluene	11.988	119	2331	0.402	ug/l #	82
87) 1,3-Dichlorobenzene	11.951	146	891	0.287	ug/l	92
88) 1,4-Dichlorobenzene	11.951	146	891	0.277	ug/l	92
89) n-Butylbenzene	12.311	91	4119	0.780	ug/l	92
90) Hexachloroethane	12.518	117	391	0.341	ug/l	90
91) 1,2-Dichlorobenzene	12.323	146	599	0.206	ug/l	79
93) 1,2,4-Trichlorobenzene	13.573	180	1994	1.013	ug/l	94
94) Hexachlorobutadiene	13.707	225	2456	3.392	ug/l	91

Data Path : Z:\voasrv\HPCHEM1\MSVOA_X\Data\VX102325\
Data File : VX048311.D
Acq On : 23 Oct 2025 09:46
Operator : JC/MD
Sample : VX1023MBL01
Misc : 5.00g/10mL/100uL/5.00mL/MSVOA_X/MEOH
ALS Vial : 3 Sample Multiplier: 1

Instrument :
MSVOA_X
ClientSampleId :

Quant Time: Oct 24 05:38:39 2025
Quant Method : Z:\voasrv\HPCHEM1\MSVOA_X\Method\82X102025W.M
Quant Title : SW846 8260
QLast Update : Mon Oct 20 14:13:59 2025
Response via : Initial Calibration

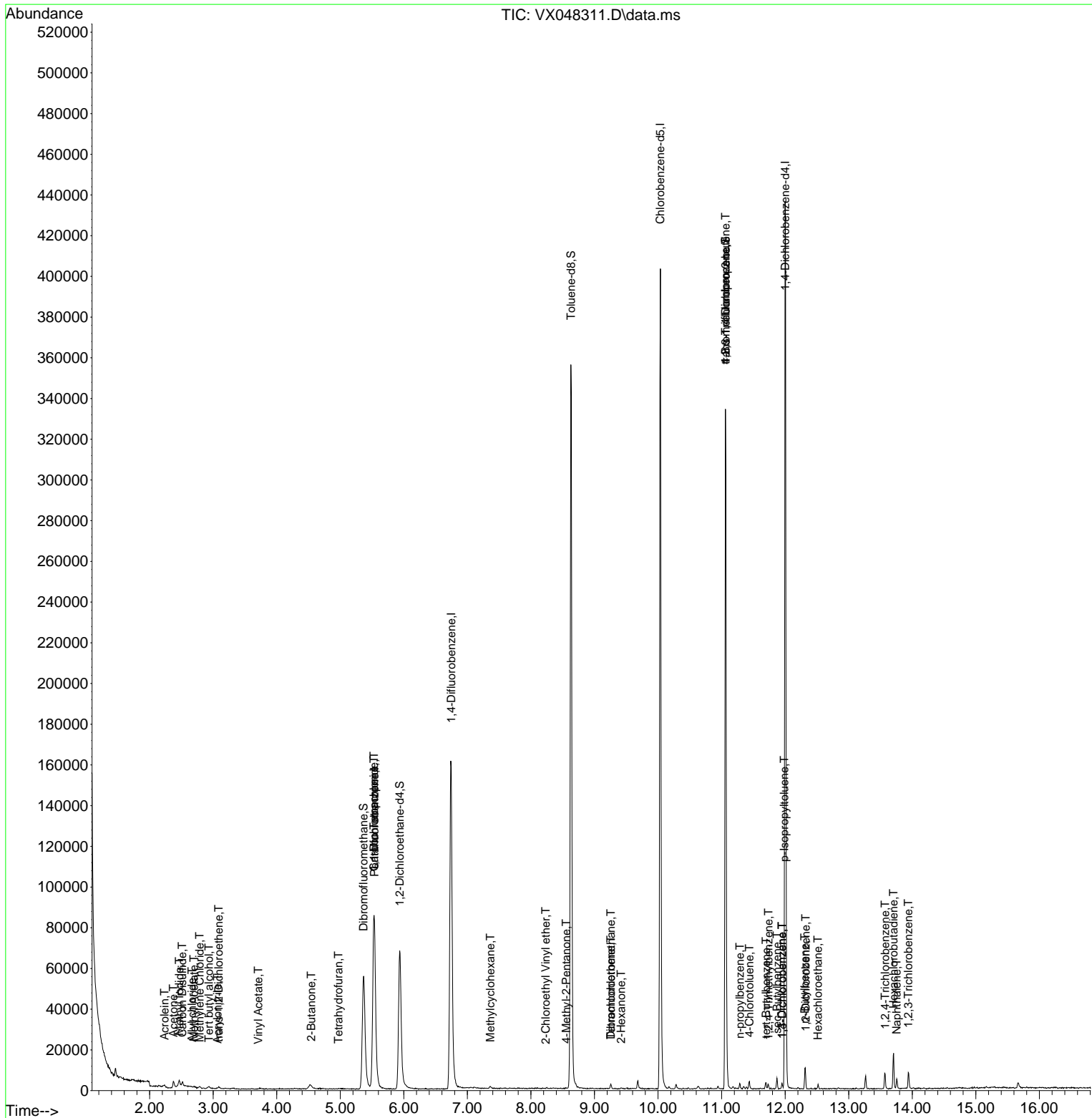
Compound	R.T.	QIon	Response	Conc	Units	Dev(Min)
95) Naphthalene	13.756	128	3096	0.594	ug/l #	95
96) 1,2,3-Trichlorobenzene	13.938	180	2209	1.223	ug/l	95

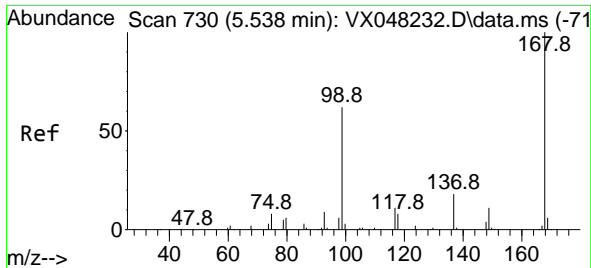
(#) = qualifier out of range (m) = manual integration (+) = signals summed

Data Path : Z:\voasrv\HPCHEM1\MSVOA_X\Data\VX102325\
 Data File : VX048311.D
 Acq On : 23 Oct 2025 09:46
 Operator : JC/MD
 Sample : VX1023MBL01
 Misc : 5.00g/10mL/100uL/5.00mL/MSVOA_X/MEOH
 ALS Vial : 3 Sample Multiplier: 1

Instrument :
 MSVOA_X
 ClientSampleId :

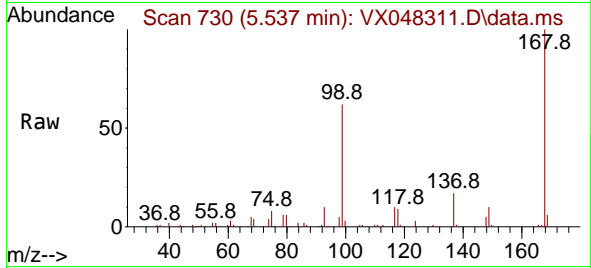
Quant Time: Oct 24 05:38:39 2025
 Quant Method : Z:\voasrv\HPCHEM1\MSVOA_X\Method\82X102025W.M
 Quant Title : SW846 8260
 QLast Update : Mon Oct 20 14:13:59 2025
 Response via : Initial Calibration



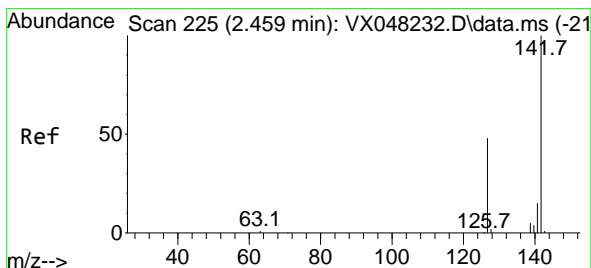
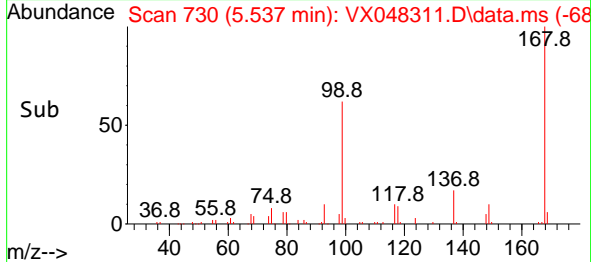
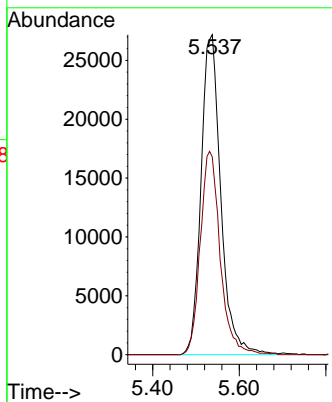


#1
 Pentafluorobenzene
 Concen: 50.000 ug/l
 RT: 5.537 min Scan# 71
 Delta R.T. -0.007 min
 Lab File: VX048311.D
 Acq: 23 Oct 2025 09:46

Instrument :
 MSVOA_X
 ClientSampleId :

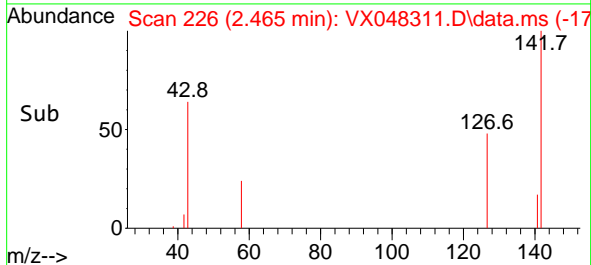
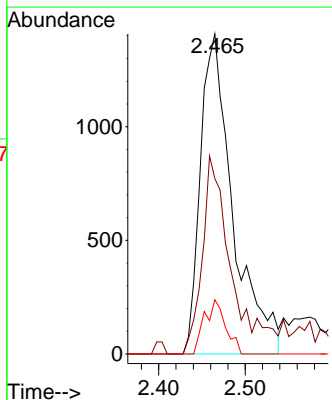
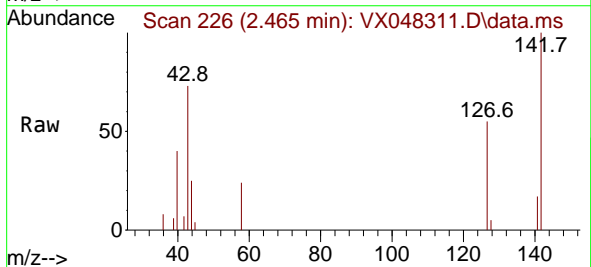


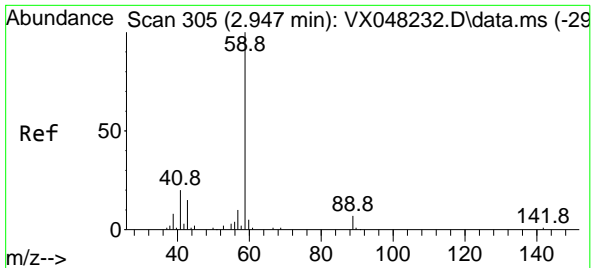
Tgt Ion:168 Resp: 86084
 Ion Ratio Lower Upper
 168 100
 99 61.8 46.4 69.6



#10
 Methyl Iodide
 Concen: 3.149 ug/l
 RT: 2.465 min Scan# 226
 Delta R.T. 0.006 min
 Lab File: VX048311.D
 Acq: 23 Oct 2025 09:46

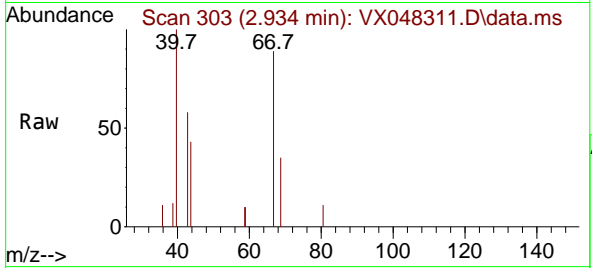
Tgt Ion:142 Resp: 3677
 Ion Ratio Lower Upper
 142 100
 127 54.9 38.5 57.7
 141 11.1 11.6 17.4#



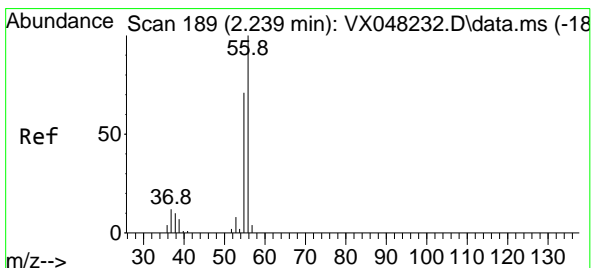
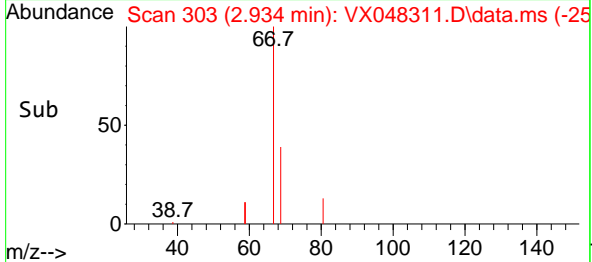
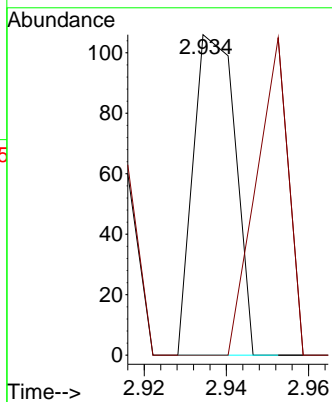


#11
 Tert butyl alcohol
 Concen: 0.626 ug/l
 RT: 2.934 min Scan# 303
 Delta R.T. -0.006 min
 Lab File: VX048311.D
 Acq: 23 Oct 2025 09:46

Instrument : MSVOA_X
 ClientSampleId :

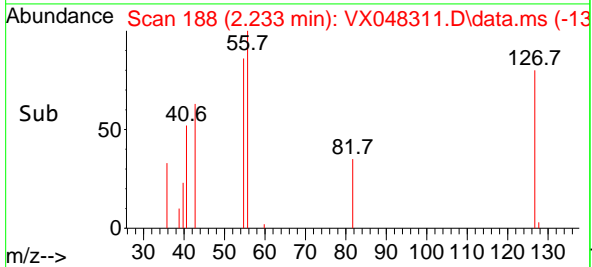
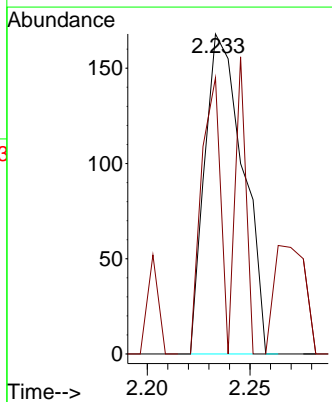
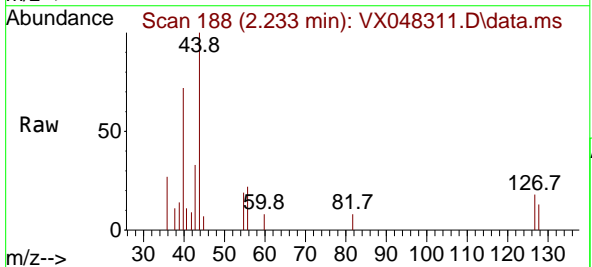


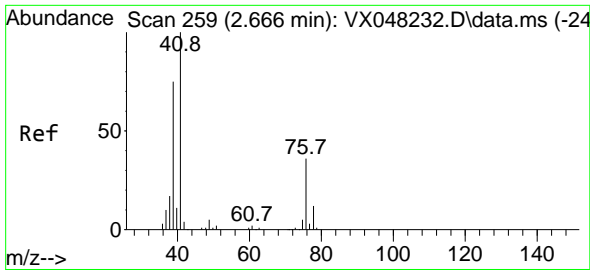
Tgt Ion: 59 Resp: 75
 Ion Ratio Lower Upper
 59 100
 57 76.0 8.2 12.4#



#13
 Acrolein
 Concen: 1.784 ug/l
 RT: 2.233 min Scan# 188
 Delta R.T. -0.000 min
 Lab File: VX048311.D
 Acq: 23 Oct 2025 09:46

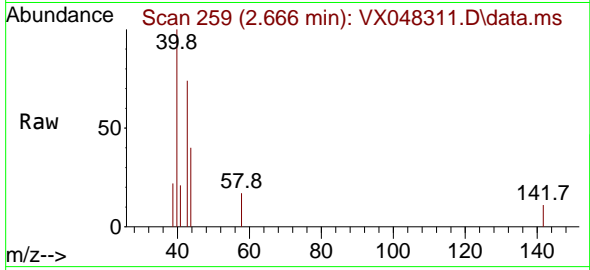
Tgt Ion: 56 Resp: 218
 Ion Ratio Lower Upper
 56 100
 55 68.8 56.1 84.1





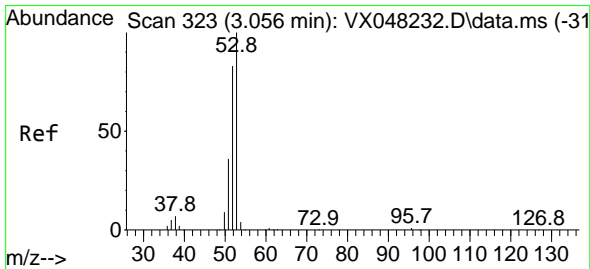
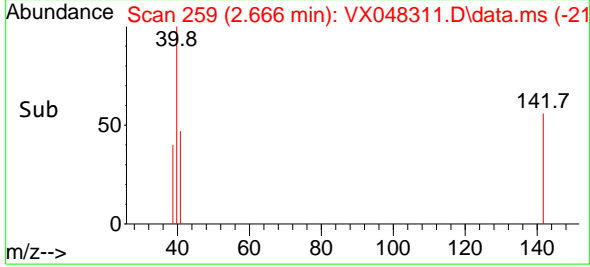
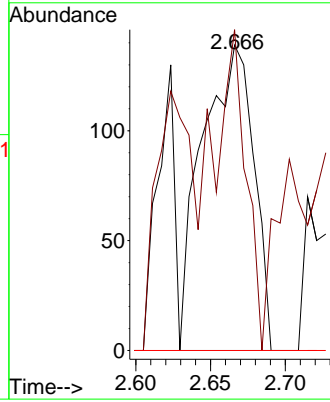
#14
 Allyl chloride
 Concen: 0.222 ug/l
 RT: 2.666 min Scan# 21
 Delta R.T. -0.000 min
 Lab File: VX048311.D
 Acq: 23 Oct 2025 09:46

Instrument :
 MSVOA_X
 ClientSampleId :



Tgt Ion: 41 Resp: 333

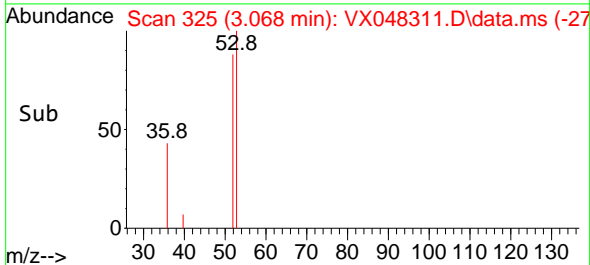
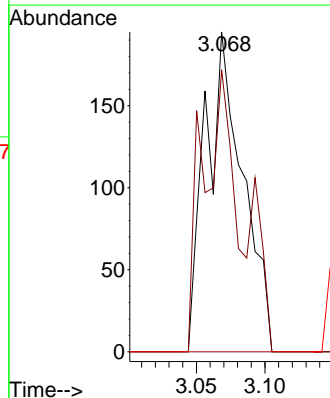
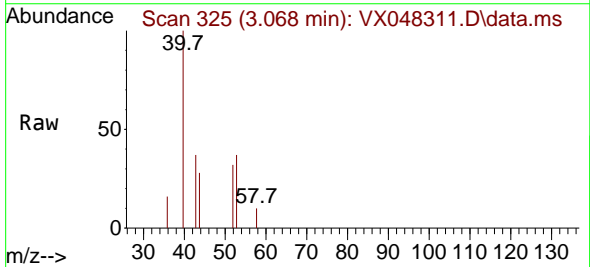
Ion	Ratio	Lower	Upper
41	100		
39	64.9	56.0	84.0
76	0.0	27.5	41.3#

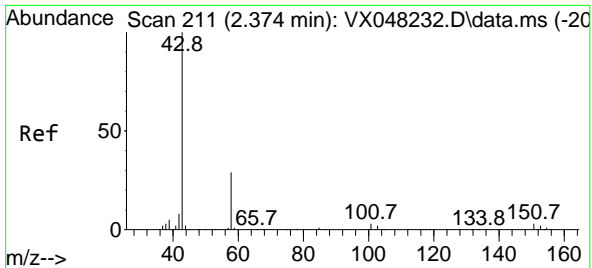


#15
 Acrylonitrile
 Concen: 0.854 ug/l
 RT: 3.068 min Scan# 325
 Delta R.T. 0.012 min
 Lab File: VX048311.D
 Acq: 23 Oct 2025 09:46

Tgt Ion: 53 Resp: 369

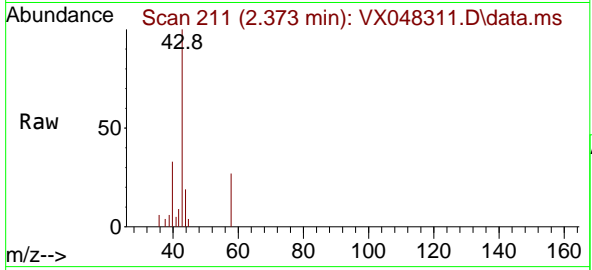
Ion	Ratio	Lower	Upper
53	100		
52	75.3	66.1	99.1
51	0.0	29.0	43.4#



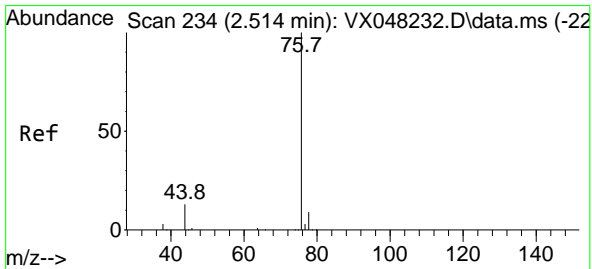
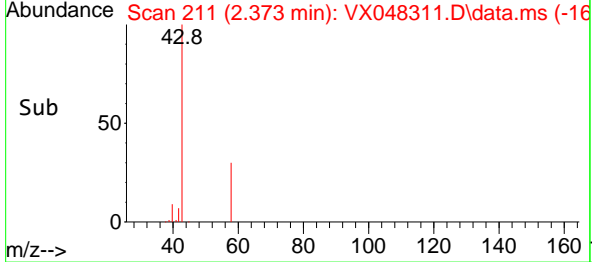
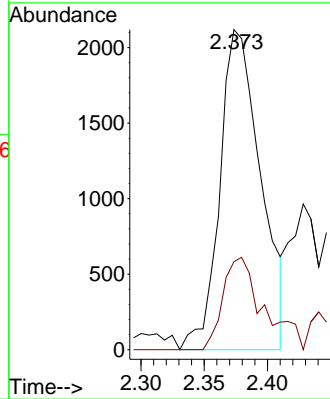


#16
 Acetone
 Concen: 11.515 ug/l
 RT: 2.373 min Scan# 211
 Delta R.T. -0.000 min
 Lab File: VX048311.D
 Acq: 23 Oct 2025 09:46

Instrument : MSVOA_X
 ClientSampleId :

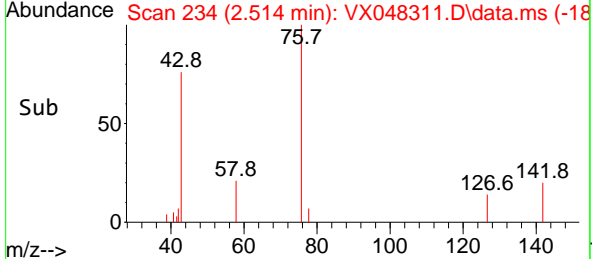
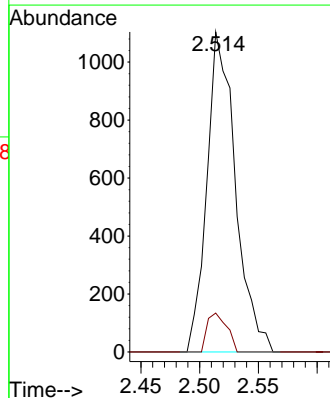
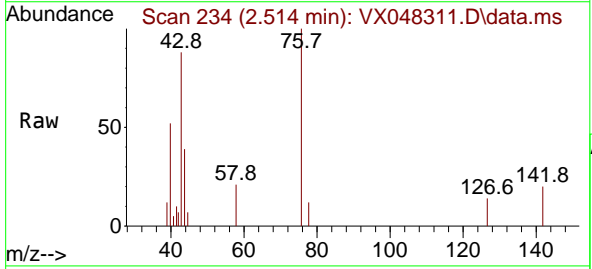


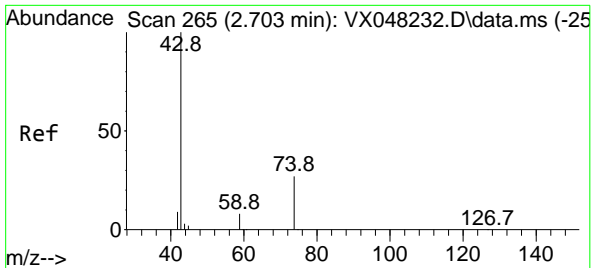
Tgt Ion: 43 Resp: 4768
 Ion Ratio Lower Upper
 43 100
 58 32.4 23.4 35.2



#17
 Carbon Disulfide
 Concen: 0.658 ug/l
 RT: 2.514 min Scan# 234
 Delta R.T. -0.000 min
 Lab File: VX048311.D
 Acq: 23 Oct 2025 09:46

Tgt Ion: 76 Resp: 1874
 Ion Ratio Lower Upper
 76 100
 78 12.1 7.1 10.7#

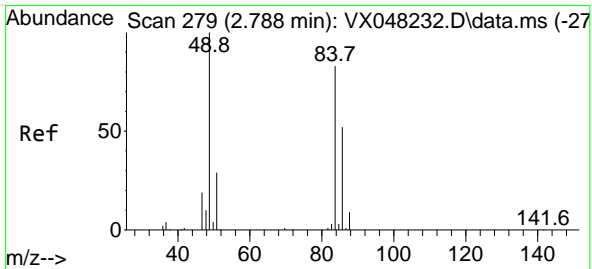
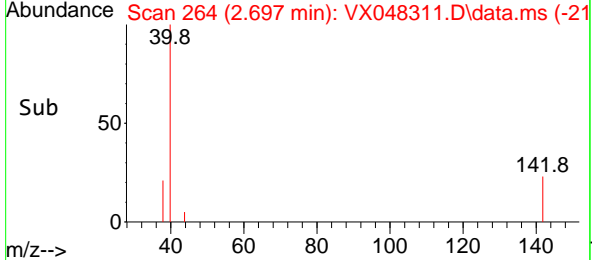
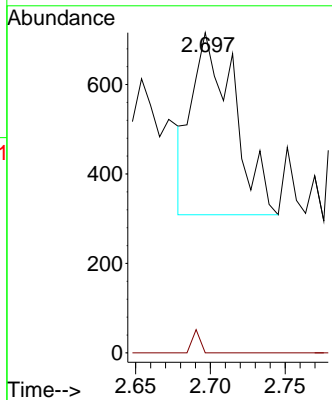
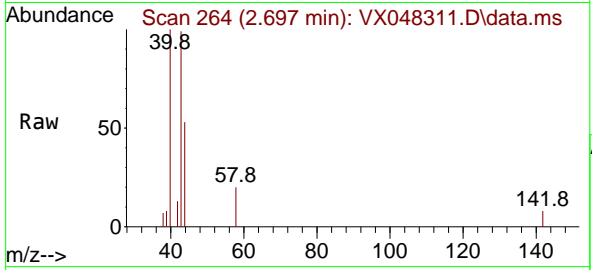




#18
 Methyl Acetate
 Concen: 0.924 ug/l
 RT: 2.697 min Scan# 20
 Delta R.T. -0.000 min
 Lab File: VX048311.D
 Acq: 23 Oct 2025 09:46

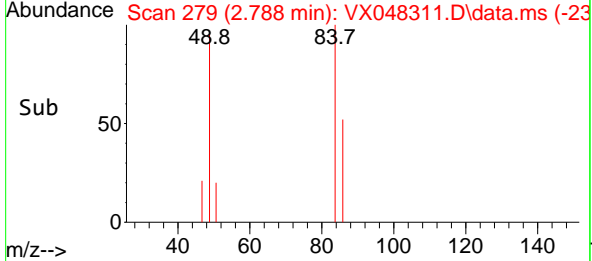
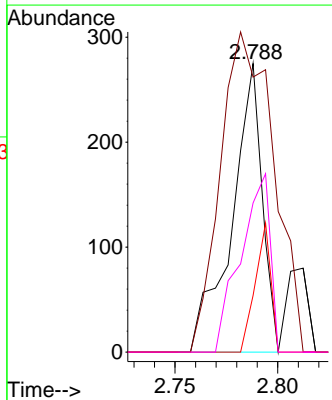
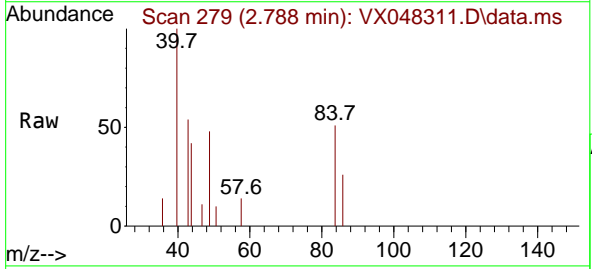
Instrument : MSVOA_X
 ClientSampleId :

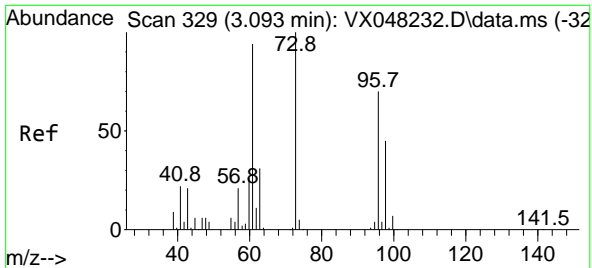
Tgt Ion: 43 Resp: 799
 Ion Ratio Lower Upper
 43 100
 74 2.4 17.5 26.3#



#20
 Methylene Chloride
 Concen: 0.281 ug/l
 RT: 2.788 min Scan# 279
 Delta R.T. -0.000 min
 Lab File: VX048311.D
 Acq: 23 Oct 2025 09:46

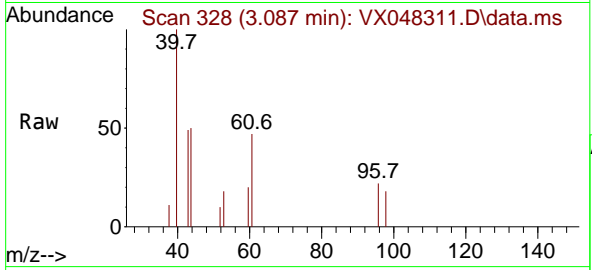
Tgt Ion: 84 Resp: 283
 Ion Ratio Lower Upper
 84 100
 49 95.3 104.1 156.1#
 51 19.6 31.3 46.9#
 86 51.6 51.3 76.9



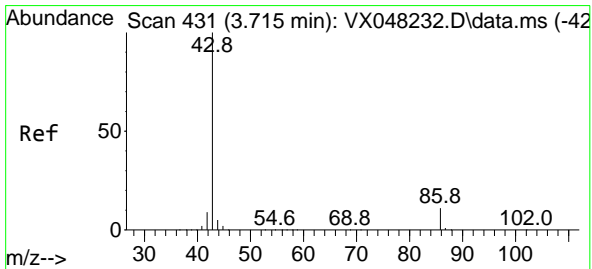
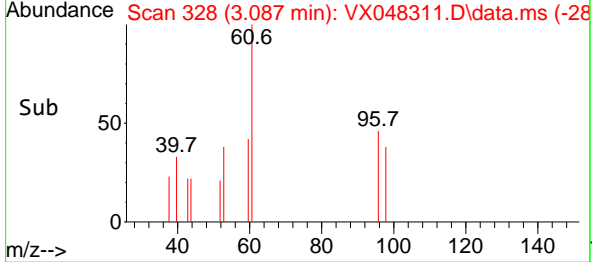
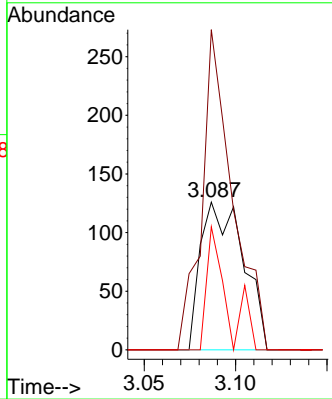


#21
 trans-1,2-Dichloroethene
 Concen: 0.208 ug/l
 RT: 3.087 min Scan# 31
 Delta R.T. -0.006 min
 Lab File: VX048311.D
 Acq: 23 Oct 2025 09:46

Instrument : MSVOA_X
 ClientSampleId :

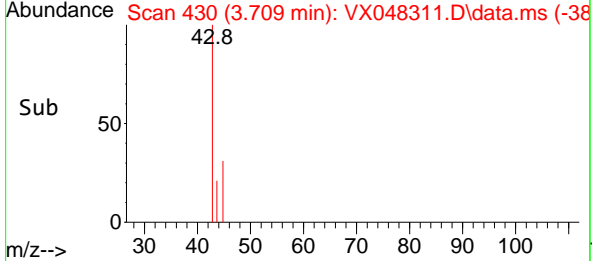
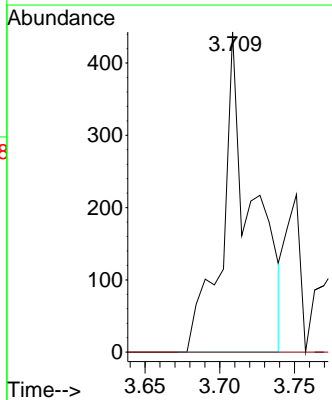
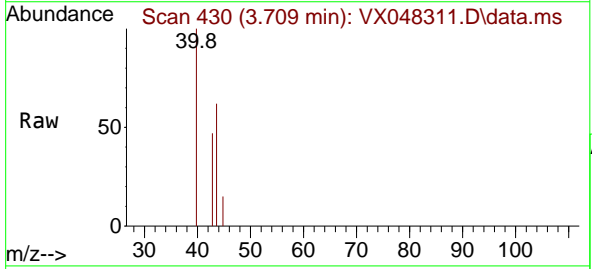


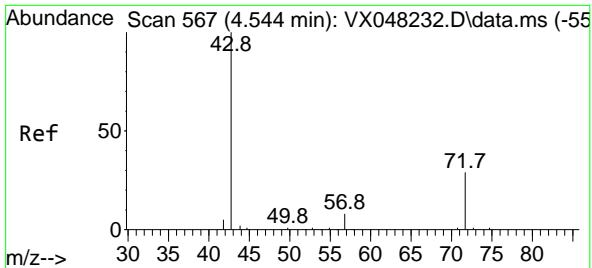
Tgt Ion	Resp	Lower	Upper
96	100		
61	216.7	111.9	167.9#
98	83.3	51.2	76.8#



#23
 Vinyl Acetate
 Concen: 0.261 ug/l
 RT: 3.709 min Scan# 430
 Delta R.T. -0.006 min
 Lab File: VX048311.D
 Acq: 23 Oct 2025 09:46

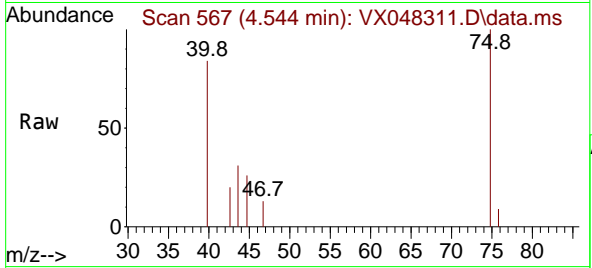
Tgt Ion	Resp	Lower	Upper
43	100		
86	0.0	7.9	11.9#



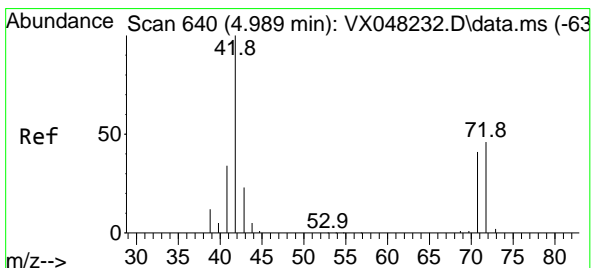
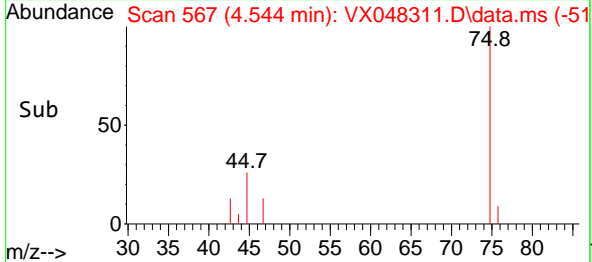
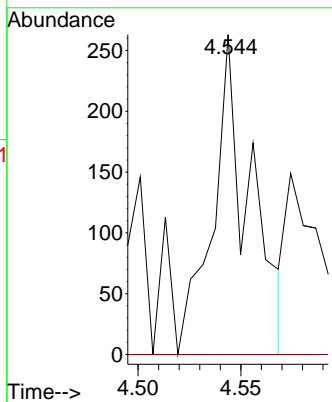


#25
 2-Butanone
 Concen: 0.633 ug/l
 RT: 4.544 min Scan# 50
 Delta R.T. 0.006 min
 Lab File: VX048311.D
 Acq: 23 Oct 2025 09:46

Instrument :
 MSVOA_X
 ClientSampleId :

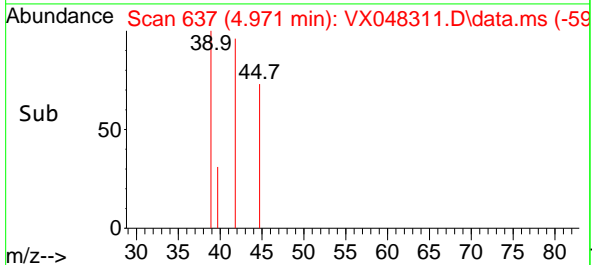
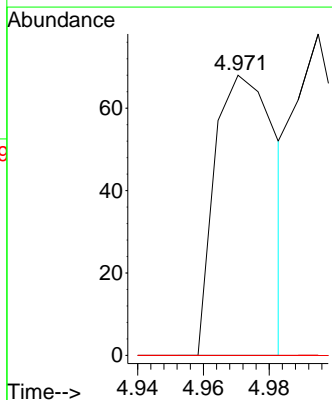
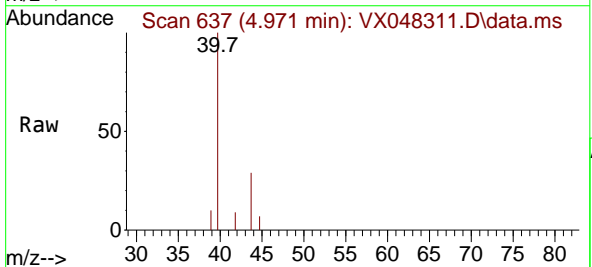


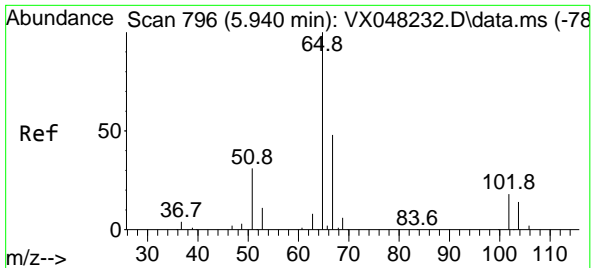
Tgt Ion: 43 Resp: 332
 Ion Ratio Lower Upper
 43 100
 72 0.0 19.9 29.9#



#29
 Tetrahydrofuran
 Concen: 0.280 ug/l
 RT: 4.971 min Scan# 637
 Delta R.T. -0.018 min
 Lab File: VX048311.D
 Acq: 23 Oct 2025 09:46

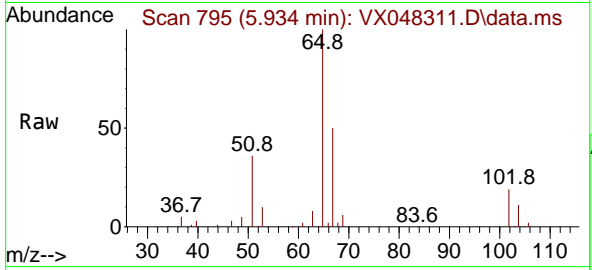
Tgt Ion: 42 Resp: 88
 Ion Ratio Lower Upper
 42 100
 72 0.0 35.3 52.9#
 71 0.0 32.2 48.4#



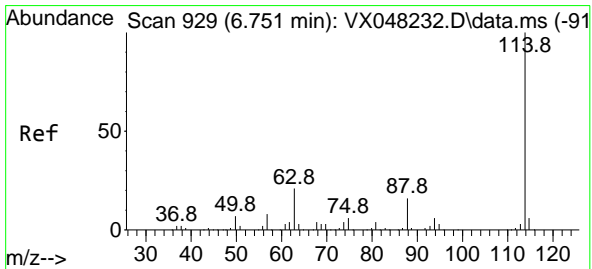
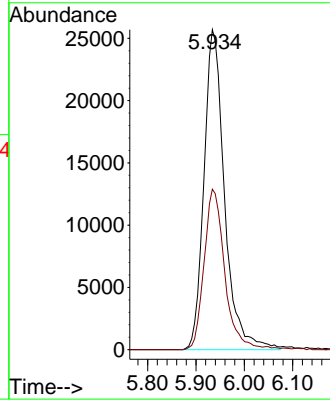
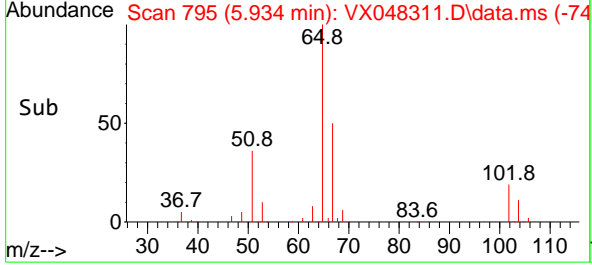


#33
 1,2-Dichloroethane-d4
 Concen: 62.942 ug/l
 RT: 5.934 min Scan# 795
 Delta R.T. -0.006 min
 Lab File: VX048311.D
 Acq: 23 Oct 2025 09:46

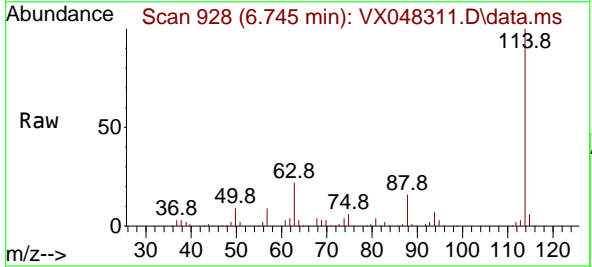
Instrument : MSVOA_X
 ClientSampleId :



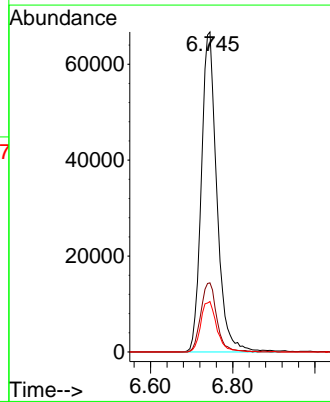
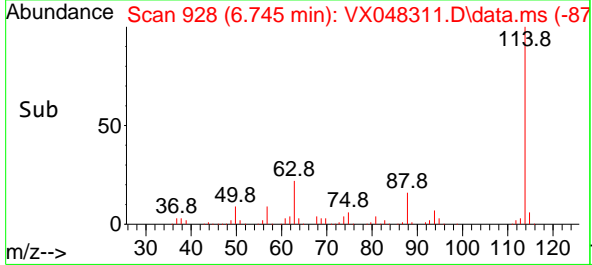
Tgt Ion: 65 Resp: 75969
 Ion Ratio Lower Upper
 65 100
 67 50.7 0.0 105.0

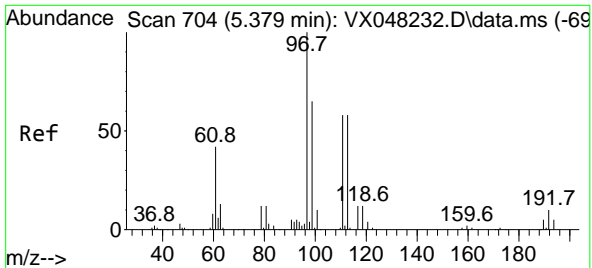


#34
 1,4-Difluorobenzene
 Concen: 50.000 ug/l
 RT: 6.745 min Scan# 928
 Delta R.T. -0.000 min
 Lab File: VX048311.D
 Acq: 23 Oct 2025 09:46



Tgt Ion: 114 Resp: 174731
 Ion Ratio Lower Upper
 114 100
 63 21.6 0.0 43.2
 88 15.7 0.0 33.6

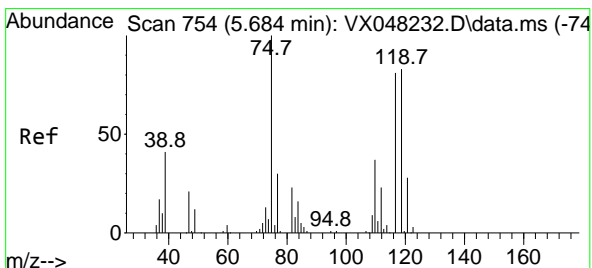
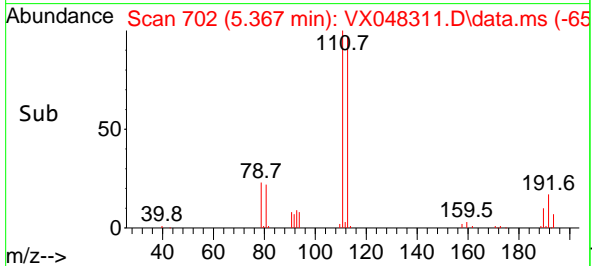
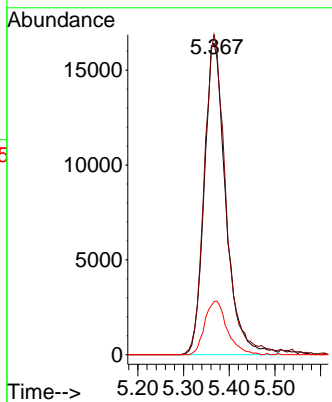
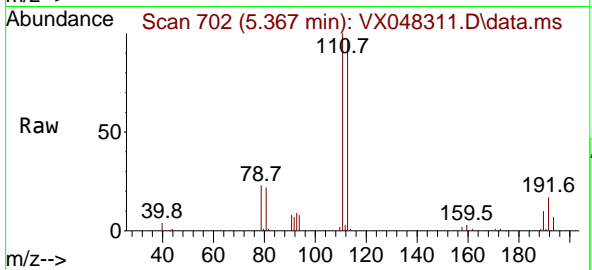




#35
 Dibromofluoromethane
 Concen: 45.083 ug/l
 RT: 5.367 min Scan# 704
 Delta R.T. -0.006 min
 Lab File: VX048311.D
 Acq: 23 Oct 2025 09:46

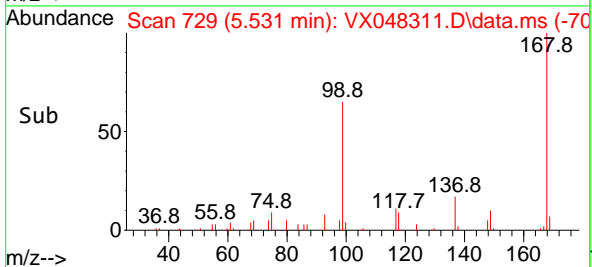
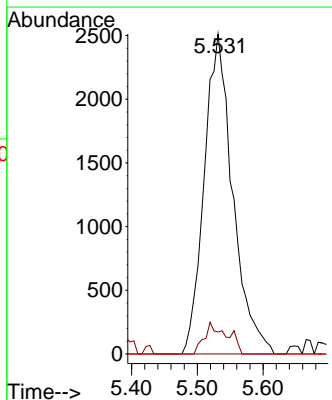
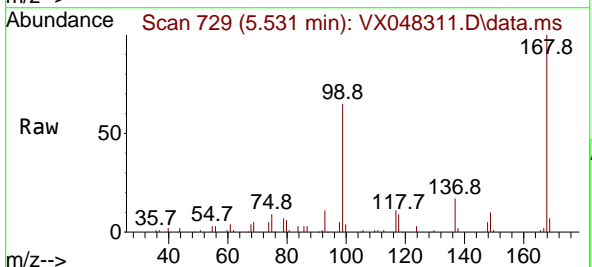
Instrument : MSVOA_X
 ClientSampleId :

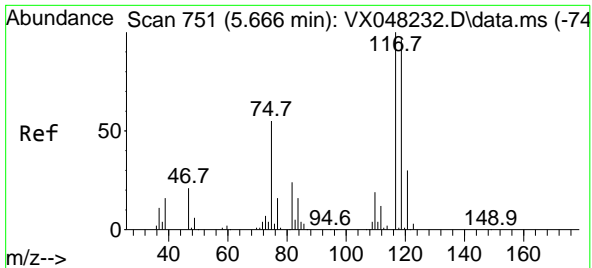
Tgt Ion:113 Resp: 53778
 Ion Ratio Lower Upper
 113 100
 111 102.6 82.2 123.4
 192 17.9 15.1 22.7



#36
 1,1-Dichloropropene
 Concen: 4.473 ug/l
 RT: 5.531 min Scan# 729
 Delta R.T. -0.153 min
 Lab File: VX048311.D
 Acq: 23 Oct 2025 09:46

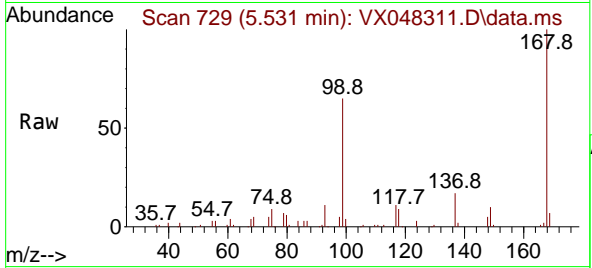
Tgt Ion: 75 Resp: 7583
 Ion Ratio Lower Upper
 75 100
 110 7.8 17.7 53.1#
 77 0.0 24.3 36.5#



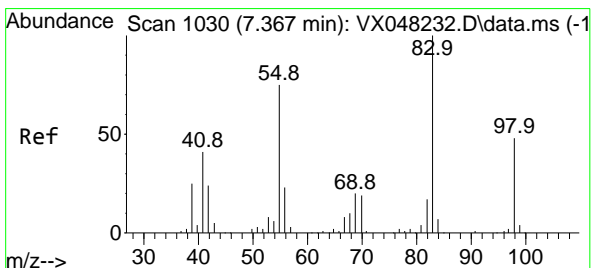
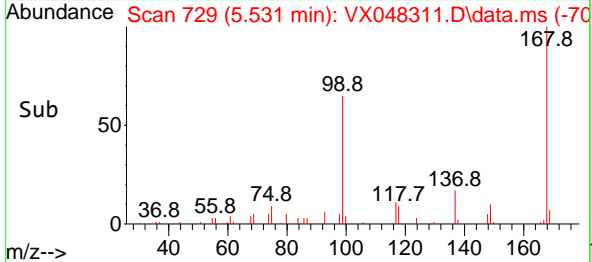
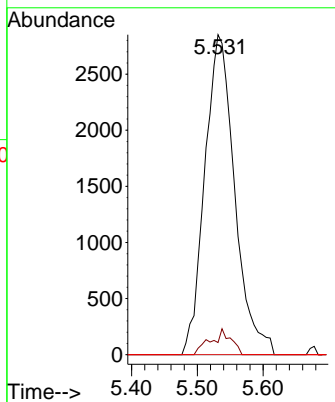


#38
 Carbon Tetrachloride
 Concen: 4.317 ug/l
 RT: 5.531 min Scan# 71
 Delta R.T. -0.134 min
 Lab File: VX048311.D
 Acq: 23 Oct 2025 09:46

Instrument :
 MSVOA_X
 ClientSampleId :

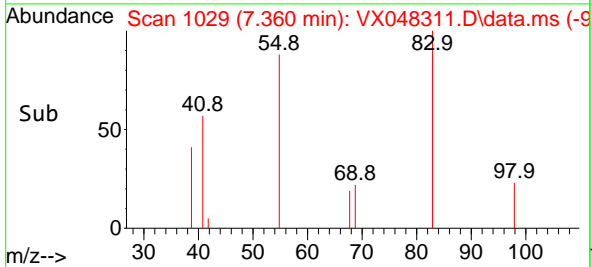
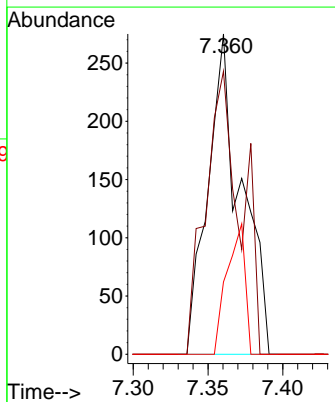
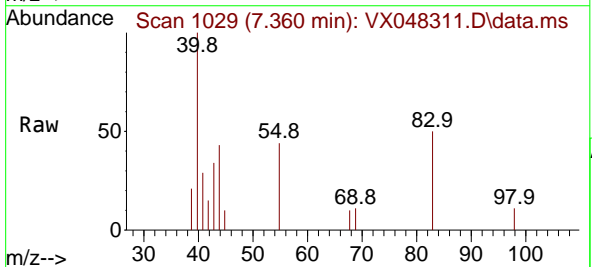


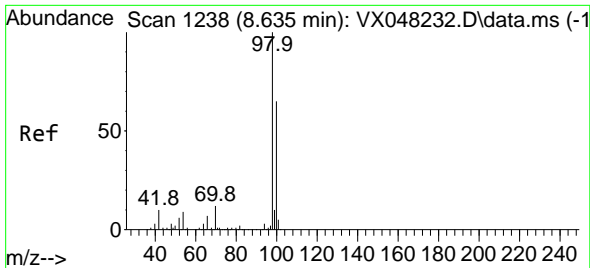
Tgt Ion:117 Resp: 9030
 Ion Ratio Lower Upper
 117 100
 119 3.8 77.2 115.8#
 121 0.0 24.8 37.2#



#39
 Methylcyclohexane
 Concen: 0.213 ug/l
 RT: 7.360 min Scan# 1029
 Delta R.T. -0.006 min
 Lab File: VX048311.D
 Acq: 23 Oct 2025 09:46

Tgt Ion: 83 Resp: 426
 Ion Ratio Lower Upper
 83 100
 55 88.4 66.2 99.2
 98 22.5 38.9 58.3#

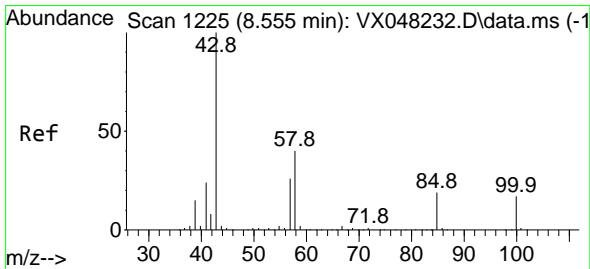
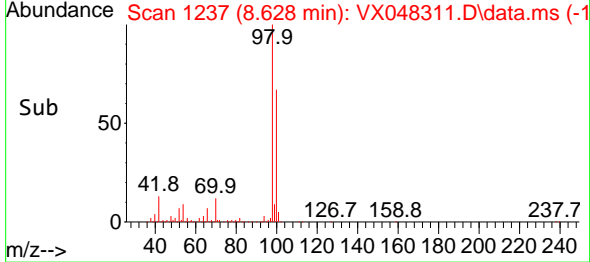
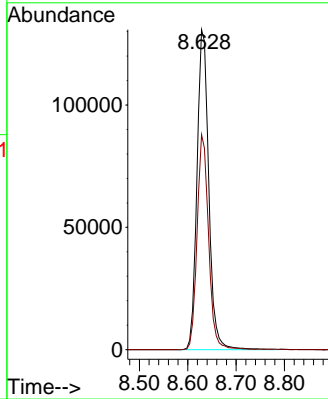
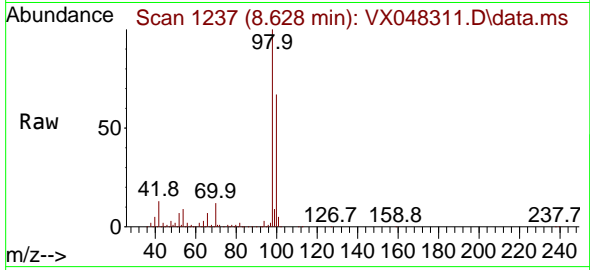




#50
 Toluene-d8
 Concen: 52.746 ug/l
 RT: 8.628 min Scan# 11
 Delta R.T. -0.006 min
 Lab File: VX048311.D
 Acq: 23 Oct 2025 09:46

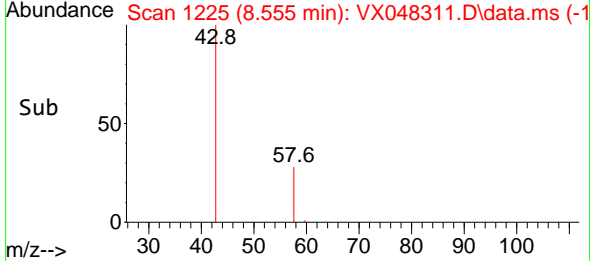
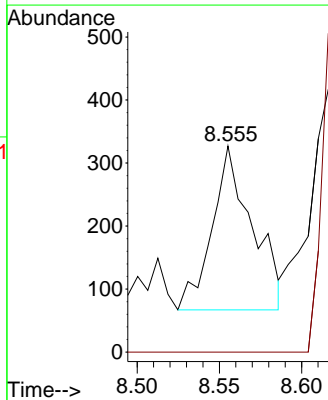
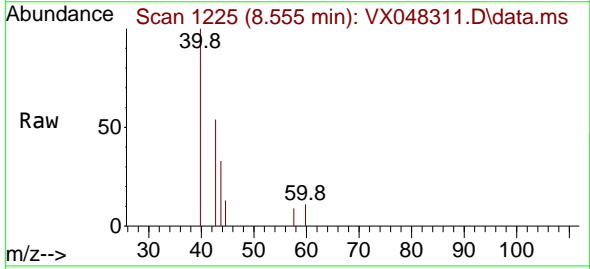
Instrument :
 MSVOA_X
 ClientSampleId :

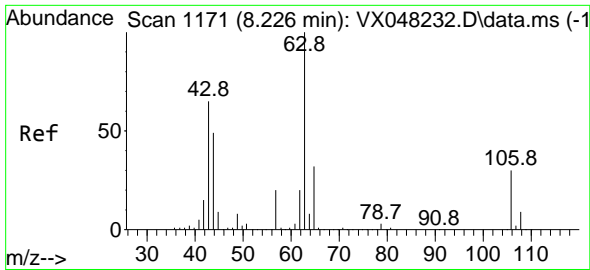
Tgt Ion: 98 Resp: 220541
 Ion Ratio Lower Upper
 98 100
 100 65.6 53.0 79.4



#51
 4-Methyl-2-Pentanone
 Concen: 0.332 ug/l
 RT: 8.555 min Scan# 1225
 Delta R.T. -0.000 min
 Lab File: VX048311.D
 Acq: 23 Oct 2025 09:46

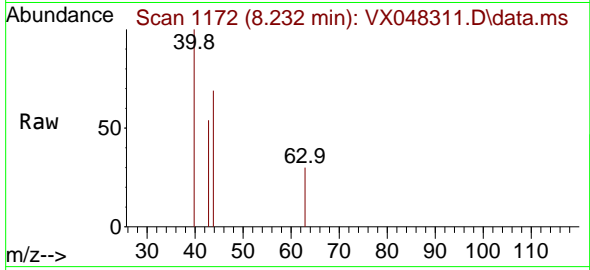
Tgt Ion: 43 Resp: 442
 Ion Ratio Lower Upper
 43 100
 58 0.0 29.5 44.3#



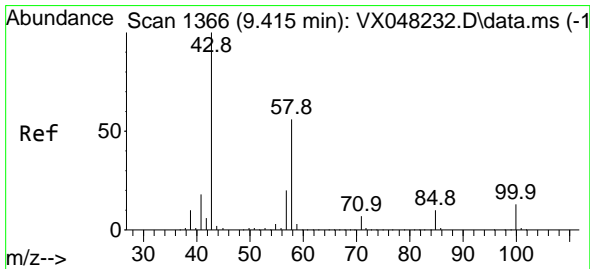
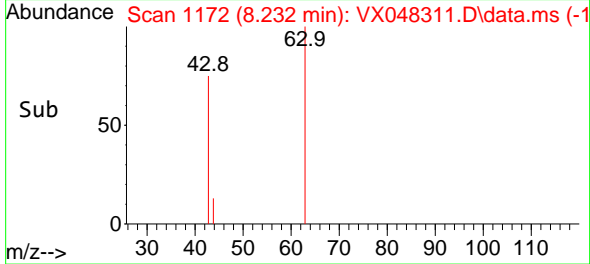
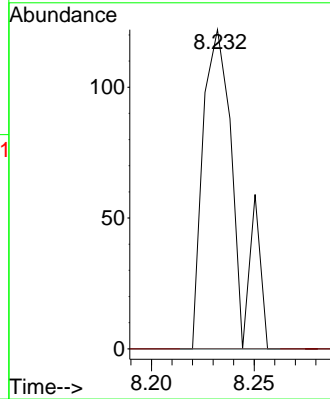


#58
 2-Chloroethyl Vinyl ether
 Concen: 1.843 ug/l
 RT: 8.232 min Scan# 1171
 Delta R.T. 0.006 min
 Lab File: VX048311.D
 Acq: 23 Oct 2025 09:46

Instrument : MSVOA_X
 ClientSampleId :

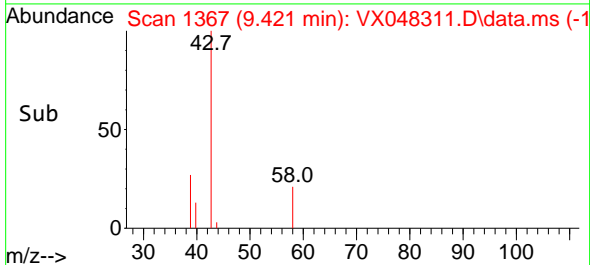
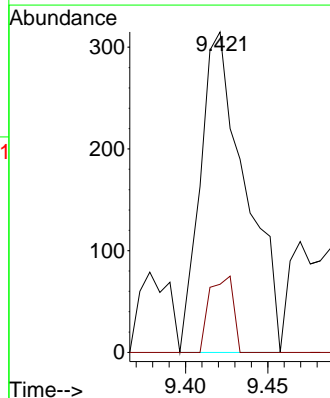
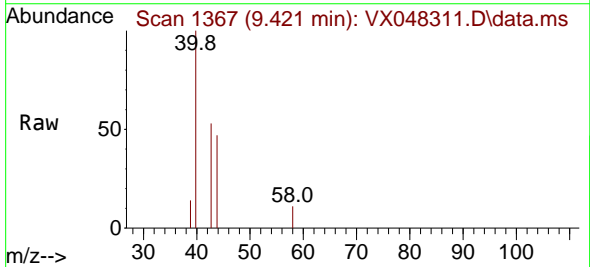


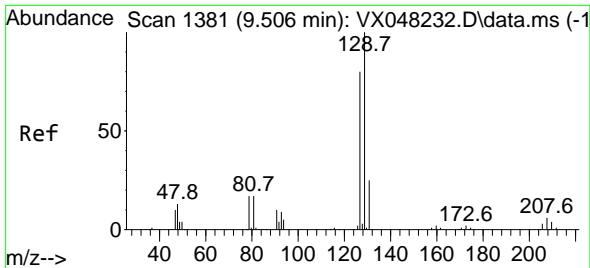
Tgt Ion: 63 Resp: 134
 Ion Ratio Lower Upper
 63 100
 106 0.0 22.2 33.2#



#59
 2-Hexanone
 Concen: 0.647 ug/l
 RT: 9.421 min Scan# 1367
 Delta R.T. 0.006 min
 Lab File: VX048311.D
 Acq: 23 Oct 2025 09:46

Tgt Ion: 43 Resp: 600
 Ion Ratio Lower Upper
 43 100
 58 12.5 26.3 78.8#

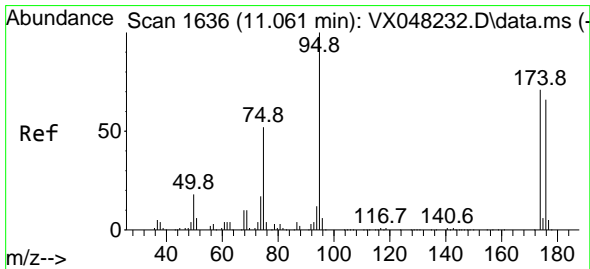
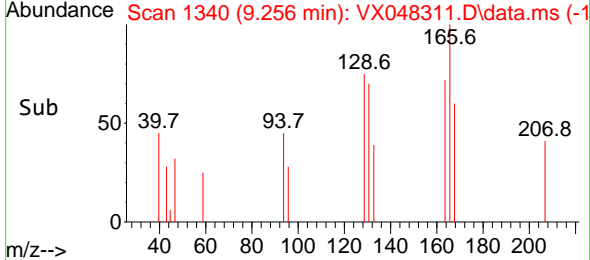
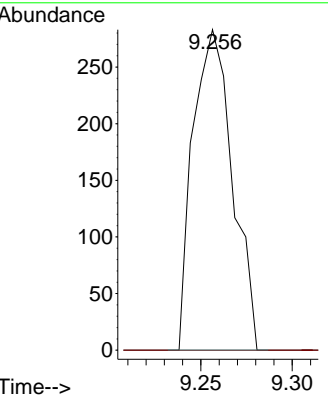
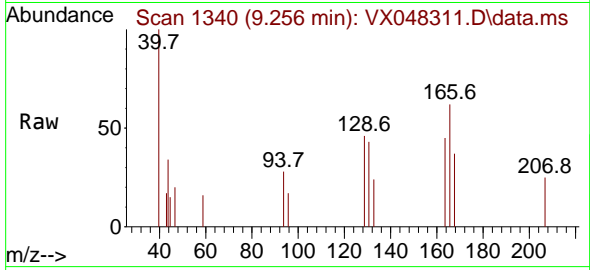




#60
 Dibromochloromethane
 Concen: 0.273 ug/l
 RT: 9.256 min Scan# 11
 Delta R.T. -0.250 min
 Lab File: VX048311.D
 Acq: 23 Oct 2025 09:46

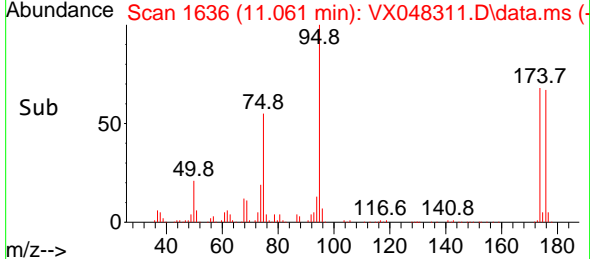
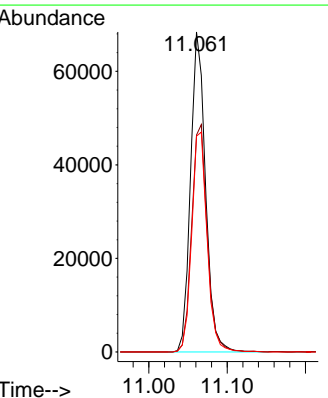
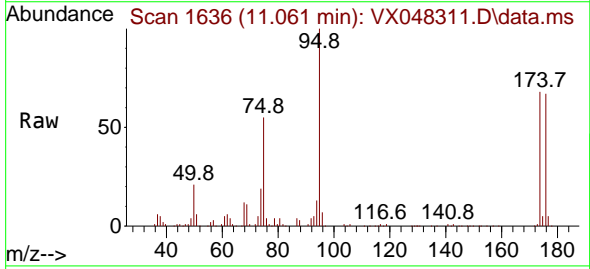
Instrument :
 MSVOA_X
 ClientSampleId :

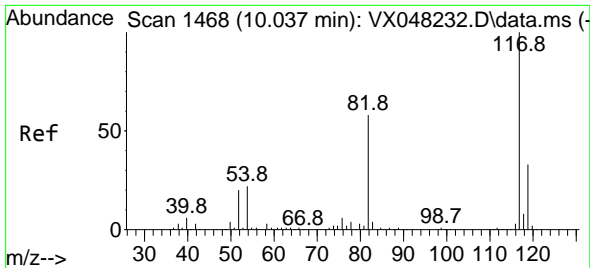
Tgt Ion:129 Resp: 426
 Ion Ratio Lower Upper
 129 100
 127 0.0 38.6 115.7#



#62
 4-Bromofluorobenzene
 Concen: 57.190 ug/l
 RT: 11.061 min Scan# 1636
 Delta R.T. -0.000 min
 Lab File: VX048311.D
 Acq: 23 Oct 2025 09:46

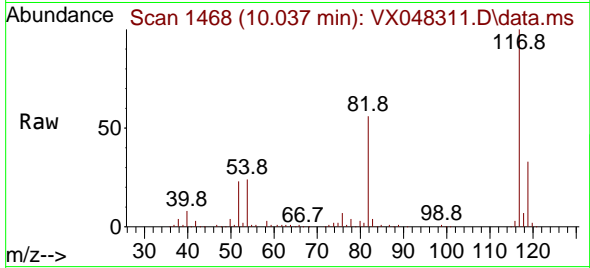
Tgt Ion: 95 Resp: 90969
 Ion Ratio Lower Upper
 95 100
 174 73.9 0.0 147.8
 176 70.4 0.0 142.8





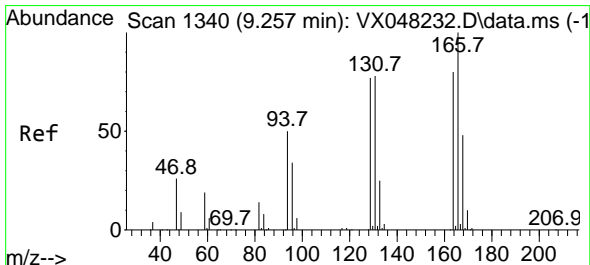
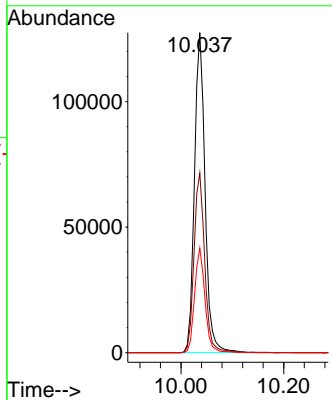
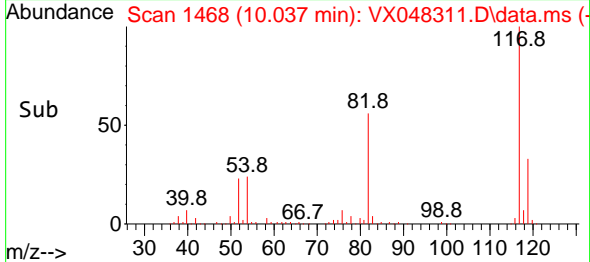
#63
 Chlorobenzene-d5
 Concen: 50.000 ug/l
 RT: 10.037 min Scan# 1468
 Delta R.T. -0.000 min
 Lab File: VX048311.D
 Acq: 23 Oct 2025 09:46

Instrument : MSVOA_X
 ClientSampleId :

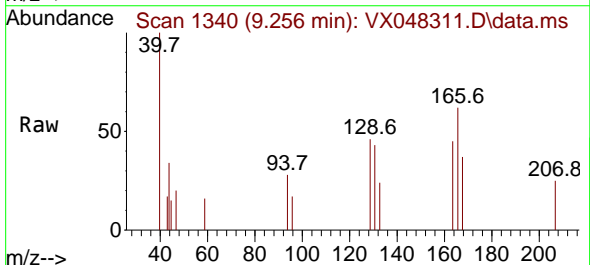


Tgt Ion:117 Resp: 182476

Ion	Ratio	Lower	Upper
117	100		
82	56.2	46.5	69.7
119	32.7	25.9	38.9

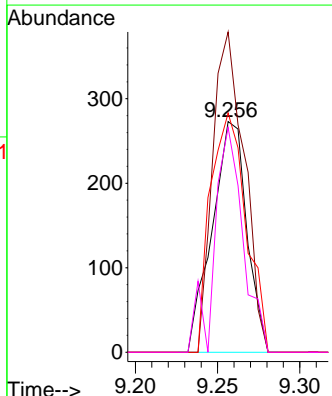
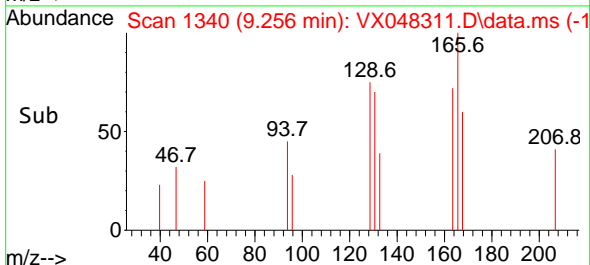


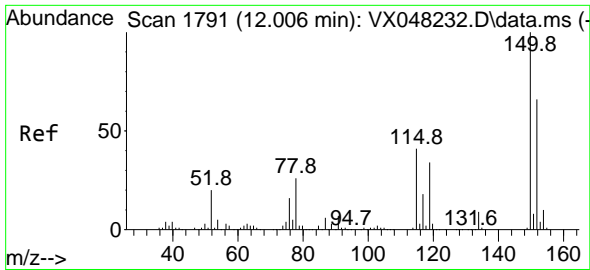
#64
 Tetrachloroethene
 Concen: 0.294 ug/l
 RT: 9.256 min Scan# 1340
 Delta R.T. -0.000 min
 Lab File: VX048311.D
 Acq: 23 Oct 2025 09:46



Tgt Ion:164 Resp: 401

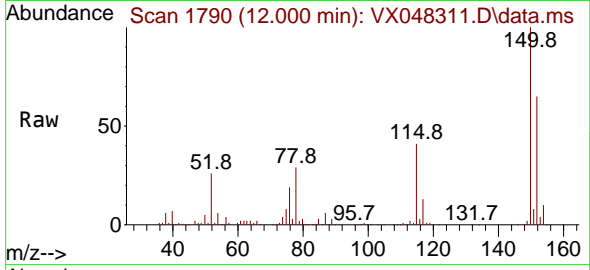
Ion	Ratio	Lower	Upper
164	100		
166	138.8	104.5	156.7
129	103.7	81.8	122.6
131	97.4	77.0	115.6



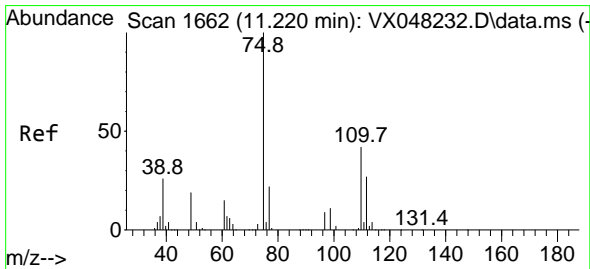
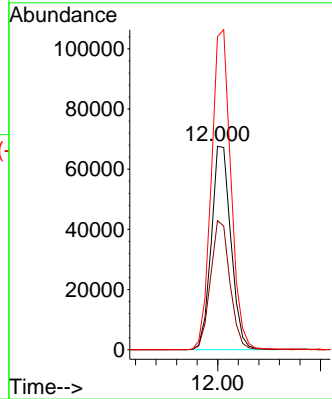
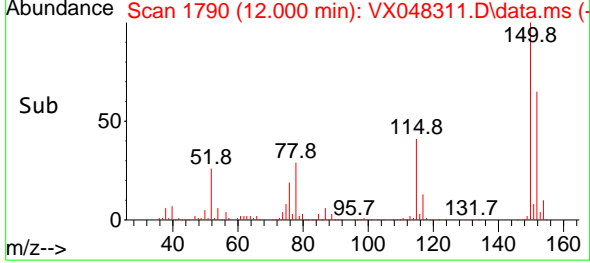


#72
 1,4-Dichlorobenzene-d4
 Concen: 50.000 ug/l
 RT: 12.000 min Scan# 1
 Delta R.T. -0.006 min
 Lab File: VX048311.D
 Acq: 23 Oct 2025 09:46

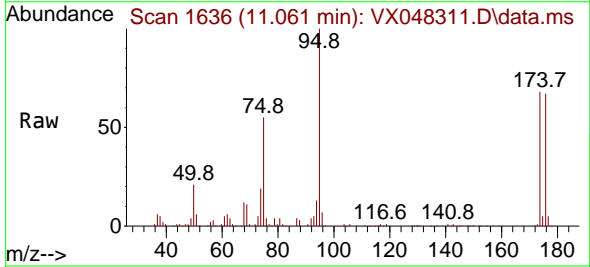
Instrument :
 MSVOA_X
 ClientSampleId :



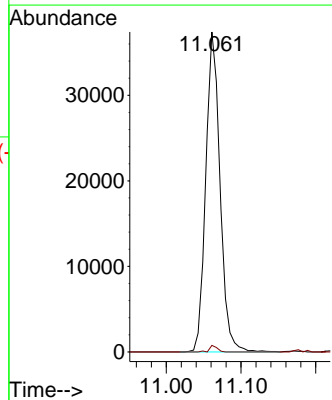
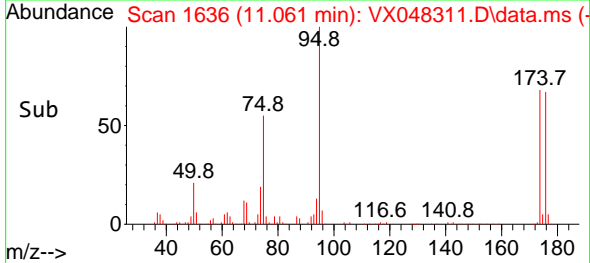
Tgt Ion:152 Resp: 89788
 Ion Ratio Lower Upper
 152 100
 115 62.8 43.1 129.4
 150 156.9 0.0 353.0

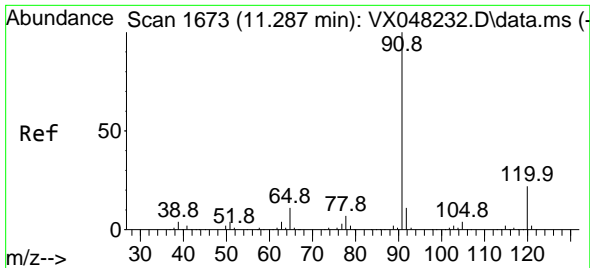


#76
 1,2,3-Trichloropropane
 Concen: 34.080 ug/l
 RT: 11.061 min Scan# 1636
 Delta R.T. -0.159 min
 Lab File: VX048311.D
 Acq: 23 Oct 2025 09:46



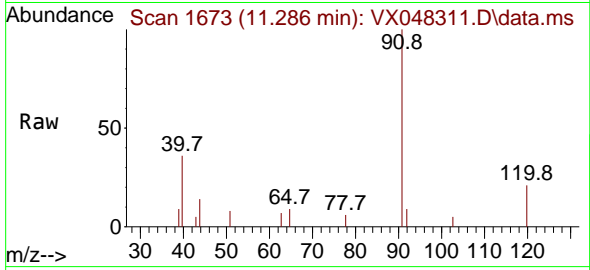
Tgt Ion: 75 Resp: 49622
 Ion Ratio Lower Upper
 75 100
 77 1.1 22.4 67.2#



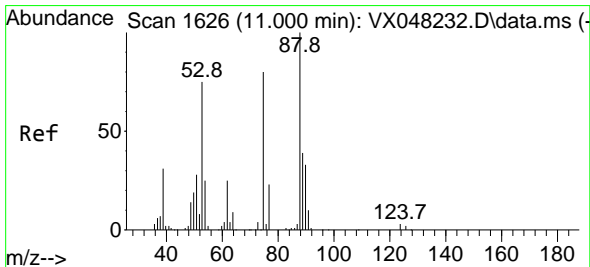
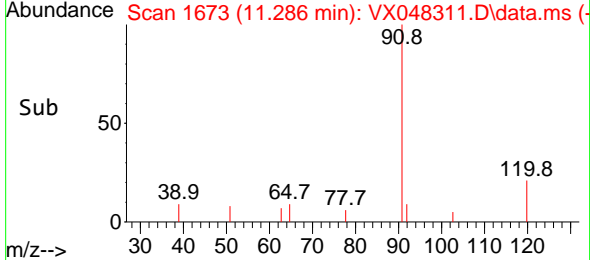
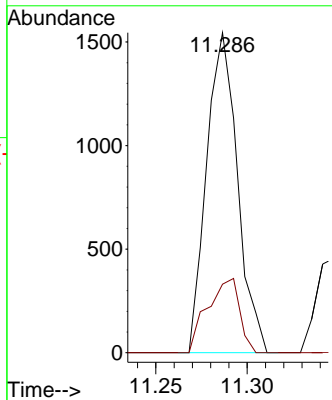


#78
 n-propylbenzene
 Concen: 0.239 ug/l
 RT: 11.286 min Scan# 1636
 Delta R.T. -0.000 min
 Lab File: VX048311.D
 Acq: 23 Oct 2025 09:46

Instrument : MSVOA_X
 ClientSampleId :

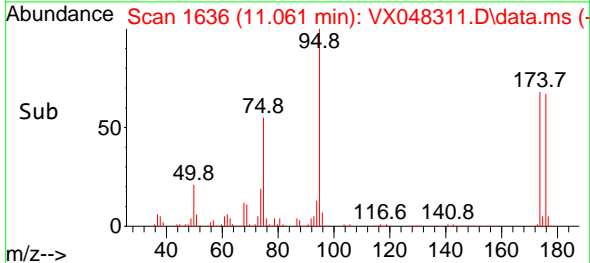
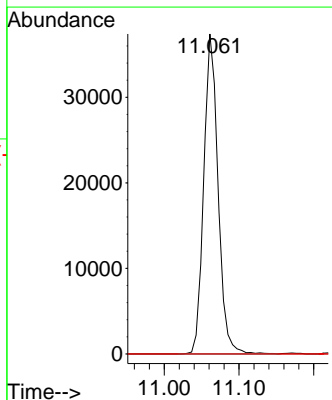
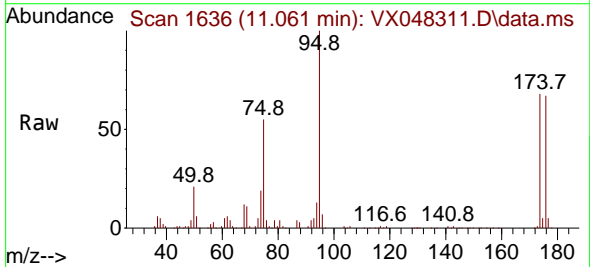


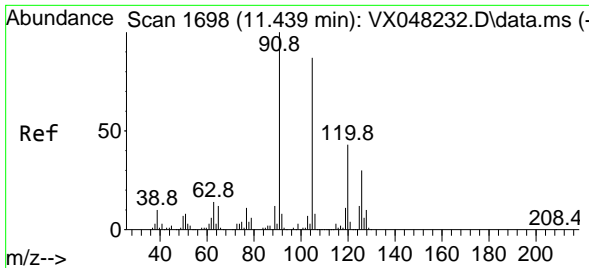
Tgt Ion: 91 Resp: 1815
 Ion Ratio Lower Upper
 91 100
 120 24.1 11.1 33.1



#81
 trans-1,4-Dichloro-2-butene
 Concen: 82.913 ug/l
 RT: 11.061 min Scan# 1636
 Delta R.T. 0.061 min
 Lab File: VX048311.D
 Acq: 23 Oct 2025 09:46

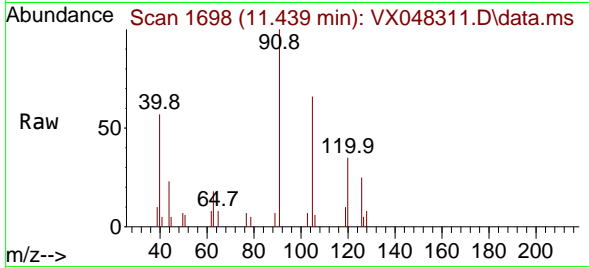
Tgt Ion: 75 Resp: 49622
 Ion Ratio Lower Upper
 75 100
 53 0.0 79.5 119.3#
 89 0.0 36.8 55.2#



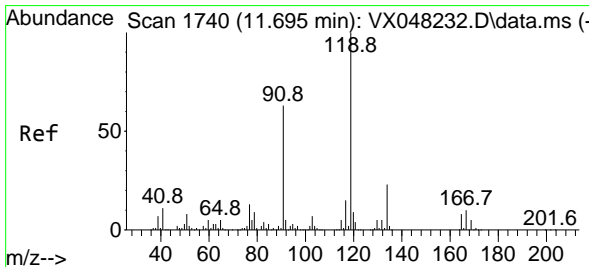
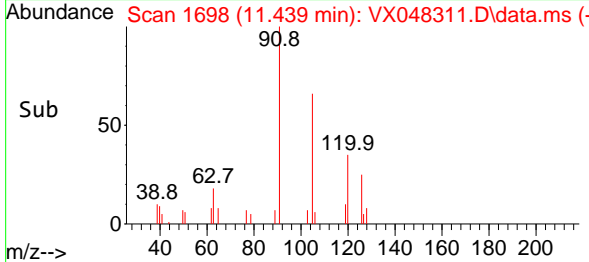
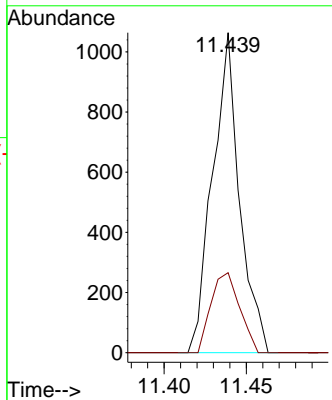


#82
 4-Chlorotoluene
 Concen: 0.221 ug/l
 RT: 11.439 min Scan# 1698
 Delta R.T. 0.006 min
 Lab File: VX048311.D
 Acq: 23 Oct 2025 09:46

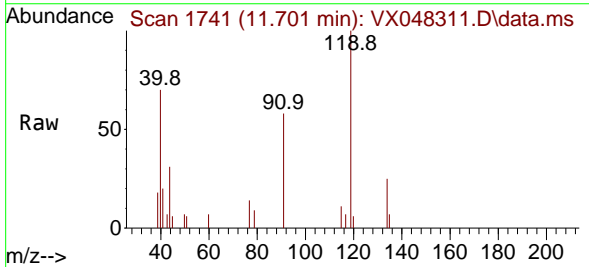
Instrument : MSVOA_X
 ClientSampleId :



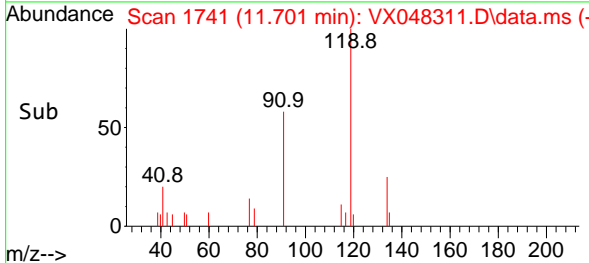
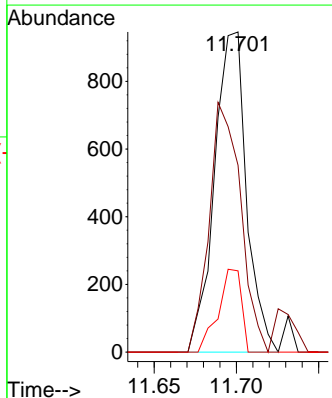
Tgt Ion: 91 Resp: 1210
 Ion Ratio Lower Upper
 91 100
 126 26.5 14.1 42.4

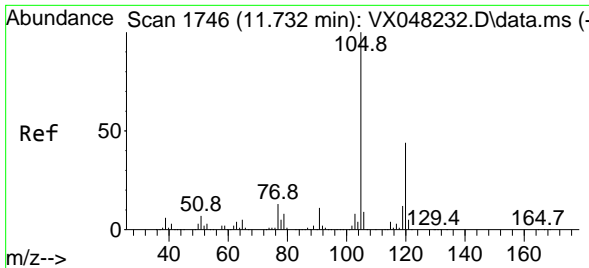


#83
 tert-Butylbenzene
 Concen: 0.230 ug/l
 RT: 11.701 min Scan# 1741
 Delta R.T. 0.006 min
 Lab File: VX048311.D
 Acq: 23 Oct 2025 09:46



Tgt Ion: 119 Resp: 1282
 Ion Ratio Lower Upper
 119 100
 91 76.6 30.3 91.0
 134 18.6 11.4 34.2

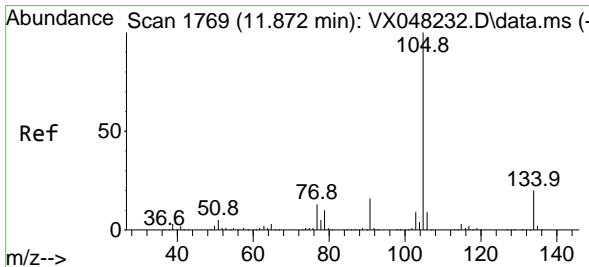
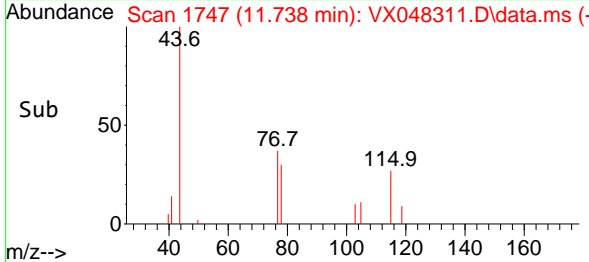
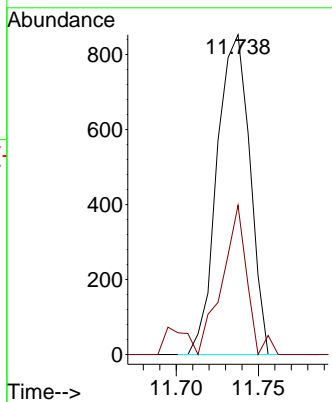
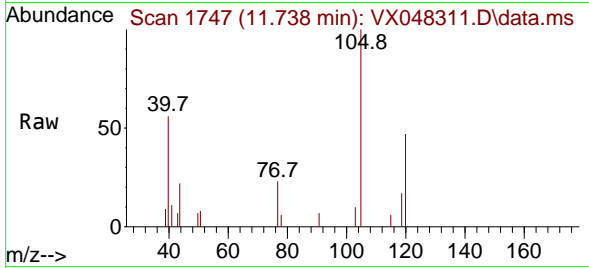




#84
 1,2,4-Trimethylbenzene
 Concen: 0.219 ug/l
 RT: 11.738 min Scan# 1184
 Delta R.T. 0.006 min
 Lab File: VX048311.D
 Acq: 23 Oct 2025 09:46

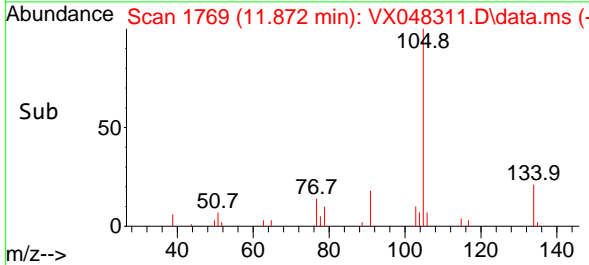
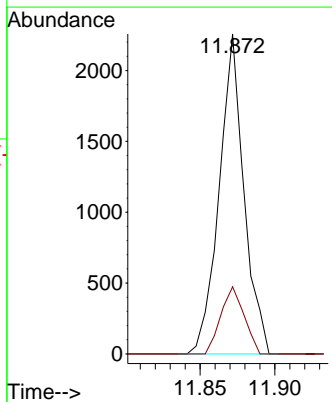
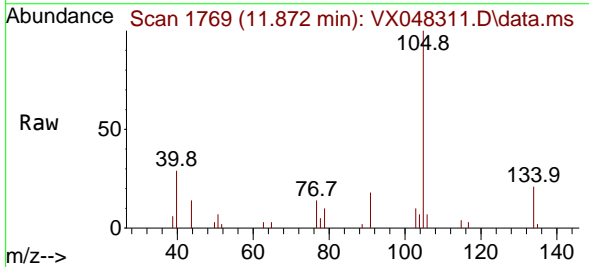
Instrument : MSVOA_X
 ClientSampleId :

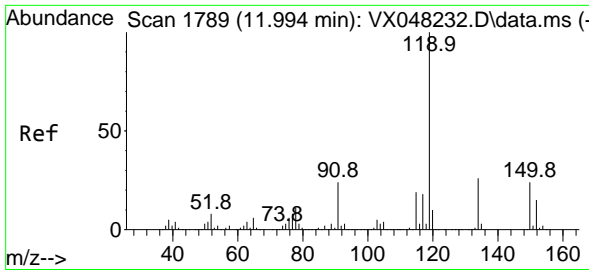
Tgt Ion:105 Resp: 1184
 Ion Ratio Lower Upper
 105 100
 120 35.4 22.1 66.5



#85
 sec-Butylbenzene
 Concen: 0.387 ug/l
 RT: 11.872 min Scan# 1769
 Delta R.T. -0.000 min
 Lab File: VX048311.D
 Acq: 23 Oct 2025 09:46

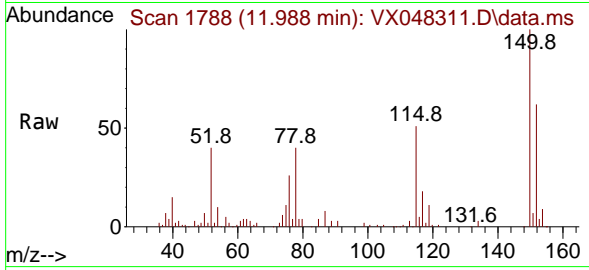
Tgt Ion:105 Resp: 2597
 Ion Ratio Lower Upper
 105 100
 134 19.7 10.1 30.1



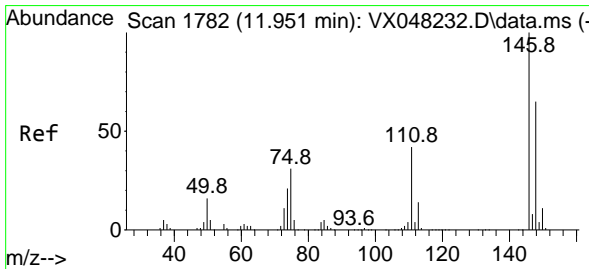
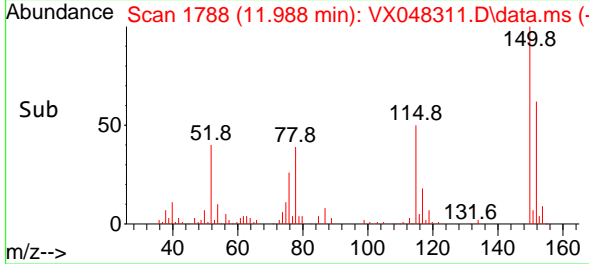
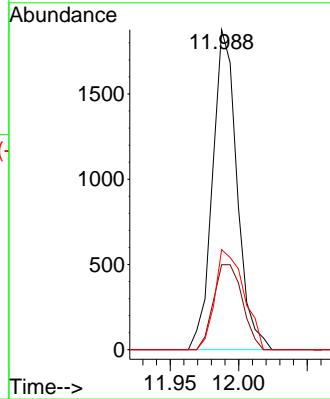


#86
 p-Isopropyltoluene
 Concen: 0.402 ug/l
 RT: 11.988 min Scan# 1788
 Delta R.T. -0.000 min
 Lab File: VX048311.D
 Acq: 23 Oct 2025 09:46

Instrument : MSVOA_X
 ClientSampleId :

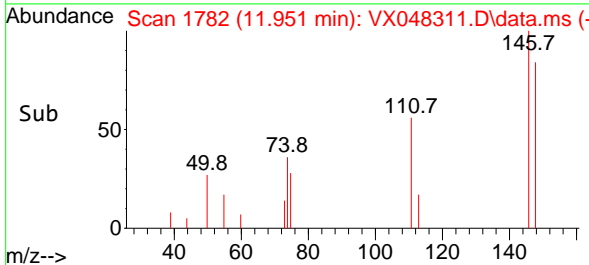
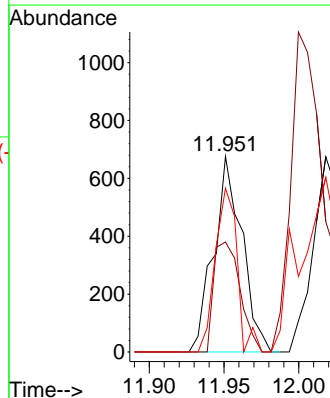
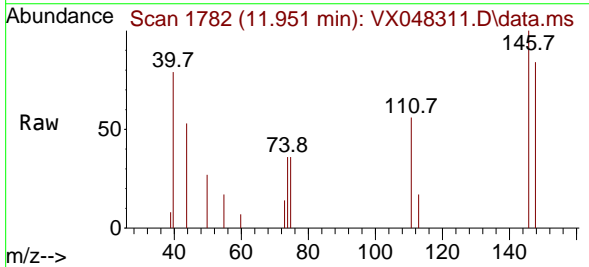


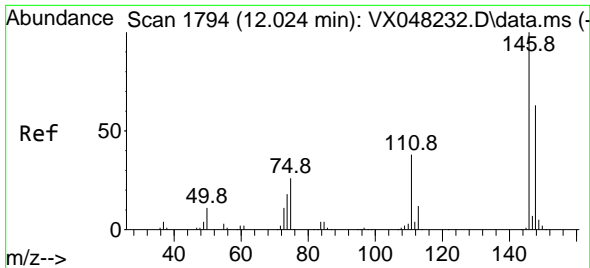
Tgt Ion:119 Resp: 2331
 Ion Ratio Lower Upper
 119 100
 134 31.4 13.0 39.0
 91 37.0 12.1 36.3#



#87
 1,3-Dichlorobenzene
 Concen: 0.287 ug/l
 RT: 11.951 min Scan# 1782
 Delta R.T. -0.000 min
 Lab File: VX048311.D
 Acq: 23 Oct 2025 09:46

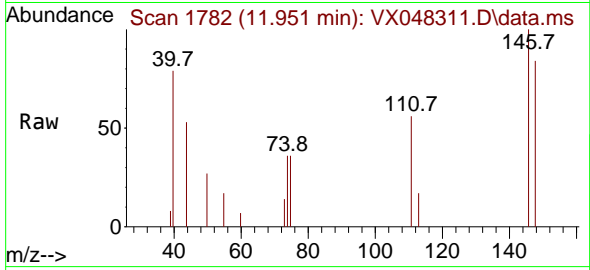
Tgt Ion:146 Resp: 891
 Ion Ratio Lower Upper
 146 100
 111 52.2 20.4 61.2
 148 64.6 31.9 95.9



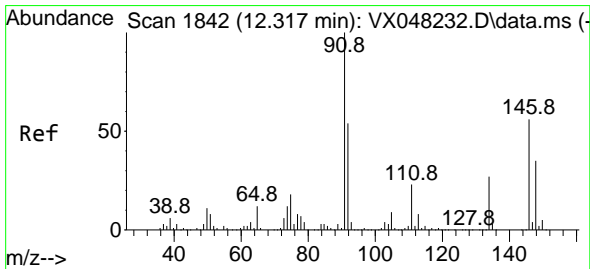
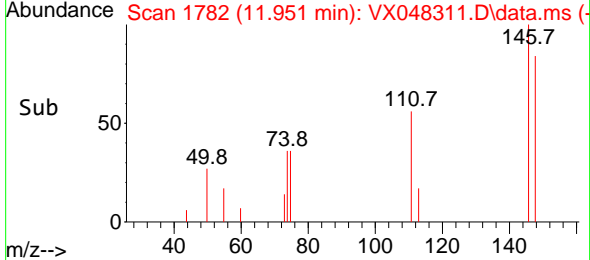
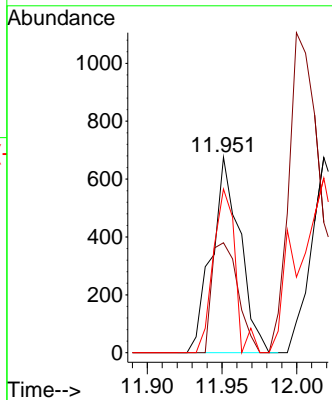


#88
 1,4-Dichlorobenzene
 Concen: 0.277 ug/l
 RT: 11.951 min Scan# 11
 Delta R.T. -0.073 min
 Lab File: VX048311.D
 Acq: 23 Oct 2025 09:46

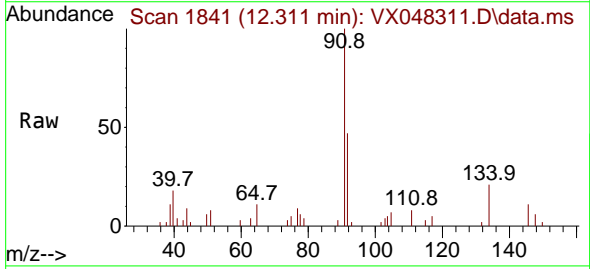
Instrument :
 MSVOA_X
 ClientSampleId :



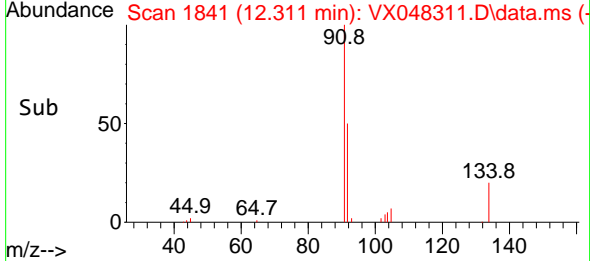
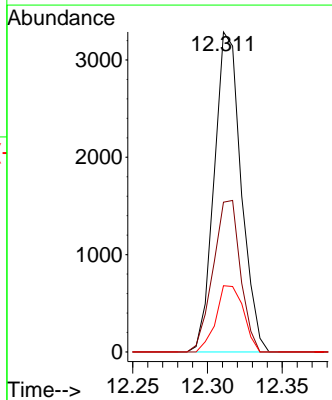
Tgt Ion:146 Resp: 891
 Ion Ratio Lower Upper
 146 100
 111 52.2 20.1 60.2
 148 64.6 31.8 95.3

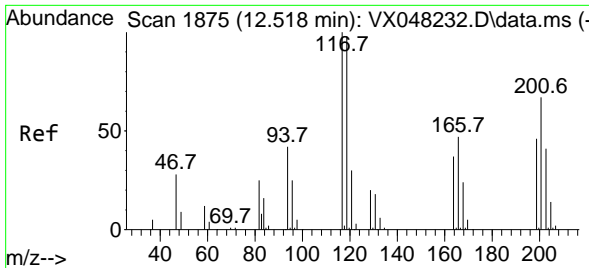


#89
 n-Butylbenzene
 Concen: 0.780 ug/l
 RT: 12.311 min Scan# 1841
 Delta R.T. -0.000 min
 Lab File: VX048311.D
 Acq: 23 Oct 2025 09:46



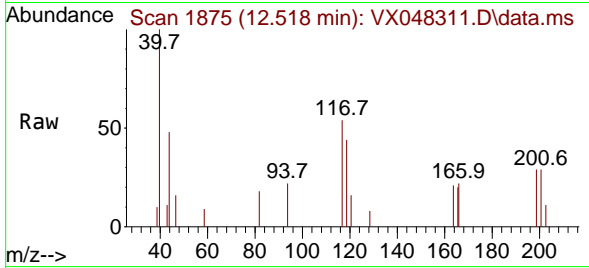
Tgt Ion: 91 Resp: 4119
 Ion Ratio Lower Upper
 91 100
 92 47.9 26.9 80.6
 134 21.1 12.7 38.1



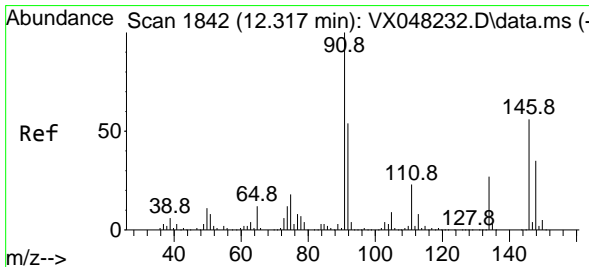
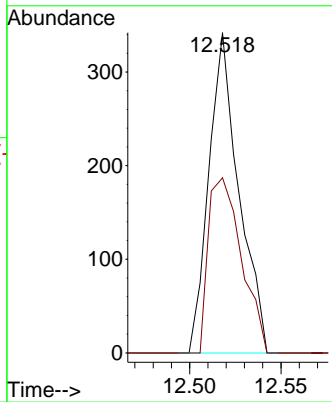
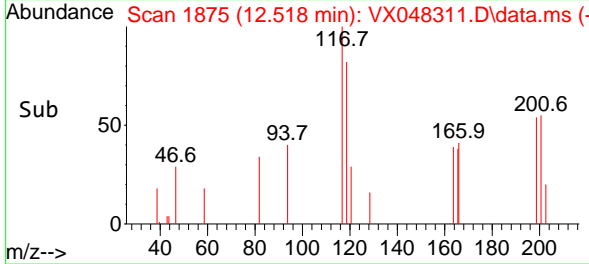


#90
 Hexachloroethane
 Concen: 0.341 ug/l
 RT: 12.518 min Scan# 1875
 Delta R.T. -0.000 min
 Lab File: VX048311.D
 Acq: 23 Oct 2025 09:46

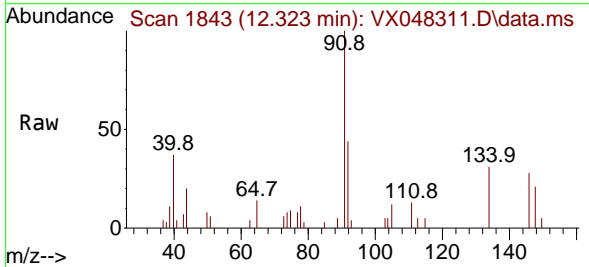
Instrument : MSVOA_X
 ClientSampleId :



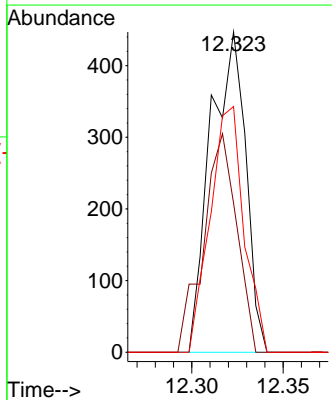
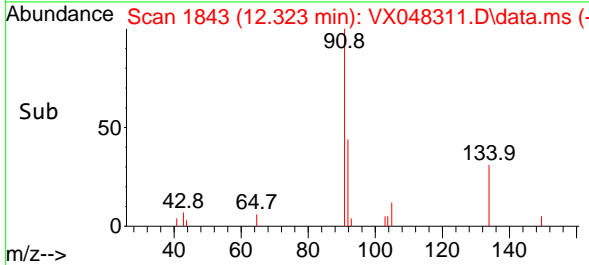
Tgt Ion:117 Resp: 391
 Ion Ratio Lower Upper
 117 100
 201 60.4 34.1 102.2

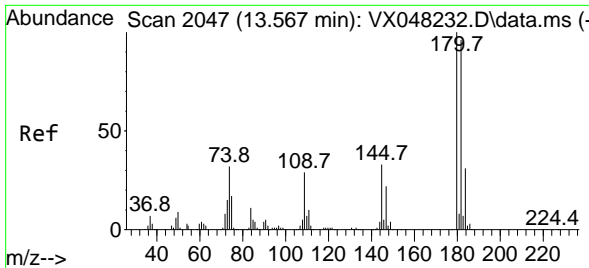


#91
 1,2-Dichlorobenzene
 Concen: 0.206 ug/l
 RT: 12.323 min Scan# 1843
 Delta R.T. 0.006 min
 Lab File: VX048311.D
 Acq: 23 Oct 2025 09:46



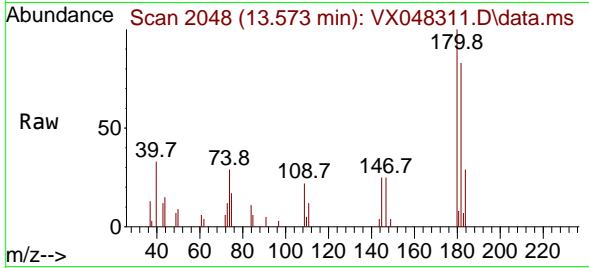
Tgt Ion:146 Resp: 599
 Ion Ratio Lower Upper
 146 100
 111 64.4 21.9 65.5
 148 73.8 31.9 95.5



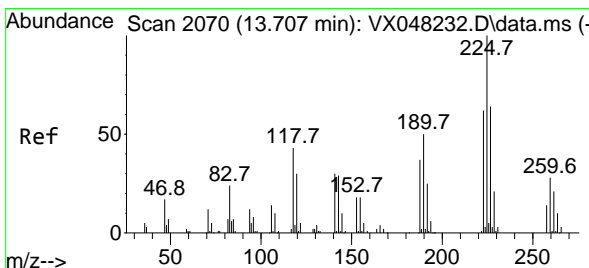
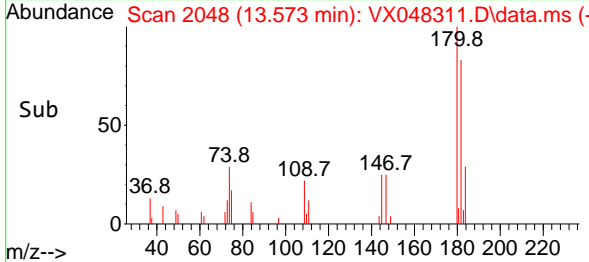
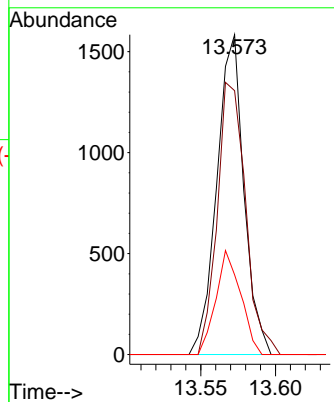


#93
 1,2,4-Trichlorobenzene
 Concen: 1.013 ug/l
 RT: 13.573 min Scan# 2048
 Delta R.T. 0.006 min
 Lab File: VX048311.D
 Acq: 23 Oct 2025 09:46

Instrument : MSVOA_X
 ClientSampleId :

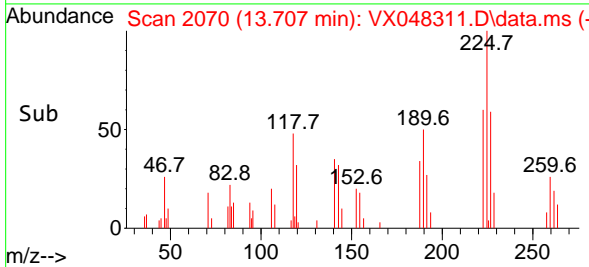
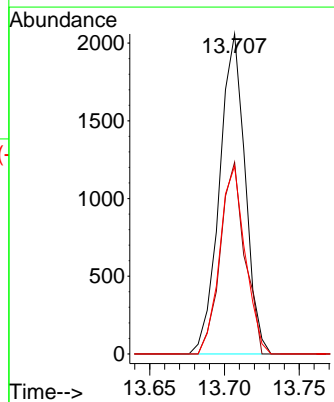
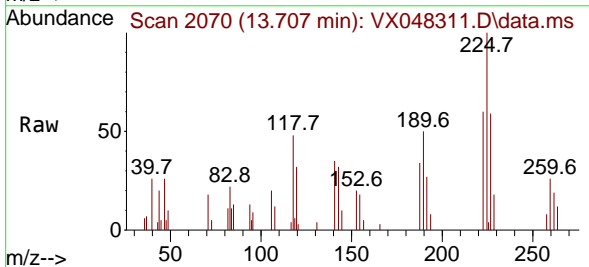


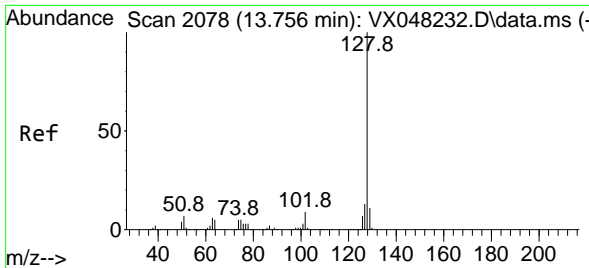
Tgt Ion:180 Resp: 1994
 Ion Ratio Lower Upper
 180 100
 182 88.7 47.3 142.0
 145 29.8 16.3 48.9



#94
 Hexachlorobutadiene
 Concen: 3.392 ug/l
 RT: 13.707 min Scan# 2070
 Delta R.T. 0.006 min
 Lab File: VX048311.D
 Acq: 23 Oct 2025 09:46

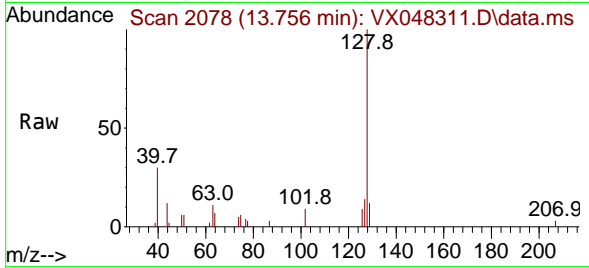
Tgt Ion:225 Resp: 2456
 Ion Ratio Lower Upper
 225 100
 223 57.0 32.6 97.7
 227 58.1 32.5 97.4



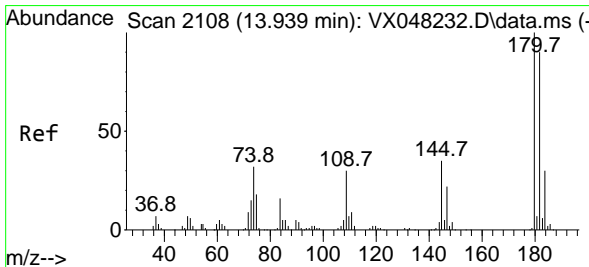
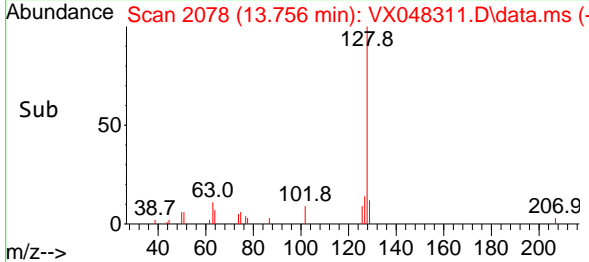
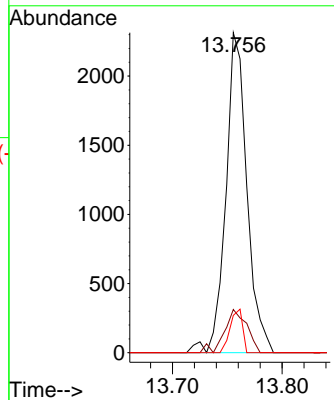


#95
 Naphthalene
 Concen: 0.594 ug/l
 RT: 13.756 min Scan# 2078
 Delta R.T. -0.000 min
 Lab File: VX048311.D
 Acq: 23 Oct 2025 09:46

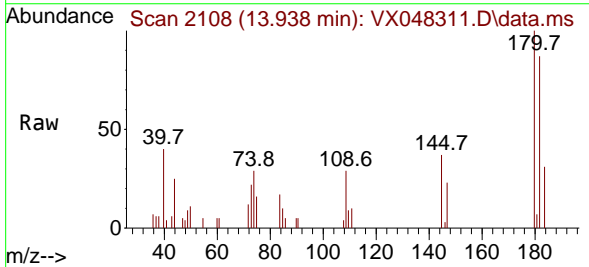
Instrument : MSVOA_X
 ClientSampleId :



Tgt Ion:128 Resp: 3096
 Ion Ratio Lower Upper
 128 100
 127 14.3 10.2 15.4
 129 7.9 8.6 12.8#



#96
 1,2,3-Trichlorobenzene
 Concen: 1.223 ug/l
 RT: 13.938 min Scan# 2108
 Delta R.T. -0.000 min
 Lab File: VX048311.D
 Acq: 23 Oct 2025 09:46



Tgt Ion:180 Resp: 2209
 Ion Ratio Lower Upper
 180 100
 182 88.0 46.6 139.7
 145 30.3 16.9 50.7

