

Data Path : Z:\voasrv\HPCHEM1\MSVOA\_X\Data\VX102325\  
 Data File : VX048312.D  
 Acq On : 23 Oct 2025 10:07  
 Operator : JC/MD  
 Sample : VX1023WBL01  
 Misc : 5.0mL/MSVOA\_X/WATER  
 ALS Vial : 4 Sample Multiplier: 1

Instrument :  
 MSVOA\_X  
 ClientSampleId :

Quant Time: Oct 24 05:39:11 2025  
 Quant Method : Z:\voasrv\HPCHEM1\MSVOA\_X\Method\82X102025W.M  
 Quant Title : SW846 8260  
 QLast Update : Mon Oct 20 14:13:59 2025  
 Response via : Initial Calibration

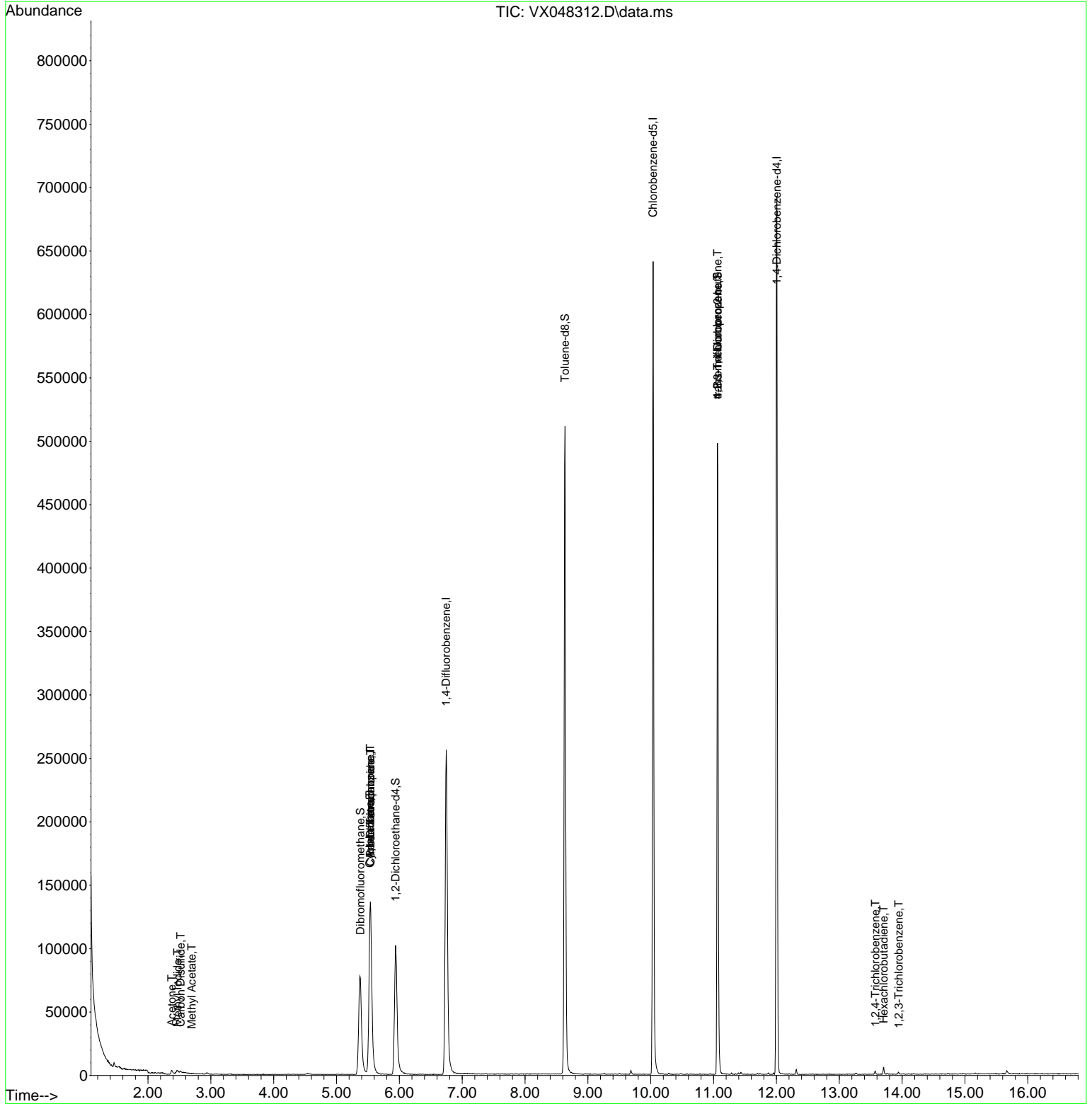
Compound	R.T.	QIon	Response	Conc	Units	Dev(Min)
-----						
Internal Standards						
1) Pentafluorobenzene	5.538	168	135150	50.000	ug/l	0.00
34) 1,4-Difluorobenzene	6.745	114	274929	50.000	ug/l	0.00
63) Chlorobenzene-d5	10.037	117	281729	50.000	ug/l	0.00
72) 1,4-Dichlorobenzene-d4	12.006	152	144428	50.000	ug/l	0.00
System Monitoring Compounds						
33) 1,2-Dichloroethane-d4	5.940	65	112087	59.152	ug/l	0.00
Spiked Amount	50.000	Range 78 - 117	Recovery	=	118.300%#	
35) Dibromofluoromethane	5.379	113	75448	40.198	ug/l	0.00
Spiked Amount	50.000	Range 75 - 124	Recovery	=	80.400%	
50) Toluene-d8	8.635	98	312816	47.549	ug/l	0.00
Spiked Amount	50.000	Range 92 - 112	Recovery	=	95.100%	
62) 4-Bromofluorobenzene	11.061	95	134411	53.705	ug/l	0.00
Spiked Amount	50.000	Range 83 - 123	Recovery	=	107.400%	
Target Compounds						
						Qvalue
10) Methyl Iodide	2.471	142	2592	1.414	ug/l #	94
16) Acetone	2.380	43	3829	5.890	ug/l	94
17) Carbon Disulfide	2.520	76	950	0.212	ug/l #	86
18) Methyl Acetate	2.697	43	719	0.530	ug/l #	69
31) Cyclohexane	5.532	56	3043	1.294	ug/l #	28
36) 1,1-Dichloropropene	5.538	75	11643	4.364	ug/l #	48
38) Carbon Tetrachloride	5.544	117	15082	4.582	ug/l #	15
76) 1,2,3-Trichloropropane	11.061	75	72415	30.918	ug/l #	33
81) trans-1,4-Dichloro-2-b...	11.061	75	72415	75.222	ug/l #	10
93) 1,2,4-Trichlorobenzene	13.573	180	727	0.230	ug/l	91
94) Hexachlorobutadiene	13.707	225	741	0.690	ug/l	97
96) 1,2,3-Trichlorobenzene	13.945	180	601	0.207	ug/l	80
-----						

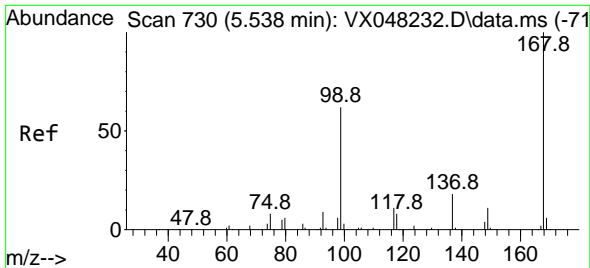
(#) = qualifier out of range (m) = manual integration (+) = signals summed

Data Path : Z:\voasrv\HPCHEM1\MSVOA\_X\Data\VX102325\  
 Data File : VX048312.D  
 Acq On : 23 Oct 2025 10:07  
 Operator : JC/MD  
 Sample : VX1023WBL01  
 Misc : 5.0mL/MSVOA\_X/WATER  
 ALS Vial : 4 Sample Multiplier: 1

Instrument :  
 MSVOA\_X  
 ClientSampleId :

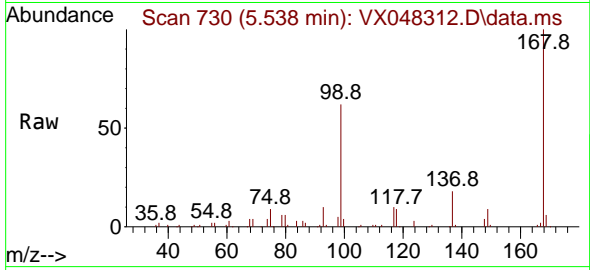
Quant Time: Oct 24 05:39:11 2025  
 Quant Method : Z:\voasrv\HPCHEM1\MSVOA\_X\Method\82X102025W.M  
 Quant Title : SW846 8260  
 QLast Update : Mon Oct 20 14:13:59 2025  
 Response via : Initial Calibration



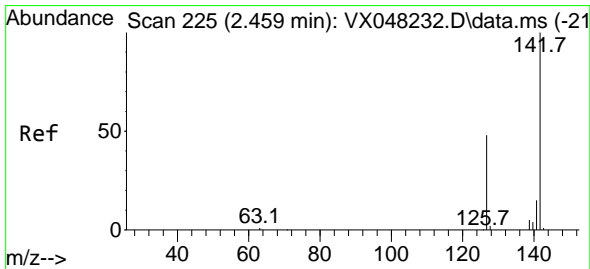
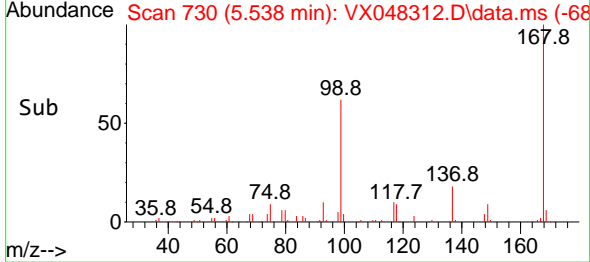
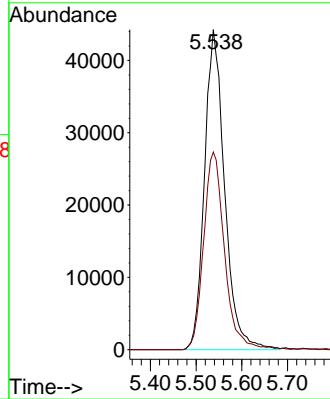


#1  
 Pentafluorobenzene  
 Concen: 50.000 ug/l  
 RT: 5.538 min Scan# 71  
 Delta R.T. -0.006 min  
 Lab File: VX048312.D  
 Acq: 23 Oct 2025 10:07

Instrument :  
 MSVOA\_X  
 ClientSampleId :

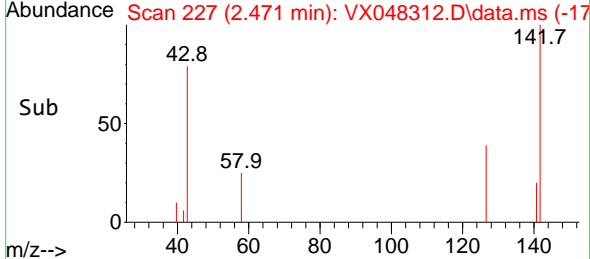
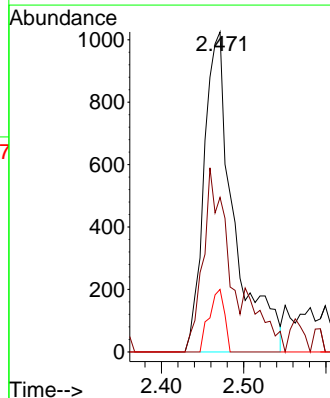
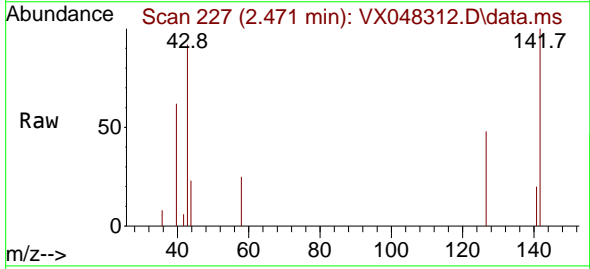


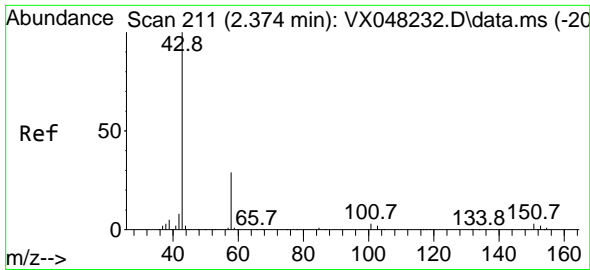
Tgt Ion:168 Resp: 135150  
 Ion Ratio Lower Upper  
 168 100  
 99 61.7 46.4 69.6



#10  
 Methyl Iodide  
 Concen: 1.414 ug/l  
 RT: 2.471 min Scan# 227  
 Delta R.T. 0.012 min  
 Lab File: VX048312.D  
 Acq: 23 Oct 2025 10:07

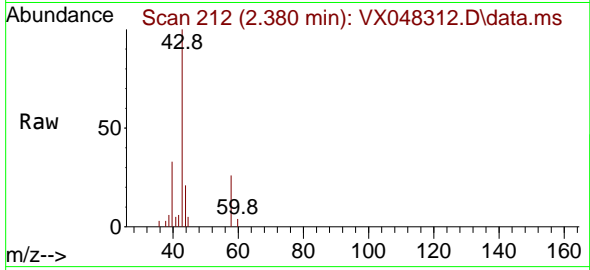
Tgt Ion:142 Resp: 2592  
 Ion Ratio Lower Upper  
 142 100  
 127 45.3 38.5 57.7  
 141 10.0 11.6 17.4#



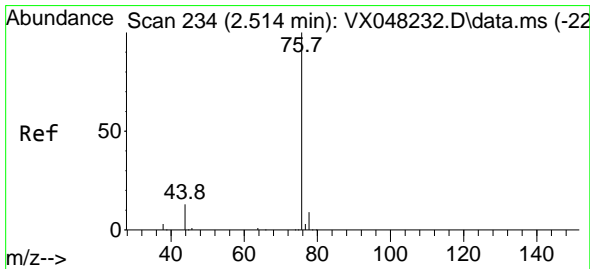
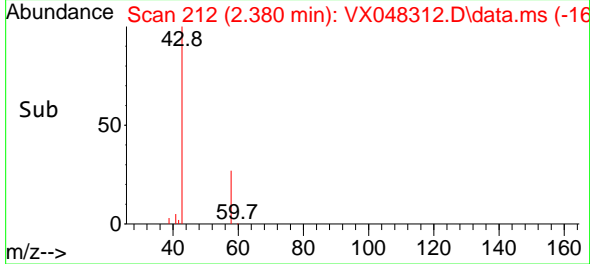
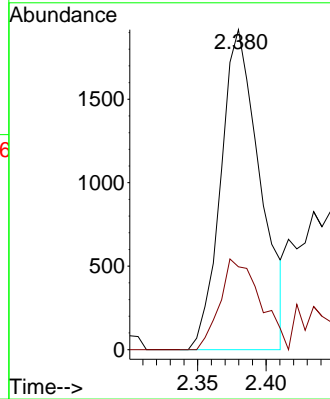


#16  
 Acetone  
 Concen: 5.890 ug/l  
 RT: 2.380 min Scan# 211  
 Delta R.T. 0.006 min  
 Lab File: VX048312.D  
 Acq: 23 Oct 2025 10:07

Instrument : MSVOA\_X  
 ClientSampleId :

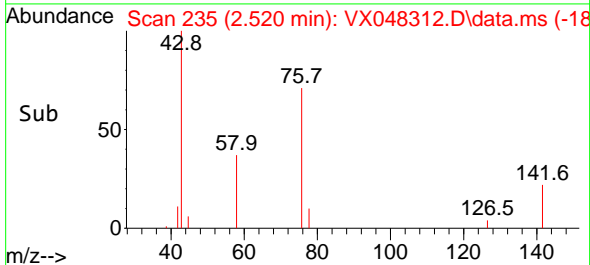
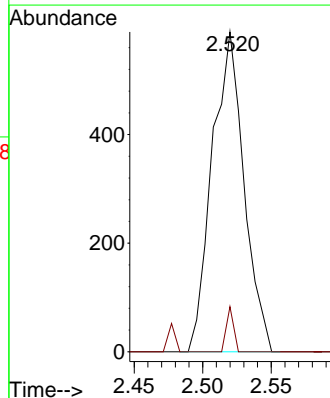
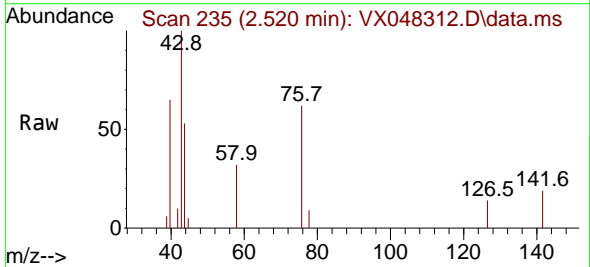


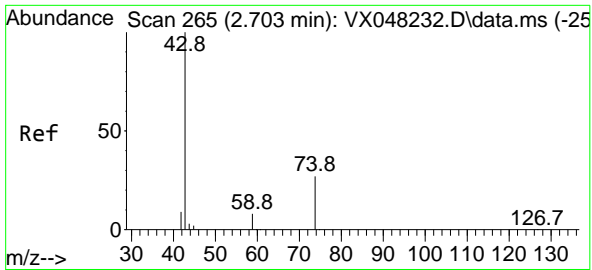
Tgt Ion: 43 Resp: 3829  
 Ion Ratio Lower Upper  
 43 100  
 58 25.9 23.4 35.2



#17  
 Carbon Disulfide  
 Concen: 0.212 ug/l  
 RT: 2.520 min Scan# 235  
 Delta R.T. 0.006 min  
 Lab File: VX048312.D  
 Acq: 23 Oct 2025 10:07

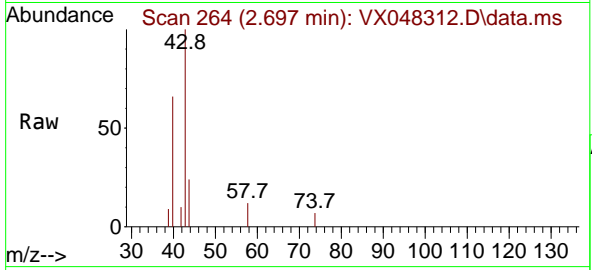
Tgt Ion: 76 Resp: 950  
 Ion Ratio Lower Upper  
 76 100  
 78 14.1 7.1 10.7#



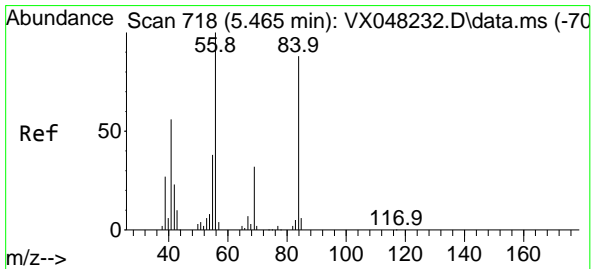
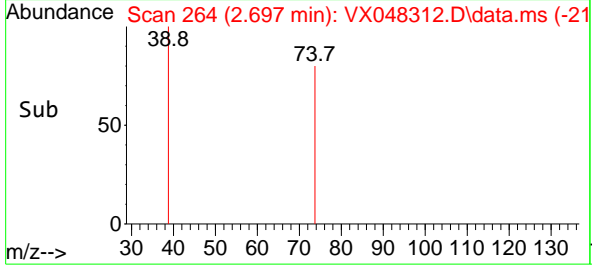
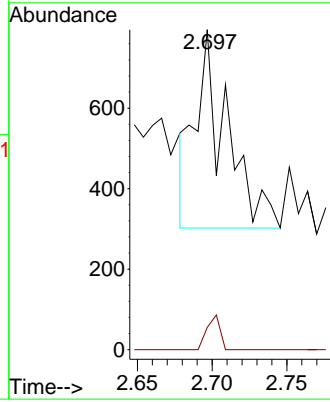


#18  
 Methyl Acetate  
 Concen: 0.530 ug/l  
 RT: 2.697 min Scan# 20  
 Delta R.T. 0.000 min  
 Lab File: VX048312.D  
 Acq: 23 Oct 2025 10:07

Instrument :  
 MSVOA\_X  
 ClientSampleId :

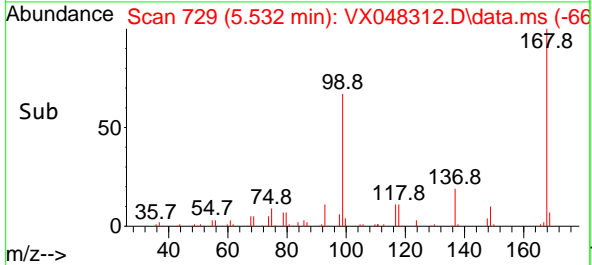
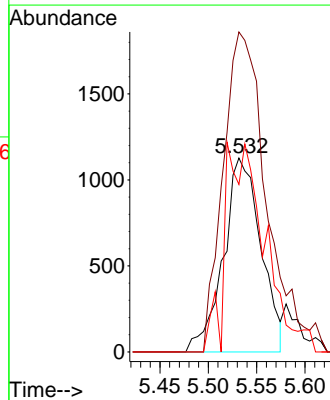
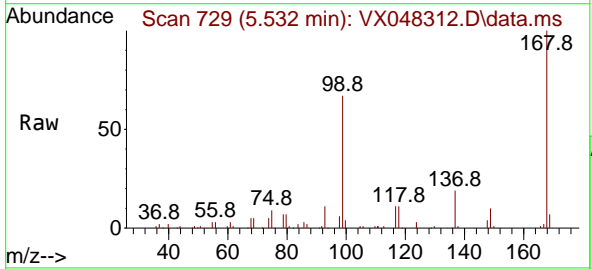


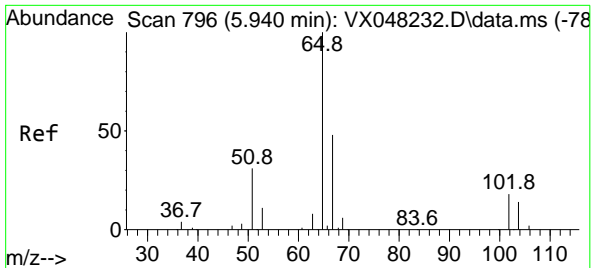
Tgt Ion: 43 Resp: 719  
 Ion Ratio Lower Upper  
 43 100  
 74 7.2 17.5 26.3#



#31  
 Cyclohexane  
 Concen: 1.294 ug/l  
 RT: 5.532 min Scan# 729  
 Delta R.T. 0.073 min  
 Lab File: VX048312.D  
 Acq: 23 Oct 2025 10:07

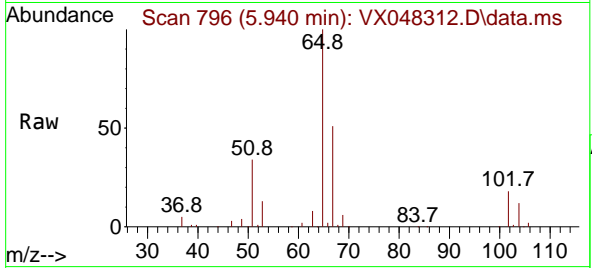
Tgt Ion: 56 Resp: 3043  
 Ion Ratio Lower Upper  
 56 100  
 69 165.0 23.0 34.6#  
 84 86.4 64.6 97.0



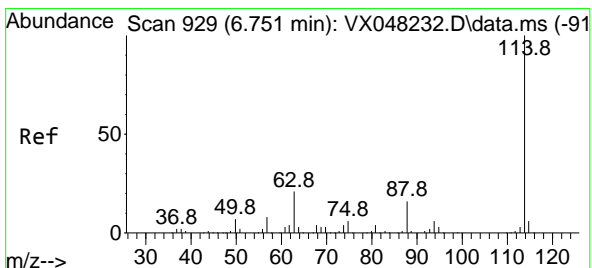
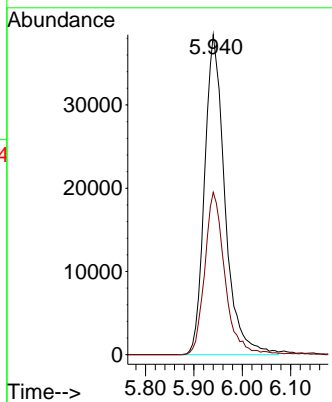
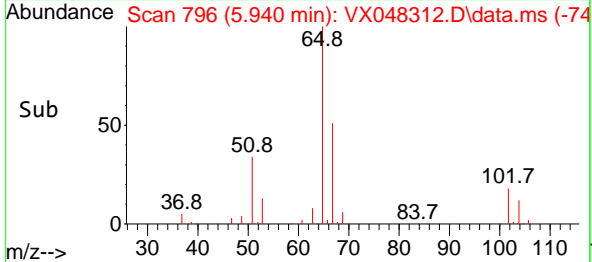


#33  
 1,2-Dichloroethane-d4  
 Concen: 59.152 ug/l  
 RT: 5.940 min Scan# 796  
 Delta R.T. 0.000 min  
 Lab File: VX048312.D  
 Acq: 23 Oct 2025 10:07

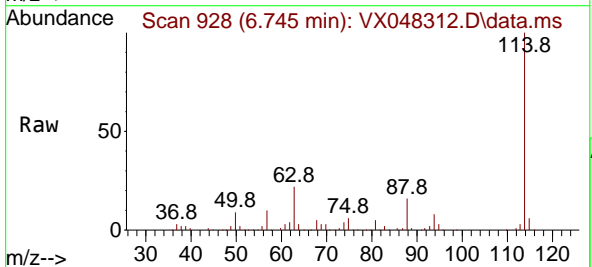
Instrument :  
 MSVOA\_X  
 ClientSampleId :



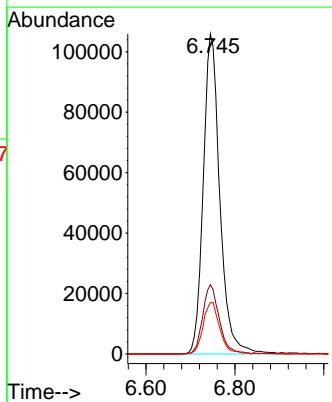
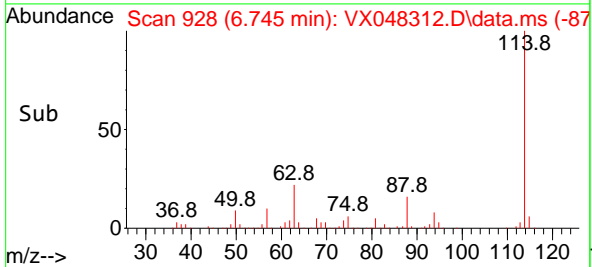
Tgt Ion: 65 Resp: 112087  
 Ion Ratio Lower Upper  
 65 100  
 67 50.4 0.0 105.0

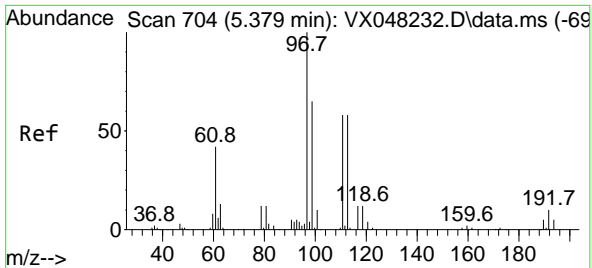


#34  
 1,4-Difluorobenzene  
 Concen: 50.000 ug/l  
 RT: 6.745 min Scan# 928  
 Delta R.T. -0.000 min  
 Lab File: VX048312.D  
 Acq: 23 Oct 2025 10:07



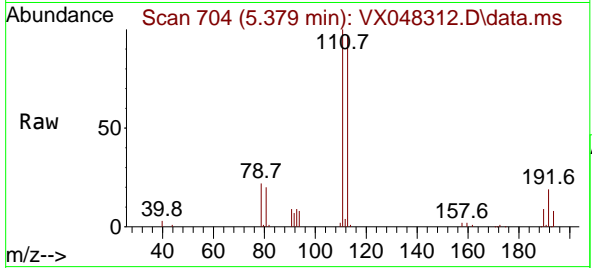
Tgt Ion: 114 Resp: 274929  
 Ion Ratio Lower Upper  
 114 100  
 63 21.7 0.0 43.2  
 88 16.1 0.0 33.6



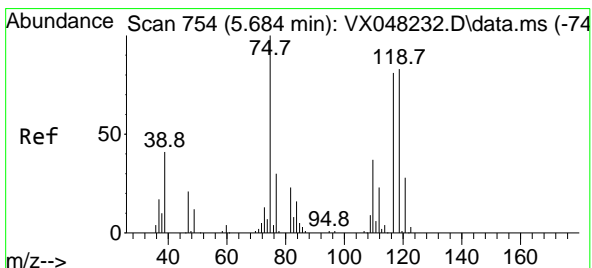
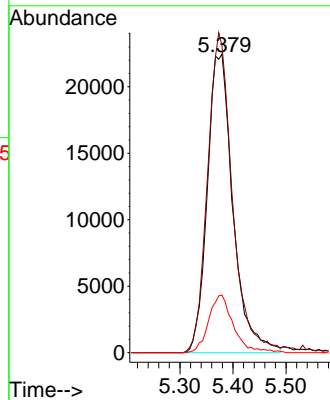
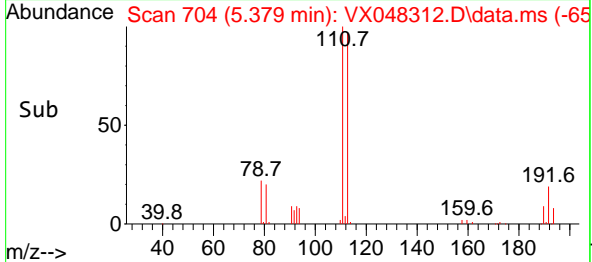


#35  
 Dibromofluoromethane  
 Concen: 40.198 ug/l  
 RT: 5.379 min Scan# 704  
 Delta R.T. 0.006 min  
 Lab File: VX048312.D  
 Acq: 23 Oct 2025 10:07

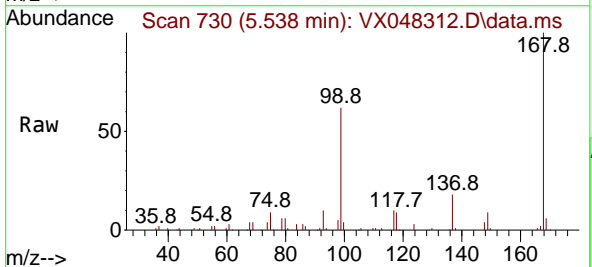
Instrument : MSVOA\_X  
 ClientSampleId :



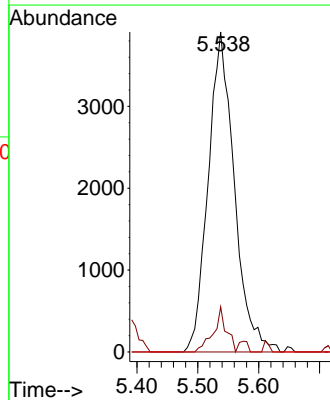
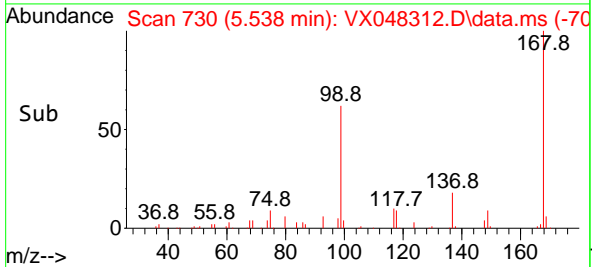
Tgt Ion:113 Resp: 75448  
 Ion Ratio Lower Upper  
 113 100  
 111 104.5 82.2 123.4  
 192 18.7 15.1 22.7

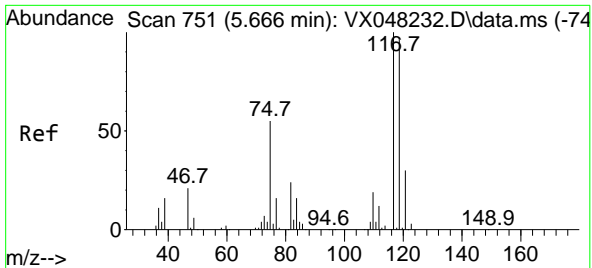


#36  
 1,1-Dichloropropene  
 Concen: 4.364 ug/l  
 RT: 5.538 min Scan# 730  
 Delta R.T. -0.146 min  
 Lab File: VX048312.D  
 Acq: 23 Oct 2025 10:07



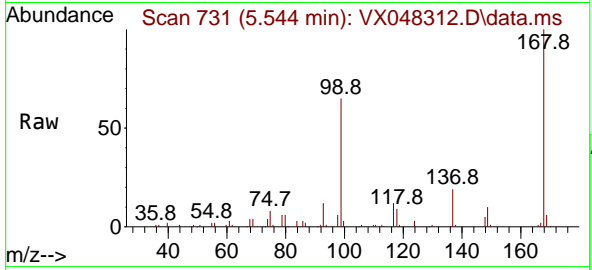
Tgt Ion: 75 Resp: 11643  
 Ion Ratio Lower Upper  
 75 100  
 110 6.9 17.7 53.1#  
 77 0.0 24.3 36.5#



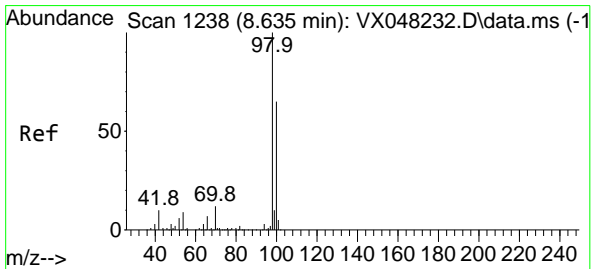
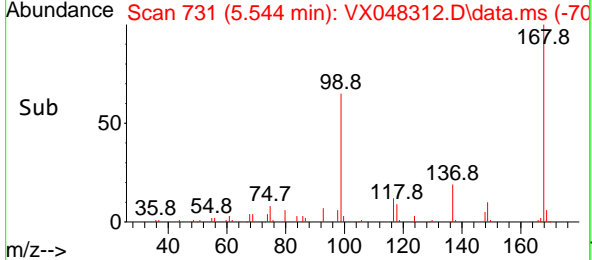
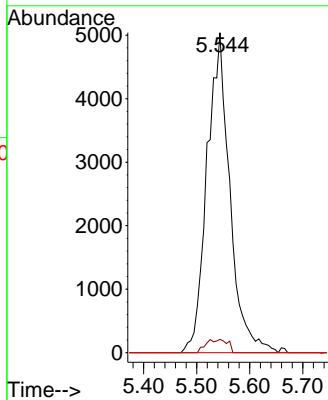


#38  
 Carbon Tetrachloride  
 Concen: 4.582 ug/l  
 RT: 5.544 min Scan# 71  
 Delta R.T. -0.122 min  
 Lab File: VX048312.D  
 Acq: 23 Oct 2025 10:07

Instrument :  
 MSVOA\_X  
 ClientSampleId :

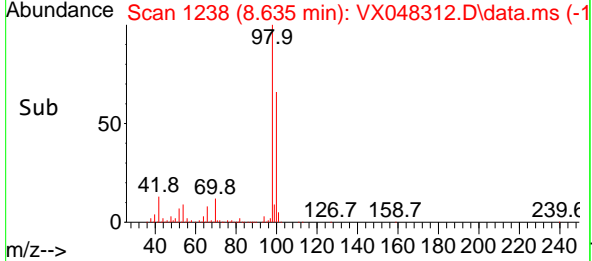
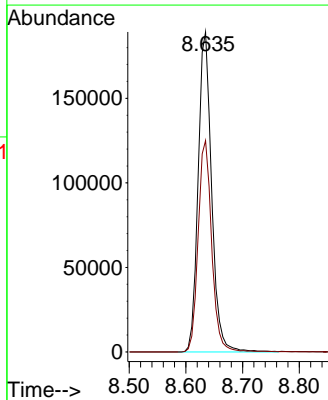
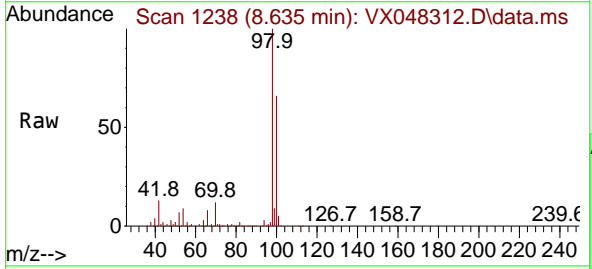


Tgt Ion:117 Resp: 15082  
 Ion Ratio Lower Upper  
 117 100  
 119 4.1 77.2 115.8#  
 121 0.0 24.8 37.2#

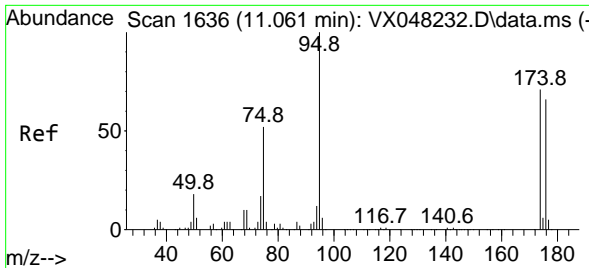


#50  
 Toluene-d8  
 Concen: 47.549 ug/l  
 RT: 8.635 min Scan# 1238  
 Delta R.T. 0.000 min  
 Lab File: VX048312.D  
 Acq: 23 Oct 2025 10:07

Tgt Ion: 98 Resp: 312816  
 Ion Ratio Lower Upper  
 98 100  
 100 66.6 53.0 79.4

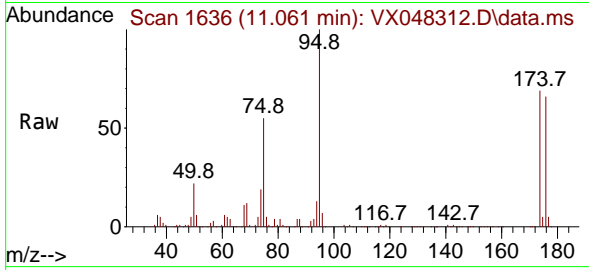




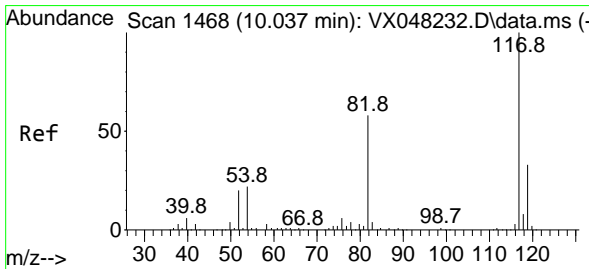
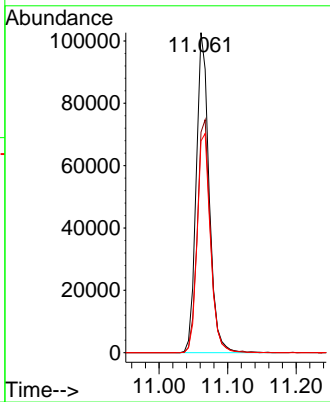
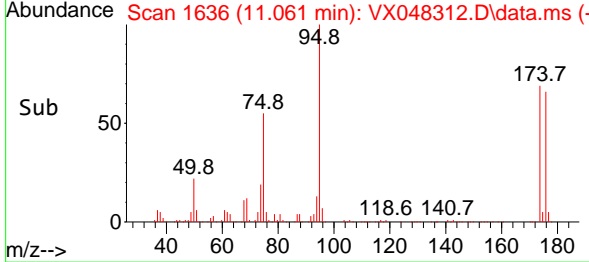


#62  
 4-Bromofluorobenzene  
 Concen: 53.705 ug/l  
 RT: 11.061 min Scan# 1  
 Delta R.T. 0.000 min  
 Lab File: VX048312.D  
 Acq: 23 Oct 2025 10:07

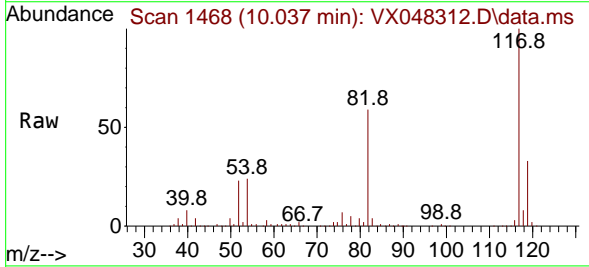
Instrument : MSVOA\_X  
 ClientSampleId :



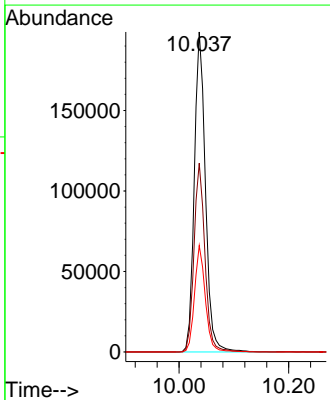
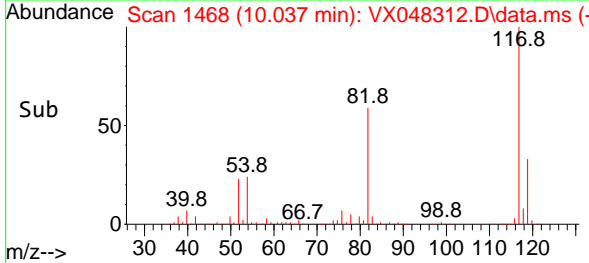
Tgt Ion: 95 Resp: 134411  
 Ion Ratio Lower Upper  
 95 100  
 174 74.4 0.0 147.8  
 176 70.7 0.0 142.8

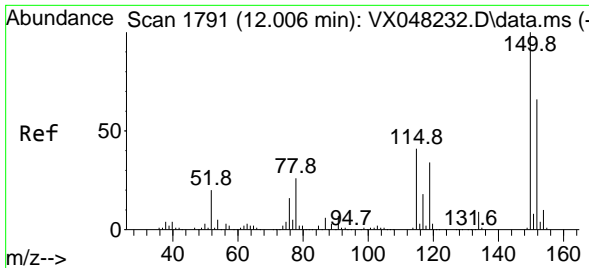


#63  
 Chlorobenzene-d5  
 Concen: 50.000 ug/l  
 RT: 10.037 min Scan# 1468  
 Delta R.T. 0.000 min  
 Lab File: VX048312.D  
 Acq: 23 Oct 2025 10:07



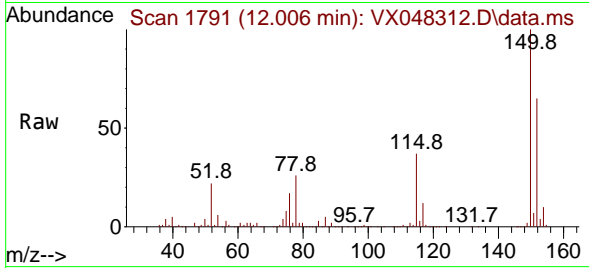
Tgt Ion: 117 Resp: 281729  
 Ion Ratio Lower Upper  
 117 100  
 82 59.0 46.5 69.7  
 119 33.3 25.9 38.9



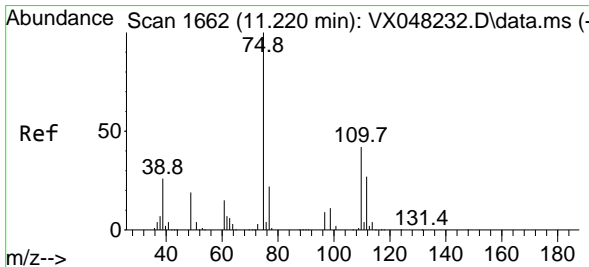
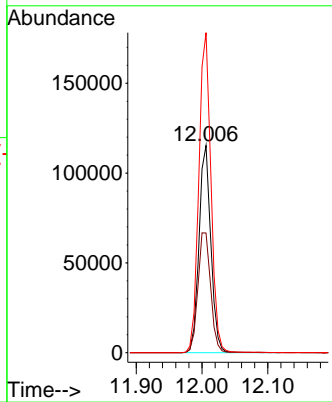
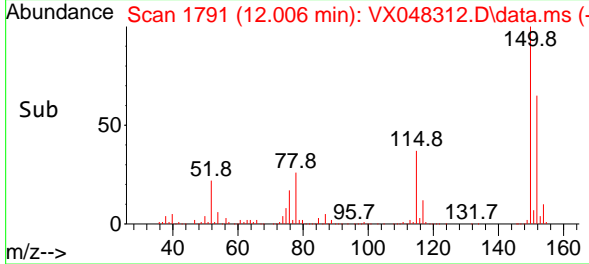


#72  
 1,4-Dichlorobenzene-d4  
 Concen: 50.000 ug/l  
 RT: 12.006 min Scan# 1  
 Delta R.T. 0.000 min  
 Lab File: VX048312.D  
 Acq: 23 Oct 2025 10:07

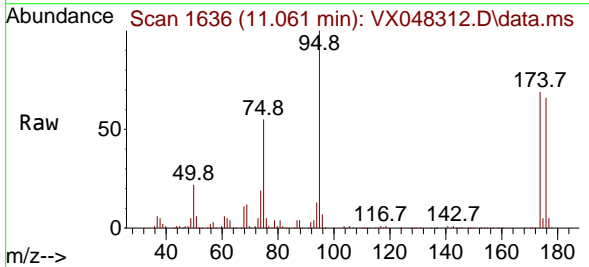
Instrument :  
 MSVOA\_X  
 ClientSampleId :



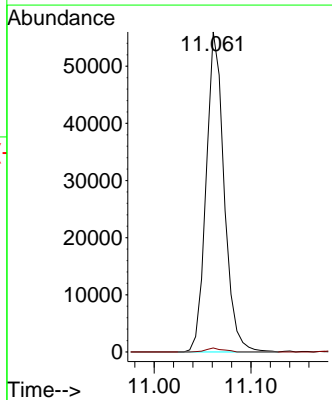
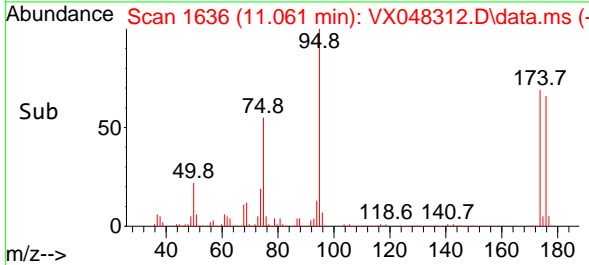
Tgt Ion:152 Resp: 144428  
 Ion Ratio Lower Upper  
 152 100  
 115 62.3 43.1 129.4  
 150 158.0 0.0 353.0

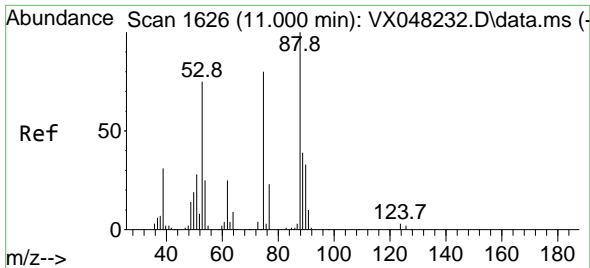


#76  
 1,2,3-Trichloropropane  
 Concen: 30.918 ug/l  
 RT: 11.061 min Scan# 1636  
 Delta R.T. -0.158 min  
 Lab File: VX048312.D  
 Acq: 23 Oct 2025 10:07



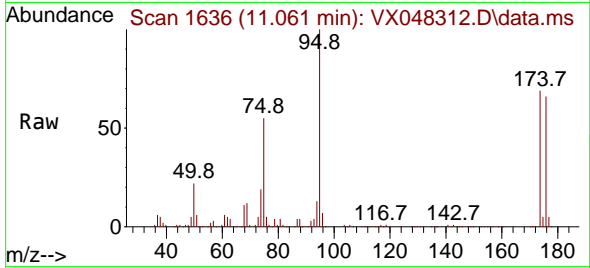
Tgt Ion: 75 Resp: 72415  
 Ion Ratio Lower Upper  
 75 100  
 77 1.2 22.4 67.2#



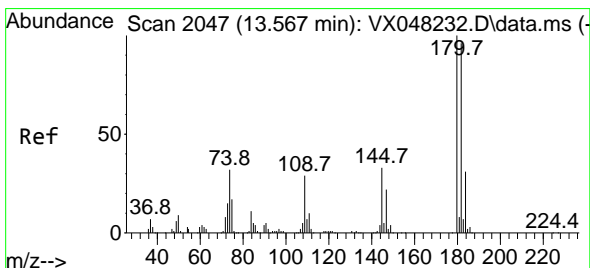
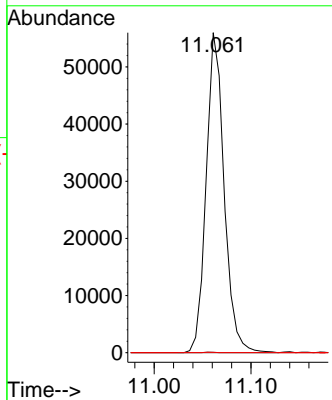
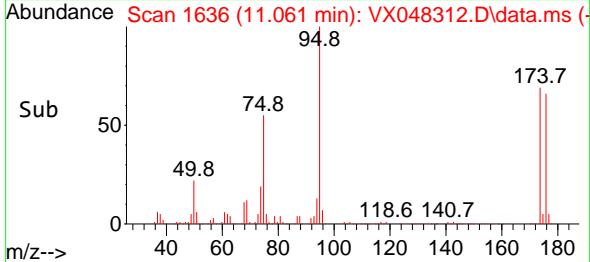


#81  
 trans-1,4-Dichloro-2-butene  
 Concen: 75.222 ug/l  
 RT: 11.061 min Scan# 1  
 Delta R.T. 0.061 min  
 Lab File: VX048312.D  
 Acq: 23 Oct 2025 10:07

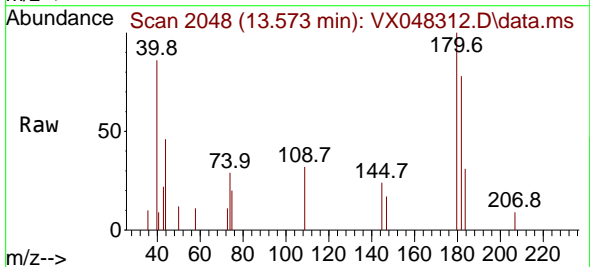
Instrument : MSVOA\_X  
 ClientSampleId :



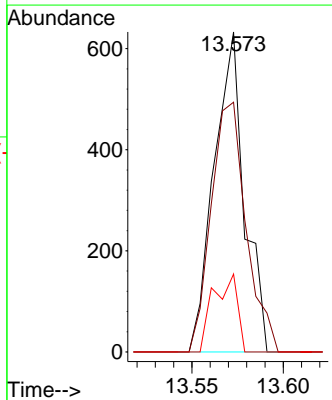
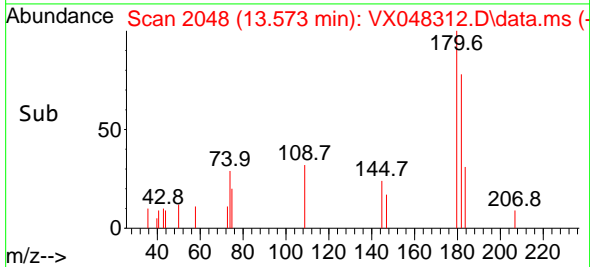
Tgt Ion: 75 Resp: 72415  
 Ion Ratio Lower Upper  
 75 100  
 53 0.1 79.5 119.3#  
 89 0.0 36.8 55.2#

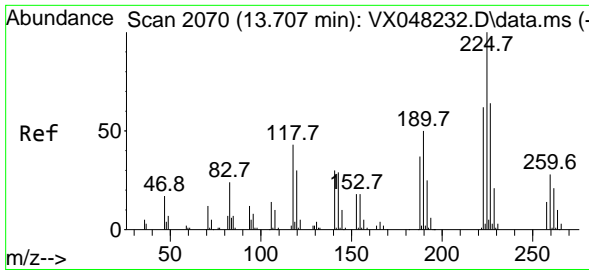


#93  
 1,2,4-Trichlorobenzene  
 Concen: 0.230 ug/l  
 RT: 13.573 min Scan# 2048  
 Delta R.T. 0.006 min  
 Lab File: VX048312.D  
 Acq: 23 Oct 2025 10:07



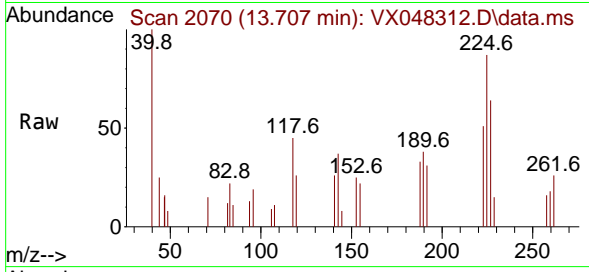
Tgt Ion:180 Resp: 727  
 Ion Ratio Lower Upper  
 180 100  
 182 90.5 47.3 142.0  
 145 19.4 16.3 48.9





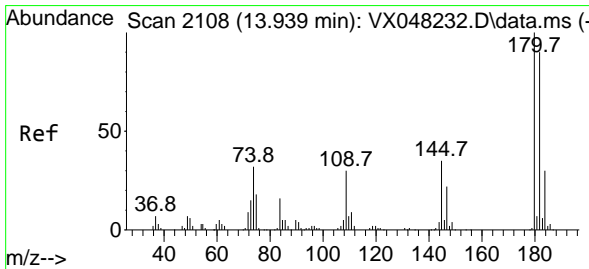
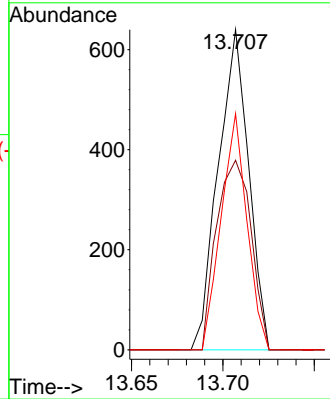
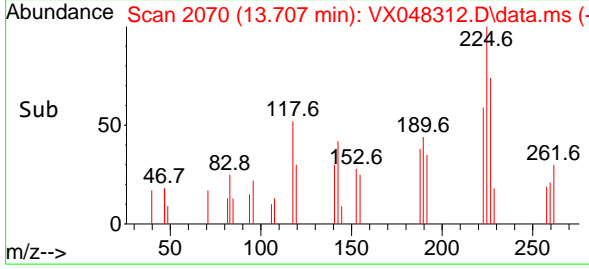
#94  
 Hexachlorobutadiene  
 Concen: 0.690 ug/l  
 RT: 13.707 min Scan# 2070  
 Delta R.T. 0.006 min  
 Lab File: VX048312.D  
 Acq: 23 Oct 2025 10:07

Instrument : MSVOA\_X  
 ClientSampleId :



Tgt Ion: 225 Resp: 741

Ion	Ratio	Lower	Upper
225	100		
223	67.3	32.6	97.7
227	62.6	32.5	97.4



#96  
 1,2,3-Trichlorobenzene  
 Concen: 0.207 ug/l  
 RT: 13.945 min Scan# 2109  
 Delta R.T. 0.006 min  
 Lab File: VX048312.D  
 Acq: 23 Oct 2025 10:07

Tgt Ion: 180 Resp: 601

Ion	Ratio	Lower	Upper
180	100		
182	68.9	46.6	139.7
145	30.8	16.9	50.7

