

Data Path : Z:\voasrv\HPCHEM1\MSVOA\_X\Data\VX102325\  
 Data File : VX048315.D  
 Acq On : 23 Oct 2025 11:26  
 Operator : JC/MD  
 Sample : PB170203TB  
 Misc : 5.0mL/MSVOA\_X/WATER  
 ALS Vial : 7 Sample Multiplier: 1

Instrument :  
 MSVOA\_X  
 ClientSampleId :  
 PB170203TB

Quant Time: Oct 24 05:41:21 2025  
 Quant Method : Z:\voasrv\HPCHEM1\MSVOA\_X\Method\82X102025W.M  
 Quant Title : SW846 8260  
 QLast Update : Mon Oct 20 14:13:59 2025  
 Response via : Initial Calibration

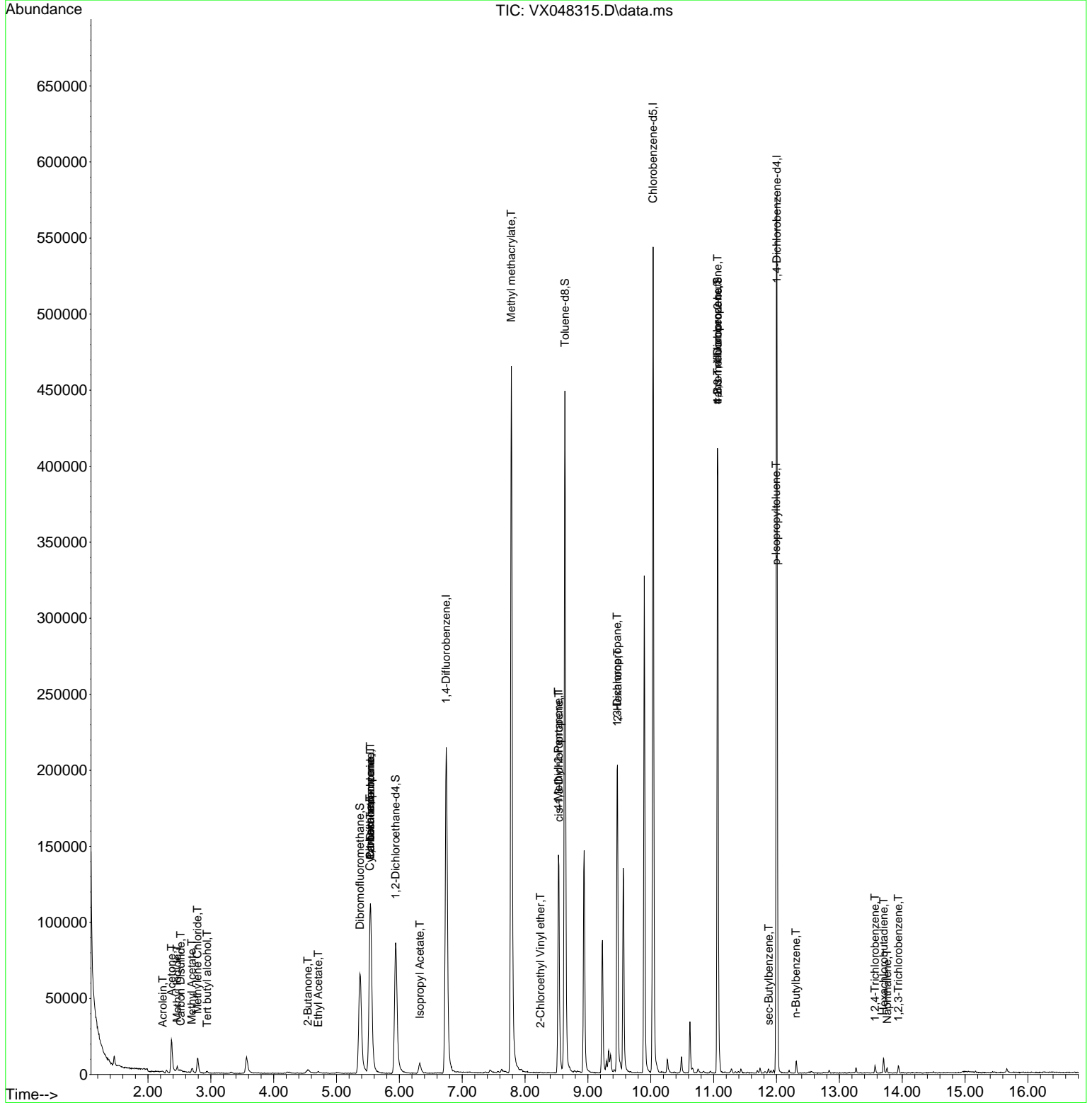
Compound	R.T.	QIon	Response	Conc	Units	Dev(Min)
Internal Standards						
1) Pentafluorobenzene	5.537	168	109241	50.000	ug/l	0.00
34) 1,4-Difluorobenzene	6.744	114	228380	50.000	ug/l	0.00
63) Chlorobenzene-d5	10.036	117	242932	50.000	ug/l	0.00
72) 1,4-Dichlorobenzene-d4	12.006	152	117869	50.000	ug/l	0.00
System Monitoring Compounds						
33) 1,2-Dichloroethane-d4	5.940	65	96337	62.898	ug/l	0.00
Spiked Amount	50.000	Range 78 - 117	Recovery	=	125.800%#	
35) Dibromofluoromethane	5.373	113	63910	40.991	ug/l	0.00
Spiked Amount	50.000	Range 75 - 124	Recovery	=	81.980%	
50) Toluene-d8	8.634	98	266865	48.832	ug/l	0.00
Spiked Amount	50.000	Range 92 - 112	Recovery	=	97.660%	
62) 4-Bromofluorobenzene	11.061	95	115532	55.570	ug/l	0.00
Spiked Amount	50.000	Range 83 - 123	Recovery	=	111.140%	
Target Compounds						
						Qvalue
10) Methyl Iodide	2.465	142	3169	2.138	ug/l #	88
11) Tert butyl alcohol	2.940	59	110	0.723	ug/l #	72
13) Acrolein	2.233	56	132	0.851	ug/l #	72
16) Acetone	2.373	43	29029	55.247	ug/l	99
17) Carbon Disulfide	2.520	76	1219	0.337	ug/l #	75
18) Methyl Acetate	2.696	43	4367	3.980	ug/l	96
20) Methylene Chloride	2.788	84	4788	3.740	ug/l	96
25) 2-Butanone	4.544	43	1688	2.538	ug/l #	83
31) Cyclohexane	5.531	56	2527	1.329	ug/l #	17
36) 1,1-Dichloropropene	5.537	75	9995	4.510	ug/l #	48
37) Ethyl Acetate	4.708	43	2489	1.355	ug/l #	81
38) Carbon Tetrachloride	5.537	117	11999	4.389	ug/l #	16
43) Isopropyl Acetate	6.324	43	9388	3.112	ug/l #	93
48) Methyl methacrylate	7.781	41	46123	30.294	ug/l #	47
51) 4-Methyl-2-Pentanone	8.531	43	55092	31.669	ug/l #	51
54) cis-1,3-Dichloropropene	8.537	75	23470	8.773	ug/l #	63
57) 1,3-Dichloropropane	9.463	76	1939	0.747	ug/l #	43
58) 2-Chloroethyl Vinyl ether	8.244	63	119	1.796	ug/l #	47
59) 2-Hexanone	9.470	43	27243	22.459	ug/l #	53
76) 1,2,3-Trichloropropane	11.061	75	63002	32.961	ug/l #	33
81) trans-1,4-Dichloro-2-b...	11.061	75	63002	80.190	ug/l #	10
85) sec-Butylbenzene	11.878	105	1834	0.208	ug/l	91
86) p-Isopropyltoluene	11.993	119	1800	0.236	ug/l #	67
89) n-Butylbenzene	12.310	91	2868	0.414	ug/l	92
93) 1,2,4-Trichlorobenzene	13.566	180	1257	0.486	ug/l	93
94) Hexachlorobutadiene	13.707	225	1330	1.438	ug/l	95
95) Naphthalene	13.761	128	2098	0.306	ug/l	97
96) 1,2,3-Trichlorobenzene	13.938	180	1127	0.475	ug/l	88

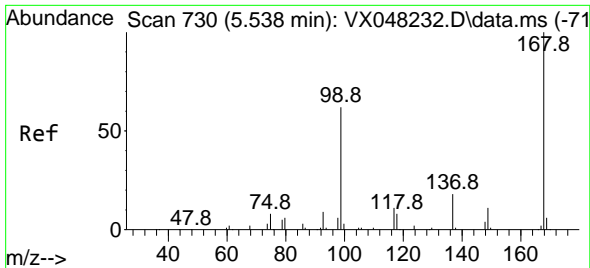
(#) = qualifier out of range (m) = manual integration (+) = signals summed

Data Path : Z:\voasrv\HPCHEM1\MSVOA\_X\Data\VX102325\  
Data File : VX048315.D  
Acq On : 23 Oct 2025 11:26  
Operator : JC/MD  
Sample : PB170203TB  
Misc : 5.0mL/MSVOA\_X/WATER  
ALS Vial : 7 Sample Multiplier: 1

Instrument :  
MSVOA\_X  
ClientSampleId :  
PB170203TB

Quant Time: Oct 24 05:41:21 2025  
Quant Method : Z:\voasrv\HPCHEM1\MSVOA\_X\Method\82X102025W.M  
Quant Title : SW846 8260  
QLast Update : Mon Oct 20 14:13:59 2025  
Response via : Initial Calibration

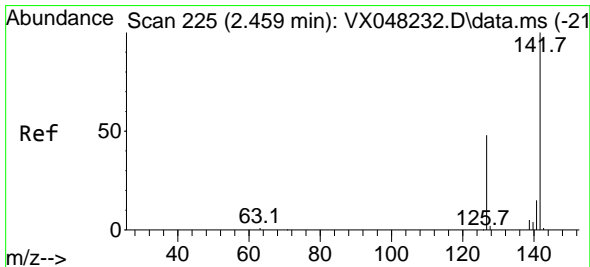
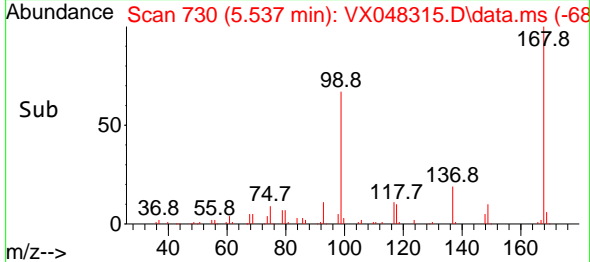
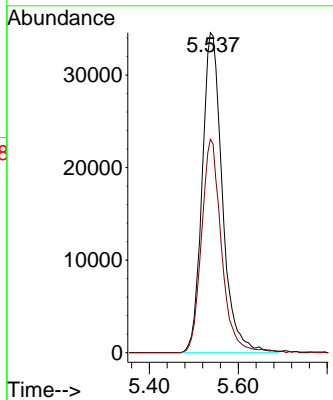
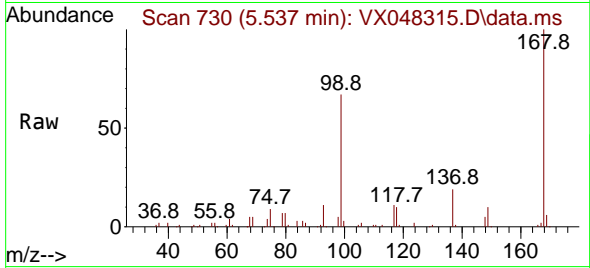




#1  
 Pentafluorobenzene  
 Concen: 50.000 ug/l  
 RT: 5.537 min Scan# 71  
 Delta R.T. -0.007 min  
 Lab File: VX048315.D  
 Acq: 23 Oct 2025 11:26

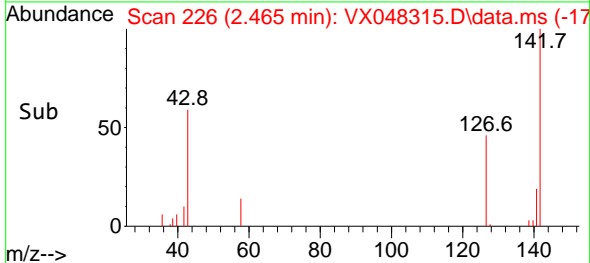
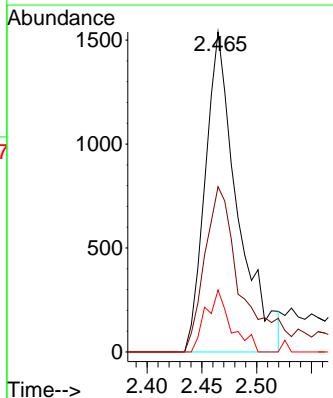
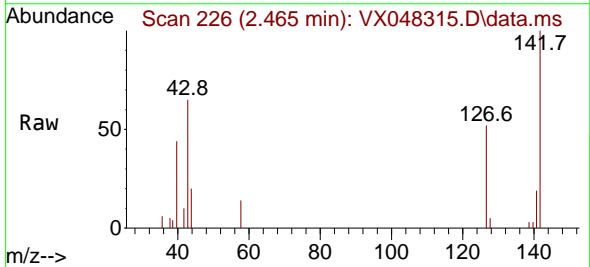
Instrument : MSVOA\_X  
 ClientSampleId : PB170203TB

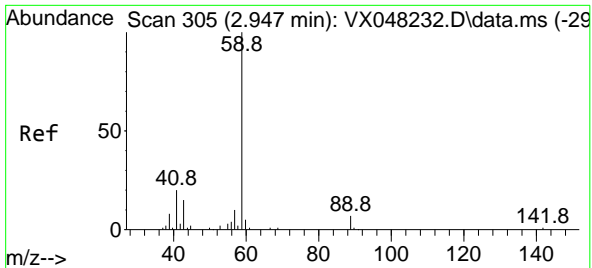
Tgt Ion:168 Resp: 109241  
 Ion Ratio Lower Upper  
 168 100  
 99 66.7 46.4 69.6



#10  
 Methyl Iodide  
 Concen: 2.138 ug/l  
 RT: 2.465 min Scan# 226  
 Delta R.T. 0.006 min  
 Lab File: VX048315.D  
 Acq: 23 Oct 2025 11:26

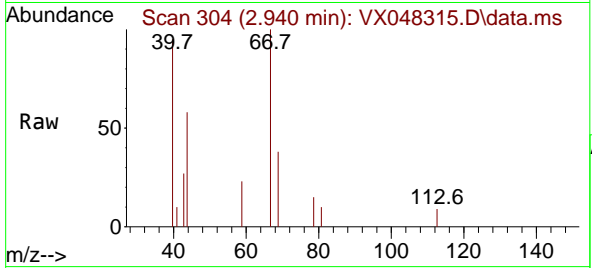
Tgt Ion:142 Resp: 3169  
 Ion Ratio Lower Upper  
 142 100  
 127 58.1 38.5 57.7#  
 141 15.1 11.6 17.4



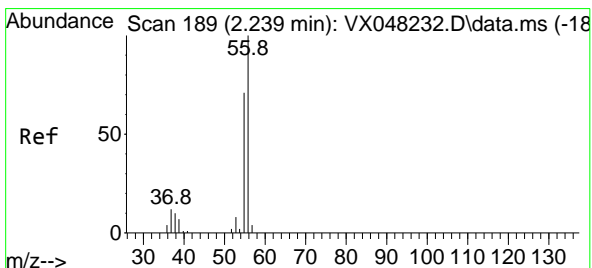
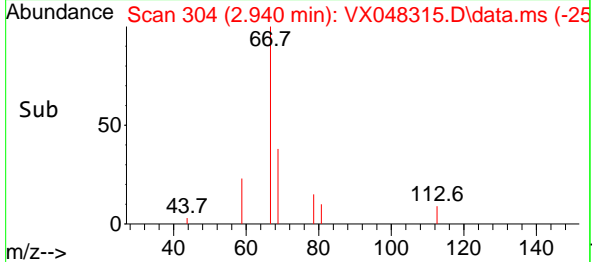
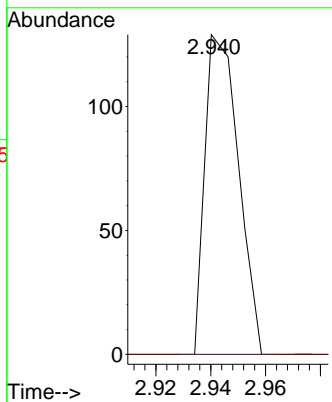


#11  
 Tert butyl alcohol  
 Concen: 0.723 ug/l  
 RT: 2.940 min Scan# 30  
 Delta R.T. -0.000 min  
 Lab File: VX048315.D  
 Acq: 23 Oct 2025 11:26

Instrument : MSVOA\_X  
 ClientSampleId : PB170203TB

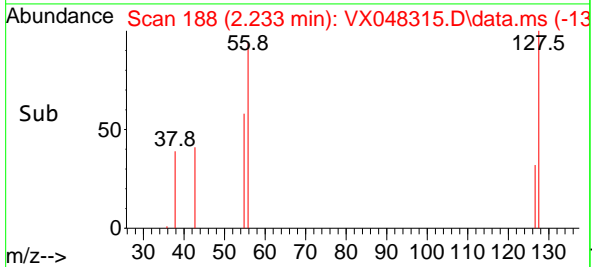
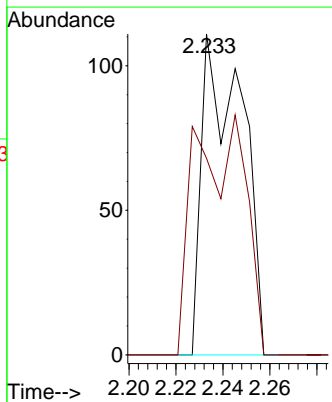
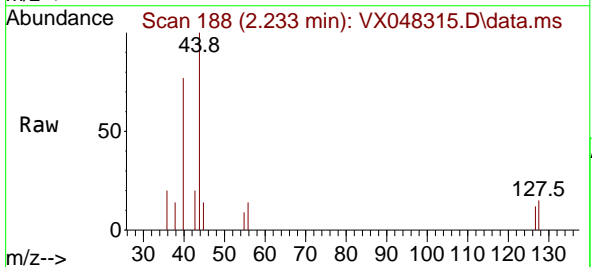


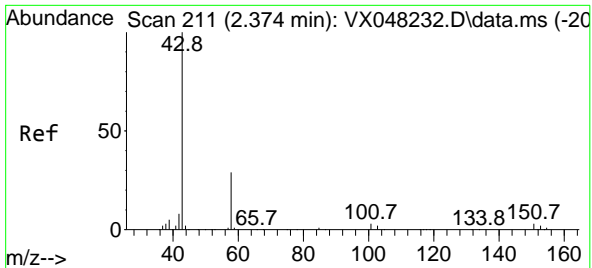
Tgt Ion: 59 Resp: 110  
 Ion Ratio Lower Upper  
 59 100  
 57 0.0 8.2 12.4#



#13  
 Acrolein  
 Concen: 0.851 ug/l  
 RT: 2.233 min Scan# 188  
 Delta R.T. -0.000 min  
 Lab File: VX048315.D  
 Acq: 23 Oct 2025 11:26

Tgt Ion: 56 Resp: 132  
 Ion Ratio Lower Upper  
 56 100  
 55 93.2 56.1 84.1#

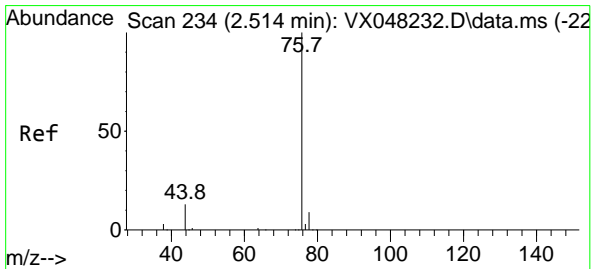
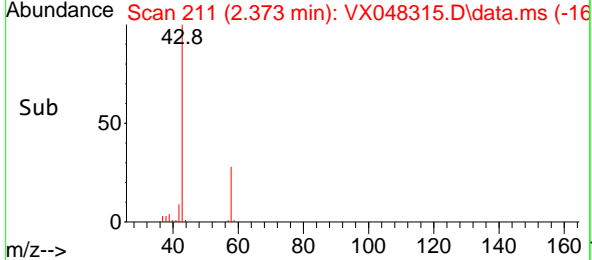
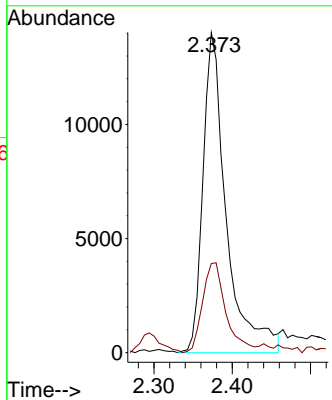
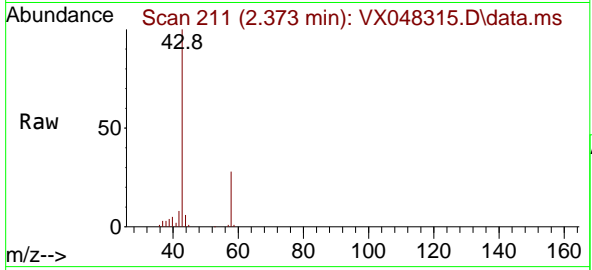




#16  
 Acetone  
 Concen: 55.247 ug/l  
 RT: 2.373 min Scan# 211  
 Delta R.T. -0.000 min  
 Lab File: VX048315.D  
 Acq: 23 Oct 2025 11:26

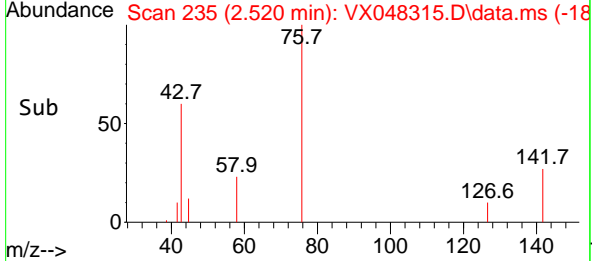
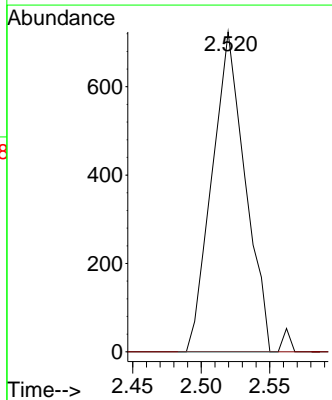
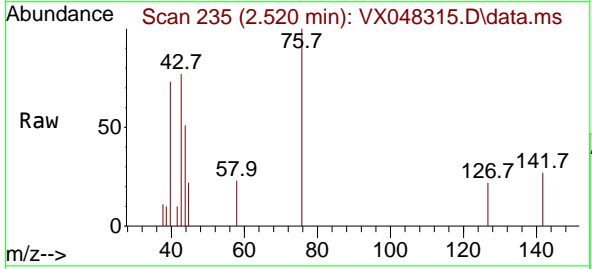
Instrument : MSVOA\_X  
 ClientSampleId : PB170203TB

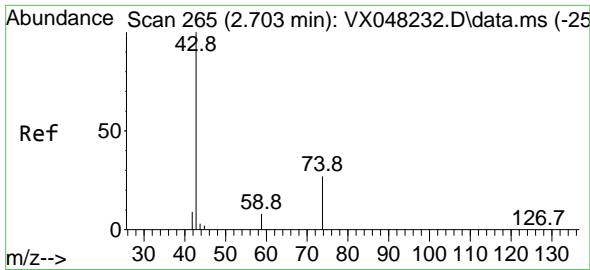
Tgt Ion: 43 Resp: 29029  
 Ion Ratio Lower Upper  
 43 100  
 58 28.7 23.4 35.2



#17  
 Carbon Disulfide  
 Concen: 0.337 ug/l  
 RT: 2.520 min Scan# 235  
 Delta R.T. 0.006 min  
 Lab File: VX048315.D  
 Acq: 23 Oct 2025 11:26

Tgt Ion: 76 Resp: 1219  
 Ion Ratio Lower Upper  
 76 100  
 78 0.0 7.1 10.7#

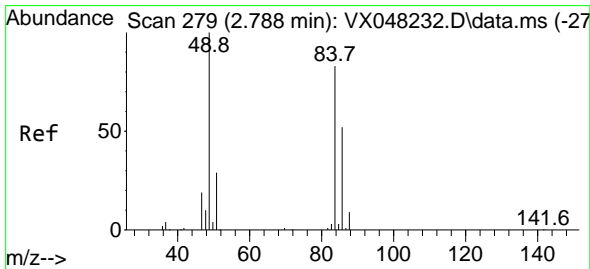
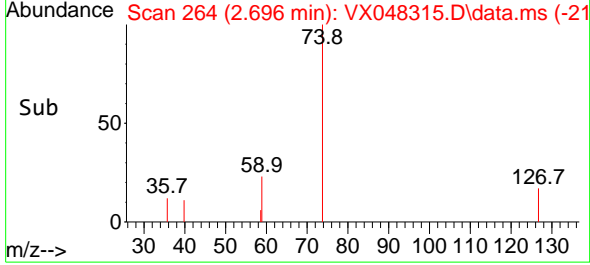
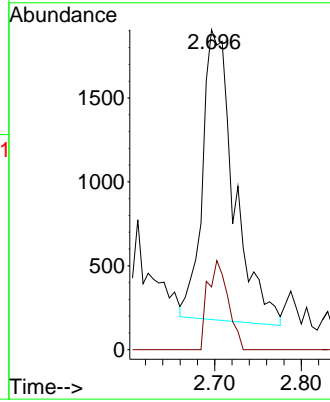
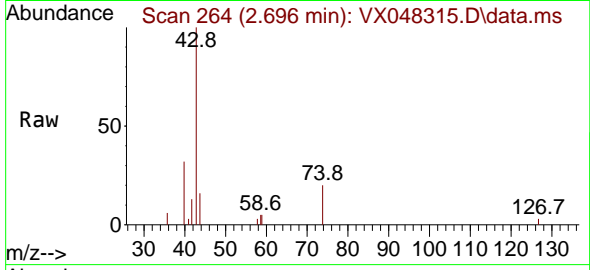




#18  
 Methyl Acetate  
 Concen: 3.980 ug/l  
 RT: 2.696 min Scan# 20  
 Delta R.T. -0.000 min  
 Lab File: VX048315.D  
 Acq: 23 Oct 2025 11:26

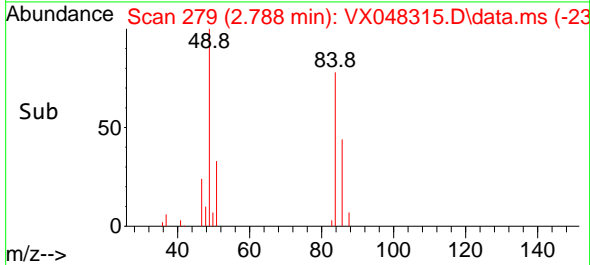
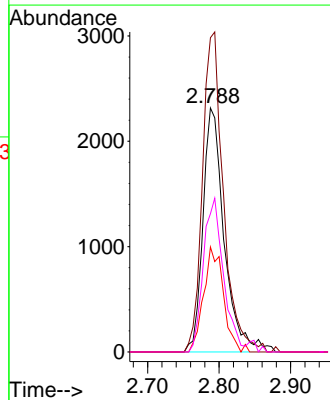
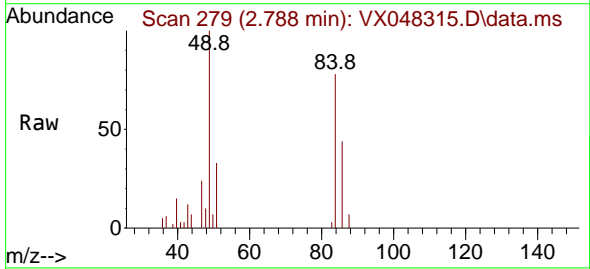
Instrument : MSVOA\_X  
 ClientSampleId : PB170203TB

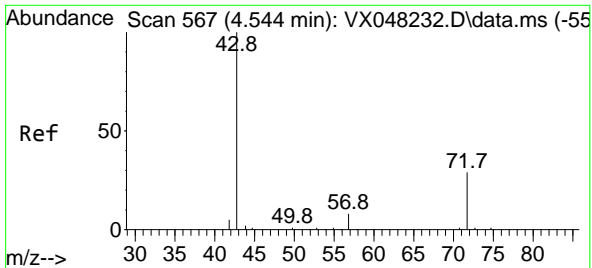
Tgt Ion: 43 Resp: 4367  
 Ion Ratio Lower Upper  
 43 100  
 74 19.8 17.5 26.3



#20  
 Methylene Chloride  
 Concen: 3.740 ug/l  
 RT: 2.788 min Scan# 279  
 Delta R.T. -0.000 min  
 Lab File: VX048315.D  
 Acq: 23 Oct 2025 11:26

Tgt Ion: 84 Resp: 4788  
 Ion Ratio Lower Upper  
 84 100  
 49 128.8 104.1 156.1  
 51 43.0 31.3 46.9  
 86 56.6 51.3 76.9

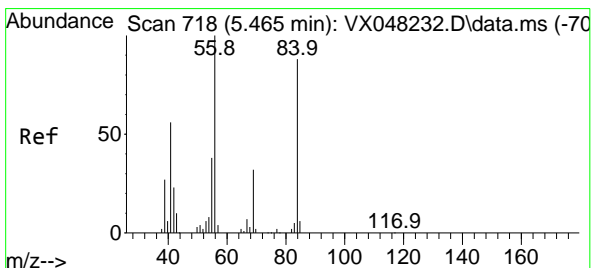
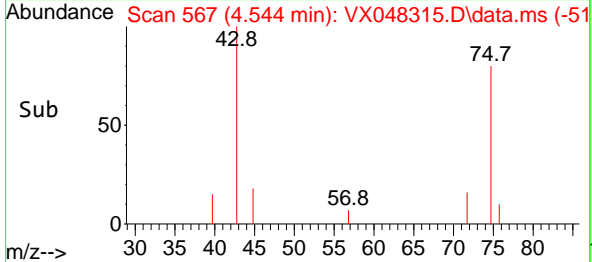
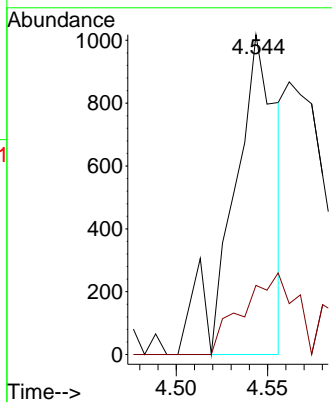
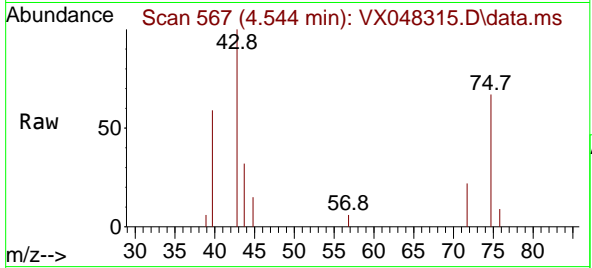




#25  
 2-Butanone  
 Concen: 2.538 ug/l  
 RT: 4.544 min Scan# 50  
 Delta R.T. 0.006 min  
 Lab File: VX048315.D  
 Acq: 23 Oct 2025 11:26

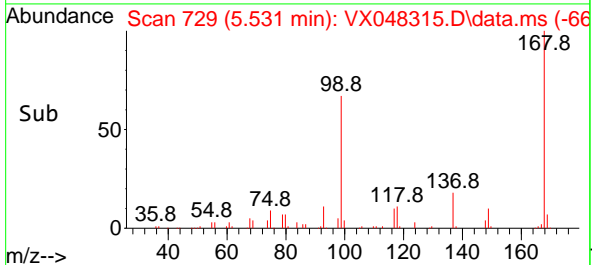
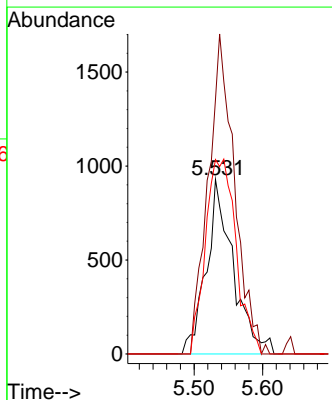
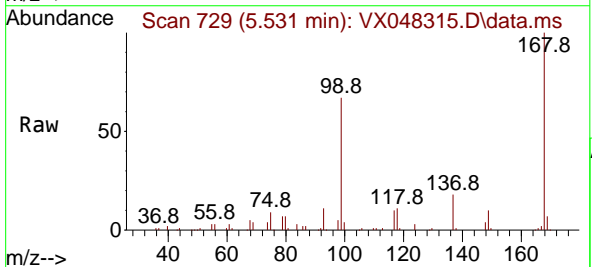
Instrument : MSVOA\_X  
 ClientSampleId : PB170203TB

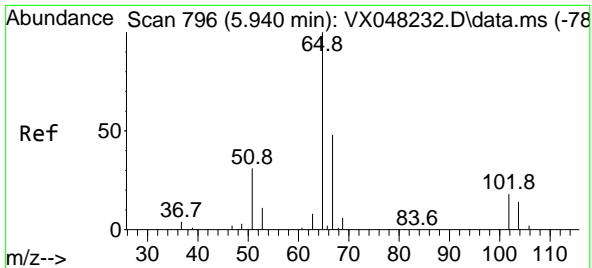
Tgt Ion: 43 Resp: 1688  
 Ion Ratio Lower Upper  
 43 100  
 72 16.3 19.9 29.9#



#31  
 Cyclohexane  
 Concen: 1.329 ug/l  
 RT: 5.531 min Scan# 729  
 Delta R.T. 0.073 min  
 Lab File: VX048315.D  
 Acq: 23 Oct 2025 11:26

Tgt Ion: 56 Resp: 2527  
 Ion Ratio Lower Upper  
 56 100  
 69 145.9 23.0 34.6#  
 84 111.4 64.6 97.0#

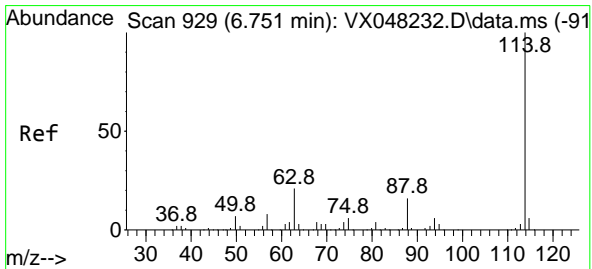
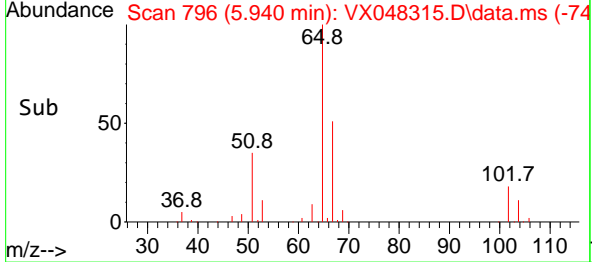
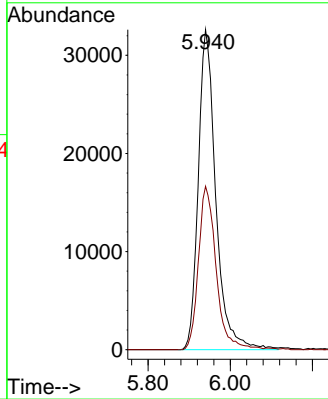
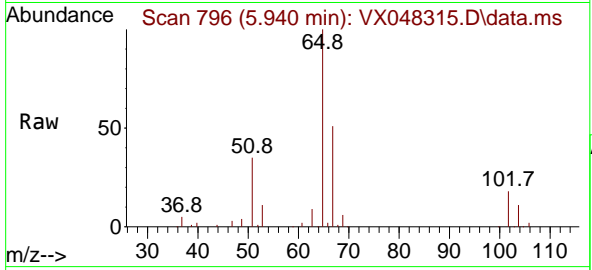




#33  
 1,2-Dichloroethane-d4  
 Concen: 62.898 ug/l  
 RT: 5.940 min Scan# 796  
 Delta R.T. -0.000 min  
 Lab File: VX048315.D  
 Acq: 23 Oct 2025 11:26

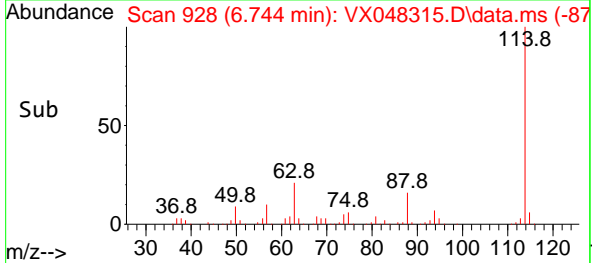
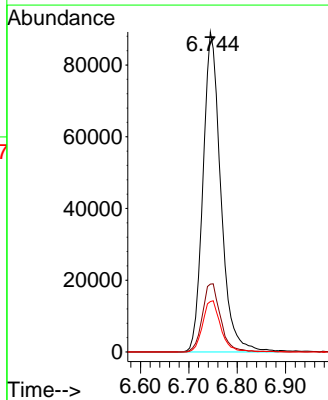
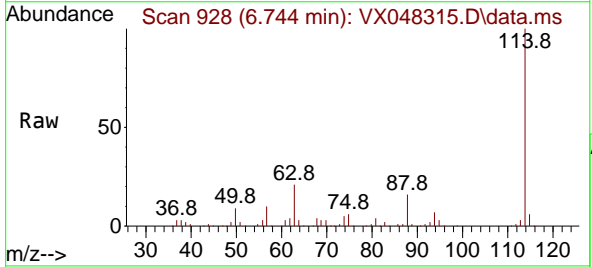
Instrument : MSVOA\_X  
 ClientSampleId : PB170203TB

Tgt Ion: 65 Resp: 96337  
 Ion Ratio Lower Upper  
 65 100  
 67 51.6 0.0 105.0

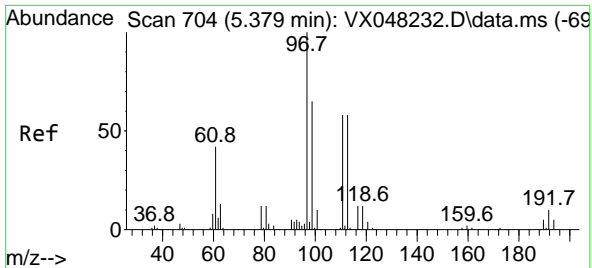


#34  
 1,4-Difluorobenzene  
 Concen: 50.000 ug/l  
 RT: 6.744 min Scan# 928  
 Delta R.T. -0.001 min  
 Lab File: VX048315.D  
 Acq: 23 Oct 2025 11:26

Tgt Ion: 114 Resp: 228380  
 Ion Ratio Lower Upper  
 114 100  
 63 21.2 0.0 43.2  
 88 15.8 0.0 33.6



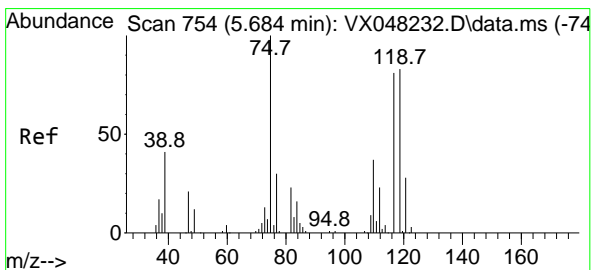
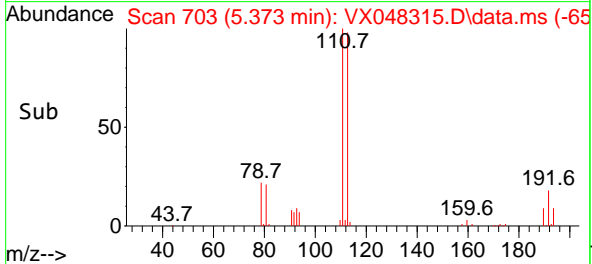
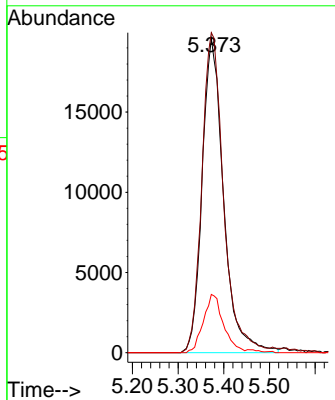
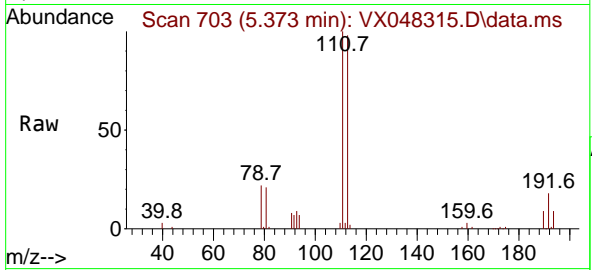




#35  
 Dibromofluoromethane  
 Concen: 40.991 ug/l  
 RT: 5.373 min Scan# 703  
 Delta R.T. -0.000 min  
 Lab File: VX048315.D  
 Acq: 23 Oct 2025 11:26

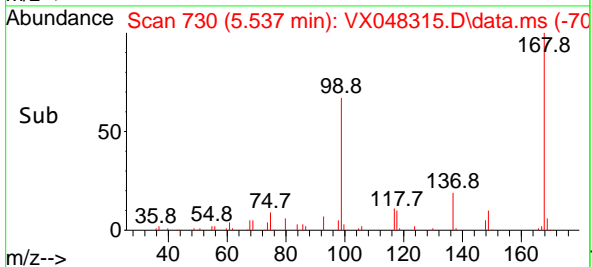
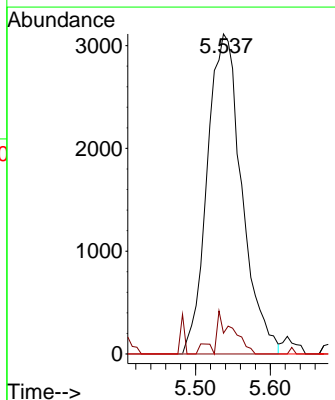
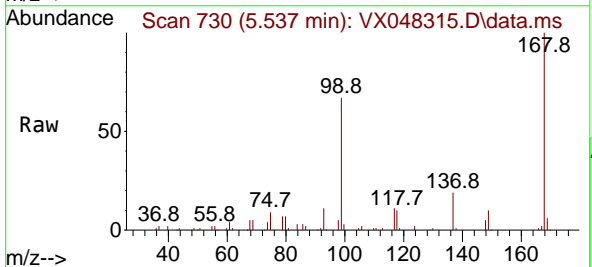
Instrument : MSVOA\_X  
 ClientSampleId : PB170203TB

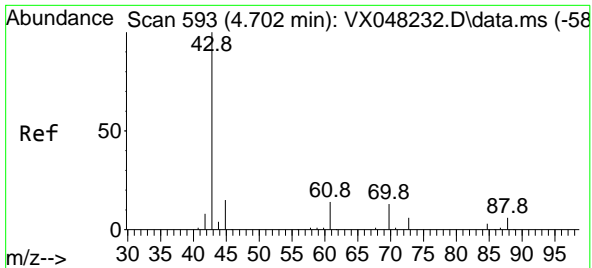
Tgt Ion	Resp	Lower	Upper
113	100		
111	102.6	82.2	123.4
192	17.3	15.1	22.7



#36  
 1,1-Dichloropropene  
 Concen: 4.510 ug/l  
 RT: 5.537 min Scan# 730  
 Delta R.T. -0.147 min  
 Lab File: VX048315.D  
 Acq: 23 Oct 2025 11:26

Tgt Ion	Resp	Lower	Upper
75	100		
110	7.0	17.7	53.1#
77	0.0	24.3	36.5#



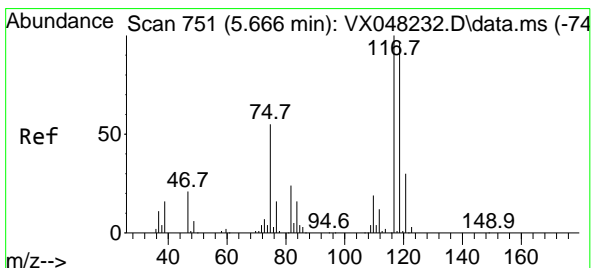
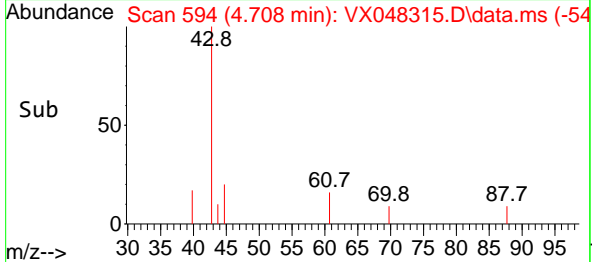
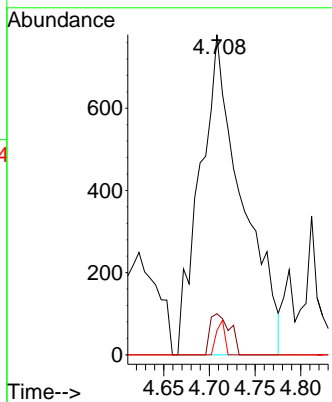
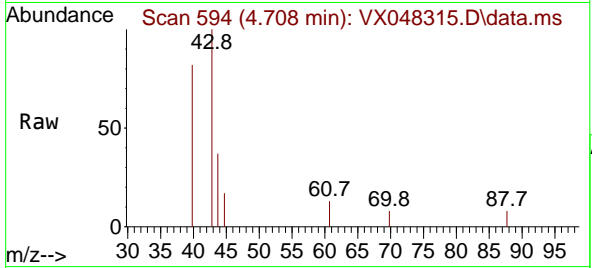


#37  
 Ethyl Acetate  
 Concen: 1.355 ug/l  
 RT: 4.708 min Scan# 593  
 Delta R.T. 0.012 min  
 Lab File: VX048315.D  
 Acq: 23 Oct 2025 11:26

Instrument : MSVOA\_X  
 ClientSampleId : PB170203TB

Tgt Ion: 43 Resp: 2489

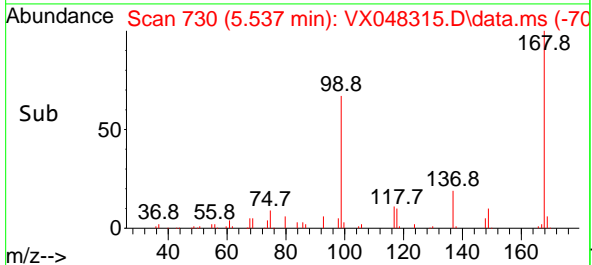
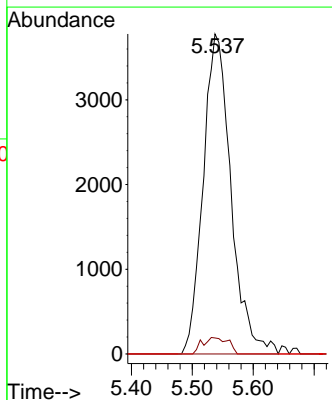
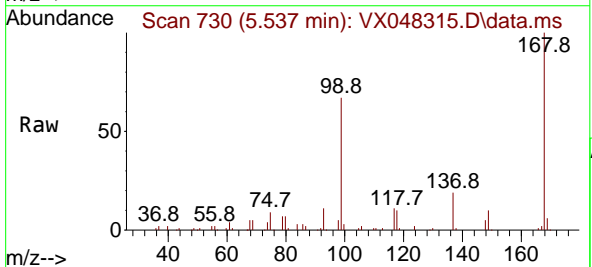
Ion	Ratio	Lower	Upper
43	100		
61	6.0	10.6	15.8#
70	2.1	7.8	11.6#

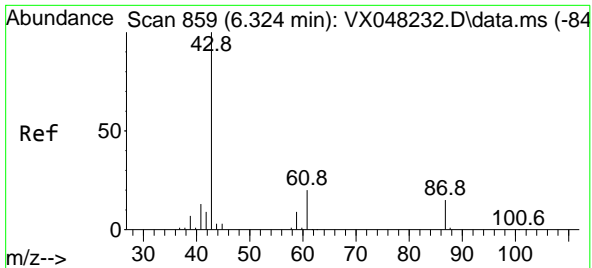


#38  
 Carbon Tetrachloride  
 Concen: 4.389 ug/l  
 RT: 5.537 min Scan# 730  
 Delta R.T. -0.128 min  
 Lab File: VX048315.D  
 Acq: 23 Oct 2025 11:26

Tgt Ion: 117 Resp: 11999

Ion	Ratio	Lower	Upper
117	100		
119	5.0	77.2	115.8#
121	0.0	24.8	37.2#

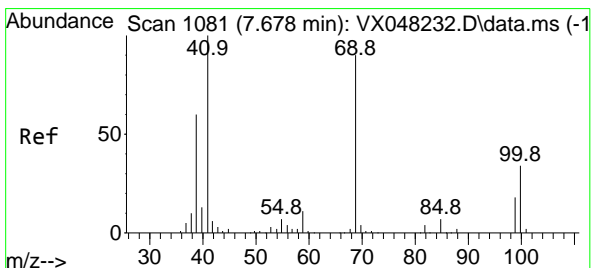
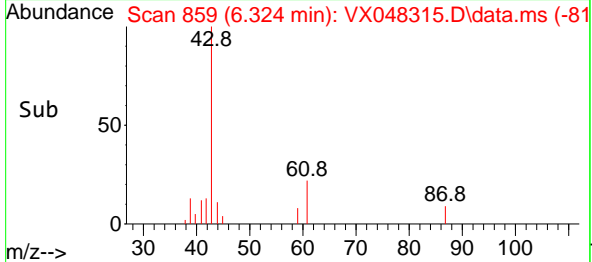
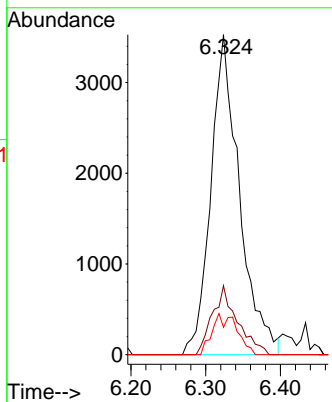
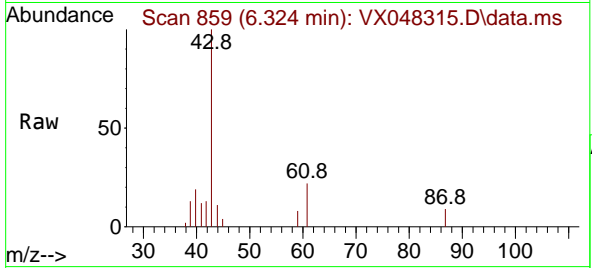




#43  
 Isopropyl Acetate  
 Concen: 3.112 ug/l  
 RT: 6.324 min Scan# 81  
 Delta R.T. -0.000 min  
 Lab File: VX048315.D  
 Acq: 23 Oct 2025 11:26

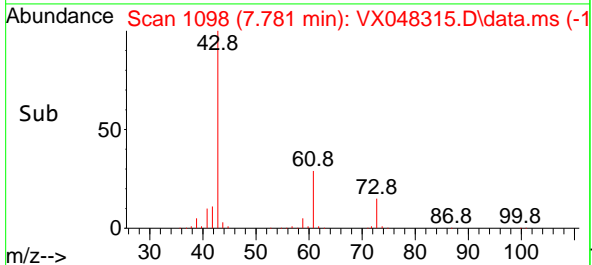
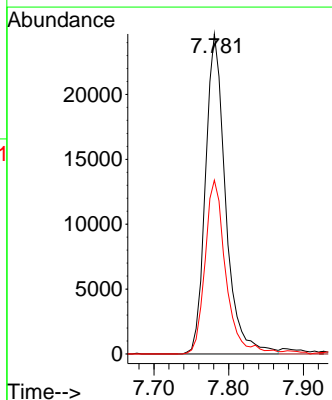
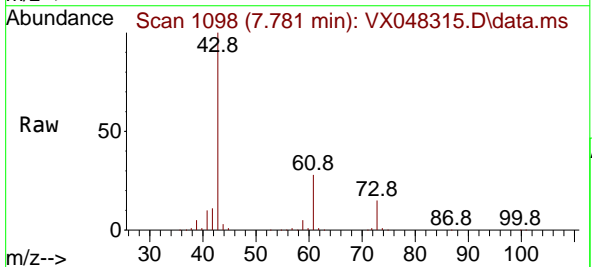
Instrument : MSVOA\_X  
 ClientSampleId : PB170203TB

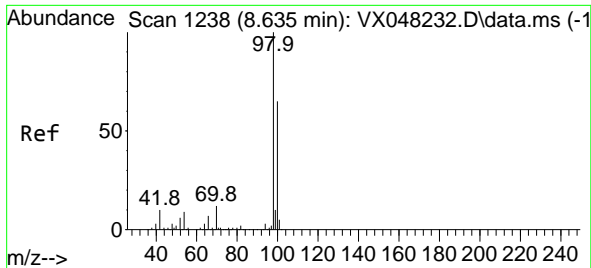
Tgt Ion	Resp	Lower	Upper
43	9388		
61	19.0	14.9	22.3
87	5.5	9.4	14.2#



#48  
 Methyl methacrylate  
 Concen: 30.294 ug/l  
 RT: 7.781 min Scan# 1098  
 Delta R.T. 0.103 min  
 Lab File: VX048315.D  
 Acq: 23 Oct 2025 11:26

Tgt Ion	Resp	Lower	Upper
41	46123		
69	0.0	63.4	95.0#
39	56.1	47.1	70.7

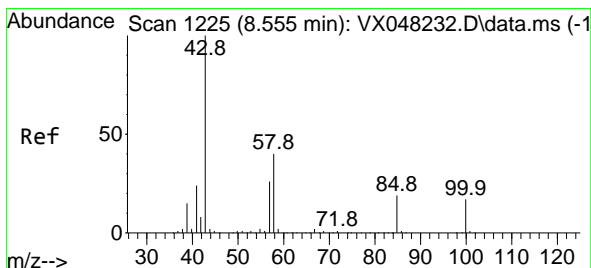
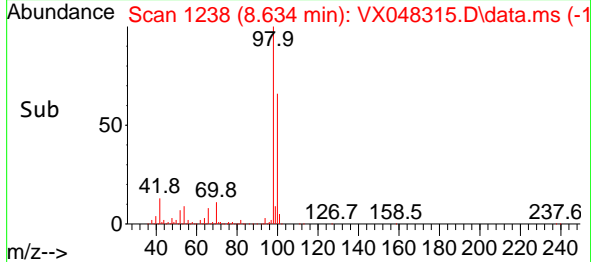
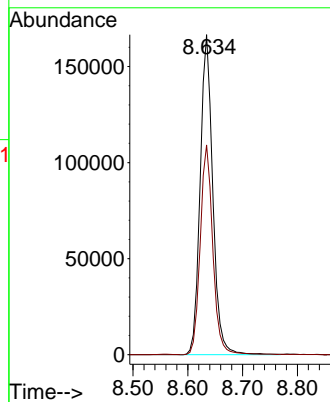
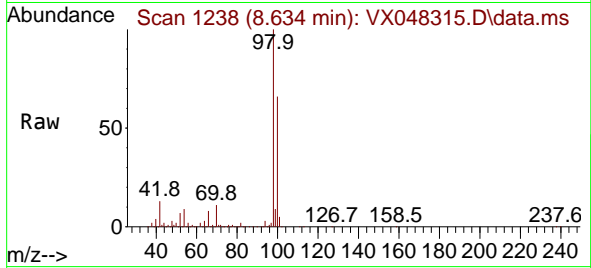




#50  
 Toluene-d8  
 Concen: 48.832 ug/l  
 RT: 8.634 min Scan# 11  
 Delta R.T. -0.000 min  
 Lab File: VX048315.D  
 Acq: 23 Oct 2025 11:26

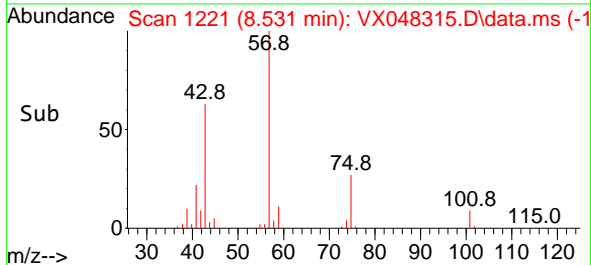
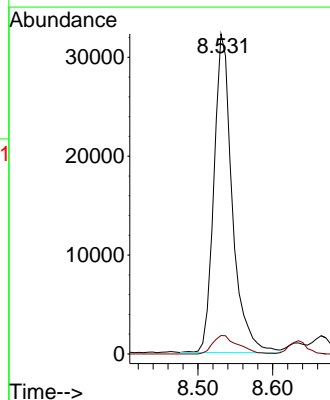
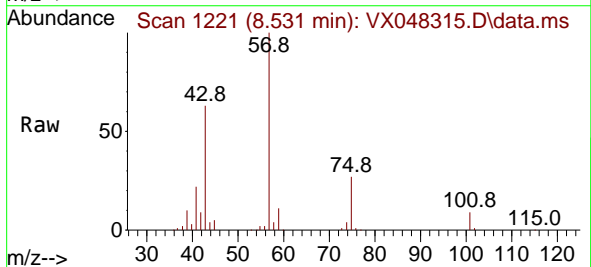
Instrument :  
 MSVOA\_X  
 ClientSampleId :  
 PB170203TB

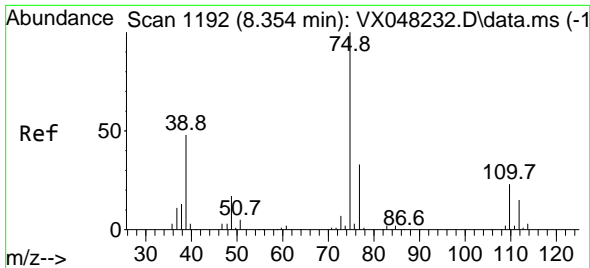
Tgt Ion: 98 Resp: 266865  
 Ion Ratio Lower Upper  
 98 100  
 100 65.4 53.0 79.4



#51  
 4-Methyl-2-Pentanone  
 Concen: 31.669 ug/l  
 RT: 8.531 min Scan# 1221  
 Delta R.T. -0.025 min  
 Lab File: VX048315.D  
 Acq: 23 Oct 2025 11:26

Tgt Ion: 43 Resp: 55092  
 Ion Ratio Lower Upper  
 43 100  
 58 8.0 29.5 44.3#





#54  
 cis-1,3-Dichloropropene  
 Concen: 8.773 ug/l  
 RT: 8.537 min Scan# 1192  
 Delta R.T. 0.189 min  
 Lab File: VX048315.D  
 Acq: 23 Oct 2025 11:26

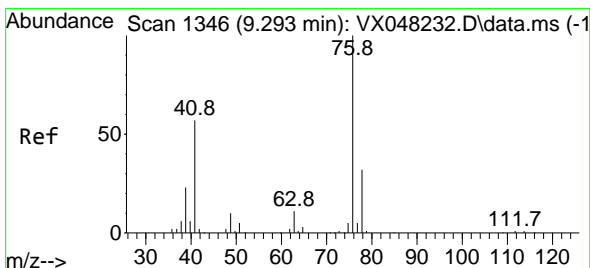
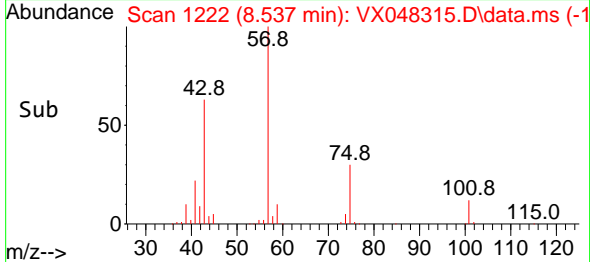
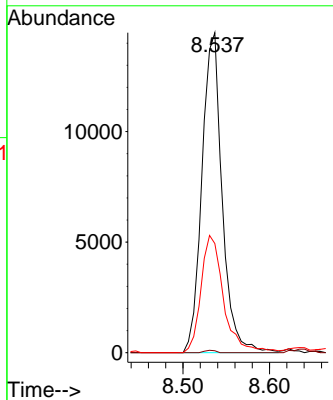
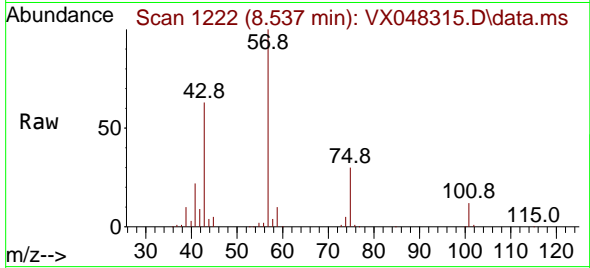
Instrument :

MSVOA\_X

ClientSampleId :

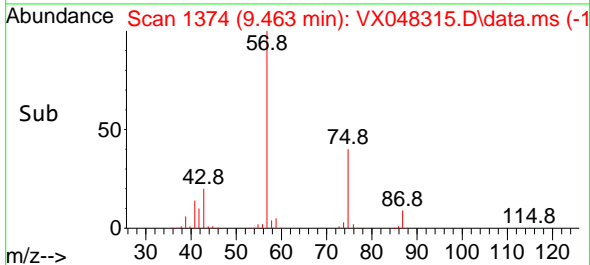
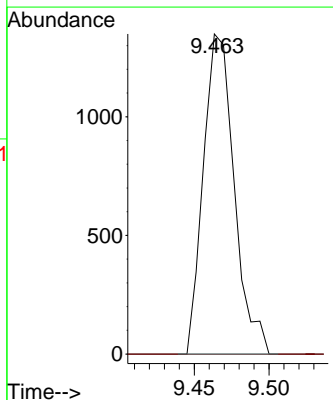
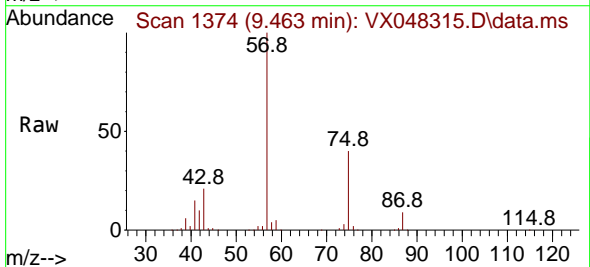
PB170203TB

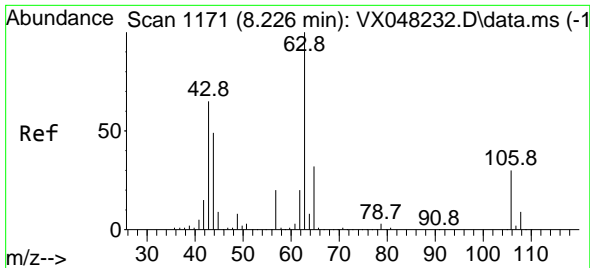
Tgt Ion: 75 Resp: 23470  
 Ion Ratio Lower Upper  
 75 100  
 77 0.6 24.9 37.3#  
 39 34.1 42.6 64.0#



#57  
 1,3-Dichloropropane  
 Concen: 0.747 ug/l  
 RT: 9.463 min Scan# 1374  
 Delta R.T. 0.170 min  
 Lab File: VX048315.D  
 Acq: 23 Oct 2025 11:26

Tgt Ion: 76 Resp: 1939  
 Ion Ratio Lower Upper  
 76 100  
 78 0.0 25.4 38.0#

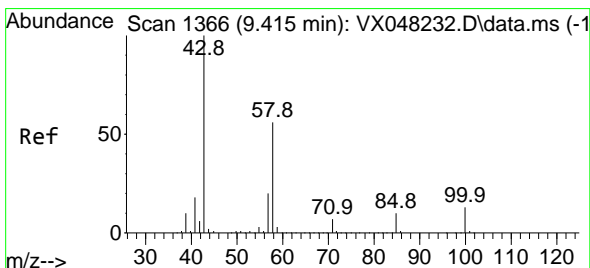
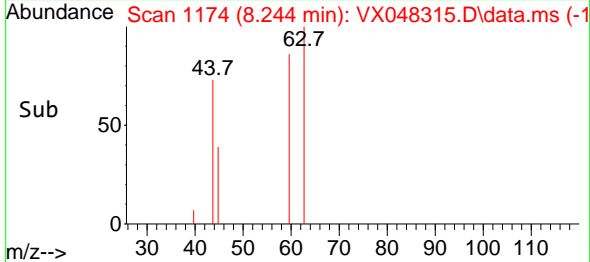
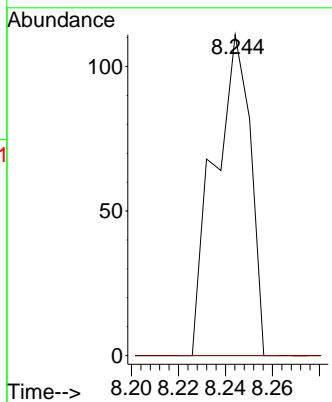
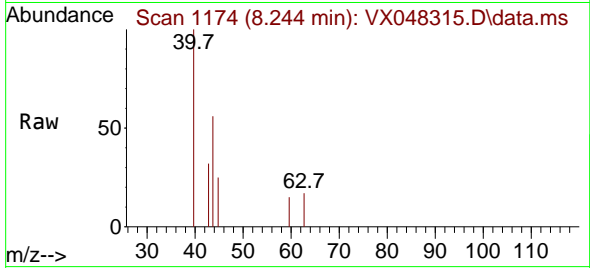




#58  
 2-Chloroethyl Vinyl ether  
 Concen: 1.796 ug/l  
 RT: 8.244 min Scan# 1174  
 Delta R.T. 0.018 min  
 Lab File: VX048315.D  
 Acq: 23 Oct 2025 11:26

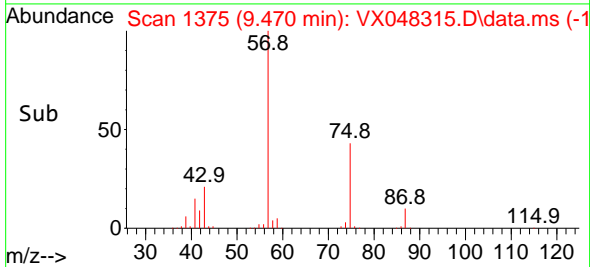
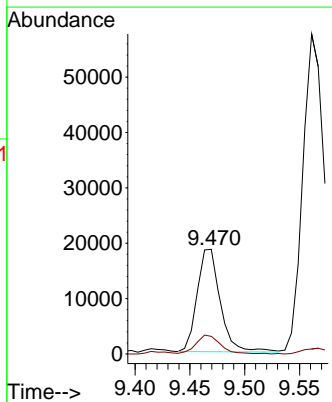
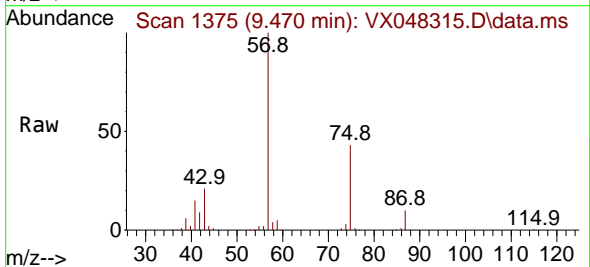
Instrument : MSVOA\_X  
 ClientSampleId : PB170203TB

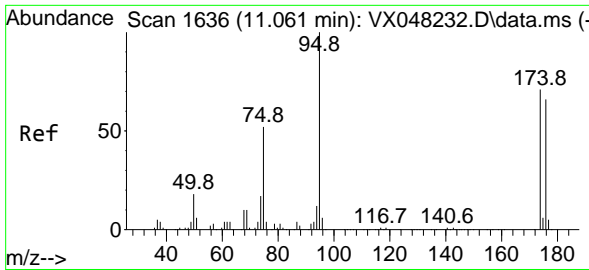
Tgt Ion: 63 Resp: 119  
 Ion Ratio Lower Upper  
 63 100  
 106 0.0 22.2 33.2#



#59  
 2-Hexanone  
 Concen: 22.459 ug/l  
 RT: 9.470 min Scan# 1375  
 Delta R.T. 0.055 min  
 Lab File: VX048315.D  
 Acq: 23 Oct 2025 11:26

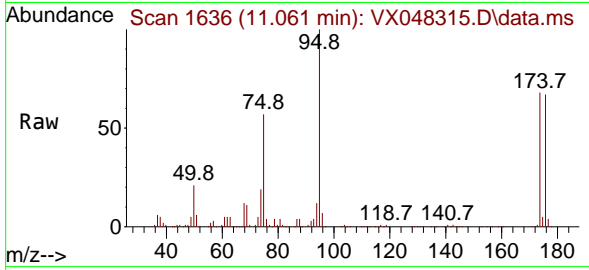
Tgt Ion: 43 Resp: 27243  
 Ion Ratio Lower Upper  
 43 100  
 58 19.5 26.3 78.8#



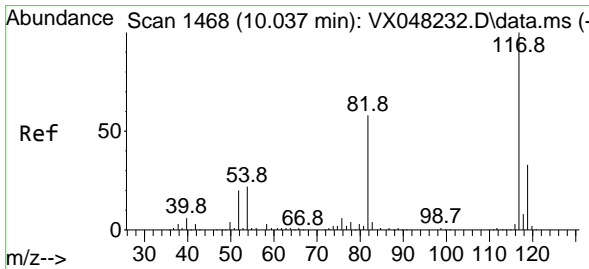
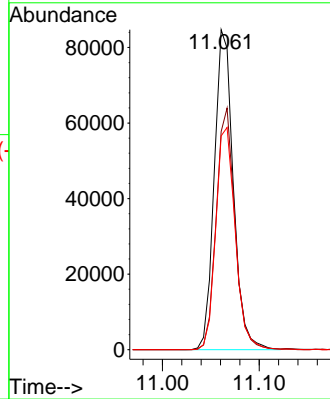
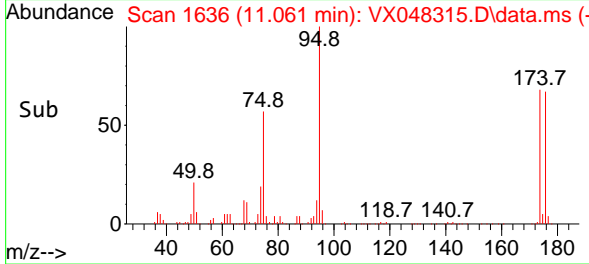


#62  
 4-Bromofluorobenzene  
 Concen: 55.570 ug/l  
 RT: 11.061 min Scan# 1  
 Delta R.T. -0.000 min  
 Lab File: VX048315.D  
 Acq: 23 Oct 2025 11:26

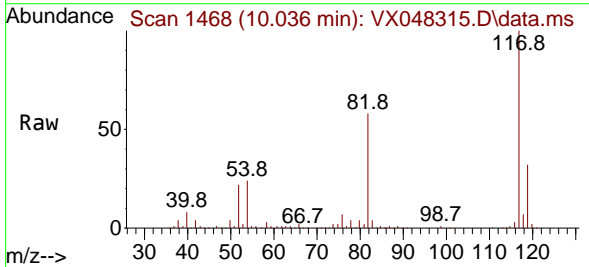
Instrument : MSVOA\_X  
 ClientSampleId : PB170203TB



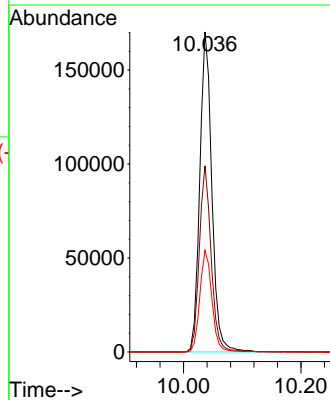
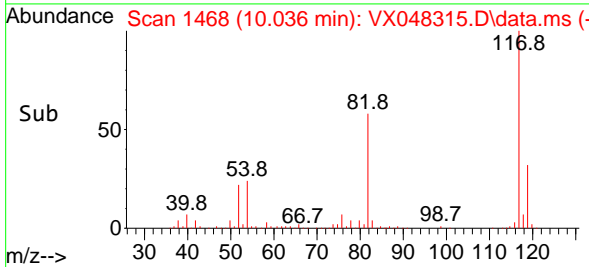
Tgt Ion: 95 Resp: 115532  
 Ion Ratio Lower Upper  
 95 100  
 174 74.4 0.0 147.8  
 176 71.3 0.0 142.8

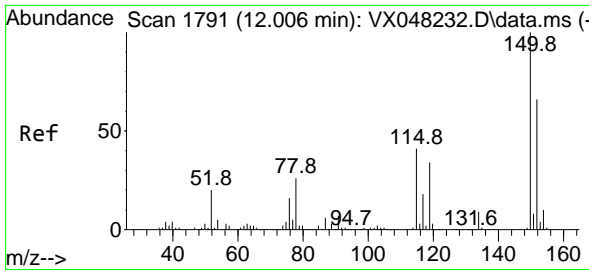


#63  
 Chlorobenzene-d5  
 Concen: 50.000 ug/l  
 RT: 10.036 min Scan# 1468  
 Delta R.T. -0.000 min  
 Lab File: VX048315.D  
 Acq: 23 Oct 2025 11:26



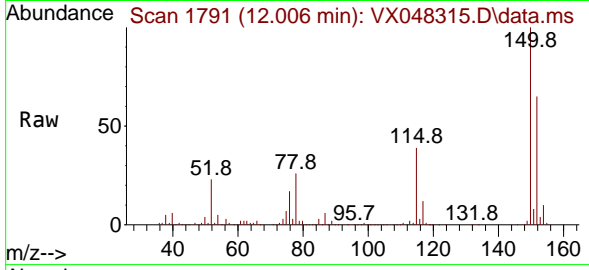
Tgt Ion: 117 Resp: 242932  
 Ion Ratio Lower Upper  
 117 100  
 82 58.2 46.5 69.7  
 119 31.8 25.9 38.9



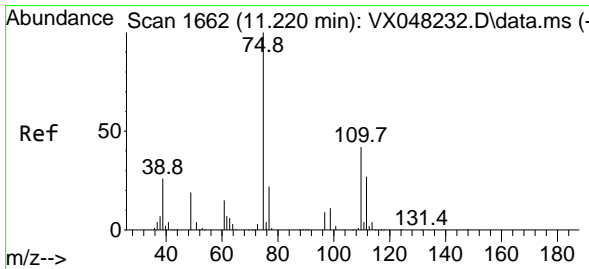
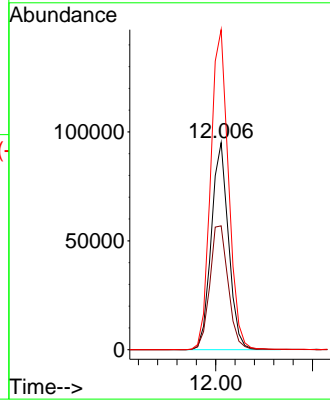
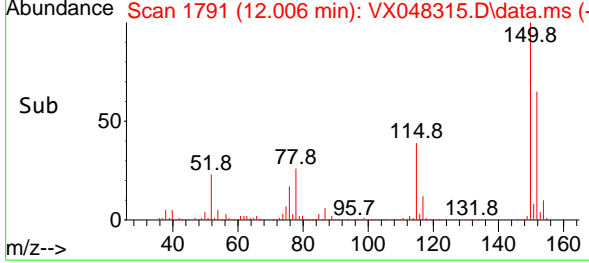


#72  
 1,4-Dichlorobenzene-d4  
 Concen: 50.000 ug/l  
 RT: 12.006 min Scan# 11  
 Delta R.T. -0.000 min  
 Lab File: VX048315.D  
 Acq: 23 Oct 2025 11:26

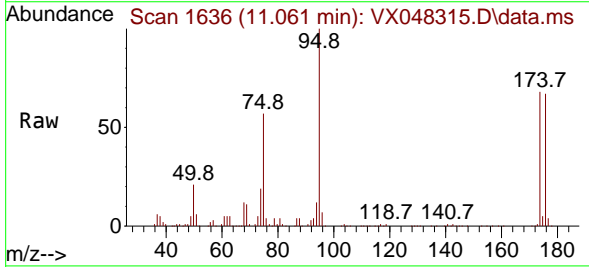
Instrument : MSVOA\_X  
 ClientSampleId : PB170203TB



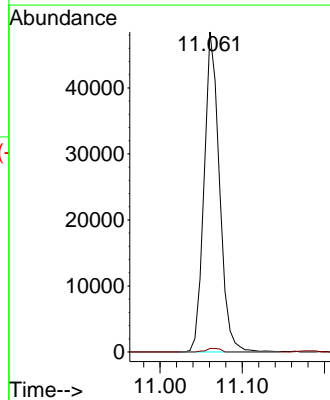
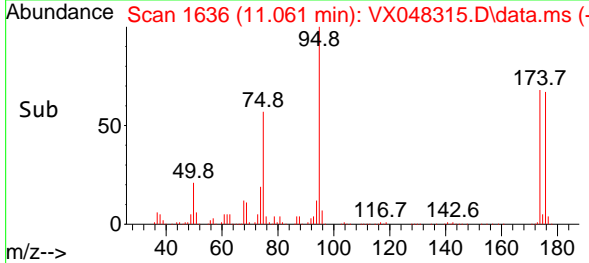
Tgt Ion:152 Resp: 117869  
 Ion Ratio Lower Upper  
 152 100  
 115 64.0 43.1 129.4  
 150 160.2 0.0 353.0



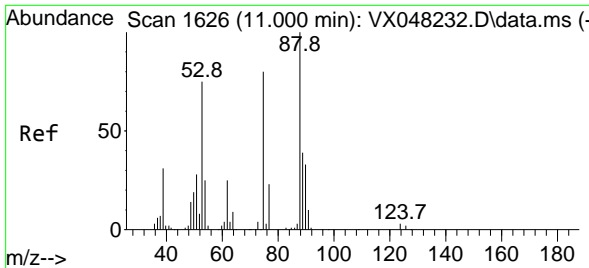
#76  
 1,2,3-Trichloropropane  
 Concen: 32.961 ug/l  
 RT: 11.061 min Scan# 1636  
 Delta R.T. -0.159 min  
 Lab File: VX048315.D  
 Acq: 23 Oct 2025 11:26



Tgt Ion: 75 Resp: 63002  
 Ion Ratio Lower Upper  
 75 100  
 77 1.0 22.4 67.2#



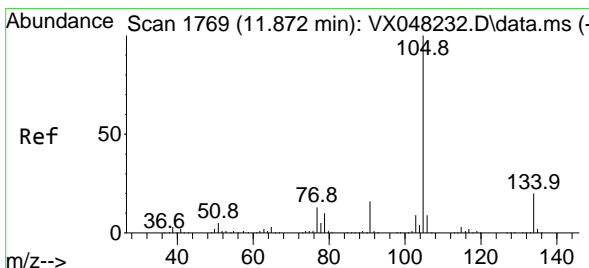
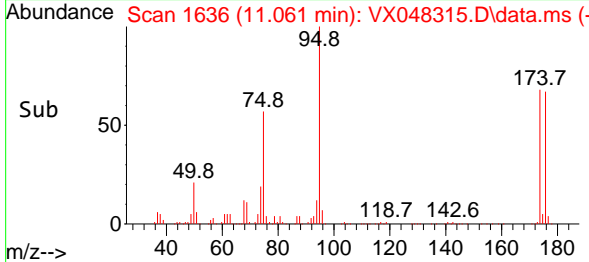
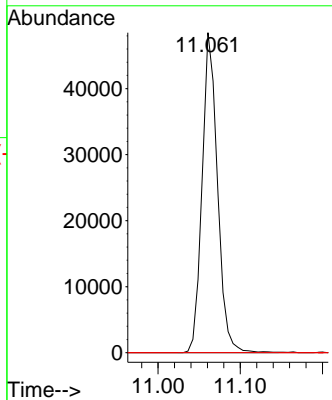
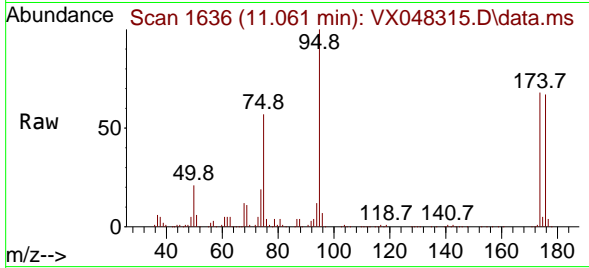




#81  
 trans-1,4-Dichloro-2-butene  
 Concen: 80.190 ug/l  
 RT: 11.061 min Scan# 11  
 Delta R.T. 0.061 min  
 Lab File: VX048315.D  
 Acq: 23 Oct 2025 11:26

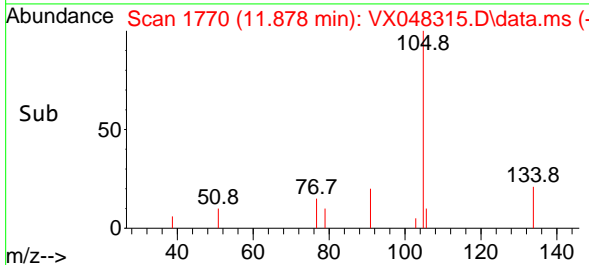
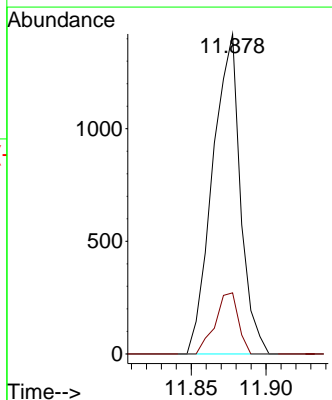
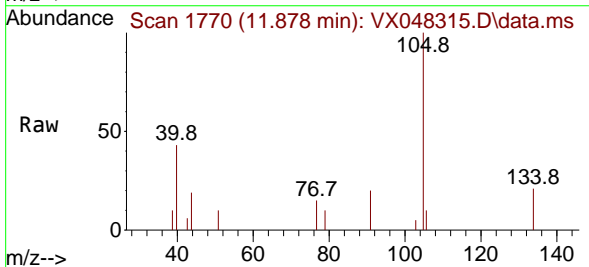
Instrument : MSVOA\_X  
 ClientSampleId : PB170203TB

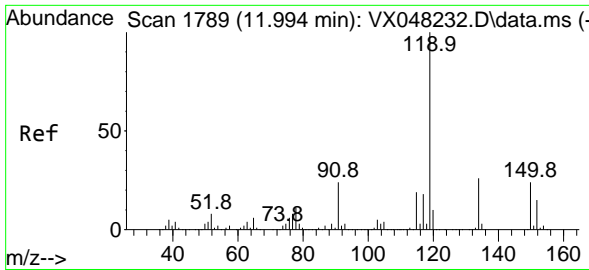
Tgt Ion: 75 Resp: 63002  
 Ion Ratio Lower Upper  
 75 100  
 53 0.0 79.5 119.3#  
 89 0.0 36.8 55.2#



#85  
 sec-Butylbenzene  
 Concen: 0.208 ug/l  
 RT: 11.878 min Scan# 1770  
 Delta R.T. 0.006 min  
 Lab File: VX048315.D  
 Acq: 23 Oct 2025 11:26

Tgt Ion: 105 Resp: 1834  
 Ion Ratio Lower Upper  
 105 100  
 134 15.9 10.1 30.1



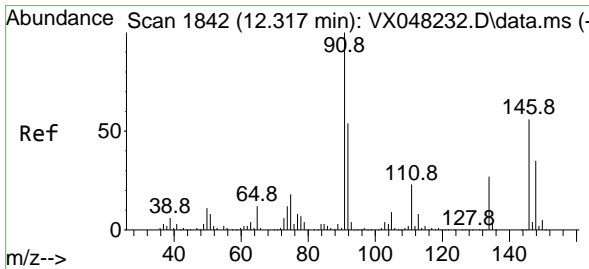
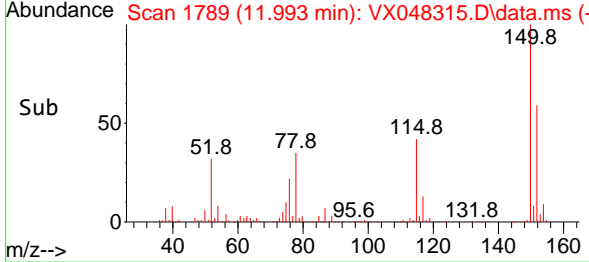
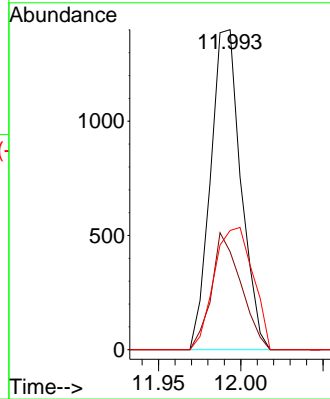
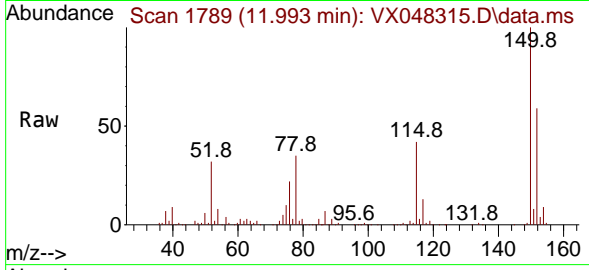


#86  
 p-Isopropyltoluene  
 Concen: 0.236 ug/l  
 RT: 11.993 min Scan# 11  
 Delta R.T. 0.006 min  
 Lab File: VX048315.D  
 Acq: 23 Oct 2025 11:26

Instrument :  
 MSVOA\_X  
 ClientSampleId :  
 PB170203TB

Tgt Ion:119 Resp: 1800

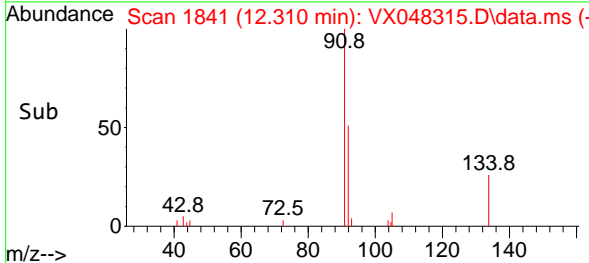
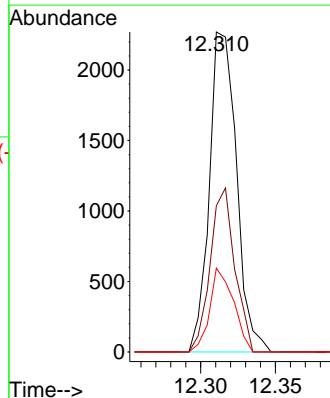
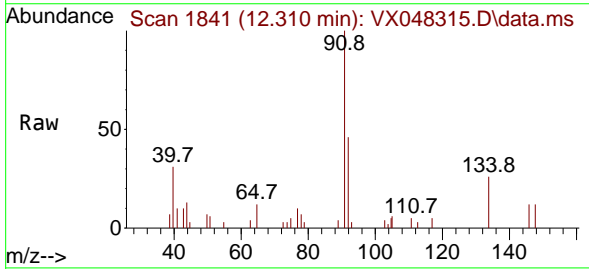
Ion	Ratio	Lower	Upper
119	100		
134	35.4	13.0	39.0
91	48.7	12.1	36.3#

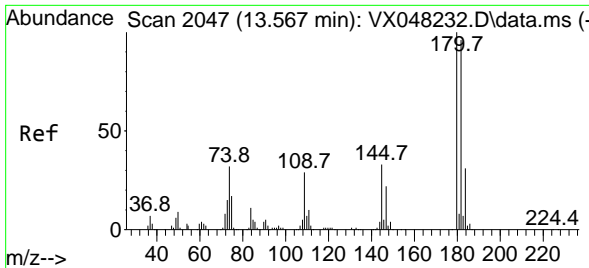


#89  
 n-Butylbenzene  
 Concen: 0.414 ug/l  
 RT: 12.310 min Scan# 1841  
 Delta R.T. -0.000 min  
 Lab File: VX048315.D  
 Acq: 23 Oct 2025 11:26

Tgt Ion: 91 Resp: 2868

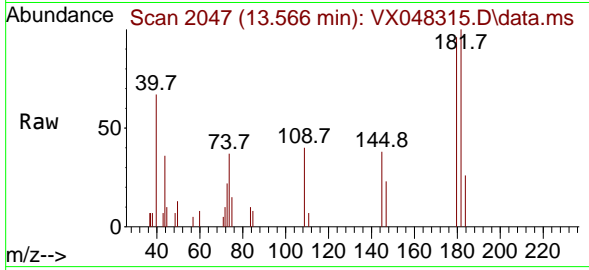
Ion	Ratio	Lower	Upper
91	100		
92	46.4	26.9	80.6
134	22.9	12.7	38.1



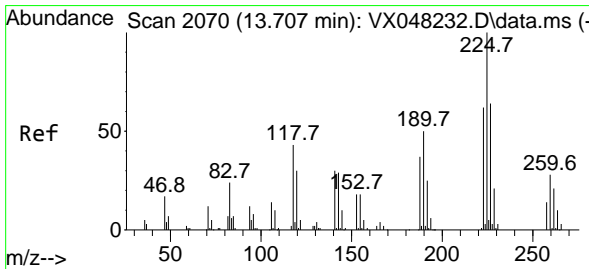
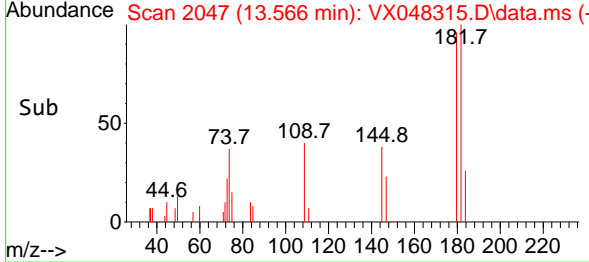
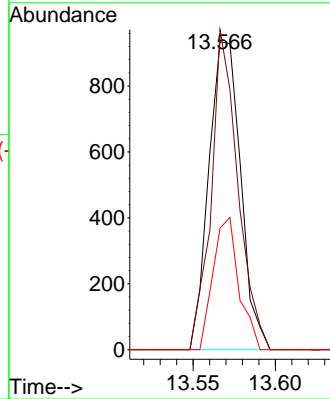


#93  
 1,2,4-Trichlorobenzene  
 Concen: 0.486 ug/l  
 RT: 13.566 min Scan# 2047  
 Delta R.T. -0.000 min  
 Lab File: VX048315.D  
 Acq: 23 Oct 2025 11:26

Instrument : MSVOA\_X  
 ClientSampleId : PB170203TB

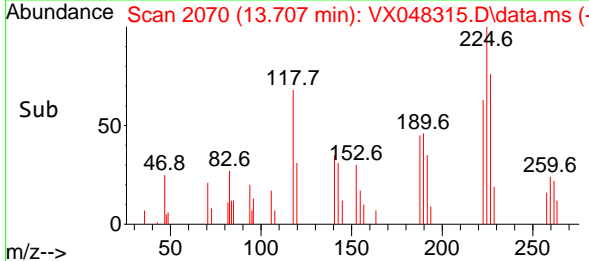
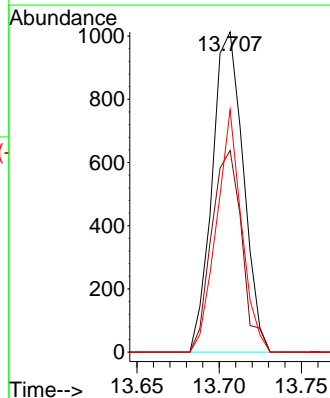
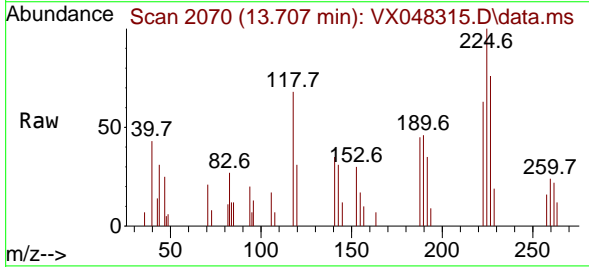


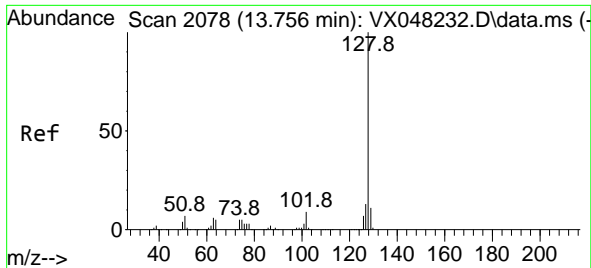
Tgt Ion:180 Resp: 1257  
 Ion Ratio Lower Upper  
 180 100  
 182 87.1 47.3 142.0  
 145 34.8 16.3 48.9



#94  
 Hexachlorobutadiene  
 Concen: 1.438 ug/l  
 RT: 13.707 min Scan# 2070  
 Delta R.T. 0.006 min  
 Lab File: VX048315.D  
 Acq: 23 Oct 2025 11:26

Tgt Ion:225 Resp: 1330  
 Ion Ratio Lower Upper  
 225 100  
 223 61.4 32.6 97.7  
 227 61.4 32.5 97.4



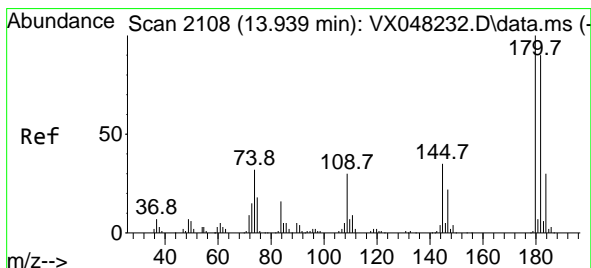
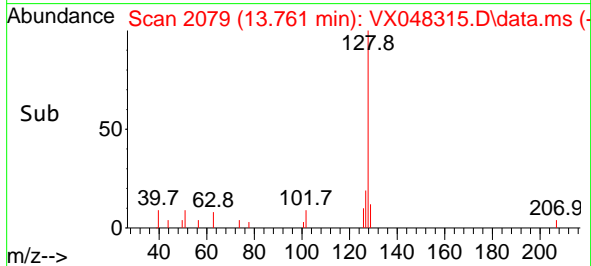
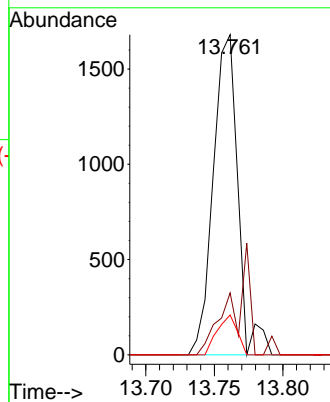
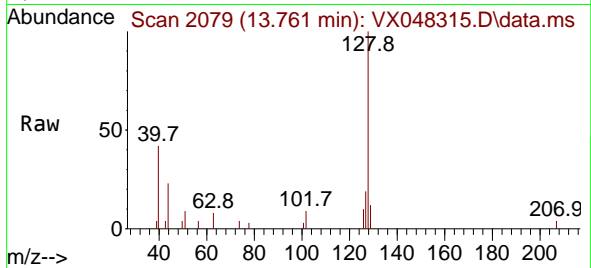


#95  
 Naphthalene  
 Concen: 0.306 ug/l  
 RT: 13.761 min Scan# 2079  
 Delta R.T. 0.006 min  
 Lab File: VX048315.D  
 Acq: 23 Oct 2025 11:26

Instrument : MSVOA\_X  
 ClientSampleId : PB170203TB

Tgt Ion:128 Resp: 2098

Ion	Ratio	Lower	Upper
128	100		
127	14.6	10.2	15.4
129	10.1	8.6	12.8



#96  
 1,2,3-Trichlorobenzene  
 Concen: 0.475 ug/l  
 RT: 13.938 min Scan# 2108  
 Delta R.T. -0.000 min  
 Lab File: VX048315.D  
 Acq: 23 Oct 2025 11:26

Tgt Ion:180 Resp: 1127

Ion	Ratio	Lower	Upper
180	100		
182	107.8	46.6	139.7
145	34.5	16.9	50.7

