

Data Path : Z:\voasrv\HPCHEM1\MSVOA_X\Data\VX102325\
 Data File : VX048318.D
 Acq On : 23 Oct 2025 12:41
 Operator : JC/MD
 Sample : Q3414-01DL 10X
 Misc : 5.0mL/MSVOA_X/WATER
 ALS Vial : 10 Sample Multiplier: 1

Instrument :
 MSVOA_X
 ClientSampleId :
 SB-1DL

Quant Time: Oct 24 05:42:54 2025
 Quant Method : Z:\voasrv\HPCHEM1\MSVOA_X\Method\82X102025W.M
 Quant Title : SW846 8260
 QLast Update : Mon Oct 20 14:13:59 2025
 Response via : Initial Calibration

| Compound | R.T. | QIon | Response | Conc | Units | Dev(Min) |
|-------------------------------|--------|----------------|----------|--------|-----------|----------|
| Internal Standards | | | | | | |
| 1) Pentafluorobenzene | 5.538 | 168 | 126031 | 50.000 | ug/l | 0.00 |
| 34) 1,4-Difluorobenzene | 6.745 | 114 | 255919 | 50.000 | ug/l | 0.00 |
| 63) Chlorobenzene-d5 | 10.037 | 117 | 269133 | 50.000 | ug/l | 0.00 |
| 72) 1,4-Dichlorobenzene-d4 | 12.006 | 152 | 142208 | 50.000 | ug/l | 0.00 |
| System Monitoring Compounds | | | | | | |
| 33) 1,2-Dichloroethane-d4 | 5.940 | 65 | 106807 | 60.444 | ug/l | 0.00 |
| Spiked Amount | 50.000 | Range 78 - 117 | Recovery | = | 120.880%# | |
| 35) Dibromofluoromethane | 5.373 | 113 | 71231 | 40.770 | ug/l | 0.00 |
| Spiked Amount | 50.000 | Range 75 - 124 | Recovery | = | 81.540% | |
| 50) Toluene-d8 | 8.635 | 98 | 290229 | 47.393 | ug/l | 0.00 |
| Spiked Amount | 50.000 | Range 92 - 112 | Recovery | = | 94.780% | |
| 62) 4-Bromofluorobenzene | 11.061 | 95 | 130151 | 55.866 | ug/l | 0.00 |
| Spiked Amount | 50.000 | Range 83 - 123 | Recovery | = | 111.740% | |
| Target Compounds | | | | | | |
| | | | | | | Qvalue |
| 10) Methyl Iodide | 2.465 | 142 | 1611 | 0.942 | ug/l # | 65 |
| 13) Acrolein | 2.246 | 56 | 93 | 0.520 | ug/l # | 1 |
| 16) Acetone | 2.380 | 43 | 4134 | 6.820 | ug/l | 97 |
| 18) Methyl Acetate | 2.697 | 43 | 414 | 0.327 | ug/l # | 75 |
| 20) Methylene Chloride | 2.782 | 84 | 983 | 0.666 | ug/l # | 81 |
| 31) Cyclohexane | 5.446 | 56 | 1070 | 0.488 | ug/l # | 55 |
| 36) 1,1-Dichloropropene | 5.538 | 75 | 10746 | 4.327 | ug/l # | 50 |
| 38) Carbon Tetrachloride | 5.538 | 117 | 13815 | 4.509 | ug/l # | 16 |
| 39) Methylcyclohexane | 7.373 | 83 | 1073 | 0.366 | ug/l # | 78 |
| 40) Benzene | 6.025 | 78 | 531860 | 73.770 | ug/l | 99 |
| 42) 1,2-Dichloroethane | 6.032 | 62 | 5539 | 2.082 | ug/l # | 76 |
| 43) Isopropyl Acetate | 6.318 | 43 | 1098 | 0.325 | ug/l # | 63 |
| 51) 4-Methyl-2-Pentanone | 8.531 | 43 | 4265 | 2.188 | ug/l # | 57 |
| 52) Toluene | 8.702 | 92 | 331493 | 72.375 | ug/l | 100 |
| 53) t-1,3-Dichloropropene | 8.708 | 75 | 4118 | 1.482 | ug/l # | 1 |
| 54) cis-1,3-Dichloropropene | 8.531 | 75 | 1388 | 0.463 | ug/l # | 65 |
| 55) 1,1,2-Trichloroethane | 9.000 | 97 | 1751 | 1.028 | ug/l # | 17 |
| 58) 2-Chloroethyl Vinyl ether | 8.251 | 63 | 155 | 1.812 | ug/l # | 47 |
| 59) 2-Hexanone | 9.464 | 43 | 1699 | 1.250 | ug/l # | 44 |
| 67) Ethyl Benzene | 10.177 | 91 | 50689 | 4.918 | ug/l | 97 |
| 68) m/p-Xylenes | 10.281 | 106 | 112432 | 29.357 | ug/l | 99 |
| 69) o-Xylene | 10.622 | 106 | 107540 | 29.085 | ug/l | 99 |
| 70) Styrene | 10.640 | 104 | 42310 | 6.720 | ug/l # | 65 |
| 73) Isopropylbenzene | 10.945 | 105 | 4234 | 0.408 | ug/l | 93 |
| 76) 1,2,3-Trichloropropane | 11.061 | 75 | 72194 | 31.305 | ug/l # | 33 |
| 78) n-propylbenzene | 11.287 | 91 | 7763 | 0.646 | ug/l | 97 |
| 79) 2-Chlorotoluene | 11.360 | 91 | 5491 | 0.753 | ug/l # | 43 |
| 80) 1,3,5-Trimethylbenzene | 11.433 | 105 | 41944 | 4.880 | ug/l | 98 |
| 81) trans-1,4-Dichloro-2-b... | 11.061 | 75 | 72194 | 76.163 | ug/l # | 10 |
| 82) 4-Chlorotoluene | 11.433 | 91 | 5227 | 0.604 | ug/l # | 46 |
| 83) tert-Butylbenzene | 11.951 | 119 | 2202 | 0.249 | ug/l | 78 |
| 84) 1,2,4-Trimethylbenzene | 11.732 | 105 | 104508 | 12.183 | ug/l | 97 |
| 85) sec-Butylbenzene | 11.732 | 105 | 104508 | 9.836 | ug/l # | 56 |
| 89) n-Butylbenzene | 12.305 | 91 | 2107 | 0.252 | ug/l # | 20 |
| 90) Hexachloroethane | 12.530 | 117 | 1494 | 0.824 | ug/l # | 16 |
| 92) 1,2-Dibromo-3-Chloropr... | 12.945 | 75 | 183 | 0.318 | ug/l # | 1 |

Data Path : Z:\voasrv\HPCHEM1\MSVOA_X\Data\VX102325\
Data File : VX048318.D
Acq On : 23 Oct 2025 12:41
Operator : JC/MD
Sample : Q3414-01DL 10X
Misc : 5.0mL/MSVOA_X/WATER
ALS Vial : 10 Sample Multiplier: 1

Instrument :
MSVOA_X
ClientSampleId :
SB-1DL

Quant Time: Oct 24 05:42:54 2025
Quant Method : Z:\voasrv\HPCHEM1\MSVOA_X\Method\82X102025W.M
Quant Title : SW846 8260
QLast Update : Mon Oct 20 14:13:59 2025
Response via : Initial Calibration

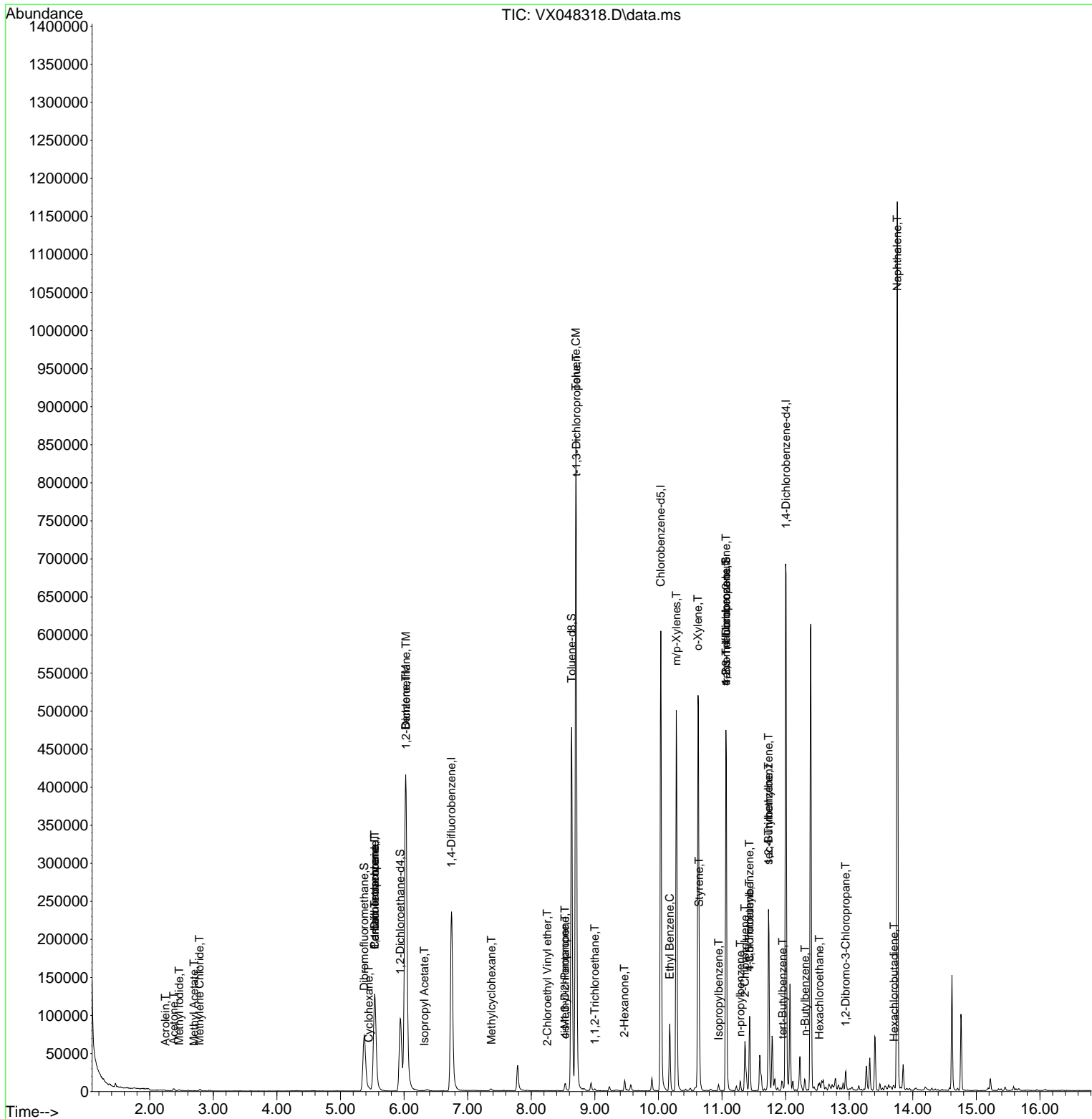
| Compound | R.T. | QIon | Response | Conc | Units | Dev(Min) |
|-------------------------|--------|------|----------|--------|-------|----------|
| 94) Hexachlorobutadiene | 13.707 | 225 | 187 | 0.227 | ug/l | 73 |
| 95) Naphthalene | 13.756 | 128 | 683573 | 82.766 | ug/l | 100 |

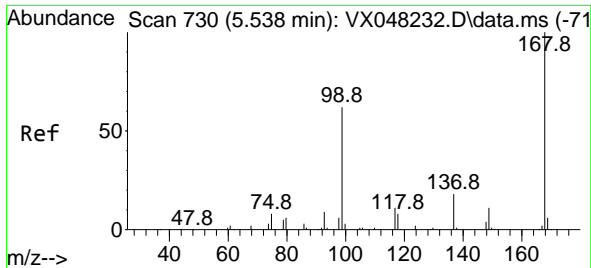
(#) = qualifier out of range (m) = manual integration (+) = signals summed

Data Path : Z:\voasrv\HPCHEM1\MSVOA_X\Data\VX102325\
 Data File : VX048318.D
 Acq On : 23 Oct 2025 12:41
 Operator : JC/MD
 Sample : Q3414-01DL 10X
 Misc : 5.0mL/MSVOA_X/WATER
 ALS Vial : 10 Sample Multiplier: 1

Instrument :
 MSVOA_X
 ClientSampleId :
 SB-1DL

Quant Time: Oct 24 05:42:54 2025
 Quant Method : Z:\voasrv\HPCHEM1\MSVOA_X\Method\82X102025W.M
 Quant Title : SW846 8260
 QLast Update : Mon Oct 20 14:13:59 2025
 Response via : Initial Calibration

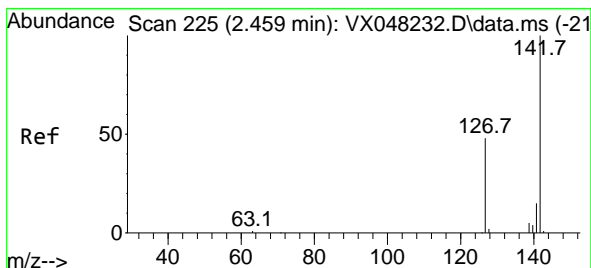
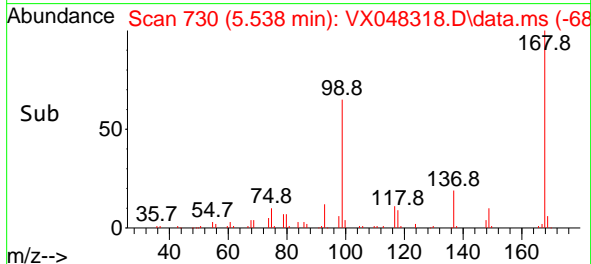
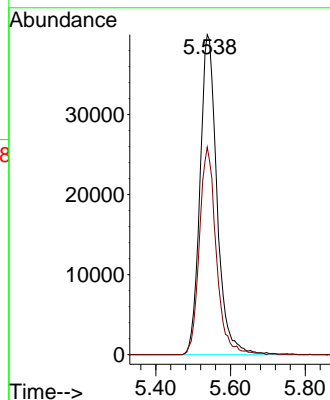
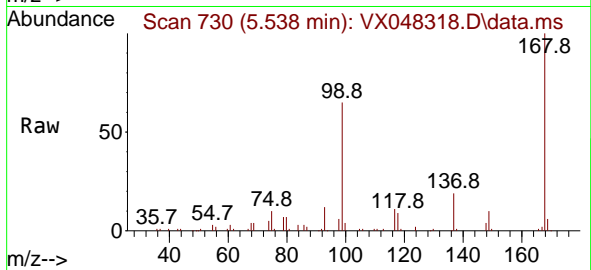




#1
 Pentafluorobenzene
 Concen: 50.000 ug/l
 RT: 5.538 min Scan# 71
 Delta R.T. -0.006 min
 Lab File: VX048318.D
 Acq: 23 Oct 2025 12:41

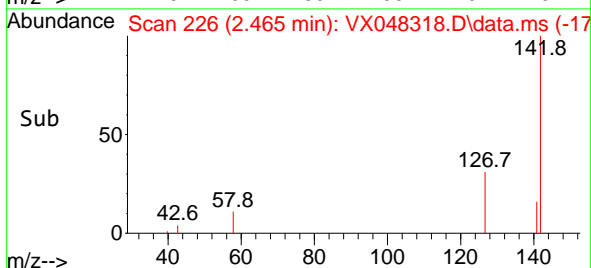
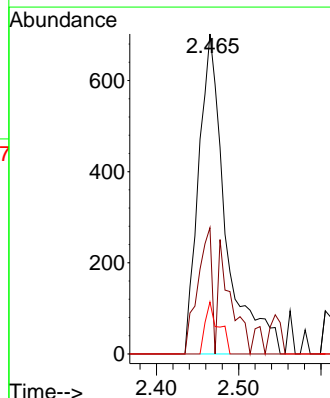
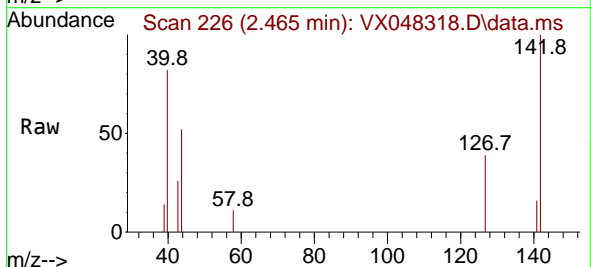
Instrument :
 MSVOA_X
 ClientSampleId :
 SB-1DL

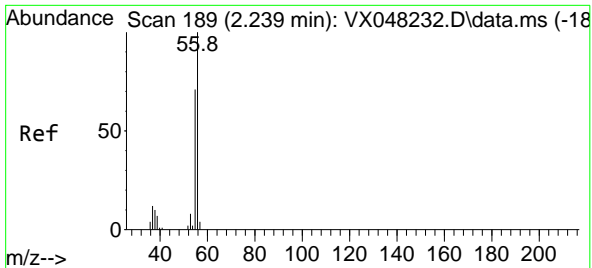
Tgt Ion:168 Resp: 126031
 Ion Ratio Lower Upper
 168 100
 99 64.9 46.4 69.6



#10
 Methyl Iodide
 Concen: 0.942 ug/l
 RT: 2.465 min Scan# 226
 Delta R.T. 0.006 min
 Lab File: VX048318.D
 Acq: 23 Oct 2025 12:41

Tgt Ion:142 Resp: 1611
 Ion Ratio Lower Upper
 142 100
 127 20.4 38.5 57.7#
 141 8.3 11.6 17.4#

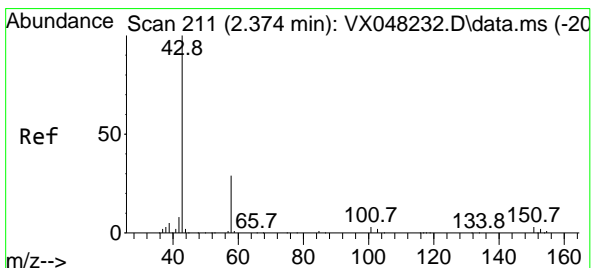
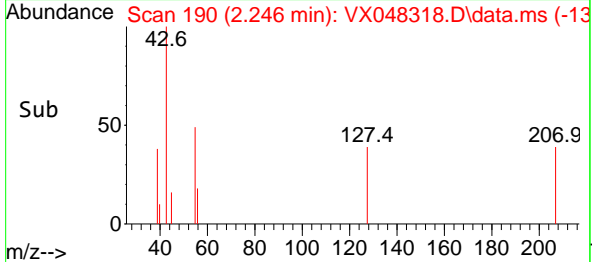
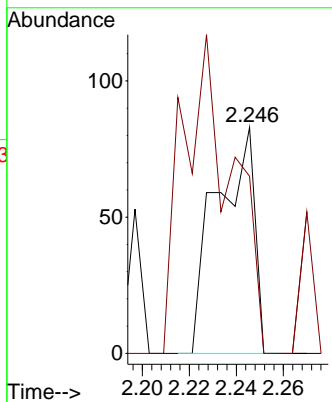
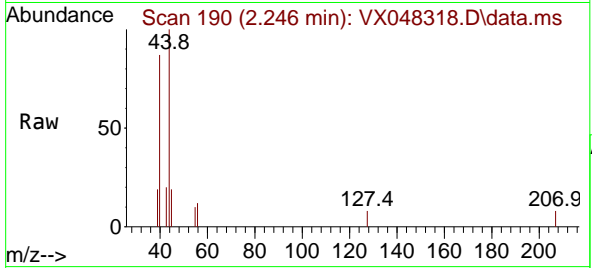




#13
 Acrolein
 Concen: 0.520 ug/l
 RT: 2.246 min Scan# 190
 Delta R.T. 0.012 min
 Lab File: VX048318.D
 Acq: 23 Oct 2025 12:41

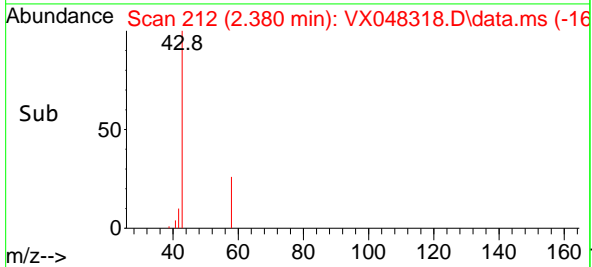
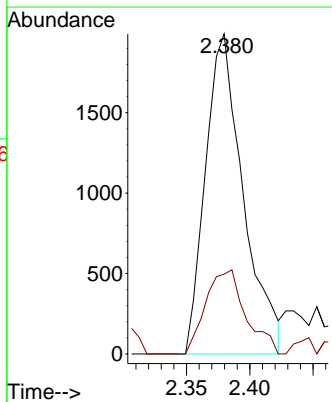
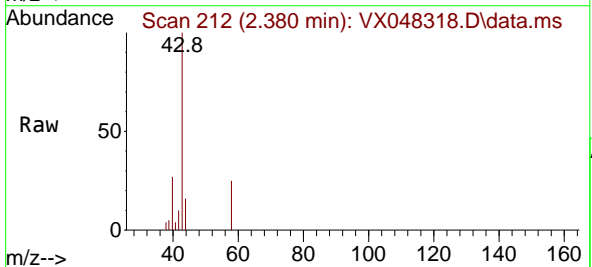
Instrument :
 MSVOA_X
 ClientSampleId :
 SB-1DL

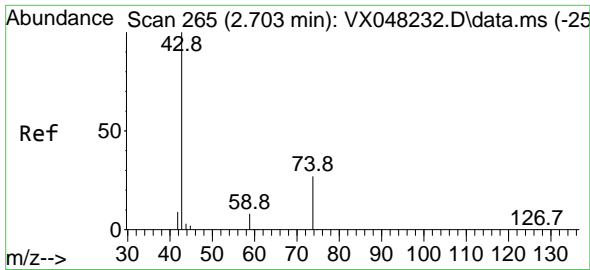
Tgt Ion: 56 Resp: 93
 Ion Ratio Lower Upper
 56 100
 55 182.8 56.1 84.1#



#16
 Acetone
 Concen: 6.820 ug/l
 RT: 2.380 min Scan# 212
 Delta R.T. 0.006 min
 Lab File: VX048318.D
 Acq: 23 Oct 2025 12:41

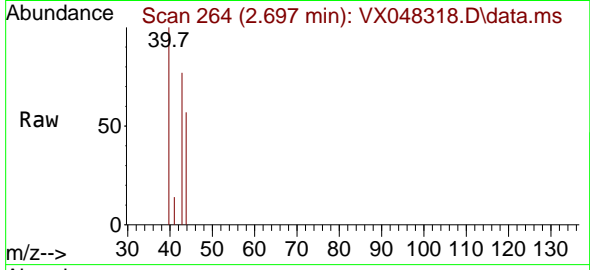
Tgt Ion: 43 Resp: 4134
 Ion Ratio Lower Upper
 43 100
 58 27.8 23.4 35.2



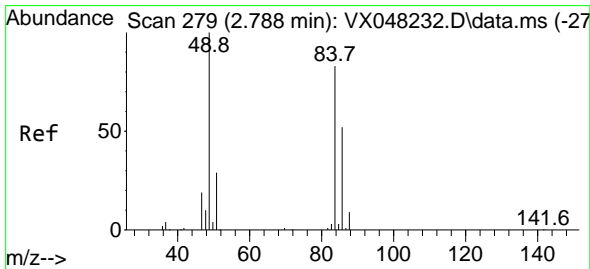
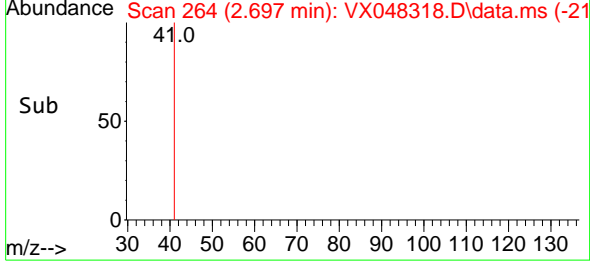
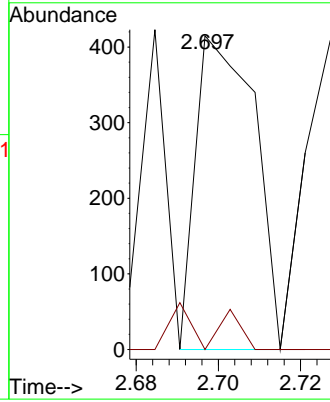


#18
 Methyl Acetate
 Concen: 0.327 ug/l
 RT: 2.697 min Scan# 20
 Delta R.T. 0.000 min
 Lab File: VX048318.D
 Acq: 23 Oct 2025 12:41

Instrument :
 MSVOA_X
 ClientSampleId :
 SB-1DL

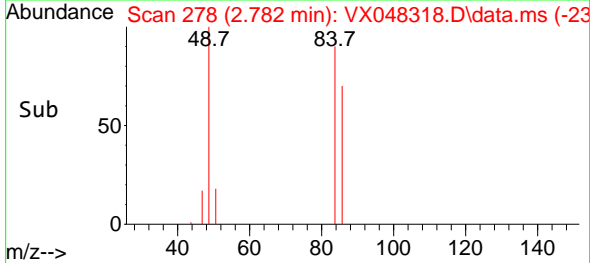
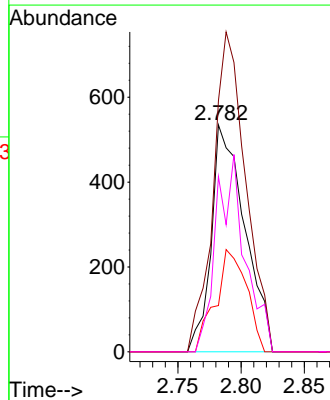
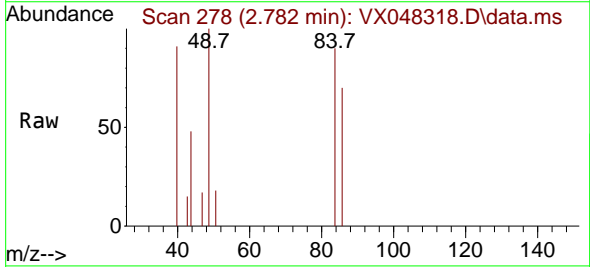


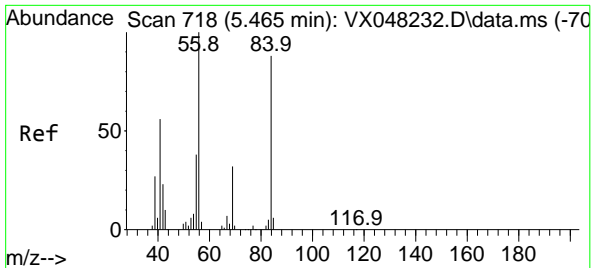
Tgt Ion: 43 Resp: 414
 Ion Ratio Lower Upper
 43 100
 74 10.1 17.5 26.3#



#20
 Methylene Chloride
 Concen: 0.666 ug/l
 RT: 2.782 min Scan# 278
 Delta R.T. -0.006 min
 Lab File: VX048318.D
 Acq: 23 Oct 2025 12:41

Tgt Ion: 84 Resp: 983
 Ion Ratio Lower Upper
 84 100
 49 110.7 104.1 156.1
 51 20.4 31.3 46.9#
 86 77.2 51.3 76.9#



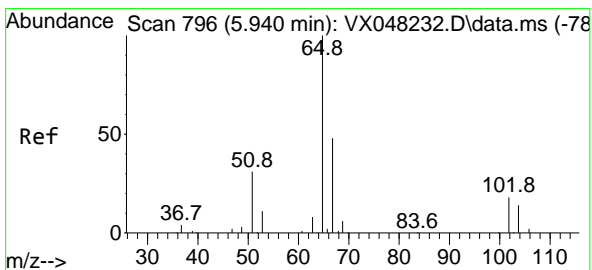
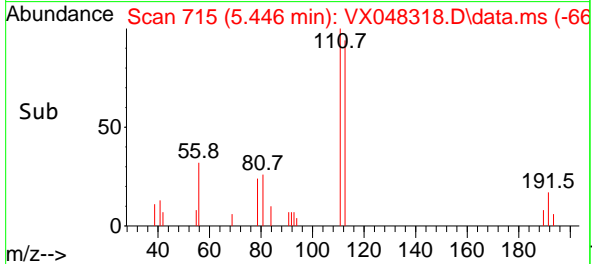
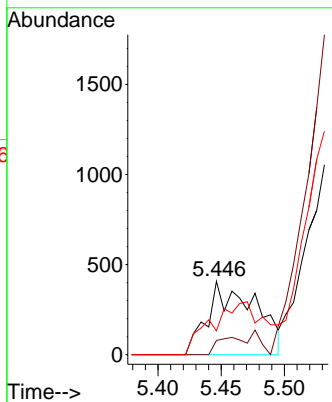
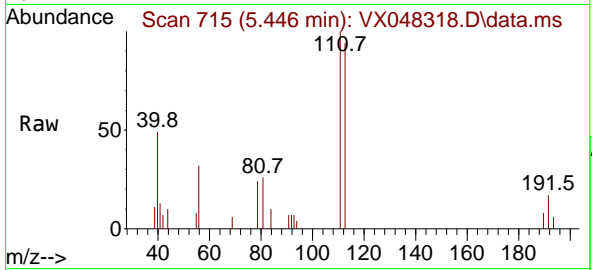


#31
 Cyclohexane
 Concen: 0.488 ug/l
 RT: 5.446 min Scan# 715
 Delta R.T. -0.012 min
 Lab File: VX048318.D
 Acq: 23 Oct 2025 12:41

Instrument : MSVOA_X
 ClientSampleId : SB-1DL

Tgt Ion: 56 Resp: 1070

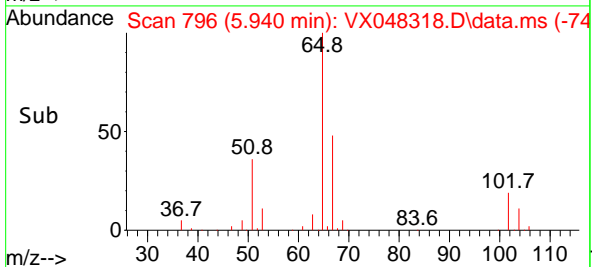
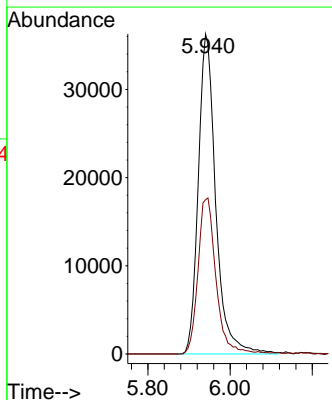
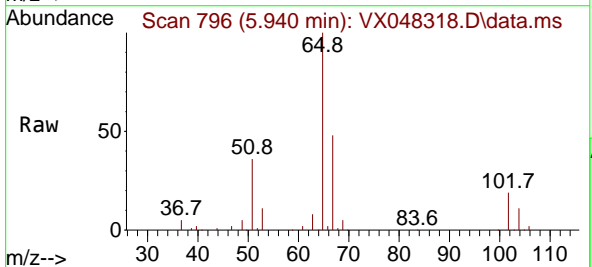
| Ion | Ratio | Lower | Upper |
|-----|-------|-------|-------|
| 56 | 100 | | |
| 69 | 19.4 | 23.0 | 34.6# |
| 84 | 32.6 | 64.6 | 97.0# |

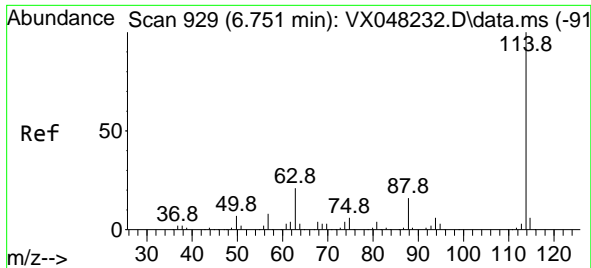


#33
 1,2-Dichloroethane-d4
 Concen: 60.444 ug/l
 RT: 5.940 min Scan# 796
 Delta R.T. 0.000 min
 Lab File: VX048318.D
 Acq: 23 Oct 2025 12:41

Tgt Ion: 65 Resp: 106807

| Ion | Ratio | Lower | Upper |
|-----|-------|-------|-------|
| 65 | 100 | | |
| 67 | 49.9 | 0.0 | 105.0 |

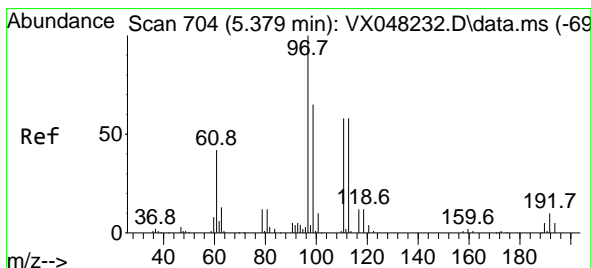
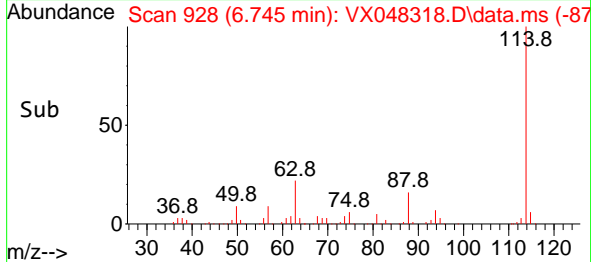
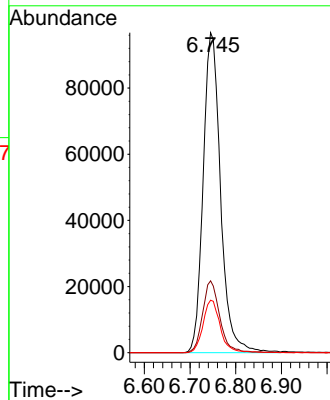
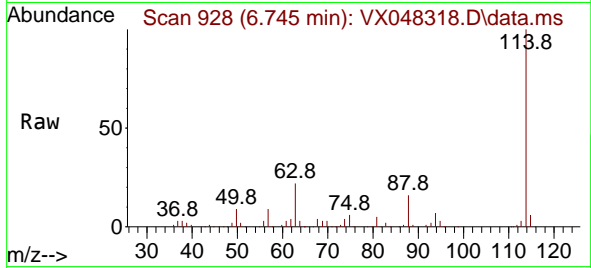




#34
 1,4-Difluorobenzene
 Concen: 50.000 ug/l
 RT: 6.745 min Scan# 91
 Delta R.T. -0.000 min
 Lab File: VX048318.D
 Acq: 23 Oct 2025 12:41

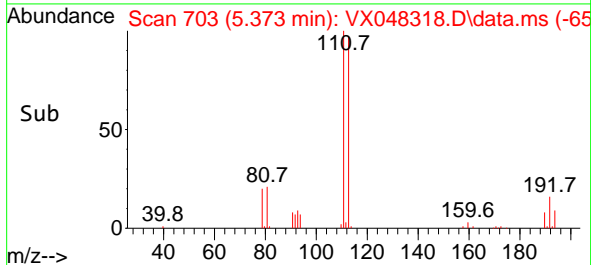
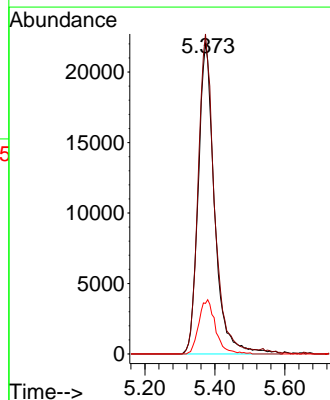
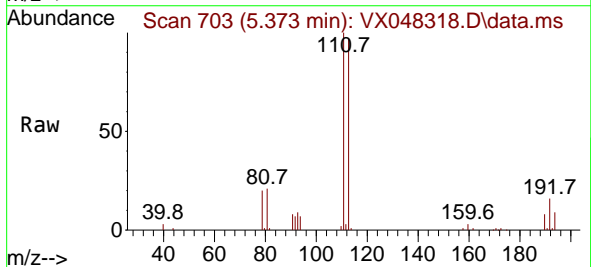
Instrument : MSVOA_X
 ClientSampleId : SB-1DL

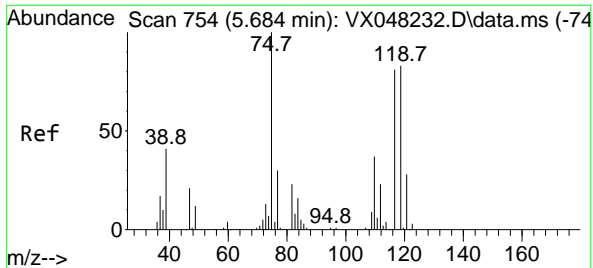
Tgt Ion:114 Resp: 255919
 Ion Ratio Lower Upper
 114 100
 63 22.4 0.0 43.2
 88 16.4 0.0 33.6



#35
 Dibromofluoromethane
 Concen: 40.770 ug/l
 RT: 5.373 min Scan# 703
 Delta R.T. 0.000 min
 Lab File: VX048318.D
 Acq: 23 Oct 2025 12:41

Tgt Ion:113 Resp: 71231
 Ion Ratio Lower Upper
 113 100
 111 102.5 82.2 123.4
 192 18.0 15.1 22.7

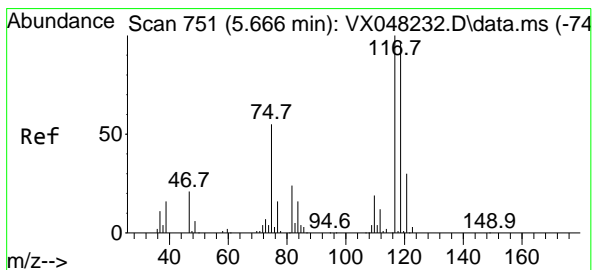
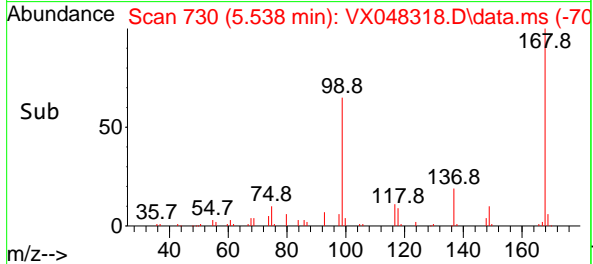
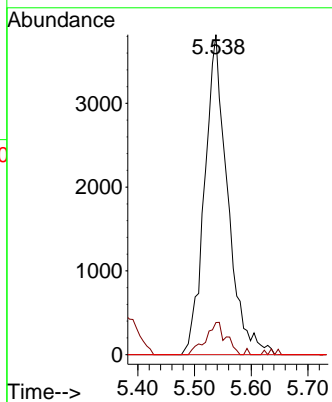
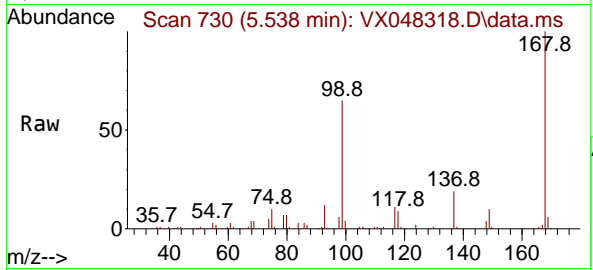




#36
 1,1-Dichloropropene
 Concen: 4.327 ug/l
 RT: 5.538 min Scan# 710
 Delta R.T. -0.146 min
 Lab File: VX048318.D
 Acq: 23 Oct 2025 12:41

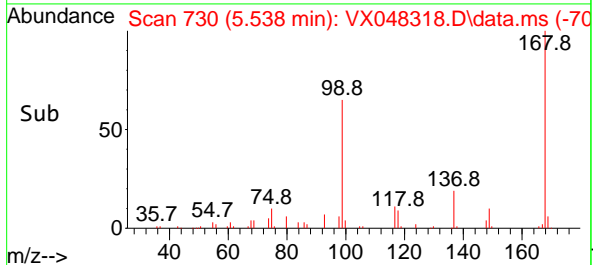
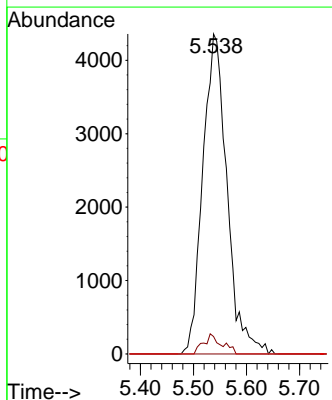
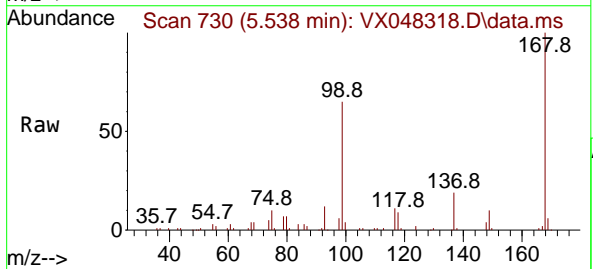
Instrument : MSVOA_X
 ClientSampleId : SB-1DL

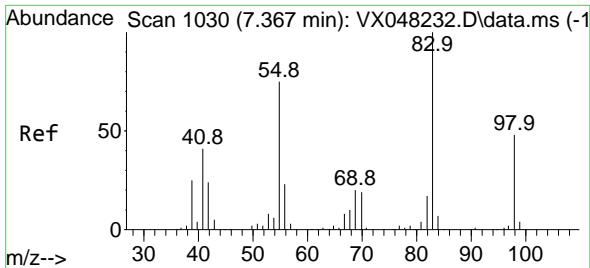
| Tgt Ion | Resp | Lower | Upper |
|---------|-------|-------|-------|
| 75 | 10746 | | |
| 75 | 100 | | |
| 110 | 8.9 | 17.7 | 53.1# |
| 77 | 0.0 | 24.3 | 36.5# |



#38
 Carbon Tetrachloride
 Concen: 4.509 ug/l
 RT: 5.538 min Scan# 730
 Delta R.T. -0.128 min
 Lab File: VX048318.D
 Acq: 23 Oct 2025 12:41

| Tgt Ion | Resp | Lower | Upper |
|---------|-------|-------|--------|
| 117 | 13815 | | |
| 117 | 100 | | |
| 119 | 5.4 | 77.2 | 115.8# |
| 121 | 0.0 | 24.8 | 37.2# |

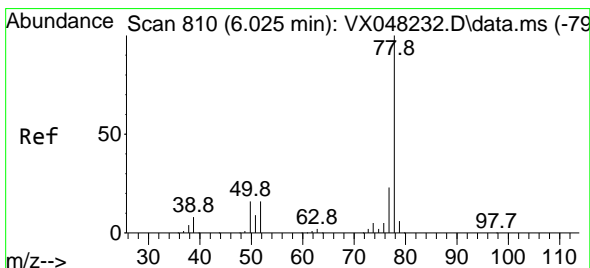
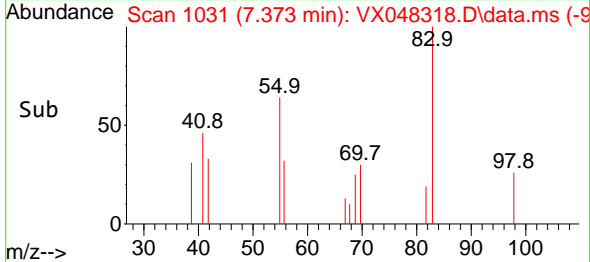
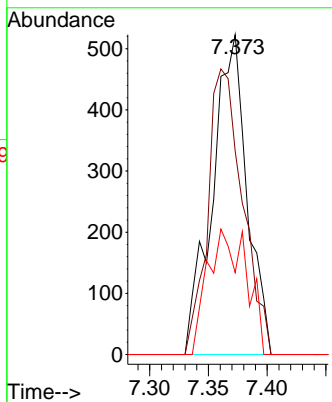
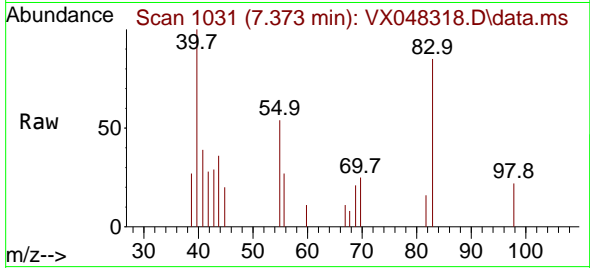




#39
 Methylcyclohexane
 Concen: 0.366 ug/l
 RT: 7.373 min Scan# 1031
 Delta R.T. 0.006 min
 Lab File: VX048318.D
 Acq: 23 Oct 2025 12:41

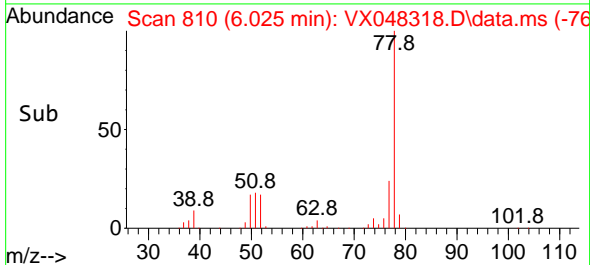
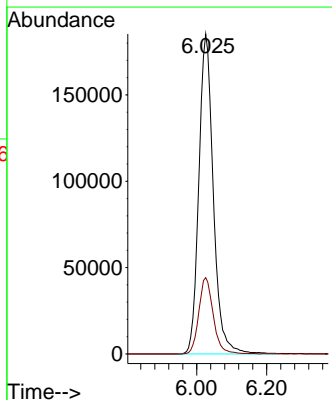
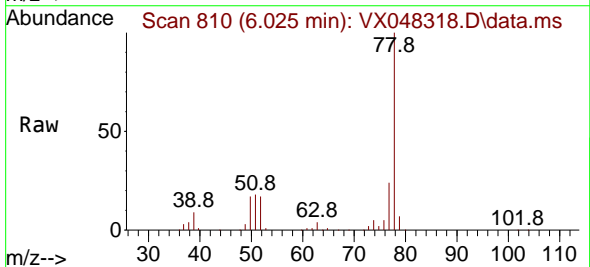
Instrument : MSVOA_X
 ClientSampleId : SB-1DL

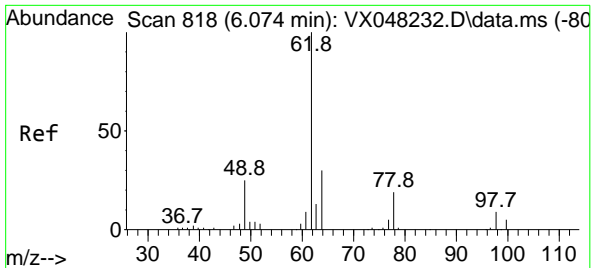
| Tgt Ion | Resp | Lower | Upper |
|---------|------|-------|-------|
| 83 | 1073 | | |
| 55 | 95.6 | 66.2 | 99.2 |
| 98 | 25.6 | 38.9 | 58.3 |



#40
 Benzene
 Concen: 73.770 ug/l
 RT: 6.025 min Scan# 810
 Delta R.T. 0.000 min
 Lab File: VX048318.D
 Acq: 23 Oct 2025 12:41

| Tgt Ion | Resp | Lower | Upper |
|---------|--------|-------|-------|
| 78 | 531860 | | |
| 77 | 23.8 | 19.3 | 28.9 |



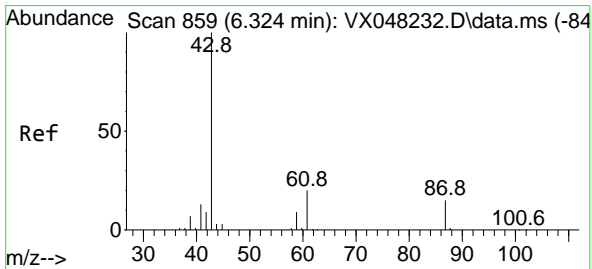
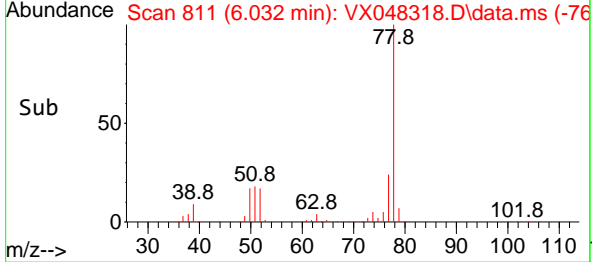
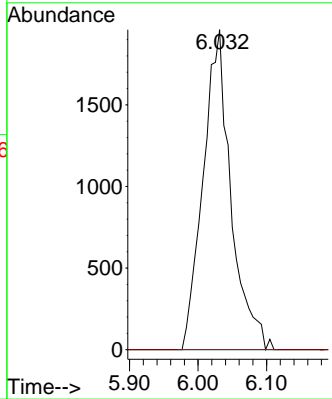
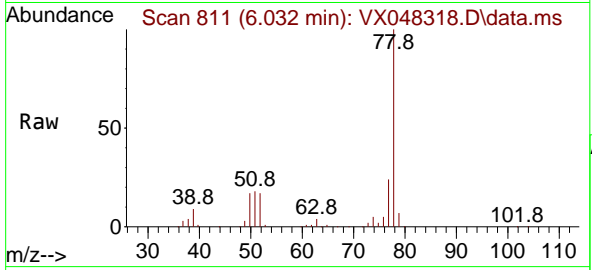


#42
 1,2-Dichloroethane
 Concen: 2.082 ug/l
 RT: 6.032 min Scan# 811
 Delta R.T. -0.037 min
 Lab File: VX048318.D
 Acq: 23 Oct 2025 12:41

Instrument : MSVOA_X
 ClientSampleId : SB-1DL

Tgt Ion: 62 Resp: 5539

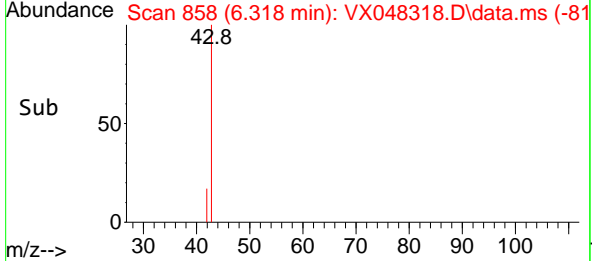
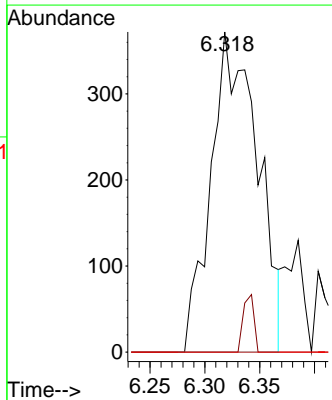
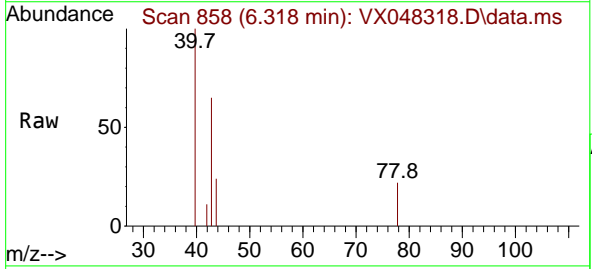
| Ion | Ratio | Lower | Upper |
|-----|-------|-------|-------|
| 62 | 100 | | |
| 98 | 0.0 | 0.0 | 17.2 |

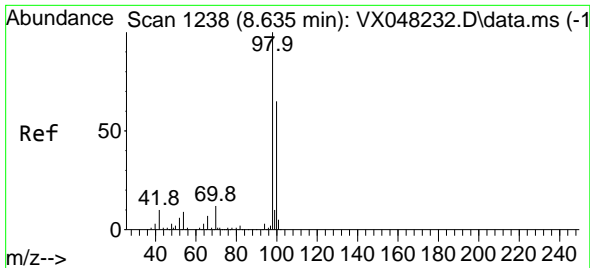


#43
 Isopropyl Acetate
 Concen: 0.325 ug/l
 RT: 6.318 min Scan# 858
 Delta R.T. -0.006 min
 Lab File: VX048318.D
 Acq: 23 Oct 2025 12:41

Tgt Ion: 43 Resp: 1098

| Ion | Ratio | Lower | Upper |
|-----|-------|-------|-------|
| 43 | 100 | | |
| 61 | 0.0 | 14.9 | 22.3# |
| 87 | 0.0 | 9.4 | 14.2# |

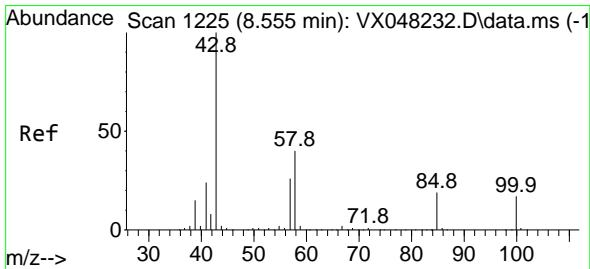
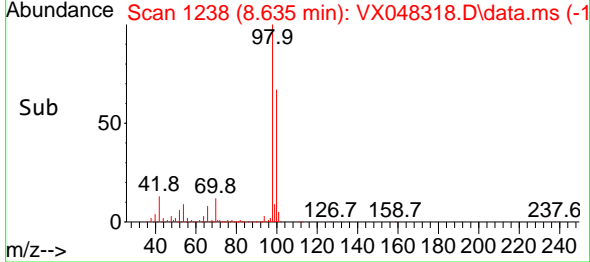
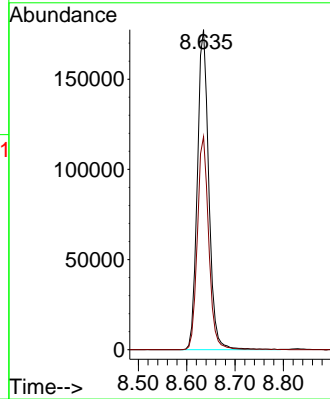
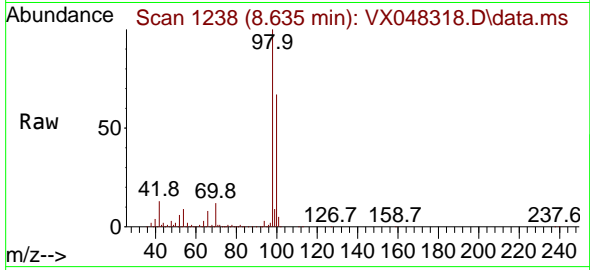




#50
 Toluene-d8
 Concen: 47.393 ug/l
 RT: 8.635 min Scan# 11
 Delta R.T. 0.000 min
 Lab File: VX048318.D
 Acq: 23 Oct 2025 12:41

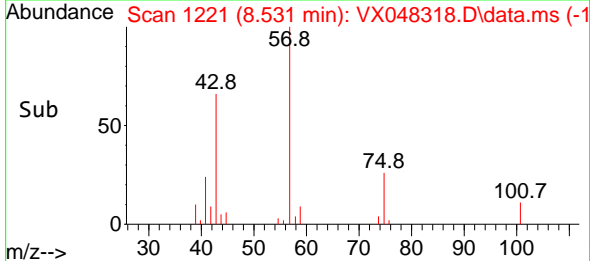
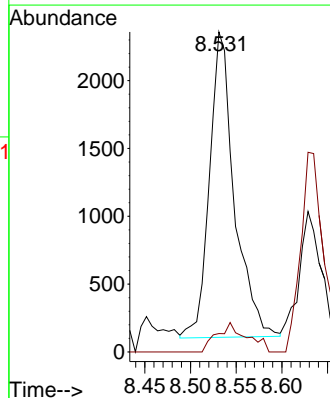
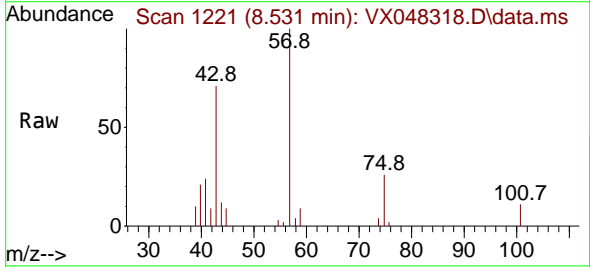
Instrument :
 MSVOA_X
 ClientSampleId :
 SB-1DL

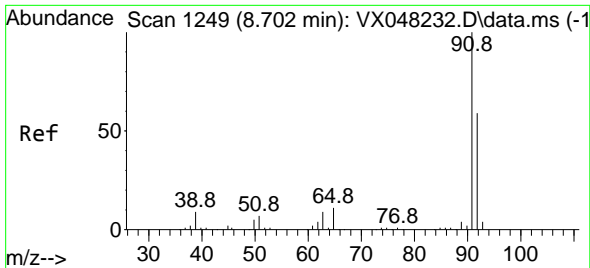
Tgt Ion: 98 Resp: 290229
 Ion Ratio Lower Upper
 98 100
 100 66.1 53.0 79.4



#51
 4-Methyl-2-Pentanone
 Concen: 2.188 ug/l
 RT: 8.531 min Scan# 1221
 Delta R.T. -0.024 min
 Lab File: VX048318.D
 Acq: 23 Oct 2025 12:41

Tgt Ion: 43 Resp: 4265
 Ion Ratio Lower Upper
 43 100
 58 11.5 29.5 44.3#

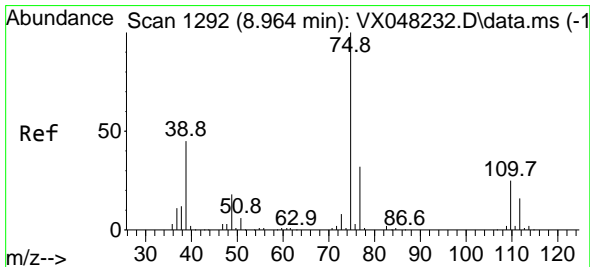
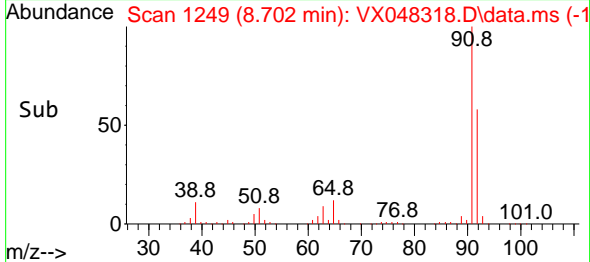
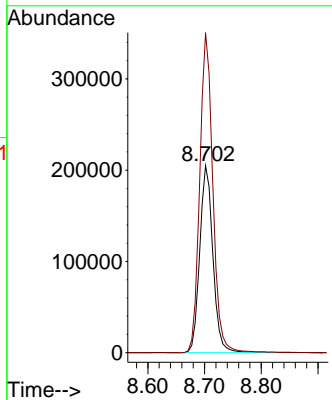
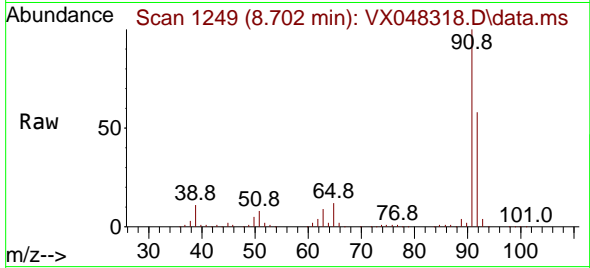




#52
 Toluene
 Concen: 72.375 ug/l
 RT: 8.702 min Scan# 11
 Delta R.T. 0.000 min
 Lab File: VX048318.D
 Acq: 23 Oct 2025 12:41

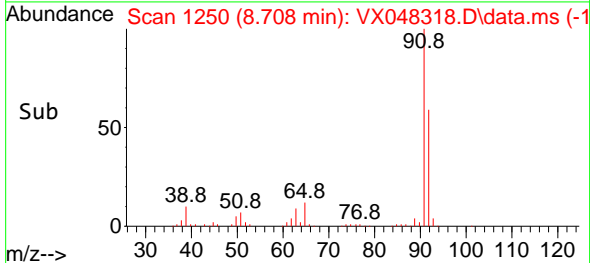
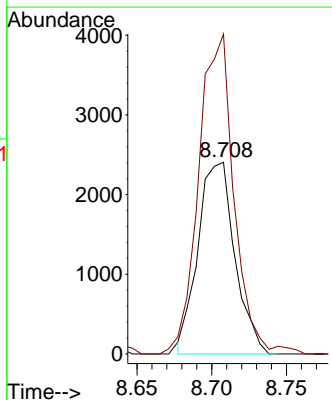
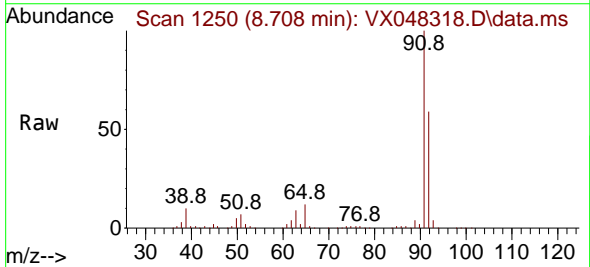
Instrument :
 MSVOA_X
 ClientSampleId :
 SB-1DL

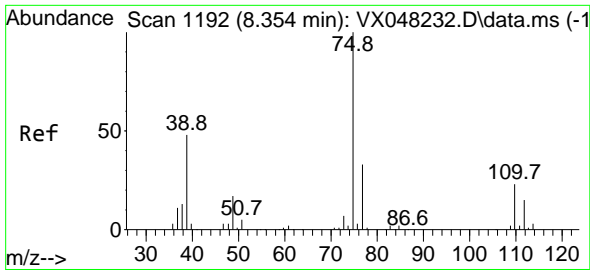
Tgt Ion: 92 Resp: 331493
 Ion Ratio Lower Upper
 92 100
 91 170.1 136.1 204.1



#53
 t-1,3-Dichloropropene
 Concen: 1.482 ug/l
 RT: 8.708 min Scan# 1250
 Delta R.T. -0.256 min
 Lab File: VX048318.D
 Acq: 23 Oct 2025 12:41

Tgt Ion: 75 Resp: 4118
 Ion Ratio Lower Upper
 75 100
 77 162.9 25.0 37.6#

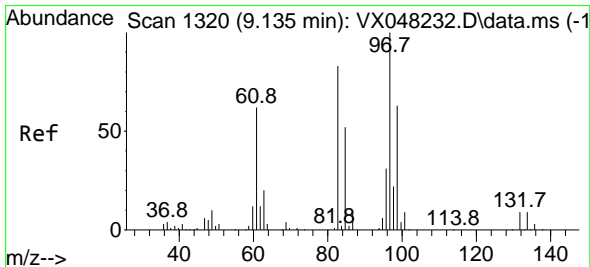
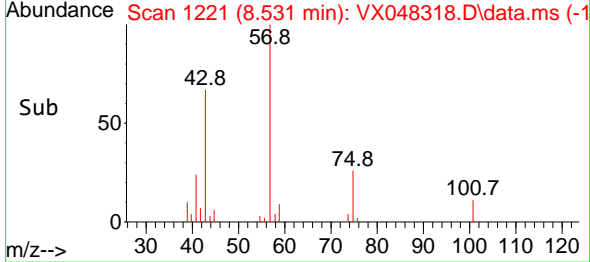
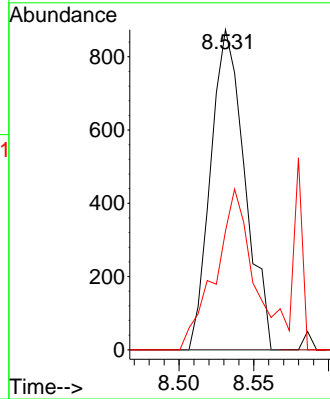
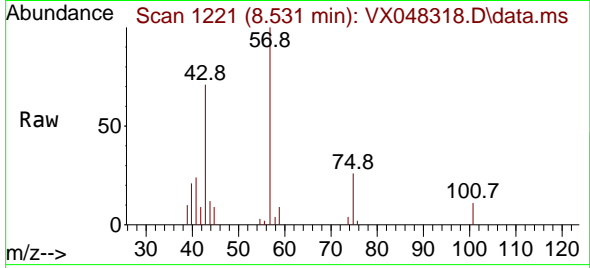




#54
 cis-1,3-Dichloropropene
 Concen: 0.463 ug/l
 RT: 8.531 min Scan# 1192
 Delta R.T. 0.183 min
 Lab File: VX048318.D
 Acq: 23 Oct 2025 12:41

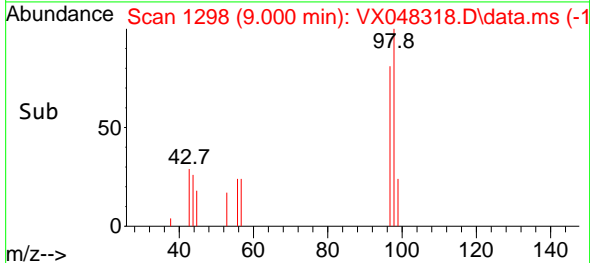
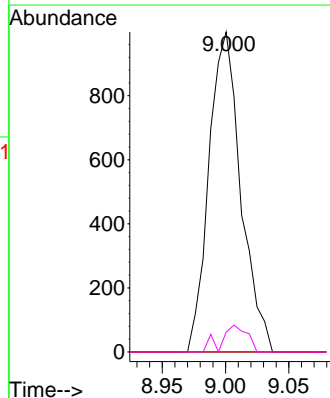
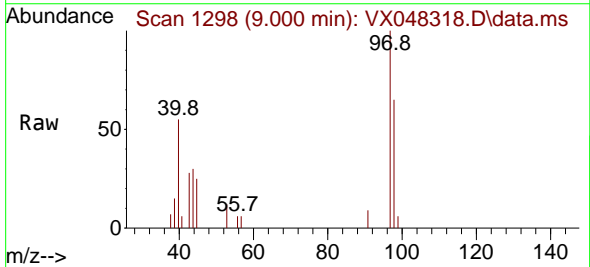
Instrument : MSVOA_X
 ClientSampleId : SB-1DL

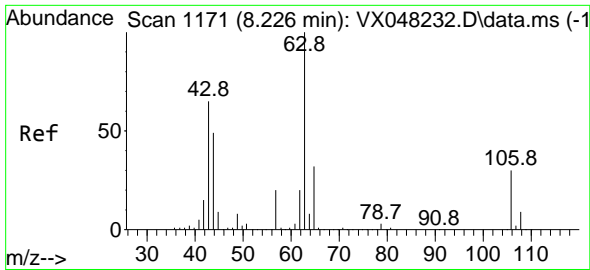
| Tgt Ion | Resp | Lower | Upper |
|---------|------|-------|-------|
| 75 | 1388 | | |
| 75 | 100 | | |
| 77 | 0.0 | 24.9 | 37.3# |
| 39 | 37.1 | 42.6 | 64.0# |



#55
 1,1,2-Trichloroethane
 Concen: 1.028 ug/l
 RT: 9.000 min Scan# 1298
 Delta R.T. -0.134 min
 Lab File: VX048318.D
 Acq: 23 Oct 2025 12:41

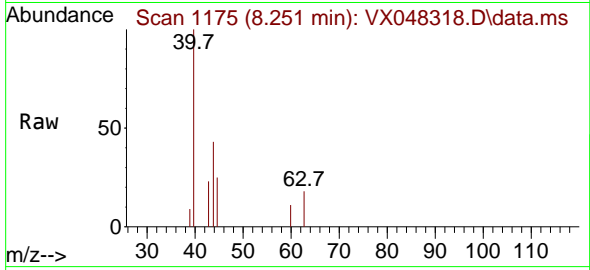
| Tgt Ion | Resp | Lower | Upper |
|---------|------|-------|--------|
| 97 | 1751 | | |
| 97 | 100 | | |
| 83 | 0.0 | 70.6 | 105.8# |
| 85 | 0.0 | 45.0 | 67.6# |
| 99 | 6.2 | 50.9 | 76.3# |



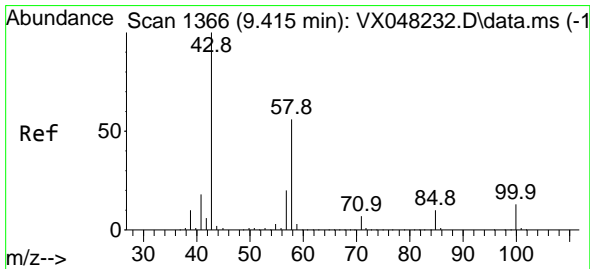
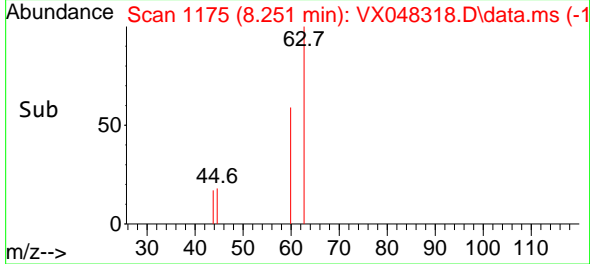
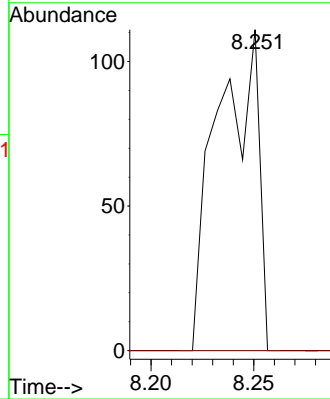


#58
 2-Chloroethyl Vinyl ether
 Concen: 1.812 ug/l
 RT: 8.251 min Scan# 1175
 Delta R.T. 0.025 min
 Lab File: VX048318.D
 Acq: 23 Oct 2025 12:41

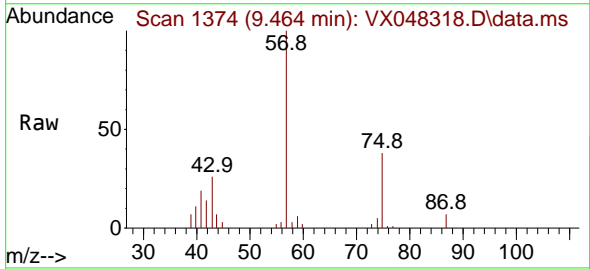
Instrument : MSVOA_X
 ClientSampleId : SB-1DL



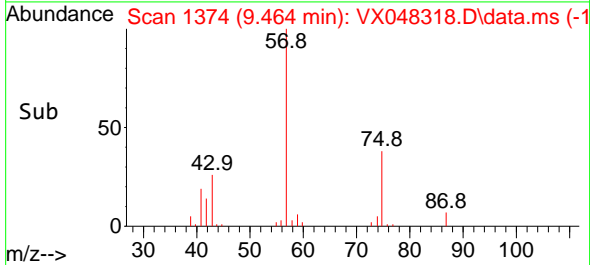
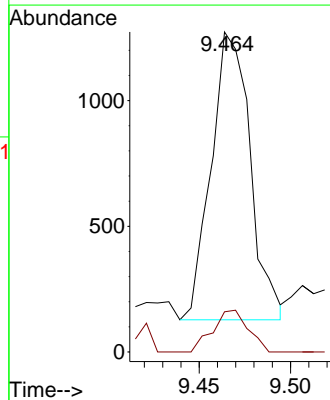
Tgt Ion: 63 Resp: 155
 Ion Ratio Lower Upper
 63 100
 106 0.0 22.2 33.2#

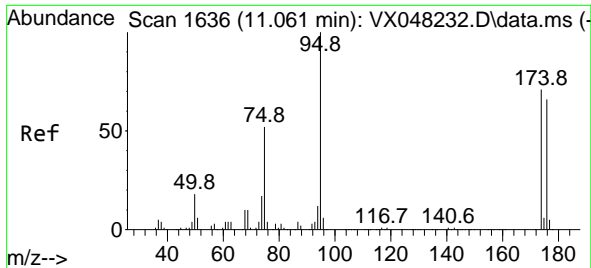


#59
 2-Hexanone
 Concen: 1.250 ug/l
 RT: 9.464 min Scan# 1374
 Delta R.T. 0.049 min
 Lab File: VX048318.D
 Acq: 23 Oct 2025 12:41



Tgt Ion: 43 Resp: 1699
 Ion Ratio Lower Upper
 43 100
 58 13.3 26.3 78.8#



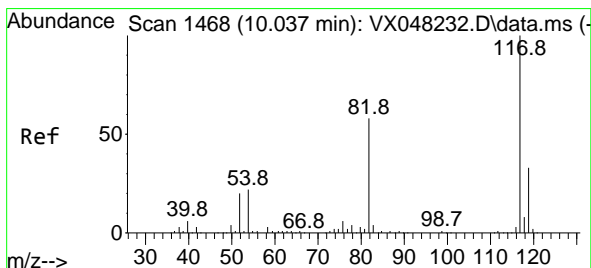
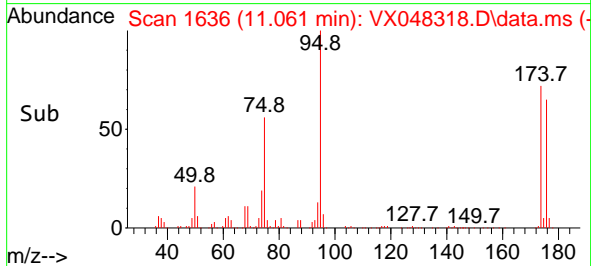
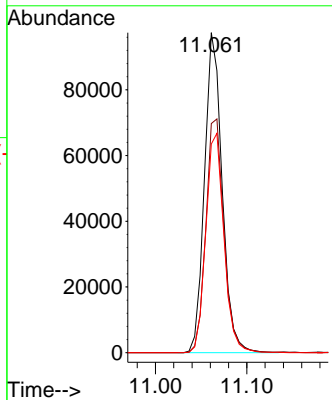
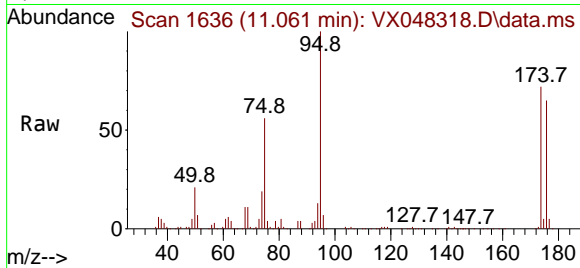


#62
 4-Bromofluorobenzene
 Concen: 55.866 ug/l
 RT: 11.061 min Scan# 1
 Delta R.T. 0.000 min
 Lab File: VX048318.D
 Acq: 23 Oct 2025 12:41

Instrument :
 MSVOA_X
 ClientSampleId :
 SB-1DL

Tgt Ion: 95 Resp: 130151

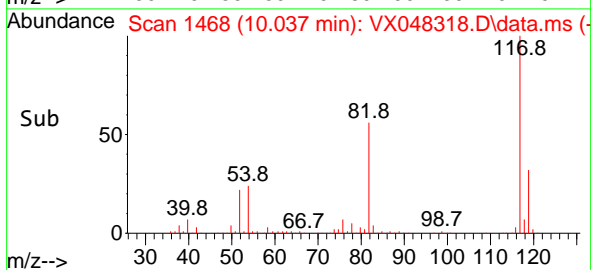
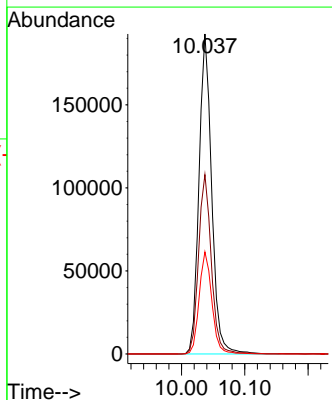
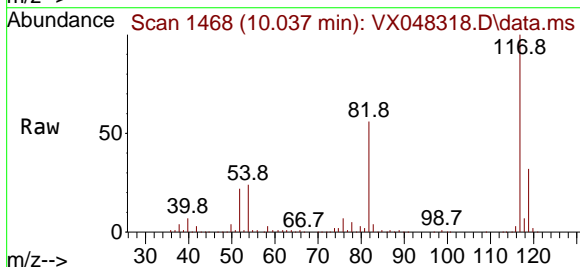
| Ion | Ratio | Lower | Upper |
|-----|-------|-------|-------|
| 95 | 100 | | |
| 174 | 75.4 | 0.0 | 147.8 |
| 176 | 70.6 | 0.0 | 142.8 |

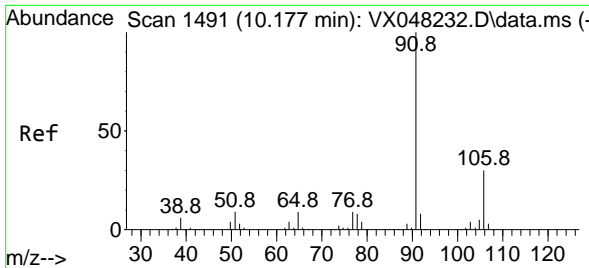


#63
 Chlorobenzene-d5
 Concen: 50.000 ug/l
 RT: 10.037 min Scan# 1468
 Delta R.T. 0.000 min
 Lab File: VX048318.D
 Acq: 23 Oct 2025 12:41

Tgt Ion: 117 Resp: 269133

| Ion | Ratio | Lower | Upper |
|-----|-------|-------|-------|
| 117 | 100 | | |
| 82 | 56.0 | 46.5 | 69.7 |
| 119 | 31.9 | 25.9 | 38.9 |

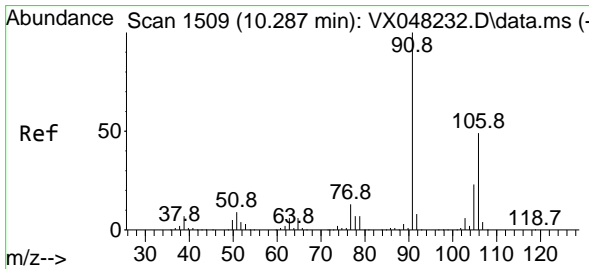
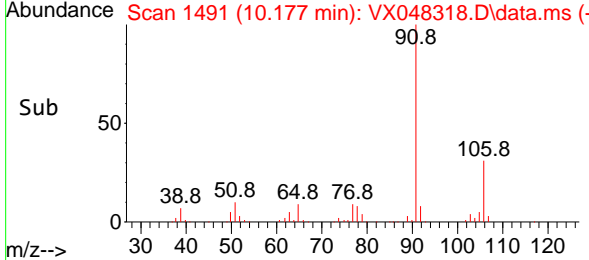
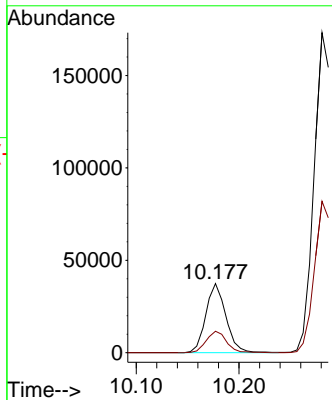
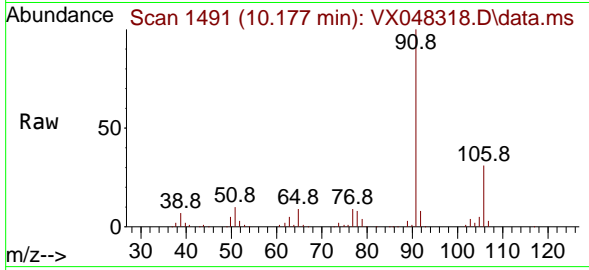




#67
 Ethyl Benzene
 Concen: 4.918 ug/l
 RT: 10.177 min Scan# 1491
 Delta R.T. 0.000 min
 Lab File: VX048318.D
 Acq: 23 Oct 2025 12:41

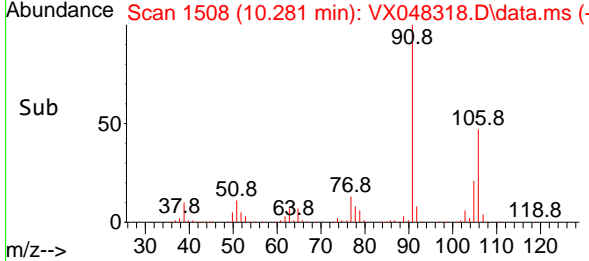
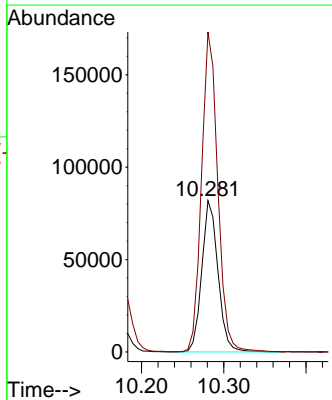
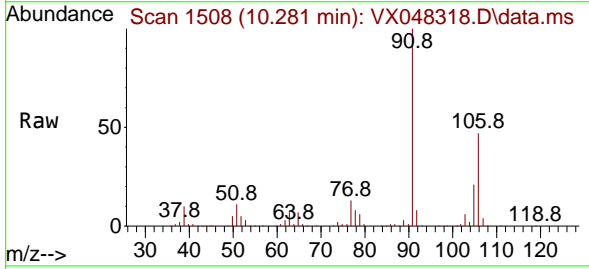
Instrument : MSVOA_X
 ClientSampleId : SB-1DL

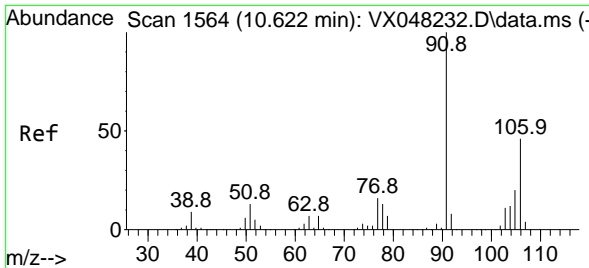
Tgt Ion: 91 Resp: 50689
 Ion Ratio Lower Upper
 91 100
 106 31.1 23.8 35.6



#68
 m/p-Xylenes
 Concen: 29.357 ug/l
 RT: 10.281 min Scan# 1508
 Delta R.T. -0.006 min
 Lab File: VX048318.D
 Acq: 23 Oct 2025 12:41

Tgt Ion: 106 Resp: 112432
 Ion Ratio Lower Upper
 106 100
 91 211.5 167.9 251.9

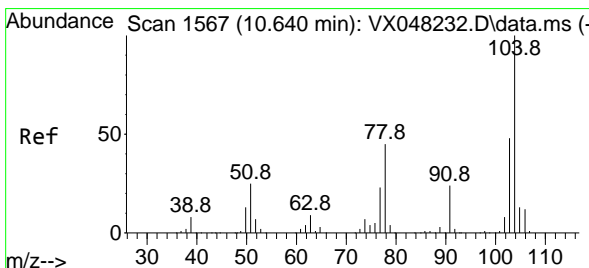
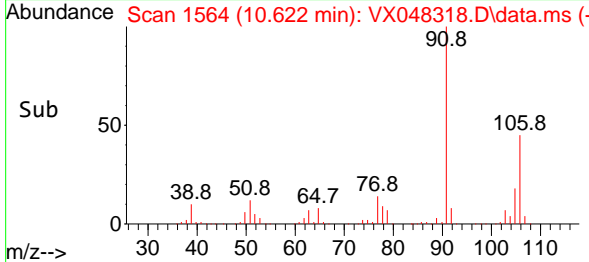
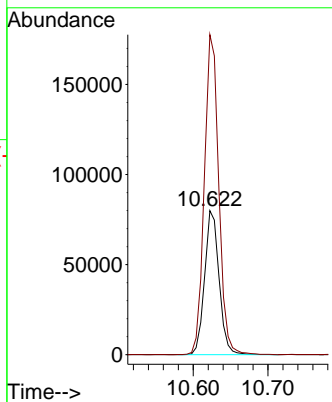
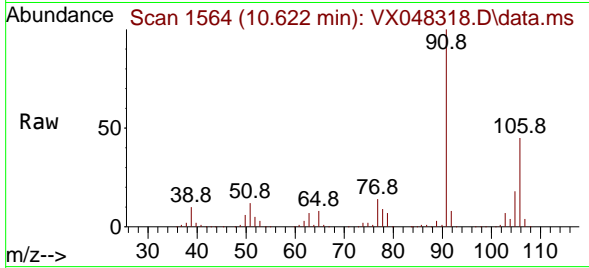




#69
 o-Xylene
 Concen: 29.085 ug/l
 RT: 10.622 min Scan# 1564
 Delta R.T. 0.000 min
 Lab File: VX048318.D
 Acq: 23 Oct 2025 12:41

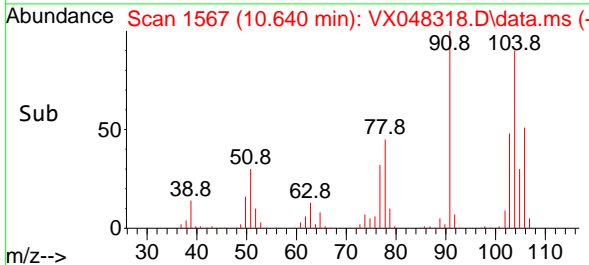
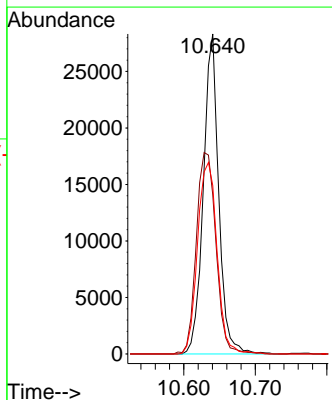
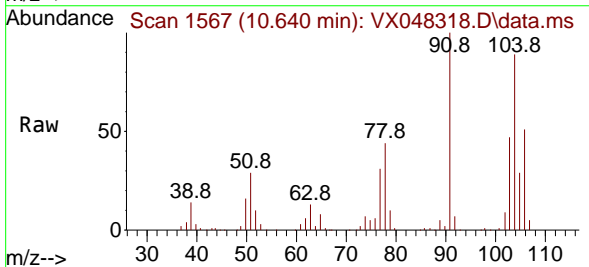
Instrument : MSVOA_X
 ClientSampleId : SB-1DL

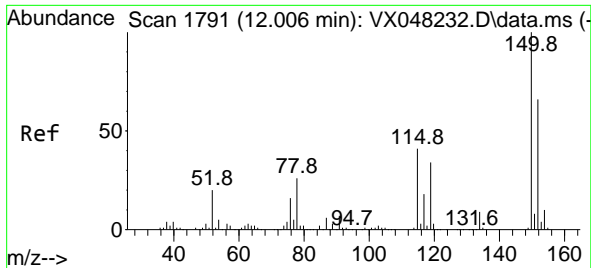
Tgt Ion:106 Resp: 107540
 Ion Ratio Lower Upper
 106 100
 91 221.5 111.3 333.9



#70
 Styrene
 Concen: 6.720 ug/l
 RT: 10.640 min Scan# 1567
 Delta R.T. 0.000 min
 Lab File: VX048318.D
 Acq: 23 Oct 2025 12:41

Tgt Ion:104 Resp: 42310
 Ion Ratio Lower Upper
 104 100
 78 80.1 42.2 63.4#
 103 75.9 43.0 64.4#

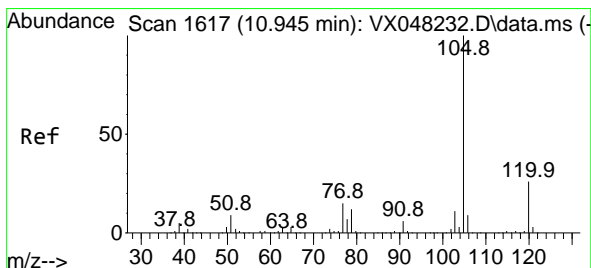
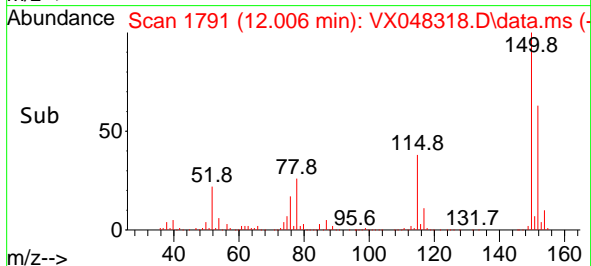
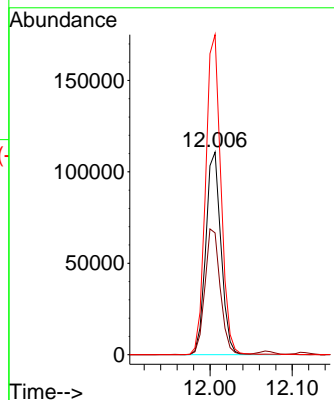
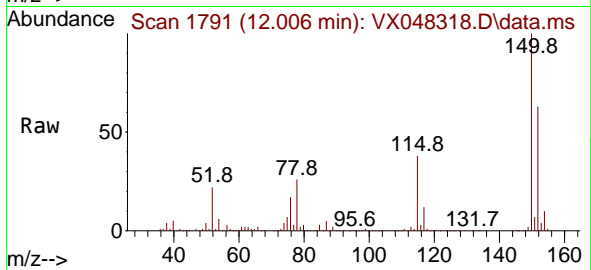




#72
 1,4-Dichlorobenzene-d4
 Concen: 50.000 ug/l
 RT: 12.006 min Scan# 1791
 Delta R.T. 0.000 min
 Lab File: VX048318.D
 Acq: 23 Oct 2025 12:41

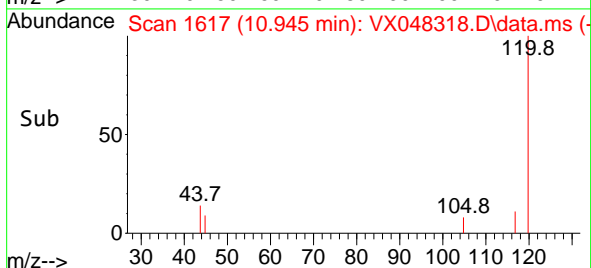
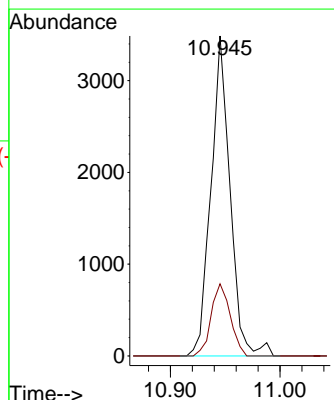
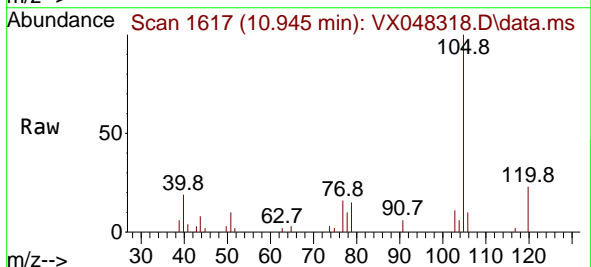
Instrument :
 MSVOA_X
 ClientSampleId :
 SB-1DL

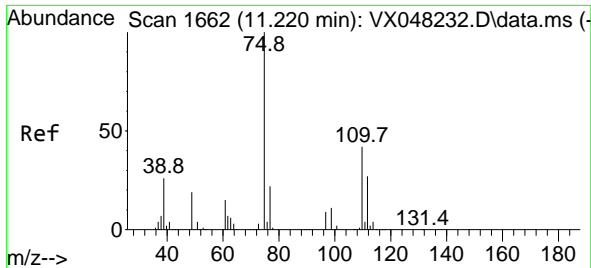
Tgt Ion:152 Resp: 142208
 Ion Ratio Lower Upper
 152 100
 115 62.5 43.1 129.4
 150 158.2 0.0 353.0



#73
 Isopropylbenzene
 Concen: 0.408 ug/l
 RT: 10.945 min Scan# 1617
 Delta R.T. 0.000 min
 Lab File: VX048318.D
 Acq: 23 Oct 2025 12:41

Tgt Ion:105 Resp: 4234
 Ion Ratio Lower Upper
 105 100
 120 22.4 13.0 38.9

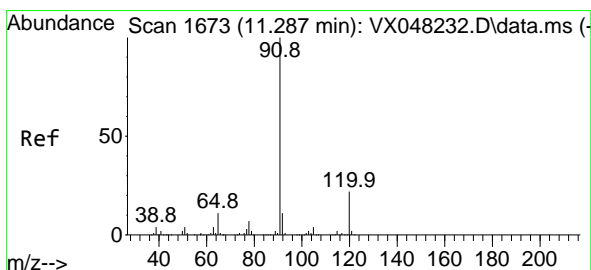
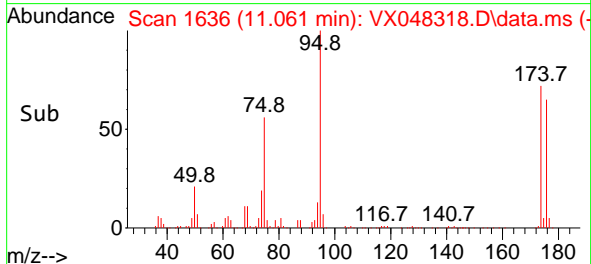
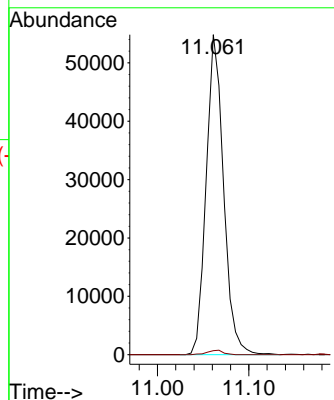
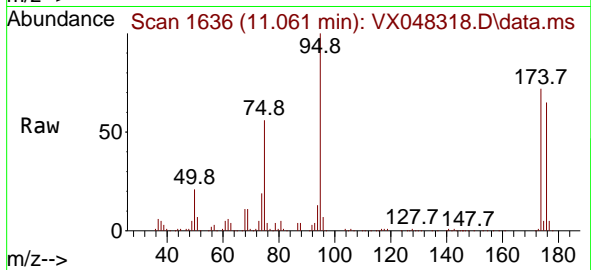




#76
 1,2,3-Trichloropropane
 Concen: 31.305 ug/l
 RT: 11.061 min Scan# 11
 Delta R.T. -0.158 min
 Lab File: VX048318.D
 Acq: 23 Oct 2025 12:41

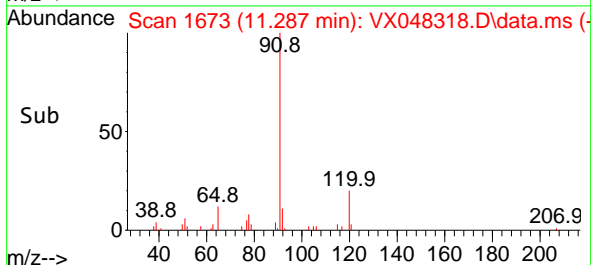
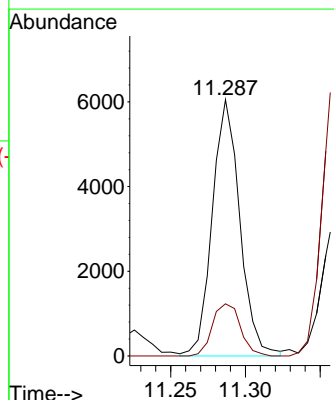
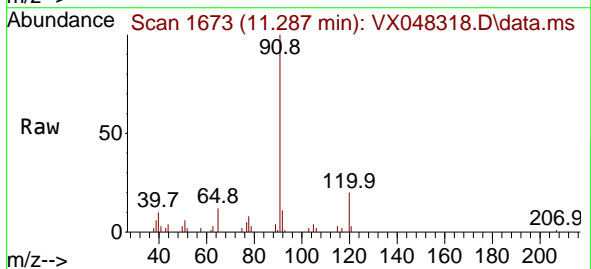
Instrument : MSVOA_X
 ClientSampleId : SB-1DL

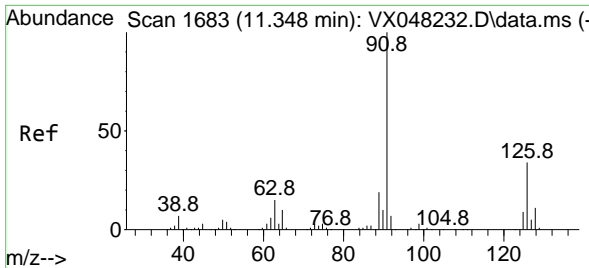
Tgt Ion: 75 Resp: 72194
 Ion Ratio Lower Upper
 75 100
 77 1.3 22.4 67.2#



#78
 n-propylbenzene
 Concen: 0.646 ug/l
 RT: 11.287 min Scan# 1673
 Delta R.T. 0.000 min
 Lab File: VX048318.D
 Acq: 23 Oct 2025 12:41

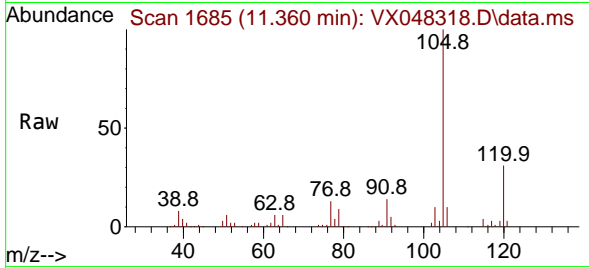
Tgt Ion: 91 Resp: 7763
 Ion Ratio Lower Upper
 91 100
 120 20.7 11.1 33.1



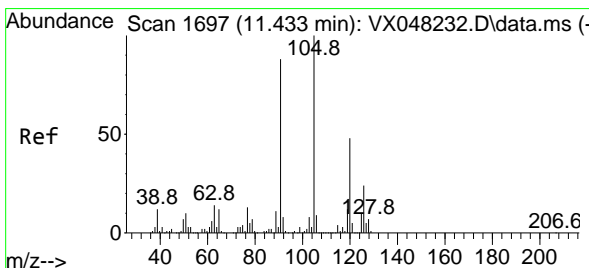
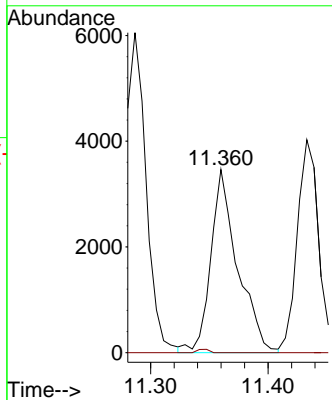
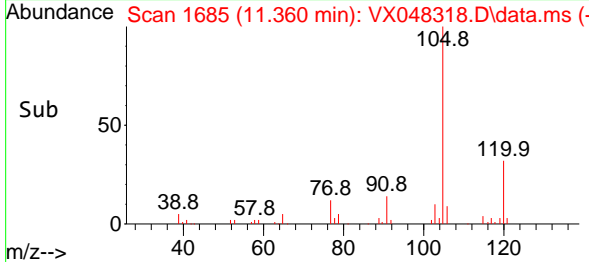


#79
 2-Chlorotoluene
 Concen: 0.753 ug/l
 RT: 11.360 min Scan# 1685
 Delta R.T. 0.012 min
 Lab File: VX048318.D
 Acq: 23 Oct 2025 12:41

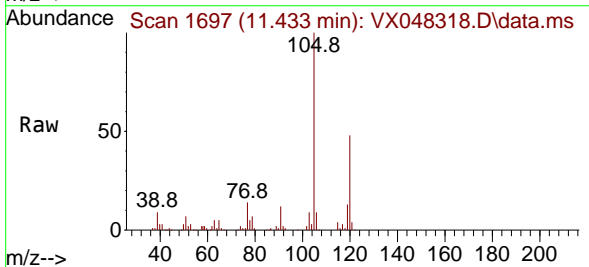
Instrument : MSVOA_X
 ClientSampleId : SB-1DL



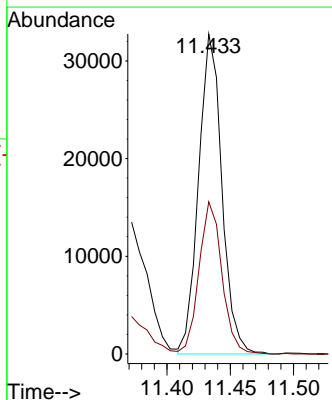
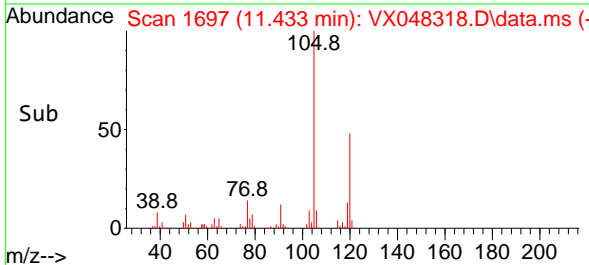
Tgt Ion: 91 Resp: 5491
 Ion Ratio Lower Upper
 91 100
 126 0.8 16.4 49.4#

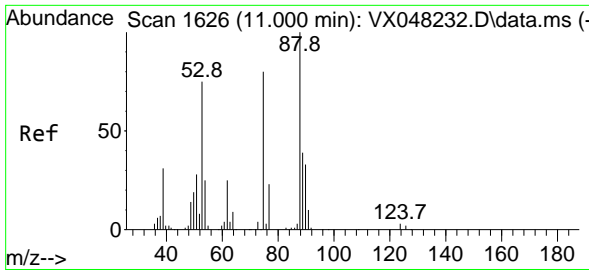


#80
 1,3,5-Trimethylbenzene
 Concen: 4.880 ug/l
 RT: 11.433 min Scan# 1697
 Delta R.T. 0.000 min
 Lab File: VX048318.D
 Acq: 23 Oct 2025 12:41



Tgt Ion: 105 Resp: 41944
 Ion Ratio Lower Upper
 105 100
 120 46.8 24.0 72.0

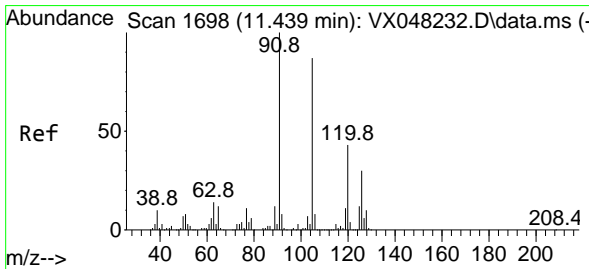
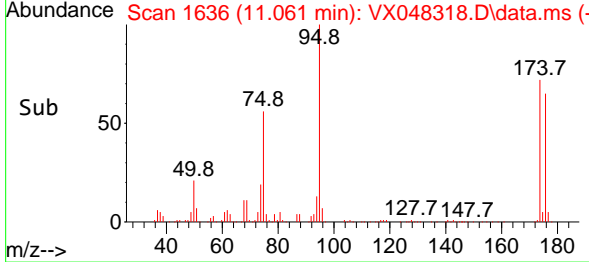
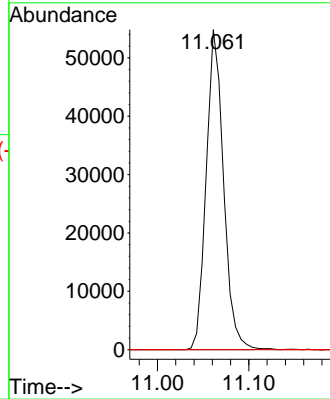
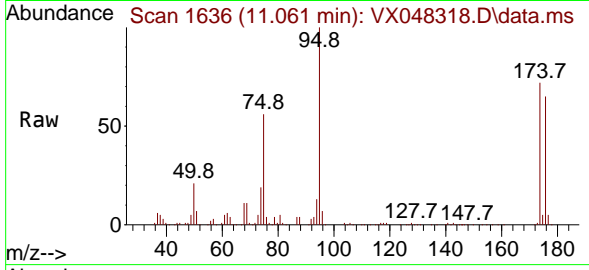




#81
 trans-1,4-Dichloro-2-butene
 Concen: 76.163 ug/l
 RT: 11.061 min Scan# 1636
 Delta R.T. 0.061 min
 Lab File: VX048318.D
 Acq: 23 Oct 2025 12:41

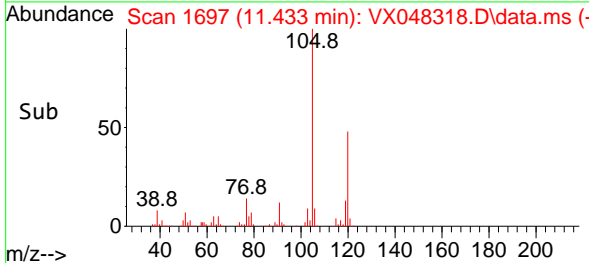
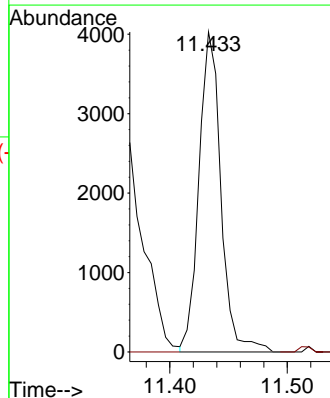
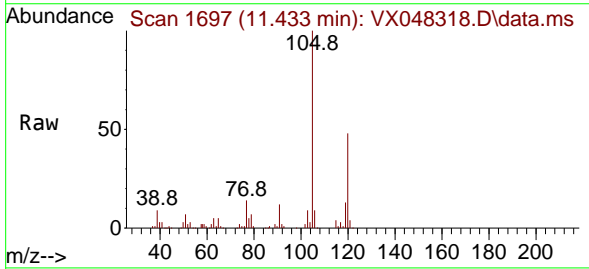
Instrument :
 MSVOA_X
 ClientSampleId :
 SB-1DL

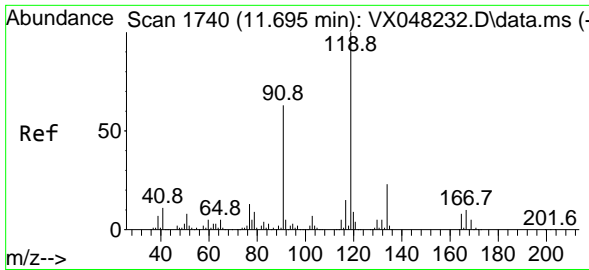
Tgt Ion: 75 Resp: 72194
 Ion Ratio Lower Upper
 75 100
 53 0.0 79.5 119.3#
 89 0.0 36.8 55.2#



#82
 4-Chlorotoluene
 Concen: 0.604 ug/l
 RT: 11.433 min Scan# 1697
 Delta R.T. 0.000 min
 Lab File: VX048318.D
 Acq: 23 Oct 2025 12:41

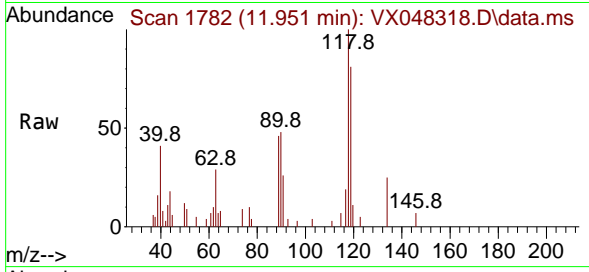
Tgt Ion: 91 Resp: 5227
 Ion Ratio Lower Upper
 91 100
 126 0.0 14.1 42.4#





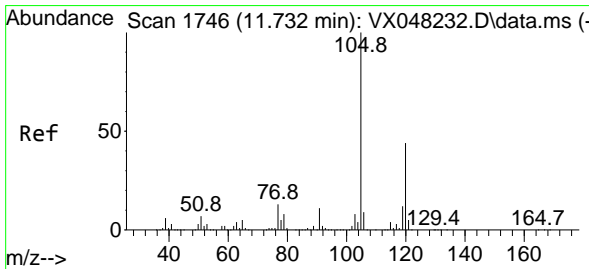
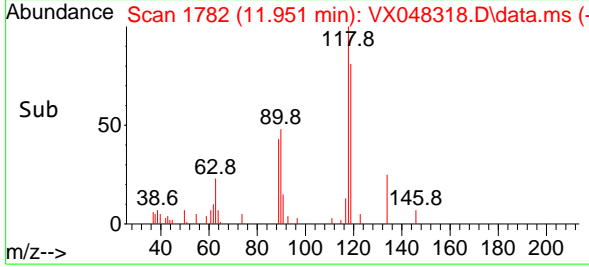
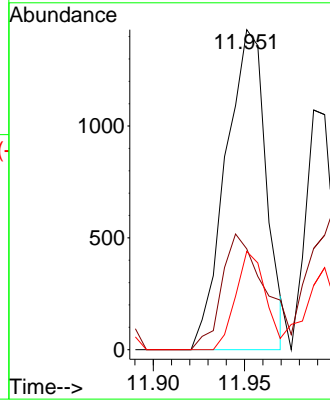
#83
 tert-Butylbenzene
 Concen: 0.249 ug/l
 RT: 11.951 min Scan# 1782
 Delta R.T. 0.256 min
 Lab File: VX048318.D
 Acq: 23 Oct 2025 12:41

Instrument : MSVOA_X
 ClientSampleId : SB-1DL



Tgt Ion:119 Resp: 2202

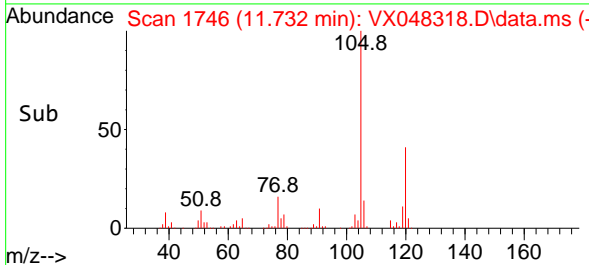
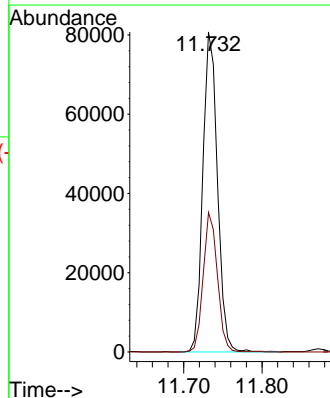
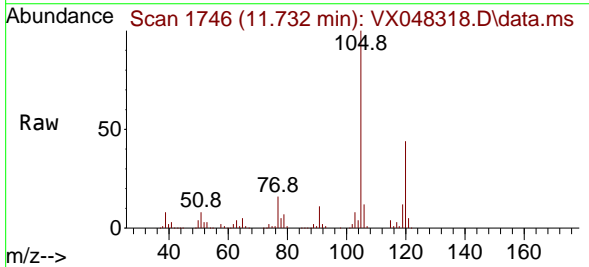
| Ion | Ratio | Lower | Upper |
|-----|-------|-------|-------|
| 119 | 100 | | |
| 91 | 37.7 | 30.3 | 91.0 |
| 134 | 22.8 | 11.4 | 34.2 |

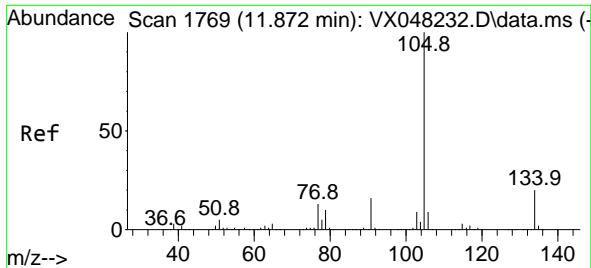


#84
 1,2,4-Trimethylbenzene
 Concen: 12.183 ug/l
 RT: 11.732 min Scan# 1746
 Delta R.T. 0.000 min
 Lab File: VX048318.D
 Acq: 23 Oct 2025 12:41

Tgt Ion:105 Resp: 104508

| Ion | Ratio | Lower | Upper |
|-----|-------|-------|-------|
| 105 | 100 | | |
| 120 | 42.4 | 22.1 | 66.5 |

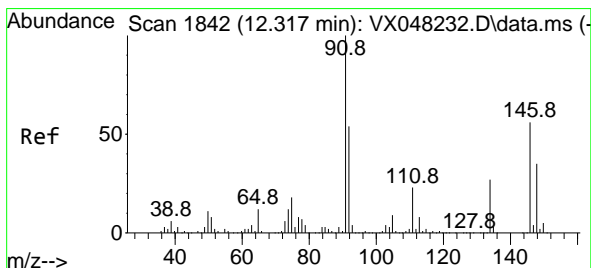
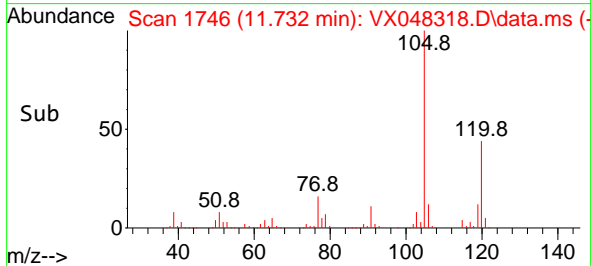
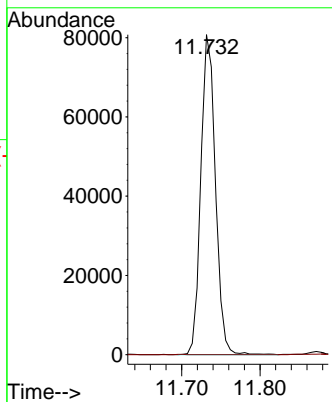
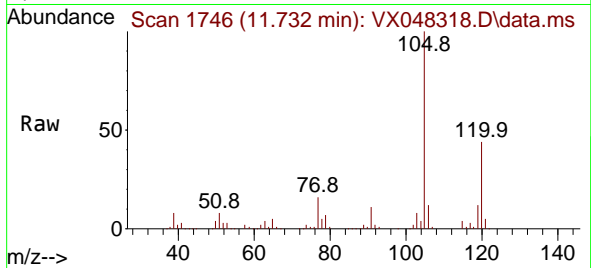




#85
 sec-Butylbenzene
 Concen: 9.836 ug/l
 RT: 11.732 min Scan# 11
 Delta R.T. -0.140 min
 Lab File: VX048318.D
 Acq: 23 Oct 2025 12:41

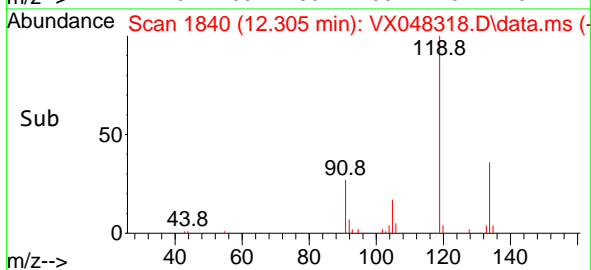
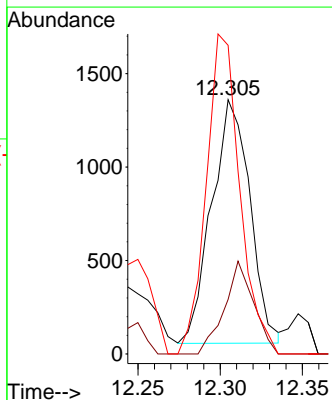
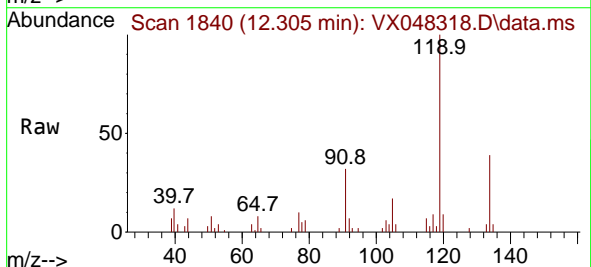
Instrument :
 MSVOA_X
 ClientSampleId :
 SB-1DL

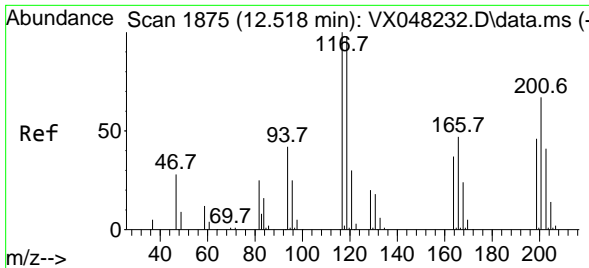
Tgt Ion:105 Resp: 104508
 Ion Ratio Lower Upper
 105 100
 134 0.0 10.1 30.1#



#89
 n-Butylbenzene
 Concen: 0.252 ug/l
 RT: 12.305 min Scan# 1840
 Delta R.T. -0.006 min
 Lab File: VX048318.D
 Acq: 23 Oct 2025 12:41

Tgt Ion: 91 Resp: 2107
 Ion Ratio Lower Upper
 91 100
 92 29.2 26.9 80.6
 134 115.3 12.7 38.1#

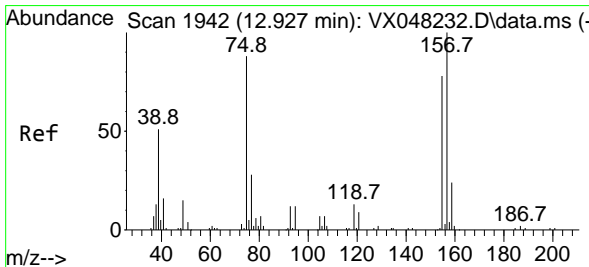
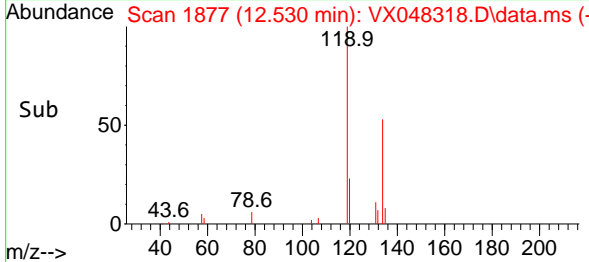
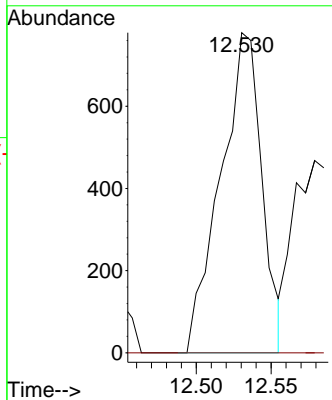
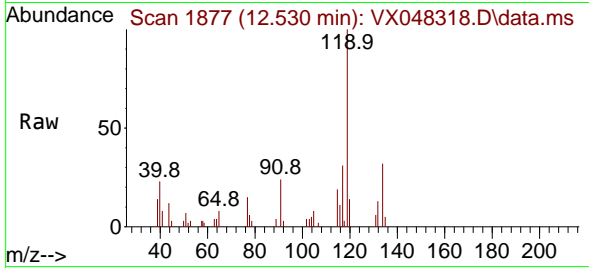




#90
 Hexachloroethane
 Concen: 0.824 ug/l
 RT: 12.530 min Scan# 1877
 Delta R.T. 0.012 min
 Lab File: VX048318.D
 Acq: 23 Oct 2025 12:41

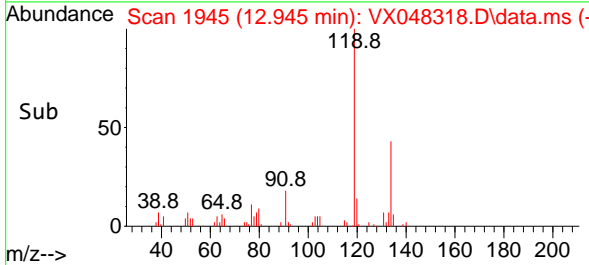
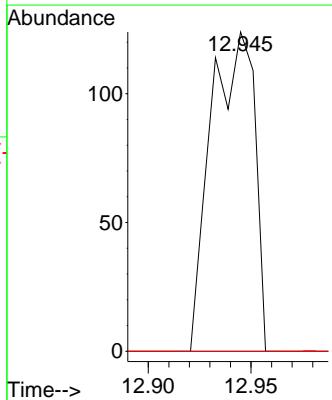
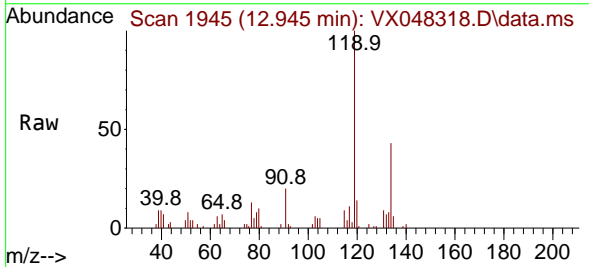
Instrument : MSVOA_X
 ClientSampleId : SB-1DL

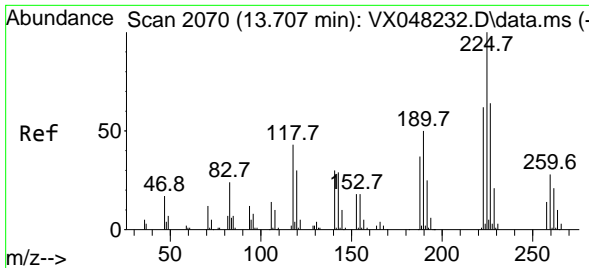
Tgt Ion:117 Resp: 1494
 Ion Ratio Lower Upper
 117 100
 201 0.0 34.1 102.2#



#92
 1,2-Dibromo-3-Chloropropane
 Concen: 0.318 ug/l
 RT: 12.945 min Scan# 1945
 Delta R.T. 0.024 min
 Lab File: VX048318.D
 Acq: 23 Oct 2025 12:41

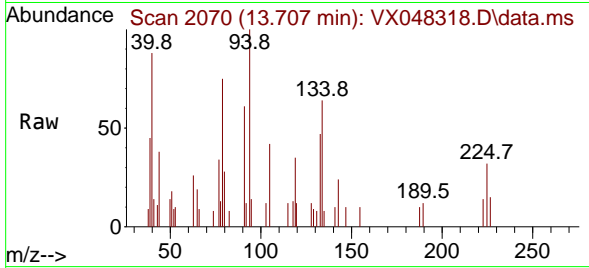
Tgt Ion: 75 Resp: 183
 Ion Ratio Lower Upper
 75 100
 155 0.0 42.8 128.4#
 157 0.0 54.2 162.6#



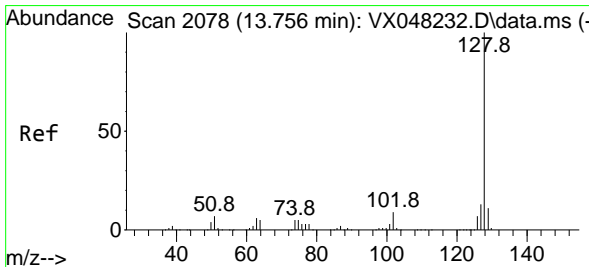
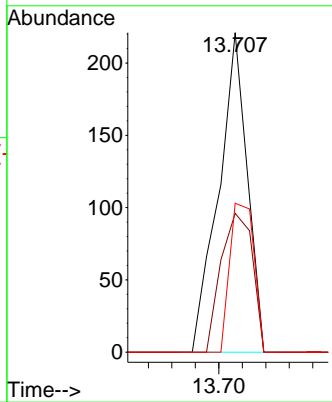
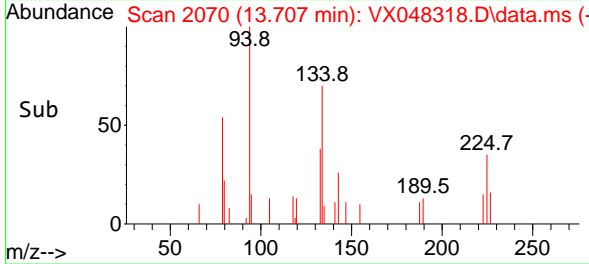


#94
 Hexachlorobutadiene
 Concen: 0.227 ug/l
 RT: 13.707 min Scan# 2070
 Delta R.T. 0.006 min
 Lab File: VX048318.D
 Acq: 23 Oct 2025 12:41

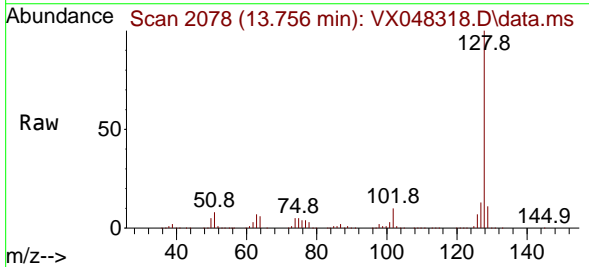
Instrument :
 MSVOA_X
 ClientSampleId :
 SB-1DL



Tgt Ion:225 Resp: 187
 Ion Ratio Lower Upper
 225 100
 223 47.6 32.6 97.7
 227 39.6 32.5 97.4



#95
 Naphthalene
 Concen: 82.766 ug/l
 RT: 13.756 min Scan# 2078
 Delta R.T. 0.000 min
 Lab File: VX048318.D
 Acq: 23 Oct 2025 12:41



Tgt Ion:128 Resp: 683573
 Ion Ratio Lower Upper
 128 100
 127 12.8 10.2 15.4
 129 11.0 8.6 12.8

