

Data Path : Z:\voasrv\HPCHEM1\MSVOA_X\Data\VX102325\
 Data File : VX048320.D
 Acq On : 23 Oct 2025 13:22
 Operator : JC/MD
 Sample : Q3414-03 10X
 Misc : 5.0mL/MSVOA_X/WATER
 ALS Vial : 12 Sample Multiplier: 1

Instrument :
 MSVOA_X
 ClientSampleId :

Quant Time: Oct 24 05:43:59 2025
 Quant Method : Z:\voasrv\HPCHEM1\MSVOA_X\Method\82X102025W.M
 Quant Title : SW846 8260
 QLast Update : Mon Oct 20 14:13:59 2025
 Response via : Initial Calibration

Compound	R.T.	QIon	Response	Conc	Units	Dev(Min)
Internal Standards						
1) Pentafluorobenzene	5.544	168	116739	50.000	ug/l	0.00
34) 1,4-Difluorobenzene	6.745	114	234904	50.000	ug/l	0.00
63) Chlorobenzene-d5	10.037	117	244134	50.000	ug/l	0.00
72) 1,4-Dichlorobenzene-d4	12.006	152	128394	50.000	ug/l	0.00
System Monitoring Compounds						
33) 1,2-Dichloroethane-d4	5.946	65	96557	58.993	ug/l	0.00
Spiked Amount	50.000	Range	78 - 117	Recovery	=	117.980%#
35) Dibromofluoromethane	5.379	113	64758	40.381	ug/l	0.00
Spiked Amount	50.000	Range	75 - 124	Recovery	=	80.760%
50) Toluene-d8	8.634	98	263311	46.844	ug/l	0.00
Spiked Amount	50.000	Range	92 - 112	Recovery	=	93.680%
62) 4-Bromofluorobenzene	11.061	95	118306	55.324	ug/l	0.00
Spiked Amount	50.000	Range	83 - 123	Recovery	=	110.640%
Target Compounds						
						Qvalue
10) Methyl Iodide	2.477	142	1180	0.745	ug/l #	37
11) Tert butyl alcohol	2.934	59	368	2.264	ug/l #	72
13) Acrolein	1.959	56	49	0.296	ug/l #	15
16) Acetone	2.379	43	4374	7.790	ug/l	97
18) Methyl Acetate	2.703	43	659	0.562	ug/l #	54
20) Methylene Chloride	2.788	84	651	0.476	ug/l #	96
25) 2-Butanone	4.544	43	260	0.366	ug/l #	50
31) Cyclohexane	5.458	56	1339	0.659	ug/l #	81
36) 1,1-Dichloropropene	5.537	75	10085	4.425	ug/l #	49
38) Carbon Tetrachloride	5.537	117	12401	4.410	ug/l #	17
39) Methylcyclohexane	7.366	83	1183	0.439	ug/l #	75
40) Benzene	6.025	78	1353870	204.583	ug/l	99
42) 1,2-Dichloroethane	6.031	62	12957	5.306	ug/l #	76
43) Isopropyl Acetate	6.330	43	898	0.289	ug/l #	69
48) Methyl methacrylate	7.787	41	3711	2.370	ug/l #	47
51) 4-Methyl-2-Pentanone	8.537	43	4459	2.492	ug/l #	38
52) Toluene	8.701	92	627017	149.143	ug/l	100
53) t-1,3-Dichloropropene	8.701	75	8033	3.150	ug/l #	1
54) cis-1,3-Dichloropropene	8.537	75	1339	0.487	ug/l #	58
55) 1,1,2-Trichloroethane	9.000	97	4249	2.718	ug/l #	19
67) Ethyl Benzene	10.177	91	77697	8.310	ug/l	99
68) m/p-Xylenes	10.280	106	170461	49.067	ug/l	99
69) o-Xylene	10.628	106	155130	46.252	ug/l	100
70) Styrene	10.640	104	47447	8.308	ug/l #	51
73) Isopropylbenzene	10.945	105	4574	0.488	ug/l	99
76) 1,2,3-Trichloropropane	11.061	75	63080	30.296	ug/l #	33
78) n-propylbenzene	11.286	91	9132	0.841	ug/l	97
79) 2-Chlorotoluene	11.360	91	6503	0.988	ug/l #	43
80) 1,3,5-Trimethylbenzene	11.433	105	41744	5.379	ug/l	99
81) trans-1,4-Dichloro-2-b...	11.061	75	63080	73.708	ug/l #	10
82) 4-Chlorotoluene	11.433	91	4906	0.628	ug/l #	46
83) tert-Butylbenzene	11.951	119	2046	0.257	ug/l	70
84) 1,2,4-Trimethylbenzene	11.731	105	115805	14.952	ug/l	95
85) sec-Butylbenzene	11.731	105	115805	12.071	ug/l #	56
86) p-Isopropyltoluene	11.951	119	2092	0.252	ug/l	82
89) n-Butylbenzene	12.305	91	2078	0.275	ug/l #	39

Data Path : Z:\voasrv\HPCHEM1\MSVOA_X\Data\VX102325\
Data File : VX048320.D
Acq On : 23 Oct 2025 13:22
Operator : JC/MD
Sample : Q3414-03 10X
Misc : 5.0mL/MSVOA_X/WATER
ALS Vial : 12 Sample Multiplier: 1

Instrument :
MSVOA_X
ClientSampleId :

Quant Time: Oct 24 05:43:59 2025
Quant Method : Z:\voasrv\HPCHEM1\MSVOA_X\Method\82X102025W.M
Quant Title : SW846 8260
QLast Update : Mon Oct 20 14:13:59 2025
Response via : Initial Calibration

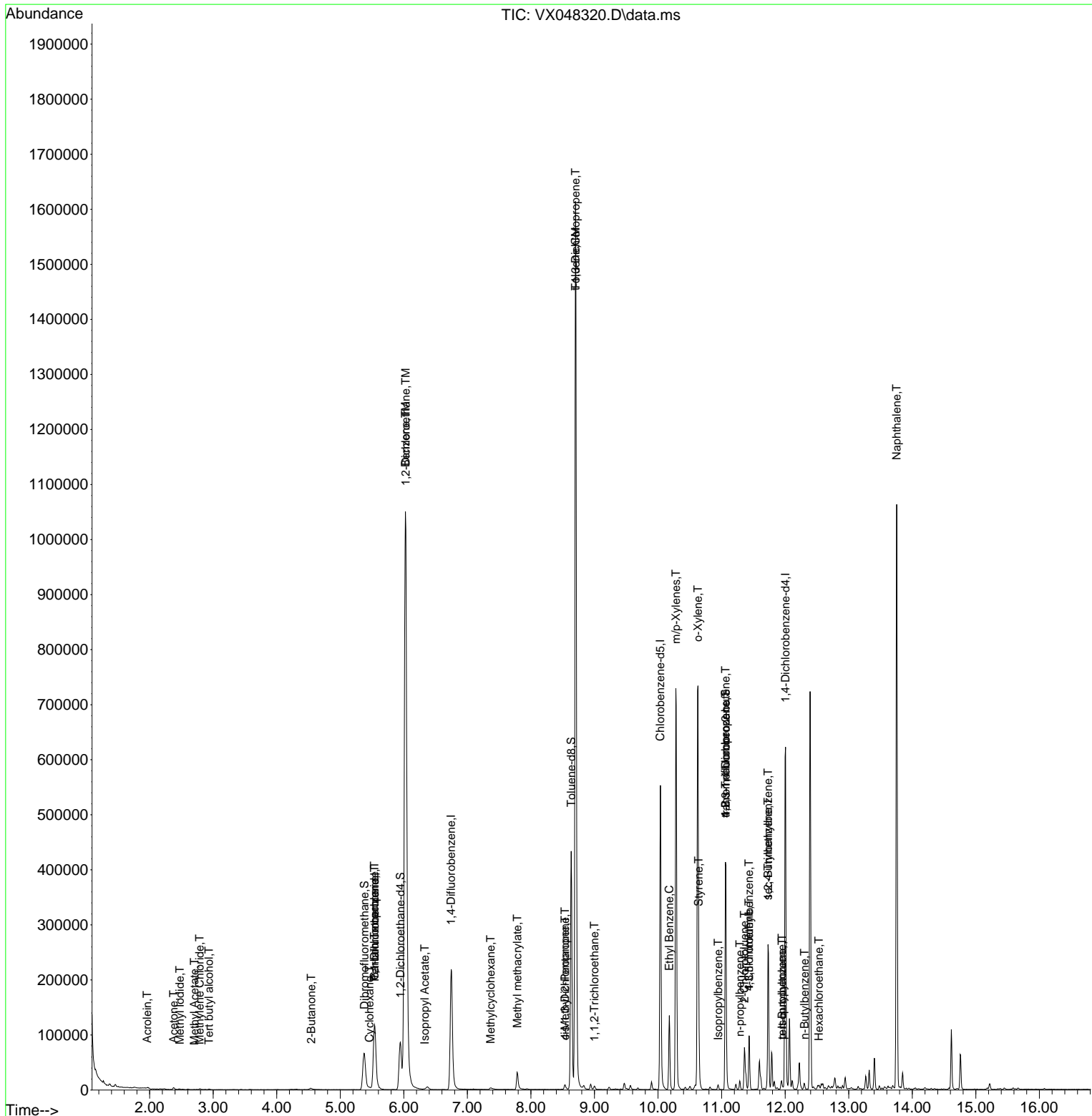
Compound	R.T.	QIon	Response	Conc	Units	Dev(Min)
90) Hexachloroethane	12.530	117	1197	0.731	ug/l #	16
95) Naphthalene	13.755	128	622517	83.483	ug/l	100

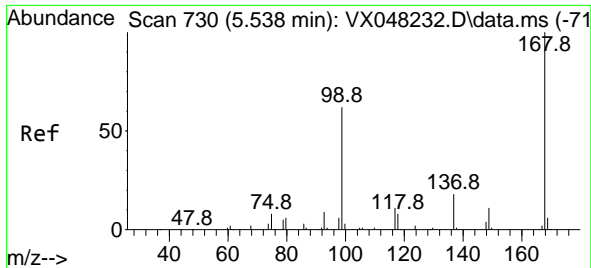
(#) = qualifier out of range (m) = manual integration (+) = signals summed

Data Path : Z:\voasrv\HPCHEM1\MSVOA_X\Data\VX102325\
 Data File : VX048320.D
 Acq On : 23 Oct 2025 13:22
 Operator : JC/MD
 Sample : Q3414-03 10X
 Misc : 5.0mL/MSVOA_X/WATER
 ALS Vial : 12 Sample Multiplier: 1

Instrument :
 MSVOA_X
 ClientSampleId :

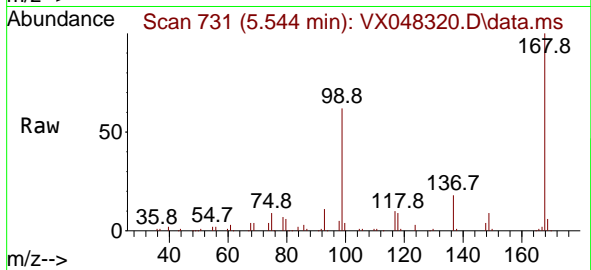
Quant Time: Oct 24 05:43:59 2025
 Quant Method : Z:\voasrv\HPCHEM1\MSVOA_X\Method\82X102025W.M
 Quant Title : SW846 8260
 QLast Update : Mon Oct 20 14:13:59 2025
 Response via : Initial Calibration



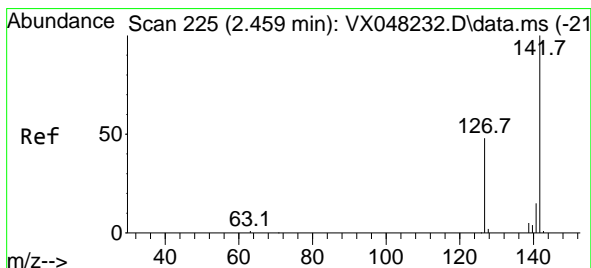
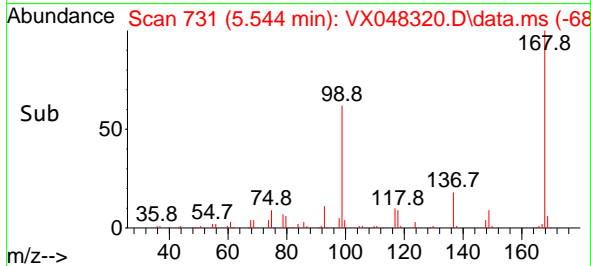
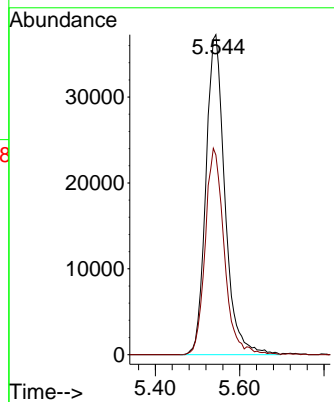


#1
 Pentafluorobenzene
 Concen: 50.000 ug/l
 RT: 5.544 min Scan# 71
 Delta R.T. -0.000 min
 Lab File: VX048320.D
 Acq: 23 Oct 2025 13:22

Instrument :
 MSVOA_X
 ClientSampleId :

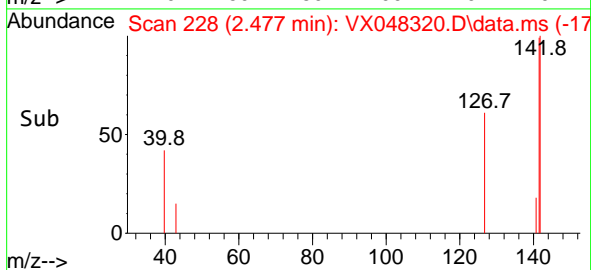
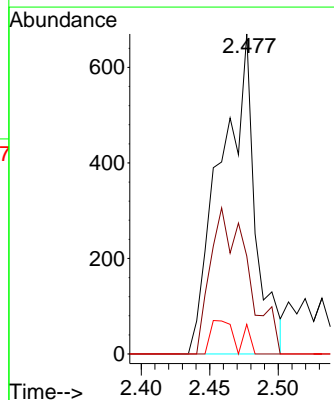
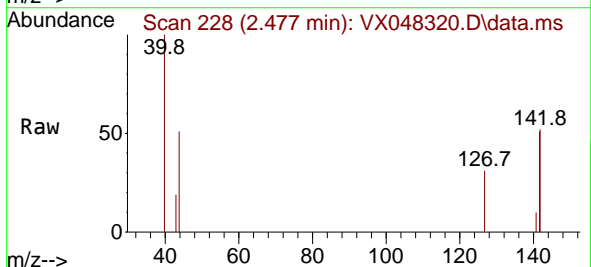


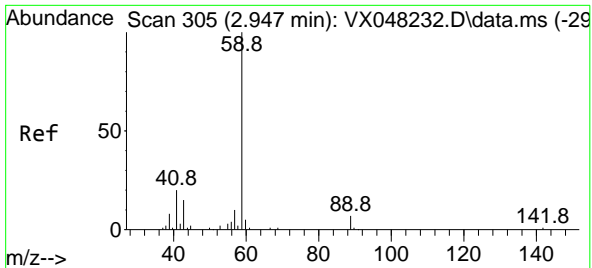
Tgt Ion:168 Resp: 116739
 Ion Ratio Lower Upper
 168 100
 99 62.4 46.4 69.6



#10
 Methyl Iodide
 Concen: 0.745 ug/l
 RT: 2.477 min Scan# 228
 Delta R.T. 0.018 min
 Lab File: VX048320.D
 Acq: 23 Oct 2025 13:22

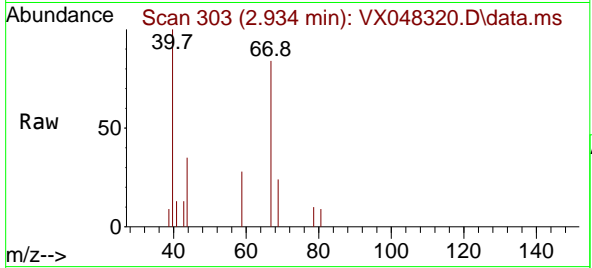
Tgt Ion:142 Resp: 1180
 Ion Ratio Lower Upper
 142 100
 127 0.0 38.5 57.7#
 141 0.0 11.6 17.4#



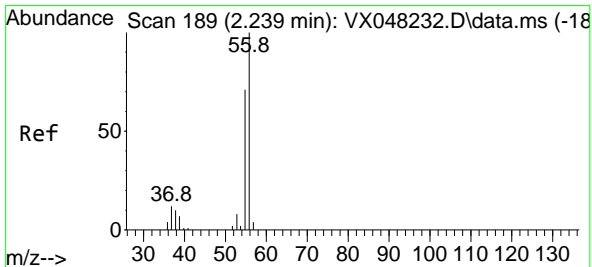
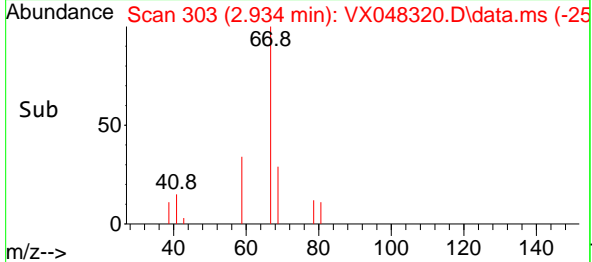
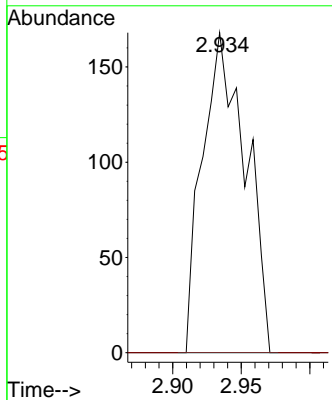


#11
 Tert butyl alcohol
 Concen: 2.264 ug/l
 RT: 2.934 min Scan# 30
 Delta R.T. -0.006 min
 Lab File: VX048320.D
 Acq: 23 Oct 2025 13:22

Instrument : MSVOA_X
 ClientSampleId :

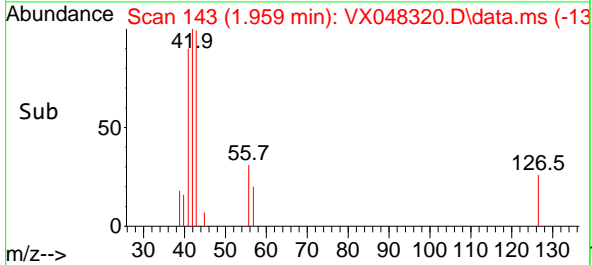
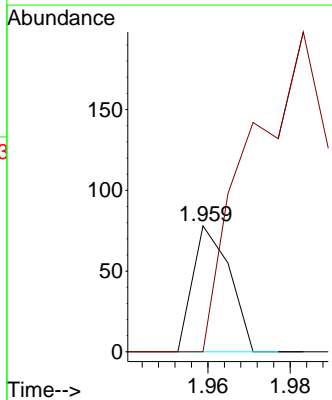
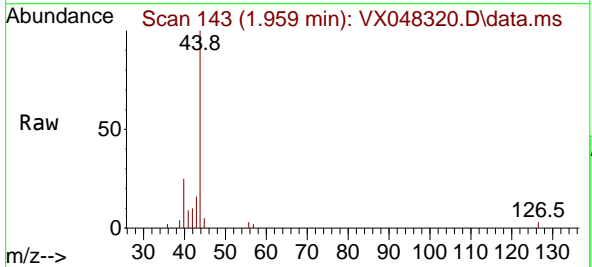


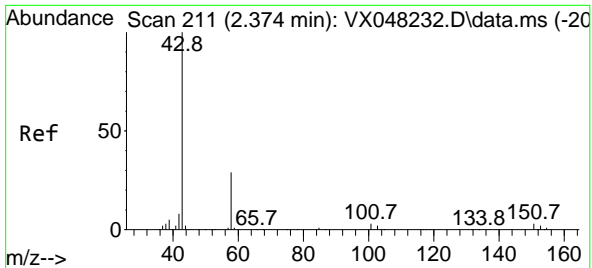
Tgt Ion: 59 Resp: 368
 Ion Ratio Lower Upper
 59 100
 57 0.0 8.2 12.4#



#13
 Acrolein
 Concen: 0.296 ug/l
 RT: 1.959 min Scan# 143
 Delta R.T. -0.275 min
 Lab File: VX048320.D
 Acq: 23 Oct 2025 13:22

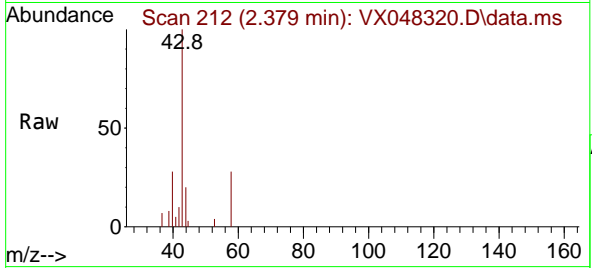
Tgt Ion: 56 Resp: 49
 Ion Ratio Lower Upper
 56 100
 55 0.0 56.1 84.1#



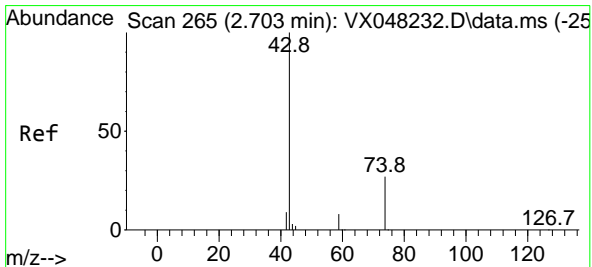
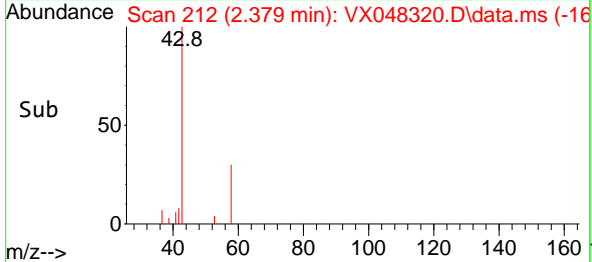
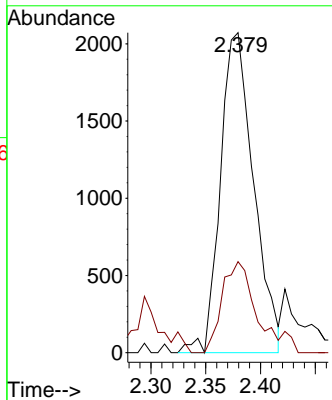


#16
 Acetone
 Concen: 7.790 ug/l
 RT: 2.379 min Scan# 211
 Delta R.T. 0.006 min
 Lab File: VX048320.D
 Acq: 23 Oct 2025 13:22

Instrument :
 MSVOA_X
 ClientSampleId :

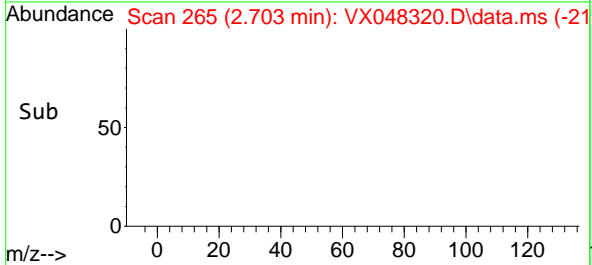
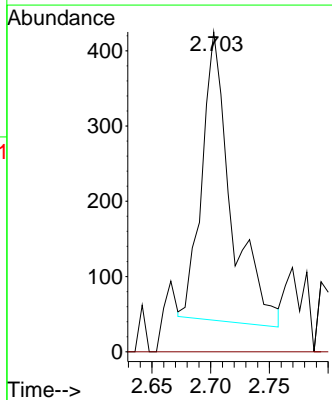
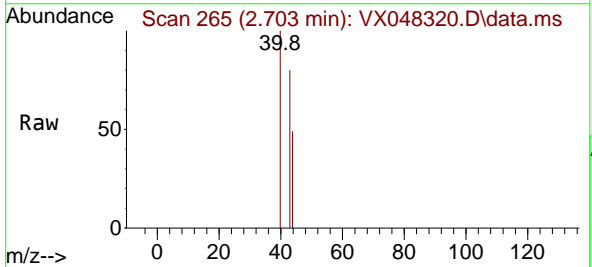


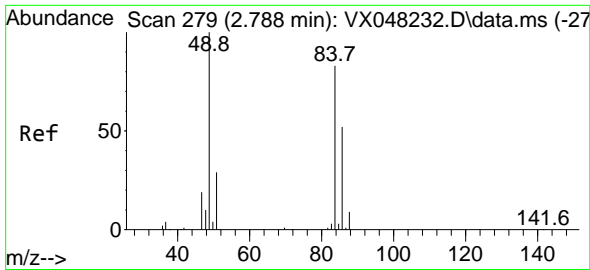
Tgt Ion: 43 Resp: 4374
 Ion Ratio Lower Upper
 43 100
 58 30.9 23.4 35.2



#18
 Methyl Acetate
 Concen: 0.562 ug/l
 RT: 2.703 min Scan# 265
 Delta R.T. 0.006 min
 Lab File: VX048320.D
 Acq: 23 Oct 2025 13:22

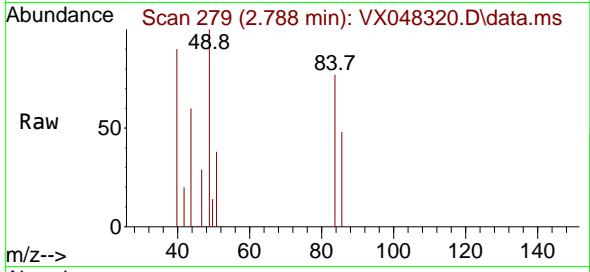
Tgt Ion: 43 Resp: 659
 Ion Ratio Lower Upper
 43 100
 74 0.0 17.5 26.3#



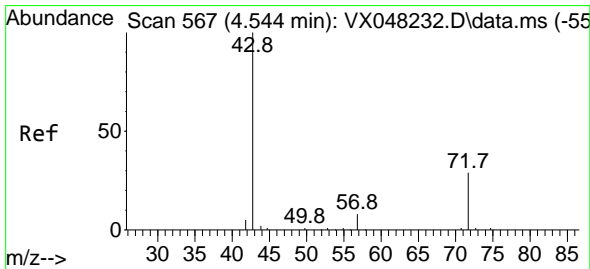
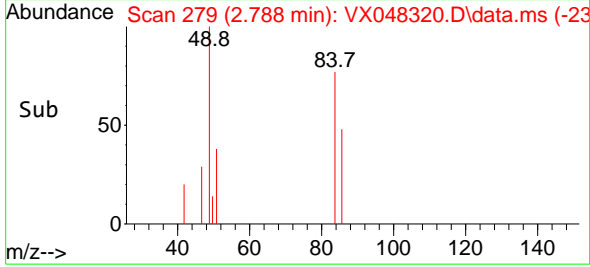
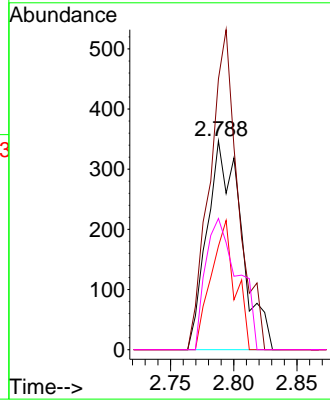


#20
 Methylene Chloride
 Concen: 0.476 ug/l
 RT: 2.788 min Scan# 21
 Delta R.T. -0.000 min
 Lab File: VX048320.D
 Acq: 23 Oct 2025 13:22

Instrument :
 MSVOA_X
 ClientSampleId :

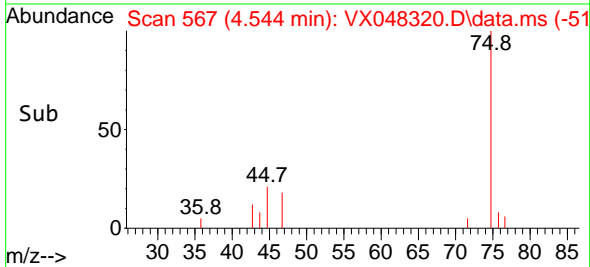
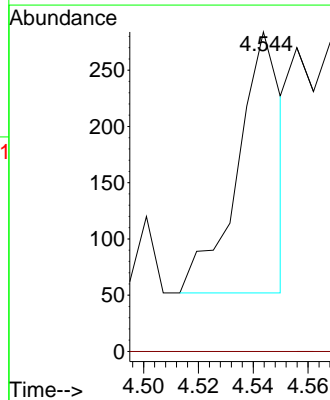
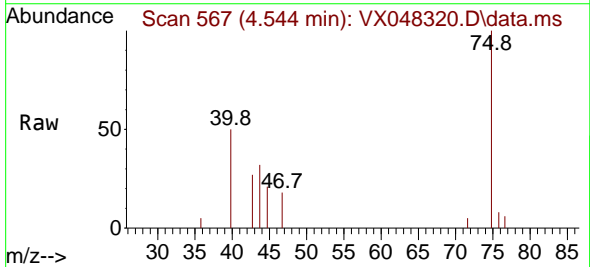


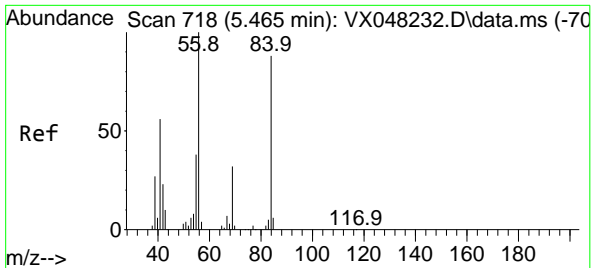
Tgt Ion: 84 Resp: 651
 Ion Ratio Lower Upper
 84 100
 49 129.7 104.1 156.1
 51 49.6 31.3 46.9#
 86 62.8 51.3 76.9



#25
 2-Butanone
 Concen: 0.366 ug/l
 RT: 4.544 min Scan# 567
 Delta R.T. 0.006 min
 Lab File: VX048320.D
 Acq: 23 Oct 2025 13:22

Tgt Ion: 43 Resp: 260
 Ion Ratio Lower Upper
 43 100
 72 0.0 19.9 29.9#



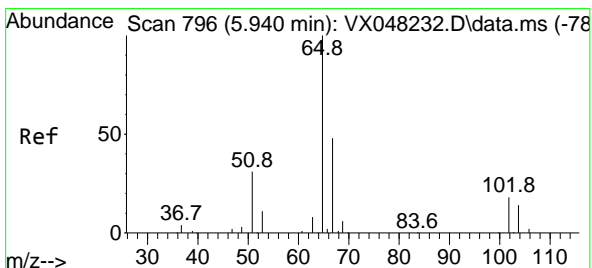
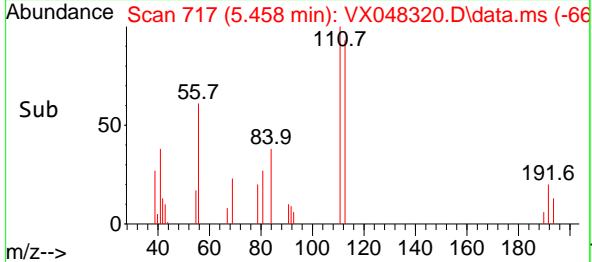
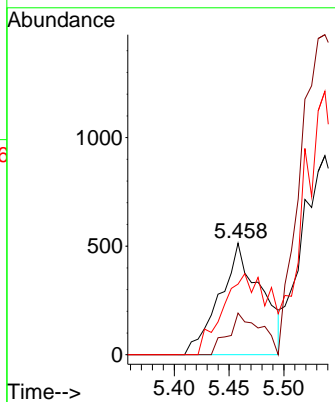
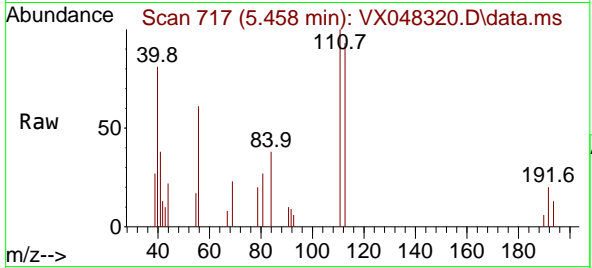


#31
 Cyclohexane
 Concen: 0.659 ug/l
 RT: 5.458 min Scan# 717
 Delta R.T. -0.000 min
 Lab File: VX048320.D
 Acq: 23 Oct 2025 13:22

Instrument :
 MSVOA_X
 ClientSampleId :

Tgt Ion: 56 Resp: 1339

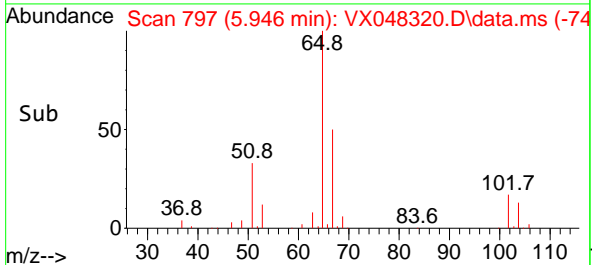
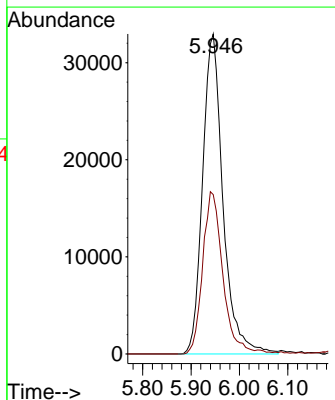
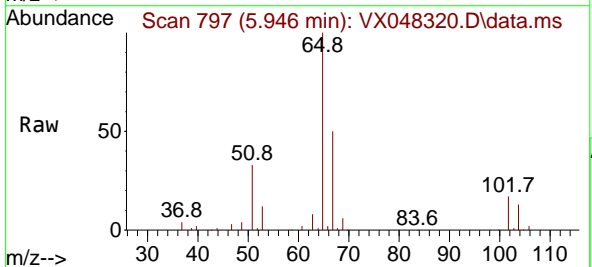
Ion	Ratio	Lower	Upper
56	100		
69	37.4	23.0	34.6#
84	63.2	64.6	97.0#

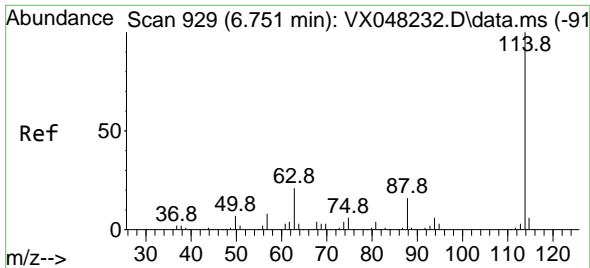


#33
 1,2-Dichloroethane-d4
 Concen: 58.993 ug/l
 RT: 5.946 min Scan# 797
 Delta R.T. 0.006 min
 Lab File: VX048320.D
 Acq: 23 Oct 2025 13:22

Tgt Ion: 65 Resp: 96557

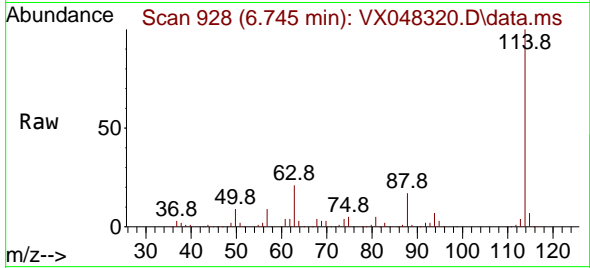
Ion	Ratio	Lower	Upper
65	100		
67	50.3	0.0	105.0



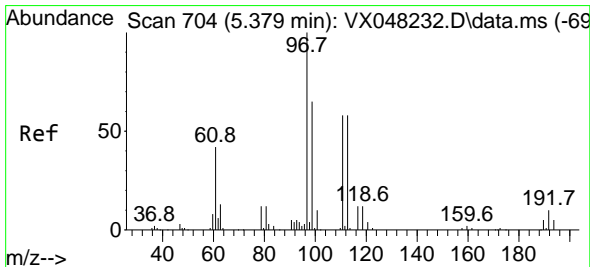
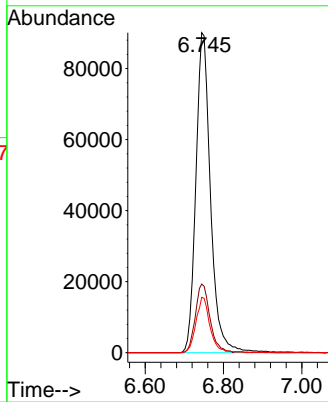
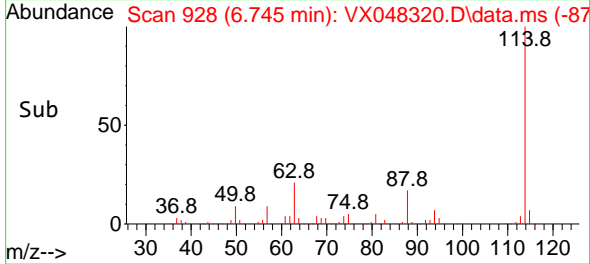


#34
 1,4-Difluorobenzene
 Concen: 50.000 ug/l
 RT: 6.745 min Scan# 91
 Delta R.T. -0.000 min
 Lab File: VX048320.D
 Acq: 23 Oct 2025 13:22

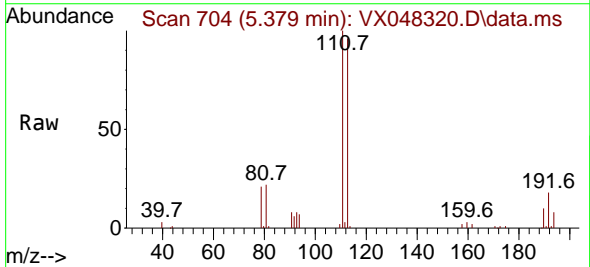
Instrument :
 MSVOA_X
 ClientSampleId :



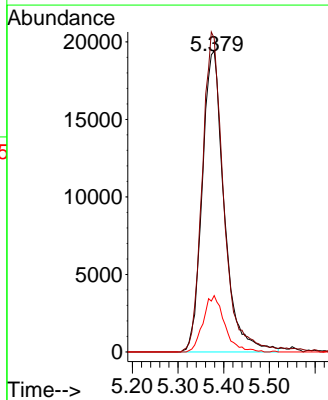
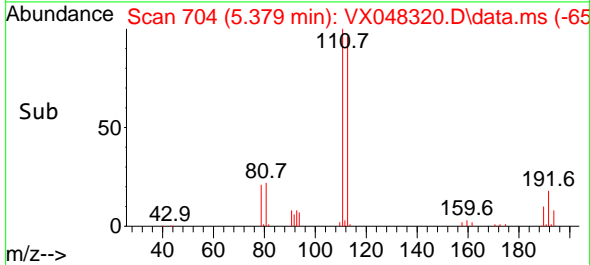
Tgt Ion:114 Resp: 234904
 Ion Ratio Lower Upper
 114 100
 63 21.4 0.0 43.2
 88 17.3 0.0 33.6

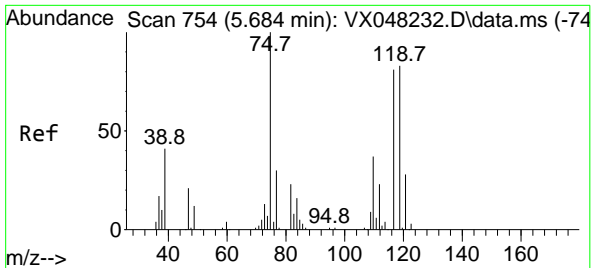


#35
 Dibromofluoromethane
 Concen: 40.381 ug/l
 RT: 5.379 min Scan# 704
 Delta R.T. 0.006 min
 Lab File: VX048320.D
 Acq: 23 Oct 2025 13:22



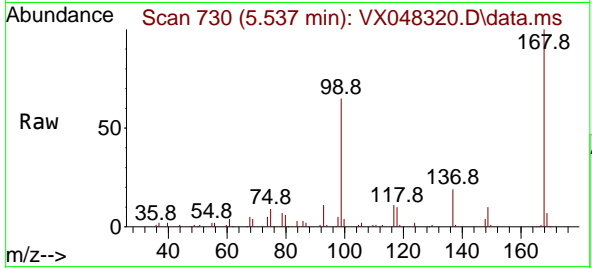
Tgt Ion:113 Resp: 64758
 Ion Ratio Lower Upper
 113 100
 111 103.2 82.2 123.4
 192 18.3 15.1 22.7





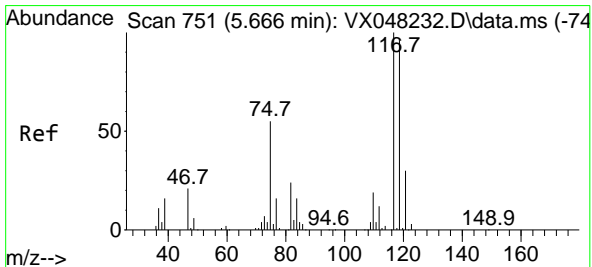
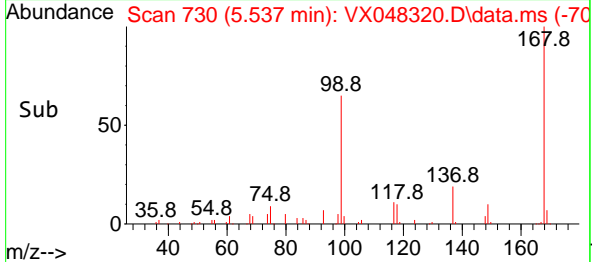
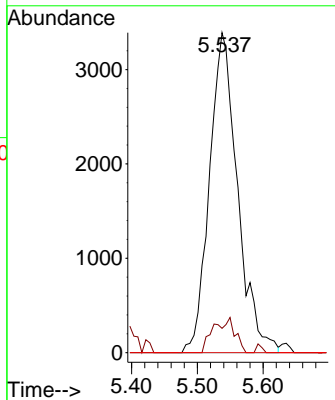
#36
 1,1-Dichloropropene
 Concen: 4.425 ug/l
 RT: 5.537 min Scan# 710
 Delta R.T. -0.147 min
 Lab File: VX048320.D
 Acq: 23 Oct 2025 13:22

Instrument : MSVOA_X
 ClientSampleId :



Tgt Ion: 75 Resp: 10085

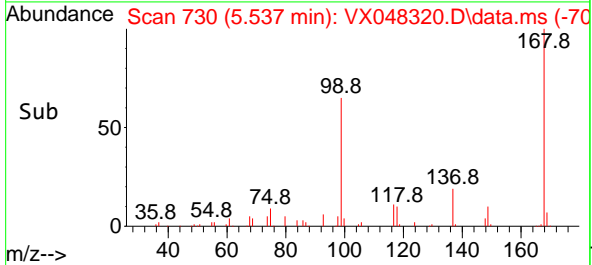
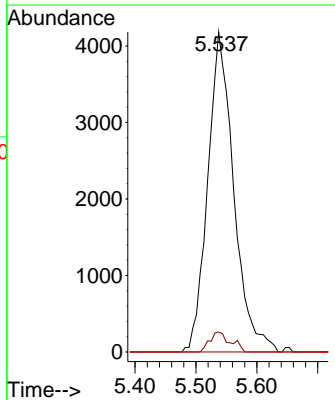
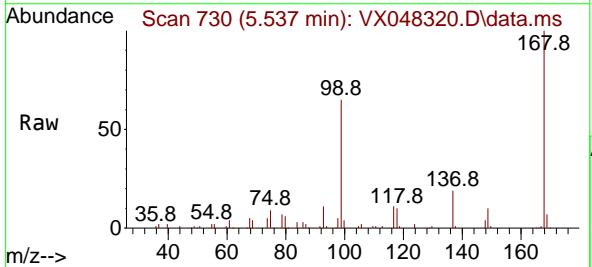
Ion	Ratio	Lower	Upper
75	100		
110	8.5	17.7	53.1#
77	0.0	24.3	36.5#

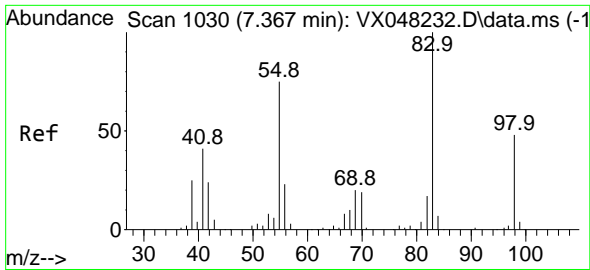


#38
 Carbon Tetrachloride
 Concen: 4.410 ug/l
 RT: 5.537 min Scan# 730
 Delta R.T. -0.128 min
 Lab File: VX048320.D
 Acq: 23 Oct 2025 13:22

Tgt Ion: 117 Resp: 12401

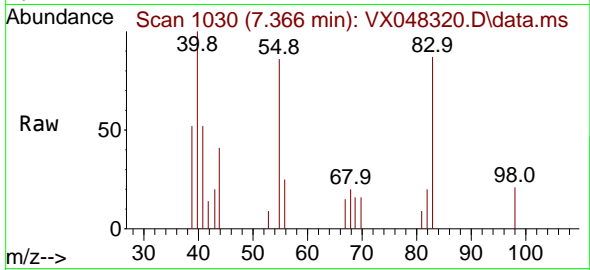
Ion	Ratio	Lower	Upper
117	100		
119	6.2	77.2	115.8#
121	0.0	24.8	37.2#



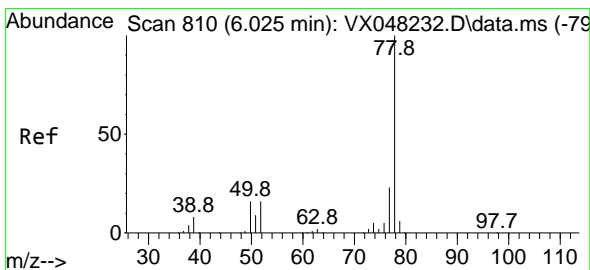
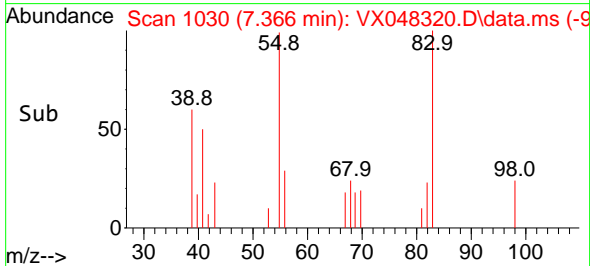
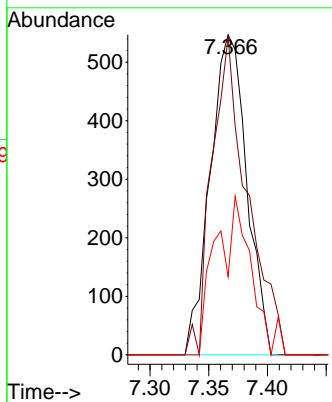


#39
 Methylcyclohexane
 Concen: 0.439 ug/l
 RT: 7.366 min Scan# 10
 Delta R.T. -0.000 min
 Lab File: VX048320.D
 Acq: 23 Oct 2025 13:22

Instrument :
 MSVOA_X
 ClientSampleId :

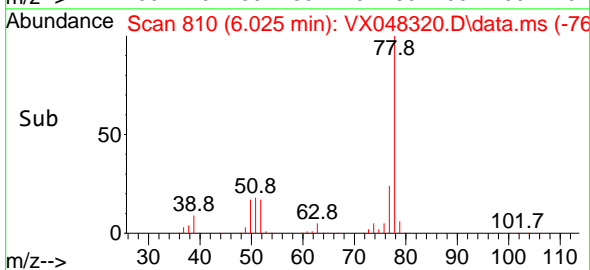
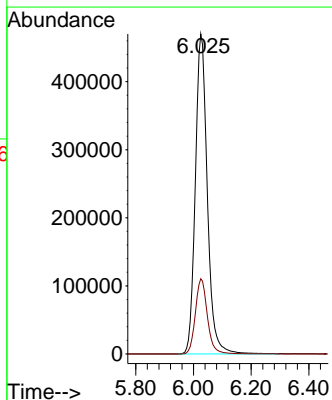
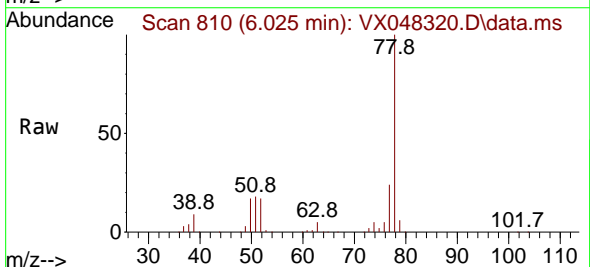


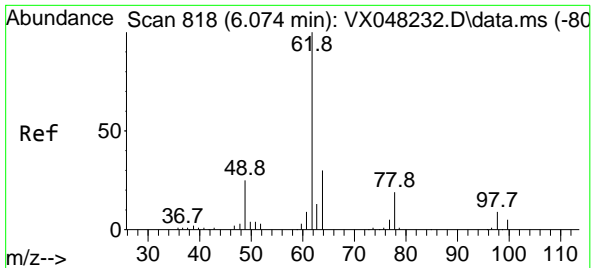
Tgt Ion: 83 Resp: 1183
 Ion Ratio Lower Upper
 83 100
 55 99.5 66.2 99.2#
 98 24.5 38.9 58.3#



#40
 Benzene
 Concen: 204.583 ug/l
 RT: 6.025 min Scan# 810
 Delta R.T. -0.000 min
 Lab File: VX048320.D
 Acq: 23 Oct 2025 13:22

Tgt Ion: 78 Resp: 1353870
 Ion Ratio Lower Upper
 78 100
 77 23.5 19.3 28.9

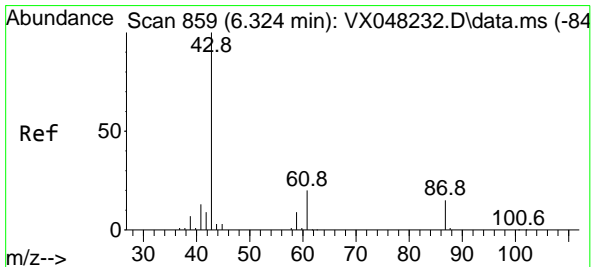
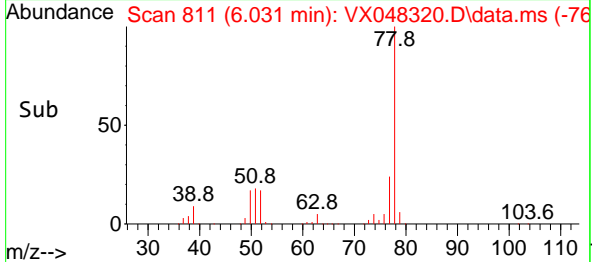
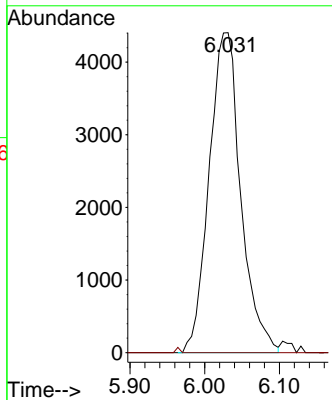
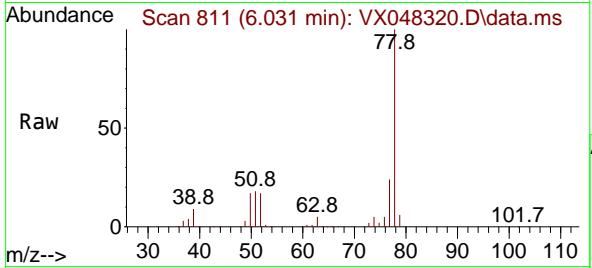




#42
 1,2-Dichloroethane
 Concen: 5.306 ug/l
 RT: 6.031 min Scan# 81
 Delta R.T. -0.037 min
 Lab File: VX048320.D
 Acq: 23 Oct 2025 13:22

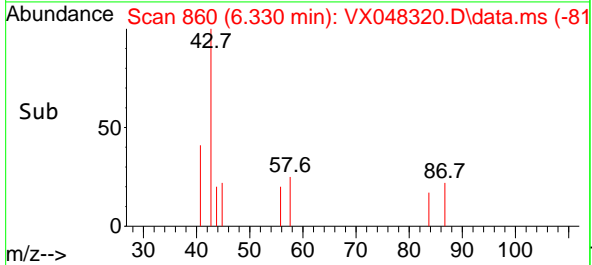
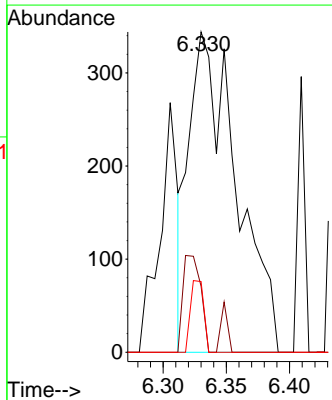
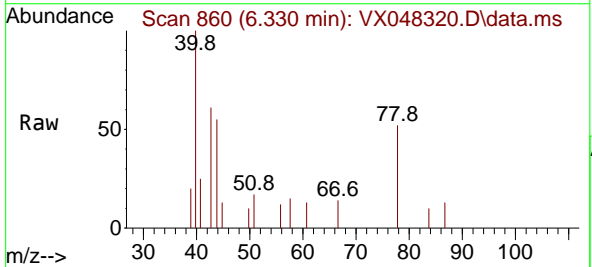
Instrument :
 MSVOA_X
 ClientSampleId :

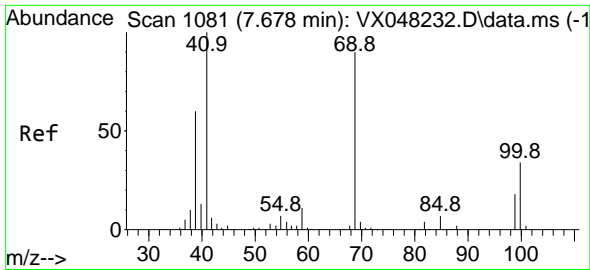
Tgt Ion: 62 Resp: 12957
 Ion Ratio Lower Upper
 62 100
 98 0.0 0.0 17.2



#43
 Isopropyl Acetate
 Concen: 0.289 ug/l
 RT: 6.330 min Scan# 860
 Delta R.T. 0.006 min
 Lab File: VX048320.D
 Acq: 23 Oct 2025 13:22

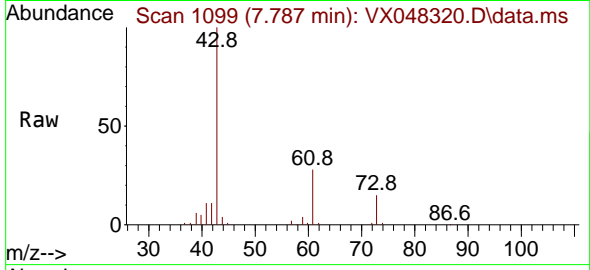
Tgt Ion: 43 Resp: 898
 Ion Ratio Lower Upper
 43 100
 61 0.0 14.9 22.3#
 87 6.2 9.4 14.2#



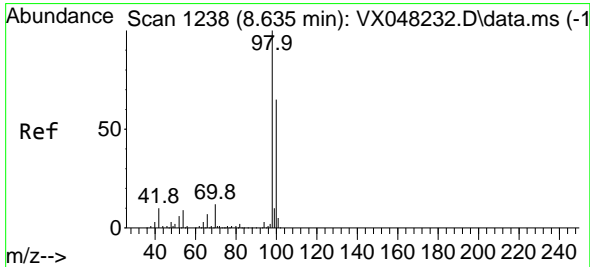
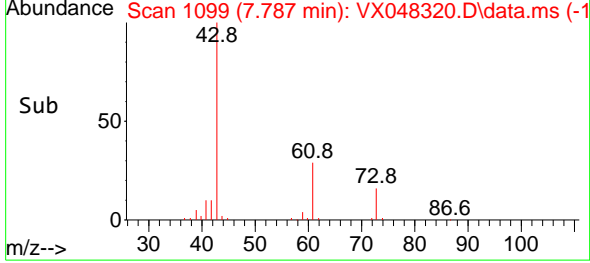
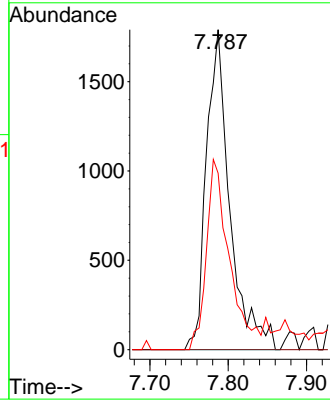


#48
 Methyl methacrylate
 Concen: 2.370 ug/l
 RT: 7.787 min Scan# 1099
 Delta R.T. 0.110 min
 Lab File: VX048320.D
 Acq: 23 Oct 2025 13:22

Instrument : MSVOA_X
 ClientSampleId :

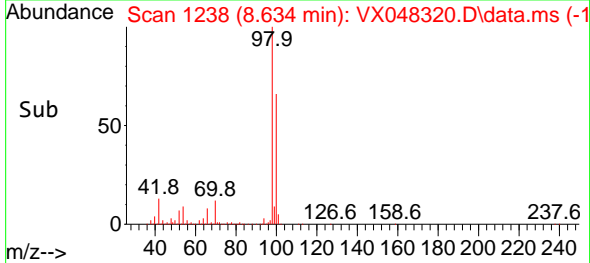
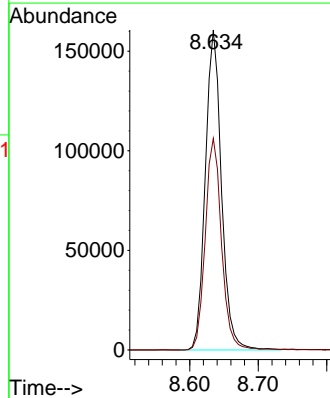
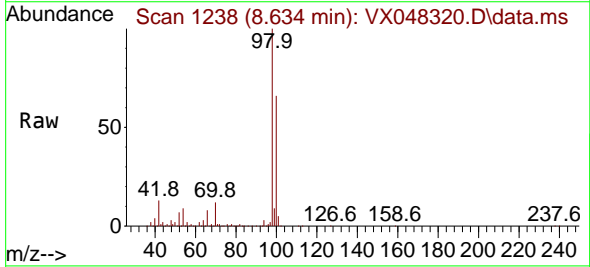


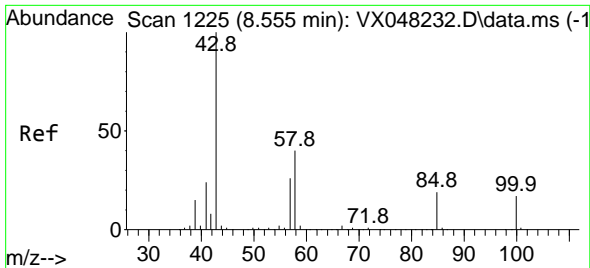
Tgt Ion: 41 Resp: 3711
 Ion Ratio Lower Upper
 41 100
 69 0.0 63.4 95.0#
 39 56.4 47.1 70.7



#50
 Toluene-d8
 Concen: 46.844 ug/l
 RT: 8.634 min Scan# 1238
 Delta R.T. -0.000 min
 Lab File: VX048320.D
 Acq: 23 Oct 2025 13:22

Tgt Ion: 98 Resp: 263311
 Ion Ratio Lower Upper
 98 100
 100 66.7 53.0 79.4

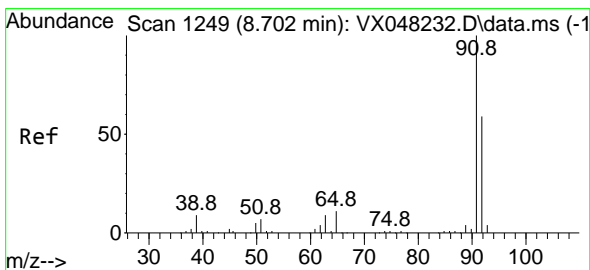
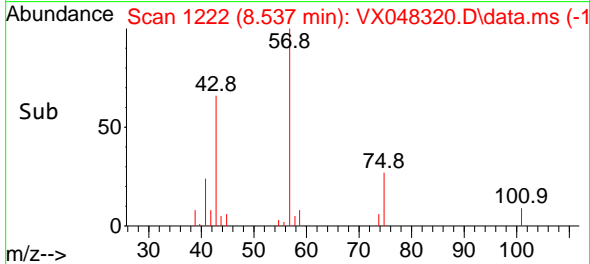
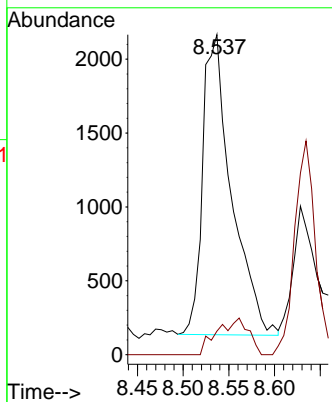
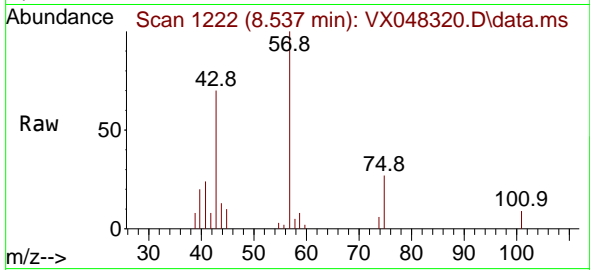




#51
 4-Methyl-2-Pentanone
 Concen: 2.492 ug/l
 RT: 8.537 min Scan# 11
 Delta R.T. -0.018 min
 Lab File: VX048320.D
 Acq: 23 Oct 2025 13:22

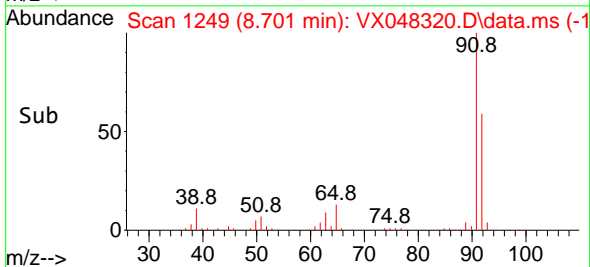
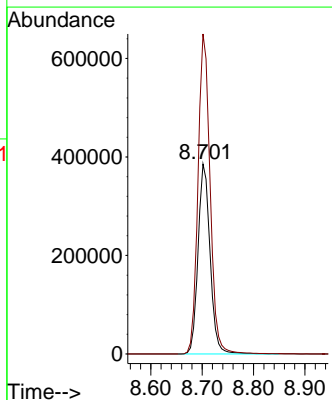
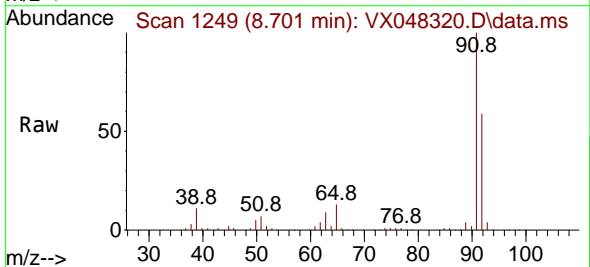
Instrument : MSVOA_X
 ClientSampleId :

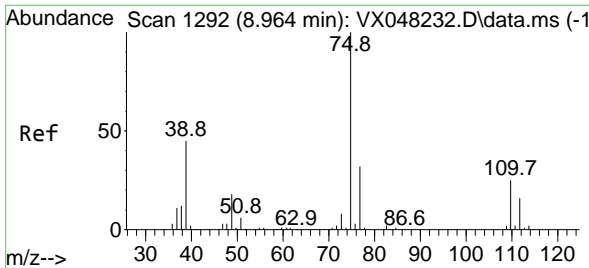
Tgt Ion: 43 Resp: 4459
 Ion Ratio Lower Upper
 43 100
 58 0.0 29.5 44.3#



#52
 Toluene
 Concen: 149.143 ug/l
 RT: 8.701 min Scan# 1249
 Delta R.T. -0.000 min
 Lab File: VX048320.D
 Acq: 23 Oct 2025 13:22

Tgt Ion: 92 Resp: 627017
 Ion Ratio Lower Upper
 92 100
 91 169.8 136.1 204.1

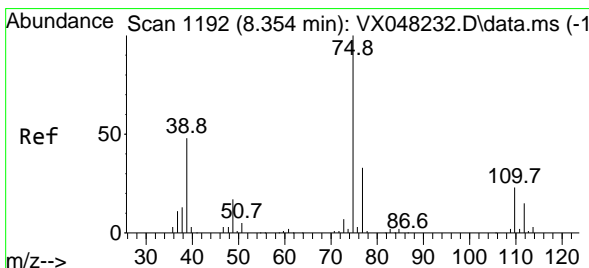
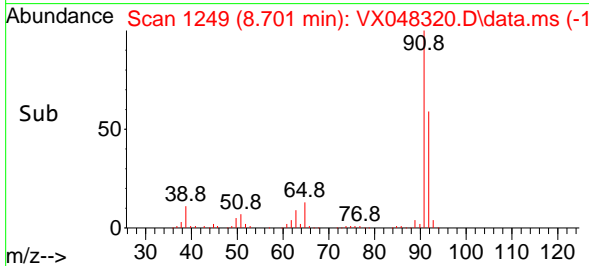
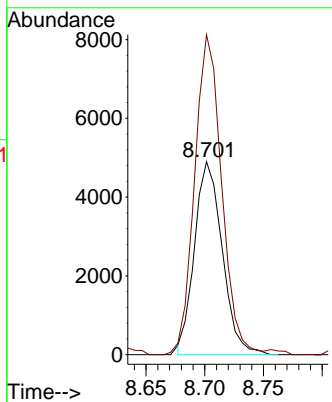
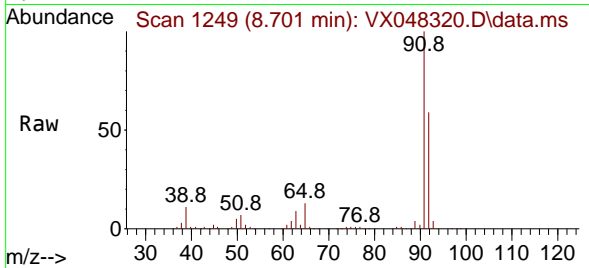




#53
 t-1,3-Dichloropropene
 Concen: 3.150 ug/l
 RT: 8.701 min Scan# 1122
 Delta R.T. -0.262 min
 Lab File: VX048320.D
 Acq: 23 Oct 2025 13:22

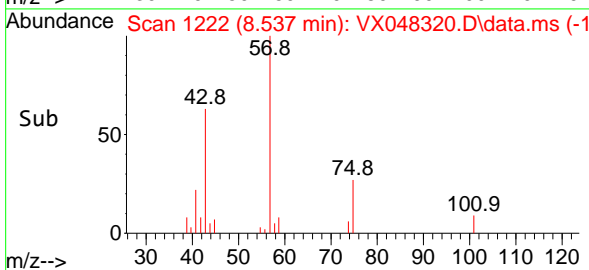
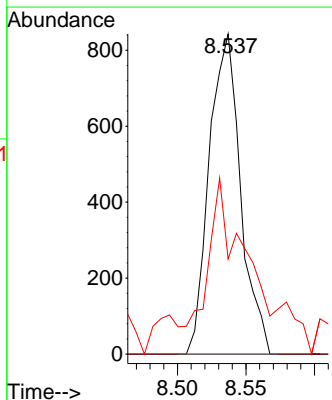
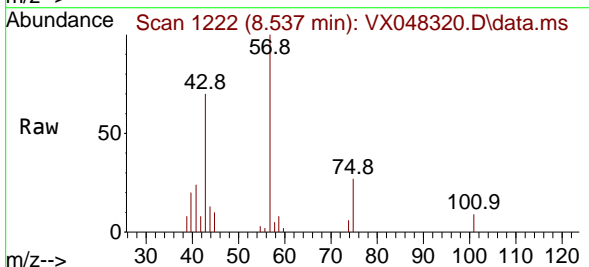
Instrument : MSVOA_X
 ClientSampleId :

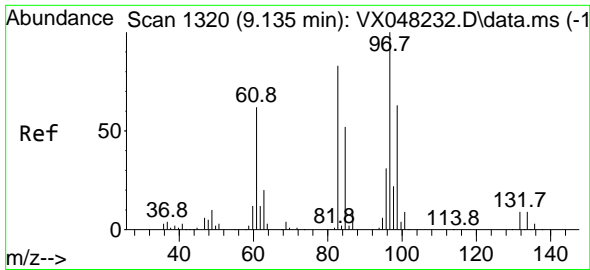
Tgt Ion: 75 Resp: 8033
 Ion Ratio Lower Upper
 75 100
 77 163.9 25.0 37.6#



#54
 cis-1,3-Dichloropropene
 Concen: 0.487 ug/l
 RT: 8.537 min Scan# 1222
 Delta R.T. 0.189 min
 Lab File: VX048320.D
 Acq: 23 Oct 2025 13:22

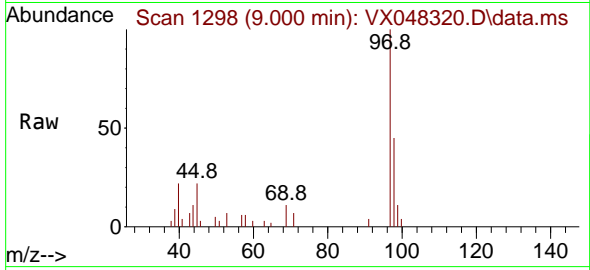
Tgt Ion: 75 Resp: 1339
 Ion Ratio Lower Upper
 75 100
 77 0.0 24.9 37.3#
 39 29.2 42.6 64.0#





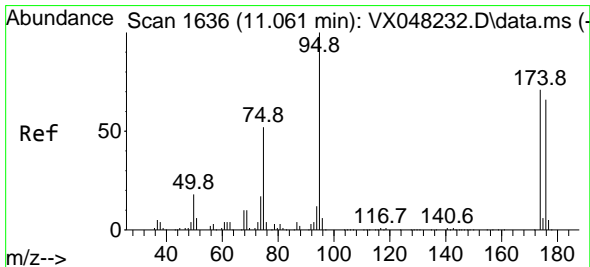
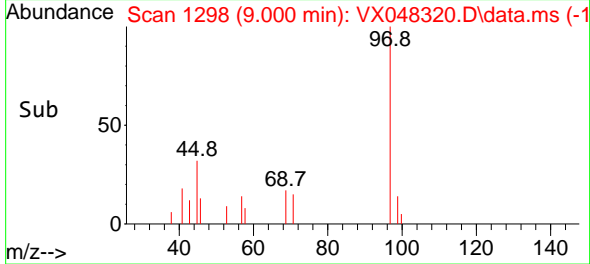
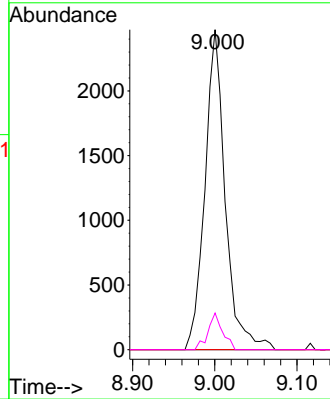
#55
 1,1,2-Trichloroethane
 Concen: 2.718 ug/l
 RT: 9.000 min Scan# 11
 Delta R.T. -0.134 min
 Lab File: VX048320.D
 Acq: 23 Oct 2025 13:22

Instrument : MSVOA_X
 ClientSampleId :



Tgt Ion: 97 Resp: 4249

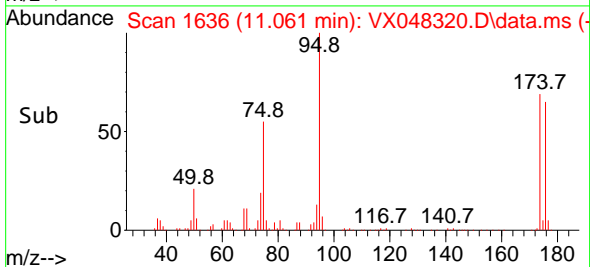
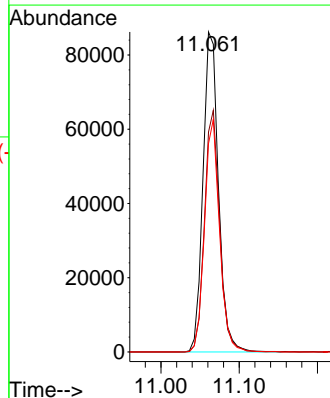
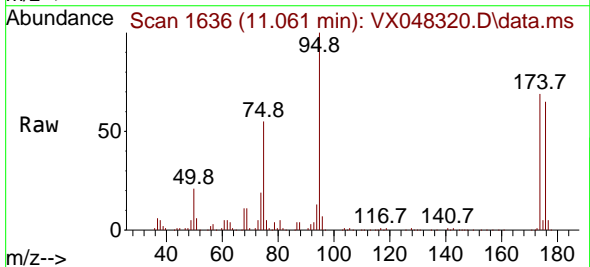
Ion	Ratio	Lower	Upper
97	100		
83	0.0	70.6	105.8#
85	0.0	45.0	67.6#
99	11.4	50.9	76.3#

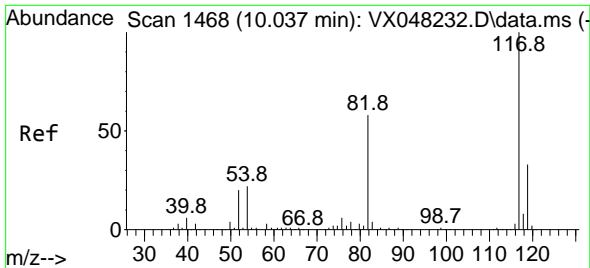


#62
 4-Bromofluorobenzene
 Concen: 55.324 ug/l
 RT: 11.061 min Scan# 1636
 Delta R.T. -0.000 min
 Lab File: VX048320.D
 Acq: 23 Oct 2025 13:22

Tgt Ion: 95 Resp: 118306

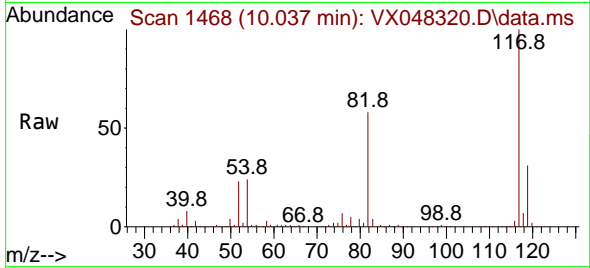
Ion	Ratio	Lower	Upper
95	100		
174	74.0	0.0	147.8
176	70.7	0.0	142.8



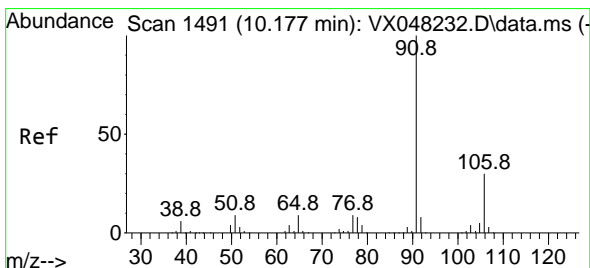
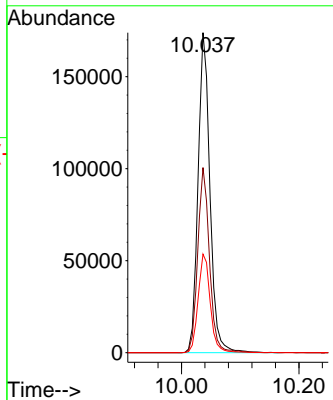
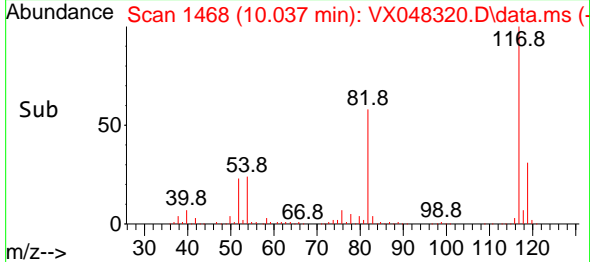


#63
 Chlorobenzene-d5
 Concen: 50.000 ug/l
 RT: 10.037 min Scan# 1468
 Delta R.T. -0.000 min
 Lab File: VX048320.D
 Acq: 23 Oct 2025 13:22

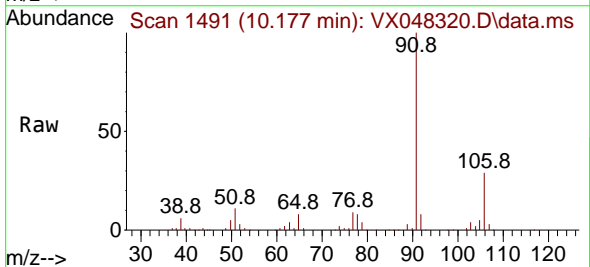
Instrument : MSVOA_X
 ClientSampleId :



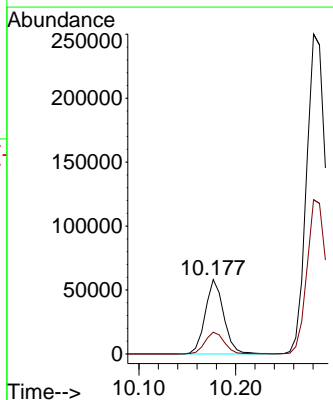
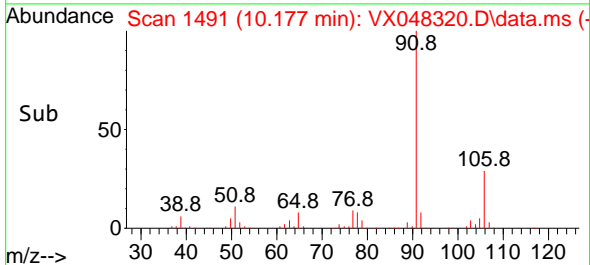
Tgt Ion:117 Resp: 244134
 Ion Ratio Lower Upper
 117 100
 82 57.9 46.5 69.7
 119 30.8 25.9 38.9

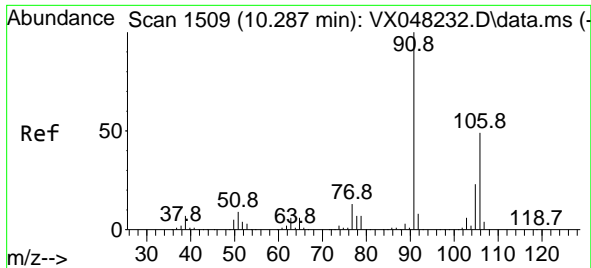


#67
 Ethyl Benzene
 Concen: 8.310 ug/l
 RT: 10.177 min Scan# 1491
 Delta R.T. -0.000 min
 Lab File: VX048320.D
 Acq: 23 Oct 2025 13:22



Tgt Ion: 91 Resp: 77697
 Ion Ratio Lower Upper
 91 100
 106 29.2 23.8 35.6

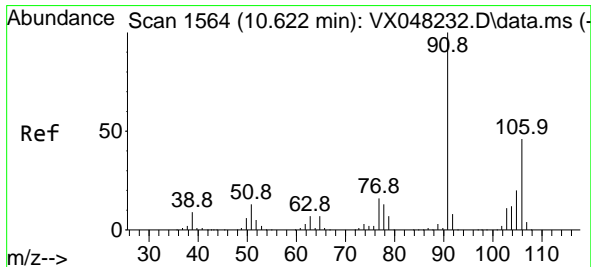
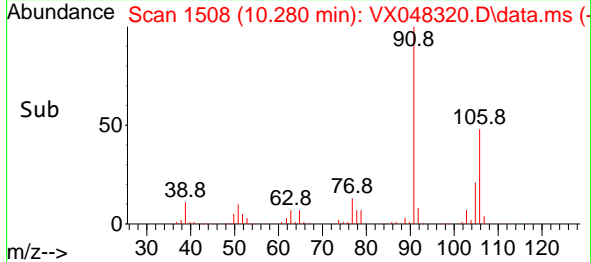
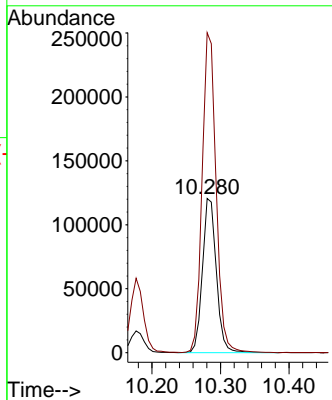
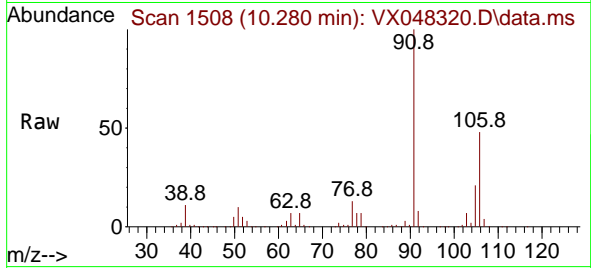




#68
 m/p-Xylenes
 Concen: 49.067 ug/l
 RT: 10.280 min Scan# 11
 Delta R.T. -0.006 min
 Lab File: VX048320.D
 Acq: 23 Oct 2025 13:22

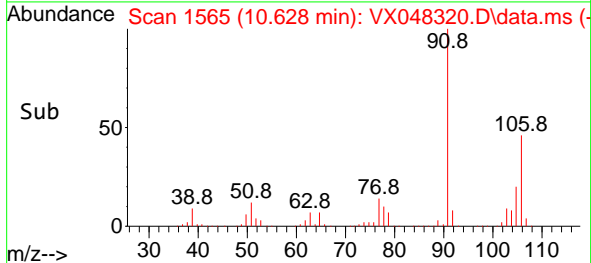
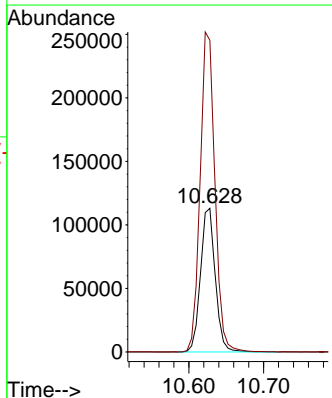
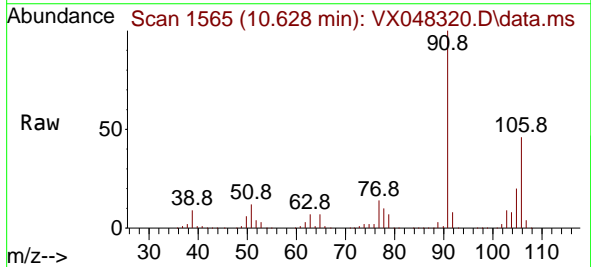
Instrument :
 MSVOA_X
 ClientSampleId :

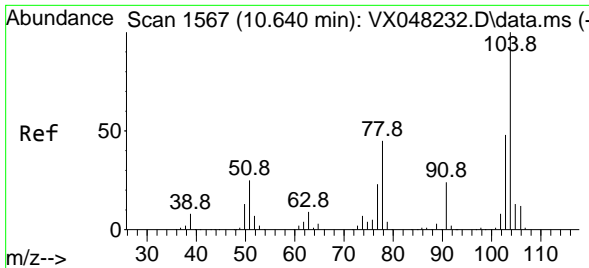
Tgt Ion:106 Resp: 170461
 Ion Ratio Lower Upper
 106 100
 91 208.3 167.9 251.9



#69
 o-Xylene
 Concen: 46.252 ug/l
 RT: 10.628 min Scan# 1565
 Delta R.T. 0.006 min
 Lab File: VX048320.D
 Acq: 23 Oct 2025 13:22

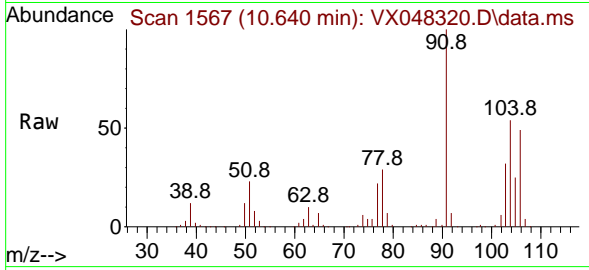
Tgt Ion:106 Resp: 155130
 Ion Ratio Lower Upper
 106 100
 91 222.6 111.3 333.9



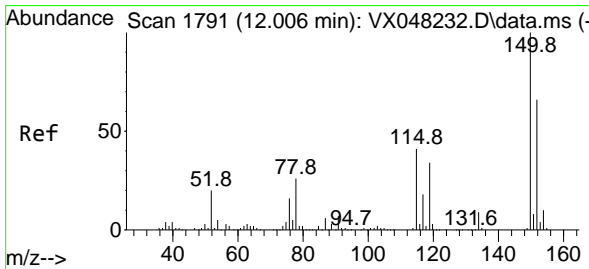
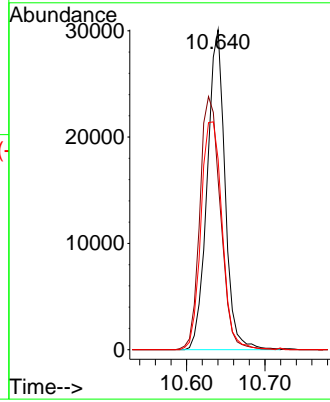
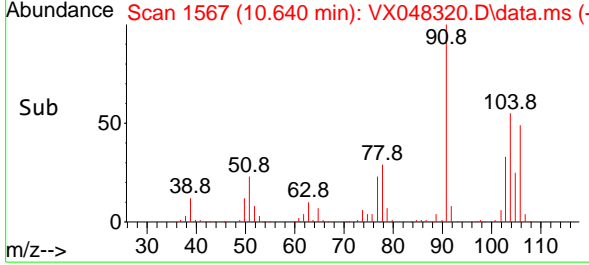


#70
 Styrene
 Concen: 8.308 ug/l
 RT: 10.640 min Scan# 1567
 Delta R.T. -0.000 min
 Lab File: VX048320.D
 Acq: 23 Oct 2025 13:22

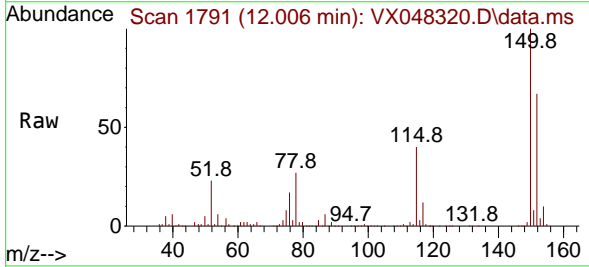
Instrument : MSVOA_X
 ClientSampleId :



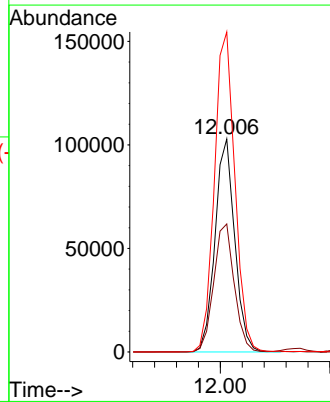
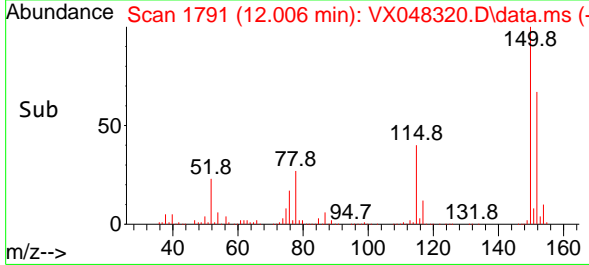
Tgt Ion:104 Resp: 47447
 Ion Ratio Lower Upper
 104 100
 78 91.5 42.2 63.4#
 103 84.9 43.0 64.4#

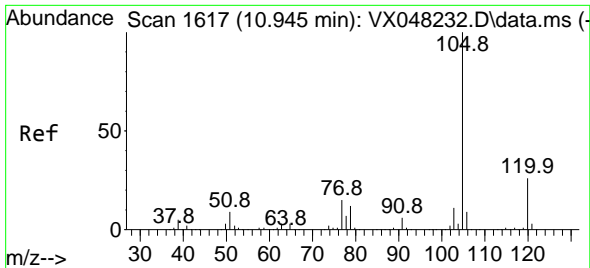


#72
 1,4-Dichlorobenzene-d4
 Concen: 50.000 ug/l
 RT: 12.006 min Scan# 1791
 Delta R.T. -0.000 min
 Lab File: VX048320.D
 Acq: 23 Oct 2025 13:22



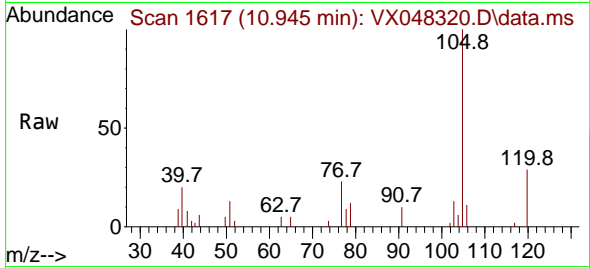
Tgt Ion:152 Resp: 128394
 Ion Ratio Lower Upper
 152 100
 115 62.9 43.1 129.4
 150 156.6 0.0 353.0



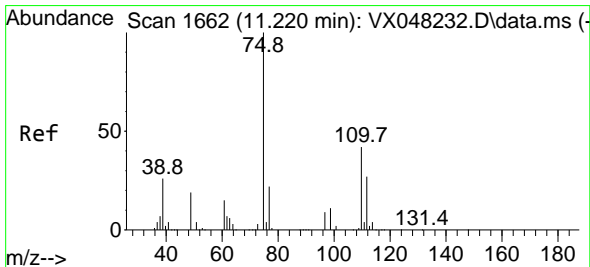
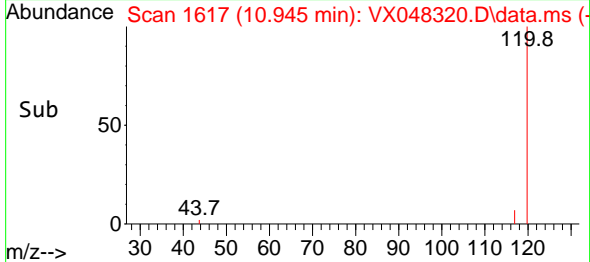
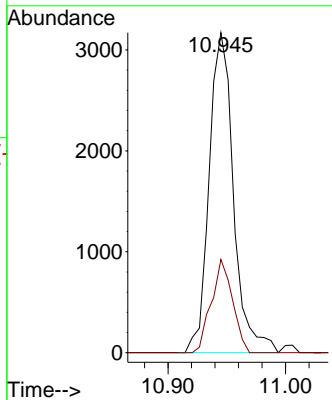


#73
 Isopropylbenzene
 Concen: 0.488 ug/l
 RT: 10.945 min Scan# 1617
 Delta R.T. -0.000 min
 Lab File: VX048320.D
 Acq: 23 Oct 2025 13:22

Instrument : MSVOA_X
 ClientSampleId :

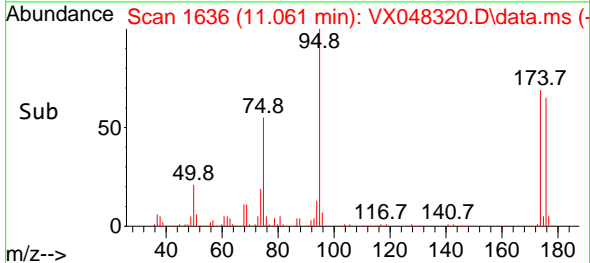
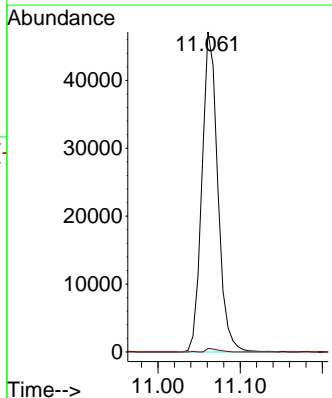
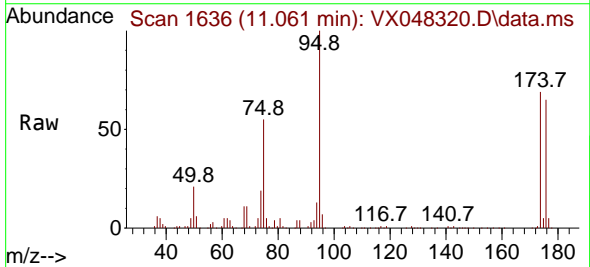


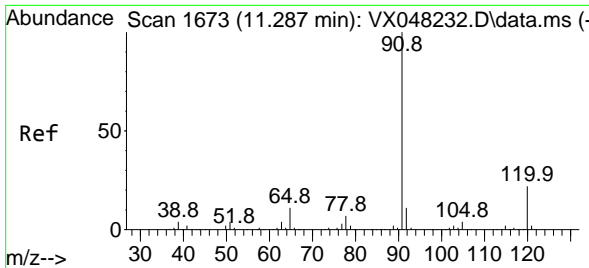
Tgt Ion:105 Resp: 4574
 Ion Ratio Lower Upper
 105 100
 120 25.3 13.0 38.9



#76
 1,2,3-Trichloropropane
 Concen: 30.296 ug/l
 RT: 11.061 min Scan# 1636
 Delta R.T. -0.159 min
 Lab File: VX048320.D
 Acq: 23 Oct 2025 13:22

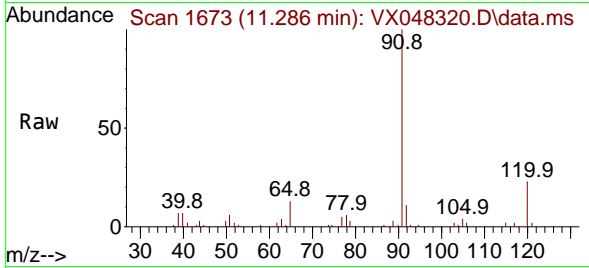
Tgt Ion: 75 Resp: 63080
 Ion Ratio Lower Upper
 75 100
 77 0.9 22.4 67.2#



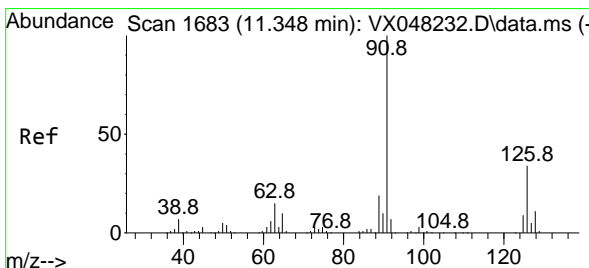
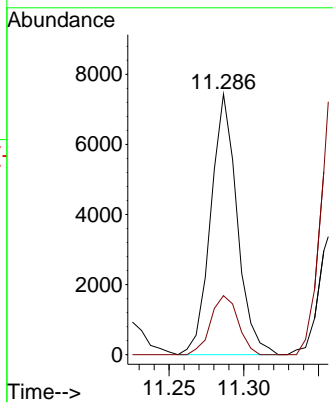
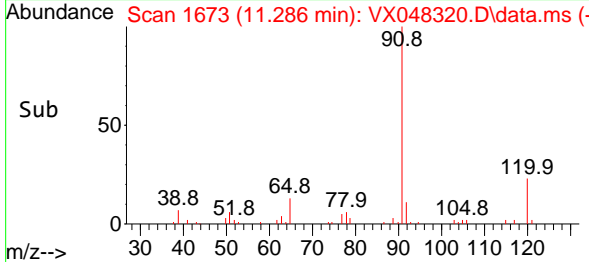


#78
 n-propylbenzene
 Concen: 0.841 ug/l
 RT: 11.286 min Scan# 1673
 Delta R.T. -0.000 min
 Lab File: VX048320.D
 Acq: 23 Oct 2025 13:22

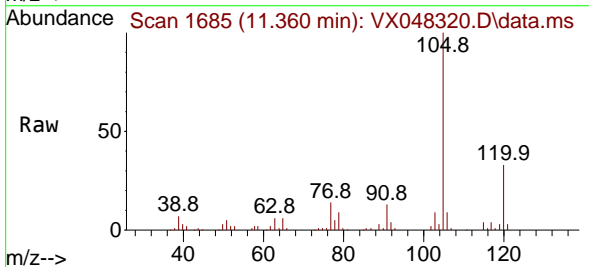
Instrument : MSVOA_X
 ClientSampleId :



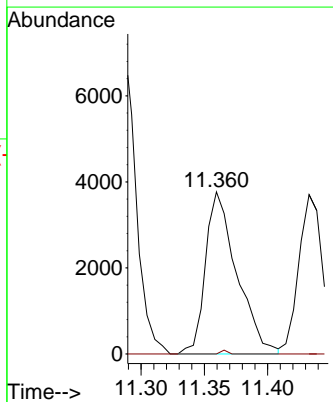
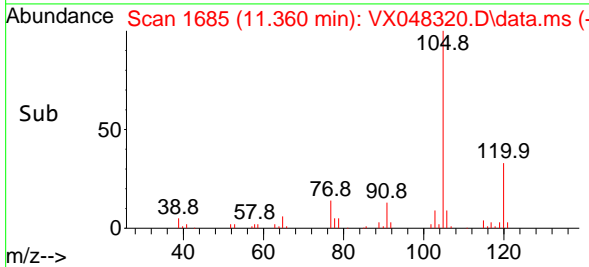
Tgt Ion: 91 Resp: 9132
 Ion Ratio Lower Upper
 91 100
 120 23.5 11.1 33.1

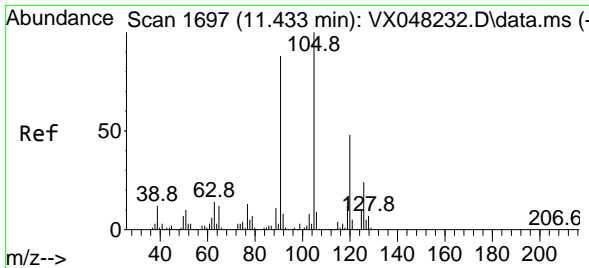


#79
 2-Chlorotoluene
 Concen: 0.988 ug/l
 RT: 11.360 min Scan# 1685
 Delta R.T. 0.012 min
 Lab File: VX048320.D
 Acq: 23 Oct 2025 13:22



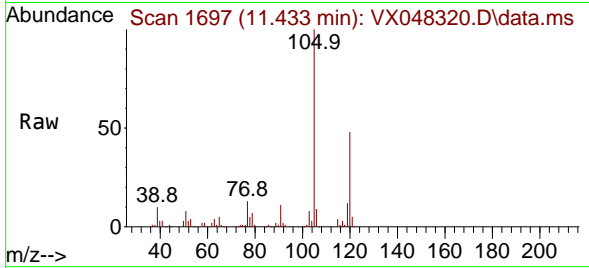
Tgt Ion: 91 Resp: 6503
 Ion Ratio Lower Upper
 91 100
 126 0.5 16.4 49.4#



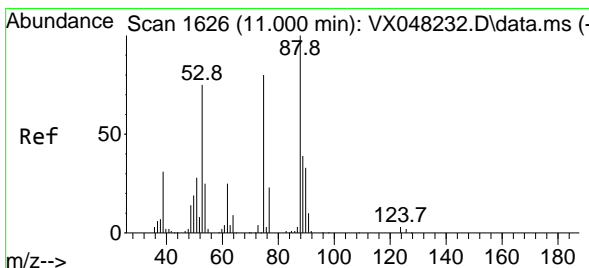
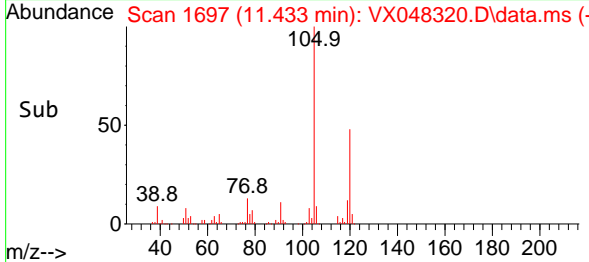
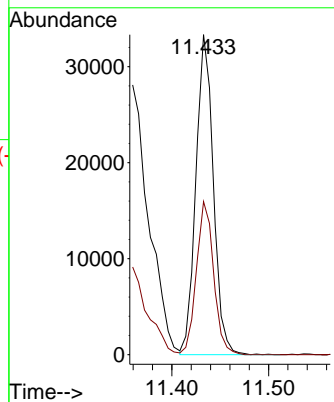


#80
 1,3,5-Trimethylbenzene
 Concen: 5.379 ug/l
 RT: 11.433 min Scan# 1
 Delta R.T. -0.000 min
 Lab File: VX048320.D
 Acq: 23 Oct 2025 13:22

Instrument :
 MSVOA_X
 ClientSampleId :

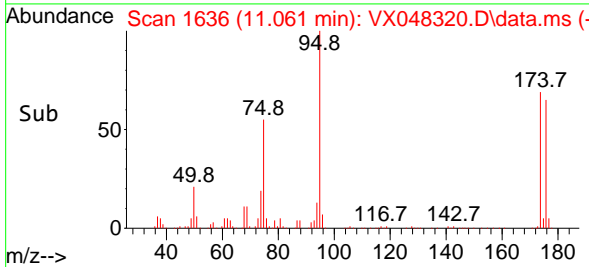
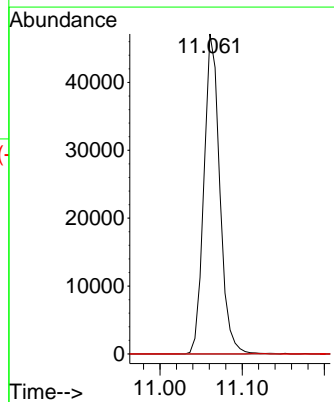
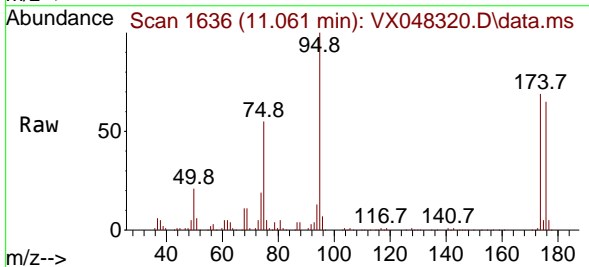


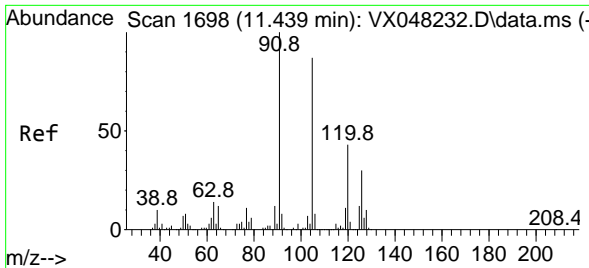
Tgt Ion:105 Resp: 41744
 Ion Ratio Lower Upper
 105 100
 120 47.4 24.0 72.0



#81
 trans-1,4-Dichloro-2-butene
 Concen: 73.708 ug/l
 RT: 11.061 min Scan# 1636
 Delta R.T. 0.061 min
 Lab File: VX048320.D
 Acq: 23 Oct 2025 13:22

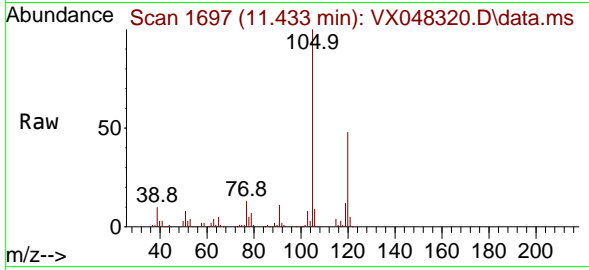
Tgt Ion: 75 Resp: 63080
 Ion Ratio Lower Upper
 75 100
 53 0.0 79.5 119.3#
 89 0.0 36.8 55.2#



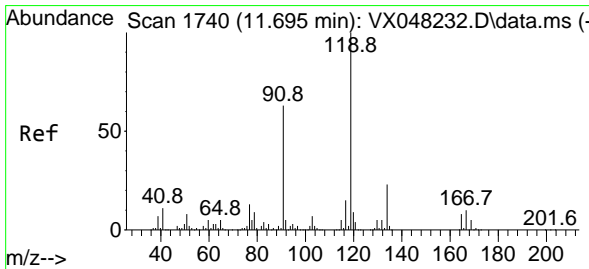
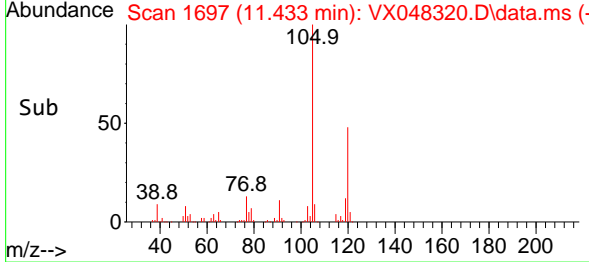
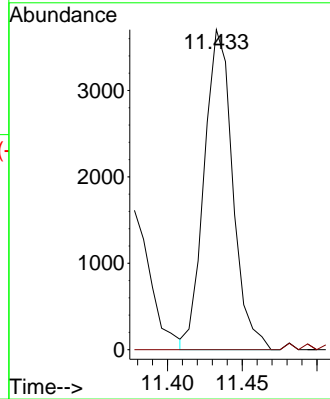


#82
 4-Chlorotoluene
 Concen: 0.628 ug/l
 RT: 11.433 min Scan# 11
 Delta R.T. -0.000 min
 Lab File: VX048320.D
 Acq: 23 Oct 2025 13:22

Instrument : MSVOA_X
 ClientSampleId :

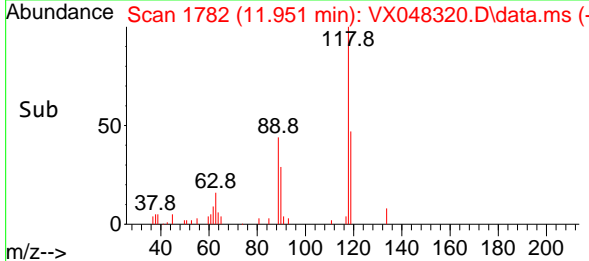
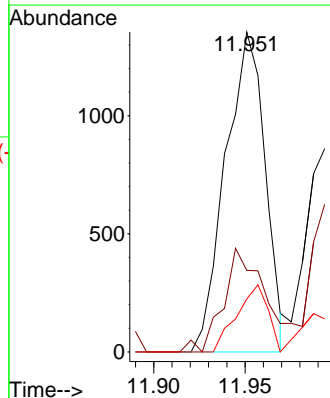
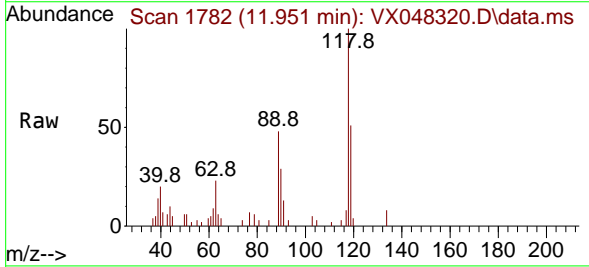


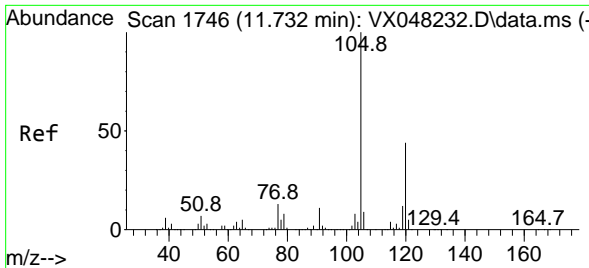
Tgt Ion: 91 Resp: 4906
 Ion Ratio Lower Upper
 91 100
 126 0.0 14.1 42.4#



#83
 tert-Butylbenzene
 Concen: 0.257 ug/l
 RT: 11.951 min Scan# 1782
 Delta R.T. 0.256 min
 Lab File: VX048320.D
 Acq: 23 Oct 2025 13:22

Tgt Ion: 119 Resp: 2046
 Ion Ratio Lower Upper
 119 100
 91 32.7 30.3 91.0
 134 16.4 11.4 34.2

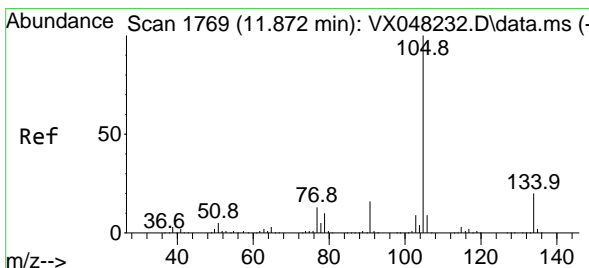
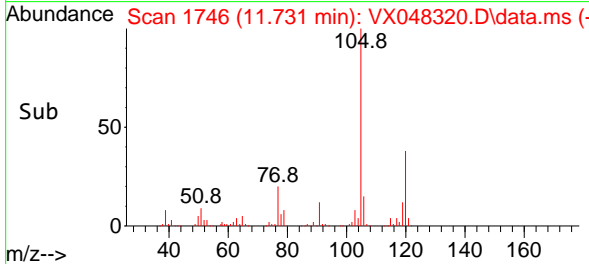
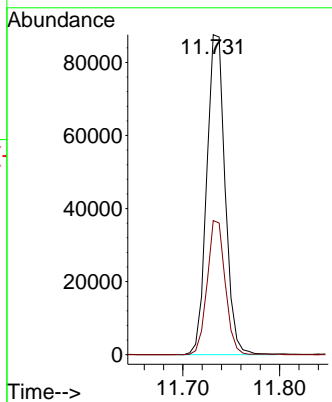
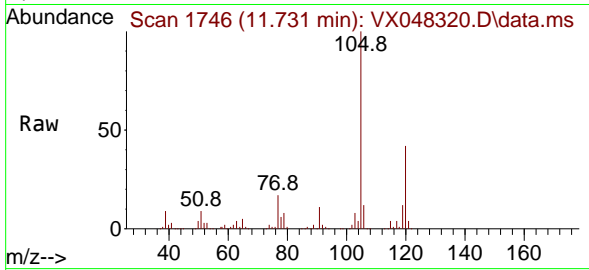




#84
 1,2,4-Trimethylbenzene
 Concen: 14.952 ug/l
 RT: 11.731 min Scan# 1746
 Delta R.T. -0.000 min
 Lab File: VX048320.D
 Acq: 23 Oct 2025 13:22

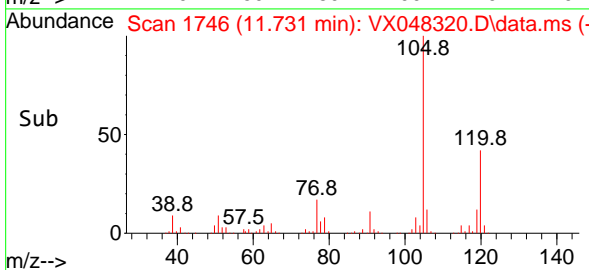
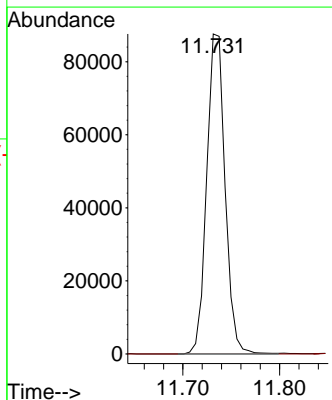
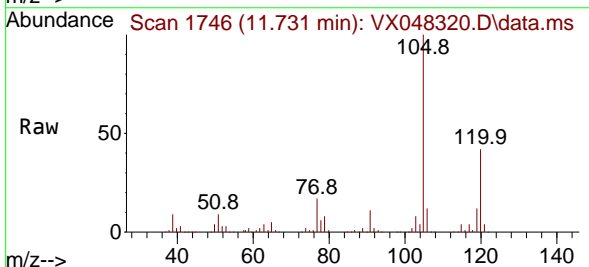
Instrument : MSVOA_X
 ClientSampleId :

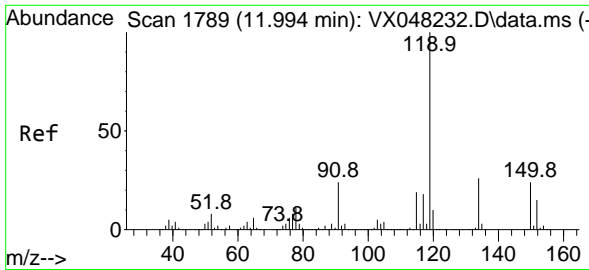
Tgt Ion:105 Resp: 115805
 Ion Ratio Lower Upper
 105 100
 120 41.2 22.1 66.5



#85
 sec-Butylbenzene
 Concen: 12.071 ug/l
 RT: 11.731 min Scan# 1746
 Delta R.T. -0.140 min
 Lab File: VX048320.D
 Acq: 23 Oct 2025 13:22

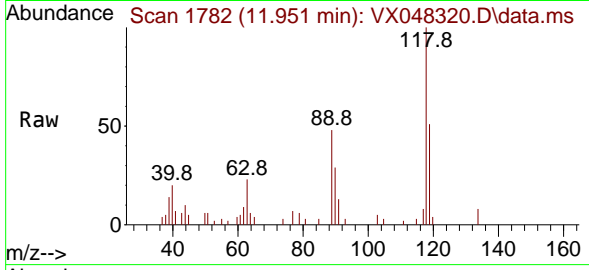
Tgt Ion:105 Resp: 115805
 Ion Ratio Lower Upper
 105 100
 134 0.0 10.1 30.1#





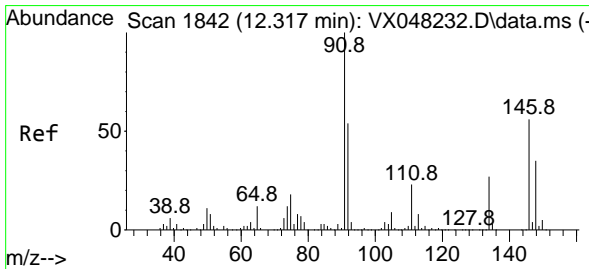
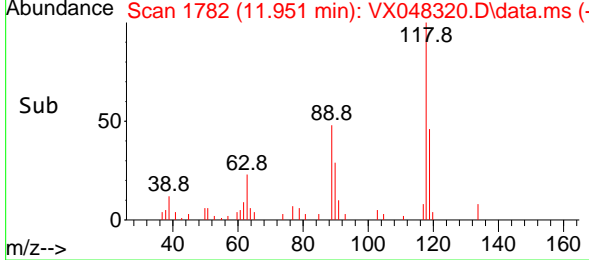
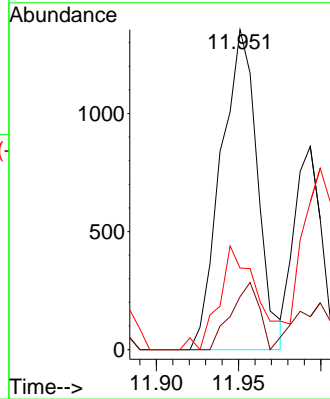
#86
 p-Isopropyltoluene
 Concen: 0.252 ug/l
 RT: 11.951 min Scan# 119
 Delta R.T. -0.037 min
 Lab File: VX048320.D
 Acq: 23 Oct 2025 13:22

Instrument : MSVOA_X
 ClientSampleId :

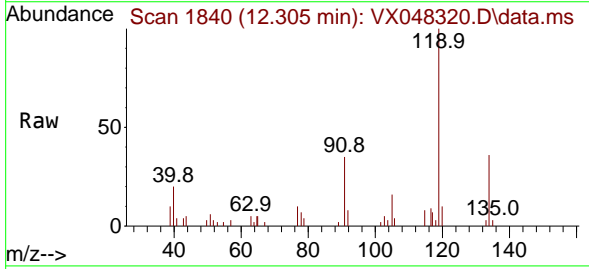


Tgt Ion: 119 Resp: 2092

Ion	Ratio	Lower	Upper
119	100		
134	16.1	13.0	39.0
91	32.0	12.1	36.3

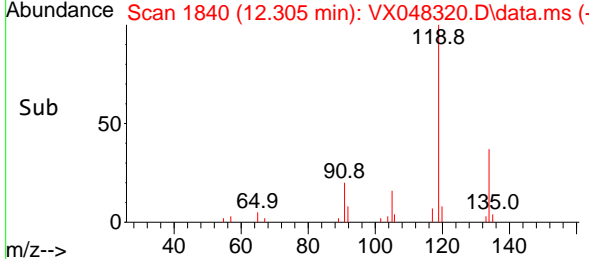
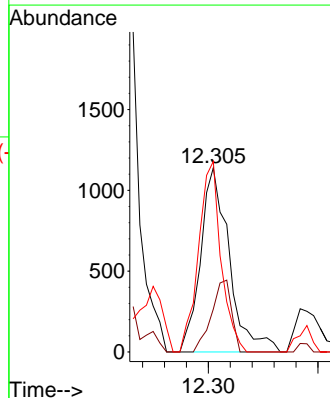


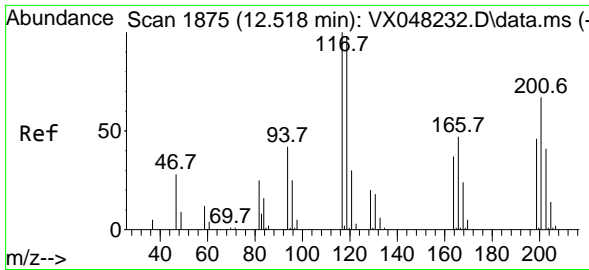
#89
 n-Butylbenzene
 Concen: 0.275 ug/l
 RT: 12.305 min Scan# 1840
 Delta R.T. -0.006 min
 Lab File: VX048320.D
 Acq: 23 Oct 2025 13:22



Tgt Ion: 91 Resp: 2078

Ion	Ratio	Lower	Upper
91	100		
92	27.1	26.9	80.6
134	81.0	12.7	38.1#

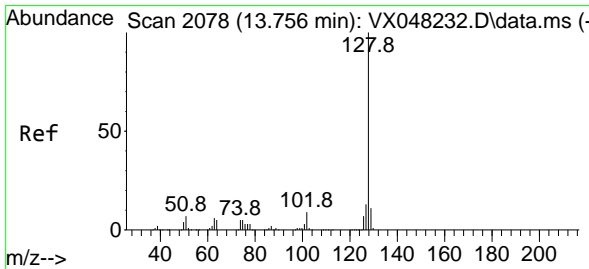
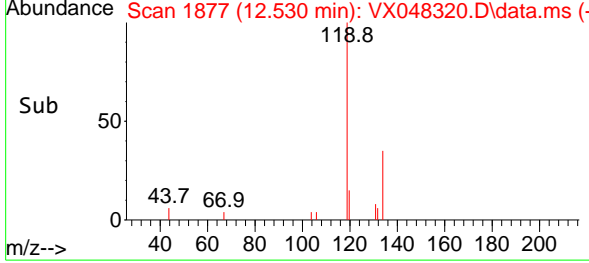
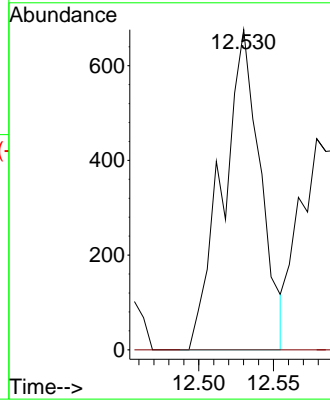
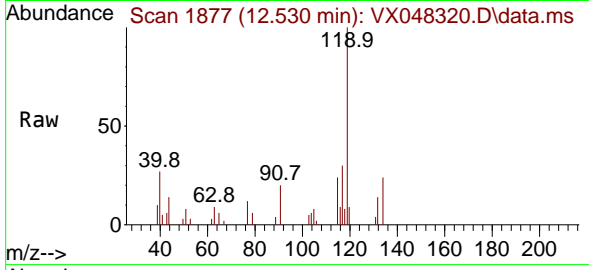




#90
 Hexachloroethane
 Concen: 0.731 ug/l
 RT: 12.530 min Scan# 117
 Delta R.T. 0.012 min
 Lab File: VX048320.D
 Acq: 23 Oct 2025 13:22

Instrument : MSVOA_X
 ClientSampleId :

Tgt Ion:117 Resp: 1197
 Ion Ratio Lower Upper
 117 100
 201 0.0 34.1 102.2#



#95
 Naphthalene
 Concen: 83.483 ug/l
 RT: 13.755 min Scan# 2078
 Delta R.T. -0.000 min
 Lab File: VX048320.D
 Acq: 23 Oct 2025 13:22

Tgt Ion:128 Resp: 622517
 Ion Ratio Lower Upper
 128 100
 127 12.8 10.2 15.4
 129 10.8 8.6 12.8

