

Data Path : Z:\voasrv\HPCHEM1\MSVOA_X\Data\VX102325\
 Data File : VX048323.D
 Acq On : 23 Oct 2025 14:25
 Operator : JC/MD
 Sample : Q3414-06 10X
 Misc : 5.0mL/MSVOA_X/WATER
 ALS Vial : 15 Sample Multiplier: 1

Instrument :
 MSVOA_X
 ClientSampleId :
 SB-6

Quant Time: Oct 24 05:45:26 2025
 Quant Method : Z:\voasrv\HPCHEM1\MSVOA_X\Method\82X102025W.M
 Quant Title : SW846 8260
 QLast Update : Mon Oct 20 14:13:59 2025
 Response via : Initial Calibration

Compound	R.T.	QIon	Response	Conc	Units	Dev(Min)
Internal Standards						
1) Pentafluorobenzene	5.544	168	142499	50.000	ug/l	0.00
34) 1,4-Difluorobenzene	6.745	114	283324	50.000	ug/l	0.00
63) Chlorobenzene-d5	10.037	117	288381	50.000	ug/l	0.00
72) 1,4-Dichlorobenzene-d4	12.006	152	146201	50.000	ug/l	0.00
System Monitoring Compounds						
33) 1,2-Dichloroethane-d4	5.940	65	110027	55.070	ug/l	0.00
Spiked Amount	50.000	Range 78 - 117	Recovery	=	110.140%	
35) Dibromofluoromethane	5.373	113	76253	39.423	ug/l	0.00
Spiked Amount	50.000	Range 75 - 124	Recovery	=	78.840%	
50) Toluene-d8	8.635	98	320539	47.279	ug/l	0.00
Spiked Amount	50.000	Range 92 - 112	Recovery	=	94.560%	
62) 4-Bromofluorobenzene	11.061	95	139602	54.126	ug/l	0.00
Spiked Amount	50.000	Range 83 - 123	Recovery	=	108.260%	
Target Compounds						
						Qvalue
10) Methyl Iodide	2.465	142	2479	1.282	ug/l	89
11) Tert butyl alcohol	2.947	59	301	1.517	ug/l #	72
13) Acrolein	2.246	56	62	0.306	ug/l #	15
16) Acetone	2.380	43	2678	3.907	ug/l	94
18) Methyl Acetate	2.703	43	691	0.483	ug/l #	54
20) Methylene Chloride	2.800	84	759	0.454	ug/l #	67
29) Tetrahydrofuran	5.007	42	142	0.273	ug/l #	33
36) 1,1-Dichloropropene	5.538	75	12276	4.465	ug/l #	50
38) Carbon Tetrachloride	5.538	117	15427	4.548	ug/l #	15
40) Benzene	6.025	78	361148	45.247	ug/l	99
42) 1,2-Dichloroethane	6.031	62	3952	1.342	ug/l #	76
43) Isopropyl Acetate	6.348	43	1144	0.306	ug/l #	63
51) 4-Methyl-2-Pentanone	8.531	43	4733	2.193	ug/l #	46
52) Toluene	8.702	92	267862	52.825	ug/l	100
53) t-1,3-Dichloropropene	8.708	75	3396	1.104	ug/l #	1
54) cis-1,3-Dichloropropene	8.531	75	1700	0.512	ug/l #	70
55) 1,1,2-Trichloroethane	9.000	97	1825	0.968	ug/l #	14
59) 2-Hexanone	9.415	43	368	0.245	ug/l	64
67) Ethyl Benzene	10.177	91	48424	4.384	ug/l	100
68) m/p-Xylenes	10.281	106	100735	24.547	ug/l	99
69) o-Xylene	10.622	106	93716	23.654	ug/l	99
70) Styrene	10.640	104	34371	5.095	ug/l #	62
73) Isopropylbenzene	10.945	105	3298	0.309	ug/l	98
76) 1,2,3-Trichloropropane	11.061	75	74616	31.472	ug/l #	33
78) n-propylbenzene	11.287	91	7351	0.595	ug/l	98
79) 2-Chlorotoluene	11.360	91	4631	0.618	ug/l #	45
80) 1,3,5-Trimethylbenzene	11.433	105	26226	2.968	ug/l	100
81) trans-1,4-Dichloro-2-b...	11.061	75	74616	76.568	ug/l #	10
82) 4-Chlorotoluene	11.433	91	3683	0.414	ug/l #	55
84) 1,2,4-Trimethylbenzene	11.732	105	74707	8.471	ug/l	99
85) sec-Butylbenzene	11.732	105	74707	6.839	ug/l #	56
89) n-Butylbenzene	12.311	91	2907	0.338	ug/l #	78
90) Hexachloroethane	12.524	117	771	0.413	ug/l #	29
93) 1,2,4-Trichlorobenzene	13.567	180	903	0.282	ug/l	82
94) Hexachlorobutadiene	13.707	225	1016	0.912	ug/l	96
95) Naphthalene	13.756	128	398496	46.931	ug/l	100

Data Path : Z:\voasrv\HPCHEM1\MSVOA_X\Data\VX102325\
 Data File : VX048323.D
 Acq On : 23 Oct 2025 14:25
 Operator : JC/MD
 Sample : Q3414-06 10X
 Misc : 5.0mL/MSVOA_X/WATER
 ALS Vial : 15 Sample Multiplier: 1

Instrument :
 MSVOA_X
 ClientSampleId :
 SB-6

Quant Time: Oct 24 05:45:26 2025
 Quant Method : Z:\voasrv\HPCHEM1\MSVOA_X\Method\82X102025W.M
 Quant Title : SW846 8260
 QLast Update : Mon Oct 20 14:13:59 2025
 Response via : Initial Calibration

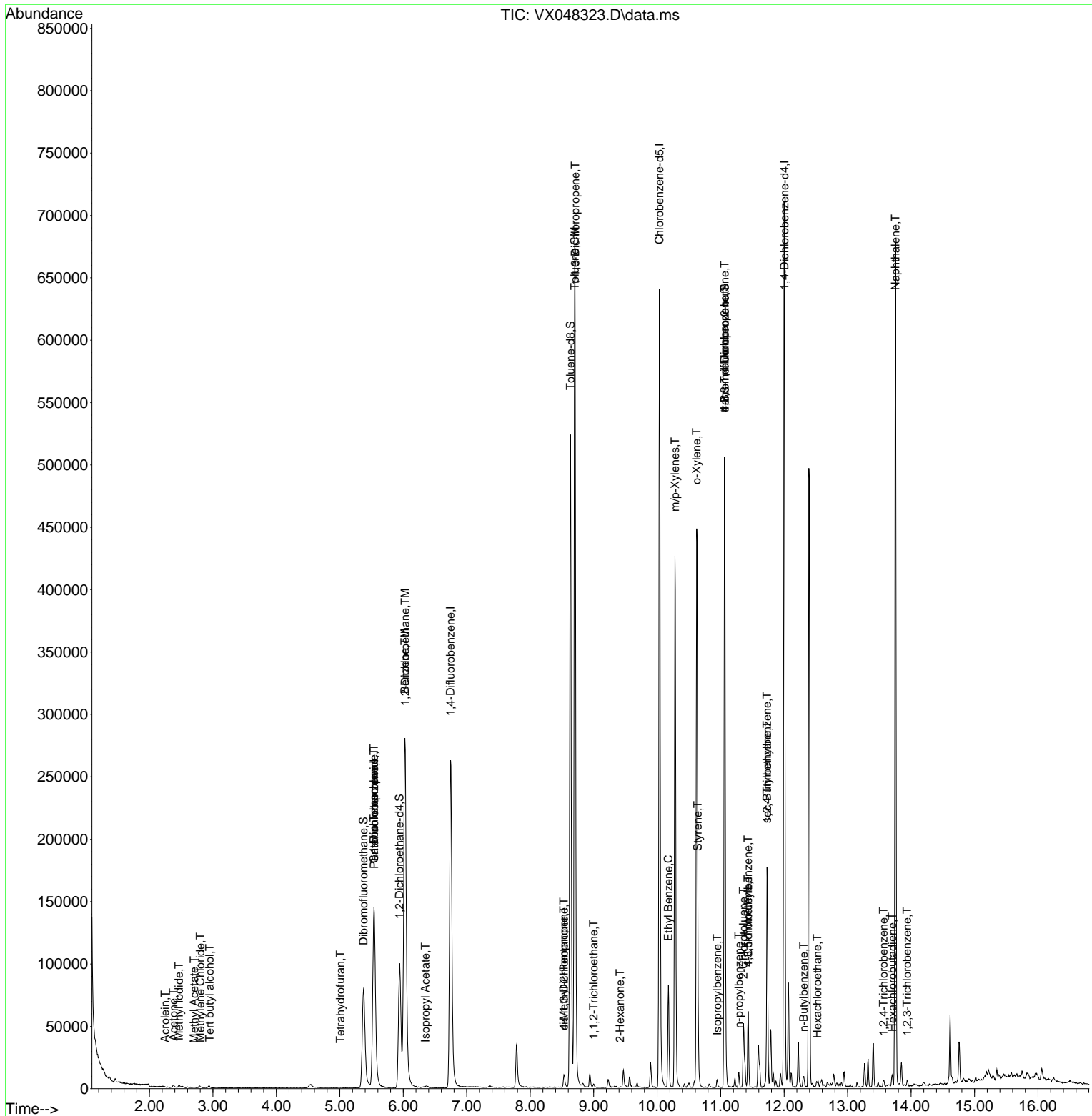
Compound	R.T.	QIon	Response	Conc	Units	Dev(Min)
96) 1,2,3-Trichlorobenzene	13.939	180	1081	0.368	ug/l	83

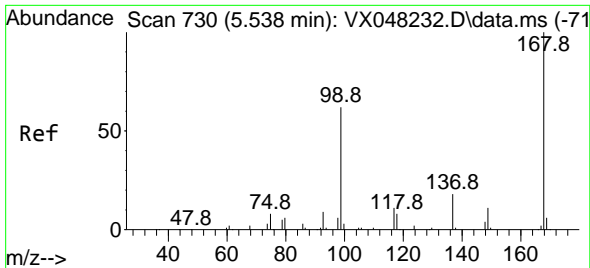
(#) = qualifier out of range (m) = manual integration (+) = signals summed

Data Path : Z:\voasrv\HPCHEM1\MSVOA_X\Data\VX102325\
 Data File : VX048323.D
 Acq On : 23 Oct 2025 14:25
 Operator : JC/MD
 Sample : Q3414-06 10X
 Misc : 5.0mL/MSVOA_X/WATER
 ALS Vial : 15 Sample Multiplier: 1

Instrument :
 MSVOA_X
 ClientSampleId :
 SB-6

Quant Time: Oct 24 05:45:26 2025
 Quant Method : Z:\voasrv\HPCHEM1\MSVOA_X\Method\82X102025W.M
 Quant Title : SW846 8260
 QLast Update : Mon Oct 20 14:13:59 2025
 Response via : Initial Calibration

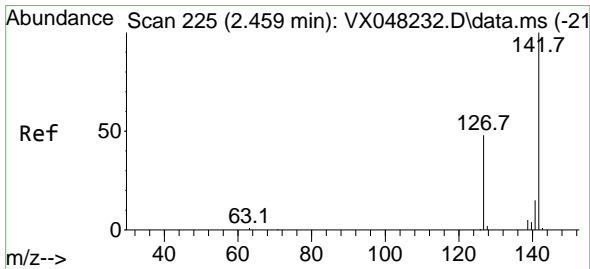
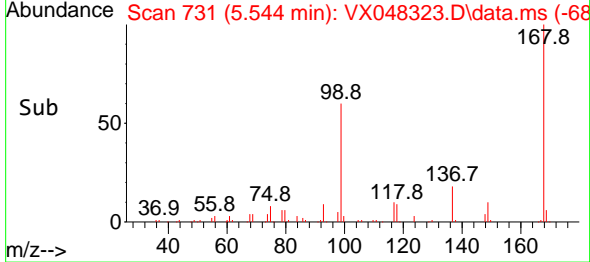
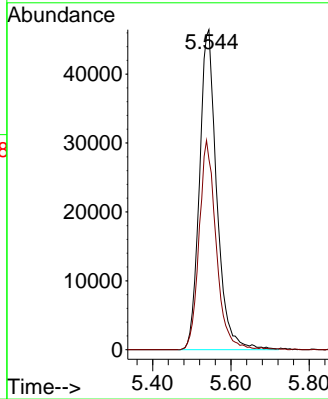
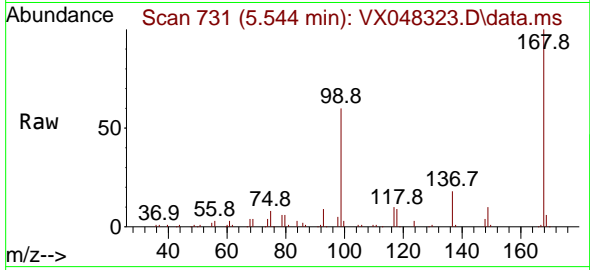




#1
 Pentafluorobenzene
 Concen: 50.000 ug/l
 RT: 5.544 min Scan# 71
 Delta R.T. -0.000 min
 Lab File: VX048323.D
 Acq: 23 Oct 2025 14:25

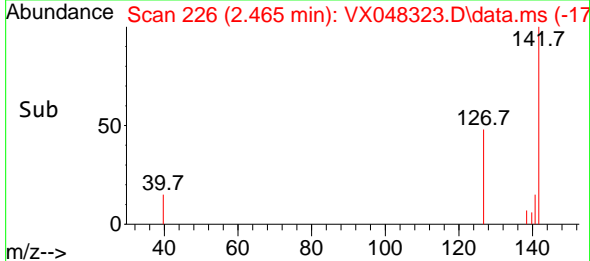
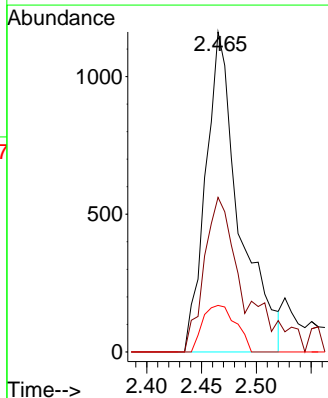
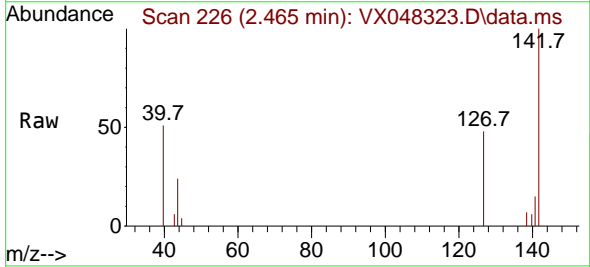
Instrument :
 MSVOA_X
 ClientSampleId :
 SB-6

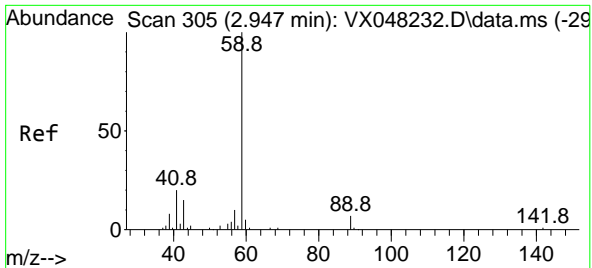
Tgt Ion:168 Resp: 142499
 Ion Ratio Lower Upper
 168 100
 99 59.6 46.4 69.6



#10
 Methyl Iodide
 Concen: 1.282 ug/l
 RT: 2.465 min Scan# 226
 Delta R.T. 0.006 min
 Lab File: VX048323.D
 Acq: 23 Oct 2025 14:25

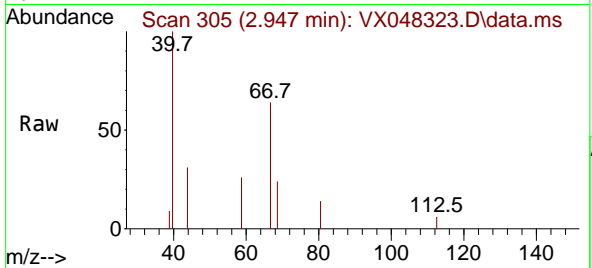
Tgt Ion:142 Resp: 2479
 Ion Ratio Lower Upper
 142 100
 127 57.6 38.5 57.7
 141 14.3 11.6 17.4



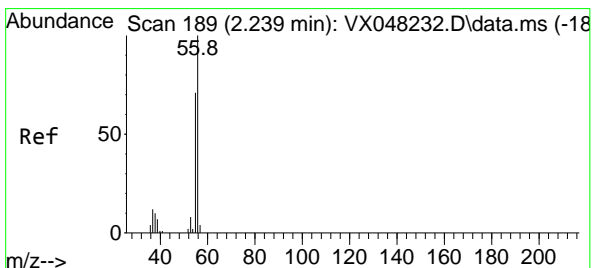
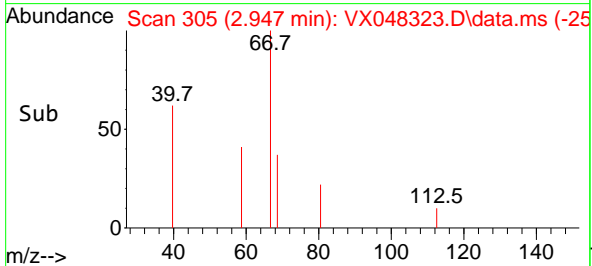
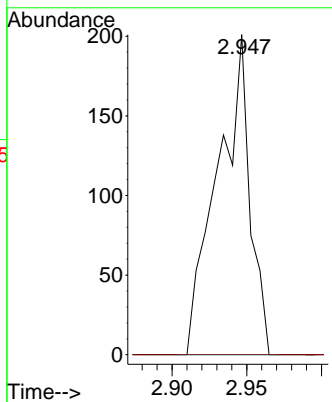


#11
 Tert butyl alcohol
 Concen: 1.517 ug/l
 RT: 2.947 min Scan# 301
 Delta R.T. 0.006 min
 Lab File: VX048323.D
 Acq: 23 Oct 2025 14:25

Instrument :
 MSVOA_X
 ClientSampleId :
 SB-6

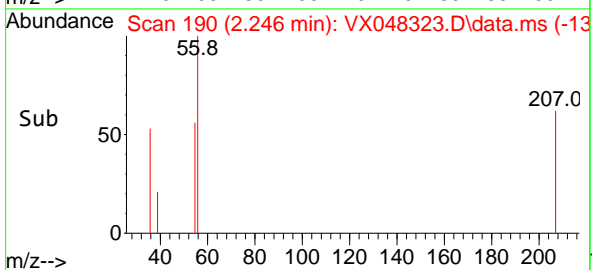
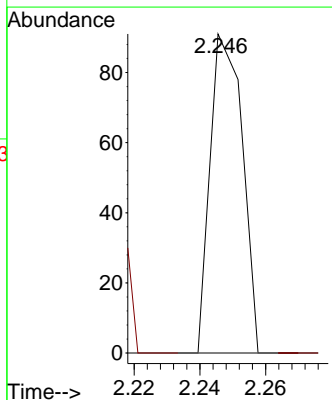
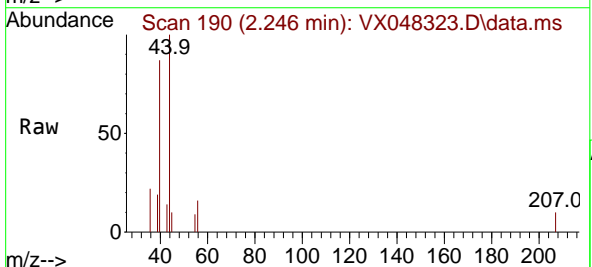


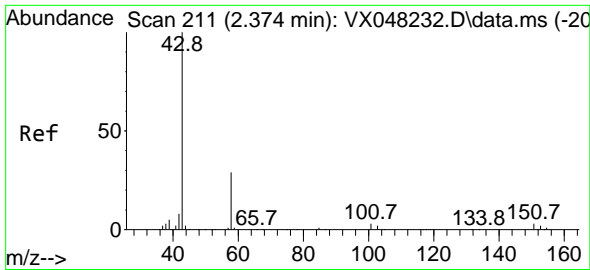
Tgt Ion: 59 Resp: 301
 Ion Ratio Lower Upper
 59 100
 57 0.0 8.2 12.4#



#13
 Acrolein
 Concen: 0.306 ug/l
 RT: 2.246 min Scan# 190
 Delta R.T. 0.012 min
 Lab File: VX048323.D
 Acq: 23 Oct 2025 14:25

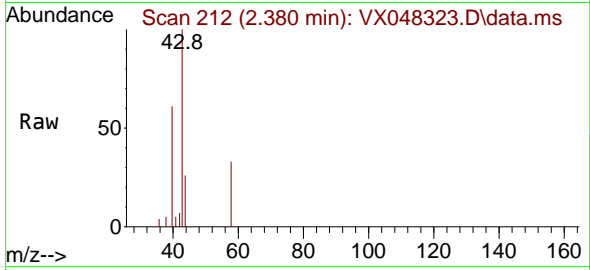
Tgt Ion: 56 Resp: 62
 Ion Ratio Lower Upper
 56 100
 55 0.0 56.1 84.1#



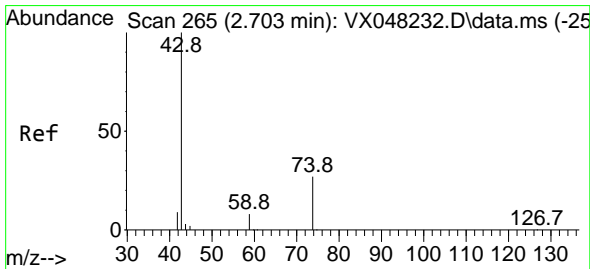
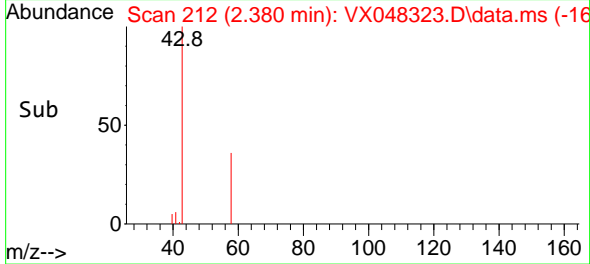
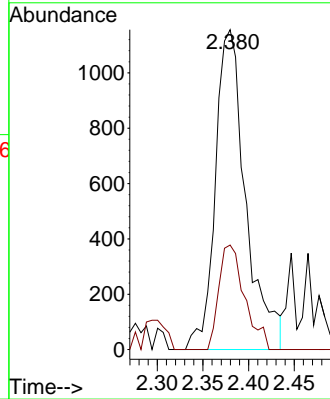


#16
 Acetone
 Concen: 3.907 ug/l
 RT: 2.380 min Scan# 211
 Delta R.T. 0.006 min
 Lab File: VX048323.D
 Acq: 23 Oct 2025 14:25

Instrument : MSVOA_X
 ClientSampleId : SB-6

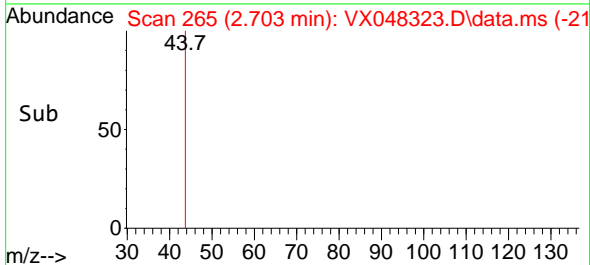
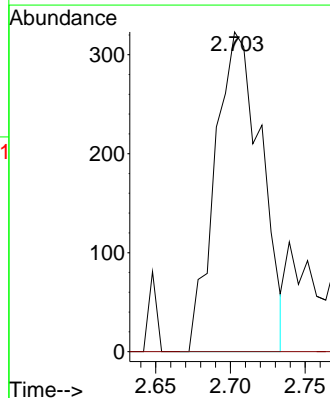
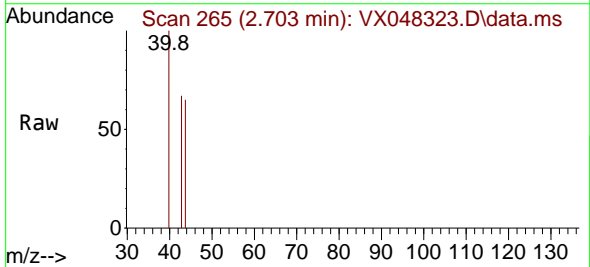


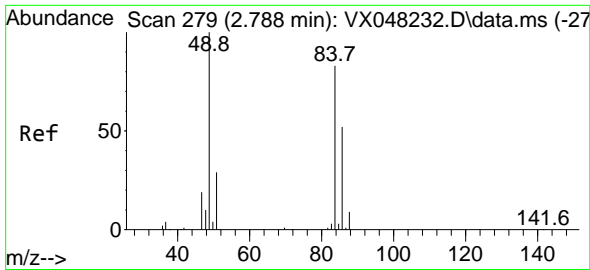
Tgt Ion: 43 Resp: 2678
 Ion Ratio Lower Upper
 43 100
 58 26.0 23.4 35.2



#18
 Methyl Acetate
 Concen: 0.483 ug/l
 RT: 2.703 min Scan# 265
 Delta R.T. 0.006 min
 Lab File: VX048323.D
 Acq: 23 Oct 2025 14:25

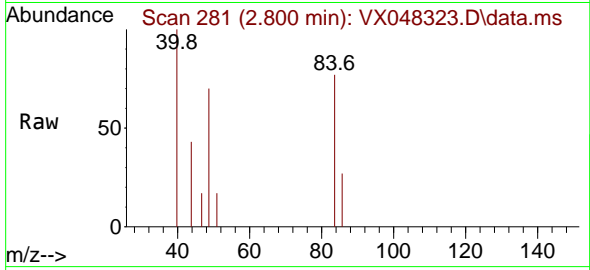
Tgt Ion: 43 Resp: 691
 Ion Ratio Lower Upper
 43 100
 74 0.0 17.5 26.3#



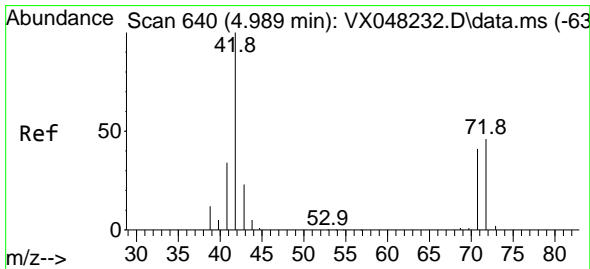
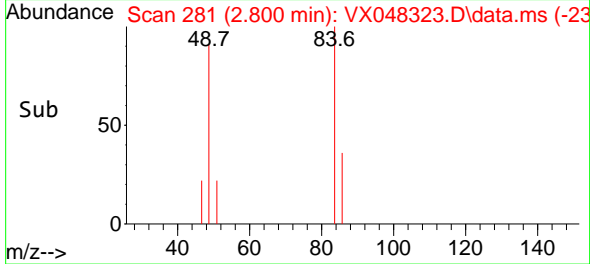
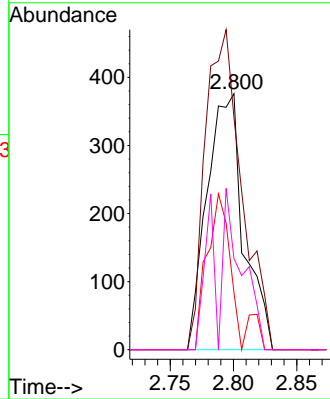


#20
 Methylene Chloride
 Concen: 0.454 ug/l
 RT: 2.800 min Scan# 21
 Delta R.T. 0.012 min
 Lab File: VX048323.D
 Acq: 23 Oct 2025 14:25

Instrument :
 MSVOA_X
 ClientSampleId :
 SB-6

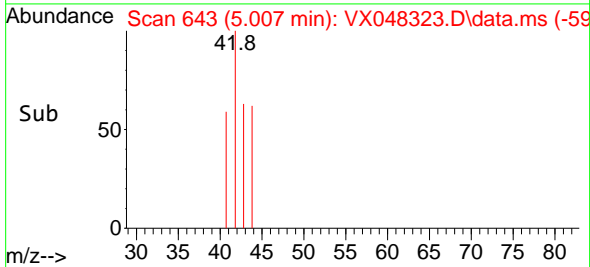
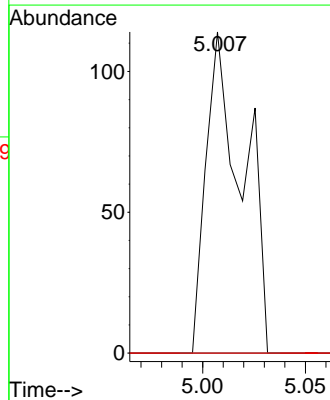
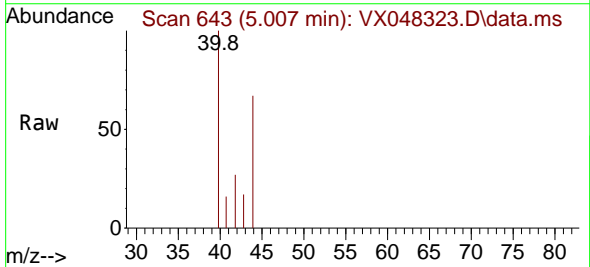


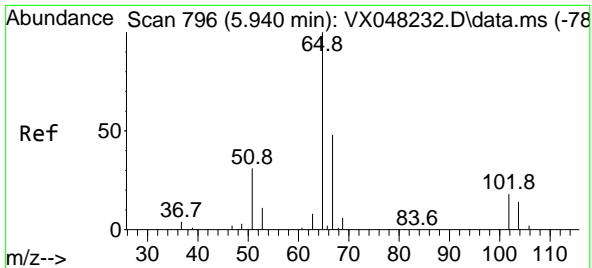
Tgt Ion: 84 Resp: 759
 Ion Ratio Lower Upper
 84 100
 49 90.7 104.1 156.1#
 51 22.3 31.3 46.9#
 86 35.6 51.3 76.9#



#29
 Tetrahydrofuran
 Concen: 0.273 ug/l
 RT: 5.007 min Scan# 643
 Delta R.T. 0.018 min
 Lab File: VX048323.D
 Acq: 23 Oct 2025 14:25

Tgt Ion: 42 Resp: 142
 Ion Ratio Lower Upper
 42 100
 72 0.0 35.3 52.9#
 71 0.0 32.2 48.4#

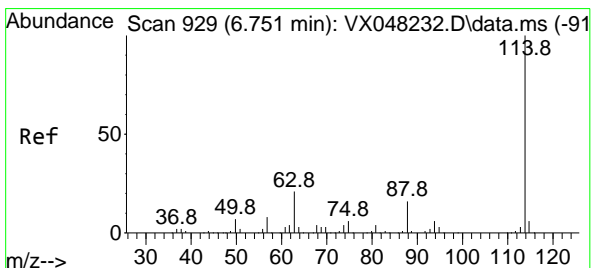
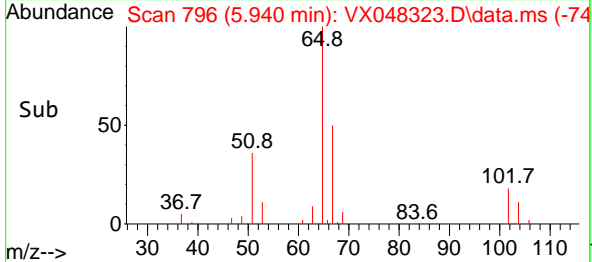
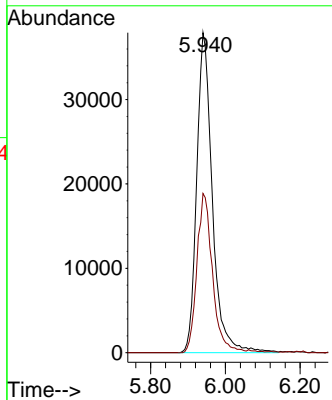
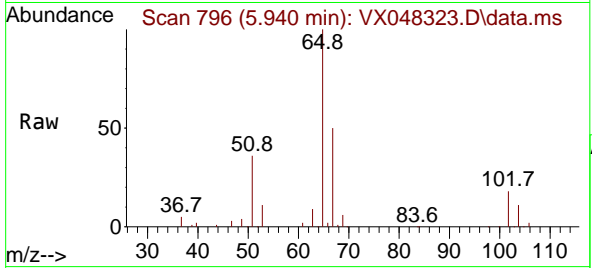




#33
 1,2-Dichloroethane-d4
 Concen: 55.070 ug/l
 RT: 5.940 min Scan# 796
 Delta R.T. -0.000 min
 Lab File: VX048323.D
 Acq: 23 Oct 2025 14:25

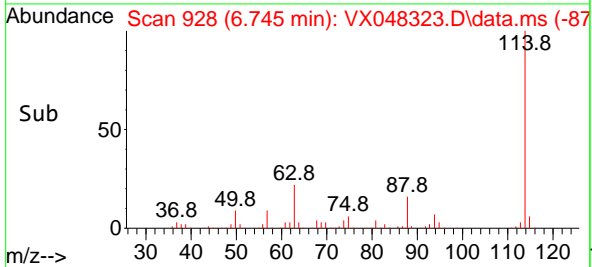
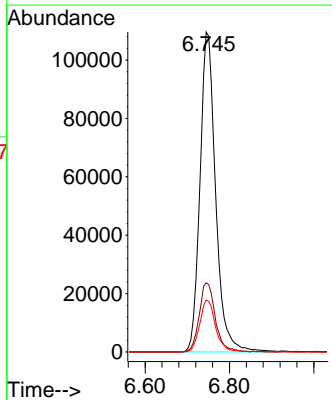
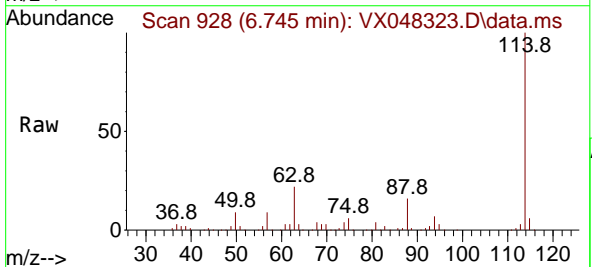
Instrument : MSVOA_X
 ClientSampleId : SB-6

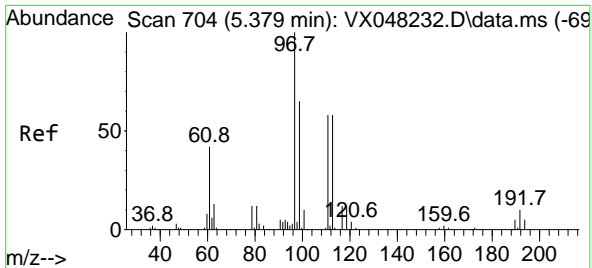
Tgt Ion: 65 Resp: 110027
 Ion Ratio Lower Upper
 65 100
 67 49.5 0.0 105.0



#34
 1,4-Difluorobenzene
 Concen: 50.000 ug/l
 RT: 6.745 min Scan# 928
 Delta R.T. -0.000 min
 Lab File: VX048323.D
 Acq: 23 Oct 2025 14:25

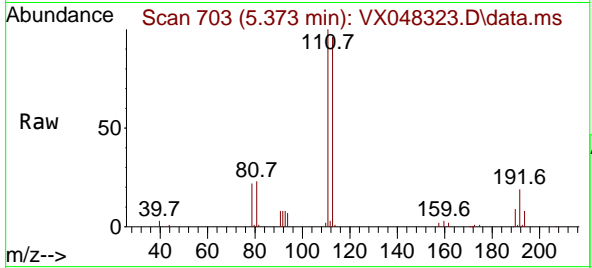
Tgt Ion: 114 Resp: 283324
 Ion Ratio Lower Upper
 114 100
 63 21.6 0.0 43.2
 88 16.3 0.0 33.6





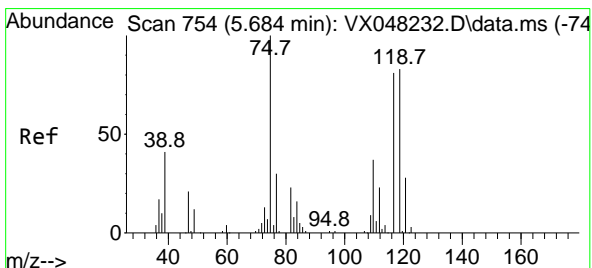
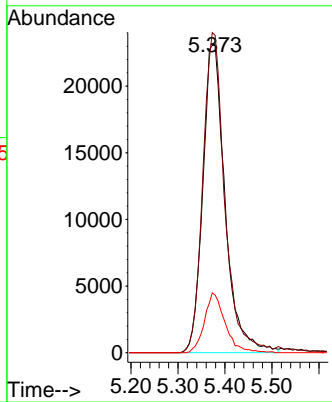
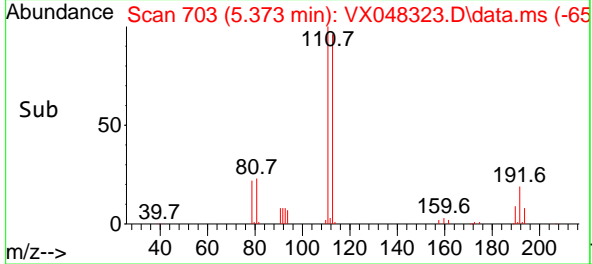
#35
 Dibromofluoromethane
 Concen: 39.423 ug/l
 RT: 5.373 min Scan# 703
 Delta R.T. -0.000 min
 Lab File: VX048323.D
 Acq: 23 Oct 2025 14:25

Instrument : MSVOA_X
 ClientSampleId : SB-6

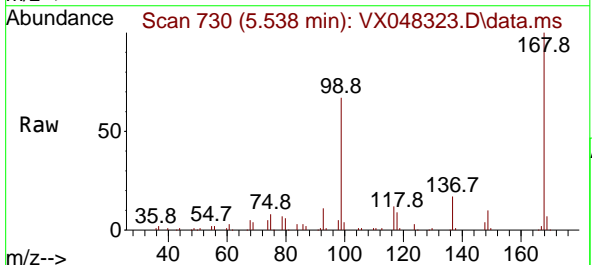


Tgt Ion: 113 Resp: 76253

Ion	Ratio	Lower	Upper
113	100		
111	101.7	82.2	123.4
192	18.1	15.1	22.7

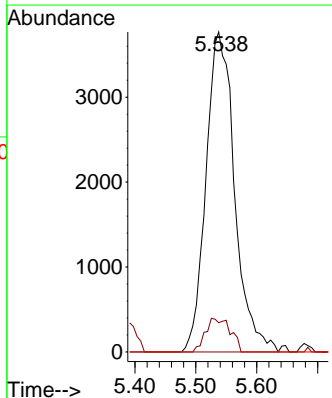
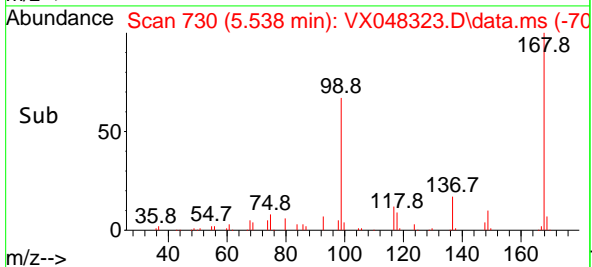


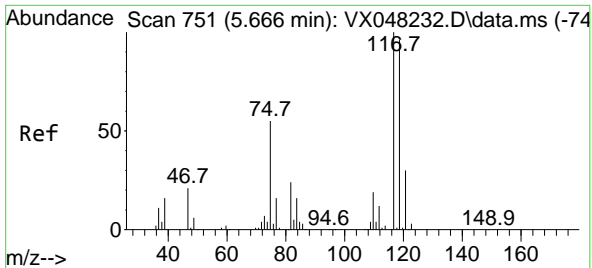
#36
 1,1-Dichloropropene
 Concen: 4.465 ug/l
 RT: 5.538 min Scan# 730
 Delta R.T. -0.146 min
 Lab File: VX048323.D
 Acq: 23 Oct 2025 14:25



Tgt Ion: 75 Resp: 12276

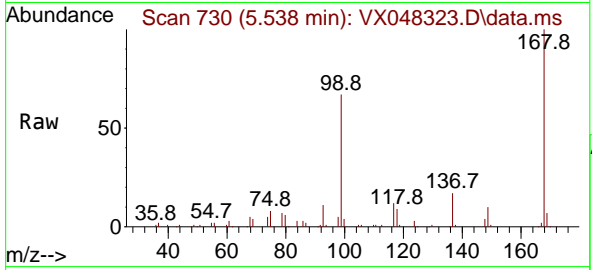
Ion	Ratio	Lower	Upper
75	100		
110	9.2	17.7	53.1#
77	0.0	24.3	36.5#





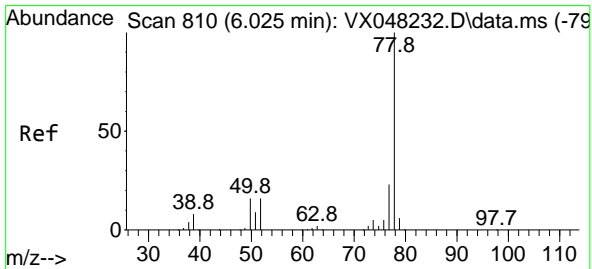
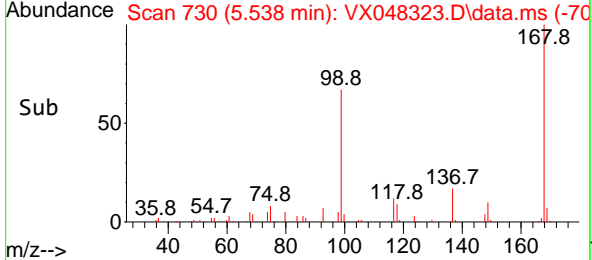
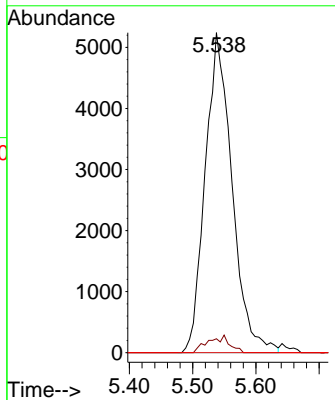
#38
 Carbon Tetrachloride
 Concen: 4.548 ug/l
 RT: 5.538 min Scan# 710
 Delta R.T. -0.128 min
 Lab File: VX048323.D
 Acq: 23 Oct 2025 14:25

Instrument : MSVOA_X
 ClientSampleId : SB-6



Tgt Ion: 117 Resp: 15427

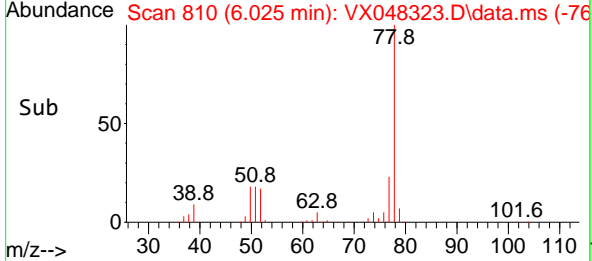
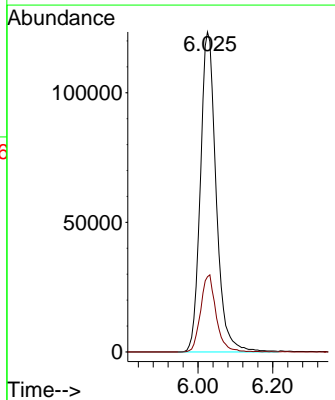
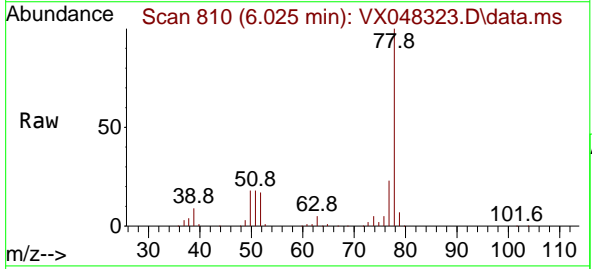
Ion	Ratio	Lower	Upper
117	100		
119	4.4	77.2	115.8#
121	0.0	24.8	37.2#

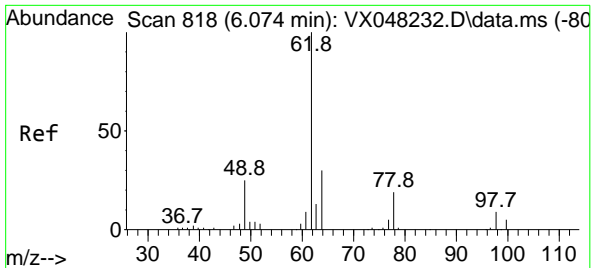


#40
 Benzene
 Concen: 45.247 ug/l
 RT: 6.025 min Scan# 810
 Delta R.T. -0.000 min
 Lab File: VX048323.D
 Acq: 23 Oct 2025 14:25

Tgt Ion: 78 Resp: 361148

Ion	Ratio	Lower	Upper
78	100		
77	23.5	19.3	28.9

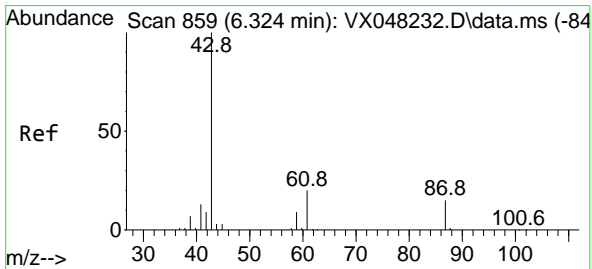
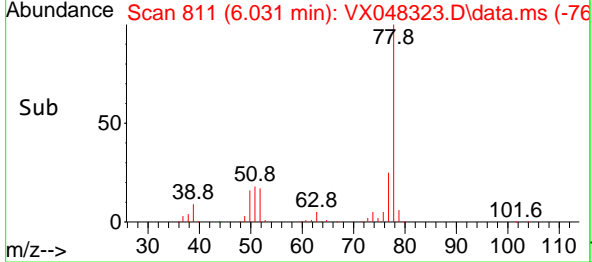
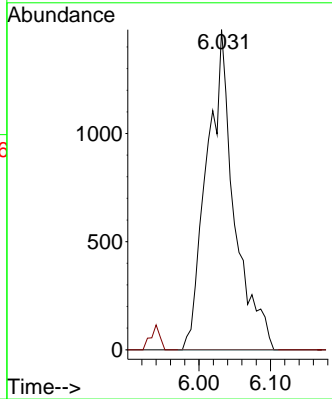
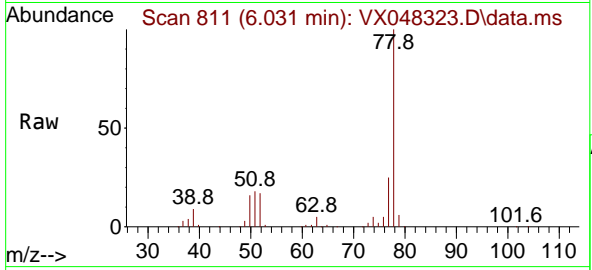




#42
 1,2-Dichloroethane
 Concen: 1.342 ug/l
 RT: 6.031 min Scan# 811
 Delta R.T. -0.037 min
 Lab File: VX048323.D
 Acq: 23 Oct 2025 14:25

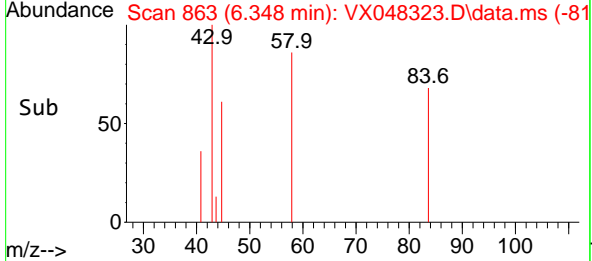
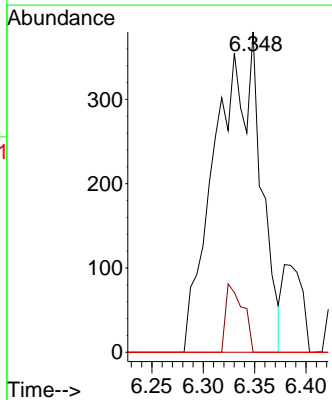
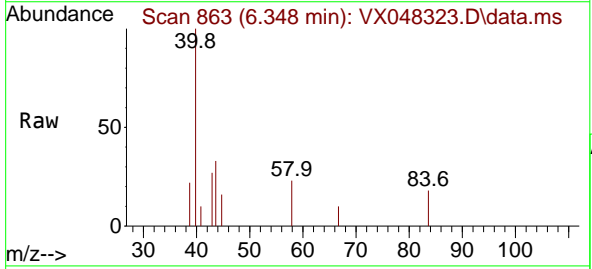
Instrument : MSVOA_X
 ClientSampleId : SB-6

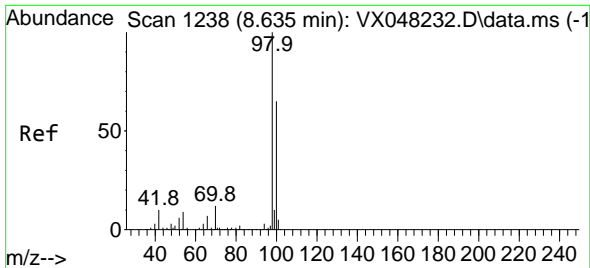
Tgt Ion: 62 Resp: 3952
 Ion Ratio Lower Upper
 62 100
 98 0.0 0.0 17.2



#43
 Isopropyl Acetate
 Concen: 0.306 ug/l
 RT: 6.348 min Scan# 863
 Delta R.T. 0.024 min
 Lab File: VX048323.D
 Acq: 23 Oct 2025 14:25

Tgt Ion: 43 Resp: 1144
 Ion Ratio Lower Upper
 43 100
 61 0.0 14.9 22.3#
 87 0.0 9.4 14.2#

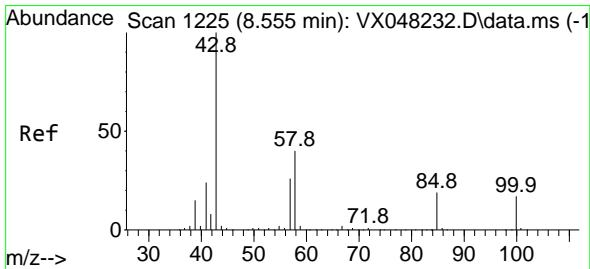
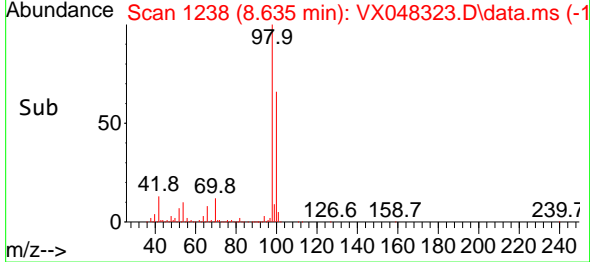
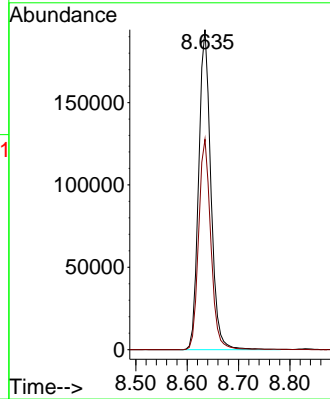
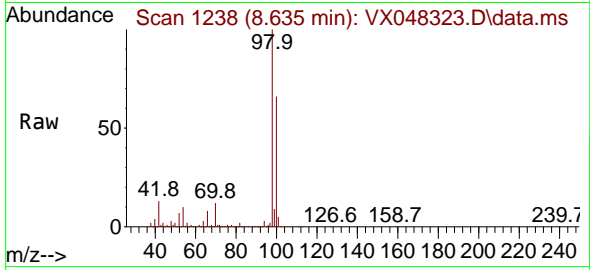




#50
 Toluene-d8
 Concen: 47.279 ug/l
 RT: 8.635 min Scan# 11
 Delta R.T. -0.000 min
 Lab File: VX048323.D
 Acq: 23 Oct 2025 14:25

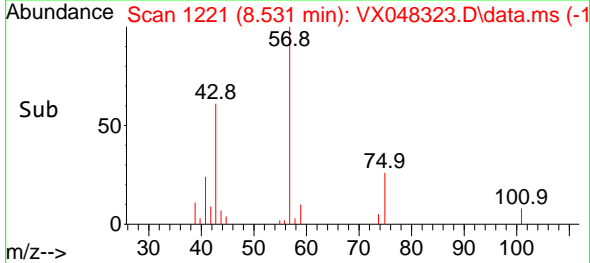
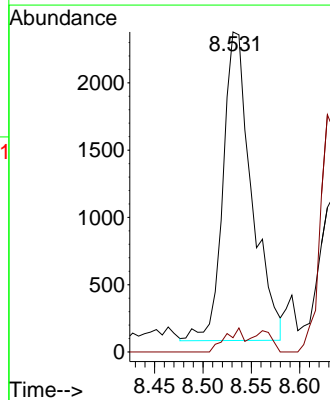
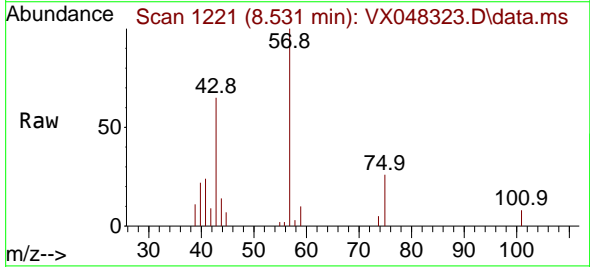
Instrument :
 MSVOA_X
 ClientSampleId :
 SB-6

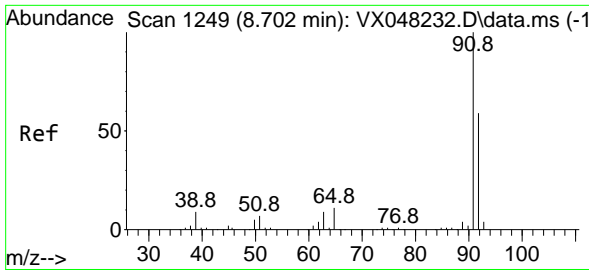
Tgt Ion: 98 Resp: 320539
 Ion Ratio Lower Upper
 98 100
 100 65.7 53.0 79.4



#51
 4-Methyl-2-Pentanone
 Concen: 2.193 ug/l
 RT: 8.531 min Scan# 1221
 Delta R.T. -0.024 min
 Lab File: VX048323.D
 Acq: 23 Oct 2025 14:25

Tgt Ion: 43 Resp: 4733
 Ion Ratio Lower Upper
 43 100
 58 4.9 29.5 44.3#

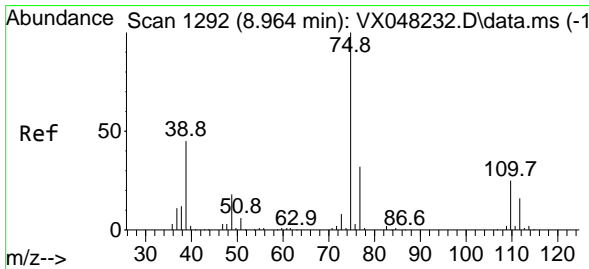
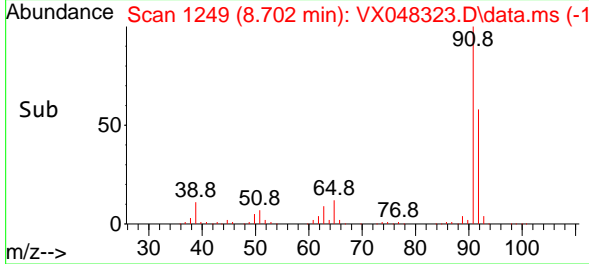
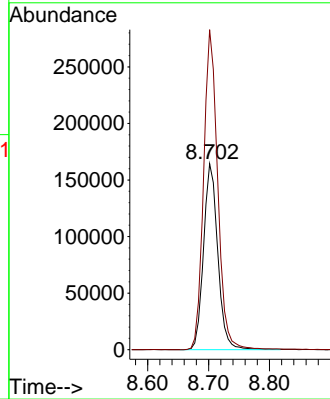
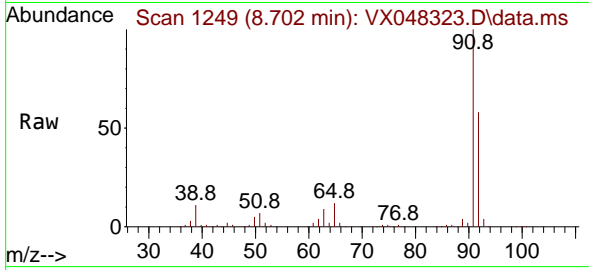




#52
 Toluene
 Concen: 52.825 ug/l
 RT: 8.702 min Scan# 11
 Delta R.T. -0.000 min
 Lab File: VX048323.D
 Acq: 23 Oct 2025 14:25

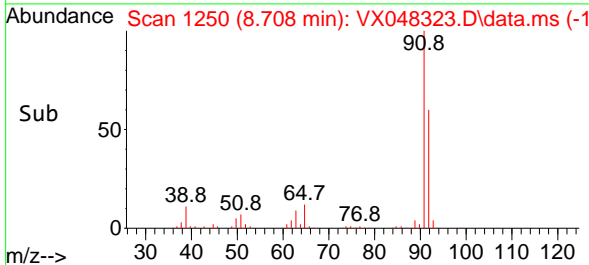
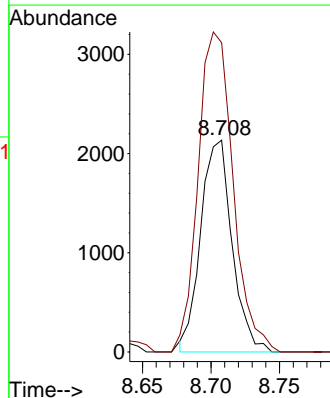
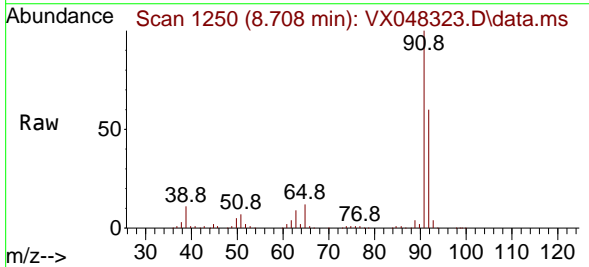
Instrument : MSVOA_X
 ClientSampleId : SB-6

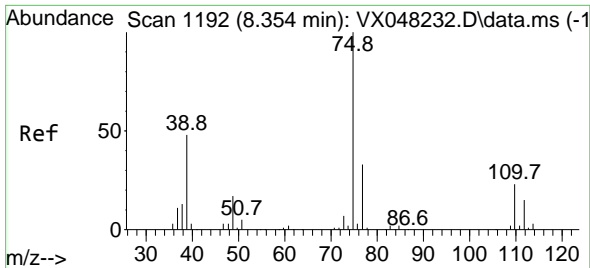
Tgt Ion: 92 Resp: 267862
 Ion Ratio Lower Upper
 92 100
 91 170.8 136.1 204.1



#53
 t-1,3-Dichloropropene
 Concen: 1.104 ug/l
 RT: 8.708 min Scan# 1250
 Delta R.T. -0.256 min
 Lab File: VX048323.D
 Acq: 23 Oct 2025 14:25

Tgt Ion: 75 Resp: 3396
 Ion Ratio Lower Upper
 75 100
 77 146.0 25.0 37.6#

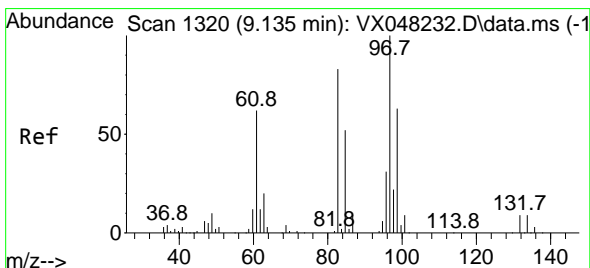
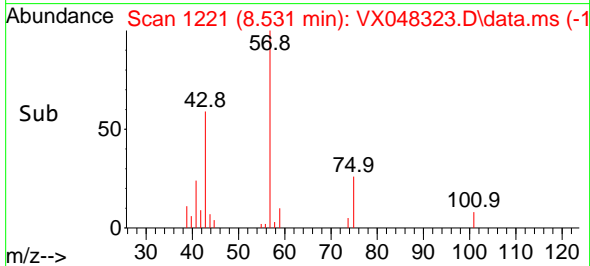
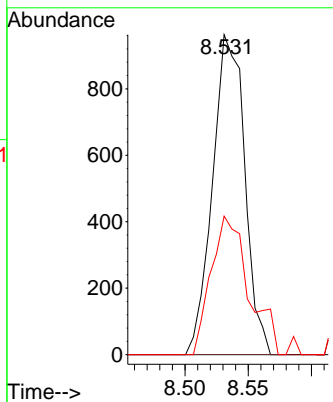
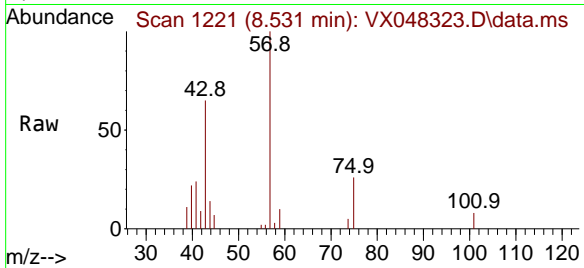




#54
 cis-1,3-Dichloropropene
 Concen: 0.512 ug/l
 RT: 8.531 min Scan# 1192
 Delta R.T. 0.183 min
 Lab File: VX048323.D
 Acq: 23 Oct 2025 14:25

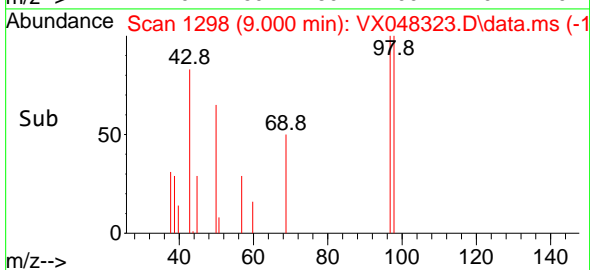
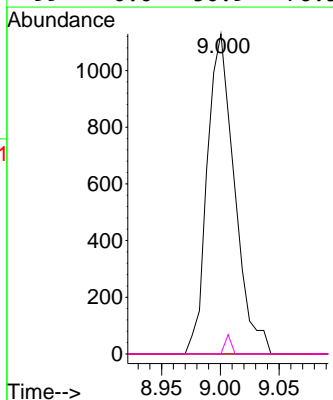
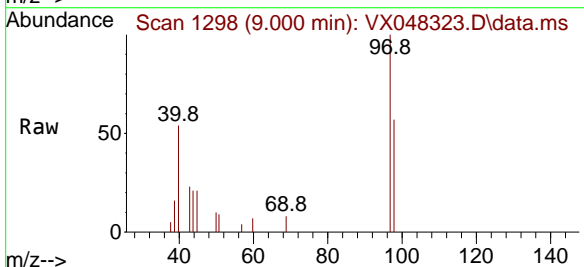
Instrument : MSVOA_X
 ClientSampleId : SB-6

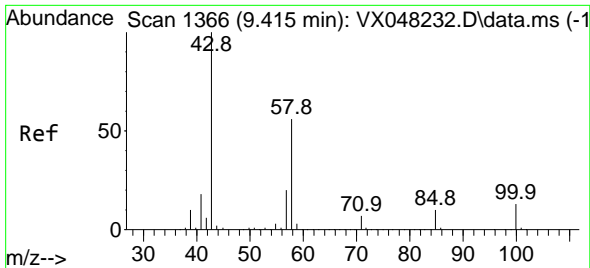
Tgt Ion	Resp	Ion Ratio	Lower	Upper
75	1700	100		
77		0.0	24.9	37.3#
39		43.3	42.6	64.0



#55
 1,1,2-Trichloroethane
 Concen: 0.968 ug/l
 RT: 9.000 min Scan# 1298
 Delta R.T. -0.134 min
 Lab File: VX048323.D
 Acq: 23 Oct 2025 14:25

Tgt Ion	Resp	Ion Ratio	Lower	Upper
97	1825	100		
83		0.0	70.6	105.8#
85		0.0	45.0	67.6#
99		0.0	50.9	76.3#

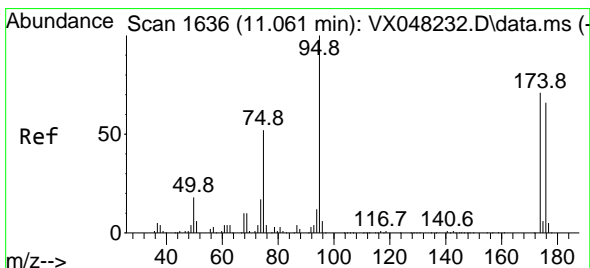
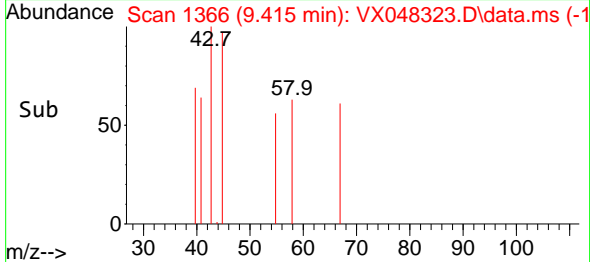
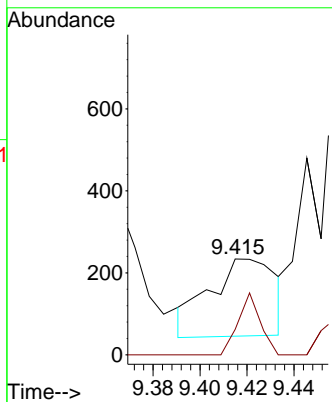
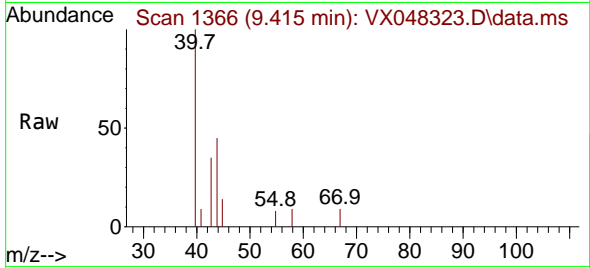




#59
 2-Hexanone
 Concen: 0.245 ug/l
 RT: 9.415 min Scan# 11
 Delta R.T. -0.000 min
 Lab File: VX048323.D
 Acq: 23 Oct 2025 14:25

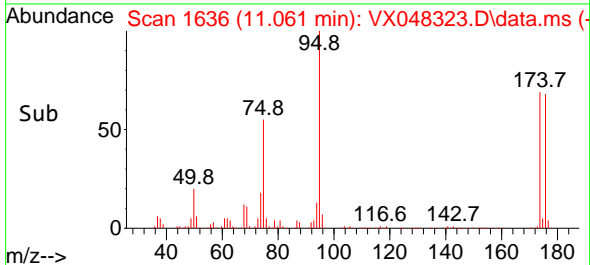
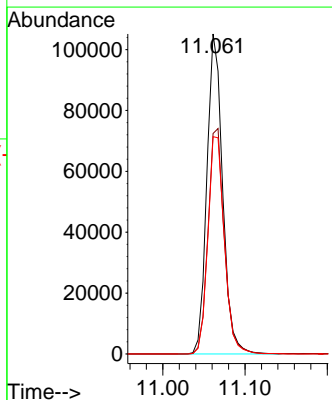
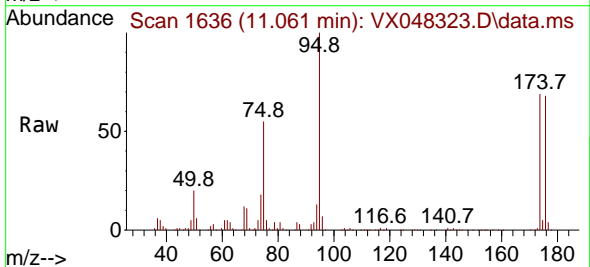
Instrument :
 MSVOA_X
 ClientSampleId :
 SB-6

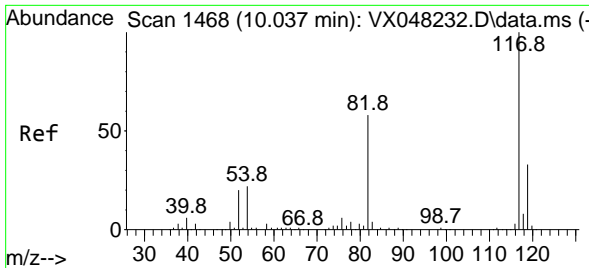
Tgt Ion: 43 Resp: 368
 Ion Ratio Lower Upper
 43 100
 58 26.9 26.3 78.8



#62
 4-Bromofluorobenzene
 Concen: 54.126 ug/l
 RT: 11.061 min Scan# 1636
 Delta R.T. -0.000 min
 Lab File: VX048323.D
 Acq: 23 Oct 2025 14:25

Tgt Ion: 95 Resp: 139602
 Ion Ratio Lower Upper
 95 100
 174 73.0 0.0 147.8
 176 71.4 0.0 142.8



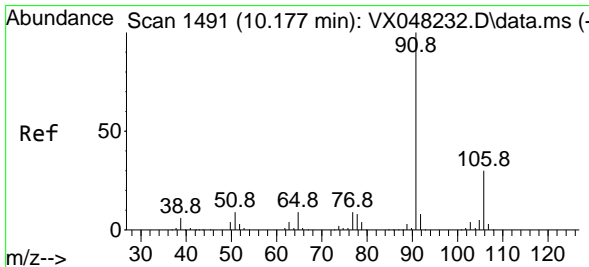
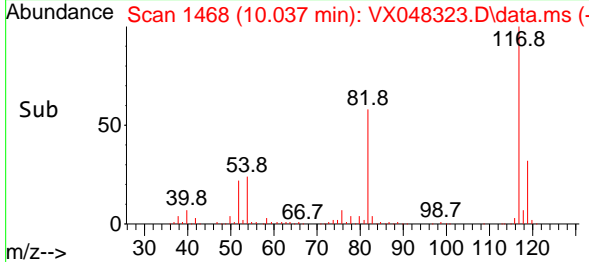
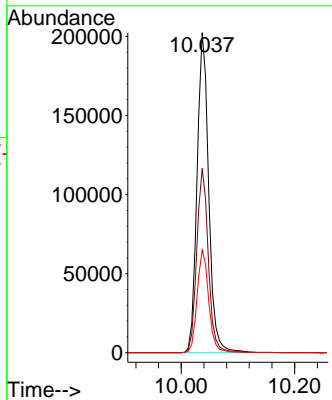
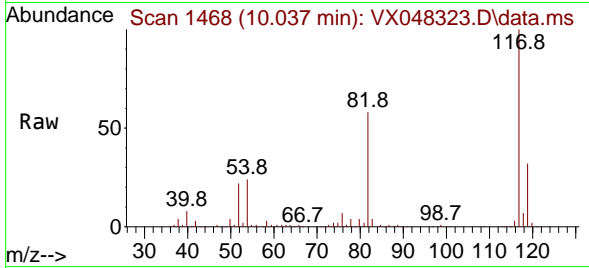


#63
 Chlorobenzene-d5
 Concen: 50.000 ug/l
 RT: 10.037 min Scan# 1491
 Delta R.T. -0.000 min
 Lab File: VX048323.D
 Acq: 23 Oct 2025 14:25

Instrument : MSVOA_X
 ClientSampleId : SB-6

Tgt Ion: 117 Resp: 288381

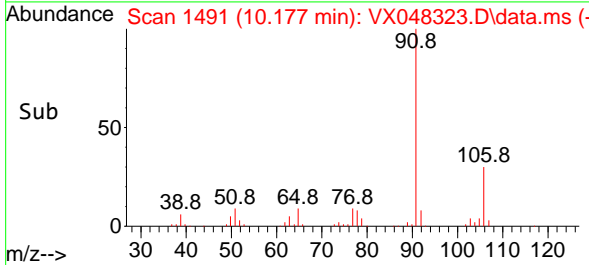
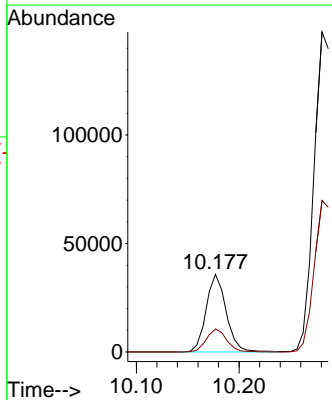
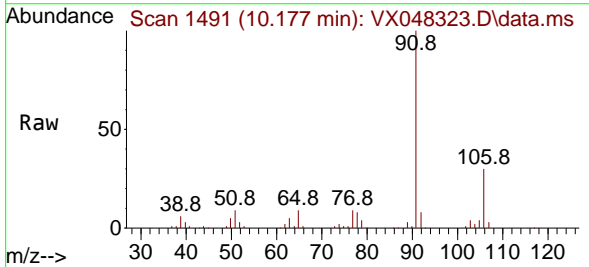
Ion	Ratio	Lower	Upper
117	100		
82	57.6	46.5	69.7
119	32.1	25.9	38.9

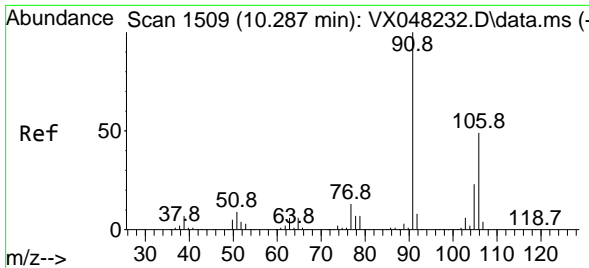


#67
 Ethyl Benzene
 Concen: 4.384 ug/l
 RT: 10.177 min Scan# 1491
 Delta R.T. -0.000 min
 Lab File: VX048323.D
 Acq: 23 Oct 2025 14:25

Tgt Ion: 91 Resp: 48424

Ion	Ratio	Lower	Upper
91	100		
106	29.7	23.8	35.6

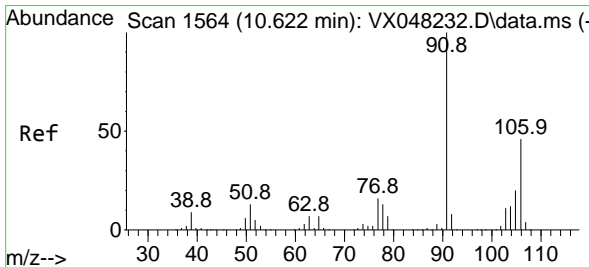
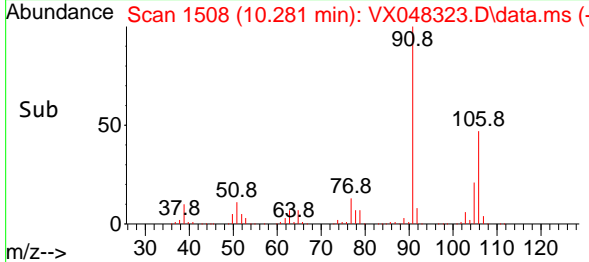
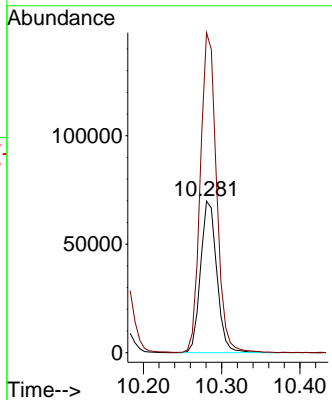
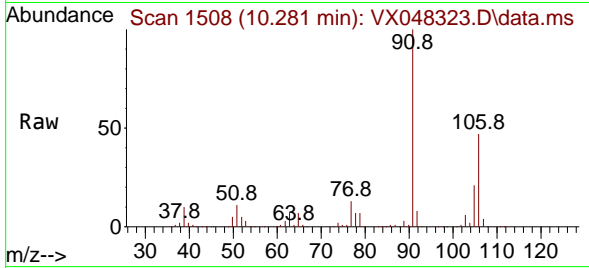




#68
 m/p-Xylenes
 Concen: 24.547 ug/l
 RT: 10.281 min Scan# 1508
 Delta R.T. -0.006 min
 Lab File: VX048323.D
 Acq: 23 Oct 2025 14:25

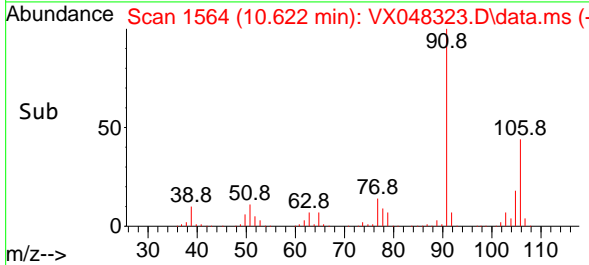
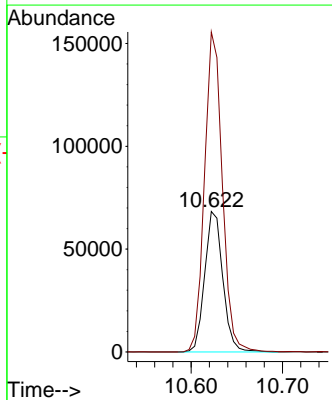
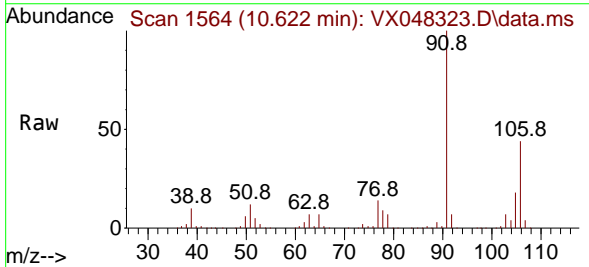
Instrument : MSVOA_X
 ClientSampleId : SB-6

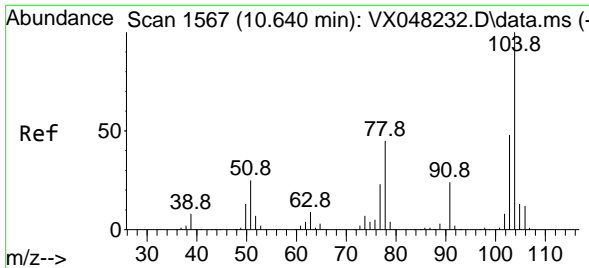
Tgt Ion:106 Resp: 100735
 Ion Ratio Lower Upper
 106 100
 91 210.8 167.9 251.9



#69
 o-Xylene
 Concen: 23.654 ug/l
 RT: 10.622 min Scan# 1564
 Delta R.T. -0.000 min
 Lab File: VX048323.D
 Acq: 23 Oct 2025 14:25

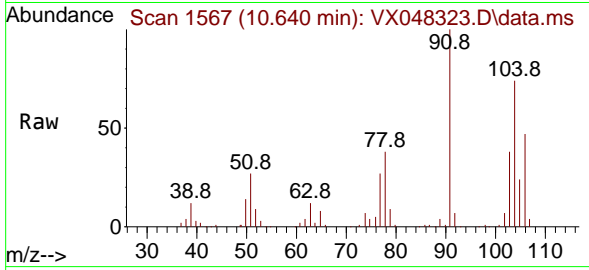
Tgt Ion:106 Resp: 93716
 Ion Ratio Lower Upper
 106 100
 91 224.1 111.3 333.9



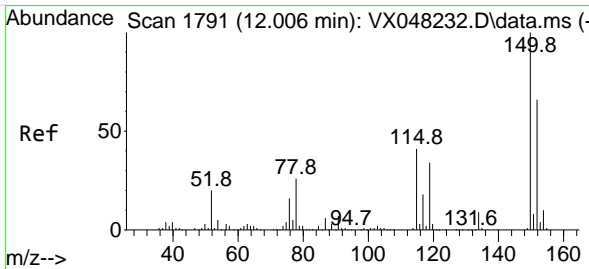
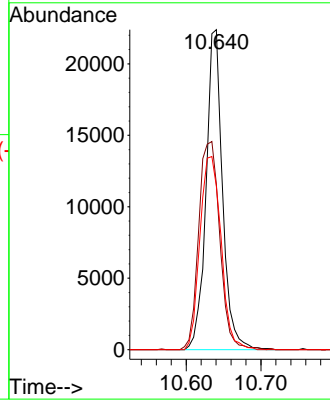
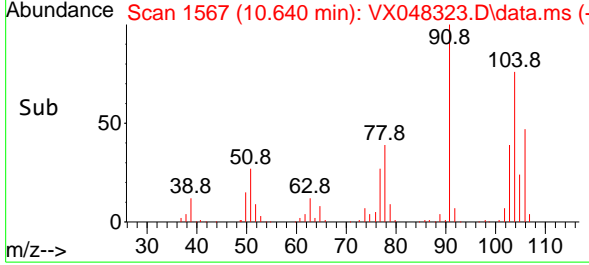


#70
 Styrene
 Concen: 5.095 ug/l
 RT: 10.640 min Scan# 111
 Delta R.T. -0.000 min
 Lab File: VX048323.D
 Acq: 23 Oct 2025 14:25

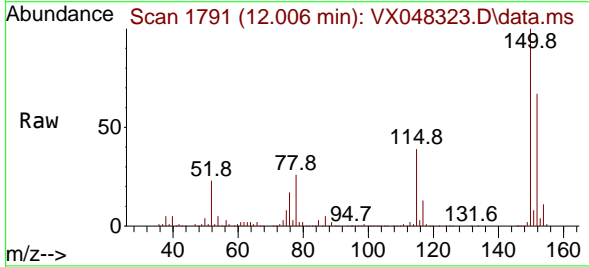
Instrument : MSVOA_X
 ClientSampleId : SB-6



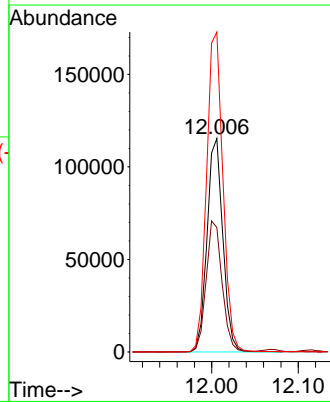
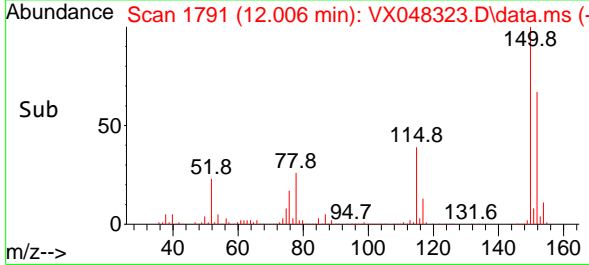
Tgt Ion:104 Resp: 34371
 Ion Ratio Lower Upper
 104 100
 78 83.0 42.2 63.4#
 103 77.1 43.0 64.4#

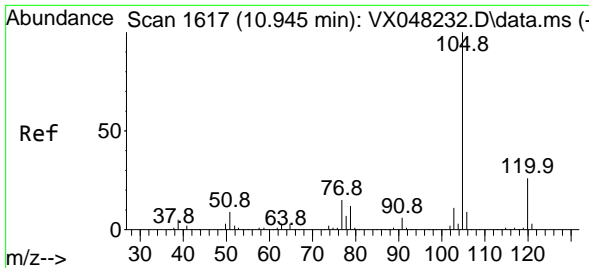


#72
 1,4-Dichlorobenzene-d4
 Concen: 50.000 ug/l
 RT: 12.006 min Scan# 1791
 Delta R.T. -0.000 min
 Lab File: VX048323.D
 Acq: 23 Oct 2025 14:25



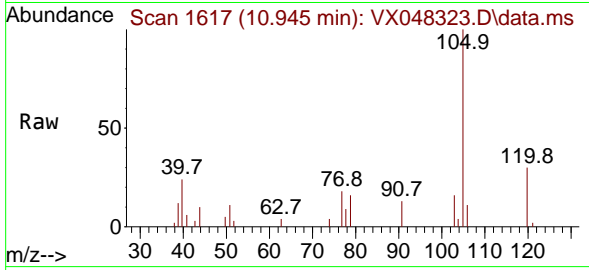
Tgt Ion:152 Resp: 146201
 Ion Ratio Lower Upper
 152 100
 115 62.3 43.1 129.4
 150 155.2 0.0 353.0



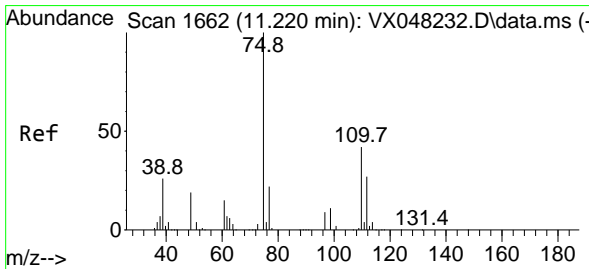
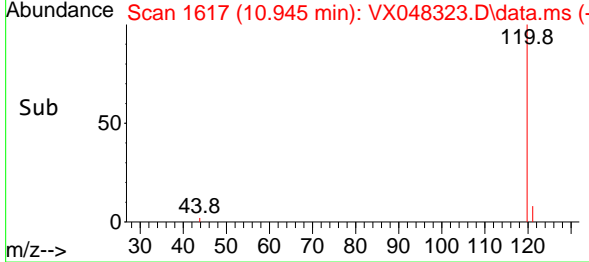
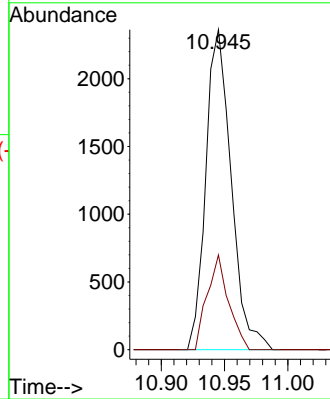


#73
 Isopropylbenzene
 Concen: 0.309 ug/l
 RT: 10.945 min Scan# 1617
 Delta R.T. -0.000 min
 Lab File: VX048323.D
 Acq: 23 Oct 2025 14:25

Instrument : MSVOA_X
 ClientSampleId : SB-6

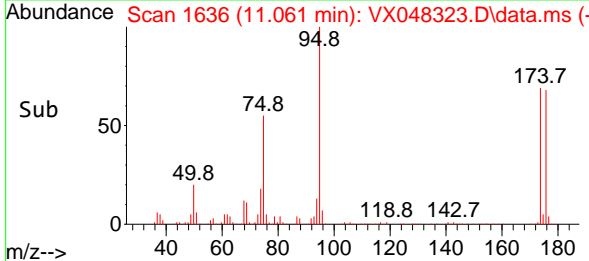
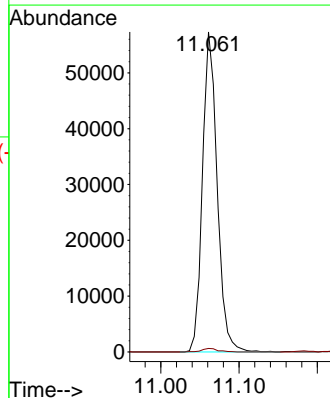
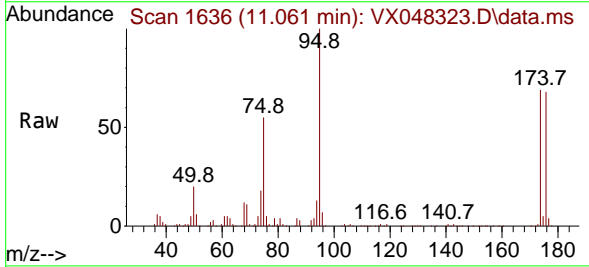


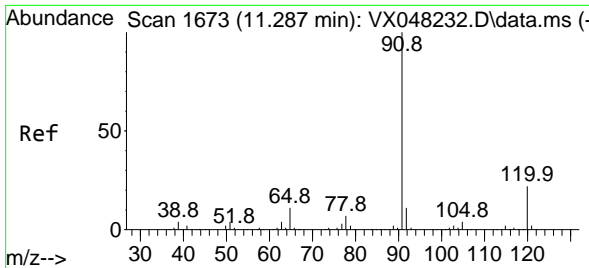
Tgt Ion:105 Resp: 3298
 Ion Ratio Lower Upper
 105 100
 120 24.8 13.0 38.9



#76
 1,2,3-Trichloropropane
 Concen: 31.472 ug/l
 RT: 11.061 min Scan# 1636
 Delta R.T. -0.159 min
 Lab File: VX048323.D
 Acq: 23 Oct 2025 14:25

Tgt Ion: 75 Resp: 74616
 Ion Ratio Lower Upper
 75 100
 77 1.2 22.4 67.2#

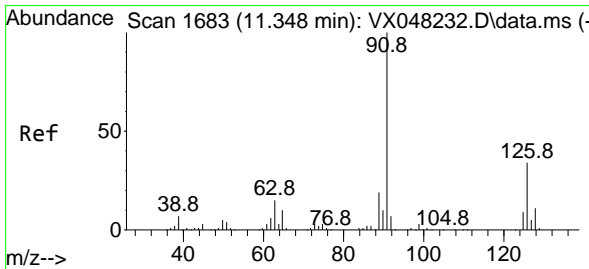
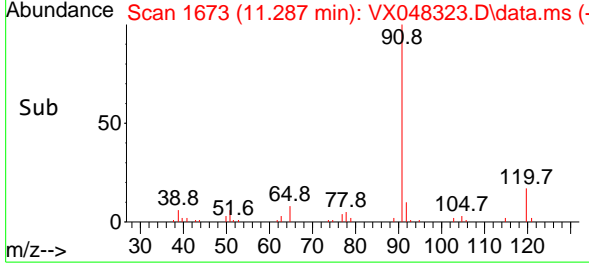
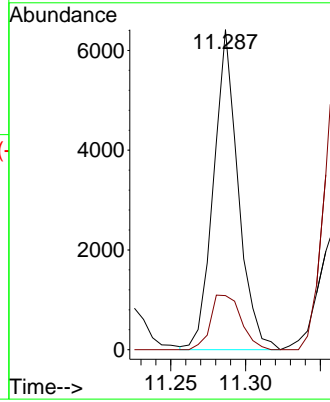
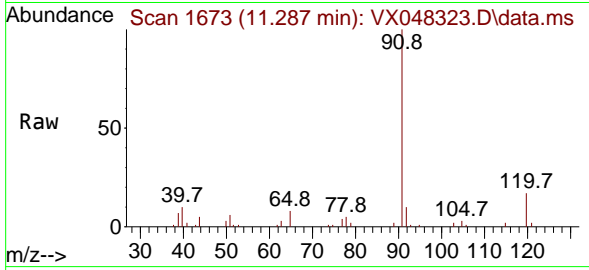




#78
 n-propylbenzene
 Concen: 0.595 ug/l
 RT: 11.287 min Scan# 1673
 Delta R.T. -0.000 min
 Lab File: VX048323.D
 Acq: 23 Oct 2025 14:25

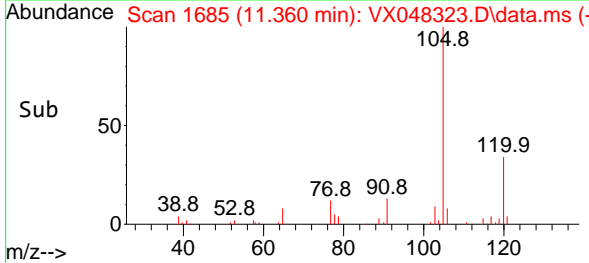
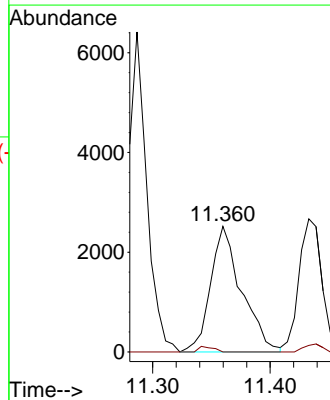
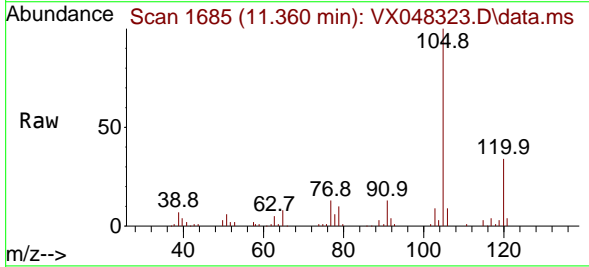
Instrument : MSVOA_X
 ClientSampleId : SB-6

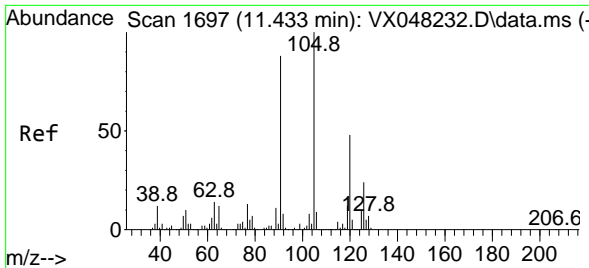
Tgt Ion: 91 Resp: 7351
 Ion Ratio Lower Upper
 91 100
 120 21.2 11.1 33.1



#79
 2-Chlorotoluene
 Concen: 0.618 ug/l
 RT: 11.360 min Scan# 1685
 Delta R.T. 0.012 min
 Lab File: VX048323.D
 Acq: 23 Oct 2025 14:25

Tgt Ion: 91 Resp: 4631
 Ion Ratio Lower Upper
 91 100
 126 2.1 16.4 49.4#

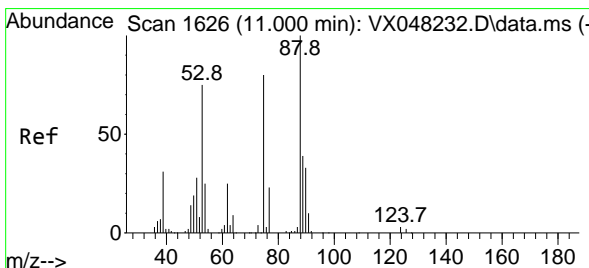
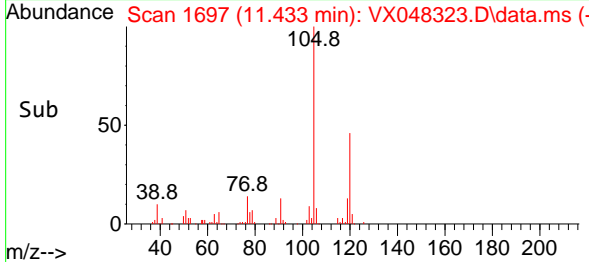
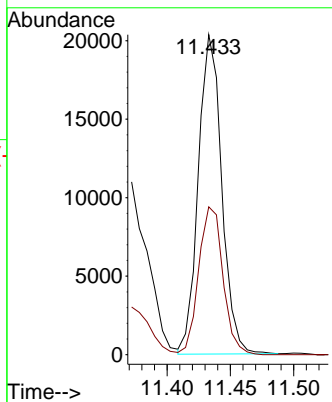
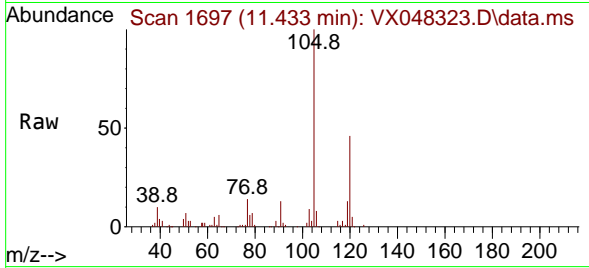




#80
 1,3,5-Trimethylbenzene
 Concen: 2.968 ug/l
 RT: 11.433 min Scan# 10
 Delta R.T. -0.000 min
 Lab File: VX048323.D
 Acq: 23 Oct 2025 14:25

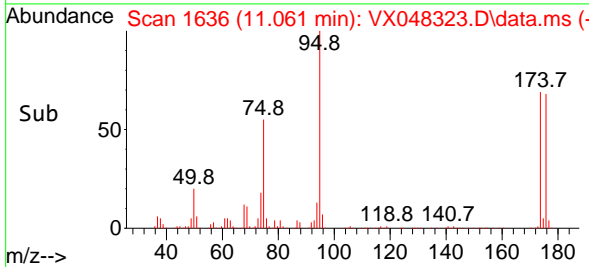
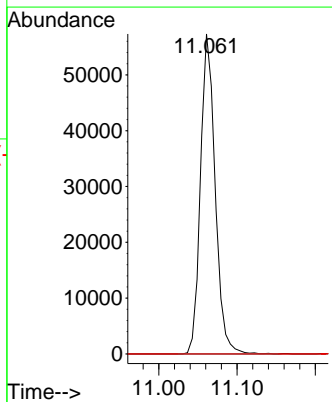
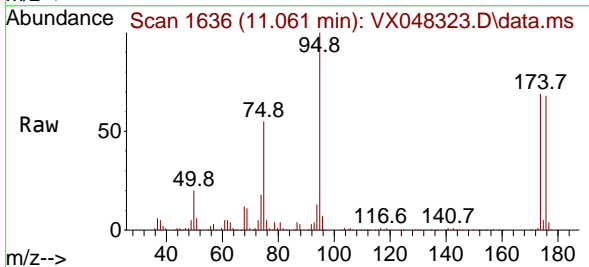
Instrument : MSVOA_X
 ClientSampleId : SB-6

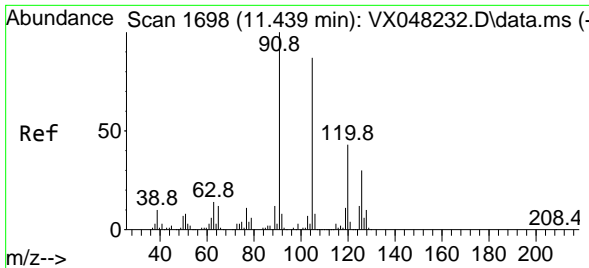
Tgt Ion: 105 Resp: 26226
 Ion Ratio Lower Upper
 105 100
 120 48.1 24.0 72.0



#81
 trans-1,4-Dichloro-2-butene
 Concen: 76.568 ug/l
 RT: 11.061 min Scan# 1636
 Delta R.T. 0.061 min
 Lab File: VX048323.D
 Acq: 23 Oct 2025 14:25

Tgt Ion: 75 Resp: 74616
 Ion Ratio Lower Upper
 75 100
 53 0.0 79.5 119.3#
 89 0.0 36.8 55.2#

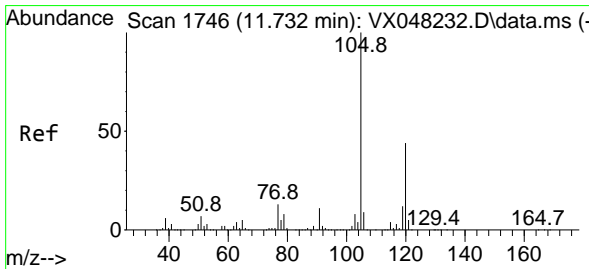
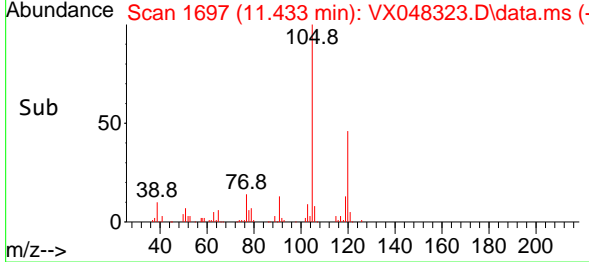
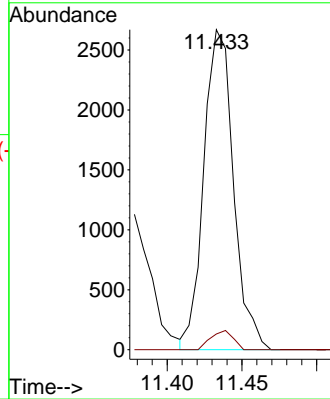
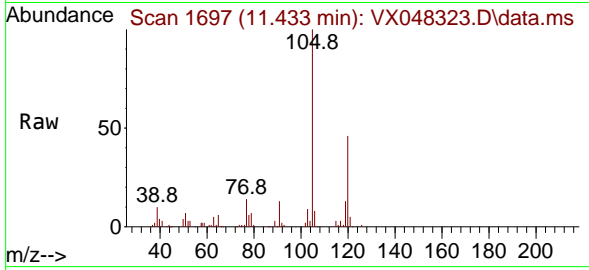




#82
 4-Chlorotoluene
 Concen: 0.414 ug/l
 RT: 11.433 min Scan# 11
 Delta R.T. -0.000 min
 Lab File: VX048323.D
 Acq: 23 Oct 2025 14:25

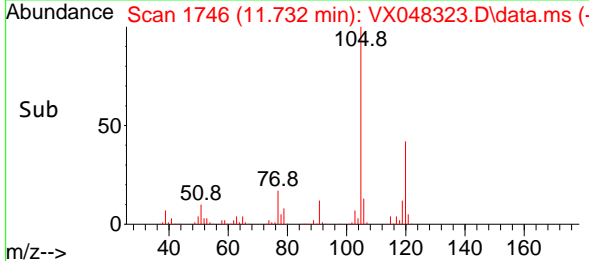
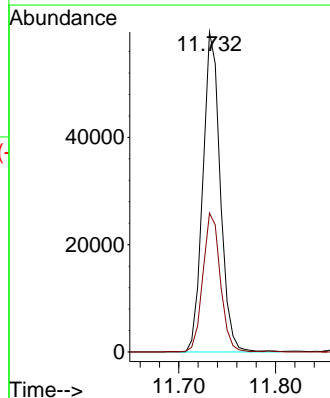
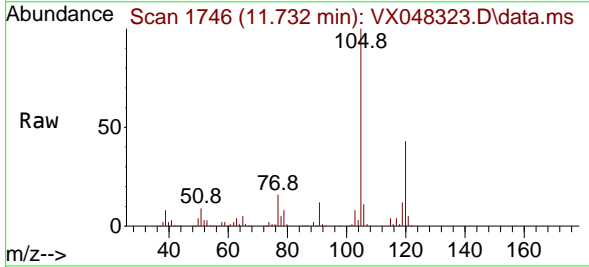
Instrument : MSVOA_X
 ClientSampleId : SB-6

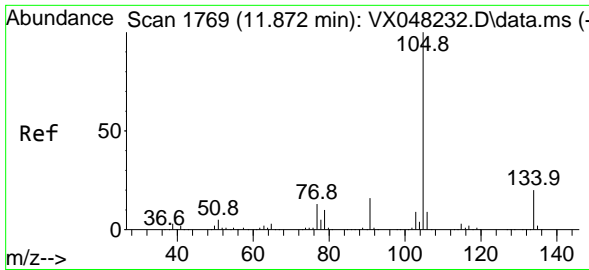
Tgt Ion: 91 Resp: 3683
 Ion Ratio Lower Upper
 91 100
 126 4.5 14.1 42.4#



#84
 1,2,4-Trimethylbenzene
 Concen: 8.471 ug/l
 RT: 11.732 min Scan# 1746
 Delta R.T. -0.000 min
 Lab File: VX048323.D
 Acq: 23 Oct 2025 14:25

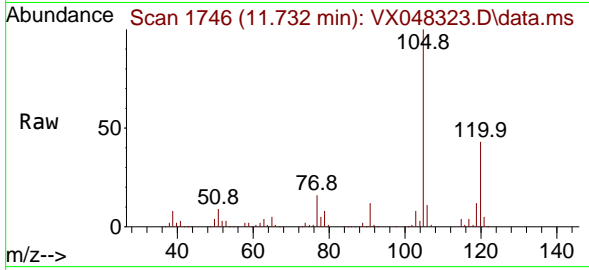
Tgt Ion: 105 Resp: 74707
 Ion Ratio Lower Upper
 105 100
 120 43.8 22.1 66.5



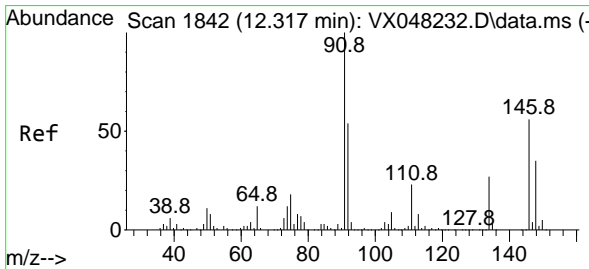
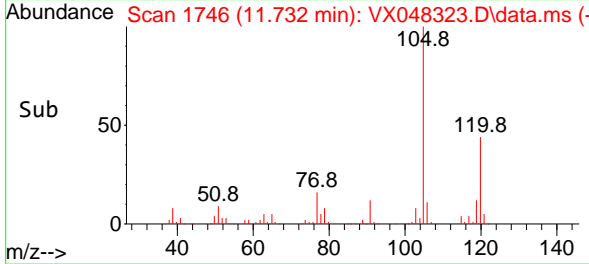
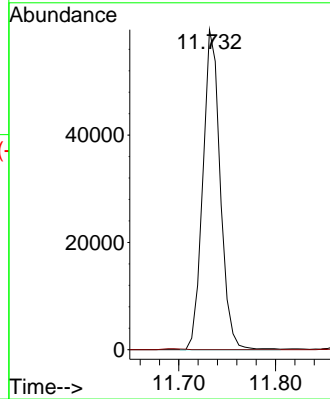


#85
 sec-Butylbenzene
 Concen: 6.839 ug/l
 RT: 11.732 min Scan# 1174
 Delta R.T. -0.140 min
 Lab File: VX048323.D
 Acq: 23 Oct 2025 14:25

Instrument : MSVOA_X
 ClientSampleId : SB-6

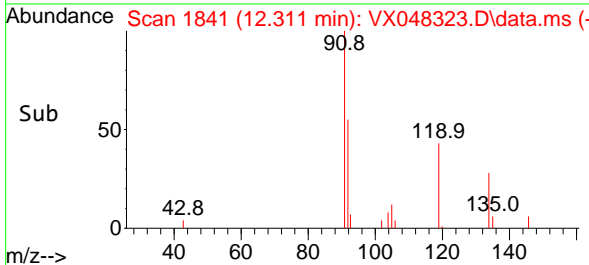
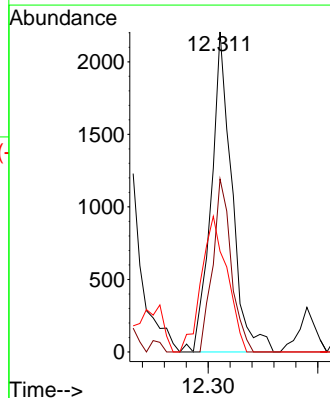
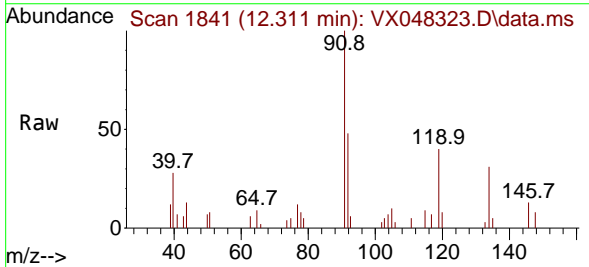


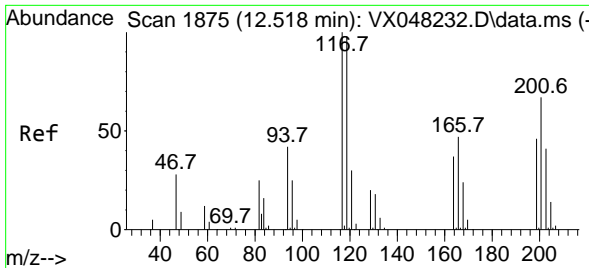
Tgt Ion: 105 Resp: 74707
 Ion Ratio Lower Upper
 105 100
 134 0.0 10.1 30.1#



#89
 n-Butylbenzene
 Concen: 0.338 ug/l
 RT: 12.311 min Scan# 1841
 Delta R.T. -0.000 min
 Lab File: VX048323.D
 Acq: 23 Oct 2025 14:25

Tgt Ion: 91 Resp: 2907
 Ion Ratio Lower Upper
 91 100
 92 48.2 26.9 80.6
 134 52.3 12.7 38.1#

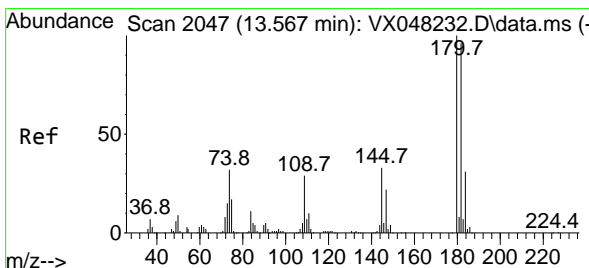
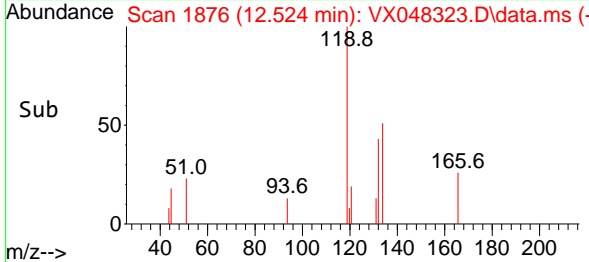
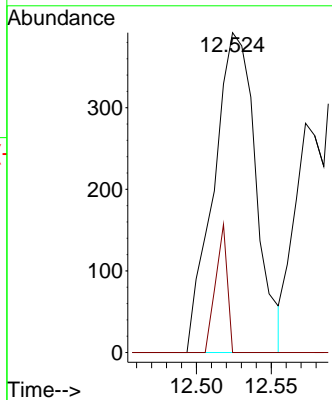
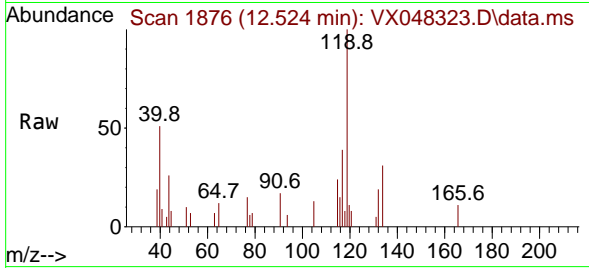




#90
 Hexachloroethane
 Concen: 0.413 ug/l
 RT: 12.524 min Scan# 117
 Delta R.T. 0.006 min
 Lab File: VX048323.D
 Acq: 23 Oct 2025 14:25

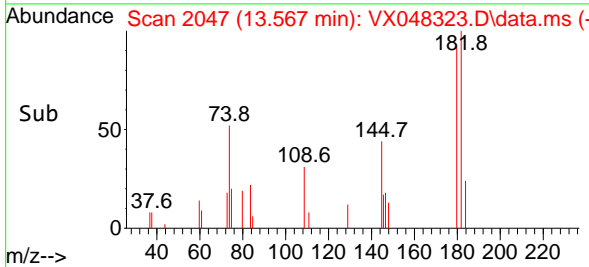
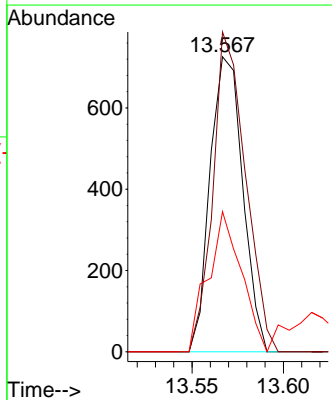
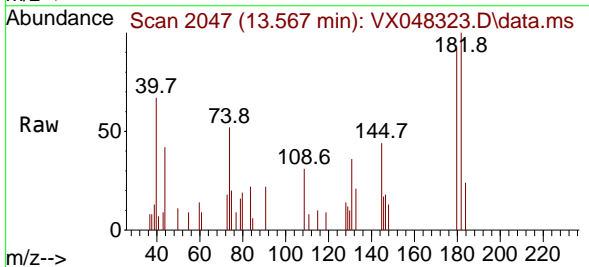
Instrument : MSVOA_X
 ClientSampleId : SB-6

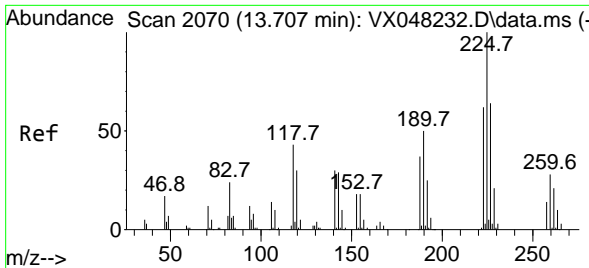
Tgt Ion:117 Resp: 771
 Ion Ratio Lower Upper
 117 100
 201 11.0 34.1 102.2#



#93
 1,2,4-Trichlorobenzene
 Concen: 0.282 ug/l
 RT: 13.567 min Scan# 2047
 Delta R.T. -0.000 min
 Lab File: VX048323.D
 Acq: 23 Oct 2025 14:25

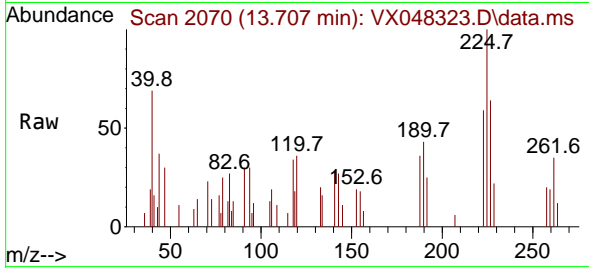
Tgt Ion:180 Resp: 903
 Ion Ratio Lower Upper
 180 100
 182 108.2 47.3 142.0
 145 48.4 16.3 48.9





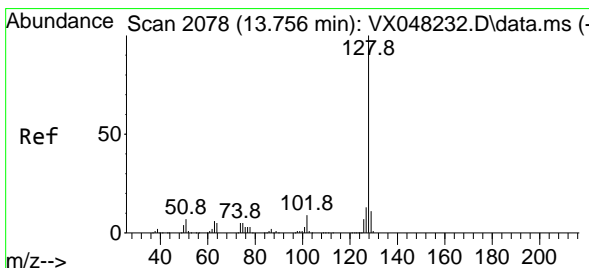
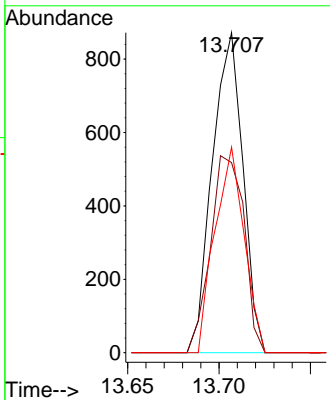
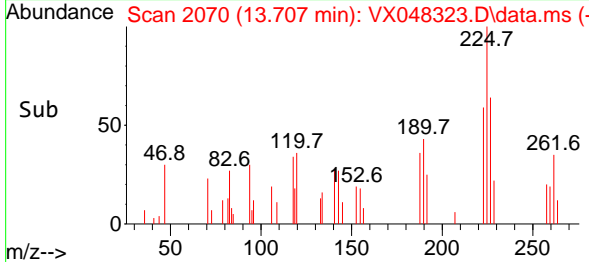
#94
 Hexachlorobutadiene
 Concen: 0.912 ug/l
 RT: 13.707 min Scan# 2070
 Delta R.T. 0.006 min
 Lab File: VX048323.D
 Acq: 23 Oct 2025 14:25

Instrument : MSVOA_X
 ClientSampleId : SB-6

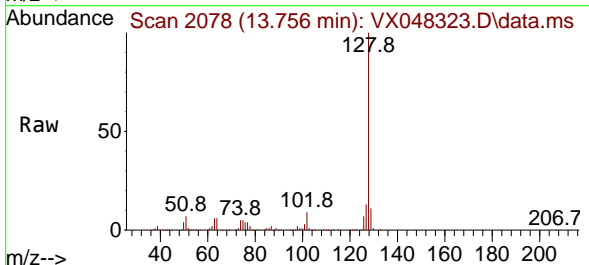


Tgt Ion: 225 Resp: 1016

Ion	Ratio	Lower	Upper
225	100		
223	67.6	32.6	97.7
227	61.4	32.5	97.4

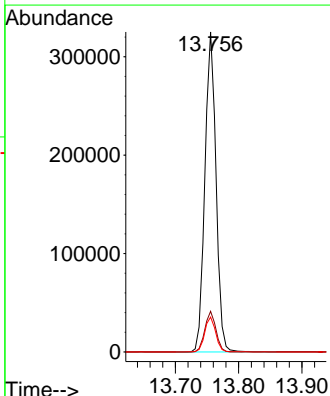
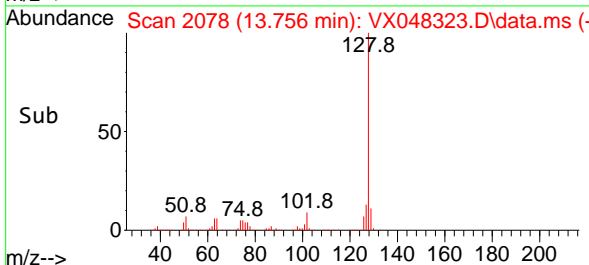


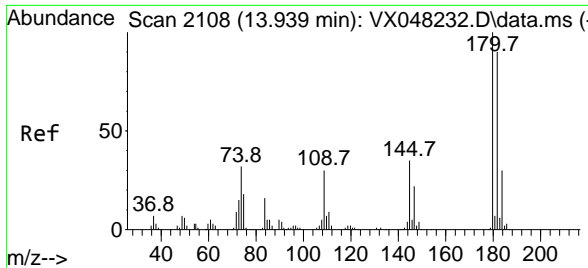
#95
 Naphthalene
 Concen: 46.931 ug/l
 RT: 13.756 min Scan# 2078
 Delta R.T. -0.000 min
 Lab File: VX048323.D
 Acq: 23 Oct 2025 14:25



Tgt Ion: 128 Resp: 398496

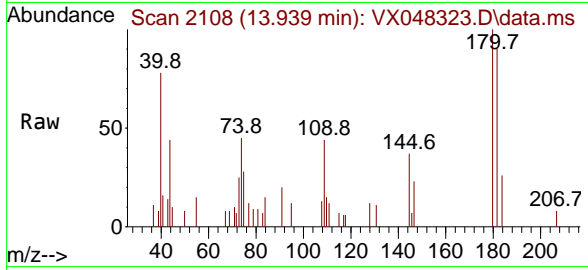
Ion	Ratio	Lower	Upper
128	100		
127	12.7	10.2	15.4
129	10.8	8.6	12.8





#96
 1,2,3-Trichlorobenzene
 Concen: 0.368 ug/l
 RT: 13.939 min Scan# 21
 Delta R.T. -0.000 min
 Lab File: VX048323.D
 Acq: 23 Oct 2025 14:25

Instrument :
 MSVOA_X
 ClientSampleId :
 SB-6



Tgt Ion:180 Resp: 1081

Ion	Ratio	Lower	Upper
180	100		
182	80.1	46.6	139.7
145	49.7	16.9	50.7

