

Data Path : Z:\voasrv\HPCHEM1\MSVOA_X\Data\VX102325\
 Data File : VX048324.D
 Acq On : 23 Oct 2025 14:45
 Operator : JC/MD
 Sample : Q3414-07 10X
 Misc : 5.0mL/MSVOA_X/WATER
 ALS Vial : 16 Sample Multiplier: 1

Instrument :
 MSVOA_X
 ClientSampleId :

Quant Time: Oct 24 05:45:58 2025
 Quant Method : Z:\voasrv\HPCHEM1\MSVOA_X\Method\82X102025W.M
 Quant Title : SW846 8260
 QLast Update : Mon Oct 20 14:13:59 2025
 Response via : Initial Calibration

Compound	R.T.	QIon	Response	Conc	Units	Dev(Min)
Internal Standards						
1) Pentafluorobenzene	5.544	168	121127	50.000	ug/l	0.00
34) 1,4-Difluorobenzene	6.751	114	246587	50.000	ug/l	0.00
63) Chlorobenzene-d5	10.037	117	255587	50.000	ug/l	0.00
72) 1,4-Dichlorobenzene-d4	12.006	152	132378	50.000	ug/l	0.00
System Monitoring Compounds						
33) 1,2-Dichloroethane-d4	5.940	65	97163	57.212	ug/l	0.00
Spiked Amount	50.000	Range 78 - 117	Recovery	=	114.420%	
35) Dibromofluoromethane	5.373	113	66730	39.639	ug/l	0.00
Spiked Amount	50.000	Range 75 - 124	Recovery	=	79.280%	
50) Toluene-d8	8.635	98	275177	46.635	ug/l	0.00
Spiked Amount	50.000	Range 92 - 112	Recovery	=	93.280%	
62) 4-Bromofluorobenzene	11.061	95	124408	55.421	ug/l	0.00
Spiked Amount	50.000	Range 83 - 123	Recovery	=	110.840%	
Target Compounds						
						Qvalue
10) Methyl Iodide	2.471	142	1602	0.975	ug/l	96
13) Acrolein	2.246	56	76	0.442	ug/l #	15
16) Acetone	2.374	43	3650	6.265	ug/l	96
18) Methyl Acetate	2.715	43	676	0.556	ug/l #	54
20) Methylene Chloride	2.794	84	732	0.516	ug/l #	80
25) 2-Butanone	4.550	43	231	0.313	ug/l #	78
29) Tetrahydrofuran	5.032	42	98	0.222	ug/l #	33
31) Cyclohexane	5.452	56	584	0.277	ug/l #	83
36) 1,1-Dichloropropene	5.544	75	10674	4.461	ug/l #	49
38) Carbon Tetrachloride	5.544	117	13044	4.419	ug/l #	15
39) Methylcyclohexane	7.367	83	1038	0.367	ug/l #	72
40) Benzene	6.025	78	852191	122.674	ug/l	99
42) 1,2-Dichloroethane	6.025	62	8631	3.367	ug/l #	76
43) Isopropyl Acetate	6.348	43	1516	0.465	ug/l #	64
48) Methyl methacrylate	7.781	41	4713	2.867	ug/l #	48
51) 4-Methyl-2-Pentanone	8.531	43	5731	3.051	ug/l #	50
52) Toluene	8.702	92	514222	116.519	ug/l	100
53) t-1,3-Dichloropropene	8.702	75	6127	2.288	ug/l #	1
54) cis-1,3-Dichloropropene	8.531	75	2151	0.745	ug/l #	55
55) 1,1,2-Trichloroethane	9.000	97	3390	2.066	ug/l #	18
67) Ethyl Benzene	10.177	91	83701	8.551	ug/l	98
68) m/p-Xylenes	10.281	106	175418	48.231	ug/l	99
69) o-Xylene	10.622	106	165616	47.166	ug/l	100
70) Styrene	10.640	104	57788	9.665	ug/l #	58
73) Isopropylbenzene	10.945	105	5234	0.541	ug/l	99
76) 1,2,3-Trichloropropane	11.061	75	66242	30.857	ug/l #	31
78) n-propylbenzene	11.287	91	10966	0.980	ug/l	99
79) 2-Chlorotoluene	11.598	91	4706	0.693	ug/l	83
80) 1,3,5-Trimethylbenzene	11.433	105	45091	5.635	ug/l	98
81) trans-1,4-Dichloro-2-b...	11.061	75	66242	75.073	ug/l #	10
82) 4-Chlorotoluene	11.598	91	4931	0.612	ug/l	98
83) tert-Butylbenzene	11.951	119	2237	0.272	ug/l	78
84) 1,2,4-Trimethylbenzene	11.732	105	126303	15.817	ug/l	98
85) sec-Butylbenzene	11.732	105	126303	12.769	ug/l #	56
89) n-Butylbenzene	12.311	91	2321	0.298	ug/l #	46
90) Hexachloroethane	12.530	117	1236	0.732	ug/l #	16

Data Path : Z:\voasrv\HPCHEM1\MSVOA_X\Data\VX102325\
Data File : VX048324.D
Acq On : 23 Oct 2025 14:45
Operator : JC/MD
Sample : Q3414-07 10X
Misc : 5.0mL/MSVOA_X/WATER
ALS Vial : 16 Sample Multiplier: 1

Instrument :
MSVOA_X
ClientSampleId :

Quant Time: Oct 24 05:45:58 2025
Quant Method : Z:\voasrv\HPCHEM1\MSVOA_X\Method\82X102025W.M
Quant Title : SW846 8260
QLast Update : Mon Oct 20 14:13:59 2025
Response via : Initial Calibration

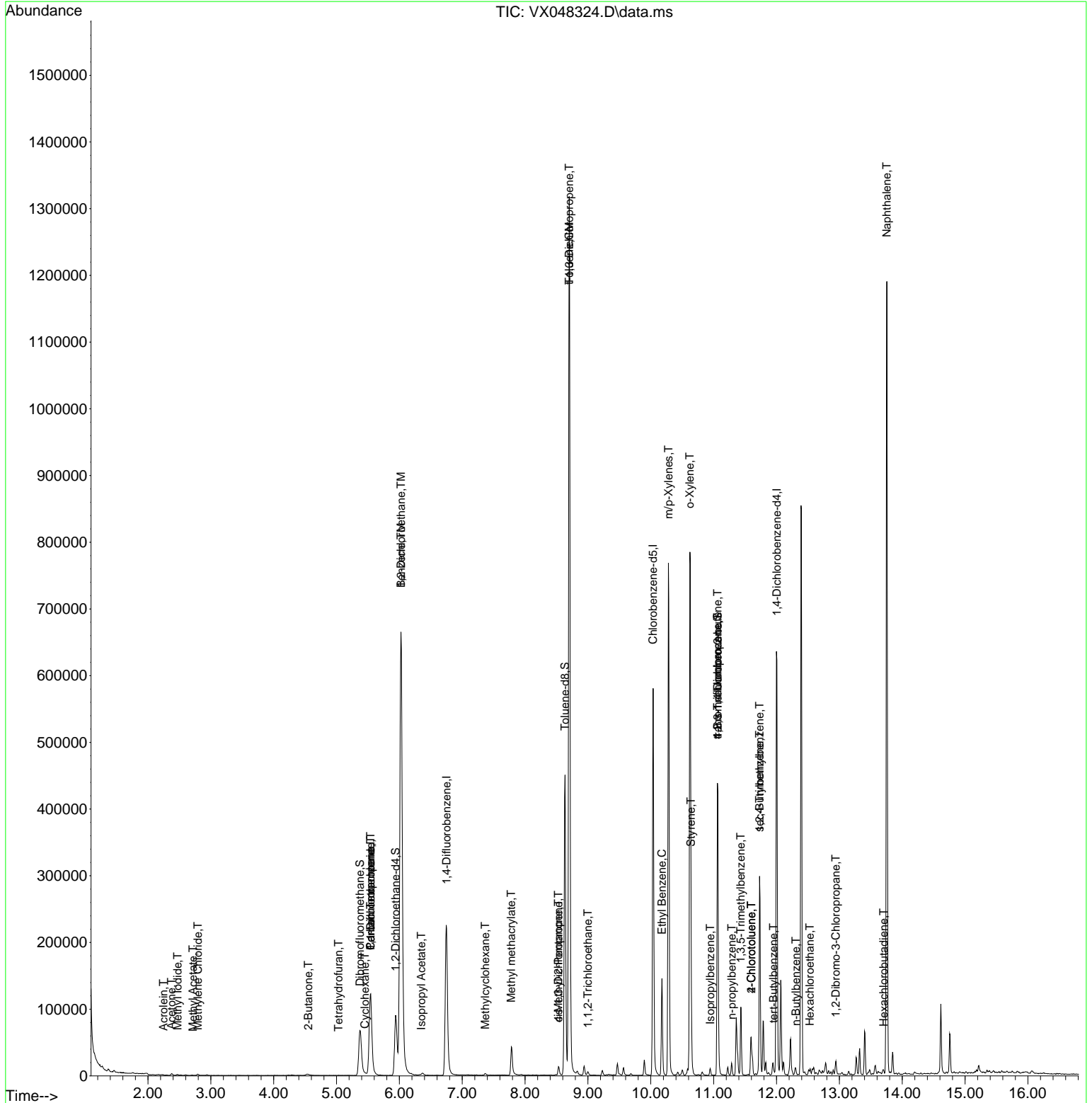
Compound	R.T.	QIon	Response	Conc	Units	Dev(Min)
92) 1,2-Dibromo-3-Chloropr...	12.945	75	151	0.282	ug/l #	1
94) Hexachlorobutadiene	13.707	225	439	0.470	ug/l	82
95) Naphthalene	13.756	128	676354	87.973	ug/l	100

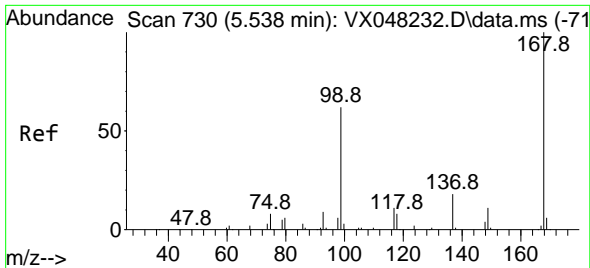
(#) = qualifier out of range (m) = manual integration (+) = signals summed

Data Path : Z:\voasrv\HPCHEM1\MSVOA_X\Data\VX102325\
 Data File : VX048324.D
 Acq On : 23 Oct 2025 14:45
 Operator : JC/MD
 Sample : Q3414-07 10X
 Misc : 5.0mL/MSVOA_X/WATER
 ALS Vial : 16 Sample Multiplier: 1

Instrument :
 MSVOA_X
 ClientSampleId :

Quant Time: Oct 24 05:45:58 2025
 Quant Method : Z:\voasrv\HPCHEM1\MSVOA_X\Method\82X102025W.M
 Quant Title : SW846 8260
 QLast Update : Mon Oct 20 14:13:59 2025
 Response via : Initial Calibration

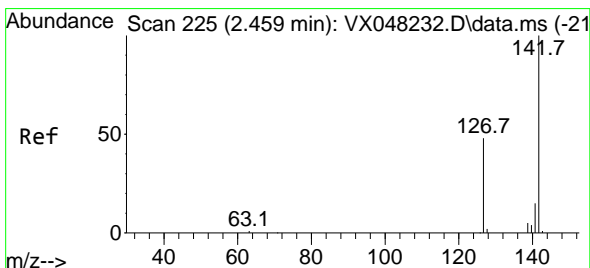
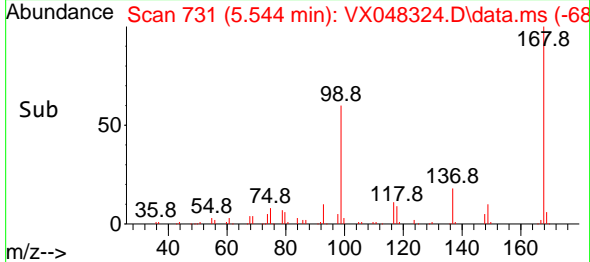
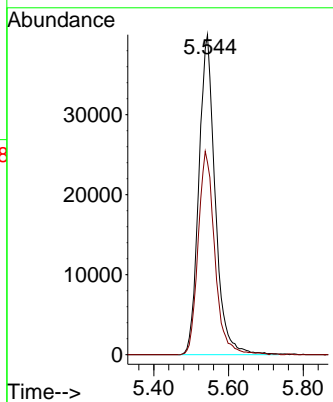
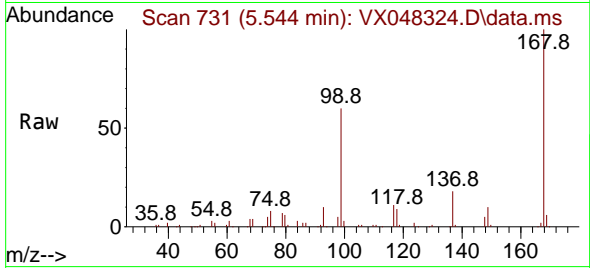




#1
 Pentafluorobenzene
 Concen: 50.000 ug/l
 RT: 5.544 min Scan# 71
 Delta R.T. -0.000 min
 Lab File: VX048324.D
 Acq: 23 Oct 2025 14:45

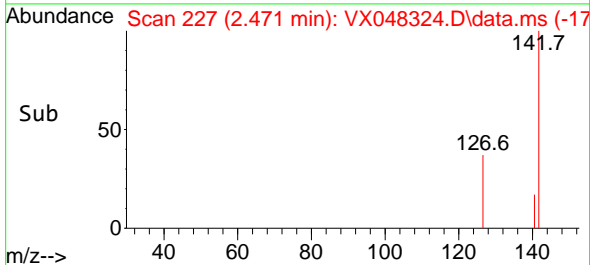
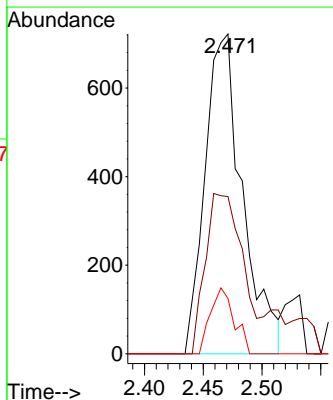
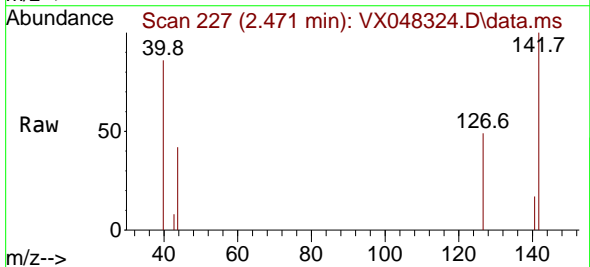
Instrument :
 MSVOA_X
 ClientSampleId :

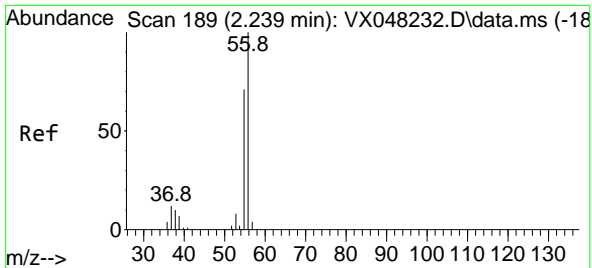
Tgt Ion:168 Resp: 121127
 Ion Ratio Lower Upper
 168 100
 99 60.1 46.4 69.6



#10
 Methyl Iodide
 Concen: 0.975 ug/l
 RT: 2.471 min Scan# 227
 Delta R.T. 0.012 min
 Lab File: VX048324.D
 Acq: 23 Oct 2025 14:45

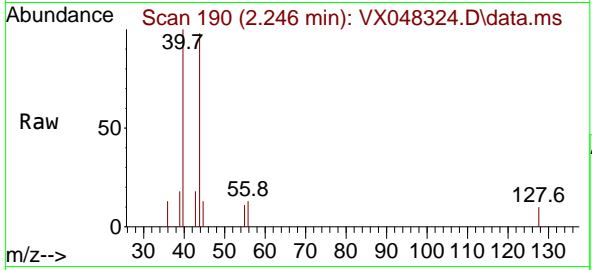
Tgt Ion:142 Resp: 1602
 Ion Ratio Lower Upper
 142 100
 127 51.1 38.5 57.7
 141 13.1 11.6 17.4



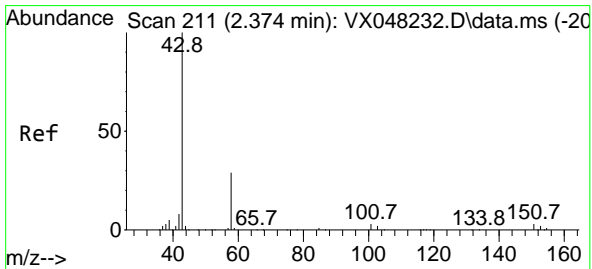
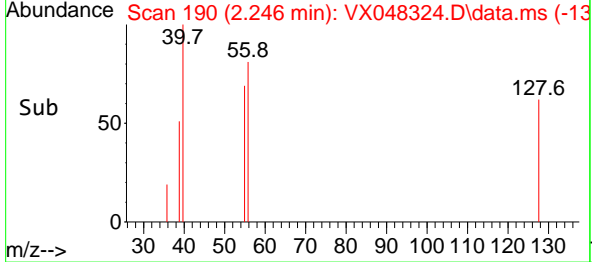
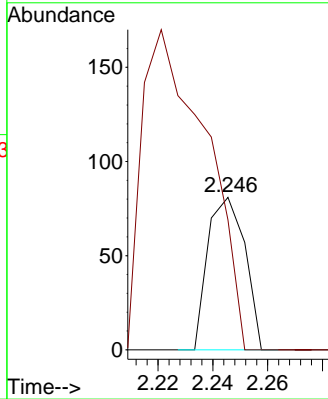


#13
 Acrolein
 Concen: 0.442 ug/l
 RT: 2.246 min Scan# 190
 Delta R.T. 0.012 min
 Lab File: VX048324.D
 Acq: 23 Oct 2025 14:45

Instrument :
 MSVOA_X
 ClientSampleId :

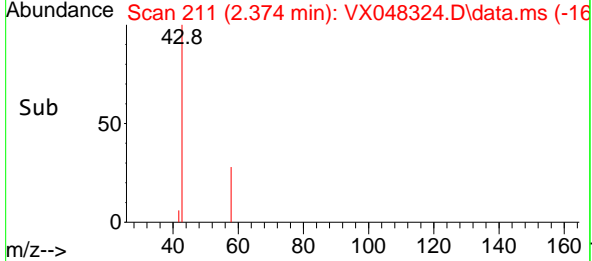
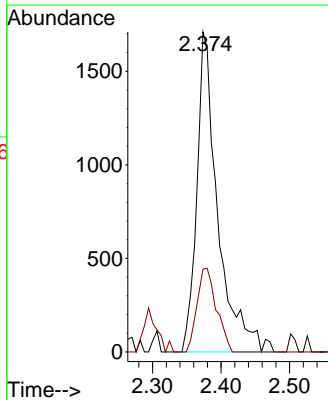
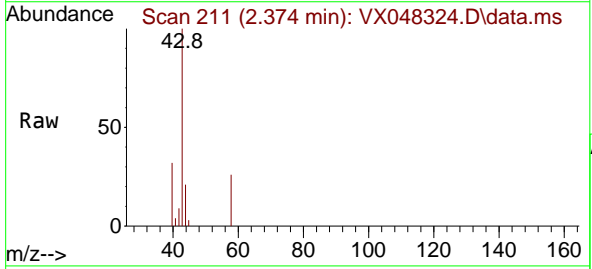


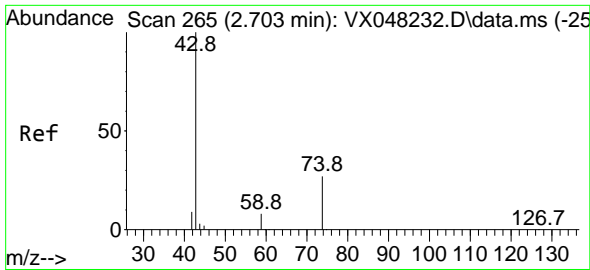
Tgt Ion: 56 Resp: 76
 Ion Ratio Lower Upper
 56 100
 55 0.0 56.1 84.1#



#16
 Acetone
 Concen: 6.265 ug/l
 RT: 2.374 min Scan# 211
 Delta R.T. -0.000 min
 Lab File: VX048324.D
 Acq: 23 Oct 2025 14:45

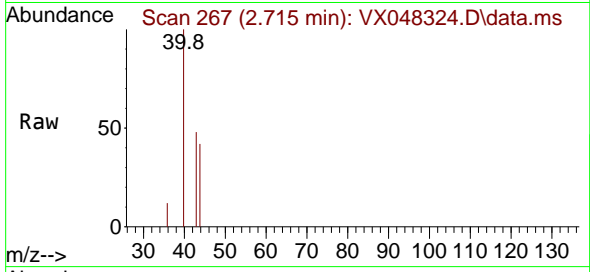
Tgt Ion: 43 Resp: 3650
 Ion Ratio Lower Upper
 43 100
 58 31.7 23.4 35.2



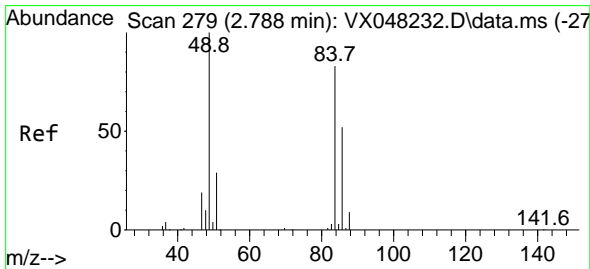
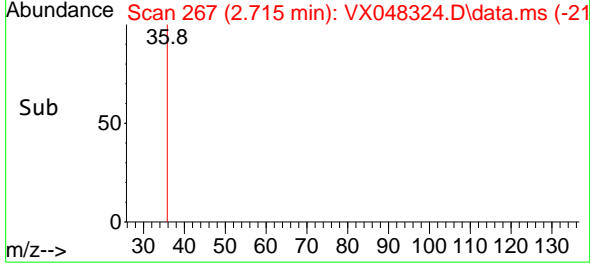
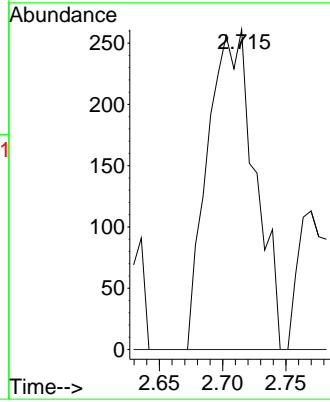


#18
 Methyl Acetate
 Concen: 0.556 ug/l
 RT: 2.715 min Scan# 20
 Delta R.T. 0.018 min
 Lab File: VX048324.D
 Acq: 23 Oct 2025 14:45

Instrument :
 MSVOA_X
 ClientSampleId :

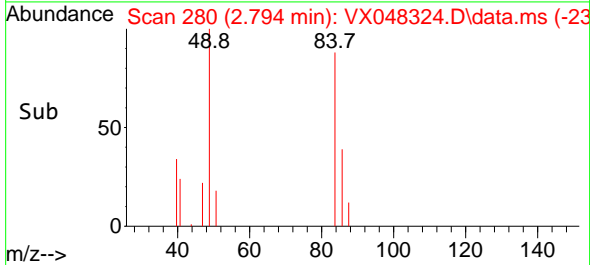
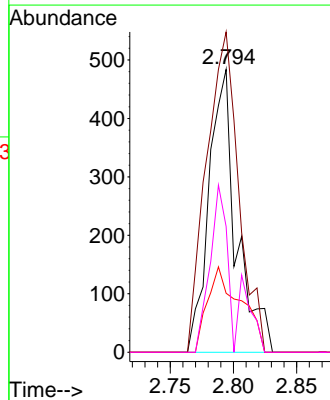
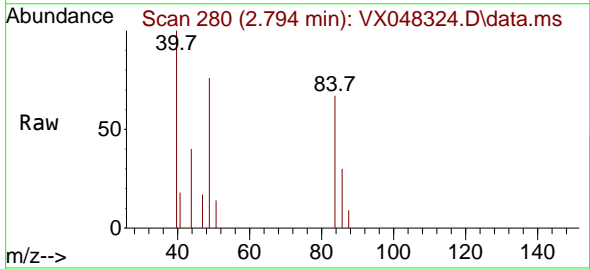


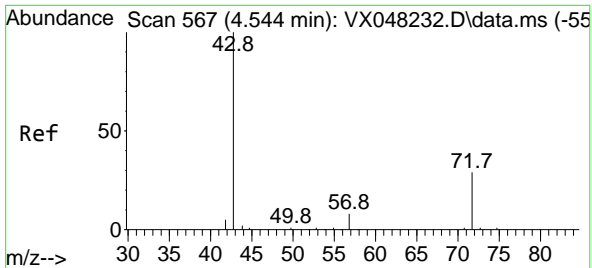
Tgt Ion: 43 Resp: 676
 Ion Ratio Lower Upper
 43 100
 74 0.0 17.5 26.3#



#20
 Methylene Chloride
 Concen: 0.516 ug/l
 RT: 2.794 min Scan# 280
 Delta R.T. 0.006 min
 Lab File: VX048324.D
 Acq: 23 Oct 2025 14:45

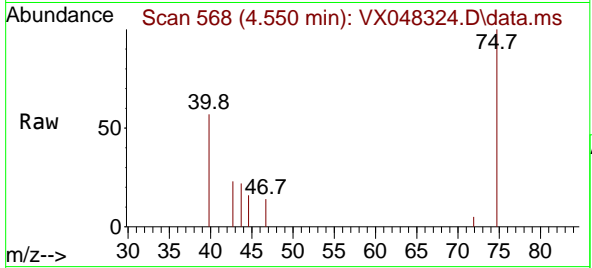
Tgt Ion: 84 Resp: 732
 Ion Ratio Lower Upper
 84 100
 49 113.2 104.1 156.1
 51 20.9 31.3 46.9#
 86 44.4 51.3 76.9#



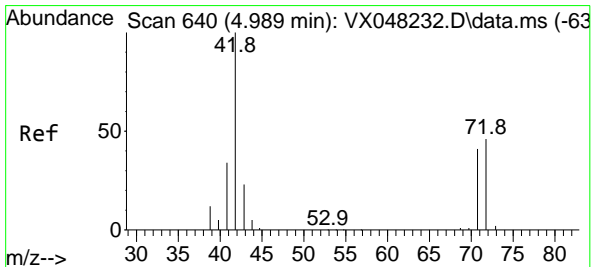
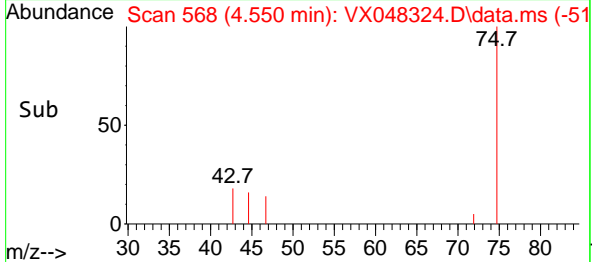
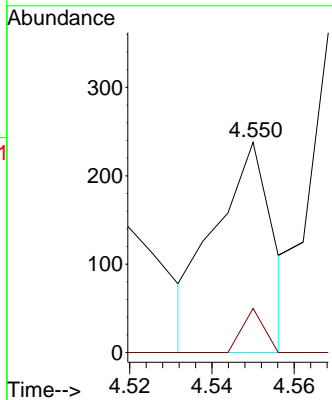


#25
 2-Butanone
 Concen: 0.313 ug/l
 RT: 4.550 min Scan# 50
 Delta R.T. 0.012 min
 Lab File: VX048324.D
 Acq: 23 Oct 2025 14:45

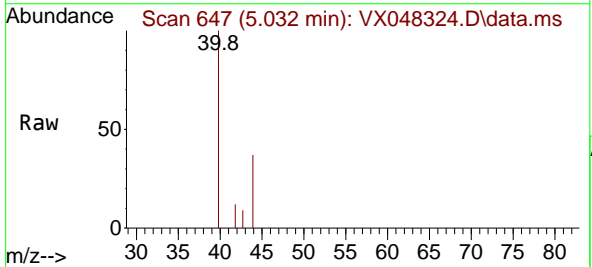
Instrument :
 MSVOA_X
 ClientSampleId :



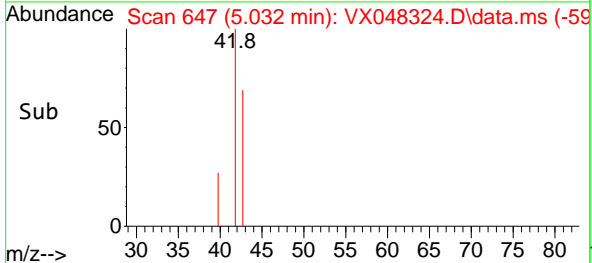
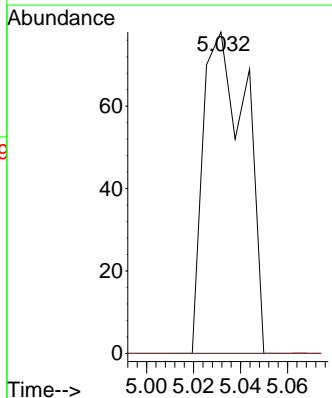
Tgt Ion: 43 Resp: 231
 Ion Ratio Lower Upper
 43 100
 72 14.1 19.9 29.9#

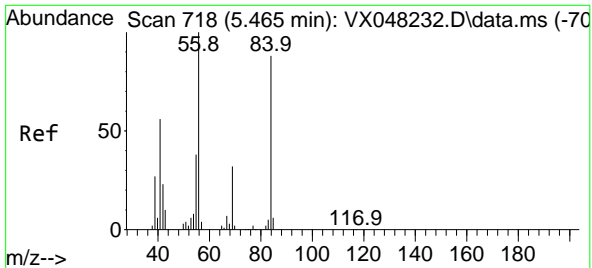


#29
 Tetrahydrofuran
 Concen: 0.222 ug/l
 RT: 5.032 min Scan# 647
 Delta R.T. 0.043 min
 Lab File: VX048324.D
 Acq: 23 Oct 2025 14:45



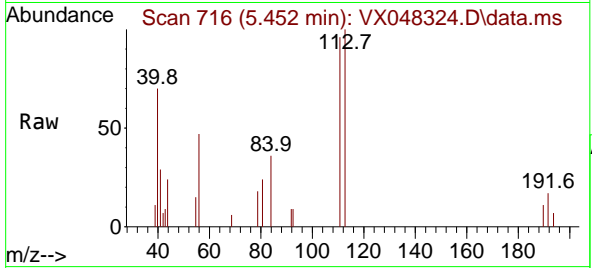
Tgt Ion: 42 Resp: 98
 Ion Ratio Lower Upper
 42 100
 72 0.0 35.3 52.9#
 71 0.0 32.2 48.4#



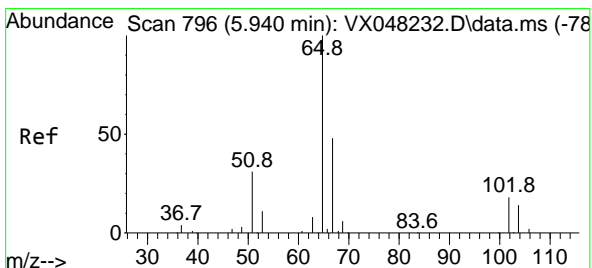
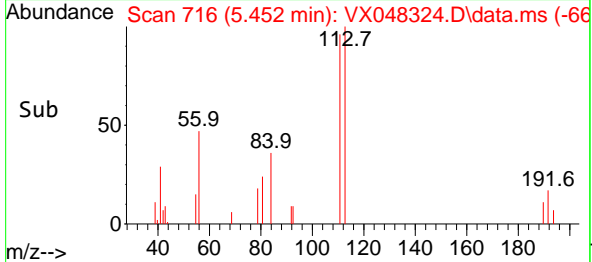
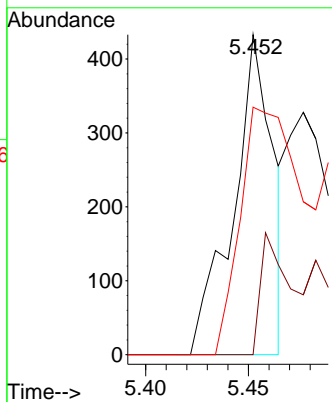


#31
 Cyclohexane
 Concen: 0.277 ug/l
 RT: 5.452 min Scan# 716
 Delta R.T. -0.006 min
 Lab File: VX048324.D
 Acq: 23 Oct 2025 14:45

Instrument :
 MSVOA_X
 ClientSampleId :

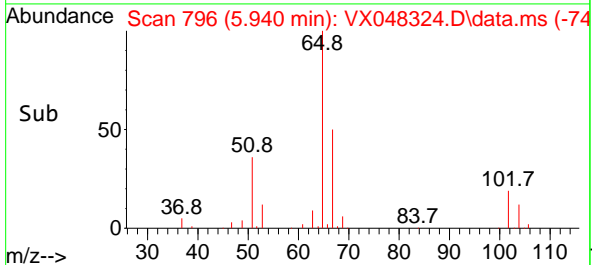
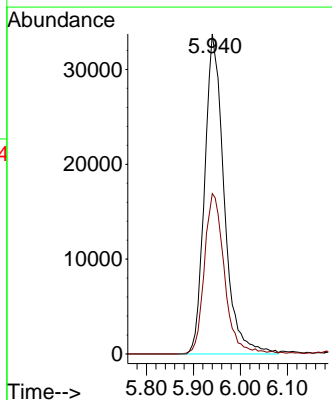
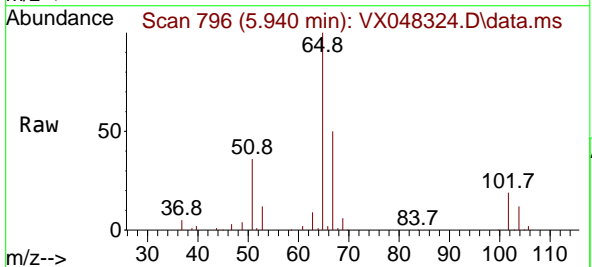


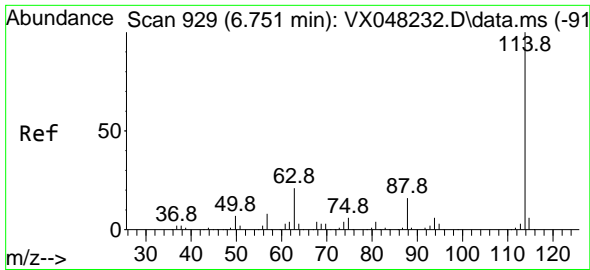
Tgt Ion: 56 Resp: 584
 Ion Ratio Lower Upper
 56 100
 69 0.0 23.0 34.6#
 84 77.4 64.6 97.0



#33
 1,2-Dichloroethane-d4
 Concen: 57.212 ug/l
 RT: 5.940 min Scan# 796
 Delta R.T. -0.000 min
 Lab File: VX048324.D
 Acq: 23 Oct 2025 14:45

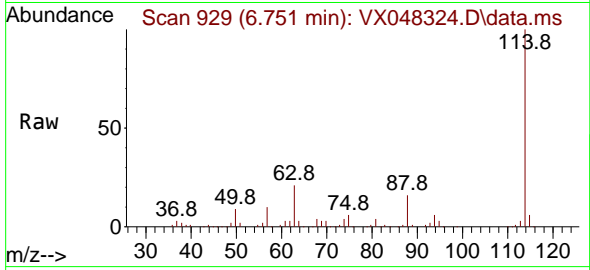
Tgt Ion: 65 Resp: 97163
 Ion Ratio Lower Upper
 65 100
 67 51.6 0.0 105.0



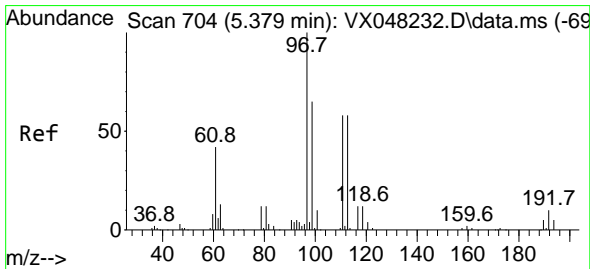
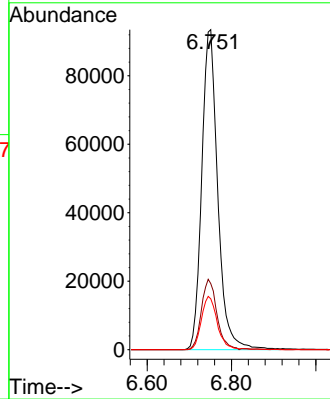
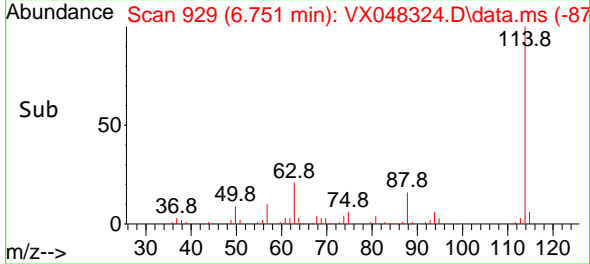


#34
 1,4-Difluorobenzene
 Concen: 50.000 ug/l
 RT: 6.751 min Scan# 91
 Delta R.T. 0.006 min
 Lab File: VX048324.D
 Acq: 23 Oct 2025 14:45

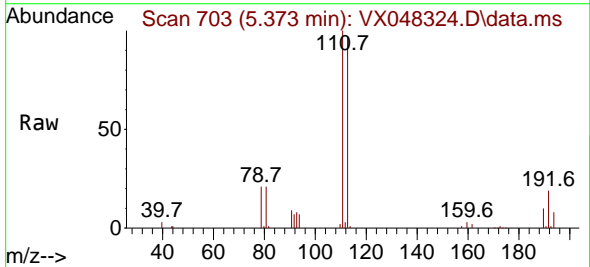
Instrument :
 MSVOA_X
 ClientSampleId :



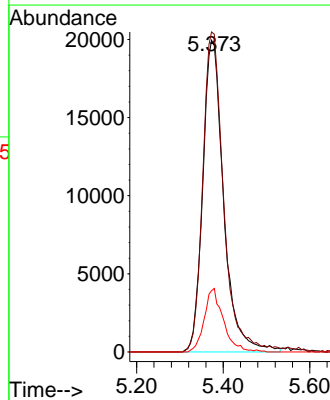
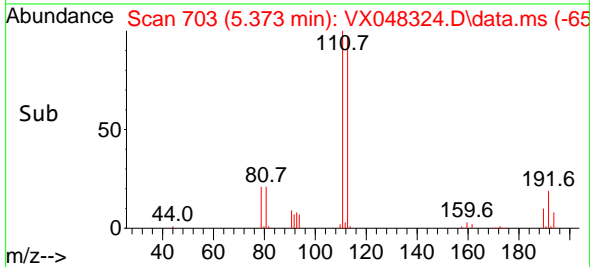
Tgt Ion:114 Resp: 246587
 Ion Ratio Lower Upper
 114 100
 63 20.6 0.0 43.2
 88 15.9 0.0 33.6

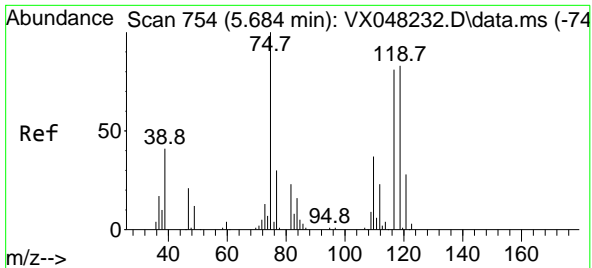


#35
 Dibromofluoromethane
 Concen: 39.639 ug/l
 RT: 5.373 min Scan# 703
 Delta R.T. -0.000 min
 Lab File: VX048324.D
 Acq: 23 Oct 2025 14:45



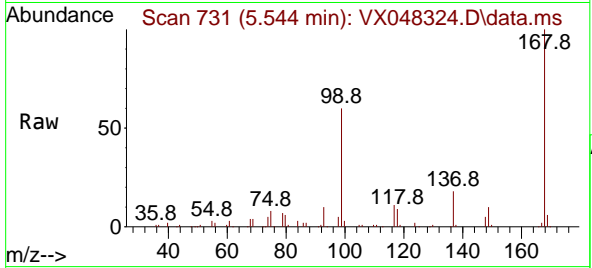
Tgt Ion:113 Resp: 66730
 Ion Ratio Lower Upper
 113 100
 111 102.5 82.2 123.4
 192 18.7 15.1 22.7



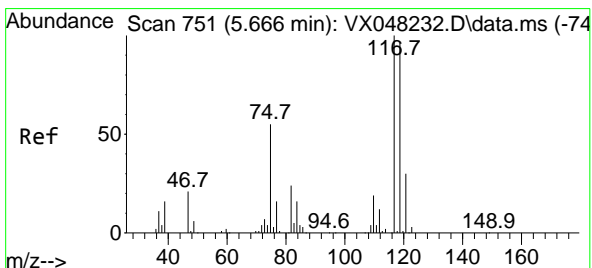
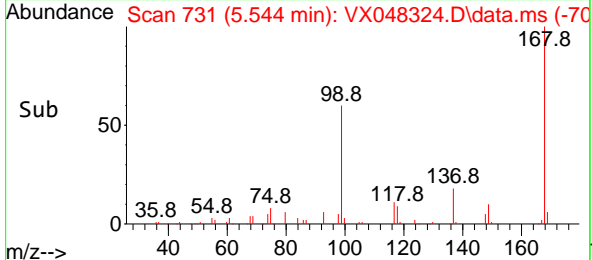
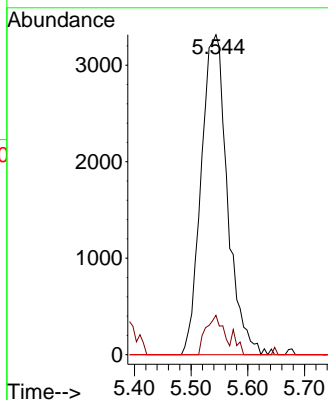


#36
 1,1-Dichloropropene
 Concen: 4.461 ug/l
 RT: 5.544 min Scan# 711
 Delta R.T. -0.140 min
 Lab File: VX048324.D
 Acq: 23 Oct 2025 14:45

Instrument :
 MSVOA_X
 ClientSampleId :

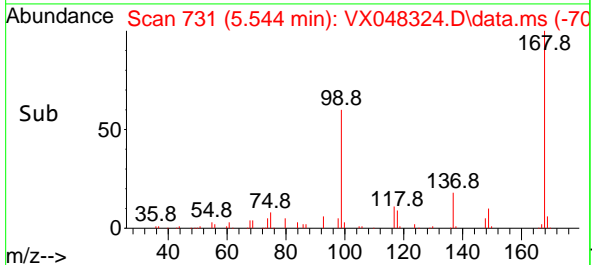
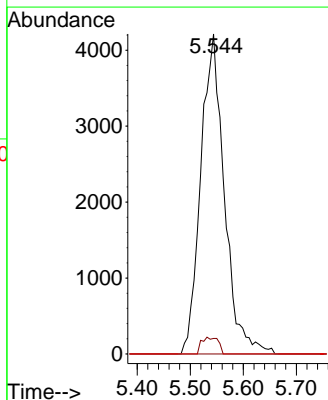
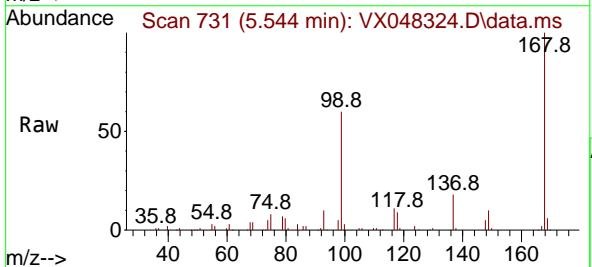


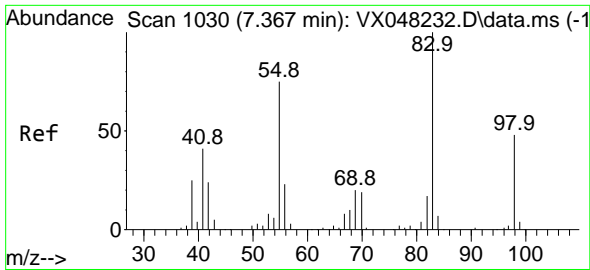
Tgt Ion: 75 Resp: 10674
 Ion Ratio Lower Upper
 75 100
 110 8.2 17.7 53.1#
 77 0.0 24.3 36.5#



#38
 Carbon Tetrachloride
 Concen: 4.419 ug/l
 RT: 5.544 min Scan# 731
 Delta R.T. -0.122 min
 Lab File: VX048324.D
 Acq: 23 Oct 2025 14:45

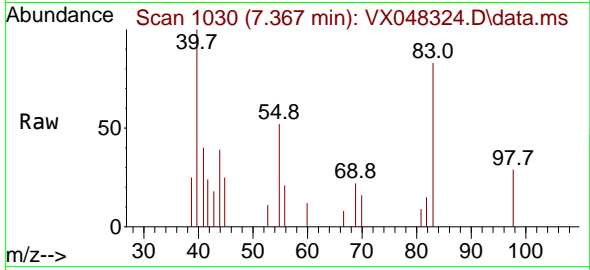
Tgt Ion: 117 Resp: 13044
 Ion Ratio Lower Upper
 117 100
 119 4.8 77.2 115.8#
 121 0.0 24.8 37.2#



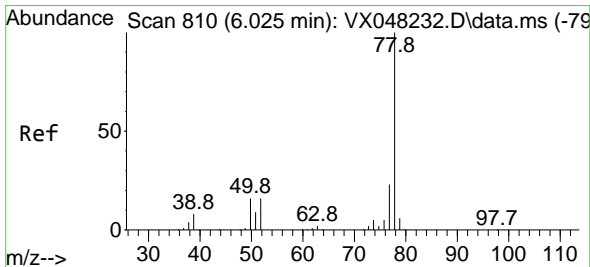
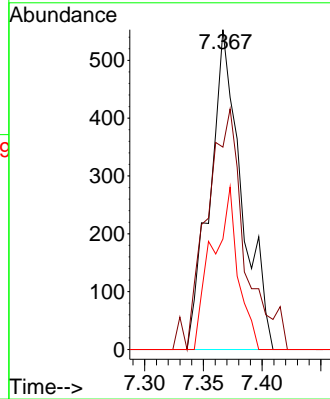
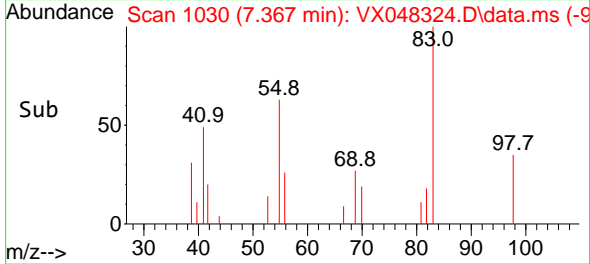


#39
 Methylcyclohexane
 Concen: 0.367 ug/l
 RT: 7.367 min Scan# 1030
 Delta R.T. -0.000 min
 Lab File: VX048324.D
 Acq: 23 Oct 2025 14:45

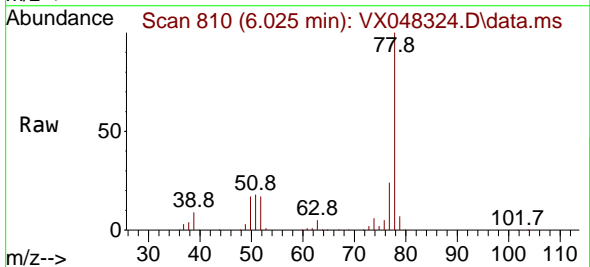
Instrument : MSVOA_X
 ClientSampleId :



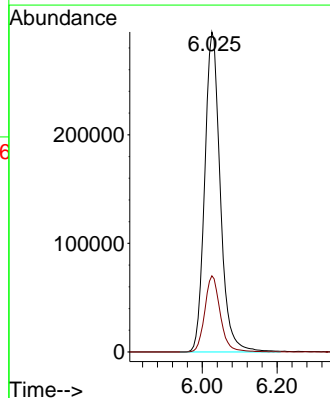
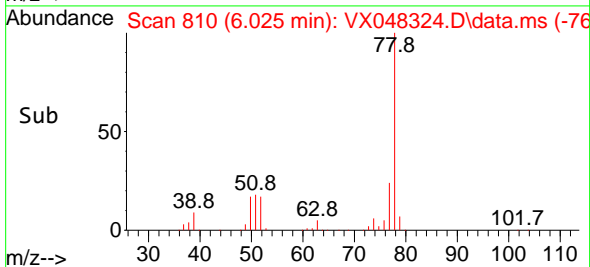
Tgt Ion: 83 Resp: 1038
 Ion Ratio Lower Upper
 83 100
 55 53.2 66.2 99.2#
 98 34.5 38.9 58.3#

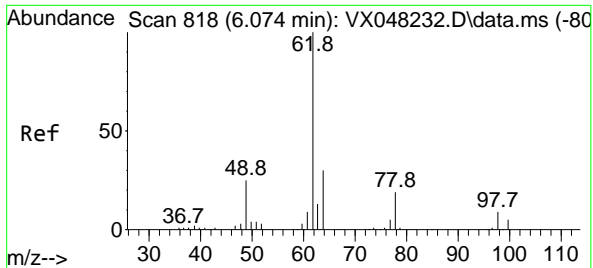


#40
 Benzene
 Concen: 122.674 ug/l
 RT: 6.025 min Scan# 810
 Delta R.T. -0.000 min
 Lab File: VX048324.D
 Acq: 23 Oct 2025 14:45



Tgt Ion: 78 Resp: 852191
 Ion Ratio Lower Upper
 78 100
 77 23.8 19.3 28.9

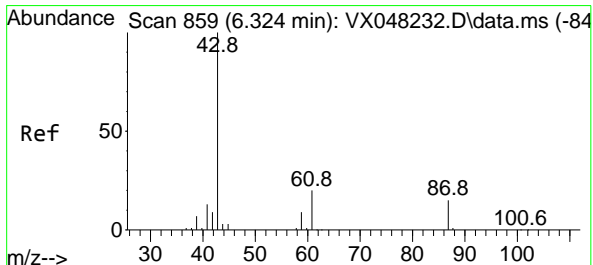
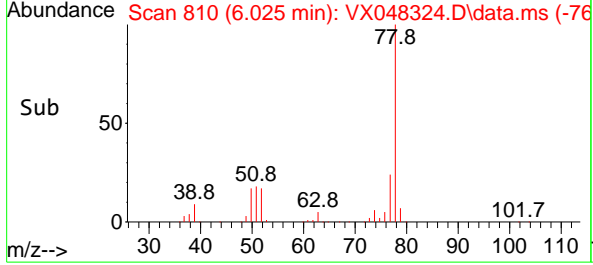
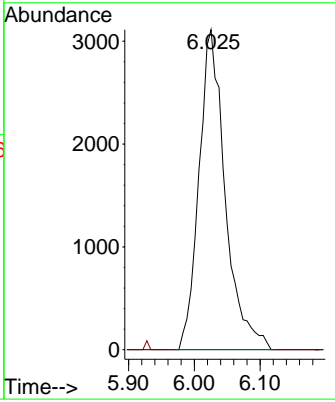
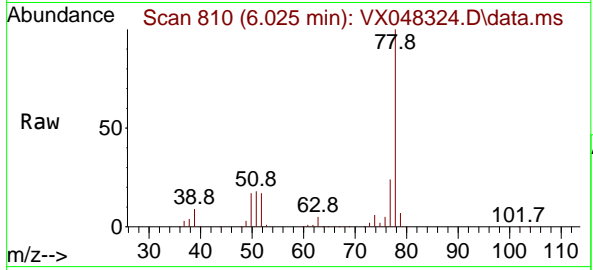




#42
 1,2-Dichloroethane
 Concen: 3.367 ug/l
 RT: 6.025 min Scan# 811
 Delta R.T. -0.043 min
 Lab File: VX048324.D
 Acq: 23 Oct 2025 14:45

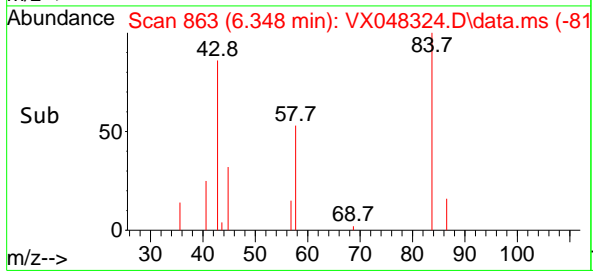
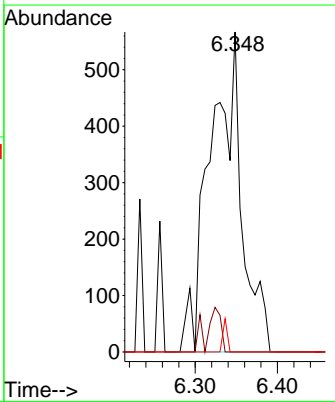
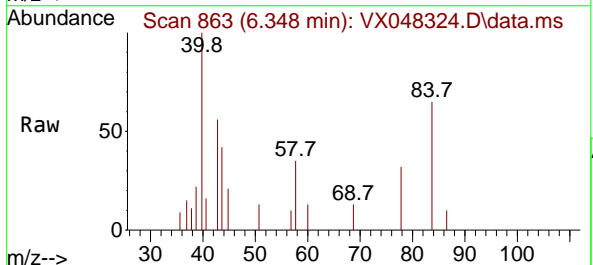
Instrument : MSVOA_X
 ClientSampleId :

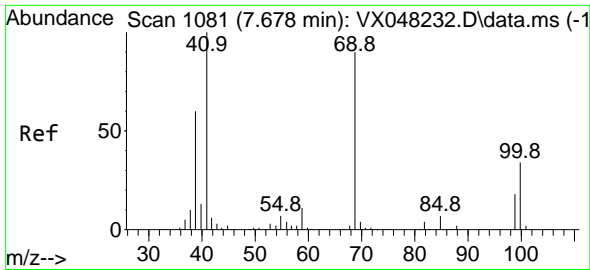
Tgt Ion: 62 Resp: 8631
 Ion Ratio Lower Upper
 62 100
 98 0.0 0.0 17.2



#43
 Isopropyl Acetate
 Concen: 0.465 ug/l
 RT: 6.348 min Scan# 863
 Delta R.T. 0.024 min
 Lab File: VX048324.D
 Acq: 23 Oct 2025 14:45

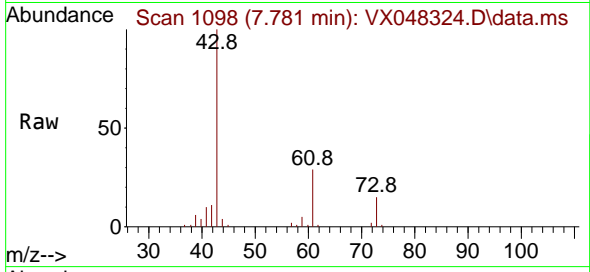
Tgt Ion: 43 Resp: 1516
 Ion Ratio Lower Upper
 43 100
 61 0.0 14.9 22.3#
 87 1.5 9.4 14.2#



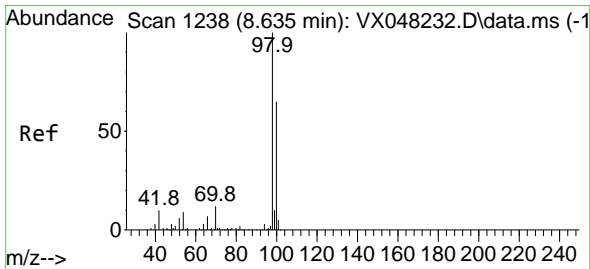
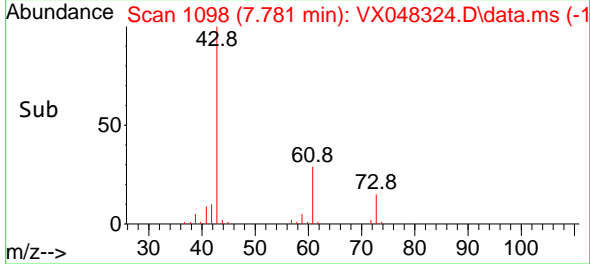
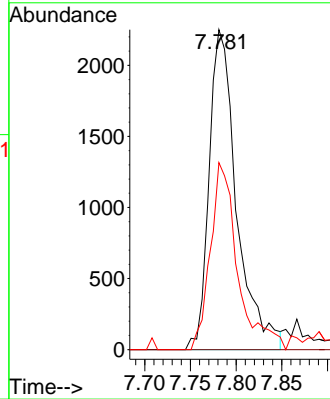


#48
 Methyl methacrylate
 Concen: 2.867 ug/l
 RT: 7.781 min Scan# 1098
 Delta R.T. 0.104 min
 Lab File: VX048324.D
 Acq: 23 Oct 2025 14:45

Instrument : MSVOA_X
 ClientSampleId :

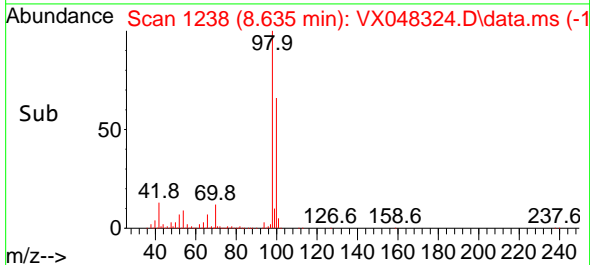
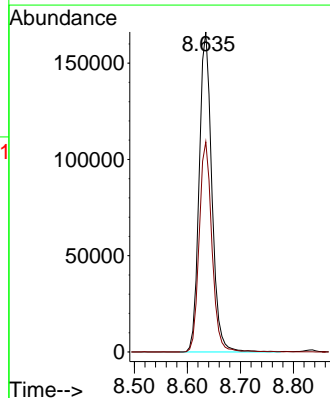
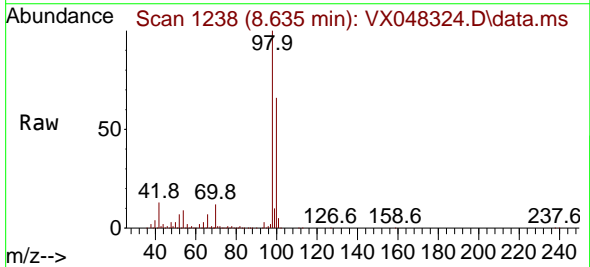


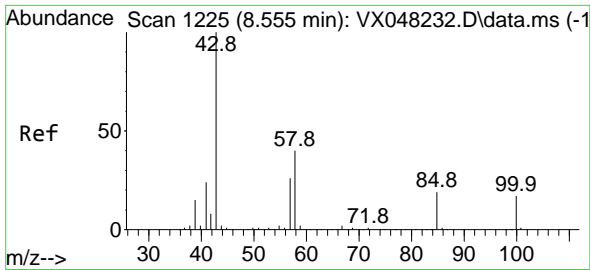
Tgt Ion: 41 Resp: 4713
 Ion Ratio Lower Upper
 41 100
 69 0.0 63.4 95.0#
 39 57.8 47.1 70.7



#50
 Toluene-d8
 Concen: 46.635 ug/l
 RT: 8.635 min Scan# 1238
 Delta R.T. -0.000 min
 Lab File: VX048324.D
 Acq: 23 Oct 2025 14:45

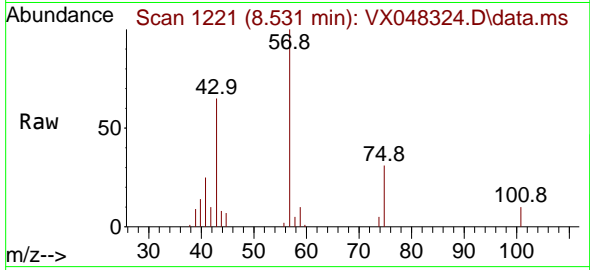
Tgt Ion: 98 Resp: 275177
 Ion Ratio Lower Upper
 98 100
 100 65.8 53.0 79.4



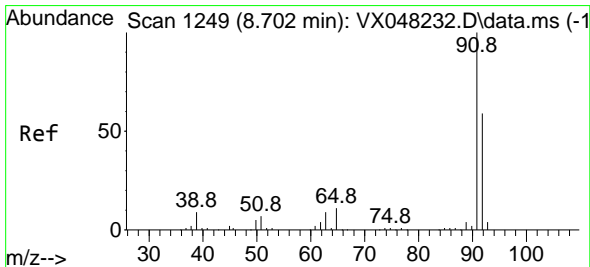
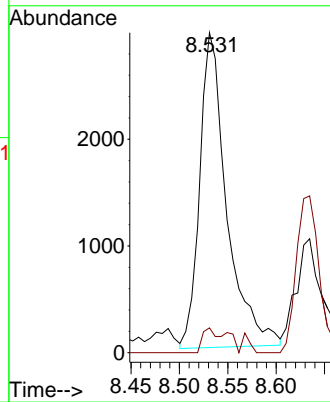
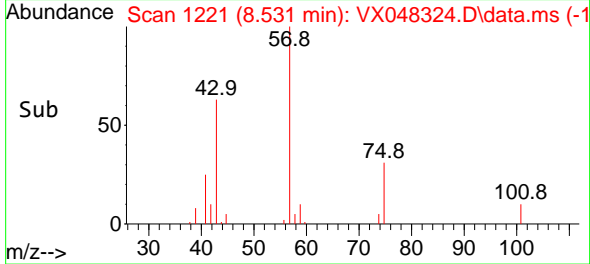


#51
 4-Methyl-2-Pentanone
 Concen: 3.051 ug/l
 RT: 8.531 min Scan# 11
 Delta R.T. -0.024 min
 Lab File: VX048324.D
 Acq: 23 Oct 2025 14:45

Instrument :
 MSVOA_X
 ClientSampleId :

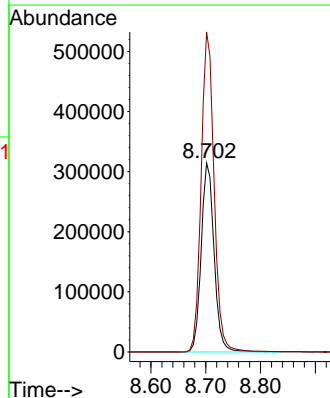
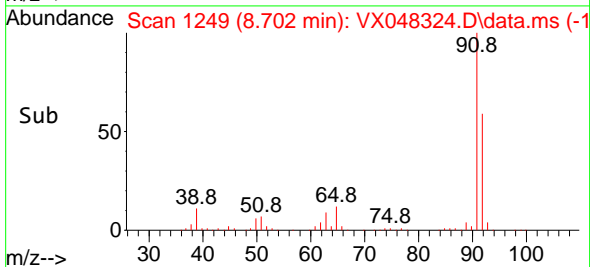
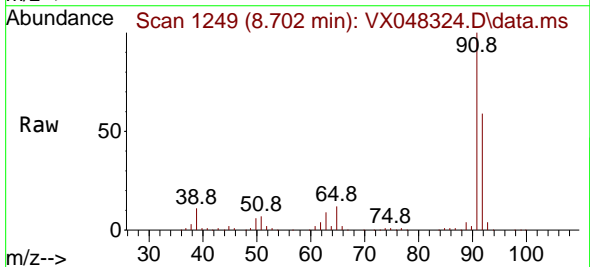


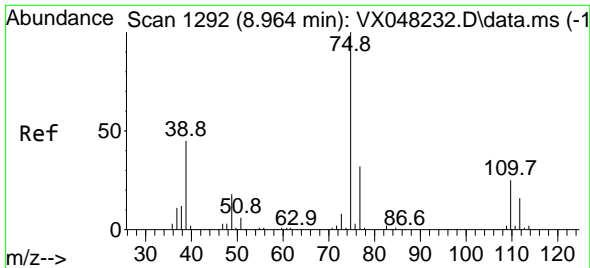
Tgt Ion: 43 Resp: 5731
 Ion Ratio Lower Upper
 43 100
 58 7.0 29.5 44.3#



#52
 Toluene
 Concen: 116.519 ug/l
 RT: 8.702 min Scan# 1249
 Delta R.T. -0.000 min
 Lab File: VX048324.D
 Acq: 23 Oct 2025 14:45

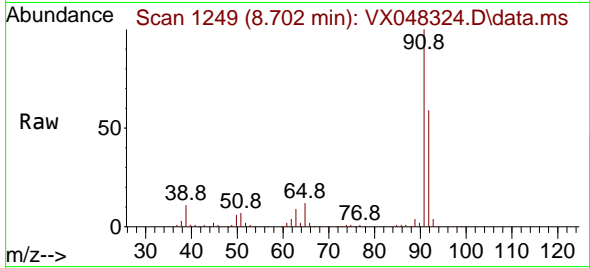
Tgt Ion: 92 Resp: 514222
 Ion Ratio Lower Upper
 92 100
 91 170.2 136.1 204.1



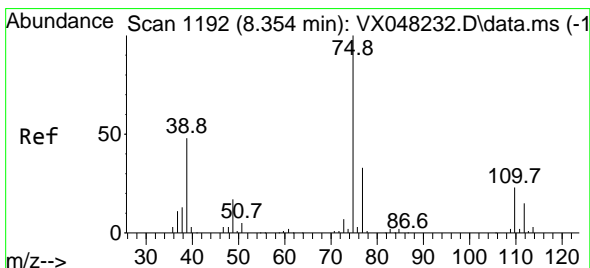
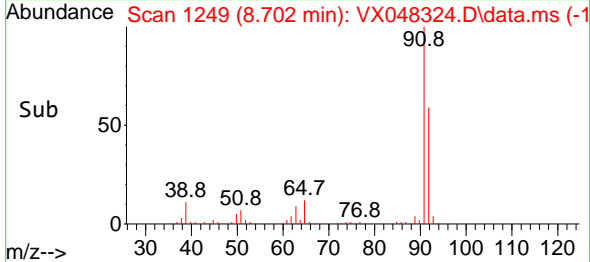
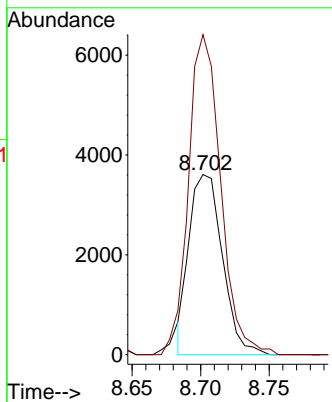


#53
 t-1,3-Dichloropropene
 Concen: 2.288 ug/l
 RT: 8.702 min Scan# 1121
 Delta R.T. -0.262 min
 Lab File: VX048324.D
 Acq: 23 Oct 2025 14:45

Instrument : MSVOA_X
 ClientSampleId :

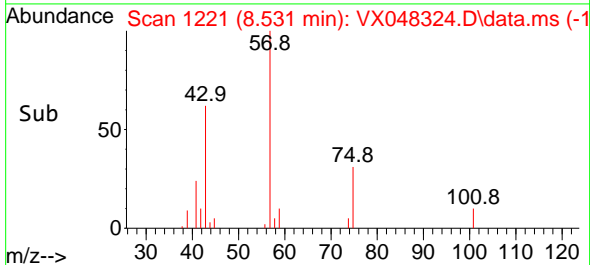
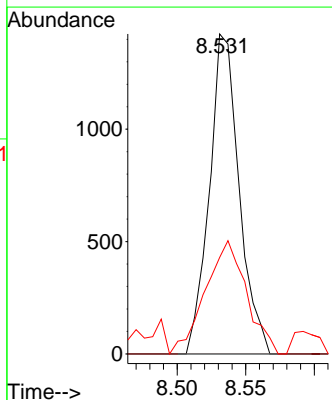
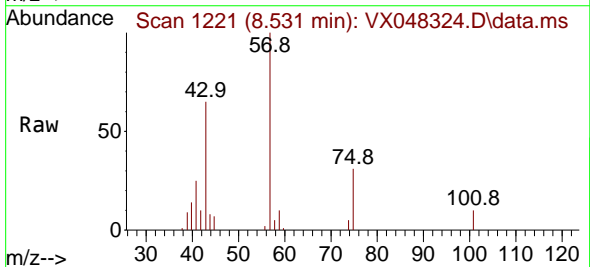


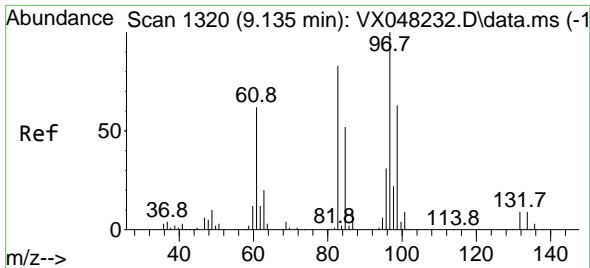
Tgt Ion: 75 Resp: 6127
 Ion Ratio Lower Upper
 75 100
 77 177.5 25.0 37.6#



#54
 cis-1,3-Dichloropropene
 Concen: 0.745 ug/l
 RT: 8.531 min Scan# 1221
 Delta R.T. 0.183 min
 Lab File: VX048324.D
 Acq: 23 Oct 2025 14:45

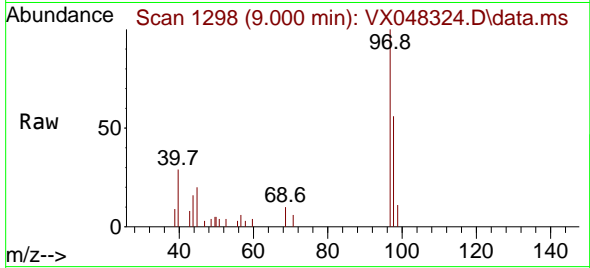
Tgt Ion: 75 Resp: 2151
 Ion Ratio Lower Upper
 75 100
 77 0.0 24.9 37.3#
 39 26.1 42.6 64.0#





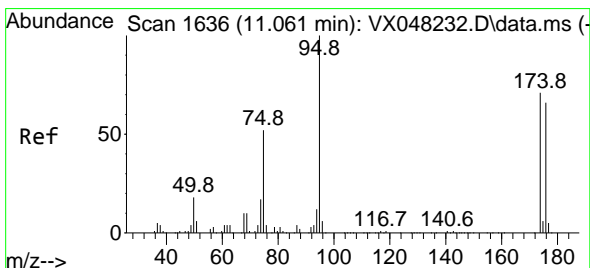
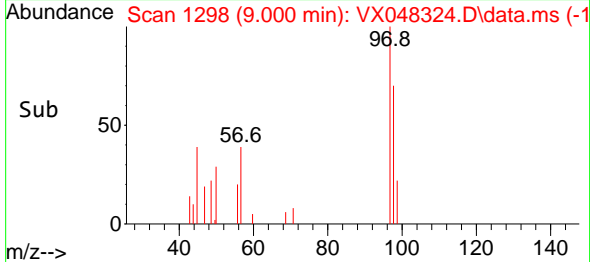
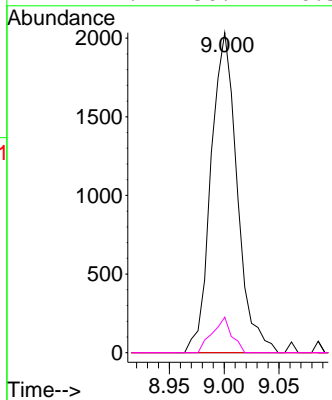
#55
 1,1,2-Trichloroethane
 Concen: 2.066 ug/l
 RT: 9.000 min Scan# 11
 Delta R.T. -0.134 min
 Lab File: VX048324.D
 Acq: 23 Oct 2025 14:45

Instrument : MSVOA_X
 ClientSampleId :



Tgt Ion: 97 Resp: 3390

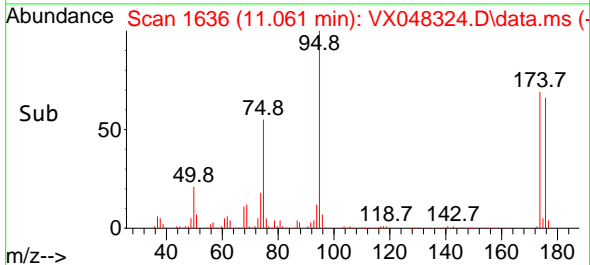
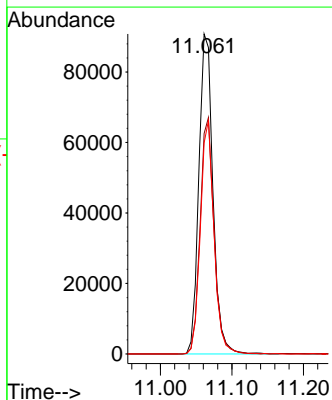
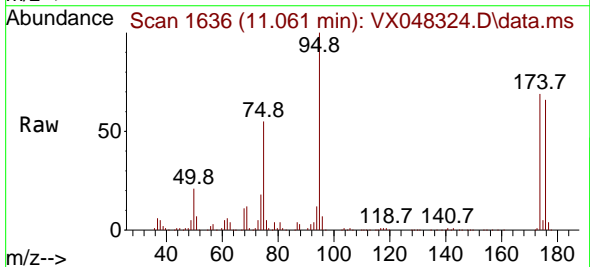
Ion	Ratio	Lower	Upper
97	100		
83	0.0	70.6	105.8#
85	0.0	45.0	67.6#
99	11.1	50.9	76.3#

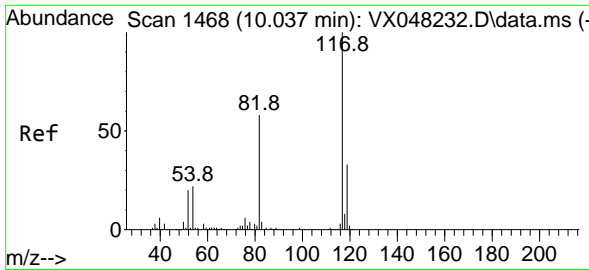


#62
 4-Bromofluorobenzene
 Concen: 55.421 ug/l
 RT: 11.061 min Scan# 1636
 Delta R.T. -0.000 min
 Lab File: VX048324.D
 Acq: 23 Oct 2025 14:45

Tgt Ion: 95 Resp: 124408

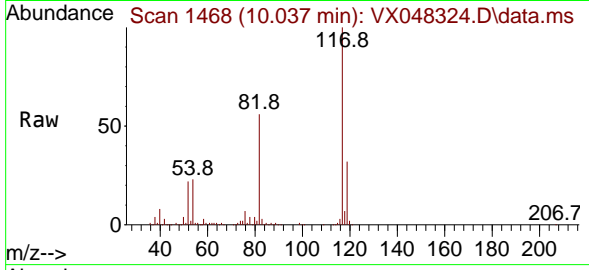
Ion	Ratio	Lower	Upper
95	100		
174	73.1	0.0	147.8
176	70.4	0.0	142.8



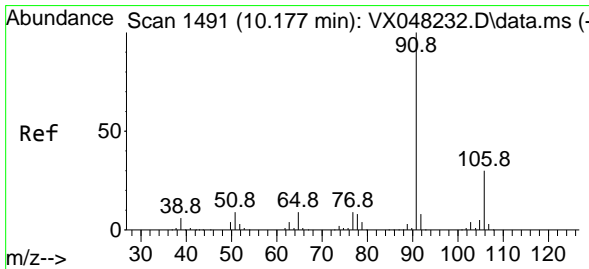
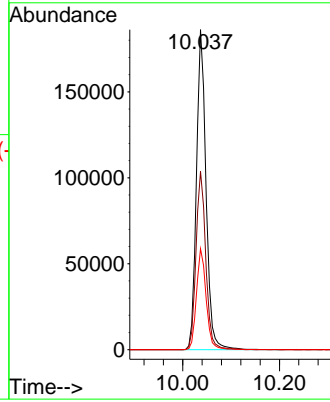
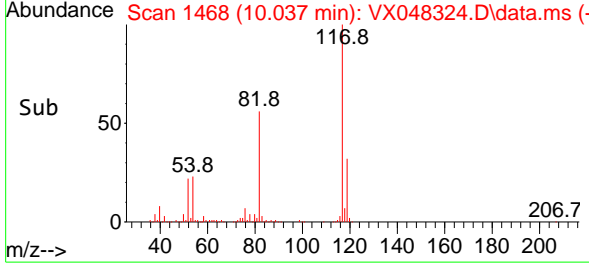


#63
 Chlorobenzene-d5
 Concen: 50.000 ug/l
 RT: 10.037 min Scan# 1468
 Delta R.T. -0.000 min
 Lab File: VX048324.D
 Acq: 23 Oct 2025 14:45

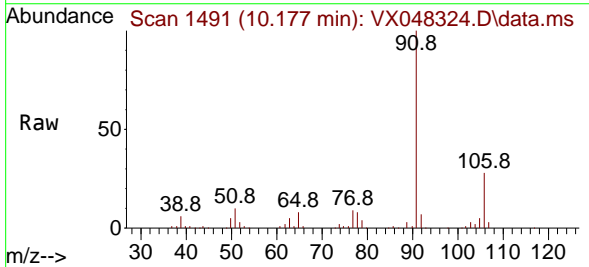
Instrument : MSVOA_X
 ClientSampleId :



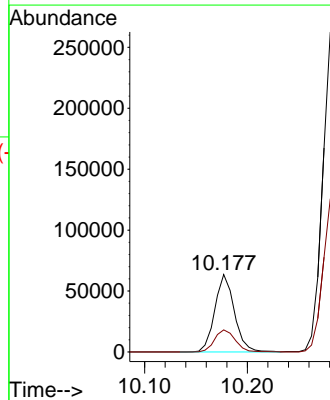
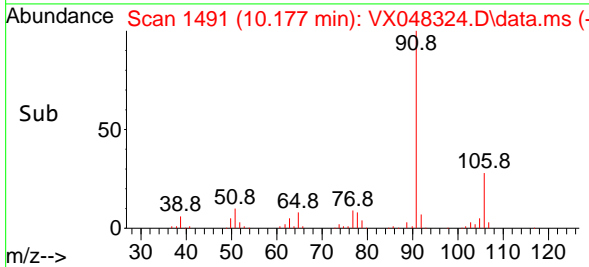
Tgt Ion:117 Resp: 255587
 Ion Ratio Lower Upper
 117 100
 82 55.7 46.5 69.7
 119 31.6 25.9 38.9

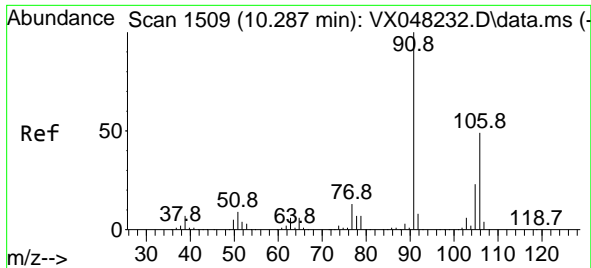


#67
 Ethyl Benzene
 Concen: 8.551 ug/l
 RT: 10.177 min Scan# 1491
 Delta R.T. -0.000 min
 Lab File: VX048324.D
 Acq: 23 Oct 2025 14:45



Tgt Ion: 91 Resp: 83701
 Ion Ratio Lower Upper
 91 100
 106 28.5 23.8 35.6

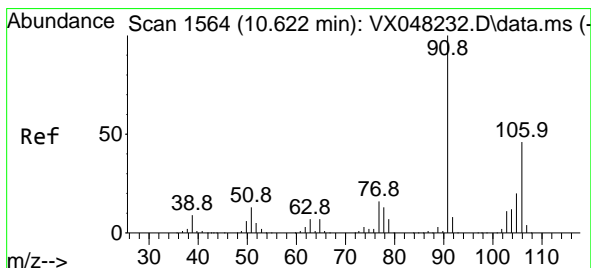
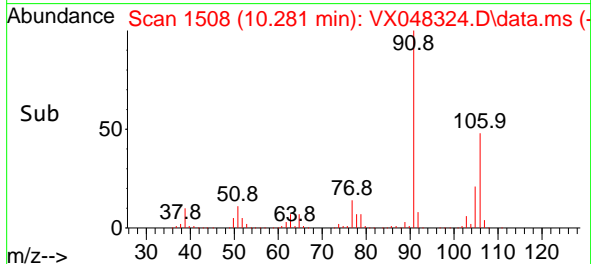
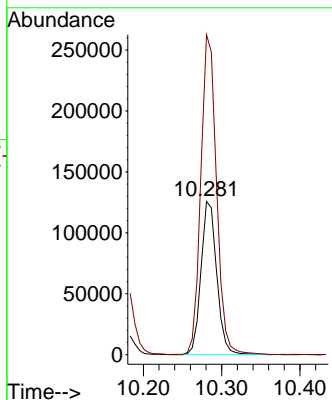
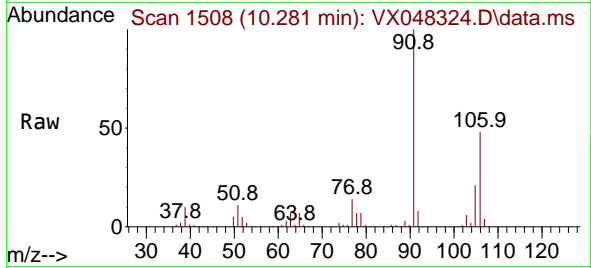




#68
 m/p-Xylenes
 Concen: 48.231 ug/l
 RT: 10.281 min Scan# 1508
 Delta R.T. -0.006 min
 Lab File: VX048324.D
 Acq: 23 Oct 2025 14:45

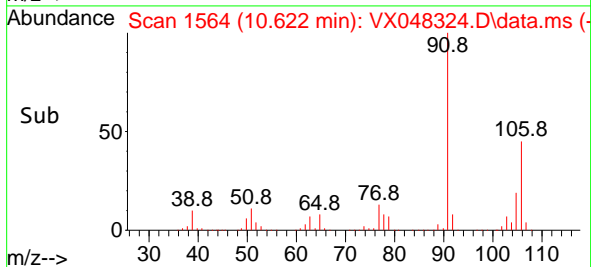
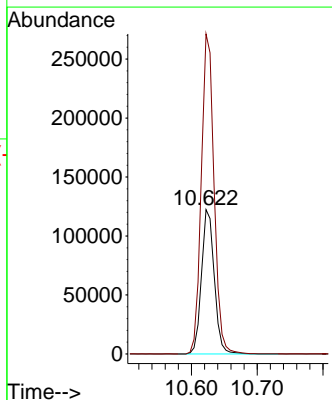
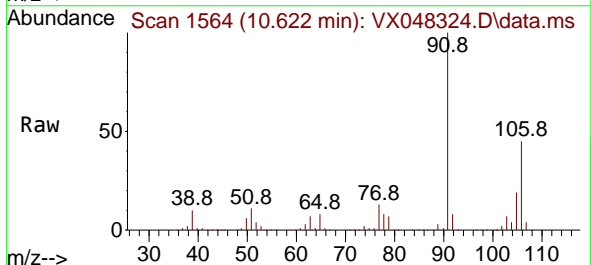
Instrument : MSVOA_X
 ClientSampleId :

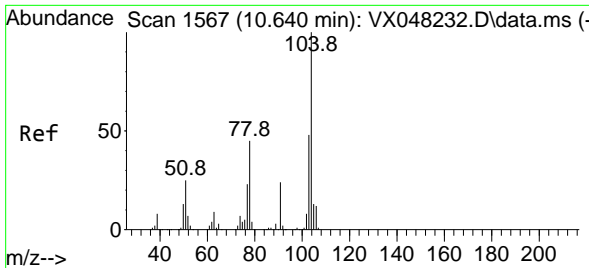
Tgt Ion:106 Resp: 175418
 Ion Ratio Lower Upper
 106 100
 91 208.7 167.9 251.9



#69
 o-Xylene
 Concen: 47.166 ug/l
 RT: 10.622 min Scan# 1564
 Delta R.T. -0.000 min
 Lab File: VX048324.D
 Acq: 23 Oct 2025 14:45

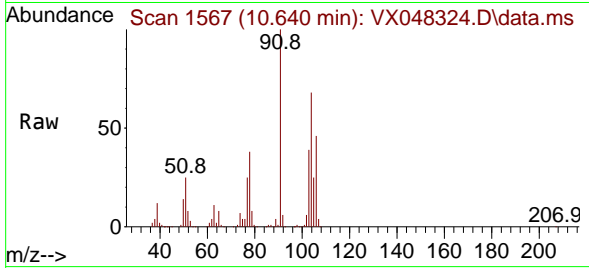
Tgt Ion:106 Resp: 165616
 Ion Ratio Lower Upper
 106 100
 91 221.9 111.3 333.9



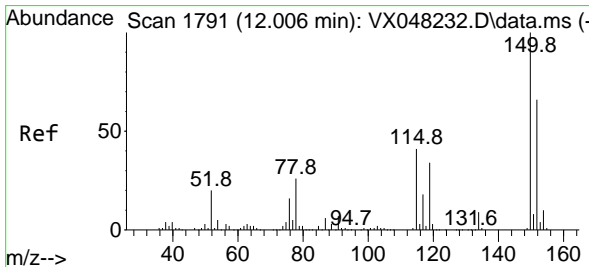
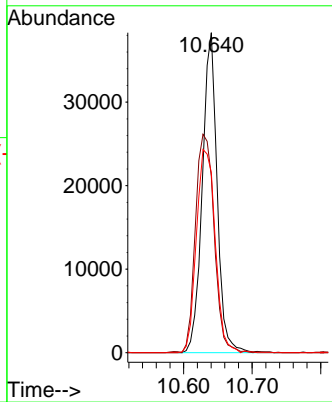
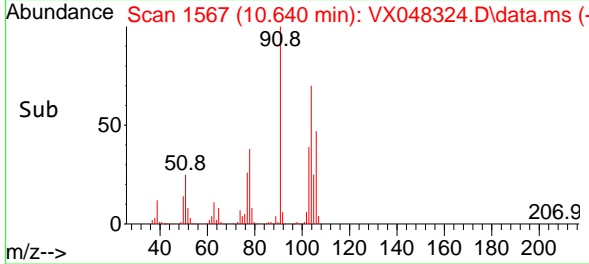


#70
 Styrene
 Concen: 9.665 ug/l
 RT: 10.640 min Scan# 1567
 Delta R.T. -0.000 min
 Lab File: VX048324.D
 Acq: 23 Oct 2025 14:45

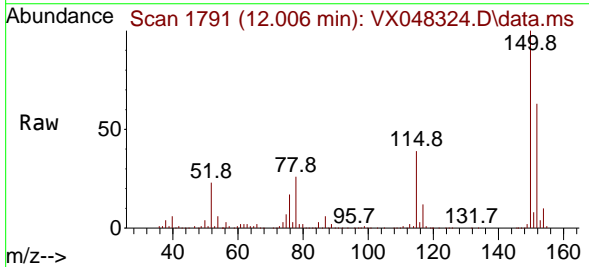
Instrument : MSVOA_X
 ClientSampleId :



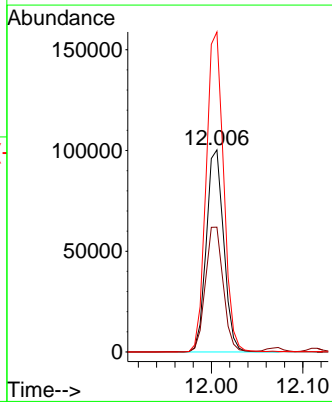
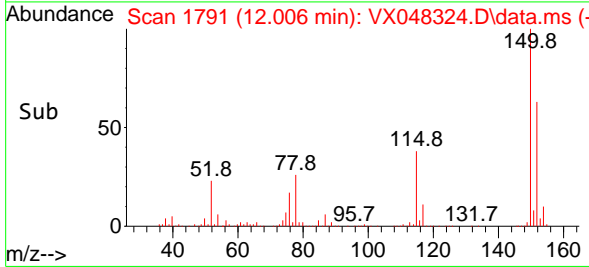
Tgt Ion:104 Resp: 57788
 Ion Ratio Lower Upper
 104 100
 78 86.2 42.2 63.4#
 103 80.5 43.0 64.4#

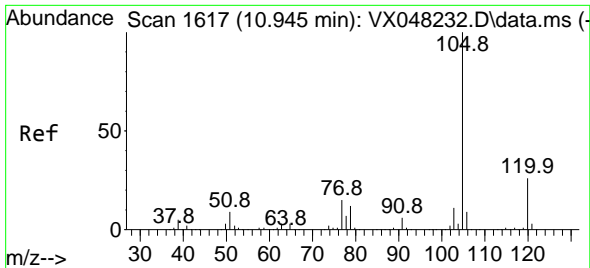


#72
 1,4-Dichlorobenzene-d4
 Concen: 50.000 ug/l
 RT: 12.006 min Scan# 1791
 Delta R.T. -0.000 min
 Lab File: VX048324.D
 Acq: 23 Oct 2025 14:45



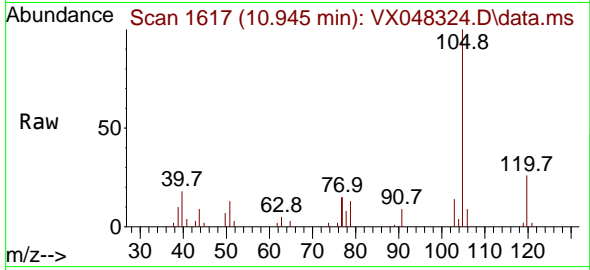
Tgt Ion:152 Resp: 132378
 Ion Ratio Lower Upper
 152 100
 115 62.9 43.1 129.4
 150 158.7 0.0 353.0



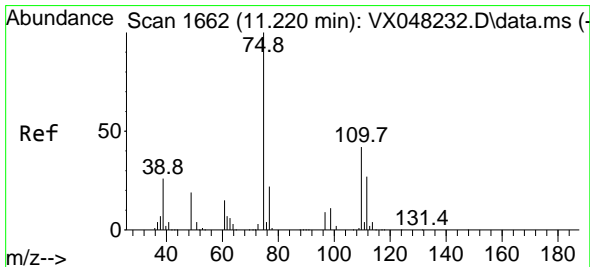
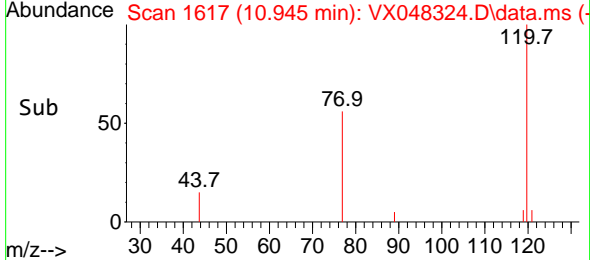
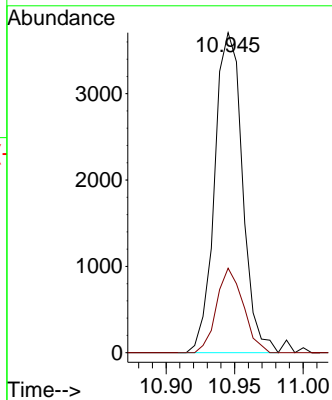


#73
 Isopropylbenzene
 Concen: 0.541 ug/l
 RT: 10.945 min Scan# 1617
 Delta R.T. -0.000 min
 Lab File: VX048324.D
 Acq: 23 Oct 2025 14:45

Instrument : MSVOA_X
 ClientSampleId :

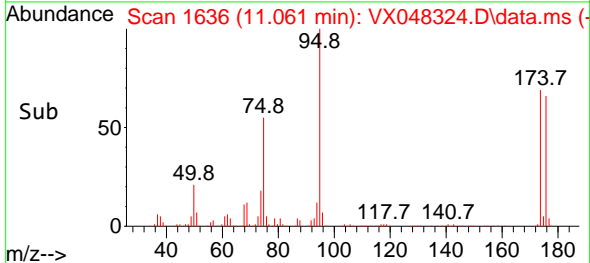
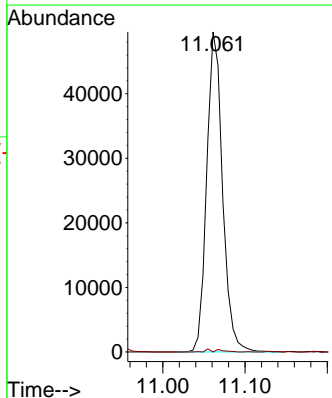
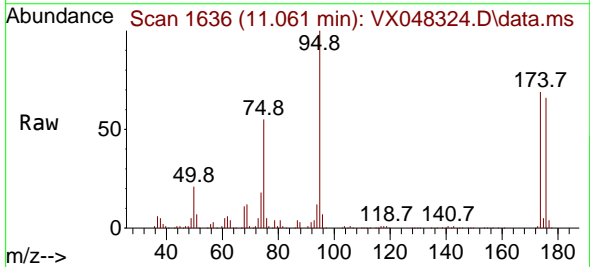


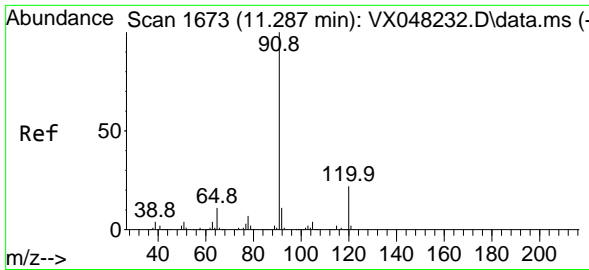
Tgt Ion:105 Resp: 5234
 Ion Ratio Lower Upper
 105 100
 120 25.3 13.0 38.9



#76
 1,2,3-Trichloropropane
 Concen: 30.857 ug/l
 RT: 11.061 min Scan# 1636
 Delta R.T. -0.159 min
 Lab File: VX048324.D
 Acq: 23 Oct 2025 14:45

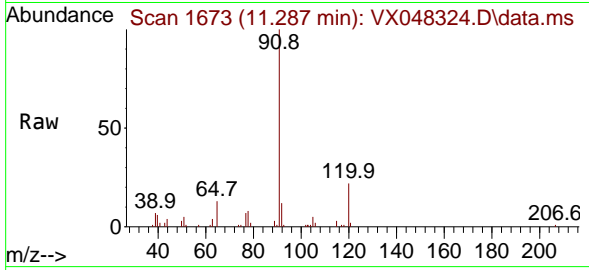
Tgt Ion: 75 Resp: 66242
 Ion Ratio Lower Upper
 75 100
 77 0.0 22.4 67.2#



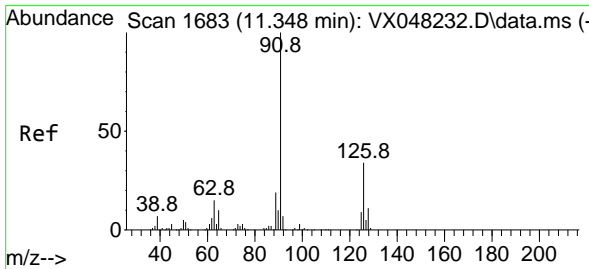
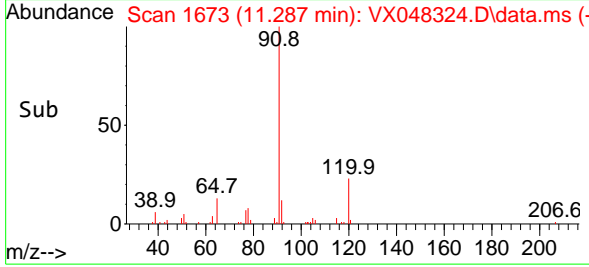
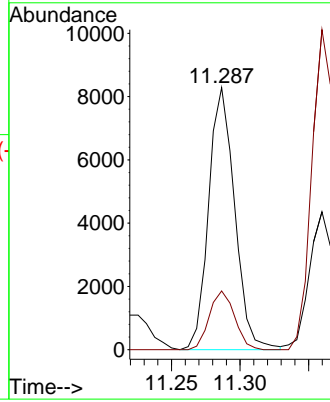


#78
 n-propylbenzene
 Concen: 0.980 ug/l
 RT: 11.287 min Scan# 1100
 Delta R.T. -0.000 min
 Lab File: VX048324.D
 Acq: 23 Oct 2025 14:45

Instrument : MSVOA_X
 ClientSampleId :

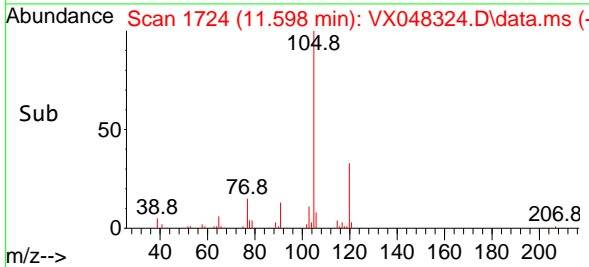
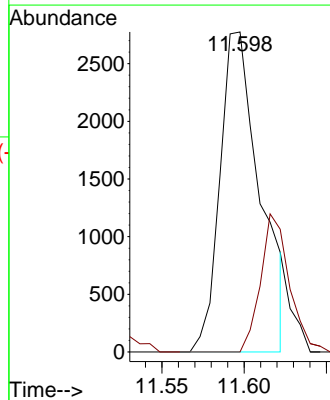
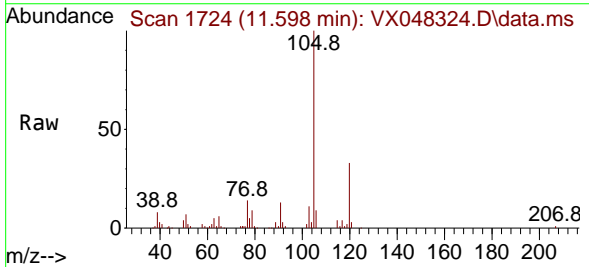


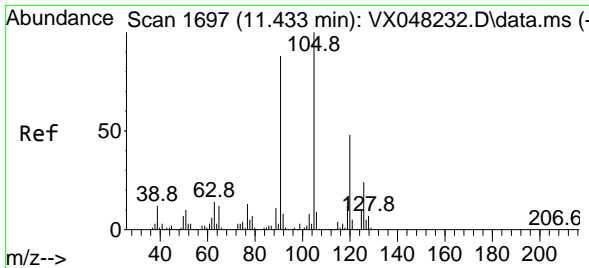
Tgt Ion: 91 Resp: 10966
 Ion Ratio Lower Upper
 91 100
 120 21.7 11.1 33.1



#79
 2-Chlorotoluene
 Concen: 0.693 ug/l
 RT: 11.598 min Scan# 1724
 Delta R.T. 0.250 min
 Lab File: VX048324.D
 Acq: 23 Oct 2025 14:45

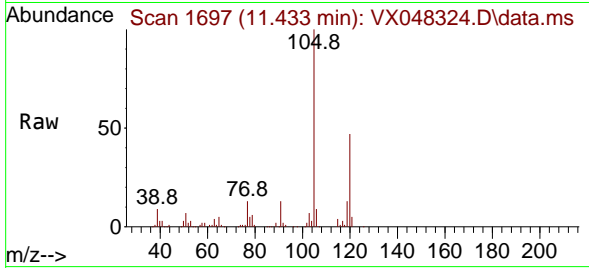
Tgt Ion: 91 Resp: 4706
 Ion Ratio Lower Upper
 91 100
 126 23.5 16.4 49.4



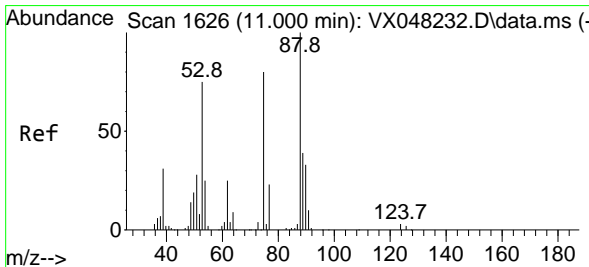
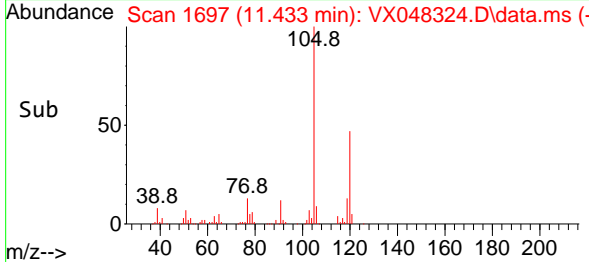
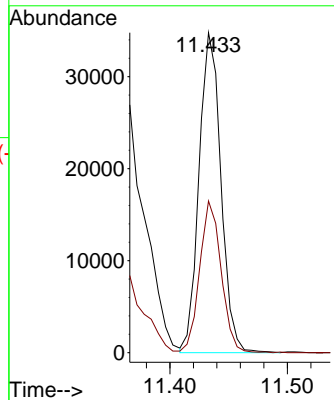


#80
 1,3,5-Trimethylbenzene
 Concen: 5.635 ug/l
 RT: 11.433 min Scan# 1
 Delta R.T. -0.000 min
 Lab File: VX048324.D
 Acq: 23 Oct 2025 14:45

Instrument : MSVOA_X
 ClientSampleId :

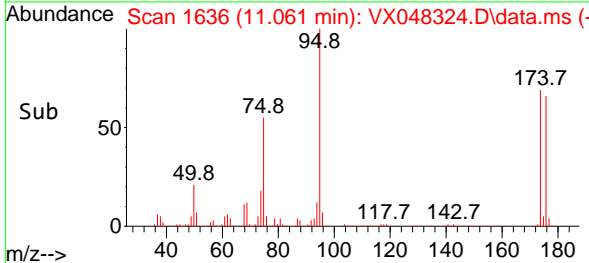
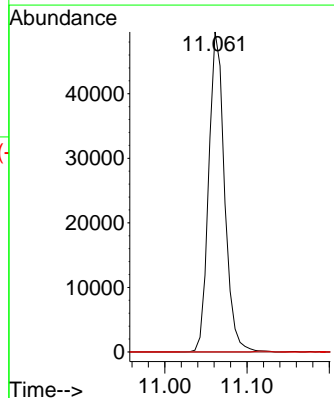
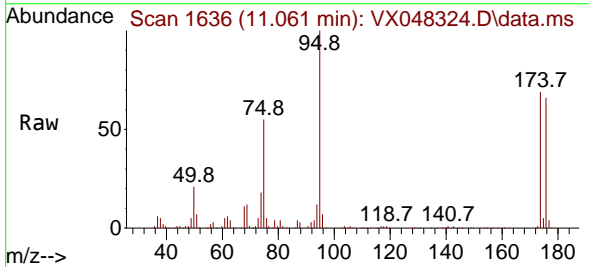


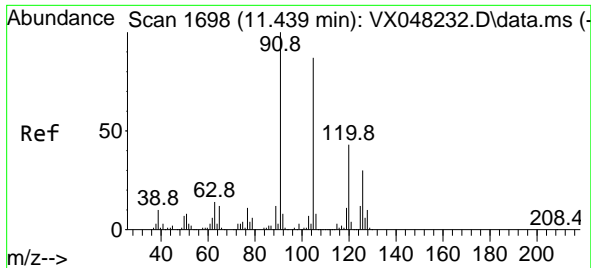
Tgt Ion:105 Resp: 45091
 Ion Ratio Lower Upper
 105 100
 120 46.7 24.0 72.0



#81
 trans-1,4-Dichloro-2-butene
 Concen: 75.073 ug/l
 RT: 11.061 min Scan# 1636
 Delta R.T. 0.061 min
 Lab File: VX048324.D
 Acq: 23 Oct 2025 14:45

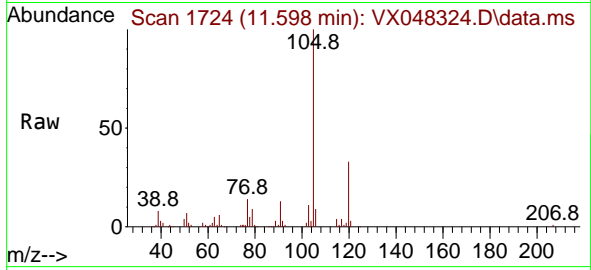
Tgt Ion: 75 Resp: 66242
 Ion Ratio Lower Upper
 75 100
 53 0.0 79.5 119.3#
 89 0.0 36.8 55.2#



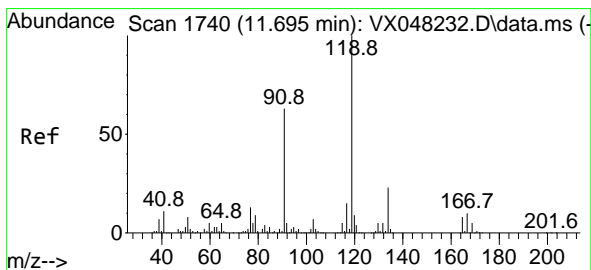
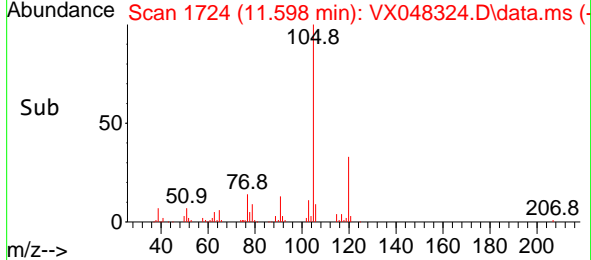
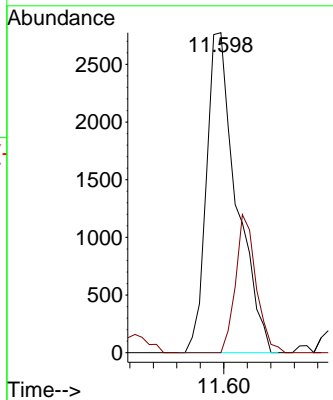


#82
 4-Chlorotoluene
 Concen: 0.612 ug/l
 RT: 11.598 min Scan# 1724
 Delta R.T. 0.165 min
 Lab File: VX048324.D
 Acq: 23 Oct 2025 14:45

Instrument : MSVOA_X
 ClientSampleId :

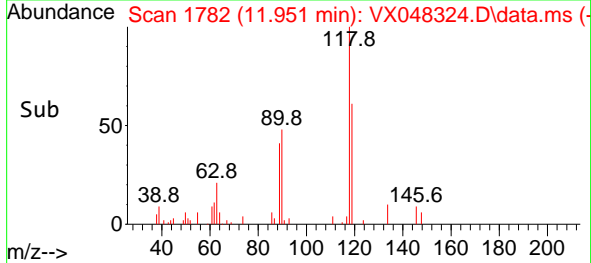
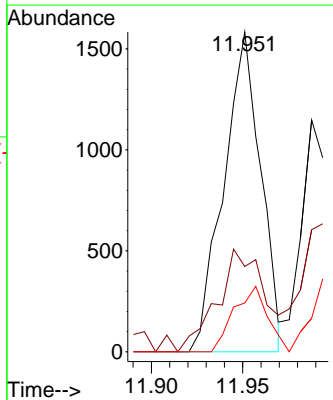
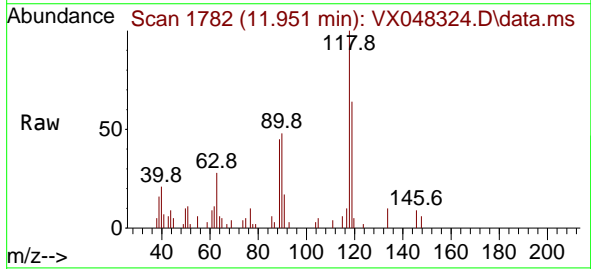


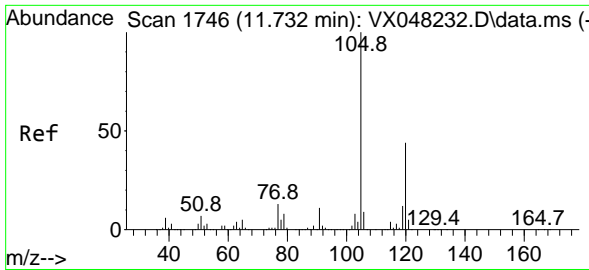
Tgt Ion: 91 Resp: 4931
 Ion Ratio Lower Upper
 91 100
 126 29.4 14.1 42.4



#83
 tert-Butylbenzene
 Concen: 0.272 ug/l
 RT: 11.951 min Scan# 1782
 Delta R.T. 0.256 min
 Lab File: VX048324.D
 Acq: 23 Oct 2025 14:45

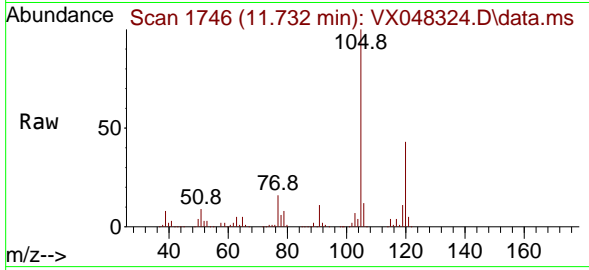
Tgt Ion: 119 Resp: 2237
 Ion Ratio Lower Upper
 119 100
 91 40.3 30.3 91.0
 134 18.6 11.4 34.2



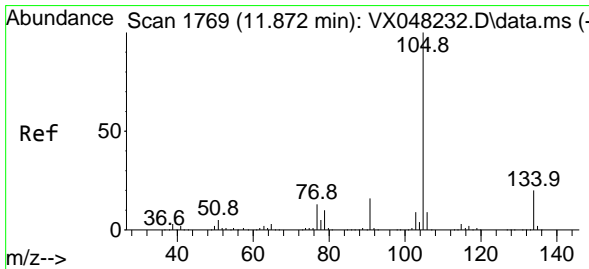
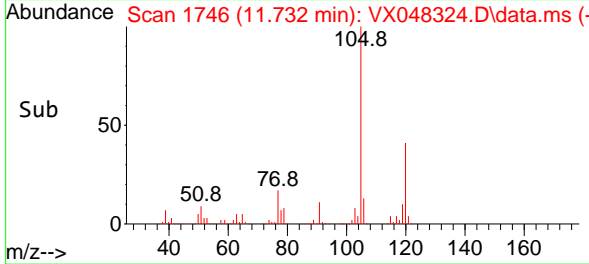
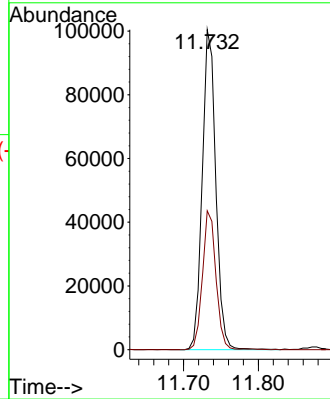


#84
 1,2,4-Trimethylbenzene
 Concen: 15.817 ug/l
 RT: 11.732 min Scan# 1746
 Delta R.T. -0.000 min
 Lab File: VX048324.D
 Acq: 23 Oct 2025 14:45

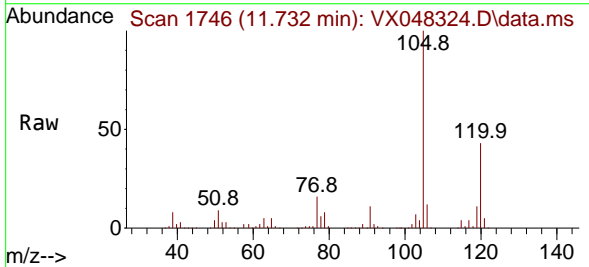
Instrument : MSVOA_X
 ClientSampleId :



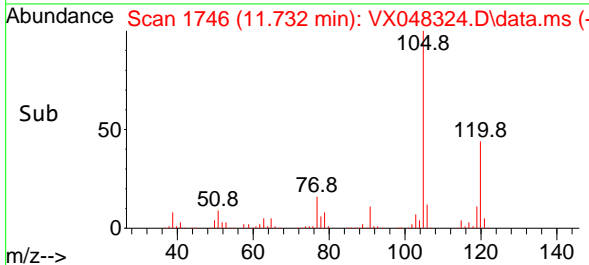
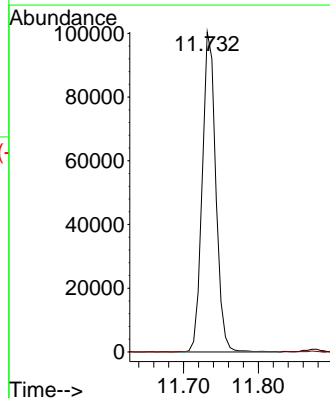
Tgt Ion:105 Resp: 126303
 Ion Ratio Lower Upper
 105 100
 120 43.3 22.1 66.5

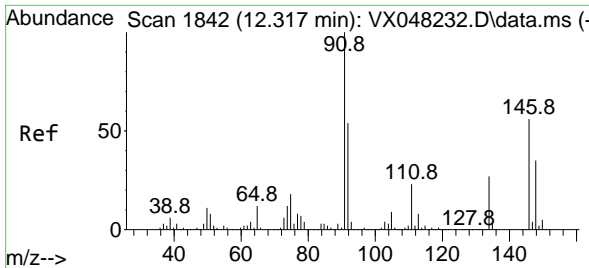


#85
 sec-Butylbenzene
 Concen: 12.769 ug/l
 RT: 11.732 min Scan# 1746
 Delta R.T. -0.140 min
 Lab File: VX048324.D
 Acq: 23 Oct 2025 14:45



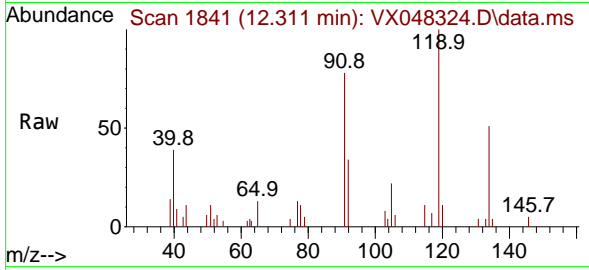
Tgt Ion:105 Resp: 126303
 Ion Ratio Lower Upper
 105 100
 134 0.0 10.1 30.1#





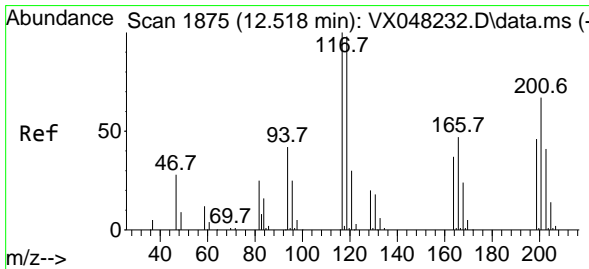
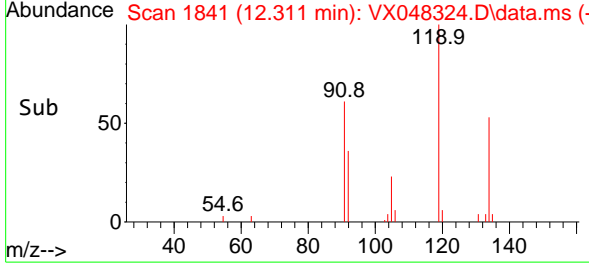
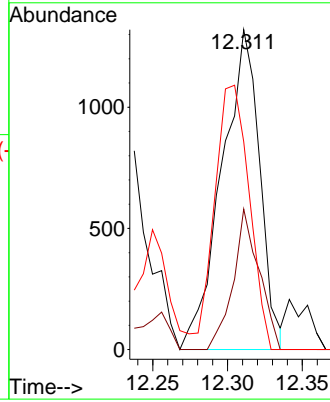
#89
 n-Butylbenzene
 Concen: 0.298 ug/l
 RT: 12.311 min Scan# 1842
 Delta R.T. -0.000 min
 Lab File: VX048324.D
 Acq: 23 Oct 2025 14:45

Instrument : MSVOA_X
 ClientSampleId :



Tgt Ion: 91 Resp: 2321

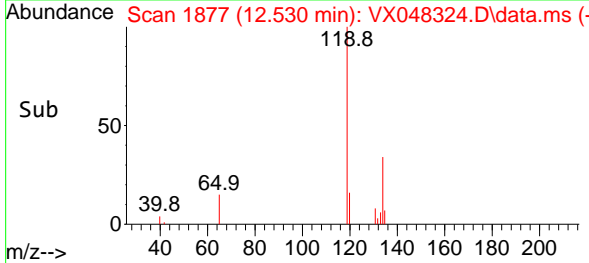
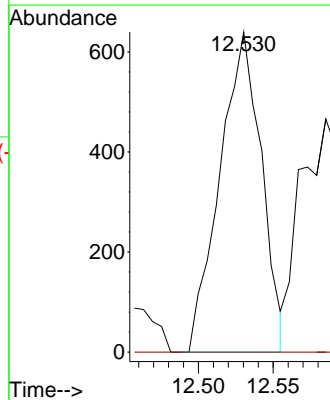
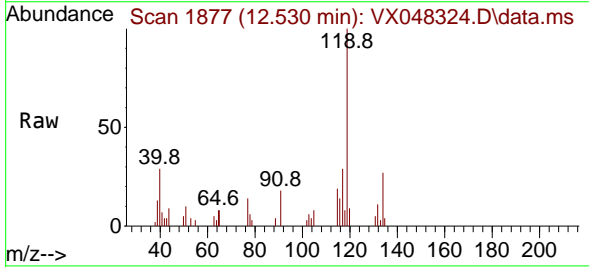
Ion	Ratio	Lower	Upper
91	100		
92	30.2	26.9	80.6
134	75.4	12.7	38.1#

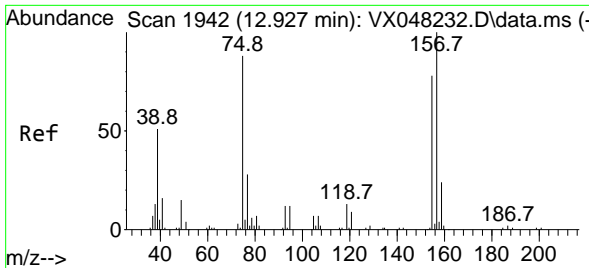


#90
 Hexachloroethane
 Concen: 0.732 ug/l
 RT: 12.530 min Scan# 1877
 Delta R.T. 0.012 min
 Lab File: VX048324.D
 Acq: 23 Oct 2025 14:45

Tgt Ion: 117 Resp: 1236

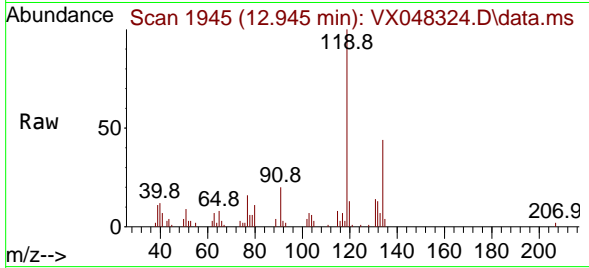
Ion	Ratio	Lower	Upper
117	100		
201	0.0	34.1	102.2#





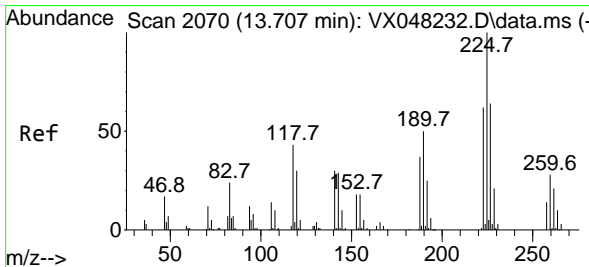
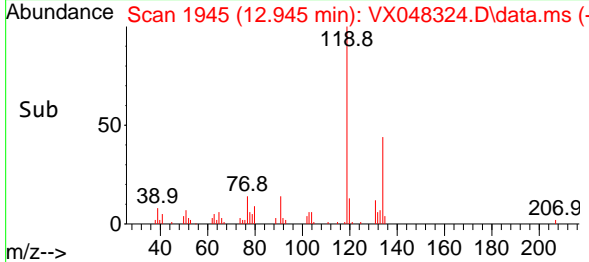
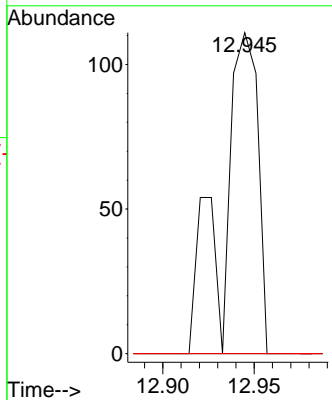
#92
 1,2-Dibromo-3-Chloropropane
 Concen: 0.282 ug/l
 RT: 12.945 min Scan# 1945
 Delta R.T. 0.024 min
 Lab File: VX048324.D
 Acq: 23 Oct 2025 14:45

Instrument : MSVOA_X
 ClientSampleId :



Tgt Ion: 75 Resp: 151

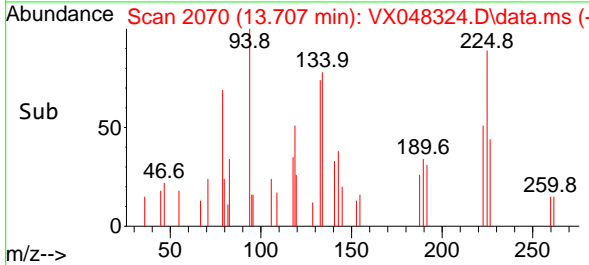
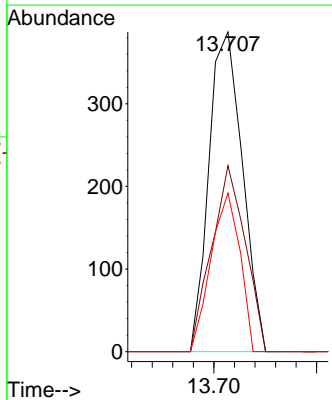
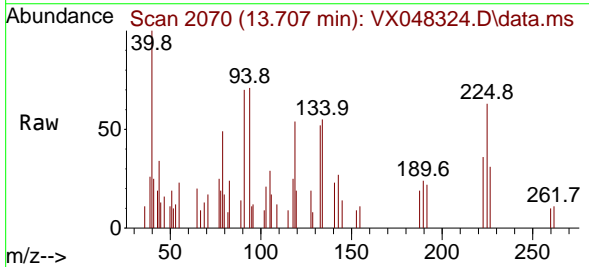
Ion	Ratio	Lower	Upper
75	100		
155	0.0	42.8	128.4#
157	0.0	54.2	162.6#

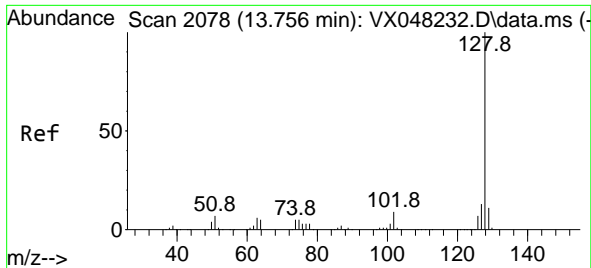


#94
 Hexachlorobutadiene
 Concen: 0.470 ug/l
 RT: 13.707 min Scan# 2070
 Delta R.T. 0.006 min
 Lab File: VX048324.D
 Acq: 23 Oct 2025 14:45

Tgt Ion: 225 Resp: 439

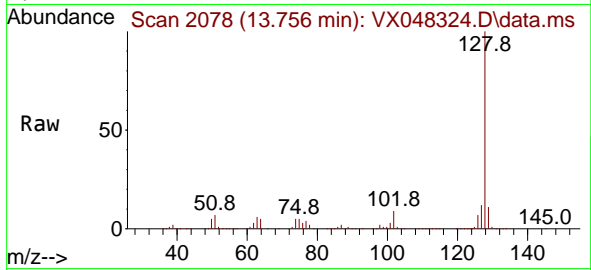
Ion	Ratio	Lower	Upper
225	100		
223	58.3	32.6	97.7
227	42.8	32.5	97.4





#95
 Naphthalene
 Concen: 87.973 ug/l
 RT: 13.756 min Scan# 20
 Delta R.T. -0.000 min
 Lab File: VX048324.D
 Acq: 23 Oct 2025 14:45

Instrument :
 MSVOA_X
 ClientSampleId :



Tgt Ion:128 Resp: 676354

Ion	Ratio	Lower	Upper
128	100		
127	12.8	10.2	15.4
129	11.0	8.6	12.8

