

Data Path : Z:\voasrv\HPCHEM1\MSVOA\_X\Data\VX102325\  
 Data File : VX048325.D  
 Acq On : 23 Oct 2025 15:06  
 Operator : JC/MD  
 Sample : Q3414-08 10X  
 Misc : 5.0mL/MSVOA\_X/WATER  
 ALS Vial : 17 Sample Multiplier: 1

Instrument :  
 MSVOA\_X  
 ClientSampleId :

Quant Time: Oct 24 05:46:31 2025  
 Quant Method : Z:\voasrv\HPCHEM1\MSVOA\_X\Method\82X102025W.M  
 Quant Title : SW846 8260  
 QLast Update : Mon Oct 20 14:13:59 2025  
 Response via : Initial Calibration

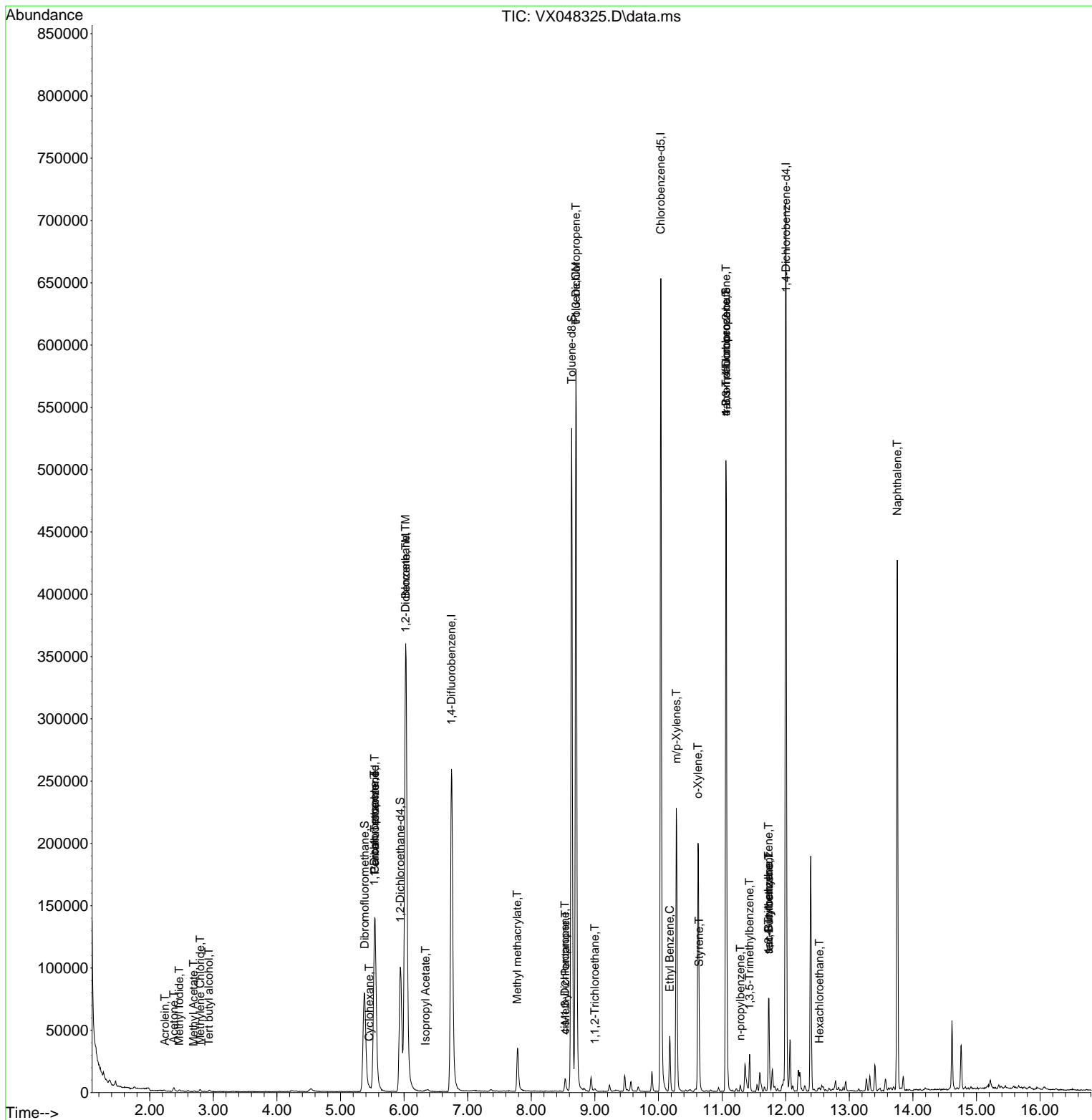
Compound	R.T.	QIon	Response	Conc	Units	Dev(Min)
-----						
Internal Standards						
1) Pentafluorobenzene	5.544	168	139853	50.000	ug/l	0.00
34) 1,4-Difluorobenzene	6.745	114	281333	50.000	ug/l	0.00
63) Chlorobenzene-d5	10.037	117	287161	50.000	ug/l	0.00
72) 1,4-Dichlorobenzene-d4	12.006	152	149554	50.000	ug/l	0.00
System Monitoring Compounds						
33) 1,2-Dichloroethane-d4	5.940	65	111203	56.712	ug/l	0.00
Spiked Amount	50.000	Range 78 - 117	Recovery	=	113.420%	
35) Dibromofluoromethane	5.379	113	77453	40.327	ug/l	0.00
Spiked Amount	50.000	Range 75 - 124	Recovery	=	80.660%	
50) Toluene-d8	8.634	98	321532	47.761	ug/l	0.00
Spiked Amount	50.000	Range 92 - 112	Recovery	=	95.520%	
62) 4-Bromofluorobenzene	11.061	95	143205	55.916	ug/l	0.00
Spiked Amount	50.000	Range 83 - 123	Recovery	=	111.840%	
Target Compounds						
						Qvalue
10) Methyl Iodide	2.465	142	1512	0.797	ug/l #	82
11) Tert butyl alcohol	2.928	59	81	0.416	ug/l #	72
13) Acrolein	2.239	56	62	0.312	ug/l #	1
16) Acetone	2.379	43	4643	6.902	ug/l #	89
18) Methyl Acetate	2.690	43	766	0.545	ug/l #	54
20) Methylene Chloride	2.794	84	690	0.421	ug/l #	65
31) Cyclohexane	5.452	56	723	0.297	ug/l	96
36) 1,1-Dichloropropene	5.531	75	12119	4.439	ug/l #	50
38) Carbon Tetrachloride	5.537	117	14869	4.415	ug/l #	15
40) Benzene	6.025	78	461201	58.191	ug/l	98
42) 1,2-Dichloroethane	6.019	62	4468	1.528	ug/l #	76
43) Isopropyl Acetate	6.336	43	1339	0.360	ug/l #	73
48) Methyl methacrylate	7.781	41	4299	2.292	ug/l #	44
51) 4-Methyl-2-Pentanone	8.537	43	4413	2.059	ug/l #	54
52) Toluene	8.701	92	225923	44.870	ug/l	99
53) t-1,3-Dichloropropene	8.701	75	2896	0.948	ug/l #	1
54) cis-1,3-Dichloropropene	8.531	75	1936	0.587	ug/l #	65
55) 1,1,2-Trichloroethane	9.000	97	1571	0.839	ug/l #	17
67) Ethyl Benzene	10.177	91	26415	2.402	ug/l	97
68) m/p-Xylenes	10.280	106	53035	12.979	ug/l	100
69) o-Xylene	10.622	106	43061	10.915	ug/l	97
70) Styrene	10.640	104	11274	1.678	ug/l #	41
76) 1,2,3-Trichloropropane	11.061	75	77268	31.860	ug/l #	33
78) n-propylbenzene	11.286	91	2998	0.237	ug/l	94
80) 1,3,5-Trimethylbenzene	11.433	105	12335	1.365	ug/l	98
81) trans-1,4-Dichloro-2-b...	11.061	75	77268	77.512	ug/l #	10
83) tert-Butylbenzene	11.738	119	3607	0.388	ug/l #	47
84) 1,2,4-Trimethylbenzene	11.731	105	33229	3.683	ug/l	94
85) sec-Butylbenzene	11.731	105	33229	2.974	ug/l #	56
90) Hexachloroethane	12.530	117	407	0.213	ug/l #	16
95) Naphthalene	13.755	128	245937	28.315	ug/l	100

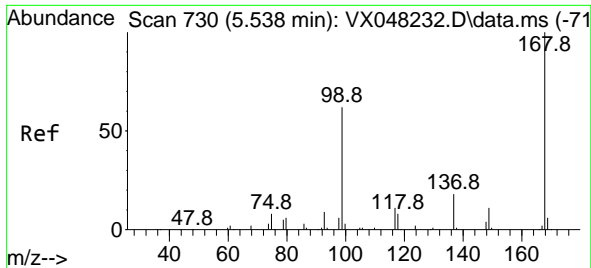
(#) = qualifier out of range (m) = manual integration (+) = signals summed

Data Path : Z:\voasrv\HPCHEM1\MSVOA\_X\Data\VX102325\  
 Data File : VX048325.D  
 Acq On : 23 Oct 2025 15:06  
 Operator : JC/MD  
 Sample : Q3414-08 10X  
 Misc : 5.0mL/MSVOA\_X/WATER  
 ALS Vial : 17 Sample Multiplier: 1

Instrument :  
 MSVOA\_X  
 ClientSampleId :

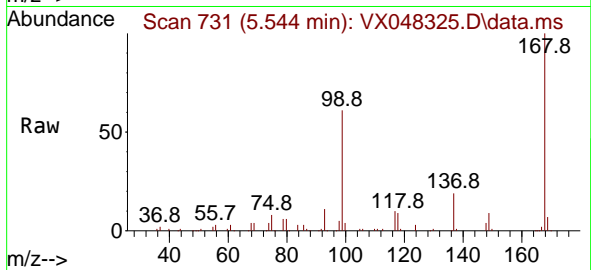
Quant Time: Oct 24 05:46:31 2025  
 Quant Method : Z:\voasrv\HPCHEM1\MSVOA\_X\Method\82X102025W.M  
 Quant Title : SW846 8260  
 QLast Update : Mon Oct 20 14:13:59 2025  
 Response via : Initial Calibration



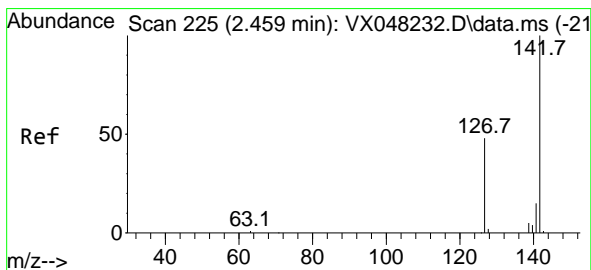
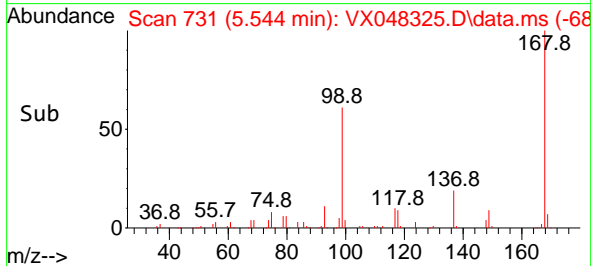
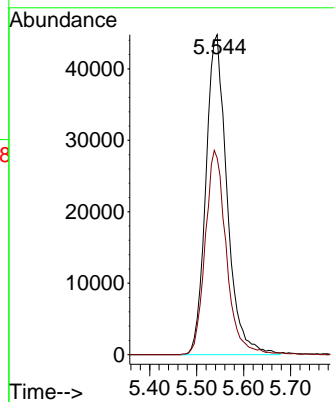


#1  
 Pentafluorobenzene  
 Concen: 50.000 ug/l  
 RT: 5.544 min Scan# 71  
 Delta R.T. -0.000 min  
 Lab File: VX048325.D  
 Acq: 23 Oct 2025 15:06

Instrument :  
 MSVOA\_X  
 ClientSampleId :

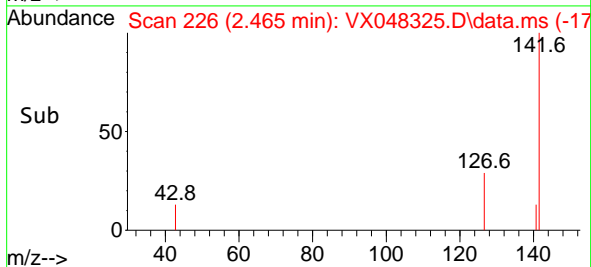
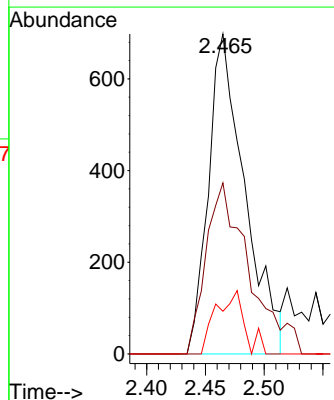
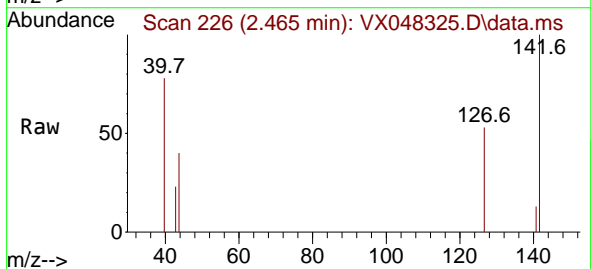


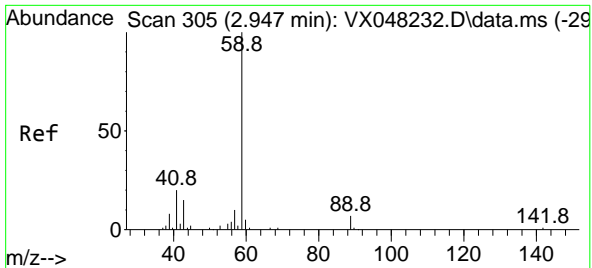
Tgt Ion:168 Resp: 139853  
 Ion Ratio Lower Upper  
 168 100  
 99 61.5 46.4 69.6



#10  
 Methyl Iodide  
 Concen: 0.797 ug/l  
 RT: 2.465 min Scan# 226  
 Delta R.T. 0.006 min  
 Lab File: VX048325.D  
 Acq: 23 Oct 2025 15:06

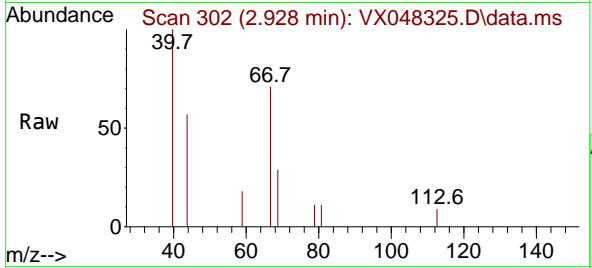
Tgt Ion:142 Resp: 1512  
 Ion Ratio Lower Upper  
 142 100  
 127 63.1 38.5 57.7#  
 141 15.3 11.6 17.4



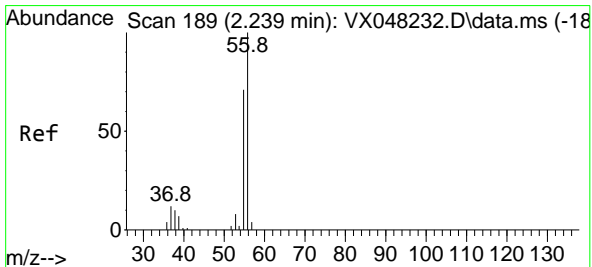
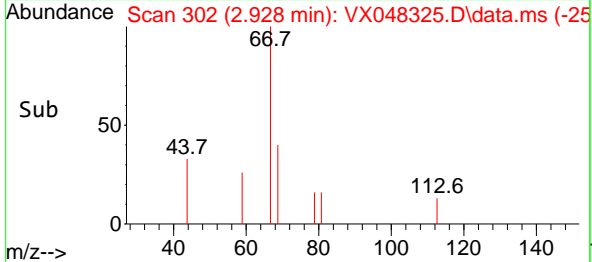
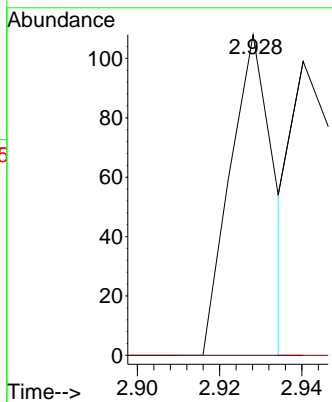


#11  
 Tert butyl alcohol  
 Concen: 0.416 ug/l  
 RT: 2.928 min Scan# 30  
 Delta R.T. -0.012 min  
 Lab File: VX048325.D  
 Acq: 23 Oct 2025 15:06

Instrument : MSVOA\_X  
 ClientSampleId :

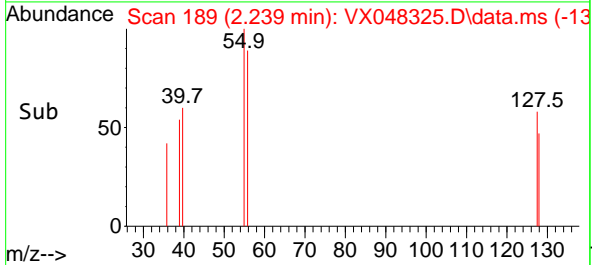
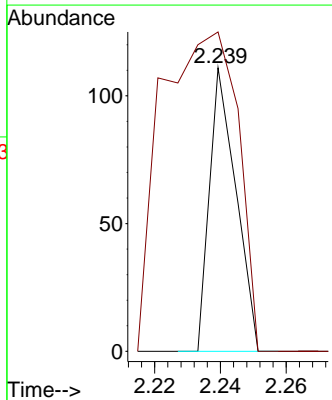
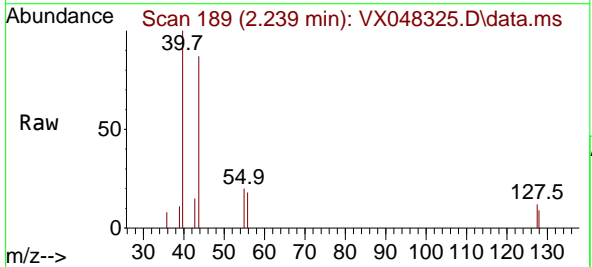


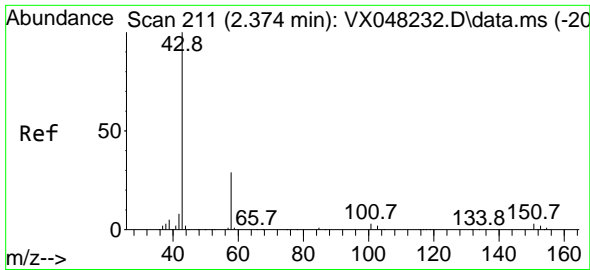
Tgt Ion: 59 Resp: 81  
 Ion Ratio Lower Upper  
 59 100  
 57 0.0 8.2 12.4#



#13  
 Acrolein  
 Concen: 0.312 ug/l  
 RT: 2.239 min Scan# 189  
 Delta R.T. 0.006 min  
 Lab File: VX048325.D  
 Acq: 23 Oct 2025 15:06

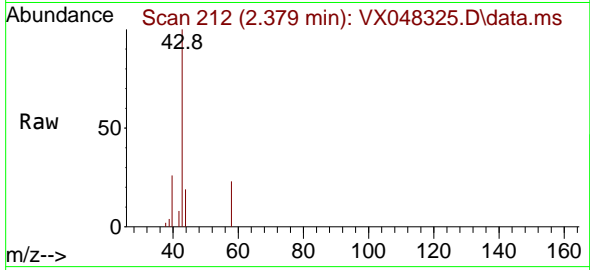
Tgt Ion: 56 Resp: 62  
 Ion Ratio Lower Upper  
 56 100  
 55 325.8 56.1 84.1#



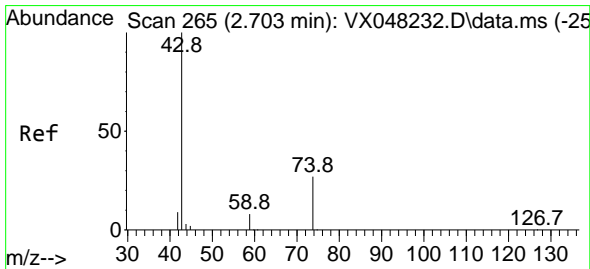
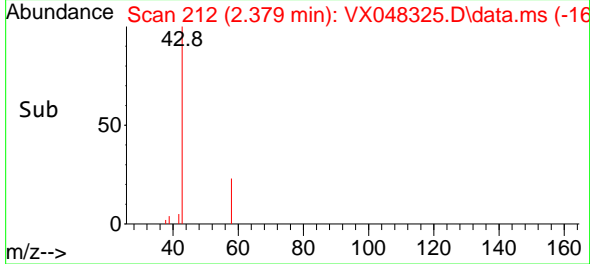
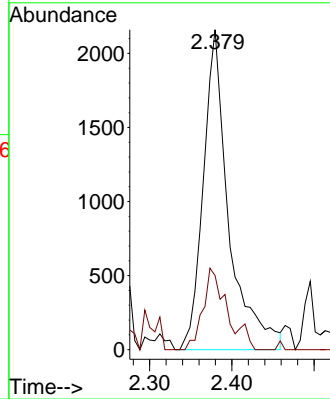


#16  
 Acetone  
 Concen: 6.902 ug/l  
 RT: 2.379 min Scan# 211  
 Delta R.T. 0.006 min  
 Lab File: VX048325.D  
 Acq: 23 Oct 2025 15:06

Instrument :  
 MSVOA\_X  
 ClientSampleId :

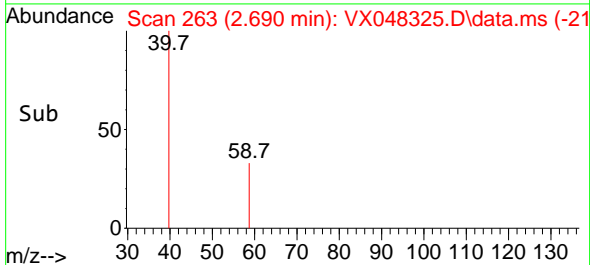
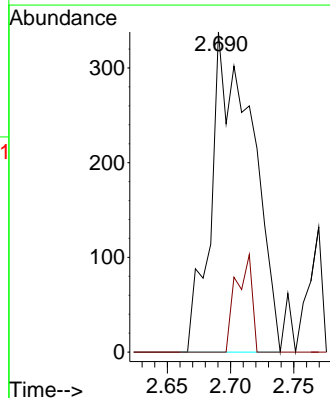
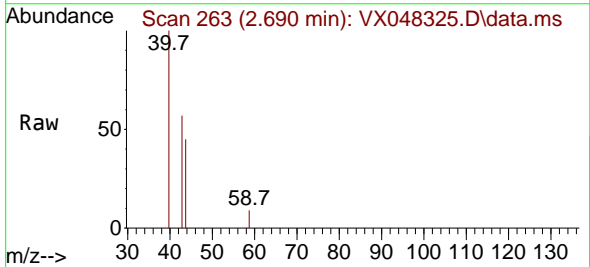


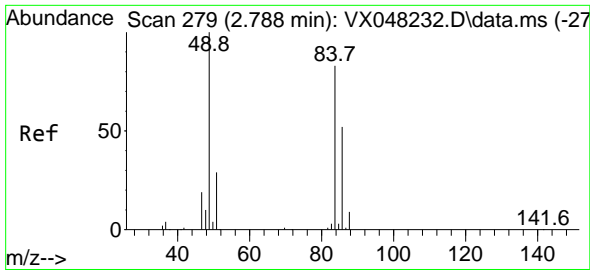
Tgt Ion: 43 Resp: 4643  
 Ion Ratio Lower Upper  
 43 100  
 58 23.1 23.4 35.2#



#18  
 Methyl Acetate  
 Concen: 0.545 ug/l  
 RT: 2.690 min Scan# 263  
 Delta R.T. -0.006 min  
 Lab File: VX048325.D  
 Acq: 23 Oct 2025 15:06

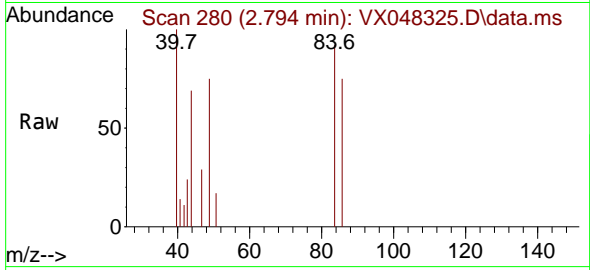
Tgt Ion: 43 Resp: 766  
 Ion Ratio Lower Upper  
 43 100  
 74 0.0 17.5 26.3#



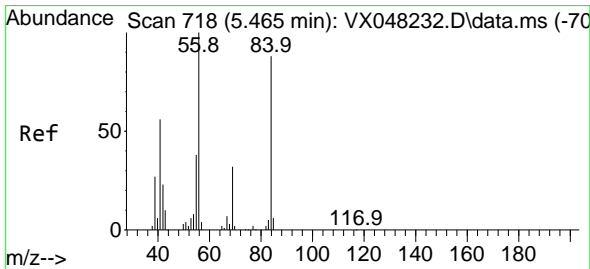
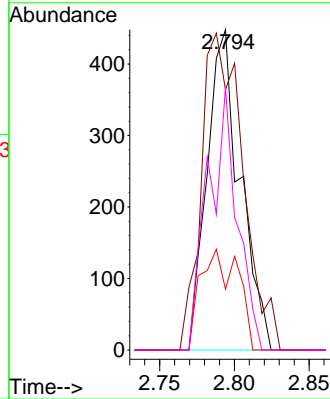
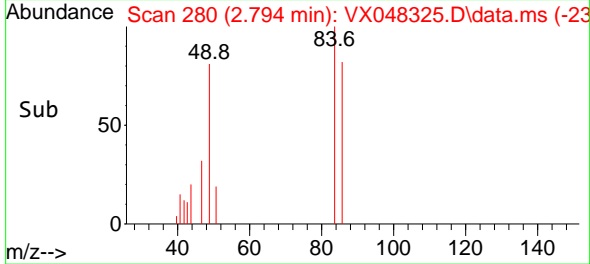


#20  
 Methylene Chloride  
 Concen: 0.421 ug/l  
 RT: 2.794 min Scan# 21  
 Delta R.T. 0.006 min  
 Lab File: VX048325.D  
 Acq: 23 Oct 2025 15:06

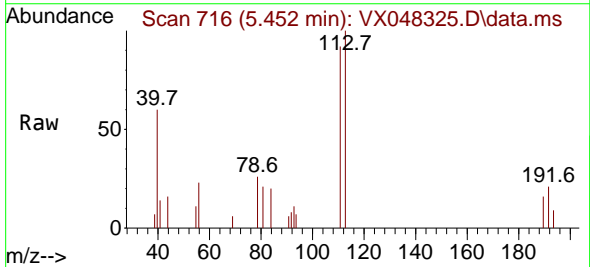
Instrument : MSVOA\_X  
 ClientSampleId :



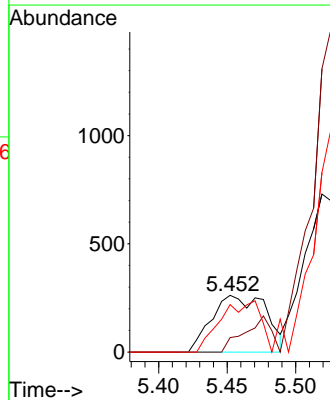
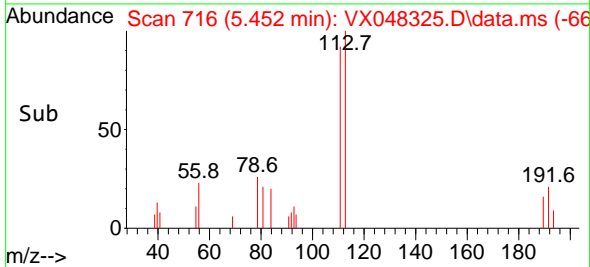
Tgt Ion: 84 Resp: 690  
 Ion Ratio Lower Upper  
 84 100  
 49 81.3 104.1 156.1#  
 51 19.0 31.3 46.9#  
 86 82.1 51.3 76.9#

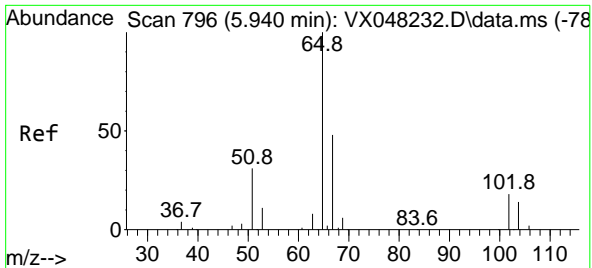


#31  
 Cyclohexane  
 Concen: 0.297 ug/l  
 RT: 5.452 min Scan# 716  
 Delta R.T. -0.006 min  
 Lab File: VX048325.D  
 Acq: 23 Oct 2025 15:06



Tgt Ion: 56 Resp: 723  
 Ion Ratio Lower Upper  
 56 100  
 69 25.6 23.0 34.6  
 84 83.6 64.6 97.0

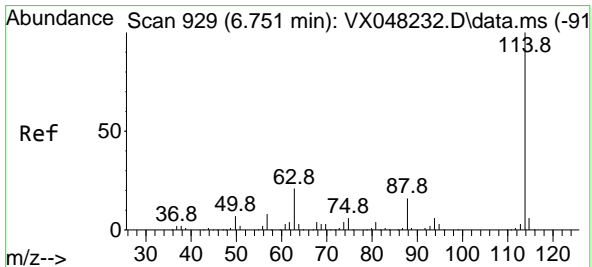
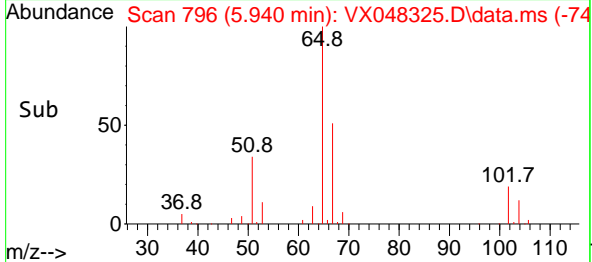
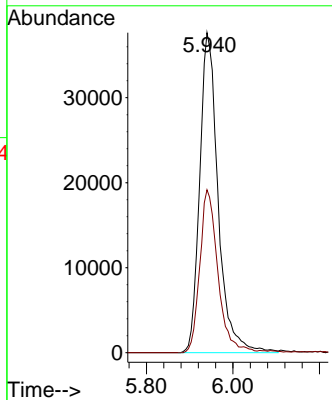
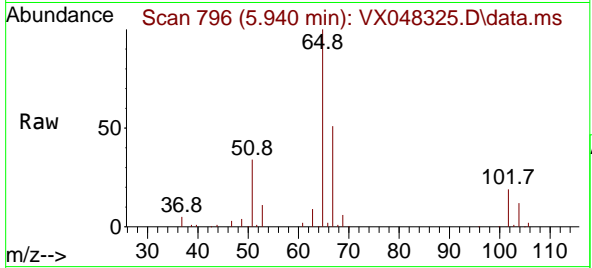




#33  
 1,2-Dichloroethane-d4  
 Concen: 56.712 ug/l  
 RT: 5.940 min Scan# 796  
 Delta R.T. -0.000 min  
 Lab File: VX048325.D  
 Acq: 23 Oct 2025 15:06

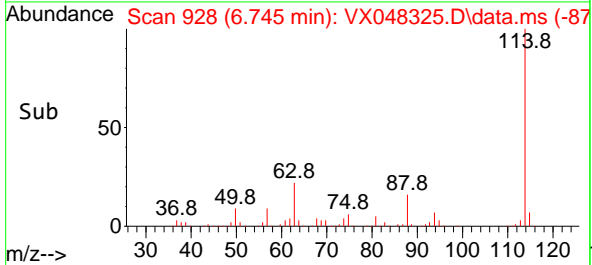
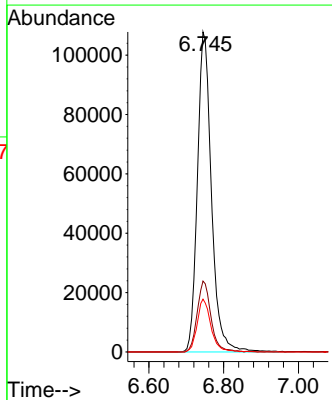
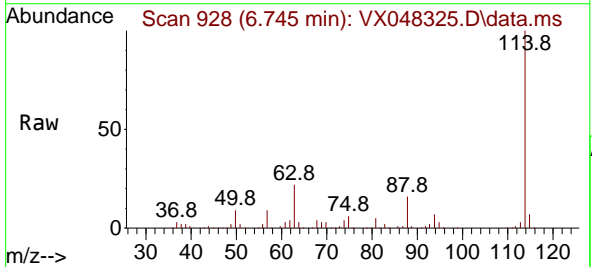
Instrument : MSVOA\_X  
 ClientSampleId :

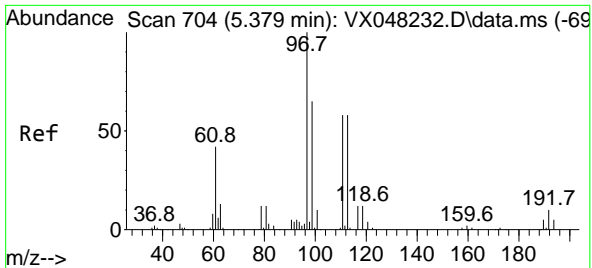
Tgt Ion: 65 Resp: 111203  
 Ion Ratio Lower Upper  
 65 100  
 67 50.0 0.0 105.0



#34  
 1,4-Difluorobenzene  
 Concen: 50.000 ug/l  
 RT: 6.745 min Scan# 928  
 Delta R.T. -0.000 min  
 Lab File: VX048325.D  
 Acq: 23 Oct 2025 15:06

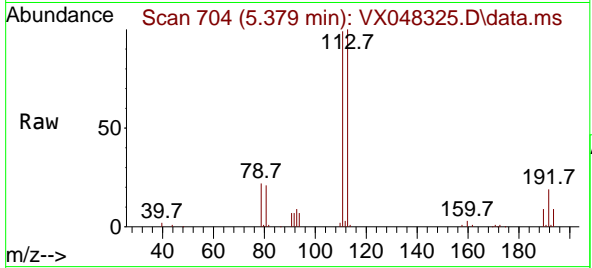
Tgt Ion: 114 Resp: 281333  
 Ion Ratio Lower Upper  
 114 100  
 63 22.1 0.0 43.2  
 88 16.5 0.0 33.6



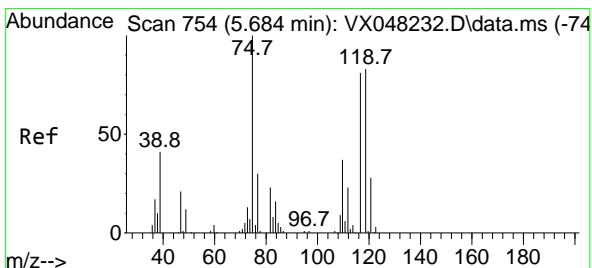
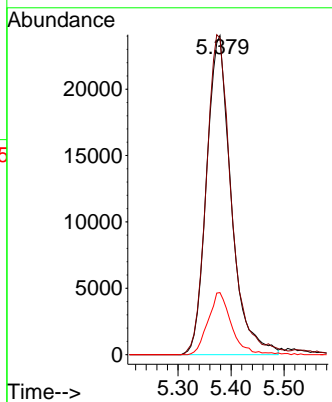
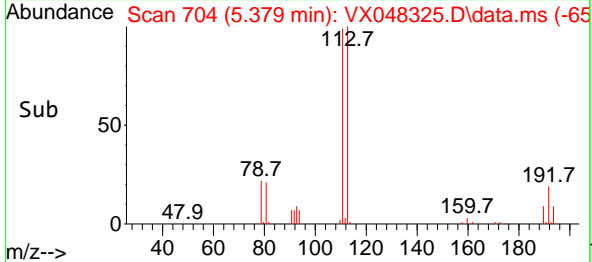


#35  
 Dibromofluoromethane  
 Concen: 40.327 ug/l  
 RT: 5.379 min Scan# 704  
 Delta R.T. 0.006 min  
 Lab File: VX048325.D  
 Acq: 23 Oct 2025 15:06

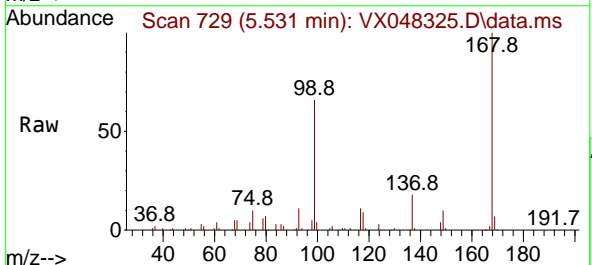
Instrument : MSVOA\_X  
 ClientSampleId :



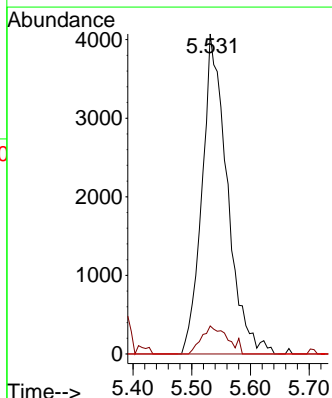
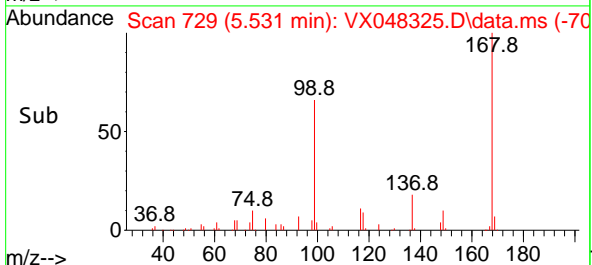
Tgt Ion: 113 Resp: 77453  
 Ion Ratio Lower Upper  
 113 100  
 111 101.9 82.2 123.4  
 192 18.7 15.1 22.7



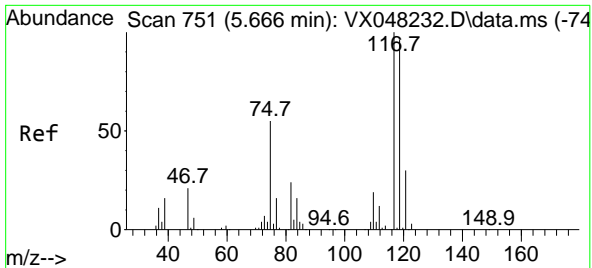
#36  
 1,1-Dichloropropene  
 Concen: 4.439 ug/l  
 RT: 5.531 min Scan# 729  
 Delta R.T. -0.153 min  
 Lab File: VX048325.D  
 Acq: 23 Oct 2025 15:06



Tgt Ion: 75 Resp: 12119  
 Ion Ratio Lower Upper  
 75 100  
 110 9.0 17.7 53.1#  
 77 0.0 24.3 36.5#

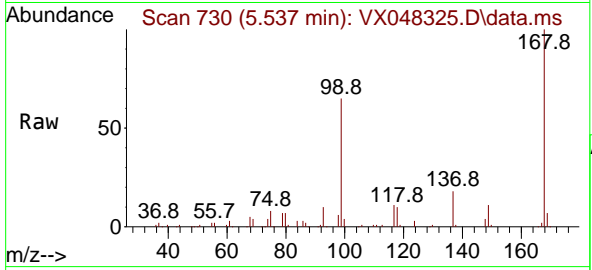




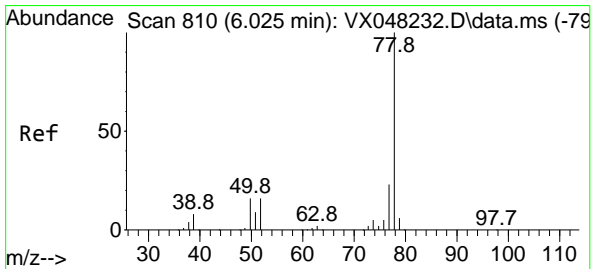
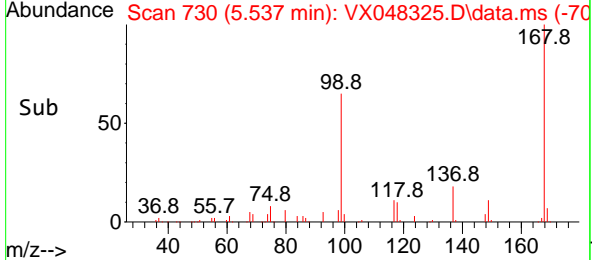
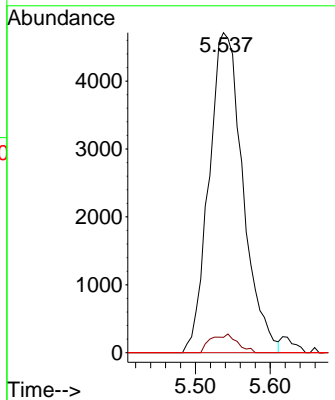


#38  
 Carbon Tetrachloride  
 Concen: 4.415 ug/l  
 RT: 5.537 min Scan# 710  
 Delta R.T. -0.128 min  
 Lab File: VX048325.D  
 Acq: 23 Oct 2025 15:06

Instrument :  
 MSVOA\_X  
 ClientSampleId :

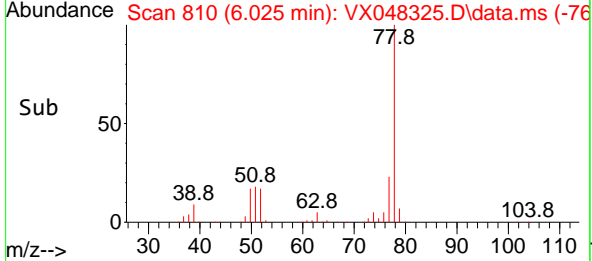
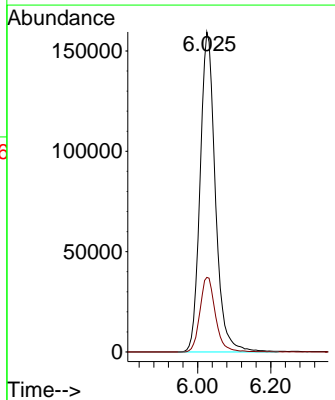
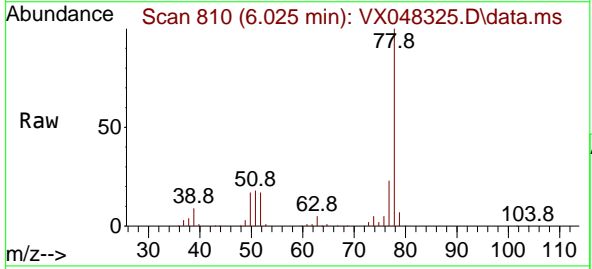


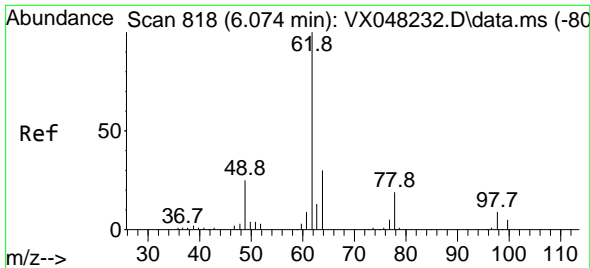
Tgt Ion:117 Resp: 14869  
 Ion Ratio Lower Upper  
 117 100  
 119 4.8 77.2 115.8#  
 121 0.0 24.8 37.2#



#40  
 Benzene  
 Concen: 58.191 ug/l  
 RT: 6.025 min Scan# 810  
 Delta R.T. -0.000 min  
 Lab File: VX048325.D  
 Acq: 23 Oct 2025 15:06

Tgt Ion: 78 Resp: 461201  
 Ion Ratio Lower Upper  
 78 100  
 77 23.3 19.3 28.9

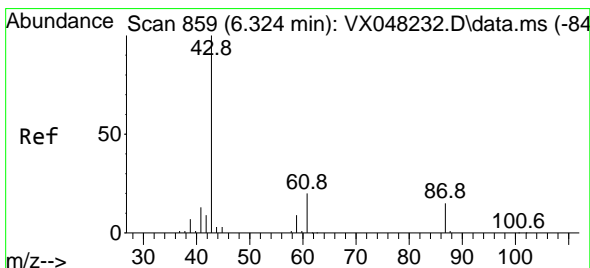
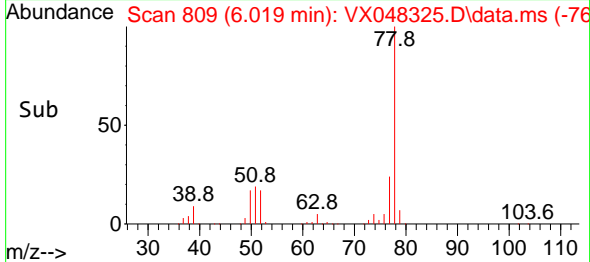
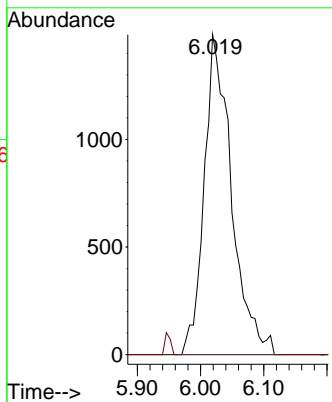
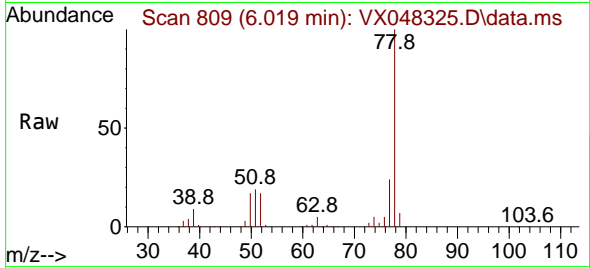




#42  
 1,2-Dichloroethane  
 Concen: 1.528 ug/l  
 RT: 6.019 min Scan# 809  
 Delta R.T. -0.049 min  
 Lab File: VX048325.D  
 Acq: 23 Oct 2025 15:06

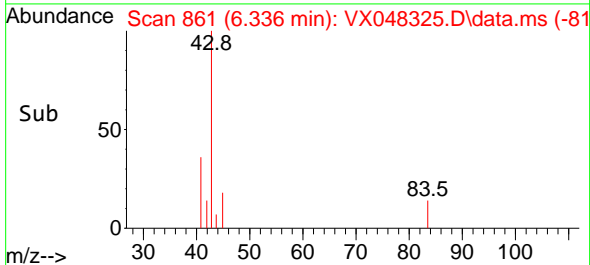
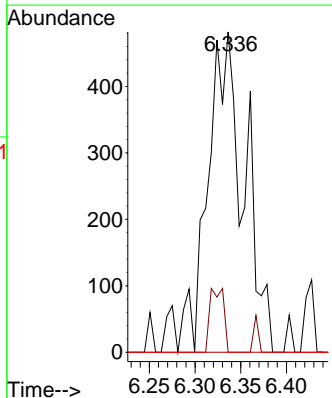
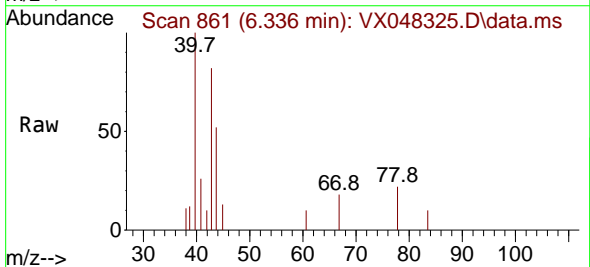
Instrument : MSVOA\_X  
 ClientSampleId :

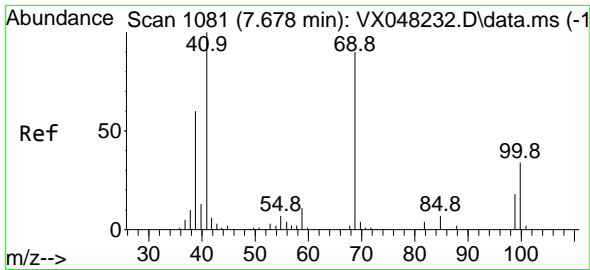
Tgt Ion: 62 Resp: 4468  
 Ion Ratio Lower Upper  
 62 100  
 98 0.0 0.0 17.2



#43  
 Isopropyl Acetate  
 Concen: 0.360 ug/l  
 RT: 6.336 min Scan# 861  
 Delta R.T. 0.012 min  
 Lab File: VX048325.D  
 Acq: 23 Oct 2025 15:06

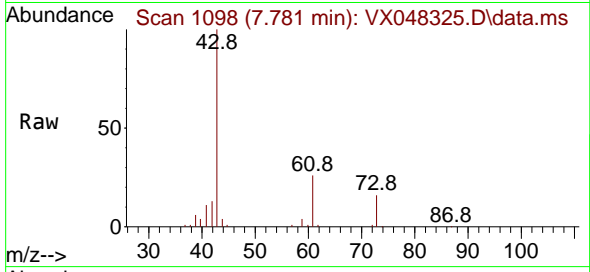
Tgt Ion: 43 Resp: 1339  
 Ion Ratio Lower Upper  
 43 100  
 61 7.5 14.9 22.3#  
 87 0.0 9.4 14.2#



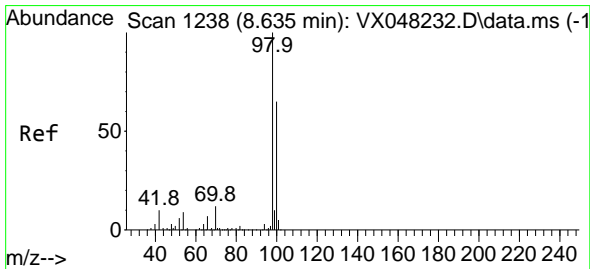
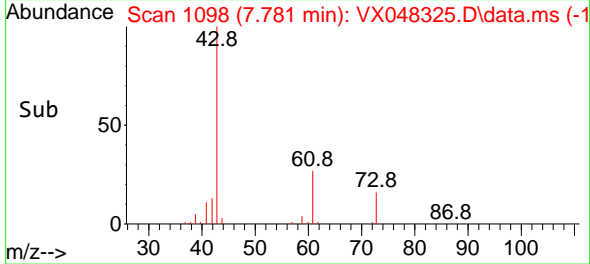
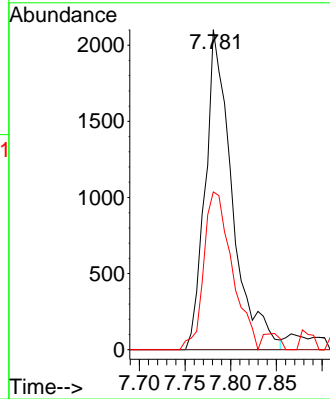


#48  
 Methyl methacrylate  
 Concen: 2.292 ug/l  
 RT: 7.781 min Scan# 1098  
 Delta R.T. 0.103 min  
 Lab File: VX048325.D  
 Acq: 23 Oct 2025 15:06

Instrument : MSVOA\_X  
 ClientSampleId :

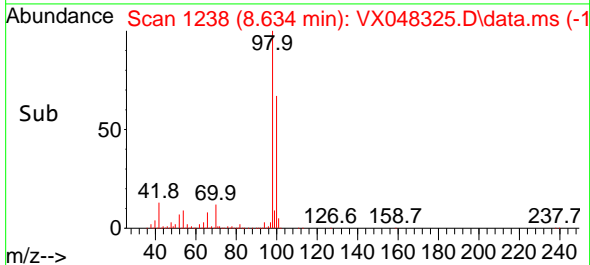
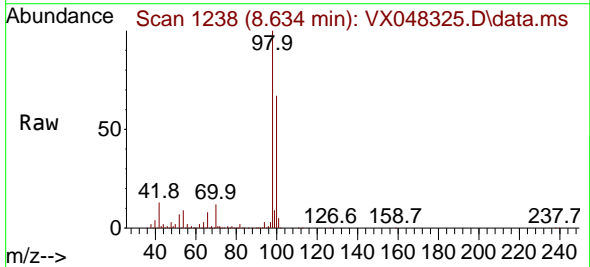
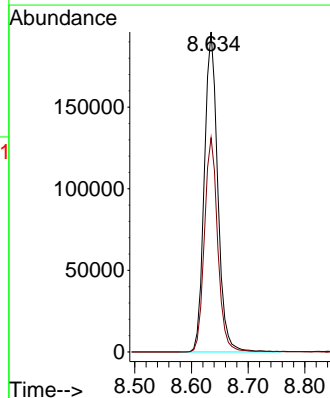


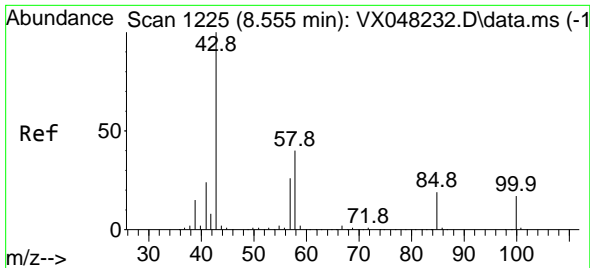
Tgt Ion: 41 Resp: 4299  
 Ion Ratio Lower Upper  
 41 100  
 69 0.0 63.4 95.0#  
 39 51.7 47.1 70.7



#50  
 Toluene-d8  
 Concen: 47.761 ug/l  
 RT: 8.634 min Scan# 1238  
 Delta R.T. -0.000 min  
 Lab File: VX048325.D  
 Acq: 23 Oct 2025 15:06

Tgt Ion: 98 Resp: 321532  
 Ion Ratio Lower Upper  
 98 100  
 100 66.5 53.0 79.4

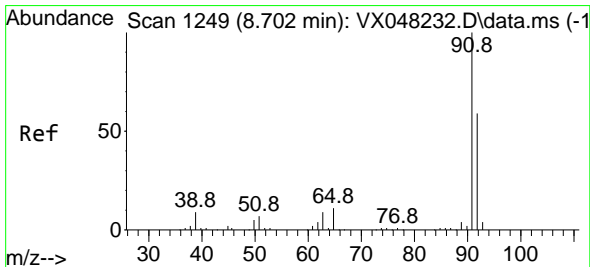
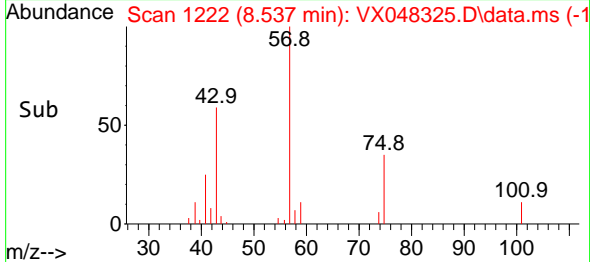
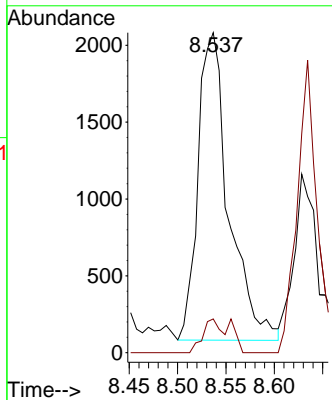
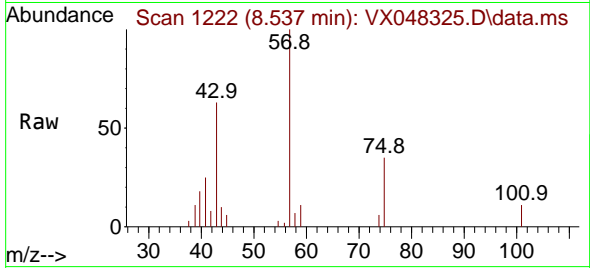




#51  
 4-Methyl-2-Pentanone  
 Concen: 2.059 ug/l  
 RT: 8.537 min Scan# 11  
 Delta R.T. -0.018 min  
 Lab File: VX048325.D  
 Acq: 23 Oct 2025 15:06

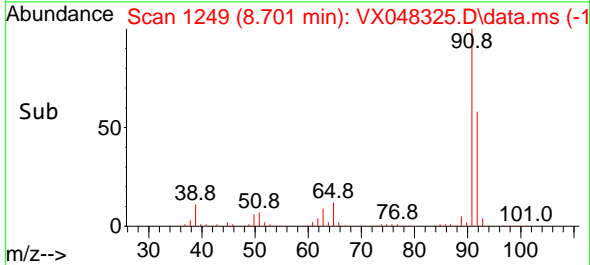
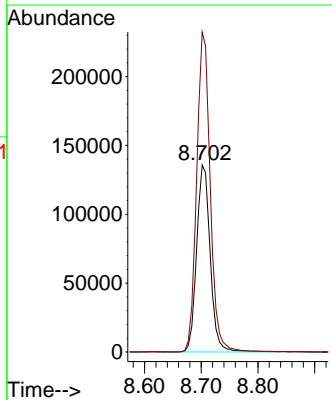
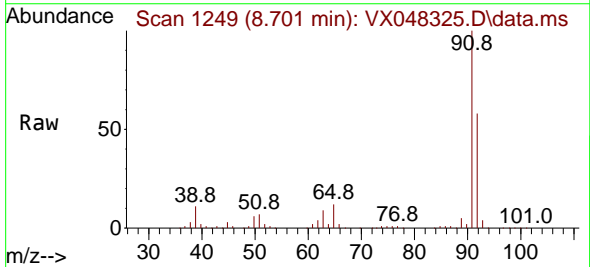
Instrument : MSVOA\_X  
 ClientSampleId :

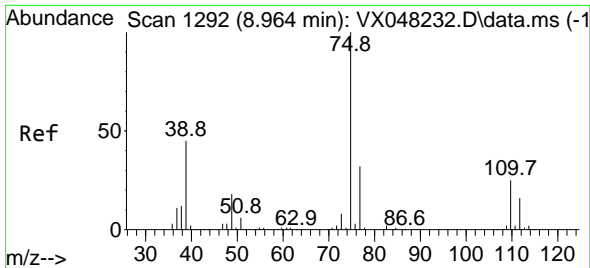
Tgt Ion: 43 Resp: 4413  
 Ion Ratio Lower Upper  
 43 100  
 58 9.7 29.5 44.3#



#52  
 Toluene  
 Concen: 44.870 ug/l  
 RT: 8.701 min Scan# 1249  
 Delta R.T. -0.000 min  
 Lab File: VX048325.D  
 Acq: 23 Oct 2025 15:06

Tgt Ion: 92 Resp: 225923  
 Ion Ratio Lower Upper  
 92 100  
 91 171.2 136.1 204.1

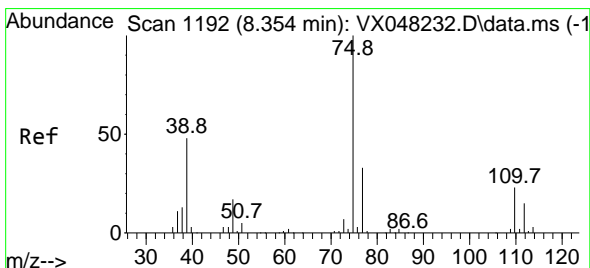
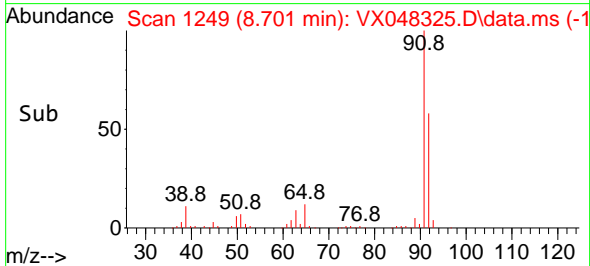
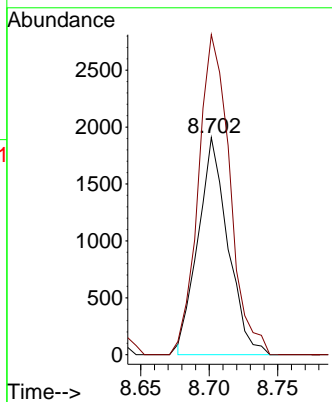
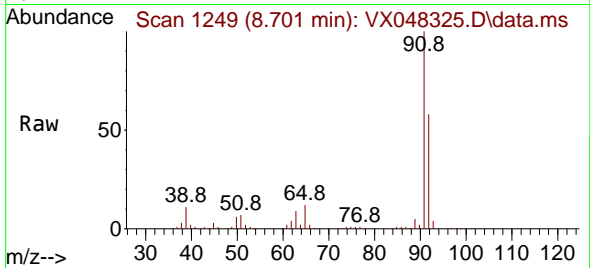




#53  
 t-1,3-Dichloropropene  
 Concen: 0.948 ug/l  
 RT: 8.701 min Scan# 1121  
 Delta R.T. -0.262 min  
 Lab File: VX048325.D  
 Acq: 23 Oct 2025 15:06

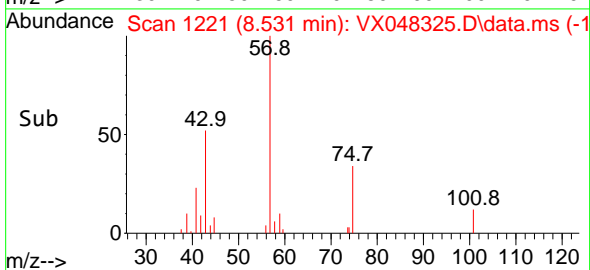
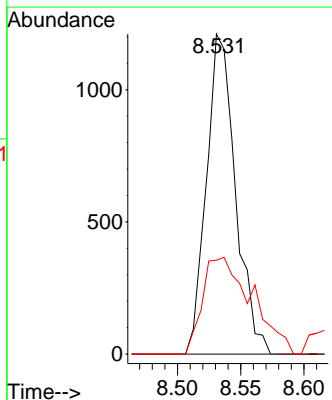
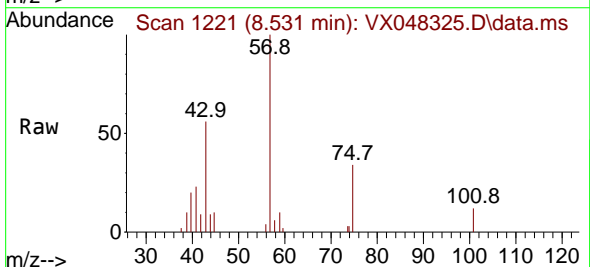
Instrument : MSVOA\_X  
 ClientSampleId :

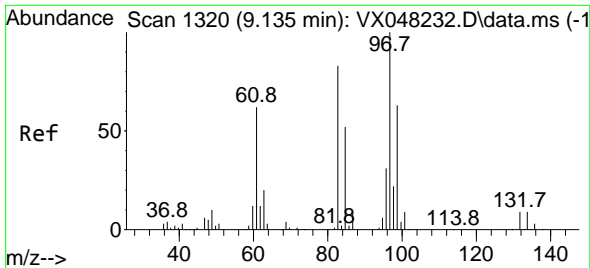
Tgt Ion: 75 Resp: 2896  
 Ion Ratio Lower Upper  
 75 100  
 77 147.4 25.0 37.6#



#54  
 cis-1,3-Dichloropropene  
 Concen: 0.587 ug/l  
 RT: 8.531 min Scan# 1221  
 Delta R.T. 0.183 min  
 Lab File: VX048325.D  
 Acq: 23 Oct 2025 15:06

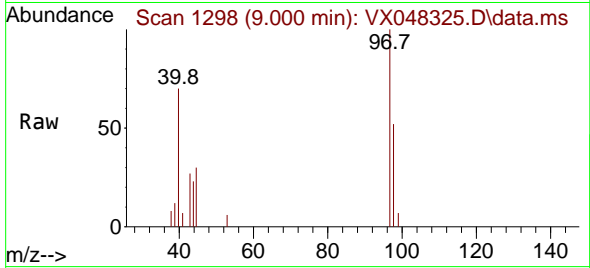
Tgt Ion: 75 Resp: 1936  
 Ion Ratio Lower Upper  
 75 100  
 77 0.0 24.9 37.3#  
 39 37.3 42.6 64.0#





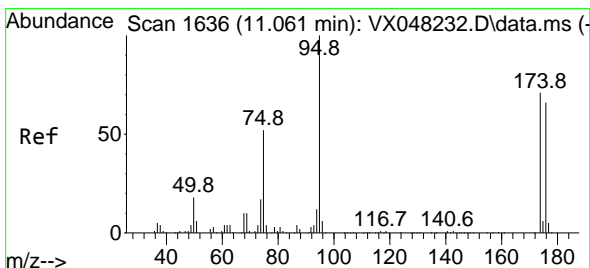
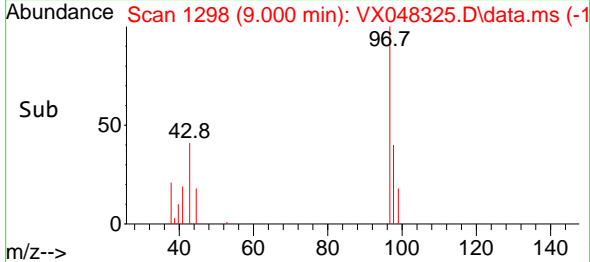
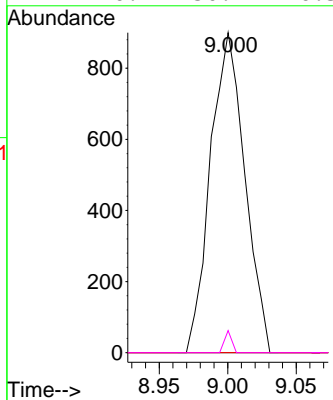
#55  
 1,1,2-Trichloroethane  
 Concen: 0.839 ug/l  
 RT: 9.000 min Scan# 11  
 Delta R.T. -0.134 min  
 Lab File: VX048325.D  
 Acq: 23 Oct 2025 15:06

Instrument : MSVOA\_X  
 ClientSampleId :



Tgt Ion: 97 Resp: 1571

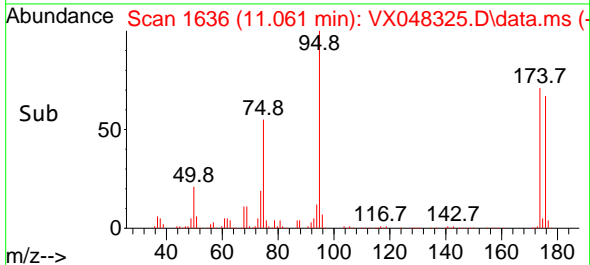
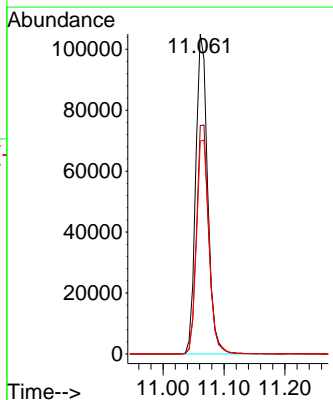
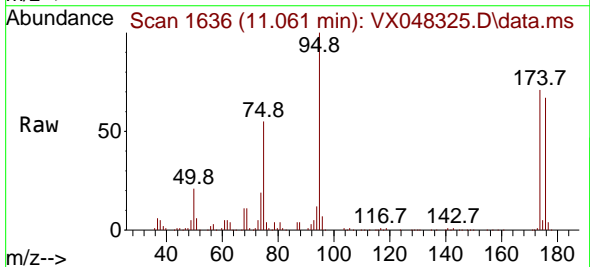
Ion	Ratio	Lower	Upper
97	100		
83	0.0	70.6	105.8#
85	0.0	45.0	67.6#
99	6.9	50.9	76.3#

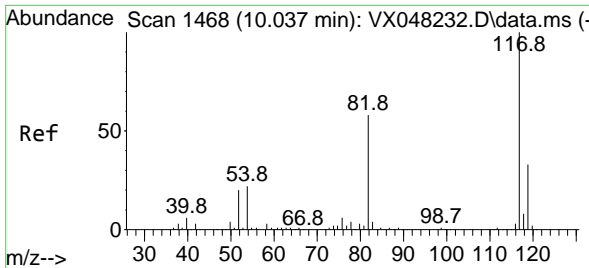


#62  
 4-Bromofluorobenzene  
 Concen: 55.916 ug/l  
 RT: 11.061 min Scan# 1636  
 Delta R.T. -0.000 min  
 Lab File: VX048325.D  
 Acq: 23 Oct 2025 15:06

Tgt Ion: 95 Resp: 143205

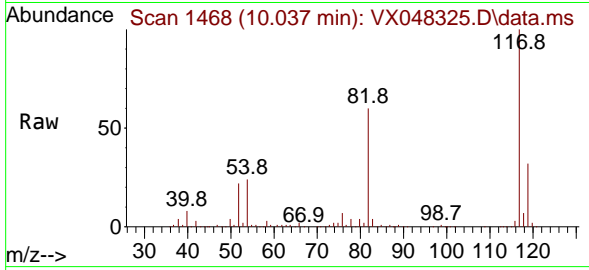
Ion	Ratio	Lower	Upper
95	100		
174	73.1	0.0	147.8
176	70.2	0.0	142.8





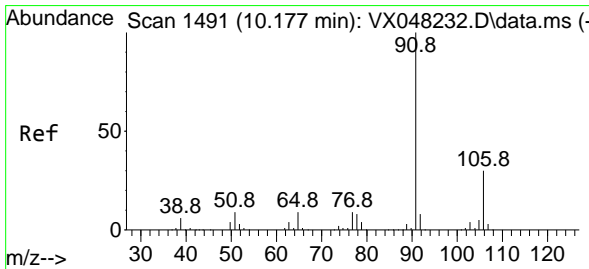
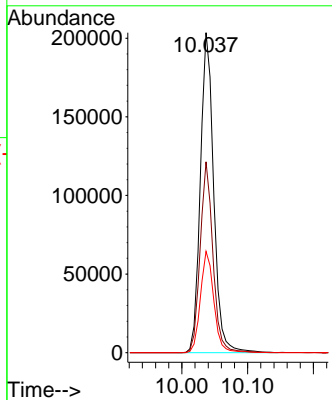
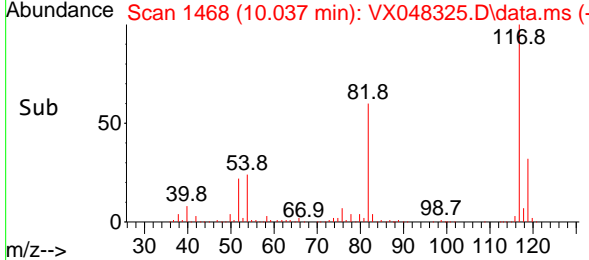
#63  
 Chlorobenzene-d5  
 Concen: 50.000 ug/l  
 RT: 10.037 min Scan# 1468  
 Delta R.T. -0.000 min  
 Lab File: VX048325.D  
 Acq: 23 Oct 2025 15:06

Instrument : MSVOA\_X  
 ClientSampleId :

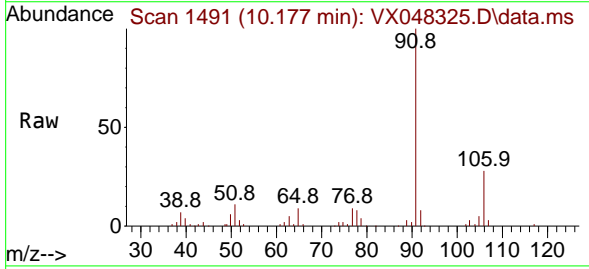


Tgt Ion: 117 Resp: 287161

Ion	Ratio	Lower	Upper
117	100		
82	59.7	46.5	69.7
119	31.6	25.9	38.9

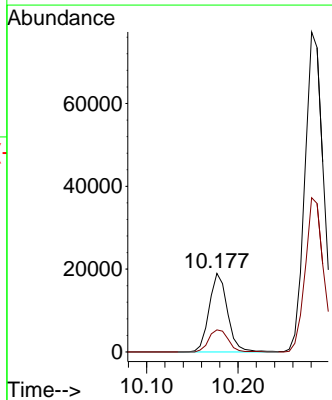
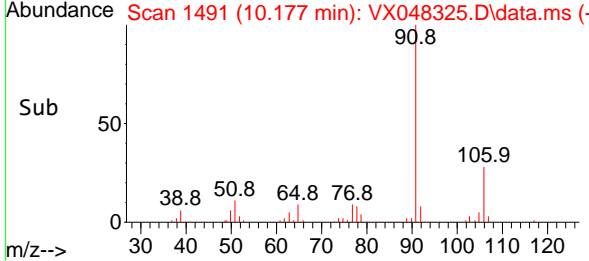


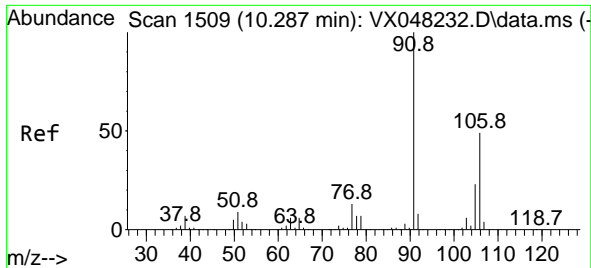
#67  
 Ethyl Benzene  
 Concen: 2.402 ug/l  
 RT: 10.177 min Scan# 1491  
 Delta R.T. -0.000 min  
 Lab File: VX048325.D  
 Acq: 23 Oct 2025 15:06



Tgt Ion: 91 Resp: 26415

Ion	Ratio	Lower	Upper
91	100		
106	28.0	23.8	35.6

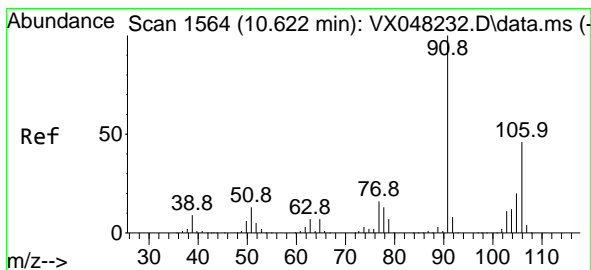
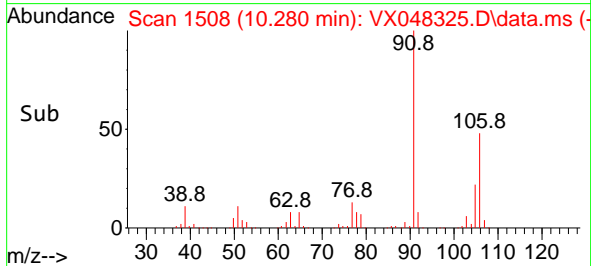
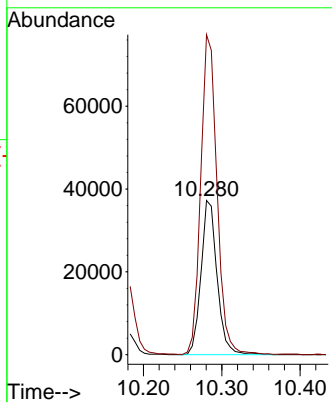
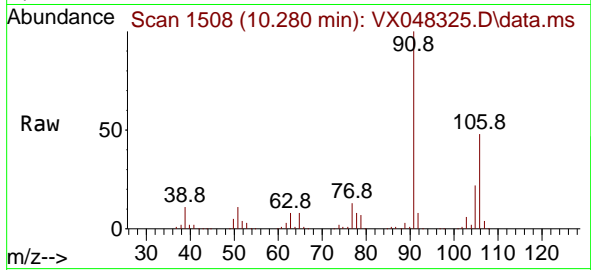




#68  
 m/p-Xylenes  
 Concen: 12.979 ug/l  
 RT: 10.280 min Scan# 11  
 Delta R.T. -0.006 min  
 Lab File: VX048325.D  
 Acq: 23 Oct 2025 15:06

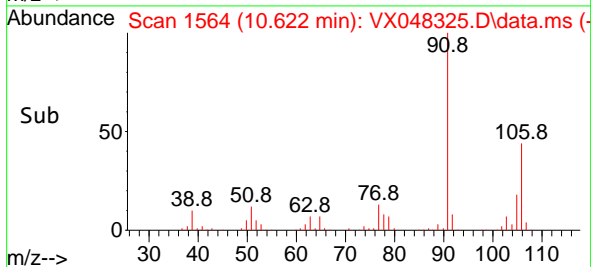
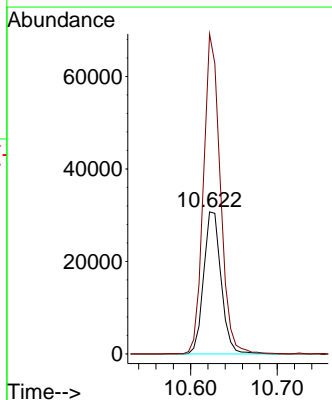
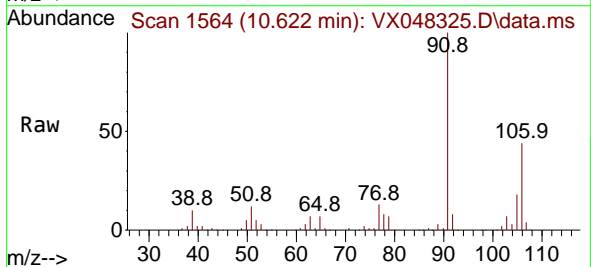
Instrument :  
 MSVOA\_X  
 ClientSampleId :

Tgt Ion:106 Resp: 53035  
 Ion Ratio Lower Upper  
 106 100  
 91 209.3 167.9 251.9

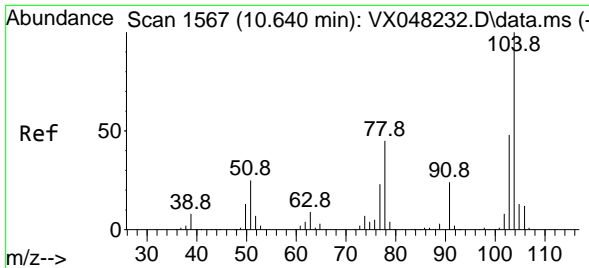


#69  
 o-Xylene  
 Concen: 10.915 ug/l  
 RT: 10.622 min Scan# 1564  
 Delta R.T. -0.000 min  
 Lab File: VX048325.D  
 Acq: 23 Oct 2025 15:06

Tgt Ion:106 Resp: 43061  
 Ion Ratio Lower Upper  
 106 100  
 91 217.8 111.3 333.9

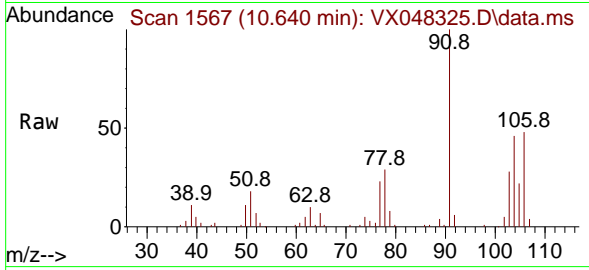




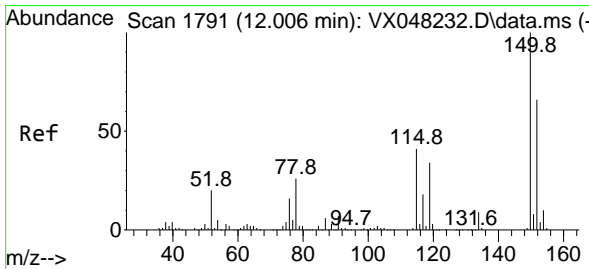
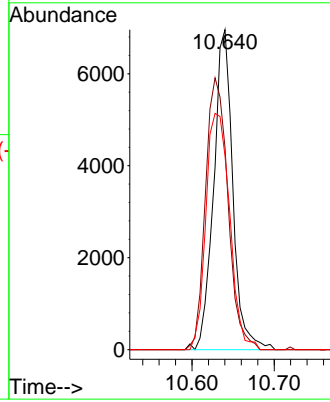
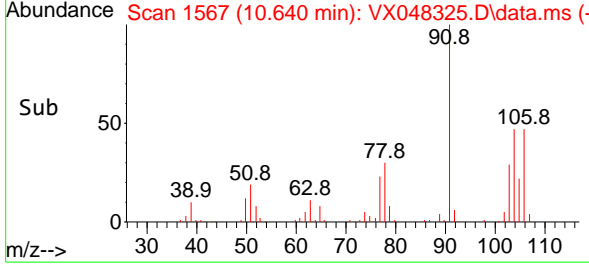


#70  
 Styrene  
 Concen: 1.678 ug/l  
 RT: 10.640 min Scan# 111  
 Delta R.T. -0.000 min  
 Lab File: VX048325.D  
 Acq: 23 Oct 2025 15:06

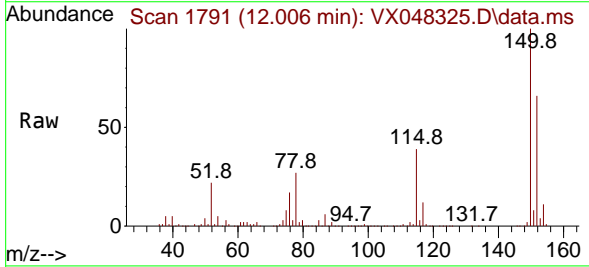
Instrument : MSVOA\_X  
 ClientSampleId :



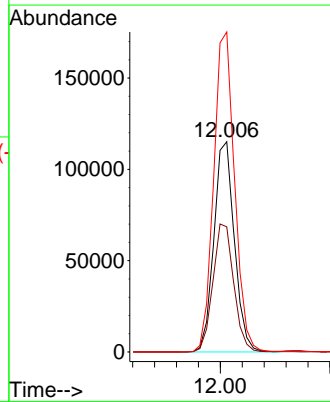
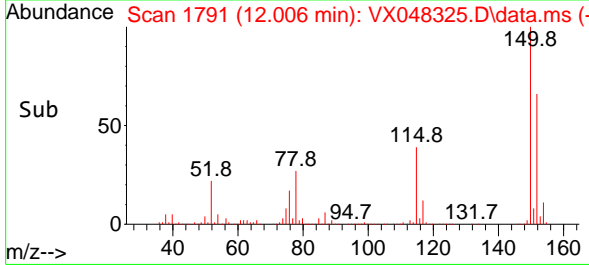
Tgt Ion:104 Resp: 11274  
 Ion Ratio Lower Upper  
 104 100  
 78 99.4 42.2 63.4#  
 103 91.6 43.0 64.4#

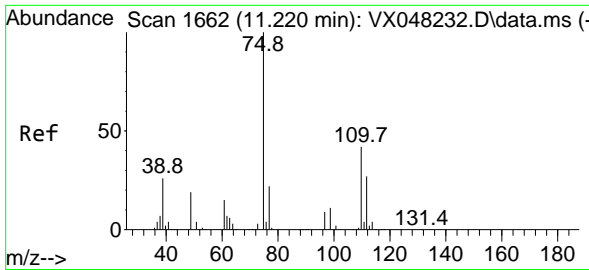


#72  
 1,4-Dichlorobenzene-d4  
 Concen: 50.000 ug/l  
 RT: 12.006 min Scan# 1791  
 Delta R.T. -0.000 min  
 Lab File: VX048325.D  
 Acq: 23 Oct 2025 15:06



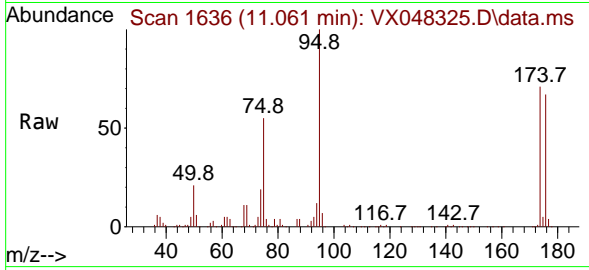
Tgt Ion:152 Resp: 149554  
 Ion Ratio Lower Upper  
 152 100  
 115 61.9 43.1 129.4  
 150 155.4 0.0 353.0



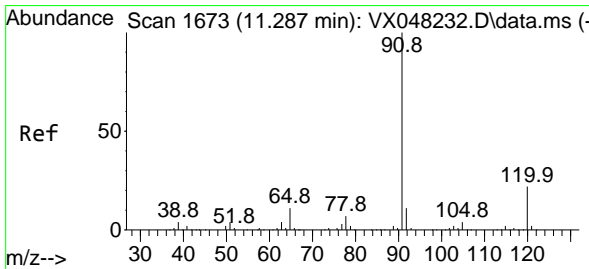
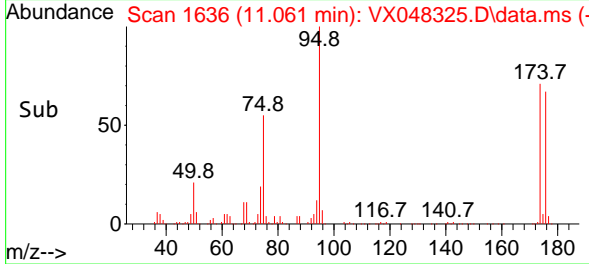
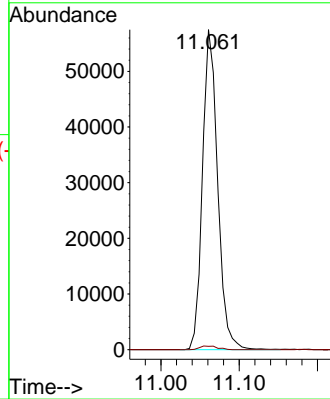


#76  
 1,2,3-Trichloropropane  
 Concen: 31.860 ug/l  
 RT: 11.061 min Scan# 1636  
 Delta R.T. -0.159 min  
 Lab File: VX048325.D  
 Acq: 23 Oct 2025 15:06

Instrument : MSVOA\_X  
 ClientSampleId :

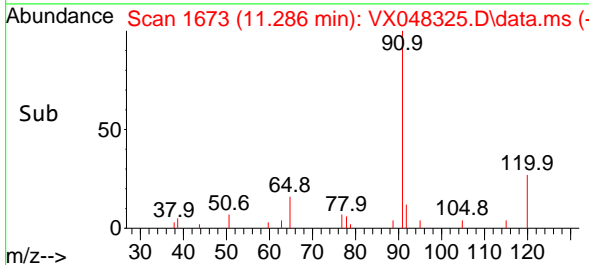
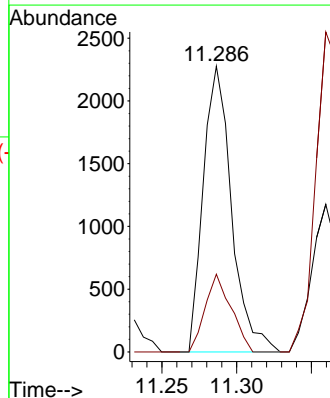
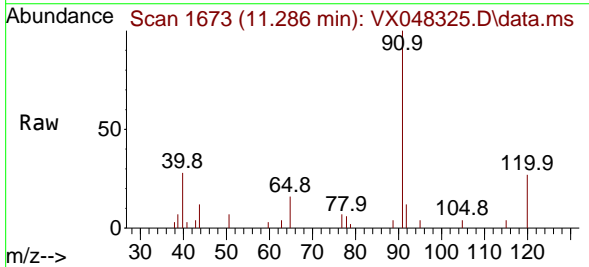


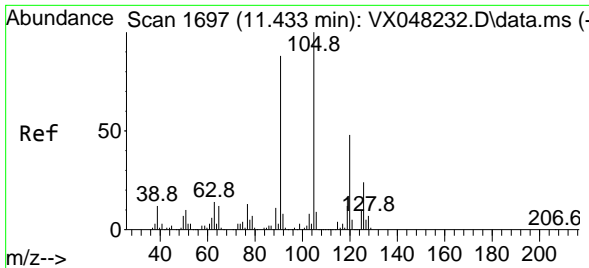
Tgt Ion: 75 Resp: 77268  
 Ion Ratio Lower Upper  
 75 100  
 77 1.4 22.4 67.2#



#78  
 n-propylbenzene  
 Concen: 0.237 ug/l  
 RT: 11.286 min Scan# 1673  
 Delta R.T. -0.000 min  
 Lab File: VX048325.D  
 Acq: 23 Oct 2025 15:06

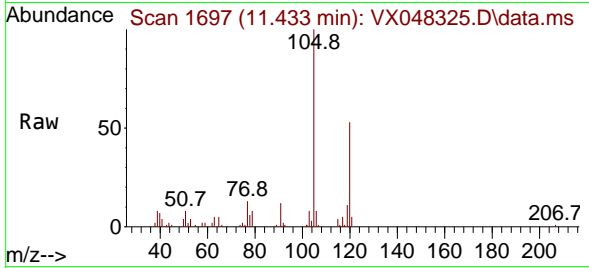
Tgt Ion: 91 Resp: 2998  
 Ion Ratio Lower Upper  
 91 100  
 120 24.9 11.1 33.1



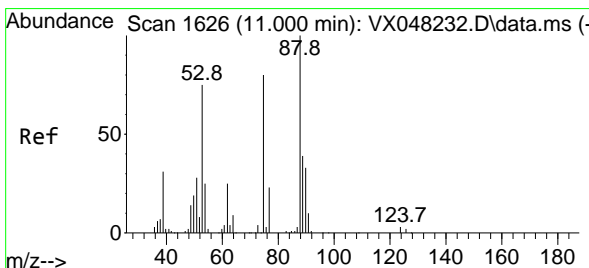
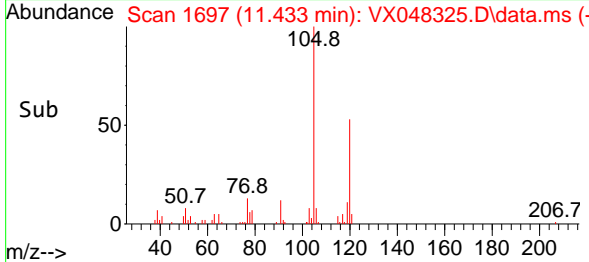
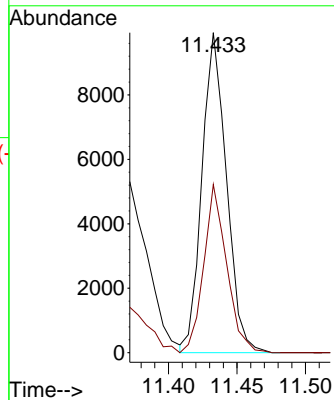


#80  
 1,3,5-Trimethylbenzene  
 Concen: 1.365 ug/l  
 RT: 11.433 min Scan# 1  
 Delta R.T. -0.000 min  
 Lab File: VX048325.D  
 Acq: 23 Oct 2025 15:06

Instrument :  
 MSVOA\_X  
 ClientSampleId :

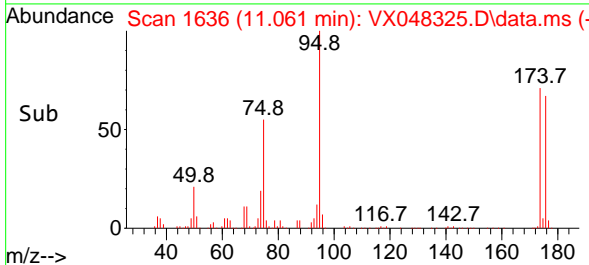
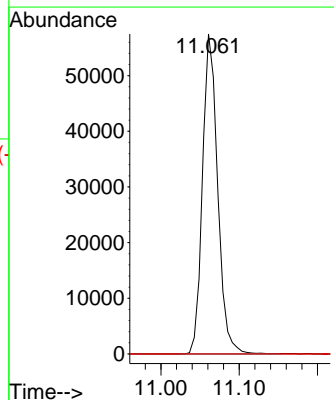
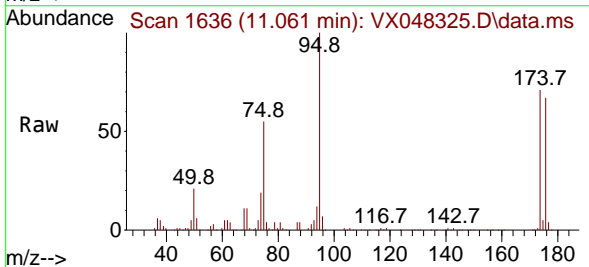


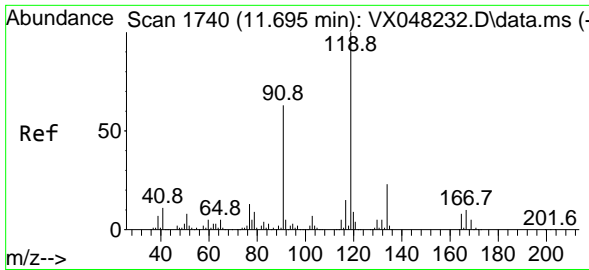
Tgt Ion:105 Resp: 12335  
 Ion Ratio Lower Upper  
 105 100  
 120 49.3 24.0 72.0



#81  
 trans-1,4-Dichloro-2-butene  
 Concen: 77.512 ug/l  
 RT: 11.061 min Scan# 1636  
 Delta R.T. 0.061 min  
 Lab File: VX048325.D  
 Acq: 23 Oct 2025 15:06

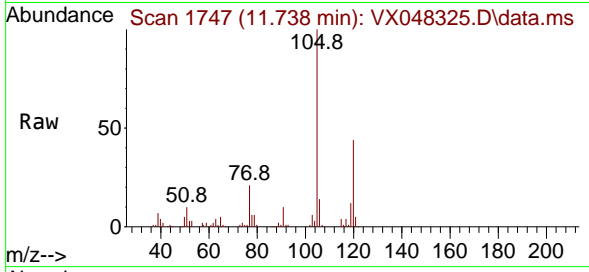
Tgt Ion: 75 Resp: 77268  
 Ion Ratio Lower Upper  
 75 100  
 53 0.0 79.5 119.3#  
 89 0.0 36.8 55.2#



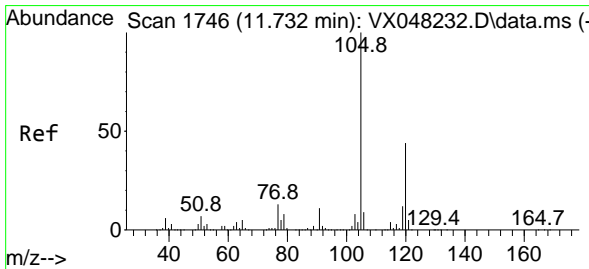
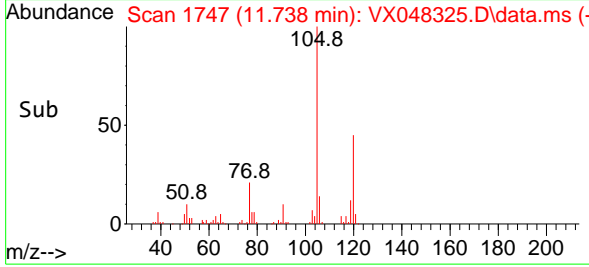
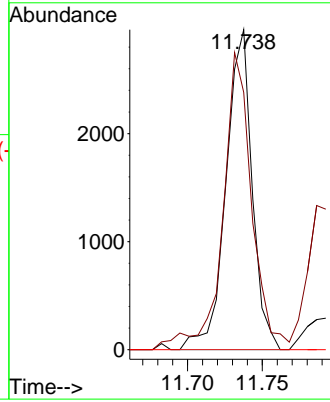


#83  
 tert-Butylbenzene  
 Concen: 0.388 ug/l  
 RT: 11.738 min Scan# 1747  
 Delta R.T. 0.042 min  
 Lab File: VX048325.D  
 Acq: 23 Oct 2025 15:06

Instrument : MSVOA\_X  
 ClientSampleId :

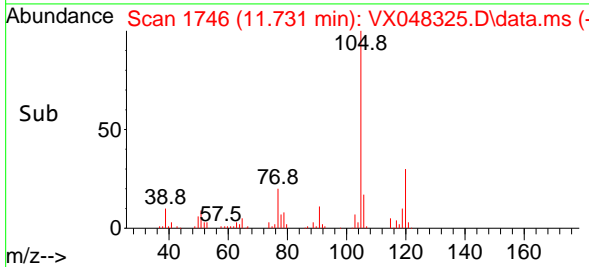
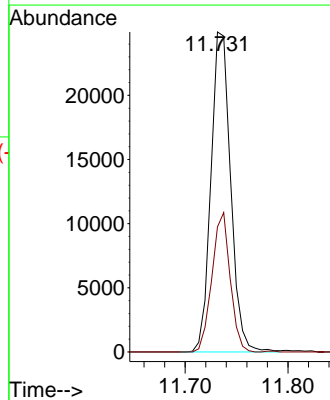
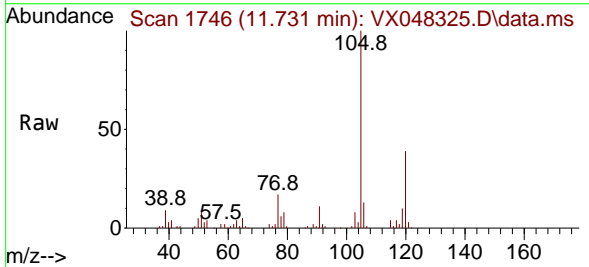


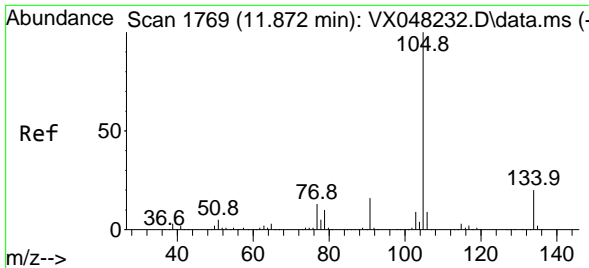
Tgt Ion:119 Resp: 3607  
 Ion Ratio Lower Upper  
 119 100  
 91 103.2 30.3 91.0#  
 134 0.0 11.4 34.2#



#84  
 1,2,4-Trimethylbenzene  
 Concen: 3.683 ug/l  
 RT: 11.731 min Scan# 1746  
 Delta R.T. -0.000 min  
 Lab File: VX048325.D  
 Acq: 23 Oct 2025 15:06

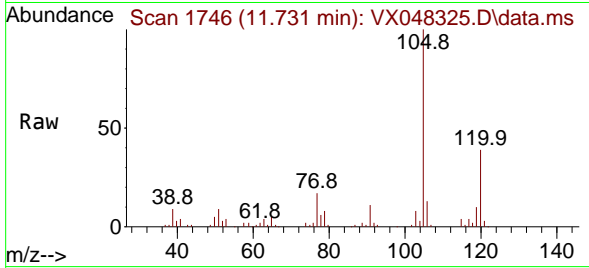
Tgt Ion:105 Resp: 33229  
 Ion Ratio Lower Upper  
 105 100  
 120 40.1 22.1 66.5



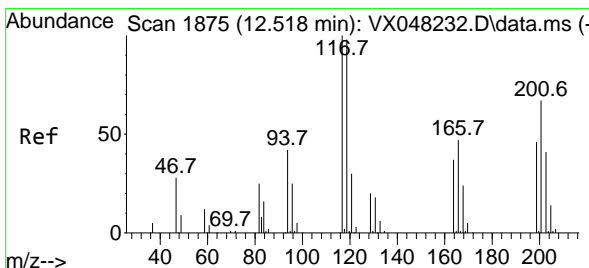
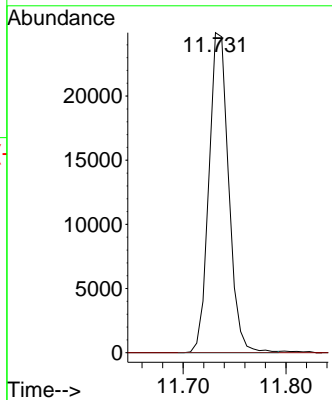
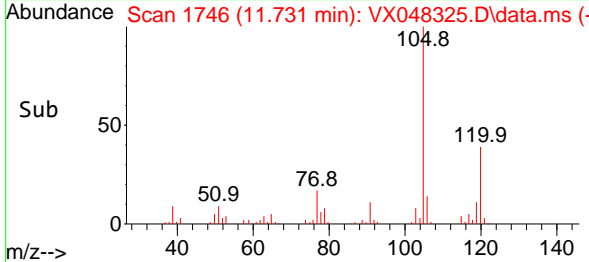


#85  
 sec-Butylbenzene  
 Concen: 2.974 ug/l  
 RT: 11.731 min Scan# 11  
 Delta R.T. -0.140 min  
 Lab File: VX048325.D  
 Acq: 23 Oct 2025 15:06

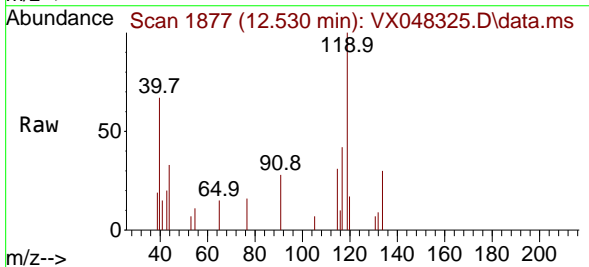
Instrument :  
 MSVOA\_X  
 ClientSampleId :



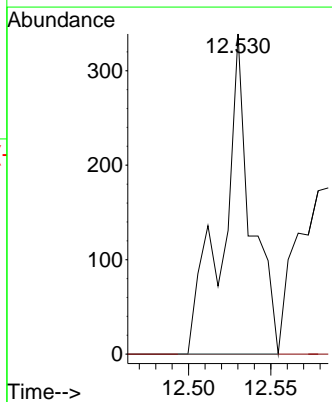
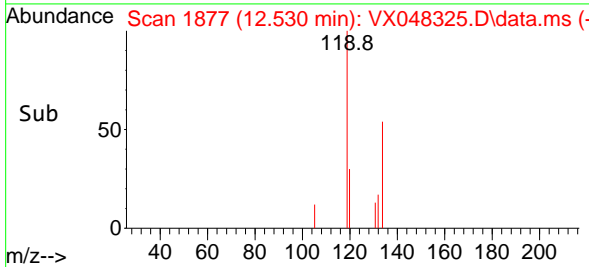
Tgt Ion:105 Resp: 33229  
 Ion Ratio Lower Upper  
 105 100  
 134 0.0 10.1 30.1#

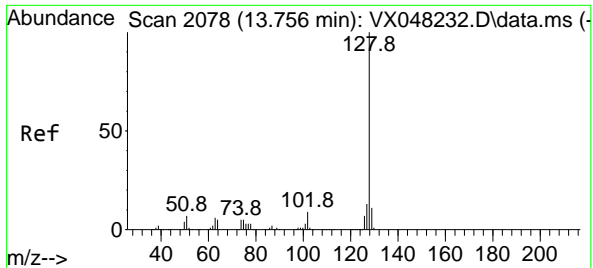


#90  
 Hexachloroethane  
 Concen: 0.213 ug/l  
 RT: 12.530 min Scan# 1877  
 Delta R.T. 0.012 min  
 Lab File: VX048325.D  
 Acq: 23 Oct 2025 15:06



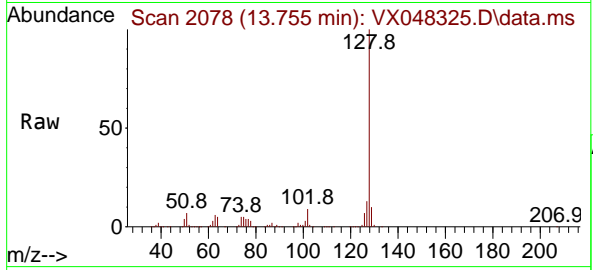
Tgt Ion:117 Resp: 407  
 Ion Ratio Lower Upper  
 117 100  
 201 0.0 34.1 102.2#





#95  
 Naphthalene  
 Concen: 28.315 ug/l  
 RT: 13.755 min Scan# 2078  
 Delta R.T. -0.000 min  
 Lab File: VX048325.D  
 Acq: 23 Oct 2025 15:06

Instrument : MSVOA\_X  
 ClientSampleId :



Tgt Ion:128 Resp: 245937

Ion	Ratio	Lower	Upper
128	100		
127	12.5	10.2	15.4
129	10.7	8.6	12.8

