

Data Path : Z:\voasrv\HPCHEM1\MSVOA_X\Data\VX102325\
 Data File : VX048325.D
 Acq On : 23 Oct 2025 15:06
 Operator : JC/MD
 Sample : Q3414-08 10X
 Misc : 5.0mL/MSVOA_X/WATER
 ALS Vial : 17 Sample Multiplier: 1

Instrument :
 MSVOA_X
 ClientSampleId :
 SB-8

Quant Time: Oct 24 05:46:31 2025
 Quant Method : Z:\voasrv\HPCHEM1\MSVOA_X\Method\82X102025W.M
 Quant Title : SW846 8260
 QLast Update : Mon Oct 20 14:13:59 2025
 Response via : Initial Calibration

Compound	R.T.	QIon	Response	Conc	Units	Dev(Min)

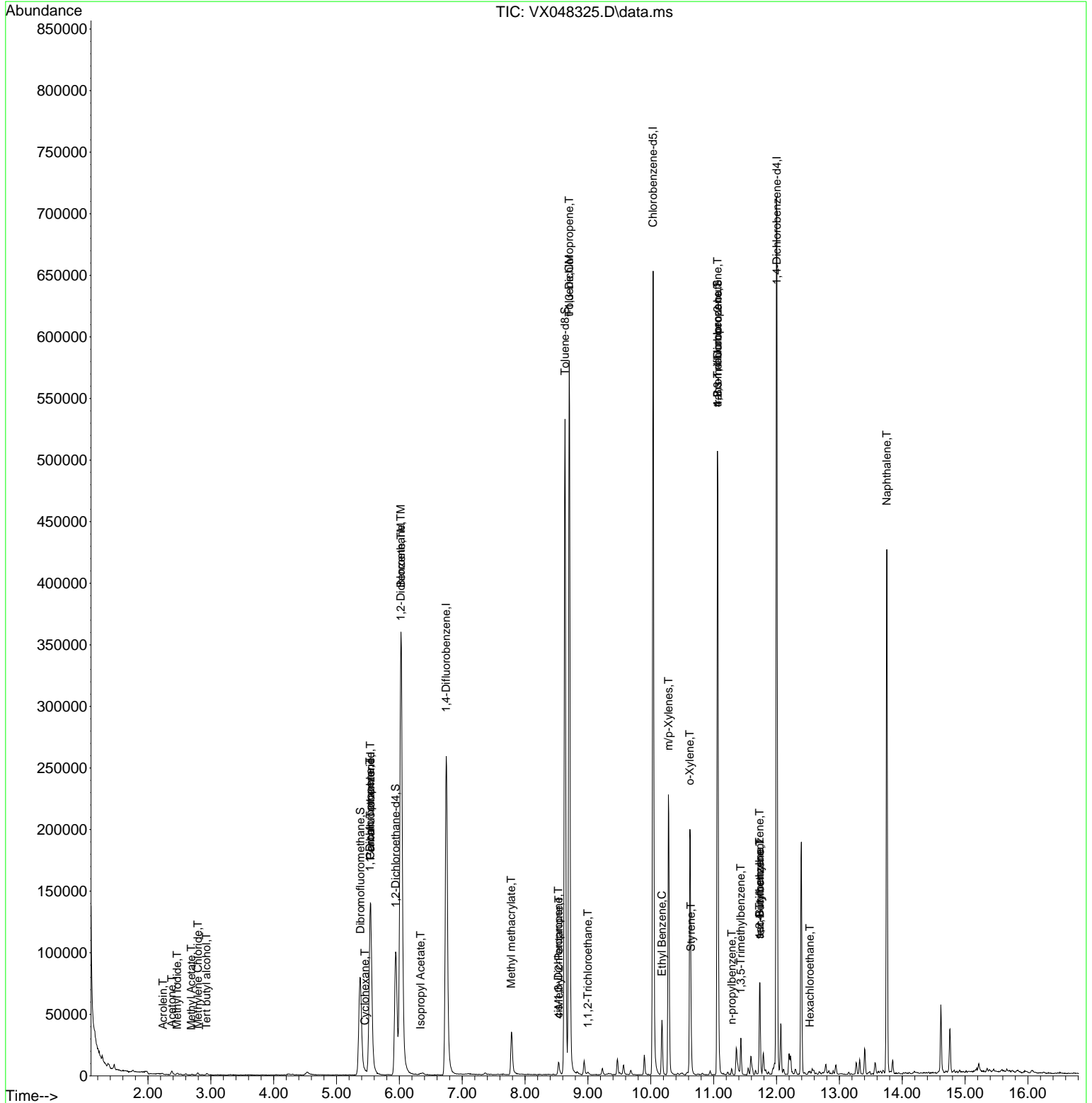
Internal Standards						
1) Pentafluorobenzene	5.544	168	139853	50.000	ug/l	0.00
34) 1,4-Difluorobenzene	6.745	114	281333	50.000	ug/l	0.00
63) Chlorobenzene-d5	10.037	117	287161	50.000	ug/l	0.00
72) 1,4-Dichlorobenzene-d4	12.006	152	149554	50.000	ug/l	0.00
System Monitoring Compounds						
33) 1,2-Dichloroethane-d4	5.940	65	111203	56.712	ug/l	0.00
Spiked Amount	50.000	Range 78 - 117	Recovery	=	113.420%	
35) Dibromofluoromethane	5.379	113	77453	40.327	ug/l	0.00
Spiked Amount	50.000	Range 75 - 124	Recovery	=	80.660%	
50) Toluene-d8	8.634	98	321532	47.761	ug/l	0.00
Spiked Amount	50.000	Range 92 - 112	Recovery	=	95.520%	
62) 4-Bromofluorobenzene	11.061	95	143205	55.916	ug/l	0.00
Spiked Amount	50.000	Range 83 - 123	Recovery	=	111.840%	
Target Compounds						
						Qvalue
10) Methyl Iodide	2.465	142	1512	0.797	ug/l #	82
11) Tert butyl alcohol	2.928	59	81	0.416	ug/l #	72
13) Acrolein	2.239	56	62	0.312	ug/l #	1
16) Acetone	2.379	43	4643	6.902	ug/l #	89
18) Methyl Acetate	2.690	43	766	0.545	ug/l #	54
20) Methylene Chloride	2.794	84	690	0.421	ug/l #	65
31) Cyclohexane	5.452	56	723	0.297	ug/l	96
36) 1,1-Dichloropropene	5.531	75	12119	4.439	ug/l #	50
38) Carbon Tetrachloride	5.537	117	14869	4.415	ug/l #	15
40) Benzene	6.025	78	461201	58.191	ug/l	98
42) 1,2-Dichloroethane	6.019	62	4468	1.528	ug/l #	76
43) Isopropyl Acetate	6.336	43	1339	0.360	ug/l #	73
48) Methyl methacrylate	7.781	41	4299	2.292	ug/l #	44
51) 4-Methyl-2-Pentanone	8.537	43	4413	2.059	ug/l #	54
52) Toluene	8.701	92	225923	44.870	ug/l	99
53) t-1,3-Dichloropropene	8.701	75	2896	0.948	ug/l #	1
54) cis-1,3-Dichloropropene	8.531	75	1936	0.587	ug/l #	65
55) 1,1,2-Trichloroethane	9.000	97	1571	0.839	ug/l #	17
67) Ethyl Benzene	10.177	91	26415	2.402	ug/l	97
68) m/p-Xylenes	10.280	106	53035	12.979	ug/l	100
69) o-Xylene	10.622	106	43061	10.915	ug/l	97
70) Styrene	10.640	104	11274	1.678	ug/l #	41
76) 1,2,3-Trichloropropane	11.061	75	77268	31.860	ug/l #	33
78) n-propylbenzene	11.286	91	2998	0.237	ug/l	94
80) 1,3,5-Trimethylbenzene	11.433	105	12335	1.365	ug/l	98
81) trans-1,4-Dichloro-2-b...	11.061	75	77268	77.512	ug/l #	10
83) tert-Butylbenzene	11.738	119	3607	0.388	ug/l #	47
84) 1,2,4-Trimethylbenzene	11.731	105	33229	3.683	ug/l	94
85) sec-Butylbenzene	11.731	105	33229	2.974	ug/l #	56
90) Hexachloroethane	12.530	117	407	0.213	ug/l #	16
95) Naphthalene	13.755	128	245937	28.315	ug/l	100

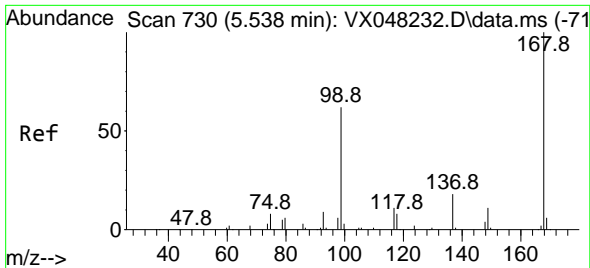
(#) = qualifier out of range (m) = manual integration (+) = signals summed

Data Path : Z:\voasrv\HPCHEM1\MSVOA_X\Data\VX102325\
 Data File : VX048325.D
 Acq On : 23 Oct 2025 15:06
 Operator : JC/MD
 Sample : Q3414-08 10X
 Misc : 5.0mL/MSVOA_X/WATER
 ALS Vial : 17 Sample Multiplier: 1

Instrument :
 MSVOA_X
 ClientSampleId :
 SB-8

Quant Time: Oct 24 05:46:31 2025
 Quant Method : Z:\voasrv\HPCHEM1\MSVOA_X\Method\82X102025W.M
 Quant Title : SW846 8260
 QLast Update : Mon Oct 20 14:13:59 2025
 Response via : Initial Calibration

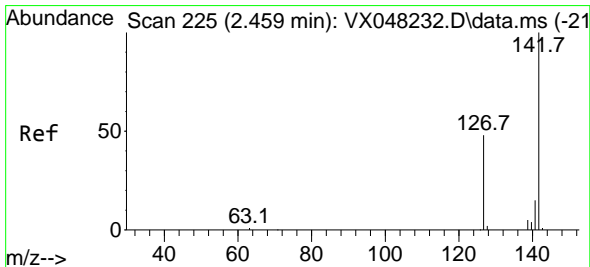
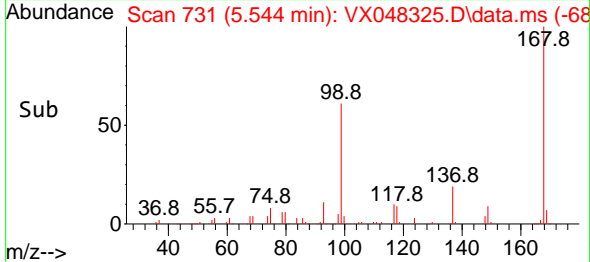
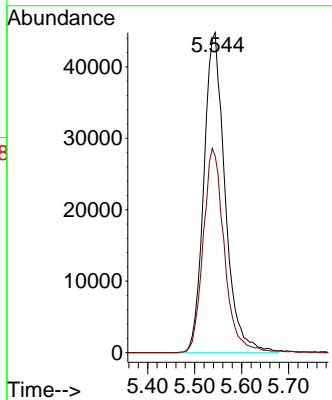
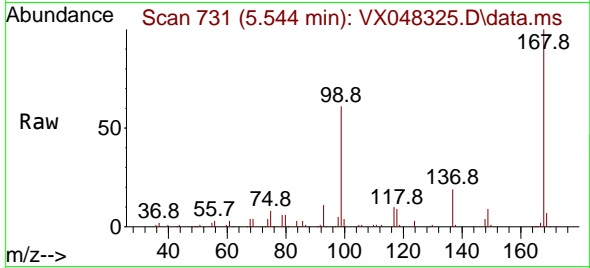




#1
 Pentafluorobenzene
 Concen: 50.000 ug/l
 RT: 5.544 min Scan# 71
 Delta R.T. -0.000 min
 Lab File: VX048325.D
 Acq: 23 Oct 2025 15:06

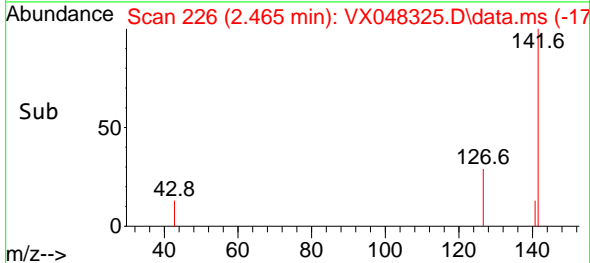
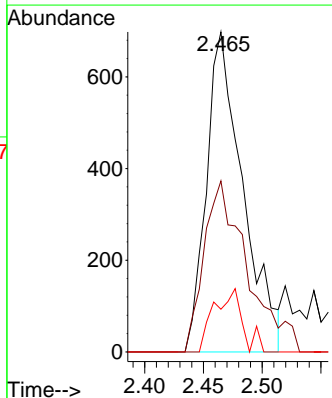
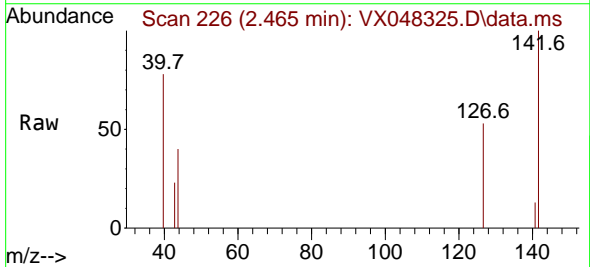
Instrument : MSVOA_X
 ClientSampleId : SB-8

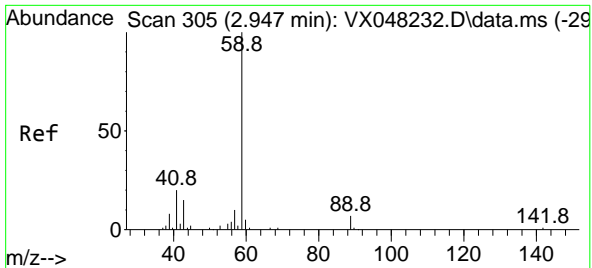
Tgt Ion:168 Resp: 139853
 Ion Ratio Lower Upper
 168 100
 99 61.5 46.4 69.6



#10
 Methyl Iodide
 Concen: 0.797 ug/l
 RT: 2.465 min Scan# 226
 Delta R.T. 0.006 min
 Lab File: VX048325.D
 Acq: 23 Oct 2025 15:06

Tgt Ion:142 Resp: 1512
 Ion Ratio Lower Upper
 142 100
 127 63.1 38.5 57.7#
 141 15.3 11.6 17.4

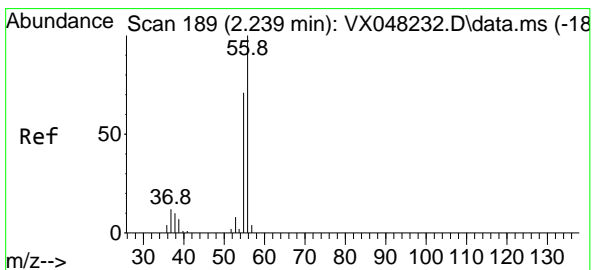
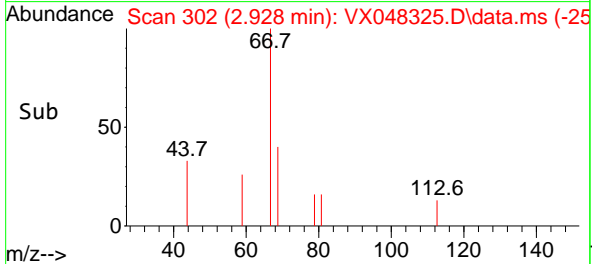
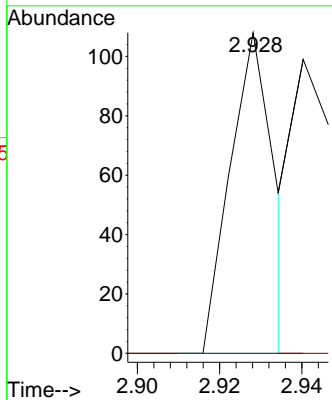
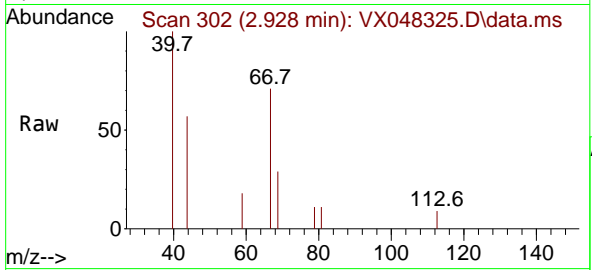




#11
 Tert butyl alcohol
 Concen: 0.416 ug/l
 RT: 2.928 min Scan# 305
 Delta R.T. -0.012 min
 Lab File: VX048325.D
 Acq: 23 Oct 2025 15:06

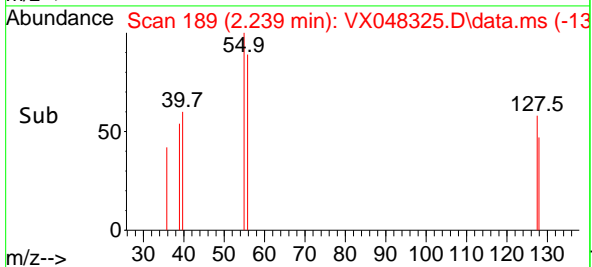
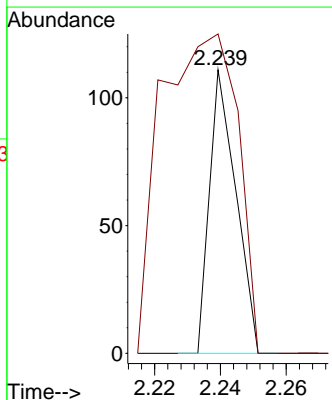
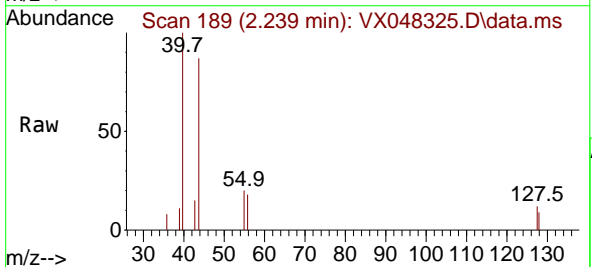
Instrument : MSVOA_X
 ClientSampleId : SB-8

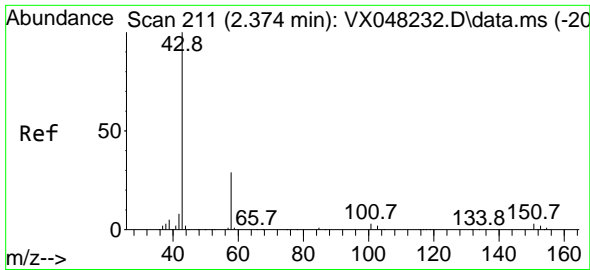
Tgt Ion: 59 Resp: 81
 Ion Ratio Lower Upper
 59 100
 57 0.0 8.2 12.4#



#13
 Acrolein
 Concen: 0.312 ug/l
 RT: 2.239 min Scan# 189
 Delta R.T. 0.006 min
 Lab File: VX048325.D
 Acq: 23 Oct 2025 15:06

Tgt Ion: 56 Resp: 62
 Ion Ratio Lower Upper
 56 100
 55 325.8 56.1 84.1#

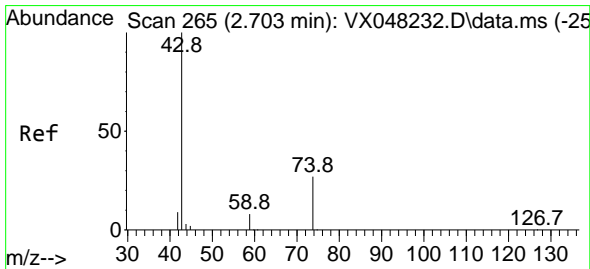
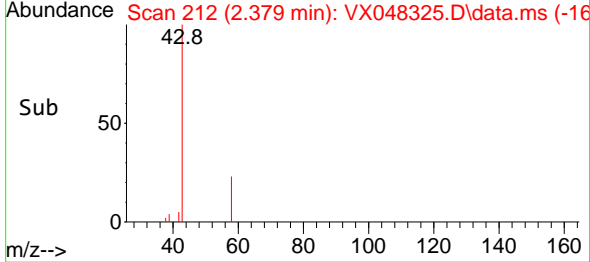
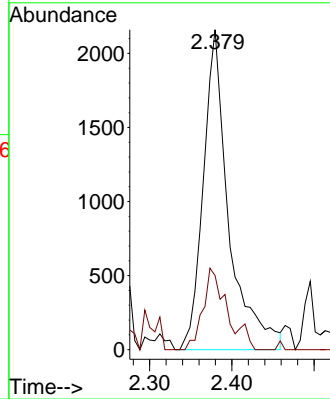
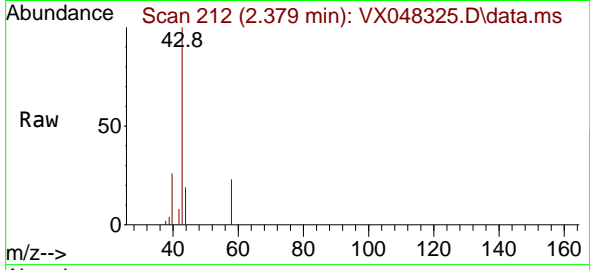




#16
 Acetone
 Concen: 6.902 ug/l
 RT: 2.379 min Scan# 211
 Delta R.T. 0.006 min
 Lab File: VX048325.D
 Acq: 23 Oct 2025 15:06

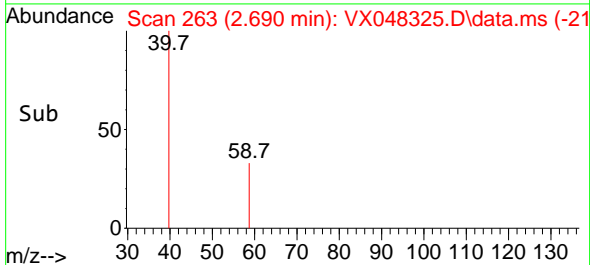
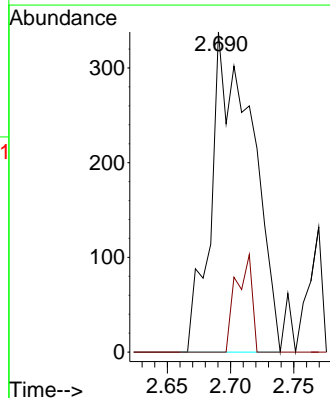
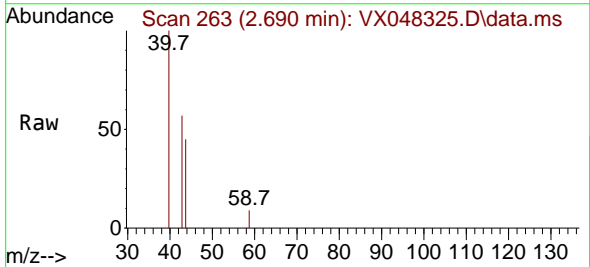
Instrument : MSVOA_X
 ClientSampleId : SB-8

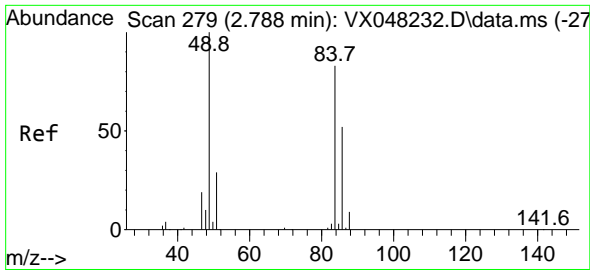
Tgt Ion: 43 Resp: 4643
 Ion Ratio Lower Upper
 43 100
 58 23.1 23.4 35.2#



#18
 Methyl Acetate
 Concen: 0.545 ug/l
 RT: 2.690 min Scan# 263
 Delta R.T. -0.006 min
 Lab File: VX048325.D
 Acq: 23 Oct 2025 15:06

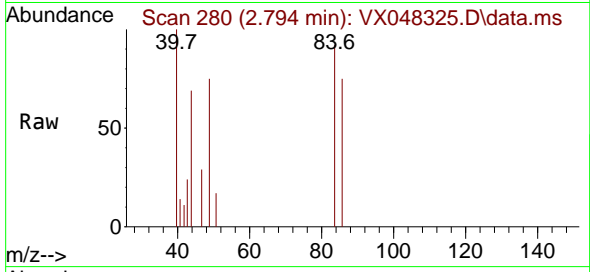
Tgt Ion: 43 Resp: 766
 Ion Ratio Lower Upper
 43 100
 74 0.0 17.5 26.3#



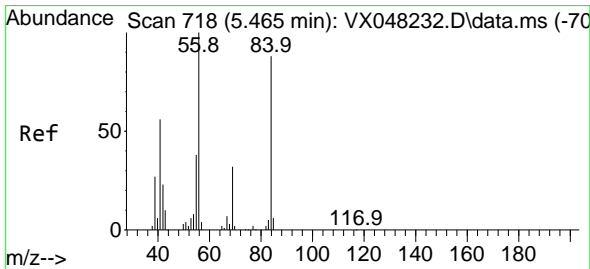
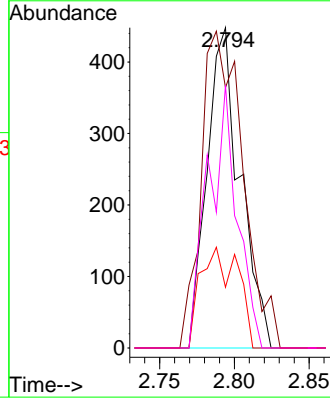
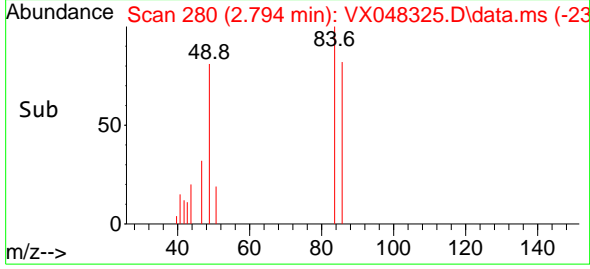


#20
 Methylene Chloride
 Concen: 0.421 ug/l
 RT: 2.794 min Scan# 21
 Delta R.T. 0.006 min
 Lab File: VX048325.D
 Acq: 23 Oct 2025 15:06

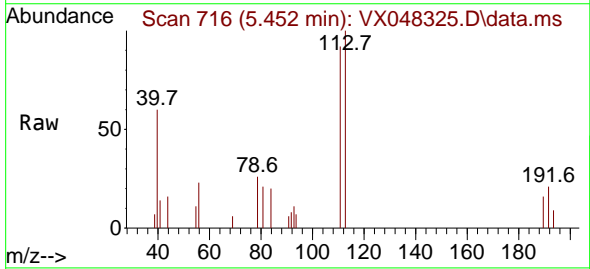
Instrument : MSVOA_X
 ClientSampleId : SB-8



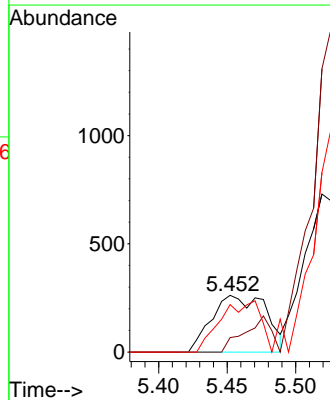
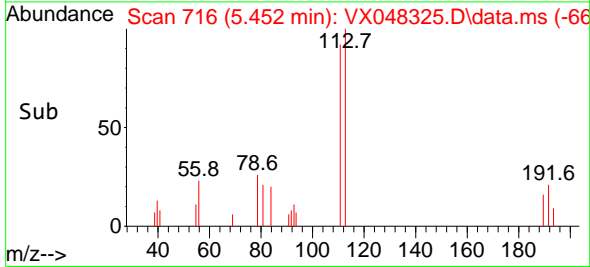
Tgt Ion: 84 Resp: 690
 Ion Ratio Lower Upper
 84 100
 49 81.3 104.1 156.1#
 51 19.0 31.3 46.9#
 86 82.1 51.3 76.9#

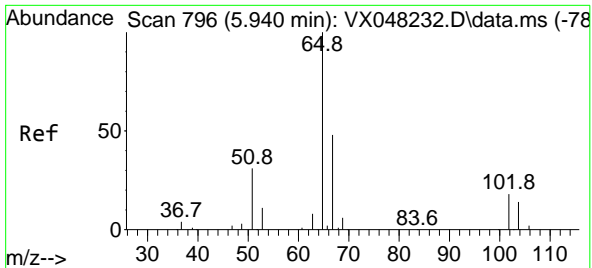


#31
 Cyclohexane
 Concen: 0.297 ug/l
 RT: 5.452 min Scan# 716
 Delta R.T. -0.006 min
 Lab File: VX048325.D
 Acq: 23 Oct 2025 15:06



Tgt Ion: 56 Resp: 723
 Ion Ratio Lower Upper
 56 100
 69 25.6 23.0 34.6
 84 83.6 64.6 97.0

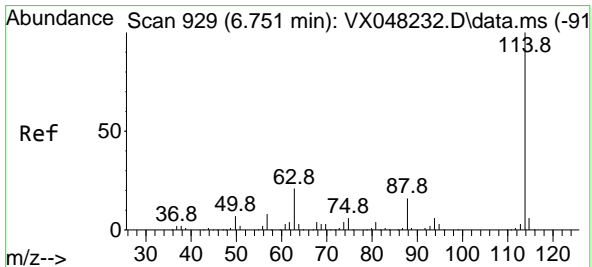
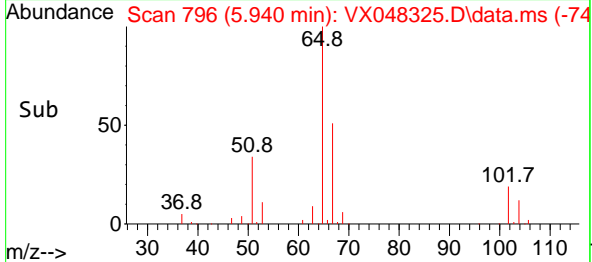
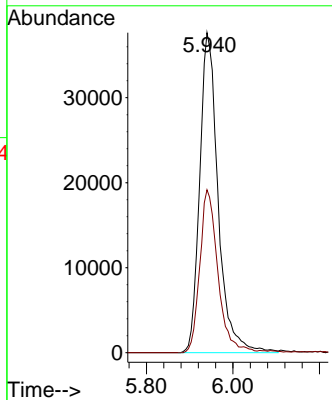
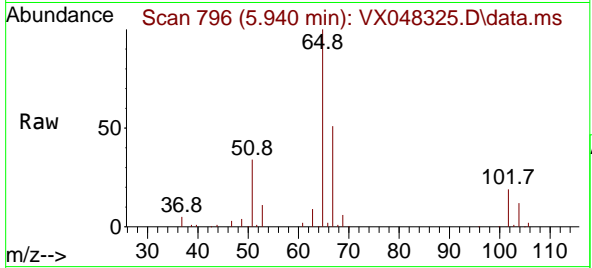




#33
 1,2-Dichloroethane-d4
 Concen: 56.712 ug/l
 RT: 5.940 min Scan# 796
 Delta R.T. -0.000 min
 Lab File: VX048325.D
 Acq: 23 Oct 2025 15:06

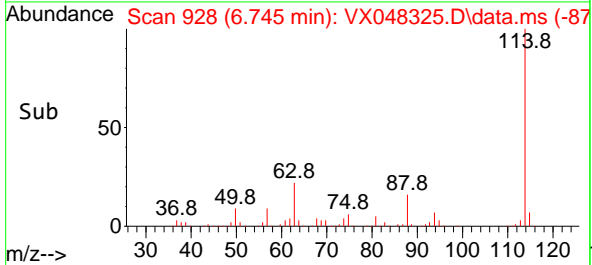
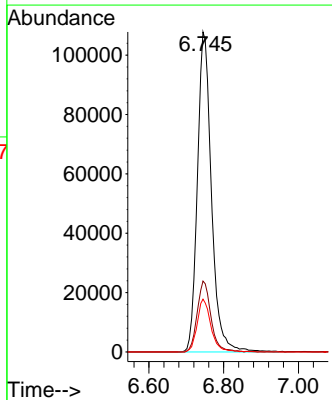
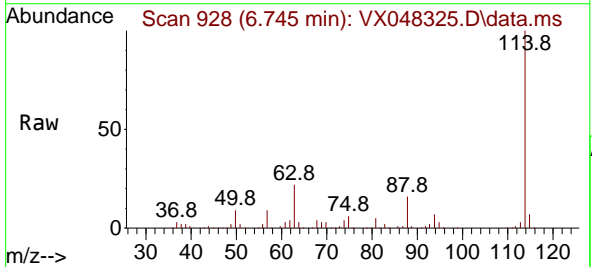
Instrument : MSVOA_X
 ClientSampleId : SB-8

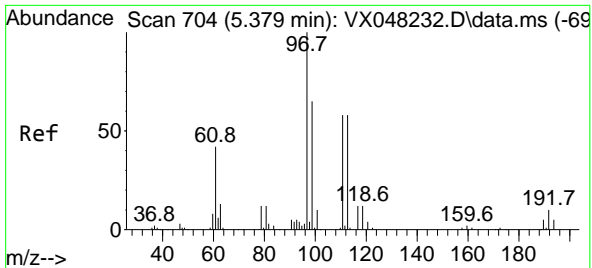
Tgt Ion: 65 Resp: 111203
 Ion Ratio Lower Upper
 65 100
 67 50.0 0.0 105.0



#34
 1,4-Difluorobenzene
 Concen: 50.000 ug/l
 RT: 6.745 min Scan# 928
 Delta R.T. -0.000 min
 Lab File: VX048325.D
 Acq: 23 Oct 2025 15:06

Tgt Ion: 114 Resp: 281333
 Ion Ratio Lower Upper
 114 100
 63 22.1 0.0 43.2
 88 16.5 0.0 33.6

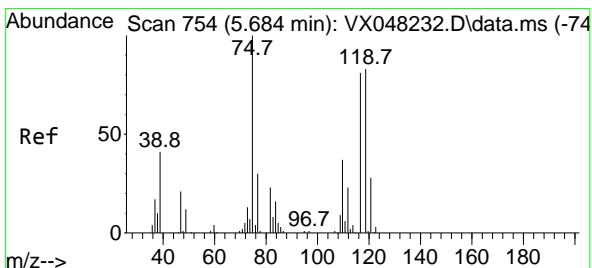
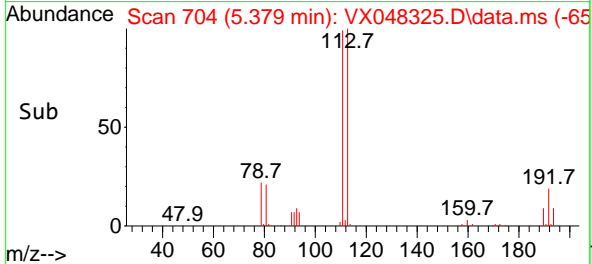
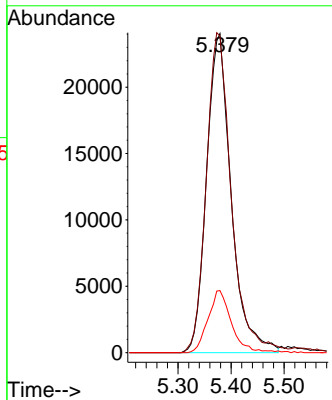
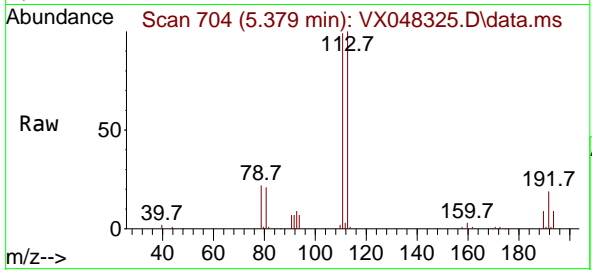




#35
 Dibromofluoromethane
 Concen: 40.327 ug/l
 RT: 5.379 min Scan# 704
 Delta R.T. 0.006 min
 Lab File: VX048325.D
 Acq: 23 Oct 2025 15:06

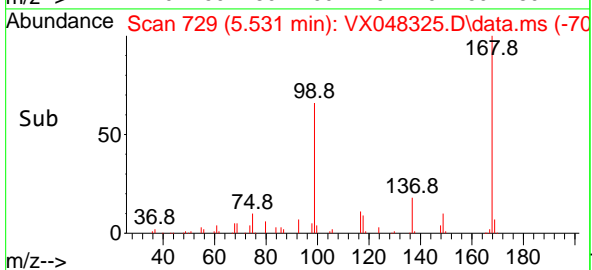
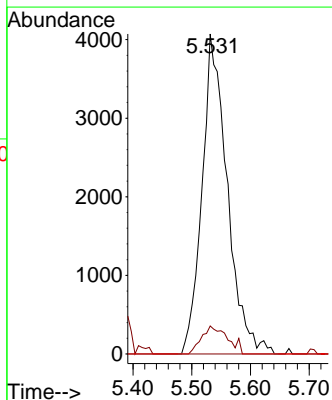
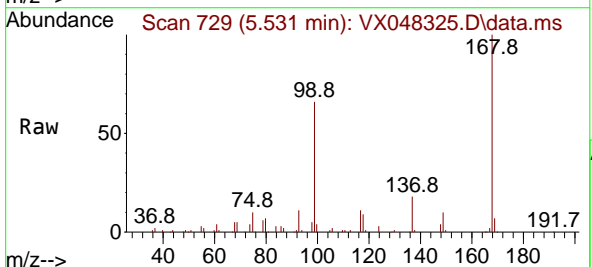
Instrument : MSVOA_X
 ClientSampleId : SB-8

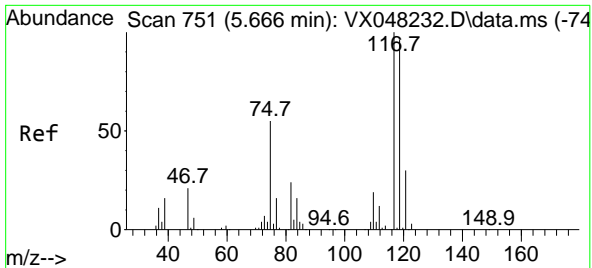
Tgt Ion	Resp	Lower	Upper
113	100		
111	101.9	82.2	123.4
192	18.7	15.1	22.7



#36
 1,1-Dichloropropene
 Concen: 4.439 ug/l
 RT: 5.531 min Scan# 729
 Delta R.T. -0.153 min
 Lab File: VX048325.D
 Acq: 23 Oct 2025 15:06

Tgt Ion	Resp	Lower	Upper
75	100		
110	9.0	17.7	53.1#
77	0.0	24.3	36.5#

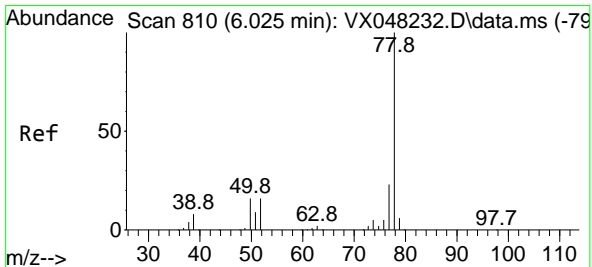
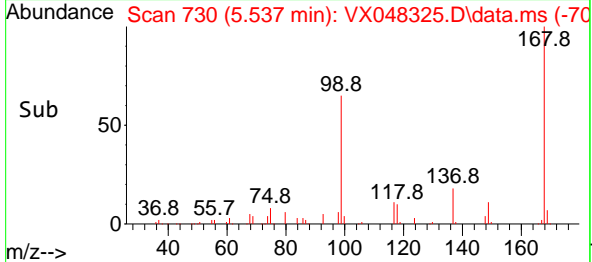
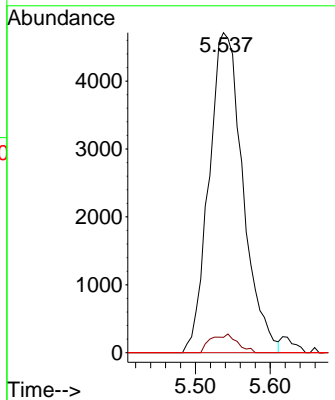
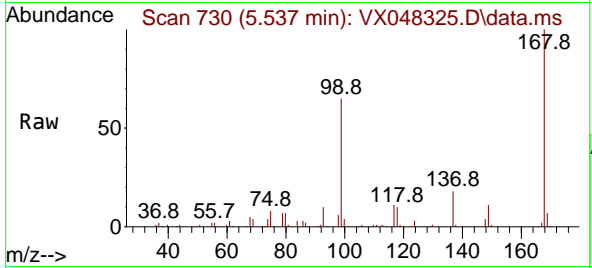




#38
 Carbon Tetrachloride
 Concen: 4.415 ug/l
 RT: 5.537 min Scan# 710
 Delta R.T. -0.128 min
 Lab File: VX048325.D
 Acq: 23 Oct 2025 15:06

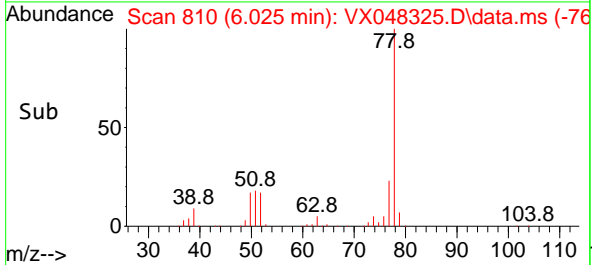
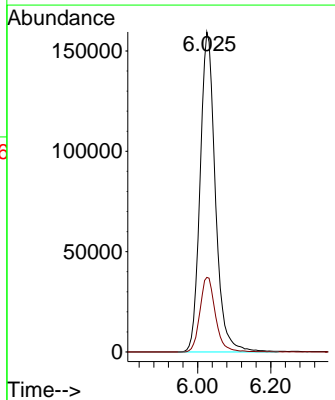
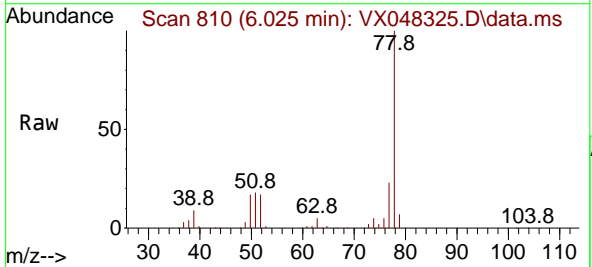
Instrument : MSVOA_X
 ClientSampleId : SB-8

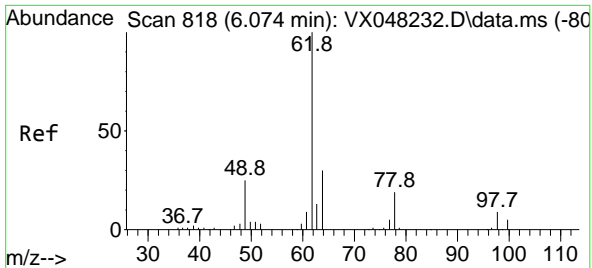
Tgt Ion	Resp	Lower	Upper
117	14869		
119	4.8	77.2	115.8#
121	0.0	24.8	37.2#



#40
 Benzene
 Concen: 58.191 ug/l
 RT: 6.025 min Scan# 810
 Delta R.T. -0.000 min
 Lab File: VX048325.D
 Acq: 23 Oct 2025 15:06

Tgt Ion	Resp	Lower	Upper
78	461201		
77	23.3	19.3	28.9

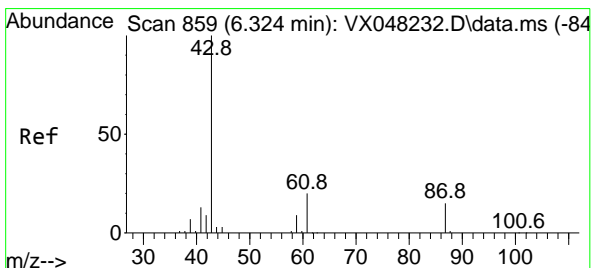
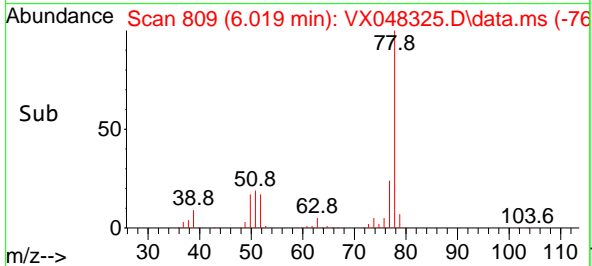
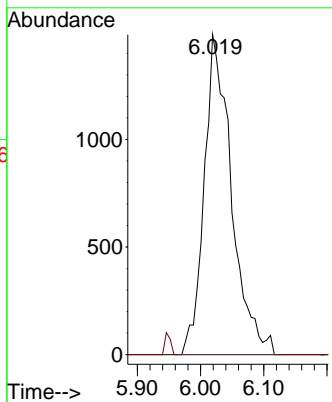
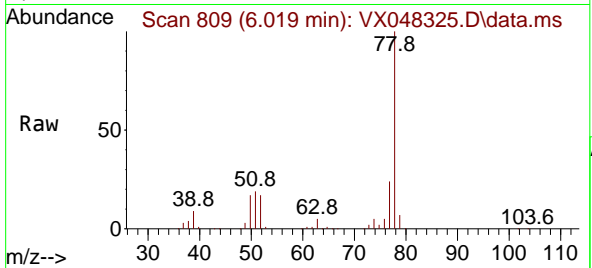




#42
 1,2-Dichloroethane
 Concen: 1.528 ug/l
 RT: 6.019 min Scan# 809
 Delta R.T. -0.049 min
 Lab File: VX048325.D
 Acq: 23 Oct 2025 15:06

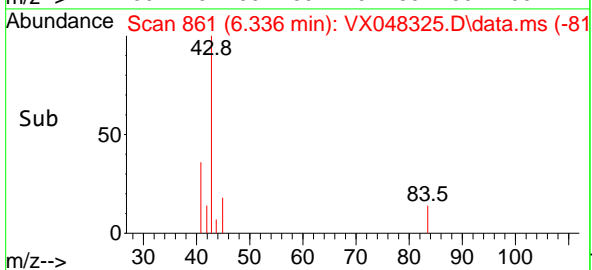
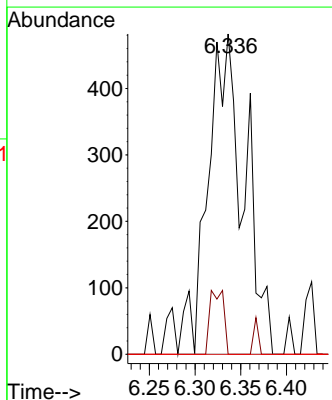
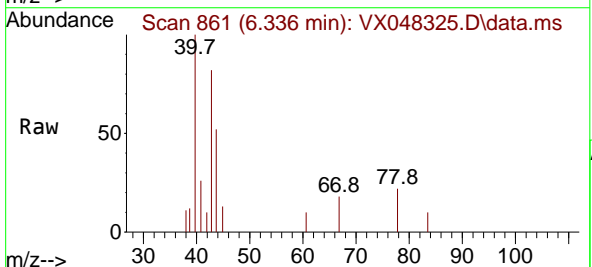
Instrument : MSVOA_X
 ClientSampleId : SB-8

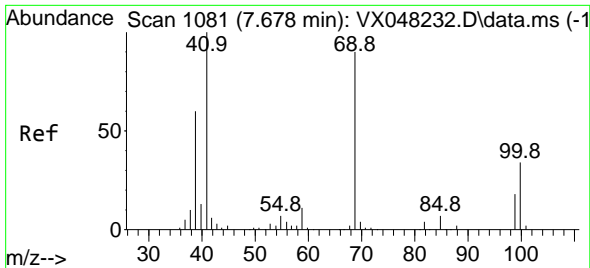
Tgt Ion: 62 Resp: 4468
 Ion Ratio Lower Upper
 62 100
 98 0.0 0.0 17.2



#43
 Isopropyl Acetate
 Concen: 0.360 ug/l
 RT: 6.336 min Scan# 861
 Delta R.T. 0.012 min
 Lab File: VX048325.D
 Acq: 23 Oct 2025 15:06

Tgt Ion: 43 Resp: 1339
 Ion Ratio Lower Upper
 43 100
 61 7.5 14.9 22.3#
 87 0.0 9.4 14.2#

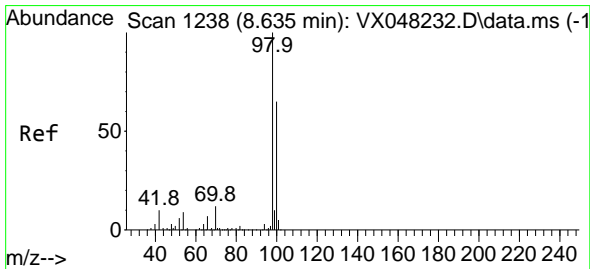
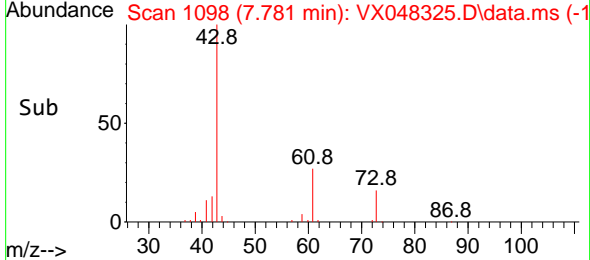
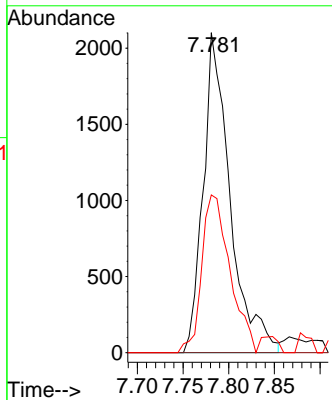
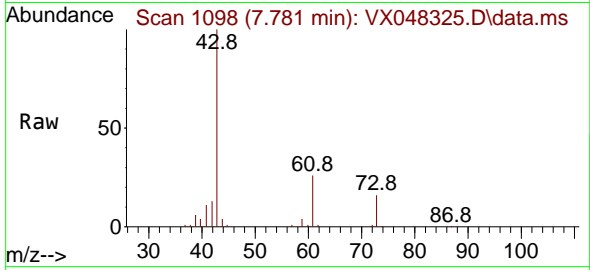




#48
 Methyl methacrylate
 Concen: 2.292 ug/l
 RT: 7.781 min Scan# 1098
 Delta R.T. 0.103 min
 Lab File: VX048325.D
 Acq: 23 Oct 2025 15:06

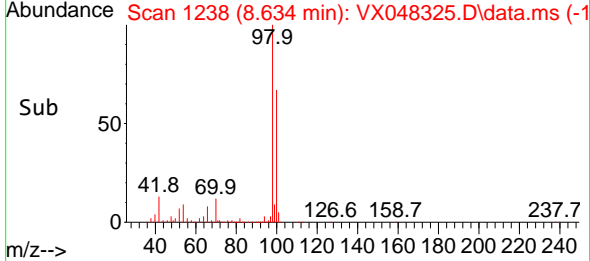
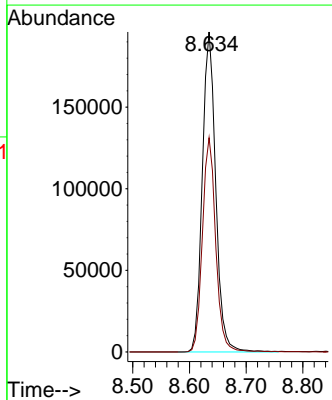
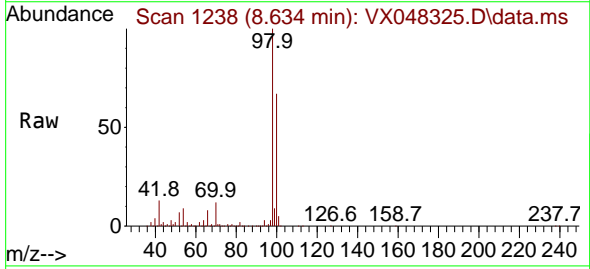
Instrument : MSVOA_X
 ClientSampleId : SB-8

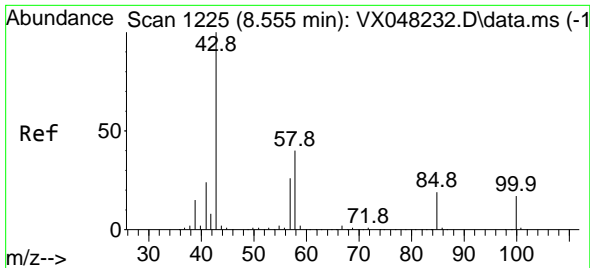
Tgt Ion	Resp	Lower	Upper
41	4299		
41	100		
69	0.0	63.4	95.0#
39	51.7	47.1	70.7



#50
 Toluene-d8
 Concen: 47.761 ug/l
 RT: 8.634 min Scan# 1238
 Delta R.T. -0.000 min
 Lab File: VX048325.D
 Acq: 23 Oct 2025 15:06

Tgt Ion	Resp	Lower	Upper
98	321532		
98	100		
100	66.5	53.0	79.4

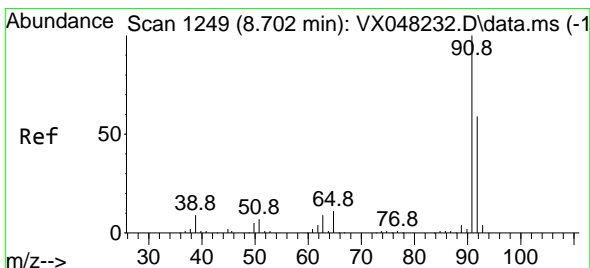
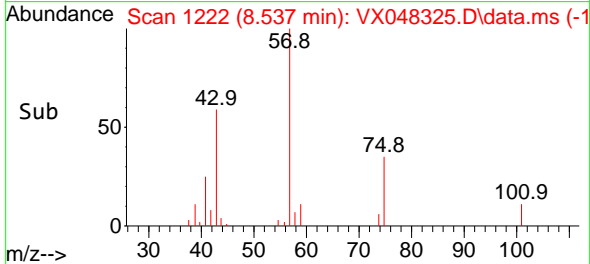
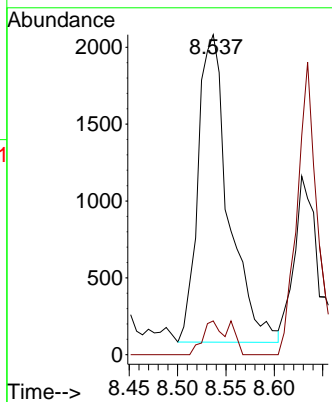
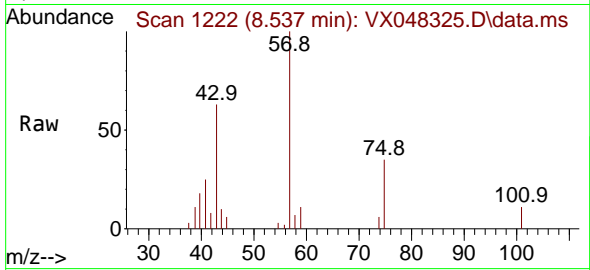




#51
 4-Methyl-2-Pentanone
 Concen: 2.059 ug/l
 RT: 8.537 min Scan# 111
 Delta R.T. -0.018 min
 Lab File: VX048325.D
 Acq: 23 Oct 2025 15:06

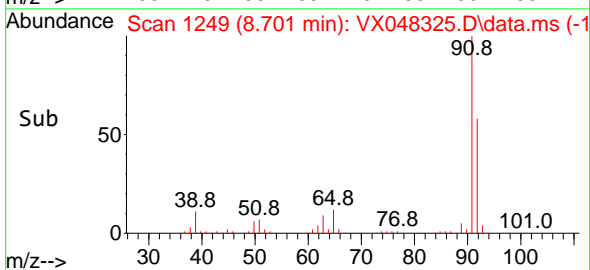
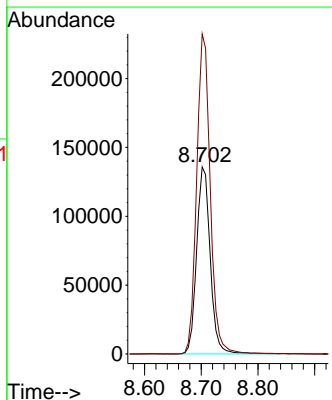
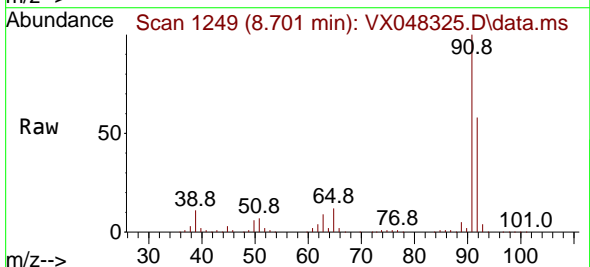
Instrument : MSVOA_X
 ClientSampleId : SB-8

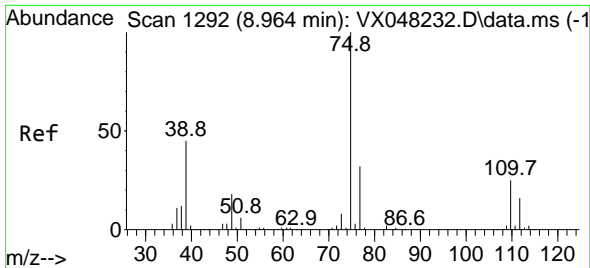
Tgt Ion: 43 Resp: 4413
 Ion Ratio Lower Upper
 43 100
 58 9.7 29.5 44.3#



#52
 Toluene
 Concen: 44.870 ug/l
 RT: 8.701 min Scan# 1249
 Delta R.T. -0.000 min
 Lab File: VX048325.D
 Acq: 23 Oct 2025 15:06

Tgt Ion: 92 Resp: 225923
 Ion Ratio Lower Upper
 92 100
 91 171.2 136.1 204.1

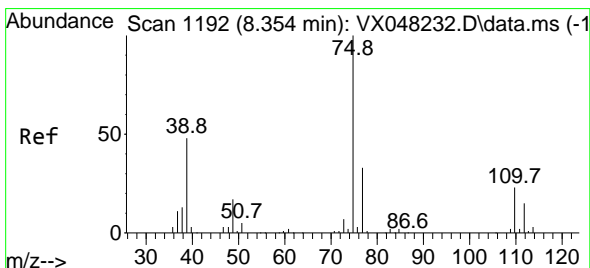
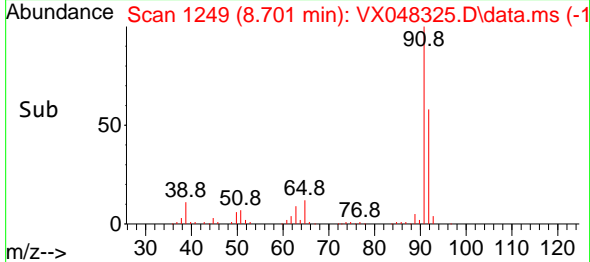
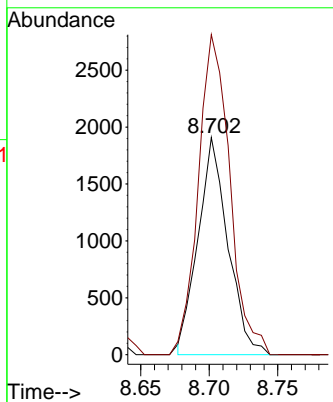
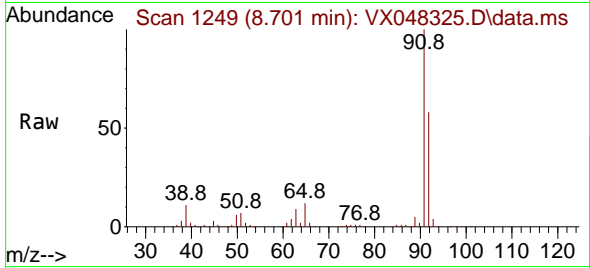




#53
 t-1,3-Dichloropropene
 Concen: 0.948 ug/l
 RT: 8.701 min Scan# 1121
 Delta R.T. -0.262 min
 Lab File: VX048325.D
 Acq: 23 Oct 2025 15:06

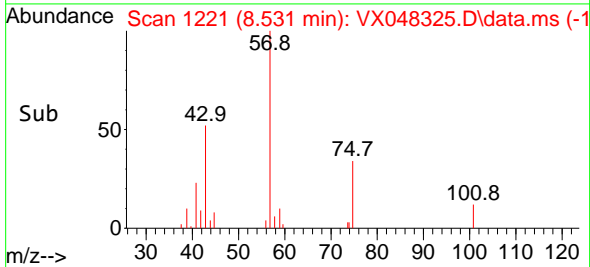
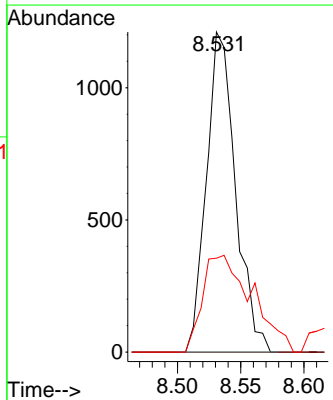
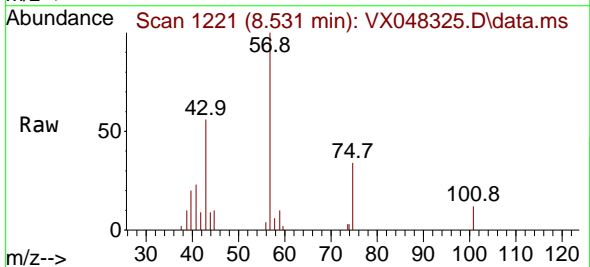
Instrument : MSVOA_X
 ClientSampleId : SB-8

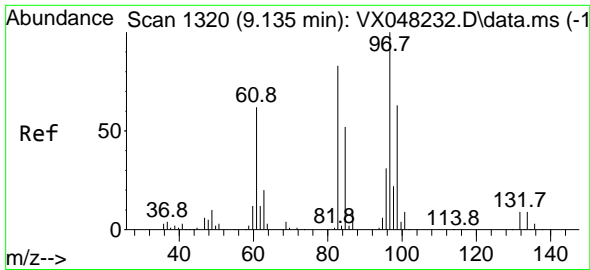
Tgt Ion: 75 Resp: 2896
 Ion Ratio Lower Upper
 75 100
 77 147.4 25.0 37.6#



#54
 cis-1,3-Dichloropropene
 Concen: 0.587 ug/l
 RT: 8.531 min Scan# 1221
 Delta R.T. 0.183 min
 Lab File: VX048325.D
 Acq: 23 Oct 2025 15:06

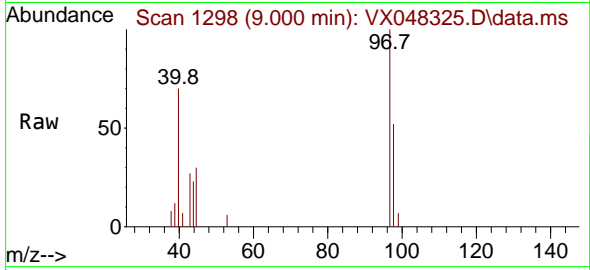
Tgt Ion: 75 Resp: 1936
 Ion Ratio Lower Upper
 75 100
 77 0.0 24.9 37.3#
 39 37.3 42.6 64.0#





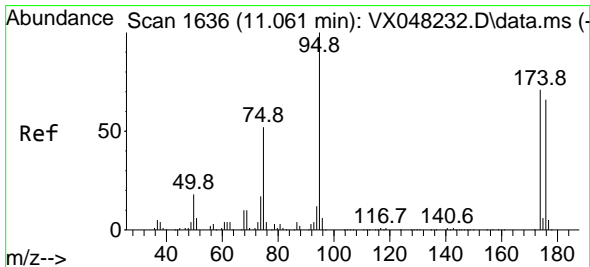
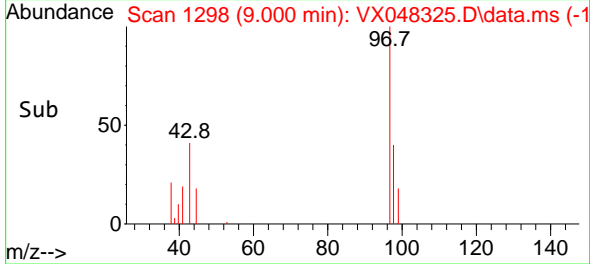
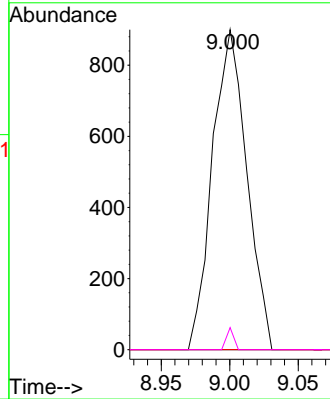
#55
 1,1,2-Trichloroethane
 Concen: 0.839 ug/l
 RT: 9.000 min Scan# 11
 Delta R.T. -0.134 min
 Lab File: VX048325.D
 Acq: 23 Oct 2025 15:06

Instrument : MSVOA_X
 ClientSampleId : SB-8



Tgt Ion: 97 Resp: 1571

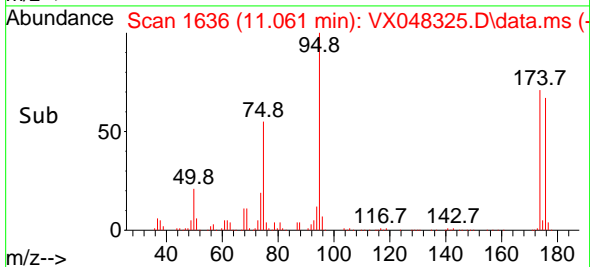
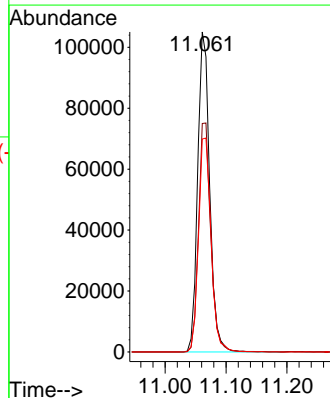
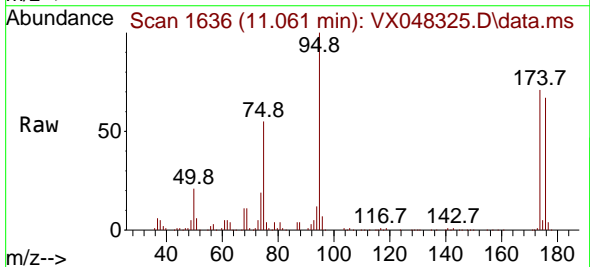
Ion	Ratio	Lower	Upper
97	100		
83	0.0	70.6	105.8#
85	0.0	45.0	67.6#
99	6.9	50.9	76.3#

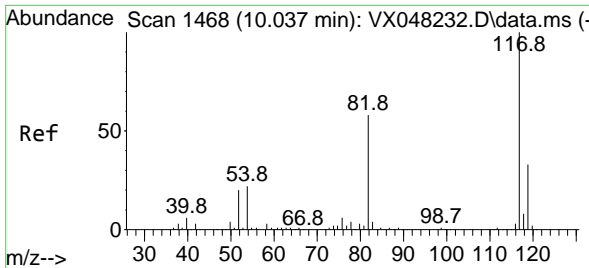


#62
 4-Bromofluorobenzene
 Concen: 55.916 ug/l
 RT: 11.061 min Scan# 1636
 Delta R.T. -0.000 min
 Lab File: VX048325.D
 Acq: 23 Oct 2025 15:06

Tgt Ion: 95 Resp: 143205

Ion	Ratio	Lower	Upper
95	100		
174	73.1	0.0	147.8
176	70.2	0.0	142.8



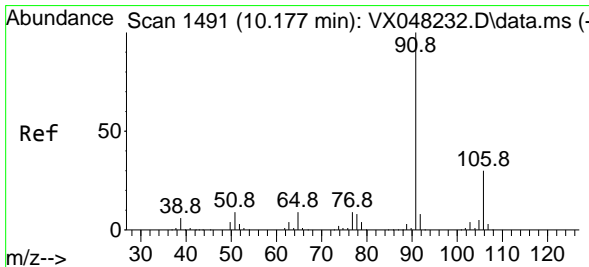
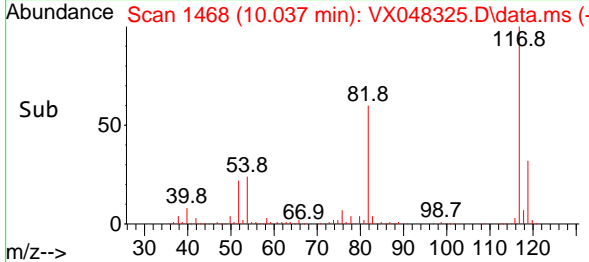
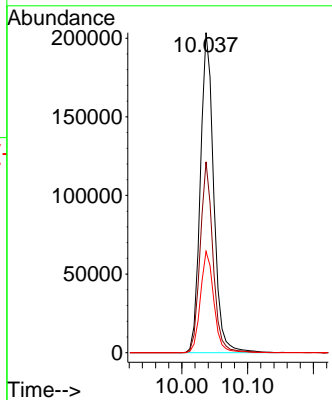
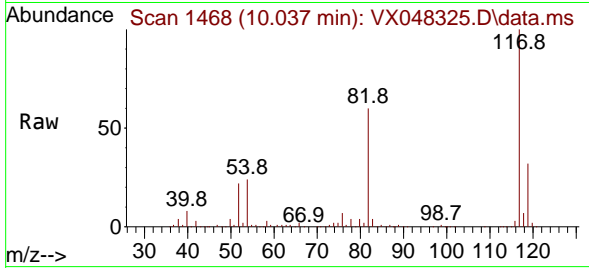


#63
 Chlorobenzene-d5
 Concen: 50.000 ug/l
 RT: 10.037 min Scan# 1468
 Delta R.T. -0.000 min
 Lab File: VX048325.D
 Acq: 23 Oct 2025 15:06

Instrument : MSVOA_X
 ClientSampleId : SB-8

Tgt Ion: 117 Resp: 287161

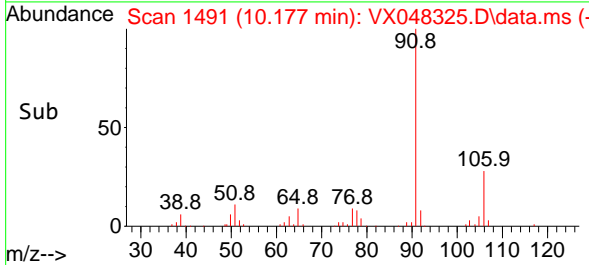
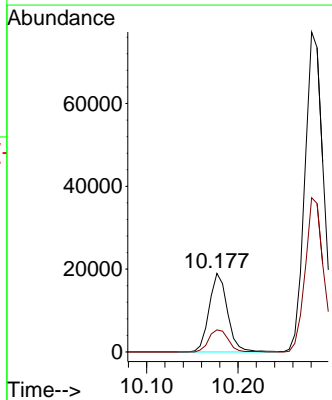
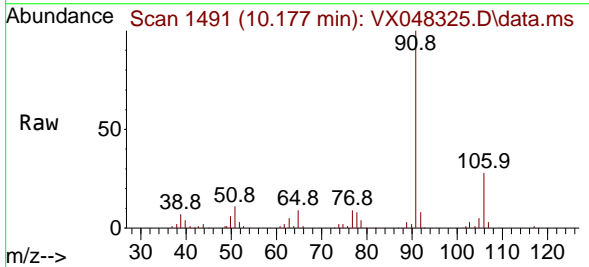
Ion	Ratio	Lower	Upper
117	100		
82	59.7	46.5	69.7
119	31.6	25.9	38.9

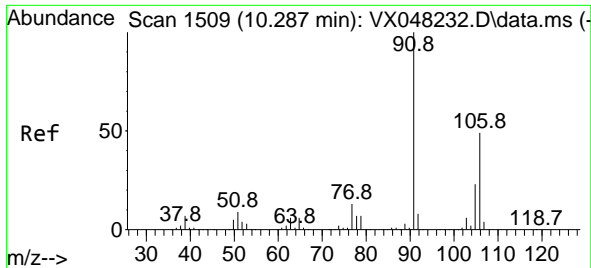


#67
 Ethyl Benzene
 Concen: 2.402 ug/l
 RT: 10.177 min Scan# 1491
 Delta R.T. -0.000 min
 Lab File: VX048325.D
 Acq: 23 Oct 2025 15:06

Tgt Ion: 91 Resp: 26415

Ion	Ratio	Lower	Upper
91	100		
106	28.0	23.8	35.6

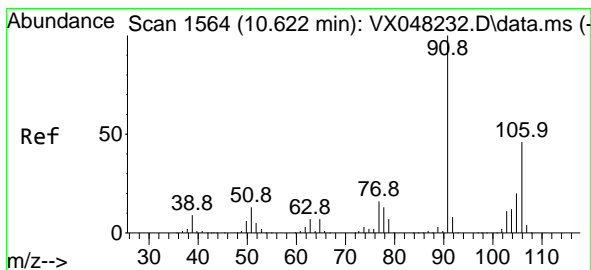
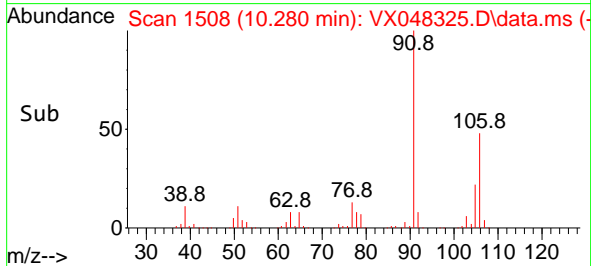
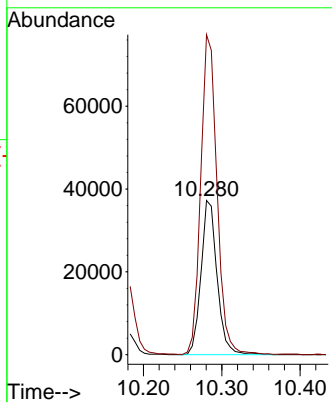
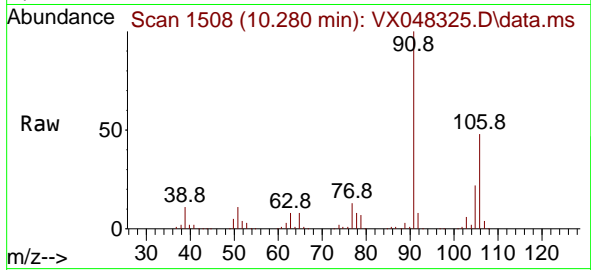




#68
 m/p-Xylenes
 Concen: 12.979 ug/l
 RT: 10.280 min Scan# 11
 Delta R.T. -0.006 min
 Lab File: VX048325.D
 Acq: 23 Oct 2025 15:06

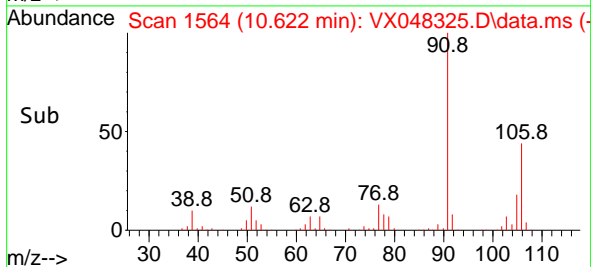
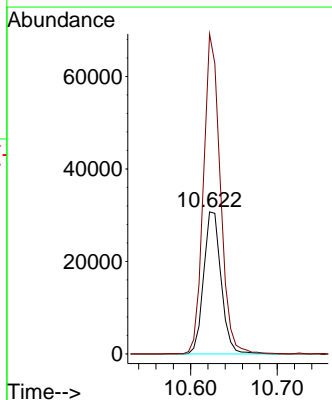
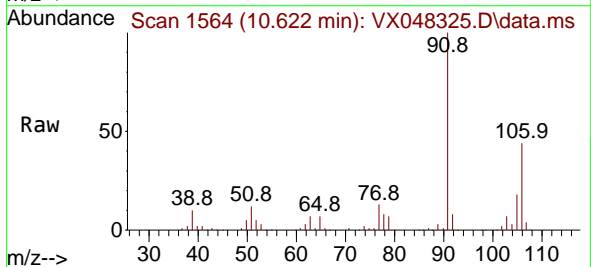
Instrument :
 MSVOA_X
 ClientSampleId :
 SB-8

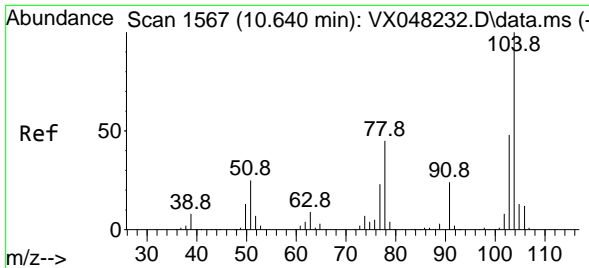
Tgt Ion:106 Resp: 53035
 Ion Ratio Lower Upper
 106 100
 91 209.3 167.9 251.9



#69
 o-Xylene
 Concen: 10.915 ug/l
 RT: 10.622 min Scan# 1564
 Delta R.T. -0.000 min
 Lab File: VX048325.D
 Acq: 23 Oct 2025 15:06

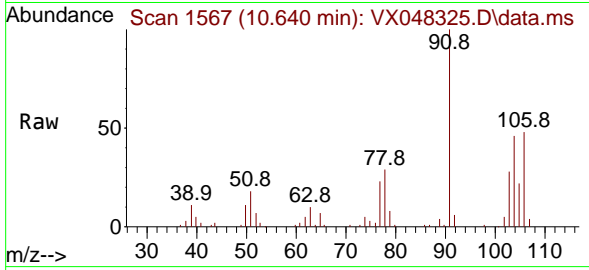
Tgt Ion:106 Resp: 43061
 Ion Ratio Lower Upper
 106 100
 91 217.8 111.3 333.9



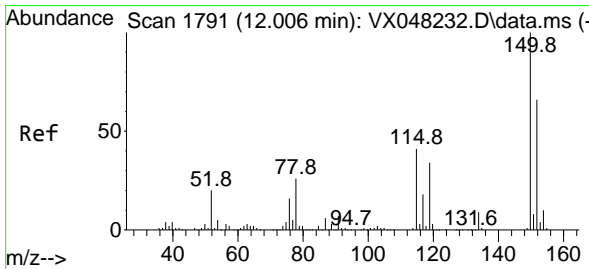
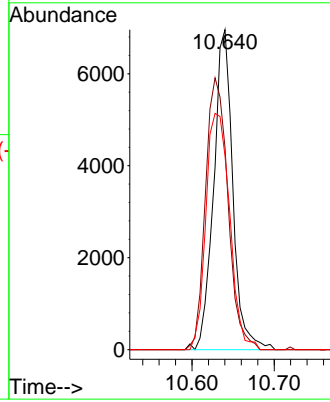
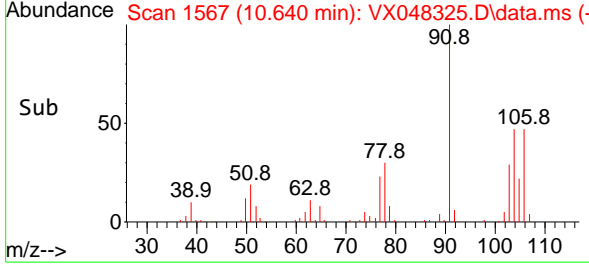


#70
 Styrene
 Concen: 1.678 ug/l
 RT: 10.640 min Scan# 1567
 Delta R.T. -0.000 min
 Lab File: VX048325.D
 Acq: 23 Oct 2025 15:06

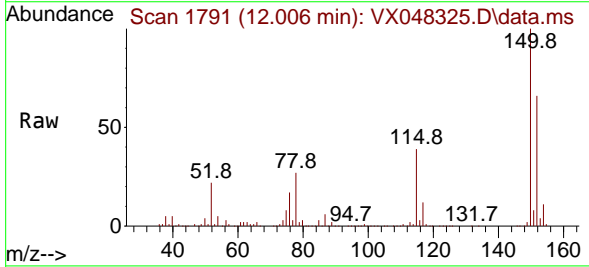
Instrument : MSVOA_X
 ClientSampleId : SB-8



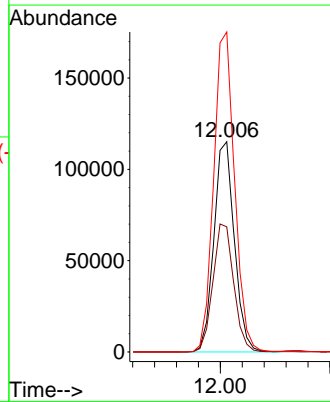
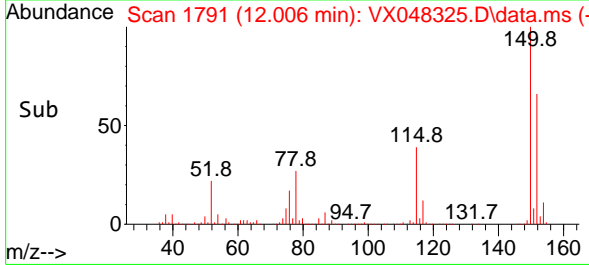
Tgt Ion:104 Resp: 11274
 Ion Ratio Lower Upper
 104 100
 78 99.4 42.2 63.4#
 103 91.6 43.0 64.4#

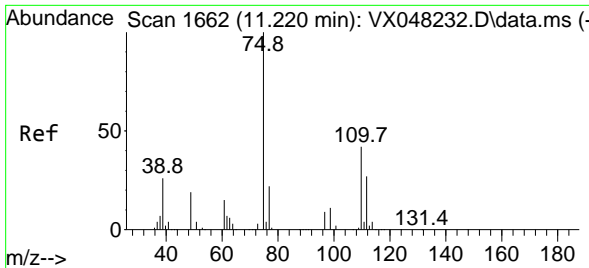


#72
 1,4-Dichlorobenzene-d4
 Concen: 50.000 ug/l
 RT: 12.006 min Scan# 1791
 Delta R.T. -0.000 min
 Lab File: VX048325.D
 Acq: 23 Oct 2025 15:06



Tgt Ion:152 Resp: 149554
 Ion Ratio Lower Upper
 152 100
 115 61.9 43.1 129.4
 150 155.4 0.0 353.0

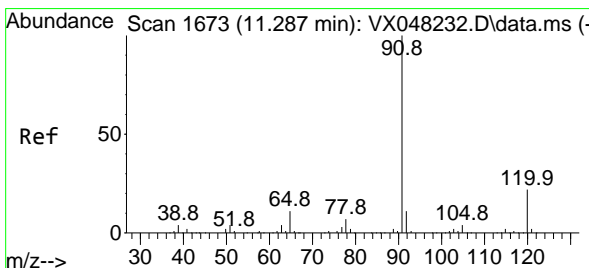
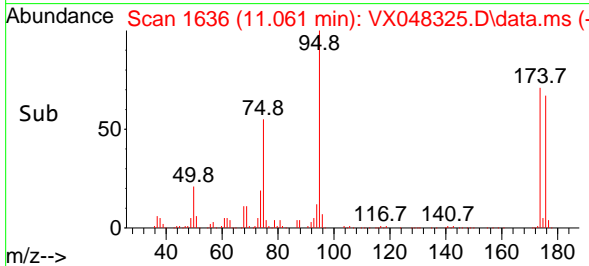
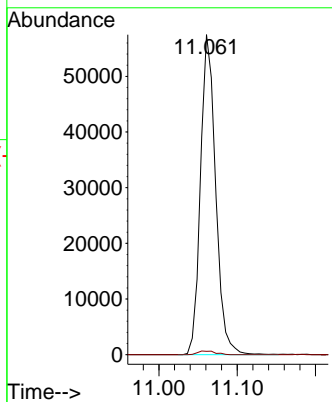
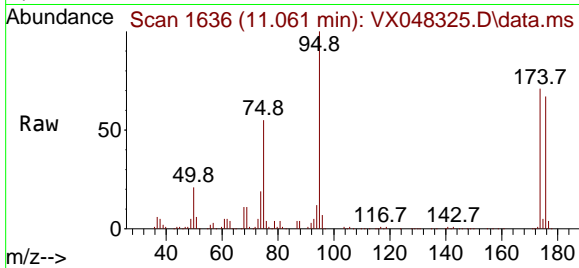




#76
 1,2,3-Trichloropropane
 Concen: 31.860 ug/l
 RT: 11.061 min Scan# 1636
 Delta R.T. -0.159 min
 Lab File: VX048325.D
 Acq: 23 Oct 2025 15:06

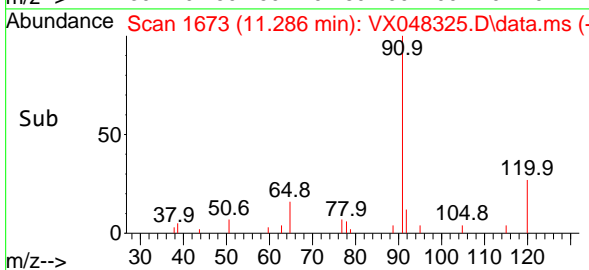
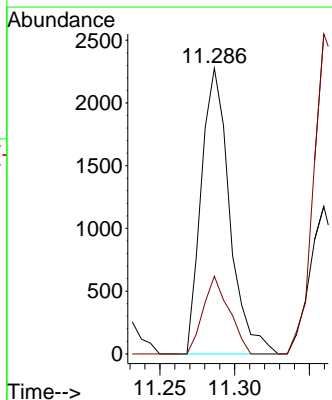
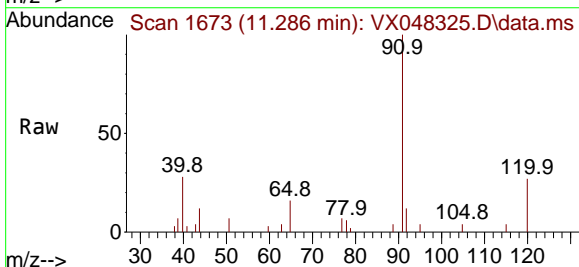
Instrument : MSVOA_X
 ClientSampleId : SB-8

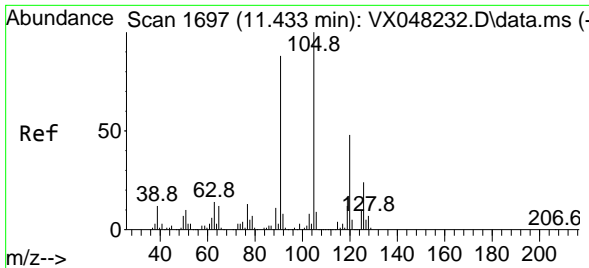
Tgt Ion: 75 Resp: 77268
 Ion Ratio Lower Upper
 75 100
 77 1.4 22.4 67.2#



#78
 n-propylbenzene
 Concen: 0.237 ug/l
 RT: 11.286 min Scan# 1673
 Delta R.T. -0.000 min
 Lab File: VX048325.D
 Acq: 23 Oct 2025 15:06

Tgt Ion: 91 Resp: 2998
 Ion Ratio Lower Upper
 91 100
 120 24.9 11.1 33.1

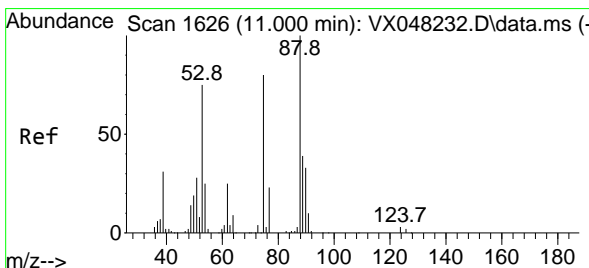
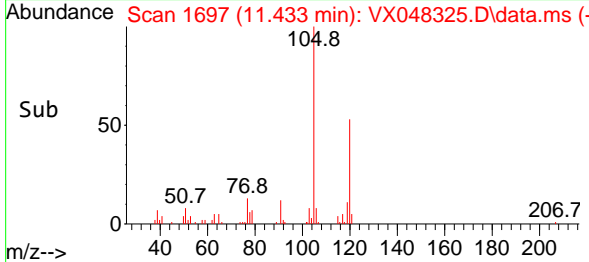
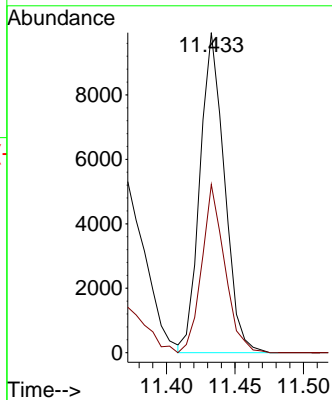
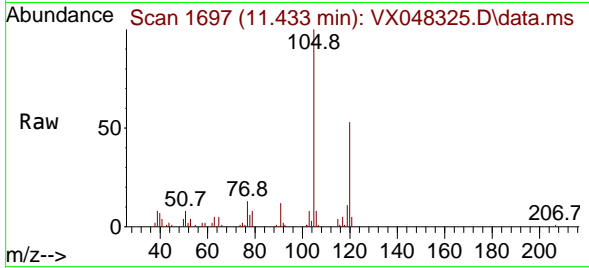




#80
 1,3,5-Trimethylbenzene
 Concen: 1.365 ug/l
 RT: 11.433 min Scan# 10
 Delta R.T. -0.000 min
 Lab File: VX048325.D
 Acq: 23 Oct 2025 15:06

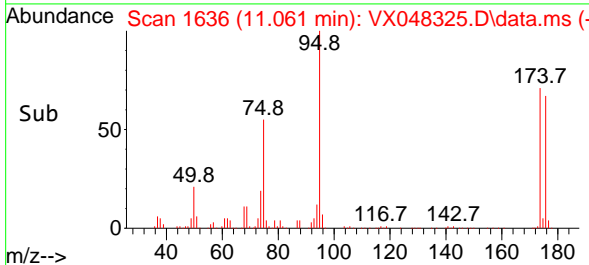
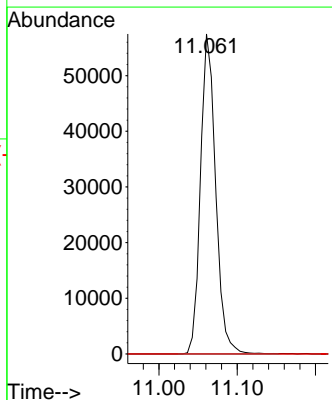
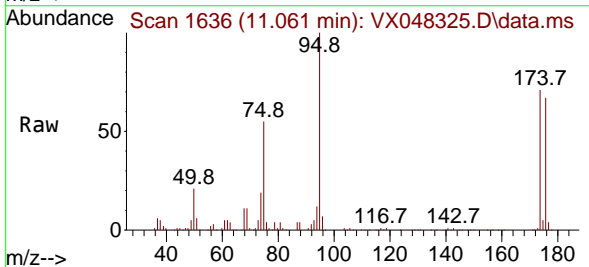
Instrument : MSVOA_X
 ClientSampleId : SB-8

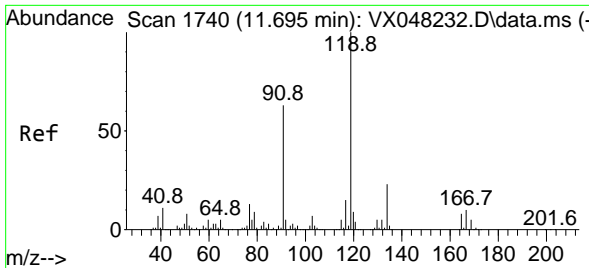
Tgt Ion: 105 Resp: 12335
 Ion Ratio Lower Upper
 105 100
 120 49.3 24.0 72.0



#81
 trans-1,4-Dichloro-2-butene
 Concen: 77.512 ug/l
 RT: 11.061 min Scan# 1636
 Delta R.T. 0.061 min
 Lab File: VX048325.D
 Acq: 23 Oct 2025 15:06

Tgt Ion: 75 Resp: 77268
 Ion Ratio Lower Upper
 75 100
 53 0.0 79.5 119.3#
 89 0.0 36.8 55.2#

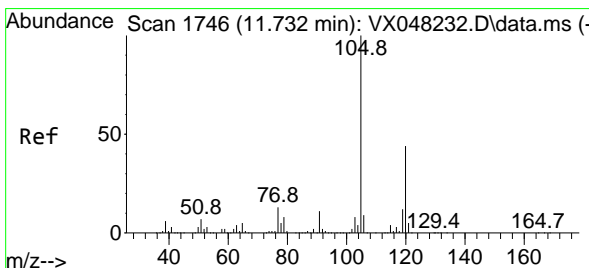
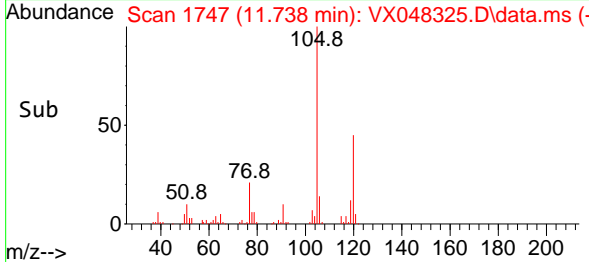
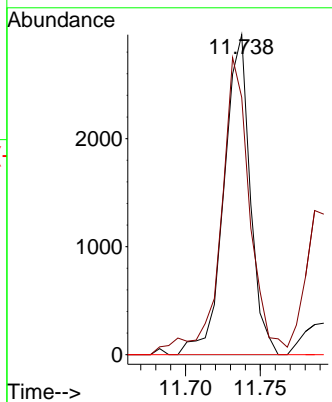
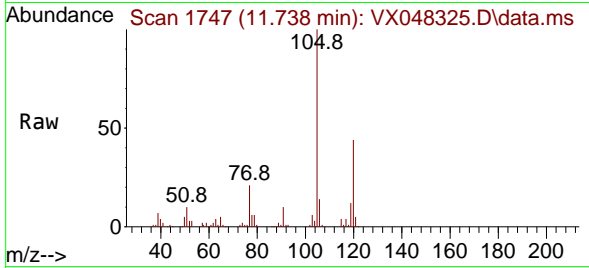




#83
 tert-Butylbenzene
 Concen: 0.388 ug/l
 RT: 11.738 min Scan# 11
 Delta R.T. 0.042 min
 Lab File: VX048325.D
 Acq: 23 Oct 2025 15:06

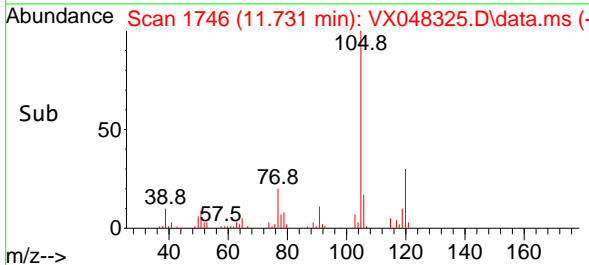
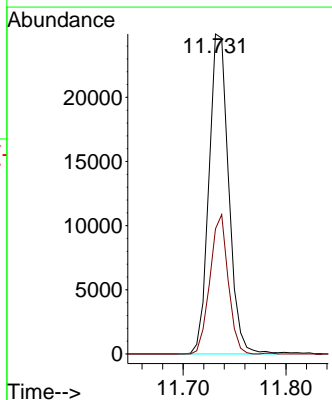
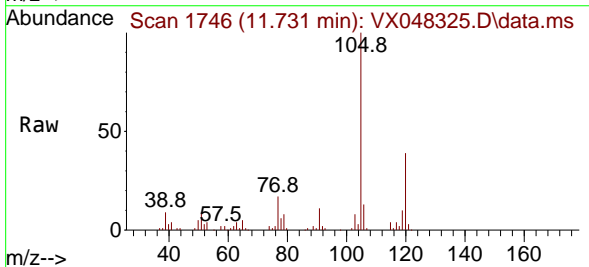
Instrument :
 MSVOA_X
 ClientSampleId :
 SB-8

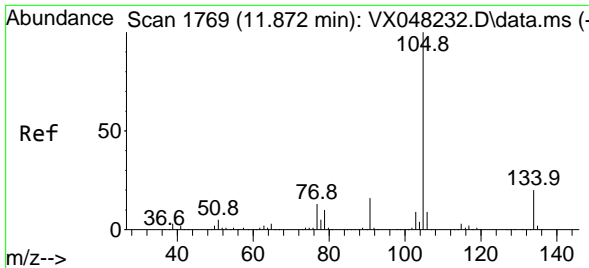
Tgt Ion:119 Resp: 3607
 Ion Ratio Lower Upper
 119 100
 91 103.2 30.3 91.0#
 134 0.0 11.4 34.2#



#84
 1,2,4-Trimethylbenzene
 Concen: 3.683 ug/l
 RT: 11.731 min Scan# 1746
 Delta R.T. -0.000 min
 Lab File: VX048325.D
 Acq: 23 Oct 2025 15:06

Tgt Ion:105 Resp: 33229
 Ion Ratio Lower Upper
 105 100
 120 40.1 22.1 66.5

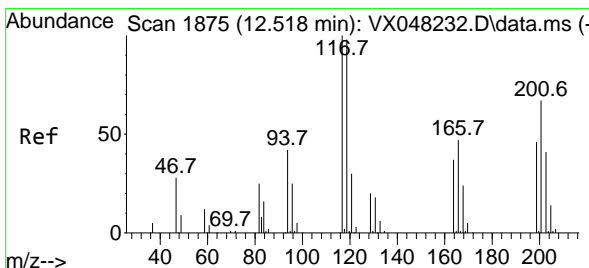
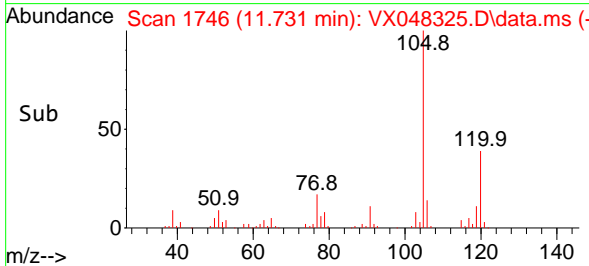
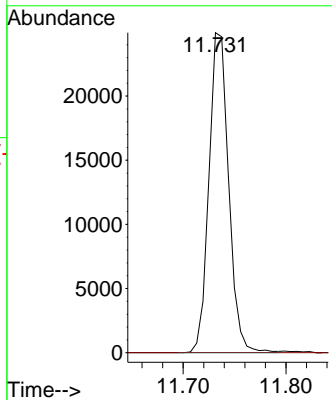
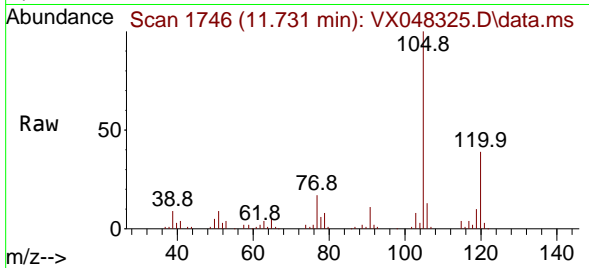




#85
 sec-Butylbenzene
 Concen: 2.974 ug/l
 RT: 11.731 min Scan# 11
 Delta R.T. -0.140 min
 Lab File: VX048325.D
 Acq: 23 Oct 2025 15:06

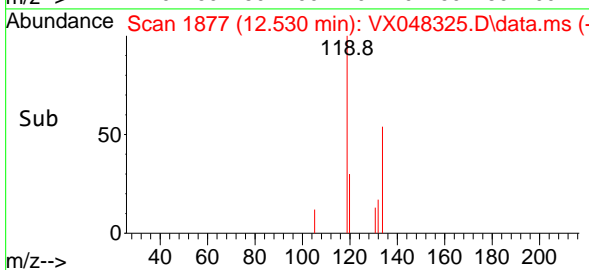
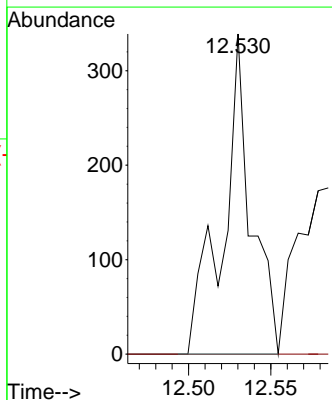
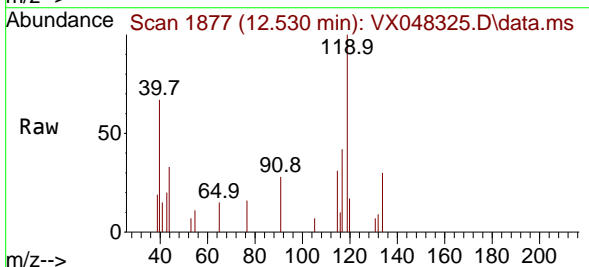
Instrument : MSVOA_X
 ClientSampleId : SB-8

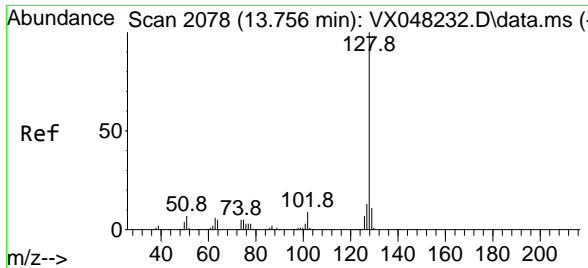
Tgt Ion:105 Resp: 33229
 Ion Ratio Lower Upper
 105 100
 134 0.0 10.1 30.1#



#90
 Hexachloroethane
 Concen: 0.213 ug/l
 RT: 12.530 min Scan# 1877
 Delta R.T. 0.012 min
 Lab File: VX048325.D
 Acq: 23 Oct 2025 15:06

Tgt Ion:117 Resp: 407
 Ion Ratio Lower Upper
 117 100
 201 0.0 34.1 102.2#





#95
 Naphthalene
 Concen: 28.315 ug/l
 RT: 13.755 min Scan# 2078
 Delta R.T. -0.000 min
 Lab File: VX048325.D
 Acq: 23 Oct 2025 15:06

Instrument : MSVOA_X
 ClientSampleId : SB-8

Tgt Ion:128 Resp: 245937

Ion	Ratio	Lower	Upper
128	100		
127	12.5	10.2	15.4
129	10.7	8.6	12.8

