

Data Path : Z:\voasrv\HPCHEM1\MSVOA\_X\Data\VX102325\  
 Data File : VX048327.D  
 Acq On : 23 Oct 2025 15:47  
 Operator : JC/MD  
 Sample : Q3414-10 10X  
 Misc : 5.0mL/MSVOA\_X/WATER  
 ALS Vial : 19 Sample Multiplier: 1

Instrument :  
 MSVOA\_X  
 ClientSampleId :

Quant Time: Oct 24 05:47:29 2025  
 Quant Method : Z:\voasrv\HPCHEM1\MSVOA\_X\Method\82X102025W.M  
 Quant Title : SW846 8260  
 QLast Update : Mon Oct 20 14:13:59 2025  
 Response via : Initial Calibration

Compound	R.T.	QIon	Response	Conc	Units	Dev(Min)
-----						
Internal Standards						
1) Pentafluorobenzene	5.544	168	115810	50.000	ug/l	0.00
34) 1,4-Difluorobenzene	6.745	114	237450	50.000	ug/l	0.00
63) Chlorobenzene-d5	10.037	117	246276	50.000	ug/l	0.00
72) 1,4-Dichlorobenzene-d4	12.006	152	130376	50.000	ug/l	0.00

System Monitoring Compounds						
33) 1,2-Dichloroethane-d4	5.940	65	100688	62.010	ug/l	0.00
Spiked Amount	50.000	Range	78 - 117	Recovery	=	124.020%#
35) Dibromofluoromethane	5.373	113	67419	41.590	ug/l	0.00
Spiked Amount	50.000	Range	75 - 124	Recovery	=	83.180%
50) Toluene-d8	8.634	98	274601	48.328	ug/l	0.00
Spiked Amount	50.000	Range	92 - 112	Recovery	=	96.660%
62) 4-Bromofluorobenzene	11.061	95	125491	58.055	ug/l	0.00
Spiked Amount	50.000	Range	83 - 123	Recovery	=	116.120%

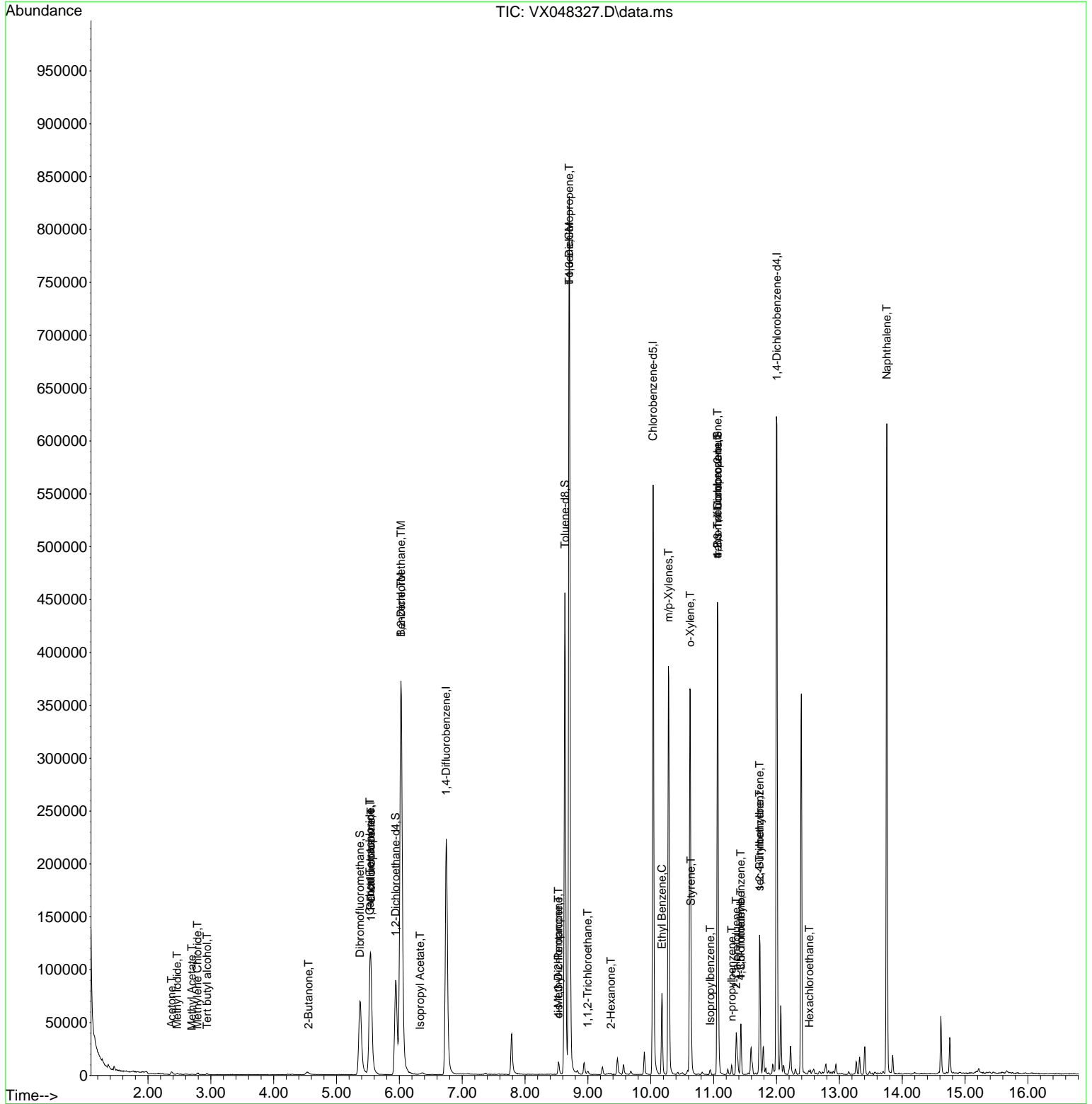
Target Compounds						Qvalue
10) Methyl Iodide	2.465	142	1478	0.941	ug/l #	89
11) Tert butyl alcohol	2.940	59	78	0.484	ug/l #	72
16) Acetone	2.373	43	3761	6.752	ug/l #	84
18) Methyl Acetate	2.697	43	840	0.722	ug/l #	66
20) Methylene Chloride	2.788	84	347	0.256	ug/l #	75
25) 2-Butanone	4.556	43	348	0.494	ug/l #	50
36) 1,1-Dichloropropene	5.550	75	9811	4.258	ug/l #	50
38) Carbon Tetrachloride	5.531	117	12798	4.502	ug/l #	16
40) Benzene	6.025	78	480185	71.783	ug/l	99
42) 1,2-Dichloroethane	6.025	62	4542	1.840	ug/l #	76
43) Isopropyl Acetate	6.330	43	1361	0.434	ug/l #	63
51) 4-Methyl-2-Pentanone	8.531	43	5221	2.887	ug/l #	48
52) Toluene	8.702	92	321137	75.567	ug/l	99
53) t-1,3-Dichloropropene	8.702	75	4102	1.591	ug/l #	1
54) cis-1,3-Dichloropropene	8.531	75	1904	0.685	ug/l #	43
55) 1,1,2-Trichloroethane	8.994	97	2233	1.413	ug/l #	16
59) 2-Hexanone	9.366	43	1169	0.927	ug/l #	26
67) Ethyl Benzene	10.177	91	45772	4.853	ug/l	100
68) m/p-Xylenes	10.281	106	93482	26.674	ug/l	99
69) o-Xylene	10.628	106	78741	23.273	ug/l	99
70) Styrene	10.640	104	23117	4.013	ug/l #	50
73) Isopropylbenzene	10.945	105	2527	0.265	ug/l	100
76) 1,2,3-Trichloropropane	11.061	75	67709	32.025	ug/l #	33
78) n-propylbenzene	11.286	91	5344	0.485	ug/l	94
79) 2-Chlorotoluene	11.360	91	3495	0.523	ug/l #	42
80) 1,3,5-Trimethylbenzene	11.433	105	20332	2.580	ug/l	99
81) trans-1,4-Dichloro-2-b...	11.061	75	67709	77.914	ug/l #	10
82) 4-Chlorotoluene	11.433	91	2552	0.322	ug/l #	46
84) 1,2,4-Trimethylbenzene	11.731	105	57518	7.313	ug/l	98
85) sec-Butylbenzene	11.731	105	57518	5.904	ug/l #	56
90) Hexachloroethane	12.524	117	626	0.376	ug/l #	16
95) Naphthalene	13.756	128	347349	45.873	ug/l	100

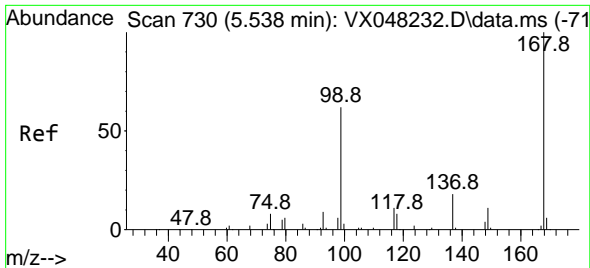
(#) = qualifier out of range (m) = manual integration (+) = signals summed

Data Path : Z:\voasrv\HPCHEM1\MSVOA\_X\Data\VX102325\  
 Data File : VX048327.D  
 Acq On : 23 Oct 2025 15:47  
 Operator : JC/MD  
 Sample : Q3414-10 10X  
 Misc : 5.0mL/MSVOA\_X/WATER  
 ALS Vial : 19 Sample Multiplier: 1

Instrument :  
 MSVOA\_X  
 ClientSampleId :

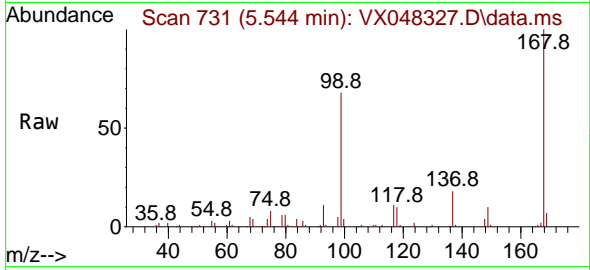
Quant Time: Oct 24 05:47:29 2025  
 Quant Method : Z:\voasrv\HPCHEM1\MSVOA\_X\Method\82X102025W.M  
 Quant Title : SW846 8260  
 QLast Update : Mon Oct 20 14:13:59 2025  
 Response via : Initial Calibration



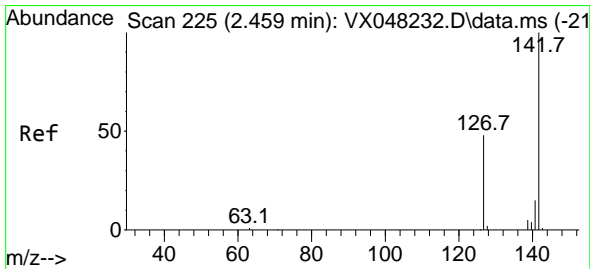
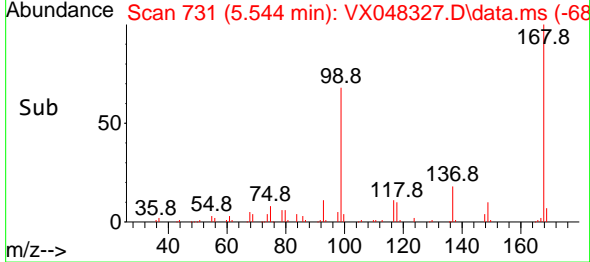
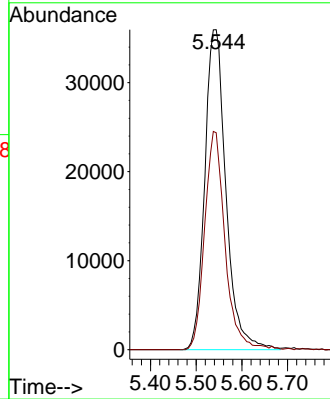


#1  
 Pentafluorobenzene  
 Concen: 50.000 ug/l  
 RT: 5.544 min Scan# 71  
 Delta R.T. -0.000 min  
 Lab File: VX048327.D  
 Acq: 23 Oct 2025 15:47

Instrument :  
 MSVOA\_X  
 ClientSampleId :

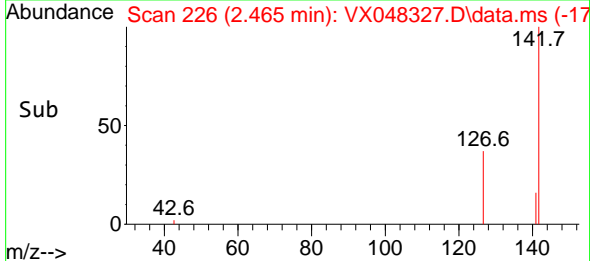
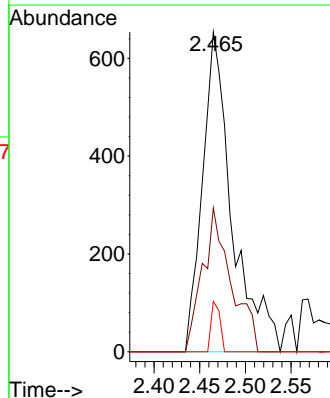
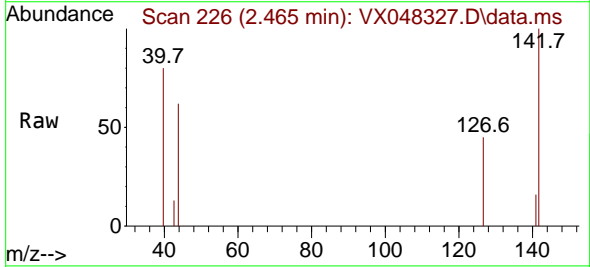


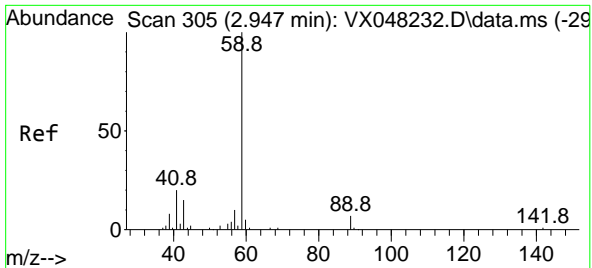
Tgt Ion:168 Resp: 115810  
 Ion Ratio Lower Upper  
 168 100  
 99 67.8 46.4 69.6



#10  
 Methyl Iodide  
 Concen: 0.941 ug/l  
 RT: 2.465 min Scan# 226  
 Delta R.T. 0.006 min  
 Lab File: VX048327.D  
 Acq: 23 Oct 2025 15:47

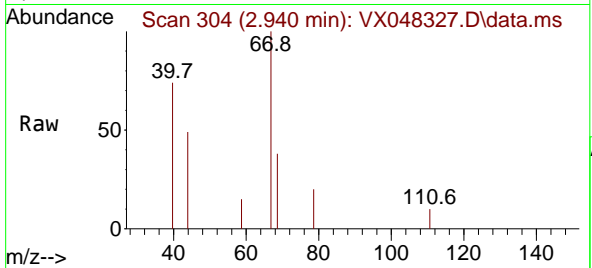
Tgt Ion:142 Resp: 1478  
 Ion Ratio Lower Upper  
 142 100  
 127 43.5 38.5 57.7  
 141 4.6 11.6 17.4#



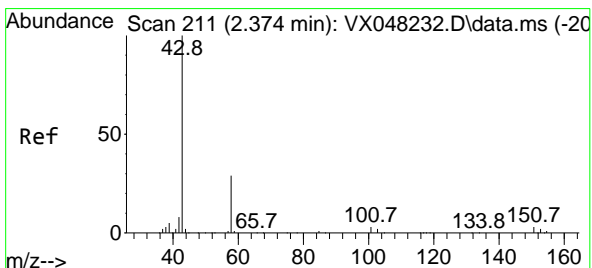
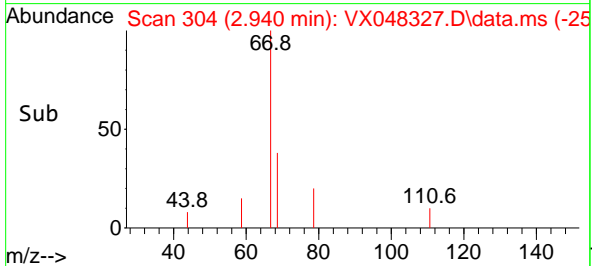
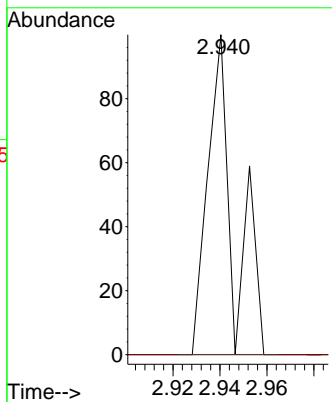


#11  
 Tert butyl alcohol  
 Concen: 0.484 ug/l  
 RT: 2.940 min Scan# 305  
 Delta R.T. -0.000 min  
 Lab File: VX048327.D  
 Acq: 23 Oct 2025 15:47

Instrument : MSVOA\_X  
 ClientSampleId :

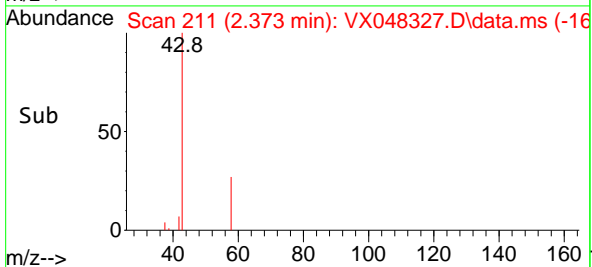
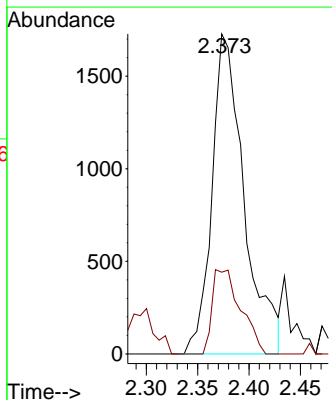
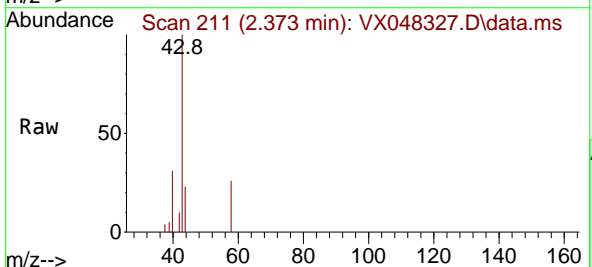


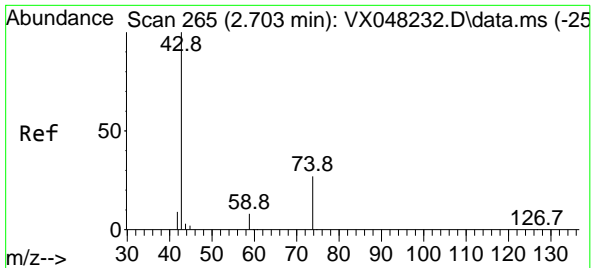
Tgt Ion: 59 Resp: 78  
 Ion Ratio Lower Upper  
 59 100  
 57 0.0 8.2 12.4#



#16  
 Acetone  
 Concen: 6.752 ug/l  
 RT: 2.373 min Scan# 211  
 Delta R.T. -0.000 min  
 Lab File: VX048327.D  
 Acq: 23 Oct 2025 15:47

Tgt Ion: 43 Resp: 3761  
 Ion Ratio Lower Upper  
 43 100  
 58 20.8 23.4 35.2#

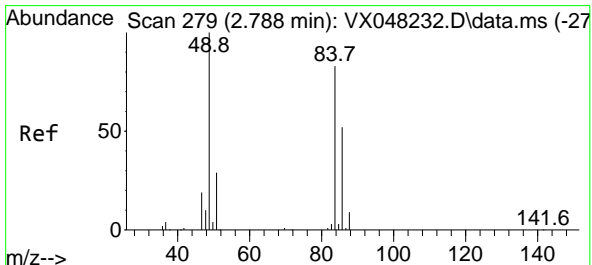
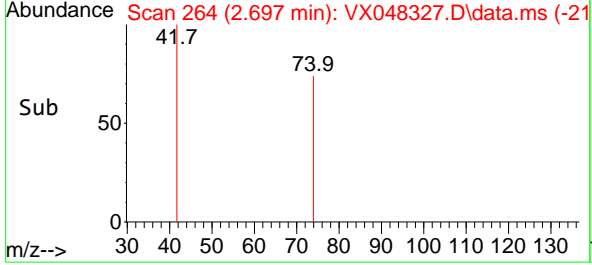
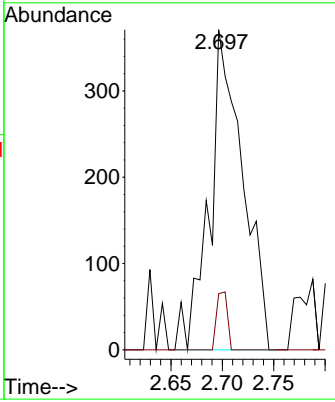
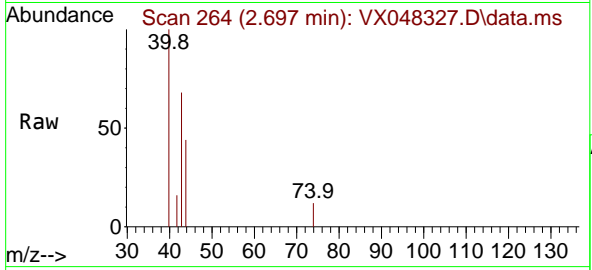




#18  
 Methyl Acetate  
 Concen: 0.722 ug/l  
 RT: 2.697 min Scan# 20  
 Delta R.T. -0.000 min  
 Lab File: VX048327.D  
 Acq: 23 Oct 2025 15:47

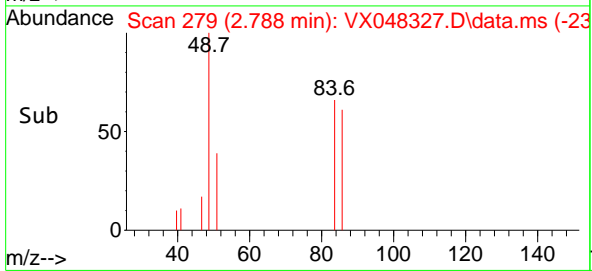
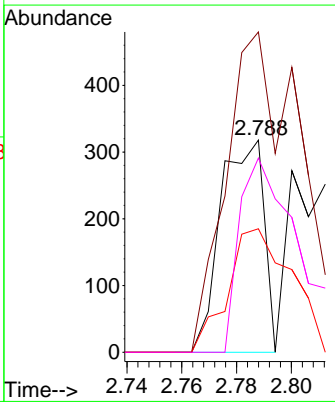
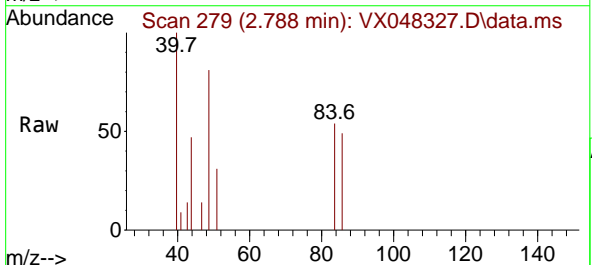
Instrument : MSVOA\_X  
 ClientSampleId :

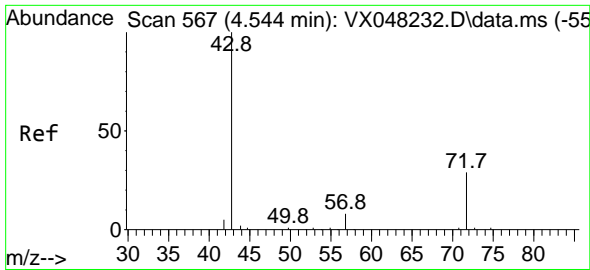
Tgt Ion: 43 Resp: 840  
 Ion Ratio Lower Upper  
 43 100  
 74 5.7 17.5 26.3#



#20  
 Methylene Chloride  
 Concen: 0.256 ug/l  
 RT: 2.788 min Scan# 279  
 Delta R.T. -0.000 min  
 Lab File: VX048327.D  
 Acq: 23 Oct 2025 15:47

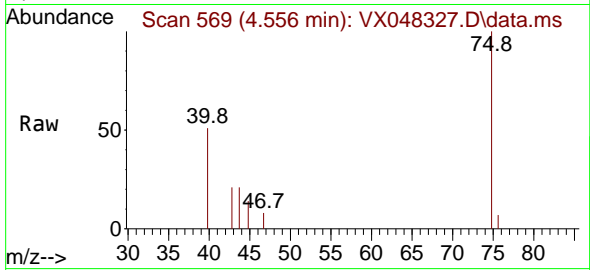
Tgt Ion: 84 Resp: 347  
 Ion Ratio Lower Upper  
 84 100  
 49 150.9 104.1 156.1  
 51 58.2 31.3 46.9#  
 86 91.5 51.3 76.9#



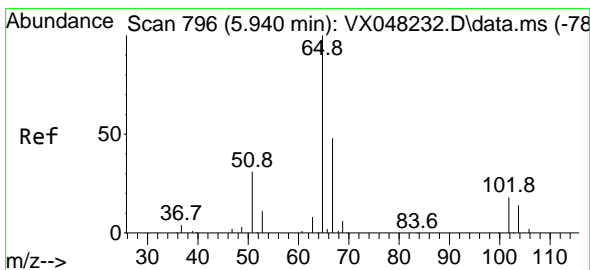
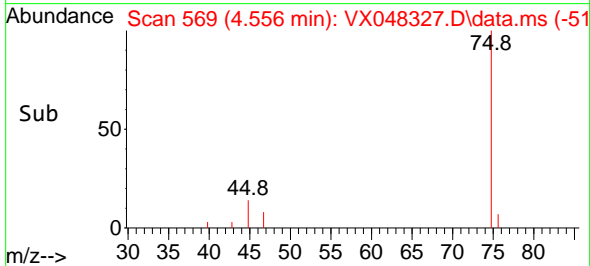
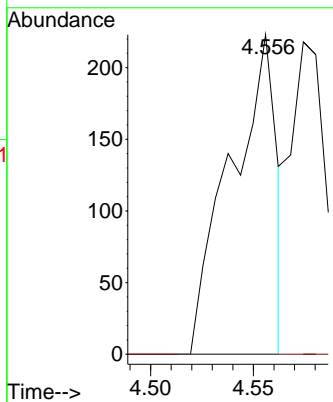


#25  
 2-Butanone  
 Concen: 0.494 ug/l  
 RT: 4.556 min Scan# 509  
 Delta R.T. 0.018 min  
 Lab File: VX048327.D  
 Acq: 23 Oct 2025 15:47

Instrument : MSVOA\_X  
 ClientSampleId :

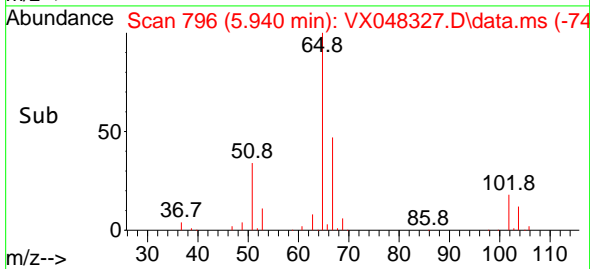
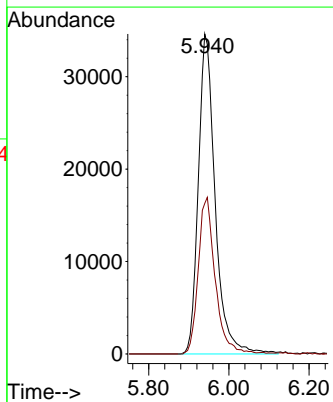
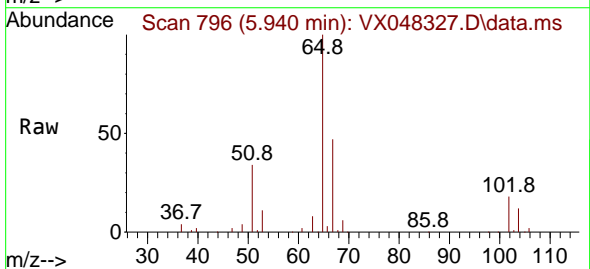


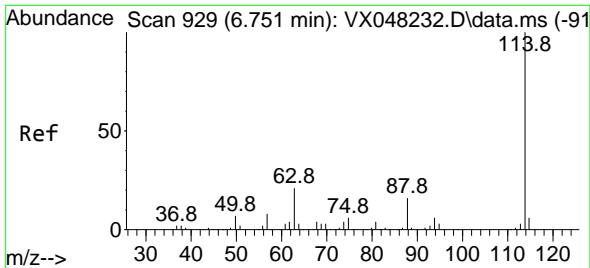
Tgt Ion: 43 Resp: 348  
 Ion Ratio Lower Upper  
 43 100  
 72 0.0 19.9 29.9#



#33  
 1,2-Dichloroethane-d4  
 Concen: 62.010 ug/l  
 RT: 5.940 min Scan# 796  
 Delta R.T. -0.000 min  
 Lab File: VX048327.D  
 Acq: 23 Oct 2025 15:47

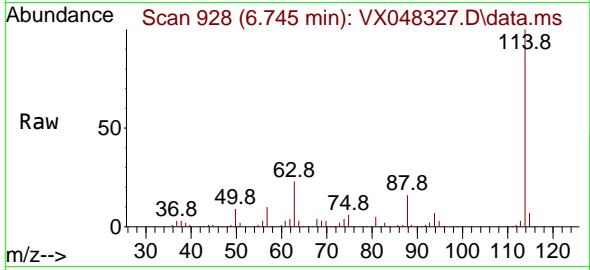
Tgt Ion: 65 Resp: 100688  
 Ion Ratio Lower Upper  
 65 100  
 67 49.3 0.0 105.0



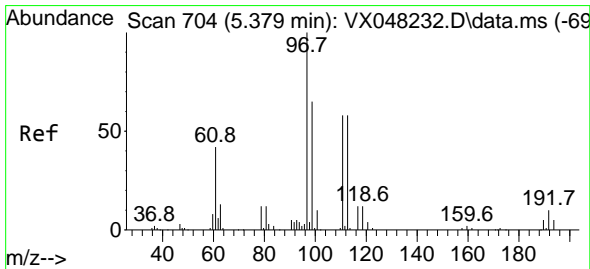
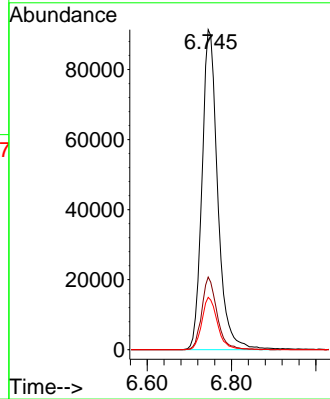
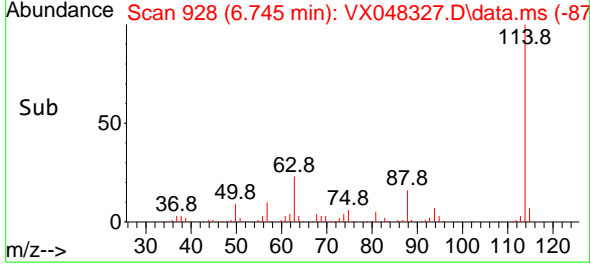


#34  
 1,4-Difluorobenzene  
 Concen: 50.000 ug/l  
 RT: 6.745 min Scan# 91  
 Delta R.T. -0.000 min  
 Lab File: VX048327.D  
 Acq: 23 Oct 2025 15:47

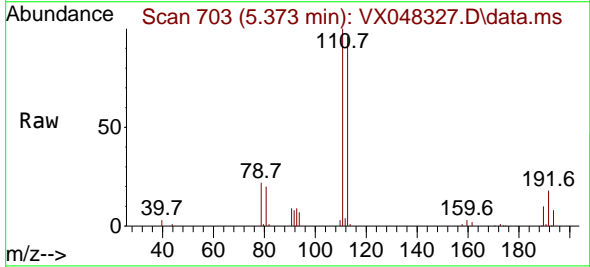
Instrument :  
 MSVOA\_X  
 ClientSampleId :



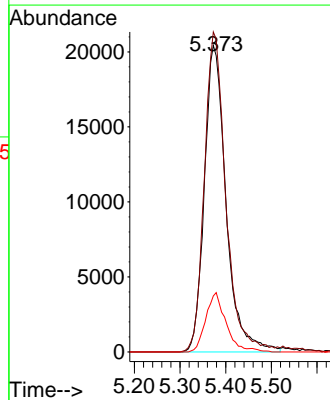
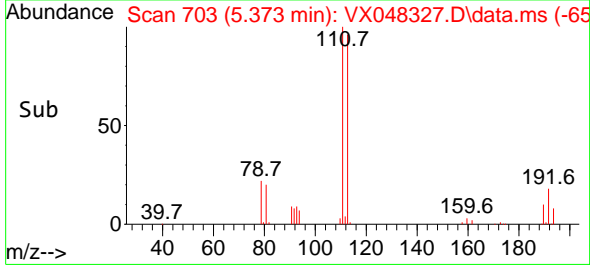
Tgt Ion:114 Resp: 237450  
 Ion Ratio Lower Upper  
 114 100  
 63 22.7 0.0 43.2  
 88 16.3 0.0 33.6

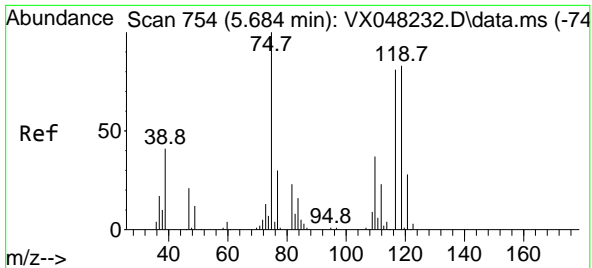


#35  
 Dibromofluoromethane  
 Concen: 41.590 ug/l  
 RT: 5.373 min Scan# 703  
 Delta R.T. -0.000 min  
 Lab File: VX048327.D  
 Acq: 23 Oct 2025 15:47



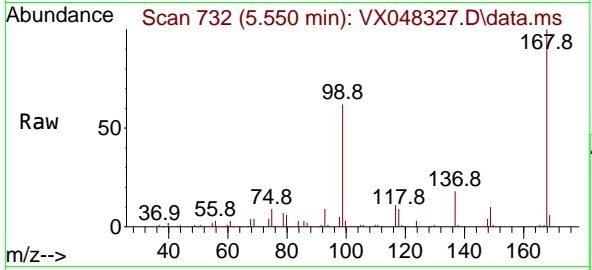
Tgt Ion:113 Resp: 67419  
 Ion Ratio Lower Upper  
 113 100  
 111 103.1 82.2 123.4  
 192 18.2 15.1 22.7



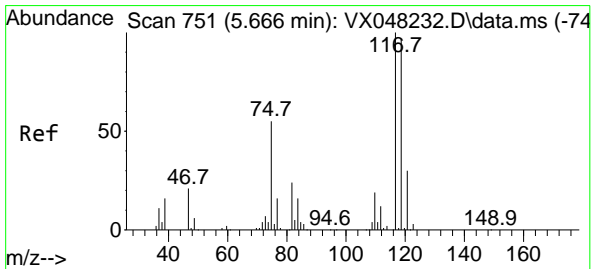
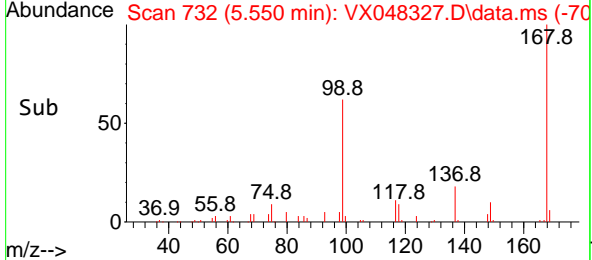
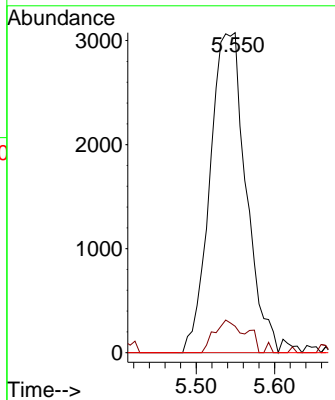


#36  
 1,1-Dichloropropene  
 Concen: 4.258 ug/l  
 RT: 5.550 min Scan# 711  
 Delta R.T. -0.134 min  
 Lab File: VX048327.D  
 Acq: 23 Oct 2025 15:47

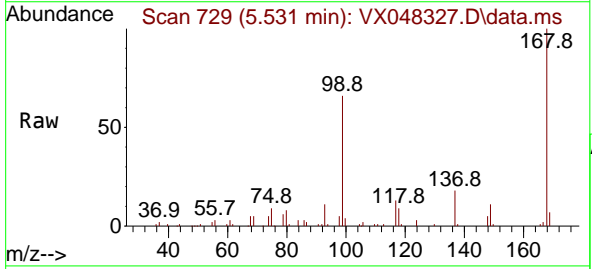
Instrument : MSVOA\_X  
 ClientSampleId :



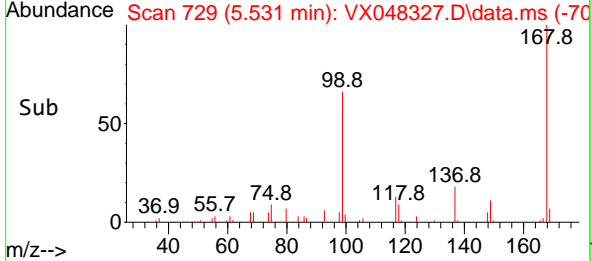
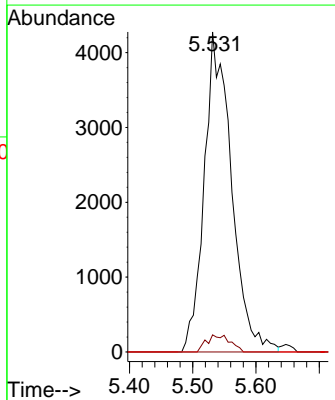
Tgt Ion: 75 Resp: 9811  
 Ion Ratio Lower Upper  
 75 100  
 110 8.9 17.7 53.1#  
 77 0.0 24.3 36.5#



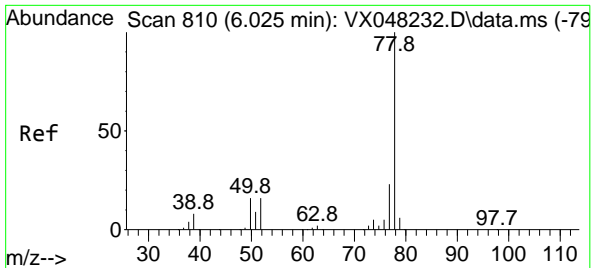
#38  
 Carbon Tetrachloride  
 Concen: 4.502 ug/l  
 RT: 5.531 min Scan# 729  
 Delta R.T. -0.134 min  
 Lab File: VX048327.D  
 Acq: 23 Oct 2025 15:47



Tgt Ion: 117 Resp: 12798  
 Ion Ratio Lower Upper  
 117 100  
 119 5.4 77.2 115.8#  
 121 0.0 24.8 37.2#



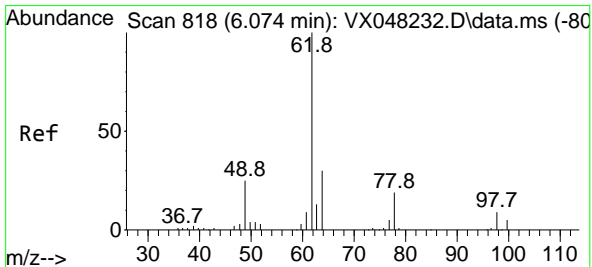
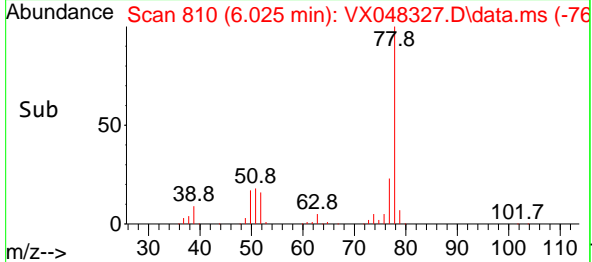
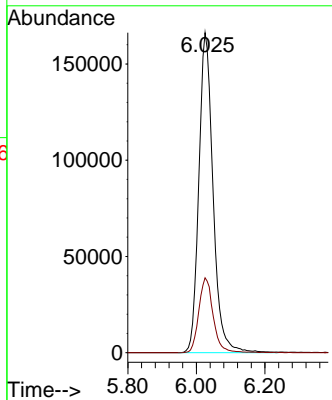
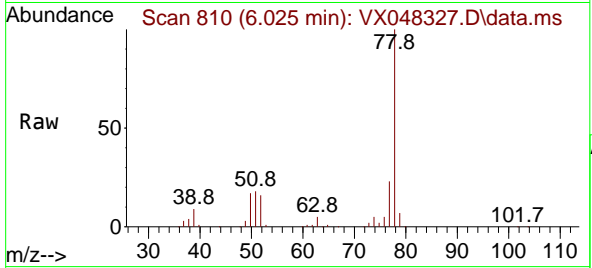




#40  
Benzene  
Concen: 71.783 ug/l  
RT: 6.025 min Scan# 810  
Delta R.T. -0.000 min  
Lab File: VX048327.D  
Acq: 23 Oct 2025 15:47

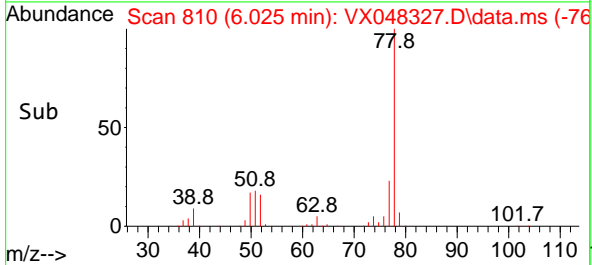
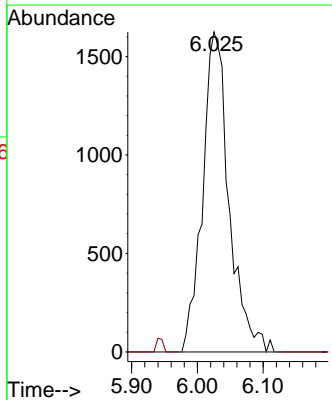
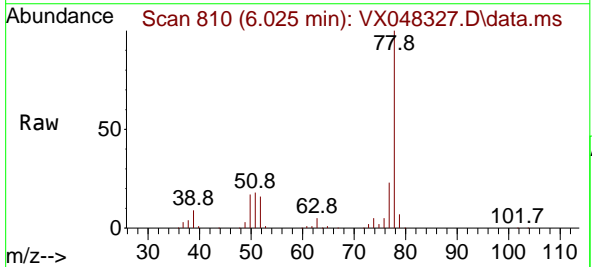
Instrument : MSVOA\_X  
ClientSampleId :

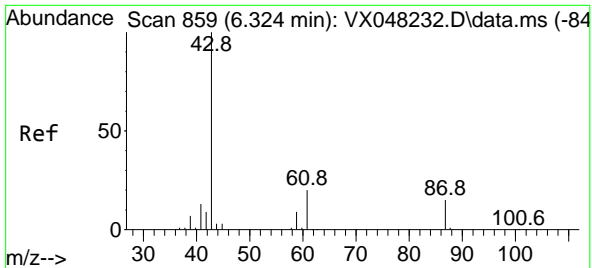
Tgt Ion: 78 Resp: 480185  
Ion Ratio Lower Upper  
78 100  
77 23.4 19.3 28.9



#42  
1,2-Dichloroethane  
Concen: 1.840 ug/l  
RT: 6.025 min Scan# 810  
Delta R.T. -0.043 min  
Lab File: VX048327.D  
Acq: 23 Oct 2025 15:47

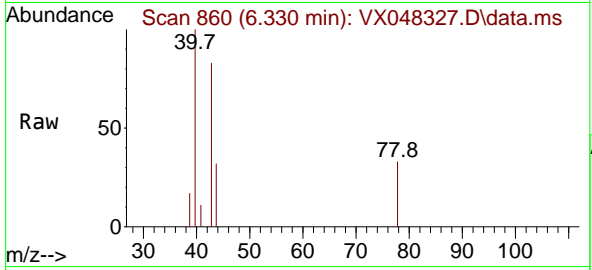
Tgt Ion: 62 Resp: 4542  
Ion Ratio Lower Upper  
62 100  
98 0.0 0.0 17.2





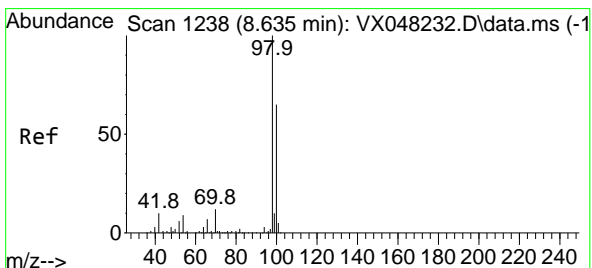
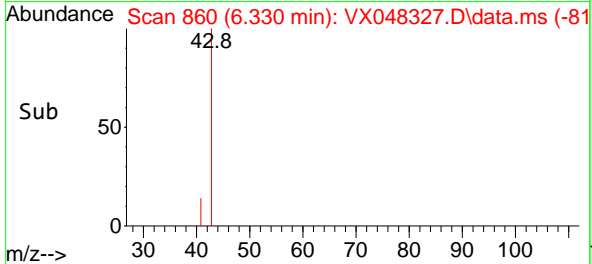
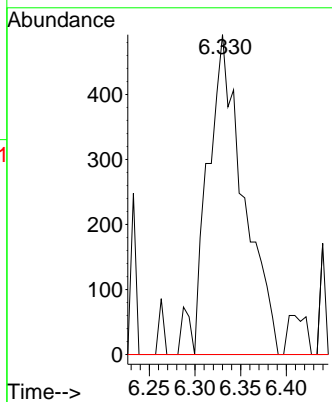
#43  
 Isopropyl Acetate  
 Concen: 0.434 ug/l  
 RT: 6.330 min Scan# 80  
 Delta R.T. 0.006 min  
 Lab File: VX048327.D  
 Acq: 23 Oct 2025 15:47

Instrument : MSVOA\_X  
 ClientSampleId :



Tgt Ion: 43 Resp: 1361

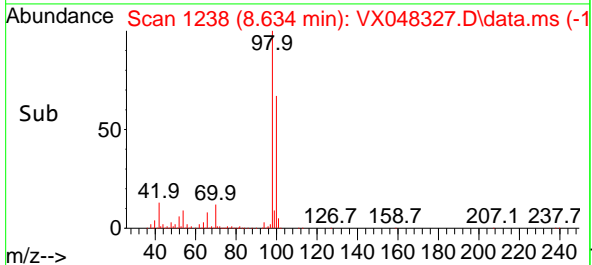
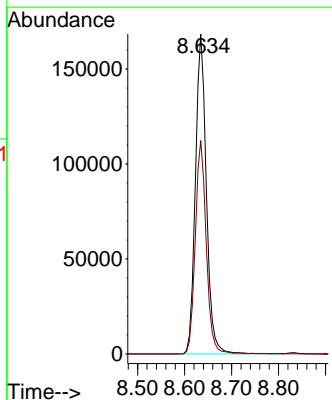
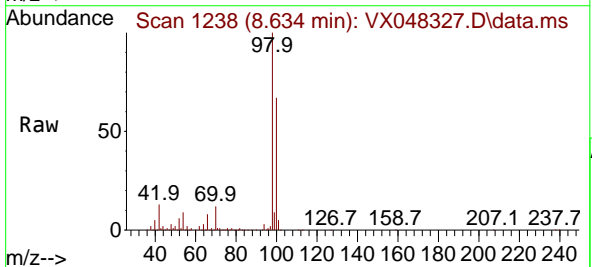
Ion	Ratio	Lower	Upper
43	100		
61	0.0	14.9	22.3#
87	0.0	9.4	14.2#

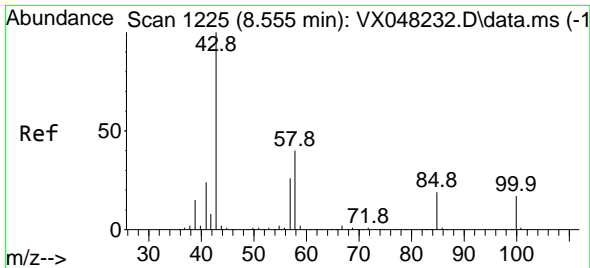


#50  
 Toluene-d8  
 Concen: 48.328 ug/l  
 RT: 8.634 min Scan# 1238  
 Delta R.T. -0.000 min  
 Lab File: VX048327.D  
 Acq: 23 Oct 2025 15:47

Tgt Ion: 98 Resp: 274601

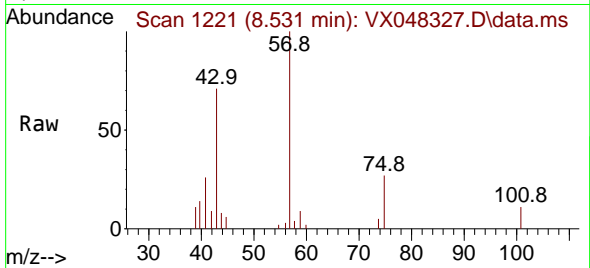
Ion	Ratio	Lower	Upper
98	100		
100	66.7	53.0	79.4



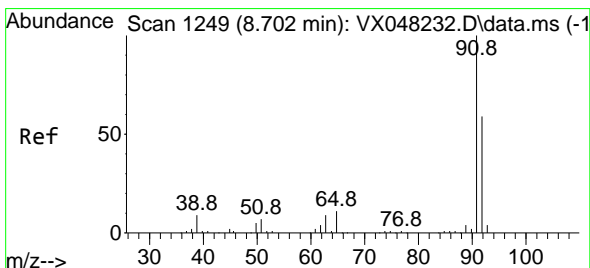
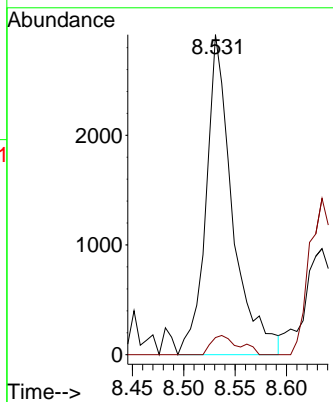
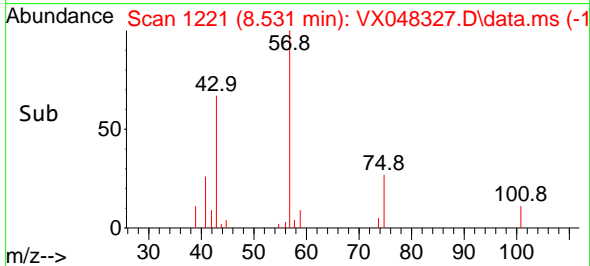


#51  
 4-Methyl-2-Pentanone  
 Concen: 2.887 ug/l  
 RT: 8.531 min Scan# 111  
 Delta R.T. -0.025 min  
 Lab File: VX048327.D  
 Acq: 23 Oct 2025 15:47

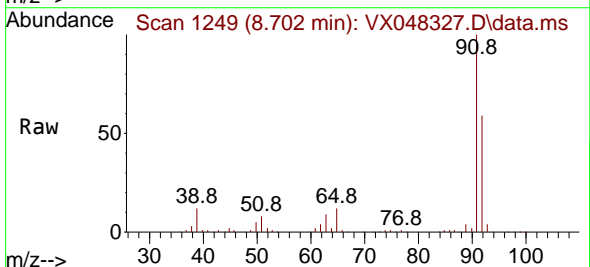
Instrument : MSVOA\_X  
 ClientSampleId :



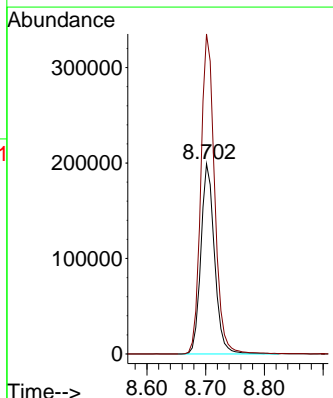
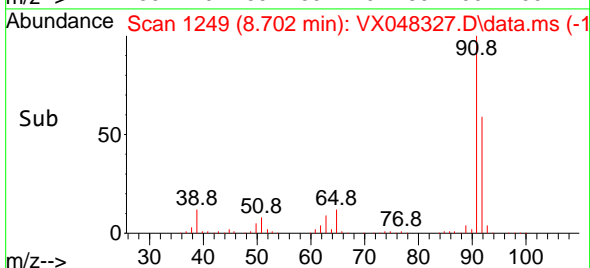
Tgt Ion: 43 Resp: 5221  
 Ion Ratio Lower Upper  
 43 100  
 58 6.2 29.5 44.3#

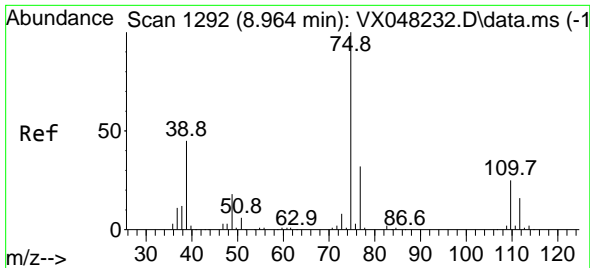


#52  
 Toluene  
 Concen: 75.567 ug/l  
 RT: 8.702 min Scan# 1249  
 Delta R.T. -0.000 min  
 Lab File: VX048327.D  
 Acq: 23 Oct 2025 15:47



Tgt Ion: 92 Resp: 321137  
 Ion Ratio Lower Upper  
 92 100  
 91 171.3 136.1 204.1

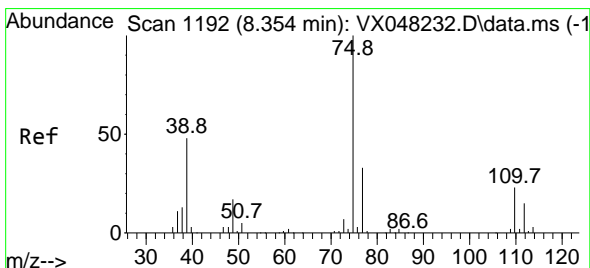
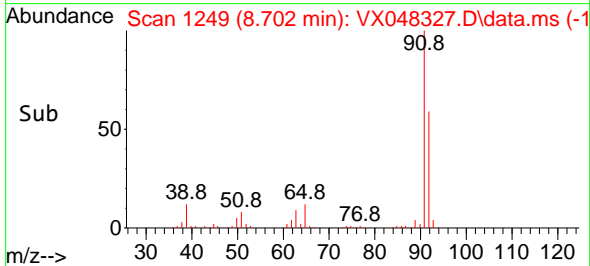
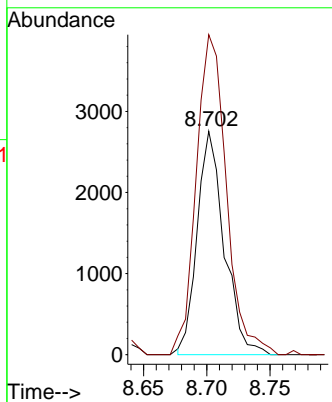
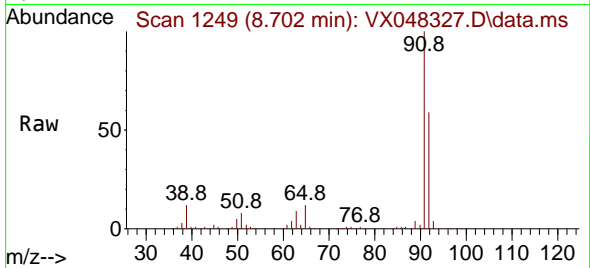




#53  
 t-1,3-Dichloropropene  
 Concen: 1.591 ug/l  
 RT: 8.702 min Scan# 1121  
 Delta R.T. -0.262 min  
 Lab File: VX048327.D  
 Acq: 23 Oct 2025 15:47

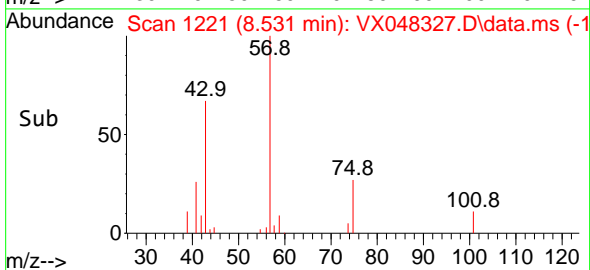
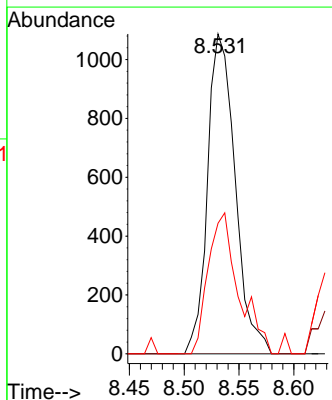
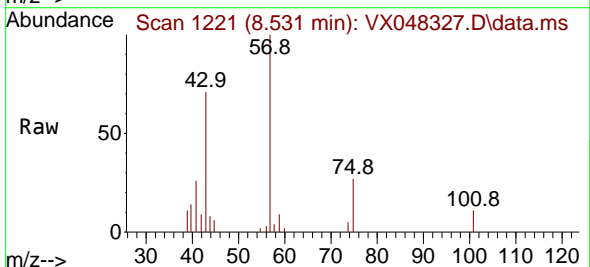
Instrument : MSVOA\_X  
 ClientSampleId :

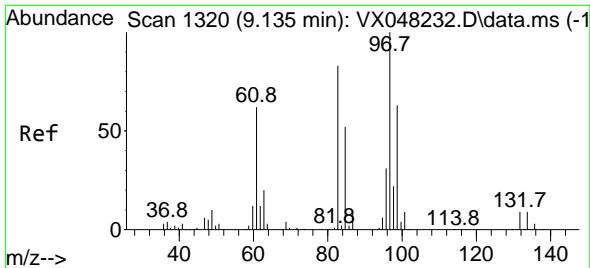
Tgt Ion: 75 Resp: 4102  
 Ion Ratio Lower Upper  
 75 100  
 77 143.2 25.0 37.6#



#54  
 cis-1,3-Dichloropropene  
 Concen: 0.685 ug/l  
 RT: 8.531 min Scan# 1221  
 Delta R.T. 0.183 min  
 Lab File: VX048327.D  
 Acq: 23 Oct 2025 15:47

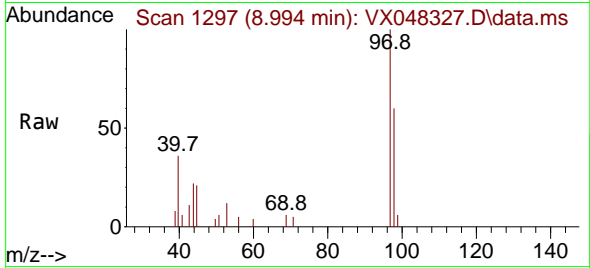
Tgt Ion: 75 Resp: 1904  
 Ion Ratio Lower Upper  
 75 100  
 77 0.0 24.9 37.3#  
 39 94.0 42.6 64.0#





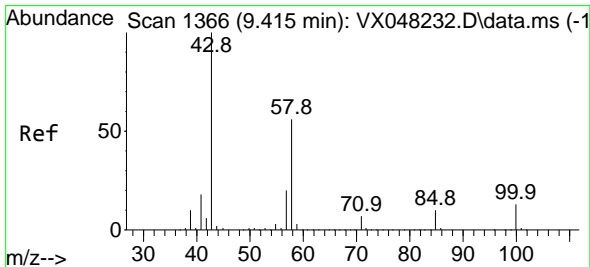
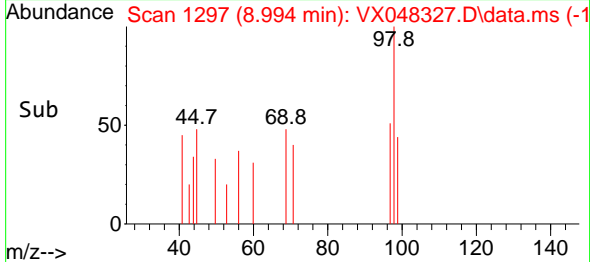
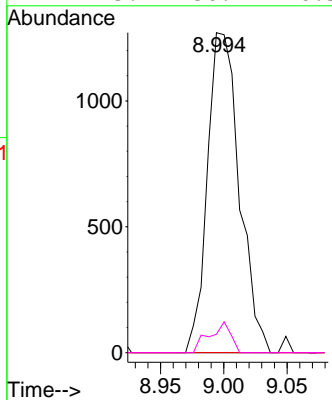
#55  
 1,1,2-Trichloroethane  
 Concen: 1.413 ug/l  
 RT: 8.994 min Scan# 11  
 Delta R.T. -0.140 min  
 Lab File: VX048327.D  
 Acq: 23 Oct 2025 15:47

Instrument :  
 MSVOA\_X  
 ClientSampleId :



Tgt Ion: 97 Resp: 2233

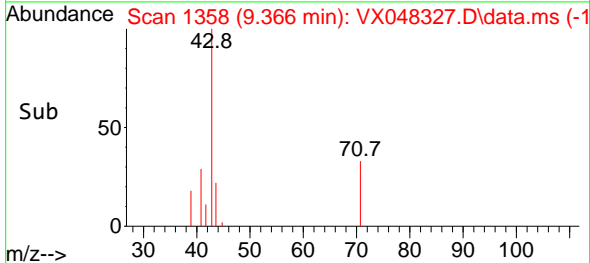
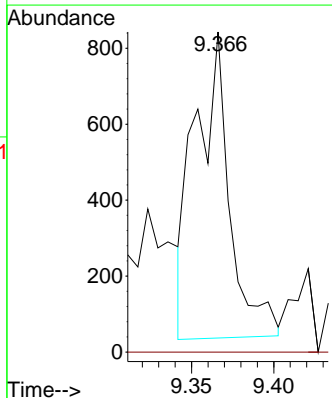
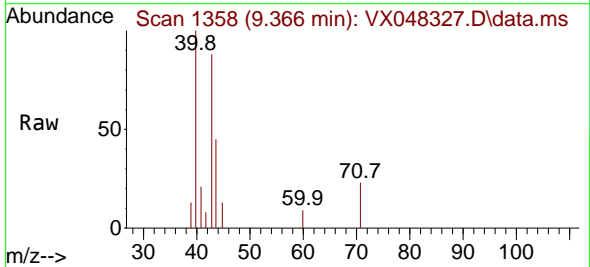
Ion	Ratio	Lower	Upper
97	100		
83	0.0	70.6	105.8#
85	0.0	45.0	67.6#
99	5.7	50.9	76.3#

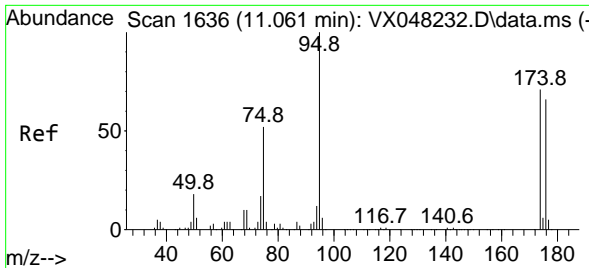


#59  
 2-Hexanone  
 Concen: 0.927 ug/l  
 RT: 9.366 min Scan# 1358  
 Delta R.T. -0.049 min  
 Lab File: VX048327.D  
 Acq: 23 Oct 2025 15:47

Tgt Ion: 43 Resp: 1169

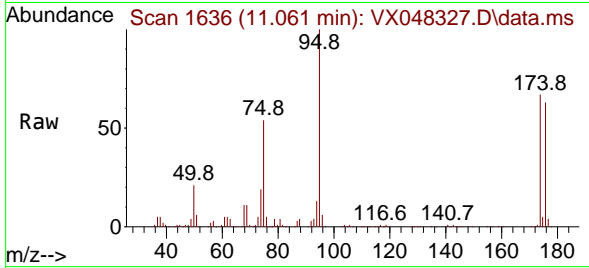
Ion	Ratio	Lower	Upper
43	100		
58	0.0	26.3	78.8#



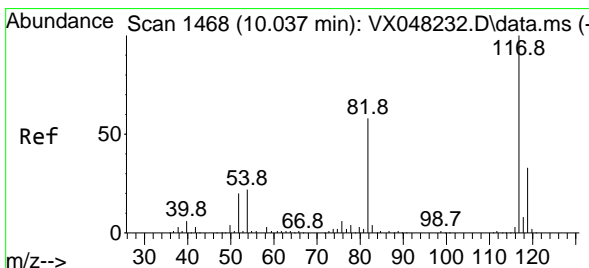
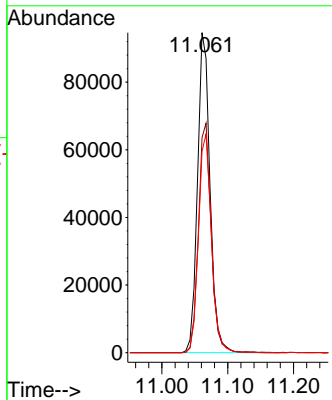
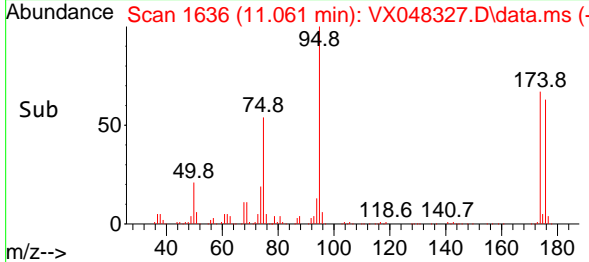


#62  
 4-Bromofluorobenzene  
 Concen: 58.055 ug/l  
 RT: 11.061 min Scan# 1  
 Delta R.T. -0.000 min  
 Lab File: VX048327.D  
 Acq: 23 Oct 2025 15:47

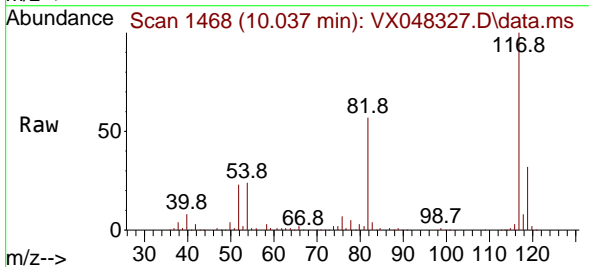
Instrument :  
 MSVOA\_X  
 ClientSampleId :



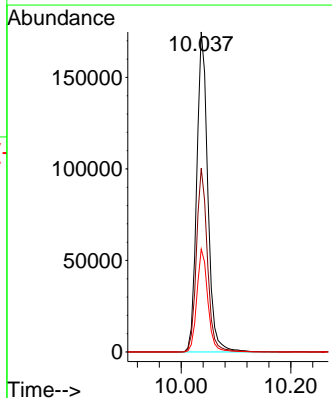
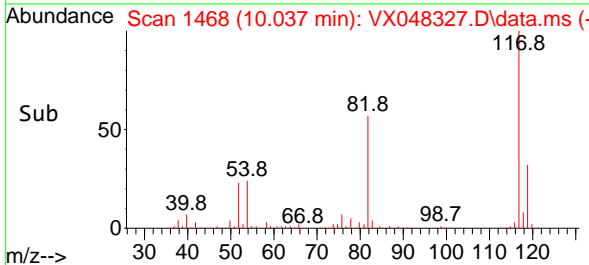
Tgt Ion: 95 Resp: 125491  
 Ion Ratio Lower Upper  
 95 100  
 174 73.1 0.0 147.8  
 176 70.4 0.0 142.8

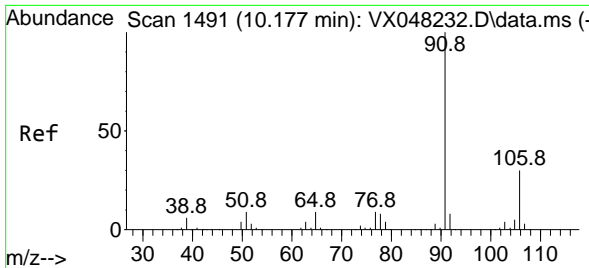


#63  
 Chlorobenzene-d5  
 Concen: 50.000 ug/l  
 RT: 10.037 min Scan# 1468  
 Delta R.T. -0.000 min  
 Lab File: VX048327.D  
 Acq: 23 Oct 2025 15:47



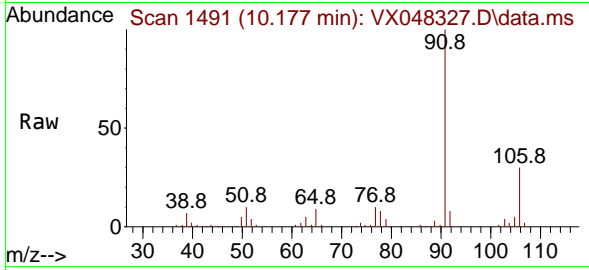
Tgt Ion: 117 Resp: 246276  
 Ion Ratio Lower Upper  
 117 100  
 82 57.4 46.5 69.7  
 119 32.2 25.9 38.9



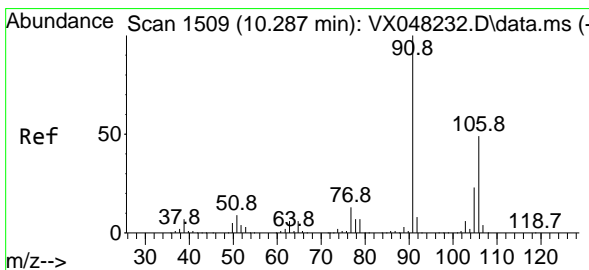
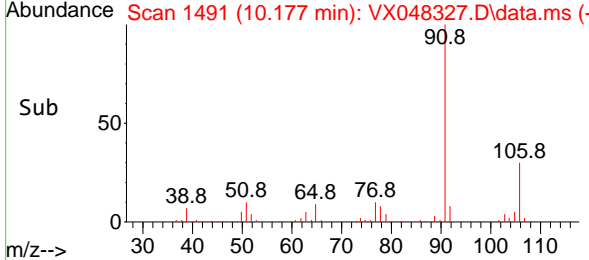
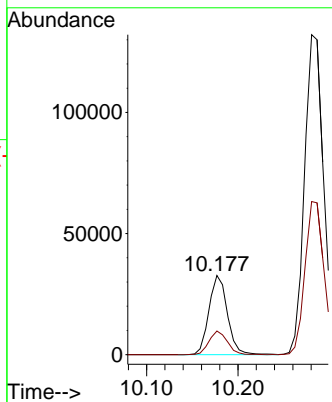


#67  
 Ethyl Benzene  
 Concen: 4.853 ug/l  
 RT: 10.177 min Scan# 1491  
 Delta R.T. -0.000 min  
 Lab File: VX048327.D  
 Acq: 23 Oct 2025 15:47

Instrument : MSVOA\_X  
 ClientSampleId :

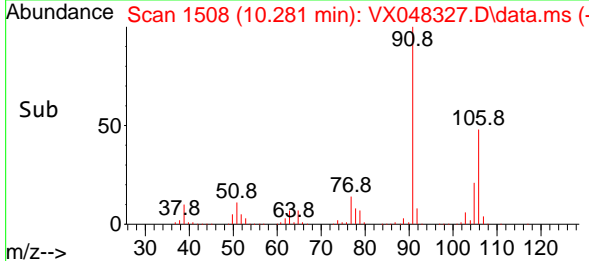
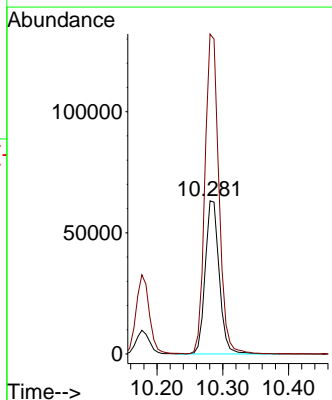
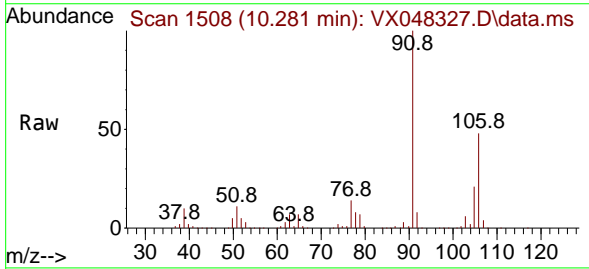


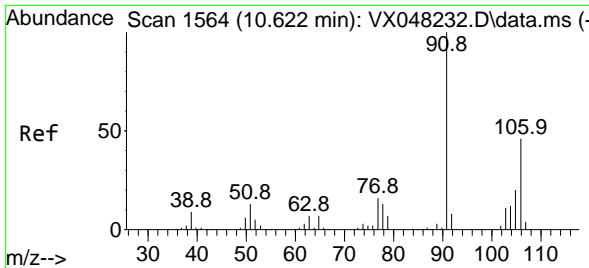
Tgt Ion: 91 Resp: 45772  
 Ion Ratio Lower Upper  
 91 100  
 106 30.0 23.8 35.6



#68  
 m/p-Xylenes  
 Concen: 26.674 ug/l  
 RT: 10.281 min Scan# 1508  
 Delta R.T. -0.006 min  
 Lab File: VX048327.D  
 Acq: 23 Oct 2025 15:47

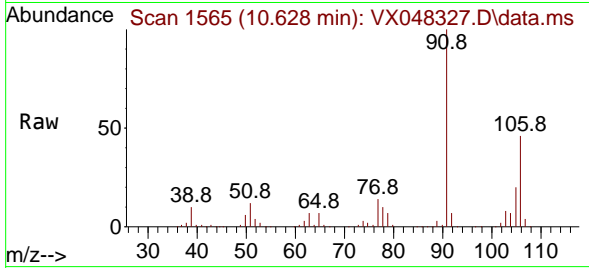
Tgt Ion: 106 Resp: 93482  
 Ion Ratio Lower Upper  
 106 100  
 91 208.4 167.9 251.9



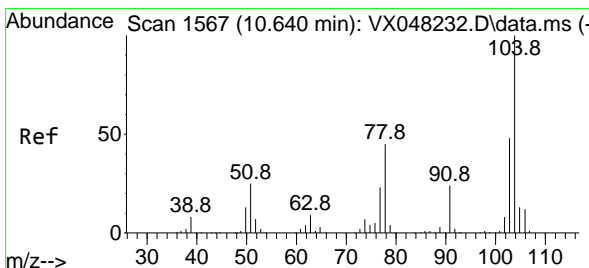
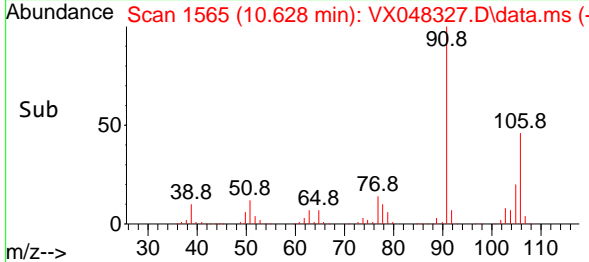
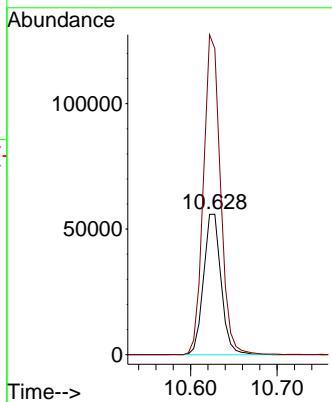


#69  
 o-Xylene  
 Concen: 23.273 ug/l  
 RT: 10.628 min Scan# 1565  
 Delta R.T. 0.006 min  
 Lab File: VX048327.D  
 Acq: 23 Oct 2025 15:47

Instrument : MSVOA\_X  
 ClientSampleId :

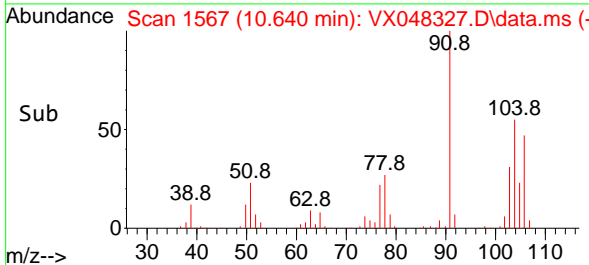
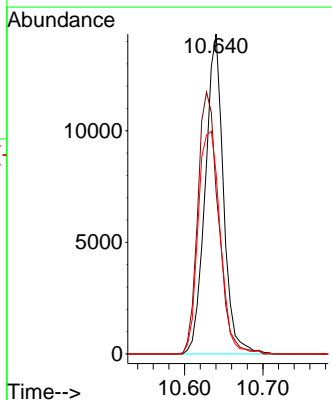
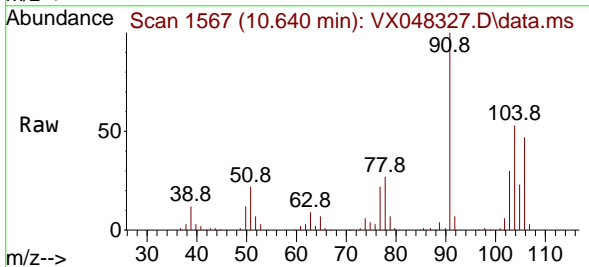


Tgt Ion:106 Resp: 78741  
 Ion Ratio Lower Upper  
 106 100  
 91 221.6 111.3 333.9

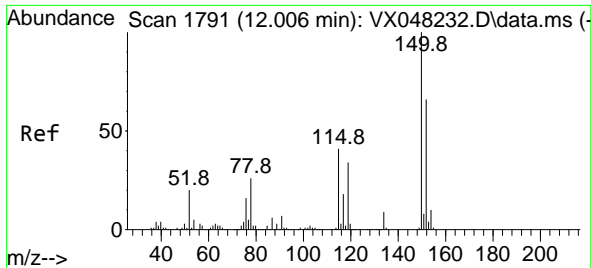


#70  
 Styrene  
 Concen: 4.013 ug/l  
 RT: 10.640 min Scan# 1567  
 Delta R.T. -0.000 min  
 Lab File: VX048327.D  
 Acq: 23 Oct 2025 15:47

Tgt Ion:104 Resp: 23117  
 Ion Ratio Lower Upper  
 104 100  
 78 92.5 42.2 63.4#  
 103 84.9 43.0 64.4#

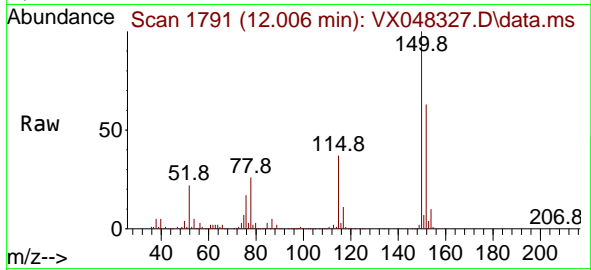




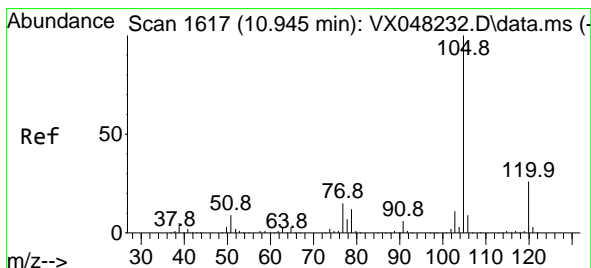
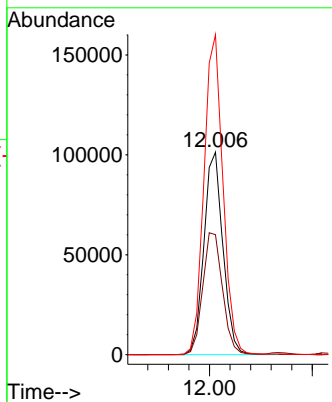
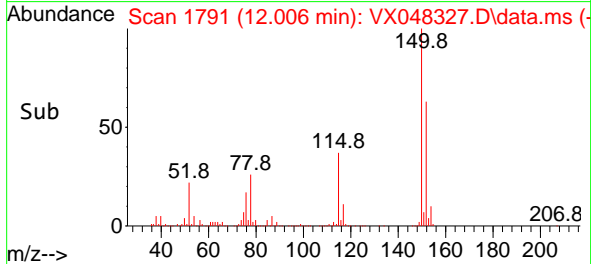


#72  
 1,4-Dichlorobenzene-d4  
 Concen: 50.000 ug/l  
 RT: 12.006 min Scan# 1791  
 Delta R.T. -0.000 min  
 Lab File: VX048327.D  
 Acq: 23 Oct 2025 15:47

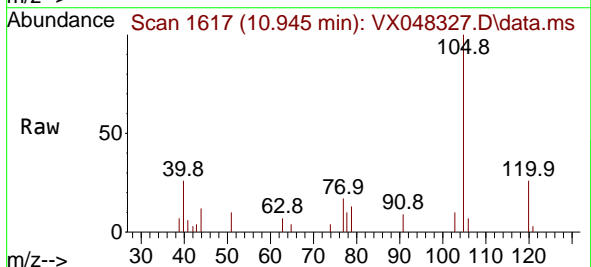
Instrument : MSVOA\_X  
 ClientSampleId :



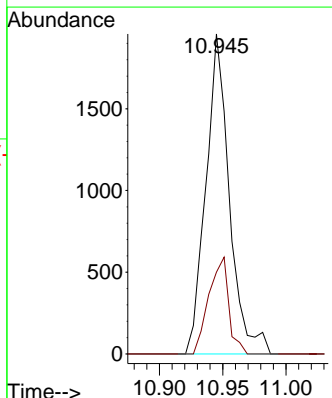
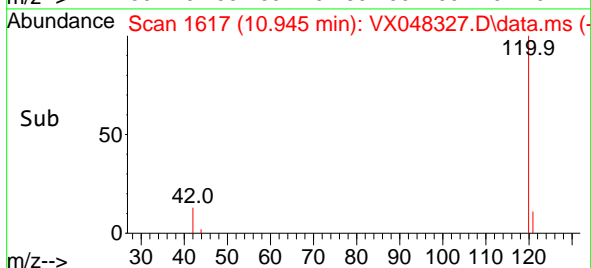
Tgt Ion:152 Resp: 130376  
 Ion Ratio Lower Upper  
 152 100  
 115 62.8 43.1 129.4  
 150 157.9 0.0 353.0

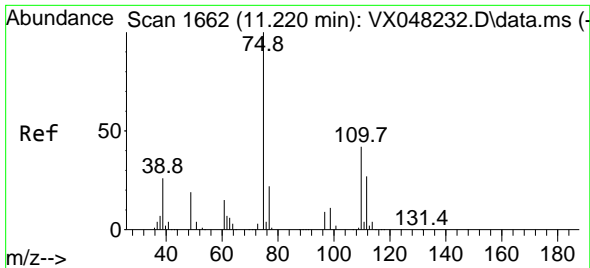


#73  
 Isopropylbenzene  
 Concen: 0.265 ug/l  
 RT: 10.945 min Scan# 1617  
 Delta R.T. -0.000 min  
 Lab File: VX048327.D  
 Acq: 23 Oct 2025 15:47



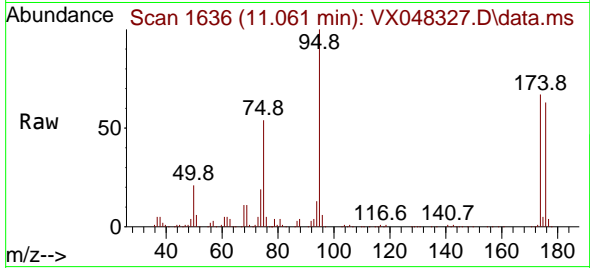
Tgt Ion:105 Resp: 2527  
 Ion Ratio Lower Upper  
 105 100  
 120 25.7 13.0 38.9



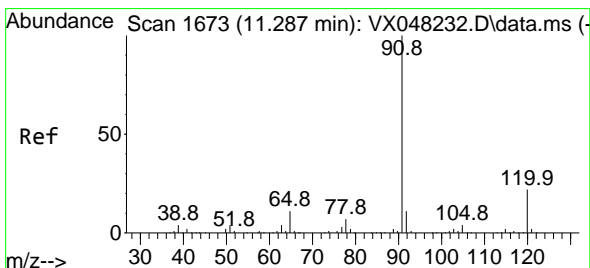
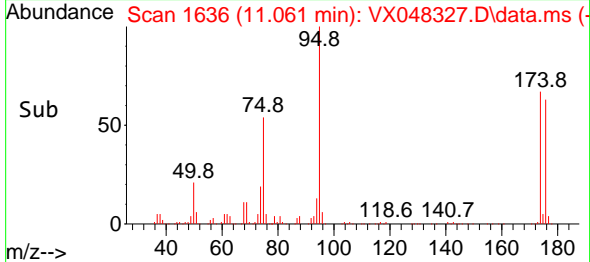
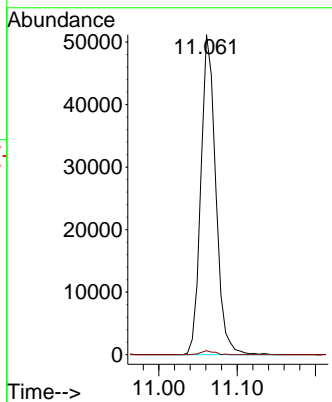


#76  
 1,2,3-Trichloropropane  
 Concen: 32.025 ug/l  
 RT: 11.061 min Scan# 1636  
 Delta R.T. -0.159 min  
 Lab File: VX048327.D  
 Acq: 23 Oct 2025 15:47

Instrument : MSVOA\_X  
 ClientSampleId :

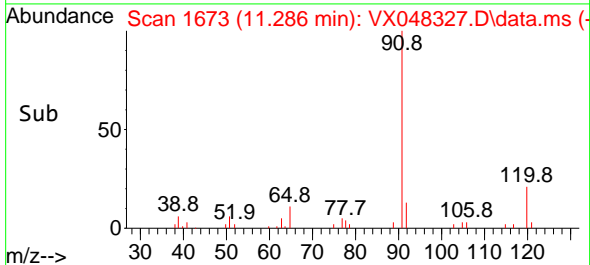
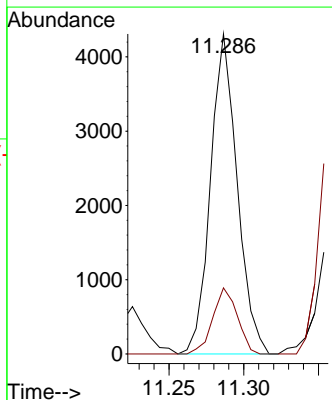
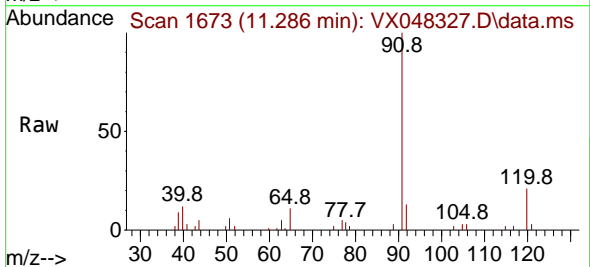


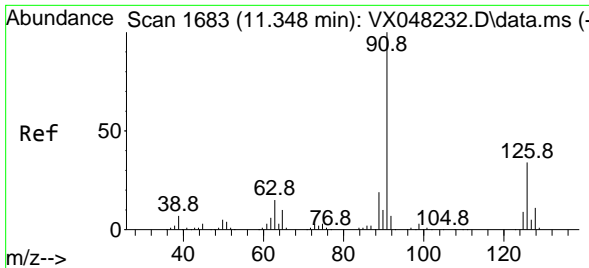
Tgt Ion: 75 Resp: 67709  
 Ion Ratio Lower Upper  
 75 100  
 77 1.1 22.4 67.2#



#78  
 n-propylbenzene  
 Concen: 0.485 ug/l  
 RT: 11.286 min Scan# 1673  
 Delta R.T. -0.000 min  
 Lab File: VX048327.D  
 Acq: 23 Oct 2025 15:47

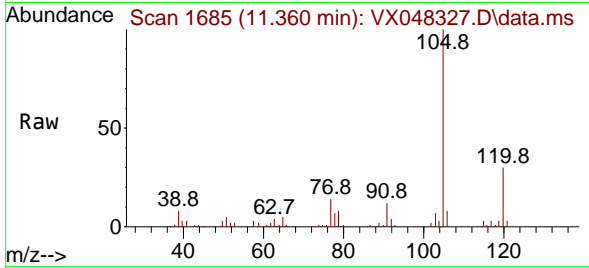
Tgt Ion: 91 Resp: 5344  
 Ion Ratio Lower Upper  
 91 100  
 120 19.0 11.1 33.1



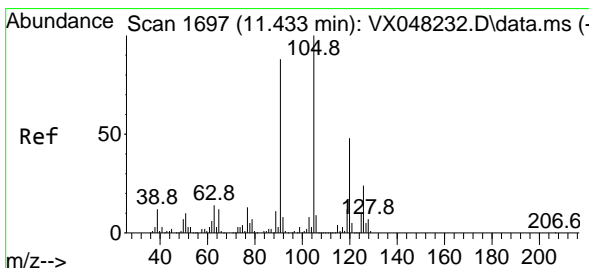
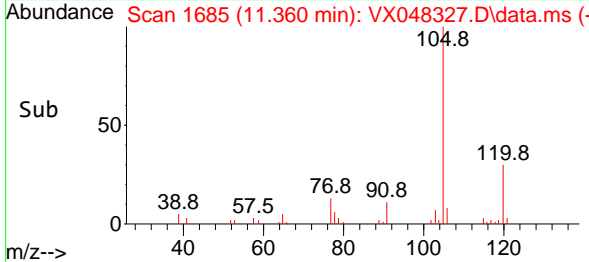
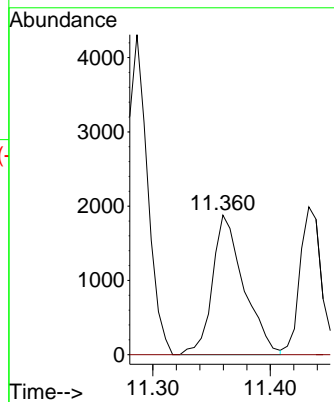


#79  
 2-Chlorotoluene  
 Concen: 0.523 ug/l  
 RT: 11.360 min Scan# 1685  
 Delta R.T. 0.012 min  
 Lab File: VX048327.D  
 Acq: 23 Oct 2025 15:47

Instrument : MSVOA\_X  
 ClientSampleId :

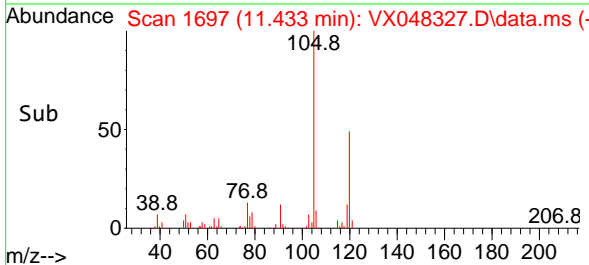
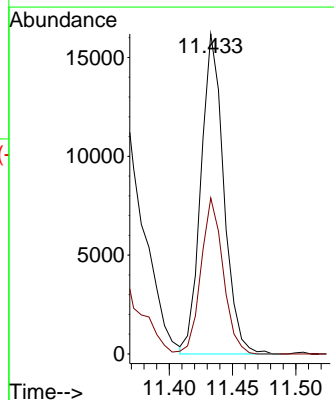
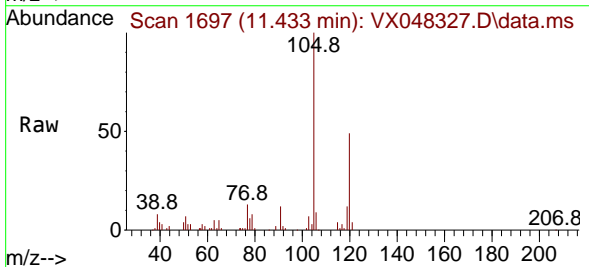


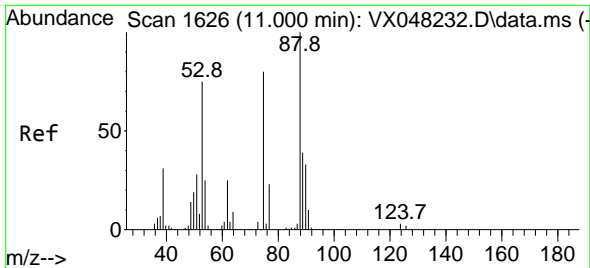
Tgt Ion: 91 Resp: 3495  
 Ion Ratio Lower Upper  
 91 100  
 126 0.0 16.4 49.4#



#80  
 1,3,5-Trimethylbenzene  
 Concen: 2.580 ug/l  
 RT: 11.433 min Scan# 1697  
 Delta R.T. -0.000 min  
 Lab File: VX048327.D  
 Acq: 23 Oct 2025 15:47

Tgt Ion: 105 Resp: 20332  
 Ion Ratio Lower Upper  
 105 100  
 120 47.4 24.0 72.0

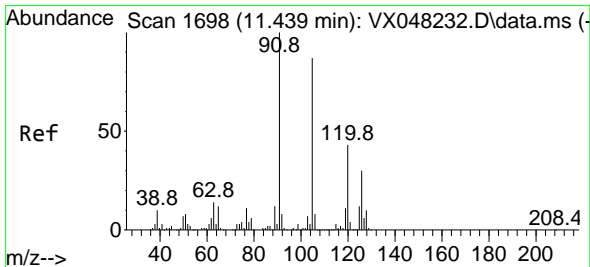
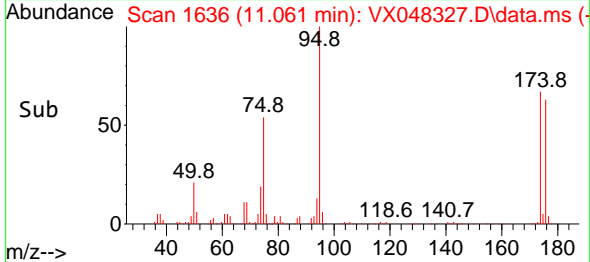
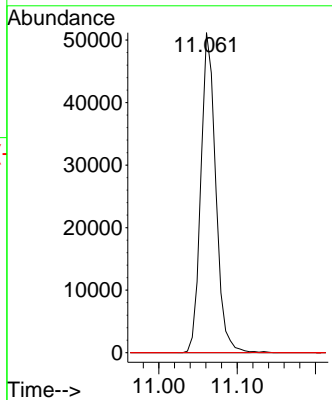
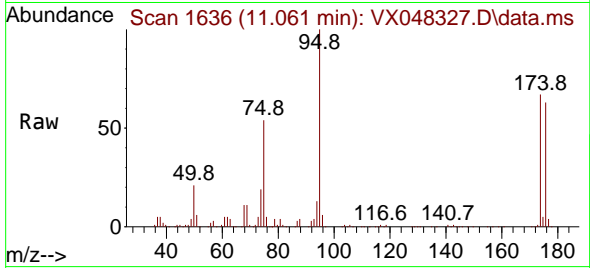




#81  
 trans-1,4-Dichloro-2-butene  
 Concen: 77.914 ug/l  
 RT: 11.061 min Scan# 1636  
 Delta R.T. 0.061 min  
 Lab File: VX048327.D  
 Acq: 23 Oct 2025 15:47

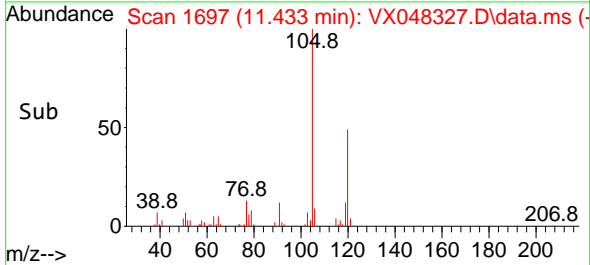
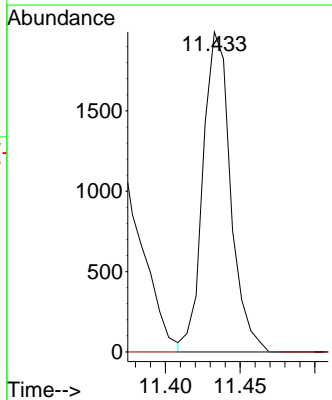
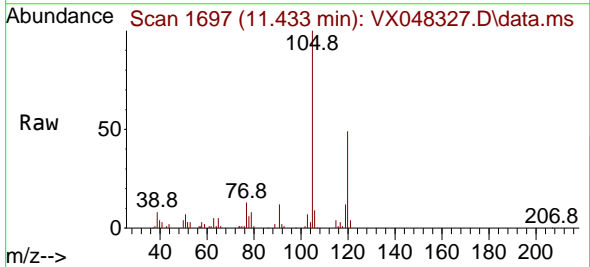
Instrument : MSVOA\_X  
 ClientSampleId :

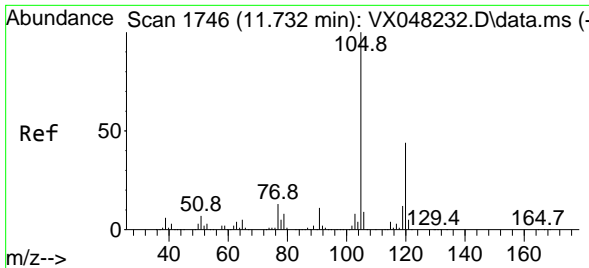
Tgt Ion: 75 Resp: 67709  
 Ion Ratio Lower Upper  
 75 100  
 53 0.0 79.5 119.3#  
 89 0.0 36.8 55.2#



#82  
 4-Chlorotoluene  
 Concen: 0.322 ug/l  
 RT: 11.433 min Scan# 1697  
 Delta R.T. -0.000 min  
 Lab File: VX048327.D  
 Acq: 23 Oct 2025 15:47

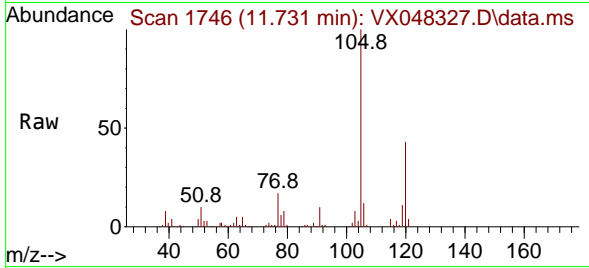
Tgt Ion: 91 Resp: 2552  
 Ion Ratio Lower Upper  
 91 100  
 126 0.0 14.1 42.4#



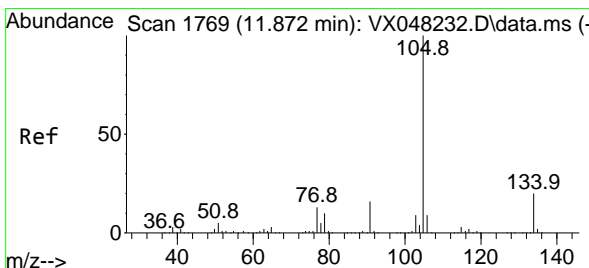
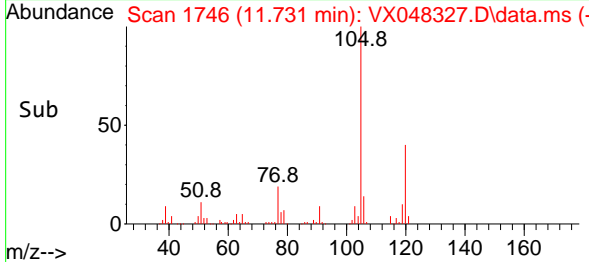
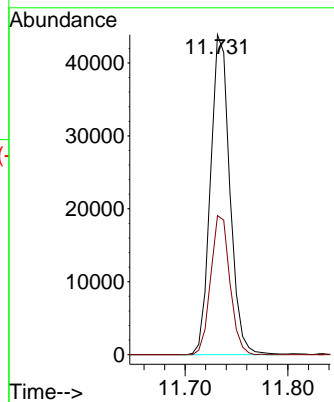


#84  
 1,2,4-Trimethylbenzene  
 Concen: 7.313 ug/l  
 RT: 11.731 min Scan# 1746  
 Delta R.T. -0.000 min  
 Lab File: VX048327.D  
 Acq: 23 Oct 2025 15:47

Instrument : MSVOA\_X  
 ClientSampleId :

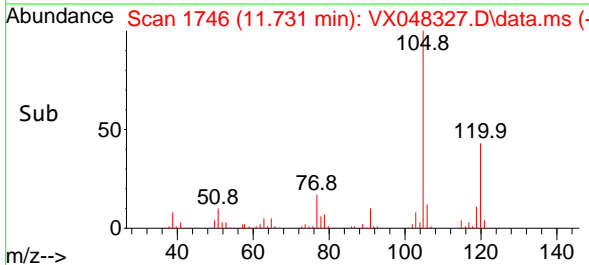
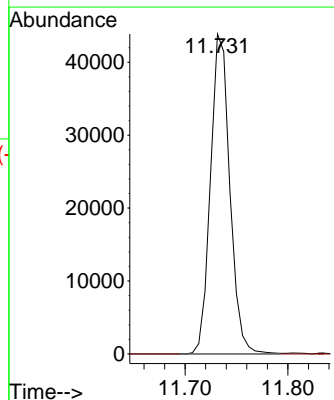
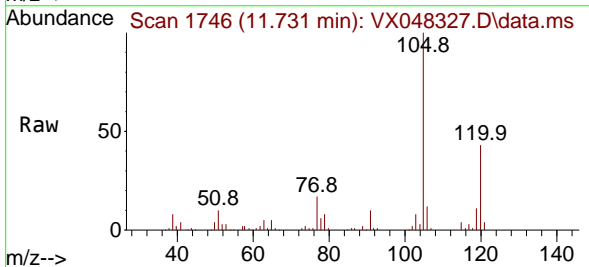


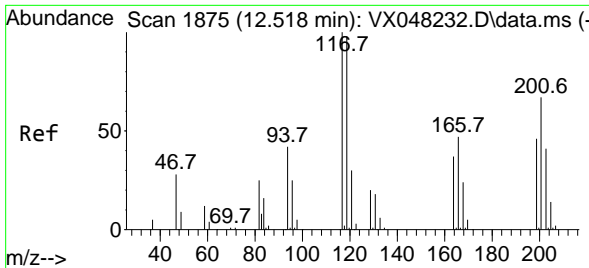
Tgt Ion:105 Resp: 57518  
 Ion Ratio Lower Upper  
 105 100  
 120 43.0 22.1 66.5



#85  
 sec-Butylbenzene  
 Concen: 5.904 ug/l  
 RT: 11.731 min Scan# 1746  
 Delta R.T. -0.140 min  
 Lab File: VX048327.D  
 Acq: 23 Oct 2025 15:47

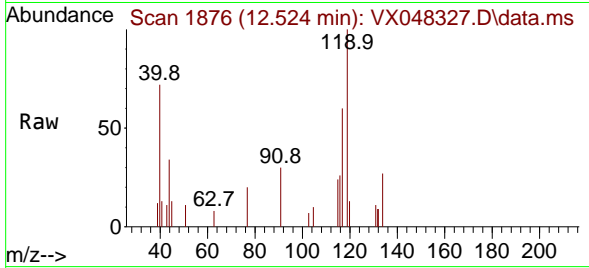
Tgt Ion:105 Resp: 57518  
 Ion Ratio Lower Upper  
 105 100  
 134 0.0 10.1 30.1#



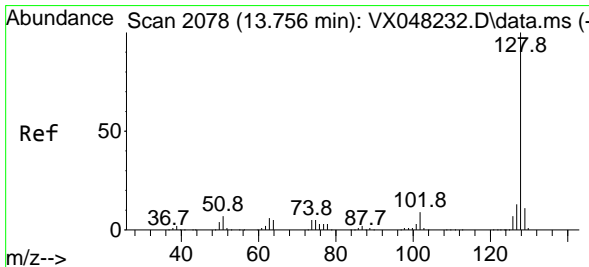
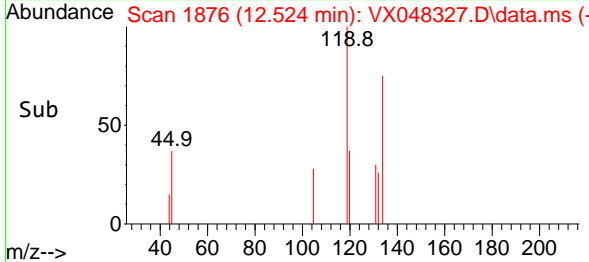
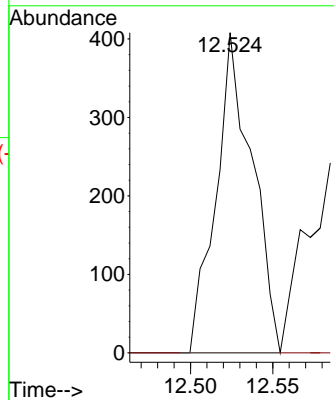


#90  
 Hexachloroethane  
 Concen: 0.376 ug/l  
 RT: 12.524 min Scan# 11  
 Delta R.T. 0.006 min  
 Lab File: VX048327.D  
 Acq: 23 Oct 2025 15:47

Instrument :  
 MSVOA\_X  
 ClientSampleId :



Tgt Ion:117 Resp: 626  
 Ion Ratio Lower Upper  
 117 100  
 201 0.0 34.1 102.2#



#95  
 Naphthalene  
 Concen: 45.873 ug/l  
 RT: 13.756 min Scan# 2078  
 Delta R.T. -0.000 min  
 Lab File: VX048327.D  
 Acq: 23 Oct 2025 15:47

Tgt Ion:128 Resp: 347349  
 Ion Ratio Lower Upper  
 128 100  
 127 12.8 10.2 15.4  
 129 10.9 8.6 12.8

