

Data Path : Z:\voasrv\HPCHEM1\MSVOA_X\Data\VX102325\
 Data File : VX048327.D
 Acq On : 23 Oct 2025 15:47
 Operator : JC/MD
 Sample : Q3414-10 10X
 Misc : 5.0mL/MSVOA_X/WATER
 ALS Vial : 19 Sample Multiplier: 1

Instrument :
 MSVOA_X
 ClientSampleId :
 SB-10

Quant Time: Oct 24 05:47:29 2025
 Quant Method : Z:\voasrv\HPCHEM1\MSVOA_X\Method\82X102025W.M
 Quant Title : SW846 8260
 QLast Update : Mon Oct 20 14:13:59 2025
 Response via : Initial Calibration

Compound	R.T.	QIon	Response	Conc	Units	Dev(Min)

Internal Standards						
1) Pentafluorobenzene	5.544	168	115810	50.000	ug/l	0.00
34) 1,4-Difluorobenzene	6.745	114	237450	50.000	ug/l	0.00
63) Chlorobenzene-d5	10.037	117	246276	50.000	ug/l	0.00
72) 1,4-Dichlorobenzene-d4	12.006	152	130376	50.000	ug/l	0.00

System Monitoring Compounds						
33) 1,2-Dichloroethane-d4	5.940	65	100688	62.010	ug/l	0.00
Spiked Amount	50.000	Range	78 - 117	Recovery	=	124.020%#
35) Dibromofluoromethane	5.373	113	67419	41.590	ug/l	0.00
Spiked Amount	50.000	Range	75 - 124	Recovery	=	83.180%
50) Toluene-d8	8.634	98	274601	48.328	ug/l	0.00
Spiked Amount	50.000	Range	92 - 112	Recovery	=	96.660%
62) 4-Bromofluorobenzene	11.061	95	125491	58.055	ug/l	0.00
Spiked Amount	50.000	Range	83 - 123	Recovery	=	116.120%

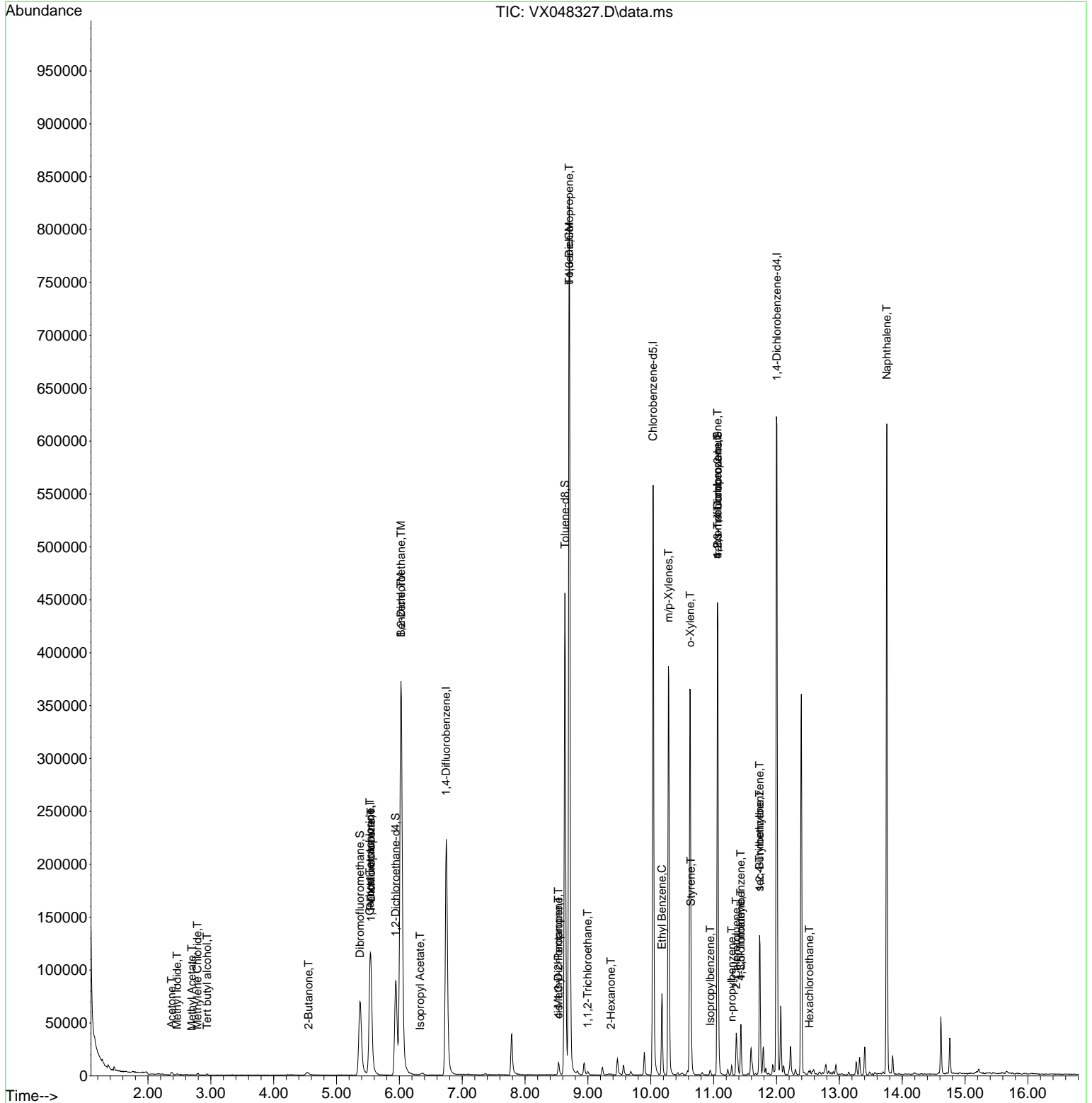
Target Compounds						Qvalue
10) Methyl Iodide	2.465	142	1478	0.941	ug/l #	89
11) Tert butyl alcohol	2.940	59	78	0.484	ug/l #	72
16) Acetone	2.373	43	3761	6.752	ug/l #	84
18) Methyl Acetate	2.697	43	840	0.722	ug/l #	66
20) Methylene Chloride	2.788	84	347	0.256	ug/l #	75
25) 2-Butanone	4.556	43	348	0.494	ug/l #	50
36) 1,1-Dichloropropene	5.550	75	9811	4.258	ug/l #	50
38) Carbon Tetrachloride	5.531	117	12798	4.502	ug/l #	16
40) Benzene	6.025	78	480185	71.783	ug/l	99
42) 1,2-Dichloroethane	6.025	62	4542	1.840	ug/l #	76
43) Isopropyl Acetate	6.330	43	1361	0.434	ug/l #	63
51) 4-Methyl-2-Pentanone	8.531	43	5221	2.887	ug/l #	48
52) Toluene	8.702	92	321137	75.567	ug/l	99
53) t-1,3-Dichloropropene	8.702	75	4102	1.591	ug/l #	1
54) cis-1,3-Dichloropropene	8.531	75	1904	0.685	ug/l #	43
55) 1,1,2-Trichloroethane	8.994	97	2233	1.413	ug/l #	16
59) 2-Hexanone	9.366	43	1169	0.927	ug/l #	26
67) Ethyl Benzene	10.177	91	45772	4.853	ug/l	100
68) m/p-Xylenes	10.281	106	93482	26.674	ug/l	99
69) o-Xylene	10.628	106	78741	23.273	ug/l	99
70) Styrene	10.640	104	23117	4.013	ug/l #	50
73) Isopropylbenzene	10.945	105	2527	0.265	ug/l	100
76) 1,2,3-Trichloropropane	11.061	75	67709	32.025	ug/l #	33
78) n-propylbenzene	11.286	91	5344	0.485	ug/l	94
79) 2-Chlorotoluene	11.360	91	3495	0.523	ug/l #	42
80) 1,3,5-Trimethylbenzene	11.433	105	20332	2.580	ug/l	99
81) trans-1,4-Dichloro-2-b...	11.061	75	67709	77.914	ug/l #	10
82) 4-Chlorotoluene	11.433	91	2552	0.322	ug/l #	46
84) 1,2,4-Trimethylbenzene	11.731	105	57518	7.313	ug/l	98
85) sec-Butylbenzene	11.731	105	57518	5.904	ug/l #	56
90) Hexachloroethane	12.524	117	626	0.376	ug/l #	16
95) Naphthalene	13.756	128	347349	45.873	ug/l	100

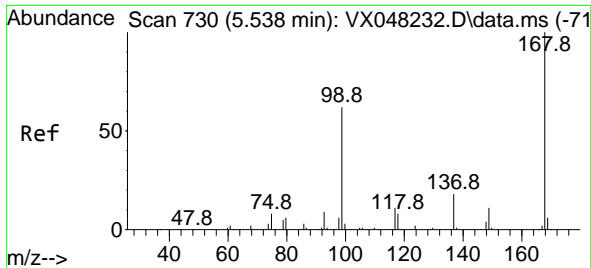
(#) = qualifier out of range (m) = manual integration (+) = signals summed

Data Path : Z:\voasrv\HPCHEM1\MSVOA_X\Data\VX102325\
 Data File : VX048327.D
 Acq On : 23 Oct 2025 15:47
 Operator : JC/MD
 Sample : Q3414-10 10X
 Misc : 5.0mL/MSVOA_X/WATER
 ALS Vial : 19 Sample Multiplier: 1

Instrument :
 MSVOA_X
 ClientSampleId :
 SB-10

Quant Time: Oct 24 05:47:29 2025
 Quant Method : Z:\voasrv\HPCHEM1\MSVOA_X\Method\82X102025W.M
 Quant Title : SW846 8260
 QLast Update : Mon Oct 20 14:13:59 2025
 Response via : Initial Calibration

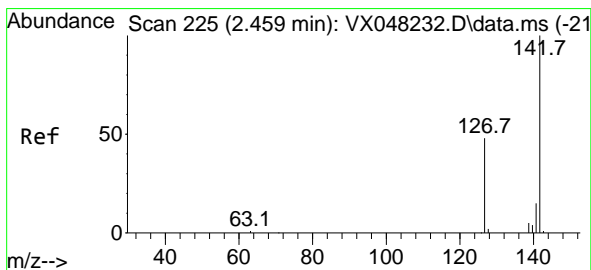
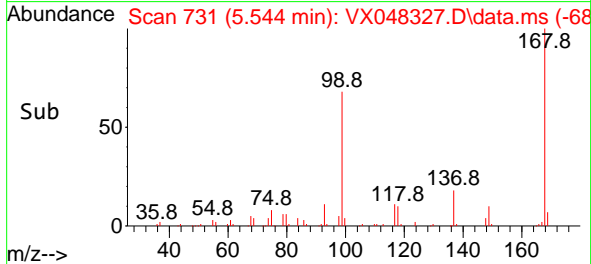
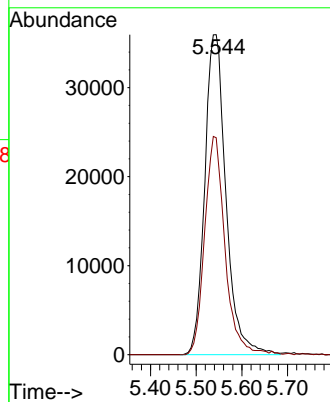
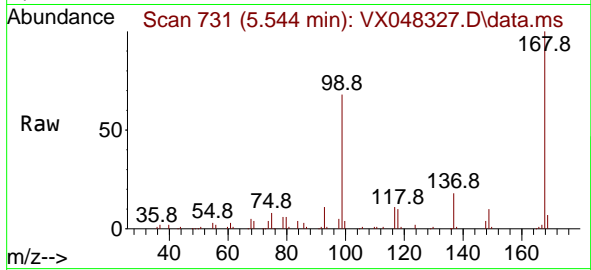




#1
 Pentafluorobenzene
 Concen: 50.000 ug/l
 RT: 5.544 min Scan# 71
 Delta R.T. -0.000 min
 Lab File: VX048327.D
 Acq: 23 Oct 2025 15:47

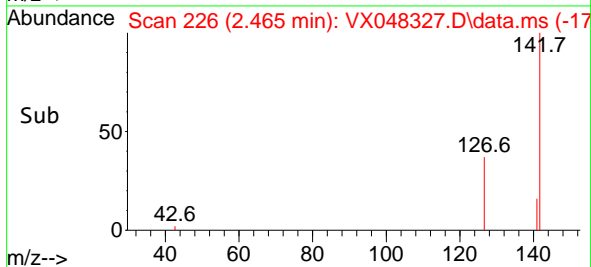
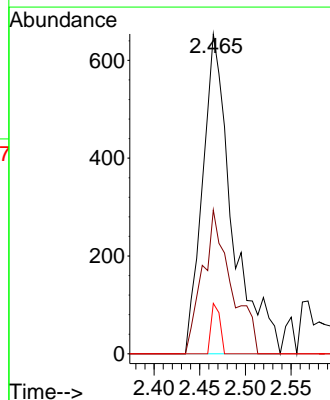
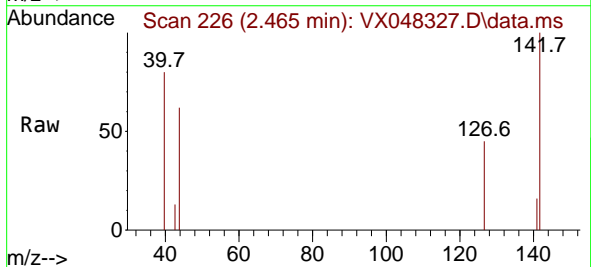
Instrument :
 MSVOA_X
 ClientSampleId :
 SB-10

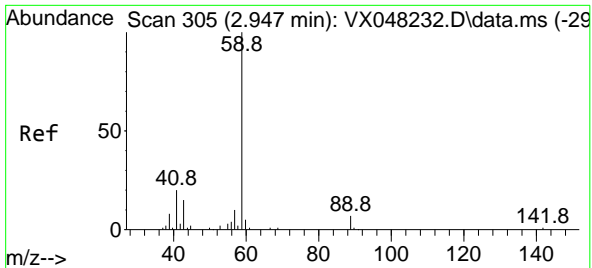
Tgt Ion:168 Resp: 115810
 Ion Ratio Lower Upper
 168 100
 99 67.8 46.4 69.6



#10
 Methyl Iodide
 Concen: 0.941 ug/l
 RT: 2.465 min Scan# 226
 Delta R.T. 0.006 min
 Lab File: VX048327.D
 Acq: 23 Oct 2025 15:47

Tgt Ion:142 Resp: 1478
 Ion Ratio Lower Upper
 142 100
 127 43.5 38.5 57.7
 141 4.6 11.6 17.4#

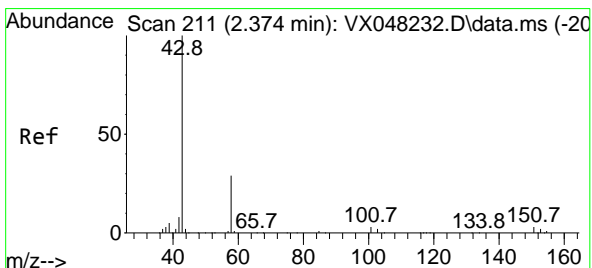
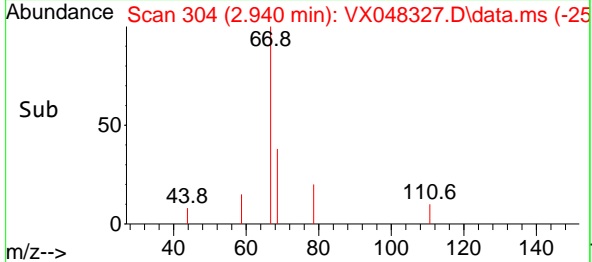
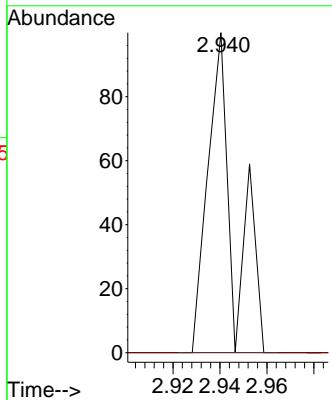
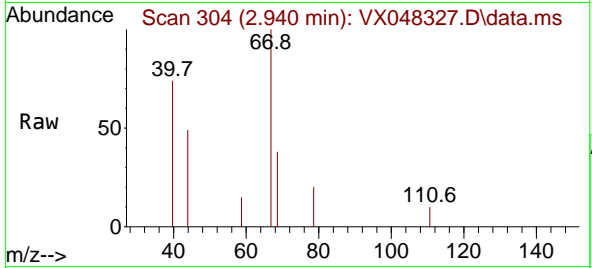




#11
 Tert butyl alcohol
 Concen: 0.484 ug/l
 RT: 2.940 min Scan# 304
 Delta R.T. -0.000 min
 Lab File: VX048327.D
 Acq: 23 Oct 2025 15:47

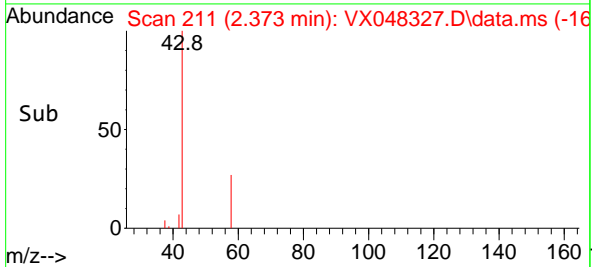
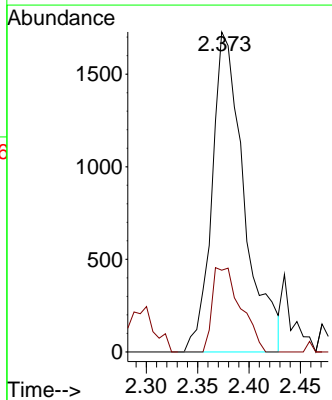
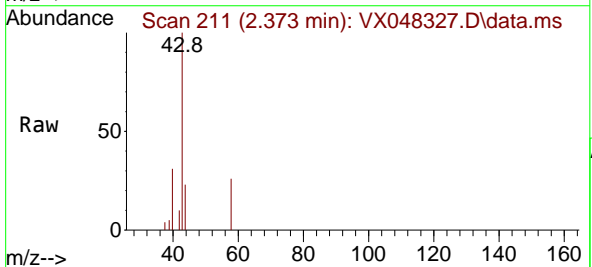
Instrument : MSVOA_X
 Client SampleID : SB-10

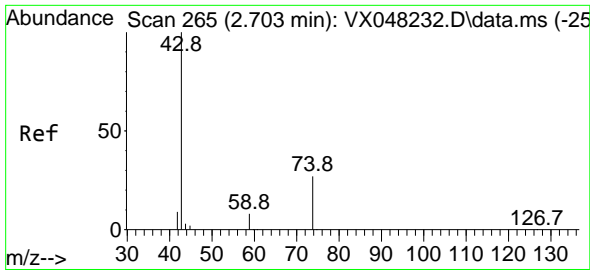
Tgt Ion: 59 Resp: 78
 Ion Ratio Lower Upper
 59 100
 57 0.0 8.2 12.4#



#16
 Acetone
 Concen: 6.752 ug/l
 RT: 2.373 min Scan# 211
 Delta R.T. -0.000 min
 Lab File: VX048327.D
 Acq: 23 Oct 2025 15:47

Tgt Ion: 43 Resp: 3761
 Ion Ratio Lower Upper
 43 100
 58 20.8 23.4 35.2#

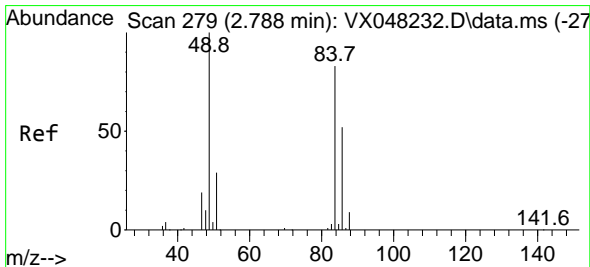
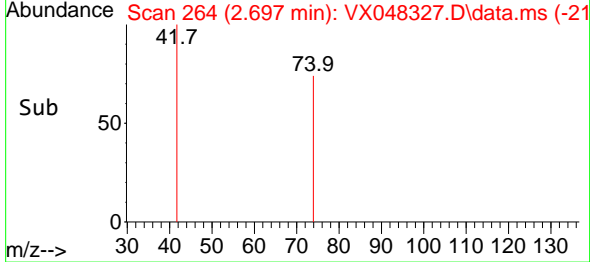
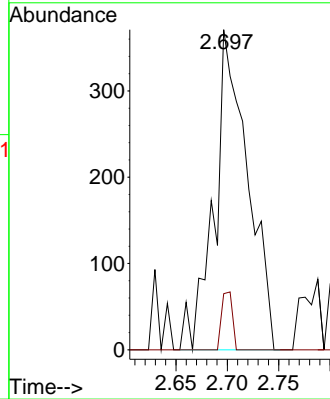
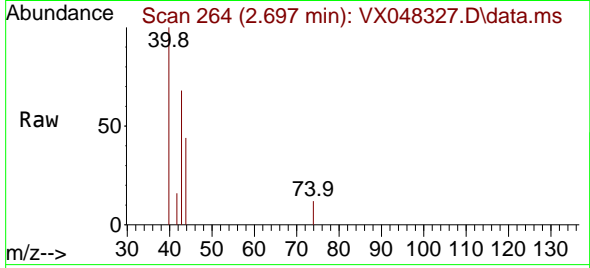




#18
 Methyl Acetate
 Concen: 0.722 ug/l
 RT: 2.697 min Scan# 20
 Delta R.T. -0.000 min
 Lab File: VX048327.D
 Acq: 23 Oct 2025 15:47

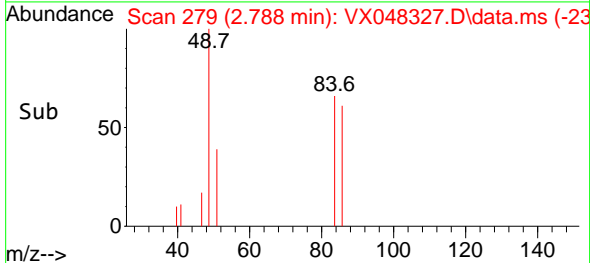
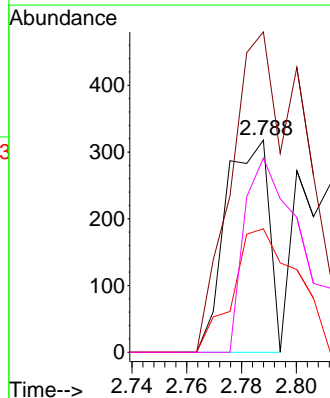
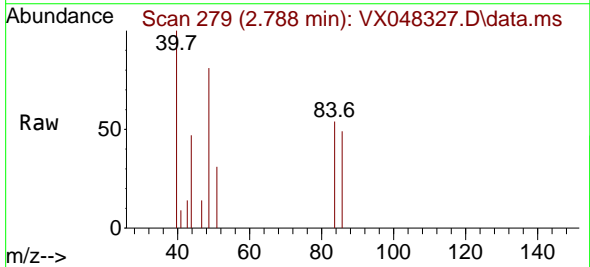
Instrument :
 MSVOA_X
 ClientSampleId :
 SB-10

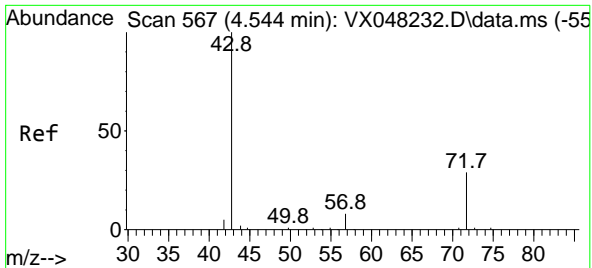
Tgt Ion: 43 Resp: 840
 Ion Ratio Lower Upper
 43 100
 74 5.7 17.5 26.3#



#20
 Methylene Chloride
 Concen: 0.256 ug/l
 RT: 2.788 min Scan# 279
 Delta R.T. -0.000 min
 Lab File: VX048327.D
 Acq: 23 Oct 2025 15:47

Tgt Ion: 84 Resp: 347
 Ion Ratio Lower Upper
 84 100
 49 150.9 104.1 156.1
 51 58.2 31.3 46.9#
 86 91.5 51.3 76.9#

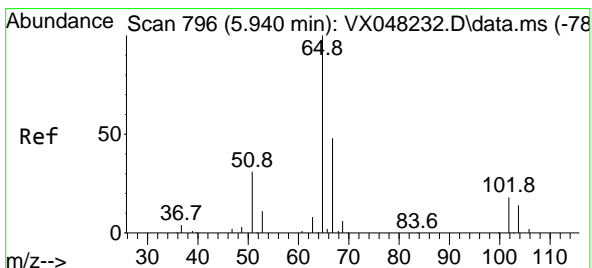
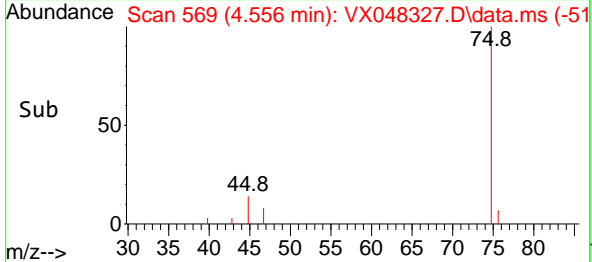
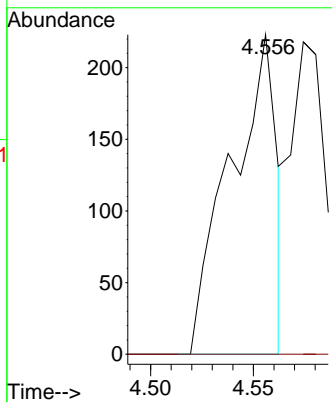
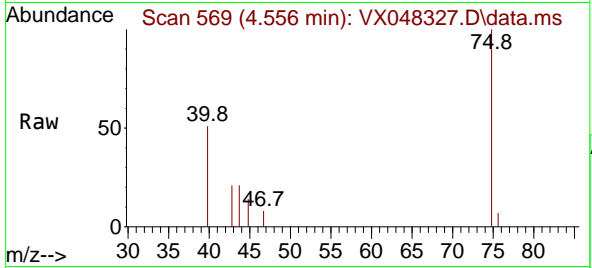




#25
 2-Butanone
 Concen: 0.494 ug/l
 RT: 4.556 min Scan# 569
 Delta R.T. 0.018 min
 Lab File: VX048327.D
 Acq: 23 Oct 2025 15:47

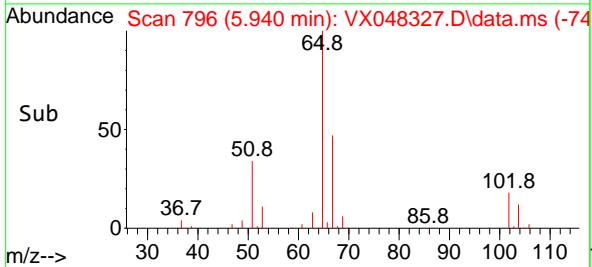
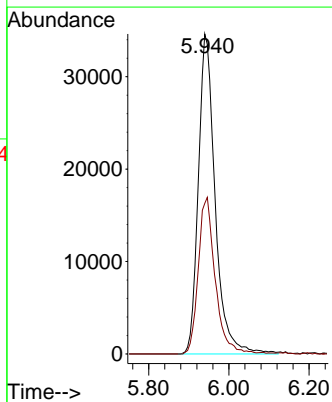
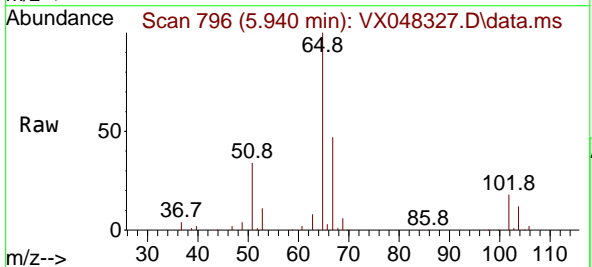
Instrument : MSVOA_X
 ClientSampleId : SB-10

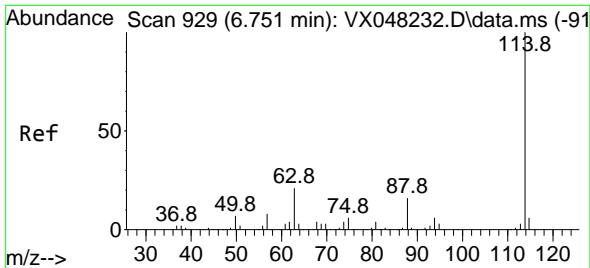
Tgt Ion: 43 Resp: 348
 Ion Ratio Lower Upper
 43 100
 72 0.0 19.9 29.9#



#33
 1,2-Dichloroethane-d4
 Concen: 62.010 ug/l
 RT: 5.940 min Scan# 796
 Delta R.T. -0.000 min
 Lab File: VX048327.D
 Acq: 23 Oct 2025 15:47

Tgt Ion: 65 Resp: 100688
 Ion Ratio Lower Upper
 65 100
 67 49.3 0.0 105.0



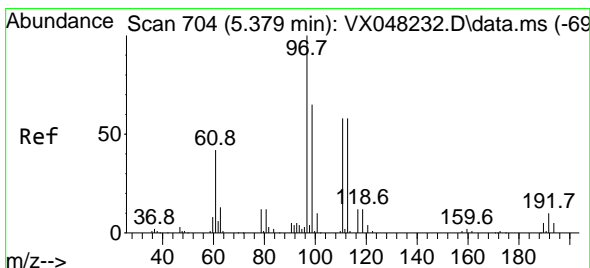
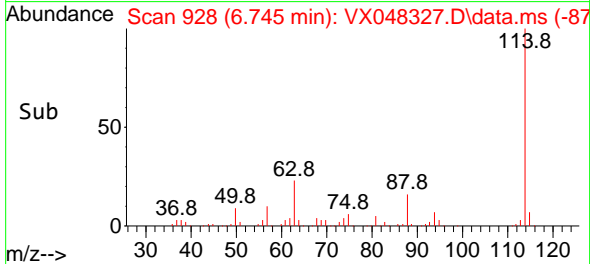
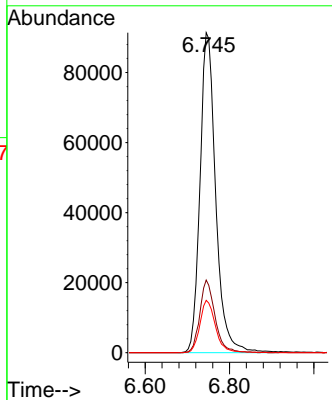
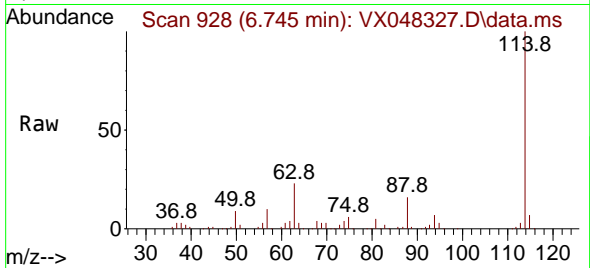


#34
 1,4-Difluorobenzene
 Concen: 50.000 ug/l
 RT: 6.745 min Scan# 91
 Delta R.T. -0.000 min
 Lab File: VX048327.D
 Acq: 23 Oct 2025 15:47

Instrument : MSVOA_X
 ClientSampleId : SB-10

Tgt Ion:114 Resp: 237450

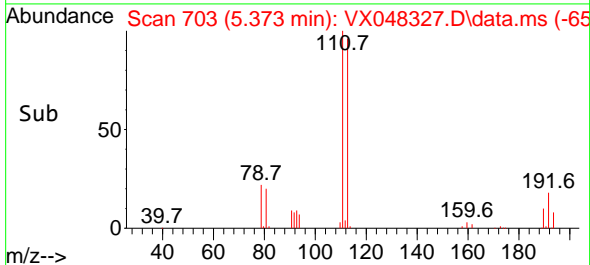
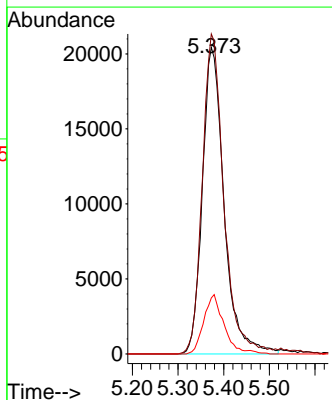
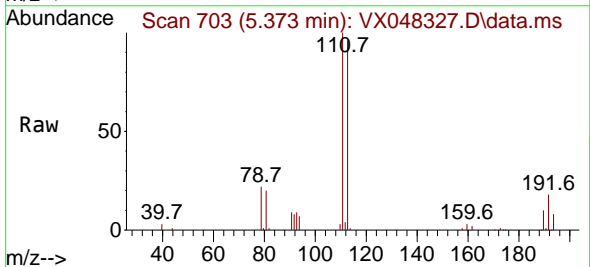
Ion	Ratio	Lower	Upper
114	100		
63	22.7	0.0	43.2
88	16.3	0.0	33.6

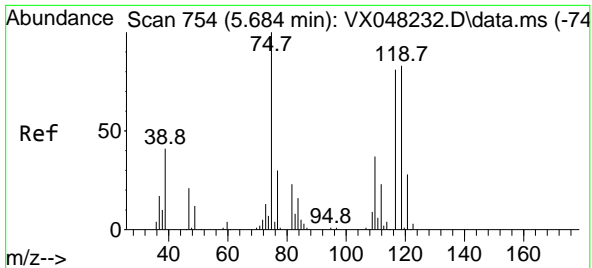


#35
 Dibromofluoromethane
 Concen: 41.590 ug/l
 RT: 5.373 min Scan# 703
 Delta R.T. -0.000 min
 Lab File: VX048327.D
 Acq: 23 Oct 2025 15:47

Tgt Ion:113 Resp: 67419

Ion	Ratio	Lower	Upper
113	100		
111	103.1	82.2	123.4
192	18.2	15.1	22.7

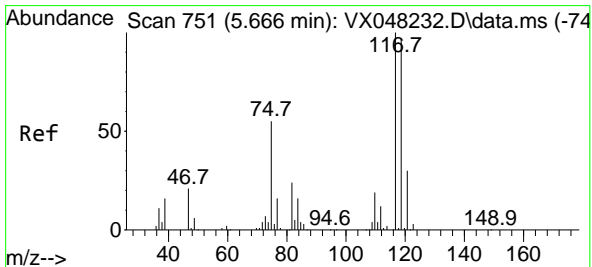
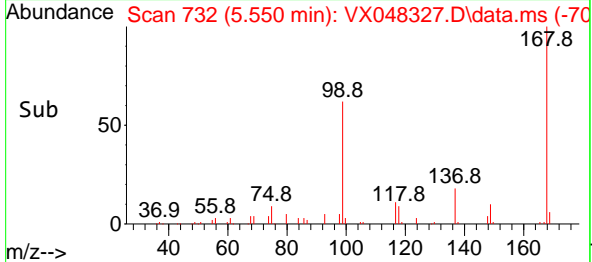
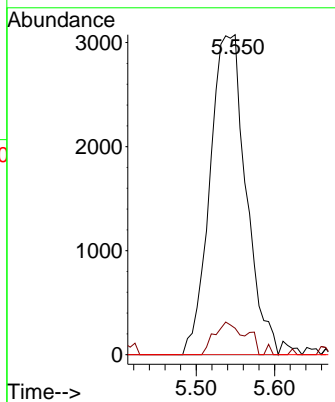
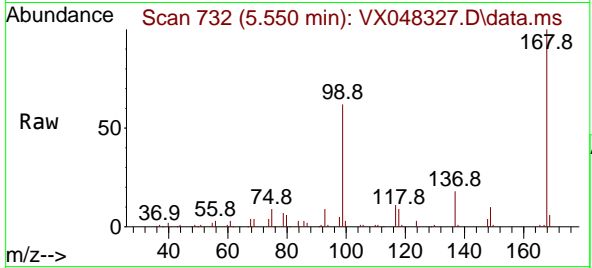




#36
 1,1-Dichloropropene
 Concen: 4.258 ug/l
 RT: 5.550 min Scan# 711
 Delta R.T. -0.134 min
 Lab File: VX048327.D
 Acq: 23 Oct 2025 15:47

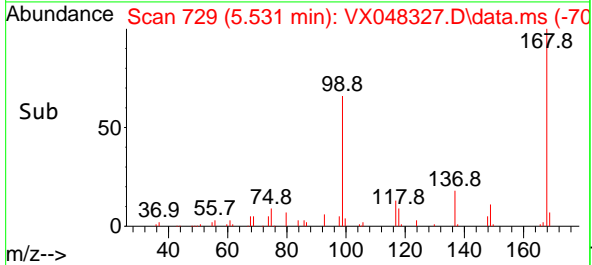
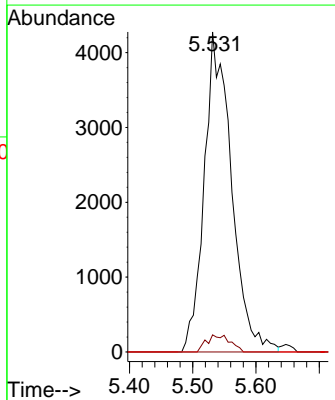
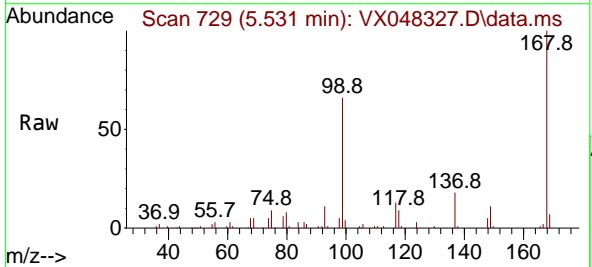
Instrument : MSVOA_X
 ClientSampleId : SB-10

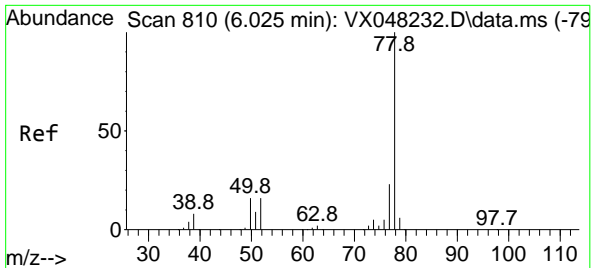
Tgt Ion	Resp	Lower	Upper
75	9811		
75	100		
110	8.9	17.7	53.1#
77	0.0	24.3	36.5#



#38
 Carbon Tetrachloride
 Concen: 4.502 ug/l
 RT: 5.531 min Scan# 729
 Delta R.T. -0.134 min
 Lab File: VX048327.D
 Acq: 23 Oct 2025 15:47

Tgt Ion	Resp	Lower	Upper
117	12798		
117	100		
119	5.4	77.2	115.8#
121	0.0	24.8	37.2#

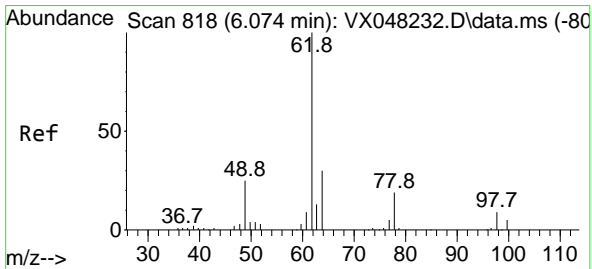
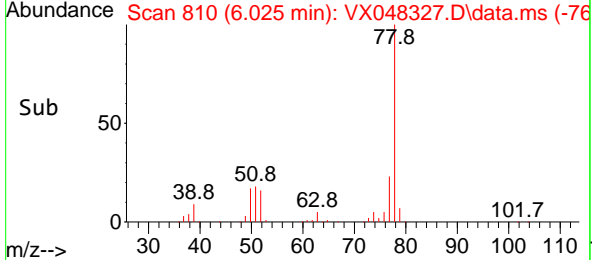
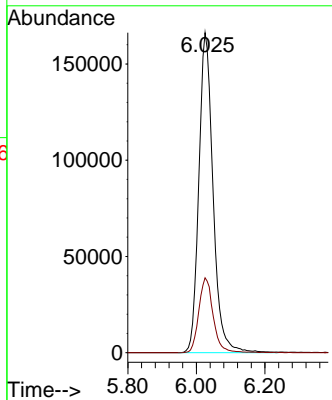
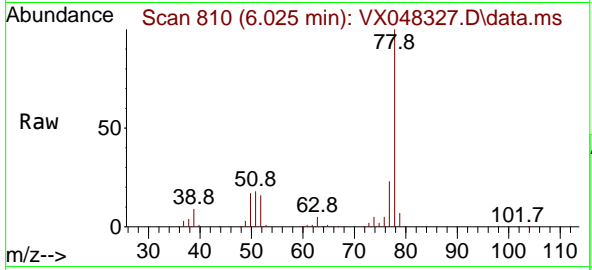




#40
Benzene
Concen: 71.783 ug/l
RT: 6.025 min Scan# 810
Delta R.T. -0.000 min
Lab File: VX048327.D
Acq: 23 Oct 2025 15:47

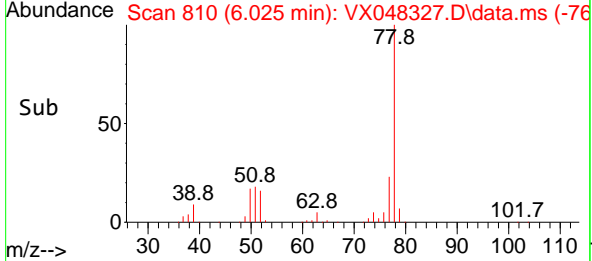
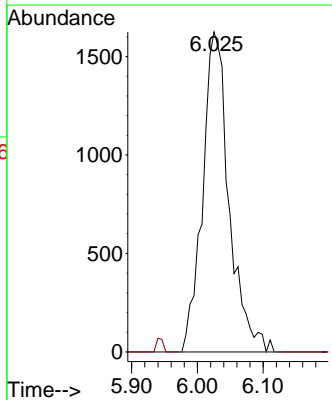
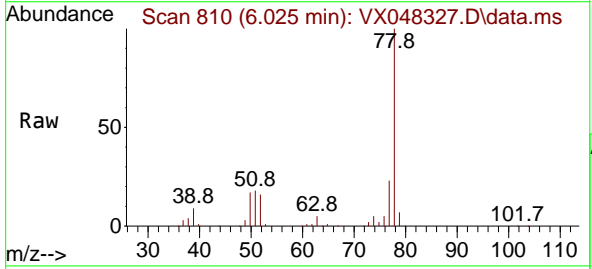
Instrument : MSVOA_X
ClientSampleId : SB-10

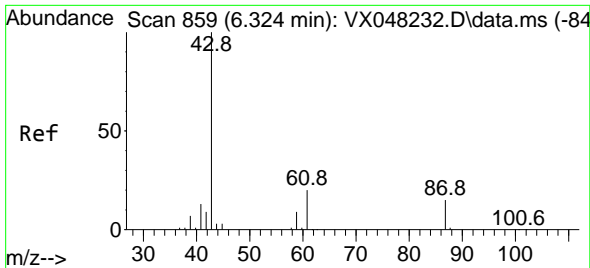
Tgt Ion: 78 Resp: 480185
Ion Ratio Lower Upper
78 100
77 23.4 19.3 28.9



#42
1,2-Dichloroethane
Concen: 1.840 ug/l
RT: 6.025 min Scan# 810
Delta R.T. -0.043 min
Lab File: VX048327.D
Acq: 23 Oct 2025 15:47

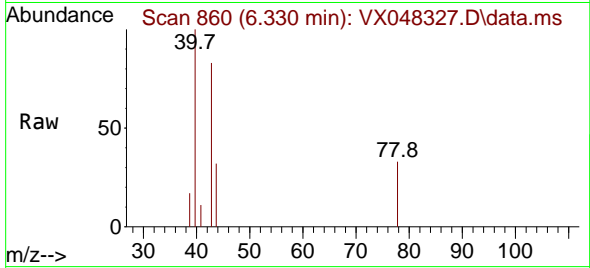
Tgt Ion: 62 Resp: 4542
Ion Ratio Lower Upper
62 100
98 0.0 0.0 17.2



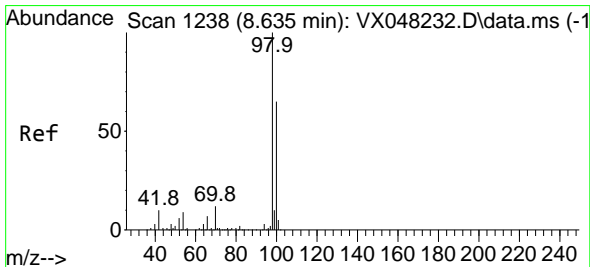
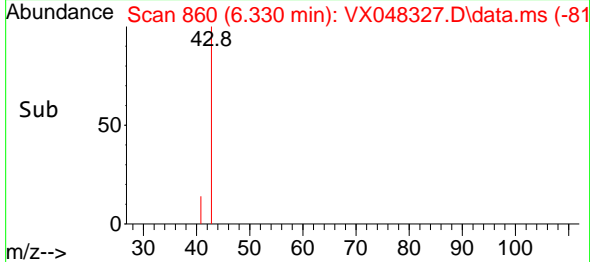
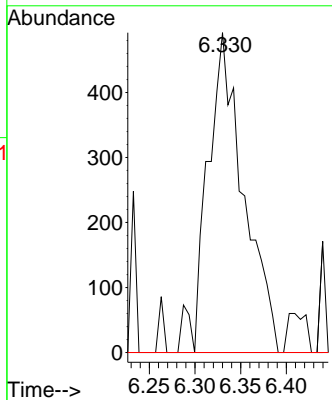


#43
 Isopropyl Acetate
 Concen: 0.434 ug/l
 RT: 6.330 min Scan# 80
 Delta R.T. 0.006 min
 Lab File: VX048327.D
 Acq: 23 Oct 2025 15:47

Instrument :
 MSVOA_X
 ClientSampleId :
 SB-10

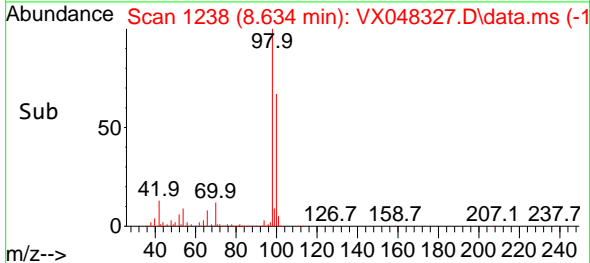
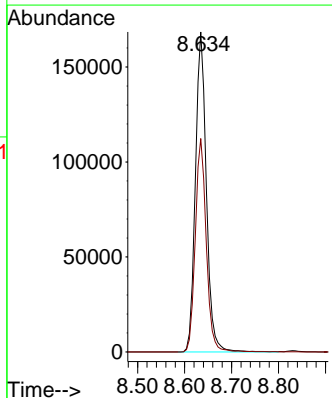
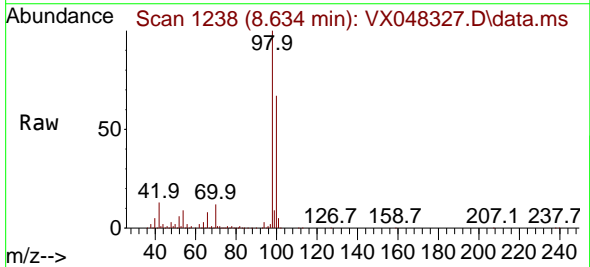


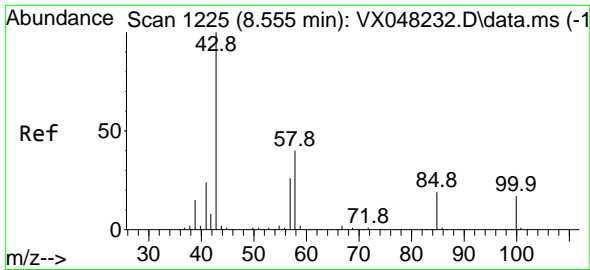
Tgt Ion: 43 Resp: 1361
 Ion Ratio Lower Upper
 43 100
 61 0.0 14.9 22.3#
 87 0.0 9.4 14.2#



#50
 Toluene-d8
 Concen: 48.328 ug/l
 RT: 8.634 min Scan# 1238
 Delta R.T. -0.000 min
 Lab File: VX048327.D
 Acq: 23 Oct 2025 15:47

Tgt Ion: 98 Resp: 274601
 Ion Ratio Lower Upper
 98 100
 100 66.7 53.0 79.4

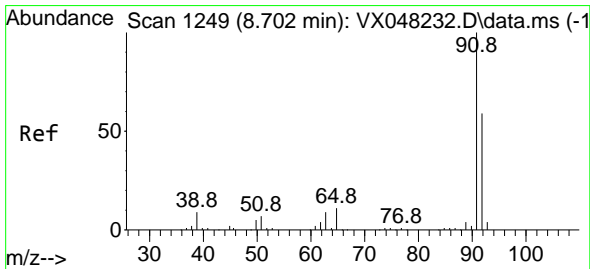
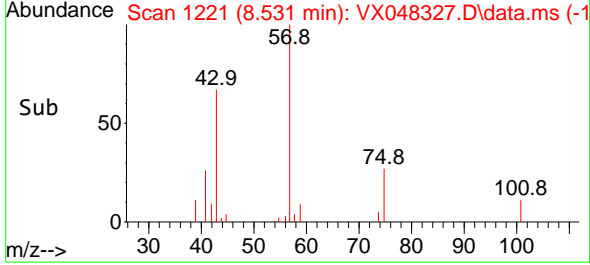
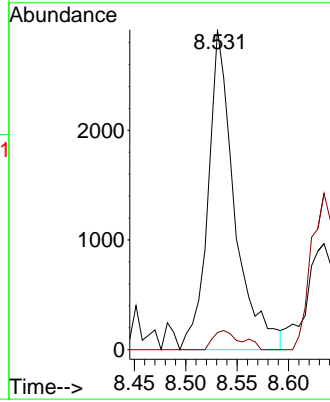
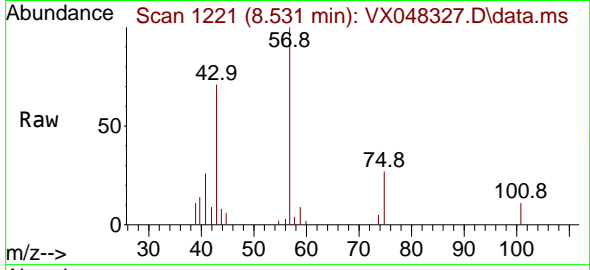




#51
 4-Methyl-2-Pentanone
 Concen: 2.887 ug/l
 RT: 8.531 min Scan# 11
 Delta R.T. -0.025 min
 Lab File: VX048327.D
 Acq: 23 Oct 2025 15:47

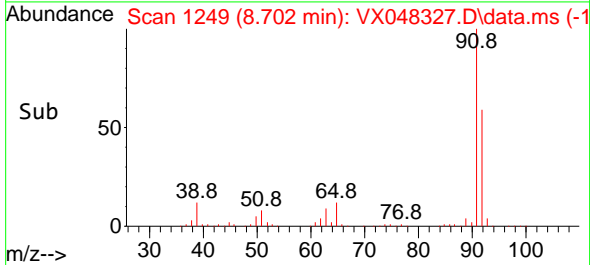
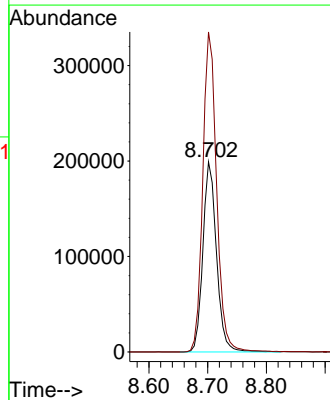
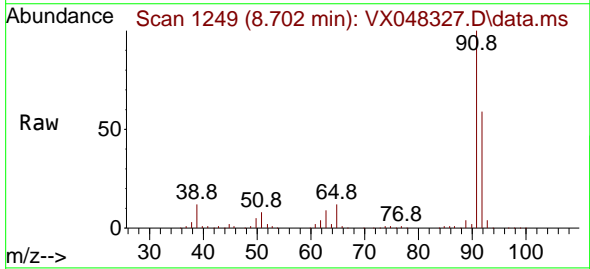
Instrument :
 MSVOA_X
 ClientSampleId :
 SB-10

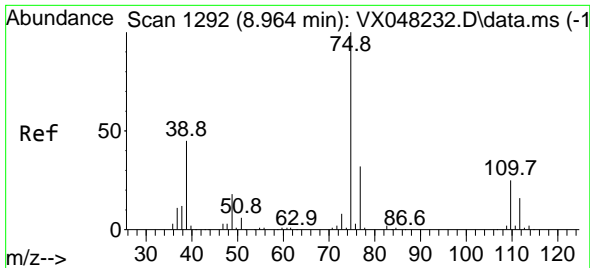
Tgt Ion: 43 Resp: 5221
 Ion Ratio Lower Upper
 43 100
 58 6.2 29.5 44.3#



#52
 Toluene
 Concen: 75.567 ug/l
 RT: 8.702 min Scan# 1249
 Delta R.T. -0.000 min
 Lab File: VX048327.D
 Acq: 23 Oct 2025 15:47

Tgt Ion: 92 Resp: 321137
 Ion Ratio Lower Upper
 92 100
 91 171.3 136.1 204.1

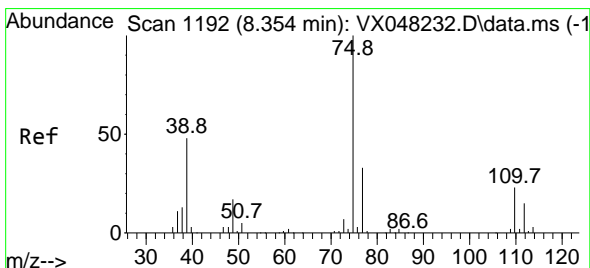
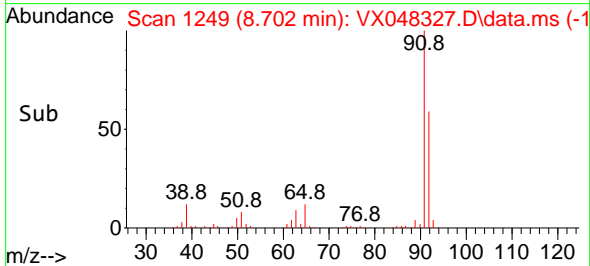
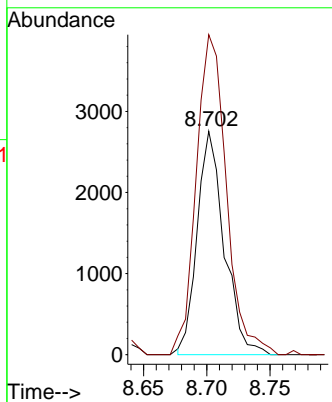
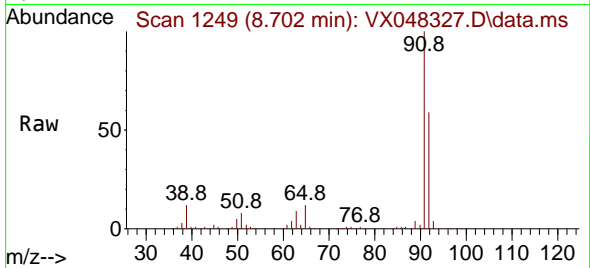




#53
 t-1,3-Dichloropropene
 Concen: 1.591 ug/l
 RT: 8.702 min Scan# 1121
 Delta R.T. -0.262 min
 Lab File: VX048327.D
 Acq: 23 Oct 2025 15:47

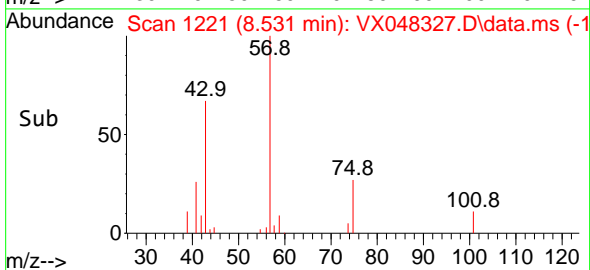
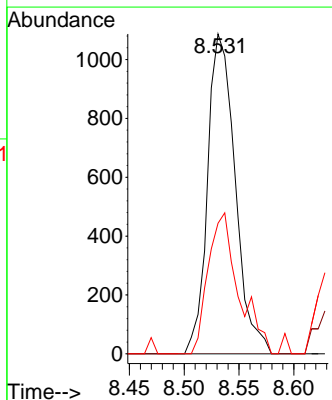
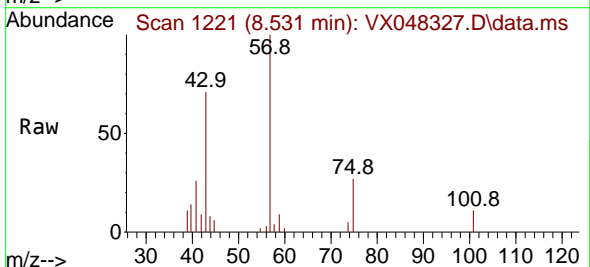
Instrument : MSVOA_X
 ClientSampleId : SB-10

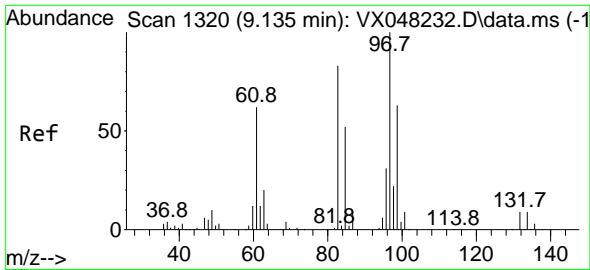
Tgt Ion: 75 Resp: 4102
 Ion Ratio Lower Upper
 75 100
 77 143.2 25.0 37.6#



#54
 cis-1,3-Dichloropropene
 Concen: 0.685 ug/l
 RT: 8.531 min Scan# 1221
 Delta R.T. 0.183 min
 Lab File: VX048327.D
 Acq: 23 Oct 2025 15:47

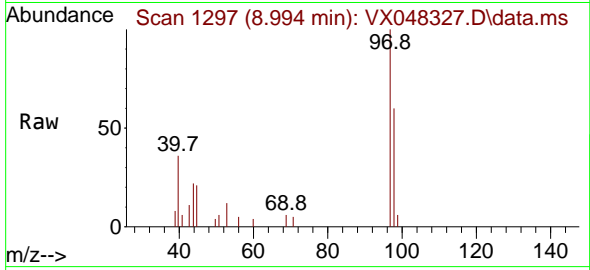
Tgt Ion: 75 Resp: 1904
 Ion Ratio Lower Upper
 75 100
 77 0.0 24.9 37.3#
 39 94.0 42.6 64.0#





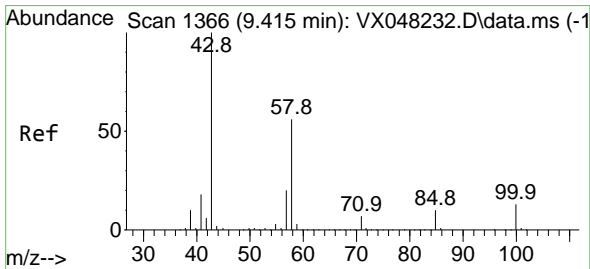
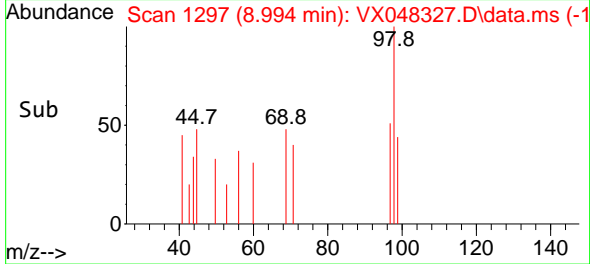
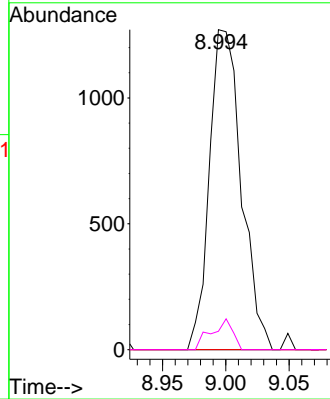
#55
 1,1,2-Trichloroethane
 Concen: 1.413 ug/l
 RT: 8.994 min Scan# 11
 Delta R.T. -0.140 min
 Lab File: VX048327.D
 Acq: 23 Oct 2025 15:47

Instrument : MSVOA_X
 ClientSampleId : SB-10

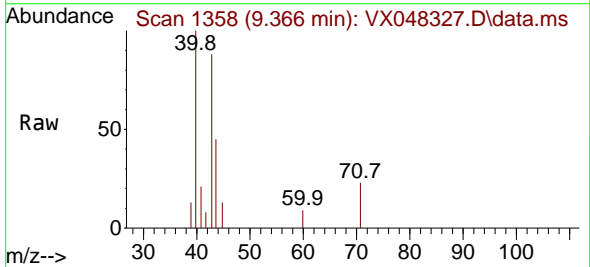


Tgt Ion: 97 Resp: 2233

Ion	Ratio	Lower	Upper
97	100		
83	0.0	70.6	105.8#
85	0.0	45.0	67.6#
99	5.7	50.9	76.3#

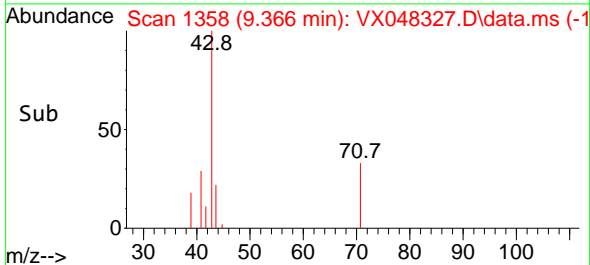
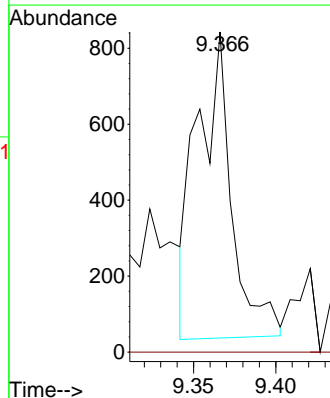


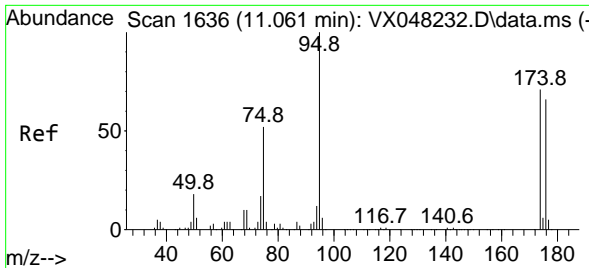
#59
 2-Hexanone
 Concen: 0.927 ug/l
 RT: 9.366 min Scan# 1358
 Delta R.T. -0.049 min
 Lab File: VX048327.D
 Acq: 23 Oct 2025 15:47



Tgt Ion: 43 Resp: 1169

Ion	Ratio	Lower	Upper
43	100		
58	0.0	26.3	78.8#



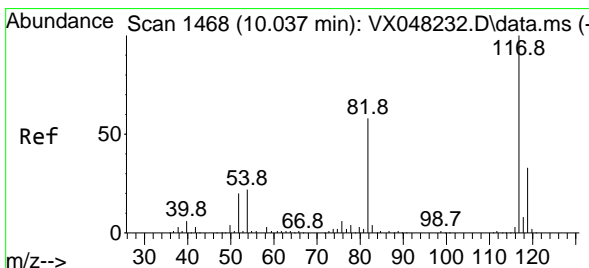
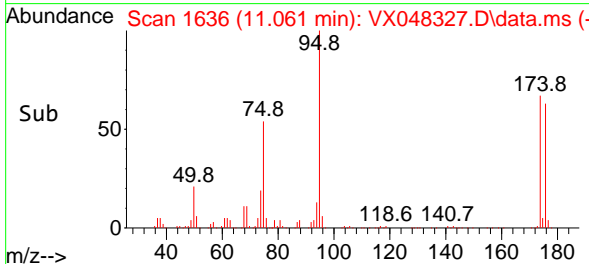
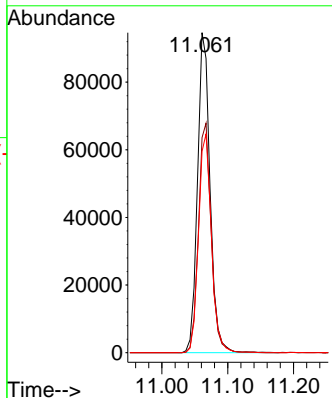
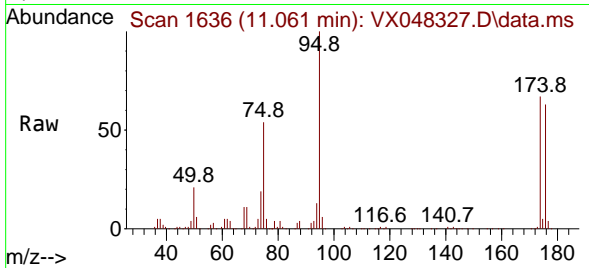


#62
 4-Bromofluorobenzene
 Concen: 58.055 ug/l
 RT: 11.061 min Scan# 1
 Delta R.T. -0.000 min
 Lab File: VX048327.D
 Acq: 23 Oct 2025 15:47

Instrument :
 MSVOA_X
 ClientSampleId :
 SB-10

Tgt Ion: 95 Resp: 125491

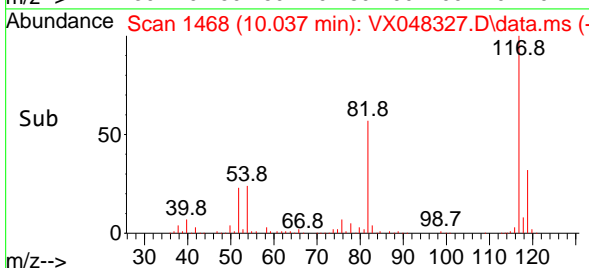
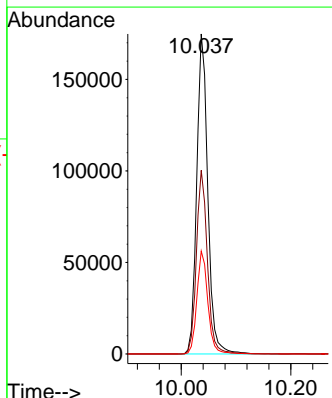
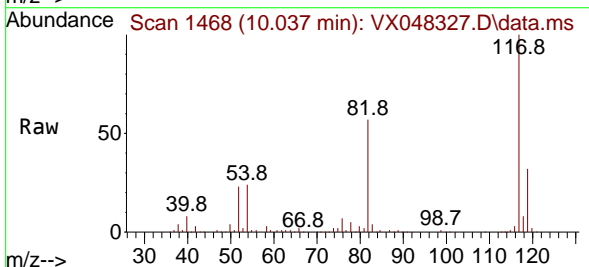
Ion	Ratio	Lower	Upper
95	100		
174	73.1	0.0	147.8
176	70.4	0.0	142.8

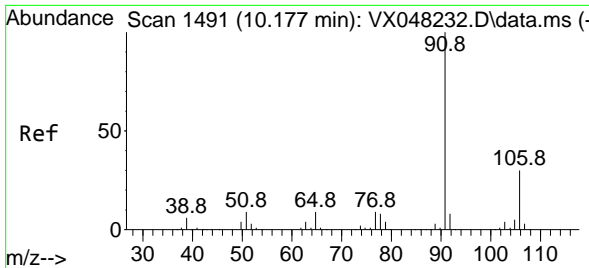


#63
 Chlorobenzene-d5
 Concen: 50.000 ug/l
 RT: 10.037 min Scan# 1468
 Delta R.T. -0.000 min
 Lab File: VX048327.D
 Acq: 23 Oct 2025 15:47

Tgt Ion: 117 Resp: 246276

Ion	Ratio	Lower	Upper
117	100		
82	57.4	46.5	69.7
119	32.2	25.9	38.9

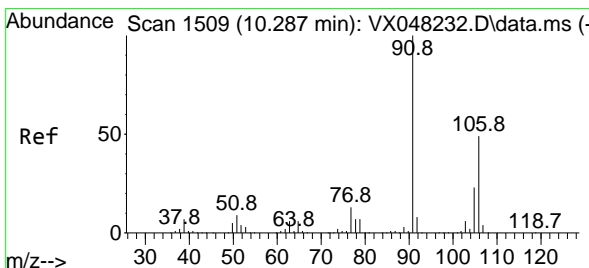
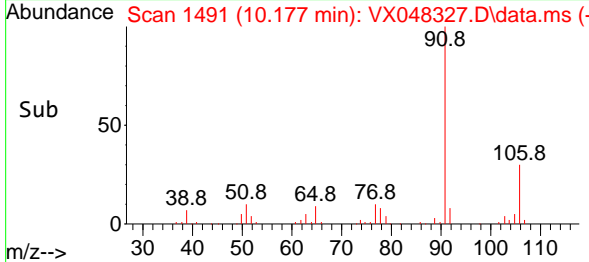
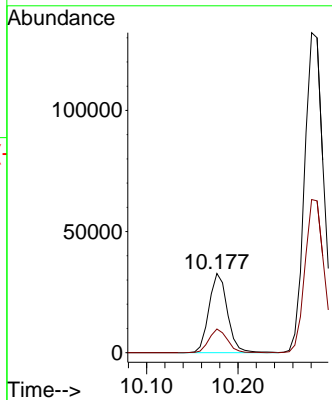
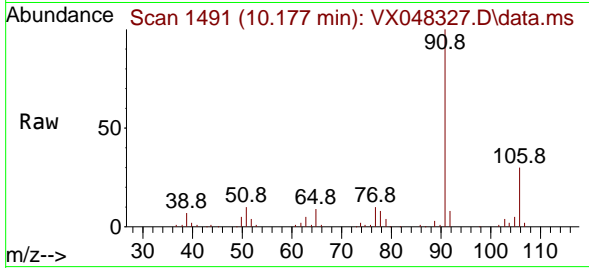




#67
 Ethyl Benzene
 Concen: 4.853 ug/l
 RT: 10.177 min Scan# 1491
 Delta R.T. -0.000 min
 Lab File: VX048327.D
 Acq: 23 Oct 2025 15:47

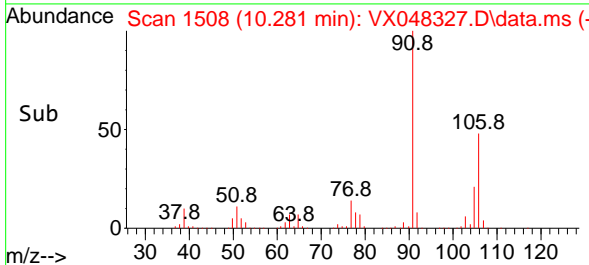
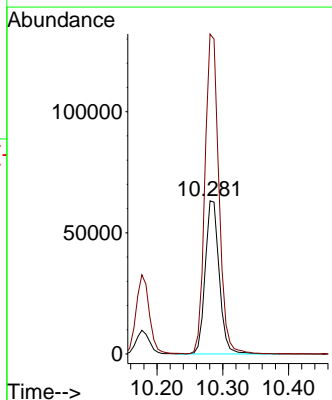
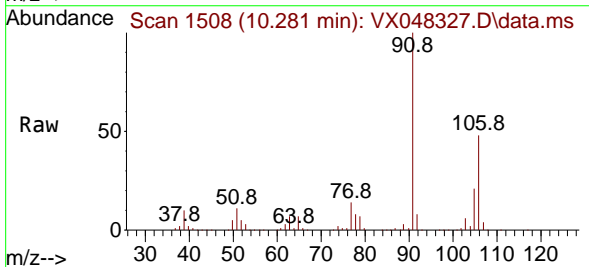
Instrument : MSVOA_X
 ClientSampleId : SB-10

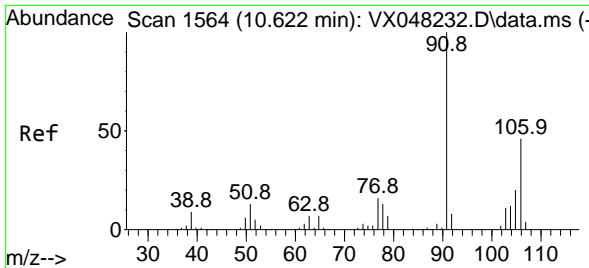
Tgt Ion: 91 Resp: 45772
 Ion Ratio Lower Upper
 91 100
 106 30.0 23.8 35.6



#68
 m/p-Xylenes
 Concen: 26.674 ug/l
 RT: 10.281 min Scan# 1508
 Delta R.T. -0.006 min
 Lab File: VX048327.D
 Acq: 23 Oct 2025 15:47

Tgt Ion: 106 Resp: 93482
 Ion Ratio Lower Upper
 106 100
 91 208.4 167.9 251.9

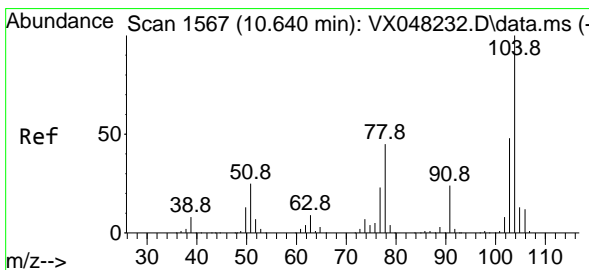
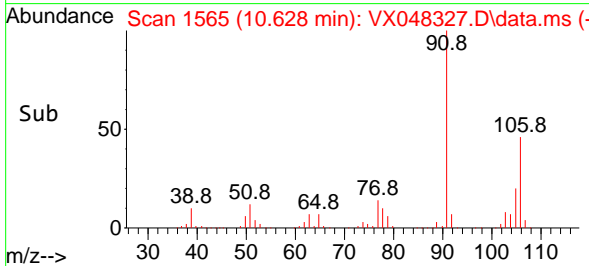
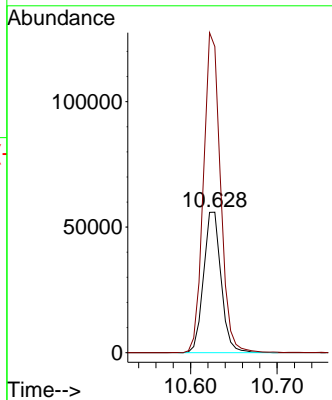
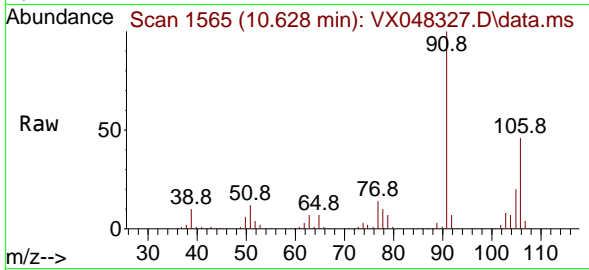




#69
 o-Xylene
 Concen: 23.273 ug/l
 RT: 10.628 min Scan# 1565
 Delta R.T. 0.006 min
 Lab File: VX048327.D
 Acq: 23 Oct 2025 15:47

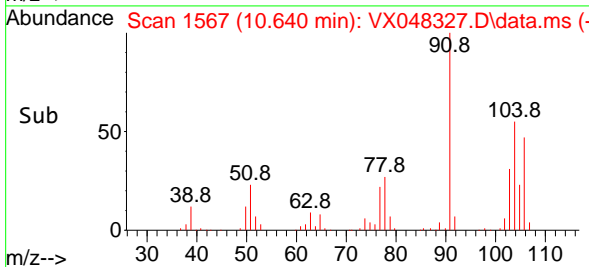
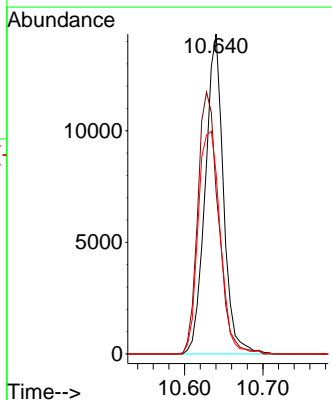
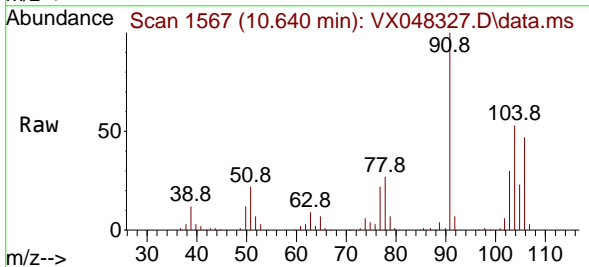
Instrument : MSVOA_X
 ClientSampleId : SB-10

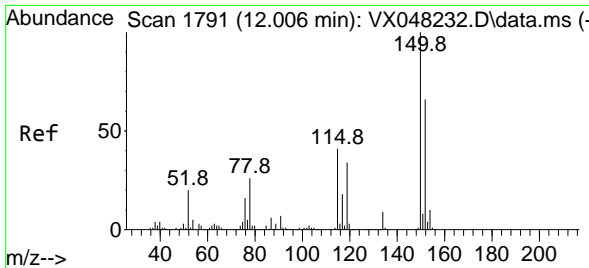
Tgt Ion:106 Resp: 78741
 Ion Ratio Lower Upper
 106 100
 91 221.6 111.3 333.9



#70
 Styrene
 Concen: 4.013 ug/l
 RT: 10.640 min Scan# 1567
 Delta R.T. -0.000 min
 Lab File: VX048327.D
 Acq: 23 Oct 2025 15:47

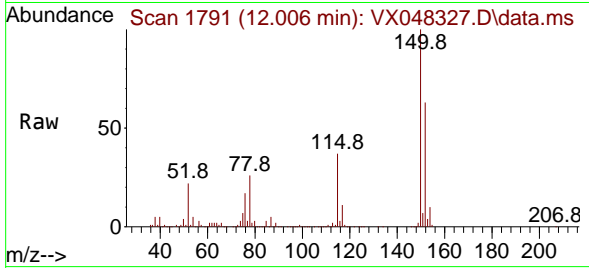
Tgt Ion:104 Resp: 23117
 Ion Ratio Lower Upper
 104 100
 78 92.5 42.2 63.4#
 103 84.9 43.0 64.4#



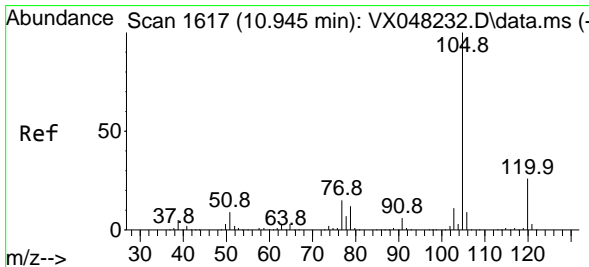
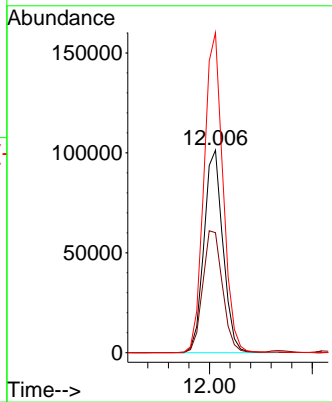
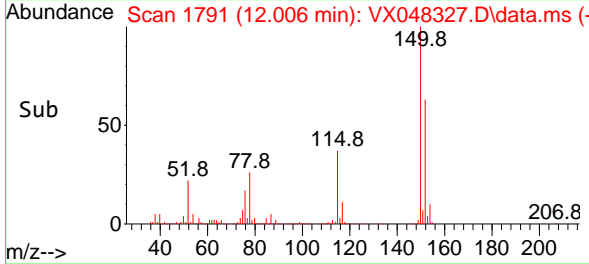


#72
 1,4-Dichlorobenzene-d4
 Concen: 50.000 ug/l
 RT: 12.006 min Scan# 11
 Delta R.T. -0.000 min
 Lab File: VX048327.D
 Acq: 23 Oct 2025 15:47

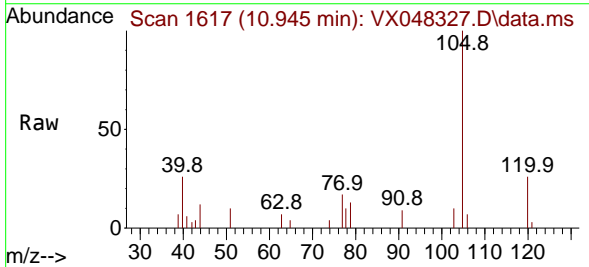
Instrument :
 MSVOA_X
 ClientSampleId :
 SB-10



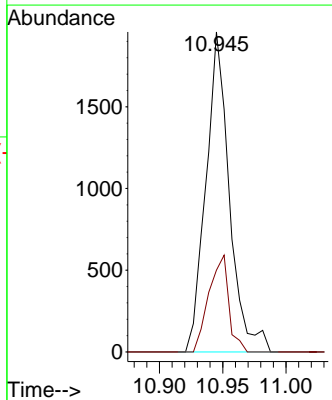
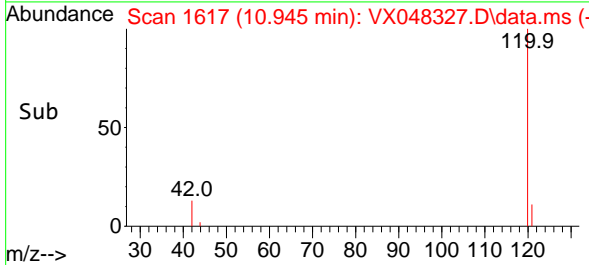
Tgt Ion:152 Resp: 130376
 Ion Ratio Lower Upper
 152 100
 115 62.8 43.1 129.4
 150 157.9 0.0 353.0

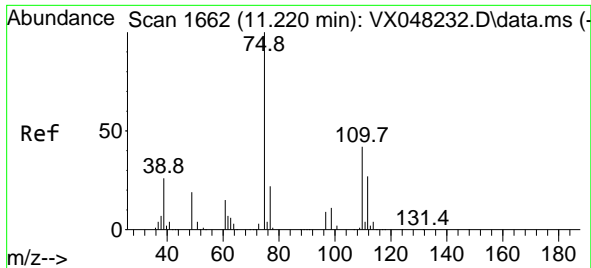


#73
 Isopropylbenzene
 Concen: 0.265 ug/l
 RT: 10.945 min Scan# 1617
 Delta R.T. -0.000 min
 Lab File: VX048327.D
 Acq: 23 Oct 2025 15:47



Tgt Ion:105 Resp: 2527
 Ion Ratio Lower Upper
 105 100
 120 25.7 13.0 38.9

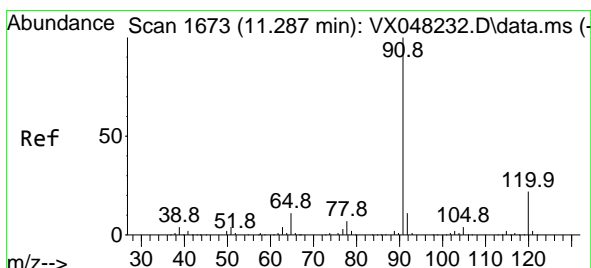
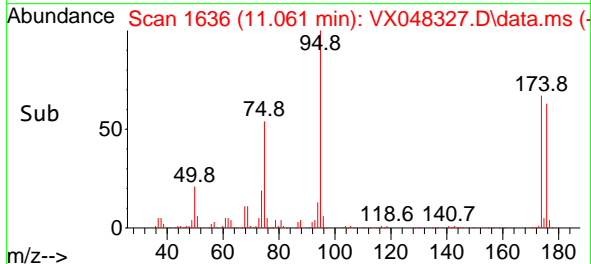
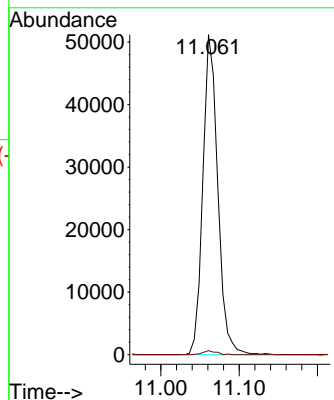
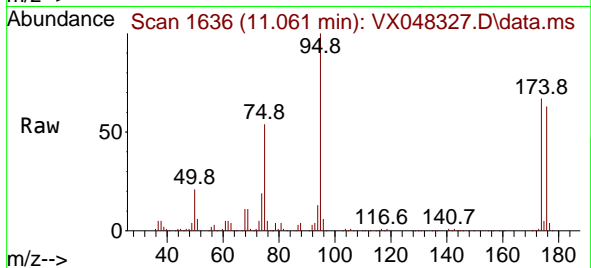




#76
 1,2,3-Trichloropropane
 Concen: 32.025 ug/l
 RT: 11.061 min Scan# 1636
 Delta R.T. -0.159 min
 Lab File: VX048327.D
 Acq: 23 Oct 2025 15:47

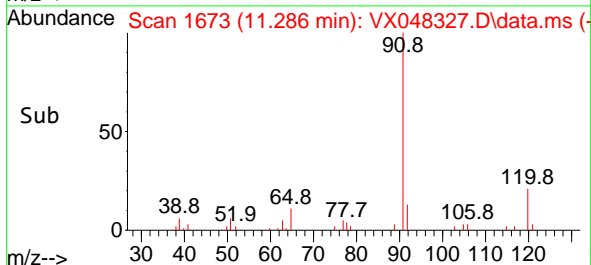
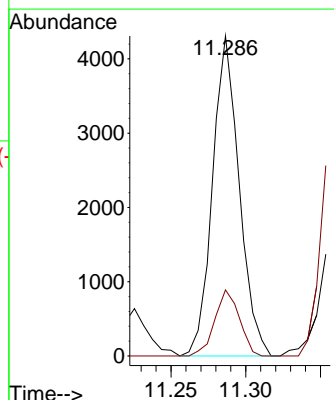
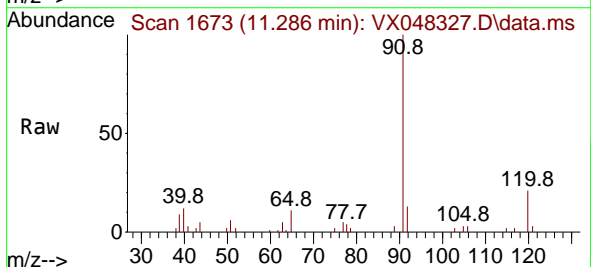
Instrument : MSVOA_X
 ClientSampleId : SB-10

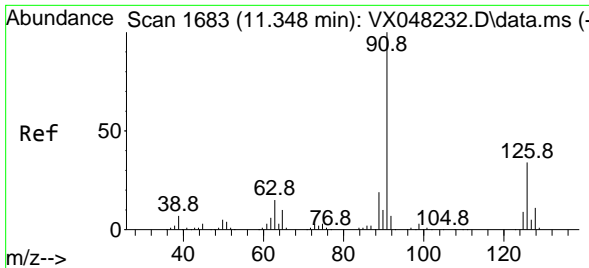
Tgt Ion: 75 Resp: 67709
 Ion Ratio Lower Upper
 75 100
 77 1.1 22.4 67.2#



#78
 n-propylbenzene
 Concen: 0.485 ug/l
 RT: 11.286 min Scan# 1673
 Delta R.T. -0.000 min
 Lab File: VX048327.D
 Acq: 23 Oct 2025 15:47

Tgt Ion: 91 Resp: 5344
 Ion Ratio Lower Upper
 91 100
 120 19.0 11.1 33.1

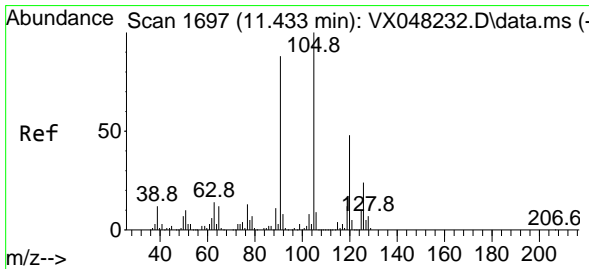
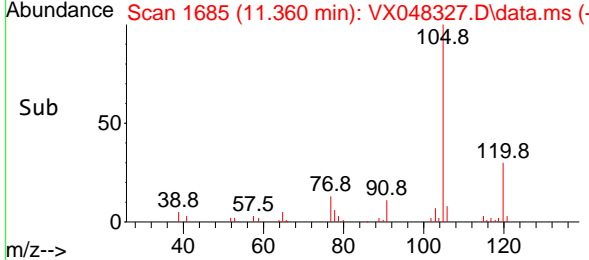
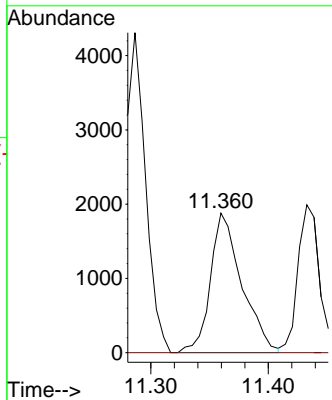
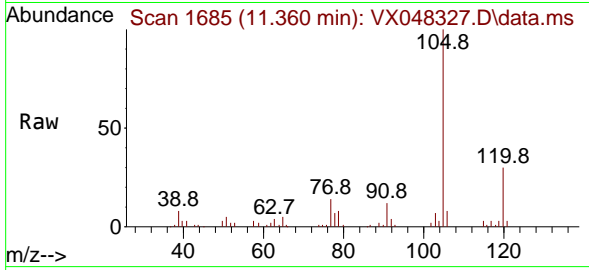




#79
 2-Chlorotoluene
 Concen: 0.523 ug/l
 RT: 11.360 min Scan# 1685
 Delta R.T. 0.012 min
 Lab File: VX048327.D
 Acq: 23 Oct 2025 15:47

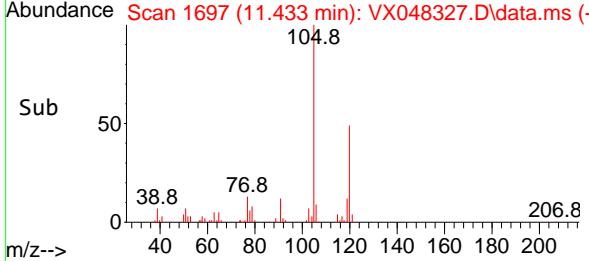
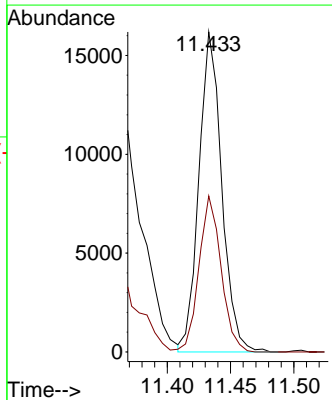
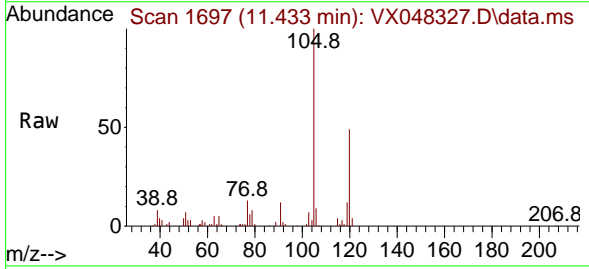
Instrument : MSVOA_X
 ClientSampleId : SB-10

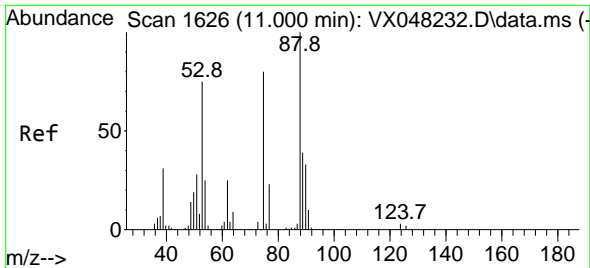
Tgt Ion: 91 Resp: 3495
 Ion Ratio Lower Upper
 91 100
 126 0.0 16.4 49.4#



#80
 1,3,5-Trimethylbenzene
 Concen: 2.580 ug/l
 RT: 11.433 min Scan# 1697
 Delta R.T. -0.000 min
 Lab File: VX048327.D
 Acq: 23 Oct 2025 15:47

Tgt Ion: 105 Resp: 20332
 Ion Ratio Lower Upper
 105 100
 120 47.4 24.0 72.0

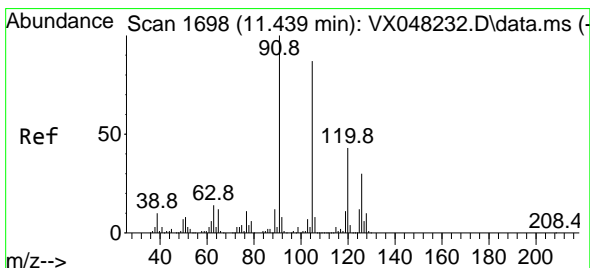
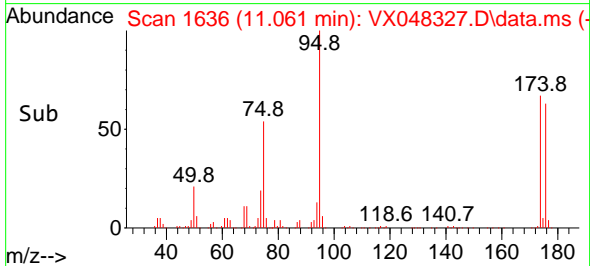
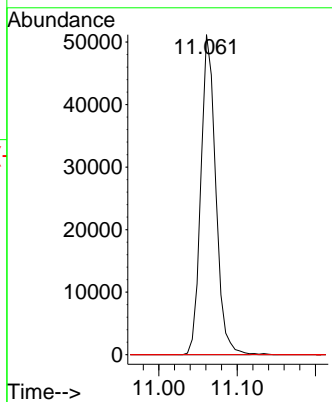
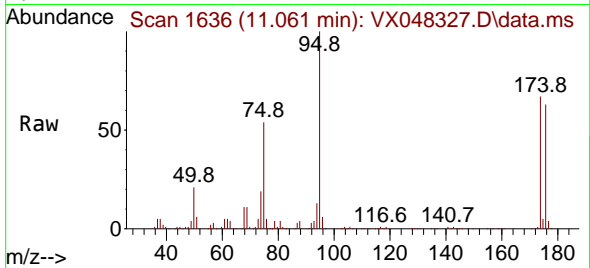




#81
 trans-1,4-Dichloro-2-butene
 Concen: 77.914 ug/l
 RT: 11.061 min Scan# 1636
 Delta R.T. 0.061 min
 Lab File: VX048327.D
 Acq: 23 Oct 2025 15:47

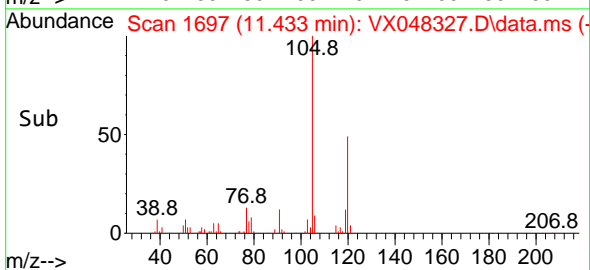
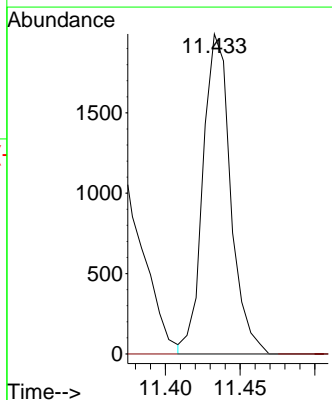
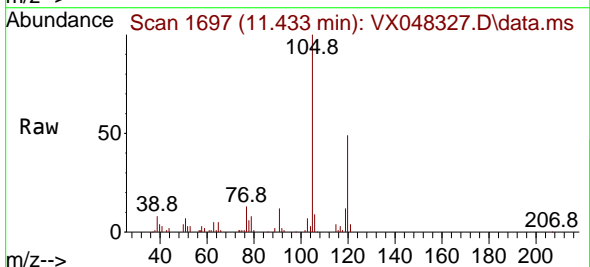
Instrument : MSVOA_X
 ClientSampleId : SB-10

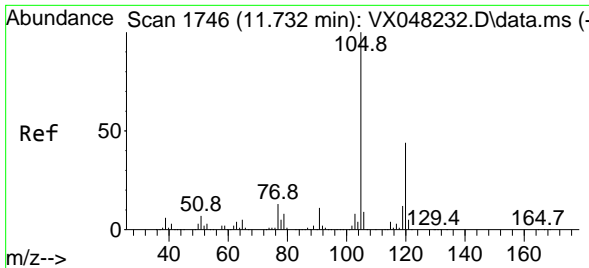
Tgt Ion: 75 Resp: 67709
 Ion Ratio Lower Upper
 75 100
 53 0.0 79.5 119.3#
 89 0.0 36.8 55.2#



#82
 4-Chlorotoluene
 Concen: 0.322 ug/l
 RT: 11.433 min Scan# 1697
 Delta R.T. -0.000 min
 Lab File: VX048327.D
 Acq: 23 Oct 2025 15:47

Tgt Ion: 91 Resp: 2552
 Ion Ratio Lower Upper
 91 100
 126 0.0 14.1 42.4#

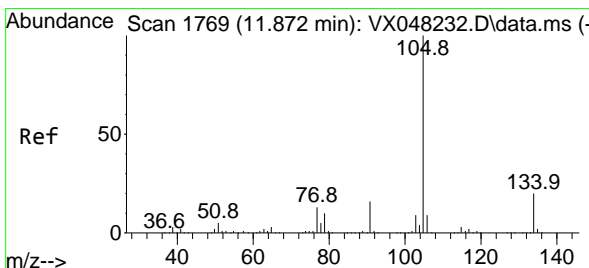
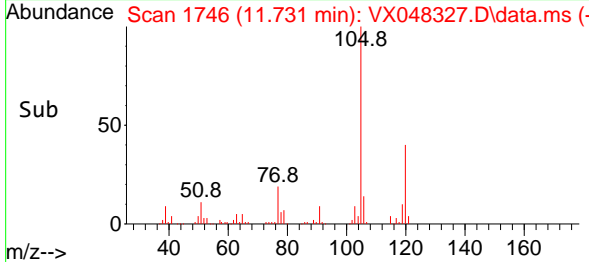
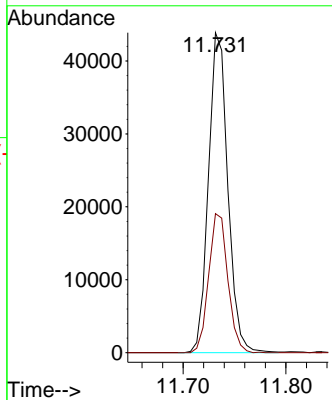
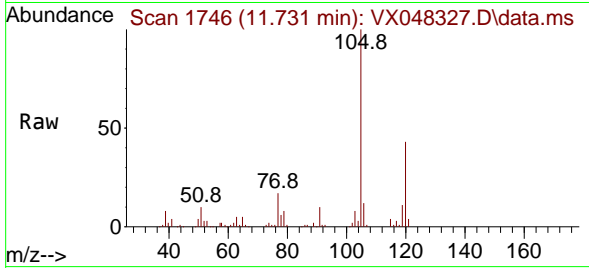




#84
 1,2,4-Trimethylbenzene
 Concen: 7.313 ug/l
 RT: 11.731 min Scan# 1746
 Delta R.T. -0.000 min
 Lab File: VX048327.D
 Acq: 23 Oct 2025 15:47

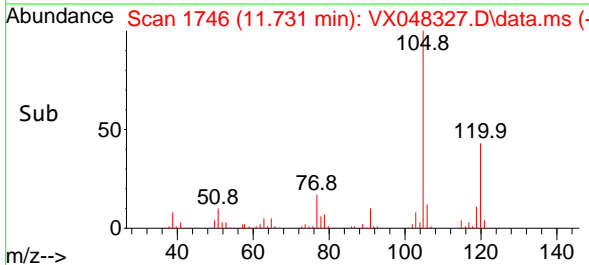
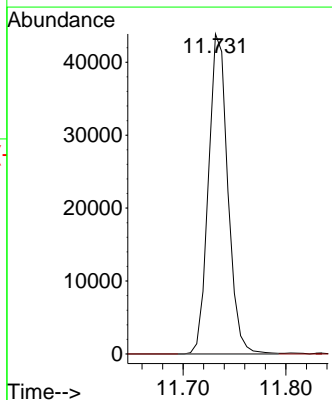
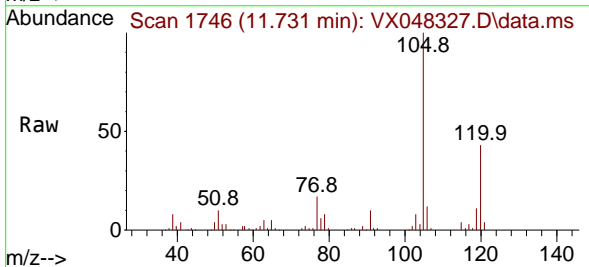
Instrument : MSVOA_X
 ClientSampleId : SB-10

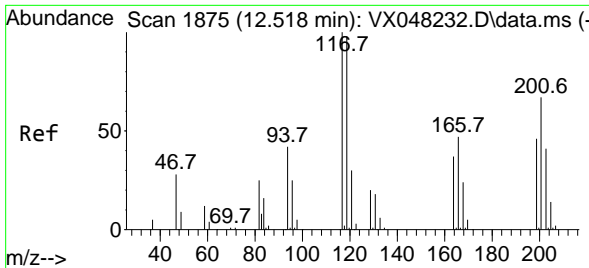
Tgt Ion:105 Resp: 57518
 Ion Ratio Lower Upper
 105 100
 120 43.0 22.1 66.5



#85
 sec-Butylbenzene
 Concen: 5.904 ug/l
 RT: 11.731 min Scan# 1746
 Delta R.T. -0.140 min
 Lab File: VX048327.D
 Acq: 23 Oct 2025 15:47

Tgt Ion:105 Resp: 57518
 Ion Ratio Lower Upper
 105 100
 134 0.0 10.1 30.1#

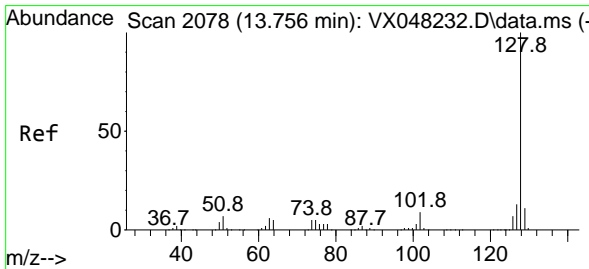
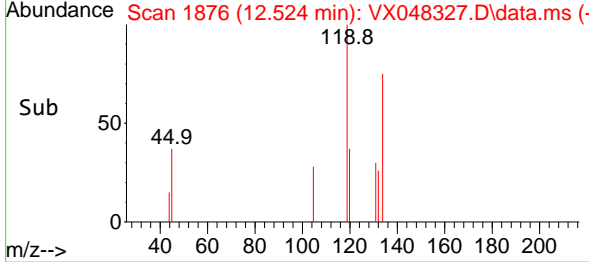
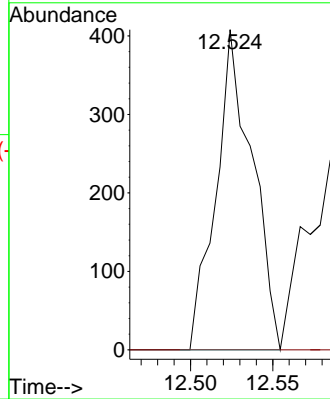
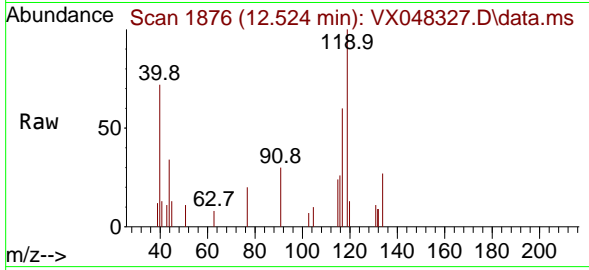




#90
 Hexachloroethane
 Concen: 0.376 ug/l
 RT: 12.524 min Scan# 117
 Delta R.T. 0.006 min
 Lab File: VX048327.D
 Acq: 23 Oct 2025 15:47

Instrument : MSVOA_X
 ClientSampleId : SB-10

Tgt Ion:117 Resp: 626
 Ion Ratio Lower Upper
 117 100
 201 0.0 34.1 102.2#



#95
 Naphthalene
 Concen: 45.873 ug/l
 RT: 13.756 min Scan# 2078
 Delta R.T. -0.000 min
 Lab File: VX048327.D
 Acq: 23 Oct 2025 15:47

Tgt Ion:128 Resp: 347349
 Ion Ratio Lower Upper
 128 100
 127 12.8 10.2 15.4
 129 10.9 8.6 12.8

