

Data Path : Z:\voasrv\HPCHEM1\MSVOA\_X\Data\VX102325\  
 Data File : VX048328.D  
 Acq On : 23 Oct 2025 16:07  
 Operator : JC/MD  
 Sample : Q3414-11 10X  
 Misc : 5.0mL/MSVOA\_X/WATER  
 ALS Vial : 20 Sample Multiplier: 1

Instrument :  
 MSVOA\_X  
 ClientSampleId :  
 SB-11

Quant Time: Oct 24 05:47:58 2025  
 Quant Method : Z:\voasrv\HPCHEM1\MSVOA\_X\Method\82X102025W.M  
 Quant Title : SW846 8260  
 QLast Update : Mon Oct 20 14:13:59 2025  
 Response via : Initial Calibration

| Compound                      | R.T.   | QIon           | Response | Conc    | Units     | Dev(Min) |
|-------------------------------|--------|----------------|----------|---------|-----------|----------|
| Internal Standards            |        |                |          |         |           |          |
| 1) Pentafluorobenzene         | 5.544  | 168            | 140663   | 50.000  | ug/l      | 0.00     |
| 34) 1,4-Difluorobenzene       | 6.745  | 114            | 277541   | 50.000  | ug/l      | 0.00     |
| 63) Chlorobenzene-d5          | 10.037 | 117            | 280528   | 50.000  | ug/l      | 0.00     |
| 72) 1,4-Dichlorobenzene-d4    | 12.006 | 152            | 142250   | 50.000  | ug/l      | 0.00     |
| System Monitoring Compounds   |        |                |          |         |           |          |
| 33) 1,2-Dichloroethane-d4     | 5.946  | 65             | 115570   | 58.600  | ug/l      | 0.00     |
| Spiked Amount                 | 50.000 | Range 78 - 117 | Recovery | =       | 117.200%# |          |
| 35) Dibromofluoromethane      | 5.373  | 113            | 81118    | 42.812  | ug/l      | 0.00     |
| Spiked Amount                 | 50.000 | Range 75 - 124 | Recovery | =       | 85.620%   |          |
| 50) Toluene-d8                | 8.635  | 98             | 329213   | 49.570  | ug/l      | 0.00     |
| Spiked Amount                 | 50.000 | Range 92 - 112 | Recovery | =       | 99.140%   |          |
| 62) 4-Bromofluorobenzene      | 11.061 | 95             | 138029   | 54.631  | ug/l      | 0.00     |
| Spiked Amount                 | 50.000 | Range 83 - 123 | Recovery | =       | 109.260%  |          |
| Target Compounds              |        |                |          |         |           |          |
|                               |        |                |          |         |           | Qvalue   |
| 3) Chloromethane              | 1.368  | 50             | 416      | 0.308   | ug/l #    | 42       |
| 10) Methyl Iodide             | 2.465  | 142            | 1302     | 0.682   | ug/l #    | 90       |
| 11) Tert butyl alcohol        | 2.935  | 59             | 260      | 1.328   | ug/l #    | 72       |
| 13) Acrolein                  | 2.246  | 56             | 52       | 0.260   | ug/l #    | 15       |
| 16) Acetone                   | 2.374  | 43             | 5399     | 7.980   | ug/l #    | 87       |
| 18) Methyl Acetate            | 2.703  | 43             | 1219     | 0.863   | ug/l #    | 79       |
| 20) Methylene Chloride        | 2.788  | 84             | 748      | 0.454   | ug/l      | 94       |
| 25) 2-Butanone                | 4.556  | 43             | 1181     | 1.379   | ug/l #    | 76       |
| 31) Cyclohexane               | 5.458  | 56             | 1582     | 0.646   | ug/l #    | 88       |
| 36) 1,1-Dichloropropene       | 5.538  | 75             | 12438    | 4.619   | ug/l #    | 50       |
| 38) Carbon Tetrachloride      | 5.544  | 117            | 15109    | 4.547   | ug/l #    | 15       |
| 39) Methylcyclohexane         | 7.373  | 83             | 1307     | 0.411   | ug/l      | 87       |
| 40) Benzene                   | 6.025  | 78             | 1883034  | 240.832 | ug/l      | 98       |
| 42) 1,2-Dichloroethane        | 6.032  | 62             | 17586    | 6.095   | ug/l #    | 76       |
| 43) Isopropyl Acetate         | 6.318  | 43             | 1539     | 0.420   | ug/l #    | 63       |
| 51) 4-Methyl-2-Pentanone      | 8.531  | 43             | 5000     | 2.365   | ug/l #    | 47       |
| 52) Toluene                   | 8.702  | 92             | 889663   | 179.107 | ug/l      | 99       |
| 53) t-1,3-Dichloropropene     | 8.702  | 75             | 11106    | 3.685   | ug/l #    | 1        |
| 54) cis-1,3-Dichloropropene   | 8.531  | 75             | 1801     | 0.554   | ug/l #    | 68       |
| 55) 1,1,2-Trichloroethane     | 8.994  | 97             | 6385     | 3.457   | ug/l #    | 17       |
| 59) 2-Hexanone                | 9.464  | 43             | 1985     | 1.347   | ug/l #    | 56       |
| 67) Ethyl Benzene             | 10.177 | 91             | 129558   | 12.058  | ug/l      | 99       |
| 68) m/p-Xylenes               | 10.281 | 106            | 270314   | 67.715  | ug/l      | 99       |
| 69) o-Xylene                  | 10.622 | 106            | 217974   | 56.558  | ug/l      | 99       |
| 70) Styrene                   | 10.640 | 104            | 48270    | 7.356   | ug/l #    | 28       |
| 73) Isopropylbenzene          | 10.945 | 105            | 5439     | 0.523   | ug/l      | 95       |
| 76) 1,2,3-Trichloropropane    | 11.061 | 75             | 76166    | 33.018  | ug/l #    | 33       |
| 78) n-propylbenzene           | 11.287 | 91             | 16011    | 1.331   | ug/l      | 98       |
| 79) 2-Chlorotoluene           | 11.360 | 91             | 10405    | 1.427   | ug/l #    | 44       |
| 80) 1,3,5-Trimethylbenzene    | 11.433 | 105            | 49640    | 5.773   | ug/l      | 100      |
| 81) trans-1,4-Dichloro-2-b... | 11.061 | 75             | 76166    | 80.330  | ug/l #    | 10       |
| 82) 4-Chlorotoluene           | 11.433 | 91             | 6076     | 0.702   | ug/l #    | 46       |
| 83) tert-Butylbenzene         | 11.951 | 119            | 2585     | 0.293   | ug/l      | 77       |
| 84) 1,2,4-Trimethylbenzene    | 11.732 | 105            | 173552   | 20.225  | ug/l      | 97       |
| 85) sec-Butylbenzene          | 11.732 | 105            | 173552   | 16.329  | ug/l #    | 56       |
| 89) n-Butylbenzene            | 12.305 | 91             | 1992     | 0.238   | ug/l #    | 36       |

Data Path : Z:\voasrv\HPCHEM1\MSVOA\_X\Data\VX102325\  
Data File : VX048328.D  
Acq On : 23 Oct 2025 16:07  
Operator : JC/MD  
Sample : Q3414-11 10X  
Misc : 5.0mL/MSVOA\_X/WATER  
ALS Vial : 20 Sample Multiplier: 1

Instrument :  
MSVOA\_X  
ClientSampleId :  
SB-11

Quant Time: Oct 24 05:47:58 2025  
Quant Method : Z:\voasrv\HPCHEM1\MSVOA\_X\Method\82X102025W.M  
Quant Title : SW846 8260  
QLast Update : Mon Oct 20 14:13:59 2025  
Response via : Initial Calibration

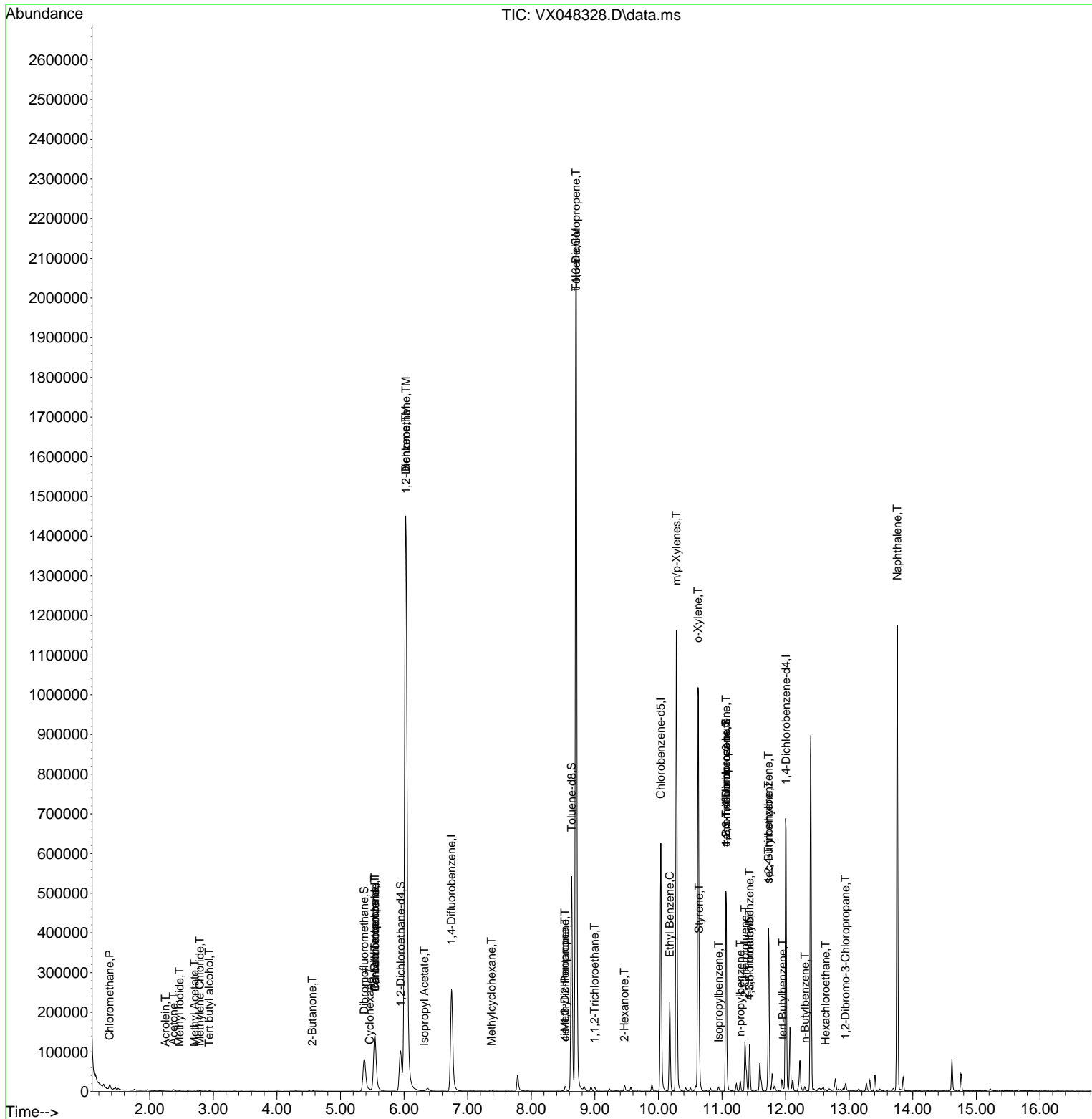
| Compound                      | R.T.   | QIon | Response | Conc   | Units  | Dev(Min) |
|-------------------------------|--------|------|----------|--------|--------|----------|
| 90) Hexachloroethane          | 12.628 | 117  | 1165     | 0.642  | ug/l # | 16       |
| 92) 1,2-Dibromo-3-Chloropr... | 12.939 | 75   | 194      | 0.337  | ug/l # | 1        |
| 95) Naphthalene               | 13.756 | 128  | 661588   | 80.080 | ug/l   | 100      |

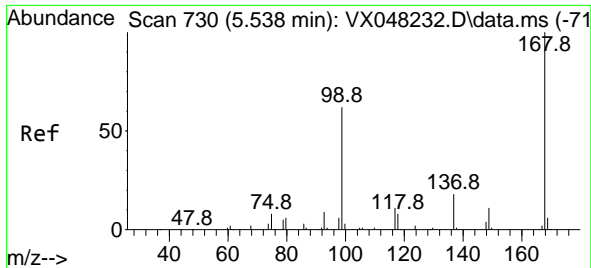
(#) = qualifier out of range (m) = manual integration (+) = signals summed

Data Path : Z:\voasrv\HPCHEM1\MSVOA\_X\Data\VX102325\  
 Data File : VX048328.D  
 Acq On : 23 Oct 2025 16:07  
 Operator : JC/MD  
 Sample : Q3414-11 10X  
 Misc : 5.0mL/MSVOA\_X/WATER  
 ALS Vial : 20 Sample Multiplier: 1

Instrument :  
 MSVOA\_X  
 ClientSampleId :  
 SB-11

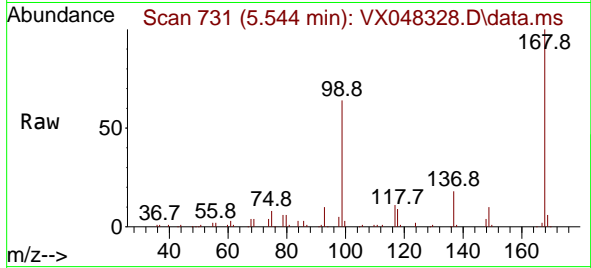
Quant Time: Oct 24 05:47:58 2025  
 Quant Method : Z:\voasrv\HPCHEM1\MSVOA\_X\Method\82X102025W.M  
 Quant Title : SW846 8260  
 QLast Update : Mon Oct 20 14:13:59 2025  
 Response via : Initial Calibration



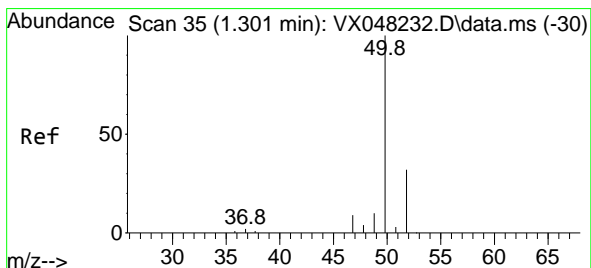
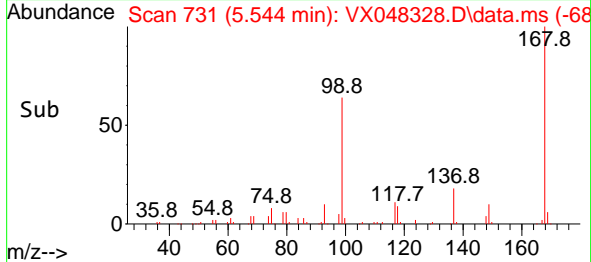
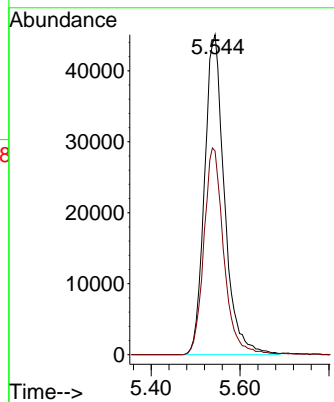


#1  
 Pentafluorobenzene  
 Concen: 50.000 ug/l  
 RT: 5.544 min Scan# 71  
 Delta R.T. -0.000 min  
 Lab File: VX048328.D  
 Acq: 23 Oct 2025 16:07

Instrument :  
 MSVOA\_X  
 ClientSampleId :  
 SB-11

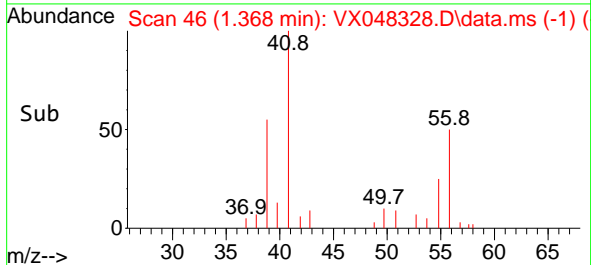
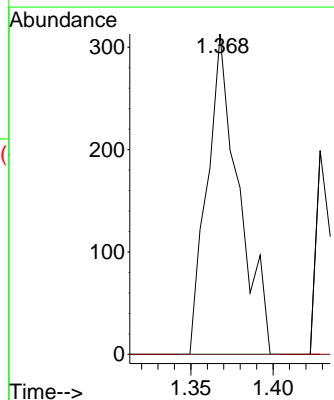
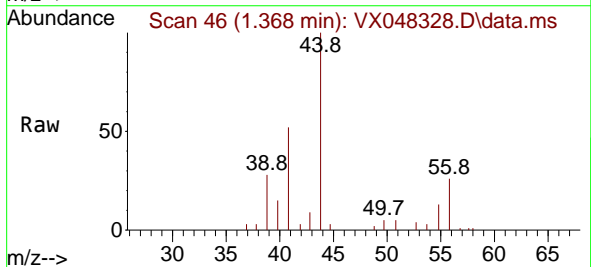


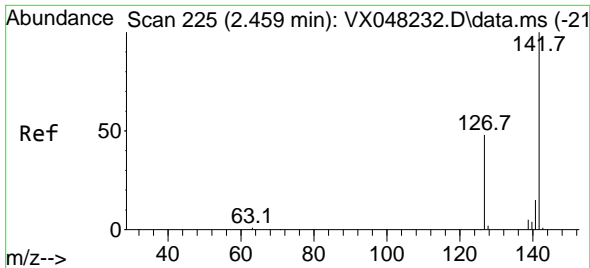
Tgt Ion:168 Resp: 140663  
 Ion Ratio Lower Upper  
 168 100  
 99 63.6 46.4 69.6



#3  
 Chloromethane  
 Concen: 0.308 ug/l  
 RT: 1.368 min Scan# 46  
 Delta R.T. 0.067 min  
 Lab File: VX048328.D  
 Acq: 23 Oct 2025 16:07

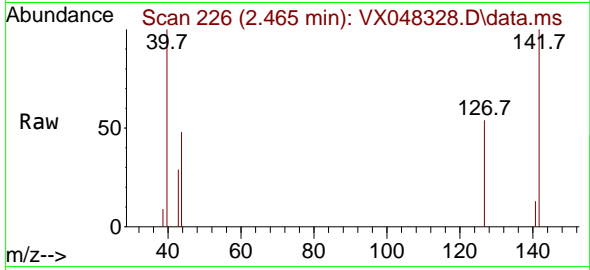
Tgt Ion: 50 Resp: 416  
 Ion Ratio Lower Upper  
 50 100  
 52 0.0 25.9 38.9#



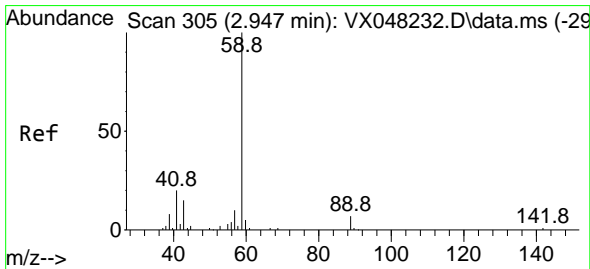
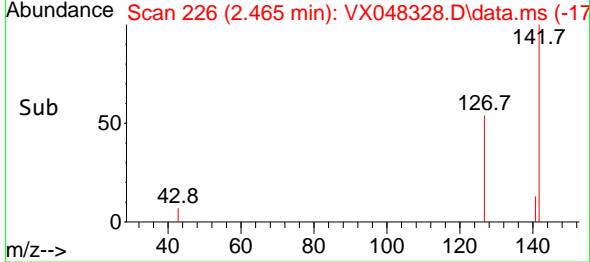
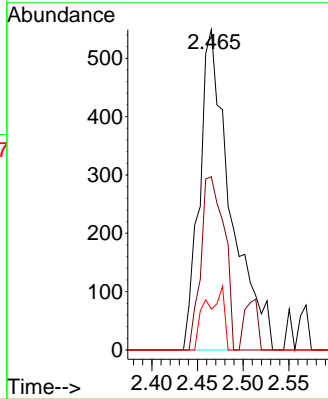


#10  
 Methyl Iodide  
 Concen: 0.682 ug/l  
 RT: 2.465 min Scan# 21  
 Delta R.T. 0.006 min  
 Lab File: VX048328.D  
 Acq: 23 Oct 2025 16:07

Instrument :  
 MSVOA\_X  
 ClientSampleId :  
 SB-11

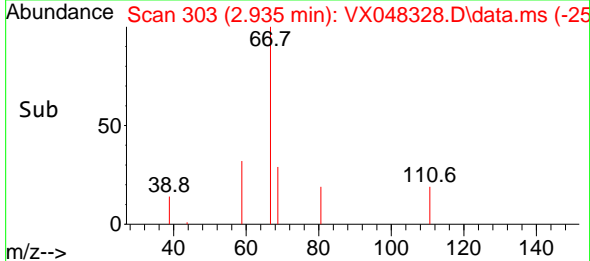
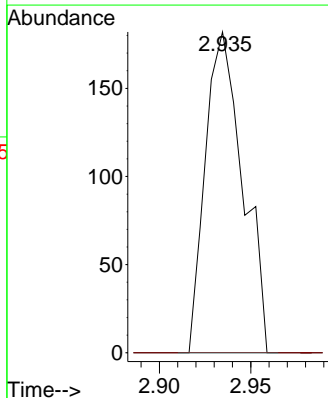
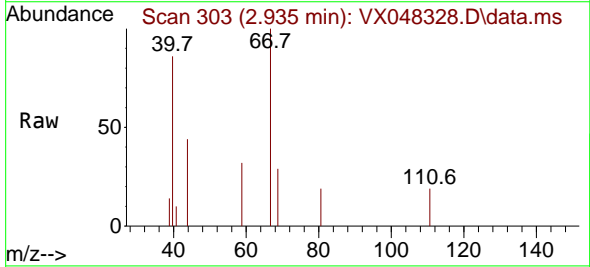


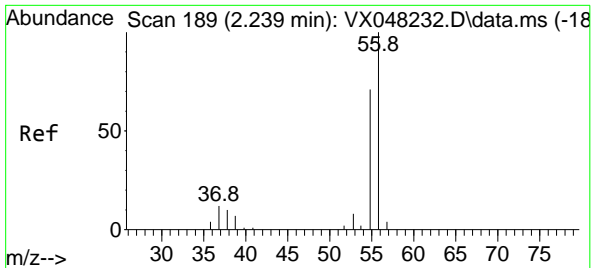
Tgt Ion:142 Resp: 1302  
 Ion Ratio Lower Upper  
 142 100  
 127 40.4 38.5 57.7  
 141 11.5 11.6 17.4#



#11  
 Tert butyl alcohol  
 Concen: 1.328 ug/l  
 RT: 2.935 min Scan# 303  
 Delta R.T. -0.006 min  
 Lab File: VX048328.D  
 Acq: 23 Oct 2025 16:07

Tgt Ion: 59 Resp: 260  
 Ion Ratio Lower Upper  
 59 100  
 57 0.0 8.2 12.4#

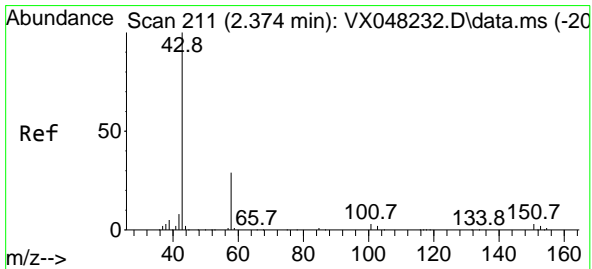
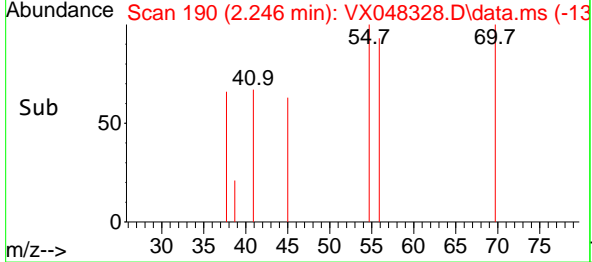
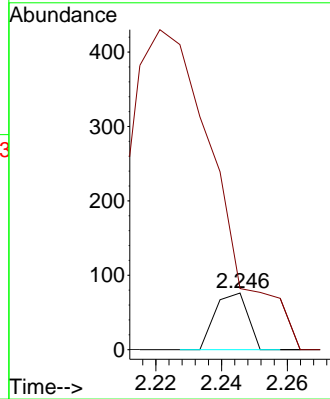
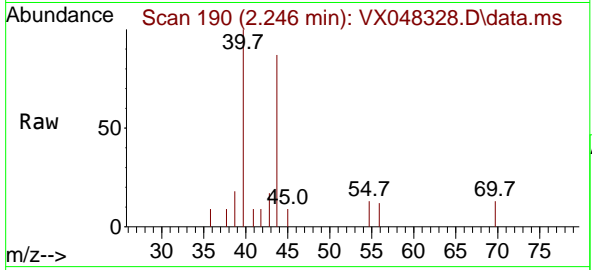




#13  
 Acrolein  
 Concen: 0.260 ug/l  
 RT: 2.246 min Scan# 190  
 Delta R.T. 0.012 min  
 Lab File: VX048328.D  
 Acq: 23 Oct 2025 16:07

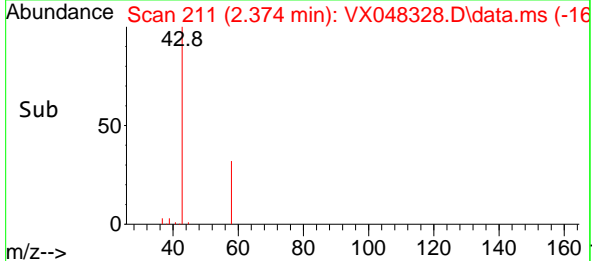
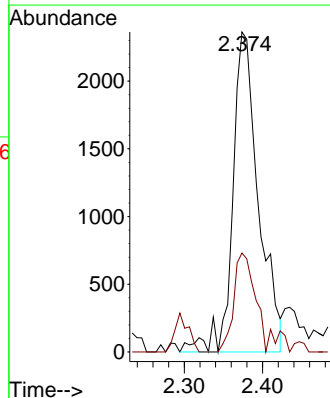
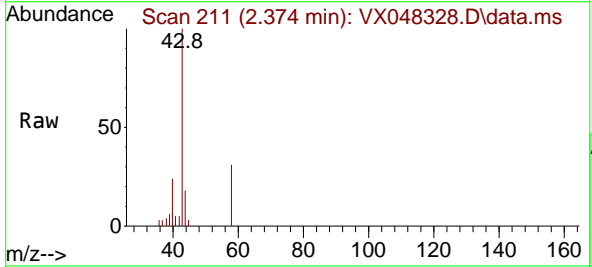
Instrument : MSVOA\_X  
 ClientSampleId : SB-11

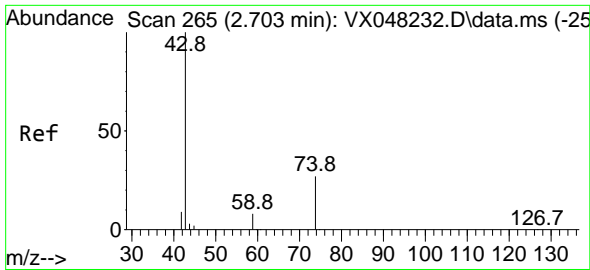
Tgt Ion: 56 Resp: 52  
 Ion Ratio Lower Upper  
 56 100  
 55 0.0 56.1 84.1#



#16  
 Acetone  
 Concen: 7.980 ug/l  
 RT: 2.374 min Scan# 211  
 Delta R.T. 0.000 min  
 Lab File: VX048328.D  
 Acq: 23 Oct 2025 16:07

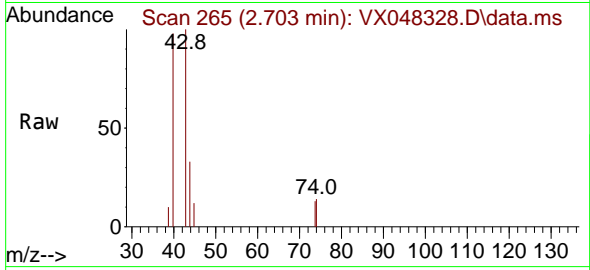
Tgt Ion: 43 Resp: 5399  
 Ion Ratio Lower Upper  
 43 100  
 58 22.5 23.4 35.2#



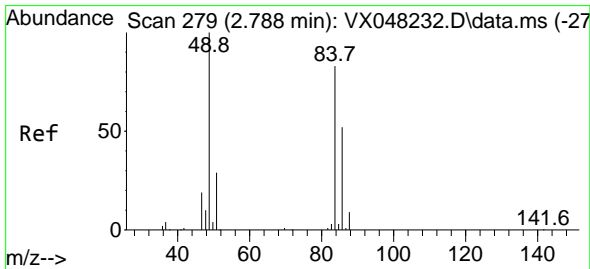
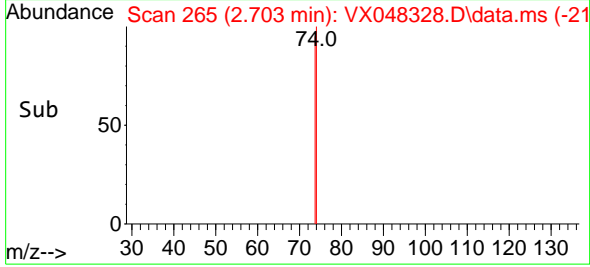
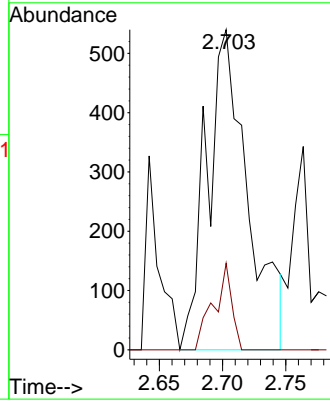


#18  
 Methyl Acetate  
 Concen: 0.863 ug/l  
 RT: 2.703 min Scan# 20  
 Delta R.T. 0.006 min  
 Lab File: VX048328.D  
 Acq: 23 Oct 2025 16:07

Instrument :  
 MSVOA\_X  
 ClientSampleId :  
 SB-11

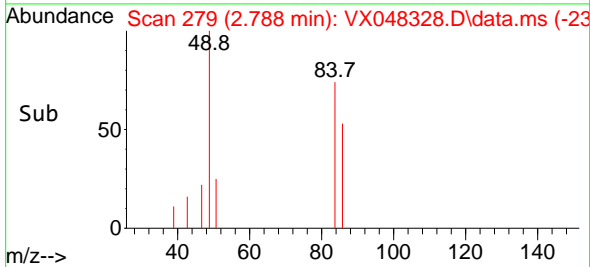
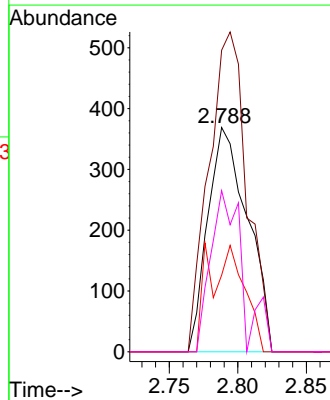
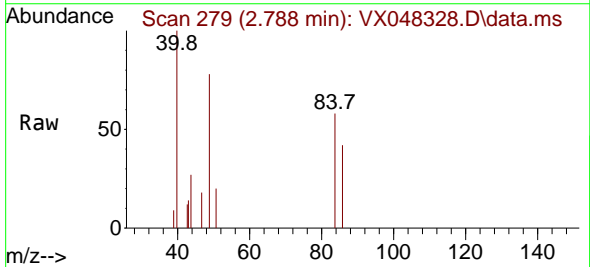


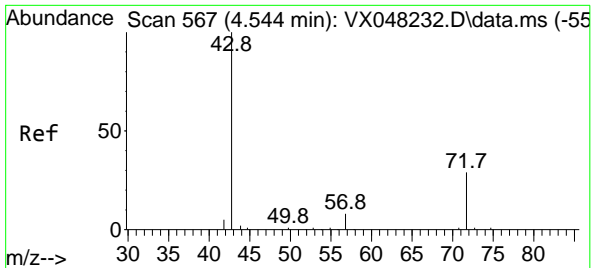
Tgt Ion: 43 Resp: 1219  
 Ion Ratio Lower Upper  
 43 100  
 74 12.0 17.5 26.3#



#20  
 Methylene Chloride  
 Concen: 0.454 ug/l  
 RT: 2.788 min Scan# 279  
 Delta R.T. 0.000 min  
 Lab File: VX048328.D  
 Acq: 23 Oct 2025 16:07

Tgt Ion: 84 Resp: 748  
 Ion Ratio Lower Upper  
 84 100  
 49 134.4 104.1 156.1  
 51 34.1 31.3 46.9  
 86 71.8 51.3 76.9

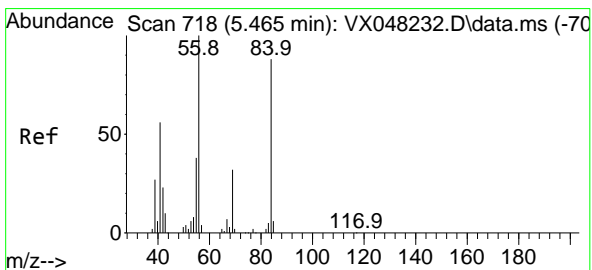
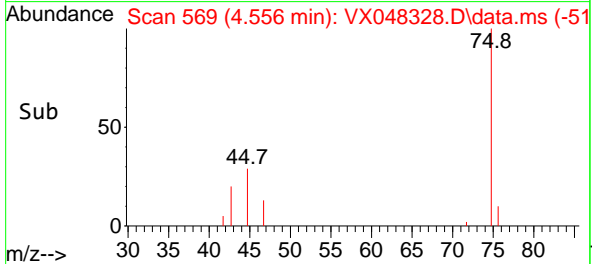
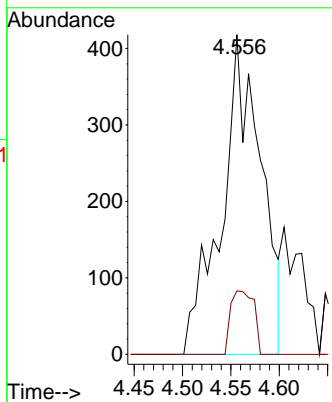
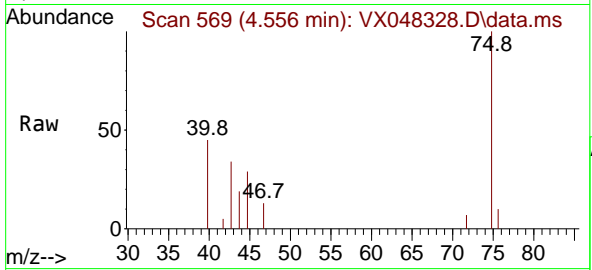




#25  
 2-Butanone  
 Concen: 1.379 ug/l  
 RT: 4.556 min Scan# 509  
 Delta R.T. 0.018 min  
 Lab File: VX048328.D  
 Acq: 23 Oct 2025 16:07

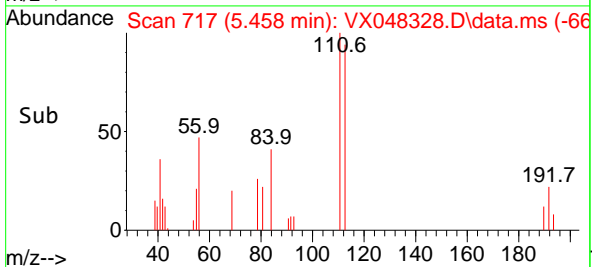
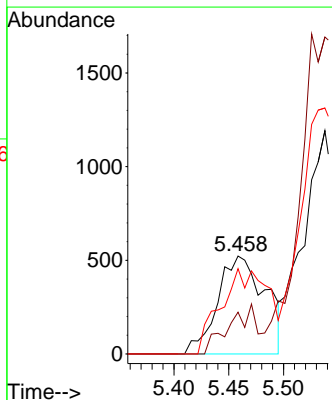
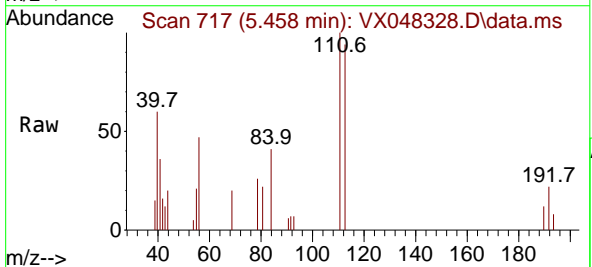
Instrument : MSVOA\_X  
 ClientSampleId : SB-11

Tgt Ion: 43 Resp: 1181  
 Ion Ratio Lower Upper  
 43 100  
 72 12.8 19.9 29.9#

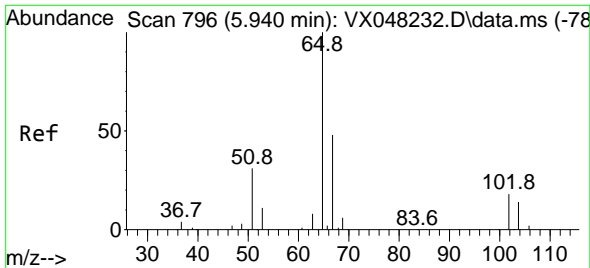


#31  
 Cyclohexane  
 Concen: 0.646 ug/l  
 RT: 5.458 min Scan# 717  
 Delta R.T. 0.000 min  
 Lab File: VX048328.D  
 Acq: 23 Oct 2025 16:07

Tgt Ion: 56 Resp: 1582  
 Ion Ratio Lower Upper  
 56 100  
 69 42.6 23.0 34.6#  
 84 87.0 64.6 97.0



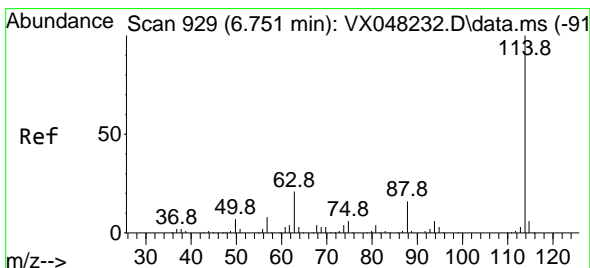
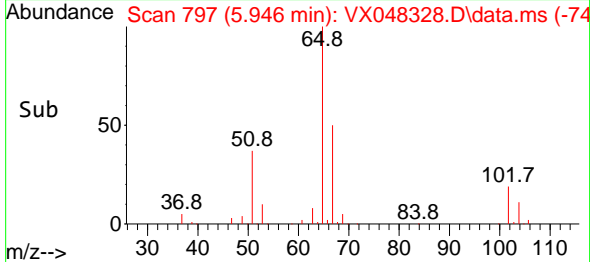
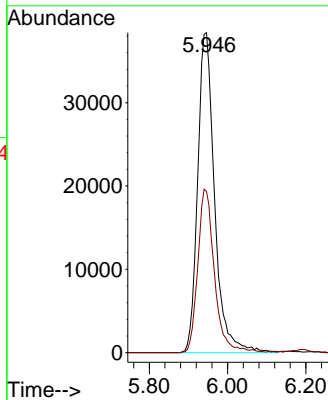
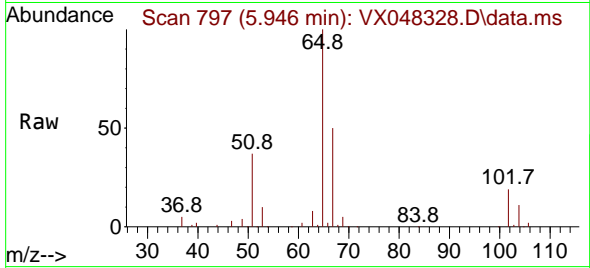




#33  
 1,2-Dichloroethane-d4  
 Concen: 58.600 ug/l  
 RT: 5.946 min Scan# 796  
 Delta R.T. 0.006 min  
 Lab File: VX048328.D  
 Acq: 23 Oct 2025 16:07

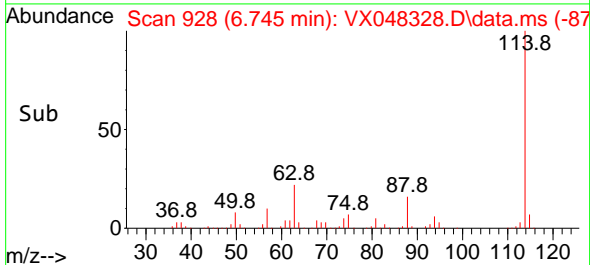
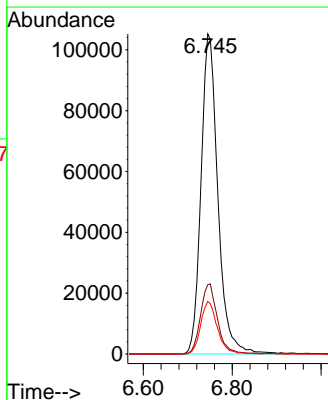
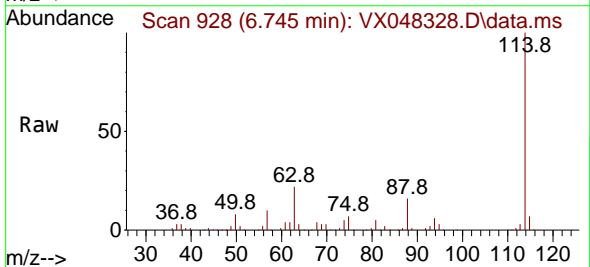
Instrument : MSVOA\_X  
 ClientSampleId : SB-11

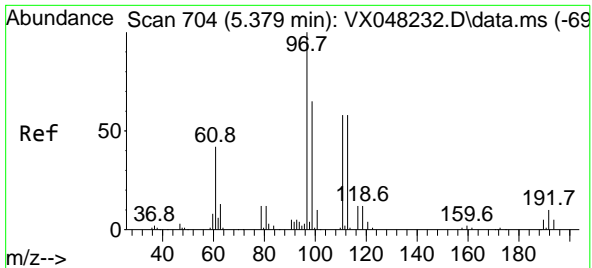
Tgt Ion: 65 Resp: 115570  
 Ion Ratio Lower Upper  
 65 100  
 67 50.3 0.0 105.0



#34  
 1,4-Difluorobenzene  
 Concen: 50.000 ug/l  
 RT: 6.745 min Scan# 928  
 Delta R.T. -0.000 min  
 Lab File: VX048328.D  
 Acq: 23 Oct 2025 16:07

Tgt Ion: 114 Resp: 277541  
 Ion Ratio Lower Upper  
 114 100  
 63 21.7 0.0 43.2  
 88 16.4 0.0 33.6



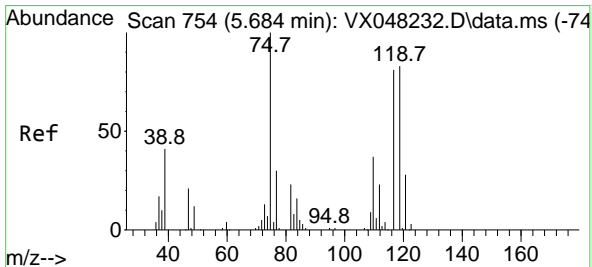
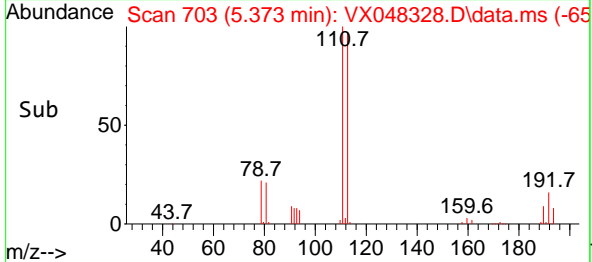
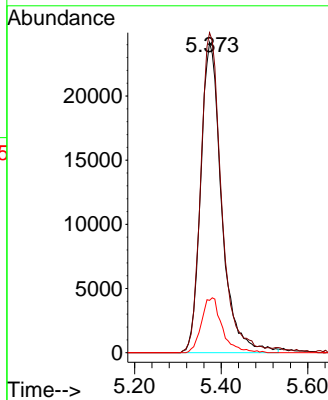
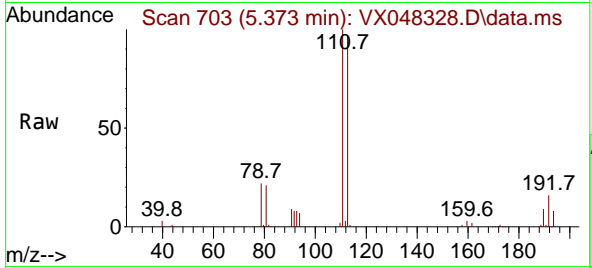


#35  
 Dibromofluoromethane  
 Concen: 42.812 ug/l  
 RT: 5.373 min Scan# 703  
 Delta R.T. 0.000 min  
 Lab File: VX048328.D  
 Acq: 23 Oct 2025 16:07

Instrument : MSVOA\_X  
 ClientSampleId : SB-11

Tgt Ion: 113 Resp: 81118

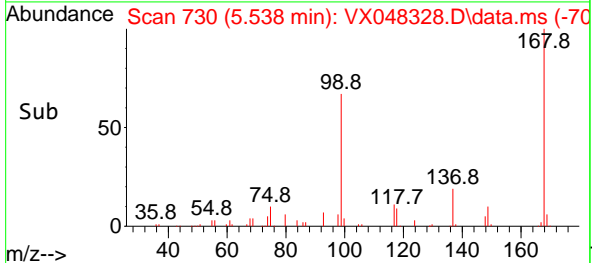
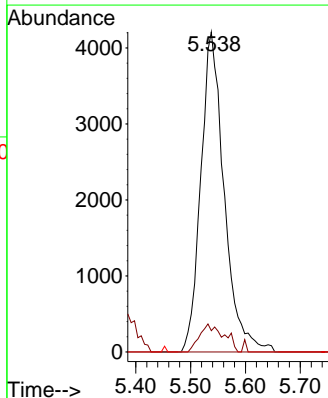
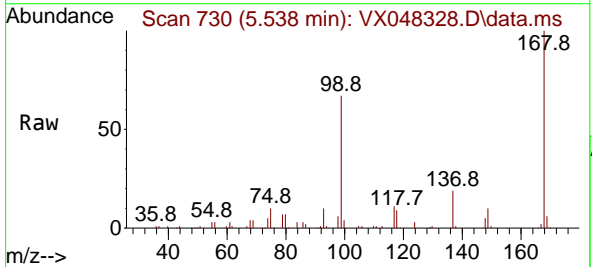
| Ion | Ratio | Lower | Upper |
|-----|-------|-------|-------|
| 113 | 100   |       |       |
| 111 | 102.5 | 82.2  | 123.4 |
| 192 | 17.5  | 15.1  | 22.7  |

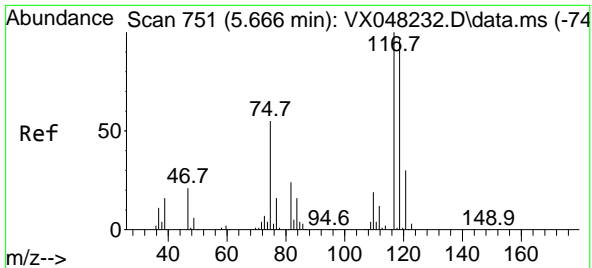


#36  
 1,1-Dichloropropene  
 Concen: 4.619 ug/l  
 RT: 5.538 min Scan# 730  
 Delta R.T. -0.146 min  
 Lab File: VX048328.D  
 Acq: 23 Oct 2025 16:07

Tgt Ion: 75 Resp: 12438

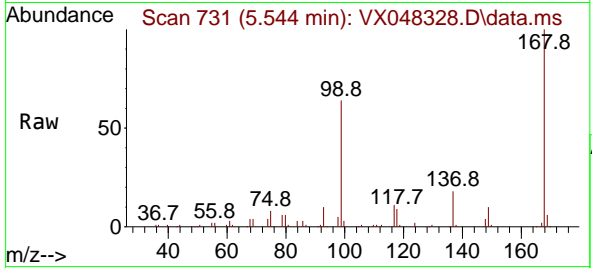
| Ion | Ratio | Lower | Upper |
|-----|-------|-------|-------|
| 75  | 100   |       |       |
| 110 | 9.1   | 17.7  | 53.1# |
| 77  | 0.0   | 24.3  | 36.5# |





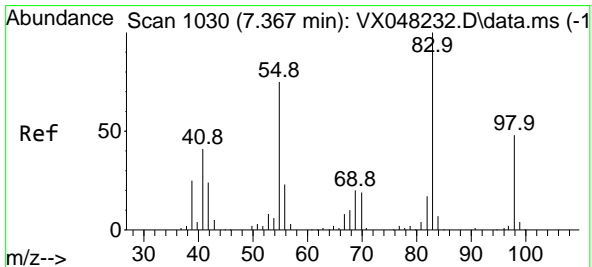
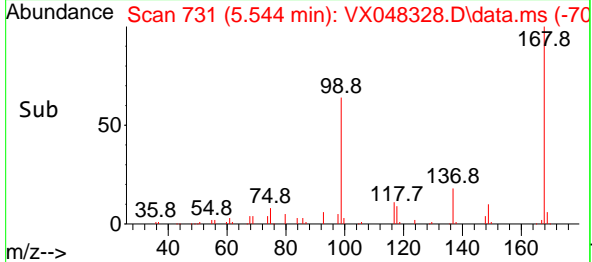
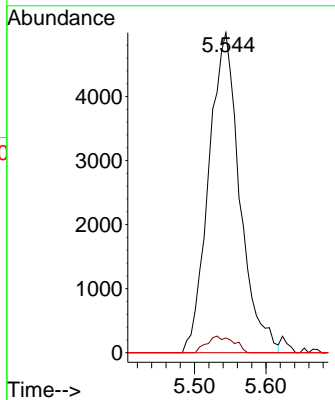
#38  
 Carbon Tetrachloride  
 Concen: 4.547 ug/l  
 RT: 5.544 min Scan# 711  
 Delta R.T. -0.122 min  
 Lab File: VX048328.D  
 Acq: 23 Oct 2025 16:07

Instrument : MSVOA\_X  
 ClientSampleId : SB-11



Tgt Ion: 117 Resp: 15109

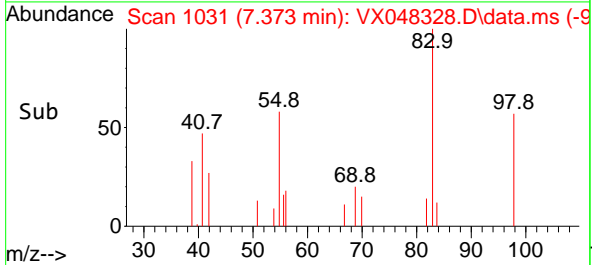
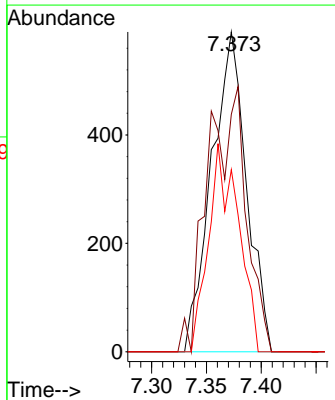
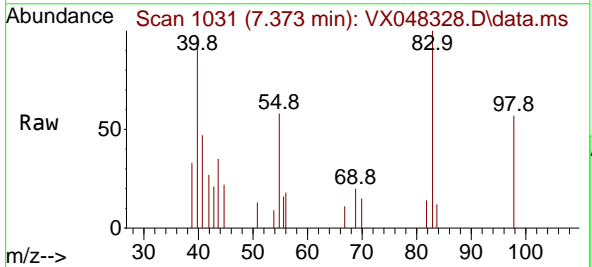
| Ion | Ratio | Lower | Upper  |
|-----|-------|-------|--------|
| 117 | 100   |       |        |
| 119 | 4.6   | 77.2  | 115.8# |
| 121 | 0.0   | 24.8  | 37.2#  |

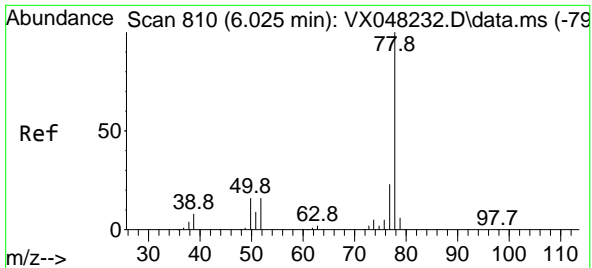


#39  
 Methylcyclohexane  
 Concen: 0.411 ug/l  
 RT: 7.373 min Scan# 1031  
 Delta R.T. 0.006 min  
 Lab File: VX048328.D  
 Acq: 23 Oct 2025 16:07

Tgt Ion: 83 Resp: 1307

| Ion | Ratio | Lower | Upper |
|-----|-------|-------|-------|
| 83  | 100   |       |       |
| 55  | 66.6  | 66.2  | 99.2  |
| 98  | 51.1  | 38.9  | 58.3  |

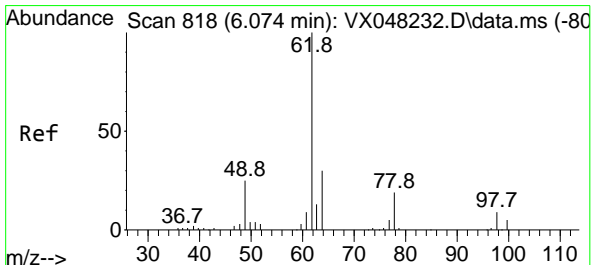
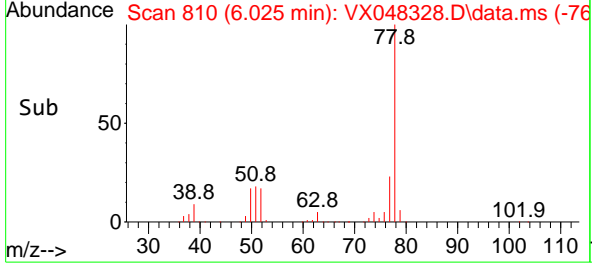
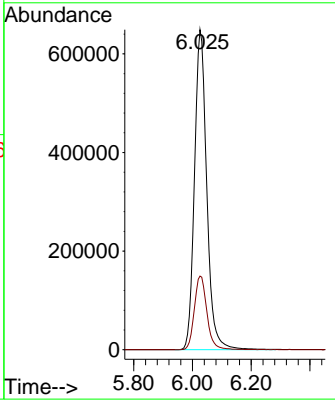
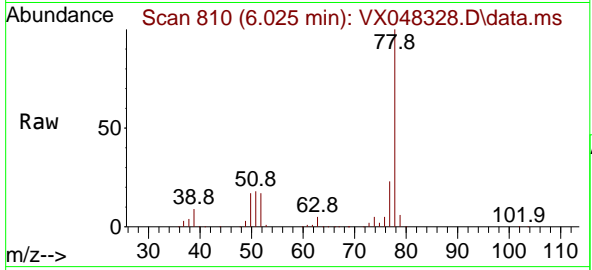




#40  
Benzene  
Concen: 240.832 ug/l  
RT: 6.025 min Scan# 810  
Delta R.T. 0.000 min  
Lab File: VX048328.D  
Acq: 23 Oct 2025 16:07

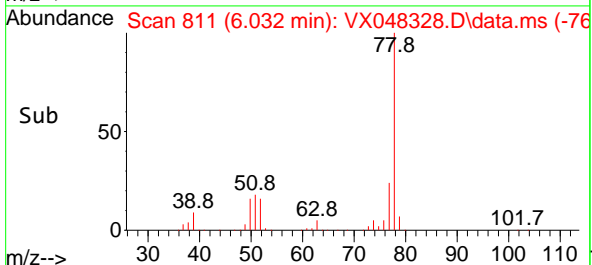
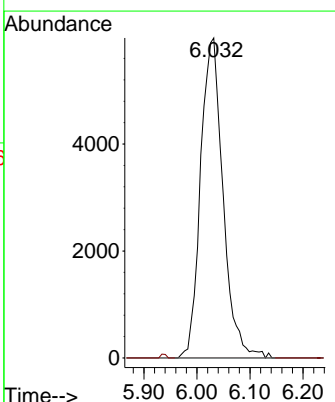
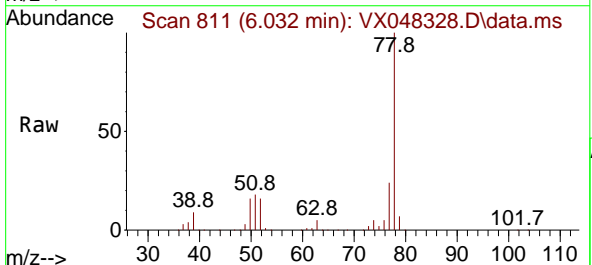
Instrument : MSVOA\_X  
ClientSampleId : SB-11

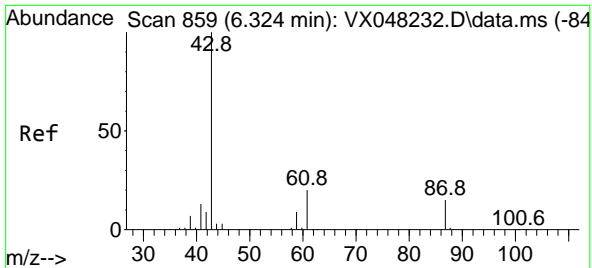
Tgt Ion: 78 Resp: 1883034  
Ion Ratio Lower Upper  
78 100  
77 23.0 19.3 28.9



#42  
1,2-Dichloroethane  
Concen: 6.095 ug/l  
RT: 6.032 min Scan# 811  
Delta R.T. -0.037 min  
Lab File: VX048328.D  
Acq: 23 Oct 2025 16:07

Tgt Ion: 62 Resp: 17586  
Ion Ratio Lower Upper  
62 100  
98 0.0 0.0 17.2

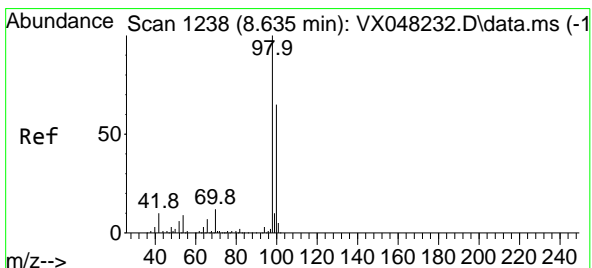
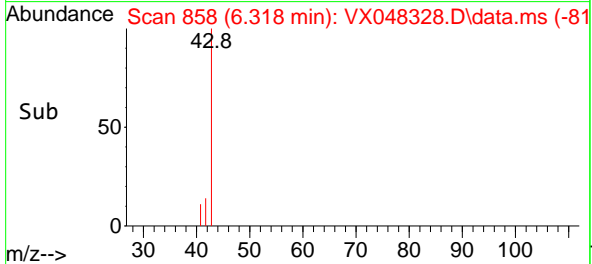
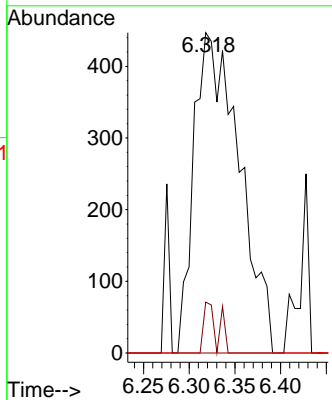
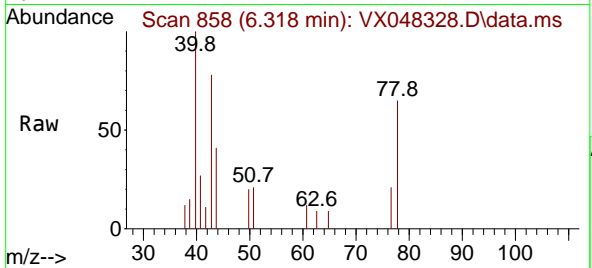




#43  
 Isopropyl Acetate  
 Concen: 0.420 ug/l  
 RT: 6.318 min Scan# 81  
 Delta R.T. -0.006 min  
 Lab File: VX048328.D  
 Acq: 23 Oct 2025 16:07

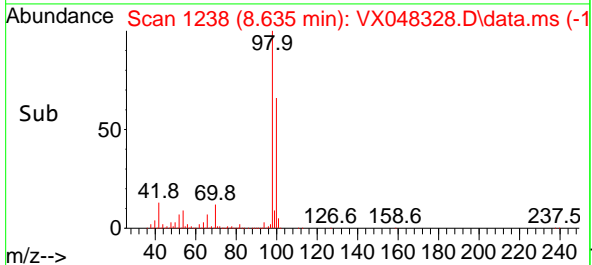
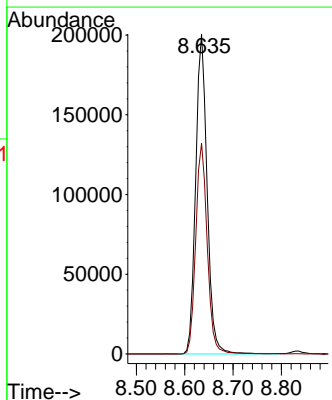
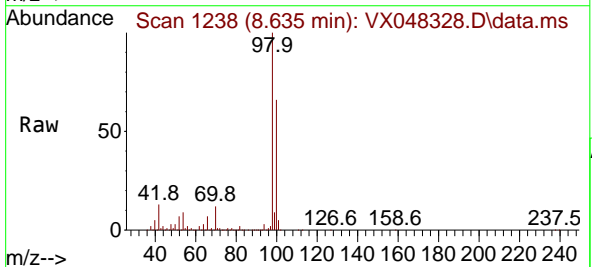
Instrument : MSVOA\_X  
 ClientSampleId : SB-11

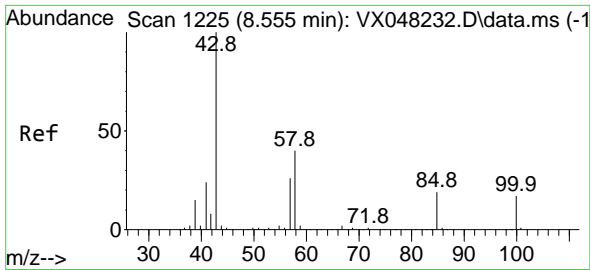
| Tgt Ion | Resp | Lower | Upper |
|---------|------|-------|-------|
| 43      | 1539 |       |       |
| 61      | 0.0  | 14.9  | 22.3# |
| 87      | 0.0  | 9.4   | 14.2# |



#50  
 Toluene-d8  
 Concen: 49.570 ug/l  
 RT: 8.635 min Scan# 1238  
 Delta R.T. 0.000 min  
 Lab File: VX048328.D  
 Acq: 23 Oct 2025 16:07

| Tgt Ion | Resp   | Lower | Upper |
|---------|--------|-------|-------|
| 98      | 329213 |       |       |
| 98      | 100    |       |       |
| 100     | 66.2   | 53.0  | 79.4  |

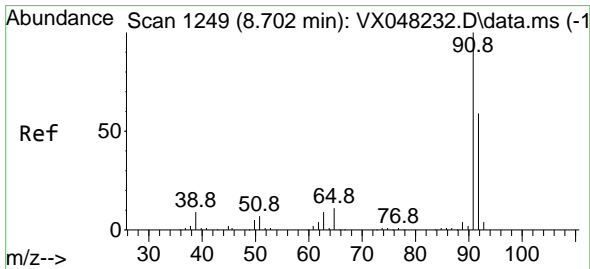
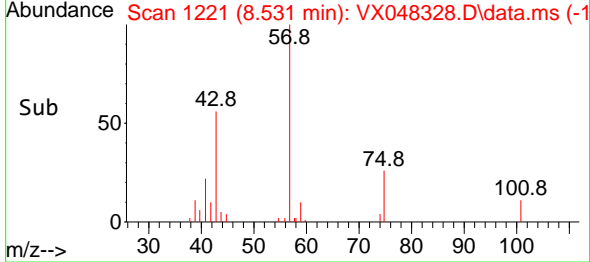
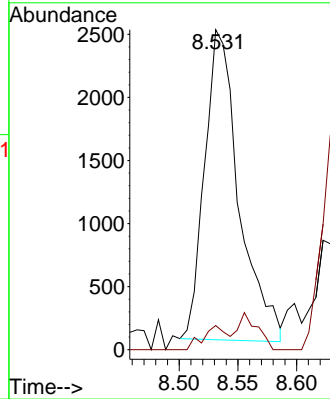
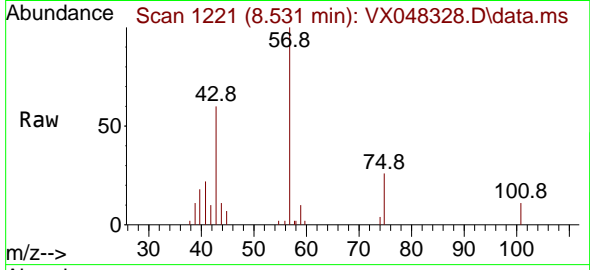




#51  
 4-Methyl-2-Pentanone  
 Concen: 2.365 ug/l  
 RT: 8.531 min Scan# 1221  
 Delta R.T. -0.024 min  
 Lab File: VX048328.D  
 Acq: 23 Oct 2025 16:07

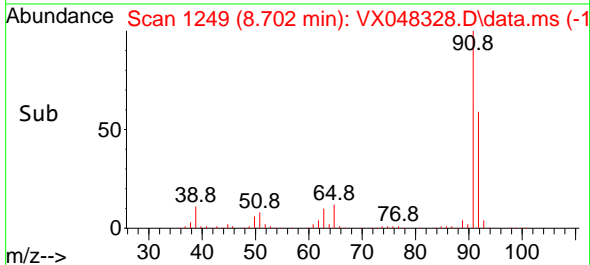
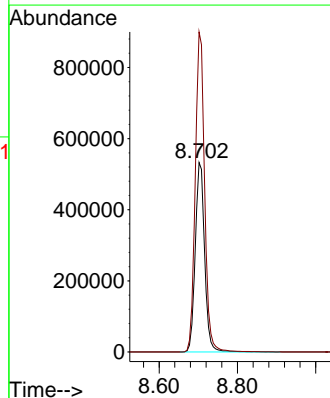
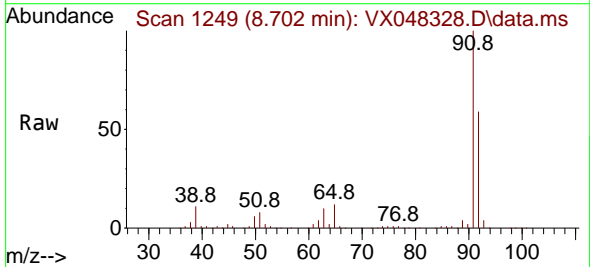
Instrument : MSVOA\_X  
 ClientSampleId : SB-11

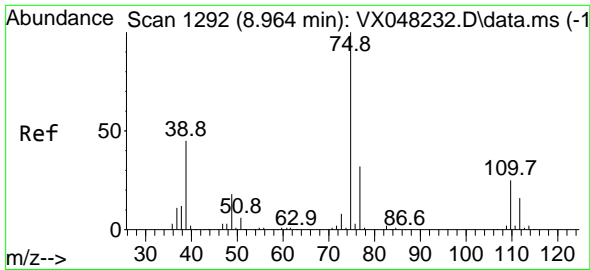
Tgt Ion: 43 Resp: 5000  
 Ion Ratio Lower Upper  
 43 100  
 58 5.4 29.5 44.3#



#52  
 Toluene  
 Concen: 179.107 ug/l  
 RT: 8.702 min Scan# 1249  
 Delta R.T. 0.000 min  
 Lab File: VX048328.D  
 Acq: 23 Oct 2025 16:07

Tgt Ion: 92 Resp: 889663  
 Ion Ratio Lower Upper  
 92 100  
 91 168.5 136.1 204.1

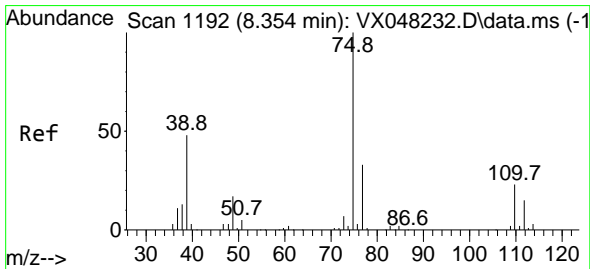
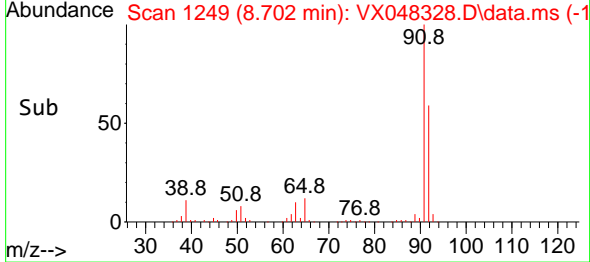
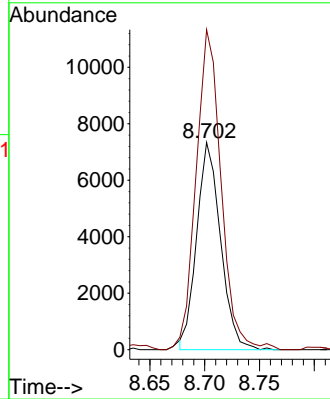
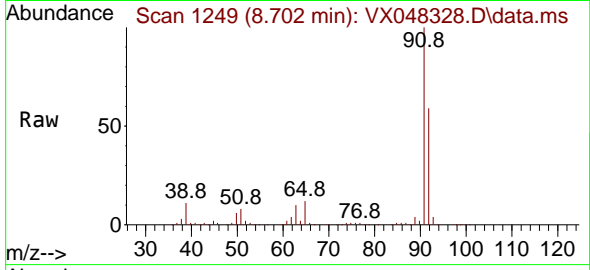




#53  
 t-1,3-Dichloropropene  
 Concen: 3.685 ug/l  
 RT: 8.702 min Scan# 11106  
 Delta R.T. -0.262 min  
 Lab File: VX048328.D  
 Acq: 23 Oct 2025 16:07

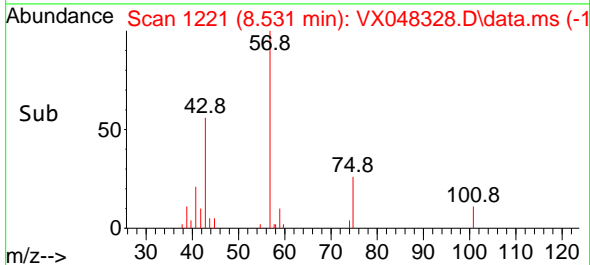
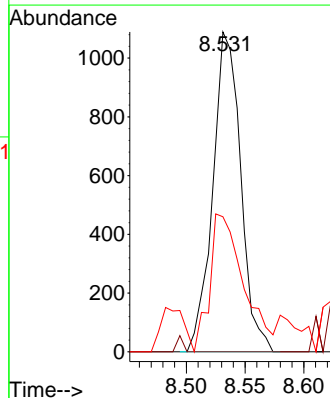
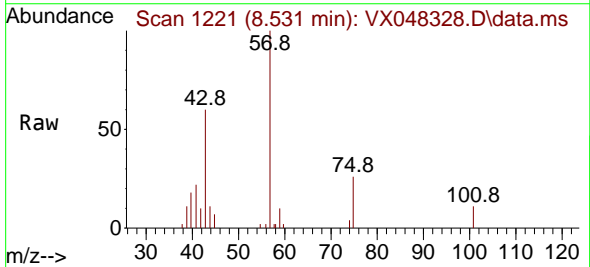
Instrument : MSVOA\_X  
 ClientSampleId : SB-11

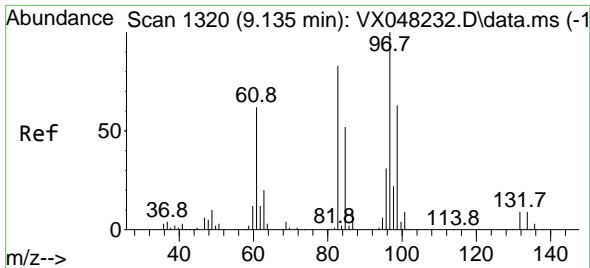
Tgt Ion: 75 Resp: 11106  
 Ion Ratio Lower Upper  
 75 100  
 77 154.4 25.0 37.6#



#54  
 cis-1,3-Dichloropropene  
 Concen: 0.554 ug/l  
 RT: 8.531 min Scan# 1221  
 Delta R.T. 0.183 min  
 Lab File: VX048328.D  
 Acq: 23 Oct 2025 16:07

Tgt Ion: 75 Resp: 1801  
 Ion Ratio Lower Upper  
 75 100  
 77 0.0 24.9 37.3#  
 39 41.2 42.6 64.0#

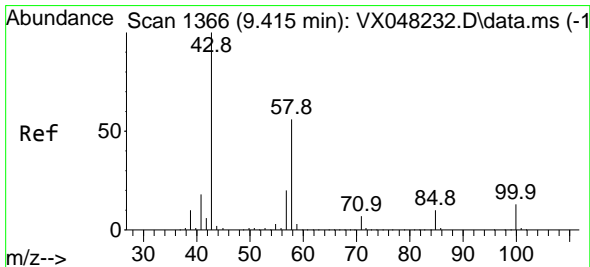
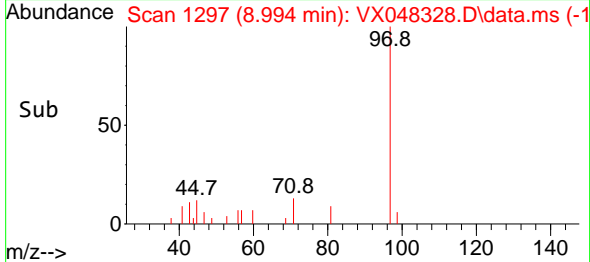
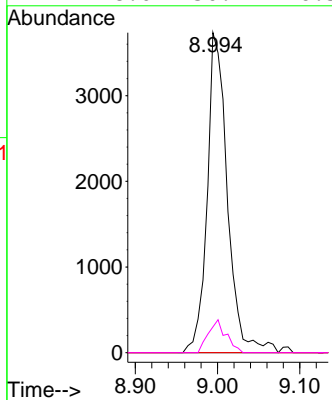
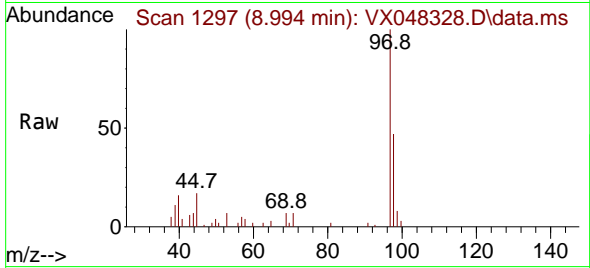




#55  
 1,1,2-Trichloroethane  
 Concen: 3.457 ug/l  
 RT: 8.994 min Scan# 11  
 Delta R.T. -0.140 min  
 Lab File: VX048328.D  
 Acq: 23 Oct 2025 16:07

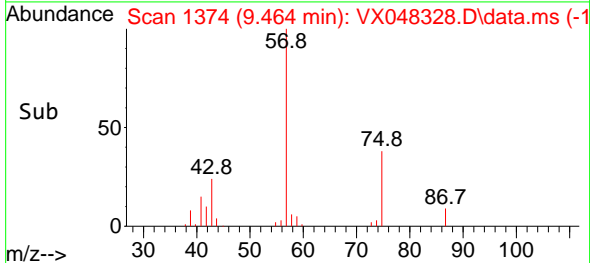
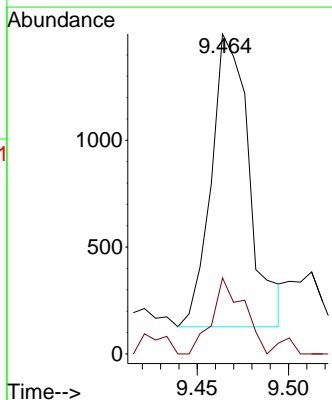
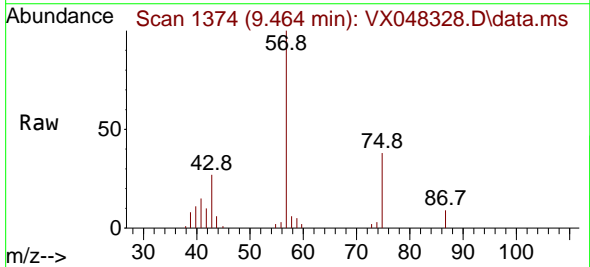
Instrument : MSVOA\_X  
 ClientSampleId : SB-11

| Tgt Ion | Resp | Lower | Upper  |
|---------|------|-------|--------|
| 97      | 6385 |       |        |
| 97      | 100  |       |        |
| 83      | 0.0  | 70.6  | 105.8# |
| 85      | 0.0  | 45.0  | 67.6#  |
| 99      | 8.0  | 50.9  | 76.3#  |

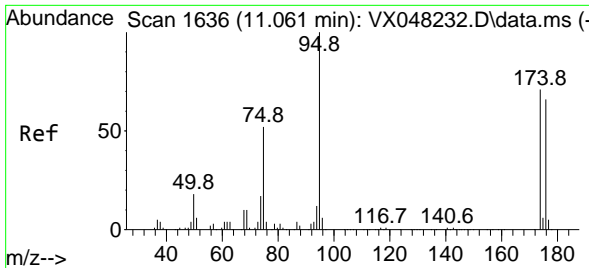


#59  
 2-Hexanone  
 Concen: 1.347 ug/l  
 RT: 9.464 min Scan# 1374  
 Delta R.T. 0.049 min  
 Lab File: VX048328.D  
 Acq: 23 Oct 2025 16:07

| Tgt Ion | Resp | Lower | Upper |
|---------|------|-------|-------|
| 43      | 1985 |       |       |
| 43      | 100  |       |       |
| 58      | 21.8 | 26.3  | 78.8# |





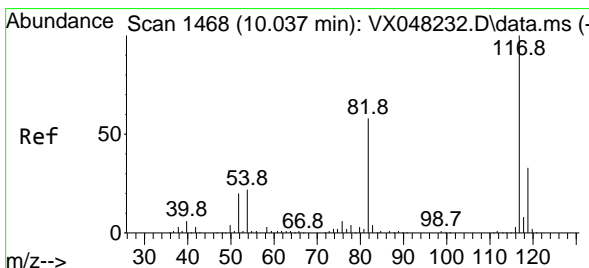
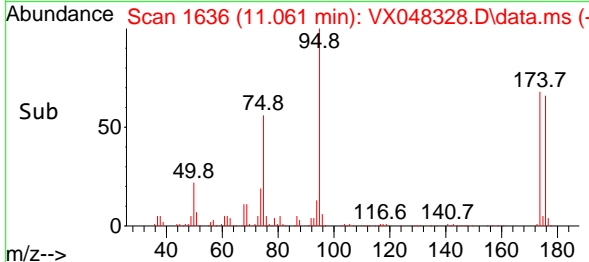
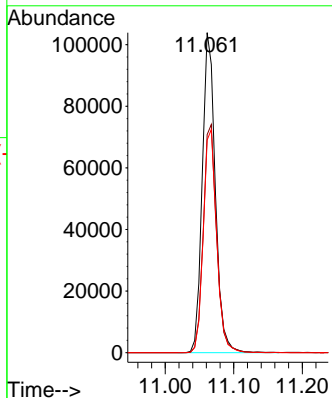
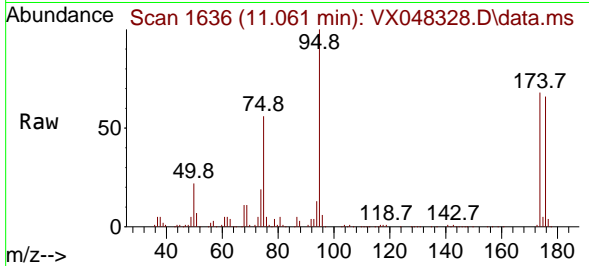


#62  
 4-Bromofluorobenzene  
 Concen: 54.631 ug/l  
 RT: 11.061 min Scan# 1  
 Delta R.T. 0.000 min  
 Lab File: VX048328.D  
 Acq: 23 Oct 2025 16:07

Instrument :  
 MSVOA\_X  
 ClientSampleId :  
 SB-11

Tgt Ion: 95 Resp: 138029

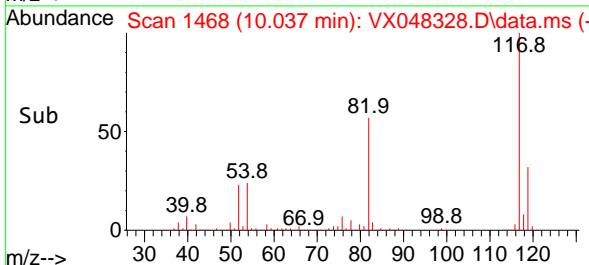
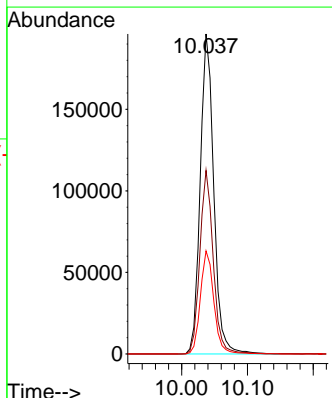
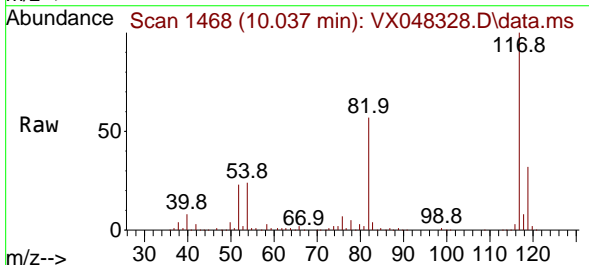
| Ion | Ratio | Lower | Upper |
|-----|-------|-------|-------|
| 95  | 100   |       |       |
| 174 | 72.6  | 0.0   | 147.8 |
| 176 | 71.3  | 0.0   | 142.8 |

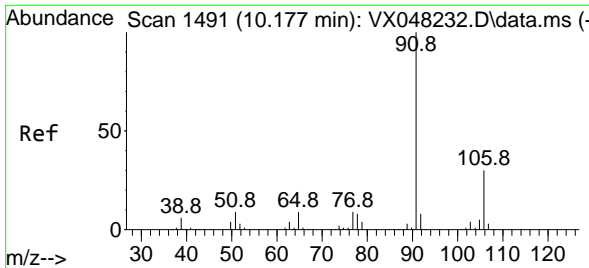


#63  
 Chlorobenzene-d5  
 Concen: 50.000 ug/l  
 RT: 10.037 min Scan# 1468  
 Delta R.T. 0.000 min  
 Lab File: VX048328.D  
 Acq: 23 Oct 2025 16:07

Tgt Ion: 117 Resp: 280528

| Ion | Ratio | Lower | Upper |
|-----|-------|-------|-------|
| 117 | 100   |       |       |
| 82  | 57.3  | 46.5  | 69.7  |
| 119 | 32.2  | 25.9  | 38.9  |

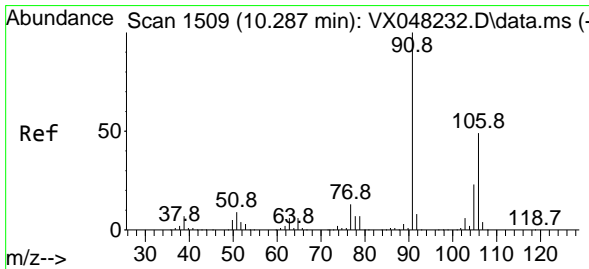
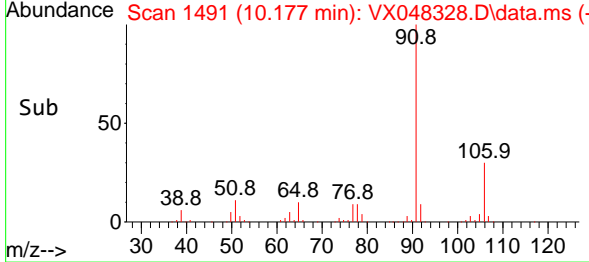
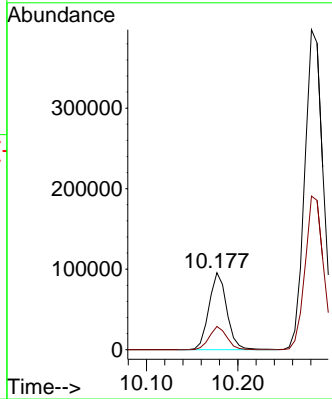
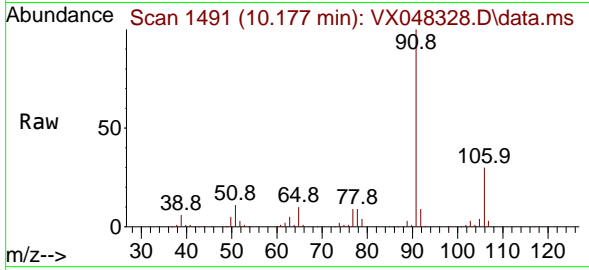




#67  
 Ethyl Benzene  
 Concen: 12.058 ug/l  
 RT: 10.177 min Scan# 1491  
 Delta R.T. 0.000 min  
 Lab File: VX048328.D  
 Acq: 23 Oct 2025 16:07

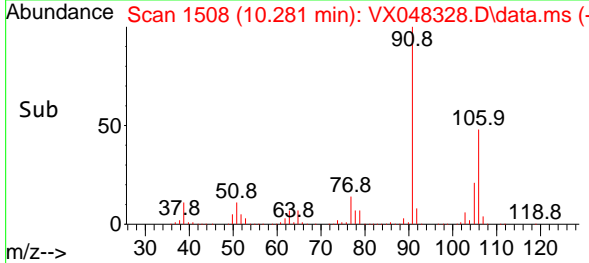
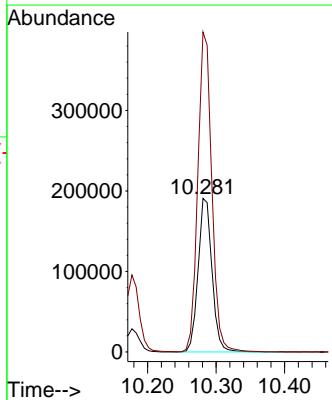
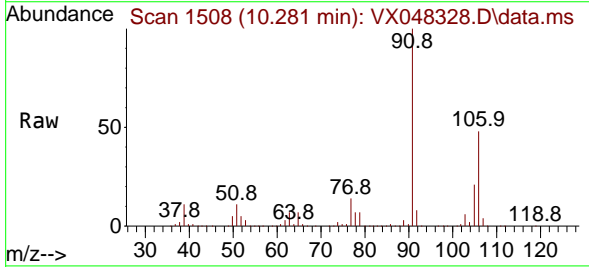
Instrument : MSVOA\_X  
 ClientSampleId : SB-11

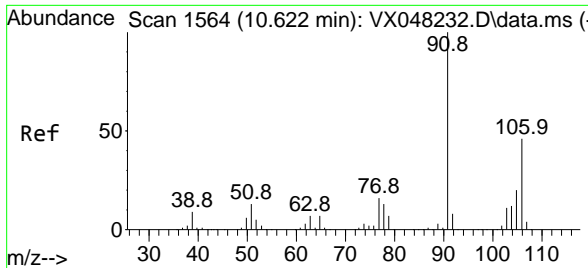
Tgt Ion: 91 Resp: 129558  
 Ion Ratio Lower Upper  
 91 100  
 106 30.2 23.8 35.6



#68  
 m/p-Xylenes  
 Concen: 67.715 ug/l  
 RT: 10.281 min Scan# 1508  
 Delta R.T. -0.006 min  
 Lab File: VX048328.D  
 Acq: 23 Oct 2025 16:07

Tgt Ion: 106 Resp: 270314  
 Ion Ratio Lower Upper  
 106 100  
 91 208.9 167.9 251.9

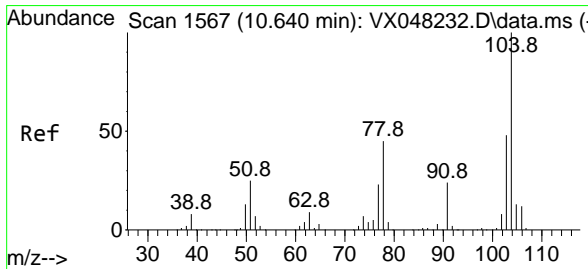
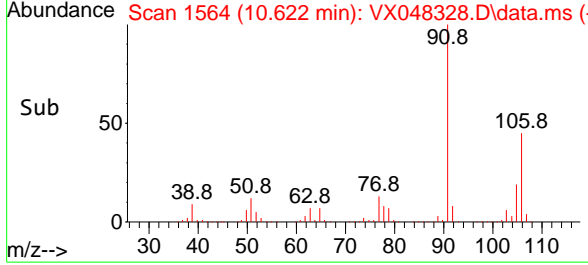
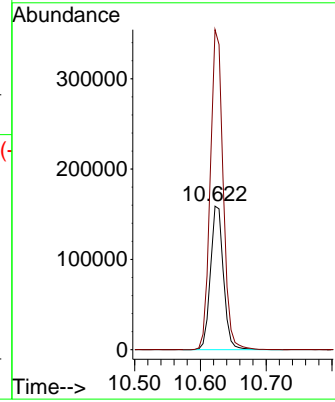
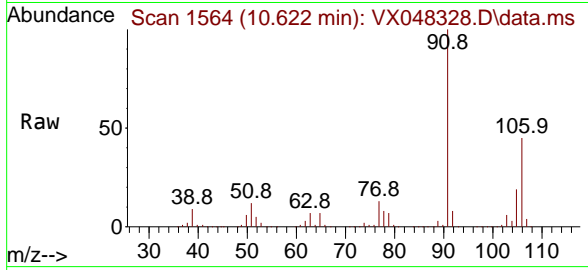




#69  
 o-Xylene  
 Concen: 56.558 ug/l  
 RT: 10.622 min Scan# 1564  
 Delta R.T. 0.000 min  
 Lab File: VX048328.D  
 Acq: 23 Oct 2025 16:07

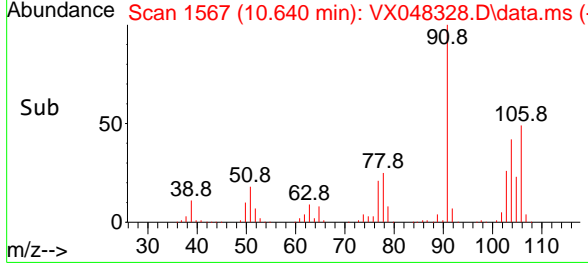
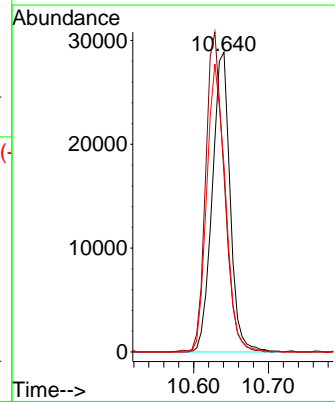
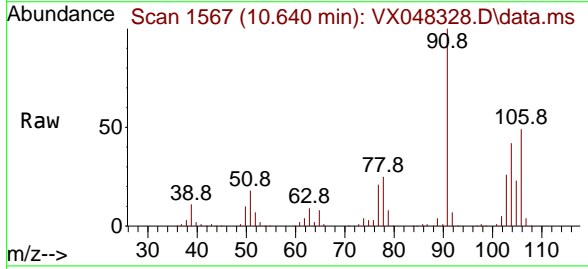
Instrument : MSVOA\_X  
 ClientSampleId : SB-11

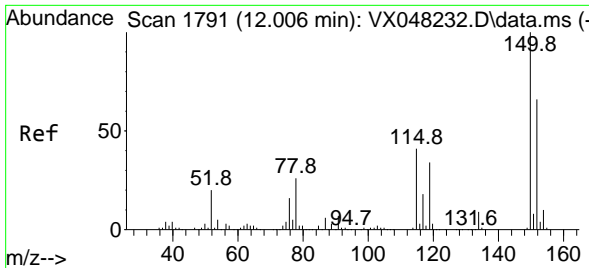
Tgt Ion:106 Resp: 217974  
 Ion Ratio Lower Upper  
 106 100  
 91 221.1 111.3 333.9



#70  
 Styrene  
 Concen: 7.356 ug/l  
 RT: 10.640 min Scan# 1567  
 Delta R.T. 0.000 min  
 Lab File: VX048328.D  
 Acq: 23 Oct 2025 16:07

Tgt Ion:104 Resp: 48270  
 Ion Ratio Lower Upper  
 104 100  
 78 109.4 42.2 63.4#  
 103 99.5 43.0 64.4#



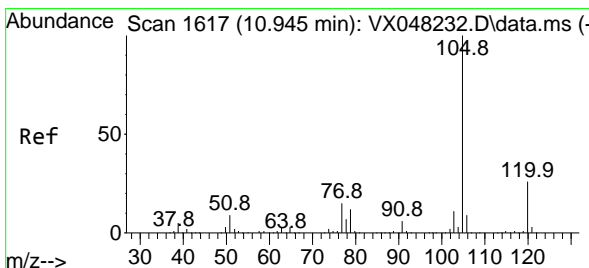
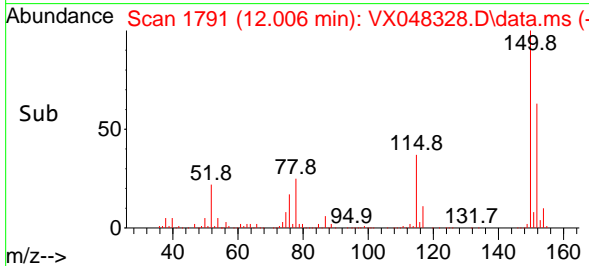
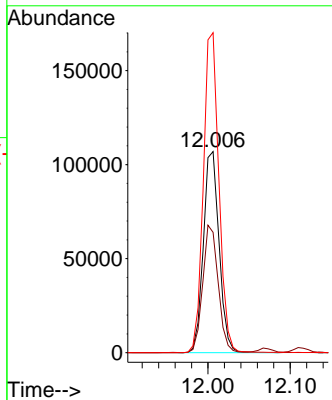
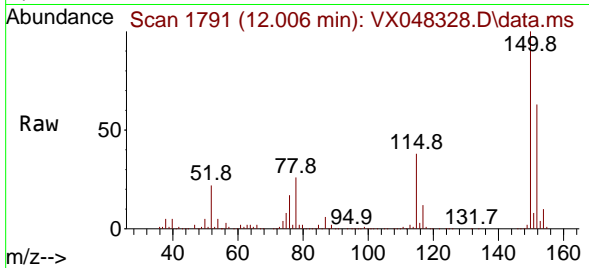


#72  
 1,4-Dichlorobenzene-d4  
 Concen: 50.000 ug/l  
 RT: 12.006 min Scan# 1  
 Delta R.T. 0.000 min  
 Lab File: VX048328.D  
 Acq: 23 Oct 2025 16:07

Instrument :  
 MSVOA\_X  
 ClientSampleId :  
 SB-11

Tgt Ion:152 Resp: 142250

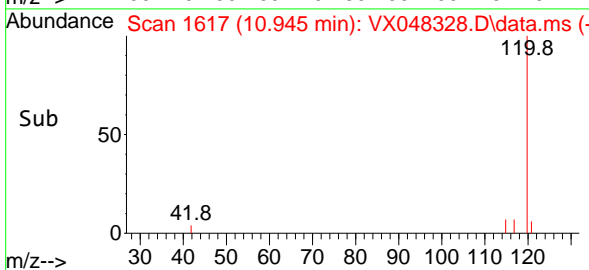
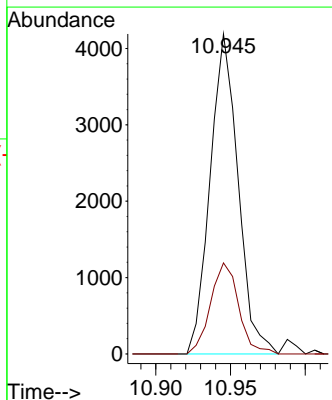
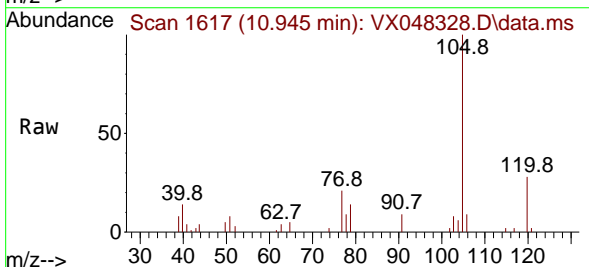
| Ion | Ratio | Lower | Upper |
|-----|-------|-------|-------|
| 152 | 100   |       |       |
| 115 | 62.3  | 43.1  | 129.4 |
| 150 | 157.1 | 0.0   | 353.0 |

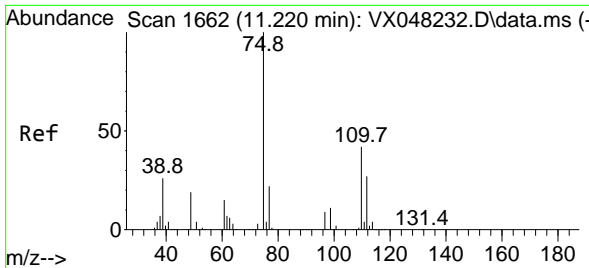


#73  
 Isopropylbenzene  
 Concen: 0.523 ug/l  
 RT: 10.945 min Scan# 1617  
 Delta R.T. 0.000 min  
 Lab File: VX048328.D  
 Acq: 23 Oct 2025 16:07

Tgt Ion:105 Resp: 5439

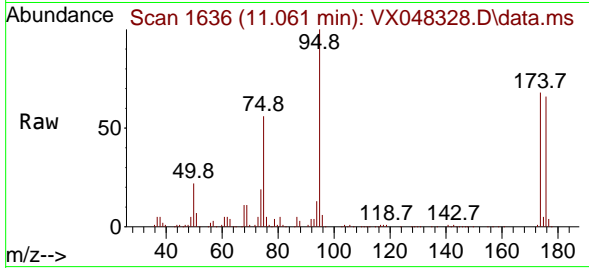
| Ion | Ratio | Lower | Upper |
|-----|-------|-------|-------|
| 105 | 100   |       |       |
| 120 | 28.6  | 13.0  | 38.9  |



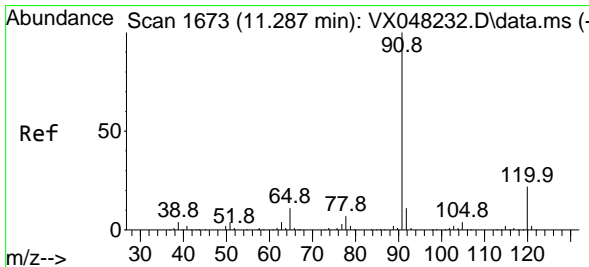
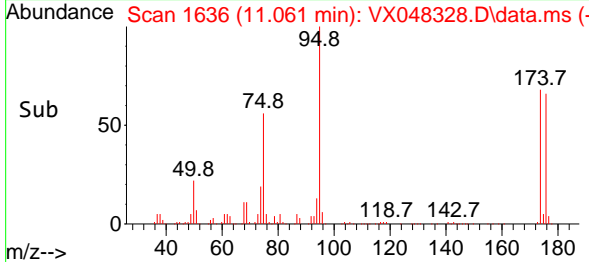
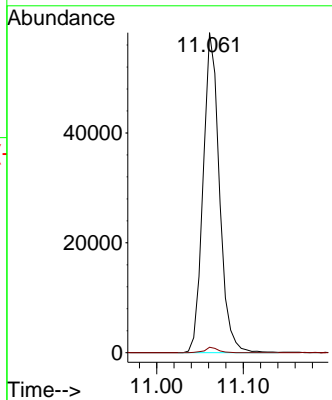


#76  
 1,2,3-Trichloropropane  
 Concen: 33.018 ug/l  
 RT: 11.061 min Scan# 1636  
 Delta R.T. -0.158 min  
 Lab File: VX048328.D  
 Acq: 23 Oct 2025 16:07

Instrument : MSVOA\_X  
 ClientSampleId : SB-11

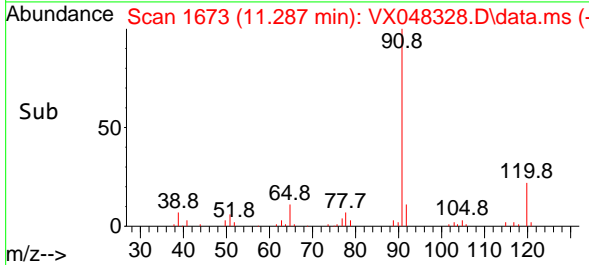
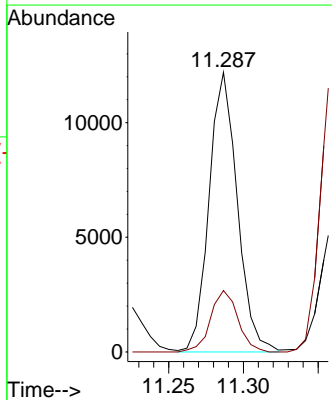
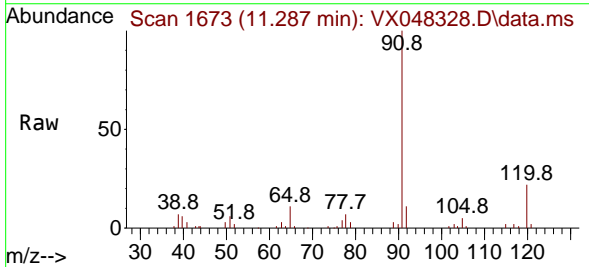


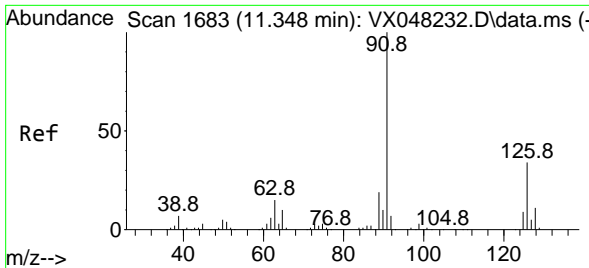
Tgt Ion: 75 Resp: 76166  
 Ion Ratio Lower Upper  
 75 100  
 77 1.4 22.4 67.2#



#78  
 n-propylbenzene  
 Concen: 1.331 ug/l  
 RT: 11.287 min Scan# 1673  
 Delta R.T. 0.000 min  
 Lab File: VX048328.D  
 Acq: 23 Oct 2025 16:07

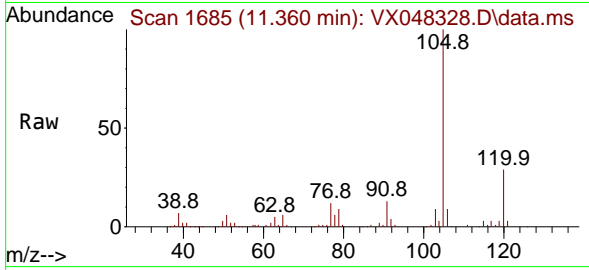
Tgt Ion: 91 Resp: 16011  
 Ion Ratio Lower Upper  
 91 100  
 120 21.2 11.1 33.1



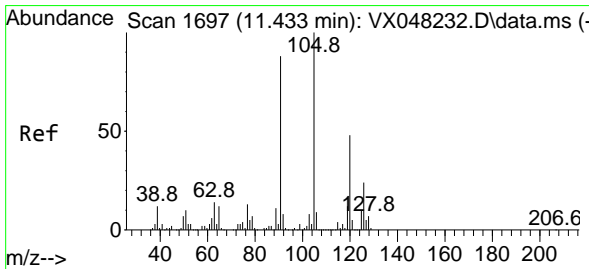
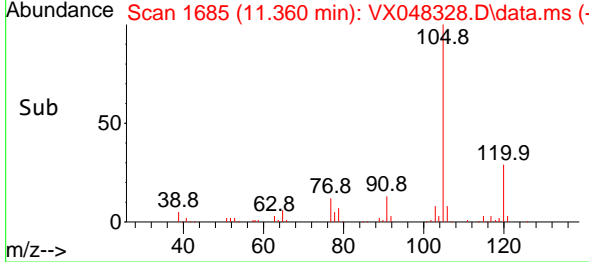
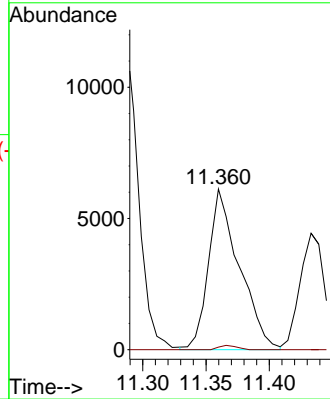


#79  
 2-Chlorotoluene  
 Concen: 1.427 ug/l  
 RT: 11.360 min Scan# 1685  
 Delta R.T. 0.012 min  
 Lab File: VX048328.D  
 Acq: 23 Oct 2025 16:07

Instrument : MSVOA\_X  
 ClientSampleId : SB-11

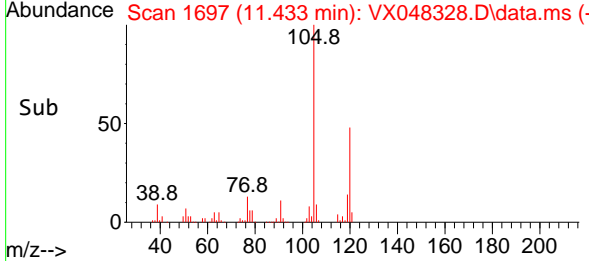
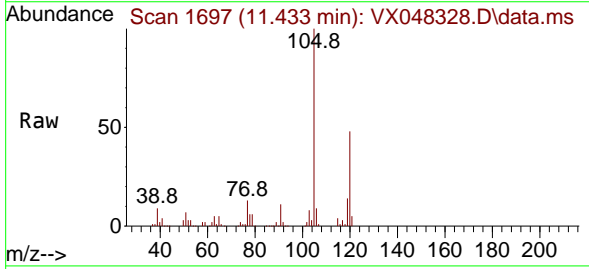
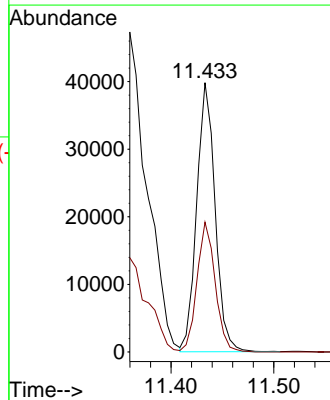


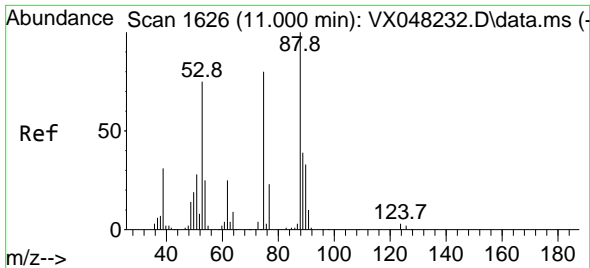
Tgt Ion: 91 Resp: 10405  
 Ion Ratio Lower Upper  
 91 100  
 126 1.5 16.4 49.4#



#80  
 1,3,5-Trimethylbenzene  
 Concen: 5.773 ug/l  
 RT: 11.433 min Scan# 1697  
 Delta R.T. 0.000 min  
 Lab File: VX048328.D  
 Acq: 23 Oct 2025 16:07

Tgt Ion: 105 Resp: 49640  
 Ion Ratio Lower Upper  
 105 100  
 120 47.7 24.0 72.0

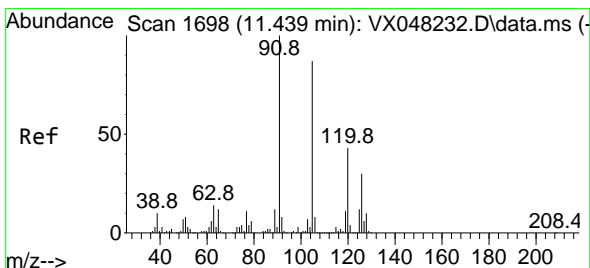
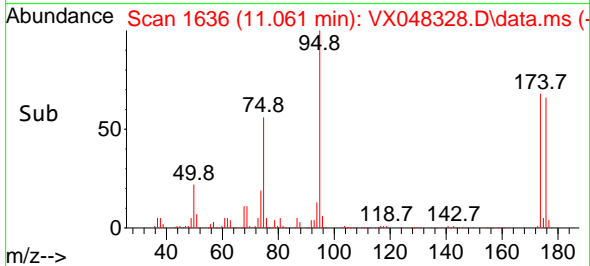
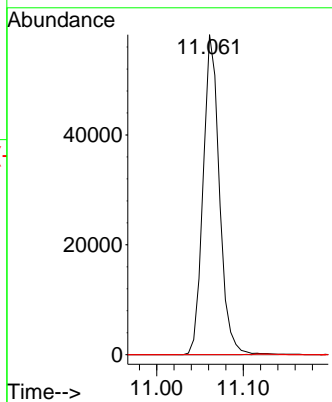
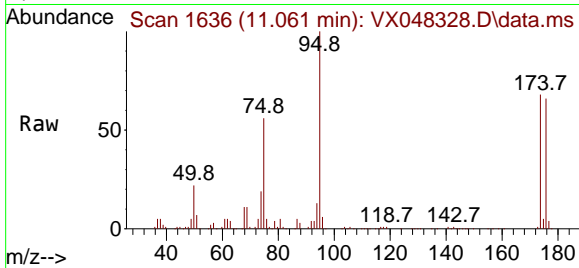




#81  
 trans-1,4-Dichloro-2-butene  
 Concen: 80.330 ug/l  
 RT: 11.061 min Scan# 1636  
 Delta R.T. 0.061 min  
 Lab File: VX048328.D  
 Acq: 23 Oct 2025 16:07

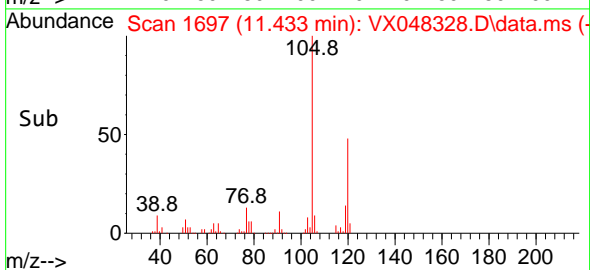
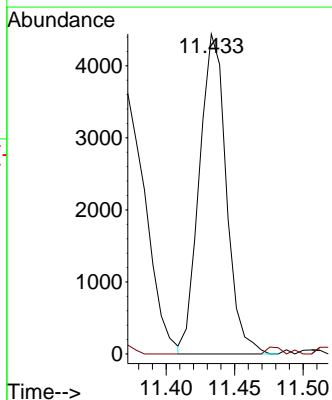
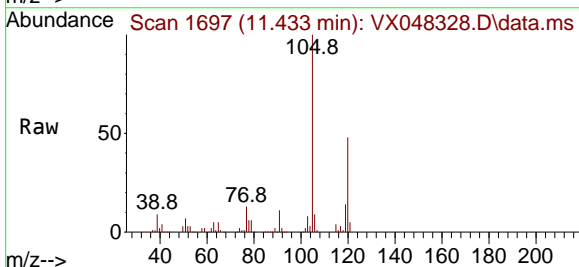
Instrument : MSVOA\_X  
 ClientSampleId : SB-11

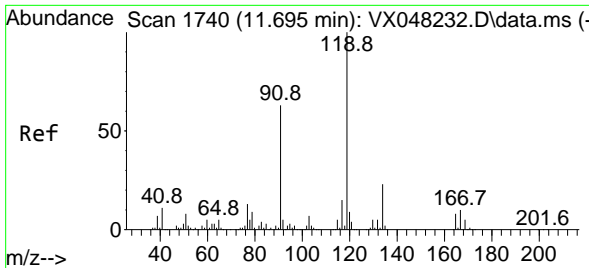
| Tgt Ion | Resp  | Lower | Upper  |
|---------|-------|-------|--------|
| 75      | 76166 |       |        |
| 75      | 100   |       |        |
| 53      | 0.0   | 79.5  | 119.3# |
| 89      | 0.0   | 36.8  | 55.2#  |



#82  
 4-Chlorotoluene  
 Concen: 0.702 ug/l  
 RT: 11.433 min Scan# 1697  
 Delta R.T. 0.000 min  
 Lab File: VX048328.D  
 Acq: 23 Oct 2025 16:07

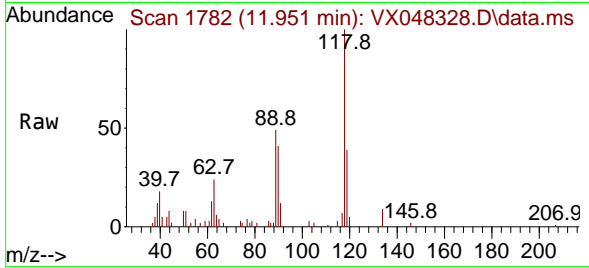
| Tgt Ion | Resp | Lower | Upper |
|---------|------|-------|-------|
| 91      | 6076 |       |       |
| 91      | 100  |       |       |
| 126     | 0.0  | 14.1  | 42.4# |



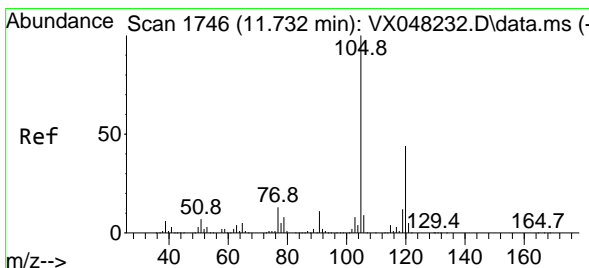
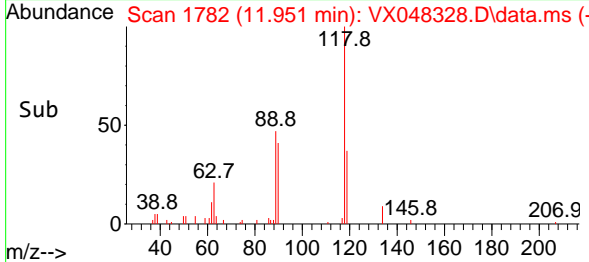
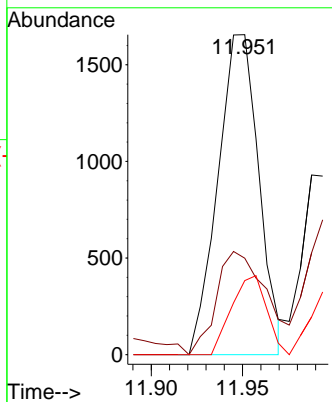


#83  
 tert-Butylbenzene  
 Concen: 0.293 ug/l  
 RT: 11.951 min Scan# 1782  
 Delta R.T. 0.256 min  
 Lab File: VX048328.D  
 Acq: 23 Oct 2025 16:07

Instrument :  
 MSVOA\_X  
 ClientSampleId :  
 SB-11

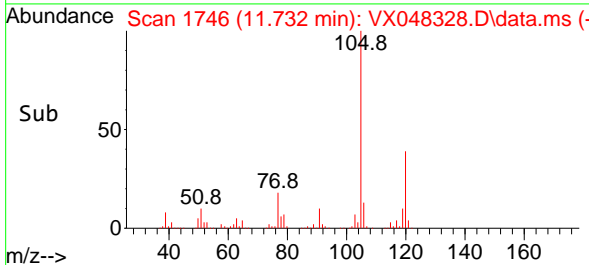
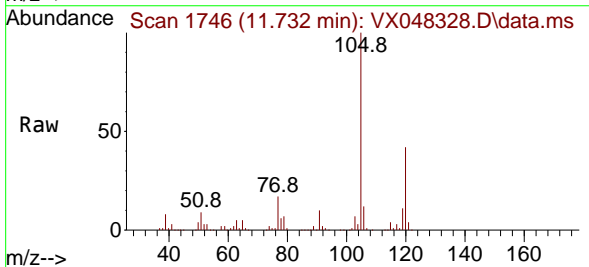
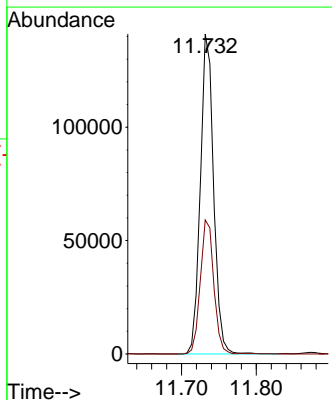


Tgt Ion:119 Resp: 2585  
 Ion Ratio Lower Upper  
 119 100  
 91 37.5 30.3 91.0  
 134 21.1 11.4 34.2

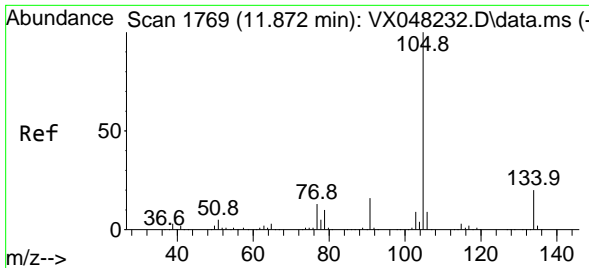


#84  
 1,2,4-Trimethylbenzene  
 Concen: 20.225 ug/l  
 RT: 11.732 min Scan# 1746  
 Delta R.T. 0.000 min  
 Lab File: VX048328.D  
 Acq: 23 Oct 2025 16:07

Tgt Ion:105 Resp: 173552  
 Ion Ratio Lower Upper  
 105 100  
 120 42.7 22.1 66.5

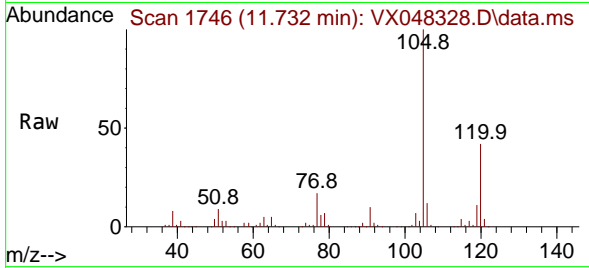




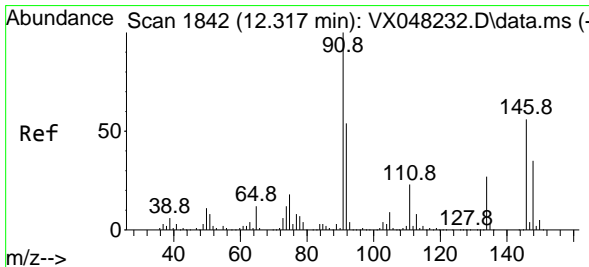
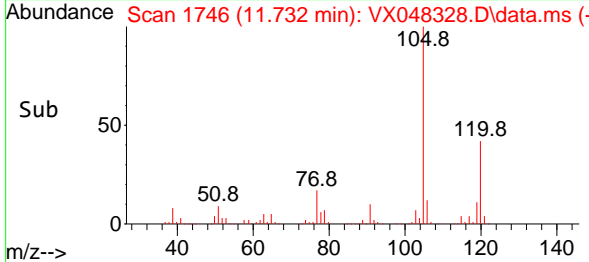
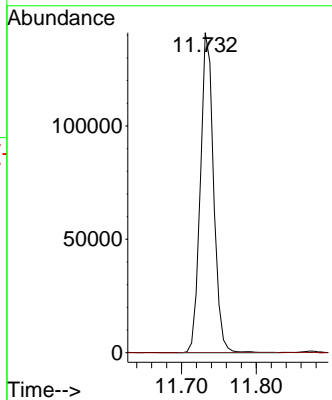


#85  
 sec-Butylbenzene  
 Concen: 16.329 ug/l  
 RT: 11.732 min Scan# 11  
 Delta R.T. -0.140 min  
 Lab File: VX048328.D  
 Acq: 23 Oct 2025 16:07

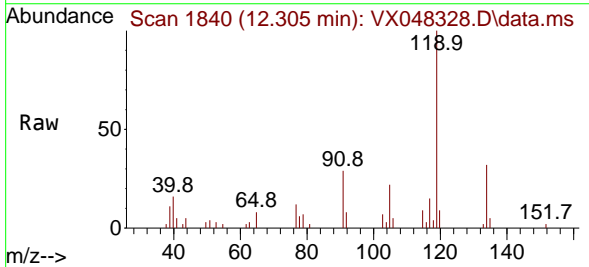
Instrument : MSVOA\_X  
 ClientSampleId : SB-11



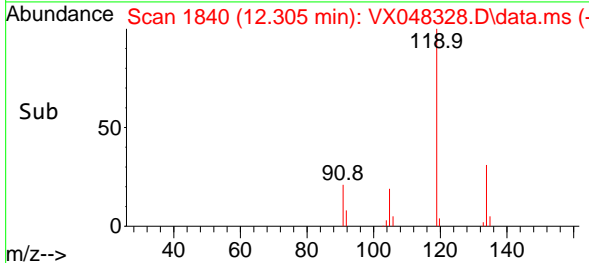
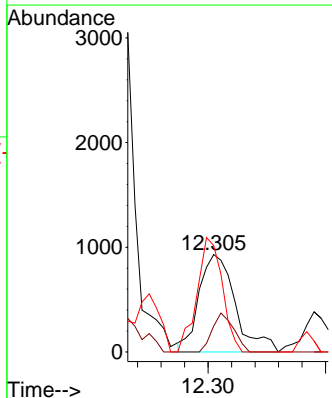
Tgt Ion: 105 Resp: 173552  
 Ion Ratio Lower Upper  
 105 100  
 134 0.0 10.1 30.1#

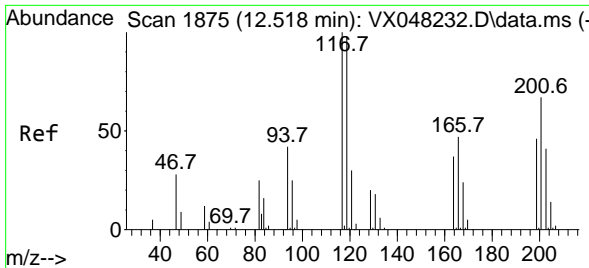


#89  
 n-Butylbenzene  
 Concen: 0.238 ug/l  
 RT: 12.305 min Scan# 1840  
 Delta R.T. -0.006 min  
 Lab File: VX048328.D  
 Acq: 23 Oct 2025 16:07



Tgt Ion: 91 Resp: 1992  
 Ion Ratio Lower Upper  
 91 100  
 92 23.5 26.9 80.6#  
 134 81.7 12.7 38.1#

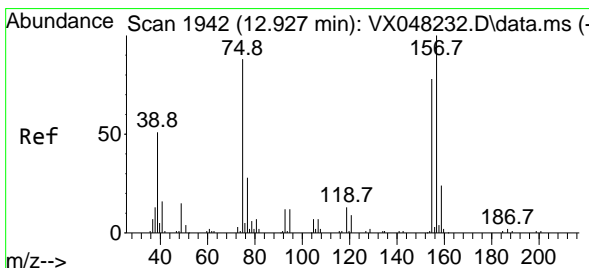
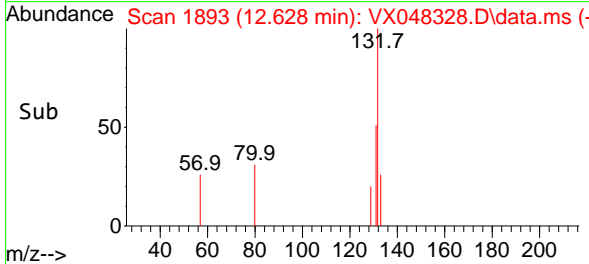
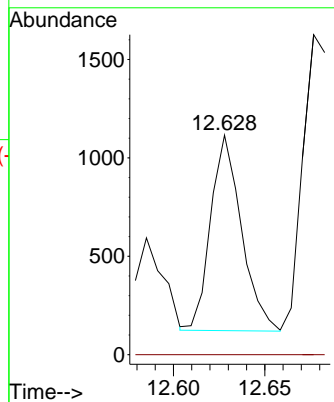
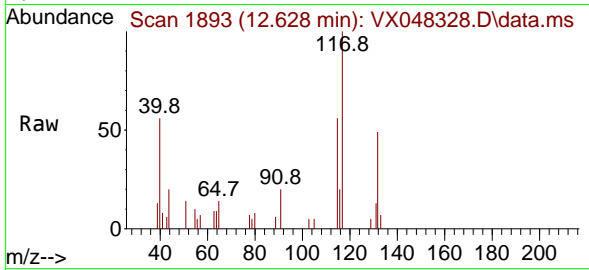




#90  
 Hexachloroethane  
 Concen: 0.642 ug/l  
 RT: 12.628 min Scan# 1875  
 Delta R.T. 0.110 min  
 Lab File: VX048328.D  
 Acq: 23 Oct 2025 16:07

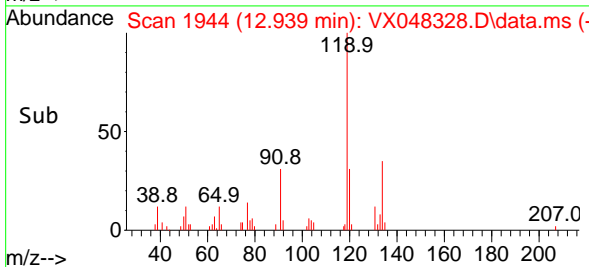
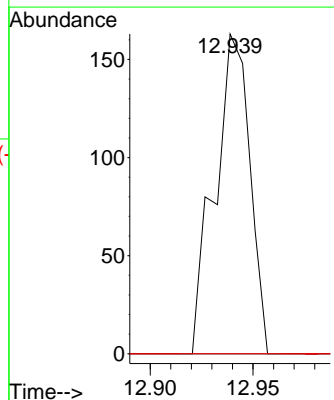
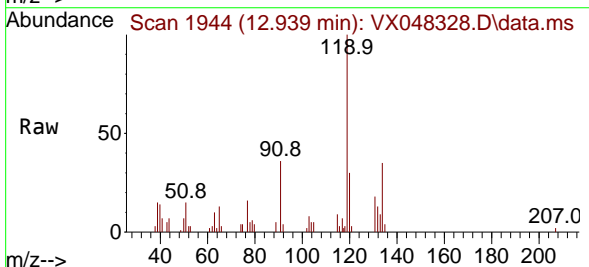
Instrument : MSVOA\_X  
 ClientSampleId : SB-11

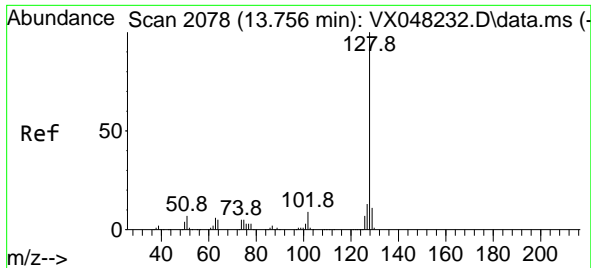
Tgt Ion:117 Resp: 1165  
 Ion Ratio Lower Upper  
 117 100  
 201 0.0 34.1 102.2#



#92  
 1,2-Dibromo-3-Chloropropane  
 Concen: 0.337 ug/l  
 RT: 12.939 min Scan# 1944  
 Delta R.T. 0.018 min  
 Lab File: VX048328.D  
 Acq: 23 Oct 2025 16:07

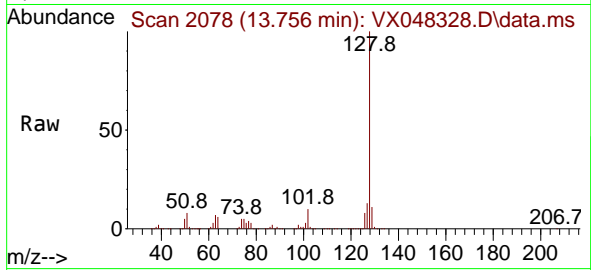
Tgt Ion: 75 Resp: 194  
 Ion Ratio Lower Upper  
 75 100  
 155 0.0 42.8 128.4#  
 157 0.0 54.2 162.6#





#95  
 Naphthalene  
 Concen: 80.080 ug/l  
 RT: 13.756 min Scan# 20  
 Delta R.T. 0.000 min  
 Lab File: VX048328.D  
 Acq: 23 Oct 2025 16:07

Instrument :  
 MSVOA\_X  
 ClientSampleId :  
 SB-11



Tgt Ion:128 Resp: 661588  
 Ion Ratio Lower Upper  
 128 100  
 127 12.9 10.2 15.4  
 129 10.9 8.6 12.8

