

Data Path : Z:\voasrv\HPCHEM1\MSVOA_X\Data\VX102325\
 Data File : VX048330.D
 Acq On : 23 Oct 2025 16:49
 Operator : JC/MD
 Sample : Q3414-13 10X
 Misc : 5.0mL/MSVOA_X/WATER
 ALS Vial : 22 Sample Multiplier: 1

Instrument :
 MSVOA_X
 ClientSampleId :

Quant Time: Oct 24 05:49:04 2025
 Quant Method : Z:\voasrv\HPCHEM1\MSVOA_X\Method\82X102025W.M
 Quant Title : SW846 8260
 QLast Update : Mon Oct 20 14:13:59 2025
 Response via : Initial Calibration

Compound	R.T.	QIon	Response	Conc	Units	Dev(Min)
Internal Standards						
1) Pentafluorobenzene	5.544	168	130437	50.000	ug/l	0.00
34) 1,4-Difluorobenzene	6.745	114	255833	50.000	ug/l	0.00
63) Chlorobenzene-d5	10.037	117	267200	50.000	ug/l	0.00
72) 1,4-Dichlorobenzene-d4	12.006	152	140349	50.000	ug/l	0.00
System Monitoring Compounds						
33) 1,2-Dichloroethane-d4	5.940	65	103647	56.674	ug/l	0.00
Spiked Amount	50.000	Range	78 - 117	Recovery	=	113.340%
35) Dibromofluoromethane	5.373	113	71187	40.758	ug/l	0.00
Spiked Amount	50.000	Range	75 - 124	Recovery	=	81.520%
50) Toluene-d8	8.635	98	288751	47.167	ug/l	0.00
Spiked Amount	50.000	Range	92 - 112	Recovery	=	94.340%
62) 4-Bromofluorobenzene	11.061	95	129981	55.811	ug/l	0.00
Spiked Amount	50.000	Range	83 - 123	Recovery	=	111.620%
Target Compounds						
						Qvalue
10) Methyl Iodide	2.459	142	1046	0.591	ug/l #	86
11) Tert butyl alcohol	2.928	59	297	1.636	ug/l #	72
13) Acrolein	2.233	56	42	0.227	ug/l #	1
16) Acetone	2.374	43	8181	13.040	ug/l	92
18) Methyl Acetate	2.715	43	1407	1.074	ug/l #	91
20) Methylene Chloride	2.794	84	703	0.460	ug/l	88
25) 2-Butanone	4.556	43	1632	2.055	ug/l #	70
31) Cyclohexane	5.446	56	816	0.359	ug/l #	68
36) 1,1-Dichloropropene	5.550	75	10781	4.343	ug/l #	51
38) Carbon Tetrachloride	5.538	117	13342	4.356	ug/l #	15
39) Methylcyclohexane	7.367	83	1272	0.434	ug/l	86
40) Benzene	6.025	78	1448939	201.038	ug/l	99
42) 1,2-Dichloroethane	6.031	62	13619	5.121	ug/l #	76
43) Isopropyl Acetate	6.342	43	1333	0.394	ug/l #	64
51) 4-Methyl-2-Pentanone	8.531	43	4256	2.184	ug/l #	38
52) Toluene	8.702	92	582924	127.312	ug/l	99
53) t-1,3-Dichloropropene	8.702	75	7490	2.696	ug/l #	1
54) cis-1,3-Dichloropropene	8.537	75	1192	0.398	ug/l #	21
55) 1,1,2-Trichloroethane	9.000	97	4184	2.457	ug/l #	17
59) 2-Hexanone	9.427	43	353	0.260	ug/l	94
67) Ethyl Benzene	10.177	91	79579	7.776	ug/l	100
68) m/p-Xylenes	10.281	106	168739	44.378	ug/l	100
69) o-Xylene	10.622	106	140290	38.217	ug/l	99
70) Styrene	10.640	104	32867	5.258	ug/l #	33
73) Isopropylbenzene	10.945	105	4197	0.409	ug/l	99
76) 1,2,3-Trichloropropane	11.061	75	70215	30.850	ug/l #	33
78) n-propylbenzene	11.287	91	9843	0.829	ug/l	98
79) 2-Chlorotoluene	11.360	91	6756	0.939	ug/l #	42
80) 1,3,5-Trimethylbenzene	11.433	105	35532	4.188	ug/l	99
81) trans-1,4-Dichloro-2-b...	11.061	75	70215	75.057	ug/l #	10
82) 4-Chlorotoluene	11.433	91	4055	0.475	ug/l #	46
83) tert-Butylbenzene	11.945	119	1757	0.202	ug/l	77
84) 1,2,4-Trimethylbenzene	11.732	105	115752	13.672	ug/l	96
85) sec-Butylbenzene	11.732	105	115752	11.038	ug/l #	56
90) Hexachloroethane	12.530	117	784	0.438	ug/l #	16
92) 1,2-Dibromo-3-Chloropr...	12.951	75	155	0.273	ug/l #	1

Data Path : Z:\voasrv\HPCHEM1\MSVOA_X\Data\VX102325\
 Data File : VX048330.D
 Acq On : 23 Oct 2025 16:49
 Operator : JC/MD
 Sample : Q3414-13 10X
 Misc : 5.0mL/MSVOA_X/WATER
 ALS Vial : 22 Sample Multiplier: 1

Instrument :
 MSVOA_X
 ClientSampleId :

Quant Time: Oct 24 05:49:04 2025
 Quant Method : Z:\voasrv\HPCHEM1\MSVOA_X\Method\82X102025W.M
 Quant Title : SW846 8260
 QLast Update : Mon Oct 20 14:13:59 2025
 Response via : Initial Calibration

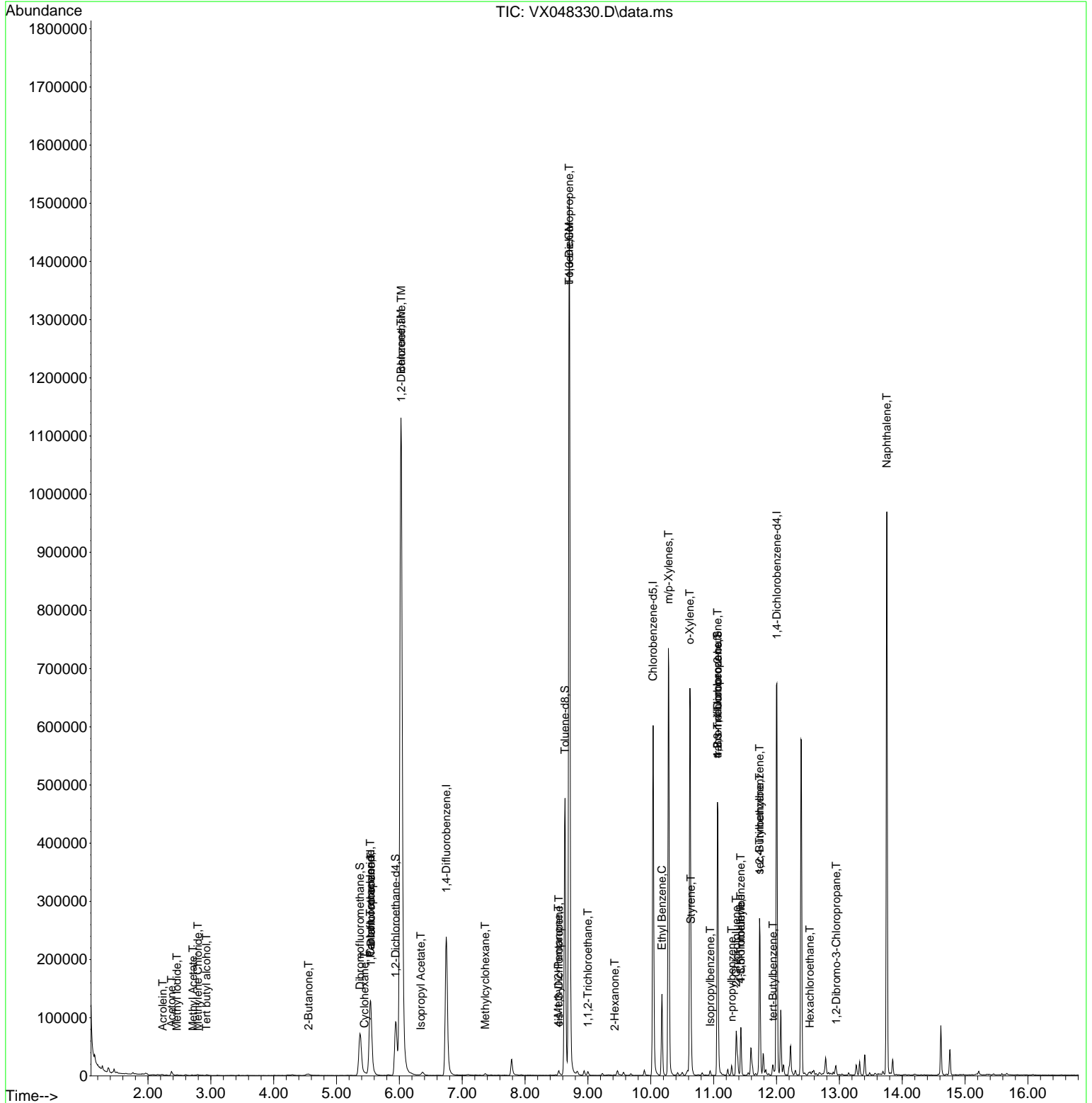
Compound	R.T.	QIon	Response	Conc	Units	Dev(Min)
95) Naphthalene	13.756	128	535484	65.694	ug/l	99

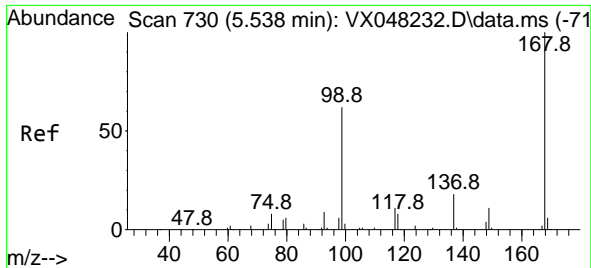
(#) = qualifier out of range (m) = manual integration (+) = signals summed

Data Path : Z:\voasrv\HPCHEM1\MSVOA_X\Data\VX102325\
 Data File : VX048330.D
 Acq On : 23 Oct 2025 16:49
 Operator : JC/MD
 Sample : Q3414-13 10X
 Misc : 5.0mL/MSVOA_X/WATER
 ALS Vial : 22 Sample Multiplier: 1

Instrument :
 MSVOA_X
 ClientSampleId :

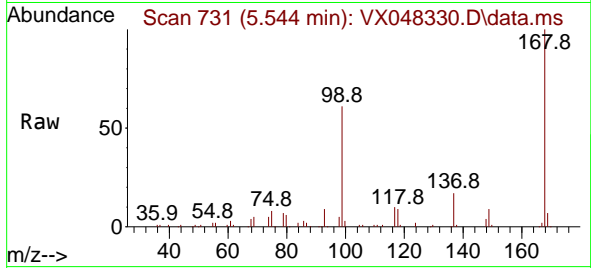
Quant Time: Oct 24 05:49:04 2025
 Quant Method : Z:\voasrv\HPCHEM1\MSVOA_X\Method\82X102025W.M
 Quant Title : SW846 8260
 QLast Update : Mon Oct 20 14:13:59 2025
 Response via : Initial Calibration



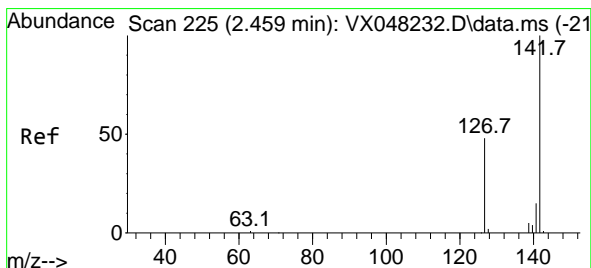
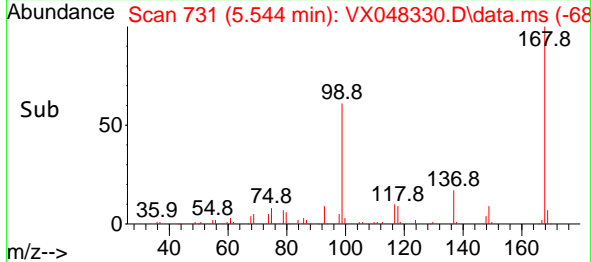
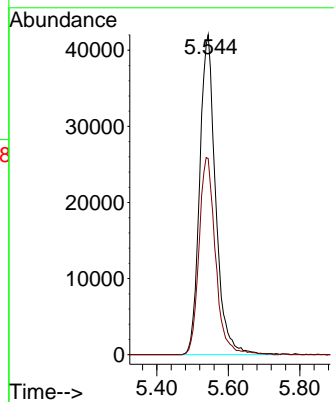


#1
 Pentafluorobenzene
 Concen: 50.000 ug/l
 RT: 5.544 min Scan# 71
 Delta R.T. -0.000 min
 Lab File: VX048330.D
 Acq: 23 Oct 2025 16:49

Instrument :
 MSVOA_X
 ClientSampleId :

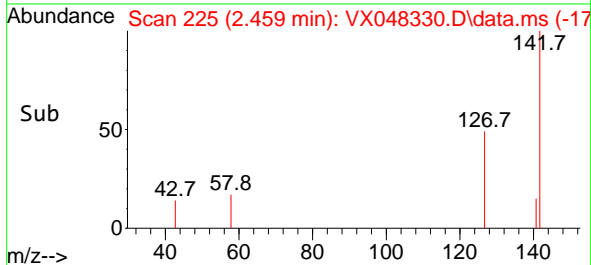
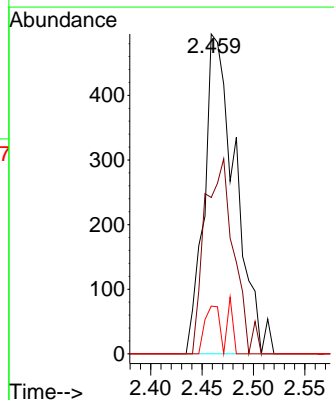
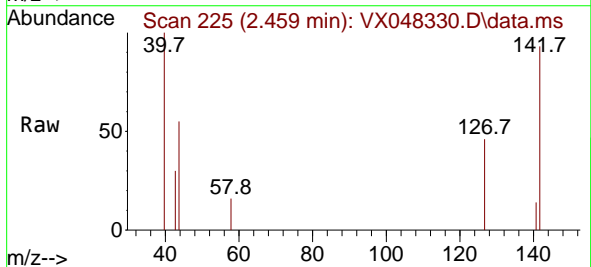


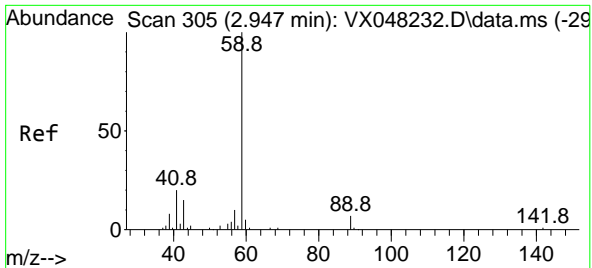
Tgt Ion:168 Resp: 130437
 Ion Ratio Lower Upper
 168 100
 99 61.3 46.4 69.6



#10
 Methyl Iodide
 Concen: 0.591 ug/l
 RT: 2.459 min Scan# 225
 Delta R.T. -0.000 min
 Lab File: VX048330.D
 Acq: 23 Oct 2025 16:49

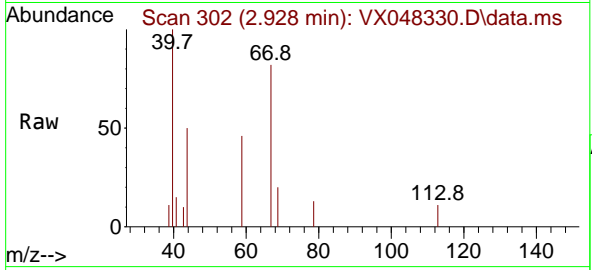
Tgt Ion:142 Resp: 1046
 Ion Ratio Lower Upper
 142 100
 127 56.7 38.5 57.7
 141 7.0 11.6 17.4#



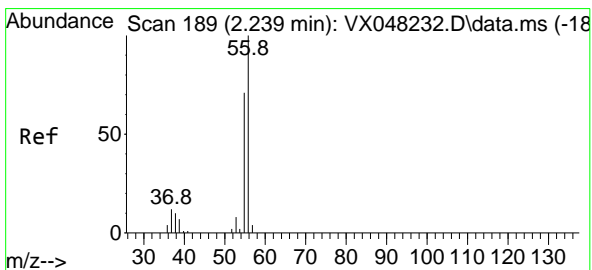
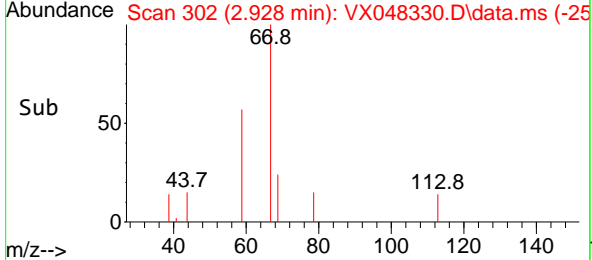
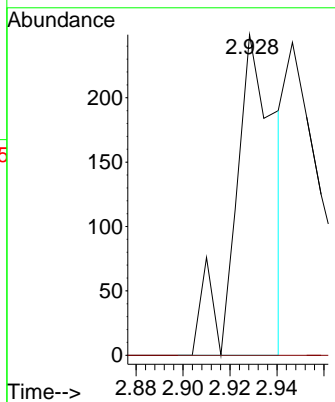


#11
 Tert butyl alcohol
 Concen: 1.636 ug/l
 RT: 2.928 min Scan# 30
 Delta R.T. -0.012 min
 Lab File: VX048330.D
 Acq: 23 Oct 2025 16:49

Instrument : MSVOA_X
 ClientSampleId :

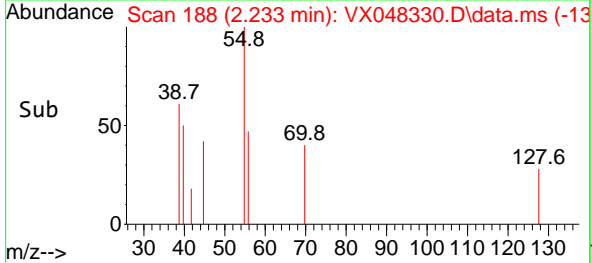
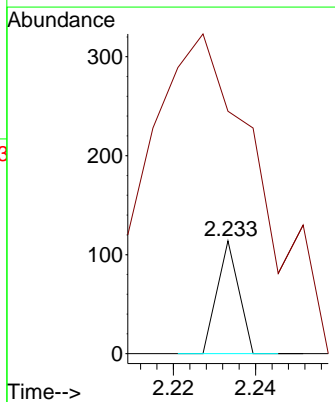
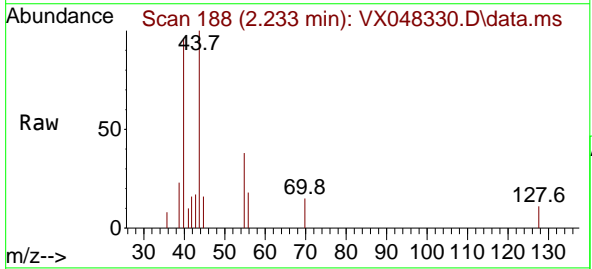


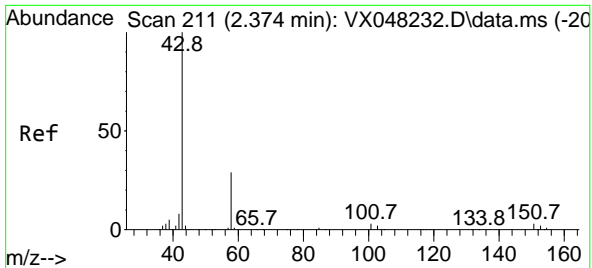
Tgt Ion: 59 Resp: 297
 Ion Ratio Lower Upper
 59 100
 57 0.0 8.2 12.4#



#13
 Acrolein
 Concen: 0.227 ug/l
 RT: 2.233 min Scan# 188
 Delta R.T. -0.000 min
 Lab File: VX048330.D
 Acq: 23 Oct 2025 16:49

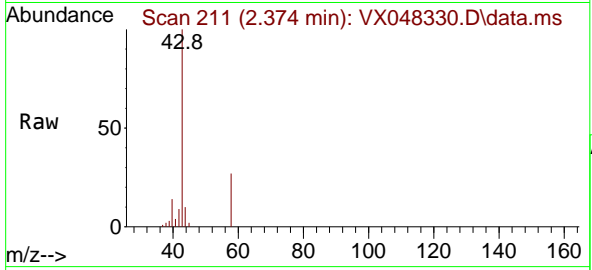
Tgt Ion: 56 Resp: 42
 Ion Ratio Lower Upper
 56 100
 55 1488.1 56.1 84.1#



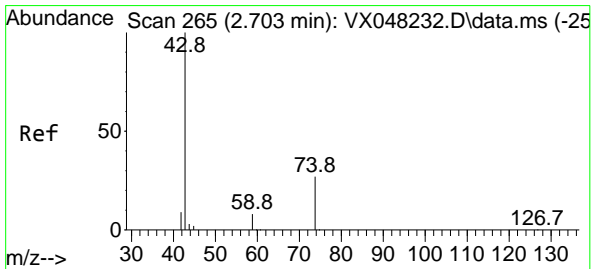
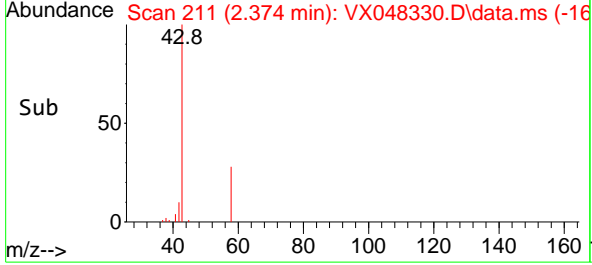
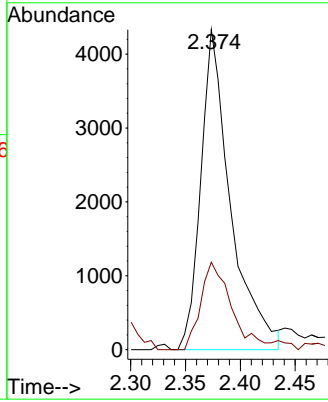


#16
 Acetone
 Concen: 13.040 ug/l
 RT: 2.374 min Scan# 211
 Delta R.T. -0.000 min
 Lab File: VX048330.D
 Acq: 23 Oct 2025 16:49

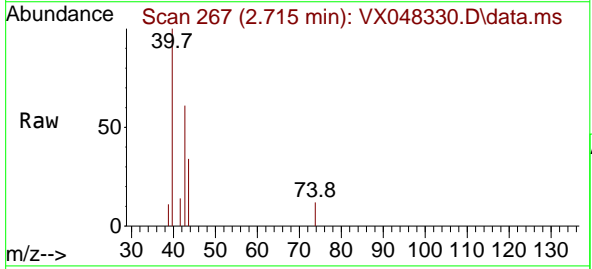
Instrument : MSVOA_X
 ClientSampleId :



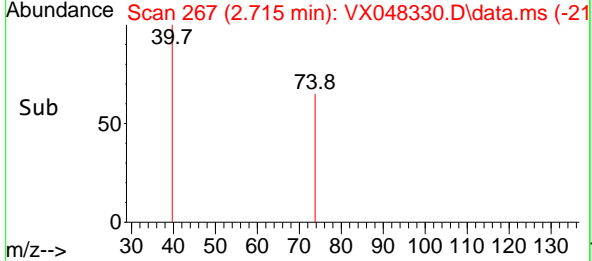
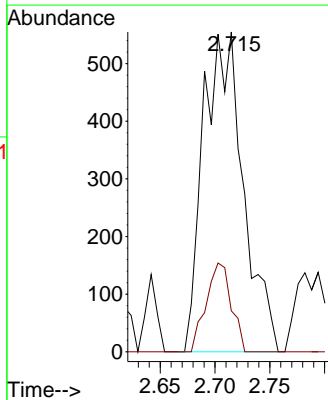
Tgt Ion: 43 Resp: 8181
 Ion Ratio Lower Upper
 43 100
 58 24.8 23.4 35.2

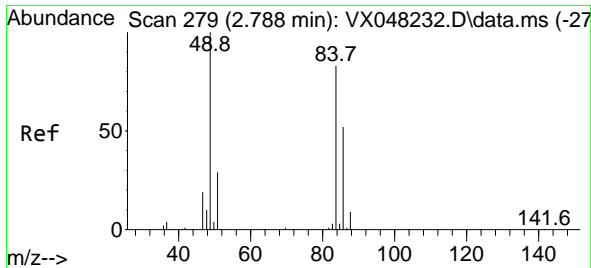


#18
 Methyl Acetate
 Concen: 1.074 ug/l
 RT: 2.715 min Scan# 267
 Delta R.T. 0.018 min
 Lab File: VX048330.D
 Acq: 23 Oct 2025 16:49



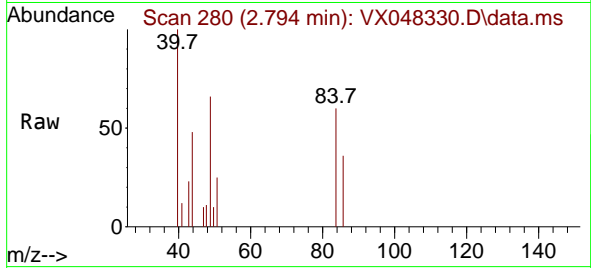
Tgt Ion: 43 Resp: 1407
 Ion Ratio Lower Upper
 43 100
 74 17.4 17.5 26.3#





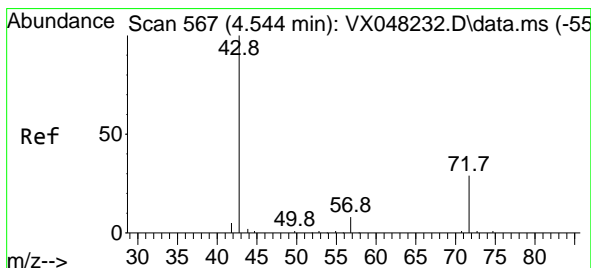
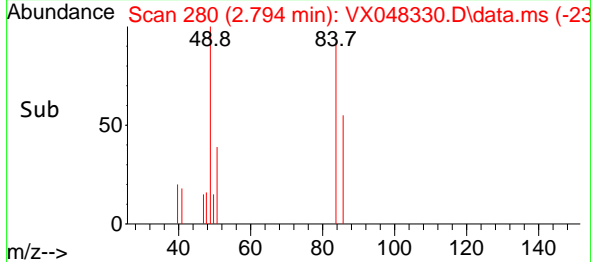
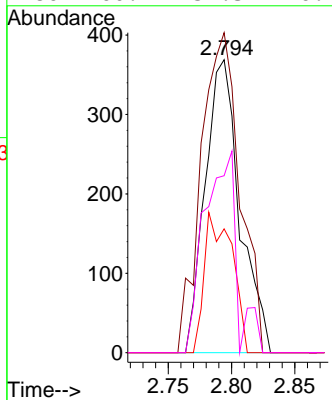
#20
 Methylene Chloride
 Concen: 0.460 ug/l
 RT: 2.794 min Scan# 21
 Delta R.T. 0.006 min
 Lab File: VX048330.D
 Acq: 23 Oct 2025 16:49

Instrument :
 MSVOA_X
 ClientSampleId :



Tgt Ion: 84 Resp: 703

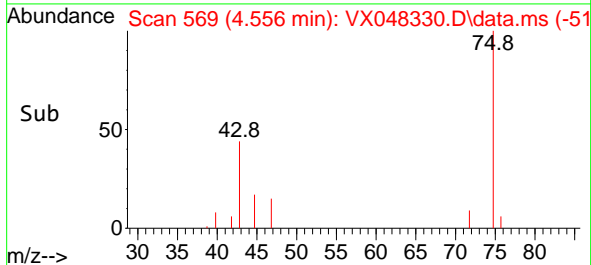
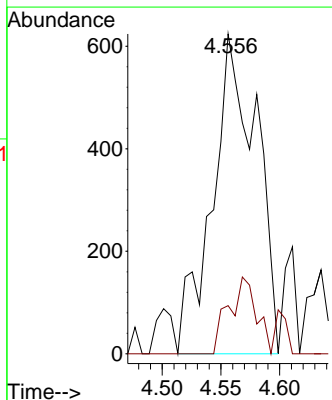
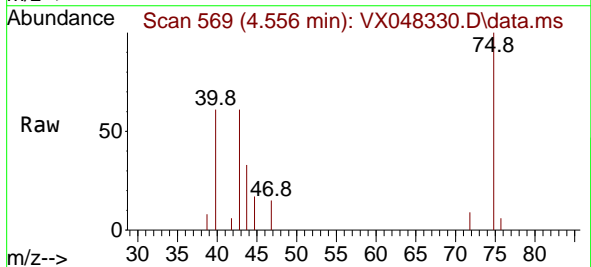
Ion	Ratio	Lower	Upper
84	100		
49	109.2	104.1	156.1
51	42.3	31.3	46.9
86	60.4	51.3	76.9

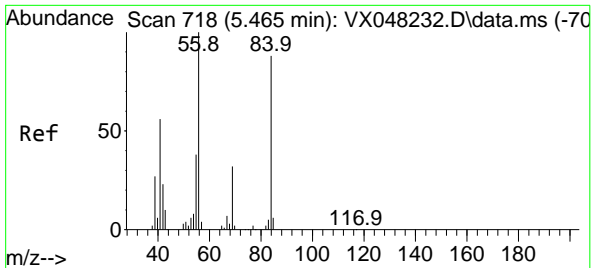


#25
 2-Butanone
 Concen: 2.055 ug/l
 RT: 4.556 min Scan# 569
 Delta R.T. 0.018 min
 Lab File: VX048330.D
 Acq: 23 Oct 2025 16:49

Tgt Ion: 43 Resp: 1632

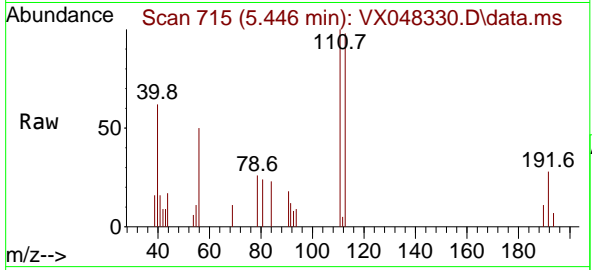
Ion	Ratio	Lower	Upper
43	100		
72	9.8	19.9	29.9#



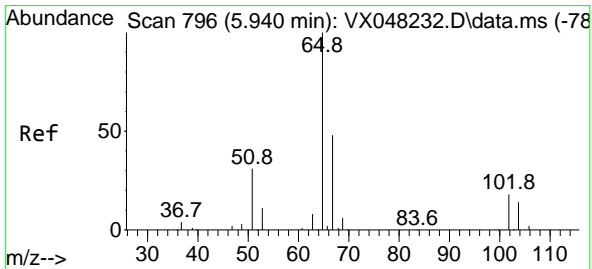
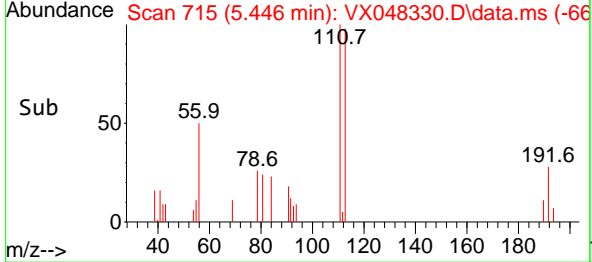
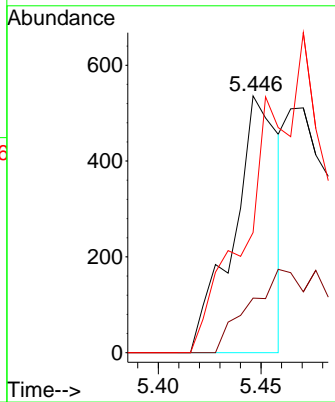


#31
 Cyclohexane
 Concen: 0.359 ug/l
 RT: 5.446 min Scan# 715
 Delta R.T. -0.012 min
 Lab File: VX048330.D
 Acq: 23 Oct 2025 16:49

Instrument :
 MSVOA_X
 ClientSampleId :

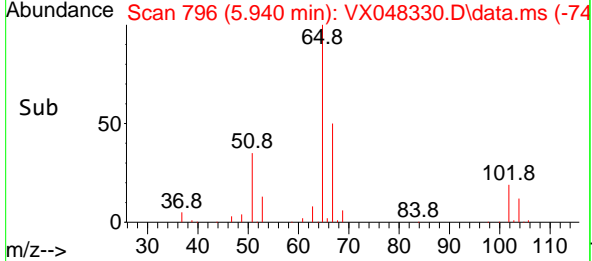
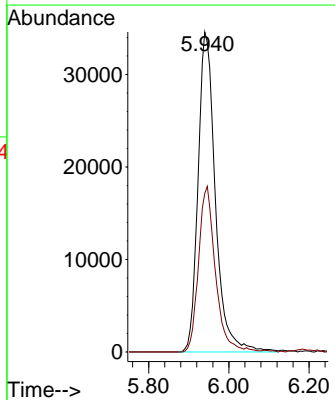
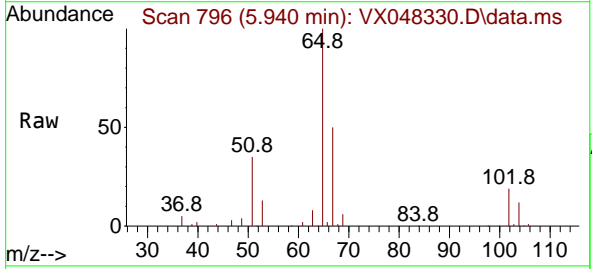


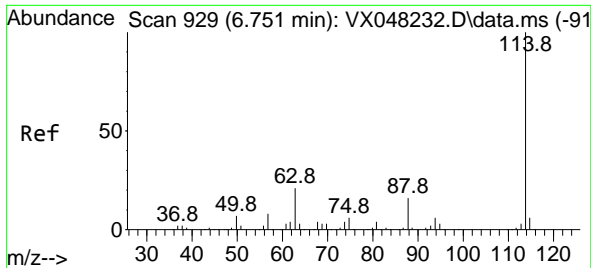
Tgt Ion: 56 Resp: 816
 Ion Ratio Lower Upper
 56 100
 69 21.3 23.0 34.6#
 84 46.8 64.6 97.0#



#33
 1,2-Dichloroethane-d4
 Concen: 56.674 ug/l
 RT: 5.940 min Scan# 796
 Delta R.T. -0.000 min
 Lab File: VX048330.D
 Acq: 23 Oct 2025 16:49

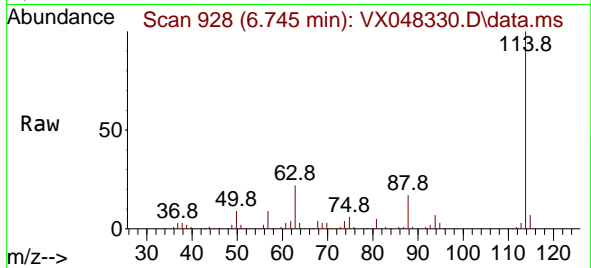
Tgt Ion: 65 Resp: 103647
 Ion Ratio Lower Upper
 65 100
 67 49.9 0.0 105.0



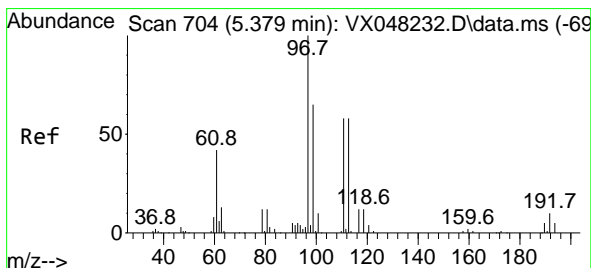
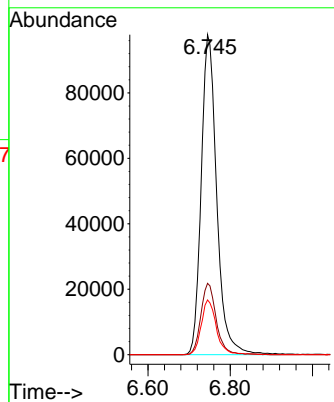
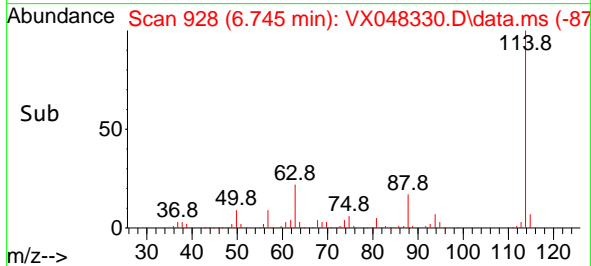


#34
 1,4-Difluorobenzene
 Concen: 50.000 ug/l
 RT: 6.745 min Scan# 91
 Delta R.T. -0.000 min
 Lab File: VX048330.D
 Acq: 23 Oct 2025 16:49

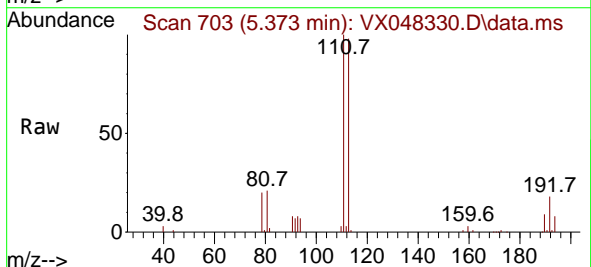
Instrument :
 MSVOA_X
 ClientSampleId :



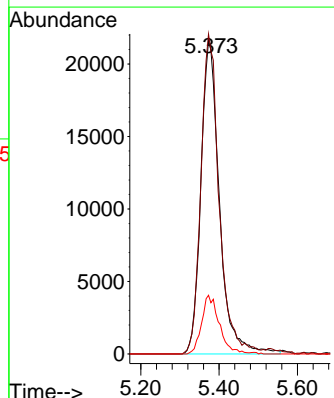
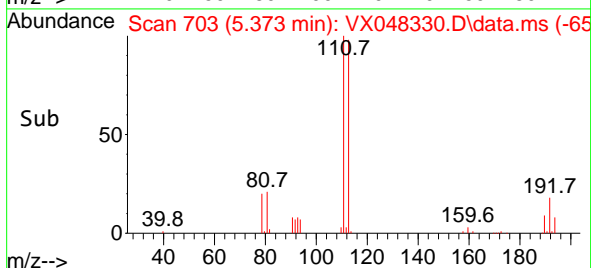
Tgt Ion:114 Resp: 255833
 Ion Ratio Lower Upper
 114 100
 63 22.3 0.0 43.2
 88 17.1 0.0 33.6

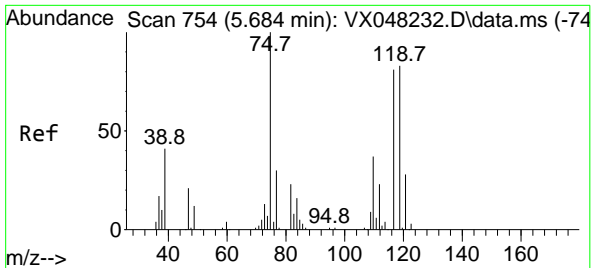


#35
 Dibromofluoromethane
 Concen: 40.758 ug/l
 RT: 5.373 min Scan# 703
 Delta R.T. -0.000 min
 Lab File: VX048330.D
 Acq: 23 Oct 2025 16:49



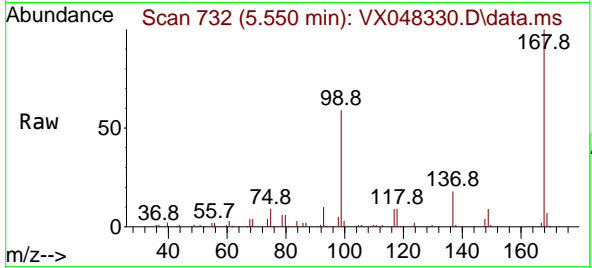
Tgt Ion:113 Resp: 71187
 Ion Ratio Lower Upper
 113 100
 111 100.1 82.2 123.4
 192 17.8 15.1 22.7



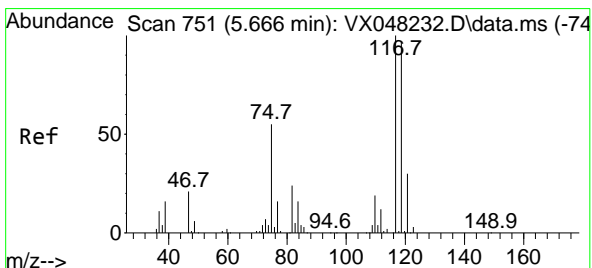
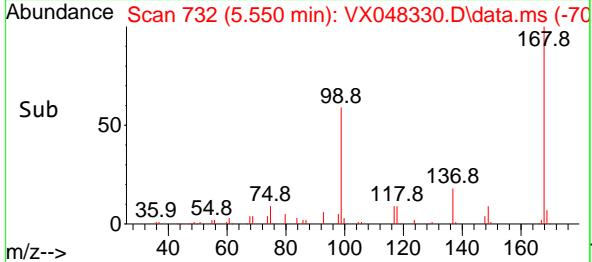
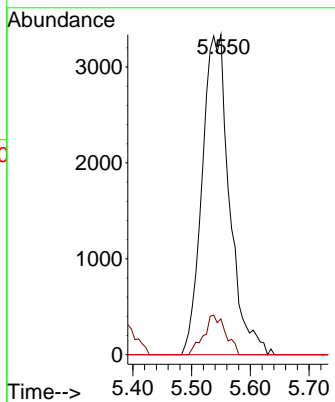


#36
 1,1-Dichloropropene
 Concen: 4.343 ug/l
 RT: 5.550 min Scan# 710
 Delta R.T. -0.134 min
 Lab File: VX048330.D
 Acq: 23 Oct 2025 16:49

Instrument : MSVOA_X
 ClientSampleId :

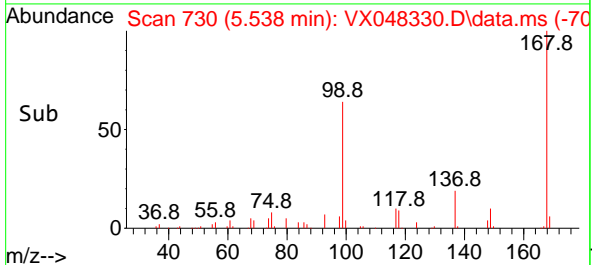
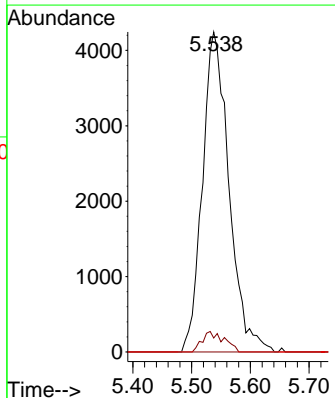
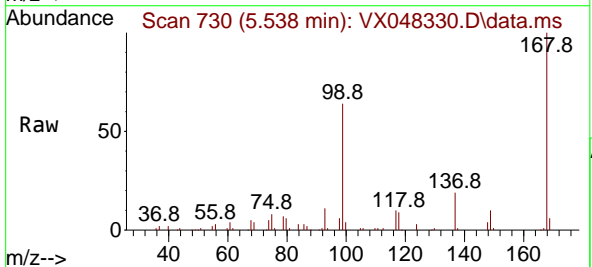


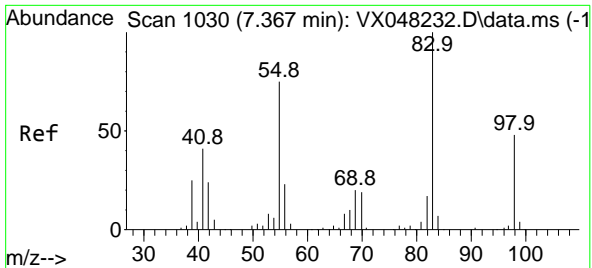
Tgt Ion: 75 Resp: 10781
 Ion Ratio Lower Upper
 75 100
 110 9.9 17.7 53.1#
 77 0.0 24.3 36.5#



#38
 Carbon Tetrachloride
 Concen: 4.356 ug/l
 RT: 5.538 min Scan# 730
 Delta R.T. -0.128 min
 Lab File: VX048330.D
 Acq: 23 Oct 2025 16:49

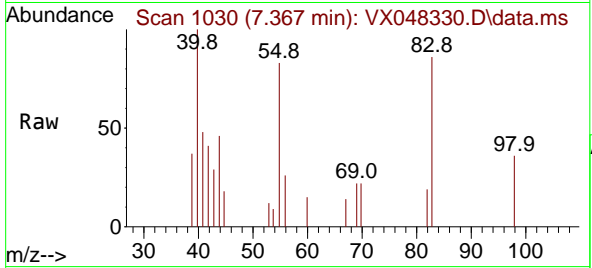
Tgt Ion: 117 Resp: 13342
 Ion Ratio Lower Upper
 117 100
 119 4.3 77.2 115.8#
 121 0.0 24.8 37.2#





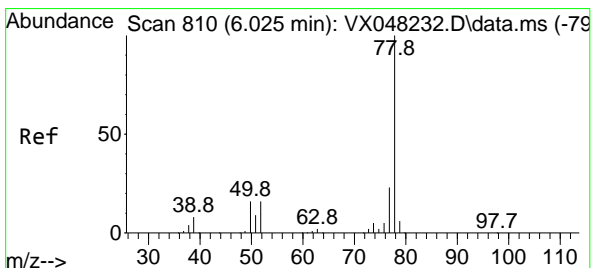
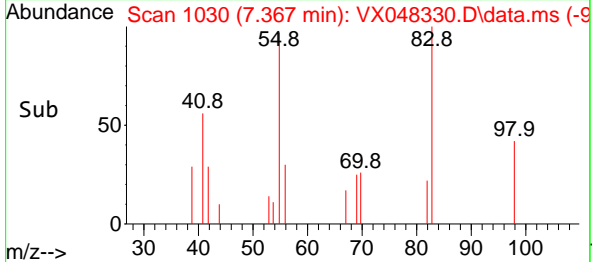
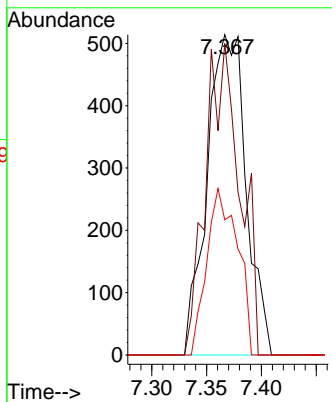
#39
 Methylcyclohexane
 Concen: 0.434 ug/l
 RT: 7.367 min Scan# 1030
 Delta R.T. -0.000 min
 Lab File: VX048330.D
 Acq: 23 Oct 2025 16:49

Instrument : MSVOA_X
 ClientSampleId :



Tgt Ion: 83 Resp: 1272

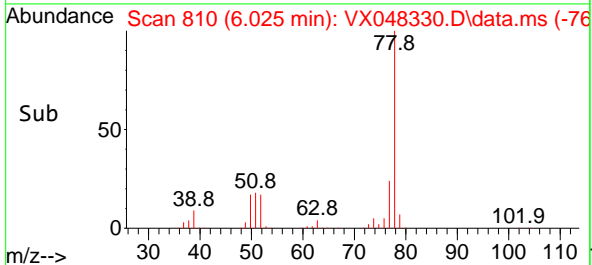
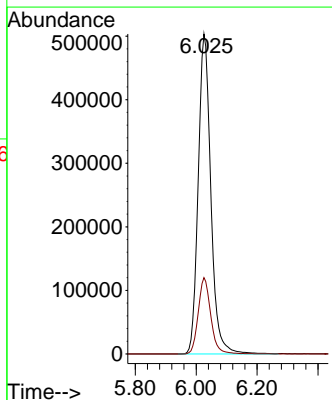
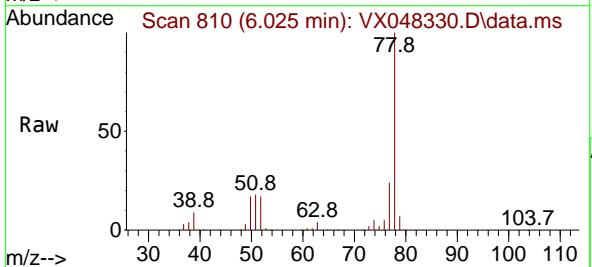
Ion	Ratio	Lower	Upper
83	100		
55	97.3	66.2	99.2
98	42.2	38.9	58.3

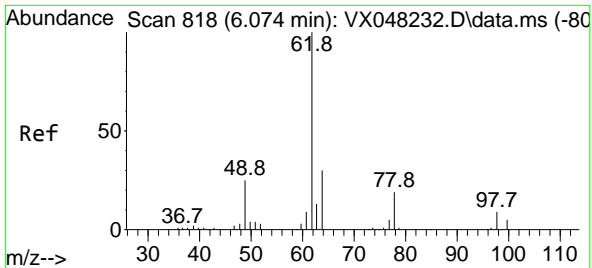


#40
 Benzene
 Concen: 201.038 ug/l
 RT: 6.025 min Scan# 810
 Delta R.T. -0.000 min
 Lab File: VX048330.D
 Acq: 23 Oct 2025 16:49

Tgt Ion: 78 Resp: 1448939

Ion	Ratio	Lower	Upper
78	100		
77	23.8	19.3	28.9

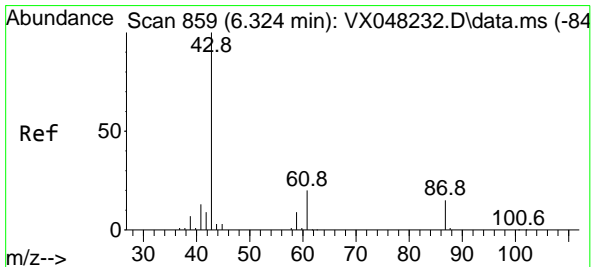
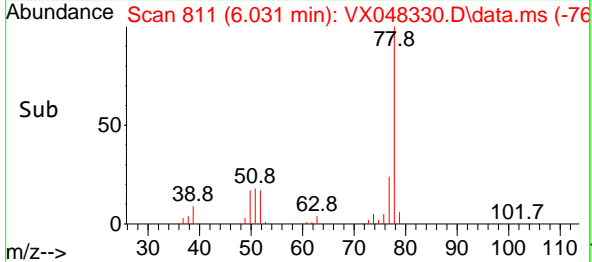
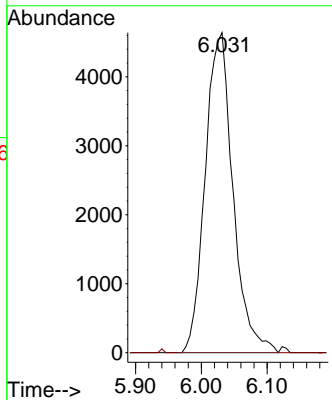
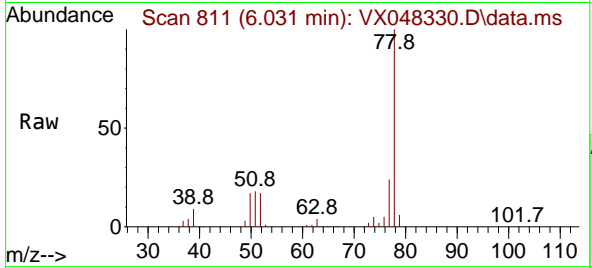




#42
 1,2-Dichloroethane
 Concen: 5.121 ug/l
 RT: 6.031 min Scan# 811
 Delta R.T. -0.037 min
 Lab File: VX048330.D
 Acq: 23 Oct 2025 16:49

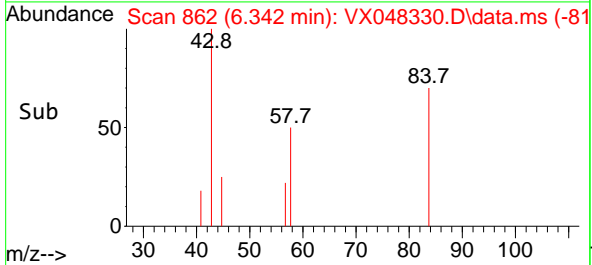
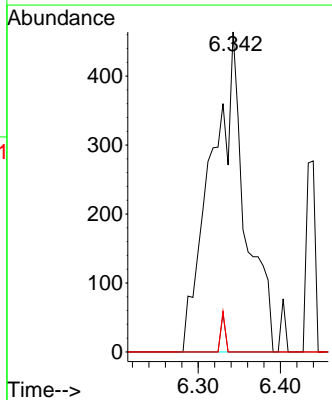
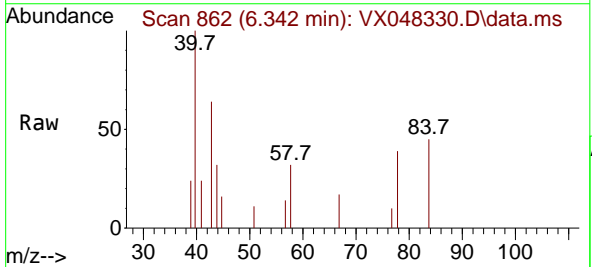
Instrument :
 MSVOA_X
 ClientSampleId :

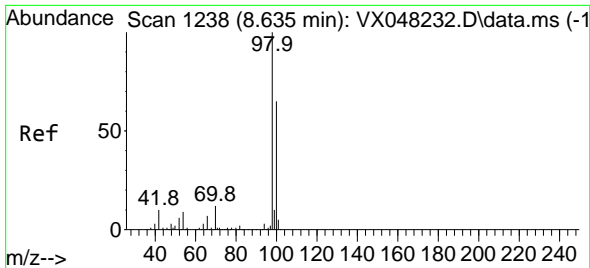
Tgt Ion: 62 Resp: 13619
 Ion Ratio Lower Upper
 62 100
 98 0.0 0.0 17.2



#43
 Isopropyl Acetate
 Concen: 0.394 ug/l
 RT: 6.342 min Scan# 862
 Delta R.T. 0.018 min
 Lab File: VX048330.D
 Acq: 23 Oct 2025 16:49

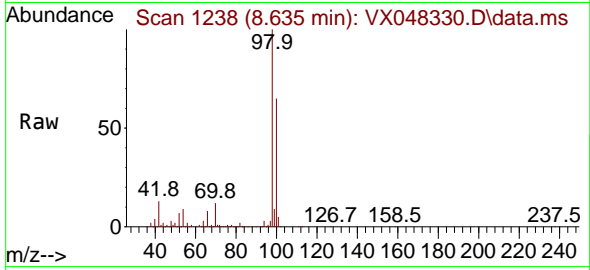
Tgt Ion: 43 Resp: 1333
 Ion Ratio Lower Upper
 43 100
 61 0.0 14.9 22.3#
 87 1.7 9.4 14.2#



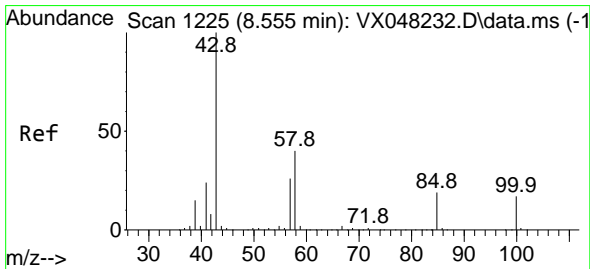
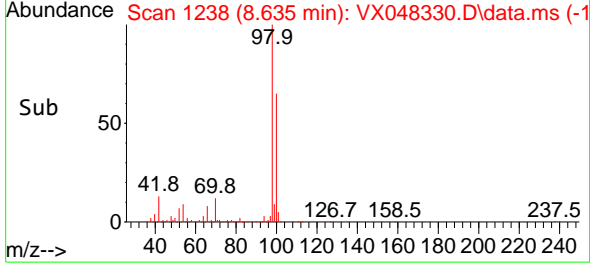
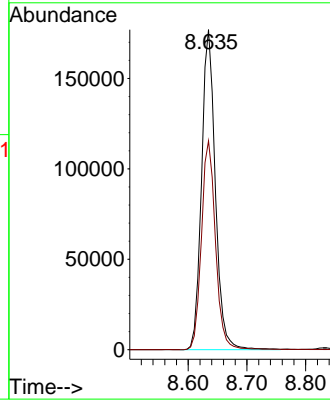


#50
 Toluene-d8
 Concen: 47.167 ug/l
 RT: 8.635 min Scan# 11
 Delta R.T. -0.000 min
 Lab File: VX048330.D
 Acq: 23 Oct 2025 16:49

Instrument :
 MSVOA_X
 ClientSampleId :

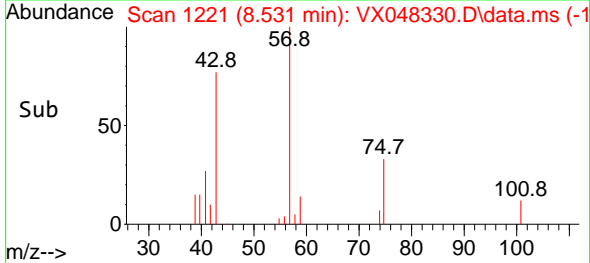
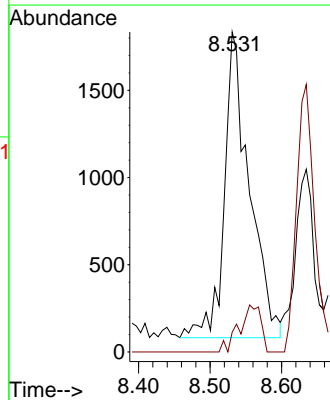
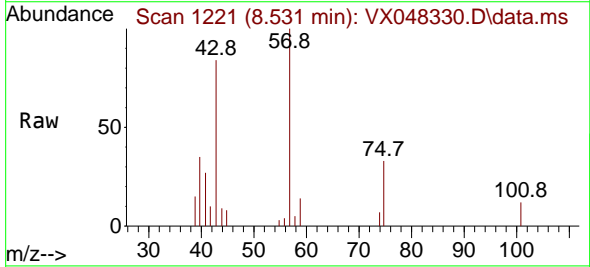


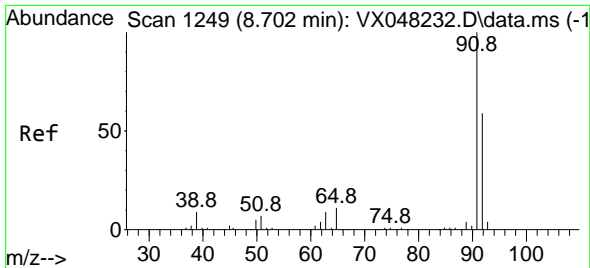
Tgt Ion: 98 Resp: 288751
 Ion Ratio Lower Upper
 98 100
 100 66.6 53.0 79.4



#51
 4-Methyl-2-Pentanone
 Concen: 2.184 ug/l
 RT: 8.531 min Scan# 1221
 Delta R.T. -0.024 min
 Lab File: VX048330.D
 Acq: 23 Oct 2025 16:49

Tgt Ion: 43 Resp: 4256
 Ion Ratio Lower Upper
 43 100
 58 0.0 29.5 44.3#

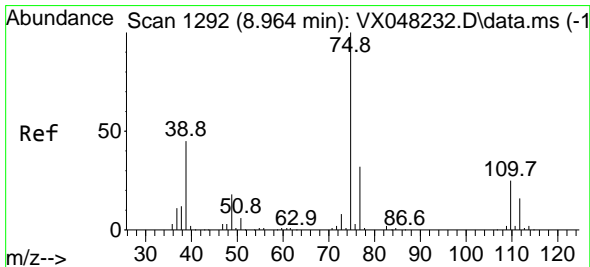
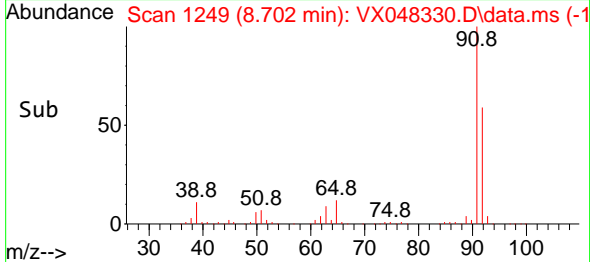
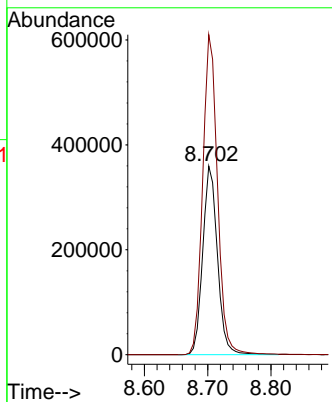
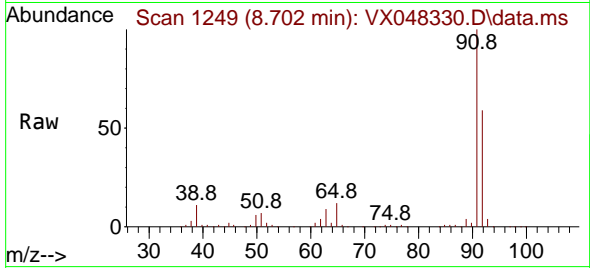




#52
 Toluene
 Concen: 127.312 ug/l
 RT: 8.702 min Scan# 1249
 Delta R.T. -0.000 min
 Lab File: VX048330.D
 Acq: 23 Oct 2025 16:49

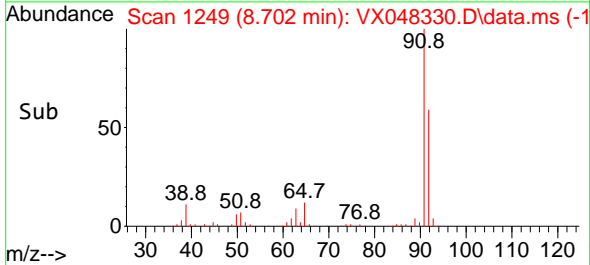
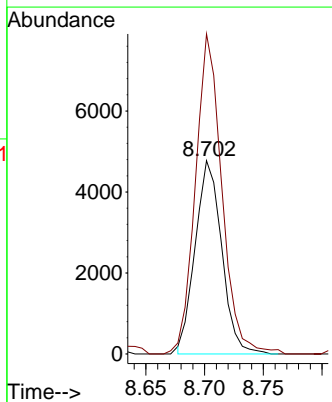
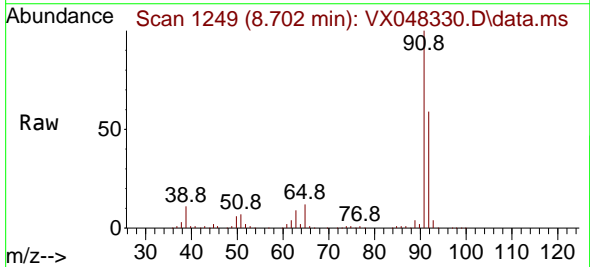
Instrument : MSVOA_X
 ClientSampleId :

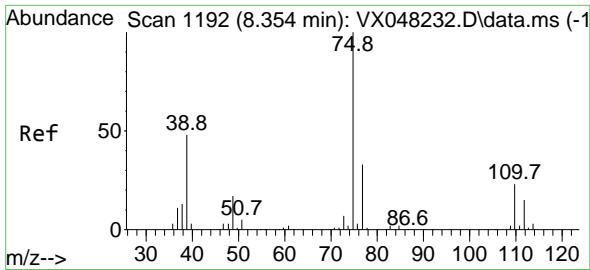
Tgt Ion: 92 Resp: 582924
 Ion Ratio Lower Upper
 92 100
 91 171.3 136.1 204.1



#53
 t-1,3-Dichloropropene
 Concen: 2.696 ug/l
 RT: 8.702 min Scan# 1249
 Delta R.T. -0.262 min
 Lab File: VX048330.D
 Acq: 23 Oct 2025 16:49

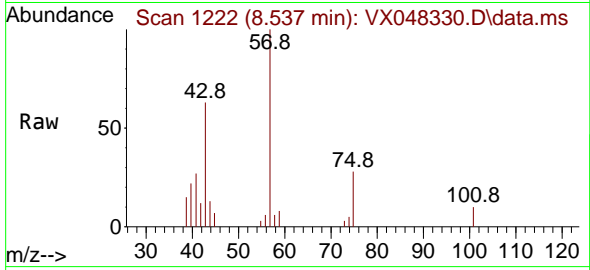
Tgt Ion: 75 Resp: 7490
 Ion Ratio Lower Upper
 75 100
 77 163.3 25.0 37.6#





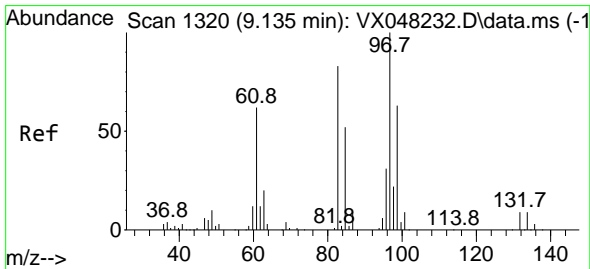
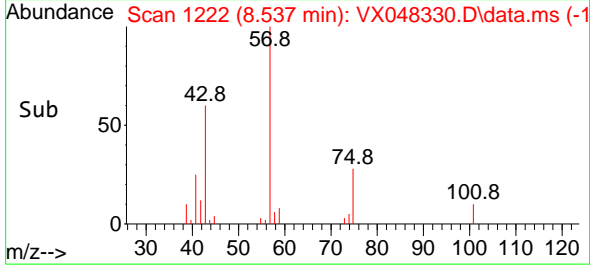
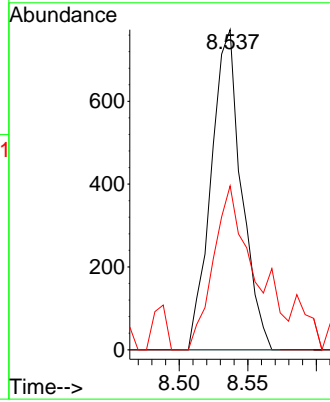
#54
 cis-1,3-Dichloropropene
 Concen: 0.398 ug/l
 RT: 8.537 min Scan# 1192
 Delta R.T. 0.189 min
 Lab File: VX048330.D
 Acq: 23 Oct 2025 16:49

Instrument : MSVOA_X
 ClientSampleId :



Tgt Ion: 75 Resp: 1192

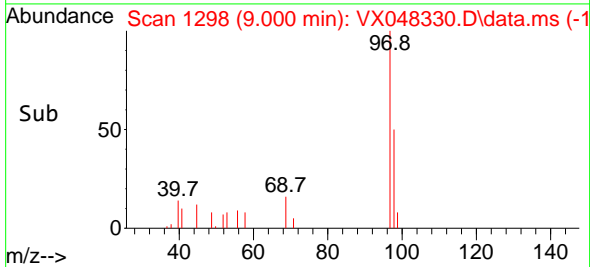
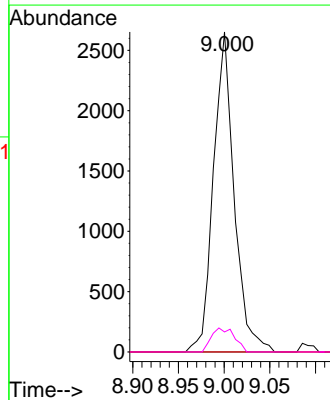
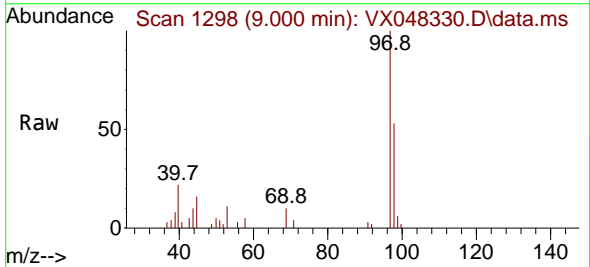
Ion	Ratio	Lower	Upper
75	100		
77	0.0	24.9	37.3#
39	118.5	42.6	64.0#

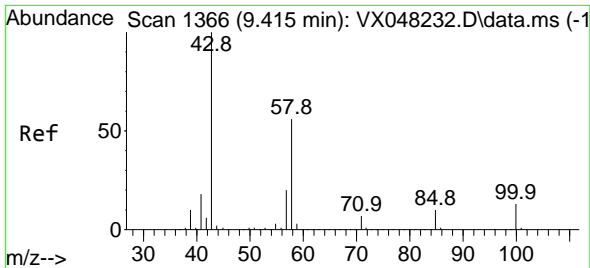


#55
 1,1,2-Trichloroethane
 Concen: 2.457 ug/l
 RT: 9.000 min Scan# 1298
 Delta R.T. -0.134 min
 Lab File: VX048330.D
 Acq: 23 Oct 2025 16:49

Tgt Ion: 97 Resp: 4184

Ion	Ratio	Lower	Upper
97	100		
83	0.0	70.6	105.8#
85	0.0	45.0	67.6#
99	6.3	50.9	76.3#

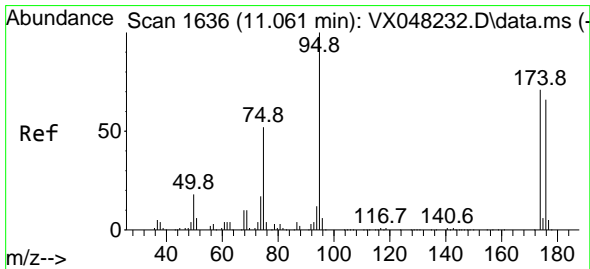
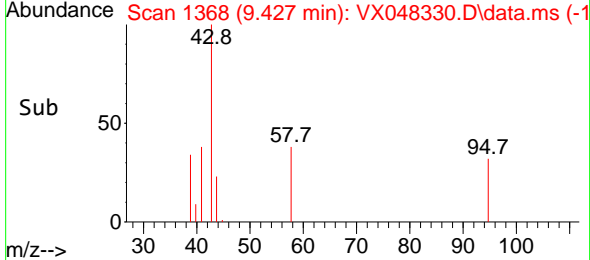
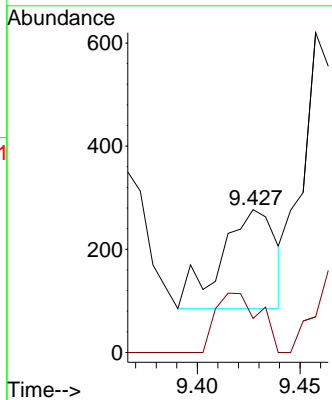
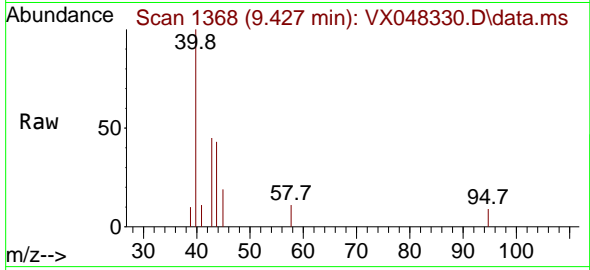




#59
 2-Hexanone
 Concen: 0.260 ug/l
 RT: 9.427 min Scan# 11
 Delta R.T. 0.012 min
 Lab File: VX048330.D
 Acq: 23 Oct 2025 16:49

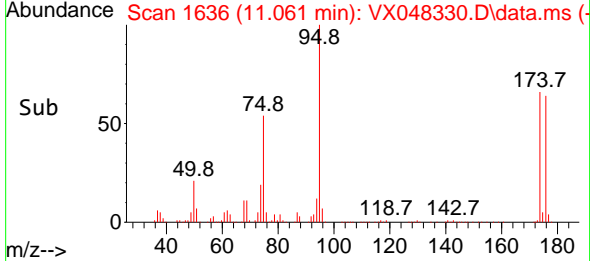
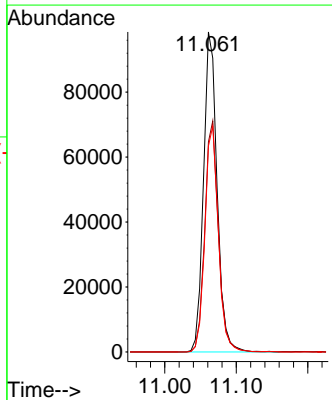
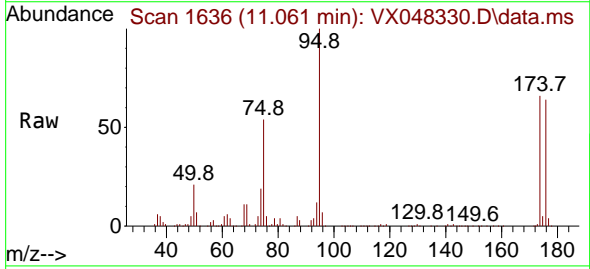
Instrument :
 MSVOA_X
 ClientSampleId :

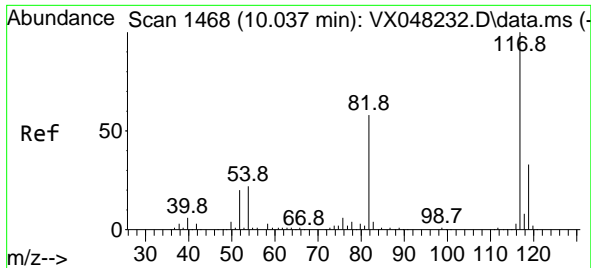
Tgt Ion: 43 Resp: 353
 Ion Ratio Lower Upper
 43 100
 58 48.4 26.3 78.8



#62
 4-Bromofluorobenzene
 Concen: 55.811 ug/l
 RT: 11.061 min Scan# 1636
 Delta R.T. -0.000 min
 Lab File: VX048330.D
 Acq: 23 Oct 2025 16:49

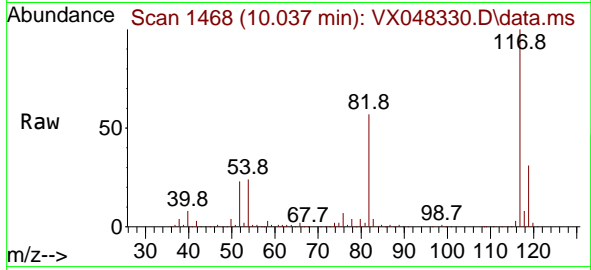
Tgt Ion: 95 Resp: 129981
 Ion Ratio Lower Upper
 95 100
 174 72.4 0.0 147.8
 176 70.2 0.0 142.8





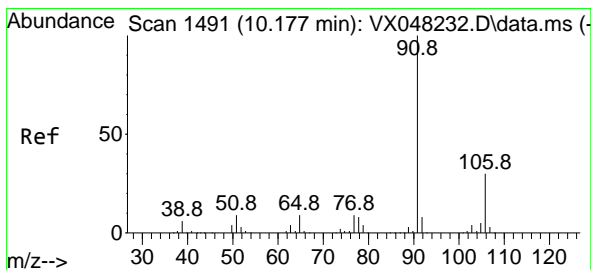
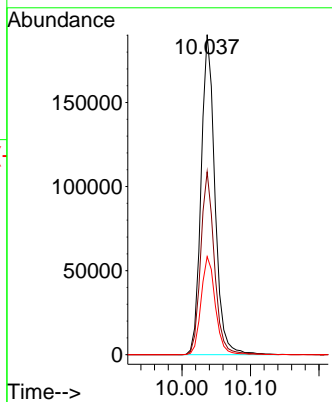
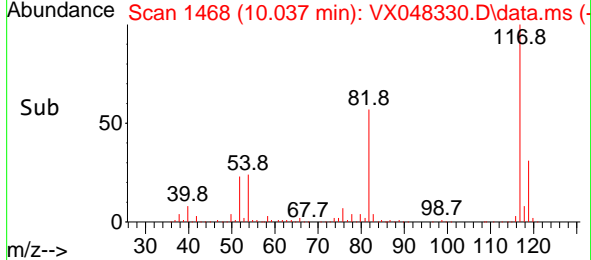
#63
 Chlorobenzene-d5
 Concen: 50.000 ug/l
 RT: 10.037 min Scan# 1468
 Delta R.T. -0.000 min
 Lab File: VX048330.D
 Acq: 23 Oct 2025 16:49

Instrument : MSVOA_X
 ClientSampleId :

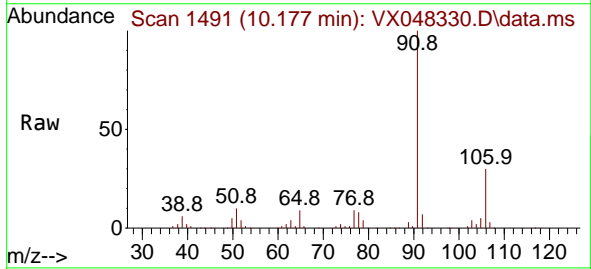


Tgt Ion:117 Resp: 267200

Ion	Ratio	Lower	Upper
117	100		
82	57.2	46.5	69.7
119	30.7	25.9	38.9

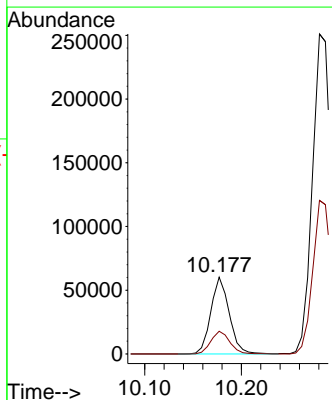
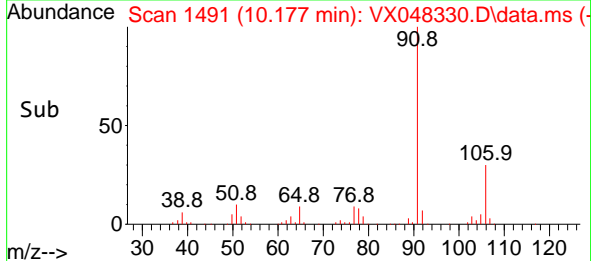


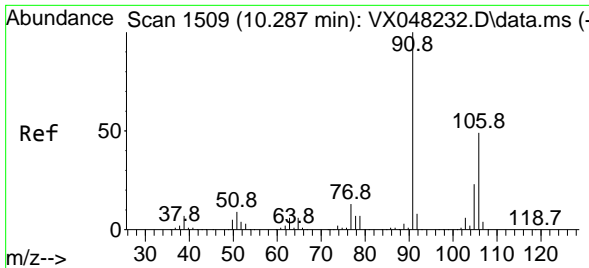
#67
 Ethyl Benzene
 Concen: 7.776 ug/l
 RT: 10.177 min Scan# 1491
 Delta R.T. -0.000 min
 Lab File: VX048330.D
 Acq: 23 Oct 2025 16:49



Tgt Ion: 91 Resp: 79579

Ion	Ratio	Lower	Upper
91	100		
106	29.6	23.8	35.6

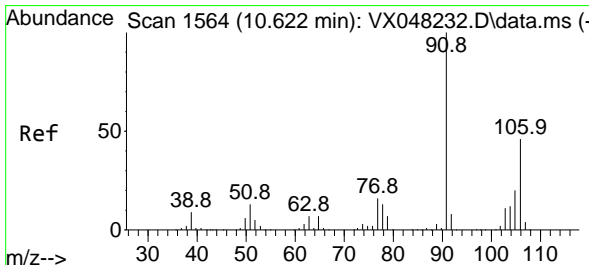
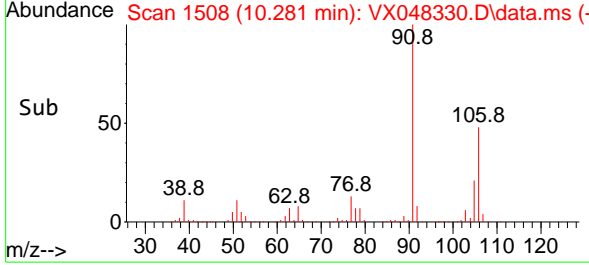
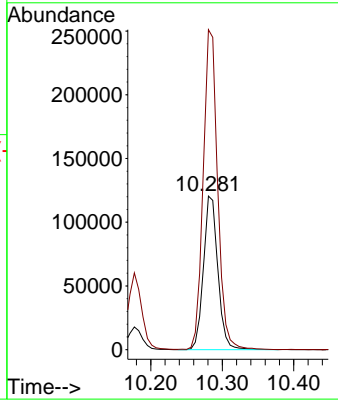
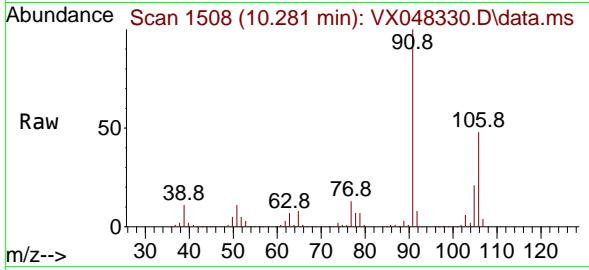




#68
 m/p-Xylenes
 Concen: 44.378 ug/l
 RT: 10.281 min Scan# 1508
 Delta R.T. -0.006 min
 Lab File: VX048330.D
 Acq: 23 Oct 2025 16:49

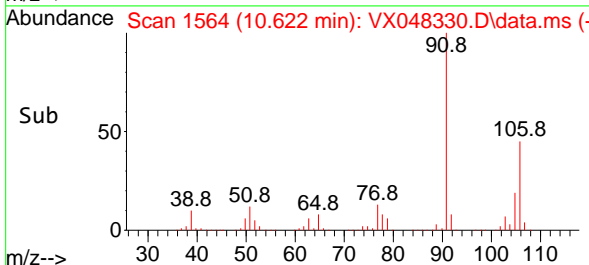
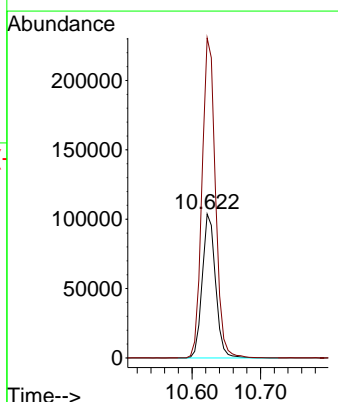
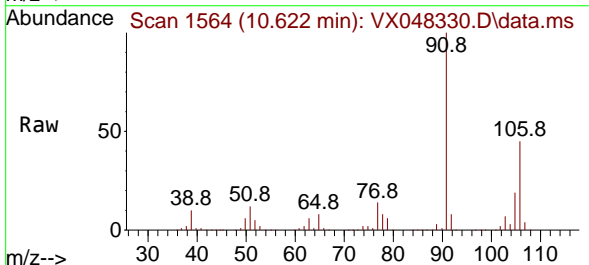
Instrument : MSVOA_X
 ClientSampleId :

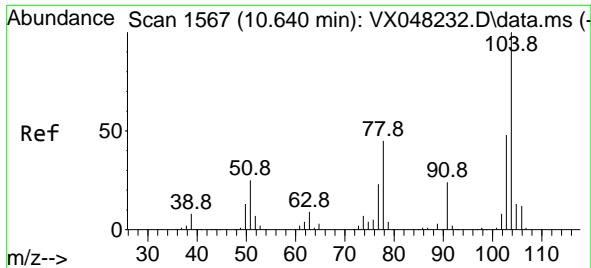
Tgt Ion:106 Resp: 168739
 Ion Ratio Lower Upper
 106 100
 91 209.2 167.9 251.9



#69
 o-Xylene
 Concen: 38.217 ug/l
 RT: 10.622 min Scan# 1564
 Delta R.T. -0.000 min
 Lab File: VX048330.D
 Acq: 23 Oct 2025 16:49

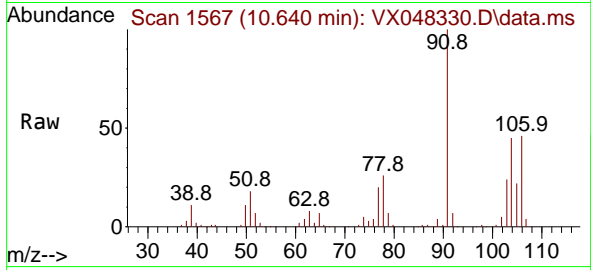
Tgt Ion:106 Resp: 140290
 Ion Ratio Lower Upper
 106 100
 91 224.5 111.3 333.9





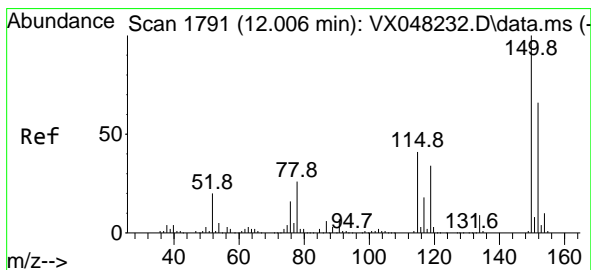
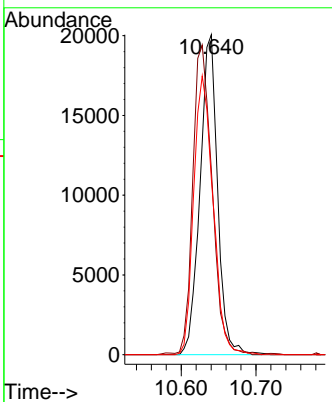
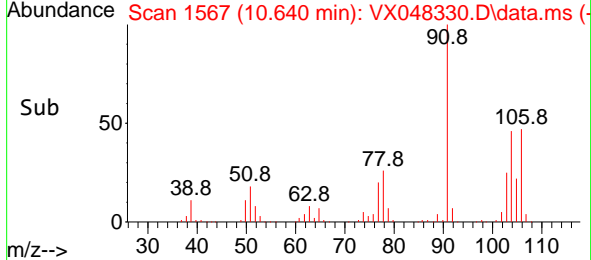
#70
 Styrene
 Concen: 5.258 ug/l
 RT: 10.640 min Scan# 111
 Delta R.T. -0.000 min
 Lab File: VX048330.D
 Acq: 23 Oct 2025 16:49

Instrument : MSVOA_X
 ClientSampleId :

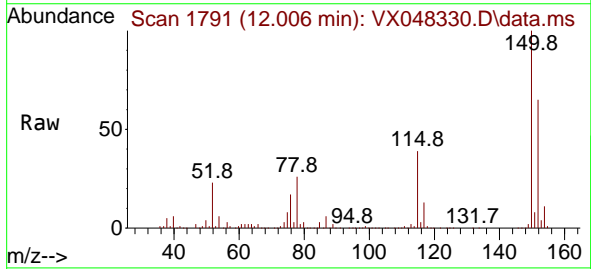


Tgt Ion:104 Resp: 32867

Ion	Ratio	Lower	Upper
104	100		
78	105.8	42.2	63.4#
103	95.5	43.0	64.4#

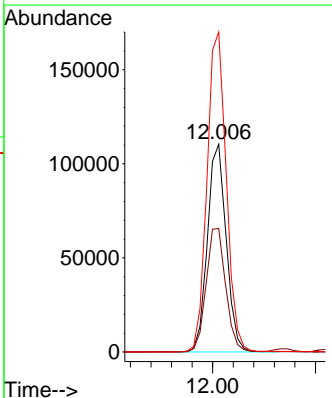
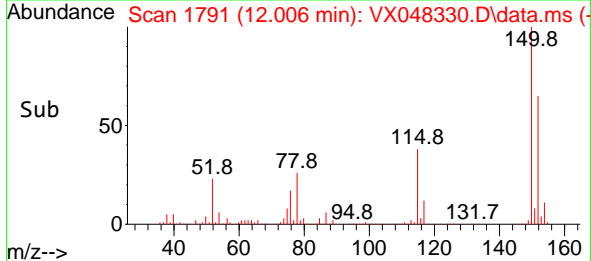


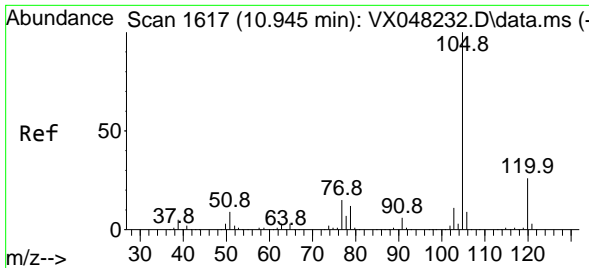
#72
 1,4-Dichlorobenzene-d4
 Concen: 50.000 ug/l
 RT: 12.006 min Scan# 1791
 Delta R.T. -0.000 min
 Lab File: VX048330.D
 Acq: 23 Oct 2025 16:49



Tgt Ion:152 Resp: 140349

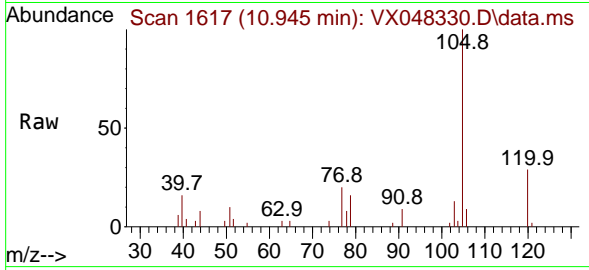
Ion	Ratio	Lower	Upper
152	100		
115	61.9	43.1	129.4
150	157.6	0.0	353.0



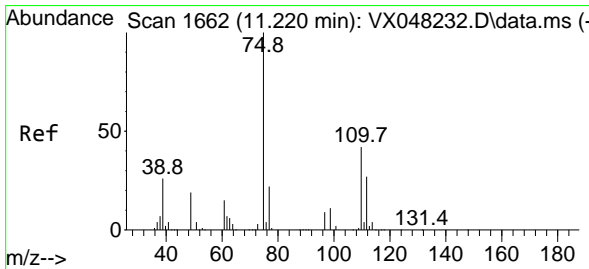
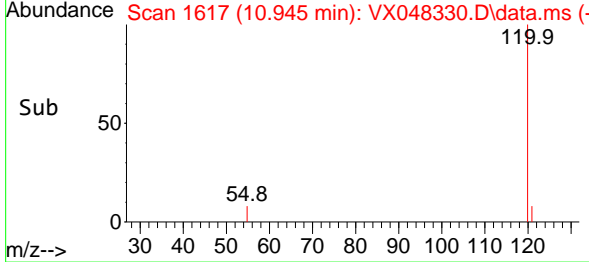
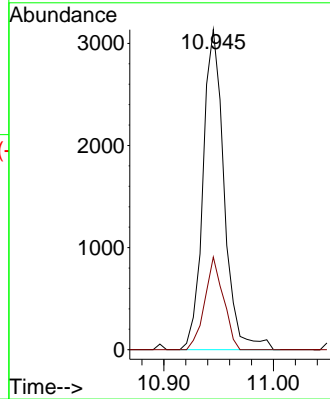


#73
 Isopropylbenzene
 Concen: 0.409 ug/l
 RT: 10.945 min Scan# 1617
 Delta R.T. -0.000 min
 Lab File: VX048330.D
 Acq: 23 Oct 2025 16:49

Instrument : MSVOA_X
 ClientSampleId :

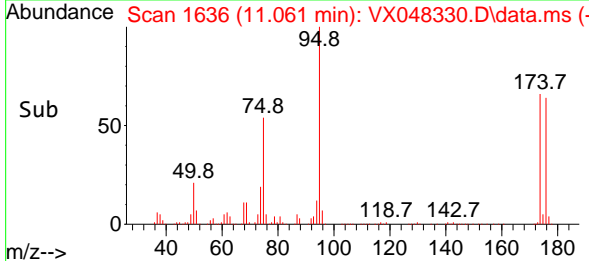
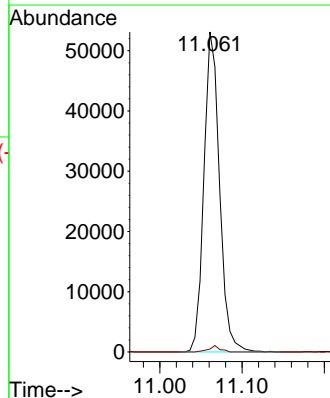
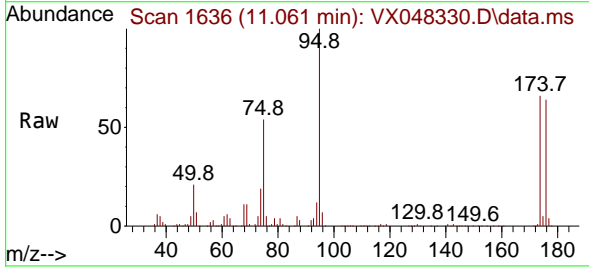


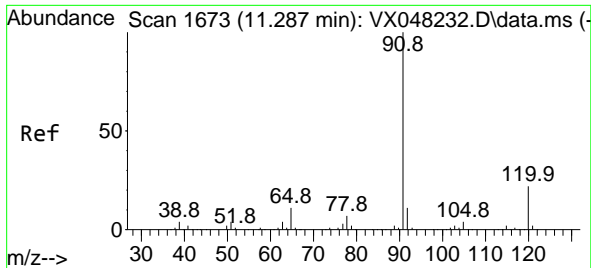
Tgt Ion:105 Resp: 4197
 Ion Ratio Lower Upper
 105 100
 120 25.6 13.0 38.9



#76
 1,2,3-Trichloropropane
 Concen: 30.850 ug/l
 RT: 11.061 min Scan# 1636
 Delta R.T. -0.159 min
 Lab File: VX048330.D
 Acq: 23 Oct 2025 16:49

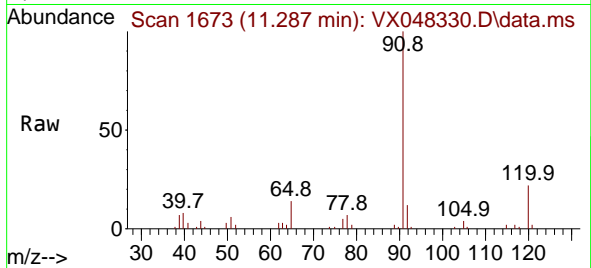
Tgt Ion: 75 Resp: 70215
 Ion Ratio Lower Upper
 75 100
 77 1.4 22.4 67.2#



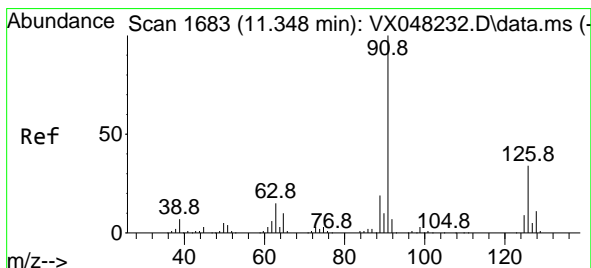
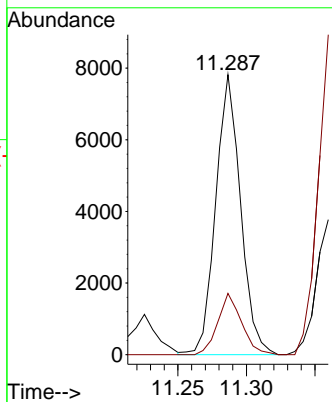
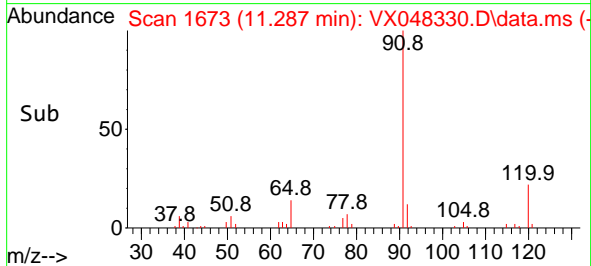


#78
 n-propylbenzene
 Concen: 0.829 ug/l
 RT: 11.287 min Scan# 1673
 Delta R.T. -0.000 min
 Lab File: VX048330.D
 Acq: 23 Oct 2025 16:49

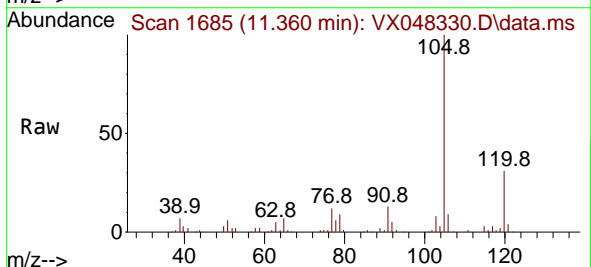
Instrument : MSVOA_X
 ClientSampleId :



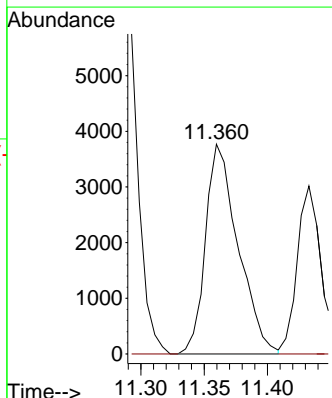
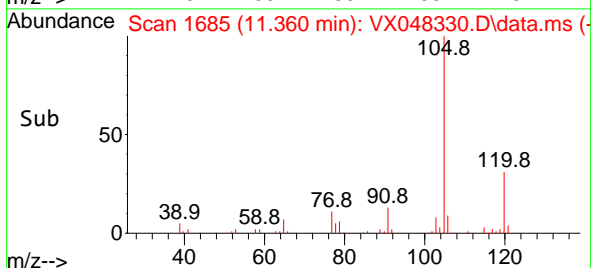
Tgt Ion: 91 Resp: 9843
 Ion Ratio Lower Upper
 91 100
 120 21.0 11.1 33.1

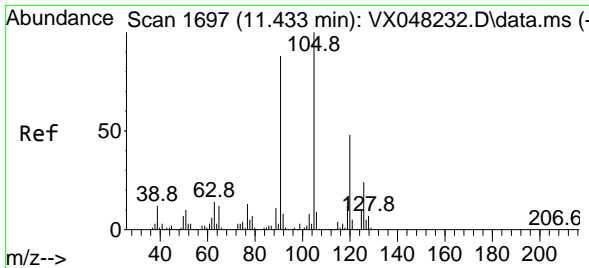


#79
 2-Chlorotoluene
 Concen: 0.939 ug/l
 RT: 11.360 min Scan# 1685
 Delta R.T. 0.012 min
 Lab File: VX048330.D
 Acq: 23 Oct 2025 16:49



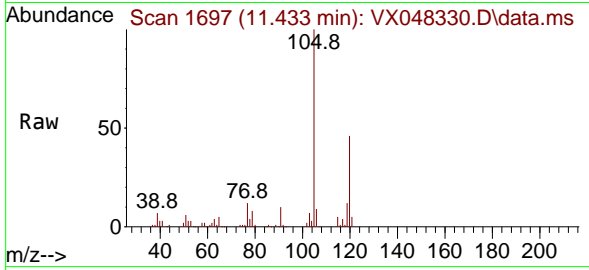
Tgt Ion: 91 Resp: 6756
 Ion Ratio Lower Upper
 91 100
 126 0.0 16.4 49.4#



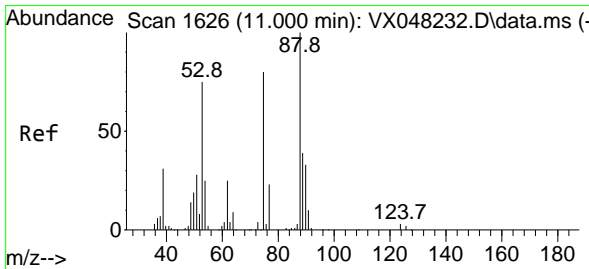
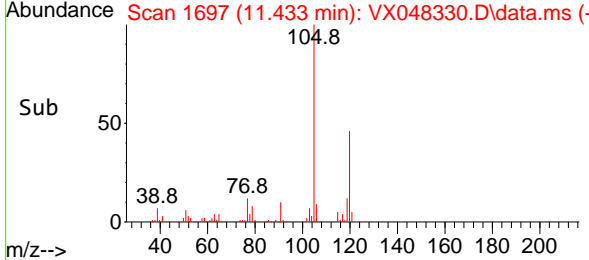
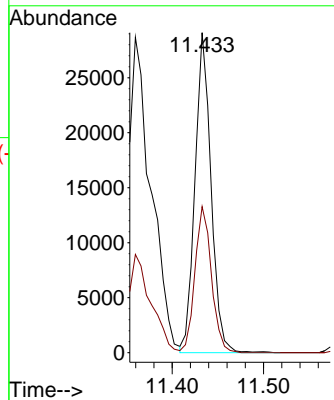


#80
 1,3,5-Trimethylbenzene
 Concen: 4.188 ug/l
 RT: 11.433 min Scan# 10
 Delta R.T. -0.000 min
 Lab File: VX048330.D
 Acq: 23 Oct 2025 16:49

Instrument : MSVOA_X
 ClientSampleId :

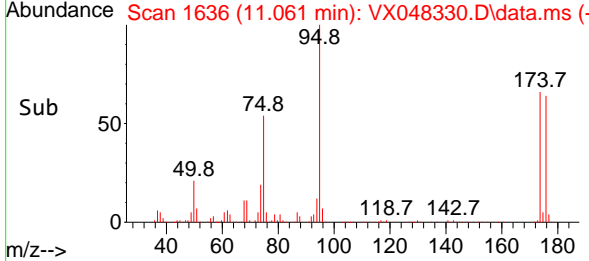
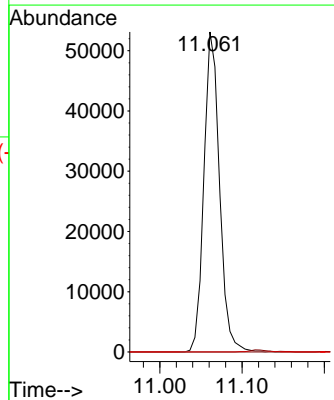
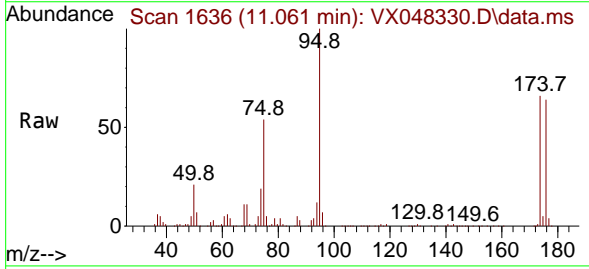


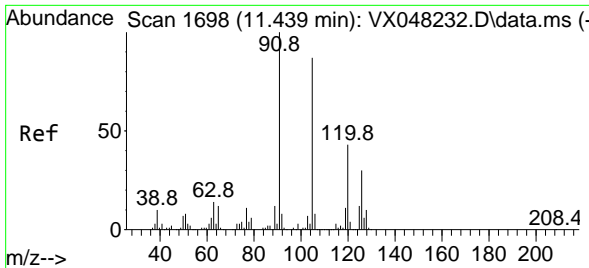
Tgt Ion:105 Resp: 35532
 Ion Ratio Lower Upper
 105 100
 120 47.0 24.0 72.0



#81
 trans-1,4-Dichloro-2-butene
 Concen: 75.057 ug/l
 RT: 11.061 min Scan# 1636
 Delta R.T. 0.061 min
 Lab File: VX048330.D
 Acq: 23 Oct 2025 16:49

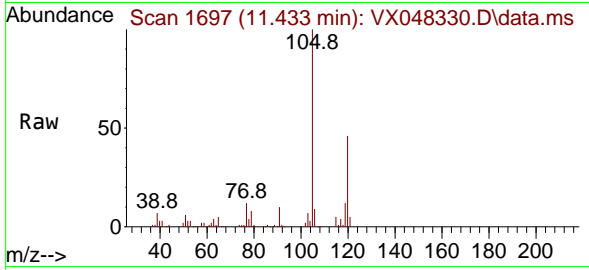
Tgt Ion: 75 Resp: 70215
 Ion Ratio Lower Upper
 75 100
 53 0.0 79.5 119.3#
 89 0.0 36.8 55.2#



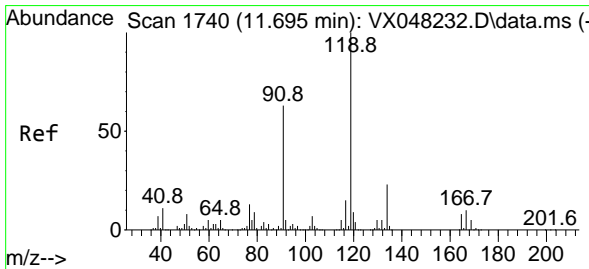
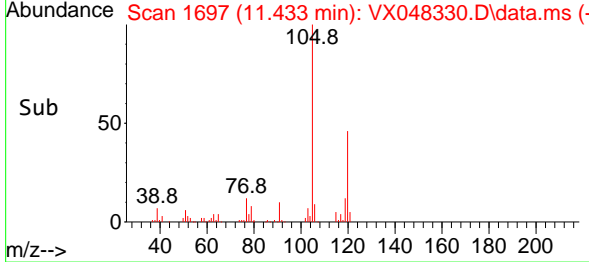
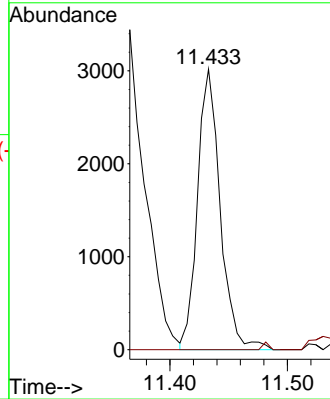


#82
 4-Chlorotoluene
 Concen: 0.475 ug/l
 RT: 11.433 min Scan# 1
 Delta R.T. -0.000 min
 Lab File: VX048330.D
 Acq: 23 Oct 2025 16:49

Instrument :
 MSVOA_X
 ClientSampleId :

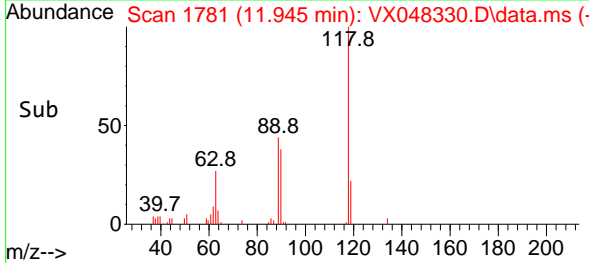
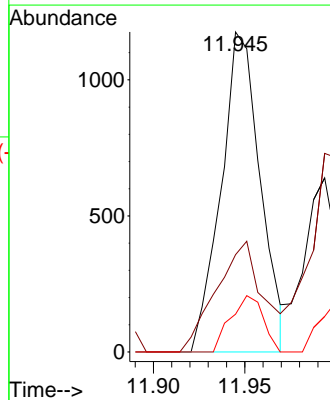
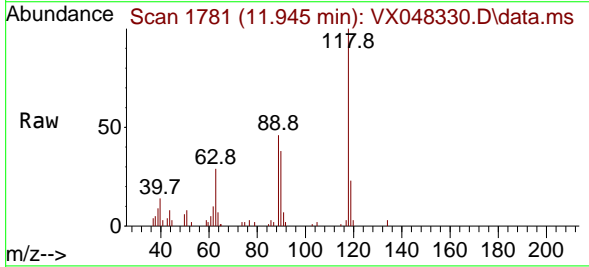


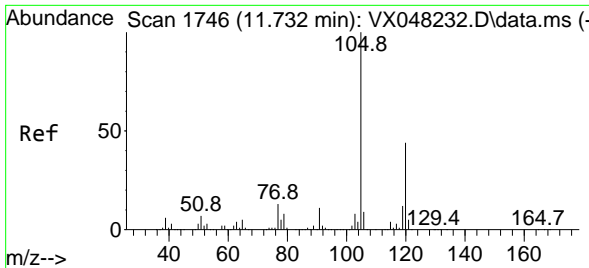
Tgt Ion: 91 Resp: 4055
 Ion Ratio Lower Upper
 91 100
 126 0.0 14.1 42.4#



#83
 tert-Butylbenzene
 Concen: 0.202 ug/l
 RT: 11.945 min Scan# 1781
 Delta R.T. 0.250 min
 Lab File: VX048330.D
 Acq: 23 Oct 2025 16:49

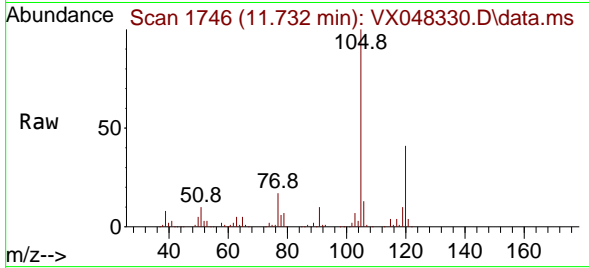
Tgt Ion: 119 Resp: 1757
 Ion Ratio Lower Upper
 119 100
 91 41.4 30.3 91.0
 134 14.6 11.4 34.2



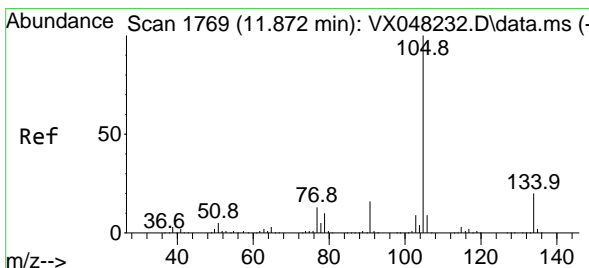
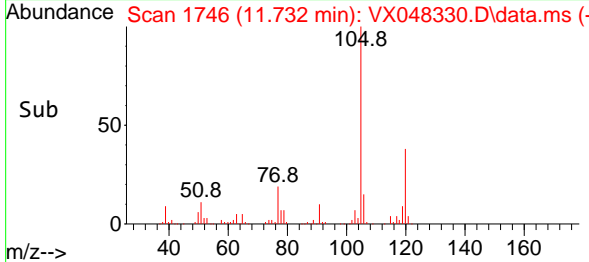
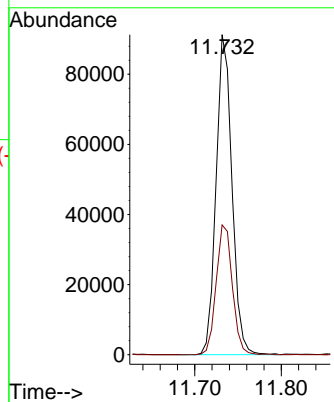


#84
 1,2,4-Trimethylbenzene
 Concen: 13.672 ug/l
 RT: 11.732 min Scan# 1746
 Delta R.T. -0.000 min
 Lab File: VX048330.D
 Acq: 23 Oct 2025 16:49

Instrument : MSVOA_X
 ClientSampleId :

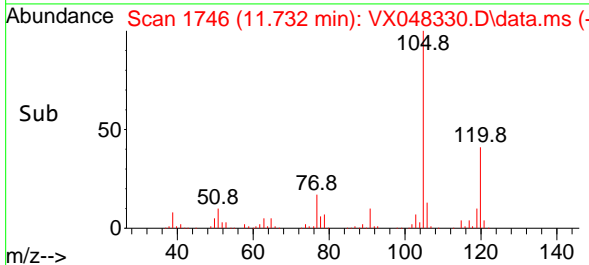
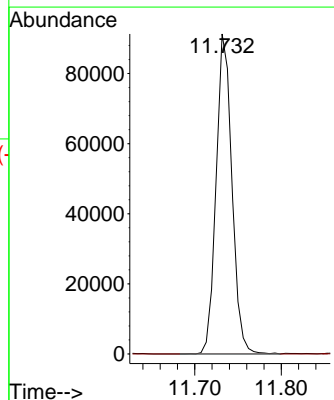
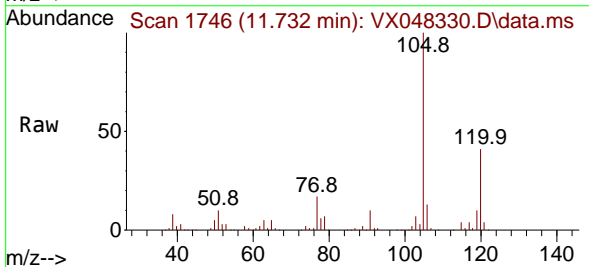


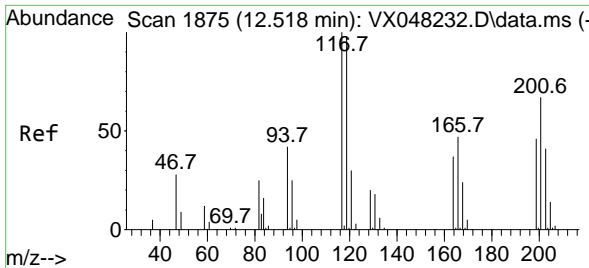
Tgt Ion:105 Resp: 115752
 Ion Ratio Lower Upper
 105 100
 120 41.6 22.1 66.5



#85
 sec-Butylbenzene
 Concen: 11.038 ug/l
 RT: 11.732 min Scan# 1746
 Delta R.T. -0.140 min
 Lab File: VX048330.D
 Acq: 23 Oct 2025 16:49

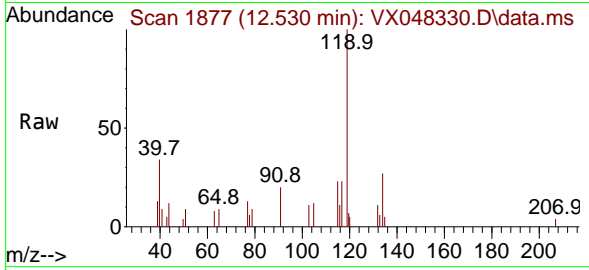
Tgt Ion:105 Resp: 115752
 Ion Ratio Lower Upper
 105 100
 134 0.0 10.1 30.1#



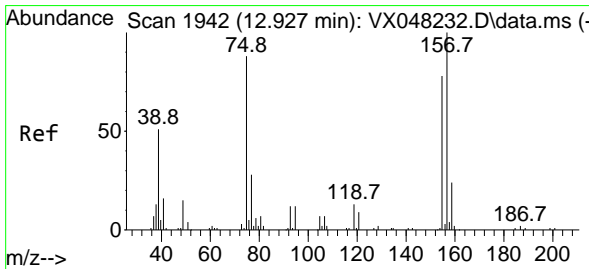
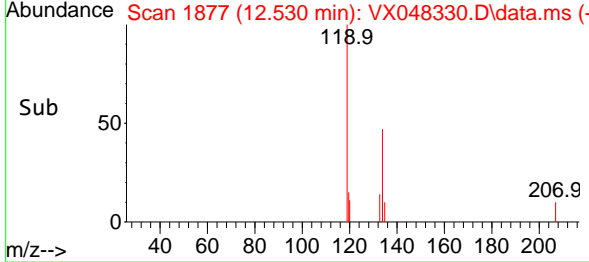
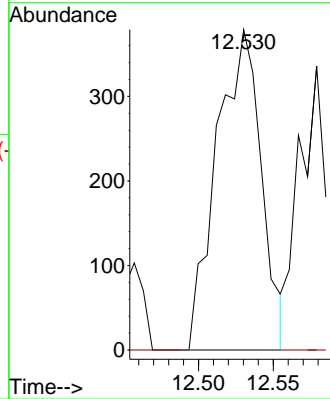


#90
 Hexachloroethane
 Concen: 0.438 ug/l
 RT: 12.530 min Scan# 1877
 Delta R.T. 0.012 min
 Lab File: VX048330.D
 Acq: 23 Oct 2025 16:49

Instrument : MSVOA_X
 ClientSampleId :

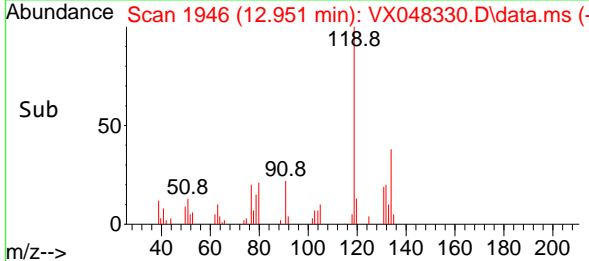
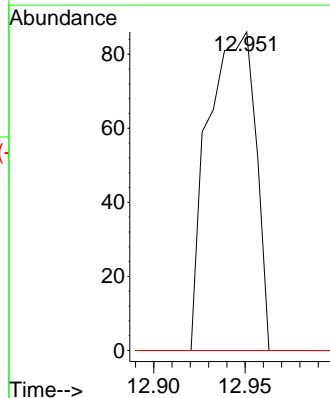
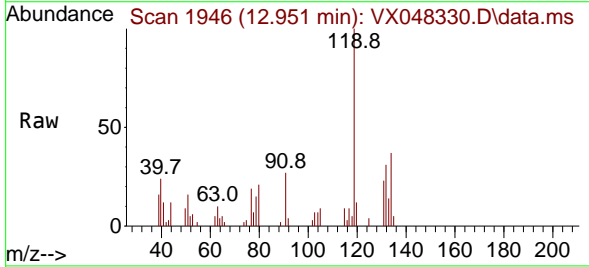


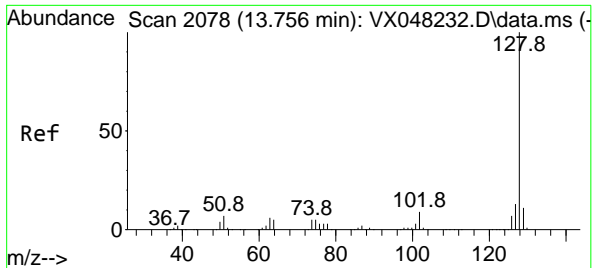
Tgt Ion: 117 Resp: 784
 Ion Ratio Lower Upper
 117 100
 201 0.0 34.1 102.2#



#92
 1,2-Dibromo-3-Chloropropane
 Concen: 0.273 ug/l
 RT: 12.951 min Scan# 1946
 Delta R.T. 0.030 min
 Lab File: VX048330.D
 Acq: 23 Oct 2025 16:49

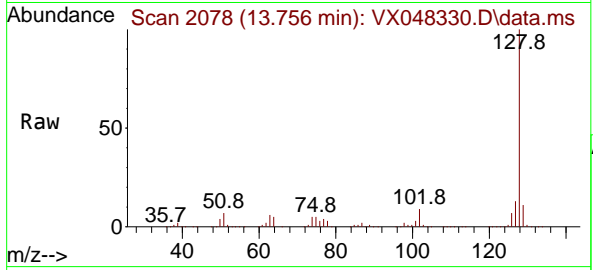
Tgt Ion: 75 Resp: 155
 Ion Ratio Lower Upper
 75 100
 155 0.0 42.8 128.4#
 157 0.0 54.2 162.6#





#95
 Naphthalene
 Concen: 65.694 ug/l
 RT: 13.756 min Scan# 20
 Delta R.T. -0.000 min
 Lab File: VX048330.D
 Acq: 23 Oct 2025 16:49

Instrument :
 MSVOA_X
 ClientSampleId :



Tgt Ion:128 Resp: 535484

Ion	Ratio	Lower	Upper
128	100		
127	13.0	10.2	15.4
129	10.9	8.6	12.8

