

Data Path : Z:\voasrv\HPCHEM1\MSVOA_X\Data\VX102325\
 Data File : VX048333.D
 Acq On : 23 Oct 2025 17:51
 Operator : JC/MD
 Sample : Q3414-03 40X
 Misc : 5.0mL/MSVOA_X/WATER
 ALS Vial : 25 Sample Multiplier: 1

Instrument :
 MSVOA_X
 ClientSampleId :
 SB-3DL

Quant Time: Oct 24 05:50:47 2025
 Quant Method : Z:\voasrv\HPCHEM1\MSVOA_X\Method\82X102025W.M
 Quant Title : SW846 8260
 QLast Update : Mon Oct 20 14:13:59 2025
 Response via : Initial Calibration

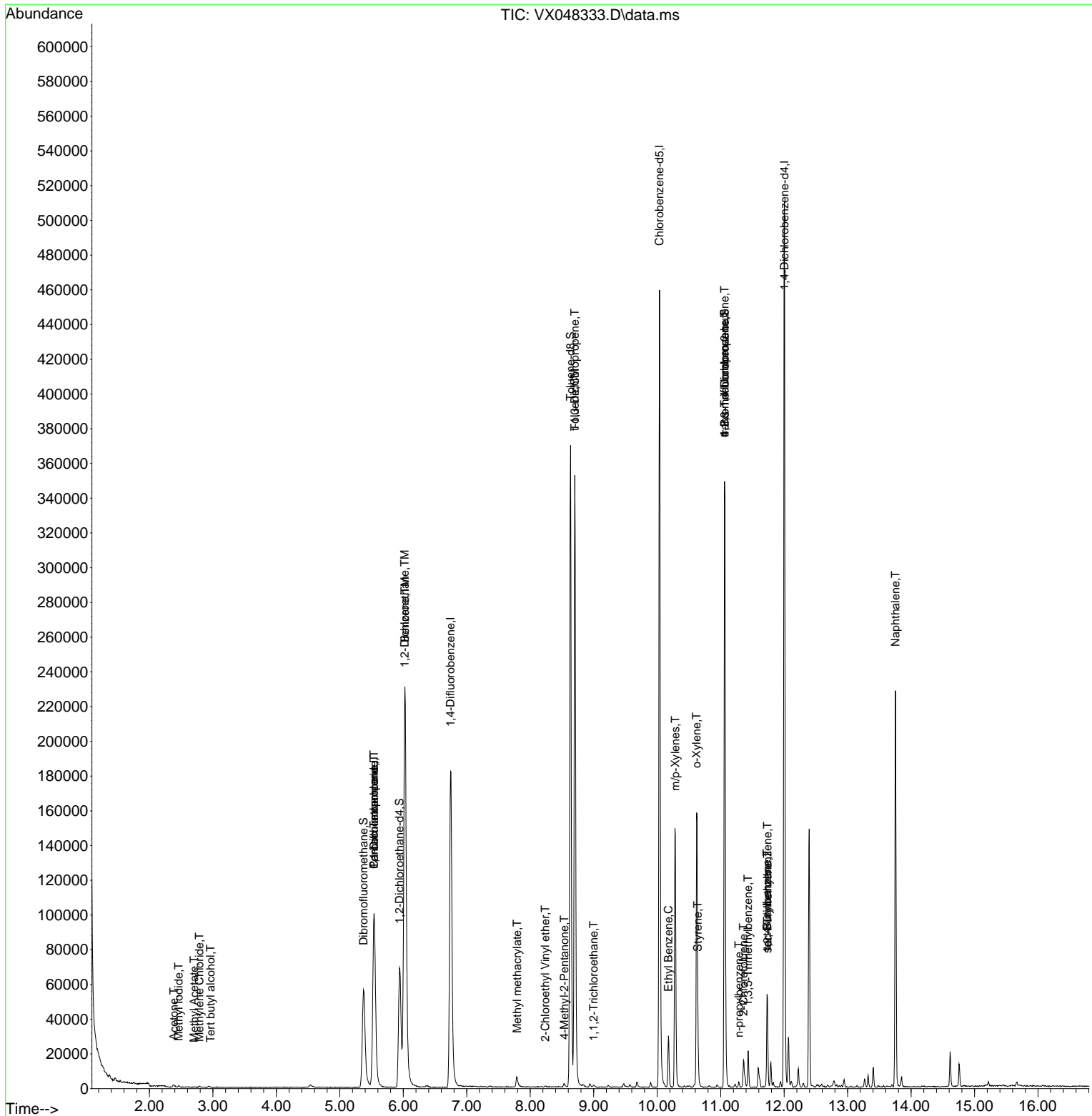
Compound	R.T.	QIon	Response	Conc	Units	Dev(Min)
Internal Standards						
1) Pentafluorobenzene	5.538	168	101048	50.000	ug/l	0.00
34) 1,4-Difluorobenzene	6.745	114	201336	50.000	ug/l	0.00
63) Chlorobenzene-d5	10.037	117	207930	50.000	ug/l	0.00
72) 1,4-Dichlorobenzene-d4	12.006	152	105814	50.000	ug/l	0.00
System Monitoring Compounds						
33) 1,2-Dichloroethane-d4	5.940	65	77990	55.048	ug/l	0.00
Spiked Amount	50.000	Range 78 - 117	Recovery	=	110.100%	
35) Dibromofluoromethane	5.373	113	55565	40.425	ug/l	0.00
Spiked Amount	50.000	Range 75 - 124	Recovery	=	80.860%	
50) Toluene-d8	8.635	98	223840	46.461	ug/l	0.00
Spiked Amount	50.000	Range 92 - 112	Recovery	=	92.920%	
62) 4-Bromofluorobenzene	11.061	95	99708	54.401	ug/l	0.00
Spiked Amount	50.000	Range 83 - 123	Recovery	=	108.800%	
Target Compounds						
						Qvalue
10) Methyl Iodide	2.459	142	922	0.673	ug/l #	83
11) Tert butyl alcohol	2.965	59	40	0.284	ug/l #	72
16) Acetone	2.386	43	2064	4.247	ug/l #	82
18) Methyl Acetate	2.703	43	348	0.343	ug/l #	54
20) Methylene Chloride	2.788	84	257	0.217	ug/l #	84
36) 1,1-Dichloropropene	5.538	75	8748	4.478	ug/l #	49
38) Carbon Tetrachloride	5.538	117	10889	4.518	ug/l #	15
40) Benzene	6.025	78	294976	52.005	ug/l	100
42) 1,2-Dichloroethane	6.019	62	2787	1.332	ug/l #	76
48) Methyl methacrylate	7.793	41	716	0.533	ug/l #	47
51) 4-Methyl-2-Pentanone	8.537	43	1508	0.983	ug/l #	38
52) Toluene	8.702	92	137094	38.046	ug/l	100
53) t-1,3-Dichloropropene	8.702	75	1536	0.703	ug/l #	1
55) 1,1,2-Trichloroethane	9.000	97	947	0.707	ug/l #	14
58) 2-Chloroethyl Vinyl ether	8.238	63	166	1.854	ug/l #	47
67) Ethyl Benzene	10.177	91	17141	2.152	ug/l	99
68) m/p-Xylenes	10.287	106	36210	12.238	ug/l	100
69) o-Xylene	10.622	106	34165	11.960	ug/l	98
70) Styrene	10.640	104	9987	2.053	ug/l #	48
76) 1,2,3-Trichloropropane	11.061	75	53211	31.010	ug/l #	33
78) n-propylbenzene	11.286	91	2195	0.245	ug/l	85
79) 2-Chlorotoluene	11.360	91	1539	0.284	ug/l #	42
80) 1,3,5-Trimethylbenzene	11.433	105	8920	1.395	ug/l	95
81) trans-1,4-Dichloro-2-b...	11.061	75	53211	75.444	ug/l #	10
83) tert-Butylbenzene	11.732	119	2898	0.441	ug/l #	53
84) 1,2,4-Trimethylbenzene	11.738	105	24499	3.838	ug/l	96
85) sec-Butylbenzene	11.738	105	24499	3.099	ug/l #	56
95) Naphthalene	13.756	128	129936	21.144	ug/l	100

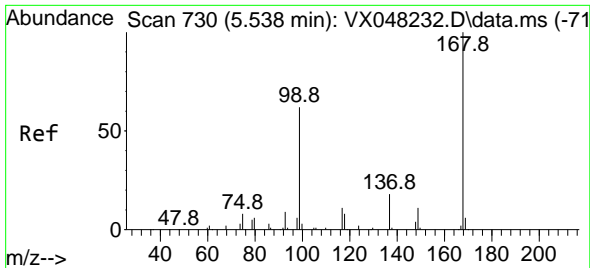
(#) = qualifier out of range (m) = manual integration (+) = signals summed

Data Path : Z:\voasrv\HPCHEM1\MSVOA_X\Data\VX102325\
 Data File : VX048333.D
 Acq On : 23 Oct 2025 17:51
 Operator : JC/MD
 Sample : Q3414-03 40X
 Misc : 5.0mL/MSVOA_X/WATER
 ALS Vial : 25 Sample Multiplier: 1

Instrument :
 MSVOA_X
 ClientSampleId :
 SB-3DL

Quant Time: Oct 24 05:50:47 2025
 Quant Method : Z:\voasrv\HPCHEM1\MSVOA_X\Method\82X102025W.M
 Quant Title : SW846 8260
 QLast Update : Mon Oct 20 14:13:59 2025
 Response via : Initial Calibration

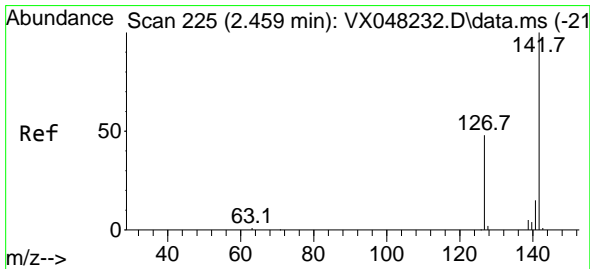
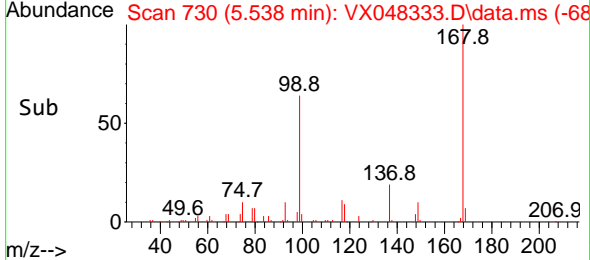
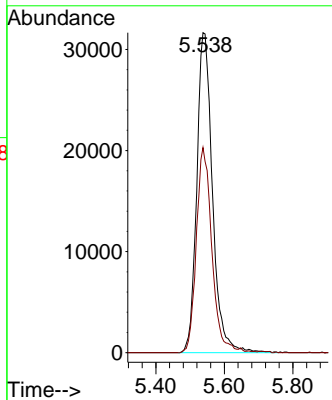
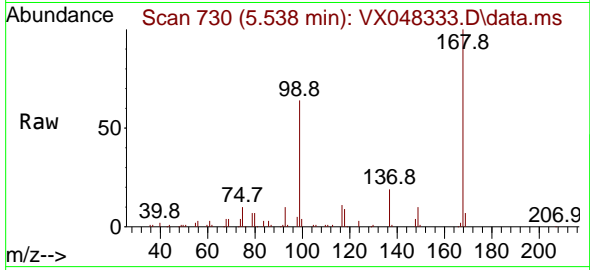




#1
 Pentafluorobenzene
 Concen: 50.000 ug/l
 RT: 5.538 min Scan# 71
 Delta R.T. -0.006 min
 Lab File: VX048333.D
 Acq: 23 Oct 2025 17:51

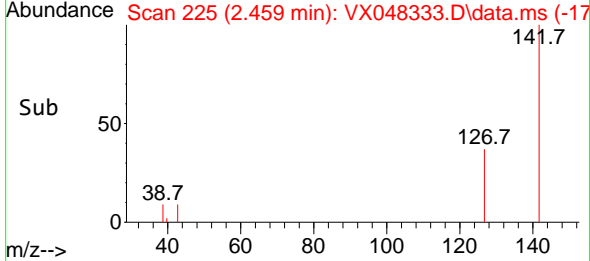
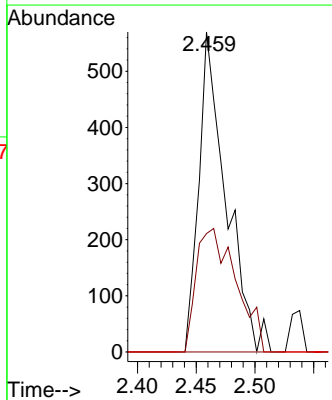
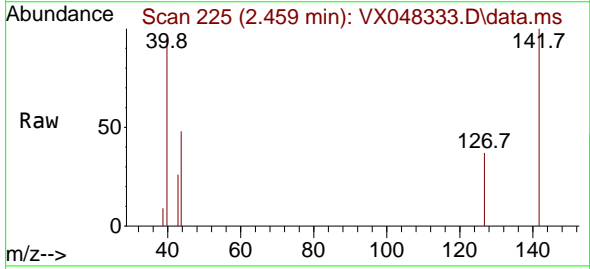
Instrument : MSVOA_X
 Client SampleId : SB-3DL

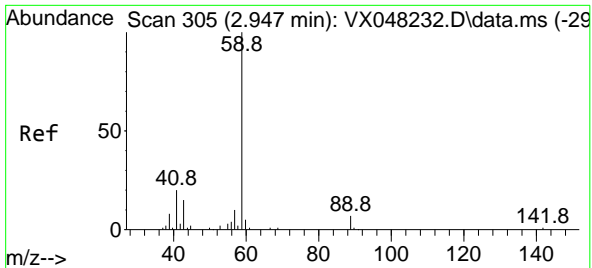
Tgt Ion:168 Resp: 101048
 Ion Ratio Lower Upper
 168 100
 99 64.1 46.4 69.6



#10
 Methyl Iodide
 Concen: 0.673 ug/l
 RT: 2.459 min Scan# 225
 Delta R.T. -0.000 min
 Lab File: VX048333.D
 Acq: 23 Oct 2025 17:51

Tgt Ion:142 Resp: 922
 Ion Ratio Lower Upper
 142 100
 127 56.3 38.5 57.7
 141 0.0 11.6 17.4#

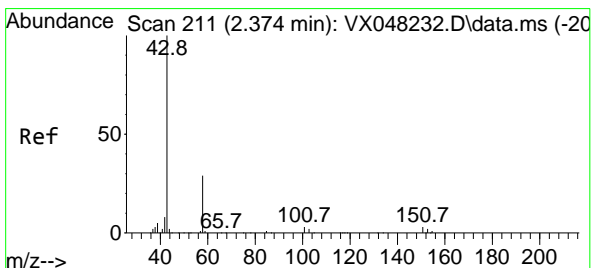
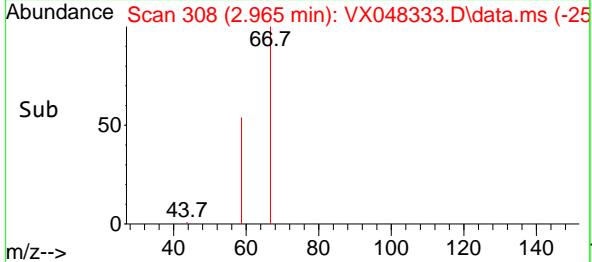
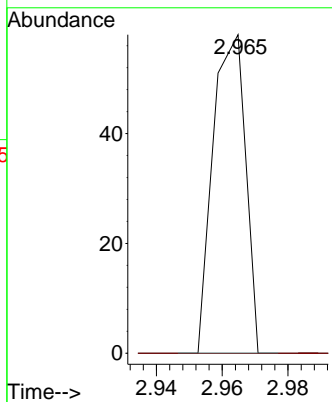
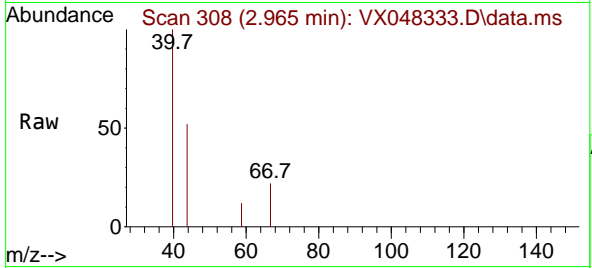




#11
 Tert butyl alcohol
 Concen: 0.284 ug/l
 RT: 2.965 min Scan# 308
 Delta R.T. 0.024 min
 Lab File: VX048333.D
 Acq: 23 Oct 2025 17:51

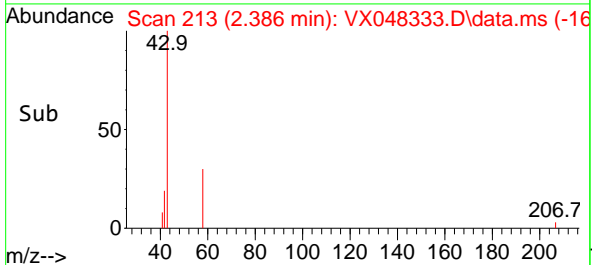
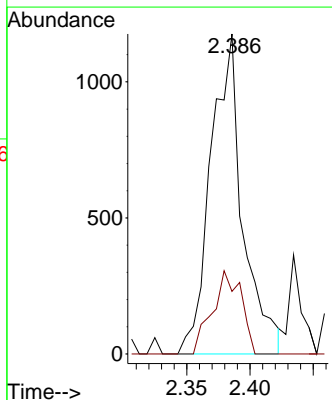
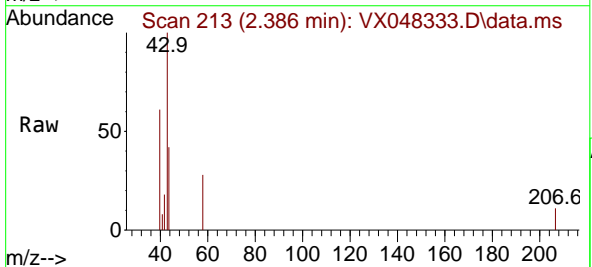
Instrument : MSVOA_X
 Client SampleId : SB-3DL

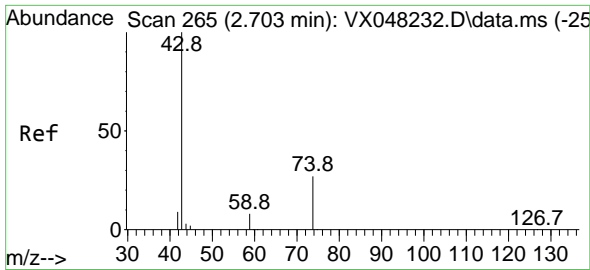
Tgt Ion: 59 Resp: 40
 Ion Ratio Lower Upper
 59 100
 57 0.0 8.2 12.4#



#16
 Acetone
 Concen: 4.247 ug/l
 RT: 2.386 min Scan# 213
 Delta R.T. 0.012 min
 Lab File: VX048333.D
 Acq: 23 Oct 2025 17:51

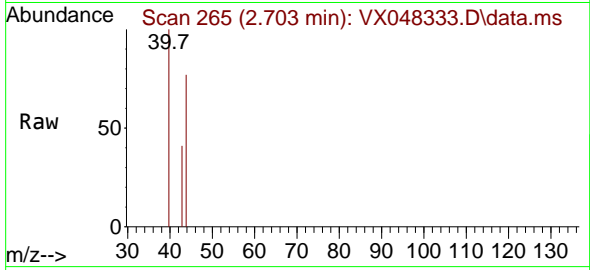
Tgt Ion: 43 Resp: 2064
 Ion Ratio Lower Upper
 43 100
 58 19.6 23.4 35.2#



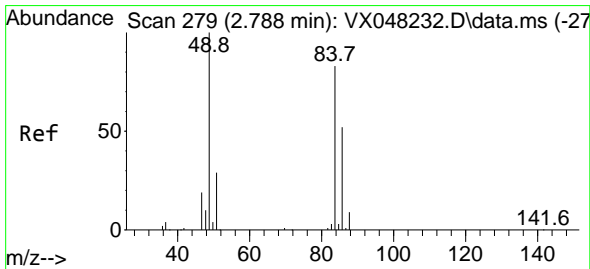
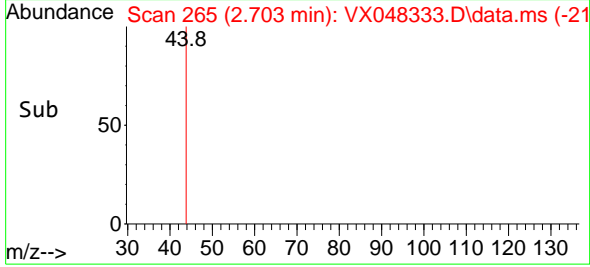
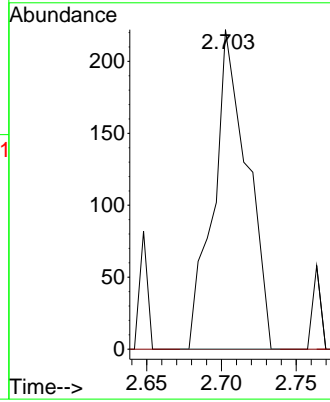


#18
 Methyl Acetate
 Concen: 0.343 ug/l
 RT: 2.703 min Scan# 20
 Delta R.T. 0.006 min
 Lab File: VX048333.D
 Acq: 23 Oct 2025 17:51

Instrument :
 MSVOA_X
 ClientSampleId :
 SB-3DL

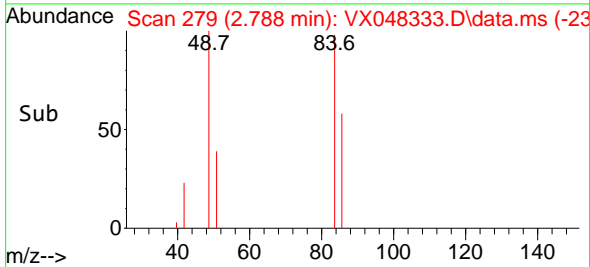
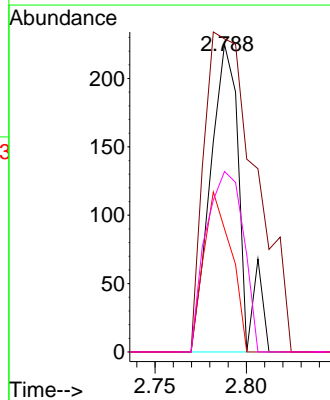
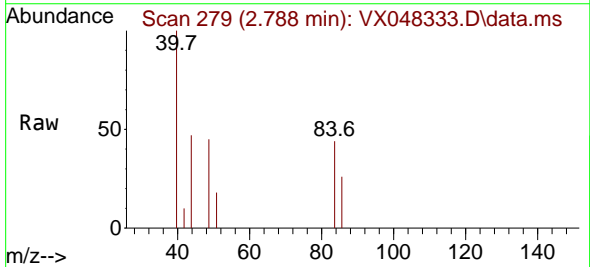


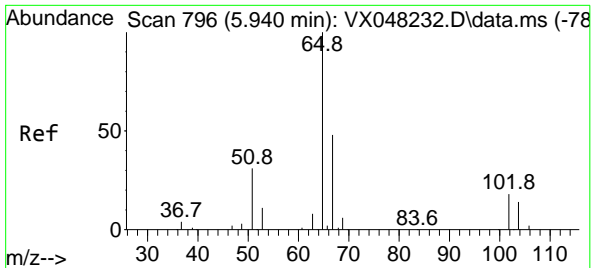
Tgt Ion: 43 Resp: 348
 Ion Ratio Lower Upper
 43 100
 74 0.0 17.5 26.3#



#20
 Methylene Chloride
 Concen: 0.217 ug/l
 RT: 2.788 min Scan# 279
 Delta R.T. -0.000 min
 Lab File: VX048333.D
 Acq: 23 Oct 2025 17:51

Tgt Ion: 84 Resp: 257
 Ion Ratio Lower Upper
 84 100
 49 101.8 104.1 156.1#
 51 40.0 31.3 46.9
 86 58.7 51.3 76.9

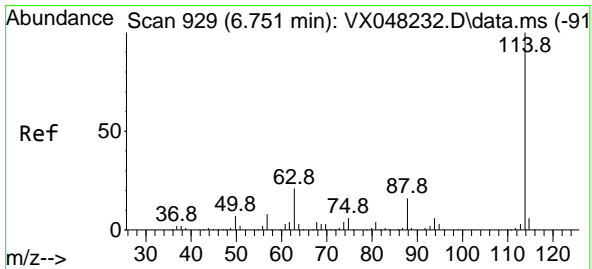
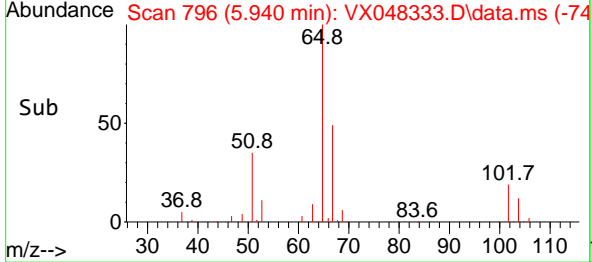
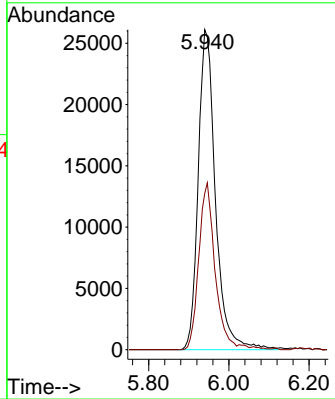
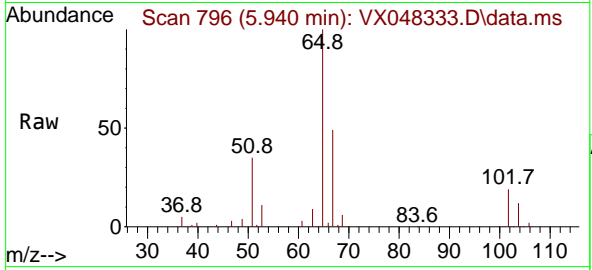




#33
 1,2-Dichloroethane-d4
 Concen: 55.048 ug/l
 RT: 5.940 min Scan# 796
 Delta R.T. -0.000 min
 Lab File: VX048333.D
 Acq: 23 Oct 2025 17:51

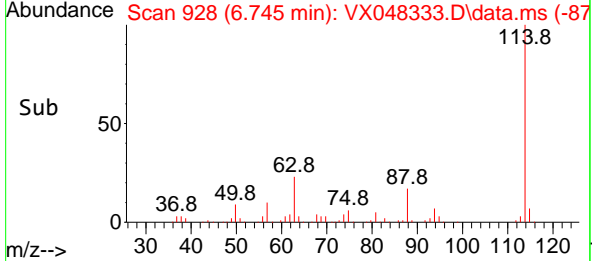
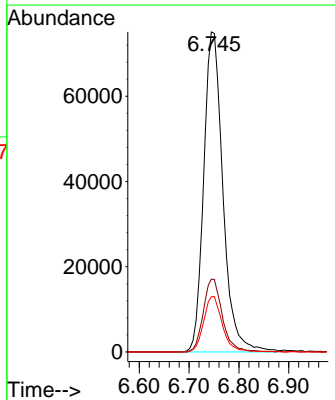
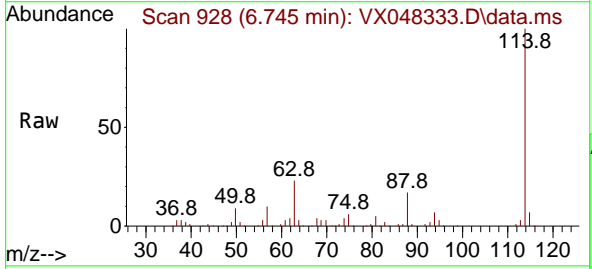
Instrument : MSVOA_X
 ClientSampleId : SB-3DL

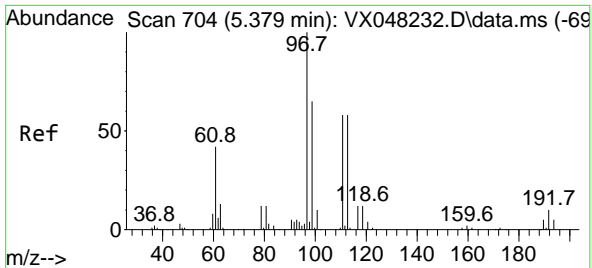
Tgt Ion: 65 Resp: 77990
 Ion Ratio Lower Upper
 65 100
 67 49.5 0.0 105.0



#34
 1,4-Difluorobenzene
 Concen: 50.000 ug/l
 RT: 6.745 min Scan# 928
 Delta R.T. -0.000 min
 Lab File: VX048333.D
 Acq: 23 Oct 2025 17:51

Tgt Ion: 114 Resp: 201336
 Ion Ratio Lower Upper
 114 100
 63 22.7 0.0 43.2
 88 17.3 0.0 33.6

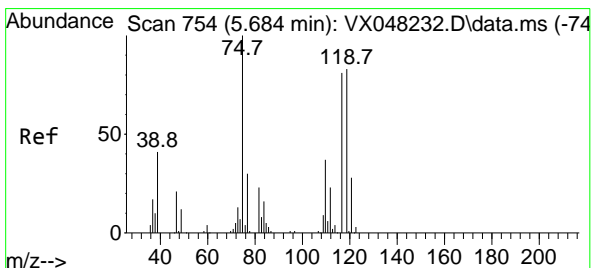
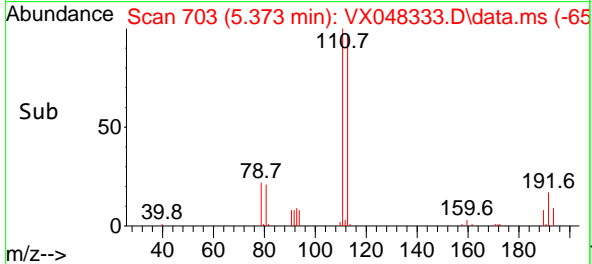
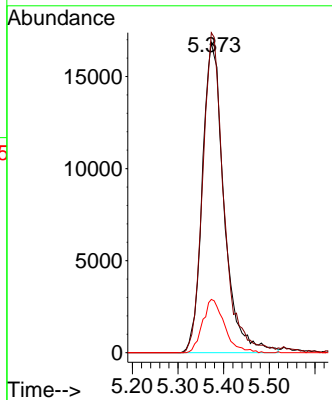
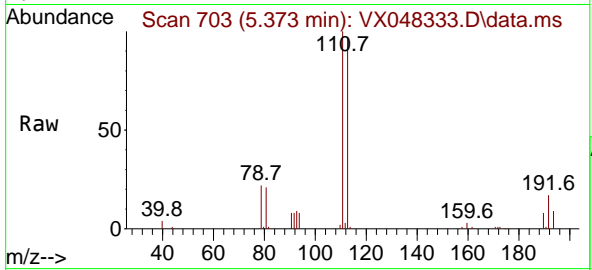




#35
 Dibromofluoromethane
 Concen: 40.425 ug/l
 RT: 5.373 min Scan# 704
 Delta R.T. -0.000 min
 Lab File: VX048333.D
 Acq: 23 Oct 2025 17:51

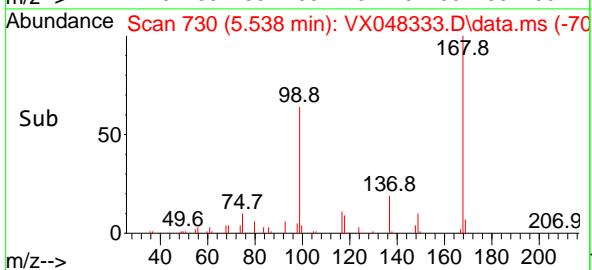
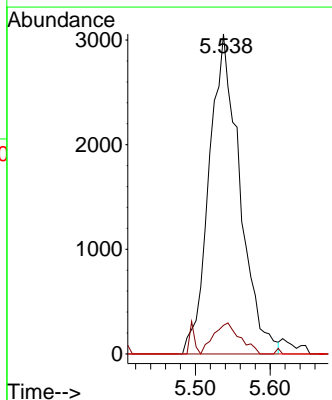
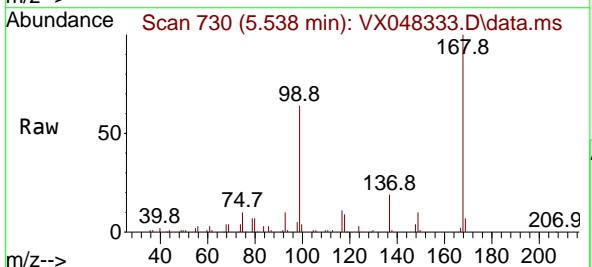
Instrument : MSVOA_X
 ClientSampleId : SB-3DL

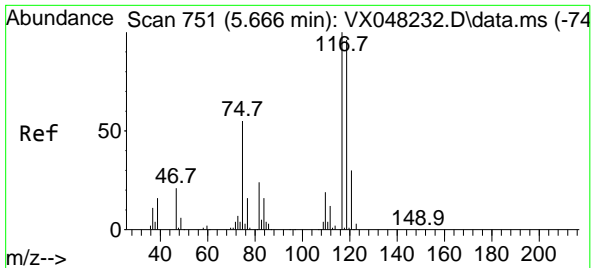
Tgt Ion	Resp	Lower	Upper
113	100		
111	99.9	82.2	123.4
192	17.3	15.1	22.7



#36
 1,1-Dichloropropene
 Concen: 4.478 ug/l
 RT: 5.538 min Scan# 730
 Delta R.T. -0.146 min
 Lab File: VX048333.D
 Acq: 23 Oct 2025 17:51

Tgt Ion	Resp	Lower	Upper
75	100		
110	8.3	17.7	53.1#
77	0.0	24.3	36.5#



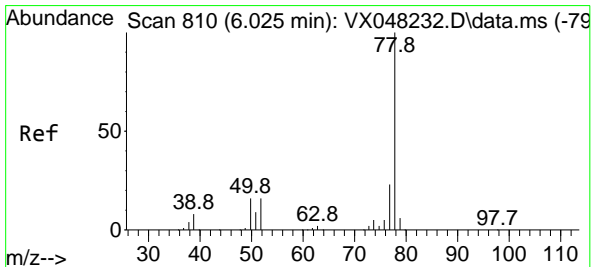
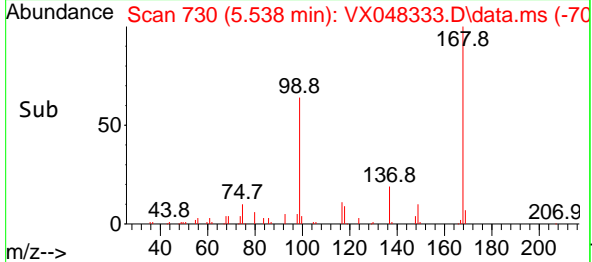
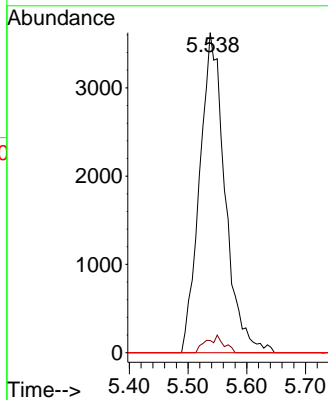
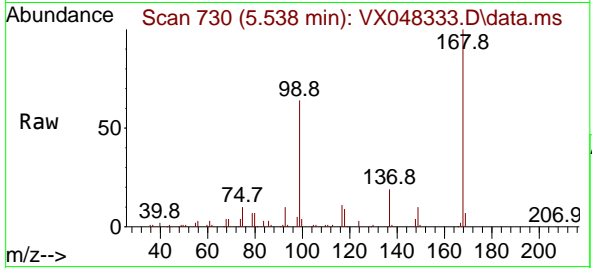


#38
 Carbon Tetrachloride
 Concen: 4.518 ug/l
 RT: 5.538 min Scan# 71
 Delta R.T. -0.128 min
 Lab File: VX048333.D
 Acq: 23 Oct 2025 17:51

Instrument : MSVOA_X
 ClientSampleId : SB-3DL

Tgt Ion:117 Resp: 10889

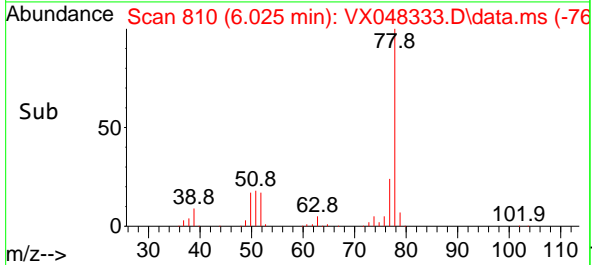
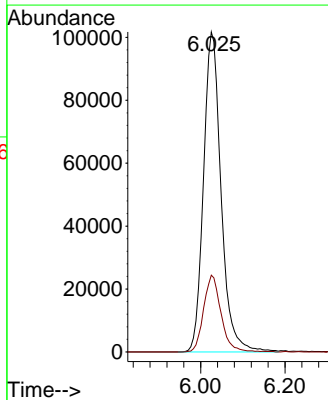
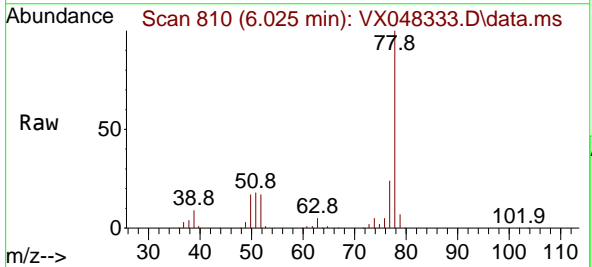
Ion	Ratio	Lower	Upper
117	100		
119	3.8	77.2	115.8#
121	0.0	24.8	37.2#

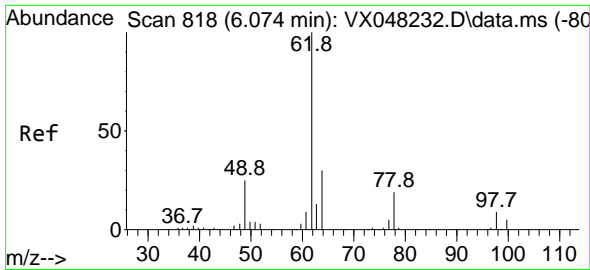


#40
 Benzene
 Concen: 52.005 ug/l
 RT: 6.025 min Scan# 810
 Delta R.T. -0.000 min
 Lab File: VX048333.D
 Acq: 23 Oct 2025 17:51

Tgt Ion: 78 Resp: 294976

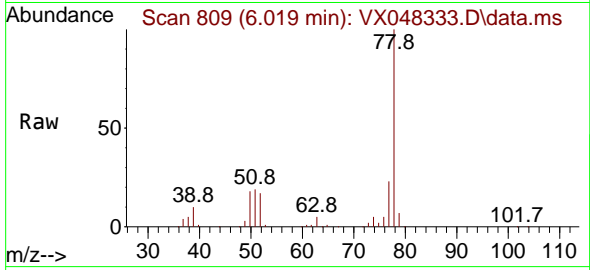
Ion	Ratio	Lower	Upper
78	100		
77	24.0	19.3	28.9



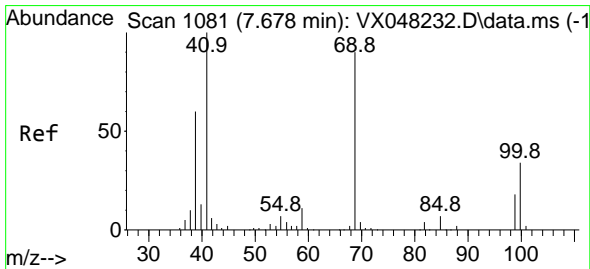
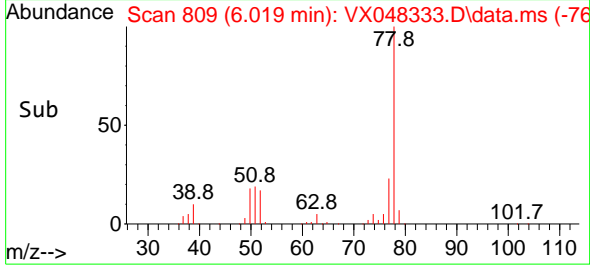
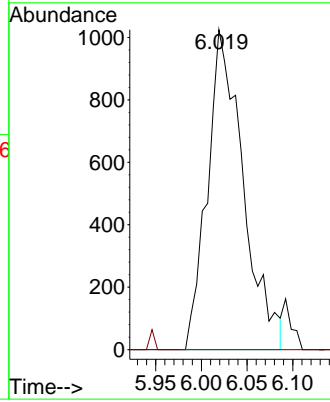


#42
 1,2-Dichloroethane
 Concen: 1.332 ug/l
 RT: 6.019 min Scan# 809
 Delta R.T. -0.049 min
 Lab File: VX048333.D
 Acq: 23 Oct 2025 17:51

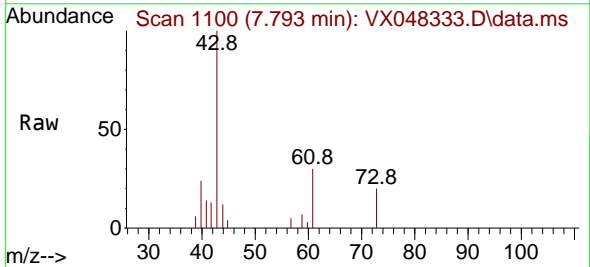
Instrument : MSVOA_X
 Client SampleId : SB-3DL



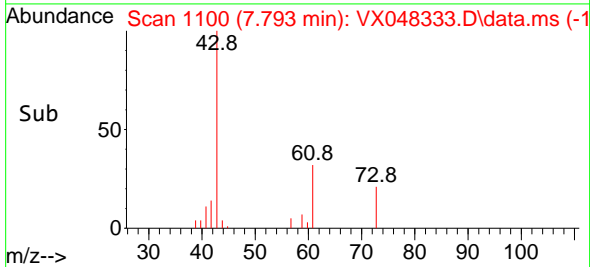
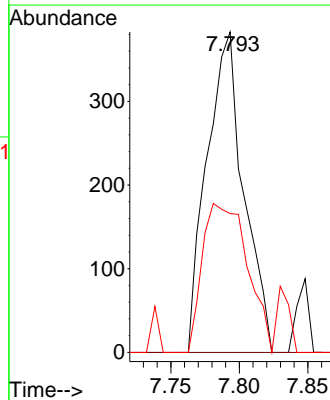
Tgt Ion: 62 Resp: 2787
 Ion Ratio Lower Upper
 62 100
 98 0.0 0.0 17.2

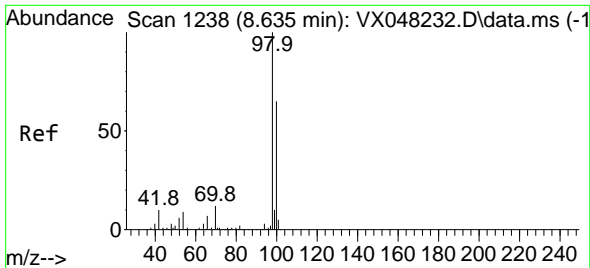


#48
 Methyl methacrylate
 Concen: 0.533 ug/l
 RT: 7.793 min Scan# 1100
 Delta R.T. 0.116 min
 Lab File: VX048333.D
 Acq: 23 Oct 2025 17:51



Tgt Ion: 41 Resp: 716
 Ion Ratio Lower Upper
 41 100
 69 0.0 63.4 95.0#
 39 56.8 47.1 70.7

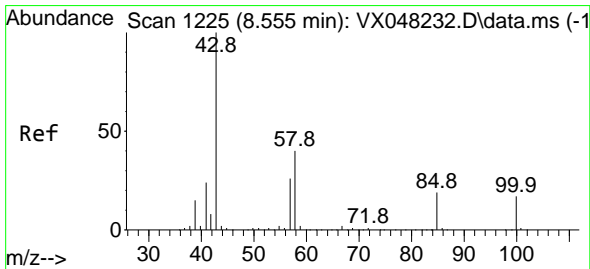
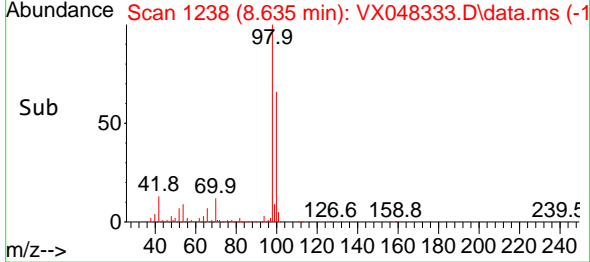
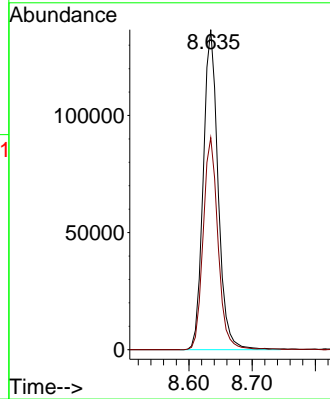
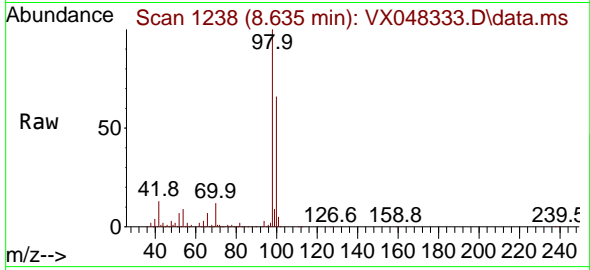




#50
 Toluene-d8
 Concen: 46.461 ug/l
 RT: 8.635 min Scan# 11
 Delta R.T. -0.000 min
 Lab File: VX048333.D
 Acq: 23 Oct 2025 17:51

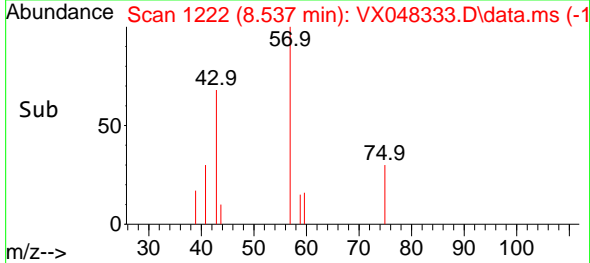
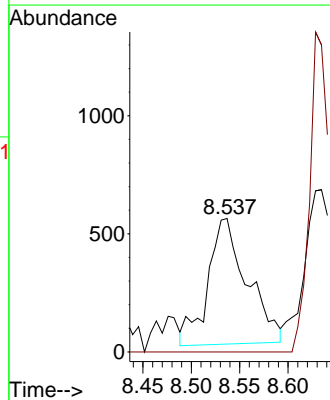
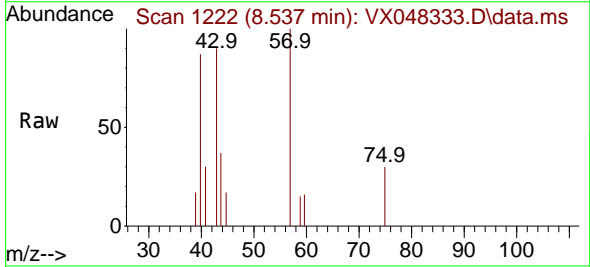
Instrument :
 MSVOA_X
 ClientSampleId :
 SB-3DL

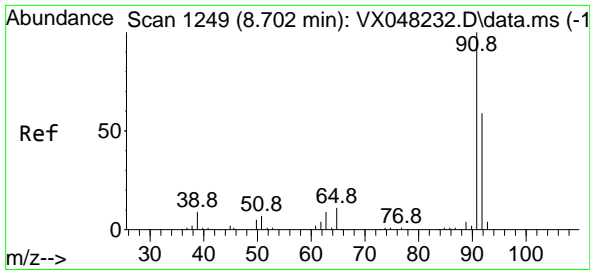
Tgt Ion: 98 Resp: 223840
 Ion Ratio Lower Upper
 98 100
 100 66.3 53.0 79.4



#51
 4-Methyl-2-Pentanone
 Concen: 0.983 ug/l
 RT: 8.537 min Scan# 1222
 Delta R.T. -0.018 min
 Lab File: VX048333.D
 Acq: 23 Oct 2025 17:51

Tgt Ion: 43 Resp: 1508
 Ion Ratio Lower Upper
 43 100
 58 0.0 29.5 44.3#

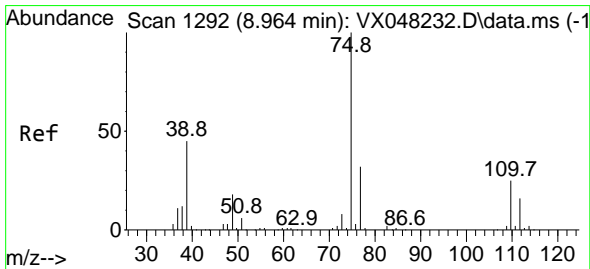
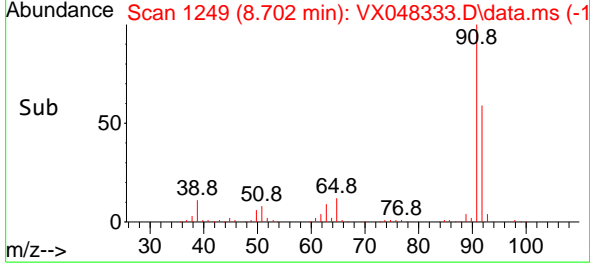
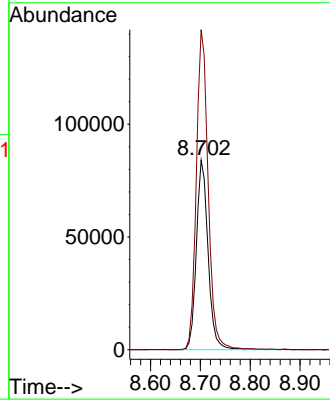
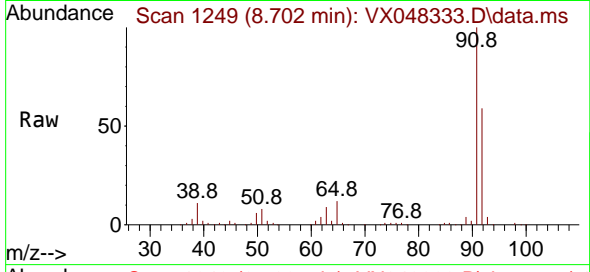




#52
 Toluene
 Concen: 38.046 ug/l
 RT: 8.702 min Scan# 1249
 Delta R.T. -0.000 min
 Lab File: VX048333.D
 Acq: 23 Oct 2025 17:51

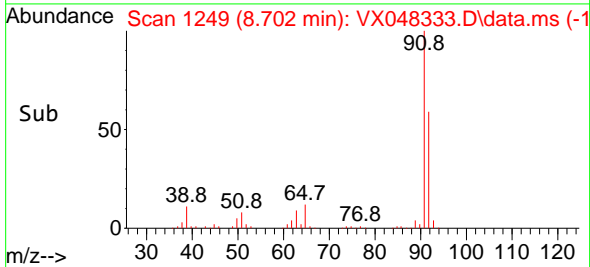
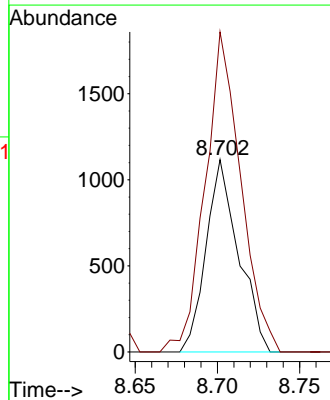
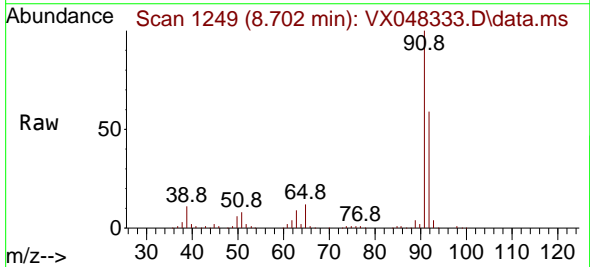
Instrument : MSVOA_X
 ClientSampleId : SB-3DL

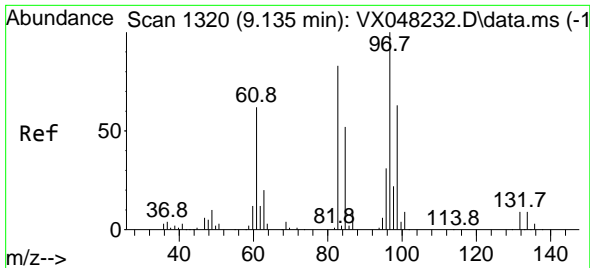
Tgt Ion: 92 Resp: 137094
 Ion Ratio Lower Upper
 92 100
 91 170.5 136.1 204.1



#53
 t-1,3-Dichloropropene
 Concen: 0.703 ug/l
 RT: 8.702 min Scan# 1249
 Delta R.T. -0.262 min
 Lab File: VX048333.D
 Acq: 23 Oct 2025 17:51

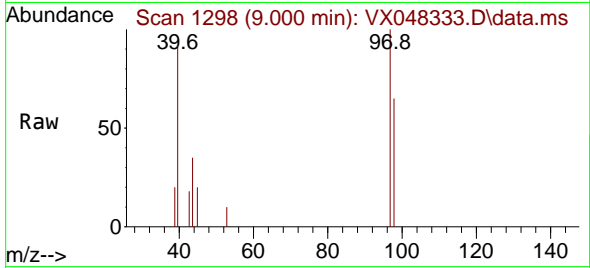
Tgt Ion: 75 Resp: 1536
 Ion Ratio Lower Upper
 75 100
 77 166.4 25.0 37.6#





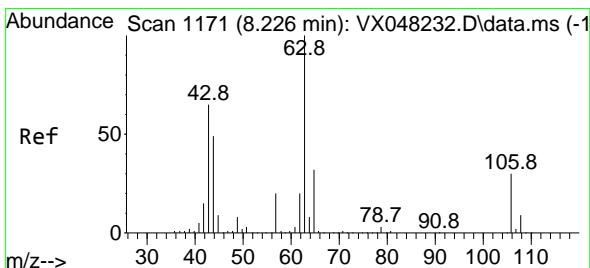
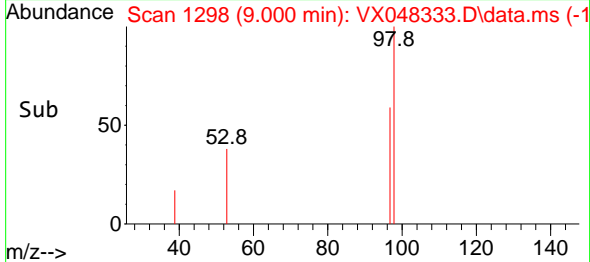
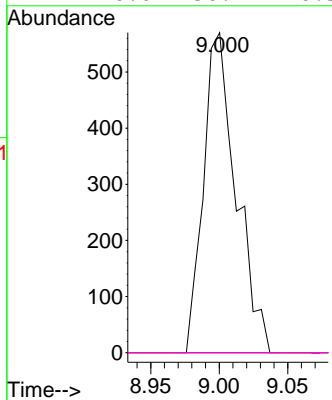
#55
 1,1,2-Trichloroethane
 Concen: 0.707 ug/l
 RT: 9.000 min Scan# 1173
 Delta R.T. -0.134 min
 Lab File: VX048333.D
 Acq: 23 Oct 2025 17:51

Instrument : MSVOA_X
 ClientSampleId : SB-3DL



Tgt Ion: 97 Resp: 947

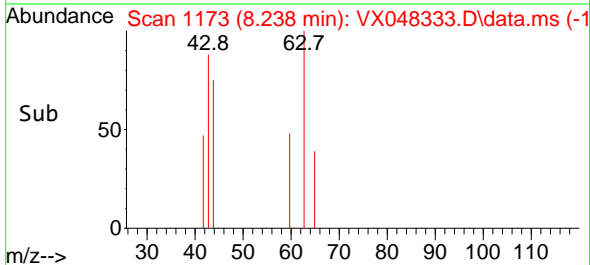
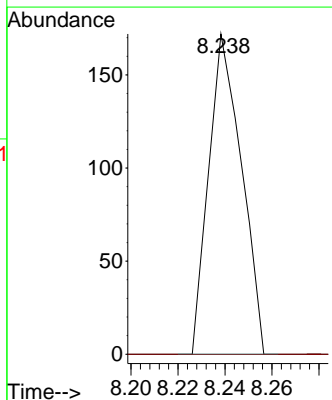
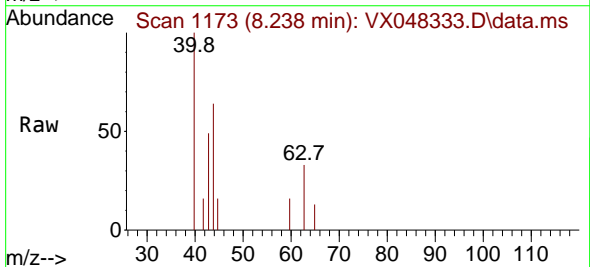
Ion	Ratio	Lower	Upper
97	100		
83	0.0	70.6	105.8#
85	0.0	45.0	67.6#
99	0.0	50.9	76.3#

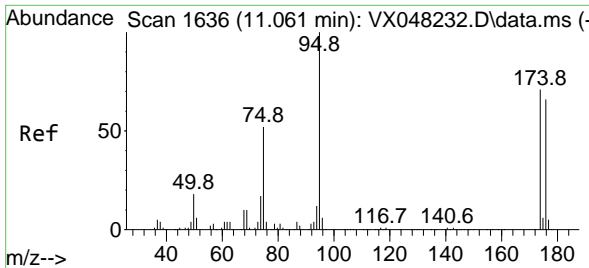


#58
 2-Chloroethyl Vinyl ether
 Concen: 1.854 ug/l
 RT: 8.238 min Scan# 1173
 Delta R.T. 0.012 min
 Lab File: VX048333.D
 Acq: 23 Oct 2025 17:51

Tgt Ion: 63 Resp: 166

Ion	Ratio	Lower	Upper
63	100		
106	0.0	22.2	33.2#

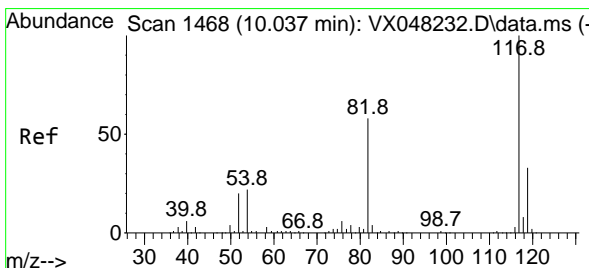
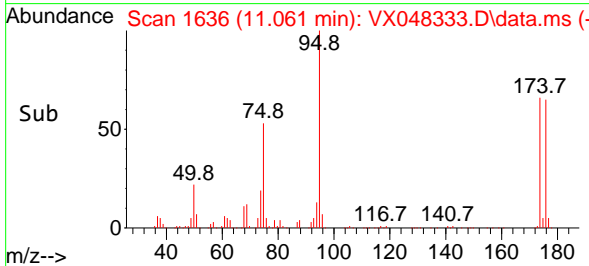
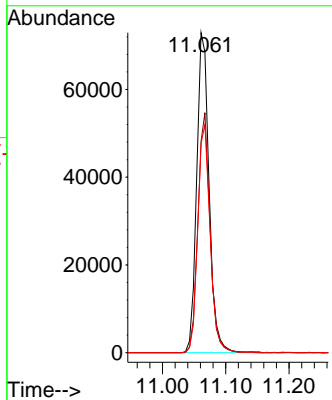
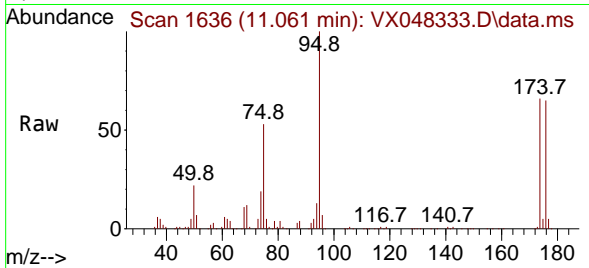




#62
 4-Bromofluorobenzene
 Concen: 54.401 ug/l
 RT: 11.061 min Scan# 11
 Delta R.T. -0.000 min
 Lab File: VX048333.D
 Acq: 23 Oct 2025 17:51

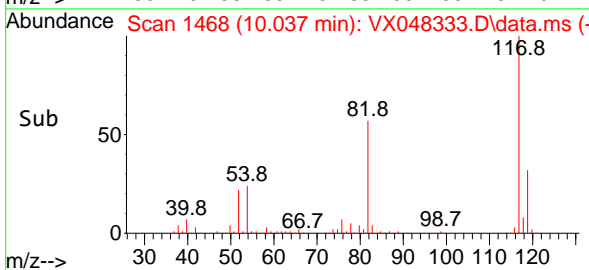
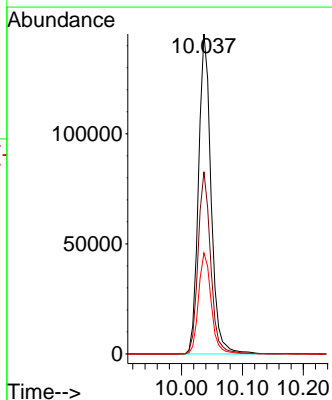
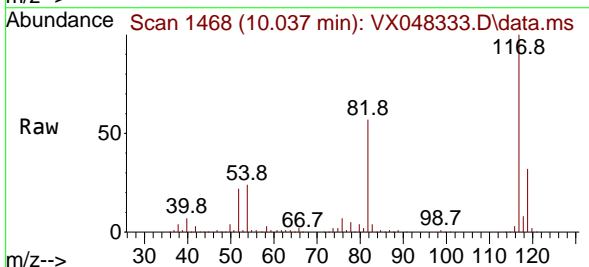
Instrument :
 MSVOA_X
 ClientSampleId :
 SB-3DL

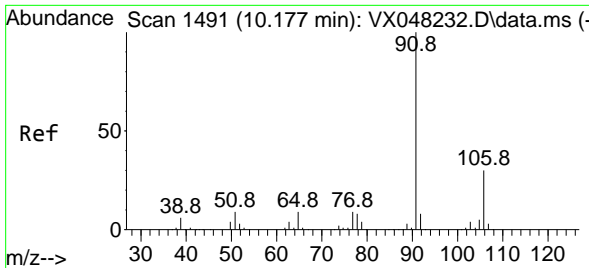
Tgt Ion	Resp	Ion Ratio	Lower	Upper
95	99708	100		
174	73.3	0.0	147.8	
176	71.0	0.0	142.8	



#63
 Chlorobenzene-d5
 Concen: 50.000 ug/l
 RT: 10.037 min Scan# 1468
 Delta R.T. -0.000 min
 Lab File: VX048333.D
 Acq: 23 Oct 2025 17:51

Tgt Ion	Resp	Ion Ratio	Lower	Upper
117	207930	100		
82	57.0	46.5	69.7	
119	31.6	25.9	38.9	

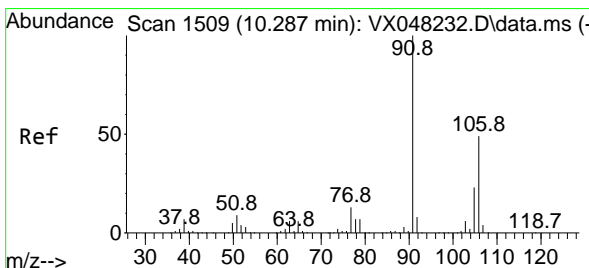
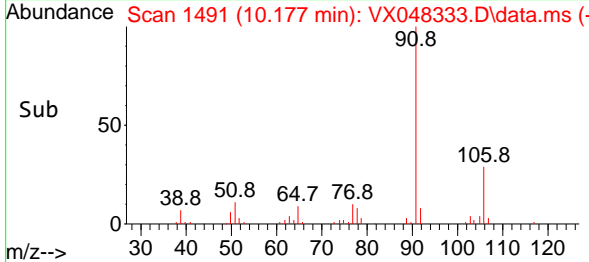
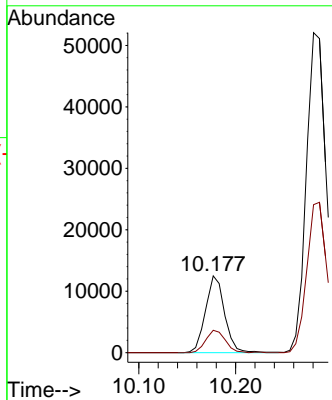
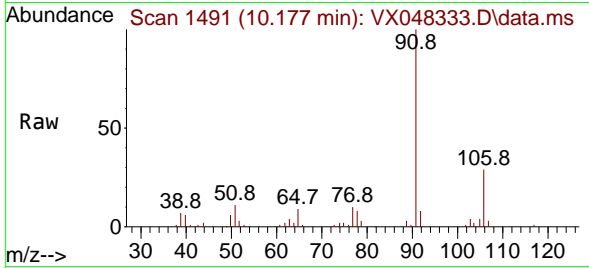




#67
 Ethyl Benzene
 Concen: 2.152 ug/l
 RT: 10.177 min Scan# 1491
 Delta R.T. -0.000 min
 Lab File: VX048333.D
 Acq: 23 Oct 2025 17:51

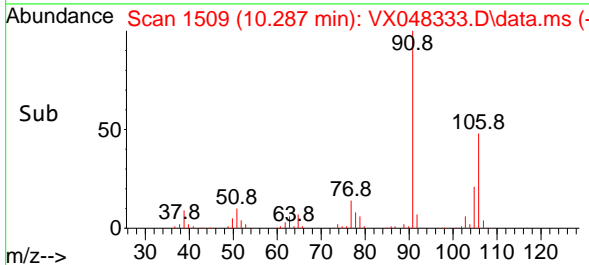
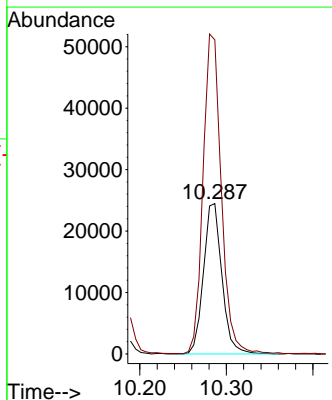
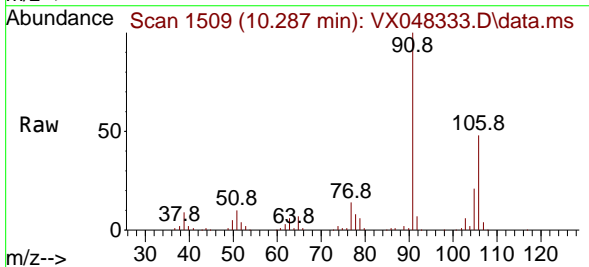
Instrument : MSVOA_X
 ClientSampleId : SB-3DL

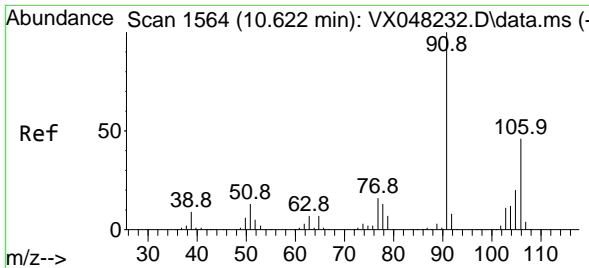
Tgt Ion: 91 Resp: 17141
 Ion Ratio Lower Upper
 91 100
 106 29.2 23.8 35.6



#68
 m/p-Xylenes
 Concen: 12.238 ug/l
 RT: 10.287 min Scan# 1509
 Delta R.T. -0.000 min
 Lab File: VX048333.D
 Acq: 23 Oct 2025 17:51

Tgt Ion: 106 Resp: 36210
 Ion Ratio Lower Upper
 106 100
 91 210.2 167.9 251.9

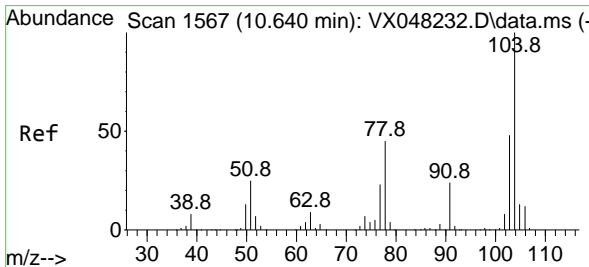
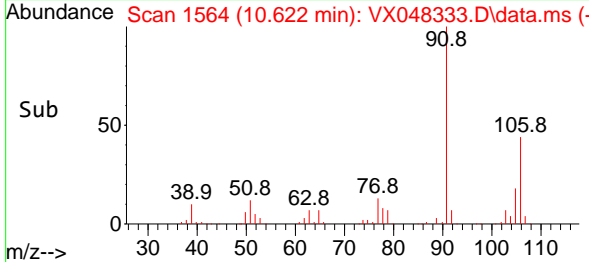
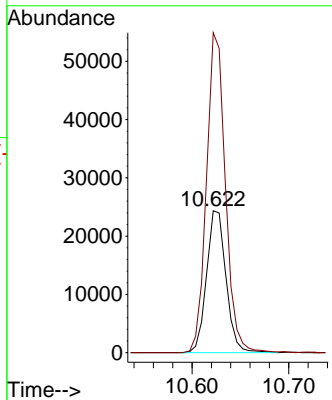
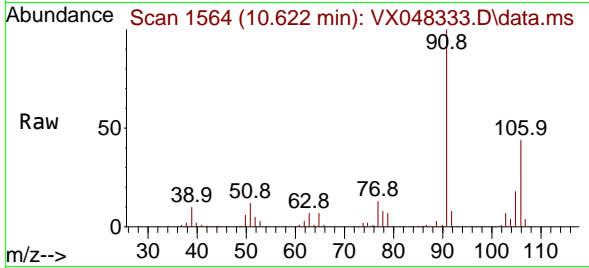




#69
 o-Xylene
 Concen: 11.960 ug/l
 RT: 10.622 min Scan# 11
 Delta R.T. -0.000 min
 Lab File: VX048333.D
 Acq: 23 Oct 2025 17:51

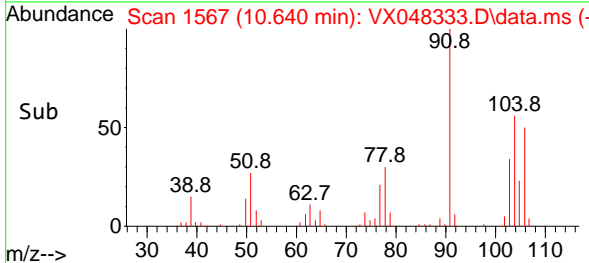
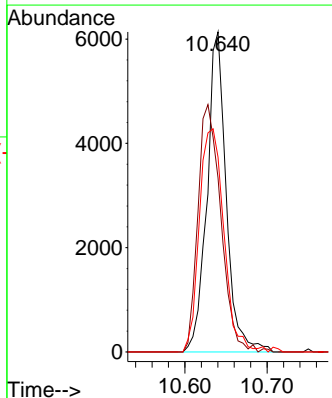
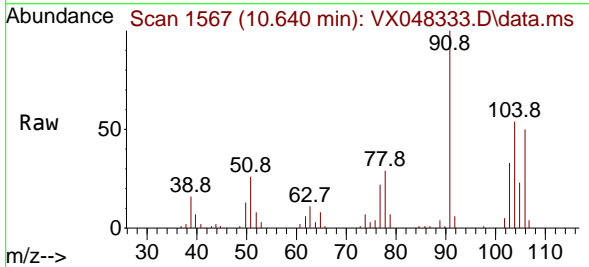
Instrument : MSVOA_X
 ClientSampleId : SB-3DL

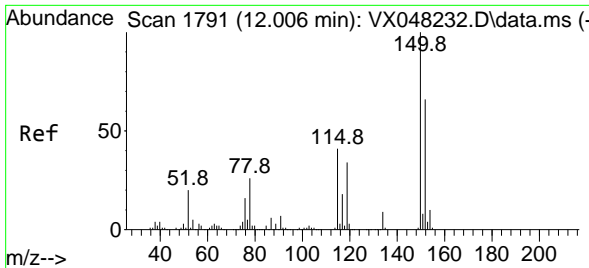
Tgt Ion:106 Resp: 34165
 Ion Ratio Lower Upper
 106 100
 91 219.6 111.3 333.9



#70
 Styrene
 Concen: 2.053 ug/l
 RT: 10.640 min Scan# 1567
 Delta R.T. -0.000 min
 Lab File: VX048333.D
 Acq: 23 Oct 2025 17:51

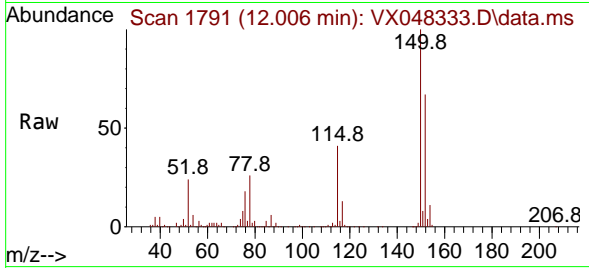
Tgt Ion:104 Resp: 9987
 Ion Ratio Lower Upper
 104 100
 78 92.1 42.2 63.4#
 103 88.9 43.0 64.4#



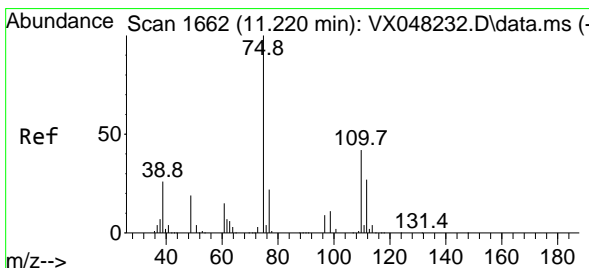
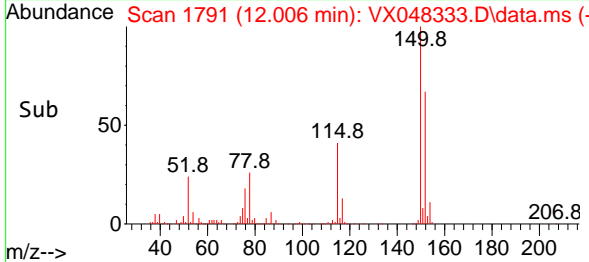
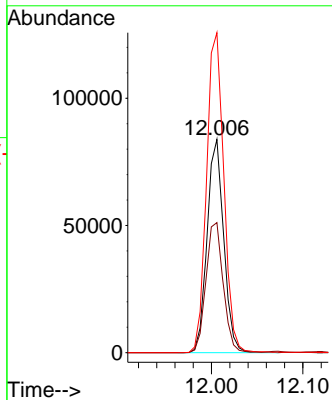


#72
 1,4-Dichlorobenzene-d4
 Concen: 50.000 ug/l
 RT: 12.006 min Scan# 11
 Delta R.T. -0.000 min
 Lab File: VX048333.D
 Acq: 23 Oct 2025 17:51

Instrument : MSVOA_X
 ClientSampleId : SB-3DL

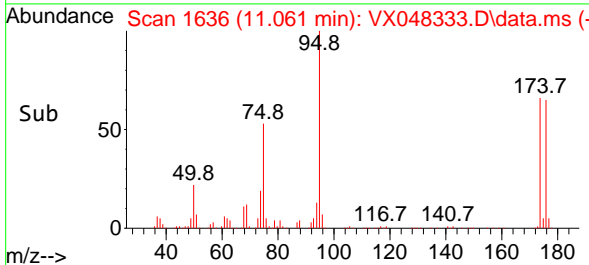
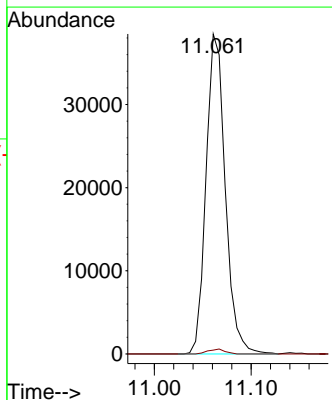
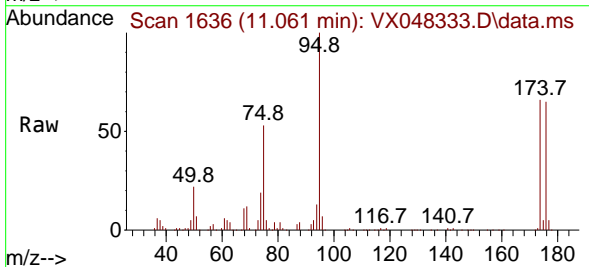


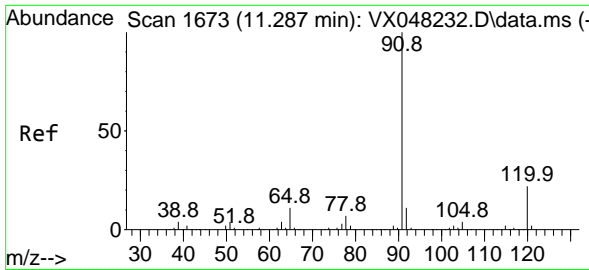
Tgt Ion:152 Resp: 105814
 Ion Ratio Lower Upper
 152 100
 115 63.3 43.1 129.4
 150 155.6 0.0 353.0



#76
 1,2,3-Trichloropropane
 Concen: 31.010 ug/l
 RT: 11.061 min Scan# 1636
 Delta R.T. -0.159 min
 Lab File: VX048333.D
 Acq: 23 Oct 2025 17:51

Tgt Ion: 75 Resp: 53211
 Ion Ratio Lower Upper
 75 100
 77 1.4 22.4 67.2#

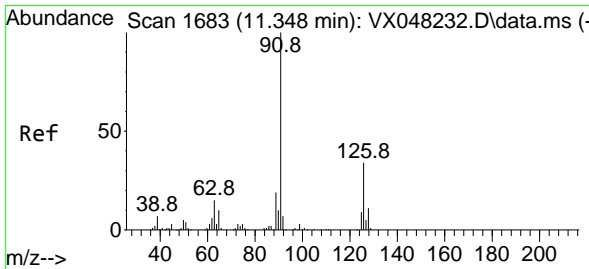
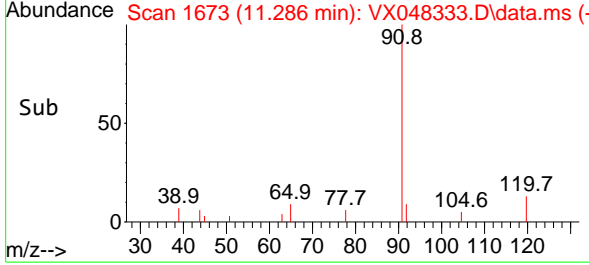
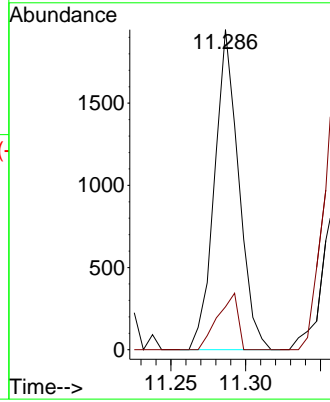
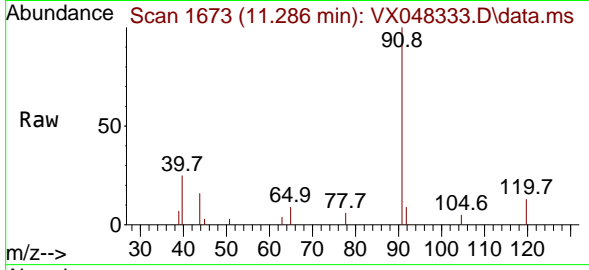




#78
 n-propylbenzene
 Concen: 0.245 ug/l
 RT: 11.286 min Scan# 1673
 Delta R.T. -0.000 min
 Lab File: VX048333.D
 Acq: 23 Oct 2025 17:51

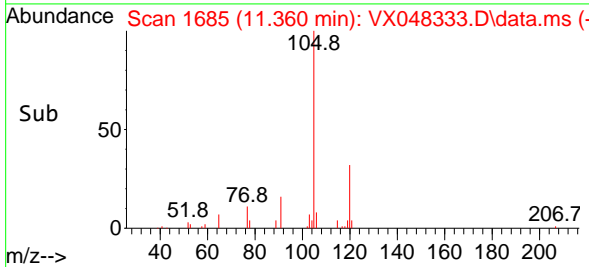
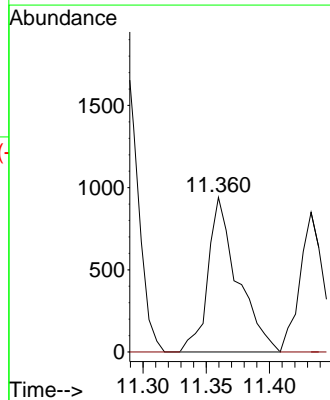
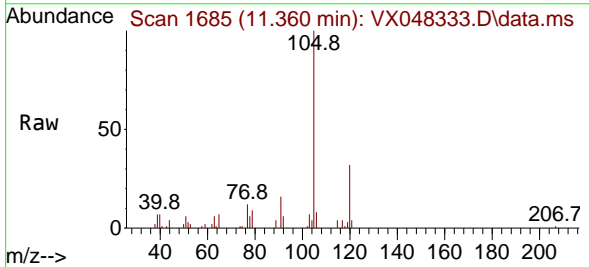
Instrument : MSVOA_X
 ClientSampleId : SB-3DL

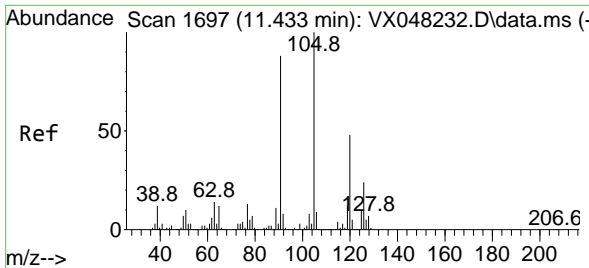
Tgt Ion: 91 Resp: 2195
 Ion Ratio Lower Upper
 91 100
 120 14.8 11.1 33.1



#79
 2-Chlorotoluene
 Concen: 0.284 ug/l
 RT: 11.360 min Scan# 1685
 Delta R.T. 0.012 min
 Lab File: VX048333.D
 Acq: 23 Oct 2025 17:51

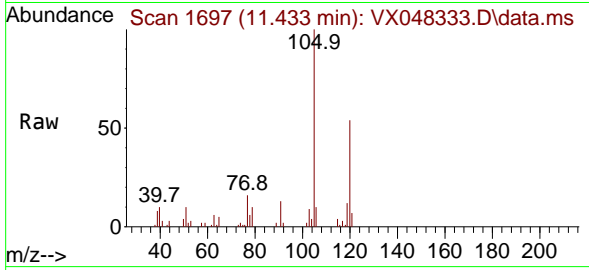
Tgt Ion: 91 Resp: 1539
 Ion Ratio Lower Upper
 91 100
 126 0.0 16.4 49.4#



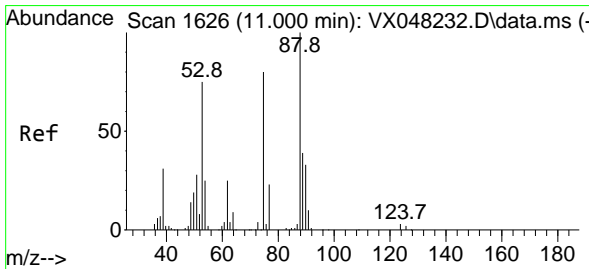
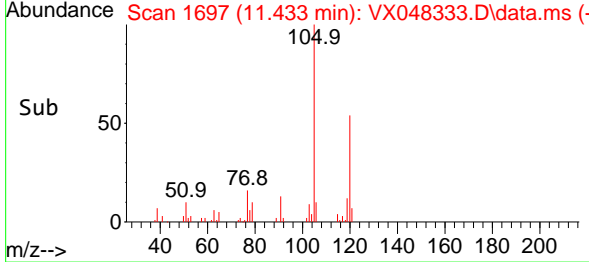
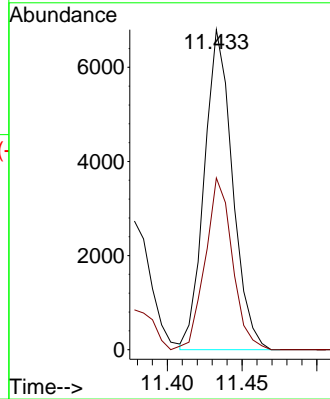


#80
 1,3,5-Trimethylbenzene
 Concen: 1.395 ug/l
 RT: 11.433 min Scan# 11
 Delta R.T. -0.000 min
 Lab File: VX048333.D
 Acq: 23 Oct 2025 17:51

Instrument : MSVOA_X
 ClientSampleId : SB-3DL

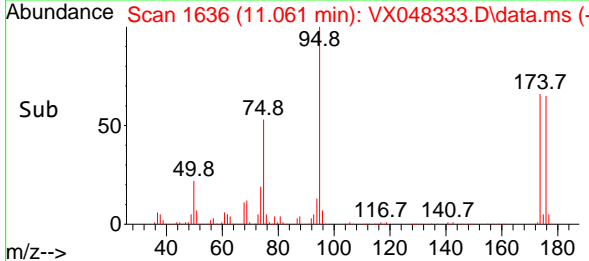
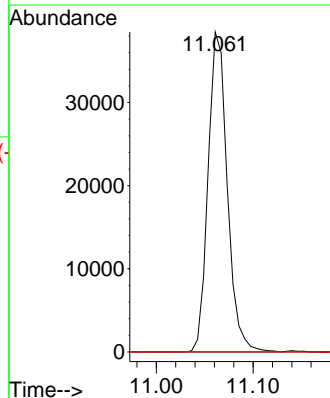
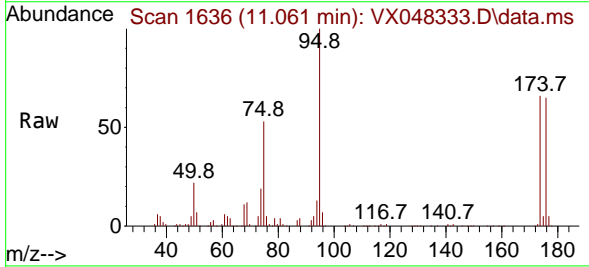


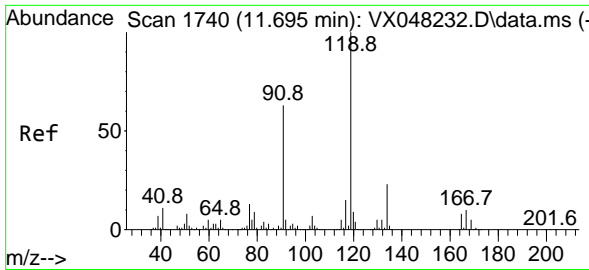
Tgt Ion: 105 Resp: 8920
 Ion Ratio Lower Upper
 105 100
 120 51.6 24.0 72.0



#81
 trans-1,4-Dichloro-2-butene
 Concen: 75.444 ug/l
 RT: 11.061 min Scan# 1636
 Delta R.T. 0.061 min
 Lab File: VX048333.D
 Acq: 23 Oct 2025 17:51

Tgt Ion: 75 Resp: 53211
 Ion Ratio Lower Upper
 75 100
 53 0.0 79.5 119.3#
 89 0.0 36.8 55.2#

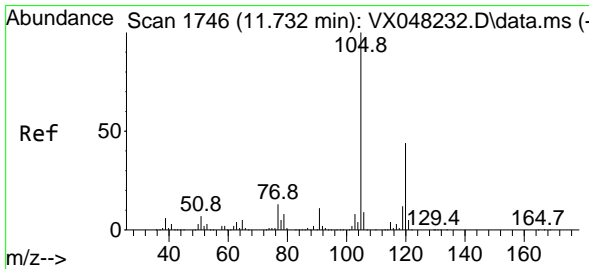
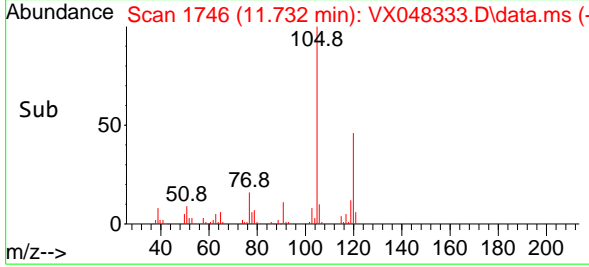
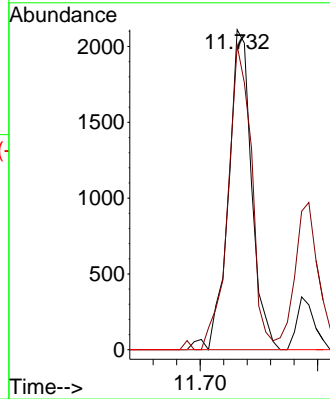
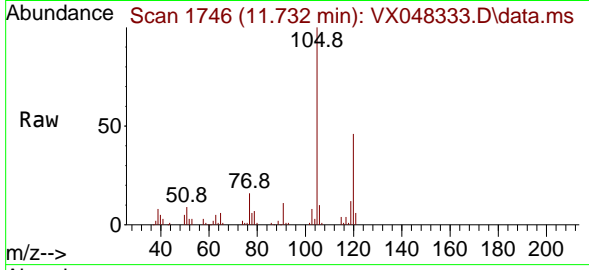




#83
 tert-Butylbenzene
 Concen: 0.441 ug/l
 RT: 11.732 min Scan# 1746
 Delta R.T. 0.036 min
 Lab File: VX048333.D
 Acq: 23 Oct 2025 17:51

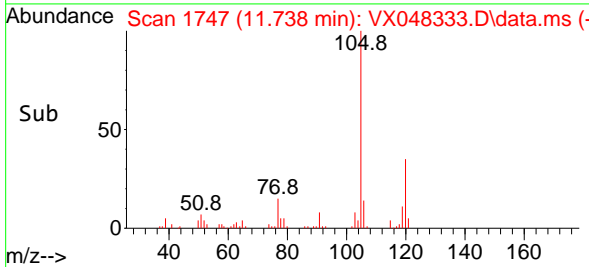
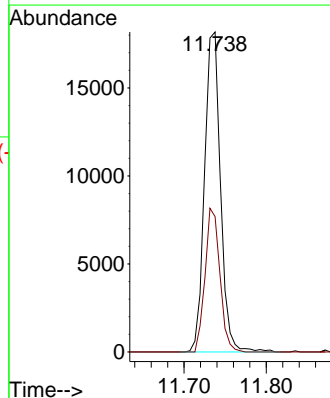
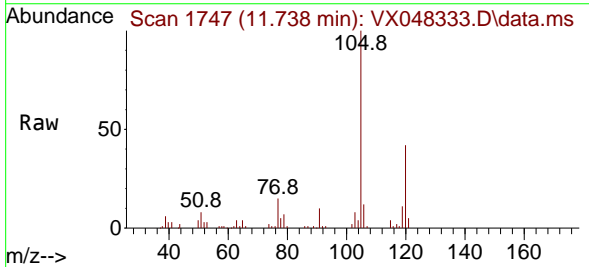
Instrument :
 MSVOA_X
 ClientSampleId :
 SB-3DL

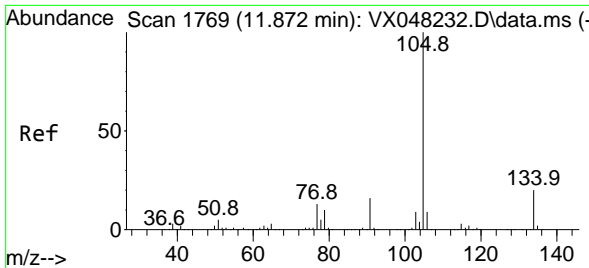
Tgt Ion:119 Resp: 2898
 Ion Ratio Lower Upper
 119 100
 91 96.5 30.3 91.0#
 134 0.0 11.4 34.2#



#84
 1,2,4-Trimethylbenzene
 Concen: 3.838 ug/l
 RT: 11.738 min Scan# 1747
 Delta R.T. 0.006 min
 Lab File: VX048333.D
 Acq: 23 Oct 2025 17:51

Tgt Ion:105 Resp: 24499
 Ion Ratio Lower Upper
 105 100
 120 41.8 22.1 66.5

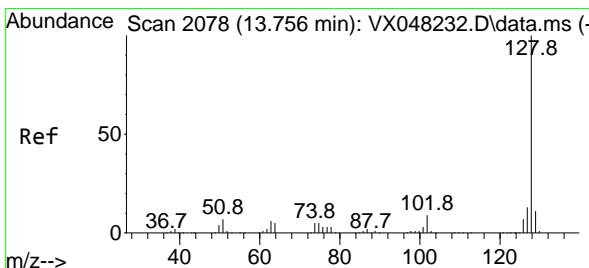
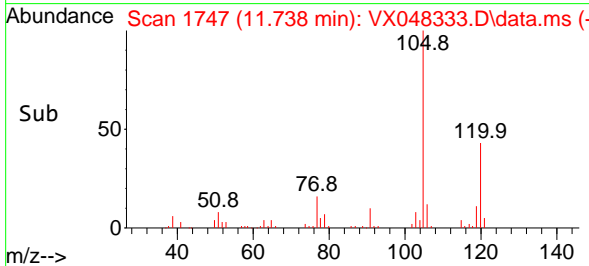
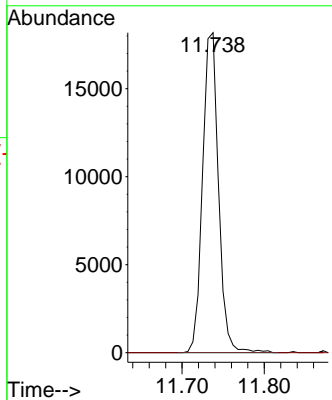
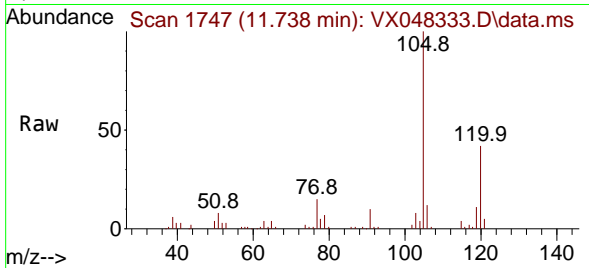




#85
 sec-Butylbenzene
 Concen: 3.099 ug/l
 RT: 11.738 min Scan# 11
 Delta R.T. -0.134 min
 Lab File: VX048333.D
 Acq: 23 Oct 2025 17:51

Instrument : MSVOA_X
 ClientSampleId : SB-3DL

Tgt Ion:105 Resp: 24499
 Ion Ratio Lower Upper
 105 100
 134 0.0 10.1 30.1#



#95
 Naphthalene
 Concen: 21.144 ug/l
 RT: 13.756 min Scan# 2078
 Delta R.T. -0.000 min
 Lab File: VX048333.D
 Acq: 23 Oct 2025 17:51

Tgt Ion:128 Resp: 129936
 Ion Ratio Lower Upper
 128 100
 127 12.9 10.2 15.4
 129 11.0 8.6 12.8

