

Data Path : Z:\voasrv\HPCHEM1\MSVOA\_X\Data\VX102325\  
 Data File : VX048335.D  
 Acq On : 23 Oct 2025 18:32  
 Operator : JC/MD  
 Sample : Q3388-01  
 Misc : 1.00g/10mL/100uL/5.00mL/MSVOA\_X/MEOH  
 ALS Vial : 27 Sample Multiplier: 1

Instrument :  
 MSVOA\_X  
 ClientSampleId :

Quant Time: Oct 24 05:51:45 2025  
 Quant Method : Z:\voasrv\HPCHEM1\MSVOA\_X\Method\82X102025W.M  
 Quant Title : SW846 8260  
 QLast Update : Mon Oct 20 14:13:59 2025  
 Response via : Initial Calibration

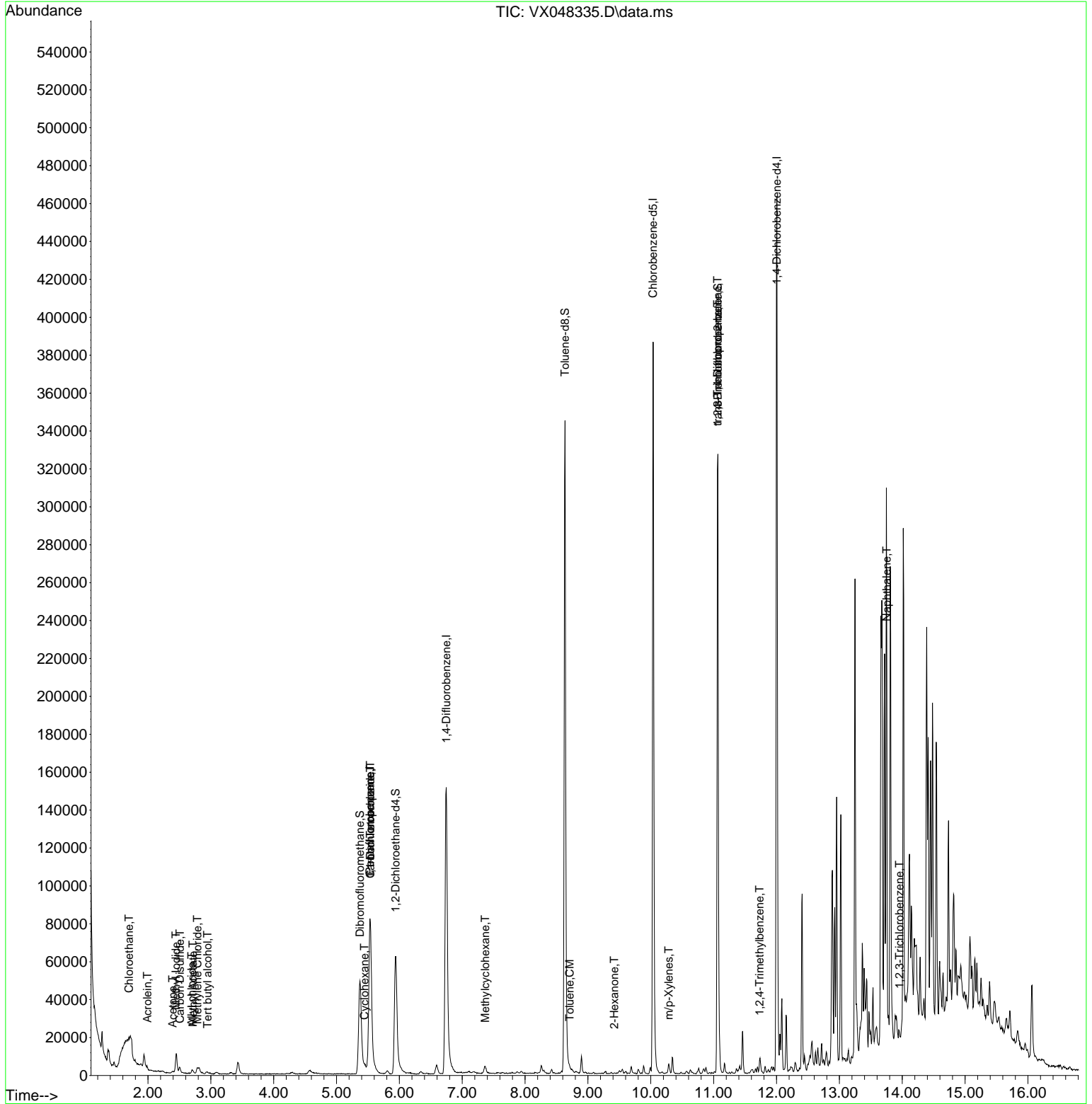
Compound	R.T.	QIon	Response	Conc	Units	Dev(Min)
-----						
Internal Standards						
1) Pentafluorobenzene	5.531	168	85331	50.000	ug/l	-0.01
34) 1,4-Difluorobenzene	6.744	114	173055	50.000	ug/l	0.00
63) Chlorobenzene-d5	10.036	117	180555	50.000	ug/l	0.00
72) 1,4-Dichlorobenzene-d4	12.006	152	94013	50.000	ug/l	0.00
System Monitoring Compounds						
33) 1,2-Dichloroethane-d4	5.940	65	73930	61.794	ug/l	0.00
Spiked Amount	50.000	Range 78 - 117	Recovery	=	123.580%#	
35) Dibromofluoromethane	5.373	113	50423	42.679	ug/l	0.00
Spiked Amount	50.000	Range 75 - 124	Recovery	=	85.360%	
50) Toluene-d8	8.634	98	214604	51.823	ug/l	0.00
Spiked Amount	50.000	Range 92 - 112	Recovery	=	103.640%	
62) 4-Bromofluorobenzene	11.067	95	94671	60.094	ug/l	0.00
Spiked Amount	50.000	Range 83 - 123	Recovery	=	120.180%	
Target Compounds						
						Qvalue
6) Chloroethane	1.696	64	169	0.379	ug/l #	66
10) Methyl Iodide	2.446	142	12182	10.523	ug/l	95
11) Tert butyl alcohol	2.946	59	624	5.253	ug/l #	72
13) Acrolein	1.989	56	28	0.231	ug/l #	1
14) Allyl chloride	2.696	41	327	0.220	ug/l #	37
16) Acetone	2.391	43	1743	4.247	ug/l	96
17) Carbon Disulfide	2.507	76	3919	1.388	ug/l	97
18) Methyl Acetate	2.715	43	3331	3.886	ug/l #	73
20) Methylene Chloride	2.788	84	1466	1.466	ug/l #	87
31) Cyclohexane	5.446	56	958	0.645	ug/l #	82
36) 1,1-Dichloropropene	5.537	75	7499	4.466	ug/l #	42
38) Carbon Tetrachloride	5.537	117	9106	4.395	ug/l #	14
39) Methylcyclohexane	7.366	83	1750	0.882	ug/l #	89
52) Toluene	8.707	92	871	0.281	ug/l	94
59) 2-Hexanone	9.421	43	190	0.207	ug/l #	26
68) m/p-Xylenes	10.286	106	1146	0.446	ug/l	93
76) 1,2,3-Trichloropropane	11.061	75	51444	33.743	ug/l #	34
81) trans-1,4-Dichloro-2-b...	11.061	75	51444	82.095	ug/l #	10
84) 1,2,4-Trimethylbenzene	11.731	105	3024	0.533	ug/l	98
95) Naphthalene	13.755	128	4595	0.842	ug/l #	68
96) 1,2,3-Trichlorobenzene	13.956	180	461	0.244	ug/l #	1
-----						

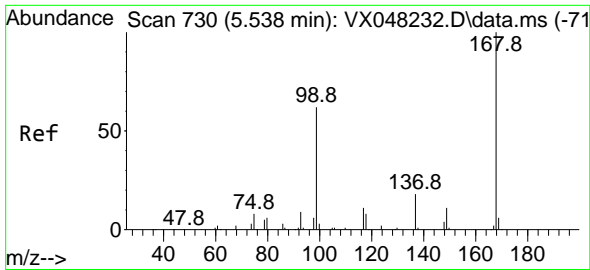
(#) = qualifier out of range (m) = manual integration (+) = signals summed

Data Path : Z:\voasrv\HPCHEM1\MSVOA\_X\Data\VX102325\  
 Data File : VX048335.D  
 Acq On : 23 Oct 2025 18:32  
 Operator : JC/MD  
 Sample : Q3388-01  
 Misc : 1.00g/10mL/100uL/5.00mL/MSVOA\_X/MEOH  
 ALS Vial : 27 Sample Multiplier: 1

Instrument :  
 MSVOA\_X  
 ClientSampleId :

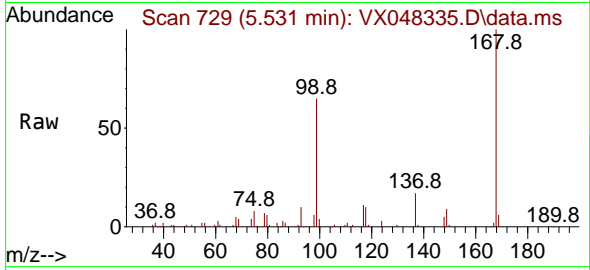
Quant Time: Oct 24 05:51:45 2025  
 Quant Method : Z:\voasrv\HPCHEM1\MSVOA\_X\Method\82X102025W.M  
 Quant Title : SW846 8260  
 QLast Update : Mon Oct 20 14:13:59 2025  
 Response via : Initial Calibration



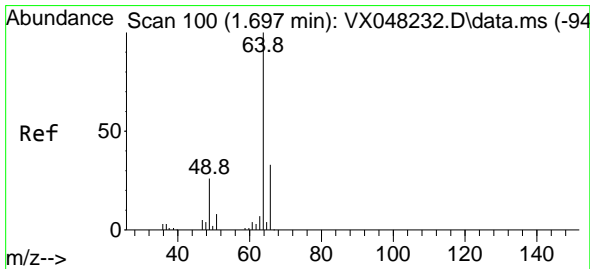
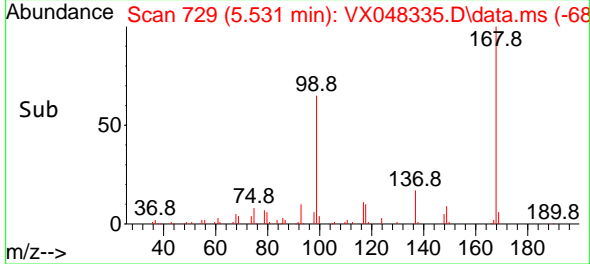
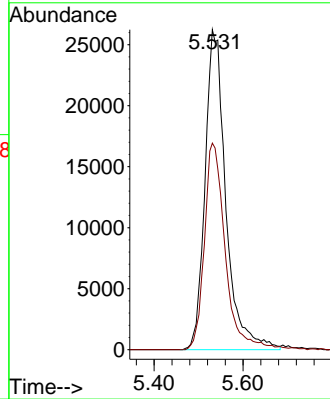


#1  
 Pentafluorobenzene  
 Concen: 50.000 ug/l  
 RT: 5.531 min Scan# 71  
 Delta R.T. -0.013 min  
 Lab File: VX048335.D  
 Acq: 23 Oct 2025 18:32

Instrument :  
 MSVOA\_X  
 ClientSampleId :

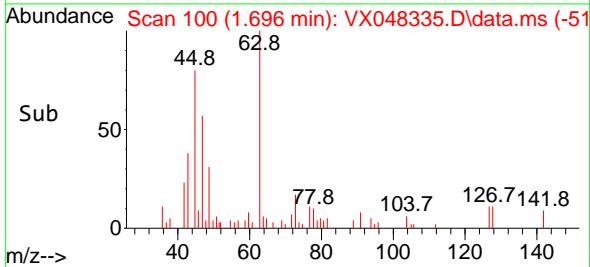
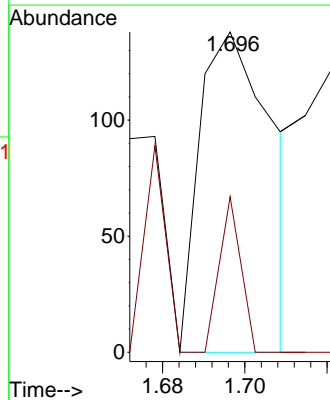
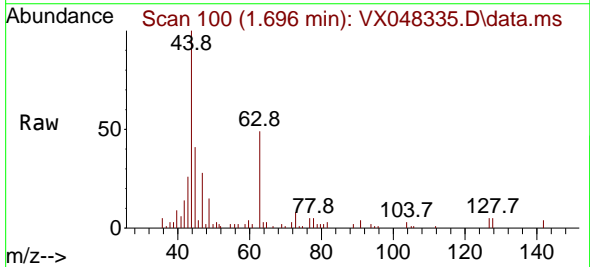


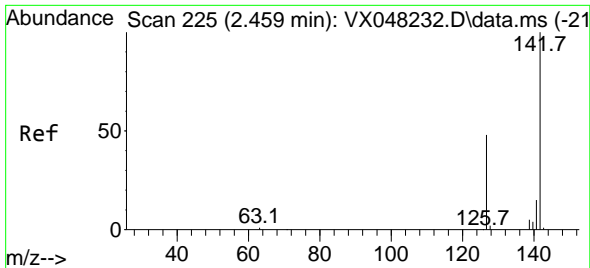
Tgt Ion:168 Resp: 85331  
 Ion Ratio Lower Upper  
 168 100  
 99 64.5 46.4 69.6



#6  
 Chloroethane  
 Concen: 0.379 ug/l  
 RT: 1.696 min Scan# 100  
 Delta R.T. -0.000 min  
 Lab File: VX048335.D  
 Acq: 23 Oct 2025 18:32

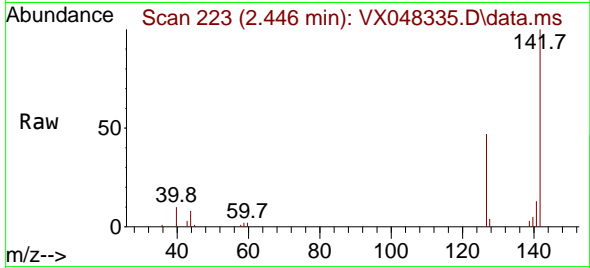
Tgt Ion: 64 Resp: 169  
 Ion Ratio Lower Upper  
 64 100  
 66 48.6 23.9 35.9#



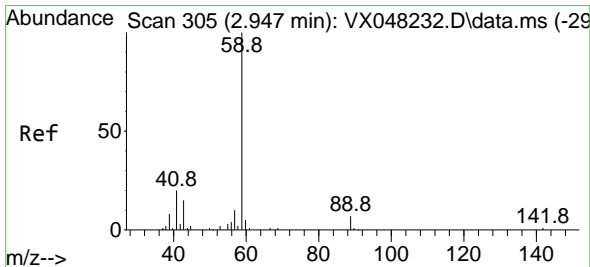
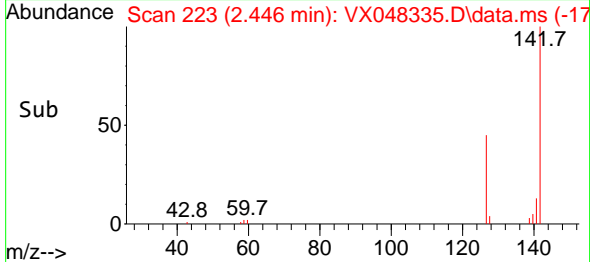
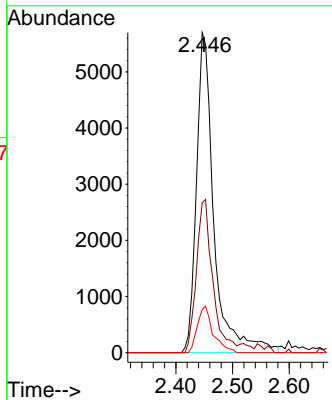


#10  
 Methyl Iodide  
 Concen: 10.523 ug/l  
 RT: 2.446 min Scan# 21  
 Delta R.T. -0.013 min  
 Lab File: VX048335.D  
 Acq: 23 Oct 2025 18:32

Instrument :  
 MSVOA\_X  
 ClientSampleId :

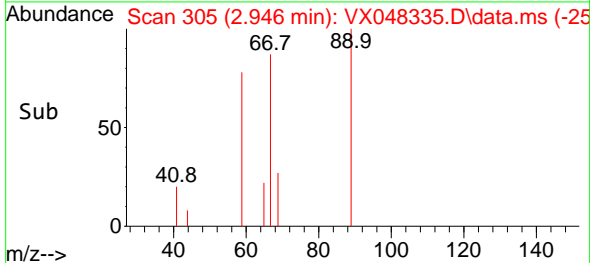
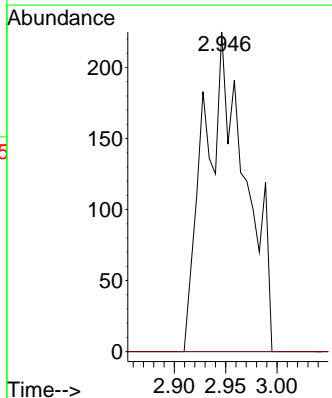
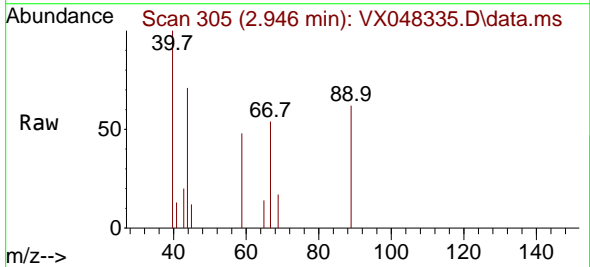


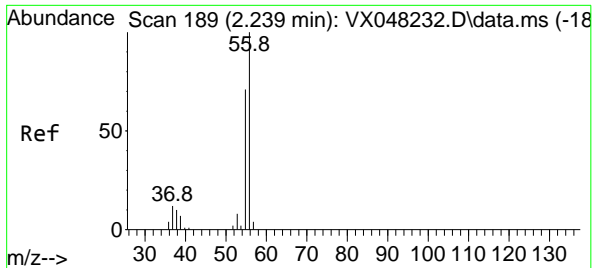
Tgt Ion:142 Resp: 12182  
 Ion Ratio Lower Upper  
 142 100  
 127 44.6 38.5 57.7  
 141 13.0 11.6 17.4



#11  
 Tert butyl alcohol  
 Concen: 5.253 ug/l  
 RT: 2.946 min Scan# 305  
 Delta R.T. 0.006 min  
 Lab File: VX048335.D  
 Acq: 23 Oct 2025 18:32

Tgt Ion: 59 Resp: 624  
 Ion Ratio Lower Upper  
 59 100  
 57 0.0 8.2 12.4#

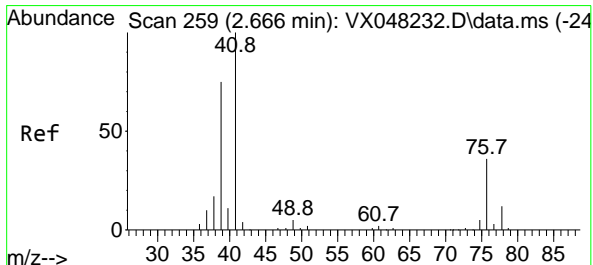
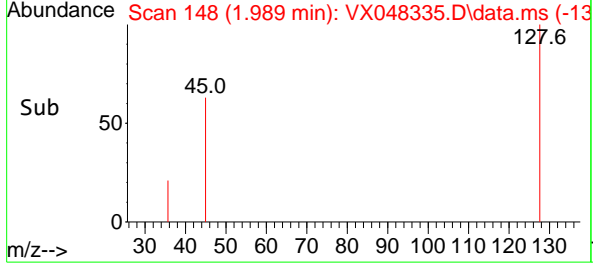
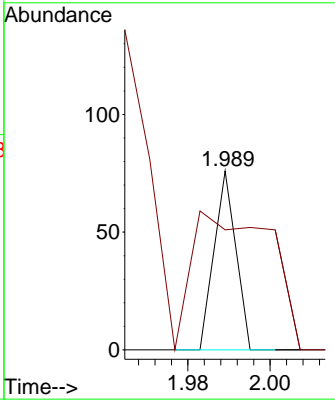
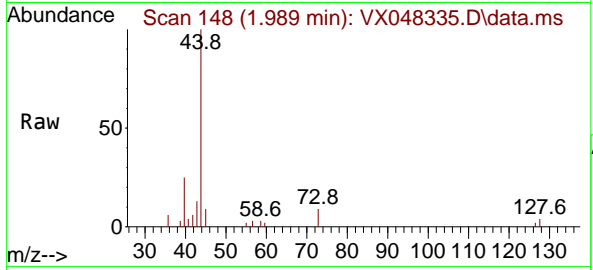




#13  
 Acrolein  
 Concen: 0.231 ug/l  
 RT: 1.989 min Scan# 14  
 Delta R.T. -0.244 min  
 Lab File: VX048335.D  
 Acq: 23 Oct 2025 18:32

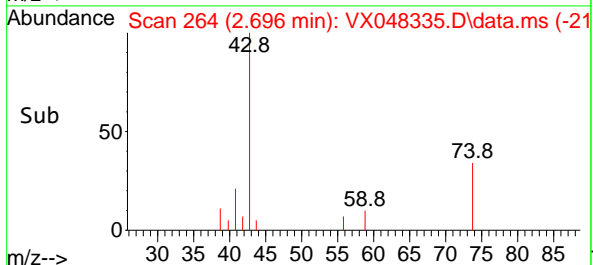
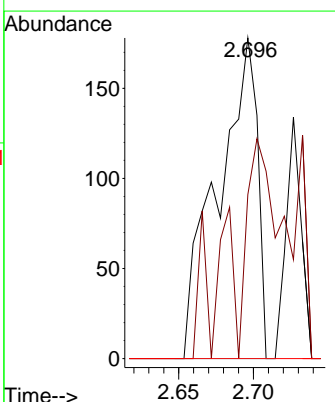
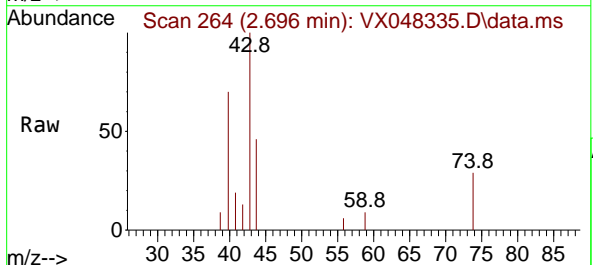
Instrument : MSVOA\_X  
 ClientSampleId :

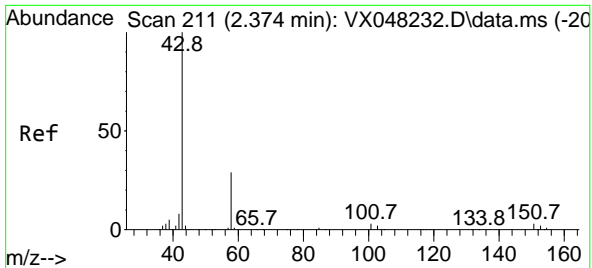
Tgt Ion	Resp	Lower	Upper
56	100		
55	278.6	56.1	84.1#



#14  
 Allyl chloride  
 Concen: 0.220 ug/l  
 RT: 2.696 min Scan# 264  
 Delta R.T. 0.030 min  
 Lab File: VX048335.D  
 Acq: 23 Oct 2025 18:32

Tgt Ion	Resp	Lower	Upper
41	100		
39	16.8	56.0	84.0#
76	0.0	27.5	41.3#

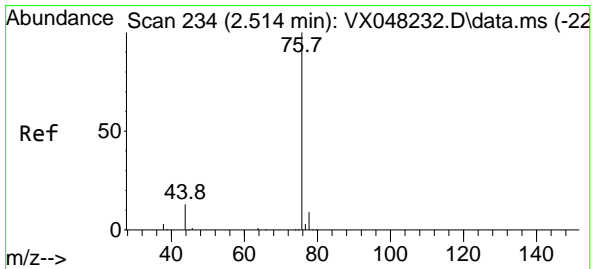
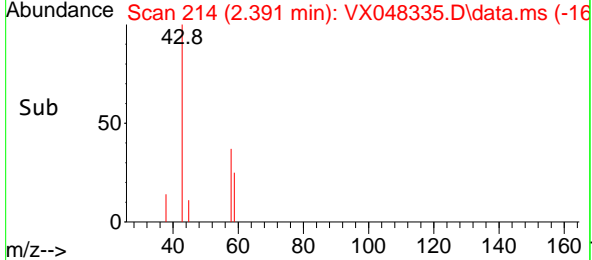
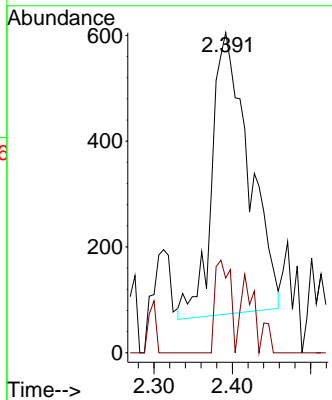
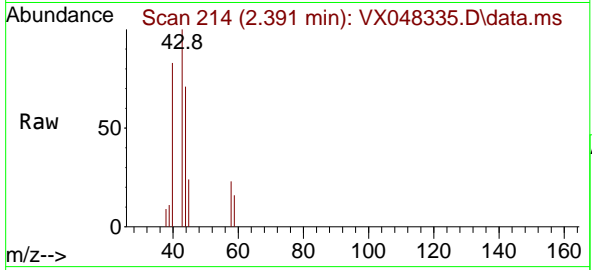




#16  
 Acetone  
 Concen: 4.247 ug/l  
 RT: 2.391 min Scan# 211  
 Delta R.T. 0.018 min  
 Lab File: VX048335.D  
 Acq: 23 Oct 2025 18:32

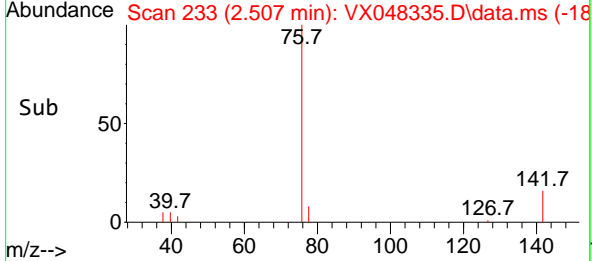
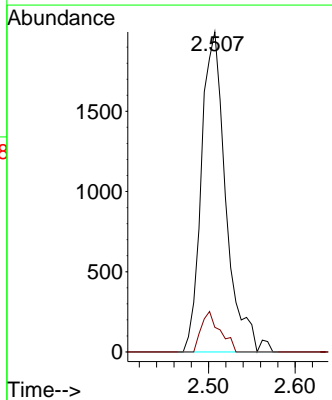
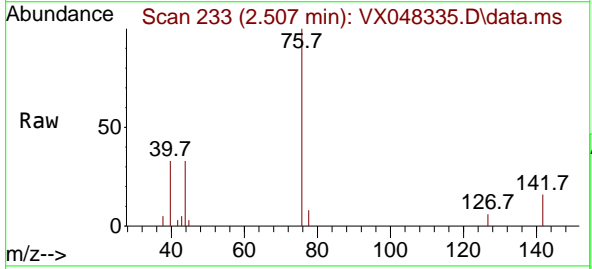
Instrument : MSVOA\_X  
 ClientSampleId :

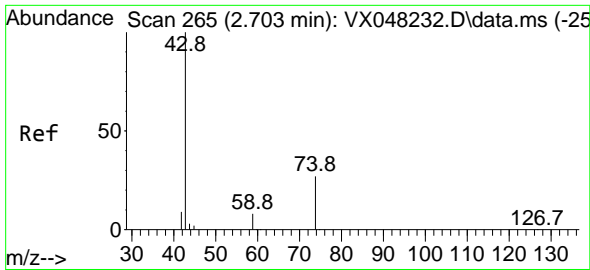
Tgt Ion: 43 Resp: 1743  
 Ion Ratio Lower Upper  
 43 100  
 58 27.1 23.4 35.2



#17  
 Carbon Disulfide  
 Concen: 1.388 ug/l  
 RT: 2.507 min Scan# 233  
 Delta R.T. -0.007 min  
 Lab File: VX048335.D  
 Acq: 23 Oct 2025 18:32

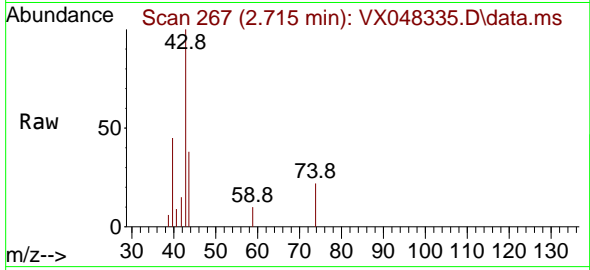
Tgt Ion: 76 Resp: 3919  
 Ion Ratio Lower Upper  
 76 100  
 78 7.7 7.1 10.7



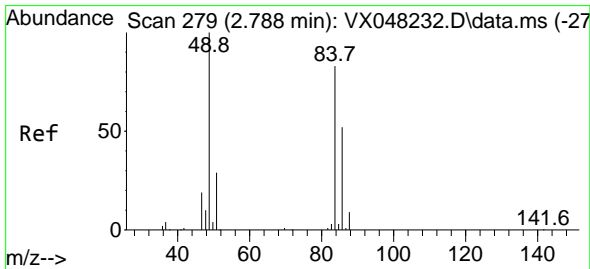
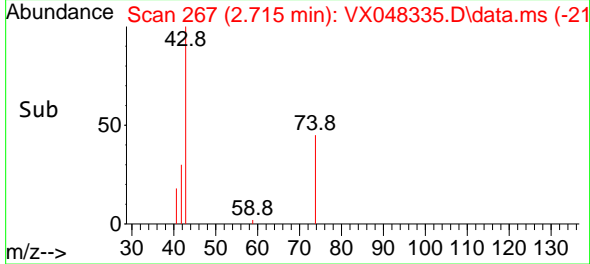
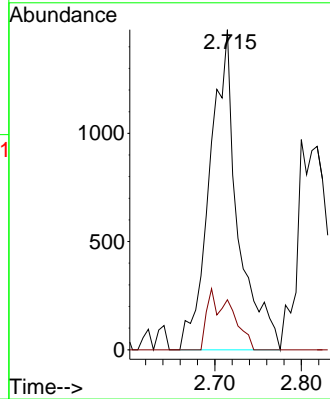


#18  
 Methyl Acetate  
 Concen: 3.886 ug/l  
 RT: 2.715 min Scan# 20  
 Delta R.T. 0.018 min  
 Lab File: VX048335.D  
 Acq: 23 Oct 2025 18:32

Instrument :  
 MSVOA\_X  
 ClientSampleId :

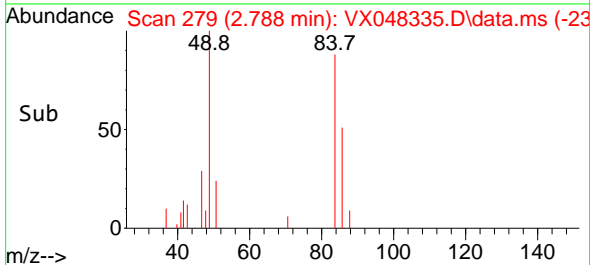
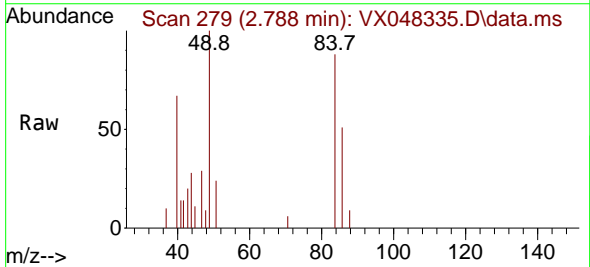
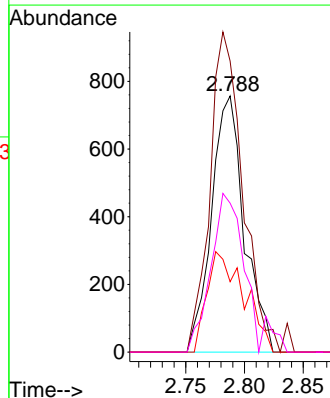


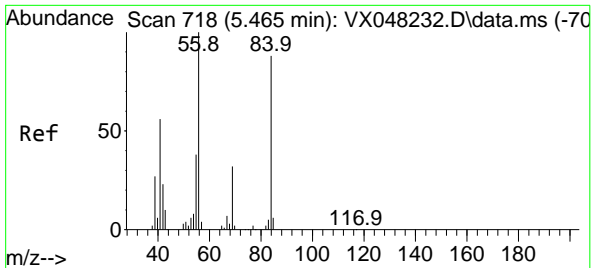
Tgt Ion: 43 Resp: 3331  
 Ion Ratio Lower Upper  
 43 100  
 74 8.9 17.5 26.3#



#20  
 Methylene Chloride  
 Concen: 1.466 ug/l  
 RT: 2.788 min Scan# 279  
 Delta R.T. -0.000 min  
 Lab File: VX048335.D  
 Acq: 23 Oct 2025 18:32

Tgt Ion: 84 Resp: 1466  
 Ion Ratio Lower Upper  
 84 100  
 49 113.6 104.1 156.1  
 51 27.5 31.3 46.9#  
 86 58.1 51.3 76.9

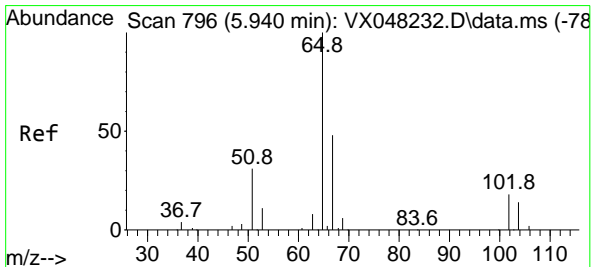
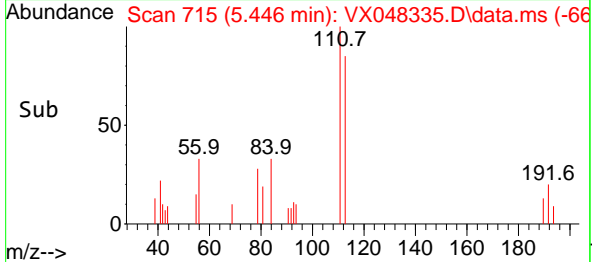
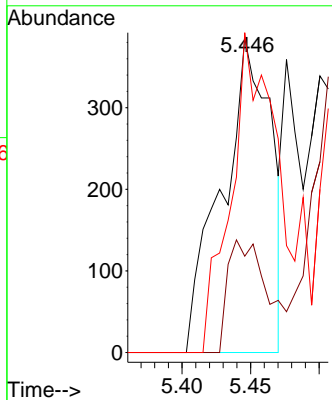
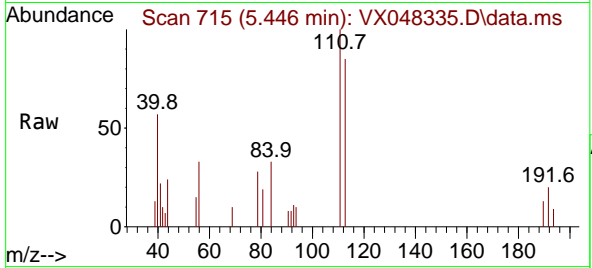




#31  
 Cyclohexane  
 Concen: 0.645 ug/l  
 RT: 5.446 min Scan# 715  
 Delta R.T. -0.013 min  
 Lab File: VX048335.D  
 Acq: 23 Oct 2025 18:32

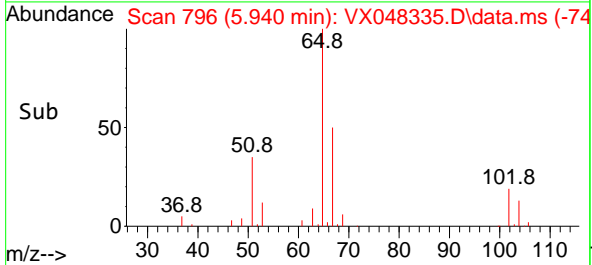
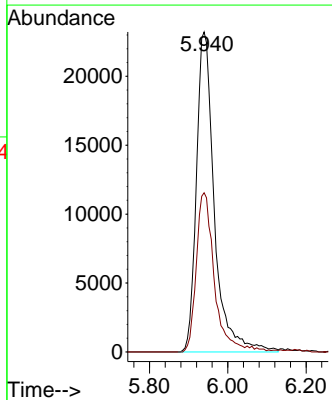
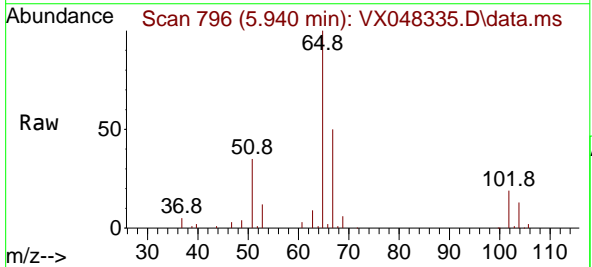
Instrument : MSVOA\_X  
 ClientSampleId :

Tgt Ion	Resp	Lower	Upper
56	100		
69	30.6	23.0	34.6
84	101.6	64.6	97.0

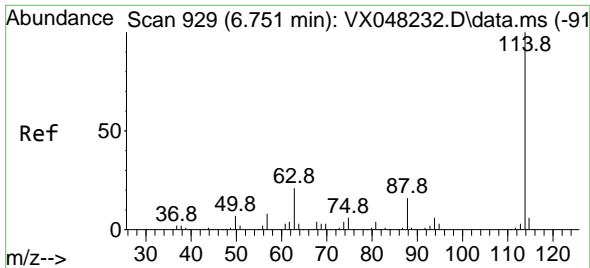


#33  
 1,2-Dichloroethane-d4  
 Concen: 61.794 ug/l  
 RT: 5.940 min Scan# 796  
 Delta R.T. -0.000 min  
 Lab File: VX048335.D  
 Acq: 23 Oct 2025 18:32

Tgt Ion	Resp	Lower	Upper
65	100		
67	49.3	0.0	105.0

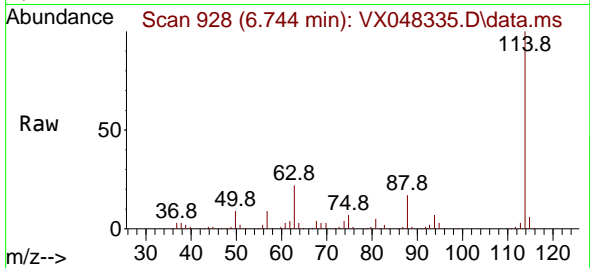




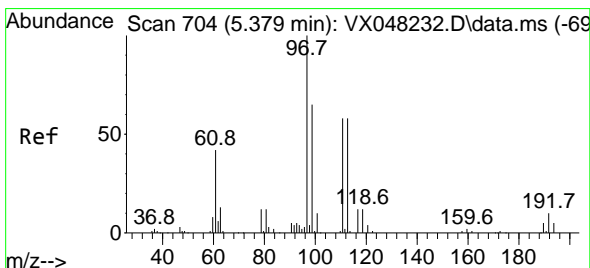
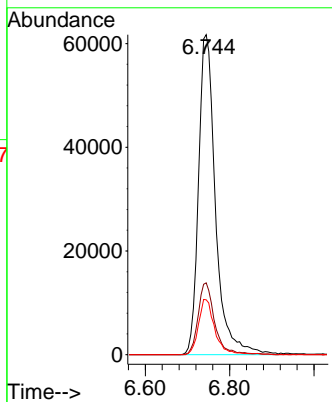
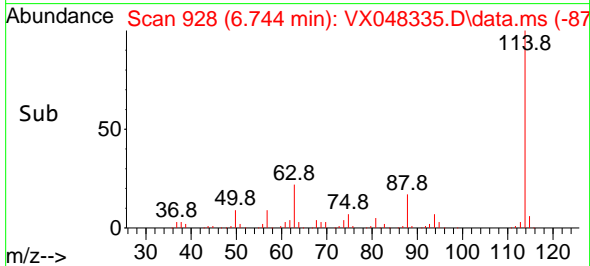


#34  
 1,4-Difluorobenzene  
 Concen: 50.000 ug/l  
 RT: 6.744 min Scan# 91  
 Delta R.T. -0.001 min  
 Lab File: VX048335.D  
 Acq: 23 Oct 2025 18:32

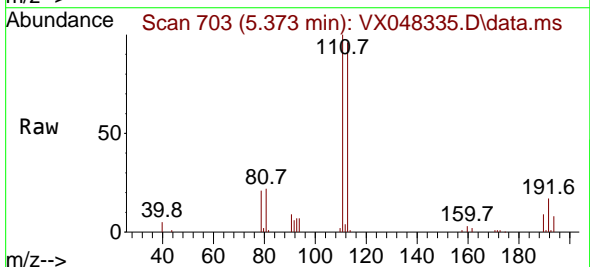
Instrument :  
 MSVOA\_X  
 ClientSampleId :



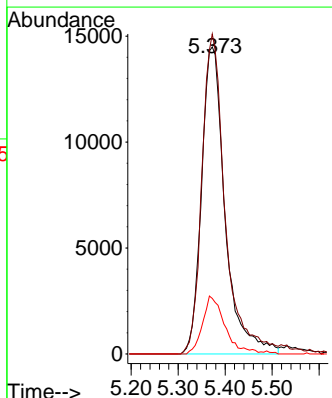
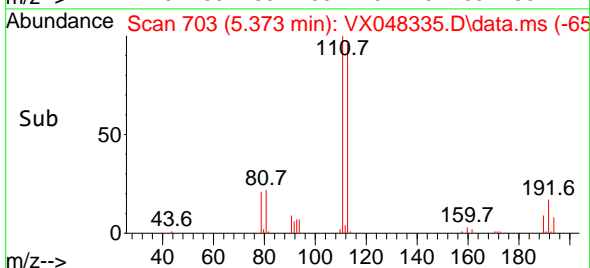
Tgt Ion:114 Resp: 173055  
 Ion Ratio Lower Upper  
 114 100  
 63 22.5 0.0 43.2  
 88 17.1 0.0 33.6

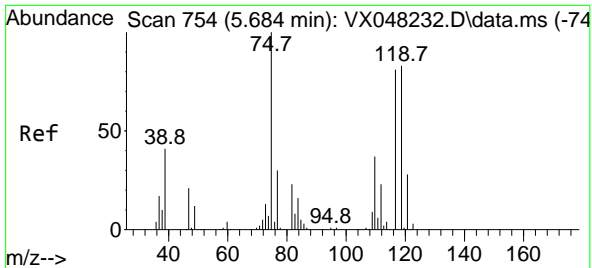


#35  
 Dibromofluoromethane  
 Concen: 42.679 ug/l  
 RT: 5.373 min Scan# 703  
 Delta R.T. -0.000 min  
 Lab File: VX048335.D  
 Acq: 23 Oct 2025 18:32



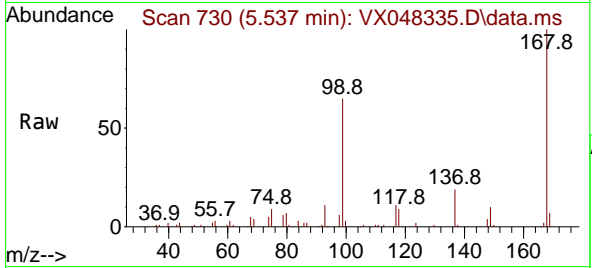
Tgt Ion:113 Resp: 50423  
 Ion Ratio Lower Upper  
 113 100  
 111 102.7 82.2 123.4  
 192 17.9 15.1 22.7



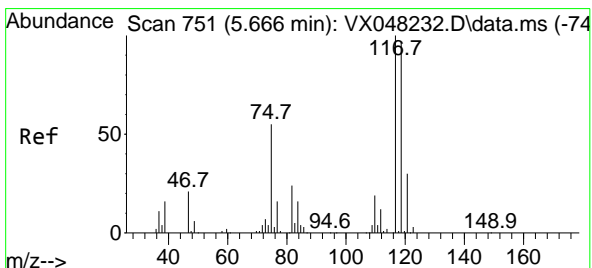
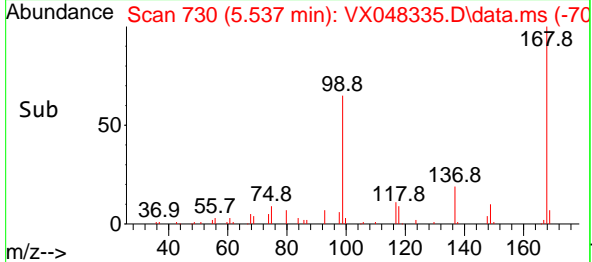
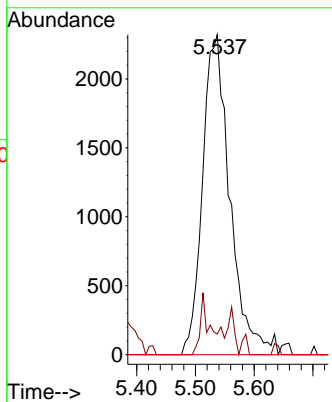


#36  
 1,1-Dichloropropene  
 Concen: 4.466 ug/l  
 RT: 5.537 min Scan# 710  
 Delta R.T. -0.147 min  
 Lab File: VX048335.D  
 Acq: 23 Oct 2025 18:32

Instrument : MSVOA\_X  
 ClientSampleId :

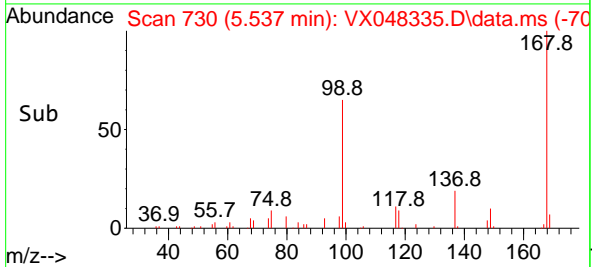
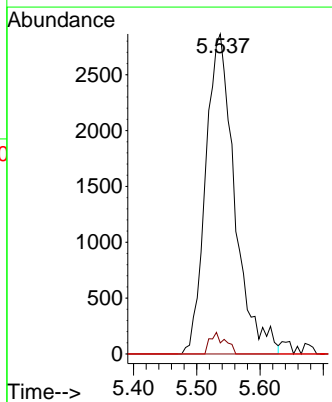
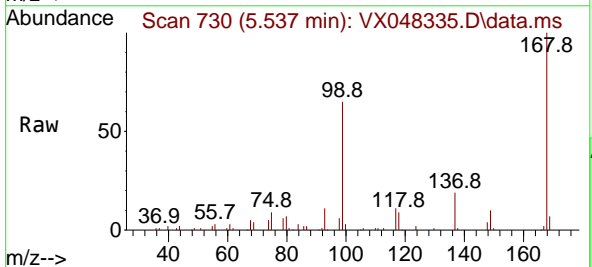


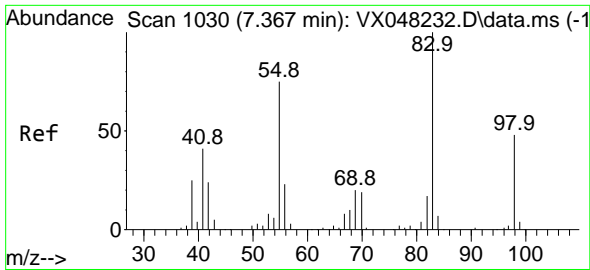
Tgt Ion: 75 Resp: 7499  
 Ion Ratio Lower Upper  
 75 100  
 110 0.0 17.7 53.1#  
 77 0.0 24.3 36.5#



#38  
 Carbon Tetrachloride  
 Concen: 4.395 ug/l  
 RT: 5.537 min Scan# 730  
 Delta R.T. -0.128 min  
 Lab File: VX048335.D  
 Acq: 23 Oct 2025 18:32

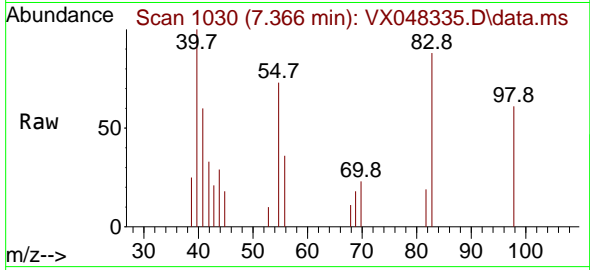
Tgt Ion:117 Resp: 9106  
 Ion Ratio Lower Upper  
 117 100  
 119 3.5 77.2 115.8#  
 121 0.0 24.8 37.2#



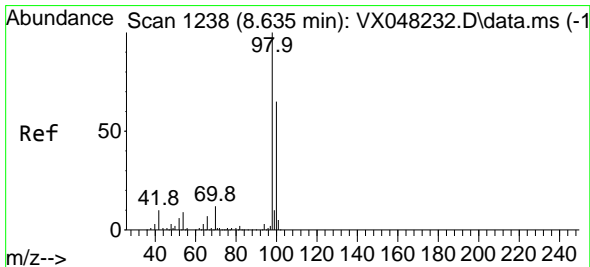
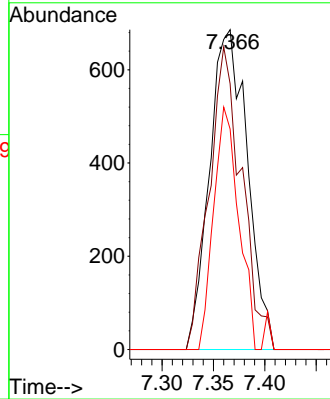
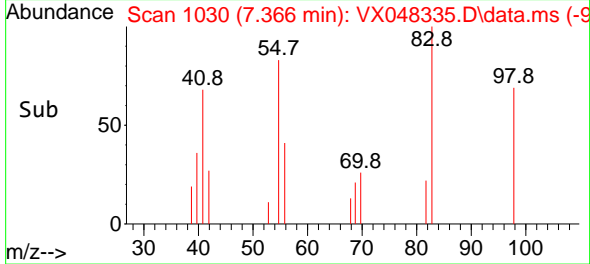


#39  
 Methylcyclohexane  
 Concen: 0.882 ug/l  
 RT: 7.366 min Scan# 10  
 Delta R.T. -0.000 min  
 Lab File: VX048335.D  
 Acq: 23 Oct 2025 18:32

Instrument : MSVOA\_X  
 ClientSampleId :

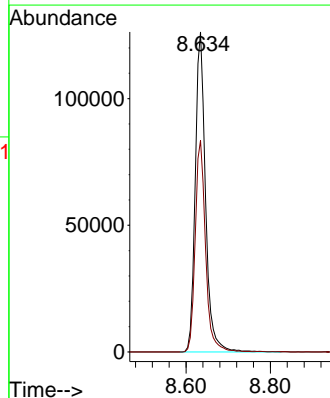
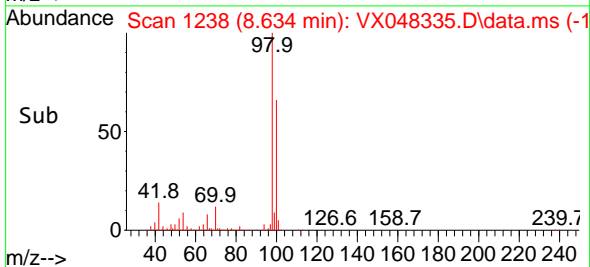
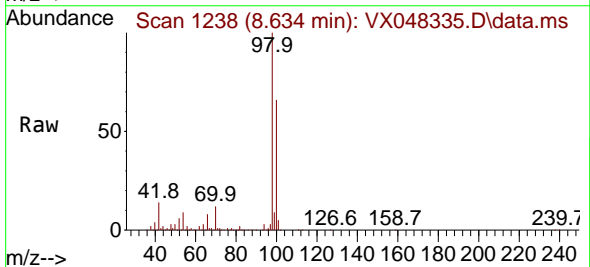


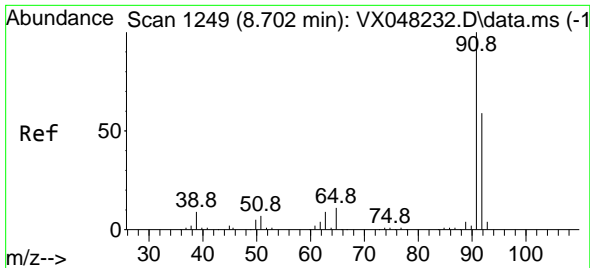
Tgt Ion: 83 Resp: 1750  
 Ion Ratio Lower Upper  
 83 100  
 55 83.1 66.2 99.2  
 98 69.0 38.9 58.3#



#50  
 Toluene-d8  
 Concen: 51.823 ug/l  
 RT: 8.634 min Scan# 1238  
 Delta R.T. -0.000 min  
 Lab File: VX048335.D  
 Acq: 23 Oct 2025 18:32

Tgt Ion: 98 Resp: 214604  
 Ion Ratio Lower Upper  
 98 100  
 100 66.5 53.0 79.4

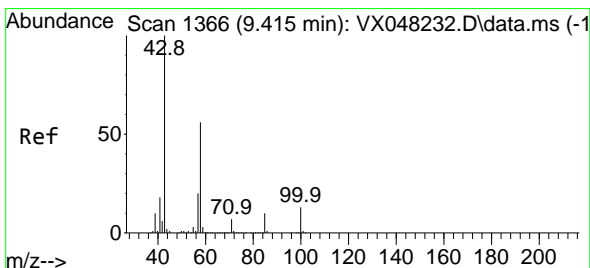
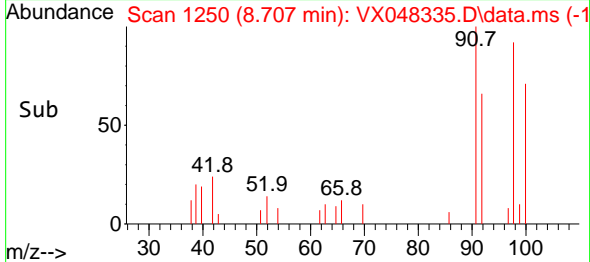
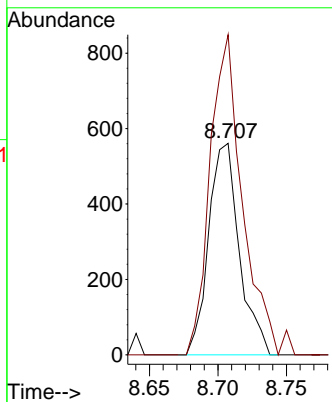
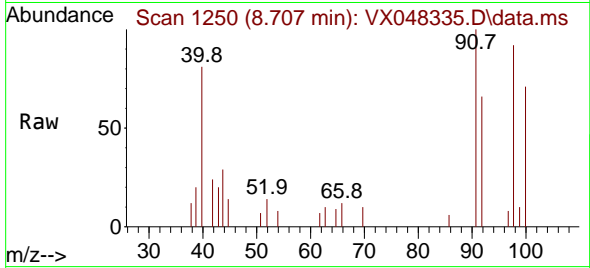




#52  
 Toluene  
 Concen: 0.281 ug/l  
 RT: 8.707 min Scan# 11  
 Delta R.T. 0.006 min  
 Lab File: VX048335.D  
 Acq: 23 Oct 2025 18:32

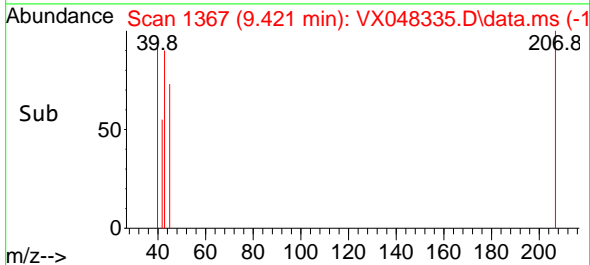
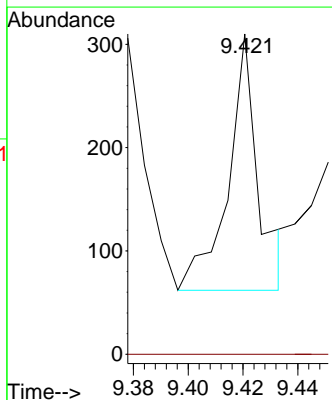
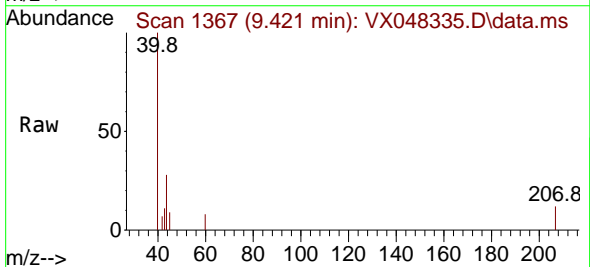
Instrument :  
 MSVOA\_X  
 ClientSampleId :

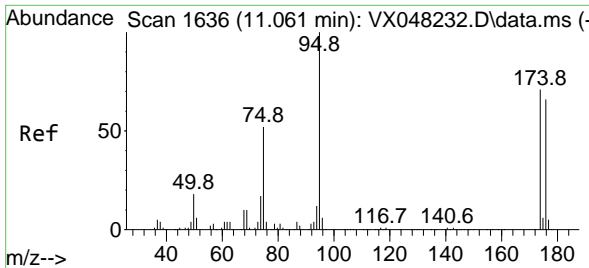
Tgt Ion: 92 Resp: 871  
 Ion Ratio Lower Upper  
 92 100  
 91 161.8 136.1 204.1



#59  
 2-Hexanone  
 Concen: 0.207 ug/l  
 RT: 9.421 min Scan# 1367  
 Delta R.T. 0.006 min  
 Lab File: VX048335.D  
 Acq: 23 Oct 2025 18:32

Tgt Ion: 43 Resp: 190  
 Ion Ratio Lower Upper  
 43 100  
 58 0.0 26.3 78.8#

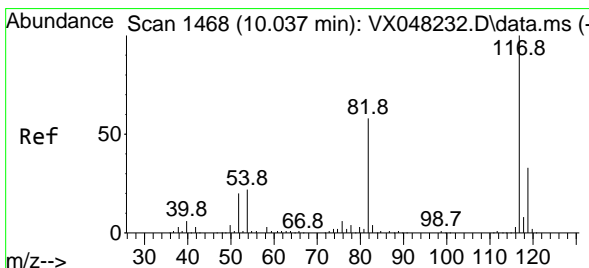
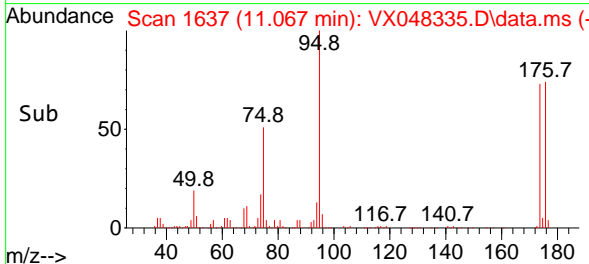
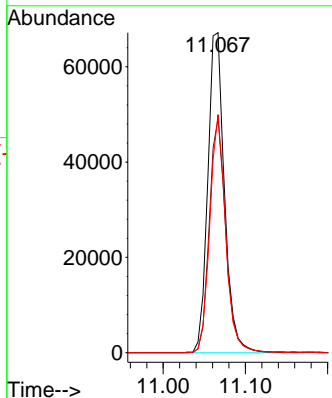
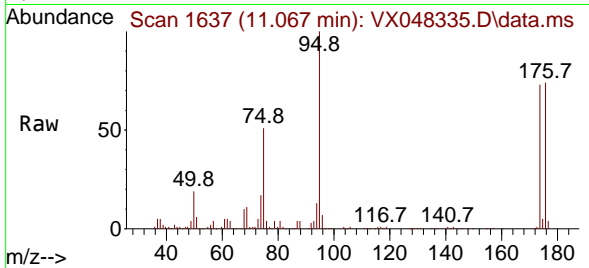




#62  
 4-Bromofluorobenzene  
 Concen: 60.094 ug/l  
 RT: 11.067 min Scan# 1  
 Delta R.T. 0.006 min  
 Lab File: VX048335.D  
 Acq: 23 Oct 2025 18:32

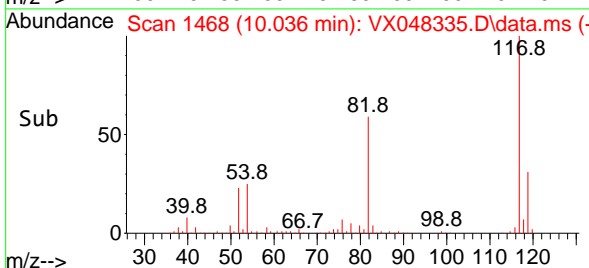
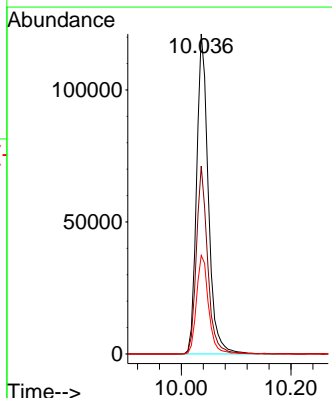
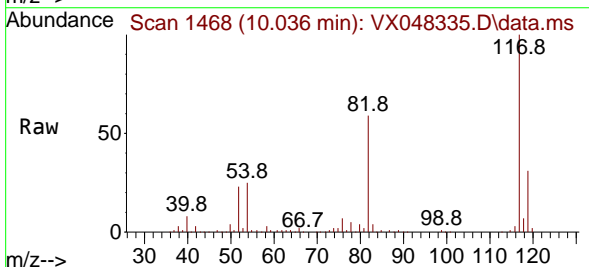
Instrument :  
 MSVOA\_X  
 ClientSampleId :

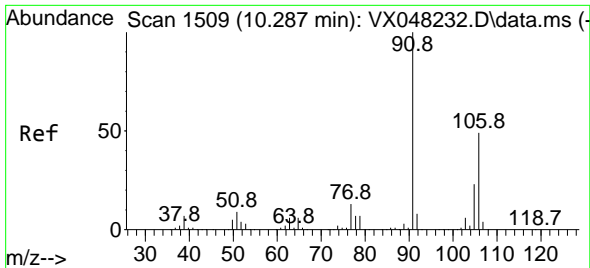
Tgt Ion: 95 Resp: 94671  
 Ion Ratio Lower Upper  
 95 100  
 174 72.1 0.0 147.8  
 176 70.5 0.0 142.8



#63  
 Chlorobenzene-d5  
 Concen: 50.000 ug/l  
 RT: 10.036 min Scan# 1468  
 Delta R.T. -0.000 min  
 Lab File: VX048335.D  
 Acq: 23 Oct 2025 18:32

Tgt Ion:117 Resp: 180555  
 Ion Ratio Lower Upper  
 117 100  
 82 58.7 46.5 69.7  
 119 30.8 25.9 38.9

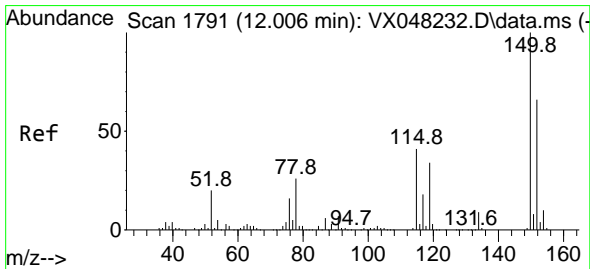
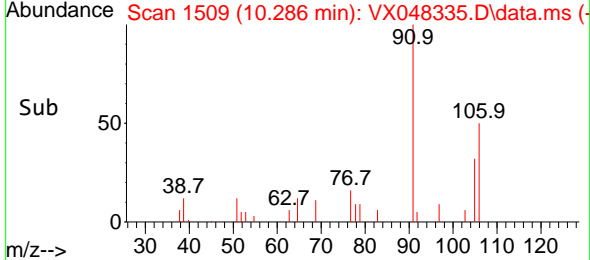
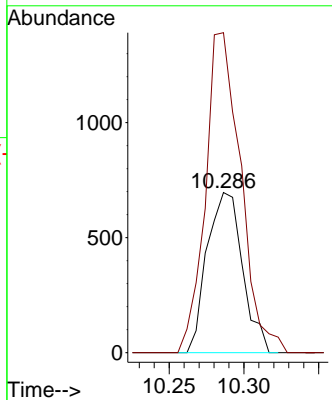
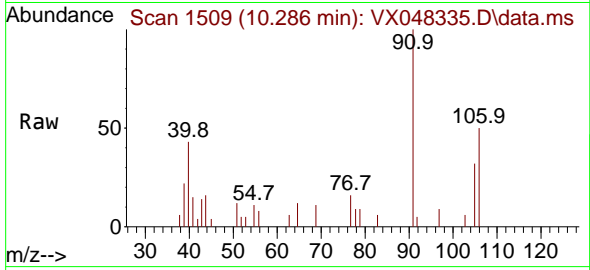




#68  
 m/p-Xylenes  
 Concen: 0.446 ug/l  
 RT: 10.286 min Scan# 1146  
 Delta R.T. -0.000 min  
 Lab File: VX048335.D  
 Acq: 23 Oct 2025 18:32

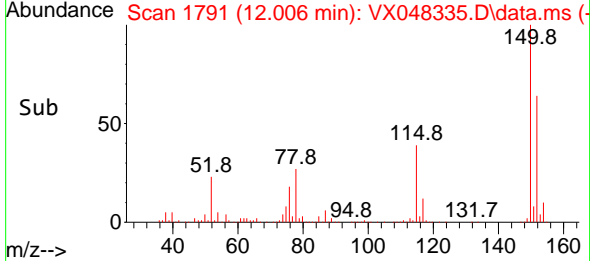
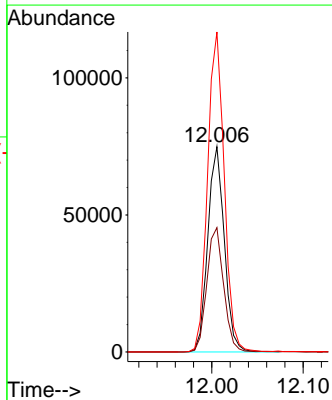
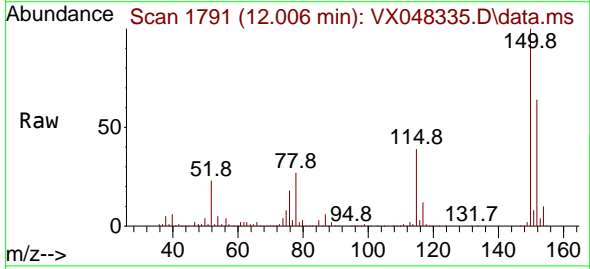
Instrument : MSVOA\_X  
 ClientSampleId :

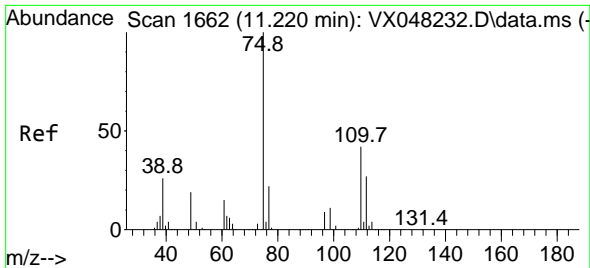
Tgt Ion:106 Resp: 1146  
 Ion Ratio Lower Upper  
 106 100  
 91 199.3 167.9 251.9



#72  
 1,4-Dichlorobenzene-d4  
 Concen: 50.000 ug/l  
 RT: 12.006 min Scan# 1791  
 Delta R.T. -0.000 min  
 Lab File: VX048335.D  
 Acq: 23 Oct 2025 18:32

Tgt Ion:152 Resp: 94013  
 Ion Ratio Lower Upper  
 152 100  
 115 62.0 43.1 129.4  
 150 156.8 0.0 353.0

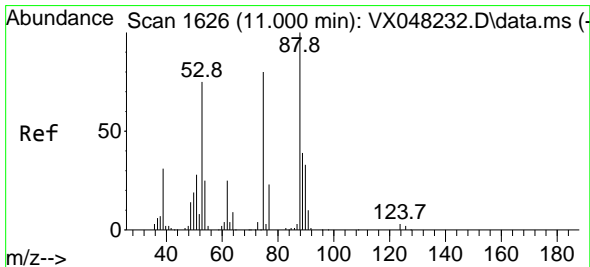
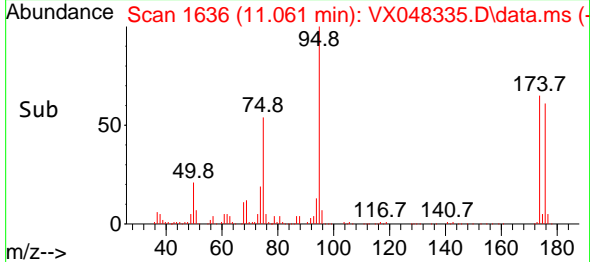
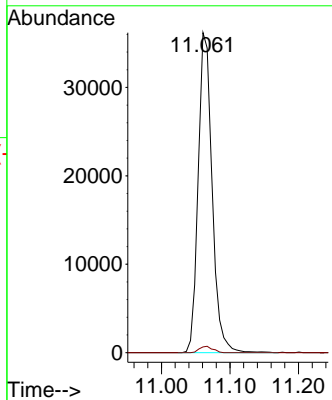
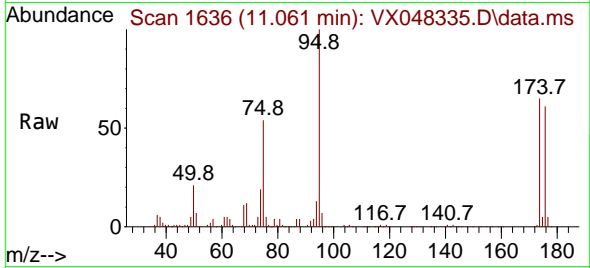




#76  
 1,2,3-Trichloropropane  
 Concen: 33.743 ug/l  
 RT: 11.061 min Scan# 1636  
 Delta R.T. -0.159 min  
 Lab File: VX048335.D  
 Acq: 23 Oct 2025 18:32

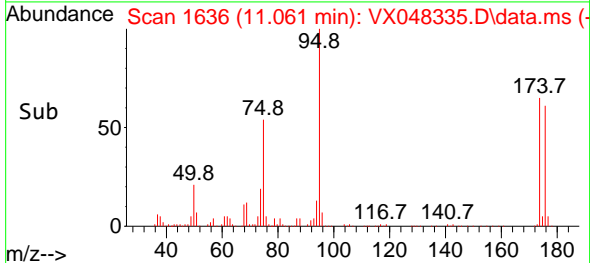
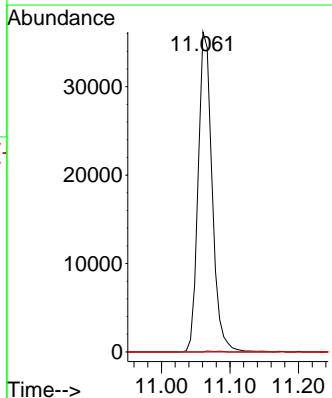
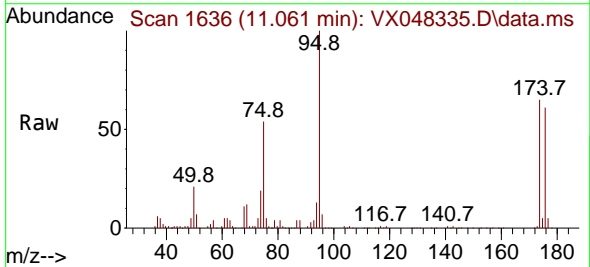
Instrument : MSVOA\_X  
 ClientSampleId :

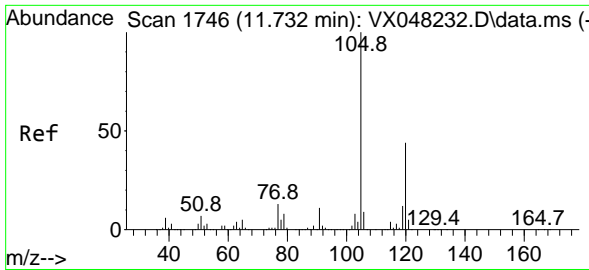
Tgt Ion: 75 Resp: 51444  
 Ion Ratio Lower Upper  
 75 100  
 77 1.9 22.4 67.2#



#81  
 trans-1,4-Dichloro-2-butene  
 Concen: 82.095 ug/l  
 RT: 11.061 min Scan# 1636  
 Delta R.T. 0.060 min  
 Lab File: VX048335.D  
 Acq: 23 Oct 2025 18:32

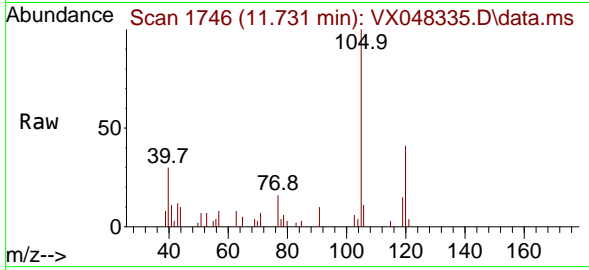
Tgt Ion: 75 Resp: 51444  
 Ion Ratio Lower Upper  
 75 100  
 53 0.3 79.5 119.3#  
 89 0.0 36.8 55.2#



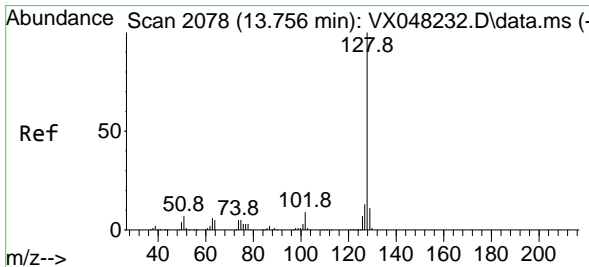
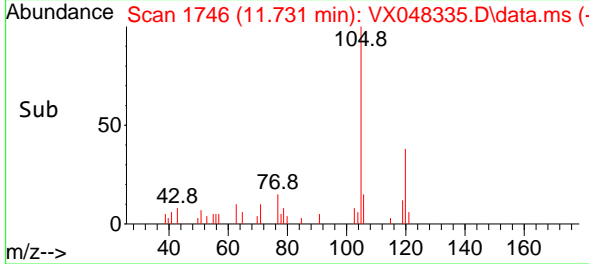
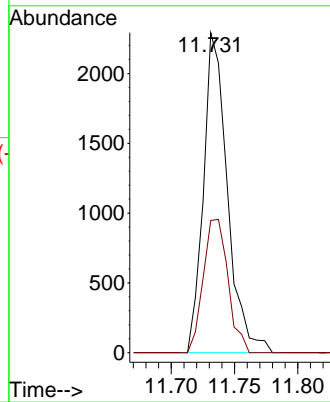


#84  
 1,2,4-Trimethylbenzene  
 Concen: 0.533 ug/l  
 RT: 11.731 min Scan# 11  
 Delta R.T. -0.000 min  
 Lab File: VX048335.D  
 Acq: 23 Oct 2025 18:32

Instrument : MSVOA\_X  
 ClientSampleId :

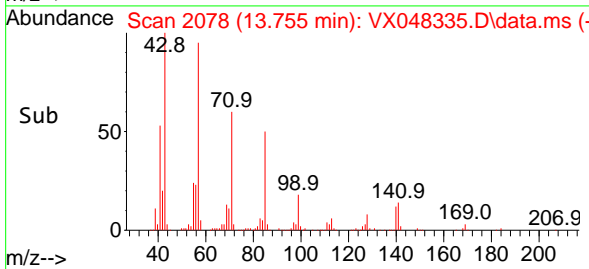
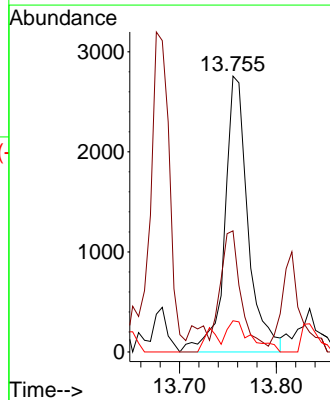
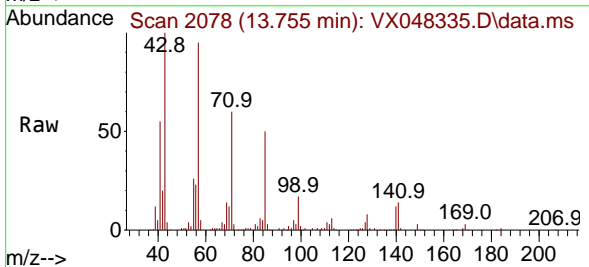


Tgt Ion:105 Resp: 3024  
 Ion Ratio Lower Upper  
 105 100  
 120 43.0 22.1 66.5

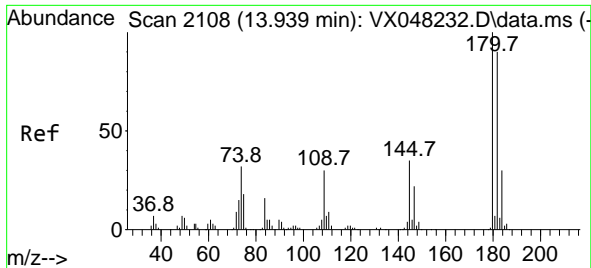


#95  
 Naphthalene  
 Concen: 0.842 ug/l  
 RT: 13.755 min Scan# 2078  
 Delta R.T. -0.000 min  
 Lab File: VX048335.D  
 Acq: 23 Oct 2025 18:32

Tgt Ion:128 Resp: 4595  
 Ion Ratio Lower Upper  
 128 100  
 127 34.8 10.2 15.4#  
 129 11.8 8.6 12.8

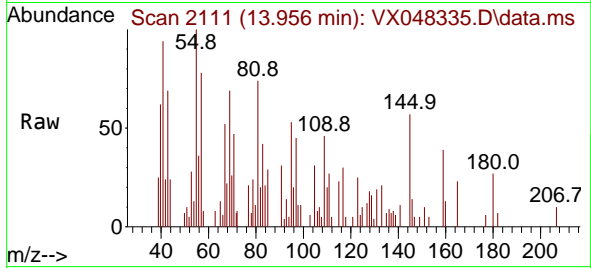






#96  
 1,2,3-Trichlorobenzene  
 Concen: 0.244 ug/l  
 RT: 13.956 min Scan# 2111  
 Delta R.T. 0.018 min  
 Lab File: VX048335.D  
 Acq: 23 Oct 2025 18:32

Instrument :  
 MSVOA\_X  
 ClientSampleId :



Tgt Ion:180 Resp: 461

Ion	Ratio	Lower	Upper
180	100		
182	19.3	46.6	139.7#
145	176.6	16.9	50.7#

