

Data Path : Z:\voasrv\HPCHEM1\MSVOA_X\Data\VX102325\
 Data File : VX048335.D
 Acq On : 23 Oct 2025 18:32
 Operator : JC/MD
 Sample : Q3388-01
 Misc : 1.00g/10mL/100uL/5.00mL/MSVOA_X/MEOH
 ALS Vial : 27 Sample Multiplier: 1

Instrument :
 MSVOA_X
 ClientSampleId :
 461

Quant Time: Oct 24 05:51:45 2025
 Quant Method : Z:\voasrv\HPCHEM1\MSVOA_X\Method\82X102025W.M
 Quant Title : SW846 8260
 QLast Update : Mon Oct 20 14:13:59 2025
 Response via : Initial Calibration

Compound	R.T.	QIon	Response	Conc	Units	Dev(Min)

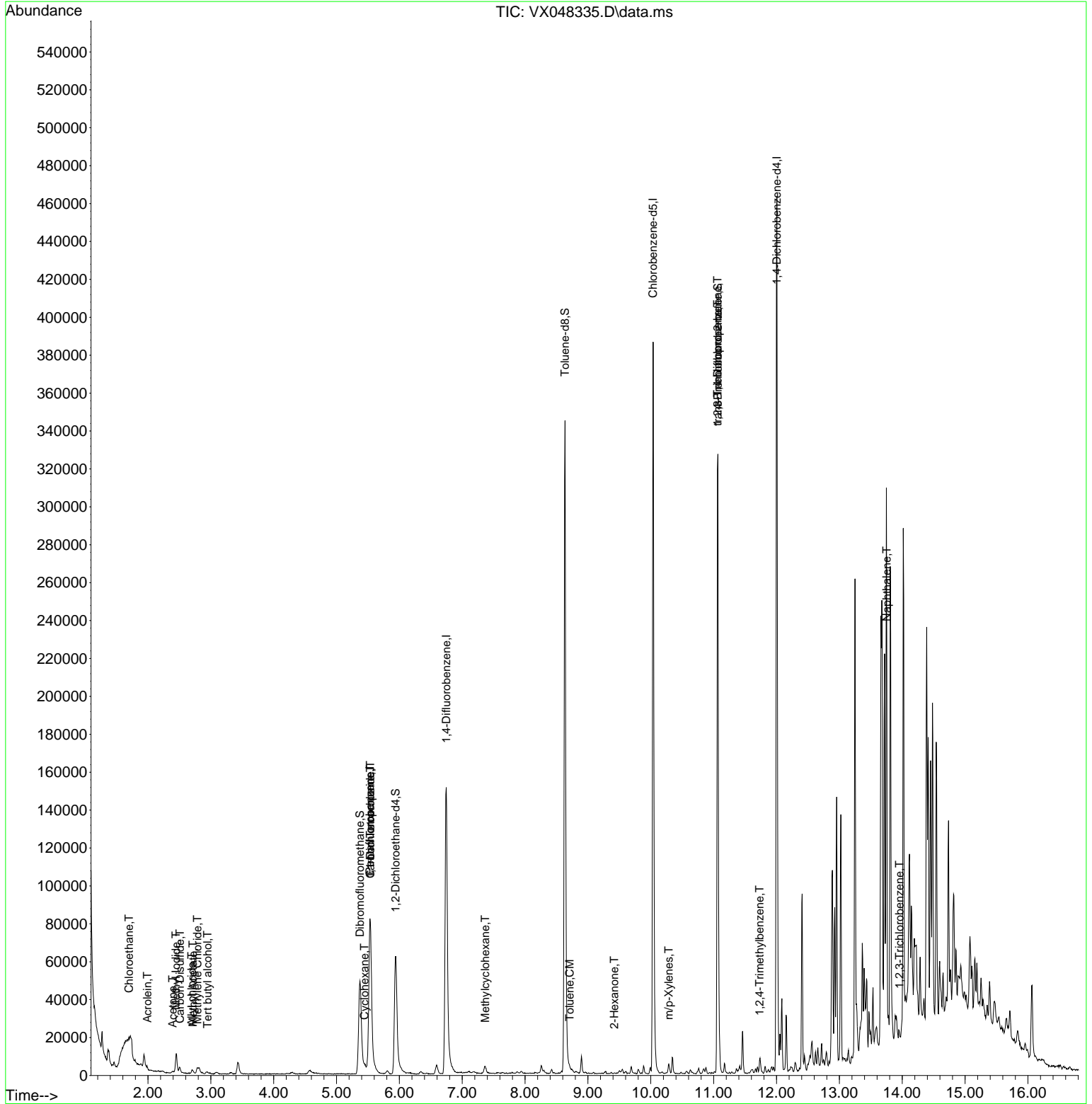
Internal Standards						
1) Pentafluorobenzene	5.531	168	85331	50.000	ug/l	-0.01
34) 1,4-Difluorobenzene	6.744	114	173055	50.000	ug/l	0.00
63) Chlorobenzene-d5	10.036	117	180555	50.000	ug/l	0.00
72) 1,4-Dichlorobenzene-d4	12.006	152	94013	50.000	ug/l	0.00
System Monitoring Compounds						
33) 1,2-Dichloroethane-d4	5.940	65	73930	61.794	ug/l	0.00
Spiked Amount	50.000	Range	78 - 117	Recovery	=	123.580%#
35) Dibromofluoromethane	5.373	113	50423	42.679	ug/l	0.00
Spiked Amount	50.000	Range	75 - 124	Recovery	=	85.360%
50) Toluene-d8	8.634	98	214604	51.823	ug/l	0.00
Spiked Amount	50.000	Range	92 - 112	Recovery	=	103.640%
62) 4-Bromofluorobenzene	11.067	95	94671	60.094	ug/l	0.00
Spiked Amount	50.000	Range	83 - 123	Recovery	=	120.180%
Target Compounds						
						Qvalue
6) Chloroethane	1.696	64	169	0.379	ug/l #	66
10) Methyl Iodide	2.446	142	12182	10.523	ug/l	95
11) Tert butyl alcohol	2.946	59	624	5.253	ug/l #	72
13) Acrolein	1.989	56	28	0.231	ug/l #	1
14) Allyl chloride	2.696	41	327	0.220	ug/l #	37
16) Acetone	2.391	43	1743	4.247	ug/l	96
17) Carbon Disulfide	2.507	76	3919	1.388	ug/l	97
18) Methyl Acetate	2.715	43	3331	3.886	ug/l #	73
20) Methylene Chloride	2.788	84	1466	1.466	ug/l #	87
31) Cyclohexane	5.446	56	958	0.645	ug/l #	82
36) 1,1-Dichloropropene	5.537	75	7499	4.466	ug/l #	42
38) Carbon Tetrachloride	5.537	117	9106	4.395	ug/l #	14
39) Methylcyclohexane	7.366	83	1750	0.882	ug/l #	89
52) Toluene	8.707	92	871	0.281	ug/l	94
59) 2-Hexanone	9.421	43	190	0.207	ug/l #	26
68) m/p-Xylenes	10.286	106	1146	0.446	ug/l	93
76) 1,2,3-Trichloropropane	11.061	75	51444	33.743	ug/l #	34
81) trans-1,4-Dichloro-2-b...	11.061	75	51444	82.095	ug/l #	10
84) 1,2,4-Trimethylbenzene	11.731	105	3024	0.533	ug/l	98
95) Naphthalene	13.755	128	4595	0.842	ug/l #	68
96) 1,2,3-Trichlorobenzene	13.956	180	461	0.244	ug/l #	1

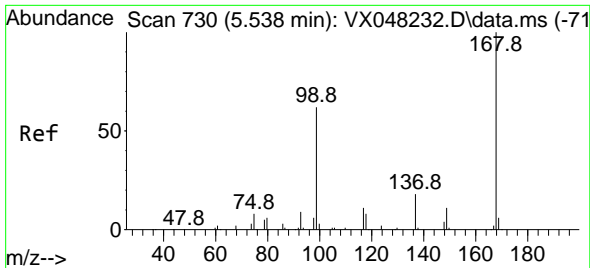
(#) = qualifier out of range (m) = manual integration (+) = signals summed

Data Path : Z:\voasrv\HPCHEM1\MSVOA_X\Data\VX102325\
 Data File : VX048335.D
 Acq On : 23 Oct 2025 18:32
 Operator : JC/MD
 Sample : Q3388-01
 Misc : 1.00g/10mL/100uL/5.00mL/MSVOA_X/MEOH
 ALS Vial : 27 Sample Multiplier: 1

Instrument :
 MSVOA_X
 ClientSampleId :
 461

Quant Time: Oct 24 05:51:45 2025
 Quant Method : Z:\voasrv\HPCHEM1\MSVOA_X\Method\82X102025W.M
 Quant Title : SW846 8260
 QLast Update : Mon Oct 20 14:13:59 2025
 Response via : Initial Calibration

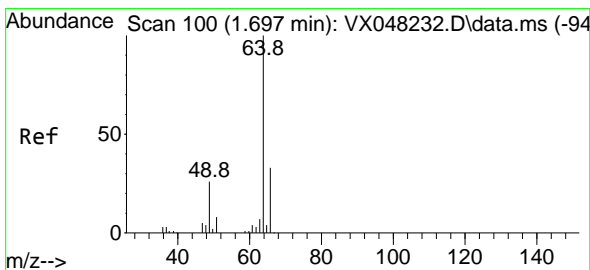
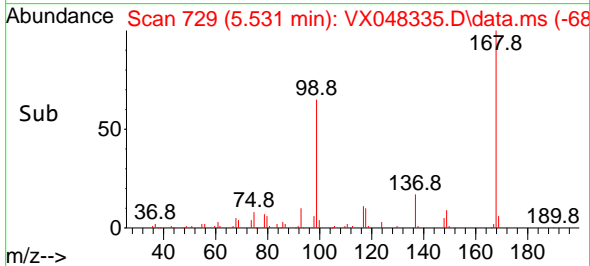
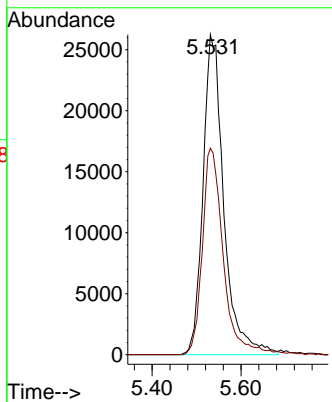
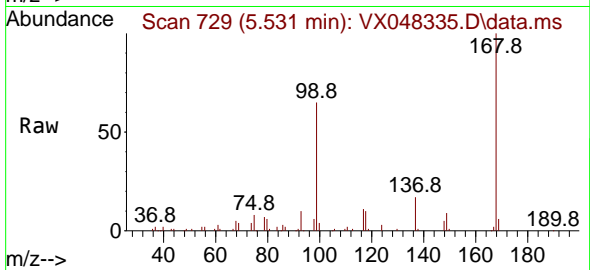




#1
 Pentafluorobenzene
 Concen: 50.000 ug/l
 RT: 5.531 min Scan# 71
 Delta R.T. -0.013 min
 Lab File: VX048335.D
 Acq: 23 Oct 2025 18:32

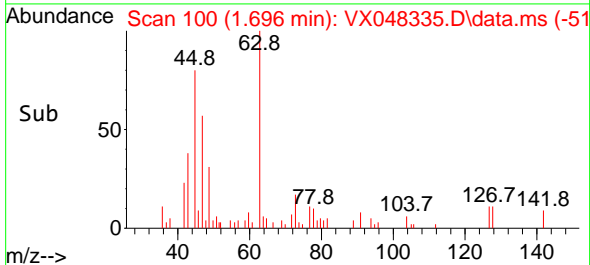
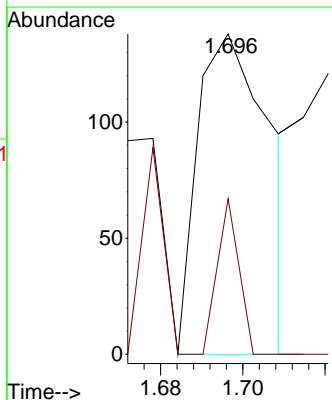
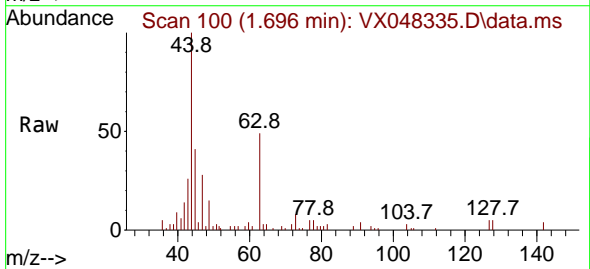
Instrument : MSVOA_X
 ClientSampleId : 461

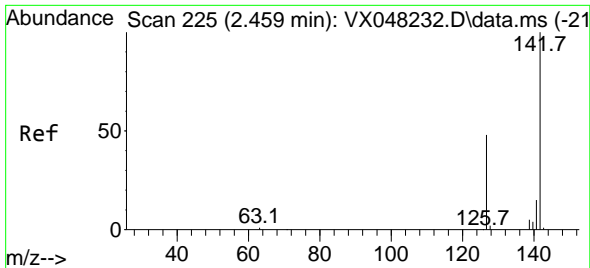
Tgt Ion:168 Resp: 85331
 Ion Ratio Lower Upper
 168 100
 99 64.5 46.4 69.6



#6
 Chloroethane
 Concen: 0.379 ug/l
 RT: 1.696 min Scan# 100
 Delta R.T. -0.000 min
 Lab File: VX048335.D
 Acq: 23 Oct 2025 18:32

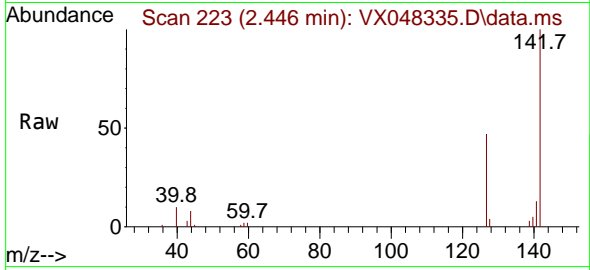
Tgt Ion: 64 Resp: 169
 Ion Ratio Lower Upper
 64 100
 66 48.6 23.9 35.9#





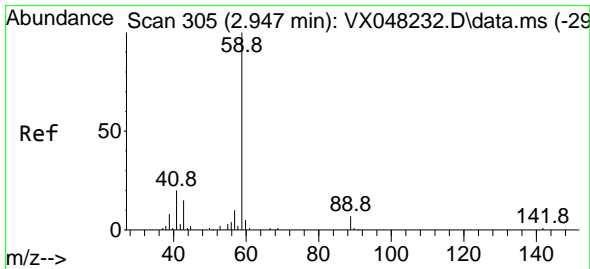
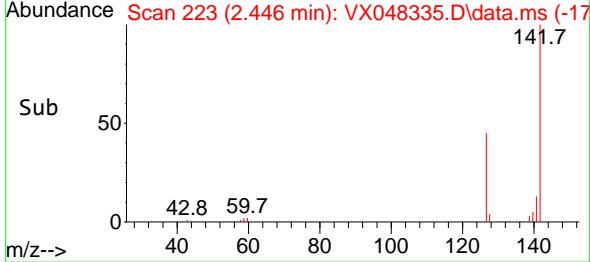
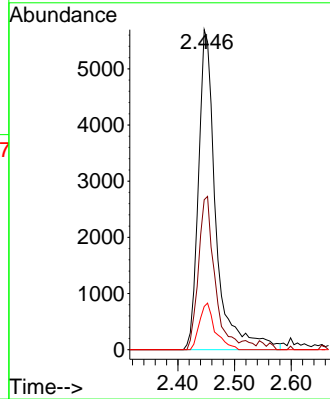
#10
 Methyl Iodide
 Concen: 10.523 ug/l
 RT: 2.446 min Scan# 21
 Delta R.T. -0.013 min
 Lab File: VX048335.D
 Acq: 23 Oct 2025 18:32

Instrument : MSVOA_X
 ClientSampleId : 461



Tgt Ion:142 Resp: 12182

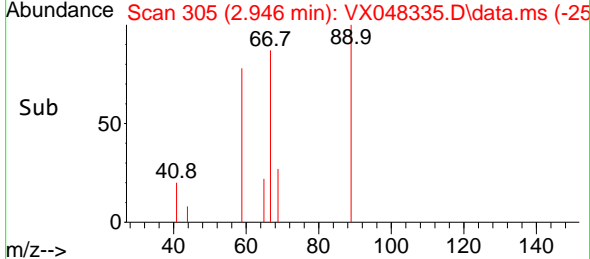
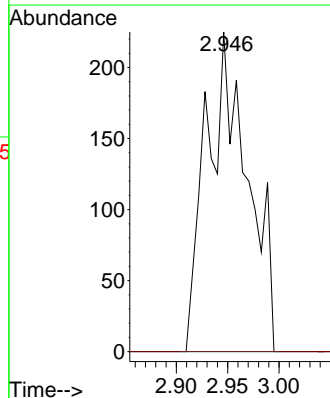
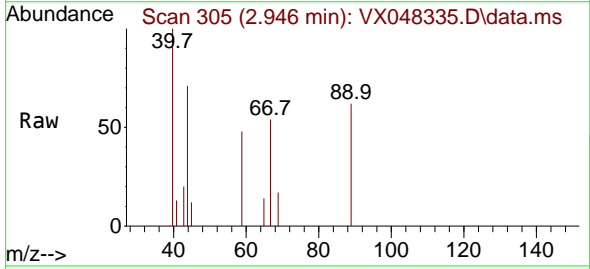
Ion	Ratio	Lower	Upper
142	100		
127	44.6	38.5	57.7
141	13.0	11.6	17.4

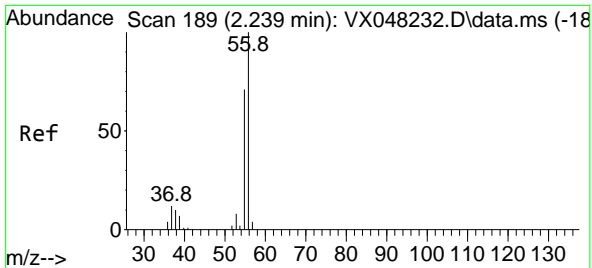


#11
 Tert butyl alcohol
 Concen: 5.253 ug/l
 RT: 2.946 min Scan# 305
 Delta R.T. 0.006 min
 Lab File: VX048335.D
 Acq: 23 Oct 2025 18:32

Tgt Ion: 59 Resp: 624

Ion	Ratio	Lower	Upper
59	100		
57	0.0	8.2	12.4#

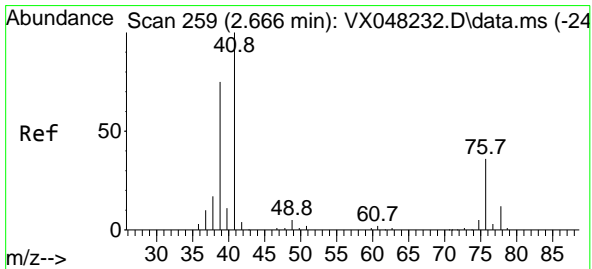
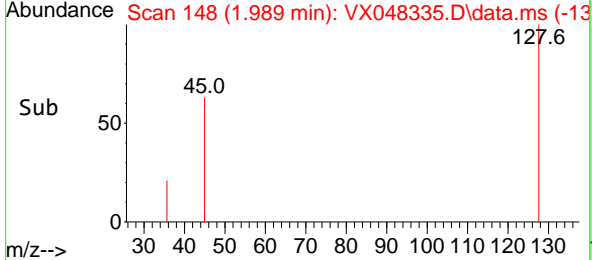
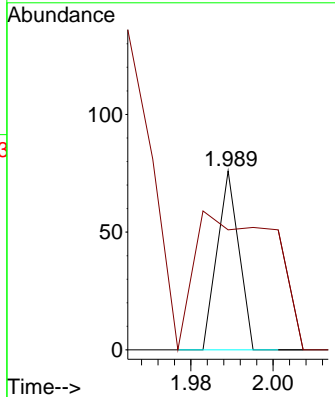
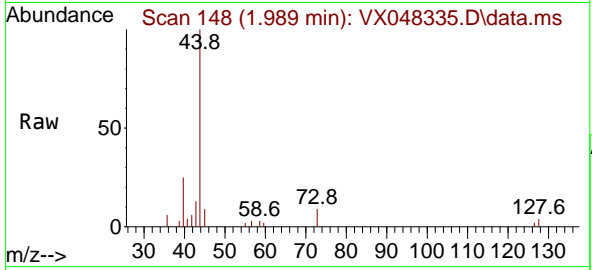




#13
 Acrolein
 Concen: 0.231 ug/l
 RT: 1.989 min Scan# 14
 Delta R.T. -0.244 min
 Lab File: VX048335.D
 Acq: 23 Oct 2025 18:32

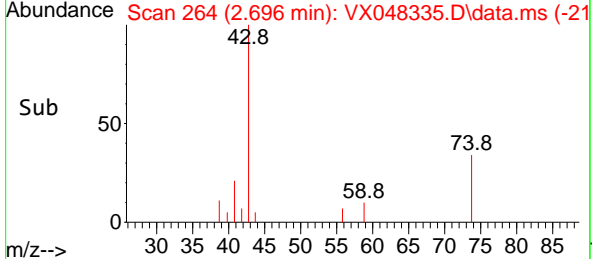
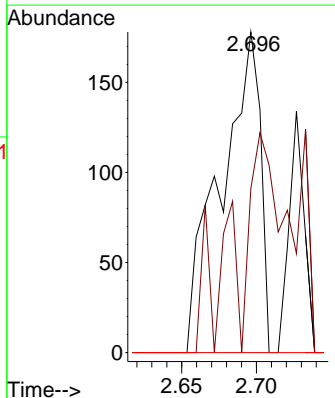
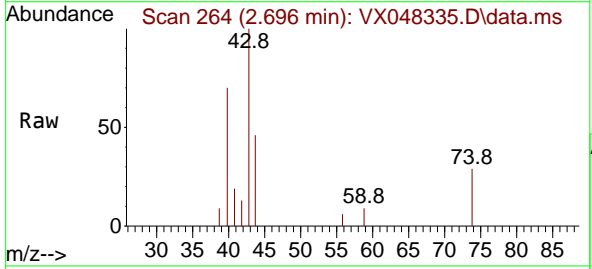
Instrument : MSVOA_X
 ClientSampleId : 461

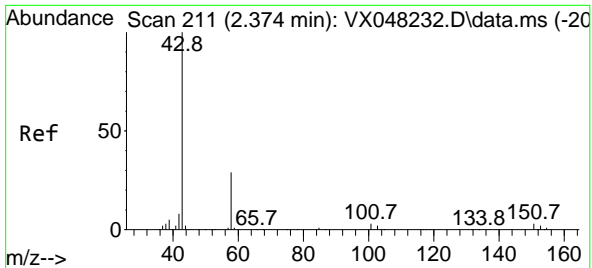
Tgt Ion	Resp	Lower	Upper
56	100		
55	278.6	56.1	84.1#



#14
 Allyl chloride
 Concen: 0.220 ug/l
 RT: 2.696 min Scan# 264
 Delta R.T. 0.030 min
 Lab File: VX048335.D
 Acq: 23 Oct 2025 18:32

Tgt Ion	Resp	Lower	Upper
41	100		
39	16.8	56.0	84.0#
76	0.0	27.5	41.3#

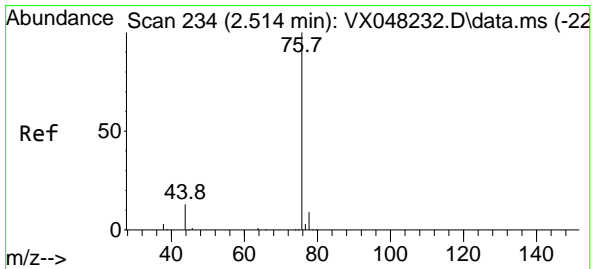
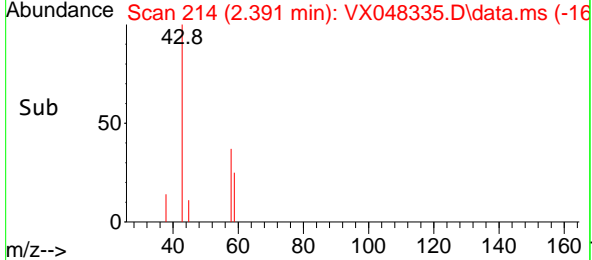
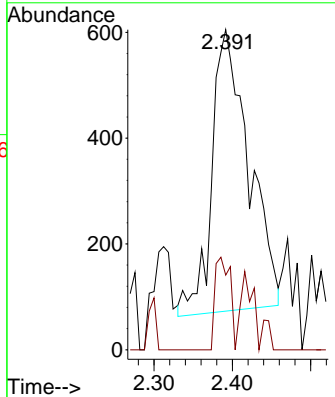
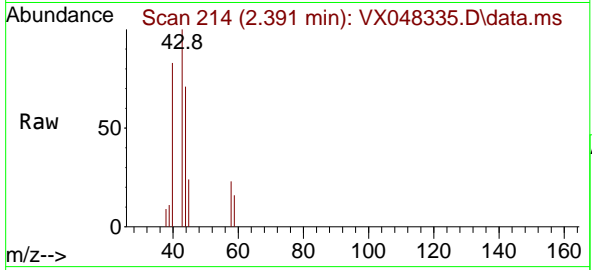




#16
 Acetone
 Concen: 4.247 ug/l
 RT: 2.391 min Scan# 211
 Delta R.T. 0.018 min
 Lab File: VX048335.D
 Acq: 23 Oct 2025 18:32

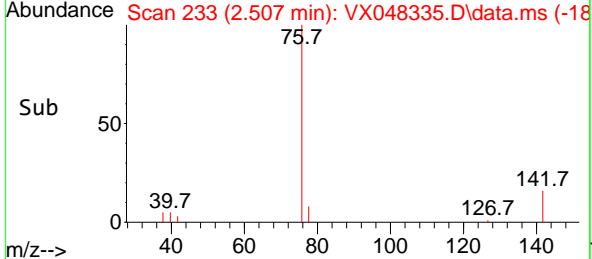
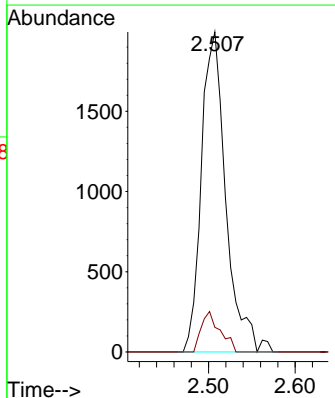
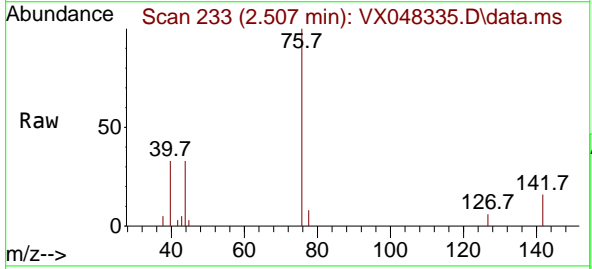
Instrument : MSVOA_X
 ClientSampleId : 461

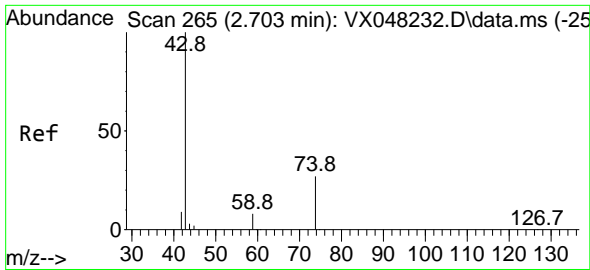
Tgt Ion: 43 Resp: 1743
 Ion Ratio Lower Upper
 43 100
 58 27.1 23.4 35.2



#17
 Carbon Disulfide
 Concen: 1.388 ug/l
 RT: 2.507 min Scan# 233
 Delta R.T. -0.007 min
 Lab File: VX048335.D
 Acq: 23 Oct 2025 18:32

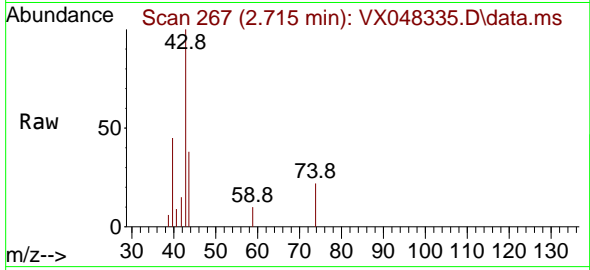
Tgt Ion: 76 Resp: 3919
 Ion Ratio Lower Upper
 76 100
 78 7.7 7.1 10.7



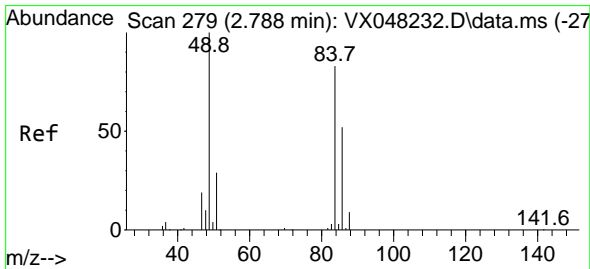
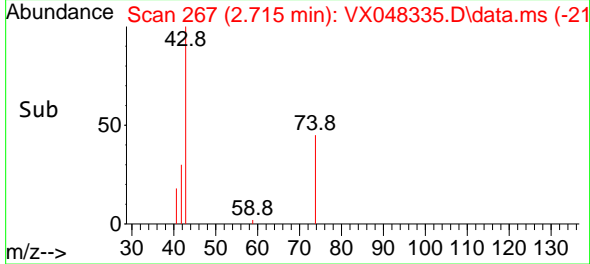
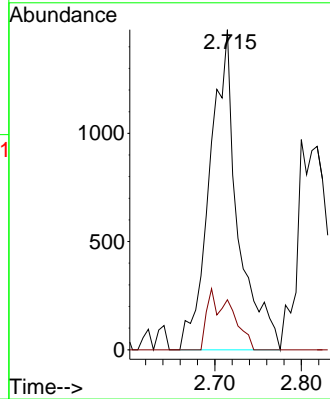


#18
 Methyl Acetate
 Concen: 3.886 ug/l
 RT: 2.715 min Scan# 20
 Delta R.T. 0.018 min
 Lab File: VX048335.D
 Acq: 23 Oct 2025 18:32

Instrument :
 MSVOA_X
 ClientSampleId :
 461

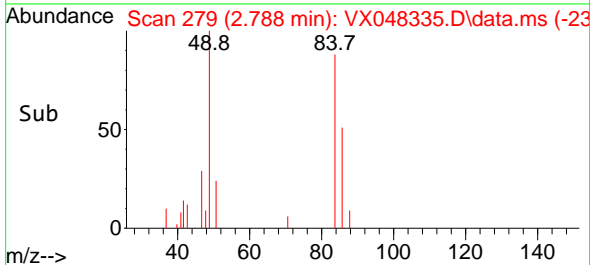
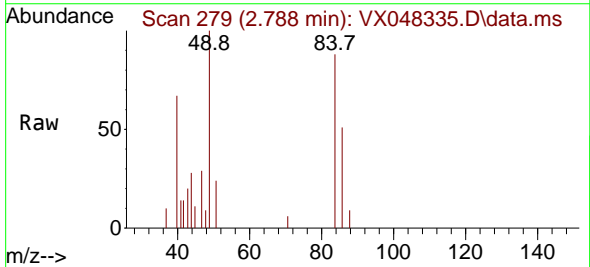
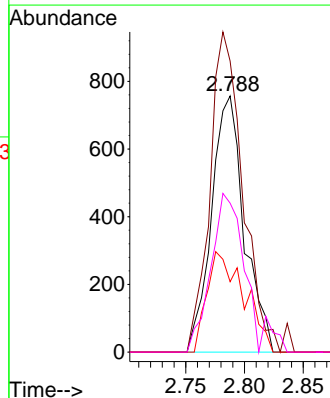


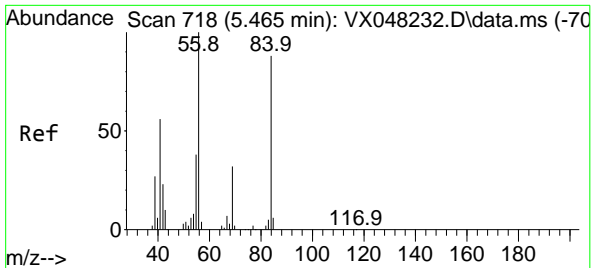
Tgt Ion: 43 Resp: 3331
 Ion Ratio Lower Upper
 43 100
 74 8.9 17.5 26.3#



#20
 Methylene Chloride
 Concen: 1.466 ug/l
 RT: 2.788 min Scan# 279
 Delta R.T. -0.000 min
 Lab File: VX048335.D
 Acq: 23 Oct 2025 18:32

Tgt Ion: 84 Resp: 1466
 Ion Ratio Lower Upper
 84 100
 49 113.6 104.1 156.1
 51 27.5 31.3 46.9#
 86 58.1 51.3 76.9



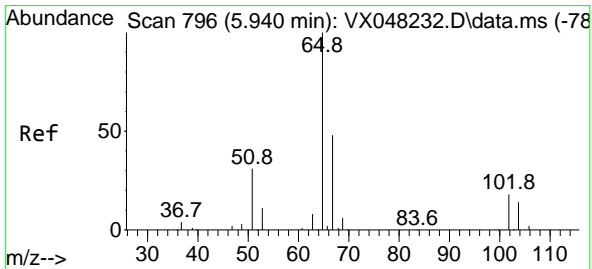
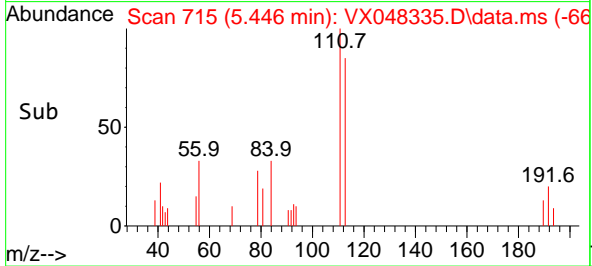
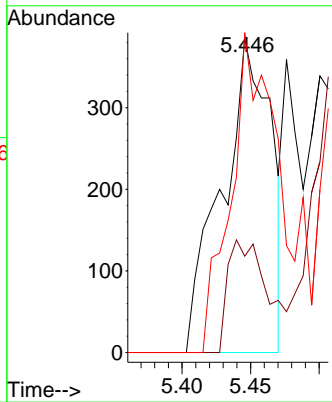
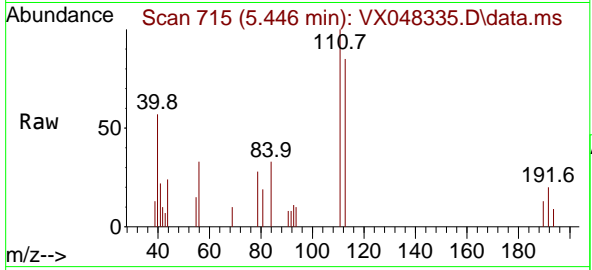


#31
 Cyclohexane
 Concen: 0.645 ug/l
 RT: 5.446 min Scan# 715
 Delta R.T. -0.013 min
 Lab File: VX048335.D
 Acq: 23 Oct 2025 18:32

Instrument : MSVOA_X
 ClientSampleId : 461

Tgt Ion: 56 Resp: 958

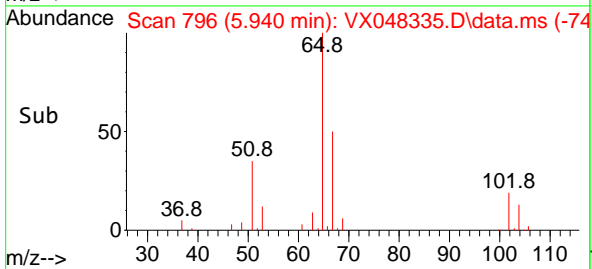
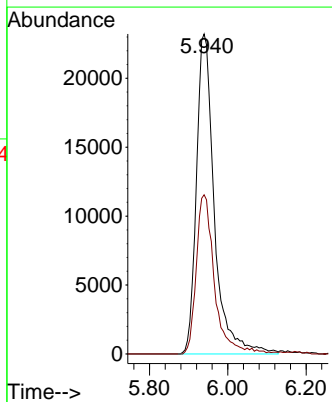
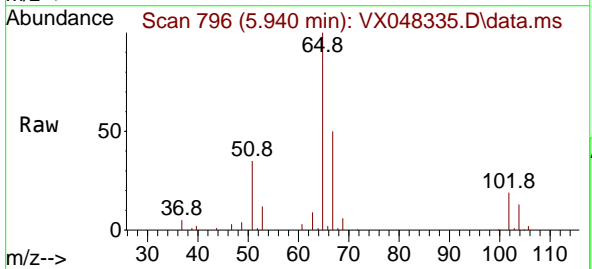
Ion	Ratio	Lower	Upper
56	100		
69	30.6	23.0	34.6
84	101.6	64.6	97.0

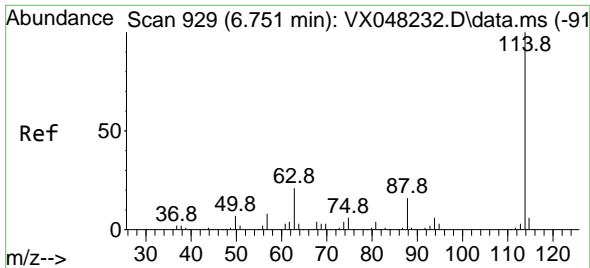


#33
 1,2-Dichloroethane-d4
 Concen: 61.794 ug/l
 RT: 5.940 min Scan# 796
 Delta R.T. -0.000 min
 Lab File: VX048335.D
 Acq: 23 Oct 2025 18:32

Tgt Ion: 65 Resp: 73930

Ion	Ratio	Lower	Upper
65	100		
67	49.3	0.0	105.0

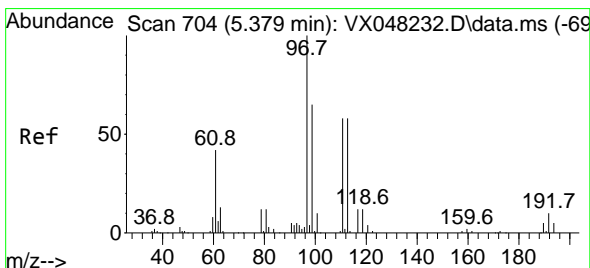
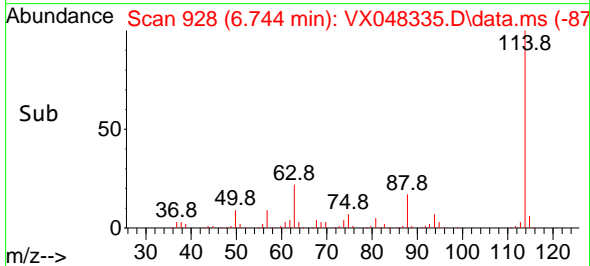
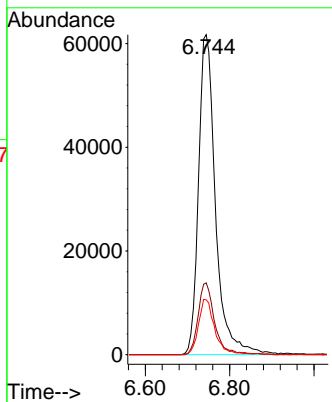
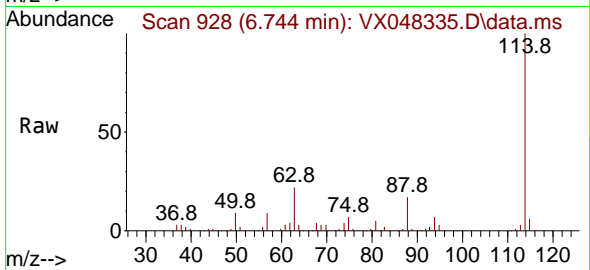




#34
 1,4-Difluorobenzene
 Concen: 50.000 ug/l
 RT: 6.744 min Scan# 911
 Delta R.T. -0.001 min
 Lab File: VX048335.D
 Acq: 23 Oct 2025 18:32

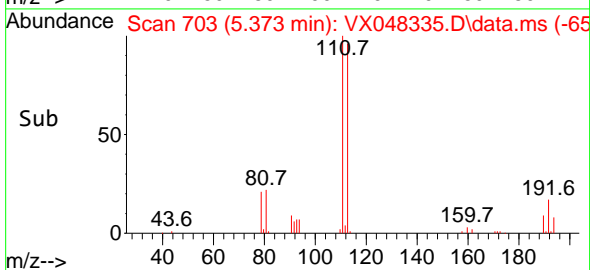
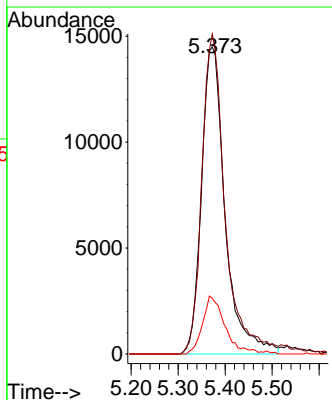
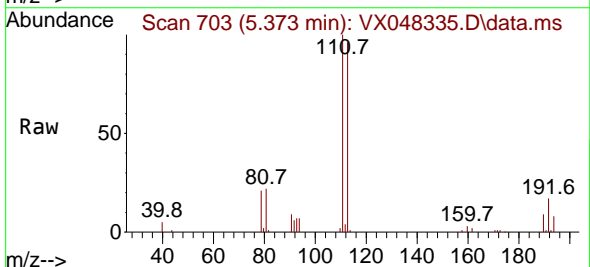
Instrument : MSVOA_X
 ClientSampleId : 461

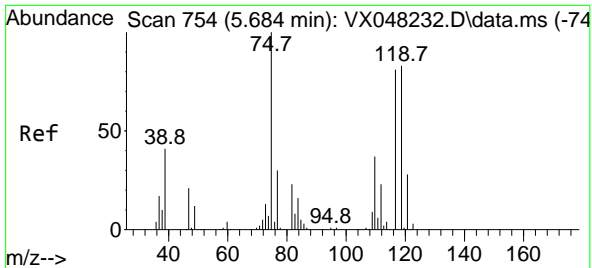
Tgt Ion	Resp	Lower	Upper
114	100		
63	22.5	0.0	43.2
88	17.1	0.0	33.6



#35
 Dibromofluoromethane
 Concen: 42.679 ug/l
 RT: 5.373 min Scan# 703
 Delta R.T. -0.000 min
 Lab File: VX048335.D
 Acq: 23 Oct 2025 18:32

Tgt Ion	Resp	Lower	Upper
113	100		
111	102.7	82.2	123.4
192	17.9	15.1	22.7

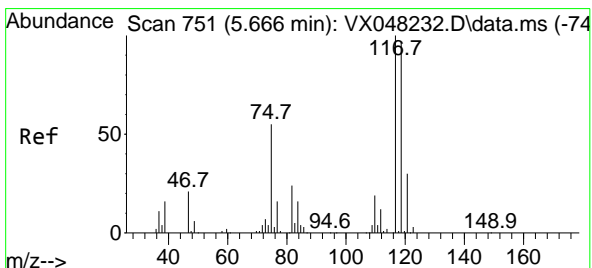
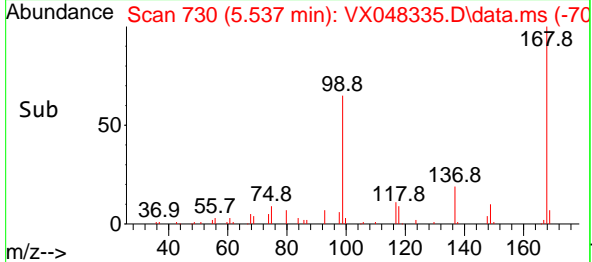
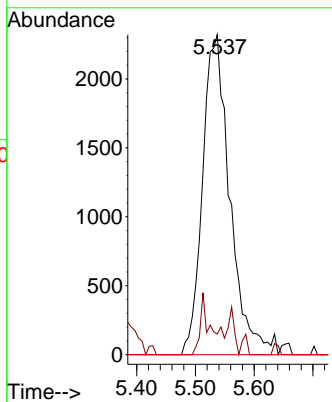
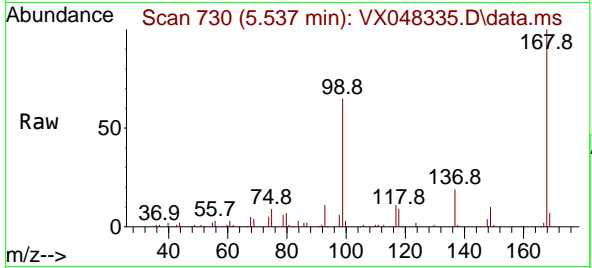




#36
 1,1-Dichloropropene
 Concen: 4.466 ug/l
 RT: 5.537 min Scan# 710
 Delta R.T. -0.147 min
 Lab File: VX048335.D
 Acq: 23 Oct 2025 18:32

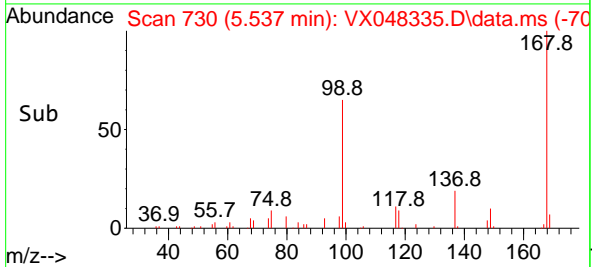
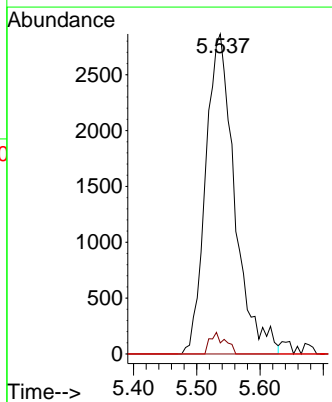
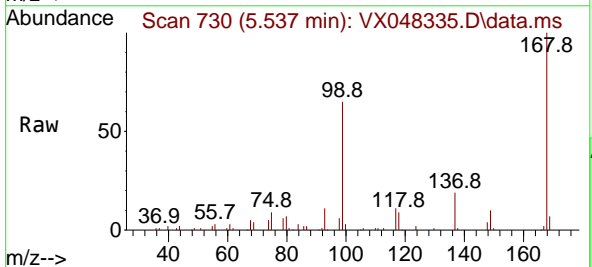
Instrument : MSVOA_X
 ClientSampleId : 461

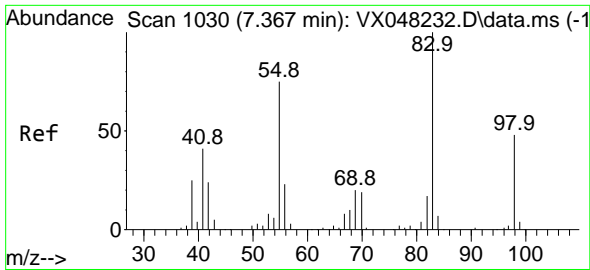
Tgt Ion	Resp	Lower	Upper
75	7499		
75	100		
110	0.0	17.7	53.1#
77	0.0	24.3	36.5#



#38
 Carbon Tetrachloride
 Concen: 4.395 ug/l
 RT: 5.537 min Scan# 730
 Delta R.T. -0.128 min
 Lab File: VX048335.D
 Acq: 23 Oct 2025 18:32

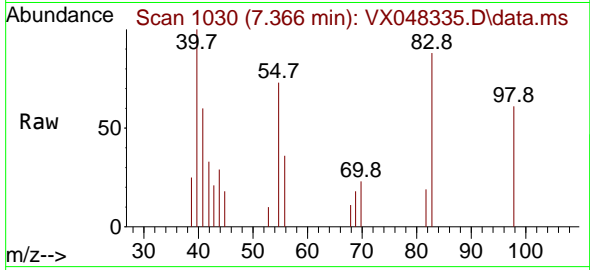
Tgt Ion	Resp	Lower	Upper
117	9106		
117	100		
119	3.5	77.2	115.8#
121	0.0	24.8	37.2#



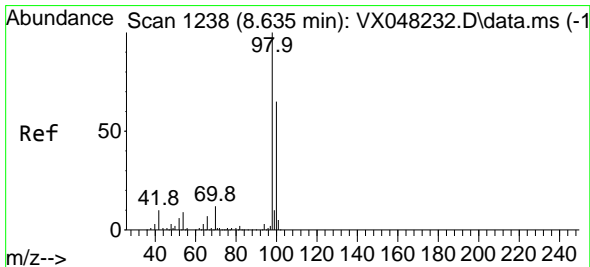
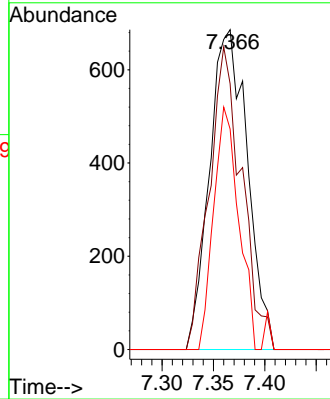
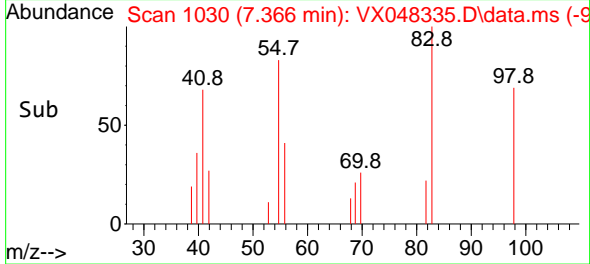


#39
 Methylcyclohexane
 Concen: 0.882 ug/l
 RT: 7.366 min Scan# 10
 Delta R.T. -0.000 min
 Lab File: VX048335.D
 Acq: 23 Oct 2025 18:32

Instrument :
 MSVOA_X
 ClientSampleId :
 461

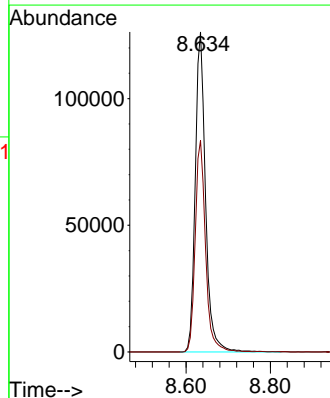
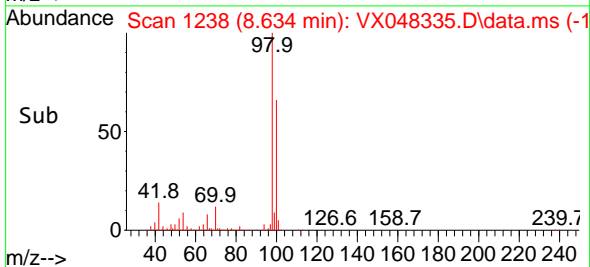
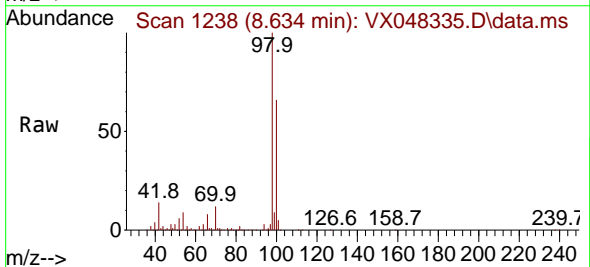


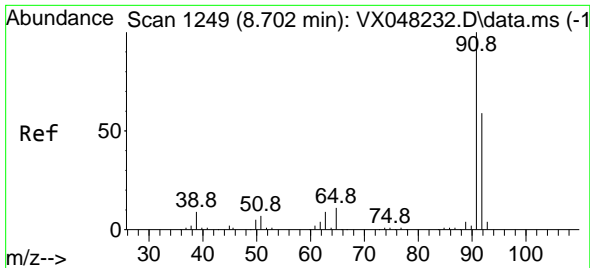
Tgt Ion: 83 Resp: 1750
 Ion Ratio Lower Upper
 83 100
 55 83.1 66.2 99.2
 98 69.0 38.9 58.3#



#50
 Toluene-d8
 Concen: 51.823 ug/l
 RT: 8.634 min Scan# 1238
 Delta R.T. -0.000 min
 Lab File: VX048335.D
 Acq: 23 Oct 2025 18:32

Tgt Ion: 98 Resp: 214604
 Ion Ratio Lower Upper
 98 100
 100 66.5 53.0 79.4

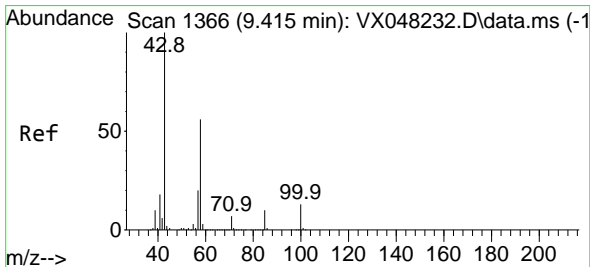
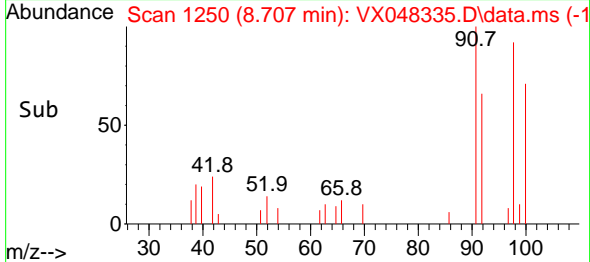
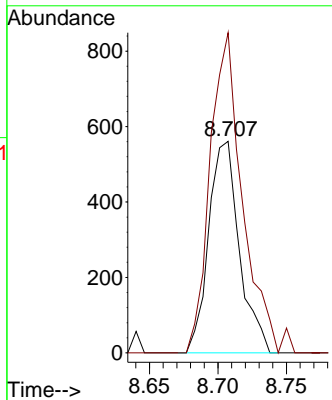
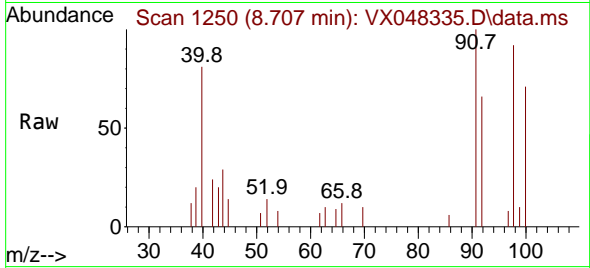




#52
 Toluene
 Concen: 0.281 ug/l
 RT: 8.707 min Scan# 11
 Delta R.T. 0.006 min
 Lab File: VX048335.D
 Acq: 23 Oct 2025 18:32

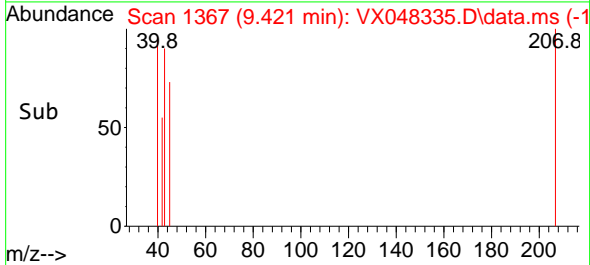
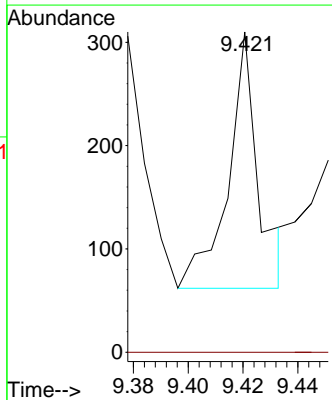
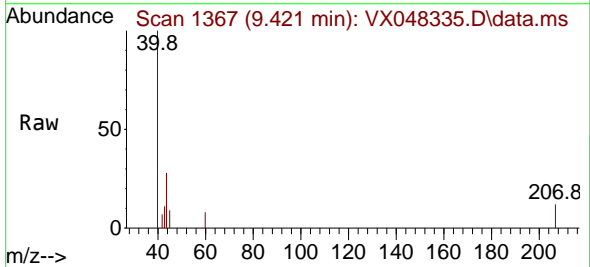
Instrument :
 MSVOA_X
 ClientSampleId :
 461

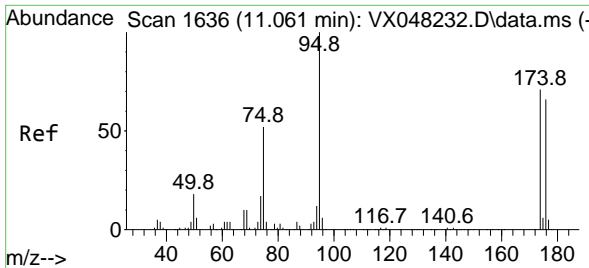
Tgt Ion: 92 Resp: 871
 Ion Ratio Lower Upper
 92 100
 91 161.8 136.1 204.1



#59
 2-Hexanone
 Concen: 0.207 ug/l
 RT: 9.421 min Scan# 1367
 Delta R.T. 0.006 min
 Lab File: VX048335.D
 Acq: 23 Oct 2025 18:32

Tgt Ion: 43 Resp: 190
 Ion Ratio Lower Upper
 43 100
 58 0.0 26.3 78.8#

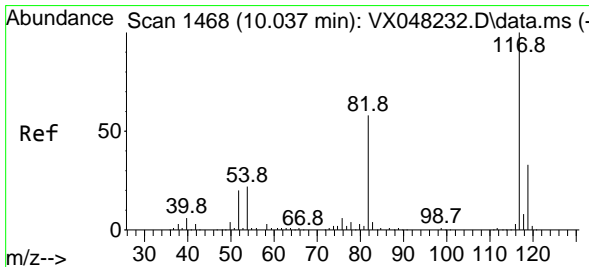
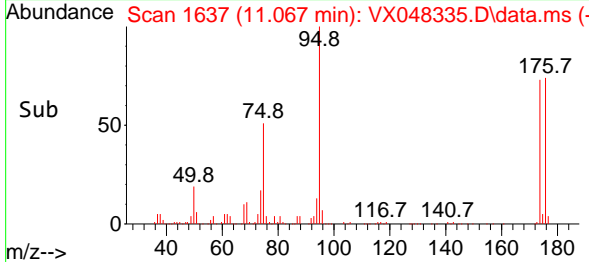
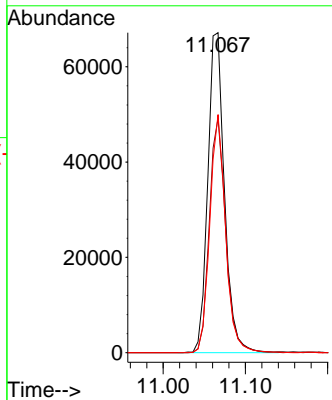
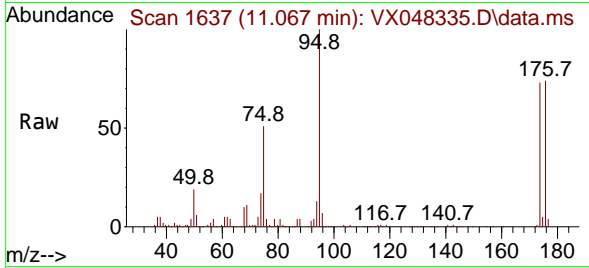




#62
 4-Bromofluorobenzene
 Concen: 60.094 ug/l
 RT: 11.067 min Scan# 11067
 Delta R.T. 0.006 min
 Lab File: VX048335.D
 Acq: 23 Oct 2025 18:32

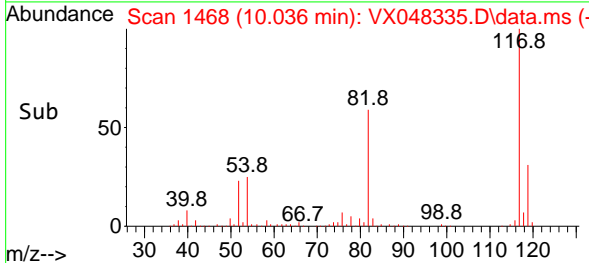
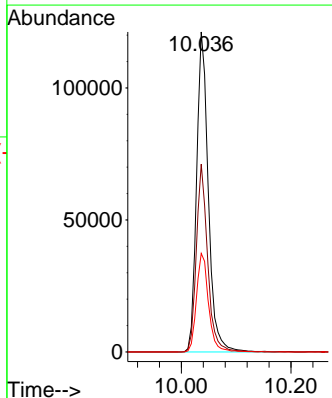
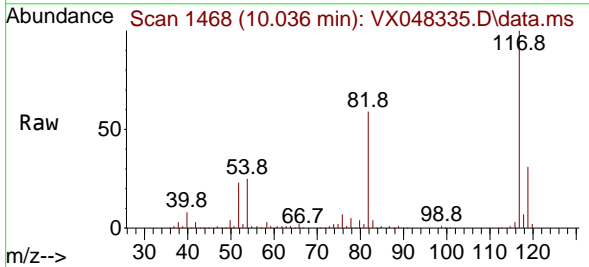
Instrument : MSVOA_X
 ClientSampleId : 461

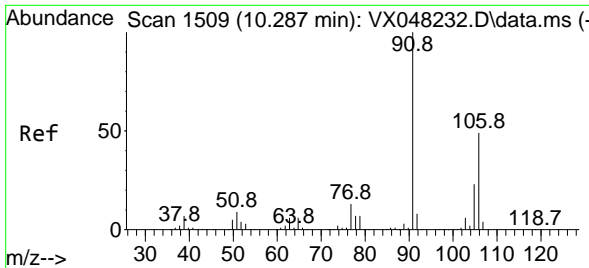
Tgt Ion: 95 Resp: 94671
 Ion Ratio Lower Upper
 95 100
 174 72.1 0.0 147.8
 176 70.5 0.0 142.8



#63
 Chlorobenzene-d5
 Concen: 50.000 ug/l
 RT: 10.036 min Scan# 1468
 Delta R.T. -0.000 min
 Lab File: VX048335.D
 Acq: 23 Oct 2025 18:32

Tgt Ion:117 Resp: 180555
 Ion Ratio Lower Upper
 117 100
 82 58.7 46.5 69.7
 119 30.8 25.9 38.9

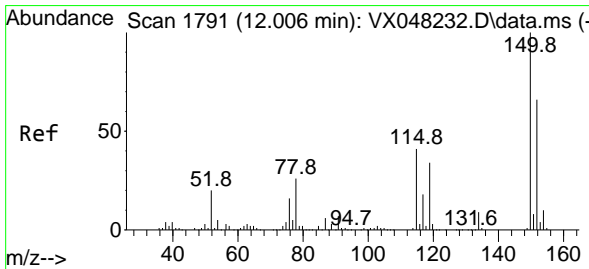
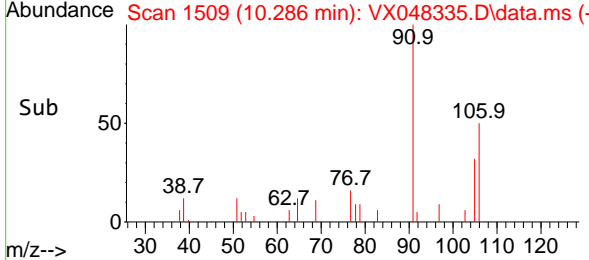
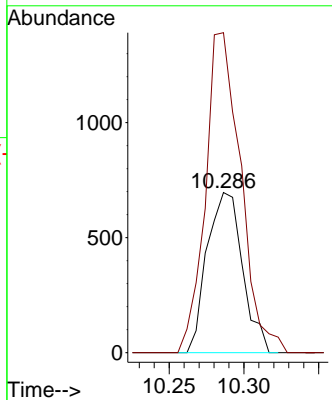
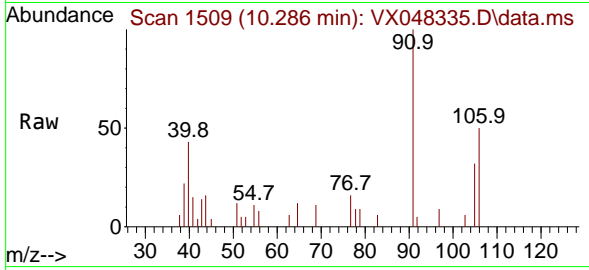




#68
 m/p-Xylenes
 Concen: 0.446 ug/l
 RT: 10.286 min Scan# 1146
 Delta R.T. -0.000 min
 Lab File: VX048335.D
 Acq: 23 Oct 2025 18:32

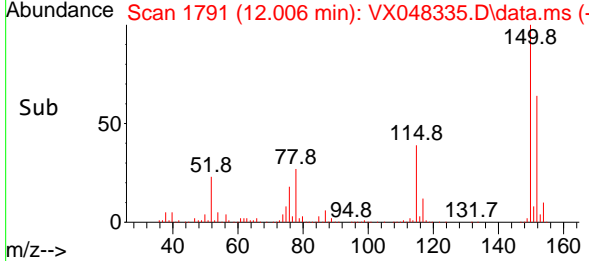
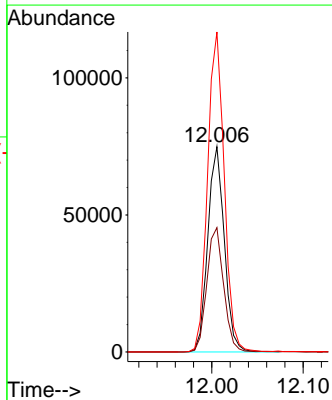
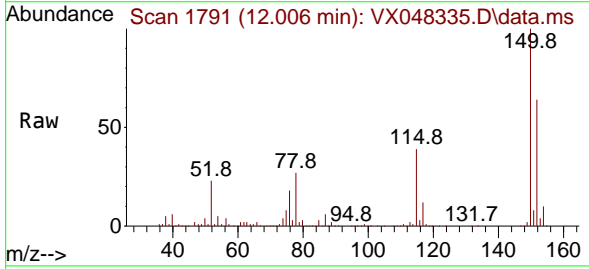
Instrument : MSVOA_X
 ClientSampleId : 461

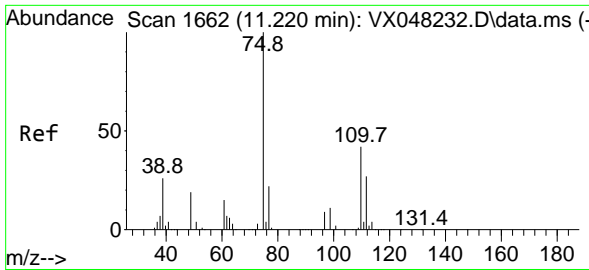
Tgt Ion:106 Resp: 1146
 Ion Ratio Lower Upper
 106 100
 91 199.3 167.9 251.9



#72
 1,4-Dichlorobenzene-d4
 Concen: 50.000 ug/l
 RT: 12.006 min Scan# 1791
 Delta R.T. -0.000 min
 Lab File: VX048335.D
 Acq: 23 Oct 2025 18:32

Tgt Ion:152 Resp: 94013
 Ion Ratio Lower Upper
 152 100
 115 62.0 43.1 129.4
 150 156.8 0.0 353.0

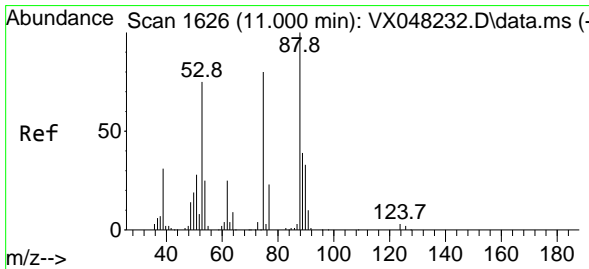
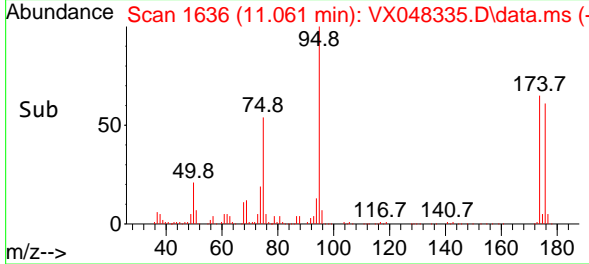
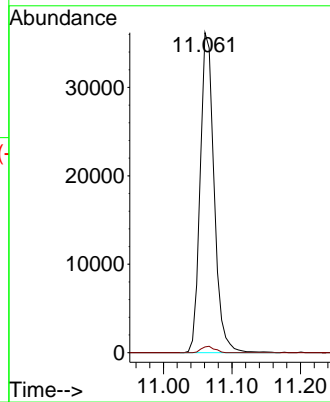
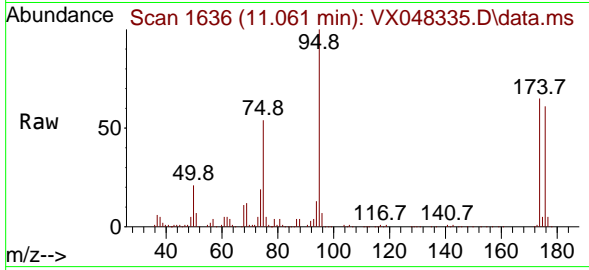




#76
 1,2,3-Trichloropropane
 Concen: 33.743 ug/l
 RT: 11.061 min Scan# 1636
 Delta R.T. -0.159 min
 Lab File: VX048335.D
 Acq: 23 Oct 2025 18:32

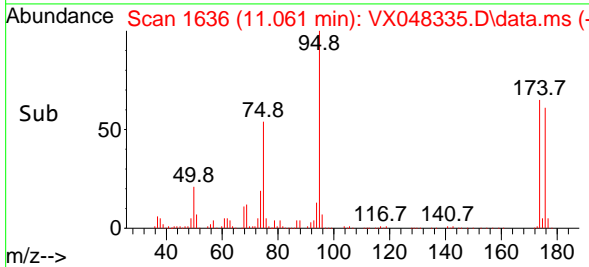
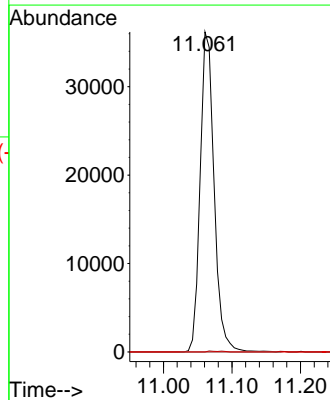
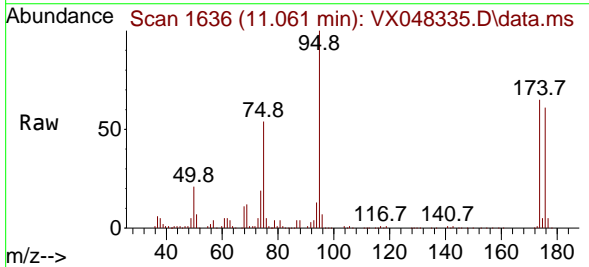
Instrument : MSVOA_X
 ClientSampleId : 461

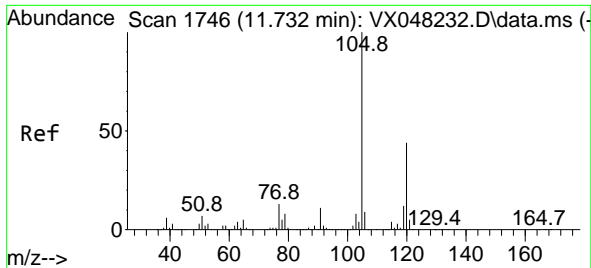
Tgt Ion: 75 Resp: 51444
 Ion Ratio Lower Upper
 75 100
 77 1.9 22.4 67.2#



#81
 trans-1,4-Dichloro-2-butene
 Concen: 82.095 ug/l
 RT: 11.061 min Scan# 1636
 Delta R.T. 0.060 min
 Lab File: VX048335.D
 Acq: 23 Oct 2025 18:32

Tgt Ion: 75 Resp: 51444
 Ion Ratio Lower Upper
 75 100
 53 0.3 79.5 119.3#
 89 0.0 36.8 55.2#

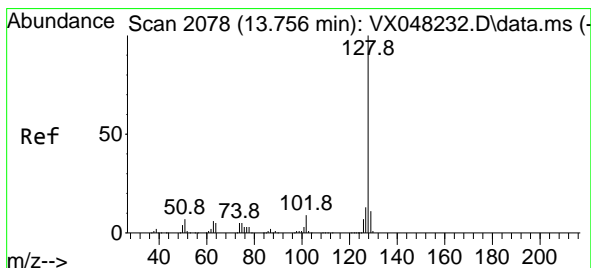
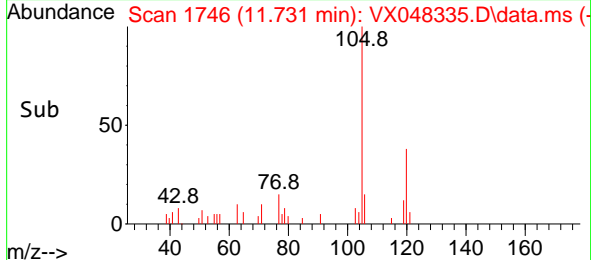
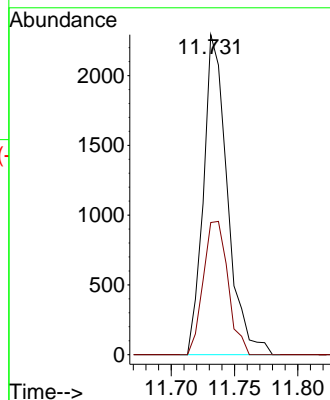
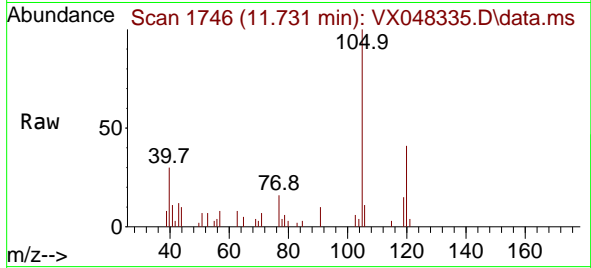




#84
 1,2,4-Trimethylbenzene
 Concen: 0.533 ug/l
 RT: 11.731 min Scan# 11
 Delta R.T. -0.000 min
 Lab File: VX048335.D
 Acq: 23 Oct 2025 18:32

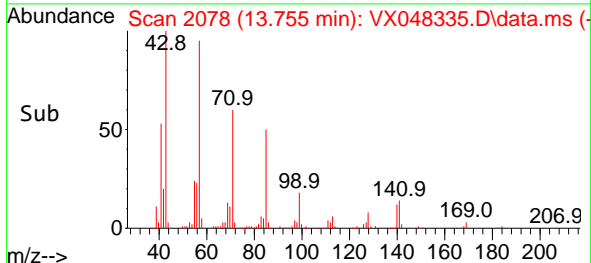
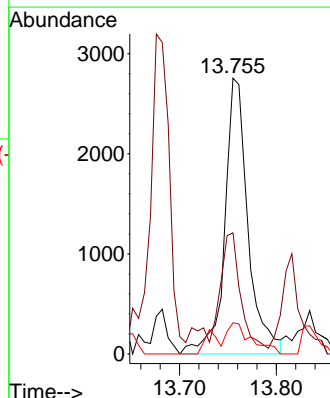
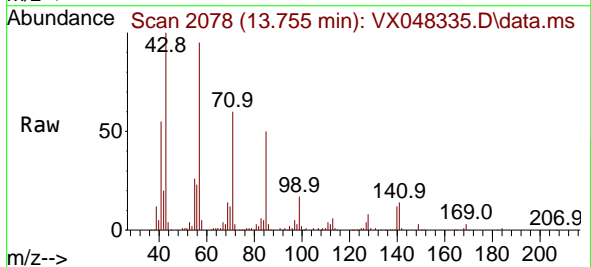
Instrument :
 MSVOA_X
 ClientSampleId :
 461

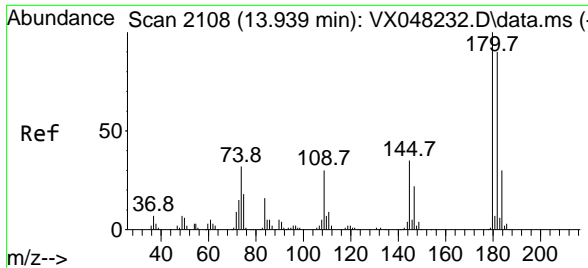
Tgt Ion:105 Resp: 3024
 Ion Ratio Lower Upper
 105 100
 120 43.0 22.1 66.5



#95
 Naphthalene
 Concen: 0.842 ug/l
 RT: 13.755 min Scan# 2078
 Delta R.T. -0.000 min
 Lab File: VX048335.D
 Acq: 23 Oct 2025 18:32

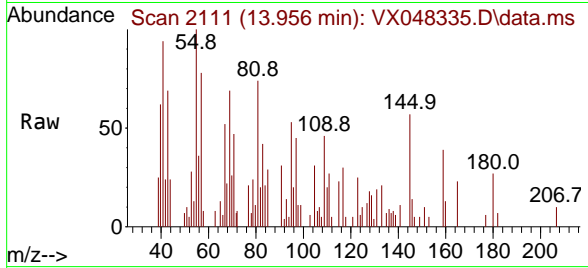
Tgt Ion:128 Resp: 4595
 Ion Ratio Lower Upper
 128 100
 127 34.8 10.2 15.4#
 129 11.8 8.6 12.8





#96
 1,2,3-Trichlorobenzene
 Concen: 0.244 ug/l
 RT: 13.956 min Scan# 2111
 Delta R.T. 0.018 min
 Lab File: VX048335.D
 Acq: 23 Oct 2025 18:32

Instrument :
 MSVOA_X
 ClientSampleId :
 461



Tgt Ion:180 Resp: 461

Ion	Ratio	Lower	Upper
180	100		
182	19.3	46.6	139.7#
145	176.6	16.9	50.7#

