

Data Path : Z:\voasrv\HPCHEM1\MSVOA_X\Data\VX102325\
 Data File : VX048336.D
 Acq On : 23 Oct 2025 18:53
 Operator : JC/MD
 Sample : IBLK
 Misc : 5.0mL/MSVOA_X/WATER
 ALS Vial : 28 Sample Multiplier: 1

Instrument :
 MSVOA_X
 ClientSampleId :

Quant Time: Oct 24 05:52:12 2025
 Quant Method : Z:\voasrv\HPCHEM1\MSVOA_X\Method\82X102025W.M
 Quant Title : SW846 8260
 QLast Update : Mon Oct 20 14:13:59 2025
 Response via : Initial Calibration

Compound	R.T.	QIon	Response	Conc	Units	Dev(Min)

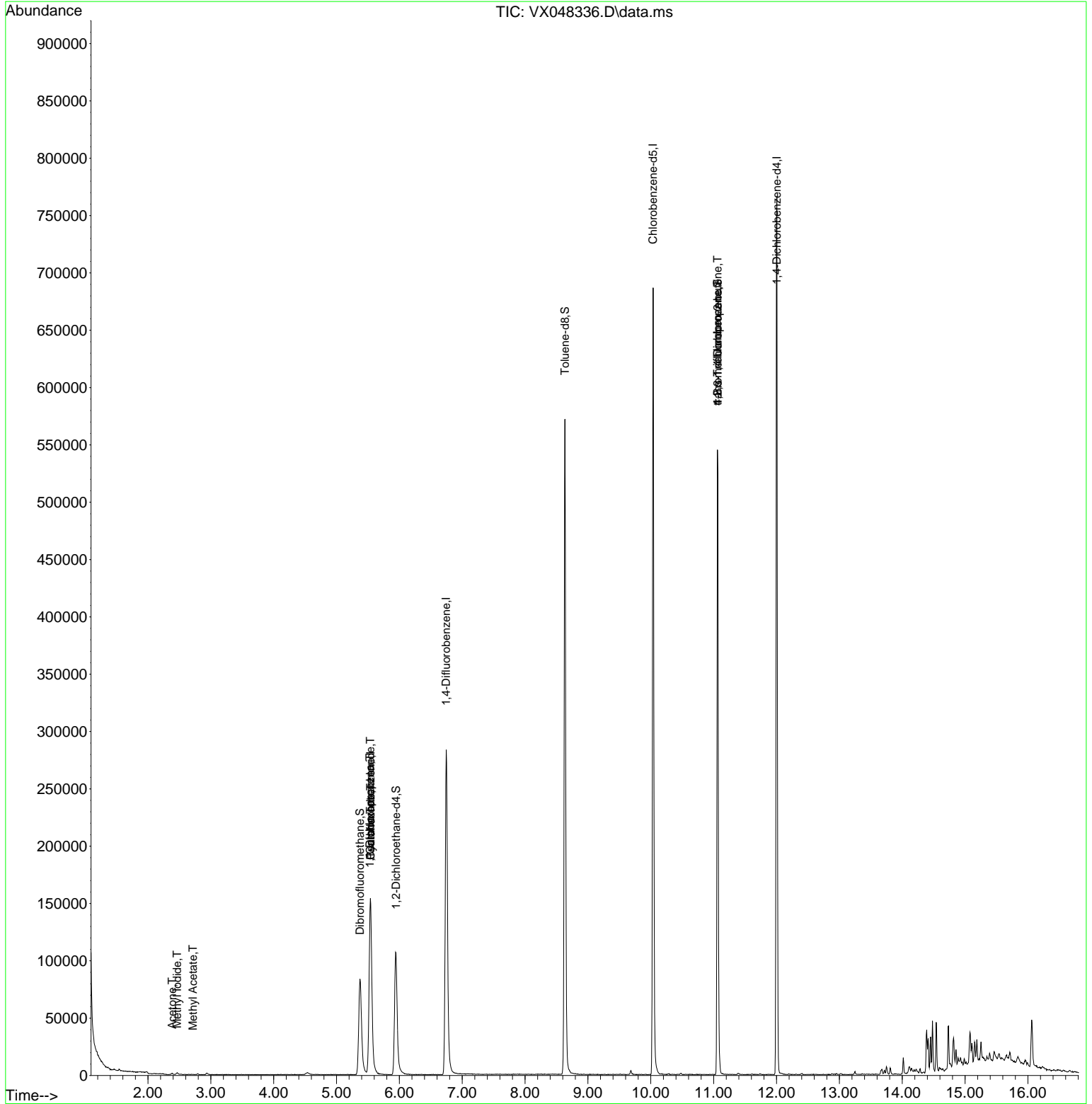
Internal Standards						
1) Pentafluorobenzene	5.544	168	152139	50.000	ug/l	0.00
34) 1,4-Difluorobenzene	6.745	114	307340	50.000	ug/l	0.00
63) Chlorobenzene-d5	10.037	117	311475	50.000	ug/l	0.00
72) 1,4-Dichlorobenzene-d4	12.006	152	157037	50.000	ug/l	0.00
System Monitoring Compounds						
33) 1,2-Dichloroethane-d4	5.946	65	120791	56.627	ug/l	0.00
Spiked Amount	50.000	Range 78 - 117	Recovery	=	113.260%	
35) Dibromofluoromethane	5.373	113	83340	39.720	ug/l	0.00
Spiked Amount	50.000	Range 75 - 124	Recovery	=	79.440%	
50) Toluene-d8	8.634	98	351740	47.827	ug/l	0.00
Spiked Amount	50.000	Range 92 - 112	Recovery	=	95.660%	
62) 4-Bromofluorobenzene	11.061	95	153716	54.941	ug/l	0.00
Spiked Amount	50.000	Range 83 - 123	Recovery	=	109.880%	
Target Compounds						
						Qvalue
10) Methyl Iodide	2.465	142	1987	0.963	ug/l	95
16) Acetone	2.386	43	1451	1.983	ug/l #	44
18) Methyl Acetate	2.715	43	486	0.318	ug/l #	54
31) Cyclohexane	5.544	56	3391	1.281	ug/l #	41
36) 1,1-Dichloropropene	5.531	75	13620	4.567	ug/l #	50
38) Carbon Tetrachloride	5.537	117	16400	4.457	ug/l #	15
76) 1,2,3-Trichloropropane	11.061	75	83681	32.860	ug/l #	33
81) trans-1,4-Dichloro-2-b...	11.061	75	83681	79.945	ug/l #	10

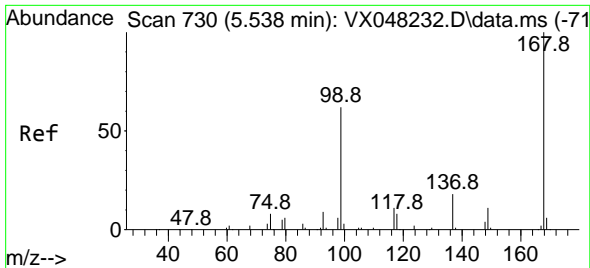
(#) = qualifier out of range (m) = manual integration (+) = signals summed

Data Path : Z:\voasrv\HPCHEM1\MSVOA_X\Data\VX102325\
 Data File : VX048336.D
 Acq On : 23 Oct 2025 18:53
 Operator : JC/MD
 Sample : IBLK
 Misc : 5.0mL/MSVOA_X/WATER
 ALS Vial : 28 Sample Multiplier: 1

Instrument :
 MSVOA_X
 ClientSampleId :

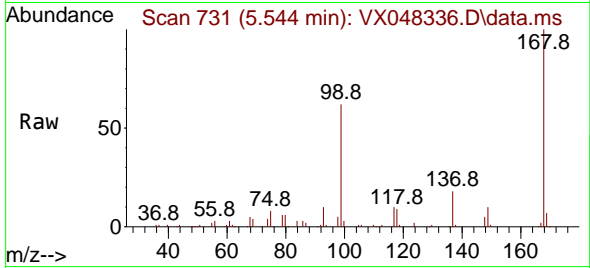
Quant Time: Oct 24 05:52:12 2025
 Quant Method : Z:\voasrv\HPCHEM1\MSVOA_X\Method\82X102025W.M
 Quant Title : SW846 8260
 QLast Update : Mon Oct 20 14:13:59 2025
 Response via : Initial Calibration



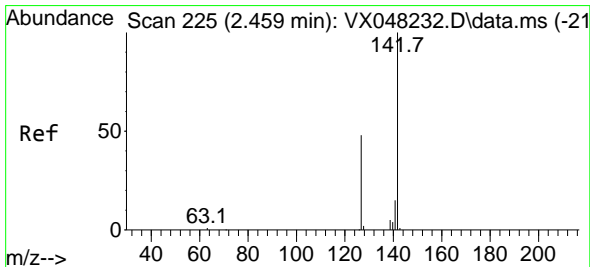
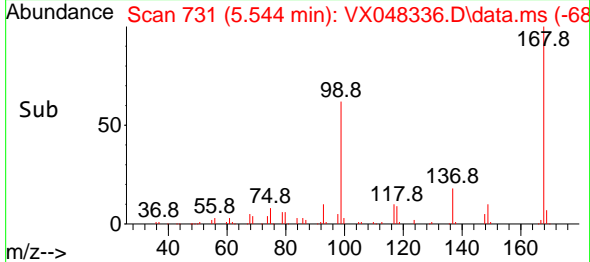
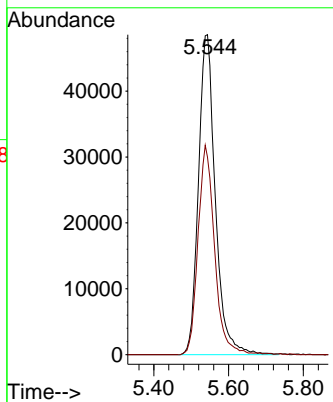


#1
 Pentafluorobenzene
 Concen: 50.000 ug/l
 RT: 5.544 min Scan# 71
 Delta R.T. -0.000 min
 Lab File: VX048336.D
 Acq: 23 Oct 2025 18:53

Instrument :
 MSVOA_X
 ClientSampleId :

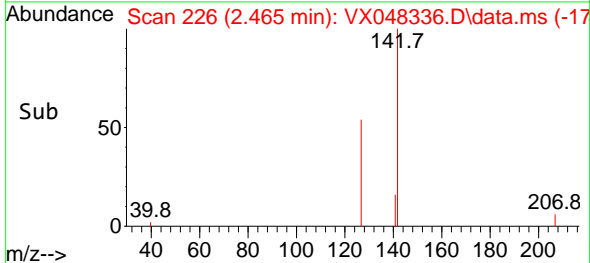
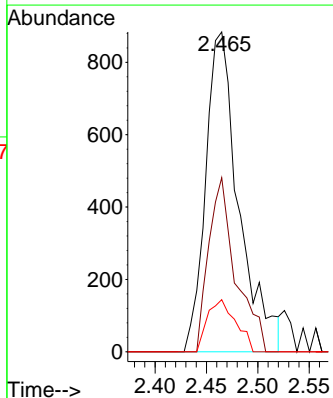
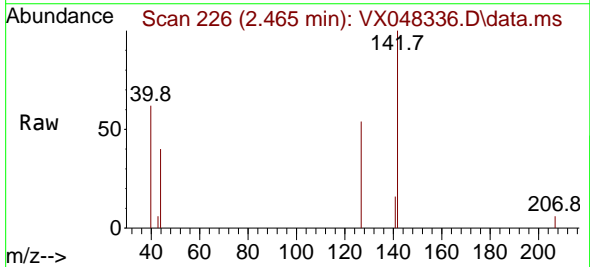


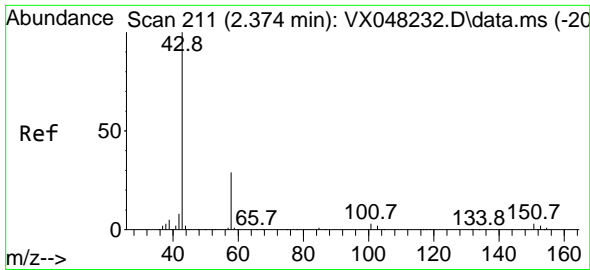
Tgt Ion:168 Resp: 152139
 Ion Ratio Lower Upper
 168 100
 99 61.7 46.4 69.6



#10
 Methyl Iodide
 Concen: 0.963 ug/l
 RT: 2.465 min Scan# 226
 Delta R.T. 0.006 min
 Lab File: VX048336.D
 Acq: 23 Oct 2025 18:53

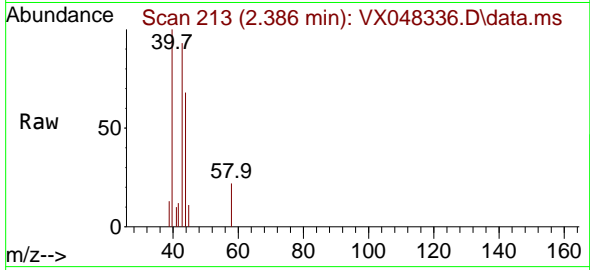
Tgt Ion:142 Resp: 1987
 Ion Ratio Lower Upper
 142 100
 127 44.4 38.5 57.7
 141 13.9 11.6 17.4



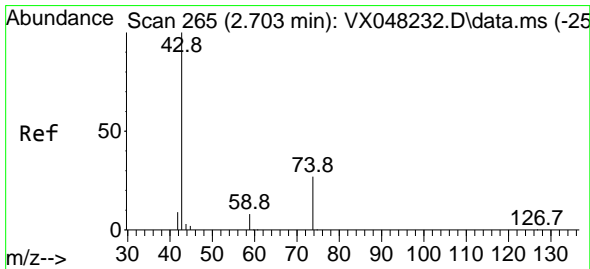
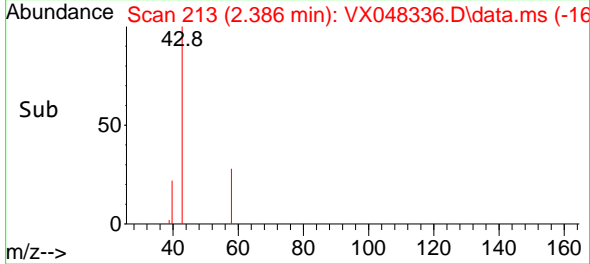
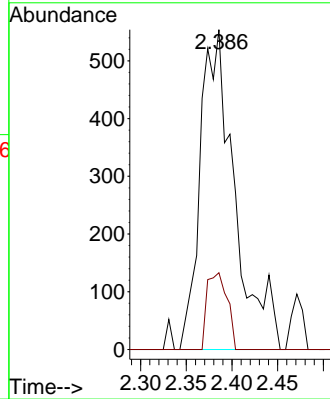


#16
 Acetone
 Concen: 1.983 ug/l
 RT: 2.386 min Scan# 211
 Delta R.T. 0.012 min
 Lab File: VX048336.D
 Acq: 23 Oct 2025 18:53

Instrument :
 MSVOA_X
 ClientSampleId :

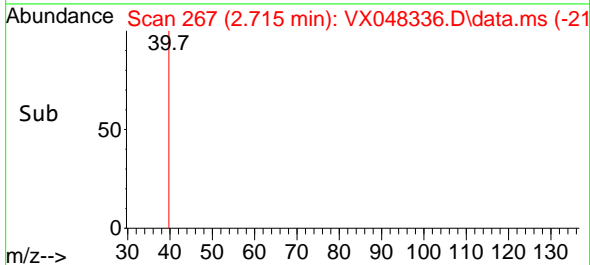
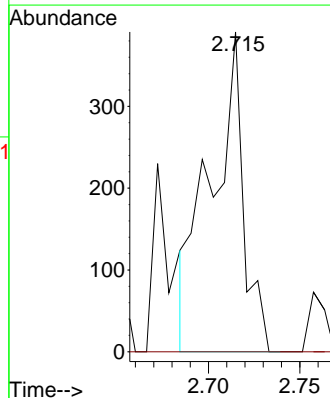
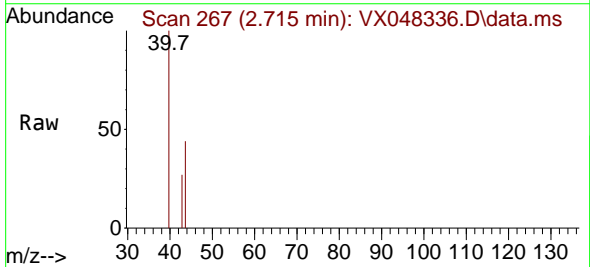


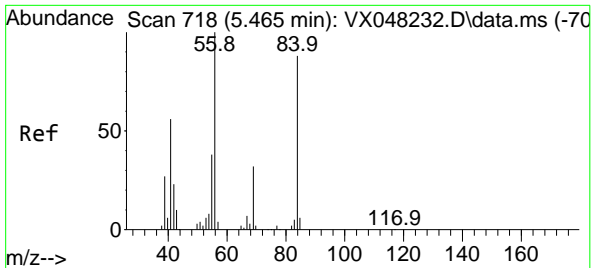
Tgt Ion: 43 Resp: 1451
 Ion Ratio Lower Upper
 43 100
 58 59.1 23.4 35.2#



#18
 Methyl Acetate
 Concen: 0.318 ug/l
 RT: 2.715 min Scan# 267
 Delta R.T. 0.018 min
 Lab File: VX048336.D
 Acq: 23 Oct 2025 18:53

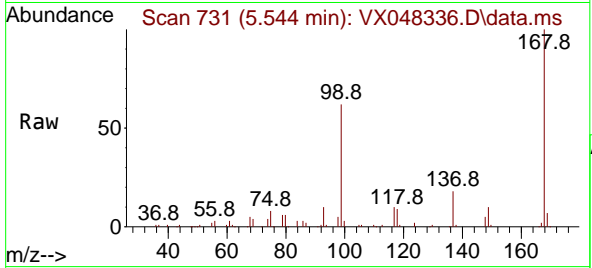
Tgt Ion: 43 Resp: 486
 Ion Ratio Lower Upper
 43 100
 74 0.0 17.5 26.3#



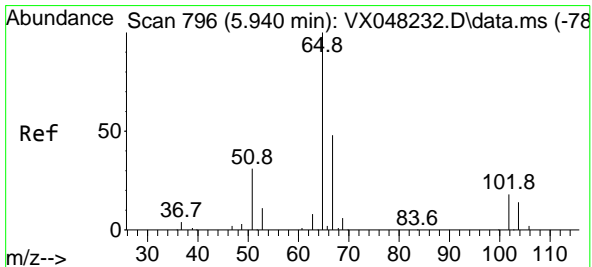
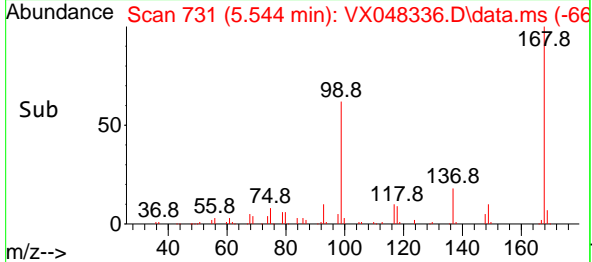
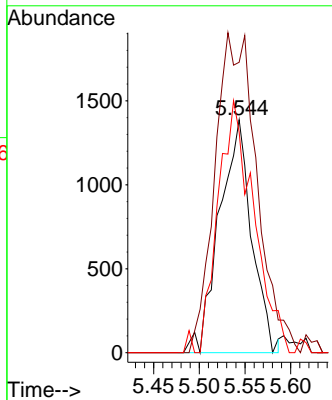


#31
 Cyclohexane
 Concen: 1.281 ug/l
 RT: 5.544 min Scan# 711
 Delta R.T. 0.085 min
 Lab File: VX048336.D
 Acq: 23 Oct 2025 18:53

Instrument :
 MSVOA_X
 ClientSampleId :

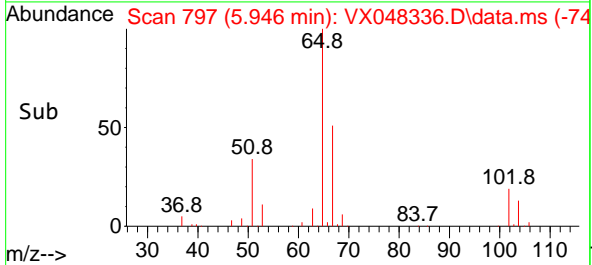
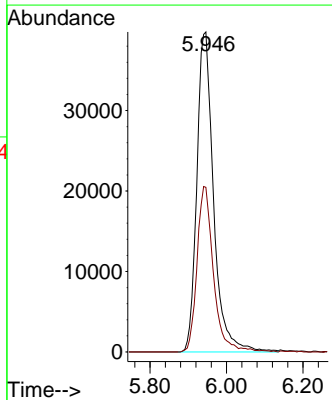
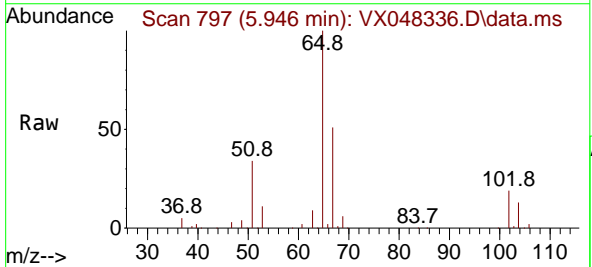


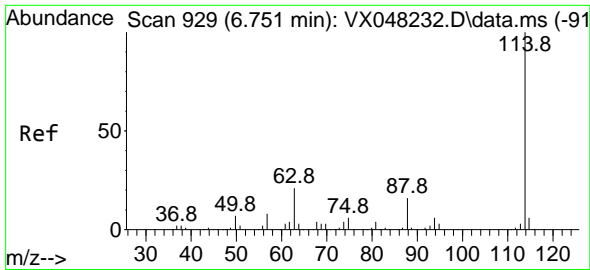
Tgt Ion: 56 Resp: 3391
 Ion Ratio Lower Upper
 56 100
 69 124.6 23.0 34.6#
 84 94.7 64.6 97.0



#33
 1,2-Dichloroethane-d4
 Concen: 56.627 ug/l
 RT: 5.946 min Scan# 797
 Delta R.T. 0.006 min
 Lab File: VX048336.D
 Acq: 23 Oct 2025 18:53

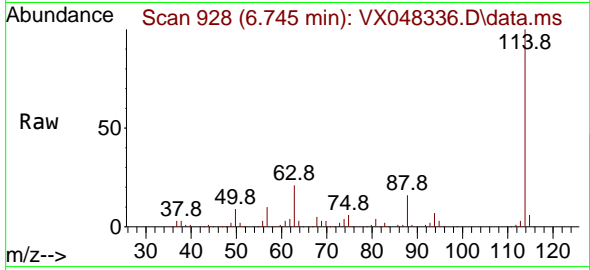
Tgt Ion: 65 Resp: 120791
 Ion Ratio Lower Upper
 65 100
 67 50.9 0.0 105.0



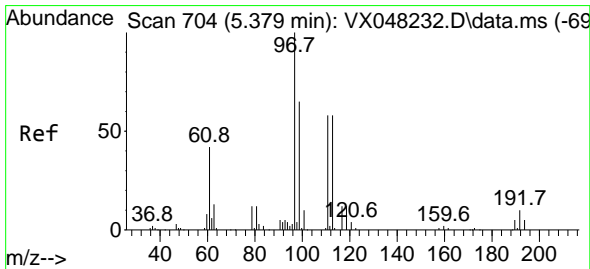
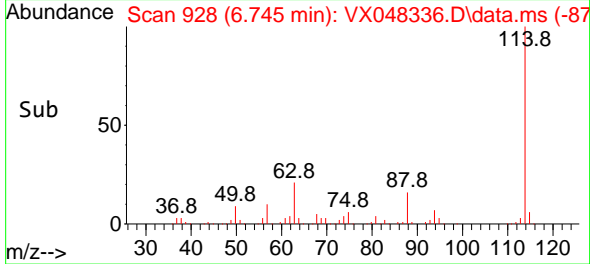
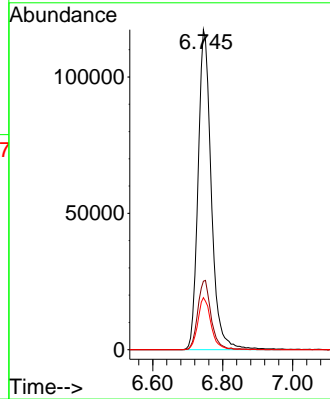


#34
 1,4-Difluorobenzene
 Concen: 50.000 ug/l
 RT: 6.745 min Scan# 91
 Delta R.T. -0.000 min
 Lab File: VX048336.D
 Acq: 23 Oct 2025 18:53

Instrument :
 MSVOA_X
 ClientSampleId :

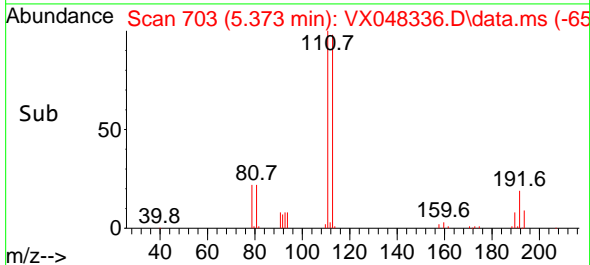
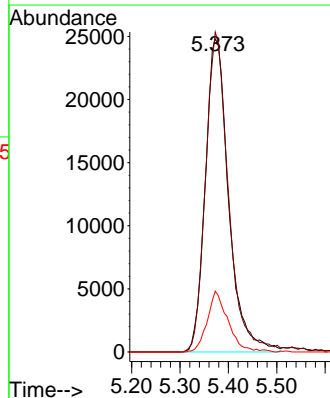
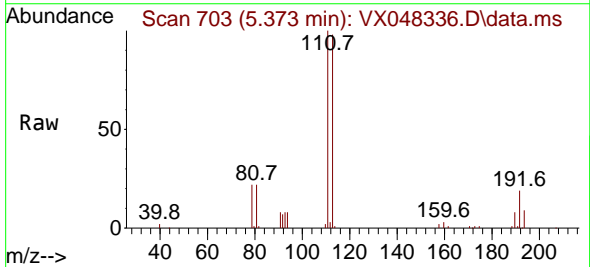


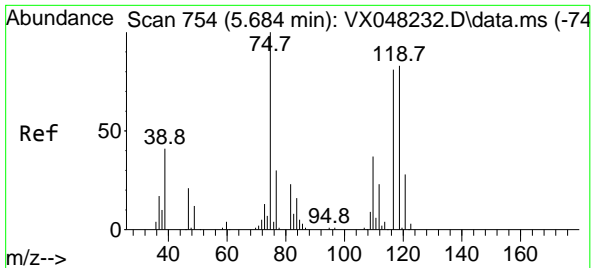
Tgt Ion:114 Resp: 307340
 Ion Ratio Lower Upper
 114 100
 63 21.4 0.0 43.2
 88 16.3 0.0 33.6



#35
 Dibromofluoromethane
 Concen: 39.720 ug/l
 RT: 5.373 min Scan# 703
 Delta R.T. -0.000 min
 Lab File: VX048336.D
 Acq: 23 Oct 2025 18:53

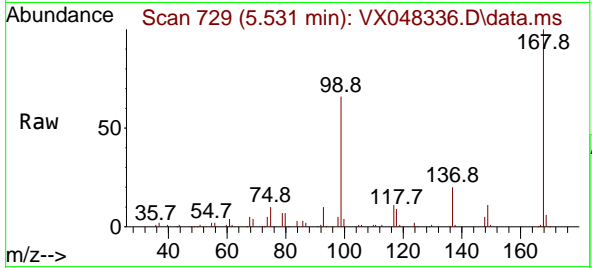
Tgt Ion:113 Resp: 83340
 Ion Ratio Lower Upper
 113 100
 111 100.3 82.2 123.4
 192 17.3 15.1 22.7





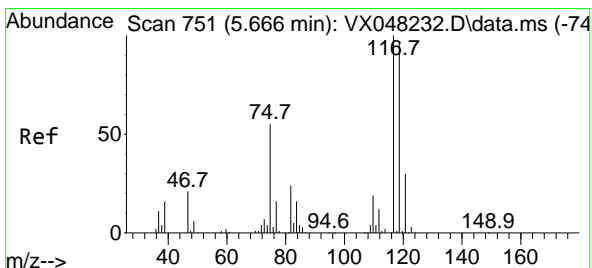
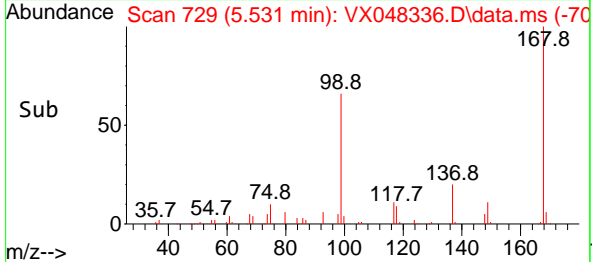
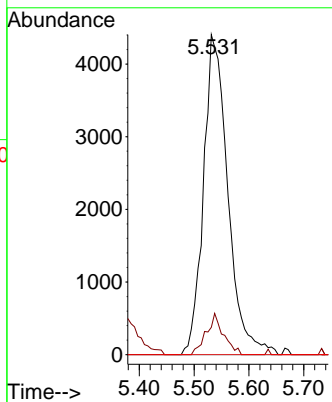
#36
 1,1-Dichloropropene
 Concen: 4.567 ug/l
 RT: 5.531 min Scan# 710
 Delta R.T. -0.153 min
 Lab File: VX048336.D
 Acq: 23 Oct 2025 18:53

Instrument : MSVOA_X
 ClientSampleId :

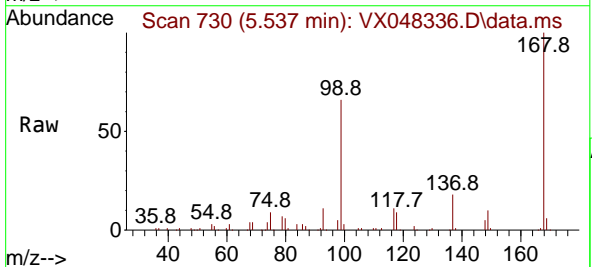


Tgt Ion: 75 Resp: 13620

Ion	Ratio	Lower	Upper
75	100		
110	9.0	17.7	53.1#
77	0.0	24.3	36.5#

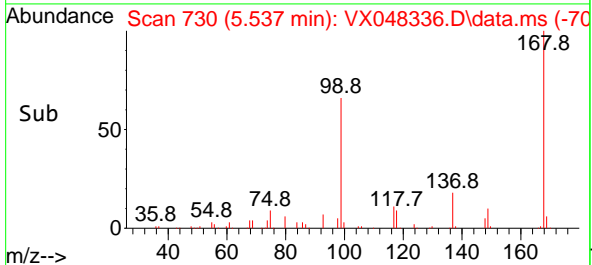
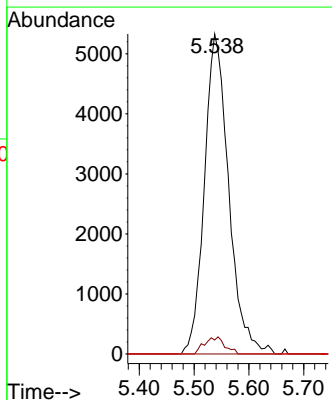


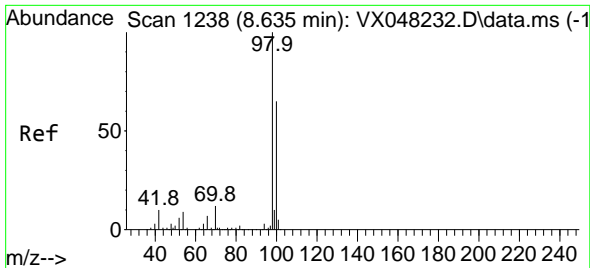
#38
 Carbon Tetrachloride
 Concen: 4.457 ug/l
 RT: 5.537 min Scan# 730
 Delta R.T. -0.128 min
 Lab File: VX048336.D
 Acq: 23 Oct 2025 18:53



Tgt Ion: 117 Resp: 16400

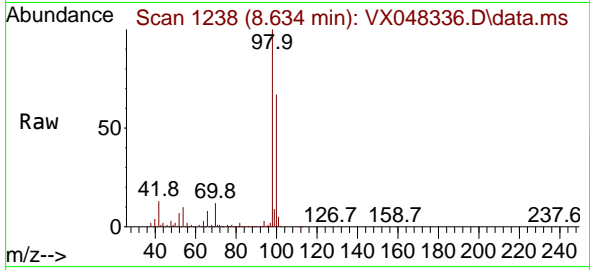
Ion	Ratio	Lower	Upper
117	100		
119	4.3	77.2	115.8#
121	0.0	24.8	37.2#



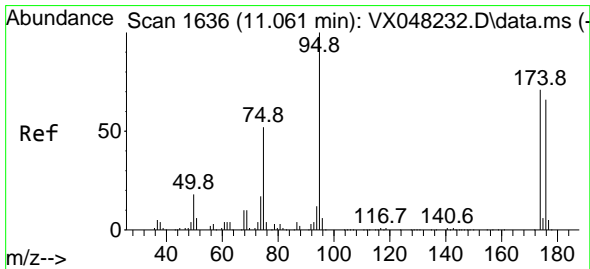
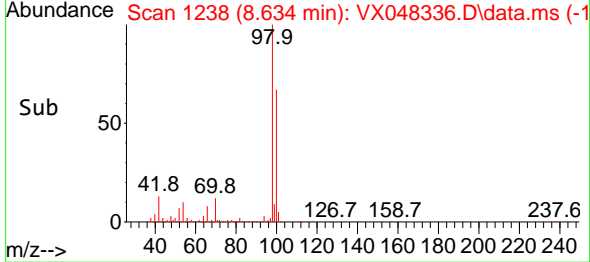
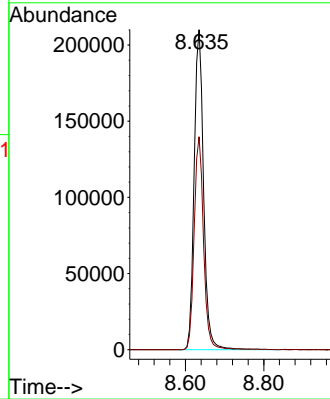


#50
 Toluene-d8
 Concen: 47.827 ug/l
 RT: 8.634 min Scan# 11
 Delta R.T. -0.000 min
 Lab File: VX048336.D
 Acq: 23 Oct 2025 18:53

Instrument :
 MSVOA_X
 ClientSampleId :

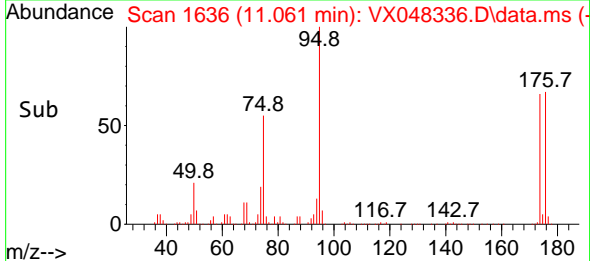
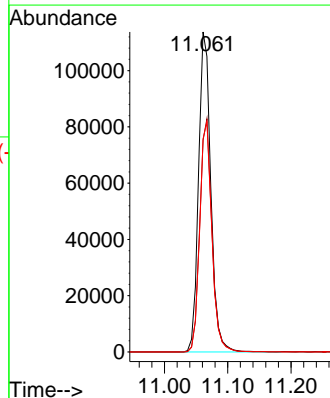
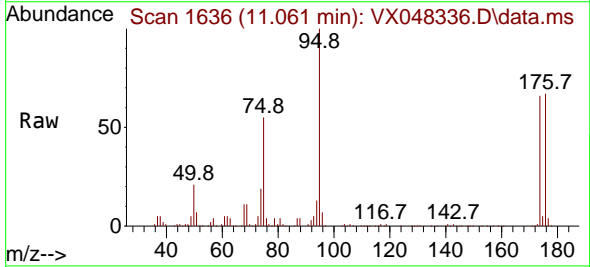


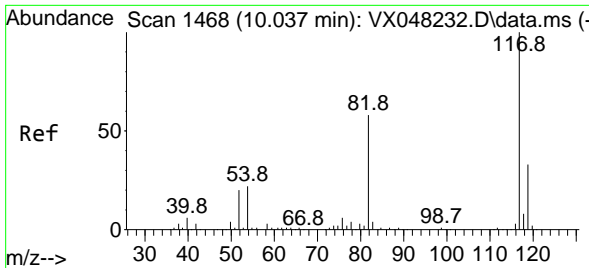
Tgt Ion: 98 Resp: 351740
 Ion Ratio Lower Upper
 98 100
 100 66.5 53.0 79.4



#62
 4-Bromofluorobenzene
 Concen: 54.941 ug/l
 RT: 11.061 min Scan# 1636
 Delta R.T. -0.000 min
 Lab File: VX048336.D
 Acq: 23 Oct 2025 18:53

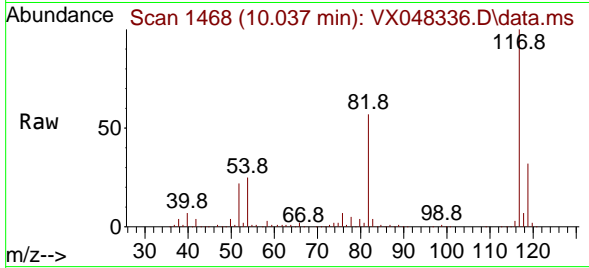
Tgt Ion: 95 Resp: 153716
 Ion Ratio Lower Upper
 95 100
 174 72.2 0.0 147.8
 176 71.5 0.0 142.8





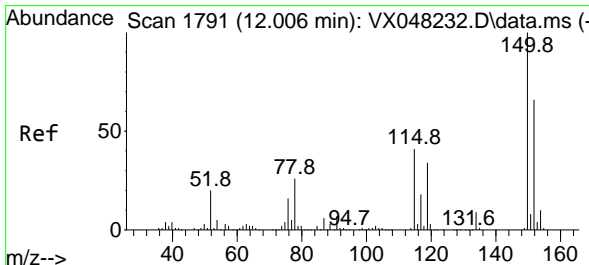
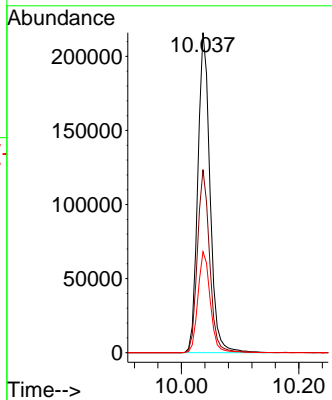
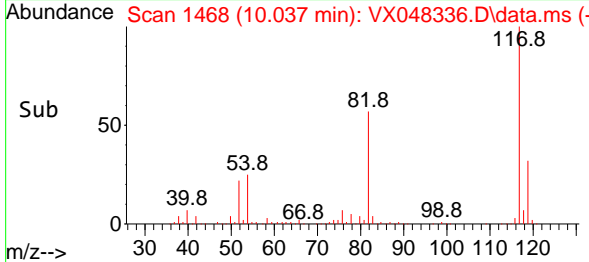
#63
 Chlorobenzene-d5
 Concen: 50.000 ug/l
 RT: 10.037 min Scan# 14
 Delta R.T. -0.000 min
 Lab File: VX048336.D
 Acq: 23 Oct 2025 18:53

Instrument :
 MSVOA_X
 ClientSampleId :

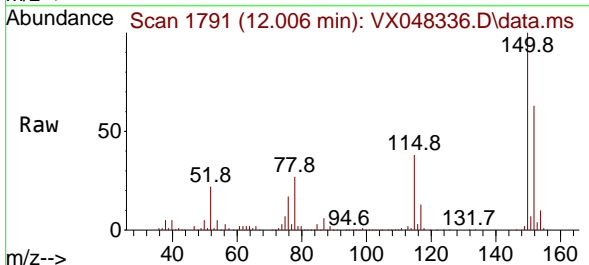


Tgt Ion:117 Resp: 311475

Ion	Ratio	Lower	Upper
117	100		
82	57.2	46.5	69.7
119	31.6	25.9	38.9

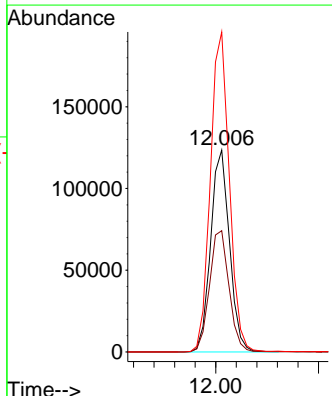
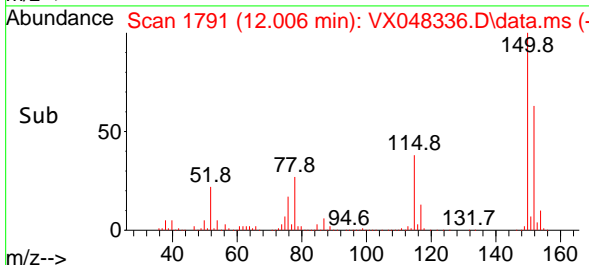


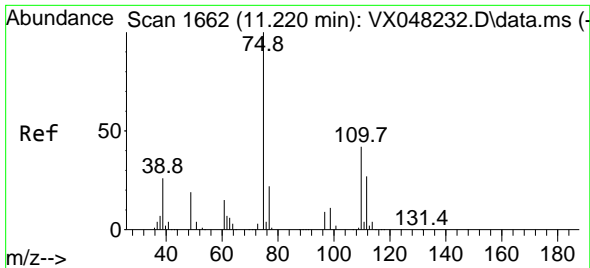
#72
 1,4-Dichlorobenzene-d4
 Concen: 50.000 ug/l
 RT: 12.006 min Scan# 1791
 Delta R.T. -0.000 min
 Lab File: VX048336.D
 Acq: 23 Oct 2025 18:53



Tgt Ion:152 Resp: 157037

Ion	Ratio	Lower	Upper
152	100		
115	62.6	43.1	129.4
150	159.2	0.0	353.0

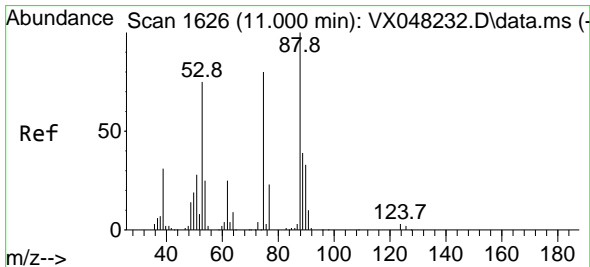
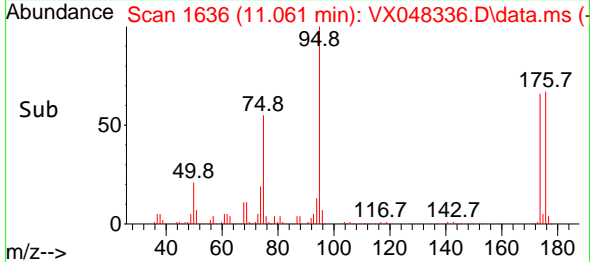
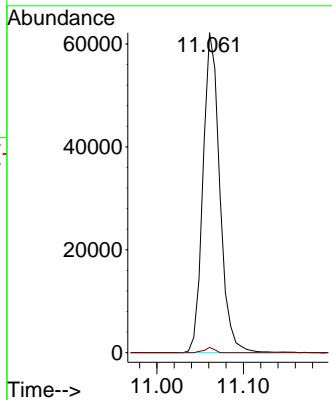
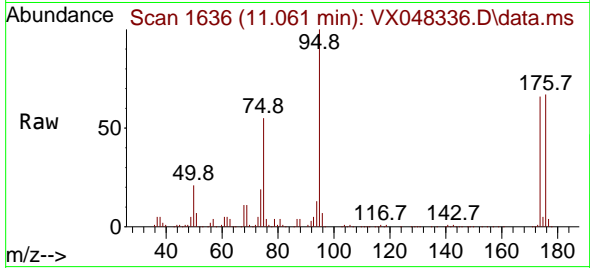




#76
 1,2,3-Trichloropropane
 Concen: 32.860 ug/l
 RT: 11.061 min Scan# 1636
 Delta R.T. -0.159 min
 Lab File: VX048336.D
 Acq: 23 Oct 2025 18:53

Instrument : MSVOA_X
 ClientSampleId :

Tgt Ion: 75 Resp: 83681
 Ion Ratio Lower Upper
 75 100
 77 1.0 22.4 67.2#



#81
 trans-1,4-Dichloro-2-butene
 Concen: 79.945 ug/l
 RT: 11.061 min Scan# 1636
 Delta R.T. 0.061 min
 Lab File: VX048336.D
 Acq: 23 Oct 2025 18:53

Tgt Ion: 75 Resp: 83681
 Ion Ratio Lower Upper
 75 100
 53 0.0 79.5 119.3#
 89 0.0 36.8 55.2#

