

Data Path : Z:\voasrv\HPCHEM1\MSVOA\_X\Data\VX102325\  
 Data File : VX048336.D  
 Acq On : 23 Oct 2025 18:53  
 Operator : JC/MD  
 Sample : IBLK  
 Misc : 5.0mL/MSVOA\_X/WATER  
 ALS Vial : 28 Sample Multiplier: 1

Instrument :  
 MSVOA\_X  
 ClientSampleId :  
 IBLK

Quant Time: Oct 24 05:52:12 2025  
 Quant Method : Z:\voasrv\HPCHEM1\MSVOA\_X\Method\82X102025W.M  
 Quant Title : SW846 8260  
 QLast Update : Mon Oct 20 14:13:59 2025  
 Response via : Initial Calibration

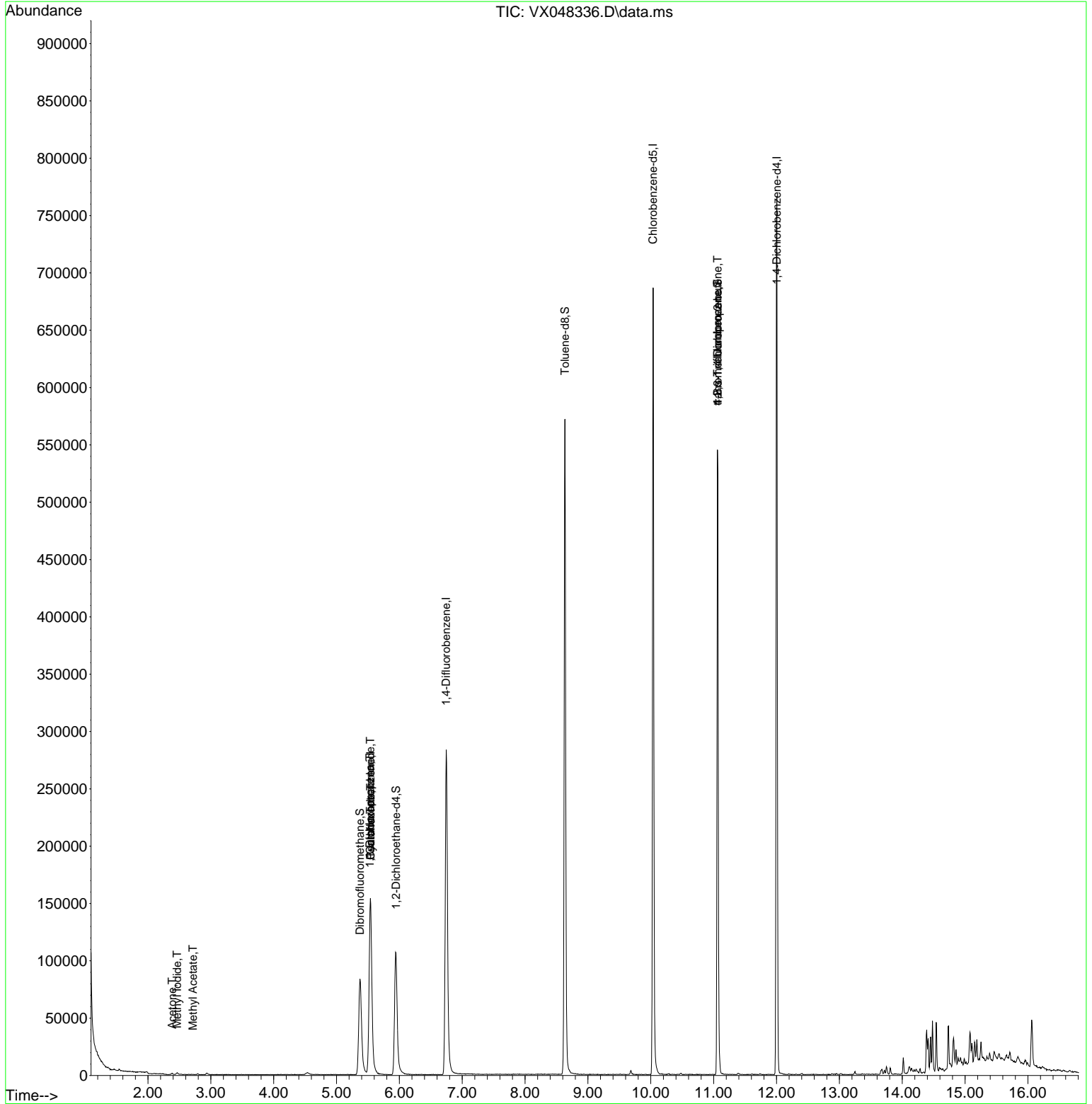
Compound	R.T.	QIon	Response	Conc	Units	Dev(Min)
-----						
Internal Standards						
1) Pentafluorobenzene	5.544	168	152139	50.000	ug/l	0.00
34) 1,4-Difluorobenzene	6.745	114	307340	50.000	ug/l	0.00
63) Chlorobenzene-d5	10.037	117	311475	50.000	ug/l	0.00
72) 1,4-Dichlorobenzene-d4	12.006	152	157037	50.000	ug/l	0.00
System Monitoring Compounds						
33) 1,2-Dichloroethane-d4	5.946	65	120791	56.627	ug/l	0.00
Spiked Amount	50.000	Range 78 - 117	Recovery	=	113.260%	
35) Dibromofluoromethane	5.373	113	83340	39.720	ug/l	0.00
Spiked Amount	50.000	Range 75 - 124	Recovery	=	79.440%	
50) Toluene-d8	8.634	98	351740	47.827	ug/l	0.00
Spiked Amount	50.000	Range 92 - 112	Recovery	=	95.660%	
62) 4-Bromofluorobenzene	11.061	95	153716	54.941	ug/l	0.00
Spiked Amount	50.000	Range 83 - 123	Recovery	=	109.880%	
Target Compounds						
						Qvalue
10) Methyl Iodide	2.465	142	1987	0.963	ug/l	95
16) Acetone	2.386	43	1451	1.983	ug/l #	44
18) Methyl Acetate	2.715	43	486	0.318	ug/l #	54
31) Cyclohexane	5.544	56	3391	1.281	ug/l #	41
36) 1,1-Dichloropropene	5.531	75	13620	4.567	ug/l #	50
38) Carbon Tetrachloride	5.537	117	16400	4.457	ug/l #	15
76) 1,2,3-Trichloropropane	11.061	75	83681	32.860	ug/l #	33
81) trans-1,4-Dichloro-2-b...	11.061	75	83681	79.945	ug/l #	10
-----						

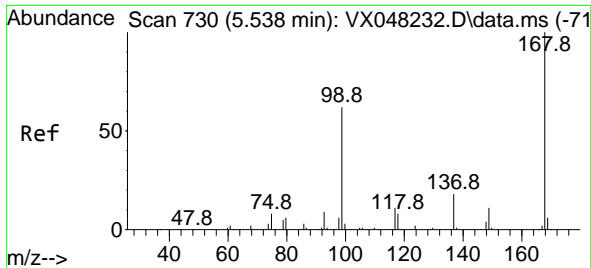
(#) = qualifier out of range (m) = manual integration (+) = signals summed

Data Path : Z:\voasrv\HPCHEM1\MSVOA\_X\Data\VX102325\  
 Data File : VX048336.D  
 Acq On : 23 Oct 2025 18:53  
 Operator : JC/MD  
 Sample : IBLK  
 Misc : 5.0mL/MSVOA\_X/WATER  
 ALS Vial : 28 Sample Multiplier: 1

Instrument :  
 MSVOA\_X  
 ClientSampleId :  
 IBLK

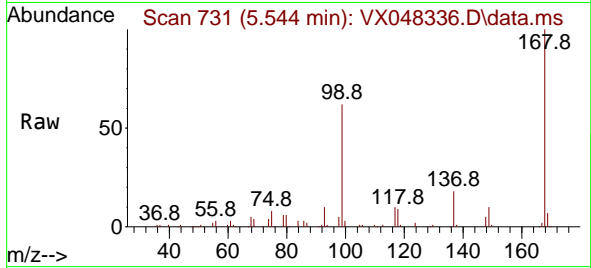
Quant Time: Oct 24 05:52:12 2025  
 Quant Method : Z:\voasrv\HPCHEM1\MSVOA\_X\Method\82X102025W.M  
 Quant Title : SW846 8260  
 QLast Update : Mon Oct 20 14:13:59 2025  
 Response via : Initial Calibration



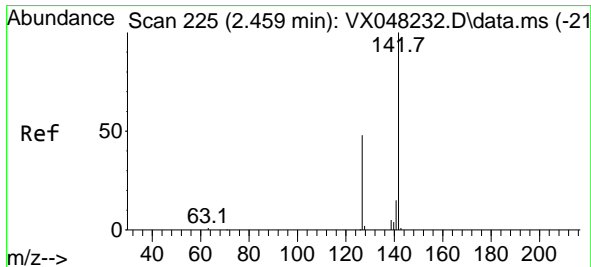
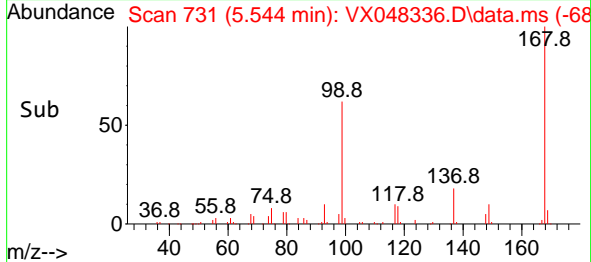
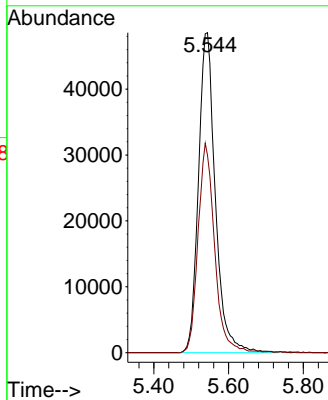


#1  
 Pentafluorobenzene  
 Concen: 50.000 ug/l  
 RT: 5.544 min Scan# 71  
 Delta R.T. -0.000 min  
 Lab File: VX048336.D  
 Acq: 23 Oct 2025 18:53

Instrument :  
 MSVOA\_X  
 ClientSampleId :  
 IBLK

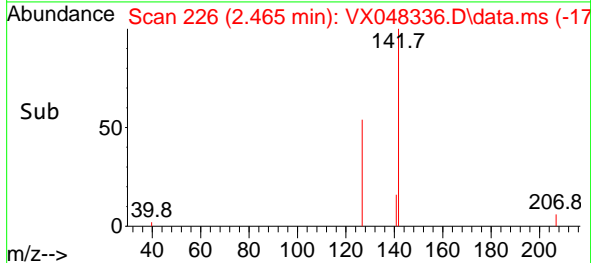
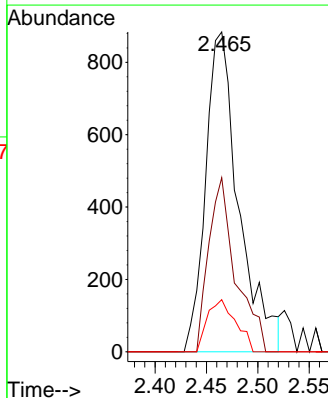
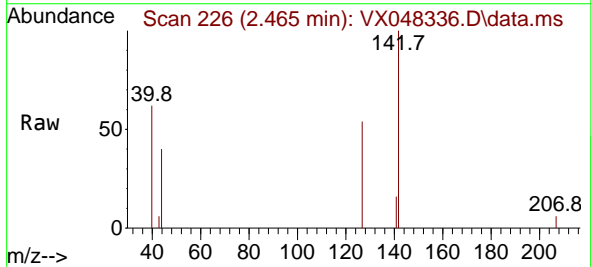


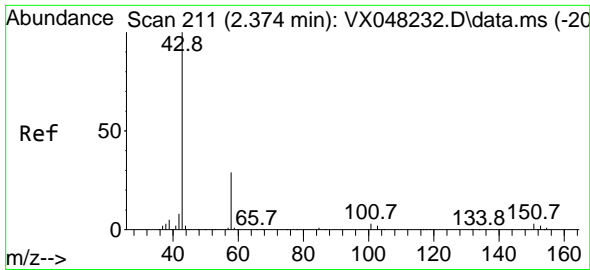
Tgt Ion:168 Resp: 152139  
 Ion Ratio Lower Upper  
 168 100  
 99 61.7 46.4 69.6



#10  
 Methyl Iodide  
 Concen: 0.963 ug/l  
 RT: 2.465 min Scan# 226  
 Delta R.T. 0.006 min  
 Lab File: VX048336.D  
 Acq: 23 Oct 2025 18:53

Tgt Ion:142 Resp: 1987  
 Ion Ratio Lower Upper  
 142 100  
 127 44.4 38.5 57.7  
 141 13.9 11.6 17.4

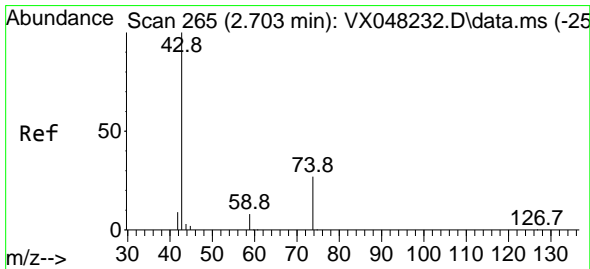
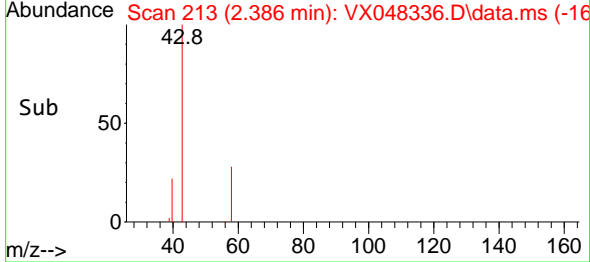
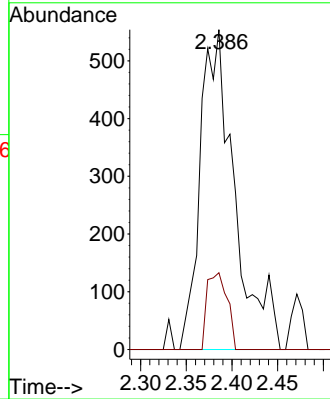
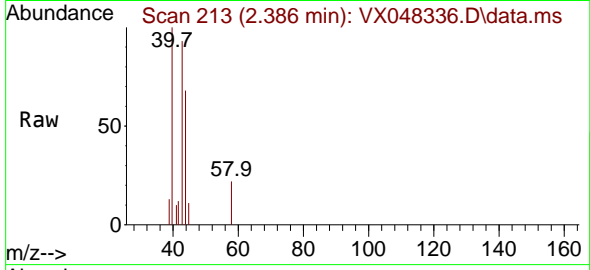




#16  
 Acetone  
 Concen: 1.983 ug/l  
 RT: 2.386 min Scan# 211  
 Delta R.T. 0.012 min  
 Lab File: VX048336.D  
 Acq: 23 Oct 2025 18:53

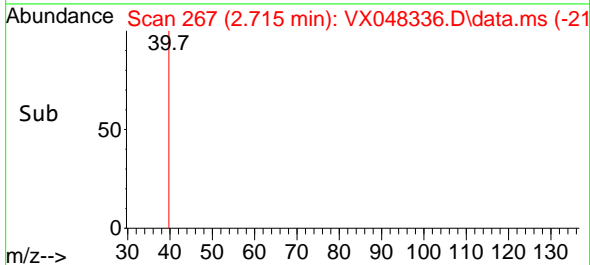
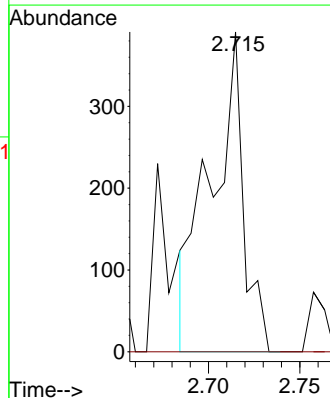
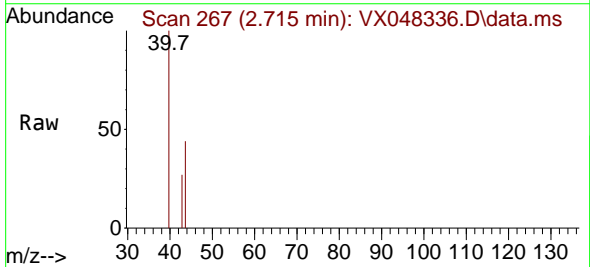
Instrument : MSVOA\_X  
 ClientSampleId : IBLK

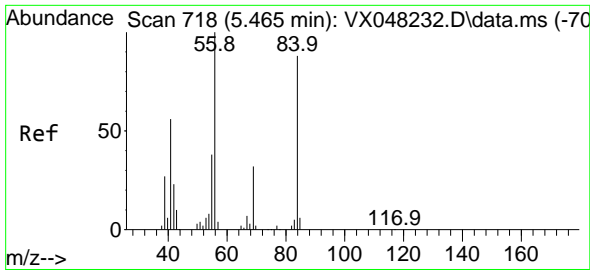
Tgt Ion: 43 Resp: 1451  
 Ion Ratio Lower Upper  
 43 100  
 58 59.1 23.4 35.2#



#18  
 Methyl Acetate  
 Concen: 0.318 ug/l  
 RT: 2.715 min Scan# 267  
 Delta R.T. 0.018 min  
 Lab File: VX048336.D  
 Acq: 23 Oct 2025 18:53

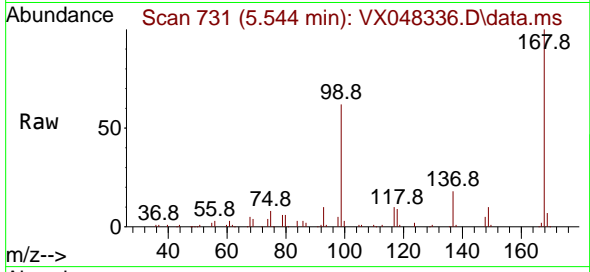
Tgt Ion: 43 Resp: 486  
 Ion Ratio Lower Upper  
 43 100  
 74 0.0 17.5 26.3#



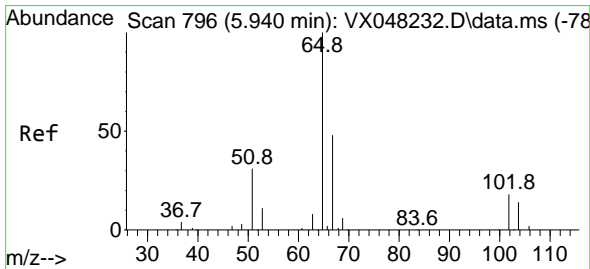
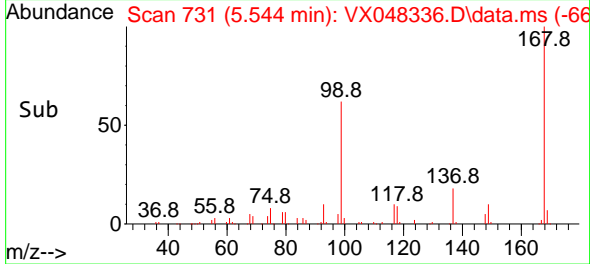
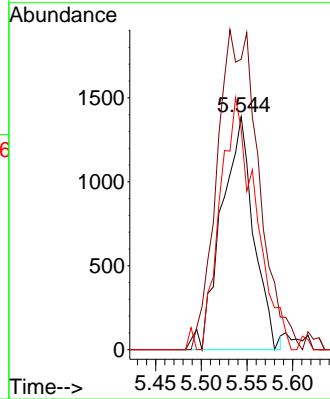


#31  
 Cyclohexane  
 Concen: 1.281 ug/l  
 RT: 5.544 min Scan# 718  
 Delta R.T. 0.085 min  
 Lab File: VX048336.D  
 Acq: 23 Oct 2025 18:53

Instrument : MSVOA\_X  
 ClientSampleId : IBLK

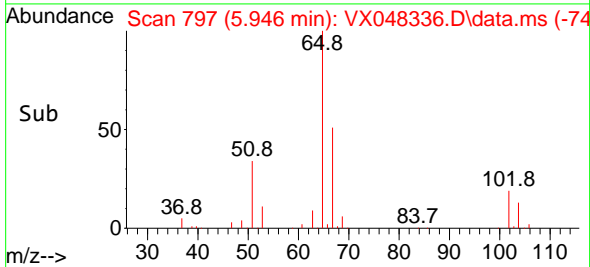
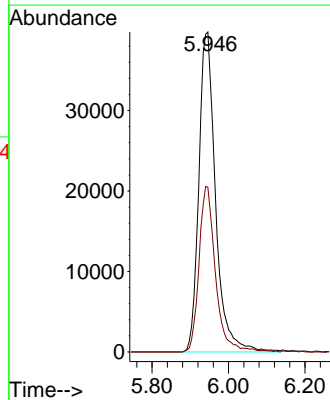
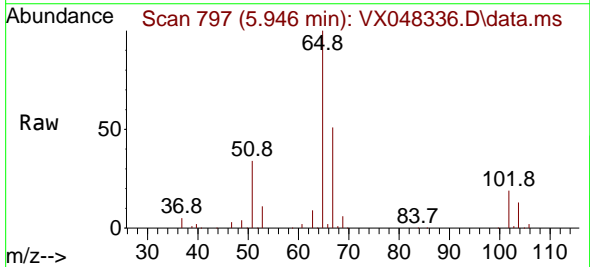


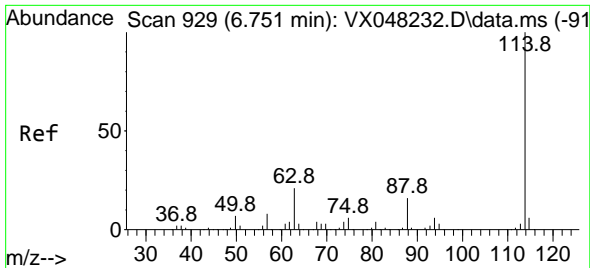
Tgt Ion: 56 Resp: 3391  
 Ion Ratio Lower Upper  
 56 100  
 69 124.6 23.0 34.6#  
 84 94.7 64.6 97.0



#33  
 1,2-Dichloroethane-d4  
 Concen: 56.627 ug/l  
 RT: 5.946 min Scan# 797  
 Delta R.T. 0.006 min  
 Lab File: VX048336.D  
 Acq: 23 Oct 2025 18:53

Tgt Ion: 65 Resp: 120791  
 Ion Ratio Lower Upper  
 65 100  
 67 50.9 0.0 105.0



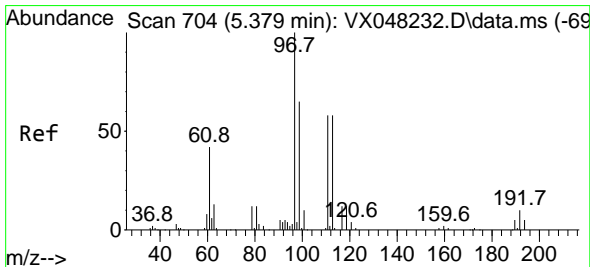
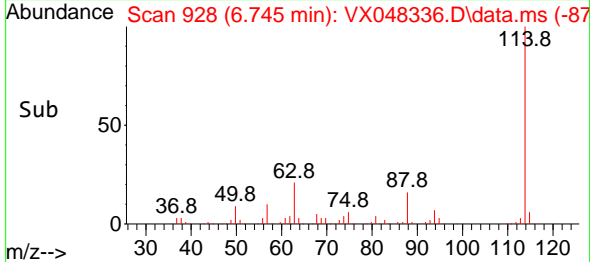
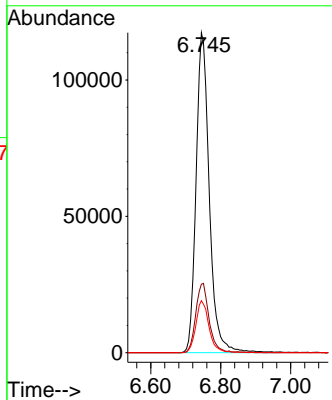
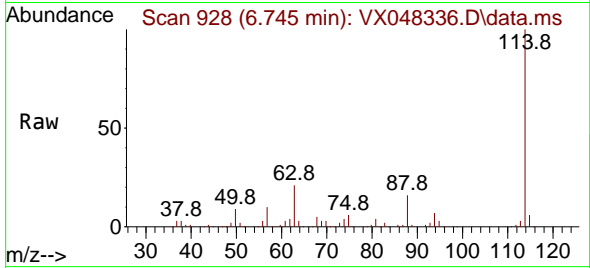


#34  
 1,4-Difluorobenzene  
 Concen: 50.000 ug/l  
 RT: 6.745 min Scan# 91  
 Delta R.T. -0.000 min  
 Lab File: VX048336.D  
 Acq: 23 Oct 2025 18:53

Instrument :  
 MSVOA\_X  
 ClientSampleId :  
 IBLK

Tgt Ion:114 Resp: 307340

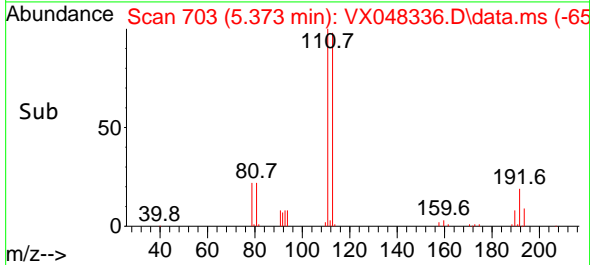
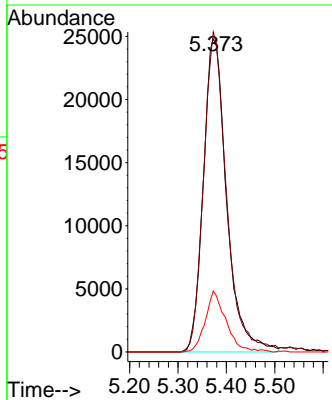
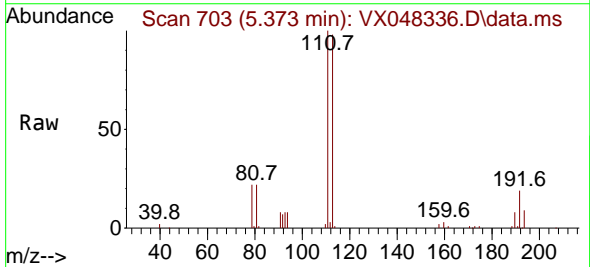
Ion	Ratio	Lower	Upper
114	100		
63	21.4	0.0	43.2
88	16.3	0.0	33.6

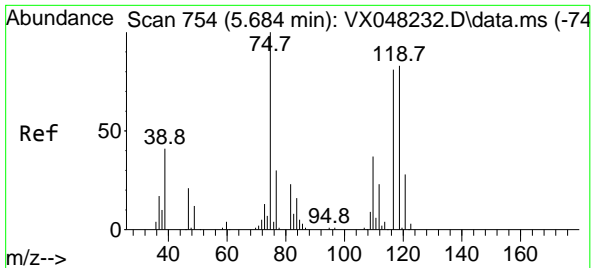


#35  
 Dibromofluoromethane  
 Concen: 39.720 ug/l  
 RT: 5.373 min Scan# 703  
 Delta R.T. -0.000 min  
 Lab File: VX048336.D  
 Acq: 23 Oct 2025 18:53

Tgt Ion:113 Resp: 83340

Ion	Ratio	Lower	Upper
113	100		
111	100.3	82.2	123.4
192	17.3	15.1	22.7

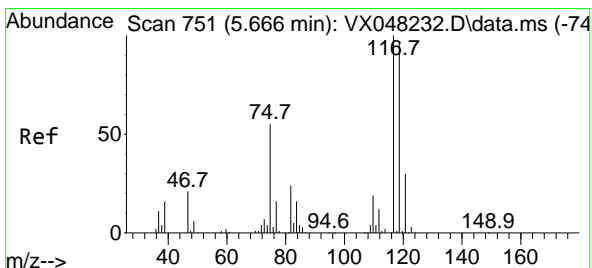
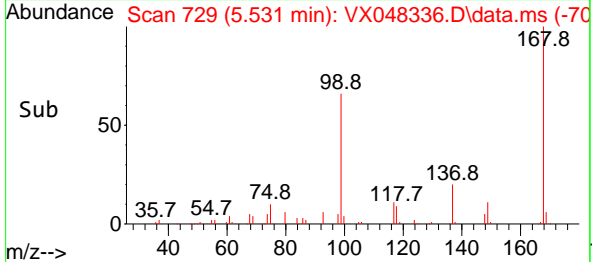
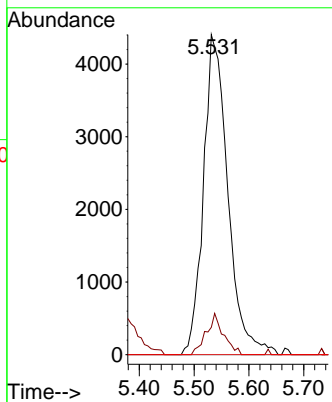
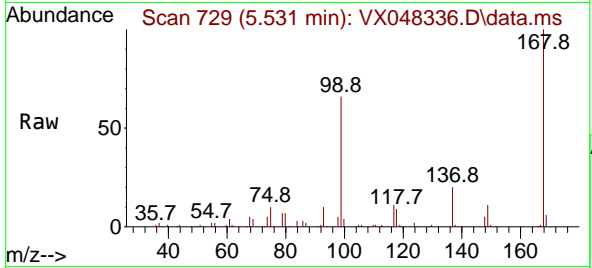




#36  
 1,1-Dichloropropene  
 Concen: 4.567 ug/l  
 RT: 5.531 min Scan# 710  
 Delta R.T. -0.153 min  
 Lab File: VX048336.D  
 Acq: 23 Oct 2025 18:53

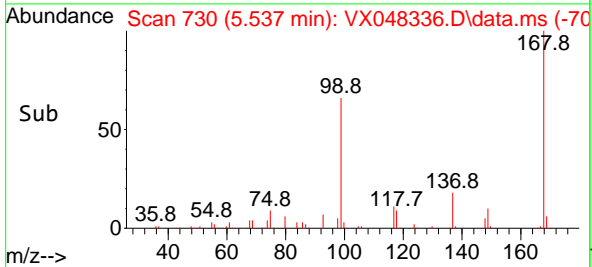
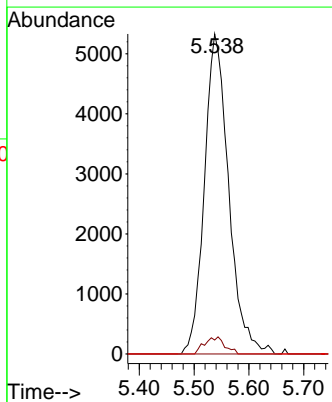
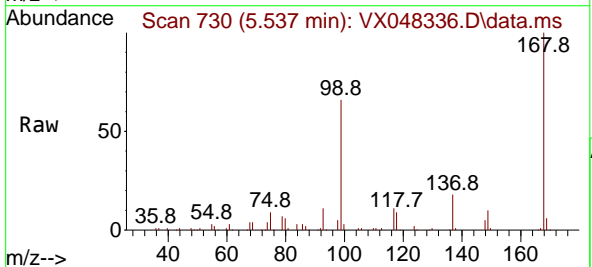
Instrument : MSVOA\_X  
 ClientSampleId : IBLK

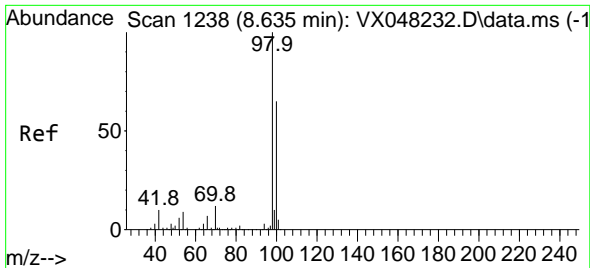
Tgt Ion	Resp	Lower	Upper
75	13620		
75	100		
110	9.0	17.7	53.1#
77	0.0	24.3	36.5#



#38  
 Carbon Tetrachloride  
 Concen: 4.457 ug/l  
 RT: 5.537 min Scan# 730  
 Delta R.T. -0.128 min  
 Lab File: VX048336.D  
 Acq: 23 Oct 2025 18:53

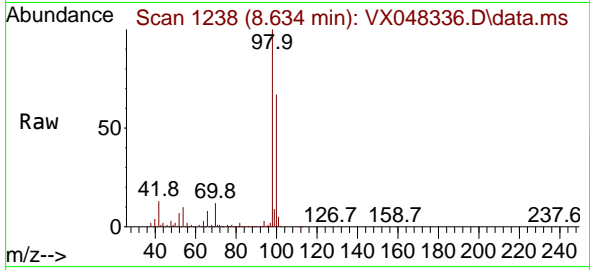
Tgt Ion	Resp	Lower	Upper
117	16400		
117	100		
119	4.3	77.2	115.8#
121	0.0	24.8	37.2#



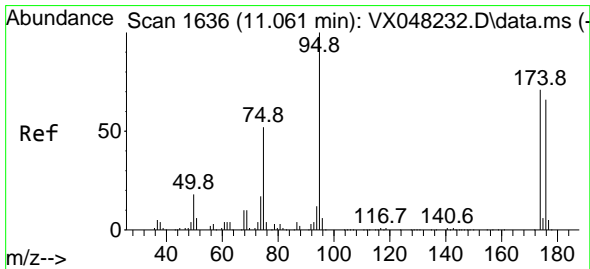
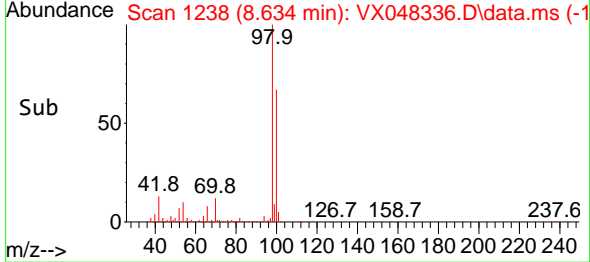
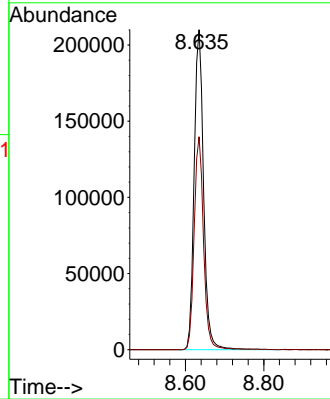


#50  
 Toluene-d8  
 Concen: 47.827 ug/l  
 RT: 8.634 min Scan# 11  
 Delta R.T. -0.000 min  
 Lab File: VX048336.D  
 Acq: 23 Oct 2025 18:53

Instrument :  
 MSVOA\_X  
 ClientSampleId :  
 IBLK

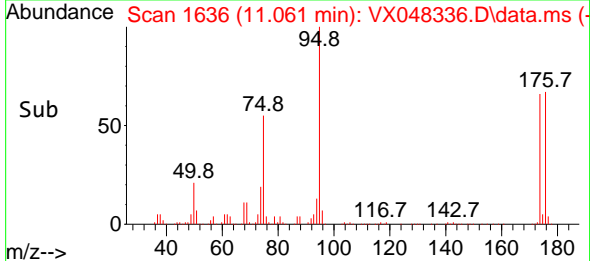
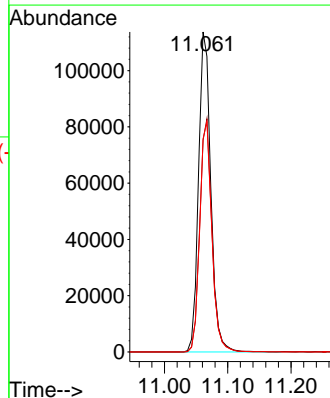
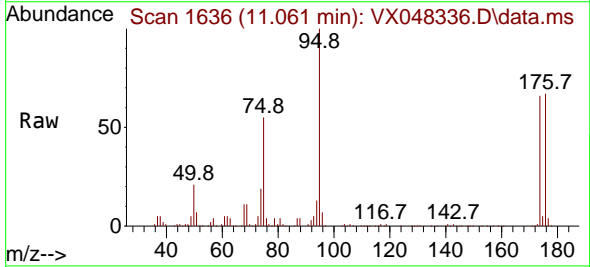


Tgt Ion: 98 Resp: 351740  
 Ion Ratio Lower Upper  
 98 100  
 100 66.5 53.0 79.4

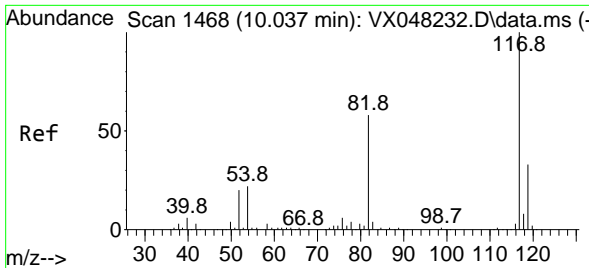


#62  
 4-Bromofluorobenzene  
 Concen: 54.941 ug/l  
 RT: 11.061 min Scan# 1636  
 Delta R.T. -0.000 min  
 Lab File: VX048336.D  
 Acq: 23 Oct 2025 18:53

Tgt Ion: 95 Resp: 153716  
 Ion Ratio Lower Upper  
 95 100  
 174 72.2 0.0 147.8  
 176 71.5 0.0 142.8

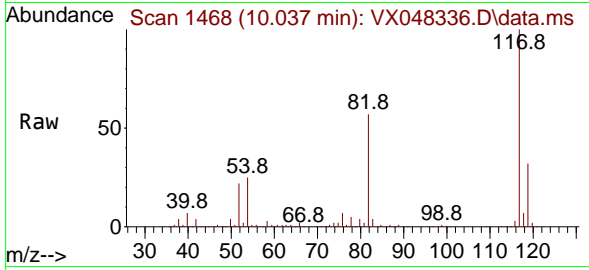






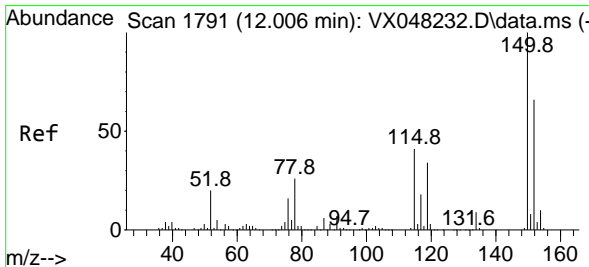
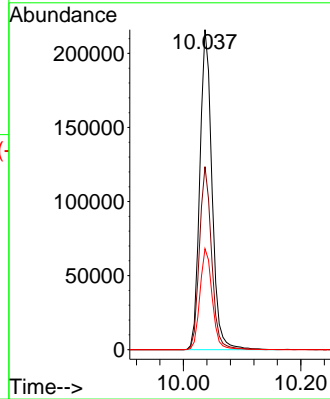
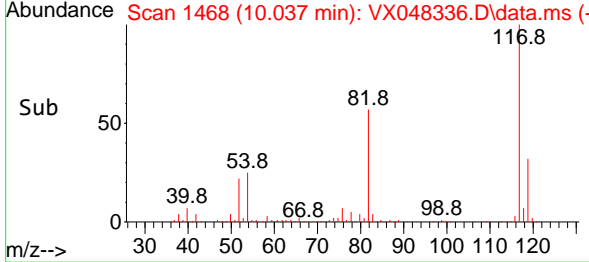
#63  
 Chlorobenzene-d5  
 Concen: 50.000 ug/l  
 RT: 10.037 min Scan# 14  
 Delta R.T. -0.000 min  
 Lab File: VX048336.D  
 Acq: 23 Oct 2025 18:53

Instrument :  
 MSVOA\_X  
 ClientSampleId :  
 IBLK

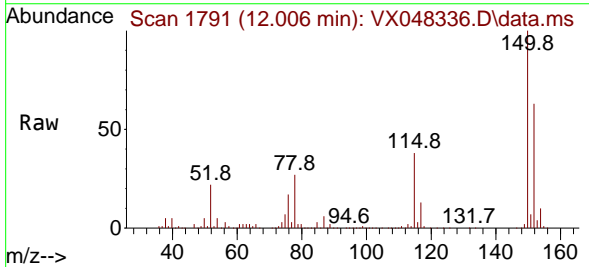


Tgt Ion:117 Resp: 311475

Ion	Ratio	Lower	Upper
117	100		
82	57.2	46.5	69.7
119	31.6	25.9	38.9

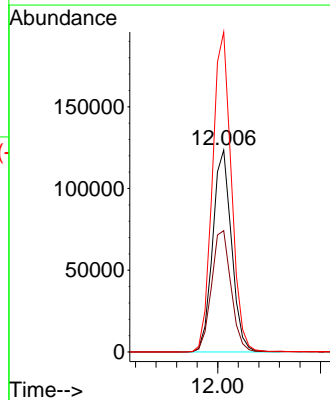
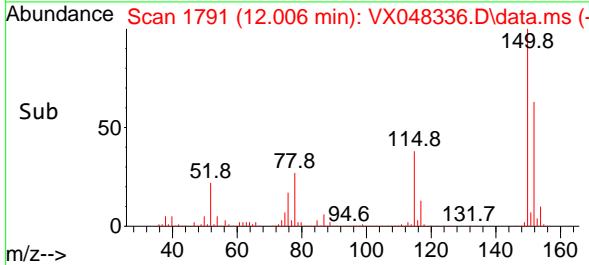


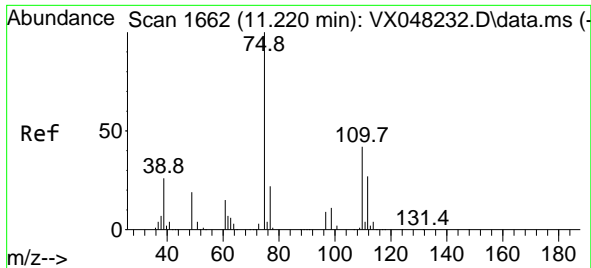
#72  
 1,4-Dichlorobenzene-d4  
 Concen: 50.000 ug/l  
 RT: 12.006 min Scan# 1791  
 Delta R.T. -0.000 min  
 Lab File: VX048336.D  
 Acq: 23 Oct 2025 18:53



Tgt Ion:152 Resp: 157037

Ion	Ratio	Lower	Upper
152	100		
115	62.6	43.1	129.4
150	159.2	0.0	353.0

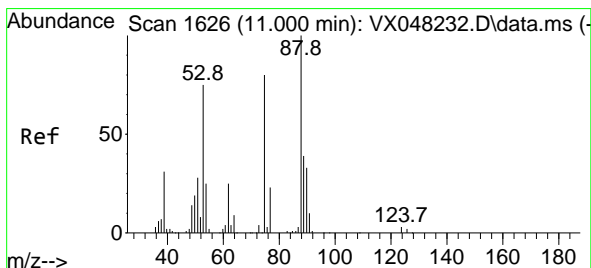
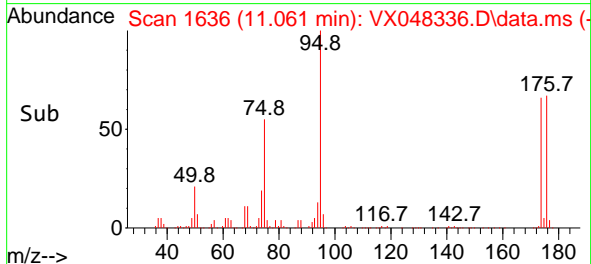
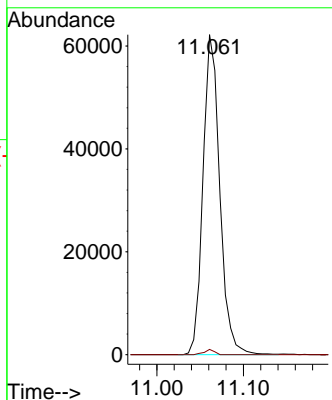
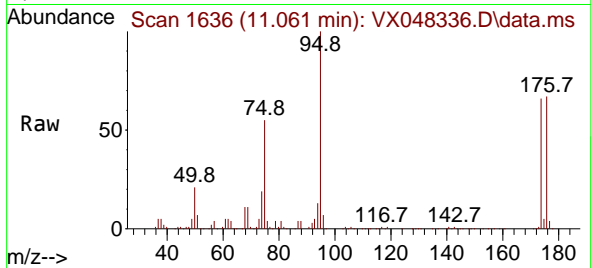




#76  
 1,2,3-Trichloropropane  
 Concen: 32.860 ug/l  
 RT: 11.061 min Scan# 1636  
 Delta R.T. -0.159 min  
 Lab File: VX048336.D  
 Acq: 23 Oct 2025 18:53

Instrument : MSVOA\_X  
 ClientSampleId : IBLK

Tgt Ion: 75 Resp: 83681  
 Ion Ratio Lower Upper  
 75 100  
 77 1.0 22.4 67.2#



#81  
 trans-1,4-Dichloro-2-butene  
 Concen: 79.945 ug/l  
 RT: 11.061 min Scan# 1636  
 Delta R.T. 0.061 min  
 Lab File: VX048336.D  
 Acq: 23 Oct 2025 18:53

Tgt Ion: 75 Resp: 83681  
 Ion Ratio Lower Upper  
 75 100  
 53 0.0 79.5 119.3#  
 89 0.0 36.8 55.2#

