

Data Path : Z:\voasrv\HPCHEM1\MSVOA_X\Data\VX102522\
 Data File : VX032386.D
 Acq On : 26 Oct 2022 00:09
 Operator : JC/MD
 Sample : PB148552TB
 Misc : 5.0mL/MSVOA_X/WATER
 ALS Vial : 36 Sample Multiplier: 1

Instrument :
 MSVOA_X
 ClientSampleId :
 PB148552TB

Quant Time: Oct 27 14:21:03 2022
 Quant Method : Z:\voasrv\HPCHEM1\MSVOA_X\Method\82X101922W.M
 Quant Title : SW846 8260
 QLast Update : Sat Oct 22 04:56:40 2022
 Response via : Initial Calibration

Compound	R.T.	QIon	Response	Conc	Units	Dev(Min)

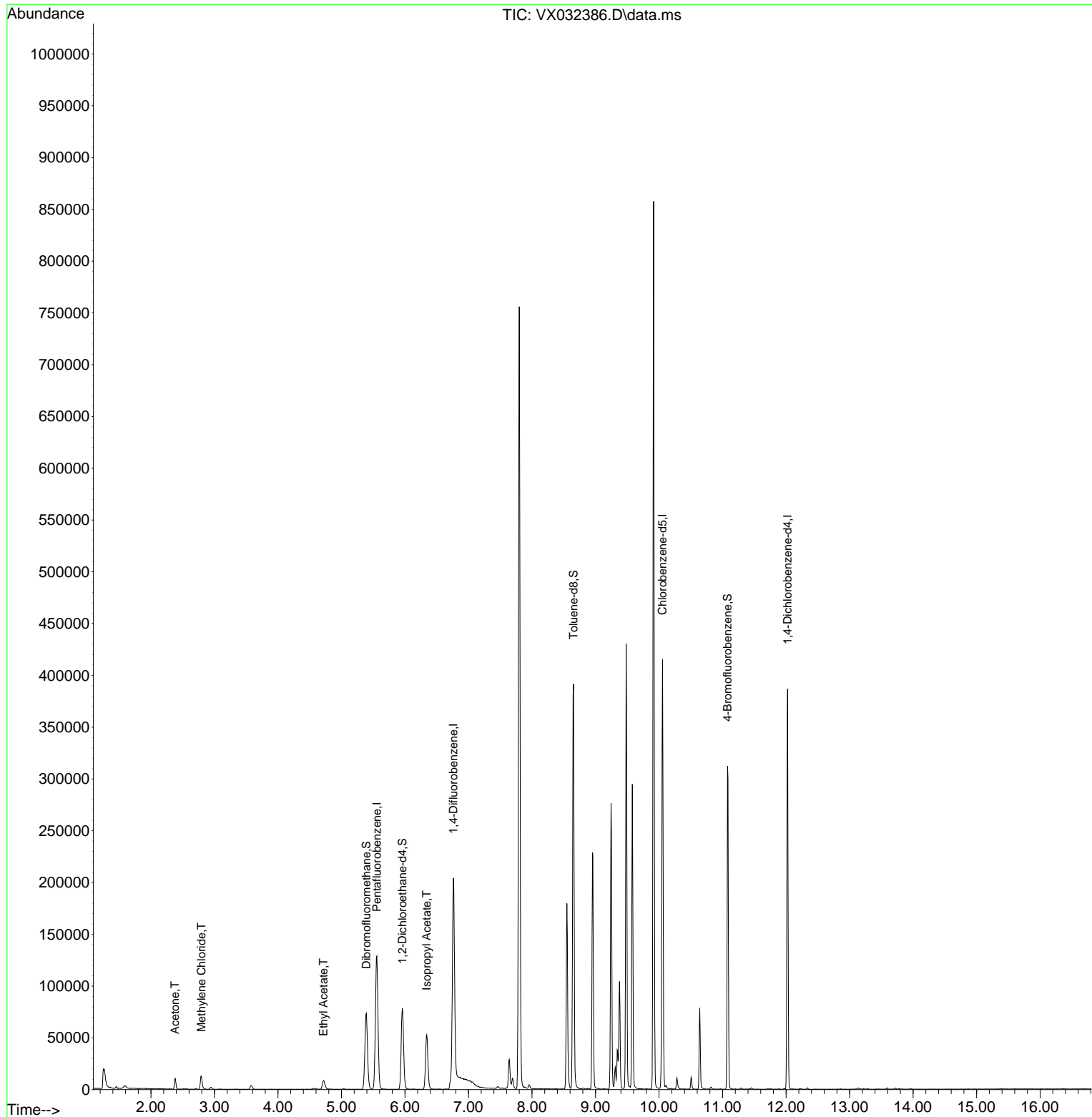
Internal Standards						
1) Pentafluorobenzene	5.556	168	121781	50.000	ug/l	0.00
34) 1,4-Difluorobenzene	6.763	114	195082	50.000	ug/l	0.00
63) Chlorobenzene-d5	10.055	117	172016	50.000	ug/l	0.00
72) 1,4-Dichlorobenzene-d4	12.024	152	76958	50.000	ug/l	0.00
System Monitoring Compounds						
33) 1,2-Dichloroethane-d4	5.958	65	78746	49.706	ug/l	0.00
Spiked Amount	50.000	Range	78 - 117	Recovery	=	99.420%
35) Dibromofluoromethane	5.391	113	62396	45.964	ug/l	0.00
Spiked Amount	50.000	Range	75 - 124	Recovery	=	91.920%
50) Toluene-d8	8.653	98	232344	47.547	ug/l	0.00
Spiked Amount	50.000	Range	92 - 112	Recovery	=	95.100%
62) 4-Bromofluorobenzene	11.079	95	79506	44.432	ug/l	0.00
Spiked Amount	50.000	Range	83 - 123	Recovery	=	88.860%
Target Compounds						
						Qvalue
16) Acetone	2.380	43	11573	22.510	ug/l	98
20) Methylene Chloride	2.794	84	6706	5.080	ug/l	93
37) Ethyl Acetate	4.715	43	15507	9.070	ug/l #	88
43) Isopropyl Acetate	6.342	43	72018	26.837	ug/l	100

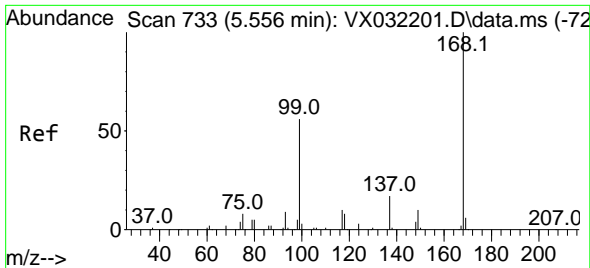
(#) = qualifier out of range (m) = manual integration (+) = signals summed

Data Path : Z:\voasrv\HPCHEM1\MSVOA_X\Data\VX102522\
 Data File : VX032386.D
 Acq On : 26 Oct 2022 00:09
 Operator : JC/MD
 Sample : PB148552TB
 Misc : 5.0mL/MSVOA_X/WATER
 ALS Vial : 36 Sample Multiplier: 1

Instrument :
 MSVOA_X
 ClientSampleId :
 PB148552TB

Quant Time: Oct 27 14:21:03 2022
 Quant Method : Z:\voasrv\HPCHEM1\MSVOA_X\Method\82X101922W.M
 Quant Title : SW846 8260
 QLast Update : Sat Oct 22 04:56:40 2022
 Response via : Initial Calibration

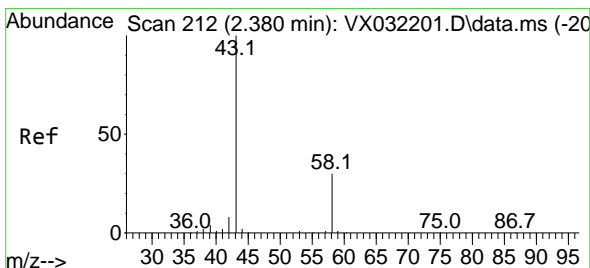
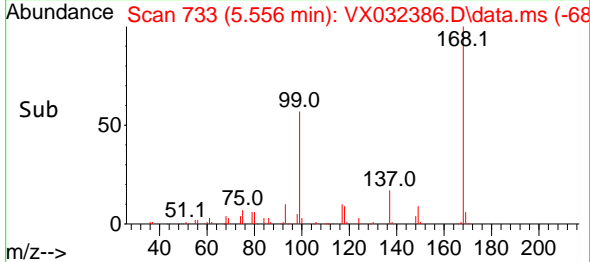
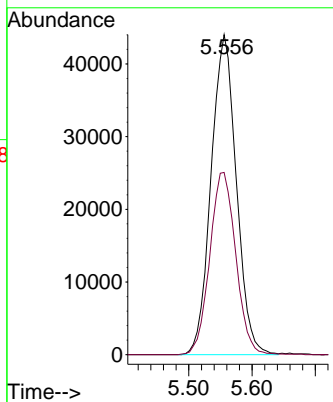
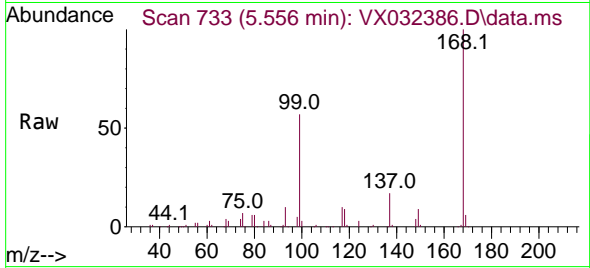




#1
 Pentafluorobenzene
 Concen: 50.000 ug/l
 RT: 5.556 min Scan# 71
 Delta R.T. -0.000 min
 Lab File: VX032386.D
 Acq: 26 Oct 2022 00:09

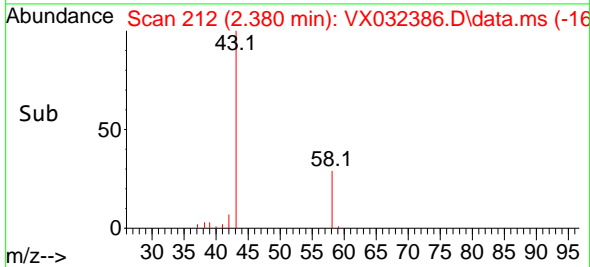
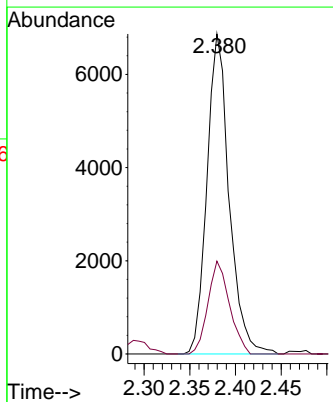
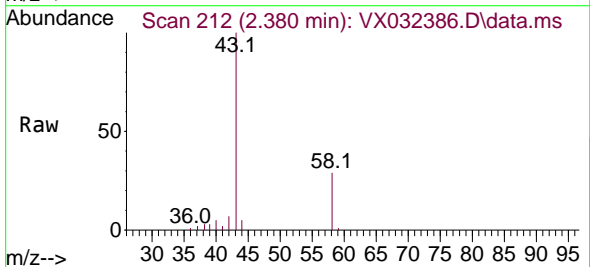
Instrument :
 MSVOA_X
 ClientSampleId :
 PB148552TB

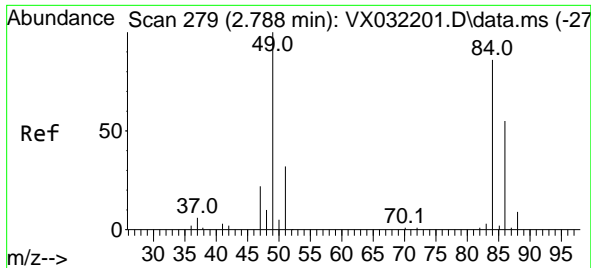
Tgt Ion:168 Resp: 121781
 Ion Ratio Lower Upper
 168 100
 99 57.0 44.8 67.2



#16
 Acetone
 Concen: 22.510 ug/l
 RT: 2.380 min Scan# 212
 Delta R.T. -0.000 min
 Lab File: VX032386.D
 Acq: 26 Oct 2022 00:09

Tgt Ion: 43 Resp: 11573
 Ion Ratio Lower Upper
 43 100
 58 29.0 24.2 36.2

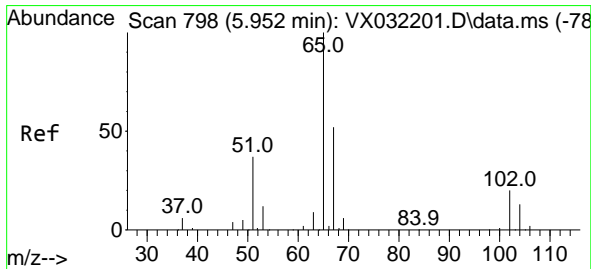
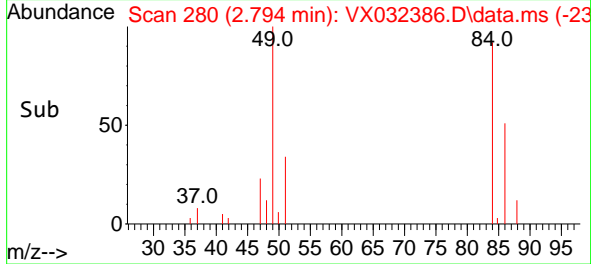
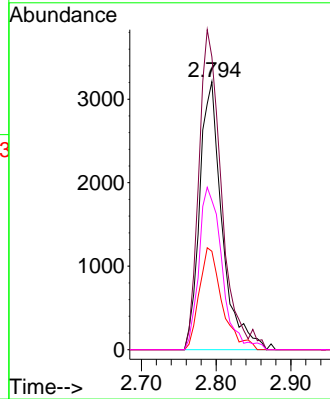
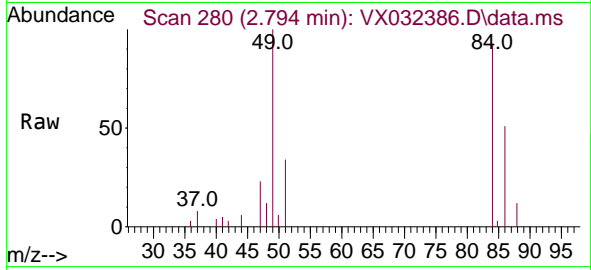




#20
 Methylene Chloride
 Concen: 5.080 ug/l
 RT: 2.794 min Scan# 21
 Delta R.T. 0.006 min
 Lab File: VX032386.D
 Acq: 26 Oct 2022 00:09

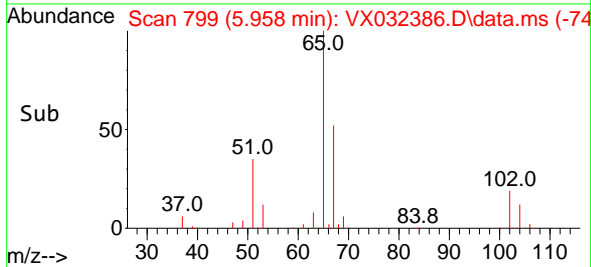
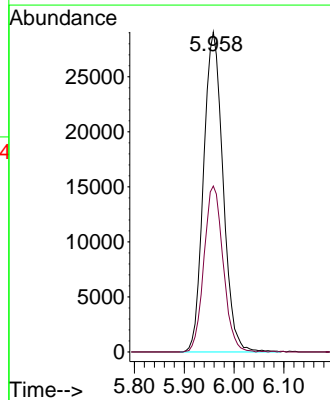
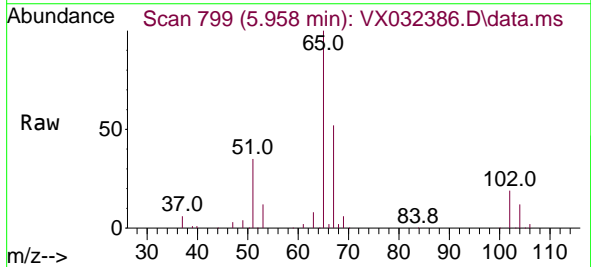
Instrument :
 MSVOA_X
 ClientSampleId :
 PB148552TB

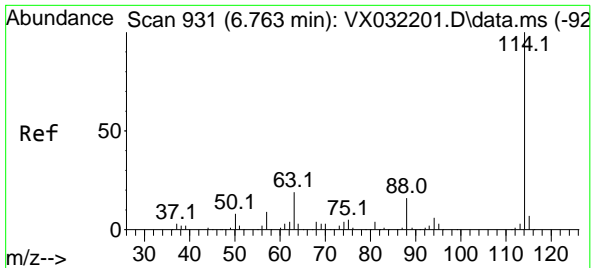
Tgt Ion	Resp	Lower	Upper
84	6706		
49	109.2	92.6	139.0
51	36.7	29.2	43.8
86	55.6	51.4	77.0



#33
 1,2-Dichloroethane-d4
 Concen: 49.706 ug/l
 RT: 5.958 min Scan# 799
 Delta R.T. 0.006 min
 Lab File: VX032386.D
 Acq: 26 Oct 2022 00:09

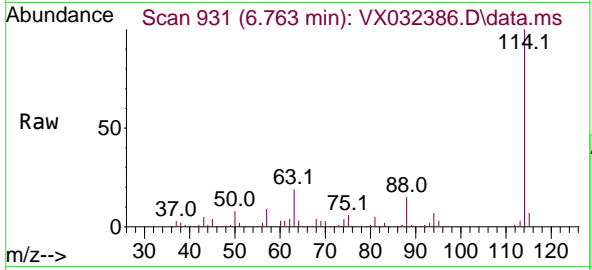
Tgt Ion	Resp	Lower	Upper
65	78746		
67	51.2	0.0	103.6





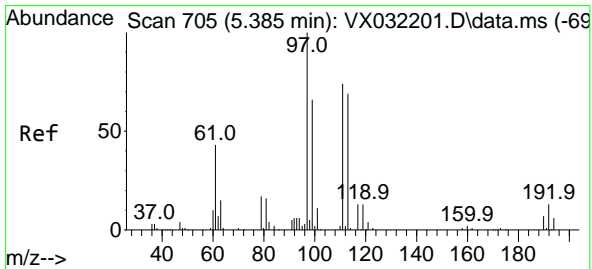
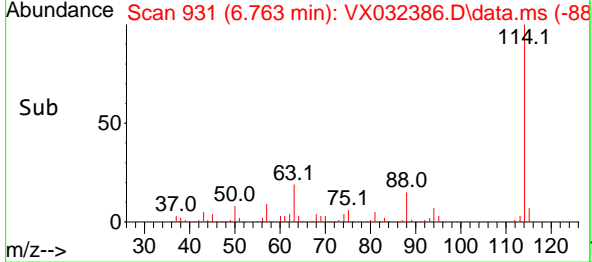
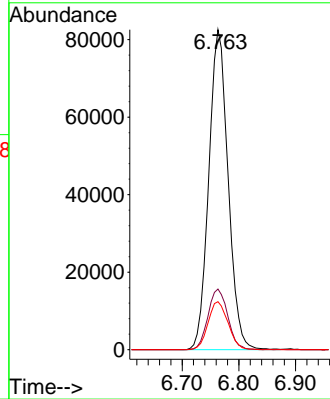
#34
 1,4-Difluorobenzene
 Concen: 50.000 ug/l
 RT: 6.763 min Scan# 91
 Delta R.T. 0.000 min
 Lab File: VX032386.D
 Acq: 26 Oct 2022 00:09

Instrument : MSVOA_X
 ClientSampleId : PB148552TB

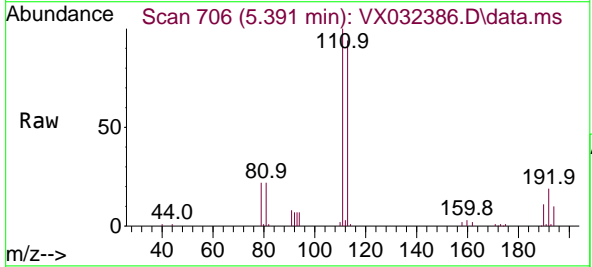


Tgt Ion:114 Resp: 195082

Ion	Ratio	Lower	Upper
114	100		
63	19.0	0.0	38.6
88	15.0	0.0	32.6

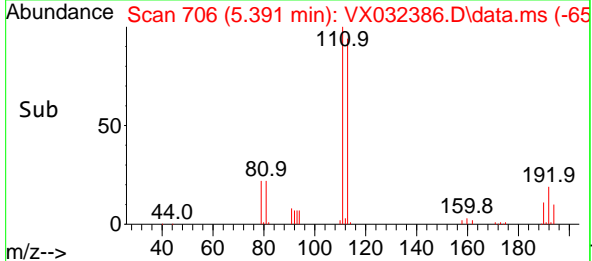
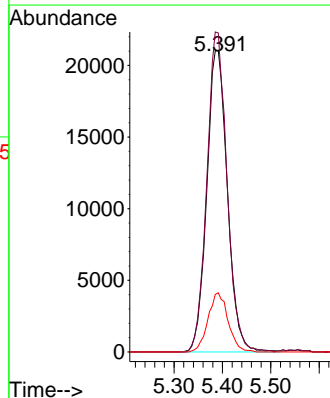


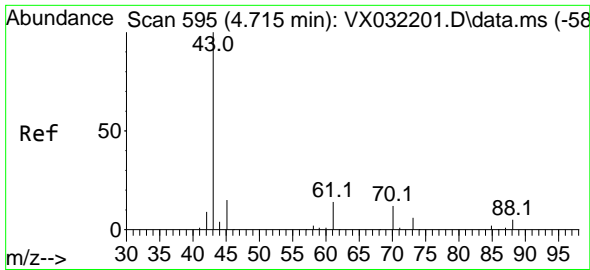
#35
 Dibromofluoromethane
 Concen: 45.964 ug/l
 RT: 5.391 min Scan# 706
 Delta R.T. 0.006 min
 Lab File: VX032386.D
 Acq: 26 Oct 2022 00:09



Tgt Ion:113 Resp: 62396

Ion	Ratio	Lower	Upper
113	100		
111	103.5	82.8	124.2
192	19.0	15.5	23.3

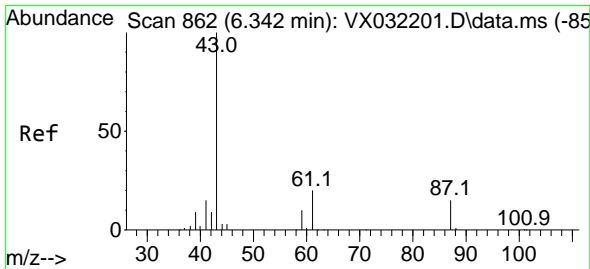
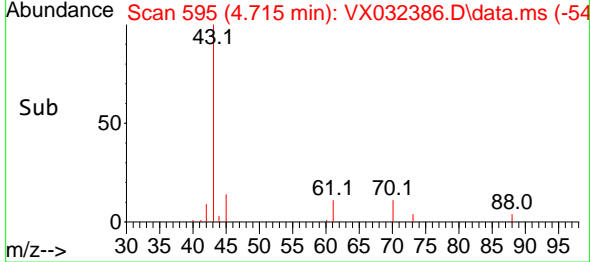
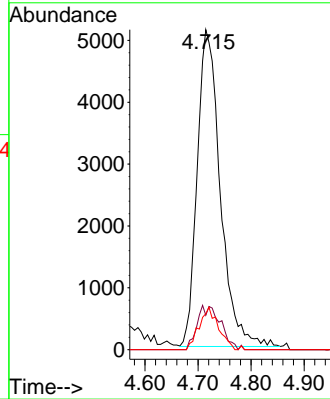
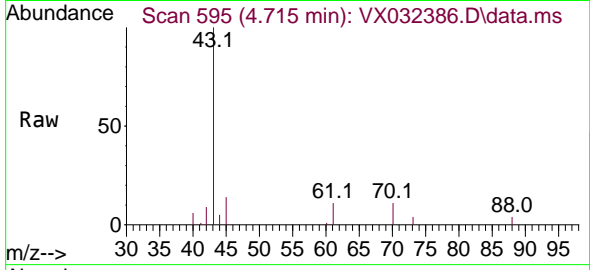




#37
 Ethyl Acetate
 Concen: 9.070 ug/l
 RT: 4.715 min Scan# 595
 Delta R.T. -0.000 min
 Lab File: VX032386.D
 Acq: 26 Oct 2022 00:09

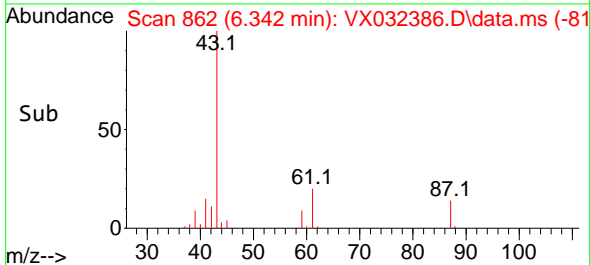
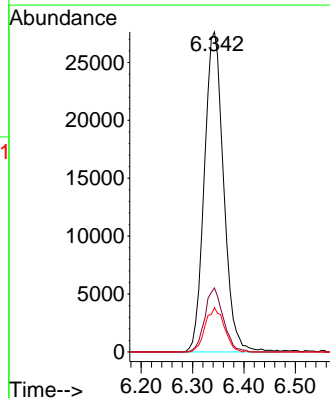
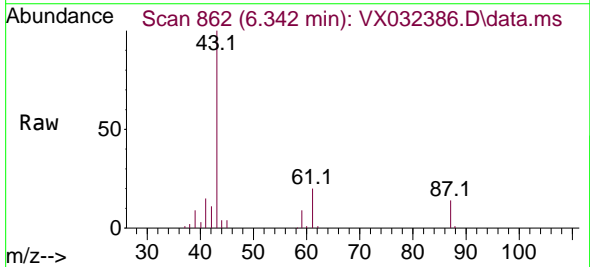
Instrument : MSVOA_X
 ClientSampleId : PB148552TB

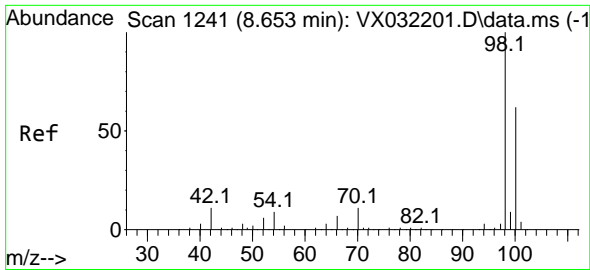
Tgt Ion	Ratio	Lower	Upper
43	100		
61	5.9	11.4	17.2#
70	11.2	8.8	13.2



#43
 Isopropyl Acetate
 Concen: 26.837 ug/l
 RT: 6.342 min Scan# 862
 Delta R.T. 0.000 min
 Lab File: VX032386.D
 Acq: 26 Oct 2022 00:09

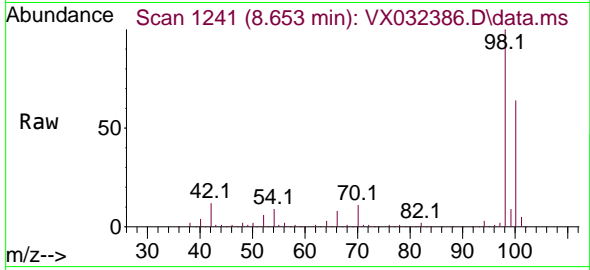
Tgt Ion	Ratio	Lower	Upper
43	100		
61	19.2	15.5	23.3
87	13.6	11.0	16.6



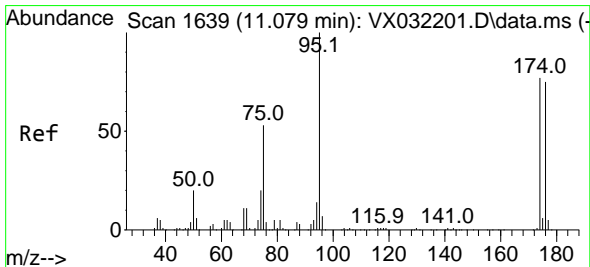
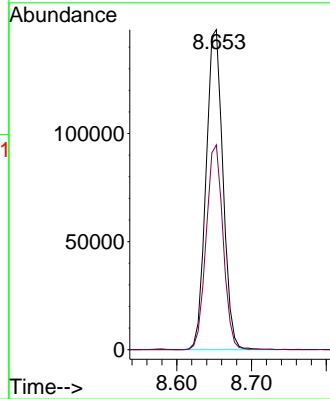
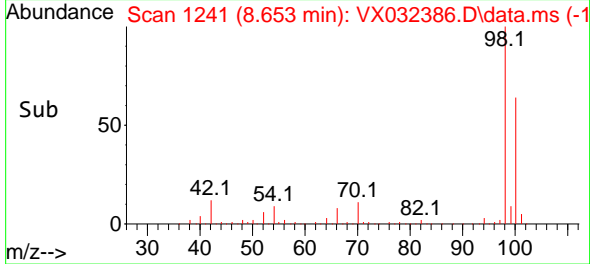


#50
 Toluene-d8
 Concen: 47.547 ug/l
 RT: 8.653 min Scan# 1241
 Delta R.T. -0.000 min
 Lab File: VX032386.D
 Acq: 26 Oct 2022 00:09

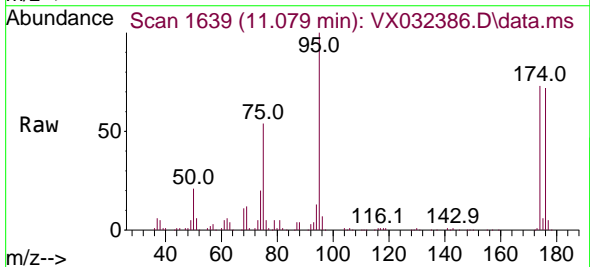
Instrument : MSVOA_X
 ClientSampleId : PB148552TB



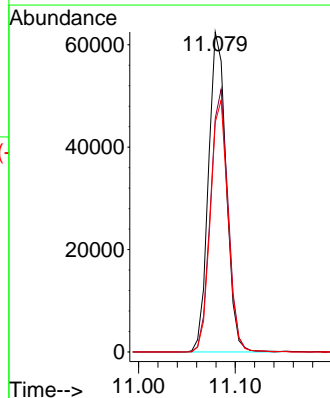
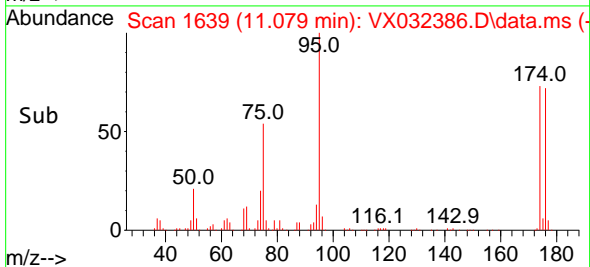
Tgt Ion: 98 Resp: 232344
 Ion Ratio Lower Upper
 98 100
 100 64.1 50.7 76.1

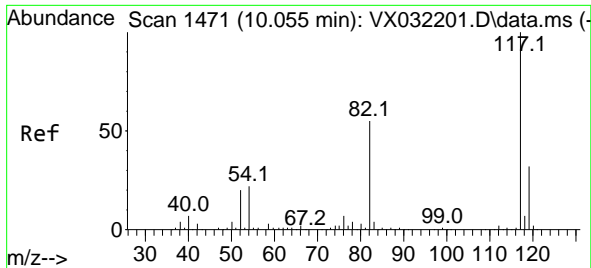


#62
 4-Bromofluorobenzene
 Concen: 44.432 ug/l
 RT: 11.079 min Scan# 1639
 Delta R.T. 0.000 min
 Lab File: VX032386.D
 Acq: 26 Oct 2022 00:09



Tgt Ion: 95 Resp: 79506
 Ion Ratio Lower Upper
 95 100
 174 81.9 0.0 166.8
 176 78.3 0.0 161.4



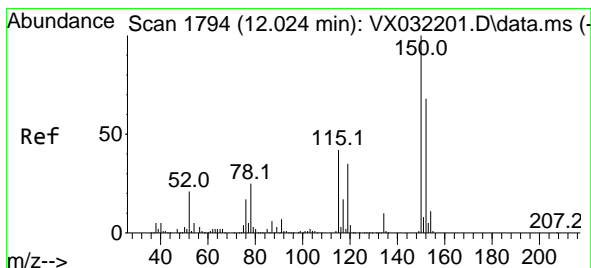
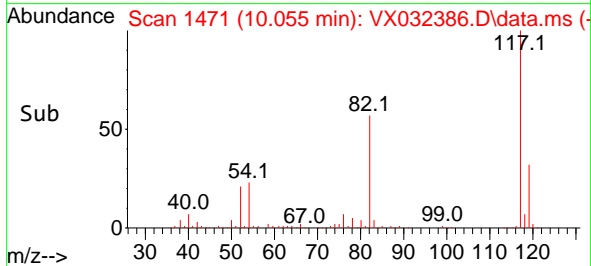
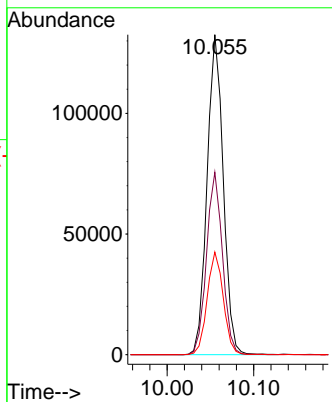
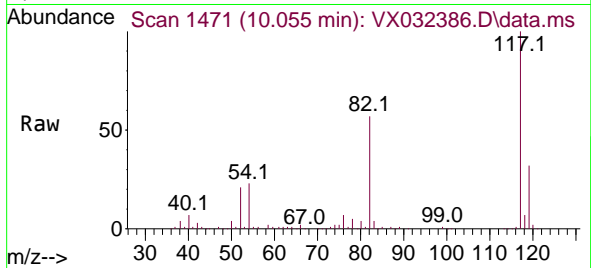


#63
 Chlorobenzene-d5
 Concen: 50.000 ug/l
 RT: 10.055 min Scan# 1471
 Delta R.T. 0.000 min
 Lab File: VX032386.D
 Acq: 26 Oct 2022 00:09

Instrument :
 MSVOA_X
 ClientSampleId :
 PB148552TB

Tgt Ion:117 Resp: 172016

Ion	Ratio	Lower	Upper
117	100		
82	57.0	44.2	66.4
119	32.0	25.8	38.8



#72
 1,4-Dichlorobenzene-d4
 Concen: 50.000 ug/l
 RT: 12.024 min Scan# 1794
 Delta R.T. 0.000 min
 Lab File: VX032386.D
 Acq: 26 Oct 2022 00:09

Tgt Ion:152 Resp: 76958

Ion	Ratio	Lower	Upper
152	100		
115	61.4	43.1	129.4
150	156.2	0.0	348.6

