

Data Path : Z:\voasrv\HPCHEM1\MSVOA_X\Data\VX102523\
 Data File : VX038485.D
 Acq On : 25 Oct 2023 17:16
 Operator : JC/MD
 Sample : 05038-07 50X
 Misc : 5.0mL/MSVOA_X/WATER
 ALS Vial : 21 Sample Multiplier: 1

Instrument :
 MSVOA_X
 ClientSampleId :

Quant Time: Oct 26 04:07:46 2023
 Quant Method : Z:\voasrv\HPCHEM1\MSVOA_X\Method\82X100523W.M
 Quant Title : SW846 8260
 QLast Update : Thu Oct 05 15:27:13 2023
 Response via : Initial Calibration

Compound	R.T.	QIon	Response	Conc	Units	Dev(Min)

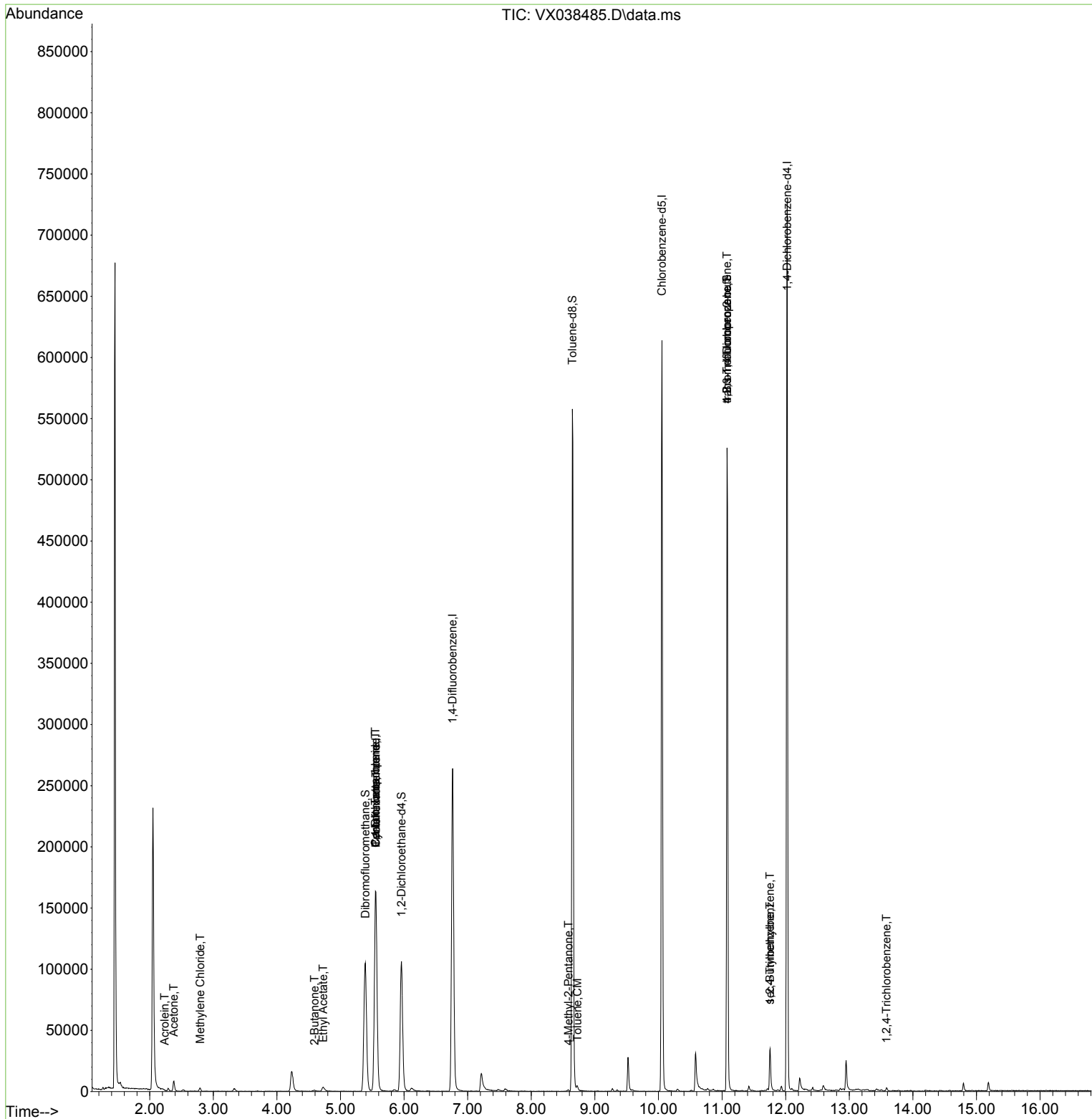
Internal Standards						
1) Pentafluorobenzene	5.556	168	161376	50.000	ug/l	# 0.00
34) 1,4-Difluorobenzene	6.763	114	278423	50.000	ug/l	0.00
63) Chlorobenzene-d5	10.055	117	286326	50.000	ug/l	0.00
72) 1,4-Dichlorobenzene-d4	12.024	152	156695	50.000	ug/l	0.00
System Monitoring Compounds						
33) 1,2-Dichloroethane-d4	5.958	65	102066	39.322	ug/l	0.00
Spiked Amount	50.000	Range 78 - 117	Recovery	=	78.640%	
35) Dibromofluoromethane	5.391	113	92770	46.241	ug/l	0.00
Spiked Amount	50.000	Range 75 - 124	Recovery	=	92.480%	
50) Toluene-d8	8.647	98	341706	44.573	ug/l	0.00
Spiked Amount	50.000	Range 92 - 112	Recovery	=	89.140%#	
62) 4-Bromofluorobenzene	11.079	95	134862	46.403	ug/l	0.00
Spiked Amount	50.000	Range 83 - 123	Recovery	=	92.800%	
Target Compounds						
						Qvalue
5) Bromomethane	1.611	94	44	Below Cal	#	3
6) Chloroethane	1.678	64	205	Below Cal	#	43
11) Tert butyl alcohol	2.965	59	29	Below Cal	#	78
13) Acrolein	2.233	56	157	0.425	ug/l	# 82
16) Acetone	2.380	43	8761	8.087	ug/l	90
20) Methylene Chloride	2.794	84	1378	0.676	ug/l	# 68
25) 2-Butanone	4.593	43	1133	0.648	ug/l	# 81
31) Cyclohexane	5.556	56	3389	1.205	ug/l	# 1
36) 1,1-Dichloropropene	5.550	75	11947	4.318	ug/l	# 51
37) Ethyl Acetate	4.727	43	5927	1.804	ug/l	95
38) Carbon Tetrachloride	5.550	117	16240	5.967	ug/l	# 15
51) 4-Methyl-2-Pentanone	8.586	43	802	0.237	ug/l	89
52) Toluene	8.726	92	1344	0.267	ug/l	89
76) 1,2,3-Trichloropropane	11.079	75	69813	19.598	ug/l	# 39
81) trans-1,4-Dichloro-2-b...	11.079	75	69813	56.642	ug/l	# 5
84) 1,2,4-Trimethylbenzene	11.756	105	12028	1.331	ug/l	# 35
85) sec-Butylbenzene	11.756	105	12028	1.048	ug/l	# 57
93) 1,2,4-Trichlorobenzene	13.585	180	787	0.237	ug/l	90

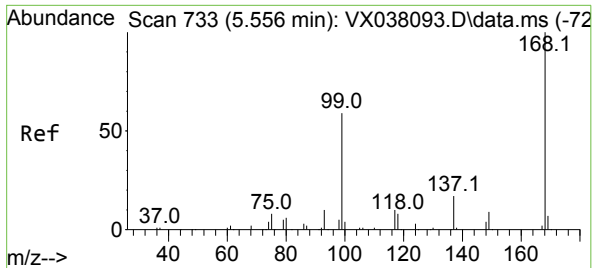
(#) = qualifier out of range (m) = manual integration (+) = signals summed

Data Path : Z:\voasrv\HPCHEM1\MSVOA_X\Data\VX102523\
 Data File : VX038485.D
 Acq On : 25 Oct 2023 17:16
 Operator : JC/MD
 Sample : 05038-07 50X
 Misc : 5.0mL/MSVOA_X/WATER
 ALS Vial : 21 Sample Multiplier: 1

Instrument :
 MSVOA_X
 ClientSampleId :

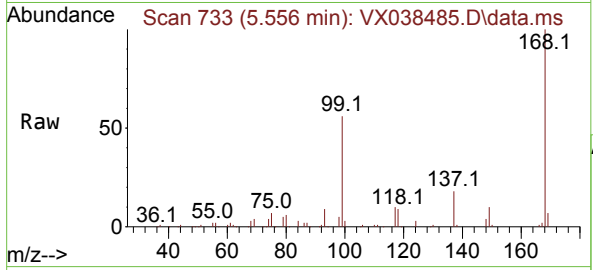
Quant Time: Oct 26 04:07:46 2023
 Quant Method : Z:\voasrv\HPCHEM1\MSVOA_X\Method\82X100523W.M
 Quant Title : SW846 8260
 QLast Update : Thu Oct 05 15:27:13 2023
 Response via : Initial Calibration



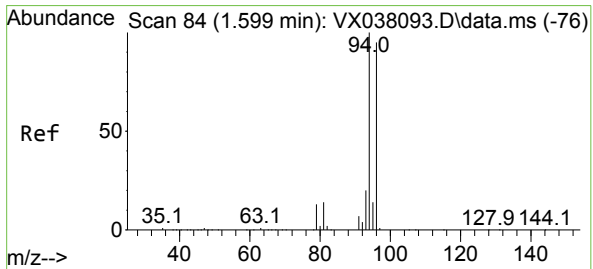
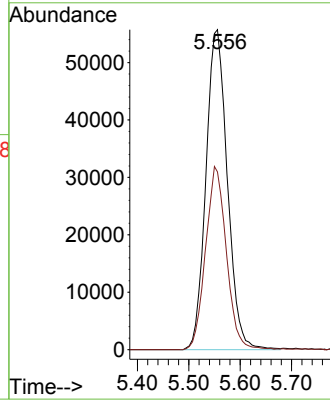
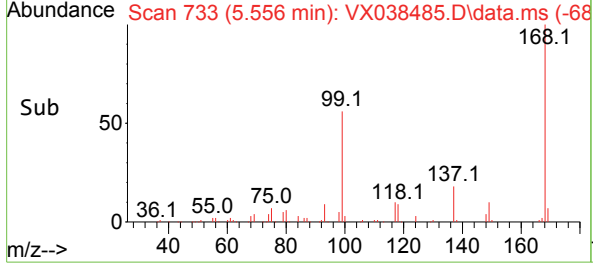


#1
 Pentafluorobenzene
 Concen: 50.000 ug/l
 RT: 5.556 min Scan# 71
 Delta R.T. -0.000 min
 Lab File: VX038485.D
 Acq: 25 Oct 2023 17:16

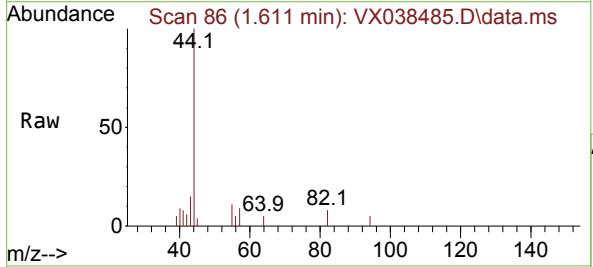
Instrument : MSVOA_X
 ClientSampleId :



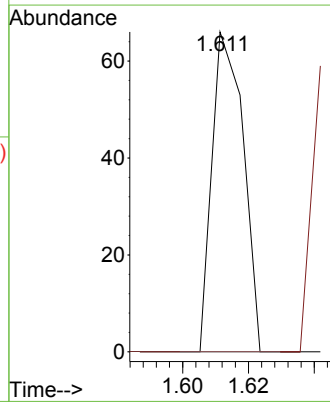
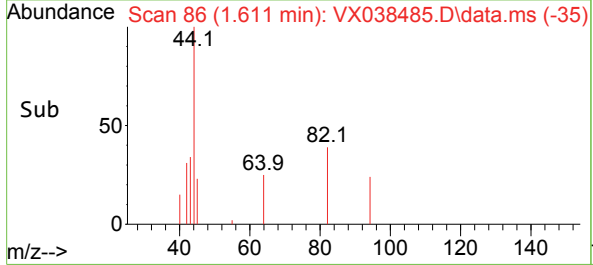
Tgt Ion:168 Resp: 161376
 Ion Ratio Lower Upper
 168 100
 99 55.5 56.6 85.0#

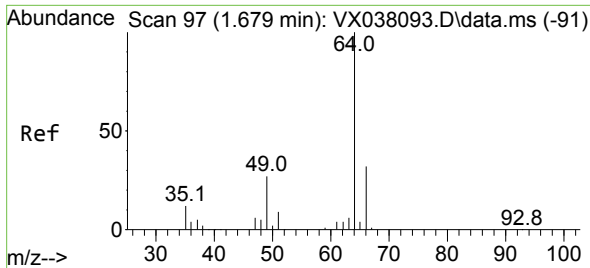


#5
 Bromomethane
 Concen: Below Cal
 RT: 1.611 min Scan# 86
 Delta R.T. 0.012 min
 Lab File: VX038485.D
 Acq: 25 Oct 2023 17:16



Tgt Ion: 94 Resp: 44
 Ion Ratio Lower Upper
 94 100
 96 0.0 74.6 111.8#

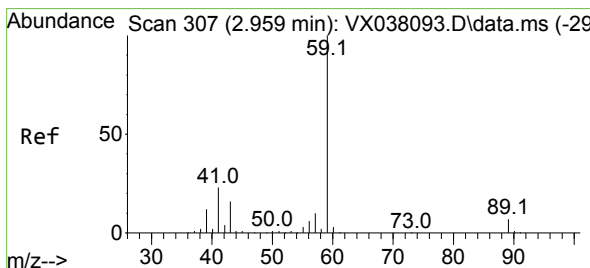
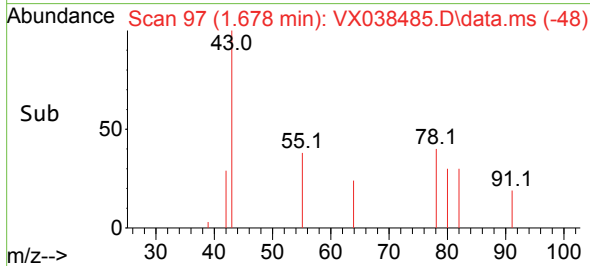
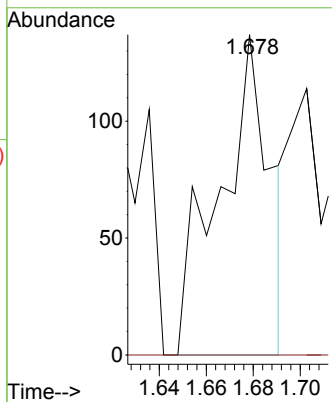
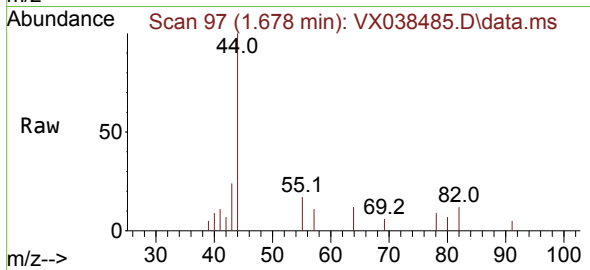




#6
 Chloroethane
 Concen: Below Cal
 RT: 1.678 min Scan# 91
 Delta R.T. -0.001 min
 Lab File: VX038485.D
 Acq: 25 Oct 2023 17:16

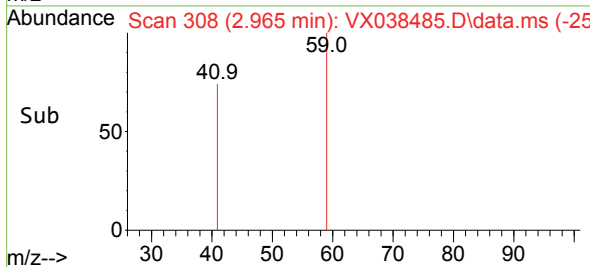
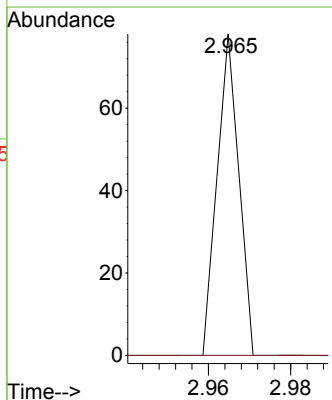
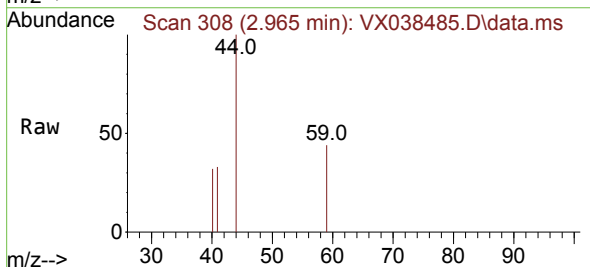
Instrument :
 MSVOA_X
 ClientSampleId :

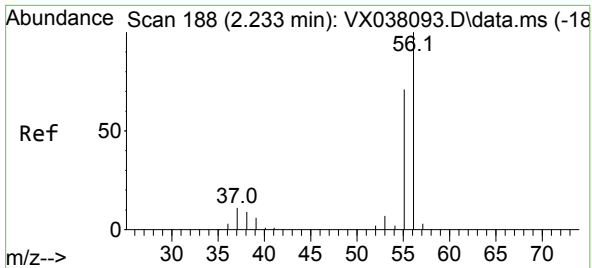
Tgt Ion: 64 Resp: 205
 Ion Ratio Lower Upper
 64 100
 66 0.0 25.1 37.7#



#11
 Tert butyl alcohol
 Concen: Below Cal
 RT: 2.965 min Scan# 308
 Delta R.T. 0.006 min
 Lab File: VX038485.D
 Acq: 25 Oct 2023 17:16

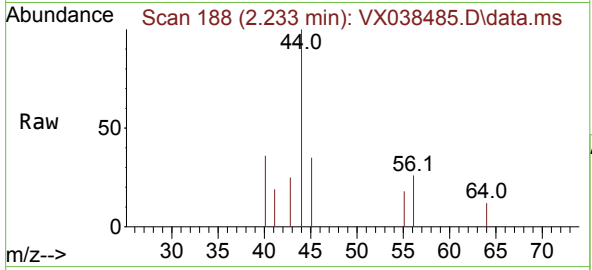
Tgt Ion: 59 Resp: 29
 Ion Ratio Lower Upper
 59 100
 57 0.0 6.0 9.0#



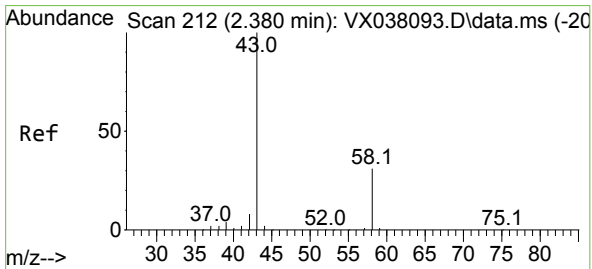
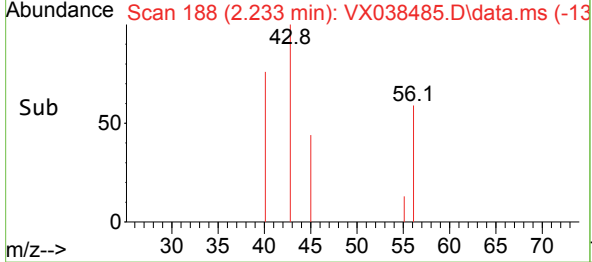
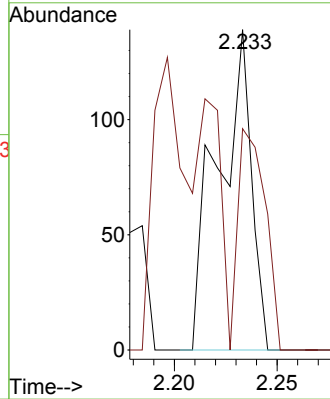


#13
 Acrolein
 Concen: 0.425 ug/l
 RT: 2.233 min Scan# 11
 Delta R.T. 0.000 min
 Lab File: VX038485.D
 Acq: 25 Oct 2023 17:16

Instrument :
 MSVOA_X
 ClientSampleId :

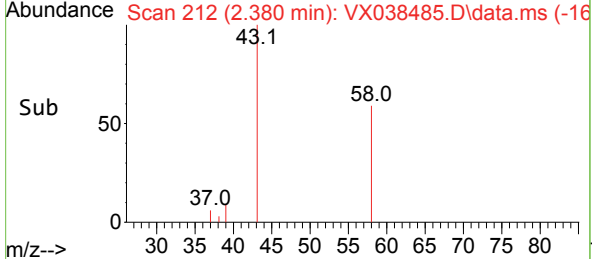
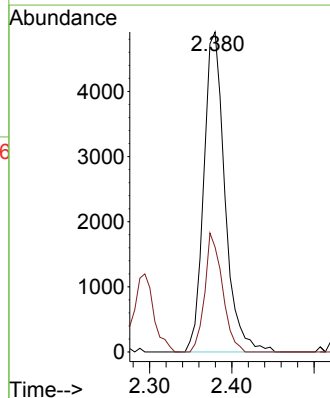
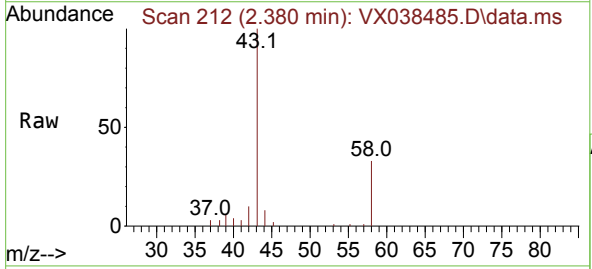


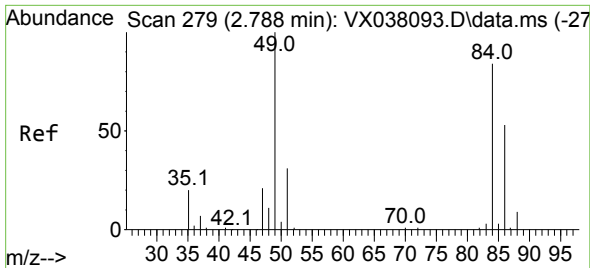
Tgt Ion: 56 Resp: 157
 Ion Ratio Lower Upper
 56 100
 55 56.7 57.1 85.7#



#16
 Acetone
 Concen: 8.087 ug/l
 RT: 2.380 min Scan# 212
 Delta R.T. -0.000 min
 Lab File: VX038485.D
 Acq: 25 Oct 2023 17:16

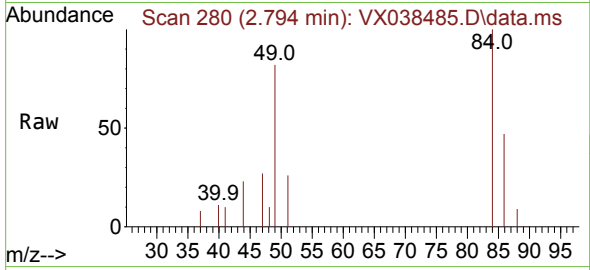
Tgt Ion: 43 Resp: 8761
 Ion Ratio Lower Upper
 43 100
 58 32.7 21.9 32.9





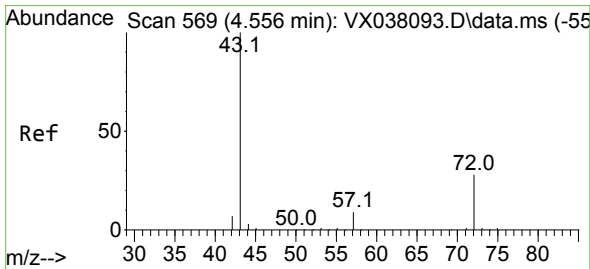
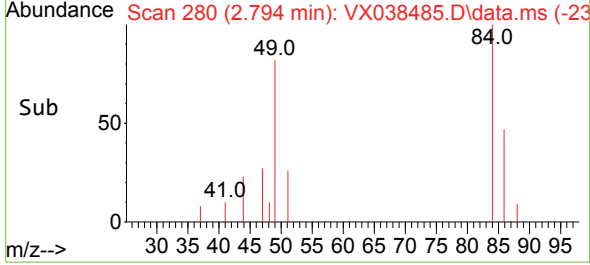
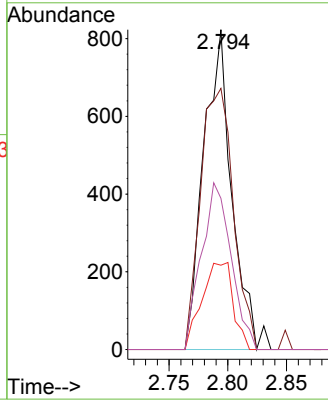
#20
 Methylene Chloride
 Concen: 0.676 ug/l
 RT: 2.794 min Scan# 21
 Delta R.T. 0.006 min
 Lab File: VX038485.D
 Acq: 25 Oct 2023 17:16

Instrument :
 MSVOA_X
 ClientSampleId :



Tgt Ion: 84 Resp: 1378

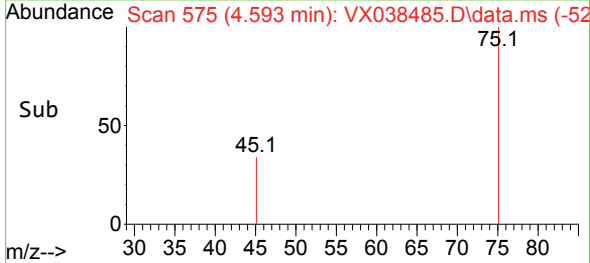
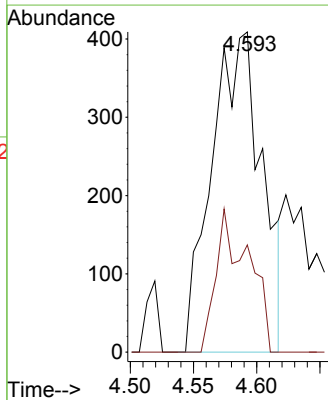
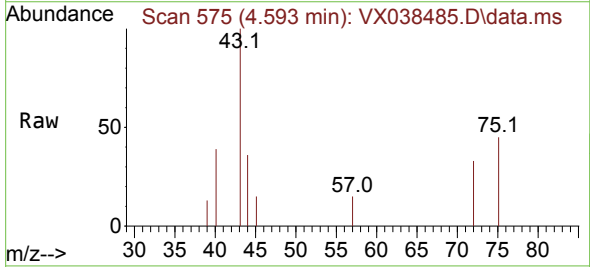
Ion	Ratio	Lower	Upper
84	100		
49	81.7	103.6	155.4#
51	26.4	33.8	50.6#
86	47.3	49.4	74.0#

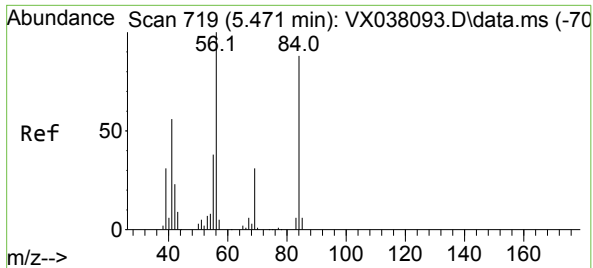


#25
 2-Butanone
 Concen: 0.648 ug/l
 RT: 4.593 min Scan# 575
 Delta R.T. 0.037 min
 Lab File: VX038485.D
 Acq: 25 Oct 2023 17:16

Tgt Ion: 43 Resp: 1133

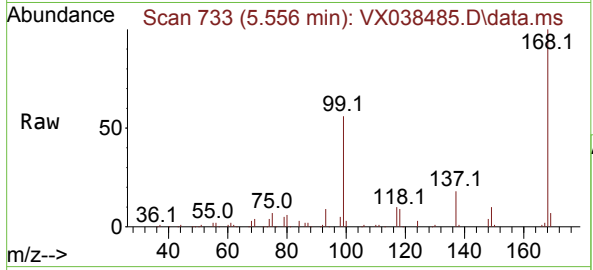
Ion	Ratio	Lower	Upper
43	100		
72	33.5	19.4	29.2#



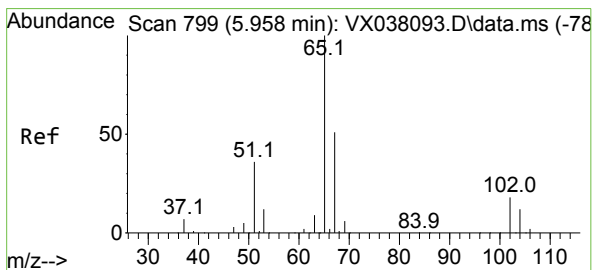
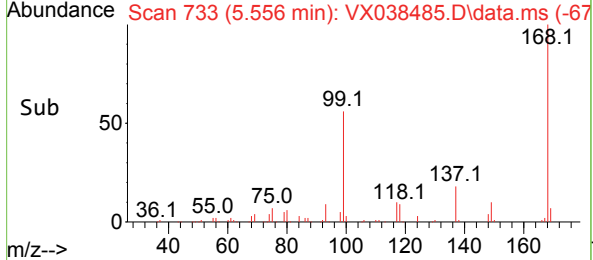
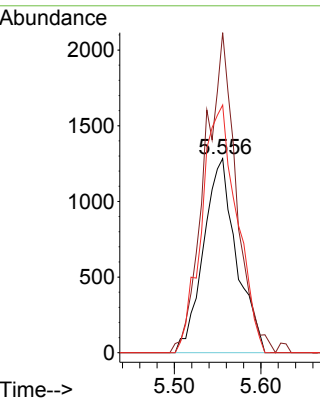


#31
 Cyclohexane
 Concen: 1.205 ug/l
 RT: 5.556 min Scan# 719
 Delta R.T. 0.085 min
 Lab File: VX038485.D
 Acq: 25 Oct 2023 17:16

Instrument : MSVOA_X
 ClientSampleId :

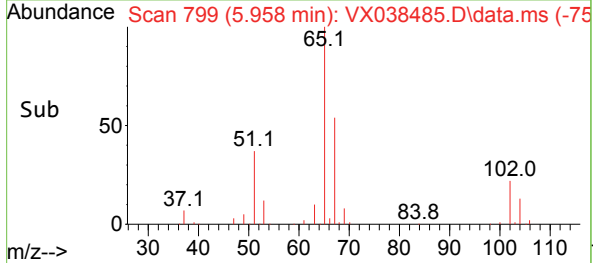
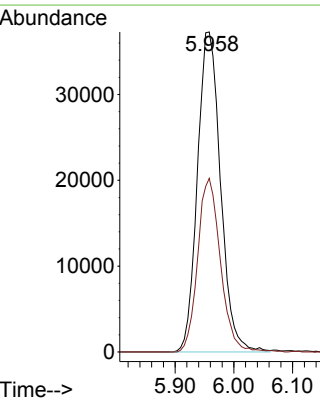
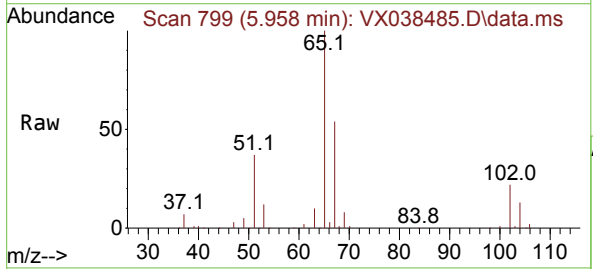


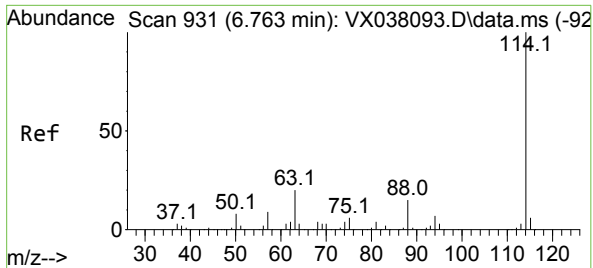
Tgt Ion: 56 Resp: 3389
 Ion Ratio Lower Upper
 56 100
 69 164.8 23.4 35.2#
 84 127.6 65.9 98.9#



#33
 1,2-Dichloroethane-d4
 Concen: 39.322 ug/l
 RT: 5.958 min Scan# 799
 Delta R.T. 0.000 min
 Lab File: VX038485.D
 Acq: 25 Oct 2023 17:16

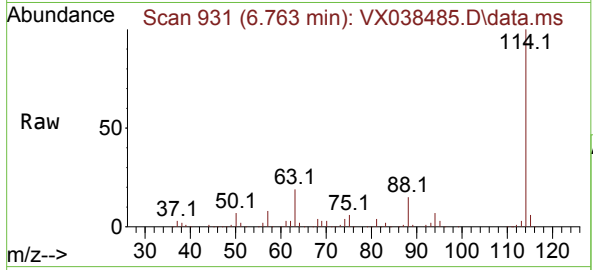
Tgt Ion: 65 Resp: 102066
 Ion Ratio Lower Upper
 65 100
 67 53.3 0.0 100.2



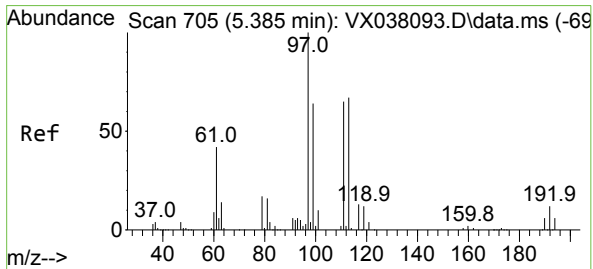
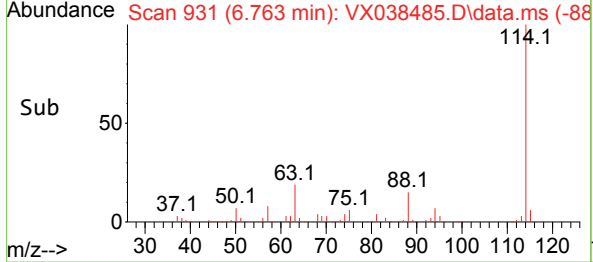
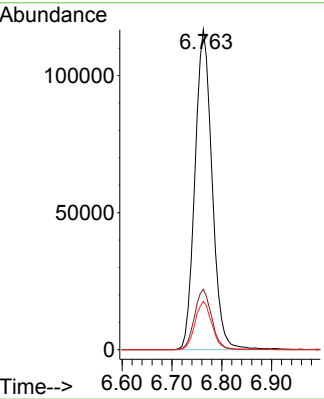


#34
 1,4-Difluorobenzene
 Concen: 50.000 ug/l
 RT: 6.763 min Scan# 91
 Delta R.T. -0.000 min
 Lab File: VX038485.D
 Acq: 25 Oct 2023 17:16

Instrument :
 MSVOA_X
 ClientSampleId :

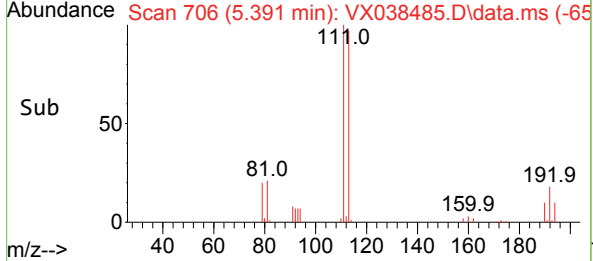
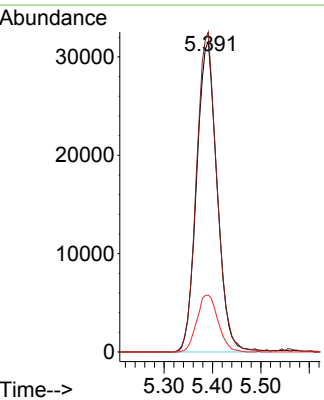
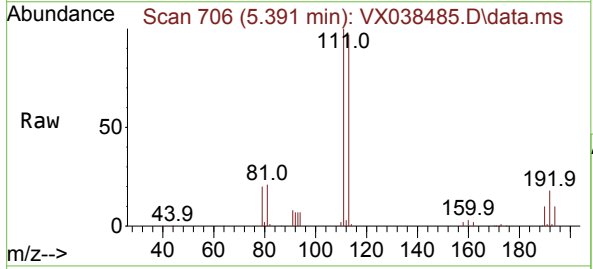


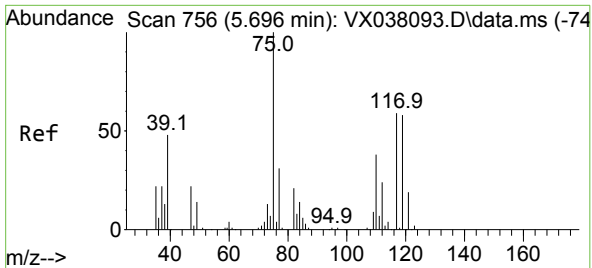
Tgt Ion:114 Resp: 278423
 Ion Ratio Lower Upper
 114 100
 63 18.9 0.0 45.0
 88 15.1 0.0 36.6



#35
 Dibromofluoromethane
 Concen: 46.241 ug/l
 RT: 5.391 min Scan# 706
 Delta R.T. 0.006 min
 Lab File: VX038485.D
 Acq: 25 Oct 2023 17:16

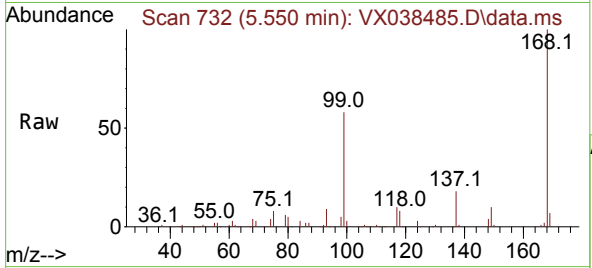
Tgt Ion:113 Resp: 92770
 Ion Ratio Lower Upper
 113 100
 111 102.6 82.9 124.3
 192 19.0 13.3 19.9



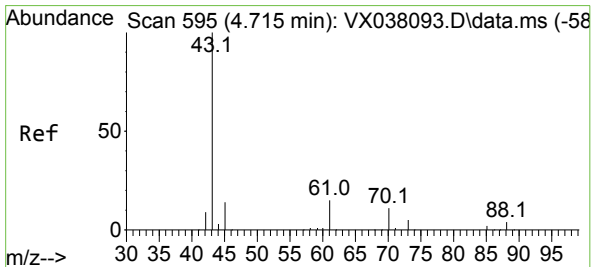
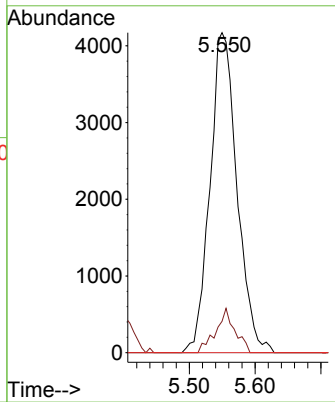
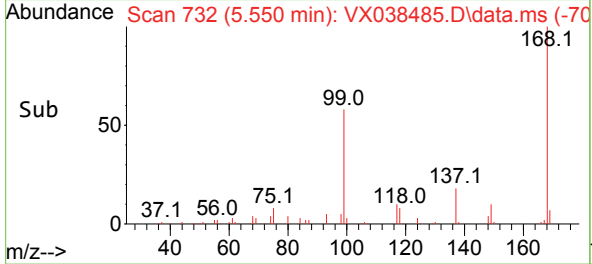


#36
 1,1-Dichloropropene
 Concen: 4.318 ug/l
 RT: 5.550 min Scan# 711
 Delta R.T. -0.140 min
 Lab File: VX038485.D
 Acq: 25 Oct 2023 17:16

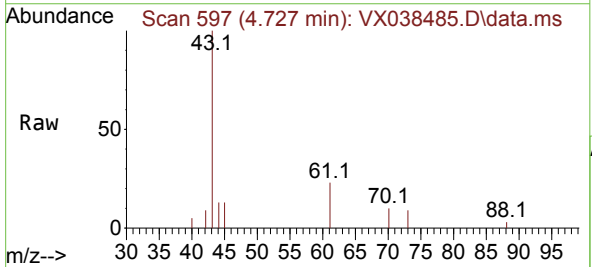
Instrument : MSVOA_X
 ClientSampleId :



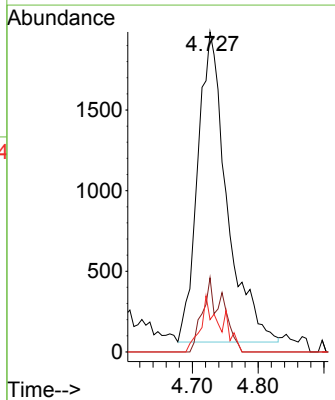
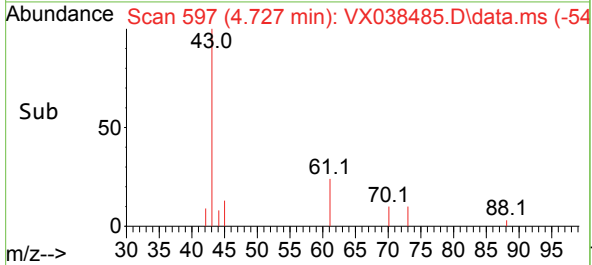
Tgt Ion: 75 Resp: 11947
 Ion Ratio Lower Upper
 75 100
 110 9.8 17.0 50.9#
 77 0.0 24.7 37.1#

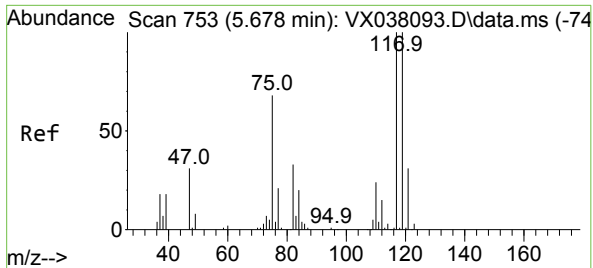


#37
 Ethyl Acetate
 Concen: 1.804 ug/l
 RT: 4.727 min Scan# 597
 Delta R.T. 0.012 min
 Lab File: VX038485.D
 Acq: 25 Oct 2023 17:16



Tgt Ion: 43 Resp: 5927
 Ion Ratio Lower Upper
 43 100
 61 10.8 10.6 16.0
 70 9.2 8.3 12.5



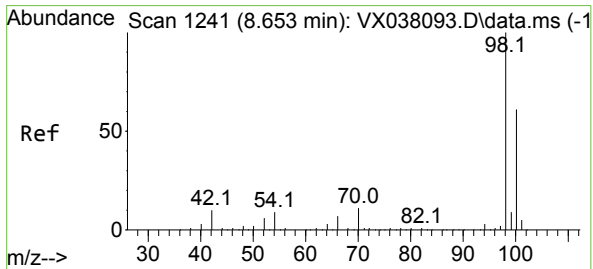
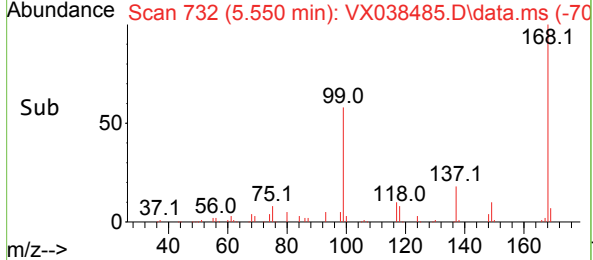
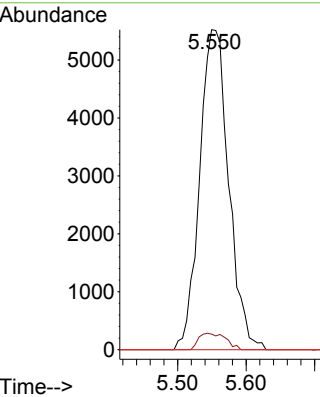
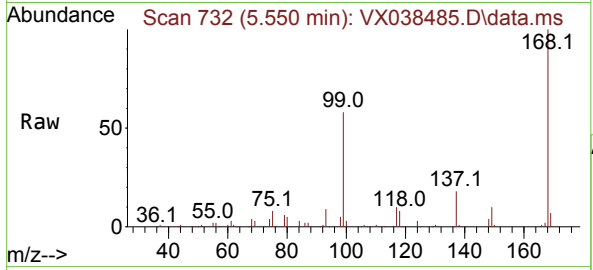


#38
 Carbon Tetrachloride
 Concen: 5.967 ug/l
 RT: 5.550 min Scan# 71
 Delta R.T. -0.128 min
 Lab File: VX038485.D
 Acq: 25 Oct 2023 17:16

Instrument : MSVOA_X
 ClientSampleId :

Tgt Ion:117 Resp: 16240

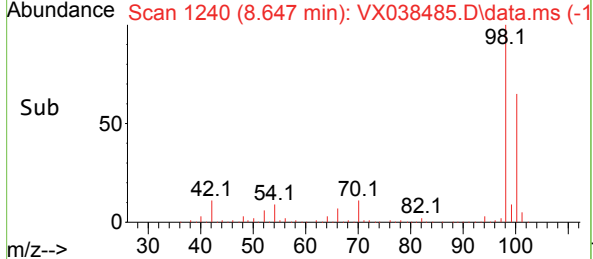
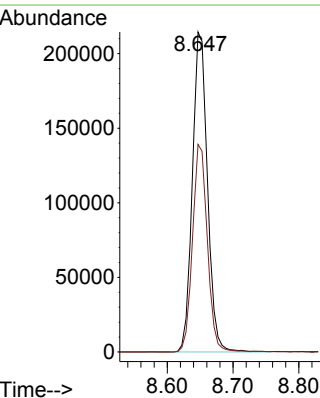
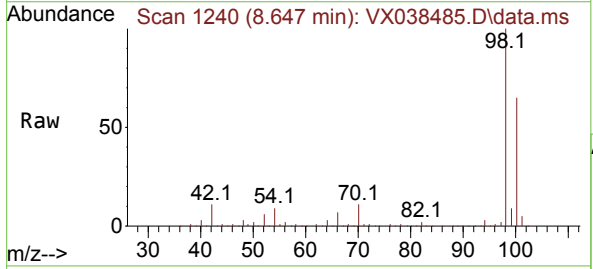
Ion	Ratio	Lower	Upper
117	100		
119	4.9	78.2	117.2#
121	0.0	24.4	36.6#

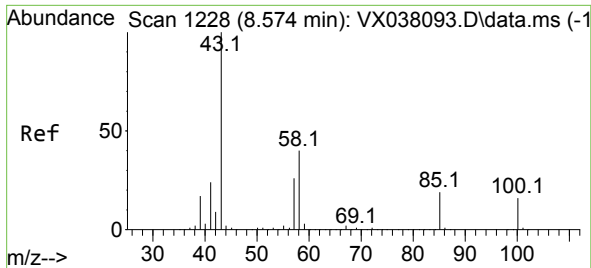


#50
 Toluene-d8
 Concen: 44.573 ug/l
 RT: 8.647 min Scan# 1240
 Delta R.T. -0.006 min
 Lab File: VX038485.D
 Acq: 25 Oct 2023 17:16

Tgt Ion: 98 Resp: 341706

Ion	Ratio	Lower	Upper
98	100		
100	64.1	53.1	79.7

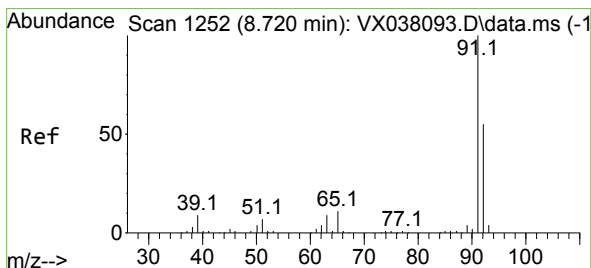
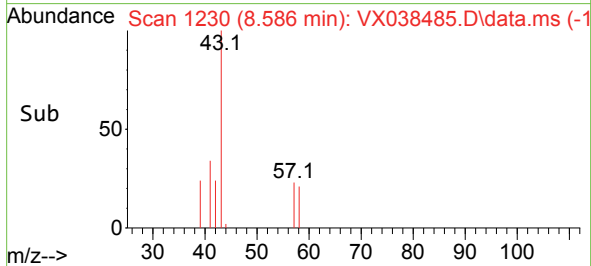
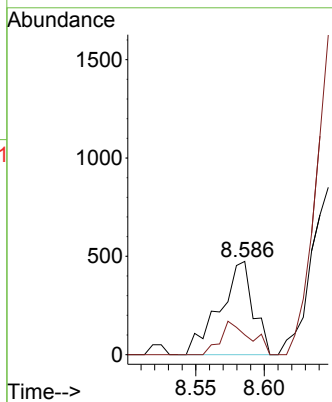
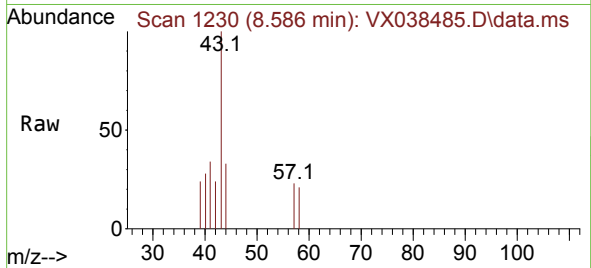




#51
 4-Methyl-2-Pentanone
 Concen: 0.237 ug/l
 RT: 8.586 min Scan# 11
 Delta R.T. 0.012 min
 Lab File: VX038485.D
 Acq: 25 Oct 2023 17:16

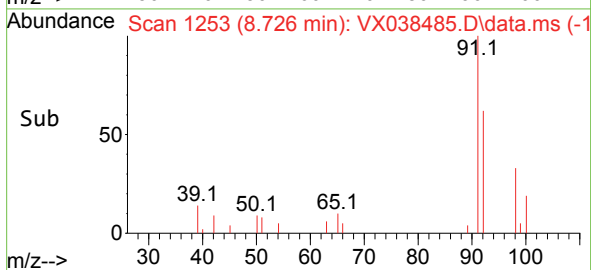
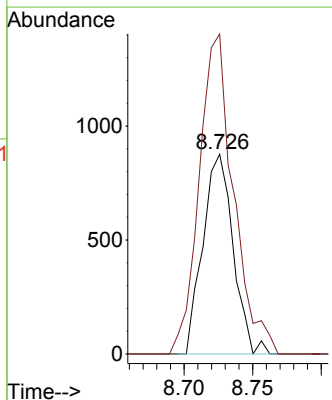
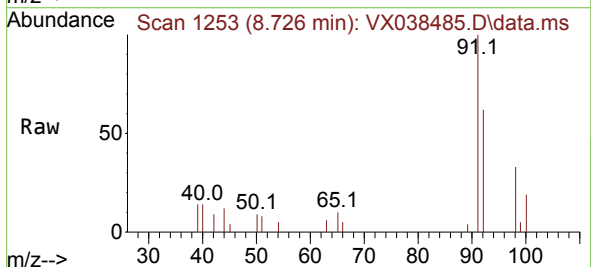
Instrument :
 MSVOA_X
 ClientSampleId :

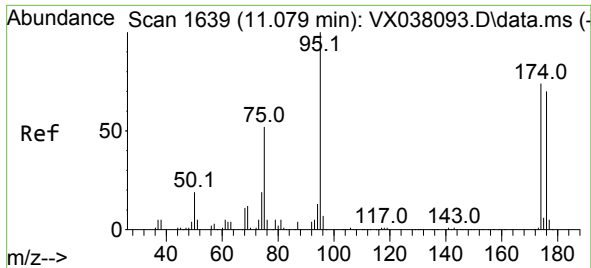
Tgt Ion: 43 Resp: 802
 Ion Ratio Lower Upper
 43 100
 58 31.3 30.4 45.6



#52
 Toluene
 Concen: 0.267 ug/l
 RT: 8.726 min Scan# 1253
 Delta R.T. 0.006 min
 Lab File: VX038485.D
 Acq: 25 Oct 2023 17:16

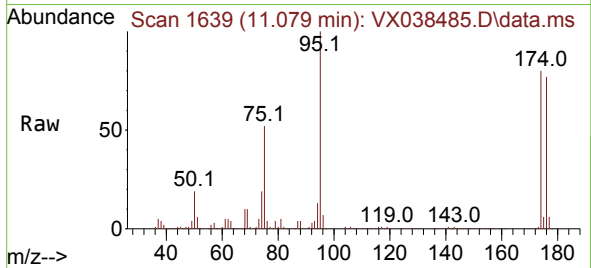
Tgt Ion: 92 Resp: 1344
 Ion Ratio Lower Upper
 92 100
 91 182.1 134.2 201.2



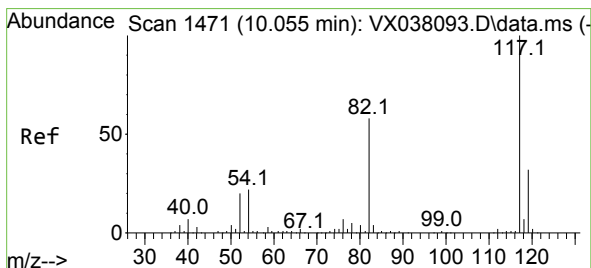
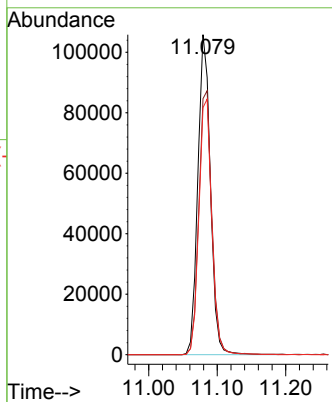
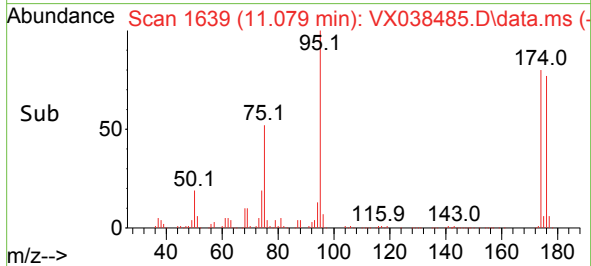


#62
 4-Bromofluorobenzene
 Concen: 46.403 ug/l
 RT: 11.079 min Scan# 1639
 Delta R.T. 0.000 min
 Lab File: VX038485.D
 Acq: 25 Oct 2023 17:16

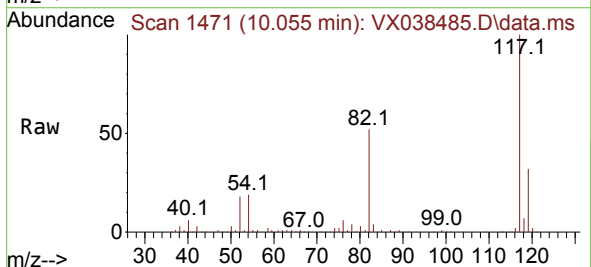
Instrument : MSVOA_X
 ClientSampleId :



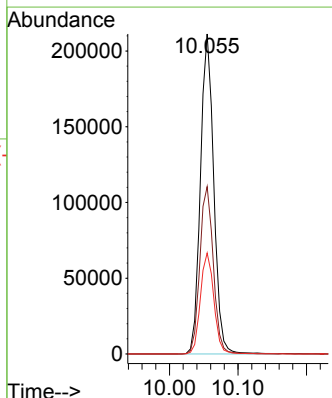
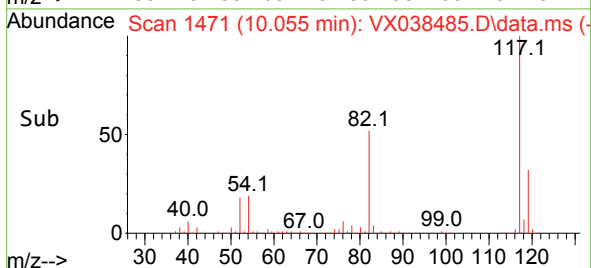
Tgt Ion: 95 Resp: 134862
 Ion Ratio Lower Upper
 95 100
 174 85.9 0.0 135.6
 176 82.7 0.0 131.0

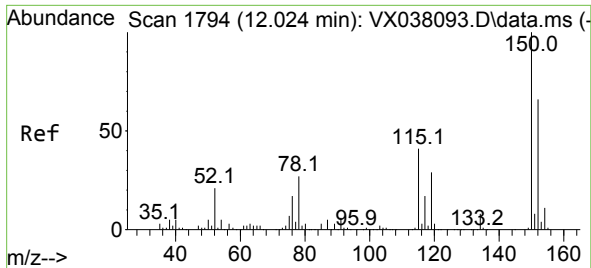


#63
 Chlorobenzene-d5
 Concen: 50.000 ug/l
 RT: 10.055 min Scan# 1471
 Delta R.T. -0.000 min
 Lab File: VX038485.D
 Acq: 25 Oct 2023 17:16



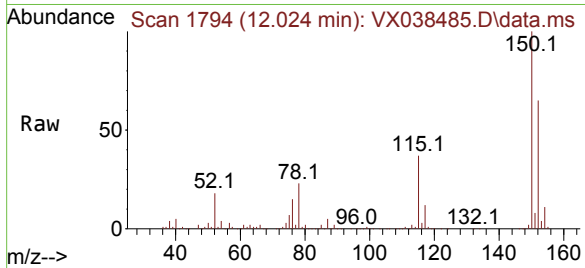
Tgt Ion: 117 Resp: 286326
 Ion Ratio Lower Upper
 117 100
 82 52.3 46.2 69.4
 119 31.5 25.5 38.3



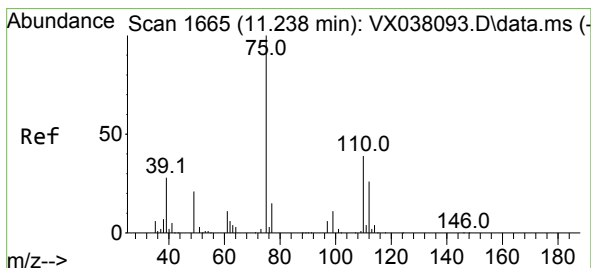
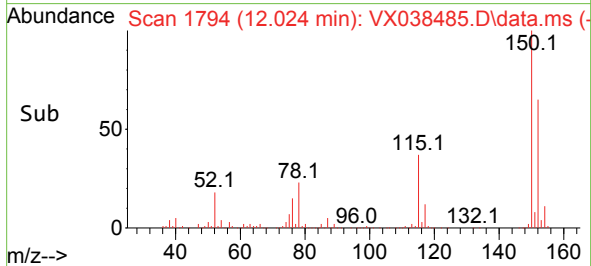
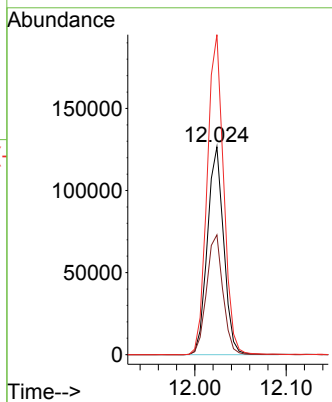


#72
 1,4-Dichlorobenzene-d4
 Concen: 50.000 ug/l
 RT: 12.024 min Scan# 11
 Delta R.T. 0.000 min
 Lab File: VX038485.D
 Acq: 25 Oct 2023 17:16

Instrument :
 MSVOA_X
 ClientSampleId :

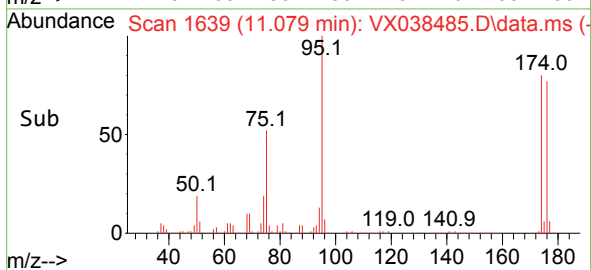
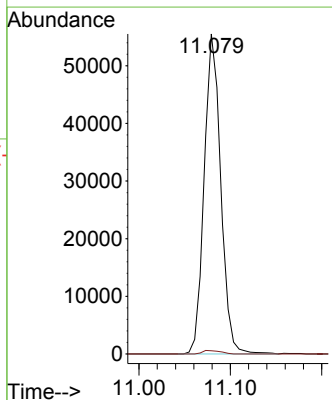
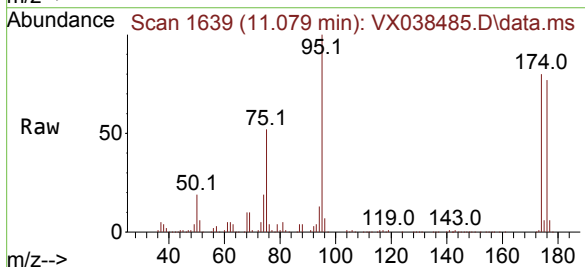


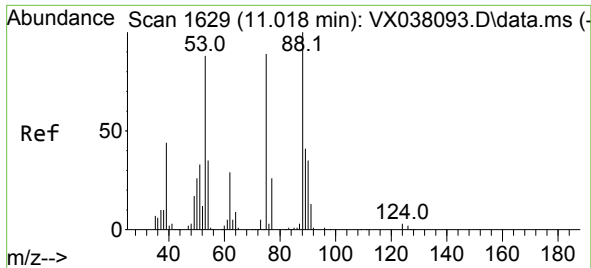
Tgt Ion:152 Resp: 156695
 Ion Ratio Lower Upper
 152 100
 115 58.2 43.3 129.9
 150 155.5 0.0 345.0



#76
 1,2,3-Trichloropropane
 Concen: 19.598 ug/l
 RT: 11.079 min Scan# 1639
 Delta R.T. -0.159 min
 Lab File: VX038485.D
 Acq: 25 Oct 2023 17:16

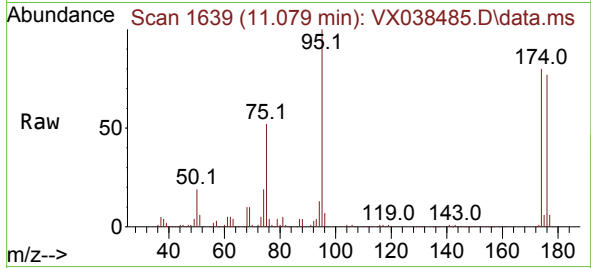
Tgt Ion: 75 Resp: 69813
 Ion Ratio Lower Upper
 75 100
 77 1.2 19.1 57.5#



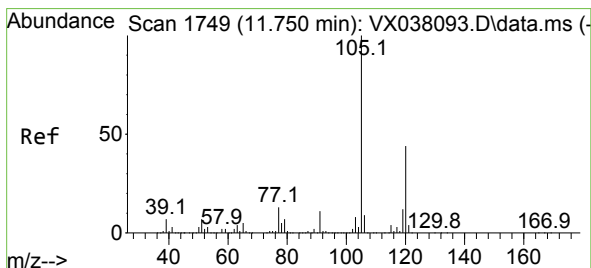
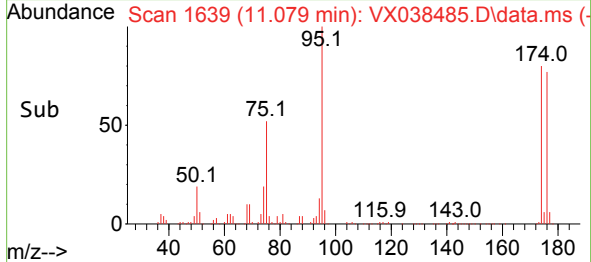
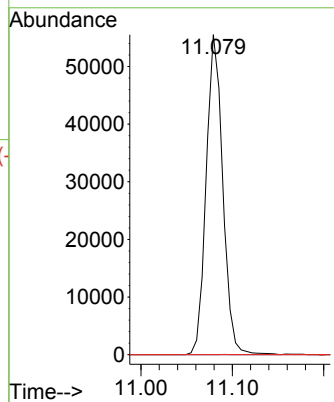


#81
 trans-1,4-Dichloro-2-butene
 Concen: 56.642 ug/l
 RT: 11.079 min Scan# 1
 Delta R.T. 0.061 min
 Lab File: VX038485.D
 Acq: 25 Oct 2023 17:16

Instrument :
 MSVOA_X
 ClientSampleId :

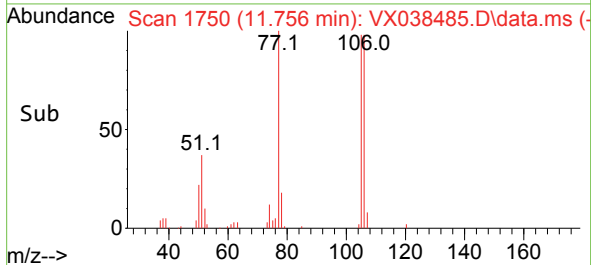
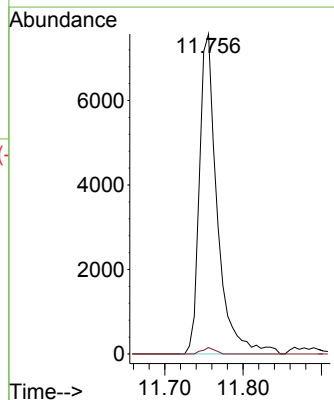
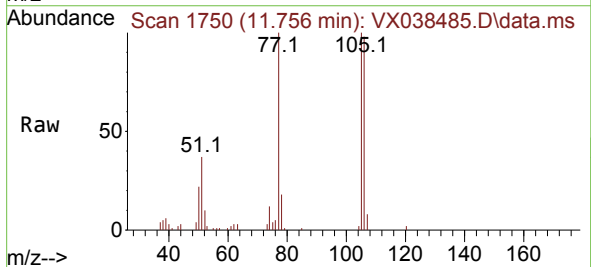


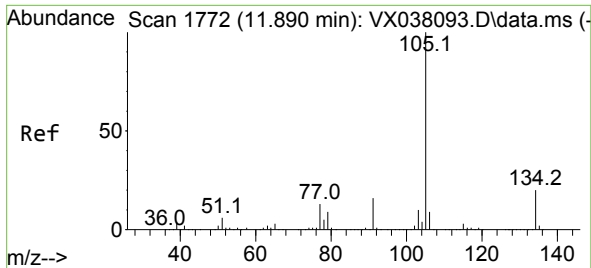
Tgt Ion: 75 Resp: 69813
 Ion Ratio Lower Upper
 75 100
 53 0.0 90.5 135.7#
 89 0.0 36.9 55.3#



#84
 1,2,4-Trimethylbenzene
 Concen: 1.331 ug/l
 RT: 11.756 min Scan# 1750
 Delta R.T. 0.006 min
 Lab File: VX038485.D
 Acq: 25 Oct 2023 17:16

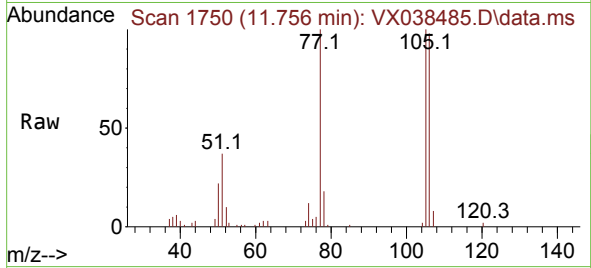
Tgt Ion: 105 Resp: 12028
 Ion Ratio Lower Upper
 105 100
 120 1.4 21.2 63.6#



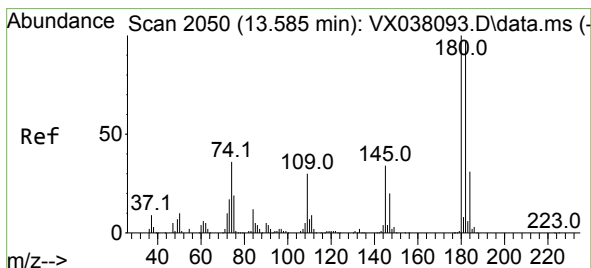
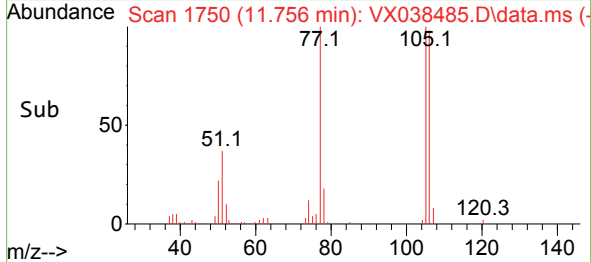
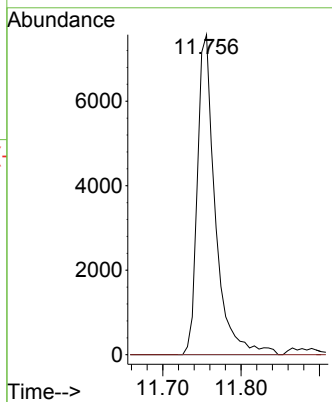


#85
 sec-Butylbenzene
 Concen: 1.048 ug/l
 RT: 11.756 min Scan# 11
 Delta R.T. -0.134 min
 Lab File: VX038485.D
 Acq: 25 Oct 2023 17:16

Instrument : MSVOA_X
 ClientSampleId :



Tgt Ion:105 Resp: 12028
 Ion Ratio Lower Upper
 105 100
 134 0.0 9.8 29.4#



#93
 1,2,4-Trichlorobenzene
 Concen: 0.237 ug/l
 RT: 13.585 min Scan# 2050
 Delta R.T. -0.000 min
 Lab File: VX038485.D
 Acq: 25 Oct 2023 17:16

Tgt Ion:180 Resp: 787
 Ion Ratio Lower Upper
 180 100
 182 86.8 48.3 144.8
 145 29.6 18.0 54.0

