

Data Path : Z:\voasrv\HPCHEM1\MSVOA_X\Data\VX102621\
 Data File : VX024934.D
 Acq On : 26 Oct 2021 10:09
 Operator : JC/MD
 Sample : VSTDCCC005
 Misc : 25.0mL/MSVOA_X/WATER
 ALS Vial : 1 Sample Multiplier: 1

Instrument :
 MSVOA_X
 ClientSampled :

Quant Time: Oct 27 02:56:16 2021
 Quant Method : Z:\voasrv\HPCHEM1\MSVOA_X\Method\SFAMXTR102221WMA.M
 Quant Title : TRACE VOA SFAM1.0
 QLast Update : Tue Oct 26 01:24:18 2021
 Response via : Initial Calibration

Compound	R.T.	QIon	Response	Conc	Units	Dev(Min)

Internal Standards						
1) 1,4-Difluorobenzene	6.763	114	73006	5.000	ug/L	0.00
28) Chlorobenzene-d5	10.055	117	68141	5.000	ug/L	0.00
58) 1,4-Dichlorobenzene-d4	12.024	152	32461	5.000	ug/L	0.00
System Monitoring Compounds						
4) Vinyl Chloride-d3	1.368	65	8486	3.959	ug/L	0.00
Spiked Amount	5.000	Range 40 - 130	Recovery	=	79.200%	
7) Chloroethane-d5	1.673	69	8592	4.449	ug/L	0.00
Spiked Amount	5.000	Range 65 - 130	Recovery	=	89.000%	
11) 1,1-Dichloroethene-d2	2.313	63	36574	4.578	ug/L	0.00
Spiked Amount	5.000	Range 60 - 125	Recovery	=	91.600%	
20) 2-Butanone-d5	4.477	46	40500	51.684	ug/L	0.00
Spiked Amount	50.000	Range 40 - 130	Recovery	=	103.360%	
24) Chloroform-d	5.068	84	52011	5.041	ug/L	0.00
Spiked Amount	5.000	Range 70 - 125	Recovery	=	100.800%	
26) 1,2-Dichloroethane-d4	5.964	65	24695	4.379	ug/L	0.00
Spiked Amount	5.000	Range 70 - 130	Recovery	=	87.600%	
32) Benzene-d6	5.983	84	75638	4.764	ug/L	0.00
Spiked Amount	5.000	Range 70 - 125	Recovery	=	95.200%	
36) 1,2-Dichloropropane-d6	7.312	67	22766	4.494	ug/L	0.00
Spiked Amount	5.000	Range 60 - 140	Recovery	=	89.800%	
41) Toluene-d8	8.653	98	75088	4.717	ug/L	0.00
Spiked Amount	5.000	Range 70 - 130	Recovery	=	94.400%	
43) trans-1,3-Dichloroprop...	8.958	79	10810	4.650	ug/L	0.00
Spiked Amount	5.000	Range 55 - 130	Recovery	=	93.000%	
46) 2-Hexanone-d5	9.391	63	41774	49.924	ug/L	0.00
Spiked Amount	50.000	Range 45 - 130	Recovery	=	99.840%	
56) 1,1,2,2-Tetrachloroeth...	11.195	84	19381	5.006	ug/L	0.00
Spiked Amount	5.000	Range 65 - 120	Recovery	=	100.200%	
66) 1,2-Dichlorobenzene-d4	12.323	152	26885	4.915	ug/L	0.00
Spiked Amount	5.000	Range 80 - 120	Recovery	=	98.200%	
Target Compounds						
						Qvalue
2) Dichlorodifluoromethane	1.167	85	39718	4.739	ug/L	99
3) Chloromethane	1.288	50	12036	4.112	ug/L	87
5) Vinyl chloride	1.374	62	16381	4.581	ug/L	93
6) Bromomethane	1.618	94	10367	3.716	ug/L	99
8) Chloroethane	1.691	64	9056	4.218	ug/L	87
9) Trichlorofluoromethane	1.892	101	50990	4.788	ug/L	99
10) 1,1,2-Trichloro-1,2,2-...	2.331	101	27563	4.935	ug/L	95
12) 1,1-Dichloroethene	2.319	96	21290	4.753	ug/L #	69
13) Acetone	2.410	43	28147	47.887	ug/L	96
14) Carbon disulfide	2.514	76	58496	4.789	ug/L #	95
15) Methyl Acetate	2.721	43	5861	4.386	ug/L	97
16) Methylene chloride	2.794	84	24815	4.769	ug/L	95
17) Methyl tert-butyl Ether	3.117	73	63013	4.895	ug/L	98
18) trans-1,2-Dichloroethene	3.093	96	24987	4.785	ug/L	90
19) 1,1-Dichloroethane	3.617	63	44370	4.862	ug/L	94
21) 2-Butanone	4.574	43	43061	49.810	ug/L	98
22) cis-1,2-Dichloroethene	4.489	96	27788	4.966	ug/L	95
23) Bromochloromethane	4.910	128	12419	4.912	ug/L	86
25) Chloroform	5.099	83	60036	5.060	ug/L	99

Data Path : Z:\voasrv\HPCHEM1\MSVOA_X\Data\VX102621\
 Data File : VX024934.D
 Acq On : 26 Oct 2021 10:09
 Operator : JC/MD
 Sample : VSTDCCC005
 Misc : 25.0mL/MSVOA_X/WATER
 ALS Vial : 1 Sample Multiplier: 1

Instrument :
 MSVOA_X
 ClientSampleId :

Quant Time: Oct 27 02:56:16 2021
 Quant Method : Z:\voasrv\HPCHEM1\MSVOA_X\Method\SFAMXTR102221WMA.M
 Quant Title : TRACE VOA SFAM1.0
 QLast Update : Tue Oct 26 01:24:18 2021
 Response via : Initial Calibration

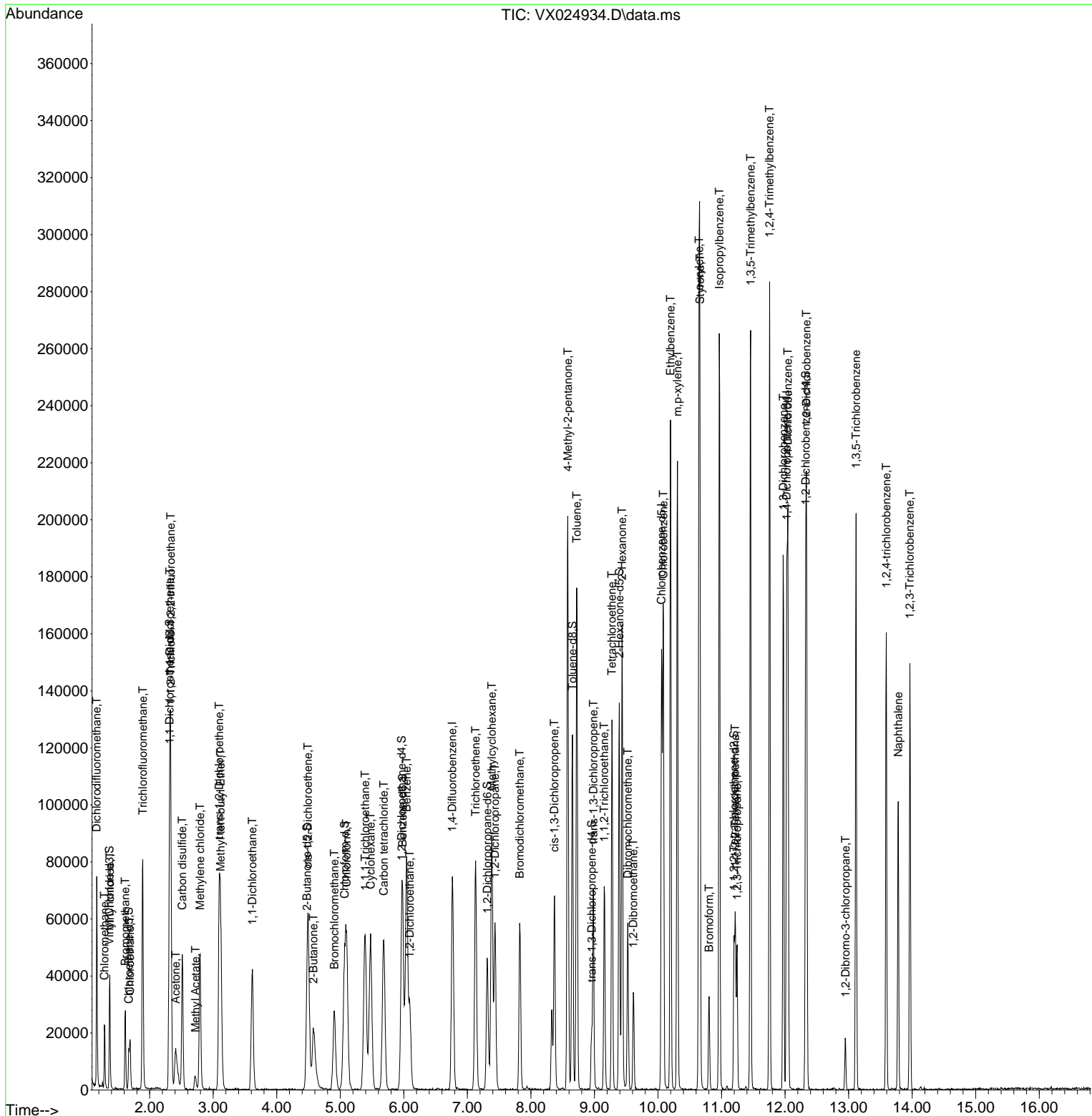
Compound	R.T.	QIon	Response	Conc	Units	Dev(Min)
27) 1,2-Dichloroethane	6.092	62	35721	4.912	ug/L #	96
29) 1,1,1-Trichloroethane	5.391	97	60087	5.079	ug/L	99
30) Cyclohexane	5.477	56	35105	4.781	ug/L	99
31) Carbon tetrachloride	5.684	117	52460	5.154	ug/L	97
33) Benzene	6.044	78	100234	5.035	ug/L	100
34) Trichloroethene	7.129	95	32768	5.054	ug/L	92
35) Methylcyclohexane	7.385	83	42571	4.697	ug/L	97
37) 1,2-Dichloropropane	7.434	63	23923	4.916	ug/L	98
38) Bromodichloromethane	7.824	83	40231	4.964	ug/L	99
39) cis-1,3-Dichloropropene	8.366	75	41243	5.027	ug/L	100
40) 4-Methyl-2-pentanone	8.580	43	100797	46.496	ug/L	99
42) Toluene	8.720	91	116765	5.015	ug/L	97
44) trans-1,3-Dichloropropene	8.982	75	36938	4.970	ug/L	93
45) 1,1,2-Trichloroethane	9.153	97	18361	4.690	ug/L	92
47) Tetrachloroethene	9.275	164	22823	5.039	ug/L	92
48) 2-Hexanone	9.433	43	72563	45.846	ug/L	98
49) Dibromochloromethane	9.525	129	26004	5.084	ug/L	99
50) 1,2-Dibromoethane	9.610	107	19384	4.943	ug/L	98
51) Chlorobenzene	10.086	112	75555	5.111	ug/L	92
52) Ethylbenzene	10.195	91	137661	5.010	ug/L	98
53) m,p-xylene	10.305	106	49425	5.071	ug/L	99
54) o-xylene	10.647	106	46930	4.939	ug/L	99
55) Styrene	10.659	104	80019	5.017	ug/L	100
57) 1,1,2,2-Tetrachloroethane	11.214	83	21512	4.761	ug/L	95
59) Bromoform	10.805	173	11831	5.256	ug/L #	98
60) Isopropylbenzene	10.964	105	139476	5.393	ug/L	98
61) 1,2,3-Trichloropropane	11.244	75	16458	5.196	ug/L	98
62) 1,3,5-Trimethylbenzene	11.457	105	123017	5.449	ug/L	99
63) 1,2,4-Trimethylbenzene	11.756	105	122975	5.318	ug/L	99
64) 1,3-Dichlorobenzene	11.969	146	58813	5.467	ug/L	95
65) 1,4-Dichlorobenzene	12.043	146	56444	5.233	ug/L	98
67) 1,2-Dichlorobenzene	12.335	146	51816	5.240	ug/L	93
68) 1,2-Dibromo-3-chloropr...	12.951	75	4094	5.309	ug/L	97
69) 1,3,5-Trichlorobenzene	13.116	180	41833	5.108	ug/L	97
70) 1,2,4-trichlorobenzene	13.591	180	34769	5.368	ug/L	95
71) Naphthalene	13.780	128	60392	5.176	ug/L	98
72) 1,2,3-Trichlorobenzene	13.963	180	31176	5.352	ug/L	97

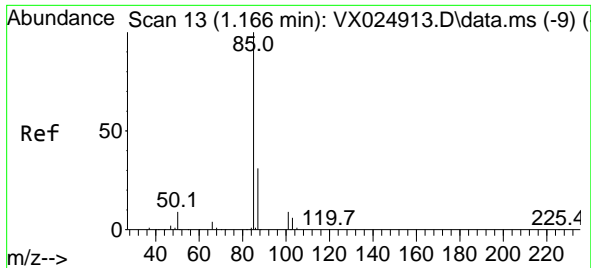
(#) = qualifier out of range (m) = manual integration (+) = signals summed

Data Path : Z:\voasrv\HPCHEM1\MSVOA_X\Data\VX102621\
 Data File : VX024934.D
 Acq On : 26 Oct 2021 10:09
 Operator : JC/MD
 Sample : VSTDCCC005
 Misc : 25.0mL/MSVOA_X/WATER
 ALS Vial : 1 Sample Multiplier: 1

Instrument :
 MSVOA_X
 Client Sampled :

Quant Time: Oct 27 02:56:16 2021
 Quant Method : Z:\voasrv\HPCHEM1\MSVOA_X\Method\SFAMXTR102221WMA.M
 Quant Title : TRACE VOA SFAM1.0
 QLast Update : Tue Oct 26 01:24:18 2021
 Response via : Initial Calibration

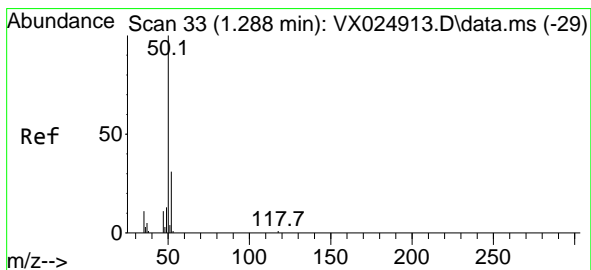
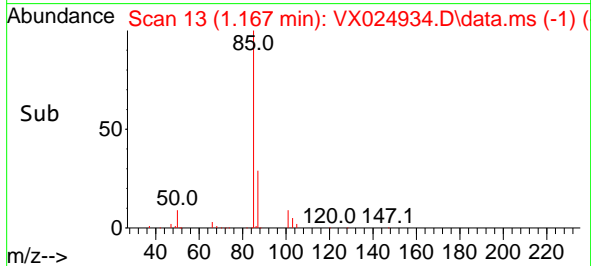
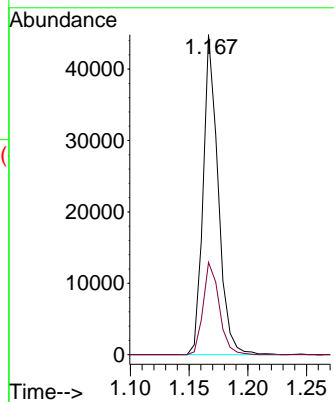
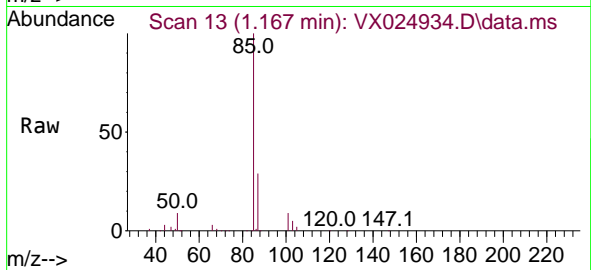




#2
 Dichlorodifluoromethane
 Concen: 4.739 ug/L
 RT: 1.167 min Scan# 13
 Delta R.T. 0.000 min
 Lab File: VX024934.D
 Acq: 26 Oct 2021 10:09

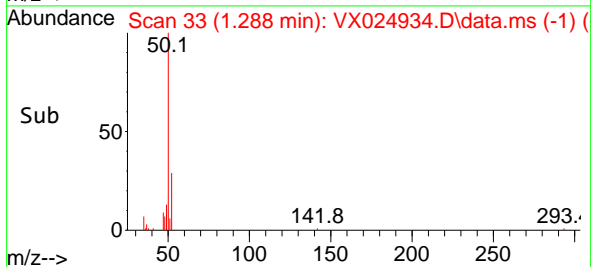
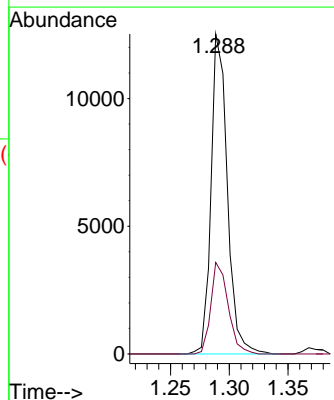
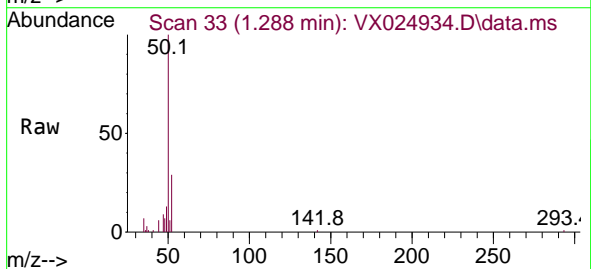
Instrument :
 MSVOA_X
 ClientSampled :

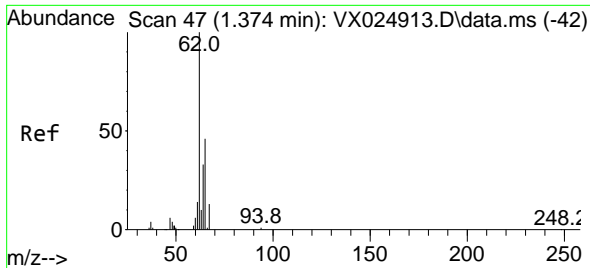
Tgt Ion: 85 Resp: 39718
 Ion Ratio Lower Upper
 85 100
 87 30.9 24.1 36.1



#3
 Chloromethane
 Concen: 4.112 ug/L
 RT: 1.288 min Scan# 33
 Delta R.T. 0.000 min
 Lab File: VX024934.D
 Acq: 26 Oct 2021 10:09

Tgt Ion: 50 Resp: 12036
 Ion Ratio Lower Upper
 50 100
 52 28.6 25.5 47.3

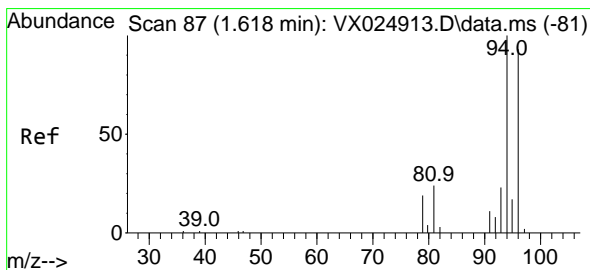
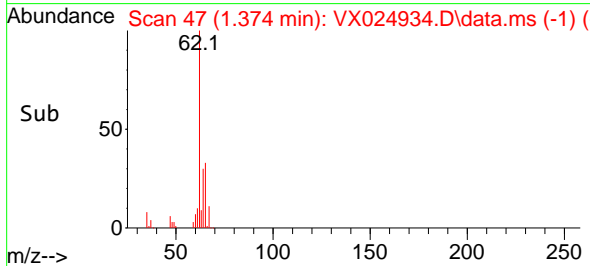
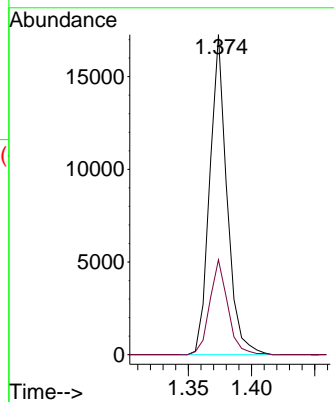
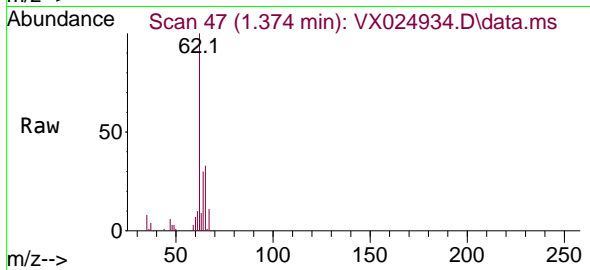




#5
 Vinyl chloride
 Concen: 4.581 ug/L
 RT: 1.374 min Scan# 47
 Delta R.T. 0.000 min
 Lab File: VX024934.D
 Acq: 26 Oct 2021 10:09

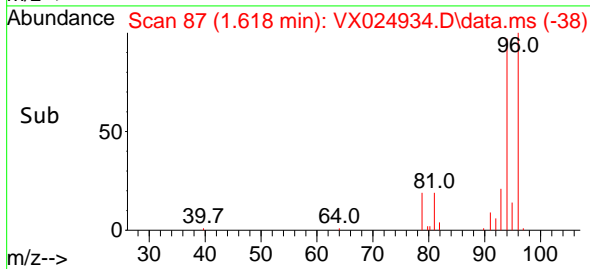
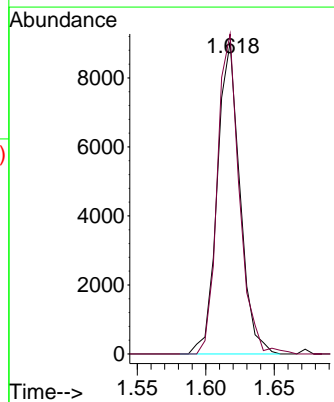
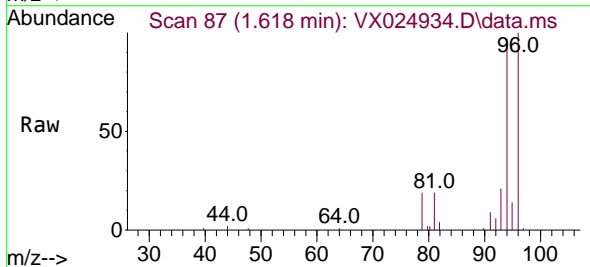
Instrument :
 MSVOA_X
 ClientSampled :

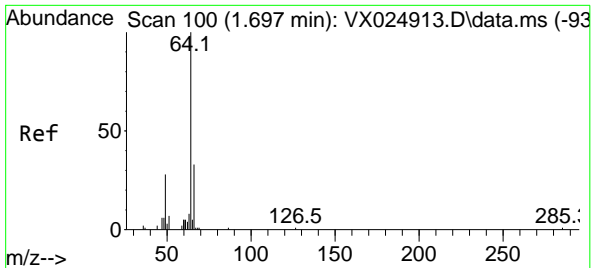
Tgt Ion: 62 Resp: 16381
 Ion Ratio Lower Upper
 62 100
 64 29.6 23.7 44.1



#6
 Bromomethane
 Concen: 3.716 ug/L
 RT: 1.618 min Scan# 87
 Delta R.T. 0.000 min
 Lab File: VX024934.D
 Acq: 26 Oct 2021 10:09

Tgt Ion: 94 Resp: 10367
 Ion Ratio Lower Upper
 94 100
 96 102.6 70.9 131.7

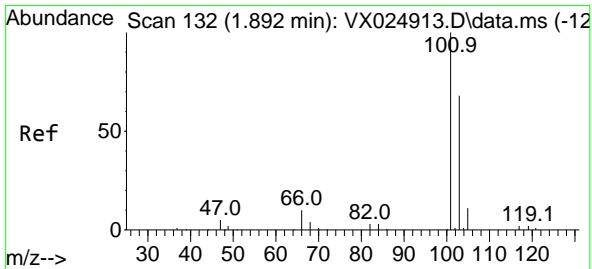
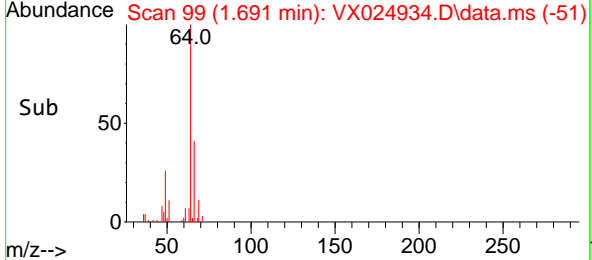
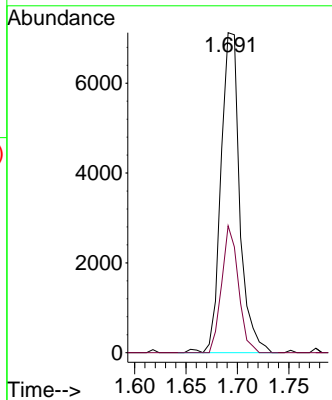
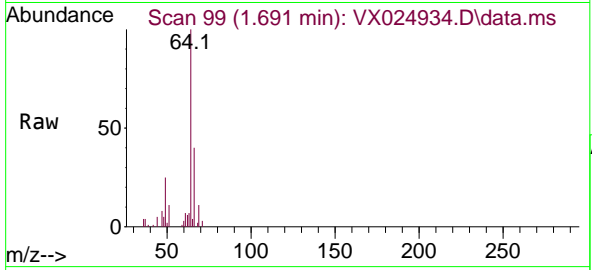




#8
 Chloroethane
 Concen: 4.218 ug/L
 RT: 1.691 min Scan# 99
 Delta R.T. -0.006 min
 Lab File: VX024934.D
 Acq: 26 Oct 2021 10:09

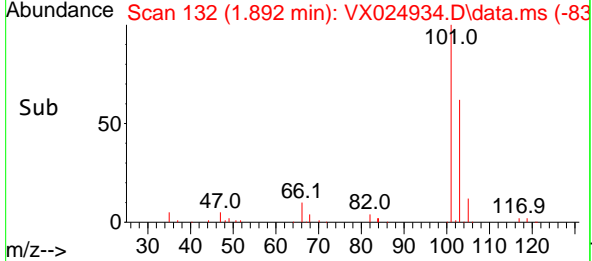
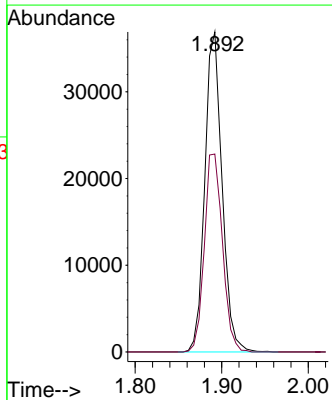
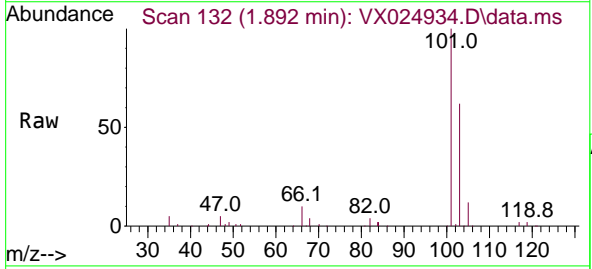
Instrument :
 MSVOA_X
 ClientSampled :

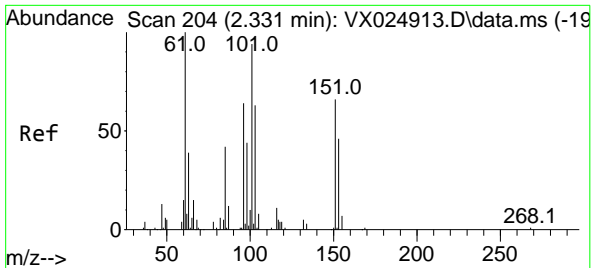
Tgt Ion: 64 Resp: 9056
 Ion Ratio Lower Upper
 64 100
 66 39.7 22.6 42.0



#9
 Trichlorofluoromethane
 Concen: 4.788 ug/L
 RT: 1.892 min Scan# 132
 Delta R.T. 0.000 min
 Lab File: VX024934.D
 Acq: 26 Oct 2021 10:09

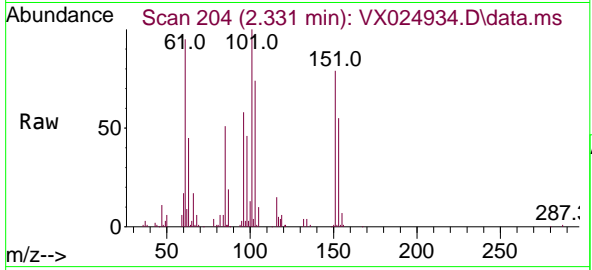
Tgt Ion: 101 Resp: 50990
 Ion Ratio Lower Upper
 101 100
 103 65.1 51.2 76.8





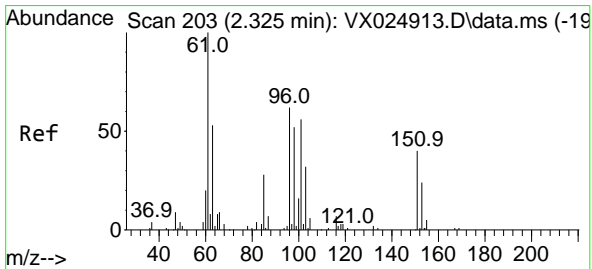
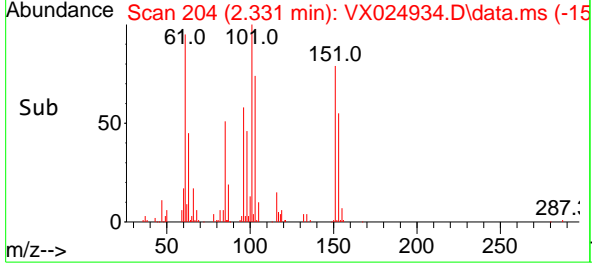
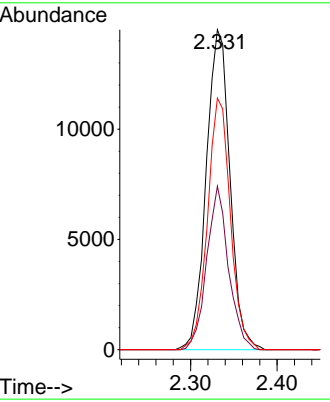
#10
 1,1,2-Trichloro-1,2,2-trifluoroethane
 Concen: 4.935 ug/L
 RT: 2.331 min Scan# 204
 Delta R.T. 0.000 min
 Lab File: VX024934.D
 Acq: 26 Oct 2021 10:09

Instrument :
 MSVOA_X
 ClientSampled :

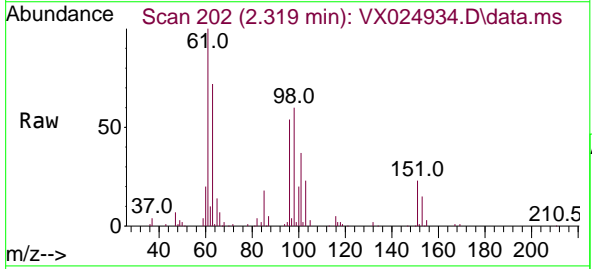


Tgt Ion: 101 Resp: 27563

Ion	Ratio	Lower	Upper
101	100		
85	47.0	34.3	51.5
151	75.9	58.3	87.5

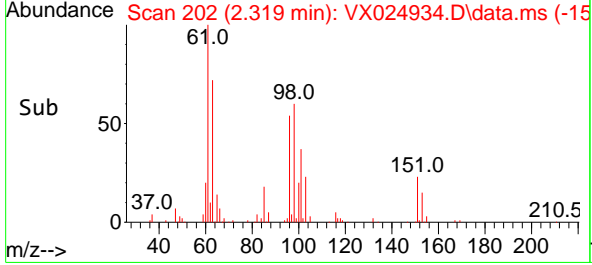
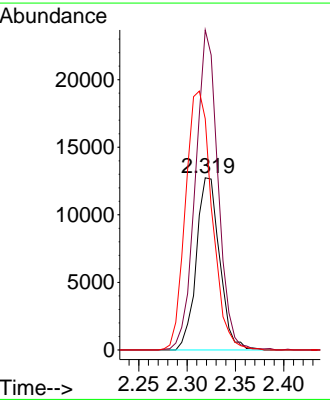


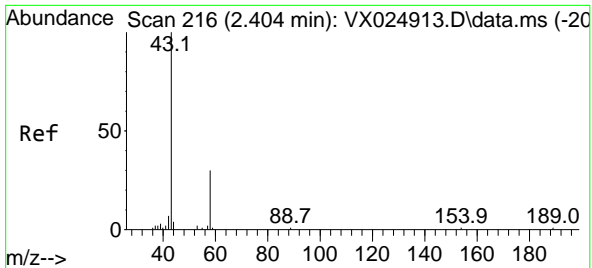
#12
 1,1-Dichloroethene
 Concen: 4.753 ug/L
 RT: 2.319 min Scan# 202
 Delta R.T. -0.006 min
 Lab File: VX024934.D
 Acq: 26 Oct 2021 10:09



Tgt Ion: 96 Resp: 21290

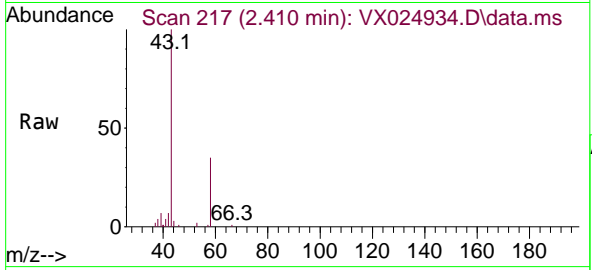
Ion	Ratio	Lower	Upper
96	100		
61	185.8	110.2	204.8
63	134.3	63.1	117.1#



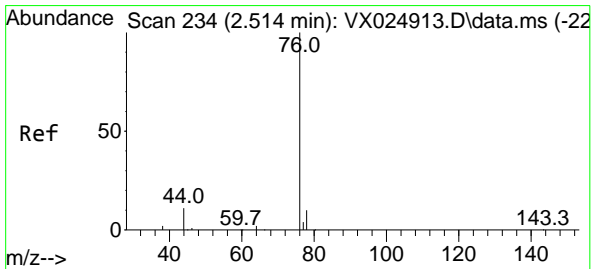
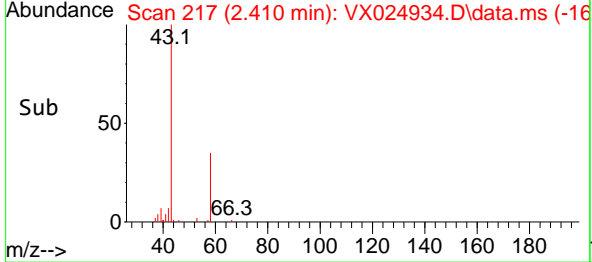
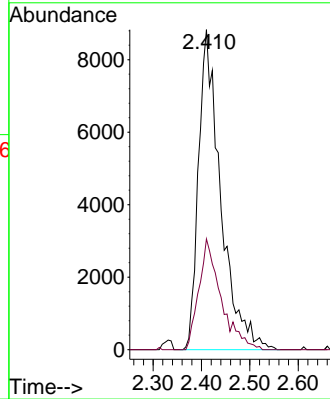


#13
 Acetone
 Concen: 47.887 ug/L
 RT: 2.410 min Scan# 217
 Delta R.T. 0.006 min
 Lab File: VX024934.D
 Acq: 26 Oct 2021 10:09

Instrument :
 MSVOA_X
 ClientSampled :

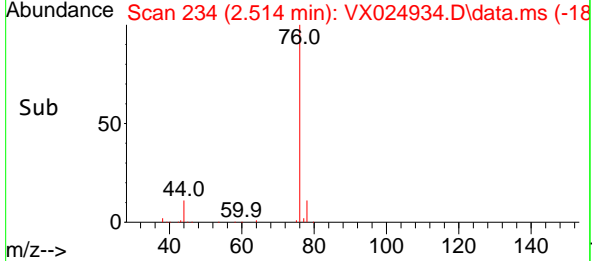
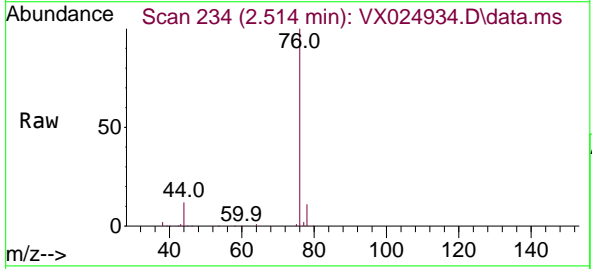
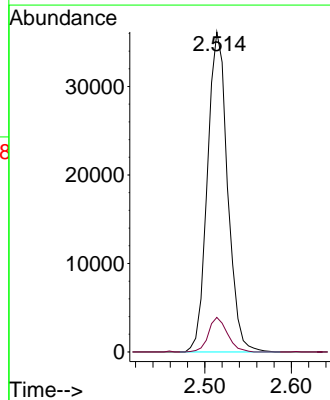


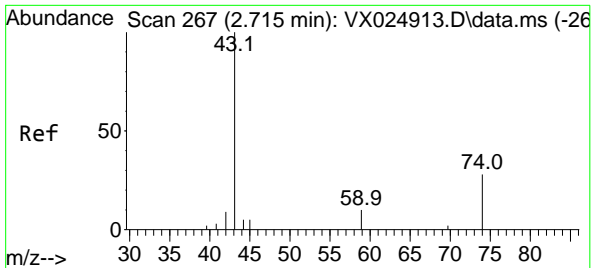
Tgt Ion: 43 Resp: 28147
 Ion Ratio Lower Upper
 43 100
 58 34.6 0.0 64.2



#14
 Carbon disulfide
 Concen: 4.789 ug/L
 RT: 2.514 min Scan# 234
 Delta R.T. 0.000 min
 Lab File: VX024934.D
 Acq: 26 Oct 2021 10:09

Tgt Ion: 76 Resp: 58496
 Ion Ratio Lower Upper
 76 100
 78 10.8 7.1 10.7#

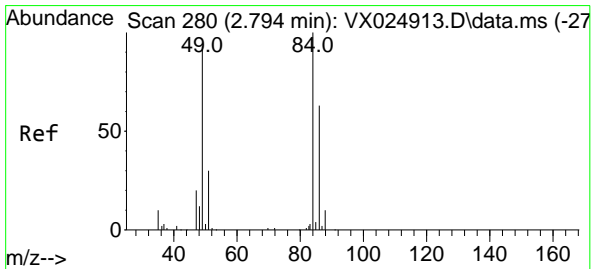
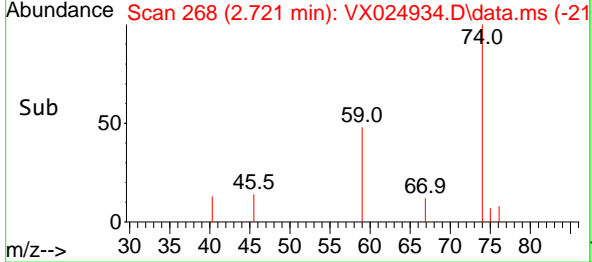
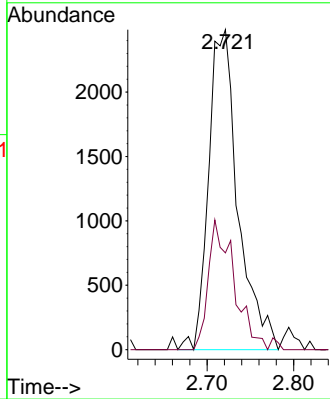
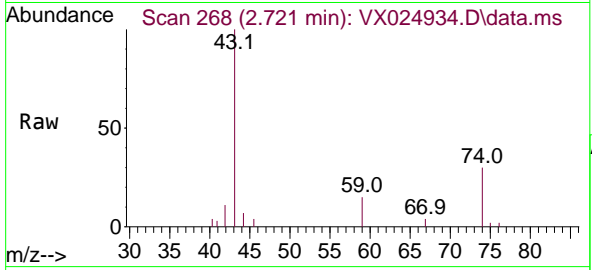




#15
 Methyl Acetate
 Concen: 4.386 ug/L
 RT: 2.721 min Scan# 268
 Delta R.T. 0.006 min
 Lab File: VX024934.D
 Acq: 26 Oct 2021 10:09

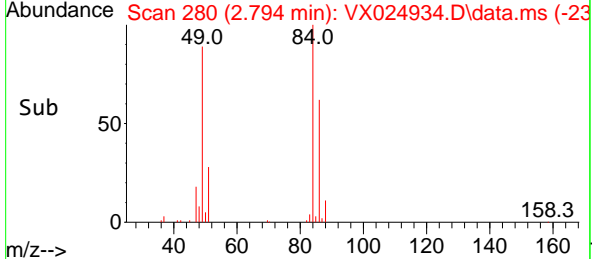
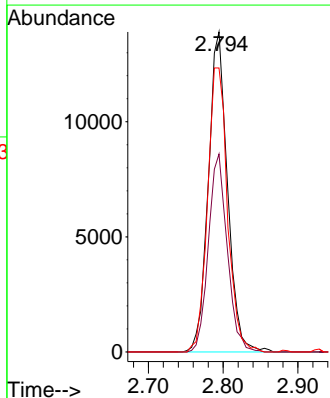
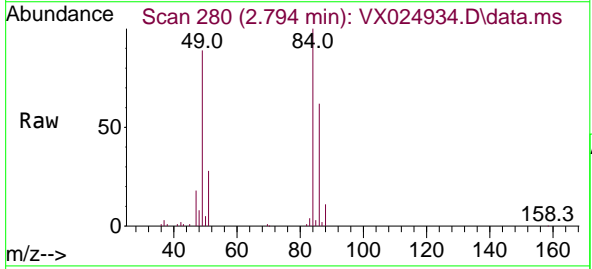
Instrument :
 MSVOA_X
 ClientSampled :

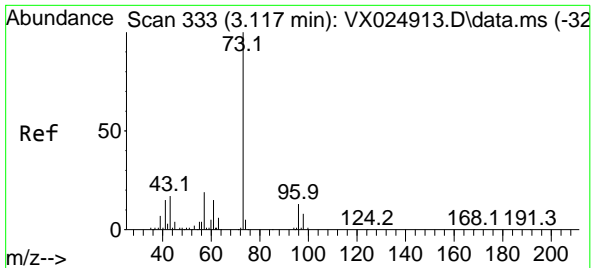
Tgt Ion	Resp	Ion Ratio	Lower	Upper
43	5861	100		
74		35.4	26.8	40.2



#16
 Methylene chloride
 Concen: 4.769 ug/L
 RT: 2.794 min Scan# 280
 Delta R.T. 0.000 min
 Lab File: VX024934.D
 Acq: 26 Oct 2021 10:09

Tgt Ion	Resp	Ion Ratio	Lower	Upper
84	24815	100		
86		61.8	49.5	91.9
49		88.8	62.7	116.5

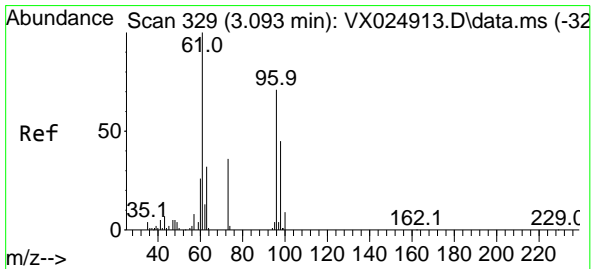
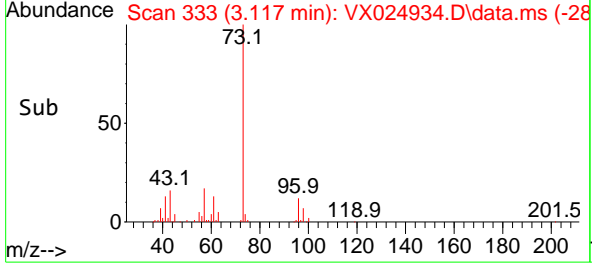
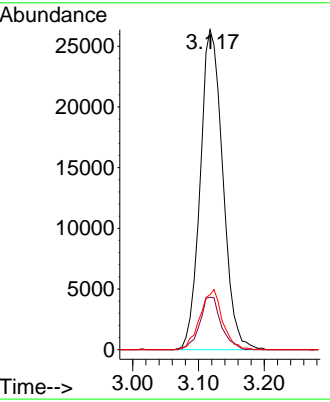
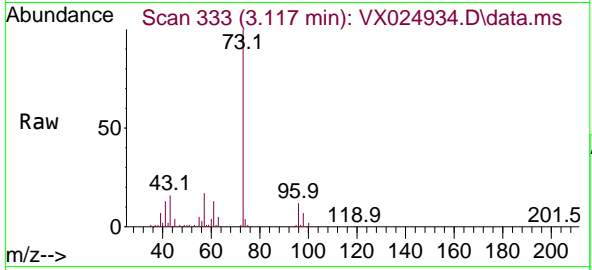




#17
 Methyl tert-butyl Ether
 Concen: 4.895 ug/L
 RT: 3.117 min Scan# 333
 Delta R.T. 0.000 min
 Lab File: VX024934.D
 Acq: 26 Oct 2021 10:09

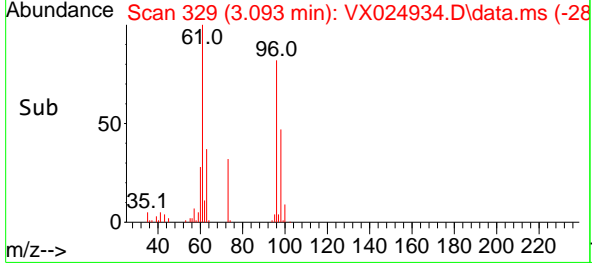
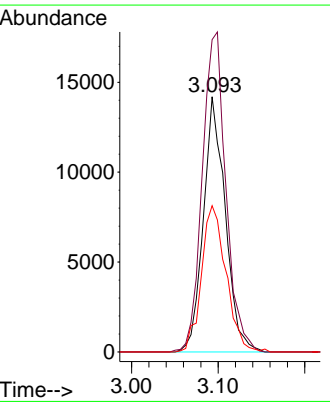
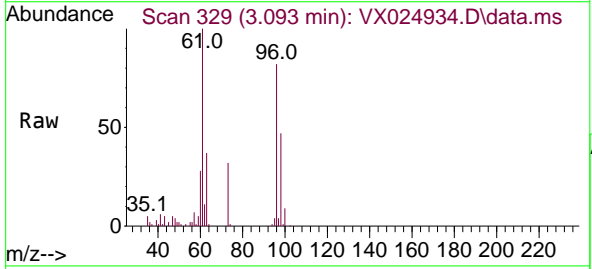
Instrument :
 MSVOA_X
 ClientSampled :

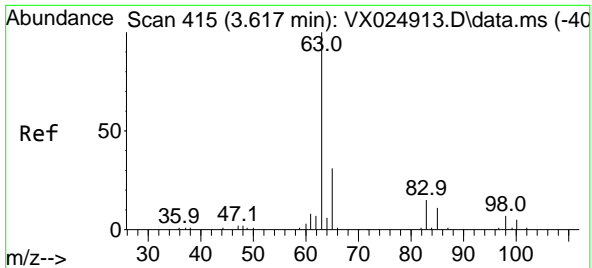
Tgt Ion	Resp	Lower	Upper
73	63013		
73	100		
43	15.6	13.6	20.4
57	18.6	14.5	21.7



#18
 trans-1,2-Dichloroethene
 Concen: 4.785 ug/L
 RT: 3.093 min Scan# 329
 Delta R.T. 0.000 min
 Lab File: VX024934.D
 Acq: 26 Oct 2021 10:09

Tgt Ion	Resp	Lower	Upper
96	24987		
96	100		
61	122.4	92.7	172.3
98	57.3	46.6	86.6

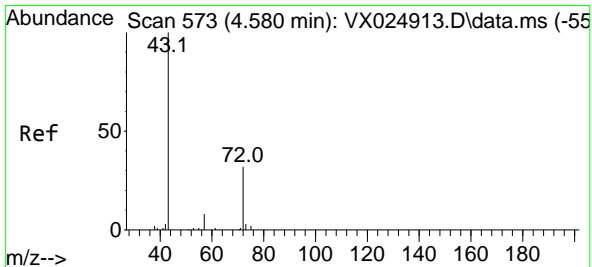
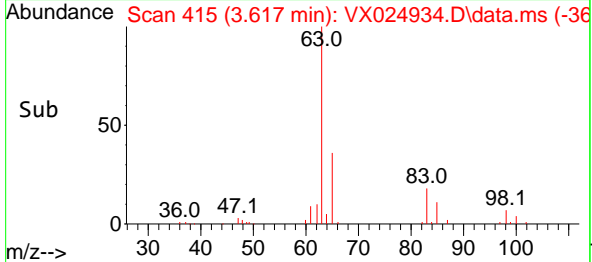
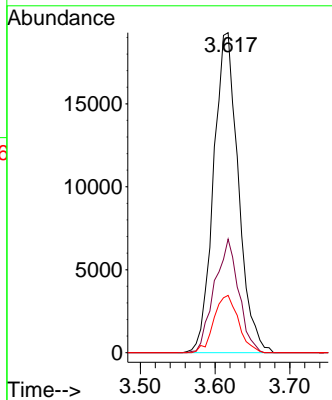
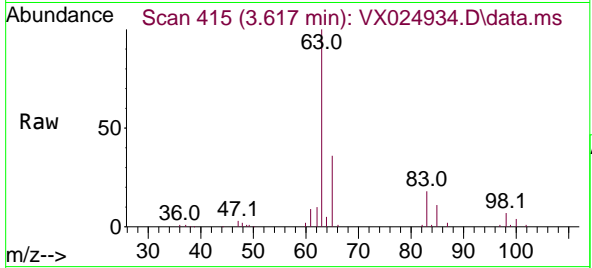




#19
 1,1-Dichloroethane
 Concen: 4.862 ug/L
 RT: 3.617 min Scan# 415
 Delta R.T. 0.000 min
 Lab File: VX024934.D
 Acq: 26 Oct 2021 10:09

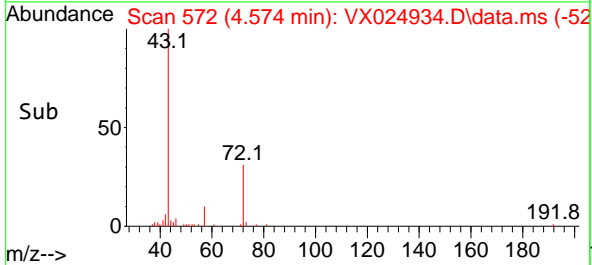
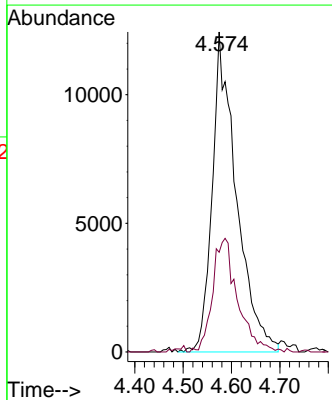
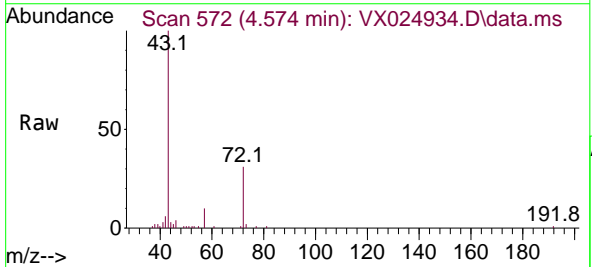
Instrument :
 MSVOA_X
 ClientSampled :

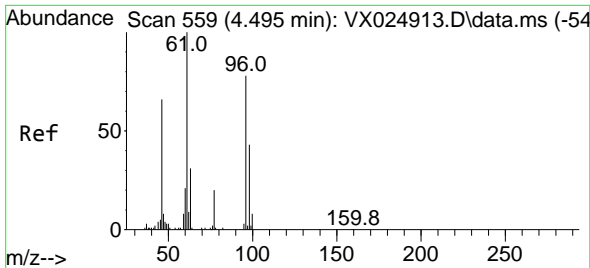
Tgt Ion	Resp	Lower	Upper
63	100		
65	35.5	22.3	41.3
83	17.9	11.5	21.3



#21
 2-Butanone
 Concen: 49.810 ug/L
 RT: 4.574 min Scan# 572
 Delta R.T. -0.006 min
 Lab File: VX024934.D
 Acq: 26 Oct 2021 10:09

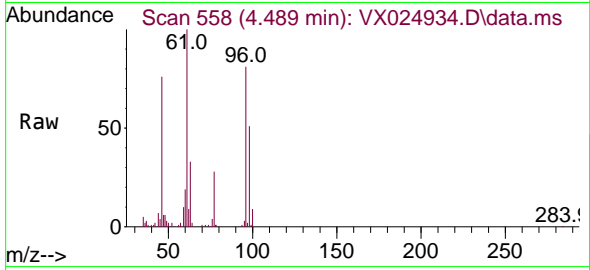
Tgt Ion	Resp	Lower	Upper
43	100		
72	36.8	18.9	56.9





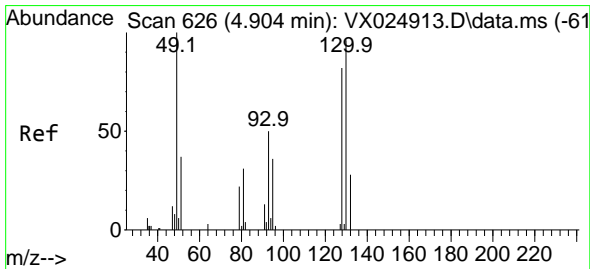
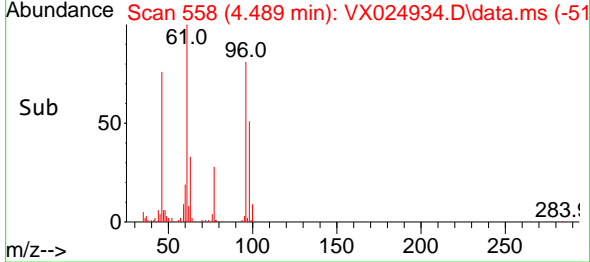
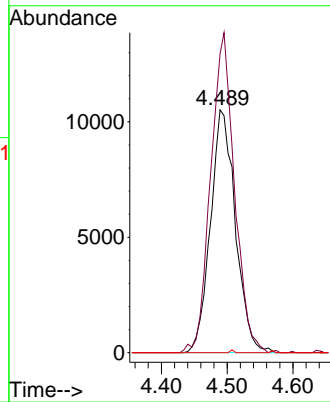
#22
 cis-1,2-Dichloroethene
 Concen: 4.966 ug/L
 RT: 4.489 min Scan# 558
 Delta R.T. -0.006 min
 Lab File: VX024934.D
 Acq: 26 Oct 2021 10:09

Instrument :
 MSVOA_X
 ClientSampled :

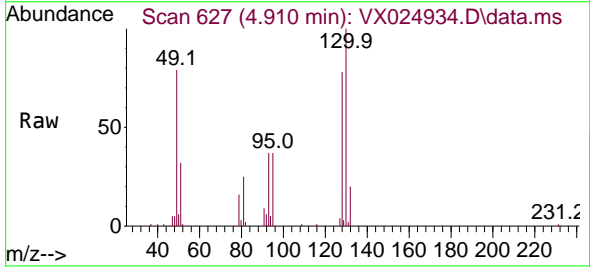


Tgt Ion: 96 Resp: 27788

Ion	Ratio	Lower	Upper
96	100		
61	123.0	90.3	167.7
68	0.0	0.0	0.0

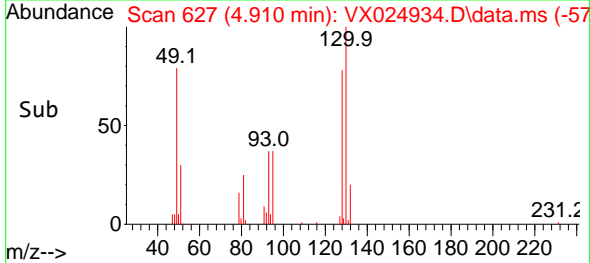
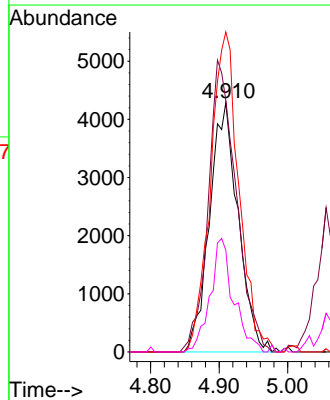


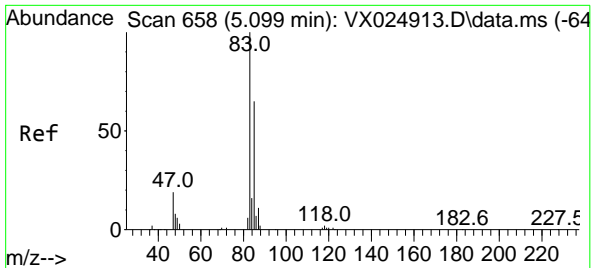
#23
 Bromochloromethane
 Concen: 4.912 ug/L
 RT: 4.910 min Scan# 627
 Delta R.T. 0.006 min
 Lab File: VX024934.D
 Acq: 26 Oct 2021 10:09



Tgt Ion: 128 Resp: 12419

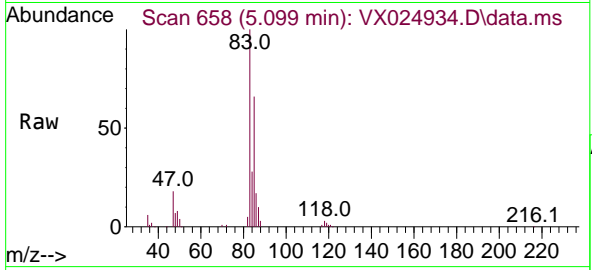
Ion	Ratio	Lower	Upper
128	100		
49	101.1	85.8	159.3
130	128.3	81.4	151.2
51	40.8	28.8	43.2



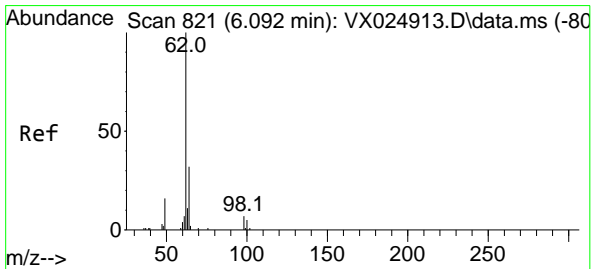
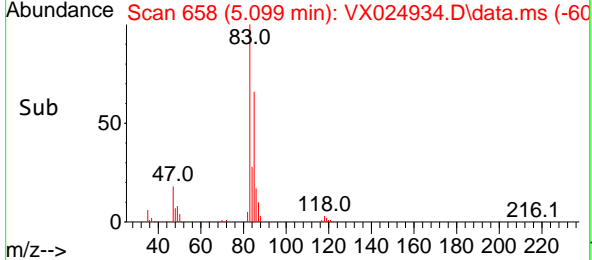
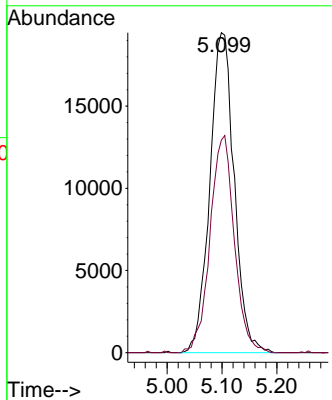


#25
 Chloroform
 Concen: 5.060 ug/L
 RT: 5.099 min Scan# 658
 Delta R.T. 0.000 min
 Lab File: VX024934.D
 Acq: 26 Oct 2021 10:09

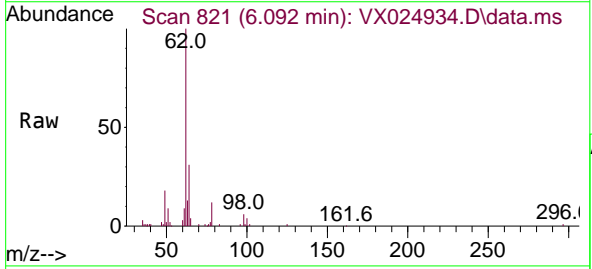
Instrument :
 MSVOA_X
 ClientSampled :



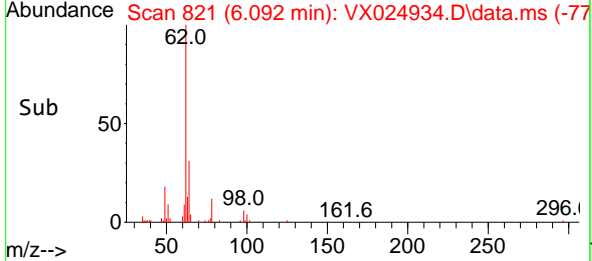
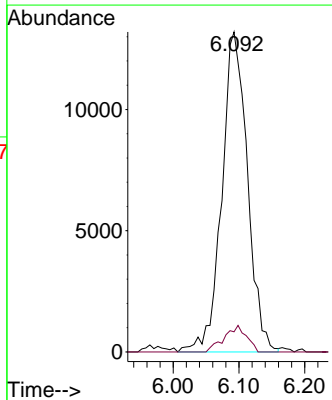
Tgt Ion: 83 Resp: 60036
 Ion Ratio Lower Upper
 83 100
 85 66.5 47.0 87.4

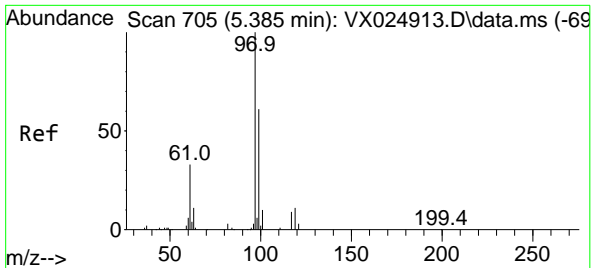


#27
 1,2-Dichloroethane
 Concen: 4.912 ug/L
 RT: 6.092 min Scan# 821
 Delta R.T. 0.000 min
 Lab File: VX024934.D
 Acq: 26 Oct 2021 10:09



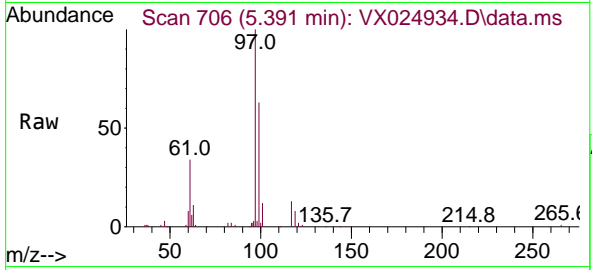
Tgt Ion: 62 Resp: 35721
 Ion Ratio Lower Upper
 62 100
 98 6.3 4.1 6.1#





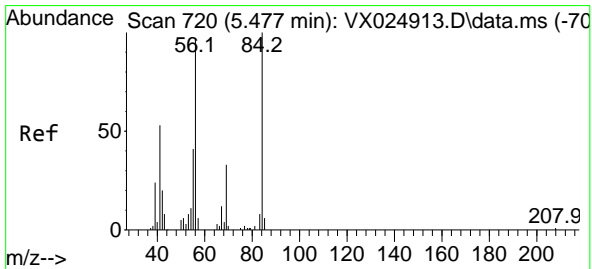
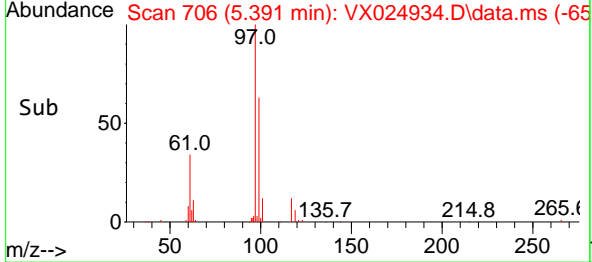
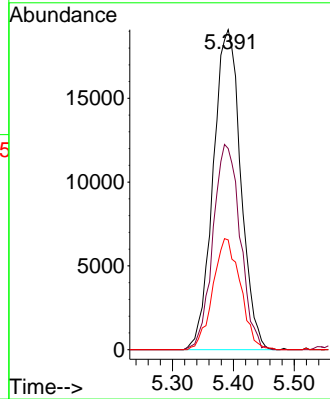
#29
 1,1,1-Trichloroethane
 Concen: 5.079 ug/L
 RT: 5.391 min Scan# 706
 Delta R.T. 0.006 min
 Lab File: VX024934.D
 Acq: 26 Oct 2021 10:09

Instrument :
 MSVOA_X
 ClientSampled :



Tgt Ion: 97 Resp: 60087

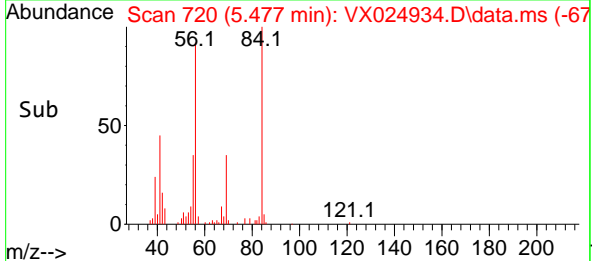
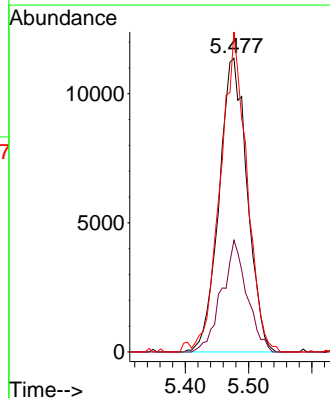
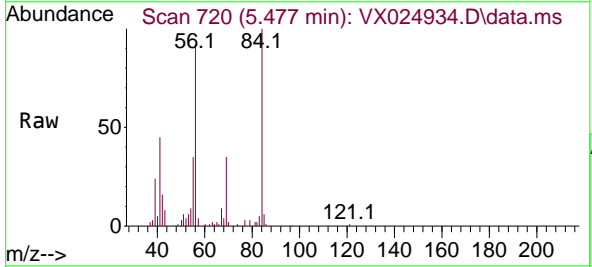
Ion	Ratio	Lower	Upper
97	100		
99	63.4	50.2	75.4
61	34.7	27.0	40.6

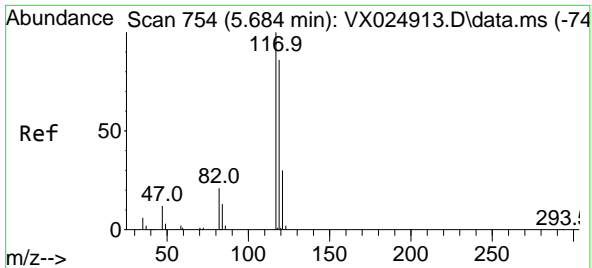


#30
 Cyclohexane
 Concen: 4.781 ug/L
 RT: 5.477 min Scan# 720
 Delta R.T. 0.000 min
 Lab File: VX024934.D
 Acq: 26 Oct 2021 10:09

Tgt Ion: 56 Resp: 35105

Ion	Ratio	Lower	Upper
56	100		
69	34.2	27.1	40.7
84	102.6	81.0	121.4

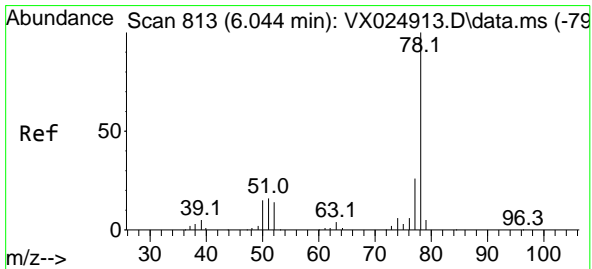
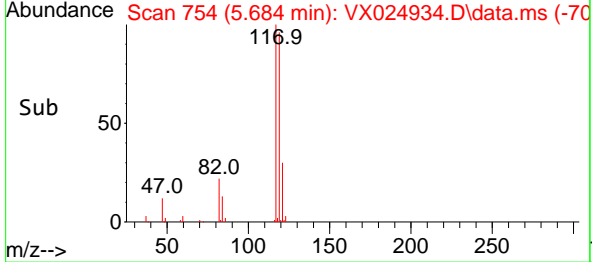
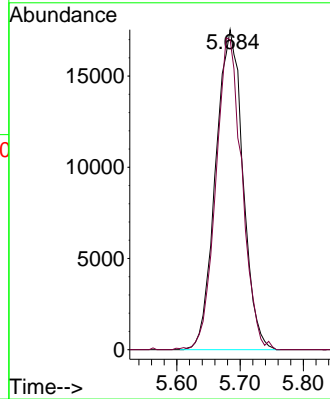
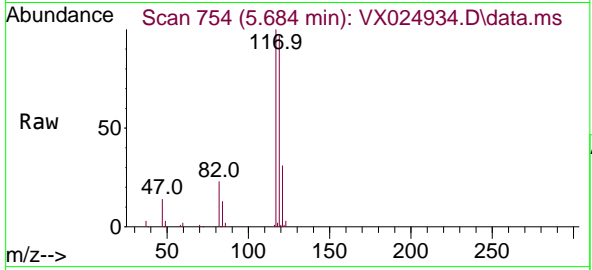




#31
 Carbon tetrachloride
 Concen: 5.154 ug/L
 RT: 5.684 min Scan# 754
 Delta R.T. 0.000 min
 Lab File: VX024934.D
 Acq: 26 Oct 2021 10:09

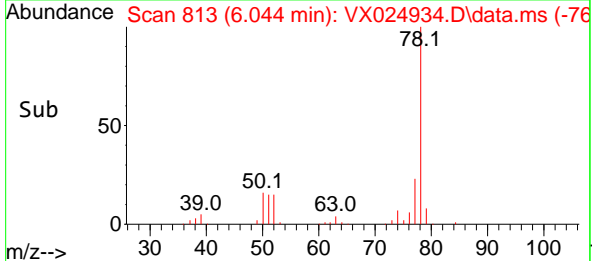
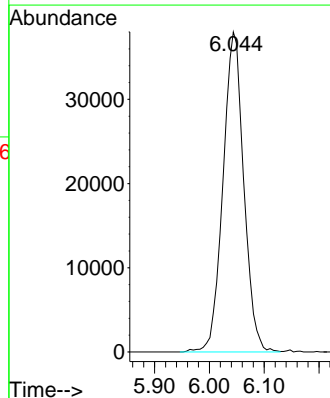
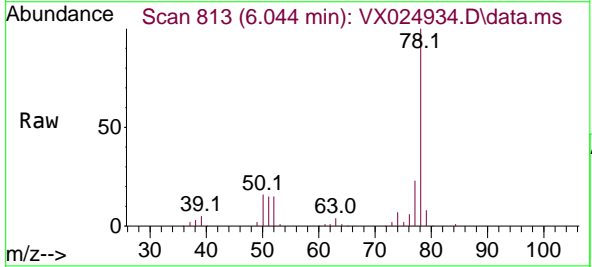
Instrument :
 MSVOA_X
 ClientSampled :

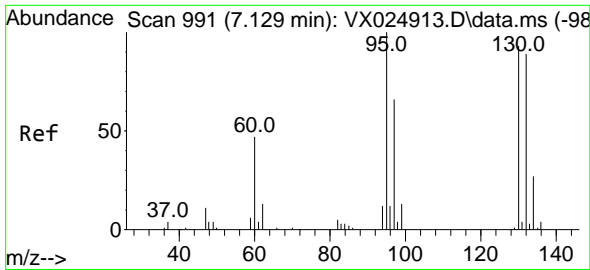
Tgt Ion:117 Resp: 52460
 Ion Ratio Lower Upper
 117 100
 119 93.5 76.9 115.3



#33
 Benzene
 Concen: 5.035 ug/L
 RT: 6.044 min Scan# 813
 Delta R.T. 0.000 min
 Lab File: VX024934.D
 Acq: 26 Oct 2021 10:09

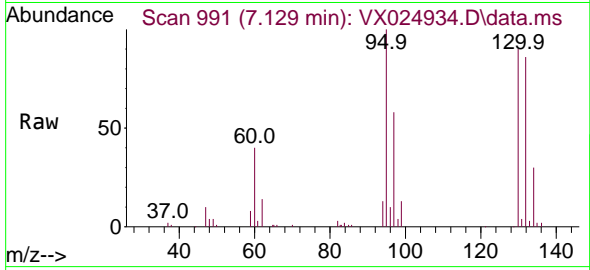
Tgt Ion: 78 Resp: 100234





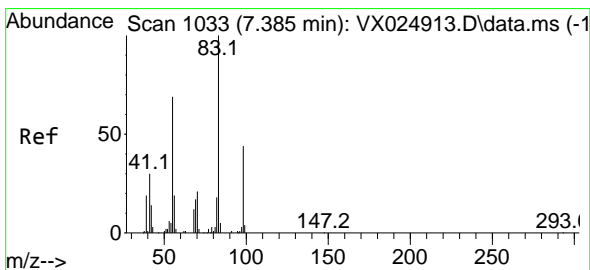
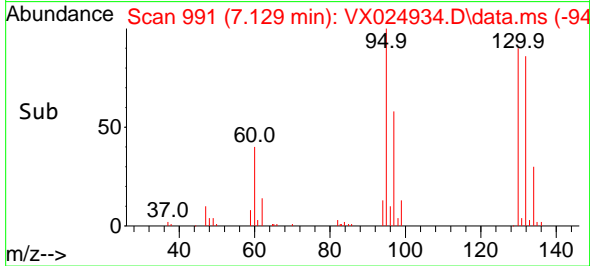
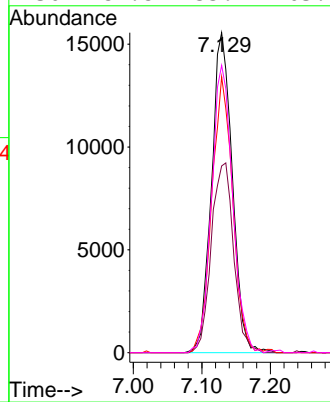
#34
 Trichloroethene
 Concen: 5.054 ug/L
 RT: 7.129 min Scan# 991
 Delta R.T. 0.000 min
 Lab File: VX024934.D
 Acq: 26 Oct 2021 10:09

Instrument :
 MSVOA_X
 ClientSampled :

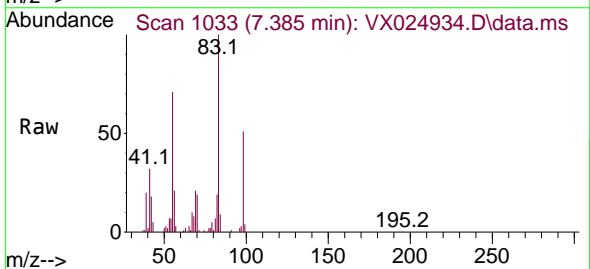


Tgt Ion: 95 Resp: 32768

Ion	Ratio	Lower	Upper
95	100		
97	58.3	46.6	86.6
132	86.2	58.4	108.6
130	89.8	55.4	103.0

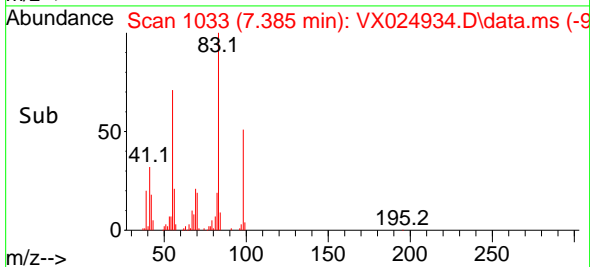
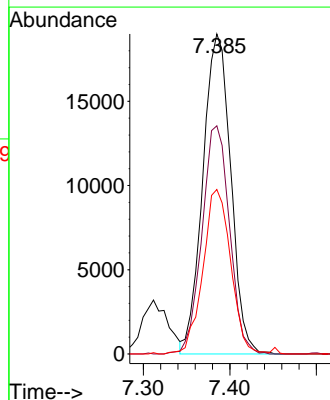


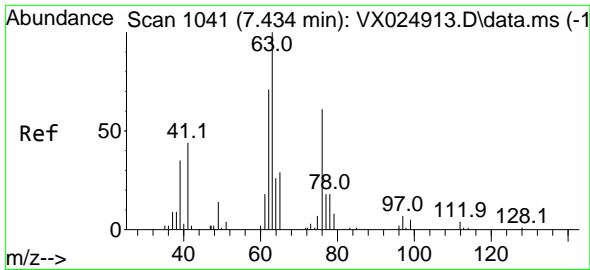
#35
 Methylcyclohexane
 Concen: 4.697 ug/L
 RT: 7.385 min Scan# 1033
 Delta R.T. 0.000 min
 Lab File: VX024934.D
 Acq: 26 Oct 2021 10:09



Tgt Ion: 83 Resp: 42571

Ion	Ratio	Lower	Upper
83	100		
55	70.3	55.7	83.5
98	51.2	38.3	57.5

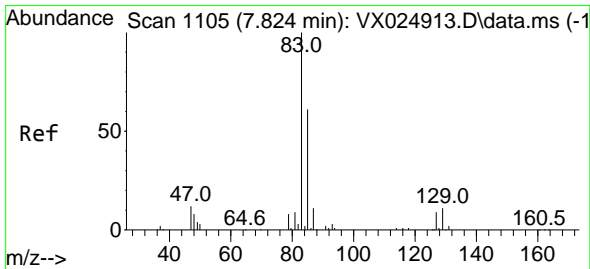
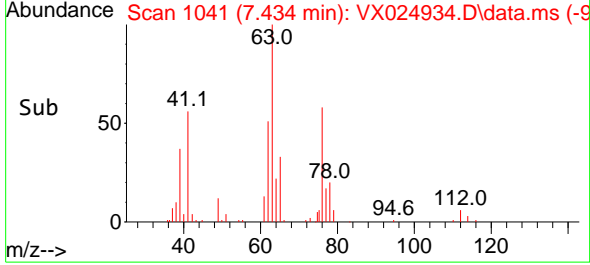
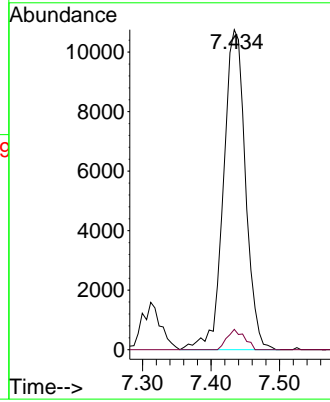
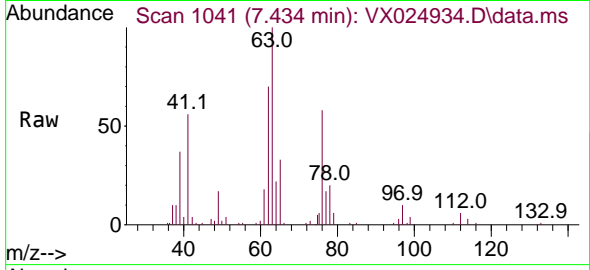




#37
 1,2-Dichloropropane
 Concen: 4.916 ug/L
 RT: 7.434 min Scan# 1041
 Delta R.T. 0.000 min
 Lab File: VX024934.D
 Acq: 26 Oct 2021 10:09

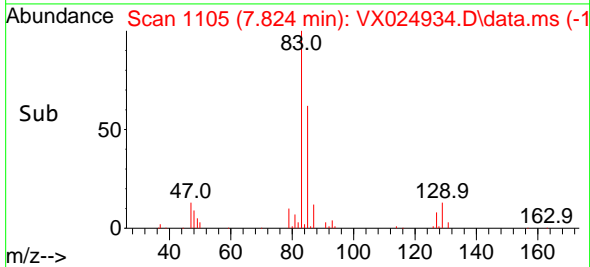
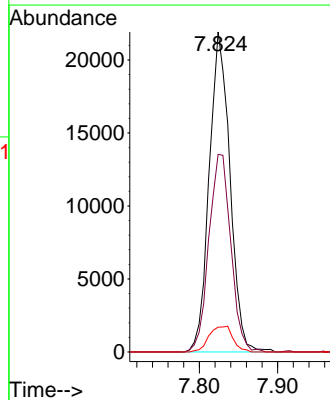
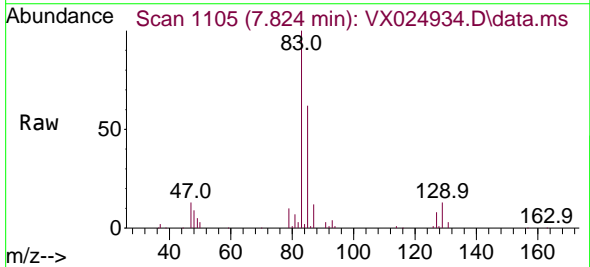
Instrument :
 MSVOA_X
 ClientSampled :

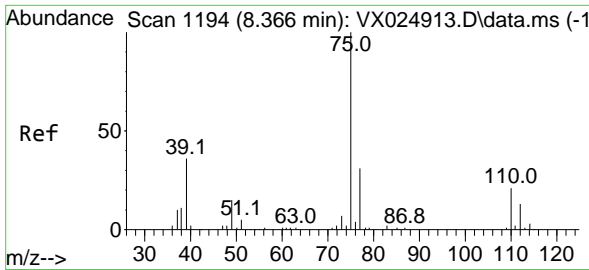
Tgt Ion: 63 Resp: 23923
 Ion Ratio Lower Upper
 63 100
 112 5.0 3.5 5.3



#38
 Bromodichloromethane
 Concen: 4.964 ug/L
 RT: 7.824 min Scan# 1105
 Delta R.T. 0.000 min
 Lab File: VX024934.D
 Acq: 26 Oct 2021 10:09

Tgt Ion: 83 Resp: 40231
 Ion Ratio Lower Upper
 83 100
 85 61.7 43.5 80.9
 127 7.7 6.9 10.3

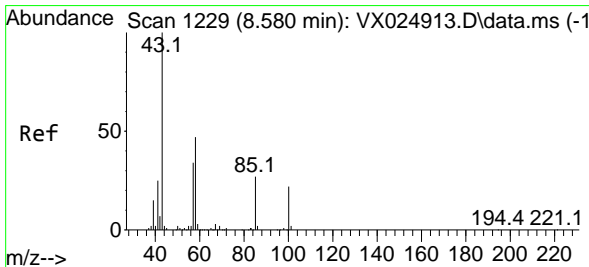
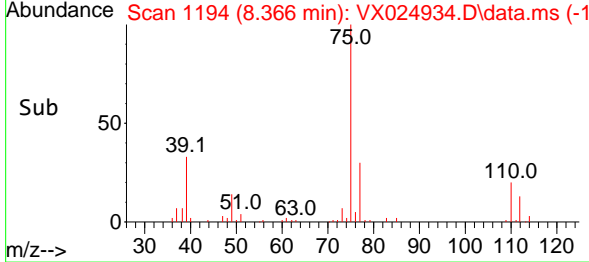
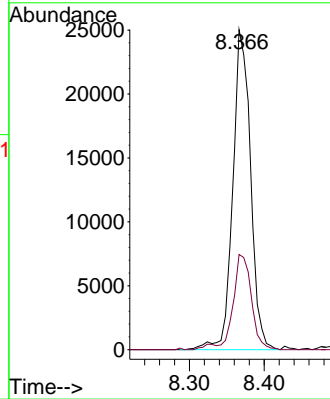
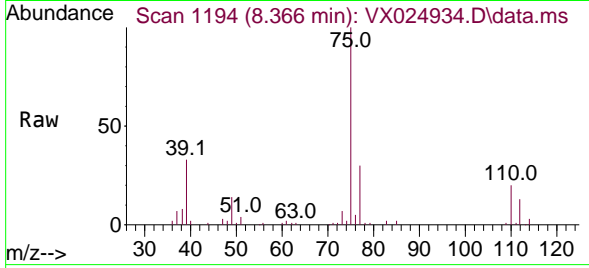




#39
 cis-1,3-Dichloropropene
 Concen: 5.027 ug/L
 RT: 8.366 min Scan# 1194
 Delta R.T. 0.000 min
 Lab File: VX024934.D
 Acq: 26 Oct 2021 10:09

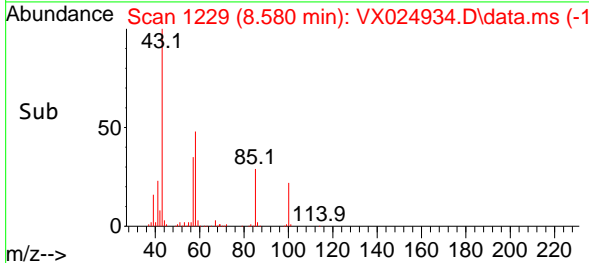
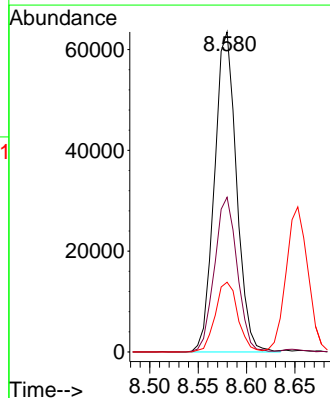
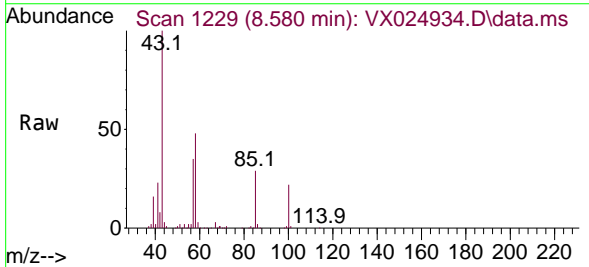
Instrument :
 MSVOA_X
 ClientSampled :

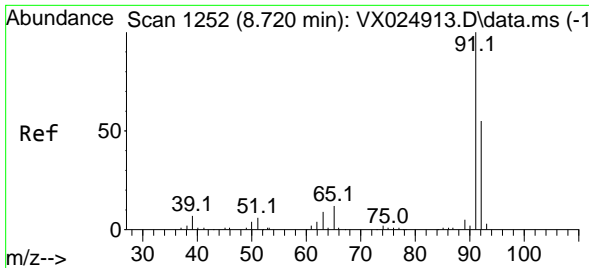
Tgt Ion: 75 Resp: 41243
 Ion Ratio Lower Upper
 75 100
 77 29.7 20.9 38.9



#40
 4-Methyl-2-pentanone
 Concen: 46.496 ug/L
 RT: 8.580 min Scan# 1229
 Delta R.T. 0.000 min
 Lab File: VX024934.D
 Acq: 26 Oct 2021 10:09

Tgt Ion: 43 Resp: 100797
 Ion Ratio Lower Upper
 43 100
 58 49.9 40.1 60.1
 100 22.3 17.4 26.0

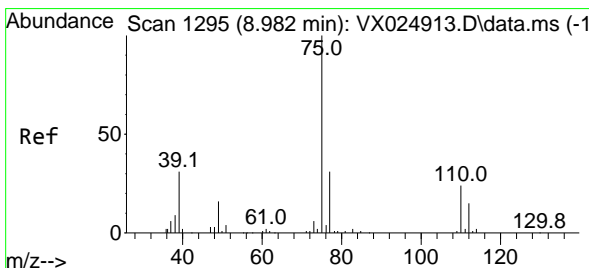
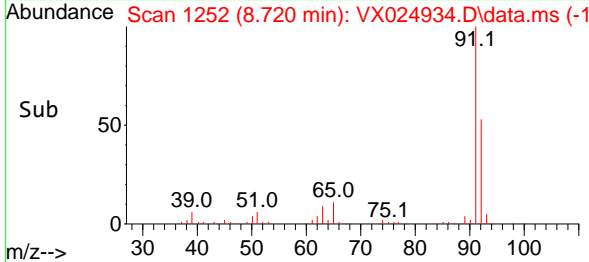
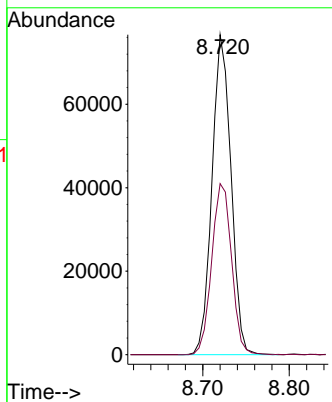
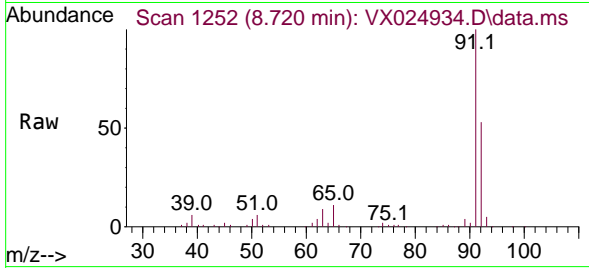




#42
 Toluene
 Concen: 5.015 ug/L
 RT: 8.720 min Scan# 1252
 Delta R.T. 0.000 min
 Lab File: VX024934.D
 Acq: 26 Oct 2021 10:09

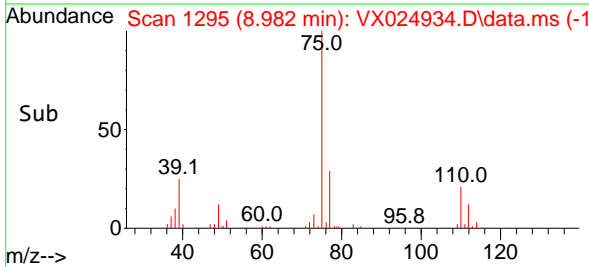
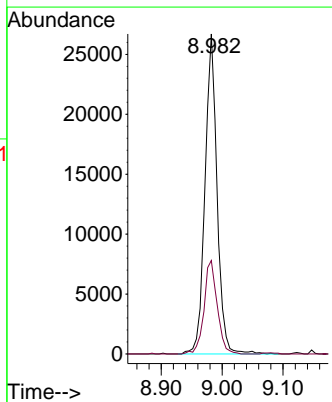
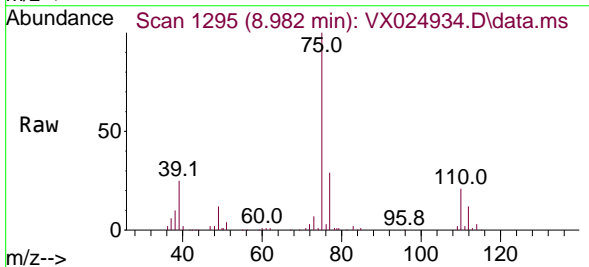
Instrument :
 MSVOA_X
 ClientSampled :

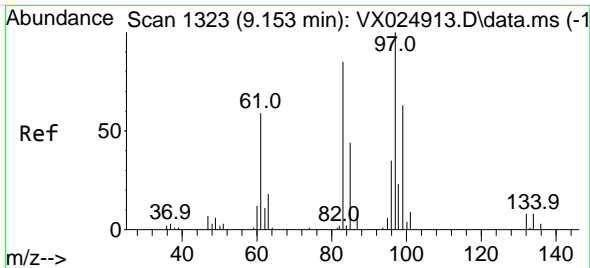
Tgt Ion: 91 Resp: 116765
 Ion Ratio Lower Upper
 91 100
 92 53.4 39.1 72.5



#44
 trans-1,3-Dichloropropene
 Concen: 4.970 ug/L
 RT: 8.982 min Scan# 1295
 Delta R.T. 0.000 min
 Lab File: VX024934.D
 Acq: 26 Oct 2021 10:09

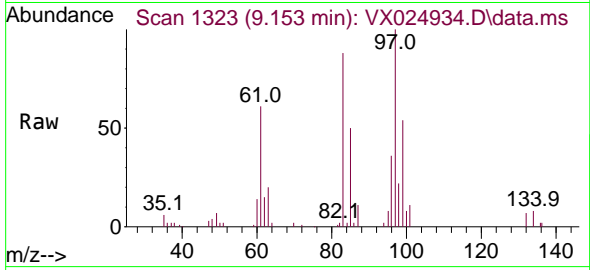
Tgt Ion: 75 Resp: 36938
 Ion Ratio Lower Upper
 75 100
 77 29.2 23.4 43.4





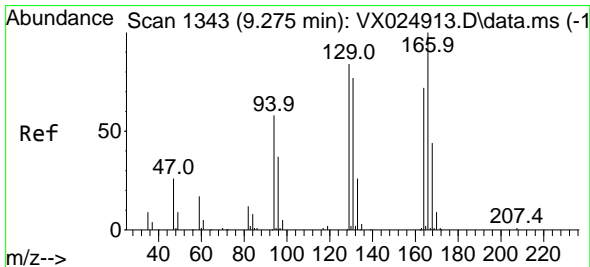
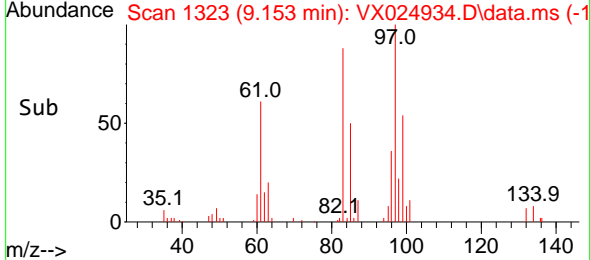
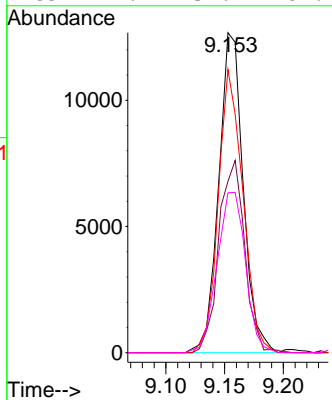
#45
 1,1,2-Trichloroethane
 Concen: 4.690 ug/L
 RT: 9.153 min Scan# 1323
 Delta R.T. 0.000 min
 Lab File: VX024934.D
 Acq: 26 Oct 2021 10:09

Instrument :
 MSVOA_X
 ClientSampled :

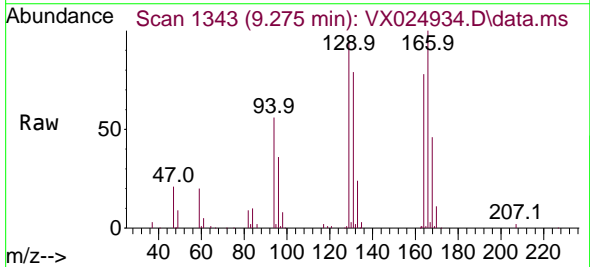


Tgt Ion: 97 Resp: 18361

Ion	Ratio	Lower	Upper
97	100		
99	53.6	46.8	86.8
83	88.5	63.6	118.2
85	49.9	37.7	69.9

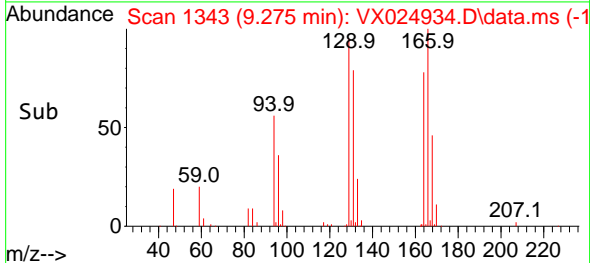
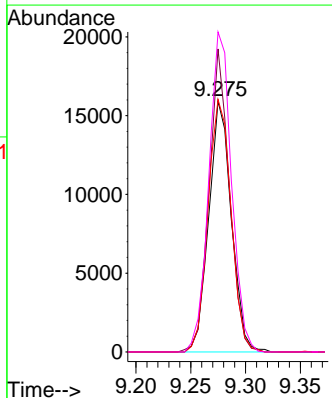


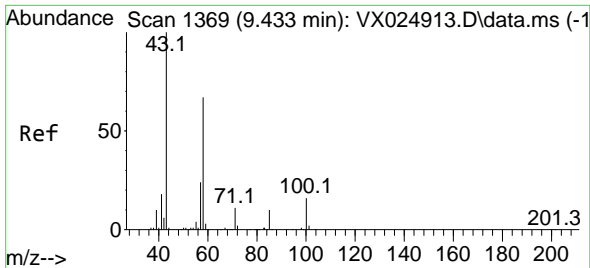
#47
 Tetrachloroethene
 Concen: 5.039 ug/L
 RT: 9.275 min Scan# 1343
 Delta R.T. 0.000 min
 Lab File: VX024934.D
 Acq: 26 Oct 2021 10:09



Tgt Ion: 164 Resp: 22823

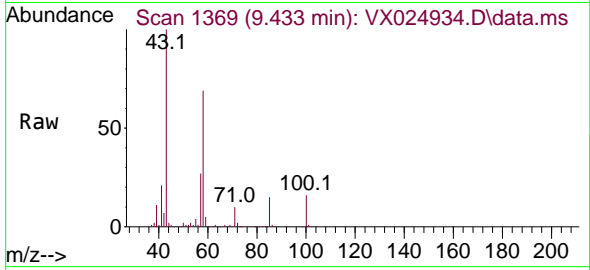
Ion	Ratio	Lower	Upper
164	100		
129	120.8	81.8	152.0
131	100.6	82.9	153.9
166	127.6	85.5	158.9





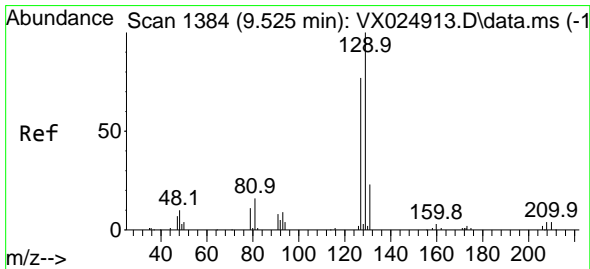
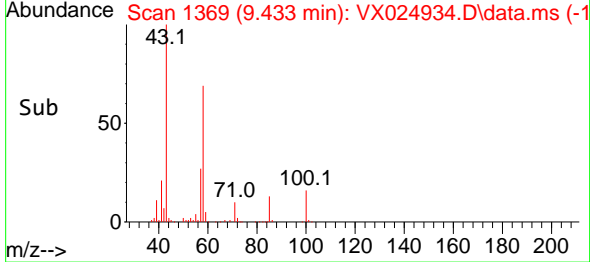
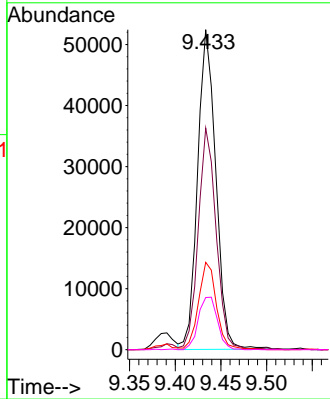
#48
 2-Hexanone
 Concen: 45.846 ug/L
 RT: 9.433 min Scan# 1369
 Delta R.T. 0.000 min
 Lab File: VX024934.D
 Acq: 26 Oct 2021 10:09

Instrument :
 MSVOA_X
 ClientSampled :

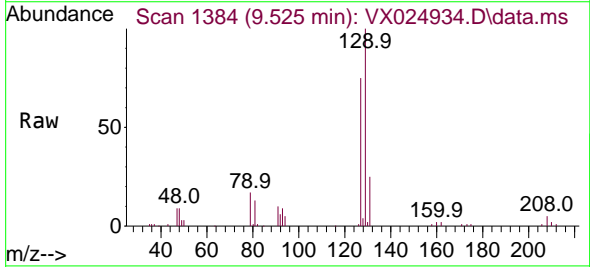


Tgt Ion: 43 Resp: 72563

Ion	Ratio	Lower	Upper
43	100		
58	67.3	52.7	79.1
57	27.0	21.2	31.8
100	17.4	12.9	19.3

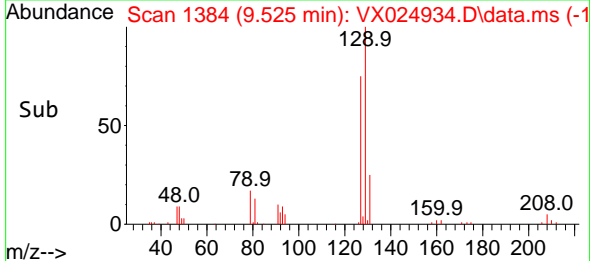
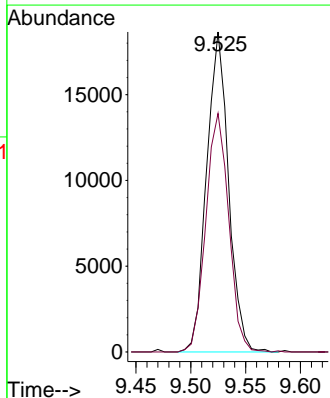


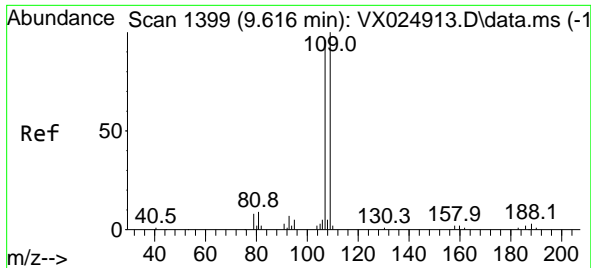
#49
 Dibromochloromethane
 Concen: 5.084 ug/L
 RT: 9.525 min Scan# 1384
 Delta R.T. 0.000 min
 Lab File: VX024934.D
 Acq: 26 Oct 2021 10:09



Tgt Ion: 129 Resp: 26004

Ion	Ratio	Lower	Upper
129	100		
127	74.6	52.5	97.5

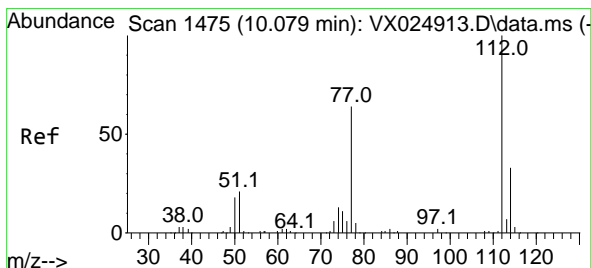
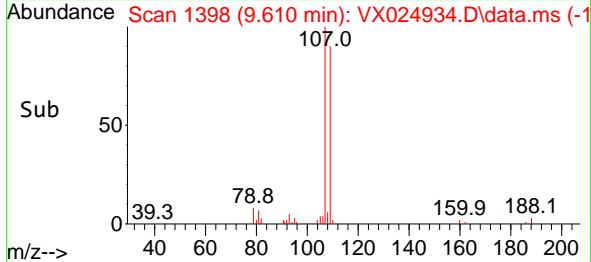
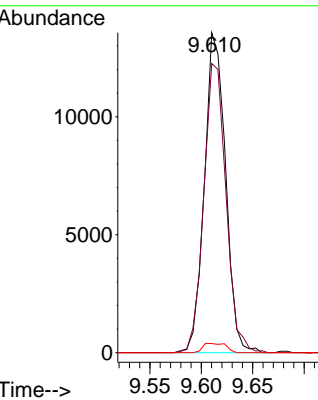
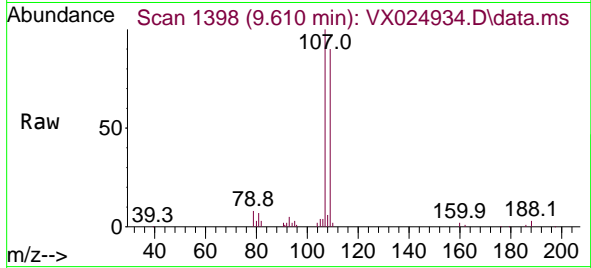




#50
 1,2-Dibromoethane
 Concen: 4.943 ug/L
 RT: 9.610 min Scan# 1398
 Delta R.T. -0.006 min
 Lab File: VX024934.D
 Acq: 26 Oct 2021 10:09

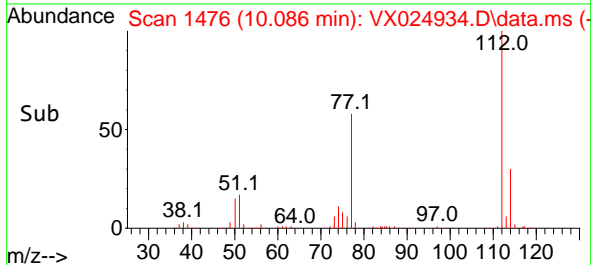
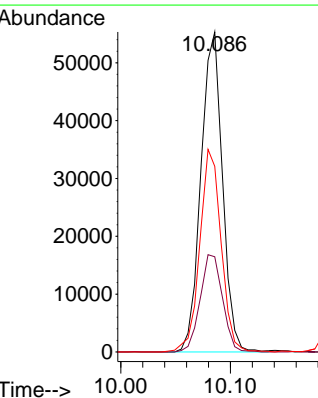
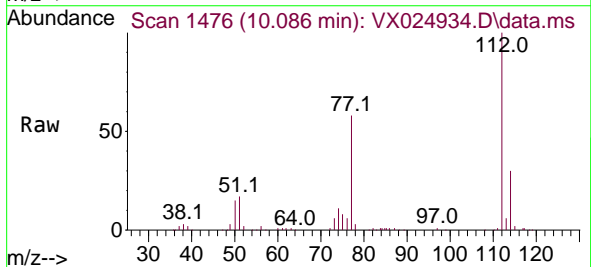
Instrument :
 MSVOA_X
 ClientSampled :

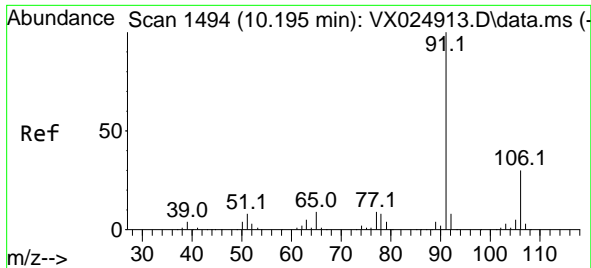
Tgt Ion	Resp	Lower	Upper
107	19384		
107	100		
109	90.3	61.7	114.7
188	2.8	2.6	4.0



#51
 Chlorobenzene
 Concen: 5.111 ug/L
 RT: 10.086 min Scan# 1476
 Delta R.T. 0.006 min
 Lab File: VX024934.D
 Acq: 26 Oct 2021 10:09

Tgt Ion	Resp	Lower	Upper
112	75555		
112	100		
114	29.7	22.8	42.4
77	58.0	52.7	79.1

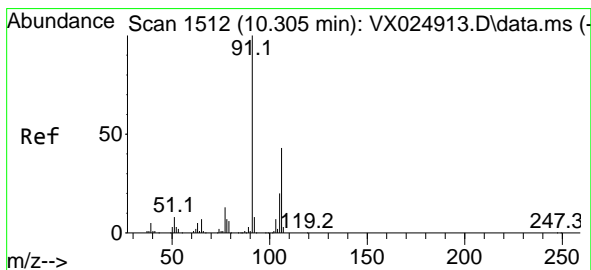
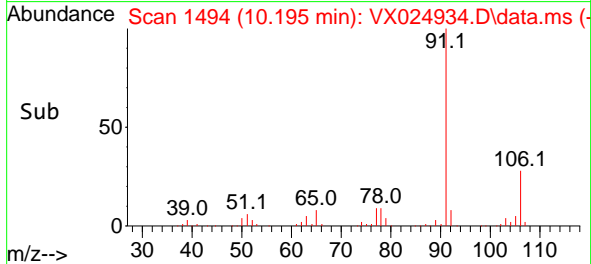
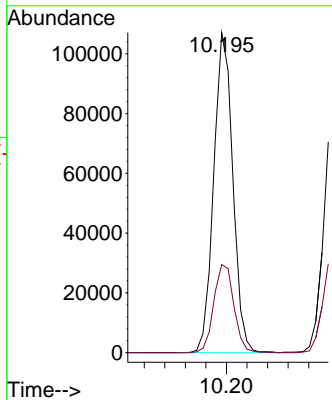
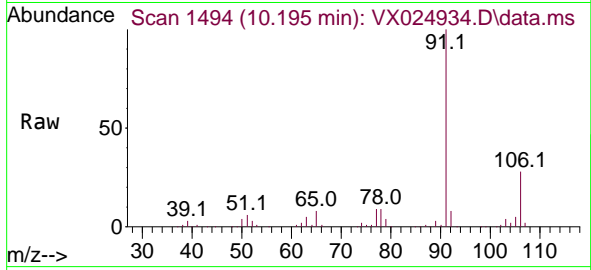




#52
 Ethylbenzene
 Concen: 5.010 ug/L
 RT: 10.195 min Scan# 1494
 Delta R.T. 0.000 min
 Lab File: VX024934.D
 Acq: 26 Oct 2021 10:09

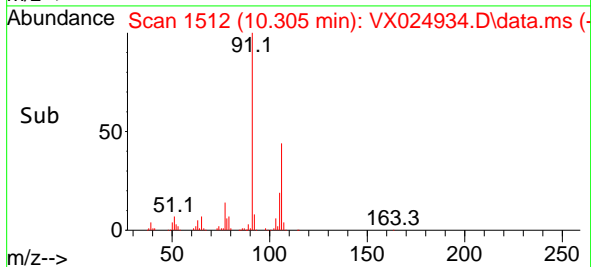
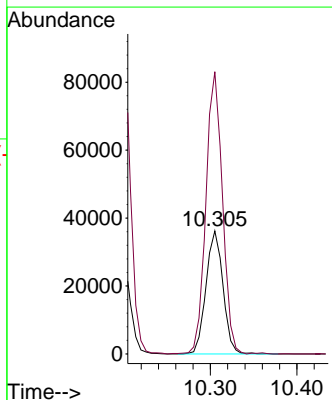
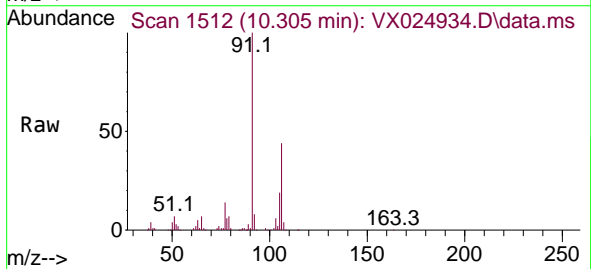
Instrument :
 MSVOA_X
 ClientSampled :

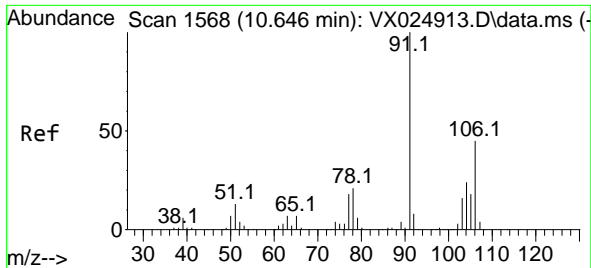
Tgt Ion: 91 Resp: 137661
 Ion Ratio Lower Upper
 91 100
 106 27.5 20.1 37.3



#53
 m,p-xylene
 Concen: 5.071 ug/L
 RT: 10.305 min Scan# 1512
 Delta R.T. 0.000 min
 Lab File: VX024934.D
 Acq: 26 Oct 2021 10:09

Tgt Ion: 106 Resp: 49425
 Ion Ratio Lower Upper
 106 100
 91 229.2 161.7 300.3

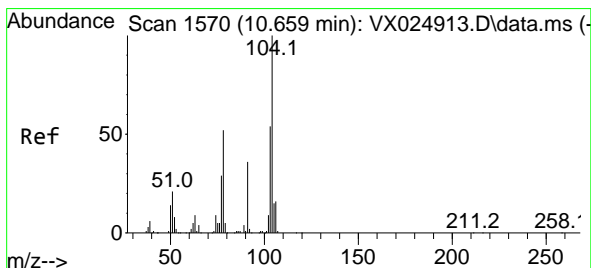
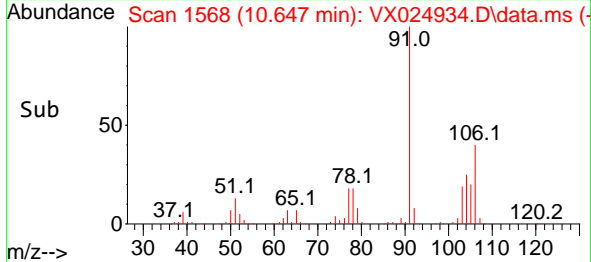
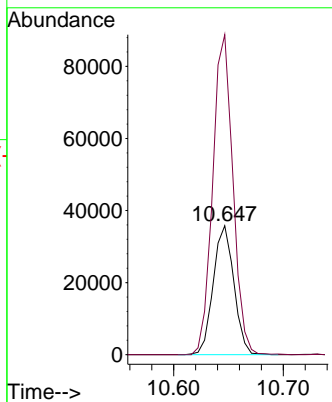
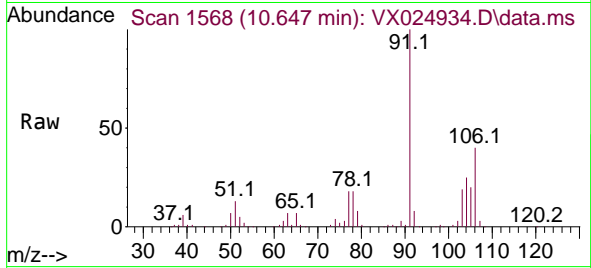




#54
 o-xylene
 Concen: 4.939 ug/L
 RT: 10.647 min Scan# 1568
 Delta R.T. 0.000 min
 Lab File: VX024934.D
 Acq: 26 Oct 2021 10:09

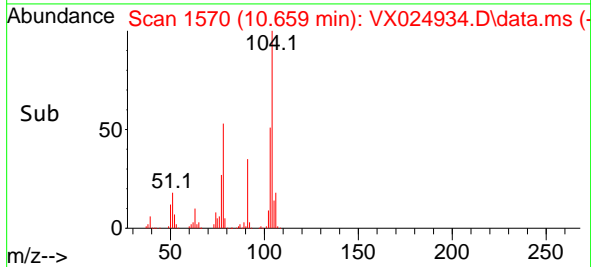
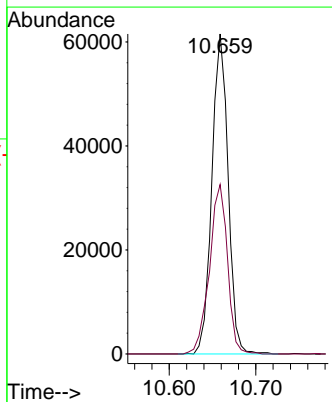
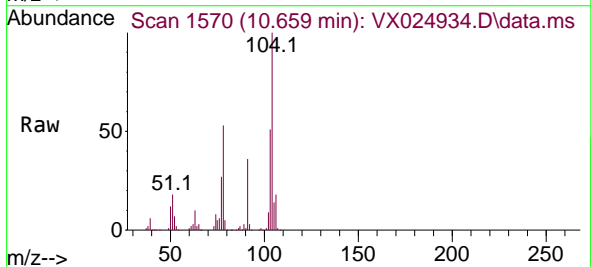
Instrument :
 MSVOA_X
 ClientSampled :

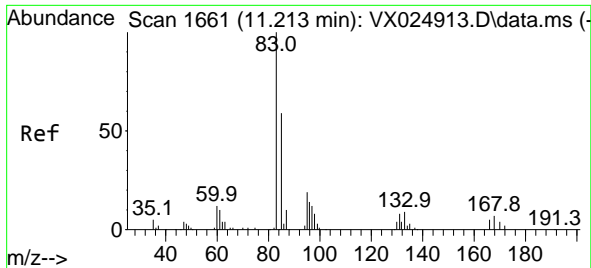
Tgt Ion:106 Resp: 46930
 Ion Ratio Lower Upper
 106 100
 91 248.2 172.9 321.1



#55
 Styrene
 Concen: 5.017 ug/L
 RT: 10.659 min Scan# 1570
 Delta R.T. 0.000 min
 Lab File: VX024934.D
 Acq: 26 Oct 2021 10:09

Tgt Ion:104 Resp: 80019
 Ion Ratio Lower Upper
 104 100
 78 52.9 37.1 68.9

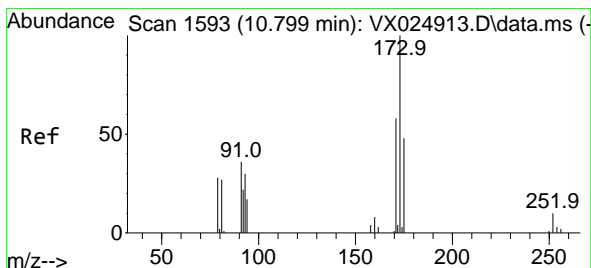
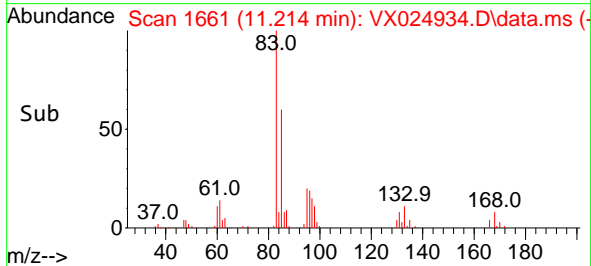
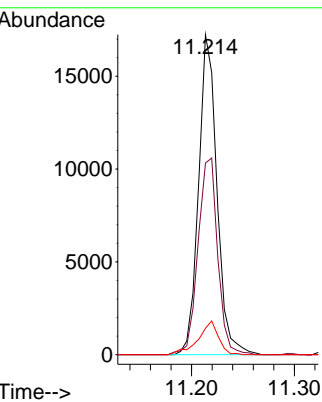
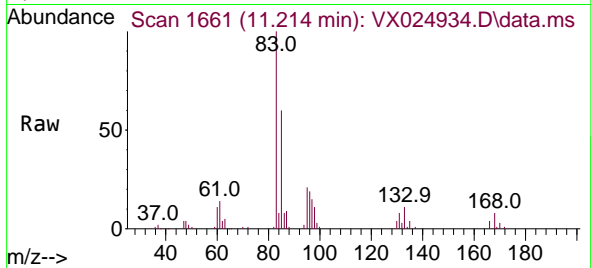




#57
 1,1,2,2-Tetrachloroethane
 Concen: 4.761 ug/L
 RT: 11.214 min Scan# 1661
 Delta R.T. 0.000 min
 Lab File: VX024934.D
 Acq: 26 Oct 2021 10:09

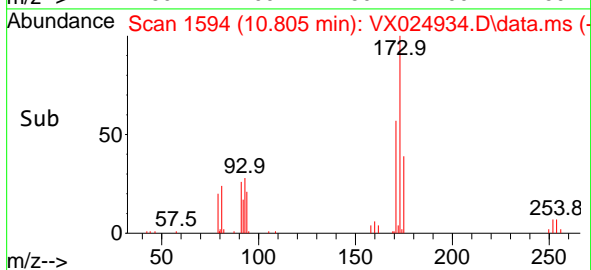
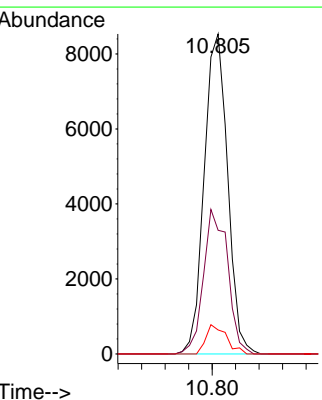
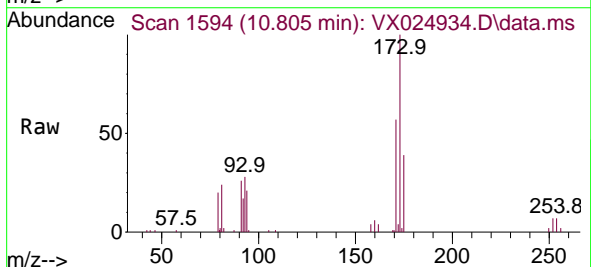
Instrument :
 MSVOA_X
 ClientSampled :

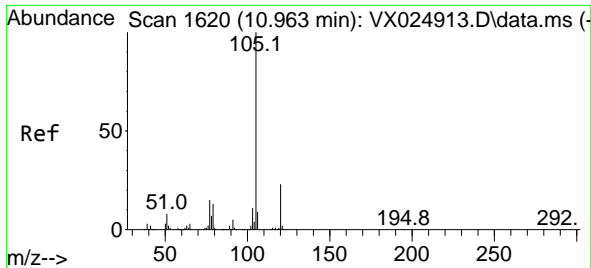
Tgt Ion	Resp	Lower	Upper
83	21512	100	
85	59.9	44.9	83.5
131	8.3	7.7	11.5



#59
 Bromoform
 Concen: 5.256 ug/L
 RT: 10.805 min Scan# 1594
 Delta R.T. 0.006 min
 Lab File: VX024934.D
 Acq: 26 Oct 2021 10:09

Tgt Ion	Resp	Lower	Upper
173	11831	100	
175	46.7	38.4	57.6
254	8.0	4.6	7.0#

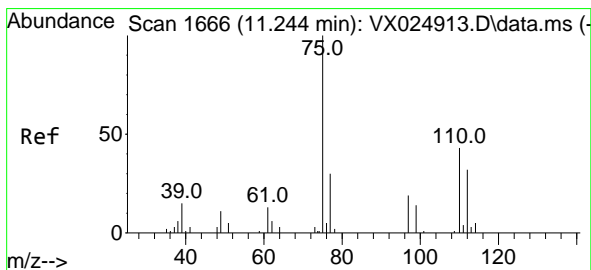
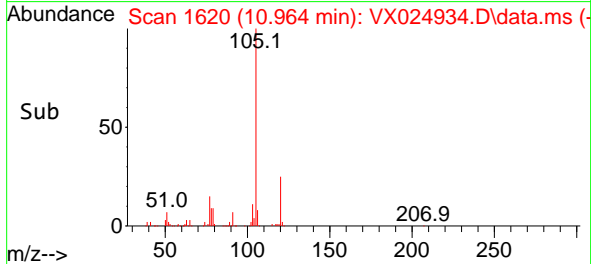
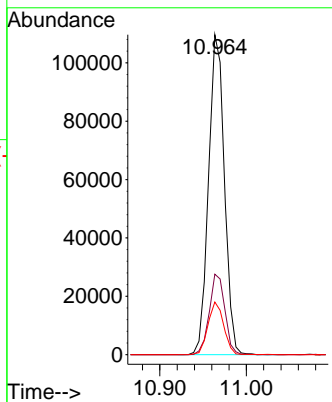
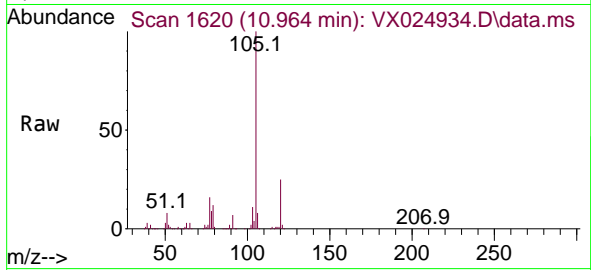




#60
 Isopropylbenzene
 Concen: 5.393 ug/L
 RT: 10.964 min Scan# 1620
 Delta R.T. 0.000 min
 Lab File: VX024934.D
 Acq: 26 Oct 2021 10:09

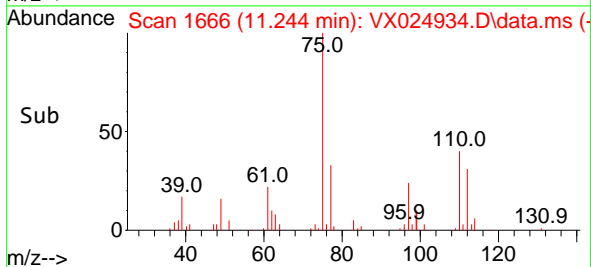
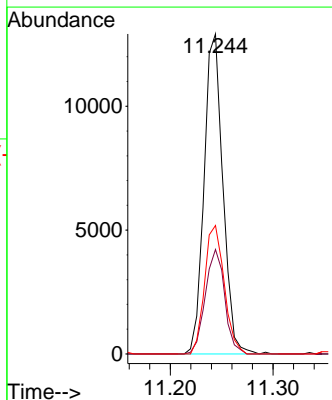
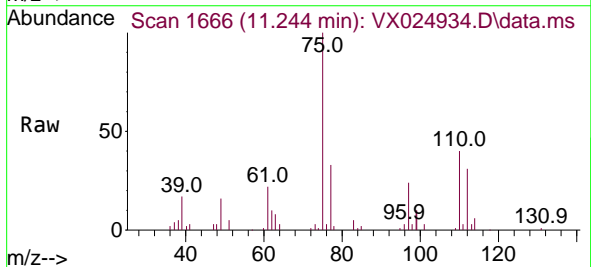
Instrument :
 MSVOA_X
 ClientSampled :

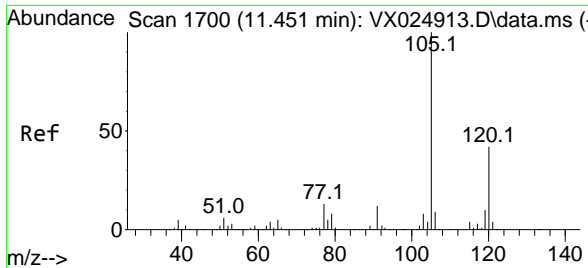
Tgt Ion	Resp	Lower	Upper
105	139476		
105	100		
120	24.8	19.0	28.6
77	16.3	13.7	20.5



#61
 1,2,3-Trichloropropane
 Concen: 5.196 ug/L
 RT: 11.244 min Scan# 1666
 Delta R.T. 0.000 min
 Lab File: VX024934.D
 Acq: 26 Oct 2021 10:09

Tgt Ion	Resp	Lower	Upper
75	16458		
75	100		
77	33.6	28.1	42.1
110	41.9	34.7	52.1

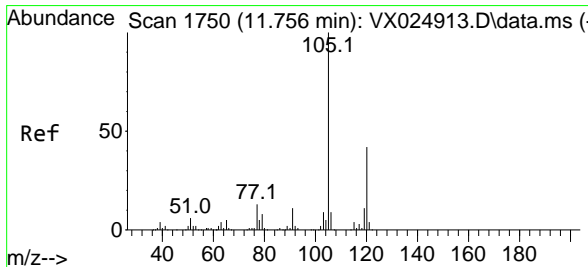
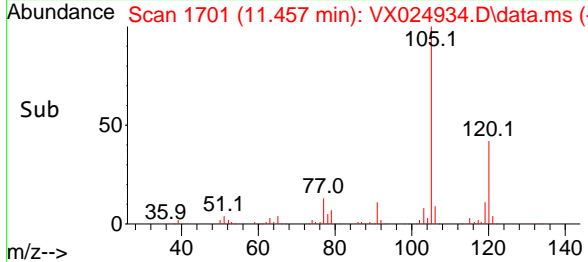
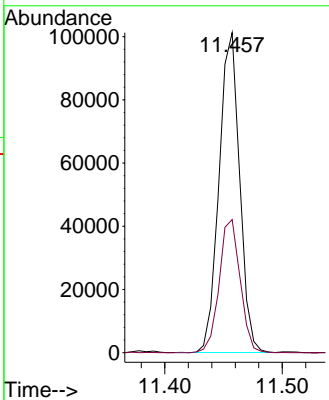
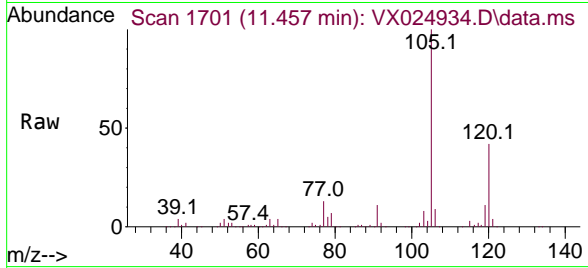




#62
 1,3,5-Trimethylbenzene
 Concen: 5.449 ug/L
 RT: 11.457 min Scan# 1701
 Delta R.T. 0.006 min
 Lab File: VX024934.D
 Acq: 26 Oct 2021 10:09

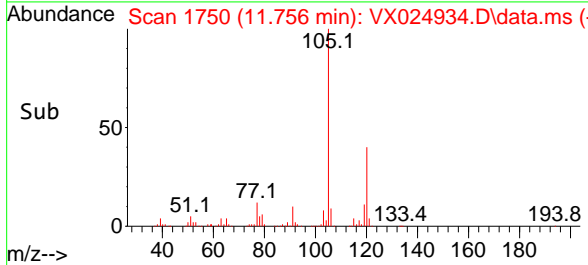
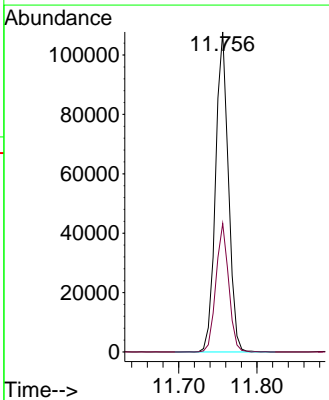
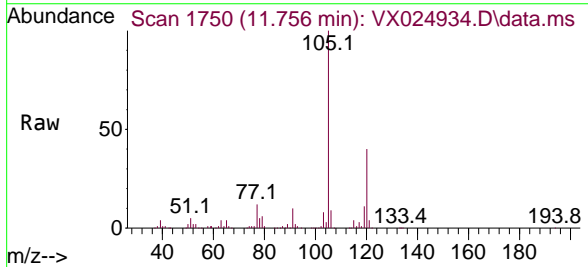
Instrument :
 MSVOA_X
 ClientSampled :

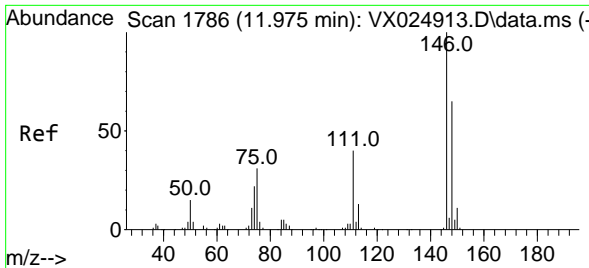
Tgt Ion:105 Resp: 123017
 Ion Ratio Lower Upper
 105 100
 120 42.5 33.6 50.4



#63
 1,2,4-Trimethylbenzene
 Concen: 5.318 ug/L
 RT: 11.756 min Scan# 1750
 Delta R.T. 0.000 min
 Lab File: VX024934.D
 Acq: 26 Oct 2021 10:09

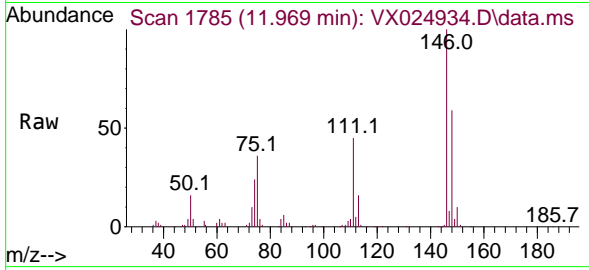
Tgt Ion:105 Resp: 122975
 Ion Ratio Lower Upper
 105 100
 120 39.7 32.3 48.5



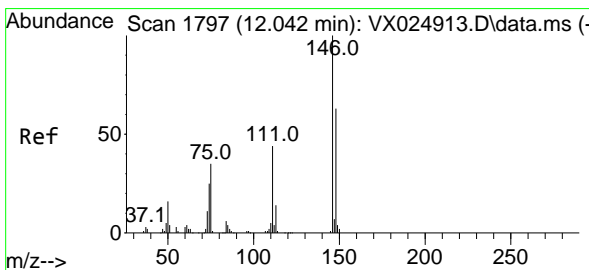
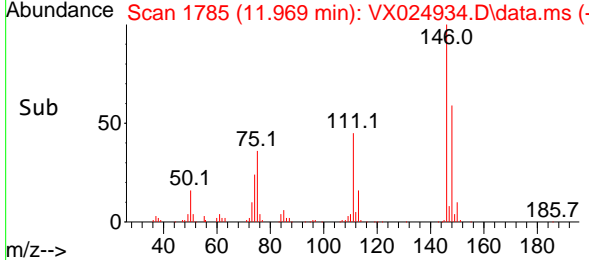
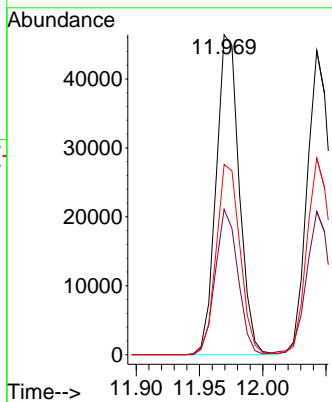


#64
 1,3-Dichlorobenzene
 Concen: 5.467 ug/L
 RT: 11.969 min Scan# 1785
 Delta R.T. -0.006 min
 Lab File: VX024934.D
 Acq: 26 Oct 2021 10:09

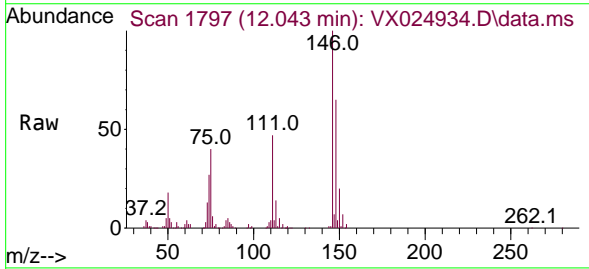
Instrument :
 MSVOA_X
 ClientSampled :



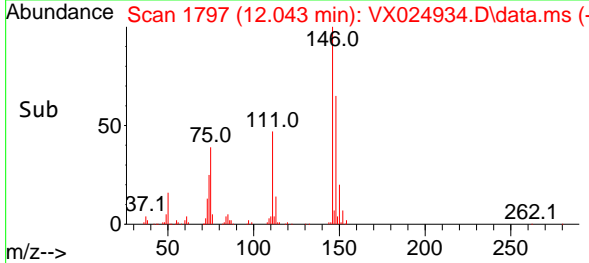
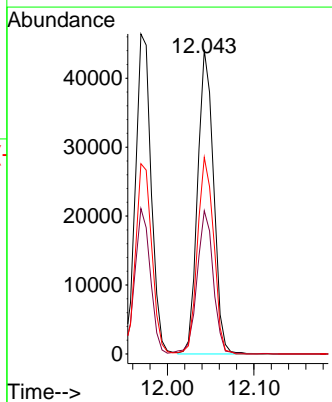
Tgt Ion:146 Resp: 58813
 Ion Ratio Lower Upper
 146 100
 111 45.5 34.2 63.4
 148 59.5 44.1 81.9

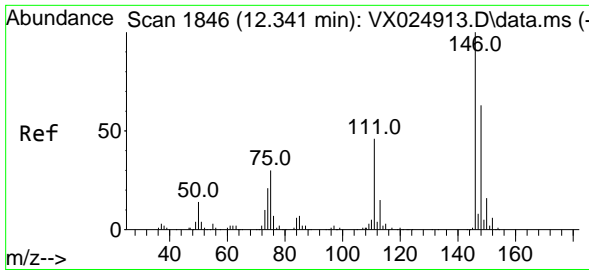


#65
 1,4-Dichlorobenzene
 Concen: 5.233 ug/L
 RT: 12.043 min Scan# 1797
 Delta R.T. 0.000 min
 Lab File: VX024934.D
 Acq: 26 Oct 2021 10:09



Tgt Ion:146 Resp: 56444
 Ion Ratio Lower Upper
 146 100
 111 47.1 32.6 60.6
 148 64.7 43.3 80.3

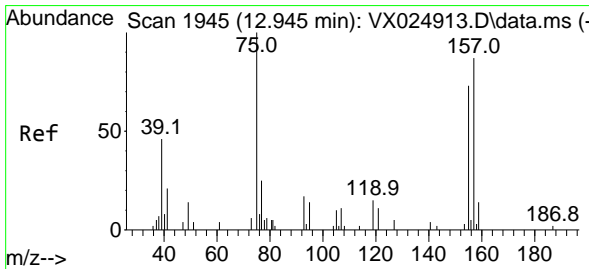
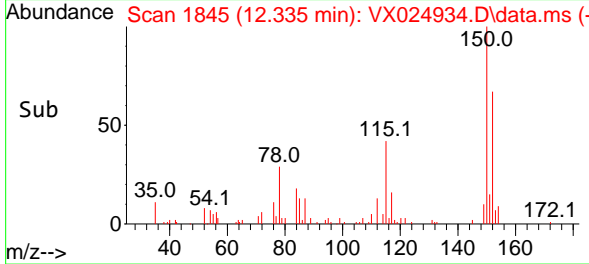
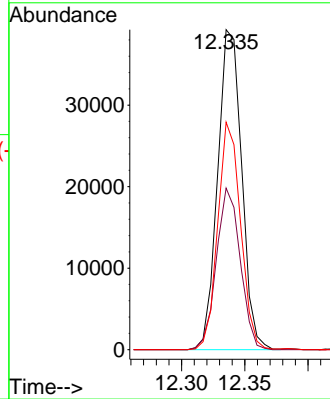
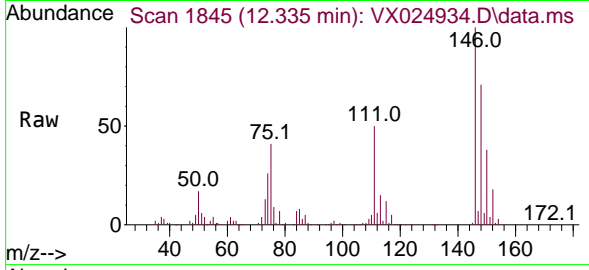




#67
 1,2-Dichlorobenzene
 Concen: 5.240 ug/L
 RT: 12.335 min Scan# 1845
 Delta R.T. -0.006 min
 Lab File: VX024934.D
 Acq: 26 Oct 2021 10:09

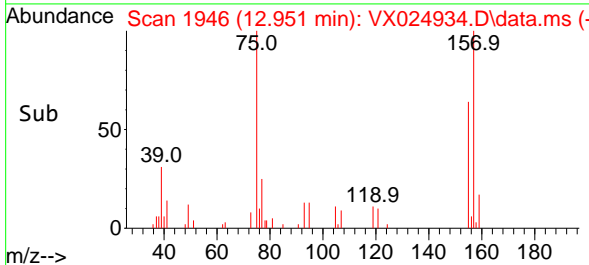
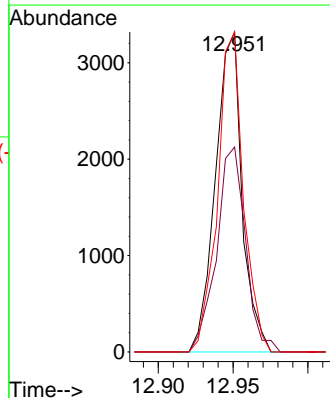
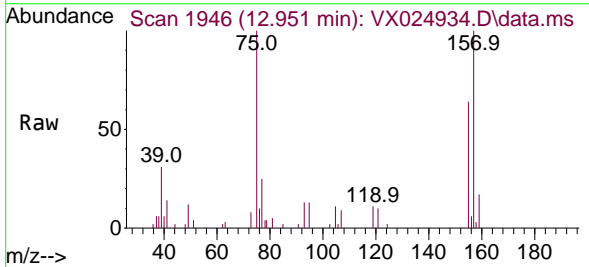
Instrument :
 MSVOA_X
 ClientSampled :

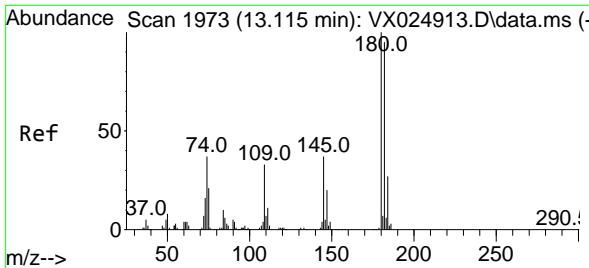
Tgt Ion	Resp	Lower	Upper
146	51816		
111	50.5	35.9	53.9
148	71.1	53.1	79.7



#68
 1,2-Dibromo-3-chloropropane
 Concen: 5.309 ug/L
 RT: 12.951 min Scan# 1946
 Delta R.T. 0.006 min
 Lab File: VX024934.D
 Acq: 26 Oct 2021 10:09

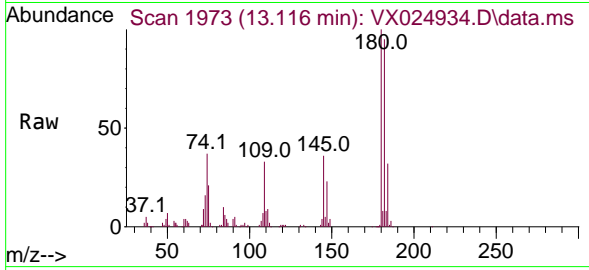
Tgt Ion	Resp	Lower	Upper
75	4094		
155	64.1	53.6	80.4
157	100.1	82.2	123.4



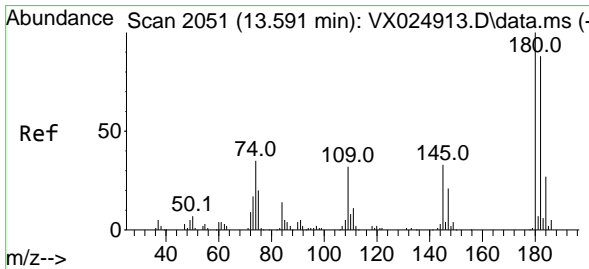
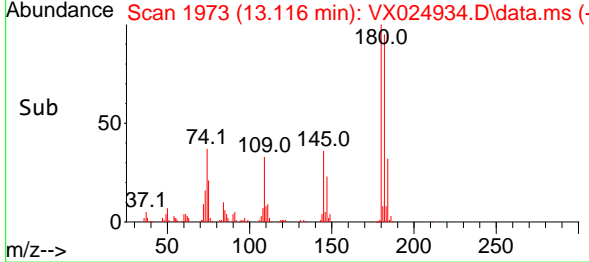
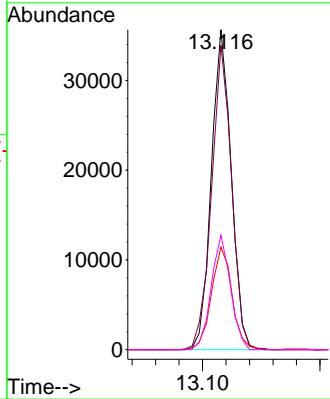


#69
 1,3,5-Trichlorobenzene
 Concen: 5.108 ug/L
 RT: 13.116 min Scan# 1973
 Delta R.T. 0.000 min
 Lab File: VX024934.D
 Acq: 26 Oct 2021 10:09

Instrument :
 MSVOA_X
 ClientSampled :

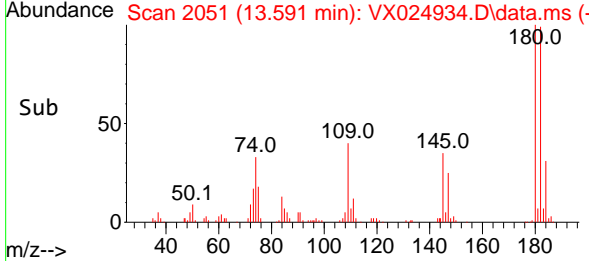
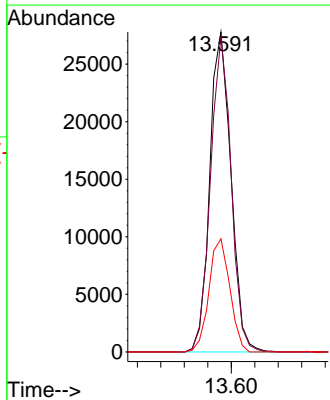
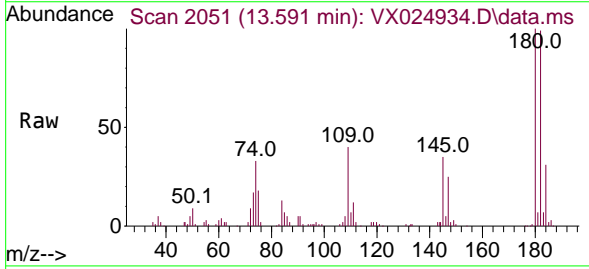


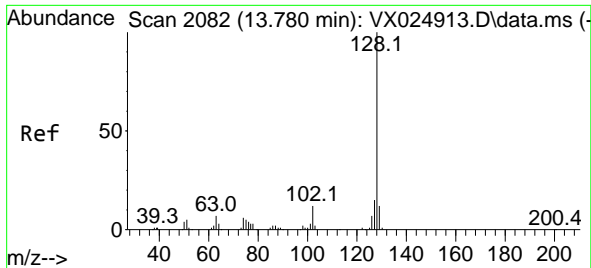
Tgt Ion:180 Resp: 41833
 Ion Ratio Lower Upper
 180 100
 182 96.0 74.6 111.8
 184 33.3 24.0 36.0
 145 34.9 28.7 43.1



#70
 1,2,4-trichlorobenzene
 Concen: 5.368 ug/L
 RT: 13.591 min Scan# 2051
 Delta R.T. 0.000 min
 Lab File: VX024934.D
 Acq: 26 Oct 2021 10:09

Tgt Ion:180 Resp: 34769
 Ion Ratio Lower Upper
 180 100
 182 96.0 72.1 108.1
 145 34.9 27.1 40.7

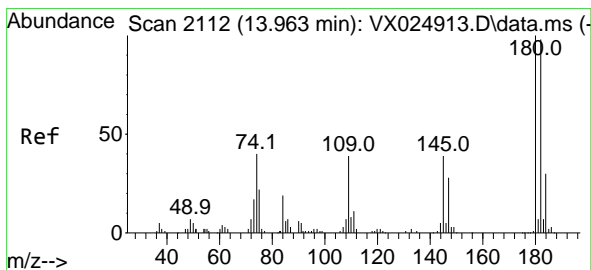
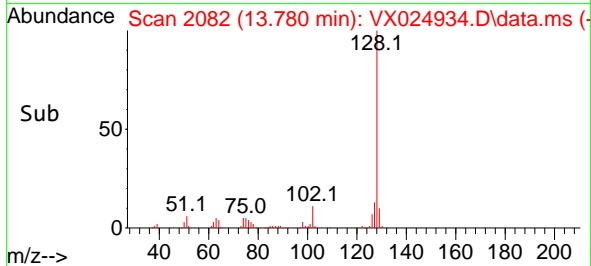
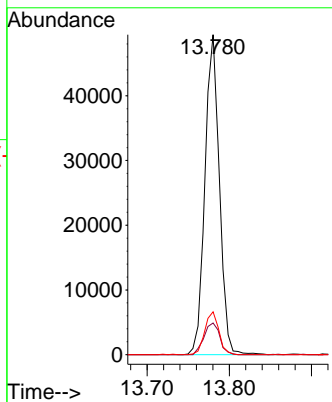
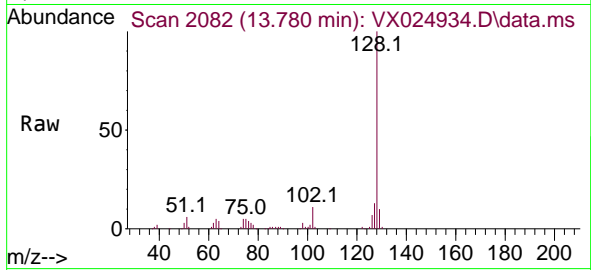




#71
 Naphthalene
 Concen: 5.176 ug/L
 RT: 13.780 min Scan# 2082
 Delta R.T. 0.000 min
 Lab File: VX024934.D
 Acq: 26 Oct 2021 10:09

Instrument :
 MSVOA_X
 ClientSampled :

Tgt Ion	Resp	Lower	Upper
128	60392	100	100
129	10.9	9.7	14.5
127	13.0	10.6	15.8



#72
 1,2,3-Trichlorobenzene
 Concen: 5.352 ug/L
 RT: 13.963 min Scan# 2112
 Delta R.T. 0.000 min
 Lab File: VX024934.D
 Acq: 26 Oct 2021 10:09

Tgt Ion	Resp	Lower	Upper
180	31176	100	100
182	94.3	77.1	115.7
145	39.2	29.4	44.0

