

Data Path : Z:\voasrv\HPCHEM1\MSVOA\_X\Data\VX102622\  
 Data File : VX032405.D  
 Acq On : 26 Oct 2022 15:22  
 Operator : JC/MD  
 Sample : IBLK  
 Misc : 5.0mL/MSVOA\_X/WATER  
 ALS Vial : 10 Sample Multiplier: 1

Instrument :  
 MSVOA\_X  
 ClientSampleId :  
 IBLK

Quant Time: Oct 27 08:31:58 2022  
 Quant Method : Z:\voasrv\HPCHEM1\MSVOA\_X\Method\82X102622W.M  
 Quant Title : SW846 8260  
 QLast Update : Thu Oct 27 08:28:06 2022  
 Response via : Initial Calibration

Compound	R.T.	QIon	Response	Conc	Units	Dev(Min)
Internal Standards						
1) Pentafluorobenzene	5.555	168	134651	50.000	ug/l	0.00
34) 1,4-Difluorobenzene	6.763	114	213476	50.000	ug/l	0.00
63) Chlorobenzene-d5	10.055	117	187893	50.000	ug/l	0.00
72) 1,4-Dichlorobenzene-d4	12.024	152	89502	50.000	ug/l	0.00
System Monitoring Compounds						
33) 1,2-Dichloroethane-d4	5.958	65	87294	46.658	ug/l	0.00
Spiked Amount	50.000	Range	78 - 117	Recovery	=	93.320%
35) Dibromofluoromethane	5.391	113	68820	45.195	ug/l	0.00
Spiked Amount	50.000	Range	75 - 124	Recovery	=	90.380%
50) Toluene-d8	8.652	98	254088	47.987	ug/l	0.00
Spiked Amount	50.000	Range	92 - 112	Recovery	=	95.980%
62) 4-Bromofluorobenzene	11.085	95	89350	43.199	ug/l	0.00
Spiked Amount	50.000	Range	83 - 123	Recovery	=	86.400%
Target Compounds						
						Qvalue
2) Dichlorodifluoromethane	1.166	85	631	0.406	ug/l	73
3) Chloromethane	1.294	50	312	0.238	ug/l #	43
4) Vinyl Chloride	1.373	62	411	0.284	ug/l	99
5) Bromomethane	1.611	94	704	0.609	ug/l #	71
7) Trichlorofluoromethane	1.885	101	826	0.302	ug/l	91
9) 1,1,2-Trichlorotrifluo...	2.324	101	584	0.404	ug/l	86
10) Methyl Iodide	2.452	142	615	2.284	ug/l #	78
11) Tert butyl alcohol	2.940	59	623	2.288	ug/l #	72
12) 1,1-Dichloroethene	2.318	96	422	0.313	ug/l #	69
13) Acrolein	2.233	56	234	0.861	ug/l #	76
14) Allyl chloride	2.660	41	435	0.202	ug/l #	70
15) Acrylonitrile	3.074	53	692	0.936	ug/l #	85
16) Acetone	2.379	43	519	0.763	ug/l #	45
17) Carbon Disulfide	2.513	76	5399	1.679	ug/l #	94
20) Methylene Chloride	2.788	84	797	0.511	ug/l	99
21) trans-1,2-Dichloroethene	3.092	96	947	0.644	ug/l #	87
23) Vinyl Acetate	3.733	43	1226	0.326	ug/l #	72
25) 2-Butanone	4.580	43	517	0.491	ug/l #	47
27) cis-1,2-Dichloroethene	4.489	96	487	0.287	ug/l	86
29) Tetrahydrofuran	5.019	42	207	0.308	ug/l #	31
36) 1,1-Dichloropropene	5.696	75	897	0.423	ug/l	90
38) Carbon Tetrachloride	5.549	117	13761	5.851	ug/l #	14
39) Methylcyclohexane	7.384	83	885	0.353	ug/l	92
44) Trichloroethene	7.141	130	670	0.397	ug/l	58
46) Dibromomethane	7.586	93	258	0.218	ug/l #	77
53) t-1,3-Dichloropropene	8.982	75	576	0.252	ug/l	95
58) 2-Chloroethyl Vinyl ether	8.262	63	294	0.257	ug/l #	76
59) 2-Hexanone	9.445	43	391	0.247	ug/l #	54
64) Tetrachloroethene	9.274	164	650	0.473	ug/l #	79
65) Chlorobenzene	10.079	112	1167	0.277	ug/l #	77
67) Ethyl Benzene	10.201	91	1799	0.239	ug/l #	82
68) m/p-Xylenes	10.305	106	1620	0.554	ug/l	91
73) Isopropylbenzene	10.963	105	1619	0.228	ug/l	96
76) 1,2,3-Trichloropropane	11.079	75	48899	24.558	ug/l #	37
77) Bromobenzene	11.201	156	582	0.335	ug/l	89
78) n-propylbenzene	11.304	91	2882	0.353	ug/l	99

Data Path : Z:\voasrv\HPCHEM1\MSVOA\_X\Data\VX102622\  
 Data File : VX032405.D  
 Acq On : 26 Oct 2022 15:22  
 Operator : JC/MD  
 Sample : IBLK  
 Misc : 5.0mL/MSVOA\_X/WATER  
 ALS Vial : 10 Sample Multiplier: 1

Instrument :  
 MSVOA\_X  
 ClientSampleId :  
 IBLK

Quant Time: Oct 27 08:31:58 2022  
 Quant Method : Z:\voasrv\HPCHEM1\MSVOA\_X\Method\82X102622W.M  
 Quant Title : SW846 8260  
 QLast Update : Thu Oct 27 08:28:06 2022  
 Response via : Initial Calibration

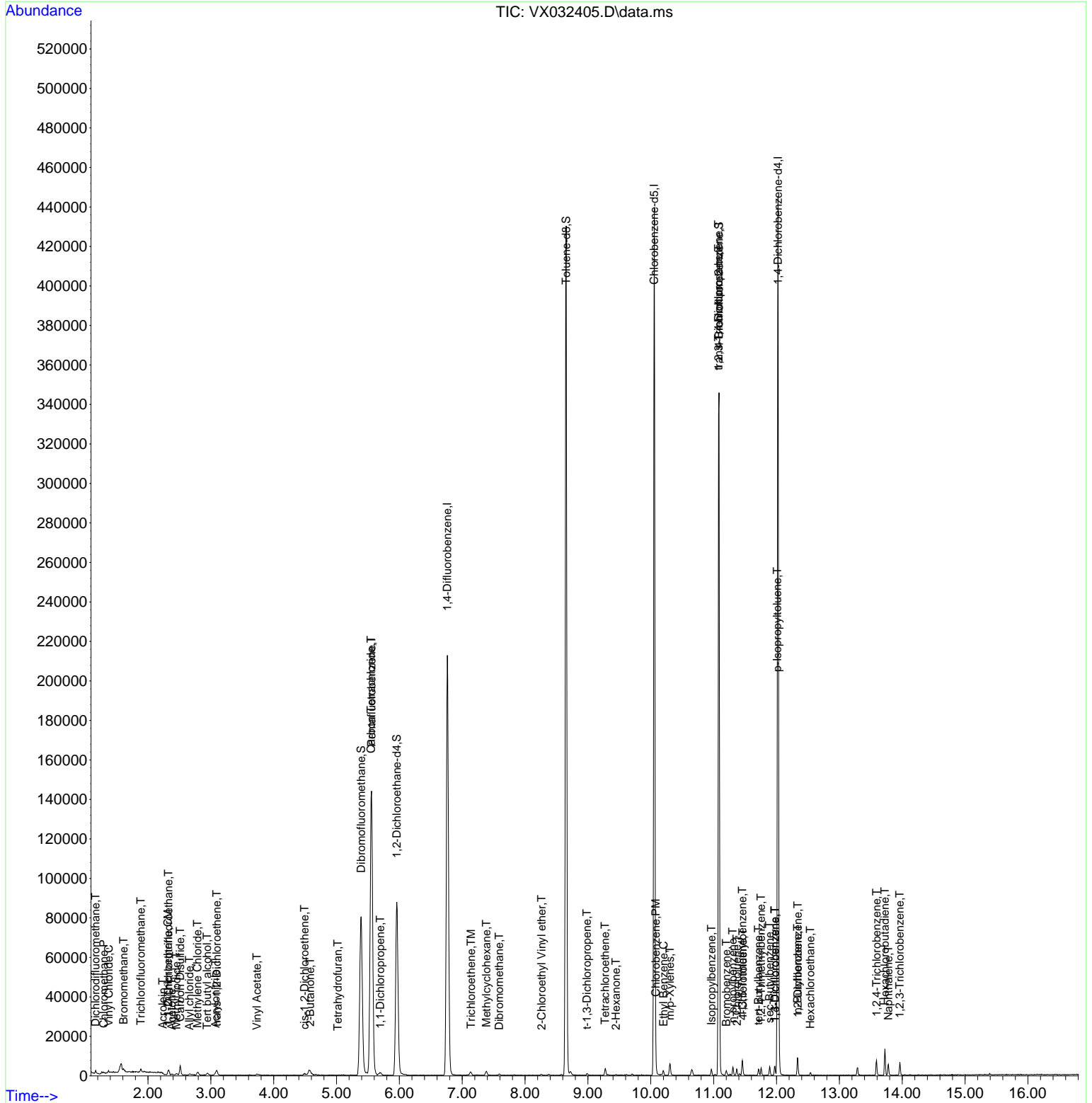
Compound	R.T.	QIon	Response	Conc	Units	Dev(Min)
79) 2-Chlorotoluene	11.371	91	1603	0.328	ug/l	95
80) 1,3,5-Trimethylbenzene	11.457	105	1664	0.275	ug/l	90
81) trans-1,4-Dichloro-2-b...	11.079	75	48899	78.143	ug/l #	6
82) 4-Chlorotoluene	11.463	91	2456	0.429	ug/l	99
83) tert-Butylbenzene	11.713	119	1407	0.232	ug/l	92
84) 1,2,4-Trimethylbenzene	11.756	105	2000	0.332	ug/l	90
85) sec-Butylbenzene	11.890	105	2562	0.352	ug/l	96
86) p-Isopropyltoluene	12.012	119	2506	0.406	ug/l	89
87) 1,3-Dichlorobenzene	11.975	146	1702	0.519	ug/l	97
88) 1,4-Dichlorobenzene	11.975	146	1702	0.500	ug/l	98
89) n-Butylbenzene	12.335	91	2972	0.553	ug/l	91
90) Hexachloroethane	12.536	117	240	0.238	ug/l	70
91) 1,2-Dichlorobenzene	12.341	146	1041	0.322	ug/l	93
93) 1,2,4-Trichlorobenzene	13.591	180	1846	0.875	ug/l	94
94) Hexachlorobutadiene	13.725	225	1750	1.987	ug/l	97
95) Naphthalene	13.780	128	4042	0.575	ug/l	98
96) 1,2,3-Trichlorobenzene	13.963	180	1822	0.850	ug/l	92

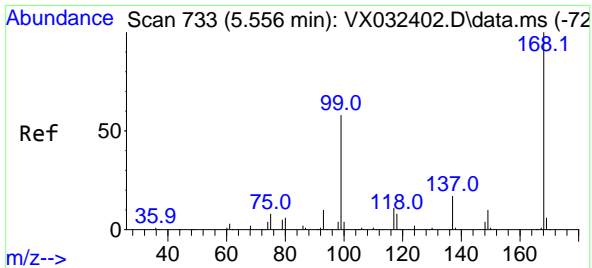
(#) = qualifier out of range (m) = manual integration (+) = signals summed

Data Path : Z:\voasrv\HPCHEM1\MSVOA\_X\Data\VX102622\  
 Data File : VX032405.D  
 Acq On : 26 Oct 2022 15:22  
 Operator : JC/MD  
 Sample : IBLK  
 Misc : 5.0mL/MSVOA\_X/WATER  
 ALS Vial : 10 Sample Multiplier: 1

Instrument :  
 MSVOA\_X  
 ClientSampleId :  
 IBLK

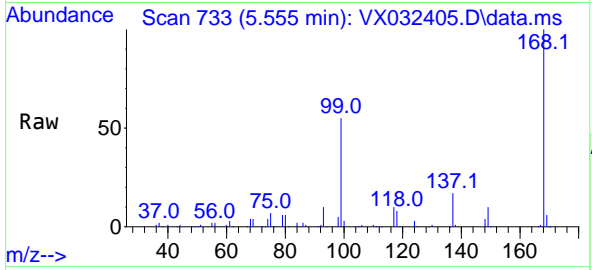
Quant Time: Oct 27 08:31:58 2022  
 Quant Method : Z:\voasrv\HPCHEM1\MSVOA\_X\Method\82X102622W.M  
 Quant Title : SW846 8260  
 QLast Update : Thu Oct 27 08:28:06 2022  
 Response via : Initial Calibration



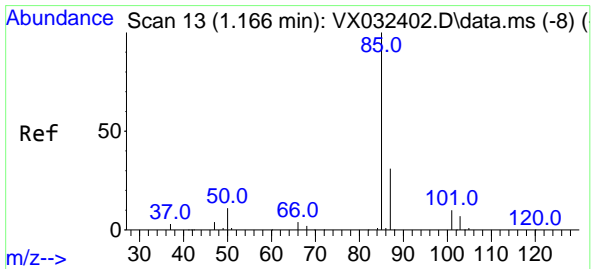
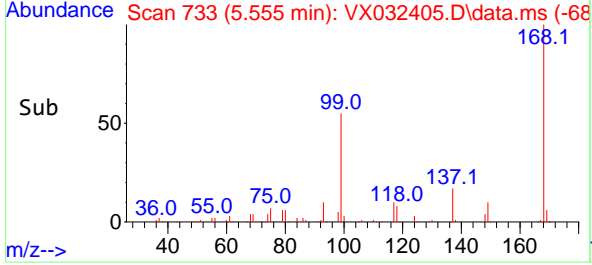
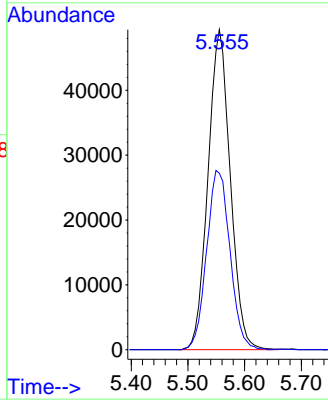


#1  
 Pentafluorobenzene  
 Concen: 50.000 ug/l  
 RT: 5.555 min Scan# 71  
 Delta R.T. -0.001 min  
 Lab File: VX032405.D  
 Acq: 26 Oct 2022 15:22

Instrument :  
 MSVOA\_X  
 ClientSampleId :  
 IBLK

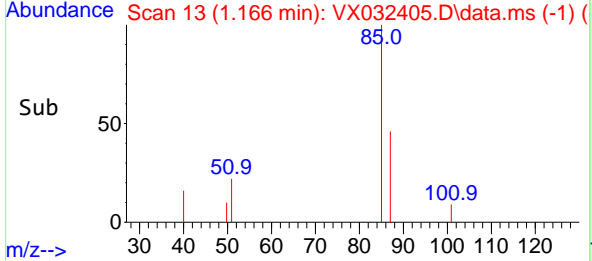
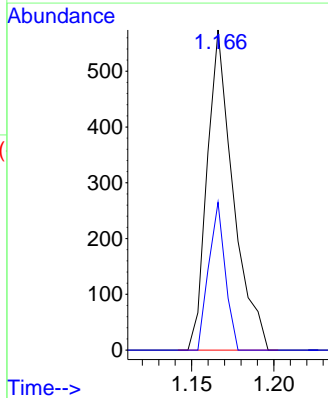
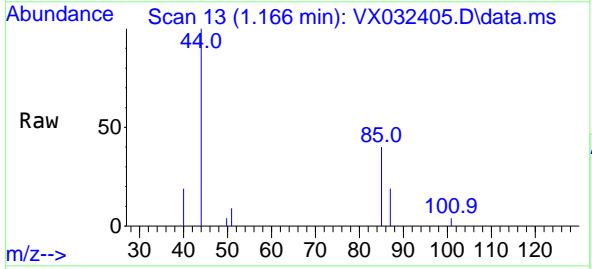


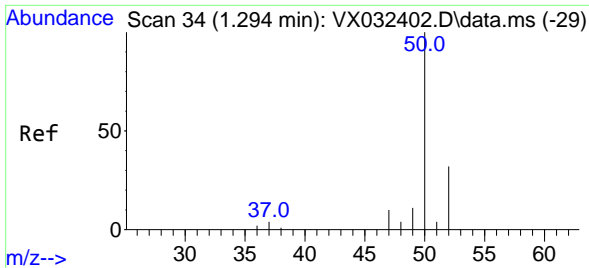
Tgt Ion:168 Resp: 134651  
 Ion Ratio Lower Upper  
 168 100  
 99 55.2 46.1 69.1



#2  
 Dichlorodifluoromethane  
 Concen: 0.406 ug/l  
 RT: 1.166 min Scan# 13  
 Delta R.T. -0.000 min  
 Lab File: VX032405.D  
 Acq: 26 Oct 2022 15:22

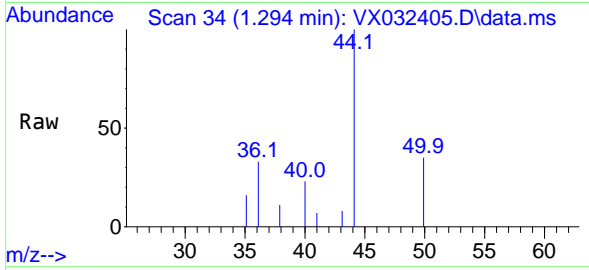
Tgt Ion: 85 Resp: 631  
 Ion Ratio Lower Upper  
 85 100  
 87 46.2 15.6 46.7



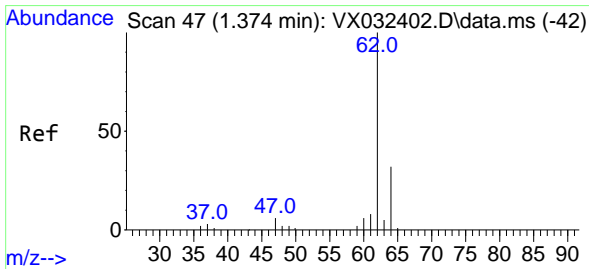
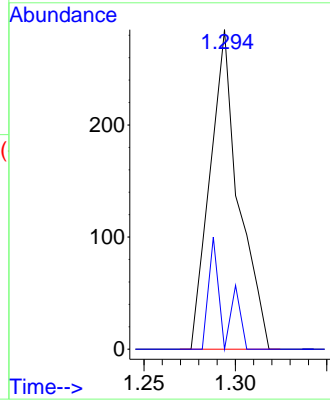
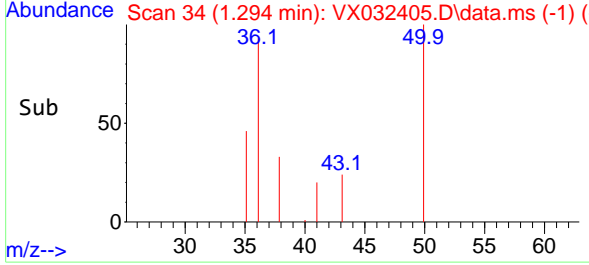


#3  
 Chloromethane  
 Concen: 0.238 ug/l  
 RT: 1.294 min Scan# 34  
 Delta R.T. -0.000 min  
 Lab File: VX032405.D  
 Acq: 26 Oct 2022 15:22

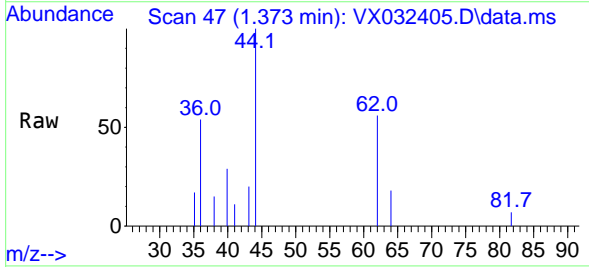
Instrument :  
 MSVOA\_X  
 ClientSampleId :  
 IBLK



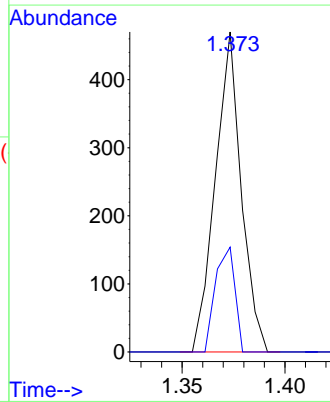
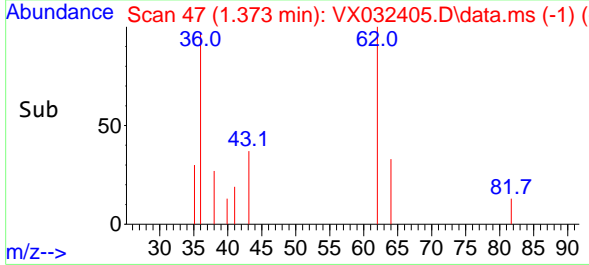
Tgt Ion: 50 Resp: 312  
 Ion Ratio Lower Upper  
 50 100  
 52 0.0 25.4 38.2#

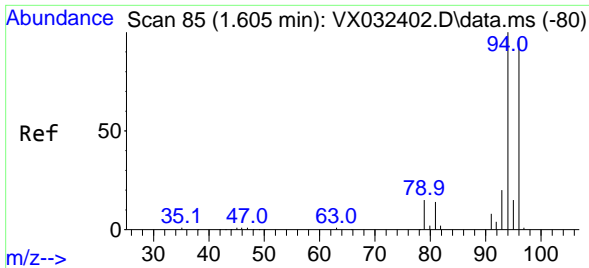


#4  
 Vinyl Chloride  
 Concen: 0.284 ug/l  
 RT: 1.373 min Scan# 47  
 Delta R.T. -0.000 min  
 Lab File: VX032405.D  
 Acq: 26 Oct 2022 15:22



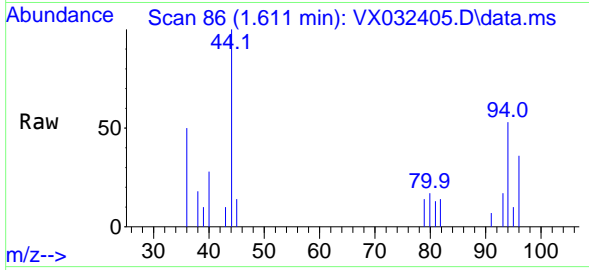
Tgt Ion: 62 Resp: 411  
 Ion Ratio Lower Upper  
 62 100  
 64 32.8 25.8 38.6



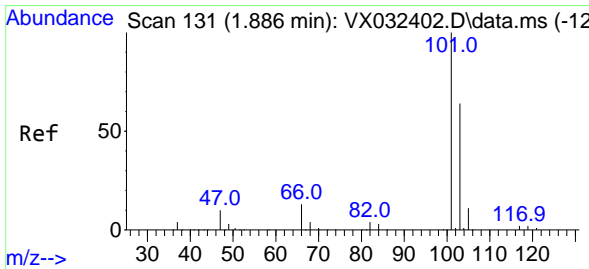
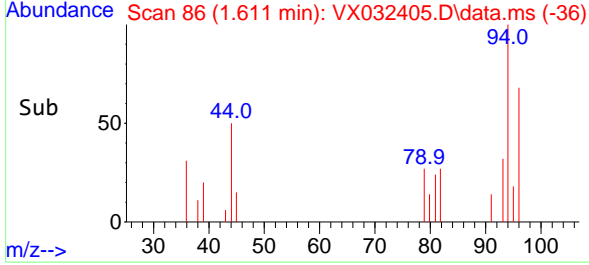
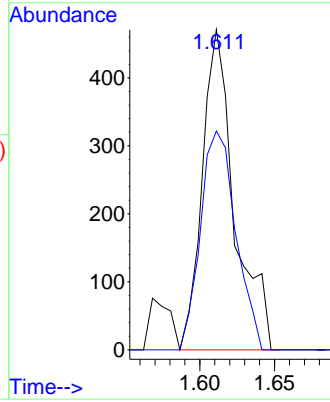


#5  
 Bromomethane  
 Concen: 0.609 ug/l  
 RT: 1.611 min Scan# 86  
 Delta R.T. 0.006 min  
 Lab File: VX032405.D  
 Acq: 26 Oct 2022 15:22

Instrument :  
 MSVOA\_X  
 ClientSampleId :  
 IBLK

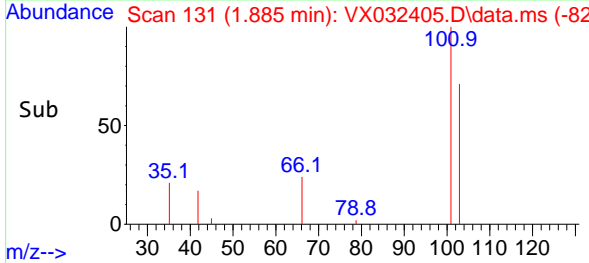
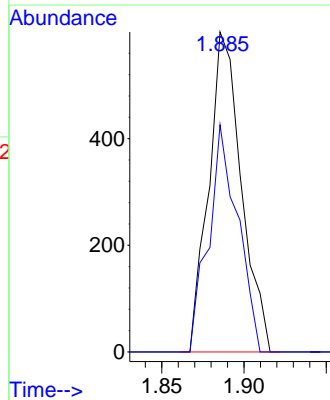
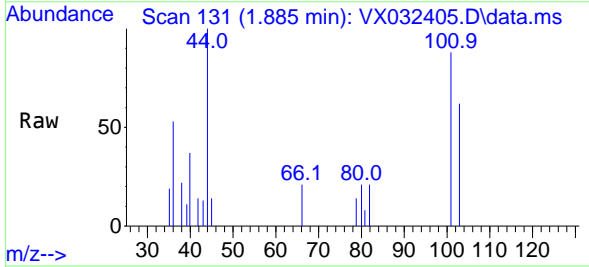


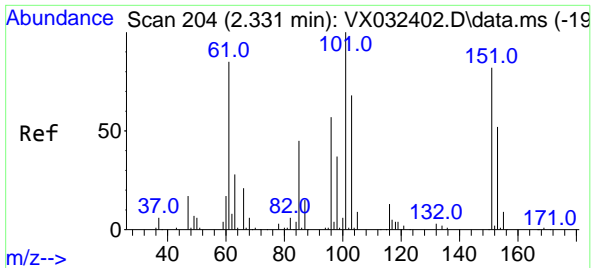
Tgt Ion: 94 Resp: 704  
 Ion Ratio Lower Upper  
 94 100  
 96 68.4 77.6 116.4#



#7  
 Trichlorofluoromethane  
 Concen: 0.302 ug/l  
 RT: 1.885 min Scan# 131  
 Delta R.T. -0.000 min  
 Lab File: VX032405.D  
 Acq: 26 Oct 2022 15:22

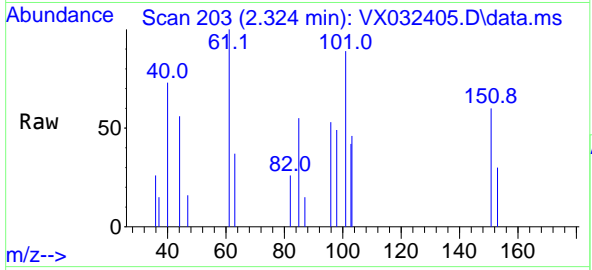
Tgt Ion: 101 Resp: 826  
 Ion Ratio Lower Upper  
 101 100  
 103 71.0 51.4 77.2





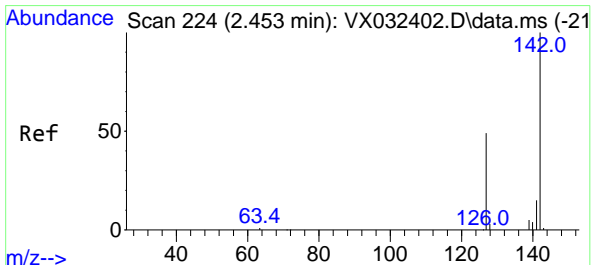
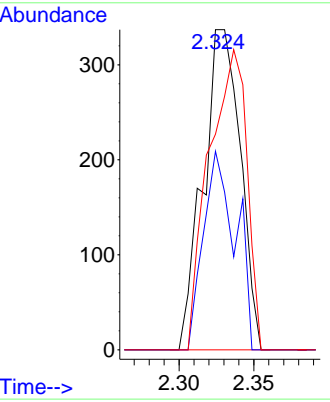
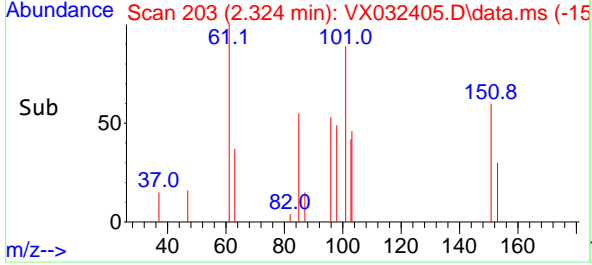
#9  
 1,1,2-Trichlorotrifluoroethane  
 Concen: 0.404 ug/l  
 RT: 2.324 min Scan# 203  
 Delta R.T. -0.006 min  
 Lab File: VX032405.D  
 Acq: 26 Oct 2022 15:22

Instrument : MSVOA\_X  
 ClientSampleId : IBLK

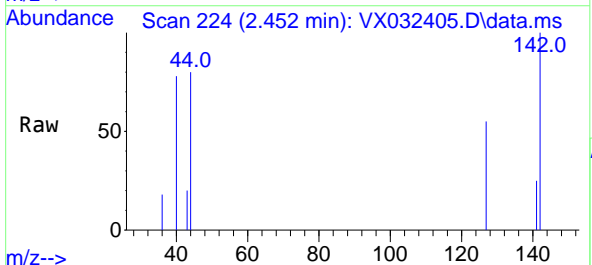


Tgt Ion:101 Resp: 584

Ion	Ratio	Lower	Upper
101	100		
85	53.4	37.0	55.4
151	95.0	64.4	96.6

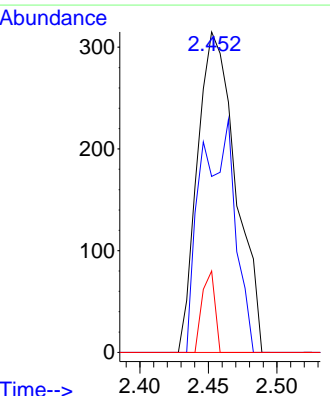
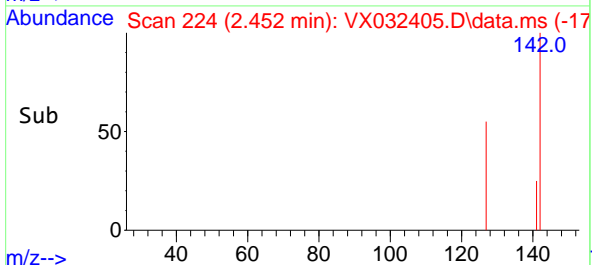


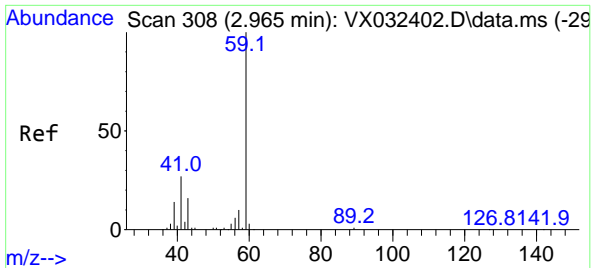
#10  
 Methyl Iodide  
 Concen: 2.284 ug/l  
 RT: 2.452 min Scan# 224  
 Delta R.T. -0.001 min  
 Lab File: VX032405.D  
 Acq: 26 Oct 2022 15:22



Tgt Ion:142 Resp: 615

Ion	Ratio	Lower	Upper
142	100		
127	64.6	38.6	57.8#
141	8.5	11.4	17.2#

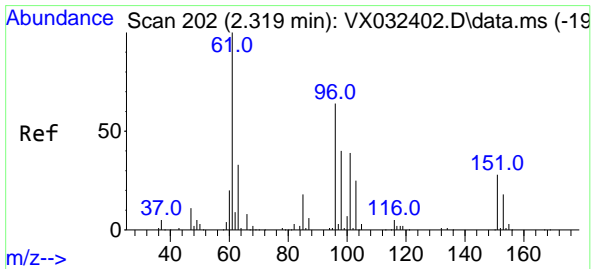
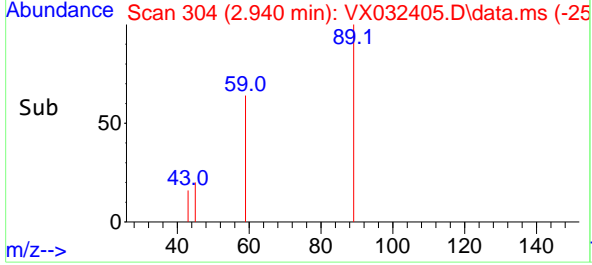
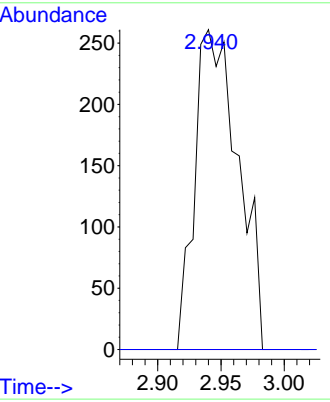
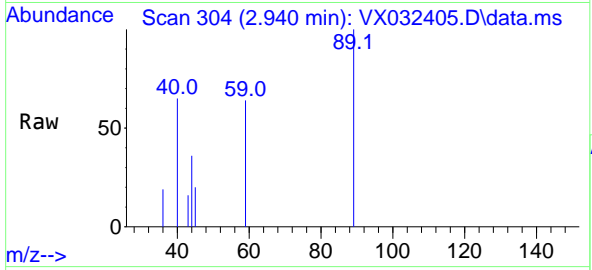




#11  
 Tert butyl alcohol  
 Concen: 2.288 ug/l  
 RT: 2.940 min Scan# 308  
 Delta R.T. -0.025 min  
 Lab File: VX032405.D  
 Acq: 26 Oct 2022 15:22

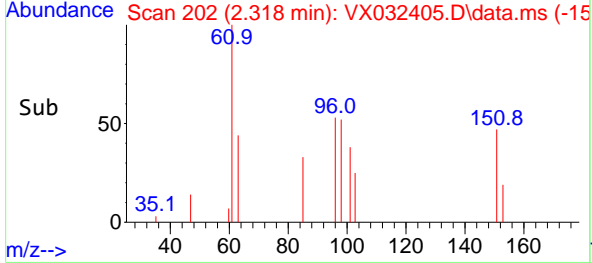
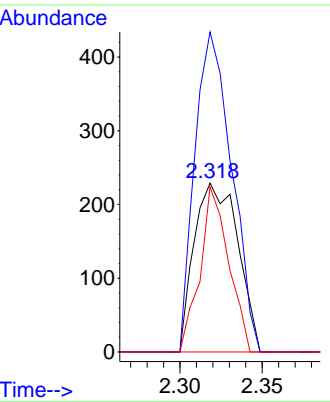
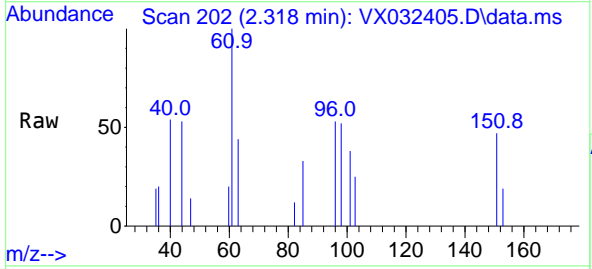
Instrument : MSVOA\_X  
 ClientSampleId : IBLK

Tgt Ion: 59 Resp: 623  
 Ion Ratio Lower Upper  
 59 100  
 57 0.0 8.2 12.4#

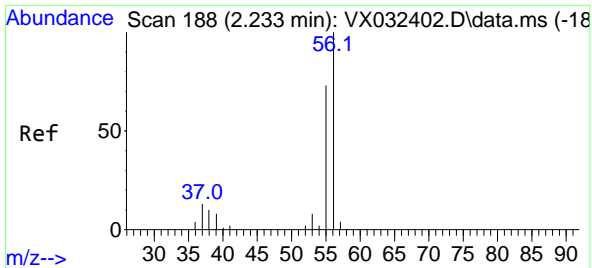


#12  
 1,1-Dichloroethene  
 Concen: 0.313 ug/l  
 RT: 2.318 min Scan# 202  
 Delta R.T. -0.000 min  
 Lab File: VX032405.D  
 Acq: 26 Oct 2022 15:22

Tgt Ion: 96 Resp: 422  
 Ion Ratio Lower Upper  
 96 100  
 61 189.5 125.1 187.7#  
 98 97.8 50.6 76.0#

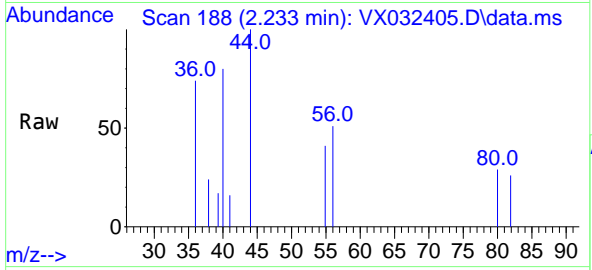




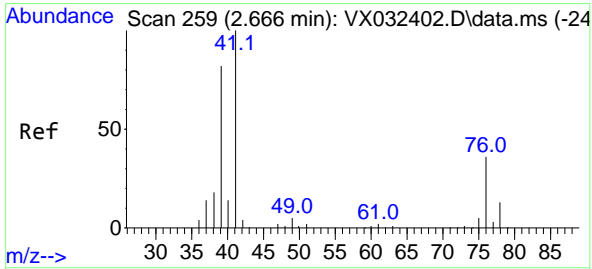
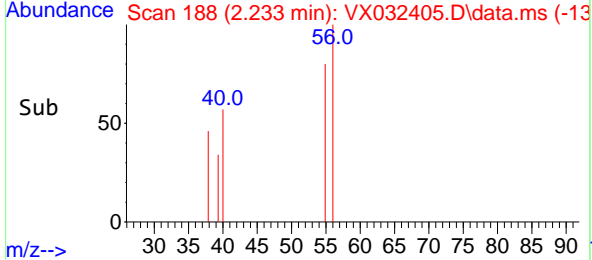
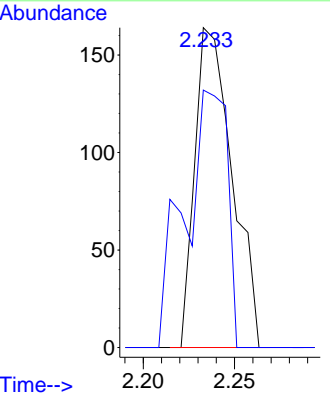


#13  
 Acrolein  
 Concen: 0.861 ug/l  
 RT: 2.233 min Scan# 11  
 Delta R.T. -0.000 min  
 Lab File: VX032405.D  
 Acq: 26 Oct 2022 15:22

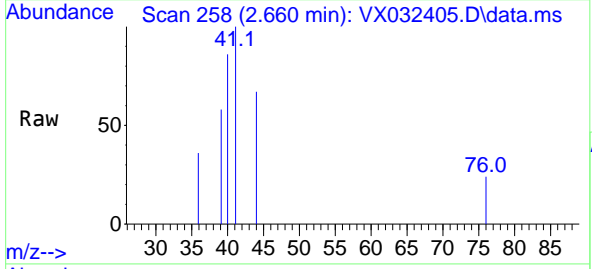
Instrument : MSVOA\_X  
 ClientSampleId : IBLK



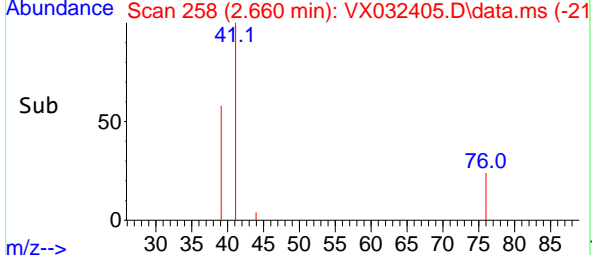
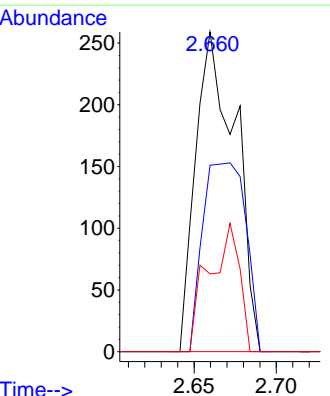
Tgt Ion: 56 Resp: 234  
 Ion Ratio Lower Upper  
 56 100  
 55 91.0 56.9 85.3#

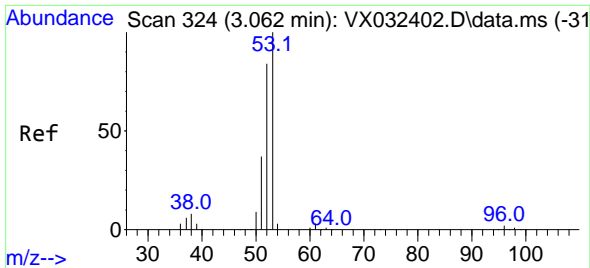


#14  
 Allyl chloride  
 Concen: 0.202 ug/l  
 RT: 2.660 min Scan# 258  
 Delta R.T. -0.006 min  
 Lab File: VX032405.D  
 Acq: 26 Oct 2022 15:22



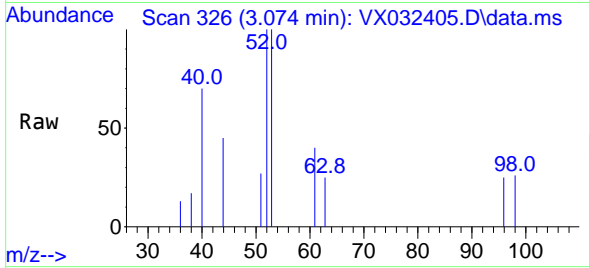
Tgt Ion: 41 Resp: 435  
 Ion Ratio Lower Upper  
 41 100  
 39 63.9 61.4 92.2  
 76 0.0 29.2 43.8#



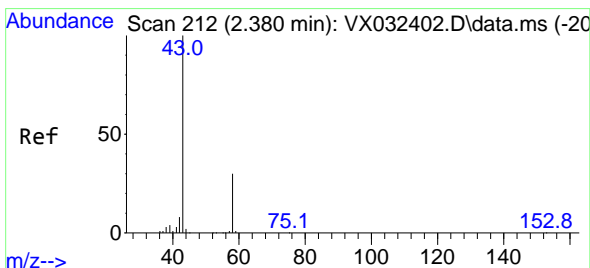
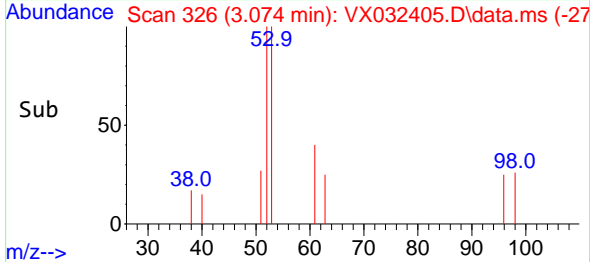
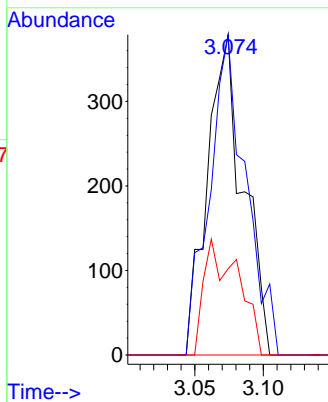


#15  
 Acrylonitrile  
 Concen: 0.936 ug/l  
 RT: 3.074 min Scan# 31  
 Delta R.T. 0.012 min  
 Lab File: VX032405.D  
 Acq: 26 Oct 2022 15:22

Instrument :  
 MSVOA\_X  
 ClientSampleId :  
 IBLK

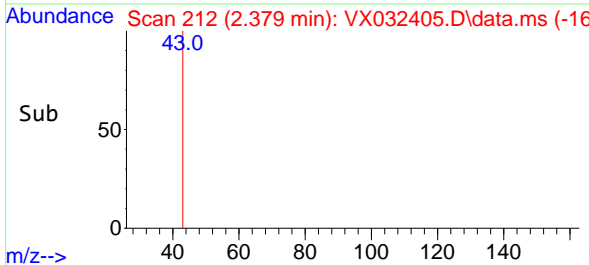
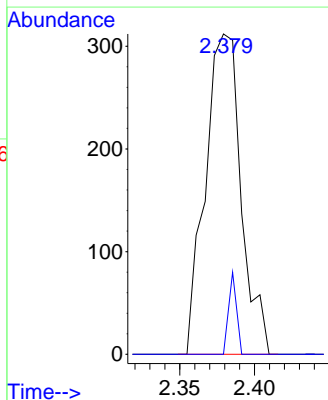
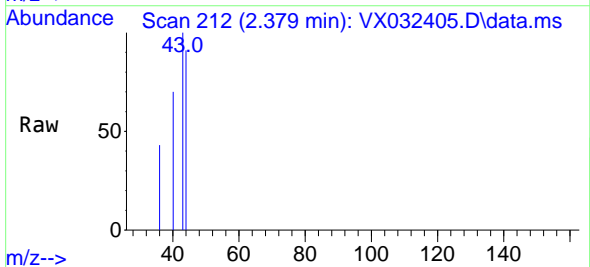


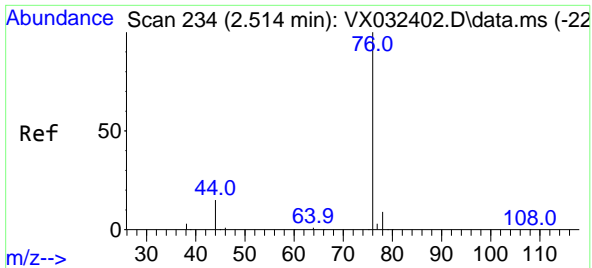
Tgt Ion: 53 Resp: 692  
 Ion Ratio Lower Upper  
 53 100  
 52 101.2 67.4 101.0#  
 51 34.4 30.3 45.5



#16  
 Acetone  
 Concen: 0.763 ug/l  
 RT: 2.379 min Scan# 212  
 Delta R.T. -0.000 min  
 Lab File: VX032405.D  
 Acq: 26 Oct 2022 15:22

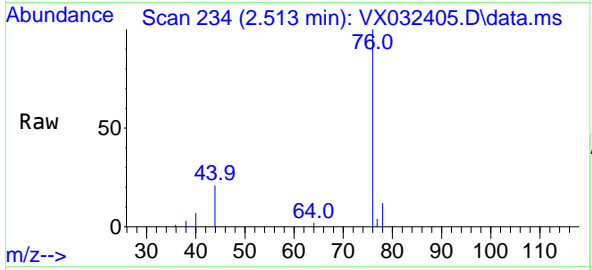
Tgt Ion: 43 Resp: 519  
 Ion Ratio Lower Upper  
 43 100  
 58 0.0 23.8 35.8#



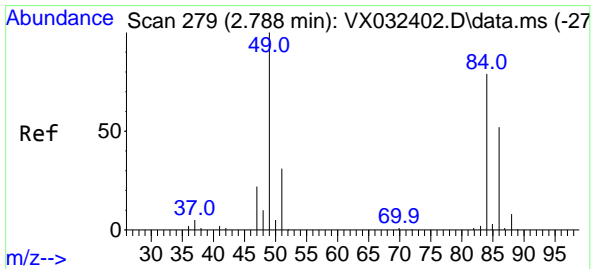
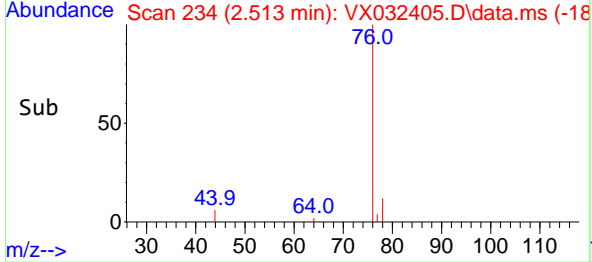
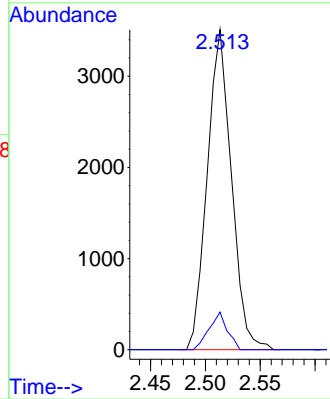


#17  
 Carbon Disulfide  
 Concen: 1.679 ug/l  
 RT: 2.513 min Scan# 21  
 Delta R.T. -0.000 min  
 Lab File: VX032405.D  
 Acq: 26 Oct 2022 15:22

Instrument : MSVOA\_X  
 ClientSampleId : IBLK

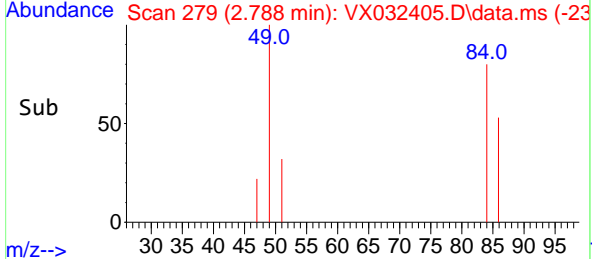
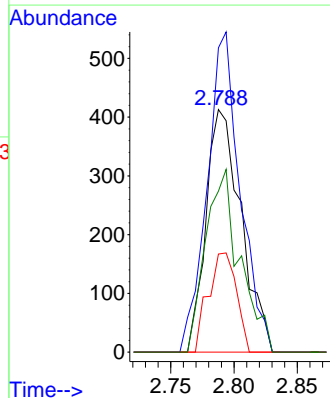
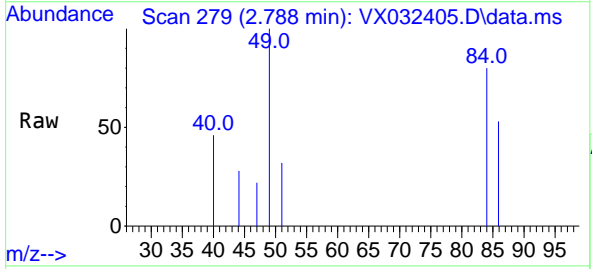


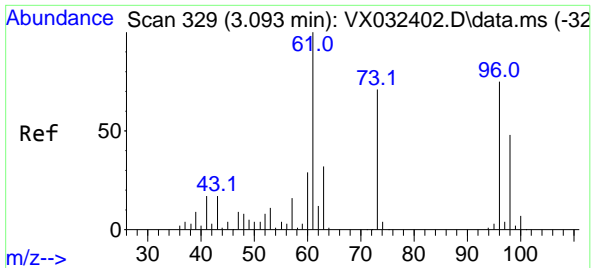
Tgt Ion: 76 Resp: 5399  
 Ion Ratio Lower Upper  
 76 100  
 78 11.8 7.5 11.3#



#20  
 Methylene Chloride  
 Concen: 0.511 ug/l  
 RT: 2.788 min Scan# 279  
 Delta R.T. -0.000 min  
 Lab File: VX032405.D  
 Acq: 26 Oct 2022 15:22

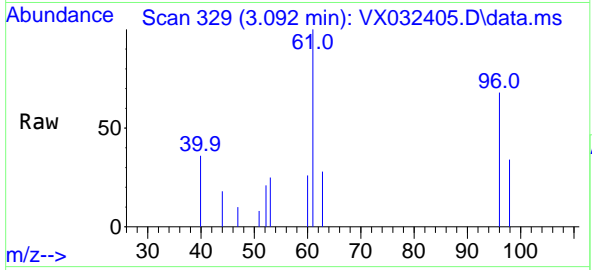
Tgt Ion: 84 Resp: 797  
 Ion Ratio Lower Upper  
 84 100  
 49 125.4 101.0 151.6  
 51 40.4 31.1 46.7  
 86 66.3 52.3 78.5



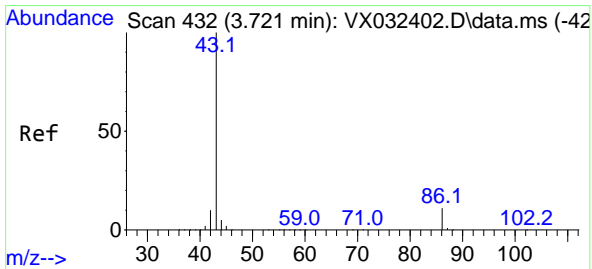
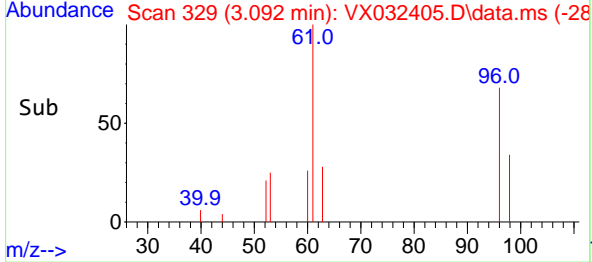
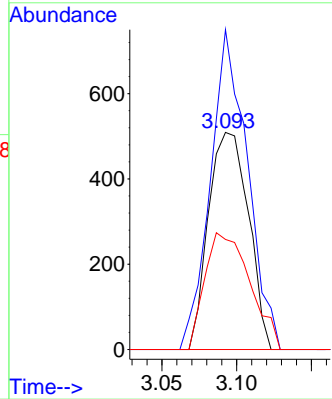


#21  
 trans-1,2-Dichloroethene  
 Concen: 0.644 ug/l  
 RT: 3.092 min Scan# 31  
 Delta R.T. -0.000 min  
 Lab File: VX032405.D  
 Acq: 26 Oct 2022 15:22

Instrument :  
 MSVOA\_X  
 ClientSampleId :  
 IBLK

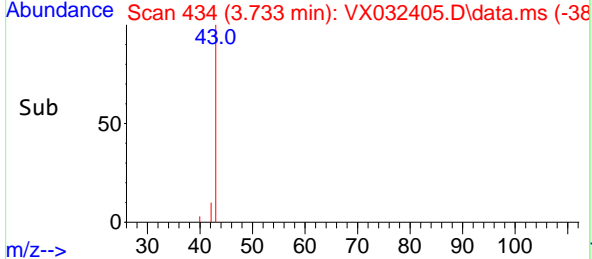
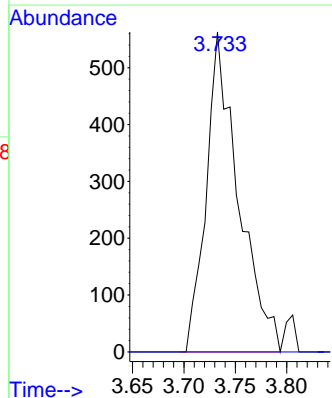
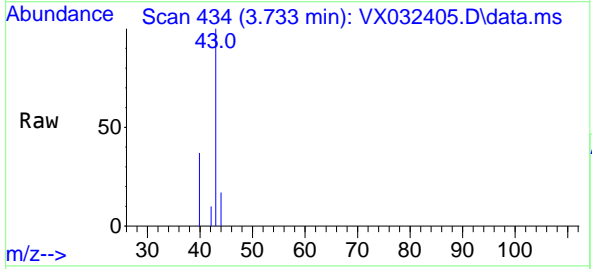


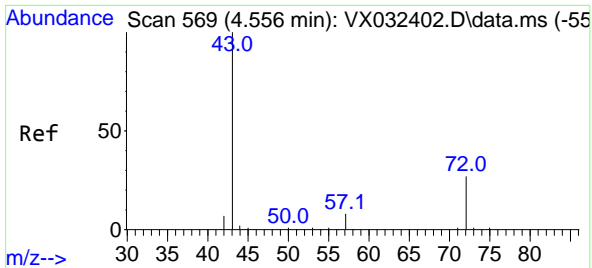
Tgt Ion: 96 Resp: 947  
 Ion Ratio Lower Upper  
 96 100  
 61 147.3 106.6 160.0  
 98 50.7 51.0 76.6#



#23  
 Vinyl Acetate  
 Concen: 0.326 ug/l  
 RT: 3.733 min Scan# 434  
 Delta R.T. 0.012 min  
 Lab File: VX032405.D  
 Acq: 26 Oct 2022 15:22

Tgt Ion: 43 Resp: 1226  
 Ion Ratio Lower Upper  
 43 100  
 86 0.0 8.6 12.8#

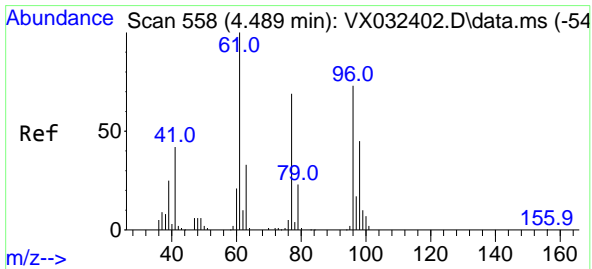
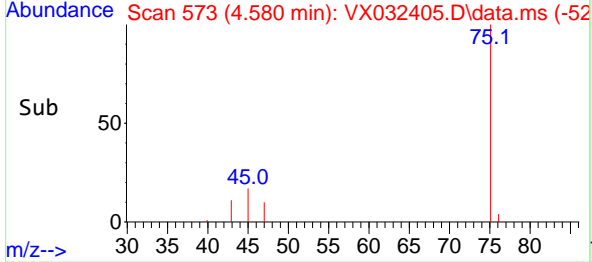
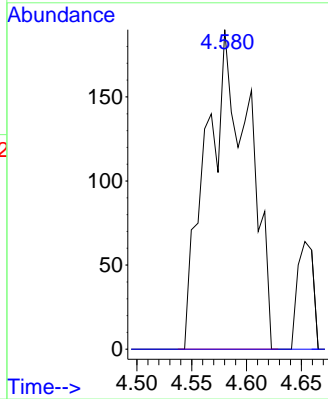
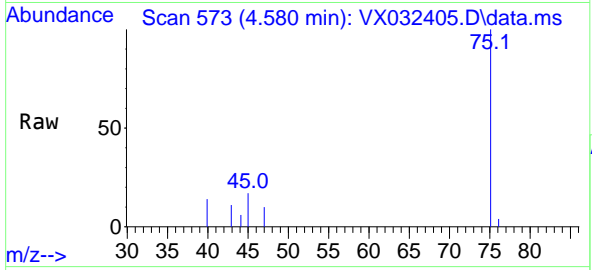




#25  
 2-Butanone  
 Concen: 0.491 ug/l  
 RT: 4.580 min Scan# 517  
 Delta R.T. 0.024 min  
 Lab File: VX032405.D  
 Acq: 26 Oct 2022 15:22

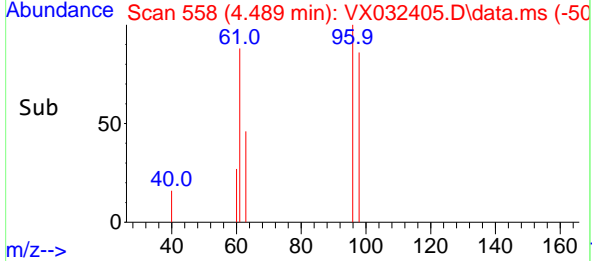
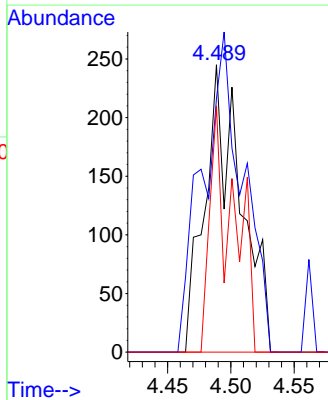
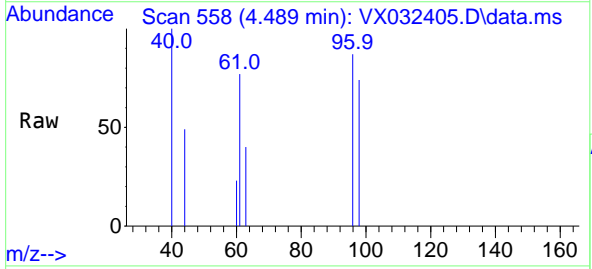
Instrument : MSVOA\_X  
 ClientSampleId : IBLK

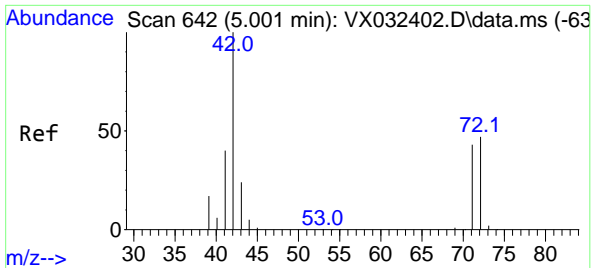
Tgt Ion: 43 Resp: 517  
 Ion Ratio Lower Upper  
 43 100  
 72 0.0 22.2 33.2#



#27  
 cis-1,2-Dichloroethene  
 Concen: 0.287 ug/l  
 RT: 4.489 min Scan# 558  
 Delta R.T. -0.000 min  
 Lab File: VX032405.D  
 Acq: 26 Oct 2022 15:22

Tgt Ion: 96 Resp: 487  
 Ion Ratio Lower Upper  
 96 100  
 61 123.4 0.0 286.0  
 98 56.5 0.0 129.6



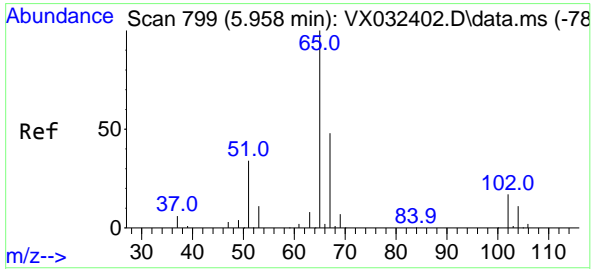
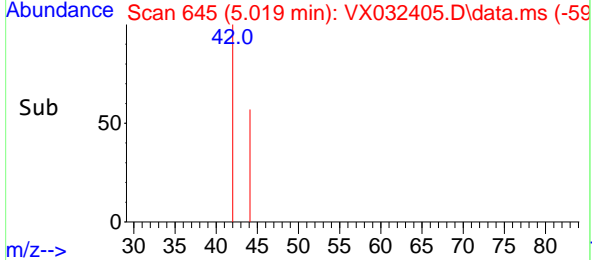
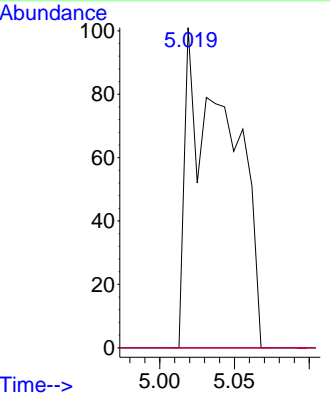
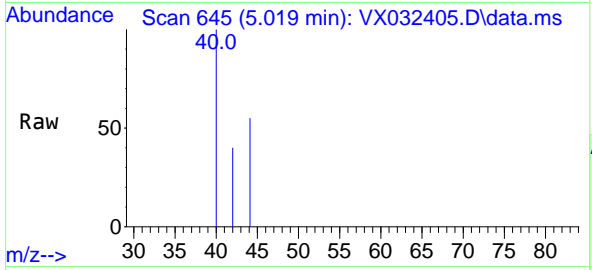


#29  
 Tetrahydrofuran  
 Concen: 0.308 ug/l  
 RT: 5.019 min Scan# 642  
 Delta R.T. 0.018 min  
 Lab File: VX032405.D  
 Acq: 26 Oct 2022 15:22

Instrument : MSVOA\_X  
 ClientSampleId : IBLK

Tgt Ion: 42 Resp: 207

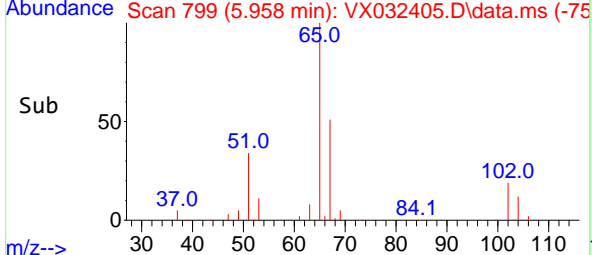
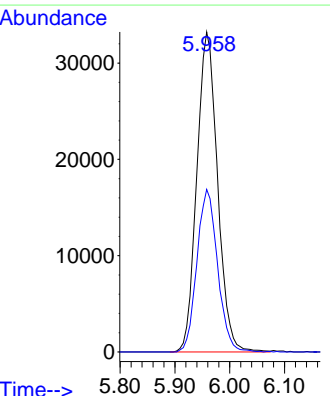
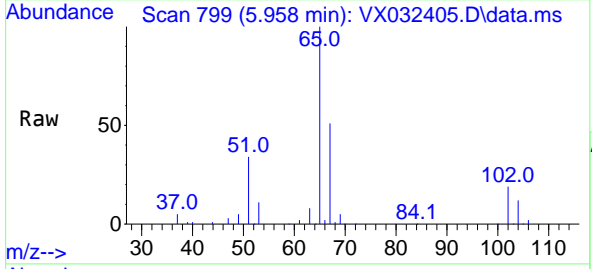
Ion	Ratio	Lower	Upper
42	100		
72	0.0	37.6	56.4#
71	0.0	34.7	52.1#

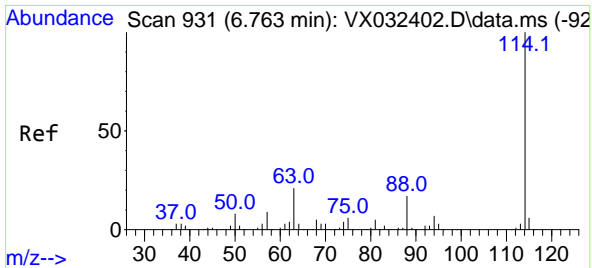


#33  
 1,2-Dichloroethane-d4  
 Concen: 46.658 ug/l  
 RT: 5.958 min Scan# 799  
 Delta R.T. -0.000 min  
 Lab File: VX032405.D  
 Acq: 26 Oct 2022 15:22

Tgt Ion: 65 Resp: 87294

Ion	Ratio	Lower	Upper
65	100		
67	50.6	0.0	101.8



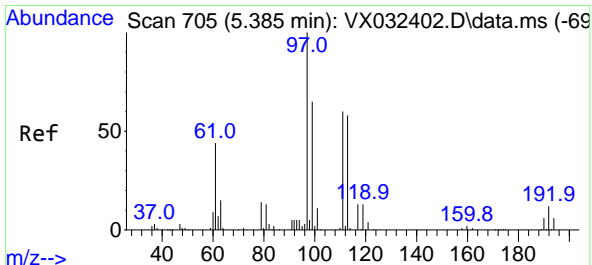
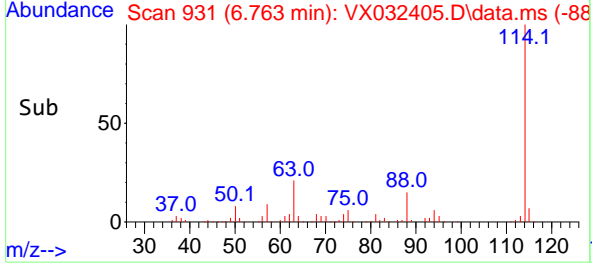
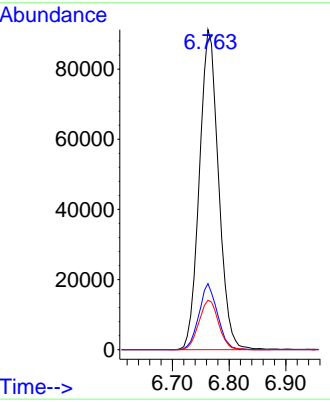
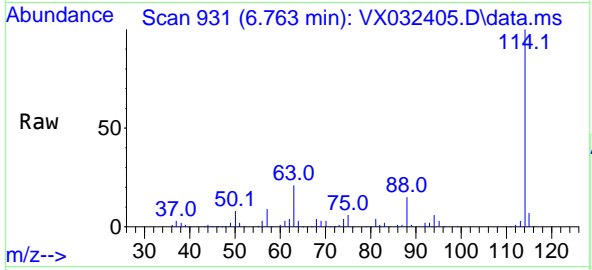


#34  
 1,4-Difluorobenzene  
 Concen: 50.000 ug/l  
 RT: 6.763 min Scan# 91  
 Delta R.T. -0.000 min  
 Lab File: VX032405.D  
 Acq: 26 Oct 2022 15:22

Instrument : MSVOA\_X  
 ClientSampleId : IBLK

Tgt Ion:114 Resp: 213476

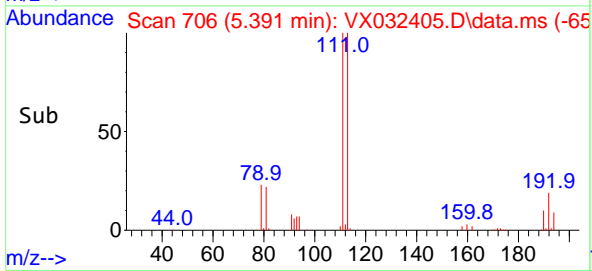
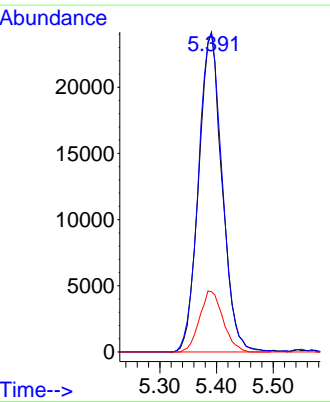
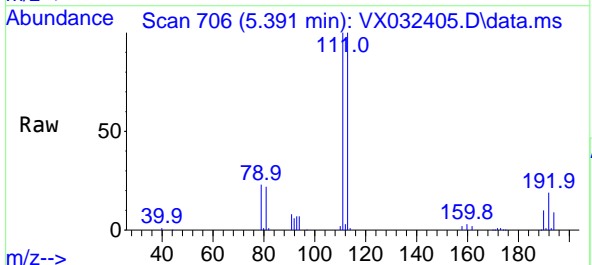
Ion	Ratio	Lower	Upper
114	100		
63	20.6	0.0	41.6
88	15.5	0.0	33.4

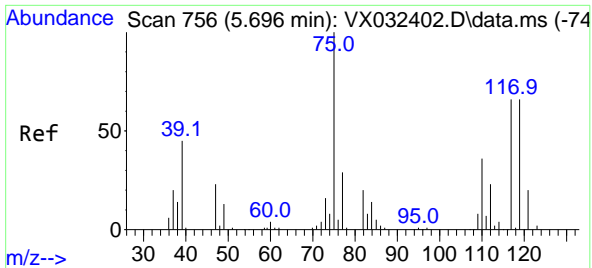


#35  
 Dibromofluoromethane  
 Concen: 45.195 ug/l  
 RT: 5.391 min Scan# 706  
 Delta R.T. 0.006 min  
 Lab File: VX032405.D  
 Acq: 26 Oct 2022 15:22

Tgt Ion:113 Resp: 68820

Ion	Ratio	Lower	Upper
113	100		
111	102.1	82.4	123.6
192	19.2	15.4	23.2



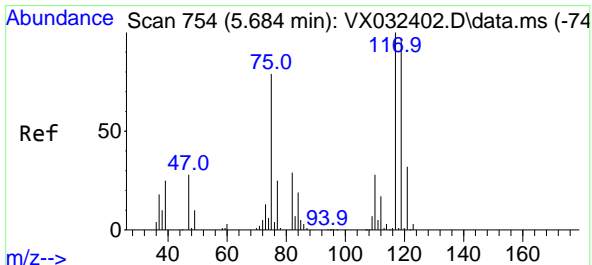
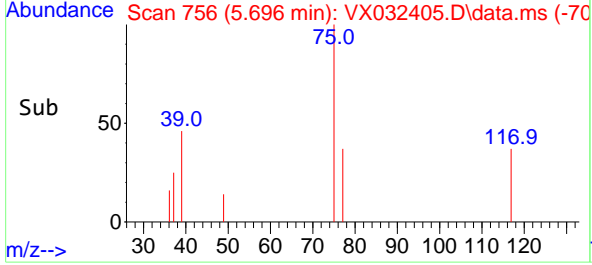
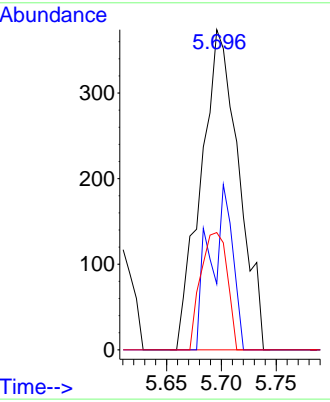
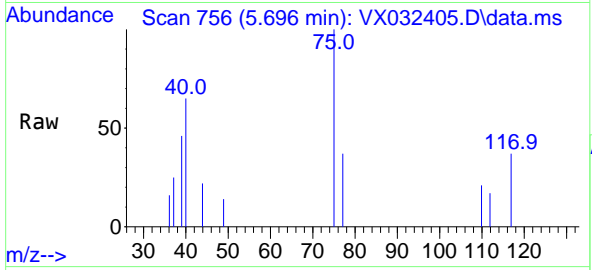


#36  
 1,1-Dichloropropene  
 Concen: 0.423 ug/l  
 RT: 5.696 min Scan# 711  
 Delta R.T. -0.000 min  
 Lab File: VX032405.D  
 Acq: 26 Oct 2022 15:22

Instrument : MSVOA\_X  
 ClientSampleId : IBLK

Tgt Ion: 75 Resp: 897

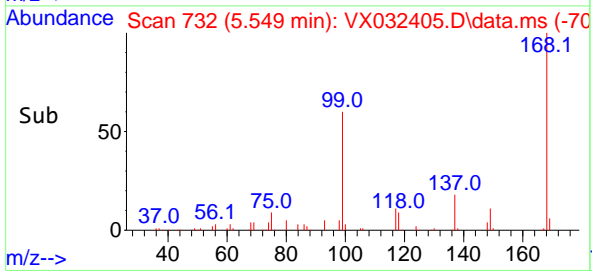
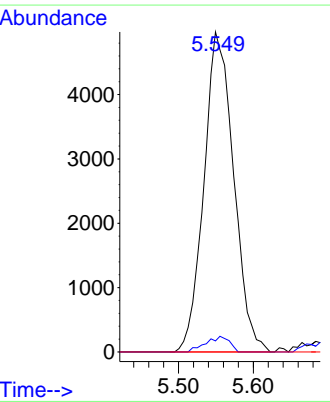
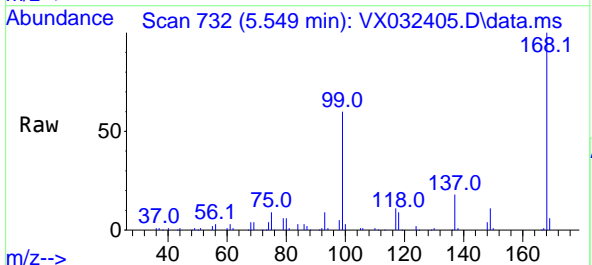
Ion	Ratio	Lower	Upper
75	100		
110	30.1	18.4	55.2
77	25.6	24.5	36.7



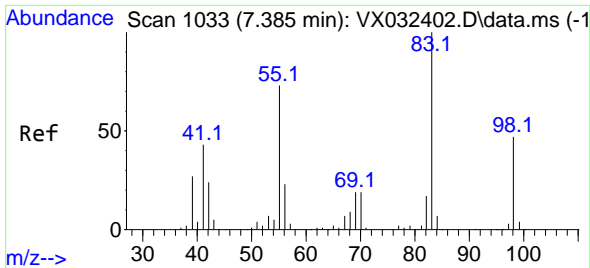
#38  
 Carbon Tetrachloride  
 Concen: 5.851 ug/l  
 RT: 5.549 min Scan# 732  
 Delta R.T. -0.134 min  
 Lab File: VX032405.D  
 Acq: 26 Oct 2022 15:22

Tgt Ion: 117 Resp: 13761

Ion	Ratio	Lower	Upper
117	100		
119	3.5	77.2	115.8#
121	0.0	25.8	38.6#





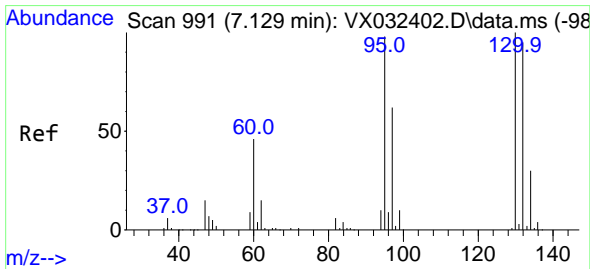
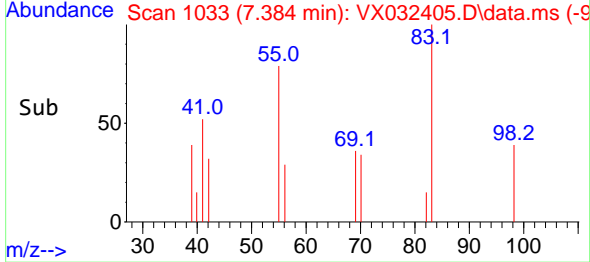
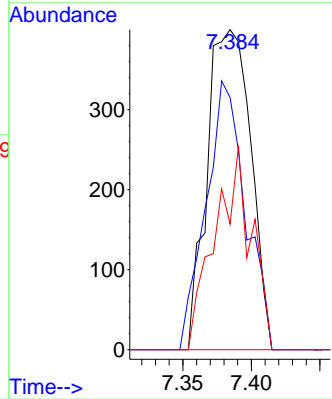
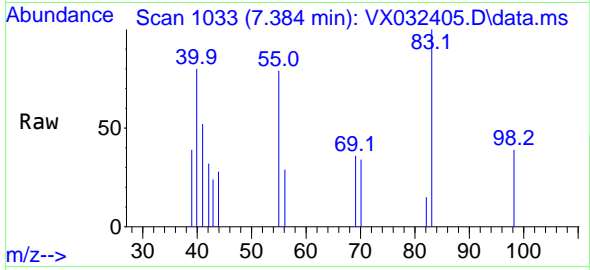


#39  
 Methylcyclohexane  
 Concen: 0.353 ug/l  
 RT: 7.384 min Scan# 1033  
 Delta R.T. -0.000 min  
 Lab File: VX032405.D  
 Acq: 26 Oct 2022 15:22

Instrument : MSVOA\_X  
 ClientSampleId : IBLK

Tgt Ion: 83 Resp: 885

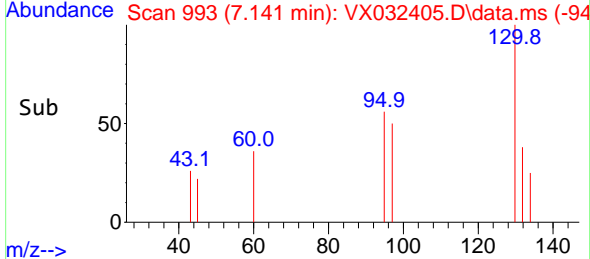
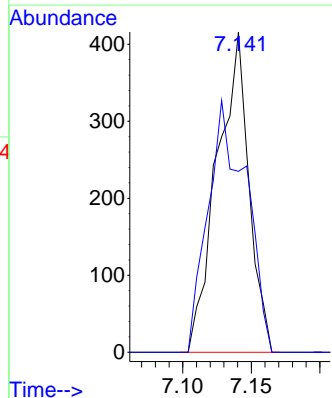
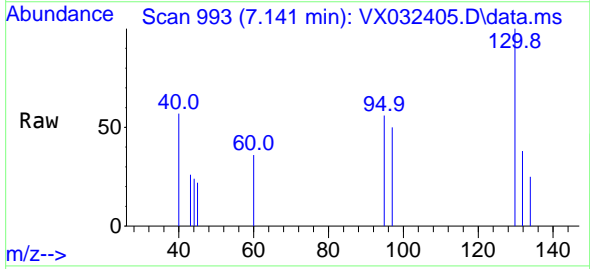
Ion	Ratio	Lower	Upper
83	100		
55	78.8	58.4	87.6
98	39.3	37.2	55.8

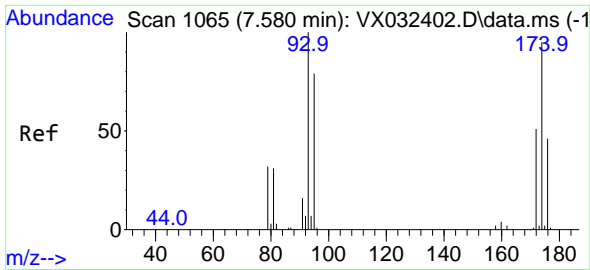


#44  
 Trichloroethene  
 Concen: 0.397 ug/l  
 RT: 7.141 min Scan# 993  
 Delta R.T. 0.012 min  
 Lab File: VX032405.D  
 Acq: 26 Oct 2022 15:22

Tgt Ion: 130 Resp: 670

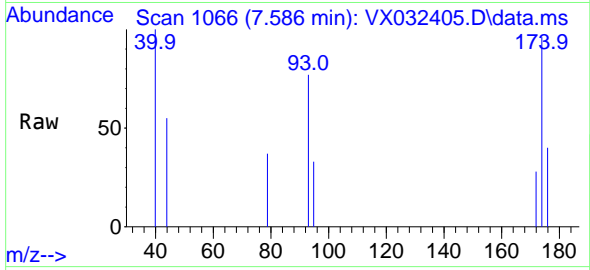
Ion	Ratio	Lower	Upper
130	100		
95	56.5	0.0	195.2



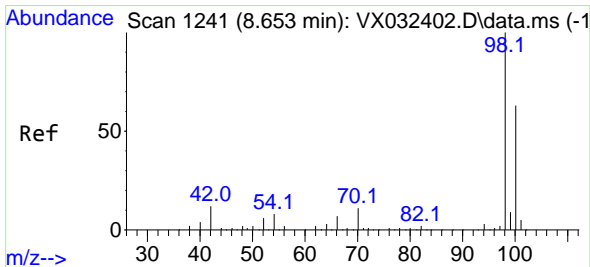
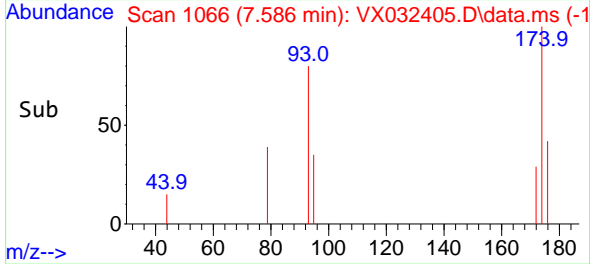
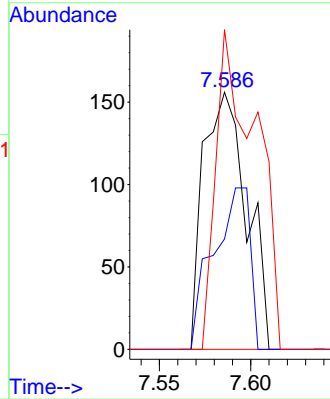


#46  
 Dibromomethane  
 Concen: 0.218 ug/l  
 RT: 7.586 min Scan# 1065  
 Delta R.T. 0.006 min  
 Lab File: VX032405.D  
 Acq: 26 Oct 2022 15:22

Instrument : MSVOA\_X  
 ClientSampleId : IBLK

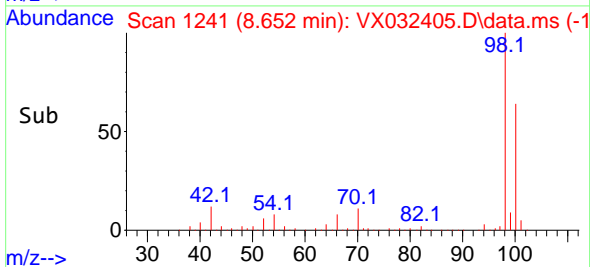
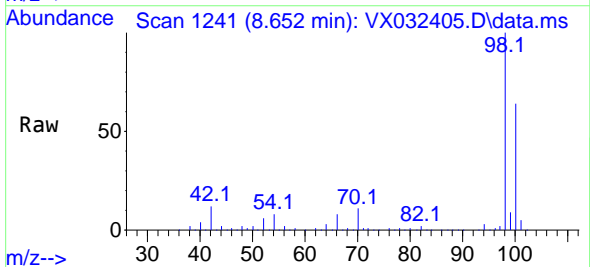
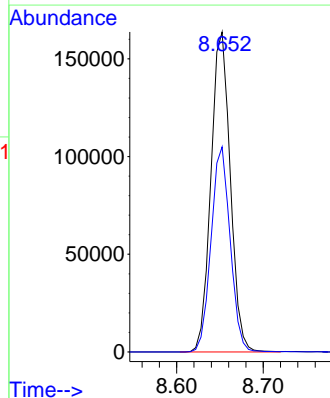


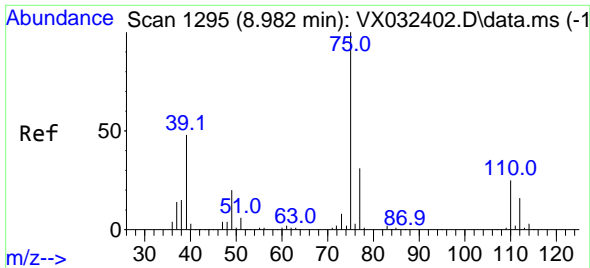
Tgt Ion: 93 Resp: 258  
 Ion Ratio Lower Upper  
 93 100  
 95 53.1 65.8 98.8#  
 174 114.7 79.8 119.6



#50  
 Toluene-d8  
 Concen: 47.987 ug/l  
 RT: 8.652 min Scan# 1241  
 Delta R.T. -0.000 min  
 Lab File: VX032405.D  
 Acq: 26 Oct 2022 15:22

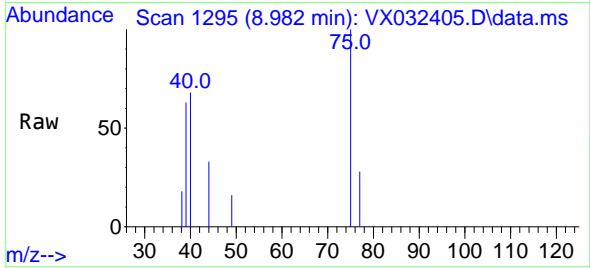
Tgt Ion: 98 Resp: 254088  
 Ion Ratio Lower Upper  
 98 100  
 100 63.3 50.9 76.3



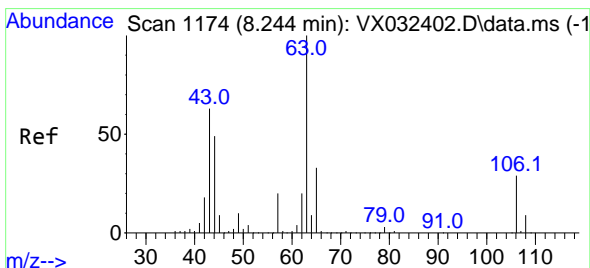
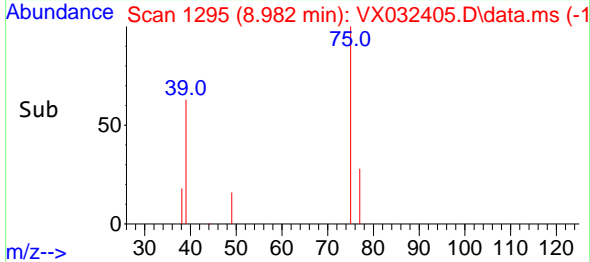
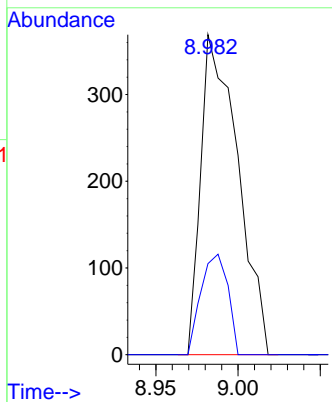


#53  
 t-1,3-Dichloropropene  
 Concen: 0.252 ug/l  
 RT: 8.982 min Scan# 1177  
 Delta R.T. -0.000 min  
 Lab File: VX032405.D  
 Acq: 26 Oct 2022 15:22

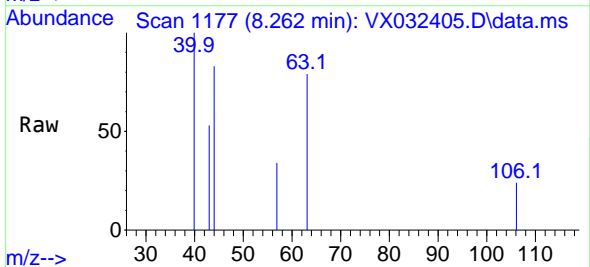
Instrument :  
 MSVOA\_X  
 ClientSampleId :  
 BLK



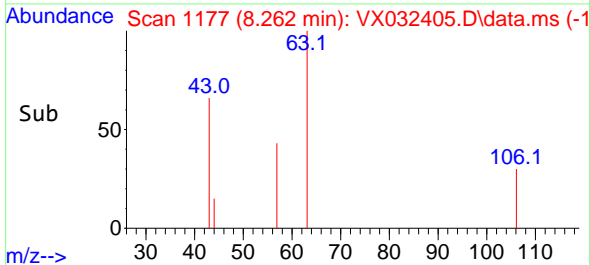
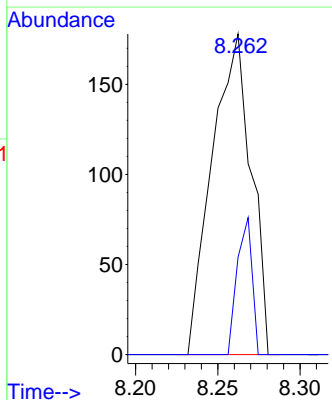
Tgt Ion: 75 Resp: 576  
 Ion Ratio Lower Upper  
 75 100  
 77 28.5 25.1 37.7

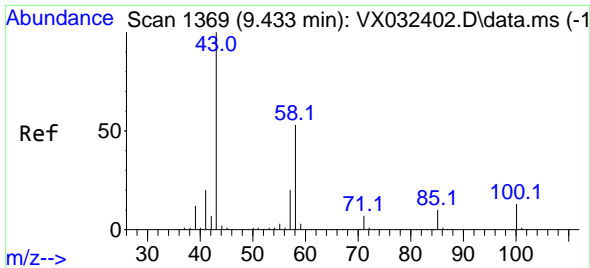


#58  
 2-Chloroethyl Vinyl ether  
 Concen: 0.257 ug/l  
 RT: 8.262 min Scan# 1177  
 Delta R.T. 0.018 min  
 Lab File: VX032405.D  
 Acq: 26 Oct 2022 15:22



Tgt Ion: 63 Resp: 294  
 Ion Ratio Lower Upper  
 63 100  
 106 16.3 23.3 34.9#

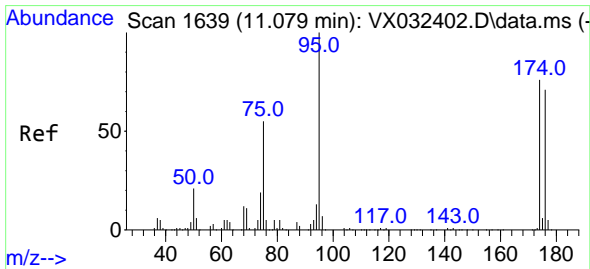
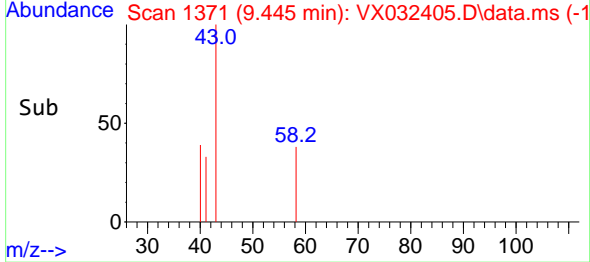
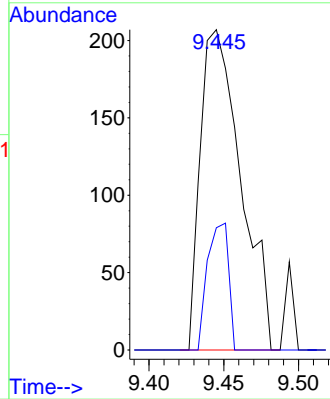
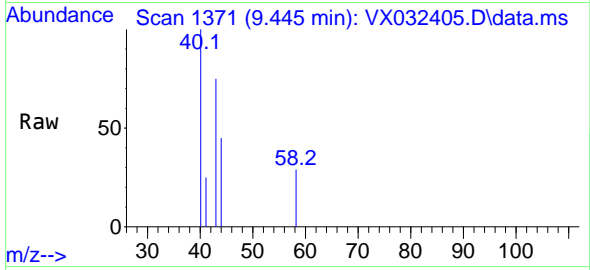




#59  
 2-Hexanone  
 Concen: 0.247 ug/l  
 RT: 9.445 min Scan# 11  
 Delta R.T. 0.012 min  
 Lab File: VX032405.D  
 Acq: 26 Oct 2022 15:22

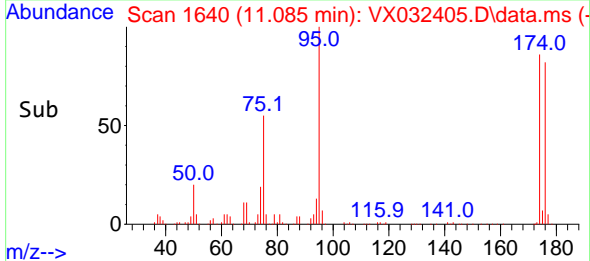
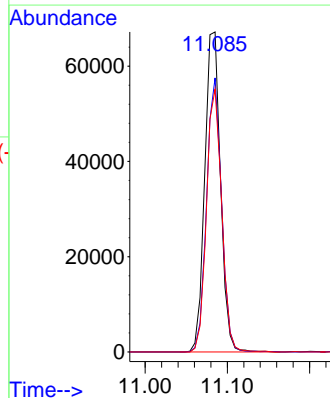
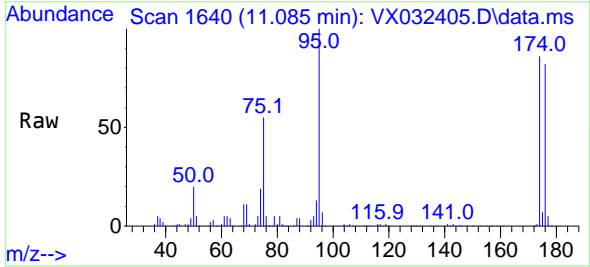
Instrument :  
 MSVOA\_X  
 ClientSampleId :  
 IBLK

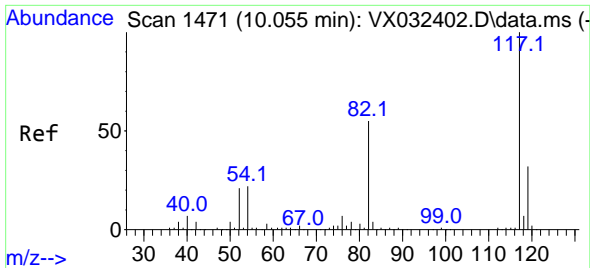
Tgt Ion: 43 Resp: 391  
 Ion Ratio Lower Upper  
 43 100  
 58 20.5 26.5 79.5#



#62  
 4-Bromofluorobenzene  
 Concen: 43.199 ug/l  
 RT: 11.085 min Scan# 1640  
 Delta R.T. 0.006 min  
 Lab File: VX032405.D  
 Acq: 26 Oct 2022 15:22

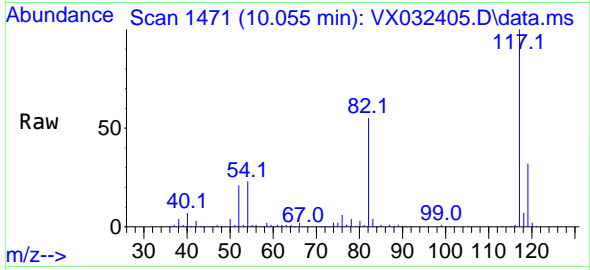
Tgt Ion: 95 Resp: 89350  
 Ion Ratio Lower Upper  
 95 100  
 174 81.4 0.0 164.0  
 176 79.5 0.0 154.4





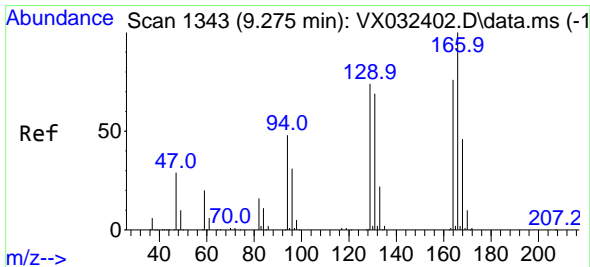
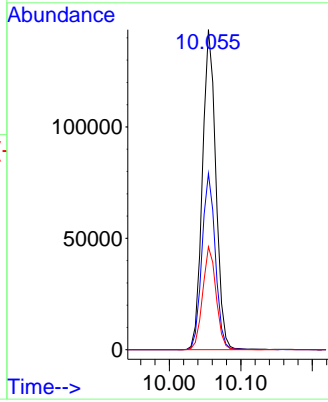
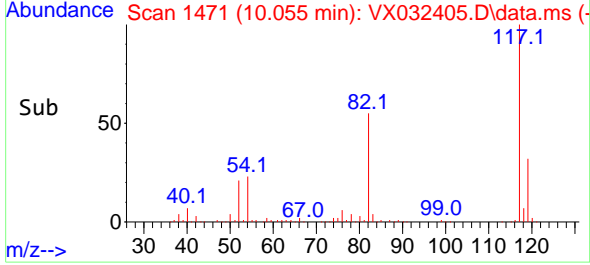
#63  
 Chlorobenzene-d5  
 Concen: 50.000 ug/l  
 RT: 10.055 min Scan# 1471  
 Delta R.T. -0.000 min  
 Lab File: VX032405.D  
 Acq: 26 Oct 2022 15:22

Instrument : MSVOA\_X  
 ClientSampleId : IBLK

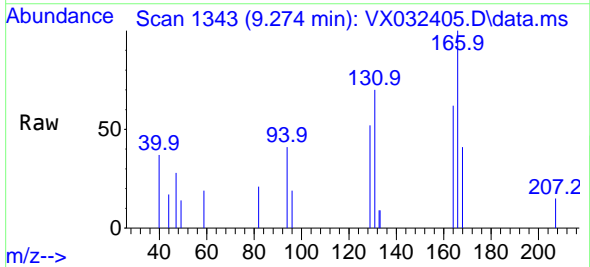


Tgt Ion:117 Resp: 187893

Ion	Ratio	Lower	Upper
117	100		
82	55.1	44.3	66.5
119	32.1	25.7	38.5

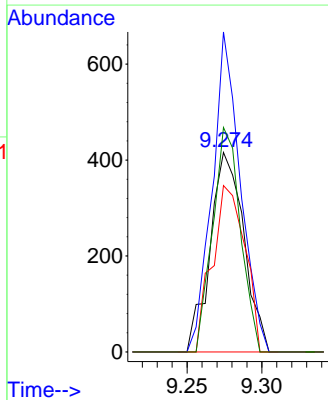
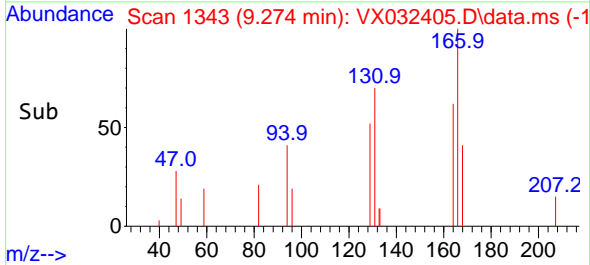


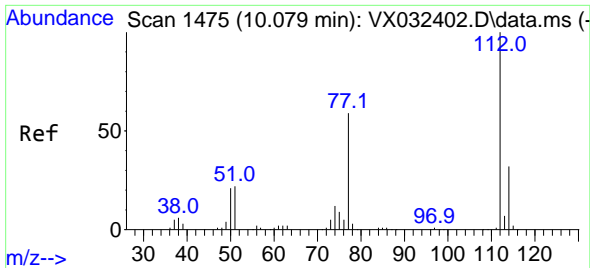
#64  
 Tetrachloroethene  
 Concen: 0.473 ug/l  
 RT: 9.274 min Scan# 1343  
 Delta R.T. -0.000 min  
 Lab File: VX032405.D  
 Acq: 26 Oct 2022 15:22



Tgt Ion:164 Resp: 650

Ion	Ratio	Lower	Upper
164	100		
166	160.3	105.4	158.2#
129	83.4	78.2	117.2
131	112.5	72.5	108.7#

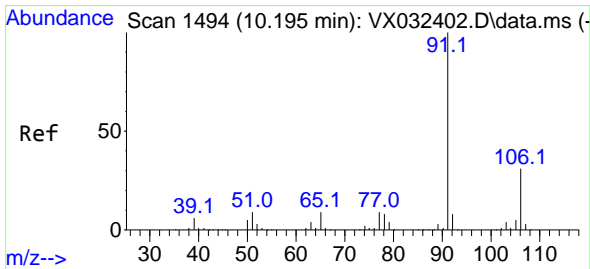
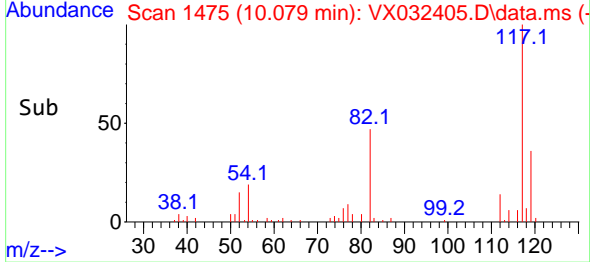
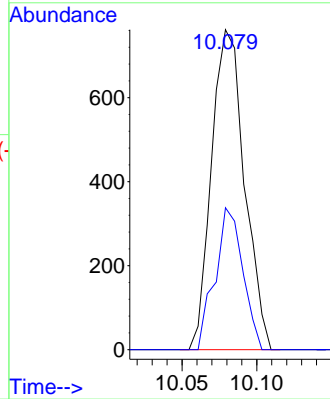
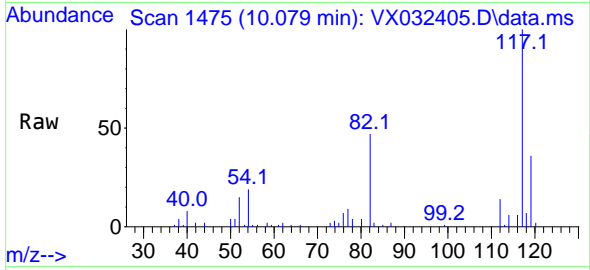




#65  
 Chlorobenzene  
 Concen: 0.277 ug/l  
 RT: 10.079 min Scan# 1475  
 Delta R.T. -0.000 min  
 Lab File: VX032405.D  
 Acq: 26 Oct 2022 15:22

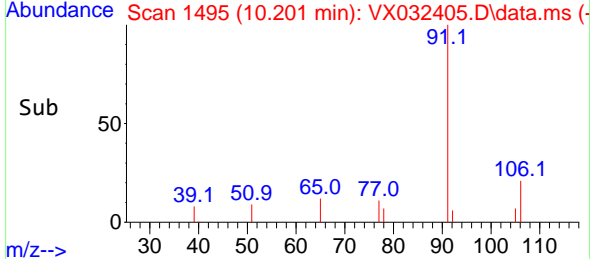
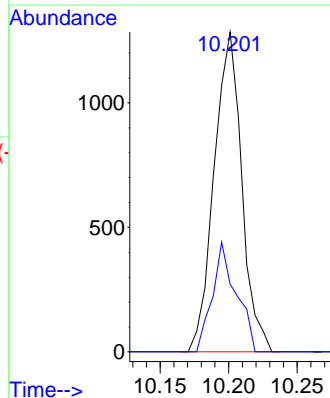
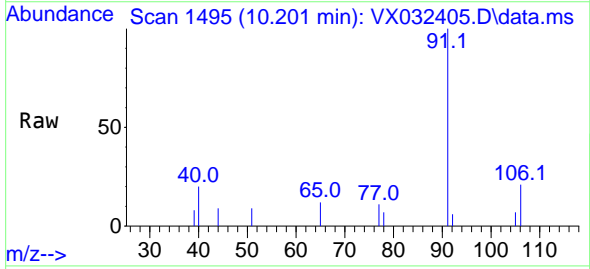
Instrument : MSVOA\_X  
 ClientSampleId : IBLK

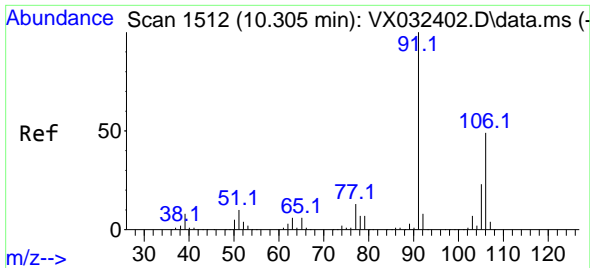
Tgt Ion:112 Resp: 1167  
 Ion Ratio Lower Upper  
 112 100  
 114 44.4 25.4 38.2#



#67  
 Ethyl Benzene  
 Concen: 0.239 ug/l  
 RT: 10.201 min Scan# 1495  
 Delta R.T. 0.006 min  
 Lab File: VX032405.D  
 Acq: 26 Oct 2022 15:22

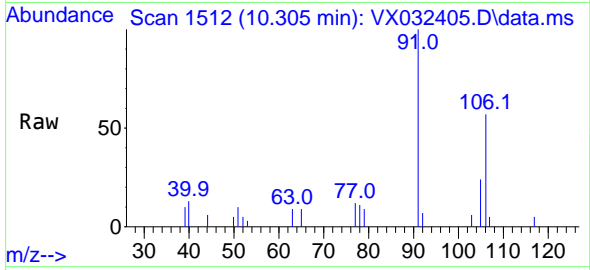
Tgt Ion: 91 Resp: 1799  
 Ion Ratio Lower Upper  
 91 100  
 106 21.2 25.0 37.6#



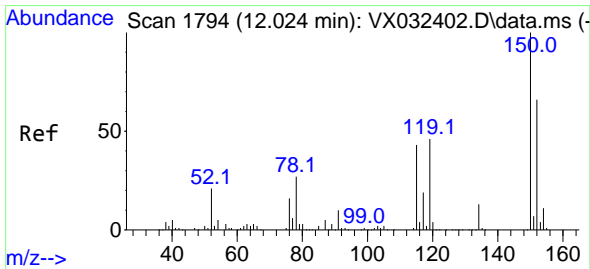
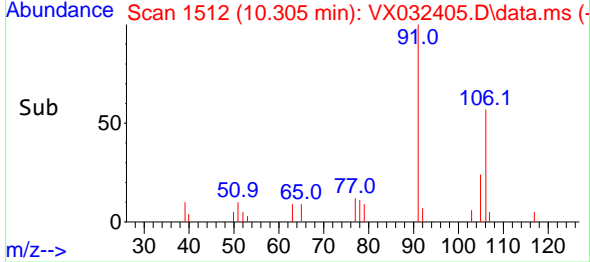
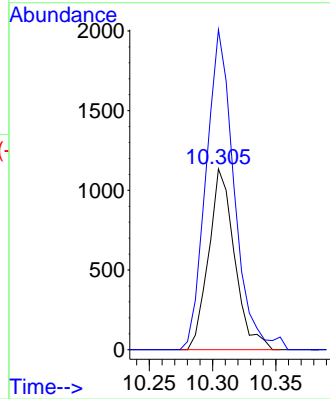


#68  
 m/p-Xylenes  
 Concen: 0.554 ug/l  
 RT: 10.305 min Scan# 11  
 Delta R.T. -0.000 min  
 Lab File: VX032405.D  
 Acq: 26 Oct 2022 15:22

Instrument :  
 MSVOA\_X  
 ClientSampleId :  
 IBLK

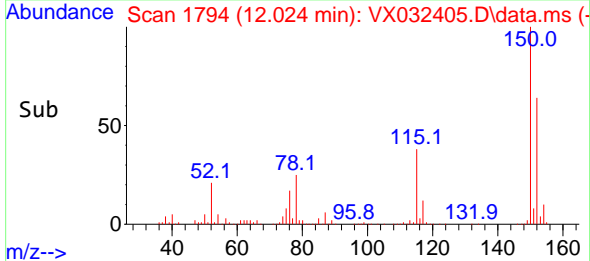
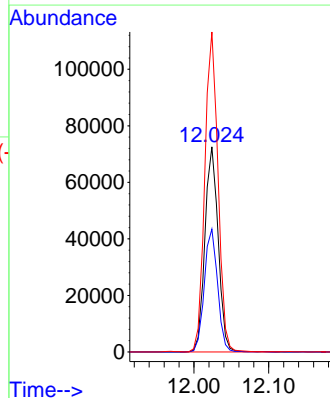
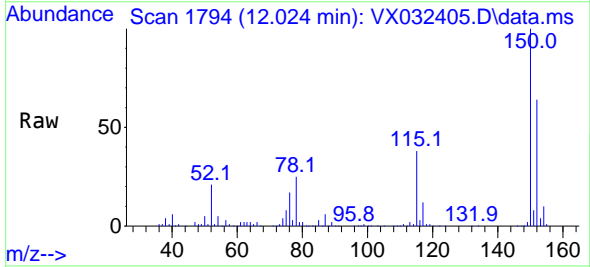


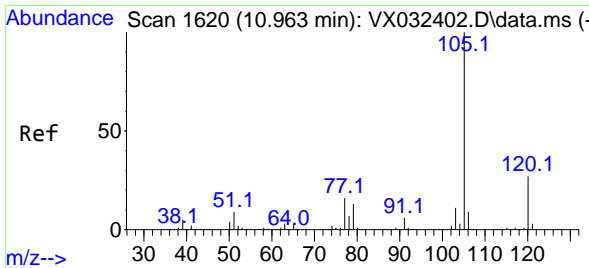
Tgt Ion:106 Resp: 1620  
 Ion Ratio Lower Upper  
 106 100  
 91 192.2 164.5 246.7



#72  
 1,4-Dichlorobenzene-d4  
 Concen: 50.000 ug/l  
 RT: 12.024 min Scan# 1794  
 Delta R.T. -0.000 min  
 Lab File: VX032405.D  
 Acq: 26 Oct 2022 15:22

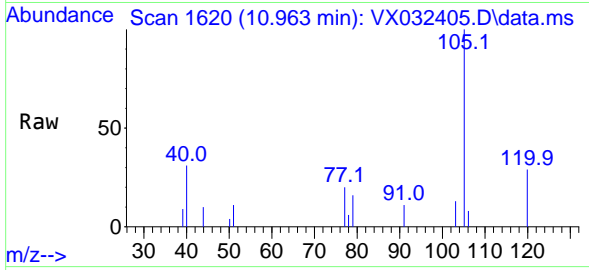
Tgt Ion:152 Resp: 89502  
 Ion Ratio Lower Upper  
 152 100  
 115 59.8 44.0 132.0  
 150 155.3 0.0 351.8



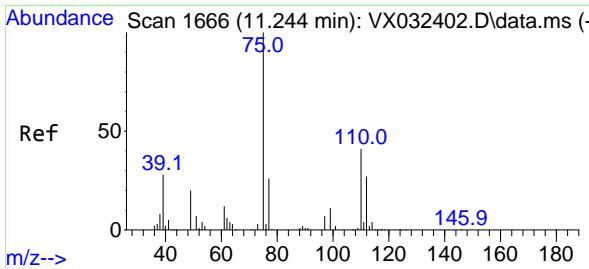
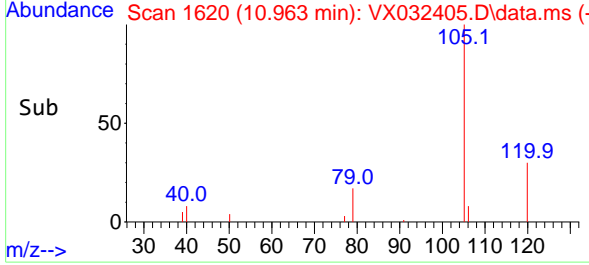
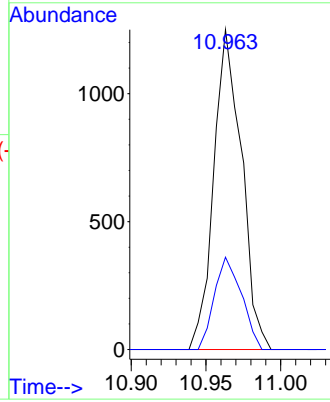


#73  
 Isopropylbenzene  
 Concen: 0.228 ug/l  
 RT: 10.963 min Scan# 1620  
 Delta R.T. -0.000 min  
 Lab File: VX032405.D  
 Acq: 26 Oct 2022 15:22

Instrument : MSVOA\_X  
 ClientSampleId : IBLK

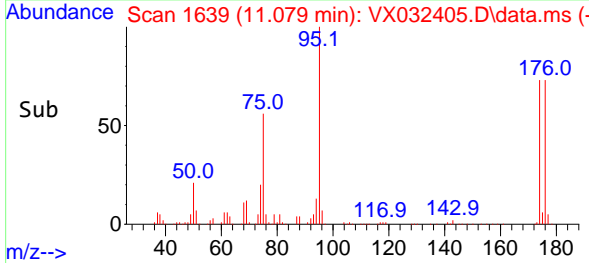
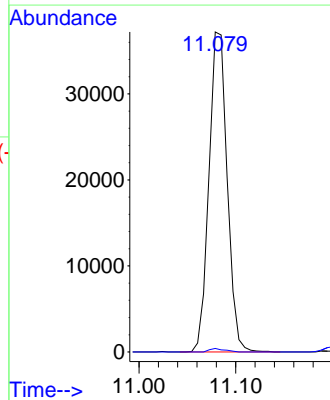
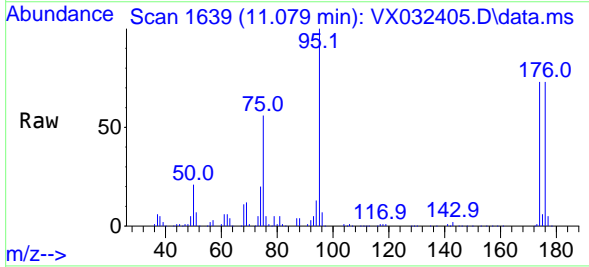


Tgt Ion:105 Resp: 1619  
 Ion Ratio Lower Upper  
 105 100  
 120 28.2 13.1 39.3

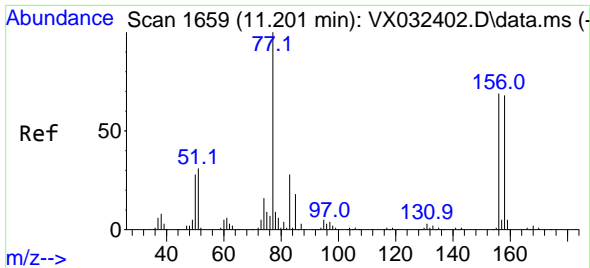


#76  
 1,2,3-Trichloropropane  
 Concen: 24.558 ug/l  
 RT: 11.079 min Scan# 1639  
 Delta R.T. -0.165 min  
 Lab File: VX032405.D  
 Acq: 26 Oct 2022 15:22

Tgt Ion: 75 Resp: 48899  
 Ion Ratio Lower Upper  
 75 100  
 77 0.9 20.0 60.0#

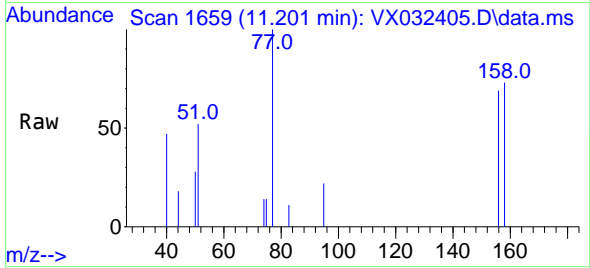




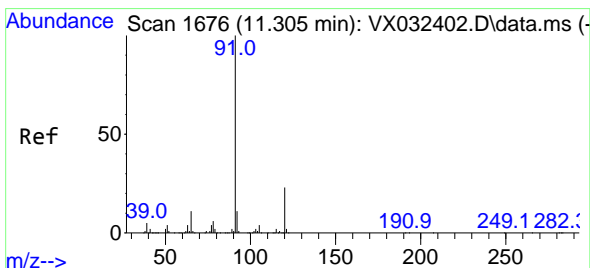
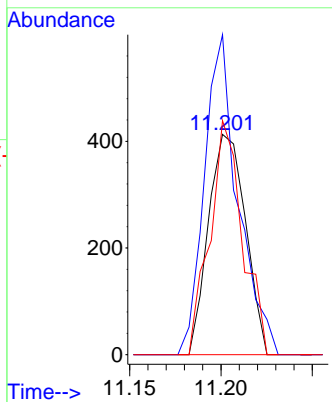
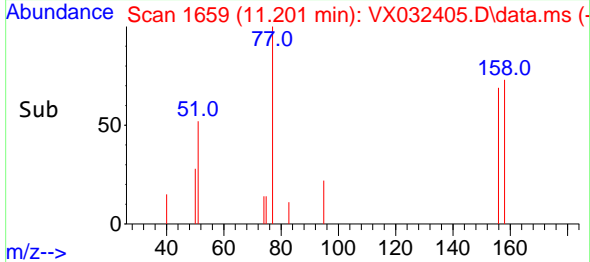


#77  
 Bromobenzene  
 Concen: 0.335 ug/l  
 RT: 11.201 min Scan# 1659  
 Delta R.T. -0.000 min  
 Lab File: VX032405.D  
 Acq: 26 Oct 2022 15:22

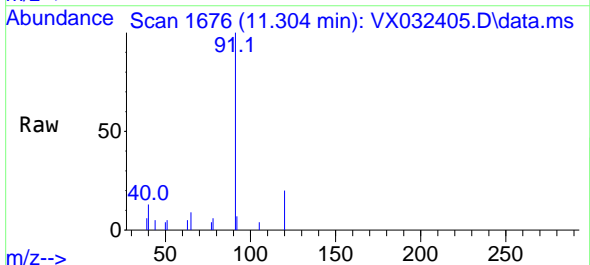
Instrument : MSVOA\_X  
 ClientSampleId : IBLK



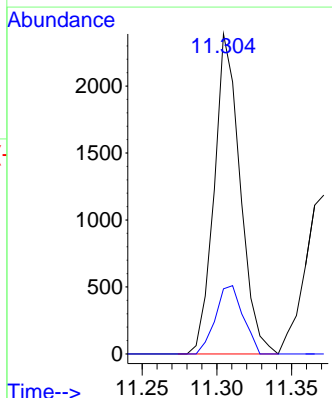
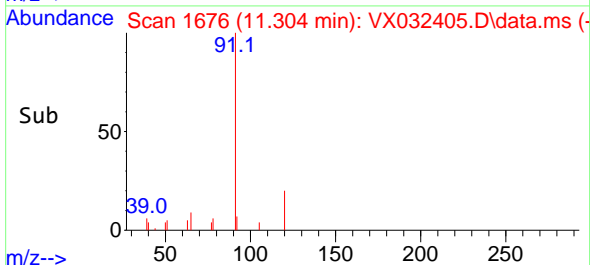
Tgt Ion:156 Resp: 582  
 Ion Ratio Lower Upper  
 156 100  
 77 131.6 76.1 228.4  
 158 93.5 48.8 146.3

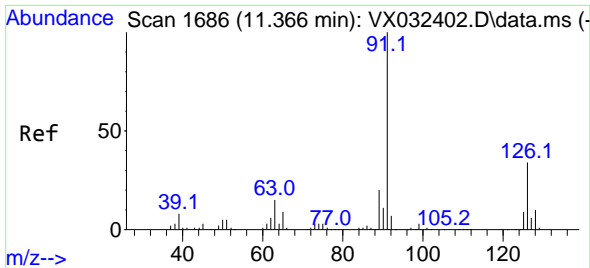


#78  
 n-propylbenzene  
 Concen: 0.353 ug/l  
 RT: 11.304 min Scan# 1676  
 Delta R.T. -0.000 min  
 Lab File: VX032405.D  
 Acq: 26 Oct 2022 15:22



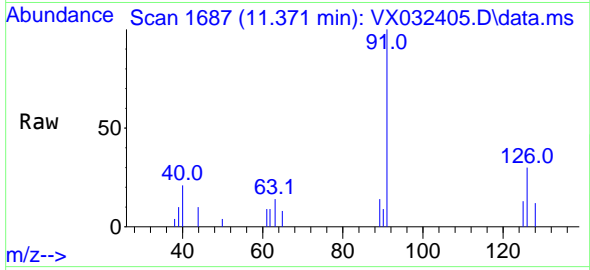
Tgt Ion: 91 Resp: 2882  
 Ion Ratio Lower Upper  
 91 100  
 120 22.6 11.6 34.8



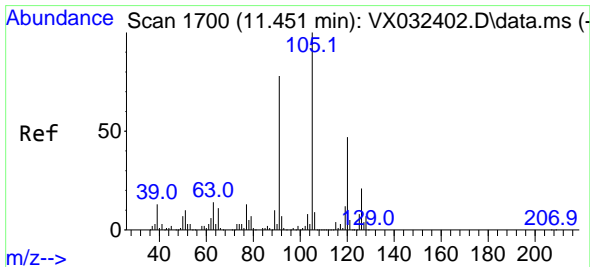
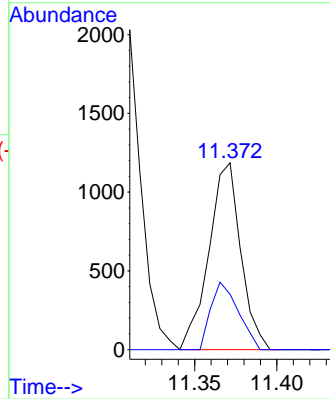
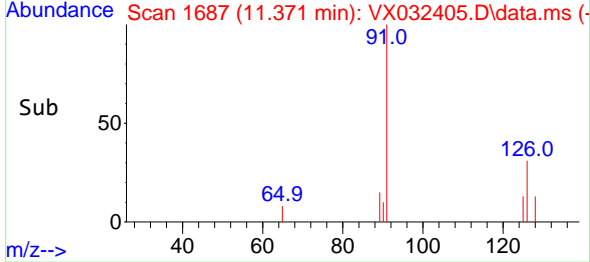


#79  
 2-Chlorotoluene  
 Concen: 0.328 ug/l  
 RT: 11.371 min Scan# 1701  
 Delta R.T. 0.006 min  
 Lab File: VX032405.D  
 Acq: 26 Oct 2022 15:22

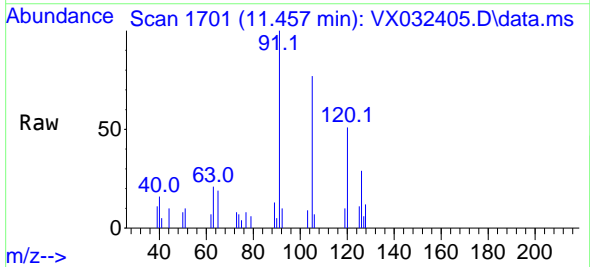
Instrument : MSVOA\_X  
 ClientSampleId : IBLK



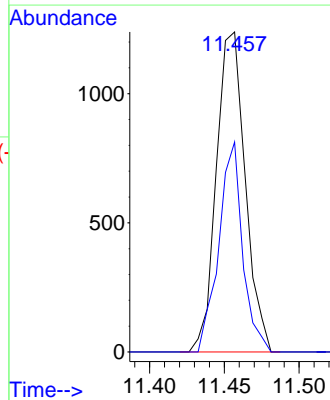
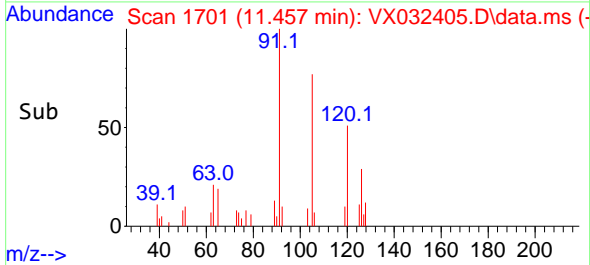
Tgt Ion: 91 Resp: 1603  
 Ion Ratio Lower Upper  
 91 100  
 126 31.0 17.1 51.2

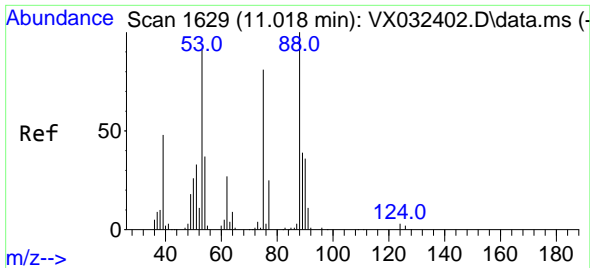


#80  
 1,3,5-Trimethylbenzene  
 Concen: 0.275 ug/l  
 RT: 11.457 min Scan# 1701  
 Delta R.T. 0.006 min  
 Lab File: VX032405.D  
 Acq: 26 Oct 2022 15:22



Tgt Ion: 105 Resp: 1664  
 Ion Ratio Lower Upper  
 105 100  
 120 54.1 23.6 71.0

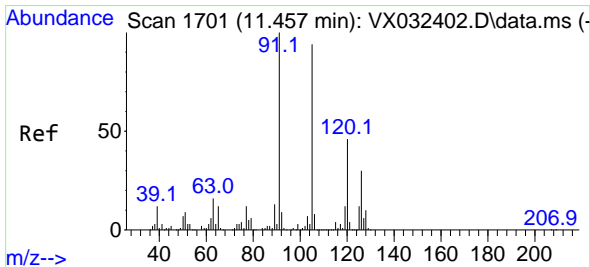
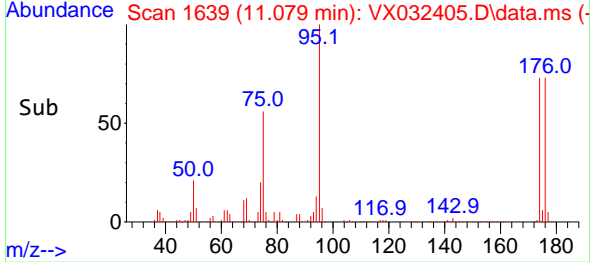
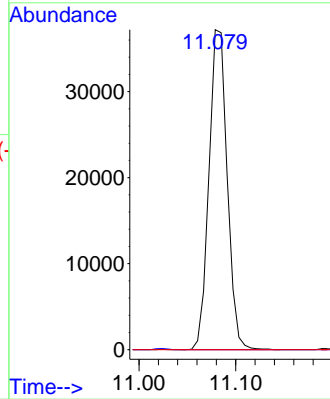
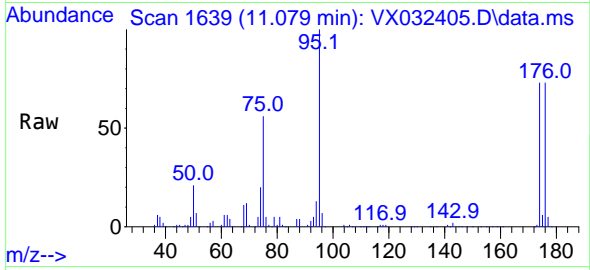




#81  
 trans-1,4-Dichloro-2-butene  
 Concen: 78.143 ug/l  
 RT: 11.079 min Scan# 1702  
 Delta R.T. 0.061 min  
 Lab File: VX032405.D  
 Acq: 26 Oct 2022 15:22

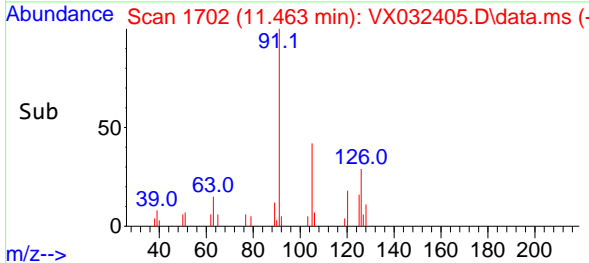
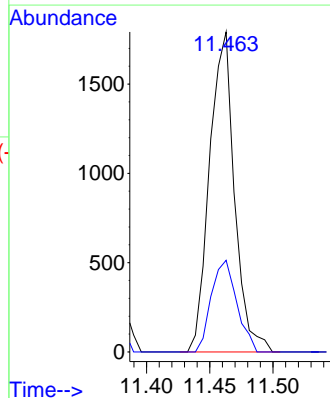
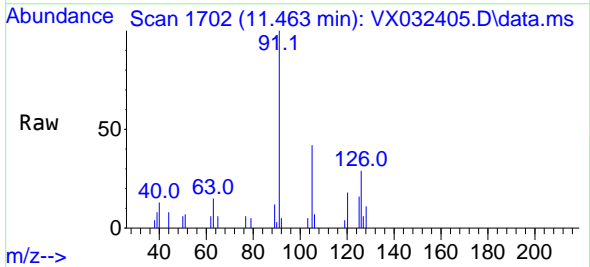
Instrument : MSVOA\_X  
 ClientSampleId : IBLK

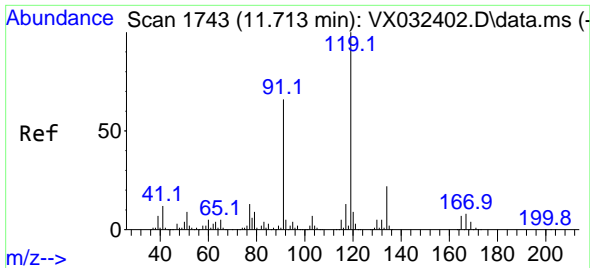
Tgt Ion: 75 Resp: 48899  
 Ion Ratio Lower Upper  
 75 100  
 53 0.0 86.9 130.3#  
 89 0.0 38.3 57.5#



#82  
 4-Chlorotoluene  
 Concen: 0.429 ug/l  
 RT: 11.463 min Scan# 1702  
 Delta R.T. 0.006 min  
 Lab File: VX032405.D  
 Acq: 26 Oct 2022 15:22

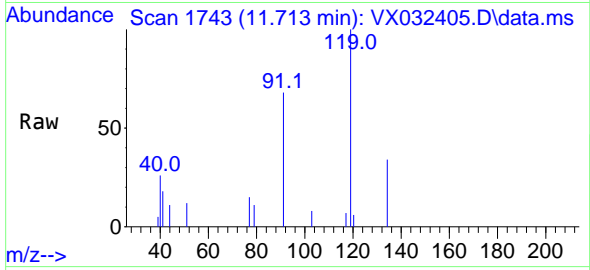
Tgt Ion: 91 Resp: 2456  
 Ion Ratio Lower Upper  
 91 100  
 126 29.2 14.8 44.4





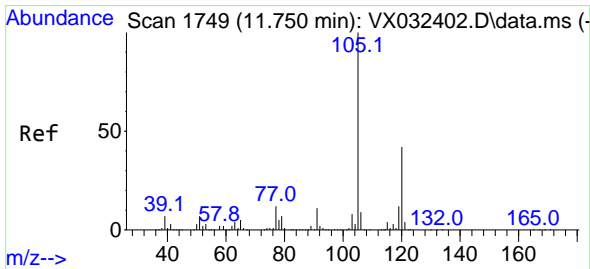
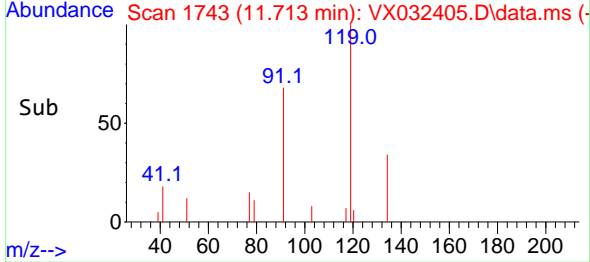
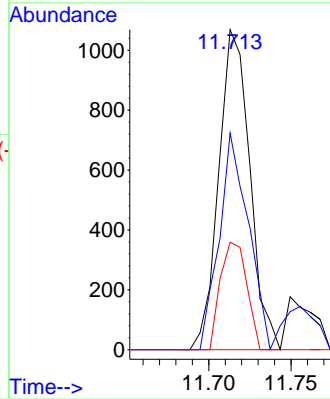
#83  
 tert-Butylbenzene  
 Concen: 0.232 ug/l  
 RT: 11.713 min Scan# 1170  
 Delta R.T. -0.000 min  
 Lab File: VX032405.D  
 Acq: 26 Oct 2022 15:22

Instrument : MSVOA\_X  
 ClientSampleId : IBLK

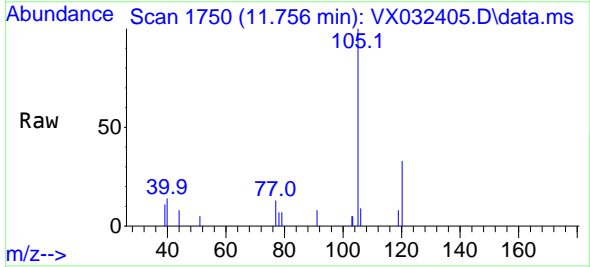


Tgt Ion:119 Resp: 1407

Ion	Ratio	Lower	Upper
119	100		
91	63.4	29.4	88.2
134	28.5	11.0	33.0

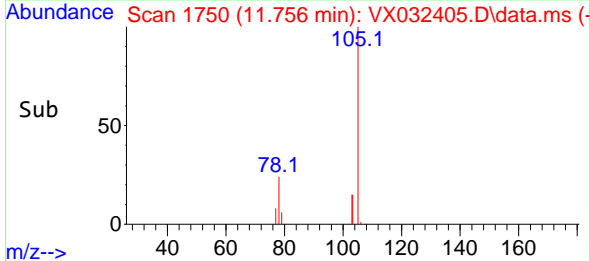
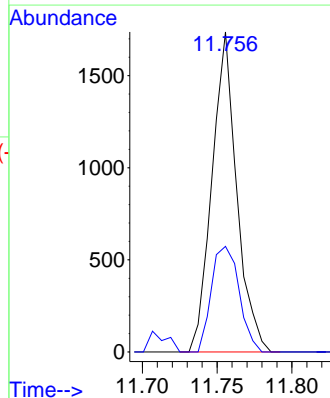


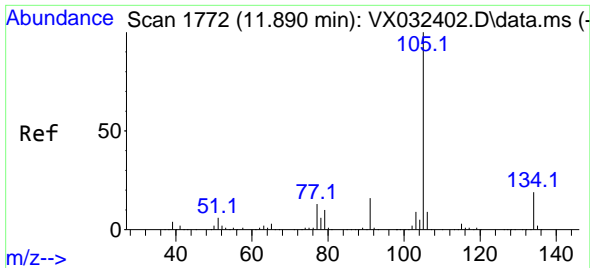
#84  
 1,2,4-Trimethylbenzene  
 Concen: 0.332 ug/l  
 RT: 11.756 min Scan# 1750  
 Delta R.T. 0.006 min  
 Lab File: VX032405.D  
 Acq: 26 Oct 2022 15:22



Tgt Ion:105 Resp: 2000

Ion	Ratio	Lower	Upper
105	100		
120	37.0	21.9	65.5

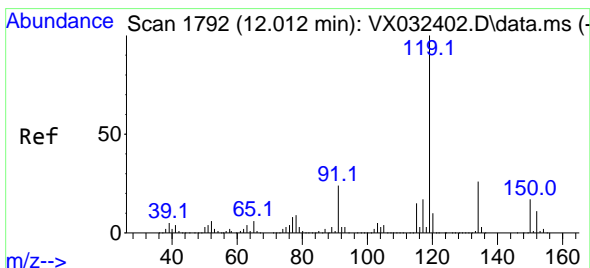
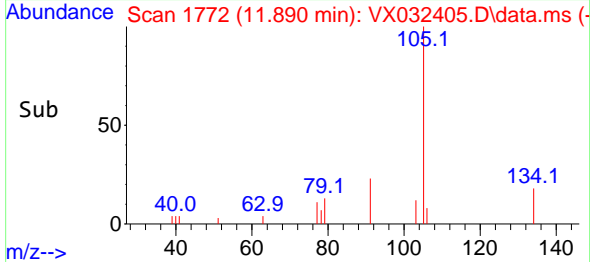
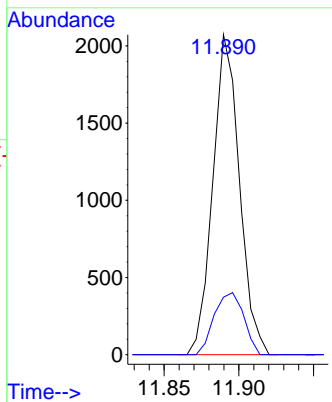
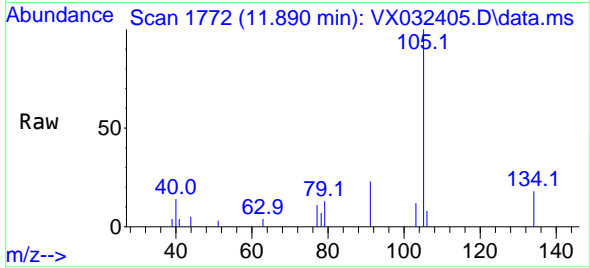




#85  
 sec-Butylbenzene  
 Concen: 0.352 ug/l  
 RT: 11.890 min Scan# 1772  
 Delta R.T. -0.000 min  
 Lab File: VX032405.D  
 Acq: 26 Oct 2022 15:22

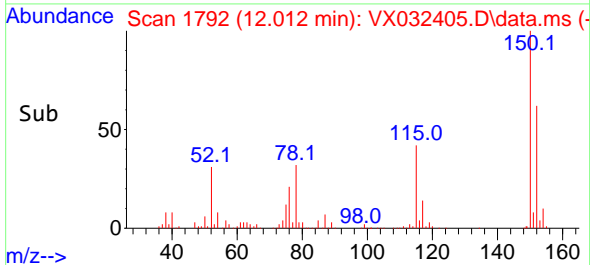
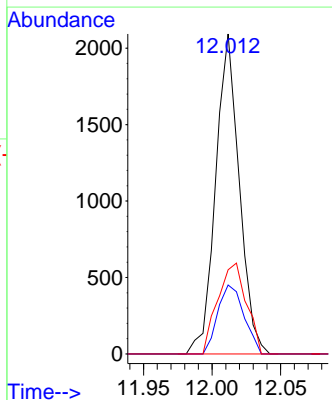
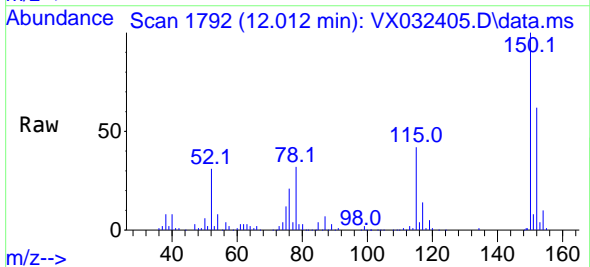
Instrument : MSVOA\_X  
 ClientSampleId : IBLK

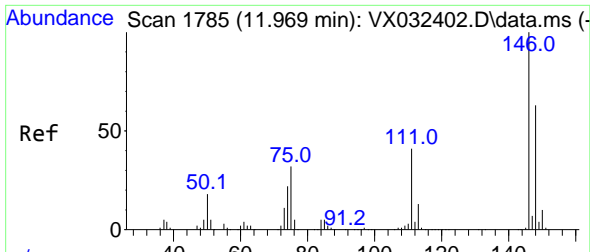
Tgt Ion:105 Resp: 2562  
 Ion Ratio Lower Upper  
 105 100  
 134 21.5 9.9 29.7



#86  
 p-Isopropyltoluene  
 Concen: 0.406 ug/l  
 RT: 12.012 min Scan# 1792  
 Delta R.T. -0.000 min  
 Lab File: VX032405.D  
 Acq: 26 Oct 2022 15:22

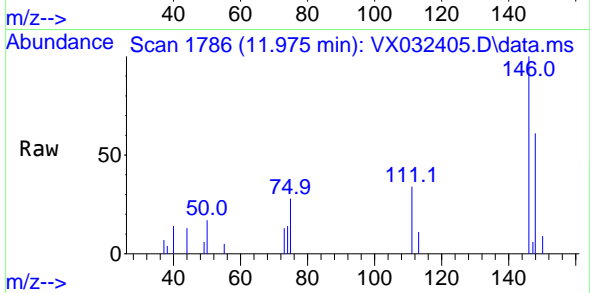
Tgt Ion:119 Resp: 2506  
 Ion Ratio Lower Upper  
 119 100  
 134 23.9 12.9 38.7  
 91 34.4 12.5 37.5



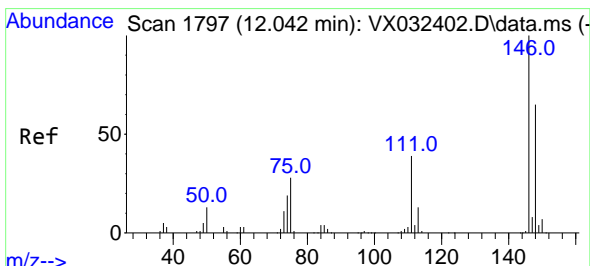
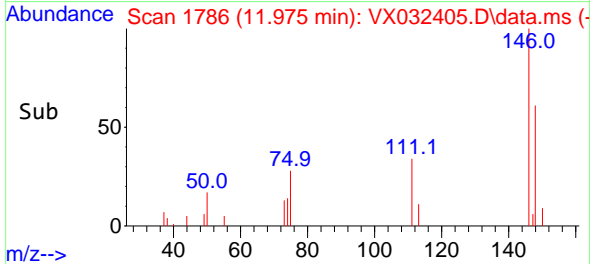
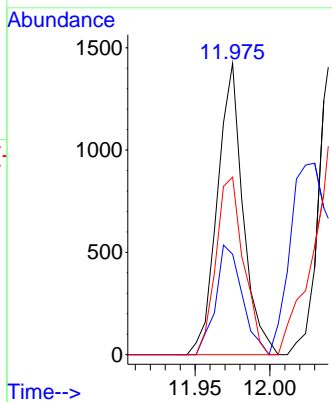


#87  
 1,3-Dichlorobenzene  
 Concen: 0.519 ug/l  
 RT: 11.975 min Scan# 1786  
 Delta R.T. 0.006 min  
 Lab File: VX032405.D  
 Acq: 26 Oct 2022 15:22

Instrument : MSVOA\_X  
 ClientSampleId : IBLK

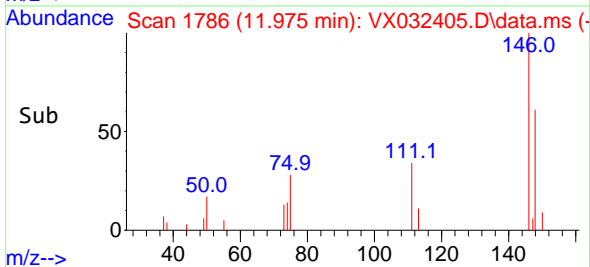
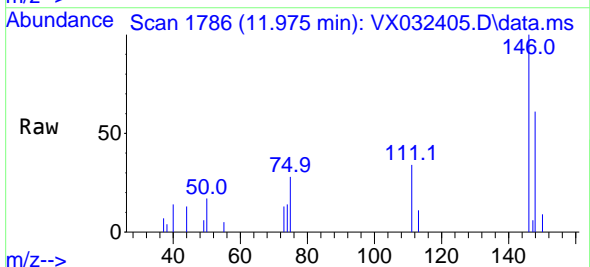
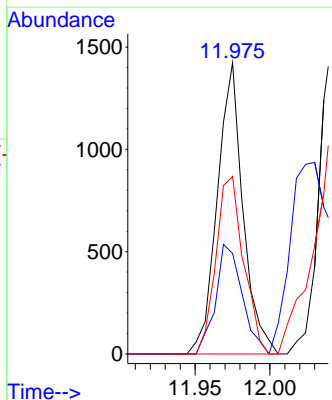


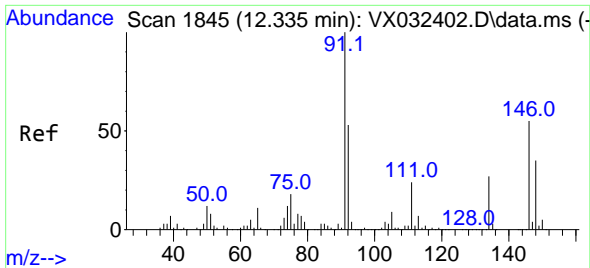
Tgt Ion:146 Resp: 1702  
 Ion Ratio Lower Upper  
 146 100  
 111 39.0 20.6 61.8  
 148 65.4 31.7 95.1



#88  
 1,4-Dichlorobenzene  
 Concen: 0.500 ug/l  
 RT: 11.975 min Scan# 1786  
 Delta R.T. -0.067 min  
 Lab File: VX032405.D  
 Acq: 26 Oct 2022 15:22

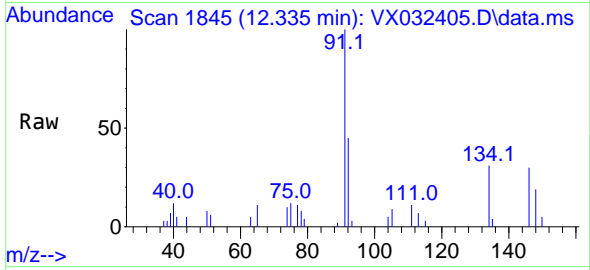
Tgt Ion:146 Resp: 1702  
 Ion Ratio Lower Upper  
 146 100  
 111 39.0 20.5 61.6  
 148 65.4 32.2 96.6





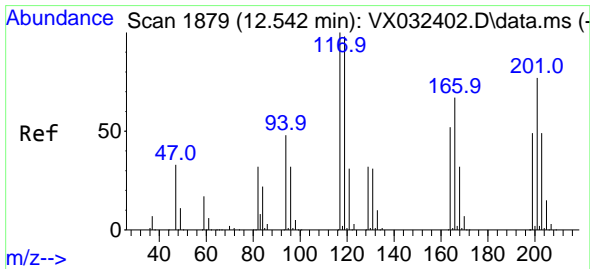
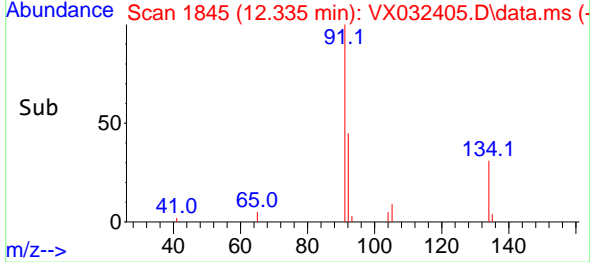
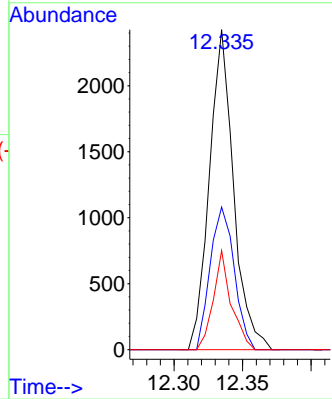
#89  
 n-Butylbenzene  
 Concen: 0.553 ug/l  
 RT: 12.335 min Scan# 1845  
 Delta R.T. -0.000 min  
 Lab File: VX032405.D  
 Acq: 26 Oct 2022 15:22

Instrument : MSVOA\_X  
 ClientSampleId : IBLK



Tgt Ion: 91 Resp: 2972

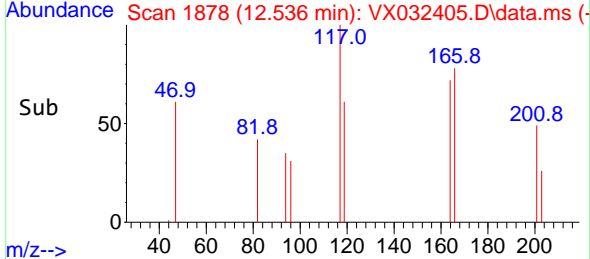
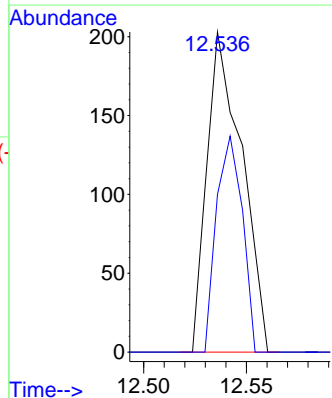
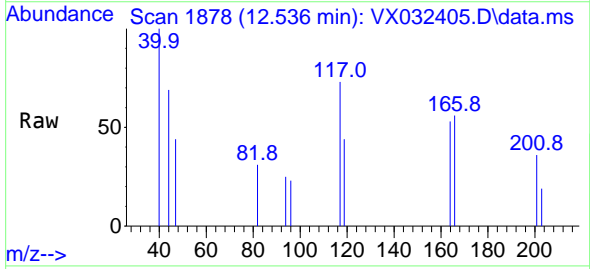
Ion	Ratio	Lower	Upper
91	100		
92	44.3	26.2	78.6
134	23.0	12.9	38.6

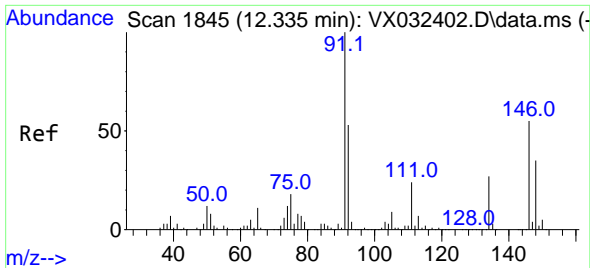


#90  
 Hexachloroethane  
 Concen: 0.238 ug/l  
 RT: 12.536 min Scan# 1878  
 Delta R.T. -0.006 min  
 Lab File: VX032405.D  
 Acq: 26 Oct 2022 15:22

Tgt Ion: 117 Resp: 240

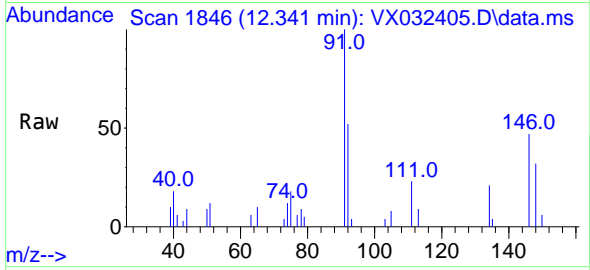
Ion	Ratio	Lower	Upper
117	100		
201	50.0	37.6	112.9



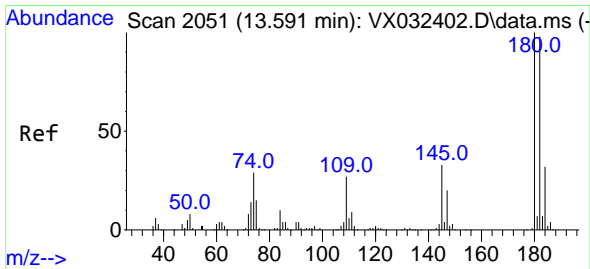
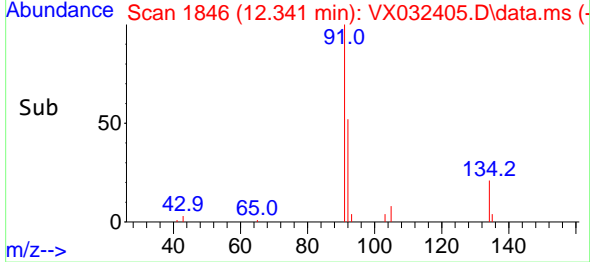
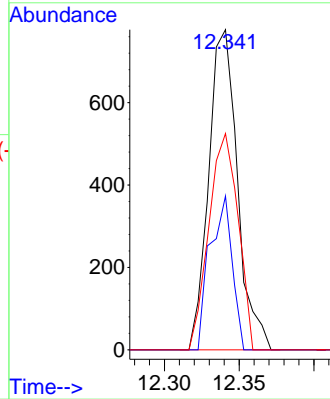


#91  
 1,2-Dichlorobenzene  
 Concen: 0.322 ug/l  
 RT: 12.341 min Scan# 1846  
 Delta R.T. 0.006 min  
 Lab File: VX032405.D  
 Acq: 26 Oct 2022 15:22

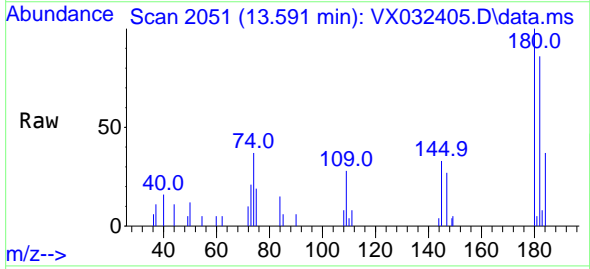
Instrument : MSVOA\_X  
 ClientSampleId : IBLK



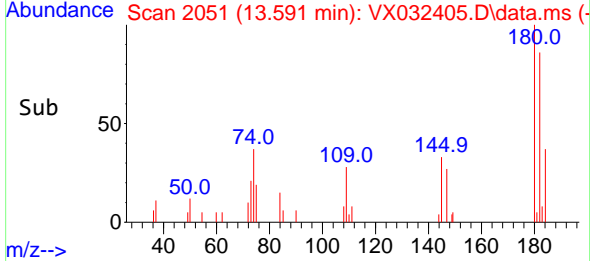
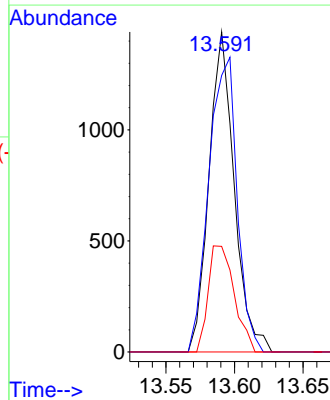
Tgt Ion:146 Resp: 1041  
 Ion Ratio Lower Upper  
 146 100  
 111 37.0 21.5 64.5  
 148 68.4 32.0 96.2



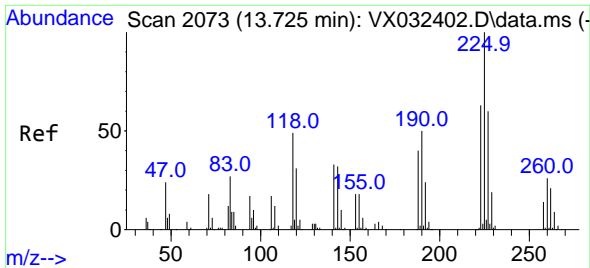
#93  
 1,2,4-Trichlorobenzene  
 Concen: 0.875 ug/l  
 RT: 13.591 min Scan# 2051  
 Delta R.T. -0.000 min  
 Lab File: VX032405.D  
 Acq: 26 Oct 2022 15:22



Tgt Ion:180 Resp: 1846  
 Ion Ratio Lower Upper  
 180 100  
 182 102.9 48.4 145.0  
 145 34.2 16.2 48.5

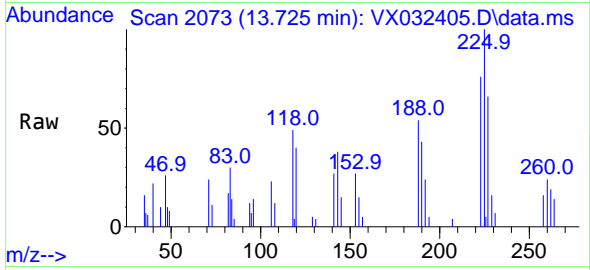




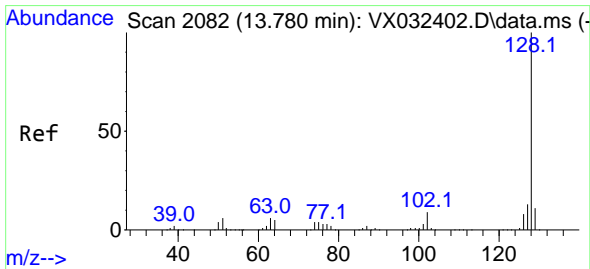
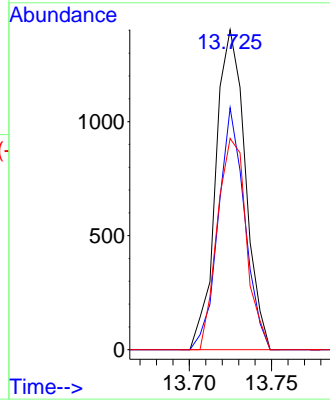
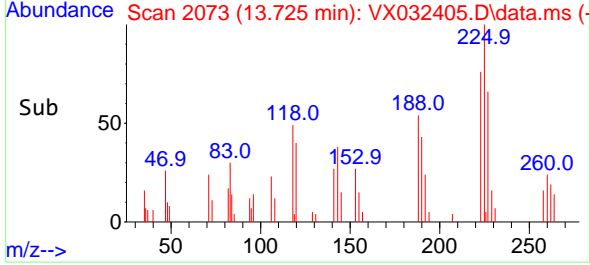


#94  
 Hexachlorobutadiene  
 Concen: 1.987 ug/l  
 RT: 13.725 min Scan# 2073  
 Delta R.T. -0.000 min  
 Lab File: VX032405.D  
 Acq: 26 Oct 2022 15:22

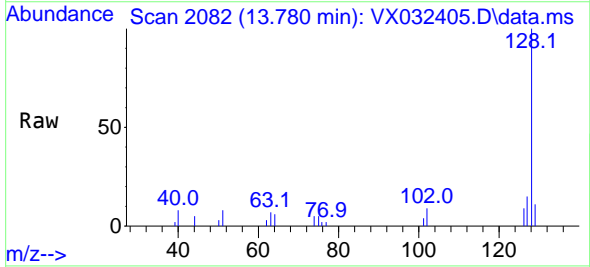
Instrument : MSVOA\_X  
 ClientSampleId : IBLK



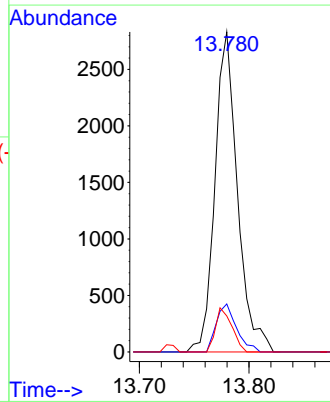
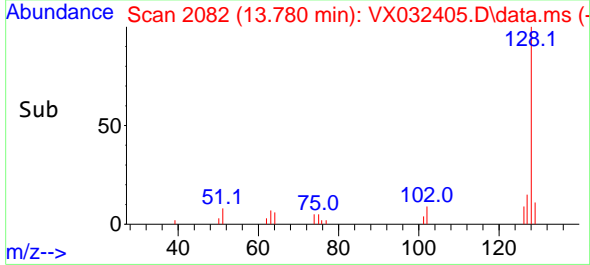
Tgt Ion:225 Resp: 1750  
 Ion Ratio Lower Upper  
 225 100  
 223 67.8 31.9 95.9  
 227 64.9 31.9 95.5

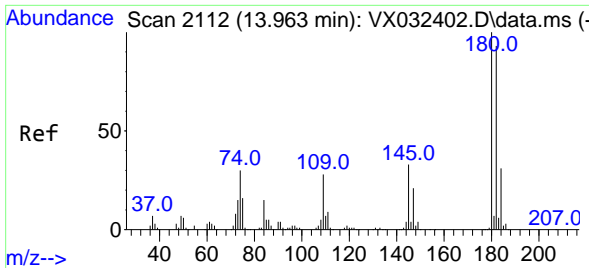


#95  
 Naphthalene  
 Concen: 0.575 ug/l  
 RT: 13.780 min Scan# 2082  
 Delta R.T. -0.000 min  
 Lab File: VX032405.D  
 Acq: 26 Oct 2022 15:22



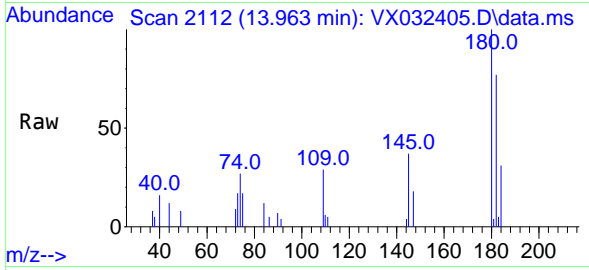
Tgt Ion:128 Resp: 4042  
 Ion Ratio Lower Upper  
 128 100  
 127 13.5 10.2 15.4  
 129 10.0 8.9 13.3





#96  
 1,2,3-Trichlorobenzene  
 Concen: 0.850 ug/l  
 RT: 13.963 min Scan# 21  
 Delta R.T. -0.000 min  
 Lab File: VX032405.D  
 Acq: 26 Oct 2022 15:22

Instrument :  
 MSVOA\_X  
 ClientSampleId :  
 IBLK



Tgt Ion:180 Resp: 1822

Ion	Ratio	Lower	Upper
180	100		
182	84.6	47.5	142.6
145	32.7	16.9	50.6

