

Data Path : Z:\voasrv\HPCHEM1\MSVOA_X\Data\VX102623\
 Data File : VX038523.D
 Acq On : 26 Oct 2023 17:19
 Operator : JC/MD
 Sample : 05063-03 2000X
 Misc : 5.0mL/MSVOA_X/WATER
 ALS Vial : 8 Sample Multiplier: 1

Instrument :
 MSVOA_X
 ClientSampleId :
 DUP-1

Quant Time: Oct 27 05:20:08 2023
 Quant Method : Z:\voasrv\HPCHEM1\MSVOA_X\Method\82X100523W.M
 Quant Title : SW846 8260
 QLast Update : Thu Oct 05 15:27:13 2023
 Response via : Initial Calibration

Compound	R.T.	QIon	Response	Conc	Units	Dev(Min)

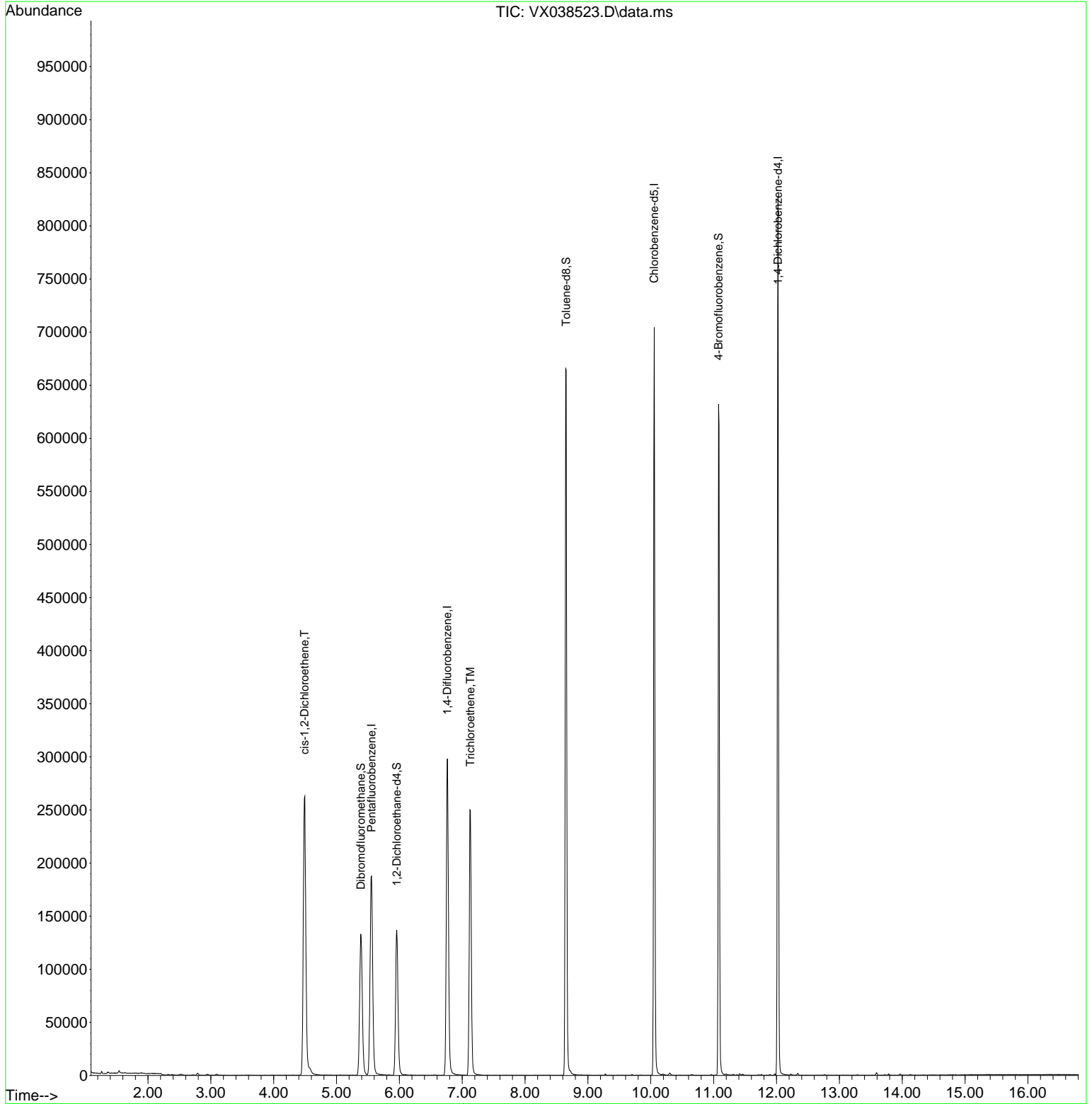
Internal Standards						
1) Pentafluorobenzene	5.556	168	190428	50.000	ug/l	# 0.00
34) 1,4-Difluorobenzene	6.763	114	319261	50.000	ug/l	0.00
63) Chlorobenzene-d5	10.055	117	324353	50.000	ug/l	0.00
72) 1,4-Dichlorobenzene-d4	12.024	152	176749	50.000	ug/l	0.00
System Monitoring Compounds						
33) 1,2-Dichloroethane-d4	5.958	65	129333	42.225	ug/l	0.00
Spiked Amount	50.000	Range	78 - 117	Recovery	=	84.460%
35) Dibromofluoromethane	5.385	113	116082	50.460	ug/l	0.00
Spiked Amount	50.000	Range	75 - 124	Recovery	=	100.920%
50) Toluene-d8	8.653	98	424992	48.346	ug/l	0.00
Spiked Amount	50.000	Range	92 - 112	Recovery	=	96.700%
62) 4-Bromofluorobenzene	11.079	95	167528	50.269	ug/l	0.00
Spiked Amount	50.000	Range	83 - 123	Recovery	=	100.540%
Target Compounds						
27) cis-1,2-Dichloroethene	4.489	96	175687	68.384	ug/l	78
44) Trichloroethene	7.129	130	100601	43.350	ug/l	93

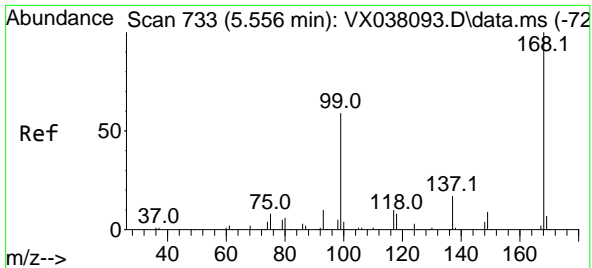
(#) = qualifier out of range (m) = manual integration (+) = signals summed

Data Path : Z:\voasrv\HPCHEM1\MSVOA_X\Data\VX102623\
 Data File : VX038523.D
 Acq On : 26 Oct 2023 17:19
 Operator : JC/MD
 Sample : 05063-03 2000X
 Misc : 5.0mL/MSVOA_X/WATER
 ALS Vial : 8 Sample Multiplier: 1

Instrument :
 MSVOA_X
 ClientSampleId :
 DUP-1

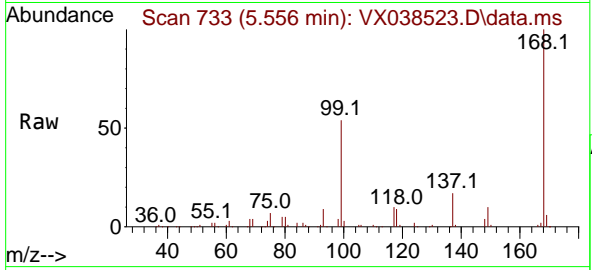
Quant Time: Oct 27 05:20:08 2023
 Quant Method : Z:\voasrv\HPCHEM1\MSVOA_X\Method\82X100523W.M
 Quant Title : SW846 8260
 QLast Update : Thu Oct 05 15:27:13 2023
 Response via : Initial Calibration



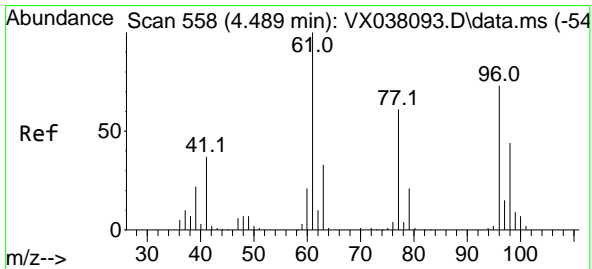
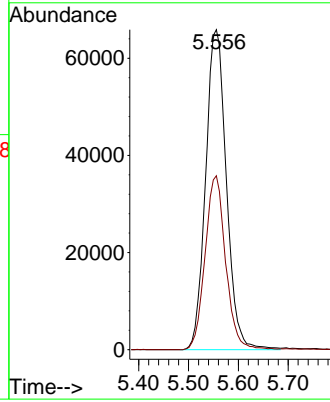
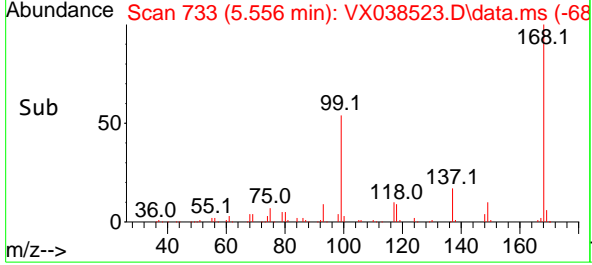


#1
 Pentafluorobenzene
 Concen: 50.000 ug/l
 RT: 5.556 min Scan# 71
 Delta R.T. -0.000 min
 Lab File: VX038523.D
 Acq: 26 Oct 2023 17:19

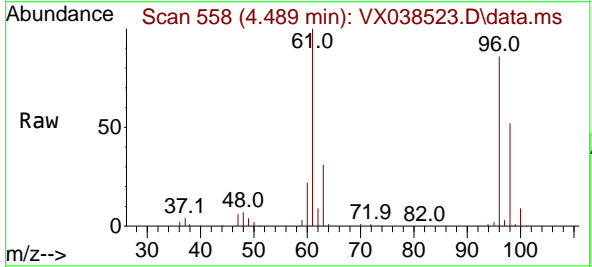
Instrument :
 MSVOA_X
 ClientSampleId :
 DUP-1



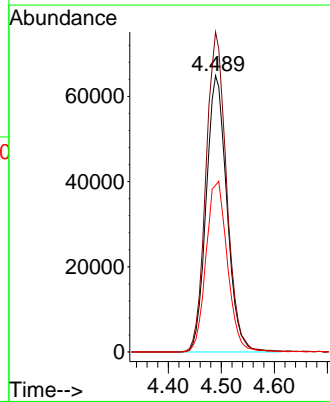
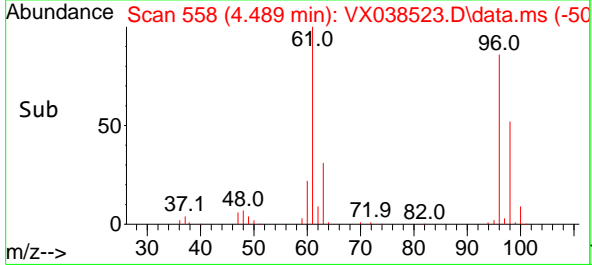
Tgt Ion:168 Resp: 190428
 Ion Ratio Lower Upper
 168 100
 99 54.4 56.6 85.0#

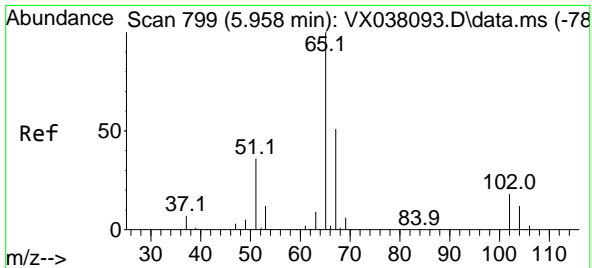


#27
 cis-1,2-Dichloroethene
 Concen: 68.384 ug/l
 RT: 4.489 min Scan# 558
 Delta R.T. -0.000 min
 Lab File: VX038523.D
 Acq: 26 Oct 2023 17:19



Tgt Ion: 96 Resp: 175687
 Ion Ratio Lower Upper
 96 100
 61 115.4 0.0 312.2
 98 63.8 0.0 129.0

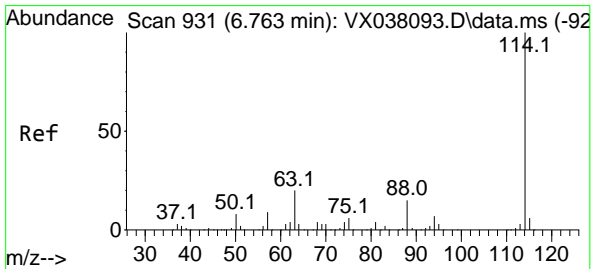
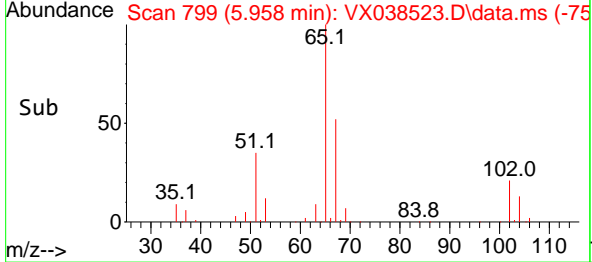
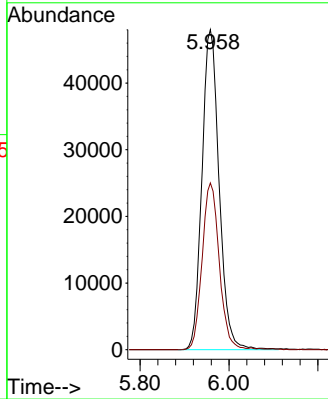
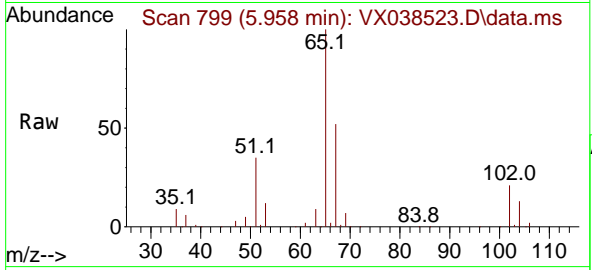




#33
 1,2-Dichloroethane-d4
 Concen: 42.225 ug/l
 RT: 5.958 min Scan# 799
 Delta R.T. 0.000 min
 Lab File: VX038523.D
 Acq: 26 Oct 2023 17:19

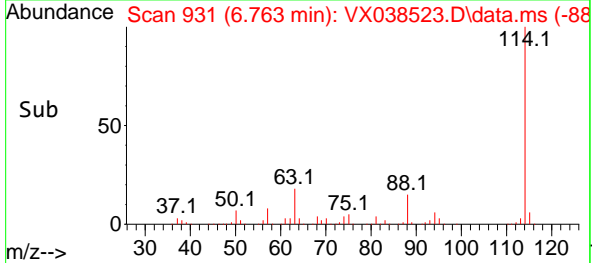
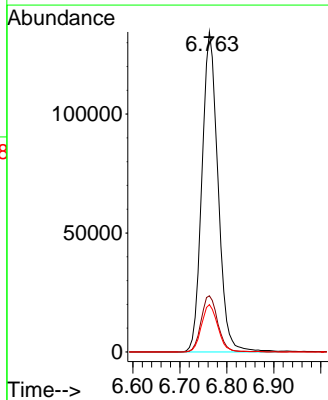
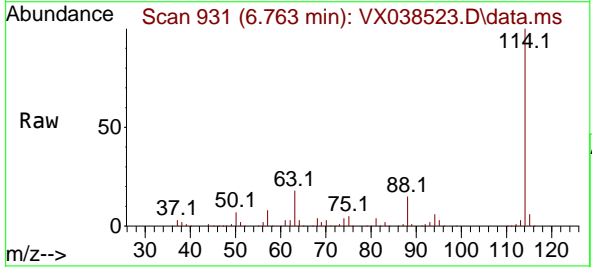
Instrument : MSVOA_X
 ClientSampleId : DUP-1

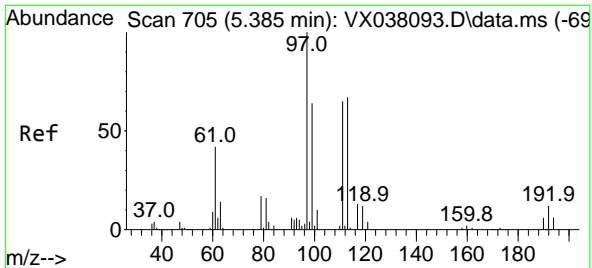
Tgt Ion: 65 Resp: 129333
 Ion Ratio Lower Upper
 65 100
 67 51.8 0.0 100.2



#34
 1,4-Difluorobenzene
 Concen: 50.000 ug/l
 RT: 6.763 min Scan# 931
 Delta R.T. -0.000 min
 Lab File: VX038523.D
 Acq: 26 Oct 2023 17:19

Tgt Ion:114 Resp: 319261
 Ion Ratio Lower Upper
 114 100
 63 17.6 0.0 45.0
 88 14.8 0.0 36.6

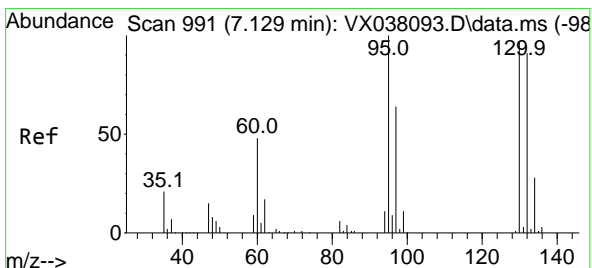
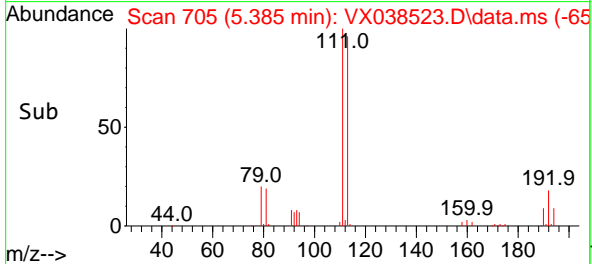
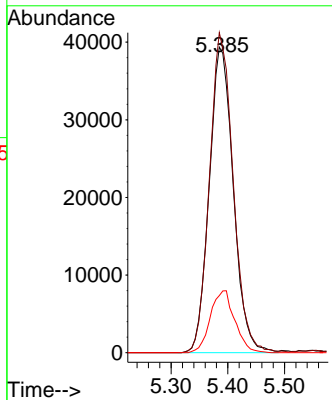
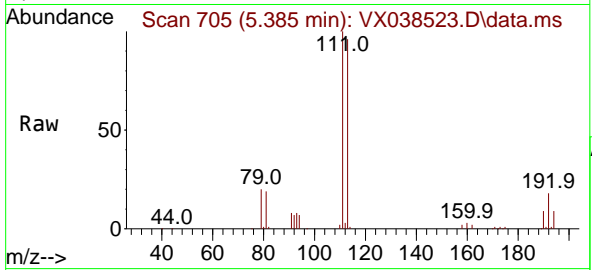




#35
 Dibromofluoromethane
 Concen: 50.460 ug/l
 RT: 5.385 min Scan# 705
 Delta R.T. 0.000 min
 Lab File: VX038523.D
 Acq: 26 Oct 2023 17:19

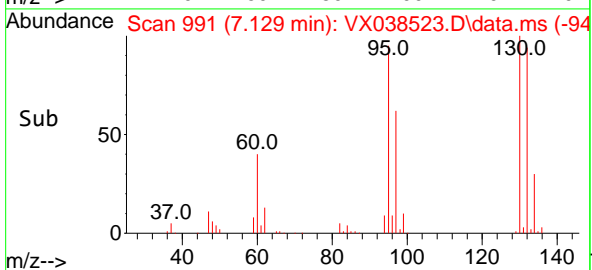
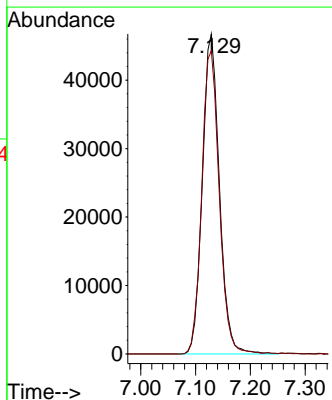
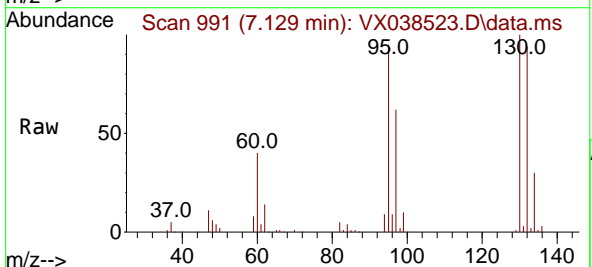
Instrument : MSVOA_X
 ClientSampleId : DUP-1

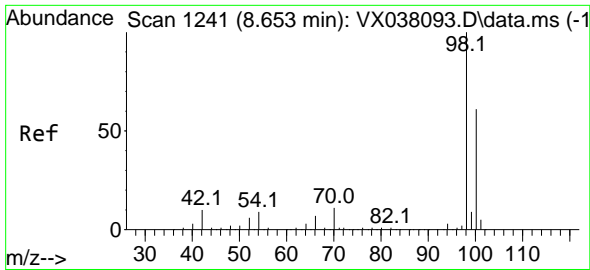
Tgt Ion:113 Resp: 116082
 Ion Ratio Lower Upper
 113 100
 111 103.2 82.9 124.3
 192 20.5 13.3 19.9#



#44
 Trichloroethene
 Concen: 43.350 ug/l
 RT: 7.129 min Scan# 991
 Delta R.T. -0.000 min
 Lab File: VX038523.D
 Acq: 26 Oct 2023 17:19

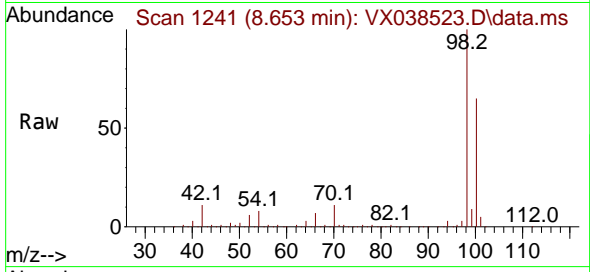
Tgt Ion:130 Resp: 100601
 Ion Ratio Lower Upper
 130 100
 95 94.7 0.0 204.4



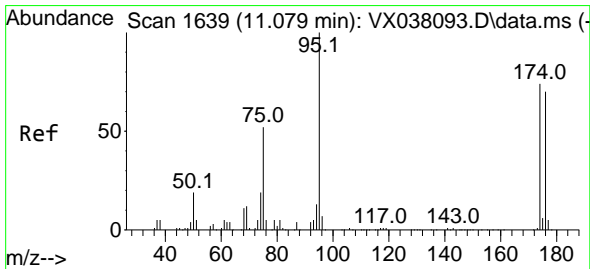
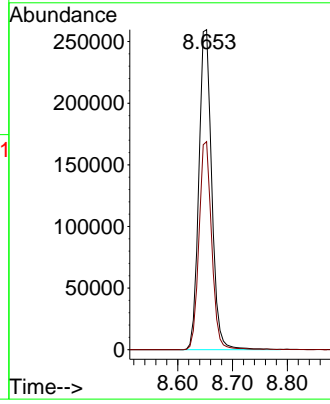
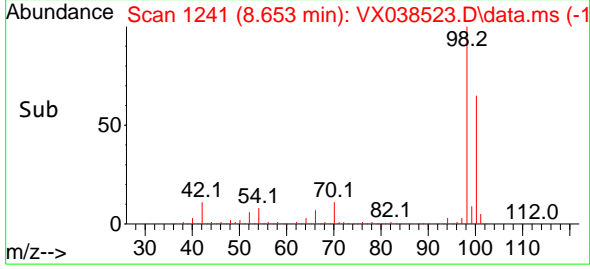


#50
 Toluene-d8
 Concen: 48.346 ug/l
 RT: 8.653 min Scan# 11
 Delta R.T. -0.000 min
 Lab File: VX038523.D
 Acq: 26 Oct 2023 17:19

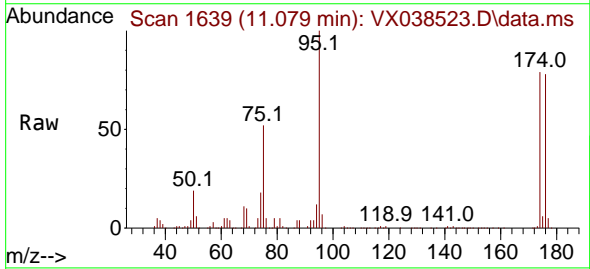
Instrument :
 MSVOA_X
 ClientSampleId :
 DUP-1



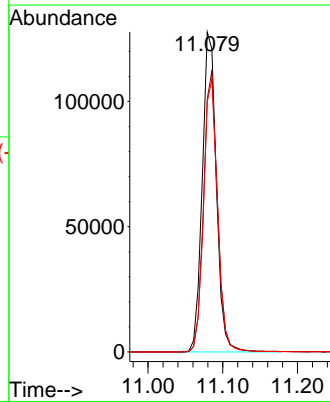
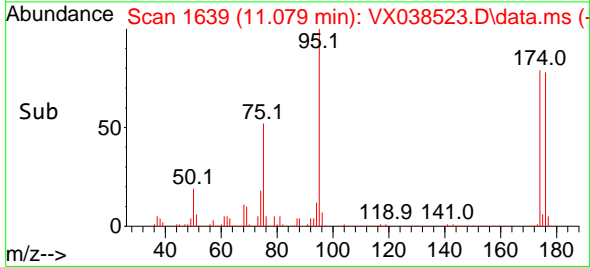
Tgt Ion: 98 Resp: 424992
 Ion Ratio Lower Upper
 98 100
 100 64.1 53.1 79.7

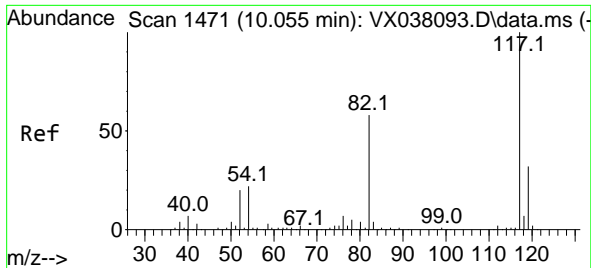


#62
 4-Bromofluorobenzene
 Concen: 50.269 ug/l
 RT: 11.079 min Scan# 1639
 Delta R.T. 0.000 min
 Lab File: VX038523.D
 Acq: 26 Oct 2023 17:19



Tgt Ion: 95 Resp: 167528
 Ion Ratio Lower Upper
 95 100
 174 86.5 0.0 135.6
 176 84.6 0.0 131.0



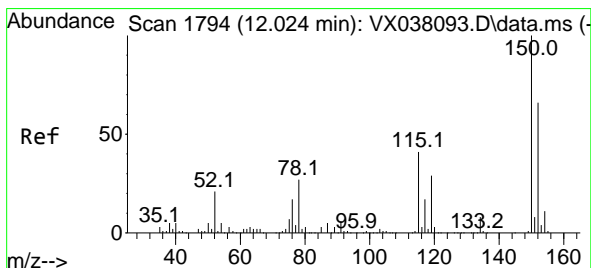
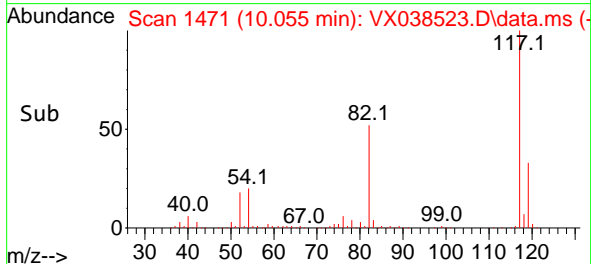
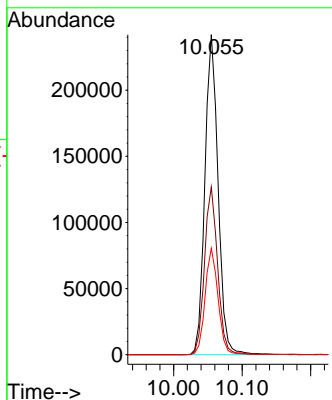
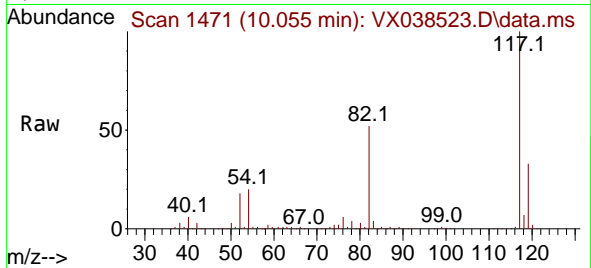


#63
 Chlorobenzene-d5
 Concen: 50.000 ug/l
 RT: 10.055 min Scan# 1471
 Delta R.T. -0.000 min
 Lab File: VX038523.D
 Acq: 26 Oct 2023 17:19

Instrument : MSVOA_X
 ClientSampleId : DUP-1

Tgt Ion:117 Resp: 324353

Ion	Ratio	Lower	Upper
117	100		
82	52.4	46.2	69.4
119	33.2	25.5	38.3



#72
 1,4-Dichlorobenzene-d4
 Concen: 50.000 ug/l
 RT: 12.024 min Scan# 1794
 Delta R.T. 0.000 min
 Lab File: VX038523.D
 Acq: 26 Oct 2023 17:19

Tgt Ion:152 Resp: 176749

Ion	Ratio	Lower	Upper
152	100		
115	58.0	43.3	129.9
150	157.8	0.0	345.0

