

Data Path : Z:\voasrv\HPCHEM1\MSVOA_X\Data\VX102623\
 Data File : VX038532.D
 Acq On : 26 Oct 2023 20:48
 Operator : JC/MD
 Sample : 05063-07
 Misc : 5.0mL/MSVOA_X/WATER
 ALS Vial : 17 Sample Multiplier: 1

Instrument :
 MSVOA_X
 ClientSampleId :
 LEA-5D

Quant Time: Oct 27 05:23:23 2023
 Quant Method : Z:\voasrv\HPCHEM1\MSVOA_X\Method\82X100523W.M
 Quant Title : SW846 8260
 QLast Update : Thu Oct 05 15:27:13 2023
 Response via : Initial Calibration

Compound	R.T.	QIon	Response	Conc	Units	Dev(Min)

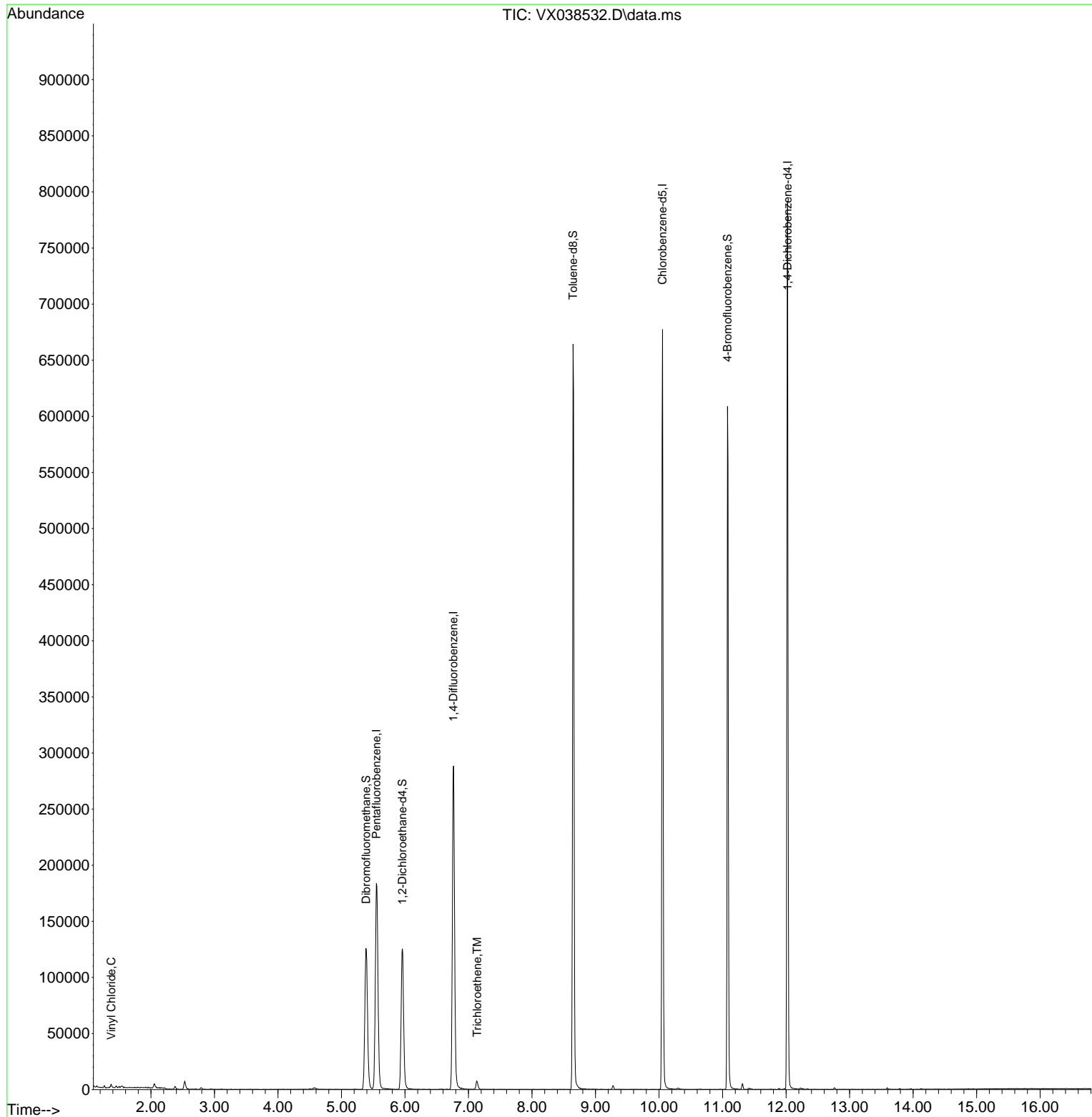
Internal Standards						
1) Pentafluorobenzene	5.550	168	184715	50.000	ug/l	# 0.00
34) 1,4-Difluorobenzene	6.763	114	312366	50.000	ug/l	0.00
63) Chlorobenzene-d5	10.055	117	319102	50.000	ug/l	0.00
72) 1,4-Dichlorobenzene-d4	12.024	152	174274	50.000	ug/l	0.00
System Monitoring Compounds						
33) 1,2-Dichloroethane-d4	5.958	65	123309	41.504	ug/l	0.00
Spiked Amount	50.000	Range	78 - 117	Recovery	=	83.000%
35) Dibromofluoromethane	5.385	113	111394	49.491	ug/l	0.00
Spiked Amount	50.000	Range	75 - 124	Recovery	=	98.980%
50) Toluene-d8	8.647	98	401888	46.727	ug/l	0.00
Spiked Amount	50.000	Range	92 - 112	Recovery	=	93.460%
62) 4-Bromofluorobenzene	11.079	95	159633	48.957	ug/l	0.00
Spiked Amount	50.000	Range	83 - 123	Recovery	=	97.920%
Target Compounds						
						Qvalue
4) Vinyl Chloride	1.374	62	1802	0.894	ug/l	97
44) Trichloroethene	7.135	130	2960	1.304	ug/l	95

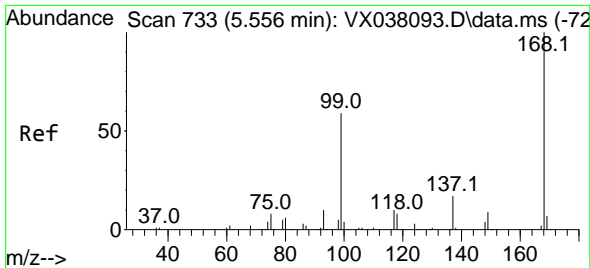
(#) = qualifier out of range (m) = manual integration (+) = signals summed

Data Path : Z:\voasrv\HPCHEM1\MSVOA_X\Data\VX102623\
 Data File : VX038532.D
 Acq On : 26 Oct 2023 20:48
 Operator : JC/MD
 Sample : 05063-07
 Misc : 5.0mL/MSVOA_X/WATER
 ALS Vial : 17 Sample Multiplier: 1

Instrument :
 MSVOA_X
 ClientSampleId :
 LEA-5D

Quant Time: Oct 27 05:23:23 2023
 Quant Method : Z:\voasrv\HPCHEM1\MSVOA_X\Method\82X100523W.M
 Quant Title : SW846 8260
 QLast Update : Thu Oct 05 15:27:13 2023
 Response via : Initial Calibration

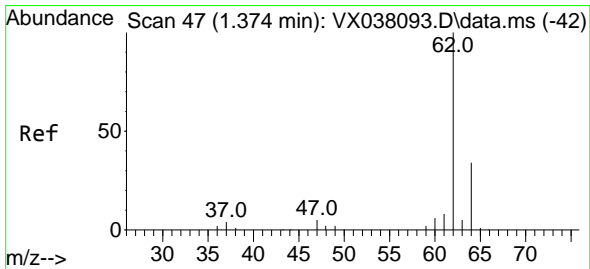
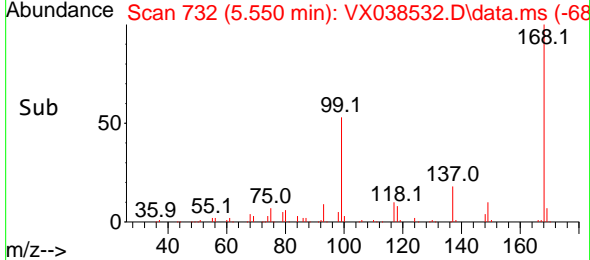
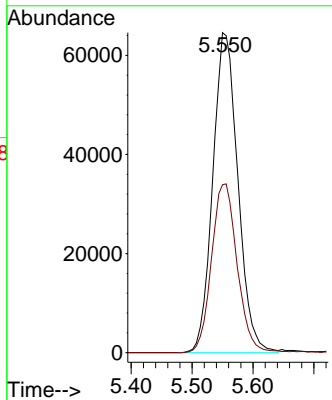
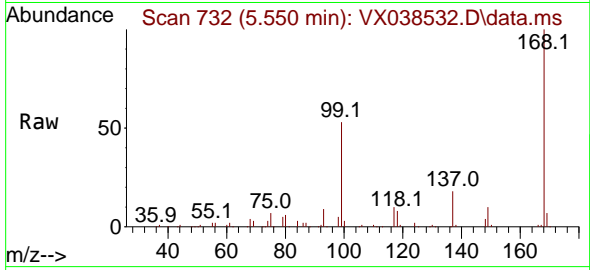




#1
 Pentafluorobenzene
 Concen: 50.000 ug/l
 RT: 5.550 min Scan# 71
 Delta R.T. -0.006 min
 Lab File: VX038532.D
 Acq: 26 Oct 2023 20:48

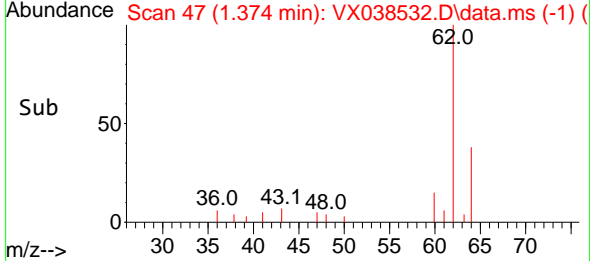
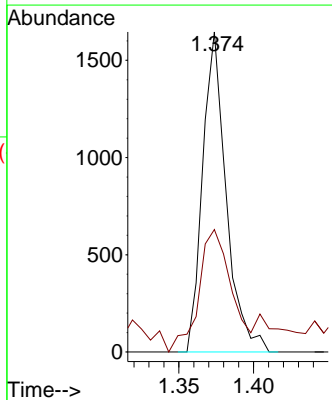
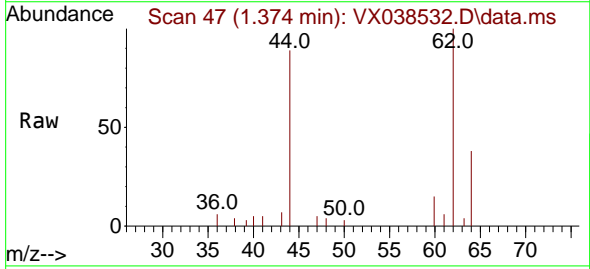
Instrument : MSVOA_X
 ClientSampleId : LEA-5D

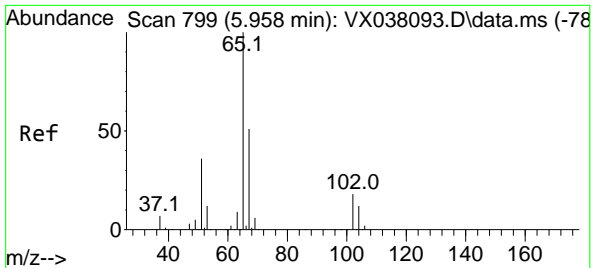
Tgt Ion:168 Resp: 184715
 Ion Ratio Lower Upper
 168 100
 99 52.5 56.6 85.0#



#4
 Vinyl Chloride
 Concen: 0.894 ug/l
 RT: 1.374 min Scan# 47
 Delta R.T. -0.000 min
 Lab File: VX038532.D
 Acq: 26 Oct 2023 20:48

Tgt Ion: 62 Resp: 1802
 Ion Ratio Lower Upper
 62 100
 64 33.2 25.4 38.0

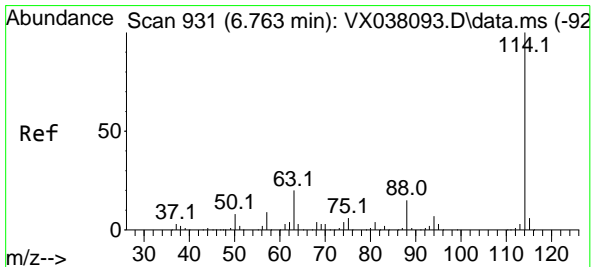
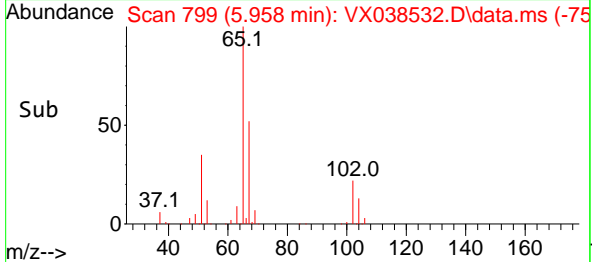
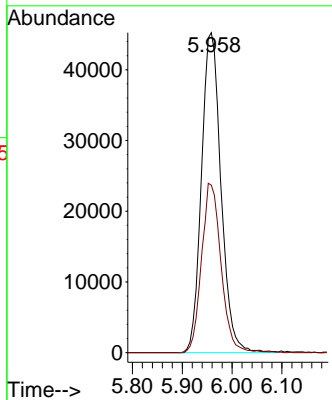
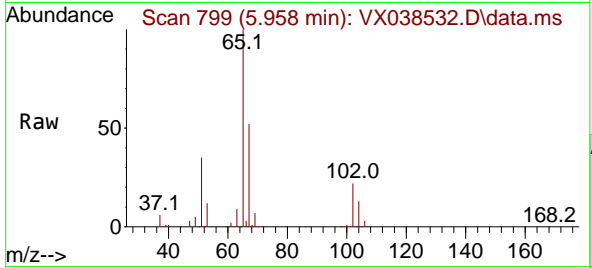




#33
 1,2-Dichloroethane-d4
 Concen: 41.504 ug/l
 RT: 5.958 min Scan# 799
 Delta R.T. 0.000 min
 Lab File: VX038532.D
 Acq: 26 Oct 2023 20:48

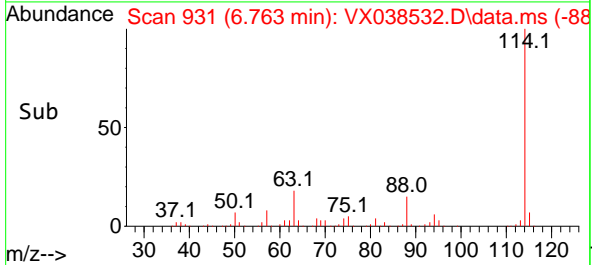
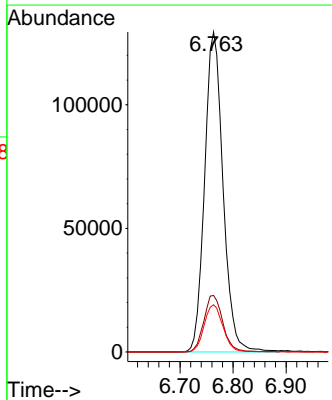
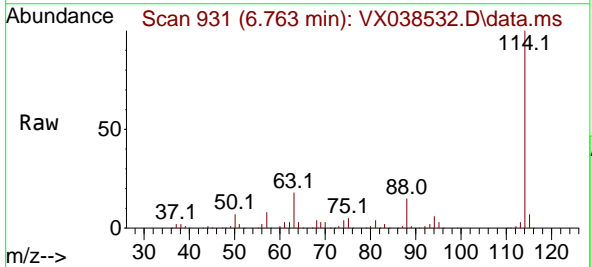
Instrument :
 MSVOA_X
 ClientSampleId :
 LEA-5D

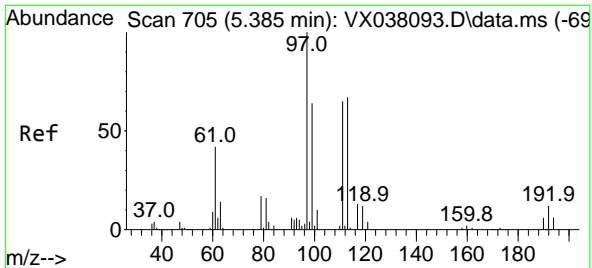
Tgt Ion: 65 Resp: 123309
 Ion Ratio Lower Upper
 65 100
 67 52.9 0.0 100.2



#34
 1,4-Difluorobenzene
 Concen: 50.000 ug/l
 RT: 6.763 min Scan# 931
 Delta R.T. 0.000 min
 Lab File: VX038532.D
 Acq: 26 Oct 2023 20:48

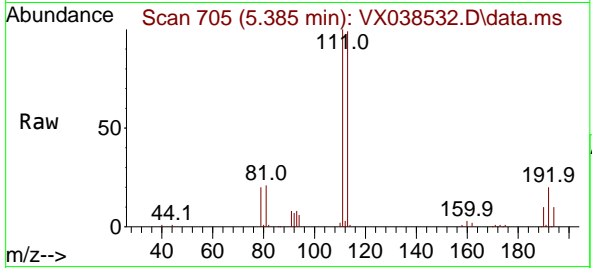
Tgt Ion:114 Resp: 312366
 Ion Ratio Lower Upper
 114 100
 63 17.7 0.0 45.0
 88 14.7 0.0 36.6



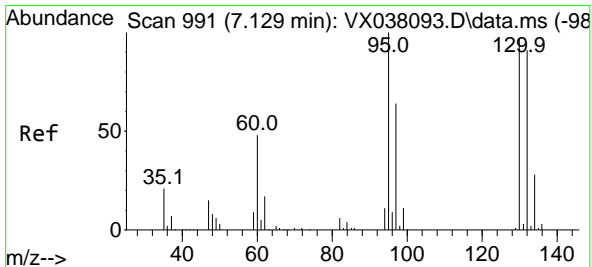
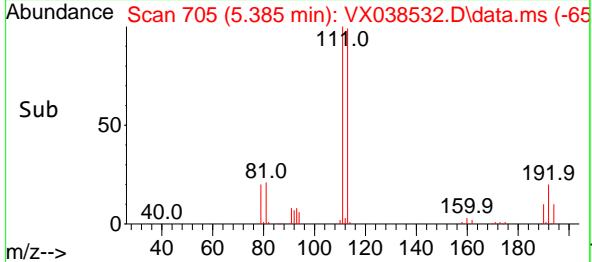
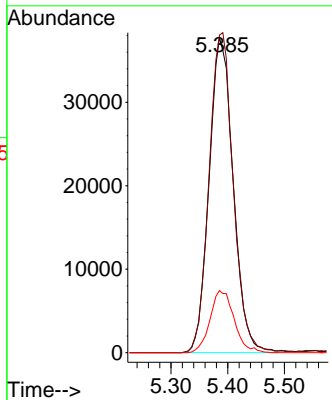


#35
 Dibromofluoromethane
 Concen: 49.491 ug/l
 RT: 5.385 min Scan# 705
 Delta R.T. 0.000 min
 Lab File: VX038532.D
 Acq: 26 Oct 2023 20:48

Instrument : MSVOA_X
 ClientSampleId : LEA-5D

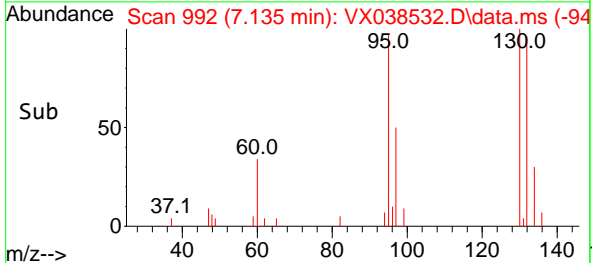
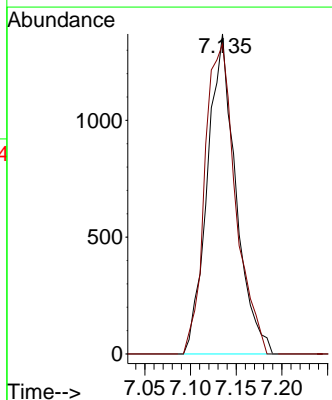
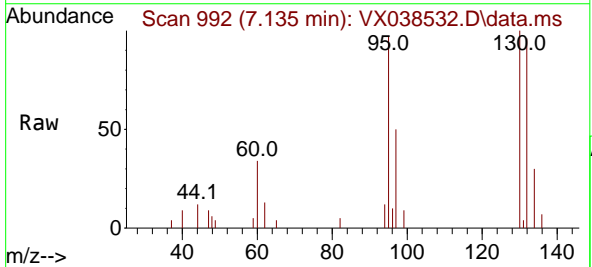


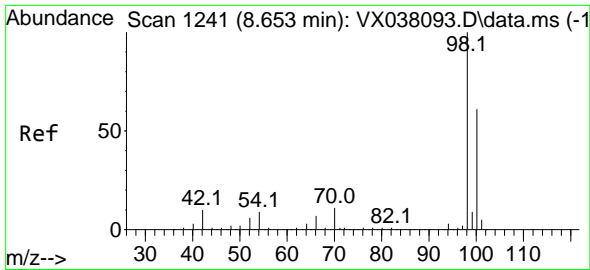
Tgt Ion:113 Resp: 111394
 Ion Ratio Lower Upper
 113 100
 111 101.9 82.9 124.3
 192 19.7 13.3 19.9



#44
 Trichloroethene
 Concen: 1.304 ug/l
 RT: 7.135 min Scan# 992
 Delta R.T. 0.006 min
 Lab File: VX038532.D
 Acq: 26 Oct 2023 20:48

Tgt Ion:130 Resp: 2960
 Ion Ratio Lower Upper
 130 100
 95 96.9 0.0 204.4

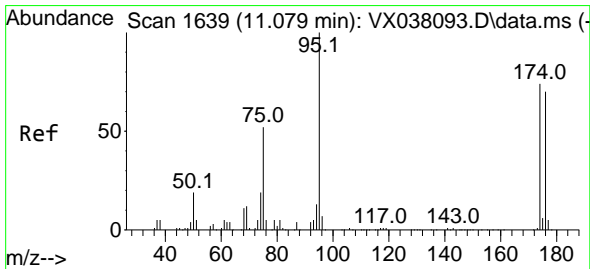
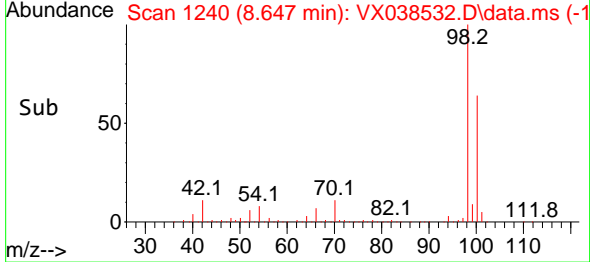
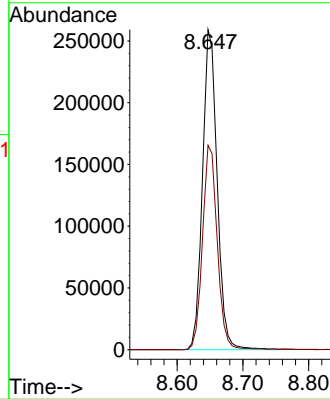
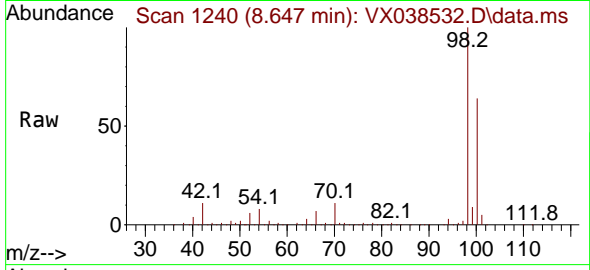




#50
 Toluene-d8
 Concen: 46.727 ug/l
 RT: 8.647 min Scan# 111
 Delta R.T. -0.006 min
 Lab File: VX038532.D
 Acq: 26 Oct 2023 20:48

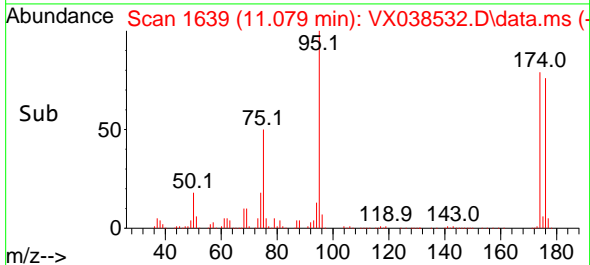
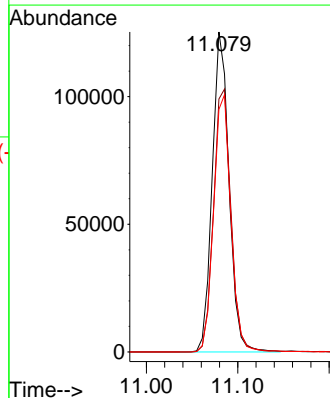
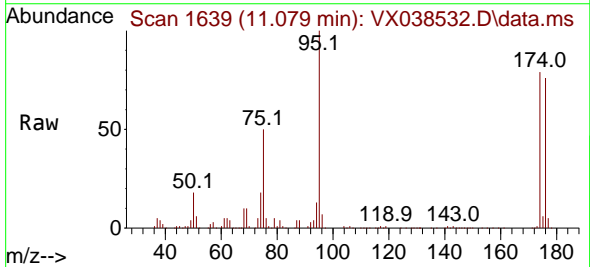
Instrument :
 MSVOA_X
 ClientSampleId :
 LEA-5D

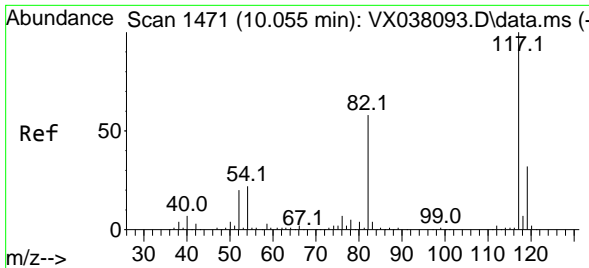
Tgt Ion: 98 Resp: 401888
 Ion Ratio Lower Upper
 98 100
 100 64.3 53.1 79.7



#62
 4-Bromofluorobenzene
 Concen: 48.957 ug/l
 RT: 11.079 min Scan# 1639
 Delta R.T. 0.000 min
 Lab File: VX038532.D
 Acq: 26 Oct 2023 20:48

Tgt Ion: 95 Resp: 159633
 Ion Ratio Lower Upper
 95 100
 174 85.6 0.0 135.6
 176 83.2 0.0 131.0



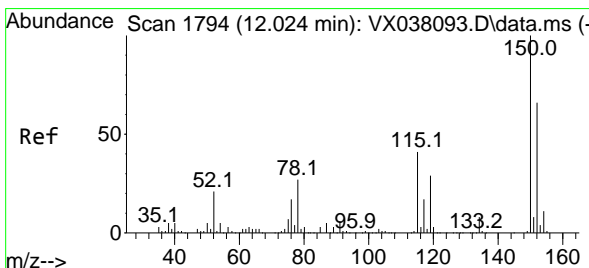
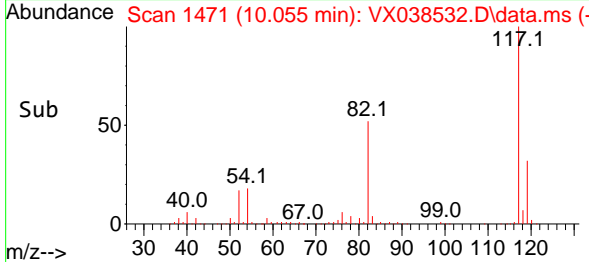
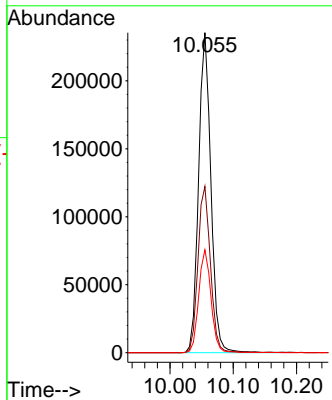
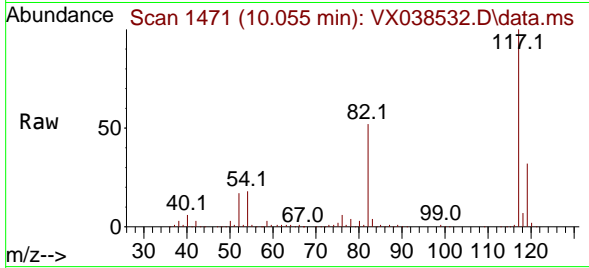


#63
 Chlorobenzene-d5
 Concen: 50.000 ug/l
 RT: 10.055 min Scan# 14
 Delta R.T. 0.000 min
 Lab File: VX038532.D
 Acq: 26 Oct 2023 20:48

Instrument : MSVOA_X
 ClientSampleId : LEA-5D

Tgt Ion:117 Resp: 319102

Ion	Ratio	Lower	Upper
117	100		
82	52.0	46.2	69.4
119	32.2	25.5	38.3



#72
 1,4-Dichlorobenzene-d4
 Concen: 50.000 ug/l
 RT: 12.024 min Scan# 1794
 Delta R.T. 0.000 min
 Lab File: VX038532.D
 Acq: 26 Oct 2023 20:48

Tgt Ion:152 Resp: 174274

Ion	Ratio	Lower	Upper
152	100		
115	57.9	43.3	129.9
150	156.1	0.0	345.0

