

Data Path : Z:\voasrv\HPCHEM1\MSVOA_X\Data\VX102623\
 Data File : VX038535.D
 Acq On : 26 Oct 2023 21:58
 Operator : JC/MD
 Sample : 05063-13
 Misc : 5.0mL/MSVOA_X/WATER
 ALS Vial : 20 Sample Multiplier: 1

Instrument :
 MSVOA_X
 ClientSampleId :
 LEA-111

Integration Parameters: RTEINT.P

Integrator: RTE
 Smoothing : ON Filtering: 5
 Sampling : 1 Min Area: 3 % of largest Peak
 Start Thrs: 0.2 Max Peaks: 100
 Stop Thrs : 0 Peak Location: TOP

If leading or trailing edge < 100 prefer < Baseline drop else tangent >
 Peak separation: 5

Method : Z:\voasrv\HPCHEM1\MSVOA_X\Method\82X100523W.M
 Title : SW846 8260

Signal : TIC: VX038535.D\data.ms

peak #	R.T. min	first scan	max scan	last scan	PK TY	peak height	corr. area	corr. % max.	% of total
1	2.526	229	236	246	rBV	9711	19748	1.09%	0.253%
2	4.495	549	559	568	rBV	22825	63057	3.50%	0.807%
3	5.385	693	705	721	rBV	131912	390903	21.67%	5.003%
4	5.556	722	733	749	rVV	185755	538216	29.84%	6.889%
5	5.958	788	799	816	rBV	133051	355135	19.69%	4.545%
6	6.763	921	931	953	rBV	298329	721522	40.01%	9.235%
7	7.129	980	991	1009	rBV	824099	1803518	100.00%	23.083%
8	8.647	1233	1240	1256	rBV	686711	1095269	60.73%	14.018%
9	10.055	1465	1471	1486	rBV	694727	947638	52.54%	12.129%
10	11.079	1634	1639	1657	rBV	631844	842393	46.71%	10.782%
11	12.024	1788	1794	1810	rBV	778339	1035707	57.43%	13.256%

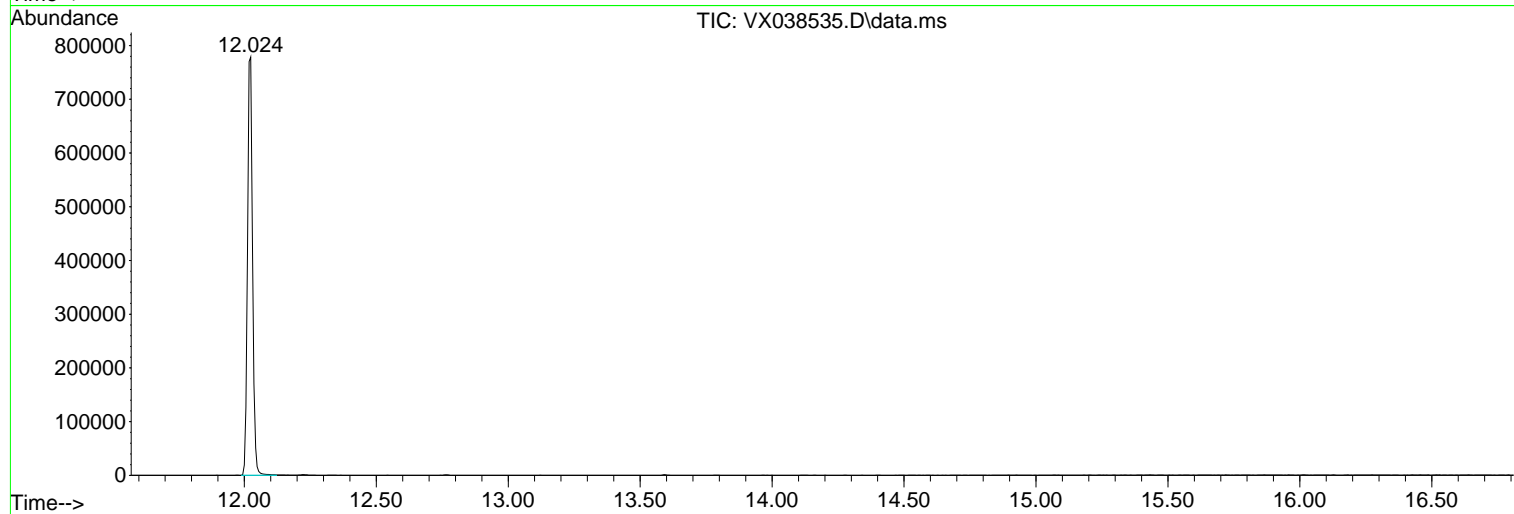
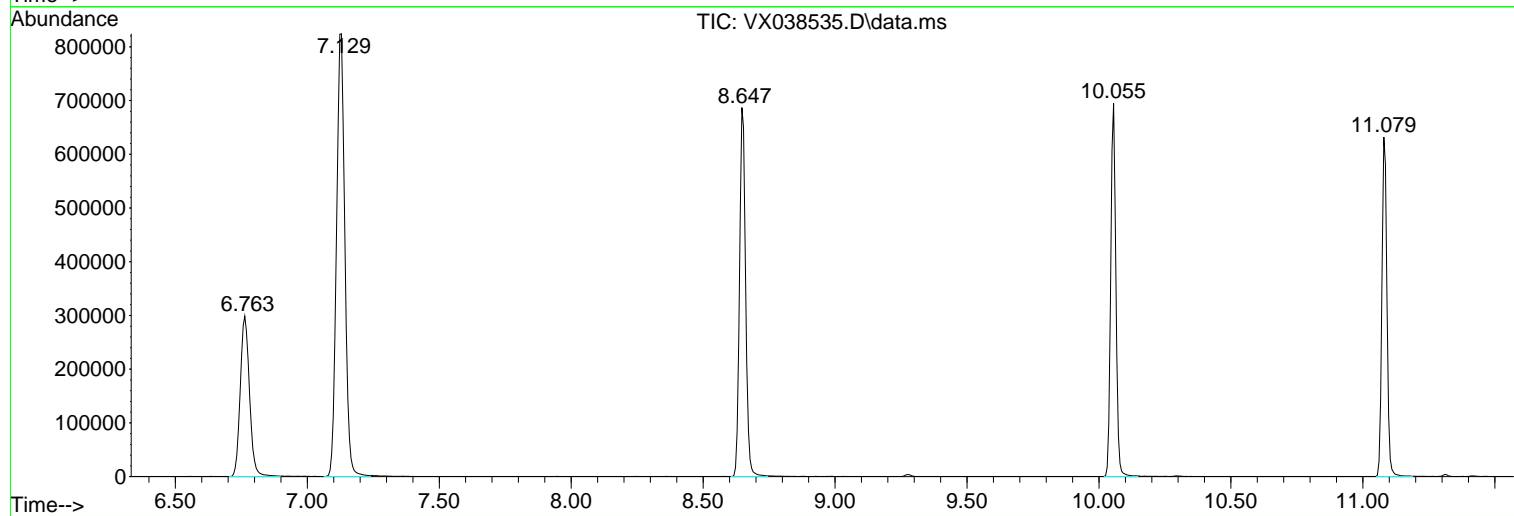
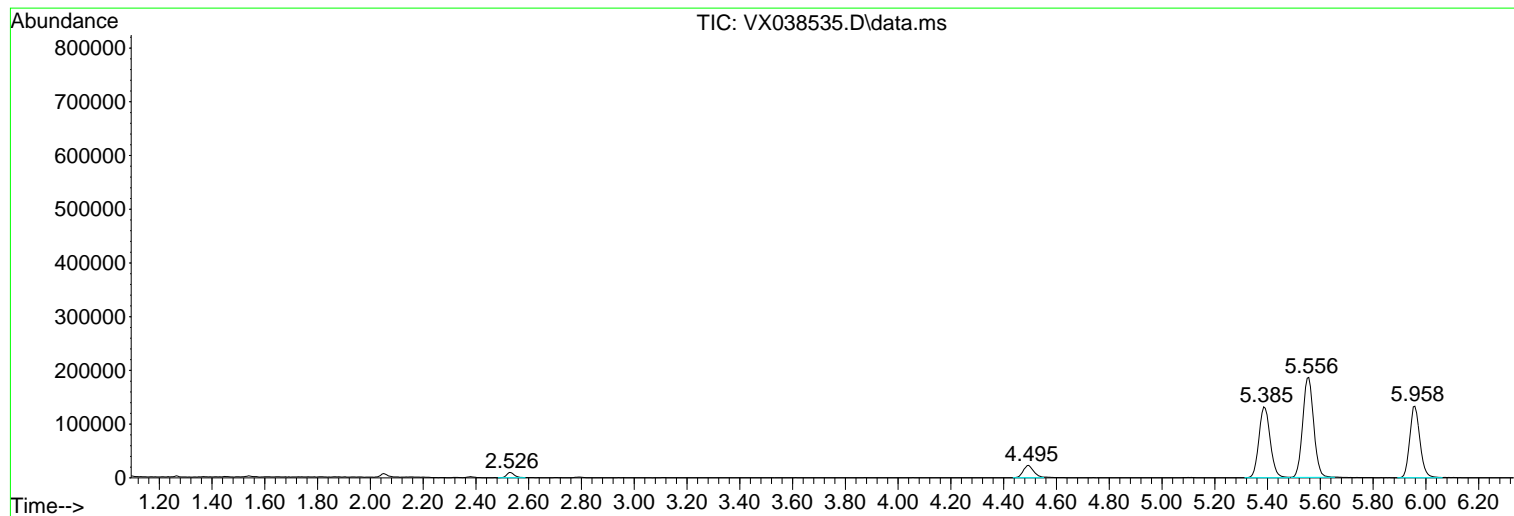
Sum of corrected areas: 7813106

Data Path : Z:\voasrv\HPCHEM1\MSVOA_X\Data\VX102623\
Data File : VX038535.D
Acq On : 26 Oct 2023 21:58
Operator : JC/MD
Sample : 05063-13
Misc : 5.0mL/MSVOA_X/WATER
ALS Vial : 20 Sample Multiplier: 1

Instrument :
MSVOA_X
ClientSampleId :
LEA-111

Quant Method : Z:\voasrv\HPCHEM1\MSVOA_X\Method\82X100523W.M
Quant Title : SW846 8260

TIC Library : C:\Database\NIST20.L
TIC Integration Parameters: LSCINT.P



Library Search Compound Report

Data Path : Z:\voasrv\HPCHEM1\MSVOA_X\Data\VX102623\
Data File : VX038535.D
Acq On : 26 Oct 2023 21:58
Operator : JC/MD
Sample : 05063-13
Misc : 5.0mL/MSVOA_X/WATER
ALS Vial : 20 Sample Multiplier: 1

Instrument :
MSVOA_X
ClientSampleId :
LEA-111

Quant Method : Z:\voasrv\HPCHEM1\MSVOA_X\Method\82X100523W.M
Quant Title : SW846 8260

TIC Library : C:\Database\NIST0.L
TIC Integration Parameters: LSCINT.P

No Library Search Compounds Detected

Data Path : Z:\voasrv\HPCHEM1\MSVOA_X\Data\VX102623\
Data File : VX038535.D
Acq On : 26 Oct 2023 21:58
Operator : JC/MD
Sample : 05063-13
Misc : 5.0mL/MSVOA_X/WATER
ALS Vial : 20 Sample Multiplier: 1

Instrument :
MSVOA_X
ClientSampleId :
LEA-111

Quant Method : Z:\voasrv\HPCHEM1\MSVOA_X\Method\82X100523W.M
Quant Title : SW846 8260

TIC Library : C:\Database\NIST20.L
TIC Integration Parameters: LSCINT.P

TIC Top Hit name	RT	EstConc	Units	Response	--Internal Standard--		
					#	RT	Resp Conc
