

Data Path : Z:\voasrv\HPCHEM1\MSVOA\_X\Data\VX102822\  
 Data File : VX032453.D  
 Acq On : 28 Oct 2022 12:43  
 Operator : JC/MD  
 Sample : N5335-06  
 Misc : 5.0mL/MSVOA\_X/WATER  
 ALS Vial : 8 Sample Multiplier: 1

Instrument :  
 MSVOA\_X  
 ClientSampleId :  
 SB-2

Quant Time: Oct 29 04:31:51 2022  
 Quant Method : Z:\voasrv\HPCHEM1\MSVOA\_X\Method\82X102622W.M  
 Quant Title : SW846 8260  
 QLast Update : Thu Oct 27 08:28:06 2022  
 Response via : Initial Calibration

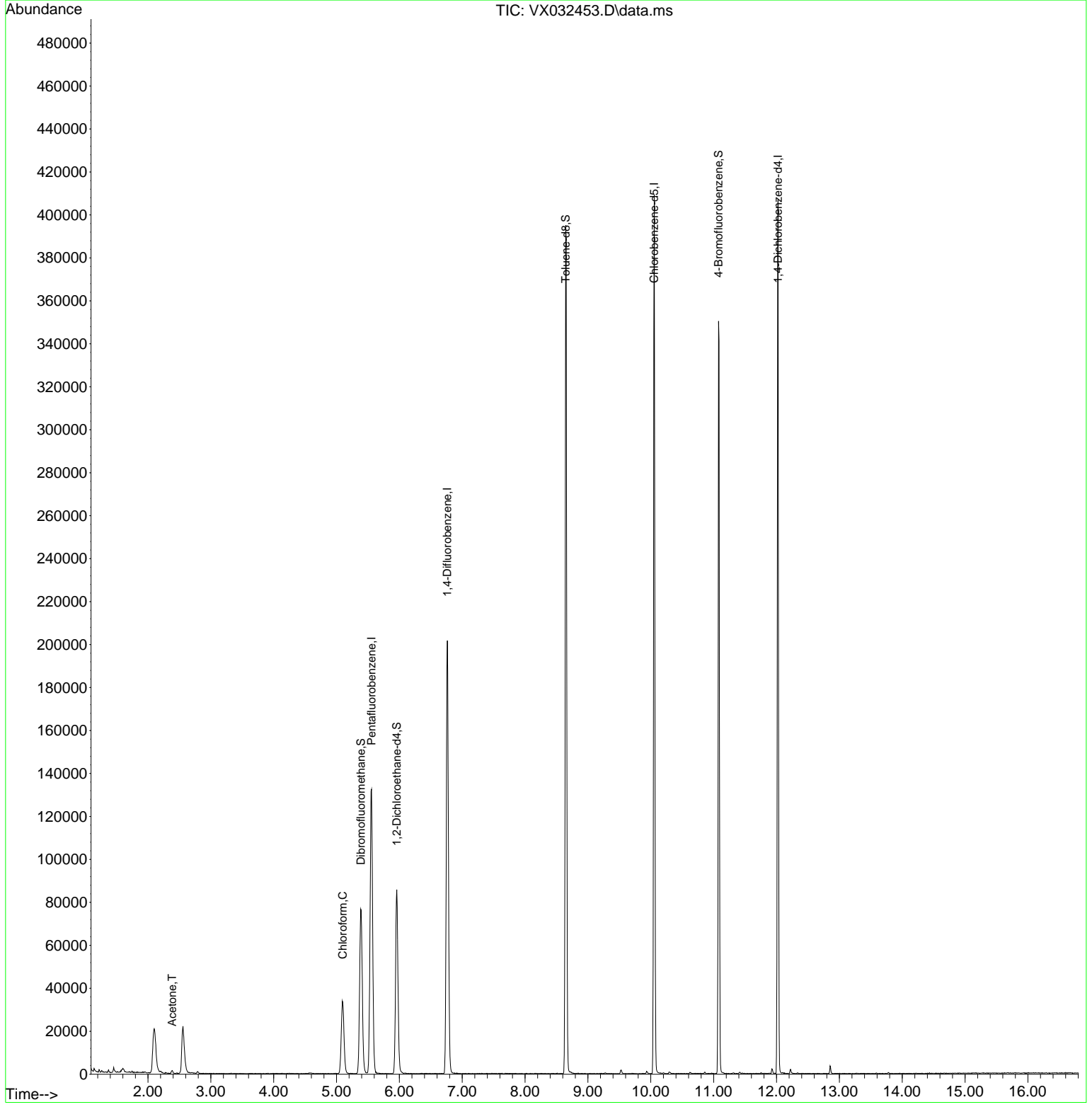
Compound	R.T.	QIon	Response	Conc	Units	Dev(Min)
-----						
Internal Standards						
1) Pentafluorobenzene	5.556	168	123568	50.000	ug/l	0.00
34) 1,4-Difluorobenzene	6.763	114	202496	50.000	ug/l	0.00
63) Chlorobenzene-d5	10.055	117	178087	50.000	ug/l	0.00
72) 1,4-Dichlorobenzene-d4	12.024	152	83363	50.000	ug/l	0.00
System Monitoring Compounds						
33) 1,2-Dichloroethane-d4	5.958	65	84008	48.929	ug/l	0.00
Spiked Amount	50.000	Range	78 - 117	Recovery	=	97.860%
35) Dibromofluoromethane	5.385	113	66288	45.892	ug/l	0.00
Spiked Amount	50.000	Range	75 - 124	Recovery	=	91.780%
50) Toluene-d8	8.647	98	238005	47.387	ug/l	0.00
Spiked Amount	50.000	Range	92 - 112	Recovery	=	94.780%
62) 4-Bromofluorobenzene	11.079	95	89632	45.685	ug/l	0.00
Spiked Amount	50.000	Range	83 - 123	Recovery	=	91.380%
Target Compounds						
					Qvalue	
16) Acetone	2.386	43	1651	2.646	ug/l	94
30) Chloroform	5.099	83	40445	14.997	ug/l	99
-----						

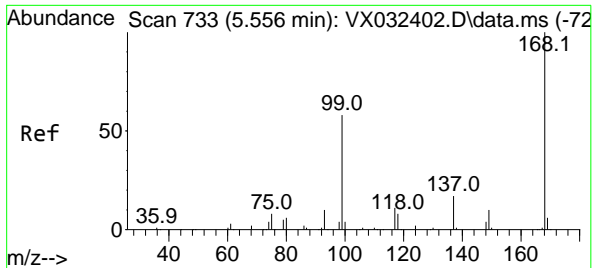
(#) = qualifier out of range (m) = manual integration (+) = signals summed

Data Path : Z:\voasrv\HPCHEM1\MSVOA\_X\Data\VX102822\  
 Data File : VX032453.D  
 Acq On : 28 Oct 2022 12:43  
 Operator : JC/MD  
 Sample : N5335-06  
 Misc : 5.0mL/MSVOA\_X/WATER  
 ALS Vial : 8 Sample Multiplier: 1

Instrument :  
 MSVOA\_X  
 ClientSampleId :  
 SB-2

Quant Time: Oct 29 04:31:51 2022  
 Quant Method : Z:\voasrv\HPCHEM1\MSVOA\_X\Method\82X102622W.M  
 Quant Title : SW846 8260  
 QLast Update : Thu Oct 27 08:28:06 2022  
 Response via : Initial Calibration

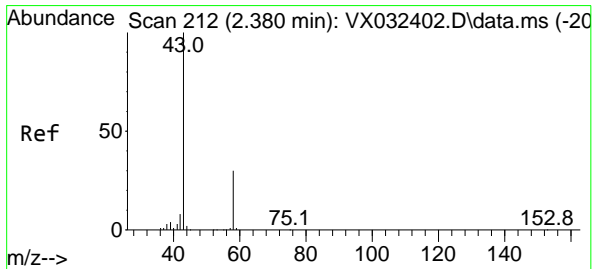
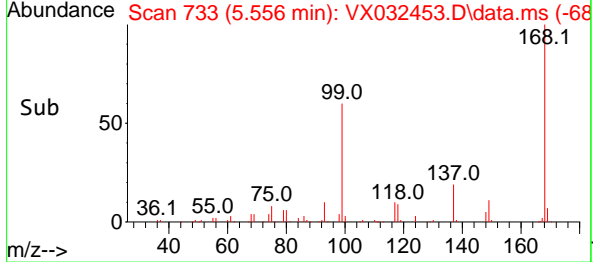
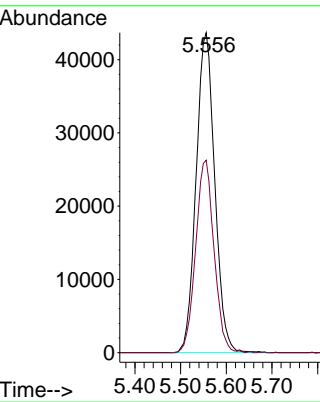
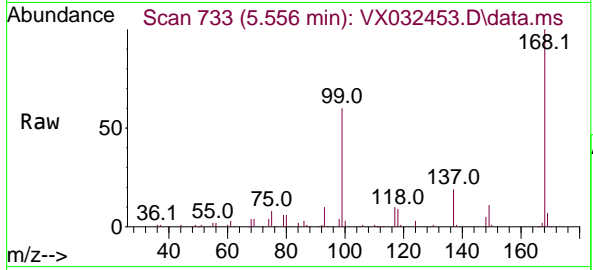




#1  
 Pentafluorobenzene  
 Concen: 50.000 ug/l  
 RT: 5.556 min Scan# 71  
 Delta R.T. -0.000 min  
 Lab File: VX032453.D  
 Acq: 28 Oct 2022 12:43

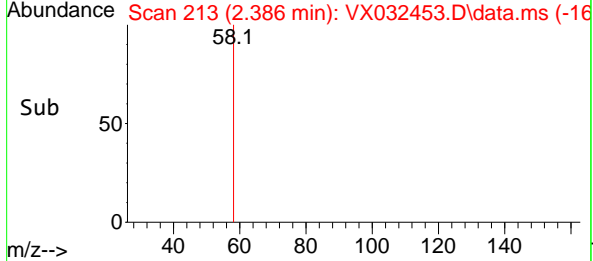
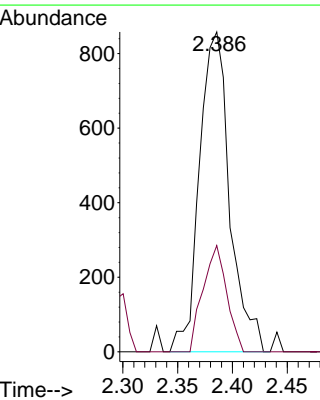
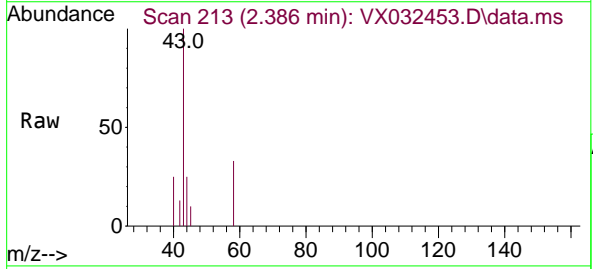
Instrument : MSVOA\_X  
 ClientSampleId : SB-2

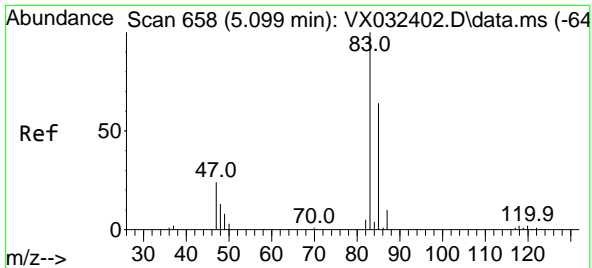
Tgt Ion:168 Resp: 123568  
 Ion Ratio Lower Upper  
 168 100  
 99 60.1 46.1 69.1



#16  
 Acetone  
 Concen: 2.646 ug/l  
 RT: 2.386 min Scan# 213  
 Delta R.T. 0.006 min  
 Lab File: VX032453.D  
 Acq: 28 Oct 2022 12:43

Tgt Ion: 43 Resp: 1651  
 Ion Ratio Lower Upper  
 43 100  
 58 33.2 23.8 35.8

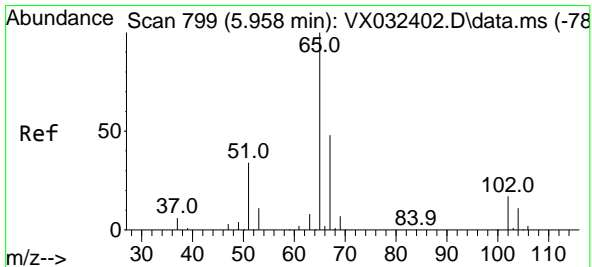
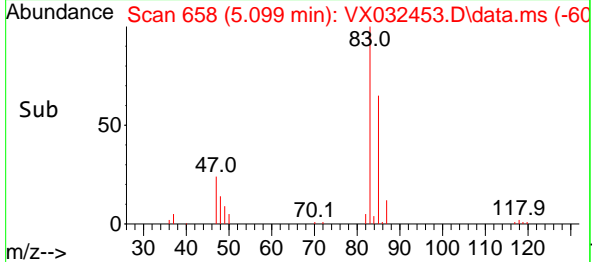
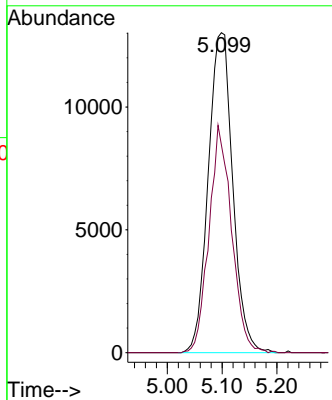
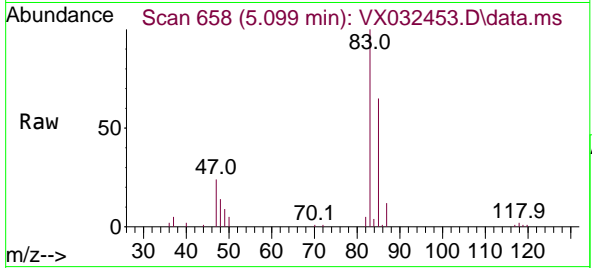




#30  
 Chloroform  
 Concen: 14.997 ug/l  
 RT: 5.099 min Scan# 611  
 Delta R.T. -0.000 min  
 Lab File: VX032453.D  
 Acq: 28 Oct 2022 12:43

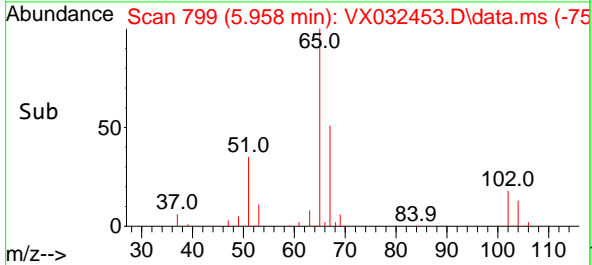
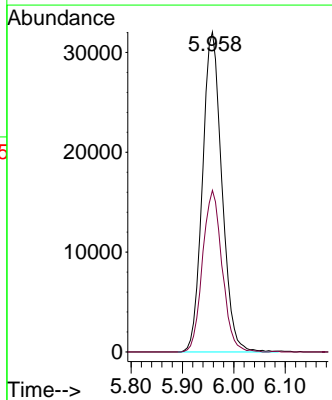
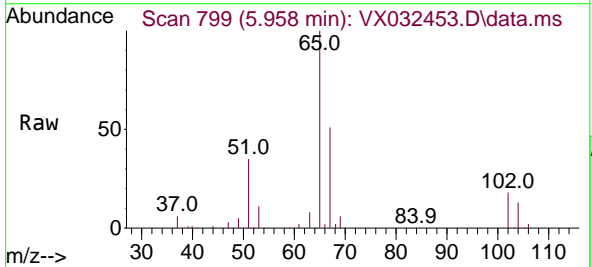
Instrument : MSVOA\_X  
 ClientSampleId : SB-2

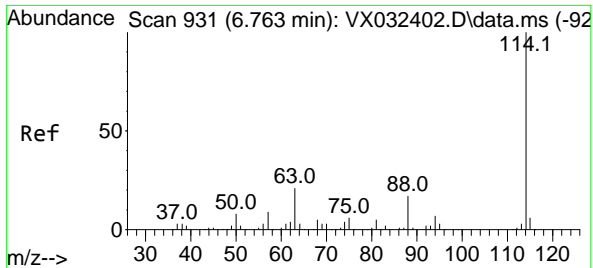
Tgt Ion: 83 Resp: 40445  
 Ion Ratio Lower Upper  
 83 100  
 85 64.9 51.1 76.7



#33  
 1,2-Dichloroethane-d4  
 Concen: 48.929 ug/l  
 RT: 5.958 min Scan# 799  
 Delta R.T. -0.000 min  
 Lab File: VX032453.D  
 Acq: 28 Oct 2022 12:43

Tgt Ion: 65 Resp: 84008  
 Ion Ratio Lower Upper  
 65 100  
 67 51.0 0.0 101.8



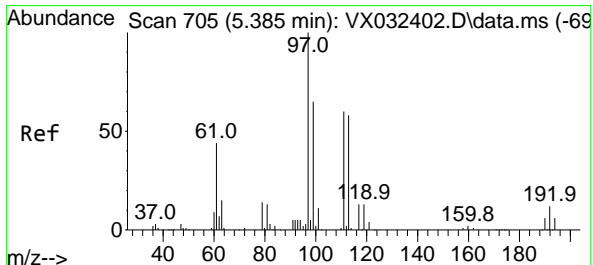
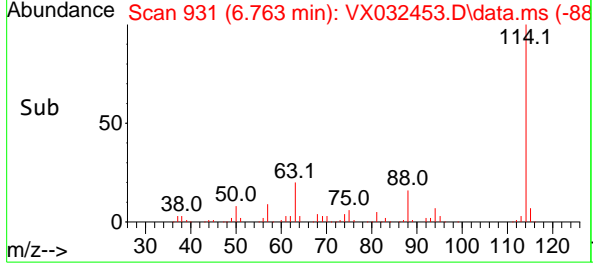
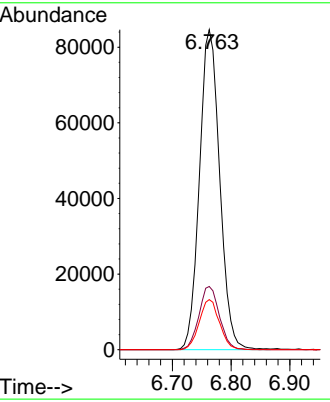
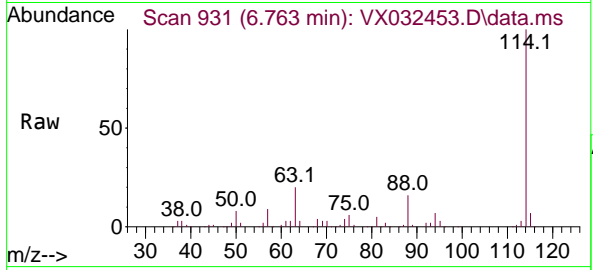


#34  
 1,4-Difluorobenzene  
 Concen: 50.000 ug/l  
 RT: 6.763 min Scan# 91  
 Delta R.T. -0.000 min  
 Lab File: VX032453.D  
 Acq: 28 Oct 2022 12:43

Instrument : MSVOA\_X  
 ClientSampleId : SB-2

Tgt Ion:114 Resp: 202496

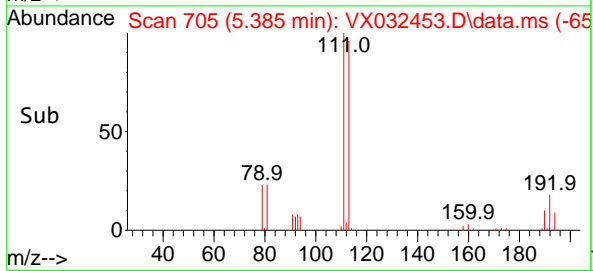
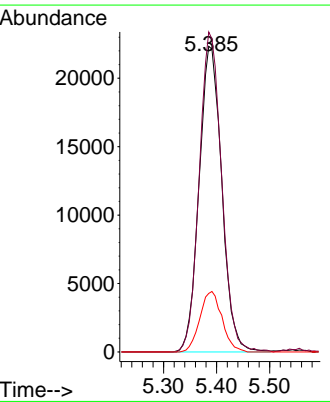
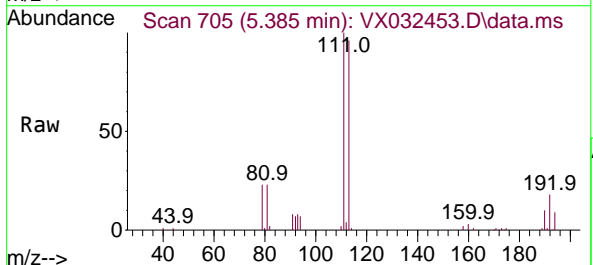
Ion	Ratio	Lower	Upper
114	100		
63	19.8	0.0	41.6
88	15.7	0.0	33.4

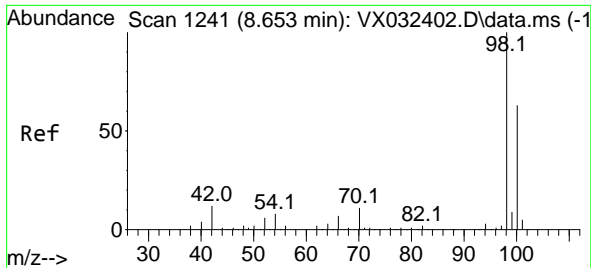


#35  
 Dibromofluoromethane  
 Concen: 45.892 ug/l  
 RT: 5.385 min Scan# 705  
 Delta R.T. -0.000 min  
 Lab File: VX032453.D  
 Acq: 28 Oct 2022 12:43

Tgt Ion:113 Resp: 66288

Ion	Ratio	Lower	Upper
113	100		
111	103.1	82.4	123.6
192	19.4	15.4	23.2

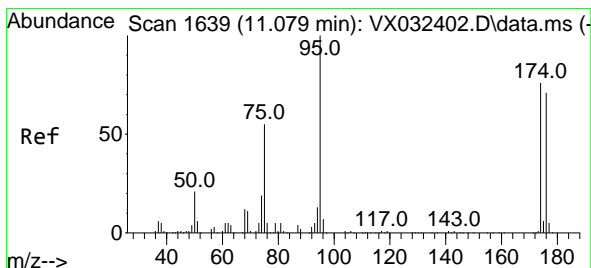
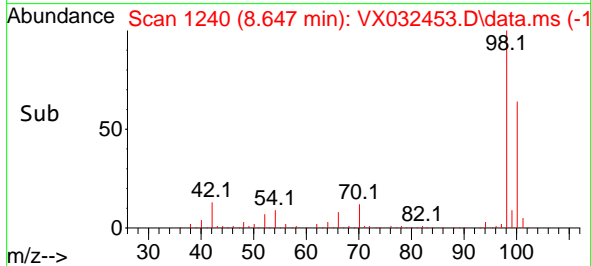
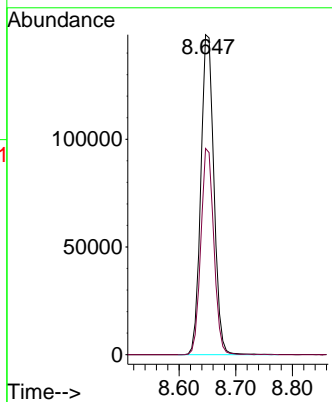
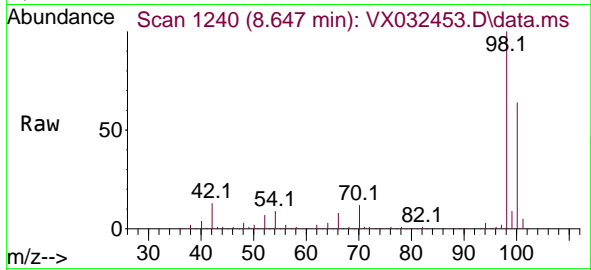




#50  
 Toluene-d8  
 Concen: 47.387 ug/l  
 RT: 8.647 min Scan# 11  
 Delta R.T. -0.006 min  
 Lab File: VX032453.D  
 Acq: 28 Oct 2022 12:43

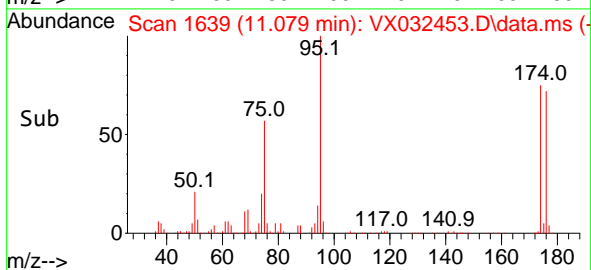
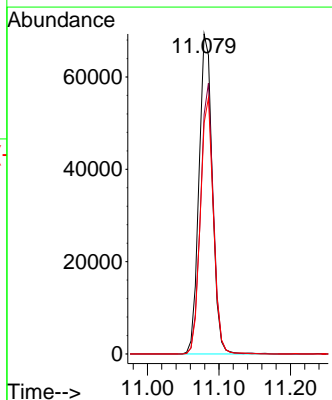
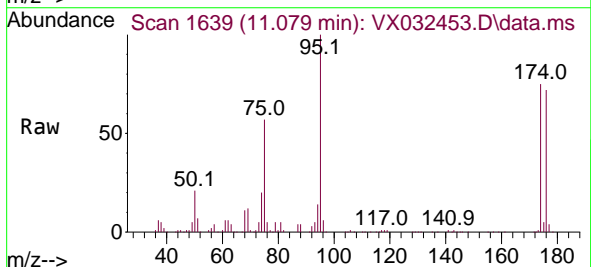
Instrument :  
 MSVOA\_X  
 ClientSampleId :  
 SB-2

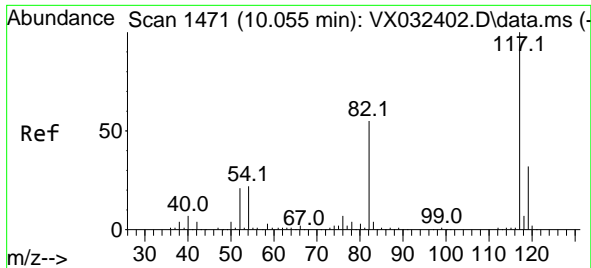
Tgt Ion: 98 Resp: 238005  
 Ion Ratio Lower Upper  
 98 100  
 100 64.0 50.9 76.3



#62  
 4-Bromofluorobenzene  
 Concen: 45.685 ug/l  
 RT: 11.079 min Scan# 1639  
 Delta R.T. -0.000 min  
 Lab File: VX032453.D  
 Acq: 28 Oct 2022 12:43

Tgt Ion: 95 Resp: 89632  
 Ion Ratio Lower Upper  
 95 100  
 174 81.8 0.0 164.0  
 176 78.6 0.0 154.4



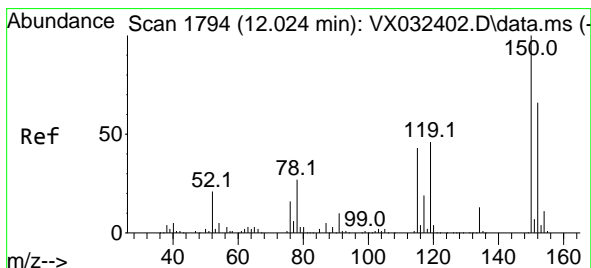
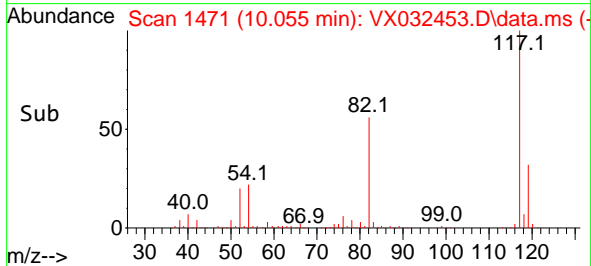
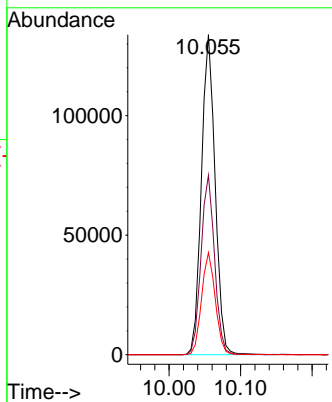
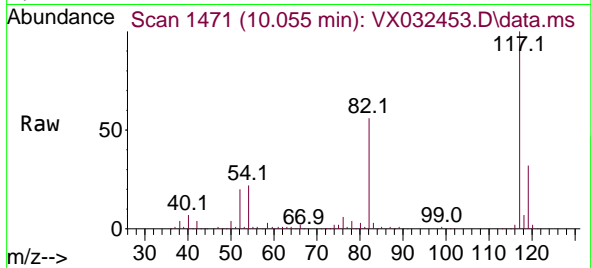


#63  
 Chlorobenzene-d5  
 Concen: 50.000 ug/l  
 RT: 10.055 min Scan# 1471  
 Delta R.T. -0.000 min  
 Lab File: VX032453.D  
 Acq: 28 Oct 2022 12:43

Instrument : MSVOA\_X  
 ClientSampleId : SB-2

Tgt Ion:117 Resp: 178087

Ion	Ratio	Lower	Upper
117	100		
82	56.1	44.3	66.5
119	31.9	25.7	38.5



#72  
 1,4-Dichlorobenzene-d4  
 Concen: 50.000 ug/l  
 RT: 12.024 min Scan# 1794  
 Delta R.T. -0.000 min  
 Lab File: VX032453.D  
 Acq: 28 Oct 2022 12:43

Tgt Ion:152 Resp: 83363

Ion	Ratio	Lower	Upper
152	100		
115	59.6	44.0	132.0
150	154.6	0.0	351.8

