

Data Path : Z:\voasrv\HPCHEM1\MSVOA_X\Data\VX103125\
 Data File : VX048418.D
 Acq On : 31 Oct 2025 10:06
 Operator : JC/MD
 Sample : VX1031WBL01
 Misc : 5.0mL/MSVOA_X/WATER
 ALS Vial : 4 Sample Multiplier: 1

Instrument :
 MSVOA_X
 ClientSampleId :
 VX1031WBL01

Quant Time: Oct 31 22:59:48 2025
 Quant Method : Z:\voasrv\HPCHEM1\MSVOA_X\Method\82X102925W.M
 Quant Title : SW846 8260
 QLast Update : Thu Oct 30 02:37:17 2025
 Response via : Initial Calibration

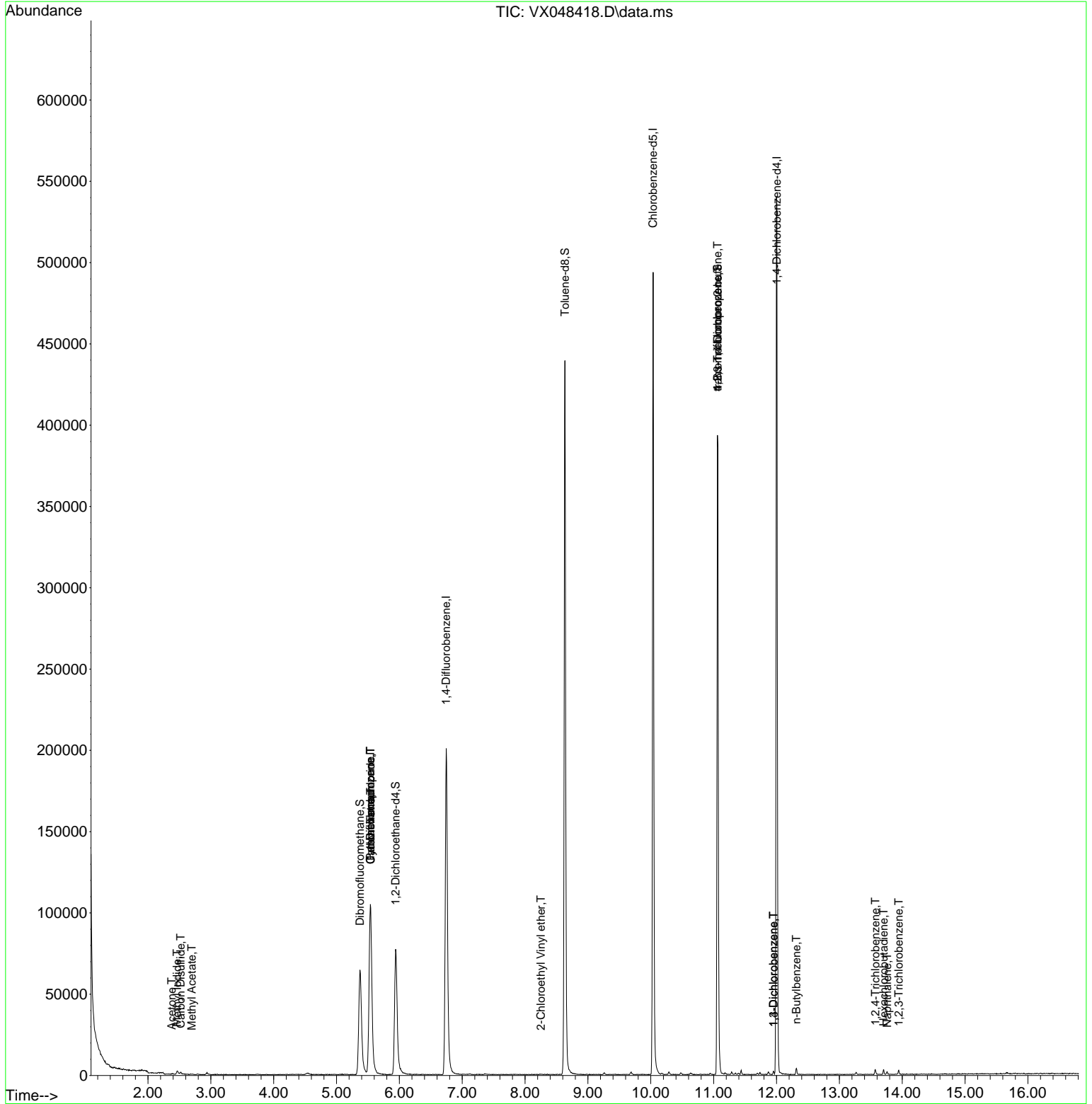
Compound	R.T.	QIon	Response	Conc	Units	Dev(Min)
Internal Standards						
1) Pentafluorobenzene	5.537	168	109923	50.000	ug/l	0.00
34) 1,4-Difluorobenzene	6.745	114	221003	50.000	ug/l	0.00
63) Chlorobenzene-d5	10.037	117	229713	50.000	ug/l	0.00
72) 1,4-Dichlorobenzene-d4	12.006	152	119652	50.000	ug/l	0.00
System Monitoring Compounds						
33) 1,2-Dichloroethane-d4	5.940	65	85260	53.933	ug/l	0.00
Spiked Amount	50.000	Range 78 - 117	Recovery	=	107.860%	
35) Dibromofluoromethane	5.373	113	63824	50.653	ug/l	0.00
Spiked Amount	50.000	Range 75 - 124	Recovery	=	101.300%	
50) Toluene-d8	8.634	98	270510	48.635	ug/l	0.00
Spiked Amount	50.000	Range 92 - 112	Recovery	=	97.260%	
62) 4-Bromofluorobenzene	11.061	95	119942	57.646	ug/l	0.00
Spiked Amount	50.000	Range 83 - 123	Recovery	=	115.300%	
Target Compounds						
						Qvalue
10) Methyl Iodide	2.465	142	2902	0.573	ug/l	97
16) Acetone	2.380	43	556	1.552	ug/l #	45
17) Carbon Disulfide	2.520	76	1489	0.406	ug/l	96
18) Methyl Acetate	2.697	43	281	0.234	ug/l #	54
31) Cyclohexane	5.544	56	2369	1.084	ug/l #	1
36) 1,1-Dichloropropene	5.537	75	8697	4.110	ug/l #	50
38) Carbon Tetrachloride	5.544	117	11590	4.744	ug/l #	16
58) 2-Chloroethyl Vinyl ether	8.250	63	44	9.328	ug/l #	47
76) 1,2,3-Trichloropropane	11.061	75	60403	35.103	ug/l #	33
81) trans-1,4-Dichloro-2-b...	11.061	75	60403	121.477	ug/l #	10
87) 1,3-Dichlorobenzene	11.951	146	859	0.206	ug/l	92
88) 1,4-Dichlorobenzene	11.951	146	859	0.202	ug/l	93
89) n-Butylbenzene	12.317	91	1611	0.221	ug/l	96
93) 1,2,4-Trichlorobenzene	13.573	180	908	0.340	ug/l	98
94) Hexachlorobutadiene	13.707	225	422	0.377	ug/l	79
95) Naphthalene	13.762	128	1608	0.238	ug/l #	86
96) 1,2,3-Trichlorobenzene	13.945	180	856	0.353	ug/l #	80

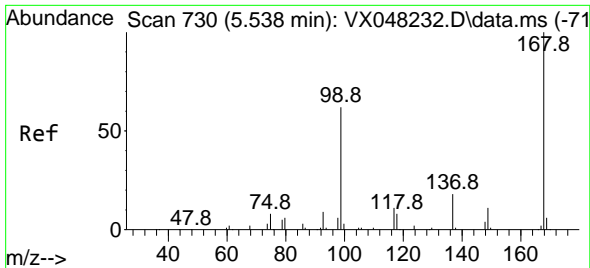
(#) = qualifier out of range (m) = manual integration (+) = signals summed

Data Path : Z:\voasrv\HPCHEM1\MSVOA_X\Data\VX103125\
 Data File : VX048418.D
 Acq On : 31 Oct 2025 10:06
 Operator : JC/MD
 Sample : VX1031WBL01
 Misc : 5.0mL/MSVOA_X/WATER
 ALS Vial : 4 Sample Multiplier: 1

Instrument :
 MSVOA_X
 ClientSampleId :
 VX1031WBL01

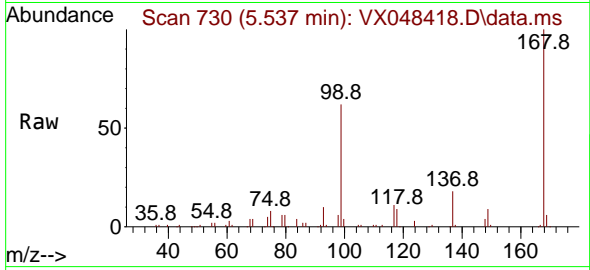
Quant Time: Oct 31 22:59:48 2025
 Quant Method : Z:\voasrv\HPCHEM1\MSVOA_X\Method\82X102925W.M
 Quant Title : SW846 8260
 QLast Update : Thu Oct 30 02:37:17 2025
 Response via : Initial Calibration



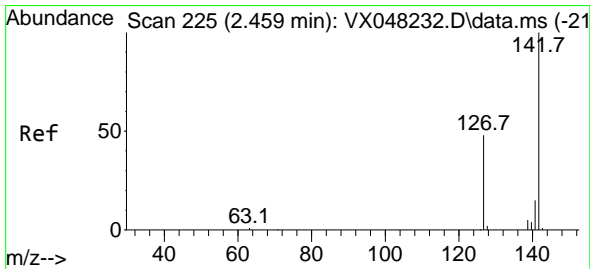
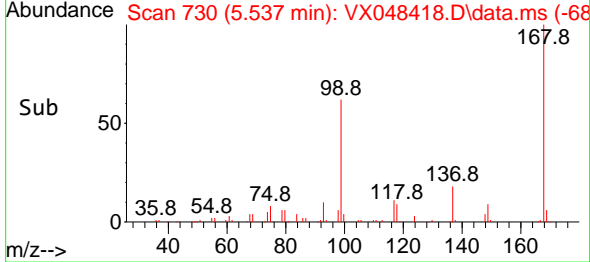
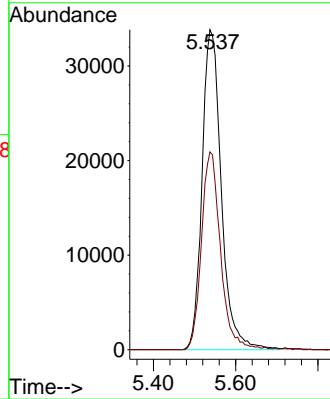


#1
 Pentafluorobenzene
 Concen: 50.000 ug/l
 RT: 5.537 min Scan# 71
 Delta R.T. 0.000 min
 Lab File: VX048418.D
 Acq: 31 Oct 2025 10:06

Instrument :
 MSVOA_X
 ClientSampleId :
 VX1031WBL01

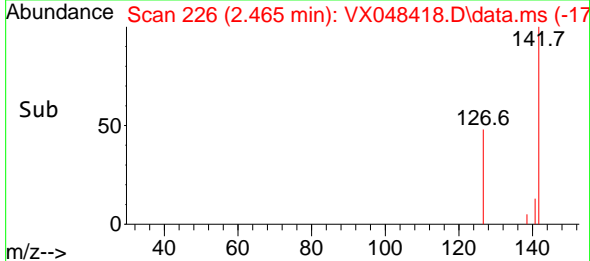
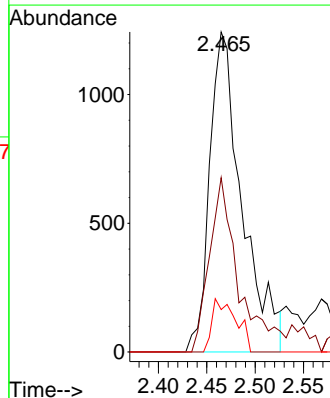
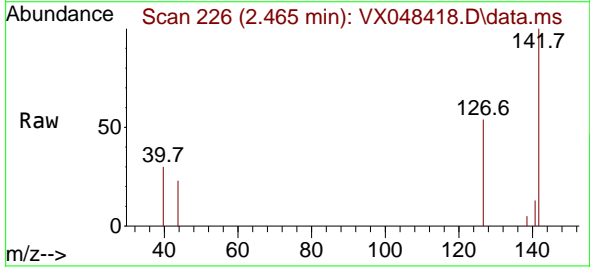


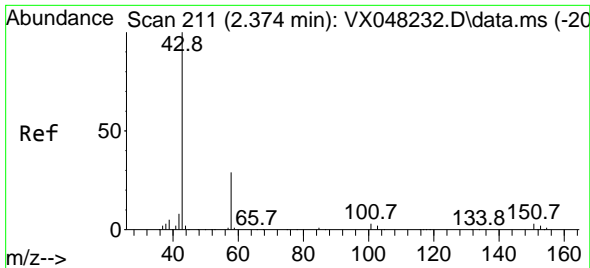
Tgt Ion:168 Resp: 109923
 Ion Ratio Lower Upper
 168 100
 99 61.8 46.4 69.6



#10
 Methyl Iodide
 Concen: 0.573 ug/l
 RT: 2.465 min Scan# 226
 Delta R.T. 0.006 min
 Lab File: VX048418.D
 Acq: 31 Oct 2025 10:06

Tgt Ion:142 Resp: 2902
 Ion Ratio Lower Upper
 142 100
 127 49.5 38.5 57.7
 141 12.3 11.6 17.4

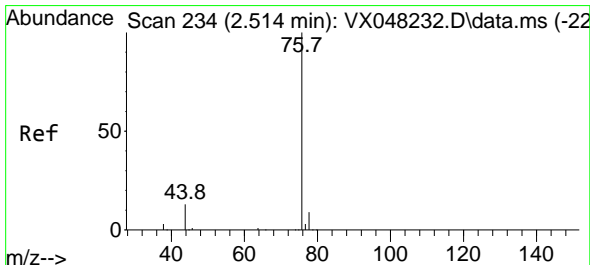
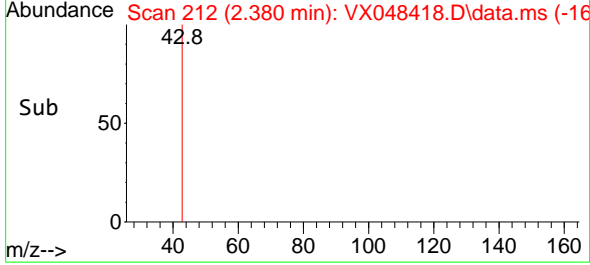
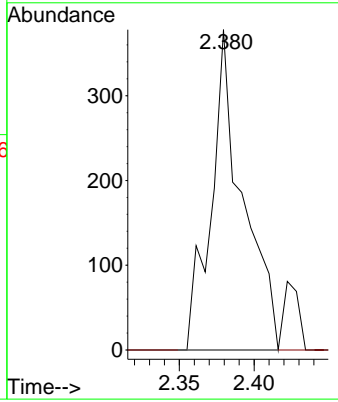
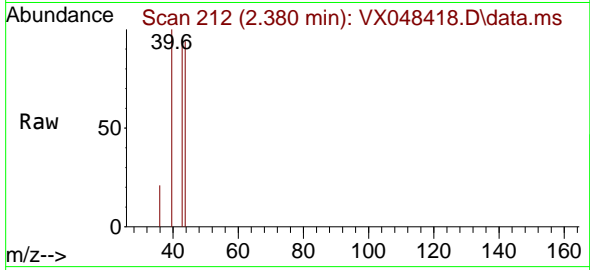




#16
 Acetone
 Concen: 1.552 ug/l
 RT: 2.380 min Scan# 211
 Delta R.T. 0.006 min
 Lab File: VX048418.D
 Acq: 31 Oct 2025 10:06

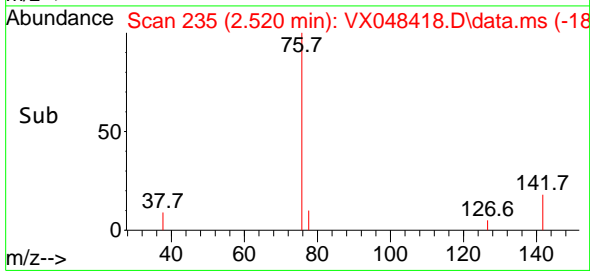
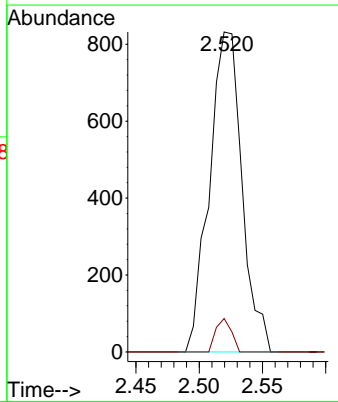
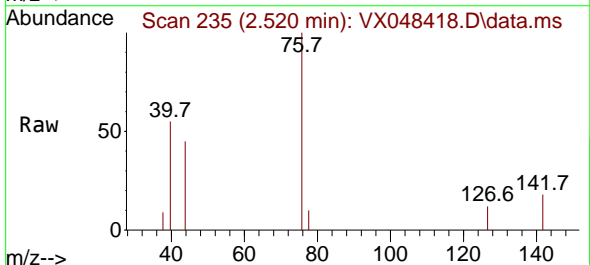
Instrument : MSVOA_X
 ClientSampleId : VX1031WBL01

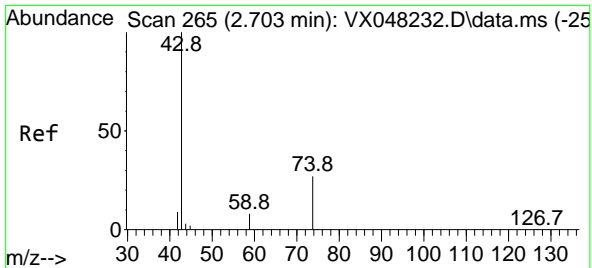
Tgt Ion: 43 Resp: 556
 Ion Ratio Lower Upper
 43 100
 58 0.0 23.4 35.2#



#17
 Carbon Disulfide
 Concen: 0.406 ug/l
 RT: 2.520 min Scan# 235
 Delta R.T. -0.000 min
 Lab File: VX048418.D
 Acq: 31 Oct 2025 10:06

Tgt Ion: 76 Resp: 1489
 Ion Ratio Lower Upper
 76 100
 78 10.5 7.1 10.7

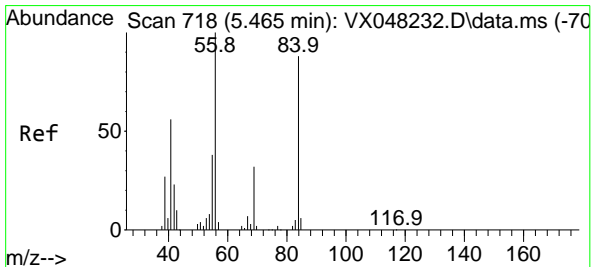
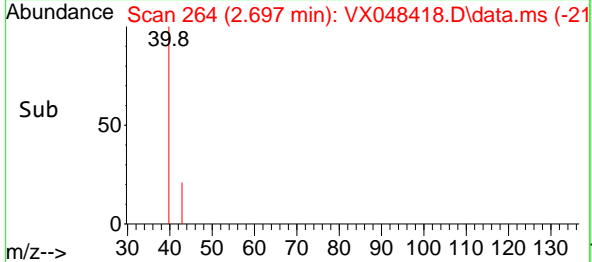
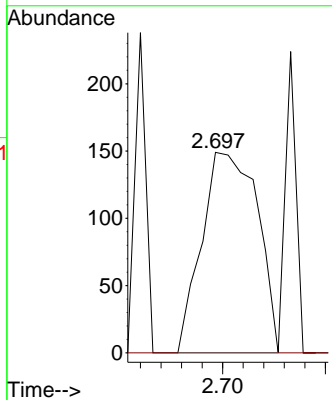
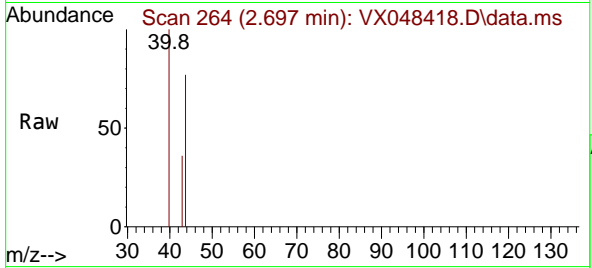




#18
 Methyl Acetate
 Concen: 0.234 ug/l
 RT: 2.697 min Scan# 201
 Delta R.T. -0.000 min
 Lab File: VX048418.D
 Acq: 31 Oct 2025 10:06

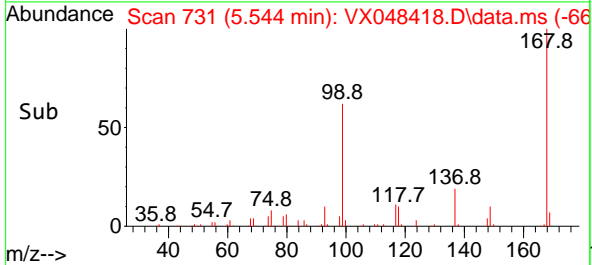
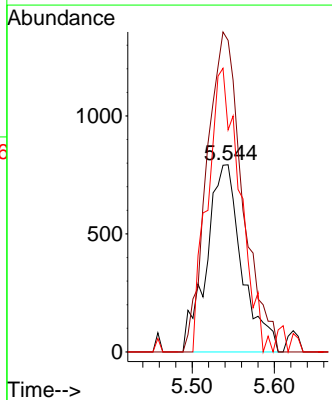
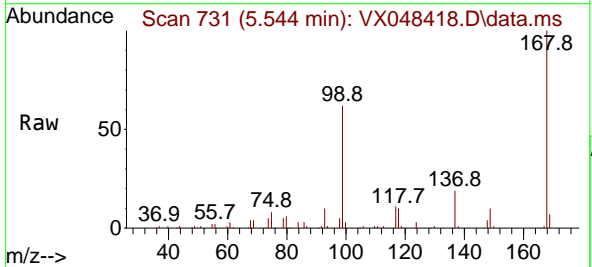
Instrument :
 MSVOA_X
 ClientSampleId :
 VX1031WBL01

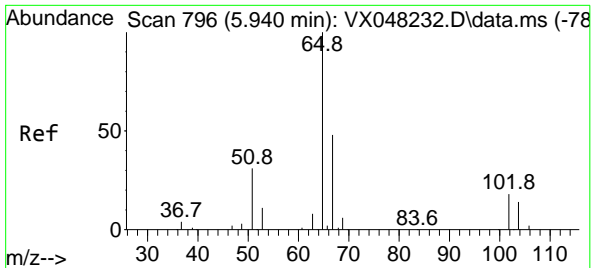
Tgt Ion: 43 Resp: 281
 Ion Ratio Lower Upper
 43 100
 74 0.0 17.5 26.3#



#31
 Cyclohexane
 Concen: 1.084 ug/l
 RT: 5.544 min Scan# 731
 Delta R.T. 0.079 min
 Lab File: VX048418.D
 Acq: 31 Oct 2025 10:06

Tgt Ion: 56 Resp: 2369
 Ion Ratio Lower Upper
 56 100
 69 166.5 23.0 34.6#
 84 118.7 64.6 97.0#

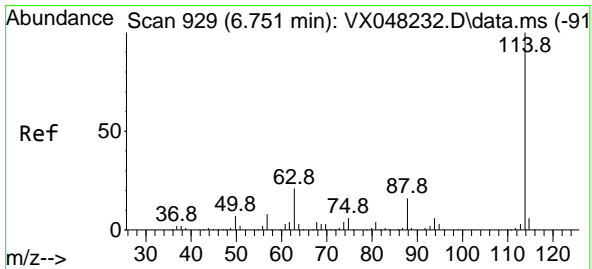
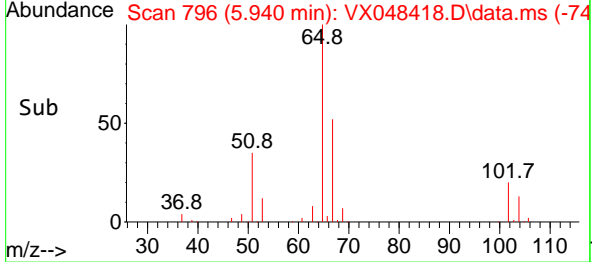
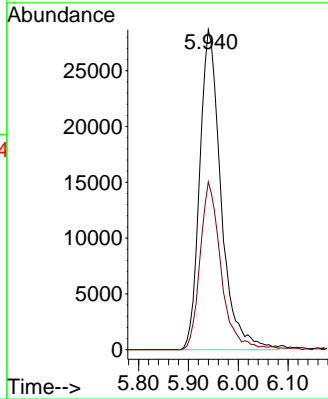
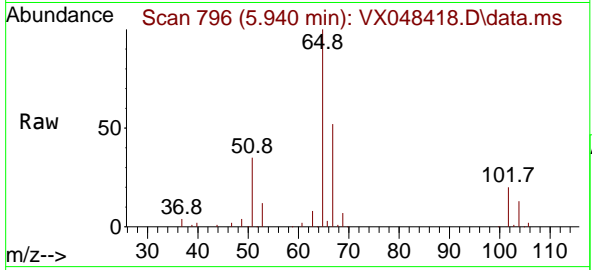




#33
 1,2-Dichloroethane-d4
 Concen: 53.933 ug/l
 RT: 5.940 min Scan# 796
 Delta R.T. -0.000 min
 Lab File: VX048418.D
 Acq: 31 Oct 2025 10:06

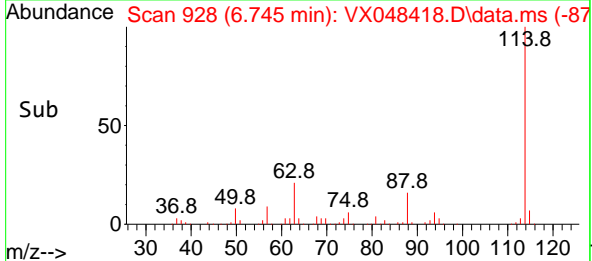
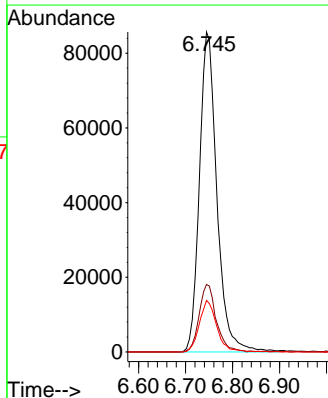
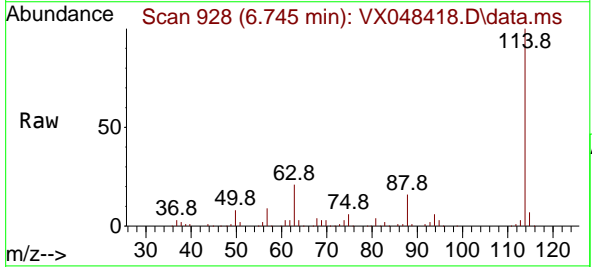
Instrument :
 MSVOA_X
 ClientSampleId :
 VX1031WBL01

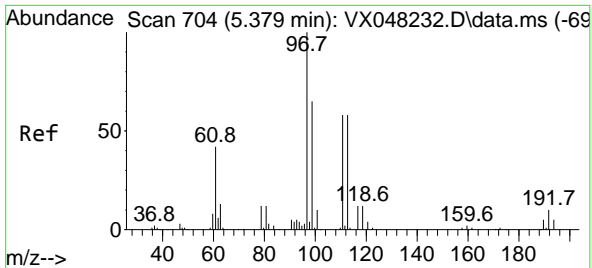
Tgt Ion: 65 Resp: 85260
 Ion Ratio Lower Upper
 65 100
 67 51.7 0.0 105.0



#34
 1,4-Difluorobenzene
 Concen: 50.000 ug/l
 RT: 6.745 min Scan# 928
 Delta R.T. -0.000 min
 Lab File: VX048418.D
 Acq: 31 Oct 2025 10:06

Tgt Ion: 114 Resp: 221003
 Ion Ratio Lower Upper
 114 100
 63 21.1 0.0 43.2
 88 16.1 0.0 33.6



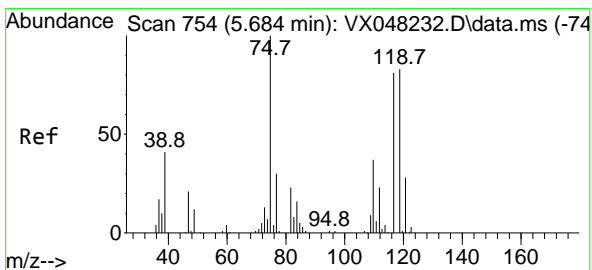
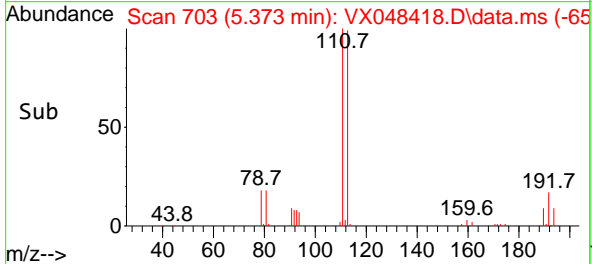
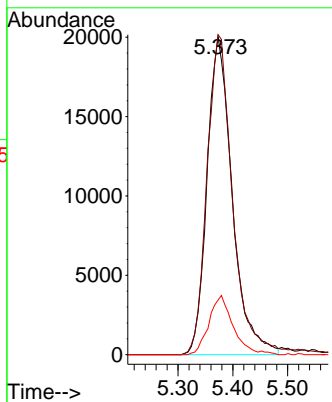
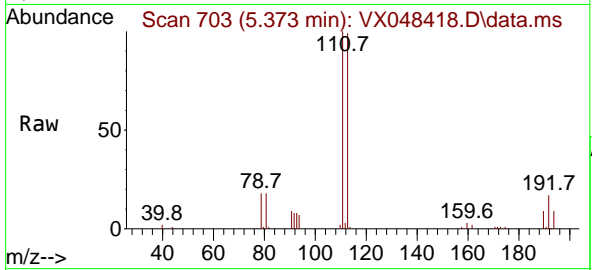


#35
 Dibromofluoromethane
 Concen: 50.653 ug/l
 RT: 5.373 min Scan# 703
 Delta R.T. -0.000 min
 Lab File: VX048418.D
 Acq: 31 Oct 2025 10:06

Instrument : MSVOA_X
 ClientSampleId : VX1031WBL01

Tgt Ion:113 Resp: 63824

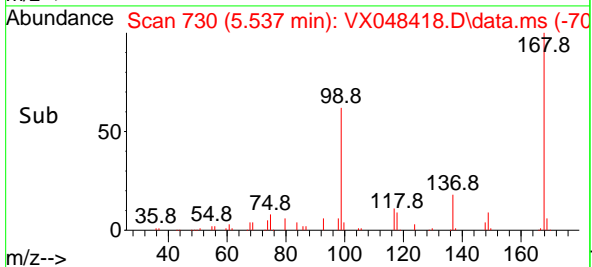
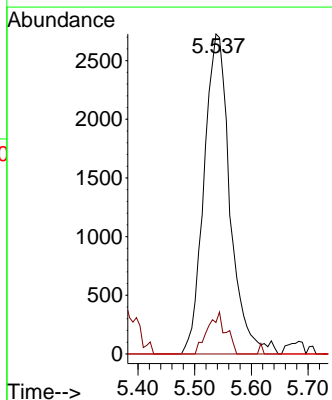
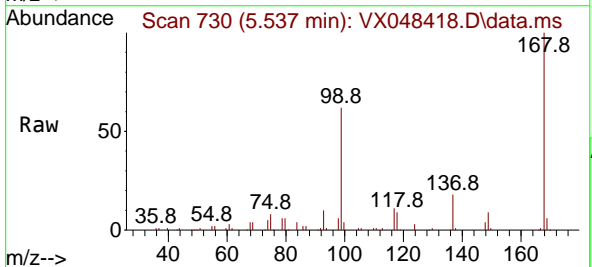
Ion	Ratio	Lower	Upper
113	100		
111	102.1	82.2	123.4
192	18.0	15.1	22.7

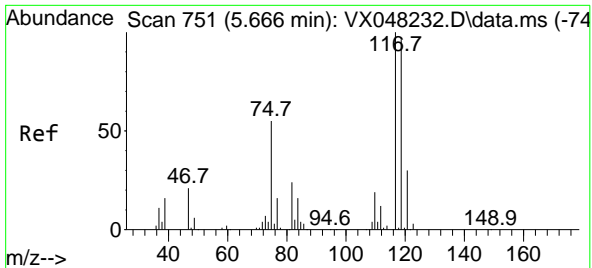


#36
 1,1-Dichloropropene
 Concen: 4.110 ug/l
 RT: 5.537 min Scan# 730
 Delta R.T. -0.146 min
 Lab File: VX048418.D
 Acq: 31 Oct 2025 10:06

Tgt Ion: 75 Resp: 8697

Ion	Ratio	Lower	Upper
75	100		
110	9.2	17.7	53.1#
77	0.0	24.3	36.5#

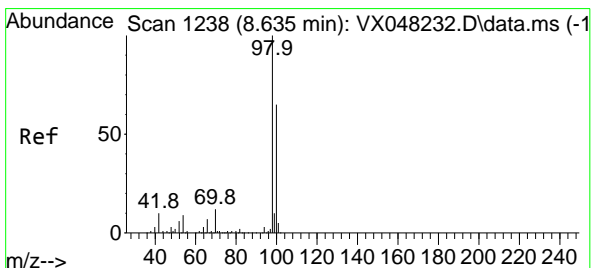
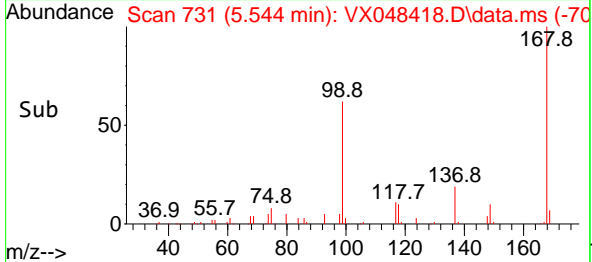
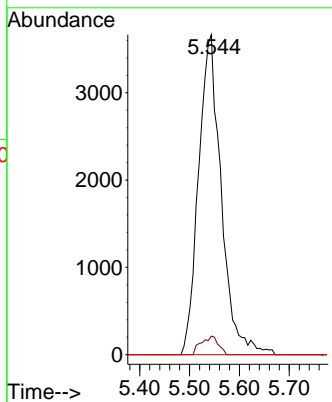
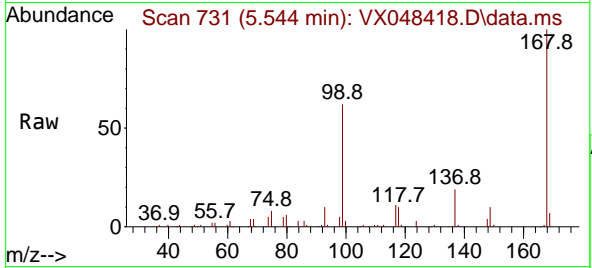




#38
 Carbon Tetrachloride
 Concen: 4.744 ug/l
 RT: 5.544 min Scan# 711
 Delta R.T. -0.122 min
 Lab File: VX048418.D
 Acq: 31 Oct 2025 10:06

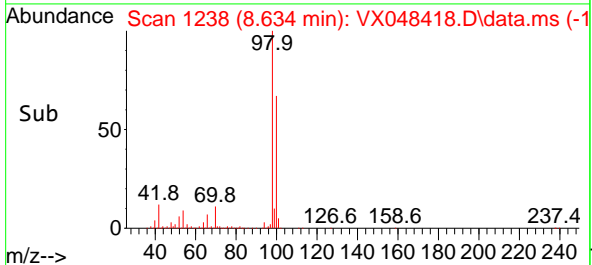
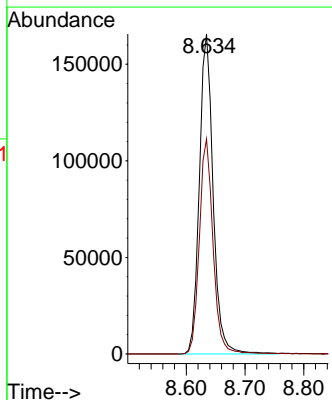
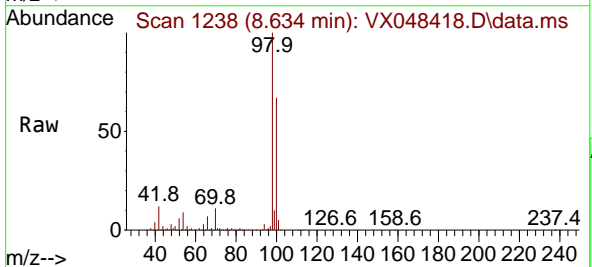
Instrument : MSVOA_X
 ClientSampleId : VX1031WBL01

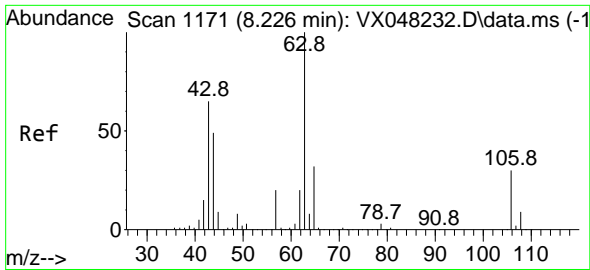
Tgt Ion:117 Resp: 11590
 Ion Ratio Lower Upper
 117 100
 119 5.8 77.2 115.8#
 121 0.0 24.8 37.2#



#50
 Toluene-d8
 Concen: 48.635 ug/l
 RT: 8.634 min Scan# 1238
 Delta R.T. -0.000 min
 Lab File: VX048418.D
 Acq: 31 Oct 2025 10:06

Tgt Ion: 98 Resp: 270510
 Ion Ratio Lower Upper
 98 100
 100 67.0 53.0 79.4

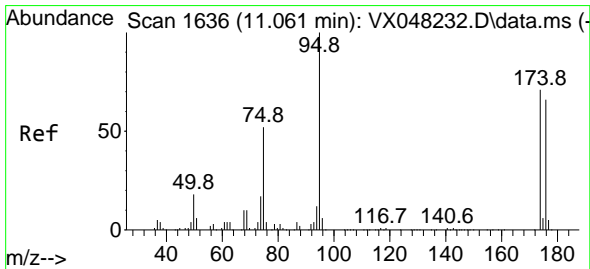
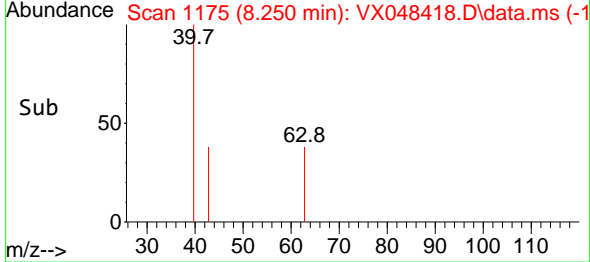
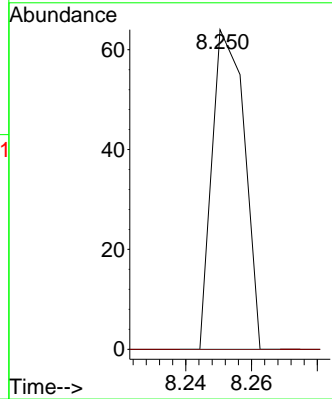
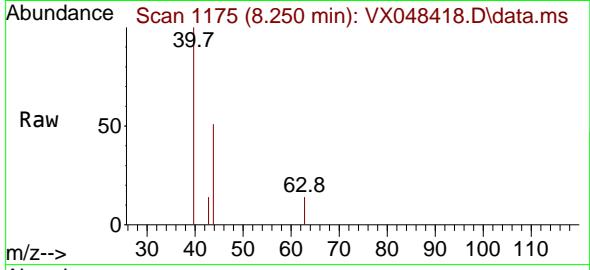




#58
 2-Chloroethyl Vinyl ether
 Concen: 9.328 ug/l
 RT: 8.250 min Scan# 1175
 Delta R.T. 0.024 min
 Lab File: VX048418.D
 Acq: 31 Oct 2025 10:06

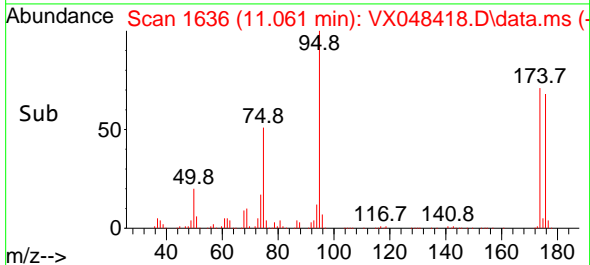
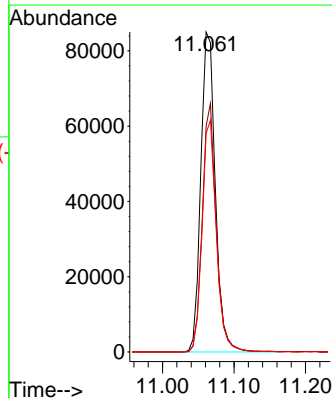
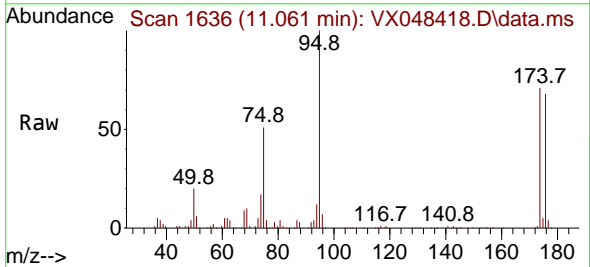
Instrument : MSVOA_X
 ClientSampleId : VX1031WBL01

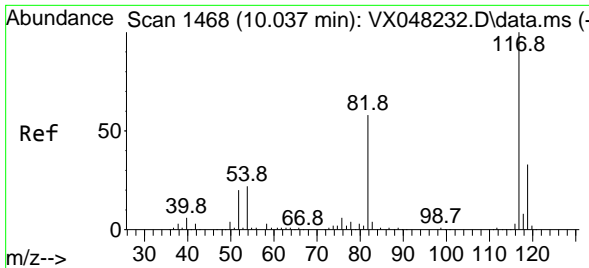
Tgt Ion: 63 Resp: 44
 Ion Ratio Lower Upper
 63 100
 106 0.0 22.2 33.2#



#62
 4-Bromofluorobenzene
 Concen: 57.646 ug/l
 RT: 11.061 min Scan# 1636
 Delta R.T. -0.000 min
 Lab File: VX048418.D
 Acq: 31 Oct 2025 10:06

Tgt Ion: 95 Resp: 119942
 Ion Ratio Lower Upper
 95 100
 174 74.9 0.0 147.8
 176 70.9 0.0 142.8



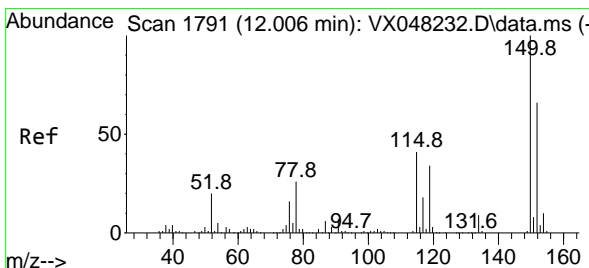
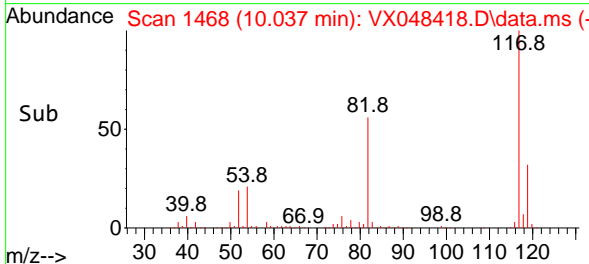
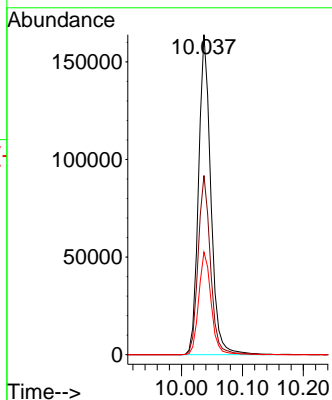
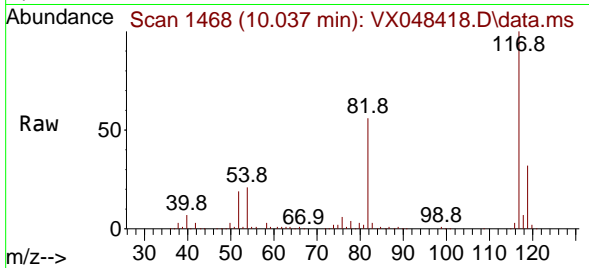


#63
 Chlorobenzene-d5
 Concen: 50.000 ug/l
 RT: 10.037 min Scan# 1468
 Delta R.T. -0.000 min
 Lab File: VX048418.D
 Acq: 31 Oct 2025 10:06

Instrument : MSVOA_X
 ClientSampleId : VX1031WBL01

Tgt Ion:117 Resp: 229713

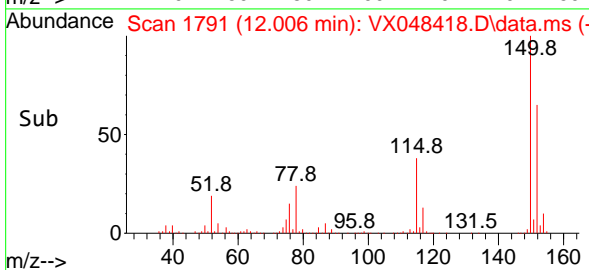
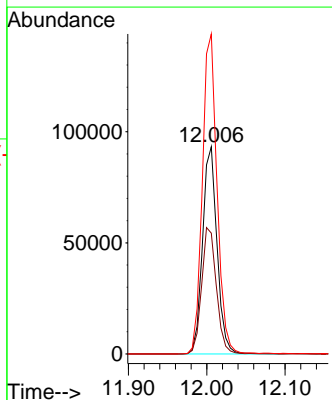
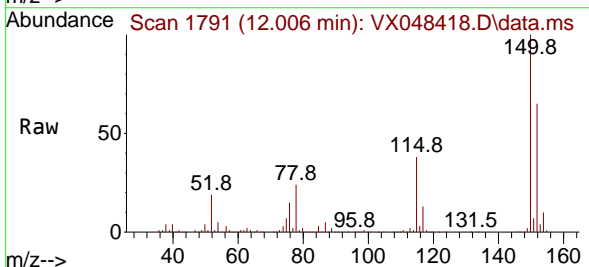
Ion	Ratio	Lower	Upper
117	100		
82	56.0	46.5	69.7
119	32.1	25.9	38.9

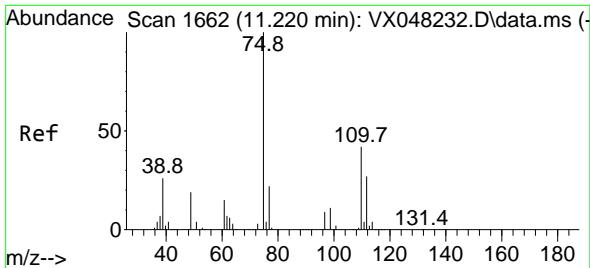


#72
 1,4-Dichlorobenzene-d4
 Concen: 50.000 ug/l
 RT: 12.006 min Scan# 1791
 Delta R.T. -0.000 min
 Lab File: VX048418.D
 Acq: 31 Oct 2025 10:06

Tgt Ion:152 Resp: 119652

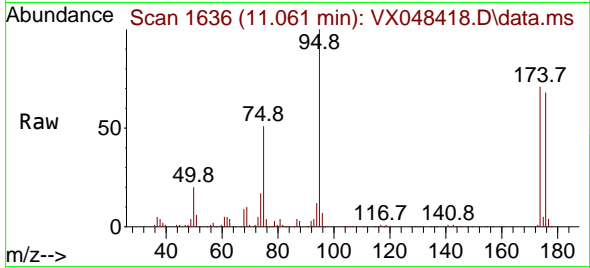
Ion	Ratio	Lower	Upper
152	100		
115	62.1	43.1	129.4
150	156.4	0.0	353.0



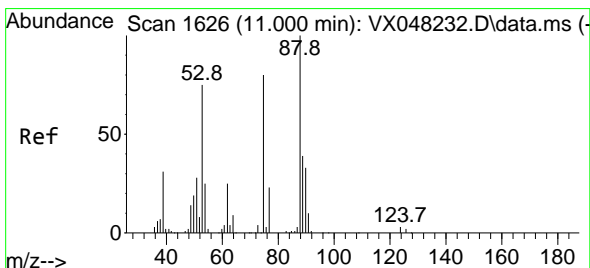
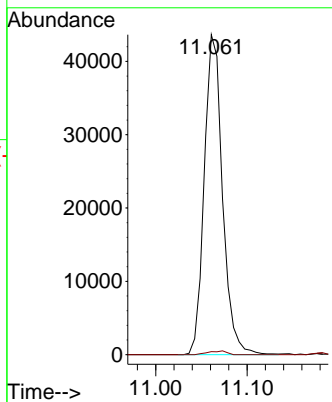
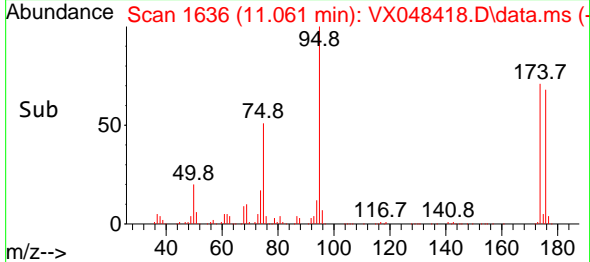


#76
 1,2,3-Trichloropropane
 Concen: 35.103 ug/l
 RT: 11.061 min Scan# 1636
 Delta R.T. -0.159 min
 Lab File: VX048418.D
 Acq: 31 Oct 2025 10:06

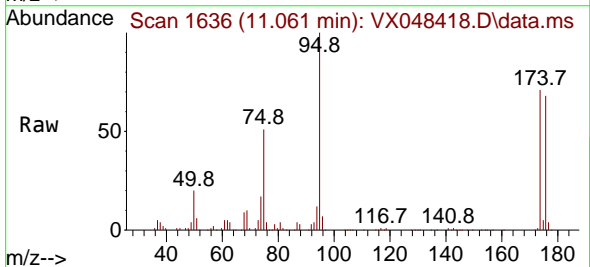
Instrument : MSVOA_X
 ClientSampleId : VX1031WBL01



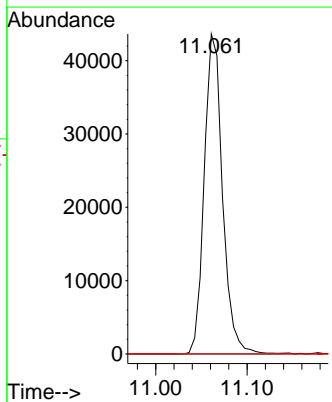
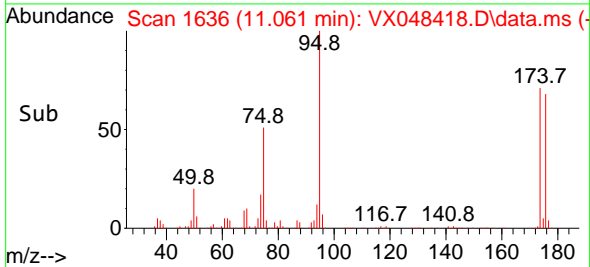
Tgt Ion: 75 Resp: 60403
 Ion Ratio Lower Upper
 75 100
 77 1.2 22.4 67.2#

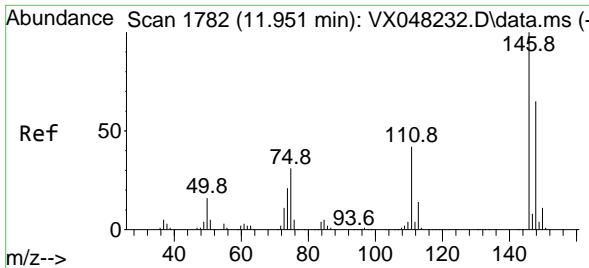


#81
 trans-1,4-Dichloro-2-butene
 Concen: 121.477 ug/l
 RT: 11.061 min Scan# 1636
 Delta R.T. 0.061 min
 Lab File: VX048418.D
 Acq: 31 Oct 2025 10:06



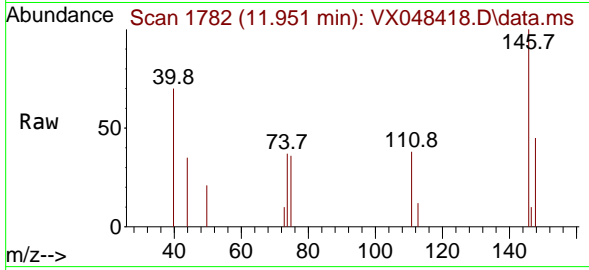
Tgt Ion: 75 Resp: 60403
 Ion Ratio Lower Upper
 75 100
 53 0.0 79.5 119.3#
 89 0.0 36.8 55.2#





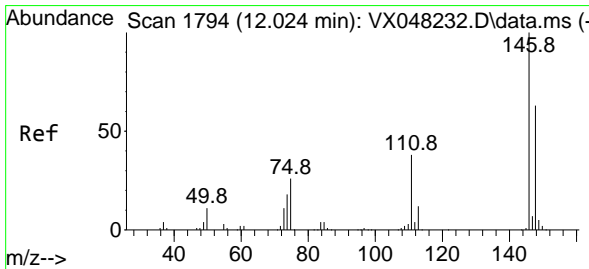
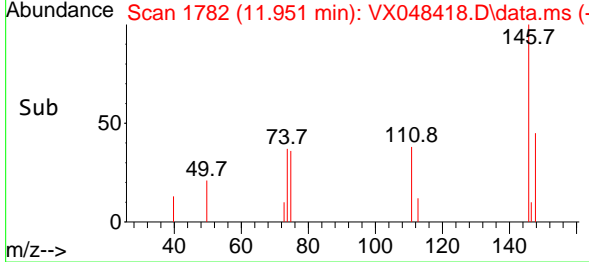
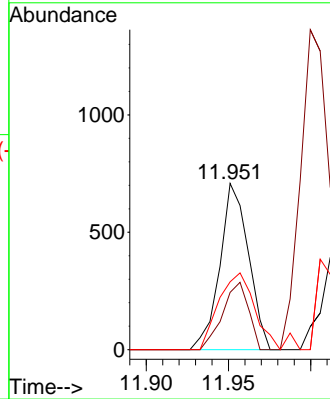
#87
 1,3-Dichlorobenzene
 Concen: 0.206 ug/l
 RT: 11.951 min Scan# 1782
 Delta R.T. -0.000 min
 Lab File: VX048418.D
 Acq: 31 Oct 2025 10:06

Instrument : MSVOA_X
 ClientSampleId : VX1031WBL01



Tgt Ion:146 Resp: 859

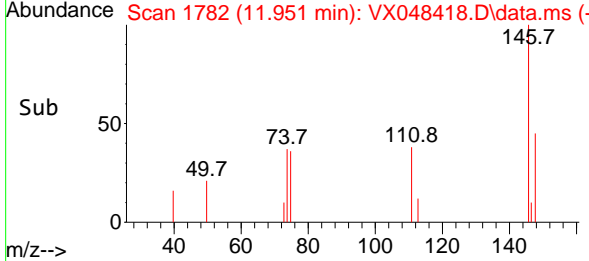
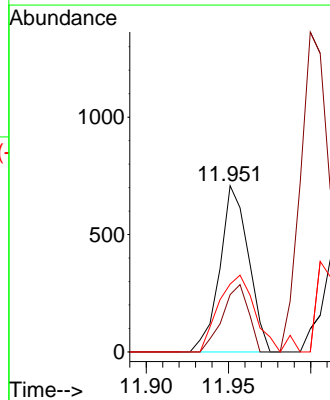
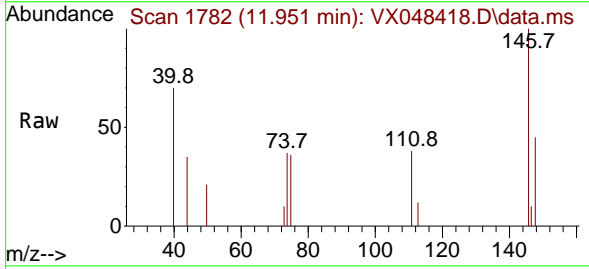
Ion	Ratio	Lower	Upper
146	100		
111	36.7	20.4	61.2
148	57.5	31.9	95.9

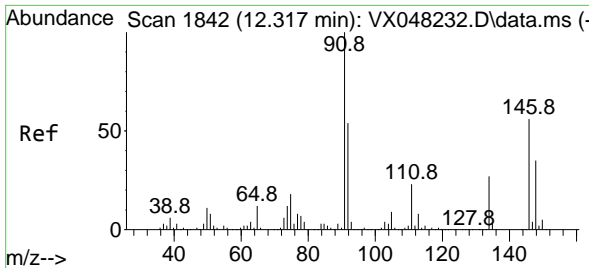


#88
 1,4-Dichlorobenzene
 Concen: 0.202 ug/l
 RT: 11.951 min Scan# 1782
 Delta R.T. -0.073 min
 Lab File: VX048418.D
 Acq: 31 Oct 2025 10:06

Tgt Ion:146 Resp: 859

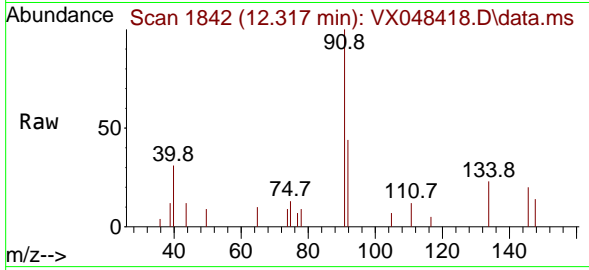
Ion	Ratio	Lower	Upper
146	100		
111	36.7	20.1	60.2
148	57.5	31.8	95.3





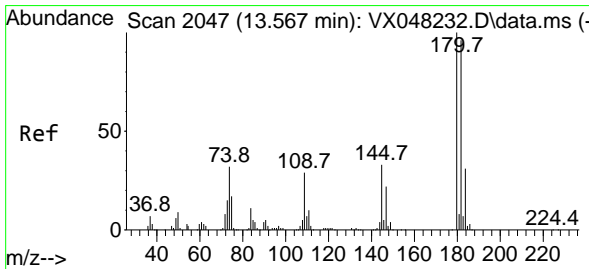
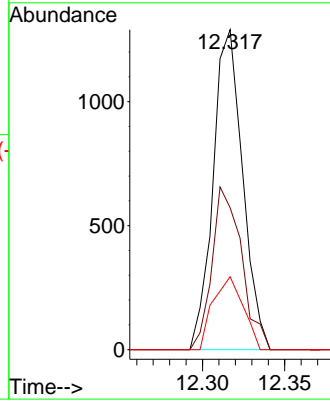
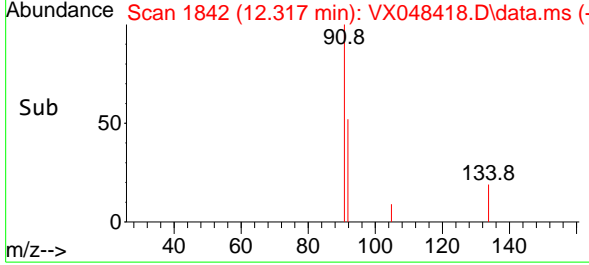
#89
 n-Butylbenzene
 Concen: 0.221 ug/l
 RT: 12.317 min Scan# 1842
 Delta R.T. 0.006 min
 Lab File: VX048418.D
 Acq: 31 Oct 2025 10:06

Instrument : MSVOA_X
 ClientSampleId : VX1031WBL01

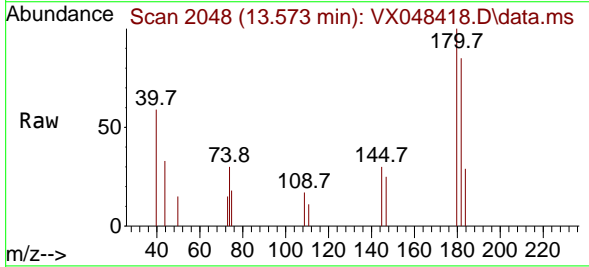


Tgt Ion: 91 Resp: 1611

Ion	Ratio	Lower	Upper
91	100		
92	50.8	26.9	80.6
134	23.2	12.7	38.1

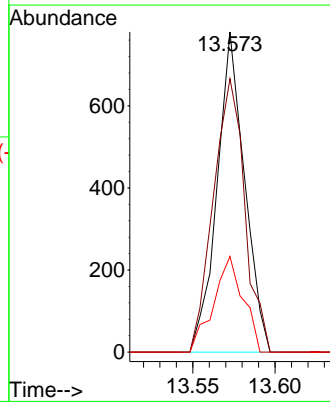
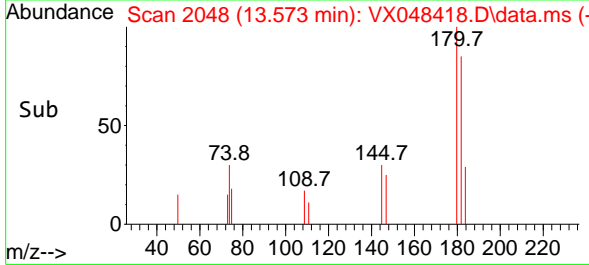


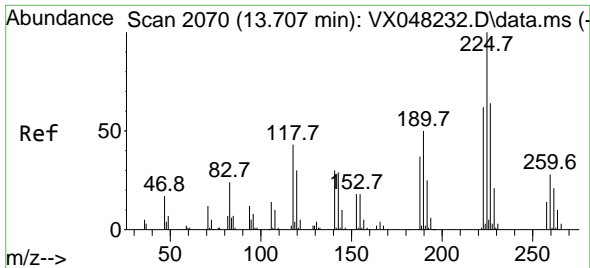
#93
 1,2,4-Trichlorobenzene
 Concen: 0.340 ug/l
 RT: 13.573 min Scan# 2048
 Delta R.T. 0.006 min
 Lab File: VX048418.D
 Acq: 31 Oct 2025 10:06



Tgt Ion: 180 Resp: 908

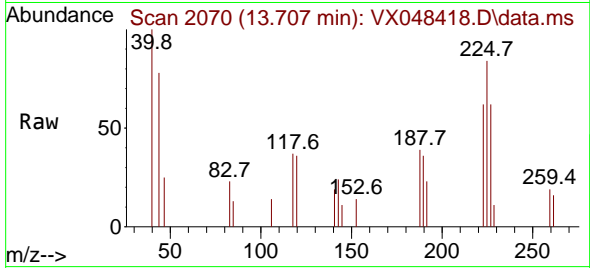
Ion	Ratio	Lower	Upper
180	100		
182	97.4	47.3	142.0
145	32.2	16.3	48.9



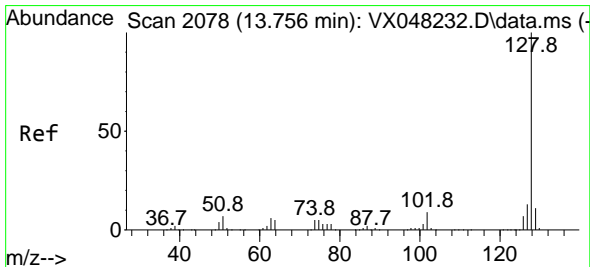
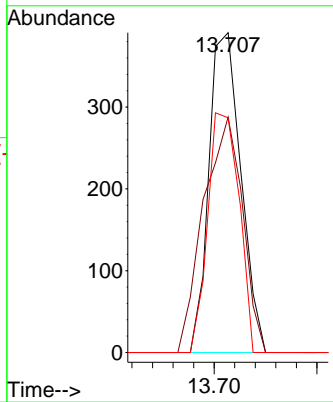
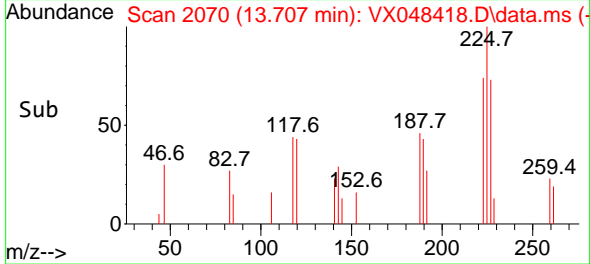


#94
 Hexachlorobutadiene
 Concen: 0.377 ug/l
 RT: 13.707 min Scan# 2070
 Delta R.T. -0.000 min
 Lab File: VX048418.D
 Acq: 31 Oct 2025 10:06

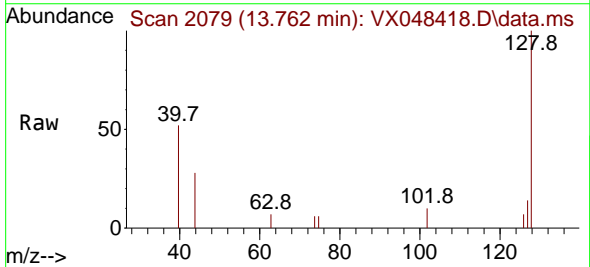
Instrument : MSVOA_X
 ClientSampleId : VX1031WBL01



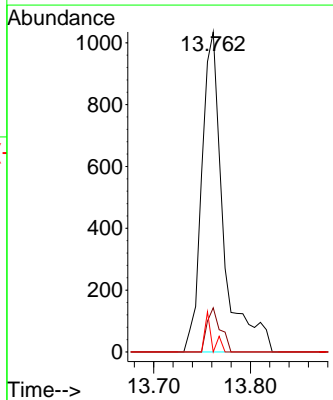
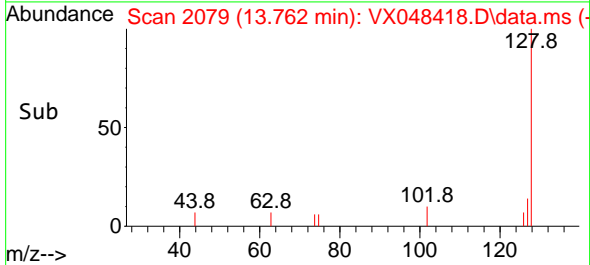
Tgt Ion	Resp	Lower	Upper
225	100		
223	89.6	32.6	97.7
227	73.2	32.5	97.4

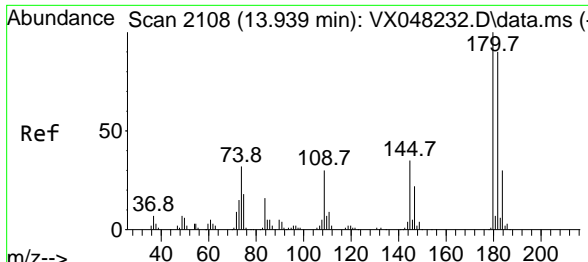


#95
 Naphthalene
 Concen: 0.238 ug/l
 RT: 13.762 min Scan# 2079
 Delta R.T. 0.006 min
 Lab File: VX048418.D
 Acq: 31 Oct 2025 10:06



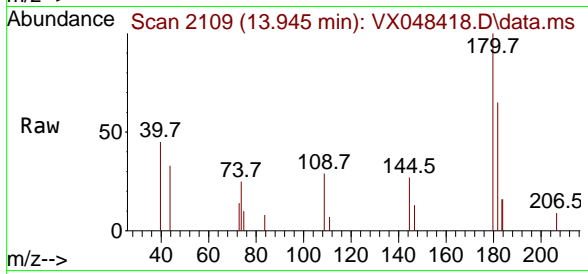
Tgt Ion	Resp	Lower	Upper
128	100		
127	8.6	10.2	15.4#
129	4.1	8.6	12.8#





#96
 1,2,3-Trichlorobenzene
 Concen: 0.353 ug/l
 RT: 13.945 min Scan# 21
 Delta R.T. 0.006 min
 Lab File: VX048418.D
 Acq: 31 Oct 2025 10:06

Instrument :
 MSVOA_X
 ClientSampleId :
 VX1031WBL01



Tgt Ion:180 Resp: 856

Ion	Ratio	Lower	Upper
180	100		
182	80.6	46.6	139.7
145	10.5	16.9	50.7#

