

Data Path : Z:\voasrv\HPCHEM1\MSVOA\_X\Data\VX103125\  
 Data File : VX048423.D  
 Acq On : 31 Oct 2025 12:02  
 Operator : JC/MD  
 Sample : Q3500-03 100X  
 Misc : 5.0mL/MSVOA\_X/WATER  
 ALS Vial : 9 Sample Multiplier: 1

Instrument :  
 MSVOA\_X  
 ClientSampleId :  
 463

Quant Time: Oct 31 23:03:04 2025  
 Quant Method : Z:\voasrv\HPCHEM1\MSVOA\_X\Method\82X102925W.M  
 Quant Title : SW846 8260  
 QLast Update : Thu Oct 30 02:37:17 2025  
 Response via : Initial Calibration

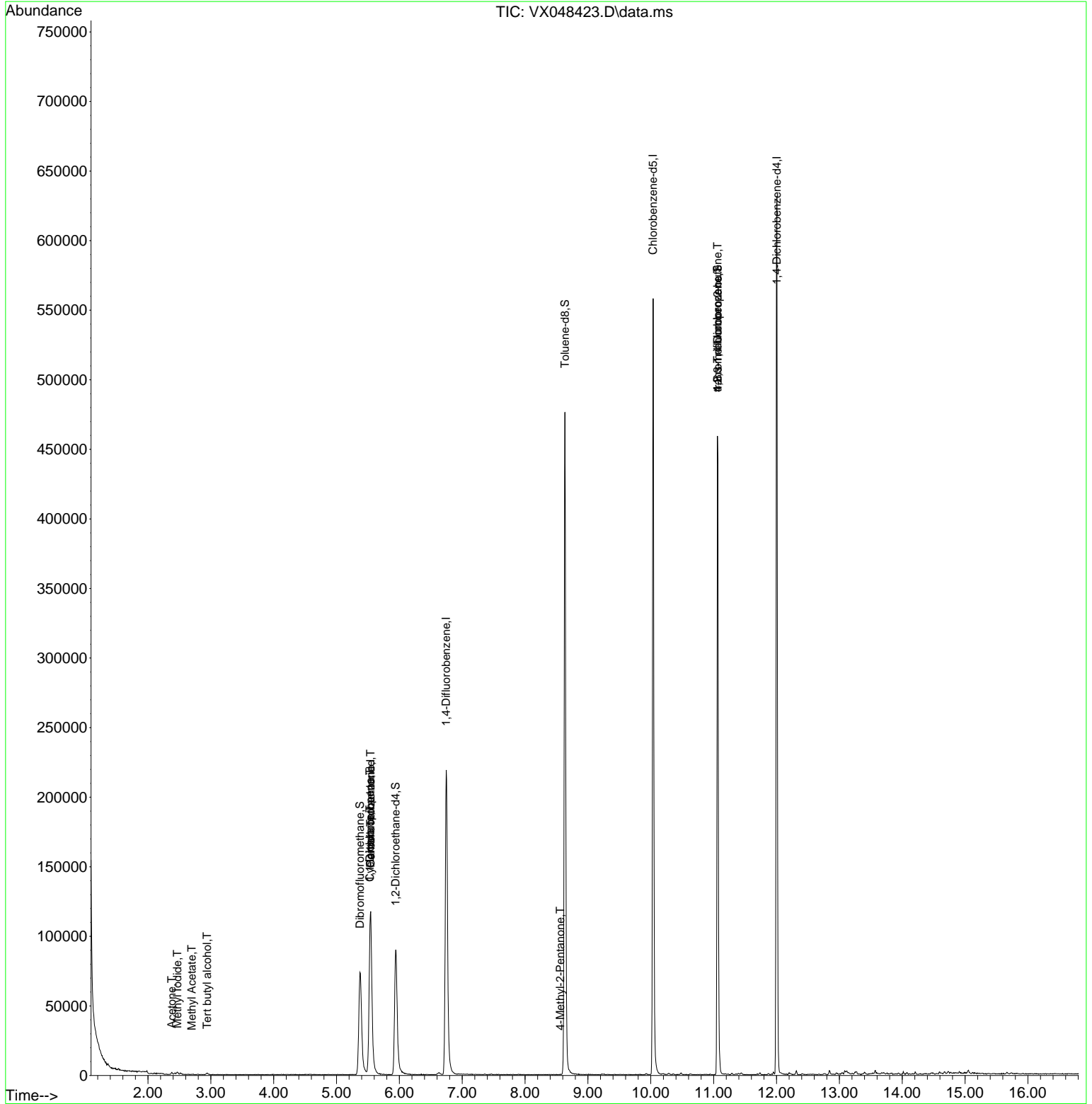
Compound	R.T.	QIon	Response	Conc	Units	Dev(Min)
-----						
Internal Standards						
1) Pentafluorobenzene	5.544	168	120387	50.000	ug/l	0.00
34) 1,4-Difluorobenzene	6.745	114	246735	50.000	ug/l	0.00
63) Chlorobenzene-d5	10.037	117	260704	50.000	ug/l	0.00
72) 1,4-Dichlorobenzene-d4	12.006	152	134789	50.000	ug/l	0.00
System Monitoring Compounds						
33) 1,2-Dichloroethane-d4	5.940	65	100604	58.107	ug/l	0.00
Spiked Amount	50.000	Range 78 - 117	Recovery	=	116.220%	
35) Dibromofluoromethane	5.373	113	74641	53.060	ug/l	0.00
Spiked Amount	50.000	Range 75 - 124	Recovery	=	106.120%	
50) Toluene-d8	8.635	98	305059	49.127	ug/l	0.00
Spiked Amount	50.000	Range 92 - 112	Recovery	=	98.260%	
62) 4-Bromofluorobenzene	11.061	95	134623	57.954	ug/l	0.00
Spiked Amount	50.000	Range 83 - 123	Recovery	=	115.900%	
Target Compounds						
						Qvalue
10) Methyl Iodide	2.465	142	2274	0.410	ug/l	98
11) Tert butyl alcohol	2.940	59	54	0.407	ug/l #	72
16) Acetone	2.380	43	1771	4.513	ug/l	89
18) Methyl Acetate	2.697	43	501	0.382	ug/l #	54
31) Cyclohexane	5.531	56	2472	1.033	ug/l #	1
36) 1,1-Dichloropropene	5.531	75	9360	3.962	ug/l #	45
38) Carbon Tetrachloride	5.544	117	12780	4.686	ug/l #	14
51) 4-Methyl-2-Pentanone	8.561	43	578	0.313	ug/l #	38
76) 1,2,3-Trichloropropane	11.061	75	68986	35.588	ug/l #	33
81) trans-1,4-Dichloro-2-b...	11.061	75	68986	123.157	ug/l #	10
-----						

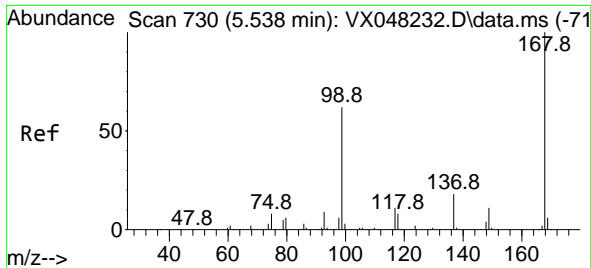
(#) = qualifier out of range (m) = manual integration (+) = signals summed

Data Path : Z:\voasrv\HPCHEM1\MSVOA\_X\Data\VX103125\  
 Data File : VX048423.D  
 Acq On : 31 Oct 2025 12:02  
 Operator : JC/MD  
 Sample : Q3500-03 100X  
 Misc : 5.0mL/MSVOA\_X/WATER  
 ALS Vial : 9 Sample Multiplier: 1

Instrument :  
 MSVOA\_X  
 ClientSampleId :  
 463

Quant Time: Oct 31 23:03:04 2025  
 Quant Method : Z:\voasrv\HPCHEM1\MSVOA\_X\Method\82X102925W.M  
 Quant Title : SW846 8260  
 QLast Update : Thu Oct 30 02:37:17 2025  
 Response via : Initial Calibration

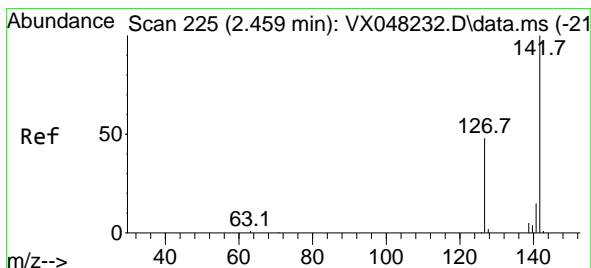
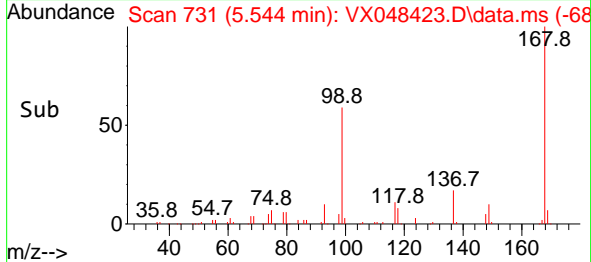
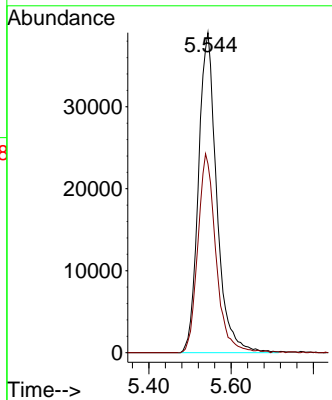
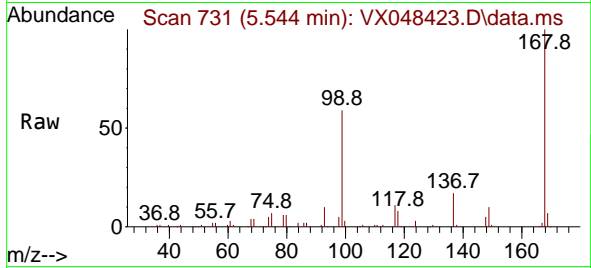




#1  
 Pentafluorobenzene  
 Concen: 50.000 ug/l  
 RT: 5.544 min Scan# 71  
 Delta R.T. 0.007 min  
 Lab File: VX048423.D  
 Acq: 31 Oct 2025 12:02

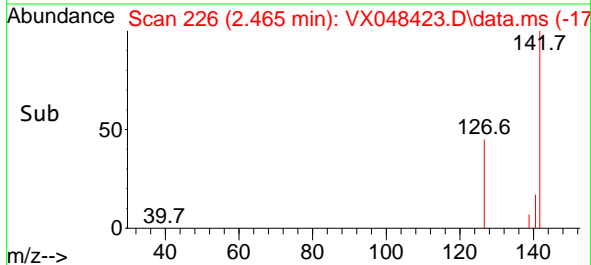
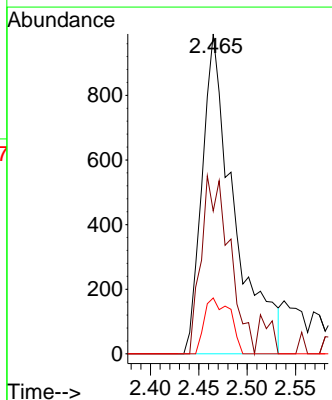
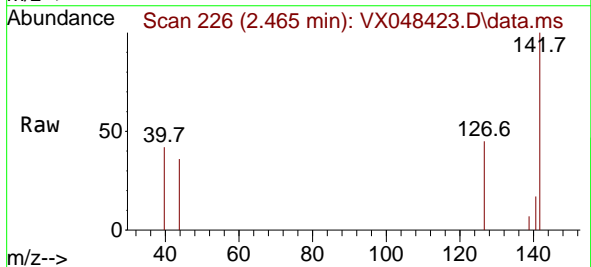
Instrument :  
 MSVOA\_X  
 ClientSampleId :  
 463

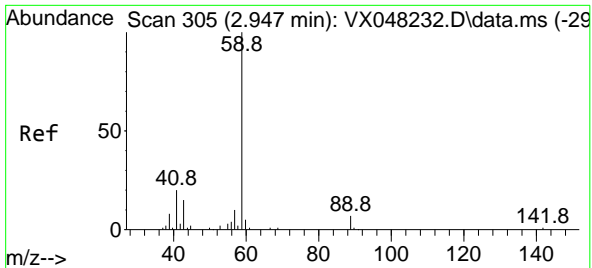
Tgt Ion:168 Resp: 120387  
 Ion Ratio Lower Upper  
 168 100  
 99 59.0 46.4 69.6



#10  
 Methyl Iodide  
 Concen: 0.410 ug/l  
 RT: 2.465 min Scan# 226  
 Delta R.T. 0.006 min  
 Lab File: VX048423.D  
 Acq: 31 Oct 2025 12:02

Tgt Ion:142 Resp: 2274  
 Ion Ratio Lower Upper  
 142 100  
 127 49.2 38.5 57.7  
 141 14.0 11.6 17.4

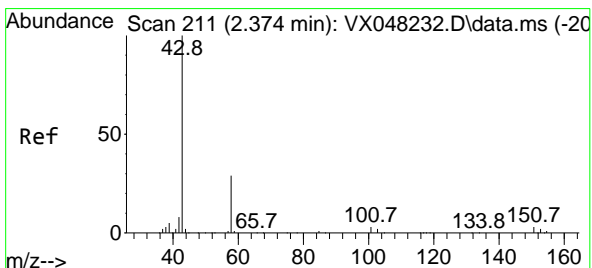
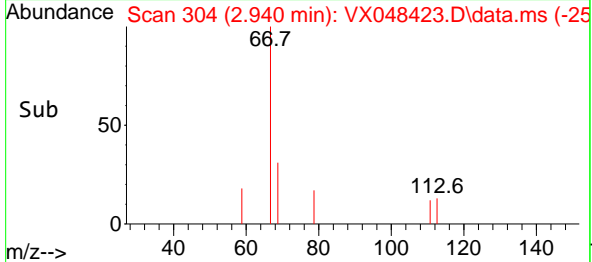
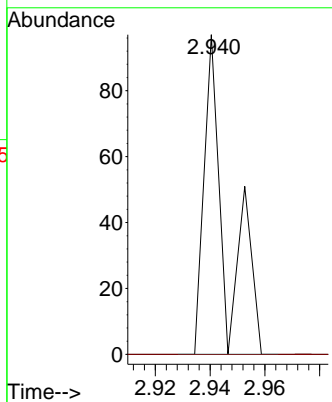
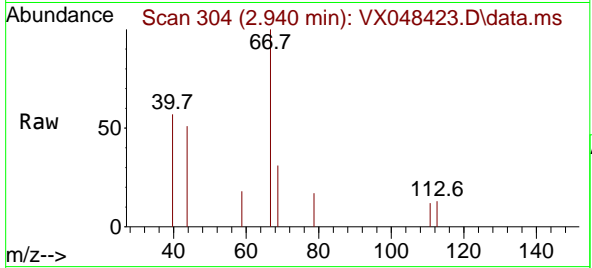




#11  
 Tert butyl alcohol  
 Concen: 0.407 ug/l  
 RT: 2.940 min Scan# 304  
 Delta R.T. 0.000 min  
 Lab File: VX048423.D  
 Acq: 31 Oct 2025 12:02

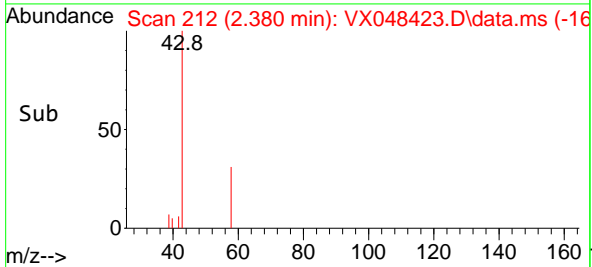
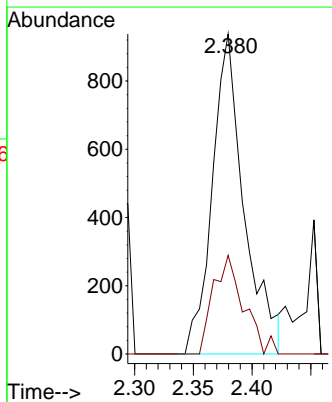
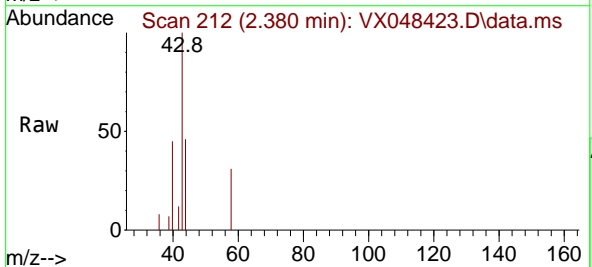
Instrument : MSVOA\_X  
 ClientSampleId : 463

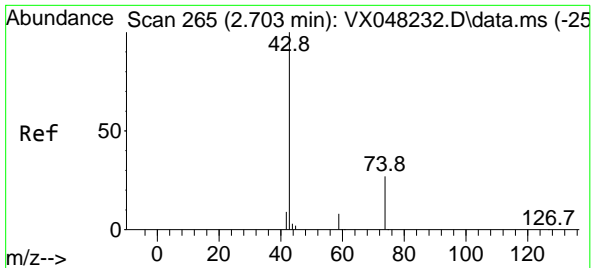
Tgt Ion: 59 Resp: 54  
 Ion Ratio Lower Upper  
 59 100  
 57 0.0 8.2 12.4#



#16  
 Acetone  
 Concen: 4.513 ug/l  
 RT: 2.380 min Scan# 212  
 Delta R.T. 0.006 min  
 Lab File: VX048423.D  
 Acq: 31 Oct 2025 12:02

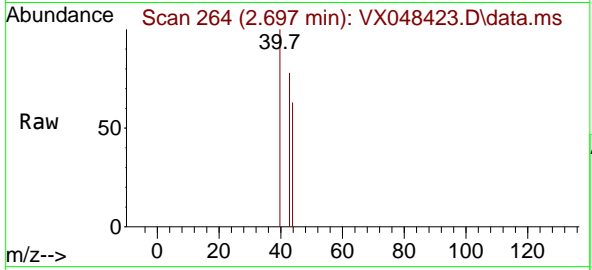
Tgt Ion: 43 Resp: 1771  
 Ion Ratio Lower Upper  
 43 100  
 58 35.2 23.4 35.2



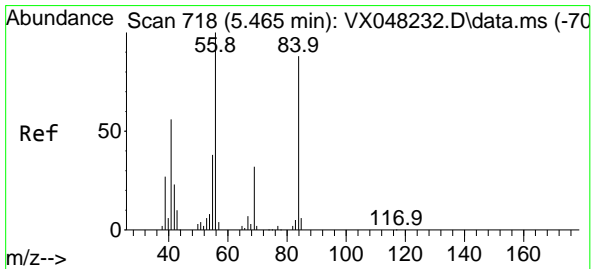
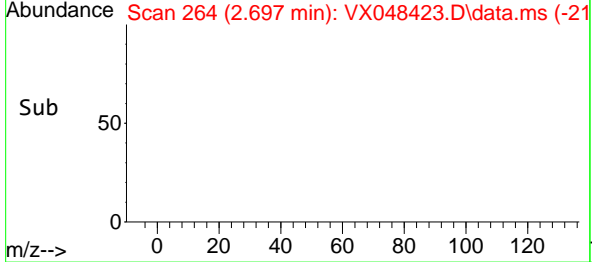
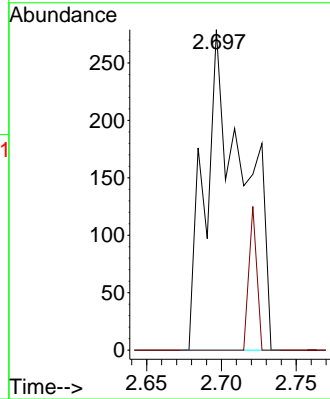


#18  
 Methyl Acetate  
 Concen: 0.382 ug/l  
 RT: 2.697 min Scan# 20  
 Delta R.T. 0.000 min  
 Lab File: VX048423.D  
 Acq: 31 Oct 2025 12:02

Instrument : MSVOA\_X  
 ClientSampleId : 463

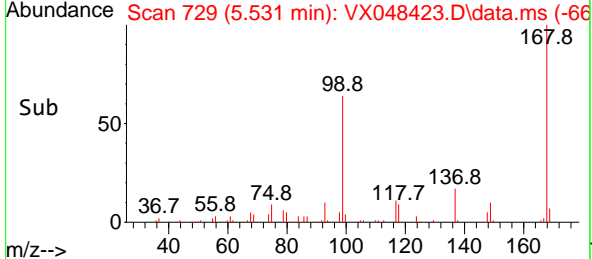
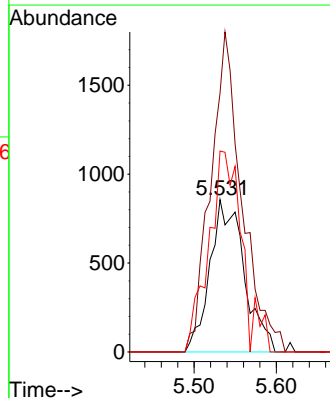
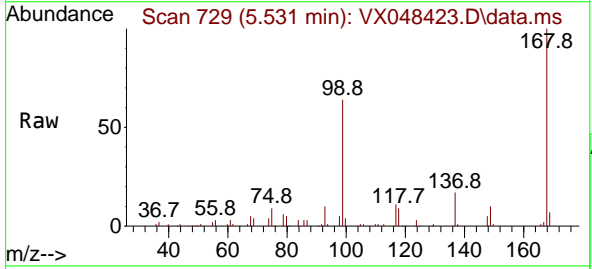


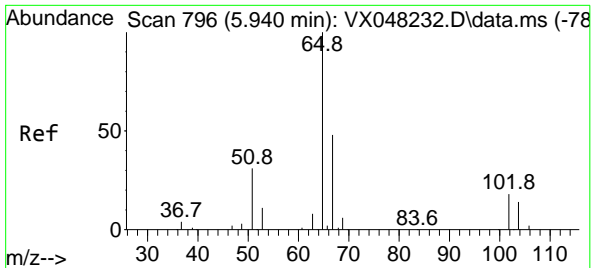
Tgt Ion: 43 Resp: 501  
 Ion Ratio Lower Upper  
 43 100  
 74 0.0 17.5 26.3#



#31  
 Cyclohexane  
 Concen: 1.033 ug/l  
 RT: 5.531 min Scan# 729  
 Delta R.T. 0.067 min  
 Lab File: VX048423.D  
 Acq: 31 Oct 2025 12:02

Tgt Ion: 56 Resp: 2472  
 Ion Ratio Lower Upper  
 56 100  
 69 169.9 23.0 34.6#  
 84 131.9 64.6 97.0#

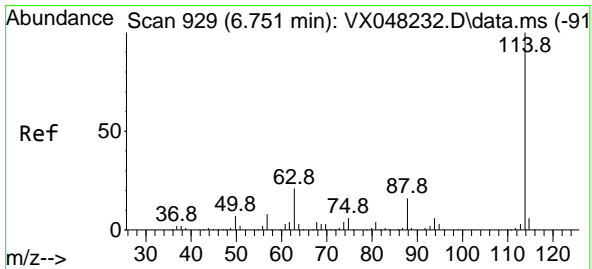
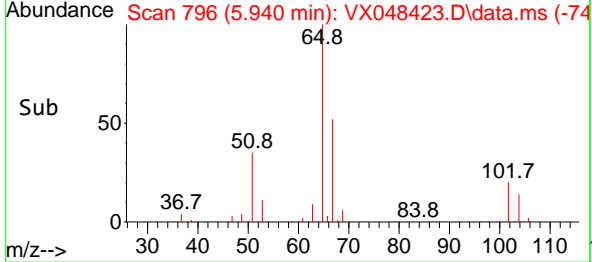
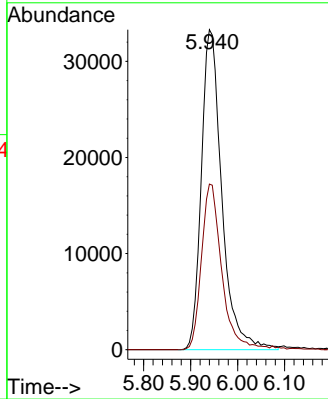
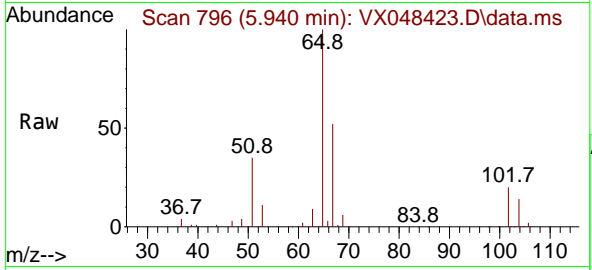




#33  
 1,2-Dichloroethane-d4  
 Concen: 58.107 ug/l  
 RT: 5.940 min Scan# 796  
 Delta R.T. 0.000 min  
 Lab File: VX048423.D  
 Acq: 31 Oct 2025 12:02

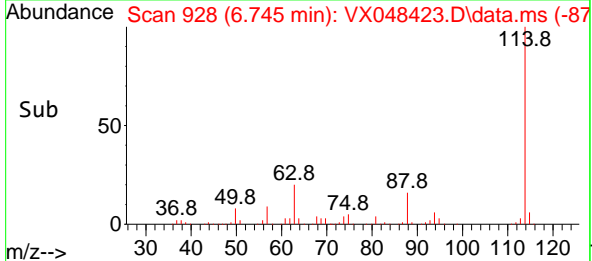
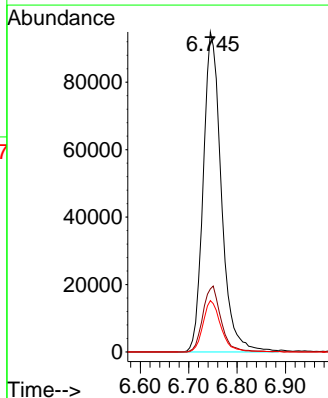
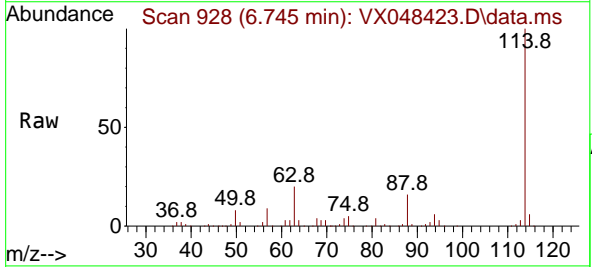
Instrument : MSVOA\_X  
 ClientSampleId : 463

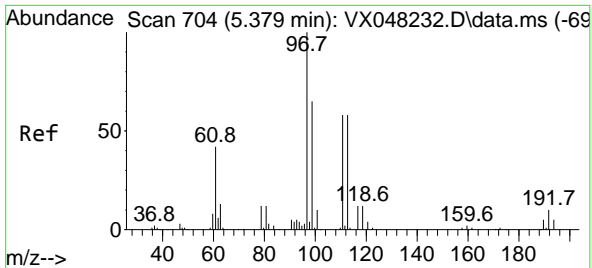
Tgt Ion: 65 Resp: 100604  
 Ion Ratio Lower Upper  
 65 100  
 67 51.1 0.0 105.0



#34  
 1,4-Difluorobenzene  
 Concen: 50.000 ug/l  
 RT: 6.745 min Scan# 928  
 Delta R.T. 0.000 min  
 Lab File: VX048423.D  
 Acq: 31 Oct 2025 12:02

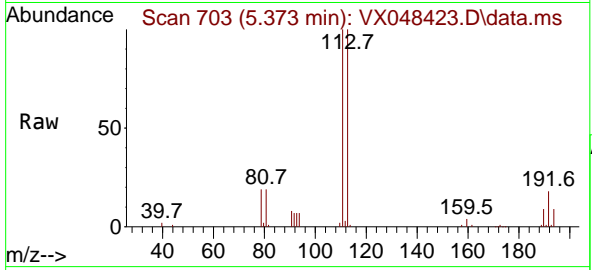
Tgt Ion: 114 Resp: 246735  
 Ion Ratio Lower Upper  
 114 100  
 63 19.7 0.0 43.2  
 88 16.0 0.0 33.6





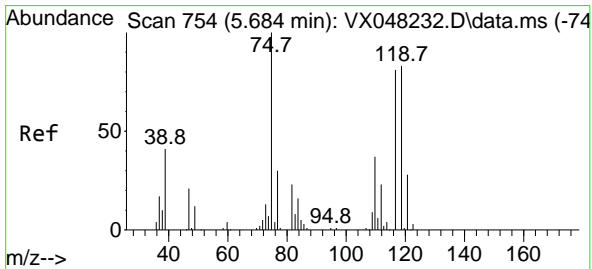
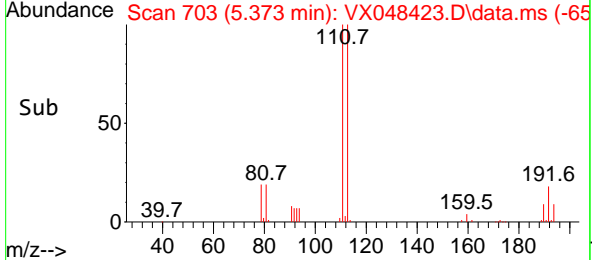
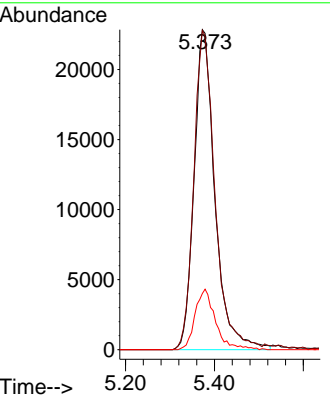
#35  
 Dibromofluoromethane  
 Concen: 53.060 ug/l  
 RT: 5.373 min Scan# 704  
 Delta R.T. 0.000 min  
 Lab File: VX048423.D  
 Acq: 31 Oct 2025 12:02

Instrument : MSVOA\_X  
 ClientSampleId : 463



Tgt Ion:113 Resp: 74641

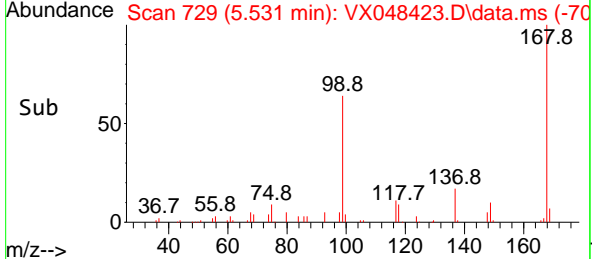
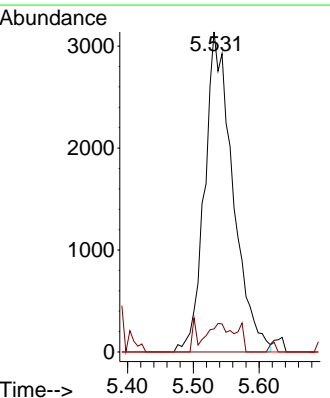
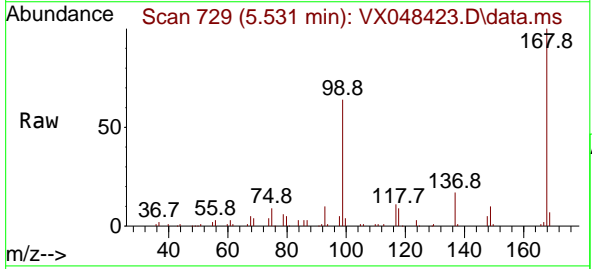
Ion	Ratio	Lower	Upper
113	100		
111	101.0	82.2	123.4
192	18.6	15.1	22.7

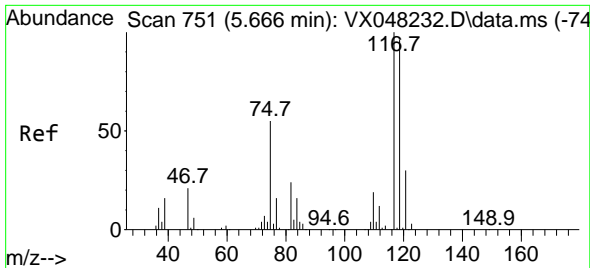


#36  
 1,1-Dichloropropene  
 Concen: 3.962 ug/l  
 RT: 5.531 min Scan# 729  
 Delta R.T. -0.152 min  
 Lab File: VX048423.D  
 Acq: 31 Oct 2025 12:02

Tgt Ion: 75 Resp: 9360

Ion	Ratio	Lower	Upper
75	100		
110	3.9	17.7	53.1#
77	0.0	24.3	36.5#

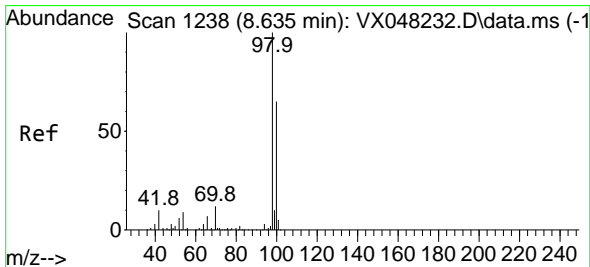
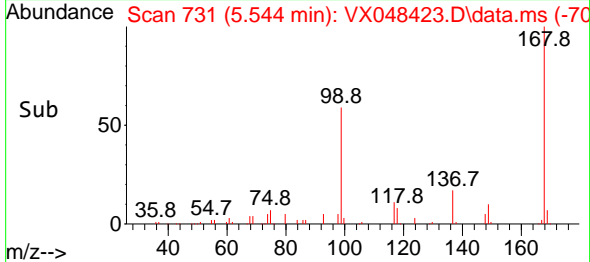
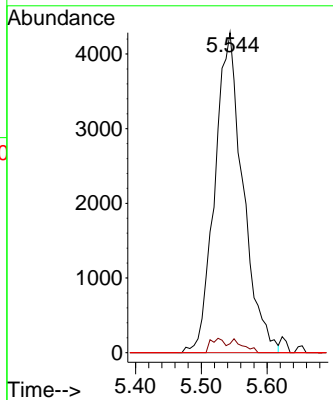
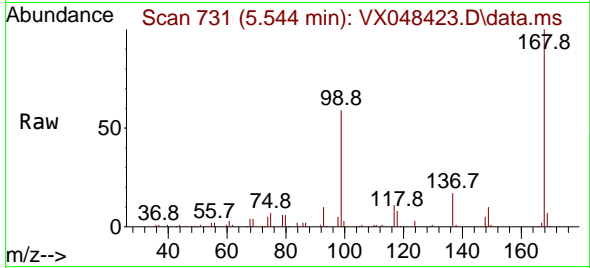




#38  
 Carbon Tetrachloride  
 Concen: 4.686 ug/l  
 RT: 5.544 min Scan# 71  
 Delta R.T. -0.122 min  
 Lab File: VX048423.D  
 Acq: 31 Oct 2025 12:02

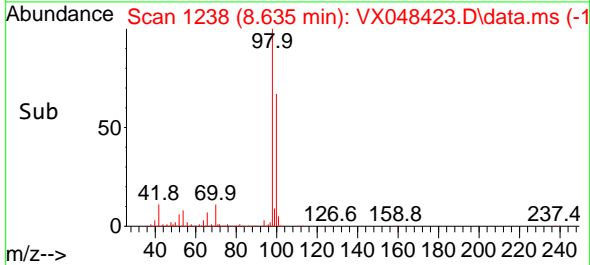
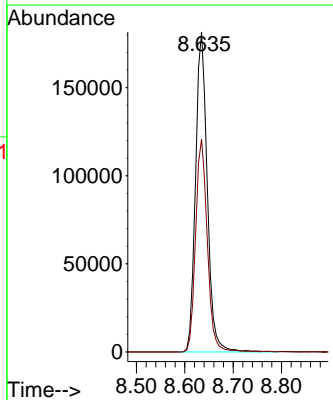
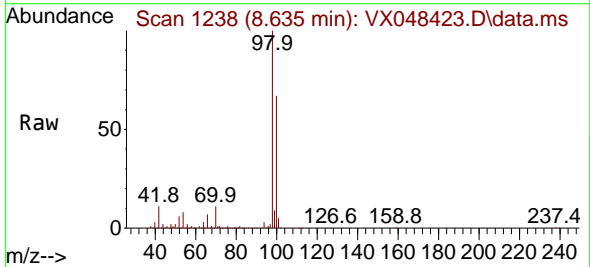
Instrument : MSVOA\_X  
 ClientSampleId : 463

Tgt Ion	Resp	Lower	Upper
117	12780		
119	2.8	77.2	115.8#
121	0.0	24.8	37.2#

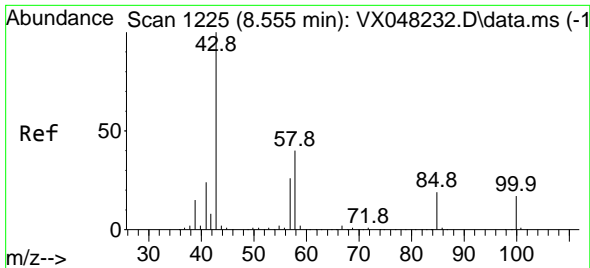


#50  
 Toluene-d8  
 Concen: 49.127 ug/l  
 RT: 8.635 min Scan# 1238  
 Delta R.T. 0.000 min  
 Lab File: VX048423.D  
 Acq: 31 Oct 2025 12:02

Tgt Ion	Resp	Lower	Upper
98	305059		
98	100		
100	66.5	53.0	79.4



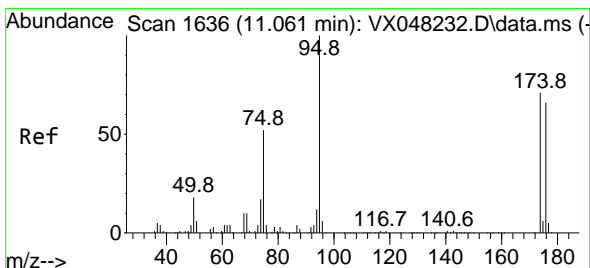
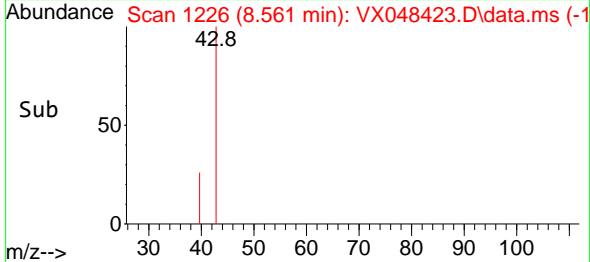
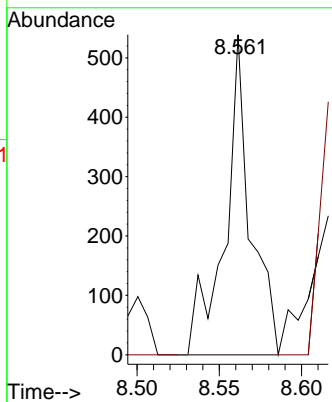
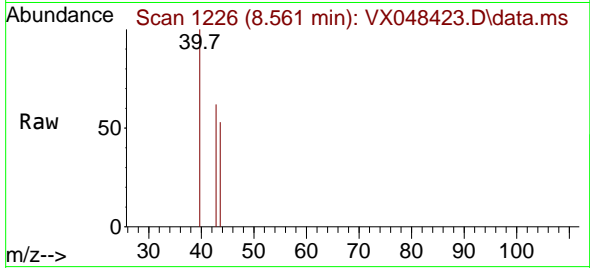




#51  
 4-Methyl-2-Pentanone  
 Concen: 0.313 ug/l  
 RT: 8.561 min Scan# 1111  
 Delta R.T. 0.006 min  
 Lab File: VX048423.D  
 Acq: 31 Oct 2025 12:02

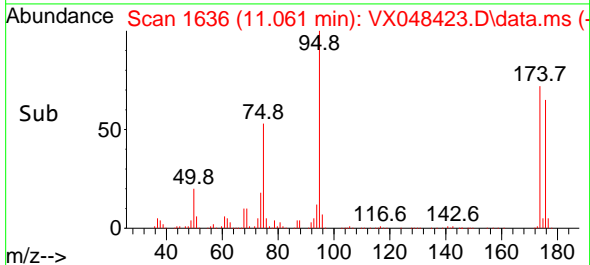
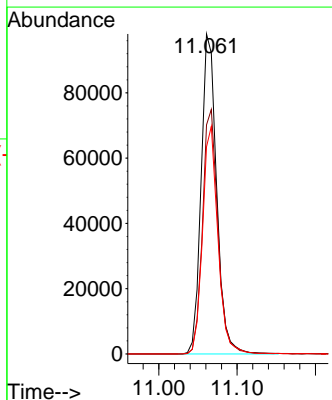
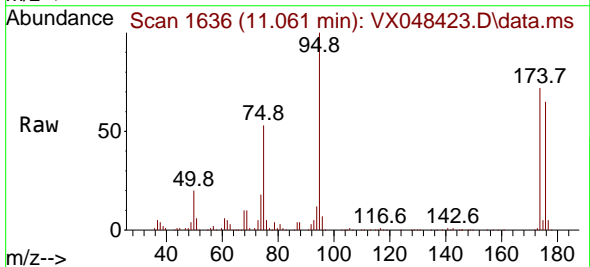
Instrument : MSVOA\_X  
 ClientSampleId : 463

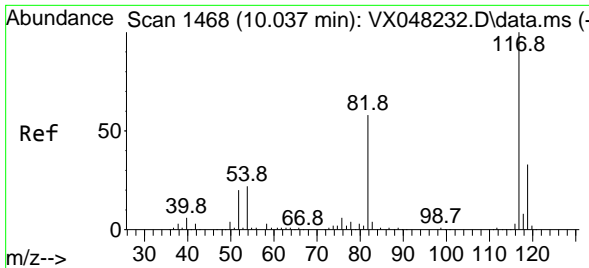
Tgt Ion: 43 Resp: 578  
 Ion Ratio Lower Upper  
 43 100  
 58 0.0 29.5 44.3#



#62  
 4-Bromofluorobenzene  
 Concen: 57.954 ug/l  
 RT: 11.061 min Scan# 1636  
 Delta R.T. -0.000 min  
 Lab File: VX048423.D  
 Acq: 31 Oct 2025 12:02

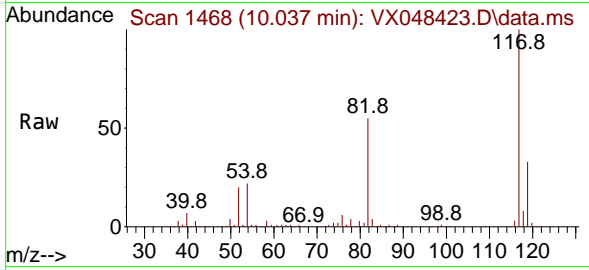
Tgt Ion: 95 Resp: 134623  
 Ion Ratio Lower Upper  
 95 100  
 174 76.4 0.0 147.8  
 176 70.5 0.0 142.8





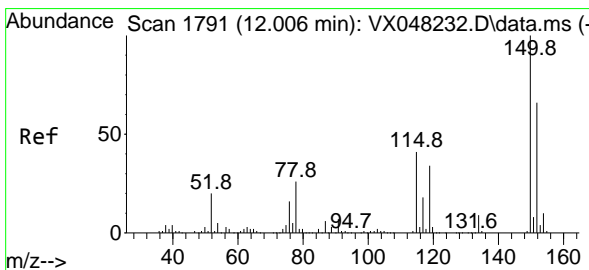
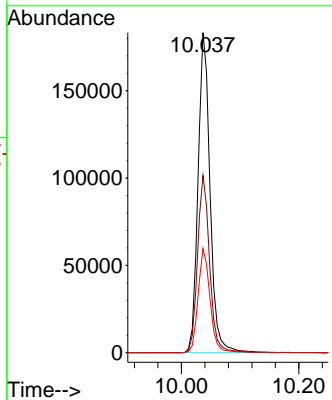
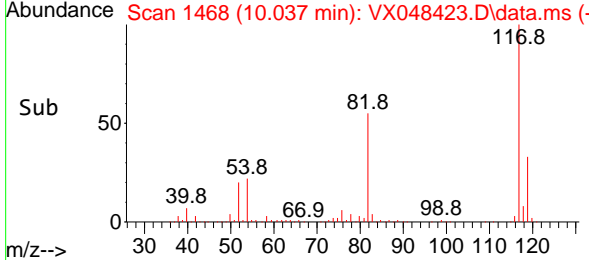
#63  
 Chlorobenzene-d5  
 Concen: 50.000 ug/l  
 RT: 10.037 min Scan# 1463  
 Delta R.T. 0.000 min  
 Lab File: VX048423.D  
 Acq: 31 Oct 2025 12:02

Instrument : MSVOA\_X  
 ClientSampleId : 463

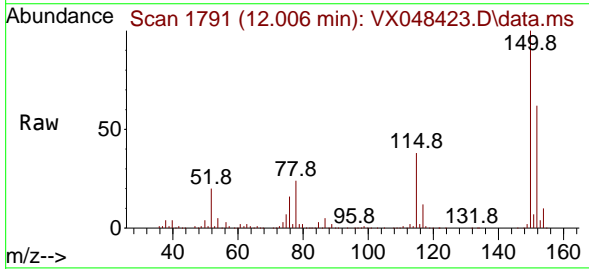


Tgt Ion:117 Resp: 260704

Ion	Ratio	Lower	Upper
117	100		
82	55.4	46.5	69.7
119	32.5	25.9	38.9

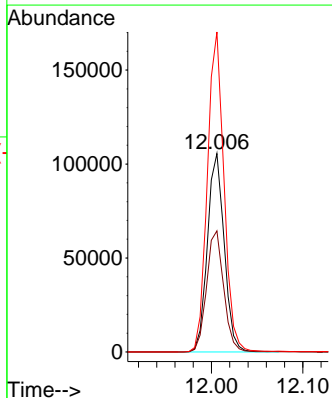
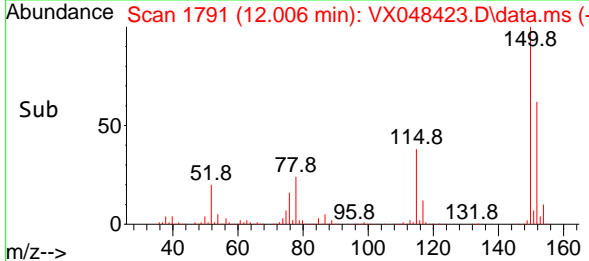


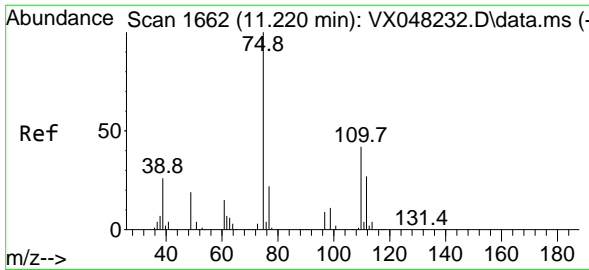
#72  
 1,4-Dichlorobenzene-d4  
 Concen: 50.000 ug/l  
 RT: 12.006 min Scan# 1791  
 Delta R.T. 0.000 min  
 Lab File: VX048423.D  
 Acq: 31 Oct 2025 12:02



Tgt Ion:152 Resp: 134789

Ion	Ratio	Lower	Upper
152	100		
115	62.2	43.1	129.4
150	159.5	0.0	353.0

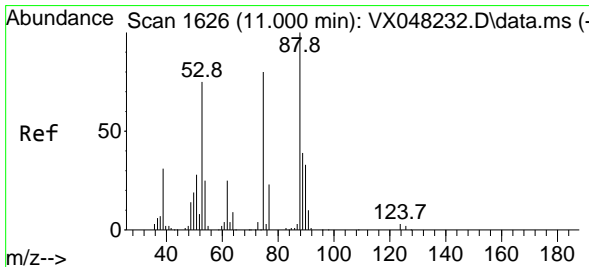
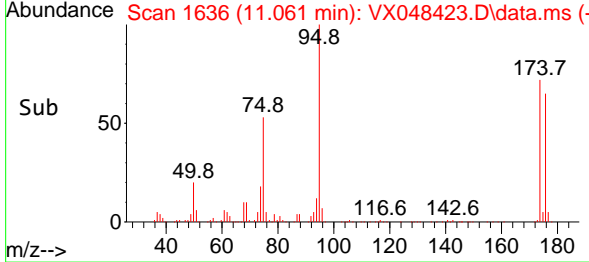
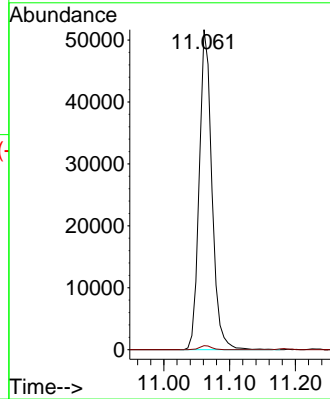
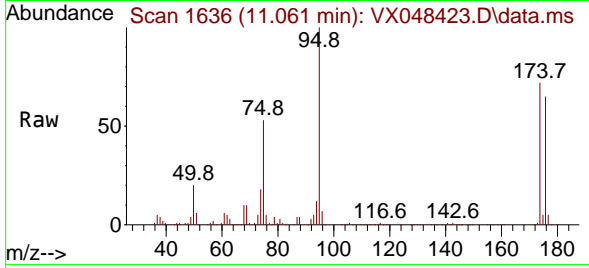




#76  
 1,2,3-Trichloropropane  
 Concen: 35.588 ug/l  
 RT: 11.061 min Scan# 1636  
 Delta R.T. -0.158 min  
 Lab File: VX048423.D  
 Acq: 31 Oct 2025 12:02

Instrument : MSVOA\_X  
 ClientSampleId : 463

Tgt Ion: 75 Resp: 68986  
 Ion Ratio Lower Upper  
 75 100  
 77 1.2 22.4 67.2#



#81  
 trans-1,4-Dichloro-2-butene  
 Concen: 123.157 ug/l  
 RT: 11.061 min Scan# 1636  
 Delta R.T. 0.061 min  
 Lab File: VX048423.D  
 Acq: 31 Oct 2025 12:02

Tgt Ion: 75 Resp: 68986  
 Ion Ratio Lower Upper  
 75 100  
 53 0.0 79.5 119.3#  
 89 0.0 36.8 55.2#

