

Data Path : Z:\voasrv\HPCHEM1\MSVOA_X\Data\VX103125\
 Data File : VX048424.D
 Acq On : 31 Oct 2025 12:23
 Operator : JC/MD
 Sample : Q3500-05 100X
 Misc : 5.0mL/MSVOA_X/WATER
 ALS Vial : 10 Sample Multiplier: 1

Instrument :
 MSVOA_X
 ClientSampleId :
 461-LIQUID

Quant Time: Oct 31 23:03:24 2025
 Quant Method : Z:\voasrv\HPCHEM1\MSVOA_X\Method\82X102925W.M
 Quant Title : SW846 8260
 QLast Update : Thu Oct 30 02:37:17 2025
 Response via : Initial Calibration

Compound	R.T.	QIon	Response	Conc	Units	Dev(Min)

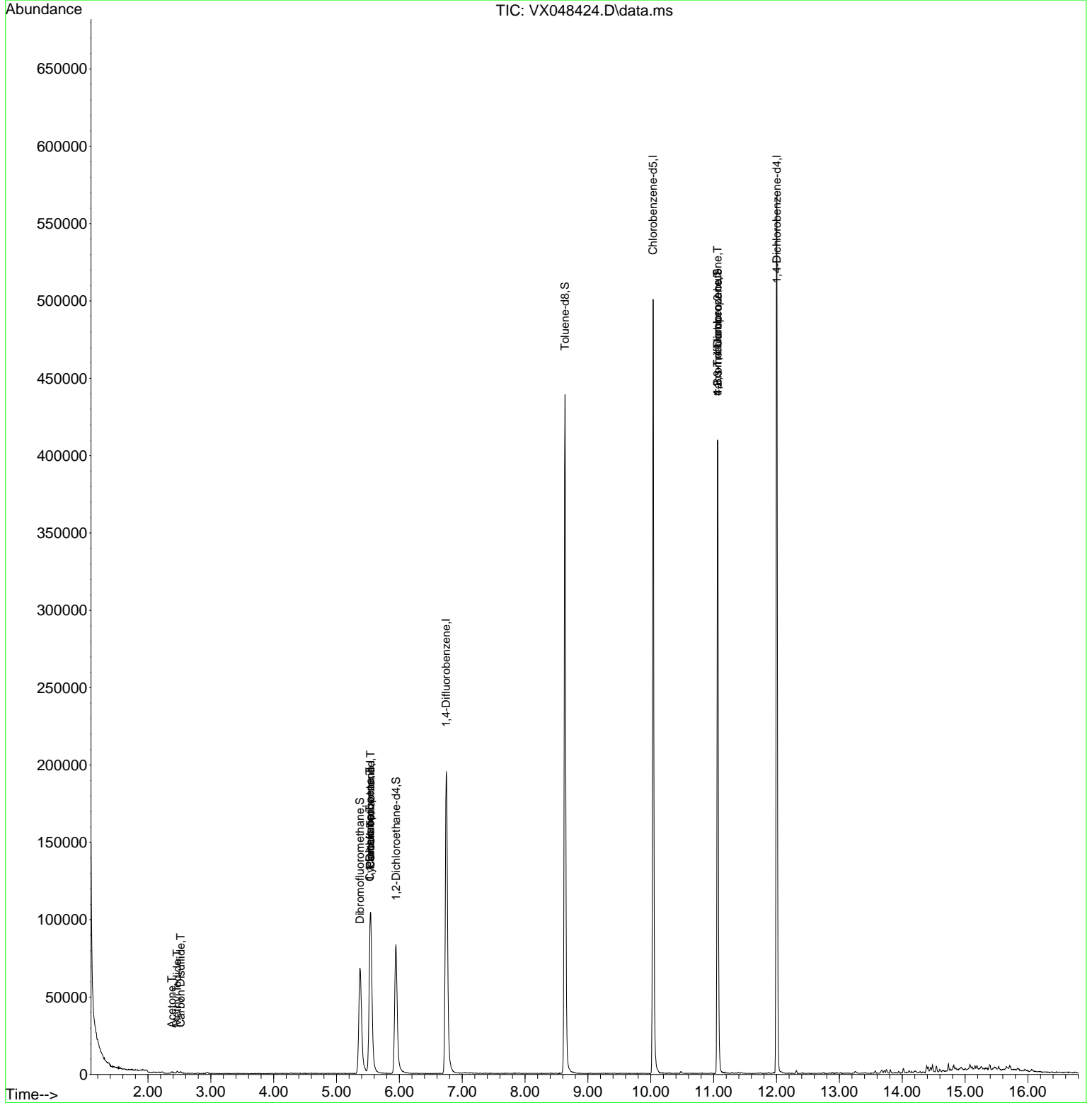
Internal Standards						
1) Pentafluorobenzene	5.537	168	109501	50.000	ug/l	0.00
34) 1,4-Difluorobenzene	6.744	114	222430	50.000	ug/l	0.00
63) Chlorobenzene-d5	10.036	117	235783	50.000	ug/l	0.00
72) 1,4-Dichlorobenzene-d4	12.006	152	124534	50.000	ug/l	0.00
System Monitoring Compounds						
33) 1,2-Dichloroethane-d4	5.946	65	91728	58.248	ug/l	0.00
Spiked Amount	50.000	Range 78 - 117	Recovery	=	116.500%	
35) Dibromofluoromethane	5.373	113	67903	53.545	ug/l	0.00
Spiked Amount	50.000	Range 75 - 124	Recovery	=	107.080%	
50) Toluene-d8	8.634	98	276135	49.328	ug/l	0.00
Spiked Amount	50.000	Range 92 - 112	Recovery	=	98.660%	
62) 4-Bromofluorobenzene	11.061	95	122860	58.670	ug/l	0.00
Spiked Amount	50.000	Range 83 - 123	Recovery	=	117.340%	
Target Compounds						
						Qvalue
10) Methyl Iodide	2.465	142	1879	0.372	ug/l	97
16) Acetone	2.379	43	1176	3.295	ug/l	96
17) Carbon Disulfide	2.519	76	1124	0.308	ug/l #	75
31) Cyclohexane	5.531	56	2105	0.967	ug/l #	1
36) 1,1-Dichloropropene	5.531	75	8472	3.978	ug/l #	50
38) Carbon Tetrachloride	5.543	117	11452	4.657	ug/l #	17
76) 1,2,3-Trichloropropane	11.061	75	61846	34.532	ug/l #	34
81) trans-1,4-Dichloro-2-b...	11.061	75	61846	119.503	ug/l #	10

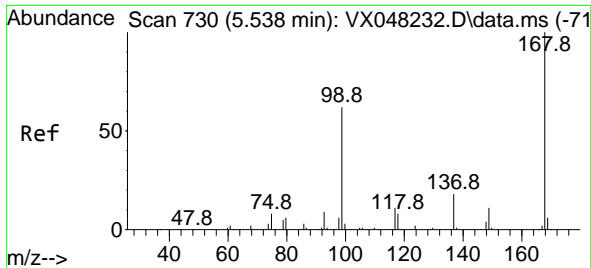
(#) = qualifier out of range (m) = manual integration (+) = signals summed

Data Path : Z:\voasrv\HPCHEM1\MSVOA_X\Data\VX103125\
 Data File : VX048424.D
 Acq On : 31 Oct 2025 12:23
 Operator : JC/MD
 Sample : Q3500-05 100X
 Misc : 5.0mL/MSVOA_X/WATER
 ALS Vial : 10 Sample Multiplier: 1

Instrument :
 MSVOA_X
 ClientSampleId :
 461-LIQUID

Quant Time: Oct 31 23:03:24 2025
 Quant Method : Z:\voasrv\HPCHEM1\MSVOA_X\Method\82X102925W.M
 Quant Title : SW846 8260
 QLast Update : Thu Oct 30 02:37:17 2025
 Response via : Initial Calibration

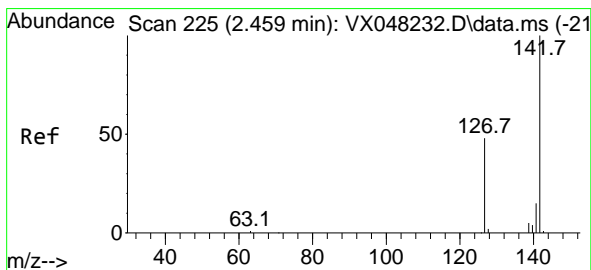
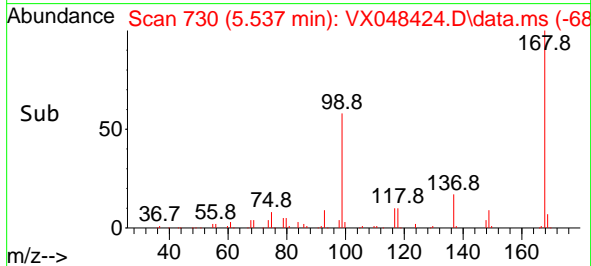
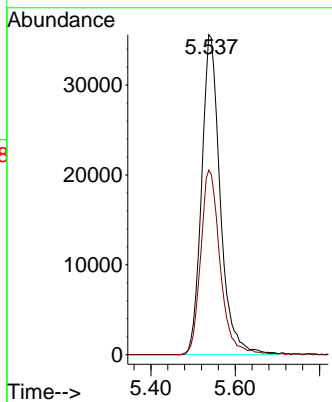
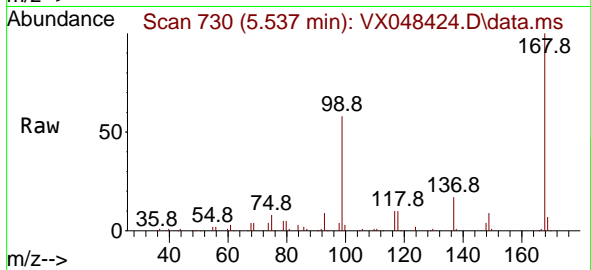




#1
 Pentafluorobenzene
 Concen: 50.000 ug/l
 RT: 5.537 min Scan# 71
 Delta R.T. 0.000 min
 Lab File: VX048424.D
 Acq: 31 Oct 2025 12:23

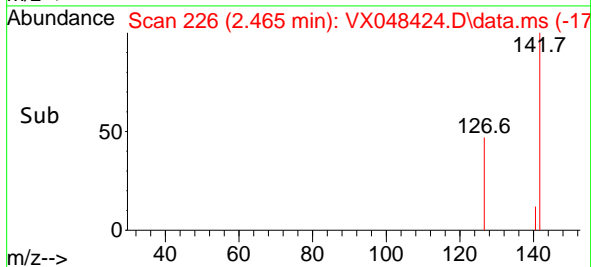
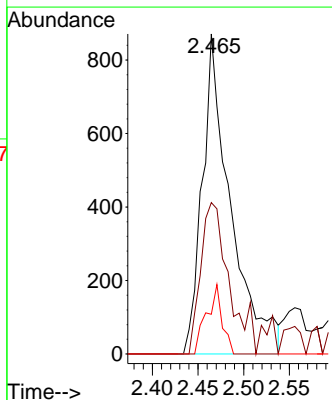
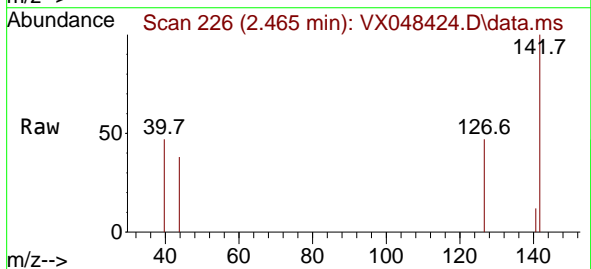
Instrument :
 MSVOA_X
 ClientSampleId :
 461-LIQUID

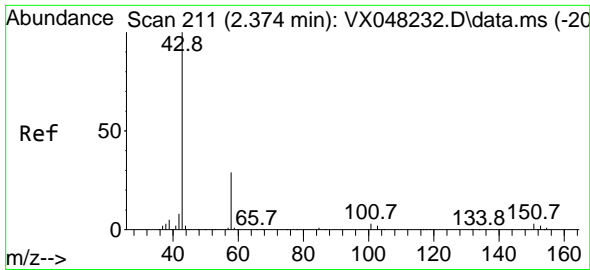
Tgt Ion:168 Resp: 109501
 Ion Ratio Lower Upper
 168 100
 99 57.6 46.4 69.6



#10
 Methyl Iodide
 Concen: 0.372 ug/l
 RT: 2.465 min Scan# 226
 Delta R.T. 0.006 min
 Lab File: VX048424.D
 Acq: 31 Oct 2025 12:23

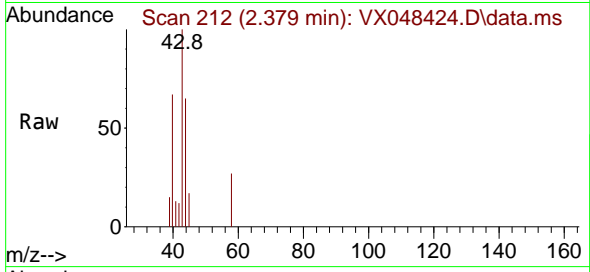
Tgt Ion:142 Resp: 1879
 Ion Ratio Lower Upper
 142 100
 127 46.8 38.5 57.7
 141 11.9 11.6 17.4



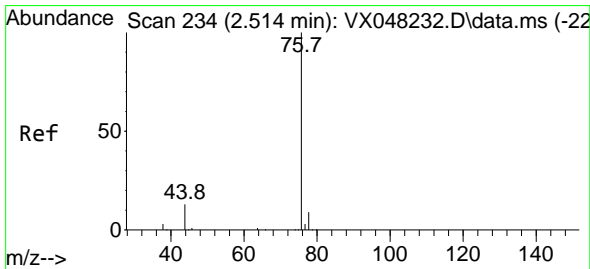
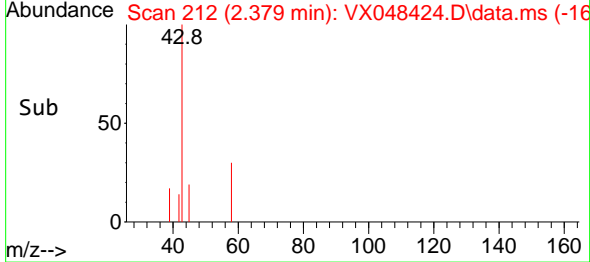
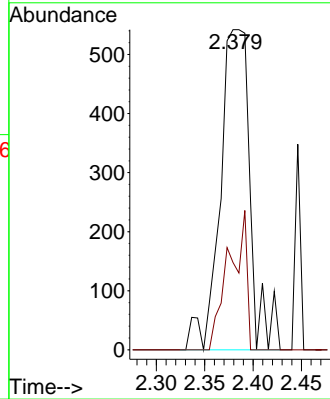


#16
 Acetone
 Concen: 3.295 ug/l
 RT: 2.379 min Scan# 211
 Delta R.T. 0.006 min
 Lab File: VX048424.D
 Acq: 31 Oct 2025 12:23

Instrument : MSVOA_X
 ClientSampleId : 461-LIQUID

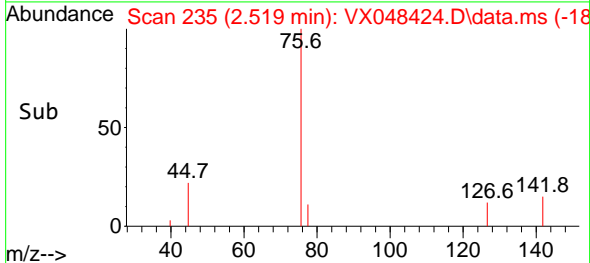
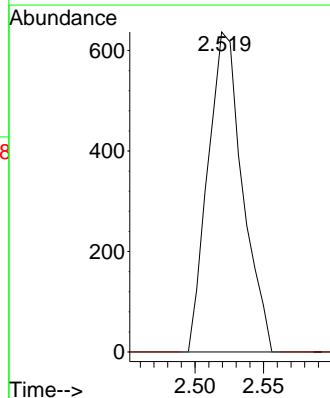
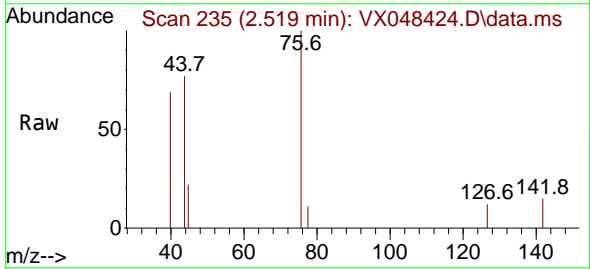


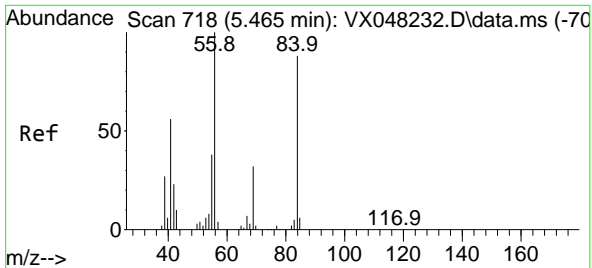
Tgt Ion: 43 Resp: 1176
 Ion Ratio Lower Upper
 43 100
 58 27.3 23.4 35.2



#17
 Carbon Disulfide
 Concen: 0.308 ug/l
 RT: 2.519 min Scan# 235
 Delta R.T. -0.000 min
 Lab File: VX048424.D
 Acq: 31 Oct 2025 12:23

Tgt Ion: 76 Resp: 1124
 Ion Ratio Lower Upper
 76 100
 78 0.0 7.1 10.7#

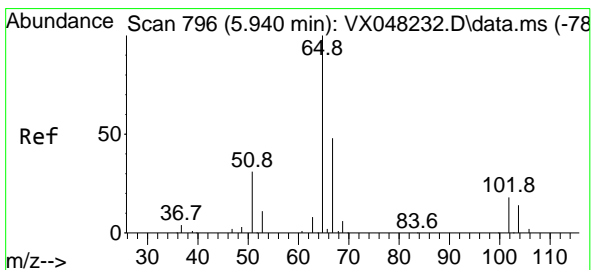
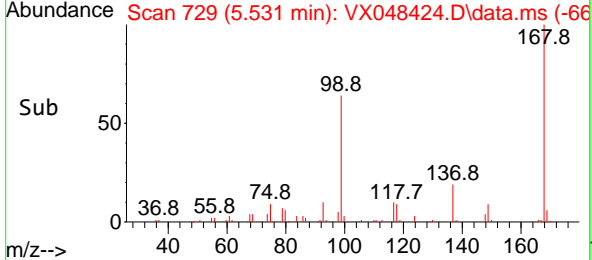
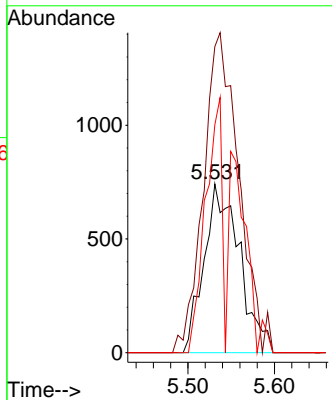
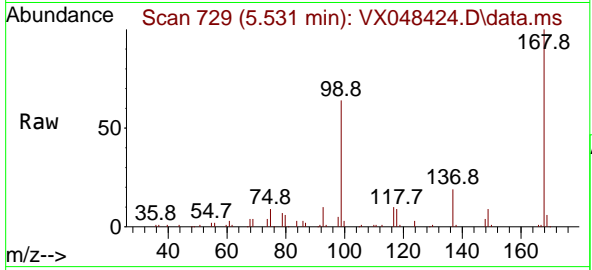




#31
 Cyclohexane
 Concen: 0.967 ug/l
 RT: 5.531 min Scan# 718
 Delta R.T. 0.067 min
 Lab File: VX048424.D
 Acq: 31 Oct 2025 12:23

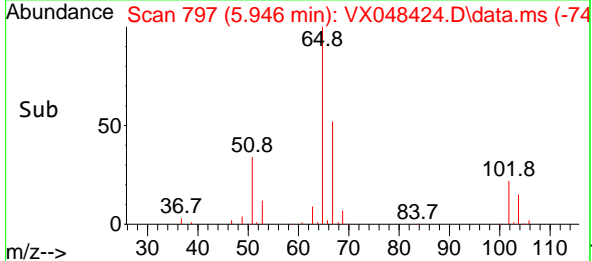
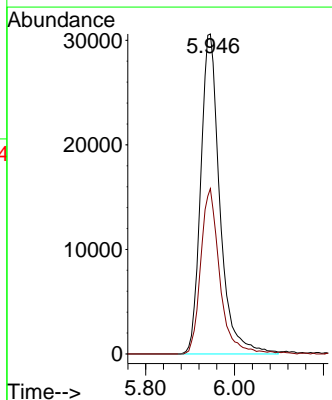
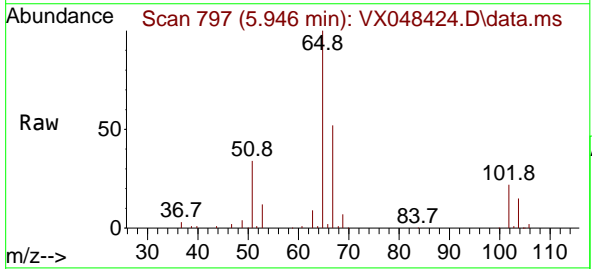
Instrument : MSVOA_X
 ClientSampleId : 461-LIQUID

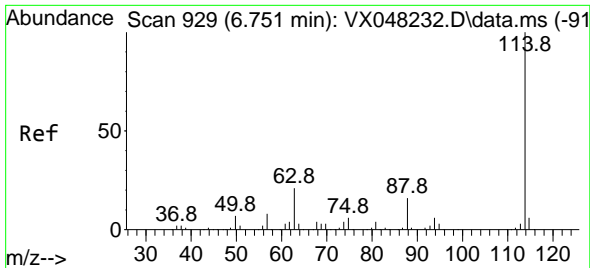
Tgt Ion: 56 Resp: 2105
 Ion Ratio Lower Upper
 56 100
 69 181.4 23.0 34.6#
 84 135.0 64.6 97.0#



#33
 1,2-Dichloroethane-d4
 Concen: 58.248 ug/l
 RT: 5.946 min Scan# 797
 Delta R.T. 0.006 min
 Lab File: VX048424.D
 Acq: 31 Oct 2025 12:23

Tgt Ion: 65 Resp: 91728
 Ion Ratio Lower Upper
 65 100
 67 51.0 0.0 105.0



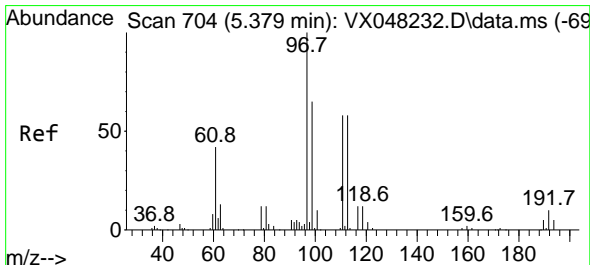
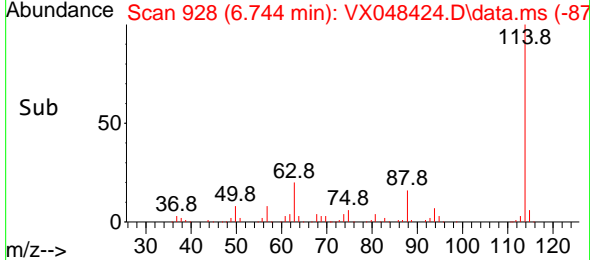
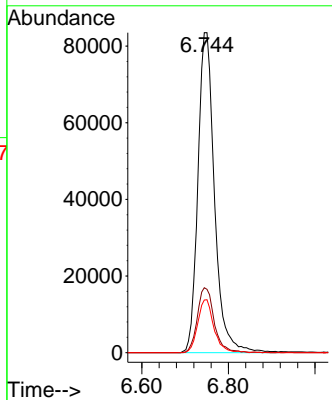
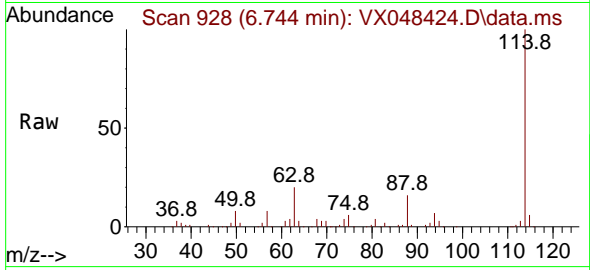


#34
 1,4-Difluorobenzene
 Concen: 50.000 ug/l
 RT: 6.744 min Scan# 91
 Delta R.T. -0.000 min
 Lab File: VX048424.D
 Acq: 31 Oct 2025 12:23

Instrument : MSVOA_X
 ClientSampleId : 461-LIQUID

Tgt Ion:114 Resp: 222430

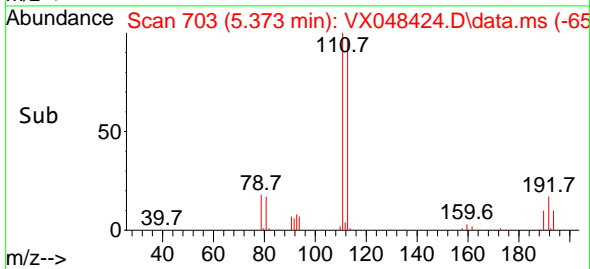
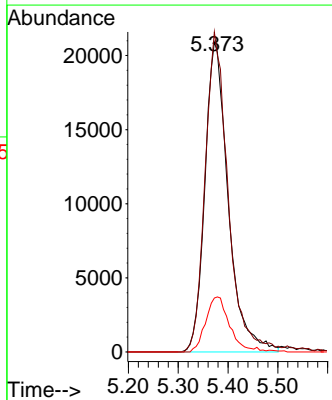
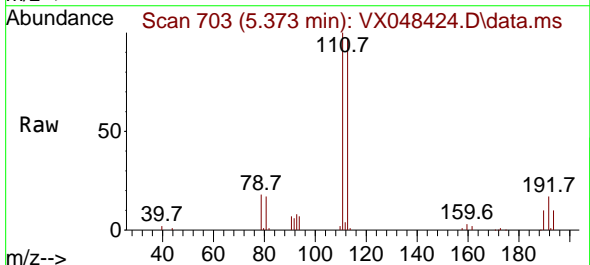
Ion	Ratio	Lower	Upper
114	100		
63	20.3	0.0	43.2
88	16.5	0.0	33.6

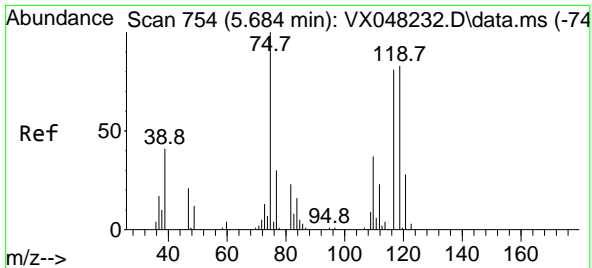


#35
 Dibromofluoromethane
 Concen: 53.545 ug/l
 RT: 5.373 min Scan# 703
 Delta R.T. -0.000 min
 Lab File: VX048424.D
 Acq: 31 Oct 2025 12:23

Tgt Ion:113 Resp: 67903

Ion	Ratio	Lower	Upper
113	100		
111	101.9	82.2	123.4
192	18.2	15.1	22.7

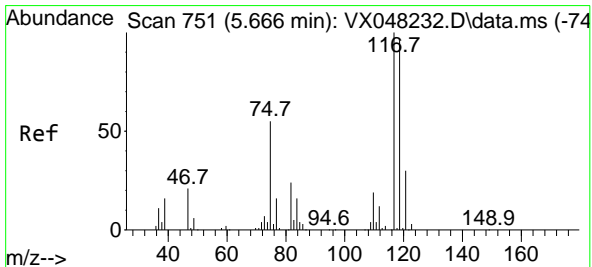
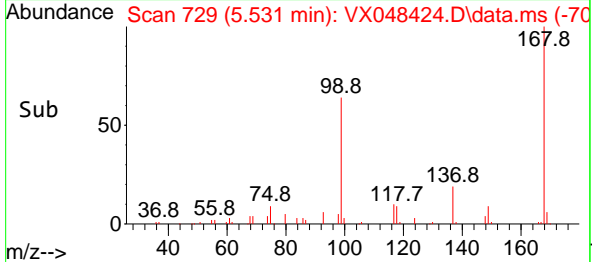
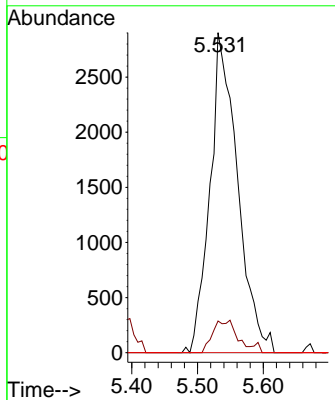
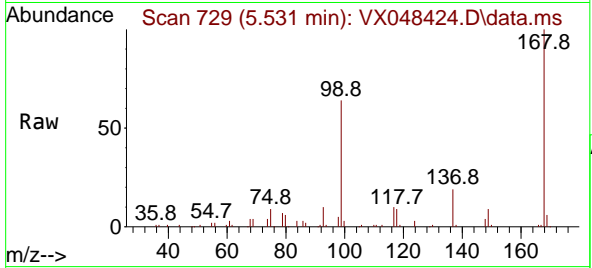




#36
 1,1-Dichloropropene
 Concen: 3.978 ug/l
 RT: 5.531 min Scan# 711
 Delta R.T. -0.153 min
 Lab File: VX048424.D
 Acq: 31 Oct 2025 12:23

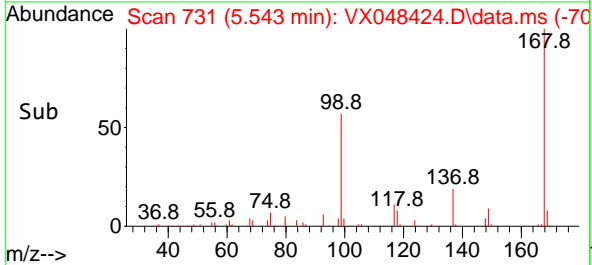
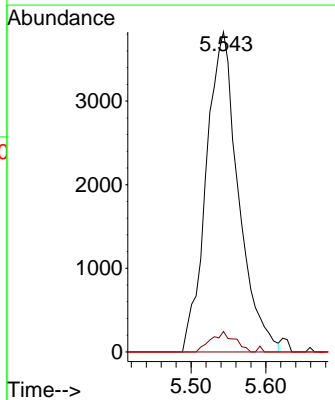
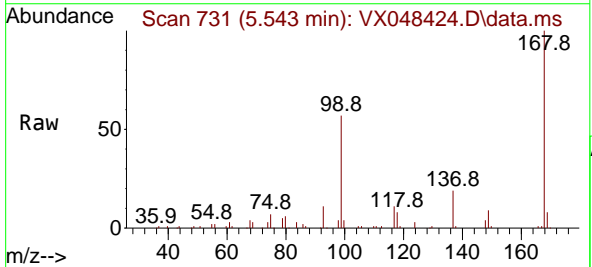
Instrument : MSVOA_X
 ClientSampleId : 461-LIQUID

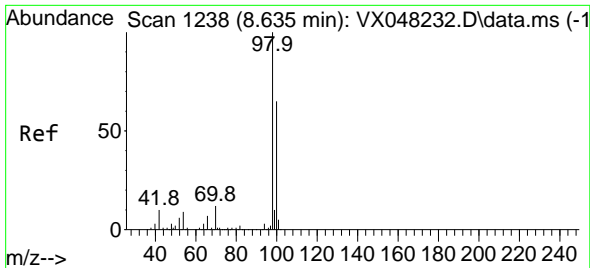
Tgt Ion:	Resp:	Lower	Upper
75	8472		
75	100		
110	8.8	17.7	53.1#
77	0.0	24.3	36.5#



#38
 Carbon Tetrachloride
 Concen: 4.657 ug/l
 RT: 5.543 min Scan# 731
 Delta R.T. -0.122 min
 Lab File: VX048424.D
 Acq: 31 Oct 2025 12:23

Tgt Ion:	Resp:	Lower	Upper
117	11452		
117	100		
119	6.4	77.2	115.8#
121	0.0	24.8	37.2#

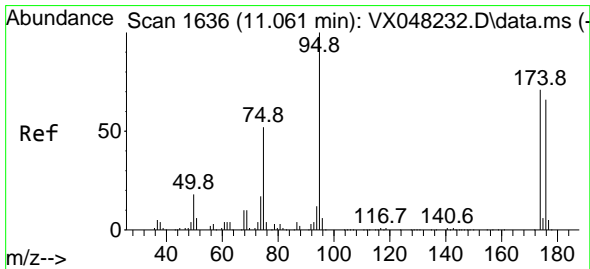
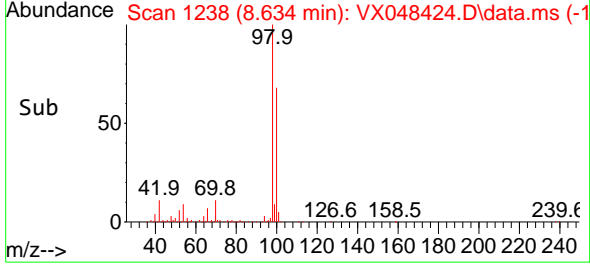
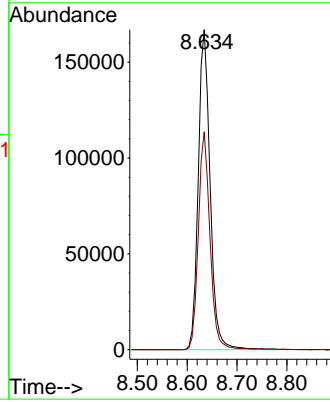
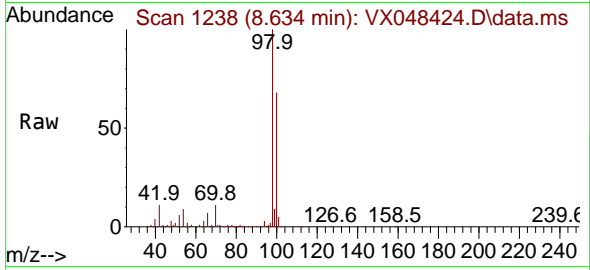




#50
 Toluene-d8
 Concen: 49.328 ug/l
 RT: 8.634 min Scan# 11
 Delta R.T. -0.000 min
 Lab File: VX048424.D
 Acq: 31 Oct 2025 12:23

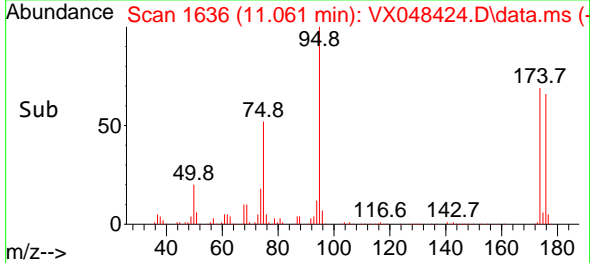
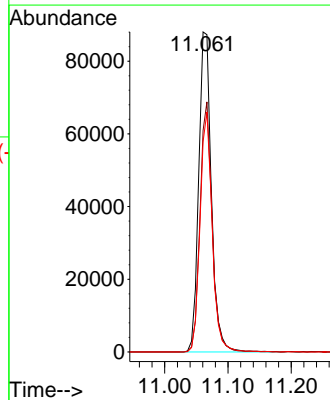
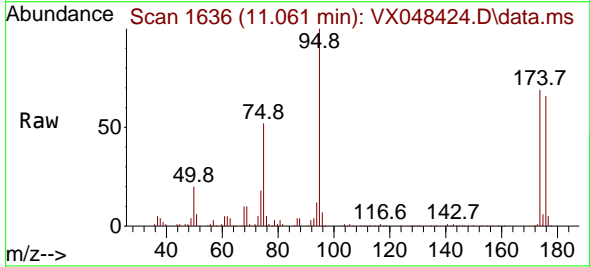
Instrument : MSVOA_X
 ClientSampleId : 461-LIQUID

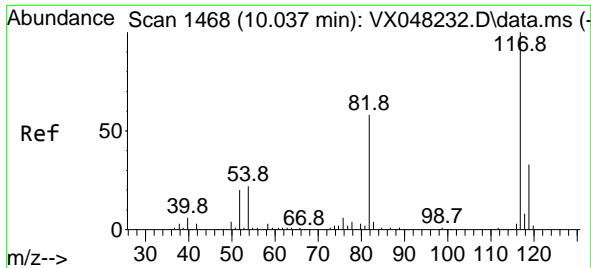
Tgt Ion: 98 Resp: 276135
 Ion Ratio Lower Upper
 98 100
 100 66.6 53.0 79.4



#62
 4-Bromofluorobenzene
 Concen: 58.670 ug/l
 RT: 11.061 min Scan# 1636
 Delta R.T. -0.000 min
 Lab File: VX048424.D
 Acq: 31 Oct 2025 12:23

Tgt Ion: 95 Resp: 122860
 Ion Ratio Lower Upper
 95 100
 174 75.2 0.0 147.8
 176 72.2 0.0 142.8



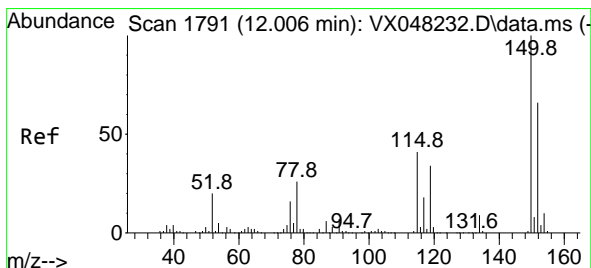
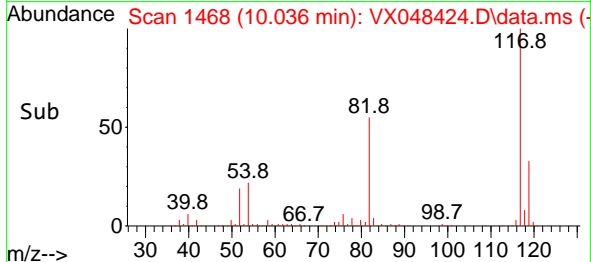
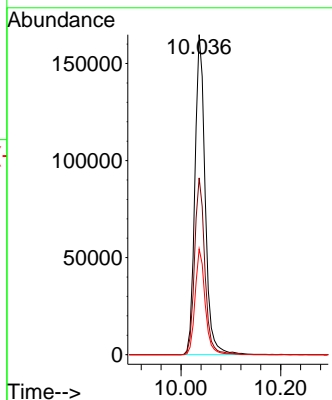
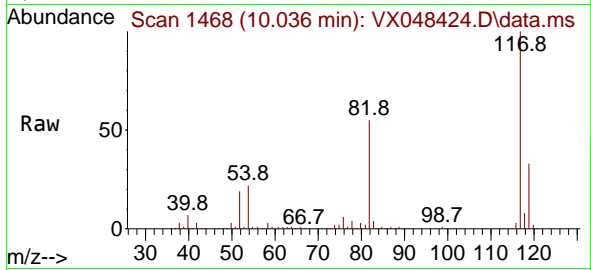


#63
 Chlorobenzene-d5
 Concen: 50.000 ug/l
 RT: 10.036 min Scan# 1468
 Delta R.T. -0.000 min
 Lab File: VX048424.D
 Acq: 31 Oct 2025 12:23

Instrument : MSVOA_X
 ClientSampleId : 461-LIQUID

Tgt Ion:117 Resp: 235783

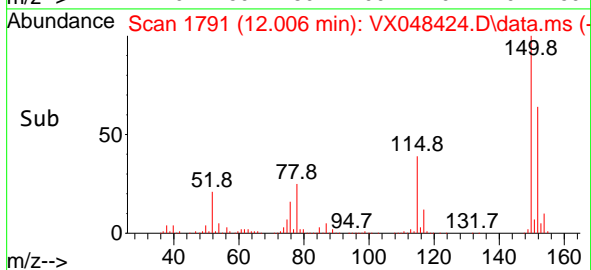
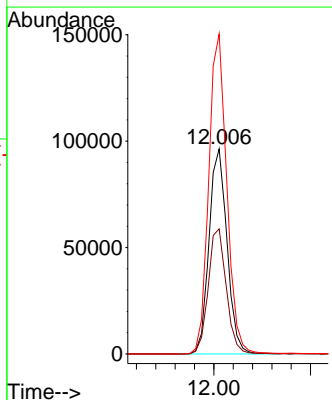
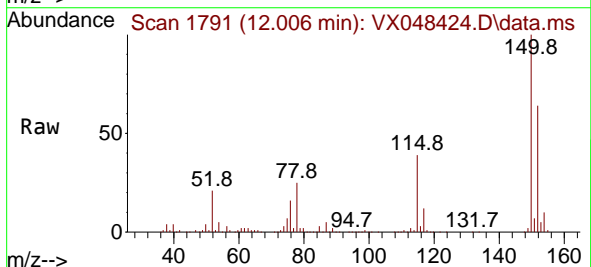
Ion	Ratio	Lower	Upper
117	100		
82	55.3	46.5	69.7
119	33.1	25.9	38.9

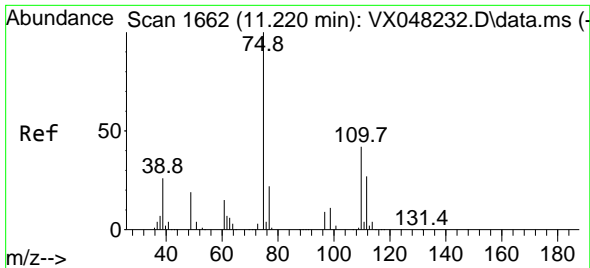


#72
 1,4-Dichlorobenzene-d4
 Concen: 50.000 ug/l
 RT: 12.006 min Scan# 1791
 Delta R.T. -0.000 min
 Lab File: VX048424.D
 Acq: 31 Oct 2025 12:23

Tgt Ion:152 Resp: 124534

Ion	Ratio	Lower	Upper
152	100		
115	61.3	43.1	129.4
150	156.6	0.0	353.0

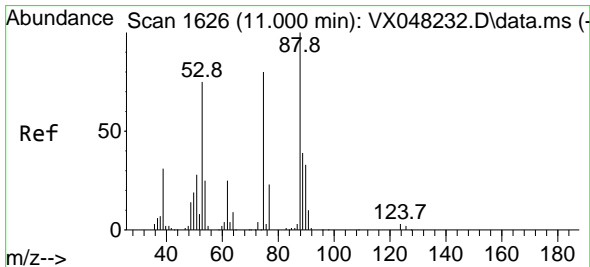
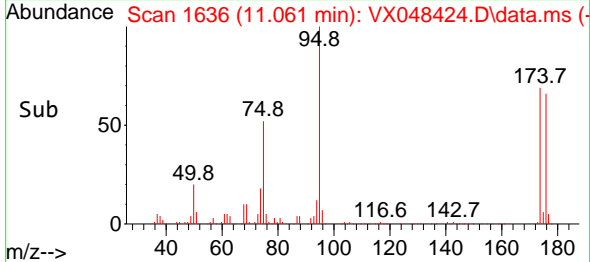
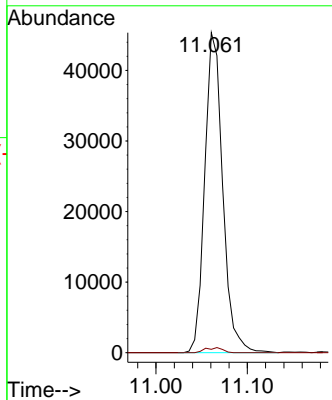
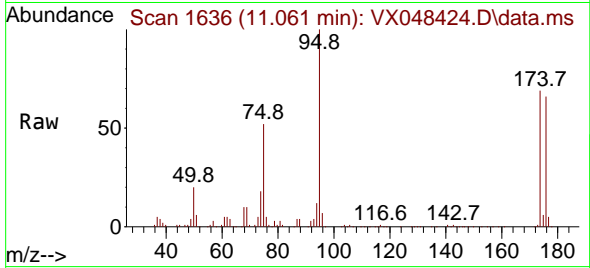




#76
 1,2,3-Trichloropropane
 Concen: 34.532 ug/l
 RT: 11.061 min Scan# 1636
 Delta R.T. -0.159 min
 Lab File: VX048424.D
 Acq: 31 Oct 2025 12:23

Instrument : MSVOA_X
 ClientSampleId : 461-LIQUID

Tgt Ion: 75 Resp: 61846
 Ion Ratio Lower Upper
 75 100
 77 1.5 22.4 67.2#



#81
 trans-1,4-Dichloro-2-butene
 Concen: 119.503 ug/l
 RT: 11.061 min Scan# 1636
 Delta R.T. 0.061 min
 Lab File: VX048424.D
 Acq: 31 Oct 2025 12:23

Tgt Ion: 75 Resp: 61846
 Ion Ratio Lower Upper
 75 100
 53 0.0 79.5 119.3#
 89 0.0 36.8 55.2#

