

Data Path : Z:\voasrv\HPCHEM1\MSVOA_X\Data\VX103125\
 Data File : VX048429.D
 Acq On : 31 Oct 2025 14:06
 Operator : JC/MD
 Sample : Q3505-06
 Misc : 5.0mL/MSVOA_X/WATER
 ALS Vial : 15 Sample Multiplier: 1

Instrument :
 MSVOA_X
 ClientSampleId :
 10-17-25-WATER

Quant Time: Oct 31 23:05:41 2025
 Quant Method : Z:\voasrv\HPCHEM1\MSVOA_X\Method\82X102925W.M
 Quant Title : SW846 8260
 QLast Update : Thu Oct 30 02:37:17 2025
 Response via : Initial Calibration

Compound	R.T.	QIon	Response	Conc	Units	Dev(Min)

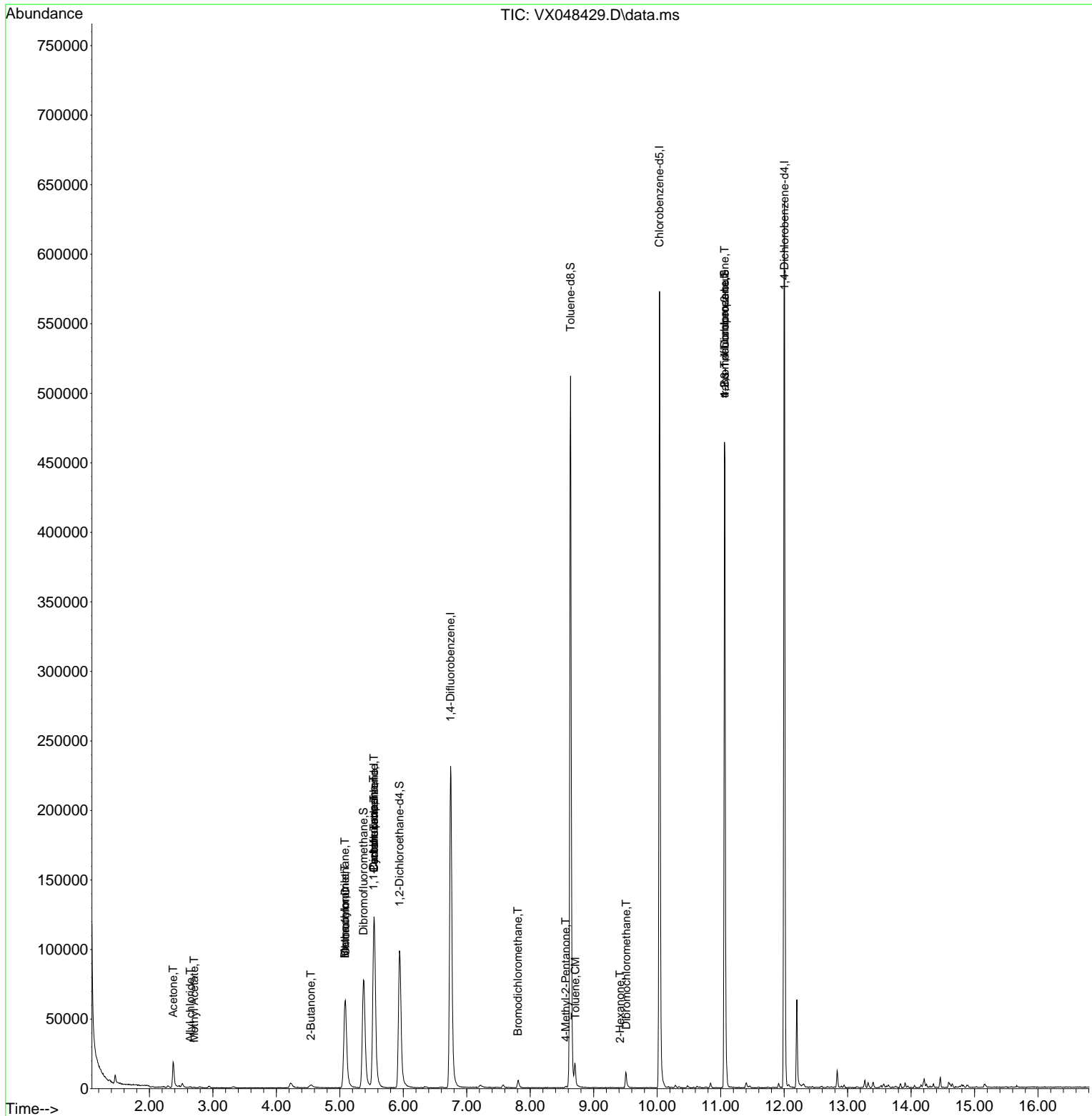
Internal Standards						
1) Pentafluorobenzene	5.538	168	126823	50.000	ug/l	0.00
34) 1,4-Difluorobenzene	6.745	114	253754	50.000	ug/l	0.00
63) Chlorobenzene-d5	10.037	117	263128	50.000	ug/l	0.00
72) 1,4-Dichlorobenzene-d4	12.006	152	133188	50.000	ug/l	0.00
System Monitoring Compounds						
33) 1,2-Dichloroethane-d4	5.940	65	111919	61.362	ug/l	0.00
Spiked Amount	50.000	Range 78 - 117	Recovery	=	122.720%#	
35) Dibromofluoromethane	5.373	113	79752	55.125	ug/l	0.00
Spiked Amount	50.000	Range 75 - 124	Recovery	=	110.260%	
50) Toluene-d8	8.635	98	322894	50.560	ug/l	0.00
Spiked Amount	50.000	Range 92 - 112	Recovery	=	101.120%	
62) 4-Bromofluorobenzene	11.061	95	133911	56.053	ug/l	0.00
Spiked Amount	50.000	Range 83 - 123	Recovery	=	112.100%	
Target Compounds						
						Qvalue
14) Allyl chloride	2.642	41	767	0.307	ug/l #	35
16) Acetone	2.374	43	24054	58.189	ug/l	98
18) Methyl Acetate	2.703	43	614	0.444	ug/l #	65
25) 2-Butanone	4.544	43	613	0.928	ug/l	93
28) Bromochloromethane	5.080	49	6379	4.847	ug/l #	15
30) Chloroform	5.087	83	86329	28.900	ug/l	97
31) Cyclohexane	5.538	56	2568	1.019	ug/l #	1
36) 1,1-Dichloropropene	5.532	75	10195	4.196	ug/l #	49
38) Carbon Tetrachloride	5.538	117	13175	4.697	ug/l #	15
41) Methacrylonitrile	5.080	41	229	0.220	ug/l #	23
47) Bromodichloromethane	7.806	83	4131	1.498	ug/l #	90
51) 4-Methyl-2-Pentanone	8.562	43	1173	0.617	ug/l #	64
52) Toluene	8.708	92	6263	1.350	ug/l	92
59) 2-Hexanone	9.415	43	387	0.313	ug/l #	26
60) Dibromochloromethane	9.513	129	545	0.263	ug/l	79
76) 1,2,3-Trichloropropane	11.061	75	70758	36.941	ug/l #	33
81) trans-1,4-Dichloro-2-b...	11.061	75	70758	127.839	ug/l #	10

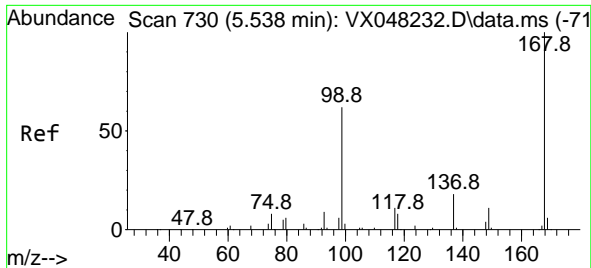
(#) = qualifier out of range (m) = manual integration (+) = signals summed

Data Path : Z:\voasrv\HPCHEM1\MSVOA_X\Data\VX103125\
 Data File : VX048429.D
 Acq On : 31 Oct 2025 14:06
 Operator : JC/MD
 Sample : Q3505-06
 Misc : 5.0mL/MSVOA_X/WATER
 ALS Vial : 15 Sample Multiplier: 1

Instrument :
 MSVOA_X
 ClientSampleId :
 10-17-25-WATER

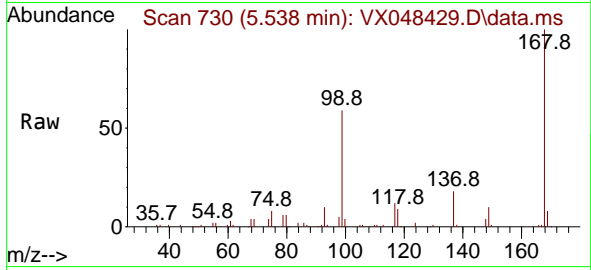
Quant Time: Oct 31 23:05:41 2025
 Quant Method : Z:\voasrv\HPCHEM1\MSVOA_X\Method\82X102925W.M
 Quant Title : SW846 8260
 QLast Update : Thu Oct 30 02:37:17 2025
 Response via : Initial Calibration



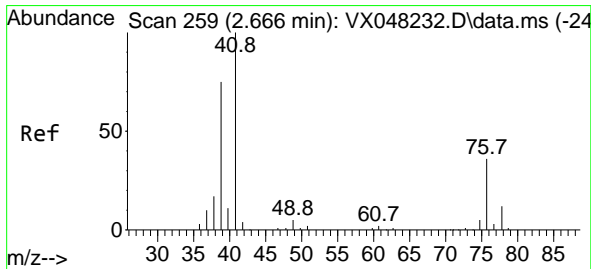
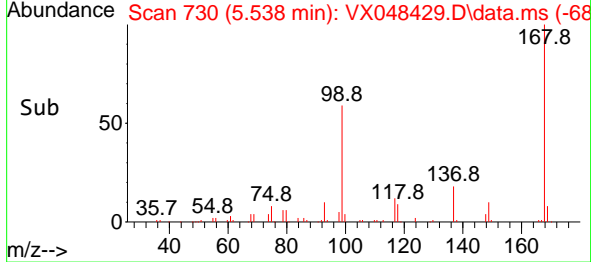
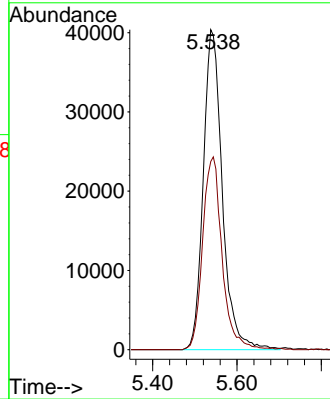


#1
 Pentafluorobenzene
 Concen: 50.000 ug/l
 RT: 5.538 min Scan# 71
 Delta R.T. 0.001 min
 Lab File: VX048429.D
 Acq: 31 Oct 2025 14:06

Instrument :
 MSVOA_X
 ClientSampleId :
 10-17-25-WATER

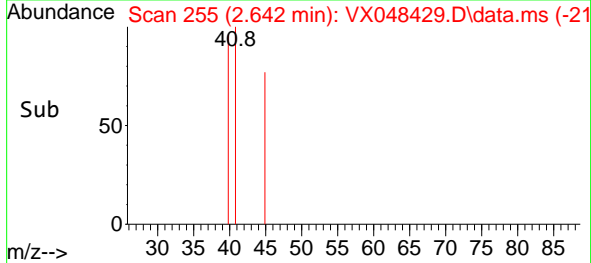
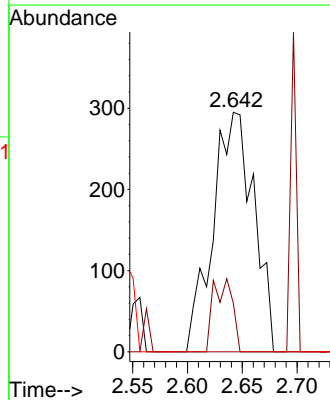
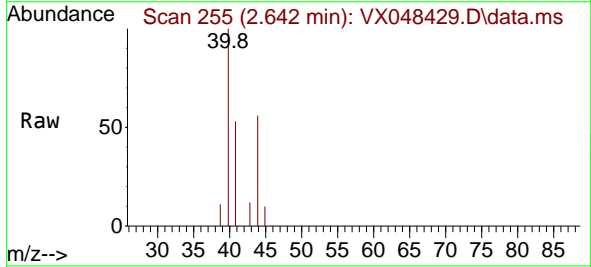


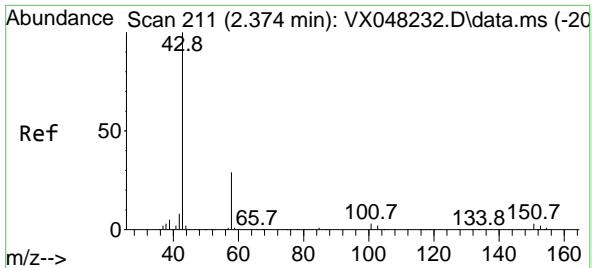
Tgt Ion:168 Resp: 126823
 Ion Ratio Lower Upper
 168 100
 99 58.8 46.4 69.6



#14
 Allyl chloride
 Concen: 0.307 ug/l
 RT: 2.642 min Scan# 255
 Delta R.T. -0.024 min
 Lab File: VX048429.D
 Acq: 31 Oct 2025 14:06

Tgt Ion: 41 Resp: 767
 Ion Ratio Lower Upper
 41 100
 39 14.2 56.0 84.0#
 76 0.0 27.5 41.3#

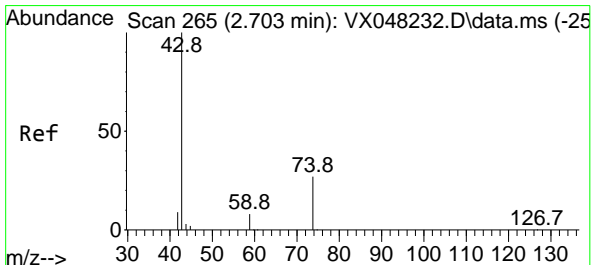
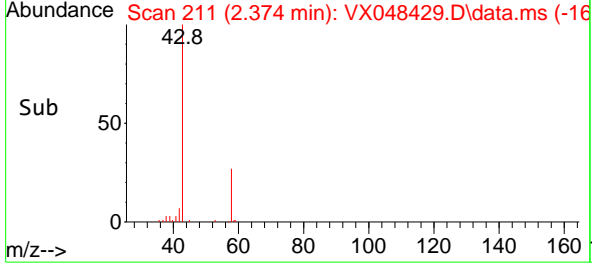
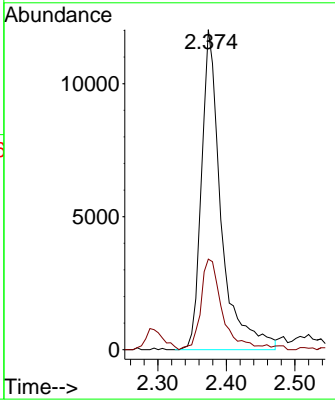
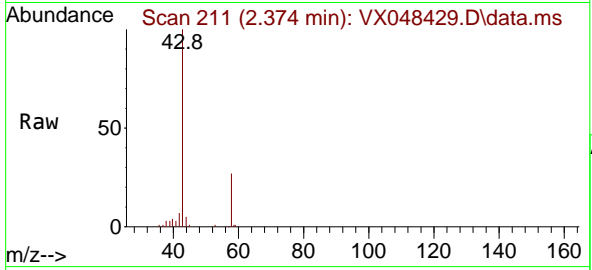




#16
 Acetone
 Concen: 58.189 ug/l
 RT: 2.374 min Scan# 211
 Delta R.T. 0.000 min
 Lab File: VX048429.D
 Acq: 31 Oct 2025 14:06

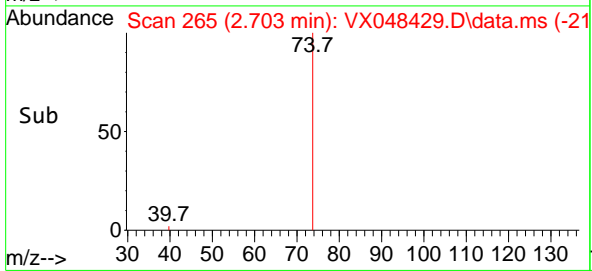
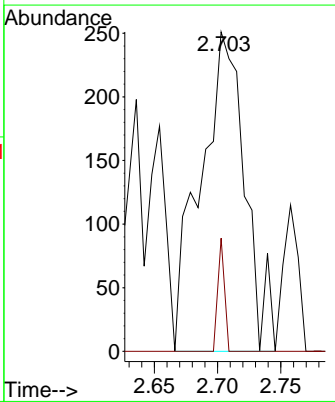
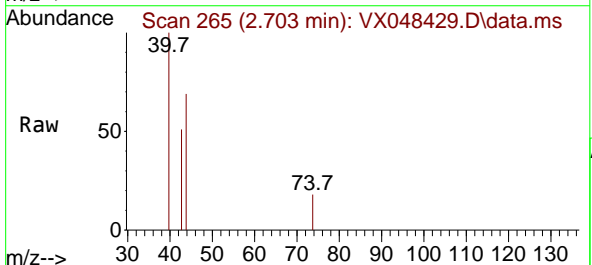
Instrument : MSVOA_X
 ClientSampleId : 10-17-25-WATER

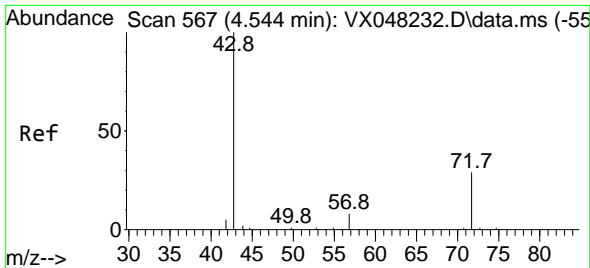
Tgt Ion: 43 Resp: 24054
 Ion Ratio Lower Upper
 43 100
 58 28.4 23.4 35.2



#18
 Methyl Acetate
 Concen: 0.444 ug/l
 RT: 2.703 min Scan# 265
 Delta R.T. 0.006 min
 Lab File: VX048429.D
 Acq: 31 Oct 2025 14:06

Tgt Ion: 43 Resp: 614
 Ion Ratio Lower Upper
 43 100
 74 5.4 17.5 26.3#

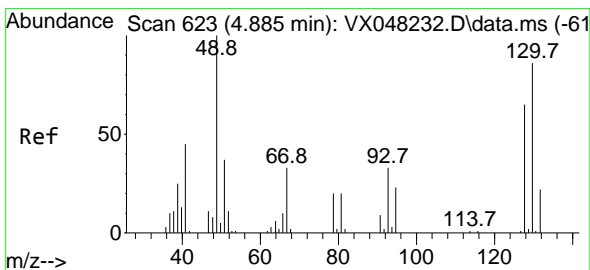
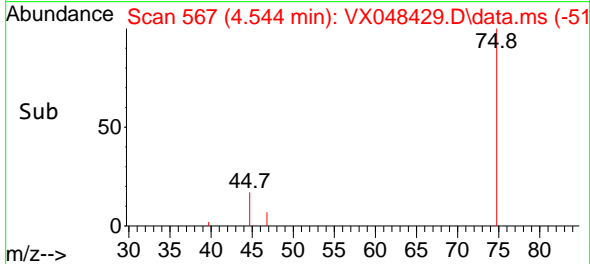
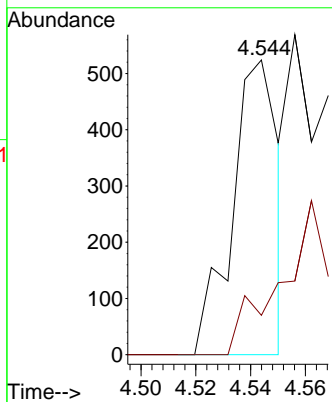
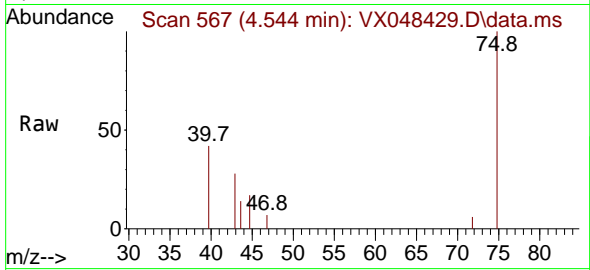




#25
 2-Butanone
 Concen: 0.928 ug/l
 RT: 4.544 min Scan# 50
 Delta R.T. 0.006 min
 Lab File: VX048429.D
 Acq: 31 Oct 2025 14:06

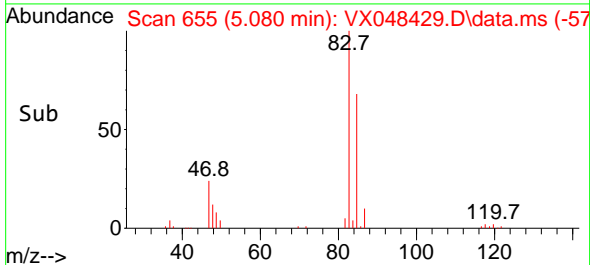
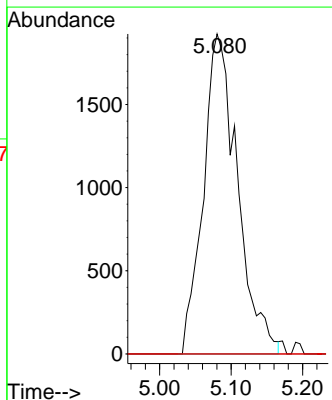
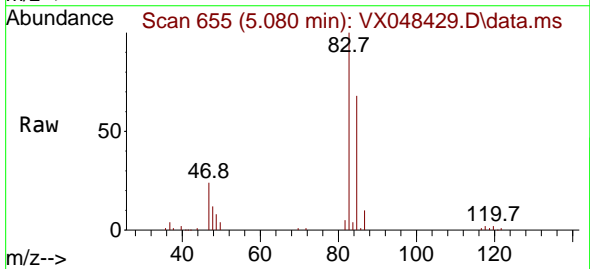
Instrument : MSVOA_X
 ClientSampleId : 10-17-25-WATER

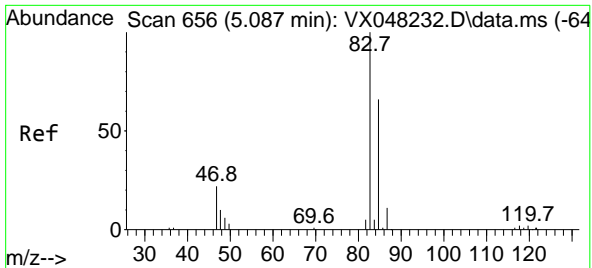
Tgt Ion: 43 Resp: 613
 Ion Ratio Lower Upper
 43 100
 72 21.1 19.9 29.9



#28
 Bromochloromethane
 Concen: 4.847 ug/l
 RT: 5.080 min Scan# 655
 Delta R.T. 0.189 min
 Lab File: VX048429.D
 Acq: 31 Oct 2025 14:06

Tgt Ion: 49 Resp: 6379
 Ion Ratio Lower Upper
 49 100
 129 0.0 0.0 4.4
 130 0.0 59.3 88.9#

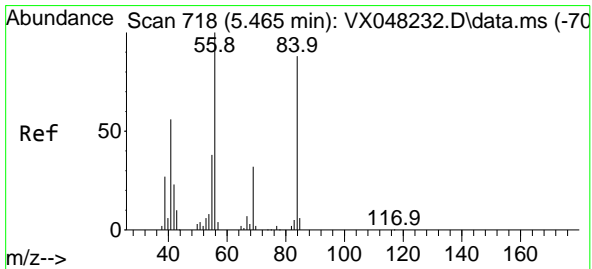
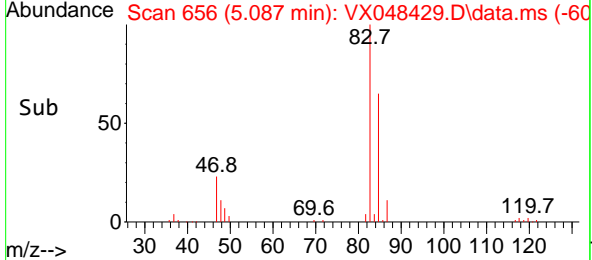
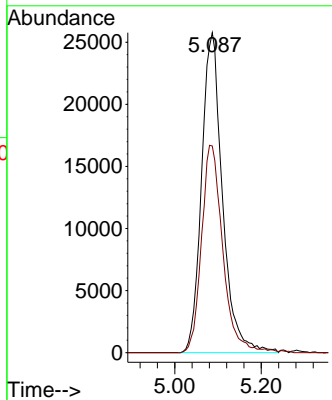
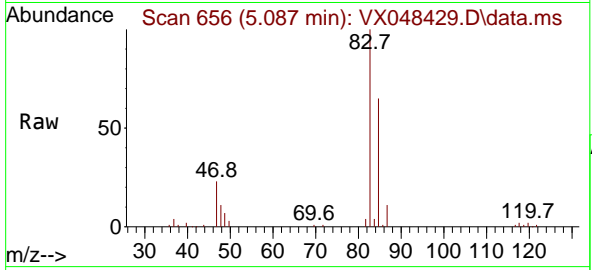




#30
 Chloroform
 Concen: 28.900 ug/l
 RT: 5.087 min Scan# 61
 Delta R.T. 0.006 min
 Lab File: VX048429.D
 Acq: 31 Oct 2025 14:06

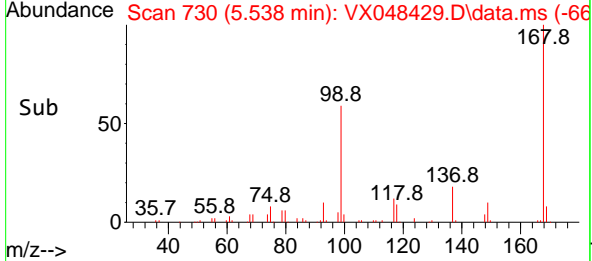
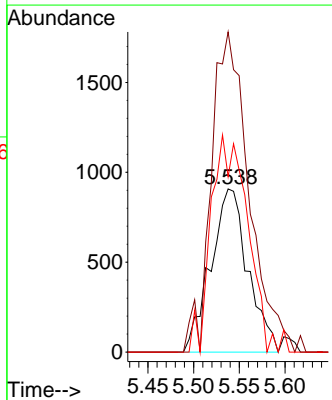
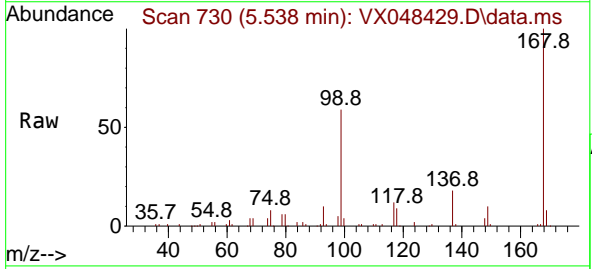
Instrument : MSVOA_X
 ClientSampleId : 10-17-25-WATER

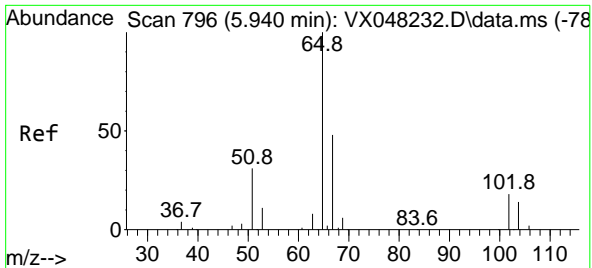
Tgt Ion: 83 Resp: 86329
 Ion Ratio Lower Upper
 83 100
 85 64.6 50.1 75.1



#31
 Cyclohexane
 Concen: 1.019 ug/l
 RT: 5.538 min Scan# 730
 Delta R.T. 0.073 min
 Lab File: VX048429.D
 Acq: 31 Oct 2025 14:06

Tgt Ion: 56 Resp: 2568
 Ion Ratio Lower Upper
 56 100
 69 196.1 23.0 34.6#
 84 107.4 64.6 97.0#

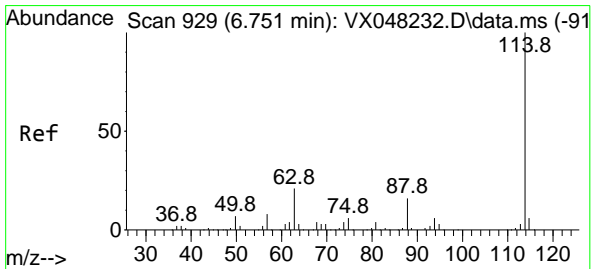
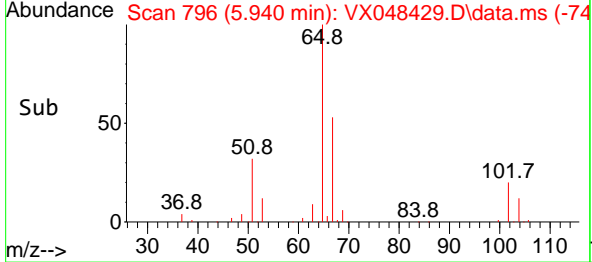
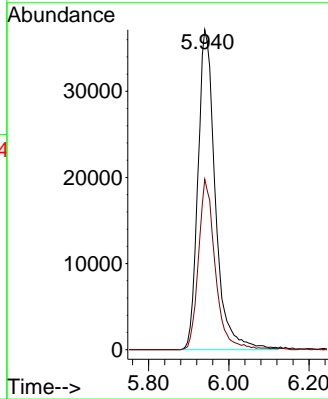
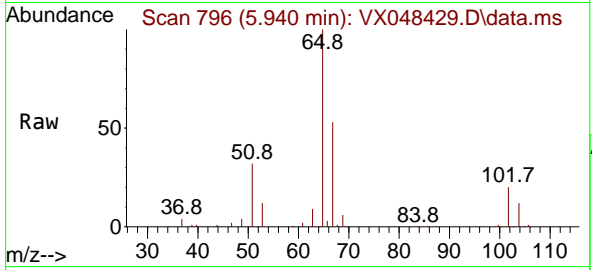




#33
 1,2-Dichloroethane-d4
 Concen: 61.362 ug/l
 RT: 5.940 min Scan# 796
 Delta R.T. 0.000 min
 Lab File: VX048429.D
 Acq: 31 Oct 2025 14:06

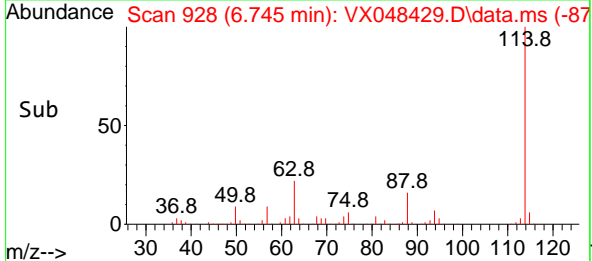
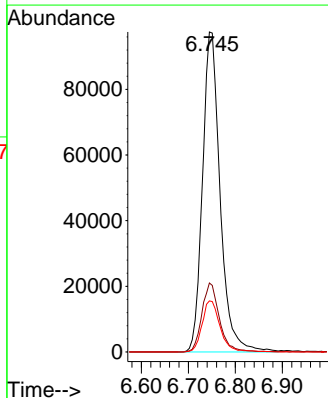
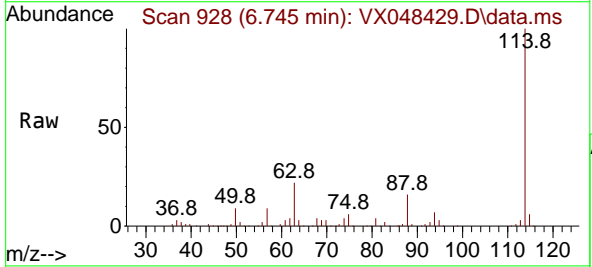
Instrument : MSVOA_X
 ClientSampleId : 10-17-25-WATER

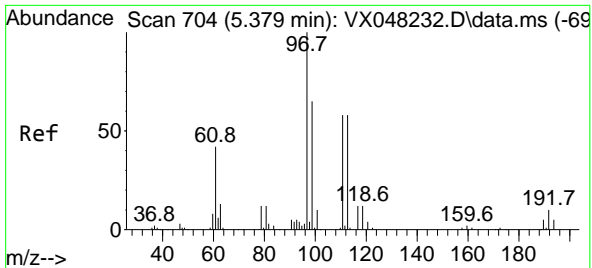
Tgt Ion: 65 Resp: 111919
 Ion Ratio Lower Upper
 65 100
 67 51.4 0.0 105.0



#34
 1,4-Difluorobenzene
 Concen: 50.000 ug/l
 RT: 6.745 min Scan# 928
 Delta R.T. 0.000 min
 Lab File: VX048429.D
 Acq: 31 Oct 2025 14:06

Tgt Ion: 114 Resp: 253754
 Ion Ratio Lower Upper
 114 100
 63 21.6 0.0 43.2
 88 16.0 0.0 33.6

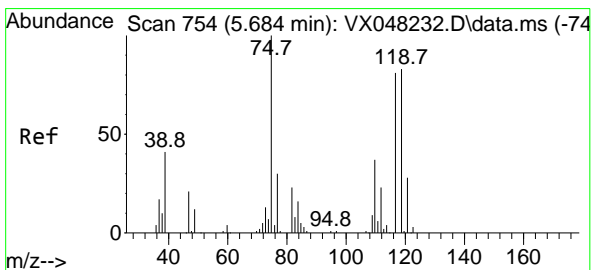
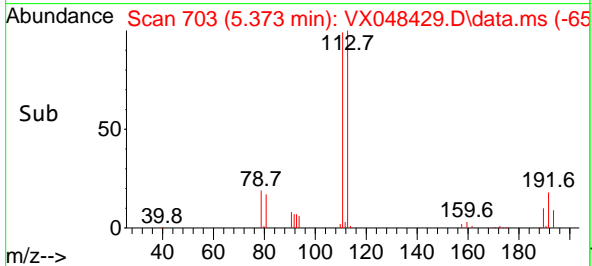
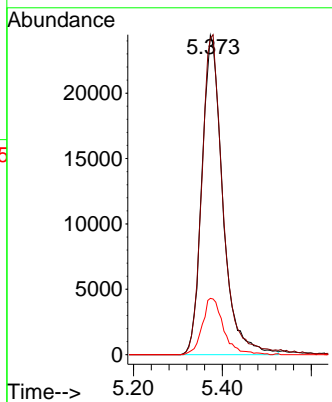
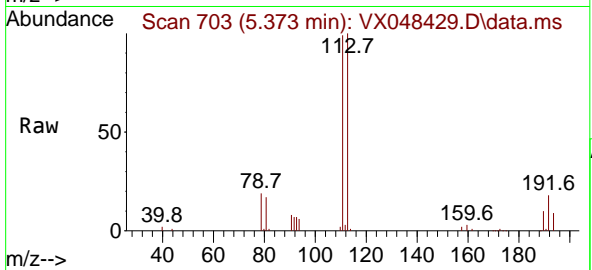




#35
 Dibromofluoromethane
 Concen: 55.125 ug/l
 RT: 5.373 min Scan# 703
 Delta R.T. 0.000 min
 Lab File: VX048429.D
 Acq: 31 Oct 2025 14:06

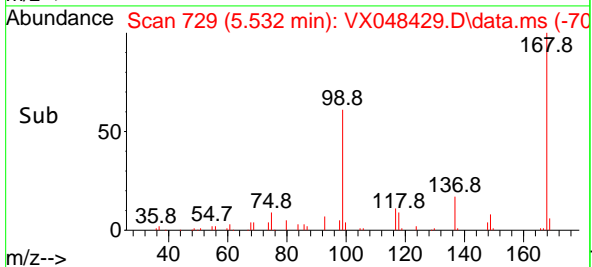
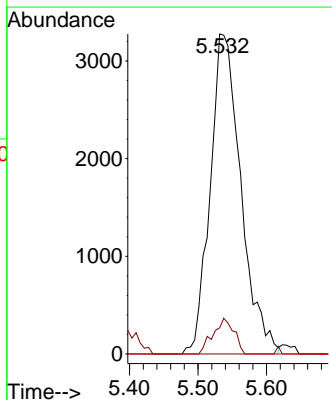
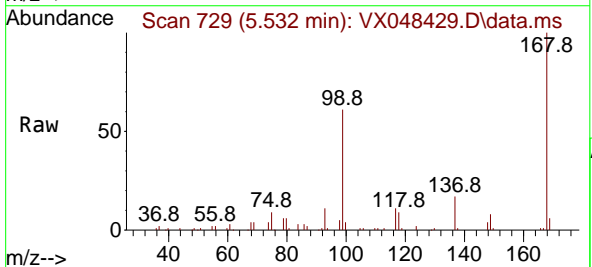
Instrument : MSVOA_X
 ClientSampleId : 10-17-25-WATER

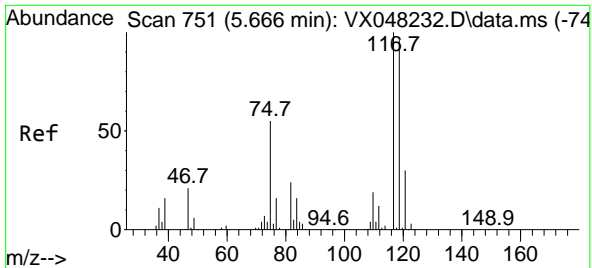
Tgt Ion	Resp	Lower	Upper
113	79752		
111	100.5	82.2	123.4
192	18.0	15.1	22.7



#36
 1,1-Dichloropropene
 Concen: 4.196 ug/l
 RT: 5.532 min Scan# 729
 Delta R.T. -0.152 min
 Lab File: VX048429.D
 Acq: 31 Oct 2025 14:06

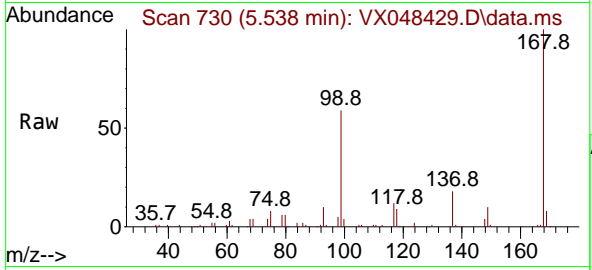
Tgt Ion	Resp	Lower	Upper
75	10195		
75	100		
110	7.6	17.7	53.1#
77	0.0	24.3	36.5#



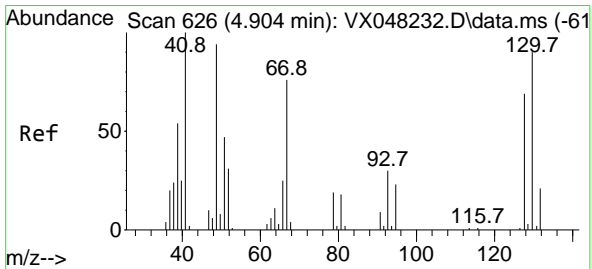
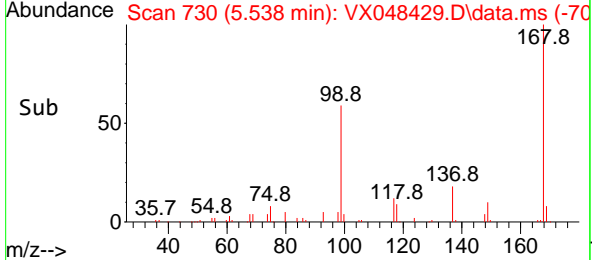
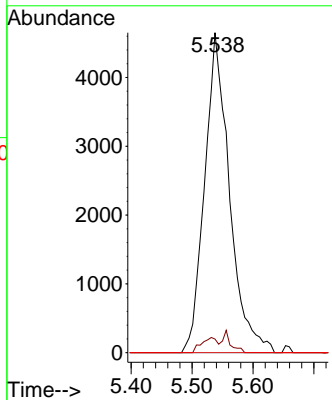


#38
 Carbon Tetrachloride
 Concen: 4.697 ug/l
 RT: 5.538 min Scan# 711
 Delta R.T. -0.128 min
 Lab File: VX048429.D
 Acq: 31 Oct 2025 14:06

Instrument : MSVOA_X
 ClientSampleId : 10-17-25-WATER

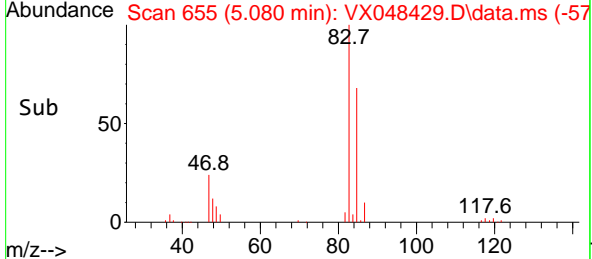
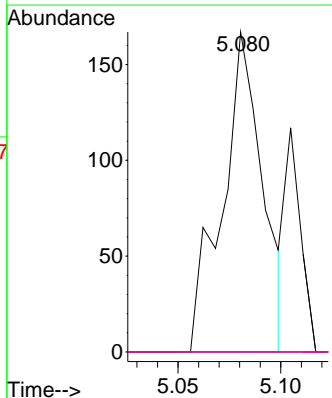
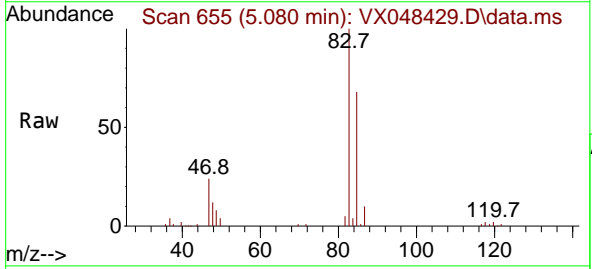


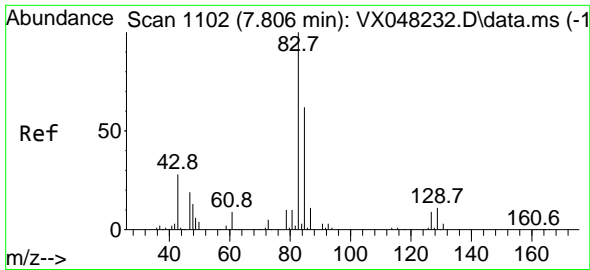
Tgt Ion:117 Resp: 13175
 Ion Ratio Lower Upper
 117 100
 119 4.2 77.2 115.8#
 121 0.0 24.8 37.2#



#41
 Methacrylonitrile
 Concen: 0.220 ug/l
 RT: 5.080 min Scan# 655
 Delta R.T. 0.171 min
 Lab File: VX048429.D
 Acq: 31 Oct 2025 14:06

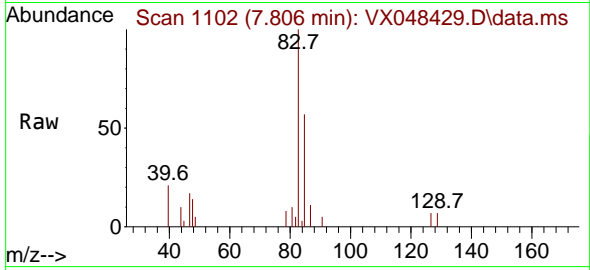
Tgt Ion: 41 Resp: 229
 Ion Ratio Lower Upper
 41 100
 39 0.0 44.0 66.0#
 67 0.0 58.7 88.1#
 52 0.0 25.9 38.9#



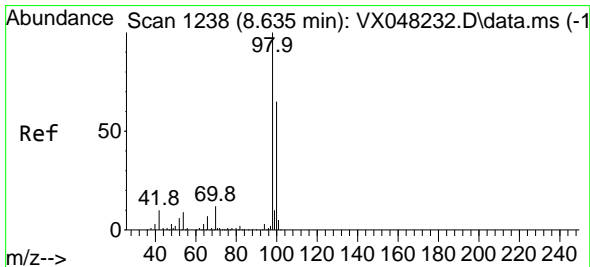
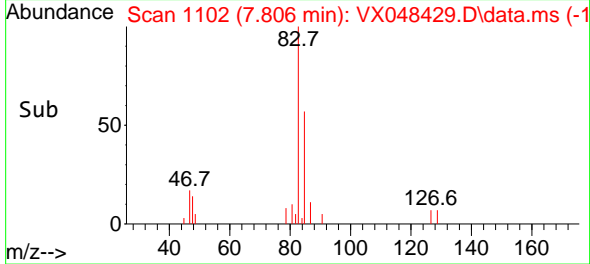
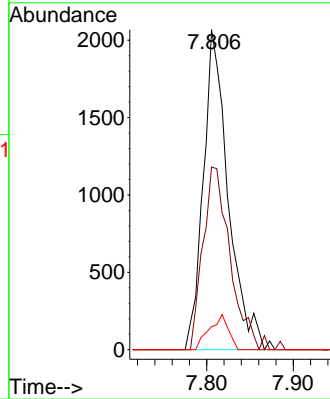


#47
 Bromodichloromethane
 Concen: 1.498 ug/l
 RT: 7.806 min Scan# 1102
 Delta R.T. 0.000 min
 Lab File: VX048429.D
 Acq: 31 Oct 2025 14:06

Instrument : MSVOA_X
 ClientSampleId : 10-17-25-WATER

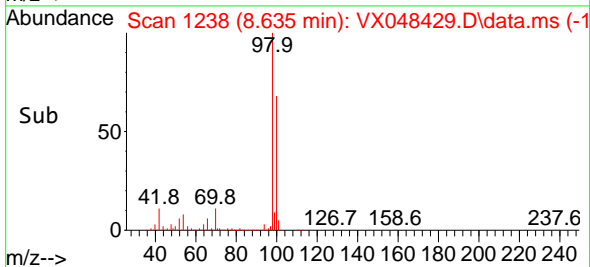
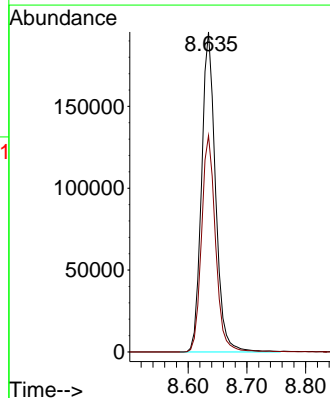
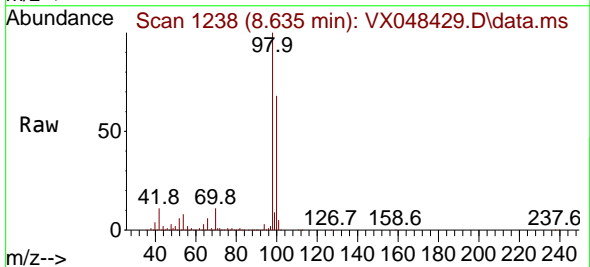


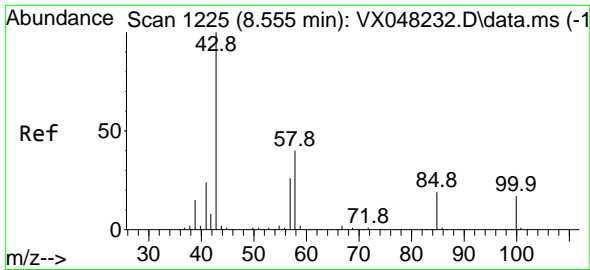
Tgt Ion: 83 Resp: 4131
 Ion Ratio Lower Upper
 83 100
 85 57.1 52.2 78.4
 127 7.3 7.3 10.9#



#50
 Toluene-d8
 Concen: 50.560 ug/l
 RT: 8.635 min Scan# 1238
 Delta R.T. 0.000 min
 Lab File: VX048429.D
 Acq: 31 Oct 2025 14:06

Tgt Ion: 98 Resp: 322894
 Ion Ratio Lower Upper
 98 100
 100 68.0 53.0 79.4

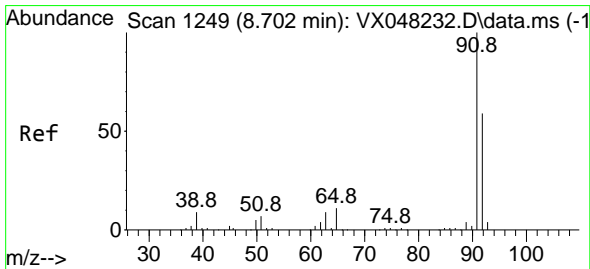
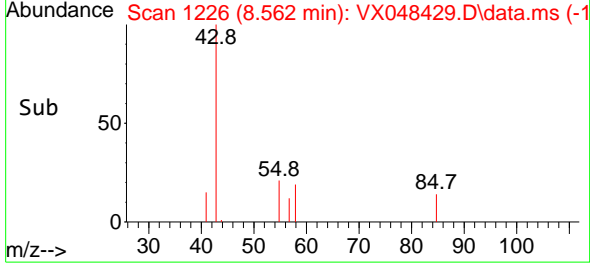
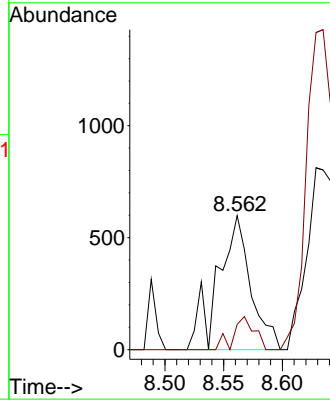
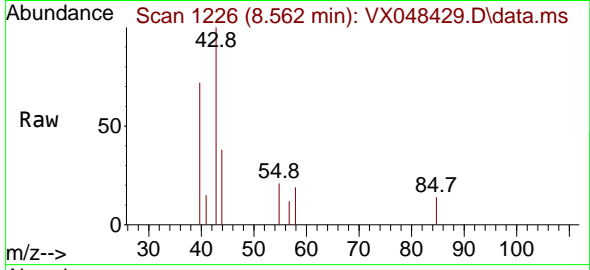




#51
 4-Methyl-2-Pentanone
 Concen: 0.617 ug/l
 RT: 8.562 min Scan# 1111
 Delta R.T. 0.006 min
 Lab File: VX048429.D
 Acq: 31 Oct 2025 14:06

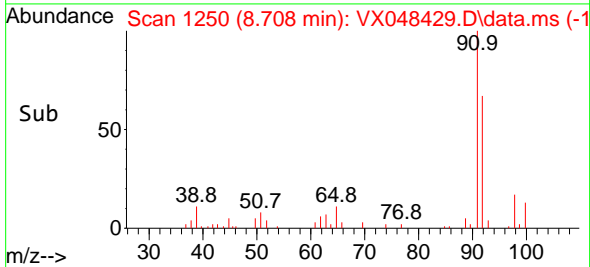
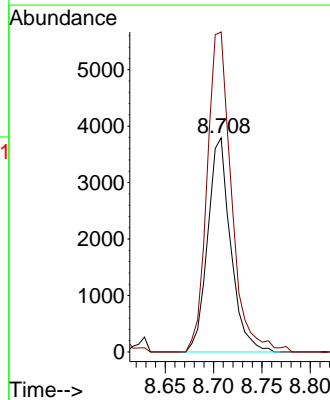
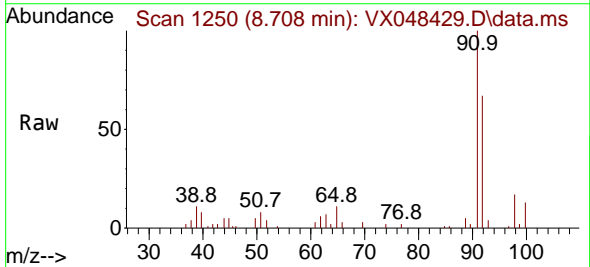
Instrument : MSVOA_X
 ClientSampleId : 10-17-25-WATER

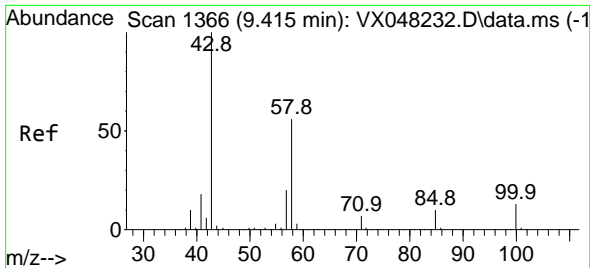
Tgt Ion: 43 Resp: 1173
 Ion Ratio Lower Upper
 43 100
 58 15.6 29.5 44.3#



#52
 Toluene
 Concen: 1.350 ug/l
 RT: 8.708 min Scan# 1250
 Delta R.T. 0.006 min
 Lab File: VX048429.D
 Acq: 31 Oct 2025 14:06

Tgt Ion: 92 Resp: 6263
 Ion Ratio Lower Upper
 92 100
 91 158.7 136.1 204.1

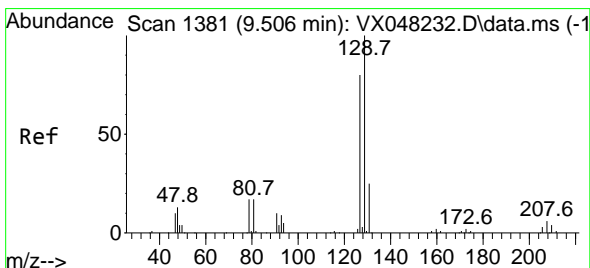
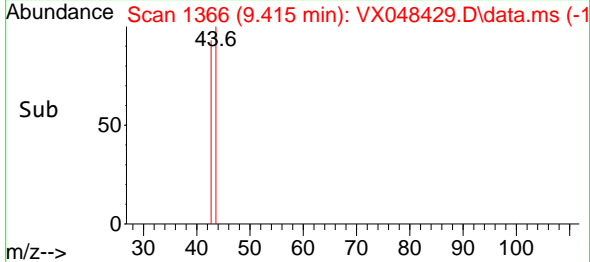
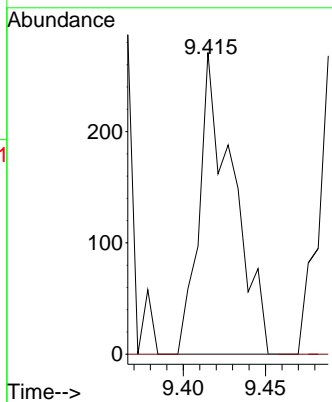
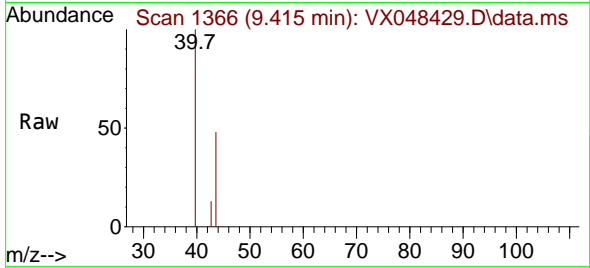




#59
 2-Hexanone
 Concen: 0.313 ug/l
 RT: 9.415 min Scan# 1366
 Delta R.T. 0.000 min
 Lab File: VX048429.D
 Acq: 31 Oct 2025 14:06

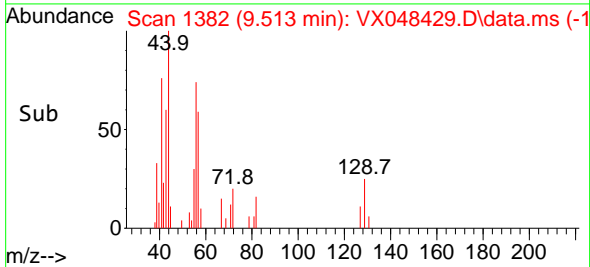
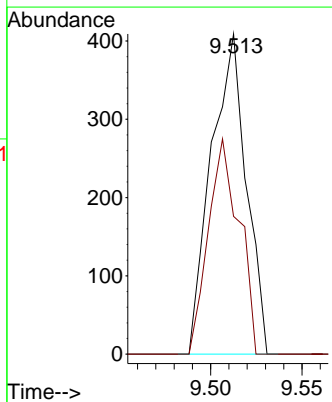
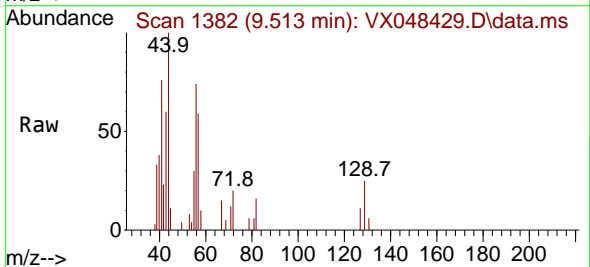
Instrument : MSVOA_X
 ClientSampleId : 10-17-25-WATER

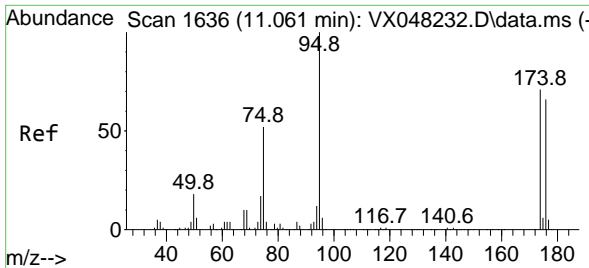
Tgt Ion: 43 Resp: 387
 Ion Ratio Lower Upper
 43 100
 58 0.0 26.3 78.8#



#60
 Dibromochloromethane
 Concen: 0.263 ug/l
 RT: 9.513 min Scan# 1382
 Delta R.T. 0.006 min
 Lab File: VX048429.D
 Acq: 31 Oct 2025 14:06

Tgt Ion: 129 Resp: 545
 Ion Ratio Lower Upper
 129 100
 127 59.3 38.6 115.7



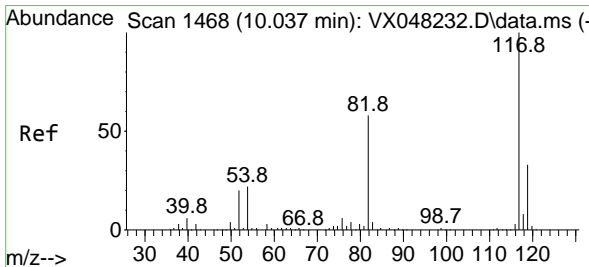
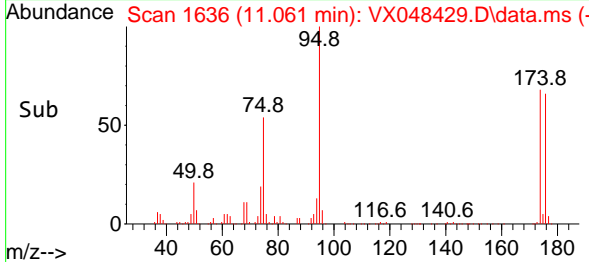
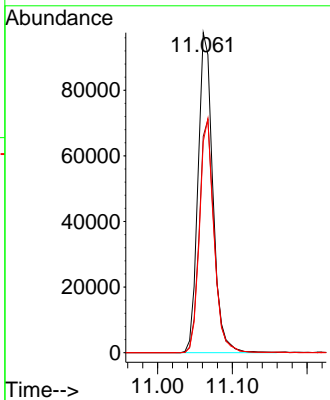
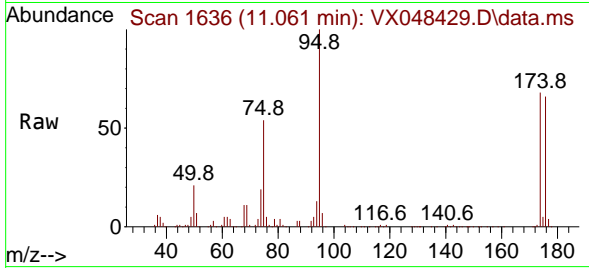


#62
 4-Bromofluorobenzene
 Concen: 56.053 ug/l
 RT: 11.061 min Scan# 11
 Delta R.T. 0.000 min
 Lab File: VX048429.D
 Acq: 31 Oct 2025 14:06

Instrument : MSVOA_X
 ClientSampleId : 10-17-25-WATER

Tgt Ion: 95 Resp: 133911

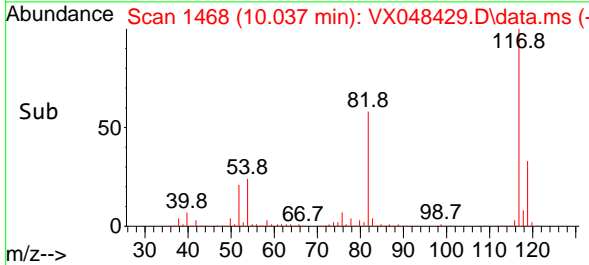
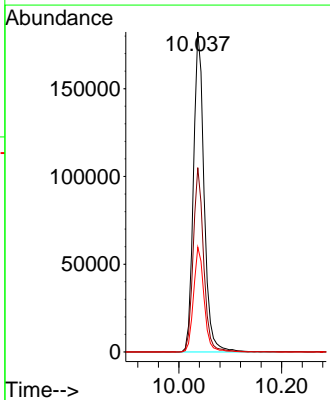
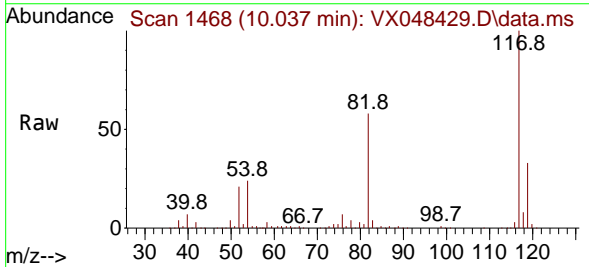
Ion	Ratio	Lower	Upper
95	100		
174	73.2	0.0	147.8
176	71.3	0.0	142.8

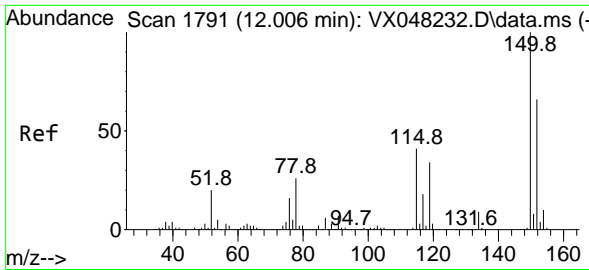


#63
 Chlorobenzene-d5
 Concen: 50.000 ug/l
 RT: 10.037 min Scan# 1468
 Delta R.T. 0.000 min
 Lab File: VX048429.D
 Acq: 31 Oct 2025 14:06

Tgt Ion: 117 Resp: 263128

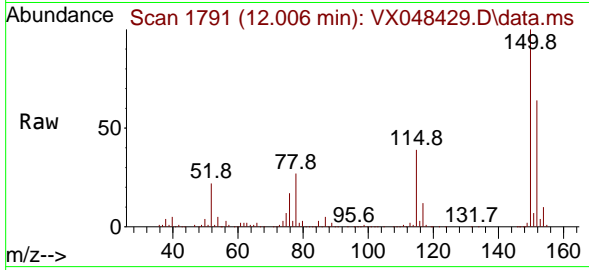
Ion	Ratio	Lower	Upper
117	100		
82	57.6	46.5	69.7
119	32.8	25.9	38.9



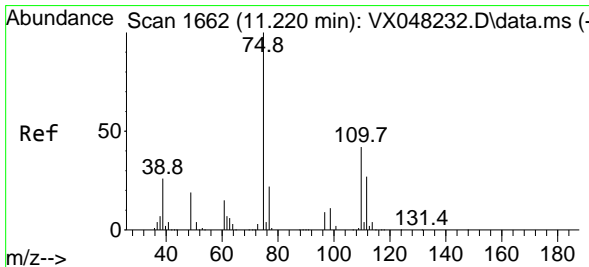
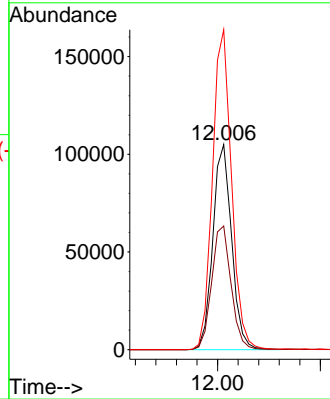
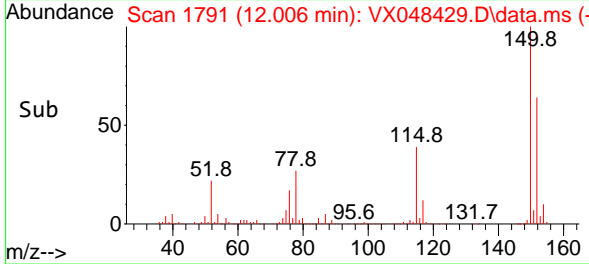


#72
 1,4-Dichlorobenzene-d4
 Concen: 50.000 ug/l
 RT: 12.006 min Scan# 11
 Delta R.T. 0.000 min
 Lab File: VX048429.D
 Acq: 31 Oct 2025 14:06

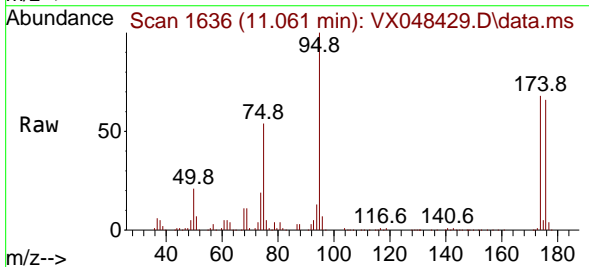
Instrument :
 MSVOA_X
 ClientSampleId :
 10-17-25-WATER



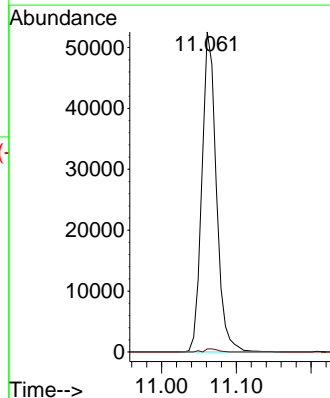
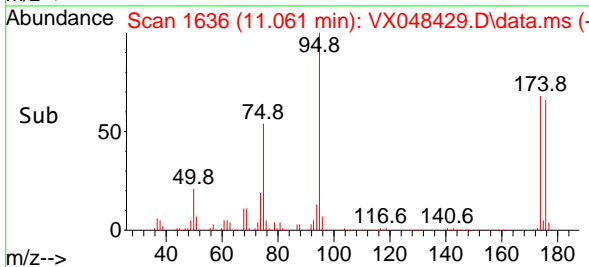
Tgt Ion:152 Resp: 133188
 Ion Ratio Lower Upper
 152 100
 115 62.5 43.1 129.4
 150 157.9 0.0 353.0

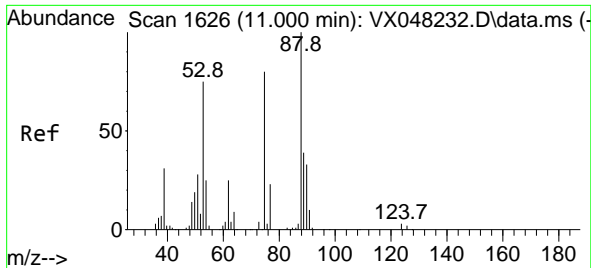


#76
 1,2,3-Trichloropropane
 Concen: 36.941 ug/l
 RT: 11.061 min Scan# 1636
 Delta R.T. -0.158 min
 Lab File: VX048429.D
 Acq: 31 Oct 2025 14:06



Tgt Ion: 75 Resp: 70758
 Ion Ratio Lower Upper
 75 100
 77 0.9 22.4 67.2#





#81
 trans-1,4-Dichloro-2-butene
 Concen: 127.839 ug/l
 RT: 11.061 min Scan# 10
 Delta R.T. 0.061 min
 Lab File: VX048429.D
 Acq: 31 Oct 2025 14:06

Instrument :
 MSVOA_X
 ClientSampleId :
 10-17-25-WATER

Tgt Ion: 75 Resp: 70758
 Ion Ratio Lower Upper
 75 100
 53 0.0 79.5 119.3#
 89 0.0 36.8 55.2#

