

Data Path : Z:\voasrv\HPCHEM1\MSVOA_X\Data\VX103125\
 Data File : VX048437.D
 Acq On : 31 Oct 2025 16:52
 Operator : JC/MD
 Sample : Q3507-02
 Misc : 5.0mL/MSVOA_X/WATER
 ALS Vial : 23 Sample Multiplier: 1

Instrument :
 MSVOA_X
 ClientSampleId :
 TB

Quant Time: Oct 31 23:08:25 2025
 Quant Method : Z:\voasrv\HPCHEM1\MSVOA_X\Method\82X102925W.M
 Quant Title : SW846 8260
 QLast Update : Thu Oct 30 02:37:17 2025
 Response via : Initial Calibration

Compound	R.T.	QIon	Response	Conc	Units	Dev(Min)

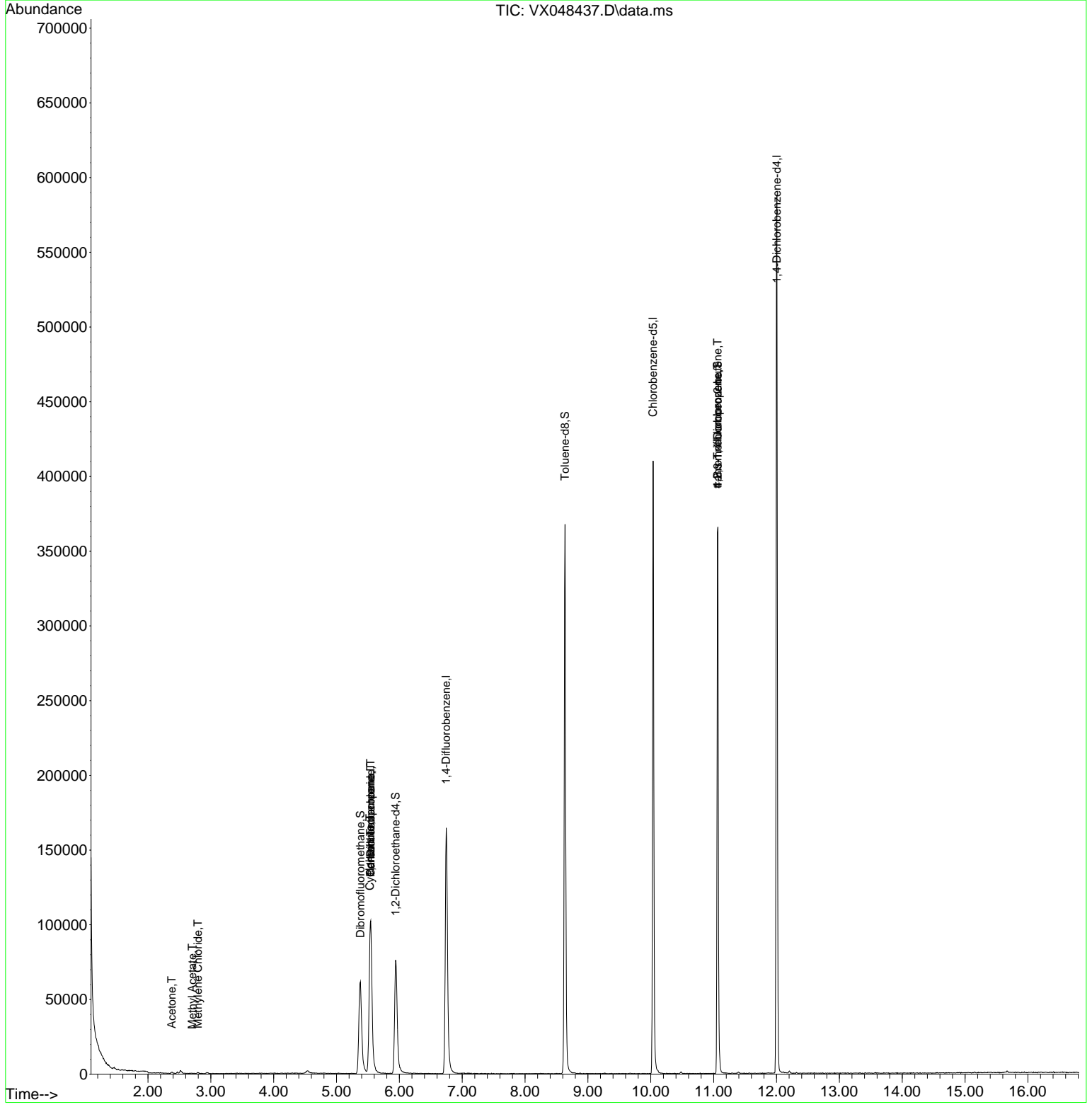
Internal Standards						
1) Pentafluorobenzene	5.544	168	110576	50.000	ug/l	0.00
34) 1,4-Difluorobenzene	6.745	114	187149	50.000	ug/l	0.00
63) Chlorobenzene-d5	10.037	117	202287	50.000	ug/l	0.00
72) 1,4-Dichlorobenzene-d4	12.006	152	129643	50.000	ug/l	0.00
System Monitoring Compounds						
33) 1,2-Dichloroethane-d4	5.940	65	82688	51.997	ug/l	0.00
Spiked Amount	50.000	Range 78 - 117	Recovery	=	104.000%	
35) Dibromofluoromethane	5.379	113	61733	57.856	ug/l	0.00
Spiked Amount	50.000	Range 75 - 124	Recovery	=	115.720%	
50) Toluene-d8	8.635	98	232995	49.468	ug/l	0.00
Spiked Amount	50.000	Range 92 - 112	Recovery	=	98.940%	
62) 4-Bromofluorobenzene	11.061	95	111653	63.370	ug/l	0.00
Spiked Amount	50.000	Range 83 - 123	Recovery	=	126.740%#	
Target Compounds						
					Qvalue	
16) Acetone	2.380	43	1180	3.274	ug/l #	89
18) Methyl Acetate	2.703	43	253	0.210	ug/l #	54
20) Methylene Chloride	2.794	84	382	0.275	ug/l #	56
31) Cyclohexane	5.532	56	1851	0.842	ug/l #	1
36) 1,1-Dichloropropene	5.544	75	8514	4.752	ug/l #	49
38) Carbon Tetrachloride	5.544	117	11166	5.397	ug/l #	15
76) 1,2,3-Trichloropropane	11.061	75	53558	28.726	ug/l #	33
81) trans-1,4-Dichloro-2-b...	11.061	75	53558	99.410	ug/l #	10

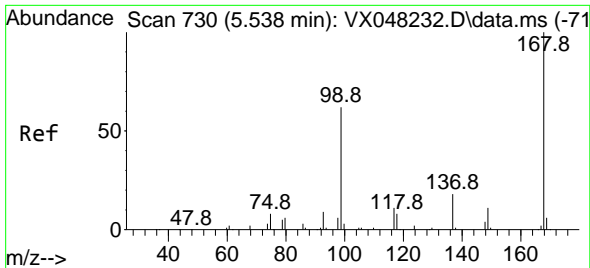
(#) = qualifier out of range (m) = manual integration (+) = signals summed

Data Path : Z:\voasrv\HPCHEM1\MSVOA_X\Data\VX103125\
 Data File : VX048437.D
 Acq On : 31 Oct 2025 16:52
 Operator : JC/MD
 Sample : Q3507-02
 Misc : 5.0mL/MSVOA_X/WATER
 ALS Vial : 23 Sample Multiplier: 1

Instrument :
 MSVOA_X
 ClientSampleId :
 TB

Quant Time: Oct 31 23:08:25 2025
 Quant Method : Z:\voasrv\HPCHEM1\MSVOA_X\Method\82X102925W.M
 Quant Title : SW846 8260
 QLast Update : Thu Oct 30 02:37:17 2025
 Response via : Initial Calibration

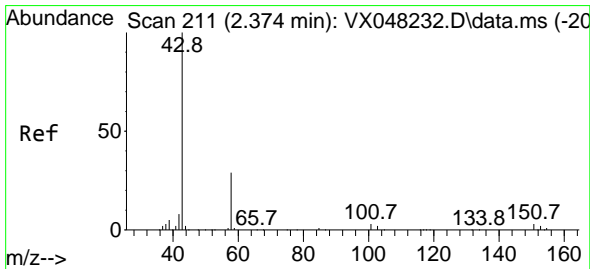
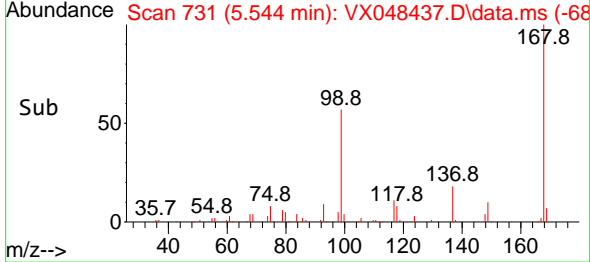
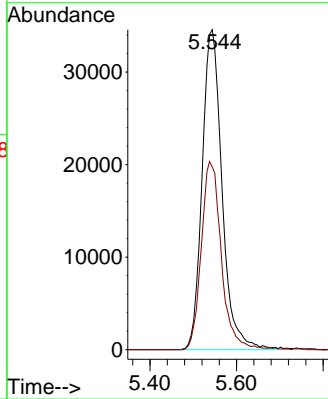
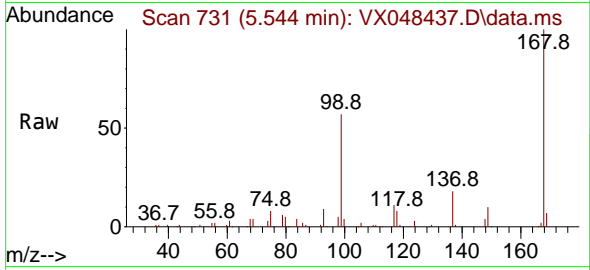




#1
 Pentafluorobenzene
 Concen: 50.000 ug/l
 RT: 5.544 min Scan# 71
 Delta R.T. 0.007 min
 Lab File: VX048437.D
 Acq: 31 Oct 2025 16:52

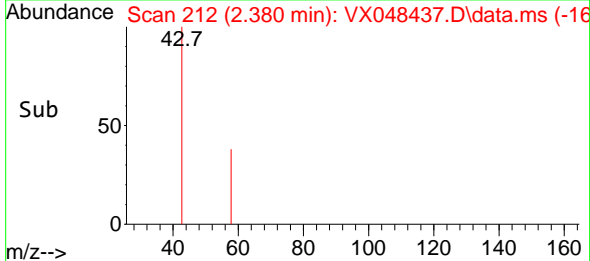
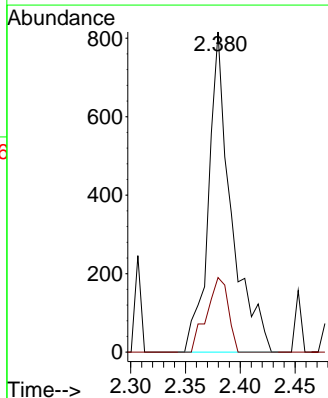
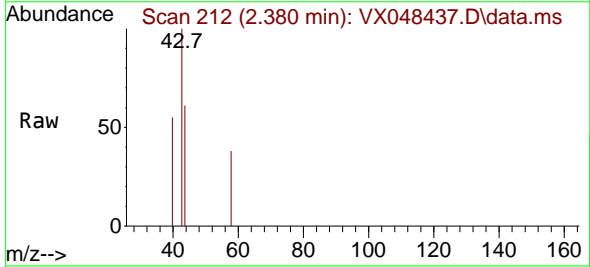
Instrument :
 MSVOA_X
 ClientSampleId :
 TB

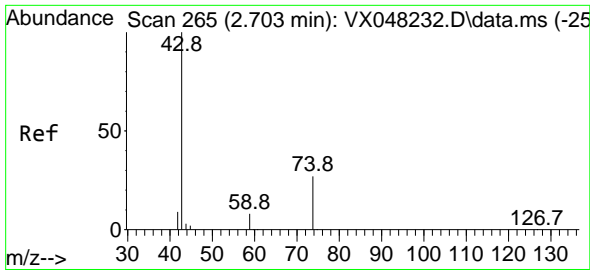
Tgt Ion:168 Resp: 110576
 Ion Ratio Lower Upper
 168 100
 99 57.0 46.4 69.6



#16
 Acetone
 Concen: 3.274 ug/l
 RT: 2.380 min Scan# 212
 Delta R.T. 0.006 min
 Lab File: VX048437.D
 Acq: 31 Oct 2025 16:52

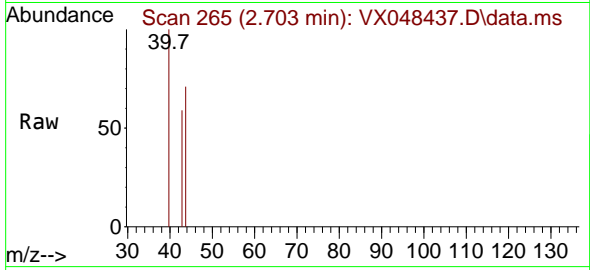
Tgt Ion: 43 Resp: 1180
 Ion Ratio Lower Upper
 43 100
 58 23.3 23.4 35.2#



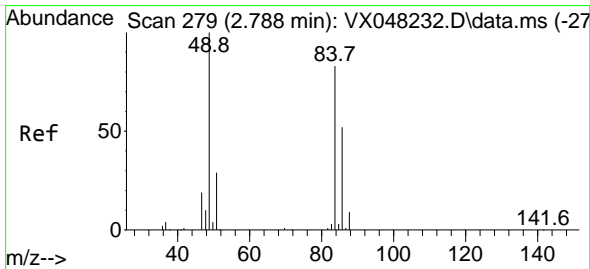
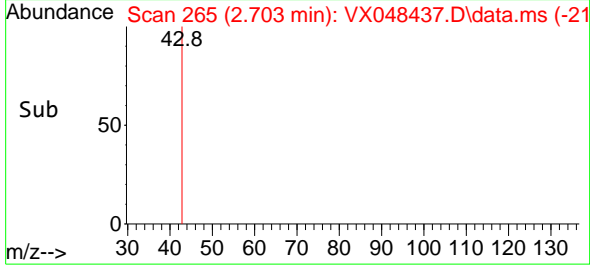
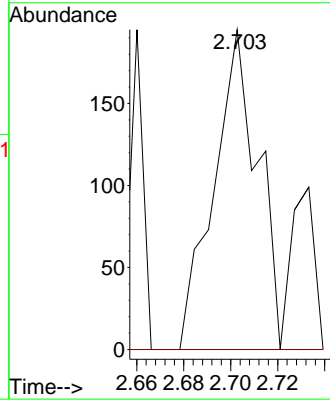


#18
 Methyl Acetate
 Concen: 0.210 ug/l
 RT: 2.703 min Scan# 20
 Delta R.T. 0.006 min
 Lab File: VX048437.D
 Acq: 31 Oct 2025 16:52

Instrument :
 MSVOA_X
 ClientSampleId :
 TB

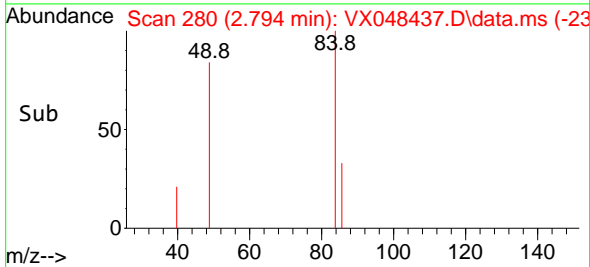
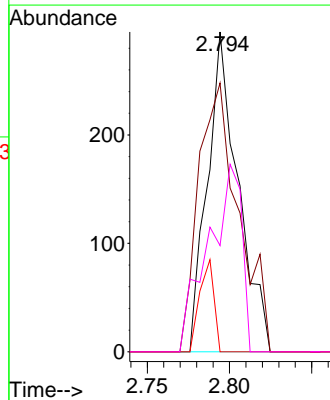
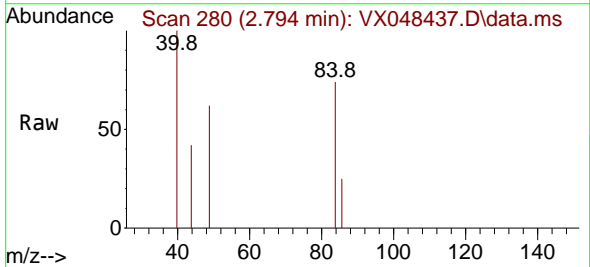


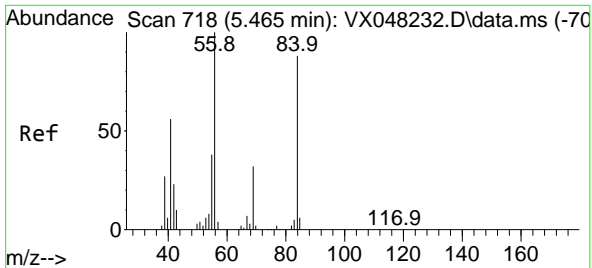
Tgt Ion: 43 Resp: 253
 Ion Ratio Lower Upper
 43 100
 74 0.0 17.5 26.3#



#20
 Methylene Chloride
 Concen: 0.275 ug/l
 RT: 2.794 min Scan# 280
 Delta R.T. 0.006 min
 Lab File: VX048437.D
 Acq: 31 Oct 2025 16:52

Tgt Ion: 84 Resp: 382
 Ion Ratio Lower Upper
 84 100
 49 84.1 104.1 156.1#
 51 0.0 31.3 46.9#
 86 33.2 51.3 76.9#



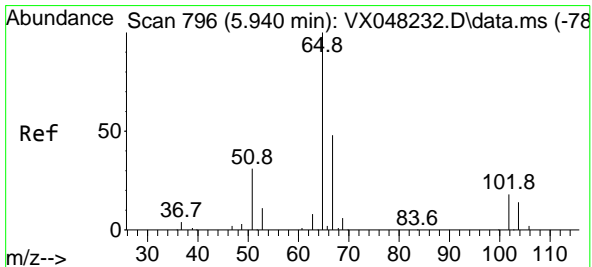
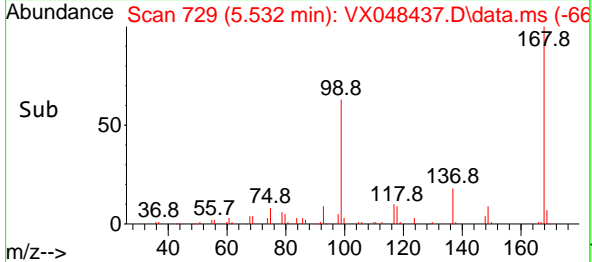
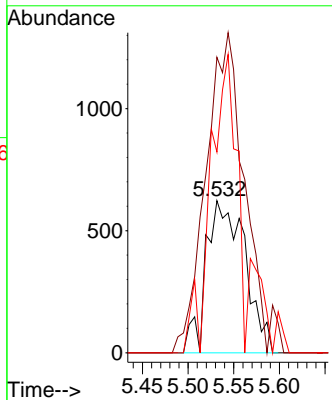
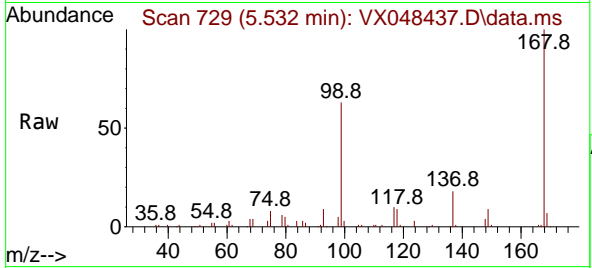


#31
 Cyclohexane
 Concen: 0.842 ug/l
 RT: 5.532 min Scan# 718
 Delta R.T. 0.067 min
 Lab File: VX048437.D
 Acq: 31 Oct 2025 16:52

Instrument :
 MSVOA_X
 ClientSampleId :
 TB

Tgt Ion: 56 Resp: 1851

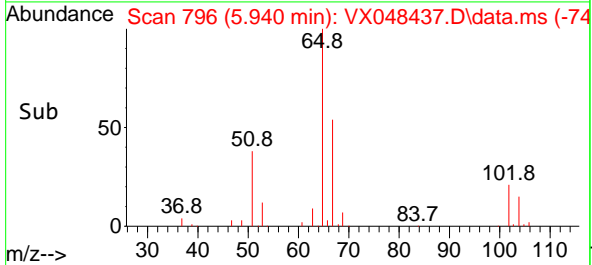
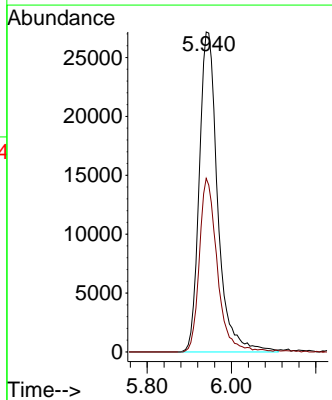
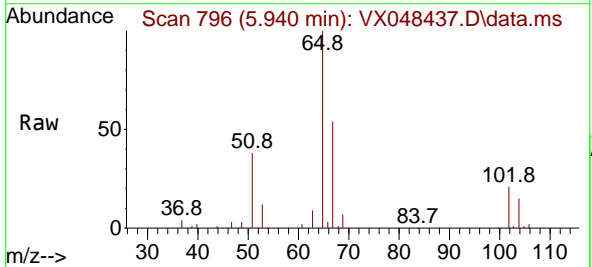
Ion	Ratio	Lower	Upper
56	100		
69	183.8	23.0	34.6#
84	131.9	64.6	97.0#

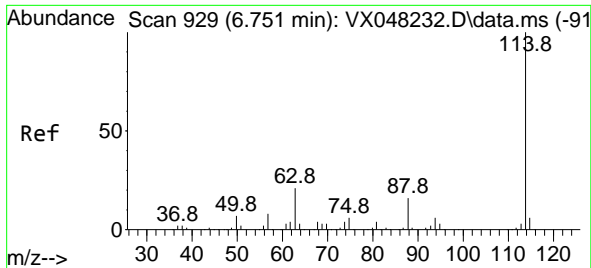


#33
 1,2-Dichloroethane-d4
 Concen: 51.997 ug/l
 RT: 5.940 min Scan# 796
 Delta R.T. 0.000 min
 Lab File: VX048437.D
 Acq: 31 Oct 2025 16:52

Tgt Ion: 65 Resp: 82688

Ion	Ratio	Lower	Upper
65	100		
67	52.7	0.0	105.0



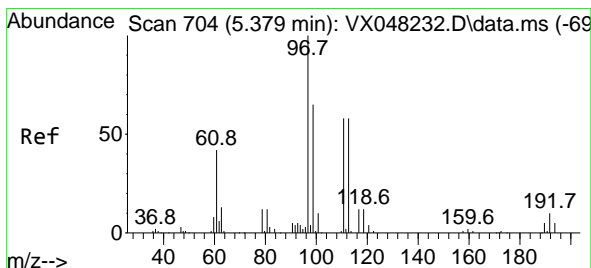
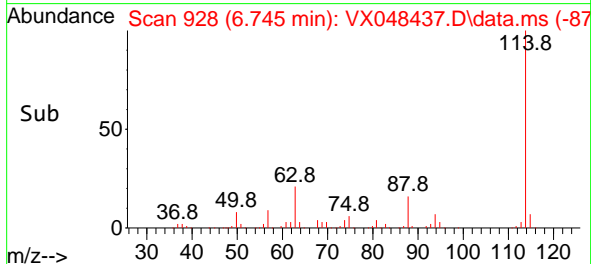
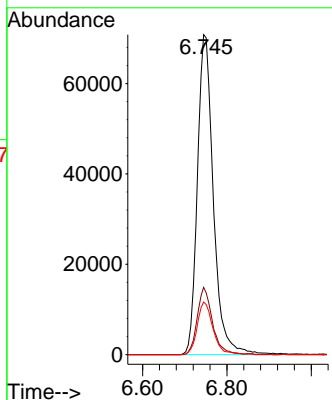
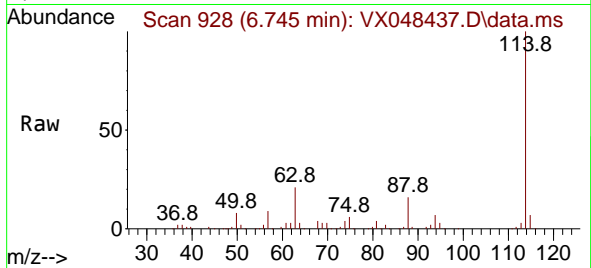


#34
 1,4-Difluorobenzene
 Concen: 50.000 ug/l
 RT: 6.745 min Scan# 91
 Delta R.T. 0.000 min
 Lab File: VX048437.D
 Acq: 31 Oct 2025 16:52

Instrument :
 MSVOA_X
 ClientSampleId :
 TB

Tgt Ion:114 Resp: 187149

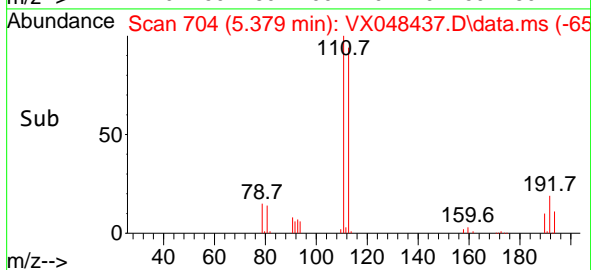
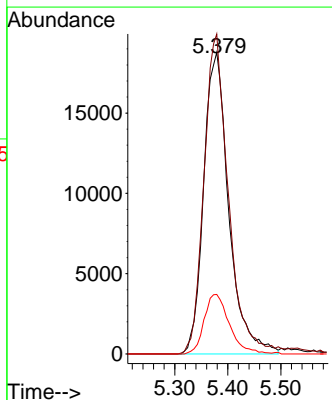
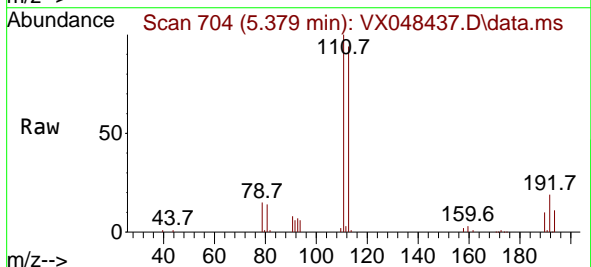
Ion	Ratio	Lower	Upper
114	100		
63	21.1	0.0	43.2
88	16.4	0.0	33.6

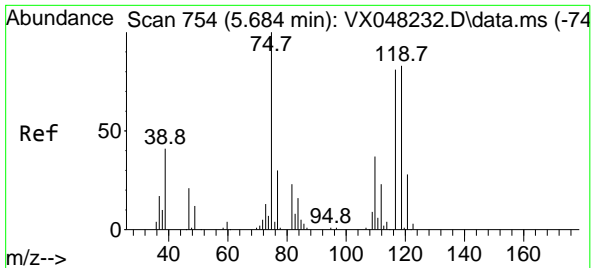


#35
 Dibromofluoromethane
 Concen: 57.856 ug/l
 RT: 5.379 min Scan# 704
 Delta R.T. 0.006 min
 Lab File: VX048437.D
 Acq: 31 Oct 2025 16:52

Tgt Ion:113 Resp: 61733

Ion	Ratio	Lower	Upper
113	100		
111	103.9	82.2	123.4
192	19.9	15.1	22.7

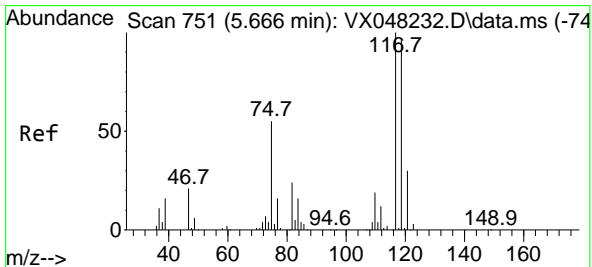
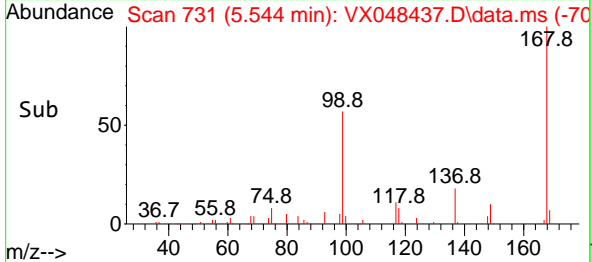
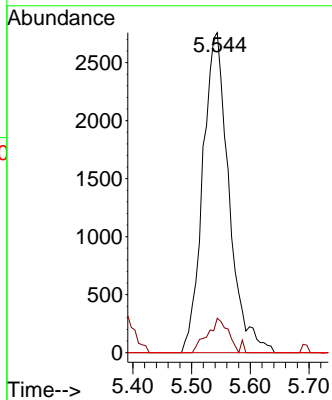
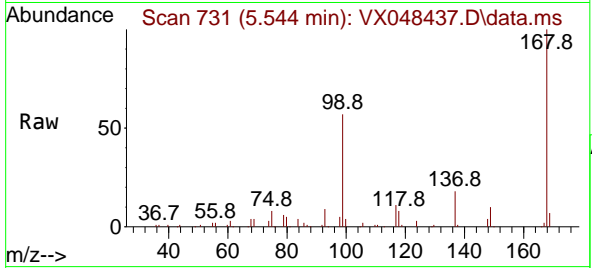




#36
 1,1-Dichloropropene
 Concen: 4.752 ug/l
 RT: 5.544 min Scan# 711
 Delta R.T. -0.140 min
 Lab File: VX048437.D
 Acq: 31 Oct 2025 16:52

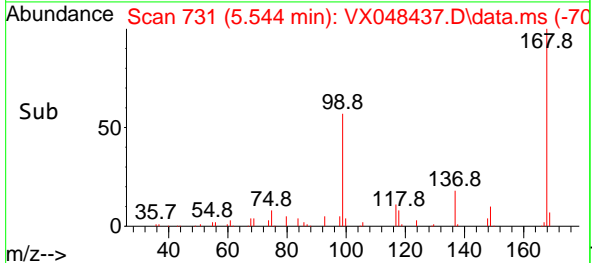
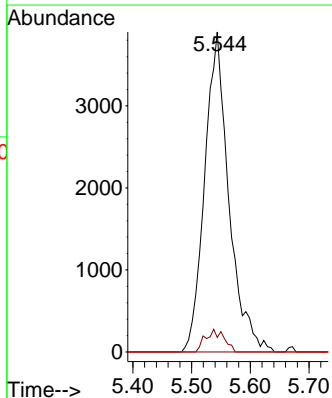
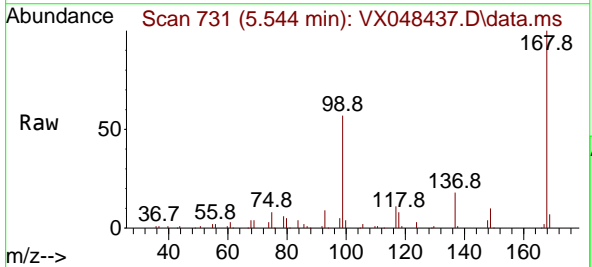
Instrument : MSVOA_X
 ClientSampleId : TB

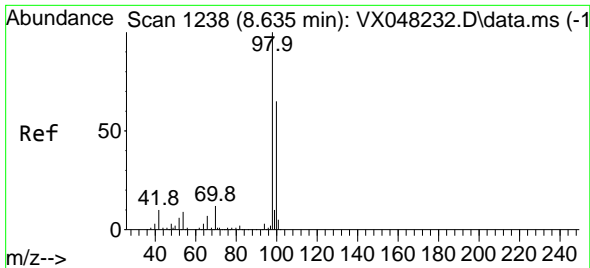
Tgt Ion	Resp	Lower	Upper
75	8514		
75	100		
110	8.4	17.7	53.1#
77	0.0	24.3	36.5#



#38
 Carbon Tetrachloride
 Concen: 5.397 ug/l
 RT: 5.544 min Scan# 731
 Delta R.T. -0.122 min
 Lab File: VX048437.D
 Acq: 31 Oct 2025 16:52

Tgt Ion	Resp	Lower	Upper
117	11166		
117	100		
119	4.6	77.2	115.8#
121	0.0	24.8	37.2#

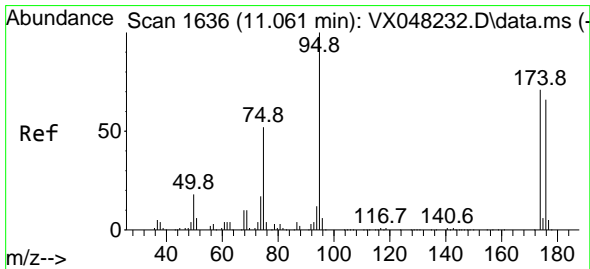
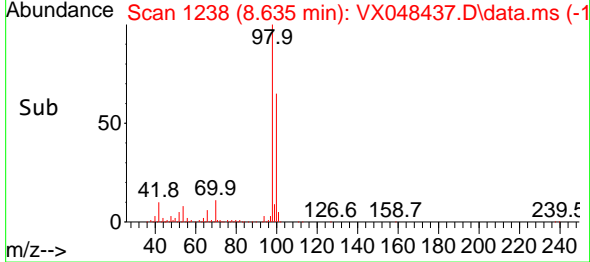
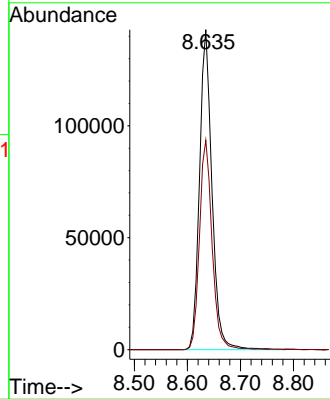
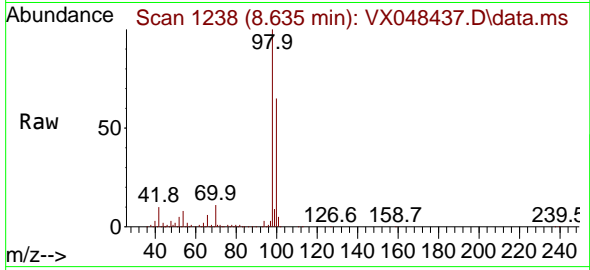




#50
 Toluene-d8
 Concen: 49.468 ug/l
 RT: 8.635 min Scan# 11
 Delta R.T. 0.000 min
 Lab File: VX048437.D
 Acq: 31 Oct 2025 16:52

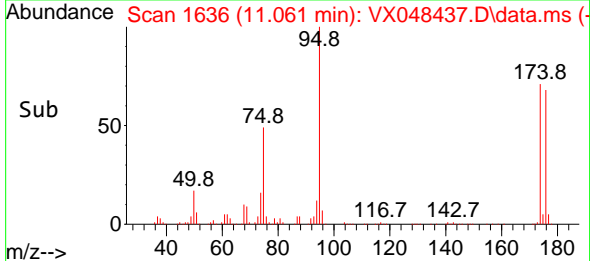
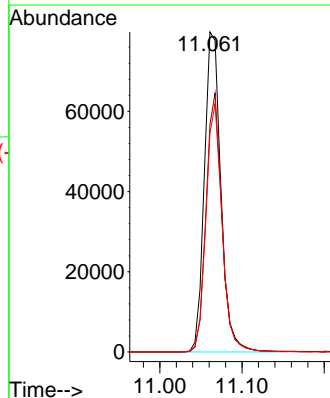
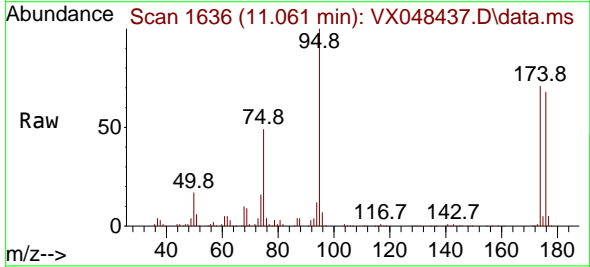
Instrument :
 MSVOA_X
 ClientSampleId :
 TB

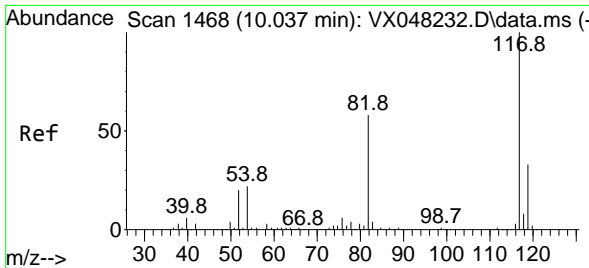
Tgt Ion: 98 Resp: 232995
 Ion Ratio Lower Upper
 98 100
 100 66.6 53.0 79.4



#62
 4-Bromofluorobenzene
 Concen: 63.370 ug/l
 RT: 11.061 min Scan# 1636
 Delta R.T. 0.000 min
 Lab File: VX048437.D
 Acq: 31 Oct 2025 16:52

Tgt Ion: 95 Resp: 111653
 Ion Ratio Lower Upper
 95 100
 174 78.0 0.0 147.8
 176 75.4 0.0 142.8



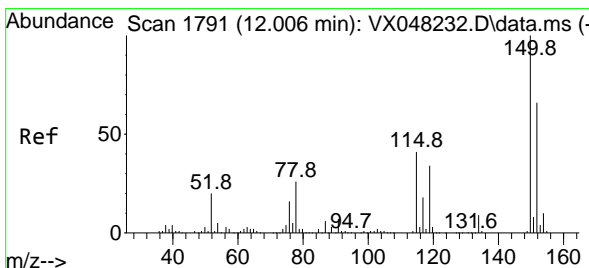
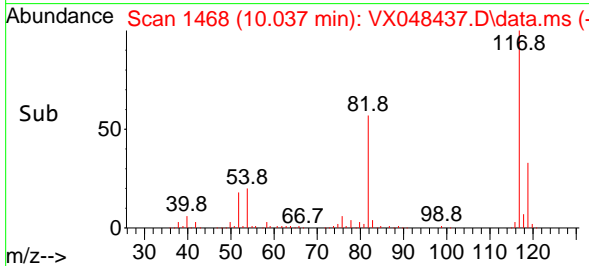
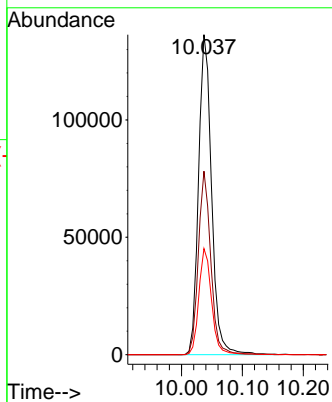
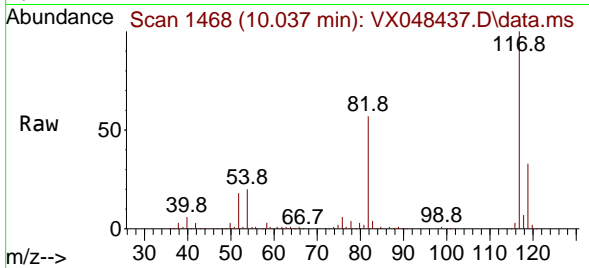


#63
 Chlorobenzene-d5
 Concen: 50.000 ug/l
 RT: 10.037 min Scan# 1468
 Delta R.T. 0.000 min
 Lab File: VX048437.D
 Acq: 31 Oct 2025 16:52

Instrument : MSVOA_X
 ClientSampleId : TB

Tgt Ion:117 Resp: 202287

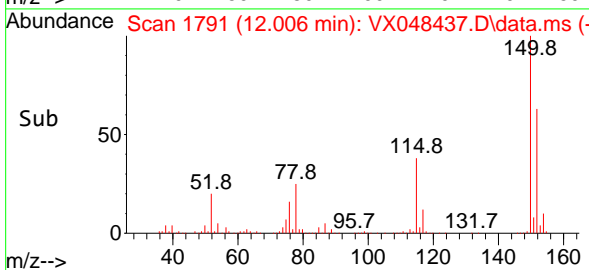
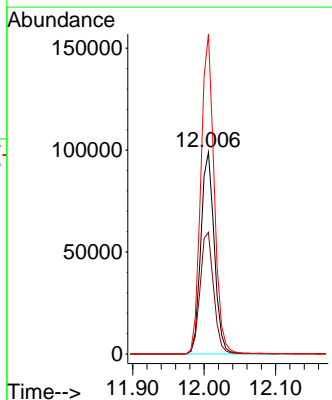
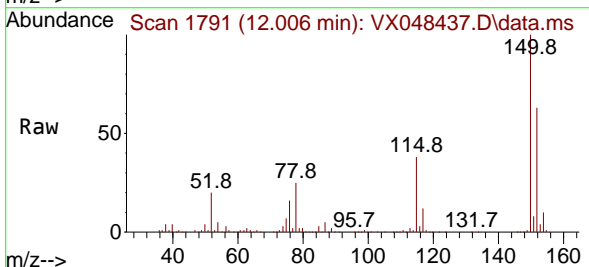
Ion	Ratio	Lower	Upper
117	100		
82	57.4	46.5	69.7
119	33.2	25.9	38.9

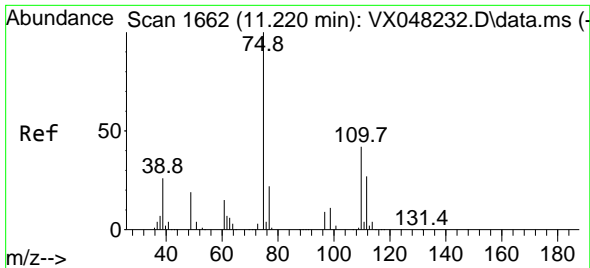


#72
 1,4-Dichlorobenzene-d4
 Concen: 50.000 ug/l
 RT: 12.006 min Scan# 1791
 Delta R.T. 0.000 min
 Lab File: VX048437.D
 Acq: 31 Oct 2025 16:52

Tgt Ion:152 Resp: 129643

Ion	Ratio	Lower	Upper
152	100		
115	60.8	43.1	129.4
150	156.2	0.0	353.0

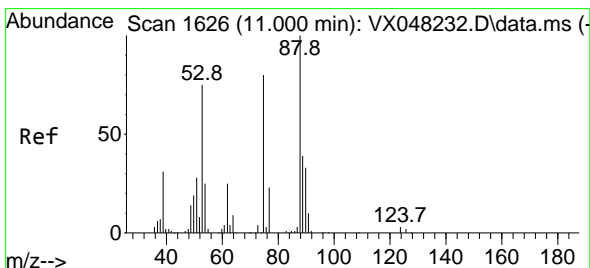
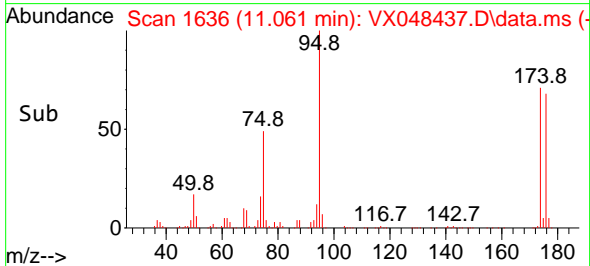
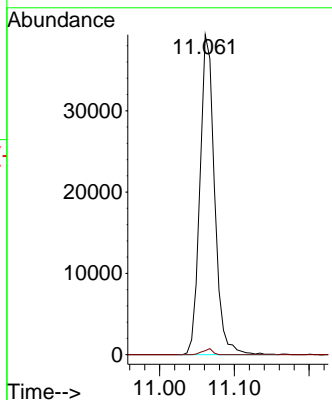
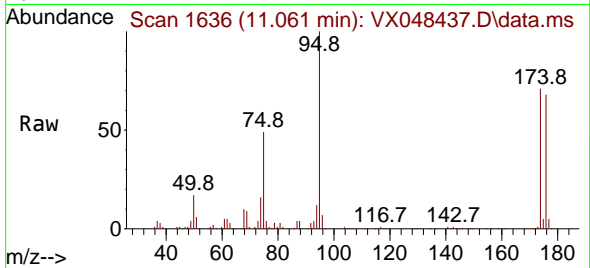




#76
 1,2,3-Trichloropropane
 Concen: 28.726 ug/l
 RT: 11.061 min Scan# 1636
 Delta R.T. -0.158 min
 Lab File: VX048437.D
 Acq: 31 Oct 2025 16:52

Instrument : MSVOA_X
 ClientSampleId : TB

Tgt Ion: 75 Resp: 53558
 Ion Ratio Lower Upper
 75 100
 77 1.3 22.4 67.2#



#81
 trans-1,4-Dichloro-2-butene
 Concen: 99.410 ug/l
 RT: 11.061 min Scan# 1636
 Delta R.T. 0.061 min
 Lab File: VX048437.D
 Acq: 31 Oct 2025 16:52

Tgt Ion: 75 Resp: 53558
 Ion Ratio Lower Upper
 75 100
 53 0.0 79.5 119.3#
 89 0.0 36.8 55.2#

